



Monthly Performance Measures Report Broward County



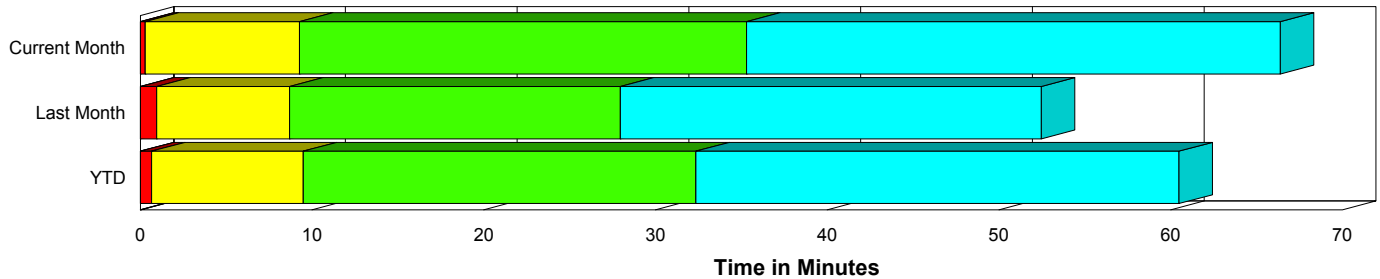
Created on:
December 01, 2009
8:40 am

Period From Nov 1, 2009 to Nov 30, 2009

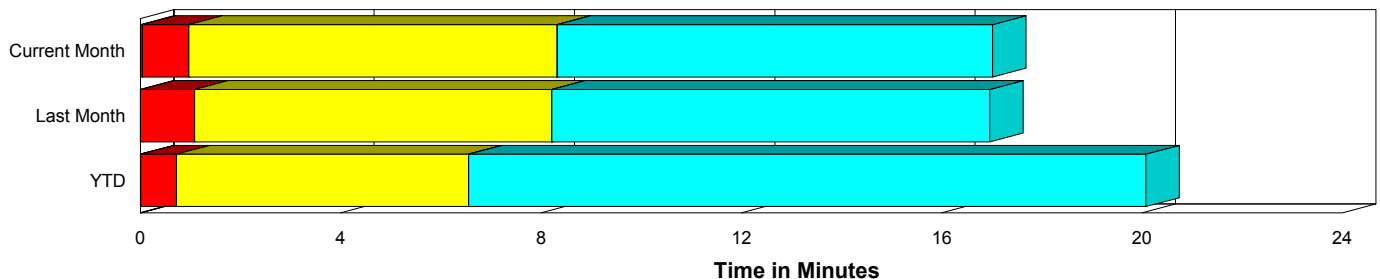
Performance Measures Summary

	Traffic Events (No Lanes Blocked)			Incidents (Lanes Blocked)		
	<u>This Month</u>	<u>Last Month</u>	<u>YTD</u>	<u>This Month</u>	<u>Last Month</u>	<u>YTD</u>
Number of Events	5,320	5,650	48,752	207	223	2,277
TMC Detection (min.)	0.04	0.00	0.01	0.00	0.01	0.00
TMC Verification (min.)	0.92	1.08	0.71	0.29	0.94	0.66
TMC Response (min.)	8.83	8.82	7.06	9.29	8.76	9.62
RR Dispatch Time (min.)	1.33	1.39	1.23	2.85	1.41	2.63
RR Response Time (min.)	7.54	7.60	5.96	7.08	7.38	7.20
Roadway Clearance (min.)				37.70	26.76	31.71
Event Clearance (min.)	17.56	17.56	20.59	68.68	51.27	59.49
# of Events w/ RR/SIRV	4,263	4,664	34,567	202	213	1,700
RR/SIRV Responses	4,263	4,664	34,567	202	213	1,700
RR/SIRV Activities	3,205	3,733	28,931	362	395	3,376

Incident Clearance Time-Line



Traffic Event (Non-Lane Blockage) Time-Line



■ Avg. TMC Detection Time	■ Avg. Time from TMC Response to Roadway Clearance*
■ Avg. Time from TMC Detection to TMC Verification	■ Avg. Time from Roadway Clearance to Incident/Event Clearance**
■ Avg. Time from TMC Verification to TMC Response	

* Roadway clearance equals all travel lanes open

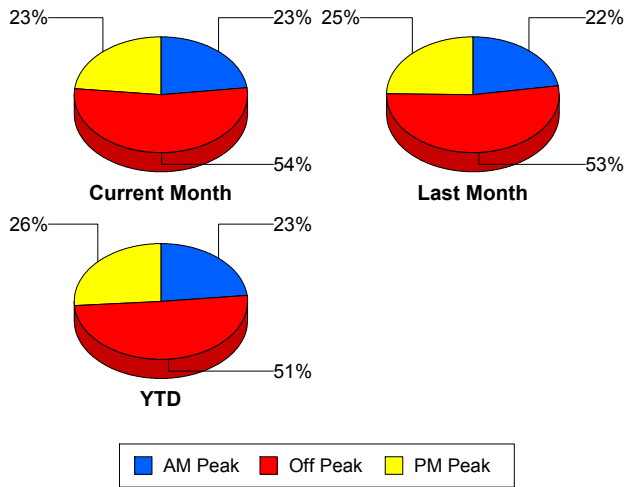
** Incident clearance equals time when last responder has left the scene

Performance Measures by Peak Period

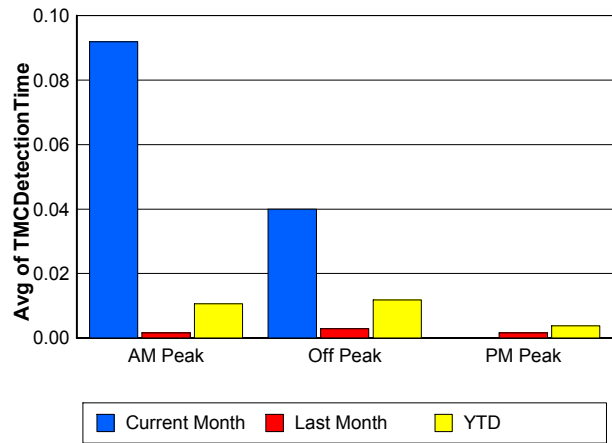
Note: AM peak period is defined as 6am to 10am and PM peak period is defined as 3pm to 7pm.

	AM Peak			Off Peak			PM Peak		
	<u>Current Month</u>	<u>Last Month</u>	<u>YTD</u>	<u>Current Month</u>	<u>Last Month</u>	<u>YTD</u>	<u>Current Month</u>	<u>Last Month</u>	<u>YTD</u>
Number of Events	1,280	1,320	11,839	2,957	3,103	25,926	1,290	1,450	13,264
Number of Incidents	46	59	533	96	100	1,106	65	64	638
TMC Detection (min.)	0.09	0.00	0.01	0.04	0.00	0.01	0.00	0.00	0.00
TMC Verification (min.)	0.53	0.70	0.55	0.92	1.12	0.69	1.21	1.33	0.89
TMC Response (min.)	7.98	8.73	6.60	9.51	9.29	8.04	8.35	7.98	6.54
RR Dispatch Time (min.)	0.79	0.96	0.95	1.67	1.59	1.70	1.40	1.37	0.99
RR Response Time (min.)	7.21	7.90	5.74	7.88	7.84	6.45	7.04	6.82	5.69
Event Clearance (min.)	17.62	17.44	20.59	19.81	19.50	24.28	20.56	18.70	20.06
Roadway Clearance (min.)	35.59	26.11	28.49	36.95	31.53	35.46	40.29	19.91	27.91
Incident Clearance (min.)	69.96	50.37	57.40	70.19	55.68	62.94	65.55	45.19	55.25
# of Events w/ RR/SIRV	1,060	1,116	9,712	2,328	2,517	16,069	1,077	1,244	10,486
RR/SIRV Responses	1,060	1,116	9,712	2,328	2,517	16,069	1,077	1,244	10,486
RR/SIRV Activities	854	931	8,934	1,816	2,100	13,845	897	1,097	9,528

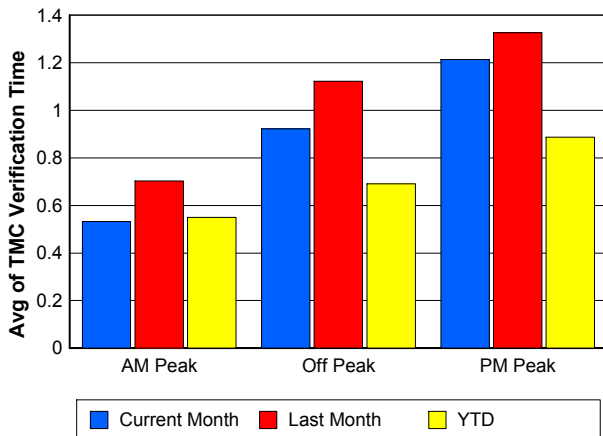
Number of Events / Peak Period



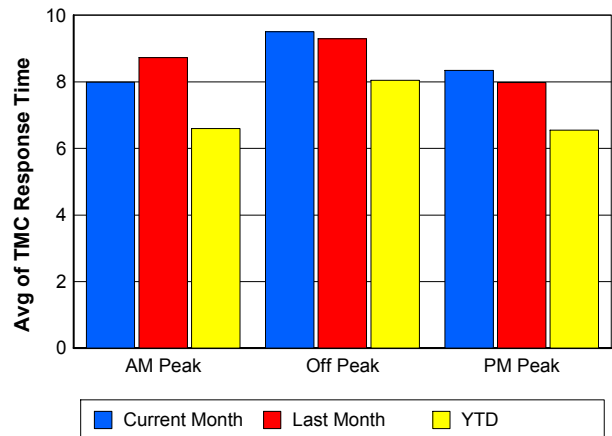
TMC Detection Time



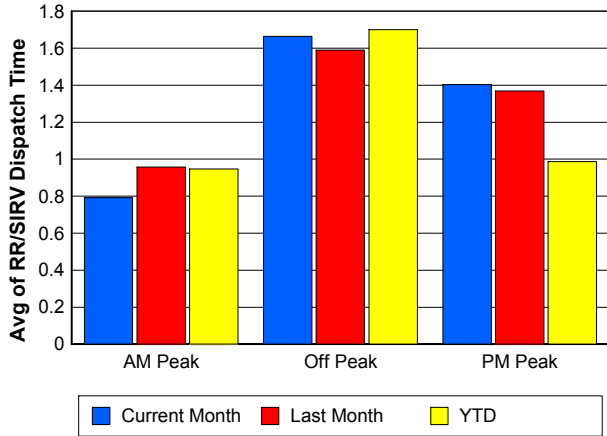
TMC Verification Time



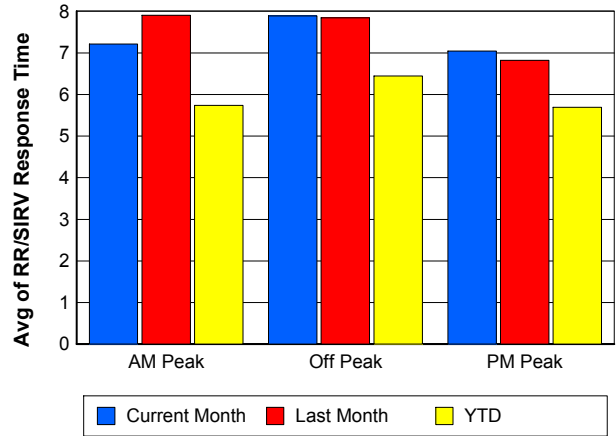
TMC Response Time



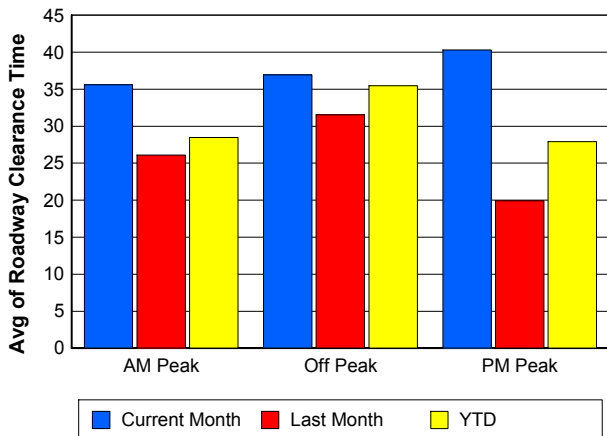
Road Ranger / SIRV Dispatch Time



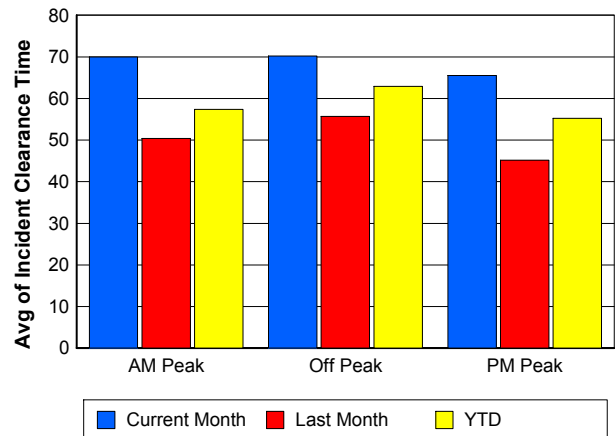
Road Ranger / SIRV Response Time



Roadway Clearance Time (2A)



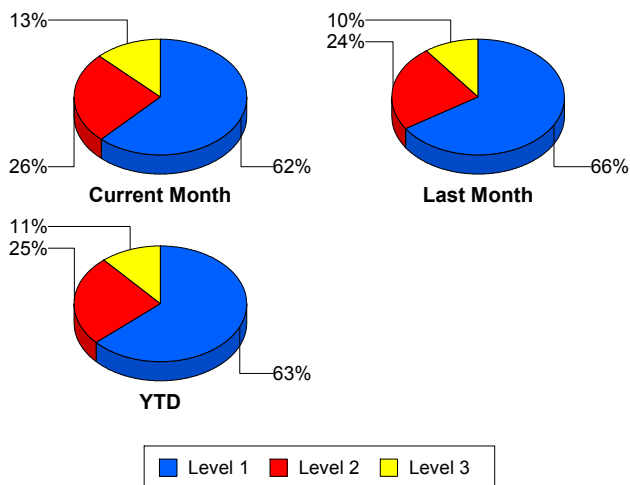
Incident Clearance Time (3B)



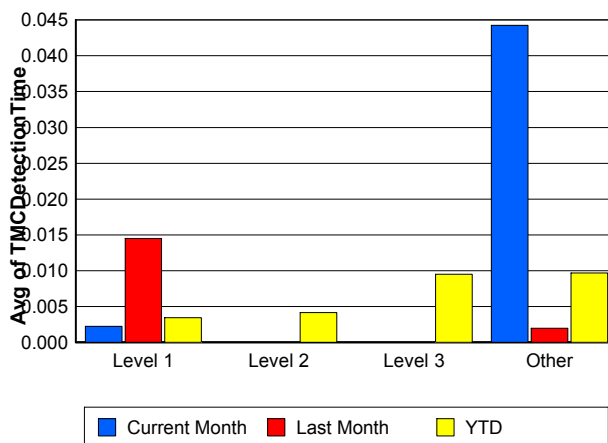
Performance Measures by Severity

	Level 1			Level 2			Level 3			Other		
	<u>This Month</u>	<u>Last Month</u>	<u>YTD</u>	<u>This Month</u>	<u>Last Month</u>	<u>YTD</u>	<u>This Month</u>	<u>Last Month</u>	<u>YTD</u>	<u>This Month</u>	<u>Last Month</u>	<u>YTD</u>
Number of Events	128	147	1,440	53	53	577	26	23	260	5,320	5,650	48,752
Number of Incidents	128	147	1,440	53	53	577	26	23	260	0	0	0
TMC Detection (min.)	0.00	0.01	0.00	0.00	0.00	0.00	0.00	0.00	0.01	0.04	0.00	0.01
TMC Verification (min.)	0.27	0.64	0.42	0.34	1.88	1.01	0.29	0.73	1.20	0.92	1.08	0.71
TMC Response (min.)	7.62	8.46	7.44	12.24	10.54	10.33	11.58	6.14	20.07	8.83	8.82	7.06
RR Dispatch Time (min.)	1.67	1.27	1.57	2.63	1.96	2.60	9.86	0.92	8.00	1.33	1.39	1.23
RR Resp. Time (min.)	5.98	7.26	5.94	9.62	8.55	7.96	7.04	5.22	12.57	7.54	7.60	5.96
Event Clearance (min.)	46.71	40.60	45.40	80.40	69.46	72.69	153.00	77.50	108.01	17.56	17.56	20.59
Roadway Clear. (min.)	14.17	14.47	14.34	46.13	49.01	48.96	136.32	54.04	89.68			
Incident Clearance (min.)	46.71	40.60	45.40	80.40	69.46	72.69	153.00	77.50	108.01			
# of Events w/ RR/SIRV	126	140	1,113	53	53	365	23	20	222	4,263	4,664	34,567
RR/SIRV Responses	126	140	1,113	53	53	365	23	20	222	4,263	4,664	34,567
RR/SIRV Activities	192	211	1,888	120	120	967	50	64	521	3,205	3,733	28,931

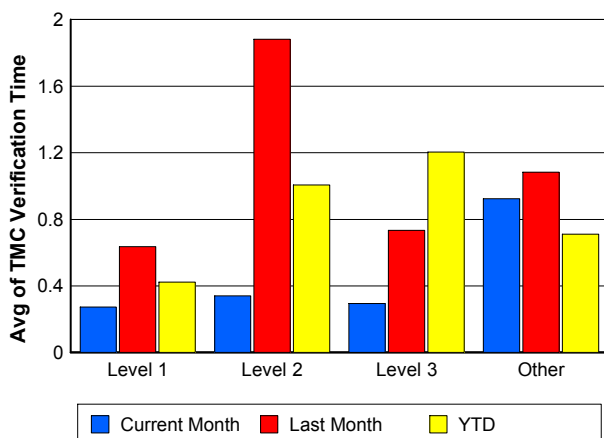
Number of Events / Severity



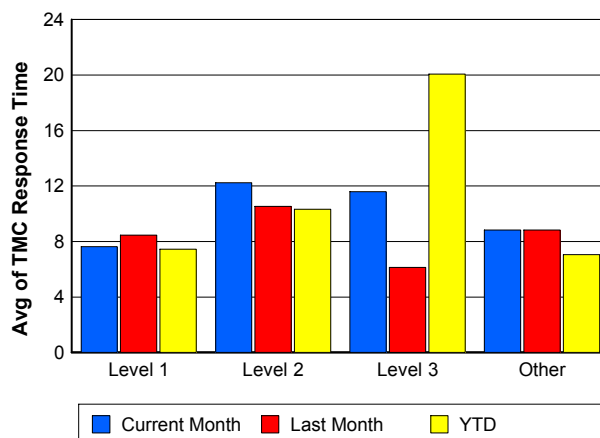
TMC Detection Time



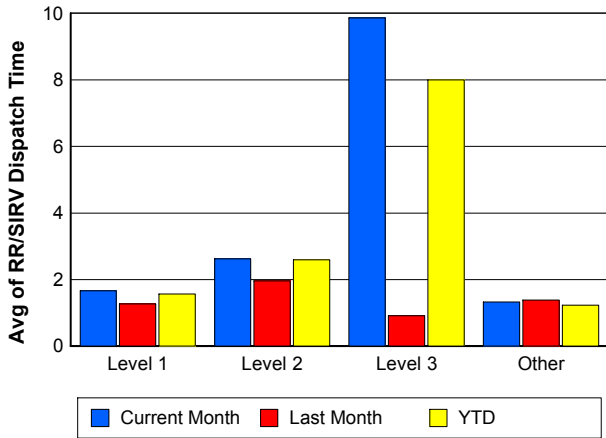
TMC Verification Time



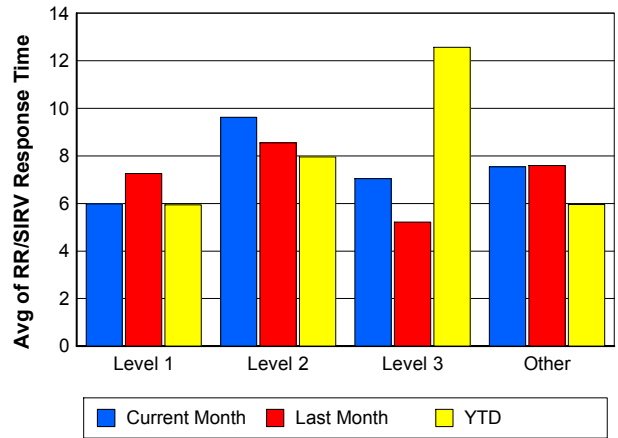
TMC Response Time



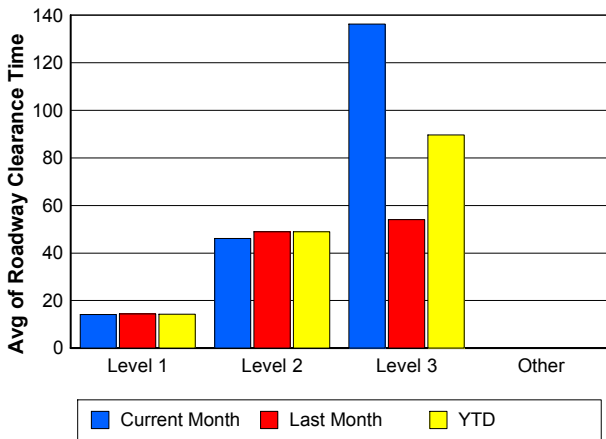
Road Ranger / SIRV Dispatch Time



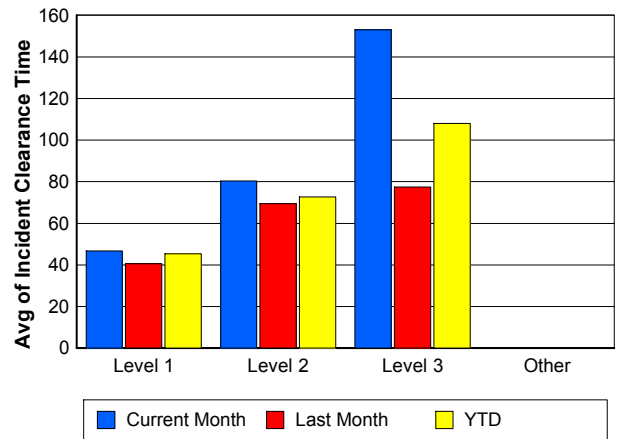
Road Ranger / SIRV Response Time



Roadway Clearance Time (2A)



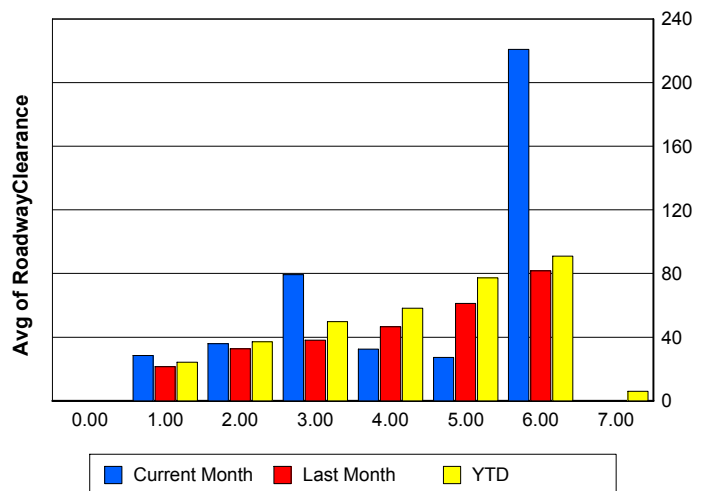
Incident Clearance Time (3B)



Roadway Clearance by Maximum Number of Lanes Blocked

	Current Month	Last Month	YTD
0			
1	28.54	21.47	24.17
2	35.95	32.75	37.18
3	79.34	38.16	49.69
4	32.42	46.51	58.24
5	27.17	61.18	77.20
6	220.89	81.75	91.00
7	0.00	0.00	5.97

Roadway Clearance Time (2A)



Performance Measures by Roadway

595

	<u>Current Month</u>	<u>Last Month</u>	<u>YTD</u>
Number of Events	160	192	4,763
Number of Incidents	7	17	288
TMC Detection (min.)	0.00	0.00	0.01
TMC Verification (min.)	0.71	2.51	0.86
TMC Response (min.)	12.91	15.36	7.09
RR Dispatch Time (min.)	1.53	1.54	1.18
RR Resp. Time (min.)	11.55	13.74	6.02
Event Clearance (min.)	17.18	20.25	21.27
Roadway Clear. (min.)	34.07	35.96	31.70
Incident Clearance (min.)	44.65	48.49	54.02
# of Events w/ RR/SIRV	116	134	3,329
RR/SIRV Responses	116	134	3,329
RR/SIRV Activities	84	106	3,009

75

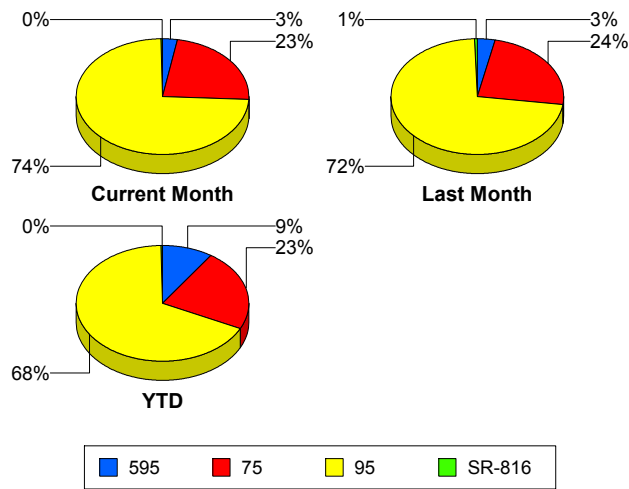
	<u>Current Month</u>	<u>Last Month</u>	<u>YTD</u>
Number of Events	1,262	1,400	11,699
Number of Incidents	15	23	209
TMC Detection (min.)	0.19	0.00	0.02
TMC Verification (min.)	1.81	1.65	1.01
TMC Response (min.)	10.47	10.10	8.53
RR Dispatch Time (min.)	1.21	1.84	1.31
RR Resp. Time (min.)	9.10	8.62	7.33
Event Clearance (min.)	20.15	19.24	24.06
Roadway Clear. (min.)	61.20	39.47	52.82
Incident Clearance (min.)	95.89	59.08	80.81
# of Events w/ RR/SIRV	994	1,140	8,108
RR/SIRV Responses	994	1,140	8,108
RR/SIRV Activities	802	940	6,917

95

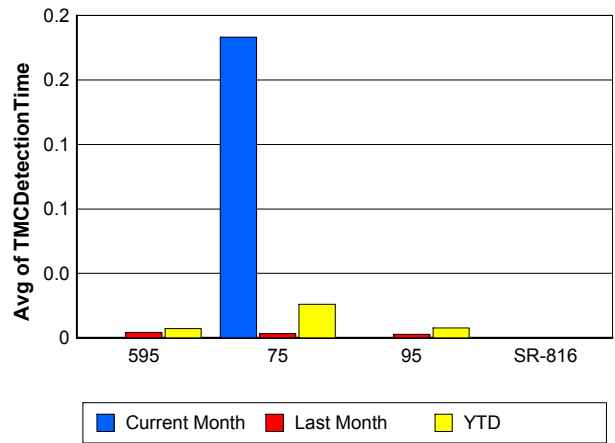
	<u>Current Month</u>	<u>Last Month</u>	<u>YTD</u>
Number of Events	4,094	4,247	34,489
Number of Incidents	175	165	1,728
TMC Detection (min.)	0.00	0.00	0.01
TMC Verification (min.)	0.63	0.83	0.59
TMC Response (min.)	8.29	8.30	6.82
RR Dispatch Time (min.)	1.45	1.25	1.31
RR Resp. Time (min.)	6.95	7.14	5.64
Event Clearance (min.)	19.36	18.67	21.90
Roadway Clear. (min.)	36.98	24.75	29.64
Incident Clearance (min.)	70.23	53.84	59.14
# of Events w/ RR/SIRV	3,344	3,570	24,755
RR/SIRV Responses	3,344	3,570	24,755
RR/SIRV Activities	2,670	3,047	22,296

	<u>Current Month</u>	<u>Last Month</u>	<u>YTD</u>
Number of Events	11	34	78
Number of Incidents	10	18	52
TMC Detection (min.)	0.00	0.00	0.00
TMC Verification (min.)	0.76	0.01	0.26
TMC Response (min.)	0.76	0.82	0.62
RR Dispatch Time (min.)	0.06	0.11	0.07
RR Resp. Time (min.)	0.69	0.74	0.57
Event Clearance (min.)	17.30	15.43	13.28
Roadway Clear. (min.)	17.47	20.27	15.75
Incident Clearance (min.)	17.65	20.31	15.67
# of Events w/ RR/SIRV	11	33	75
RR/SIRV Responses	11	33	75
RR/SIRV Activities	11	35	85

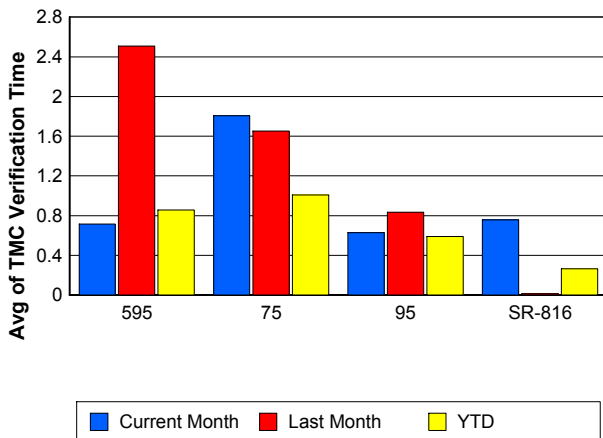
Number of Events / Roadway



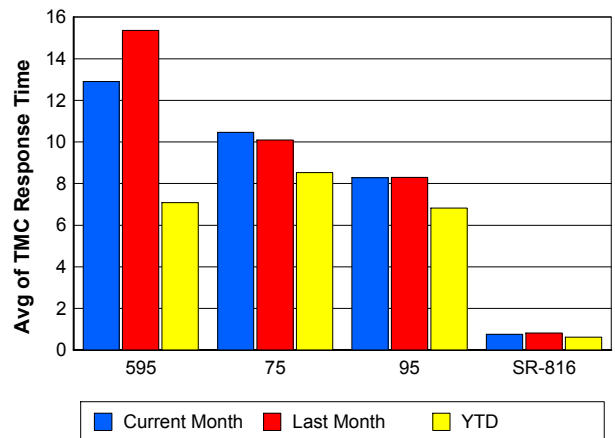
TMC Detection Time



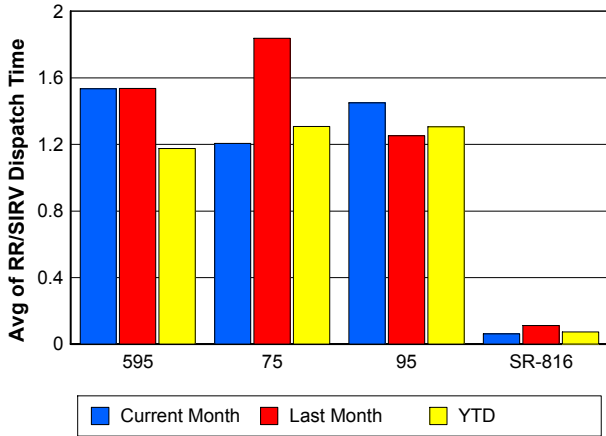
TMC Verification Time



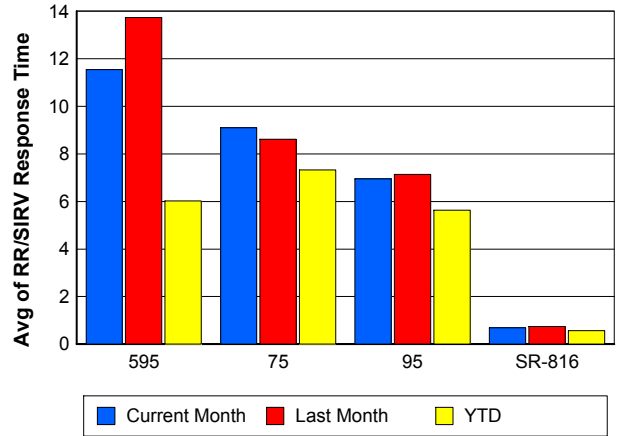
TMC Response Time



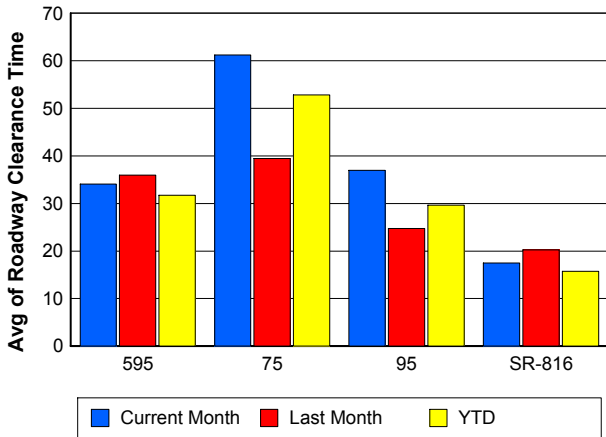
Road Ranger / SIRV Dispatch Time



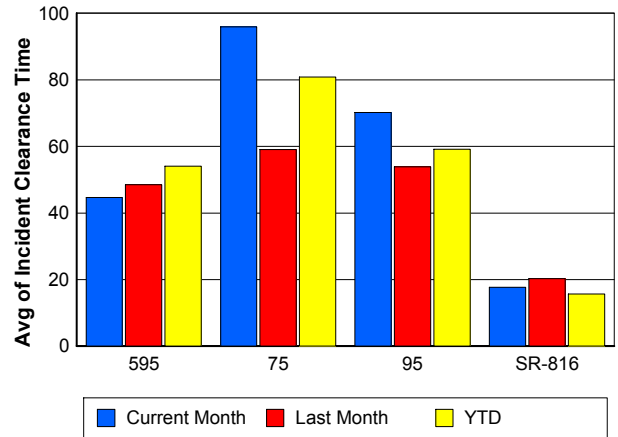
Road Ranger / SIRV Response Time



Roadway Clearance Time (2A)



Incident Clearance Time (3B)



Performance Measures by Event Type

Accident

	<u>Current Month</u>	<u>Last Month</u>	<u>YTD</u>
Number of Events	301	325	3,385
Number of Incidents	143	145	1,617
TMC Detection (min.)	0.00	0.00	0.01
TMC Verification (min.)	0.62	0.97	0.74
TMC Response (min.)	9.89	10.07	9.16
RR Dispatch Time (min.)	1.88	1.42	1.67
RR Response Time (min.)	8.00	8.63	7.55
Event Clearance (min.)	56.58	51.41	55.02
Roadway Clearance (min.)	34.31	31.57	32.97
Incident Clearance (min.)	74.82	64.16	66.96
# of Events w/ RR/SIRV	294	321	2,625
RR/SIRV Assists	294	321	2,625
RR/SIRV Activities	417	480	4,022

Debris on Roadway

	<u>Current Month</u>	<u>Last Month</u>	<u>YTD</u>
Number of Events	155	218	1,571
Number of Incidents	2	4	31
TMC Detection (min.)	0.00	0.00	0.07
TMC Verification (min.)	4.89	6.20	4.18
TMC Response (min.)	9.38	10.11	7.98
RR Dispatch Time (min.)	1.26	1.47	0.99
RR Response Time (min.)	8.16	8.70	7.01
Event Clearance (min.)	11.81	12.65	11.70
Roadway Clearance (min.)	36.86	24.72	25.60
Incident Clearance (min.)	39.73	30.91	31.53
# of Events w/ RR/SIRV	144	206	1,458
RR/SIRV Assists	144	206	1,458
RR/SIRV Activities	143	198	1,476

Disabled Vehicle

	<u>Current Month</u>	<u>Last Month</u>	<u>YTD</u>
Number of Events	2,950	3,394	29,759
Number of Incidents	35	51	381
TMC Detection (min.)	0.06	0.00	0.01
TMC Verification (min.)	1.28	1.30	0.86
TMC Response (min.)	8.61	8.64	6.84
RR Dispatch Time (min.)	1.27	1.35	1.13
RR Response Time (min.)	7.37	7.44	5.77
Event Clearance (min.)	22.09	21.15	25.00
Roadway Clearance (min.)	14.38	15.61	18.14
Incident Clearance (min.)	23.68	25.51	31.79
# of Events w/ RR/SIRV	2,878	3,310	24,802
RR/SIRV Assists	2,878	3,310	24,802
RR/SIRV Activities	2,817	3,250	25,090

Emergency Vehicles

	<u>Current Month</u>	<u>Last Month</u>	<u>YTD</u>
Number of Events	14	9	86
Number of Incidents	12	8	68
TMC Detection (min.)	0.00	0.00	0.00
TMC Verification (min.)	0.00	0.00	0.45
TMC Response (min.)	18.37	8.88	13.77
RR Dispatch Time (min.)	21.47	0.75	10.82
RR Response Time (min.)	5.57	8.12	4.43
Event Clearance (min.)	98.85	20.31	56.90
Roadway Clearance (min.)	110.15	12.73	58.79
Incident Clearance (min.)	113.09	19.03	64.78
# of Events w/ RR/SIRV	10	4	50
RR/SIRV Assists	10	4	50
RR/SIRV Activities	11	9	80

Other

	<u>Current Month</u>	<u>Last Month</u>	<u>YTD</u>
Number of Events	2,062	1,895	15,756
Number of Incidents	0	4	31
TMC Detection (min.)	0.03	0.00	0.01
TMC Verification (min.)	0.10	0.14	0.08
TMC Response (min.)	10.07	8.34	8.47
RR Dispatch Time (min.)	1.41	1.49	1.68
RR Response Time (min.)	8.29	7.25	6.49
Event Clearance (min.)	9.83	9.84	10.81
Roadway Clearance (min.)		54.47	33.55
Incident Clearance (min.)		56.92	38.56
# of Events w/ RR/SIRV	1,101	1,011	7,050
RR/SIRV Assists	1,101	1,011	7,050
RR/SIRV Activities	133	165	1,276

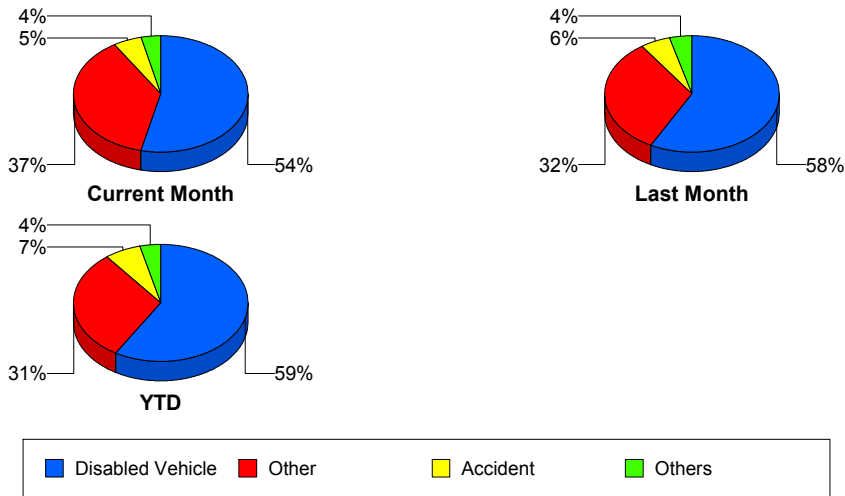
Police Activity

	<u>Current Month</u>	<u>Last Month</u>	<u>YTD</u>
Number of Events	20	14	197
Number of Incidents	10	8	68
TMC Detection (min.)	0.00	0.00	0.00
TMC Verification (min.)	0.86	0.10	0.36
TMC Response (min.)	14.95	8.12	13.40
RR Dispatch Time (min.)	2.62	2.68	3.80
RR Response Time (min.)	13.04	5.97	9.73
Event Clearance (min.)	55.22	16.25	34.38
Roadway Clearance (min.)	78.86	15.97	43.02
Incident Clearance (min.)	81.75	21.21	50.79
# of Events w/ RR/SIRV	15	8	76
RR/SIRV Assists	15	8	76
RR/SIRV Activities	14	11	88

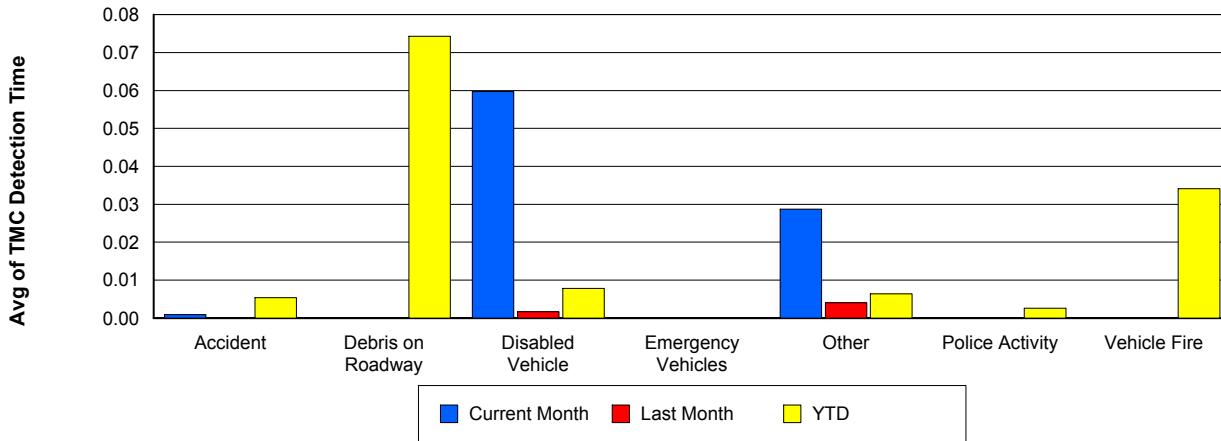
Vehicle Fire

	<u>Current Month</u>	<u>Last Month</u>	<u>YTD</u>
Number of Events	7	7	105
Number of Incidents	5	3	81
TMC Detection (min.)	0.00	0.00	0.03
TMC Verification (min.)	3.24	0.85	1.24
TMC Response (min.)	7.80	10.04	9.76
RR Dispatch Time (min.)	1.55	0.94	2.07
RR Response Time (min.)	6.25	9.10	8.05
Event Clearance (min.)	71.04	36.15	57.76
Roadway Clearance (min.)	41.75	16.01	39.81
Incident Clearance (min.)	87.08	51.91	62.48
# of Events w/ RR/SIRV	7	7	75
RR/SIRV Assists	7	7	75
RR/SIRV Activities	16	7	156

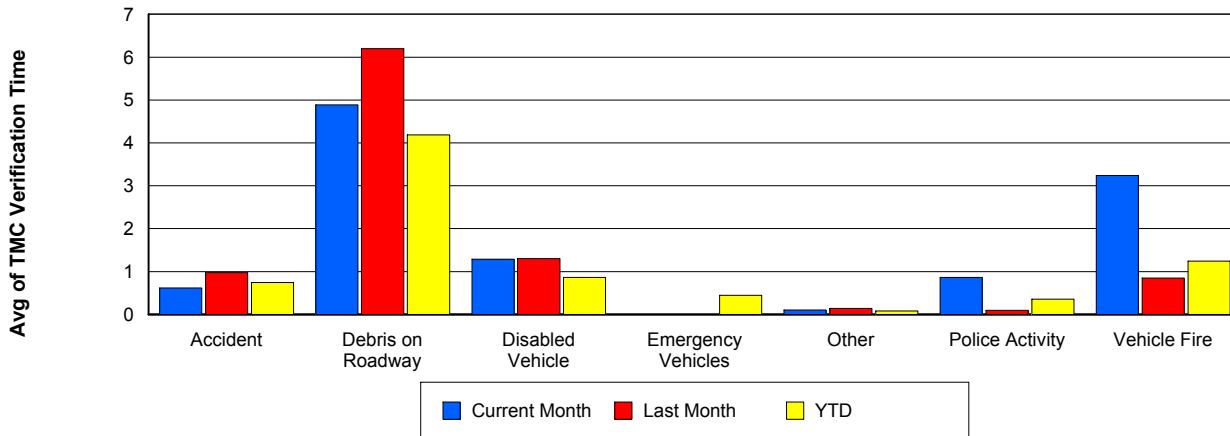
Number of Events / Event Type



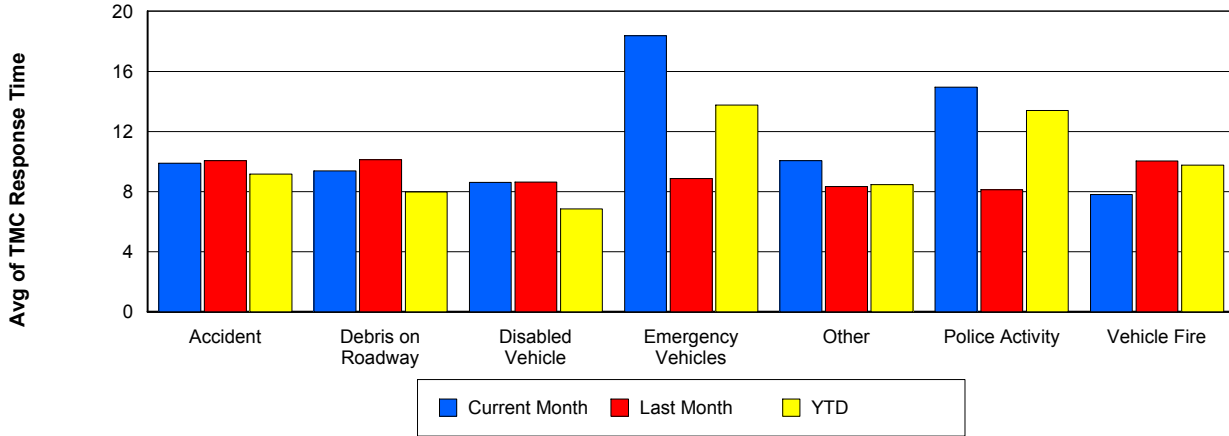
TMC Detection Time



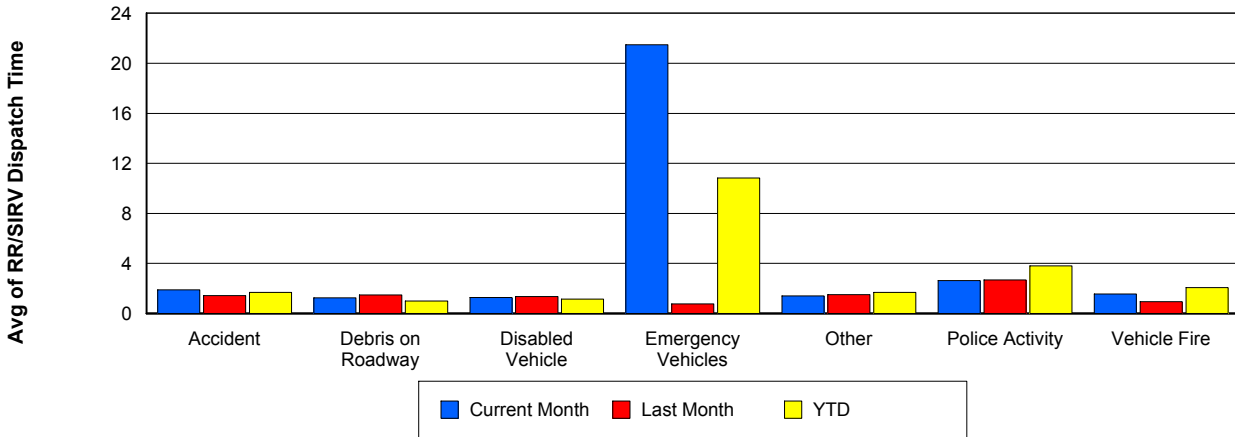
TMC Verification Time



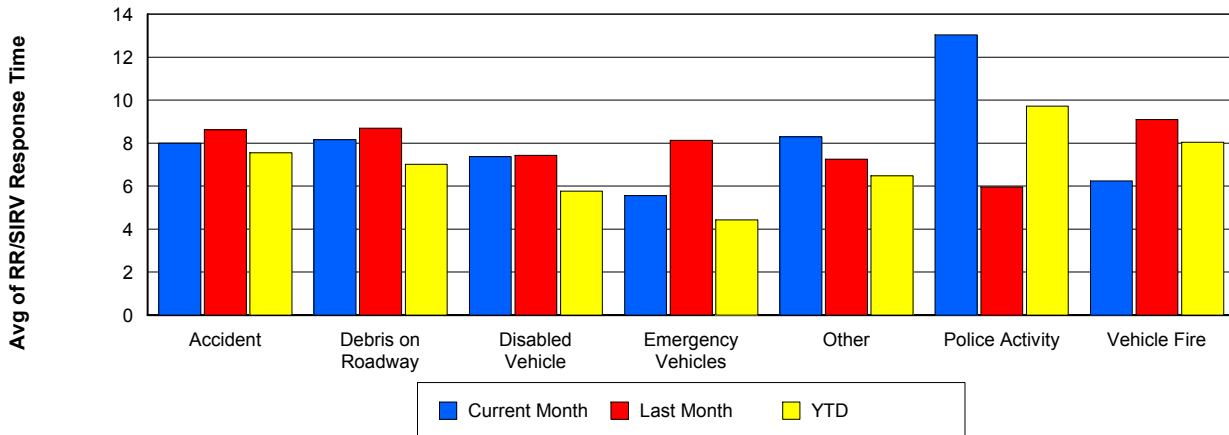
TMC Response Time



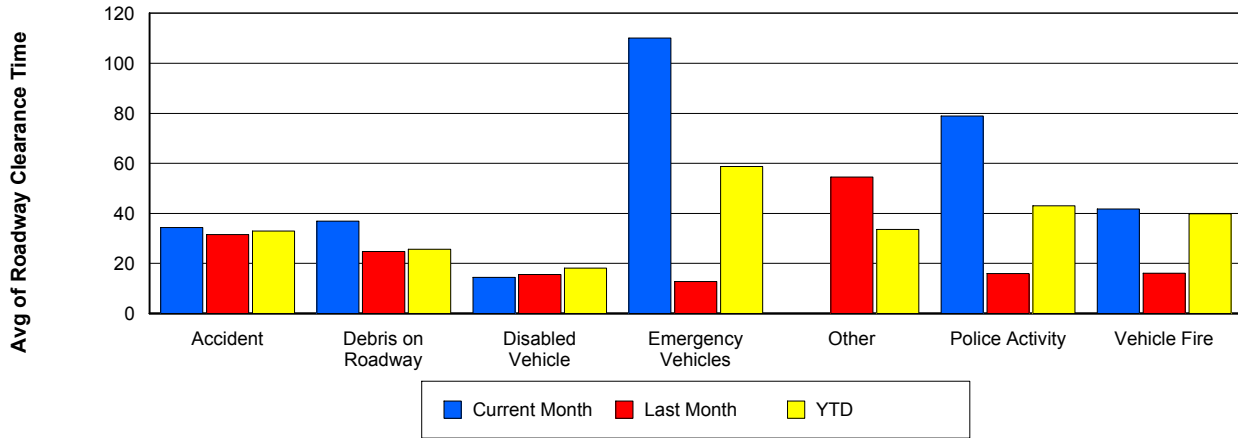
Road Ranger / SIRV Dispatch Time



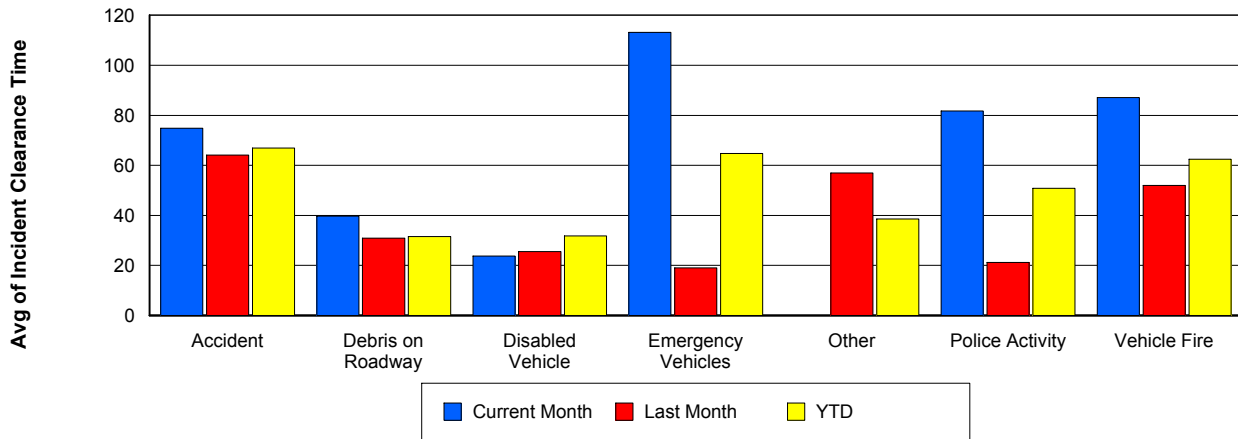
Road Ranger / SIRV Response Time



Roadway Clearance Time (2A)



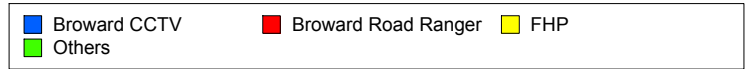
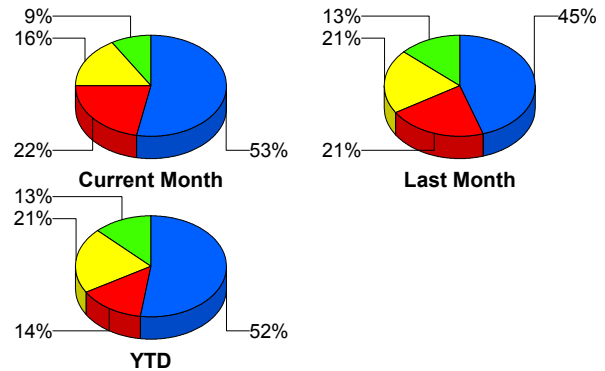
Incident Clearance Time (3B)



Incident Detection Methods

	Current Month	Last Month	YTD
Broward CCTV	110	98	1,183
Broward Road Ranger	45	46	325
Broward TMC	0	2	4
Broward VideoWall	5	3	65
BSO	2	8	49
District 4	1	4	51
District 6	0	2	3
FDOT Maintenance	1	2	7
FHP	34	45	475
Fire	0	1	4
Florida's Turnpike	0	0	6
ITMS	1	0	3
Local Police	1	0	1
Motorist	2	3	13
Other	0	0	1
Palm Beach Road Ran	4	1	9
Road Watcher	1	1	15
SIRV	0	0	12
SmarTraveler (511)	0	0	6
VisioPaD Detection	0	2	37
Total	207	218	2,269

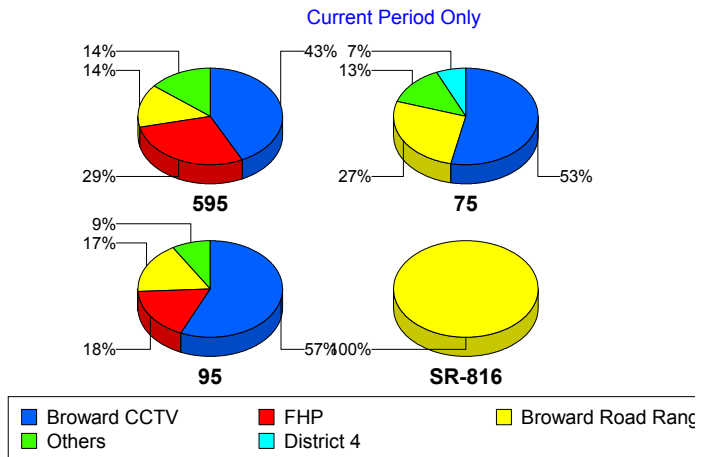
Total Incidents by Detection Method



Incident Detection Methods by Roadway

		Current Month	Last Month	YTD
595	Broward CCTV	3	4	136
	Broward Road Ranger	1	1	39
	Broward VideoWall	0	0	8
	BSO	0	3	7
	District 4	0	0	12
	FDOT Maintenance	0	0	2
	FHP	2	3	57
	Florida's Turnpike	0	0	6
	Motorist	0	1	3
	Road Watcher	1	0	4
	SIRV	0	0	1
	VisioPaD Detection	0	0	6
	Total	7	12	281
	75	Broward CCTV	8	10
Broward Road Ranger		4	3	25
Broward VideoWall		0	0	1
BSO		0	5	35
District 4		1	1	7
FHP		1	3	45
Local Police		1	0	1
Other		0	0	1
Road Watcher		0	1	3
VisioPaD Detection		0	0	5
Total		15	23	209
95	Broward CCTV	99	84	961
	Broward Road Ranger	30	24	210
	Broward TMC	0	2	4
	Broward VideoWall	5	3	56
	BSO	2	0	7
	District 4	0	3	31
	District 6	0	2	3

Total Events by Roadway and Detection Method

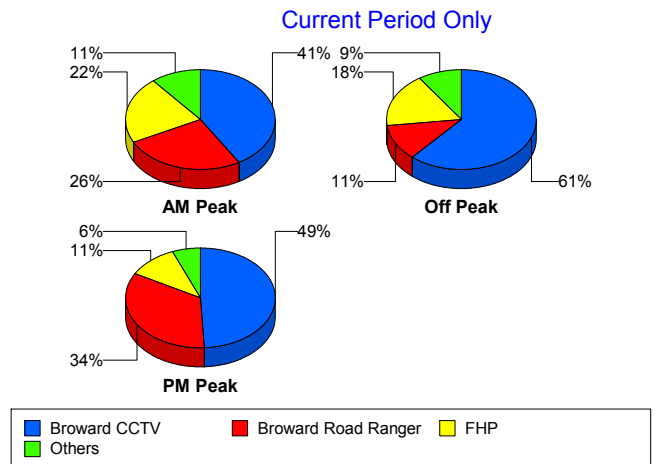


		Current Month	Last Month	YTD
95	FDOT Maintenance	1	2	5
	FHP	31	39	373
	Fire	0	1	4
	ITMS	1	0	3
	Motorist	2	2	10
	Palm Beach Road Ran	4	1	9
	Road Watcher	0	0	8
	SIRV	0	0	11
	SmarTraveler (511)	0	0	6
	VisioPaD Detection	0	2	26
	Total	175	165	1,727
SR-816	Broward Road Ranger	10	18	51
	District 4	0	0	1
	Total	10	18	52
Total		207	218	2,269

Incident Detection Methods by Peak Period

		Current Month	Last Month	YTD
AM Peak	Broward CCTV	19	24	233
	Broward Road Ranger	12	18	106
	Broward TMC	0	0	1
	Broward VideoWall	2	0	22
	BSO	2	1	9
	District 4	1	1	19
	FDOT Maintenance	0	1	1
	FHP	10	11	120
	Florida's Turnpike	0	0	2
	Motorist	0	1	6
	Palm Beach Road Ran	0	0	2
	Road Watcher	0	1	5
	SIRV	0	0	1
	SmarTraveler (511)	0	0	1

Total Events by Peak Period and Detection Method



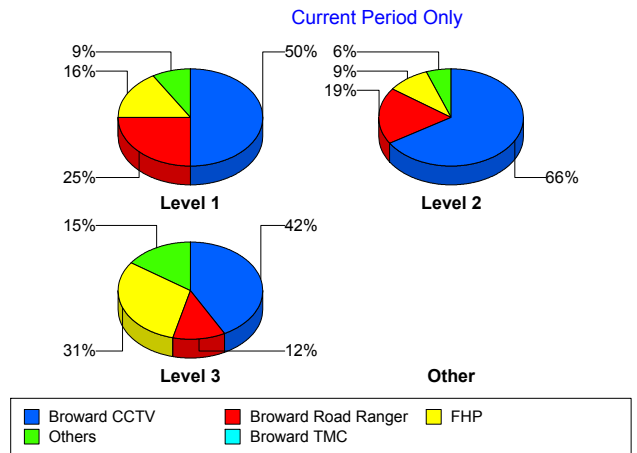
		Current Month	Last Month	YTD
AM Peak	VisioPaD Detection	0	0	2
	Total	46	58	530
Off Peak	Broward CCTV	59	46	635
	Broward Road Ranger	11	12	89
	Broward TMC	0	2	3
	Broward VideoWall	3	3	36
	BSO	0	4	31
	District 4	0	2	16
	District 6	0	2	2
	FDOT Maintenance	1	1	4
	FHP	17	21	226
	Fire	0	1	3
	Florida's Turnpike	0	0	3
	ITMS	1	0	3
	Local Police	1	0	1
	Motorist	0	1	4
	Palm Beach Road Ran	3	0	4
	Road Watcher	0	0	6
	SIRV	0	0	5
	SmarTraveler (511)	0	0	3
	VisioPaD Detection	0	2	29
	Total	96	97	1,103
PM Peak	Broward CCTV	32	28	315
	Broward Road Ranger	22	16	130
	Broward VideoWall	0	0	7
	BSO	0	3	9
	District 4	0	1	16
	District 6	0	0	1
	FDOT Maintenance	0	0	2
	FHP	7	13	129
	Fire	0	0	1
	Florida's Turnpike	0	0	1

		Current Month	Last Month	YTD
PM Peak	Motorist	2	1	3
	Other	0	0	1
	Palm Beach Road Ran	1	1	3
	Road Watcher	1	0	4
	SIRV	0	0	6
	SmarTraveler (511)	0	0	2
	VisioPaD Detection	0	0	6
	Total	65	63	636
Total	207	218	2,269	

Incident Detection Methods by Severity

		Current Month	Last Month	YTD
Level 1	Broward CCTV	64	66	751
	Broward Road Ranger	32	35	238
	Broward TMC	0	2	3
	Broward VideoWall	5	2	44
	BSO	0	0	10
	District 4	1	2	38
	District 6	0	2	2
	FDOT Maintenance	0	2	5
	FHP	21	27	277
	Fire	0	1	3
	ITMS	1	0	2
	Local Police	1	0	1
	Motorist	1	2	9
	Palm Beach Road Ran	2	1	6
	Road Watcher	0	0	9
	SIRV	0	0	11
	SmarTraveler (511)	0	0	4
	VisioPaD Detection	0	1	21
	Total	128	143	1,434
	Level 2	Broward CCTV	35	26

Total Events by Severity and Detection Method



		Current Month	Last Month	YTD
Level 2	Broward Road Ranger	10	5	61
	Broward TMC	0	0	1
	Broward VideoWall	0	1	18
	BSO	0	1	11
	District 4	0	2	7
	FDOT Maintenance	0	0	1
	FHP	5	16	135
	Florida's Turnpike	0	0	4
	ITMS	0	0	1
	Motorist	1	1	4
	Other	0	0	1
	Palm Beach Road Ran	1	0	1
	Road Watcher	1	0	3
	SIRV	0	0	1
	SmarTraveler (511)	0	0	2
	VisioPaD Detection	0	1	13
	Total	53	53	577
Level 3	Broward CCTV	11	6	119
	Broward Road Ranger	3	6	26
	Broward VideoWall	0	0	3
	BSO	2	7	28
	District 4	0	0	6
	District 6	0	0	1
	FDOT Maintenance	1	0	1
	FHP	8	2	63
	Fire	0	0	1
	Florida's Turnpike	0	0	2
	Palm Beach Road Ran	1	0	2
	Road Watcher	0	1	3
	VisioPaD Detection	0	0	3
	Total	26	22	258
Total	207	218	2,269	

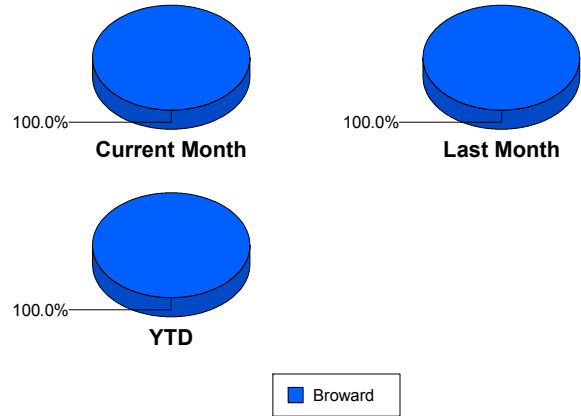
Road Ranger / SIRV Performance Measures

Road Ranger / SIRV Performance By County

Values presented are:
 - Total Events with a RR/SIRV Response
 - Total RR/SIRV Responses,
 - Total Activities Performed

	Current Mo	Last Month	YTD
Broward	3,904	4,444	34,754
	4,144	4,756	37,300
	4,318	4,944	38,835

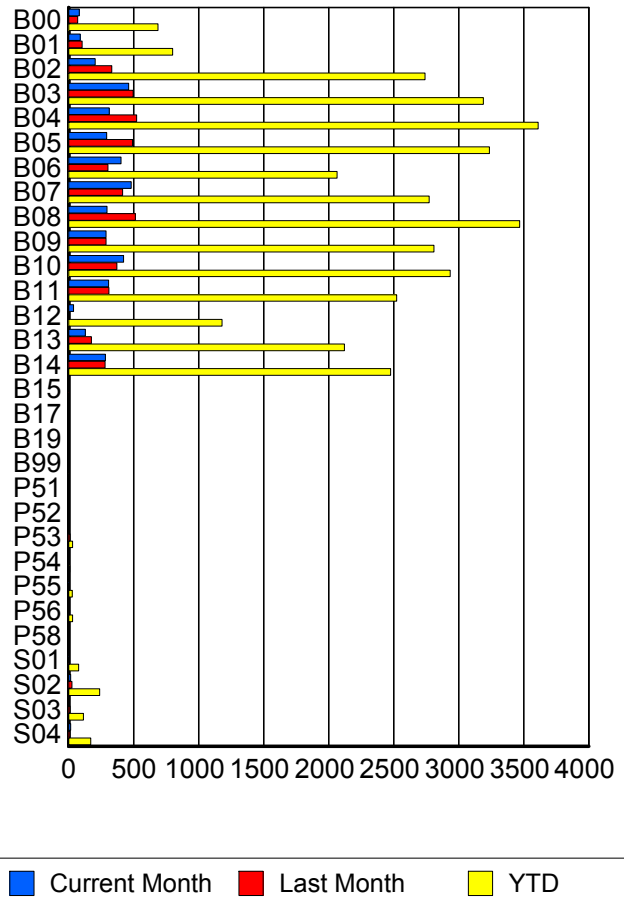
RR/SIRV Responses per County



Road Ranger / SIRV Performance By Truck

	Current Mo	Last Month	YTD
B00	82	68	674
	82	69	688
	87	75	722
B01	90	105	787
	90	105	799
	93	105	837
B02	204	326	2,714
	205	333	2,742
	208	342	2,846
B03	455	492	3,146
	461	497	3,191
	483	516	3,318
B04	312	517	3,574
	313	524	3,612
	326	542	3,763
B05	291	486	3,182
	292	492	3,236
	305	509	3,350
B06	398	300	2,036
	402	302	2,065
	418	315	2,135
B07	476	409	2,735
	482	416	2,774
	504	435	2,898
B08	295	507	3,427
	295	514	3,468
	307	532	3,596

RR/SIRV Responses per Truck



	Current Mo	Last Month	YTD
B09	286	284	2,768
	288	287	2,809
	299	299	2,917
B10	414	365	2,884
	422	372	2,936
	441	388	3,054
B11	304	307	2,485
	307	311	2,523
	317	318	2,602
B12	37	3	1,164
	38	3	1,180
	42	3	1,233
B13	127	174	2,094
	129	175	2,120
	134	181	2,196
B14	277	273	2,432
	283	281	2,476
	293	293	2,568
B15	0	4	6
	0	4	6
	0	4	6
B17	0	1	1
	0	1	1
	0	1	1
B19	0	1	1
	0	1	1
	0	1	1
B99	0	0	4
	0	0	4
	0	0	4
P51	0	0	1
	0	0	1
	0	0	1
P52	0	2	4
	0	2	4
	0	2	4
P53	2	10	30
	2	10	31
	3	14	38
P54	1	1	9
	1	1	9
	1	1	9
P55	3	6	27
	3	6	27
	3	6	31

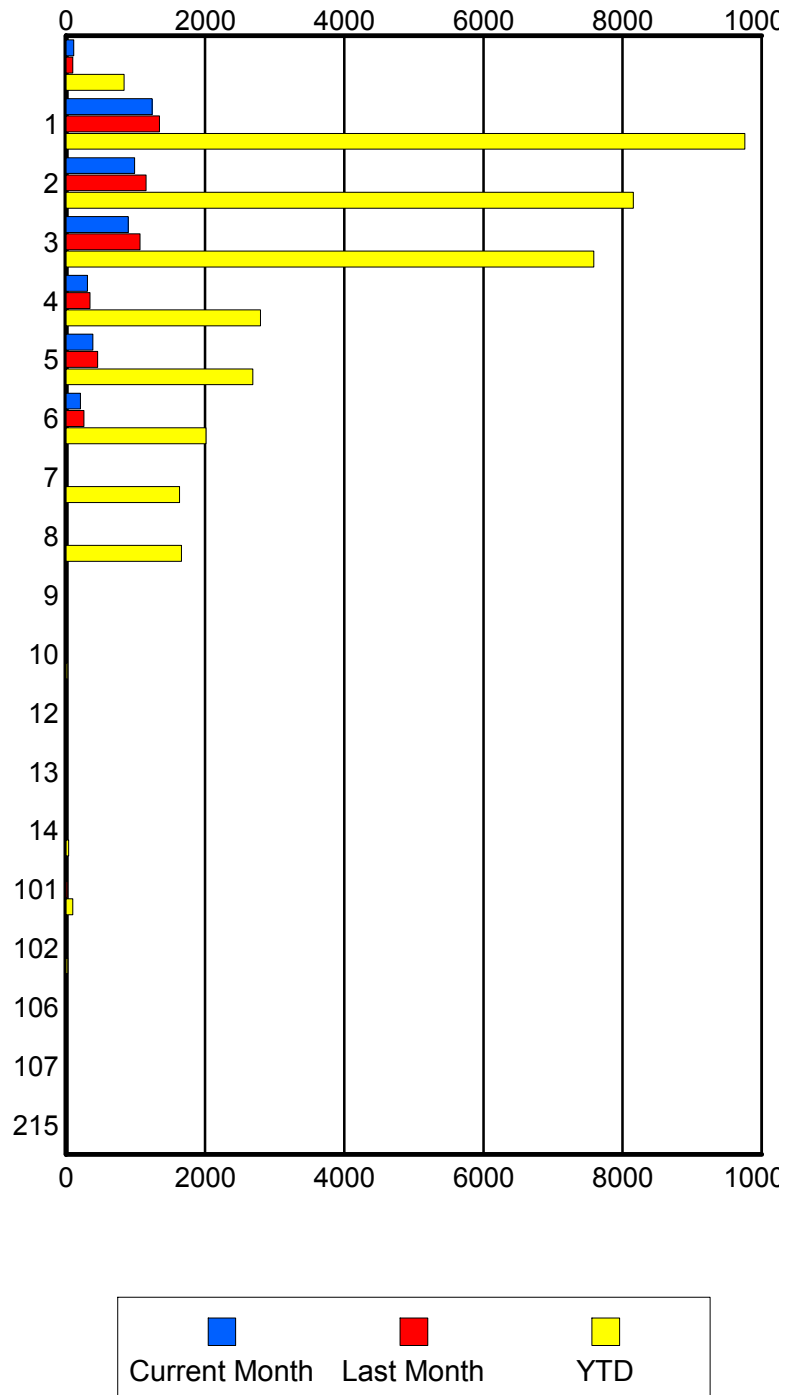
	Current Mo	Last Month	YTD
P56	7	2	30
	7	2	30
	7	2	31
P58	0	0	1
	0	0	1
	0	0	1
S01	4	3	74
	4	3	77
	4	4	89
S02	16	25	231
	16	25	238
	18	32	266
S03	7	10	113
	7	10	115
	8	12	131
S04	15	10	166
	15	10	171
	17	12	187

Road Ranger / SIRV Performance By Beat

	Current Mo	Last Month	YTD
	108	96	785
	111	97	834
	116	111	910
1	1,184	1,286	9,230
	1,238	1,341	9,758
	1,289	1,383	10,095
2	959	1,102	7,880
	984	1,151	8,155
	1,021	1,202	8,503
3	875	1,029	7,377
	892	1,063	7,588
	931	1,100	7,880
4	306	335	2,736
	310	342	2,793
	325	351	2,888
5	376	450	2,639
	384	456	2,684
	400	471	2,781
6	202	253	1,968
	207	259	2,010
	217	272	2,110
7	0	6	1,606
	0	6	1,631
	0	6	1,704
8	3	5	1,641
	3	5	1,661
	3	8	1,727
9	0	0	12
	0	0	14
	0	0	14
10	0	5	18
	0	5	19
	0	5	19
12	0	0	9
	0	0	9
	0	0	9
13	2	0	16
	2	0	16
	2	0	17
14	0	10	38
	0	10	38
	0	10	39
101	13	20	97
	13	21	99
	14	25	111

Values presented are:
 - Total Events with a RR/SIRV Response
 - Total RR/SIRV Responses,
 - Total Activities Performed

RR/SIRV Responses per Beat



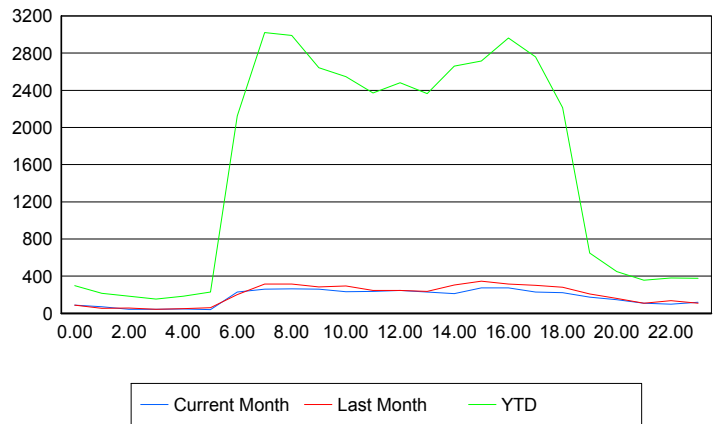
	Current Mo	Last Month	YTD
102	0	0	23
	0	0	23
	0	0	25
106	0	0	1
	0	0	1
	0	0	1
107	0	0	1
	0	0	1
	0	0	1
215	0	0	1
	0	0	1
	0	0	1

Road Ranger / SIRV Performance By Time of Day

Values presented are:
- Total Events with a RR/SIRV Response
- Total RR/SIRV Responses,
- Total Activities Performed

	Current Mo	Last Month	YTD
12AM-1AM	83	86	287
	87	88	298
	100	90	323
1AM-2AM	69	53	209
	72	55	215
	73	63	226
2AM-3AM	42	56	173
	43	57	186
	44	57	193
3AM-4AM	42	41	145
	43	43	152
	46	49	161
4AM-5AM	47	46	170
	48	50	186
	51	52	194
5AM-6AM	40	44	189
	40	59	230
	41	66	245
6AM-7AM	207	188	1,945
	228	200	2,124
	235	207	2,190
7AM-8AM	245	294	2,810
	259	314	3,020
	267	323	3,128
8AM-9AM	244	288	2,719
	264	315	2,989
	270	326	3,107

Number of Responses / Hour of the Day



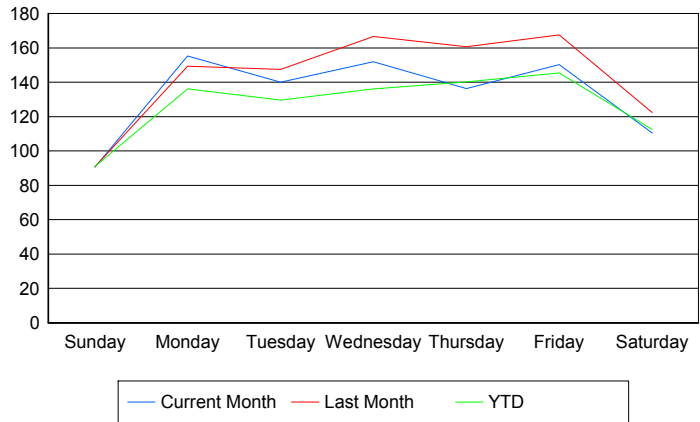
	Current Mo	Last Month	YTD
9AM-10AM	236	267	2,461
	259	285	2,644
	274	287	2,733
10AM-11AM	225	273	2,365
	233	294	2,547
	247	301	2,658
11AM-12PM	217	223	2,207
	235	247	2,372
	243	259	2,471
12PM-1PM	235	233	2,339
	245	246	2,483
	250	256	2,571
1PM-2PM	214	227	2,201
	230	236	2,364
	240	239	2,462
2PM-3PM	200	279	2,490
	212	303	2,662
	216	312	2,769
3PM-4PM	263	325	2,535
	274	347	2,715
	292	365	2,835
4PM-5PM	261	294	2,774
	275	315	2,962
	284	328	3,079
5PM-6PM	217	277	2,548
	229	301	2,759
	238	319	2,875
6PM-7PM	204	269	2,097
	221	279	2,214
	225	288	2,284
7PM-8PM	164	191	607
	175	208	647
	185	226	684
8PM-9PM	140	152	426
	145	161	449
	154	171	478
9PM-10PM	97	102	329
	109	108	357
	114	110	377
10PM-11PM	98	131	367
	100	135	381
	107	138	398
11PM-12AM	114	105	361
	118	110	377
	122	112	394

Road Ranger / SIRV Performance By Day of Week

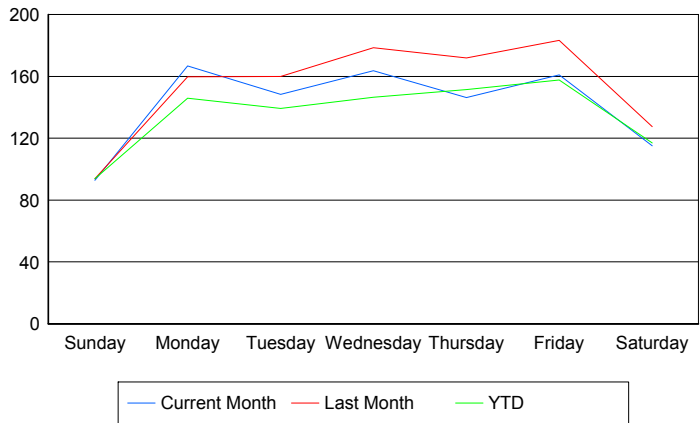
Values presented are:
 - Total Events with a RR/SIRV Response
 - Total RR/SIRV Responses,
 - Total Activities Performed

	Current Mo	Last Month	YTD
Sunday	435	363	1,193
	445	375	1,229
	464	389	1,286
Monday	772	597	6,405
	828	638	6,860
	859	654	7,073
Tuesday	556	588	5,950
	589	638	6,388
	610	660	6,610
Wednesday	590	664	6,240
	635	711	6,711
	668	732	7,012
Thursday	518	792	6,592
	553	846	7,112
	570	891	7,402
Friday	594	836	6,903
	635	913	7,476
	655	953	7,807
Saturday	441	610	1,493
	459	635	1,556
	492	665	1,645

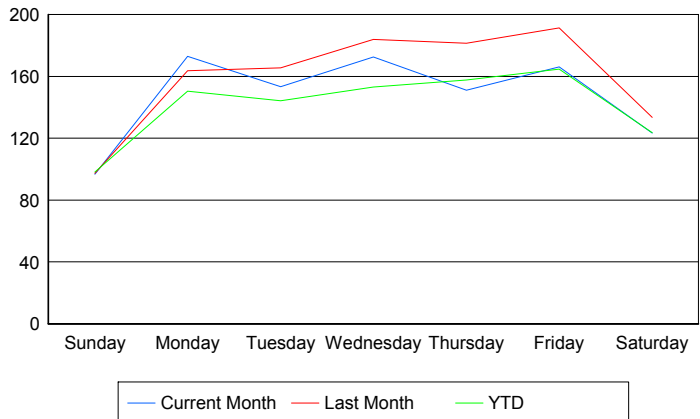
Avg # of events with a RR/SIRV Response per Day of the Week



Avg # of RR/SIRV Responses per Day of the Week



Avg # of RR/SIRV Activities Performed per Day of the Week



Road Ranger / SIRV Responses per Time of Day and Day of Week

