



# Monthly Performance Measures Report Broward County



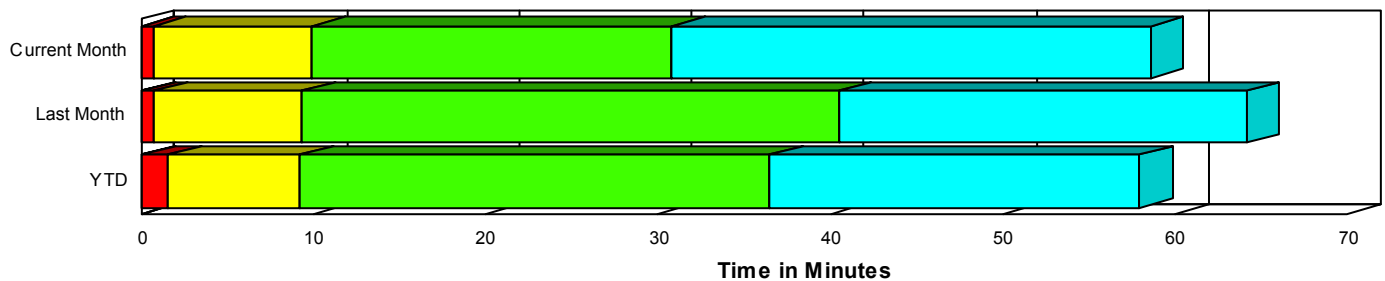
Period From Nov 1, 2008 to Nov 30, 2008

Created on:  
December 08, 2008  
8:58 am

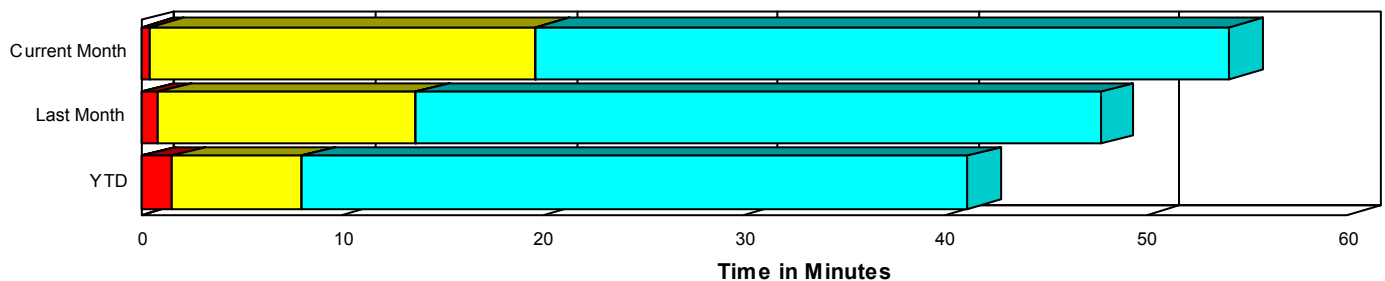
## Performance Measures Summary

	Traffic Events (No Lanes Blocked)			Incidents (Lanes Blocked)		
	<u>This Month</u>	<u>Last Month</u>	<u>YTD</u>	<u>This Month</u>	<u>Last Month</u>	<u>YTD</u>
Number of Events	4,993	5,063	49,361	160	162	2,220
TMC Detection (min.)	0.00	0.00	0.01	0.00	0.05	0.03
TMC Verification (min.)	0.45	0.86	1.52	0.68	0.72	1.56
TMC Response (min.)	20.23	14.42	8.52	10.16	9.60	9.29
RR Dispatch Time (min.)	12.59	6.66	2.84	2.74	2.57	2.44
RR Response Time (min.)	6.76	6.29	5.96	7.87	7.25	6.92
Roadway Clearance (min.)				30.90	35.61	35.63
Event Clearance (min.)	54.71	48.44	41.62	58.51	59.25	55.87
# of Events w/ RR/SIRV	2,844	3,376	39,926	119	102	2,051
RR/SIRV Responses	2,844	3,376	40,060	119	102	2,301
RR/SIRV Activities	2,317	2,834	38,120	232	207	3,984

### Incident Clearance TimeLine



### Traffic Event (Non-Lane Blockage) Time-Line



<span style="color: blue;">■</span> Avg. TMC Detection Time	<span style="color: green;">■</span> Avg. Time from TMC Response to Roadway Clearance*
<span style="color: red;">■</span> Avg. Time from TMC Detection to TMC Verification	<span style="color: cyan;">■</span> Avg. Time from Roadway Clearance to Incident/Event Clearance**
<span style="color: yellow;">■</span> Avg. Time from TMC Verification to TMC Response	

\* Roadway clearance equals all travel lanes open

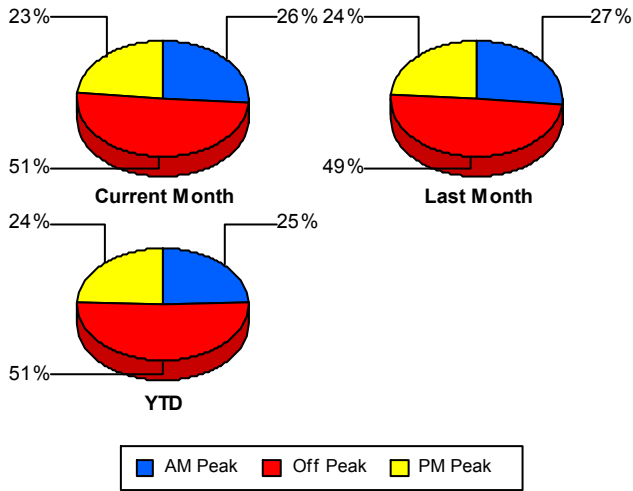
\*\* Incident clearance equals time when last responder has left the scene

## Performance Measures by Peak Period

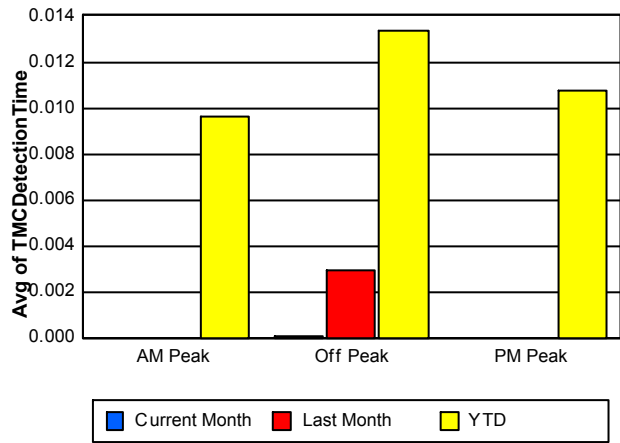
Note: AM peak period is defined as 6am to 10am and PM peak period is defined as 3pm to 7pm.

	AM Peak			Off Peak			PM Peak		
	<u>Current Month</u>	<u>Last Month</u>	<u>YTD</u>	<u>Current Month</u>	<u>Last Month</u>	<u>YTD</u>	<u>Current Month</u>	<u>Last Month</u>	<u>YTD</u>
Number of Events	1,332	1,385	12,753	2,613	2,584	26,344	1,208	1,256	12,484
Number of Incidents	54	28	531	70	88	1,161	36	46	528
TMC Detection (min.)	0.00	0.00	0.01	0.00	0.00	0.01	0.00	0.00	0.01
TMC Verification (min.)	0.56	0.86	0.87	0.41	0.85	1.85	0.44	0.87	1.49
TMC Response (min.)	15.15	16.63	7.95	30.64	17.81	9.83	11.40	6.57	6.79
RR Dispatch Time (min.)	9.28	8.65	2.53	20.10	8.75	3.63	4.64	0.91	1.54
RR Response Time (min.)	7.45	6.34	5.59	6.87	6.73	6.63	5.92	5.73	5.30
Event Clearance (min.)	54.22	52.51	35.92	59.07	54.42	47.52	46.31	33.07	37.55
Roadway Clearance (min.)	24.14	49.77	31.65	39.44	39.89	42.16	24.41	18.78	25.26
Incident Clearance (min.)	58.19	65.03	53.01	64.73	65.37	63.05	46.88	44.02	42.96
# of Events w/ RR/SIRV	995	1,106	11,010	1,150	1,406	20,464	818	966	10,503
RR/SIRV Responses	995	1,106	11,114	1,150	1,406	20,672	818	966	10,575
RR/SIRV Activities	915	1,007	11,146	910	1,187	20,375	724	847	10,583

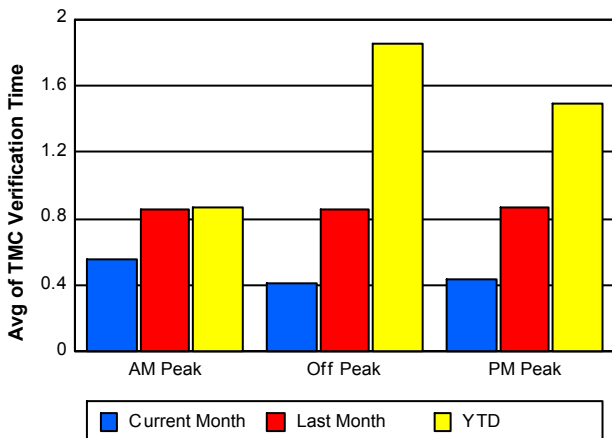
### Number of Events / Peak Period



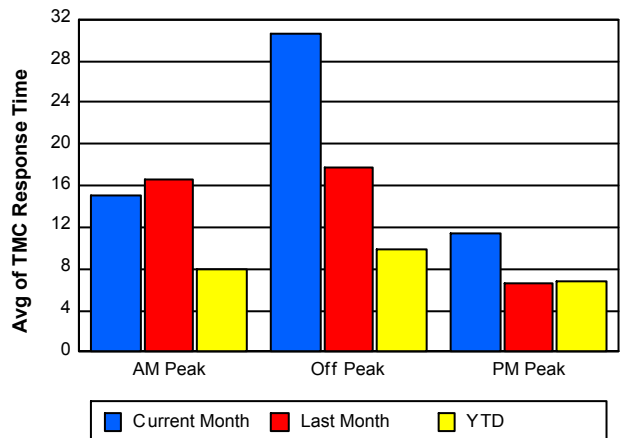
### TMC Detection Time



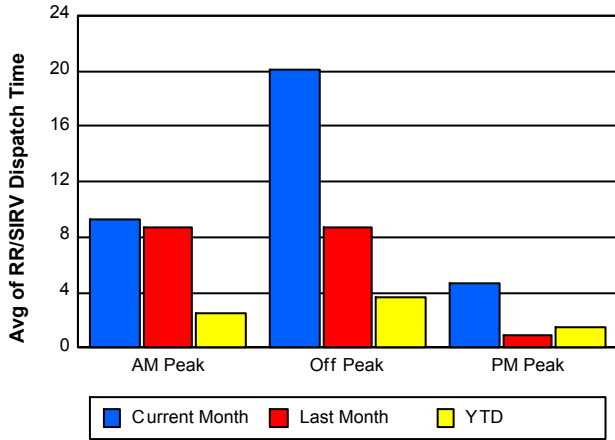
### TMC Verification Time



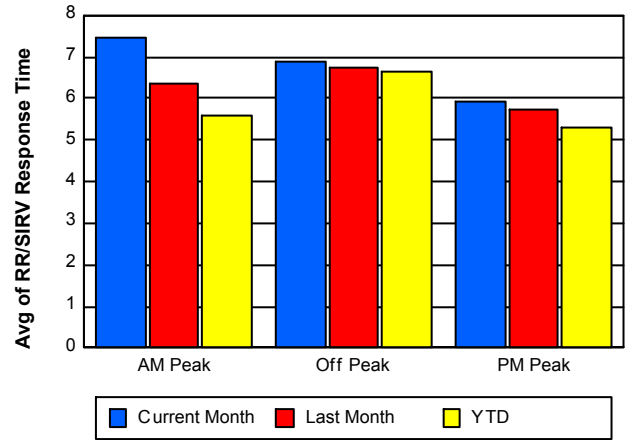
### TMC Response Time



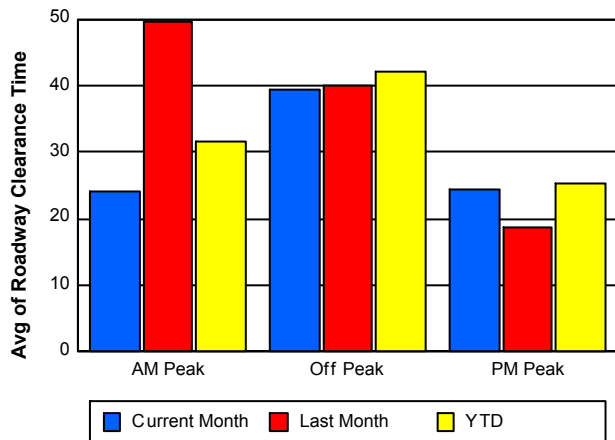
### Road Ranger / SIRV Dispatch Time



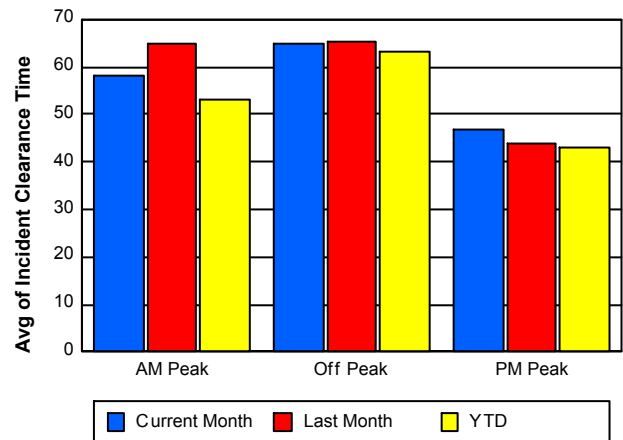
### Road Ranger / SIRV Response Time



### Roadway Clearance Time (2A)



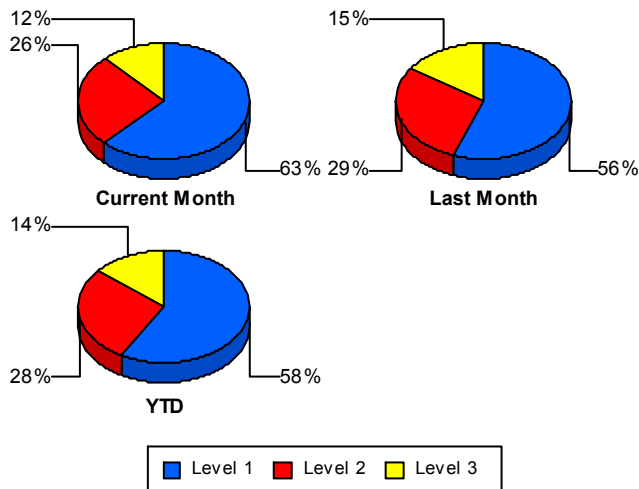
### Incident Clearance Time (3B)



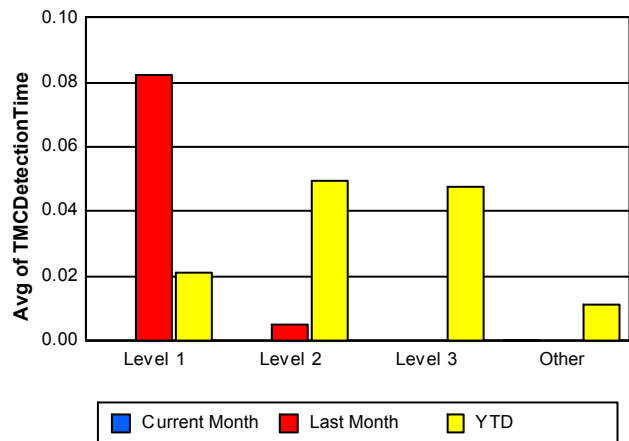
## Performance Measures by Severity

	Level 1			Level 2			Level 3			Other		
	<u>This Month</u>	<u>Last Month</u>	<u>YTD</u>	<u>This Month</u>	<u>Last Month</u>	<u>YTD</u>	<u>This Month</u>	<u>Last Month</u>	<u>YTD</u>	<u>This Month</u>	<u>Last Month</u>	<u>YTD</u>
Number of Events	100	90	1,290	41	47	618	19	25	312	4,993	5,063	49,361
Number of Incidents	100	90	1,290	41	47	618	19	25	312	0	0	0
TMC Detection (min.)	0.00	0.08	0.02	0.00	0.00	0.05	0.00	0.00	0.05	0.00	0.00	0.01
TMC Verification (min.)	0.59	0.46	0.92	0.87	0.87	2.36	0.78	1.39	2.63	0.45	0.86	1.52
TMC Response (min.)	7.56	5.34	7.82	10.34	12.14	10.86	24.85	18.37	12.22	20.23	14.42	8.52
RR Dispatch Time (min.)	1.74	1.44	2.22	2.03	3.12	2.43	8.77	4.93	3.36	12.59	6.66	2.84
RR Resp. Time (min.)	5.84	4.02	5.64	8.41	9.02	8.43	18.66	14.11	9.13	6.76	6.29	5.96
Event Clearance (min.)	49.24	38.12	41.05	62.51	72.24	65.88	98.66	110.90	97.32	54.71	48.44	41.62
Roadway Clear. (min.)	13.84	12.88	14.83	49.28	47.12	50.07	80.99	95.77	93.01			
Incident Clearance (min.)	49.24	38.12	41.05	62.51	72.24	65.88	98.66	110.90	97.32			
# of Events w/ RR/SIRV	78	56	1,191	25	25	573	16	21	287	2,844	3,376	39,926
RR/SIRV Responses	78	56	1,264	25	25	647	16	21	390	2,844	3,376	40,060
RR/SIRV Activities	149	101	1,966	60	59	1,227	23	47	791	2,317	2,834	38,120

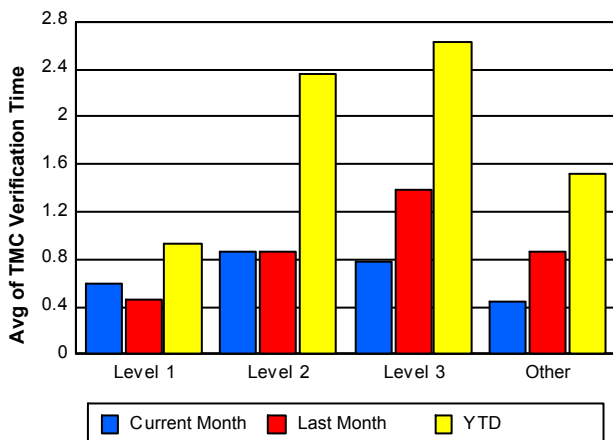
### Number of Events / Severity



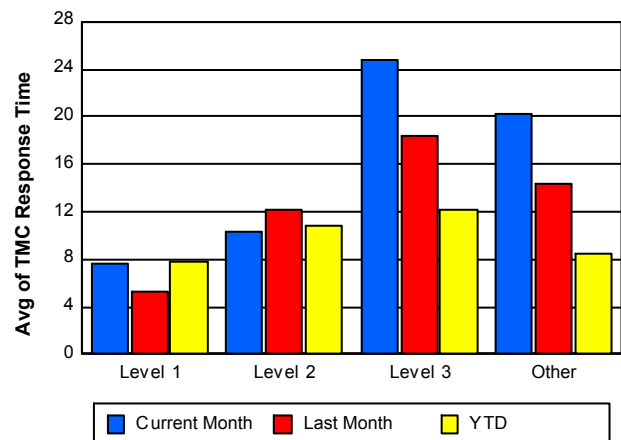
### TMC Detection Time



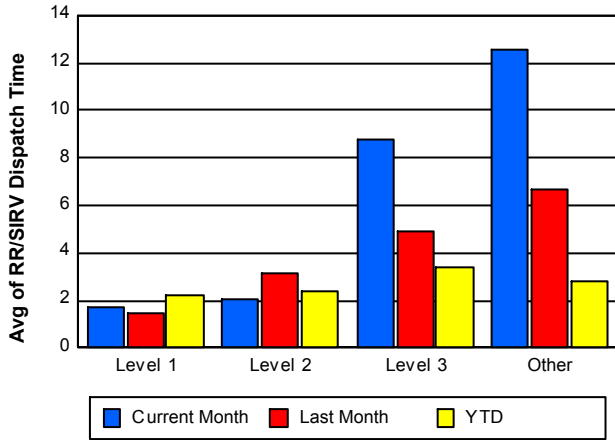
### TMC Verification Time



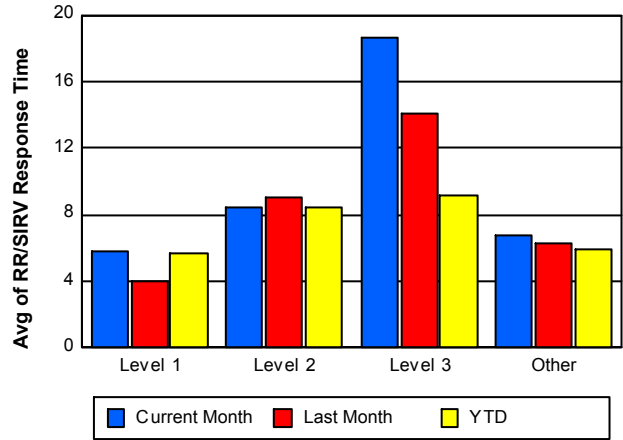
### TMC Response Time



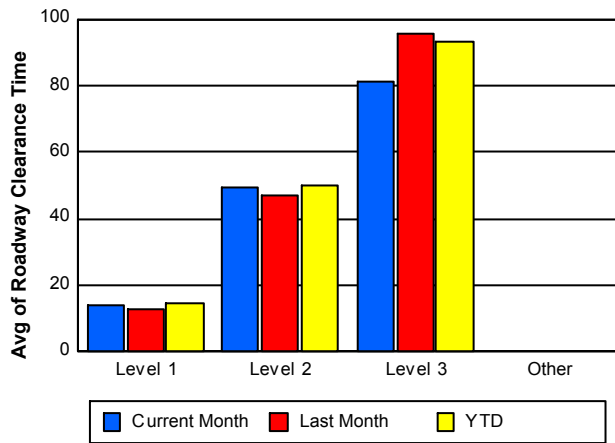
## Road Ranger / SIRV Dispatch Time



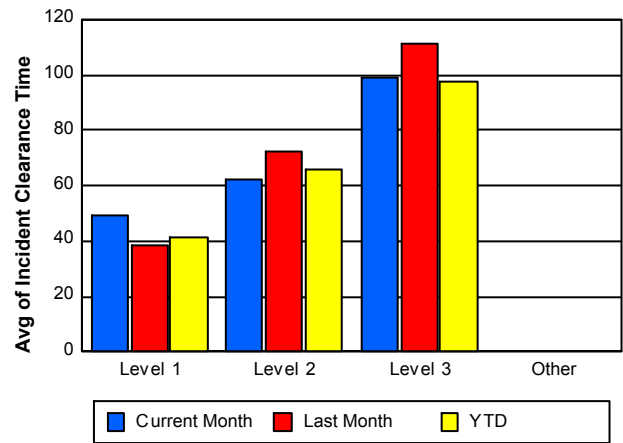
## Road Ranger / SIRV Response Time



## Roadway Clearance Time (2A)



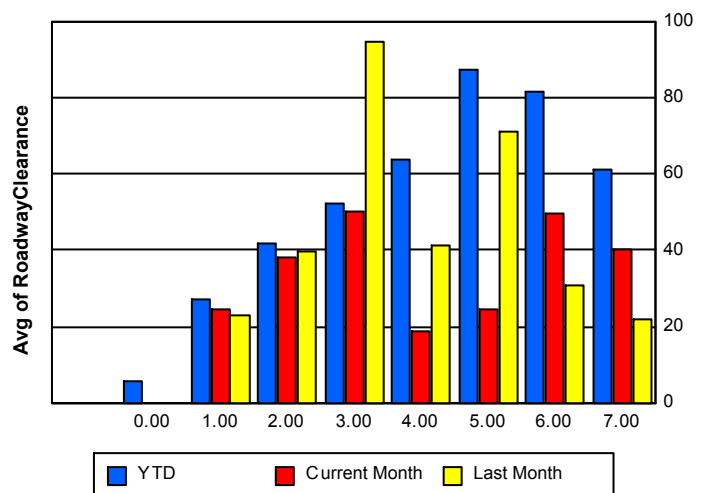
## Incident Clearance Time (3B)



## Roadway Clearance by Maximum Number of Lanes Blocked

	Current Month	Last Month	YTD
	0.00	0.00	
0			5.87
1	24.48	22.94	27.19
2	38.11	39.70	41.53
3	49.89	94.78	52.32
4	18.47	41.40	63.65
5	24.57	71.11	87.12
6	49.54	30.82	81.47

## Roadway Clearance Time (2A)



	Current Month	Last Month	YTD
7	<b>40.03</b>	<b>21.60</b>	<b>60.95</b>

## Performance Measures by Roadway

**595**

	<u>Current Month</u>	<u>Last Month</u>	<u>YTD</u>
Number of Events	701	708	7,809
Number of Incidents	25	32	384
TMC Detection (min.)	0.00	0.00	0.01
TMC Verification (min.)	0.94	0.99	1.72
TMC Response (min.)	32.61	8.17	9.08
RR Dispatch Time (min.)	22.03	1.22	3.11
RR Resp. Time (min.)	6.96	6.96	5.92
Event Clearance (min.)	47.15	38.96	41.42
Roadway Clear. (min.)	35.66	41.02	37.81
Incident Clearance (min.)	62.49	56.75	52.56
# of Events w/ RR/SIRV	419	473	6,520
RR/SIRV Responses	419	473	6,583
RR/SIRV Activities	387	438	6,706

**75**

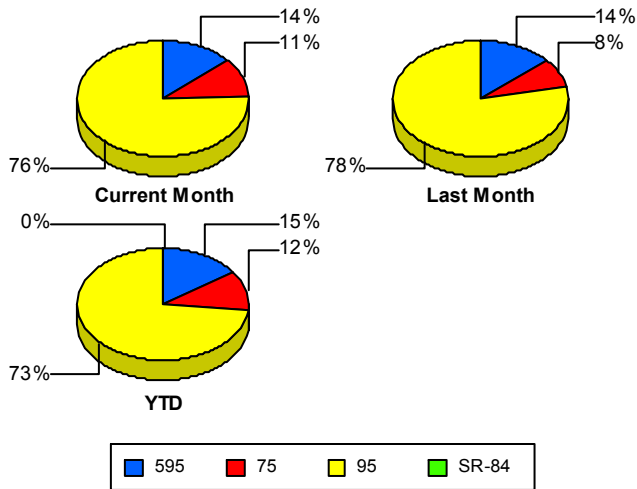
	<u>Current Month</u>	<u>Last Month</u>	<u>YTD</u>
Number of Events	555	432	5,985
Number of Incidents	13	5	135
TMC Detection (min.)	0.00	0.00	0.02
TMC Verification (min.)	1.02	4.93	5.04
TMC Response (min.)	6.15	5.22	5.84
RR Dispatch Time (min.)	0.96	0.43	2.13
RR Resp. Time (min.)	5.50	4.79	4.99
Event Clearance (min.)	65.62	68.04	46.43
Roadway Clear. (min.)	28.10	67.02	60.37
Incident Clearance (min.)	62.59	83.48	68.66
# of Events w/ RR/SIRV	411	417	5,711
RR/SIRV Responses	411	417	5,744
RR/SIRV Activities	399	456	6,175

**95**

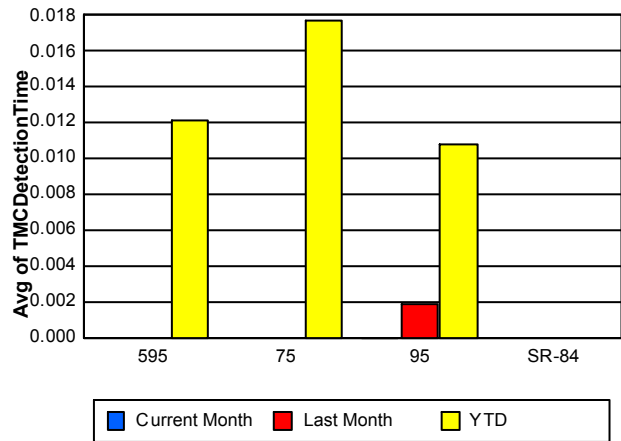
	<u>Current Month</u>	<u>Last Month</u>	<u>YTD</u>
Number of Events	3,897	4,085	37,786
Number of Incidents	122	125	1,701
TMC Detection (min.)	0.00	0.00	0.01
TMC Verification (min.)	0.29	0.40	0.92
TMC Response (min.)	20.18	17.41	9.04
RR Dispatch Time (min.)	12.43	8.50	2.88
RR Resp. Time (min.)	7.09	6.52	6.26
Event Clearance (min.)	54.67	48.44	41.74
Roadway Clear. (min.)	30.22	32.96	33.17
Incident Clearance (min.)	57.26	58.92	55.61
# of Events w/ RR/SIRV	2,133	2,588	29,746
RR/SIRV Responses	2,133	2,588	30,034
RR/SIRV Activities	1,763	2,147	29,223

	<u>YTD</u>
Number of Events	<b>1</b>
Number of Incidents	<b>0</b>
TMC Detection (min.)	<b>0.00</b>
TMC Verification (min.)	<b>0.47</b>
TMC Response (min.)	
RR Dispatch Time (min.)	
RR Resp. Time (min.)	
Event Clearance (min.)	<b>5.22</b>
Roadway Clear. (min.)	
Incident Clearance (min.)	
# of Events w/ RR/SIRV	<b>0</b>
RR/SIRV Responses	<b>0</b>
RR/SIRV Activities	<b>0</b>

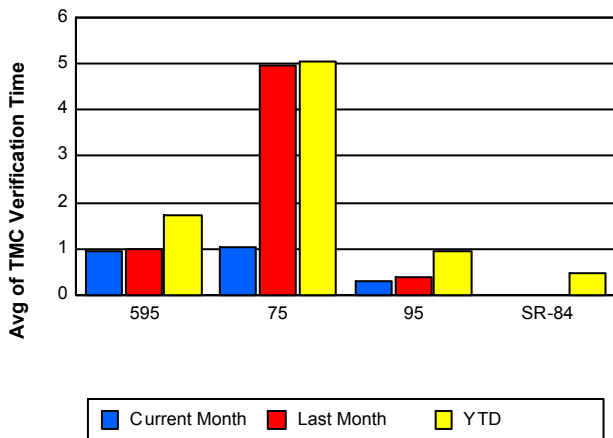
### Number of Events / Roadway



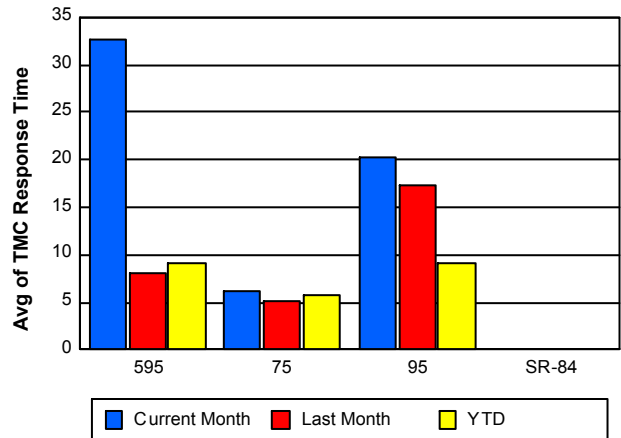
### TMC Detection Time



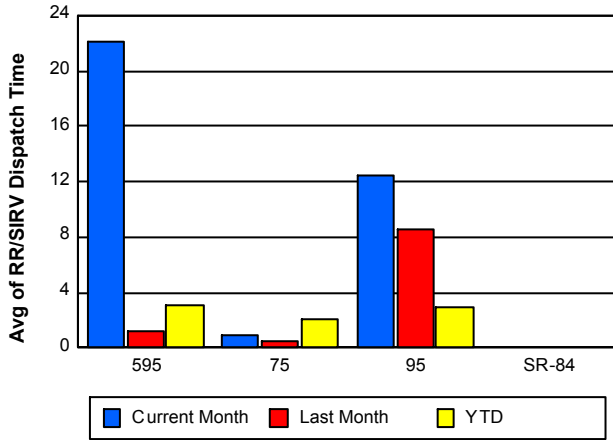
### TMC Verification Time



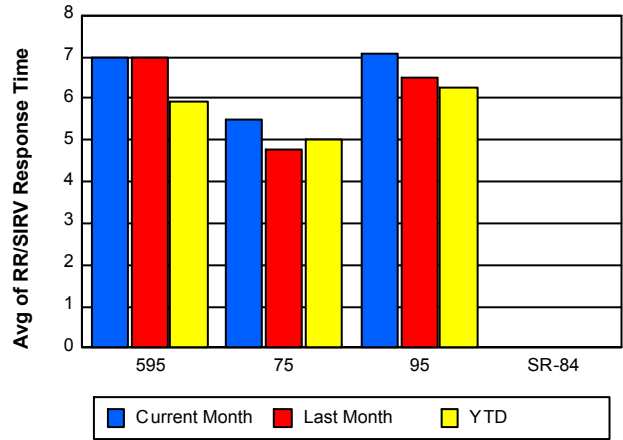
### TMC Response Time



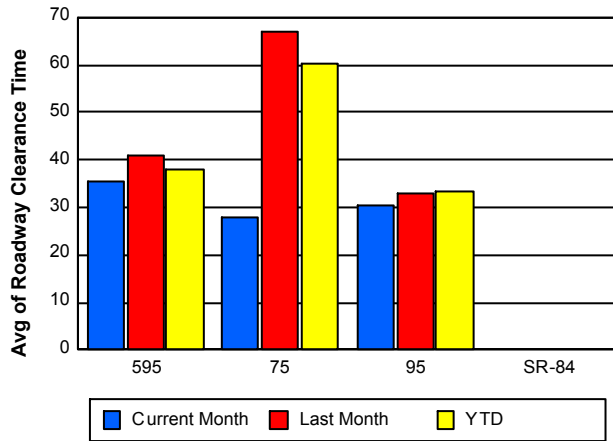
## Road Ranger / SIRV Dispatch Time



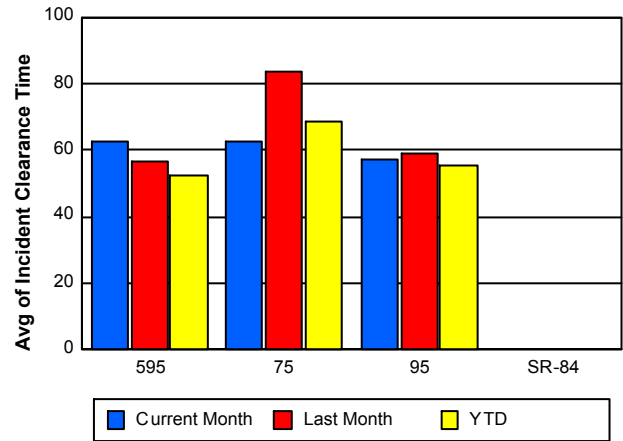
## Road Ranger / SIRV Response Time



## Roadway Clearance Time (2A)



## Incident Clearance Time (3B)



## Performance Measures by Event Type

### Abandoned Vehicle

	<u>Current Month</u>	<u>Last Month</u>	<u>YTD</u>
Number of Events	605	606	6,594
Number of Incidents	1	0	13
TMC Detection (min.)	0.00	0.00	0.02
TMC Verification (min.)	0.20	0.23	0.44
TMC Response (min.)	87.83	52.58	15.71
RR Dispatch Time (min.)	92.47	46.53	12.29
RR Response Time (min.)	9.47	5.93	5.81
Event Clearance (min.)	309.18	259.16	191.69
Roadway Clearance (min.)	1.20		39.46
Incident Clearance (min.)	22.97		236.85
# of Events w/ RR/SIRV	334	394	5,206
RR/SIRV Assists	334	394	5,213
RR/SIRV Activities	354	406	5,463

### Accident

	<u>Current Month</u>	<u>Last Month</u>	<u>YTD</u>
Number of Events	294	310	3,492
Number of Incidents	110	116	1,605
TMC Detection (min.)	0.00	0.02	0.03
TMC Verification (min.)	0.65	1.22	1.82
TMC Response (min.)	9.09	9.95	8.21
RR Dispatch Time (min.)	1.64	2.18	1.74
RR Response Time (min.)	7.75	7.89	6.52
Event Clearance (min.)	51.57	50.04	45.70
Roadway Clearance (min.)	33.61	38.46	36.17
Incident Clearance (min.)	67.98	67.70	59.60
# of Events w/ RR/SIRV	207	210	3,238
RR/SIRV Assists	207	210	3,465
RR/SIRV Activities	305	310	4,986

### Congestion

	<u>Current Month</u>	<u>YTD</u>
Number of Events	5	25
Number of Incidents	0	1
TMC Detection (min.)	0.00	0.00
TMC Verification (min.)	0.00	0.00
TMC Response (min.)		
RR Dispatch Time (min.)		
RR Response Time (min.)		
Event Clearance (min.)	52.04	76.82
Roadway Clearance (min.)		8.22
Incident Clearance (min.)		98.70
# of Events w/ RR/SIRV	0	0
RR/SIRV Assists	0	0
RR/SIRV Activities	0	0

## Debris on Roadway

	<u>Current Month</u>	<u>Last Month</u>	<u>YTD</u>
Number of Events	95	122	1,723
Number of Incidents	0	5	31
TMC Detection (min.)	0.00	0.00	0.03
TMC Verification (min.)	5.08	6.71	5.36
TMC Response (min.)	8.26	9.92	7.85
RR Dispatch Time (min.)	0.74	1.05	1.08
RR Response Time (min.)	7.51	8.85	6.80
Event Clearance (min.)	12.43	14.55	12.23
Roadway Clearance (min.)		43.84	43.85
Incident Clearance (min.)		47.37	51.47
# of Events w/ RR/SIRV	85	106	1,663
RR/SIRV Assists	85	106	1,690
RR/SIRV Activities	93	106	1,777

## Disabled Vehicle

	<u>Current Month</u>	<u>Last Month</u>	<u>YTD</u>
Number of Events	2,267	2,607	28,951
Number of Incidents	28	24	354
TMC Detection (min.)	0.00	0.00	0.01
TMC Verification (min.)	0.64	1.18	1.97
TMC Response (min.)	7.66	7.44	7.18
RR Dispatch Time (min.)	1.78	1.44	1.44
RR Response Time (min.)	5.96	6.02	5.88
Event Clearance (min.)	25.29	24.32	20.62
Roadway Clearance (min.)	23.04	17.63	24.44
Incident Clearance (min.)	37.15	25.03	36.30
# of Events w/ RR/SIRV	1,699	2,100	27,230
RR/SIRV Assists	1,699	2,100	27,326
RR/SIRV Activities	1,666	2,114	28,488

## Emergency Vehicles

	<u>Current Month</u>	<u>YTD</u>
Number of Events	4	63
Number of Incidents	4	58
TMC Detection (min.)	0.00	0.06
TMC Verification (min.)	0.00	0.34
TMC Response (min.)	2.39	7.28
RR Dispatch Time (min.)	1.96	2.42
RR Response Time (min.)	0.44	4.94
Event Clearance (min.)	18.35	38.92
Roadway Clearance (min.)	11.89	38.47
Incident Clearance (min.)	18.35	39.60
# of Events w/ RR/SIRV	3	49
RR/SIRV Assists	3	51
RR/SIRV Activities	7	80

## Other

	<u>Current Month</u>	<u>Last Month</u>	<u>YTD</u>
Number of Events	1,789	1,538	10,254
Number of Incidents	2	0	24
TMC Detection (min.)	0.00	0.00	0.00
TMC Verification (min.)	0.01	0.03	0.25
TMC Response (min.)	17.30	10.37	10.80
RR Dispatch Time (min.)	2.90	1.23	1.89
RR Response Time (min.)	8.50	9.13	8.54
Event Clearance (min.)	10.67	10.24	11.56
Roadway Clearance (min.)	24.24		19.36
Incident Clearance (min.)	11.67		25.47
# of Events w/ RR/SIRV	600	646	4,218
RR/SIRV Assists	600	646	4,223
RR/SIRV Activities	85	81	858

## Pedestrian

	<u>YTD</u>
Number of Events	41
Number of Incidents	0
TMC Detection (min.)	0.01
TMC Verification (min.)	1.34
TMC Response (min.)	2.56
RR Dispatch Time (min.)	0.37
RR Response Time (min.)	2.29
Event Clearance (min.)	10.68
Roadway Clearance (min.)	
Incident Clearance (min.)	
# of Events w/ RR/SIRV	37
RR/SIRV Assists	37
RR/SIRV Activities	39

## Police Activity

	<u>Current Month</u>	<u>Last Month</u>	<u>YTD</u>
Number of Events	52	16	174
Number of Incidents	9	11	91
TMC Detection (min.)	0.00	0.00	0.02
TMC Verification (min.)	0.93	0.98	1.34
TMC Response (min.)	15.32	15.08	10.63
RR Dispatch Time (min.)	5.87	3.09	3.12
RR Response Time (min.)	9.13	11.99	7.34
Event Clearance (min.)	25.73	42.07	40.41
Roadway Clearance (min.)	19.24	44.12	67.19
Incident Clearance (min.)	31.59	50.49	55.31
# of Events w/ RR/SIRV	9	4	104
RR/SIRV Assists	9	4	124
RR/SIRV Activities	13	6	164

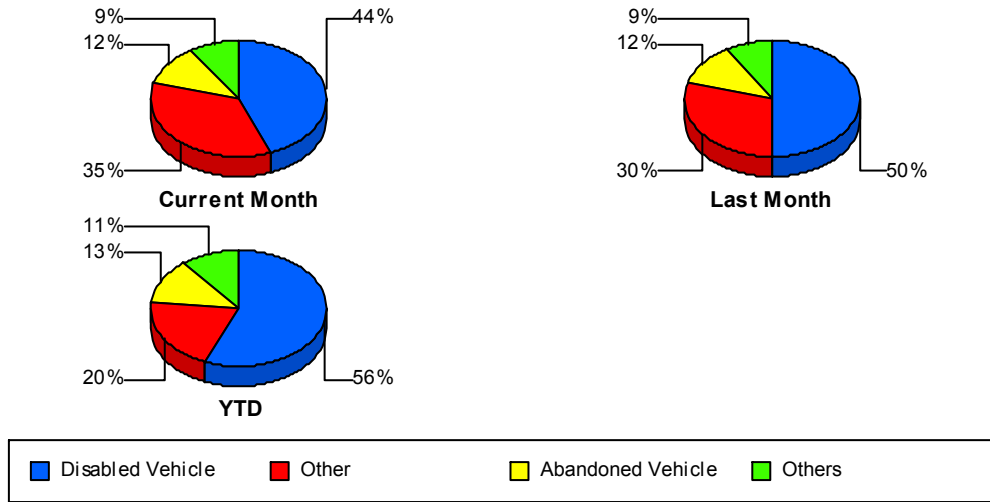
## Vehicle Fire

	<u>Current Month</u>	<u>Last Month</u>	<u>YTD</u>
Number of Events	12	8	55
Number of Incidents	6	6	42
TMC Detection (min.)	0.00	0.00	0.00
TMC Verification (min.)	1.35	0.02	0.78
TMC Response (min.)	20.99	5.56	9.62
RR Dispatch Time (min.)	2.34	4.57	2.60
RR Response Time (min.)	18.65	0.99	7.02
Event Clearance (min.)	52.66	46.46	60.25
Roadway Clearance (min.)	55.02	29.93	39.93
Incident Clearance (min.)	73.09	58.77	66.33
# of Events w/ RR/SIRV	7	6	47
RR/SIRV Assists	7	6	47
RR/SIRV Activities	10	9	83

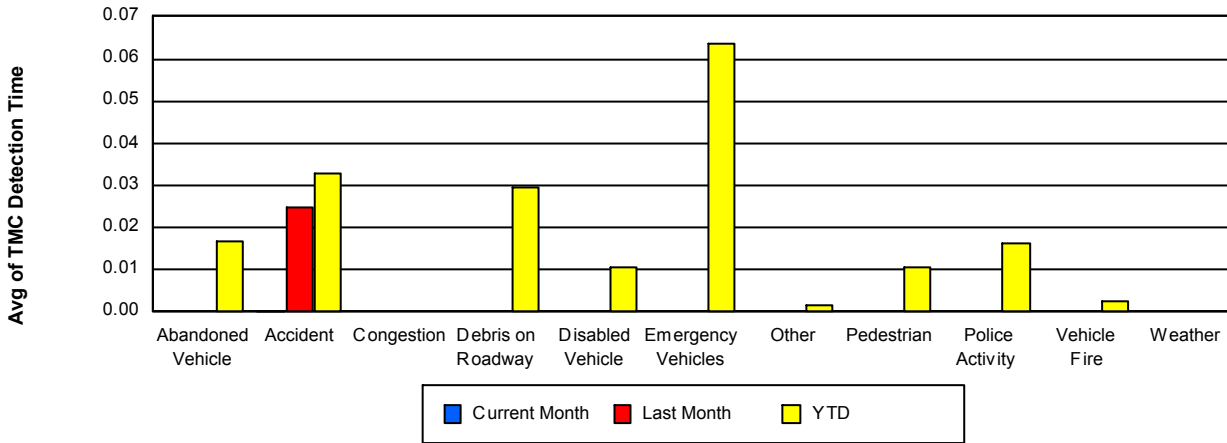
## Weather

	<u>Current Month</u>	<u>Last Month</u>	<u>YTD</u>
Number of Events	5	4	15
Number of Incidents	0	0	0
TMC Detection (min.)	0.00	0.00	0.00
TMC Verification (min.)	0.00	0.00	0.00
TMC Response (min.)			0.10
RR Dispatch Time (min.)	0.43	0.62	1.41
RR Response Time (min.)			0.00
Event Clearance (min.)	4.19	14.25	13.87
Roadway Clearance (min.)			
Incident Clearance (min.)			
# of Events w/ RR/SIRV	2	2	7
RR/SIRV Assists	2	2	7
RR/SIRV Activities	0	0	1

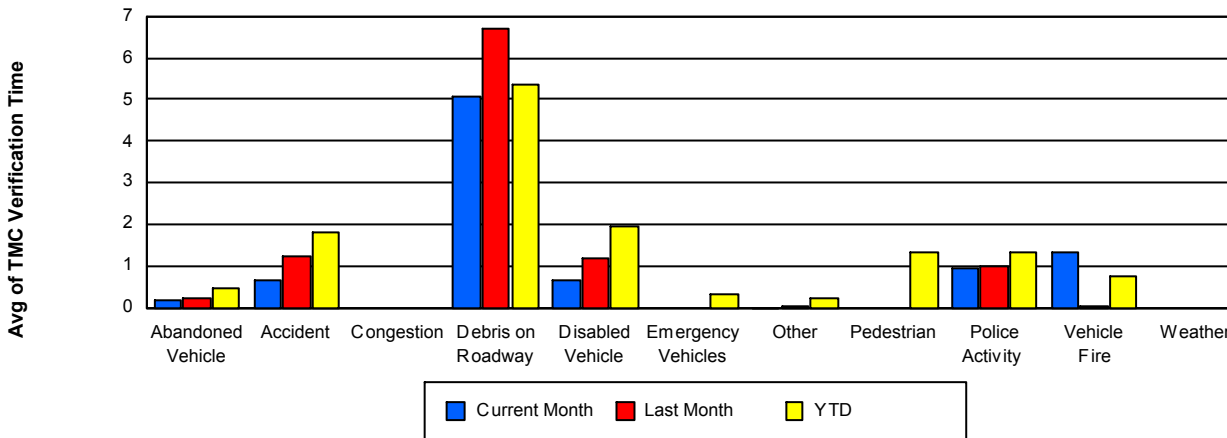
## Number of Events / Event Type



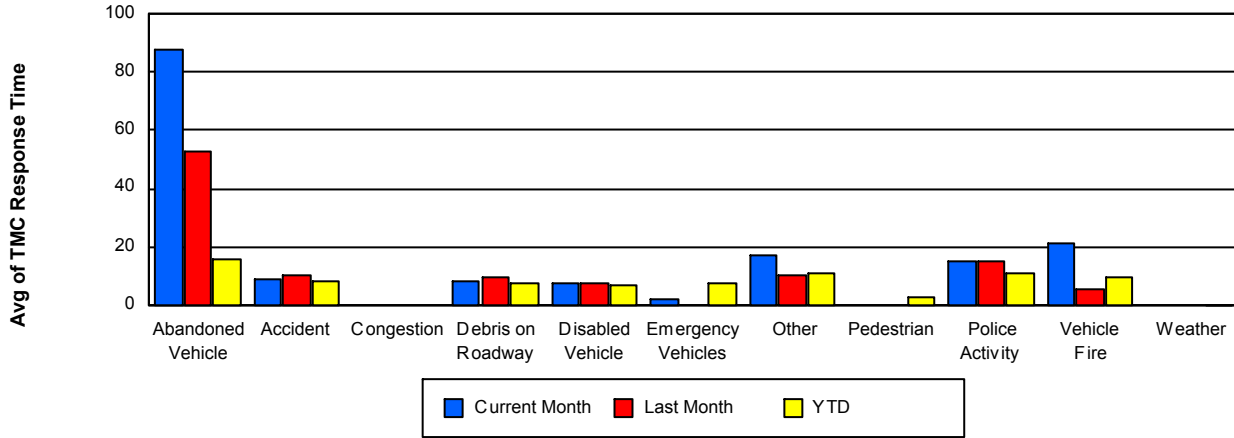
## TMC Detection Time



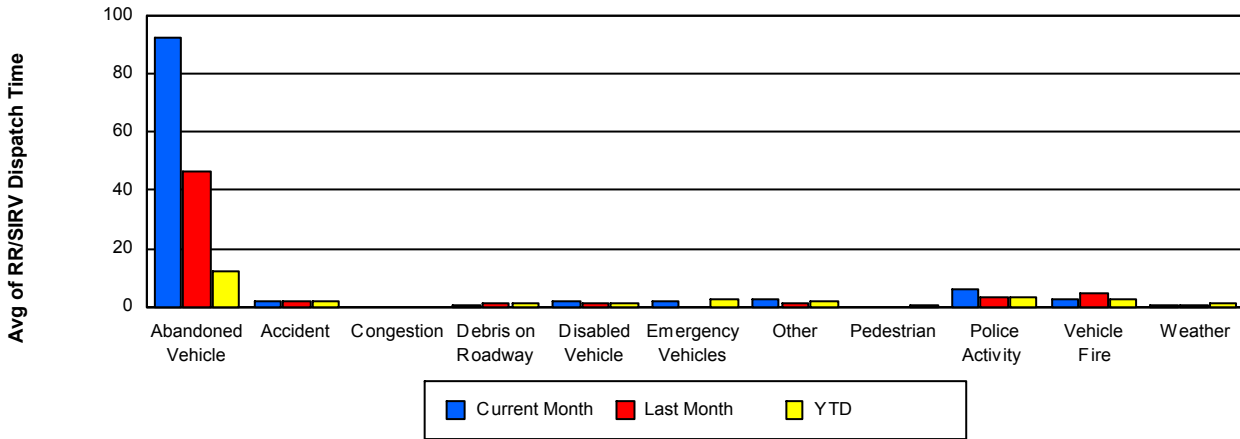
## TMC Verification Time



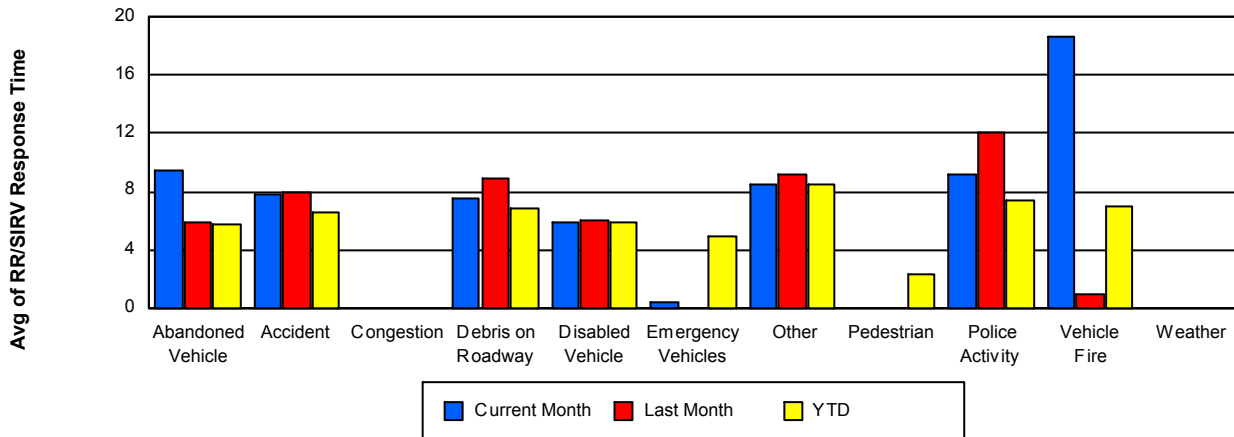
## TMC Response Time



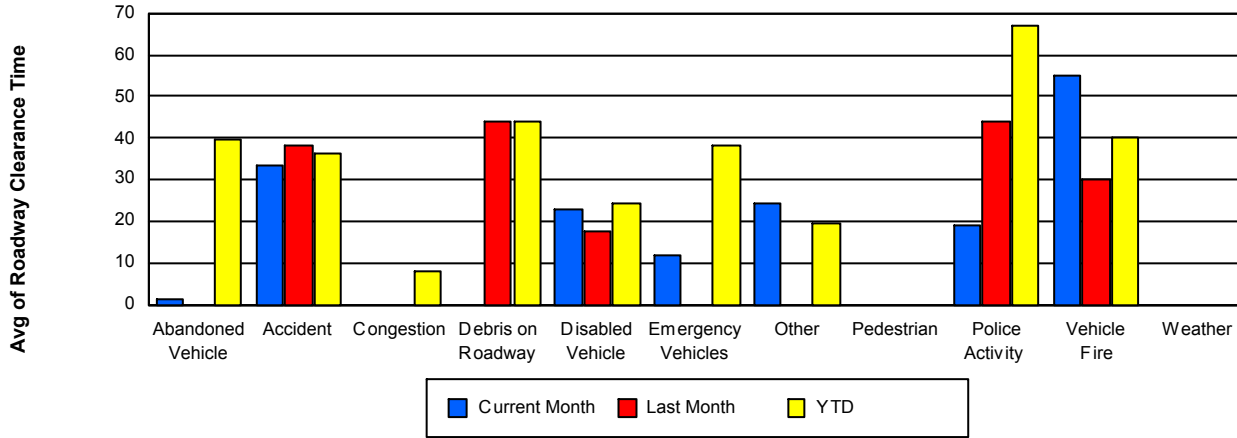
## Road Ranger / SIRV Dispatch Time



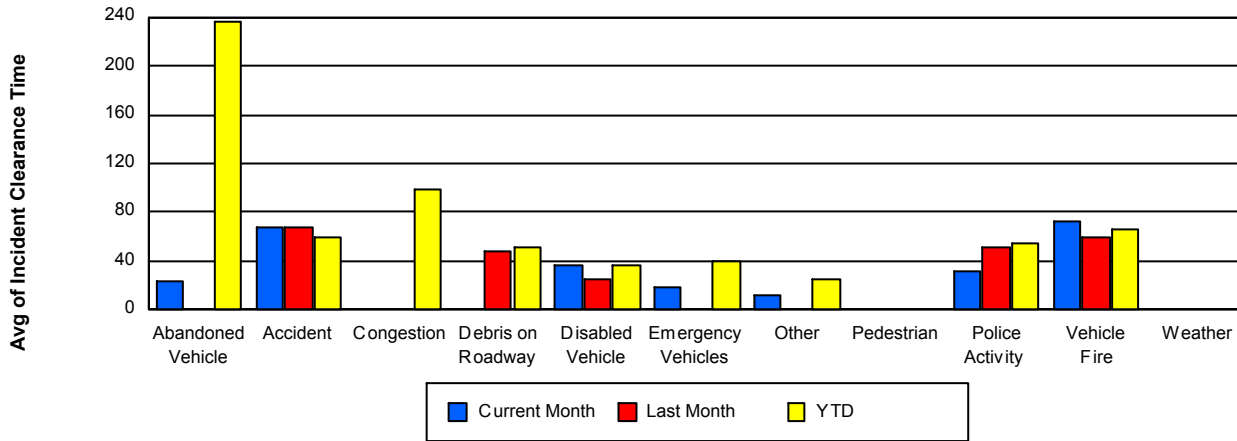
## Road Ranger / SIRV Response Time



## Roadway Clearance Time (2A)



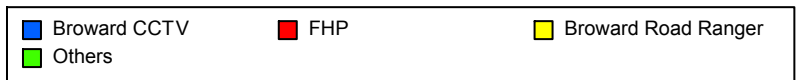
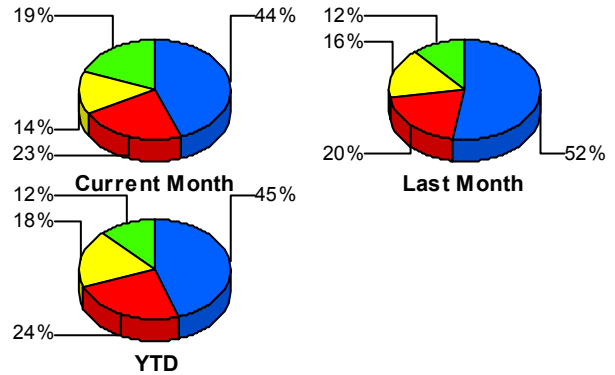
## Incident Clearance Time (3B)



## Incident Detection Methods

	Current Month	Last Month	YTD
Broward CCTV	71	85	1,001
Broward Road Ranger	23	26	408
Broward VideoWall	13	5	58
BSO	2	2	20
District 4	7	5	57
District 6	0	0	5
FDOT Maintenance	0	0	2
FHP	36	32	541
Fire	0	0	6
Florida's Turnpike	0	0	8
ITMS	0	0	2
Motorist	1	1	18
Other	0	0	1
Palm Beach Road Rang	0	0	8
PSAP	0	0	3
Road Watcher	0	0	14
SIRV	1	1	8
SmarTraveler (511)	1	1	11
VisioPaD Detection	5	4	49
<b>Total</b>	<b>160</b>	<b>162</b>	<b>2,220</b>

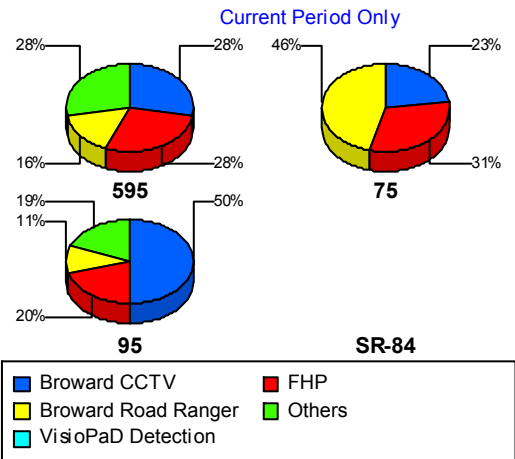
### Total Incidents by Detection Method



## Incident Detection Methods by Roadway

		Current Month	Last Month	YTD
595	Broward CCTV	7	14	141
	Broward Road Ranger	4	6	80
	Broward VideoWall	4	3	10
	BSO	2	1	10
	District 4	0	1	8
	FHP	7	7	111
	Florida's Turnpike	0	0	8
	Motorist	0	0	3
	Road Watcher	0	0	5
	SIRV	0	0	2
	SmarTraveler (511)	0	0	1
	VisioPaD Detection	1	0	5
	<b>Total</b>	<b>25</b>	<b>32</b>	<b>384</b>
75	Broward CCTV	3	0	3
	Broward Road Ranger	6	4	58
	BSO	0	0	5
	District 4	0	0	7
	District 6	0	0	2
	FHP	4	0	57
	Road Watcher	0	0	1
	SIRV	0	1	1
	SmarTraveler (511)	0	0	1
	<b>Total</b>	<b>13</b>	<b>5</b>	<b>135</b>
95	Broward CCTV	61	71	857
	Broward Road Ranger	13	16	270
	Broward VideoWall	9	2	48
	BSO	0	1	5
	District 4	7	4	42
	District 6	0	0	3
	FDOT Maintenance	0	0	2
	<b>FHP</b>	<b>25</b>	<b>25</b>	<b>373</b>

Total Events by Roadway and Detection Method

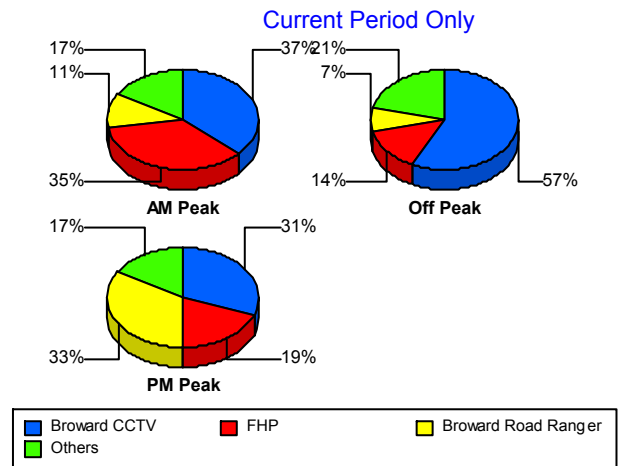


		Current Month	Last Month	YTD
95	Fire	0	0	6
	ITMS	0	0	2
	Motorist	1	1	15
	Other	0	0	1
	Palm Beach Road Rang	0	0	8
	PSAP	0	0	3
	Road Watcher	0	0	8
	SIRV	1	0	5
	SmarTraveler (511)	1	1	9
	VisioPaD Detection	4	4	44
	Total	122	125	1,701
Total	160	162	2,220	

### Incident Detection Methods by Peak Period

		Current Month	Last Month	YTD
AM Peak	Broward CCTV	20	12	236
	Broward Road Ranger	6	7	103
	Broward VideoWall	5	2	21
	BSO	1	0	6
	District 4	2	1	14
	FHP	19	6	121
	Fire	0	0	1
	Florida's Turnpike	0	0	3
	Motorist	0	0	3
	Palm Beach Road Rang	0	0	5
	PSAP	0	0	1
	Road Watcher	0	0	7
	SIRV	1	0	4
	SmarTraveler (511)	0	0	1
	VisioPaD Detection	0	0	5
	Total	54	28	531
	Off Peak	Broward CCTV	40	47

Total Events by Peak Period and Detection Method



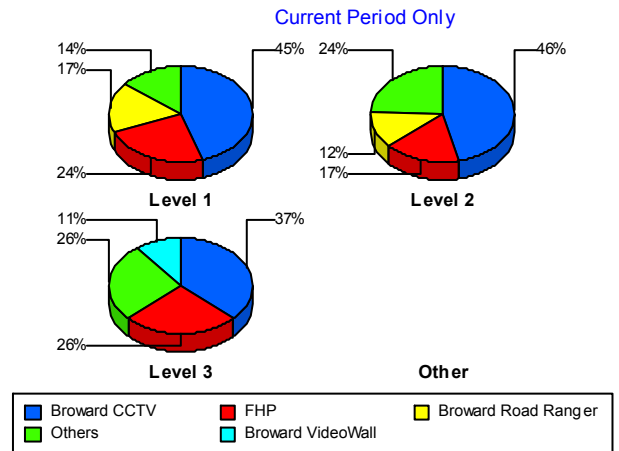
		Current Month	Last Month	YTD
Off Peak	Broward Road Ranger	5	12	191
	Broward VideoWall	4	3	25
	BSO	0	1	7
	District 4	5	3	29
	District 6	0	0	3
	FDOT Maintenance	0	0	2
	FHP	10	18	304
	Fire	0	0	4
	Florida's Turnpike	0	0	4
	ITMS	0	0	1
	Motorist	1	0	7
	Other	0	0	1
	Palm Beach Road Rang	0	0	3
	PSAP	0	0	2
	Road Watcher	0	0	3
	SIRV	0	1	2
	SmarTraveler (511)	0	0	1
	VisioPaD Detection	5	3	40
	Total	70	88	1,161
	PM Peak	Broward CCTV	11	26
Broward Road Ranger		12	7	114
Broward VideoWall		4	0	12
BSO		1	1	7
District 4		0	1	14
District 6		0	0	2
FHP		7	8	116
Fire		0	0	1
Florida's Turnpike		0	0	1
ITMS		0	0	1
Motorist		0	1	8
Road Watcher		0	0	4
SIRV		0	0	2

		Current Month	Last Month	YTD
PM Peak	SmarTraveler (511)	1	1	9
	VisioPaD Detection	0	1	4
	<b>Total</b>	<b>36</b>	<b>46</b>	<b>528</b>
<b>Total</b>		<b>160</b>	<b>162</b>	<b>2,220</b>

### Incident Detection Methods by Severity

		Current Month	Last Month	YTD	
Level 1	Broward CCTV	45	48	615	
	Broward Road Ranger	17	19	263	
	Broward VideoWall	6	2	37	
	BSO	0	1	4	
	District 4	3	0	32	
	District 6	0	0	4	
	FHP	24	17	259	
	Fire	0	0	3	
	Florida's Turnpike	0	0	2	
	ITMS	0	0	1	
	Motorist	0	1	9	
	Palm Beach Road Rang	0	0	6	
	PSAP	0	0	2	
	Road Watcher	0	0	12	
	SIRV	1	0	6	
	SmarTraveler (511)	1	1	8	
	VisioPaD Detection	3	1	27	
	<b>Total</b>	<b>100</b>	<b>90</b>	<b>1,290</b>	
	Level 2	Broward CCTV	19	25	280
		Broward Road Ranger	5	3	100
Broward VideoWall		5	2	13	
BSO		1	1	9	
District 4		2	5	12	
District 6		0	0	1	
FDOT Maintenance		0	0	1	

### Total Events by Severity and Detection Method



		Current Month	Last Month	YTD
Level 2	FHP	7	7	168
	Fire	0	0	1
	ITMS	0	0	1
	Motorist	1	0	8
	Palm Beach Road Rang	0	0	1
	PSAP	0	0	1
	Road Watcher	0	0	1
	SIRV	0	1	1
	SmarTraveler (511)	0	0	2
	VisioPaD Detection	1	3	18
	Total	41	47	618
Level 3	Broward CCTV	7	12	106
	Broward Road Ranger	1	4	45
	Broward VideoWall	2	1	8
	BSO	1	0	7
	District 4	2	0	13
	FDOT Maintenance	0	0	1
	FHP	5	8	114
	Fire	0	0	2
	Florida's Turnpike	0	0	6
	Motorist	0	0	1
	Other	0	0	1
	Palm Beach Road Rang	0	0	1
	Road Watcher	0	0	1
	SIRV	0	0	1
	SmarTraveler (511)	0	0	1
	VisioPaD Detection	1	0	4
	Total	19	25	312
Total	160	162	2,220	

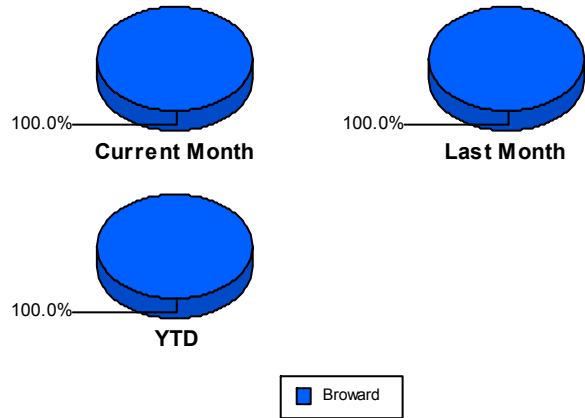
## Road Ranger / SIRV Performance Measures

### Road Ranger / SIRV Performance By County

Values presented are:  
 - Total Events with a RR/SIRV Response  
 - Total RR/SIRV Responses,  
 - Total Activities Performed

	Current Mo	Last Month	YTD
Broward	2,434	2,915	39,372
	2,615	3,099	42,145
	2,700	3,213	44,416

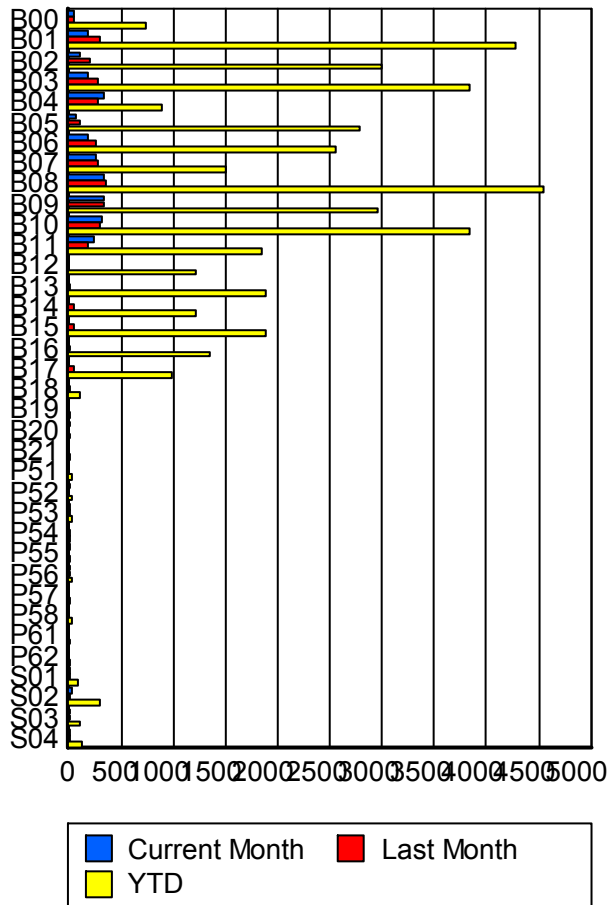
RR/SIRV Responses per County



### Road Ranger / SIRV Performance By Truck

	Current Mo	Last Month	YTD
B00	42	44	726
	43	46	739
	46	48	777
B01	175	290	4,216
	176	292	4,278
	182	294	4,510
B02	109	197	2,959
	111	201	3,003
	114	206	3,165
B03	183	278	3,793
	184	282	3,839
	190	288	4,069
B04	338	282	879
	341	287	889
	352	296	921
B05	75	103	2,755
	76	103	2,782
	78	106	2,966
B06	175	252	2,521
	178	254	2,550
	182	265	2,693
B07	250	272	1,484
	253	276	1,503
	265	291	1,559
B08	321	346	4,477
	326	348	4,549
	336	357	4,784

RR/SIRV Responses per Truck



	Current Mo	Last Month	YTD
B09	327	328	2,917
	332	332	2,949
	340	344	3,106
B10	306	281	3,797
	308	288	3,838
	317	303	4,051
B11	232	180	1,833
	234	181	1,848
	242	185	1,934
B12	0	0	1,190
	0	0	1,210
	0	0	1,273
B13	0	9	1,859
	0	9	1,882
	0	9	1,989
B14	0	47	1,198
	0	47	1,213
	0	51	1,250
B15	0	42	1,870
	0	43	1,881
	0	47	1,988
B16	0	1	1,332
	0	1	1,347
	0	1	1,414
B17	0	47	968
	0	48	981
	0	49	1,031
B18	0	1	97
	0	1	97
	0	1	101
B19	0	0	2
	0	0	2
	0	0	2
B20	1	0	2
	1	0	2
	1	0	2
B21	0	0	4
	0	0	4
	0	0	4
P51	0	0	35
	0	0	35
	0	0	37
P52	1	0	20
	1	0	20
	1	0	20

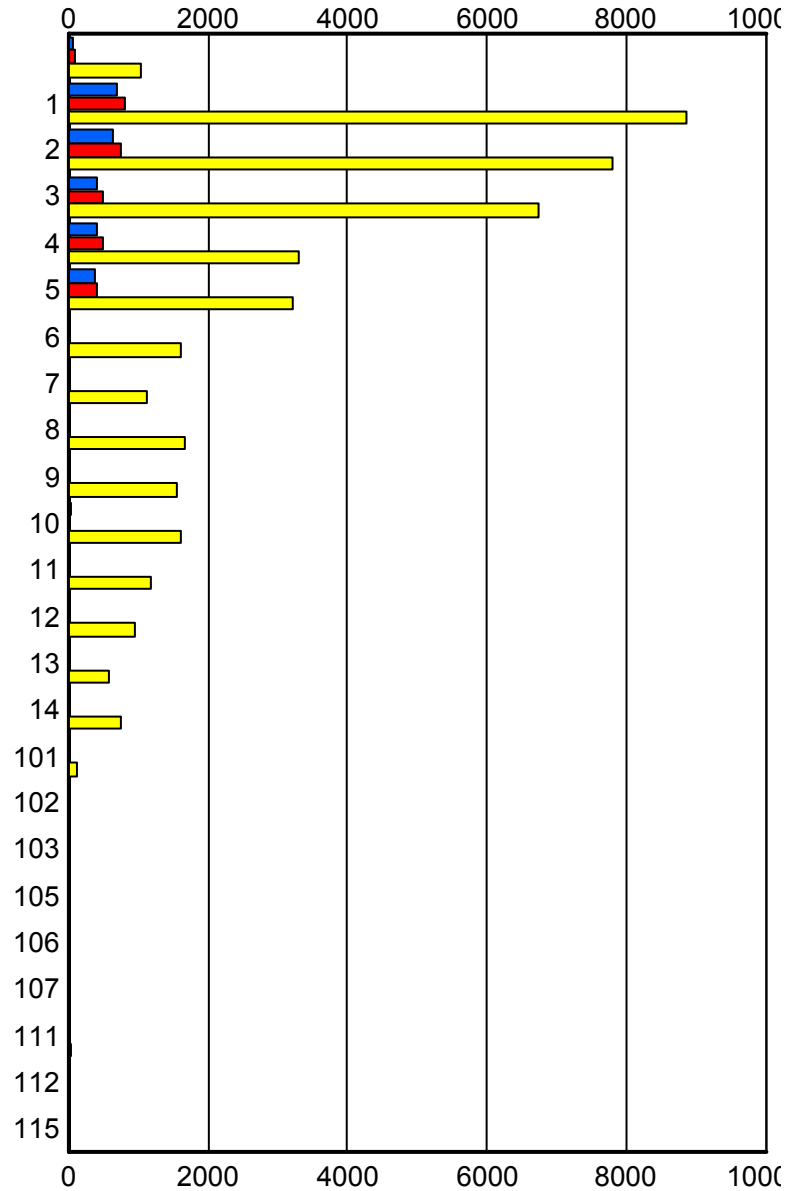
	Current Mo	Last Month	YTD
P53	2	2	22
	2	2	22
	2	2	25
P54	0	1	13
	0	1	13
	0	1	13
P55	2	0	16
	2	0	16
	2	0	17
P56	1	6	21
	1	6	22
	1	7	26
P57	0	0	11
	0	0	11
	0	0	11
P58	0	0	21
	0	0	21
	0	0	21
P61	0	0	1
	0	0	1
	0	0	1
P62	0	0	3
	0	0	3
	0	0	3
S01	5	10	76
	6	10	78
	6	13	86
S02	19	18	287
	20	19	290
	23	21	315
S03	7	9	107
	7	9	109
	7	11	120
S04	13	12	114
	13	13	118
	13	17	132

### Road Ranger / SIRV Performance By Beat

	Current Mo	Last Month	YTD
	57	88	951
	62	91	1,032
	67	102	1,103
1	647	783	8,473
	683	808	8,854
	702	836	9,306
2	607	730	7,582
	626	756	7,801
	647	784	8,215
3	409	484	6,543
	418	494	6,733
	433	506	7,067
4	396	468	3,246
	401	491	3,297
	418	508	3,457
5	362	413	3,168
	374	423	3,219
	381	440	3,362
6	0	0	1,589
	0	0	1,615
	0	0	1,693
7	12	0	1,107
	12	0	1,123
	13	0	1,177
8	0	21	1,640
	0	21	1,659
	0	21	1,748
9	0	2	1,540
	0	2	1,563
	0	2	1,685
10	32	0	1,588
	33	0	1,609
	33	0	1,723
11	0	4	1,185
	0	4	1,196
	0	4	1,286
12	0	0	942
	0	0	957
	0	0	1,026
13	0	0	578
	0	0	589
	0	0	622
14	0	0	735
	0	0	740
	0	0	778

Values presented are:  
 - Total Events with a RR/SIRV Response  
 - Total RR/SIRV Responses,  
 - Total Activities Performed

### RR/SIRV Responses per Beat



■ Current Month   
 ■ Last Month   
 ■ YTD

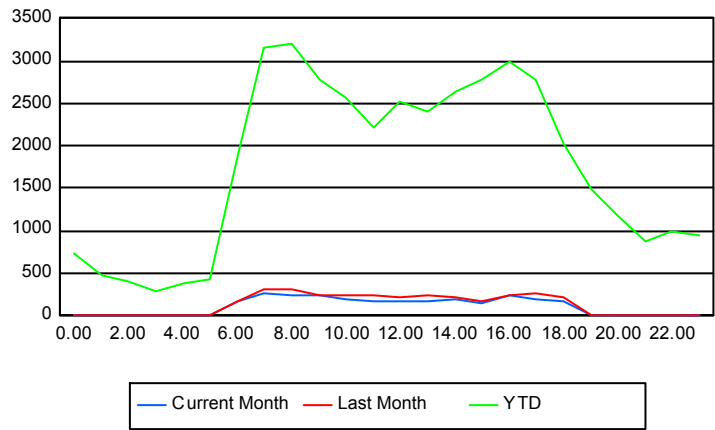
	Current Mo	Last Month	YTD
101	5	9	113
	5	9	113
	5	10	121
102	0	0	3
	0	0	4
	0	0	4
103	1	0	3
	1	0	3
	1	0	3
105	0	0	2
	0	0	2
	0	0	2
106	0	0	1
	0	0	1
	0	0	1
107	0	0	3
	0	0	3
	0	0	3
111	0	0	29
	0	0	29
	0	0	31
112	0	0	1
	0	0	1
	0	0	1
115	0	0	2
	0	0	2
	0	0	2

## Road Ranger / SIRV Performance By Time of Day

Values presented are:  
 - Total Events with a RR/SIRV Response  
 - Total RR/SIRV Responses,  
 - Total Activities Performed

	Current Mo	Last Month	YTD
12AM-1AM	2	4	698
	2	4	739
	2	4	794
1AM-2AM	4	3	451
	4	3	481
	4	6	513
2AM-3AM	5	3	356
	6	3	407
	7	3	438
3AM-4AM	1	5	253
	1	5	280
	1	5	302
4AM-5AM	0	5	326
	0	7	377
	0	7	408
5AM-6AM	11	5	351
	13	5	424
	15	5	451
6AM-7AM	152	150	1,749
	167	163	1,896
	173	167	1,968
7AM-8AM	247	278	2,950
	273	300	3,151
	276	311	3,303
8AM-9AM	217	287	2,948
	239	303	3,199
	251	315	3,370
9AM-10AM	236	235	2,609
	248	247	2,775
	254	261	2,912
10AM-11AM	180	235	2,431
	195	243	2,576
	201	246	2,710
11AM-12PM	157	209	2,067
	162	230	2,216
	166	239	2,329
12PM-1PM	168	208	2,373
	176	222	2,518
	178	230	2,638

## Number of Responses / Hour of the Day



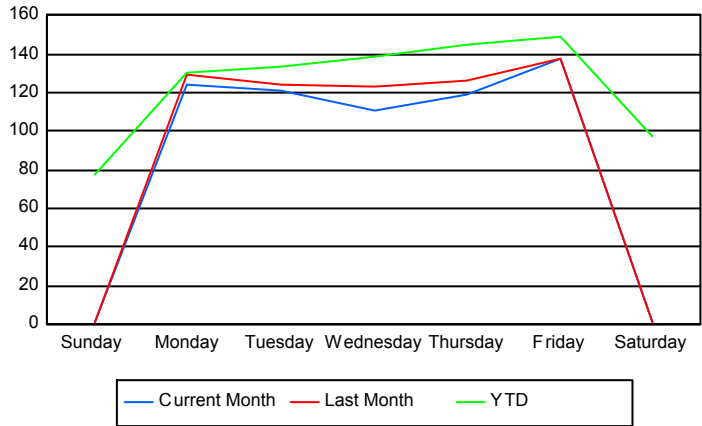
	Current Mo	Last Month	YTD
1PM-2PM	166	215	2,215
	175	234	2,397
	185	244	2,530
2PM-3PM	178	212	2,478
	184	227	2,642
	190	232	2,765
3PM-4PM	141	169	2,594
	152	176	2,788
	156	177	2,930
4PM-5PM	227	215	2,816
	242	233	2,989
	251	245	3,149
5PM-6PM	178	251	2,621
	192	261	2,791
	198	275	2,921
6PM-7PM	143	201	1,927
	161	207	2,039
	168	213	2,152
7PM-8PM	3	16	1,417
	3	16	1,480
	3	16	1,578
8PM-9PM	6	1	1,109
	6	1	1,182
	6	2	1,268
9PM-10PM	2	2	808
	3	2	869
	4	2	929
10PM-11PM	4	3	924
	5	4	982
	5	5	1,054
11PM-12AM	6	3	901
	6	3	947
	6	3	1,004

**Road Ranger / SIRV Performance By Day of Week**

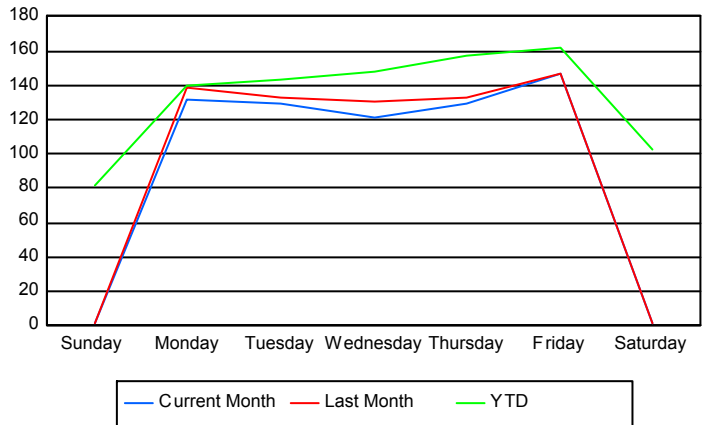
Values presented are: - Total Events with a RR/SIRV Response - Total RR/SIRV Responses, - Total Activities Performed
---

	Current Mo	Last Month	YTD
Sunday	1	1	2,906
	1	1	3,035
	2	1	3,212
Monday	497	511	6,024
	526	550	6,445
	537	569	6,737
Tuesday	477	487	6,309
	510	520	6,765
	526	537	7,112
Wednesday	441	613	6,533
	482	649	6,973
	502	666	7,329
Thursday	471	618	6,856
	511	650	7,397
	524	684	7,803
Friday	546	685	7,061
	583	728	7,639
	607	755	8,075
Saturday	2	1	3,709
	2	1	3,891
	2	1	4,148

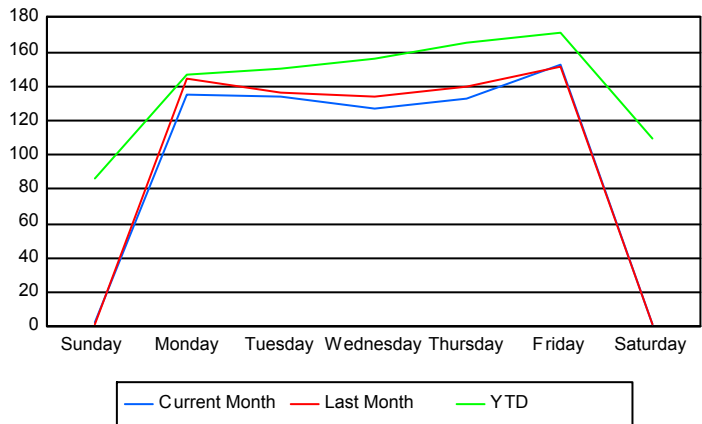
**Avg # of events with a RR/SIRV Response per Day of the Week**



**Avg # of RR/SIRV Responses per Day of the Week**



**Avg # of RR/SIRV Activities Performed per Day of the Week**



### Road Ranger / SIRV Responses per Time of Day and Day of Week

