



Monthly Performance Measures Report Broward County



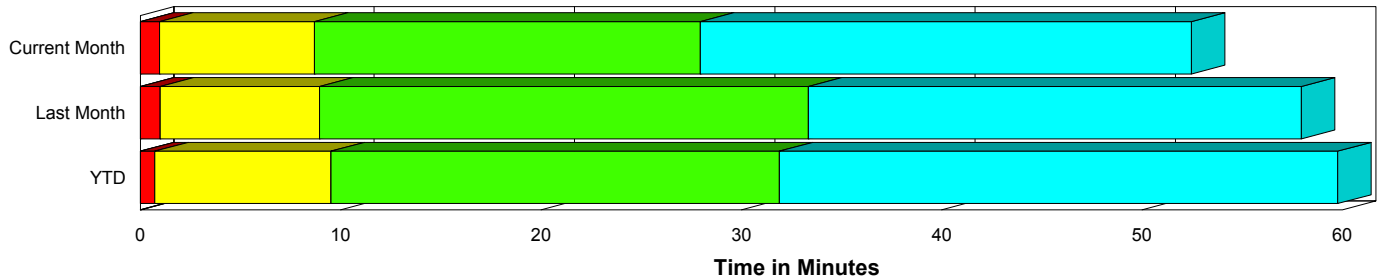
Created on:
November 02, 2009
12:16 pm

Period From Oct 1, 2009 to Oct 31, 2009

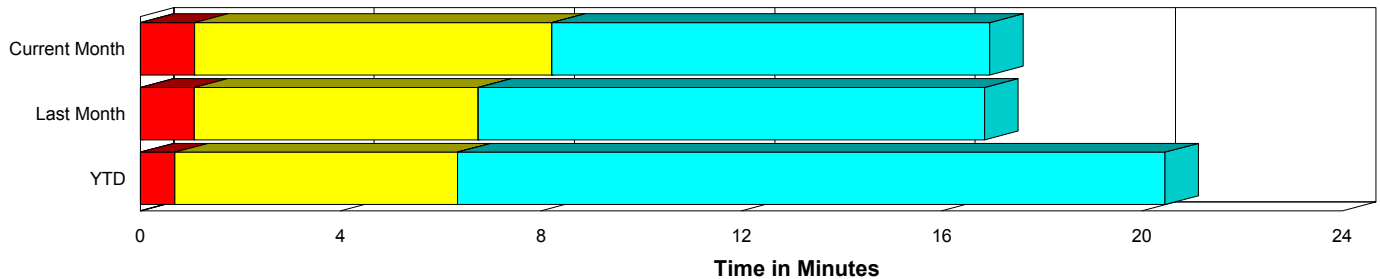
Performance Measures Summary

	Traffic Events (No Lanes Blocked)			Incidents (Lanes Blocked)		
	<u>This Month</u>	<u>Last Month</u>	<u>YTD</u>	<u>This Month</u>	<u>Last Month</u>	<u>YTD</u>
Number of Events	5,650	4,856	43,431	223	237	2,071
TMC Detection (min.)	0.00	0.00	0.01	0.01	0.01	0.00
TMC Verification (min.)	1.08	1.07	0.68	0.96	0.98	0.73
TMC Response (min.)	8.82	7.18	6.83	8.76	8.93	9.70
RR Dispatch Time (min.)	1.39	1.13	1.21	1.41	1.70	2.61
RR Response Time (min.)	7.60	6.20	5.76	7.38	7.22	7.23
Roadway Clearance (min.)				26.76	32.58	31.10
Event Clearance (min.)	17.56	17.29	20.96	51.27	57.12	58.57
# of Events w/ RR/SIRV	4,664	4,219	30,303	213	232	1,499
RR/SIRV Responses	4,664	4,219	30,303	213	232	1,499
RR/SIRV Activities	3,733	3,591	25,725	395	463	3,015

Incident Clearance Time-Line



Traffic Event (Non-Lane Blockage) Time-Line



■ Avg. TMC Detection Time	■ Avg. Time from TMC Response to Roadway Clearance*
■ Avg. Time from TMC Detection to TMC Verification	■ Avg. Time from Roadway Clearance to Incident/Event Clearance**
■ Avg. Time from TMC Verification to TMC Response	

* Roadway clearance equals all travel lanes open

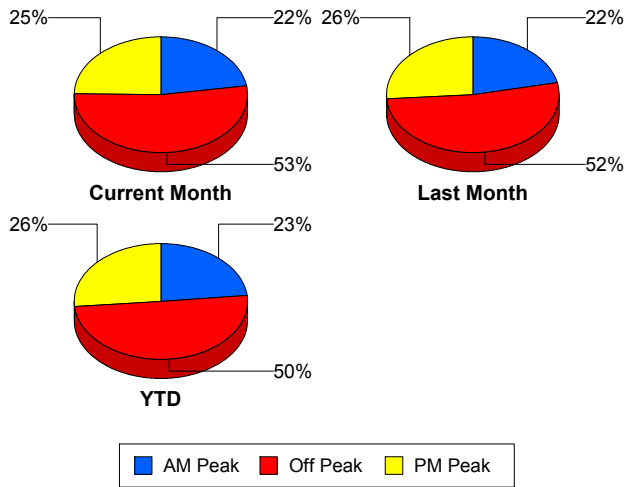
** Incident clearance equals time when last responder has left the scene

Performance Measures by Peak Period

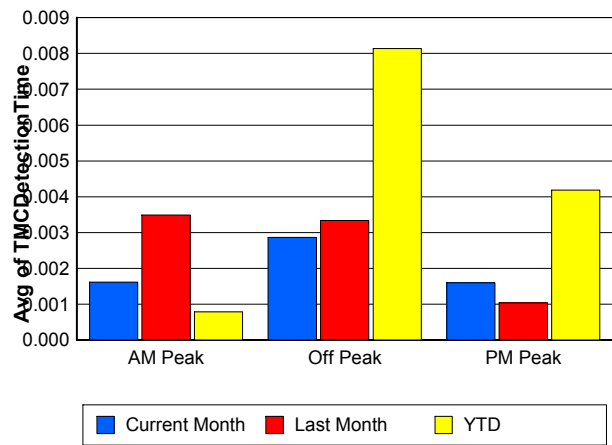
Note: AM peak period is defined as 6am to 10am and PM peak period is defined as 3pm to 7pm.

	AM Peak			Off Peak			PM Peak		
	<u>Current Month</u>	<u>Last Month</u>	<u>YTD</u>	<u>Current Month</u>	<u>Last Month</u>	<u>YTD</u>	<u>Current Month</u>	<u>Last Month</u>	<u>YTD</u>
Number of Events	1,320	1,103	10,559	3,103	2,659	22,969	1,450	1,331	11,974
Number of Incidents	59	74	487	100	113	1,011	64	50	573
TMC Detection (min.)	0.00	0.00	0.00	0.00	0.00	0.01	0.00	0.00	0.00
TMC Verification (min.)	0.70	0.77	0.55	1.12	1.25	0.66	1.33	0.97	0.85
TMC Response (min.)	8.73	6.78	6.45	9.29	7.89	7.82	7.98	6.61	6.36
RR Dispatch Time (min.)	0.96	0.84	0.97	1.59	1.34	1.71	1.37	1.08	0.94
RR Response Time (min.)	7.90	6.09	5.58	7.84	6.69	6.23	6.82	5.64	5.55
Event Clearance (min.)	17.44	20.68	20.95	19.50	18.80	24.86	18.70	18.56	20.01
Roadway Clearance (min.)	26.11	35.46	27.82	31.53	30.35	35.29	19.91	33.35	26.50
Incident Clearance (min.)	50.37	62.21	56.22	55.68	56.29	62.25	45.19	51.48	54.08
# of Events w/ RR/SIRV	1,116	984	8,652	2,517	2,279	13,741	1,244	1,188	9,409
RR/SIRV Responses	1,116	984	8,652	2,517	2,279	13,741	1,244	1,188	9,409
RR/SIRV Activities	931	903	8,080	2,100	2,048	12,029	1,097	1,103	8,631

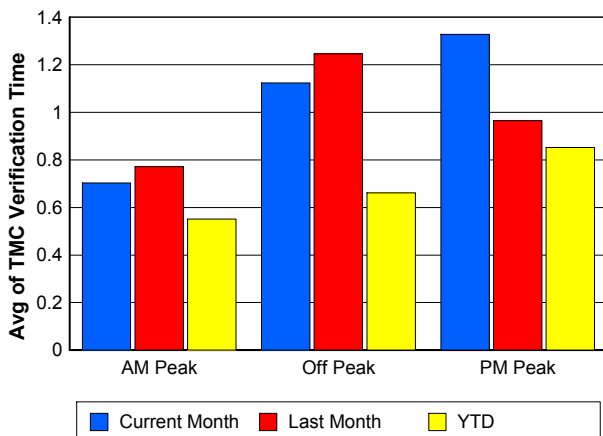
Number of Events / Peak Period



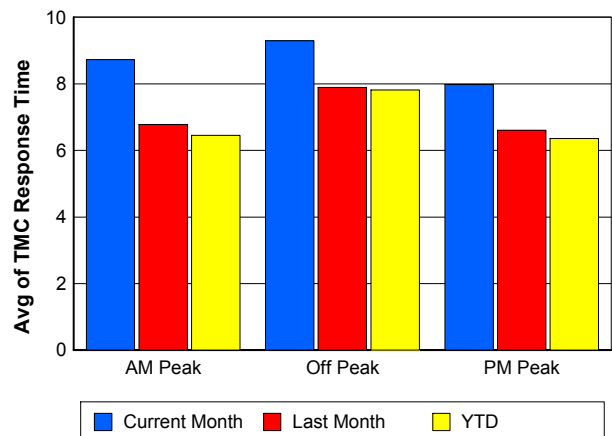
TMC Detection Time



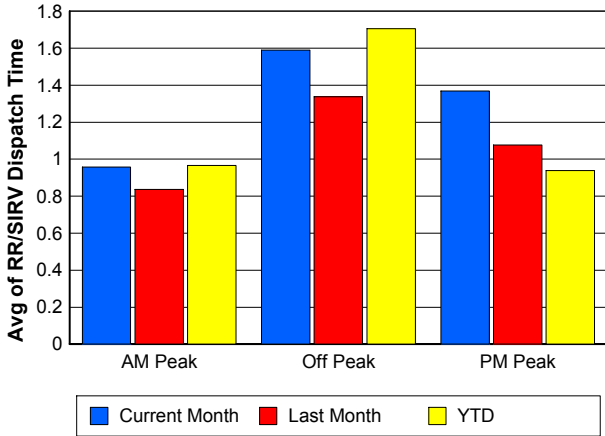
TMC Verification Time



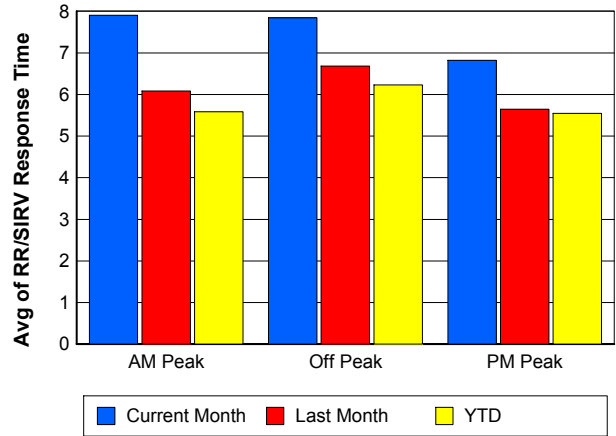
TMC Response Time



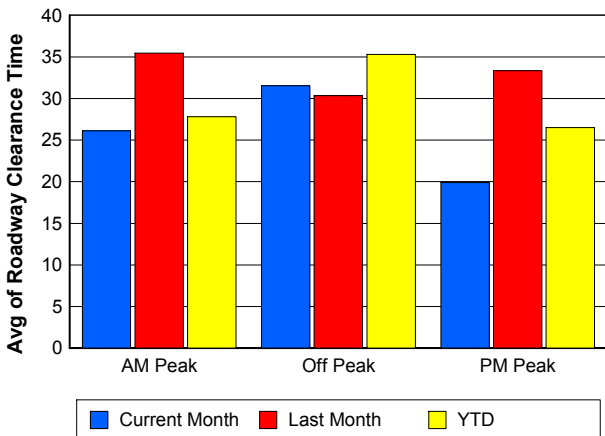
Road Ranger / SIRV Dispatch Time



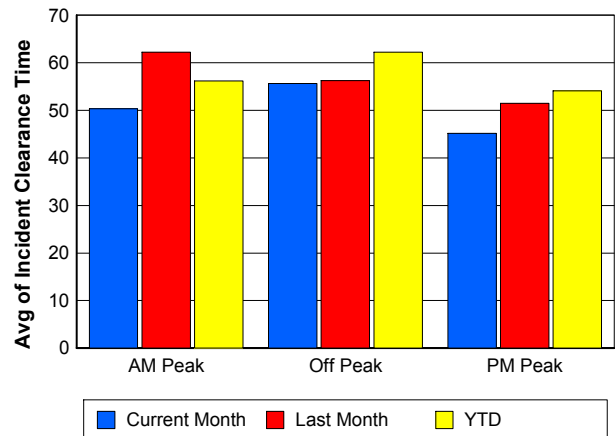
Road Ranger / SIRV Response Time



Roadway Clearance Time (2A)



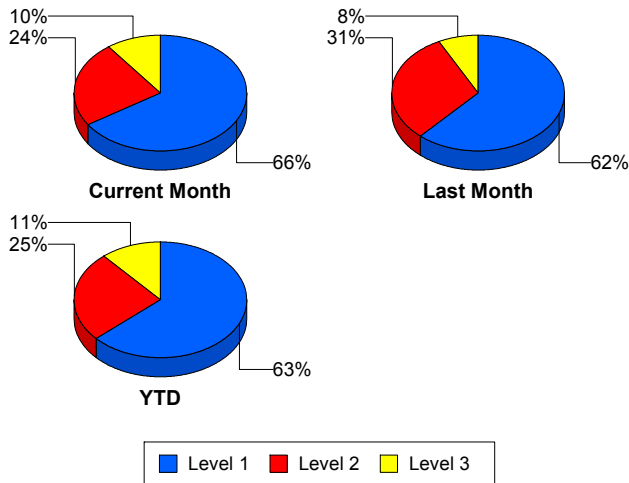
Incident Clearance Time (3B)



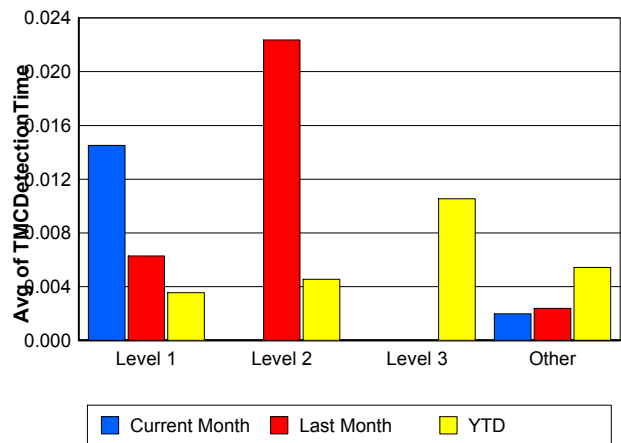
Performance Measures by Severity

	Level 1			Level 2			Level 3			Other		
	<u>This Month</u>	<u>Last Month</u>	<u>YTD</u>	<u>This Month</u>	<u>Last Month</u>	<u>YTD</u>	<u>This Month</u>	<u>Last Month</u>	<u>YTD</u>	<u>This Month</u>	<u>Last Month</u>	<u>YTD</u>
Number of Events	147	146	1,313	53	73	524	23	18	234	5,650	4,856	43,431
Number of Incidents	147	146	1,313	53	73	524	23	18	234	0	0	0
TMC Detection (min.)	0.01	0.01	0.00	0.00	0.02	0.00	0.00	0.00	0.01	0.00	0.00	0.01
TMC Verification (min.)	0.65	0.77	0.48	1.90	1.40	1.07	0.78	1.02	1.31	1.08	1.07	0.68
TMC Response (min.)	8.46	8.35	7.47	10.54	9.70	10.00	6.14	10.31	21.02	8.82	7.18	6.83
RR Dispatch Time (min.)	1.27	1.61	1.58	1.96	1.74	2.59	0.92	2.31	7.78	1.39	1.13	1.21
RR Resp. Time (min.)	7.26	6.73	5.96	8.55	7.96	7.67	5.22	8.00	13.19	7.60	6.20	5.76
Event Clearance (min.)	40.60	42.65	45.28	69.46	70.32	71.91	77.50	120.95	103.01	17.56	17.29	20.96
Roadway Clear. (min.)	14.47	15.04	14.34	49.01	50.94	49.24	54.04	100.38	84.50			
Incident Clearance (min.)	40.60	42.65	45.28	69.46	70.32	71.91	77.50	120.95	103.01			
# of Events w/ RR/SIRV	140	142	988	53	73	312	20	17	199	4,664	4,219	30,303
RR/SIRV Responses	140	142	988	53	73	312	20	17	199	4,664	4,219	30,303
RR/SIRV Activities	211	234	1,697	120	182	847	64	47	471	3,733	3,591	25,725

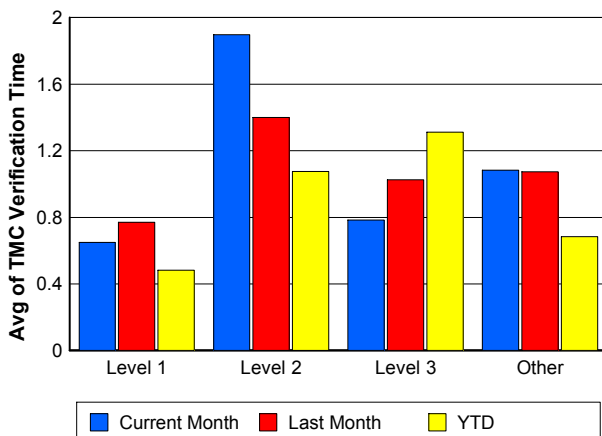
Number of Events / Severity



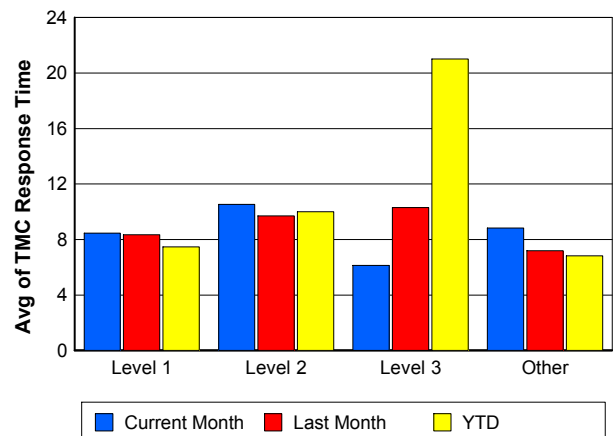
TMC Detection Time



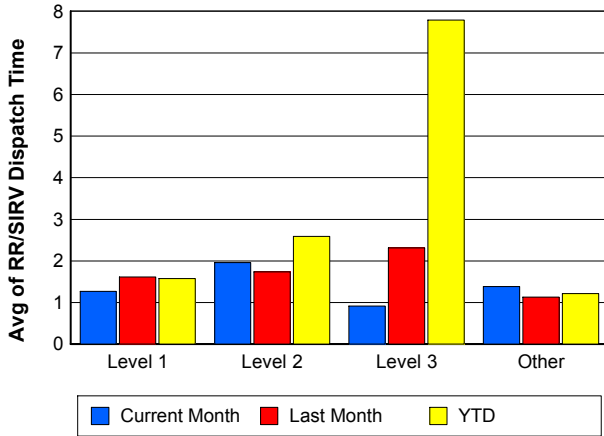
TMC Verification Time



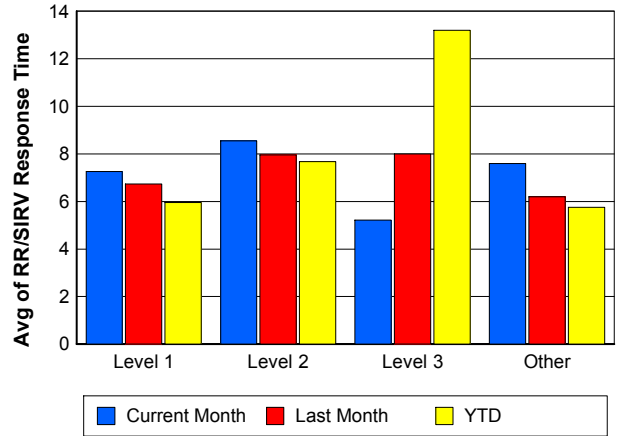
TMC Response Time



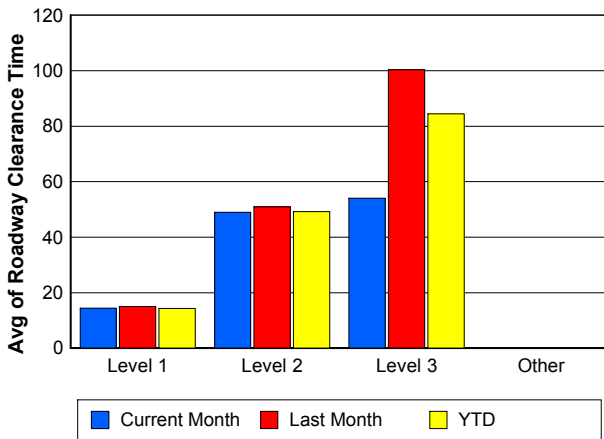
Road Ranger / SIRV Dispatch Time



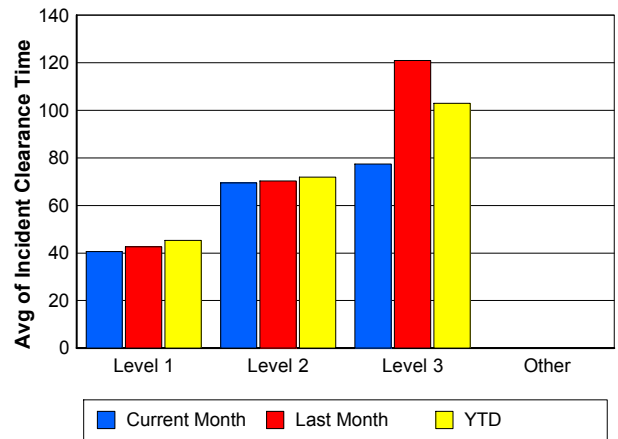
Road Ranger / SIRV Response Time



Roadway Clearance Time (2A)



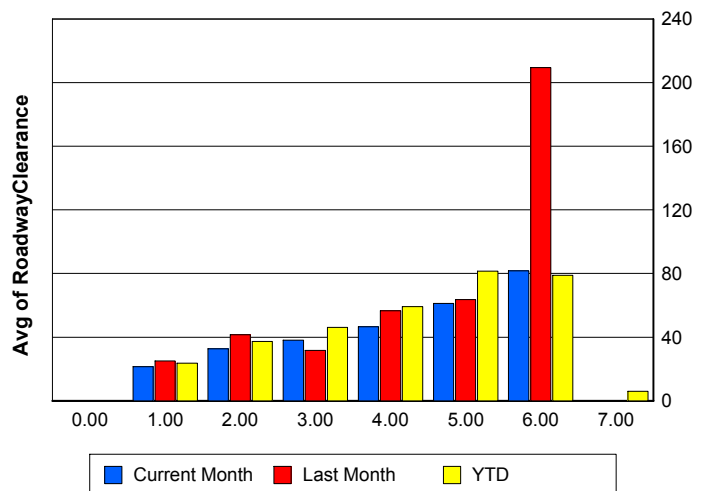
Incident Clearance Time (3B)



Roadway Clearance by Maximum Number of Lanes Blocked

	Current Month	Last Month	YTD
0			
1	21.47	25.00	23.70
2	32.75	41.52	37.29
3	38.16	31.67	46.15
4	46.51	56.59	59.22
5	61.18	63.61	81.56
6	81.75	209.44	78.82
7	0.00	0.00	5.97

Roadway Clearance Time (2A)



Performance Measures by Roadway

595

	<u>Current Month</u>	<u>Last Month</u>	<u>YTD</u>
Number of Events	192	184	4,603
Number of Incidents	17	6	281
TMC Detection (min.)	0.00	0.01	0.01
TMC Verification (min.)	2.51	1.67	0.86
TMC Response (min.)	15.36	12.01	6.93
RR Dispatch Time (min.)	1.54	2.09	1.16
RR Resp. Time (min.)	13.74	10.18	5.87
Event Clearance (min.)	20.25	23.76	21.41
Roadway Clear. (min.)	35.96	69.10	31.65
Incident Clearance (min.)	48.49	116.74	54.26
# of Events w/ RR/SIRV	134	156	3,213
RR/SIRV Responses	134	156	3,213
RR/SIRV Activities	106	124	2,925

75

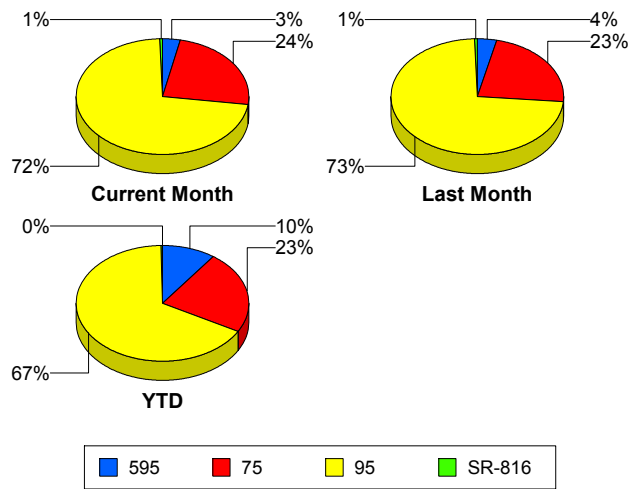
	<u>Current Month</u>	<u>Last Month</u>	<u>YTD</u>
Number of Events	1,400	1,166	10,437
Number of Incidents	23	22	194
TMC Detection (min.)	0.00	0.00	0.00
TMC Verification (min.)	1.65	1.67	0.91
TMC Response (min.)	10.10	9.09	8.27
RR Dispatch Time (min.)	1.84	1.32	1.32
RR Resp. Time (min.)	8.62	7.81	7.09
Event Clearance (min.)	19.24	20.84	24.53
Roadway Clear. (min.)	39.47	32.13	52.18
Incident Clearance (min.)	59.08	65.87	79.65
# of Events w/ RR/SIRV	1,140	999	7,114
RR/SIRV Responses	1,140	999	7,114
RR/SIRV Activities	940	897	6,115

95

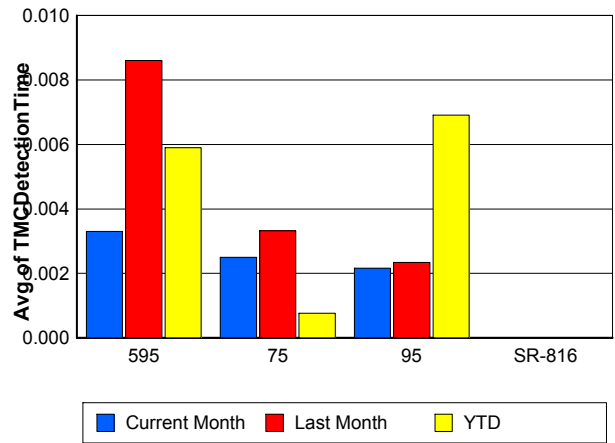
	<u>Current Month</u>	<u>Last Month</u>	<u>YTD</u>
Number of Events	4,247	3,710	30,395
Number of Incidents	165	185	1,554
TMC Detection (min.)	0.00	0.00	0.01
TMC Verification (min.)	0.84	0.86	0.58
TMC Response (min.)	8.30	6.64	6.62
RR Dispatch Time (min.)	1.25	1.07	1.28
RR Resp. Time (min.)	7.14	5.71	5.46
Event Clearance (min.)	18.67	18.47	22.25
Roadway Clear. (min.)	24.75	34.16	28.80
Incident Clearance (min.)	53.84	60.08	57.88
# of Events w/ RR/SIRV	3,570	3,265	21,411
RR/SIRV Responses	3,570	3,265	21,411
RR/SIRV Activities	3,047	2,994	19,626

	<u>Current Month</u>	<u>Last Month</u>	<u>YTD</u>
Number of Events	34	33	67
Number of Incidents	18	24	42
TMC Detection (min.)	0.00	0.00	0.00
TMC Verification (min.)	0.01	0.36	0.18
TMC Response (min.)	0.82	0.38	0.60
RR Dispatch Time (min.)	0.11	0.04	0.08
RR Resp. Time (min.)	0.74	0.34	0.55
Event Clearance (min.)	15.43	9.72	12.62
Roadway Clear. (min.)	20.27	11.65	15.34
Incident Clearance (min.)	20.31	11.37	15.20
# of Events w/ RR/SIRV	33	31	64
RR/SIRV Responses	33	31	64
RR/SIRV Activities	35	39	74

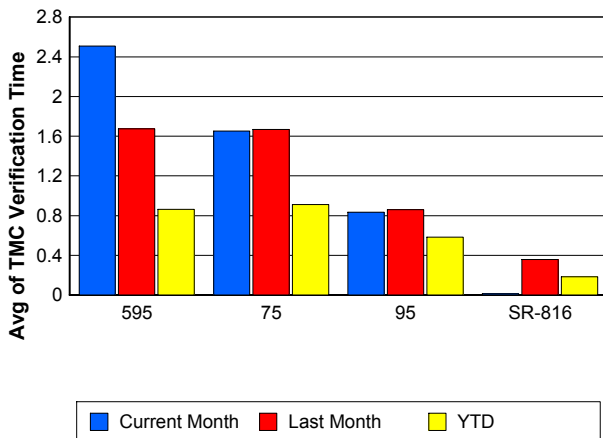
Number of Events / Roadway



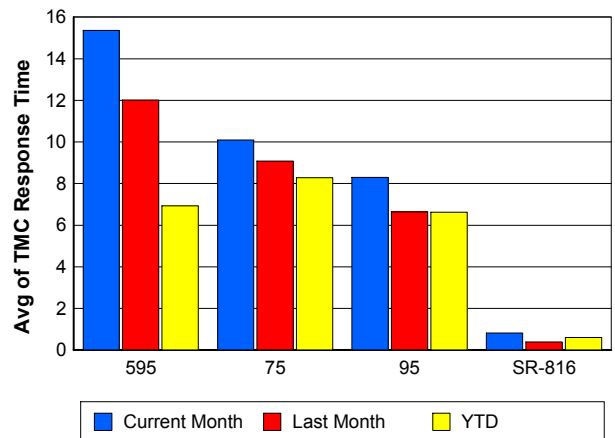
TMC Detection Time



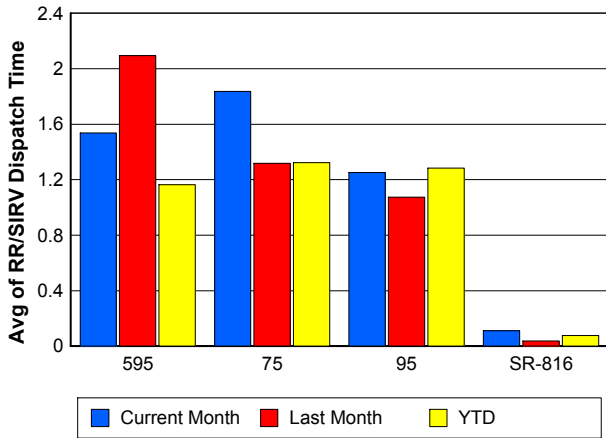
TMC Verification Time



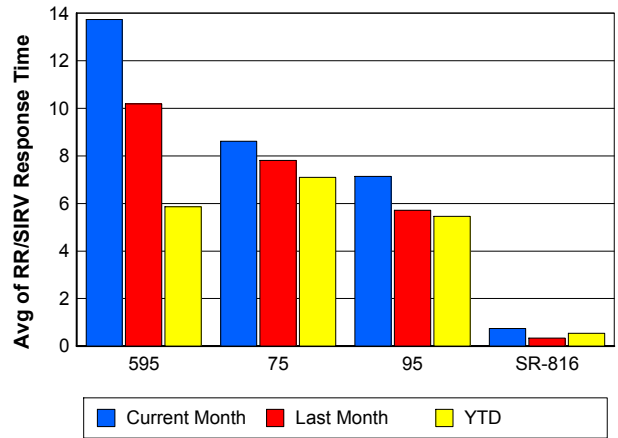
TMC Response Time



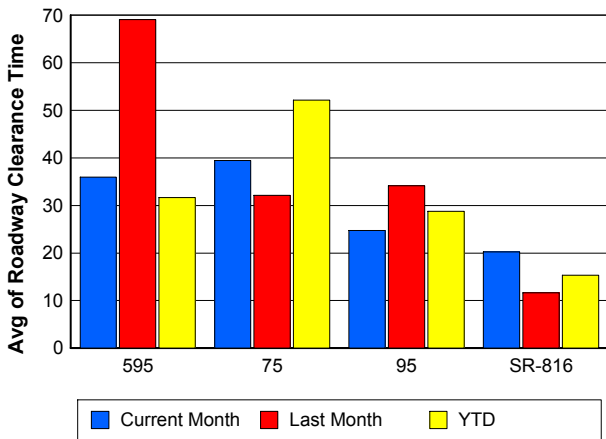
Road Ranger / SIRV Dispatch Time



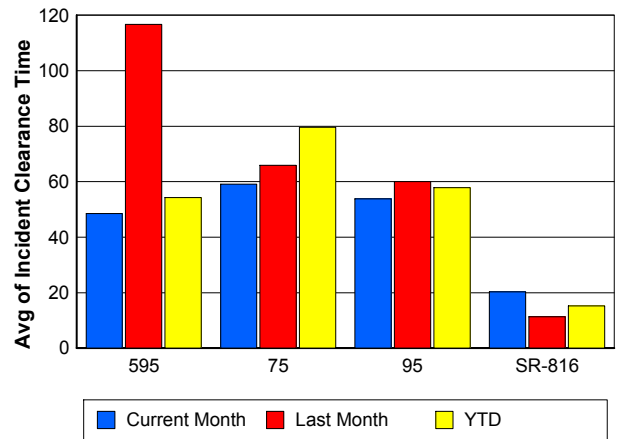
Road Ranger / SIRV Response Time



Roadway Clearance Time (2A)



Incident Clearance Time (3B)



Performance Measures by Event Type

Accident

	<u>Current Month</u>	<u>Last Month</u>	<u>YTD</u>
Number of Events	325	362	3,084
Number of Incidents	145	162	1,474
TMC Detection (min.)	0.00	0.00	0.01
TMC Verification (min.)	0.98	0.71	0.75
TMC Response (min.)	10.07	10.34	9.07
RR Dispatch Time (min.)	1.42	1.87	1.65
RR Response Time (min.)	8.63	8.45	7.49
Event Clearance (min.)	51.41	54.85	54.87
Roadway Clearance (min.)	31.57	33.80	32.84
Incident Clearance (min.)	64.16	66.11	66.19
# of Events w/ RR/SIRV	321	354	2,331
RR/SIRV Assists	321	354	2,331
RR/SIRV Activities	480	558	3,605

Debris on Roadway

	<u>Current Month</u>	<u>Last Month</u>	<u>YTD</u>
Number of Events	218	195	1,416
Number of Incidents	4	4	30
TMC Detection (min.)	0.00	0.00	0.08
TMC Verification (min.)	6.20	3.71	4.11
TMC Response (min.)	10.11	7.18	7.83
RR Dispatch Time (min.)	1.47	0.82	0.96
RR Response Time (min.)	8.70	6.39	6.89
Event Clearance (min.)	12.65	11.22	11.68
Roadway Clearance (min.)	24.72	31.96	24.02
Incident Clearance (min.)	30.91	57.70	31.95
# of Events w/ RR/SIRV	206	193	1,314
RR/SIRV Assists	206	193	1,314
RR/SIRV Activities	198	193	1,333

Disabled Vehicle

	<u>Current Month</u>	<u>Last Month</u>	<u>YTD</u>
Number of Events	3,394	3,104	26,809
Number of Incidents	51	51	346
TMC Detection (min.)	0.00	0.00	0.00
TMC Verification (min.)	1.30	1.39	0.82
TMC Response (min.)	8.64	7.09	6.62
RR Dispatch Time (min.)	1.35	1.06	1.11
RR Response Time (min.)	7.44	6.13	5.57
Event Clearance (min.)	21.15	19.59	25.32
Roadway Clearance (min.)	15.61	18.93	18.52
Incident Clearance (min.)	25.51	24.92	32.61
# of Events w/ RR/SIRV	3,310	3,049	21,924
RR/SIRV Assists	3,310	3,049	21,924
RR/SIRV Activities	3,250	3,093	22,273

Emergency Vehicles

	<u>Current Month</u>	<u>Last Month</u>	<u>YTD</u>
Number of Events	9	9	72
Number of Incidents	8	8	56
TMC Detection (min.)	0.00	0.00	0.00
TMC Verification (min.)	0.00	0.01	0.54
TMC Response (min.)	8.88	5.56	12.87
RR Dispatch Time (min.)	0.75	4.70	8.16
RR Response Time (min.)	8.12	0.85	4.21
Event Clearance (min.)	20.31	106.68	48.74
Roadway Clearance (min.)	12.73	97.91	47.79
Incident Clearance (min.)	19.03	109.42	54.43
# of Events w/ RR/SIRV	4	7	40
RR/SIRV Assists	4	7	40
RR/SIRV Activities	9	15	69

Other

	<u>Current Month</u>	<u>Last Month</u>	<u>YTD</u>
Number of Events	1,895	1,380	13,694
Number of Incidents	4	2	31
TMC Detection (min.)	0.00	0.01	0.00
TMC Verification (min.)	0.14	0.11	0.07
TMC Response (min.)	8.34	5.02	8.28
RR Dispatch Time (min.)	1.49	1.29	1.73
RR Response Time (min.)	7.25	4.45	6.27
Event Clearance (min.)	9.84	9.25	10.95
Roadway Clearance (min.)	54.47	2.02	33.55
Incident Clearance (min.)	56.92	2.88	38.56
# of Events w/ RR/SIRV	1,011	816	5,949
RR/SIRV Assists	1,011	816	5,949
RR/SIRV Activities	165	152	1,143

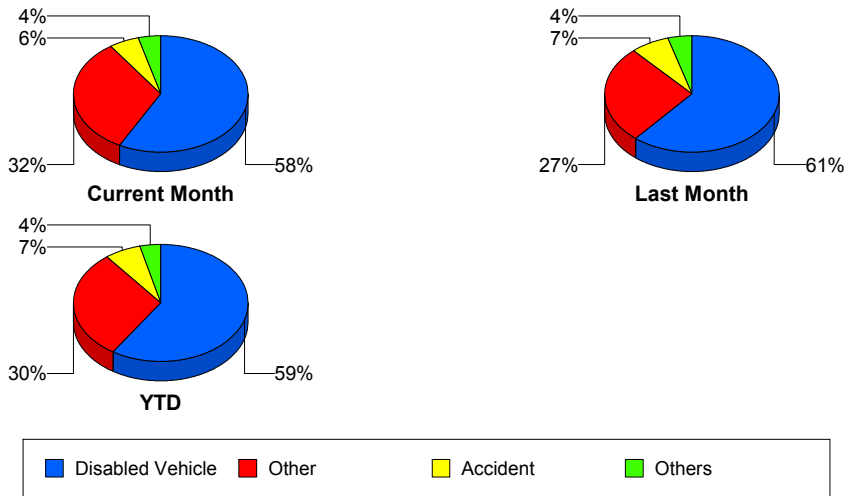
Police Activity

	<u>Current Month</u>	<u>Last Month</u>	<u>YTD</u>
Number of Events	14	14	177
Number of Incidents	8	2	58
TMC Detection (min.)	0.00	0.04	0.00
TMC Verification (min.)	0.10	0.04	0.30
TMC Response (min.)	8.12	7.65	13.07
RR Dispatch Time (min.)	2.68	0.51	4.09
RR Response Time (min.)	5.97	7.25	9.02
Event Clearance (min.)	16.25	22.27	32.03
Roadway Clearance (min.)	15.97	27.73	36.84
Incident Clearance (min.)	21.21	29.80	45.45
# of Events w/ RR/SIRV	8	5	61
RR/SIRV Assists	8	5	61
RR/SIRV Activities	11	7	74

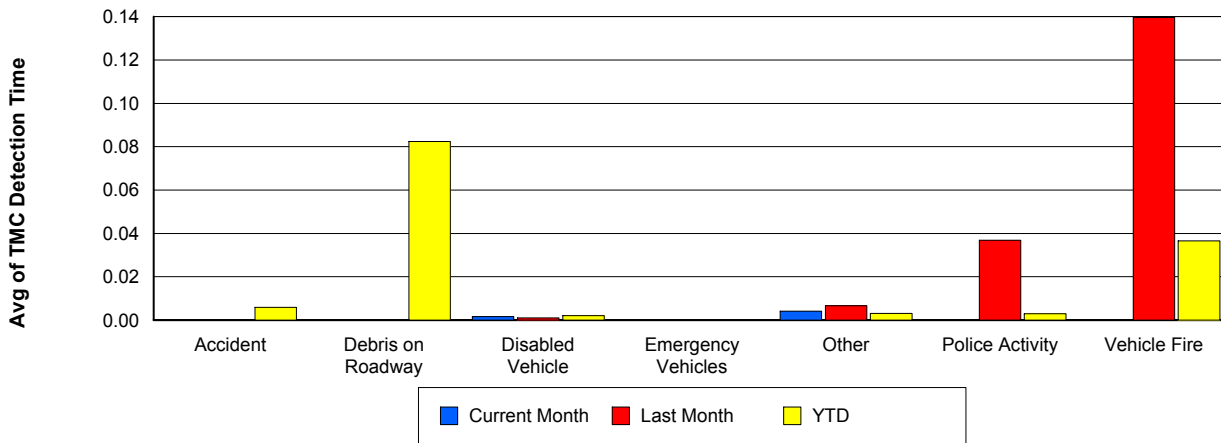
Vehicle Fire

	<u>Current Month</u>	<u>Last Month</u>	<u>YTD</u>
Number of Events	7	8	98
Number of Incidents	3	8	76
TMC Detection (min.)	0.00	0.14	0.04
TMC Verification (min.)	0.85	0.15	1.10
TMC Response (min.)	10.04	3.18	9.98
RR Dispatch Time (min.)	0.94	0.84	2.12
RR Response Time (min.)	9.10	2.35	8.25
Event Clearance (min.)	36.15	48.28	56.80
Roadway Clearance (min.)	16.01	38.57	39.68
Incident Clearance (min.)	51.91	48.28	60.84
# of Events w/ RR/SIRV	7	8	68
RR/SIRV Assists	7	8	68
RR/SIRV Activities	7	20	140

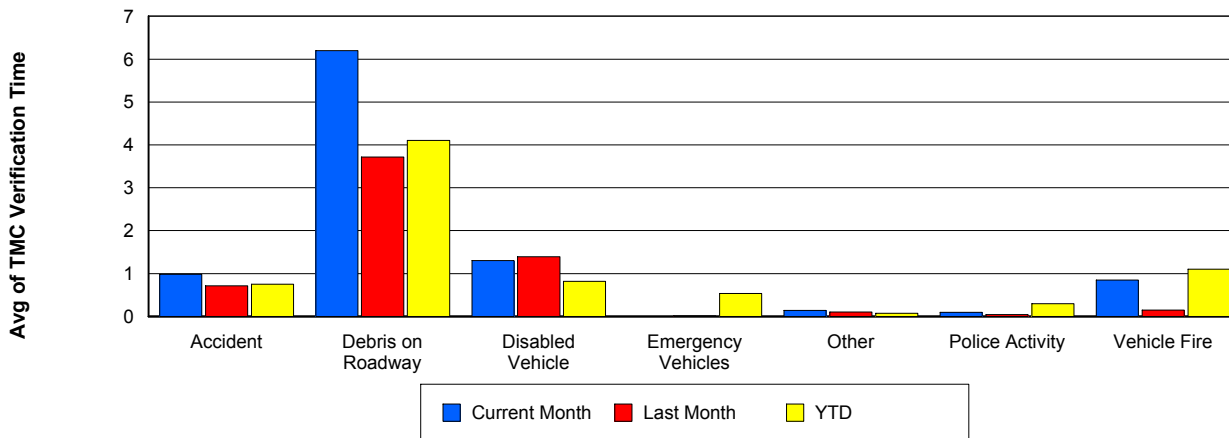
Number of Events / Event Type



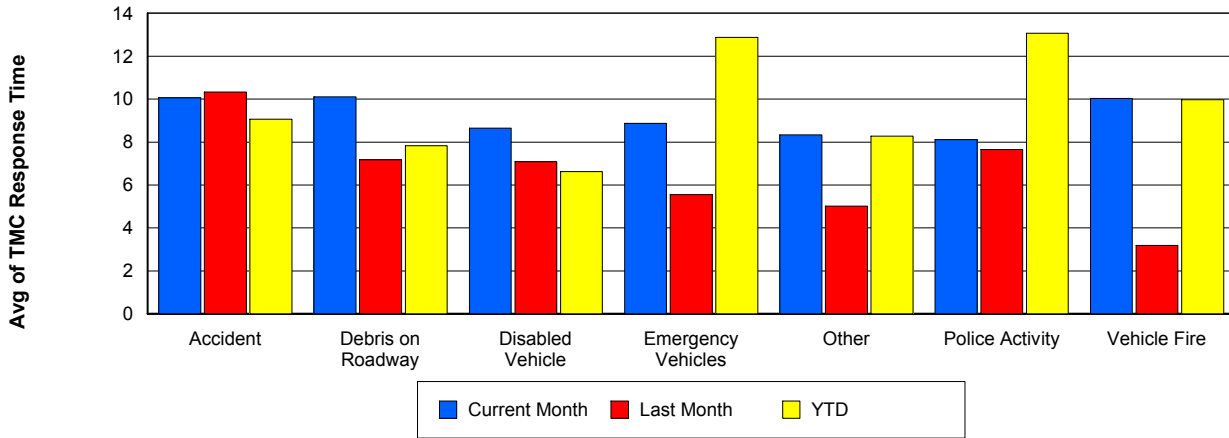
TMC Detection Time



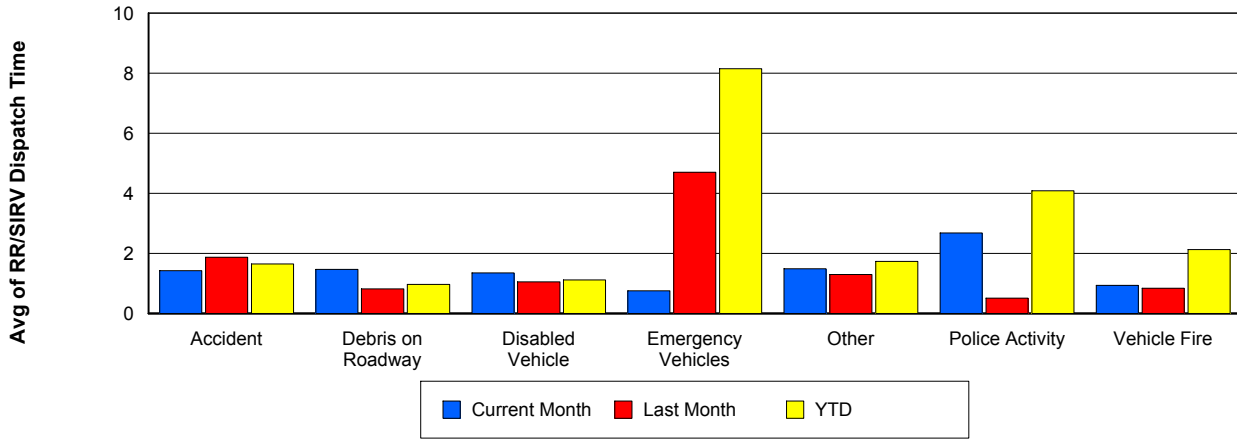
TMC Verification Time



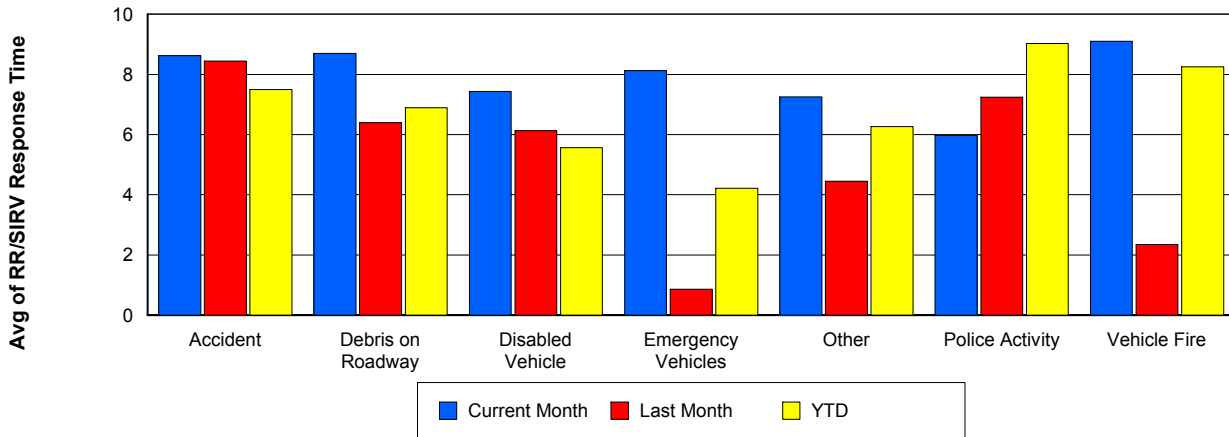
TMC Response Time



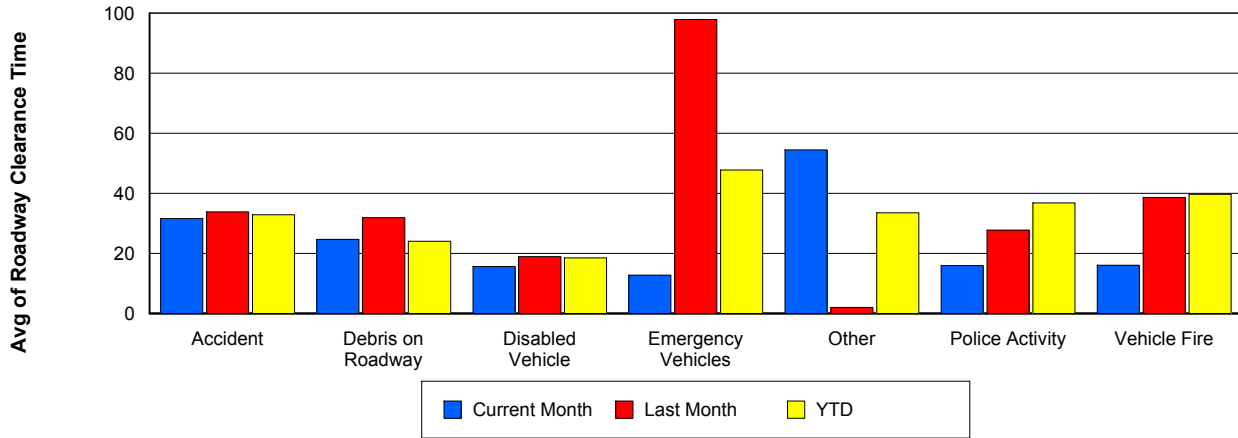
Road Ranger / SIRV Dispatch Time



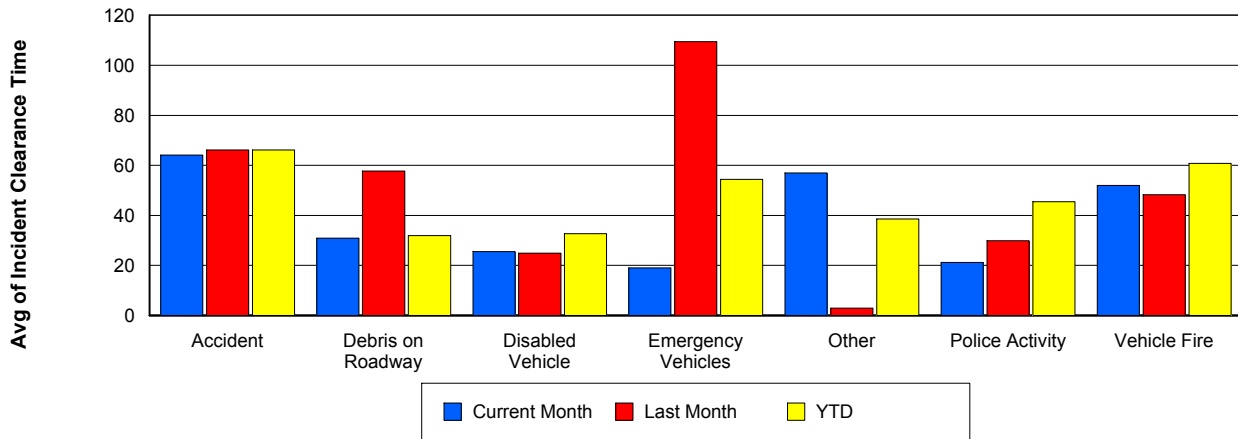
Road Ranger / SIRV Response Time



Roadway Clearance Time (2A)



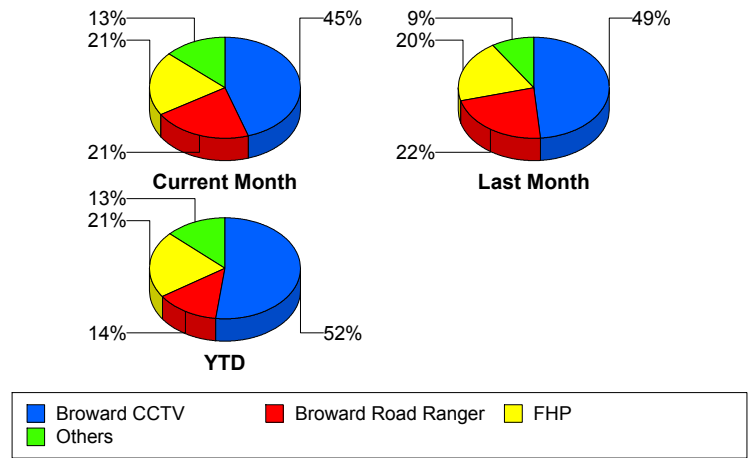
Incident Clearance Time (3B)



Incident Detection Methods

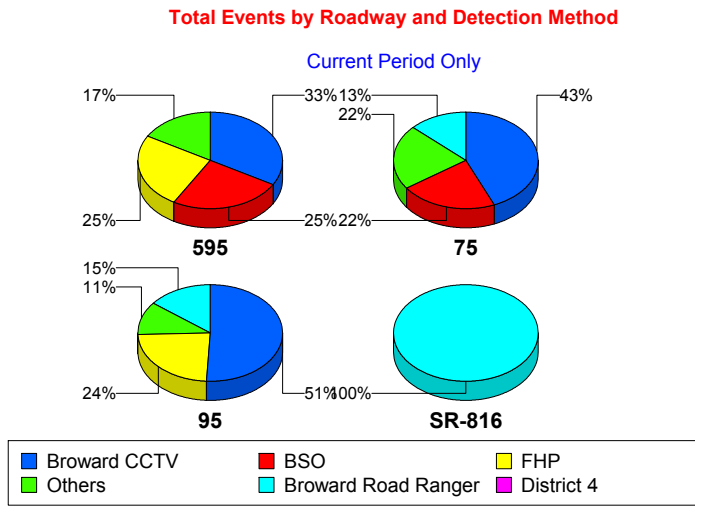
	Current Month	Last Month	YTD
Broward CCTV	98	115	1,073
Broward Road Ranger	46	53	280
Broward TMC	2	1	4
Broward VideoWall	3	3	60
BSO	8	2	47
District 4	4	4	50
District 6	2	0	3
FDOT Maintenance	2	0	6
FHP	45	47	442
Fire	1	1	4
Florida's Turnpike	0	0	6
ITMS	0	0	2
Motorist	3	0	11
Other	0	0	1
Palm Beach Road Ran	1	2	5
Road Watcher	1	1	14
SIRV	0	2	12
SmarTraveler (511)	0	0	6
VisioPaD Detection	2	6	37
Total	218	237	2,063

Total Incidents by Detection Method



Incident Detection Methods by Roadway

		Current Month	Last Month	YTD
595	Broward CCTV	4	5	133
	Broward Road Ranger	1	0	38
	Broward VideoWall	0	0	8
	BSO	3	0	7
	District 4	0	0	12
	FDOT Maintenance	0	0	2
	FHP	3	1	55
	Florida's Turnpike	0	0	6
	Motorist	1	0	3
	Road Watcher	0	0	3
	SIRV	0	0	1
	VisioPaD Detection	0	0	6
	Total	12	6	274
	75	Broward CCTV	10	8
Broward Road Ranger		3	5	21
Broward VideoWall		0	0	1
BSO		5	2	35
District 4		1	0	6
FHP		3	6	44
Other		0	0	1
Road Watcher		1	0	3
VisioPaD Detection		0	1	5
Total		23	22	194
95	Broward CCTV	84	102	862
	Broward Road Ranger	24	25	180
	Broward TMC	2	1	4
	Broward VideoWall	3	3	51
	BSO	0	0	5
	District 4	3	3	31
	District 6	2	0	3
	FDOT Maintenance	2	0	4

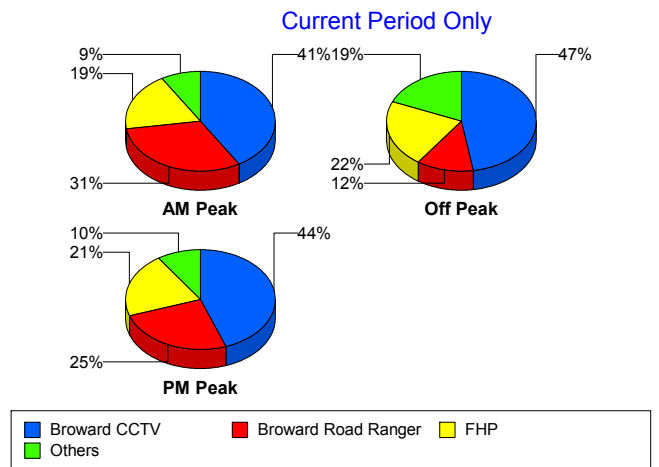


		Current Month	Last Month	YTD
95	FHP	39	40	343
	Fire	1	1	4
	ITMS	0	0	2
	Motorist	2	0	8
	Palm Beach Road Ran	1	2	5
	Road Watcher	0	1	8
	SIRV	0	2	11
	SmarTraveler (511)	0	0	6
	VisioPaD Detection	2	5	26
	Total	165	185	1,553
	SR-816	Broward Road Ranger	18	23
District 4		0	1	1
Total		18	24	42
Total		218	237	2,063

Incident Detection Methods by Peak Period

		Current Month	Last Month	YTD
AM Peak	Broward CCTV	24	29	214
	Broward Road Ranger	18	23	94
	Broward TMC	0	1	1
	Broward VideoWall	0	2	20
	BSO	1	1	7
	District 4	1	4	18
	FDOT Maintenance	1	0	1
	FHP	11	13	110
	Florida's Turnpike	0	0	2
	Motorist	1	0	6
	Palm Beach Road Ran	0	1	2
	Road Watcher	1	0	5
	SIRV	0	0	1
	SmarTraveler (511)	0	0	1
	VisioPaD Detection	0	0	2

Total Events by Peak Period and Detection Method

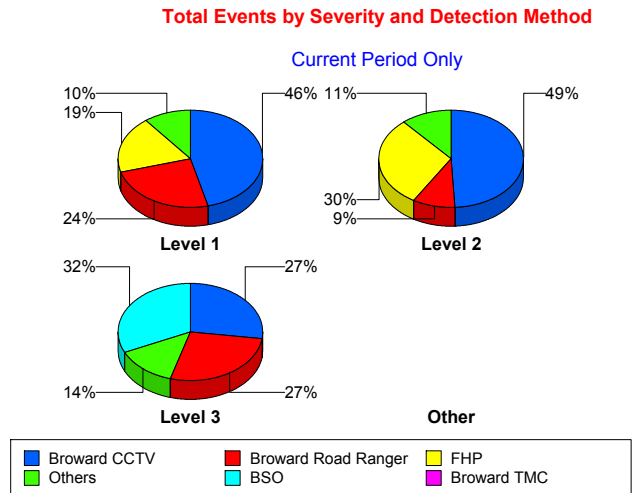


		Current Month	Last Month	YTD
AM Peak	Total	58	74	484
Off Peak	Broward CCTV	46	66	576
	Broward Road Ranger	12	15	78
	Broward TMC	2	0	3
	Broward VideoWall	3	1	33
	BSO	4	1	31
	District 4	2	0	16
	District 6	2	0	2
	FDOT Maintenance	1	0	3
	FHP	21	19	210
	Fire	1	1	3
	Florida's Turnpike	0	0	3
	ITMS	0	0	2
	Motorist	1	0	4
	Palm Beach Road Ran	0	1	1
	Road Watcher	0	1	6
	SIRV	0	2	5
	SmarTraveler (511)	0	0	3
	VisioPaD Detection	2	6	29
	Total	97	113	1,008
	PM Peak	Broward CCTV	28	20
Broward Road Ranger		16	15	108
Broward VideoWall		0	0	7
BSO		3	0	9
District 4		1	0	16
District 6		0	0	1
FDOT Maintenance		0	0	2
FHP		13	15	122
Fire		0	0	1
Florida's Turnpike		0	0	1
Motorist		1	0	1
Other		0	0	1

		Current Month	Last Month	YTD
PM Peak	Palm Beach Road Ran	1	0	2
	Road Watcher	0	0	3
	SIRV	0	0	6
	SmarTraveler (511)	0	0	2
	VisioPaD Detection	0	0	6
	Total	63	50	571
Total		218	237	2,063

Incident Detection Methods by Severity

		Current Month	Last Month	YTD	
Level 1	Broward CCTV	66	70	687	
	Broward Road Ranger	35	39	206	
	Broward TMC	2	1	3	
	Broward VideoWall	2	2	39	
	BSO	0	1	10	
	District 4	2	4	37	
	District 6	2	0	2	
	FDOT Maintenance	2	0	5	
	FHP	27	21	257	
	Fire	1	1	3	
	ITMS	0	0	1	
	Motorist	2	0	8	
	Palm Beach Road Ran	1	1	4	
	Road Watcher	0	0	9	
	SIRV	0	2	11	
	SmarTraveler (511)	0	0	4	
	VisioPaD Detection	1	4	21	
	Total	143	146	1,307	
	Level 2	Broward CCTV	26	39	278
		Broward Road Ranger	5	12	51
Broward TMC		0	0	1	
Broward VideoWall		1	1	18	



		Current Month	Last Month	YTD
Level 2	BSO	1	1	11
	District 4	2	0	7
	FDOT Maintenance	0	0	1
	FHP	16	18	130
	Florida's Turnpike	0	0	4
	ITMS	0	0	1
	Motorist	1	0	3
	Other	0	0	1
	Road Watcher	0	1	2
	SIRV	0	0	1
	SmarTraveler (511)	0	0	2
	VisioPaD Detection	1	1	13
	Total	53	73	524
Level 3	Broward CCTV	6	6	108
	Broward Road Ranger	6	2	23
	Broward VideoWall	0	0	3
	BSO	7	0	26
	District 4	0	0	6
	District 6	0	0	1
	FHP	2	8	55
	Fire	0	0	1
	Florida's Turnpike	0	0	2
	Palm Beach Road Ran	0	1	1
	Road Watcher	1	0	3
	VisioPaD Detection	0	1	3
	Total	22	18	232
Total		218	237	2,063

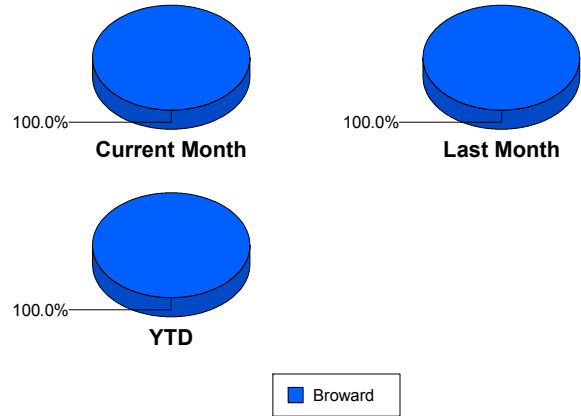
Road Ranger / SIRV Performance Measures

Road Ranger / SIRV Performance By County

RR/SIRV Responses per County

Values presented are:
 - Total Events with a RR/SIRV Response
 - Total RR/SIRV Responses,
 - Total Activities Performed

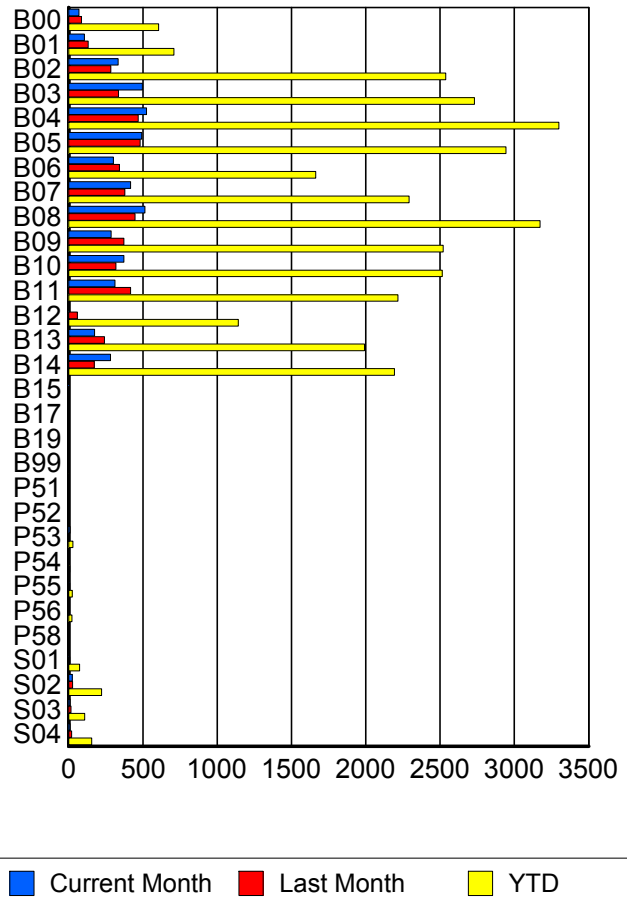
	Current Mo	Last Month	YTD
Broward	4,444	4,294	30,850
	4,756	4,619	33,165
	4,944	4,821	34,517



Road Ranger / SIRV Performance By Truck

	Current Mo	Last Month	YTD
B00	68	82	592
	69	86	606
	75	91	635
B01	105	129	697
	105	132	709
	105	138	744
B02	326	282	2,510
	333	285	2,537
	342	293	2,638
B03	492	332	2,691
	497	336	2,730
	516	362	2,835
B04	517	459	3,262
	524	469	3,299
	542	485	3,437
B05	486	471	2,891
	492	481	2,944
	509	504	3,045
B06	300	340	1,638
	302	343	1,663
	315	353	1,717
B07	409	376	2,259
	416	378	2,292
	435	395	2,394
B08	507	440	3,132
	514	447	3,173
	532	458	3,289

RR/SIRV Responses per Truck



	Current Mo	Last Month	YTD
B09	284	363	2,482
	287	371	2,521
	299	387	2,618
B10	365	312	2,470
	372	319	2,514
	388	333	2,613
B11	307	412	2,181
	311	416	2,216
	318	427	2,285
B12	3	56	1,127
	3	58	1,142
	3	60	1,191
B13	174	241	1,967
	175	242	1,991
	181	257	2,062
B14	273	170	2,155
	281	172	2,193
	293	178	2,275
B15	4	0	6
	4	0	6
	4	0	6
B17	1	0	1
	1	0	1
	1	0	1
B19	1	0	1
	1	0	1
	1	0	1
B99	0	0	4
	0	0	4
	0	0	4
P51	0	0	1
	0	0	1
	0	0	1
P52	2	0	4
	2	0	4
	2	0	4
P53	10	2	28
	10	2	29
	14	2	35
P54	1	5	8
	1	5	8
	1	5	8
P55	6	7	24
	6	7	24
	6	9	28

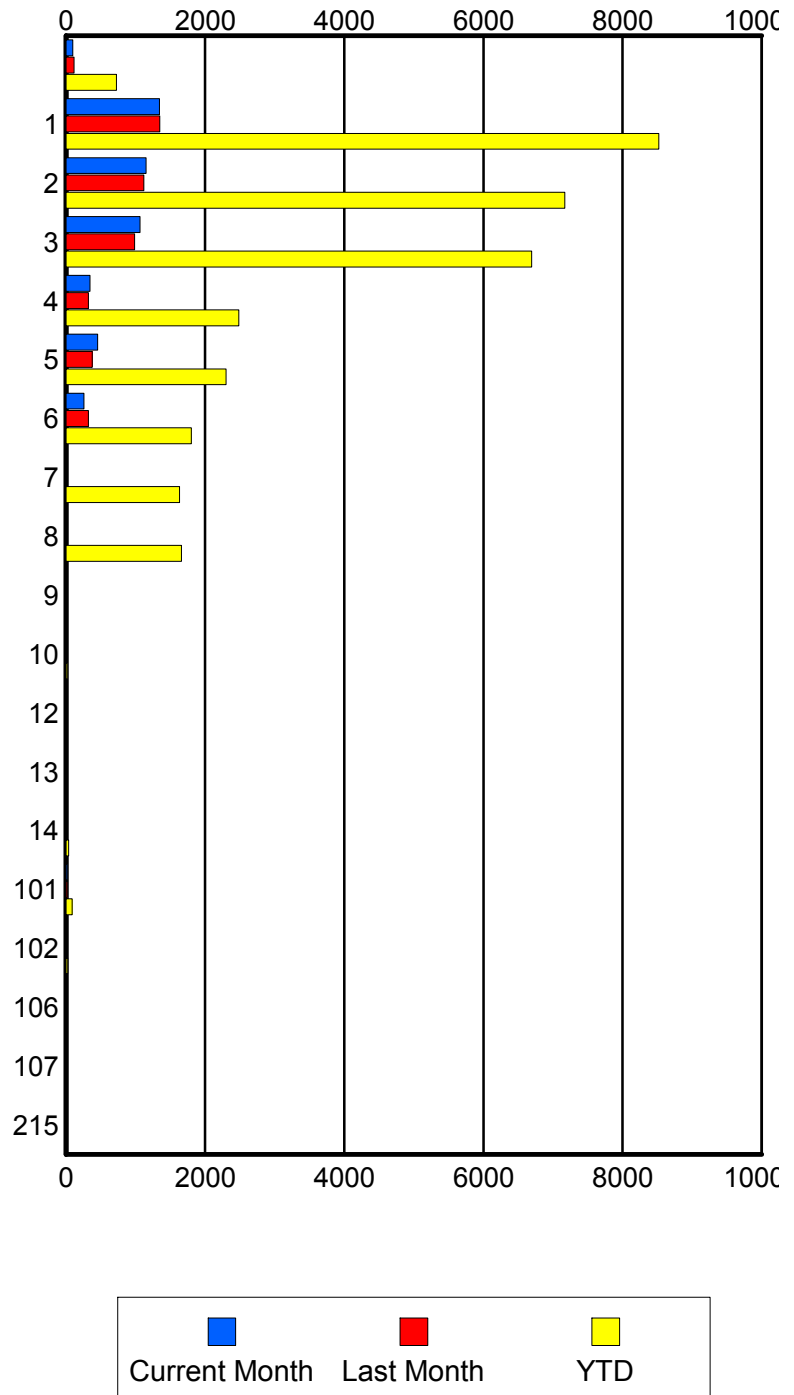
	Current Mo	Last Month	YTD
P56	2	3	23
	2	3	23
	2	3	24
P58	0	0	1
	0	0	1
	0	0	1
S01	3	7	70
	3	7	73
	4	10	85
S02	25	25	215
	25	26	222
	32	30	248
S03	10	16	106
	10	16	108
	12	19	123
S04	10	20	151
	10	20	156
	12	22	170

Road Ranger / SIRV Performance By Beat

	Current Mo	Last Month	YTD
	96	108	677
	97	116	723
	111	128	794
1	1,286	1,249	8,046
	1,341	1,348	8,520
	1,383	1,400	8,806
2	1,102	1,091	6,921
	1,151	1,118	7,171
	1,202	1,173	7,482
3	1,029	956	6,502
	1,063	987	6,696
	1,100	1,022	6,949
4	335	314	2,430
	342	320	2,483
	351	334	2,563
5	450	373	2,263
	456	378	2,300
	471	396	2,381
6	253	319	1,766
	259	322	1,803
	272	333	1,893
7	6	0	1,606
	6	0	1,631
	6	0	1,704
8	5	0	1,638
	5	0	1,658
	8	0	1,724
9	0	0	12
	0	0	14
	0	0	14
10	5	0	18
	5	0	19
	5	0	19
12	0	0	9
	0	0	9
	0	0	9
13	0	0	14
	0	0	14
	0	0	15
14	10	15	38
	10	15	38
	10	16	39
101	20	17	84
	21	17	86
	25	19	97

Values presented are:
 - Total Events with a RR/SIRV Response
 - Total RR/SIRV Responses,
 - Total Activities Performed

RR/SIRV Responses per Beat



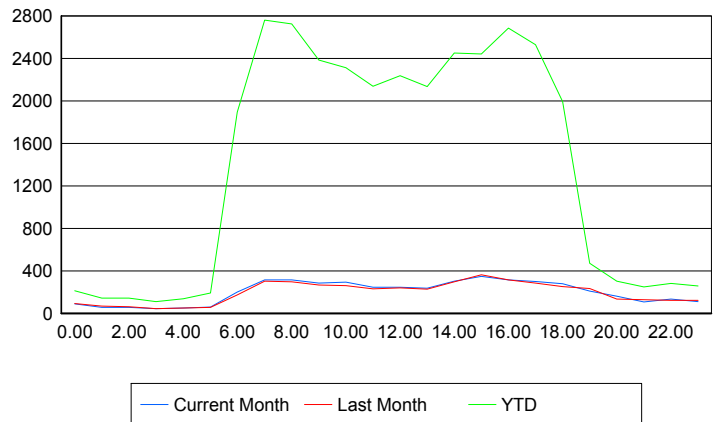
	Current Mo	Last Month	YTD
102	0	0	23
	0	0	23
	0	0	25
106	0	0	1
	0	0	1
	0	0	1
107	0	0	1
	0	0	1
	0	0	1
215	0	0	1
	0	0	1
	0	0	1

Road Ranger / SIRV Performance By Time of Day

Values presented are:
- Total Events with a RR/SIRV Response
- Total RR/SIRV Responses,
- Total Activities Performed

	Current Mo	Last Month	YTD
12AM-1AM	86	89	204
	88	93	211
	90	101	223
1AM-2AM	53	69	140
	55	69	143
	63	71	153
2AM-3AM	56	55	131
	57	61	143
	57	67	149
3AM-4AM	41	41	103
	43	43	109
	49	43	115
4AM-5AM	46	48	123
	50	49	138
	52	51	143
5AM-6AM	44	39	149
	59	56	190
	66	59	204
6AM-7AM	188	161	1,738
	200	174	1,896
	207	181	1,955
7AM-8AM	294	271	2,565
	314	303	2,761
	323	314	2,861
8AM-9AM	288	263	2,475
	315	297	2,725
	326	310	2,837

Number of Responses / Hour of the Day



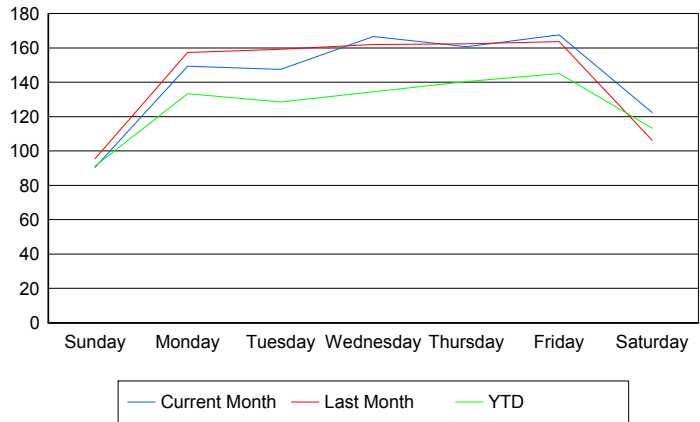
	Current Mo	Last Month	YTD
9AM-10AM	267	251	2,225
	285	267	2,385
	287	275	2,459
10AM-11AM	273	243	2,140
	294	262	2,314
	301	273	2,411
11AM-12PM	223	212	1,990
	247	230	2,137
	259	235	2,228
12PM-1PM	233	218	2,104
	246	240	2,238
	256	244	2,321
1PM-2PM	227	213	1,987
	236	226	2,134
	239	233	2,222
2PM-3PM	279	275	2,290
	303	296	2,450
	312	311	2,553
3PM-4PM	325	337	2,272
	347	364	2,441
	365	380	2,543
4PM-5PM	294	293	2,513
	315	314	2,687
	328	329	2,795
5PM-6PM	277	271	2,331
	301	286	2,530
	319	299	2,637
6PM-7PM	269	237	1,893
	279	251	1,993
	288	258	2,059
7PM-8PM	191	226	443
	208	234	472
	226	241	499
8PM-9PM	152	125	286
	161	134	304
	171	144	324
9PM-10PM	102	118	232
	108	128	248
	110	141	263
10PM-11PM	131	119	269
	135	121	281
	138	128	291
11PM-12AM	105	120	247
	110	123	259
	112	133	272

Road Ranger / SIRV Performance By Day of Week

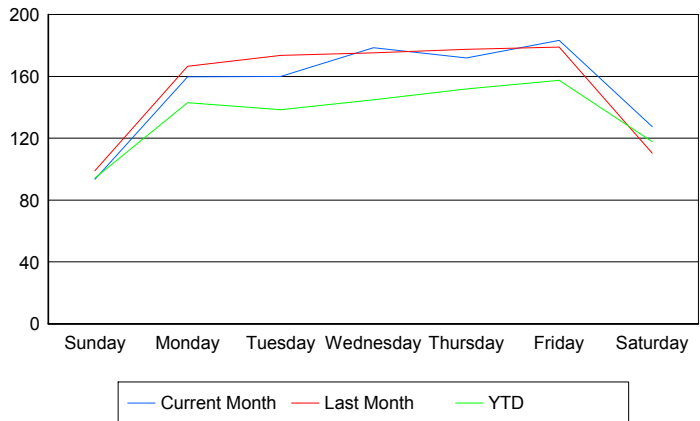
Values presented are:
 - Total Events with a RR/SIRV Response
 - Total RR/SIRV Responses,
 - Total Activities Performed

	Current Mo	Last Month	YTD
Sunday	363	380	758
	375	394	784
	389	416	822
Monday	597	603	5,633
	638	637	6,032
	654	657	6,214
Tuesday	588	788	5,394
	638	859	5,799
	660	889	6,000
Wednesday	664	808	5,650
	711	873	6,076
	732	920	6,344
Thursday	792	648	6,074
	846	708	6,560
	891	733	6,832
Friday	836	648	6,309
	913	710	6,841
	953	743	7,152
Saturday	610	423	1,052
	635	440	1,097
	665	463	1,153

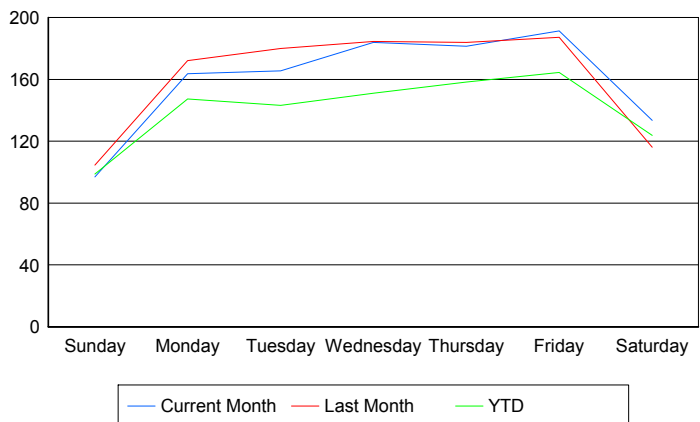
Avg # of events with a RR/SIRV Response per Day of the Week



Avg # of RR/SIRV Responses per Day of the Week



Avg # of RR/SIRV Activities Performed per Day of the Week



Road Ranger / SIRV Responses per Time of Day and Day of Week

