



Monthly Performance Measures Report Broward County



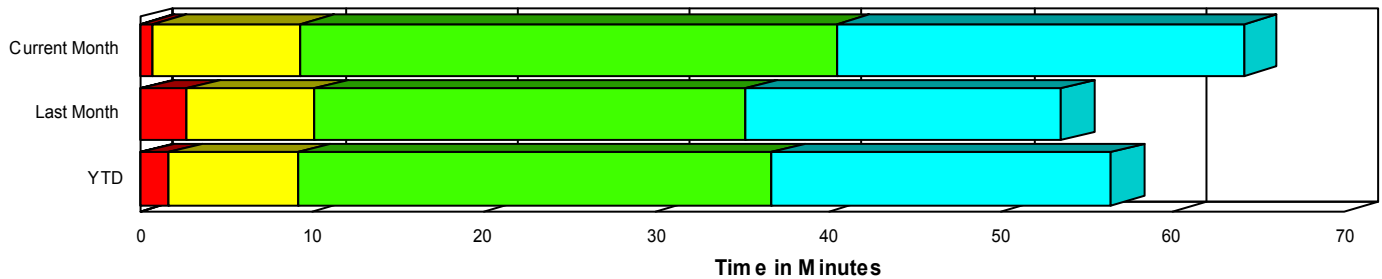
Created on:
November 03, 2008
12:30 pm

Period From Oct 1, 2008 to Oct 31, 2008

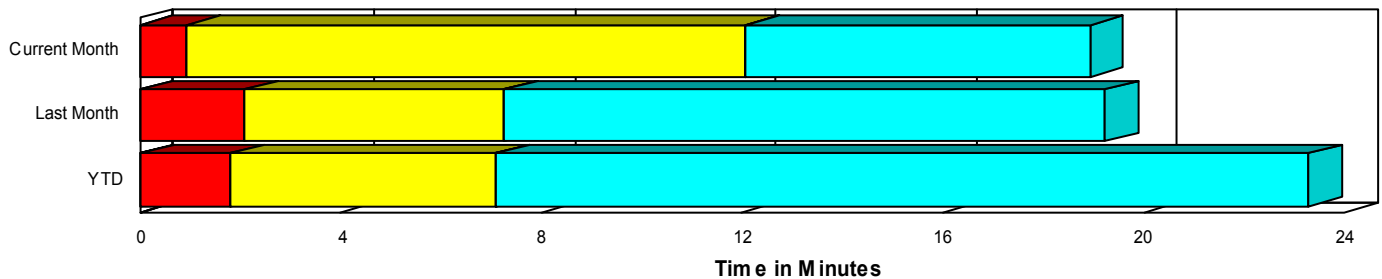
Performance Measures Summary

	Traffic Events (No Lanes Blocked)			Incidents (Lanes Blocked)		
	<u>This Month</u>	<u>Last Month</u>	<u>YTD</u>	<u>This Month</u>	<u>Last Month</u>	<u>YTD</u>
Number of Events	4,454	3,952	39,275	162	183	2,048
TMC Detection (min.)	0.00	0.00	0.01	0.05	0.01	0.04
TMC Verification (min.)	0.95	2.10	1.79	0.72	2.73	1.63
TMC Response (min.)	12.93	8.07	7.63	9.60	10.34	9.25
RR Dispatch Time (min.)	5.30	1.48	1.78	2.57	1.82	2.42
RR Response Time (min.)	6.35	6.90	5.98	7.25	8.58	6.86
Roadway Clearance (min.)				35.61	35.44	35.96
Event Clearance (min.)	19.80	20.06	23.82	59.25	53.23	54.47
# of Events w/ RR/SIRV	2,981	3,406	32,916	102	177	1,922
RR/SIRV Responses	2,981	3,406	33,050	102	177	2,172
RR/SIRV Activities	2,428	2,983	31,419	207	314	3,737

Incident Clearance TimeLine



Traffic Event(Non-Lane Blockage) Time-Line



■ Avg. TMC Detection Time	■ Avg. Time from TMC Response to Roadway Clearance*
■ Avg. Time from TMC Detection to TMC Verification	■ Avg. Time from Roadway Clearance to Incident/Event Clearance**
■ Avg. Time from TMC Verification to TMC Response	

* Roadway clearance equals all travel lanes open

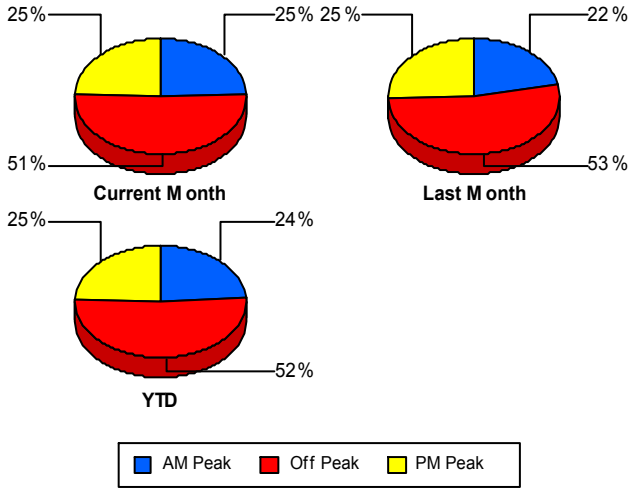
** Incident clearance equals time when last responder has left the scene

Performance Measures by Peak Period

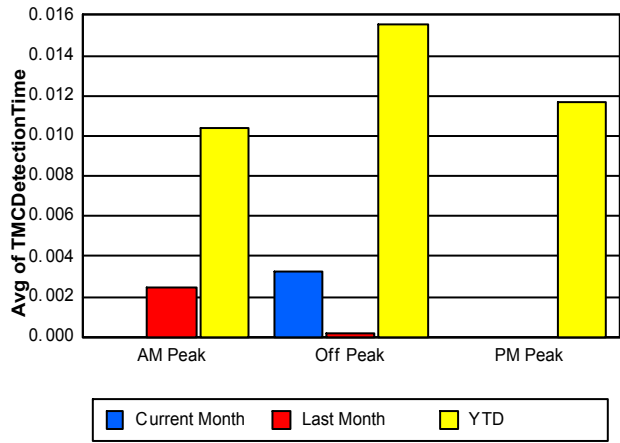
Note: AM peak period is defined as 6am to 10am and PM peak period is defined as 3pm to 7pm.

	AM Peak			Off Peak			PM Peak		
	<u>Current Month</u>	<u>Last Month</u>	<u>YTD</u>	<u>Current Month</u>	<u>Last Month</u>	<u>YTD</u>	<u>Current Month</u>	<u>Last Month</u>	<u>YTD</u>
Number of Events	1,146	910	9,727	2,334	2,180	21,360	1,136	1,045	10,236
Number of Incidents	28	35	475	88	106	1,082	46	42	491
TMC Detection (min.)	0.00	0.00	0.01	0.00	0.00	0.02	0.00	0.00	0.01
TMC Verification (min.)	1.02	1.04	1.03	0.94	2.44	2.15	0.88	2.44	1.71
TMC Response (min.)	7.52	6.88	6.16	21.32	9.02	9.17	6.46	7.86	6.48
RR Dispatch Time (min.)	1.00	1.02	1.05	11.13	1.75	2.50	0.93	1.43	1.20
RR Response Time (min.)	6.62	5.95	5.22	6.75	7.73	6.77	5.61	6.56	5.39
Event Clearance (min.)	19.05	19.69	22.32	23.91	23.70	28.12	17.72	18.59	22.40
Roadway Clearance (min.)	49.77	22.43	32.58	39.89	41.97	42.26	18.78	29.79	25.36
Incident Clearance (min.)	65.03	35.09	52.55	65.37	61.89	60.71	44.02	46.52	42.56
# of Events w/ RR/SIRV	921	813	8,514	1,289	1,832	17,478	873	938	8,846
RR/SIRV Responses	921	813	8,618	1,289	1,832	17,686	873	938	8,918
RR/SIRV Activities	820	764	8,672	1,063	1,644	17,508	752	889	8,976

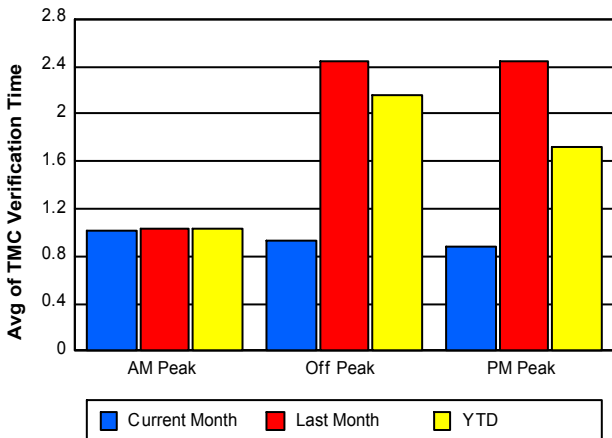
Number of Events / Peak Period



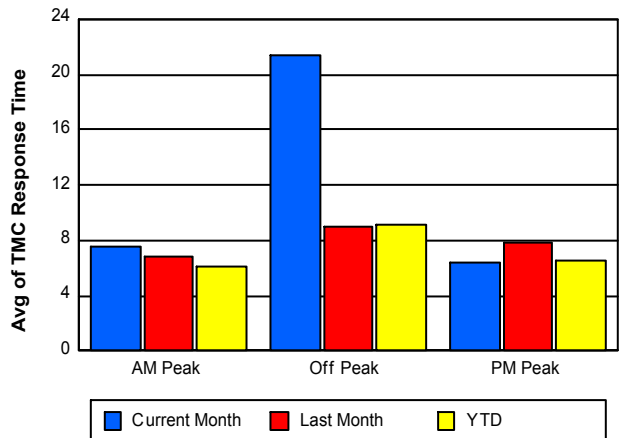
TMC Detection Time



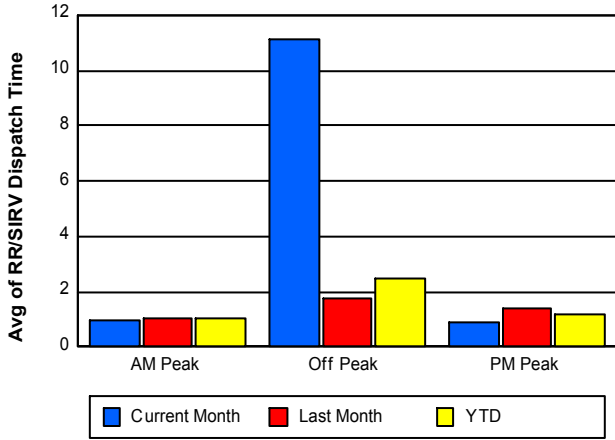
TMC Verification Time



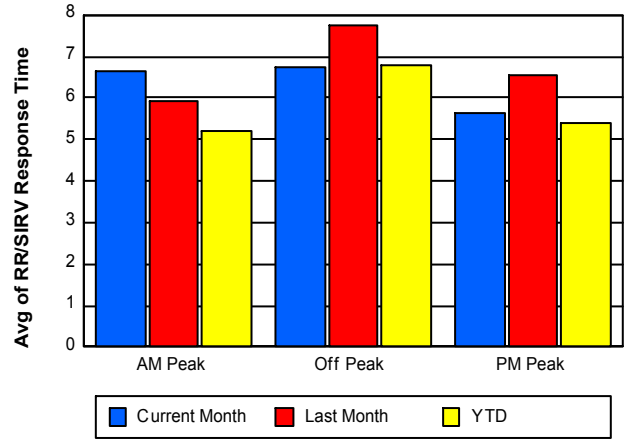
TMC Response Time



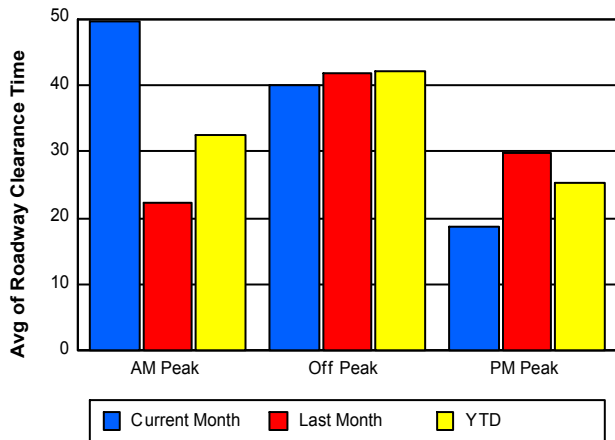
Road Ranger / SIRV Dispatch Time



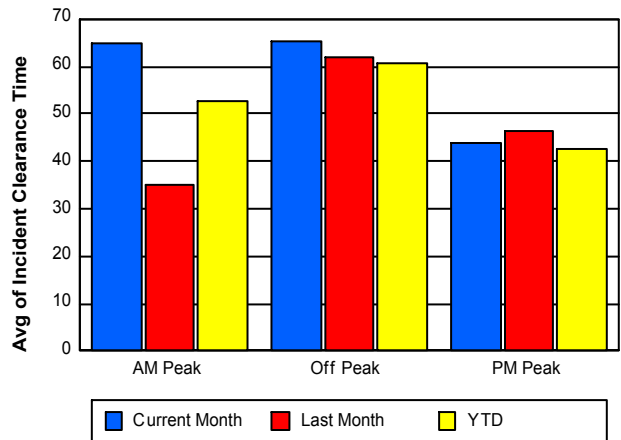
Road Ranger / SIRV Response Time



Roadway Clearance Time (2A)



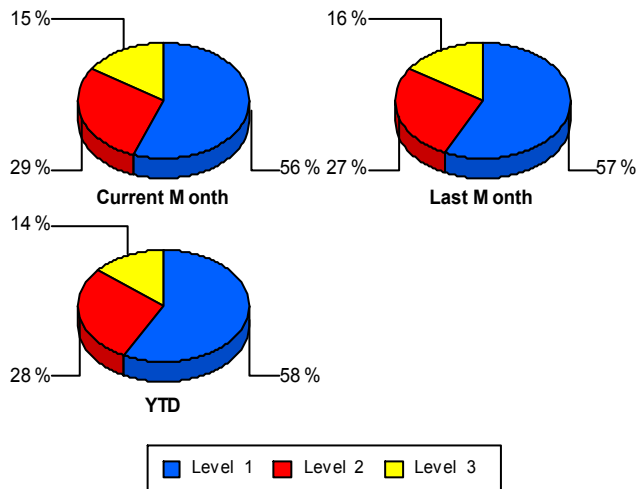
Incident Clearance Time (3B)



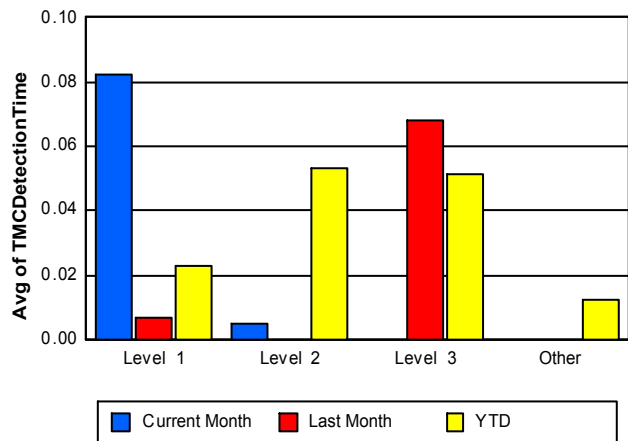
Performance Measures by Severity

	Level 1			Level 2			Level 3			Other		
	<u>This Month</u>	<u>Last Month</u>	<u>YTD</u>	<u>This Month</u>	<u>Last Month</u>	<u>YTD</u>	<u>This Month</u>	<u>Last Month</u>	<u>YTD</u>	<u>This Month</u>	<u>Last Month</u>	<u>YTD</u>
Number of Events	90	104	1,181	47	50	575	25	29	292	4,454	3,952	39,275
Number of Incidents	90	104	1,181	47	50	575	25	29	292	0	0	0
TMC Detection (min.)	0.08	0.01	0.02	0.00	0.00	0.05	0.00	0.07	0.05	0.00	0.00	0.01
TMC Verification (min.)	0.46	1.18	0.94	0.87	3.99	2.46	1.39	6.16	2.75	0.95	2.10	1.79
TMC Response (min.)	5.34	9.49	7.84	12.14	10.70	10.86	18.37	12.69	11.64	12.93	8.07	7.63
RR Dispatch Time (min.)	1.44	1.80	2.25	3.12	1.41	2.45	4.93	2.57	3.05	5.30	1.48	1.78
RR Resp. Time (min.)	4.02	7.74	5.62	9.02	9.29	8.41	14.11	10.33	8.69	6.35	6.90	5.98
Event Clearance (min.)	38.12	33.62	38.12	72.24	69.14	66.14	110.90	96.17	97.54	19.80	20.06	23.82
Roadway Clear. (min.)	12.88	15.05	14.92	47.12	49.87	50.13	95.77	83.66	93.18			
Incident Clearance (min.)	38.12	33.62	38.12	72.24	69.14	66.14	110.90	96.17	97.54			
# of Events w/ RR/SIRV	56	101	1,106	25	48	546	21	28	270	2,981	3,406	32,916
RR/SIRV Responses	56	101	1,179	25	48	620	21	28	373	2,981	3,406	33,050
RR/SIRV Activities	101	152	1,805	59	98	1,165	47	64	767	2,428	2,983	31,419

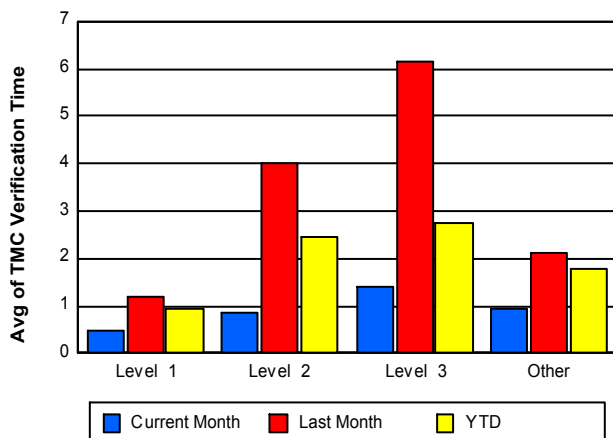
Number of Events / Severity



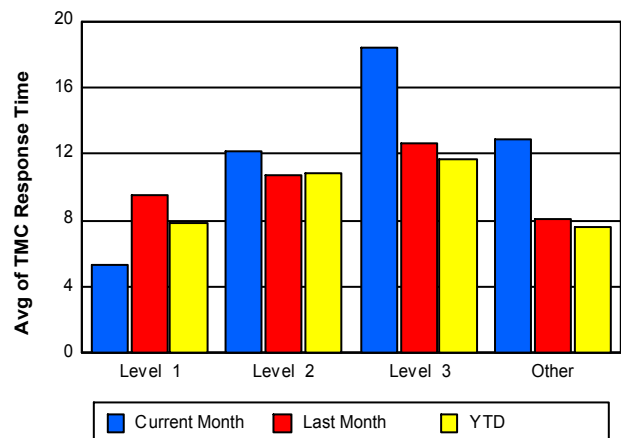
TMC Detection Time



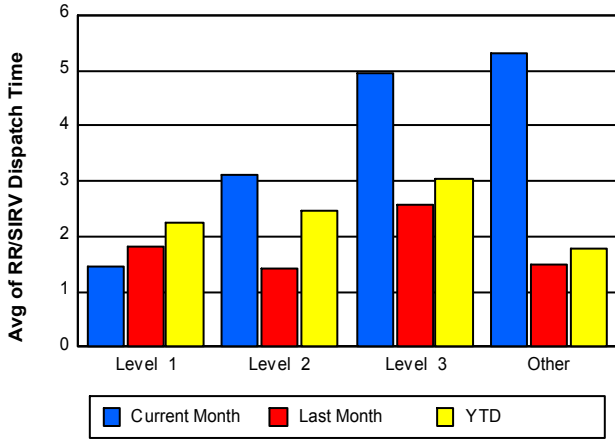
TMC Verification Time



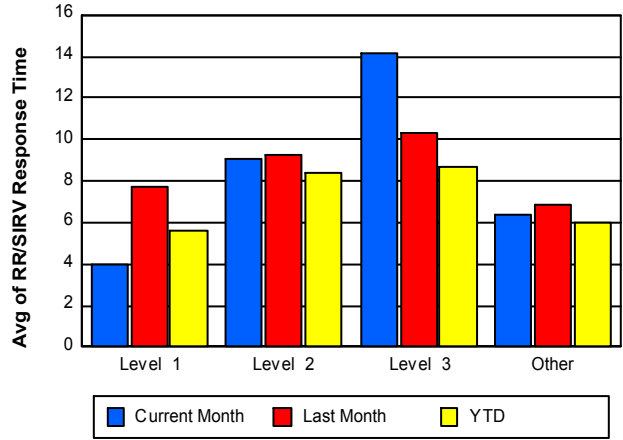
TMC Response Time



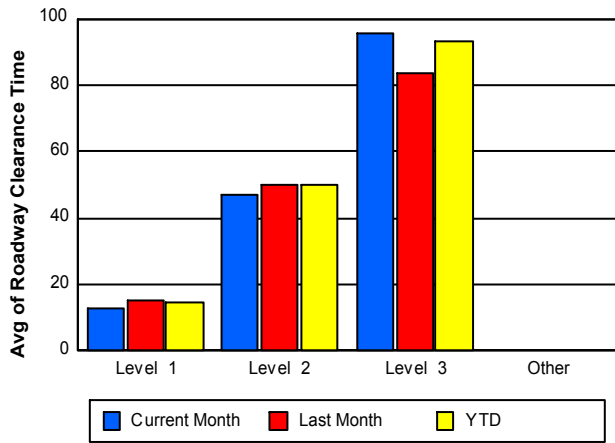
Road Ranger / SIRV Dispatch Time



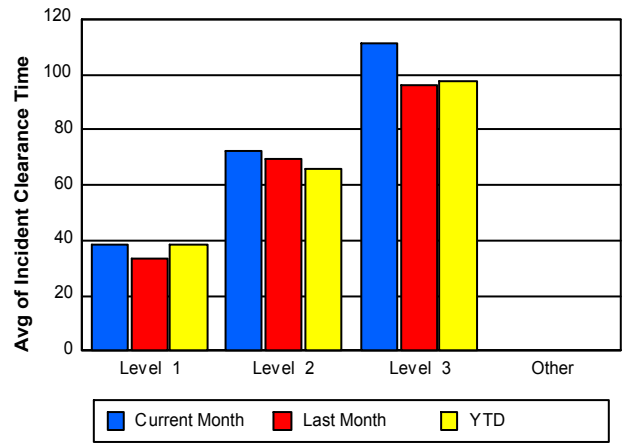
Road Ranger / SIRV Response Time



Roadway Clearance Time (2A)



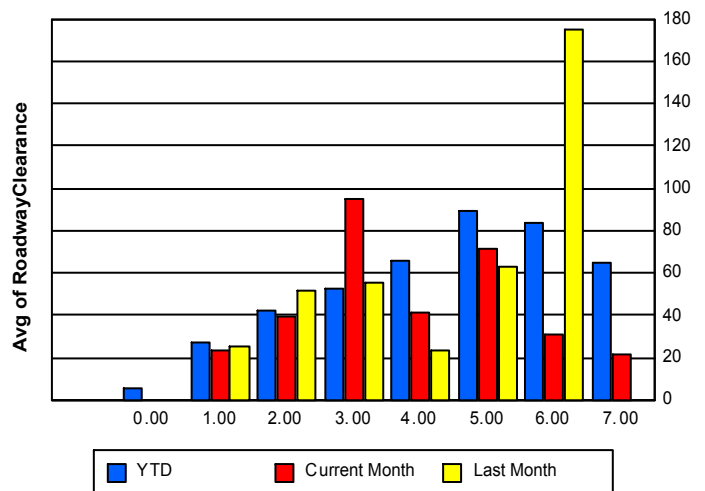
Incident Clearance Time (3B)



Roadway Clearance by Maximum Number of Lanes Blocked

	Current Month	Last Month	YTD
	0.00	0.00	
0			5.87
1	22.94	25.40	27.24
2	39.70	51.83	41.84
3	94.78	54.92	52.72
4	41.40	23.77	65.91
5	71.11	62.52	88.91
6	30.82	174.42	84.02

Roadway Clearance Time(2A)



	Current Month	Last Month	YTD
7	21.60	0.00	65.13

Performance Measures by Roadway

595

	<u>Current Month</u>	<u>Last Month</u>	<u>YTD</u>
Number of Events	616	561	6,390
Number of Incidents	32	36	359
TMC Detection (min.)	0.00	0.00	0.01
TMC Verification (min.)	1.10	2.19	1.95
TMC Response (min.)	8.67	7.52	7.77
RR Dispatch Time (min.)	1.34	1.18	1.97
RR Resp. Time (min.)	7.31	6.39	5.85
Event Clearance (min.)	21.80	19.30	25.71
Roadway Clear. (min.)	41.02	33.21	37.96
Incident Clearance (min.)	56.75	44.52	51.86
# of Events w/ RR/SIRV	409	502	5,506
RR/SIRV Responses	409	502	5,569
RR/SIRV Activities	372	499	5,680

75

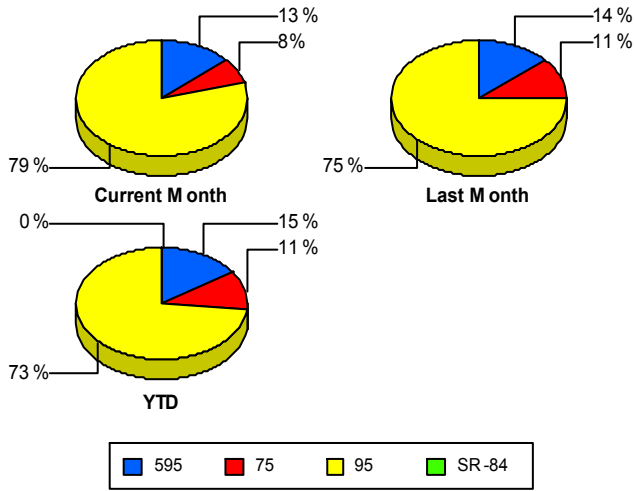
	<u>Current Month</u>	<u>Last Month</u>	<u>YTD</u>
Number of Events	348	467	4,729
Number of Incidents	5	18	122
TMC Detection (min.)	0.00	0.00	0.02
TMC Verification (min.)	5.94	9.06	6.05
TMC Response (min.)	6.06	9.13	6.31
RR Dispatch Time (min.)	0.50	1.68	0.92
RR Resp. Time (min.)	5.57	7.47	5.41
Event Clearance (min.)	18.80	30.03	26.30
Roadway Clear. (min.)	67.02	71.28	63.81
Incident Clearance (min.)	83.48	87.38	69.30
# of Events w/ RR/SIRV	348	465	4,695
RR/SIRV Responses	348	465	4,728
RR/SIRV Activities	387	501	5,152

95

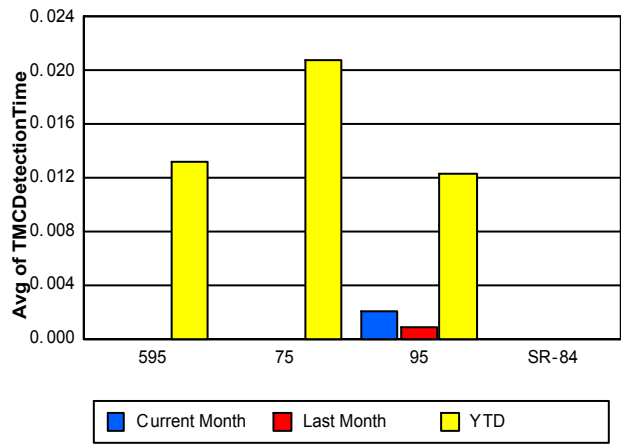
	<u>Current Month</u>	<u>Last Month</u>	<u>YTD</u>
Number of Events	3,652	3,107	30,203
Number of Incidents	125	129	1,567
TMC Detection (min.)	0.00	0.00	0.01
TMC Verification (min.)	0.44	1.09	1.08
TMC Response (min.)	14.99	8.14	8.04
RR Dispatch Time (min.)	6.60	1.53	1.95
RR Resp. Time (min.)	6.37	7.02	6.21
Event Clearance (min.)	21.30	20.65	25.11
Roadway Clear. (min.)	32.96	31.06	33.34
Incident Clearance (min.)	58.92	50.90	53.91
# of Events w/ RR/SIRV	2,326	2,616	24,637
RR/SIRV Responses	2,326	2,616	24,925
RR/SIRV Activities	1,876	2,297	24,324

	<u>YTD</u>
Number of Events	1
Number of Incidents	0
TMC Detection (min.)	0.00
TMC Verification (min.)	0.47
TMC Response (min.)	
RR Dispatch Time (min.)	
RR Resp. Time (min.)	
Event Clearance (min.)	5.22
Roadway Clear. (min.)	
Incident Clearance (min.)	
# of Events w/ RR/SIRV	0
RR/SIRV Responses	0
RR/SIRV Activities	0

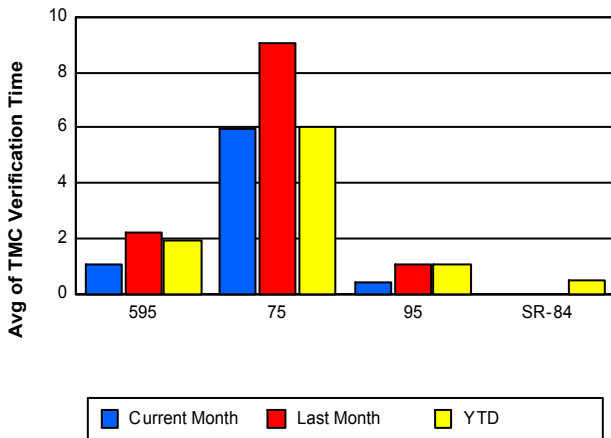
Number of Events / Roadway



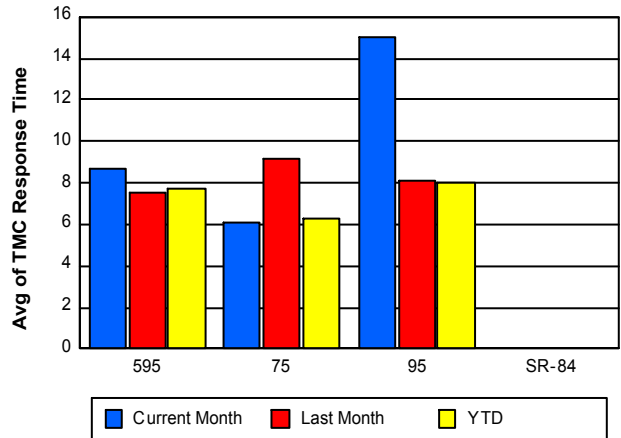
TMC Detection Time



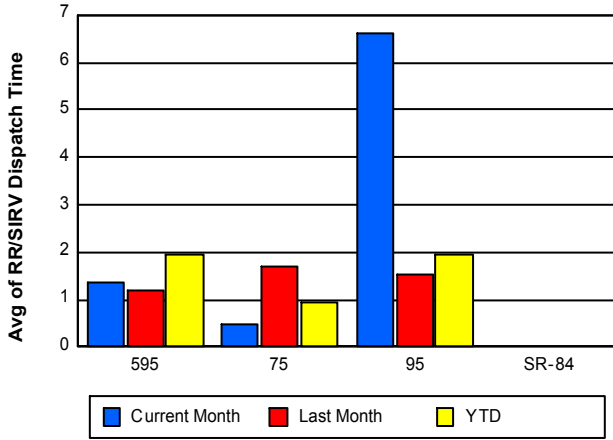
TMC Verification Time



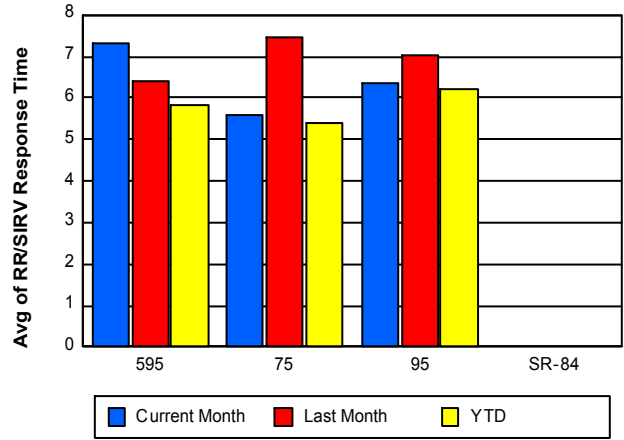
TMC Response Time



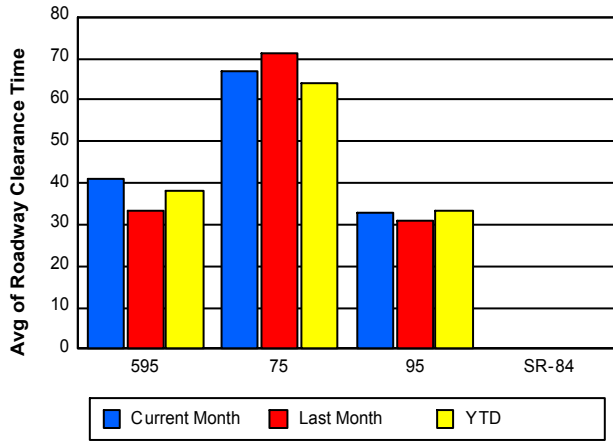
Road Ranger / SIRV Dispatch Time



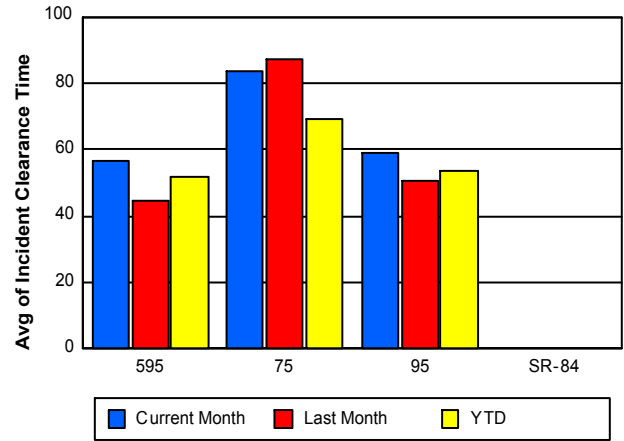
Road Ranger / SIRV Response Time



Roadway Clearance Time (2A)



Incident Clearance Time (3B)



Performance Measures by Event Type

Abandoned Vehicle

	<u>YTD</u>
Number of Events	910
Number of Incidents	1
TMC Detection (min.)	0.06
TMC Verification (min.)	0.32
TMC Response (min.)	7.63
RR Dispatch Time (min.)	2.06
RR Response Time (min.)	6.10
Event Clearance (min.)	252.40
Roadway Clearance (min.)	21.48
Incident Clearance (min.)	26.25
# of Events w/ RR/SIRV	700
RR/SIRV Assists	707
RR/SIRV Activities	711

Accident

	<u>Current Month</u>	<u>Last Month</u>	<u>YTD</u>
Number of Events	310	291	3,198
Number of Incidents	116	137	1,495
TMC Detection (min.)	0.02	0.00	0.04
TMC Verification (min.)	1.22	3.50	1.92
TMC Response (min.)	9.95	9.88	8.15
RR Dispatch Time (min.)	2.18	1.87	1.75
RR Response Time (min.)	7.89	8.11	6.44
Event Clearance (min.)	50.04	43.24	45.16
Roadway Clearance (min.)	38.46	35.79	36.36
Incident Clearance (min.)	67.70	54.97	58.99
# of Events w/ RR/SIRV	210	288	3,031
RR/SIRV Assists	210	288	3,258
RR/SIRV Activities	310	422	4,681

Congestion

	<u>YTD</u>
Number of Events	2
Number of Incidents	0
TMC Detection (min.)	0.00
TMC Verification (min.)	0.00
TMC Response (min.)	
RR Dispatch Time (min.)	
RR Response Time (min.)	
Event Clearance (min.)	105.74
Roadway Clearance (min.)	
Incident Clearance (min.)	
# of Events w/ RR/SIRV	0
RR/SIRV Assists	0
RR/SIRV Activities	0

Debris on Roadway

	<u>Current Month</u>	<u>Last Month</u>	<u>YTD</u>
Number of Events	122	160	1,628
Number of Incidents	5	1	31
TMC Detection (min.)	0.00	0.00	0.03
TMC Verification (min.)	6.71	5.89	5.37
TMC Response (min.)	9.92	9.16	7.83
RR Dispatch Time (min.)	1.05	1.26	1.10
RR Response Time (min.)	8.85	8.00	6.76
Event Clearance (min.)	14.55	12.47	12.22
Roadway Clearance (min.)	43.84	7.95	43.85
Incident Clearance (min.)	47.37	7.82	51.47
# of Events w/ RR/SIRV	106	160	1,578
RR/SIRV Assists	106	160	1,605
RR/SIRV Activities	106	162	1,684

Disabled Vehicle

	<u>Current Month</u>	<u>Last Month</u>	<u>YTD</u>
Number of Events	2,607	2,708	26,684
Number of Incidents	24	28	326
TMC Detection (min.)	0.00	0.00	0.01
TMC Verification (min.)	1.18	2.48	2.08
TMC Response (min.)	7.44	7.84	7.15
RR Dispatch Time (min.)	1.44	1.44	1.42
RR Response Time (min.)	6.02	6.69	5.87
Event Clearance (min.)	24.32	22.50	20.23
Roadway Clearance (min.)	17.63	27.64	24.56
Incident Clearance (min.)	25.03	33.91	36.23
# of Events w/ RR/SIRV	2,100	2,618	25,531
RR/SIRV Assists	2,100	2,618	25,627
RR/SIRV Activities	2,114	2,600	26,822

Emergency Vehicles

	<u>Last Month</u>	<u>YTD</u>
Number of Events	6	59
Number of Incidents	6	54
TMC Detection (min.)	0.00	0.07
TMC Verification (min.)	0.00	0.36
TMC Response (min.)	1.54	7.61
RR Dispatch Time (min.)	2.71	2.45
RR Response Time (min.)	0.14	5.24
Event Clearance (min.)	32.58	40.31
Roadway Clearance (min.)	30.94	40.44
Incident Clearance (min.)	32.58	41.17
# of Events w/ RR/SIRV	4	46
RR/SIRV Assists	4	48
RR/SIRV Activities	4	73

Other

	<u>Current Month</u>	<u>Last Month</u>	<u>YTD</u>
Number of Events	1,539	935	8,466
Number of Incidents	0	0	22
TMC Detection (min.)	0.00	0.00	0.00
TMC Verification (min.)	0.03	0.10	0.30
TMC Response (min.)	154.06	12.84	25.82
RR Dispatch Time (min.)	19.23	1.68	4.33
RR Response Time (min.)	9.02	11.68	8.54
Event Clearance (min.)	10.23	12.56	11.74
Roadway Clearance (min.)			18.92
Incident Clearance (min.)			26.73
# of Events w/ RR/SIRV	647	482	3,619
RR/SIRV Assists	647	482	3,624
RR/SIRV Activities	81	68	773

Pedestrian

	<u>YTD</u>
Number of Events	41
Number of Incidents	0
TMC Detection (min.)	0.01
TMC Verification (min.)	1.34
TMC Response (min.)	2.56
RR Dispatch Time (min.)	0.37
RR Response Time (min.)	2.29
Event Clearance (min.)	10.68
Roadway Clearance (min.)	
Incident Clearance (min.)	
# of Events w/ RR/SIRV	37
RR/SIRV Assists	37
RR/SIRV Activities	39

Police Activity

	<u>Current Month</u>	<u>Last Month</u>	<u>YTD</u>
Number of Events	16	6	122
Number of Incidents	11	5	82
TMC Detection (min.)	0.00	0.00	0.02
TMC Verification (min.)	0.98	3.47	1.52
TMC Response (min.)	15.08	6.40	10.20
RR Dispatch Time (min.)	3.09	2.48	2.86
RR Response Time (min.)	11.99	3.92	7.18
Event Clearance (min.)	42.07	47.84	46.66
Roadway Clearance (min.)	44.12	75.62	72.45
Incident Clearance (min.)	50.49	57.08	57.91
# of Events w/ RR/SIRV	4	5	95
RR/SIRV Assists	4	5	115
RR/SIRV Activities	6	9	151

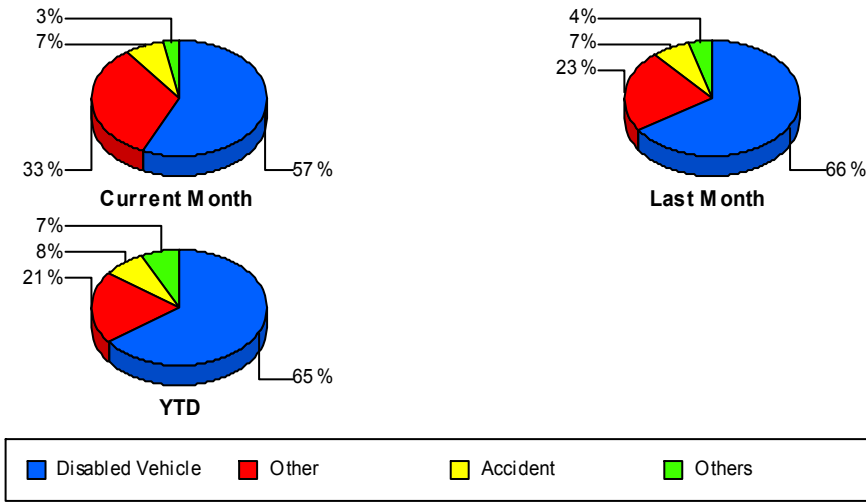
Vehicle Fire

	<u>Current Month</u>	<u>Last Month</u>	<u>YTD</u>
Number of Events	8	8	43
Number of Incidents	6	6	36
TMC Detection (min.)	0.00	0.00	0.00
TMC Verification (min.)	0.02	2.89	0.62
TMC Response (min.)	5.56	8.85	7.63
RR Dispatch Time (min.)	4.57	1.27	2.65
RR Response Time (min.)	0.99	7.58	4.98
Event Clearance (min.)	46.46	105.48	62.36
Roadway Clearance (min.)	29.93	39.39	37.41
Incident Clearance (min.)	58.77	128.81	65.20
# of Events w/ RR/SIRV	6	8	40
RR/SIRV Assists	6	8	40
RR/SIRV Activities	9	16	73

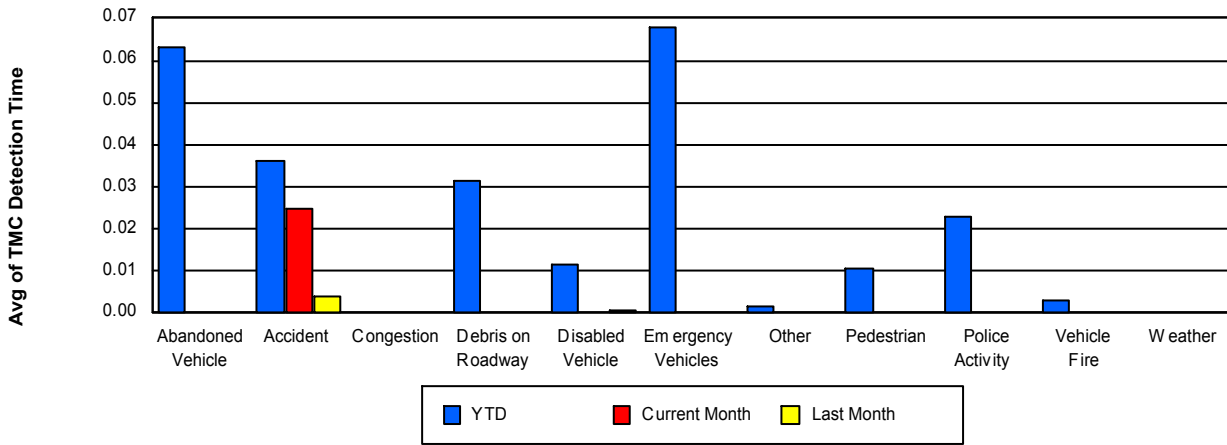
Weather

	<u>YTD</u>
Number of Events	1
Number of Incidents	0
TMC Detection (min.)	0.00
TMC Verification (min.)	0.00
TMC Response (min.)	
RR Dispatch Time (min.)	
RR Response Time (min.)	
Event Clearance (min.)	1.25
Roadway Clearance (min.)	
Incident Clearance (min.)	
# of Events w/ RR/SIRV	0
RR/SIRV Assists	0
RR/SIRV Activities	0

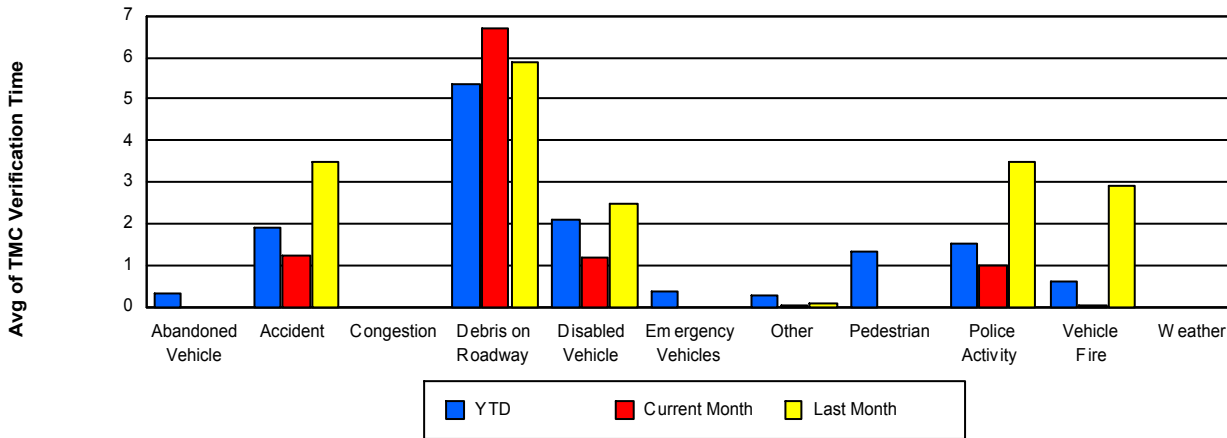
Number of Events / Event Type



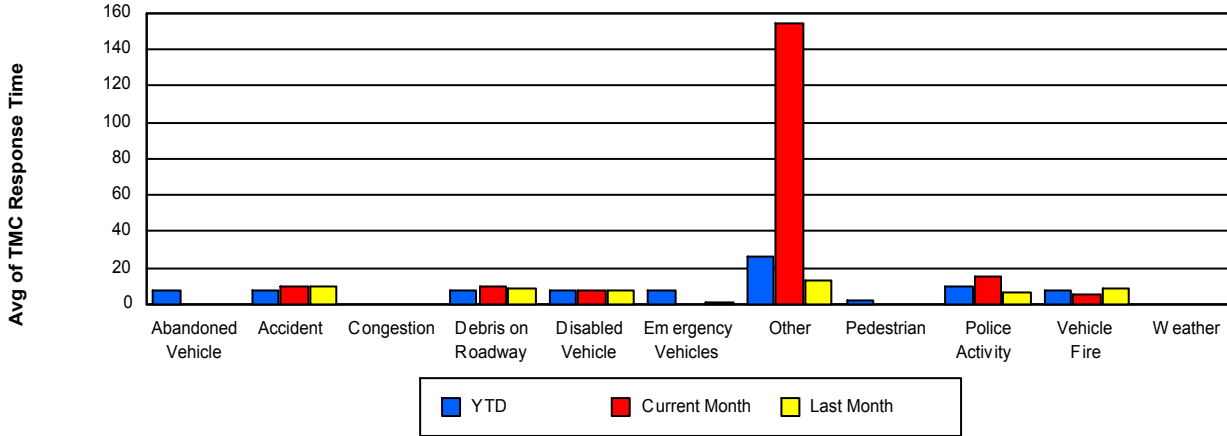
TMC Detection Time



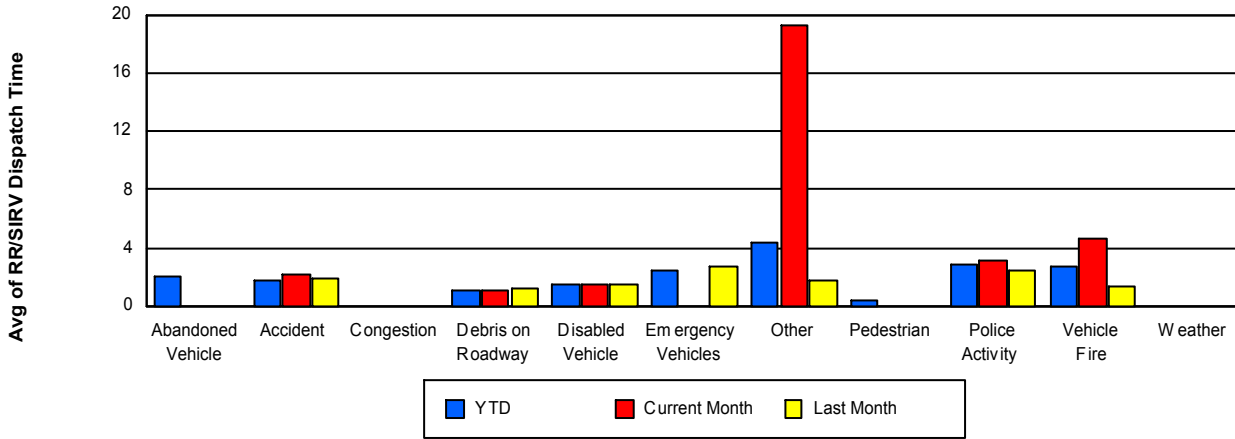
TMC Verification Time



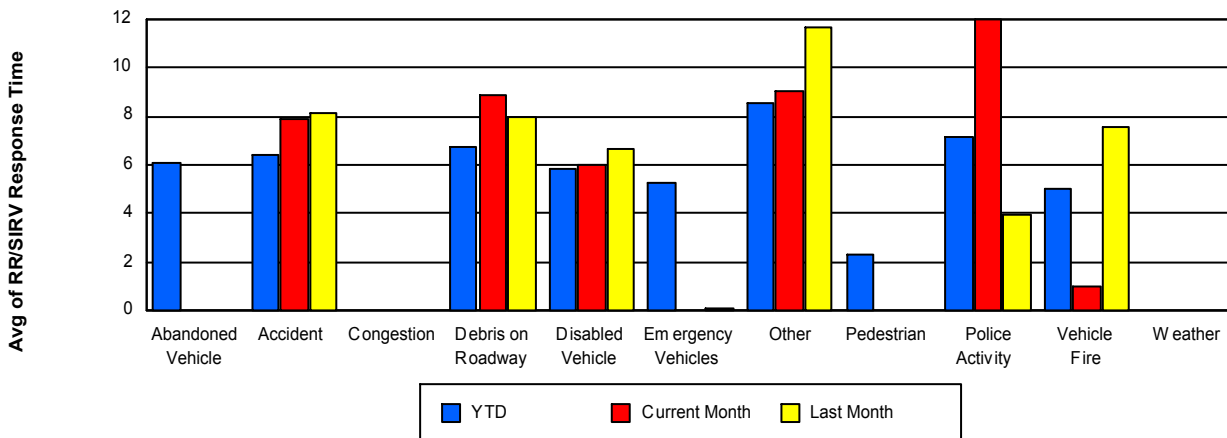
TMC Response Time



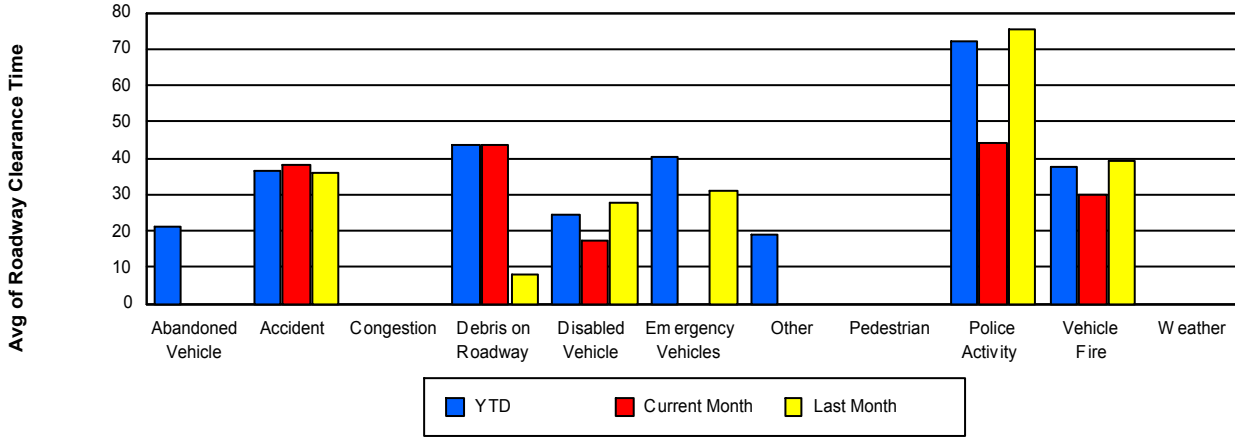
Road Ranger / SIRV Dispatch Time



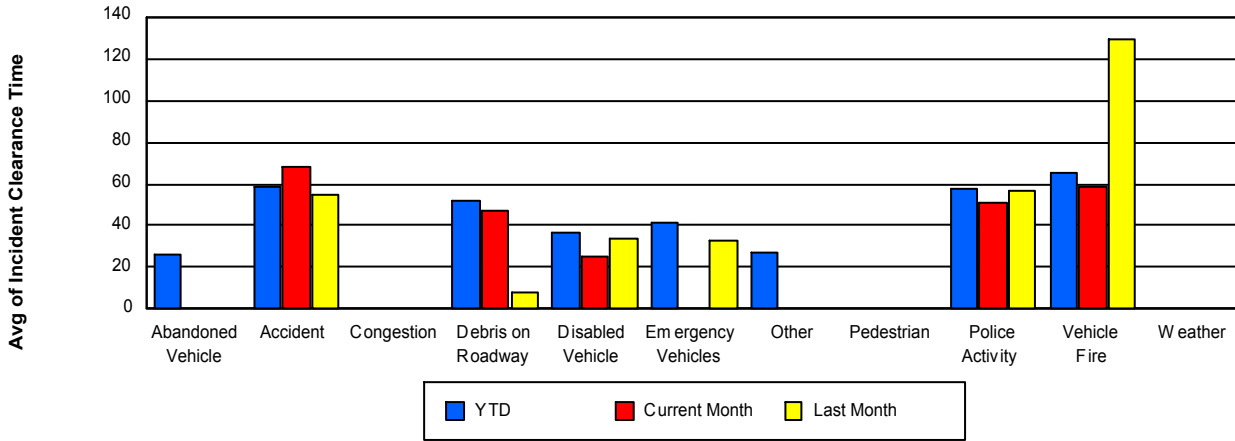
Road Ranger / SIRV Response Time



Roadway Clearance Time (2A)



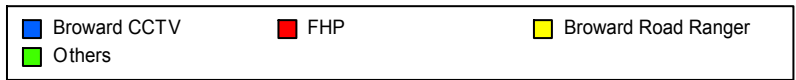
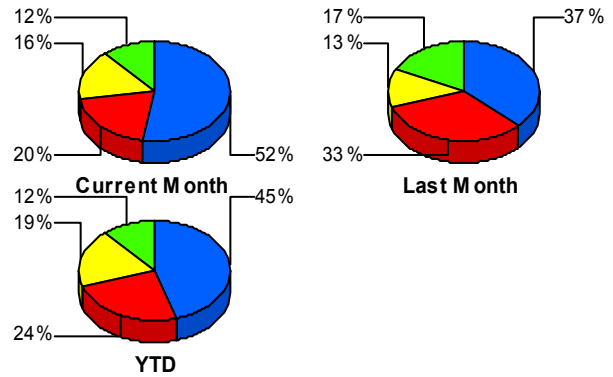
Incident Clearance Time (3B)



Incident Detection Methods

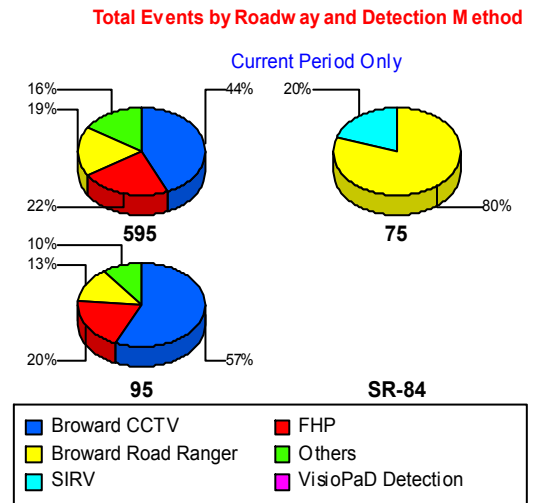
	Current Month	Last Month	YTD
Broward CCTV	85	68	928
Broward Road Ranger	26	23	382
Broward VideoWall	5	6	45
BSO	2	6	17
District 4	5	8	50
District 6	0	0	4
FDOT Maintenance	0	0	2
FHP	32	60	500
Fire	0	0	6
Florida's Turnpike	0	2	8
ITMS	0	0	2
Motorist	1	1	17
Other	0	0	1
Palm Beach Road Rang	0	0	8
PSAP	0	0	3
Road Watcher	0	0	14
SIRV	1	0	7
SmarTraveler (511)	1	1	10
VisioPaD Detection	4	8	44
Total	162	183	2,048

Total Incidents by Detection Method



Incident Detection Methods by Roadway

		Current Month	Last Month	YTD
595	Broward CCTV	14	10	134
	Broward Road Ranger	6	8	76
	Broward VideoWall	3	1	6
	BSO	1	2	8
	District 4	1	1	8
	FHP	7	11	104
	Florida's Turnpike	0	2	8
	Motorist	0	0	3
	Road Watcher	0	0	5
	SIRV	0	0	2
	SmarTraveler (511)	0	1	1
	VisioPaD Detection	0	0	4
	Total	32	36	359
75	Broward Road Ranger	4	3	52
	BSO	0	3	5
	District 4	0	0	7
	District 6	0	0	2
	FHP	0	12	53
	Road Watcher	0	0	1
	SIRV	1	0	1
	SmarTraveler (511)	0	0	1
	Total	5	18	122
95	Broward CCTV	71	58	794
	Broward Road Ranger	16	12	254
	Broward VideoWall	2	5	39
	BSO	1	1	4
	District 4	4	7	35
	District 6	0	0	2
	FDOT Maintenance	0	0	2
	FHP	25	37	343
	Fire	0	0	6

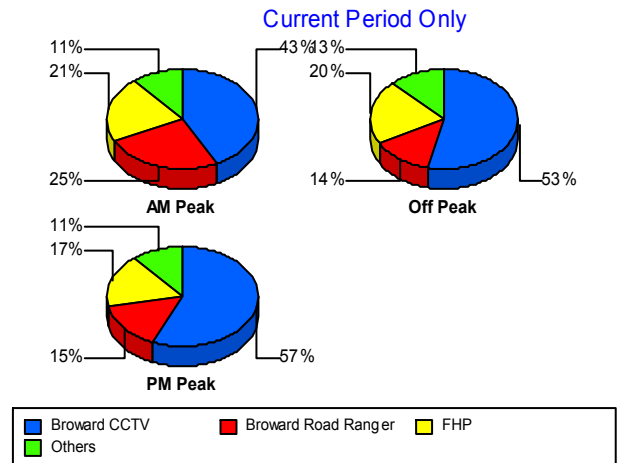


		Current Month	Last Month	YTD
95	ITMS	0	0	2
	Motorist	1	1	14
	Other	0	0	1
	Palm Beach Road Rang	0	0	8
	PSAP	0	0	3
	Road Watcher	0	0	8
	SIRV	0	0	4
	SmarTraveler (511)	1	0	8
	VisioPaD Detection	4	8	40
	Total	125	129	1,567
Total	162	183	2,048	

Incident Detection Methods by Peak Period

		Current Month	Last Month	YTD
AM Peak	Broward CCTV	12	14	215
	Broward Road Ranger	7	5	97
	Broward VideoWall	2	1	16
	BSO	0	2	4
	District 4	1	2	12
	FHP	6	9	102
	Fire	0	0	1
	Florida's Turnpike	0	1	3
	Motorist	0	0	3
	Palm Beach Road Rang	0	0	5
	PSAP	0	0	1
	Road Watcher	0	0	7
	SIRV	0	0	3
	SmarTraveler (511)	0	0	1
	VisioPaD Detection	0	1	5
	Total	28	35	475
	Off Peak	Broward CCTV	47	36
Broward Road Ranger		12	13	183

Total Events by Peak Period and Detection Method



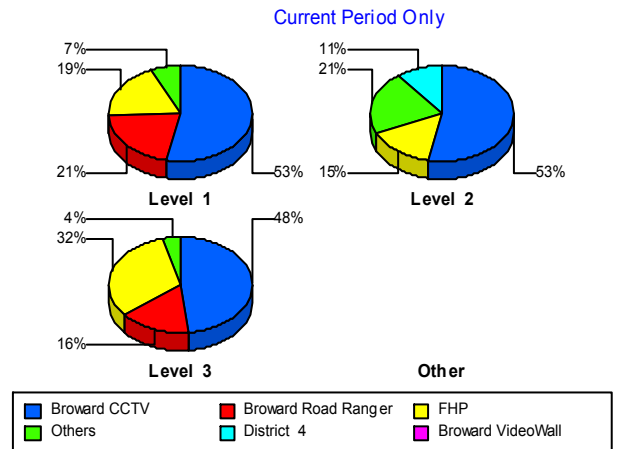
		Current Month	Last Month	YTD
Off Peak	Broward VideoWall	3	3	21
	BSO	1	3	7
	District 4	3	4	24
	District 6	0	0	3
	FDOT Maintenance	0	0	2
	FHP	18	39	289
	Fire	0	0	4
	Florida's Turnpike	0	1	4
	ITMS	0	0	1
	Motorist	0	0	6
	Other	0	0	1
	Palm Beach Road Rang	0	0	3
	PSAP	0	0	2
	Road Watcher	0	0	3
	SIRV	1	0	2
	SmarTraveler (511)	0	0	1
	VisioPaD Detection	3	7	35
	Total	88	106	1,082
	PM Peak	Broward CCTV	26	18
Broward Road Ranger		7	5	102
Broward VideoWall		0	2	8
BSO		1	1	6
District 4		1	2	14
District 6		0	0	1
FHP		8	12	109
Fire		0	0	1
Florida's Turnpike		0	0	1
ITMS		0	0	1
Motorist		1	1	8
Road Watcher		0	0	4
SIRV		0	0	2
SmarTraveler (511)		1	1	8

		Current Month	Last Month	YTD
PM Peak	VisioPaD Detection	1	0	4
	Total	46	42	491
Total		162	183	2,048

Incident Detection Methods by Severity

		Current Month	Last Month	YTD
Level 1	Broward CCTV	48	40	568
	Broward Road Ranger	19	16	244
	Broward VideoWall	2	6	31
	BSO	1	0	3
	District 4	0	5	29
	District 6	0	0	3
	FHP	17	29	232
	Fire	0	0	3
	Florida's Turnpike	0	1	2
	ITMS	0	0	1
	Motorist	1	1	9
	Palm Beach Road Rang	0	0	6
	PSAP	0	0	2
	Road Watcher	0	0	12
	SIRV	0	0	5
	SmarTraveler (511)	1	0	7
	VisioPaD Detection	1	6	24
	Total	90	104	1,181
	Level 2	Broward CCTV	25	20
Broward Road Ranger		3	5	95
Broward VideoWall		2	0	8
BSO		1	4	8
District 4		5	2	10
District 6		0	0	1
FDOT Maintenance		0	0	1
FHP		7	17	159

Total Events by Severity and Detection Method



		Current Month	Last Month	YTD
Level 2	Fire	0	0	1
	ITMS	0	0	1
	Motorist	0	0	7
	Palm Beach Road Rang	0	0	1
	PSAP	0	0	1
	Road Watcher	0	0	1
	SIRV	1	0	1
	SmarTraveler (511)	0	0	2
	VisioPaD Detection	3	2	17
	Total	47	50	575
Level 3	Broward CCTV	12	8	99
	Broward Road Ranger	4	2	43
	Broward VideoWall	1	0	6
	BSO	0	2	6
	District 4	0	1	11
	FDOT Maintenance	0	0	1
	FHP	8	14	109
	Fire	0	0	2
	Florida's Turnpike	0	1	6
	Motorist	0	0	1
	Other	0	0	1
	Palm Beach Road Rang	0	0	1
	Road Watcher	0	0	1
	SIRV	0	0	1
	SmarTraveler (511)	0	1	1
	VisioPaD Detection	0	0	3
	Total	25	29	292
Total		162	183	2,048

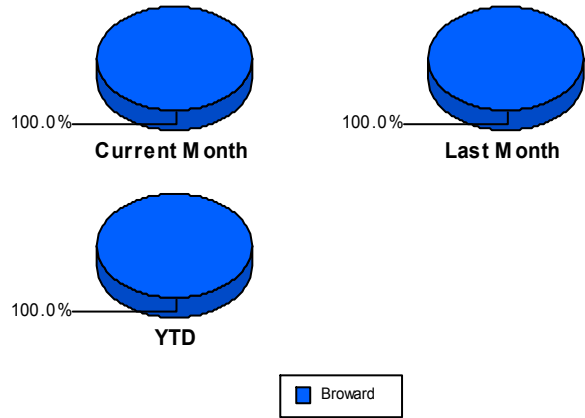
Road Ranger / SIRV Performance Measures

Road Ranger / SIRV Performance By County

Values presented are:
 - Total Events with a RR/SIRV Response
 - Total RR/SIRV Responses,
 - Total Activities Performed

	Current Mo	Last Month	YTD
Broward	2,915	3,719	36,938
	3,099	3,985	39,530
	3,213	4,149	41,716

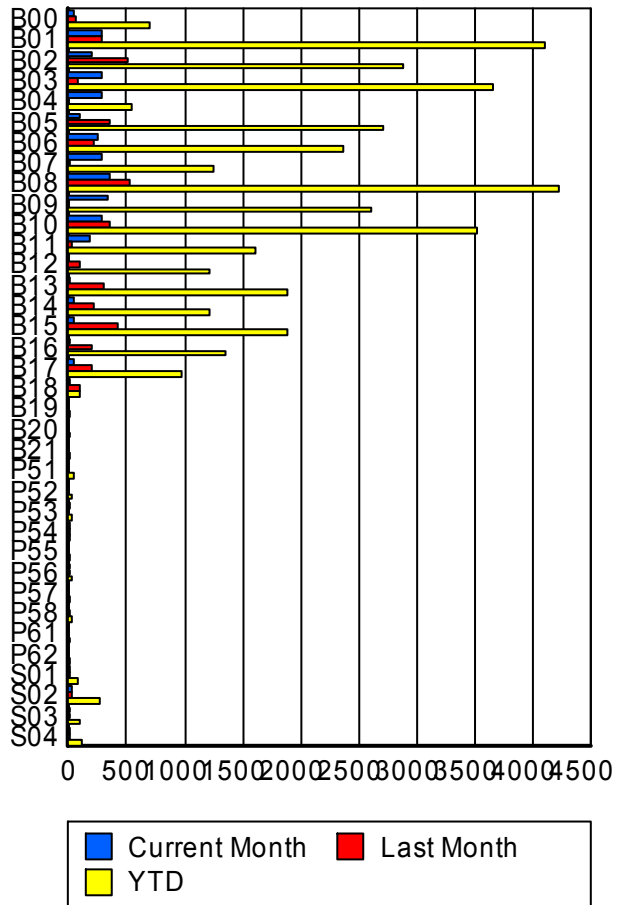
RR/SIRV Responses per County



Road Ranger / SIRV Performance By Truck

	Current Mo	Last Month	YTD
B00	44	64	684
	46	65	696
	48	68	731
B01	290	270	4,041
	292	277	4,102
	294	295	4,328
B02	197	499	2,850
	201	510	2,892
	206	539	3,051
B03	278	76	3,610
	282	78	3,655
	288	81	3,879
B04	282	0	541
	287	0	548
	296	0	569
B05	103	352	2,680
	103	359	2,706
	106	377	2,888
B06	252	219	2,346
	254	224	2,372
	265	232	2,511
B07	272	2	1,234
	276	2	1,250
	291	2	1,294
B08	346	515	4,156
	348	530	4,223
	357	544	4,448

RR/SIRV Responses per Truck



	Current Mo	Last Month	YTD
B09	328	0	2,590
	332	0	2,617
	344	0	2,766
B10	281	344	3,491
	288	350	3,530
	303	356	3,734
B11	180	21	1,601
	181	22	1,614
	185	23	1,692
B12	0	88	1,190
	0	89	1,210
	0	90	1,273
B13	9	291	1,859
	9	295	1,882
	9	311	1,989
B14	47	209	1,198
	47	211	1,213
	51	214	1,250
B15	42	413	1,870
	43	417	1,881
	47	437	1,988
B16	1	201	1,332
	1	203	1,347
	1	214	1,414
B17	47	198	968
	48	201	981
	49	206	1,031
B18	1	96	97
	1	96	97
	1	100	101
B19	0	0	2
	0	0	2
	0	0	2
B20	0	0	1
	0	0	1
	0	0	1
B21	0	0	4
	0	0	4
	0	0	4
P51	0	0	35
	0	0	35
	0	0	37
P52	0	0	19
	0	0	19
	0	0	19

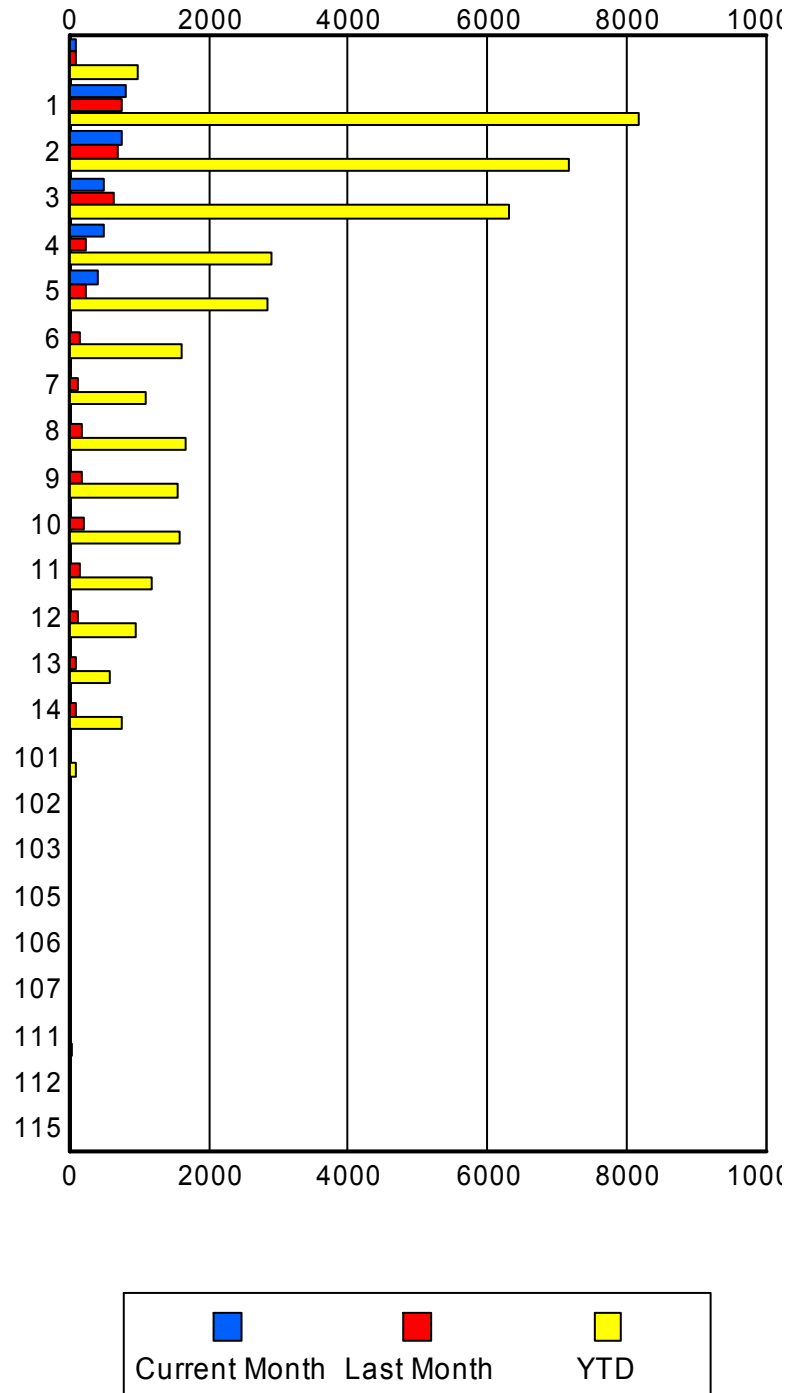
	Current Mo	Last Month	YTD
P53	2	0	20
	2	0	20
	2	0	23
P54	1	1	13
	1	1	13
	1	1	13
P55	0	0	14
	0	0	14
	0	0	15
P56	6	3	20
	6	3	21
	7	3	25
P57	0	0	11
	0	0	11
	0	0	11
P58	0	5	21
	0	5	21
	0	5	21
P61	0	0	1
	0	0	1
	0	0	1
P62	0	0	3
	0	0	3
	0	0	3
S01	10	3	71
	10	3	72
	13	3	80
S02	18	23	268
	19	23	270
	21	24	292
S03	9	14	100
	9	14	102
	11	15	113
S04	12	7	101
	13	7	105
	17	9	119

Road Ranger / SIRV Performance By Beat

	Current Mo	Last Month	YTD
	88	81	894
	91	86	970
	102	91	1,036
1	783	717	7,826
	808	748	8,171
	836	773	8,604
2	730	688	6,975
	756	709	7,175
	784	738	7,568
3	484	618	6,134
	494	640	6,315
	506	659	6,634
4	468	231	2,850
	491	236	2,896
	508	245	3,039
5	413	239	2,806
	423	242	2,845
	440	258	2,981
6	0	162	1,589
	0	167	1,615
	0	172	1,693
7	0	115	1,095
	0	118	1,111
	0	125	1,164
8	21	166	1,640
	21	169	1,659
	21	175	1,748
9	2	186	1,540
	2	195	1,563
	2	206	1,685
10	0	195	1,556
	0	200	1,576
	0	213	1,690
11	4	143	1,185
	4	147	1,196
	4	158	1,286
12	0	125	942
	0	128	957
	0	133	1,026
13	0	83	578
	0	85	589
	0	86	622
14	0	106	735
	0	106	740
	0	108	778

Values presented are:
 - Total Events with a RR/SIRV Response
 - Total RR/SIRV Responses,
 - Total Activities Performed

RR/SIRV Responses per Beat



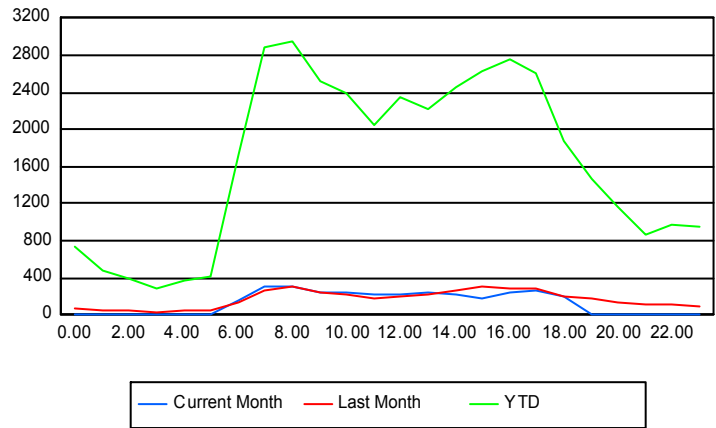
	Current Mo	Last Month	YTD
101	9	8	108
	9	8	108
	10	8	116
102	0	0	3
	0	0	4
	0	0	4
103	0	1	2
	0	1	2
	0	1	2
105	0	0	2
	0	0	2
	0	0	2
106	0	0	1
	0	0	1
	0	0	1
107	0	0	3
	0	0	3
	0	0	3
111	0	0	29
	0	0	29
	0	0	31
112	0	0	1
	0	0	1
	0	0	1
115	0	0	2
	0	0	2
	0	0	2

Road Ranger / SIRV Performance By Time of Day

Values presented are:
 - Total Events with a RR/SIRV Response
 - Total RR/SIRV Responses,
 - Total Activities Performed

	Current Mo	Last Month	YTD
12AM-1AM	4	70	696
	4	76	737
	4	82	792
1AM-2AM	3	49	447
	3	52	477
	6	59	509
2AM-3AM	3	37	351
	3	39	401
	3	41	431
3AM-4AM	5	21	252
	5	22	279
	5	24	301
4AM-5AM	5	40	326
	7	47	377
	7	52	408
5AM-6AM	5	34	340
	5	42	411
	5	45	436
6AM-7AM	150	121	1,597
	163	130	1,729
	167	134	1,795
7AM-8AM	278	257	2,703
	300	274	2,878
	311	287	3,027
8AM-9AM	287	276	2,731
	303	299	2,960
	315	311	3,119
9AM-10AM	235	233	2,373
	247	239	2,527
	261	244	2,658
10AM-11AM	235	204	2,251
	243	216	2,381
	246	223	2,509
11AM-12PM	209	172	1,910
	230	187	2,054
	239	198	2,163
12PM-1PM	208	192	2,205
	222	199	2,342
	230	205	2,460

Number of Responses / Hour of the Day



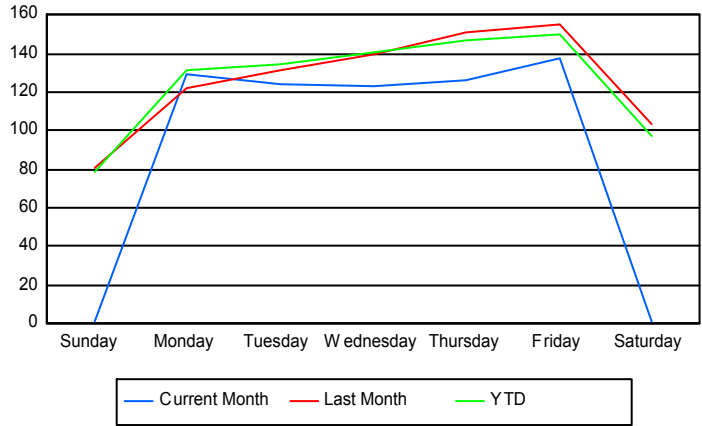
	Current Mo	Last Month	YTD
1PM-2PM	215	197	2,049
	234	218	2,222
	244	226	2,345
2PM-3PM	212	237	2,300
	227	253	2,458
	232	263	2,575
3PM-4PM	169	269	2,453
	176	296	2,636
	177	304	2,774
4PM-5PM	215	261	2,589
	233	279	2,747
	245	292	2,898
5PM-6PM	251	261	2,443
	261	282	2,599
	275	291	2,723
6PM-7PM	201	193	1,784
	207	199	1,878
	213	208	1,984
7PM-8PM	16	174	1,414
	16	183	1,477
	16	193	1,575
8PM-9PM	1	125	1,103
	1	134	1,176
	2	136	1,262
9PM-10PM	2	106	806
	2	110	866
	2	117	925
10PM-11PM	3	101	920
	4	111	977
	5	115	1,049
11PM-12AM	3	89	895
	3	98	941
	3	99	998

Road Ranger / SIRV Performance By Day of Week

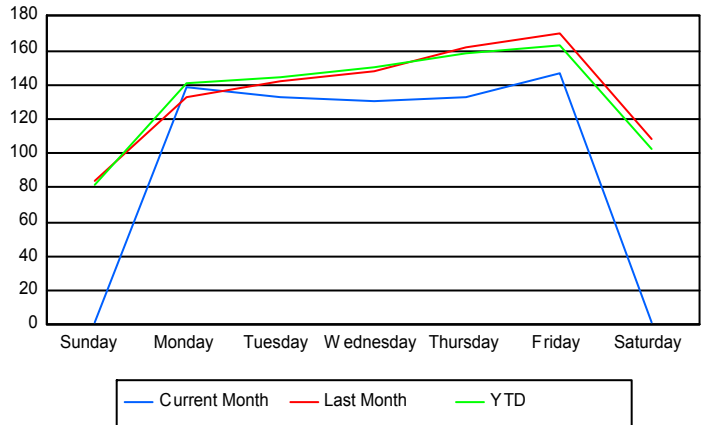
Values presented are:
 - Total Events with a RR/SIRV Response
 - Total RR/SIRV Responses,
 - Total Activities Performed

	Current Mo	Last Month	YTD
Sunday	1	314	2,905
	1	326	3,034
	1	343	3,210
Monday	511	573	5,527
	550	618	5,919
	569	647	6,200
Tuesday	487	651	5,832
	520	705	6,255
	537	733	6,586
Wednesday	613	554	6,092
	649	586	6,491
	666	608	6,827
Thursday	618	601	6,385
	650	643	6,886
	684	672	7,279
Friday	685	617	6,515
	728	674	7,056
	755	697	7,468
Saturday	1	415	3,707
	1	433	3,889
	1	449	4,146

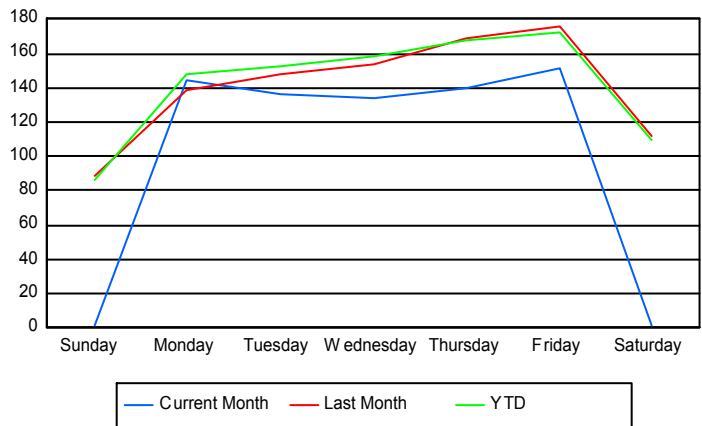
Avg # of events with a RR/SIRV Response per Day of the Week



Avg # of RR/SIRV Responses per Day of the Week



Avg # of RR/SIRV Activities Performed per Day of the Week



Road Ranger/ SIRV Responses per Time of Day and Day of Week

