



Monthly Performance Measures Report Broward County



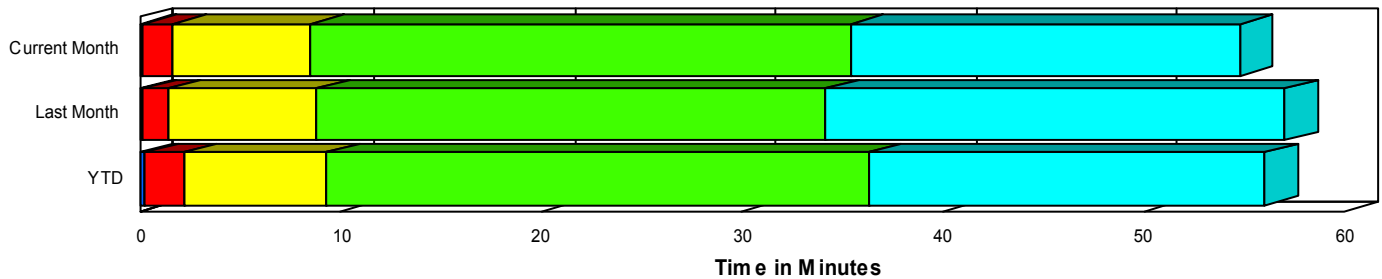
Created on:
November 05, 2007
10:37 am

Period From Oct 1, 2007 to Oct 31, 2007

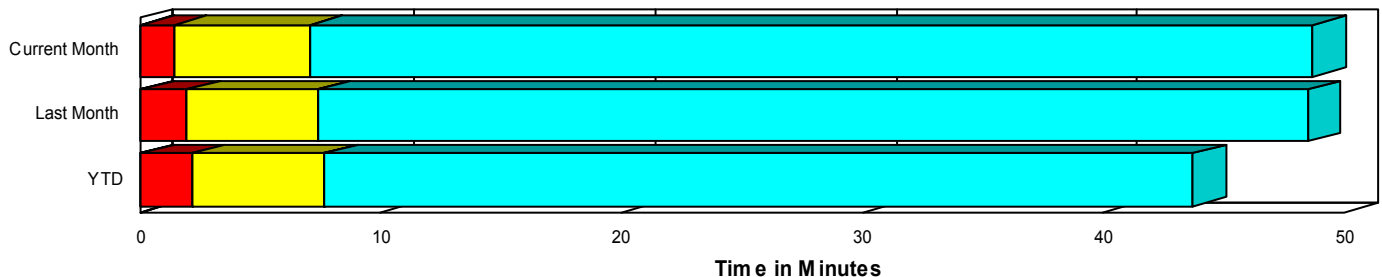
Performance Measures Summary

	Traffic Events (No Lanes Blocked)			Incidents (Lanes Blocked)		
	<u>This Month</u>	<u>Last Month</u>	<u>YTD</u>	<u>This Month</u>	<u>Last Month</u>	<u>YTD</u>
Number of Events	5,532	4,769	48,941	302	252	2,382
TMC Detection (min.)	0.02	0.03	0.04	0.19	0.13	0.22
TMC Verification (min.)	1.39	1.91	2.11	1.49	1.27	1.98
TMC Response (min.)	7.37	7.57	7.88	8.34	8.69	9.14
RR Dispatch Time (min.)	1.74	2.24	1.99	2.48	2.66	2.48
RR Response Time (min.)	5.82	5.46	6.03	5.86	6.06	6.67
Roadway Clearance (min.)				36.15	32.99	35.91
Event Clearance (min.)	49.02	48.69	43.90	54.69	53.82	54.83
# of Events w/ RR/SIRV	3,930	3,622	38,256	290	238	2,284
RR/SIRV Responses	4,052	3,757	39,491	519	443	3,968
RR/SIRV Activities	4,198	3,908	41,046	555	458	4,231

Incident Clearance TimeLine



Traffic Event(Non-Lane Blockage) Time-Line



■ Avg. TMC Detection Time	■ Avg. Time from TMC Response to Roadway Clearance*
■ Avg. Time from TMC Detection to TMC Verification	■ Avg. Time from Roadway Clearance to Incident/Event Clearance**
■ Avg. Time from TMC Verification to TMC Response	

* Roadway clearance equals all travel lanes open

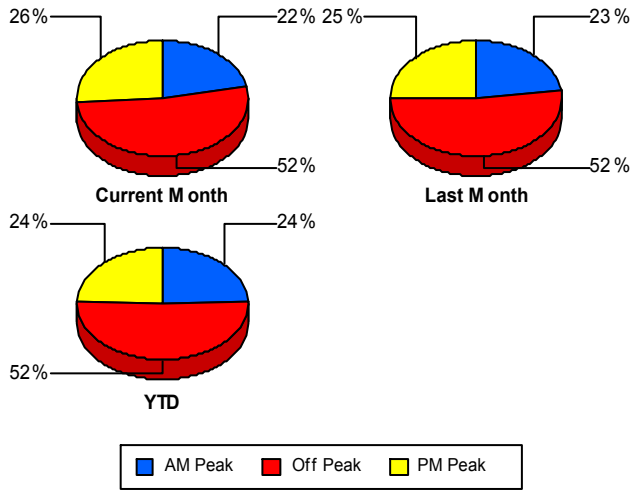
** Incident clearance equals time when last responder has left the scene

Performance Measures by Peak Period

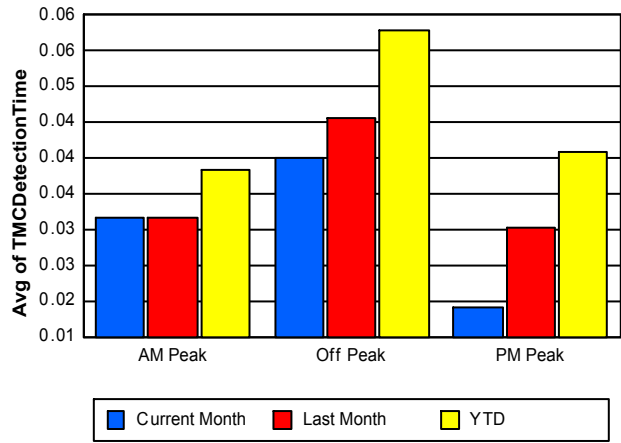
Note: AM peak period is defined as 6am to 10am and PM peak period is defined as 3pm to 7pm.

	AM Peak			Off Peak			PM Peak		
	<u>Current Month</u>	<u>Last Month</u>	<u>YTD</u>	<u>Current Month</u>	<u>Last Month</u>	<u>YTD</u>	<u>Current Month</u>	<u>Last Month</u>	<u>YTD</u>
Number of Events	1,274	1,142	12,490	3,041	2,620	26,503	1,519	1,259	12,330
Number of Incidents	64	46	512	182	137	1,272	56	69	598
TMC Detection (min.)	0.03	0.03	0.04	0.04	0.05	0.06	0.02	0.03	0.04
TMC Verification (min.)	1.33	1.97	1.42	1.63	1.85	2.48	0.97	1.86	1.99
TMC Response (min.)	7.25	6.97	6.74	7.73	8.28	8.85	7.05	6.98	7.37
RR Dispatch Time (min.)	1.96	1.97	1.56	1.67	2.46	2.27	1.86	2.12	1.95
RR Response Time (min.)	5.36	5.07	5.29	6.17	5.84	6.67	5.56	5.23	5.63
Event Clearance (min.)	35.19	44.10	35.61	59.43	58.30	51.76	40.91	33.88	37.52
Roadway Clearance (min.)	31.82	22.11	30.33	41.98	41.12	40.94	22.14	24.10	30.00
Incident Clearance (min.)	57.26	60.70	54.94	58.10	58.45	58.90	40.69	40.04	46.10
# of Events w/ RR/SIRV	1,008	955	10,382	2,128	1,958	20,448	1,084	947	9,710
RR/SIRV Responses	1,088	1,038	11,109	2,344	2,157	22,023	1,139	1,005	10,327
RR/SIRV Activities	1,131	1,086	11,579	2,445	2,240	22,970	1,177	1,040	10,728

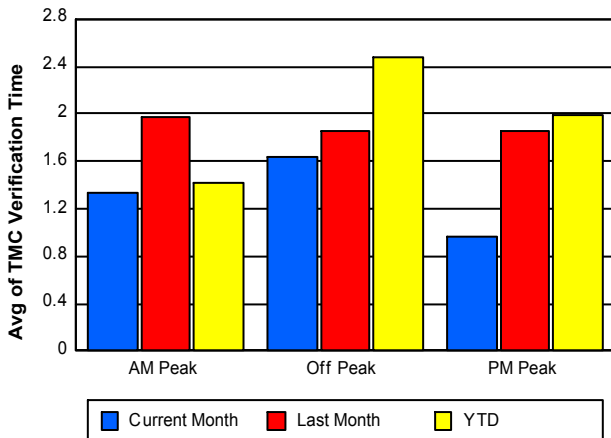
Number of Events / Peak Period



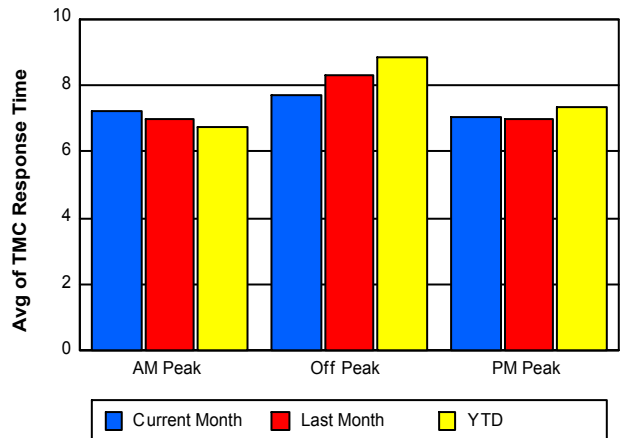
TMC Detection Time



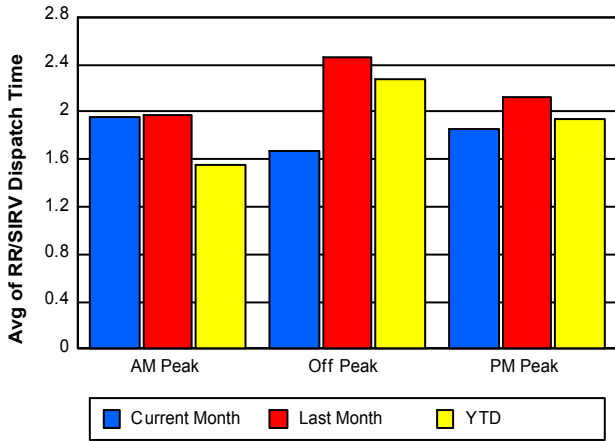
TMC Verification Time



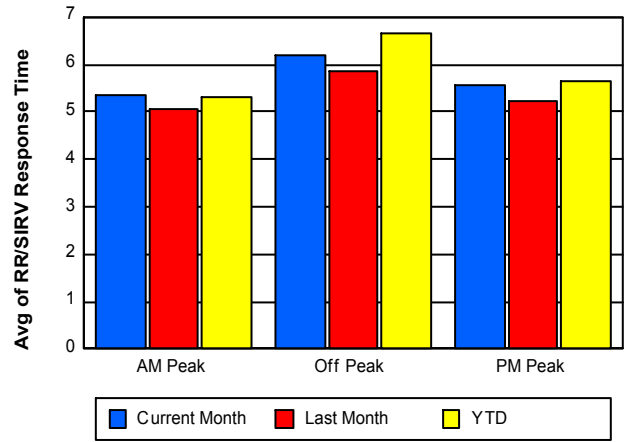
TMC Response Time



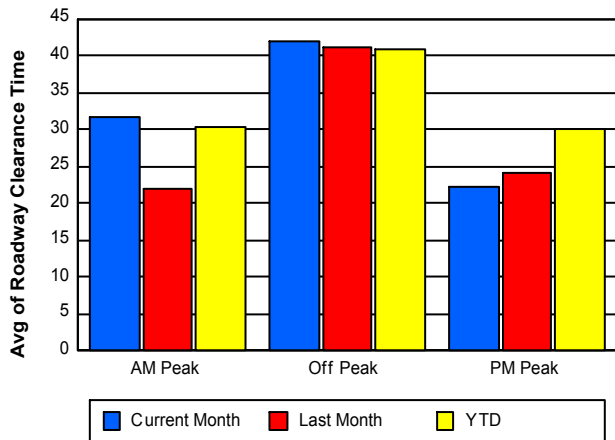
Road Ranger / SIRV Dispatch Time



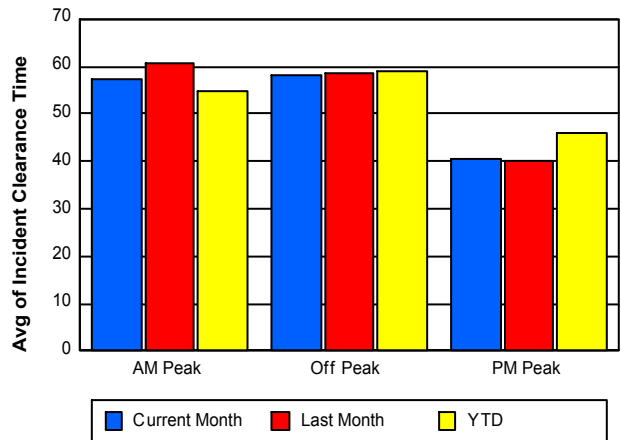
Road Ranger / SIRV Response Time



Roadway Clearance Time (2A)



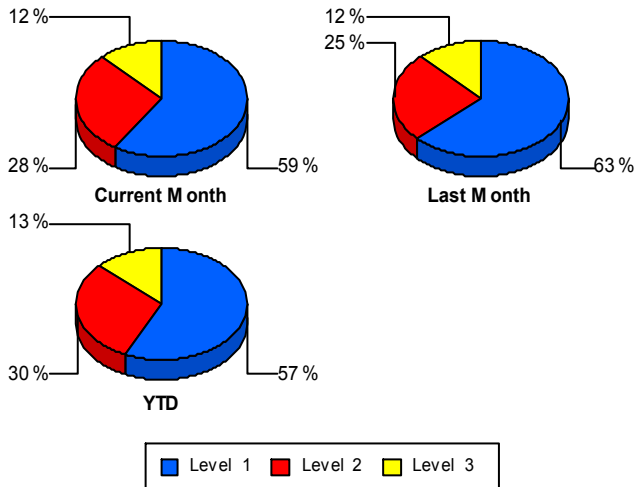
Incident Clearance Time (3B)



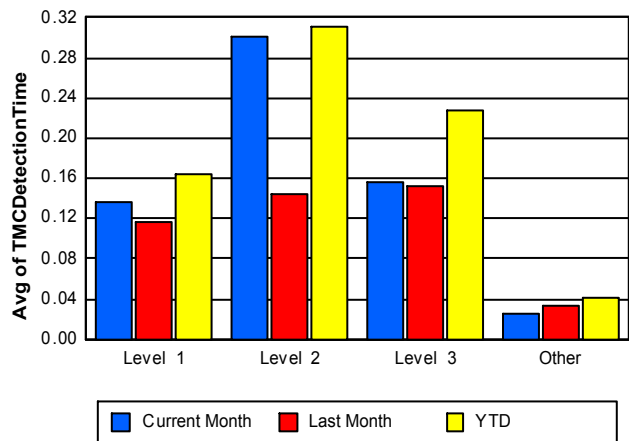
Performance Measures by Severity

	Level 1			Level 2			Level 3			Other		
	<u>This Month</u>	<u>Last Month</u>	<u>YTD</u>	<u>This Month</u>	<u>Last Month</u>	<u>YTD</u>	<u>This Month</u>	<u>Last Month</u>	<u>YTD</u>	<u>This Month</u>	<u>Last Month</u>	<u>YTD</u>
Number of Events	179	158	1,355	86	64	722	37	30	305	5,532	4,769	48,941
Number of Incidents	179	158	1,355	86	64	722	37	30	305	0	0	0
TMC Detection (min.)	0.14	0.12	0.16	0.30	0.14	0.31	0.16	0.15	0.23	0.02	0.03	0.04
TMC Verification (min.)	1.11	0.90	1.38	2.52	1.43	2.67	0.91	2.88	3.01	1.39	1.91	2.11
TMC Response (min.)	7.66	7.96	8.08	9.23	10.02	10.69	9.49	9.51	10.01	7.37	7.57	7.88
RR Dispatch Time (min.)	2.25	2.23	2.16	2.92	3.11	2.87	2.60	4.11	2.99	1.74	2.24	1.99
RR Resp. Time (min.)	5.42	5.81	5.95	6.30	6.91	7.82	6.89	5.41	7.03	5.82	5.46	6.03
Event Clearance (min.)	35.90	39.50	37.31	64.74	71.24	67.39	122.24	92.10	102.98	49.02	48.69	43.90
Roadway Clear. (min.)	14.26	14.57	14.88	49.69	47.04	51.78	110.56	100.03	91.82			
Incident Clearance (min.)	35.90	39.50	37.31	64.74	71.24	67.39	122.24	92.10	102.98			
# of Events w/ RR/SIRV	170	148	1,279	85	64	714	35	26	291	3,930	3,622	38,256
RR/SIRV Responses	243	235	1,826	186	136	1,392	90	72	750	4,052	3,757	39,491
RR/SIRV Activities	264	244	1,962	194	141	1,459	97	73	810	4,198	3,908	41,046

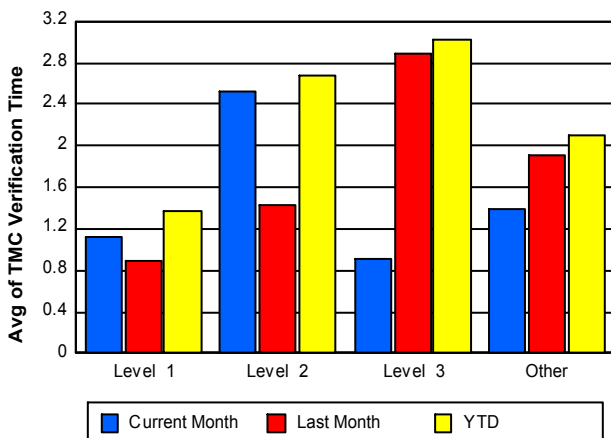
Number of Events / Severity



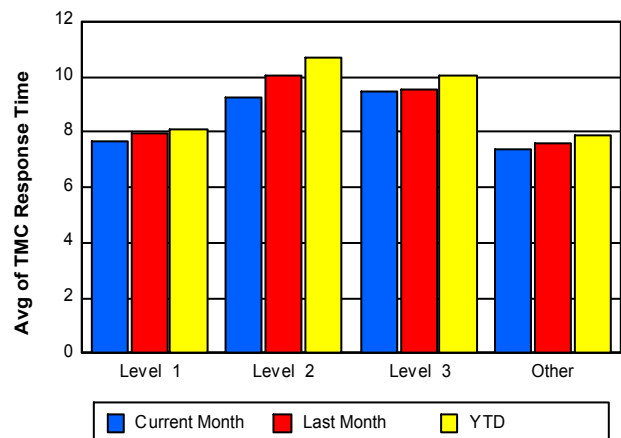
TMC Detection Time



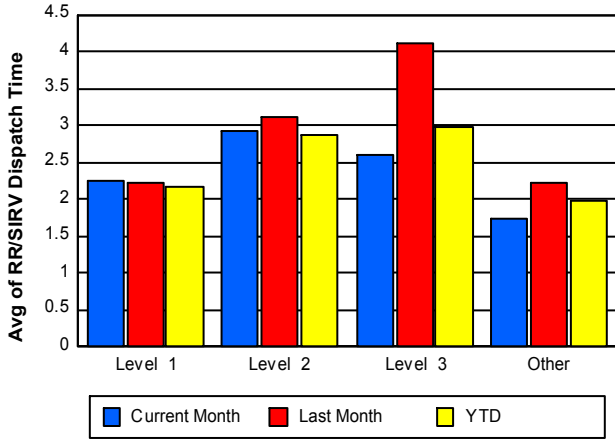
TMC Verification Time



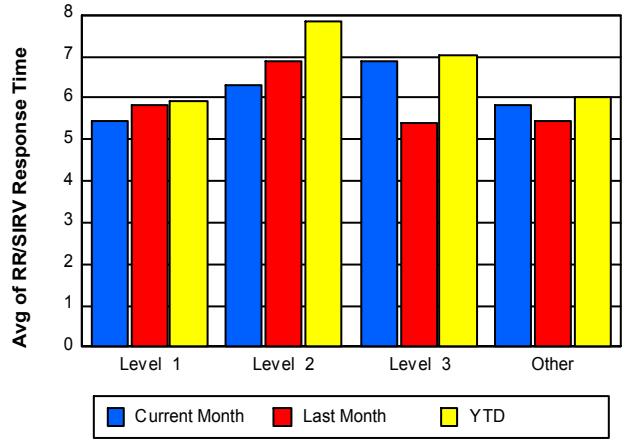
TMC Response Time



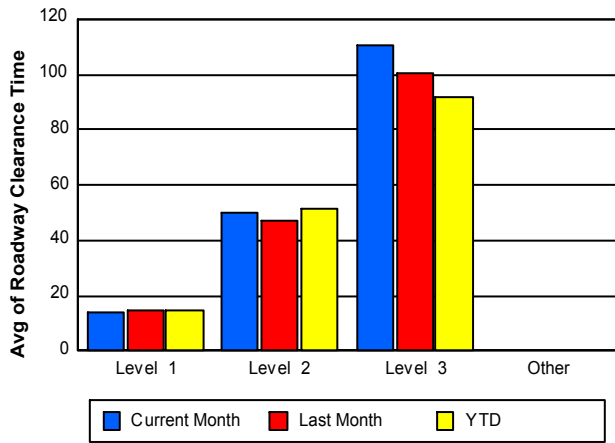
Road Ranger / SIRV Dispatch Time



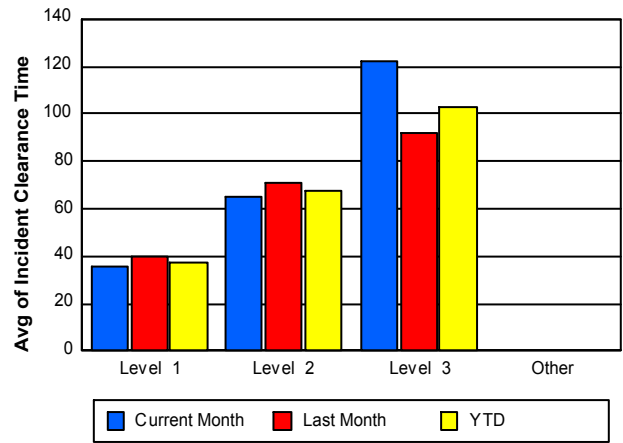
Road Ranger / SIRV Response Time



Roadway Clearance Time (2A)



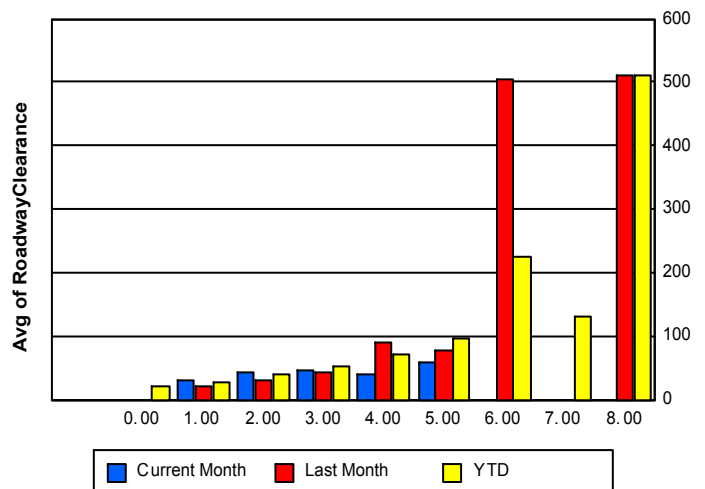
Incident Clearance Time (3B)



Roadway Clearance by Maximum Number of Lanes Blocked

	Current Month	Last Month	YTD
0			21.25
1	31.51	22.44	26.99
2	43.20	29.74	40.97
3	46.49	43.66	53.63
4	40.21	89.70	71.55
5	58.48	77.57	97.85
6	0.00	503.73	226.15

Roadway Clearance Time(2A)



	Current Month	Last Month	YTD
7	0.00	0.00	130.40
8	0.00	510.05	510.05

Performance Measures by Roadway

595

	<u>Current Month</u>	<u>Last Month</u>	<u>YTD</u>
Number of Events	865	791	8,011
Number of Incidents	69	44	409
TMC Detection (min.)	0.05	0.05	0.06
TMC Verification (min.)	1.77	2.45	2.58
TMC Response (min.)	7.06	6.82	7.59
RR Dispatch Time (min.)	1.84	1.79	2.11
RR Resp. Time (min.)	5.43	5.29	5.64
Event Clearance (min.)	48.64	41.97	43.07
Roadway Clear. (min.)	58.15	35.10	43.17
Incident Clearance (min.)	74.95	54.48	60.38
# of Events w/ RR/SIRV	659	629	6,496
RR/SIRV Responses	740	676	7,007
RR/SIRV Activities	775	706	7,290

75

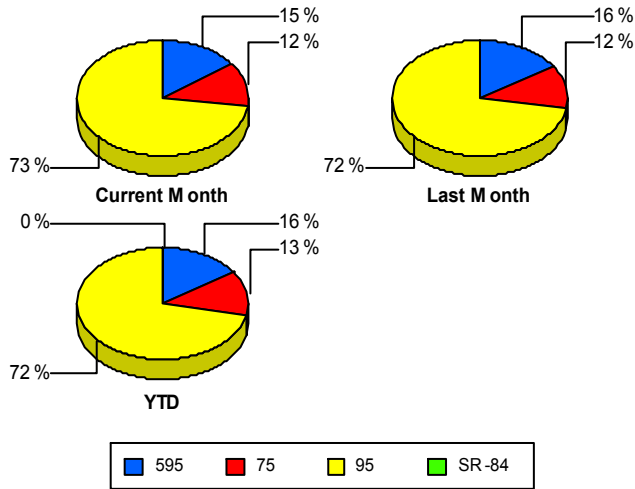
	<u>Current Month</u>	<u>Last Month</u>	<u>YTD</u>
Number of Events	711	594	6,509
Number of Incidents	14	10	142
TMC Detection (min.)	0.04	0.08	0.06
TMC Verification (min.)	2.72	4.63	3.45
TMC Response (min.)	3.10	4.44	3.88
RR Dispatch Time (min.)	0.82	1.34	1.17
RR Resp. Time (min.)	2.30	3.14	2.73
Event Clearance (min.)	65.25	49.24	51.07
Roadway Clear. (min.)	35.80	42.46	58.66
Incident Clearance (min.)	50.99	60.02	72.40
# of Events w/ RR/SIRV	683	572	6,292
RR/SIRV Responses	714	610	6,631
RR/SIRV Activities	734	639	6,927

95

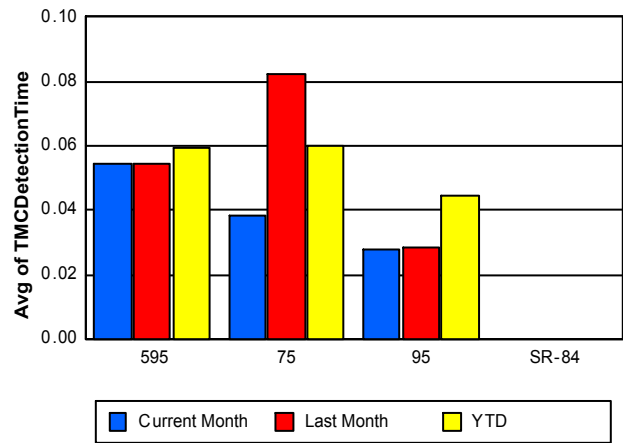
	<u>Current Month</u>	<u>Last Month</u>	<u>YTD</u>
Number of Events	4,258	3,636	36,802
Number of Incidents	219	198	1,831
TMC Detection (min.)	0.03	0.03	0.04
TMC Verification (min.)	1.09	1.31	1.76
TMC Response (min.)	8.55	8.51	8.97
RR Dispatch Time (min.)	1.96	2.54	2.16
RR Resp. Time (min.)	6.75	6.06	6.93
Event Clearance (min.)	46.80	50.42	43.52
Roadway Clear. (min.)	29.24	32.04	32.53
Incident Clearance (min.)	48.54	53.36	52.23
# of Events w/ RR/SIRV	2,878	2,659	27,752
RR/SIRV Responses	3,117	2,914	29,821
RR/SIRV Activities	3,244	3,021	31,060

	<u>YTD</u>
Number of Events	1
Number of Incidents	0
TMC Detection (min.)	0.00
TMC Verification (min.)	1.08
TMC Response (min.)	
RR Dispatch Time (min.)	
RR Resp. Time (min.)	
Event Clearance (min.)	3.77
Roadway Clear. (min.)	
Incident Clearance (min.)	
# of Events w/ RR/SIRV	0
RR/SIRV Responses	0
RR/SIRV Activities	0

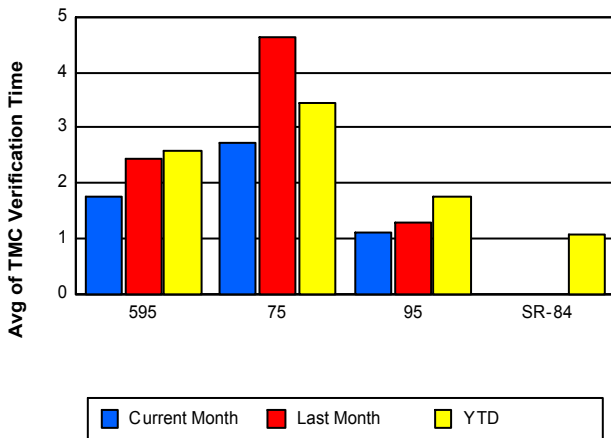
Number of Events / Roadway



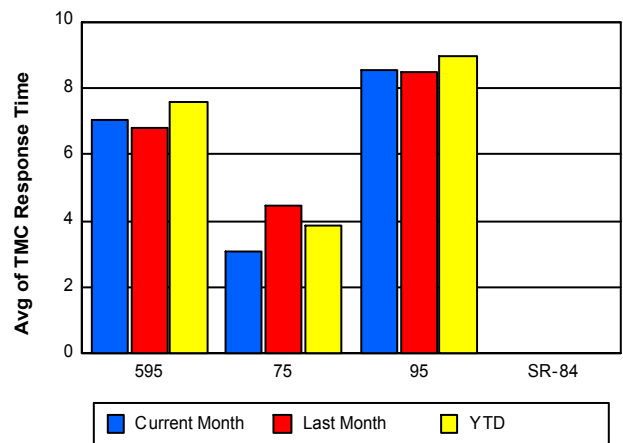
TMC Detection Time



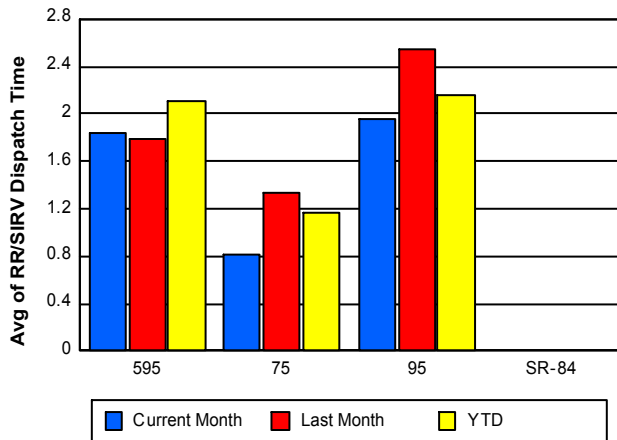
TMC Verification Time



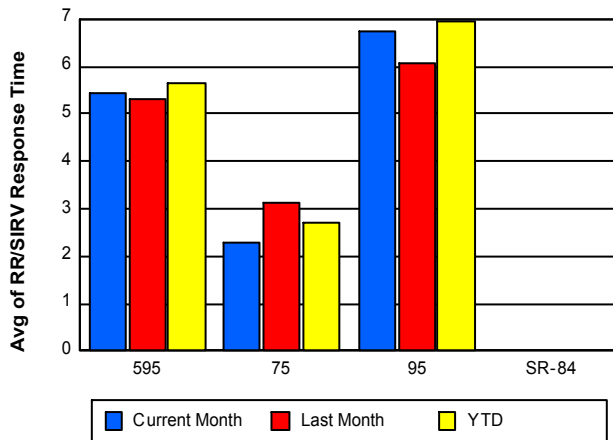
TMC Response Time



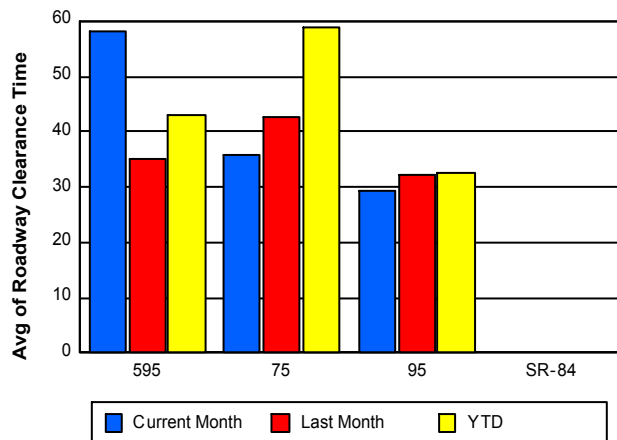
Road Ranger / SIRV Dispatch Time



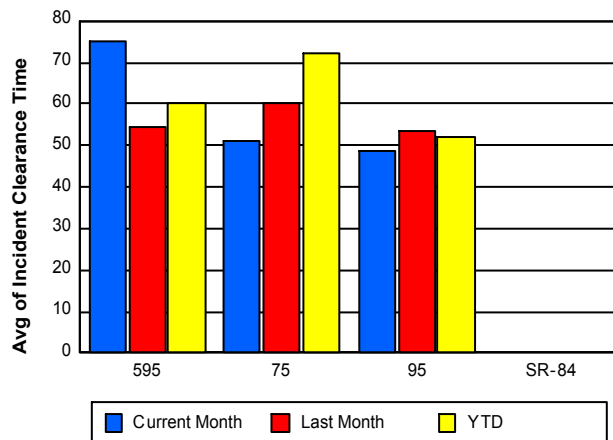
Road Ranger / SIRV Response Time



Roadway Clearance Time (2A)



Incident Clearance Time (3B)



Performance Measures by Event Type

Abandoned Vehicle

	<u>Current Month</u>	<u>Last Month</u>	<u>YTD</u>
Number of Events	699	642	6,552
Number of Incidents	0	3	11
TMC Detection (min.)	0.00	0.01	0.01
TMC Verification (min.)	0.19	0.61	0.60
TMC Response (min.)	8.09	8.04	8.79
RR Dispatch Time (min.)	2.02	3.15	2.75
RR Response Time (min.)	6.07	4.88	6.05
Event Clearance (min.)	268.31	241.50	199.51
Roadway Clearance (min.)		20.29	17.92
Incident Clearance (min.)		31.87	28.34
# of Events w/ RR/SIRV	534	514	5,311
RR/SIRV Assists	542	528	5,435
RR/SIRV Activities	550	544	5,580

Accident

	<u>Current Month</u>	<u>Last Month</u>	<u>YTD</u>
Number of Events	469	414	3,706
Number of Incidents	219	187	1,732
TMC Detection (min.)	0.13	0.18	0.19
TMC Verification (min.)	1.74	2.21	2.54
TMC Response (min.)	8.51	8.30	8.68
RR Dispatch Time (min.)	2.29	2.71	2.23
RR Response Time (min.)	6.26	5.63	6.47
Event Clearance (min.)	47.47	45.54	46.59
Roadway Clearance (min.)	37.00	33.22	36.84
Incident Clearance (min.)	59.36	57.67	59.43
# of Events w/ RR/SIRV	457	396	3,599
RR/SIRV Assists	669	601	5,192
RR/SIRV Activities	696	615	5,434

Congestion

	<u>Current Month</u>	<u>Last Month</u>	<u>YTD</u>
Number of Events	2	1	3
Number of Incidents	0	0	0
TMC Detection (min.)	0.00	0.00	0.00
TMC Verification (min.)	0.00	0.00	0.00
TMC Response (min.)			
RR Dispatch Time (min.)			
RR Response Time (min.)			
Event Clearance (min.)	53.16	360.25	155.52
Roadway Clearance (min.)			
Incident Clearance (min.)			
# of Events w/ RR/SIRV	0	0	0
RR/SIRV Assists	0	0	0
RR/SIRV Activities	0	0	0

Debris on Roadway

	<u>Current Month</u>	<u>Last Month</u>	<u>YTD</u>
Number of Events	206	191	2,048
Number of Incidents	14	10	69
TMC Detection (min.)	0.14	0.18	0.19
TMC Verification (min.)	5.27	6.28	7.42
TMC Response (min.)	7.89	7.79	8.81
RR Dispatch Time (min.)	2.20	1.38	1.95
RR Response Time (min.)	5.67	6.49	6.95
Event Clearance (min.)	12.64	11.75	13.35
Roadway Clearance (min.)	23.02	17.48	23.25
Incident Clearance (min.)	26.61	19.38	28.66
# of Events w/ RR/SIRV	195	176	1,934
RR/SIRV Assists	220	190	2,077
RR/SIRV Activities	224	195	2,104

Disabled Vehicle

	<u>Current Month</u>	<u>Last Month</u>	<u>YTD</u>
Number of Events	3,243	2,945	30,363
Number of Incidents	53	39	430
TMC Detection (min.)	0.02	0.02	0.04
TMC Verification (min.)	1.69	2.15	2.32
TMC Response (min.)	6.99	7.34	7.51
RR Dispatch Time (min.)	1.53	2.10	1.77
RR Response Time (min.)	5.59	5.42	5.84
Event Clearance (min.)	18.73	20.10	20.51
Roadway Clearance (min.)	24.04	26.82	26.33
Incident Clearance (min.)	34.35	50.72	38.25
# of Events w/ RR/SIRV	2,900	2,651	27,968
RR/SIRV Assists	3,000	2,745	28,931
RR/SIRV Activities	3,138	2,873	30,310

Emergency Vehicles

	<u>Current Month</u>	<u>Last Month</u>	<u>YTD</u>
Number of Events	4	1	25
Number of Incidents	1	1	17
TMC Detection (min.)	0.11	0.00	0.03
TMC Verification (min.)	0.00	0.00	0.15
TMC Response (min.)	0.00	7.10	7.27
RR Dispatch Time (min.)	0.64	3.30	4.37
RR Response Time (min.)	0.00	3.80	2.58
Event Clearance (min.)	7.45	72.92	32.22
Roadway Clearance (min.)	7.55	14.23	25.05
Incident Clearance (min.)	8.80	72.92	42.25
# of Events w/ RR/SIRV	2	1	17
RR/SIRV Assists	2	1	20
RR/SIRV Activities	2	1	21

Off Ramp Backup

	<u>YTD</u>
Number of Events	1
Number of Incidents	0
TMC Detection (min.)	0.00
TMC Verification (min.)	0.00
TMC Response (min.)	12.80
RR Dispatch Time (min.)	0.37
RR Response Time (min.)	12.43
Event Clearance (min.)	17.57
Roadway Clearance (min.)	
Incident Clearance (min.)	
# of Events w/ RR/SIRV	1
RR/SIRV Assists	1
RR/SIRV Activities	1

Other

	<u>Current Month</u>	<u>Last Month</u>	<u>YTD</u>
Number of Events	1,168	794	8,285
Number of Incidents	7	4	44
TMC Detection (min.)	0.01	0.02	0.01
TMC Verification (min.)	0.43	0.73	1.01
TMC Response (min.)	12.33	10.49	10.83
RR Dispatch Time (min.)	2.43	2.25	2.53
RR Response Time (min.)	10.40	8.39	8.72
Event Clearance (min.)	11.15	11.63	16.39
Roadway Clearance (min.)	20.90	133.15	34.56
Incident Clearance (min.)	31.79	32.85	33.59
# of Events w/ RR/SIRV	96	94	1,444
RR/SIRV Assists	99	99	1,477
RR/SIRV Activities	102	101	1,488

Pedestrian

	<u>Current Month</u>	<u>Last Month</u>	<u>YTD</u>
Number of Events	28	20	197
Number of Incidents	0	1	1
TMC Detection (min.)	0.06	0.07	0.21
TMC Verification (min.)	2.12	0.83	1.46
TMC Response (min.)	4.57	8.29	4.54
RR Dispatch Time (min.)	1.31	0.94	1.03
RR Response Time (min.)	3.35	7.33	3.65
Event Clearance (min.)	8.33	16.92	13.65
Roadway Clearance (min.)		13.55	13.55
Incident Clearance (min.)		13.28	13.28
# of Events w/ RR/SIRV	24	19	180
RR/SIRV Assists	25	22	189
RR/SIRV Activities	25	22	192

Police Activity

	<u>Current Month</u>	<u>Last Month</u>	<u>YTD</u>
Number of Events	14	12	119
Number of Incidents	7	7	56
TMC Detection (min.)	0.12	0.06	0.08
TMC Verification (min.)	2.28	0.46	1.39
TMC Response (min.)	7.13	7.51	10.19
RR Dispatch Time (min.)	1.49	3.85	3.37
RR Response Time (min.)	5.64	4.22	6.94
Event Clearance (min.)	46.42	34.56	56.78
Roadway Clearance (min.)	77.37	36.96	59.20
Incident Clearance (min.)	81.21	41.93	71.25
# of Events w/ RR/SIRV	12	9	69
RR/SIRV Assists	14	14	104
RR/SIRV Activities	16	15	110

Road Work - Emergency

	<u>Current Month</u>	<u>YTD</u>
Number of Events	1	16
Number of Incidents	1	15
TMC Detection (min.)	0.92	0.15
TMC Verification (min.)	0.00	6.10
TMC Response (min.)		15.00
RR Dispatch Time (min.)		3.82
RR Response Time (min.)		11.18
Event Clearance (min.)	523.22	116.33
Roadway Clearance (min.)	521.52	116.50
Incident Clearance (min.)	523.22	119.83
# of Events w/ RR/SIRV	0	10
RR/SIRV Assists	0	15
RR/SIRV Activities	0	18

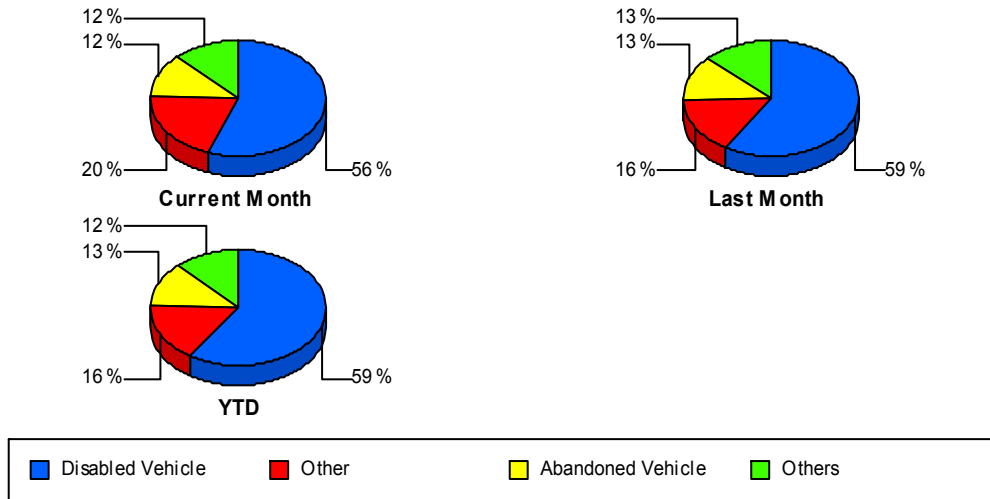
Visibility

	<u>YTD</u>
Number of Events	7
Number of Incidents	7
TMC Detection (min.)	0.53
TMC Verification (min.)	8.09
TMC Response (min.)	13.24
RR Dispatch Time (min.)	6.93
RR Response Time (min.)	6.31
Event Clearance (min.)	135.09
Roadway Clearance (min.)	228.55
Incident Clearance (min.)	135.09
# of Events w/ RR/SIRV	7
RR/SIRV Assists	18
RR/SIRV Activities	19

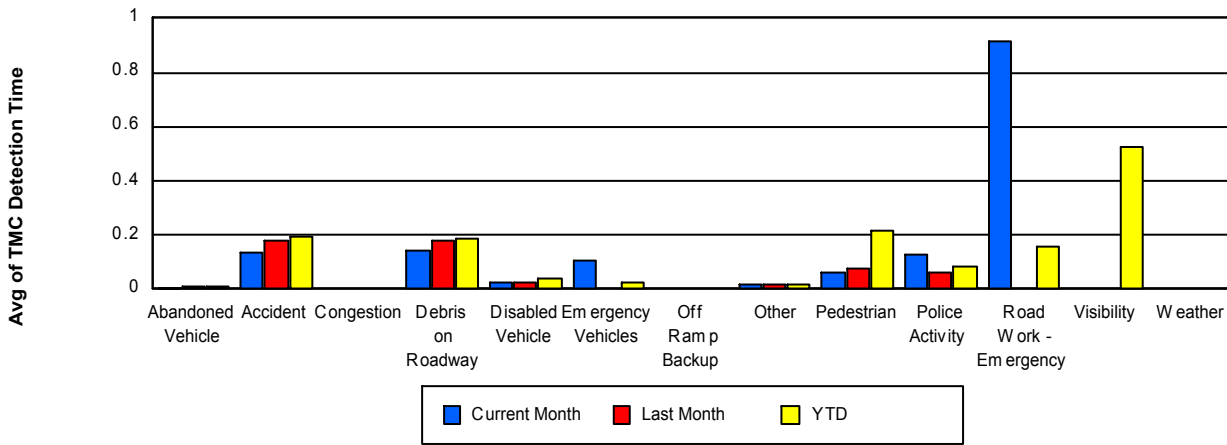
Weather

	<u>Last Month</u>	<u>YTD</u>
Number of Events	1	1
Number of Incidents	0	0
TMC Detection (min.)	0.00	0.00
TMC Verification (min.)	3.97	3.97
TMC Response (min.)		
RR Dispatch Time (min.)		
RR Response Time (min.)		
Event Clearance (min.)	7.35	7.35
Roadway Clearance (min.)		
Incident Clearance (min.)		
# of Events w/ RR/SIRV	0	0
RR/SIRV Assists	0	0
RR/SIRV Activities	0	0

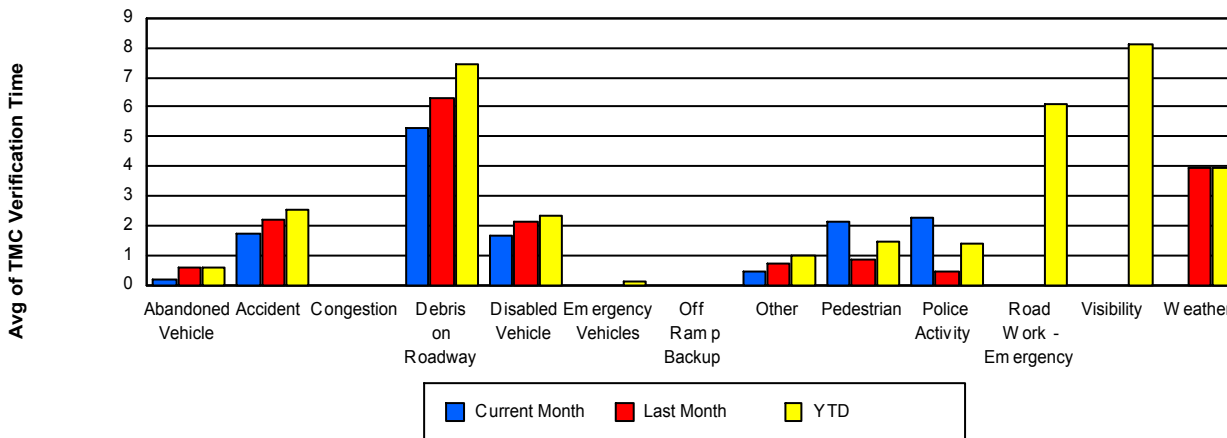
Number of Events / Event Type



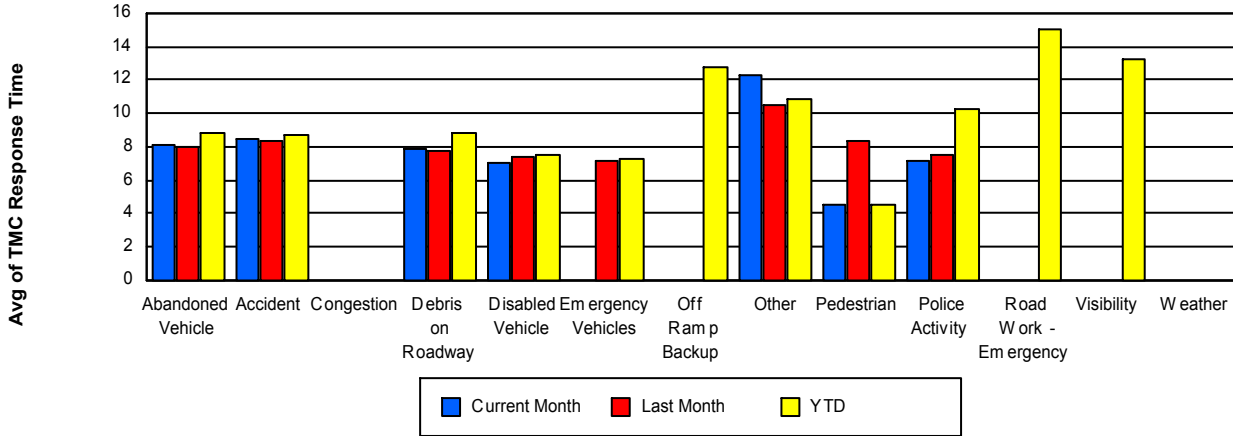
TMC Detection Time



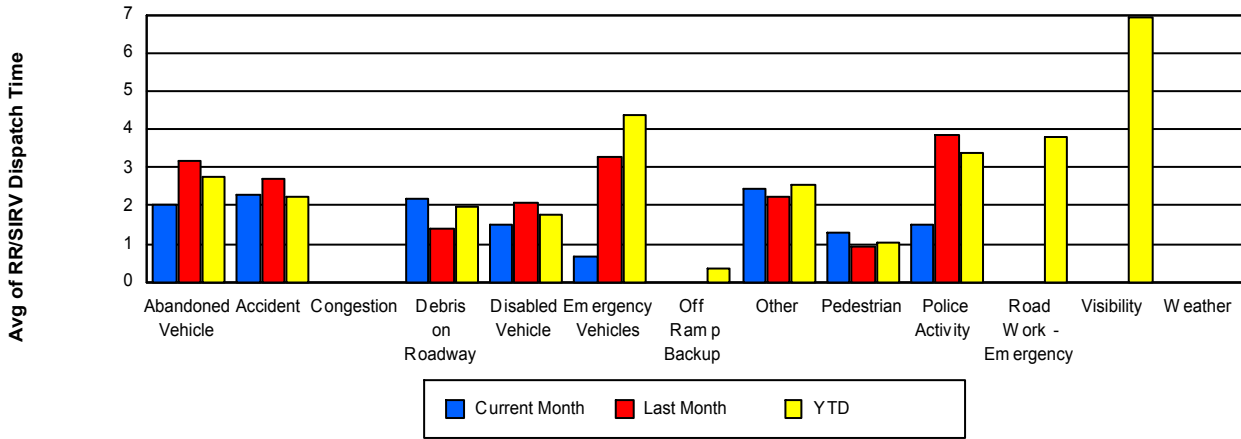
TMC Verification Time



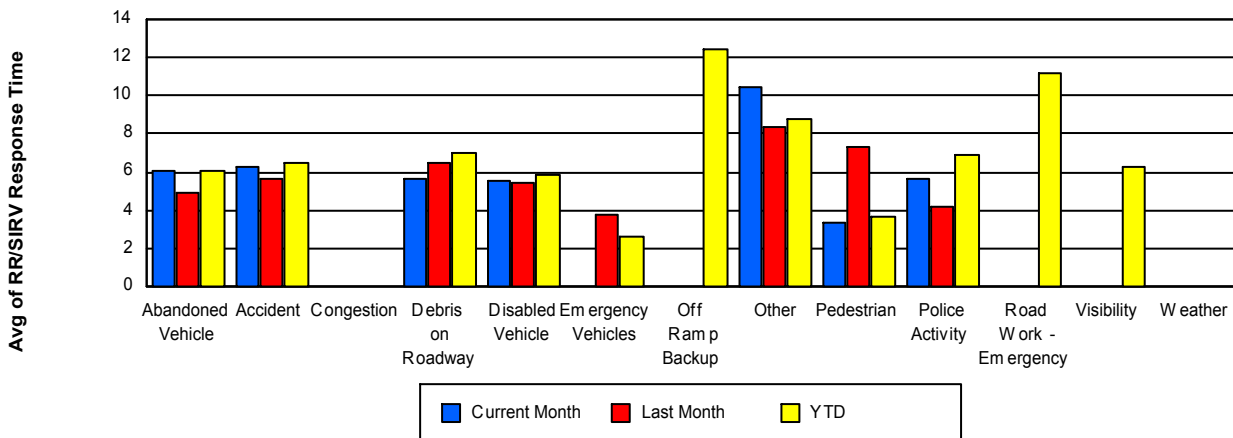
TMC Response Time



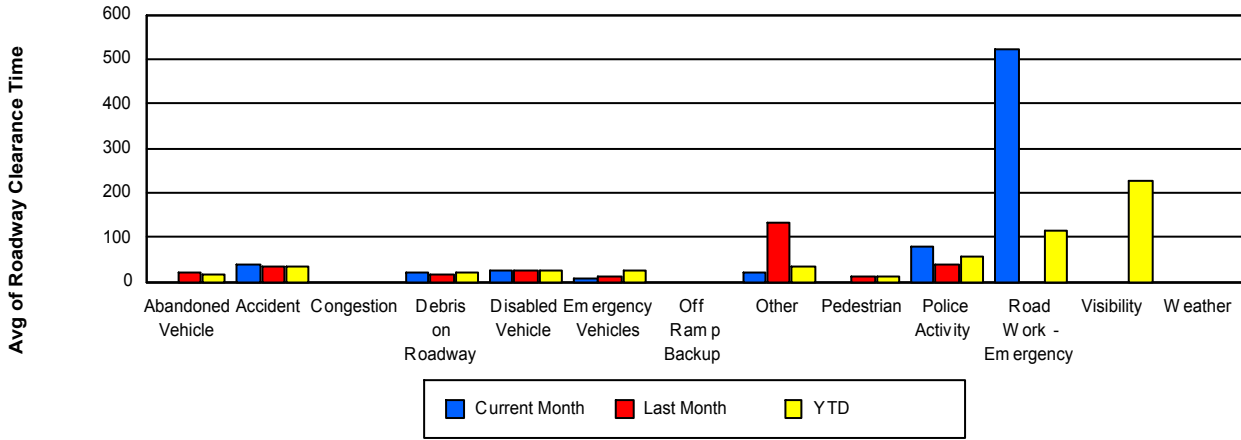
Road Ranger / SIRV Dispatch Time



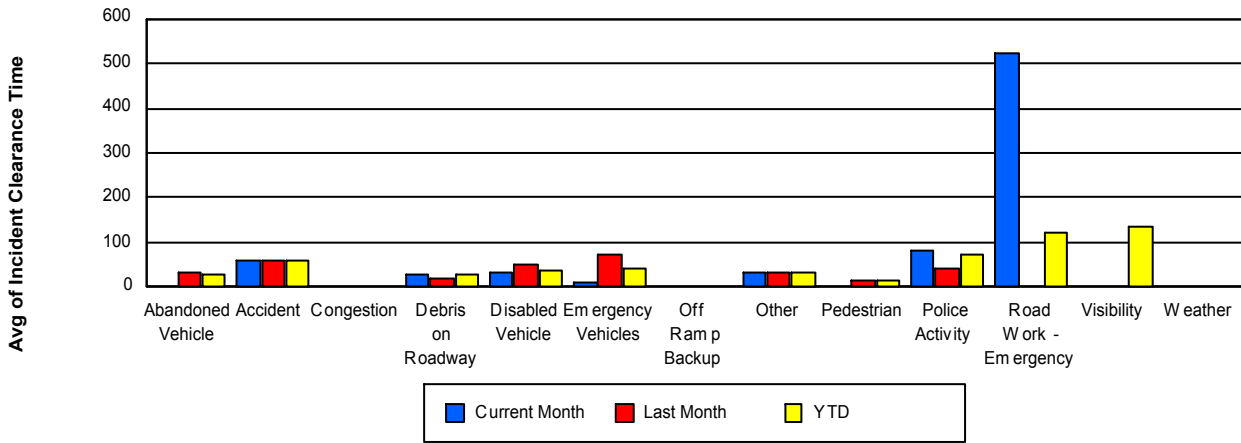
Road Ranger / SIRV Response Time



Roadway Clearance Time (2A)



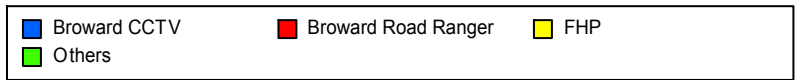
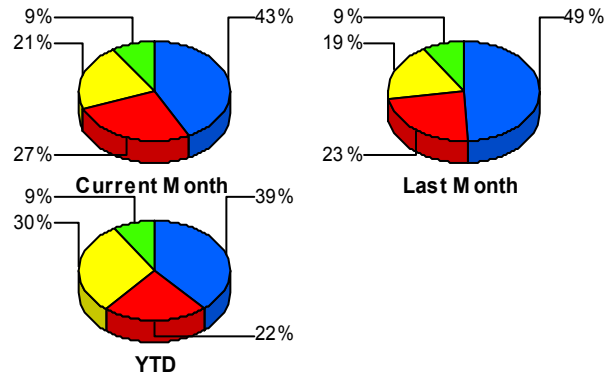
Incident Clearance Time (3B)



Incident Detection Methods

	Current Month	Last Month	YTD
Broward CCTV	129	124	922
Broward Road Ranger	81	59	533
Broward TMC	0	0	1
Broward VideoWall	2	4	6
BSO	5	1	14
District 4	4	1	49
District 6	1	0	4
FDOT Maintenance	1	1	6
FHP	64	47	721
Florida's Turnpike	3	3	7
FLPD	0	0	1
Motorist	3	5	31
Other	0	0	1
Palm Beach Road Rang	0	1	9
PSAP	1	0	1
Road Watcher	0	3	17
SIRV	2	1	8
SmarTraveler (511)	3	0	23
VisioPaD Detection	3	2	28
Total	302	252	2,382

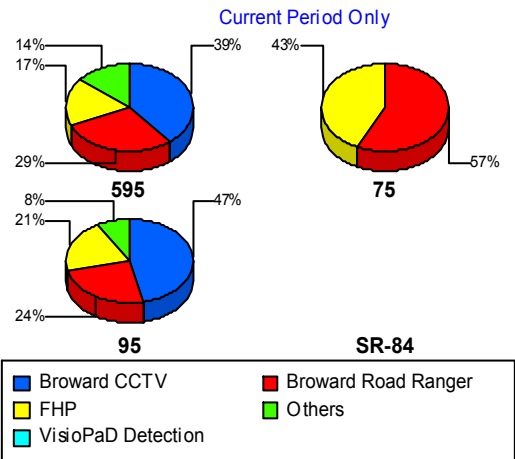
Total Incidents by Detection Method



Incident Detection Methods by Roadway

		Current Month	Last Month	YTD
595	Broward CCTV	27	15	135
	Broward Road Ranger	20	11	98
	BSO	1	0	3
	District 4	2	0	10
	FHP	12	11	132
	Florida's Turnpike	3	3	6
	FLPD	0	0	1
	Motorist	1	3	8
	Road Watcher	0	1	2
	SIRV	1	0	4
	SmarTraveler (511)	1	0	4
	VisioPaD Detection	1	0	6
	Total	69	44	409
	75	Broward Road Ranger	8	7
BSO		0	0	1
District 4		0	0	2
FHP		6	2	71
Road Watcher		0	1	2
Total		14	10	142
95	Broward CCTV	102	109	787
	Broward Road Ranger	53	41	369
	Broward TMC	0	0	1
	Broward VideoWall	2	4	6
	BSO	4	1	10
	District 4	2	1	37
	District 6	1	0	4
	FDOT Maintenance	1	1	6
	FHP	46	34	518
	Florida's Turnpike	0	0	1
	Motorist	2	2	23
	Other	0	0	1

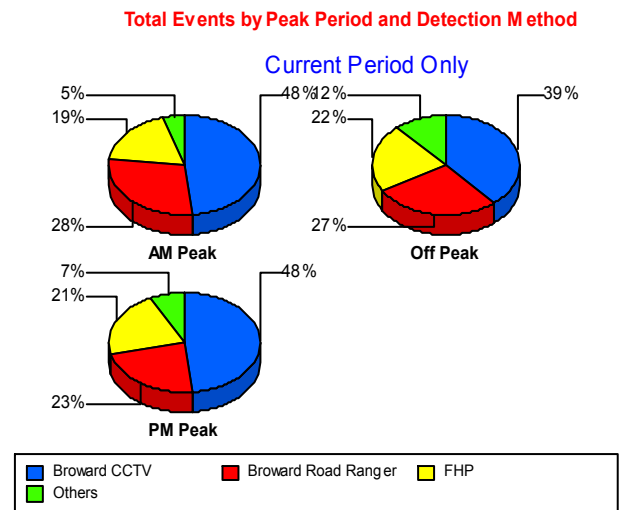
Total Events by Roadway and Detection Method



		Current Month	Last Month	YTD
95	Palm Beach Road Rang	0	1	9
	PSAP	1	0	1
	Road Watcher	0	1	13
	SIRV	1	1	4
	SmarTraveler (511)	2	0	19
	VisioPaD Detection	2	2	22
	Total	219	198	1,831
Total	302	252	2,382	

Incident Detection Methods by Peak Period

		Current Month	Last Month	YTD	
AM Peak	Broward CCTV	31	13	190	
	Broward Road Ranger	18	16	139	
	BSO	1	0	1	
	District 4	0	1	12	
	District 6	0	0	1	
	FDOT Maintenance	0	0	1	
	FHP	12	11	133	
	Florida's Turnpike	0	0	1	
	FLPD	0	0	1	
	Motorist	0	2	10	
	Palm Beach Road Rang	0	1	4	
	PSAP	1	0	1	
	Road Watcher	0	2	5	
	SIRV	1	0	2	
	SmarTraveler (511)	0	0	5	
	VisioPaD Detection	0	0	6	
	Total	64	46	512	
	Off Peak	Broward CCTV	71	70	483
		Broward Road Ranger	50	31	280
Broward TMC		0	0	1	
Broward VideoWall		2	4	6	

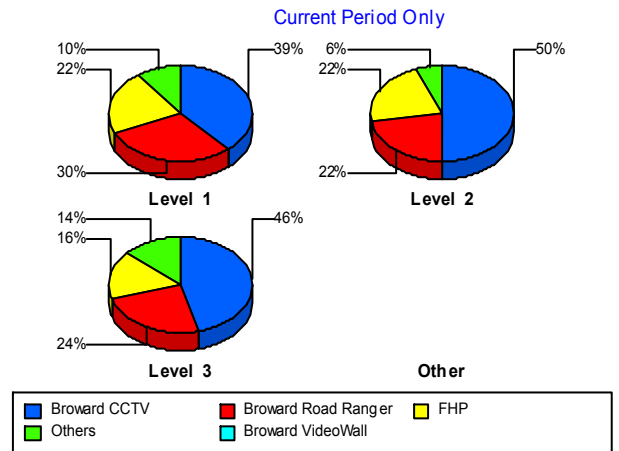


		Current Month	Last Month	YTD
Off Peak	BSO	3	1	7
	District 4	4	0	28
	District 6	1	0	2
	FDOT Maintenance	1	0	3
	FHP	40	24	402
	Florida's Turnpike	3	3	6
	Motorist	2	2	13
	Palm Beach Road Rang	0	0	3
	Road Watcher	0	1	9
	SIRV	1	0	4
	SmarTraveler (511)	1	0	10
	VisioPaD Detection	3	1	15
	Total	182	137	1,272
	PM Peak	Broward CCTV	27	41
Broward Road Ranger		13	12	114
BSO		1	0	6
District 4		0	0	9
District 6		0	0	1
FDOT Maintenance		0	1	2
FHP		12	12	186
Motorist		1	1	8
Other		0	0	1
Palm Beach Road Rang		0	0	2
Road Watcher		0	0	3
SIRV		0	1	2
SmarTraveler (511)		2	0	8
VisioPaD Detection		0	1	7
Total		56	69	598
Total	302	252	2,382	

Incident Detection Methods by Severity

		Current Month	Last Month	YTD
Level 1	Broward CCTV	69	84	559
	Broward Road Ranger	53	41	328
	Broward VideoWall	2	2	4
	BSO	5	1	9
	District 4	2	1	27
	District 6	1	0	1
	FDOT Maintenance	0	0	2
	FHP	39	23	357
	FLPD	0	0	1
	Motorist	2	2	21
	Other	0	0	1
	Palm Beach Road Rang	0	1	7
	PSAP	1	0	1
	Road Watcher	0	2	9
	SIRV	1	0	4
	SmarTraveler (511)	2	0	12
	VisioPaD Detection	2	1	12
	Total	179	158	1,355
Level 2	Broward CCTV	43	30	266
	Broward Road Ranger	19	14	144
	BSO	0	0	2
	District 4	1	0	18
	District 6	0	0	2
	FDOT Maintenance	0	1	3
	FHP	19	15	244
	Florida's Turnpike	1	0	2
	Motorist	1	2	9
	Palm Beach Road Rang	0	0	1
	Road Watcher	0	1	5
	SIRV	0	0	2
	SmarTraveler (511)	1	0	9

Total Events by Severity and Detection Method



		Current Month	Last Month	YTD
Level 2	VisioPaD Detection	1	1	15
	Total	86	64	722
Level 3	Broward CCTV	17	10	97
	Broward Road Ranger	9	4	61
	Broward TMC	0	0	1
	Broward VideoWall	0	2	2
	BSO	0	0	3
	District 4	1	0	4
	District 6	0	0	1
	FDOT Maintenance	1	0	1
	FHP	6	9	120
	Florida's Turnpike	2	3	5
	Motorist	0	1	1
	Palm Beach Road Rang	0	0	1
	Road Watcher	0	0	3
	SIRV	1	1	2
	SmarTraveler (511)	0	0	2
	VisioPaD Detection	0	0	1
	Total	37	30	305
Total		302	252	2,382

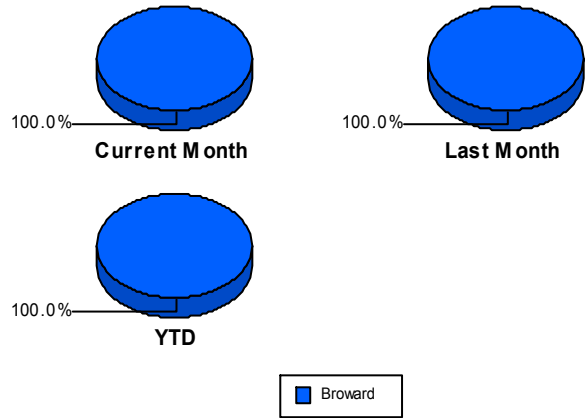
Road Ranger / SIRV Performance Measures

Road Ranger / SIRV Performance By County

Values presented are:
 - Total Events with a RR/SIRV Response
 - Total RR/SIRV Responses,
 - Total Activities Performed

	Current Mo	Last Month	YTD
Broward	4,220	3,860	40,540
	4,571	4,200	43,458
	4,753	4,366	45,274

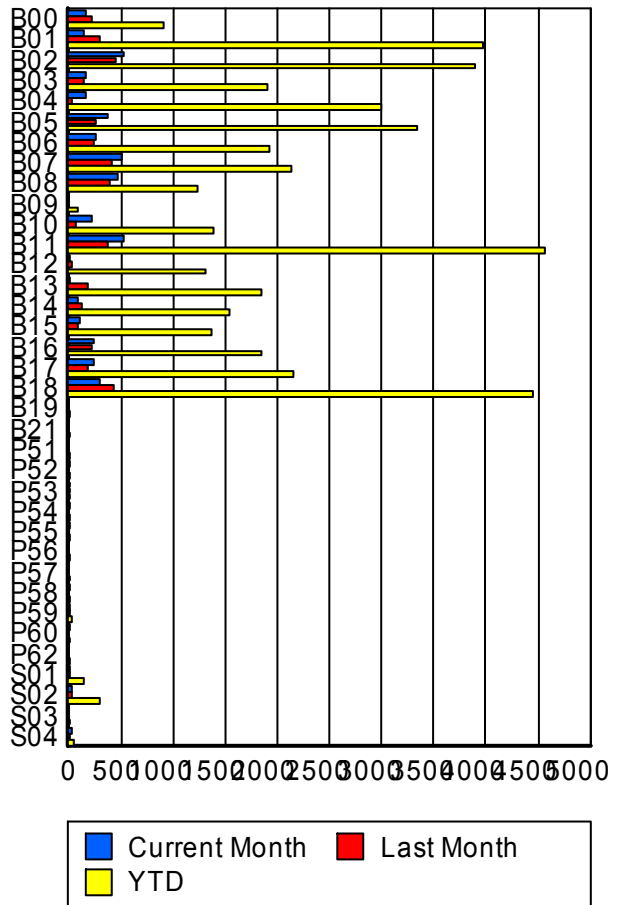
RR/SIRV Responses per County



Road Ranger / SIRV Performance By Truck

	Current Mo	Last Month	YTD
B00	168	215	890
	171	216	901
	178	222	929
B01	146	299	3,934
	146	302	3,966
	151	314	4,125
B02	516	435	3,854
	520	441	3,892
	540	468	4,079
B03	155	143	1,890
	156	143	1,913
	162	147	1,981
B04	158	27	2,956
	159	27	2,993
	161	29	3,121
B05	365	257	3,309
	366	262	3,342
	388	273	3,503
B06	266	248	1,916
	267	249	1,926
	280	266	2,017
B07	513	413	2,117
	516	418	2,133
	529	431	2,198
B08	462	388	1,234
	463	390	1,243
	479	401	1,280

**RR/SIRV
Responses per
Truck**



	Current Mo	Last Month	YTD
B09	0	0	87
	0	0	87
	0	0	90
B10	222	63	1,368
	225	65	1,389
	244	66	1,462
B11	522	370	4,538
	530	370	4,573
	550	388	4,755
B12	4	27	1,297
	4	28	1,308
	5	28	1,360
B13	5	189	1,836
	5	190	1,852
	5	198	1,903
B14	83	128	1,529
	84	129	1,541
	85	133	1,588
B15	97	92	1,360
	98	93	1,370
	101	98	1,427
B16	243	213	1,815
	246	215	1,840
	253	226	1,924
B17	245	185	2,131
	247	186	2,149
	253	188	2,234
B18	295	428	4,412
	298	434	4,457
	312	447	4,641
B19	0	0	2
	0	0	2
	0	0	2
B21	0	0	2
	0	0	2
	0	0	2
P51	0	0	6
	0	0	6
	0	0	6
P52	1	0	4
	1	0	4
	1	0	4
P53	1	2	7
	1	2	7
	1	2	7

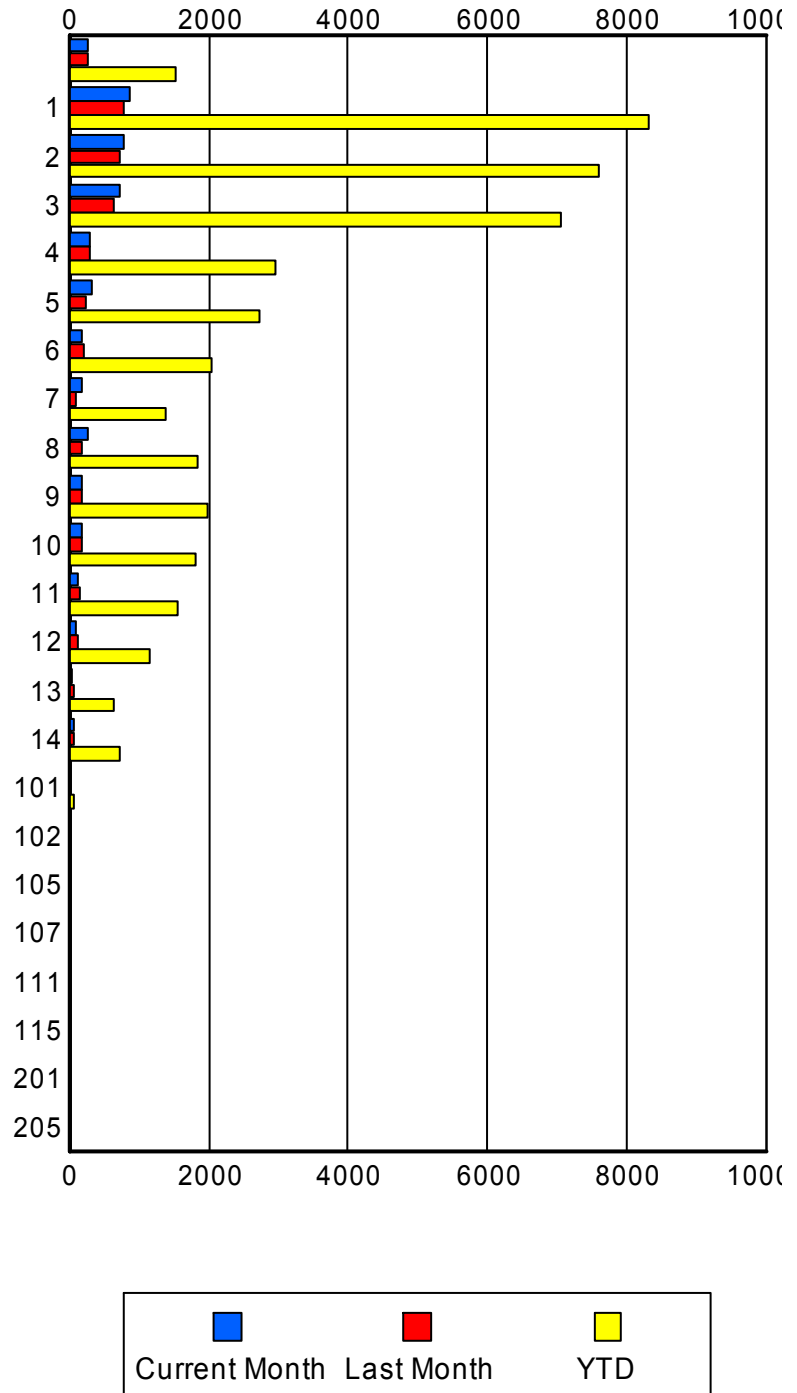
	Current Mo	Last Month	YTD
P54	1	0	4
	1	0	4
	1	0	6
P55	2	0	4
	2	0	4
	2	0	4
P56	0	0	6
	0	0	6
	0	0	6
P57	0	0	2
	0	0	2
	0	0	2
P58	1	0	18
	1	0	18
	1	0	21
P59	2	3	38
	2	3	38
	4	3	45
P60	2	0	3
	2	0	3
	2	0	3
P62	0	0	2
	0	0	2
	0	0	2
S01	14	8	150
	14	8	152
	17	10	188
S02	24	21	289
	24	21	290
	25	21	316
S03	0	0	1
	0	0	1
	0	0	1
S04	22	8	42
	22	8	42
	23	7	42

Road Ranger / SIRV Performance By Beat

	Current Mo	Last Month	YTD
	217	234	1,342
	262	265	1,522
	276	272	1,620
1	850	759	8,070
	872	780	8,308
	913	813	8,652
2	769	694	7,383
	788	717	7,609
	818	743	7,934
3	714	613	6,837
	738	637	7,040
	760	660	7,343
4	284	305	2,933
	285	310	2,963
	301	324	3,063
5	308	228	2,725
	311	228	2,744
	322	241	2,863
6	191	198	2,034
	192	199	2,049
	197	210	2,133
7	172	108	1,379
	174	108	1,396
	176	112	1,460
8	258	170	1,839
	259	173	1,851
	268	180	1,940
9	170	192	1,969
	172	194	1,985
	180	201	2,056
10	167	171	1,810
	168	173	1,826
	175	179	1,896
11	135	157	1,530
	135	157	1,545
	142	162	1,589
12	95	125	1,147
	95	125	1,158
	101	130	1,207
13	48	58	643
	49	59	652
	51	60	671
14	61	68	711
	62	70	720
	62	74	745

Values presented are:
 - Total Events with a RR/SIRV Response
 - Total RR/SIRV Responses,
 - Total Activities Performed

RR/SIRV Responses per Beat



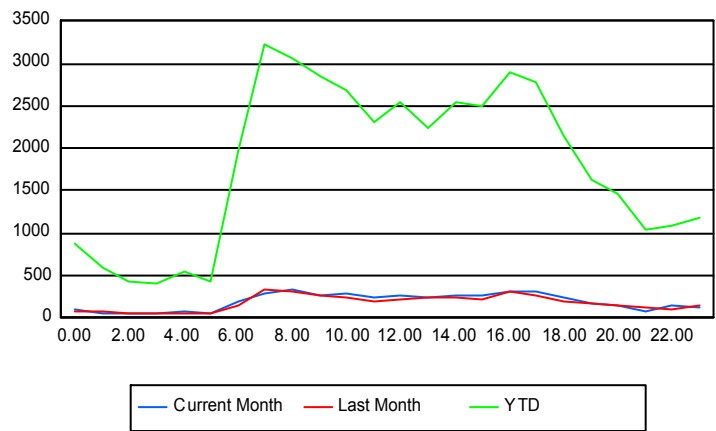
	Current Mo	Last Month	YTD
101	5	4	60
	5	4	60
	7	4	72
102	0	0	4
	0	0	4
	0	0	4
105	0	0	1
	0	0	1
	0	0	1
107	0	0	1
	0	0	1
	0	0	1
111	3	1	20
	3	1	20
	3	1	20
115	1	0	2
	1	0	2
	1	0	2
201	0	0	1
	0	0	1
	0	0	1
205	0	0	1
	0	0	1
	0	0	1

Road Ranger / SIRV Performance By Time of Day

Values presented are: - Total Events with a RR/SIRV Response - Total RR/SIRV Responses, - Total Activities Performed

	Current Mo	Last Month	YTD
12AM-1AM	95	75	817
	107	87	884
	114	88	920
1AM-2AM	56	64	549
	62	69	604
	65	75	633
2AM-3AM	42	43	409
	45	47	439
	47	48	452
3AM-4AM	47	40	356
	47	54	406
	50	56	424
4AM-5AM	52	40	472
	67	54	552
	69	57	566
5AM-6AM	40	48	389
	47	55	429
	48	56	444
6AM-7AM	172	117	1,828
	187	136	1,981
	196	140	2,069
7AM-8AM	272	310	3,021
	292	327	3,218
	302	344	3,348
8AM-9AM	308	283	2,872
	333	311	3,066
	345	323	3,206
9AM-10AM	256	245	2,661
	276	264	2,843
	288	279	2,953
10AM-11AM	266	223	2,526
	284	238	2,691
	297	245	2,819
11AM-12PM	211	186	2,143
	234	199	2,304
	243	208	2,403
12PM-1PM	240	205	2,363
	261	219	2,538
	281	226	2,663

Number of Responses / Hour of the Day



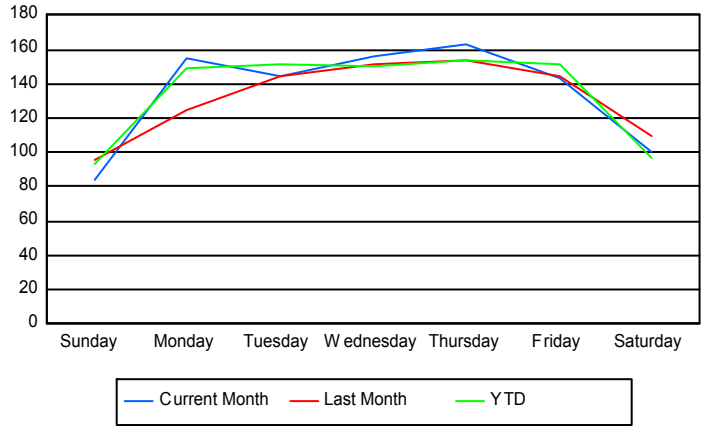
	Current Mo	Last Month	YTD
1PM-2PM	215	204	2,044
	248	235	2,233
	251	253	2,337
2PM-3PM	242	205	2,371
	264	230	2,551
	272	238	2,670
3PM-4PM	252	214	2,346
	263	226	2,490
	278	234	2,595
4PM-5PM	306	296	2,725
	313	312	2,900
	324	322	3,007
5PM-6PM	286	243	2,617
	311	263	2,780
	318	274	2,896
6PM-7PM	240	194	2,022
	252	204	2,157
	257	210	2,230
7PM-8PM	165	157	1,549
	182	164	1,635
	196	170	1,709
8PM-9PM	136	137	1,395
	143	142	1,455
	149	146	1,521
9PM-10PM	78	104	958
	85	118	1,049
	86	123	1,084
10PM-11PM	122	101	1,006
	140	106	1,080
	146	106	1,119
11PM-12AM	121	126	1,101
	128	140	1,173
	131	145	1,206

Road Ranger / SIRV Performance By Day of Week

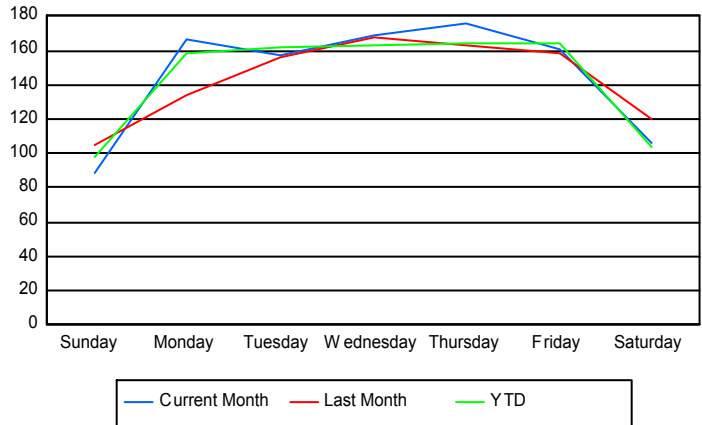
Values presented are:
 - Total Events with a RR/SIRV Response
 - Total RR/SIRV Responses,
 - Total Activities Performed

	Current Mo	Last Month	YTD
Sunday	336	474	3,892
	351	519	4,125
	373	537	4,298
Monday	771	485	6,435
	829	524	6,847
	856	548	7,102
Tuesday	720	573	6,599
	784	616	7,064
	816	625	7,374
Wednesday	781	605	6,557
	843	667	7,066
	876	691	7,376
Thursday	646	611	6,528
	700	650	6,989
	716	681	7,268
Friday	569	571	6,460
	640	628	6,992
	668	657	7,271
Saturday	400	545	4,105
	424	596	4,375
	448	627	4,585

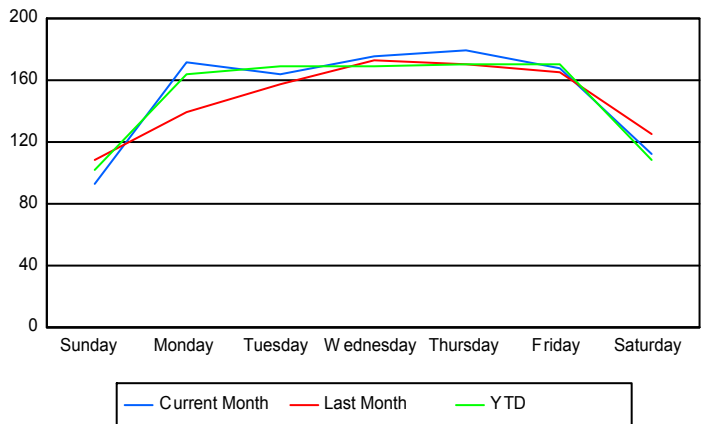
Avg # of events with a RR/SIRV Response per Day of the Week



Avg # of RR/SIRV Responses per Day of the Week



Avg # of RR/SIRV Activities Performed per Day of the Week



Road Ranger/ SIRV Responses per Time of Day and Day of Week

