



# Monthly Performance Measures Report Broward County



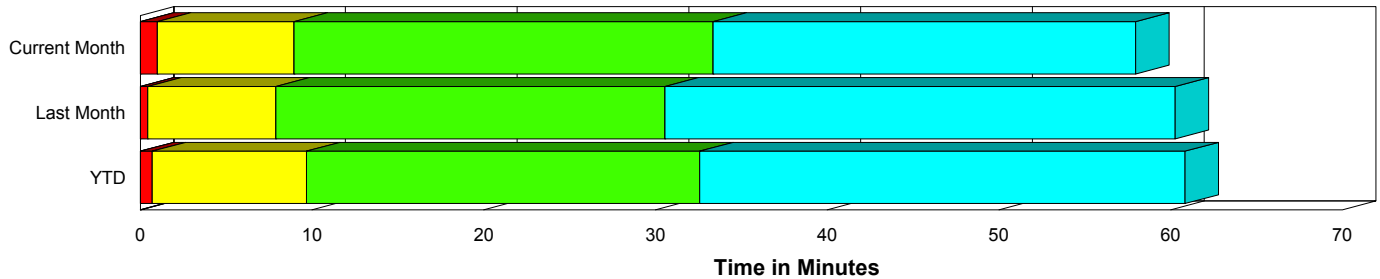
Created on:  
October 05, 2009  
5:39 pm

Period From Sep 1, 2009 to Sep 30, 2009

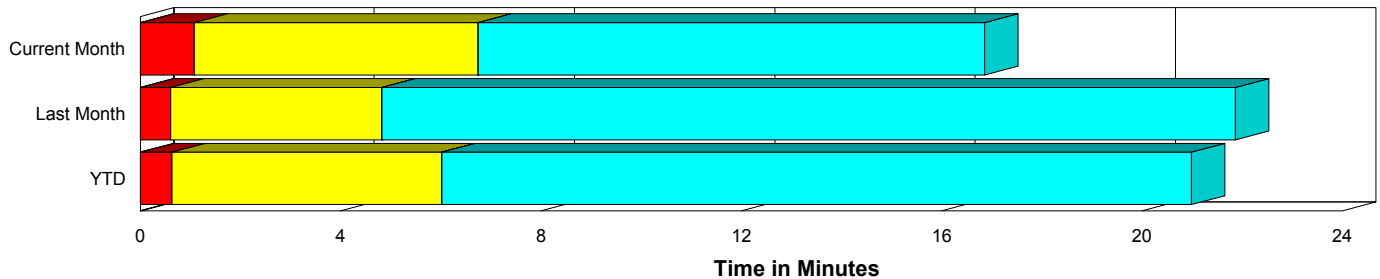
## Performance Measures Summary

	Traffic Events (No Lanes Blocked)			Incidents (Lanes Blocked)		
	<u>This Month</u>	<u>Last Month</u>	<u>YTD</u>	<u>This Month</u>	<u>Last Month</u>	<u>YTD</u>
Number of Events	4,856	3,535	37,781	237	183	1,848
TMC Detection (min.)	0.00	0.00	0.01	0.01	0.00	0.00
TMC Verification (min.)	1.07	0.60	0.62	0.98	0.44	0.70
TMC Response (min.)	7.18	5.18	6.50	8.93	8.06	9.86
RR Dispatch Time (min.)	1.13	0.73	1.18	1.70	1.82	2.81
RR Response Time (min.)	6.20	4.57	5.45	7.22	6.40	7.21
Roadway Clearance (min.)				32.58	27.66	31.62
Event Clearance (min.)	17.29	22.22	21.47	57.12	57.37	59.45
# of Events w/ RR/SIRV	4,219	2,423	25,639	232	113	1,286
RR/SIRV Responses	4,219	2,423	25,639	232	113	1,286
RR/SIRV Activities	3,591	2,272	21,992	463	244	2,620

### Incident Clearance Time-Line



### Traffic Event (Non-Lane Blockage) Time-Line



<span style="color: blue;">■</span> Avg. TMC Detection Time	<span style="color: green;">■</span> Avg. Time from TMC Response to Roadway Clearance*
<span style="color: red;">■</span> Avg. Time from TMC Detection to TMC Verification	<span style="color: cyan;">■</span> Avg. Time from Roadway Clearance to Incident/Event Clearance**
<span style="color: yellow;">■</span> Avg. Time from TMC Verification to TMC Response	

\* Roadway clearance equals all travel lanes open

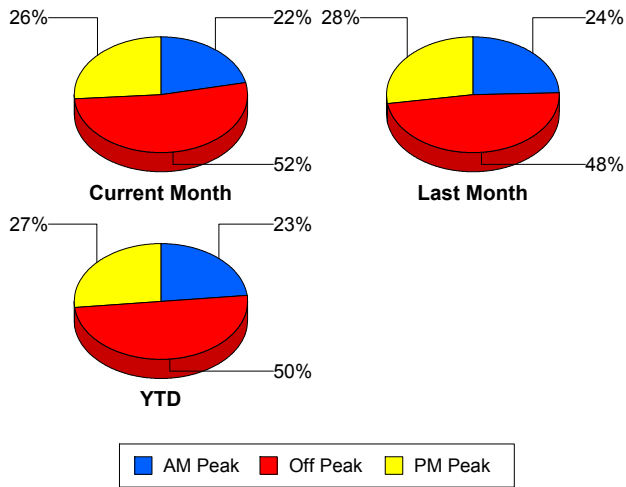
\*\* Incident clearance equals time when last responder has left the scene

## Performance Measures by Peak Period

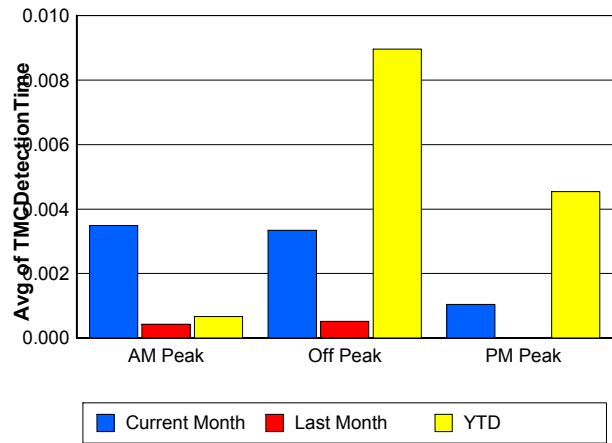
Note: AM peak period is defined as 6am to 10am and PM peak period is defined as 3pm to 7pm.

	AM Peak			Off Peak			PM Peak		
	<u>Current Month</u>	<u>Last Month</u>	<u>YTD</u>	<u>Current Month</u>	<u>Last Month</u>	<u>YTD</u>	<u>Current Month</u>	<u>Last Month</u>	<u>YTD</u>
Number of Events	1,103	906	9,239	2,659	1,788	19,866	1,331	1,024	10,524
Number of Incidents	74	36	428	113	94	911	50	53	509
TMC Detection (min.)	0.00	0.00	0.00	0.00	0.00	0.01	0.00	0.00	0.00
TMC Verification (min.)	0.77	0.49	0.53	1.25	0.53	0.59	0.97	0.80	0.79
TMC Response (min.)	6.78	4.92	6.14	7.89	5.73	7.51	6.61	5.16	6.12
RR Dispatch Time (min.)	0.84	0.71	0.97	1.34	1.01	1.73	1.08	0.57	0.87
RR Response Time (min.)	6.09	4.33	5.27	6.69	4.86	5.89	5.64	4.69	5.36
Event Clearance (min.)	20.68	21.38	21.45	18.80	27.45	25.69	18.56	20.07	20.18
Roadway Clearance (min.)	35.46	32.67	28.06	30.35	28.34	35.70	33.35	23.05	27.33
Incident Clearance (min.)	62.21	67.74	57.02	56.29	61.09	62.97	51.48	43.78	55.20
# of Events w/ RR/SIRV	984	734	7,536	2,279	984	11,224	1,188	818	8,165
RR/SIRV Responses	984	734	7,536	2,279	984	11,224	1,188	818	8,165
RR/SIRV Activities	903	733	7,149	2,048	958	9,929	1,103	825	7,534

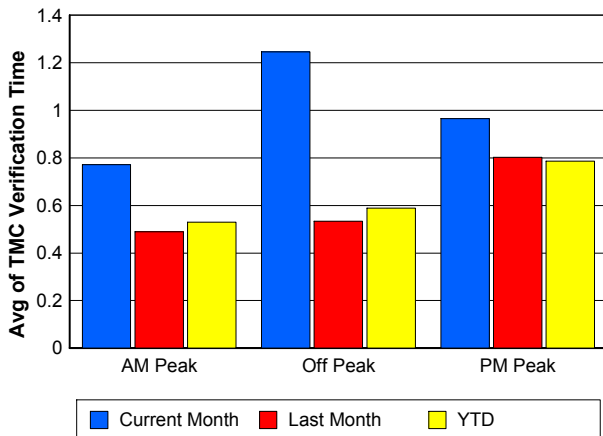
### Number of Events / Peak Period



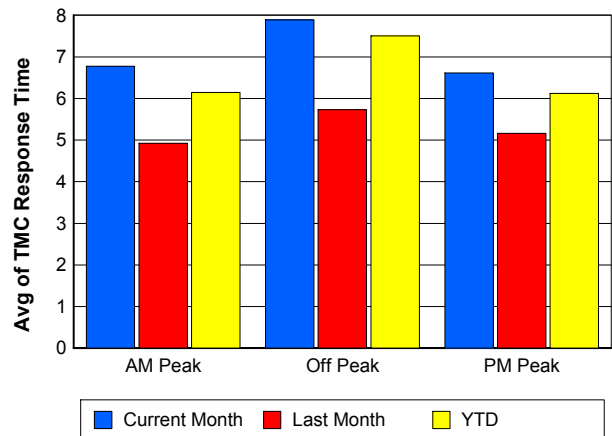
### TMC Detection Time



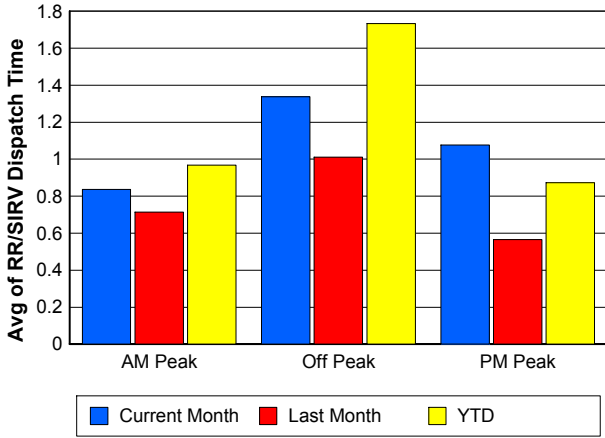
### TMC Verification Time



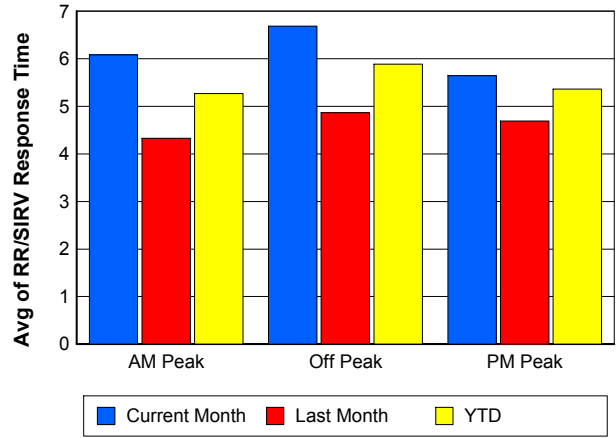
### TMC Response Time



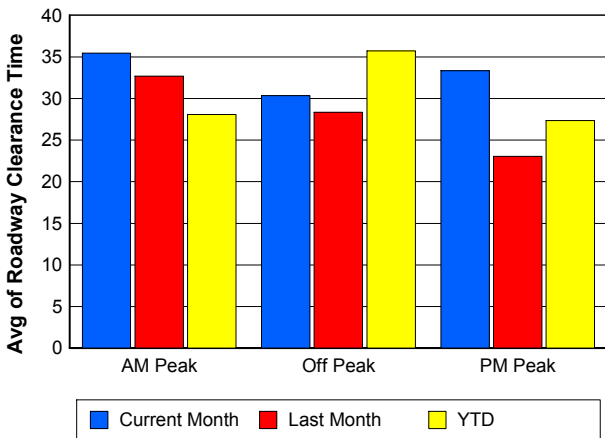
## Road Ranger / SIRV Dispatch Time



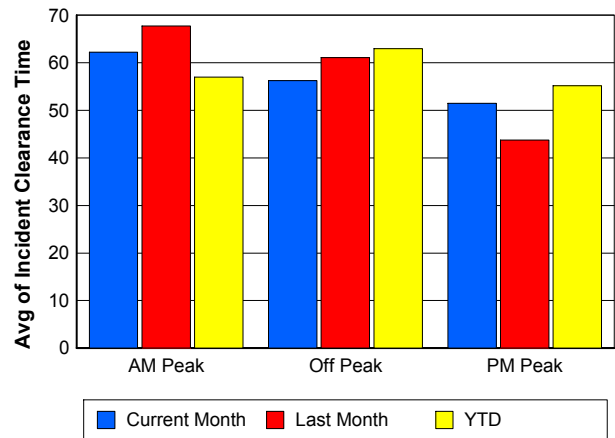
## Road Ranger / SIRV Response Time



## Roadway Clearance Time (2A)



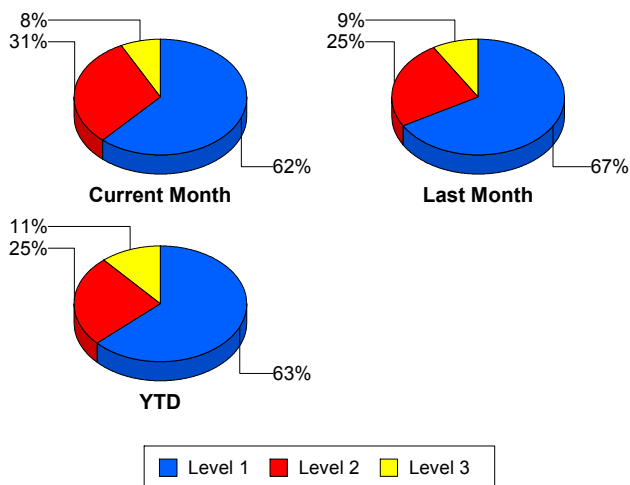
## Incident Clearance Time (3B)



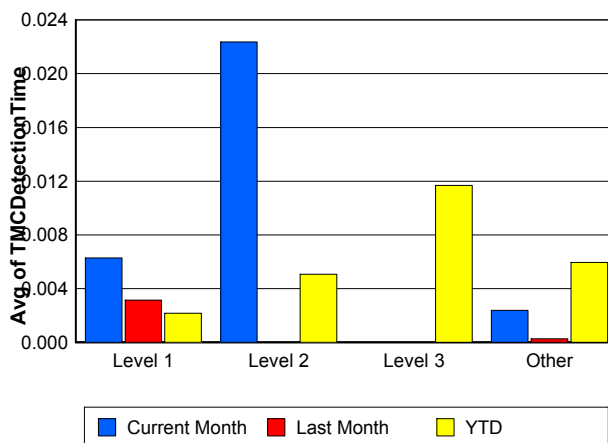
## Performance Measures by Severity

	Level 1			Level 2			Level 3			Other		
	<u>This Month</u>	<u>Last Month</u>	<u>YTD</u>	<u>This Month</u>	<u>Last Month</u>	<u>YTD</u>	<u>This Month</u>	<u>Last Month</u>	<u>YTD</u>	<u>This Month</u>	<u>Last Month</u>	<u>YTD</u>
Number of Events	146	122	1,166	73	45	471	18	16	211	4,856	3,535	37,781
Number of Incidents	146	122	1,166	73	45	471	18	16	211	0	0	0
TMC Detection (min.)	0.01	0.00	0.00	0.02	0.00	0.01	0.00	0.00	0.01	0.00	0.00	0.01
TMC Verification (min.)	0.77	0.38	0.46	1.40	0.70	0.98	1.02	0.13	1.37	1.07	0.60	0.62
TMC Response (min.)	8.35	6.62	7.30	9.70	7.11	9.89	10.31	15.51	22.90	7.18	5.18	6.50
RR Dispatch Time (min.)	1.61	1.42	1.63	1.74	1.52	2.72	2.31	4.09	8.55	1.13	0.73	1.18
RR Resp. Time (min.)	6.73	5.30	5.75	7.96	5.60	7.50	8.00	12.22	14.20	6.20	4.57	5.45
Event Clearance (min.)	42.65	46.51	45.87	70.32	71.22	72.18	120.95	100.55	105.79	17.29	22.22	21.47
Roadway Clear. (min.)	15.04	15.22	14.33	50.94	46.74	49.27	100.38	68.85	87.82			
Incident Clearance (min.)	42.65	46.51	45.87	70.32	71.22	72.18	120.95	100.55	105.79			
# of Events w/ RR/SIRV	142	76	848	73	21	259	17	16	179	4,219	2,423	25,639
RR/SIRV Responses	142	76	848	73	21	259	17	16	179	4,219	2,423	25,639
RR/SIRV Activities	234	141	1,486	182	61	727	47	42	407	3,591	2,272	21,992

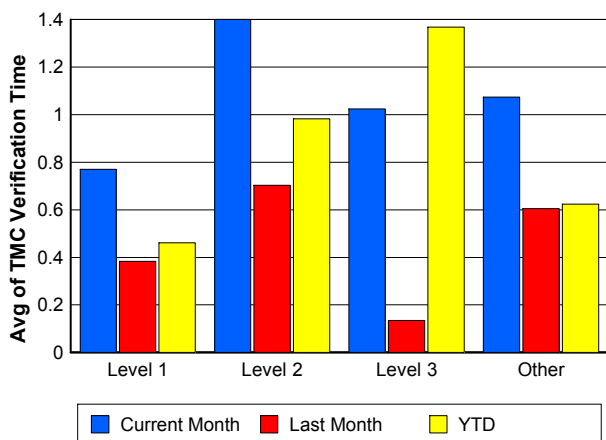
### Number of Events / Severity



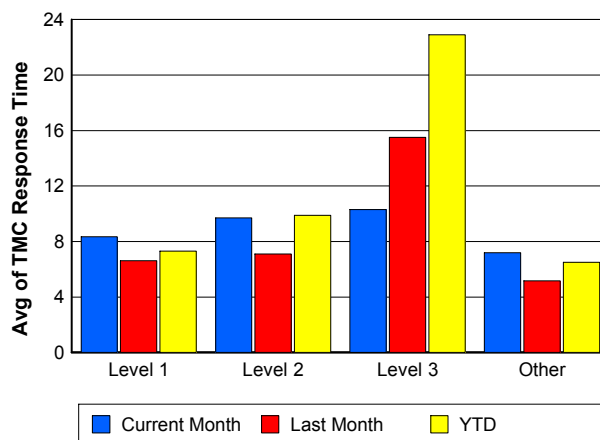
### TMC Detection Time



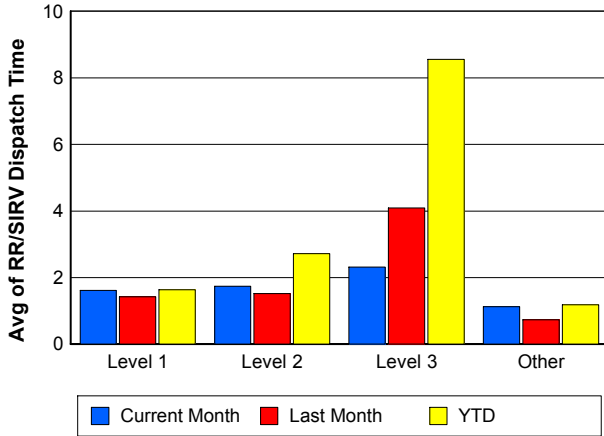
### TMC Verification Time



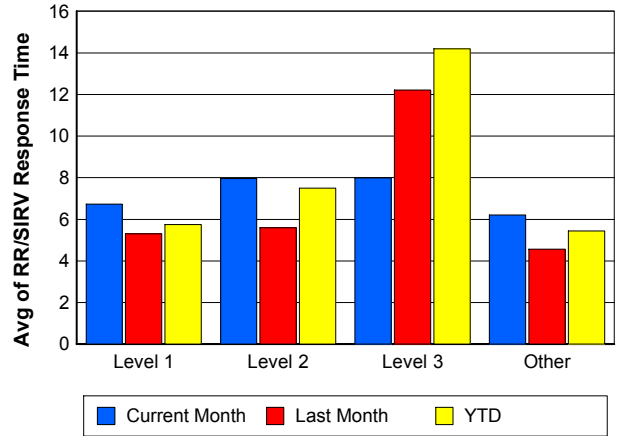
### TMC Response Time



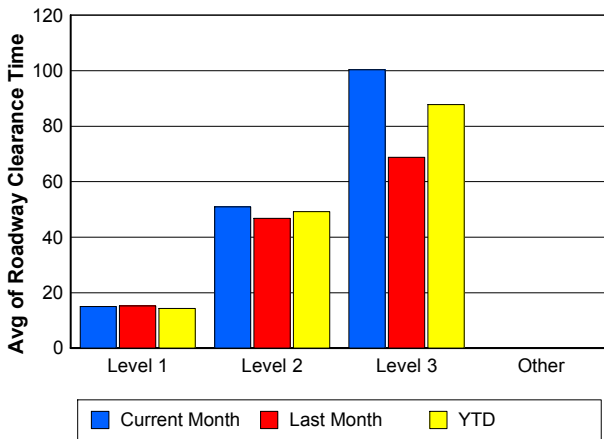
## Road Ranger / SIRV Dispatch Time



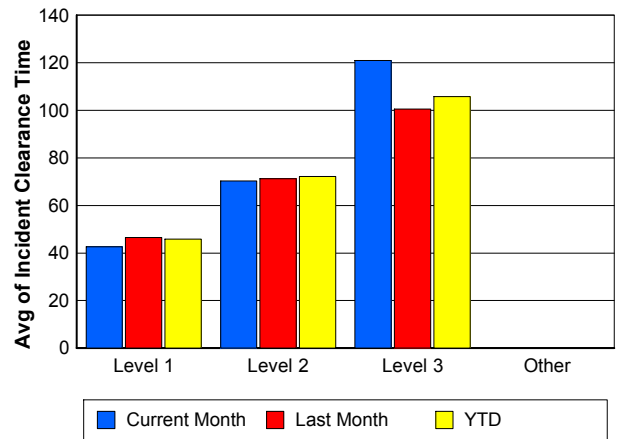
## Road Ranger / SIRV Response Time



## Roadway Clearance Time (2A)



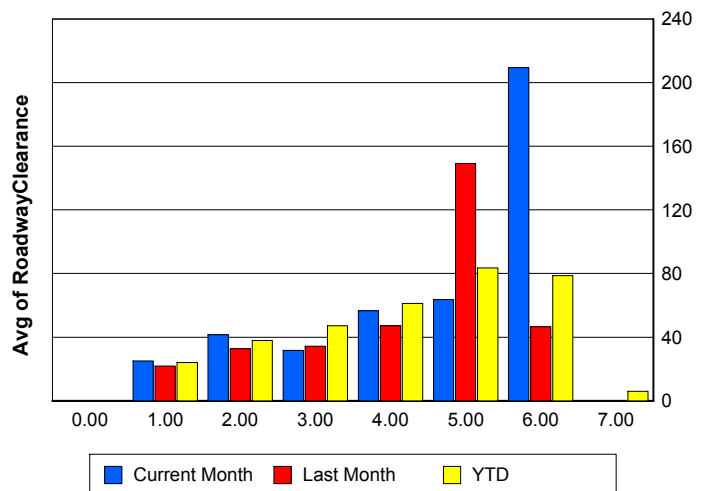
## Incident Clearance Time (3B)



## Roadway Clearance by Maximum Number of Lanes Blocked

	Current Month	Last Month	YTD
0			
1	25.00	21.79	23.98
2	41.52	32.67	37.83
3	31.67	34.20	47.04
4	56.59	47.17	61.15
5	63.61	149.23	83.50
6	209.44	46.62	78.73
7	0.00	0.00	5.97

## Roadway Clearance Time (2A)



## Performance Measures by Roadway

**595**

	<u>Current Month</u>	<u>Last Month</u>	<u>YTD</u>
Number of Events	184	154	4,411
Number of Incidents	6	9	264
TMC Detection (min.)	0.01	0.00	0.01
TMC Verification (min.)	1.67	1.03	0.79
TMC Response (min.)	12.01	6.24	6.64
RR Dispatch Time (min.)	2.09	0.71	1.15
RR Resp. Time (min.)	10.18	5.61	5.60
Event Clearance (min.)	23.76	17.96	21.46
Roadway Clear. (min.)	69.10	22.49	31.37
Incident Clearance (min.)	116.74	39.53	54.63
# of Events w/ RR/SIRV	156	110	3,079
RR/SIRV Responses	156	110	3,079
RR/SIRV Activities	124	106	2,819

**75**

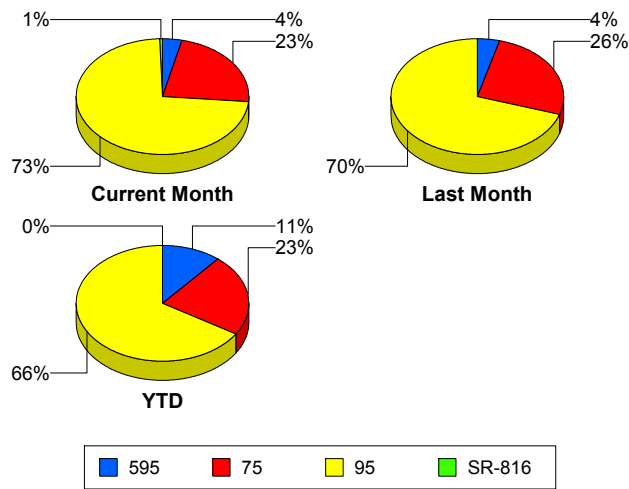
	<u>Current Month</u>	<u>Last Month</u>	<u>YTD</u>
Number of Events	1,166	965	9,037
Number of Incidents	22	22	171
TMC Detection (min.)	0.00	0.00	0.00
TMC Verification (min.)	1.67	0.57	0.80
TMC Response (min.)	9.09	5.32	7.94
RR Dispatch Time (min.)	1.32	0.77	1.22
RR Resp. Time (min.)	7.81	4.63	6.82
Event Clearance (min.)	20.84	25.19	25.35
Roadway Clear. (min.)	32.13	44.98	53.88
Incident Clearance (min.)	65.87	87.11	82.41
# of Events w/ RR/SIRV	999	603	5,974
RR/SIRV Responses	999	603	5,974
RR/SIRV Activities	897	598	5,175

**95**

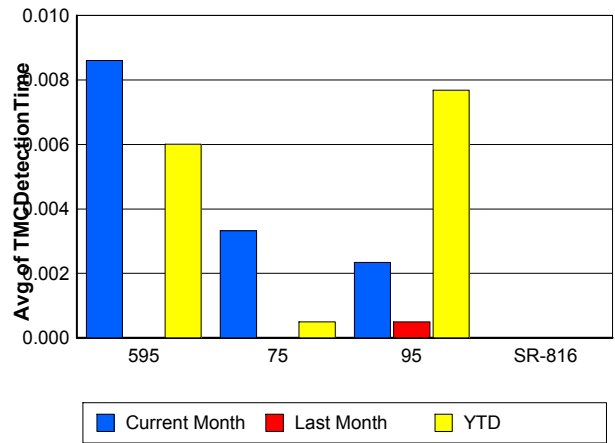
	<u>Current Month</u>	<u>Last Month</u>	<u>YTD</u>
Number of Events	3,710	2,599	26,148
Number of Incidents	185	152	1,389
TMC Detection (min.)	0.00	0.00	0.01
TMC Verification (min.)	0.86	0.58	0.54
TMC Response (min.)	6.64	5.25	6.31
RR Dispatch Time (min.)	1.07	0.79	1.29
RR Resp. Time (min.)	5.71	4.60	5.14
Event Clearance (min.)	18.47	23.83	22.83
Roadway Clear. (min.)	34.16	25.46	29.28
Incident Clearance (min.)	60.08	54.10	58.37
# of Events w/ RR/SIRV	3,265	1,823	17,841
RR/SIRV Responses	3,265	1,823	17,841
RR/SIRV Activities	2,994	1,812	16,579

	<u>Current Month</u>	<u>YTD</u>
Number of Events	33	33
Number of Incidents	24	24
TMC Detection (min.)	0.00	0.00
TMC Verification (min.)	0.36	0.36
TMC Response (min.)	0.38	0.38
RR Dispatch Time (min.)	0.04	0.04
RR Resp. Time (min.)	0.34	0.34
Event Clearance (min.)	9.72	9.72
Roadway Clear. (min.)	11.65	11.65
Incident Clearance (min.)	11.37	11.37
# of Events w/ RR/SIRV	31	31
RR/SIRV Responses	31	31
RR/SIRV Activities	39	39

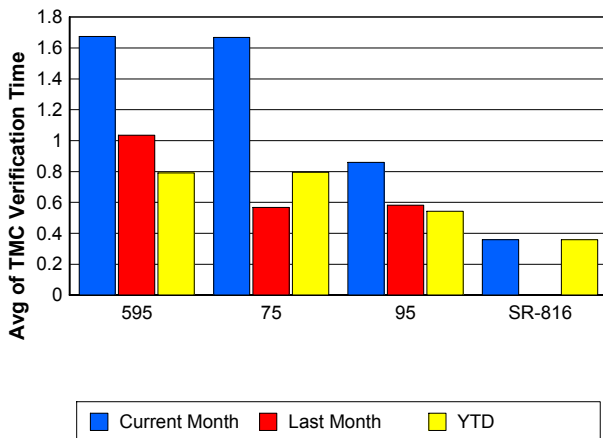
### Number of Events / Roadway



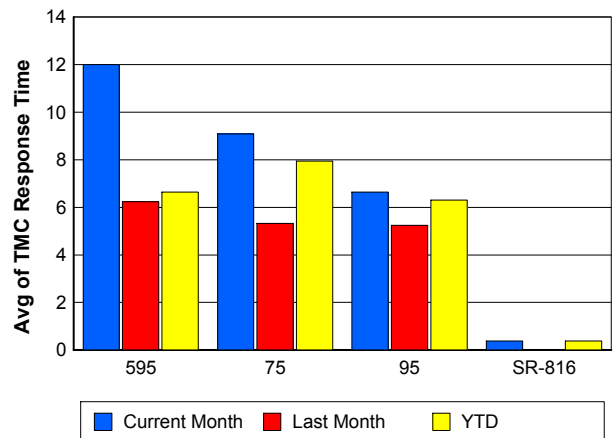
### TMC Detection Time



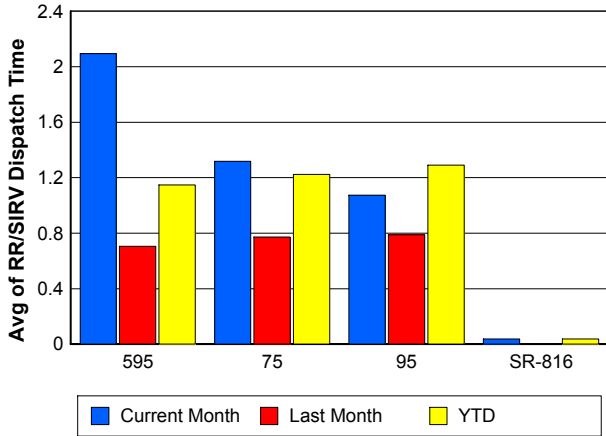
### TMC Verification Time



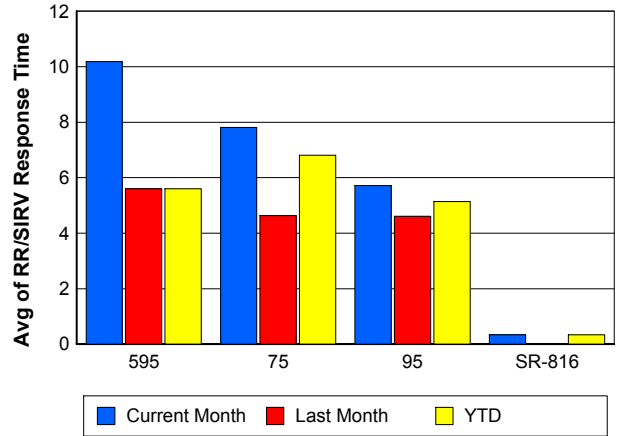
### TMC Response Time



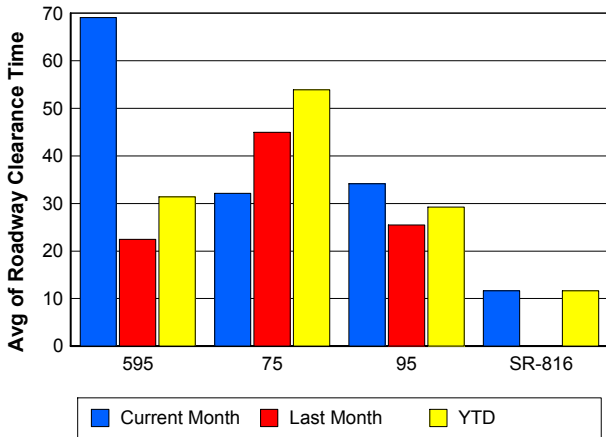
## Road Ranger / SIRV Dispatch Time



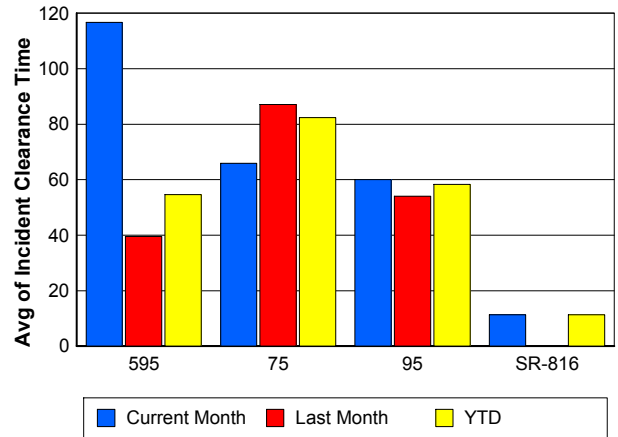
## Road Ranger / SIRV Response Time



## Roadway Clearance Time (2A)



## Incident Clearance Time (3B)



## Performance Measures by Event Type

### Accident

	<u>Current Month</u>	<u>Last Month</u>	<u>YTD</u>
Number of Events	362	271	2,759
Number of Incidents	162	142	1,329
TMC Detection (min.)	0.00	0.00	0.01
TMC Verification (min.)	0.71	0.65	0.73
TMC Response (min.)	10.34	7.73	8.91
RR Dispatch Time (min.)	1.87	1.29	1.68
RR Response Time (min.)	8.45	6.53	7.31
Event Clearance (min.)	54.85	55.80	55.28
Roadway Clearance (min.)	33.80	29.37	32.98
Incident Clearance (min.)	66.11	64.97	66.42
# of Events w/ RR/SIRV	354	170	2,010
RR/SIRV Assists	354	170	2,010
RR/SIRV Activities	558	283	3,125

### Debris on Roadway

	<u>Current Month</u>	<u>Last Month</u>	<u>YTD</u>
Number of Events	195	138	1,198
Number of Incidents	4	1	26
TMC Detection (min.)	0.00	0.00	0.10
TMC Verification (min.)	3.71	3.64	3.73
TMC Response (min.)	7.18	7.70	7.41
RR Dispatch Time (min.)	0.82	0.88	0.87
RR Response Time (min.)	6.39	6.81	6.56
Event Clearance (min.)	11.22	13.14	11.51
Roadway Clearance (min.)	31.96	1.37	23.91
Incident Clearance (min.)	57.70	16.67	32.11
# of Events w/ RR/SIRV	193	121	1,108
RR/SIRV Assists	193	121	1,108
RR/SIRV Activities	193	120	1,135

### Disabled Vehicle

	<u>Current Month</u>	<u>Last Month</u>	<u>YTD</u>
Number of Events	3,104	2,448	23,415
Number of Incidents	51	21	295
TMC Detection (min.)	0.00	0.00	0.00
TMC Verification (min.)	1.39	0.59	0.75
TMC Response (min.)	7.09	4.98	6.28
RR Dispatch Time (min.)	1.06	0.61	1.07
RR Response Time (min.)	6.13	4.41	5.25
Event Clearance (min.)	19.59	25.44	25.93
Roadway Clearance (min.)	18.93	15.54	19.03
Incident Clearance (min.)	24.92	23.33	33.84
# of Events w/ RR/SIRV	3,049	1,911	18,614
RR/SIRV Assists	3,049	1,911	18,614
RR/SIRV Activities	3,093	1,989	19,023

## Emergency Vehicles

	<u>Current Month</u>	<u>Last Month</u>	<u>YTD</u>
Number of Events	9	12	63
Number of Incidents	8	6	48
TMC Detection (min.)	0.00	0.00	0.00
TMC Verification (min.)	0.01	0.00	0.61
TMC Response (min.)	5.56	15.35	13.37
RR Dispatch Time (min.)	4.70	9.43	8.98
RR Response Time (min.)	0.85	1.28	3.72
Event Clearance (min.)	106.68	22.39	52.81
Roadway Clearance (min.)	97.91	14.64	53.63
Incident Clearance (min.)	109.42	21.17	60.33
# of Events w/ RR/SIRV	7	4	36
RR/SIRV Assists	7	4	36
RR/SIRV Activities	15	3	60

## Other

	<u>Current Month</u>	<u>Last Month</u>	<u>YTD</u>
Number of Events	1,380	822	11,799
Number of Incidents	2	3	27
TMC Detection (min.)	0.01	0.00	0.00
TMC Verification (min.)	0.11	0.07	0.06
TMC Response (min.)	5.02	4.28	8.27
RR Dispatch Time (min.)	1.29	1.37	1.78
RR Response Time (min.)	4.45	3.43	6.10
Event Clearance (min.)	9.25	10.65	11.13
Roadway Clearance (min.)	2.02	24.09	30.45
Incident Clearance (min.)	2.88	34.63	35.84
# of Events w/ RR/SIRV	816	315	4,938
RR/SIRV Assists	816	315	4,938
RR/SIRV Activities	152	98	978

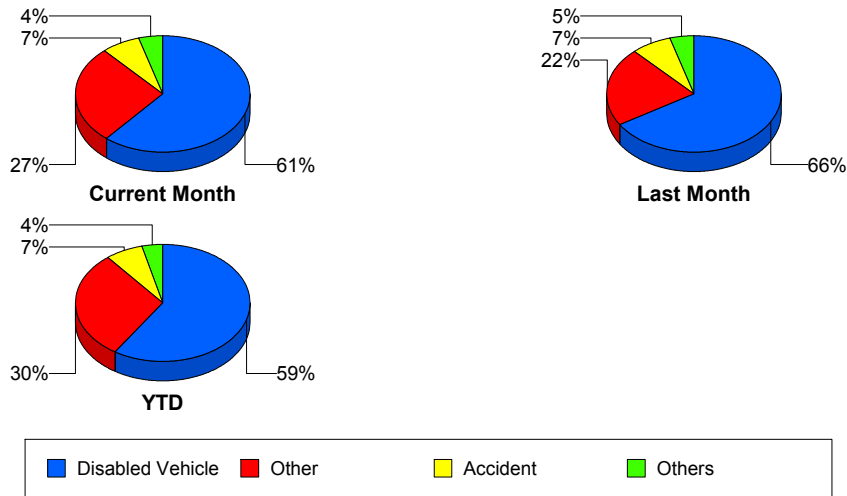
## Police Activity

	<u>Current Month</u>	<u>Last Month</u>	<u>YTD</u>
Number of Events	14	12	163
Number of Incidents	2	4	50
TMC Detection (min.)	0.04	0.00	0.00
TMC Verification (min.)	0.04	2.20	0.31
TMC Response (min.)	7.65	7.13	13.66
RR Dispatch Time (min.)	0.51	1.82	4.30
RR Response Time (min.)	7.25	5.77	9.39
Event Clearance (min.)	22.27	16.22	33.38
Roadway Clearance (min.)	27.73	33.50	40.18
Incident Clearance (min.)	29.80	35.70	49.32
# of Events w/ RR/SIRV	5	5	53
RR/SIRV Assists	5	5	53
RR/SIRV Activities	7	7	63

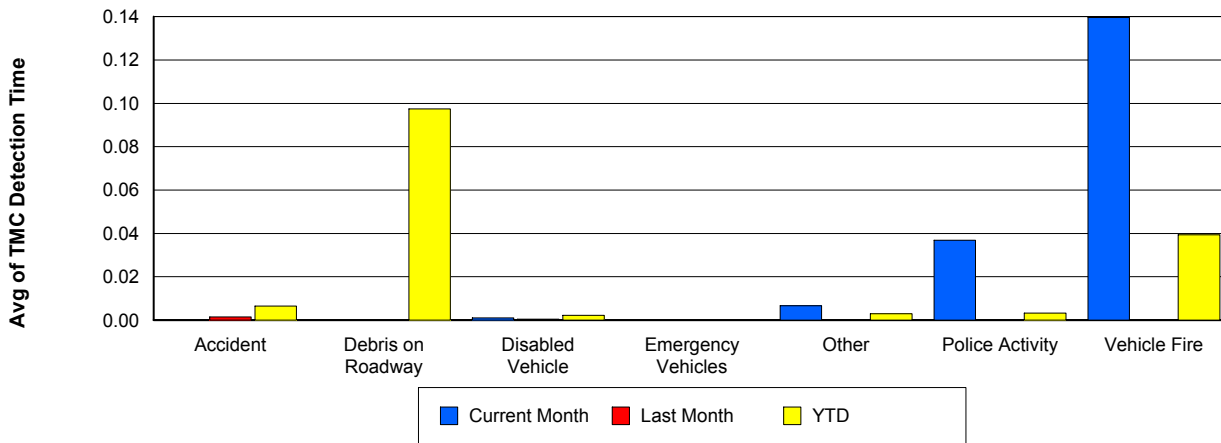
## Vehicle Fire

	<u>Current Month</u>	<u>Last Month</u>	<u>YTD</u>
Number of Events	8	7	91
Number of Incidents	8	6	73
TMC Detection (min.)	0.14	0.00	0.04
TMC Verification (min.)	0.15	0.24	1.12
TMC Response (min.)	3.18	8.13	9.97
RR Dispatch Time (min.)	0.84	2.34	2.26
RR Response Time (min.)	2.35	5.79	8.15
Event Clearance (min.)	48.28	71.68	58.41
Roadway Clearance (min.)	38.57	44.83	40.65
Incident Clearance (min.)	48.28	66.68	61.21
# of Events w/ RR/SIRV	8	3	61
RR/SIRV Assists	8	3	61
RR/SIRV Activities	20	10	133

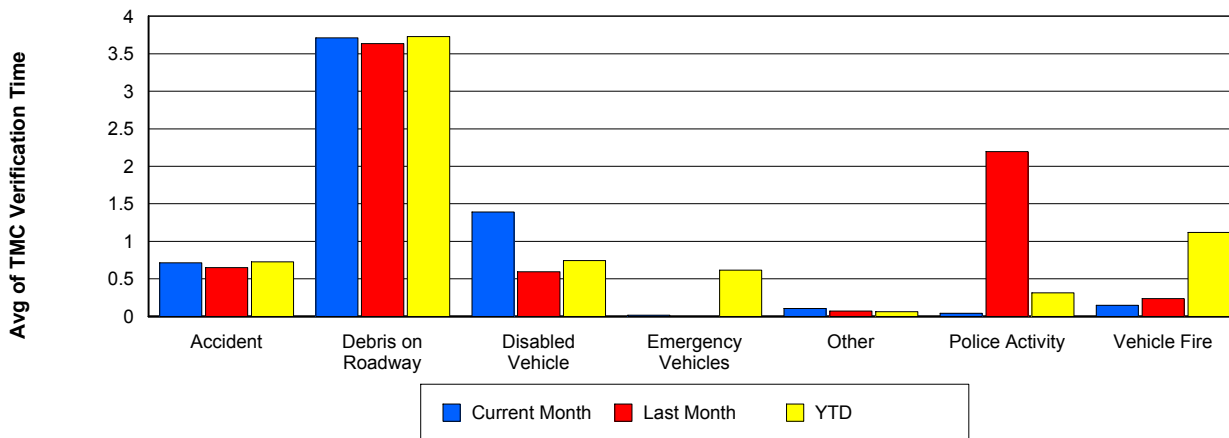
## Number of Events / Event Type



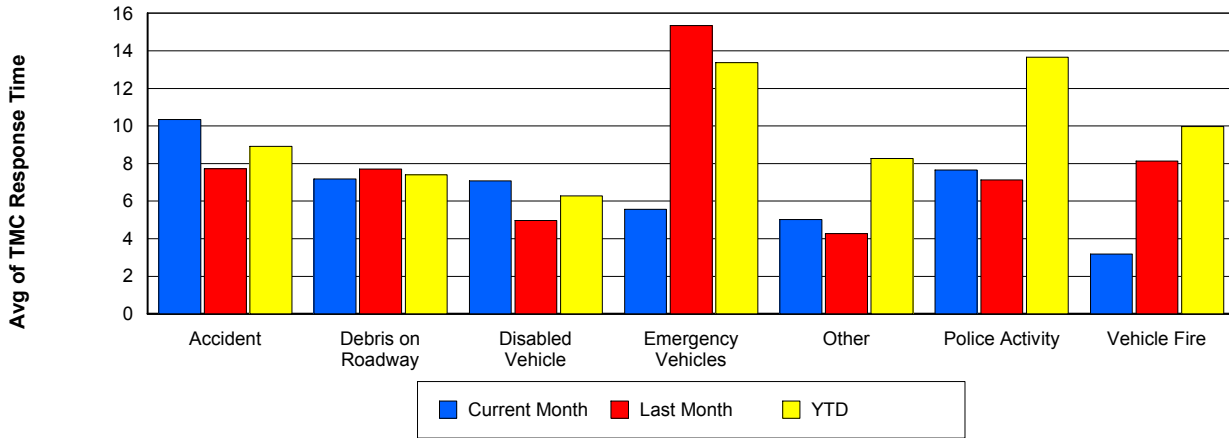
## TMC Detection Time



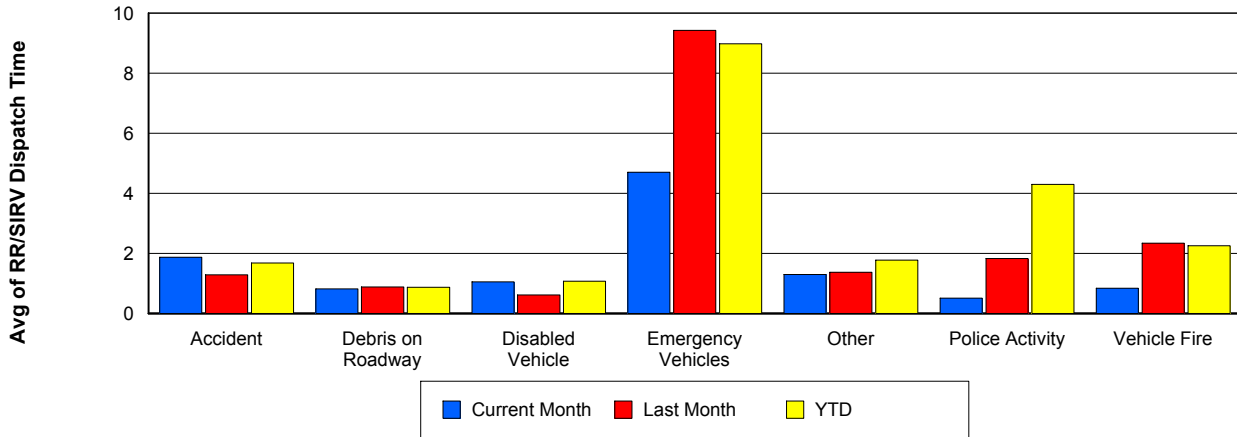
## TMC Verification Time



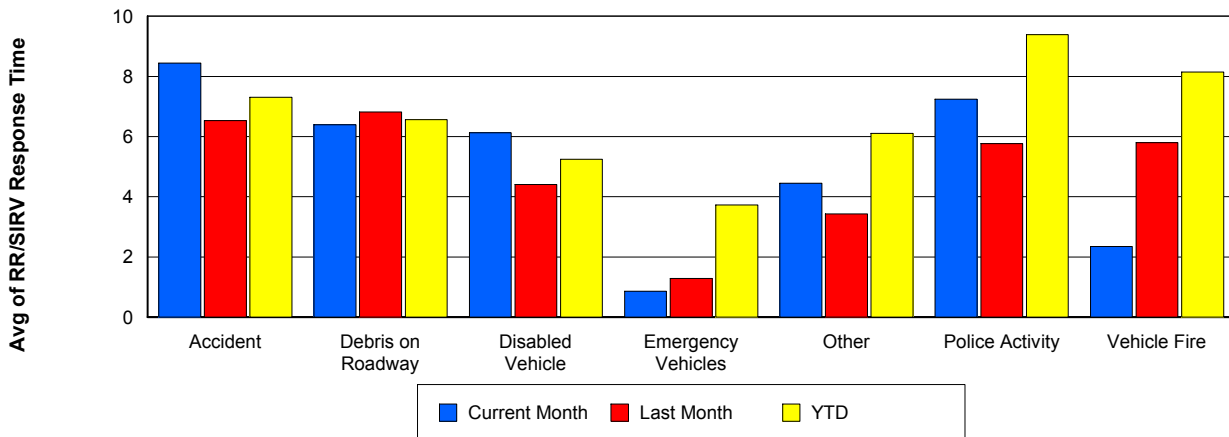
## TMC Response Time



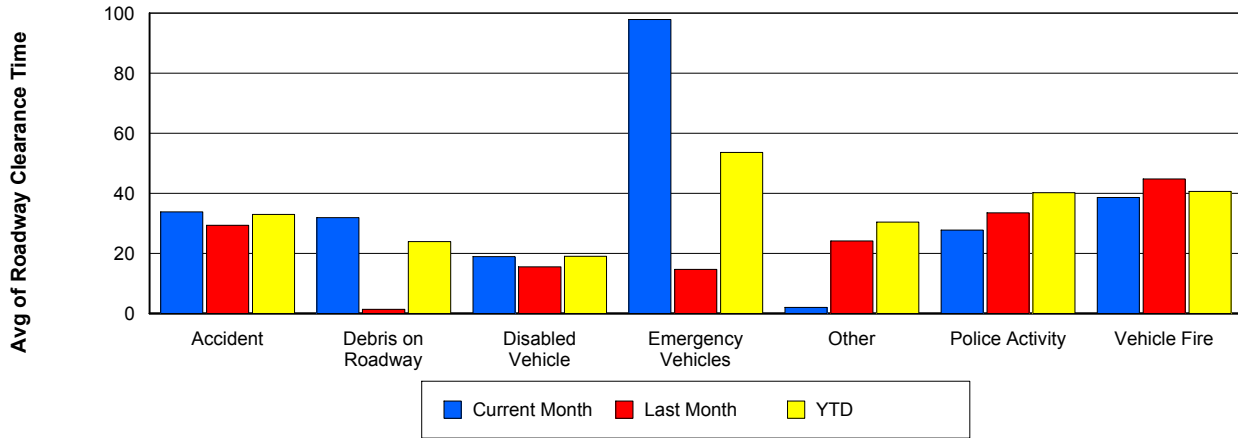
## Road Ranger / SIRV Dispatch Time



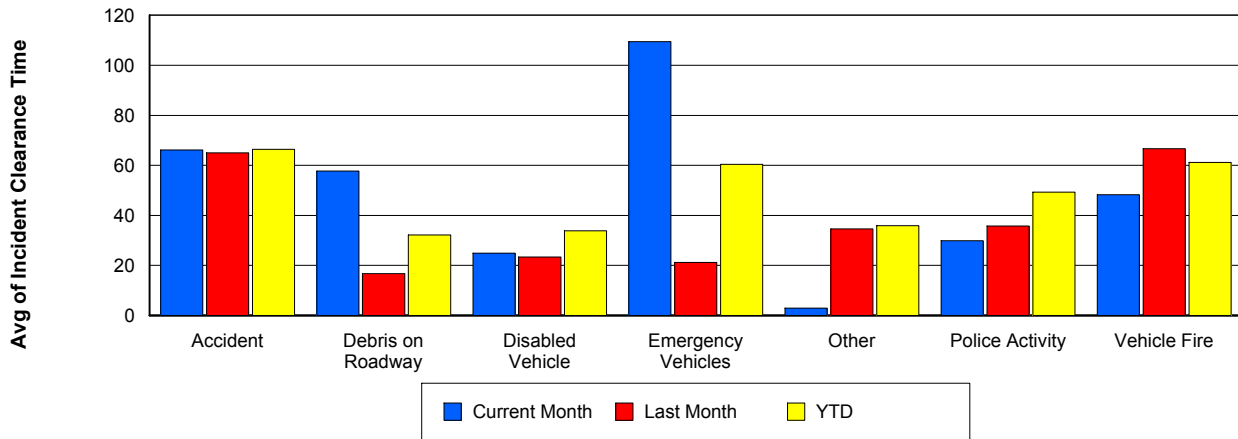
## Road Ranger / SIRV Response Time



## Roadway Clearance Time (2A)



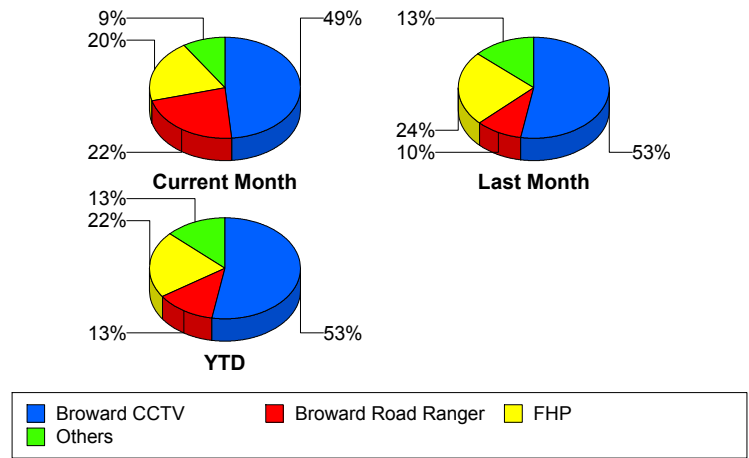
## Incident Clearance Time (3B)



## Incident Detection Methods

	Current Month	Last Month	YTD
Broward CCTV	115	95	975
Broward Road Ranger	53	18	234
Broward TMC	1	1	2
Broward VideoWall	3	5	57
BSO	2	6	39
District 4	4	1	46
District 6	0	0	1
FDOT Maintenance	0	0	4
FHP	47	43	397
Fire	1	0	3
Florida's Turnpike	0	0	6
ITMS	0	1	2
Motorist	0	1	8
Other	0	0	1
Palm Beach Road Ran	2	0	4
Road Watcher	1	0	13
SIRV	2	1	12
SmarTraveler (511)	0	0	6
VisioPaD Detection	6	8	35
<b>Total</b>	<b>237</b>	<b>180</b>	<b>1,845</b>

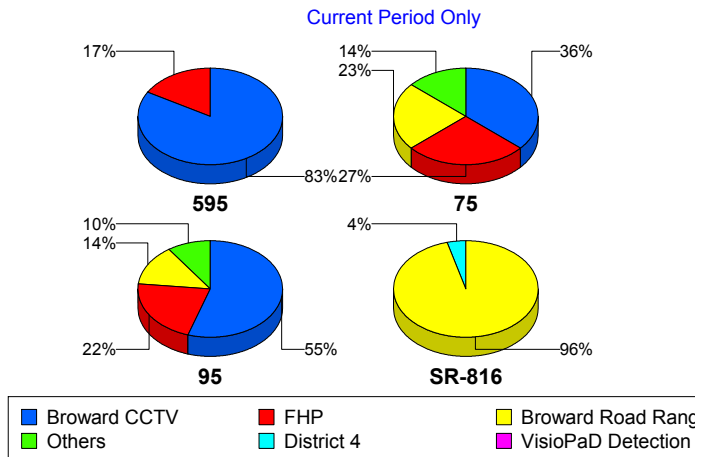
### Total Incidents by Detection Method



## Incident Detection Methods by Roadway

		Current Month	Last Month	YTD
595	Broward CCTV	5	3	129
	Broward Road Ranger	0	0	37
	Broward VideoWall	0	0	8
	BSO	0	1	4
	District 4	0	0	12
	FDOT Maintenance	0	0	2
	FHP	1	2	52
	Florida's Turnpike	0	0	6
	Motorist	0	0	2
	Road Watcher	0	0	3
	SIRV	0	0	1
	VisioPaD Detection	0	1	6
	Total	6	7	262
	75	Broward CCTV	8	7
Broward Road Ranger		5	1	18
Broward VideoWall		0	0	1
BSO		2	3	30
District 4		0	0	5
FHP		6	9	41
Other		0	0	1
Road Watcher		0	0	2
VisioPaD Detection		1	2	5
Total		22	22	171
95	Broward CCTV	102	85	778
	Broward Road Ranger	25	17	156
	Broward TMC	1	1	2
	Broward VideoWall	3	5	48
	BSO	0	2	5
	District 4	3	1	28
	District 6	0	0	1
	FDOT Maintenance	0	0	2

**Total Events by Roadway and Detection Method**

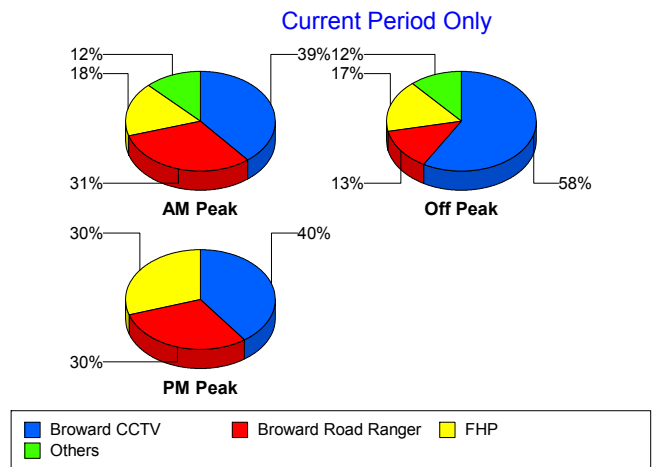


		Current Month	Last Month	YTD
95	FHP	40	32	304
	Fire	1	0	3
	ITMS	0	1	2
	Motorist	0	1	6
	Palm Beach Road Ran	2	0	4
	Road Watcher	1	0	8
	SIRV	2	1	11
	SmarTraveler (511)	0	0	6
	VisioPaD Detection	5	5	24
	Total	185	151	1,388
	SR-816	Broward Road Ranger	23	0
District 4		1	0	1
Total		24	0	24
Total		237	180	1,845

### Incident Detection Methods by Peak Period

		Current Month	Last Month	YTD
AM Peak	Broward CCTV	29	18	190
	Broward Road Ranger	23	2	76
	Broward TMC	1	0	1
	Broward VideoWall	2	2	20
	BSO	1	0	6
	District 4	4	0	17
	FHP	13	10	99
	Florida's Turnpike	0	0	2
	Motorist	0	1	5
	Palm Beach Road Ran	1	0	2
	Road Watcher	0	0	4
	SIRV	0	0	1
	SmarTraveler (511)	0	0	1
	VisioPaD Detection	0	1	2
	Total	74	34	426

Total Events by Peak Period and Detection Method



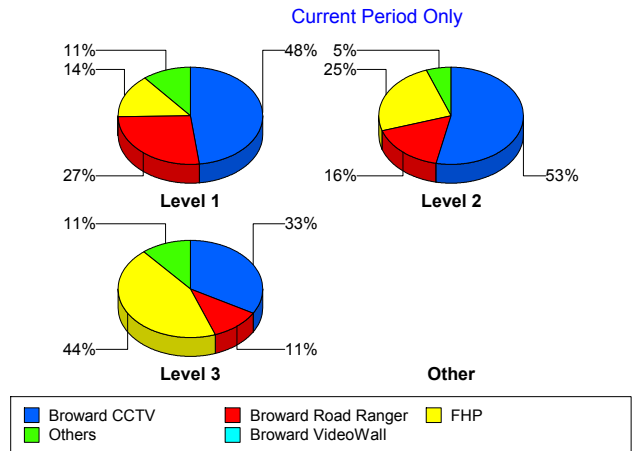
		Current Month	Last Month	YTD
Off Peak	Broward CCTV	66	49	530
	Broward Road Ranger	15	6	66
	Broward TMC	0	1	1
	Broward VideoWall	1	2	30
	BSO	1	5	27
	District 4	0	1	14
	FDOT Maintenance	0	0	2
	FHP	19	23	189
	Fire	1	0	2
	Florida's Turnpike	0	0	3
	ITMS	0	1	2
	Motorist	0	0	3
	Palm Beach Road Ran	1	0	1
	Road Watcher	1	0	6
	SIRV	2	1	5
	SmarTraveler (511)	0	0	3
	VisioPaD Detection	6	5	27
	Total	113	94	911
	PM Peak	Broward CCTV	20	28
Broward Road Ranger		15	10	92
Broward VideoWall		0	1	7
BSO		0	1	6
District 4		0	0	15
District 6		0	0	1
FDOT Maintenance		0	0	2
FHP		15	10	109
Fire		0	0	1
Florida's Turnpike		0	0	1
Other		0	0	1
Palm Beach Road Ran		0	0	1
Road Watcher		0	0	3
SIRV		0	0	6

		Current Month	Last Month	YTD
PM Peak	SmarTraveler (511)	0	0	2
	VisioPaD Detection	0	2	6
	Total	50	52	508
Total		237	180	1,845

### Incident Detection Methods by Severity

		Current Month	Last Month	YTD
Level 1	Broward CCTV	70	63	621
	Broward Road Ranger	39	11	171
	Broward TMC	1	0	1
	Broward VideoWall	2	5	37
	BSO	1	3	10
	District 4	4	1	35
	FDOT Maintenance	0	0	3
	FHP	21	30	230
	Fire	1	0	2
	ITMS	0	1	1
	Motorist	0	1	6
	Palm Beach Road Ran	1	0	3
	Road Watcher	0	0	9
	SIRV	2	1	11
	SmarTraveler (511)	0	0	4
	VisioPaD Detection	4	4	20
	Total	146	120	1,164
Level 2	Broward CCTV	39	22	252
	Broward Road Ranger	12	6	46
	Broward TMC	0	1	1
	Broward VideoWall	1	0	17
	BSO	1	2	10
	District 4	0	0	5
	FDOT Maintenance	0	0	1
	FHP	18	10	114

### Total Events by Severity and Detection Method



		Current Month	Last Month	YTD
Level 2	Florida's Turnpike	0	0	4
	ITMS	0	0	1
	Motorist	0	0	2
	Other	0	0	1
	Road Watcher	1	0	2
	SIRV	0	0	1
	SmarTraveler (511)	0	0	2
	VisioPaD Detection	1	4	12
	Total	73	45	471
Level 3	Broward CCTV	6	10	102
	Broward Road Ranger	2	1	17
	Broward VideoWall	0	0	3
	BSO	0	1	19
	District 4	0	0	6
	District 6	0	0	1
	FHP	8	3	53
	Fire	0	0	1
	Florida's Turnpike	0	0	2
	Palm Beach Road Ran	1	0	1
	Road Watcher	0	0	2
	VisioPaD Detection	1	0	3
	Total	18	15	210
Total		237	180	1,845

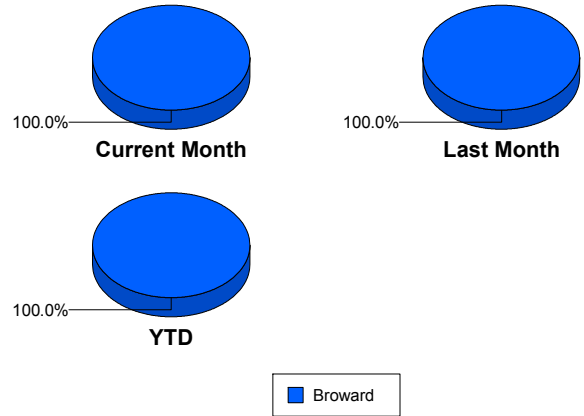
# Road Ranger / SIRV Performance Measures

## Road Ranger / SIRV Performance By County

RR/SIRV Responses per County

Values presented are: - Total Events with a RR/SIRV Response - Total RR/SIRV Responses, - Total Activities Performed
---

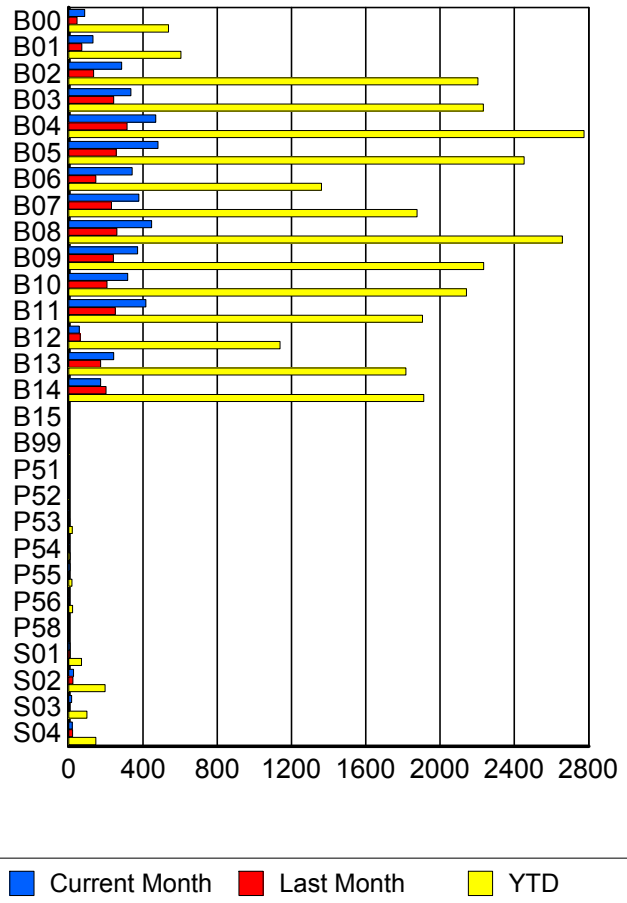
	Current Mo	Last Month	YTD
Broward	<b>4,294</b>	<b>2,685</b>	<b>26,406</b>
	<b>4,619</b>	<b>2,898</b>	<b>28,421</b>
	<b>4,821</b>	<b>3,000</b>	<b>29,573</b>



## Road Ranger / SIRV Performance By Truck

	Current Mo	Last Month	YTD
B00	82	45	524
	86	46	537
	91	47	560
B01	129	68	592
	132	71	604
	138	77	639
B02	282	132	2,184
	285	134	2,204
	293	140	2,296
B03	332	240	2,199
	336	242	2,233
	362	247	2,319
B04	459	313	2,745
	469	314	2,775
	485	325	2,895
B05	471	248	2,405
	481	256	2,452
	504	262	2,536
B06	340	144	1,338
	343	147	1,361
	353	149	1,402
B07	376	228	1,850
	378	231	1,876
	395	241	1,959
B08	440	258	2,625
	447	260	2,659
	458	268	2,757

**RR/SIRV Responses per Truck**



	Current Mo	Last Month	YTD
B09	363	238	2,198
	371	241	2,234
	387	248	2,319
B10	312	203	2,105
	319	206	2,142
	333	214	2,225
B11	412	245	1,874
	416	251	1,905
	427	257	1,967
B12	56	63	1,124
	58	63	1,139
	60	69	1,188
B13	241	170	1,793
	242	173	1,816
	257	177	1,881
B14	170	198	1,882
	172	201	1,912
	178	211	1,982
B15	0	0	2
	0	0	2
	0	0	2
B99	0	0	4
	0	0	4
	0	0	4
P51	0	0	1
	0	0	1
	0	0	1
P52	0	0	2
	0	0	2
	0	0	2
P53	2	5	18
	2	6	19
	2	8	21
P54	5	1	7
	5	1	7
	5	1	7
P55	7	0	18
	7	0	18
	9	0	22
P56	3	1	21
	3	1	21
	3	1	22
P58	0	0	1
	0	0	1
	0	0	1

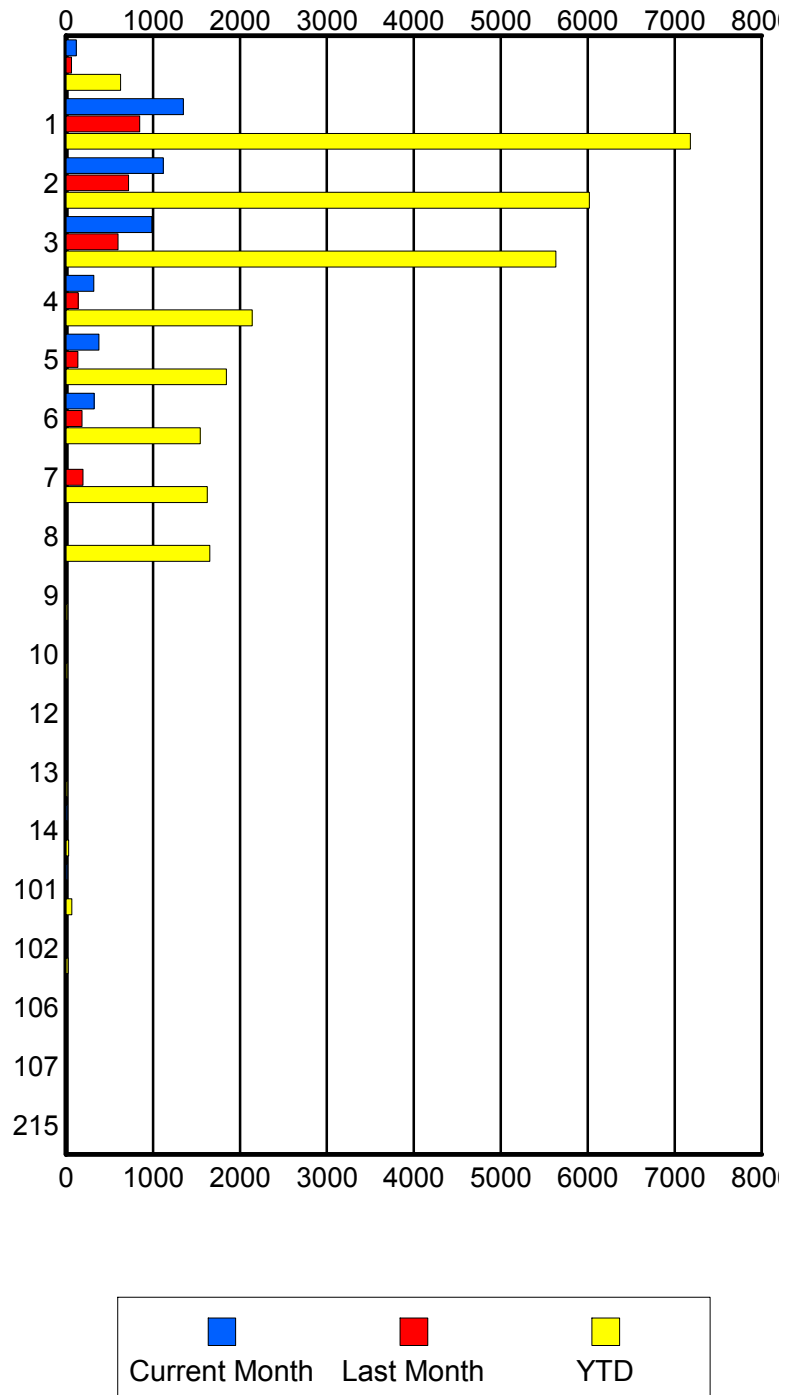
	Current Mo	Last Month	YTD
S01	7	6	67
	7	7	70
	10	7	81
S02	25	22	190
	26	23	197
	30	25	216
S03	16	4	96
	16	4	98
	19	4	111
S04	20	20	141
	20	21	146
	22	22	158

### Road Ranger / SIRV Performance By Beat

	Current Mo	Last Month	YTD
	108	56	581
	116	62	626
	128	65	683
1	1,249	803	6,760
	1,348	848	7,179
	1,400	878	7,423
2	1,091	687	5,819
	1,118	717	6,020
	1,173	746	6,280
3	956	582	5,473
	987	599	5,633
	1,022	617	5,849
4	314	136	2,095
	320	140	2,141
	334	146	2,212
5	373	135	1,813
	378	137	1,844
	396	140	1,910
6	319	176	1,513
	322	183	1,544
	333	190	1,621
7	0	191	1,600
	0	193	1,625
	0	196	1,698
8	0	12	1,633
	0	12	1,653
	0	12	1,716
9	0	0	12
	0	0	14
	0	0	14
10	0	0	13
	0	0	14
	0	0	14
12	0	0	9
	0	0	9
	0	0	9
13	0	0	14
	0	0	14
	0	0	15
14	15	0	28
	15	0	28
	16	0	29
101	17	7	64
	17	8	65
	19	10	72

Values presented are:  
 - Total Events with a RR/SIRV Response  
 - Total RR/SIRV Responses,  
 - Total Activities Performed

### RR/SIRV Responses per Beat



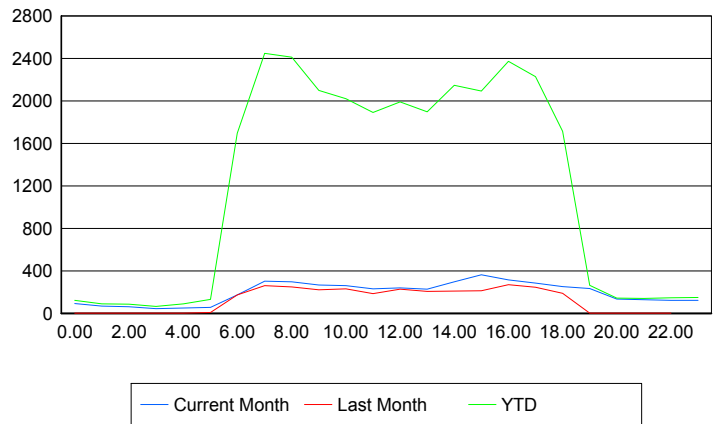
	Current Mo	Last Month	YTD
102	0	0	23
	0	0	23
	0	0	25
106	0	0	1
	0	0	1
	0	0	1
107	0	0	1
	0	0	1
	0	0	1
215	0	0	1
	0	0	1
	0	0	1

**Road Ranger / SIRV Performance By Time of Day**

*Values presented are:*  
- Total Events with a RR/SIRV Response  
- Total RR/SIRV Responses,  
- Total Activities Performed

	Current Mo	Last Month	YTD
12AM-1AM	89	3	118
	93	3	123
	101	3	133
1AM-2AM	69	2	87
	69	3	88
	71	3	90
2AM-3AM	55	0	75
	61	0	86
	67	0	92
3AM-4AM	41	2	62
	43	2	66
	43	2	66
4AM-5AM	48	1	77
	49	1	88
	51	1	91
5AM-6AM	39	7	105
	56	9	131
	59	9	138
6AM-7AM	161	166	1,550
	174	172	1,696
	181	175	1,748
7AM-8AM	271	250	2,271
	303	261	2,447
	314	269	2,538
8AM-9AM	263	219	2,187
	297	249	2,411
	310	256	2,511

**Number of Responses / Hour of the Day**



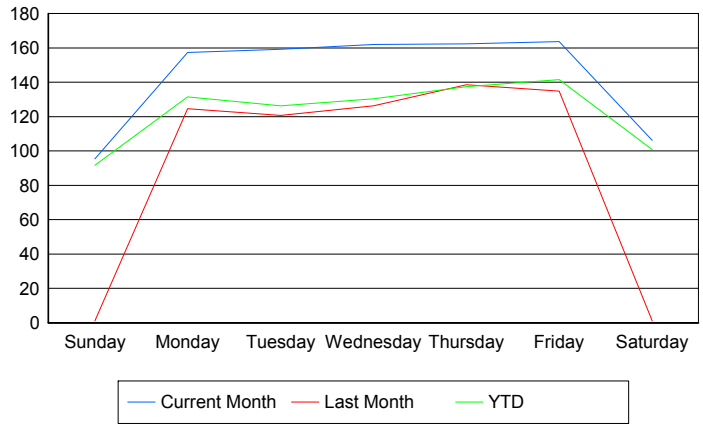
	Current Mo	Last Month	YTD
9AM-10AM	251	198	1,958
	267	220	2,100
	275	228	2,172
10AM-11AM	243	206	1,867
	262	229	2,020
	273	234	2,110
11AM-12PM	212	175	1,767
	230	186	1,890
	235	200	1,969
12PM-1PM	218	210	1,871
	240	227	1,992
	244	235	2,065
1PM-2PM	213	194	1,760
	226	207	1,898
	233	213	1,983
2PM-3PM	275	195	2,011
	296	209	2,147
	311	217	2,241
3PM-4PM	337	193	1,947
	364	212	2,094
	380	219	2,178
4PM-5PM	293	255	2,219
	314	271	2,373
	329	282	2,467
5PM-6PM	271	224	2,054
	286	244	2,229
	299	250	2,318
6PM-7PM	237	179	1,624
	251	188	1,714
	258	198	1,771
7PM-8PM	226	2	252
	234	2	264
	241	2	273
8PM-9PM	125	0	134
	134	0	143
	144	0	153
9PM-10PM	118	3	130
	128	3	140
	141	3	153
10PM-11PM	119	1	138
	121	1	146
	128	1	153
11PM-12AM	120	0	142
	123	0	149
	133	0	160

## Road Ranger / SIRV Performance By Day of Week

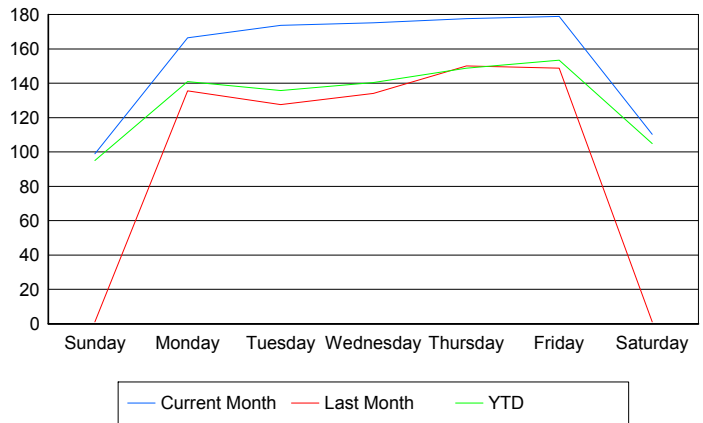
Values presented are:  
 - Total Events with a RR/SIRV Response  
 - Total RR/SIRV Responses,  
 - Total Activities Performed

	Current Mo	Last Month	YTD
Sunday	380 394 416	1 1 1	395 409 433
Monday	603 637 657	622 676 691	5,036 5,394 5,560
Tuesday	788 859 889	475 501 524	4,806 5,161 5,340
Wednesday	808 873 920	501 532 547	4,986 5,365 5,612
Thursday	648 708 733	550 597 616	5,282 5,714 5,941
Friday	648 710 743	535 591 620	5,473 5,929 6,199
Saturday	423 440 463	1 1 1	442 462 488

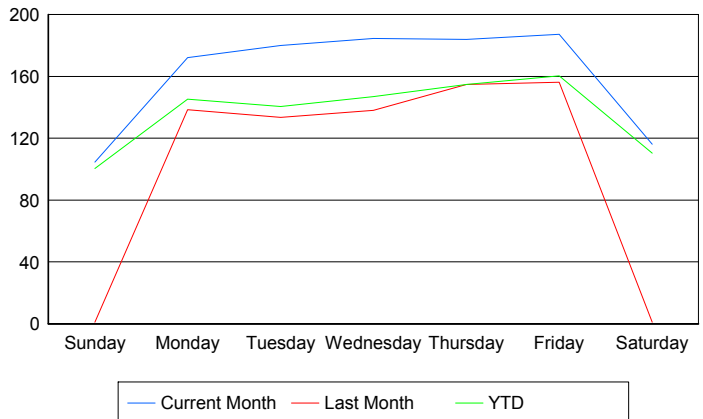
### Avg # of events with a RR/SIRV Response per Day of the Week



### Avg # of RR/SIRV Responses per Day of the Week



### Avg # of RR/SIRV Activities Performed per Day of the Week



### Road Ranger / SIRV Responses per Time of Day and Day of Week

