



Monthly Performance Measures Report Broward County



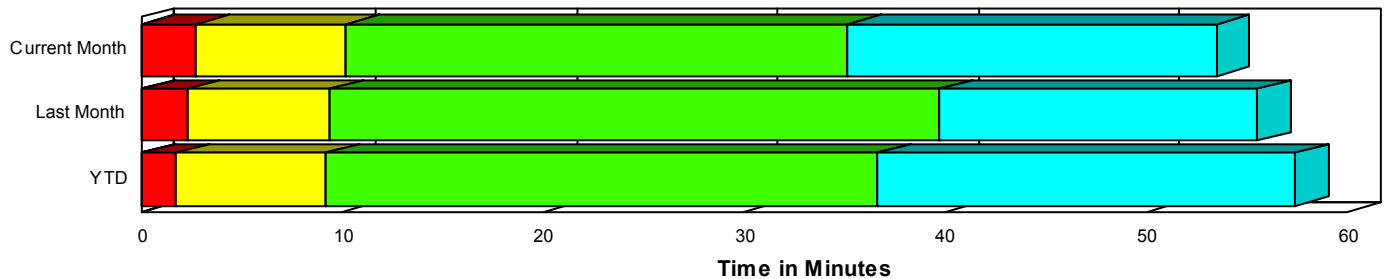
Created on:
October 03, 2008
1:30 pm

Period From Sep 1, 2008 to Sep 30, 2008

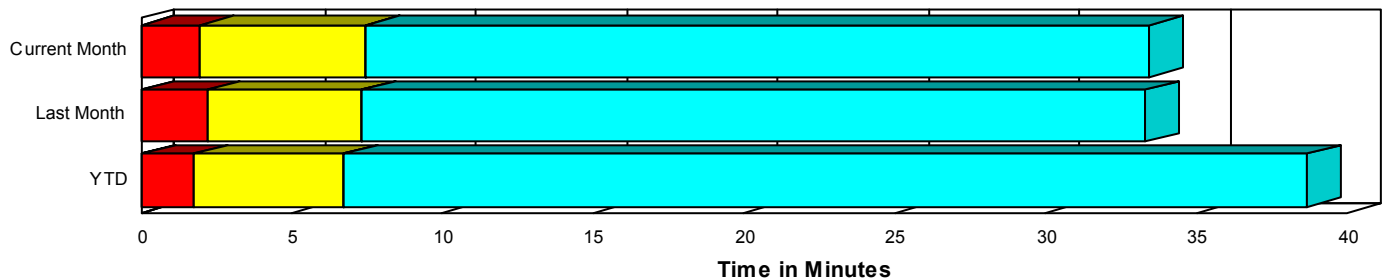
Performance Measures Summary

	Traffic Events (No Lanes Blocked)			Incidents (Lanes Blocked)		
	<u>This Month</u>	<u>Last Month</u>	<u>YTD</u>	<u>This Month</u>	<u>Last Month</u>	<u>YTD</u>
Number of Events	4,544	4,254	39,305	183	208	1,898
TMC Detection (min.)	0.00	0.00	0.01	0.01	0.01	0.03
TMC Verification (min.)	1.95	2.19	1.74	2.73	2.27	1.71
TMC Response (min.)	8.17	7.84	7.17	10.34	9.47	9.22
RR Dispatch Time (min.)	1.57	1.04	1.67	1.82	1.93	2.41
RR Response Time (min.)	6.84	6.90	5.88	8.58	7.57	6.84
Roadway Clearance (min.)				35.44	39.22	36.03
Event Clearance (min.)	34.11	33.83	39.08	53.23	51.60	55.36
# of Events w/ RR/SIRV	3,919	3,837	33,706	177	201	1,830
RR/SIRV Responses	3,919	3,837	33,840	177	201	2,080
RR/SIRV Activities	3,542	3,645	32,969	314	392	3,545

Incident Clearance TimeLine



Traffic Event (Non-Lane Blockage) Time-Line



■ Avg. TMC Detection Time	■ Avg. Time from TMC Response to Roadway Clearance*
■ Avg. Time from TMC Detection to TMC Verification	■ Avg. Time from Roadway Clearance to Incident/Event Clearance**
■ Avg. Time from TMC Verification to TMC Response	

* Roadway clearance equals all travel lanes open

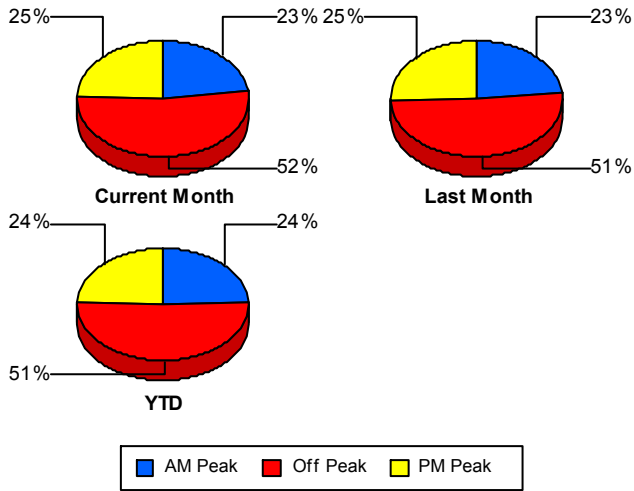
** Incident clearance equals time when last responder has left the scene

Performance Measures by Peak Period

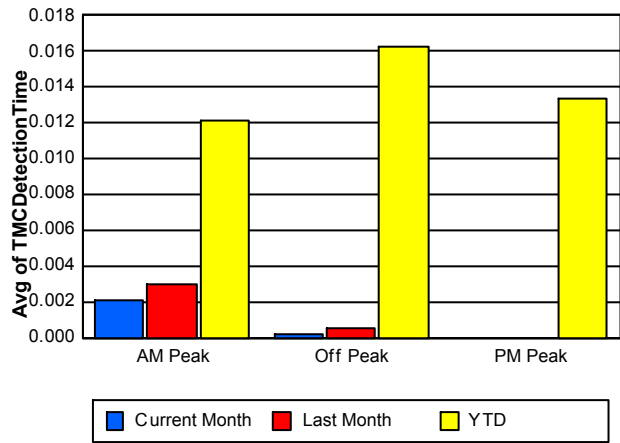
Note: AM peak period is defined as 6am to 10am and PM peak period is defined as 3pm to 7pm.

	AM Peak			Off Peak			PM Peak		
	<u>Current Month</u>	<u>Last Month</u>	<u>YTD</u>	<u>Current Month</u>	<u>Last Month</u>	<u>YTD</u>	<u>Current Month</u>	<u>Last Month</u>	<u>YTD</u>
Number of Events	1,089	1,046	10,036	2,465	2,293	21,147	1,173	1,123	10,020
Number of Incidents	35	50	449	106	112	1,003	42	46	446
TMC Detection (min.)	0.00	0.00	0.01	0.00	0.00	0.02	0.00	0.00	0.01
TMC Verification (min.)	0.90	1.45	0.91	2.30	2.61	2.15	2.30	2.04	1.69
TMC Response (min.)	7.67	7.13	6.27	8.93	8.98	8.21	7.61	6.61	6.44
RR Dispatch Time (min.)	1.46	0.96	1.05	1.70	1.23	2.21	1.47	0.91	1.33
RR Response Time (min.)	6.21	6.25	5.32	7.64	7.84	6.61	6.27	5.82	5.21
Event Clearance (min.)	35.22	25.90	31.20	38.63	38.39	45.25	26.55	35.22	37.06
Roadway Clearance (min.)	22.43	39.98	31.42	41.97	44.15	42.55	29.79	26.40	26.00
Incident Clearance (min.)	35.09	55.09	51.63	61.89	54.56	62.73	46.52	40.60	42.54
# of Events w/ RR/SIRV	972	963	8,909	2,073	2,061	17,908	1,051	1,014	8,719
RR/SIRV Responses	972	963	9,013	2,073	2,061	18,116	1,051	1,014	8,791
RR/SIRV Activities	928	1,006	9,224	1,914	2,021	18,278	1,014	1,010	9,012

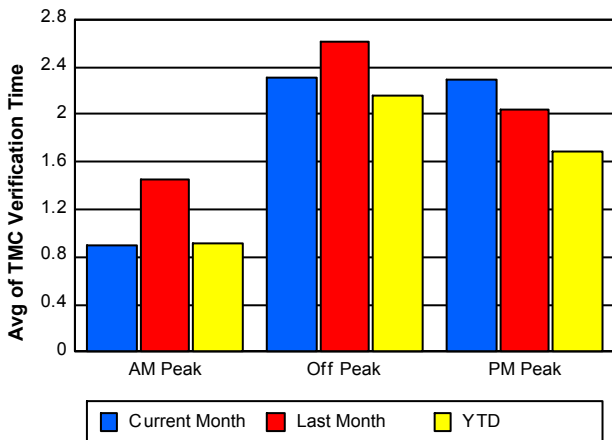
Number of Events / Peak Period



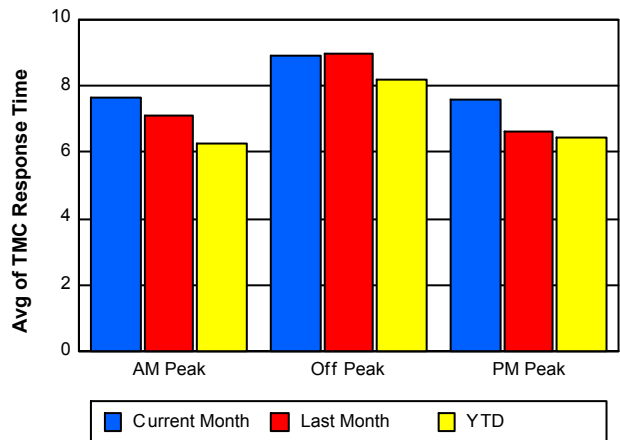
TMC Detection Time



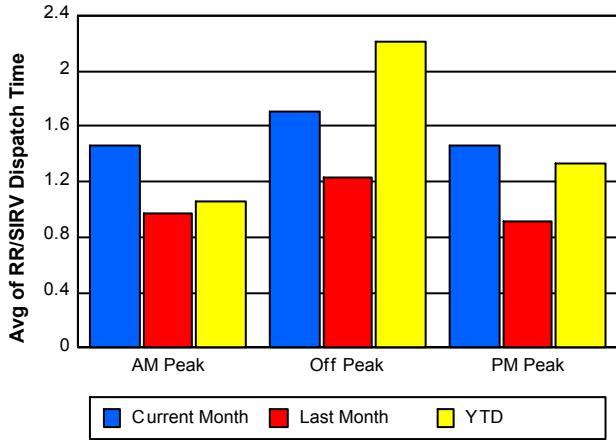
TMC Verification Time



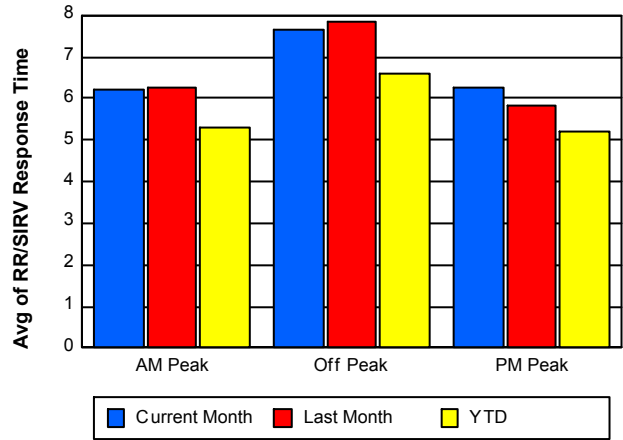
TMC Response Time



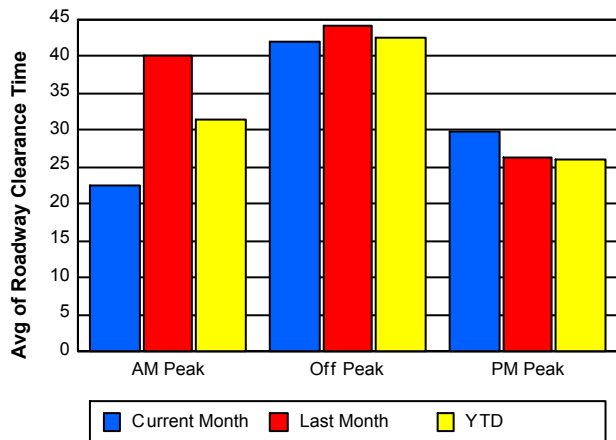
Road Ranger / SIRV Dispatch Time



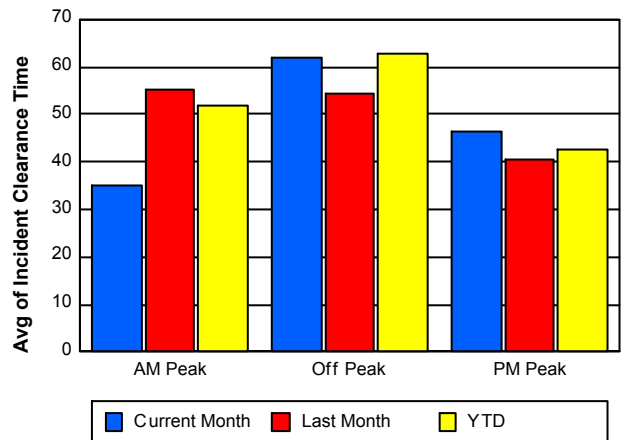
Road Ranger / SIRV Response Time



Roadway Clearance Time (2A)



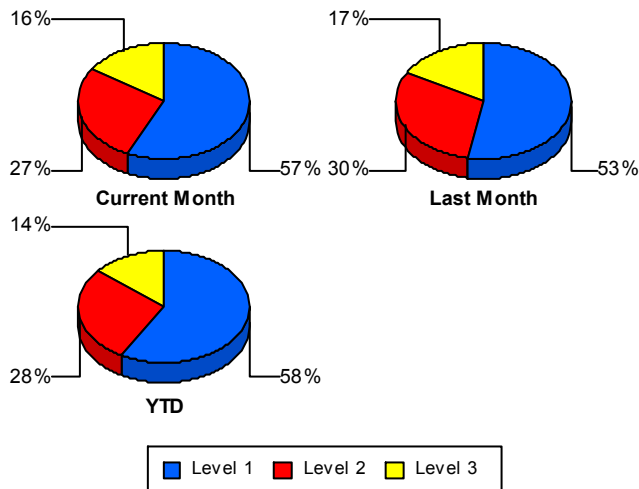
Incident Clearance Time (3B)



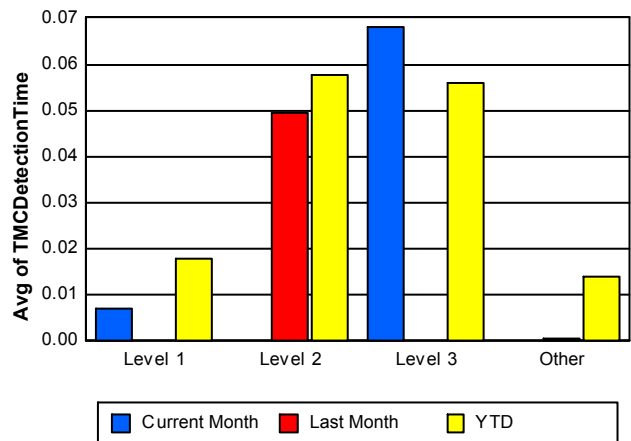
Performance Measures by Severity

	Level 1			Level 2			Level 3			Other		
	<u>This Month</u>	<u>Last Month</u>	<u>YTD</u>	<u>This Month</u>	<u>Last Month</u>	<u>YTD</u>	<u>This Month</u>	<u>Last Month</u>	<u>YTD</u>	<u>This Month</u>	<u>Last Month</u>	<u>YTD</u>
Number of Events	104	110	1,100	50	63	530	29	35	268	4,544	4,254	39,305
Number of Incidents	104	110	1,100	50	63	530	29	35	268	0	0	0
TMC Detection (min.)	0.01	0.00	0.02	0.00	0.05	0.06	0.07	0.00	0.06	0.00	0.00	0.01
TMC Verification (min.)	1.18	1.62	0.99	3.99	3.05	2.60	6.16	2.92	2.87	1.95	2.19	1.74
TMC Response (min.)	9.49	7.64	7.96	10.70	11.51	10.82	12.69	11.47	11.10	8.17	7.84	7.17
RR Dispatch Time (min.)	1.80	1.74	2.29	1.41	1.72	2.41	2.57	2.93	2.88	1.57	1.04	1.67
RR Resp. Time (min.)	7.74	5.89	5.71	9.29	9.79	8.40	10.33	8.72	8.26	6.84	6.90	5.88
Event Clearance (min.)	33.62	34.31	40.54	69.14	62.71	65.57	96.17	85.96	95.96	34.11	33.83	39.08
Roadway Clear. (min.)	15.05	15.56	15.08	49.87	46.66	50.39	83.66	100.21	93.61			
Incident Clearance (min.)	33.62	34.31	40.54	69.14	62.71	65.57	96.17	85.96	95.96			
# of Events w/ RR/SIRV	101	107	1,057	48	62	523	28	32	250	3,919	3,837	33,706
RR/SIRV Responses	101	107	1,130	48	62	597	28	32	353	3,919	3,837	33,840
RR/SIRV Activities	152	176	1,716	98	134	1,108	64	82	721	3,542	3,645	32,969

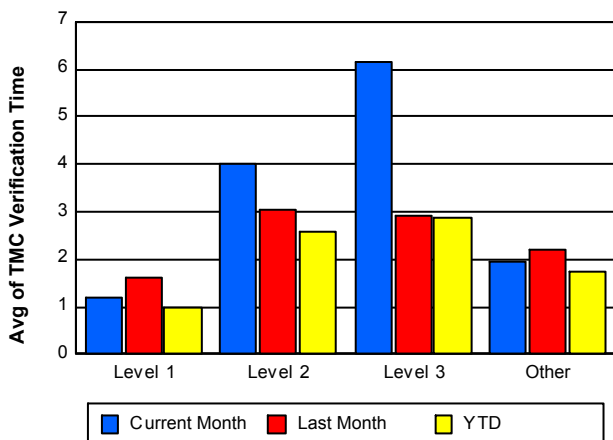
Number of Events / Severity



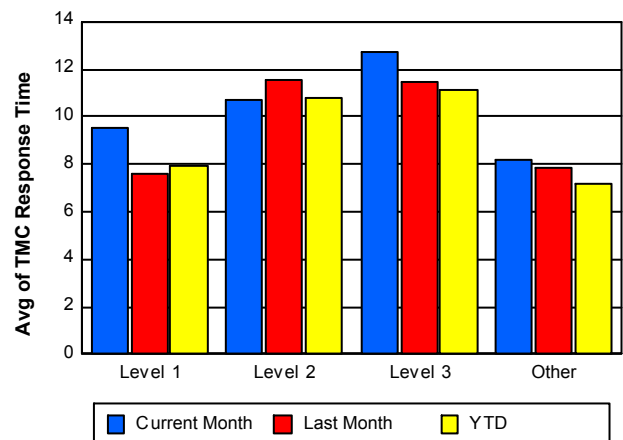
TMC Detection Time



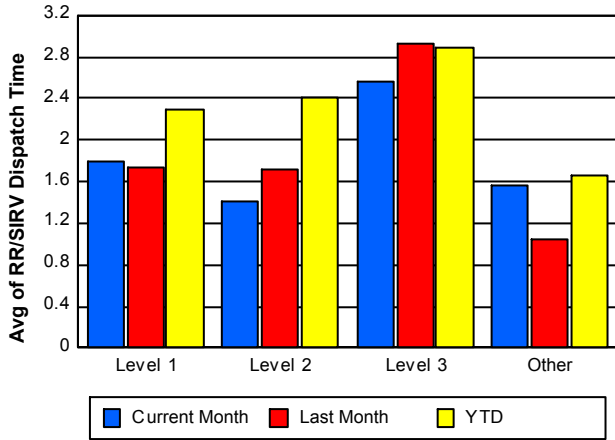
TMC Verification Time



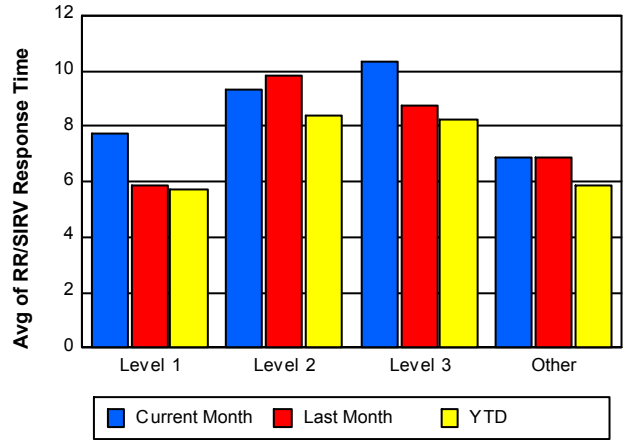
TMC Response Time



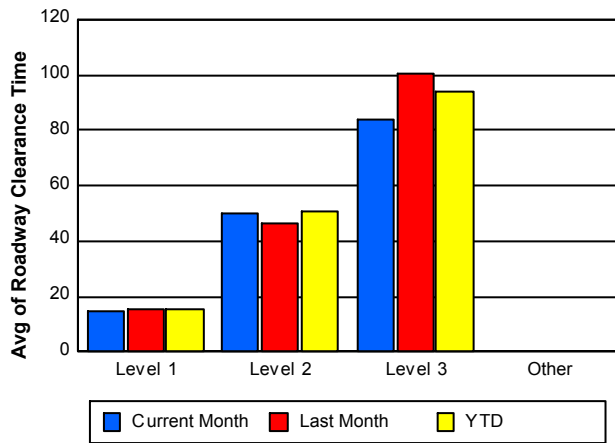
Road Ranger / SIRV Dispatch Time



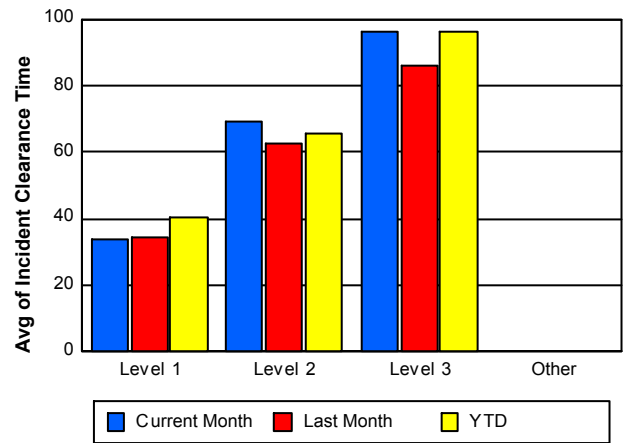
Road Ranger / SIRV Response Time



Roadway Clearance Time (2A)



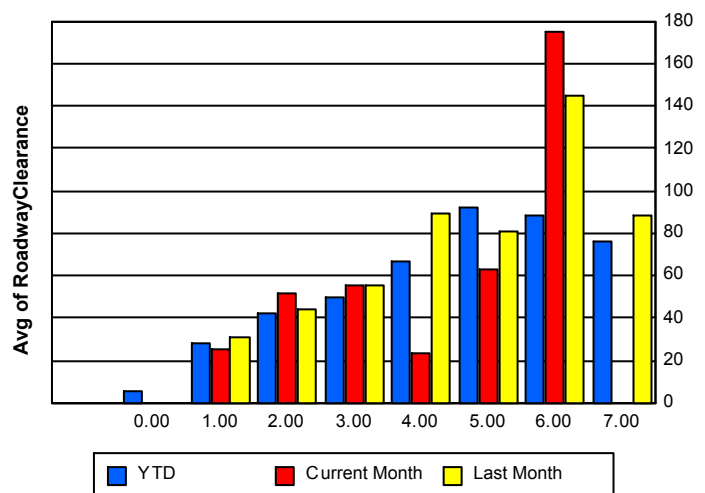
Incident Clearance Time (3B)



Roadway Clearance by Maximum Number of Lanes Blocked

	Current Month	Last Month	YTD
	0.00	0.00	
0			5.87
1	25.40	30.84	27.75
2	51.83	44.28	42.07
3	54.92	55.25	49.46
4	23.77	89.12	66.76
5	62.52	80.58	91.87
6	174.42	144.82	88.65

Roadway Clearance Time (2A)



	Current Month	Last Month	YTD
7	0.00	87.95	76.02

Performance Measures by Roadway

595

	<u>Current Month</u>	<u>Last Month</u>	<u>YTD</u>
Number of Events	630	692	6,400
Number of Incidents	36	42	327
TMC Detection (min.)	0.00	0.00	0.01
TMC Verification (min.)	2.04	2.12	1.89
TMC Response (min.)	7.51	7.70	7.60
RR Dispatch Time (min.)	1.11	1.15	1.89
RR Resp. Time (min.)	6.46	6.69	5.78
Event Clearance (min.)	41.80	38.69	41.06
Roadway Clear. (min.)	33.21	54.63	37.66
Incident Clearance (min.)	44.52	56.54	51.39
# of Events w/ RR/SIRV	561	632	5,628
RR/SIRV Responses	561	632	5,691
RR/SIRV Activities	565	673	5,881

75

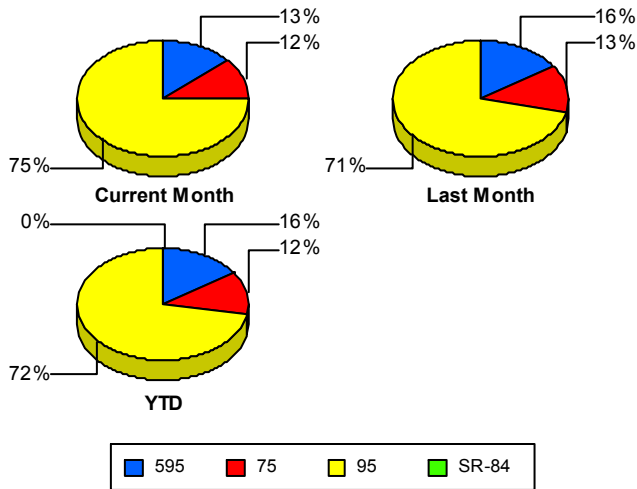
	<u>Current Month</u>	<u>Last Month</u>	<u>YTD</u>
Number of Events	553	586	4,998
Number of Incidents	18	13	117
TMC Detection (min.)	0.00	0.00	0.02
TMC Verification (min.)	8.32	7.96	5.49
TMC Response (min.)	8.91	8.55	5.87
RR Dispatch Time (min.)	1.76	0.59	2.38
RR Resp. Time (min.)	7.17	7.97	4.97
Event Clearance (min.)	49.68	36.02	42.43
Roadway Clear. (min.)	71.28	38.76	63.68
Incident Clearance (min.)	87.38	52.08	68.70
# of Events w/ RR/SIRV	538	572	4,883
RR/SIRV Responses	538	572	4,916
RR/SIRV Activities	579	617	5,320

95

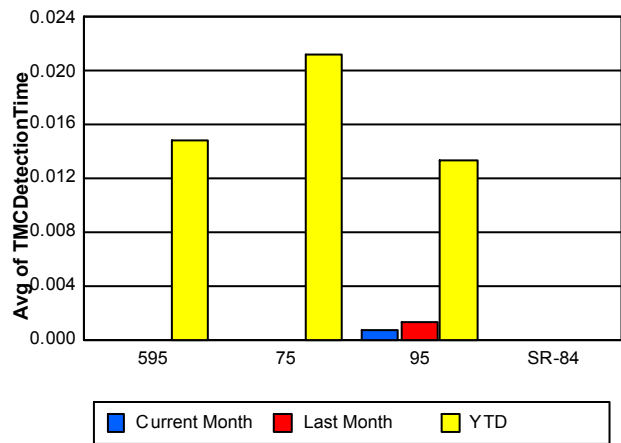
	<u>Current Month</u>	<u>Last Month</u>	<u>YTD</u>
Number of Events	3,544	3,184	29,804
Number of Incidents	129	153	1,454
TMC Detection (min.)	0.00	0.00	0.01
TMC Verification (min.)	0.99	1.16	1.08
TMC Response (min.)	8.29	7.84	7.52
RR Dispatch Time (min.)	1.64	1.17	1.54
RR Resp. Time (min.)	6.97	6.76	6.18
Event Clearance (min.)	31.30	33.54	39.13
Roadway Clear. (min.)	31.06	35.03	33.44
Incident Clearance (min.)	50.90	50.21	55.18
# of Events w/ RR/SIRV	2,997	2,834	25,025
RR/SIRV Responses	2,997	2,834	25,313
RR/SIRV Activities	2,712	2,747	25,313

	<u>YTD</u>
Number of Events	1
Number of Incidents	0
TMC Detection (min.)	0.00
TMC Verification (min.)	0.47
TMC Response (min.)	
RR Dispatch Time (min.)	
RR Resp. Time (min.)	
Event Clearance (min.)	5.22
Roadway Clear. (min.)	
Incident Clearance (min.)	
# of Events w/ RR/SIRV	0
RR/SIRV Responses	0
RR/SIRV Activities	0

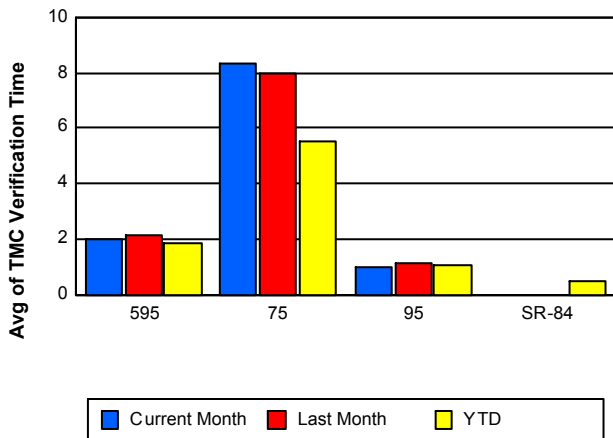
Number of Events / Roadway



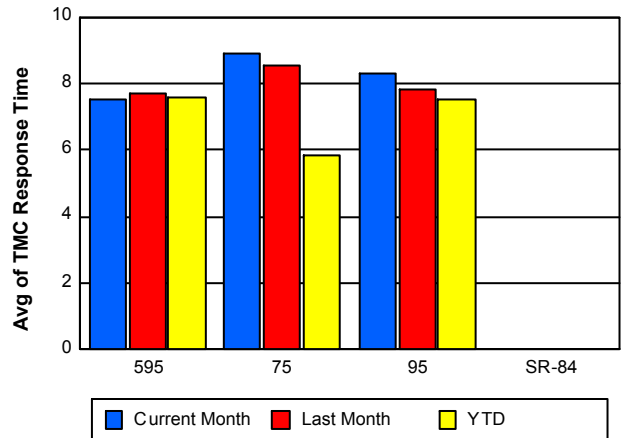
TMC Detection Time



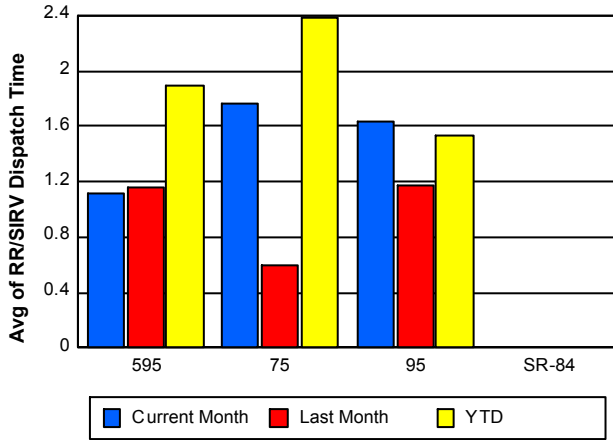
TMC Verification Time



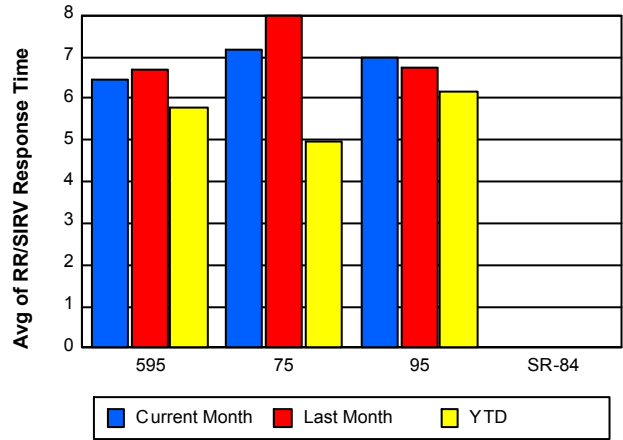
TMC Response Time



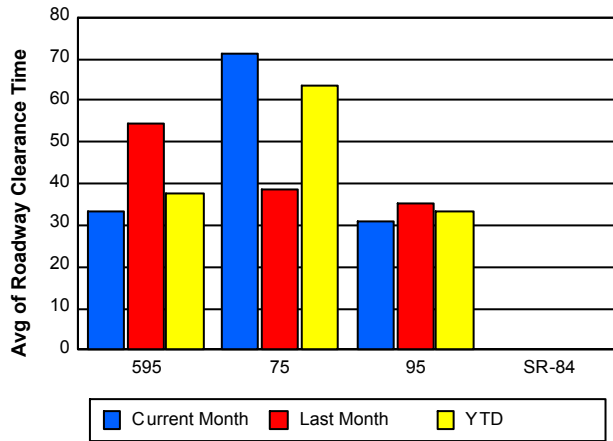
Road Ranger / SIRV Dispatch Time



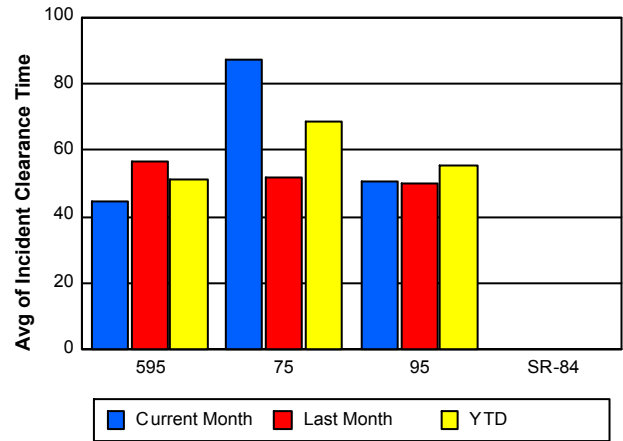
Road Ranger / SIRV Response Time



Roadway Clearance Time (2A)



Incident Clearance Time (3B)



Performance Measures by Event Type

Abandoned Vehicle

	<u>Current Month</u>	<u>Last Month</u>	<u>YTD</u>
Number of Events	588	610	5,383
Number of Incidents	0	2	12
TMC Detection (min.)	0.00	0.00	0.02
TMC Verification (min.)	0.92	0.61	0.50
TMC Response (min.)	8.69	6.88	7.15
RR Dispatch Time (min.)	2.18	0.78	3.30
RR Response Time (min.)	6.52	6.10	5.52
Event Clearance (min.)	128.37	121.78	170.89
Roadway Clearance (min.)		13.75	42.65
Incident Clearance (min.)		18.59	254.67
# of Events w/ RR/SIRV	511	516	4,478
RR/SIRV Assists	511	516	4,485
RR/SIRV Activities	559	542	4,703

Accident

	<u>Current Month</u>	<u>Last Month</u>	<u>YTD</u>
Number of Events	291	309	2,888
Number of Incidents	137	151	1,379
TMC Detection (min.)	0.00	0.00	0.04
TMC Verification (min.)	3.50	2.74	2.00
TMC Response (min.)	9.88	9.04	8.02
RR Dispatch Time (min.)	1.87	1.46	1.72
RR Response Time (min.)	8.11	7.60	6.33
Event Clearance (min.)	43.24	42.77	44.64
Roadway Clearance (min.)	35.79	38.54	36.18
Incident Clearance (min.)	54.97	56.32	58.25
# of Events w/ RR/SIRV	288	303	2,821
RR/SIRV Assists	288	303	3,048
RR/SIRV Activities	422	473	4,371

Congestion

	<u>Current Month</u>	<u>Last Month</u>	<u>YTD</u>
Number of Events	2	3	20
Number of Incidents	0	0	1
TMC Detection (min.)	0.00	0.00	0.00
TMC Verification (min.)	0.00	0.00	0.00
TMC Response (min.)			
RR Dispatch Time (min.)			
RR Response Time (min.)			
Event Clearance (min.)	84.65	94.74	83.01
Roadway Clearance (min.)			8.22
Incident Clearance (min.)			98.70
# of Events w/ RR/SIRV	0	0	0
RR/SIRV Assists	0	0	0
RR/SIRV Activities	0	0	0

Debris on Roadway

	<u>Current Month</u>	<u>Last Month</u>	<u>YTD</u>
Number of Events	160	176	1,506
Number of Incidents	1	5	26
TMC Detection (min.)	0.00	0.00	0.03
TMC Verification (min.)	5.89	4.99	5.26
TMC Response (min.)	9.16	7.79	7.69
RR Dispatch Time (min.)	1.26	0.92	1.10
RR Response Time (min.)	8.00	6.88	6.62
Event Clearance (min.)	12.47	11.47	12.03
Roadway Clearance (min.)	7.95	27.99	43.86
Incident Clearance (min.)	7.82	31.97	52.25
# of Events w/ RR/SIRV	160	172	1,472
RR/SIRV Assists	160	172	1,499
RR/SIRV Activities	162	186	1,578

Disabled Vehicle

	<u>Current Month</u>	<u>Last Month</u>	<u>YTD</u>
Number of Events	2,708	2,649	24,077
Number of Incidents	28	25	302
TMC Detection (min.)	0.00	0.00	0.01
TMC Verification (min.)	2.48	2.84	2.18
TMC Response (min.)	7.84	8.01	7.12
RR Dispatch Time (min.)	1.44	1.03	1.42
RR Response Time (min.)	6.69	7.04	5.86
Event Clearance (min.)	22.50	20.08	19.78
Roadway Clearance (min.)	27.64	20.12	25.11
Incident Clearance (min.)	33.91	26.85	37.12
# of Events w/ RR/SIRV	2,618	2,617	23,431
RR/SIRV Assists	2,618	2,617	23,527
RR/SIRV Activities	2,600	2,686	24,708

Emergency Vehicles

	<u>Current Month</u>	<u>Last Month</u>	<u>YTD</u>
Number of Events	6	9	59
Number of Incidents	6	8	54
TMC Detection (min.)	0.00	0.35	0.07
TMC Verification (min.)	0.00	0.35	0.36
TMC Response (min.)	1.54	11.32	7.61
RR Dispatch Time (min.)	2.71	0.57	2.45
RR Response Time (min.)	0.14	10.75	5.24
Event Clearance (min.)	32.58	67.01	40.31
Roadway Clearance (min.)	30.94	87.35	40.44
Incident Clearance (min.)	32.58	66.45	41.17
# of Events w/ RR/SIRV	4	7	46
RR/SIRV Assists	4	7	48
RR/SIRV Activities	4	14	73

Other

	<u>Current Month</u>	<u>Last Month</u>	<u>YTD</u>
Number of Events	935	668	6,927
Number of Incidents	0	5	22
TMC Detection (min.)	0.00	0.00	0.00
TMC Verification (min.)	0.10	0.24	0.36
TMC Response (min.)	12.84	8.51	10.01
RR Dispatch Time (min.)	1.68	1.68	1.85
RR Response Time (min.)	11.68	7.42	8.48
Event Clearance (min.)	12.56	14.78	12.08
Roadway Clearance (min.)		13.88	18.92
Incident Clearance (min.)		24.05	26.73
# of Events w/ RR/SIRV	482	386	2,972
RR/SIRV Assists	482	386	2,977
RR/SIRV Activities	68	90	692

Pedestrian

	<u>YTD</u>
Number of Events	41
Number of Incidents	0
TMC Detection (min.)	0.01
TMC Verification (min.)	1.34
TMC Response (min.)	2.56
RR Dispatch Time (min.)	0.37
RR Response Time (min.)	2.29
Event Clearance (min.)	10.68
Roadway Clearance (min.)	
Incident Clearance (min.)	
# of Events w/ RR/SIRV	37
RR/SIRV Assists	37
RR/SIRV Activities	39

Police Activity

	<u>Current Month</u>	<u>Last Month</u>	<u>YTD</u>
Number of Events	6	14	106
Number of Incidents	5	9	71
TMC Detection (min.)	0.00	0.00	0.03
TMC Verification (min.)	3.47	1.22	1.60
TMC Response (min.)	6.40	5.18	9.97
RR Dispatch Time (min.)	2.48	1.09	2.85
RR Response Time (min.)	3.92	4.00	6.94
Event Clearance (min.)	47.84	48.45	47.35
Roadway Clearance (min.)	75.62	90.14	76.84
Incident Clearance (min.)	57.08	67.23	59.06
# of Events w/ RR/SIRV	5	14	91
RR/SIRV Assists	5	14	111
RR/SIRV Activities	9	21	145

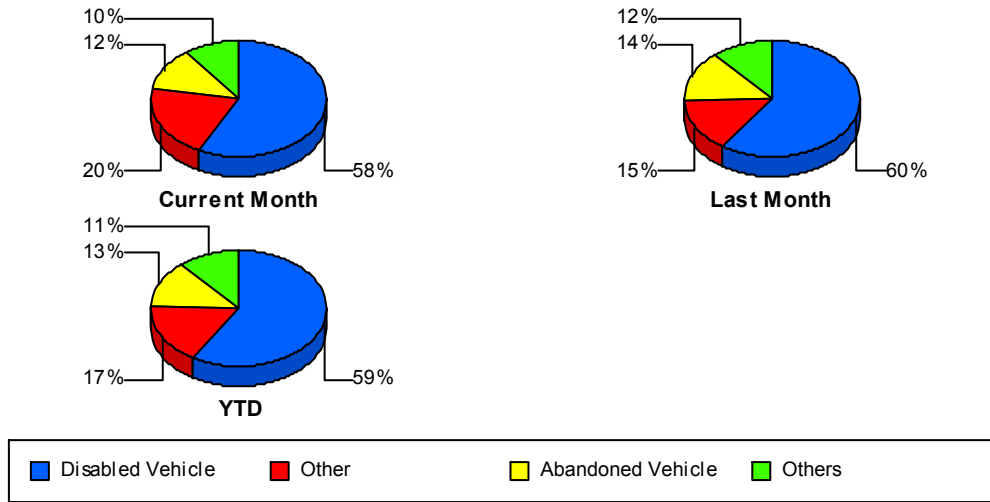
Vehicle Fire

	<u>Current Month</u>	<u>Last Month</u>	<u>YTD</u>
Number of Events	8	3	35
Number of Incidents	6	3	30
TMC Detection (min.)	0.00	0.00	0.00
TMC Verification (min.)	2.89	0.30	0.75
TMC Response (min.)	8.85	12.28	8.00
RR Dispatch Time (min.)	1.27	3.68	2.31
RR Response Time (min.)	7.58	8.60	5.69
Event Clearance (min.)	105.48	34.63	66.00
Roadway Clearance (min.)	39.39	29.83	38.91
Incident Clearance (min.)	128.81	34.63	66.49
# of Events w/ RR/SIRV	8	3	34
RR/SIRV Assists	8	3	34
RR/SIRV Activities	16	6	64

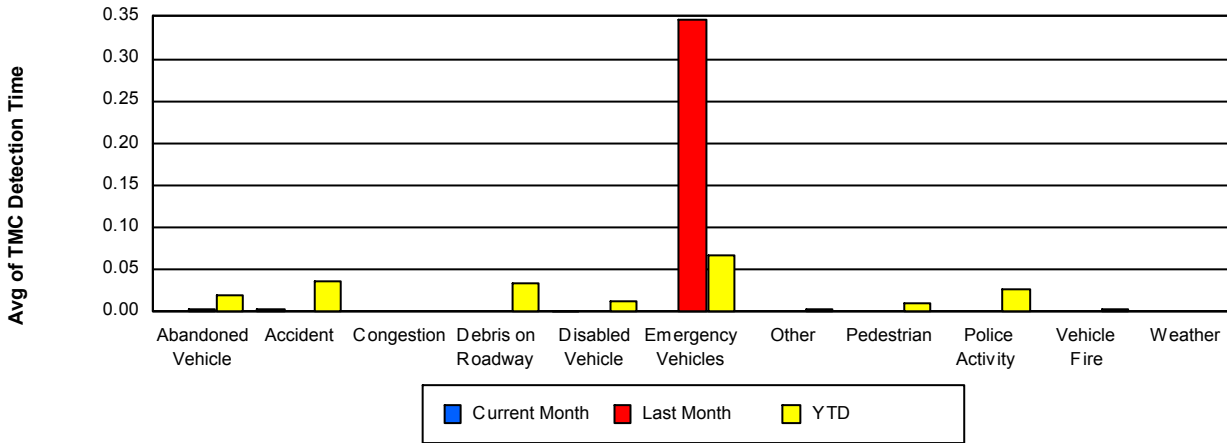
Weather

	<u>Current Month</u>	<u>Last Month</u>	<u>YTD</u>
Number of Events	2	1	6
Number of Incidents	0	0	0
TMC Detection (min.)	0.00	0.00	0.00
TMC Verification (min.)	0.00	0.00	0.00
TMC Response (min.)			0.10
RR Dispatch Time (min.)	3.83		2.59
RR Response Time (min.)			0.00
Event Clearance (min.)	35.66	55.32	21.70
Roadway Clearance (min.)			
Incident Clearance (min.)			
# of Events w/ RR/SIRV	2	0	3
RR/SIRV Assists	2	0	3
RR/SIRV Activities	0	0	1

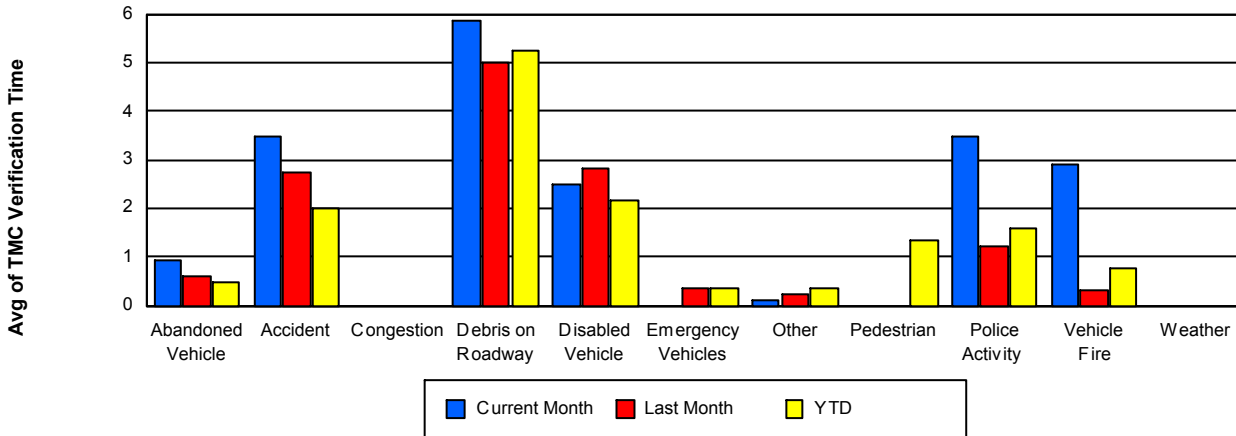
Number of Events / Event Type



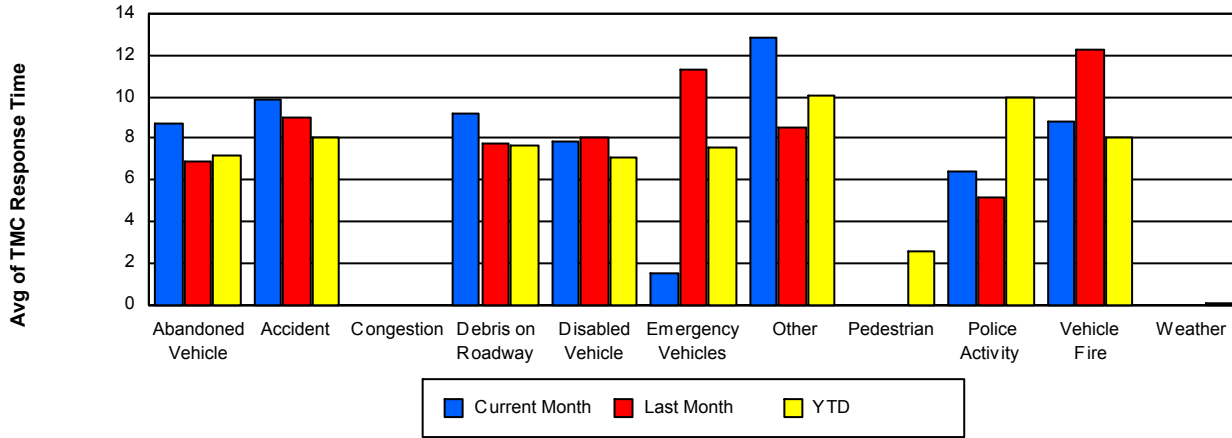
TMC Detection Time



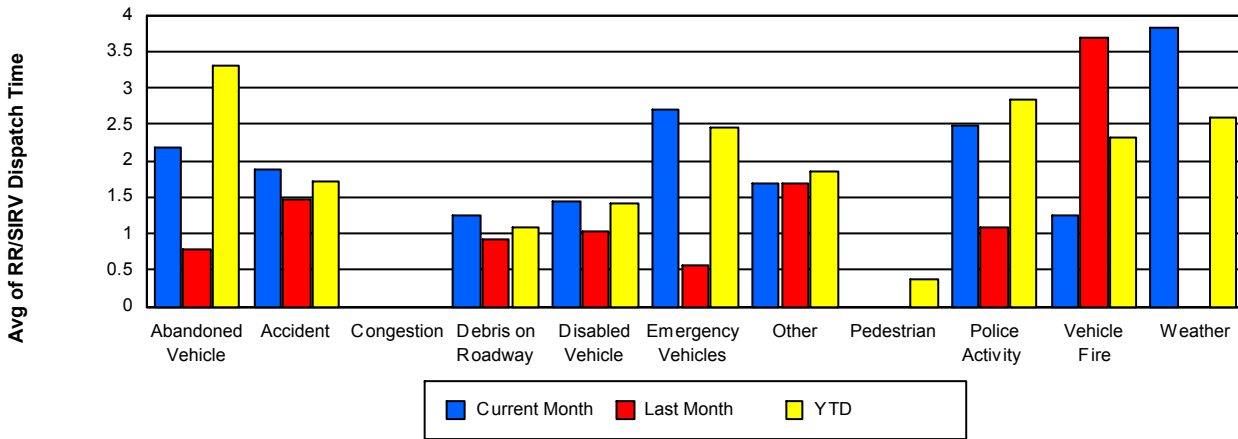
TMC Verification Time



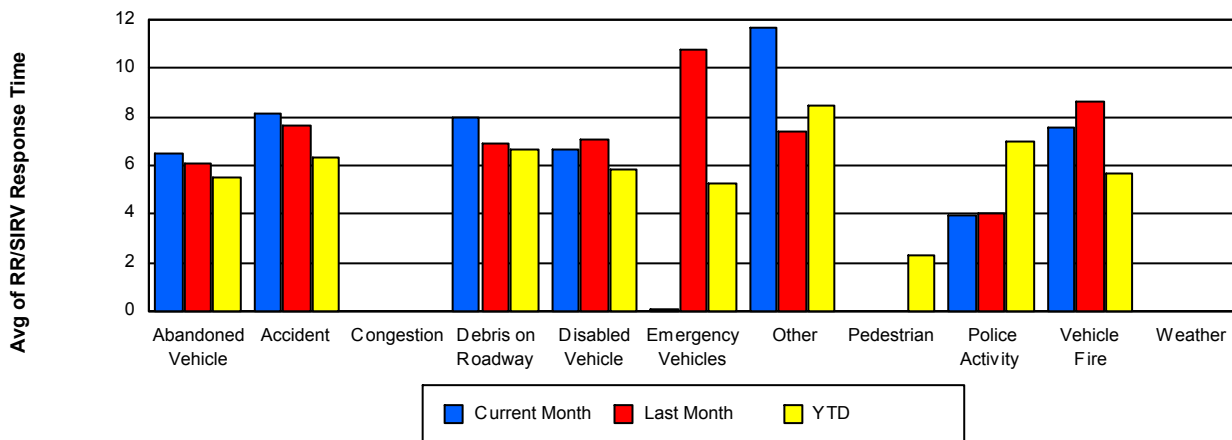
TMC Response Time



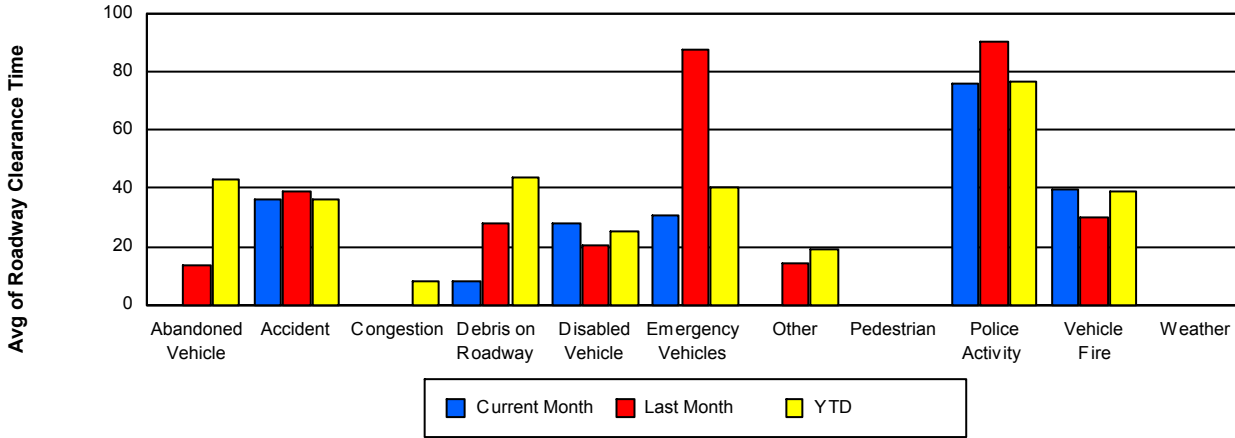
Road Ranger / SIRV Dispatch Time



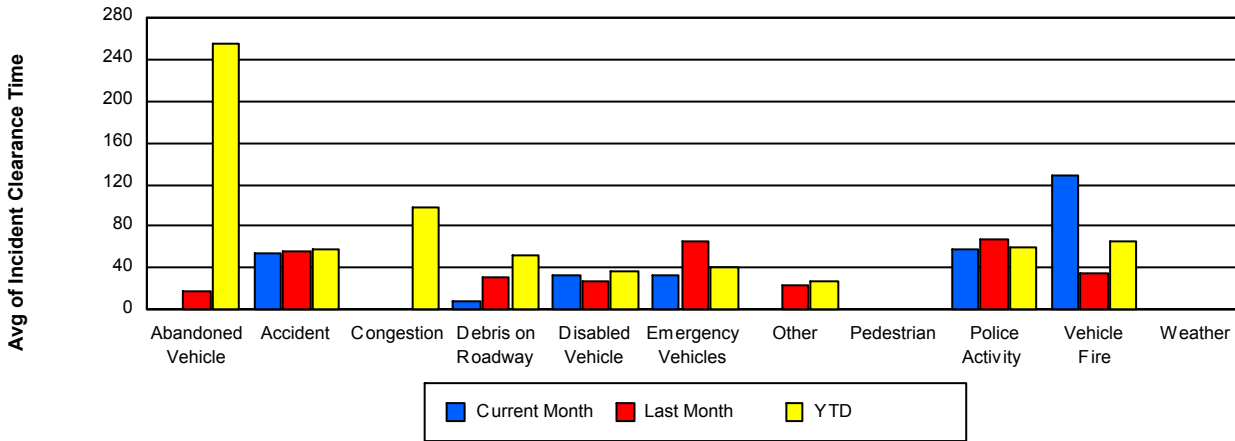
Road Ranger / SIRV Response Time



Roadway Clearance Time (2A)



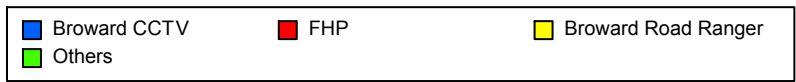
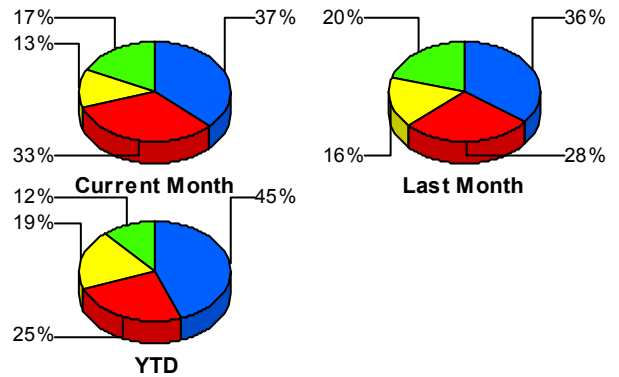
Incident Clearance Time (3B)



Incident Detection Methods

	Current Month	Last Month	YTD
Broward CCTV	68	74	845
Broward Road Ranger	23	34	359
Broward VideoWall	6	5	40
BSO	6	7	16
District 4	8	7	45
District 6	0	0	5
FDOT Maintenance	0	1	2
FHP	60	58	473
Fire	0	0	6
Florida's Turnpike	2	1	8
ITMS	0	0	2
Motorist	1	2	16
Other	0	0	1
Palm Beach Road Rang	0	4	8
PSAP	0	1	3
Road Watcher	0	3	14
SIRV	0	2	6
SmarTraveler (511)	1	2	9
VisioPaD Detection	8	7	40
Total	183	208	1,898

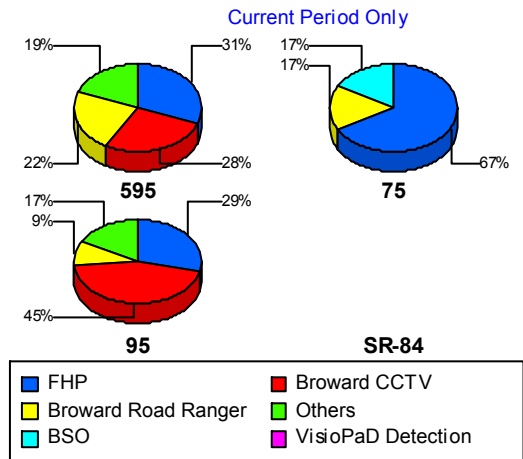
Total Incidents by Detection Method



Incident Detection Methods by Roadway

		Current Month	Last Month	YTD
595	Broward CCTV	10	9	120
	Broward Road Ranger	8	10	70
	Broward VideoWall	1	0	3
	BSO	2	5	7
	District 4	1	1	7
	FHP	11	14	97
	Florida's Turnpike	2	1	8
	Motorist	0	0	3
	Road Watcher	0	1	5
	SIRV	0	1	2
	SmarTraveler (511)	1	0	1
	VisioPaD Detection	0	0	4
	Total	36	42	327
	75	Broward Road Ranger	3	5
BSO		3	2	5
District 4		0	1	7
District 6		0	0	2
FHP		12	4	53
Road Watcher		0	0	1
SmarTraveler (511)		0	1	1
Total		18	13	117
95	Broward CCTV	58	65	725
	Broward Road Ranger	12	19	241
	Broward VideoWall	5	5	37
	BSO	1	0	4
	District 4	7	5	31
	District 6	0	0	3
	FDOT Maintenance	0	1	2
	FHP	37	40	323
	Fire	0	0	6
	ITMS	0	0	2

Total Events by Roadway and Detection Method

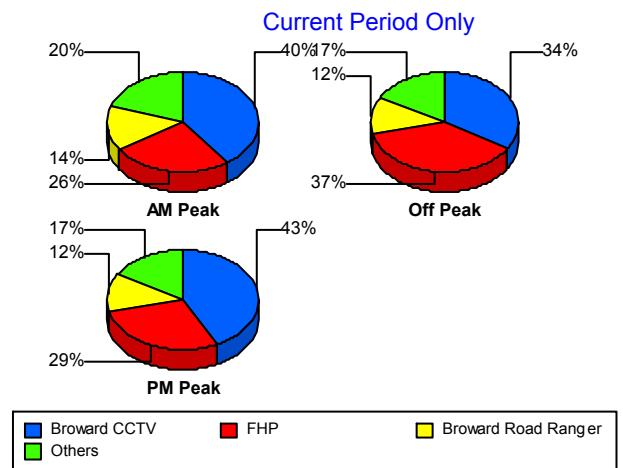


		Current Month	Last Month	YTD
95	Motorist	1	2	13
	Other	0	0	1
	Palm Beach Road Rang	0	4	8
	PSAP	0	1	3
	Road Watcher	0	2	8
	SIRV	0	1	4
	SmarTraveler (511)	0	1	7
	VisioPaD Detection	8	7	36
	Total	129	153	1,454
Total	183	208	1,898	

Incident Detection Methods by Peak Period

		Current Month	Last Month	YTD
AM Peak	Broward CCTV	14	23	204
	Broward Road Ranger	5	5	90
	Broward VideoWall	1	0	14
	BSO	2	2	5
	District 4	2	0	11
	FHP	9	14	96
	Fire	0	0	1
	Florida's Turnpike	1	0	3
	Motorist	0	0	3
	Palm Beach Road Rang	0	2	5
	PSAP	0	1	1
	Road Watcher	0	1	7
	SIRV	0	1	3
	SmarTraveler (511)	0	0	1
	VisioPaD Detection	1	1	5
	Total	35	50	449
Off Peak	Broward CCTV	36	37	445
	Broward Road Ranger	13	22	174
	Broward VideoWall	3	3	18

Total Events by Peak Period and Detection Method



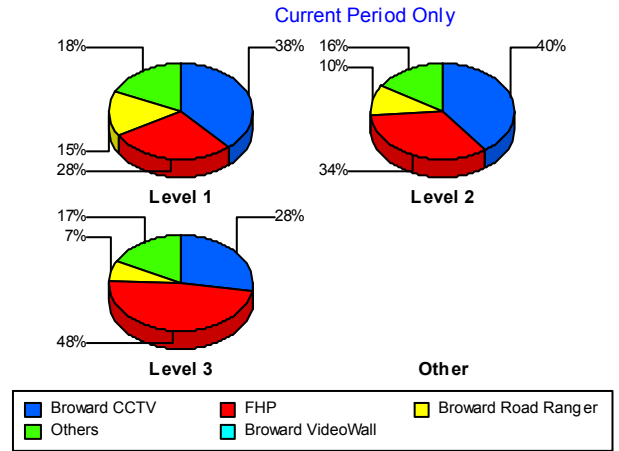
		Current Month	Last Month	YTD
Off Peak	BSO	3	3	6
	District 4	4	4	21
	District 6	0	0	3
	FDOT Maintenance	0	1	2
	FHP	39	31	276
	Fire	0	0	4
	Florida's Turnpike	1	1	4
	ITMS	0	0	1
	Motorist	0	1	6
	Other	0	0	1
	Palm Beach Road Rang	0	2	3
	PSAP	0	0	2
	Road Watcher	0	0	3
	SIRV	0	0	1
	SmarTraveler (511)	0	1	1
	VisioPaD Detection	7	6	32
	Total	106	112	1,003
PM Peak	Broward CCTV	18	14	196
	Broward Road Ranger	5	7	95
	Broward VideoWall	2	2	8
	BSO	1	2	5
	District 4	2	3	13
	District 6	0	0	2
	FHP	12	13	101
	Fire	0	0	1
	Florida's Turnpike	0	0	1
	ITMS	0	0	1
	Motorist	1	1	7
	Road Watcher	0	2	4
	SIRV	0	1	2
	SmarTraveler (511)	1	1	7
	VisioPaD Detection	0	0	3

		Current Month	Last Month	YTD
PM Peak	Total	42	46	446
Total		183	208	1,898

Incident Detection Methods by Severity

		Current Month	Last Month	YTD
Level 1	Broward CCTV	40	42	522
	Broward Road Ranger	16	21	227
	Broward VideoWall	6	4	29
	BSO	0	2	3
	District 4	5	4	29
	District 6	0	0	4
	FHP	29	25	218
	Fire	0	0	3
	Florida's Turnpike	1	0	2
	ITMS	0	0	1
	Motorist	1	1	8
	Palm Beach Road Rang	0	3	6
	PSAP	0	1	2
	Road Watcher	0	2	12
	SIRV	0	1	5
	SmarTraveler (511)	0	1	6
	VisioPaD Detection	6	3	23
	Total	104	110	1,100
	Level 2	Broward CCTV	20	25
Broward Road Ranger		5	8	92
Broward VideoWall		0	0	6
BSO		4	2	7
District 4		2	1	5
District 6		0	0	1
FDOT Maintenance		0	1	1
FHP		17	19	154
Fire		0	0	1

Total Events by Severity and Detection Method



		Current Month	Last Month	YTD
Level 2	ITMS	0	0	1
	Motorist	0	1	7
	Palm Beach Road Rang	0	1	1
	PSAP	0	0	1
	Road Watcher	0	1	1
	SmarTraveler (511)	0	1	2
	VisioPaD Detection	2	3	14
	Total	50	63	530
Level 3	Broward CCTV	8	7	87
	Broward Road Ranger	2	5	40
	Broward VideoWall	0	1	5
	BSO	2	3	6
	District 4	1	2	11
	FDOT Maintenance	0	0	1
	FHP	14	14	101
	Fire	0	0	2
	Florida's Turnpike	1	1	6
	Motorist	0	0	1
	Other	0	0	1
	Palm Beach Road Rang	0	0	1
	Road Watcher	0	0	1
	SIRV	0	1	1
	SmarTraveler (511)	1	0	1
	VisioPaD Detection	0	1	3
	Total	29	35	268
	Total	183	208	1,898

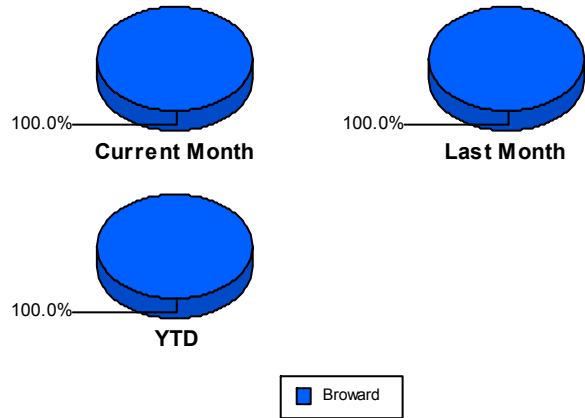
Road Ranger / SIRV Performance Measures

Road Ranger / SIRV Performance By County

Values presented are:
 - Total Events with a RR/SIRV Response
 - Total RR/SIRV Responses,
 - Total Activities Performed

	Current Mo	Last Month	YTD
Broward	3,719	3,856	34,023
	3,985	4,145	36,431
	4,149	4,323	38,503

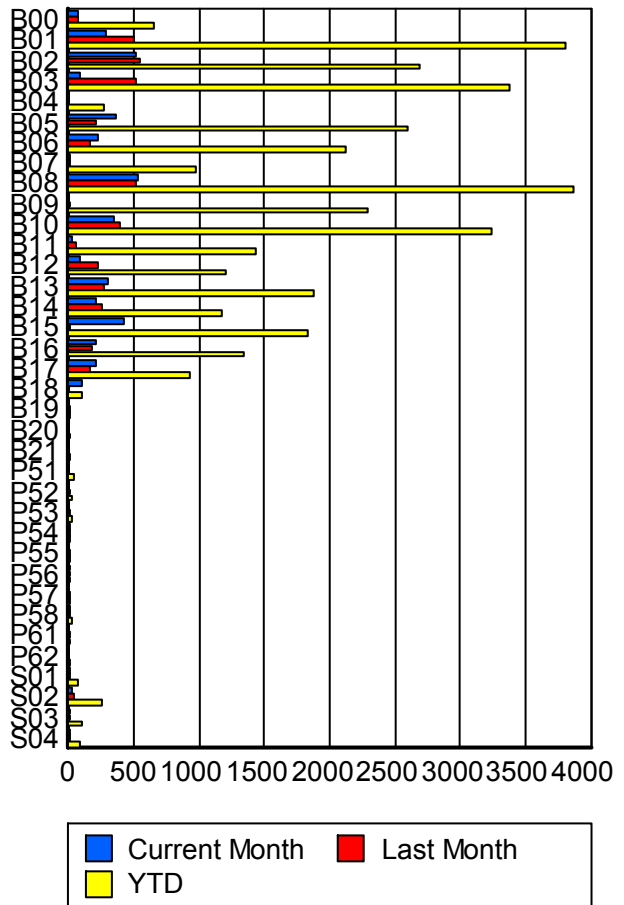
RR/SIRV Responses per County



Road Ranger / SIRV Performance By Truck

	Current Mo	Last Month	YTD
B00	64	76	640
	65	76	650
	68	78	683
B01	270	485	3,751
	277	498	3,810
	295	518	4,034
B02	499	536	2,653
	510	542	2,691
	539	557	2,845
B03	76	506	3,332
	78	514	3,373
	81	544	3,591
B04	0	0	259
	0	0	261
	0	0	273
B05	352	196	2,577
	359	200	2,603
	377	210	2,782
B06	219	158	2,094
	224	160	2,118
	232	163	2,246
B07	2	1	962
	2	1	974
	2	1	1,003
B08	515	506	3,810
	530	515	3,875
	544	541	4,091

RR/SIRV Responses per Truck



	Current Mo	Last Month	YTD
B09	0	4	2,262
	0	4	2,285
	0	4	2,422
B10	344	387	3,210
	350	391	3,242
	356	407	3,431
B11	21	48	1,421
	22	50	1,433
	23	51	1,507
B12	88	220	1,190
	89	221	1,210
	90	233	1,273
B13	291	271	1,850
	295	275	1,873
	311	290	1,980
B14	209	253	1,151
	211	258	1,166
	214	267	1,199
B15	413	7	1,828
	417	7	1,838
	437	7	1,941
B16	201	169	1,331
	203	172	1,346
	214	181	1,413
B17	198	164	921
	201	165	933
	206	170	982
B18	96	0	96
	96	0	96
	100	0	100
B19	0	1	2
	0	1	2
	0	1	2
B20	0	0	1
	0	0	1
	0	0	1
B21	0	0	4
	0	0	4
	0	0	4
P51	0	0	35
	0	0	35
	0	0	37
P52	0	3	19
	0	3	19
	0	3	19

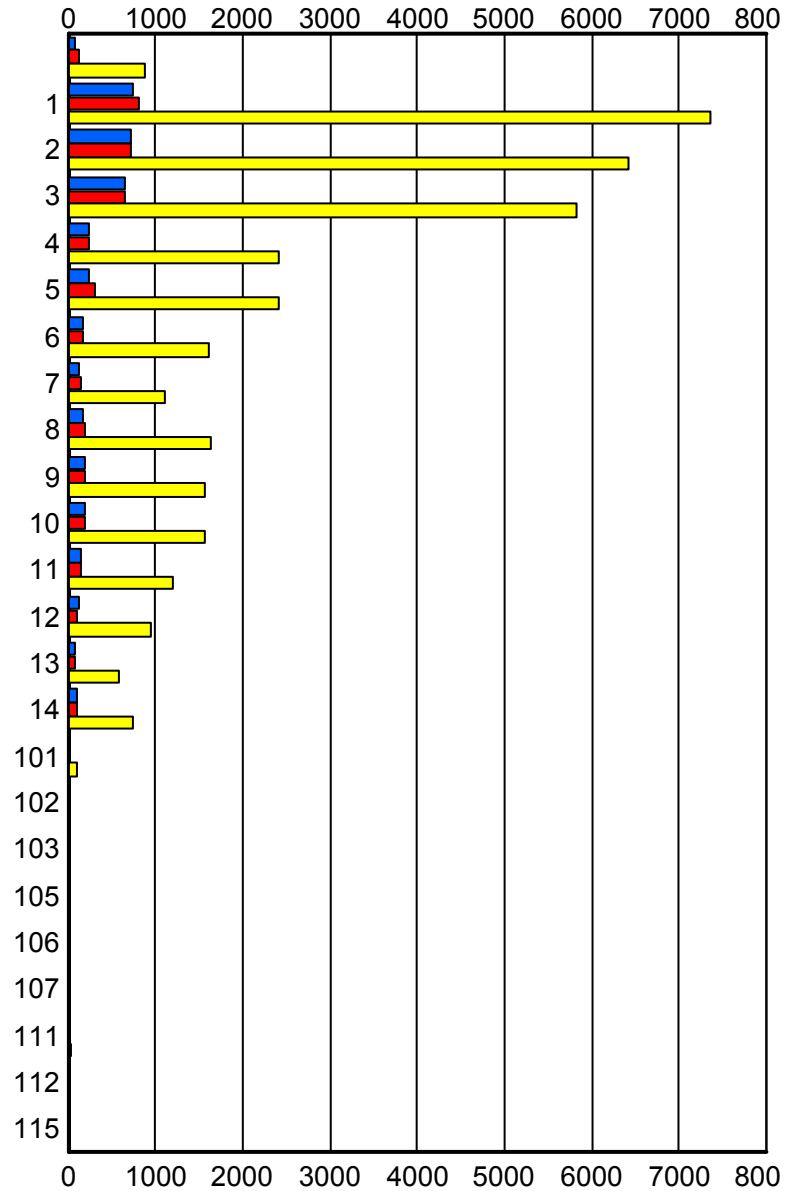
	Current Mo	Last Month	YTD
P53	0	3	18
	0	3	18
	0	3	21
P54	1	6	12
	1	6	12
	1	6	12
P55	0	4	14
	0	4	14
	0	5	15
P56	3	4	14
	3	5	15
	3	6	18
P57	0	2	11
	0	2	11
	0	2	11
P58	5	2	21
	5	2	21
	5	2	21
P61	0	1	1
	0	1	1
	0	1	1
P62	0	0	3
	0	0	3
	0	0	3
S01	3	8	61
	3	8	62
	3	8	67
S02	23	35	250
	23	35	251
	24	37	271
S03	14	14	91
	14	14	93
	15	14	102
S04	7	12	89
	7	12	92
	9	13	102

Road Ranger / SIRV Performance By Beat

	Current Mo	Last Month	YTD
	81	110	806
	86	117	879
	91	123	934
1	717	777	7,043
	748	816	7,363
	773	858	7,768
2	688	695	6,245
	709	711	6,419
	738	737	6,784
3	618	627	5,650
	640	645	5,821
	659	665	6,128
4	231	239	2,382
	236	242	2,405
	245	258	2,531
5	239	301	2,393
	242	310	2,422
	258	318	2,541
6	162	174	1,589
	167	176	1,615
	172	183	1,693
7	115	139	1,095
	118	142	1,111
	125	144	1,164
8	166	180	1,619
	169	182	1,638
	175	193	1,727
9	186	182	1,538
	195	183	1,561
	206	193	1,683
10	195	194	1,556
	200	196	1,576
	213	209	1,690
11	143	132	1,181
	147	134	1,192
	158	139	1,282
12	125	91	942
	128	92	957
	133	95	1,026
13	83	72	578
	85	74	589
	86	76	622
14	106	98	735
	106	100	740
	108	105	778

Values presented are:
 - Total Events with a RR/SIRV Response
 - Total RR/SIRV Responses,
 - Total Activities Performed

RR/SIRV Responses per Beat



■ Current Month
 ■ Last Month
 ■ YTD

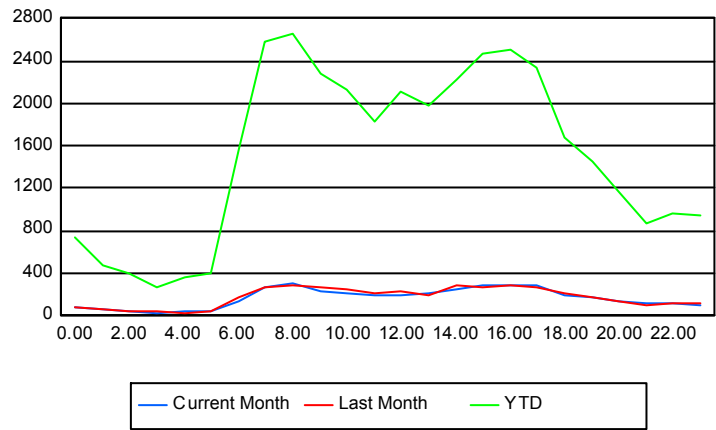
	Current Mo	Last Month	YTD
101	8 8 8	18 18 20	99 99 106
102	0 0 0	1 2 2	3 4 4
103	1 1 1	0 0 0	2 2 2
105	0 0 0	1 1 1	2 2 2
106	0 0 0	0 0 0	1 1 1
107	0 0 0	1 1 1	3 3 3
111	0 0 0	3 3 3	29 29 31
112	0 0 0	0 0 0	1 1 1
115	0 0 0	0 0 0	2 2 2

Road Ranger / SIRV Performance By Time of Day

Values presented are:
 - Total Events with a RR/SIRV Response
 - Total RR/SIRV Responses,
 - Total Activities Performed

	Current Mo	Last Month	YTD
12AM-1AM	70	68	692
	76	75	733
	82	80	788
1AM-2AM	49	49	444
	52	53	474
	59	56	503
2AM-3AM	37	34	348
	39	41	398
	41	41	428
3AM-4AM	21	29	247
	22	34	274
	24	35	296
4AM-5AM	40	30	321
	47	31	370
	52	32	401
5AM-6AM	34	31	335
	42	37	406
	45	41	431
6AM-7AM	121	155	1,447
	130	173	1,566
	134	181	1,628
7AM-8AM	257	247	2,425
	274	275	2,578
	287	284	2,716
8AM-9AM	276	255	2,444
	299	284	2,657
	311	297	2,804
9AM-10AM	233	247	2,138
	239	263	2,280
	244	280	2,397
10AM-11AM	204	232	2,016
	216	250	2,138
	223	257	2,263
11AM-12PM	172	195	1,701
	187	215	1,824
	198	224	1,924
12PM-1PM	192	225	1,997
	199	237	2,120
	205	248	2,230

Number of Responses / Hour of the Day



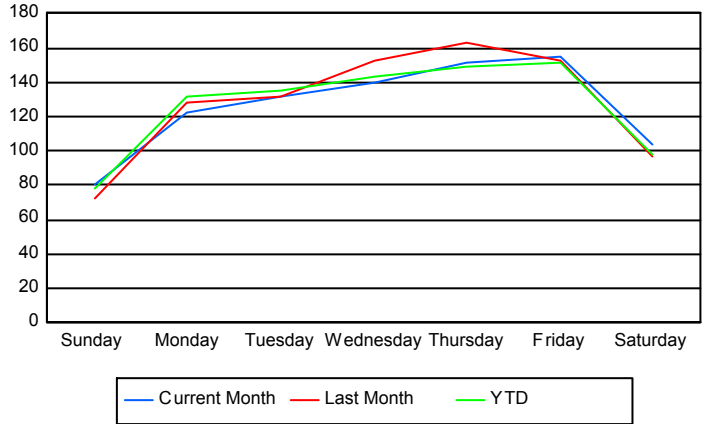
	Current Mo	Last Month	YTD
1PM-2PM	197 218 226	181 191 200	1,834 1,988 2,101
2PM-3PM	237 253 263	273 290 303	2,088 2,231 2,343
3PM-4PM	269 296 304	247 264 270	2,284 2,460 2,597
4PM-5PM	261 279 292	274 295 310	2,374 2,514 2,653
5PM-6PM	261 282 291	253 270 281	2,192 2,338 2,448
6PM-7PM	193 199 208	206 215 222	1,583 1,671 1,771
7PM-8PM	174 183 193	168 170 176	1,398 1,461 1,559
8PM-9PM	125 134 136	135 139 146	1,102 1,175 1,260
9PM-10PM	106 110 117	99 108 112	804 864 923
10PM-11PM	101 111 115	106 110 117	917 973 1,044
11PM-12AM	89 98 99	117 125 130	892 938 995

Road Ranger / SIRV Performance By Day of Week

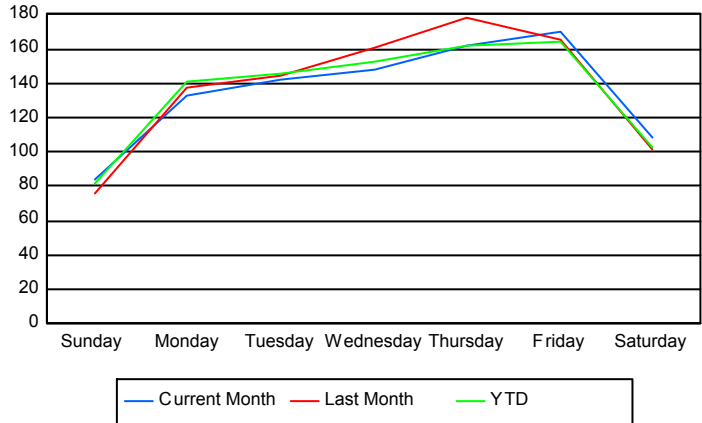
Values presented are:
 - Total Events with a RR/SIRV Response
 - Total RR/SIRV Responses,
 - Total Activities Performed

	Current Mo	Last Month	YTD
Sunday	314	346	2,904
	326	362	3,033
	343	375	3,209
Monday	573	507	5,016
	618	546	5,369
	647	560	5,631
Tuesday	651	518	5,345
	705	566	5,735
	733	591	6,049
Wednesday	554	607	5,479
	586	641	5,842
	608	669	6,161
Thursday	601	649	5,767
	643	707	6,236
	672	740	6,595
Friday	617	754	5,830
	674	823	6,328
	697	856	6,713
Saturday	415	478	3,706
	433	500	3,888
	449	532	4,145

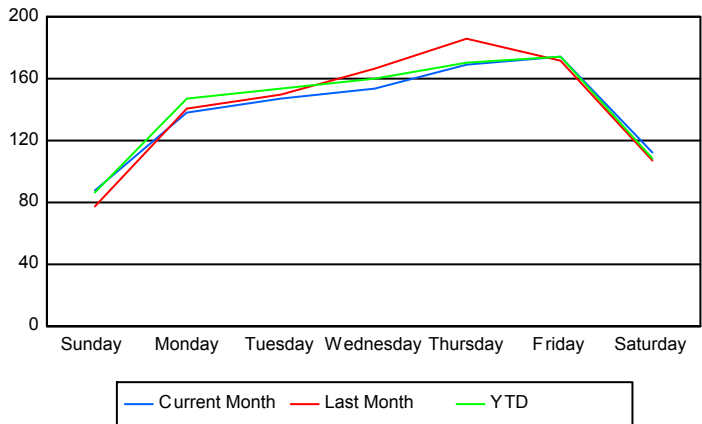
Avg # of events with a RR/SIRV Response per Day of the Week



Avg # of RR/SIRV Responses per Day of the Week



Avg # of RR/SIRV Activities Performed per Day of the Week



Road Ranger / SIRV Responses per Time of Day and Day of Week

