



# Monthly Performance Measures Report Broward County



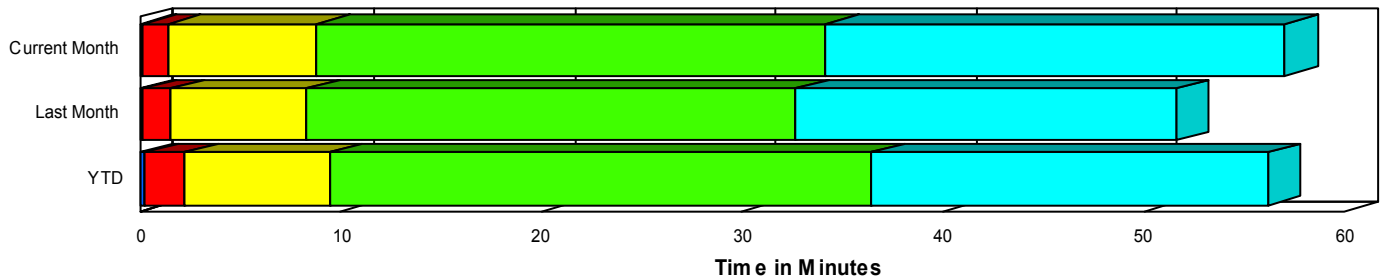
Created on:  
October 01, 2007  
10:30 am

Period From Sep 1, 2007 to Sep 30, 2007

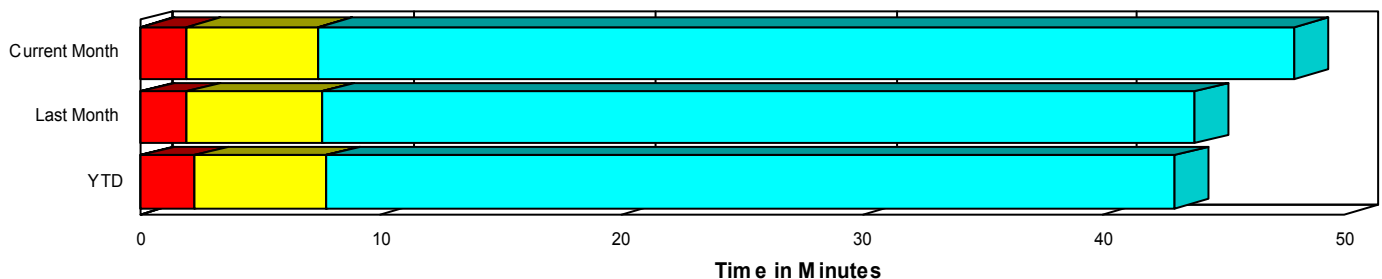
## Performance Measures Summary

	Traffic Events (No Lanes Blocked)			Incidents (Lanes Blocked)		
	<u>This Month</u>	<u>Last Month</u>	<u>YTD</u>	<u>This Month</u>	<u>Last Month</u>	<u>YTD</u>
Number of Events	4,768	5,100	43,408	252	233	2,080
TMC Detection (min.)	0.03	0.05	0.04	0.13	0.11	0.22
TMC Verification (min.)	1.94	1.92	2.20	1.27	1.39	2.05
TMC Response (min.)	7.59	7.63	7.95	8.69	8.21	9.26
RR Dispatch Time (min.)	2.24	1.68	2.02	2.66	2.31	2.48
RR Response Time (min.)	5.48	6.13	6.06	6.06	5.92	6.79
Roadway Clearance (min.)				32.99	31.56	35.88
Event Clearance (min.)	48.19	43.91	43.19	53.82	50.32	54.86
# of Events w/ RR/SIRV	3,622	3,977	34,326	238	219	1,994
RR/SIRV Responses	3,757	4,107	35,439	443	434	3,449
RR/SIRV Activities	3,908	4,245	36,848	459	470	3,677

### Incident Clearance TimeLine



### Traffic Event(Non-Lane Blockage) Time-Line



<span style="color: blue;">■</span> Avg. TMC Detection Time	<span style="color: green;">■</span> Avg. Time from TMC Response to Roadway Clearance*
<span style="color: red;">■</span> Avg. Time from TMC Detection to TMC Verification	<span style="color: cyan;">■</span> Avg. Time from Roadway Clearance to Incident/Event Clearance**
<span style="color: yellow;">■</span> Avg. Time from TMC Verification to TMC Response	

\* Roadway clearance equals all travel lanes open

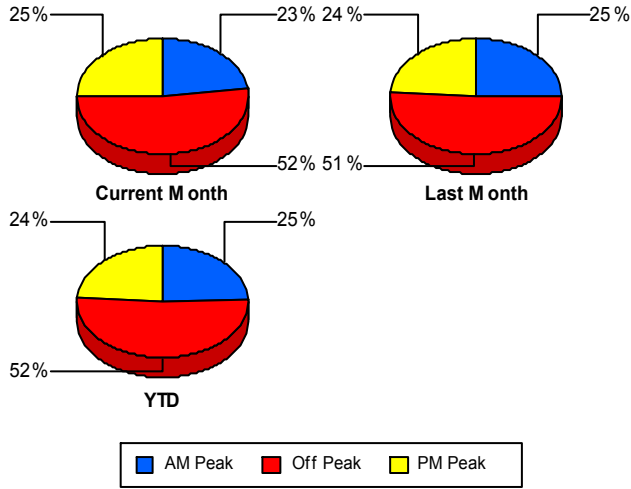
\*\* Incident clearance equals time when last responder has left the scene

## Performance Measures by Peak Period

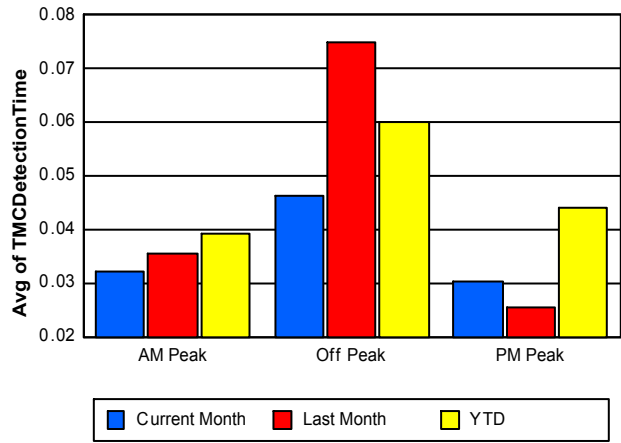
Note: AM peak period is defined as 6am to 10am and PM peak period is defined as 3pm to 7pm.

	AM Peak			Off Peak			PM Peak		
	Current Month	Last Month	YTD	Current Month	Last Month	YTD	Current Month	Last Month	YTD
Number of Events	1,142	1,328	11,216	2,620	2,722	23,462	1,258	1,283	10,810
Number of Incidents	46	50	448	137	125	1,090	69	58	542
TMC Detection (min.)	0.03	0.04	0.04	0.05	0.07	0.06	0.03	0.03	0.04
TMC Verification (min.)	1.99	1.42	1.44	1.89	2.29	2.59	1.86	1.55	2.14
TMC Response (min.)	6.97	7.30	6.68	8.31	8.07	8.98	6.99	7.21	7.41
RR Dispatch Time (min.)	1.97	1.52	1.51	2.47	1.89	2.34	2.12	1.55	1.96
RR Response Time (min.)	5.07	5.86	5.29	5.88	6.40	6.73	5.24	5.81	5.64
Event Clearance (min.)	44.09	33.30	35.65	57.37	54.06	50.66	33.91	34.52	37.05
Roadway Clearance (min.)	22.11	26.71	30.12	41.12	35.95	40.77	24.10	26.27	30.81
Incident Clearance (min.)	60.70	50.93	54.61	58.45	52.86	59.03	40.04	44.31	46.65
# of Events w/ RR/SIRV	955	1,086	9,374	1,959	2,097	18,321	946	1,013	8,625
RR/SIRV Responses	1,038	1,173	10,021	2,158	2,288	19,680	1,004	1,080	9,187
RR/SIRV Activities	1,086	1,221	10,448	2,243	2,379	20,528	1,038	1,115	9,549

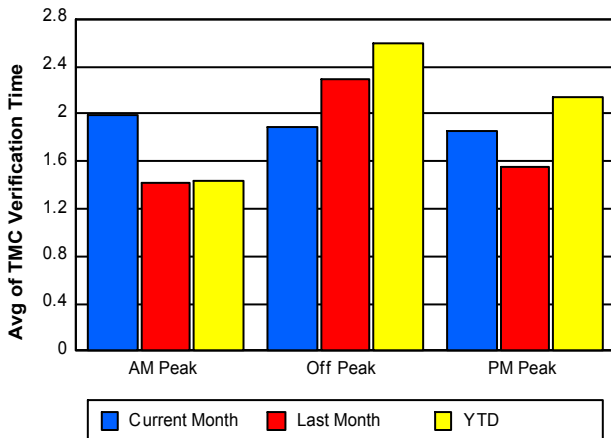
### Number of Events / Peak Period



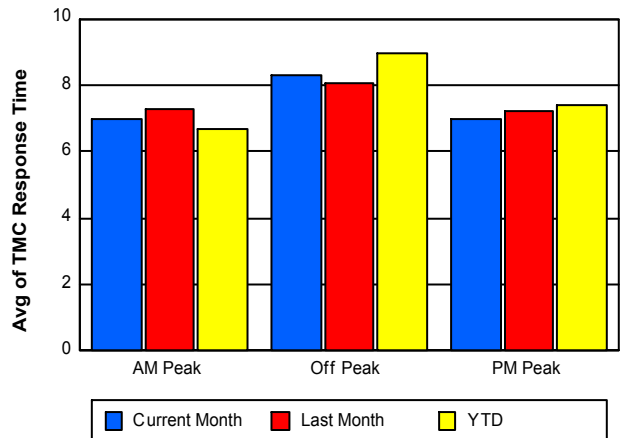
### TMC Detection Time



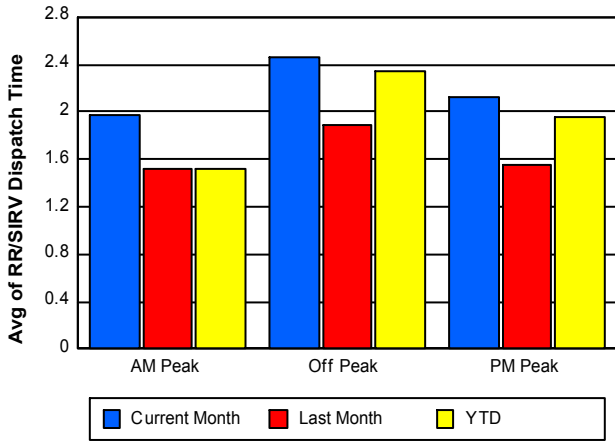
### TMC Verification Time



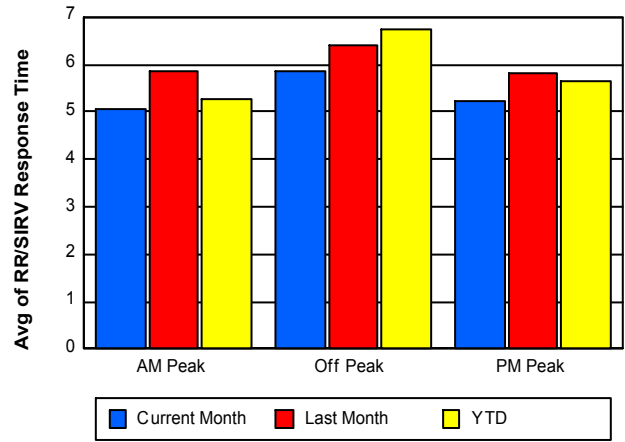
### TMC Response Time



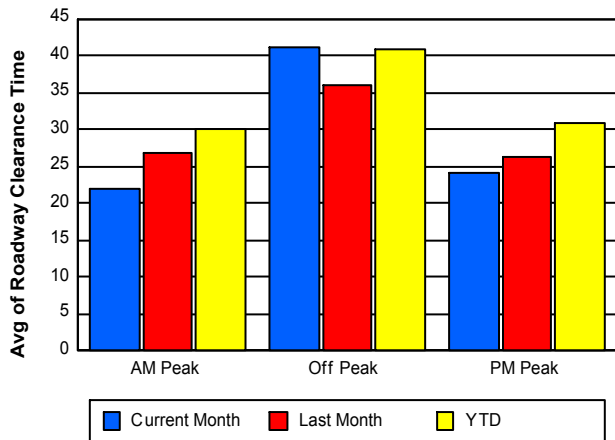
### Road Ranger / SIRV Dispatch Time



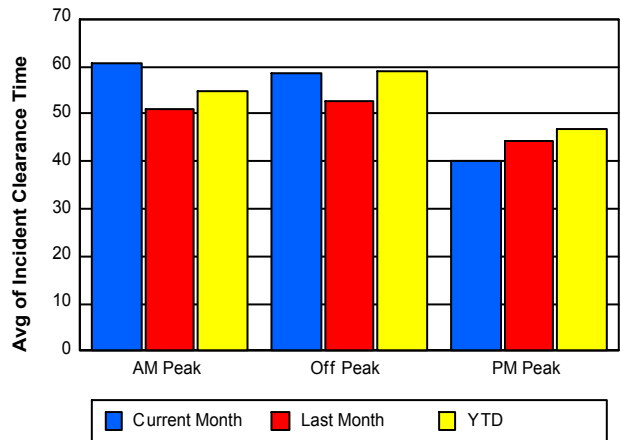
### Road Ranger / SIRV Response Time



### Roadway Clearance Time (2A)



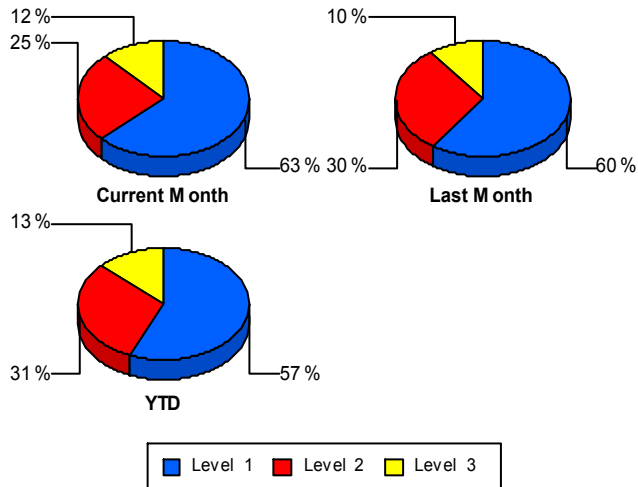
### Incident Clearance Time (3B)



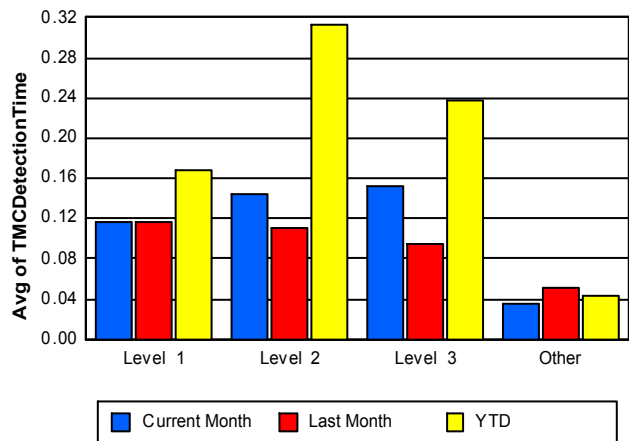
## Performance Measures by Severity

	Level 1			Level 2			Level 3			Other		
	<u>This Month</u>	<u>Last Month</u>	<u>YTD</u>	<u>This Month</u>	<u>Last Month</u>	<u>YTD</u>	<u>This Month</u>	<u>Last Month</u>	<u>YTD</u>	<u>This Month</u>	<u>Last Month</u>	<u>YTD</u>
Number of Events	158	139	1,176	64	70	636	30	24	268	4,768	5,100	43,408
Number of Incidents	158	139	1,176	64	70	636	30	24	268	0	0	0
TMC Detection (min.)	0.12	0.12	0.17	0.14	0.11	0.31	0.15	0.10	0.24	0.03	0.05	0.04
TMC Verification (min.)	0.90	1.11	1.42	1.43	2.14	2.69	2.88	0.81	3.30	1.94	1.92	2.20
TMC Response (min.)	7.96	6.91	8.14	10.02	10.28	10.89	9.51	9.25	10.08	7.59	7.63	7.95
RR Dispatch Time (min.)	2.23	2.04	2.15	3.11	2.92	2.86	4.11	2.05	3.04	2.24	1.68	2.02
RR Resp. Time (min.)	5.81	4.92	6.03	6.91	7.36	8.03	5.41	7.21	7.05	5.48	6.13	6.06
Event Clearance (min.)	39.50	35.53	37.52	71.24	66.98	67.75	92.10	87.35	100.32	48.19	43.91	43.19
Roadway Clear. (min.)	14.57	14.71	14.97	47.04	52.65	52.06	100.03	67.64	89.23			
Incident Clearance (min.)	39.50	35.53	37.52	71.24	66.98	67.75	92.10	87.35	100.32			
# of Events w/ RR/SIRV	148	128	1,109	64	69	629	26	22	256	3,622	3,977	34,326
RR/SIRV Responses	235	207	1,583	136	161	1,206	72	66	660	3,757	4,107	35,439
RR/SIRV Activities	244	231	1,698	141	171	1,265	74	68	714	3,908	4,245	36,848

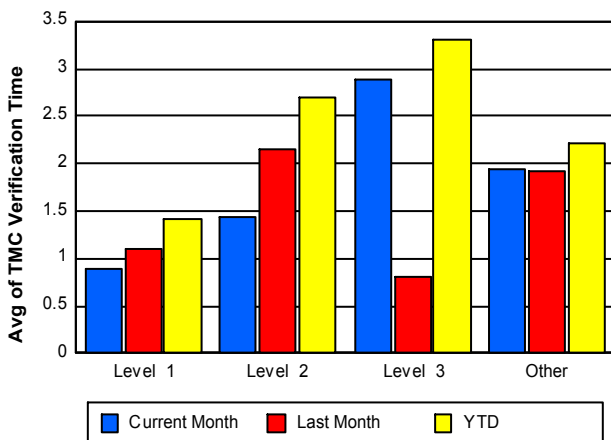
### Number of Events / Severity



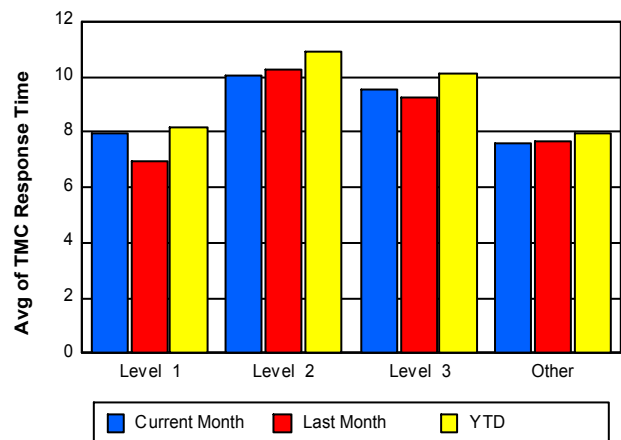
### TMC Detection Time



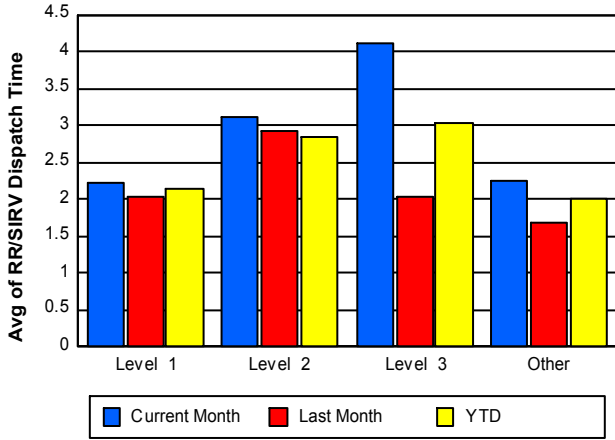
### TMC Verification Time



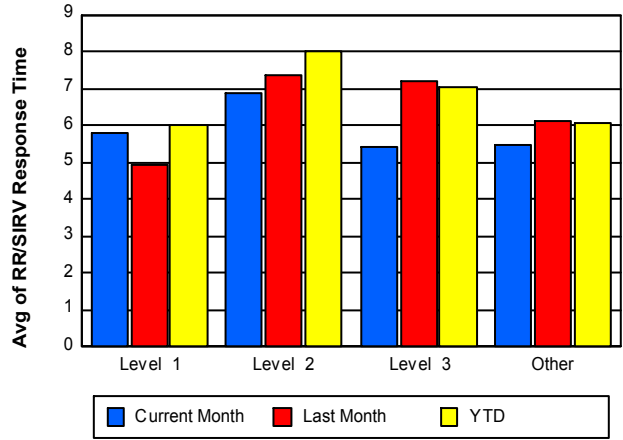
### TMC Response Time



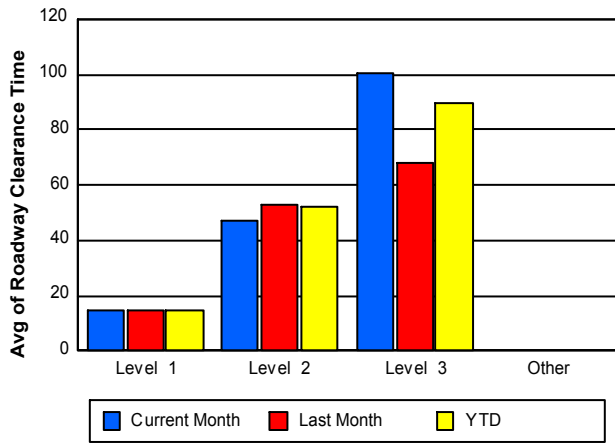
## Road Ranger / SIRV Dispatch Time



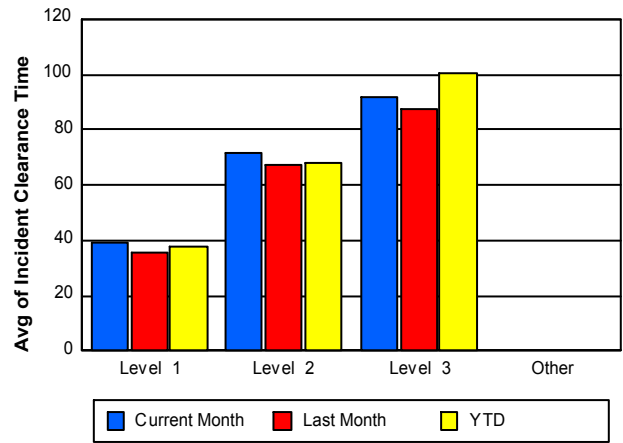
## Road Ranger / SIRV Response Time



## Roadway Clearance Time (2A)



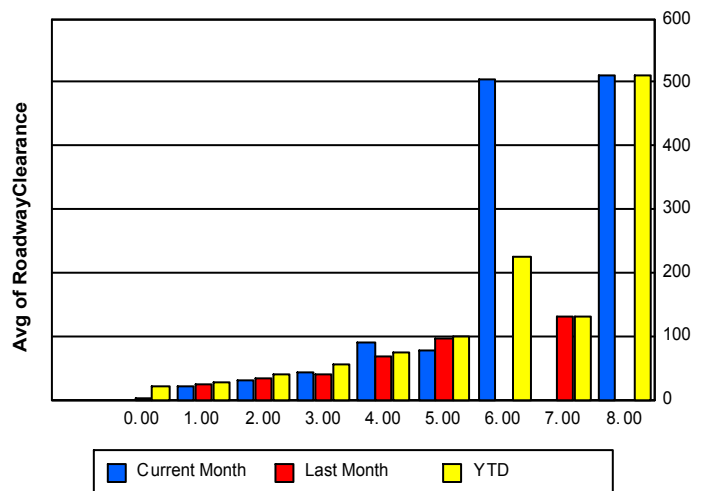
## Incident Clearance Time (3B)



## Roadway Clearance by Maximum Number of Lanes Blocked

	Current Month	Last Month	YTD
0		2.51	21.25
1	22.44	25.00	26.30
2	29.74	32.31	40.64
3	43.66	39.97	54.65
4	89.70	68.28	75.96
5	77.57	95.32	100.96
6	503.73	0.00	226.15

## Roadway Clearance Time(2A)



	Current Month	Last Month	YTD
7	<b>0.00</b>	<b>130.40</b>	<b>130.40</b>
8	<b>510.05</b>	<b>0.00</b>	<b>510.05</b>

## Performance Measures by Roadway

**595**

	<u>Current Month</u>	<u>Last Month</u>	<u>YTD</u>
Number of Events	792	856	7,147
Number of Incidents	44	40	340
TMC Detection (min.)	0.06	0.04	0.06
TMC Verification (min.)	2.50	2.51	2.68
TMC Response (min.)	6.88	7.73	7.66
RR Dispatch Time (min.)	1.79	2.21	2.14
RR Resp. Time (min.)	5.35	5.75	5.67
Event Clearance (min.)	41.98	48.15	42.40
Roadway Clear. (min.)	35.10	33.78	40.13
Incident Clearance (min.)	54.48	48.39	57.42
# of Events w/ RR/SIRV	630	708	5,838
RR/SIRV Responses	677	768	6,268
RR/SIRV Activities	707	787	6,516

**75**

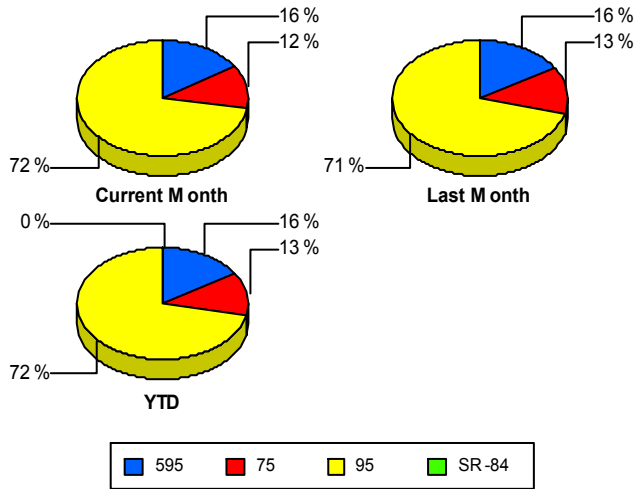
	<u>Current Month</u>	<u>Last Month</u>	<u>YTD</u>
Number of Events	594	694	5,798
Number of Incidents	10	8	128
TMC Detection (min.)	0.08	0.04	0.06
TMC Verification (min.)	4.63	2.86	3.54
TMC Response (min.)	4.44	3.07	3.97
RR Dispatch Time (min.)	1.34	0.64	1.22
RR Resp. Time (min.)	3.14	2.46	2.78
Event Clearance (min.)	49.24	60.82	49.33
Roadway Clear. (min.)	42.46	67.97	61.17
Incident Clearance (min.)	60.02	77.68	74.74
# of Events w/ RR/SIRV	572	662	5,609
RR/SIRV Responses	610	683	5,917
RR/SIRV Activities	639	706	6,193

**95**

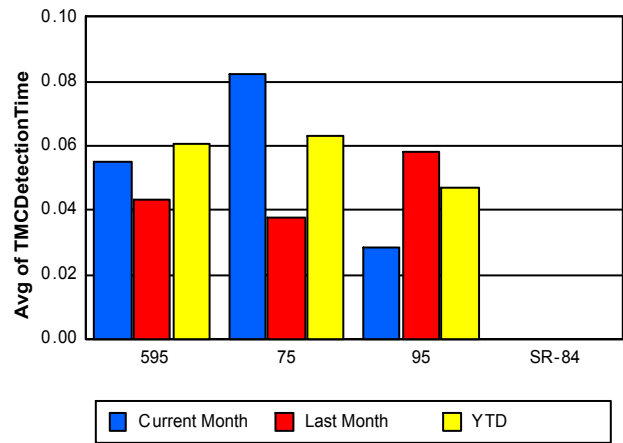
	<u>Current Month</u>	<u>Last Month</u>	<u>YTD</u>
Number of Events	3,634	3,783	32,542
Number of Incidents	198	185	1,612
TMC Detection (min.)	0.03	0.06	0.05
TMC Verification (min.)	1.33	1.58	1.85
TMC Response (min.)	8.53	8.72	9.01
RR Dispatch Time (min.)	2.54	1.81	2.18
RR Resp. Time (min.)	6.07	7.06	6.95
Event Clearance (min.)	49.76	40.24	43.02
Roadway Clear. (min.)	32.04	29.50	32.98
Incident Clearance (min.)	53.36	49.55	52.74
# of Events w/ RR/SIRV	2,658	2,826	24,873
RR/SIRV Responses	2,913	3,090	26,703
RR/SIRV Activities	3,021	3,222	27,816

	<u>YTD</u>
Number of Events	<b>1</b>
Number of Incidents	<b>0</b>
TMC Detection (min.)	<b>0.00</b>
TMC Verification (min.)	<b>1.08</b>
TMC Response (min.)	
RR Dispatch Time (min.)	
RR Resp. Time (min.)	
Event Clearance (min.)	<b>3.77</b>
Roadway Clear. (min.)	
Incident Clearance (min.)	
# of Events w/ RR/SIRV	<b>0</b>
RR/SIRV Responses	<b>0</b>
RR/SIRV Activities	<b>0</b>

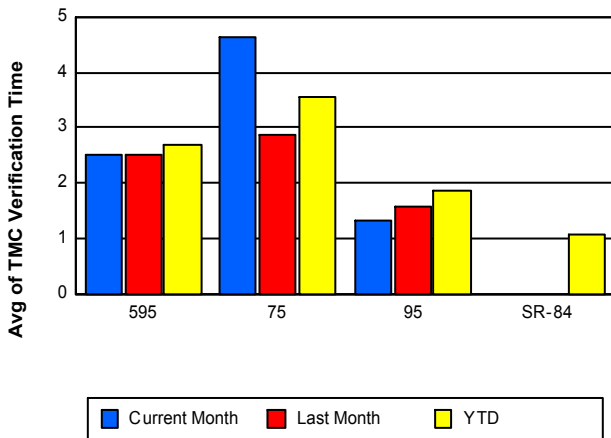
### Number of Events / Roadway



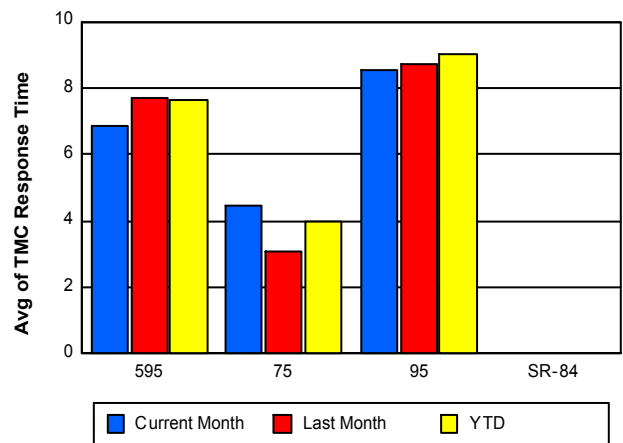
### TMC Detection Time



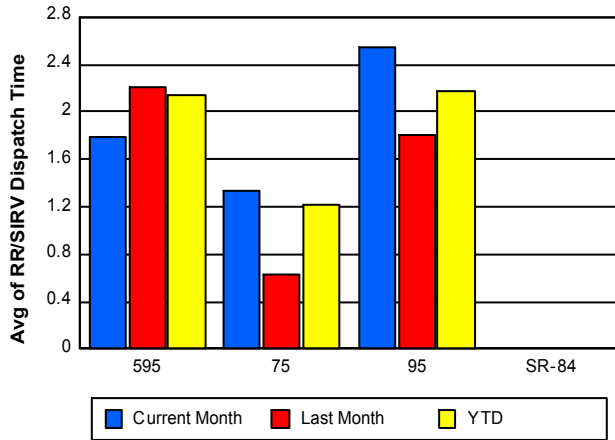
### TMC Verification Time



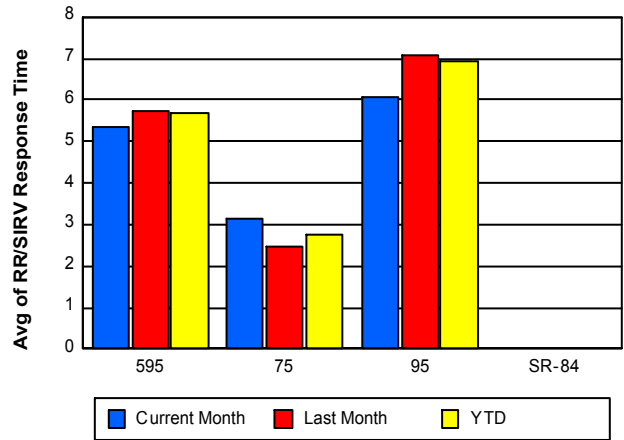
### TMC Response Time



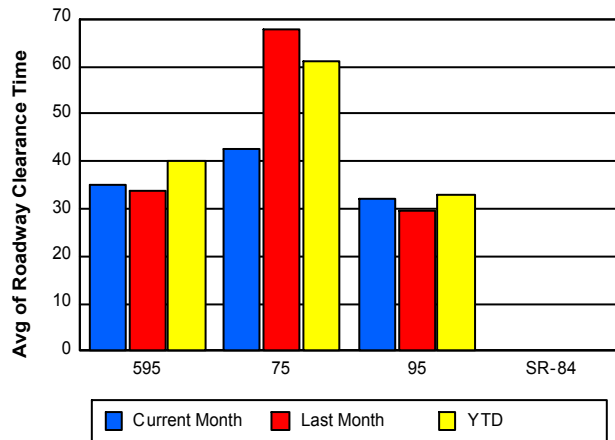
## Road Ranger / SIRV Dispatch Time



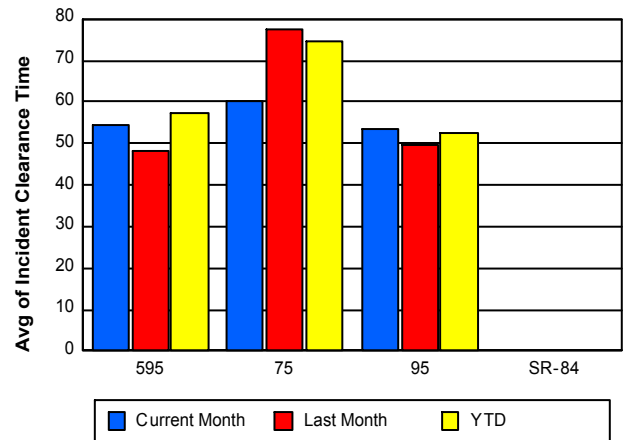
## Road Ranger / SIRV Response Time



## Roadway Clearance Time (2A)



## Incident Clearance Time (3B)



## Performance Measures by Event Type

### Abandoned Vehicle

	<u>Current Month</u>	<u>Last Month</u>	<u>YTD</u>
Number of Events	637	750	5,848
Number of Incidents	3	0	11
TMC Detection (min.)	0.01	0.01	0.01
TMC Verification (min.)	0.62	0.62	0.65
TMC Response (min.)	8.05	8.25	8.88
RR Dispatch Time (min.)	3.17	1.83	2.83
RR Response Time (min.)	4.88	6.42	6.04
Event Clearance (min.)	239.38	189.57	191.02
Roadway Clearance (min.)	20.29		17.92
Incident Clearance (min.)	31.87		28.34
# of Events w/ RR/SIRV	510	630	4,773
RR/SIRV Assists	524	648	4,889
RR/SIRV Activities	540	666	5,026

### Accident

	<u>Current Month</u>	<u>Last Month</u>	<u>YTD</u>
Number of Events	414	329	3,237
Number of Incidents	187	167	1,513
TMC Detection (min.)	0.18	0.13	0.20
TMC Verification (min.)	2.21	2.04	2.65
TMC Response (min.)	8.30	8.42	8.70
RR Dispatch Time (min.)	2.71	2.05	2.23
RR Response Time (min.)	5.63	6.38	6.51
Event Clearance (min.)	45.54	47.22	46.46
Roadway Clearance (min.)	33.22	35.01	36.81
Incident Clearance (min.)	57.67	56.84	59.44
# of Events w/ RR/SIRV	396	319	3,142
RR/SIRV Assists	601	516	4,523
RR/SIRV Activities	617	553	4,740

### Congestion

	<u>Current Month</u>	<u>YTD</u>
Number of Events	1	1
Number of Incidents	0	0
TMC Detection (min.)	0.00	0.00
TMC Verification (min.)	0.00	0.00
TMC Response (min.)		
RR Dispatch Time (min.)		
RR Response Time (min.)		
Event Clearance (min.)	360.25	360.25
Roadway Clearance (min.)		
Incident Clearance (min.)		
# of Events w/ RR/SIRV	0	0
RR/SIRV Assists	0	0
RR/SIRV Activities	0	0

## Debris on Roadway

	<u>Current Month</u>	<u>Last Month</u>	<u>YTD</u>
Number of Events	193	199	1,844
Number of Incidents	10	6	55
TMC Detection (min.)	0.18	0.19	0.19
TMC Verification (min.)	6.42	6.87	7.67
TMC Response (min.)	7.92	8.51	8.93
RR Dispatch Time (min.)	1.39	2.01	1.92
RR Response Time (min.)	6.62	6.96	7.11
Event Clearance (min.)	11.85	12.11	13.44
Roadway Clearance (min.)	17.48	9.24	23.31
Incident Clearance (min.)	19.38	13.54	29.19
# of Events w/ RR/SIRV	178	189	1,741
RR/SIRV Assists	192	193	1,859
RR/SIRV Activities	197	195	1,882

## Disabled Vehicle

	<u>Current Month</u>	<u>Last Month</u>	<u>YTD</u>
Number of Events	2,947	3,147	27,122
Number of Incidents	39	44	377
TMC Detection (min.)	0.02	0.06	0.04
TMC Verification (min.)	2.17	2.16	2.40
TMC Response (min.)	7.36	7.26	7.57
RR Dispatch Time (min.)	2.10	1.54	1.80
RR Response Time (min.)	5.44	5.83	5.87
Event Clearance (min.)	20.11	19.59	20.72
Roadway Clearance (min.)	26.82	22.43	26.65
Incident Clearance (min.)	50.72	33.34	38.79
# of Events w/ RR/SIRV	2,653	2,915	25,070
RR/SIRV Assists	2,747	3,034	25,933
RR/SIRV Activities	2,875	3,151	27,174

## Emergency Vehicles

	<u>Current Month</u>	<u>Last Month</u>	<u>YTD</u>
Number of Events	1	1	21
Number of Incidents	1	1	16
TMC Detection (min.)	0.00	0.00	0.01
TMC Verification (min.)	0.00	0.00	0.17
TMC Response (min.)	7.10	0.00	8.24
RR Dispatch Time (min.)	3.30	0.00	5.07
RR Response Time (min.)	3.80	0.00	2.93
Event Clearance (min.)	72.92	11.02	36.93
Roadway Clearance (min.)	14.23	6.25	26.14
Incident Clearance (min.)	72.92	11.02	44.34
# of Events w/ RR/SIRV	1	1	15
RR/SIRV Assists	1	1	18
RR/SIRV Activities	1	1	19

## Off Ramp Backup

	<u>Last Month</u>	<u>YTD</u>
Number of Events	1	1
Number of Incidents	0	0
TMC Detection (min.)	0.00	0.00
TMC Verification (min.)	0.00	0.00
TMC Response (min.)	12.80	12.80
RR Dispatch Time (min.)	0.37	0.37
RR Response Time (min.)	12.43	12.43
Event Clearance (min.)	17.57	17.57
Roadway Clearance (min.)		
Incident Clearance (min.)		
# of Events w/ RR/SIRV	1	1
RR/SIRV Assists	1	1
RR/SIRV Activities	1	1

## Other

	<u>Current Month</u>	<u>Last Month</u>	<u>YTD</u>
Number of Events	794	864	7,117
Number of Incidents	4	3	37
TMC Detection (min.)	0.02	0.01	0.01
TMC Verification (min.)	0.73	0.89	1.11
TMC Response (min.)	10.49	11.20	10.72
RR Dispatch Time (min.)	2.25	2.23	2.54
RR Response Time (min.)	8.39	9.73	8.60
Event Clearance (min.)	11.63	14.65	17.25
Roadway Clearance (min.)	133.15	4.22	37.14
Incident Clearance (min.)	32.85	8.77	33.93
# of Events w/ RR/SIRV	94	107	1,348
RR/SIRV Assists	99	108	1,378
RR/SIRV Activities	101	108	1,386

## Pedestrian

	<u>Current Month</u>	<u>Last Month</u>	<u>YTD</u>
Number of Events	20	24	169
Number of Incidents	1	0	1
TMC Detection (min.)	0.07	0.03	0.24
TMC Verification (min.)	0.83	1.27	1.35
TMC Response (min.)	8.29	6.33	4.54
RR Dispatch Time (min.)	0.94	0.84	0.98
RR Response Time (min.)	7.33	5.51	3.69
Event Clearance (min.)	16.92	11.86	14.54
Roadway Clearance (min.)	13.55		13.55
Incident Clearance (min.)	13.28		13.28
# of Events w/ RR/SIRV	19	22	156
RR/SIRV Assists	22	22	164
RR/SIRV Activities	22	22	167

## Police Activity

	<u>Current Month</u>	<u>Last Month</u>	<u>YTD</u>
Number of Events	12	17	105
Number of Incidents	7	11	49
TMC Detection (min.)	0.06	0.00	0.07
TMC Verification (min.)	0.46	0.61	1.27
TMC Response (min.)	7.51	11.33	10.84
RR Dispatch Time (min.)	3.85	4.62	3.73
RR Response Time (min.)	4.22	6.73	7.21
Event Clearance (min.)	34.56	52.54	58.16
Roadway Clearance (min.)	36.96	38.95	56.61
Incident Clearance (min.)	41.93	56.16	69.83
# of Events w/ RR/SIRV	9	11	57
RR/SIRV Assists	14	16	90
RR/SIRV Activities	14	16	93

## Road Work - Emergency

	<u>Last Month</u>	<u>YTD</u>
Number of Events	1	15
Number of Incidents	1	14
TMC Detection (min.)	0.78	0.10
TMC Verification (min.)	0.00	6.51
TMC Response (min.)	13.40	15.00
RR Dispatch Time (min.)	5.40	3.82
RR Response Time (min.)	8.00	11.18
Event Clearance (min.)	28.90	89.20
Roadway Clearance (min.)	17.15	87.57
Incident Clearance (min.)	28.90	91.01
# of Events w/ RR/SIRV	1	10
RR/SIRV Assists	2	15
RR/SIRV Activities	2	18

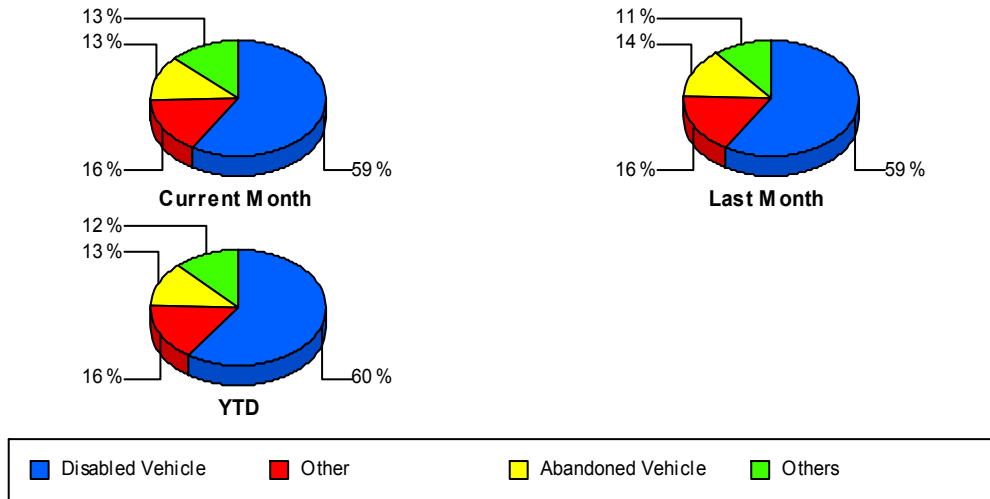
## Visibility

	<u>YTD</u>
Number of Events	7
Number of Incidents	7
TMC Detection (min.)	0.53
TMC Verification (min.)	8.09
TMC Response (min.)	13.24
RR Dispatch Time (min.)	6.93
RR Response Time (min.)	6.31
Event Clearance (min.)	135.09
Roadway Clearance (min.)	228.55
Incident Clearance (min.)	135.09
# of Events w/ RR/SIRV	7
RR/SIRV Assists	18
RR/SIRV Activities	19

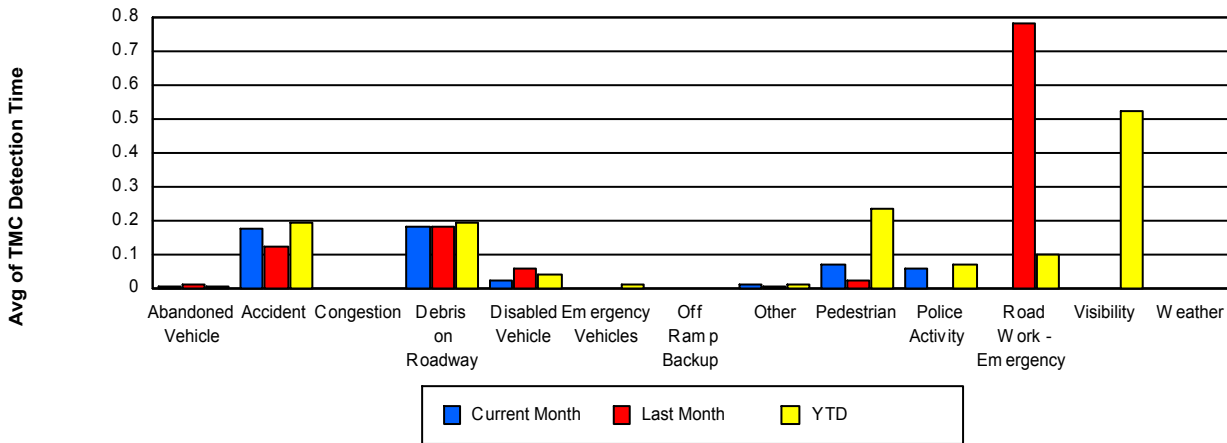
## Weather

	<u>Current Month</u>	<u>YTD</u>
Number of Events	1	1
Number of Incidents	0	0
TMC Detection (min.)	0.00	0.00
TMC Verification (min.)	3.97	3.97
TMC Response (min.)		
RR Dispatch Time (min.)		
RR Response Time (min.)		
Event Clearance (min.)	7.35	7.35
Roadway Clearance (min.)		
Incident Clearance (min.)		
# of Events w/ RR/SIRV	0	0
RR/SIRV Assists	0	0
RR/SIRV Activities	0	0

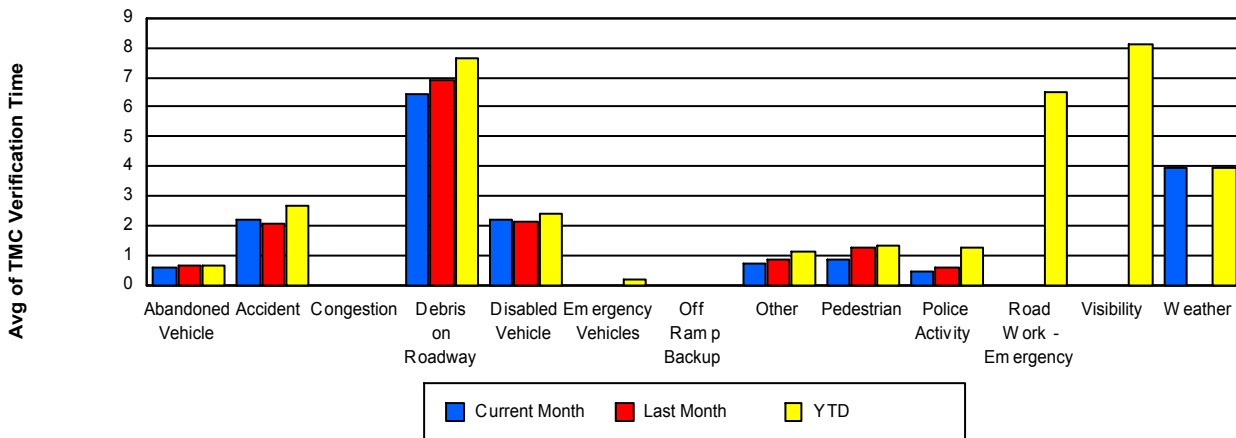
## Number of Events / Event Type



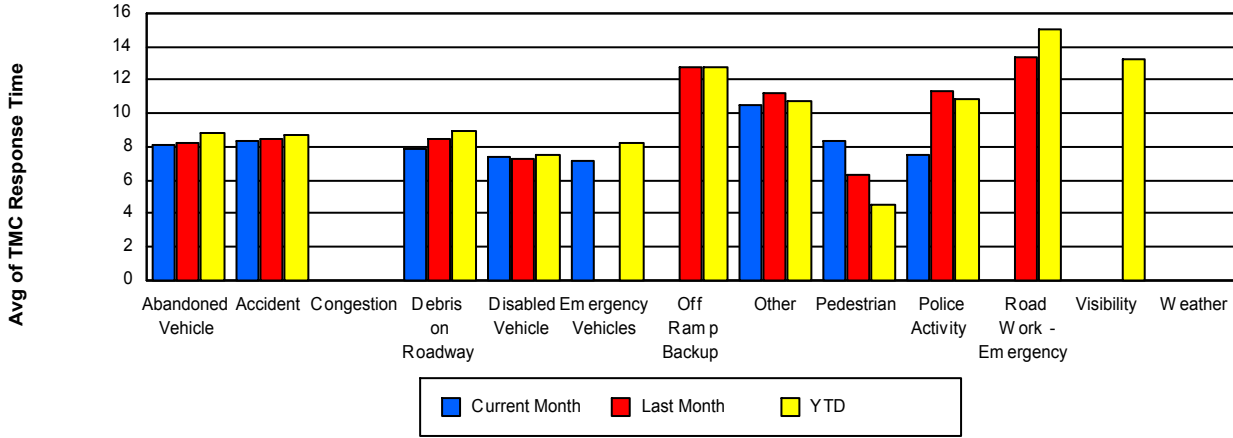
## TMC Detection Time



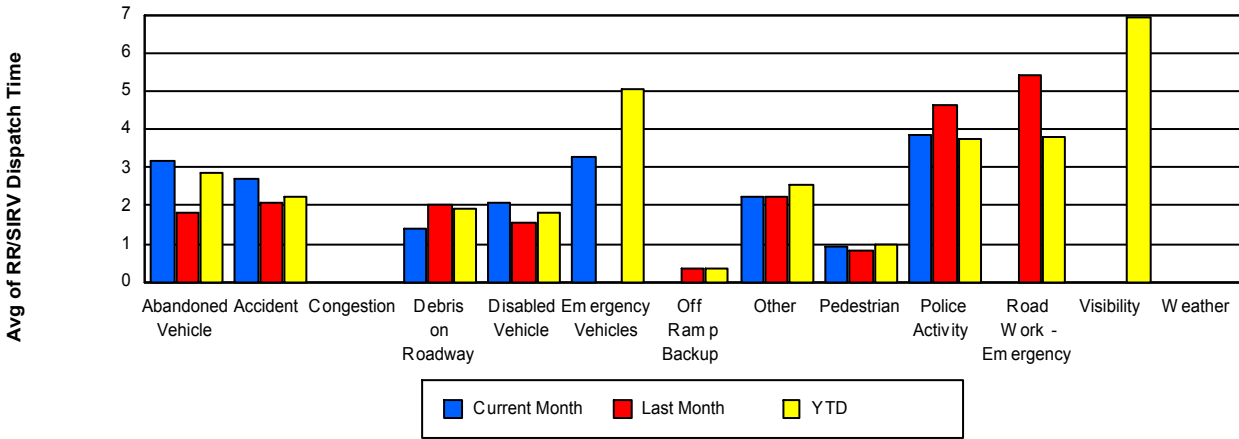
## TMC Verification Time



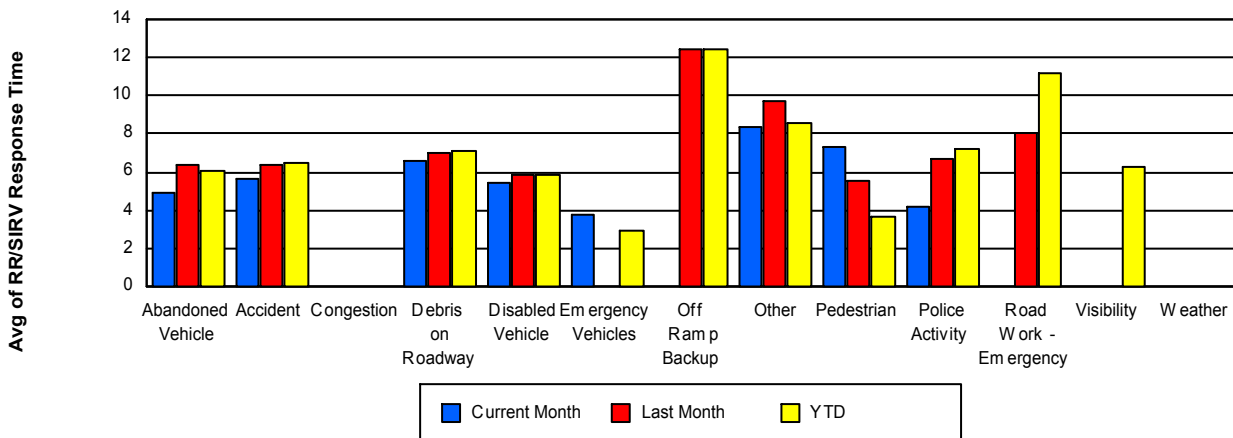
## TMC Response Time



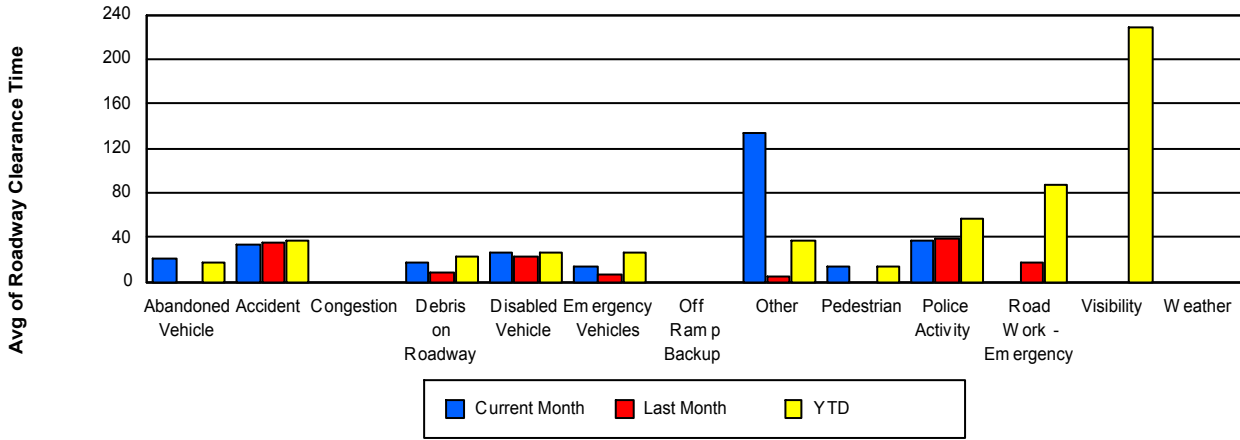
## Road Ranger / SIRV Dispatch Time



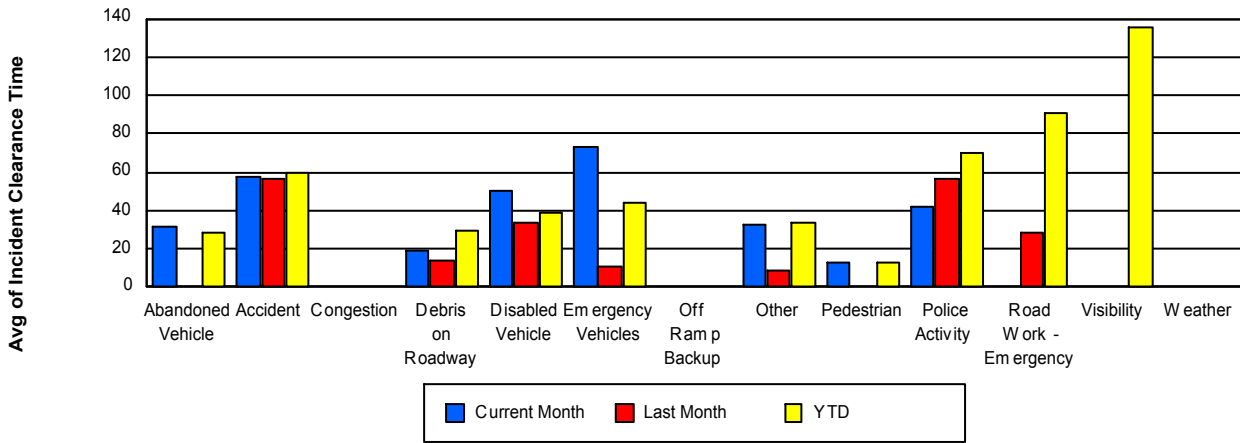
## Road Ranger / SIRV Response Time



## Roadway Clearance Time (2A)



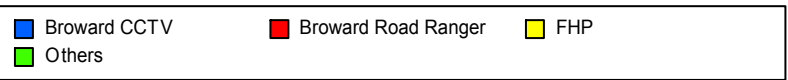
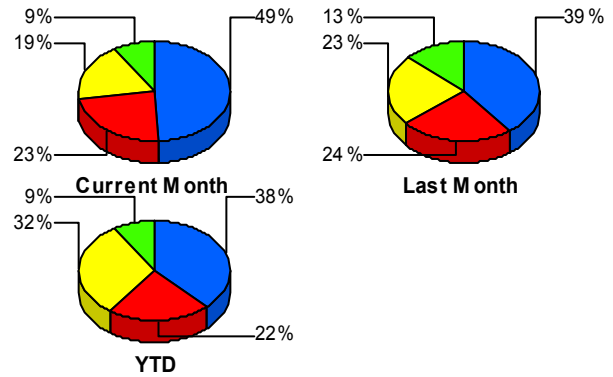
## Incident Clearance Time (3B)



## Incident Detection Methods

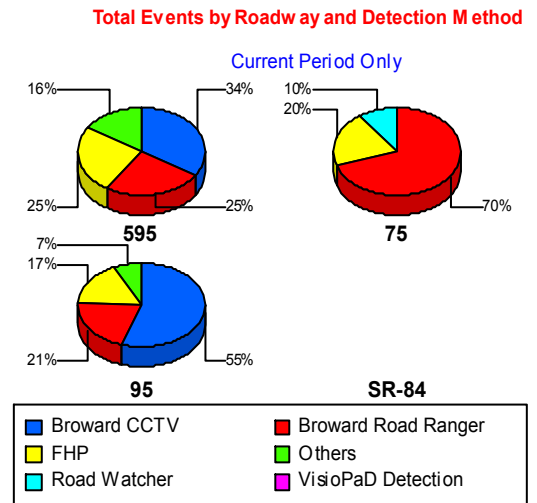
	Current Month	Last Month	YTD
Broward CCTV	<b>124</b>	<b>92</b>	<b>793</b>
Broward Road Ranger	<b>59</b>	<b>56</b>	<b>452</b>
Broward TMC	<b>0</b>	<b>0</b>	<b>1</b>
Broward VideoWall	<b>4</b>	<b>0</b>	<b>4</b>
BSO	<b>1</b>	<b>1</b>	<b>9</b>
District 4	<b>1</b>	<b>6</b>	<b>45</b>
District 6	<b>0</b>	<b>0</b>	<b>3</b>
FDOT Maintenance	<b>1</b>	<b>1</b>	<b>5</b>
FHP	<b>47</b>	<b>54</b>	<b>657</b>
Florida's Turnpike	<b>3</b>	<b>0</b>	<b>4</b>
FLPD	<b>0</b>	<b>0</b>	<b>1</b>
Motorist	<b>5</b>	<b>12</b>	<b>28</b>
Other	<b>0</b>	<b>0</b>	<b>1</b>
Palm Beach Road Rang	<b>1</b>	<b>1</b>	<b>9</b>
Road Watcher	<b>3</b>	<b>3</b>	<b>17</b>
SIRV	<b>1</b>	<b>3</b>	<b>6</b>
SmarTraveler (511)	<b>0</b>	<b>1</b>	<b>20</b>
VisioPaD Detection	<b>2</b>	<b>3</b>	<b>25</b>
<b>Total</b>	<b>252</b>	<b>233</b>	<b>2,080</b>

### Total Incidents by Detection Method



## Incident Detection Methods by Roadway

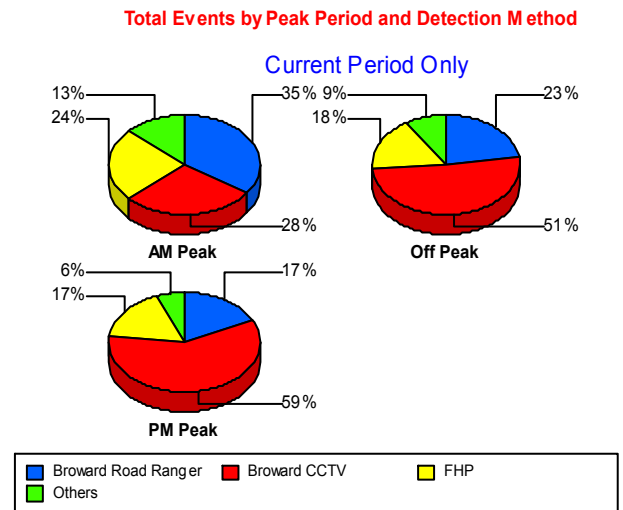
		Current Month	Last Month	YTD
595	Broward CCTV	15	10	108
	Broward Road Ranger	11	13	78
	BSO	0	0	2
	District 4	0	2	8
	FHP	11	10	120
	Florida's Turnpike	3	0	3
	FLPD	0	0	1
	Motorist	3	2	7
	Road Watcher	1	0	2
	SIRV	0	2	3
	SmarTraveler (511)	0	0	3
	VisioPaD Detection	0	1	5
	<b>Total</b>	<b>44</b>	<b>40</b>	<b>340</b>
75	Broward Road Ranger	7	3	58
	BSO	0	0	1
	District 4	0	1	2
	FHP	2	4	65
	Road Watcher	1	0	2
	<b>Total</b>	<b>10</b>	<b>8</b>	<b>128</b>
95	Broward CCTV	109	82	685
	Broward Road Ranger	41	40	316
	Broward TMC	0	0	1
	Broward VideoWall	4	0	4
	BSO	1	1	6
	District 4	1	3	35
	District 6	0	0	3
	FDOT Maintenance	1	1	5
	FHP	34	40	472
	Florida's Turnpike	0	0	1
	Motorist	2	10	21
	Other	0	0	1



		Current Month	Last Month	YTD
95	Palm Beach Road Rang	1	1	9
	Road Watcher	1	3	13
	SIRV	1	1	3
	SmarTraveler (511)	0	1	17
	VisioPaD Detection	2	2	20
	Total	198	185	1,612
Total		252	233	2,080

### Incident Detection Methods by Peak Period

		Current Month	Last Month	YTD
AM Peak	Broward CCTV	13	17	159
	Broward Road Ranger	16	14	121
	District 4	1	2	12
	District 6	0	0	1
	FDOT Maintenance	0	0	1
	FHP	11	11	121
	Florida's Turnpike	0	0	1
	FLPD	0	0	1
	Motorist	2	3	10
	Palm Beach Road Rang	1	0	4
	Road Watcher	2	1	5
	SIRV	0	1	1
	SmarTraveler (511)	0	0	5
	VisioPaD Detection	0	1	6
	Total	46	50	448
	Off Peak	Broward CCTV	70	45
Broward Road Ranger		31	33	230
Broward TMC		0	0	1
Broward VideoWall		4	0	4
BSO		1	1	4
District 4		0	3	24
District 6		0	0	1

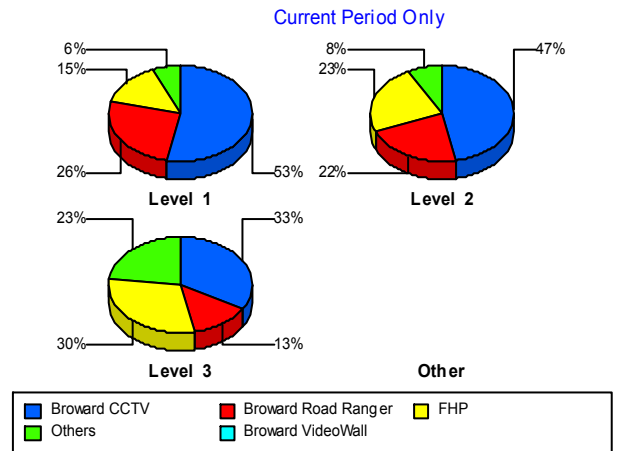


		Current Month	Last Month	YTD
Off Peak	FDOT Maintenance	0	1	2
	FHP	24	34	362
	Florida's Turnpike	3	0	3
	Motorist	2	4	11
	Palm Beach Road Rang	0	0	3
	Road Watcher	1	1	9
	SIRV	0	1	3
	SmarTraveler (511)	0	1	9
	VisioPaD Detection	1	1	12
	Total	137	125	1,090
PM Peak	Broward CCTV	41	30	222
	Broward Road Ranger	12	9	101
	BSO	0	0	5
	District 4	0	1	9
	District 6	0	0	1
	FDOT Maintenance	1	0	2
	FHP	12	9	174
	Motorist	1	5	7
	Other	0	0	1
	Palm Beach Road Rang	0	1	2
	Road Watcher	0	1	3
	SIRV	1	1	2
	SmarTraveler (511)	0	0	6
	VisioPaD Detection	1	1	7
Total	69	58	542	
Total		252	233	2,080

## Incident Detection Methods by Severity

		Current Month	Last Month	YTD
Level 1	Broward CCTV	84	52	490
	Broward Road Ranger	41	39	275
	Broward VideoWall	2	0	2
	BSO	1	0	4
	District 4	1	4	25
	FDOT Maintenance	0	1	2
	FHP	23	28	318
	FLPD	0	0	1
	Motorist	2	11	19
	Other	0	0	1
	Palm Beach Road Rang	1	1	7
	Road Watcher	2	1	9
	SIRV	0	2	3
	SmarTraveler (511)	0	0	10
	VisioPaD Detection	1	0	10
	<b>Total</b>	<b>158</b>	<b>139</b>	<b>1,176</b>
Level 2	Broward CCTV	30	28	223
	Broward Road Ranger	14	13	125
	BSO	0	0	2
	District 4	0	1	17
	District 6	0	0	2
	FDOT Maintenance	1	0	3
	FHP	15	21	225
	Florida's Turnpike	0	0	1
	Motorist	2	1	8
	Palm Beach Road Rang	0	0	1
	Road Watcher	1	1	5
	SIRV	0	1	2
	SmarTraveler (511)	0	1	8
	VisioPaD Detection	1	3	14
	<b>Total</b>	<b>64</b>	<b>70</b>	<b>636</b>

Total Events by Severity and Detection Method



		Current Month	Last Month	YTD
Level 3	Broward CCTV	10	12	80
	Broward Road Ranger	4	4	52
	Broward TMC	0	0	1
	Broward VideoWall	2	0	2
	BSO	0	1	3
	District 4	0	1	3
	District 6	0	0	1
	FHP	9	5	114
	Florida's Turnpike	3	0	3
	Motorist	1	0	1
	Palm Beach Road Rang	0	0	1
	Road Watcher	0	1	3
	SIRV	1	0	1
	SmarTraveler (511)	0	0	2
	VisioPaD Detection	0	0	1
Total	30	24	268	
Total		252	233	2,080

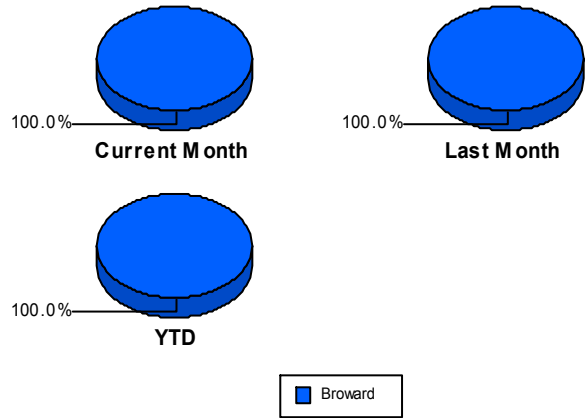
# Road Ranger / SIRV Performance Measures

## Road Ranger / SIRV Performance By County

Values presented are:  
 - Total Events with a RR/SIRV Response  
 - Total RR/SIRV Responses,  
 - Total Activities Performed

	Current Mo	Last Month	YTD
Broward	3,860	4,196	36,320
	4,200	4,540	38,887
	4,367	4,712	40,522

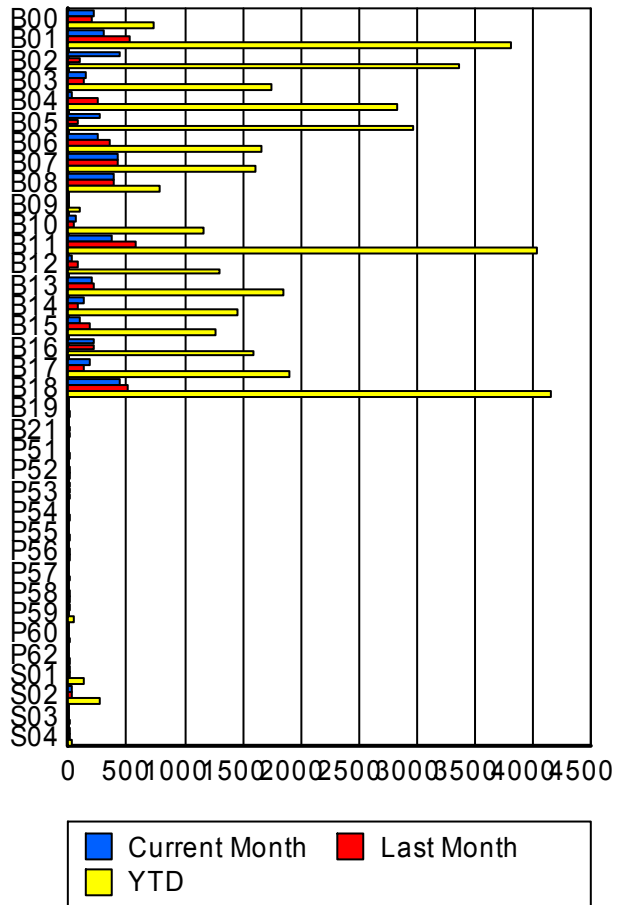
RR/SIRV Responses per County



## Road Ranger / SIRV Performance By Truck

	Current Mo	Last Month	YTD
B00	214	196	721
	215	198	729
	221	207	750
B01	299	531	3,788
	302	532	3,820
	314	553	3,974
B02	433	98	3,336
	439	100	3,370
	466	103	3,537
B03	143	136	1,735
	143	136	1,757
	147	143	1,819
B04	27	241	2,798
	27	244	2,834
	29	249	2,960
B05	256	78	2,943
	261	79	2,975
	272	82	3,114
B06	249	355	1,651
	250	357	1,660
	267	365	1,738
B07	413	414	1,604
	418	417	1,617
	431	431	1,669
B08	388	383	772
	390	389	780
	401	399	801

RR/SIRV Responses per Truck



	Current Mo	Last Month	YTD
B09	0	0	87
	0	0	87
	0	0	90
B10	64	45	1,147
	66	45	1,165
	67	46	1,219
B11	370	571	4,016
	370	572	4,043
	388	594	4,205
B12	27	80	1,293
	28	80	1,304
	28	80	1,355
B13	189	210	1,831
	190	213	1,847
	198	219	1,898
B14	128	72	1,446
	129	72	1,457
	133	75	1,503
B15	92	177	1,263
	93	178	1,272
	98	183	1,326
B16	213	211	1,572
	215	214	1,594
	226	220	1,671
B17	186	132	1,887
	187	135	1,903
	189	139	1,982
B18	429	510	4,118
	435	516	4,160
	448	552	4,330
B19	0	0	2
	0	0	2
	0	0	2
B21	0	2	2
	0	2	2
	0	2	2
P51	0	0	6
	0	0	6
	0	0	6
P52	0	1	3
	0	1	3
	0	1	3
P53	2	4	6
	2	4	6
	2	4	6

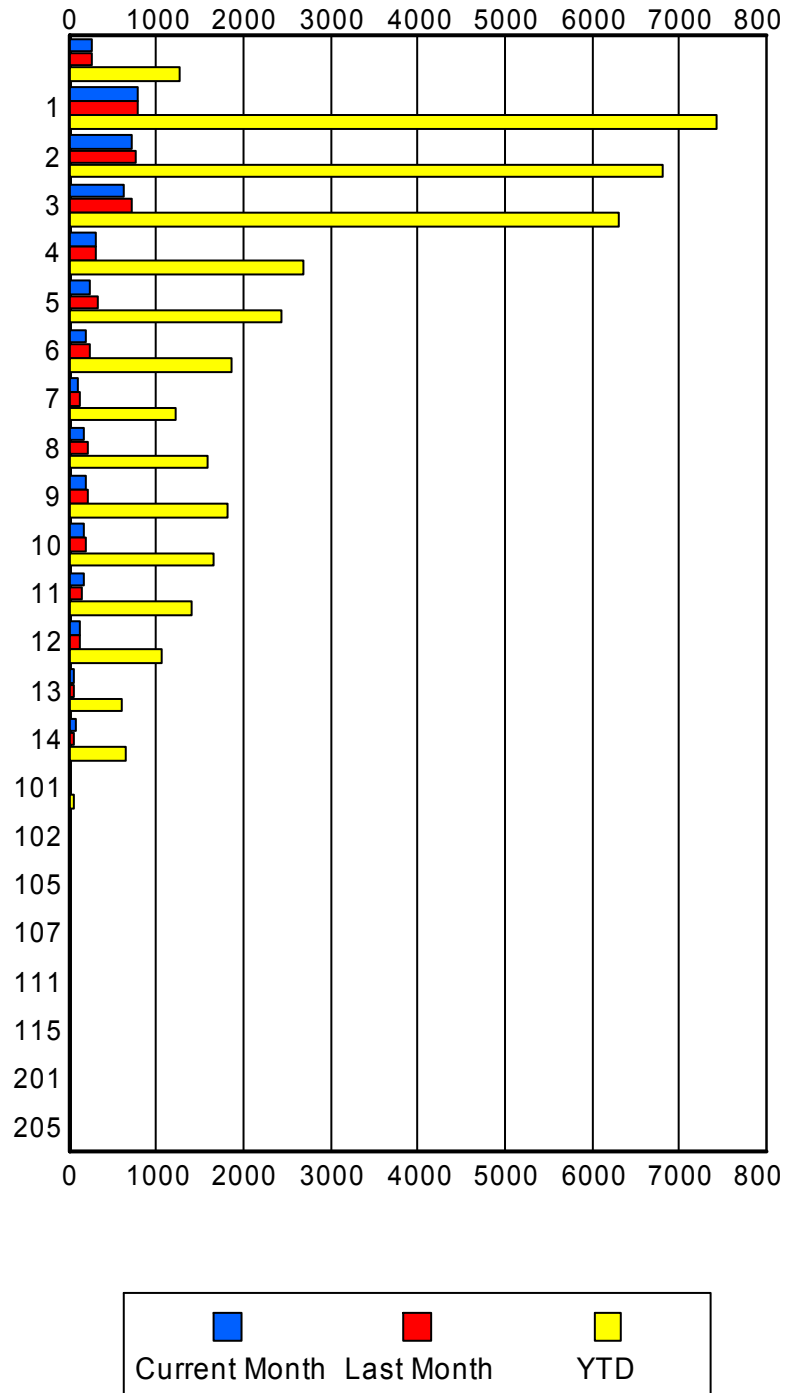
	Current Mo	Last Month	YTD
P54	0 0 0	0 0 0	3 3 5
P55	0 0 0	0 0 0	2 2 2
P56	0 0 0	1 1 1	6 6 6
P57	0 0 0	0 0 0	2 2 2
P58	0 0 0	4 4 6	17 17 20
P59	3 3 3	0 0 0	36 36 41
P60	0 0 0	0 0 0	1 1 1
P62	0 0 0	0 0 0	2 2 2
S01	8 8 9	11 11 15	136 138 170
S02	21 21 22	33 33 36	265 266 292
S03	0 0 0	0 0 0	1 1 1
S04	8 8 8	7 7 7	20 20 20

### Road Ranger / SIRV Performance By Beat

	Current Mo	Last Month	YTD
	233	222	1,124
	264	262	1,259
	272	280	1,344
1	760	766	7,221
	781	787	7,437
	814	811	7,740
2	694	747	6,614
	717	773	6,821
	743	804	7,116
3	613	691	6,123
	637	707	6,302
	660	739	6,583
4	305	306	2,649
	310	308	2,678
	324	315	2,762
5	228	328	2,417
	228	330	2,433
	241	337	2,541
6	199	245	1,844
	200	245	1,858
	211	253	1,937
7	108	115	1,207
	108	116	1,222
	112	119	1,284
8	170	204	1,581
	173	206	1,592
	180	215	1,672
9	191	210	1,798
	193	210	1,812
	200	218	1,875
10	171	195	1,643
	173	196	1,658
	179	213	1,721
11	157	140	1,395
	157	140	1,410
	162	141	1,447
12	125	127	1,052
	125	128	1,063
	130	129	1,106
13	58	58	595
	59	58	603
	60	61	620
14	68	63	650
	70	64	658
	74	65	683

Values presented are:  
 - Total Events with a RR/SIRV Response  
 - Total RR/SIRV Responses,  
 - Total Activities Performed

### RR/SIRV Responses per Beat



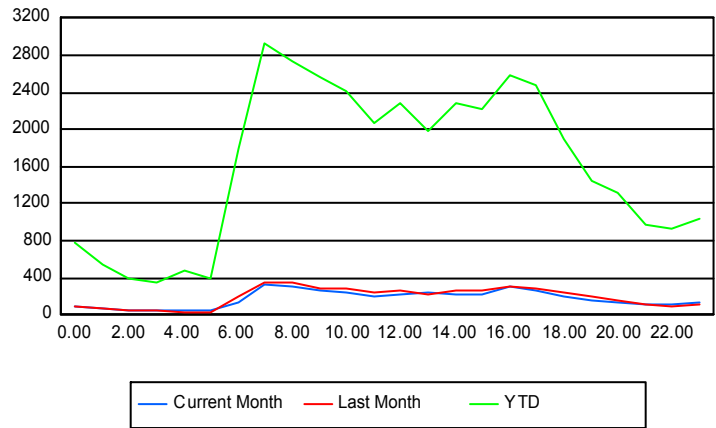
	Current Mo	Last Month	YTD
101	4	7	55
	4	7	55
	4	9	65
102	0	1	4
	0	1	4
	0	1	4
105	0	0	1
	0	0	1
	0	0	1
107	0	0	1
	0	0	1
	0	0	1
111	1	2	17
	1	2	17
	1	2	17
115	0	0	1
	0	0	1
	0	0	1
201	0	0	1
	0	0	1
	0	0	1
205	0	0	1
	0	0	1
	0	0	1

## Road Ranger / SIRV Performance By Time of Day

Values presented are:  
 - Total Events with a RR/SIRV Response  
 - Total RR/SIRV Responses,  
 - Total Activities Performed

	Current Mo	Last Month	YTD
12AM-1AM	75	75	722
	87	86	777
	88	91	806
1AM-2AM	64	65	493
	69	76	542
	75	79	568
2AM-3AM	43	43	367
	47	45	394
	48	47	405
3AM-4AM	40	42	309
	54	54	359
	56	55	374
4AM-5AM	40	32	420
	54	36	485
	57	37	497
5AM-6AM	48	30	349
	55	37	382
	56	38	396
6AM-7AM	117	181	1,656
	136	201	1,794
	140	209	1,873
7AM-8AM	309	325	2,748
	326	353	2,925
	343	366	3,045
8AM-9AM	284	325	2,565
	312	343	2,734
	324	361	2,862
9AM-10AM	245	255	2,405
	264	275	2,567
	279	282	2,665
10AM-11AM	223	254	2,260
	238	281	2,407
	245	295	2,522
11AM-12PM	187	223	1,933
	200	241	2,071
	209	250	2,161
12PM-1PM	205	243	2,123
	219	270	2,277
	226	282	2,382

## Number of Responses / Hour of the Day



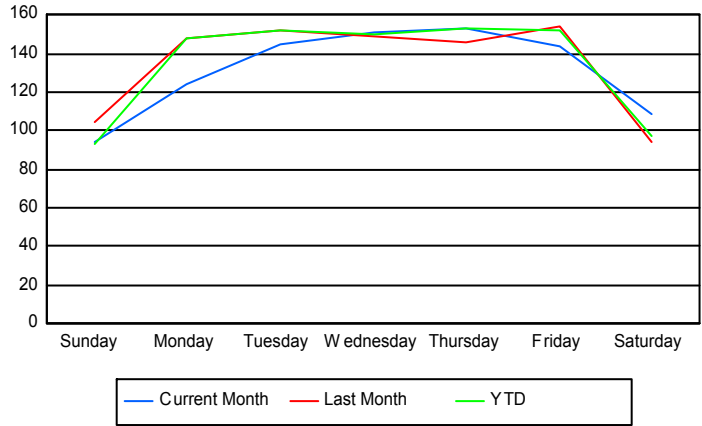
	Current Mo	Last Month	YTD
1PM-2PM	203	201	1,828
	234	228	1,984
	254	232	2,087
2PM-3PM	206	245	2,130
	231	258	2,288
	239	265	2,399
3PM-4PM	214	246	2,094
	226	263	2,227
	233	271	2,316
4PM-5PM	296	281	2,419
	312	302	2,587
	322	309	2,683
5PM-6PM	243	266	2,331
	263	282	2,469
	274	294	2,578
6PM-7PM	193	220	1,781
	203	233	1,904
	209	241	1,972
7PM-8PM	157	182	1,384
	164	189	1,453
	170	200	1,513
8PM-9PM	136	150	1,258
	141	157	1,311
	145	166	1,371
9PM-10PM	105	111	881
	119	114	965
	124	119	999
10PM-11PM	101	89	884
	106	95	940
	106	98	973
11PM-12AM	126	112	980
	140	121	1,045
	145	125	1,075

## Road Ranger / SIRV Performance By Day of Week

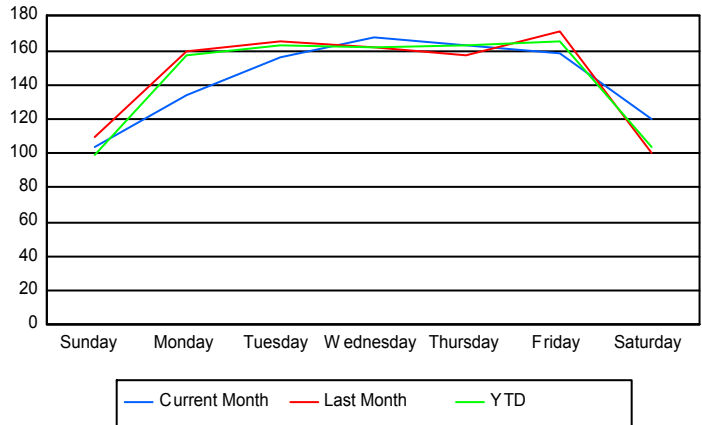
Values presented are:  
 - Total Events with a RR/SIRV Response  
 - Total RR/SIRV Responses,  
 - Total Activities Performed

	Current Mo	Last Month	YTD
Sunday	470	415	3,552
	515	436	3,770
	533	452	3,921
Monday	486	593	5,665
	525	639	6,019
	549	658	6,247
Tuesday	574	607	5,880
	617	660	6,281
	626	699	6,559
Wednesday	605	731	5,776
	667	796	6,223
	691	824	6,500
Thursday	612	716	5,883
	651	769	6,290
	681	792	6,552
Friday	572	769	5,892
	629	845	6,353
	660	878	6,606
Saturday	545	370	3,705
	596	395	3,951
	627	409	4,137

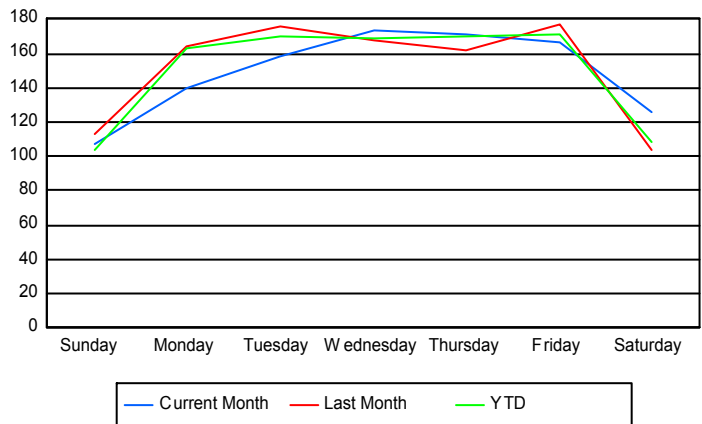
### Avg # of events with a RR/SIRV Response per Day of the Week



### Avg # of RR/SIRV Responses per Day of the Week



### Avg # of RR/SIRV Activities Performed per Day of the Week



### Road Ranger/ SIRV Responses per Time of Day and Day of Week

