



Monthly Performance Measures Report Broward County



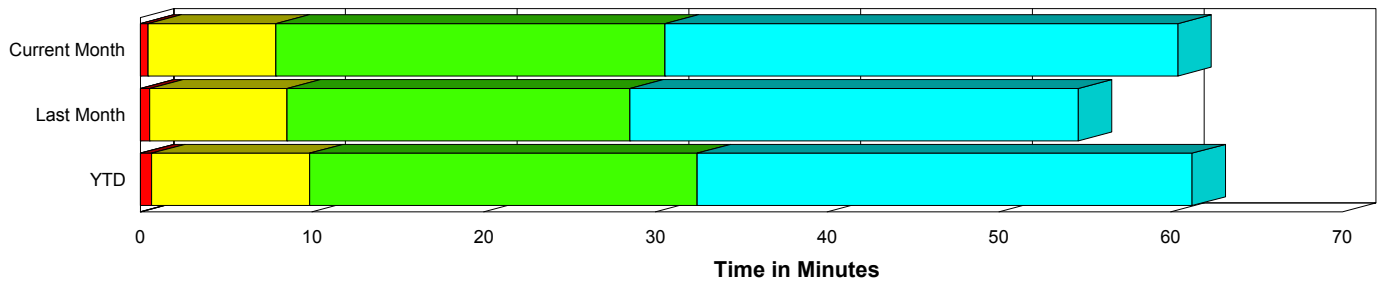
Created on:
September 01, 2009
10:38 pm

Period From Aug 1, 2009 to Aug 31, 2009

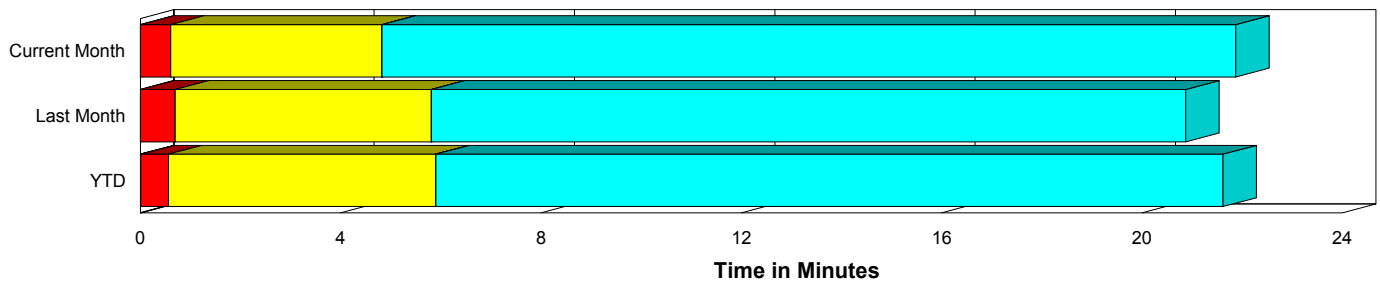
Performance Measures Summary

	Traffic Events (No Lanes Blocked)			Incidents (Lanes Blocked)		
	<u>This Month</u>	<u>Last Month</u>	<u>YTD</u>	<u>This Month</u>	<u>Last Month</u>	<u>YTD</u>
Number of Events	3,534	4,049	32,924	182	192	1,610
TMC Detection (min.)	0.00	0.00	0.01	0.00	0.00	0.00
TMC Verification (min.)	0.60	0.69	0.56	0.44	0.54	0.66
TMC Response (min.)	5.18	6.21	6.37	8.06	8.61	10.08
RR Dispatch Time (min.)	0.73	1.03	1.19	1.82	2.19	3.06
RR Response Time (min.)	4.57	5.39	5.30	6.40	6.54	7.20
Roadway Clearance (min.)				27.47	28.70	31.47
Event Clearance (min.)	22.22	21.28	22.09	57.34	54.79	59.79
# of Events w/ RR/SIRV	2,422	2,953	21,419	113	133	1,054
RR/SIRV Responses	2,422	2,953	21,419	113	133	1,054
RR/SIRV Activities	2,271	2,557	18,400	244	291	2,157

Incident Clearance Time-Line



Traffic Event (Non-Lane Blockage) Time-Line



■ Avg. TMC Detection Time	■ Avg. Time from TMC Response to Roadway Clearance*
■ Avg. Time from TMC Detection to TMC Verification	■ Avg. Time from Roadway Clearance to Incident/Event Clearance**
■ Avg. Time from TMC Verification to TMC Response	

* Roadway clearance equals all travel lanes open

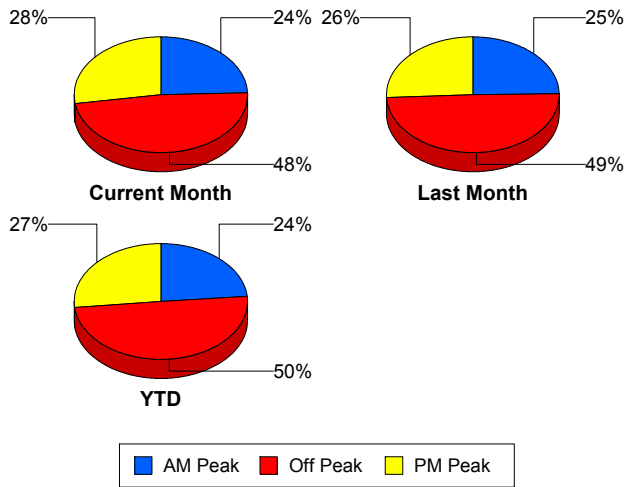
** Incident clearance equals time when last responder has left the scene

Performance Measures by Peak Period

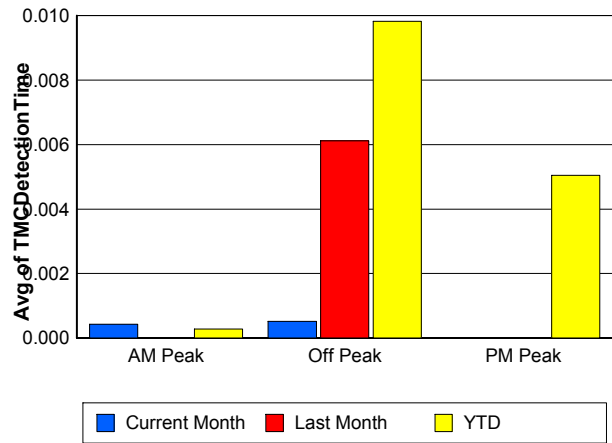
Note: AM peak period is defined as 6am to 10am and PM peak period is defined as 3pm to 7pm.

	AM Peak			Off Peak			PM Peak		
	<u>Current Month</u>	<u>Last Month</u>	<u>YTD</u>	<u>Current Month</u>	<u>Last Month</u>	<u>YTD</u>	<u>Current Month</u>	<u>Last Month</u>	<u>YTD</u>
Number of Events	906	1,050	8,136	1,787	2,090	17,206	1,023	1,101	9,192
Number of Incidents	36	36	354	93	98	797	53	58	459
TMC Detection (min.)	0.00	0.00	0.00	0.00	0.01	0.01	0.00	0.00	0.01
TMC Verification (min.)	0.49	0.65	0.50	0.53	0.63	0.49	0.80	0.84	0.76
TMC Response (min.)	4.92	5.93	6.05	5.73	7.15	7.41	5.17	5.63	6.04
RR Dispatch Time (min.)	0.71	0.77	0.99	1.01	1.45	1.83	0.57	0.87	0.84
RR Response Time (min.)	4.33	5.26	5.15	4.86	6.02	5.68	4.70	4.89	5.31
Event Clearance (min.)	21.38	21.20	21.55	27.43	25.01	26.75	20.09	20.08	20.42
Roadway Clearance (min.)	32.67	18.34	26.51	27.98	30.96	36.42	23.05	31.32	26.67
Incident Clearance (min.)	67.74	44.70	55.94	61.07	57.34	63.92	43.78	56.79	55.60
# of Events w/ RR/SIRV	734	898	6,552	984	1,262	8,945	817	926	6,976
RR/SIRV Responses	734	898	6,552	984	1,262	8,945	817	926	6,976
RR/SIRV Activities	733	839	6,246	958	1,127	7,881	824	882	6,430

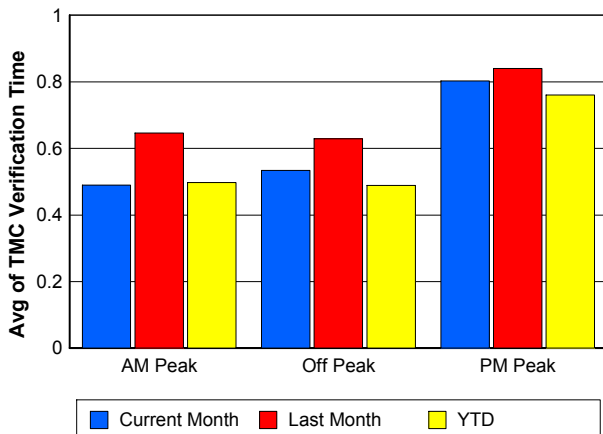
Number of Events / Peak Period



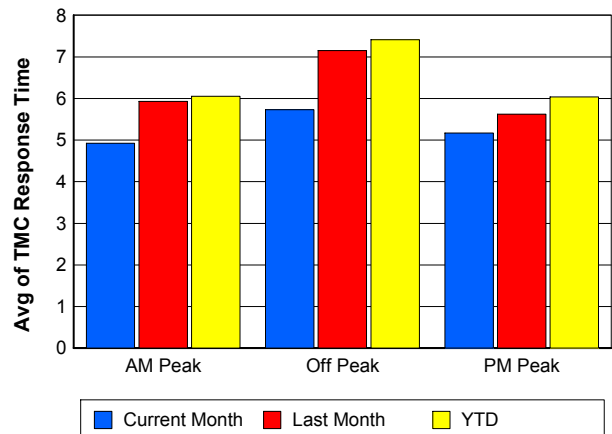
TMC Detection Time



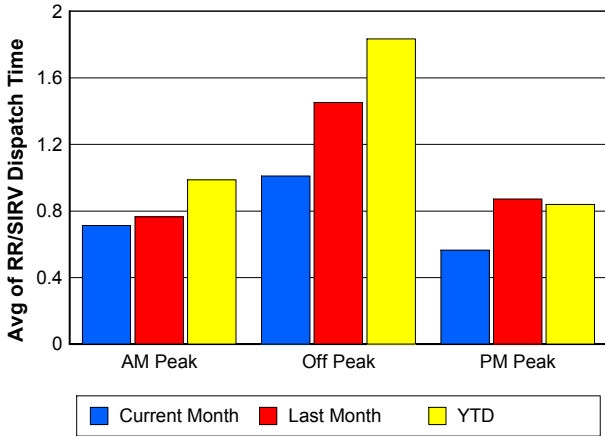
TMC Verification Time



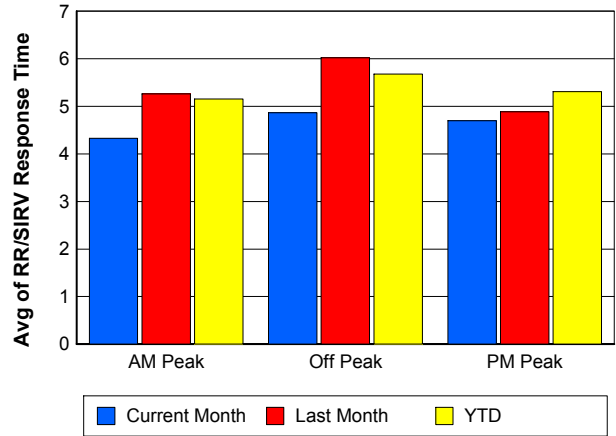
TMC Response Time



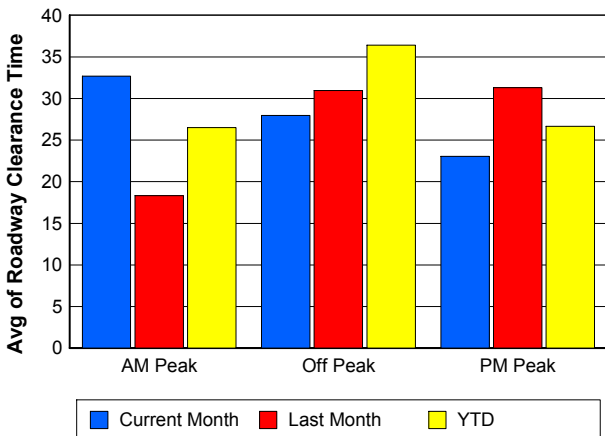
Road Ranger / SIRV Dispatch Time



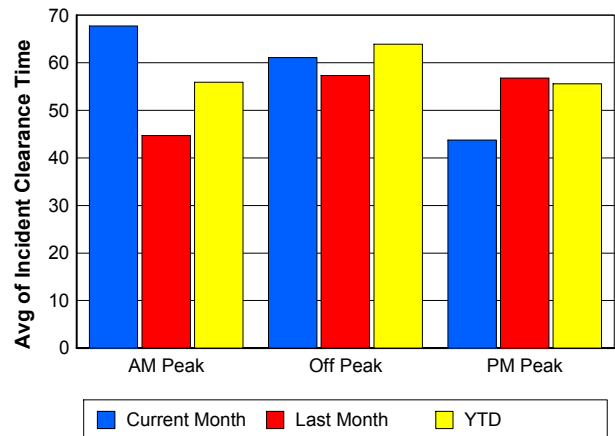
Road Ranger / SIRV Response Time



Roadway Clearance Time (2A)



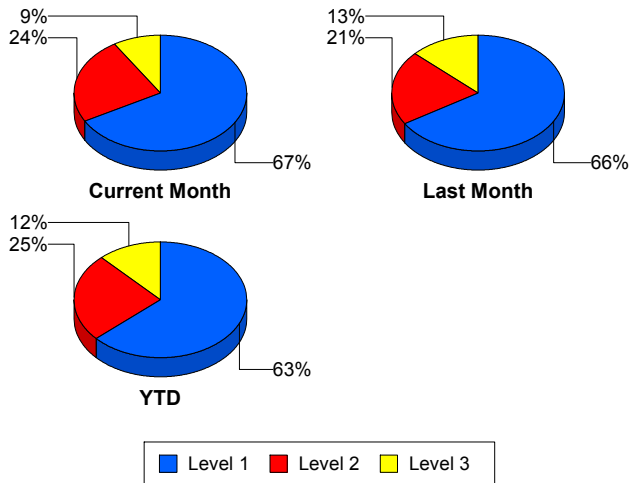
Incident Clearance Time (3B)



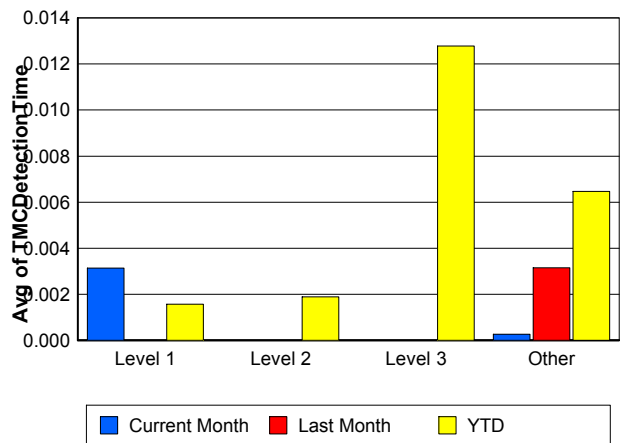
Performance Measures by Severity

	Level 1			Level 2			Level 3			Other		
	<u>This Month</u>	<u>Last Month</u>	<u>YTD</u>	<u>This Month</u>	<u>Last Month</u>	<u>YTD</u>	<u>This Month</u>	<u>Last Month</u>	<u>YTD</u>	<u>This Month</u>	<u>Last Month</u>	<u>YTD</u>
Number of Events	122	127	1,020	44	40	397	16	25	193	3,534	4,049	32,924
Number of Incidents	122	127	1,020	44	40	397	16	25	193	0	0	0
TMC Detection (min.)	0.00	0.00	0.00	0.00	0.00	0.00	0.00	0.00	0.01	0.00	0.00	0.01
TMC Verification (min.)	0.38	0.28	0.42	0.72	1.36	0.91	0.13	0.59	1.40	0.60	0.69	0.56
TMC Response (min.)	6.62	6.26	7.08	7.11	10.61	9.97	15.51	17.72	24.42	5.18	6.21	6.37
RR Dispatch Time (min.)	1.42	1.65	1.63	1.52	1.53	3.10	4.09	5.18	9.21	0.73	1.03	1.19
RR Resp. Time (min.)	5.30	4.60	5.54	5.60	9.08	7.31	12.22	13.09	14.95	4.57	5.39	5.30
Event Clearance (min.)	46.51	42.86	46.34	71.40	66.94	72.55	100.55	95.47	104.37	22.22	21.28	22.09
Roadway Clear. (min.)	15.22	13.61	14.23	46.40	47.54	48.93	68.85	75.20	86.65			
Incident Clearance (min.)	46.51	42.86	46.34	71.40	66.94	72.55	100.55	95.47	104.37			
# of Events w/ RR/SIRV	76	92	706	21	20	186	16	21	162	2,422	2,953	21,419
RR/SIRV Responses	76	92	706	21	20	186	16	21	162	2,422	2,953	21,419
RR/SIRV Activities	141	167	1,252	61	66	545	42	58	360	2,271	2,557	18,400

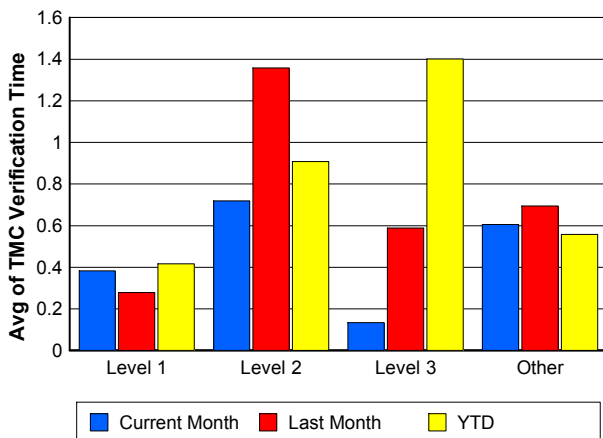
Number of Events / Severity



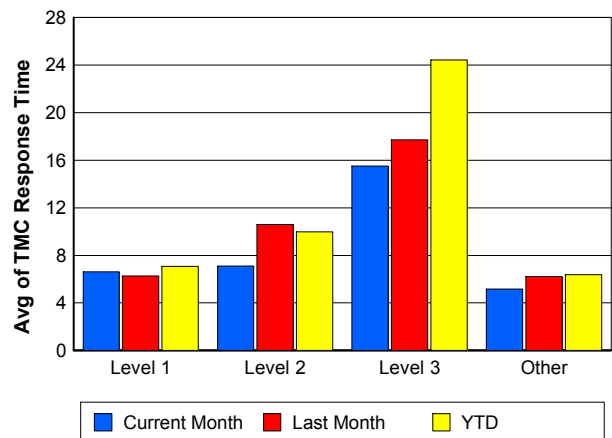
TMC Detection Time



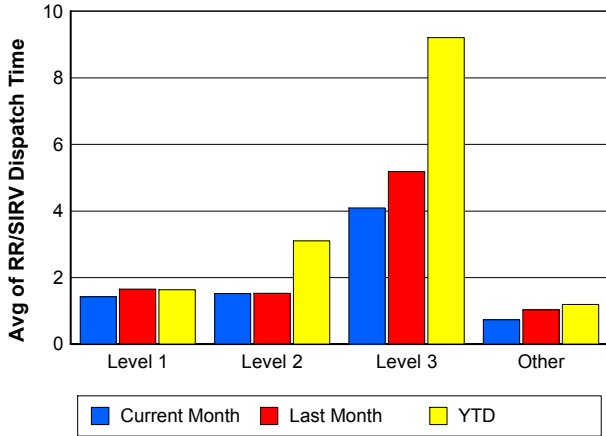
TMC Verification Time



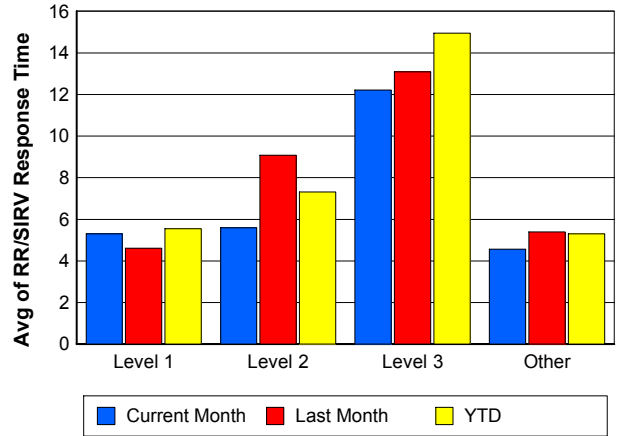
TMC Response Time



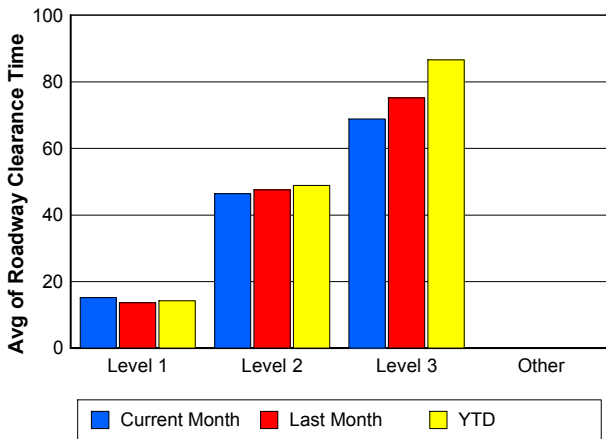
Road Ranger / SIRV Dispatch Time



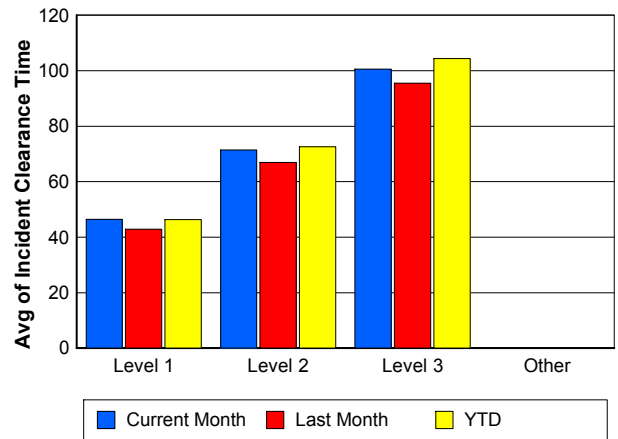
Road Ranger / SIRV Response Time



Roadway Clearance Time (2A)



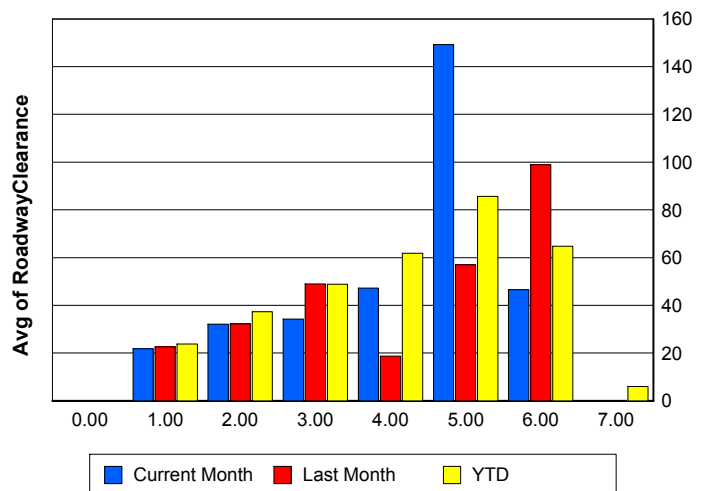
Incident Clearance Time (3B)



Roadway Clearance by Maximum Number of Lanes Blocked

	Current Month	Last Month	YTD
0			
1	21.79	22.58	23.82
2	32.07	32.28	37.27
3	34.20	48.99	48.84
4	47.17	18.71	61.84
5	149.23	56.94	85.59
6	46.62	98.87	64.72
7	0.00	0.00	5.97

Roadway Clearance Time (2A)



Performance Measures by Roadway

595

	<u>Current Month</u>	<u>Last Month</u>	<u>YTD</u>
Number of Events	154	493	4,227
Number of Incidents	9	28	258
TMC Detection (min.)	0.00	0.00	0.01
TMC Verification (min.)	1.03	1.18	0.75
TMC Response (min.)	6.24	7.11	6.41
RR Dispatch Time (min.)	0.71	1.19	1.10
RR Resp. Time (min.)	5.61	6.04	5.40
Event Clearance (min.)	17.96	21.50	21.36
Roadway Clear. (min.)	22.49	33.59	30.49
Incident Clearance (min.)	39.53	47.41	53.18
# of Events w/ RR/SIRV	110	367	2,923
RR/SIRV Responses	110	367	2,923
RR/SIRV Activities	106	349	2,695

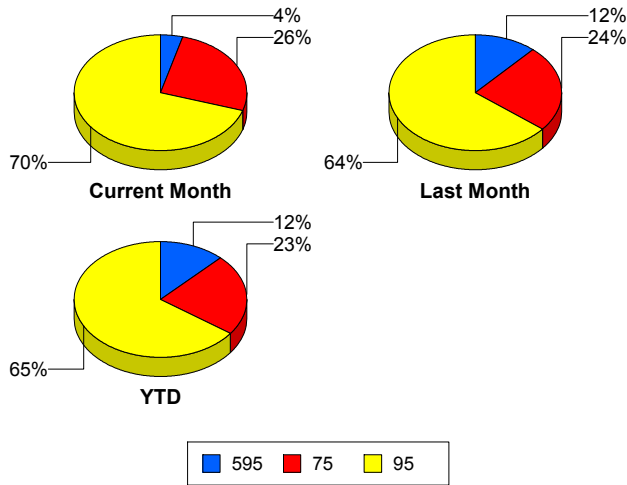
75

	<u>Current Month</u>	<u>Last Month</u>	<u>YTD</u>
Number of Events	965	1,027	7,871
Number of Incidents	22	18	149
TMC Detection (min.)	0.00	0.00	0.00
TMC Verification (min.)	0.57	0.72	0.67
TMC Response (min.)	5.32	7.54	7.70
RR Dispatch Time (min.)	0.77	1.30	1.21
RR Resp. Time (min.)	4.63	6.78	6.61
Event Clearance (min.)	25.19	24.20	26.02
Roadway Clear. (min.)	44.98	35.40	57.10
Incident Clearance (min.)	87.11	60.84	84.86
# of Events w/ RR/SIRV	603	720	4,975
RR/SIRV Responses	603	720	4,975
RR/SIRV Activities	598	628	4,278

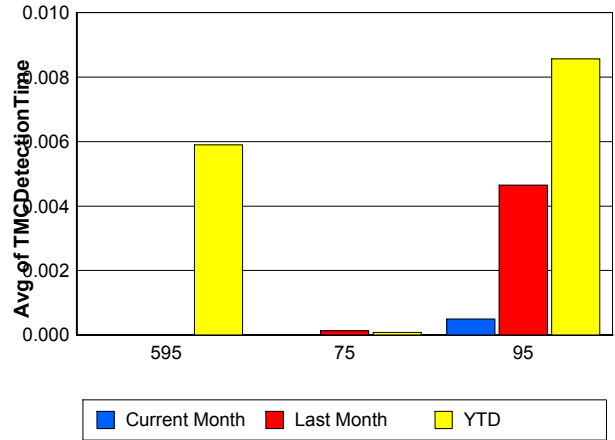
95

	<u>Current Month</u>	<u>Last Month</u>	<u>YTD</u>
Number of Events	2,597	2,721	22,436
Number of Incidents	151	146	1,203
TMC Detection (min.)	0.00	0.00	0.01
TMC Verification (min.)	0.58	0.59	0.49
TMC Response (min.)	5.25	5.77	6.23
RR Dispatch Time (min.)	0.79	0.97	1.34
RR Resp. Time (min.)	4.61	4.88	5.02
Event Clearance (min.)	23.82	22.49	23.55
Roadway Clear. (min.)	25.22	26.94	28.50
Incident Clearance (min.)	54.04	55.47	58.10
# of Events w/ RR/SIRV	1,822	1,999	14,575
RR/SIRV Responses	1,822	1,999	14,575
RR/SIRV Activities	1,811	1,871	13,584

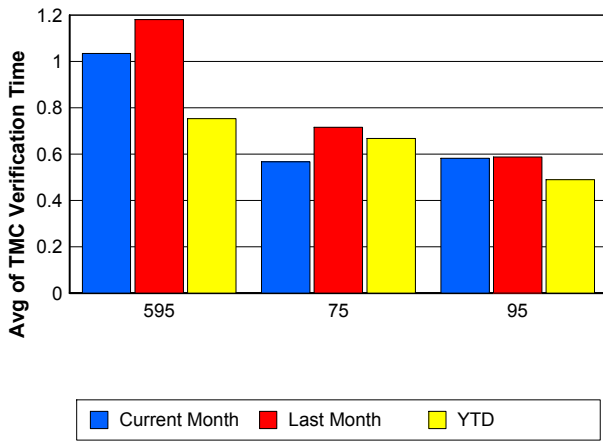
Number of Events / Roadway



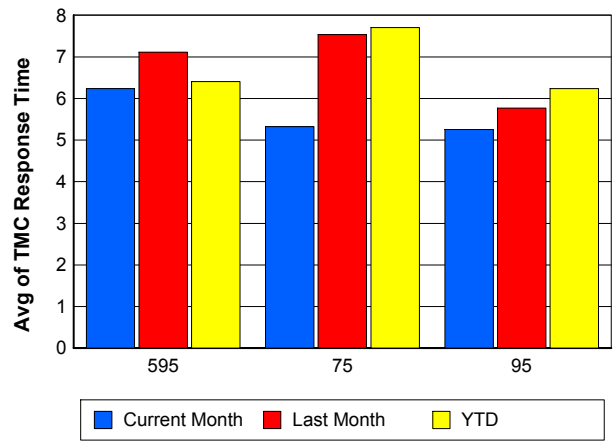
TMC Detection Time



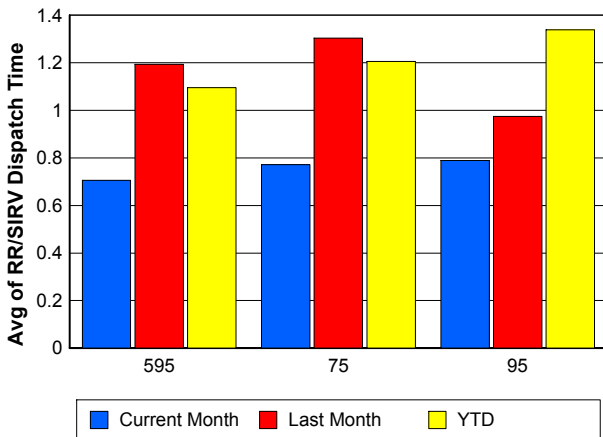
TMC Verification Time



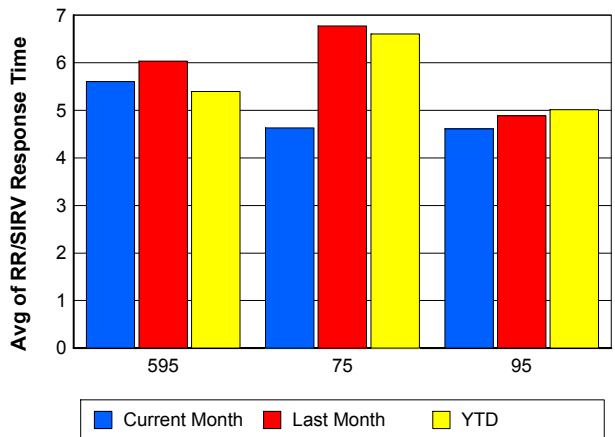
TMC Response Time



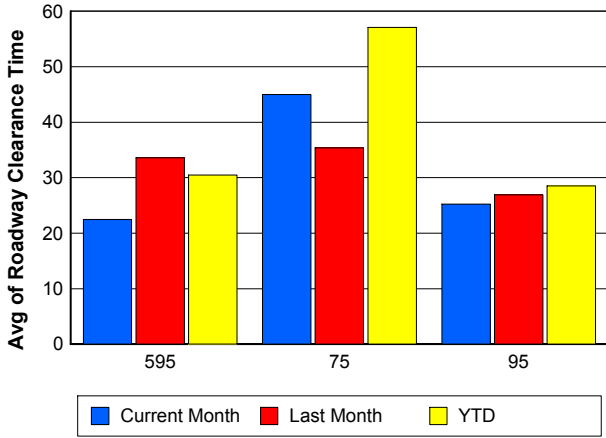
Road Ranger / SIRV Dispatch Time



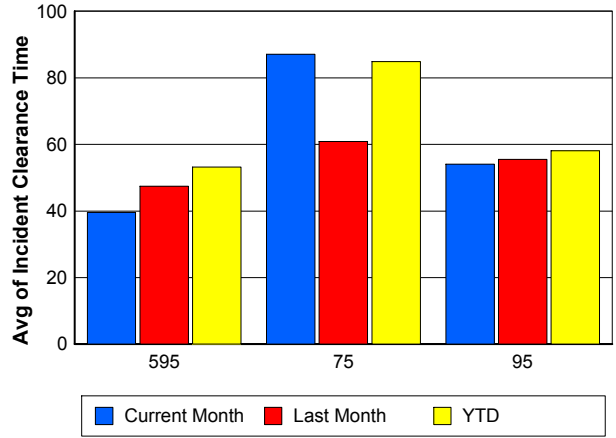
Road Ranger / SIRV Response Time



Roadway Clearance Time (2A)



Incident Clearance Time (3B)



Performance Measures by Event Type

Accident

	<u>Current Month</u>	<u>Last Month</u>	<u>YTD</u>
Number of Events	270	287	2,396
Number of Incidents	141	136	1,166
TMC Detection (min.)	0.00	0.00	0.01
TMC Verification (min.)	0.65	0.78	0.73
TMC Response (min.)	7.73	8.24	8.61
RR Dispatch Time (min.)	1.29	1.48	1.64
RR Response Time (min.)	6.53	6.85	7.07
Event Clearance (min.)	55.77	51.66	55.34
Roadway Clearance (min.)	29.14	28.64	32.84
Incident Clearance (min.)	64.98	60.76	66.46
# of Events w/ RR/SIRV	170	209	1,656
RR/SIRV Assists	170	209	1,656
RR/SIRV Activities	283	330	2,567

Debris on Roadway

	<u>Current Month</u>	<u>Last Month</u>	<u>YTD</u>
Number of Events	138	153	1,003
Number of Incidents	1	5	22
TMC Detection (min.)	0.00	0.00	0.12
TMC Verification (min.)	3.64	3.47	3.73
TMC Response (min.)	7.70	7.72	7.46
RR Dispatch Time (min.)	0.88	0.74	0.88
RR Response Time (min.)	6.81	7.03	6.59
Event Clearance (min.)	13.14	9.76	11.57
Roadway Clearance (min.)	1.37	19.42	22.45
Incident Clearance (min.)	16.67	24.16	27.46
# of Events w/ RR/SIRV	121	141	915
RR/SIRV Assists	121	141	915
RR/SIRV Activities	120	143	942

Disabled Vehicle

	<u>Current Month</u>	<u>Last Month</u>	<u>YTD</u>
Number of Events	2,447	2,599	20,310
Number of Incidents	21	30	244
TMC Detection (min.)	0.00	0.00	0.00
TMC Verification (min.)	0.59	0.78	0.65
TMC Response (min.)	4.98	6.10	6.12
RR Dispatch Time (min.)	0.61	0.86	1.07
RR Response Time (min.)	4.41	5.27	5.08
Event Clearance (min.)	25.45	25.53	26.90
Roadway Clearance (min.)	15.54	15.10	19.05
Incident Clearance (min.)	23.33	25.63	35.70
# of Events w/ RR/SIRV	1,910	2,141	15,564
RR/SIRV Assists	1,910	2,141	15,564
RR/SIRV Activities	1,988	2,186	15,929

Emergency Vehicles

	<u>Current Month</u>	<u>Last Month</u>	<u>YTD</u>
Number of Events	12	3	54
Number of Incidents	6	3	40
TMC Detection (min.)	0.00	0.00	0.00
TMC Verification (min.)	0.00	0.00	0.72
TMC Response (min.)	15.35	9.05	15.56
RR Dispatch Time (min.)	9.43	1.30	10.01
RR Response Time (min.)	1.28	7.75	4.53
Event Clearance (min.)	22.39	25.92	43.83
Roadway Clearance (min.)	14.64	22.53	44.77
Incident Clearance (min.)	21.17	25.92	50.51
# of Events w/ RR/SIRV	4	1	29
RR/SIRV Assists	4	1	29
RR/SIRV Activities	3	2	45

Other

	<u>Current Month</u>	<u>Last Month</u>	<u>YTD</u>
Number of Events	822	1,165	10,419
Number of Incidents	3	2	25
TMC Detection (min.)	0.00	0.00	0.00
TMC Verification (min.)	0.07	0.10	0.06
TMC Response (min.)	4.28	5.25	8.89
RR Dispatch Time (min.)	1.37	1.80	1.87
RR Response Time (min.)	3.43	4.34	6.42
Event Clearance (min.)	10.65	10.82	11.38
Roadway Clearance (min.)	24.09	157.32	32.72
Incident Clearance (min.)	34.63	169.15	38.48
# of Events w/ RR/SIRV	315	573	4,122
RR/SIRV Assists	315	573	4,122
RR/SIRV Activities	98	154	826

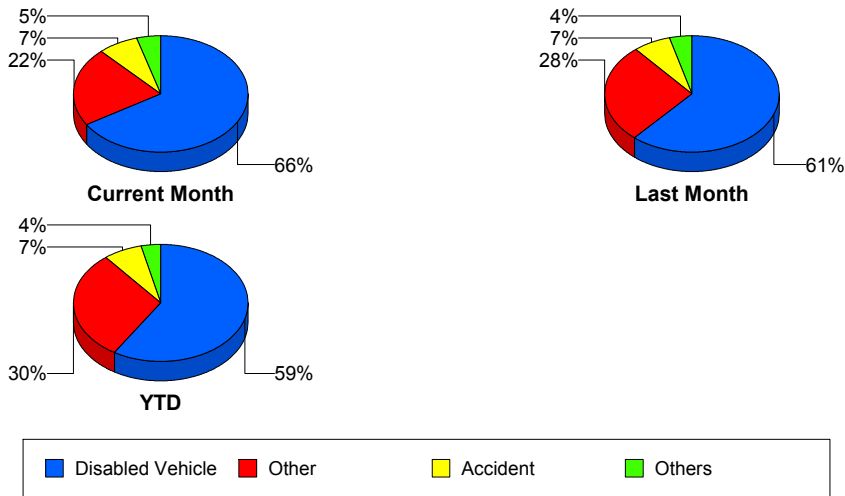
Police Activity

	<u>Current Month</u>	<u>Last Month</u>	<u>YTD</u>
Number of Events	12	8	149
Number of Incidents	4	4	48
TMC Detection (min.)	0.00	0.00	0.00
TMC Verification (min.)	2.20	0.05	0.34
TMC Response (min.)	7.13	47.63	14.29
RR Dispatch Time (min.)	1.82	2.07	4.69
RR Response Time (min.)	5.77	44.18	9.61
Event Clearance (min.)	16.22	42.92	34.43
Roadway Clearance (min.)	33.50	57.84	40.70
Incident Clearance (min.)	35.70	66.12	50.14
# of Events w/ RR/SIRV	5	4	48
RR/SIRV Assists	5	4	48
RR/SIRV Activities	7	1	56

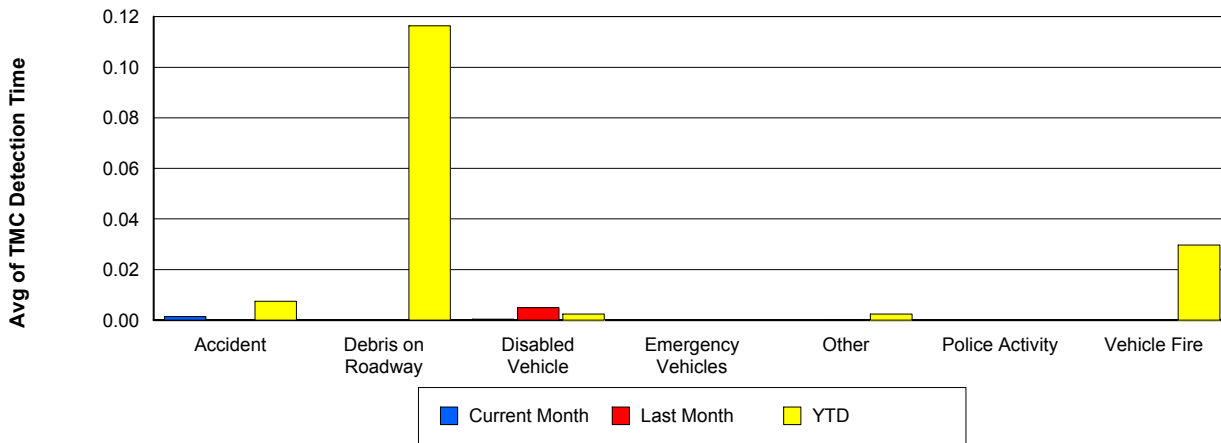
Vehicle Fire

	<u>Current Month</u>	<u>Last Month</u>	<u>YTD</u>
Number of Events	7	17	83
Number of Incidents	6	12	65
TMC Detection (min.)	0.00	0.00	0.03
TMC Verification (min.)	0.24	0.11	1.21
TMC Response (min.)	8.13	9.02	11.12
RR Dispatch Time (min.)	2.34	1.62	2.47
RR Response Time (min.)	5.79	7.41	9.13
Event Clearance (min.)	71.68	47.86	59.39
Roadway Clearance (min.)	44.83	37.60	40.91
Incident Clearance (min.)	66.68	57.68	62.82
# of Events w/ RR/SIRV	3	12	53
RR/SIRV Assists	3	12	53
RR/SIRV Activities	10	27	113

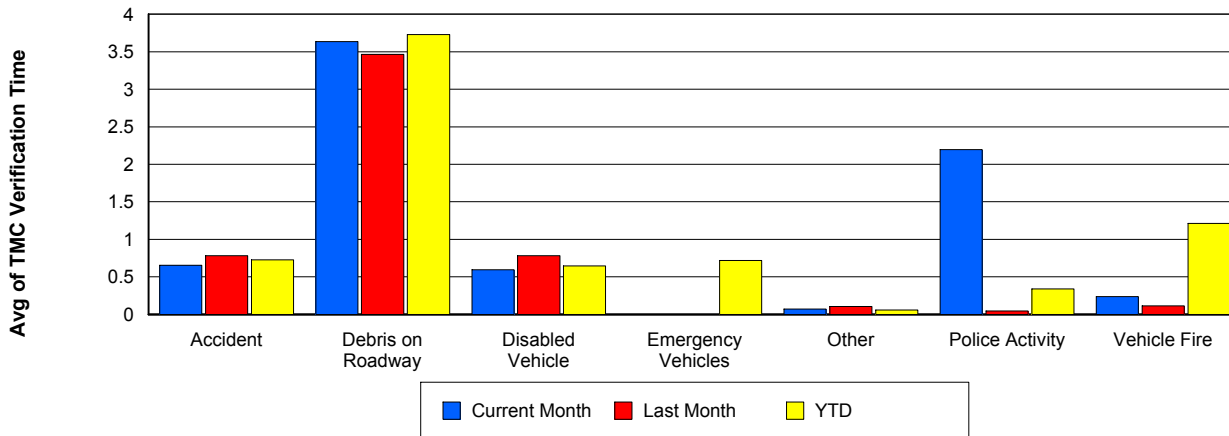
Number of Events / Event Type



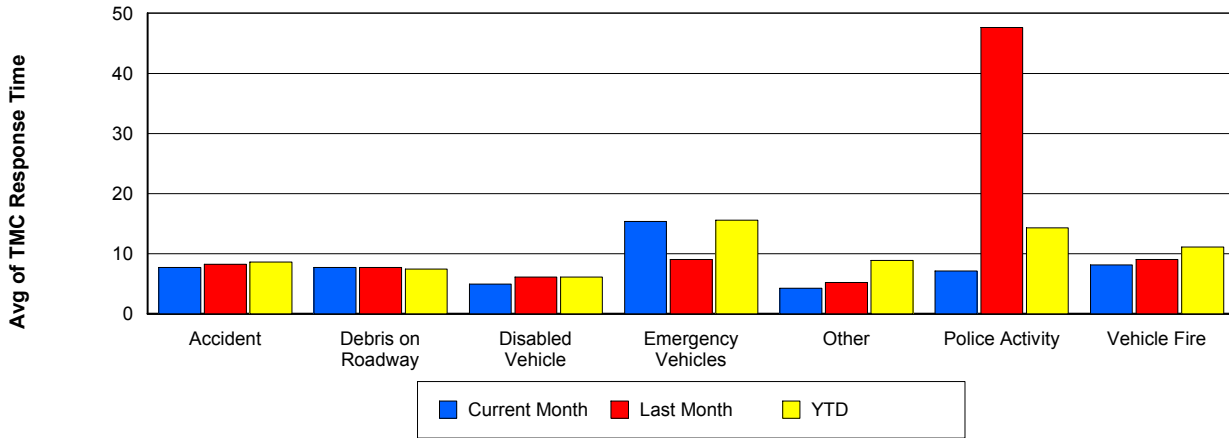
TMC Detection Time



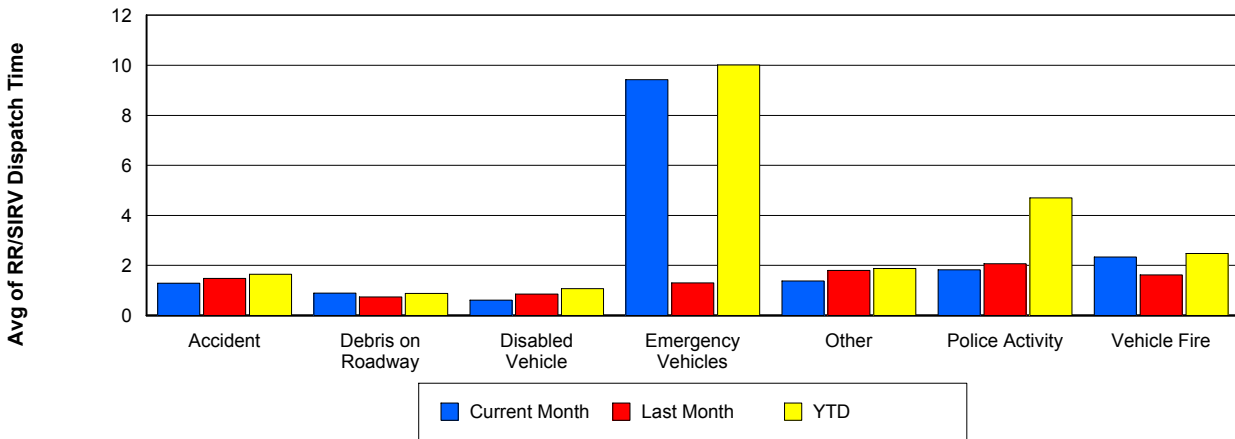
TMC Verification Time



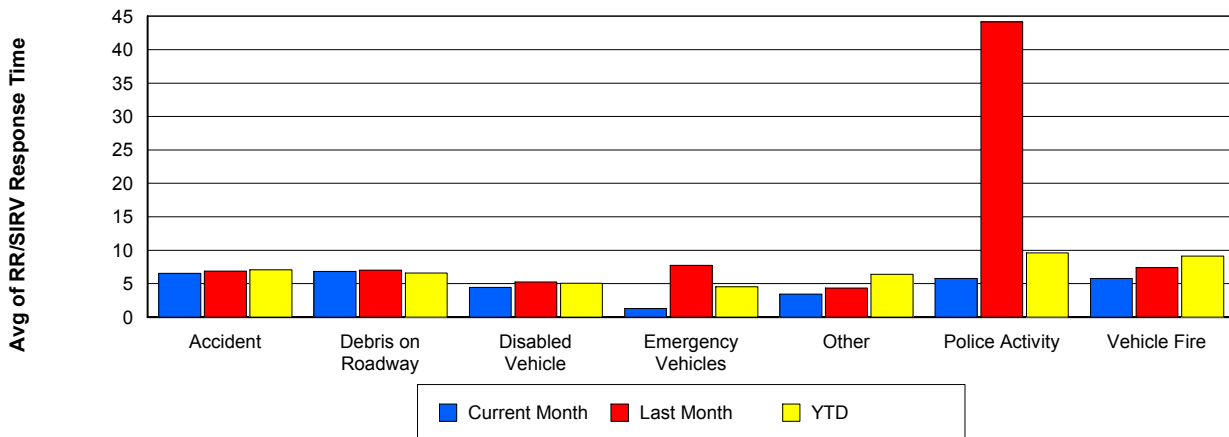
TMC Response Time



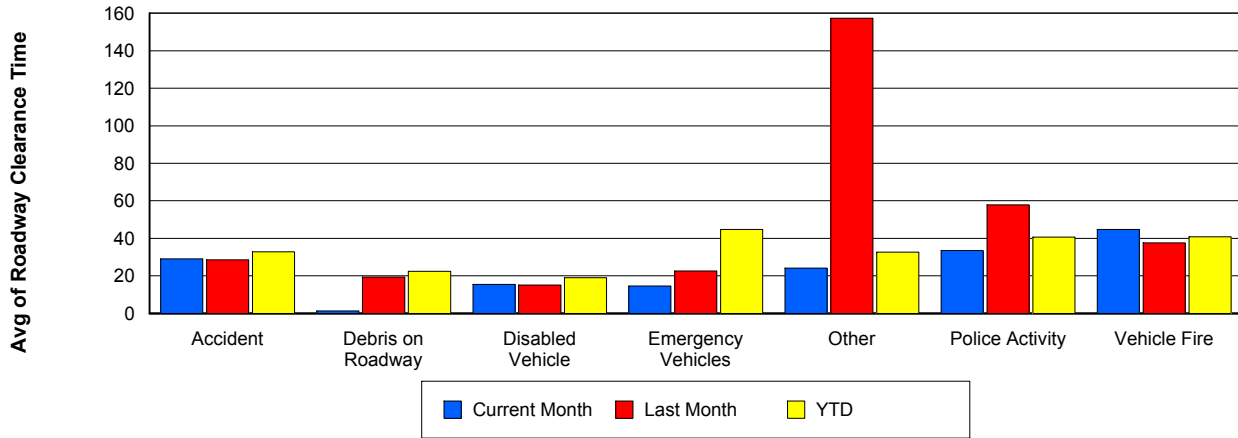
Road Ranger / SIRV Dispatch Time



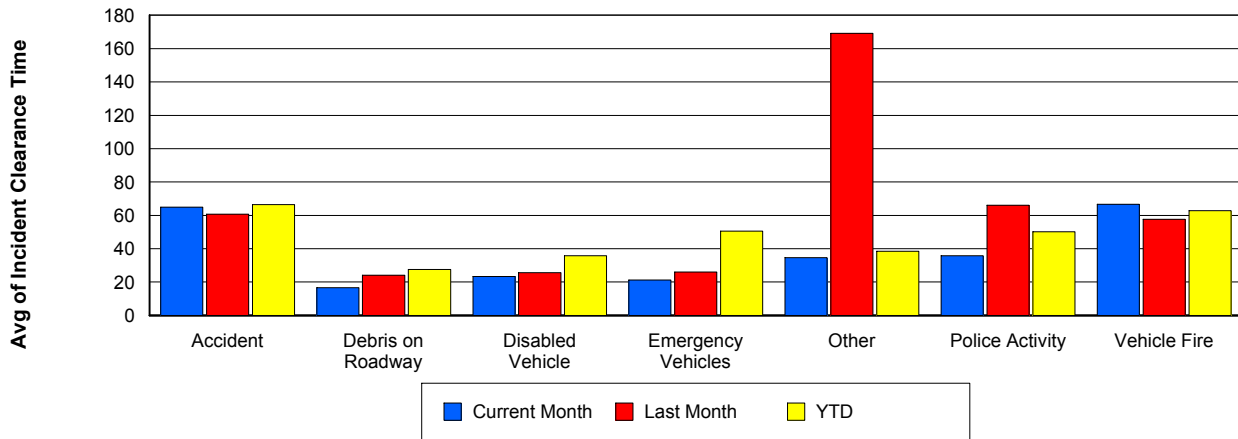
Road Ranger / SIRV Response Time



Roadway Clearance Time (2A)



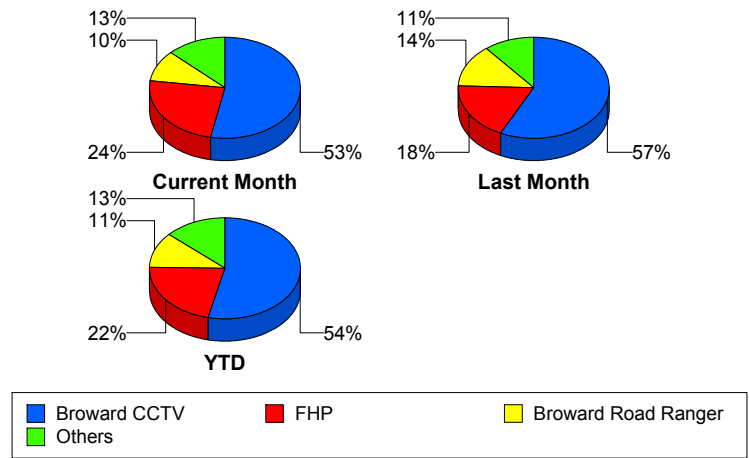
Incident Clearance Time (3B)



Incident Detection Methods

	Current Month	Last Month	YTD
Broward CCTV	95	110	860
Broward Road Ranger	18	26	181
Broward VideoWall	5	3	54
BSO	6	2	37
District 4	1	5	42
District 6	0	0	1
FDOT Maintenance	0	0	4
FHP	43	35	350
Fire	0	1	2
Florida's Turnpike	0	0	6
ITMS	1	0	2
Motorist	1	3	8
Other	0	0	1
Palm Beach Road Ran	0	0	2
Road Watcher	0	0	12
SIRV	1	4	10
SmarTraveler (511)	0	0	6
VisioPaD Detection	8	3	29
Total	179	192	1,607

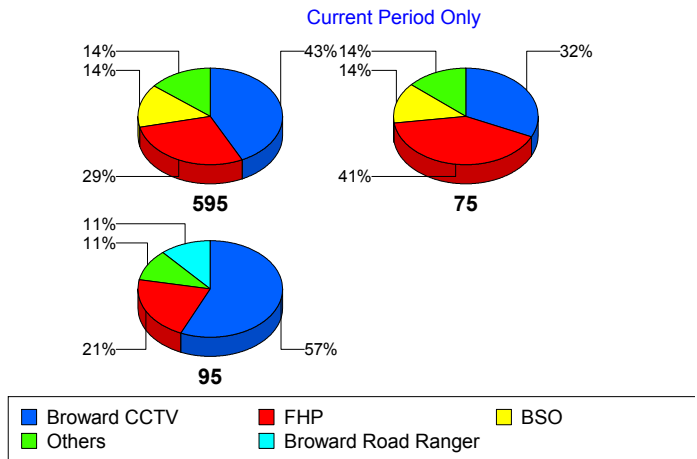
Total Incidents by Detection Method



Incident Detection Methods by Roadway

		Current Month	Last Month	YTD
595	Broward CCTV	3	18	124
	Broward Road Ranger	0	3	37
	Broward VideoWall	0	0	8
	BSO	1	0	4
	District 4	0	1	12
	FDOT Maintenance	0	0	2
	FHP	2	4	51
	Florida's Turnpike	0	0	6
	Motorist	0	0	2
	Road Watcher	0	0	3
	SIRV	0	1	1
	VisioPaD Detection	1	1	6
	Total	7	28	256
	75	Broward CCTV	7	7
Broward Road Ranger		1	1	13
Broward VideoWall		0	0	1
BSO		3	2	28
District 4		0	2	5
FHP		9	5	35
Other		0	0	1
Road Watcher		0	0	2
VisioPaD Detection		2	1	4
Total		22	18	149
95	Broward CCTV	85	85	676
	Broward Road Ranger	17	22	131
	Broward VideoWall	5	3	45
	BSO	2	0	5
	District 4	1	2	25
	District 6	0	0	1
	FDOT Maintenance	0	0	2
	FHP	32	26	264

Total Events by Roadway and Detection Method

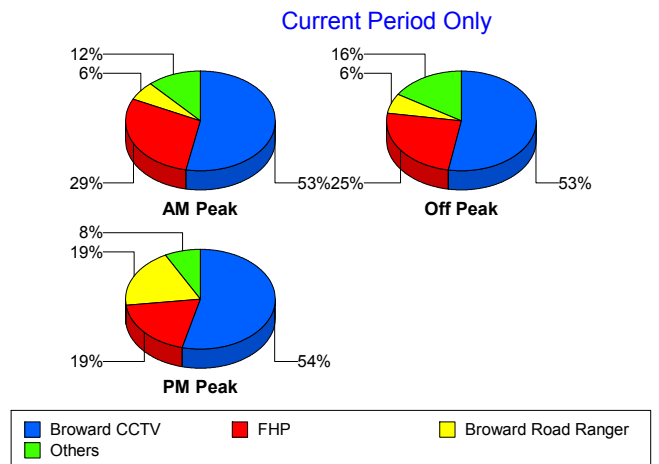


		Current Month	Last Month	YTD
95	Fire	0	1	2
	ITMS	1	0	2
	Motorist	1	3	6
	Palm Beach Road Ran	0	0	2
	Road Watcher	0	0	7
	SIRV	1	3	9
	SmarTraveler (511)	0	0	6
	VisioPaD Detection	5	1	19
	Total	150	146	1,202
Total	179	192	1,607	

Incident Detection Methods by Peak Period

		Current Month	Last Month	YTD
AM Peak	Broward CCTV	18	19	161
	Broward Road Ranger	2	9	53
	Broward VideoWall	2	2	18
	BSO	0	0	5
	District 4	0	0	13
	FHP	10	5	86
	Florida's Turnpike	0	0	2
	Motorist	1	1	5
	Palm Beach Road Ran	0	0	1
	Road Watcher	0	0	4
	SIRV	0	0	1
	SmarTraveler (511)	0	0	1
	VisioPaD Detection	1	0	2
	Total	34	36	352
Off Peak	Broward CCTV	49	60	464
	Broward Road Ranger	6	6	51
	Broward VideoWall	2	1	29
	BSO	5	2	26
	District 4	1	2	14

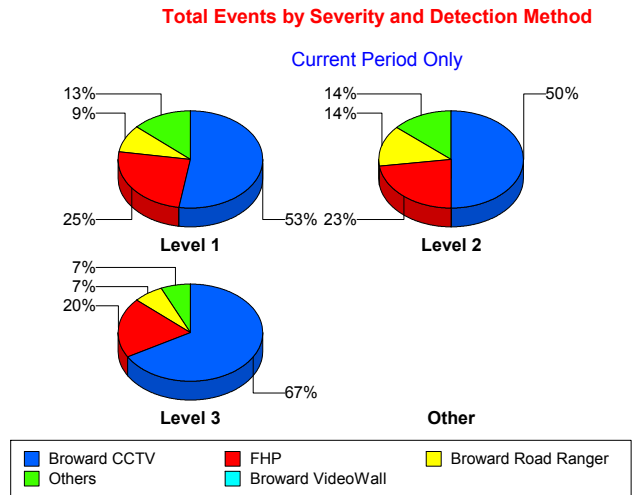
Total Events by Peak Period and Detection Method



		Current Month	Last Month	YTD
Off Peak	FDOT Maintenance	0	0	2
	FHP	23	21	170
	Fire	0	1	1
	Florida's Turnpike	0	0	3
	ITMS	1	0	2
	Motorist	0	2	3
	Road Watcher	0	0	5
	SIRV	1	1	3
	SmarTraveler (511)	0	0	3
	VisioPaD Detection	5	2	21
	Total	93	98	797
PM Peak	Broward CCTV	28	31	235
	Broward Road Ranger	10	11	77
	Broward VideoWall	1	0	7
	BSO	1	0	6
	District 4	0	3	15
	District 6	0	0	1
	FDOT Maintenance	0	0	2
	FHP	10	9	94
	Fire	0	0	1
	Florida's Turnpike	0	0	1
	Other	0	0	1
	Palm Beach Road Ran	0	0	1
	Road Watcher	0	0	3
	SIRV	0	3	6
	SmarTraveler (511)	0	0	2
	VisioPaD Detection	2	1	6
	Total	52	58	458
Total	179	192	1,607	

Incident Detection Methods by Severity

		Current Month	Last Month	YTD
Level 1	Broward CCTV	63	74	551
	Broward Road Ranger	11	21	132
	Broward VideoWall	5	3	35
	BSO	3	1	9
	District 4	1	2	31
	FDOT Maintenance	0	0	3
	FHP	30	18	209
	Fire	0	1	1
	ITMS	1	0	1
	Motorist	1	1	6
	Palm Beach Road Ran	0	0	2
	Road Watcher	0	0	9
	SIRV	1	3	9
	SmarTraveler (511)	0	0	4
	VisioPaD Detection	4	3	16
	Total	120	127	1,018
Level 2	Broward CCTV	22	25	213
	Broward Road Ranger	6	2	34
	Broward VideoWall	0	0	16
	BSO	2	0	9
	District 4	0	0	5
	FDOT Maintenance	0	0	1
	FHP	10	10	96
	Florida's Turnpike	0	0	4
	ITMS	0	0	1
	Motorist	0	2	2
	Other	0	0	1
	Road Watcher	0	0	1
	SIRV	0	1	1
	SmarTraveler (511)	0	0	2
	VisioPaD Detection	4	0	11



		Current Month	Last Month	YTD
Level 2	Total	44	40	397
Level 3	Broward CCTV	10	11	96
	Broward Road Ranger	1	3	15
	Broward VideoWall	0	0	3
	BSO	1	1	19
	District 4	0	3	6
	District 6	0	0	1
	FHP	3	7	45
	Fire	0	0	1
	Florida's Turnpike	0	0	2
	Road Watcher	0	0	2
	VisioPaD Detection	0	0	2
	Total	15	25	192
Total		179	192	1,607

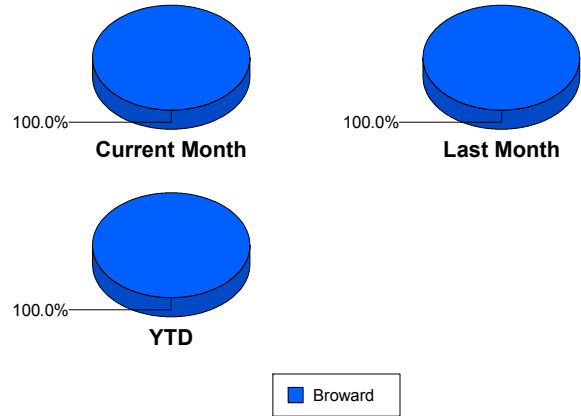
Road Ranger / SIRV Performance Measures

Road Ranger / SIRV Performance By County

Values presented are:
 - Total Events with a RR/SIRV Response
 - Total RR/SIRV Responses,
 - Total Activities Performed

	Current Mo	Last Month	YTD
Broward	2,684	3,085	22,111
	2,898	3,323	23,813
	2,999	3,415	24,751

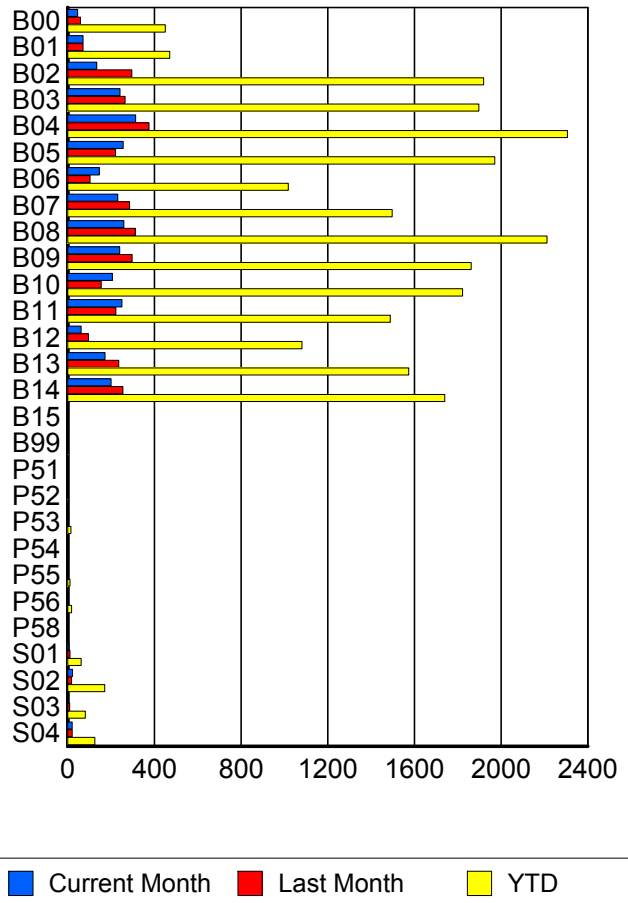
RR/SIRV Responses per County



Road Ranger / SIRV Performance By Truck

	Current Mo	Last Month	YTD
B00	45	58	442
	46	60	451
	47	64	469
B01	68	69	463
	71	71	472
	77	74	501
B02	132	296	1,902
	134	297	1,919
	140	303	2,003
B03	240	259	1,867
	242	266	1,897
	247	274	1,957
B04	313	372	2,286
	314	376	2,306
	325	386	2,410
B05	248	220	1,934
	256	222	1,971
	262	228	2,032
B06	144	100	998
	147	103	1,018
	149	105	1,049
B07	228	283	1,474
	231	286	1,498
	241	297	1,564
B08	258	310	2,185
	260	313	2,212
	268	323	2,299

RR/SIRV Responses per Truck



	Current Mo	Last Month	YTD
B09	238	297	1,835
	241	298	1,863
	248	302	1,932
B10	203	151	1,793
	206	155	1,823
	214	160	1,892
B11	245	221	1,462
	251	223	1,489
	257	229	1,540
B12	63	94	1,068
	63	96	1,081
	69	102	1,128
B13	170	230	1,552
	173	236	1,574
	177	239	1,624
B14	198	248	1,712
	201	255	1,740
	211	260	1,804
B15	0	1	2
	0	1	2
	0	1	2
B99	0	1	4
	0	1	4
	0	1	4
P51	0	1	1
	0	1	1
	0	1	1
P52	0	0	2
	0	0	2
	0	0	2
P53	4	2	15
	5	2	16
	7	2	18
P54	1	0	2
	1	0	2
	1	0	2
P55	0	2	11
	0	2	11
	0	2	13
P56	1	0	18
	1	0	18
	1	0	19
P58	0	0	1
	0	0	1
	0	0	1

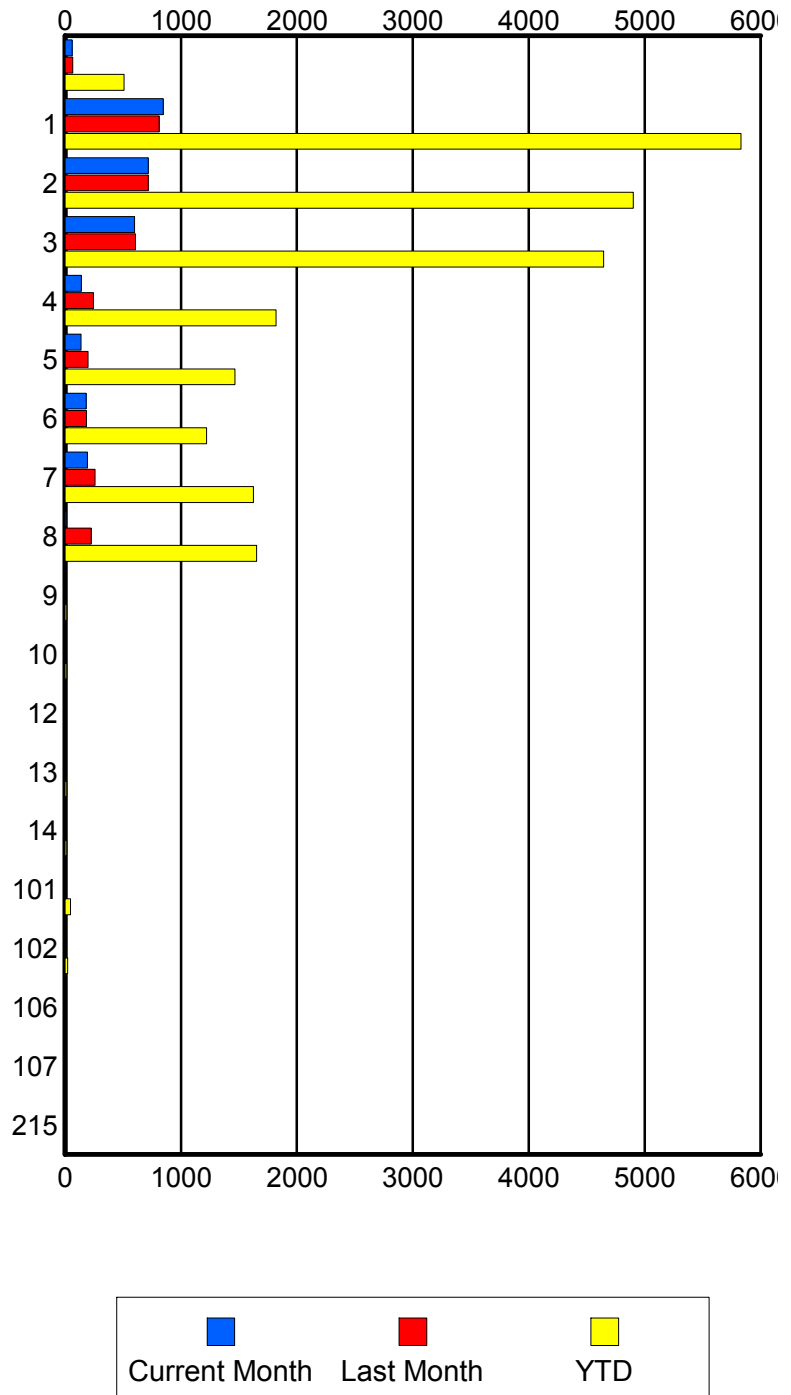
	Current Mo	Last Month	YTD
S01	6	11	60
	7	11	63
	7	12	71
S02	22	18	165
	23	18	171
	25	19	186
S03	4	9	80
	4	9	82
	4	10	92
S04	20	21	121
	21	21	126
	22	21	136

Road Ranger / SIRV Performance By Beat

	Current Mo	Last Month	YTD
	56	65	473
	62	66	510
	65	69	555
1	803	768	5,511
	848	811	5,831
	878	827	6,023
2	687	697	4,728
	717	719	4,902
	746	738	5,107
3	582	591	4,517
	599	608	4,646
	617	629	4,827
4	136	241	1,781
	140	246	1,821
	146	253	1,878
5	135	193	1,440
	137	198	1,466
	140	204	1,514
6	176	177	1,194
	183	186	1,222
	190	194	1,288
7	191	252	1,600
	193	258	1,625
	196	268	1,698
8	12	226	1,633
	12	226	1,653
	12	228	1,716
9	0	0	12
	0	0	14
	0	0	14
10	0	0	13
	0	0	14
	0	0	14
12	0	0	9
	0	0	9
	0	0	9
13	0	0	14
	0	0	14
	0	0	15
14	0	0	13
	0	0	13
	0	0	13
101	6	4	46
	7	4	47
	9	4	52

Values presented are:
 - Total Events with a RR/SIRV Response
 - Total RR/SIRV Responses,
 - Total Activities Performed

RR/SIRV Responses per Beat



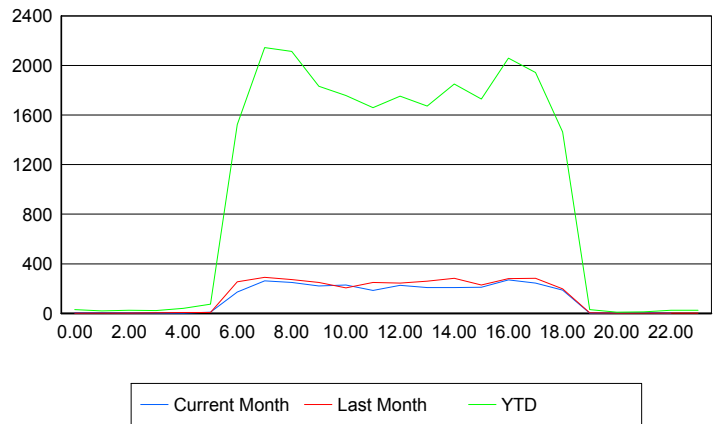
	Current Mo	Last Month	YTD
102	0	0	23
	0	0	23
	0	0	25
106	0	0	1
	0	0	1
	0	0	1
107	0	0	1
	0	0	1
	0	0	1
215	0	1	1
	0	1	1
	0	1	1

Road Ranger / SIRV Performance By Time of Day

Values presented are:
 - Total Events with a RR/SIRV Response
 - Total RR/SIRV Responses,
 - Total Activities Performed

	Current Mo	Last Month	YTD
12AM-1AM	3	1	29
	3	1	30
	3	1	32
1AM-2AM	2	1	18
	3	1	19
	3	1	19
2AM-3AM	0	1	20
	0	1	25
	0	1	25
3AM-4AM	2	4	21
	2	4	23
	2	4	23
4AM-5AM	1	3	29
	1	6	39
	1	6	40
5AM-6AM	7	2	66
	9	6	75
	9	7	79
6AM-7AM	166	225	1,389
	172	254	1,522
	175	258	1,567
7AM-8AM	250	277	2,000
	261	290	2,144
	269	296	2,224
8AM-9AM	219	256	1,924
	249	273	2,114
	256	279	2,201

Number of Responses / Hour of the Day



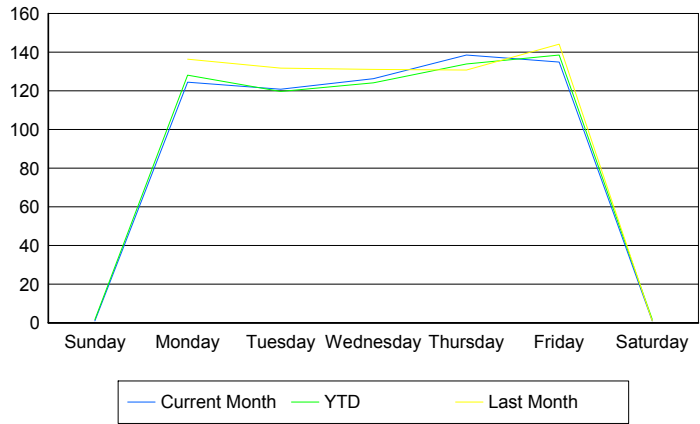
	Current Mo	Last Month	YTD
9AM-10AM	198	230	1,707
	220	249	1,833
	228	255	1,897
10AM-11AM	206	197	1,624
	229	206	1,758
	234	209	1,837
11AM-12PM	175	236	1,555
	186	249	1,660
	200	257	1,734
12PM-1PM	210	235	1,653
	227	243	1,752
	235	253	1,821
1PM-2PM	194	239	1,547
	207	260	1,672
	213	269	1,750
2PM-3PM	195	266	1,736
	209	283	1,851
	217	289	1,930
3PM-4PM	192	209	1,609
	211	228	1,729
	218	241	1,797
4PM-5PM	255	256	1,926
	271	281	2,059
	282	288	2,138
5PM-6PM	224	251	1,783
	244	283	1,943
	250	291	2,019
6PM-7PM	179	188	1,387
	188	197	1,463
	198	202	1,513
7PM-8PM	2	5	26
	2	5	30
	2	5	32
8PM-9PM	0	1	9
	0	1	9
	0	1	9
9PM-10PM	3	0	12
	3	0	12
	3	0	12
10PM-11PM	1	0	19
	1	0	25
	1	0	25
11PM-12AM	0	2	22
	0	2	26
	0	2	27

Road Ranger / SIRV Performance By Day of Week

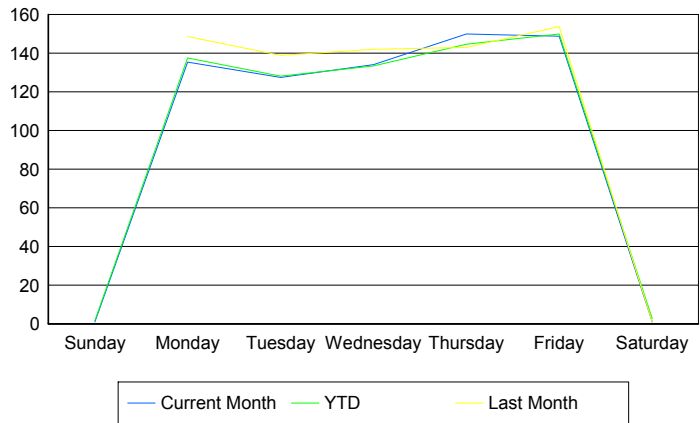
Values presented are:
 - Total Events with a RR/SIRV Response
 - Total RR/SIRV Responses,
 - Total Activities Performed

	Current Mo	Last Month	YTD
Sunday	1	0	15
	1	0	15
	1	0	17
Monday	621	545	4,432
	675	594	4,756
	690	614	4,902
Tuesday	475	521	4,018
	501	549	4,302
	524	559	4,451
Wednesday	501	652	4,178
	532	707	4,492
	547	726	4,692
Thursday	550	649	4,634
	597	708	5,007
	616	730	5,208
Friday	535	716	4,825
	591	763	5,219
	620	784	5,456
Saturday	1	2	19
	1	2	22
	1	2	25

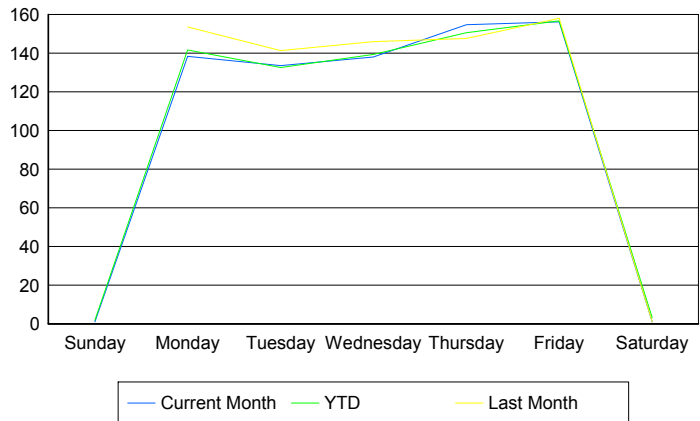
Avg # of events with a RR/SIRV Response per Day of the Week



Avg # of RR/SIRV Responses per Day of the Week



Avg # of RR/SIRV Activities Performed per Day of the Week



Road Ranger / SIRV Responses per Time of Day and Day of Week

