



# Monthly Performance Measures Report Broward County



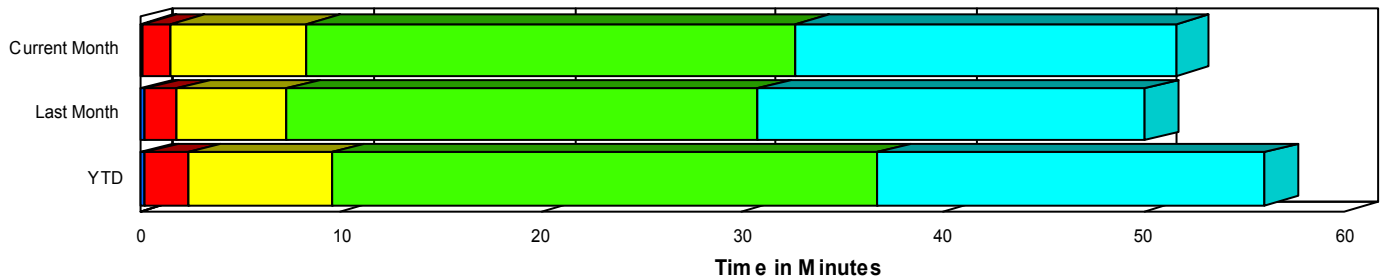
Created on:  
September 04, 2007  
8:44 am

Period From Aug 1, 2007 to Aug 31, 2007

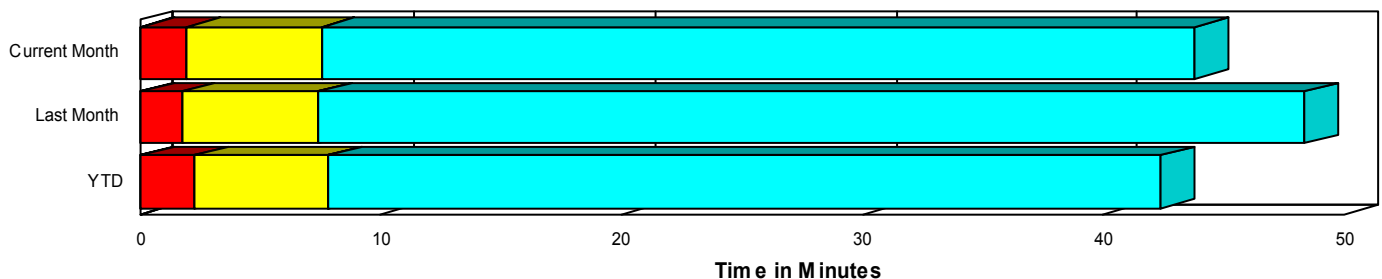
## Performance Measures Summary

	Traffic Events (No Lanes Blocked)			Incidents (Lanes Blocked)		
	<u>This Month</u>	<u>Last Month</u>	<u>YTD</u>	<u>This Month</u>	<u>Last Month</u>	<u>YTD</u>
Number of Events	5,100	5,356	38,640	233	217	1,828
TMC Detection (min.)	0.05	0.03	0.04	0.11	0.21	0.23
TMC Verification (min.)	1.92	1.72	2.24	1.39	1.63	2.16
TMC Response (min.)	7.63	7.62	7.99	8.21	7.10	9.34
RR Dispatch Time (min.)	1.68	2.22	1.99	2.31	2.20	2.45
RR Response Time (min.)	6.13	5.51	6.13	5.92	4.90	6.89
Roadway Clearance (min.)				31.56	30.54	36.28
Event Clearance (min.)	43.91	48.53	42.58	50.32	49.52	55.00
# of Events w/ RR/SIRV	3,977	4,164	30,704	219	213	1,756
RR/SIRV Responses	4,107	4,310	31,682	434	400	3,006
RR/SIRV Activities	4,245	4,507	32,940	466	422	3,214

### Incident Clearance TimeLine



### Traffic Event(Non-Lane Blockage) Time-Line



<span style="color: blue;">■</span> Avg. TMC Detection Time	<span style="color: green;">■</span> Avg. Time from TMC Response to Roadway Clearance*
<span style="color: red;">■</span> Avg. Time from TMC Detection to TMC Verification	<span style="color: cyan;">■</span> Avg. Time from Roadway Clearance to Incident/Event Clearance**
<span style="color: yellow;">■</span> Avg. Time from TMC Verification to TMC Response	

\* Roadway clearance equals all travel lanes open

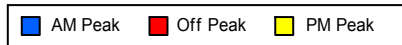
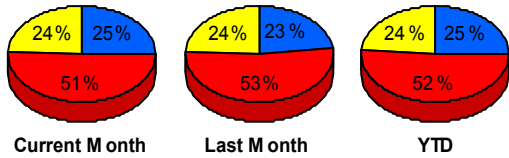
\*\* Incident clearance equals time when last responder has left the scene

## Performance Measures by Peak Period

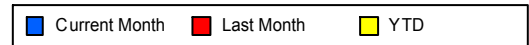
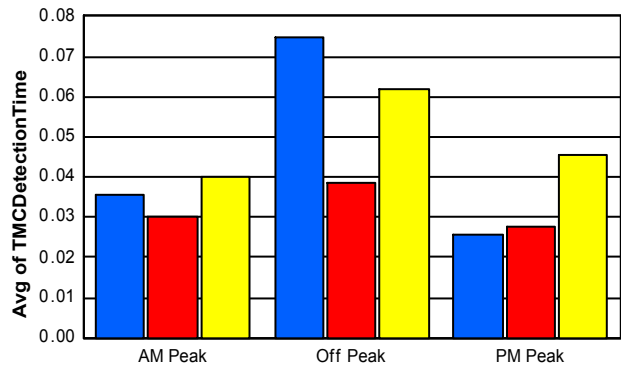
*Note: AM peak period is defined as 6am to 10am and PM peak period is defined as 3pm to 7pm.*

	AM Peak			Off Peak			PM Peak		
	<u>Current Month</u>	<u>Last Month</u>	<u>YTD</u>	<u>Current Month</u>	<u>Last Month</u>	<u>YTD</u>	<u>Current Month</u>	<u>Last Month</u>	<u>YTD</u>
Number of Events	1,328	1,277	10,074	2,722	2,931	20,842	1,283	1,365	9,552
Number of Incidents	50	49	402	125	109	953	58	59	473
TMC Detection (min.)	0.04	0.03	0.04	0.07	0.04	0.06	0.03	0.03	0.05
TMC Verification (min.)	1.42	0.97	1.37	2.29	2.19	2.68	1.55	1.41	2.17
TMC Response (min.)	7.30	6.39	6.65	8.07	8.72	9.06	7.21	6.39	7.47
RR Dispatch Time (min.)	1.52	1.55	1.46	1.89	2.77	2.33	1.55	1.68	1.94
RR Response Time (min.)	5.86	4.97	5.31	6.40	5.98	6.84	5.81	4.94	5.69
Event Clearance (min.)	33.30	38.39	34.70	54.06	53.08	49.82	34.52	48.39	37.46
Roadway Clearance (min.)	26.71	26.34	31.04	35.95	33.23	40.71	26.27	29.08	31.79
Incident Clearance (min.)	50.93	46.33	53.91	52.86	53.76	59.12	44.31	44.33	47.62
# of Events w/ RR/SIRV	1,086	1,069	8,419	2,097	2,253	16,362	1,013	1,055	7,679
RR/SIRV Responses	1,173	1,155	8,983	2,288	2,422	17,522	1,080	1,133	8,183
RR/SIRV Activities	1,220	1,200	9,361	2,378	2,529	18,284	1,113	1,200	8,509

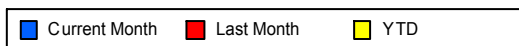
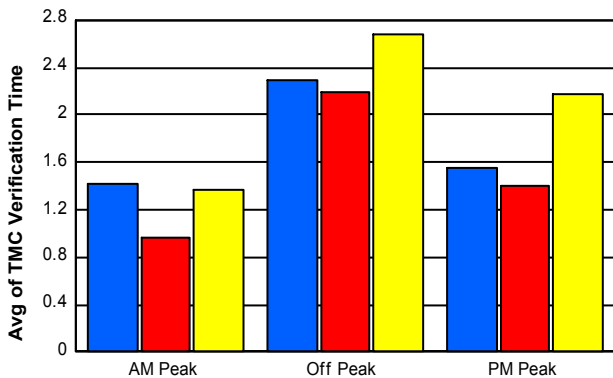
### Number of Events / Peak Period



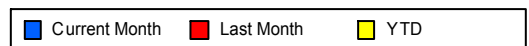
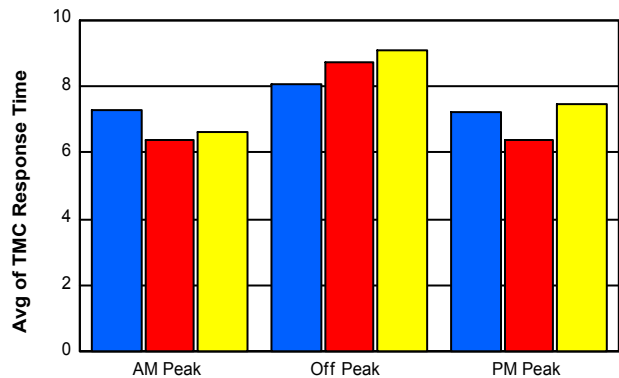
### TMC Detection Time



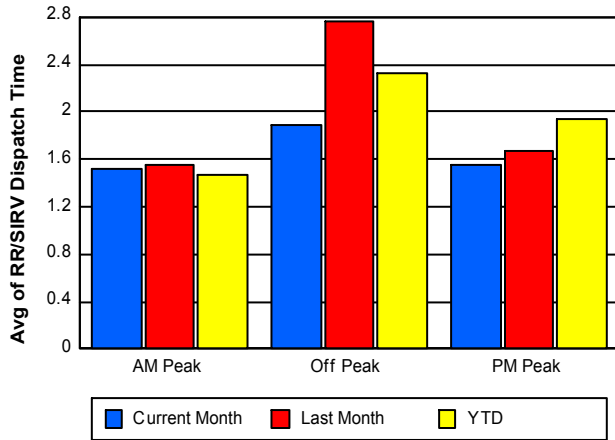
### TMC Verification Time



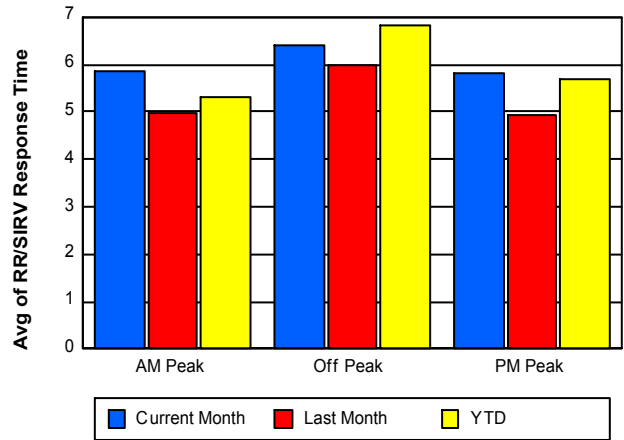
### TMC Response Time



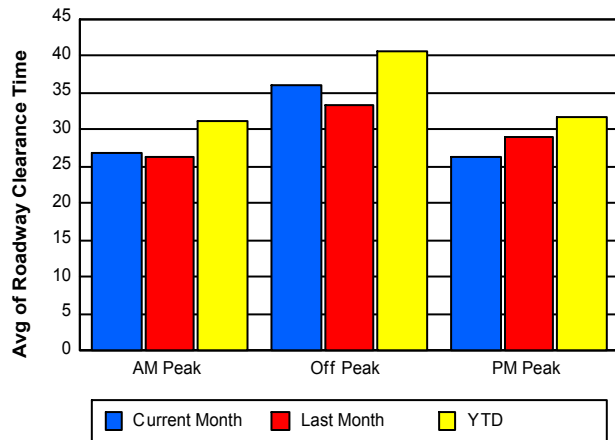
## Road Ranger / SIRV Dispatch Time



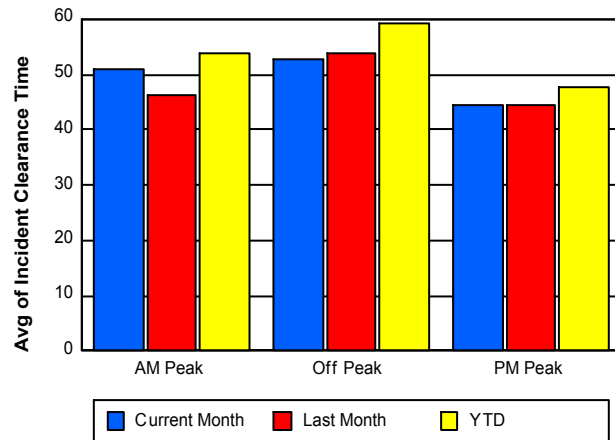
## Road Ranger / SIRV Response Time



## Roadway Clearance Time (2A)



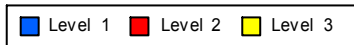
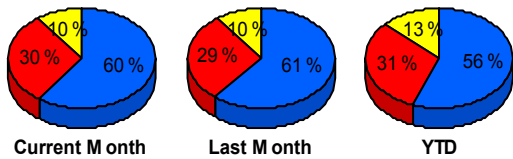
## Incident Clearance Time (3B)



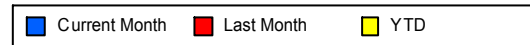
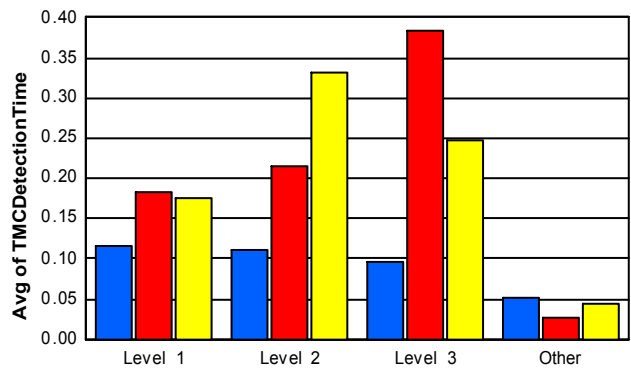
## Performance Measures by Severity

	Level 1			Level 2			Level 3			Other		
	<u>This Month</u>	<u>Last Month</u>	<u>YTD</u>	<u>This Month</u>	<u>Last Month</u>	<u>YTD</u>	<u>This Month</u>	<u>Last Month</u>	<u>YTD</u>	<u>This Month</u>	<u>Last Month</u>	<u>YTD</u>
Number of Events	139	132	1,018	70	63	572	24	22	238	5,100	5,356	38,640
Number of Incidents	139	132	1,018	70	63	572	24	22	238	0	0	0
TMC Detection (min.)	0.12	0.18	0.18	0.11	0.22	0.33	0.10	0.38	0.25	0.05	0.03	0.04
TMC Verification (min.)	1.11	1.34	1.50	2.14	2.18	2.83	0.81	1.78	3.36	1.92	1.72	2.24
TMC Response (min.)	6.91	7.39	8.17	10.28	7.61	10.98	9.25	3.91	10.14	7.63	7.62	7.99
RR Dispatch Time (min.)	2.04	2.04	2.13	2.92	3.03	2.83	2.05	0.77	2.92	1.68	2.22	1.99
RR Resp. Time (min.)	4.92	5.35	6.06	7.36	4.59	8.15	7.21	3.14	7.24	6.13	5.51	6.13
Event Clearance (min.)	35.53	36.51	37.22	66.98	63.43	67.35	87.35	87.70	101.36	43.91	48.53	42.58
Roadway Clear. (min.)	14.71	14.77	15.03	52.65	50.74	52.62	67.64	67.33	87.87			
Incident Clearance (min.)	35.53	36.51	37.22	66.98	63.43	67.35	87.35	87.70	101.36			
# of Events w/ RR/SIRV	128	128	961	69	63	565	22	22	230	3,977	4,164	30,704
RR/SIRV Responses	207	191	1,348	161	153	1,070	66	56	588	4,107	4,310	31,682
RR/SIRV Activities	229	203	1,452	170	161	1,123	67	58	639	4,245	4,507	32,940

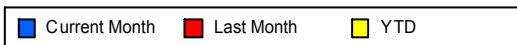
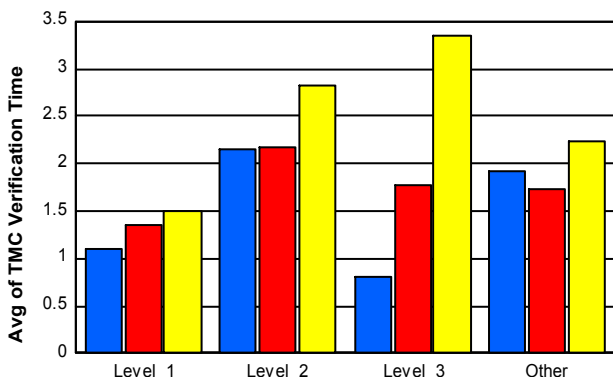
### Number of Events / Severity



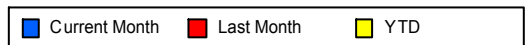
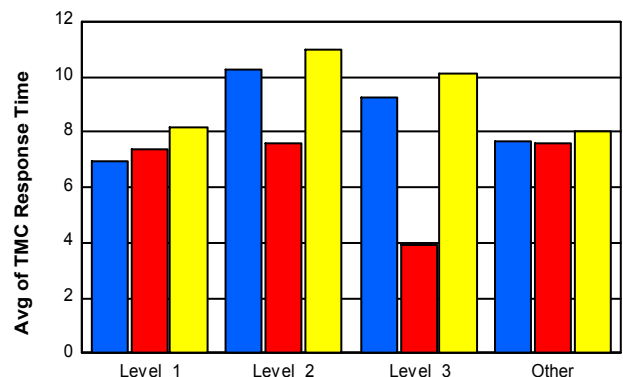
### TMC Detection Time



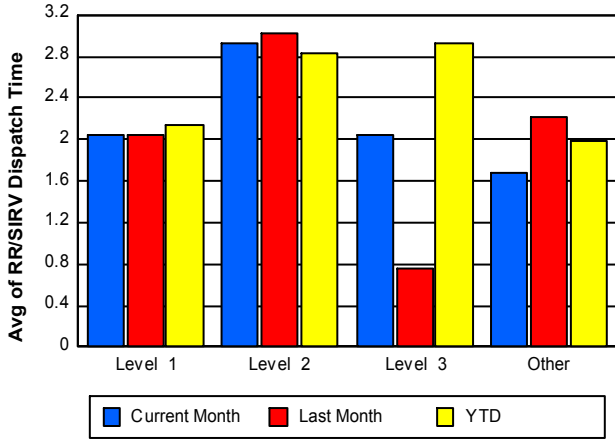
### TMC Verification Time



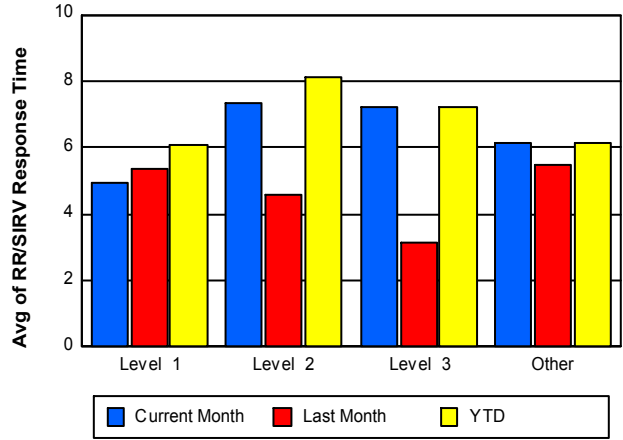
### TMC Response Time



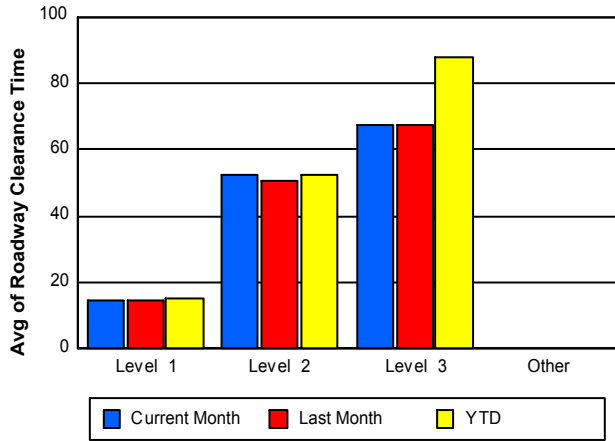
## Road Ranger / SIRV Dispatch Time



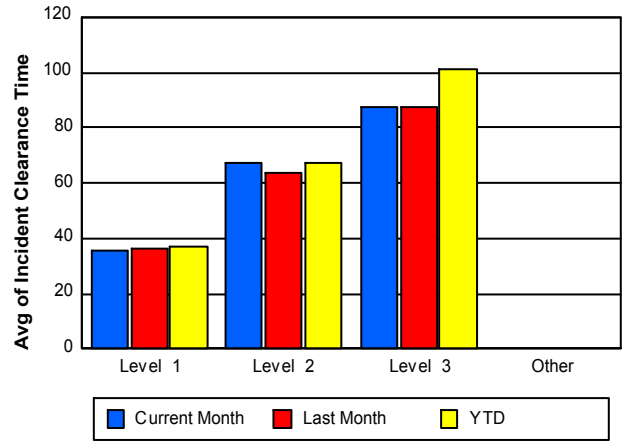
## Road Ranger / SIRV Response Time



## Roadway Clearance Time (2A)



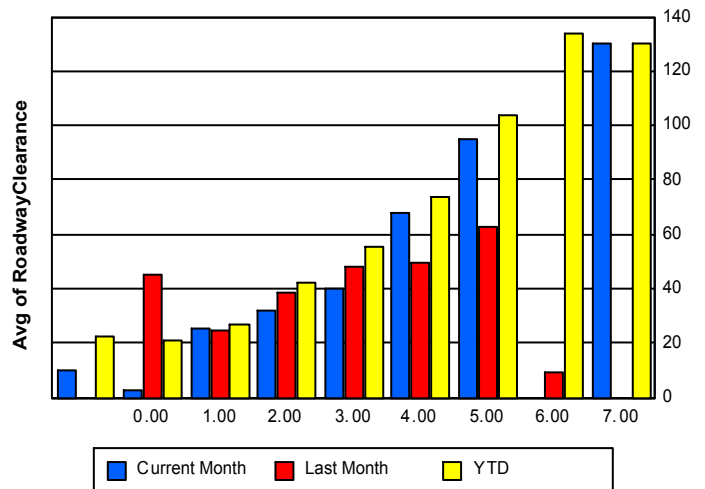
## Incident Clearance Time (3B)



## Roadway Clearance by Maximum Number of Lanes Blocked

	Current Month	Last Month	YTD
	10.26		22.28
0	2.51	45.15	21.25
1	25.23	24.90	26.85
2	32.31	38.32	42.30
3	39.97	48.10	55.78
4	68.28	49.65	73.71
5	95.32	63.08	103.71
6	0.00	9.28	133.62

## Roadway Clearance Time (2A) by Max. # Lanes Blocked



	Current Month	Last Month	YTD
7	<b>130.40</b>	<b>0.00</b>	<b>130.40</b>

## Performance Measures by Roadway

**595**

	<u>Current Month</u>	<u>Last Month</u>	<u>YTD</u>
Number of Events	856	913	6,355
Number of Incidents	40	42	296
TMC Detection (min.)	0.04	0.04	0.06
TMC Verification (min.)	2.51	2.15	2.70
TMC Response (min.)	7.73	8.63	7.75
RR Dispatch Time (min.)	2.21	3.68	2.19
RR Resp. Time (min.)	5.75	4.97	5.71
Event Clearance (min.)	48.15	49.70	42.45
Roadway Clear. (min.)	33.78	33.20	40.87
Incident Clearance (min.)	48.39	49.85	57.85
# of Events w/ RR/SIRV	708	755	5,208
RR/SIRV Responses	768	815	5,591
RR/SIRV Activities	787	853	5,809

**75**

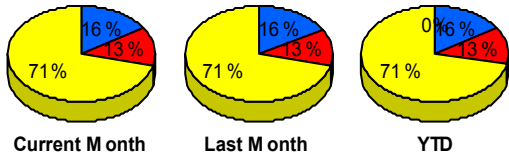
	<u>Current Month</u>	<u>Last Month</u>	<u>YTD</u>
Number of Events	694	711	5,204
Number of Incidents	8	12	118
TMC Detection (min.)	0.04	0.03	0.06
TMC Verification (min.)	2.86	2.11	3.42
TMC Response (min.)	3.07	2.45	3.92
RR Dispatch Time (min.)	0.64	0.59	1.20
RR Resp. Time (min.)	2.46	1.85	2.74
Event Clearance (min.)	60.82	67.54	49.34
Roadway Clear. (min.)	67.97	48.29	62.75
Incident Clearance (min.)	77.68	77.15	75.98
# of Events w/ RR/SIRV	662	687	5,037
RR/SIRV Responses	683	743	5,307
RR/SIRV Activities	705	772	5,553

**95**

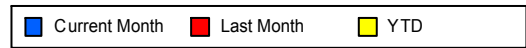
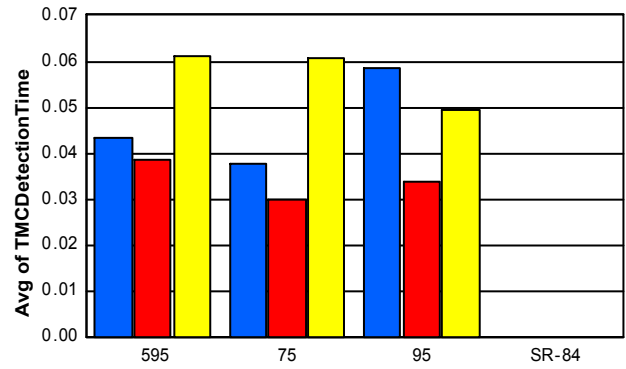
	<u>Current Month</u>	<u>Last Month</u>	<u>YTD</u>
Number of Events	3,783	3,949	28,908
Number of Incidents	185	163	1,414
TMC Detection (min.)	0.06	0.03	0.05
TMC Verification (min.)	1.58	1.55	1.92
TMC Response (min.)	8.72	8.53	9.07
RR Dispatch Time (min.)	1.81	2.19	2.14
RR Resp. Time (min.)	7.06	6.47	7.06
Event Clearance (min.)	40.24	44.89	42.17
Roadway Clear. (min.)	29.50	28.55	33.11
Incident Clearance (min.)	49.55	47.40	52.65
# of Events w/ RR/SIRV	2,826	2,935	22,215
RR/SIRV Responses	3,090	3,152	23,790
RR/SIRV Activities	3,219	3,304	24,792

	<u>YTD</u>
Number of Events	1
Number of Incidents	0
TMC Detection (min.)	0.00
TMC Verification (min.)	1.08
TMC Response (min.)	
RR Dispatch Time (min.)	
RR Resp. Time (min.)	
Event Clearance (min.)	3.77
Roadway Clear. (min.)	
Incident Clearance (min.)	
# of Events w/ RR/SIRV	0
RR/SIRV Responses	0
RR/SIRV Activities	0

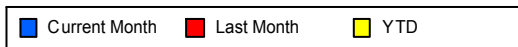
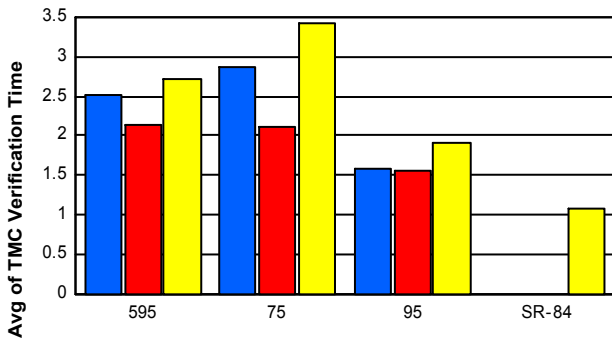
### Number of Events / Roadway



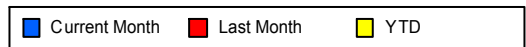
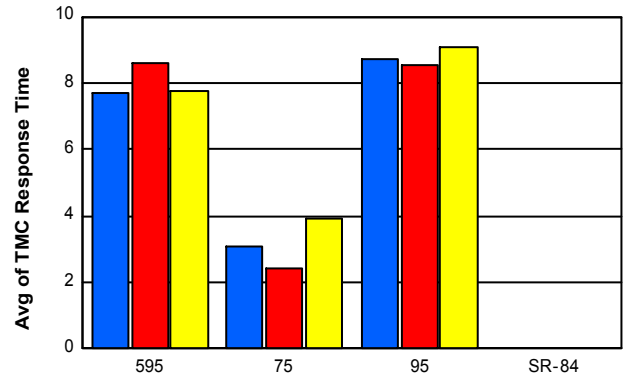
### TMC Detection Time



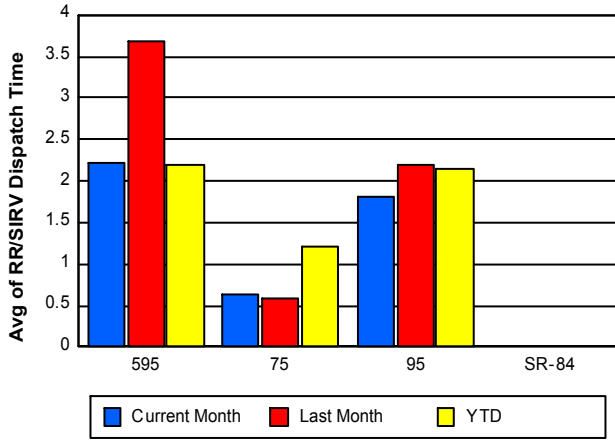
### TMC Verification Time



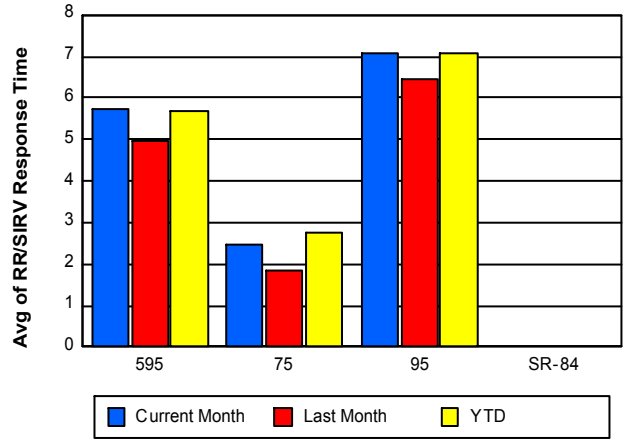
### TMC Response Time



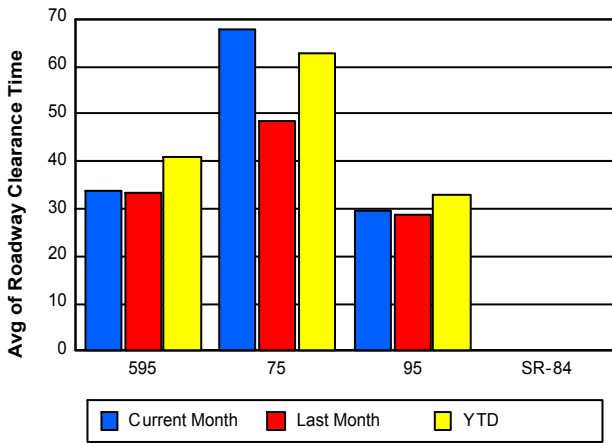
### Road Ranger / SIRV Dispatch Time



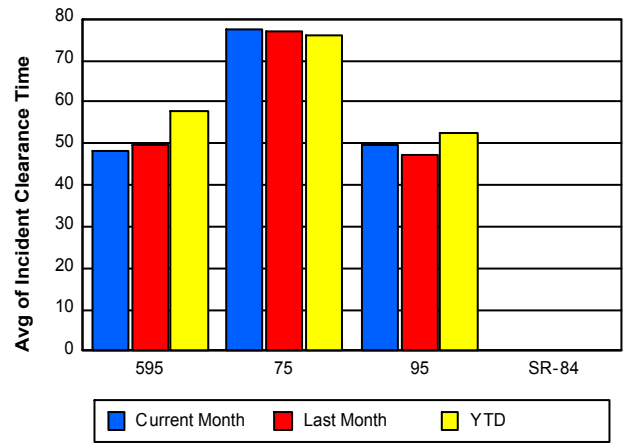
### Road Ranger / SIRV Response Time



### Roadway Clearance Time (2A)



### Incident Clearance Time (3B)



## Performance Measures by Event Type

### Abandoned Vehicle

	<u>Current Month</u>	<u>Last Month</u>	<u>YTD</u>
Number of Events	750	758	5,211
Number of Incidents	0	3	8
TMC Detection (min.)	0.01	0.01	0.01
TMC Verification (min.)	0.62	0.73	0.65
TMC Response (min.)	8.25	10.80	8.97
RR Dispatch Time (min.)	1.83	5.56	2.79
RR Response Time (min.)	6.42	5.24	6.18
Event Clearance (min.)	189.57	227.34	185.11
Roadway Clearance (min.)		26.77	17.03
Incident Clearance (min.)		29.96	27.01
# of Events w/ RR/SIRV	630	589	4,263
RR/SIRV Assists	648	607	4,365
RR/SIRV Activities	666	632	4,486

### Accident

	<u>Current Month</u>	<u>Last Month</u>	<u>YTD</u>
Number of Events	329	332	2,823
Number of Incidents	167	166	1,326
TMC Detection (min.)	0.13	0.17	0.20
TMC Verification (min.)	2.04	1.47	2.72
TMC Response (min.)	8.42	5.98	8.76
RR Dispatch Time (min.)	2.05	1.70	2.15
RR Response Time (min.)	6.38	4.30	6.63
Event Clearance (min.)	47.22	42.70	46.59
Roadway Clearance (min.)	35.01	31.21	37.32
Incident Clearance (min.)	56.84	53.08	59.69
# of Events w/ RR/SIRV	319	324	2,746
RR/SIRV Assists	516	510	3,922
RR/SIRV Activities	549	532	4,119

### Debris on Roadway

	<u>Current Month</u>	<u>Last Month</u>	<u>YTD</u>
Number of Events	199	212	1,651
Number of Incidents	6	3	45
TMC Detection (min.)	0.19	0.14	0.20
TMC Verification (min.)	6.87	4.89	7.81
TMC Response (min.)	8.51	6.08	9.04
RR Dispatch Time (min.)	2.01	1.33	1.98
RR Response Time (min.)	6.96	4.77	7.16
Event Clearance (min.)	12.11	11.34	13.62
Roadway Clearance (min.)	9.24	73.40	24.60
Incident Clearance (min.)	13.54	76.99	31.37
# of Events w/ RR/SIRV	189	205	1,563
RR/SIRV Assists	193	224	1,667
RR/SIRV Activities	195	228	1,685

## Disabled Vehicle

	<u>Current Month</u>	<u>Last Month</u>	<u>YTD</u>
Number of Events	3,147	3,371	24,175
Number of Incidents	44	37	338
TMC Detection (min.)	0.06	0.03	0.04
TMC Verification (min.)	2.16	1.99	2.43
TMC Response (min.)	7.26	7.11	7.59
RR Dispatch Time (min.)	1.54	1.66	1.77
RR Response Time (min.)	5.83	5.56	5.92
Event Clearance (min.)	19.59	20.81	20.80
Roadway Clearance (min.)	22.43	27.24	26.63
Incident Clearance (min.)	33.34	39.02	37.42
# of Events w/ RR/SIRV	2,915	3,104	22,417
RR/SIRV Assists	3,034	3,209	23,186
RR/SIRV Activities	3,151	3,377	24,299

## Emergency Vehicles

	<u>Current Month</u>	<u>Last Month</u>	<u>YTD</u>
Number of Events	1	2	20
Number of Incidents	1	2	15
TMC Detection (min.)	0.00	0.03	0.01
TMC Verification (min.)	0.00	1.32	0.18
TMC Response (min.)	0.00	2.40	8.33
RR Dispatch Time (min.)	0.00	0.50	5.19
RR Response Time (min.)	0.00	1.90	2.87
Event Clearance (min.)	11.02	17.42	35.13
Roadway Clearance (min.)	6.25	11.03	26.94
Incident Clearance (min.)	11.02	17.42	42.43
# of Events w/ RR/SIRV	1	1	14
RR/SIRV Assists	1	1	17
RR/SIRV Activities	1	1	18

## Off Ramp Backup

	<u>Current Month</u>	<u>YTD</u>
Number of Events	1	1
Number of Incidents	0	0
TMC Detection (min.)	0.00	0.00
TMC Verification (min.)	0.00	0.00
TMC Response (min.)	12.80	12.80
RR Dispatch Time (min.)	0.37	0.37
RR Response Time (min.)	12.43	12.43
Event Clearance (min.)	17.57	17.57
Roadway Clearance (min.)		
Incident Clearance (min.)		
# of Events w/ RR/SIRV	1	1
RR/SIRV Assists	1	1
RR/SIRV Activities	1	1

## Other

	<u>Current Month</u>	<u>Last Month</u>	<u>YTD</u>
Number of Events	864	867	6,323
Number of Incidents	3	1	33
TMC Detection (min.)	0.01	0.01	0.01
TMC Verification (min.)	0.89	0.88	1.15
TMC Response (min.)	11.20	11.95	10.74
RR Dispatch Time (min.)	2.23	2.62	2.58
RR Response Time (min.)	9.73	9.76	8.61
Event Clearance (min.)	14.65	12.81	17.96
Roadway Clearance (min.)	4.22	38.85	25.50
Incident Clearance (min.)	8.77	46.42	34.06
# of Events w/ RR/SIRV	107	127	1,254
RR/SIRV Assists	108	129	1,279
RR/SIRV Activities	108	129	1,285

## Pedestrian

	<u>Current Month</u>	<u>Last Month</u>	<u>YTD</u>
Number of Events	24	21	149
Number of Incidents	0	0	0
TMC Detection (min.)	0.03	0.06	0.26
TMC Verification (min.)	1.27	0.47	1.42
TMC Response (min.)	6.33	2.33	4.02
RR Dispatch Time (min.)	0.84	0.92	0.99
RR Response Time (min.)	5.51	1.40	3.19
Event Clearance (min.)	11.86	9.04	14.22
Roadway Clearance (min.)			
Incident Clearance (min.)			
# of Events w/ RR/SIRV	22	20	137
RR/SIRV Assists	22	20	142
RR/SIRV Activities	22	20	145

## Police Activity

	<u>Current Month</u>	<u>Last Month</u>	<u>YTD</u>
Number of Events	17	8	93
Number of Incidents	11	3	42
TMC Detection (min.)	0.00	0.09	0.08
TMC Verification (min.)	0.61	0.61	1.38
TMC Response (min.)	11.33	4.62	11.46
RR Dispatch Time (min.)	4.62	1.55	3.71
RR Response Time (min.)	6.73	3.07	7.77
Event Clearance (min.)	52.54	25.60	61.20
Roadway Clearance (min.)	38.95	7.27	59.88
Incident Clearance (min.)	56.16	9.98	74.48
# of Events w/ RR/SIRV	11	6	48
RR/SIRV Assists	16	7	76
RR/SIRV Activities	16	7	79

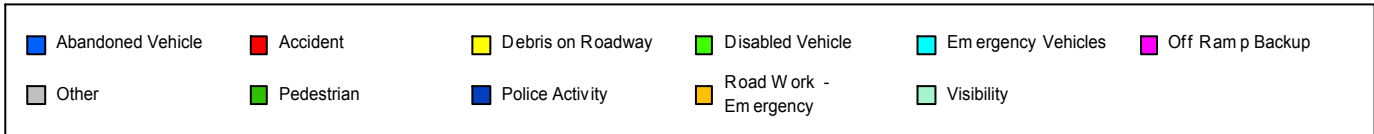
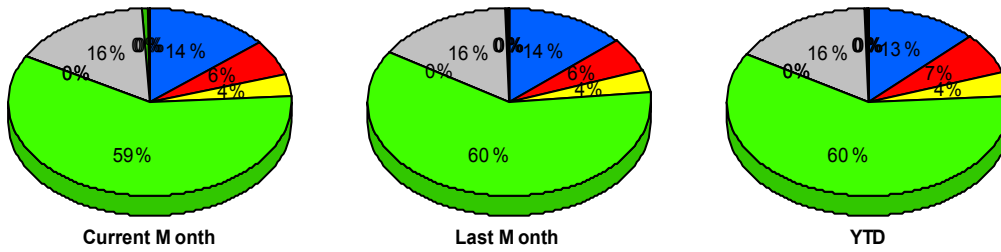
## Road Work - Emergency

	<u>Current Month</u>	<u>Last Month</u>	<u>YTD</u>
Number of Events	1	1	15
Number of Incidents	1	1	14
TMC Detection (min.)	0.78	0.00	0.10
TMC Verification (min.)	0.00	0.00	6.51
TMC Response (min.)	13.40		15.00
RR Dispatch Time (min.)	5.40		3.82
RR Response Time (min.)	8.00		11.18
Event Clearance (min.)	28.90	12.05	89.20
Roadway Clearance (min.)	17.15	10.90	87.57
Incident Clearance (min.)	28.90	12.05	91.01
# of Events w/ RR/SIRV	1	0	10
RR/SIRV Assists	2	0	15
RR/SIRV Activities	2	0	18

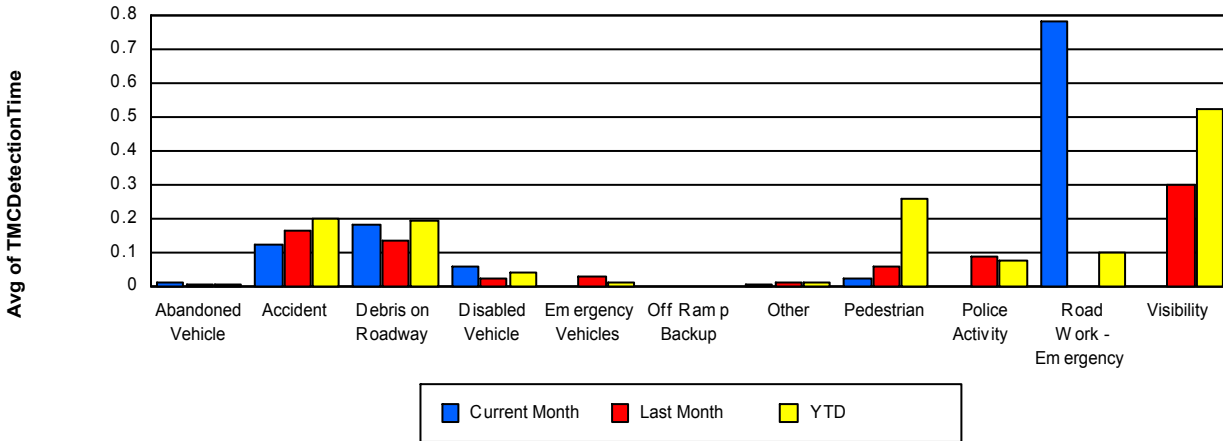
## Visibility

	<u>Last Month</u>	<u>YTD</u>
Number of Events	1	7
Number of Incidents	1	7
TMC Detection (min.)	0.30	0.53
TMC Verification (min.)	0.00	8.09
TMC Response (min.)	18.03	13.24
RR Dispatch Time (min.)	17.63	6.93
RR Response Time (min.)	0.40	6.31
Event Clearance (min.)	46.00	135.09
Roadway Clearance (min.)	45.15	228.55
Incident Clearance (min.)	46.00	135.09
# of Events w/ RR/SIRV	1	7
RR/SIRV Assists	3	18
RR/SIRV Activities	3	19

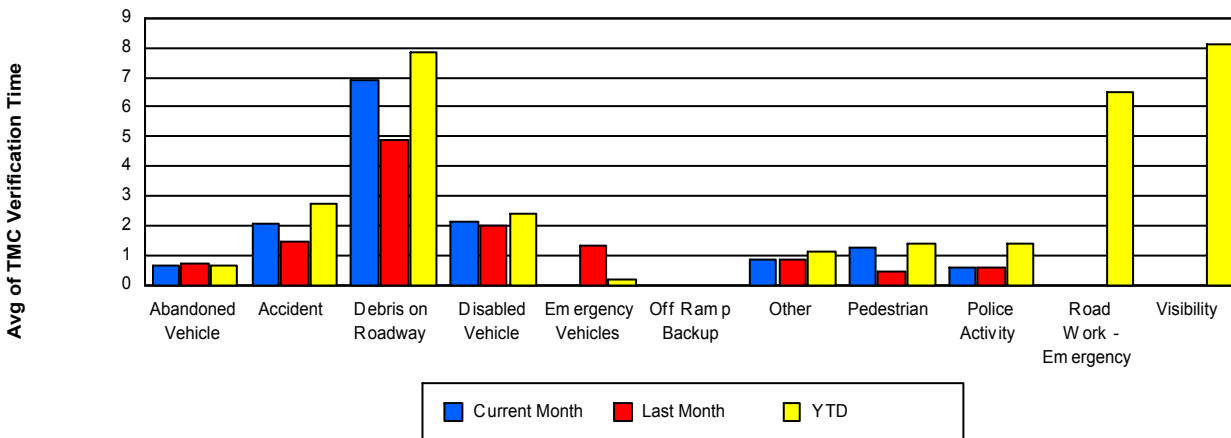
## Number of Events / Event Type



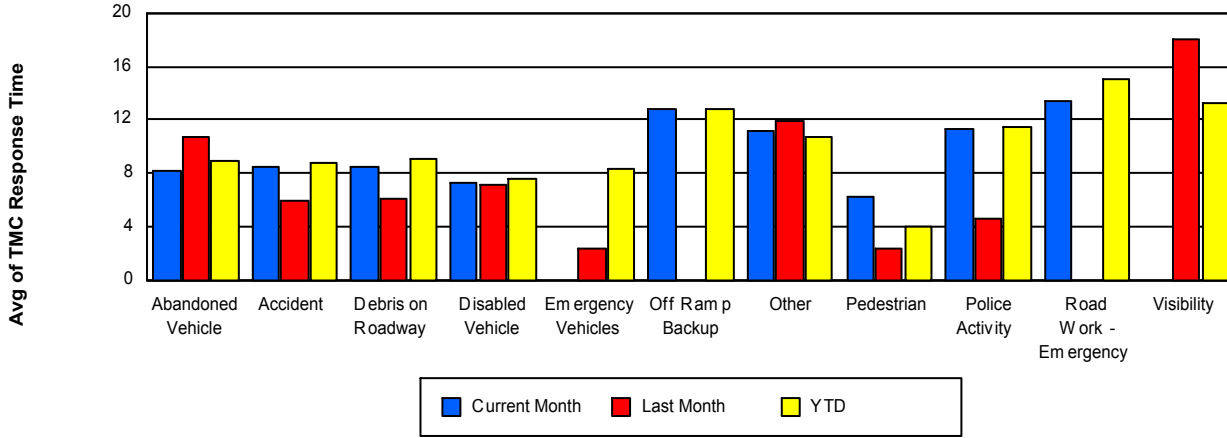
## TMC Detection Time



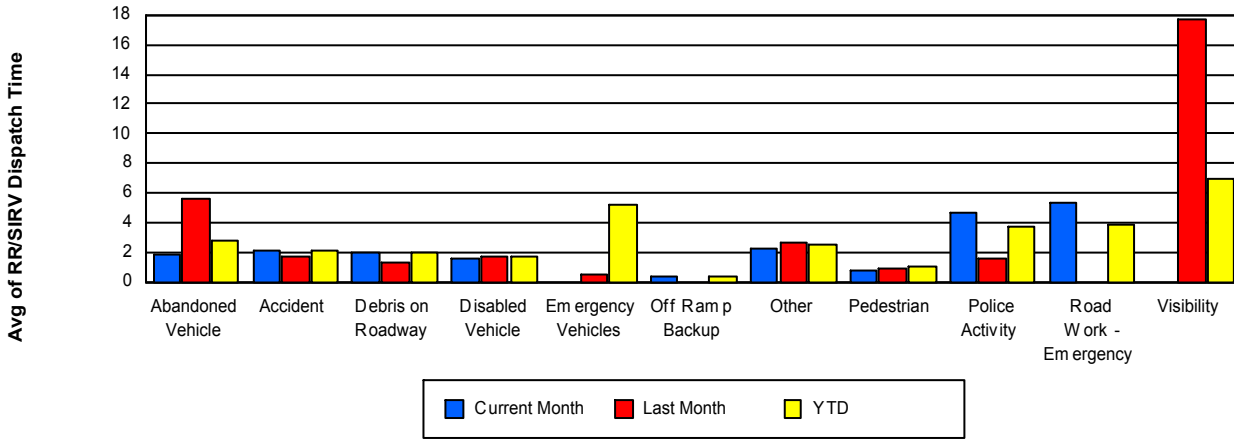
## TMC Verification Time



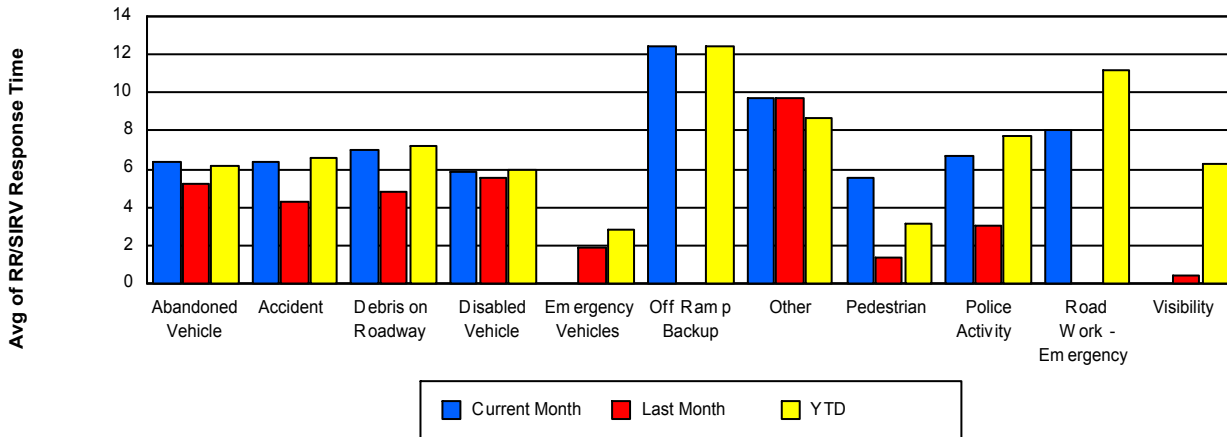
## TMC Response Time



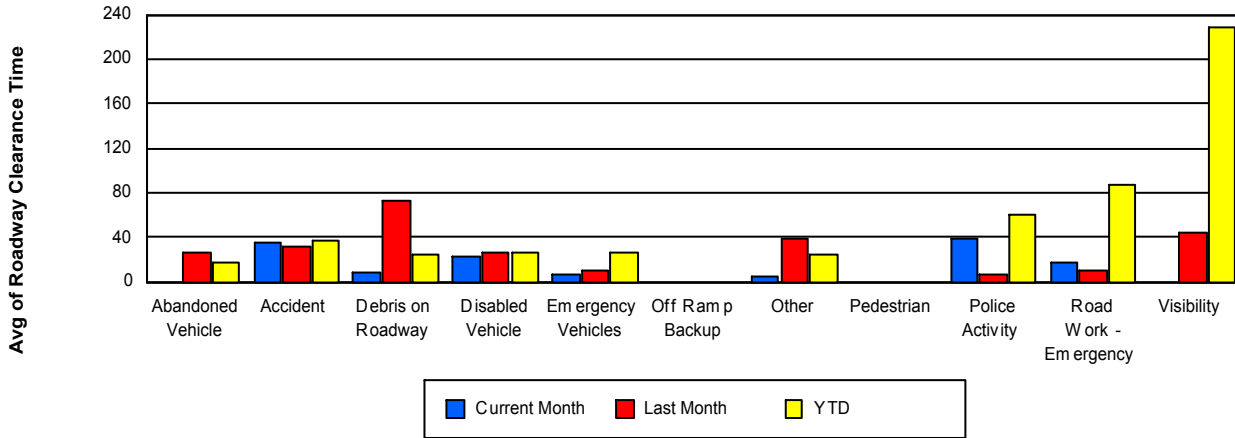
## Road Ranger / SIRV Dispatch Time



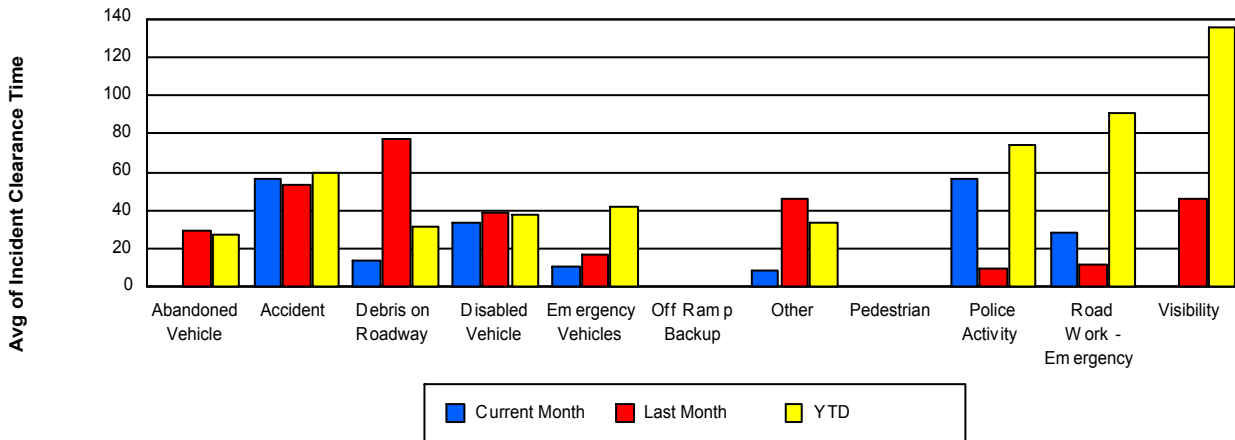
## Road Ranger / SIRV Response Time



## Roadway Clearance Time (2A)



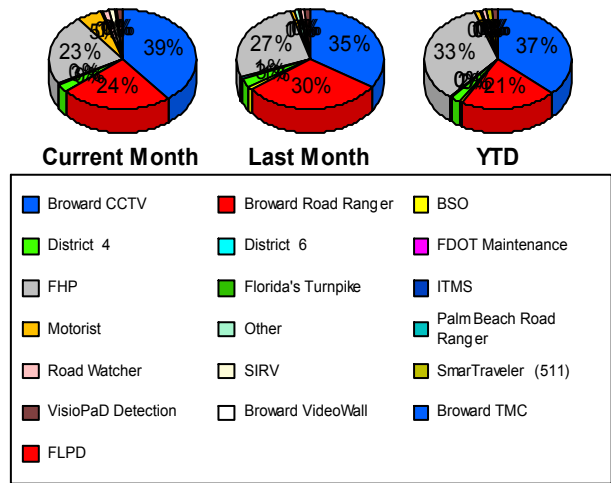
## Incident Clearance Time (3B)



## Incident Detection Methods

	Current Month	Last Month	YTD
Broward CCTV	92	75	669
Broward Road Ra	56	65	393
Broward TMC	0	0	1
BSO	1	2	8
District 4	6	6	44
District 6	0	2	3
FDOT Maintenanc	1	0	4
FHP	54	58	610
Florida's Turnpike	0	0	1
FLPD	0	0	1
Motorist	12	2	23
Other	0	1	1
Palm Beach Road	1	2	8
Road Watcher	3	1	14
SIRV	3	0	5
SmarTraveler (511)	1	0	20
VisioPaD Detectio	3	3	23
<b>Total</b>	<b>233</b>	<b>217</b>	<b>1,828</b>

## Total Incidents by Detection Method

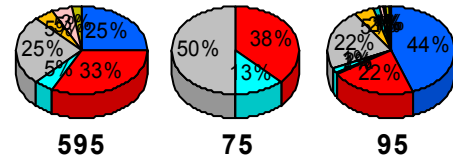


## Incident Detection Methods by Roadway

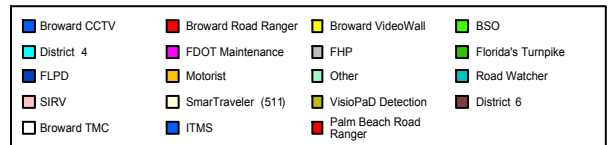
		Current Month	Last Month	YTD
595	Broward CCTV	10	12	93
	Broward Road Ra	13	13	67
	BSO	0	0	2
	District 4	2	2	8
	FHP	10	14	109
	FLPD	0	0	1
	Motorist	2	0	4
	Road Watcher	0	0	1
	SIRV	2	0	3
	SmarTraveler (511)	0	0	3
	VisioPaD Detectio	1	1	5
	<b>Total</b>	<b>40</b>	<b>42</b>	<b>296</b>
75	Broward Road Ra	3	9	51
	BSO	0	0	1
	District 4	1	0	2
	FHP	4	3	63
	Road Watcher	0	0	1
	<b>Total</b>	<b>8</b>	<b>12</b>	<b>118</b>
95	Broward CCTV	82	63	576
	Broward Road Ra	40	43	275
	Broward TMC	0	0	1
	BSO	1	2	5
	District 4	3	4	34
	District 6	0	2	3
	FDOT Maintenanc	1	0	4
	FHP	40	41	438
	Florida's Turnpike	0	0	1
	Motorist	10	2	19
	Other	0	1	1
	Palm Beach Road	1	2	8
	Road Watcher	3	1	12

## Total Events by Roadway and Detection Method

Current Period Only



### SR-84



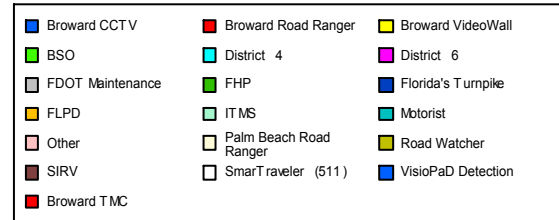
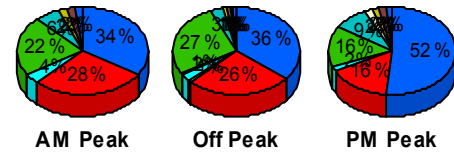
		Current Month	Last Month	YTD
95	SIRV	1	0	2
	SmarTraveler (511)	1	0	17
	VisioPaD Detectio	2	2	18
	<b>Total</b>	<b>185</b>	<b>163</b>	<b>1,414</b>
<b>Total</b>	<b>233</b>	<b>217</b>	<b>1,828</b>	

### Incident Detection Methods by Peak Period

		Current Month	Last Month	YTD
AM Peak	Broward CCTV	17	15	146
	Broward Road Ra	14	19	105
	District 4	2	1	11
	District 6	0	1	1
	FDOT Maintenanc	0	0	1
	FHP	11	11	110
	Florida's Turnpike	0	0	1
	FLPD	0	0	1
	Motorist	3	1	8
	Palm Beach Road	0	0	3
	Road Watcher	1	0	3
	SIRV	1	0	1
	SmarTraveler (511)	0	0	5
	VisioPaD Detectio	1	1	6
	<b>Total</b>	<b>50</b>	<b>49</b>	<b>402</b>
Off Peak	Broward CCTV	45	40	342
	Broward Road Ra	33	30	199
	Broward TMC	0	0	1
	BSO	1	1	3
	District 4	3	5	24
	District 6	0	0	1
	FDOT Maintenanc	1	0	2
	FHP	34	29	338
	Motorist	4	0	9

### Total Events by Roadway and Detection Method

Current Period Only

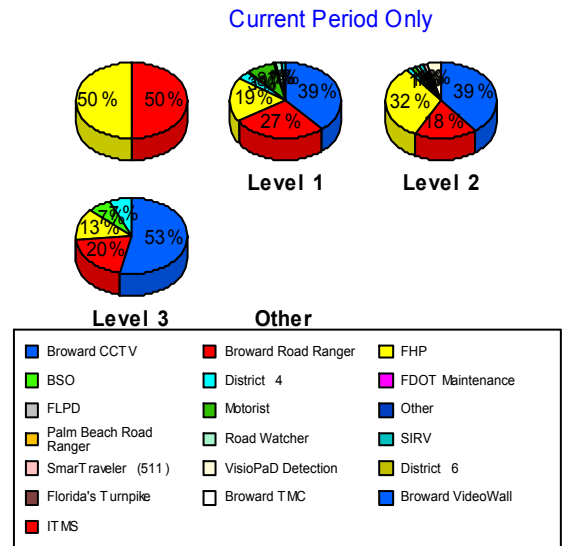


		Current Month	Last Month	YTD
Off Peak	Palm Beach Road	0	2	3
	Road Watcher	1	1	8
	SIRV	1	0	3
	SmarTraveler (511	1	0	9
	VisioPaD Detectio	1	1	11
	<b>Total</b>	<b>125</b>	<b>109</b>	<b>953</b>
PM Peak	Broward CCTV	30	20	181
	Broward Road Ra	9	16	89
	BSO	0	1	5
	District 4	1	0	9
	District 6	0	1	1
	FDOT Maintenanc	0	0	1
	FHP	9	18	162
	Motorist	5	1	6
	Other	0	1	1
	Palm Beach Road	1	0	2
	Road Watcher	1	0	3
	SIRV	1	0	1
	SmarTraveler (511	0	0	6
	VisioPaD Detectio	1	1	6
	<b>Total</b>	<b>58</b>	<b>59</b>	<b>473</b>
<b>Total</b>	<b>233</b>	<b>217</b>	<b>1,828</b>	

## Incident Detection Methods by Severity

		Current Month	Last Month	YTD
	Broward CCTV	0	0	1
	Broward Road Ra	1	0	1
	FHP	1	0	1
	Total	2	0	3
Level 1	Broward CCTV	54	54	421
	Broward Road Ra	38	40	243
	BSO	0	1	3
	District 4	4	3	24
	FDOT Maintenanc	1	0	2
	FHP	27	35	311
	FLPD	0	0	1
	Motorist	11	2	17
	Other	0	1	1
	Palm Beach Road	1	1	5
	Road Watcher	2	1	9
	SIRV	2	0	3
	SmarTraveler (511)	0	0	11
	VisioPaD Detectio	0	2	9
	Total	140	140	1,060
Level 2	Broward CCTV	30	20	207
	Broward Road Ra	14	22	127
	BSO	0	1	3
	District 4	1	3	17
	District 6	0	1	2
	FDOT Maintenanc	0	0	2
	FHP	24	19	239
	Florida's Turnpike	0	0	1
	Motorist	1	0	6
	Palm Beach Road	0	0	1
	Road Watcher	1	0	4
	SIRV	1	0	2

### Total Events by Roadway and Detection Method



		Current Month	Last Month	YTD
Level 2	SmarTraveler (511)	1	0	8
	VisioPaD Detectio	3	1	13
	Total	76	67	632
Level 3	Broward CCTV	8	1	40
	Broward Road Ra	3	3	22
	Broward TMC	0	0	1
	BSO	1	0	2
	District 4	1	0	3
	District 6	0	1	1
	FHP	2	4	59
	Palm Beach Road	0	1	2
	Road Watcher	0	0	1
	SmarTraveler (511)	0	0	1
	VisioPaD Detectio	0	0	1
	Total	15	10	133
Total		233	217	1,828

# Road Ranger / SIRV Performance Measures

## Road Ranger / SIRV Performance By County

RR/SIRV Responses per County

Values presented are:  
 - Total Events with a RR/SIRV Response  
 - Total RR/SIRV Responses,  
 - Total Activities Performed

	Current Month	Last Month	YTD
Broward	4,196	4,377	32,460
	4,540	4,710	34,687
	4,708	4,929	36,151

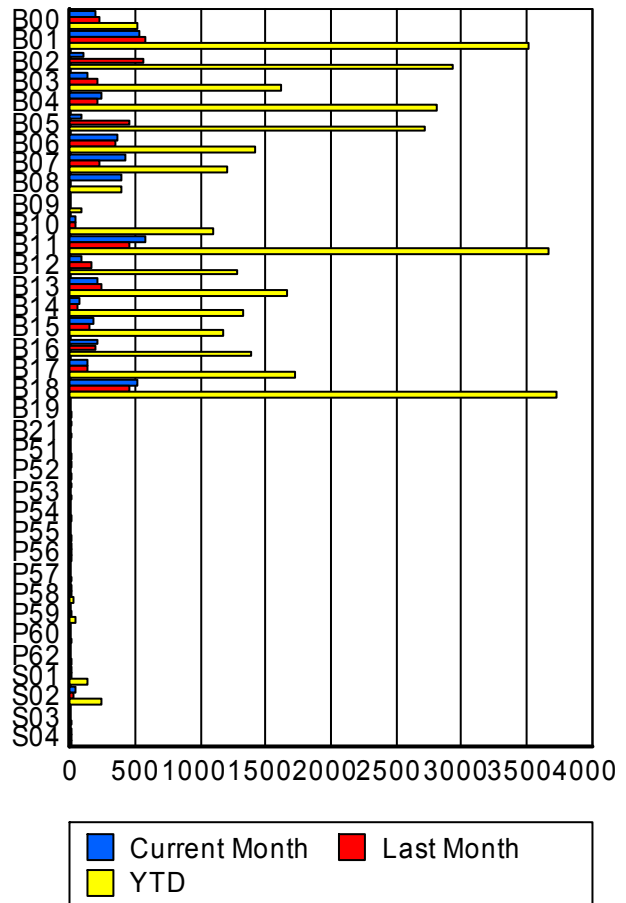


■ Broward

## Road Ranger / SIRV Performance By Truck

	Current Month	Last Month	YTD
B00	196	212	507
	198	215	514
	207	219	529
B01	531	575	3,489
	532	581	3,518
	553	598	3,660
B02	98	551	2,903
	100	557	2,931
	103	583	3,071
B03	136	211	1,592
	136	214	1,614
	143	223	1,672
B04	241	214	2,771
	244	214	2,807
	249	225	2,931
B05	78	445	2,687
	79	450	2,714
	82	471	2,842
B06	355	348	1,402
	357	350	1,410
	365	366	1,471
B07	414	226	1,191
	417	228	1,199
	431	246	1,238

RR/SIRV Responses per Truck



	Current Month	Last Month	YTD
B08	383 389 399	0 0 0	384 390 400
B09	0 0 0	0 0 0	87 87 90
B10	45 45 46	32 32 32	1,083 1,099 1,152
B11	571 572 594	453 454 477	3,646 3,673 3,817
B12	80 80 80	152 154 158	1,266 1,276 1,327
B13	210 213 219	231 231 241	1,642 1,657 1,700
B14	72 72 75	61 61 62	1,318 1,328 1,370
B15	177 178 183	144 145 150	1,171 1,179 1,228
B16	211 214 220	191 194 211	1,359 1,379 1,445
B17	132 135 139	138 138 147	1,701 1,716 1,793
B18	510 516 552	446 452 474	3,689 3,725 3,882
B19	0 0 0	0 0 0	2 2 2
B21	2 2 2	0 0 0	2 2 2
P51	0 0 0	0 0 0	6 6 6
P52	1 1 1	0 0 0	3 3 3

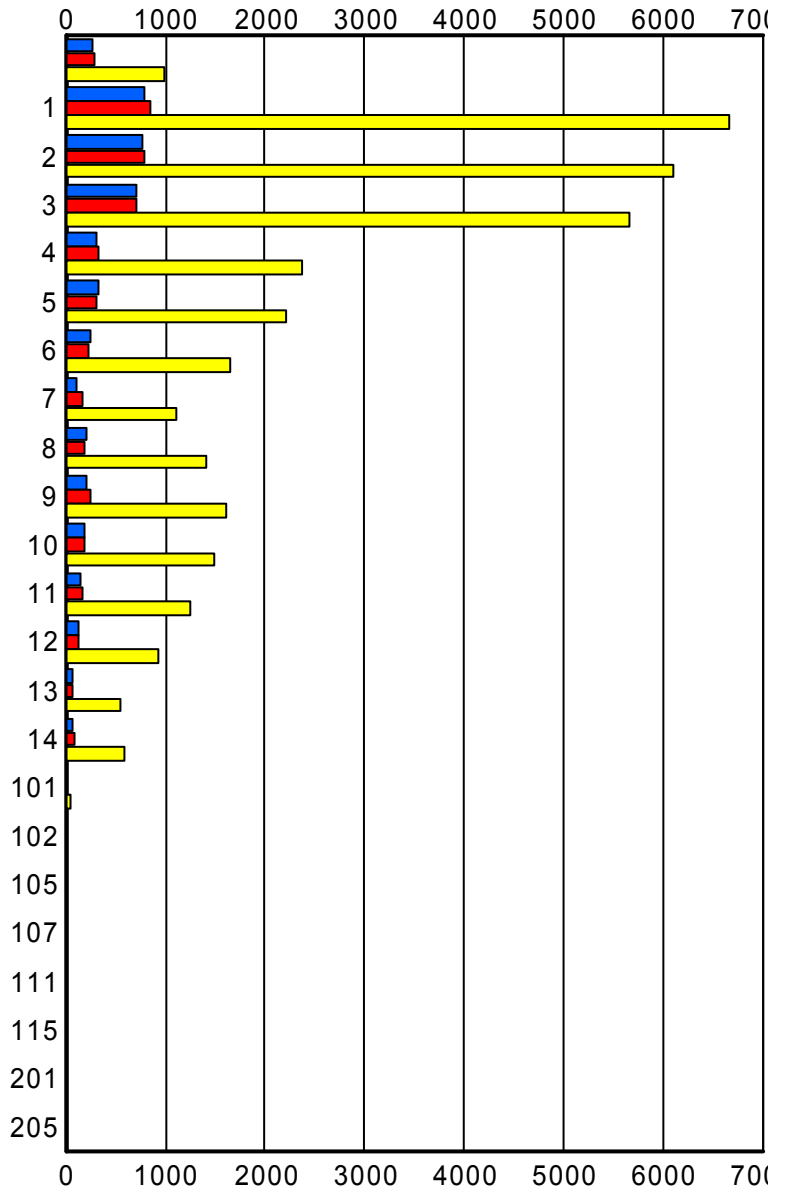
	Current Month	Last Month	YTD
P53	4 4 4	0 0 0	4 4 4
P54	0 0 0	0 0 0	3 3 5
P55	0 0 0	0 0 0	2 2 2
P56	1 1 1	4 4 4	6 6 6
P57	0 0 0	0 0 0	2 2 2
P58	4 4 6	2 2 2	17 17 20
P59	0 0 0	1 1 1	33 33 38
P60	0 0 0	0 0 0	1 1 1
P62	0 0 0	0 0 0	2 2 2
S01	11 11 13	12 12 18	128 130 159
S02	33 33 34	16 16 16	244 245 268
S03	0 0 0	0 0 0	1 1 1
S04	7 7 7	5 5 5	12 12 12

### Road Ranger / SIRV Performance By Beat

	Current Month	Last Month	YTD
	222	253	891
	262	282	995
	276	292	1,068
1	766	833	6,461
	787	849	6,656
	811	881	6,926
2	747	774	5,920
	773	787	6,104
	804	837	6,373
3	691	691	5,510
	707	706	5,665
	739	743	5,923
4	306	322	2,344
	308	325	2,368
	315	341	2,438
5	328	302	2,189
	330	302	2,205
	337	317	2,300
6	245	231	1,645
	245	233	1,658
	253	244	1,726
7	115	157	1,099
	116	161	1,114
	119	172	1,172
8	204	178	1,411
	206	180	1,419
	215	183	1,492
9	210	237	1,607
	210	241	1,619
	218	253	1,675
10	195	187	1,472
	196	188	1,485
	213	196	1,542
11	140	167	1,238
	140	169	1,253
	141	174	1,285
12	127	132	927
	128	132	938
	129	138	976
13	58	64	537
	58	64	544
	61	64	560

Values presented are:  
 - Total Events with a RR/SIRV Response  
 - Total RR/SIRV Responses,  
 - Total Activities Performed

### RR/SIRV Responses per Beat



■ Current Month   
 ■ Last Month   
 ■ YTD

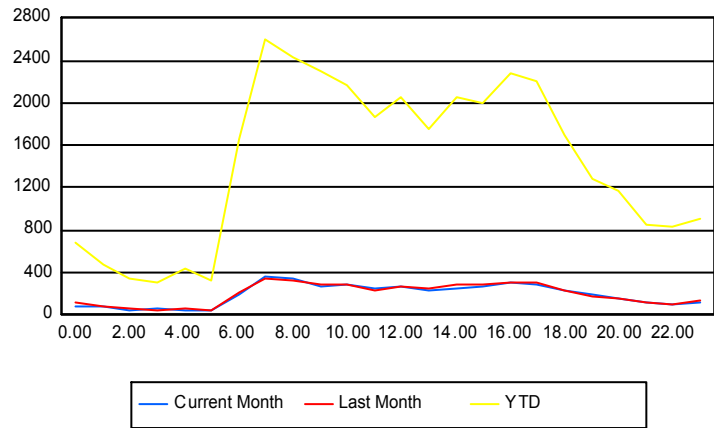
	Current Month	Last Month	YTD
14	63	84	582
	64	84	588
	65	87	609
101	7	2	51
	7	2	51
	9	2	61
102	1	2	4
	1	2	4
	1	2	4
105	0	0	1
	0	0	1
	0	0	1
107	0	0	1
	0	0	1
	0	0	1
111	2	3	16
	2	3	16
	2	3	16
115	0	0	1
	0	0	1
	0	0	1
201	0	0	1
	0	0	1
	0	0	1
205	0	0	1
	0	0	1
	0	0	1

## Road Ranger / SIRV Performance By Time of Day

Values presented are:  
 - Total Events with a RR/SIRV Response  
 - Total RR/SIRV Responses,  
 - Total Activities Performed

	Current Month	Last Month	YTD
12AM-1AM	75	114	647
	86	120	690
	91	125	718
1AM-2AM	65	75	429
	76	84	473
	78	87	492
2AM-3AM	43	55	324
	45	62	347
	47	63	357
3AM-4AM	42	43	269
	54	48	305
	55	49	318
4AM-5AM	32	49	380
	36	56	431
	37	58	440
5AM-6AM	30	38	301
	37	43	327
	38	43	340
6AM-7AM	181	187	1,539
	201	207	1,658
	209	210	1,733
7AM-8AM	325	322	2,439
	353	348	2,599
	365	368	2,701
8AM-9AM	325	299	2,281
	343	318	2,422
	361	328	2,538
9AM-10AM	255	261	2,160
	275	282	2,303
	282	294	2,386
10AM-11AM	254	266	2,037
	281	282	2,169
	295	297	2,277
11AM-12PM	223	204	1,746
	241	226	1,871
	250	231	1,952
12PM-1PM	243	251	1,918
	270	275	2,058
	282	293	2,156

## Number of Responses / Hour of the Day



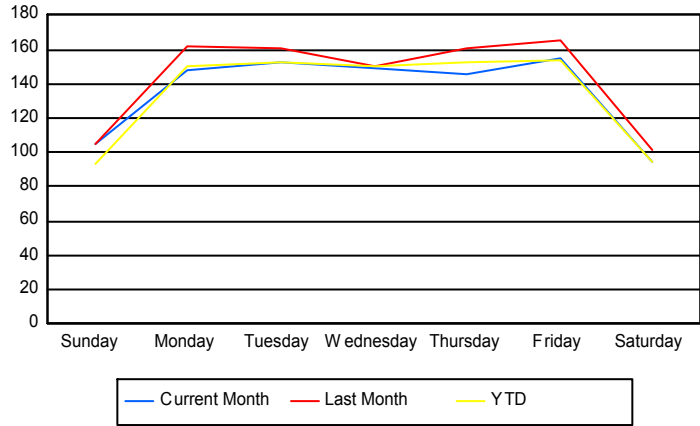
	Current Month	Last Month	YTD
1PM-2PM	201 228 232	230 251 257	1,625 1,750 1,833
2PM-3PM	245 258 265	275 284 308	1,924 2,057 2,160
3PM-4PM	246 263 271	262 284 309	1,880 2,001 2,083
4PM-5PM	281 302 309	289 308 325	2,123 2,275 2,361
5PM-6PM	266 282 292	289 312 330	2,088 2,206 2,302
6PM-7PM	220 233 241	215 229 236	1,588 1,701 1,763
7PM-8PM	182 189 200	172 179 184	1,227 1,289 1,343
8PM-9PM	150 157 166	144 150 155	1,122 1,170 1,226
9PM-10PM	111 114 119	108 118 123	776 846 875
10PM-11PM	89 95 98	105 108 114	783 834 867
11PM-12AM	112 121 125	124 136 142	854 905 930

## Road Ranger / SIRV Performance By Day of Week

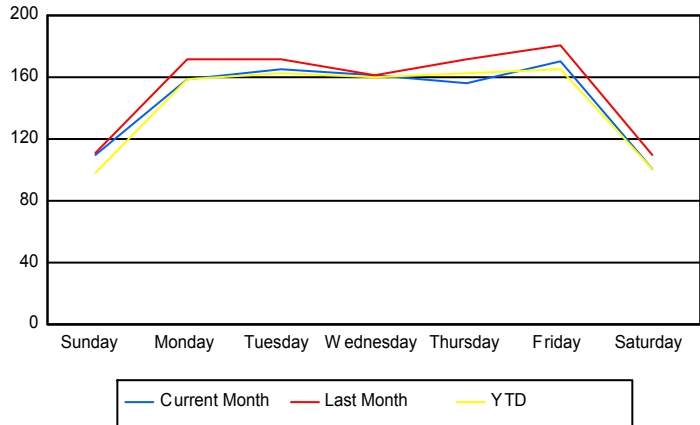
Values presented are:  
 - Total Events with a RR/SIRV Response  
 - Total RR/SIRV Responses,  
 - Total Activities Performed

	Current Month	Last Month	YTD
Sunday	415	512	3,082
	436	546	3,255
	452	564	3,388
Monday	593	798	5,179
	639	853	5,494
	658	895	5,698
Tuesday	607	789	5,306
	660	844	5,664
	697	876	5,931
Wednesday	731	581	5,171
	796	626	5,556
	824	673	5,809
Thursday	716	641	5,271
	769	684	5,639
	792	716	5,871
Friday	769	658	5,320
	845	721	5,724
	876	746	5,944
Saturday	370	402	3,160
	395	436	3,355
	409	459	3,510

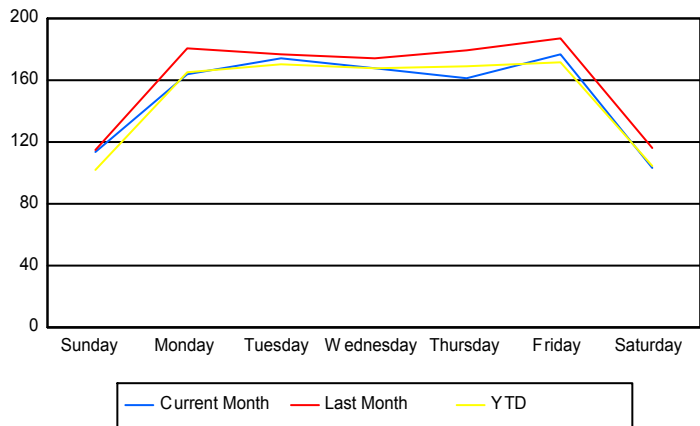
### Avg # of events with a RR/SIRV Response per Day of the Week



### Avg # of RR/SIRV Responses per Day of the Week



### Avg # of RR/SIRV Activities Performed per Day of the Week



### Road Ranger/SIRV Responses per Time of Day and Day of Week

