



Monthly Performance Measures Report Broward County



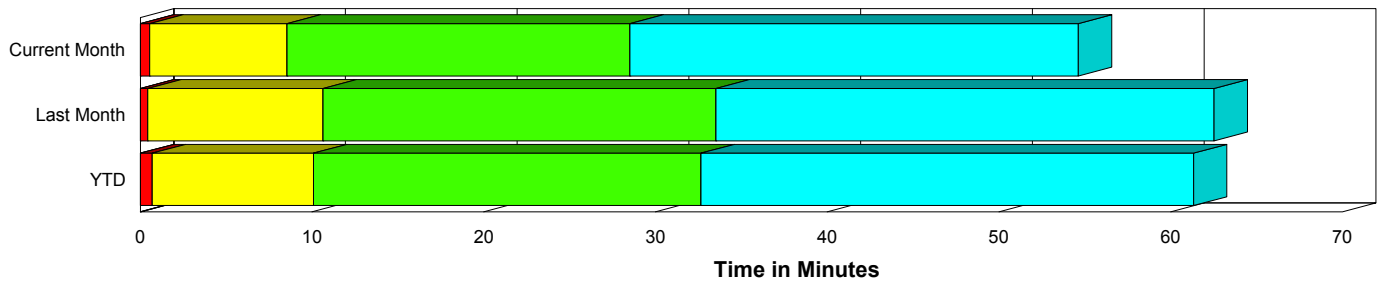
Created on:
August 03, 2009
9:59 am

Period From Jul 1, 2009 to Jul 31, 2009

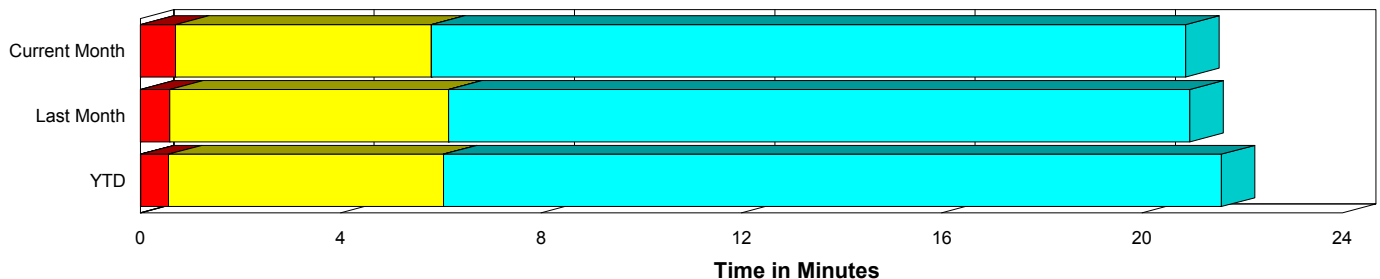
Performance Measures Summary

	Traffic Events (No Lanes Blocked)			Incidents (Lanes Blocked)		
	<u>This Month</u>	<u>Last Month</u>	<u>YTD</u>	<u>This Month</u>	<u>Last Month</u>	<u>YTD</u>
Number of Events	4,050	4,252	29,391	192	213	1,428
TMC Detection (min.)	0.00	0.00	0.01	0.00	0.00	0.00
TMC Verification (min.)	0.70	0.58	0.55	0.54	0.44	0.68
TMC Response (min.)	6.22	6.60	6.53	8.61	10.82	10.30
RR Dispatch Time (min.)	1.03	1.37	1.25	2.19	2.26	3.21
RR Response Time (min.)	5.40	5.25	5.40	6.54	8.94	7.29
Roadway Clearance (min.)				28.70	29.69	31.97
Event Clearance (min.)	21.28	21.40	22.07	54.79	58.54	60.10
# of Events w/ RR/SIRV	2,954	2,918	18,998	133	124	941
RR/SIRV Responses	2,954	2,918	18,998	133	124	941
RR/SIRV Activities	2,558	2,481	16,130	291	246	1,913

Incident Clearance Time-Line



Traffic Event (Non-Lane Blockage) Time-Line



■ Avg. TMC Detection Time	■ Avg. Time from TMC Response to Roadway Clearance*
■ Avg. Time from TMC Detection to TMC Verification	■ Avg. Time from Roadway Clearance to Incident/Event Clearance**
■ Avg. Time from TMC Verification to TMC Response	

* Roadway clearance equals all travel lanes open

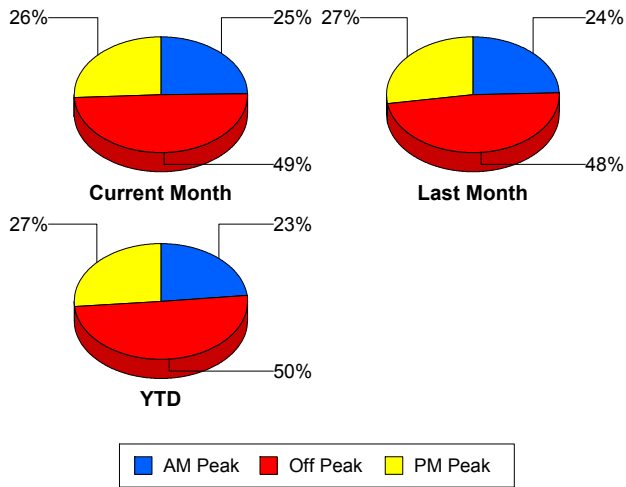
** Incident clearance equals time when last responder has left the scene

Performance Measures by Peak Period

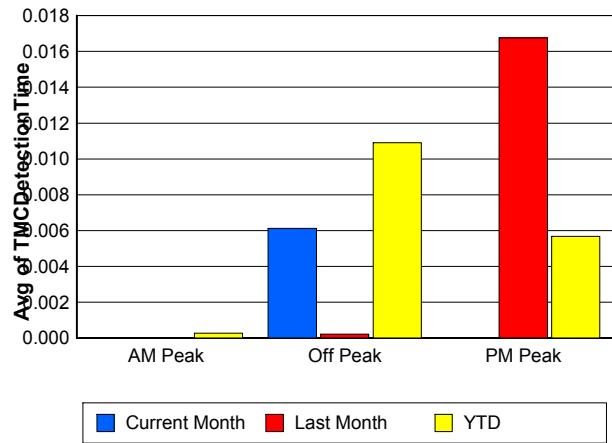
Note: AM peak period is defined as 6am to 10am and PM peak period is defined as 3pm to 7pm.

	AM Peak			Off Peak			PM Peak		
	<u>Current Month</u>	<u>Last Month</u>	<u>YTD</u>	<u>Current Month</u>	<u>Last Month</u>	<u>YTD</u>	<u>Current Month</u>	<u>Last Month</u>	<u>YTD</u>
Number of Events	1,050	1,092	7,230	2,091	2,148	15,420	1,101	1,225	8,169
Number of Incidents	36	49	318	98	106	704	58	58	406
TMC Detection (min.)	0.00	0.00	0.00	0.01	0.00	0.01	0.00	0.02	0.01
TMC Verification (min.)	0.65	0.54	0.50	0.64	0.40	0.48	0.84	0.92	0.76
TMC Response (min.)	5.93	6.45	6.20	7.17	7.76	7.64	5.63	6.02	6.16
RR Dispatch Time (min.)	0.77	1.47	1.02	1.46	1.85	1.94	0.87	0.81	0.87
RR Response Time (min.)	5.26	4.99	5.26	6.02	5.86	5.79	4.89	5.35	5.40
Event Clearance (min.)	21.20	22.30	21.57	25.01	24.83	26.68	20.08	21.02	20.46
Roadway Clearance (min.)	18.34	31.93	25.82	30.96	32.73	37.54	31.32	22.25	27.15
Incident Clearance (min.)	44.70	57.04	54.60	57.34	63.47	64.29	56.79	50.67	57.15
# of Events w/ RR/SIRV	898	897	5,818	1,263	1,198	7,962	926	947	6,159
RR/SIRV Responses	898	897	5,818	1,263	1,198	7,962	926	947	6,159
RR/SIRV Activities	839	847	5,513	1,128	1,022	6,924	882	858	5,606

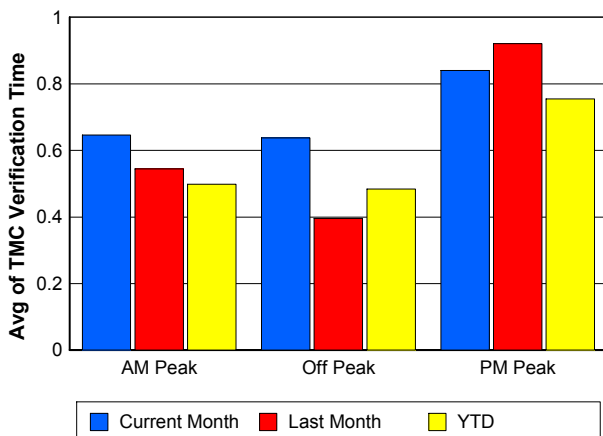
Number of Events / Peak Period



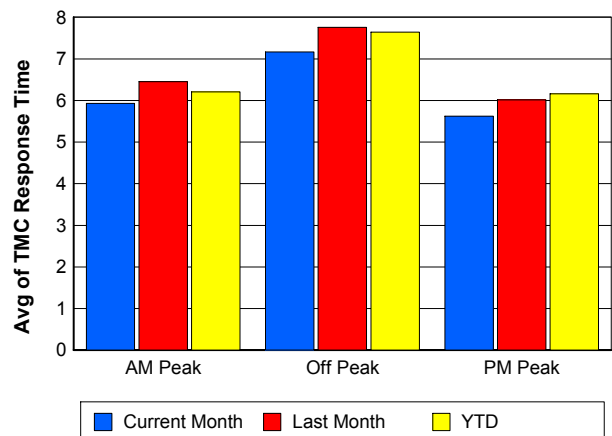
TMC Detection Time



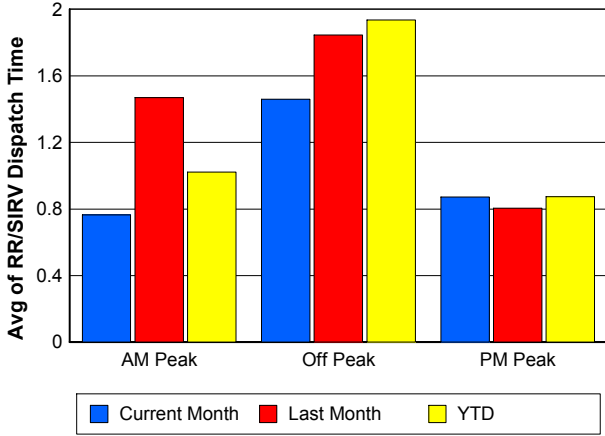
TMC Verification Time



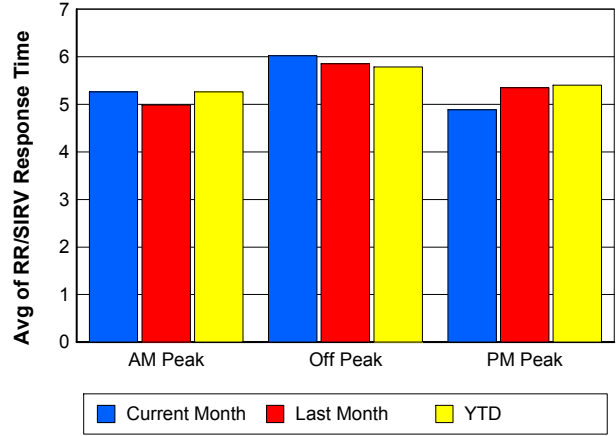
TMC Response Time



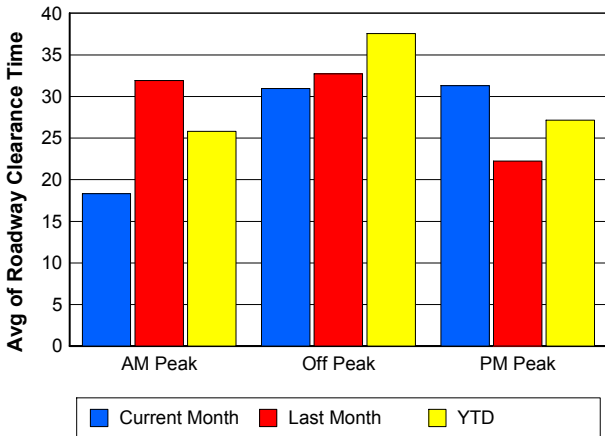
Road Ranger / SIRV Dispatch Time



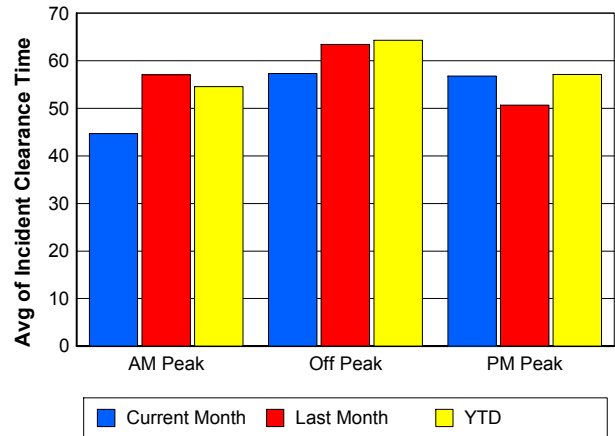
Road Ranger / SIRV Response Time



Roadway Clearance Time (2A)



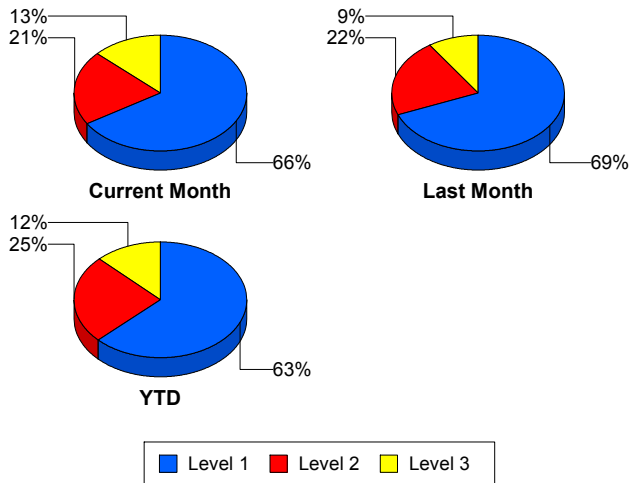
Incident Clearance Time (3B)



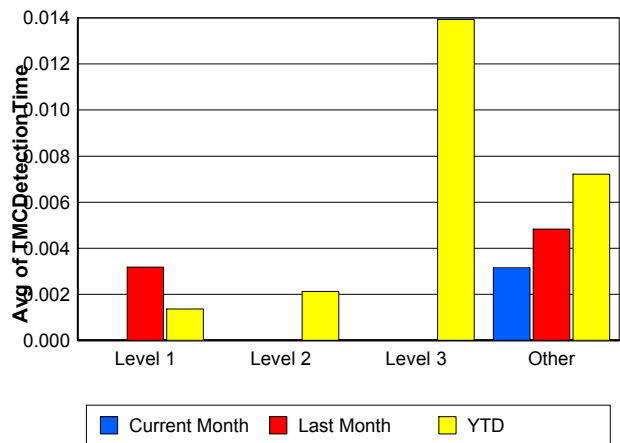
Performance Measures by Severity

	Level 1			Level 2			Level 3			Other		
	<u>This Month</u>	<u>Last Month</u>	<u>YTD</u>	<u>This Month</u>	<u>Last Month</u>	<u>YTD</u>	<u>This Month</u>	<u>Last Month</u>	<u>YTD</u>	<u>This Month</u>	<u>Last Month</u>	<u>YTD</u>
Number of Events	127	147	898	40	46	353	25	20	177	4,050	4,252	29,391
Number of Incidents	127	147	898	40	46	353	25	20	177	0	0	0
TMC Detection (min.)	0.00	0.00	0.00	0.00	0.00	0.00	0.00	0.00	0.01	0.00	0.00	0.01
TMC Verification (min.)	0.28	0.35	0.42	1.36	0.70	0.93	0.59	0.46	1.52	0.70	0.58	0.55
TMC Response (min.)	6.26	9.01	7.13	10.61	8.89	10.34	17.72	24.47	25.48	6.22	6.60	6.53
RR Dispatch Time (min.)	1.65	1.77	1.66	1.53	1.24	3.31	5.18	6.30	9.77	1.03	1.37	1.25
RR Resp. Time (min.)	4.60	7.70	5.57	9.08	7.65	7.53	13.09	18.21	15.27	5.40	5.25	5.40
Event Clearance (min.)	42.86	45.99	46.31	66.94	70.98	72.69	95.47	121.57	104.72	21.28	21.40	22.07
Roadway Clear. (min.)	13.61	13.68	14.09	47.54	50.64	49.24	75.20	99.20	88.26			
Incident Clearance (min.)	42.86	45.99	46.31	66.94	70.98	72.69	95.47	121.57	104.72			
# of Events w/ RR/SIRV	92	85	630	20	23	165	21	16	146	2,954	2,918	18,998
RR/SIRV Responses	92	85	630	20	23	165	21	16	146	2,954	2,918	18,998
RR/SIRV Activities	167	154	1,111	66	70	484	58	22	318	2,558	2,481	16,130

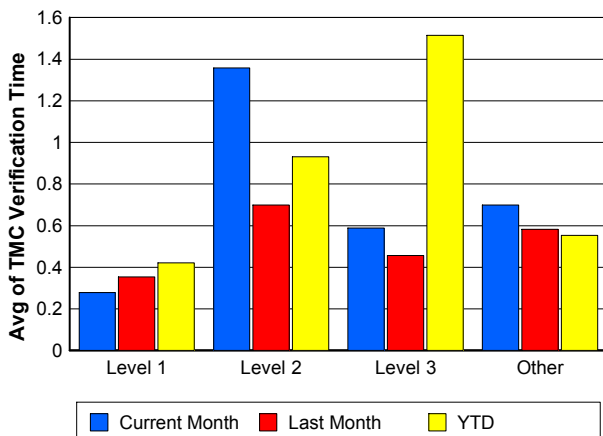
Number of Events / Severity



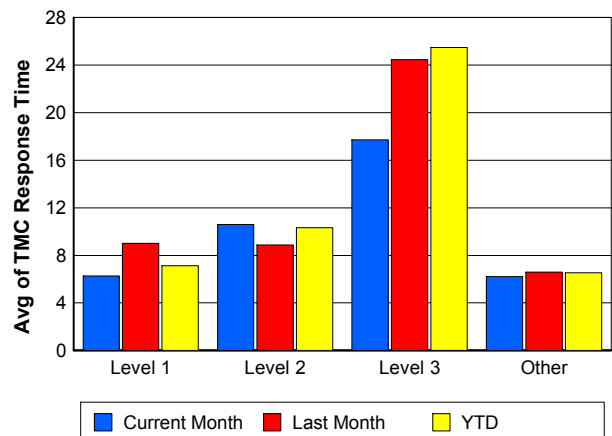
TMC Detection Time



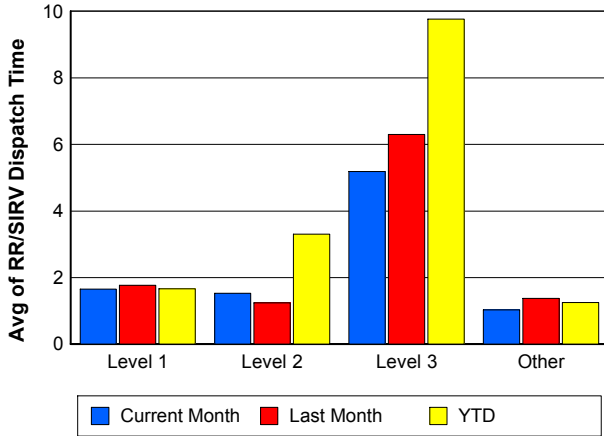
TMC Verification Time



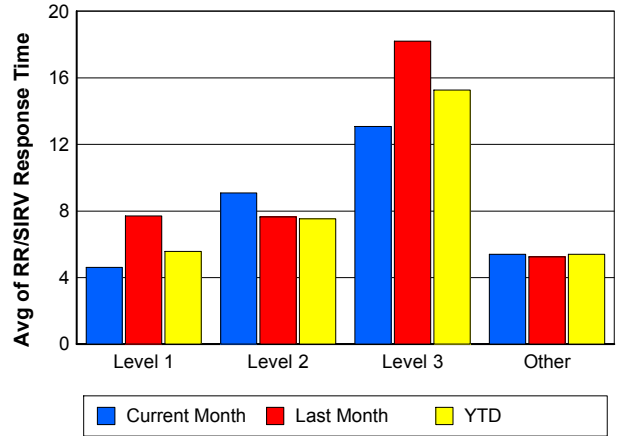
TMC Response Time



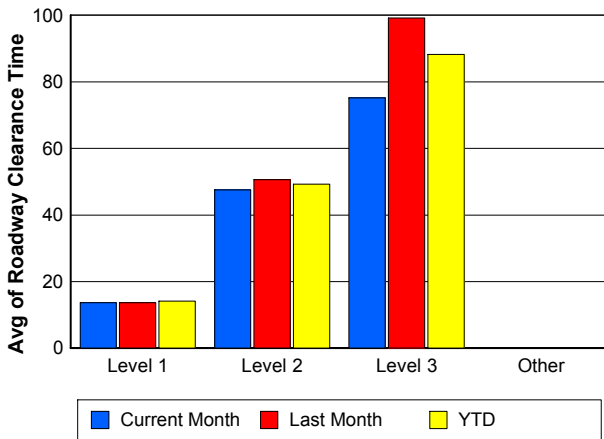
Road Ranger / SIRV Dispatch Time



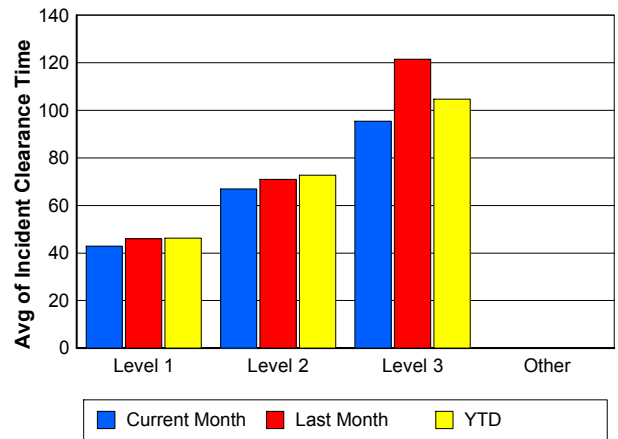
Road Ranger / SIRV Response Time



Roadway Clearance Time (2A)



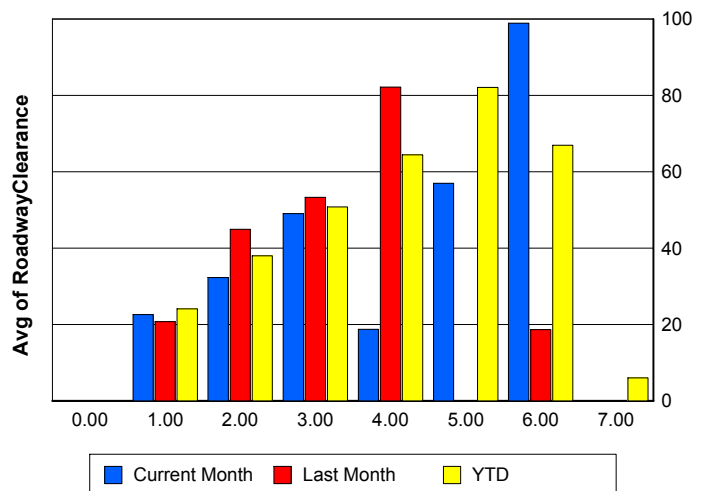
Incident Clearance Time (3B)



Roadway Clearance by Maximum Number of Lanes Blocked

	Current Month	Last Month	YTD
0			
1	22.58	20.73	24.06
2	32.28	44.88	38.00
3	48.99	53.30	50.78
4	18.71	82.18	64.43
5	56.94	0.00	82.05
6	98.87	18.67	66.89
7	0.00	0.00	5.97

Roadway Clearance Time (2A)



Performance Measures by Roadway

595

	<u>Current Month</u>	<u>Last Month</u>	<u>YTD</u>
Number of Events	493	569	4,073
Number of Incidents	28	28	249
TMC Detection (min.)	0.00	0.00	0.01
TMC Verification (min.)	1.18	0.74	0.74
TMC Response (min.)	7.11	5.30	6.42
RR Dispatch Time (min.)	1.19	0.85	1.11
RR Resp. Time (min.)	6.04	4.67	5.39
Event Clearance (min.)	21.50	19.98	21.49
Roadway Clear. (min.)	33.59	40.75	30.78
Incident Clearance (min.)	47.41	60.52	53.68
# of Events w/ RR/SIRV	367	418	2,813
RR/SIRV Responses	367	418	2,813
RR/SIRV Activities	349	375	2,589

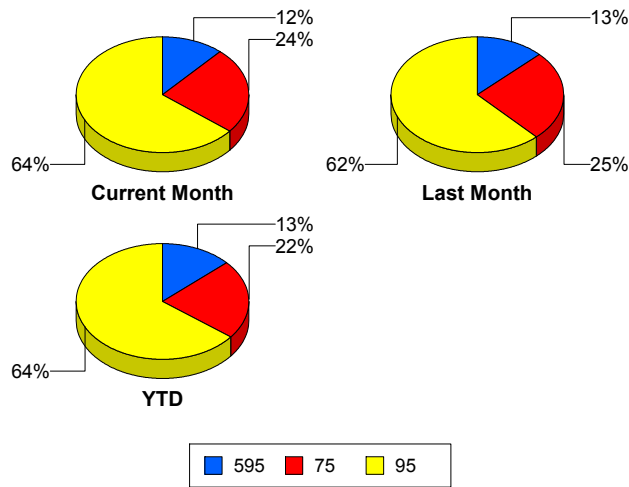
75

	<u>Current Month</u>	<u>Last Month</u>	<u>YTD</u>
Number of Events	1,027	1,124	6,906
Number of Incidents	18	27	127
TMC Detection (min.)	0.00	0.00	0.00
TMC Verification (min.)	0.72	0.67	0.68
TMC Response (min.)	7.54	7.99	8.08
RR Dispatch Time (min.)	1.30	1.02	1.27
RR Resp. Time (min.)	6.78	7.08	6.92
Event Clearance (min.)	24.20	26.88	26.14
Roadway Clear. (min.)	35.40	38.97	59.20
Incident Clearance (min.)	60.84	77.20	84.47
# of Events w/ RR/SIRV	720	714	4,372
RR/SIRV Responses	720	714	4,372
RR/SIRV Activities	628	570	3,680

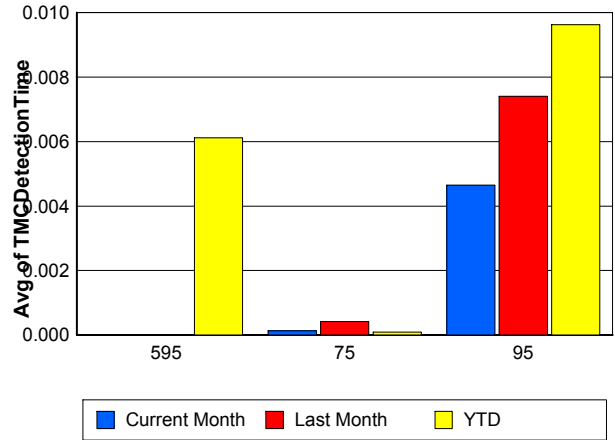
95

	<u>Current Month</u>	<u>Last Month</u>	<u>YTD</u>
Number of Events	2,722	2,772	19,840
Number of Incidents	146	158	1,052
TMC Detection (min.)	0.00	0.01	0.01
TMC Verification (min.)	0.59	0.51	0.48
TMC Response (min.)	5.77	6.73	6.39
RR Dispatch Time (min.)	0.98	1.68	1.42
RR Resp. Time (min.)	4.89	5.04	5.08
Event Clearance (min.)	22.49	22.31	23.51
Roadway Clear. (min.)	26.94	26.15	28.97
Incident Clearance (min.)	55.47	54.98	58.68
# of Events w/ RR/SIRV	2,000	1,910	12,754
RR/SIRV Responses	2,000	1,910	12,754
RR/SIRV Activities	1,872	1,782	11,774

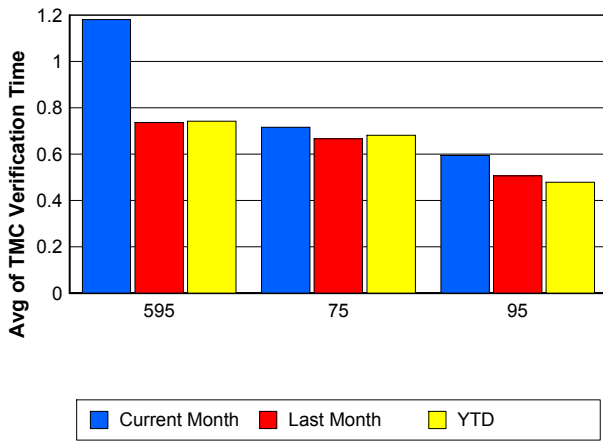
Number of Events / Roadway



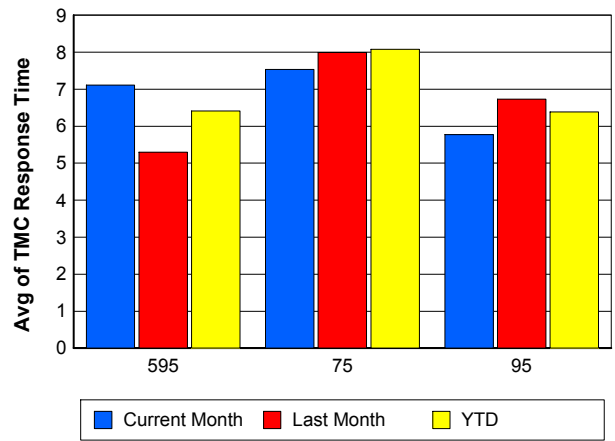
TMC Detection Time



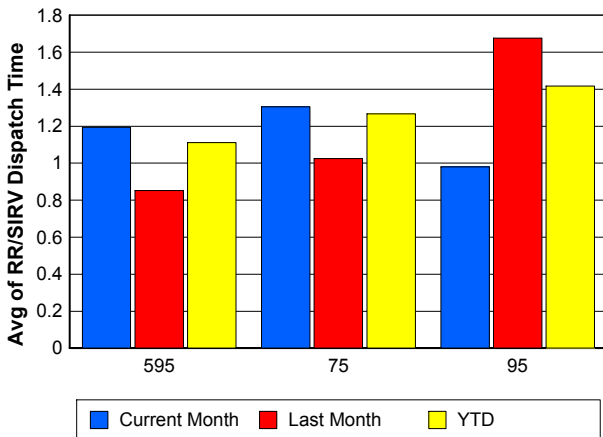
TMC Verification Time



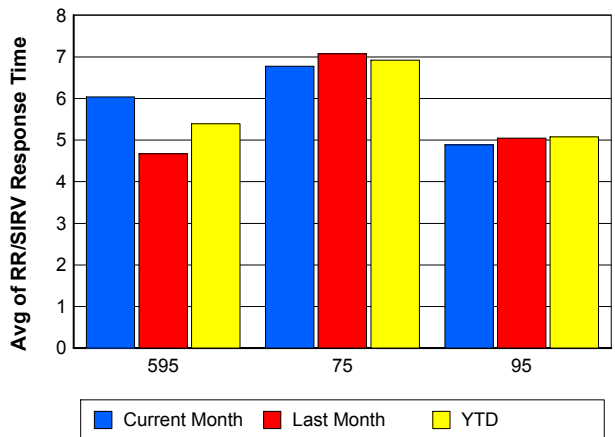
TMC Response Time



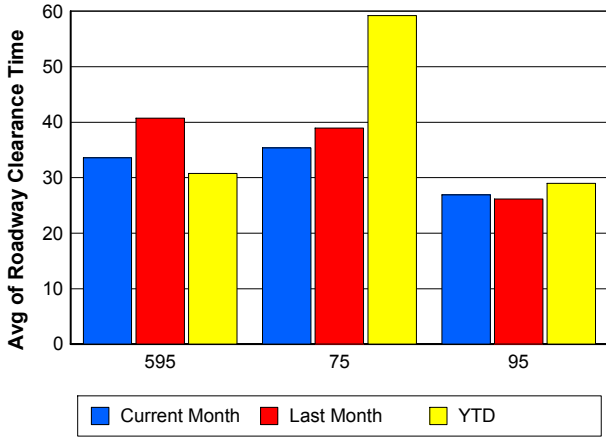
Road Ranger / SIRV Dispatch Time



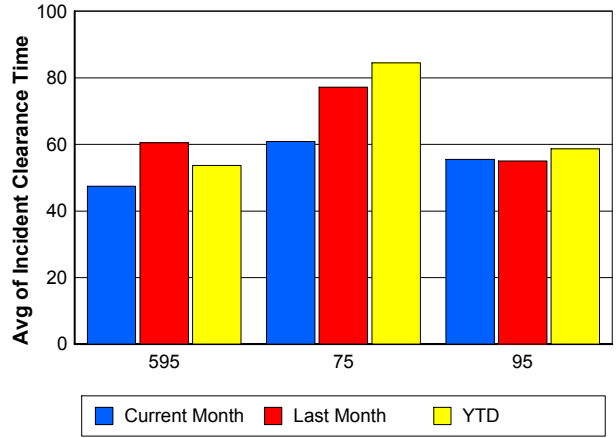
Road Ranger / SIRV Response Time



Roadway Clearance Time (2A)



Incident Clearance Time (3B)



Performance Measures by Event Type

Accident

	<u>Current Month</u>	<u>Last Month</u>	<u>YTD</u>
Number of Events	287	307	2,126
Number of Incidents	136	171	1,025
TMC Detection (min.)	0.00	0.00	0.01
TMC Verification (min.)	0.78	0.64	0.74
TMC Response (min.)	8.24	9.98	8.70
RR Dispatch Time (min.)	1.48	1.73	1.68
RR Response Time (min.)	6.85	8.48	7.13
Event Clearance (min.)	51.66	54.08	55.29
Roadway Clearance (min.)	28.64	32.08	33.35
Incident Clearance (min.)	60.76	65.78	66.67
# of Events w/ RR/SIRV	209	203	1,486
RR/SIRV Assists	209	203	1,486
RR/SIRV Activities	330	308	2,284

Debris on Roadway

	<u>Current Month</u>	<u>Last Month</u>	<u>YTD</u>
Number of Events	154	152	866
Number of Incidents	5	5	21
TMC Detection (min.)	0.00	0.14	0.13
TMC Verification (min.)	3.57	2.95	3.76
TMC Response (min.)	7.81	7.65	7.44
RR Dispatch Time (min.)	0.83	0.72	0.90
RR Response Time (min.)	7.02	7.01	6.56
Event Clearance (min.)	9.83	11.93	11.32
Roadway Clearance (min.)	19.42	6.78	23.45
Incident Clearance (min.)	24.16	9.33	27.98
# of Events w/ RR/SIRV	142	138	795
RR/SIRV Assists	142	138	795
RR/SIRV Activities	144	143	823

Disabled Vehicle

	<u>Current Month</u>	<u>Last Month</u>	<u>YTD</u>
Number of Events	2,599	2,612	17,863
Number of Incidents	30	24	223
TMC Detection (min.)	0.00	0.00	0.00
TMC Verification (min.)	0.78	0.73	0.65
TMC Response (min.)	6.10	6.45	6.28
RR Dispatch Time (min.)	0.86	1.45	1.14
RR Response Time (min.)	5.27	5.02	5.17
Event Clearance (min.)	25.53	26.81	27.10
Roadway Clearance (min.)	15.10	20.09	19.38
Incident Clearance (min.)	25.63	30.64	36.87
# of Events w/ RR/SIRV	2,141	2,107	13,654
RR/SIRV Assists	2,141	2,107	13,654
RR/SIRV Activities	2,186	2,164	13,941

Emergency Vehicles

	<u>Current Month</u>	<u>Last Month</u>	<u>YTD</u>
Number of Events	3	4	42
Number of Incidents	3	4	34
TMC Detection (min.)	0.00	0.00	0.00
TMC Verification (min.)	0.00	0.00	0.89
TMC Response (min.)	9.05	16.88	15.58
RR Dispatch Time (min.)	1.30	1.60	10.10
RR Response Time (min.)	7.75	15.28	4.81
Event Clearance (min.)	25.92	15.69	49.95
Roadway Clearance (min.)	22.53	10.31	50.09
Incident Clearance (min.)	25.92	15.69	55.68
# of Events w/ RR/SIRV	1	1	25
RR/SIRV Assists	1	1	25
RR/SIRV Activities	2	1	42

Other

	<u>Current Month</u>	<u>Last Month</u>	<u>YTD</u>
Number of Events	1,165	1,367	9,597
Number of Incidents	2	2	22
TMC Detection (min.)	0.00	0.00	0.00
TMC Verification (min.)	0.10	0.02	0.06
TMC Response (min.)	5.25	6.61	9.51
RR Dispatch Time (min.)	1.80	1.30	1.92
RR Response Time (min.)	4.34	5.82	6.82
Event Clearance (min.)	10.82	10.56	11.45
Roadway Clearance (min.)	157.32	23.43	33.90
Incident Clearance (min.)	169.15	26.76	39.00
# of Events w/ RR/SIRV	573	578	3,807
RR/SIRV Assists	573	578	3,807
RR/SIRV Activities	154	96	728

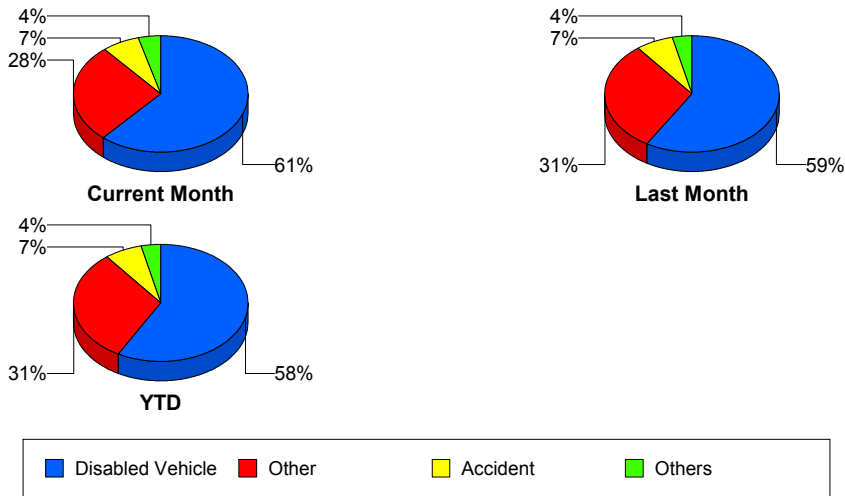
Police Activity

	<u>Current Month</u>	<u>Last Month</u>	<u>YTD</u>
Number of Events	8	6	137
Number of Incidents	4	3	44
TMC Detection (min.)	0.00	0.00	0.00
TMC Verification (min.)	0.05	0.61	0.20
TMC Response (min.)	47.63	12.21	15.13
RR Dispatch Time (min.)	2.07	2.48	5.03
RR Response Time (min.)	44.18	9.73	10.06
Event Clearance (min.)	42.92	35.87	36.02
Roadway Clearance (min.)	57.84	53.87	41.36
Incident Clearance (min.)	66.12	59.29	51.45
# of Events w/ RR/SIRV	4	3	43
RR/SIRV Assists	4	3	43
RR/SIRV Activities	1	4	49

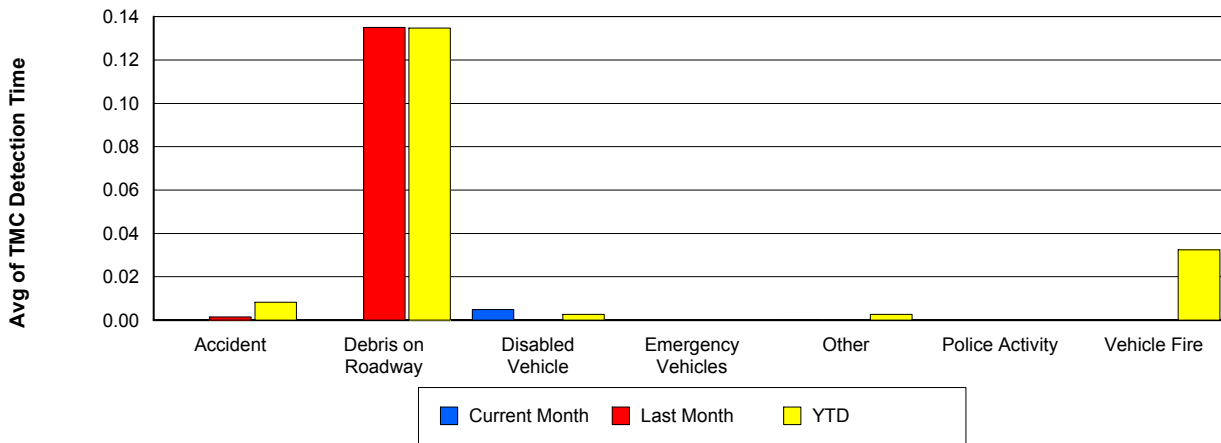
Vehicle Fire

	<u>Current Month</u>	<u>Last Month</u>	<u>YTD</u>
Number of Events	17	5	76
Number of Incidents	12	4	59
TMC Detection (min.)	0.00	0.00	0.03
TMC Verification (min.)	0.11	0.78	1.30
TMC Response (min.)	9.02	5.31	11.33
RR Dispatch Time (min.)	1.62	1.05	2.48
RR Response Time (min.)	7.41	4.01	9.36
Event Clearance (min.)	47.86	22.80	58.25
Roadway Clearance (min.)	37.60	18.37	40.51
Incident Clearance (min.)	57.68	28.98	62.42
# of Events w/ RR/SIRV	12	3	50
RR/SIRV Assists	12	3	50
RR/SIRV Activities	27	3	103

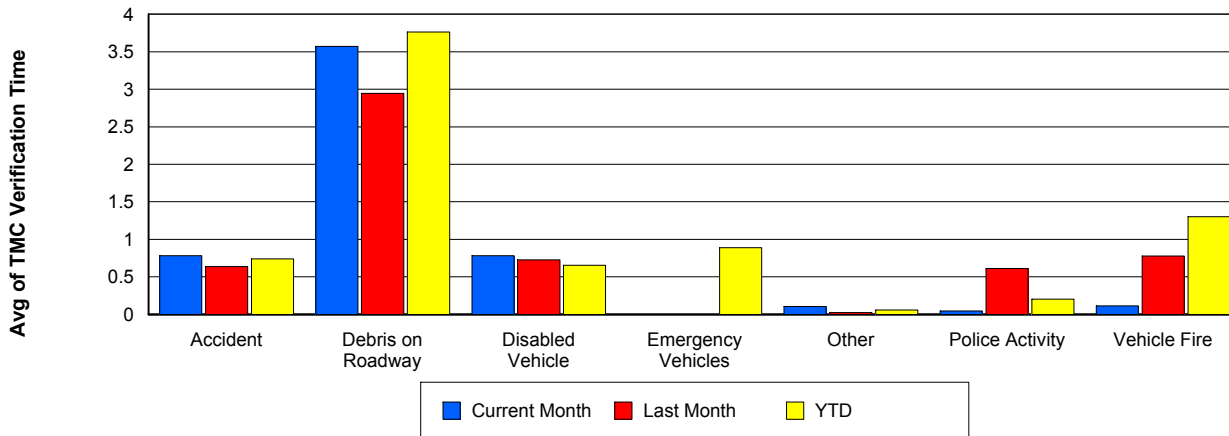
Number of Events / Event Type



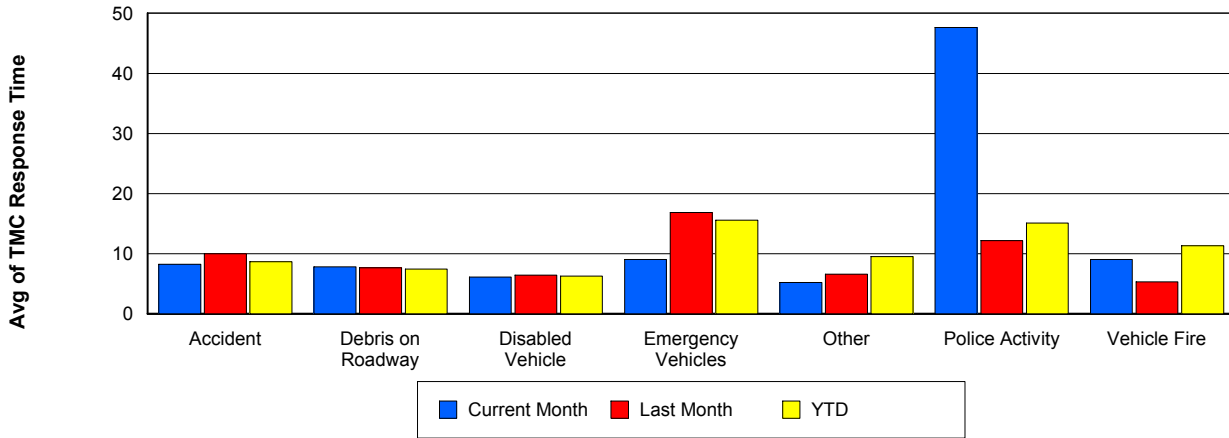
TMC Detection Time



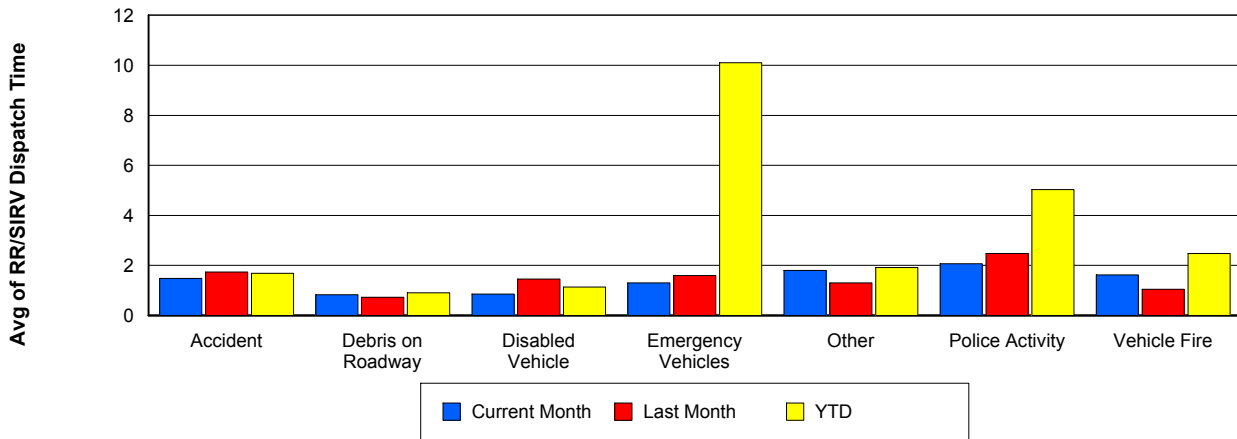
TMC Verification Time



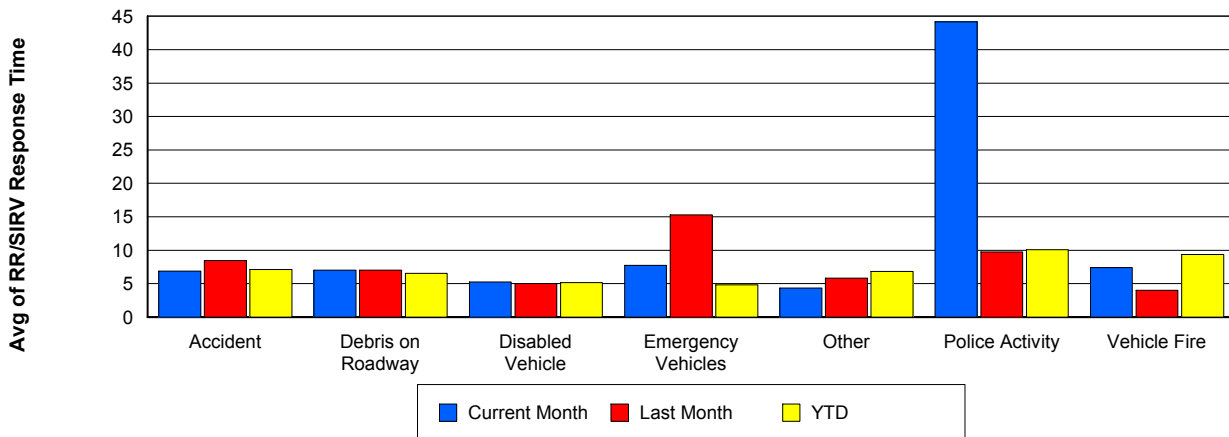
TMC Response Time



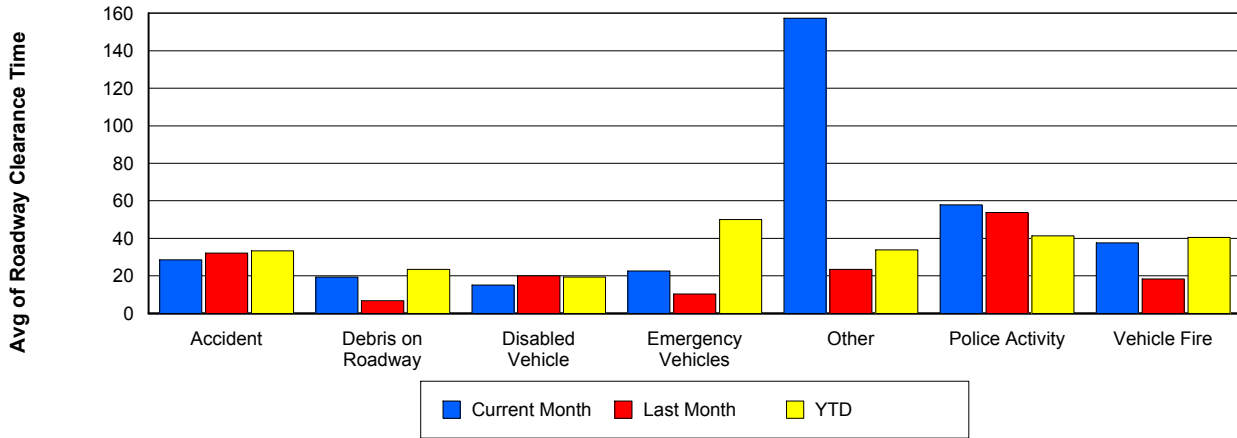
Road Ranger / SIRV Dispatch Time



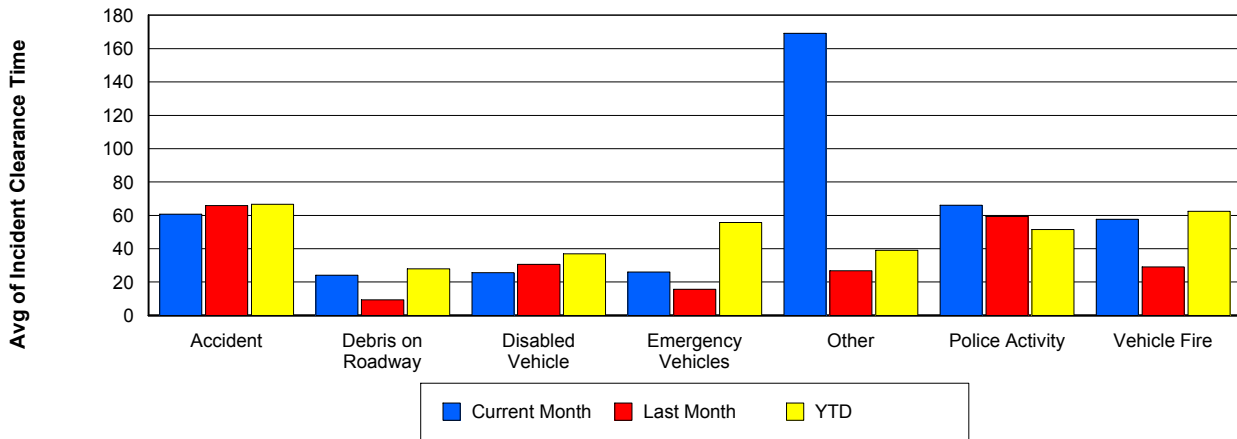
Road Ranger / SIRV Response Time



Roadway Clearance Time (2A)



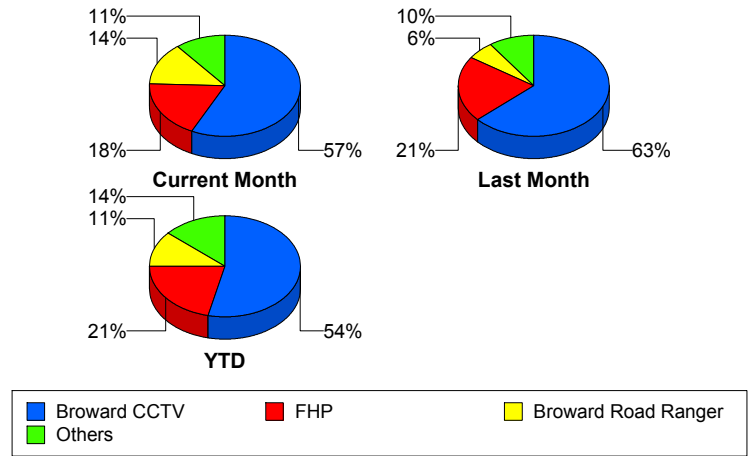
Incident Clearance Time (3B)



Incident Detection Methods

	Current Month	Last Month	YTD
Broward CCTV	110	135	765
Broward Road Ranger	26	12	163
Broward VideoWall	3	3	49
BSO	2	7	31
District 4	5	4	41
District 6	0	0	1
FDOT Maintenance	0	1	4
FHP	35	45	307
Fire	1	0	2
Florida's Turnpike	0	0	6
ITMS	0	0	1
Motorist	3	0	7
Other	0	0	1
Palm Beach Road Ran	0	0	2
Road Watcher	0	1	12
SIRV	4	1	9
SmarTraveler (511)	0	0	6
VisioPaD Detection	3	4	21
Total	192	213	1,428

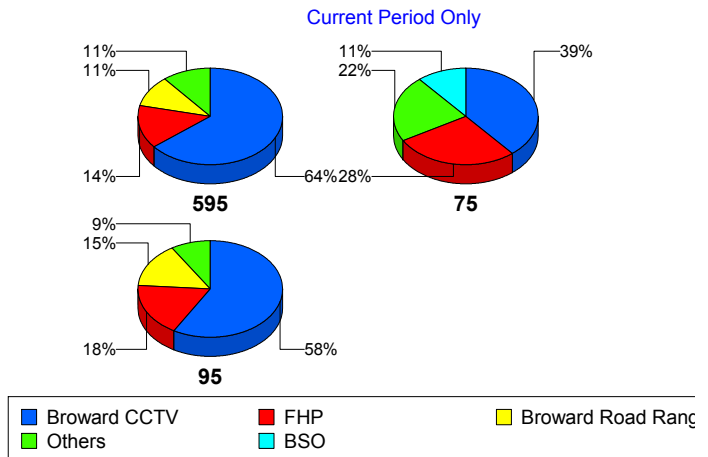
Total Incidents by Detection Method



Incident Detection Methods by Roadway

		Current Month	Last Month	YTD
595	Broward CCTV	18	16	121
	Broward Road Ranger	3	2	37
	Broward VideoWall	0	1	8
	BSO	0	1	3
	District 4	1	1	12
	FDOT Maintenance	0	0	2
	FHP	4	7	49
	Florida's Turnpike	0	0	6
	Motorist	0	0	2
	Road Watcher	0	0	3
	SIRV	1	0	1
	VisioPaD Detection	1	0	5
	Total	28	28	249
	75	Broward CCTV	7	15
Broward Road Ranger		1	3	12
Broward VideoWall		0	1	1
BSO		2	4	25
District 4		2	0	5
FHP		5	3	26
Other		0	0	1
Road Watcher		0	0	2
VisioPaD Detection		1	1	2
Total		18	27	127
95	Broward CCTV	85	104	591
	Broward Road Ranger	22	7	114
	Broward VideoWall	3	1	40
	BSO	0	2	3
	District 4	2	3	24
	District 6	0	0	1
	FDOT Maintenance	0	1	2
	FHP	26	35	232

Total Events by Roadway and Detection Method

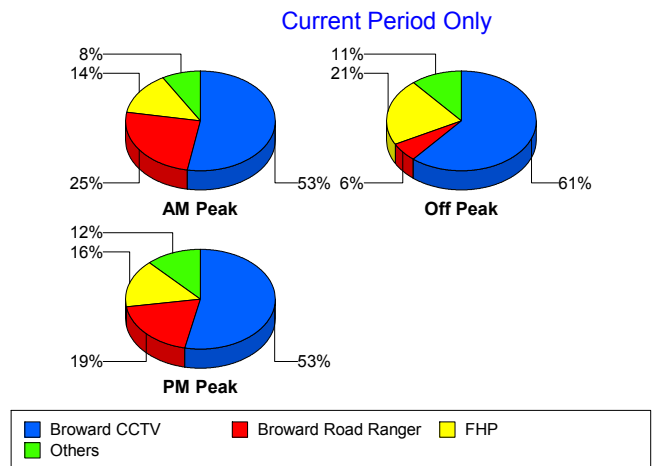


		Current Month	Last Month	YTD
95	Fire	1	0	2
	ITMS	0	0	1
	Motorist	3	0	5
	Palm Beach Road Ran	0	0	2
	Road Watcher	0	1	7
	SIRV	3	1	8
	SmarTraveler (511)	0	0	6
	VisioPaD Detection	1	3	14
	Total	146	158	1,052
Total	192	213	1,428	

Incident Detection Methods by Peak Period

		Current Month	Last Month	YTD
AM Peak	Broward CCTV	19	27	143
	Broward Road Ranger	9	4	51
	Broward VideoWall	2	0	16
	BSO	0	2	5
	District 4	0	2	13
	FHP	5	13	76
	Florida's Turnpike	0	0	2
	Motorist	1	0	4
	Palm Beach Road Ran	0	0	1
	Road Watcher	0	0	4
	SIRV	0	0	1
	SmarTraveler (511)	0	0	1
	VisioPaD Detection	0	1	1
	Total	36	49	318
	Off Peak	Broward CCTV	60	82
Broward Road Ranger		6	0	45
Broward VideoWall		1	1	27
BSO		2	1	21
District 4		2	1	13

Total Events by Peak Period and Detection Method

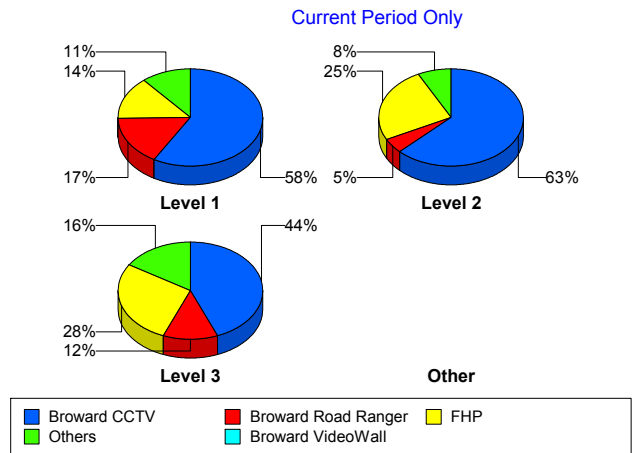


		Current Month	Last Month	YTD
Off Peak	FDOT Maintenance	0	0	2
	FHP	21	17	147
	Fire	1	0	1
	Florida's Turnpike	0	0	3
	ITMS	0	0	1
	Motorist	2	0	3
	Road Watcher	0	1	5
	SIRV	1	1	2
	SmarTraveler (511)	0	0	3
	VisioPaD Detection	2	2	16
	Total	98	106	704
PM Peak	Broward CCTV	31	26	207
	Broward Road Ranger	11	8	67
	Broward VideoWall	0	2	6
	BSO	0	4	5
	District 4	3	1	15
	District 6	0	0	1
	FDOT Maintenance	0	1	2
	FHP	9	15	84
	Fire	0	0	1
	Florida's Turnpike	0	0	1
	Other	0	0	1
	Palm Beach Road Ran	0	0	1
	Road Watcher	0	0	3
	SIRV	3	0	6
	SmarTraveler (511)	0	0	2
	VisioPaD Detection	1	1	4
	Total	58	58	406
Total	192	213	1,428	

Incident Detection Methods by Severity

		Current Month	Last Month	YTD
Level 1	Broward CCTV	74	97	488
	Broward Road Ranger	21	7	121
	Broward VideoWall	3	3	30
	BSO	1	3	6
	District 4	2	3	30
	FDOT Maintenance	0	1	3
	FHP	18	29	179
	Fire	1	0	1
	Motorist	1	0	5
	Palm Beach Road Ran	0	0	2
	Road Watcher	0	1	9
	SIRV	3	1	8
	SmarTraveler (511)	0	0	4
	VisioPaD Detection	3	2	12
	Total	127	147	898
Level 2	Broward CCTV	25	26	191
	Broward Road Ranger	2	4	28
	Broward VideoWall	0	0	16
	BSO	0	1	7
	District 4	0	1	5
	FDOT Maintenance	0	0	1
	FHP	10	13	86
	Florida's Turnpike	0	0	4
	ITMS	0	0	1
	Motorist	2	0	2
	Other	0	0	1
	Road Watcher	0	0	1
	SIRV	1	0	1
	SmarTraveler (511)	0	0	2
	VisioPaD Detection	0	1	7
Total	40	46	353	

Total Events by Severity and Detection Method



		Current Month	Last Month	YTD
Level 3	Broward CCTV	11	12	86
	Broward Road Ranger	3	1	14
	Broward VideoWall	0	0	3
	BSO	1	3	18
	District 4	3	0	6
	District 6	0	0	1
	FHP	7	3	42
	Fire	0	0	1
	Florida's Turnpike	0	0	2
	Road Watcher	0	0	2
	VisioPaD Detection	0	1	2
	Total	25	20	177
Total		192	213	1,428

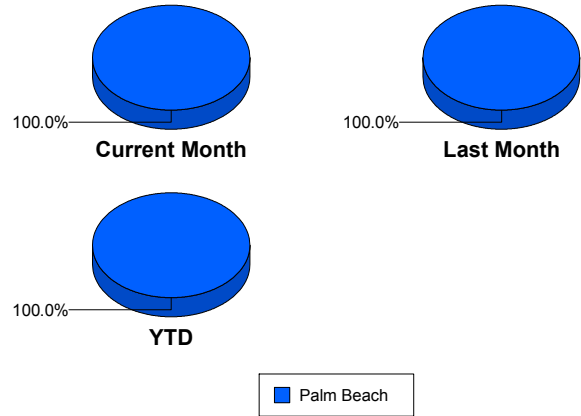
Road Ranger / SIRV Performance Measures

Road Ranger / SIRV Performance By County

Values presented are:
 - Total Events with a RR/SIRV Response
 - Total RR/SIRV Responses,
 - Total Activities Performed

	Current Mo	Last Month	YTD
Palm Beach	1,649	1,517	10,062
	1,730	1,564	10,422
	1,862	1,660	11,131

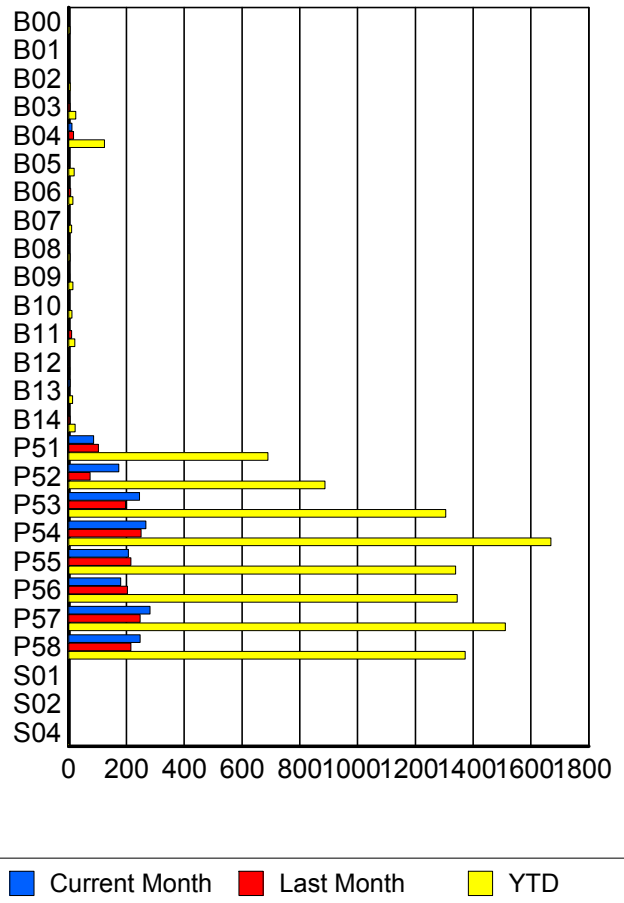
RR/SIRV Responses per County



Road Ranger / SIRV Performance By Truck

	Current Mo	Last Month	YTD
B00	2	1	5
	2	1	5
	2	1	5
B01	0	0	1
	0	0	1
	0	0	1
B02	2	1	6
	2	1	6
	2	1	6
B03	3	5	25
	3	5	25
	3	5	26
B04	11	17	123
	11	17	124
	15	19	145
B05	0	2	18
	0	2	19
	0	2	20
B06	3	7	15
	3	7	15
	3	7	15
B07	3	0	10
	3	0	10
	3	0	10
B08	2	0	5
	2	0	5
	2	0	5

RR/SIRV Responses per Truck



	Current Mo	Last Month	YTD
B09	1	4	15
	1	4	15
	1	4	15
B10	2	0	10
	3	0	11
	3	0	11
B11	3	10	21
	3	10	21
	3	10	22
B12	0	2	4
	0	2	4
	0	2	4
B13	5	1	14
	5	1	14
	5	1	15
B14	3	5	23
	3	5	23
	3	5	24
P51	82	101	680
	86	103	690
	89	108	722
P52	171	74	880
	174	74	887
	194	75	948
P53	241	195	1,289
	245	197	1,305
	256	203	1,383
P54	262	246	1,649
	267	251	1,669
	287	273	1,790
P55	204	216	1,328
	207	216	1,340
	228	235	1,435
P56	177	200	1,326
	180	204	1,345
	198	216	1,451
P57	276	244	1,496
	282	248	1,512
	299	263	1,618
P58	240	214	1,351
	247	216	1,372
	265	230	1,456
S01	1	0	1
	1	0	1
	1	0	1

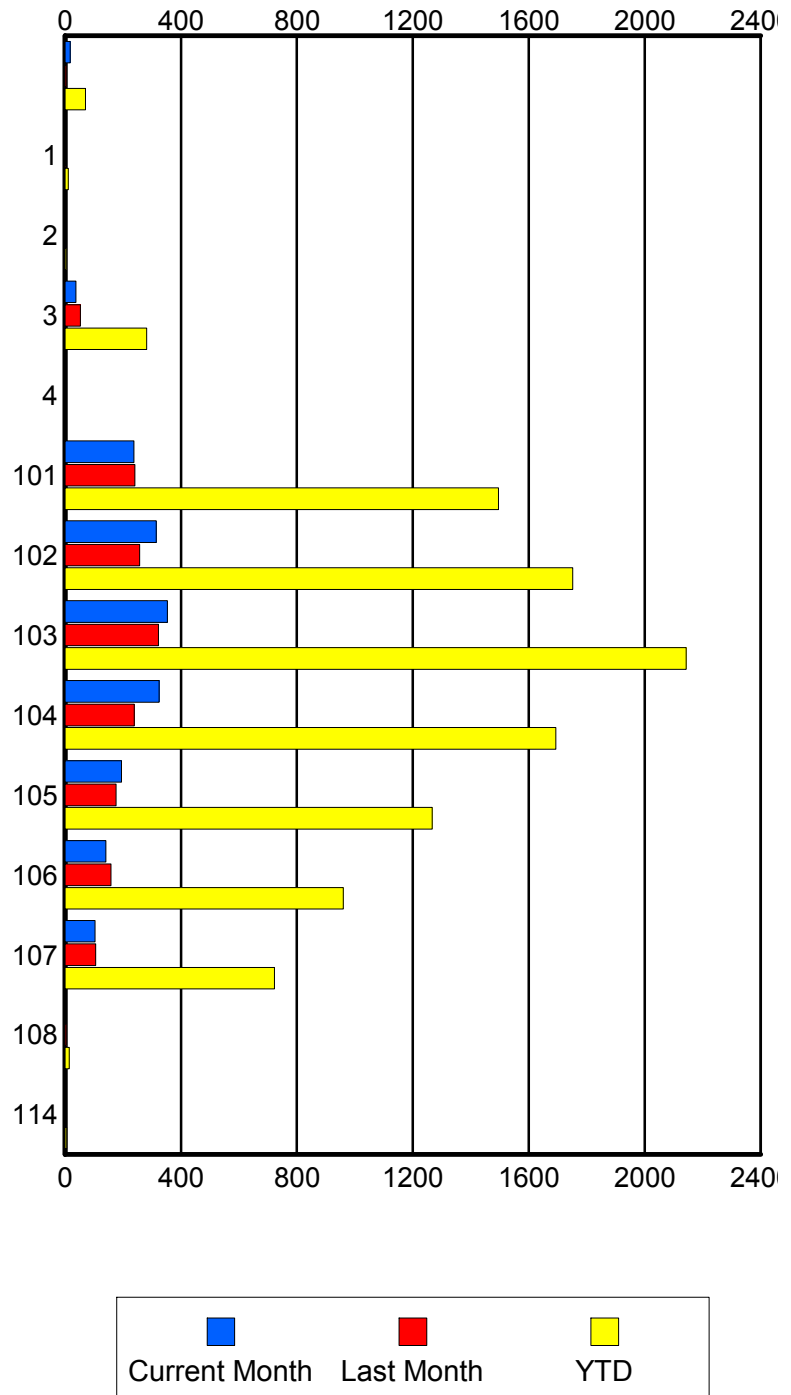
	Current Mo	Last Month	YTD
S02	0	0	1
	0	0	1
	0	0	1
S04	0	0	2
	0	0	2
	0	0	2

Road Ranger / SIRV Performance By Beat

	Current Mo	Last Month	YTD
	18	4	71
	18	4	71
	18	4	71
1	3	1	11
	3	1	11
	3	1	12
2	0	1	4
	0	1	4
	0	1	5
3	36	52	278
	37	53	282
	41	55	306
4	1	0	2
	1	0	2
	1	0	2
101	234	237	1,476
	238	241	1,495
	254	259	1,605
102	308	256	1,730
	315	258	1,752
	339	275	1,864
103	345	317	2,113
	353	322	2,143
	376	347	2,299
104	320	233	1,674
	325	239	1,693
	350	247	1,811
105	193	175	1,256
	195	176	1,267
	213	189	1,354
106	137	156	945
	141	159	960
	159	167	1,030
107	99	104	711
	104	106	722
	108	111	752
108	0	4	13
	0	4	14
	0	4	14
114	0	0	6
	0	0	6
	0	0	6

Values presented are:
 - Total Events with a RR/SIRV Response
 - Total RR/SIRV Responses,
 - Total Activities Performed

RR/SIRV Responses per Beat

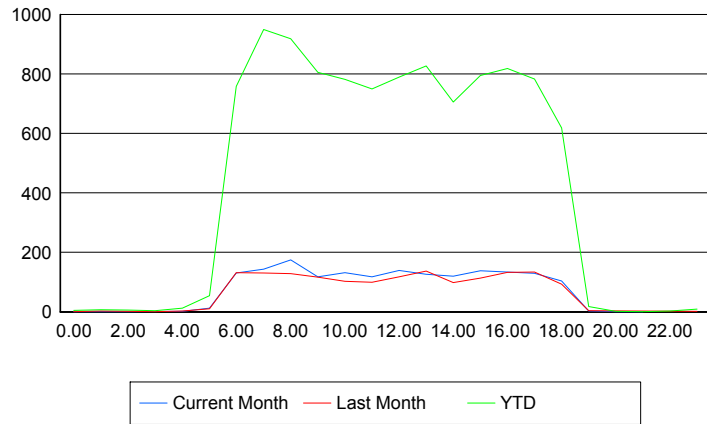


Road Ranger / SIRV Performance By Time of Day

Values presented are:
 - Total Events with a RR/SIRV Response
 - Total RR/SIRV Responses,
 - Total Activities Performed

	Current Mo	Last Month	YTD
12AM-1AM	1 1 1	1 1 1	5 5 5
1AM-2AM	0 0 0	1 3 3	5 7 7
2AM-3AM	1 1 1	2 2 3	6 6 7
3AM-4AM	0 0 0	1 1 1	4 4 4
4AM-5AM	2 2 2	3 3 3	9 12 13
5AM-6AM	10 12 13	10 10 12	50 54 57
6AM-7AM	125 131 140	130 132 138	728 758 798
7AM-8AM	137 144 156	123 131 139	907 949 1,017
8AM-9AM	165 175 190	128 129 136	883 918 988
9AM-10AM	114 118 133	113 117 125	780 806 885
10AM-11AM	123 132 140	99 103 110	751 782 827
11AM-12PM	112 118 131	96 100 104	724 750 813
12PM-1PM	132 139 148	113 118 126	760 789 843

Number of Responses / Hour of the Day



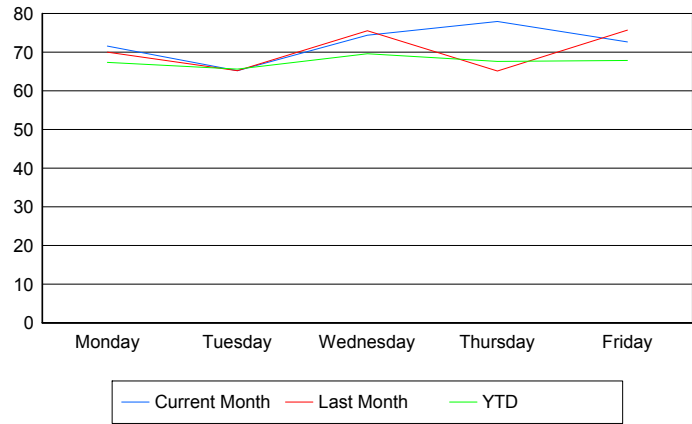
	Current Mo	Last Month	YTD
1PM-2PM	124	134	809
	126	137	827
	136	148	895
2PM-3PM	118	93	682
	120	98	706
	129	104	747
3PM-4PM	130	110	766
	138	113	795
	149	125	853
4PM-5PM	125	133	792
	134	133	819
	142	141	861
5PM-6PM	124	128	757
	130	134	783
	138	137	824
6PM-7PM	101	93	612
	104	93	619
	108	98	653
7PM-8PM	3	4	18
	3	4	18
	3	4	19
8PM-9PM	1	0	2
	1	0	2
	1	0	2
9PM-10PM	1	0	1
	1	0	1
	1	0	1
10PM-11PM	0	0	3
	0	0	3
	0	0	3
11PM-12AM	0	2	8
	0	2	9
	0	2	9

Road Ranger / SIRV Performance By Day of Week

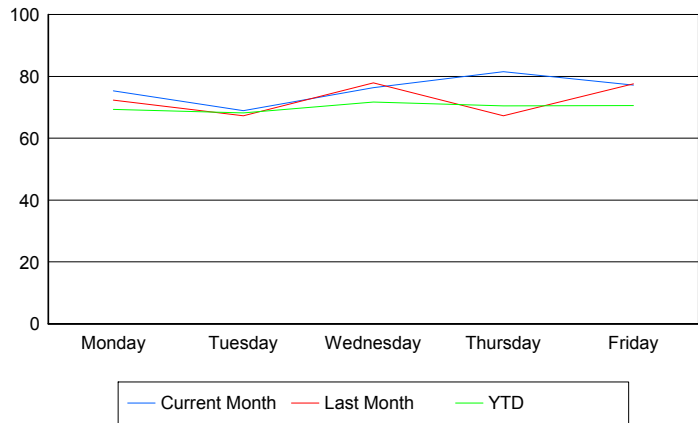
Values presented are:
 - Total Events with a RR/SIRV Response
 - Total RR/SIRV Responses,
 - Total Activities Performed

	Current Mo	Last Month	YTD
Monday	284	341	1,974
	299	353	2,030
	319	368	2,148
Tuesday	257	318	1,932
	271	328	2,005
	295	341	2,136
Wednesday	370	301	2,059
	380	310	2,123
	411	337	2,286
Thursday	382	256	2,041
	399	264	2,124
	426	284	2,277
Friday	357	302	2,060
	381	309	2,140
	411	330	2,284

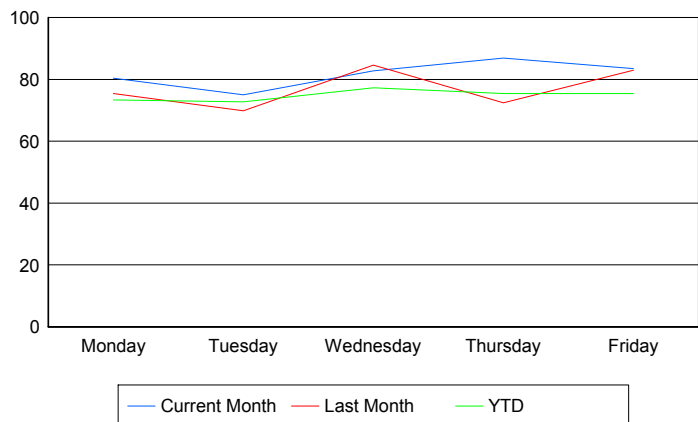
Avg # of events with a RR/SIRV Response per Day of the Week



Avg # of RR/SIRV Responses per Day of the Week



Avg # of RR/SIRV Activities Performed per Day of the Week



Road Ranger / SIRV Responses per Time of Day and Day of Week

