



# Monthly Performance Measures Report Broward County



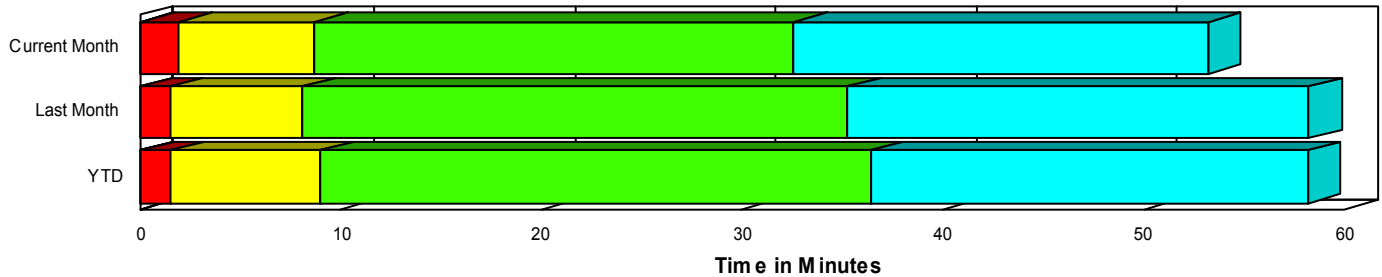
Created on:  
August 04, 2008  
10:43 am

Period From Jul 1, 2008 to Jul 31, 2008

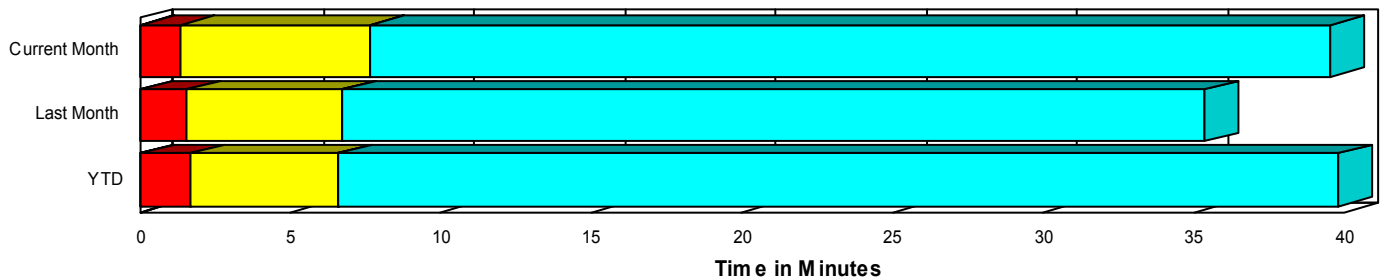
## Performance Measures Summary

	Traffic Events (No Lanes Blocked)			Incidents (Lanes Blocked)		
	<u>This Month</u>	<u>Last Month</u>	<u>YTD</u>	<u>This Month</u>	<u>Last Month</u>	<u>YTD</u>
Number of Events	4,604	4,552	30,516	215	239	1,507
TMC Detection (min.)	0.01	0.01	0.02	0.01	0.01	0.04
TMC Verification (min.)	1.38	1.58	1.66	1.92	1.48	1.50
TMC Response (min.)	7.96	7.14	6.94	8.80	8.14	9.06
RR Dispatch Time (min.)	3.63	1.25	1.77	1.88	1.82	2.55
RR Response Time (min.)	5.99	6.04	5.61	6.91	6.32	6.53
Roadway Clearance (min.)				31.77	35.09	35.66
Event Clearance (min.)	39.87	35.76	40.20	52.04	54.81	56.14
# of Events w/ RR/SIRV	4,139	4,108	25,959	213	230	1,452
RR/SIRV Responses	4,139	4,108	26,093	213	230	1,702
RR/SIRV Activities	3,897	3,893	25,791	400	449	2,839

### Incident Clearance TimeLine



### Traffic Event(Non-Lane Blockage) Time-Line



<ul style="list-style-type: none"> <li><span style="color: blue;">■</span> Avg. TMC Detection Time</li> <li><span style="color: red;">■</span> Avg. Time from TMC Detection to TMC Verification</li> <li><span style="color: yellow;">■</span> Avg. Time from TMC Verification to TMC Response</li> </ul>	<ul style="list-style-type: none"> <li><span style="color: green;">■</span> Avg. Time from TMC Response to Roadway Clearance*</li> <li><span style="color: cyan;">■</span> Avg. Time from Roadway Clearance to Incident/Event Clearance**</li> </ul>
---	--

\* Roadway clearance equals all travel lanes open

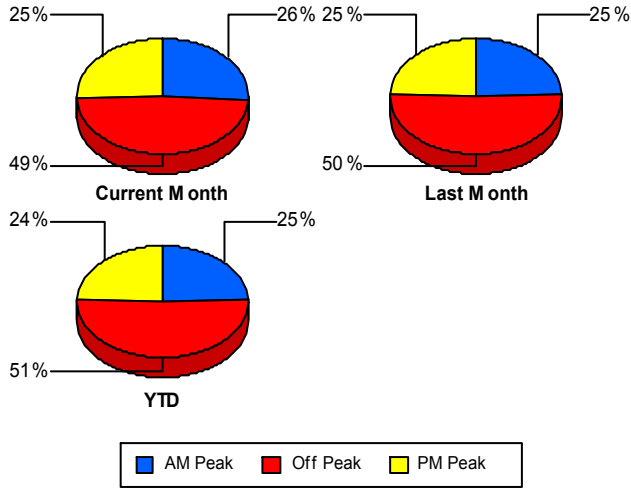
\*\* Incident clearance equals time when last responder has left the scene

## Performance Measures by Peak Period

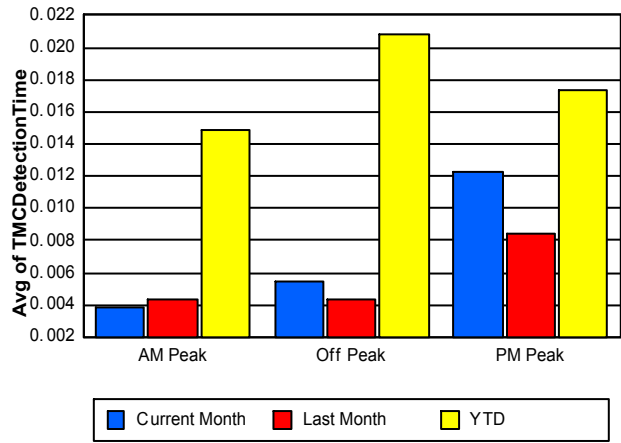
Note: AM peak period is defined as 6am to 10am and PM peak period is defined as 3pm to 7pm.

	AM Peak			Off Peak			PM Peak		
	<u>Current Month</u>	<u>Last Month</u>	<u>YTD</u>	<u>Current Month</u>	<u>Last Month</u>	<u>YTD</u>	<u>Current Month</u>	<u>Last Month</u>	<u>YTD</u>
Number of Events	1,252	1,190	7,902	2,352	2,415	16,395	1,215	1,186	7,726
Number of Incidents	49	71	364	107	120	785	59	48	358
TMC Detection (min.)	0.00	0.00	0.01	0.01	0.00	0.02	0.01	0.01	0.02
TMC Verification (min.)	0.78	0.84	0.84	1.86	2.04	2.08	1.14	1.36	1.56
TMC Response (min.)	7.09	6.61	5.98	9.84	8.29	8.02	5.56	5.65	6.27
RR Dispatch Time (min.)	0.89	1.18	1.01	6.36	1.43	2.43	0.99	1.08	1.36
RR Response Time (min.)	6.28	5.56	5.07	6.63	7.02	6.30	4.69	4.65	4.99
Event Clearance (min.)	30.82	32.95	31.34	47.04	40.21	46.54	37.50	33.37	38.92
Roadway Clearance (min.)	30.06	28.87	31.11	38.30	44.18	42.40	21.37	21.59	25.50
Incident Clearance (min.)	57.13	50.97	52.75	54.68	64.41	64.01	43.01	36.51	42.32
# of Events w/ RR/SIRV	1,153	1,105	6,975	2,093	2,166	13,780	1,106	1,067	6,656
RR/SIRV Responses	1,153	1,105	7,079	2,093	2,166	13,988	1,106	1,067	6,728
RR/SIRV Activities	1,188	1,101	7,291	2,030	2,165	14,349	1,079	1,076	6,990

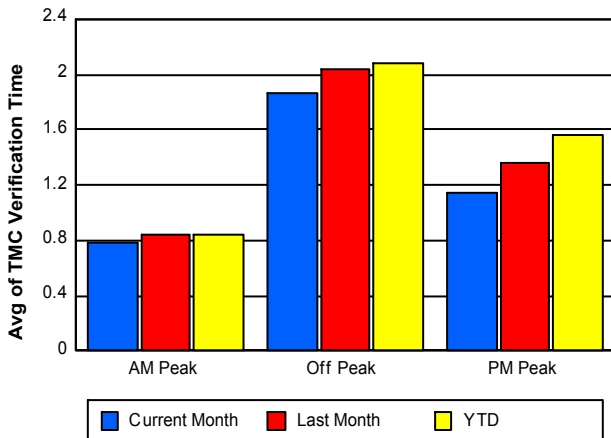
### Number of Events / Peak Period



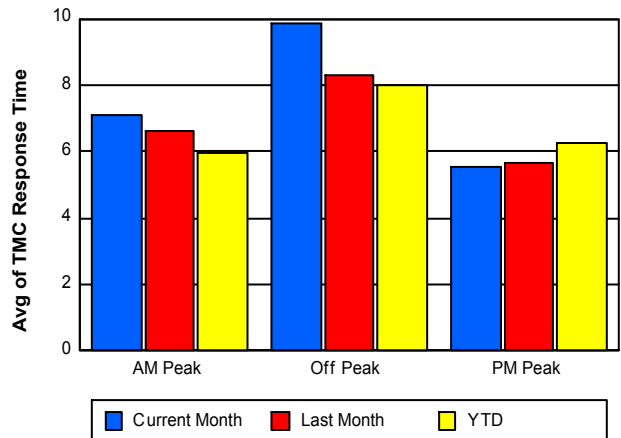
### TMC Detection Time



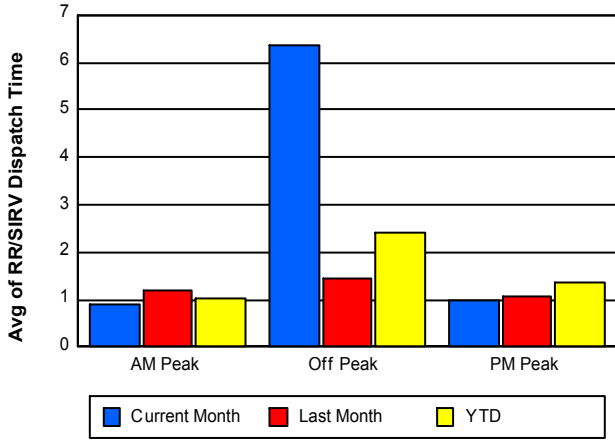
### TMC Verification Time



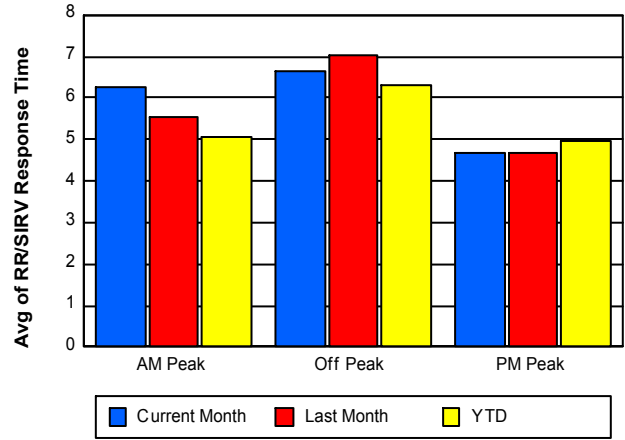
### TMC Response Time



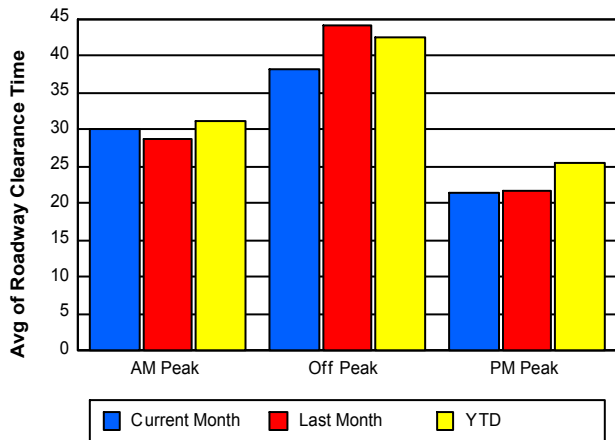
### Road Ranger / SIRV Dispatch Time



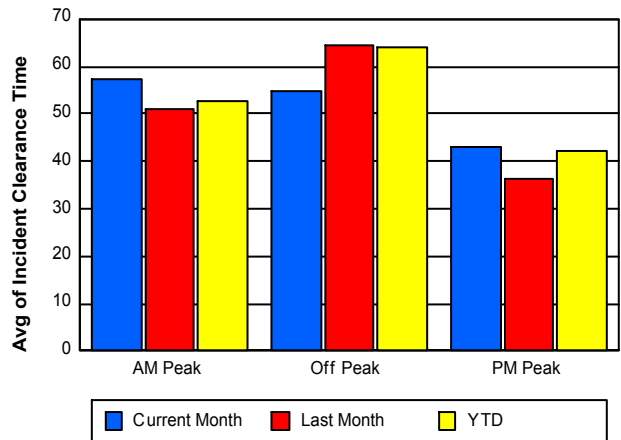
### Road Ranger / SIRV Response Time



### Roadway Clearance Time (2A)



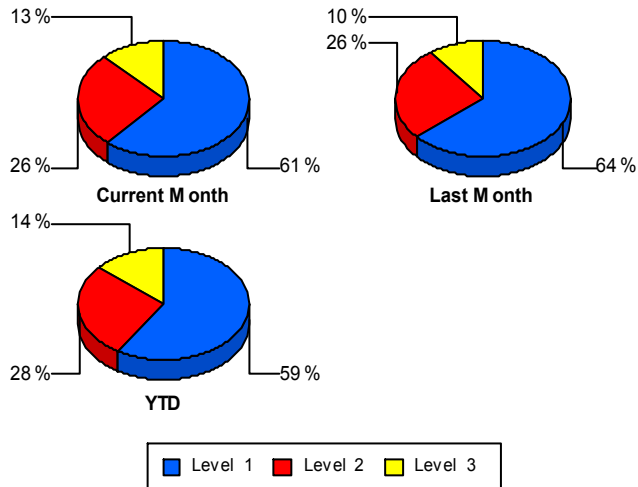
### Incident Clearance Time (3B)



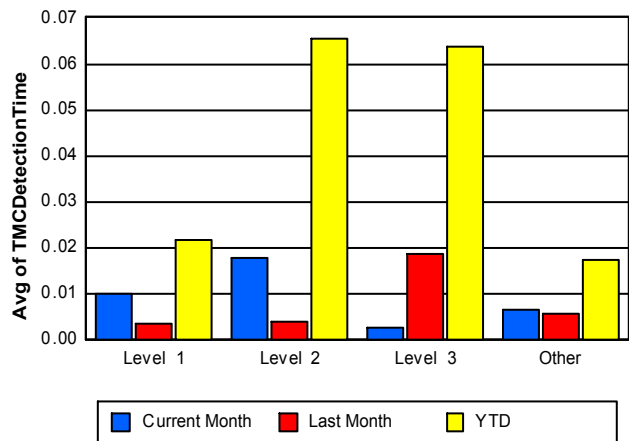
## Performance Measures by Severity

	Level 1			Level 2			Level 3			Other		
	<u>This Month</u>	<u>Last Month</u>	<u>YTD</u>	<u>This Month</u>	<u>Last Month</u>	<u>YTD</u>	<u>This Month</u>	<u>Last Month</u>	<u>YTD</u>	<u>This Month</u>	<u>Last Month</u>	<u>YTD</u>
Number of Events	132	152	886	56	63	417	27	24	204	4,604	4,552	30,516
Number of Incidents	132	152	886	56	63	417	27	24	204	0	0	0
TMC Detection (min.)	0.01	0.00	0.02	0.02	0.00	0.07	0.00	0.02	0.06	0.01	0.01	0.02
TMC Verification (min.)	1.07	0.79	0.89	3.56	2.32	2.37	2.68	3.67	2.40	1.38	1.58	1.66
TMC Response (min.)	7.94	6.59	7.83	9.53	10.90	10.73	11.23	10.58	10.81	7.96	7.14	6.94
RR Dispatch Time (min.)	1.84	1.58	2.42	1.92	2.41	2.63	2.03	1.74	2.92	3.63	1.25	1.77
RR Resp. Time (min.)	6.10	5.02	5.45	7.59	8.47	8.09	9.20	8.84	7.89	5.99	6.04	5.61
Event Clearance (min.)	39.18	41.17	42.13	62.28	68.01	65.58	93.64	106.55	97.65	39.87	35.76	40.20
Roadway Clear. (min.)	15.04	15.16	15.02	49.29	50.81	51.02	77.25	120.05	93.89			
Incident Clearance (min.)	39.18	41.17	42.13	62.28	68.01	65.58	93.64	106.55	97.65			
# of Events w/ RR/SIRV	130	146	849	56	63	413	27	21	190	4,139	4,108	25,959
RR/SIRV Responses	130	146	922	56	63	487	27	21	293	4,139	4,108	26,093
RR/SIRV Activities	214	254	1,388	111	142	876	75	53	575	3,897	3,893	25,791

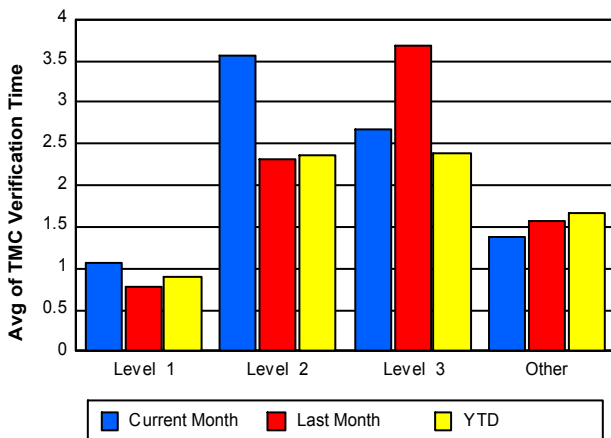
### Number of Events / Severity



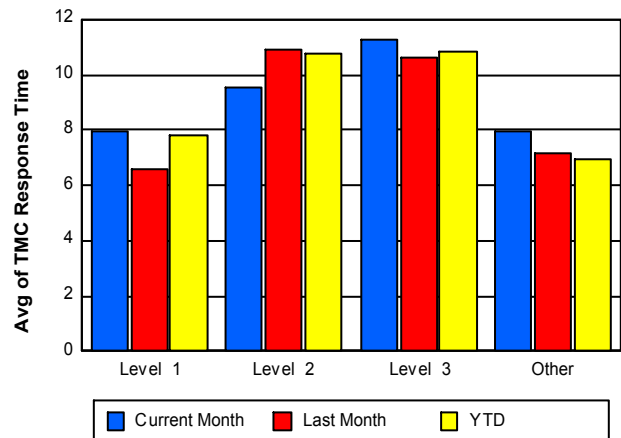
### TMC Detection Time



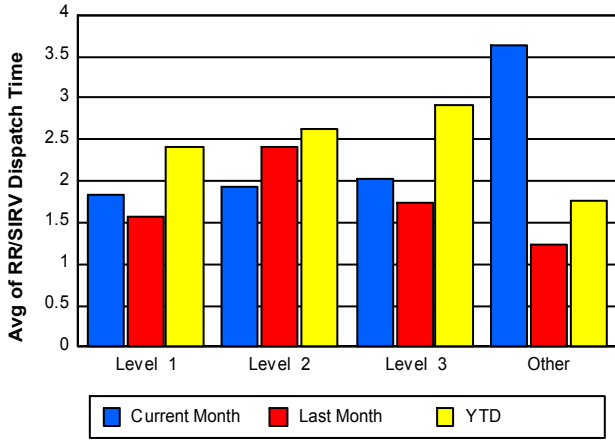
### TMC Verification Time



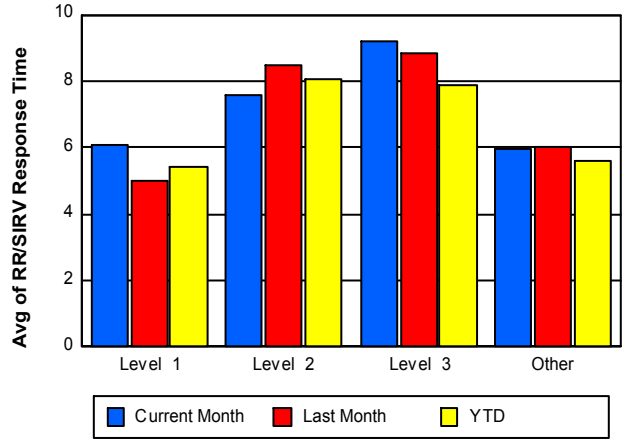
### TMC Response Time



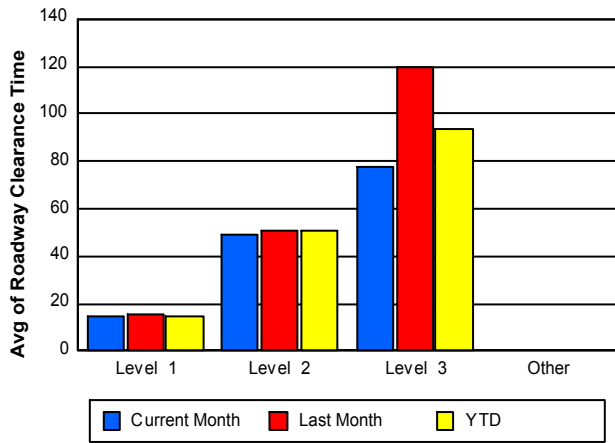
## Road Ranger / SIRV Dispatch Time



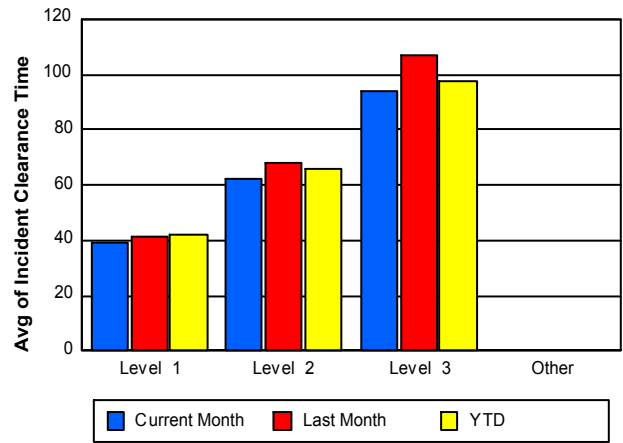
## Road Ranger / SIRV Response Time



## Roadway Clearance Time (2A)



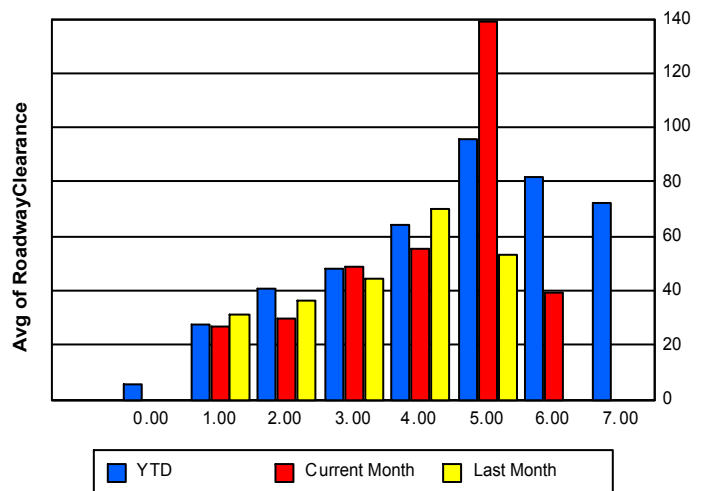
## Incident Clearance Time (3B)



## Roadway Clearance by Maximum Number of Lanes Blocked

	Current Month	Last Month	YTD
	0.00	0.00	
0			5.87
1	27.11	31.24	27.62
2	29.89	36.15	40.50
3	49.14	44.71	48.39
4	55.50	69.78	64.49
5	138.87	53.52	95.58
6	39.17	0.00	81.89

## Roadway Clearance Time(2A)



	Current Month	Last Month	YTD
7	0.00	0.00	72.04

## Performance Measures by Roadway

**595**

	<u>Current Month</u>	<u>Last Month</u>	<u>YTD</u>
Number of Events	710	738	5,080
Number of Incidents	39	31	249
TMC Detection (min.)	0.01	0.01	0.02
TMC Verification (min.)	1.45	1.91	1.85
TMC Response (min.)	14.38	5.62	7.61
RR Dispatch Time (min.)	7.17	1.33	2.09
RR Resp. Time (min.)	6.17	4.88	5.57
Event Clearance (min.)	42.21	37.56	41.29
Roadway Clear. (min.)	39.41	30.26	35.44
Incident Clearance (min.)	55.11	46.49	51.51
# of Events w/ RR/SIRV	644	682	4,437
RR/SIRV Responses	644	682	4,500
RR/SIRV Activities	627	673	4,645

**75**

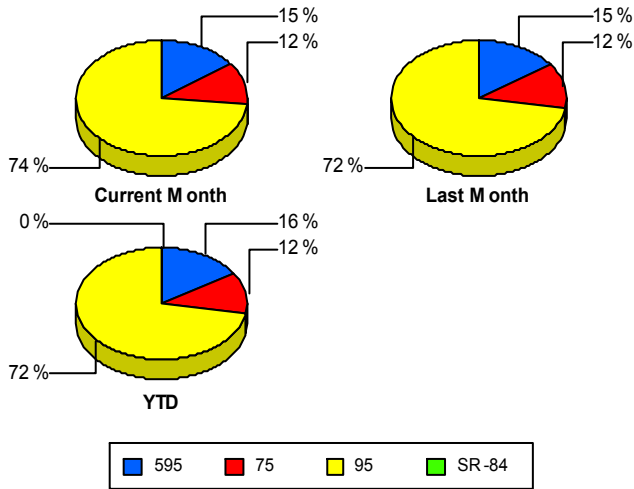
	<u>Current Month</u>	<u>Last Month</u>	<u>YTD</u>
Number of Events	563	587	3,861
Number of Incidents	13	19	86
TMC Detection (min.)	0.01	0.01	0.03
TMC Verification (min.)	4.91	4.46	4.74
TMC Response (min.)	5.40	5.29	5.05
RR Dispatch Time (min.)	13.42	1.33	2.74
RR Resp. Time (min.)	4.91	3.96	4.22
Event Clearance (min.)	37.03	35.97	39.61
Roadway Clear. (min.)	51.05	75.44	65.85
Incident Clearance (min.)	66.24	70.33	67.30
# of Events w/ RR/SIRV	549	575	3,775
RR/SIRV Responses	549	575	3,808
RR/SIRV Activities	597	625	4,126

**95**

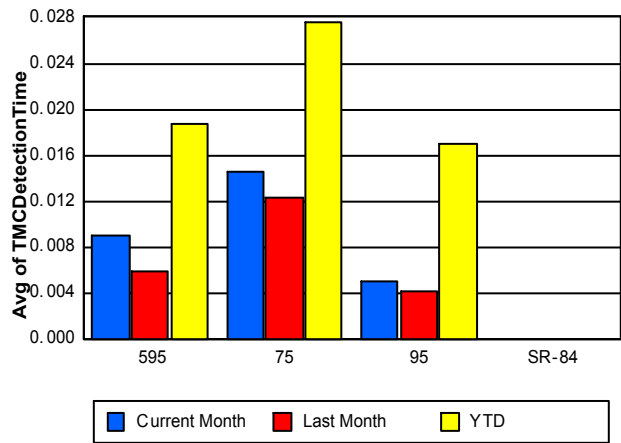
	<u>Current Month</u>	<u>Last Month</u>	<u>YTD</u>
Number of Events	3,546	3,466	23,081
Number of Incidents	163	189	1,172
TMC Detection (min.)	0.01	0.00	0.02
TMC Verification (min.)	0.83	1.01	1.09
TMC Response (min.)	7.24	7.98	7.37
RR Dispatch Time (min.)	1.09	1.25	1.58
RR Resp. Time (min.)	6.24	6.78	6.00
Event Clearance (min.)	40.60	36.66	41.11
Roadway Clear. (min.)	28.41	31.83	33.49
Incident Clearance (min.)	50.17	54.62	56.31
# of Events w/ RR/SIRV	3,159	3,081	19,199
RR/SIRV Responses	3,159	3,081	19,487
RR/SIRV Activities	3,073	3,044	19,859

	<u>YTD</u>
Number of Events	<b>1</b>
Number of Incidents	<b>0</b>
TMC Detection (min.)	<b>0.00</b>
TMC Verification (min.)	<b>0.47</b>
TMC Response (min.)	
RR Dispatch Time (min.)	
RR Resp. Time (min.)	
Event Clearance (min.)	<b>5.22</b>
Roadway Clear. (min.)	
Incident Clearance (min.)	
# of Events w/ RR/SIRV	<b>0</b>
RR/SIRV Responses	<b>0</b>
RR/SIRV Activities	<b>0</b>

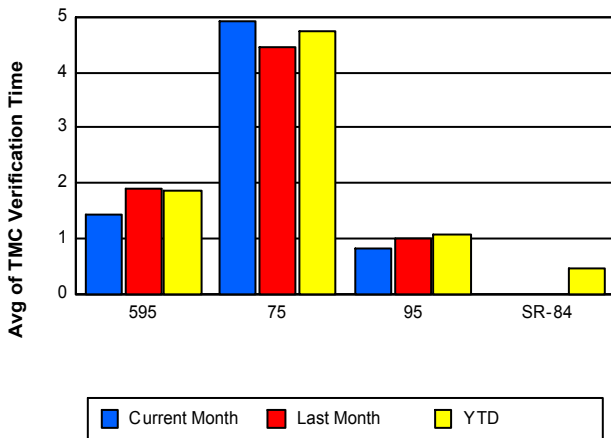
### Number of Events / Roadway



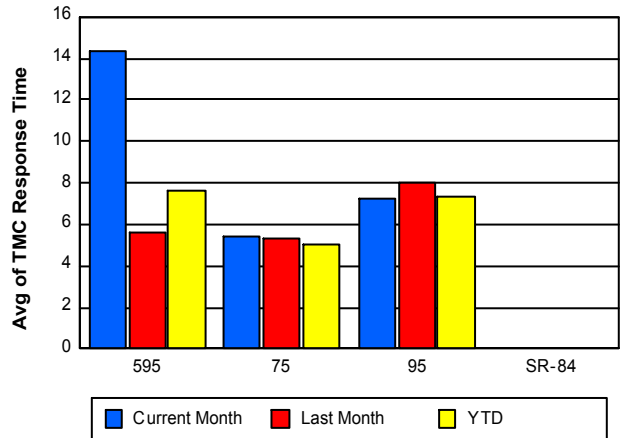
### TMC Detection Time



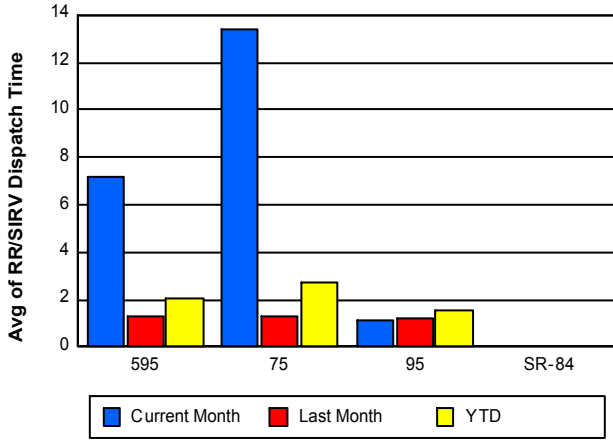
### TMC Verification Time



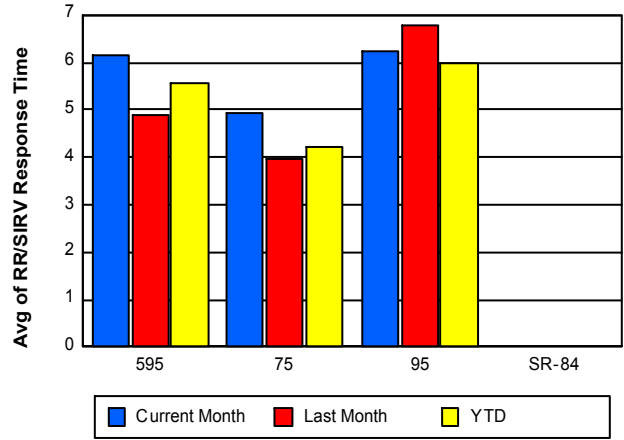
### TMC Response Time



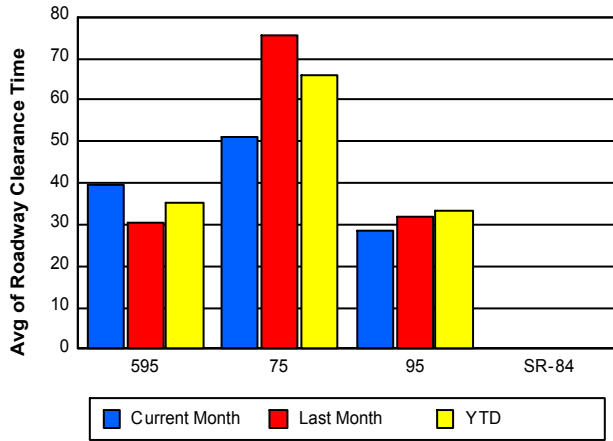
## Road Ranger / SIRV Dispatch Time



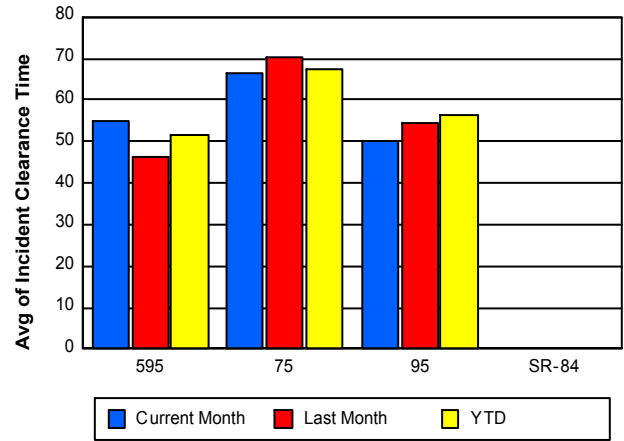
## Road Ranger / SIRV Response Time



## Roadway Clearance Time (2A)



## Incident Clearance Time (3B)



## Performance Measures by Event Type

### Abandoned Vehicle

	<u>Current Month</u>	<u>Last Month</u>	<u>YTD</u>
Number of Events	666	657	4,185
Number of Incidents	0	5	10
TMC Detection (min.)	0.01	0.00	0.03
TMC Verification (min.)	0.37	0.35	0.42
TMC Response (min.)	6.90	6.72	6.96
RR Dispatch Time (min.)	13.61	1.70	3.84
RR Response Time (min.)	6.15	5.02	5.29
Event Clearance (min.)	168.18	138.87	181.50
Roadway Clearance (min.)		75.04	48.42
Incident Clearance (min.)		28.59	301.89
# of Events w/ RR/SIRV	552	566	3,451
RR/SIRV Assists	552	566	3,458
RR/SIRV Activities	569	587	3,602

### Accident

	<u>Current Month</u>	<u>Last Month</u>	<u>YTD</u>
Number of Events	296	321	2,289
Number of Incidents	151	170	1,091
TMC Detection (min.)	0.01	0.02	0.05
TMC Verification (min.)	1.93	1.49	1.72
TMC Response (min.)	8.17	7.06	7.65
RR Dispatch Time (min.)	1.62	1.59	1.73
RR Response Time (min.)	6.56	5.51	5.94
Event Clearance (min.)	43.43	46.93	45.06
Roadway Clearance (min.)	32.77	33.14	35.90
Incident Clearance (min.)	57.34	59.09	58.93
# of Events w/ RR/SIRV	293	310	2,231
RR/SIRV Assists	293	310	2,458
RR/SIRV Activities	451	493	3,477

### Congestion

	<u>Current Month</u>	<u>Last Month</u>	<u>YTD</u>
Number of Events	2	2	15
Number of Incidents	0	0	1
TMC Detection (min.)	0.00	0.00	0.00
TMC Verification (min.)	0.00	0.00	0.00
TMC Response (min.)			
RR Dispatch Time (min.)			
RR Response Time (min.)			
Event Clearance (min.)	64.42	79.89	80.45
Roadway Clearance (min.)			8.22
Incident Clearance (min.)			98.70
# of Events w/ RR/SIRV	0	0	0
RR/SIRV Assists	0	0	0
RR/SIRV Activities	0	0	0

## Debris on Roadway

	<u>Current Month</u>	<u>Last Month</u>	<u>YTD</u>
Number of Events	188	179	1,172
Number of Incidents	3	2	20
TMC Detection (min.)	0.01	0.01	0.04
TMC Verification (min.)	4.18	4.15	5.28
TMC Response (min.)	6.72	5.88	7.53
RR Dispatch Time (min.)	0.93	0.75	1.12
RR Response Time (min.)	5.80	5.19	6.44
Event Clearance (min.)	12.56	9.91	12.11
Roadway Clearance (min.)	75.51	33.62	49.62
Incident Clearance (min.)	95.19	35.54	59.55
# of Events w/ RR/SIRV	186	173	1,142
RR/SIRV Assists	186	173	1,169
RR/SIRV Activities	191	186	1,232

## Disabled Vehicle

	<u>Current Month</u>	<u>Last Month</u>	<u>YTD</u>
Number of Events	2,869	2,806	18,725
Number of Incidents	34	40	249
TMC Detection (min.)	0.01	0.01	0.02
TMC Verification (min.)	1.71	2.06	2.05
TMC Response (min.)	8.24	7.24	6.91
RR Dispatch Time (min.)	2.31	1.05	1.47
RR Response Time (min.)	5.90	6.24	5.59
Event Clearance (min.)	20.14	20.22	19.36
Roadway Clearance (min.)	18.43	25.78	25.33
Incident Clearance (min.)	30.89	40.73	38.51
# of Events w/ RR/SIRV	2,814	2,760	18,201
RR/SIRV Assists	2,814	2,760	18,297
RR/SIRV Activities	2,953	2,912	19,427

## Emergency Vehicles

	<u>Current Month</u>	<u>Last Month</u>	<u>YTD</u>
Number of Events	9	8	44
Number of Incidents	9	6	40
TMC Detection (min.)	0.09	0.00	0.02
TMC Verification (min.)	0.30	0.00	0.41
TMC Response (min.)	4.41	5.73	7.38
RR Dispatch Time (min.)	1.29	2.74	2.80
RR Response Time (min.)	3.13	2.99	4.58
Event Clearance (min.)	45.72	20.51	35.91
Roadway Clearance (min.)	37.79	16.64	32.48
Incident Clearance (min.)	45.72	20.96	37.41
# of Events w/ RR/SIRV	9	6	35
RR/SIRV Assists	9	6	37
RR/SIRV Activities	14	9	55

## Other

	<u>Current Month</u>	<u>Last Month</u>	<u>YTD</u>
Number of Events	743	770	5,325
Number of Incidents	3	0	17
TMC Detection (min.)	0.00	0.00	0.00
TMC Verification (min.)	0.29	0.28	0.42
TMC Response (min.)	11.76	10.85	9.92
RR Dispatch Time (min.)	1.53	2.06	1.89
RR Response Time (min.)	10.12	9.86	8.26
Event Clearance (min.)	11.13	11.74	11.65
Roadway Clearance (min.)	13.10		20.40
Incident Clearance (min.)	16.80		27.52
# of Events w/ RR/SIRV	456	478	2,105
RR/SIRV Assists	456	478	2,110
RR/SIRV Activities	69	103	535

## Pedestrian

	<u>YTD</u>
Number of Events	41
Number of Incidents	0
TMC Detection (min.)	0.01
TMC Verification (min.)	1.34
TMC Response (min.)	2.56
RR Dispatch Time (min.)	0.37
RR Response Time (min.)	2.29
Event Clearance (min.)	10.68
Roadway Clearance (min.)	
Incident Clearance (min.)	
# of Events w/ RR/SIRV	37
RR/SIRV Assists	37
RR/SIRV Activities	39

## Police Activity

	<u>Current Month</u>	<u>Last Month</u>	<u>YTD</u>
Number of Events	10	10	86
Number of Incidents	6	8	57
TMC Detection (min.)	0.00	0.00	0.03
TMC Verification (min.)	2.69	2.42	1.54
TMC Response (min.)	14.44	9.65	11.11
RR Dispatch Time (min.)	1.70	3.39	3.22
RR Response Time (min.)	12.55	5.92	7.71
Event Clearance (min.)	41.17	61.19	47.14
Roadway Clearance (min.)	60.40	106.39	74.85
Incident Clearance (min.)	65.48	69.14	57.95
# of Events w/ RR/SIRV	7	9	72
RR/SIRV Assists	7	9	92
RR/SIRV Activities	10	14	115

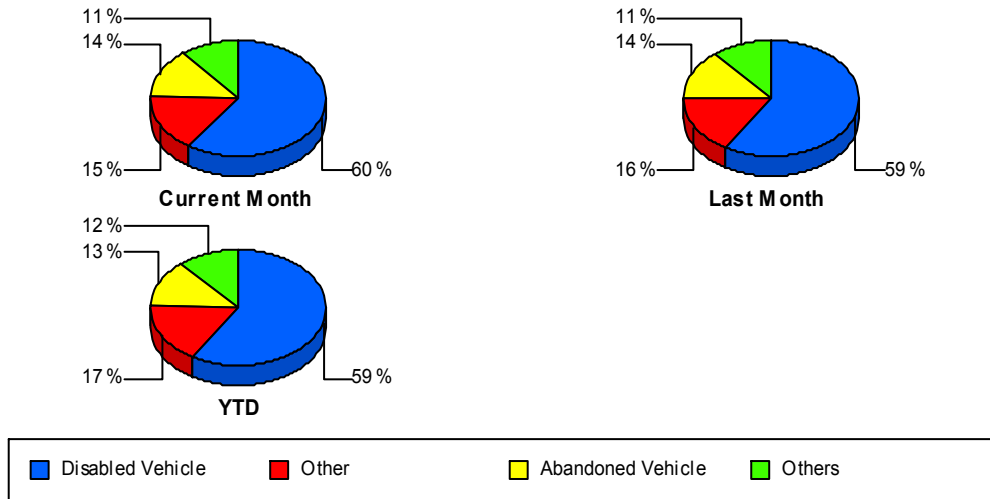
## Vehicle Fire

	<u>Current Month</u>	<u>Last Month</u>	<u>YTD</u>
Number of Events	10	9	24
Number of Incidents	9	7	21
TMC Detection (min.)	0.01	0.01	0.01
TMC Verification (min.)	0.14	0.10	0.10
TMC Response (min.)	5.96	8.91	7.14
RR Dispatch Time (min.)	1.46	2.03	2.49
RR Response Time (min.)	4.49	6.89	4.65
Event Clearance (min.)	38.77	77.79	56.76
Roadway Clearance (min.)	32.11	43.78	40.07
Incident Clearance (min.)	37.57	72.19	53.23
# of Events w/ RR/SIRV	10	8	23
RR/SIRV Assists	10	8	23
RR/SIRV Activities	16	14	42

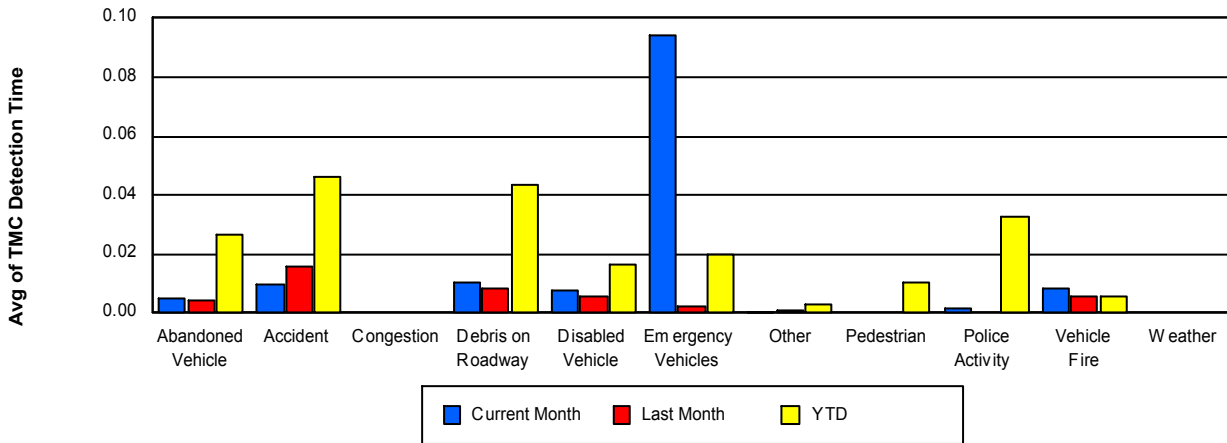
## Weather

	<u>Current Month</u>	<u>Last Month</u>	<u>YTD</u>
Number of Events	1	1	3
Number of Incidents	0	0	0
TMC Detection (min.)	0.00	0.00	0.00
TMC Verification (min.)	0.00	0.00	0.00
TMC Response (min.)	0.10		0.10
RR Dispatch Time (min.)	0.10		0.10
RR Response Time (min.)	0.00		0.00
Event Clearance (min.)	1.18	1.12	1.18
Roadway Clearance (min.)			
Incident Clearance (min.)			
# of Events w/ RR/SIRV	1	0	1
RR/SIRV Assists	1	0	1
RR/SIRV Activities	1	0	1

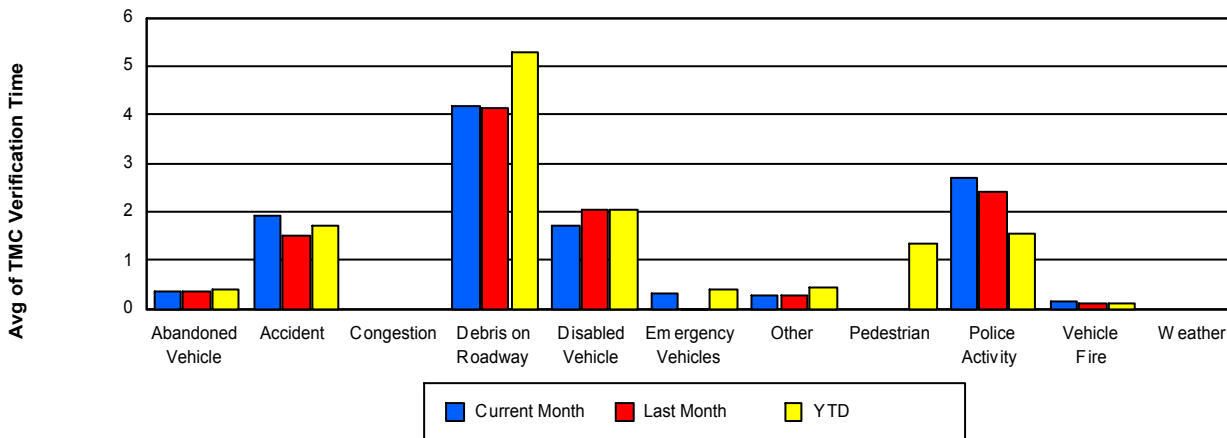
## Number of Events / Event Type



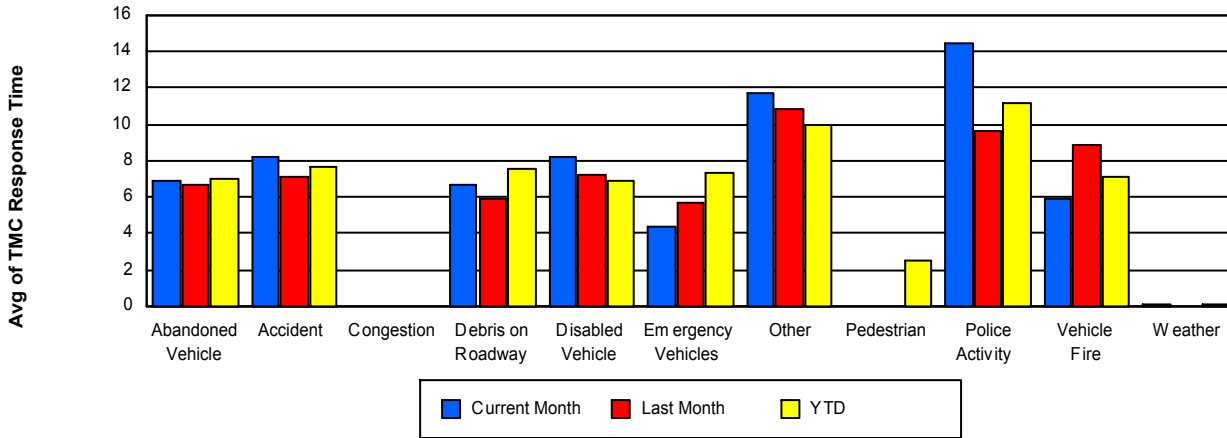
## TMC Detection Time



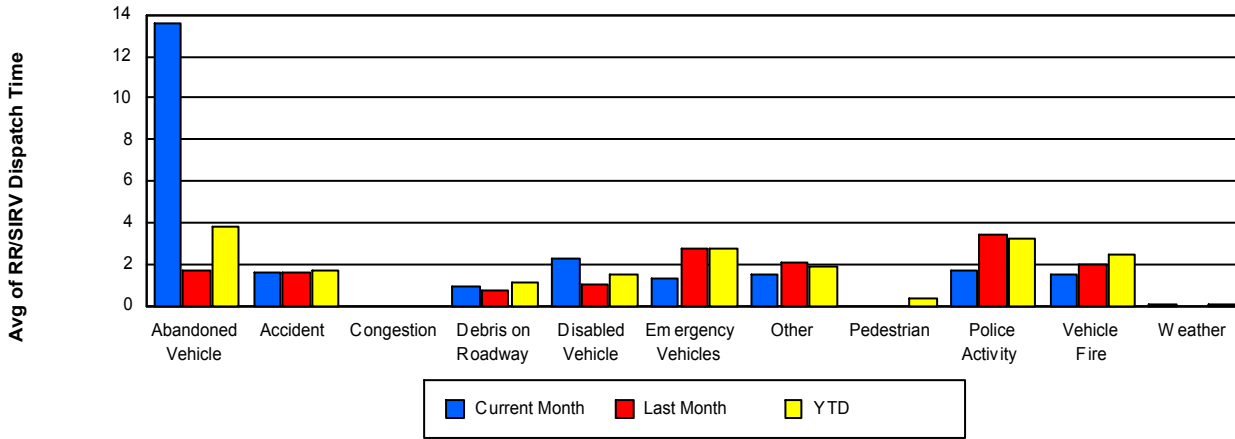
## TMC Verification Time



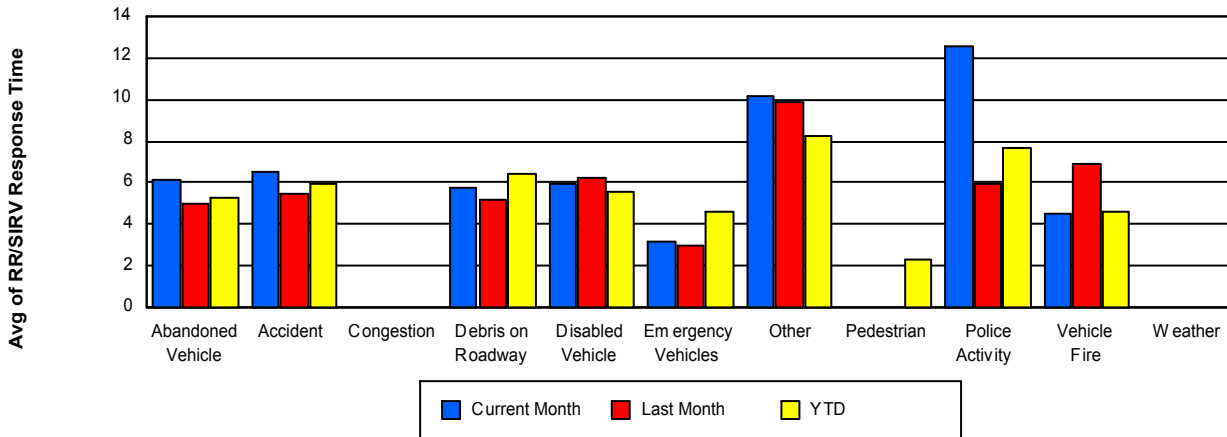
## TMC Response Time



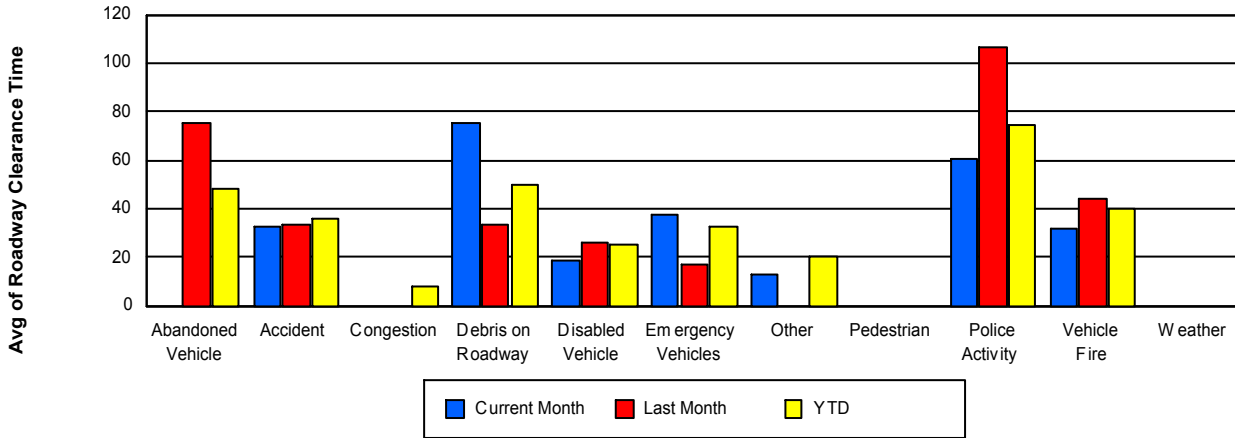
## Road Ranger / SIRV Dispatch Time



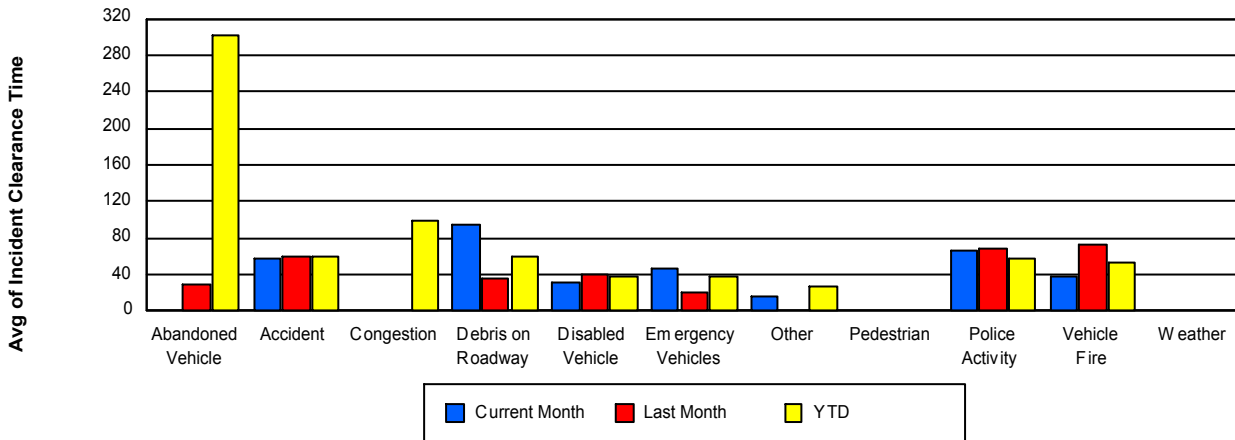
## Road Ranger / SIRV Response Time



## Roadway Clearance Time (2A)



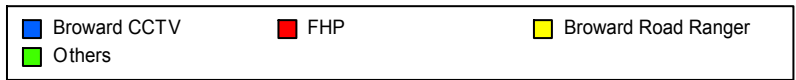
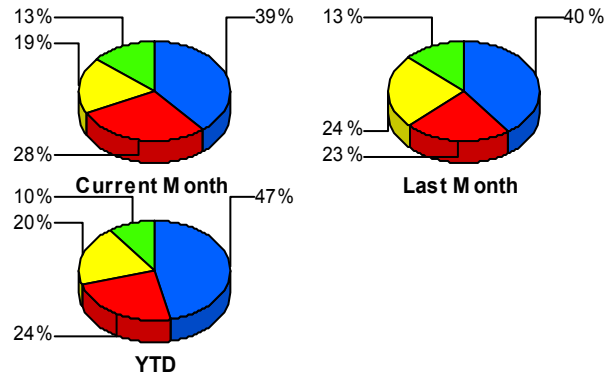
## Incident Clearance Time (3B)



## Incident Detection Methods

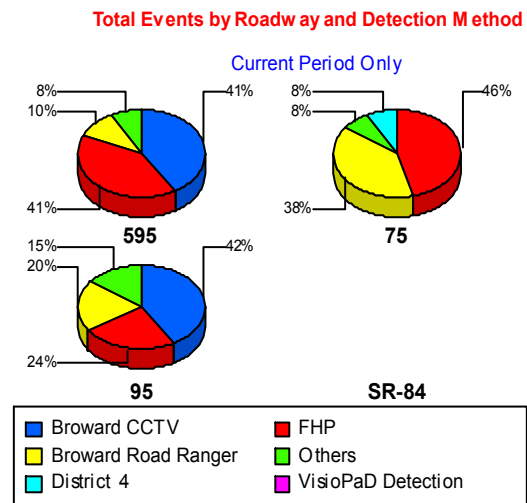
	Current Month	Last Month	YTD
Broward CCTV	84	96	703
Broward Road Ranger	41	57	302
Broward VideoWall	9	11	29
BSO	1	2	3
District 4	9	1	30
District 6	2	0	5
FDOT Maintenance	1	0	1
FHP	61	54	355
Fire	1	1	6
Florida's Turnpike	0	1	5
ITMS	0	1	2
Motorist	1	4	13
Other	0	0	1
Palm Beach Road Rang	0	0	4
PSAP	0	1	2
Road Watcher	2	3	11
SIRV	0	0	4
SmarTraveler (511)	0	1	6
VisioPaD Detection	3	6	25
<b>Total</b>	<b>215</b>	<b>239</b>	<b>1,507</b>

### Total Incidents by Detection Method



## Incident Detection Methods by Roadway

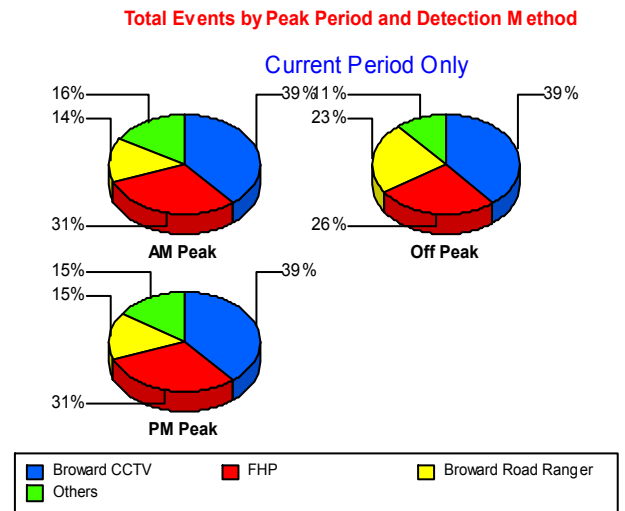
		Current Month	Last Month	YTD
595	Broward CCTV	16	9	101
	Broward Road Ranger	4	7	52
	Broward VideoWall	0	2	2
	District 4	0	0	5
	FHP	16	10	72
	Florida's Turnpike	0	1	5
	Motorist	0	2	3
	Road Watcher	2	0	4
	SIRV	0	0	1
	VisioPaD Detection	1	0	4
	<b>Total</b>	<b>39</b>	<b>31</b>	<b>249</b>
75	Broward Road Ranger	5	9	40
	District 4	1	1	6
	District 6	1	0	2
	FHP	6	9	37
	Road Watcher	0	0	1
	<b>Total</b>	<b>13</b>	<b>19</b>	<b>86</b>
95	Broward CCTV	68	87	602
	Broward Road Ranger	32	41	210
	Broward VideoWall	9	9	27
	BSO	1	2	3
	District 4	8	0	19
	District 6	1	0	3
	FDOT Maintenance	1	0	1
	FHP	39	35	246
	Fire	1	1	6
	ITMS	0	1	2
	Motorist	1	2	10
	Other	0	0	1
	Palm Beach Road Rang	0	0	4
PSAP	0	1	2	



		Current Month	Last Month	YTD
95	Road Watcher	0	3	6
	SIRV	0	0	3
	SmarTraveler (511)	0	1	6
	VisioPaD Detection	2	6	21
	Total	163	189	1,172
Total		215	239	1,507

### Incident Detection Methods by Peak Period

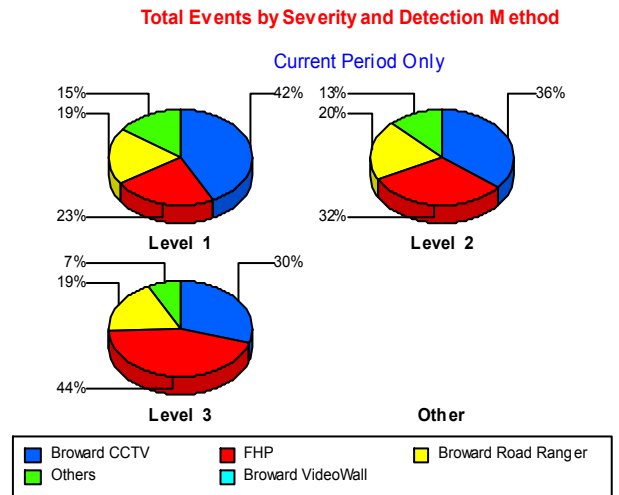
		Current Month	Last Month	YTD
AM Peak	Broward CCTV	19	29	167
	Broward Road Ranger	7	18	80
	Broward VideoWall	4	6	13
	BSO	0	1	1
	District 4	3	1	9
	FHP	15	13	73
	Fire	0	0	1
	Florida's Turnpike	0	0	2
	Motorist	0	0	3
	Palm Beach Road Rang	0	0	3
	Road Watcher	1	1	6
	SIRV	0	0	2
	SmarTraveler (511)	0	0	1
	VisioPaD Detection	0	2	3
	Total	49	71	364
	Off Peak	Broward CCTV	42	48
Broward Road Ranger		25	26	139
Broward VideoWall		3	5	12
District 4		5	0	13
District 6		1	0	3
FDOT Maintenance		1	0	1
FHP		28	30	206
Fire		0	1	4



		Current Month	Last Month	YTD
Off Peak	Florida's Turnpike	0	1	2
	ITMS	0	1	1
	Motorist	0	2	5
	Other	0	0	1
	Palm Beach Road Rang	0	0	1
	PSAP	0	1	2
	Road Watcher	0	2	3
	SIRV	0	0	1
	VisioPaD Detection	2	3	19
	Total	107	120	785
PM Peak	Broward CCTV	23	19	164
	Broward Road Ranger	9	13	83
	Broward VideoWall	2	0	4
	BSO	1	1	2
	District 4	1	0	8
	District 6	1	0	2
	FHP	18	11	76
	Fire	1	0	1
	Florida's Turnpike	0	0	1
	ITMS	0	0	1
	Motorist	1	2	5
	Road Watcher	1	0	2
	SIRV	0	0	1
	SmarTraveler (511)	0	1	5
	VisioPaD Detection	1	1	3
	Total	59	48	358
Total		215	239	1,507

## Incident Detection Methods by Severity

		Current Month	Last Month	YTD
Level 1	Broward CCTV	56	65	440
	Broward Road Ranger	25	36	190
	Broward VideoWall	5	10	19
	BSO	0	1	1
	District 4	7	0	20
	District 6	2	0	4
	FHP	31	28	164
	Fire	1	1	3
	Florida's Turnpike	0	1	1
	ITMS	0	1	1
	Motorist	1	3	6
	Palm Beach Road Rang	0	0	3
	PSAP	0	0	1
	Road Watcher	2	3	10
	SIRV	0	0	4
	SmarTraveler (511)	0	1	5
	VisioPaD Detection	2	2	14
	<b>Total</b>	<b>132</b>	<b>152</b>	<b>886</b>
Level 2	Broward CCTV	20	26	191
	Broward Road Ranger	11	16	79
	Broward VideoWall	4	0	6
	BSO	1	0	1
	District 4	1	0	2
	District 6	0	0	1
	FHP	18	16	118
	Fire	0	0	1
	ITMS	0	0	1
	Motorist	0	1	6
	PSAP	0	1	1
	SmarTraveler (511)	0	0	1
	VisioPaD Detection	1	3	9



		Current Month	Last Month	YTD
Level 2	Total	<b>56</b>	<b>63</b>	<b>417</b>
Level 3	Broward CCTV	<b>8</b>	<b>5</b>	<b>72</b>
	Broward Road Ranger	<b>5</b>	<b>5</b>	<b>33</b>
	Broward VideoWall	<b>0</b>	<b>1</b>	<b>4</b>
	BSO	<b>0</b>	<b>1</b>	<b>1</b>
	District 4	<b>1</b>	<b>1</b>	<b>8</b>
	FDOT Maintenance	<b>1</b>	<b>0</b>	<b>1</b>
	FHP	<b>12</b>	<b>10</b>	<b>73</b>
	Fire	<b>0</b>	<b>0</b>	<b>2</b>
	Florida's Turnpike	<b>0</b>	<b>0</b>	<b>4</b>
	Motorist	<b>0</b>	<b>0</b>	<b>1</b>
	Other	<b>0</b>	<b>0</b>	<b>1</b>
	Palm Beach Road Rang	<b>0</b>	<b>0</b>	<b>1</b>
	Road Watcher	<b>0</b>	<b>0</b>	<b>1</b>
	VisioPaD Detection	<b>0</b>	<b>1</b>	<b>2</b>
	Total	<b>27</b>	<b>24</b>	<b>204</b>
Total		<b>215</b>	<b>239</b>	<b>1,507</b>

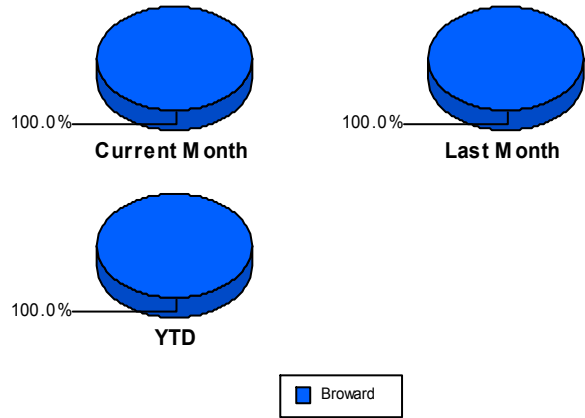
# Road Ranger / SIRV Performance Measures

## Road Ranger / SIRV Performance By County

Values presented are:  
 - Total Events with a RR/SIRV Response  
 - Total RR/SIRV Responses,  
 - Total Activities Performed

	Current Mo	Last Month	YTD
Broward	<b>4,070</b>	<b>4,054</b>	<b>26,448</b>
	<b>4,349</b>	<b>4,361</b>	<b>28,301</b>
	<b>4,578</b>	<b>4,617</b>	<b>30,031</b>

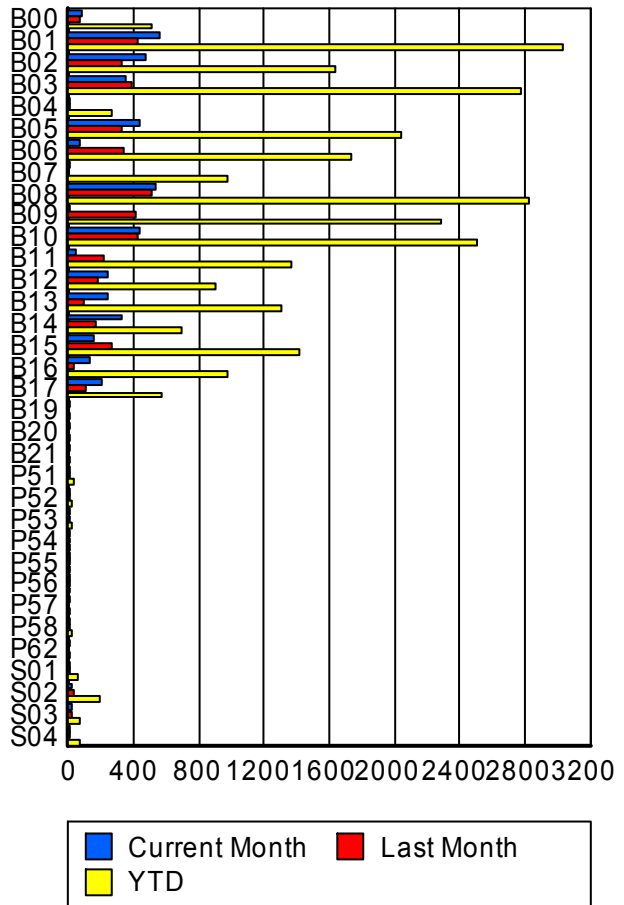
RR/SIRV Responses per County



## Road Ranger / SIRV Performance By Truck

	Current Mo	Last Month	YTD
B00	84	68	500
	84	69	509
	89	72	537
B01	556	415	2,996
	563	421	3,035
	599	440	3,221
B02	471	315	1,618
	475	320	1,639
	502	335	1,749
B03	343	383	2,750
	349	389	2,781
	375	405	2,966
B04	1	1	259
	1	1	261
	1	1	273
B05	436	324	2,029
	439	326	2,044
	470	349	2,195
B06	64	335	1,717
	66	342	1,734
	67	369	1,851
B07	2	0	959
	2	0	971
	2	0	1,000
B08	525	499	2,789
	532	512	2,830
	556	542	3,006

RR/SIRV Responses per Truck



	Current Mo	Last Month	YTD
B09	1	410	2,258
	1	416	2,281
	1	438	2,418
B10	431	416	2,479
	435	424	2,501
	453	457	2,668
B11	43	207	1,352
	43	210	1,361
	44	223	1,433
B12	237	170	882
	240	174	900
	249	185	950
B13	236	93	1,288
	238	97	1,303
	253	105	1,379
B14	315	165	689
	320	165	697
	324	172	718
B15	150	267	1,408
	151	269	1,414
	160	283	1,497
B16	125	32	961
	127	32	971
	130	33	1,018
B17	205	102	559
	208	104	567
	224	111	606
B19	1	0	1
	1	0	1
	1	0	1
B20	1	0	1
	1	0	1
	1	0	1
B21	1	0	4
	1	0	4
	1	0	4
P51	3	12	35
	3	12	35
	3	12	37
P52	4	2	16
	4	2	16
	4	2	16
P53	1	2	15
	1	2	15
	1	2	18

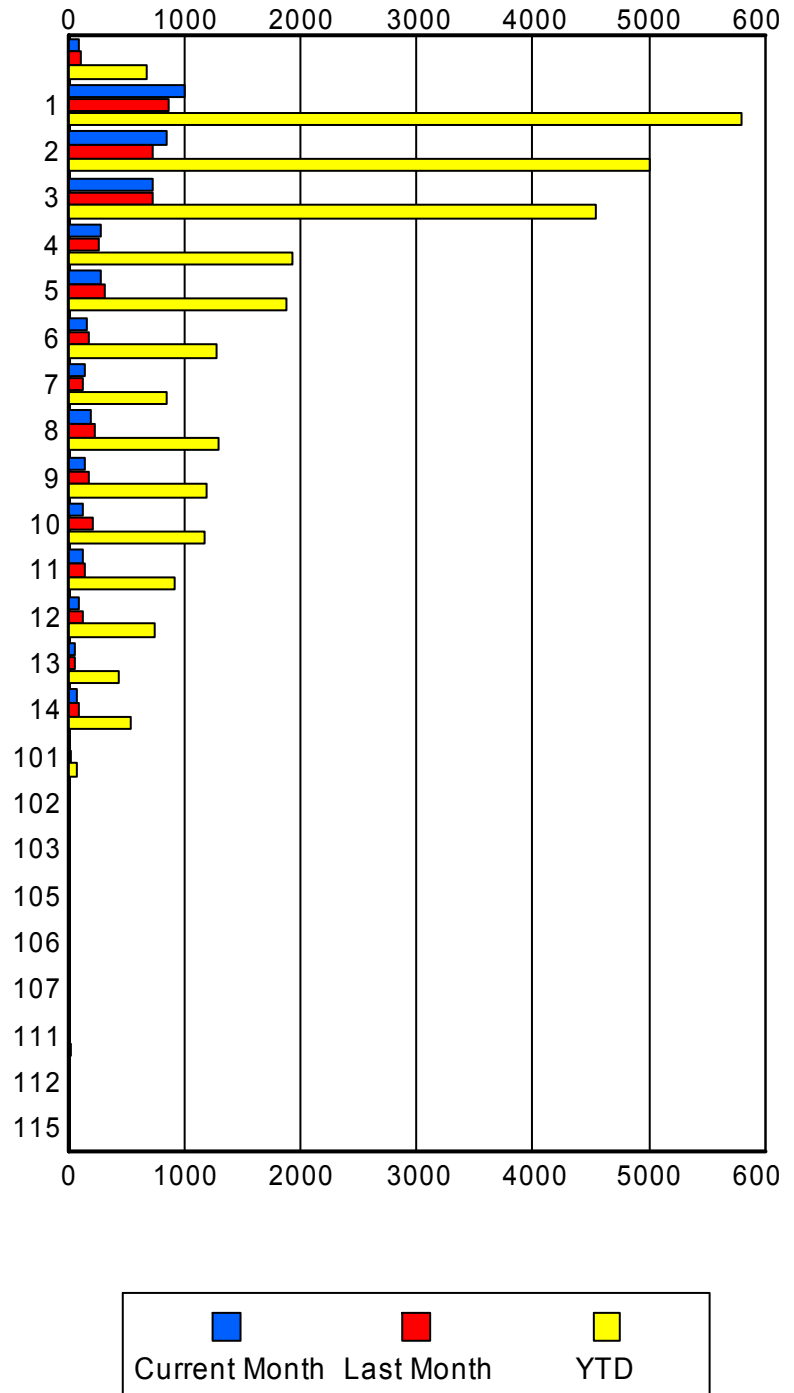
	Current Mo	Last Month	YTD
P54	1	1	5
	1	1	5
	1	1	5
P55	1	1	10
	1	1	10
	1	1	10
P56	1	1	7
	1	1	7
	1	1	9
P57	1	0	9
	1	0	9
	1	0	9
P58	3	7	14
	3	7	14
	3	7	14
P62	1	0	3
	1	0	3
	1	0	3
S01	8	6	50
	8	6	51
	8	8	56
S02	24	25	192
	24	25	193
	26	28	210
S03	20	22	63
	20	22	65
	22	23	73
S04	4	11	70
	4	11	73
	4	12	80

### Road Ranger / SIRV Performance By Beat

	Current Mo	Last Month	YTD
	94	108	615
	98	111	676
	103	121	720
1	955	814	5,549
	995	861	5,799
	1,052	904	6,137
2	824	700	4,862
	856	726	4,999
	908	775	5,309
3	696	705	4,405
	720	723	4,536
	761	778	4,804
4	273	259	1,912
	280	260	1,927
	294	273	2,028
5	276	317	1,853
	279	321	1,870
	299	330	1,965
6	165	171	1,253
	167	175	1,272
	173	179	1,338
7	144	130	841
	148	131	851
	153	135	895
8	188	227	1,273
	190	229	1,287
	201	242	1,359
9	141	169	1,170
	141	173	1,183
	148	189	1,284
10	124	212	1,167
	124	213	1,180
	128	231	1,268
11	118	142	906
	118	142	911
	119	150	985
12	85	118	726
	85	121	737
	87	128	798
13	64	59	423
	66	61	430
	68	65	460
14	67	89	531
	67	90	534
	69	93	565

Values presented are:  
 - Total Events with a RR/SIRV Response  
 - Total RR/SIRV Responses,  
 - Total Activities Performed

### RR/SIRV Responses per Beat



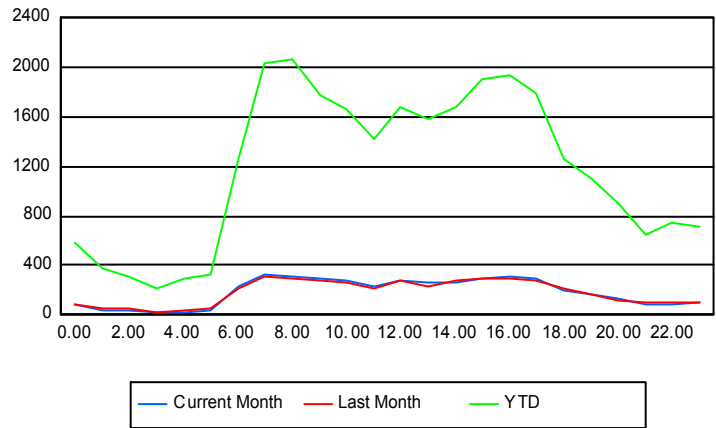
	Current Mo	Last Month	YTD
101	6 6 6	18 18 18	73 73 78
102	0 0 0	0 0 0	2 2 2
103	0 0 0	0 0 0	1 1 1
105	0 0 0	0 0 0	1 1 1
106	1 1 1	0 0 0	1 1 1
107	1 1 1	0 0 0	2 2 2
111	6 6 6	6 6 6	26 26 28
112	1 1 1	0 0 0	1 1 1
115	0 0 0	0 0 0	2 2 2

## Road Ranger / SIRV Performance By Time of Day

Values presented are:  
 - Total Events with a RR/SIRV Response  
 - Total RR/SIRV Responses,  
 - Total Activities Performed

	Current Mo	Last Month	YTD
12AM-1AM	84	87	554
	89	90	582
	91	94	626
1AM-2AM	29	55	346
	29	59	369
	29	61	388
2AM-3AM	39	51	277
	40	58	318
	40	61	346
3AM-4AM	24	25	197
	25	28	218
	25	31	237
4AM-5AM	26	34	251
	27	44	292
	27	49	317
5AM-6AM	33	45	270
	33	58	327
	33	61	345
6AM-7AM	217	200	1,171
	236	214	1,263
	248	223	1,313
7AM-8AM	313	285	1,921
	328	307	2,029
	346	318	2,145
8AM-9AM	289	266	1,913
	312	302	2,074
	335	317	2,196
9AM-10AM	257	256	1,658
	298	274	1,778
	317	288	1,873
10AM-11AM	256	251	1,580
	271	266	1,672
	290	282	1,783
11AM-12PM	208	199	1,334
	222	221	1,422
	234	240	1,502
12PM-1PM	257	266	1,580
	281	277	1,684
	305	292	1,777

## Number of Responses / Hour of the Day



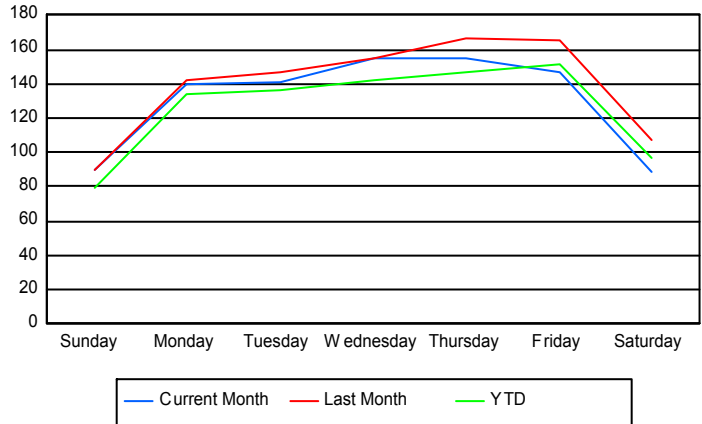
	Current Mo	Last Month	YTD
1PM-2PM	232	211	1,456
	259	224	1,579
	276	233	1,675
2PM-3PM	241	252	1,578
	255	273	1,688
	267	288	1,777
3PM-4PM	273	278	1,768
	296	294	1,900
	314	314	2,023
4PM-5PM	298	268	1,839
	310	288	1,940
	323	303	2,051
5PM-6PM	275	259	1,678
	291	273	1,786
	300	291	1,876
6PM-7PM	188	198	1,184
	197	209	1,257
	205	218	1,341
7PM-8PM	158	154	1,056
	164	161	1,108
	169	175	1,190
8PM-9PM	123	116	842
	128	122	902
	133	135	978
9PM-10PM	75	97	599
	79	104	646
	85	111	694
10PM-11PM	83	101	710
	86	108	752
	88	120	812
11PM-12AM	92	100	686
	93	107	715
	98	112	766

## Road Ranger / SIRV Performance By Day of Week

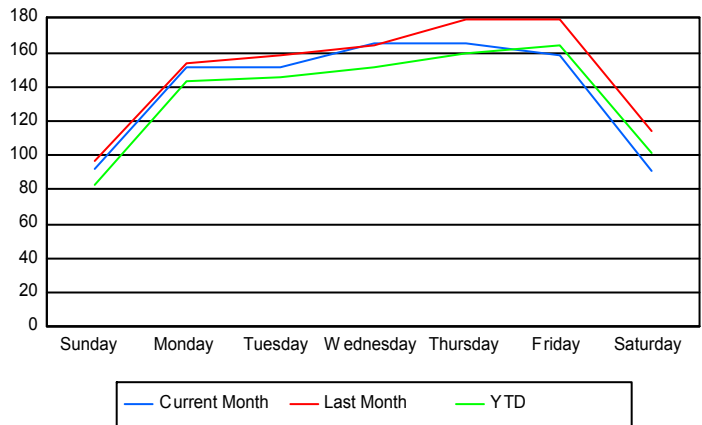
Values presented are:  
 - Total Events with a RR/SIRV Response  
 - Total RR/SIRV Responses,  
 - Total Activities Performed

	Current Mo	Last Month	YTD
Sunday	359	425	2,244
	365	456	2,345
	385	487	2,491
Monday	553	711	3,936
	601	767	4,205
	625	812	4,424
Tuesday	702	584	4,176
	757	632	4,464
	796	673	4,725
Wednesday	769	608	4,318
	823	645	4,615
	857	682	4,884
Thursday	772	660	4,517
	828	712	4,886
	875	751	5,183
Friday	568	650	4,459
	615	705	4,831
	660	752	5,160
Saturday	349	420	2,813
	360	444	2,955
	380	460	3,164

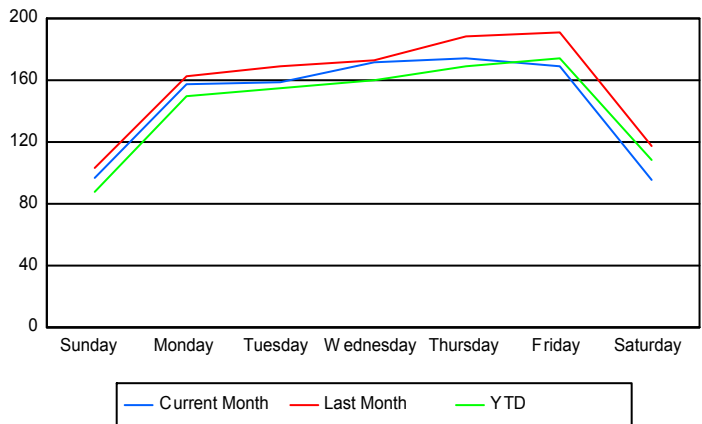
### Avg # of events with a RR/SIRV Response per Day of the Week



### Avg # of RR/SIRV Responses per Day of the Week



### Avg # of RR/SIRV Activities Performed per Day of the Week



### Road Ranger/ SIRV Responses per Time of Day and Day of Week

