



Monthly Performance Measures Report Broward County



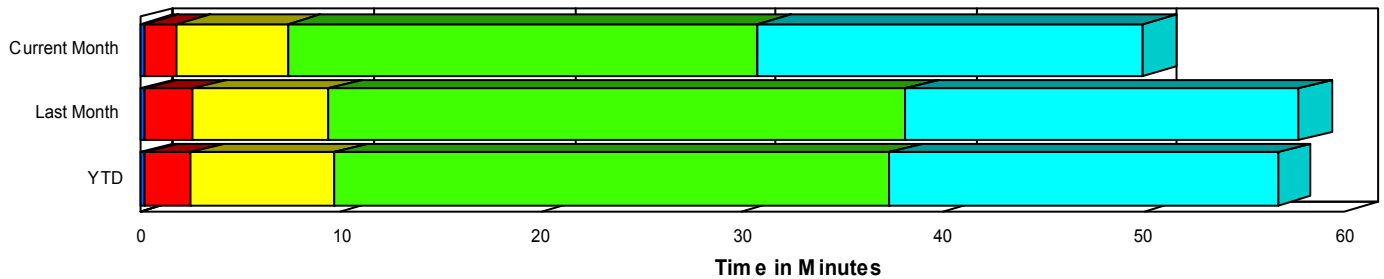
Created on:
August 06, 2007
9:55 am

Period From Jul 1, 2007 to Jul 31, 2007

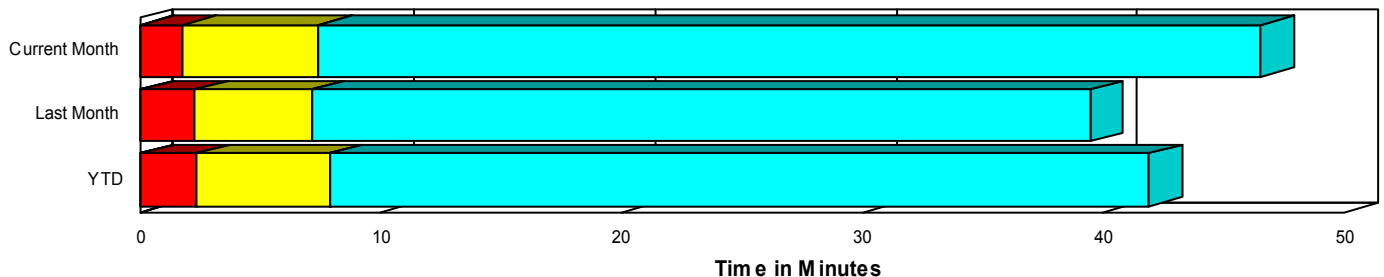
Performance Measures Summary

	Traffic Events (No Lanes Blocked)			Incidents (Lanes Blocked)		
	<u>This Month</u>	<u>Last Month</u>	<u>YTD</u>	<u>This Month</u>	<u>Last Month</u>	<u>YTD</u>
Number of Events	5,357	5,255	33,541	218	243	1,596
TMC Detection (min.)	0.03	0.04	0.04	0.22	0.20	0.25
TMC Verification (min.)	1.72	2.27	2.29	1.63	2.44	2.27
TMC Response (min.)	7.62	7.37	8.04	7.17	9.05	9.51
RR Dispatch Time (min.)	2.22	1.78	2.04	2.20	2.50	2.48
RR Response Time (min.)	5.51	5.77	6.13	4.97	6.56	7.04
Roadway Clearance (min.)				30.49	37.12	36.96
Event Clearance (min.)	46.70	39.70	42.08	49.40	56.29	55.66
# of Events w/ RR/SIRV	4,166	4,084	26,729	214	235	1,538
RR/SIRV Responses	4,312	4,250	27,577	401	418	2,573
RR/SIRV Activities	4,509	4,454	28,697	423	449	2,749

Incident Clearance TimeLine



Traffic Event(Non-Lane Blockage) Time-Line



<ul style="list-style-type: none"> ■ Avg. TMC Detection Time ■ Avg. Time from TMC Detection to TMC Verification ■ Avg. Time from TMC Verification to TMC Response 	<ul style="list-style-type: none"> ■ Avg. Time from TMC Response to Roadway Clearance* ■ Avg. Time from Roadway Clearance to Incident/Event Clearance**
---	--

* Roadway clearance equals all travel lanes open

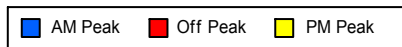
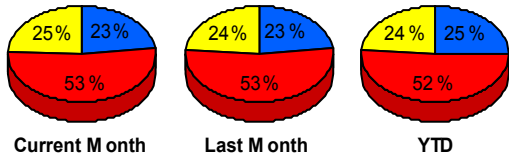
** Incident clearance equals time when last responder has left the scene

Performance Measures by Peak Period

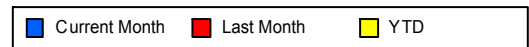
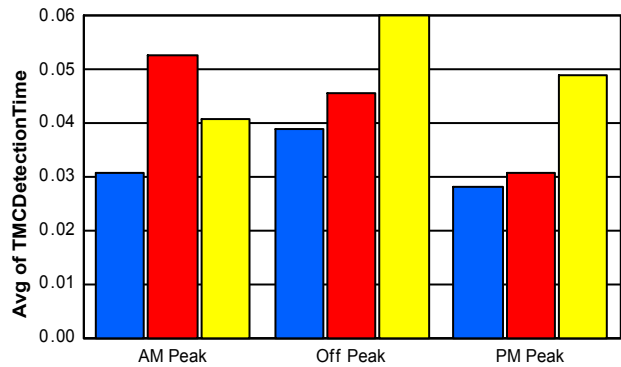
Note: AM peak period is defined as 6am to 10am and PM peak period is defined as 3pm to 7pm.

	AM Peak			Off Peak			PM Peak		
	<u>Current Month</u>	<u>Last Month</u>	<u>YTD</u>	<u>Current Month</u>	<u>Last Month</u>	<u>YTD</u>	<u>Current Month</u>	<u>Last Month</u>	<u>YTD</u>
Number of Events	1,278	1,262	8,747	2,931	2,921	18,120	1,366	1,315	8,270
Number of Incidents	49	44	352	110	147	829	59	52	415
TMC Detection (min.)	0.03	0.05	0.04	0.04	0.05	0.06	0.03	0.03	0.05
TMC Verification (min.)	0.98	1.43	1.37	2.19	2.73	2.73	1.41	2.10	2.27
TMC Response (min.)	6.40	6.23	6.56	8.73	8.23	9.21	6.39	7.01	7.51
RR Dispatch Time (min.)	1.55	1.69	1.45	2.77	1.82	2.39	1.68	1.95	2.00
RR Response Time (min.)	4.98	4.68	5.23	5.99	6.60	6.90	4.94	5.24	5.68
Event Clearance (min.)	38.38	28.44	34.90	49.76	44.53	48.65	48.36	42.86	37.91
Roadway Clearance (min.)	26.34	33.45	31.65	33.09	41.88	41.41	29.08	26.75	32.56
Incident Clearance (min.)	46.33	55.28	54.34	53.49	60.54	60.02	44.33	45.13	48.08
# of Events w/ RR/SIRV	1,070	1,018	7,334	2,254	2,251	14,266	1,056	1,050	6,667
RR/SIRV Responses	1,156	1,095	7,811	2,423	2,455	15,235	1,134	1,118	7,104
RR/SIRV Activities	1,201	1,147	8,142	2,530	2,578	15,907	1,201	1,178	7,397

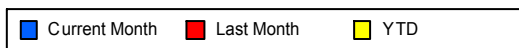
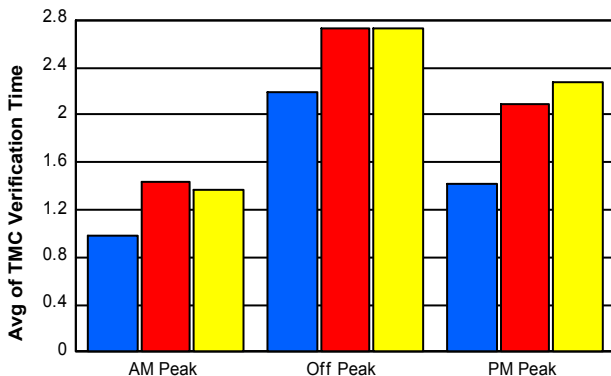
Number of Events / Peak Period



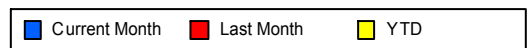
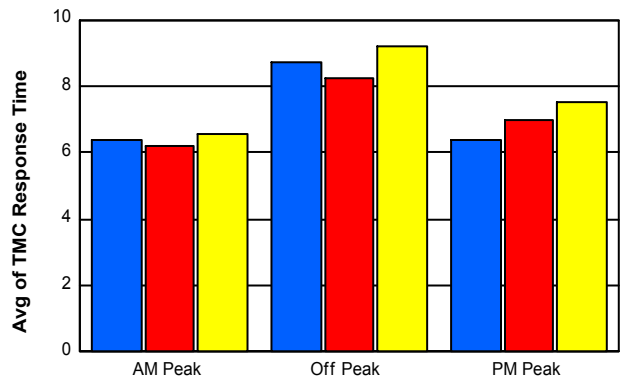
TMC Detection Time



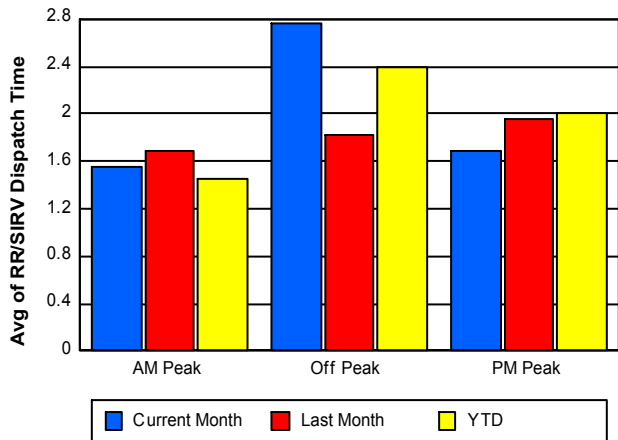
TMC Verification Time



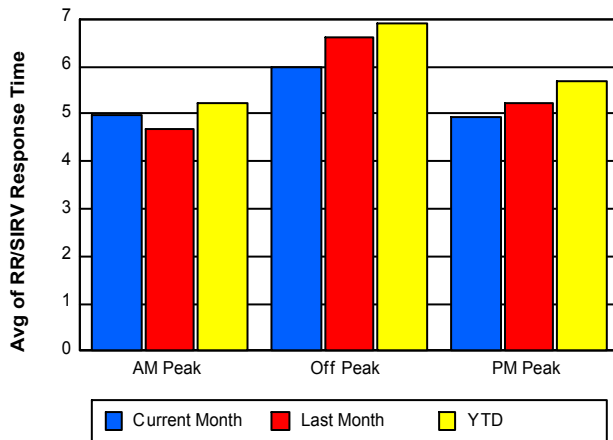
TMC Response Time



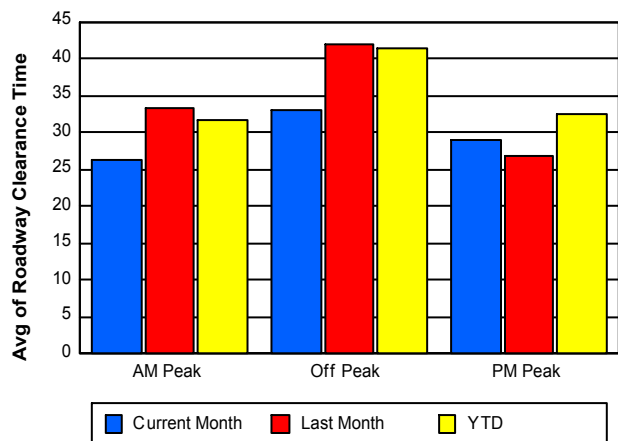
Road Ranger / SIRV Dispatch Time



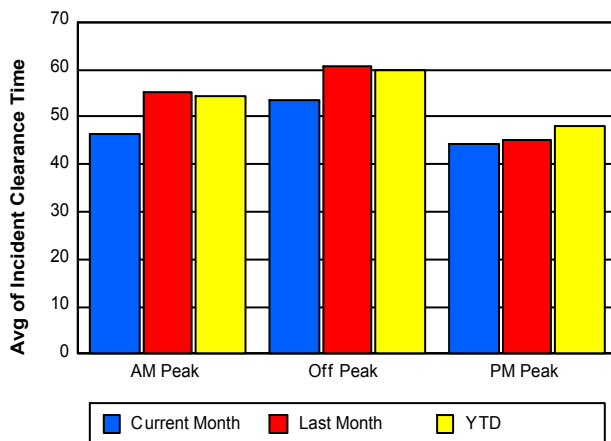
Road Ranger / SIRV Response Time



Roadway Clearance Time (2A)



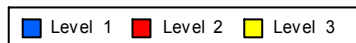
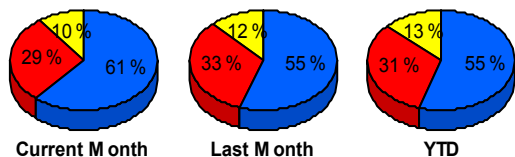
Incident Clearance Time (3B)



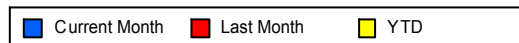
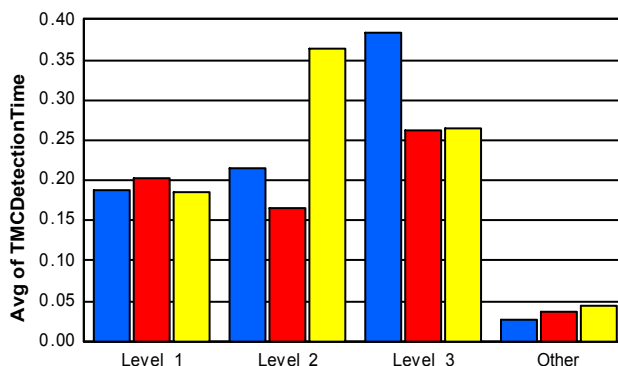
Performance Measures by Severity

	Level 1			Level 2			Level 3			Other		
	<u>This Month</u>	<u>Last Month</u>	<u>YTD</u>	<u>This Month</u>	<u>Last Month</u>	<u>YTD</u>	<u>This Month</u>	<u>Last Month</u>	<u>YTD</u>	<u>This Month</u>	<u>Last Month</u>	<u>YTD</u>
Number of Events	133	134	880	63	80	502	22	29	214	5,357	5,255	33,541
Number of Incidents	133	134	880	63	80	502	22	29	214	0	0	0
TMC Detection (min.)	0.19	0.20	0.19	0.22	0.17	0.36	0.38	0.26	0.26	0.03	0.04	0.04
TMC Verification (min.)	1.35	1.94	1.56	2.18	2.08	2.92	1.78	5.79	3.64	1.72	2.27	2.29
TMC Response (min.)	7.51	7.60	8.38	7.61	10.72	11.08	3.91	10.85	10.24	7.62	7.37	8.04
RR Dispatch Time (min.)	2.05	2.04	2.15	3.03	2.91	2.82	0.77	3.48	3.01	2.22	1.78	2.04
RR Resp. Time (min.)	5.46	5.61	6.25	4.59	7.81	8.27	3.14	7.37	7.24	5.51	5.77	6.13
Event Clearance (min.)	36.42	38.25	37.47	63.43	70.05	67.41	87.70	101.67	102.93	46.70	39.70	42.08
Roadway Clear. (min.)	14.80	15.68	15.09	50.74	52.88	52.62	67.33	92.69	90.14			
Incident Clearance (min.)	36.42	38.25	37.47	63.43	70.05	67.41	87.70	101.67	102.93			
# of Events w/ RR/SIRV	129	127	834	63	79	496	22	29	208	4,166	4,084	26,729
RR/SIRV Responses	192	188	1,142	153	149	909	56	81	522	4,312	4,250	27,577
RR/SIRV Activities	204	207	1,224	161	156	953	58	86	572	4,509	4,454	28,697

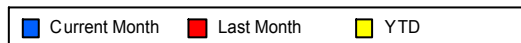
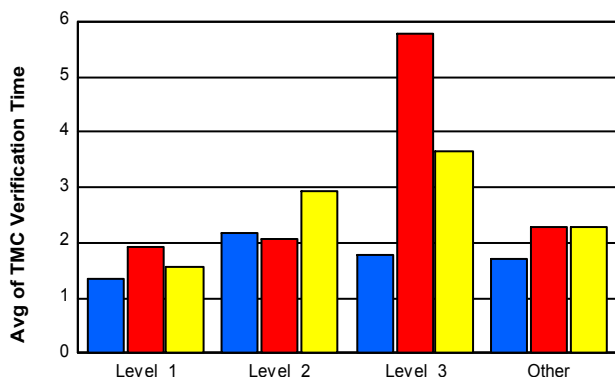
Number of Events / Severity



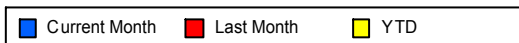
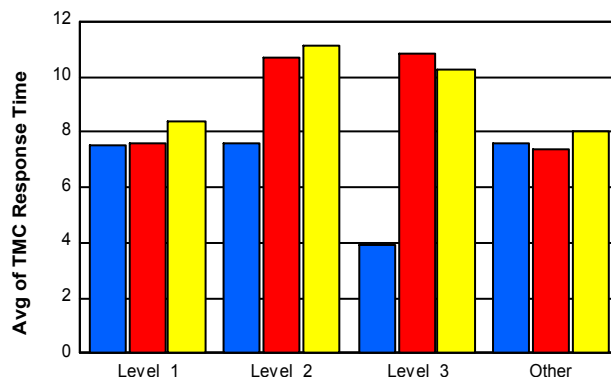
TMC Detection Time



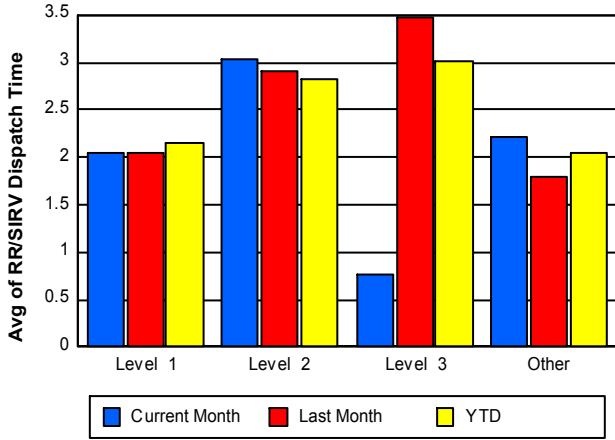
TMC Verification Time



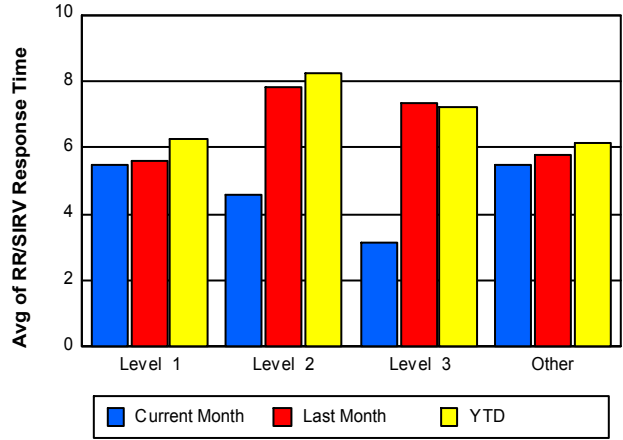
TMC Response Time



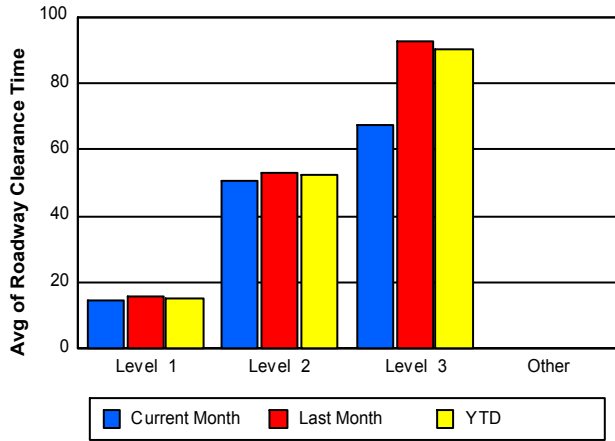
Road Ranger / SIRV Dispatch Time



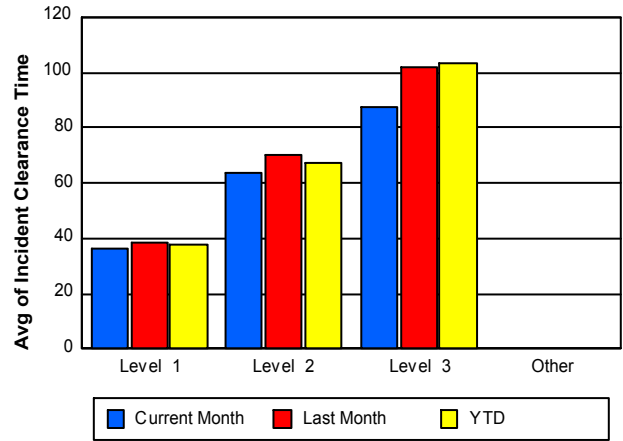
Road Ranger / SIRV Response Time



Roadway Clearance Time (2A)



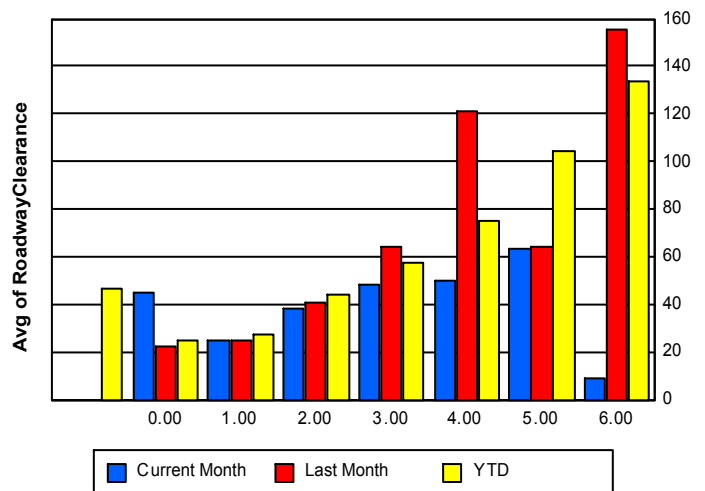
Incident Clearance Time (3B)



Roadway Clearance by Maximum Number of Lanes Blocked

	Current Month	Last Month	YTD
			46.32
0	45.15	22.50	25.00
1	24.86	25.09	27.05
2	38.32	41.07	44.08
3	48.10	63.97	57.71
4	49.65	121.11	75.23
5	63.08	64.45	104.52
6	9.28	155.08	133.62

Roadway Clearance Time (2A) by Max. # Lanes Blocked



Performance Measures by Roadway

595

	<u>Current Month</u>	<u>Last Month</u>	<u>YTD</u>
Number of Events	913	880	5,499
Number of Incidents	42	29	256
TMC Detection (min.)	0.04	0.08	0.06
TMC Verification (min.)	2.15	2.34	2.73
TMC Response (min.)	8.63	6.47	7.75
RR Dispatch Time (min.)	3.68	1.90	2.18
RR Resp. Time (min.)	4.97	4.83	5.70
Event Clearance (min.)	49.70	44.30	41.56
Roadway Clear. (min.)	33.20	49.46	41.98
Incident Clearance (min.)	49.85	62.53	59.33
# of Events w/ RR/SIRV	755	702	4,500
RR/SIRV Responses	815	759	4,823
RR/SIRV Activities	853	800	5,022

75

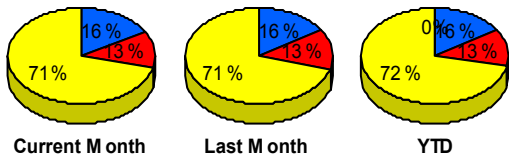
	<u>Current Month</u>	<u>Last Month</u>	<u>YTD</u>
Number of Events	710	739	4,509
Number of Incidents	12	16	110
TMC Detection (min.)	0.03	0.04	0.06
TMC Verification (min.)	2.11	4.21	3.50
TMC Response (min.)	2.45	4.11	4.04
RR Dispatch Time (min.)	0.59	1.00	1.29
RR Resp. Time (min.)	1.85	3.14	2.78
Event Clearance (min.)	53.89	46.80	45.42
Roadway Clear. (min.)	48.29	54.78	62.37
Incident Clearance (min.)	77.15	68.83	75.86
# of Events w/ RR/SIRV	687	718	4,375
RR/SIRV Responses	743	761	4,624
RR/SIRV Activities	772	801	4,848

95

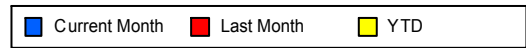
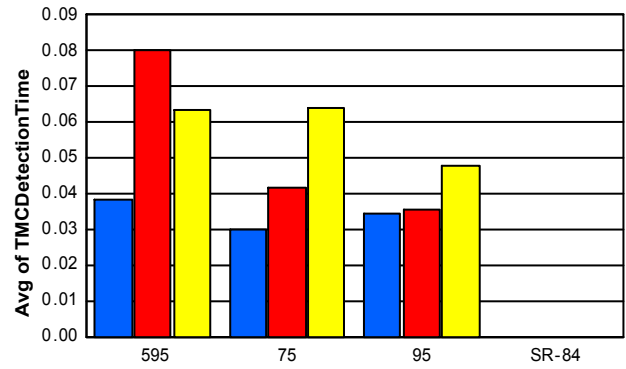
	<u>Current Month</u>	<u>Last Month</u>	<u>YTD</u>
Number of Events	3,952	3,879	25,128
Number of Incidents	164	198	1,230
TMC Detection (min.)	0.03	0.04	0.05
TMC Verification (min.)	1.55	1.90	1.97
TMC Response (min.)	8.53	8.53	9.12
RR Dispatch Time (min.)	2.20	1.98	2.19
RR Resp. Time (min.)	6.47	6.72	7.06
Event Clearance (min.)	44.87	38.35	42.46
Roadway Clear. (min.)	28.49	33.88	33.64
Incident Clearance (min.)	47.25	54.36	53.09
# of Events w/ RR/SIRV	2,938	2,899	19,392
RR/SIRV Responses	3,155	3,148	20,703
RR/SIRV Activities	3,307	3,302	21,576

	<u>YTD</u>
Number of Events	1
Number of Incidents	0
TMC Detection (min.)	0.00
TMC Verification (min.)	1.08
TMC Response (min.)	
RR Dispatch Time (min.)	
RR Resp. Time (min.)	
Event Clearance (min.)	3.77
Roadway Clear. (min.)	
Incident Clearance (min.)	
# of Events w/ RR/SIRV	0
RR/SIRV Responses	0
RR/SIRV Activities	0

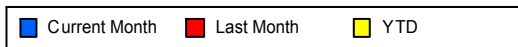
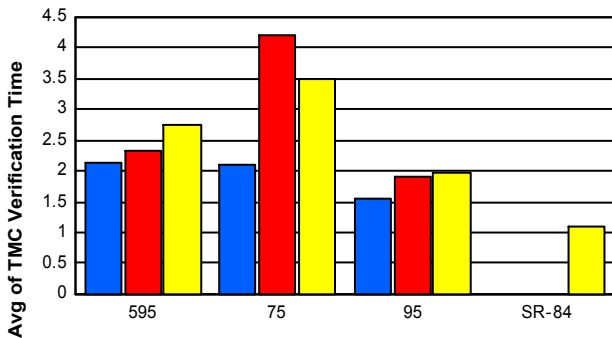
Number of Events / Roadway



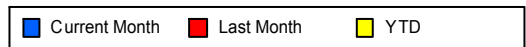
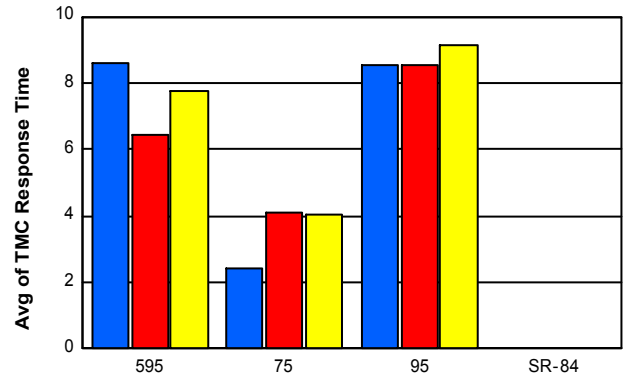
TMC Detection Time



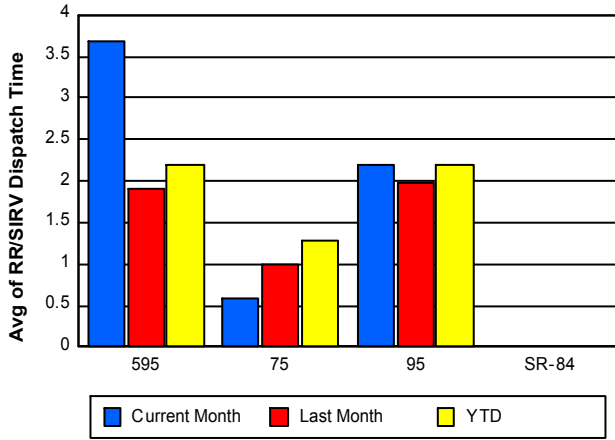
TMC Verification Time



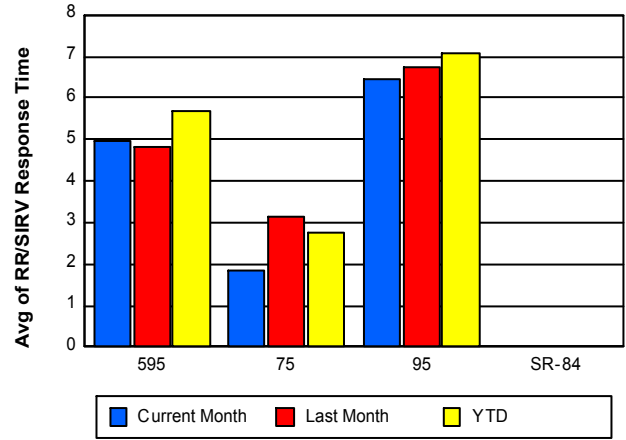
TMC Response Time



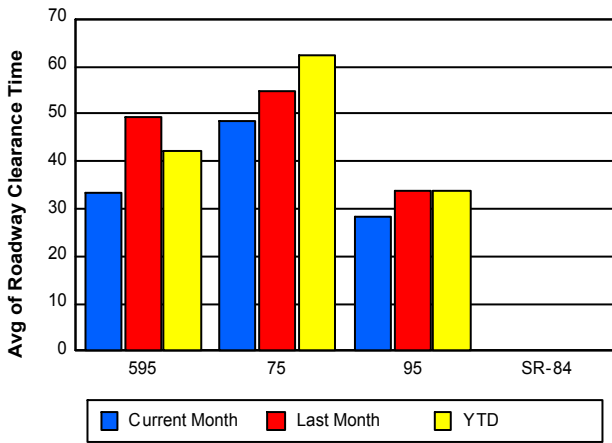
Road Ranger / SIRV Dispatch Time



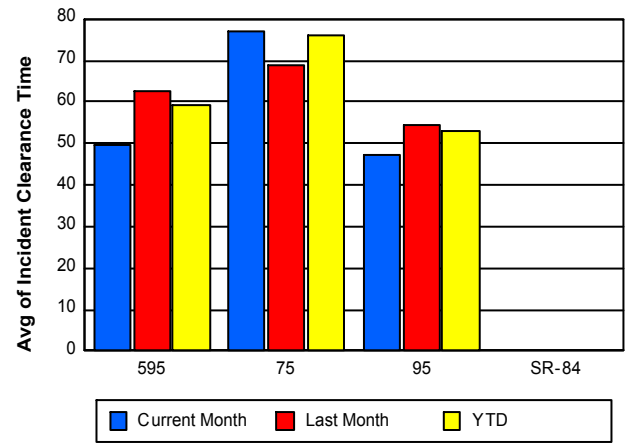
Road Ranger / SIRV Response Time



Roadway Clearance Time (2A)



Incident Clearance Time (3B)



Performance Measures by Event Type

Abandoned Vehicle

	<u>Current Month</u>	<u>Last Month</u>	<u>YTD</u>
Number of Events	757	696	4,460
Number of Incidents	3	1	8
TMC Detection (min.)	0.01	0.01	0.01
TMC Verification (min.)	0.73	0.46	0.66
TMC Response (min.)	10.80	7.34	9.10
RR Dispatch Time (min.)	5.56	1.09	2.96
RR Response Time (min.)	5.24	6.26	6.14
Event Clearance (min.)	214.75	172.32	182.21
Roadway Clearance (min.)	26.77	8.83	17.03
Incident Clearance (min.)	29.96	52.42	27.01
# of Events w/ RR/SIRV	589	577	3,633
RR/SIRV Assists	607	598	3,717
RR/SIRV Activities	632	622	3,820

Accident

	<u>Current Month</u>	<u>Last Month</u>	<u>YTD</u>
Number of Events	333	417	2,495
Number of Incidents	166	185	1,159
TMC Detection (min.)	0.17	0.19	0.21
TMC Verification (min.)	1.51	3.05	2.81
TMC Response (min.)	6.01	9.29	8.81
RR Dispatch Time (min.)	1.72	2.35	2.17
RR Response Time (min.)	4.32	6.96	6.67
Event Clearance (min.)	42.62	48.16	46.50
Roadway Clearance (min.)	31.21	39.82	37.65
Incident Clearance (min.)	53.08	62.47	60.11
# of Events w/ RR/SIRV	325	408	2,428
RR/SIRV Assists	511	590	3,407
RR/SIRV Activities	533	621	3,571

Debris on Roadway

	<u>Current Month</u>	<u>Last Month</u>	<u>YTD</u>
Number of Events	213	230	1,453
Number of Incidents	3	6	39
TMC Detection (min.)	0.14	0.18	0.20
TMC Verification (min.)	4.91	7.81	7.94
TMC Response (min.)	6.08	8.27	9.12
RR Dispatch Time (min.)	1.34	1.88	1.98
RR Response Time (min.)	4.77	6.46	7.19
Event Clearance (min.)	11.33	12.71	13.83
Roadway Clearance (min.)	73.40	22.23	26.97
Incident Clearance (min.)	76.99	25.94	34.11
# of Events w/ RR/SIRV	206	216	1,375
RR/SIRV Assists	225	231	1,475
RR/SIRV Activities	229	234	1,491

Disabled Vehicle

	<u>Current Month</u>	<u>Last Month</u>	<u>YTD</u>
Number of Events	3,373	3,234	21,030
Number of Incidents	38	41	295
TMC Detection (min.)	0.03	0.03	0.04
TMC Verification (min.)	1.99	2.46	2.47
TMC Response (min.)	7.11	6.84	7.64
RR Dispatch Time (min.)	1.66	1.66	1.80
RR Response Time (min.)	5.56	5.28	5.93
Event Clearance (min.)	20.81	19.92	20.98
Roadway Clearance (min.)	27.01	30.36	27.23
Incident Clearance (min.)	38.63	38.09	37.98
# of Events w/ RR/SIRV	3,105	2,950	19,503
RR/SIRV Assists	3,210	3,070	20,153
RR/SIRV Activities	3,378	3,246	21,149

Emergency Vehicles

	<u>Current Month</u>	<u>Last Month</u>	<u>YTD</u>
Number of Events	2	1	19
Number of Incidents	2	1	14
TMC Detection (min.)	0.03	0.00	0.01
TMC Verification (min.)	1.32	0.00	0.19
TMC Response (min.)	2.40		8.97
RR Dispatch Time (min.)	0.50		5.56
RR Response Time (min.)	1.90		3.09
Event Clearance (min.)	17.42	7.52	36.40
Roadway Clearance (min.)	11.03	6.48	28.42
Incident Clearance (min.)	17.42	7.52	44.68
# of Events w/ RR/SIRV	1	0	13
RR/SIRV Assists	1	0	16
RR/SIRV Activities	1	0	17

Other

	<u>Current Month</u>	<u>Last Month</u>	<u>YTD</u>
Number of Events	866	894	5,458
Number of Incidents	1	6	30
TMC Detection (min.)	0.01	0.01	0.02
TMC Verification (min.)	0.89	1.22	1.20
TMC Response (min.)	11.95	14.60	10.69
RR Dispatch Time (min.)	2.62	3.19	2.64
RR Response Time (min.)	9.76	11.20	8.51
Event Clearance (min.)	12.82	16.24	18.48
Roadway Clearance (min.)	38.85	23.49	27.63
Incident Clearance (min.)	46.42	36.76	36.59
# of Events w/ RR/SIRV	127	145	1,147
RR/SIRV Assists	129	155	1,171
RR/SIRV Activities	129	156	1,177

Pedestrian

	<u>Current Month</u>	<u>Last Month</u>	<u>YTD</u>
Number of Events	21	22	125
Number of Incidents	0	0	0
TMC Detection (min.)	0.06	1.10	0.31
TMC Verification (min.)	0.47	0.31	1.45
TMC Response (min.)	2.33	0.97	3.58
RR Dispatch Time (min.)	0.92	1.19	1.02
RR Response Time (min.)	1.40	0.43	2.74
Event Clearance (min.)	9.04	10.66	14.67
Roadway Clearance (min.)			
Incident Clearance (min.)			
# of Events w/ RR/SIRV	20	19	115
RR/SIRV Assists	20	20	120
RR/SIRV Activities	20	20	123

Police Activity

	<u>Current Month</u>	<u>Last Month</u>	<u>YTD</u>
Number of Events	8	1	76
Number of Incidents	3	1	31
TMC Detection (min.)	0.09	0.00	0.09
TMC Verification (min.)	0.61	0.00	1.55
TMC Response (min.)	4.62	14.30	11.50
RR Dispatch Time (min.)	1.55	4.60	3.43
RR Response Time (min.)	3.07	9.70	8.08
Event Clearance (min.)	25.60	48.37	63.14
Roadway Clearance (min.)	7.27	46.78	67.30
Incident Clearance (min.)	9.98	48.37	80.98
# of Events w/ RR/SIRV	6	1	37
RR/SIRV Assists	7	1	60
RR/SIRV Activities	7	1	63

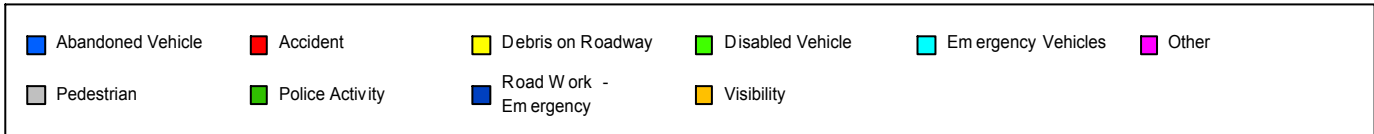
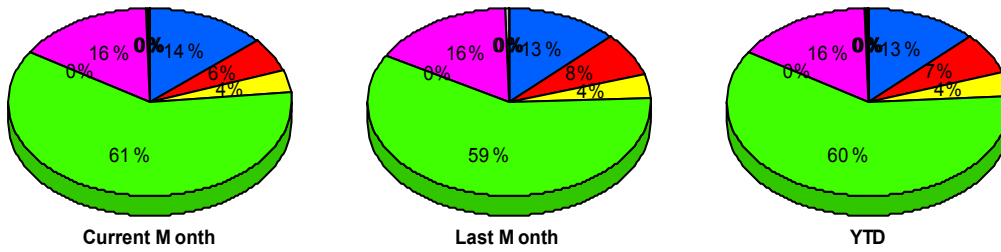
Road Work - Emergency

	<u>Current Month</u>	<u>Last Month</u>	<u>YTD</u>
Number of Events	1	3	14
Number of Incidents	1	2	13
TMC Detection (min.)	0.00	0.00	0.05
TMC Verification (min.)	0.00	26.17	6.97
TMC Response (min.)		26.08	15.18
RR Dispatch Time (min.)		5.73	3.65
RR Response Time (min.)		20.35	11.54
Event Clearance (min.)	12.05	46.26	93.51
Roadway Clearance (min.)	10.90	35.78	92.99
Incident Clearance (min.)	12.05	37.45	95.79
# of Events w/ RR/SIRV	0	3	9
RR/SIRV Assists	0	3	13
RR/SIRV Activities	0	3	16

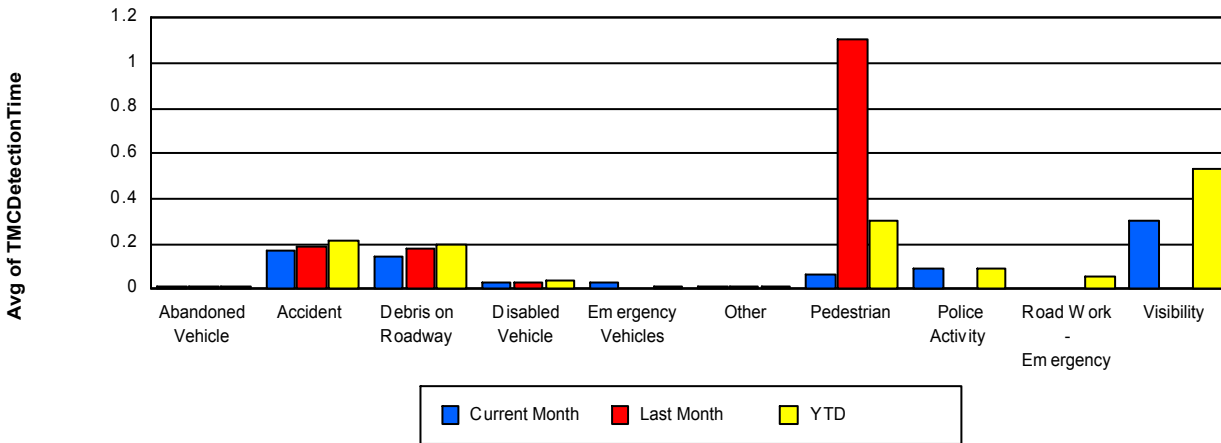
Visibility

	<u>Current Month</u>	<u>YTD</u>
Number of Events	1	7
Number of Incidents	1	7
TMC Detection (min.)	0.30	0.53
TMC Verification (min.)	0.00	8.09
TMC Response (min.)	18.03	13.24
RR Dispatch Time (min.)	17.63	6.93
RR Response Time (min.)	0.40	6.31
Event Clearance (min.)	46.00	135.09
Roadway Clearance (min.)	45.15	228.55
Incident Clearance (min.)	46.00	135.09
# of Events w/ RR/SIRV	1	7
RR/SIRV Assists	3	18
RR/SIRV Activities	3	19

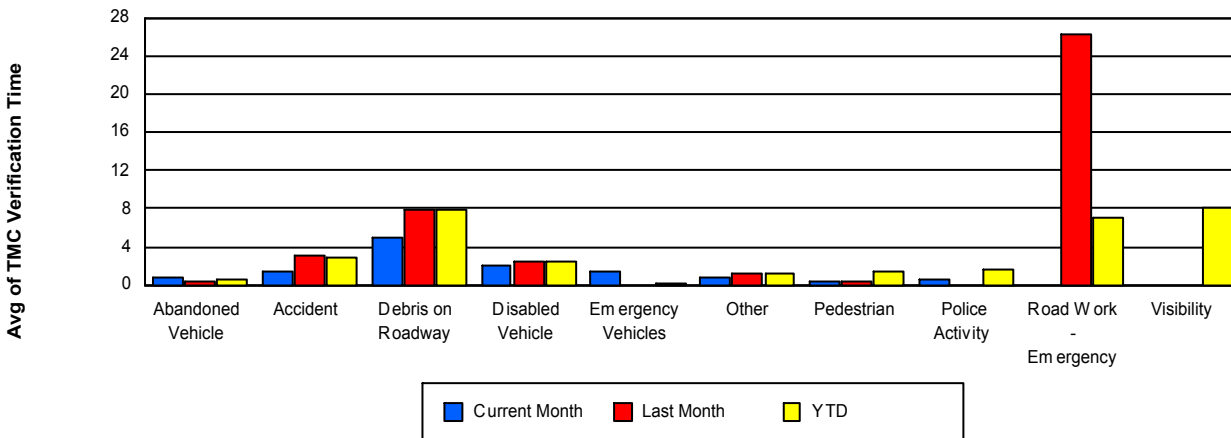
Number of Events / Event Type



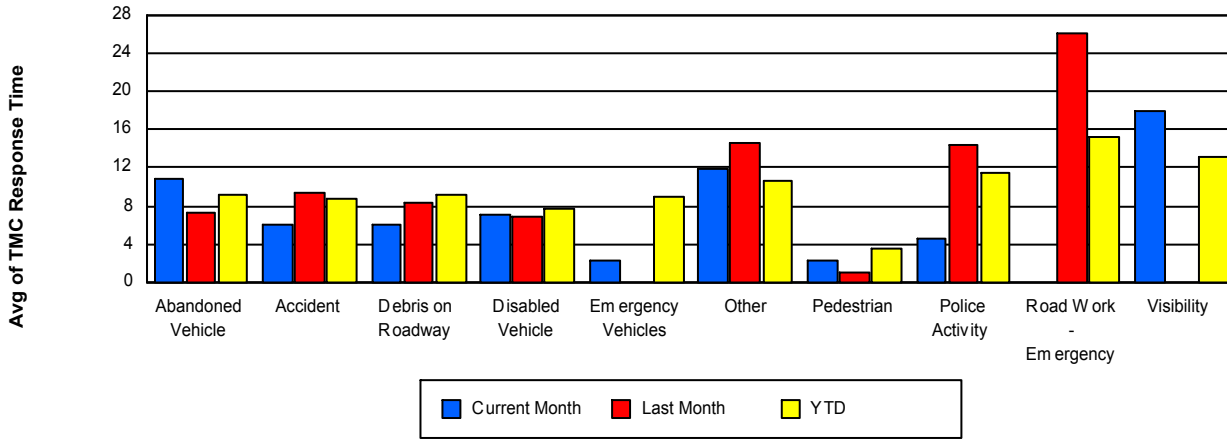
TMC Detection Time



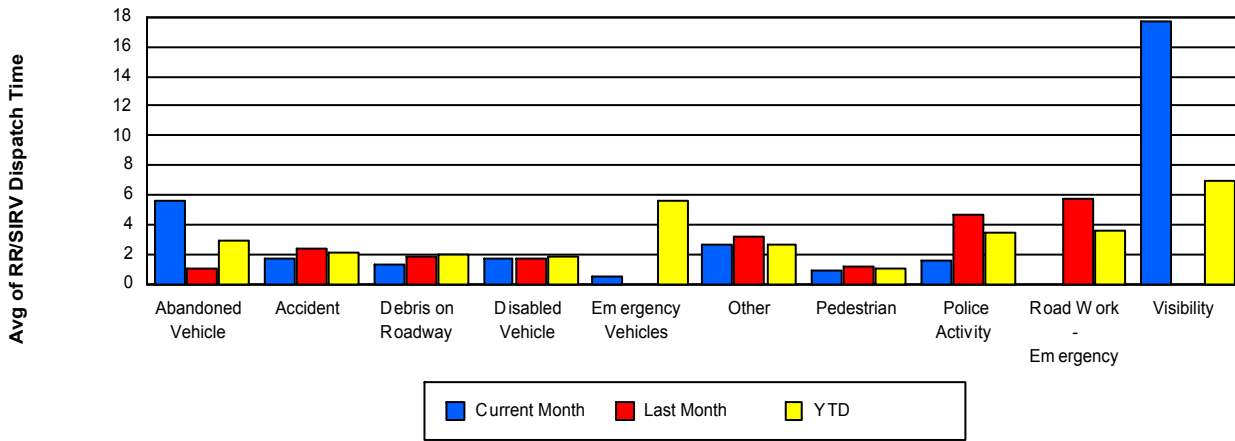
TMC Verification Time



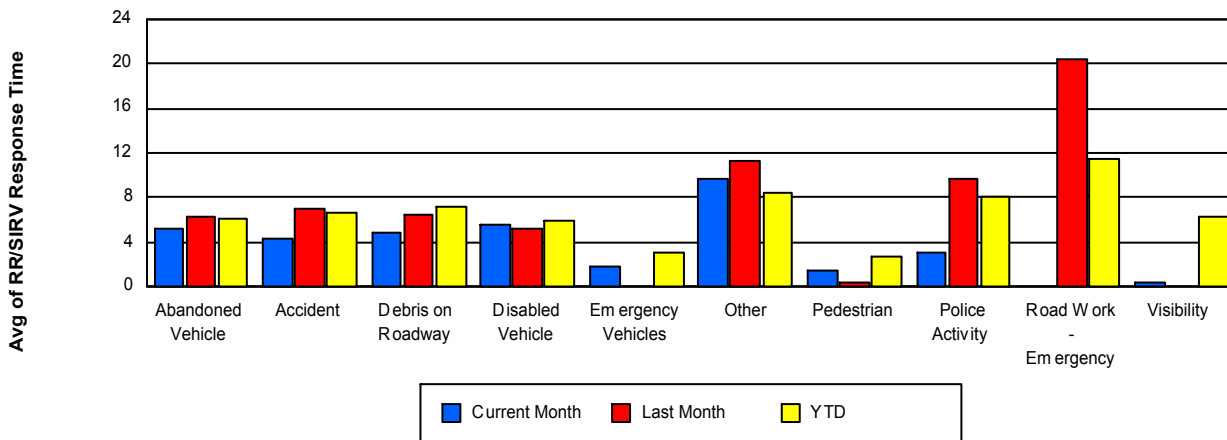
TMC Response Time



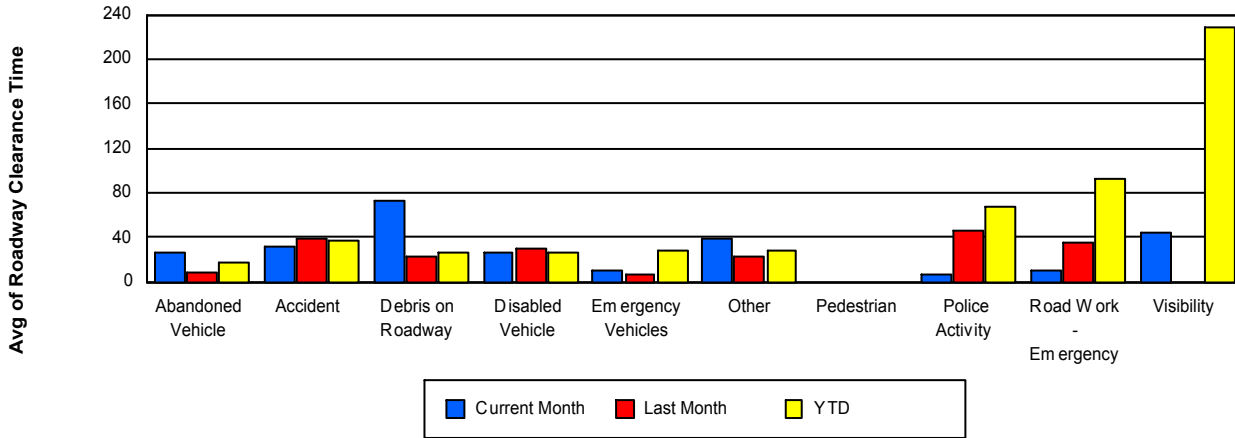
Road Ranger / SIRV Dispatch Time



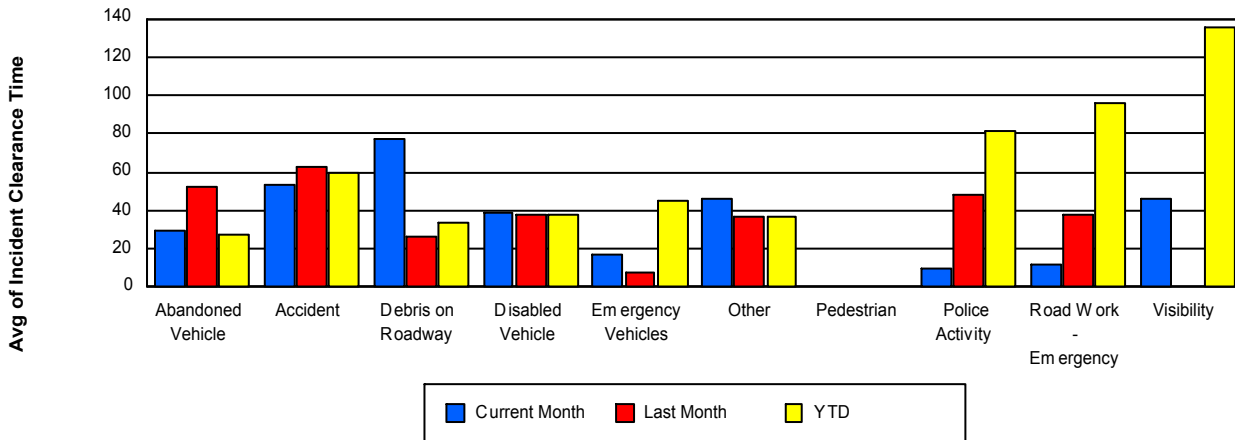
Road Ranger / SIRV Response Time



Roadway Clearance Time (2A)



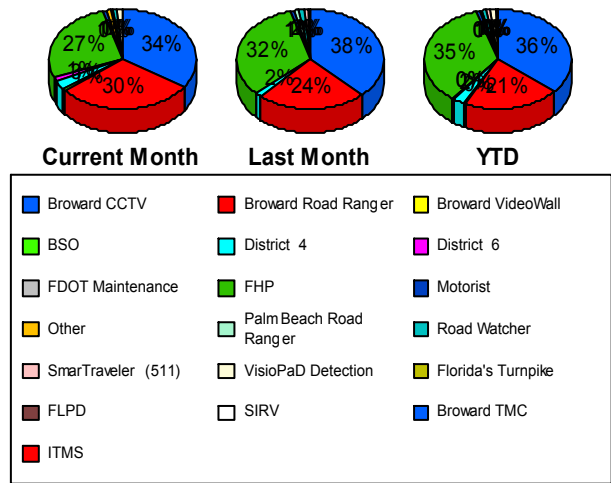
Incident Clearance Time (3B)



Incident Detection Methods

	Current Month	Last Month	YTD
Broward CCTV	75	92	577
Broward Road Ra	65	58	337
Broward TMC	0	0	1
BSO	2	0	7
District 4	6	4	38
District 6	2	0	3
FDOT Maintenanc	0	0	3
FHP	59	78	557
Florida's Turnpike	0	0	1
FLPD	0	0	1
Motorist	2	2	11
Other	1	0	1
Palm Beach Road	2	2	7
Road Watcher	1	4	11
SIRV	0	0	2
SmarTraveler (511)	0	2	19
VisioPaD Detectio	3	1	20
Total	218	243	1,596

Total Incidents by Detection Method

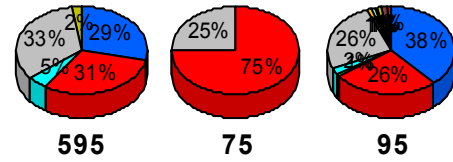


Incident Detection Methods by Roadway

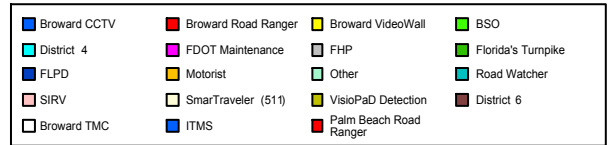
		Current Month	Last Month	YTD
595	Broward CCTV	12	9	83
	Broward Road Ra	13	7	54
	BSO	0	0	2
	District 4	2	0	6
	FHP	14	12	99
	FLPD	0	0	1
	Motorist	0	0	2
	Road Watcher	0	0	1
	SIRV	0	0	1
	SmarTraveler (511)	0	1	3
	VisioPaD Detectio	1	0	4
	Total	42	29	256
75	Broward Road Ra	9	6	48
	BSO	0	0	1
	District 4	0	0	1
	FHP	3	10	59
	Road Watcher	0	0	1
	Total	12	16	110
95	Broward CCTV	63	83	494
	Broward Road Ra	43	45	235
	Broward TMC	0	0	1
	BSO	2	0	4
	District 4	4	4	31
	District 6	2	0	3
	FDOT Maintenanc	0	0	3
	FHP	42	56	399
	Florida's Turnpike	0	0	1
	Motorist	2	2	9
	Other	1	0	1
	Palm Beach Road	2	2	7
	Road Watcher	1	4	9

Total Events by Roadway and Detection Method

Current Period Only



SR-84



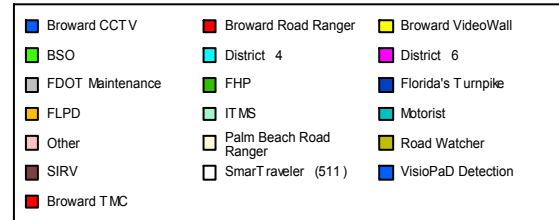
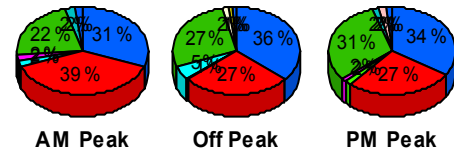
		Current Month	Last Month	YTD
95	SIRV	0	0	1
	SmarTraveler (511)	0	1	16
	VisioPaD Detectio	2	1	16
	Total	164	198	1,230
Total	218	243	1,596	

Incident Detection Methods by Peak Period

		Current Month	Last Month	YTD
AM Peak	Broward CCTV	15	14	129
	Broward Road Ra	19	10	91
	District 4	1	2	9
	District 6	1	0	1
	FDOT Maintenanc	0	0	1
	FHP	11	13	99
	Florida's Turnpike	0	0	1
	FLPD	0	0	1
	Motorist	1	1	5
	Palm Beach Road	0	1	3
	Road Watcher	0	0	2
	SmarTraveler (511)	0	2	5
	VisioPaD Detectio	1	1	5
	Total	49	44	352
Off Peak	Broward CCTV	40	57	297
	Broward Road Ra	30	33	166
	Broward TMC	0	0	1
	BSO	1	0	2
	District 4	5	1	21
	District 6	0	0	1
	FDOT Maintenanc	0	0	1
	FHP	30	51	305
	Motorist	0	1	5
	Palm Beach Road	2	1	3

Total Events by Roadway and Detection Method

Current Period Only



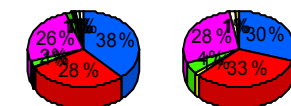
		Current Month	Last Month	YTD
Off Peak	Road Watcher	1	3	7
	SIRV	0	0	2
	SmarTraveler (511)	0	0	8
	VisioPaD Detectio	1	0	10
	Total	110	147	829
PM Peak	Broward CCTV	20	21	151
	Broward Road Ra	16	15	80
	BSO	1	0	5
	District 4	0	1	8
	District 6	1	0	1
	FDOT Maintenanc	0	0	1
	FHP	18	14	153
	Motorist	1	0	1
	Other	1	0	1
	Palm Beach Road	0	0	1
	Road Watcher	0	1	2
	SmarTraveler (511)	0	0	6
	VisioPaD Detectio	1	0	5
	Total	59	52	415
Total		218	243	1,596

Incident Detection Methods by Severity

		Current Month	Last Month	YTD
	Broward CCTV	0	0	1
	Total	0	0	1
Level 1	Broward CCTV	54	57	367
	Broward Road Ra	40	37	205
	BSO	1	0	3
	District 4	3	1	20
	FDOT Maintenanc	0	0	1
	FHP	36	40	285
	FLPD	0	0	1

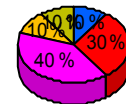
Total Events by Roadway and Detection Method

Current Period Only



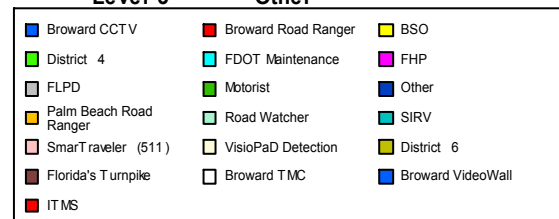
Level 1

Level 2



Level 3

Other



		Current Month	Last Month	YTD
Level 1	Motorist	2	1	6
	Other	1	0	1
	Palm Beach Road	1	2	4
	Road Watcher	1	2	7
	SIRV	0	0	1
	SmarTraveler (511)	0	1	11
	VisioPaD Detectio	2	1	9
	Total	141	142	921
Level 2	Broward CCTV	20	32	177
	Broward Road Ra	22	19	113
	BSO	1	0	3
	District 4	3	2	16
	District 6	1	0	2
	FDOT Maintenanc	0	0	2
	FHP	19	32	215
	Florida's Turnpike	0	0	1
	Motorist	0	1	5
	Palm Beach Road	0	0	1
	Road Watcher	0	1	3
	SIRV	0	0	1
	SmarTraveler (511)	0	1	7
	VisioPaD Detectio	1	0	10
	Total	67	88	556
Level 3	Broward CCTV	1	3	32
	Broward Road Ra	3	2	19
	Broward TMC	0	0	1
	BSO	0	0	1
	District 4	0	1	2
	District 6	1	0	1
	FHP	4	6	57
	Palm Beach Road	1	0	2
	Road Watcher	0	1	1

		Current Month	Last Month	YTD
Level 3	SmarTraveler (511)	0	0	1
	VisioPaD Detectio	0	0	1
	Total	10	13	118
Total		218	243	1,596

Road Ranger / SIRV Performance Measures

Road Ranger / SIRV Performance By County

RR/SIRV Responses per County

Values presented are:
 - Total Events with a RR/SIRV Response
 - Total RR/SIRV Responses,
 - Total Activities Performed

	Current Month	Last Month	YTD
Broward	4,380	4,319	28,267
	4,713	4,668	30,150
	4,932	4,903	31,446

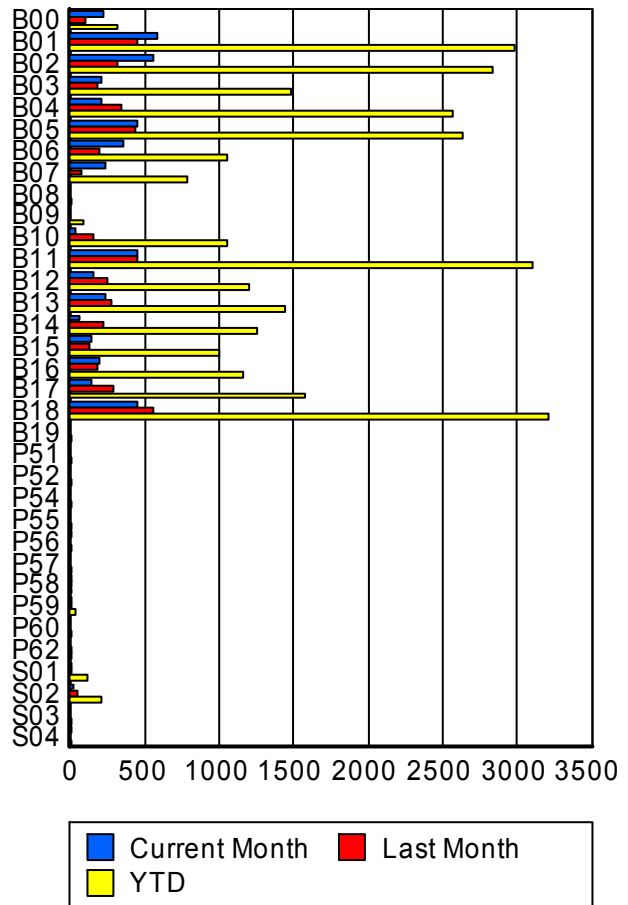


■ Broward

Road Ranger / SIRV Performance By Truck

	Current Month	Last Month	YTD
B00	212	93	311
	215	95	316
	219	97	322
B01	575	443	2,958
	581	445	2,986
	598	465	3,107
B02	551	311	2,805
	557	315	2,831
	583	340	2,968
B03	211	181	1,456
	214	183	1,478
	223	191	1,529
B04	214	333	2,530
	214	340	2,563
	225	365	2,682
B05	445	438	2,609
	450	442	2,635
	471	471	2,760
B06	349	191	1,048
	351	193	1,054
	367	204	1,107
B07	227	74	778
	229	74	783
	247	75	808

RR/SIRV Responses per Truck



	Current Month	Last Month	YTD
B08	0 0 0	0 0 0	1 1 1
B09	0 0 0	0 0 0	87 87 90
B10	32 32 32	148 152 161	1,038 1,054 1,106
B11	453 454 477	448 455 471	3,075 3,101 3,223
B12	152 154 158	251 254 272	1,186 1,196 1,247
B13	231 231 241	276 280 284	1,432 1,444 1,481
B14	61 61 62	222 226 237	1,246 1,256 1,295
B15	145 146 151	122 123 127	995 1,002 1,046
B16	191 194 211	182 185 193	1,148 1,165 1,225
B17	138 138 147	285 286 305	1,569 1,581 1,654
B18	446 452 474	545 553 573	3,179 3,209 3,330
B19	0 0 0	0 0 0	2 2 2
P51	0 0 0	0 0 0	6 6 6
P52	0 0 0	0 0 0	2 2 2
P54	0 0 0	0 0 0	3 3 5

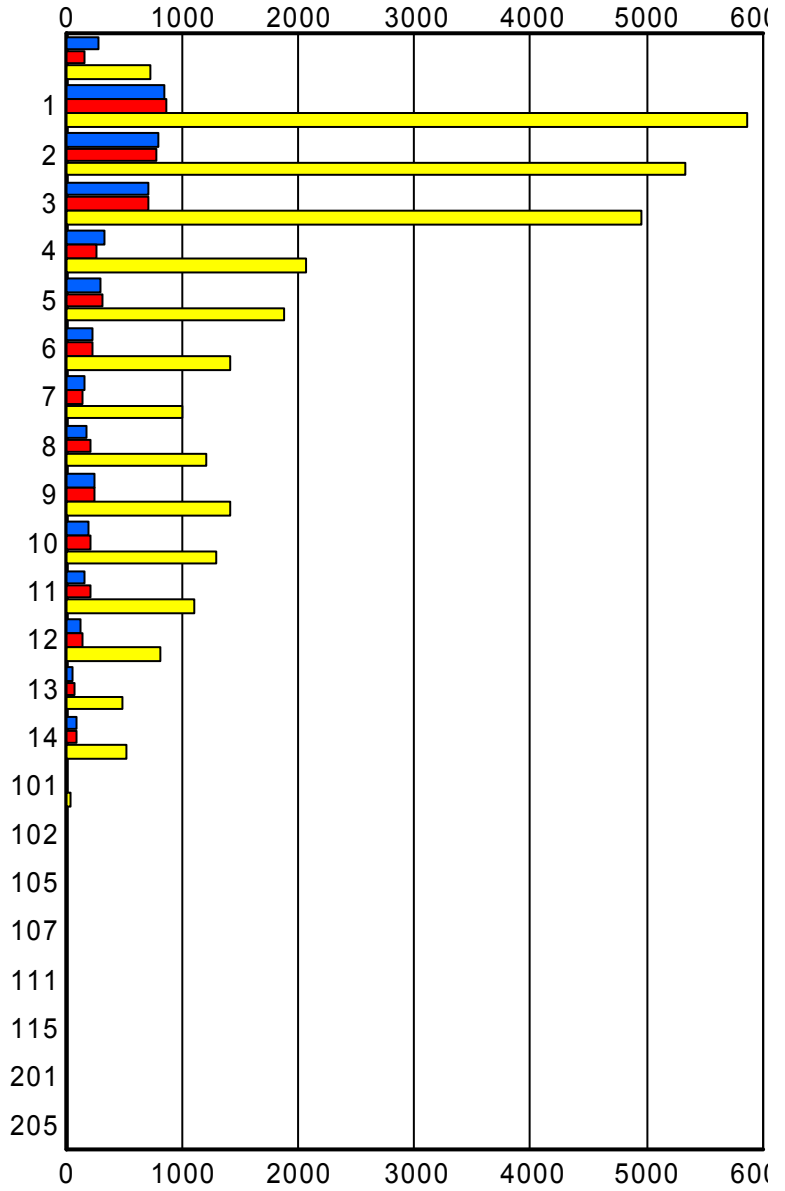
	Current Month	Last Month	YTD
P55	0 0 0	0 0 0	2 2 2
P56	4 4 4	0 0 0	5 5 5
P57	0 0 0	0 0 0	2 2 2
P58	2 2 2	4 4 4	13 13 14
P59	1 1 1	7 7 9	33 33 38
P60	0 0 0	0 0 0	1 1 1
P62	0 0 0	1 1 1	2 2 2
S01	12 12 18	12 12 13	117 119 146
S02	16 16 16	43 43 45	211 212 234
S03	0 0 0	0 0 0	1 1 1
S04	5 5 5	0 0 0	5 5 5

Road Ranger / SIRV Performance By Beat

	Current Month	Last Month	YTD
	253	136	669
	282	161	733
	292	167	792
1	834	827	5,696
	850	863	5,870
	882	904	6,116
2	776	749	5,175
	789	783	5,333
	839	823	5,571
3	691	688	4,819
	706	705	4,958
	743	744	5,184
4	322	255	2,038
	325	257	2,060
	341	263	2,123
5	302	320	1,861
	302	322	1,875
	317	345	1,963
6	231	229	1,400
	233	232	1,413
	244	240	1,473
7	157	142	984
	161	146	998
	172	151	1,053
8	178	207	1,207
	180	208	1,213
	183	225	1,277
9	237	243	1,397
	241	244	1,409
	253	260	1,457
10	187	208	1,277
	188	210	1,289
	196	216	1,329
11	167	205	1,098
	169	208	1,113
	174	216	1,144
12	132	145	800
	132	147	810
	138	157	847
13	64	81	479
	64	82	486
	64	85	499

Values presented are:
 - Total Events with a RR/SIRV Response
 - Total RR/SIRV Responses,
 - Total Activities Performed

RR/SIRV Responses per Beat



■ Current Month
 ■ Last Month
 ■ YTD

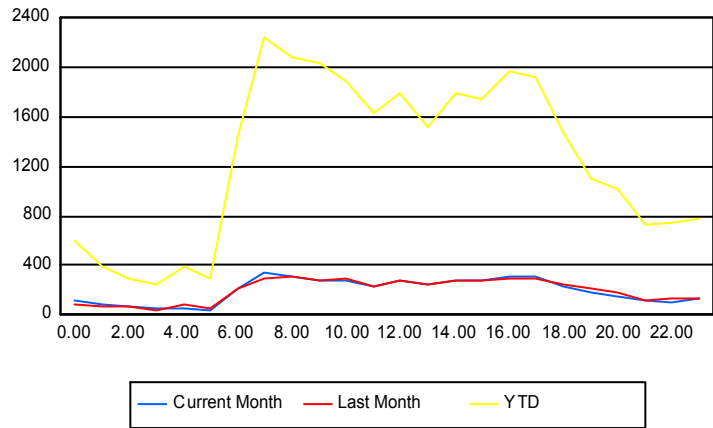
	Current Month	Last Month	YTD
14	84	86	519
	84	88	524
	87	93	544
101	2	9	44
	2	9	44
	2	11	52
102	2	0	3
	2	0	3
	2	0	3
105	0	1	1
	0	1	1
	0	1	1
107	0	0	1
	0	0	1
	0	0	1
111	3	2	14
	3	2	14
	3	2	14
115	0	0	1
	0	0	1
	0	0	1
201	0	0	1
	0	0	1
	0	0	1
205	0	0	1
	0	0	1
	0	0	1

Road Ranger / SIRV Performance By Time of Day

Values presented are:
 - Total Events with a RR/SIRV Response
 - Total RR/SIRV Responses,
 - Total Activities Performed

	Current Month	Last Month	YTD
12AM-1AM	114 120 125	76 81 88	572 604 627
1AM-2AM	75 84 87	60 72 75	364 397 414
2AM-3AM	55 62 63	60 64 66	281 302 310
3AM-4AM	43 48 49	36 39 39	227 251 263
4AM-5AM	49 56 58	58 79 80	348 395 403
5AM-6AM	38 43 43	45 47 48	271 290 302
6AM-7AM	188 208 211	203 218 226	1,359 1,458 1,525
7AM-8AM	322 348 368	276 293 308	2,114 2,246 2,336
8AM-9AM	299 318 328	292 312 330	1,956 2,079 2,177
9AM-10AM	261 282 294	247 272 283	1,905 2,028 2,104
10AM-11AM	266 282 297	266 287 297	1,783 1,888 1,982
11AM-12PM	204 226 231	203 222 237	1,523 1,630 1,702
12PM-1PM	251 275 293	247 271 286	1,675 1,788 1,874

Number of Responses / Hour of the Day



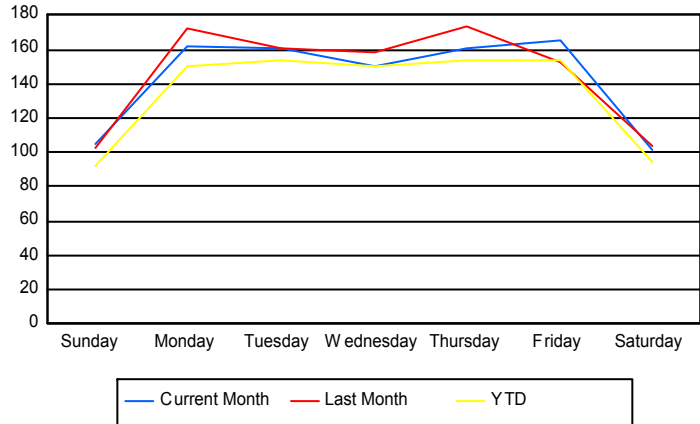
	Current Month	Last Month	YTD
1PM-2PM	230	223	1,424
	251	243	1,522
	257	256	1,601
2PM-3PM	276	256	1,680
	285	286	1,800
	309	306	1,896
3PM-4PM	263	262	1,635
	285	284	1,739
	310	295	1,813
4PM-5PM	289	278	1,842
	308	299	1,973
	325	312	2,052
5PM-6PM	289	281	1,822
	312	291	1,924
	330	309	2,010
6PM-7PM	215	229	1,368
	229	244	1,468
	236	262	1,522
7PM-8PM	172	210	1,045
	179	215	1,100
	184	228	1,143
8PM-9PM	144	166	972
	150	182	1,013
	155	193	1,060
9PM-10PM	108	102	665
	118	112	732
	123	118	756
10PM-11PM	105	120	694
	108	126	739
	114	131	769
11PM-12AM	124	123	742
	136	129	784
	142	130	805

Road Ranger / SIRV Performance By Day of Week

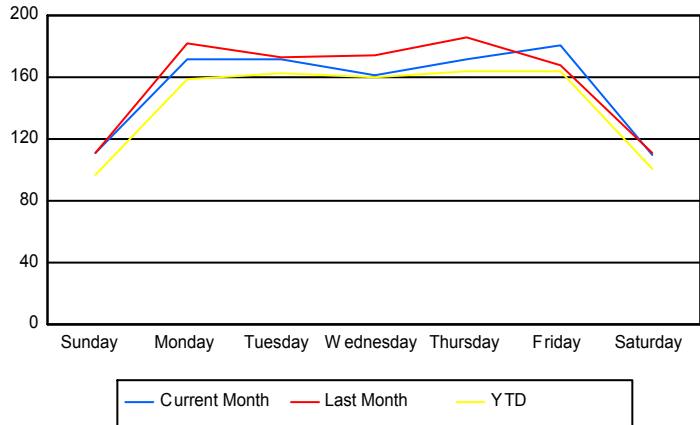
Values presented are:
 - Total Events with a RR/SIRV Response
 - Total RR/SIRV Responses,
 - Total Activities Performed

	Current Month	Last Month	YTD
Sunday	512	407	2,667
	546	440	2,819
	564	458	2,936
Monday	798	685	4,586
	853	722	4,855
	895	755	5,040
Tuesday	792	642	4,702
	847	693	5,007
	879	729	5,237
Wednesday	581	628	4,440
	626	692	4,760
	673	729	4,985
Thursday	641	692	4,555
	684	740	4,870
	716	775	5,079
Friday	658	754	4,551
	721	827	4,879
	746	869	5,068
Saturday	402	516	2,790
	436	554	2,960
	459	588	3,101

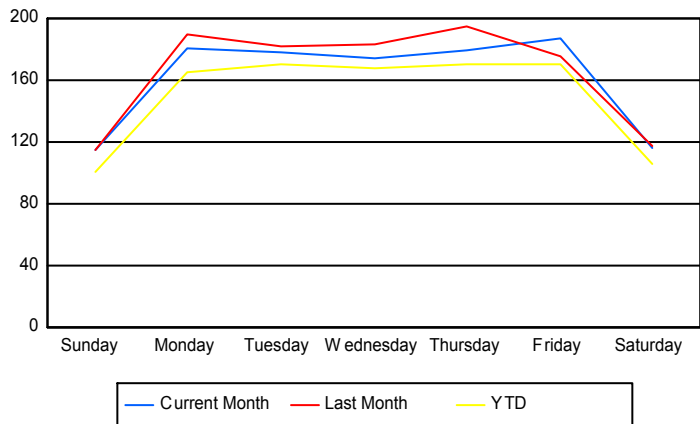
Avg # of events with a RR/SIRV Response per Day of the Week



Avg # of RR/SIRV Responses per Day of the Week



Avg # of RR/SIRV Activities Performed per Day of the Week



Road Ranger/SIRV Responses per Time of Day and Day of Week

