



Monthly Performance Measures Report Broward County



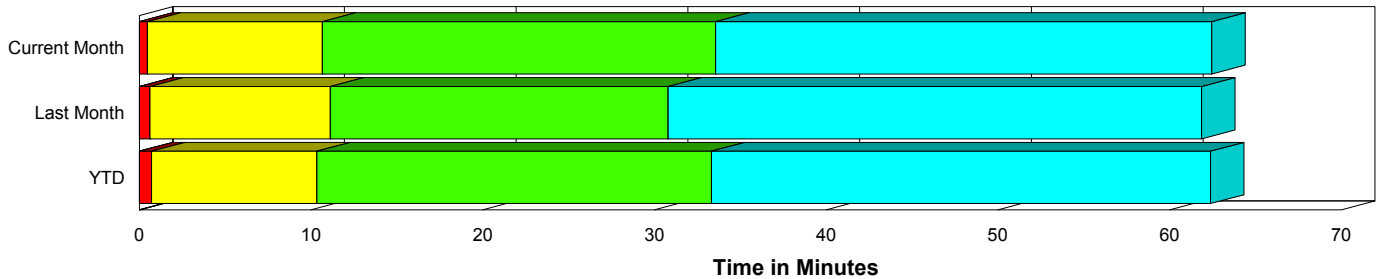
Created on:
July 01, 2009
8:43 am

Period From Jun 1, 2009 to Jun 30, 2009

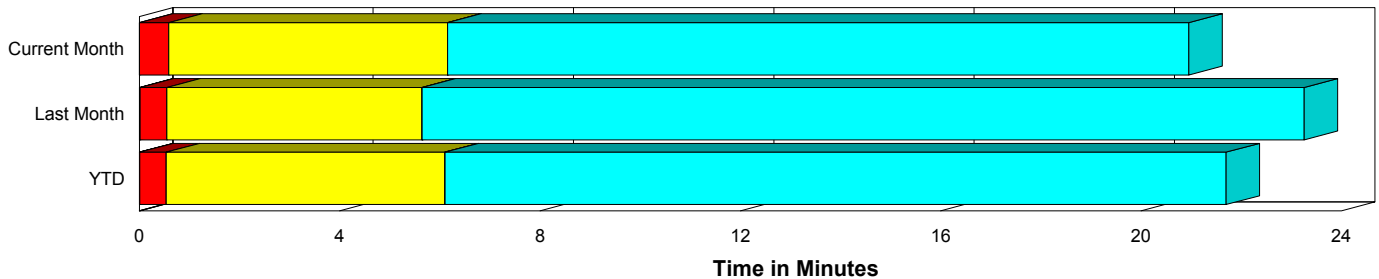
Performance Measures Summary

	Traffic Events (No Lanes Blocked)			Incidents (Lanes Blocked)		
	<u>This Month</u>	<u>Last Month</u>	<u>YTD</u>	<u>This Month</u>	<u>Last Month</u>	<u>YTD</u>
Number of Events	4,252	4,128	25,341	213	208	1,236
TMC Detection (min.)	0.00	0.02	0.01	0.00	0.00	0.00
TMC Verification (min.)	0.58	0.53	0.53	0.47	0.62	0.71
TMC Response (min.)	6.60	6.11	6.59	10.82	11.13	10.58
RR Dispatch Time (min.)	1.37	1.02	1.29	2.26	4.85	3.37
RR Response Time (min.)	5.25	5.19	5.40	8.94	6.59	7.42
Roadway Clearance (min.)				29.69	31.67	32.48
Event Clearance (min.)	21.40	23.73	22.20	58.41	62.81	60.90
# of Events w/ RR/SIRV	2,918	2,577	16,044	124	140	808
RR/SIRV Responses	2,918	2,577	16,044	124	140	808
RR/SIRV Activities	2,481	2,260	13,572	246	281	1,622

Incident Clearance Time-Line



Traffic Event (Non-Lane Blockage) Time-Line



■ Avg. TMC Detection Time	■ Avg. Time from TMC Response to Roadway Clearance*
■ Avg. Time from TMC Detection to TMC Verification	■ Avg. Time from Roadway Clearance to Incident/Event Clearance**
■ Avg. Time from TMC Verification to TMC Response	

* Roadway clearance equals all travel lanes open

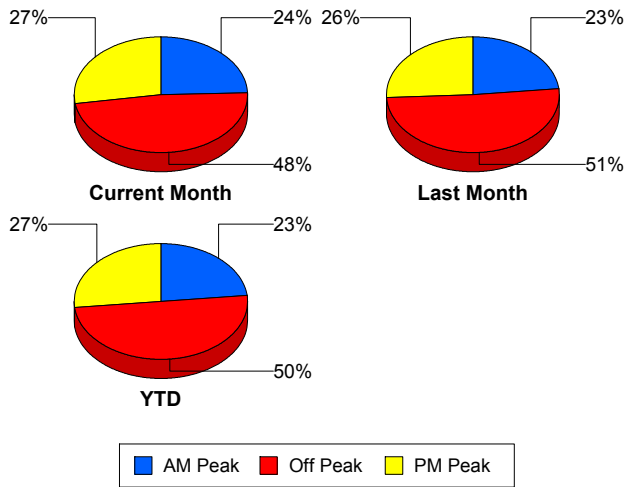
** Incident clearance equals time when last responder has left the scene

Performance Measures by Peak Period

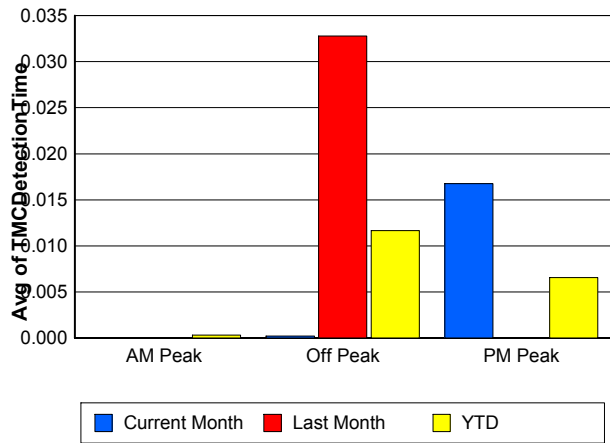
Note: AM peak period is defined as 6am to 10am and PM peak period is defined as 3pm to 7pm.

	AM Peak			Off Peak			PM Peak		
	<u>Current Month</u>	<u>Last Month</u>	<u>YTD</u>	<u>Current Month</u>	<u>Last Month</u>	<u>YTD</u>	<u>Current Month</u>	<u>Last Month</u>	<u>YTD</u>
Number of Events	1,092	1,015	6,180	2,148	2,206	13,329	1,225	1,115	7,068
Number of Incidents	49	48	282	106	96	606	58	64	348
TMC Detection (min.)	0.00	0.00	0.00	0.00	0.03	0.01	0.02	0.00	0.01
TMC Verification (min.)	0.54	0.35	0.47	0.40	0.43	0.46	0.93	0.92	0.74
TMC Response (min.)	6.45	5.43	6.25	7.76	7.17	7.74	6.02	6.41	6.26
RR Dispatch Time (min.)	1.47	0.95	1.07	1.85	1.65	2.03	0.81	0.91	0.88
RR Response Time (min.)	4.99	4.63	5.26	5.86	5.49	5.74	5.35	5.62	5.50
Event Clearance (min.)	22.30	23.10	21.64	24.83	29.37	26.94	21.02	20.41	20.52
Roadway Clearance (min.)	31.93	26.00	26.77	32.73	40.57	38.60	22.25	22.57	26.45
Incident Clearance (min.)	57.04	55.05	55.87	63.47	76.64	65.41	50.34	48.10	57.14
# of Events w/ RR/SIRV	897	807	4,920	1,198	1,085	6,699	947	825	5,233
RR/SIRV Responses	897	807	4,920	1,198	1,085	6,699	947	825	5,233
RR/SIRV Activities	847	788	4,674	1,022	953	5,796	858	800	4,724

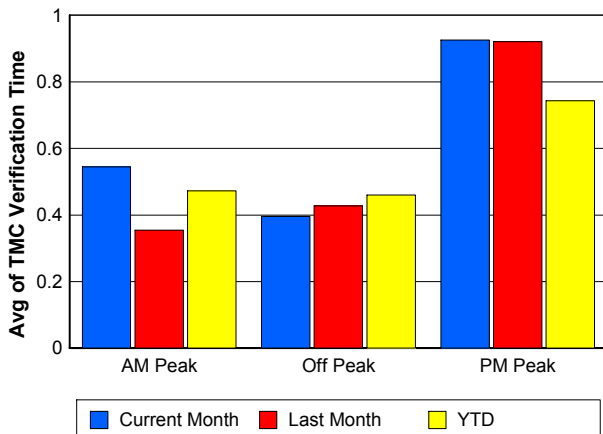
Number of Events / Peak Period



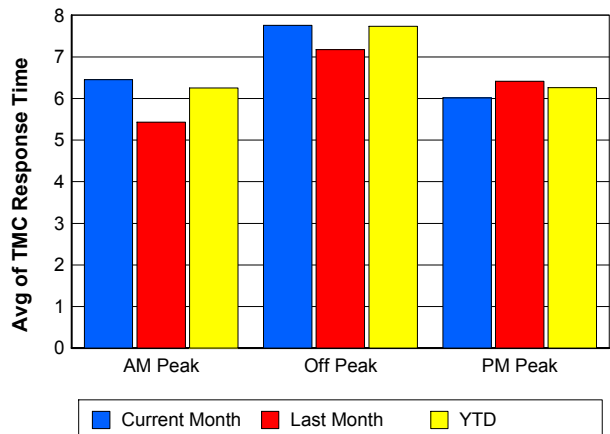
TMC Detection Time



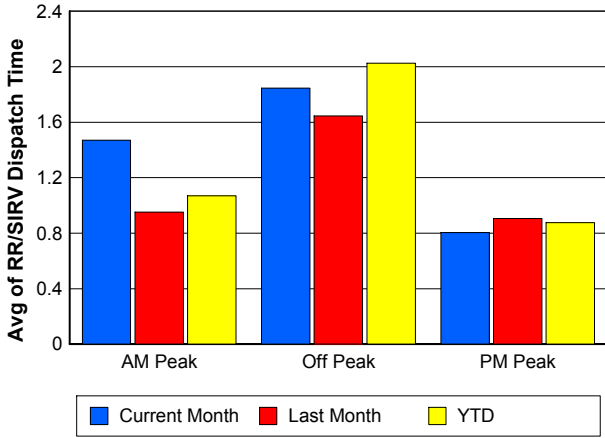
TMC Verification Time



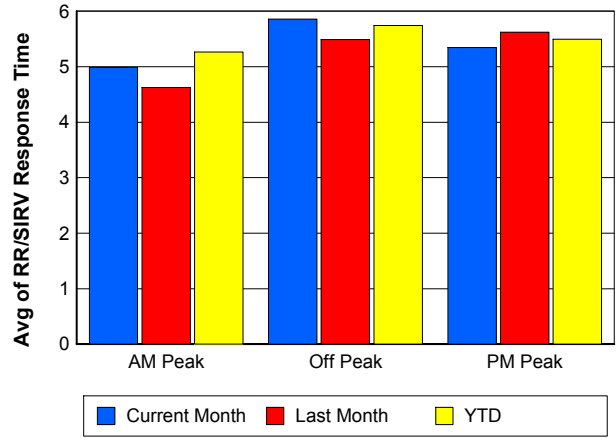
TMC Response Time



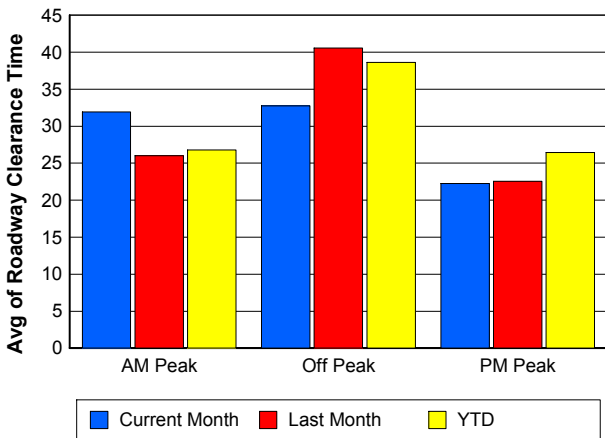
Road Ranger / SIRV Dispatch Time



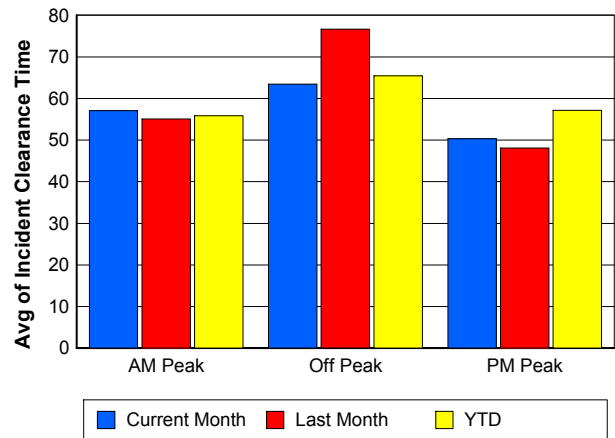
Road Ranger / SIRV Response Time



Roadway Clearance Time (2A)



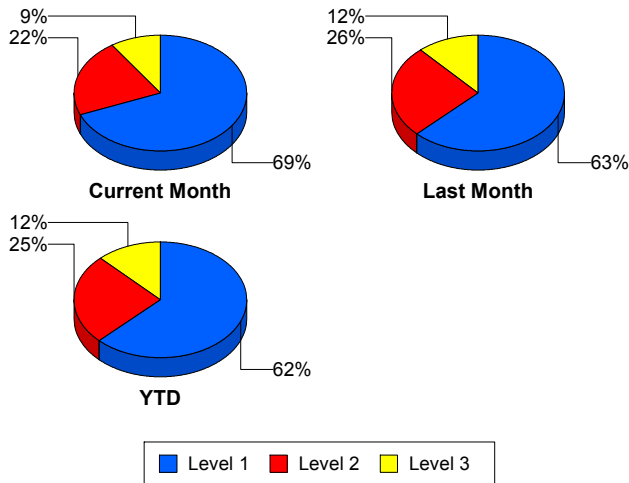
Incident Clearance Time (3B)



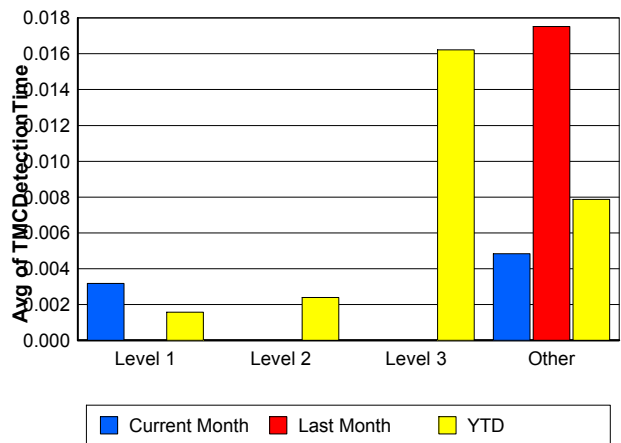
Performance Measures by Severity

	Level 1			Level 2			Level 3			Other		
	<u>This Month</u>	<u>Last Month</u>	<u>YTD</u>	<u>This Month</u>	<u>Last Month</u>	<u>YTD</u>	<u>This Month</u>	<u>Last Month</u>	<u>YTD</u>	<u>This Month</u>	<u>Last Month</u>	<u>YTD</u>
Number of Events	147	130	771	46	54	313	20	24	152	4,252	4,128	25,341
Number of Incidents	147	130	771	46	54	313	20	24	152	0	0	0
TMC Detection (min.)	0.00	0.00	0.00	0.00	0.00	0.00	0.00	0.00	0.02	0.00	0.02	0.01
TMC Verification (min.)	0.39	0.37	0.45	0.70	1.11	0.88	0.46	0.86	1.67	0.58	0.53	0.53
TMC Response (min.)	9.01	7.74	7.28	8.89	7.59	10.30	24.47	35.78	26.78	6.60	6.11	6.59
RR Dispatch Time (min.)	1.77	1.80	1.66	1.24	3.75	3.55	6.30	21.52	10.54	1.37	1.02	1.29
RR Resp. Time (min.)	7.70	5.95	5.73	7.65	5.98	7.31	18.21	11.13	15.64	5.25	5.19	5.40
Event Clearance (min.)	45.89	49.55	46.86	70.98	68.26	73.42	121.57	121.83	106.24	21.40	23.73	22.20
Roadway Clear. (min.)	13.68	13.61	14.17	50.64	45.65	49.46	99.20	98.04	90.40			
Incident Clearance (min.)	45.89	49.55	46.86	70.98	68.26	73.42	121.57	121.83	106.24			
# of Events w/ RR/SIRV	85	94	538	23	27	145	16	19	125	2,918	2,577	16,044
RR/SIRV Responses	85	94	538	23	27	145	16	19	125	2,918	2,577	16,044
RR/SIRV Activities	154	158	944	70	79	418	22	44	260	2,481	2,260	13,572

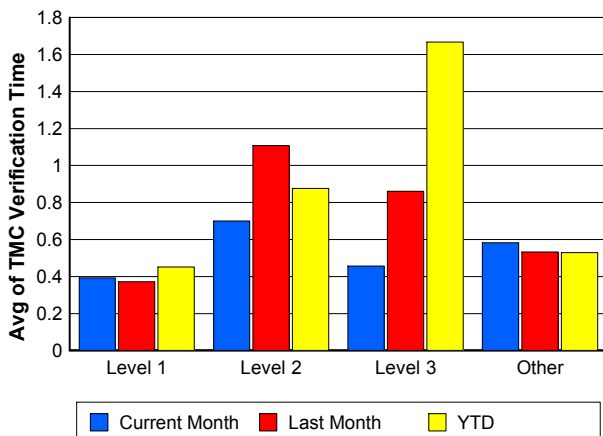
Number of Events / Severity



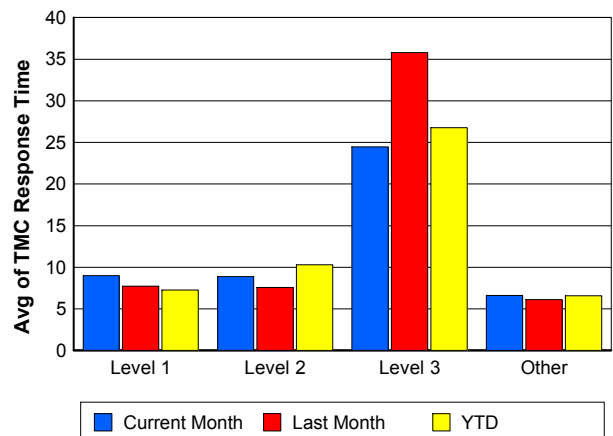
TMC Detection Time



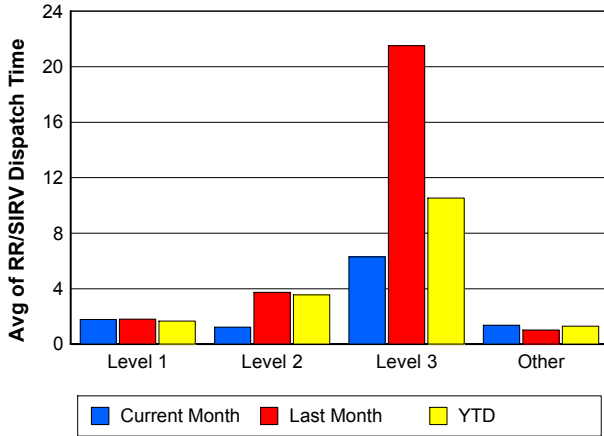
TMC Verification Time



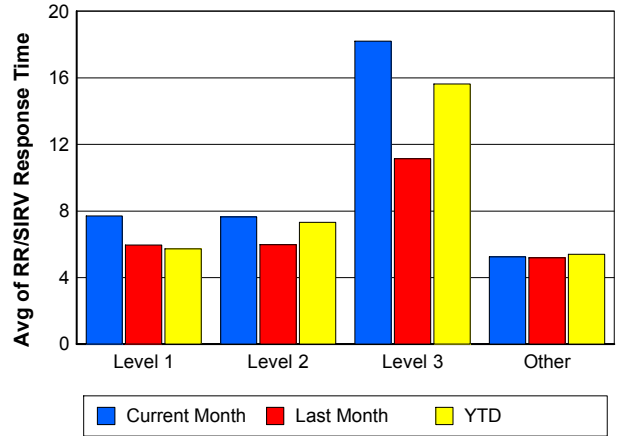
TMC Response Time



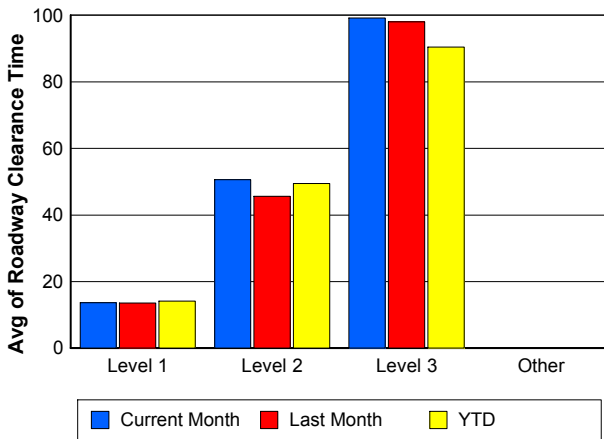
Road Ranger / SIRV Dispatch Time



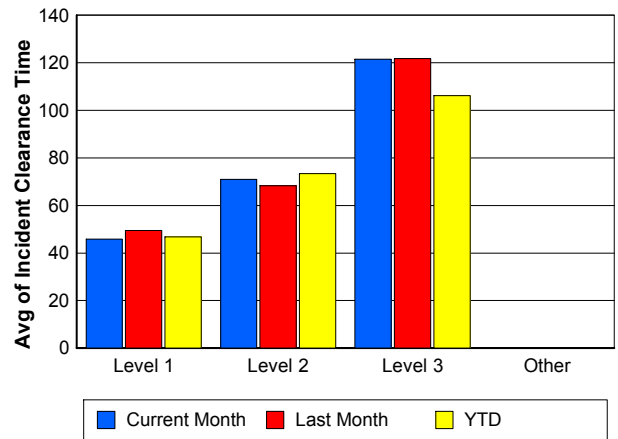
Road Ranger / SIRV Response Time



Roadway Clearance Time (2A)



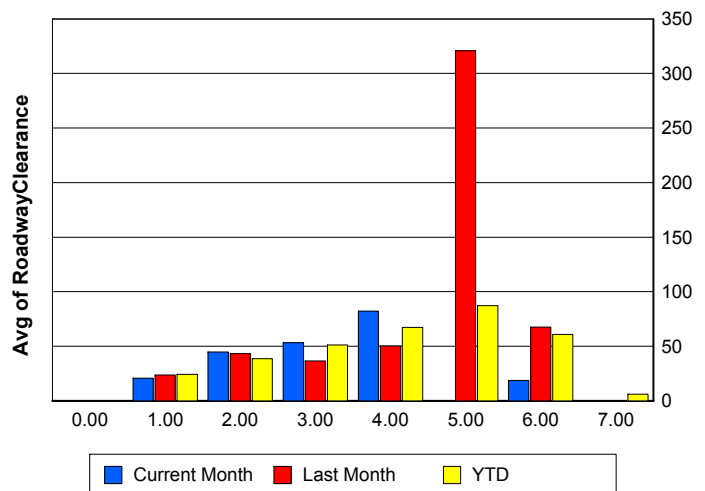
Incident Clearance Time (3B)



Roadway Clearance by Maximum Number of Lanes Blocked

	Current Month	Last Month	YTD
0			
1	20.73	23.71	24.32
2	44.88	43.16	38.73
3	53.30	36.51	51.06
4	82.18	50.34	67.28
5	0.00	321.05	87.07
6	18.67	67.62	60.80
7	0.00	0.00	5.97

Roadway Clearance Time (2A)



Performance Measures by Roadway

595

	<u>Current Month</u>	<u>Last Month</u>	<u>YTD</u>
Number of Events	569	568	3,580
Number of Incidents	28	44	221
TMC Detection (min.)	0.00	0.00	0.01
TMC Verification (min.)	0.74	0.94	0.68
TMC Response (min.)	5.30	5.91	6.31
RR Dispatch Time (min.)	0.85	1.26	1.10
RR Resp. Time (min.)	4.67	4.78	5.29
Event Clearance (min.)	19.98	23.18	21.48
Roadway Clear. (min.)	40.75	25.98	30.42
Incident Clearance (min.)	60.52	56.73	54.47
# of Events w/ RR/SIRV	418	408	2,446
RR/SIRV Responses	418	408	2,446
RR/SIRV Activities	375	377	2,240

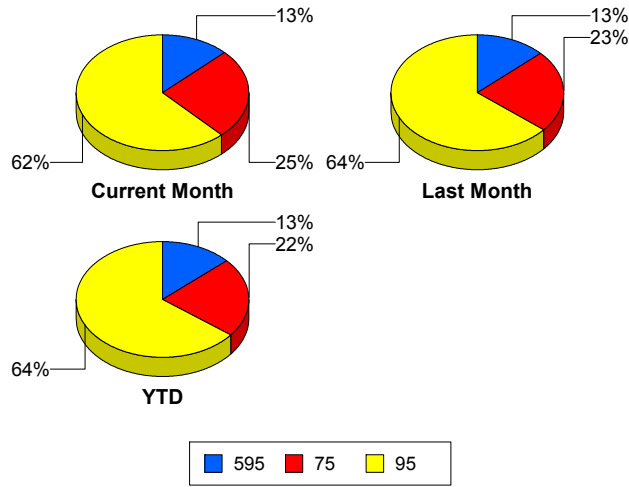
75

	<u>Current Month</u>	<u>Last Month</u>	<u>YTD</u>
Number of Events	1,124	995	5,879
Number of Incidents	27	14	109
TMC Detection (min.)	0.00	0.00	0.00
TMC Verification (min.)	0.67	0.81	0.68
TMC Response (min.)	7.99	8.74	8.20
RR Dispatch Time (min.)	1.02	1.64	1.26
RR Resp. Time (min.)	7.08	7.02	6.95
Event Clearance (min.)	26.88	30.30	26.48
Roadway Clear. (min.)	38.97	84.11	63.13
Incident Clearance (min.)	77.20	117.82	88.37
# of Events w/ RR/SIRV	714	548	3,652
RR/SIRV Responses	714	548	3,652
RR/SIRV Activities	570	480	3,052

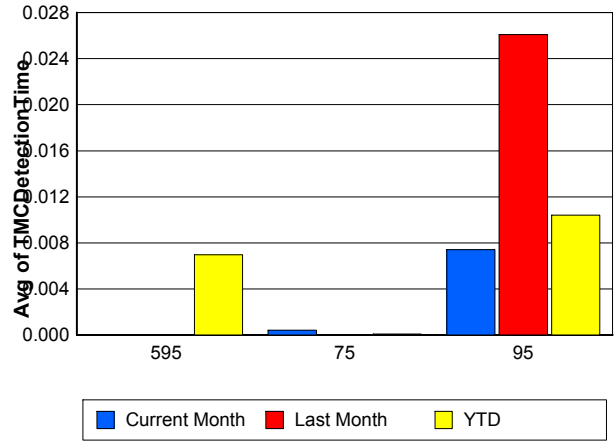
95

	<u>Current Month</u>	<u>Last Month</u>	<u>YTD</u>
Number of Events	2,772	2,773	17,118
Number of Incidents	158	150	906
TMC Detection (min.)	0.01	0.03	0.01
TMC Verification (min.)	0.51	0.36	0.46
TMC Response (min.)	6.73	5.82	6.50
RR Dispatch Time (min.)	1.68	1.07	1.50
RR Resp. Time (min.)	5.04	4.85	5.12
Event Clearance (min.)	22.32	24.40	23.67
Roadway Clear. (min.)	26.15	28.44	29.30
Incident Clearance (min.)	54.83	59.44	59.16
# of Events w/ RR/SIRV	1,910	1,761	10,754
RR/SIRV Responses	1,910	1,761	10,754
RR/SIRV Activities	1,782	1,684	9,902

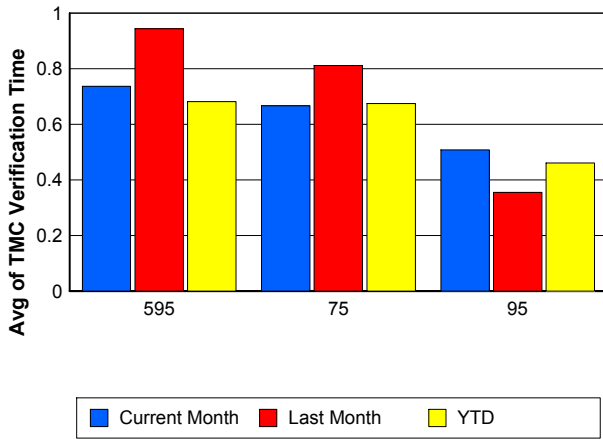
Number of Events / Roadway



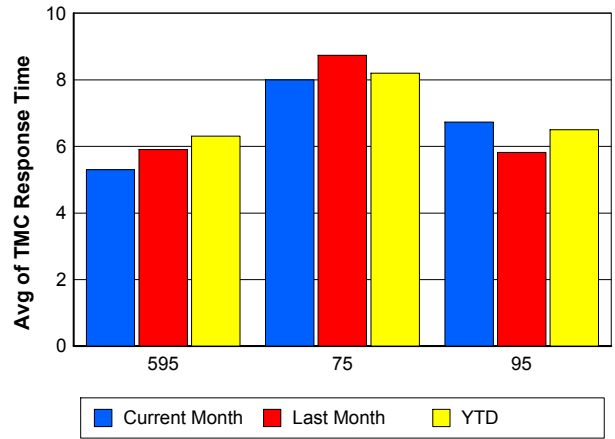
TMC Detection Time



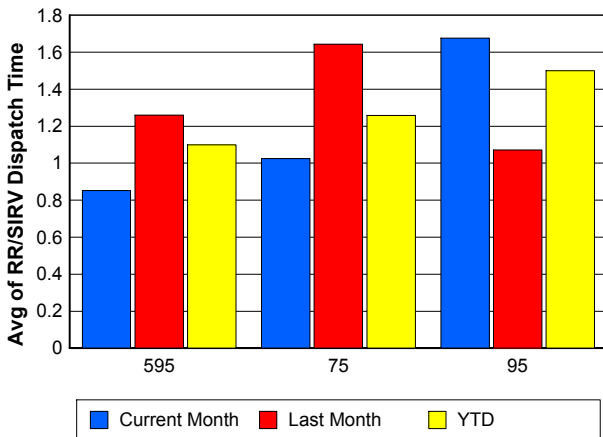
TMC Verification Time



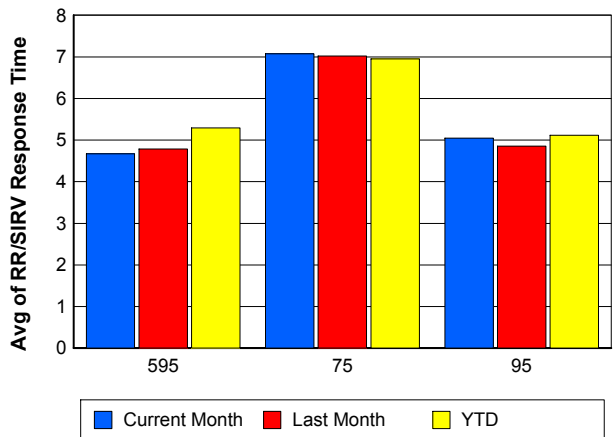
TMC Response Time



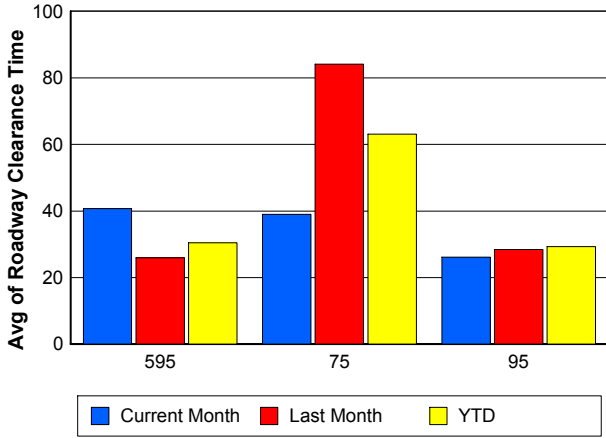
Road Ranger / SIRV Dispatch Time



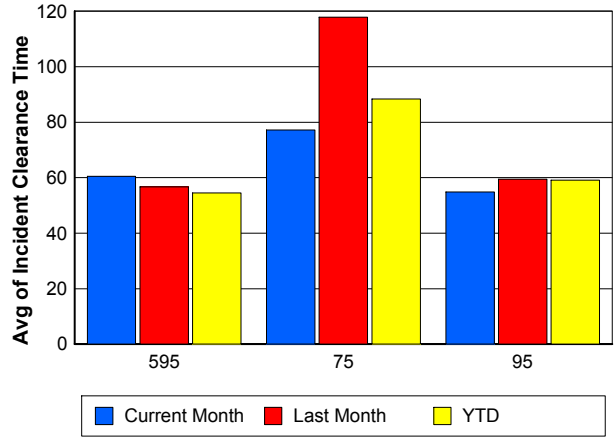
Road Ranger / SIRV Response Time



Roadway Clearance Time (2A)



Incident Clearance Time (3B)



Performance Measures by Event Type

Accident

	<u>Current Month</u>	<u>Last Month</u>	<u>YTD</u>
Number of Events	307	316	1,839
Number of Incidents	171	155	889
TMC Detection (min.)	0.00	0.00	0.01
TMC Verification (min.)	0.64	0.61	0.73
TMC Response (min.)	9.98	7.50	8.78
RR Dispatch Time (min.)	1.73	1.50	1.72
RR Response Time (min.)	8.48	6.19	7.17
Event Clearance (min.)	54.08	56.03	55.85
Roadway Clearance (min.)	32.08	31.91	34.07
Incident Clearance (min.)	65.78	68.48	67.56
# of Events w/ RR/SIRV	203	221	1,277
RR/SIRV Assists	203	221	1,277
RR/SIRV Activities	308	343	1,954

Debris on Roadway

	<u>Current Month</u>	<u>Last Month</u>	<u>YTD</u>
Number of Events	152	120	712
Number of Incidents	5	1	16
TMC Detection (min.)	0.14	0.60	0.16
TMC Verification (min.)	2.95	3.31	3.81
TMC Response (min.)	7.65	6.19	7.36
RR Dispatch Time (min.)	0.72	0.94	0.91
RR Response Time (min.)	7.01	5.25	6.46
Event Clearance (min.)	11.93	11.85	11.65
Roadway Clearance (min.)	6.78	40.08	24.71
Incident Clearance (min.)	9.33	46.48	29.17
# of Events w/ RR/SIRV	138	113	653
RR/SIRV Assists	138	113	653
RR/SIRV Activities	143	120	679

Disabled Vehicle

	<u>Current Month</u>	<u>Last Month</u>	<u>YTD</u>
Number of Events	2,612	2,550	15,264
Number of Incidents	24	39	193
TMC Detection (min.)	0.00	0.00	0.00
TMC Verification (min.)	0.73	0.66	0.63
TMC Response (min.)	6.45	6.21	6.32
RR Dispatch Time (min.)	1.45	1.18	1.19
RR Response Time (min.)	5.02	5.07	5.15
Event Clearance (min.)	26.81	29.54	27.36
Roadway Clearance (min.)	20.09	32.03	20.04
Incident Clearance (min.)	30.64	46.77	38.62
# of Events w/ RR/SIRV	2,107	1,913	11,513
RR/SIRV Assists	2,107	1,913	11,513
RR/SIRV Activities	2,164	1,965	11,755

Emergency Vehicles

	<u>Current Month</u>	<u>Last Month</u>	<u>YTD</u>
Number of Events	4	2	39
Number of Incidents	4	1	31
TMC Detection (min.)	0.00	0.00	0.00
TMC Verification (min.)	0.00	0.00	0.96
TMC Response (min.)	16.88	1.08	15.87
RR Dispatch Time (min.)	1.60	1.02	10.47
RR Response Time (min.)	15.28	0.07	4.68
Event Clearance (min.)	15.69	23.22	51.80
Roadway Clearance (min.)	10.31	14.18	52.76
Incident Clearance (min.)	15.69	23.48	58.56
# of Events w/ RR/SIRV	1	1	24
RR/SIRV Assists	1	1	24
RR/SIRV Activities	1	1	40

Other

	<u>Current Month</u>	<u>Last Month</u>	<u>YTD</u>
Number of Events	1,367	1,326	8,432
Number of Incidents	2	3	20
TMC Detection (min.)	0.00	0.00	0.00
TMC Verification (min.)	0.02	0.04	0.05
TMC Response (min.)	6.61	7.91	10.63
RR Dispatch Time (min.)	1.30	1.26	1.94
RR Response Time (min.)	5.82	7.04	7.47
Event Clearance (min.)	10.56	11.84	11.53
Roadway Clearance (min.)	23.43	8.12	21.56
Incident Clearance (min.)	26.76	10.51	25.99
# of Events w/ RR/SIRV	578	459	3,234
RR/SIRV Assists	578	459	3,234
RR/SIRV Activities	96	101	574

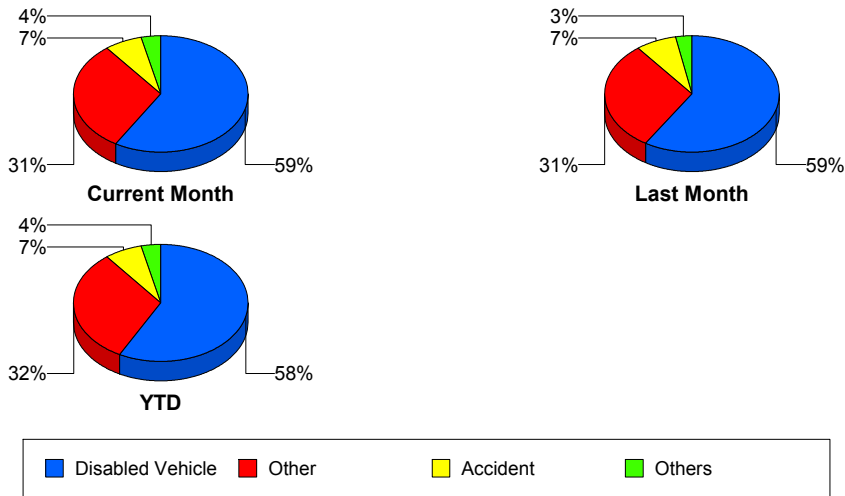
Police Activity

	<u>Current Month</u>	<u>Last Month</u>	<u>YTD</u>
Number of Events	6	7	129
Number of Incidents	3	3	40
TMC Detection (min.)	0.00	0.00	0.00
TMC Verification (min.)	0.61	0.00	0.21
TMC Response (min.)	12.21	13.97	14.14
RR Dispatch Time (min.)	2.48	9.31	5.33
RR Response Time (min.)	9.73	12.63	9.03
Event Clearance (min.)	35.87	43.01	35.59
Roadway Clearance (min.)	53.87	52.32	39.71
Incident Clearance (min.)	59.29	55.80	49.98
# of Events w/ RR/SIRV	3	3	39
RR/SIRV Assists	3	3	39
RR/SIRV Activities	4	3	48

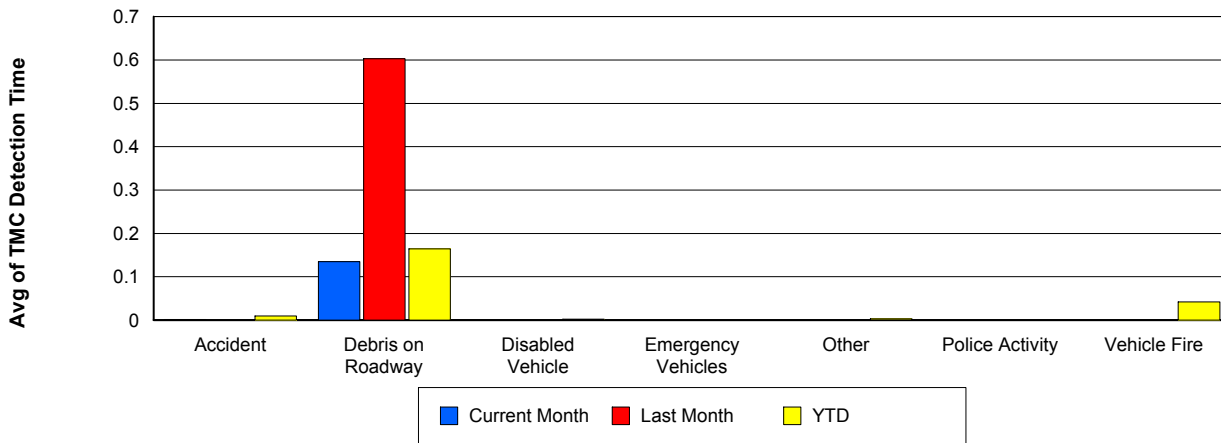
Vehicle Fire

	<u>Current Month</u>	<u>Last Month</u>	<u>YTD</u>
Number of Events	5	7	59
Number of Incidents	4	6	47
TMC Detection (min.)	0.00	0.00	0.04
TMC Verification (min.)	1.87	0.12	1.74
TMC Response (min.)	5.31	5.19	12.19
RR Dispatch Time (min.)	1.05	0.87	2.75
RR Response Time (min.)	4.01	4.34	10.09
Event Clearance (min.)	24.53	61.12	60.79
Roadway Clearance (min.)	18.37	26.00	41.25
Incident Clearance (min.)	29.59	60.52	62.98
# of Events w/ RR/SIRV	3	4	38
RR/SIRV Assists	3	4	38
RR/SIRV Activities	3	5	76

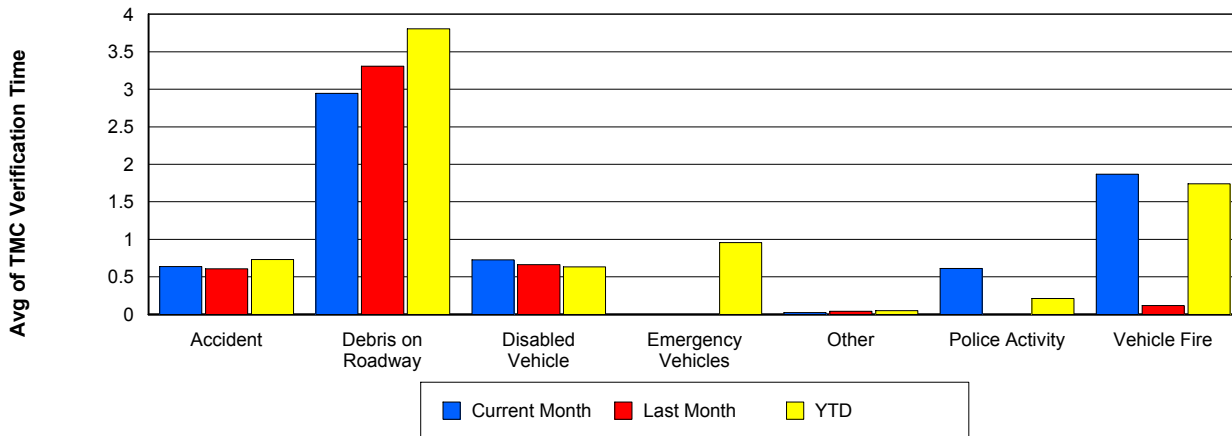
Number of Events / Event Type



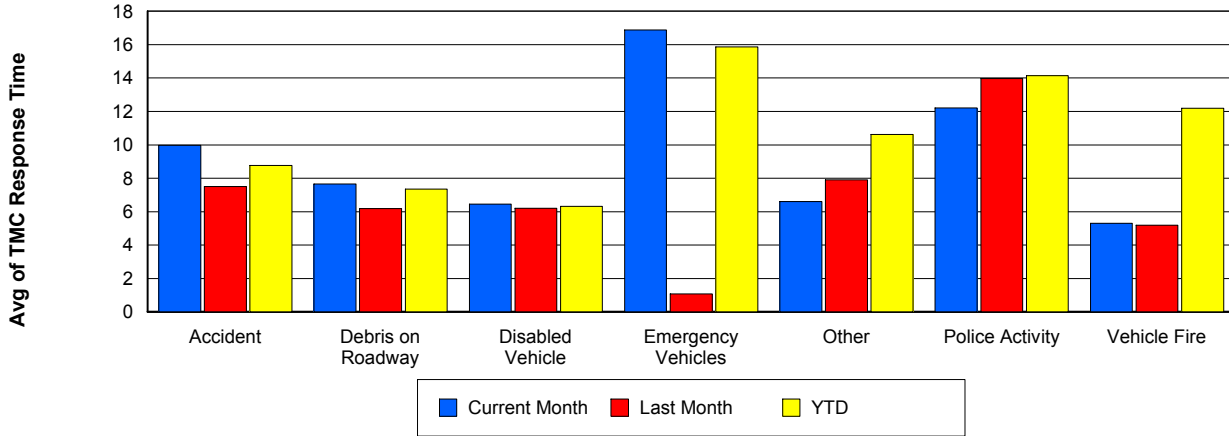
TMC Detection Time



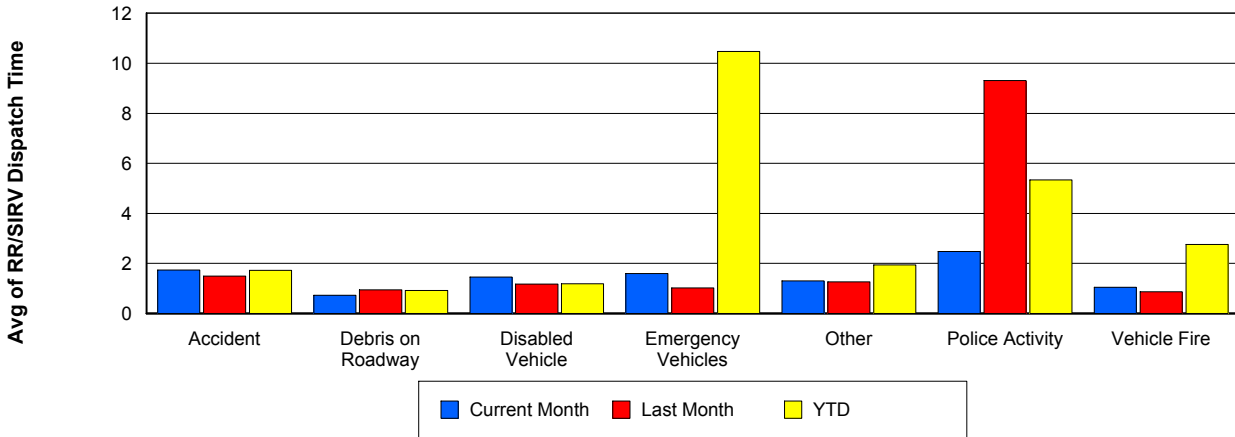
TMC Verification Time



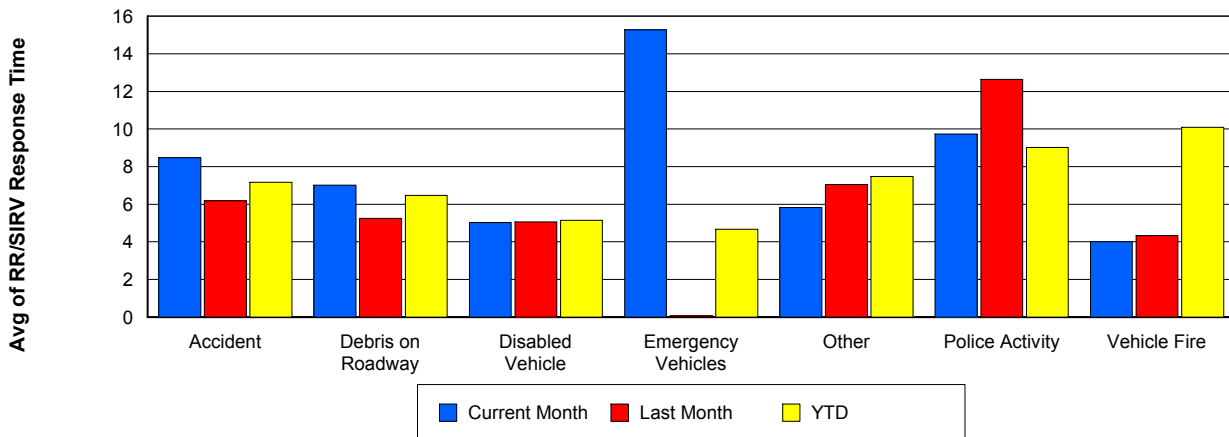
TMC Response Time



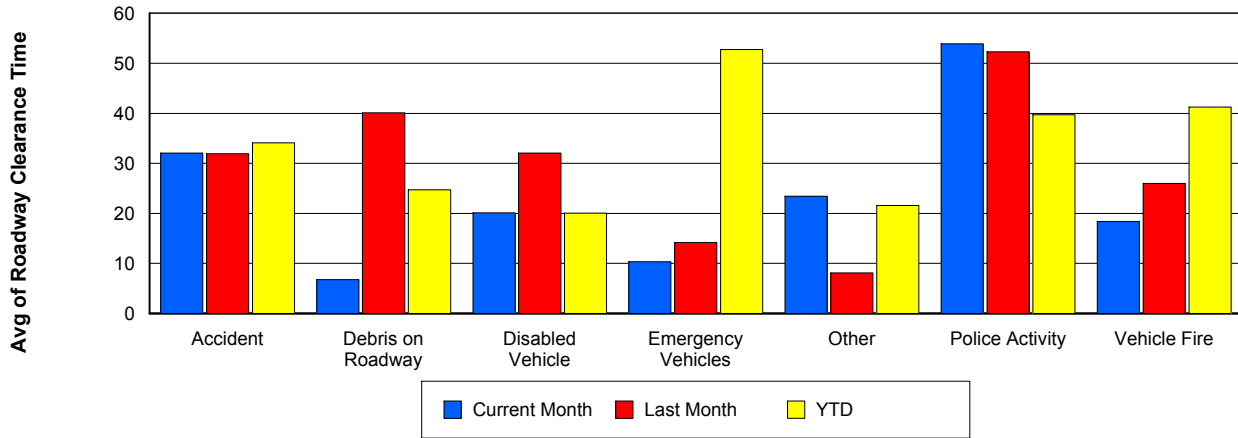
Road Ranger / SIRV Dispatch Time



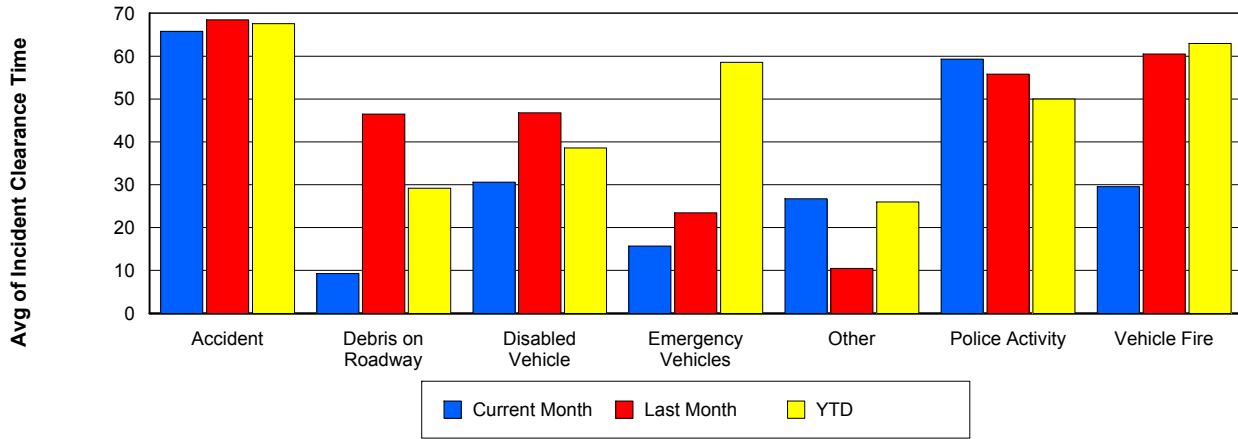
Road Ranger / SIRV Response Time



Roadway Clearance Time (2A)



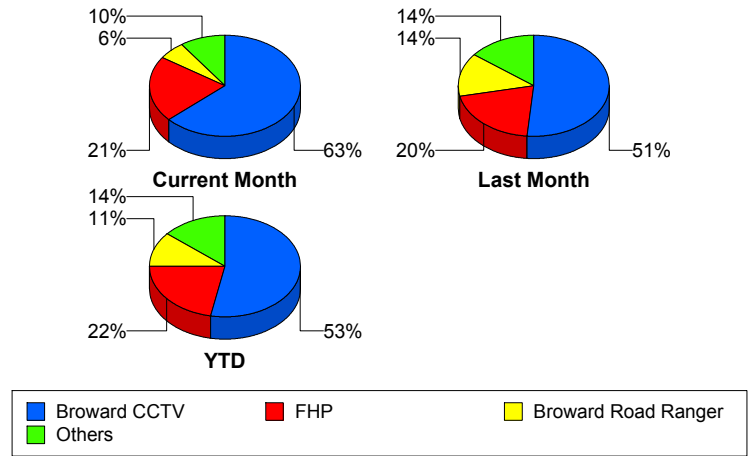
Incident Clearance Time (3B)



Incident Detection Methods

	Current Month	Last Month	YTD
Broward CCTV	135	107	655
Broward Road Ranger	12	29	137
Broward VideoWall	3	4	46
BSO	7	2	29
District 4	4	10	36
District 6	0	0	1
FDOT Maintenance	1	1	4
FHP	45	42	272
Fire	0	0	1
Florida's Turnpike	0	3	6
ITMS	0	0	1
Motorist	0	3	4
Other	0	0	1
Palm Beach Road Ran	0	0	2
Road Watcher	1	2	12
SIRV	1	1	5
SmarTraveler (511)	0	0	6
VisioPaD Detection	4	4	18
Total	213	208	1,236

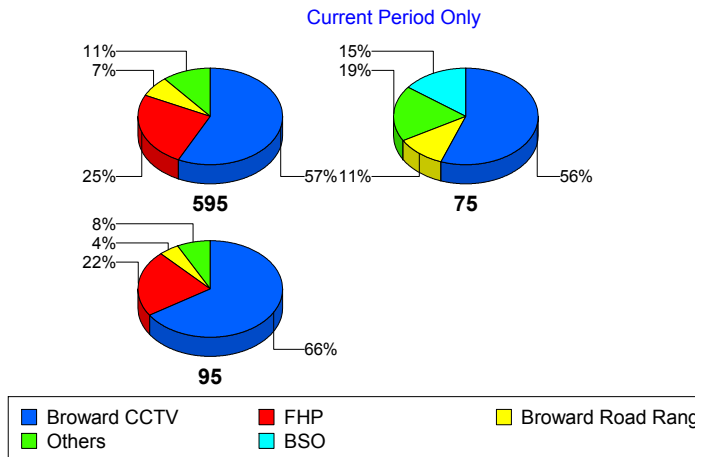
Total Incidents by Detection Method



Incident Detection Methods by Roadway

		Current Month	Last Month	YTD
595	Broward CCTV	16	22	103
	Broward Road Ranger	2	6	34
	Broward VideoWall	1	1	8
	BSO	1	0	3
	District 4	1	2	11
	FDOT Maintenance	0	1	2
	FHP	7	6	45
	Florida's Turnpike	0	3	6
	Motorist	0	1	2
	Road Watcher	0	1	3
	VisioPaD Detection	0	1	4
	Total	28	44	221
75	Broward CCTV	15	5	46
	Broward Road Ranger	3	2	11
	Broward VideoWall	1	0	1
	BSO	4	1	23
	District 4	0	2	3
	FHP	3	4	21
	Other	0	0	1
	Road Watcher	0	0	2
	VisioPaD Detection	1	0	1
	Total	27	14	109
95	Broward CCTV	104	80	506
	Broward Road Ranger	7	21	92
	Broward VideoWall	1	3	37
	BSO	2	1	3
	District 4	3	6	22
	District 6	0	0	1
	FDOT Maintenance	1	0	2
	FHP	35	32	206
	Fire	0	0	1

Total Events by Roadway and Detection Method

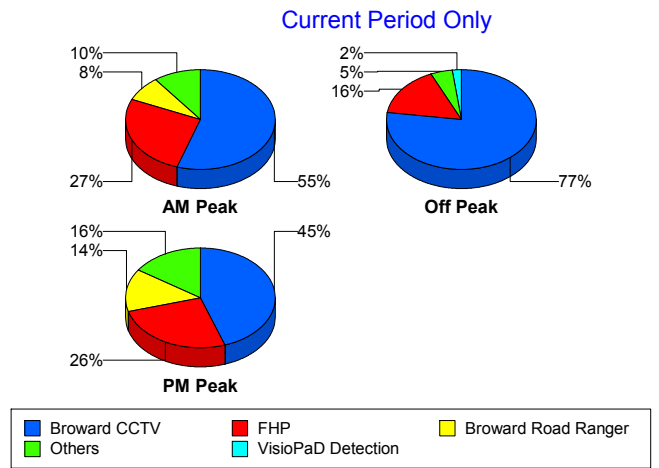


		Current Month	Last Month	YTD
95	ITMS	0	0	1
	Motorist	0	2	2
	Palm Beach Road Ran	0	0	2
	Road Watcher	1	1	7
	SIRV	1	1	5
	SmarTraveler (511)	0	0	6
	VisioPaD Detection	3	3	13
	Total	158	150	906
Total	213	208	1,236	

Incident Detection Methods by Peak Period

		Current Month	Last Month	YTD
AM Peak	Broward CCTV	27	23	124
	Broward Road Ranger	4	8	42
	Broward VideoWall	0	2	14
	BSO	2	0	5
	District 4	2	4	13
	FHP	13	7	71
	Florida's Turnpike	0	2	2
	Motorist	0	2	3
	Palm Beach Road Ran	0	0	1
	Road Watcher	0	0	4
	SIRV	0	0	1
	SmarTraveler (511)	0	0	1
	VisioPaD Detection	1	0	1
	Total	49	48	282
	Off Peak	Broward CCTV	82	56
Broward Road Ranger		0	11	39
Broward VideoWall		1	2	26
BSO		1	1	19
District 4		1	3	11
FDOT Maintenance		0	1	2

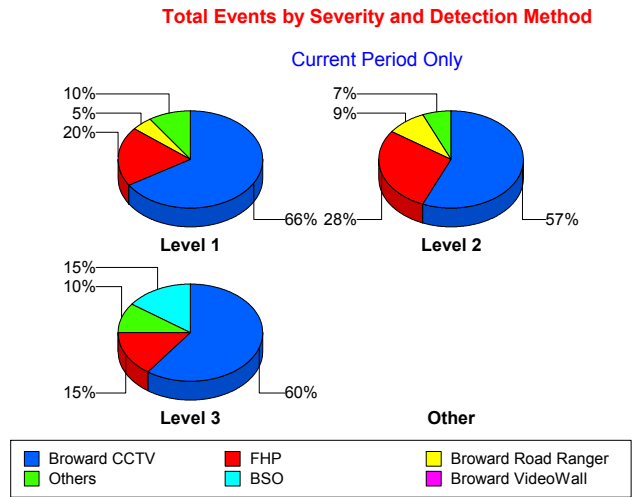
Total Events by Peak Period and Detection Method



		Current Month	Last Month	YTD
Off Peak	FHP	17	18	126
	Florida's Turnpike	0	0	3
	ITMS	0	0	1
	Motorist	0	1	1
	Road Watcher	1	0	5
	SIRV	1	0	1
	SmarTraveler (511)	0	0	3
	VisioPaD Detection	2	3	14
	Total	106	96	606
PM Peak	Broward CCTV	26	28	176
	Broward Road Ranger	8	10	56
	Broward VideoWall	2	0	6
	BSO	4	1	5
	District 4	1	3	12
	District 6	0	0	1
	FDOT Maintenance	1	0	2
	FHP	15	17	75
	Fire	0	0	1
	Florida's Turnpike	0	1	1
	Other	0	0	1
	Palm Beach Road Ran	0	0	1
	Road Watcher	0	2	3
	SIRV	0	1	3
	SmarTraveler (511)	0	0	2
	VisioPaD Detection	1	1	3
	Total	58	64	348
Total		213	208	1,236

Incident Detection Methods by Severity

		Current Month	Last Month	YTD
Level 1	Broward CCTV	97	64	414
	Broward Road Ranger	7	22	100
	Broward VideoWall	3	2	27
	BSO	3	0	5
	District 4	3	10	28
	FDOT Maintenance	1	1	3
	FHP	29	23	161
	Motorist	0	3	4
	Palm Beach Road Ran	0	0	2
	Road Watcher	1	1	9
	SIRV	1	1	5
	SmarTraveler (511)	0	0	4
	VisioPaD Detection	2	3	9
	Total	147	130	771
	Level 2	Broward CCTV	26	28
Broward Road Ranger		4	6	26
Broward VideoWall		0	2	16
BSO		1	2	7
District 4		1	0	5
FDOT Maintenance		0	0	1
FHP		13	11	76
Florida's Turnpike		0	3	4
ITMS		0	0	1
Other		0	0	1
Road Watcher		0	1	1
SmarTraveler (511)		0	0	2
VisioPaD Detection		1	1	7
Total		46	54	313
Level 3	Broward CCTV	12	15	75
	Broward Road Ranger	1	1	11
	Broward VideoWall	0	0	3



		Current Month	Last Month	YTD
Level 3	BSO	3	0	17
	District 4	0	0	3
	District 6	0	0	1
	FHP	3	8	35
	Fire	0	0	1
	Florida's Turnpike	0	0	2
	Road Watcher	0	0	2
	VisioPaD Detection	1	0	2
	Total	20	24	152
Total		213	208	1,236

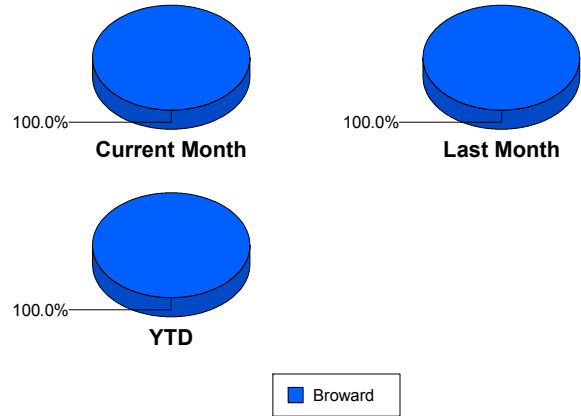
Road Ranger / SIRV Performance Measures

Road Ranger / SIRV Performance By County

Values presented are:
 - Total Events with a RR/SIRV Response
 - Total RR/SIRV Responses,
 - Total Activities Performed

	Current Mo	Last Month	YTD
Broward	2,963	2,675	16,342
	3,166	2,916	17,592
	3,280	3,040	18,337

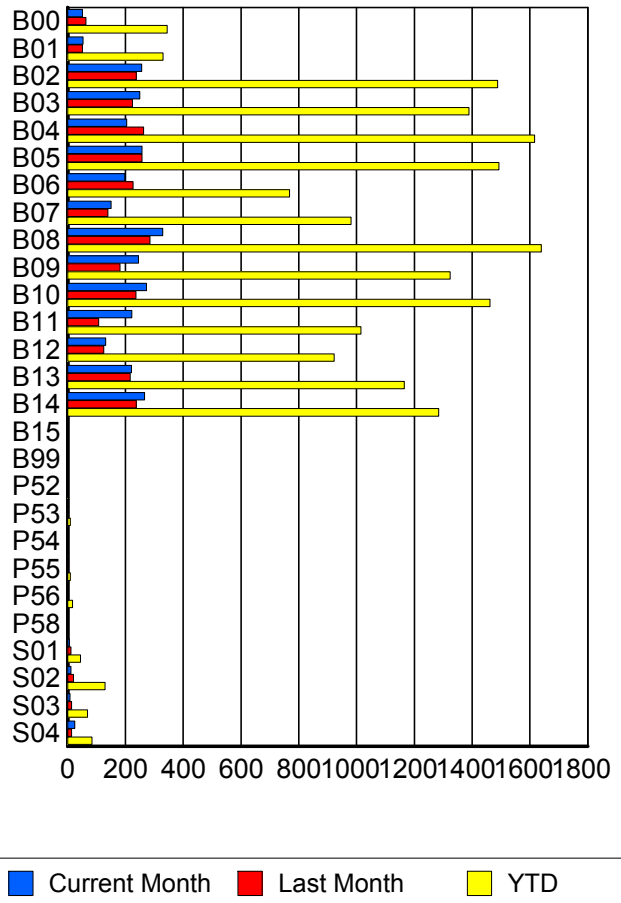
RR/SIRV Responses per County



Road Ranger / SIRV Performance By Truck

	Current Mo	Last Month	YTD
B00	50	62	339
	51	63	345
	53	67	358
B01	53	50	326
	53	51	330
	53	53	350
B02	254	234	1,474
	256	238	1,488
	264	258	1,560
B03	246	218	1,368
	250	224	1,389
	257	230	1,436
B04	205	261	1,601
	205	263	1,616
	216	274	1,699
B05	255	252	1,466
	257	258	1,493
	265	262	1,542
B06	193	226	754
	198	227	768
	204	238	795
B07	147	134	963
	151	139	981
	159	148	1,026
B08	321	282	1,617
	329	285	1,639
	342	294	1,708

RR/SIRV Responses per Truck



	Current Mo	Last Month	YTD
B09	241	177	1,300
	245	181	1,324
	255	190	1,382
B10	268	232	1,439
	273	237	1,462
	282	250	1,518
B11	220	104	996
	222	108	1,015
	226	112	1,054
B12	130	124	911
	132	125	922
	140	128	957
B13	220	212	1,152
	221	217	1,165
	229	225	1,208
B14	263	236	1,266
	266	238	1,284
	273	244	1,333
B15	0	0	1
	0	0	1
	0	0	1
B99	1	1	3
	1	1	3
	1	1	3
P52	1	0	2
	1	0	2
	1	0	2
P53	2	0	9
	2	0	9
	2	0	9
P54	0	0	1
	0	0	1
	0	0	1
P55	2	2	9
	2	2	9
	3	3	11
P56	1	0	17
	1	0	17
	1	0	18
P58	0	0	1
	0	0	1
	0	0	1
S01	6	11	43
	6	11	45
	7	13	52

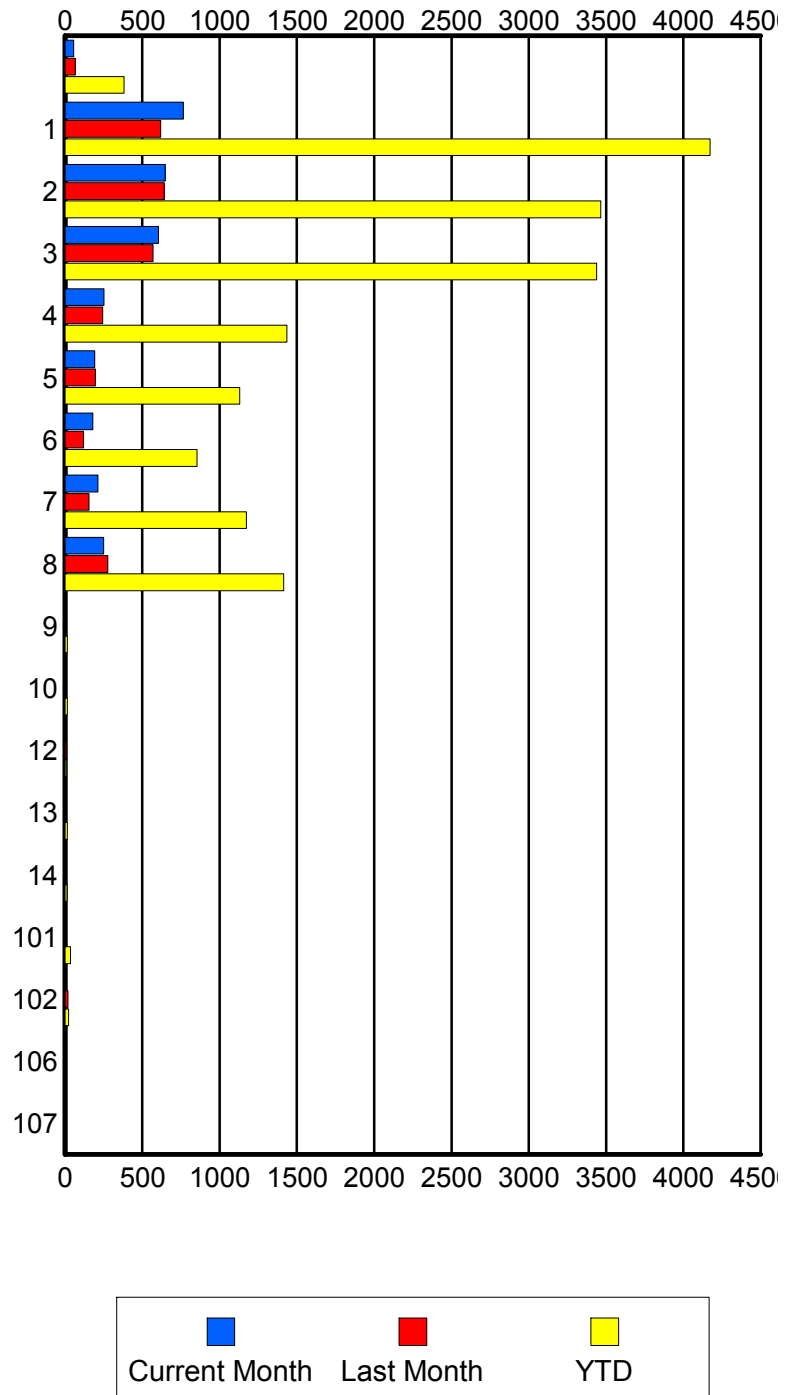
	Current Mo	Last Month	YTD
S02	11	20	125
	11	20	130
	12	20	142
S03	8	13	67
	8	14	69
	8	16	78
S04	24	13	80
	25	14	84
	27	14	93

Road Ranger / SIRV Performance By Beat

	Current Mo	Last Month	YTD
	51	59	352
	55	66	382
	59	70	421
1	728	582	3,940
	766	618	4,172
	791	638	4,318
2	621	616	3,344
	648	642	3,466
	669	679	3,623
3	583	552	3,344
	604	570	3,439
	628	598	3,581
4	246	240	1,404
	252	243	1,435
	261	248	1,479
5	191	191	1,112
	192	196	1,131
	205	203	1,170
6	177	119	841
	179	120	853
	183	122	904
7	210	151	1,157
	213	154	1,174
	221	160	1,234
8	249	270	1,395
	250	276	1,415
	255	288	1,476
9	0	0	12
	0	0	14
	0	0	14
10	0	0	13
	0	0	14
	0	0	14
12	0	9	9
	0	9	9
	0	9	9
13	0	0	14
	0	0	14
	0	0	15
14	1	1	13
	1	1	13
	1	1	13
101	5	2	36
	5	2	36
	6	3	39

Values presented are:
 - Total Events with a RR/SIRV Response
 - Total RR/SIRV Responses,
 - Total Activities Performed

RR/SIRV Responses per Beat



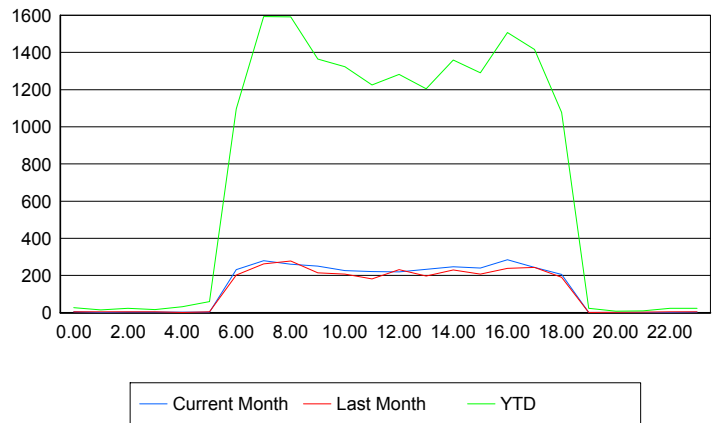
	Current Mo	Last Month	YTD
102	0	19	23
	0	19	23
	0	21	25
106	1	0	1
	1	0	1
	1	0	1
107	0	0	1
	0	0	1
	0	0	1

Road Ranger / SIRV Performance By Time of Day

Values presented are:
- Total Events with a RR/SIRV Response
- Total RR/SIRV Responses,
- Total Activities Performed

	Current Mo	Last Month	YTD
12AM-1AM	4	4	25
	4	5	26
	5	5	28
1AM-2AM	1	0	15
	1	0	15
	1	0	15
2AM-3AM	2	4	19
	2	4	24
	2	4	24
3AM-4AM	2	4	15
	2	5	17
	2	5	17
4AM-5AM	3	1	25
	3	1	32
	3	1	33
5AM-6AM	3	5	57
	3	5	60
	3	5	63
6AM-7AM	214	183	998
	232	202	1,096
	239	211	1,134
7AM-8AM	257	236	1,473
	280	263	1,593
	288	275	1,659
8AM-9AM	237	249	1,449
	261	278	1,592
	269	296	1,666
9AM-10AM	241	196	1,279
	250	215	1,364
	263	220	1,414

Number of Responses / Hour of the Day



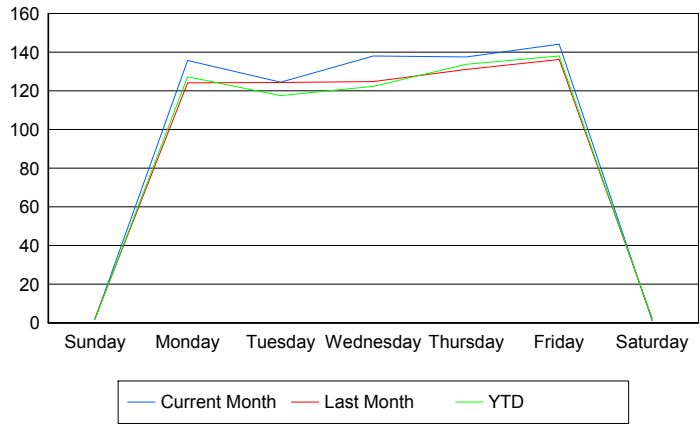
	Current Mo	Last Month	YTD
10AM-11AM	213	195	1,221
	227	207	1,323
	235	223	1,394
11AM-12PM	210	170	1,144
	221	182	1,225
	234	186	1,277
12PM-1PM	209	213	1,208
	220	231	1,282
	231	240	1,333
1PM-2PM	221	182	1,114
	233	197	1,205
	240	205	1,268
2PM-3PM	225	219	1,275
	247	230	1,359
	259	241	1,424
3PM-4PM	226	183	1,208
	240	207	1,290
	250	218	1,338
4PM-5PM	265	222	1,415
	284	239	1,507
	286	245	1,568
5PM-6PM	230	218	1,308
	244	243	1,416
	252	250	1,478
6PM-7PM	193	184	1,020
	205	190	1,078
	211	198	1,113
7PM-8PM	1	1	19
	1	1	23
	1	1	25
8PM-9PM	1	0	8
	1	0	8
	1	0	8
9PM-10PM	1	2	9
	1	2	9
	1	2	9
10PM-11PM	1	2	18
	1	5	24
	1	5	24
11PM-12AM	3	2	20
	3	4	24
	3	4	25

Road Ranger / SIRV Performance By Day of Week

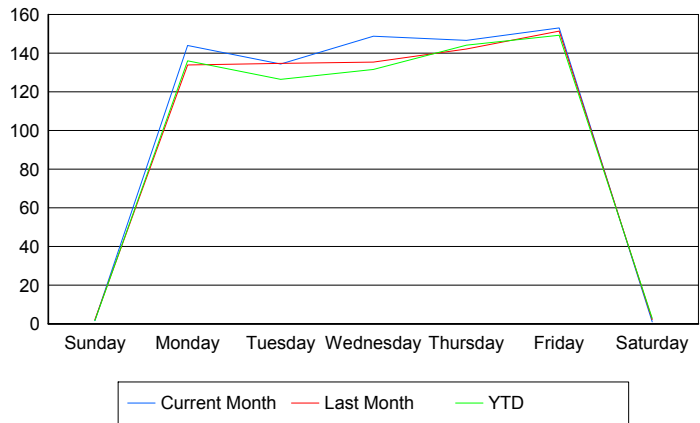
Values presented are:
 - Total Events with a RR/SIRV Response
 - Total RR/SIRV Responses,
 - Total Activities Performed

	Current Mo	Last Month	YTD
Sunday	4 4 4	2 2 2	14 14 16
Monday	665 705 725	484 522 536	3,266 3,487 3,598
Tuesday	619 668 692	493 533 554	3,022 3,252 3,368
Wednesday	549 591 611	497 539 573	3,025 3,253 3,419
Thursday	548 584 609	523 566 596	3,435 3,702 3,862
Friday	575 611 636	677 752 777	3,574 3,865 4,052
Saturday	3 3 3	2 2 2	16 19 22

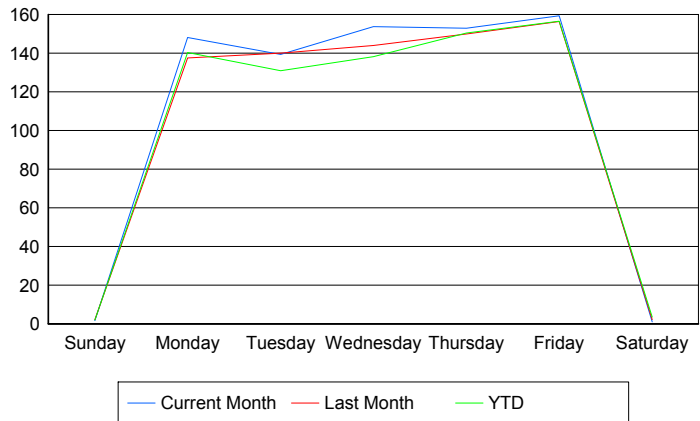
Avg # of events with a RR/SIRV Response per Day of the Week



Avg # of RR/SIRV Responses per Day of the Week



Avg # of RR/SIRV Activities Performed per Day of the Week



Road Ranger / SIRV Responses per Time of Day and Day of Week

