



# Monthly Performance Measures Report Broward County



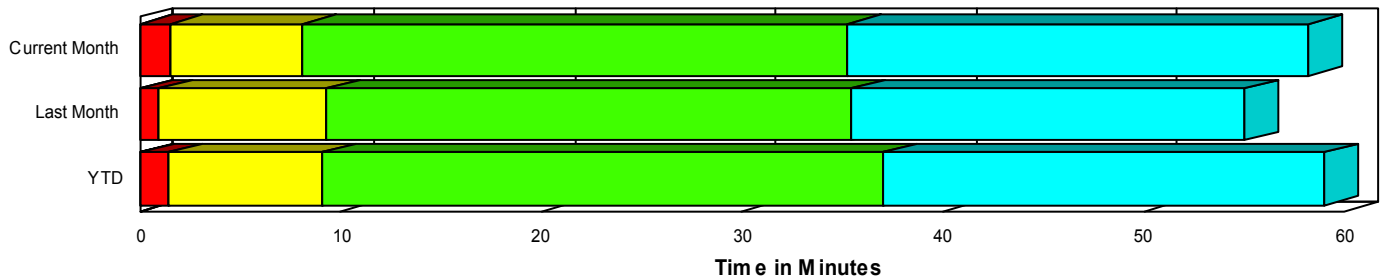
Created on:  
July 01, 2008  
8:45 am

Period From Jun 1, 2008 to Jun 30, 2008

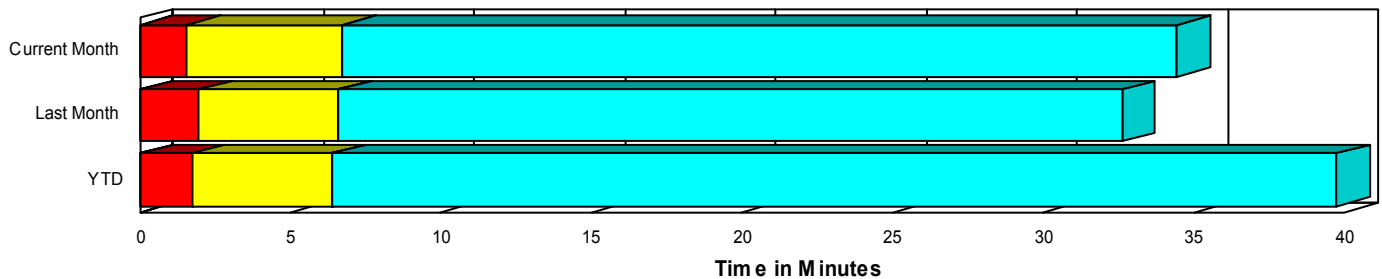
## Performance Measures Summary

	Traffic Events (No Lanes Blocked)			Incidents (Lanes Blocked)		
	<u>This Month</u>	<u>Last Month</u>	<u>YTD</u>	<u>This Month</u>	<u>Last Month</u>	<u>YTD</u>
Number of Events	4,552	4,389	25,912	239	202	1,292
TMC Detection (min.)	0.01	0.00	0.02	0.01	0.01	0.04
TMC Verification (min.)	1.58	1.96	1.70	1.48	0.91	1.43
TMC Response (min.)	7.14	6.99	6.76	8.14	9.36	9.10
RR Dispatch Time (min.)	1.25	1.66	1.44	1.82	3.00	2.66
RR Response Time (min.)	6.04	5.35	5.54	6.32	6.33	6.47
Roadway Clearance (min.)				35.09	34.24	36.31
Event Clearance (min.)	34.88	32.99	40.11	54.81	53.81	56.83
# of Events w/ RR/SIRV	4,108	4,025	21,820	230	195	1,239
RR/SIRV Responses	4,108	4,025	21,954	230	195	1,489
RR/SIRV Activities	3,893	4,052	21,894	449	411	2,439

### Incident Clearance TimeLine



### Traffic Event(Non-Lane Blockage) Time-Line



<span style="color: blue;">■</span> Avg. TMC Detection Time	<span style="color: green;">■</span> Avg. Time from TMC Response to Roadway Clearance*
<span style="color: red;">■</span> Avg. Time from TMC Detection to TMC Verification	<span style="color: cyan;">■</span> Avg. Time from Roadway Clearance to Incident/Event Clearance**
<span style="color: yellow;">■</span> Avg. Time from TMC Verification to TMC Response	

\* Roadway clearance equals all travel lanes open

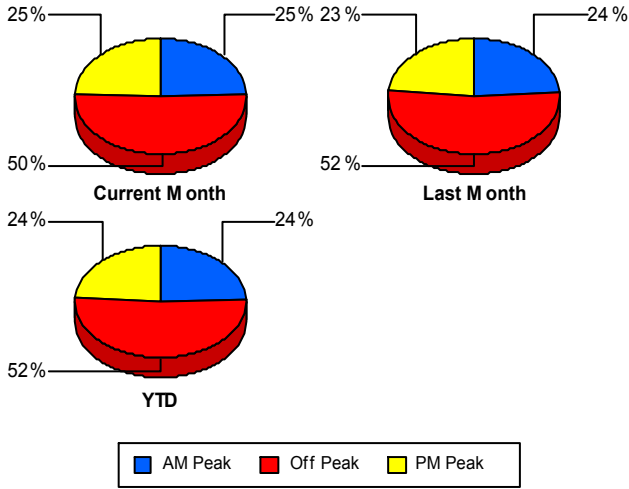
\*\* Incident clearance equals time when last responder has left the scene

## Performance Measures by Peak Period

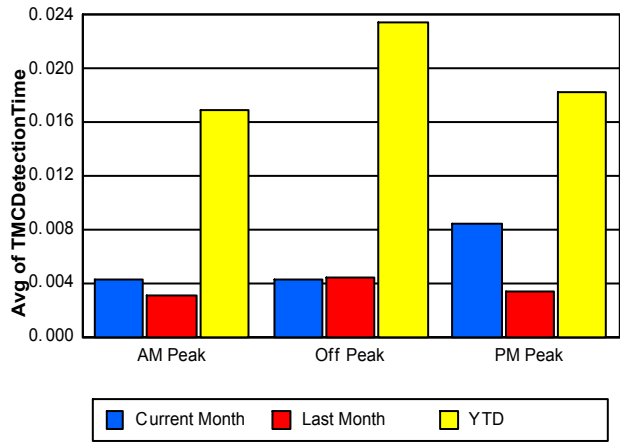
Note: AM peak period is defined as 6am to 10am and PM peak period is defined as 3pm to 7pm.

	AM Peak			Off Peak			PM Peak		
	Current Month	Last Month	YTD	Current Month	Last Month	YTD	Current Month	Last Month	YTD
Number of Events	1,190	1,107	6,650	2,415	2,407	14,043	1,186	1,077	6,511
Number of Incidents	71	43	315	120	104	678	48	55	299
TMC Detection (min.)	0.00	0.00	0.02	0.00	0.00	0.02	0.01	0.00	0.02
TMC Verification (min.)	0.84	0.72	0.85	2.04	2.57	2.11	1.36	1.69	1.64
TMC Response (min.)	6.61	5.54	5.77	8.29	8.01	7.71	5.65	6.83	6.40
RR Dispatch Time (min.)	1.18	0.79	1.03	1.43	1.85	1.76	1.08	2.39	1.43
RR Response Time (min.)	5.56	4.84	4.85	7.02	6.12	6.24	4.65	4.47	5.04
Event Clearance (min.)	32.95	22.83	31.44	40.21	40.52	46.46	29.95	30.53	38.57
Roadway Clearance (min.)	28.87	23.28	31.28	44.18	40.49	43.05	21.59	31.01	26.32
Incident Clearance (min.)	50.97	41.80	52.06	64.41	59.75	65.49	36.51	51.97	42.19
# of Events w/ RR/SIRV	1,105	1,033	5,822	2,166	2,177	11,687	1,067	1,010	5,550
RR/SIRV Responses	1,105	1,033	5,926	2,166	2,177	11,895	1,067	1,010	5,622
RR/SIRV Activities	1,101	1,068	6,103	2,165	2,274	12,319	1,076	1,121	5,911

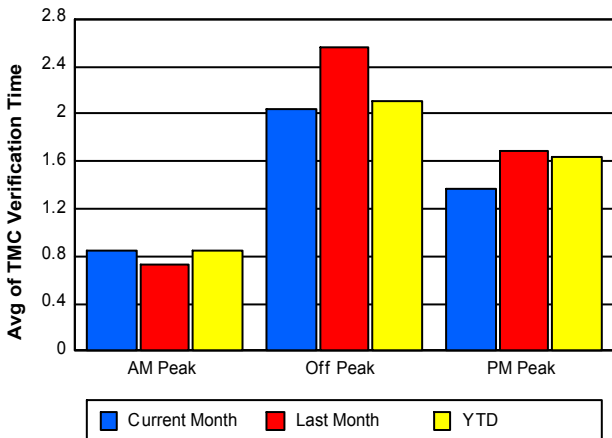
### Number of Events / Peak Period



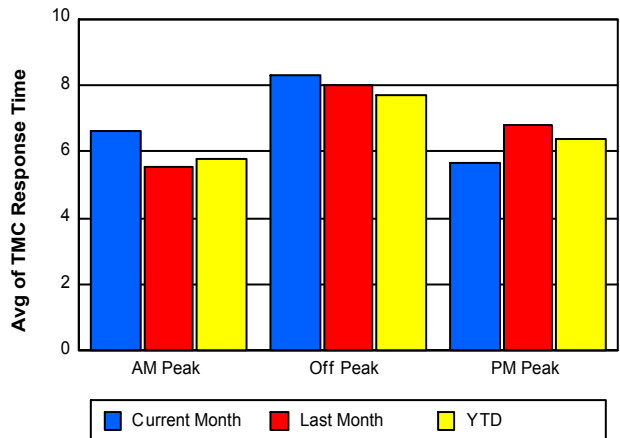
### TMC Detection Time



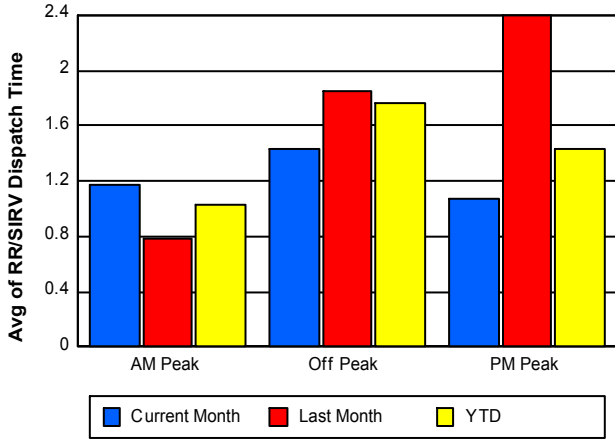
### TMC Verification Time



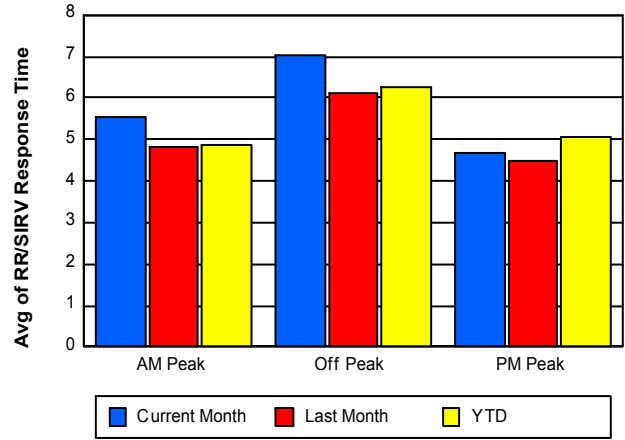
### TMC Response Time



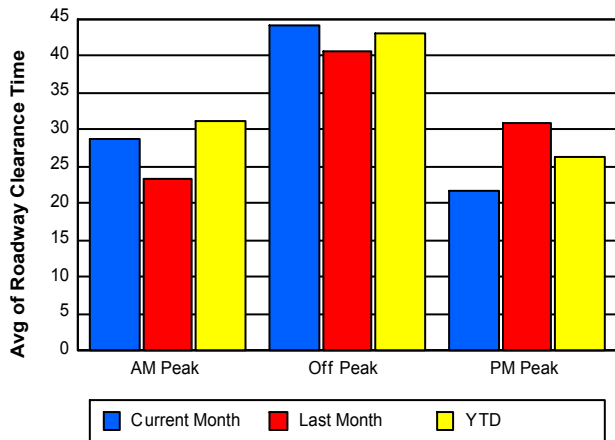
### Road Ranger / SIRV Dispatch Time



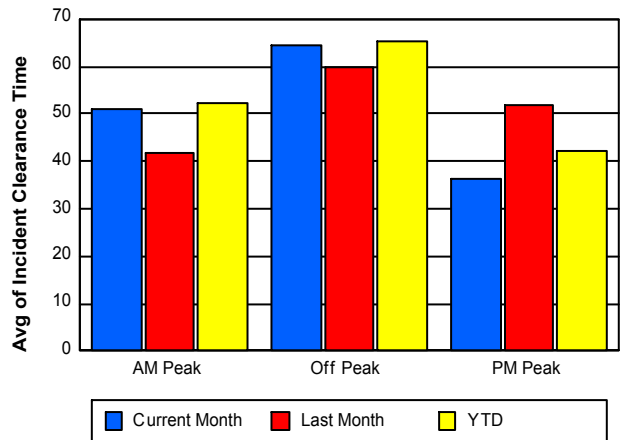
### Road Ranger / SIRV Response Time



### Roadway Clearance Time (2A)



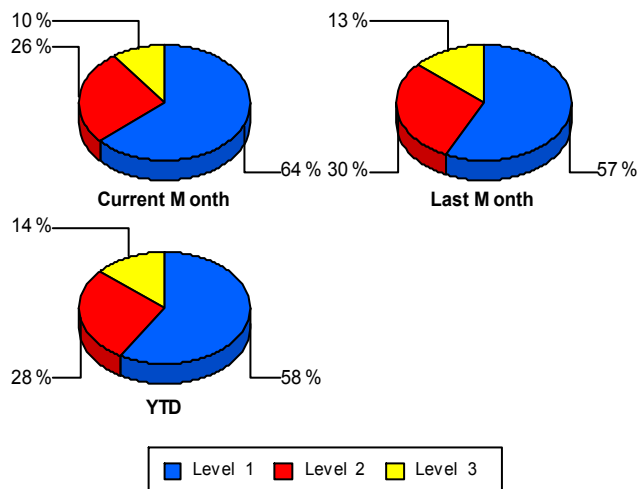
### Incident Clearance Time (3B)



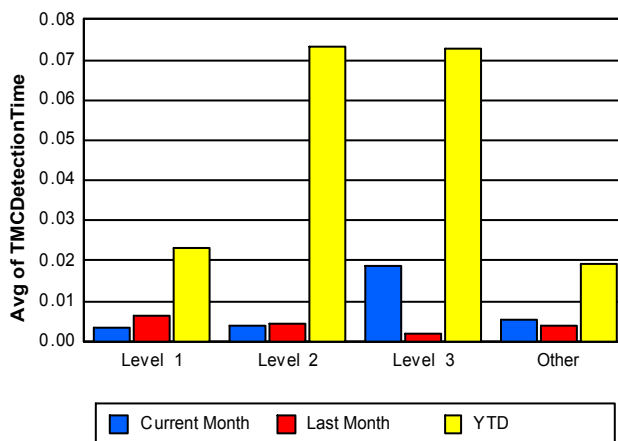
## Performance Measures by Severity

	Level 1			Level 2			Level 3			Other		
	<u>This Month</u>	<u>Last Month</u>	<u>YTD</u>	<u>This Month</u>	<u>Last Month</u>	<u>YTD</u>	<u>This Month</u>	<u>Last Month</u>	<u>YTD</u>	<u>This Month</u>	<u>Last Month</u>	<u>YTD</u>
Number of Events	152	115	754	63	60	361	24	27	177	4,552	4,389	25,912
Number of Incidents	152	115	754	63	60	361	24	27	177	0	0	0
TMC Detection (min.)	0.00	0.01	0.02	0.00	0.00	0.07	0.02	0.00	0.07	0.01	0.00	0.02
TMC Verification (min.)	0.79	0.72	0.86	2.32	0.95	2.18	3.67	1.64	2.35	1.58	1.96	1.70
TMC Response (min.)	6.59	8.90	7.81	10.90	8.92	10.92	10.58	12.47	10.74	7.14	6.99	6.76
RR Dispatch Time (min.)	1.58	2.95	2.52	2.41	2.74	2.74	1.74	3.93	3.07	1.25	1.66	1.44
RR Resp. Time (min.)	5.02	5.92	5.33	8.47	6.18	8.17	8.84	8.54	7.67	6.04	5.35	5.54
Event Clearance (min.)	41.17	39.05	42.64	68.01	69.09	66.09	106.55	82.75	98.26	34.88	32.99	40.11
Roadway Clear. (min.)	15.16	14.66	15.02	50.81	54.73	51.29	120.05	72.09	96.42			
Incident Clearance (min.)	41.17	39.05	42.64	68.01	69.09	66.09	106.55	82.75	98.26			
# of Events w/ RR/SIRV	146	112	719	63	59	357	21	24	163	4,108	4,025	21,820
RR/SIRV Responses	146	112	792	63	59	431	21	24	266	4,108	4,025	21,954
RR/SIRV Activities	254	182	1,174	142	149	765	53	80	500	3,893	4,052	21,894

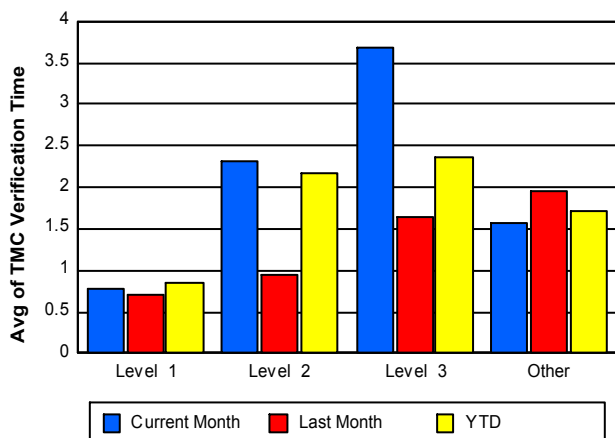
### Number of Events / Severity



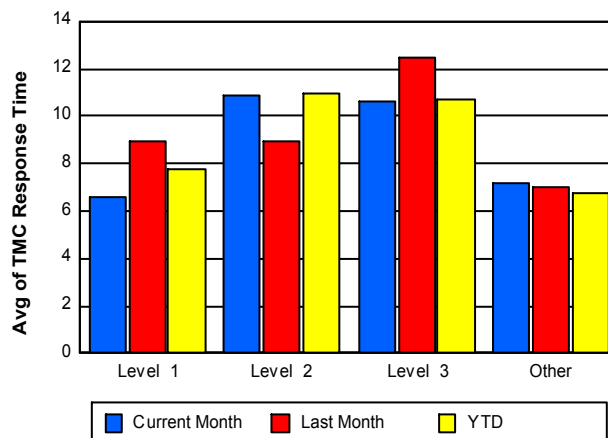
### TMC Detection Time



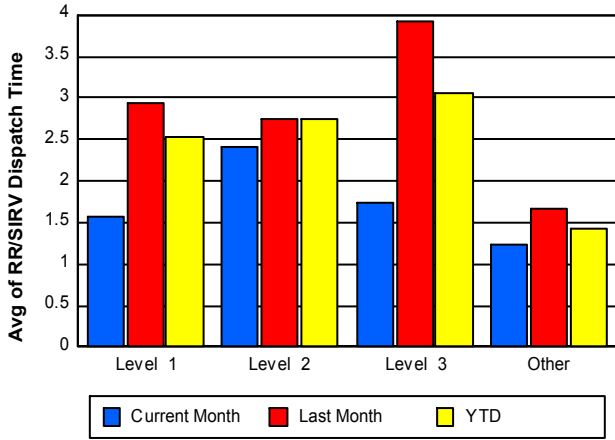
### TMC Verification Time



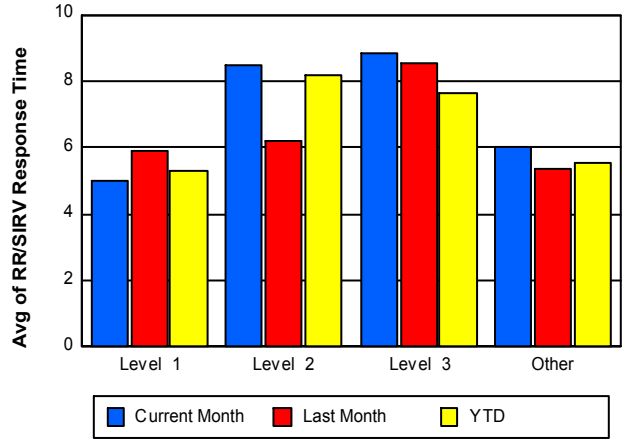
### TMC Response Time



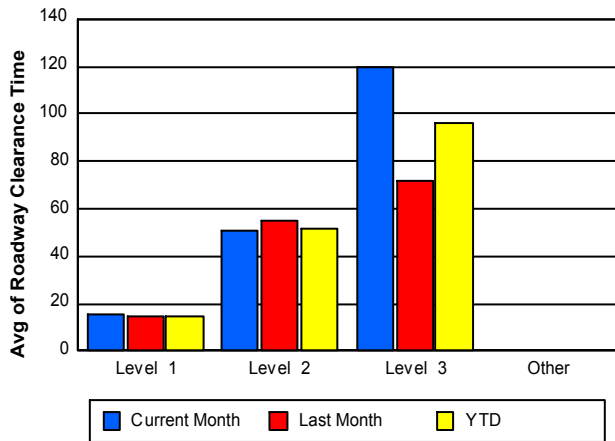
## Road Ranger / SIRV Dispatch Time



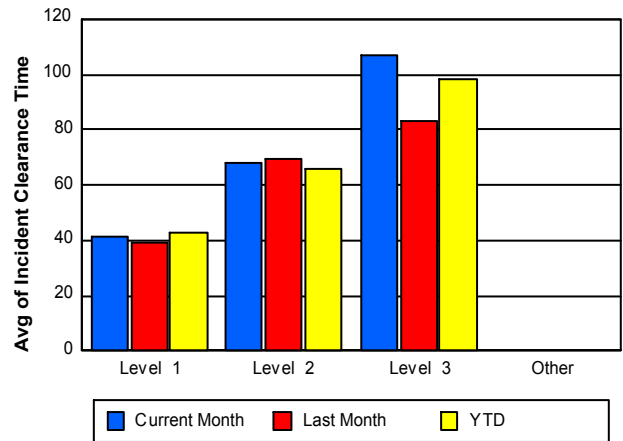
## Road Ranger / SIRV Response Time



## Roadway Clearance Time (2A)



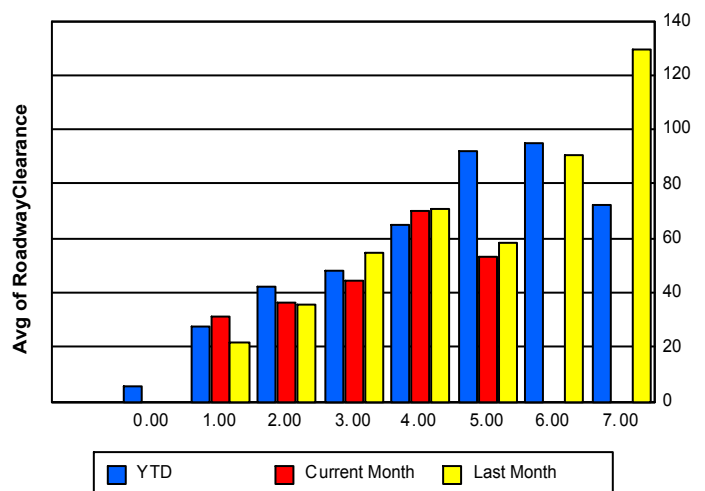
## Incident Clearance Time (3B)



## Roadway Clearance by Maximum Number of Lanes Blocked

	Current Month	Last Month	YTD
	0.00	0.00	
0			5.87
1	31.24	22.01	27.71
2	36.15	35.39	41.98
3	44.71	54.88	48.26
4	69.78	71.18	64.86
5	53.52	58.12	91.81
6	0.00	90.82	95.24

## Roadway Clearance Time(2A)



	Current Month	Last Month	YTD
7	<b>0.00</b>	<b>129.37</b>	<b>72.04</b>

## Performance Measures by Roadway

**595**

	<u>Current Month</u>	<u>Last Month</u>	<u>YTD</u>
Number of Events	738	736	4,370
Number of Incidents	31	33	210
TMC Detection (min.)	0.01	0.01	0.02
TMC Verification (min.)	1.91	1.87	1.91
TMC Response (min.)	5.62	6.81	6.57
RR Dispatch Time (min.)	1.33	1.25	1.26
RR Resp. Time (min.)	4.88	5.59	5.48
Event Clearance (min.)	37.56	29.27	41.14
Roadway Clear. (min.)	30.26	29.18	34.70
Incident Clearance (min.)	46.49	51.39	50.84
# of Events w/ RR/SIRV	682	686	3,793
RR/SIRV Responses	682	686	3,856
RR/SIRV Activities	673	751	4,018

**75**

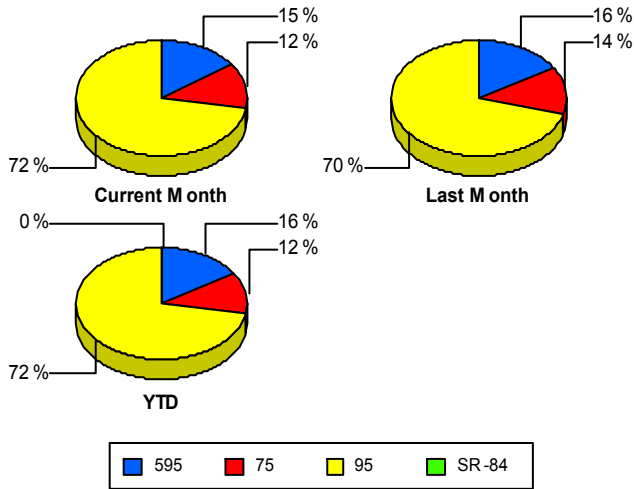
	<u>Current Month</u>	<u>Last Month</u>	<u>YTD</u>
Number of Events	587	626	3,298
Number of Incidents	19	14	73
TMC Detection (min.)	0.01	0.01	0.03
TMC Verification (min.)	4.46	5.86	4.71
TMC Response (min.)	5.29	6.05	4.99
RR Dispatch Time (min.)	1.33	0.93	0.92
RR Resp. Time (min.)	3.96	5.13	4.10
Event Clearance (min.)	35.97	31.75	40.05
Roadway Clear. (min.)	75.44	43.94	68.49
Incident Clearance (min.)	70.33	54.75	67.49
# of Events w/ RR/SIRV	575	614	3,226
RR/SIRV Responses	575	614	3,259
RR/SIRV Activities	625	681	3,529

**95**

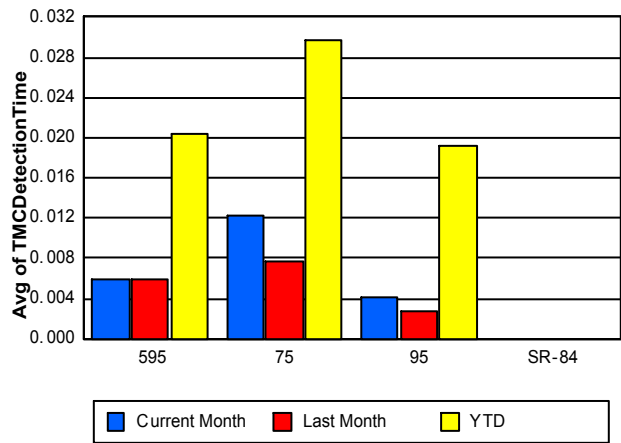
	<u>Current Month</u>	<u>Last Month</u>	<u>YTD</u>
Number of Events	3,466	3,229	19,535
Number of Incidents	189	155	1,009
TMC Detection (min.)	0.00	0.00	0.02
TMC Verification (min.)	1.01	1.16	1.14
TMC Response (min.)	7.98	7.44	7.40
RR Dispatch Time (min.)	1.25	2.00	1.67
RR Resp. Time (min.)	6.78	5.41	5.95
Event Clearance (min.)	35.49	35.39	40.99
Roadway Clear. (min.)	31.83	34.44	34.31
Incident Clearance (min.)	54.62	54.24	57.30
# of Events w/ RR/SIRV	3,081	2,920	16,040
RR/SIRV Responses	3,081	2,920	16,328
RR/SIRV Activities	3,044	3,031	16,786

	<u>YTD</u>
Number of Events	<b>1</b>
Number of Incidents	<b>0</b>
TMC Detection (min.)	<b>0.00</b>
TMC Verification (min.)	<b>0.47</b>
TMC Response (min.)	
RR Dispatch Time (min.)	
RR Resp. Time (min.)	
Event Clearance (min.)	<b>5.22</b>
Roadway Clear. (min.)	
Incident Clearance (min.)	
# of Events w/ RR/SIRV	<b>0</b>
RR/SIRV Responses	<b>0</b>
RR/SIRV Activities	<b>0</b>

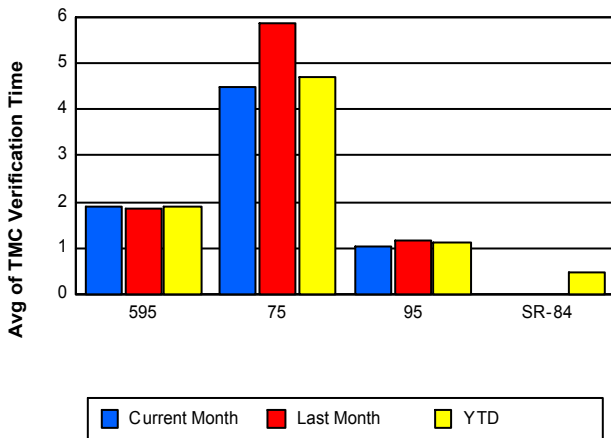
### Number of Events / Roadway



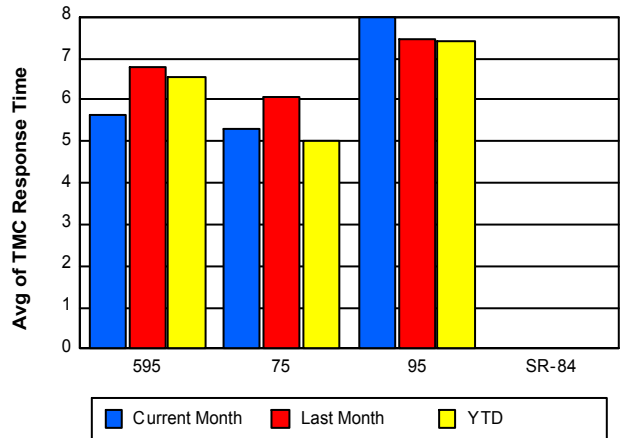
### TMC Detection Time



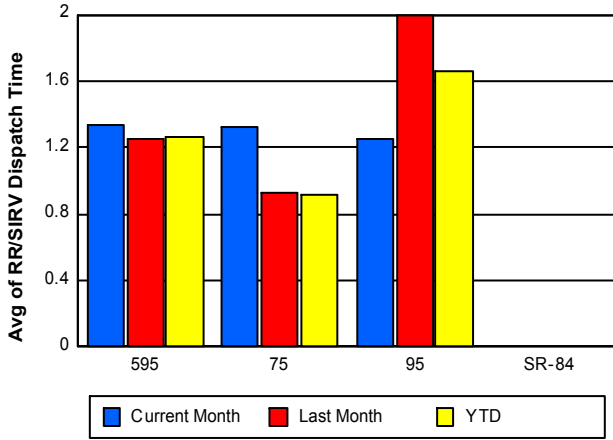
### TMC Verification Time



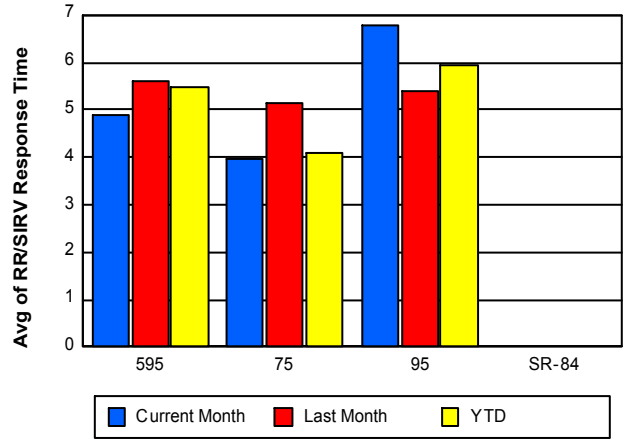
### TMC Response Time



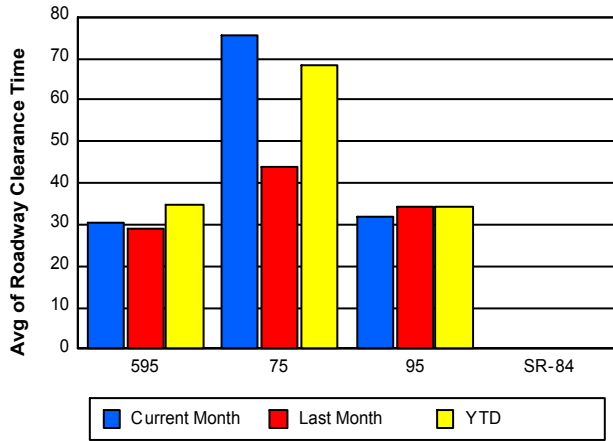
## Road Ranger / SIRV Dispatch Time



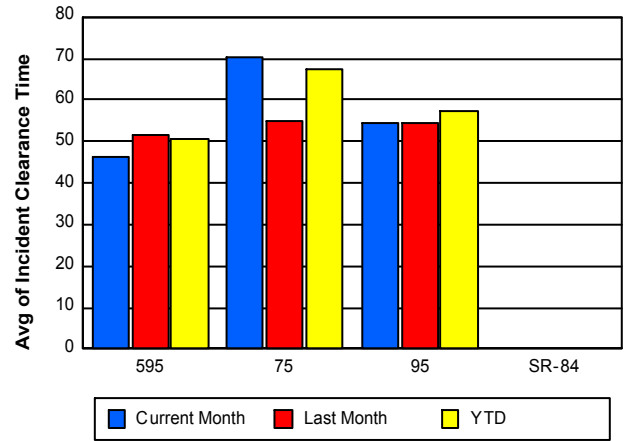
## Road Ranger / SIRV Response Time



## Roadway Clearance Time (2A)



## Incident Clearance Time (3B)



## Performance Measures by Event Type

### Abandoned Vehicle

	<u>Current Month</u>	<u>Last Month</u>	<u>YTD</u>
Number of Events	657	655	3,519
Number of Incidents	5	2	10
TMC Detection (min.)	0.00	0.00	0.03
TMC Verification (min.)	0.35	0.69	0.43
TMC Response (min.)	6.72	9.77	6.97
RR Dispatch Time (min.)	1.70	4.46	1.98
RR Response Time (min.)	5.02	5.31	5.13
Event Clearance (min.)	132.86	119.68	182.91
Roadway Clearance (min.)	75.04	19.67	48.42
Incident Clearance (min.)	28.59	58.76	301.89
# of Events w/ RR/SIRV	566	558	2,899
RR/SIRV Assists	566	558	2,906
RR/SIRV Activities	587	600	3,033

### Accident

	<u>Current Month</u>	<u>Last Month</u>	<u>YTD</u>
Number of Events	321	308	1,993
Number of Incidents	170	147	940
TMC Detection (min.)	0.02	0.01	0.05
TMC Verification (min.)	1.49	1.97	1.69
TMC Response (min.)	7.06	7.89	7.57
RR Dispatch Time (min.)	1.59	1.94	1.75
RR Response Time (min.)	5.51	5.95	5.84
Event Clearance (min.)	46.93	43.58	45.30
Roadway Clearance (min.)	33.14	37.57	36.41
Incident Clearance (min.)	59.09	58.61	59.19
# of Events w/ RR/SIRV	310	305	1,938
RR/SIRV Assists	310	305	2,165
RR/SIRV Activities	493	501	3,026

### Congestion

	<u>Current Month</u>	<u>Last Month</u>	<u>YTD</u>
Number of Events	2	2	13
Number of Incidents	0	0	1
TMC Detection (min.)	0.00	0.00	0.00
TMC Verification (min.)	0.00	0.00	0.00
TMC Response (min.)			
RR Dispatch Time (min.)			
RR Response Time (min.)			
Event Clearance (min.)	79.89	32.32	82.92
Roadway Clearance (min.)			8.22
Incident Clearance (min.)			98.70
# of Events w/ RR/SIRV	0	0	0
RR/SIRV Assists	0	0	0
RR/SIRV Activities	0	0	0

## Debris on Roadway

	<u>Current Month</u>	<u>Last Month</u>	<u>YTD</u>
Number of Events	179	205	984
Number of Incidents	2	3	17
TMC Detection (min.)	0.01	0.00	0.05
TMC Verification (min.)	4.15	5.21	5.49
TMC Response (min.)	5.88	7.65	7.69
RR Dispatch Time (min.)	0.75	1.35	1.16
RR Response Time (min.)	5.19	6.34	6.56
Event Clearance (min.)	9.91	12.06	12.02
Roadway Clearance (min.)	33.62	12.82	45.05
Incident Clearance (min.)	35.54	53.65	53.26
# of Events w/ RR/SIRV	173	199	956
RR/SIRV Assists	173	199	983
RR/SIRV Activities	186	219	1,041

## Disabled Vehicle

	<u>Current Month</u>	<u>Last Month</u>	<u>YTD</u>
Number of Events	2,806	2,819	15,856
Number of Incidents	40	31	215
TMC Detection (min.)	0.01	0.00	0.02
TMC Verification (min.)	2.06	2.33	2.11
TMC Response (min.)	7.24	6.37	6.67
RR Dispatch Time (min.)	1.05	1.13	1.32
RR Response Time (min.)	6.24	5.27	5.54
Event Clearance (min.)	20.22	19.16	19.21
Roadway Clearance (min.)	25.78	24.70	26.42
Incident Clearance (min.)	40.73	43.36	39.72
# of Events w/ RR/SIRV	2,760	2,794	15,387
RR/SIRV Assists	2,760	2,794	15,483
RR/SIRV Activities	2,912	3,053	16,474

## Emergency Vehicles

	<u>Current Month</u>	<u>Last Month</u>	<u>YTD</u>
Number of Events	8	8	35
Number of Incidents	6	8	31
TMC Detection (min.)	0.00	0.00	0.00
TMC Verification (min.)	0.00	0.00	0.44
TMC Response (min.)	5.73	8.57	8.41
RR Dispatch Time (min.)	2.74	5.81	3.33
RR Response Time (min.)	2.99	2.76	5.09
Event Clearance (min.)	20.51	31.95	33.38
Roadway Clearance (min.)	16.64	27.38	30.94
Incident Clearance (min.)	20.96	31.95	34.99
# of Events w/ RR/SIRV	6	6	26
RR/SIRV Assists	6	6	28
RR/SIRV Activities	9	10	41

## Other

	<u>Current Month</u>	<u>Last Month</u>	<u>YTD</u>
Number of Events	770	569	4,582
Number of Incidents	0	4	14
TMC Detection (min.)	0.00	0.00	0.00
TMC Verification (min.)	0.28	0.12	0.44
TMC Response (min.)	10.85	10.35	9.64
RR Dispatch Time (min.)	2.06	1.98	1.96
RR Response Time (min.)	9.86	7.04	7.98
Event Clearance (min.)	11.74	11.50	11.74
Roadway Clearance (min.)		15.01	21.96
Incident Clearance (min.)		18.18	29.81
# of Events w/ RR/SIRV	478	334	1,649
RR/SIRV Assists	478	334	1,654
RR/SIRV Activities	103	51	466

## Pedestrian

	<u>YTD</u>
Number of Events	41
Number of Incidents	0
TMC Detection (min.)	0.01
TMC Verification (min.)	1.34
TMC Response (min.)	2.56
RR Dispatch Time (min.)	0.37
RR Response Time (min.)	2.29
Event Clearance (min.)	10.68
Roadway Clearance (min.)	
Incident Clearance (min.)	
# of Events w/ RR/SIRV	37
RR/SIRV Assists	37
RR/SIRV Activities	39

## Police Activity

	<u>Current Month</u>	<u>Last Month</u>	<u>YTD</u>
Number of Events	10	5	76
Number of Incidents	8	2	51
TMC Detection (min.)	0.00	0.00	0.04
TMC Verification (min.)	2.42	3.31	1.38
TMC Response (min.)	9.65	17.92	10.77
RR Dispatch Time (min.)	3.39	1.86	3.38
RR Response Time (min.)	5.92	16.00	7.22
Event Clearance (min.)	61.19	18.17	47.93
Roadway Clearance (min.)	106.39	13.07	76.55
Incident Clearance (min.)	69.14	14.79	57.06
# of Events w/ RR/SIRV	9	4	65
RR/SIRV Assists	9	4	85
RR/SIRV Activities	14	3	105

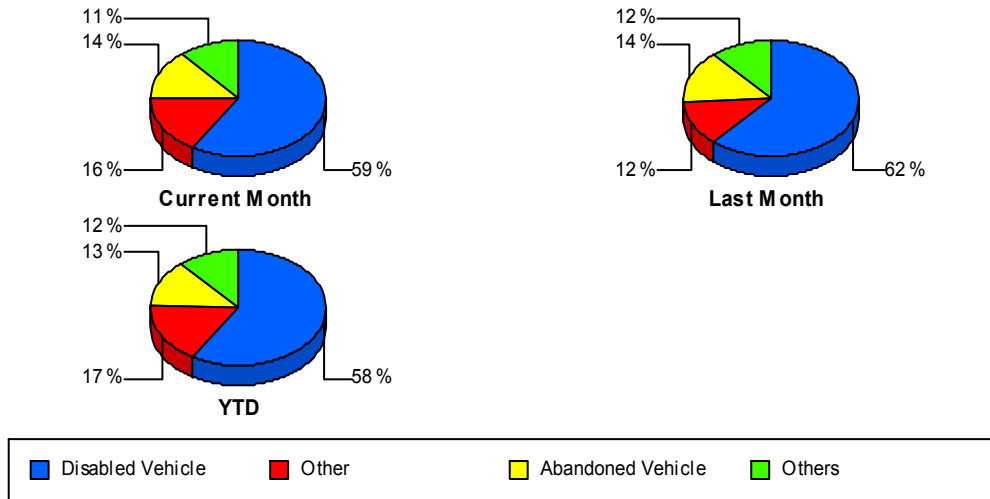
## Vehicle Fire

	<u>Current Month</u>	<u>Last Month</u>	<u>YTD</u>
Number of Events	9	5	14
Number of Incidents	7	5	12
TMC Detection (min.)	0.01	0.00	0.00
TMC Verification (min.)	0.10	0.00	0.06
TMC Response (min.)	8.91	6.67	8.05
RR Dispatch Time (min.)	2.03	5.30	3.29
RR Response Time (min.)	6.89	1.38	4.77
Event Clearance (min.)	77.79	54.89	69.61
Roadway Clearance (min.)	43.78	49.20	46.04
Incident Clearance (min.)	72.19	54.89	64.98
# of Events w/ RR/SIRV	8	5	13
RR/SIRV Assists	8	5	13
RR/SIRV Activities	14	12	26

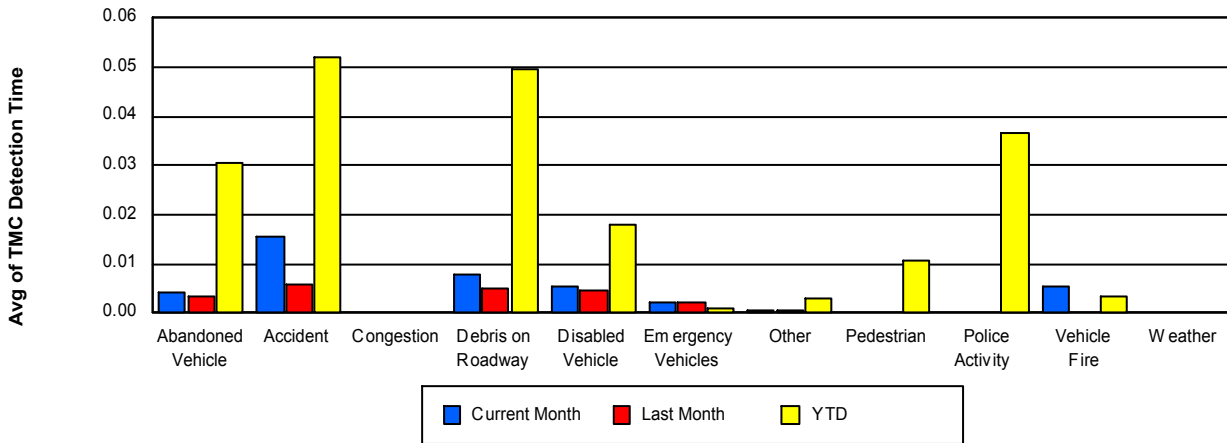
## Weather

	<u>Current Month</u>	<u>YTD</u>
Number of Events	1	2
Number of Incidents	0	0
TMC Detection (min.)	0.00	0.00
TMC Verification (min.)	0.00	0.00
TMC Response (min.)		
RR Dispatch Time (min.)		
RR Response Time (min.)		
Event Clearance (min.)	1.12	1.18
Roadway Clearance (min.)		
Incident Clearance (min.)		
# of Events w/ RR/SIRV	0	0
RR/SIRV Assists	0	0
RR/SIRV Activities	0	0

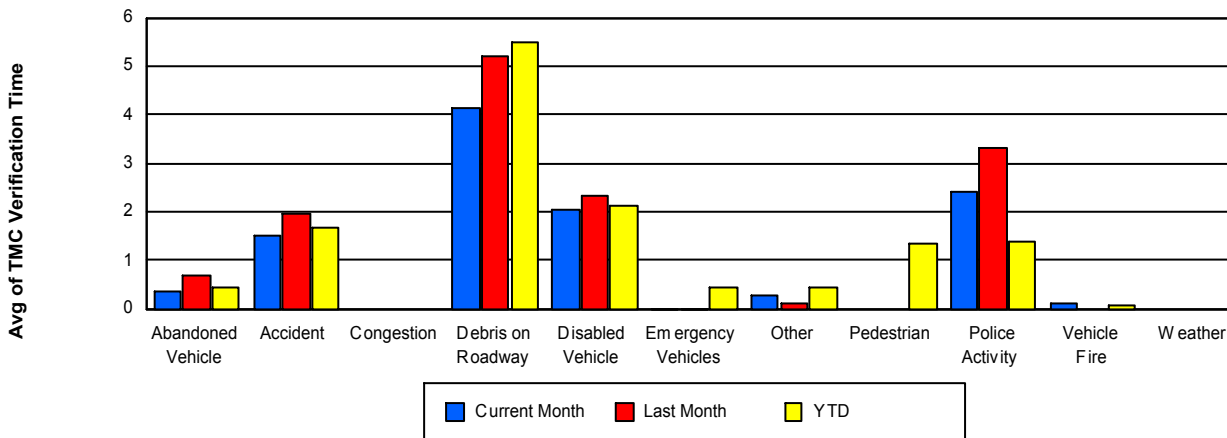
## Number of Events / Event Type



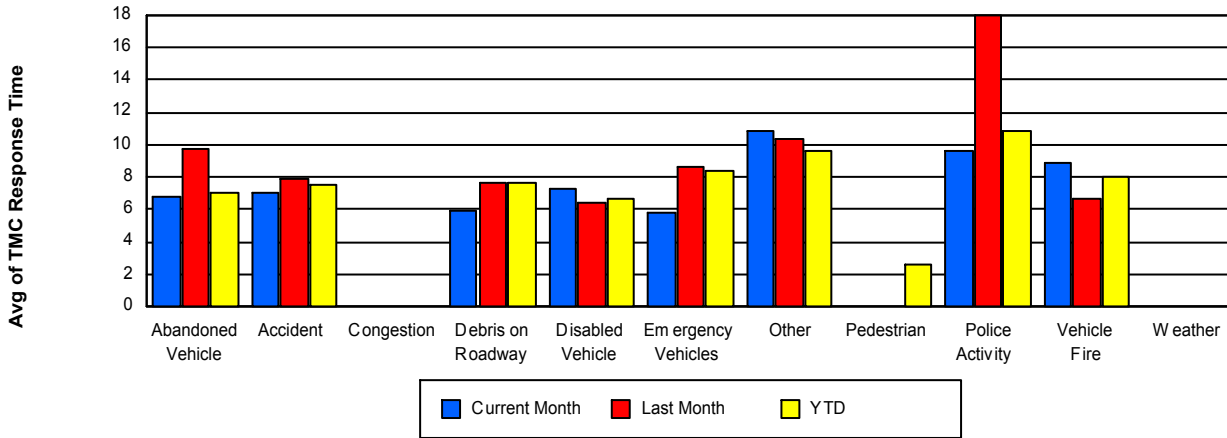
## TMC Detection Time



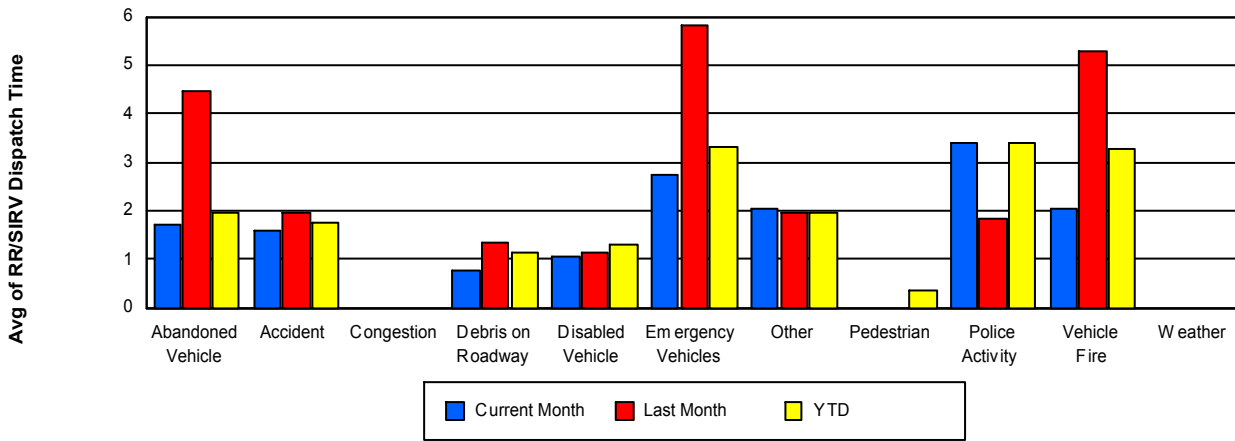
## TMC Verification Time



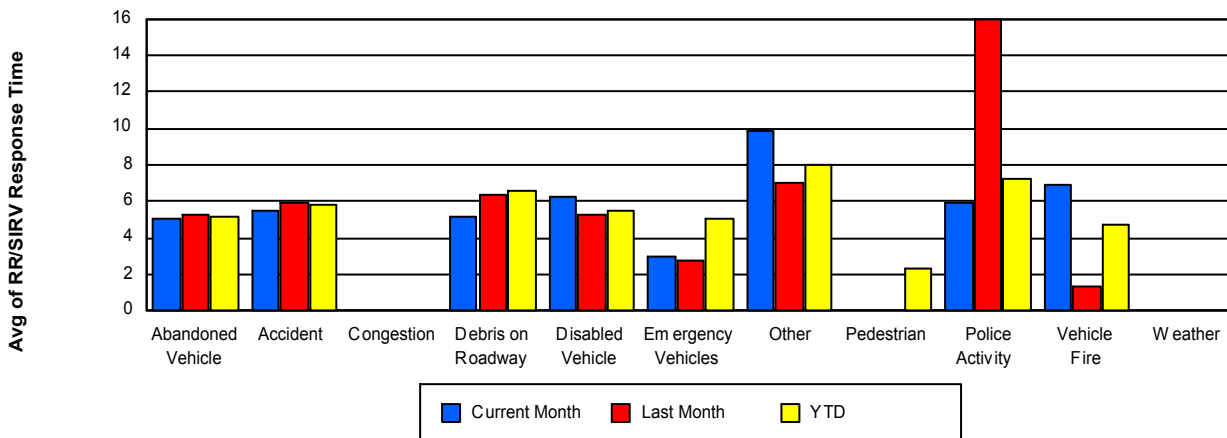
## TMC Response Time



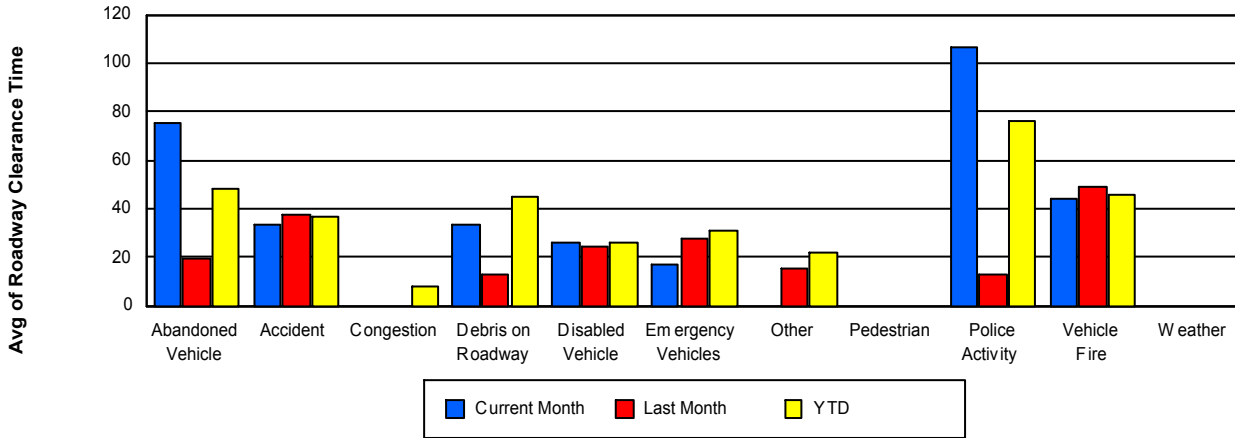
## Road Ranger / SIRV Dispatch Time



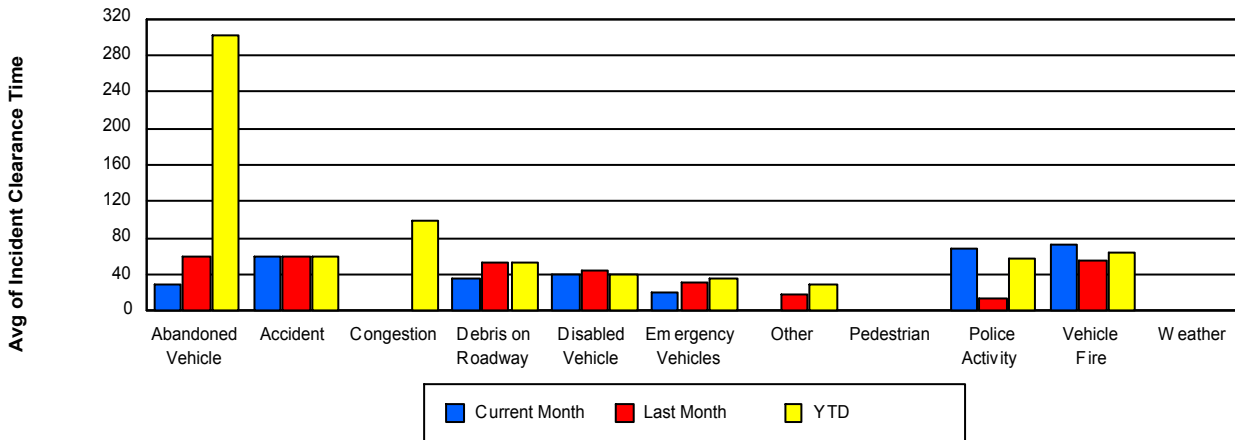
## Road Ranger / SIRV Response Time



## Roadway Clearance Time (2A)



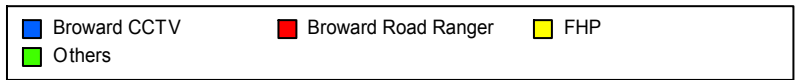
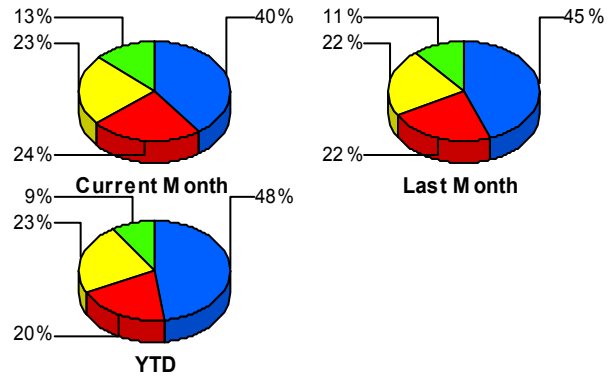
## Incident Clearance Time (3B)



## Incident Detection Methods

	Current Month	Last Month	YTD
Broward CCTV	96	90	619
Broward Road Ranger	57	45	261
Broward VideoWall	11	2	20
BSO	2	0	2
District 4	1	2	21
District 6	0	0	3
FHP	54	45	294
Fire	1	4	5
Florida's Turnpike	1	0	5
ITMS	1	1	2
Motorist	4	4	12
Other	0	0	1
Palm Beach Road Rang	0	1	4
PSAP	1	0	2
Road Watcher	3	2	9
SIRV	0	0	4
SmarTraveler (511)	1	1	6
VisioPaD Detection	6	5	22
<b>Total</b>	<b>239</b>	<b>202</b>	<b>1,292</b>

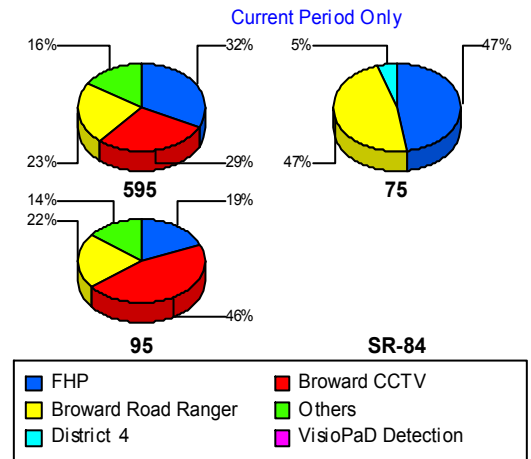
### Total Incidents by Detection Method



## Incident Detection Methods by Roadway

		Current Month	Last Month	YTD
595	Broward CCTV	9	11	85
	Broward Road Ranger	7	11	48
	Broward VideoWall	2	0	2
	District 4	0	2	5
	FHP	10	9	56
	Florida's Turnpike	1	0	5
	Motorist	2	0	3
	Road Watcher	0	0	2
	SIRV	0	0	1
	VisioPaD Detection	0	0	3
	Total	31	33	210
	75	Broward Road Ranger	9	7
District 4		1	0	5
District 6		0	0	1
FHP		9	6	31
Road Watcher		0	1	1
Total		19	14	73
95	Broward CCTV	87	79	534
	Broward Road Ranger	41	27	178
	Broward VideoWall	9	2	18
	BSO	2	0	2
	District 4	0	0	11
	District 6	0	0	2
	FHP	35	30	207
	Fire	1	4	5
	ITMS	1	1	2
	Motorist	2	4	9
	Other	0	0	1
	Palm Beach Road Rang	0	1	4
	PSAP	1	0	2
	Road Watcher	3	1	6

Total Events by Roadway and Detection Method

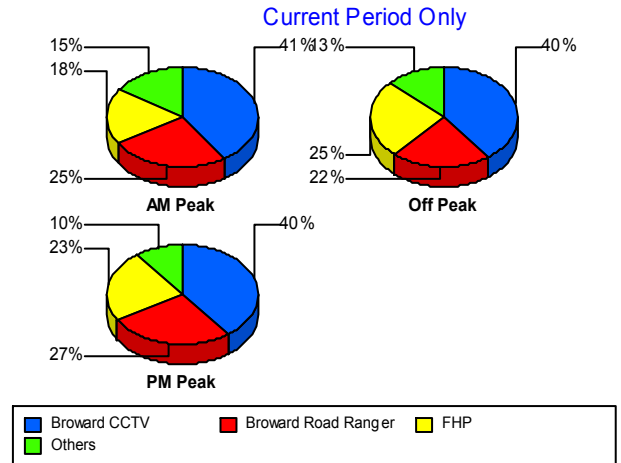


		Current Month	Last Month	YTD
95	SIRV	0	0	3
	SmarTraveler (511)	1	1	6
	VisioPaD Detection	6	5	19
	Total	189	155	1,009
Total		239	202	1,292

### Incident Detection Methods by Peak Period

		Current Month	Last Month	YTD
AM Peak	Broward CCTV	29	20	148
	Broward Road Ranger	18	14	73
	Broward VideoWall	6	1	9
	BSO	1	0	1
	District 4	1	0	6
	FHP	13	4	58
	Fire	0	1	1
	Florida's Turnpike	0	0	2
	Motorist	0	1	3
	Palm Beach Road Rang	0	1	3
	Road Watcher	1	0	5
	SIRV	0	0	2
	SmarTraveler (511)	0	0	1
	VisioPaD Detection	2	1	3
	Total	71	43	315
Off Peak	Broward CCTV	48	45	330
	Broward Road Ranger	26	19	114
	Broward VideoWall	5	0	9
	District 4	0	1	8
	District 6	0	0	2
	FHP	30	29	178
	Fire	1	3	4
	Florida's Turnpike	1	0	2
	ITMS	1	0	1

Total Events by Peak Period and Detection Method

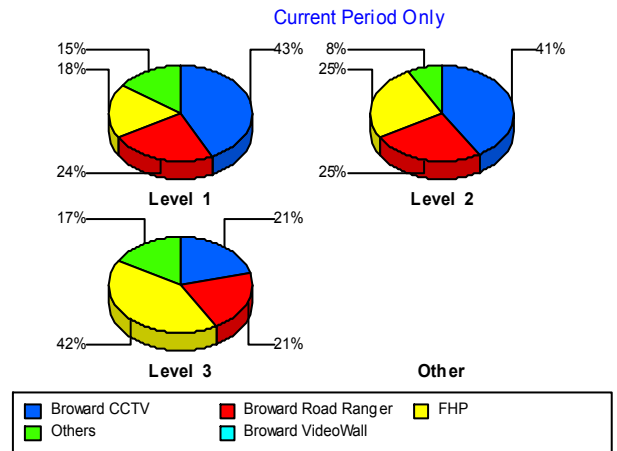


		Current Month	Last Month	YTD
Off Peak	Motorist	2	2	5
	Other	0	0	1
	Palm Beach Road Rang	0	0	1
	PSAP	1	0	2
	Road Watcher	2	1	3
	SIRV	0	0	1
	VisioPaD Detection	3	4	17
	<b>Total</b>	<b>120</b>	<b>104</b>	<b>678</b>
PM Peak	Broward CCTV	19	25	141
	Broward Road Ranger	13	12	74
	Broward VideoWall	0	1	2
	BSO	1	0	1
	District 4	0	1	7
	District 6	0	0	1
	FHP	11	12	58
	Florida's Turnpike	0	0	1
	ITMS	0	1	1
	Motorist	2	1	4
	Road Watcher	0	1	1
	SIRV	0	0	1
	SmarTraveler (511)	1	1	5
	VisioPaD Detection	1	0	2
	<b>Total</b>	<b>48</b>	<b>55</b>	<b>299</b>
<b>Total</b>	<b>239</b>	<b>202</b>	<b>1,292</b>	

## Incident Detection Methods by Severity

		Current Month	Last Month	YTD
Level 1	Broward CCTV	65	55	384
	Broward Road Ranger	36	26	165
	Broward VideoWall	10	1	14
	BSO	1	0	1
	District 4	0	1	13
	District 6	0	0	2
	FHP	28	24	133
	Fire	1	1	2
	Florida's Turnpike	1	0	1
	ITMS	1	0	1
	Motorist	3	1	5
	Palm Beach Road Rang	0	1	3
	PSAP	0	0	1
	Road Watcher	3	1	8
	SIRV	0	0	4
	SmarTraveler (511)	1	1	5
	VisioPaD Detection	2	3	12
	<b>Total</b>	<b>152</b>	<b>115</b>	<b>754</b>
Level 2	Broward CCTV	26	24	171
	Broward Road Ranger	16	15	68
	Broward VideoWall	0	1	2
	District 4	0	1	1
	District 6	0	0	1
	FHP	16	12	100
	Fire	0	1	1
	ITMS	0	1	1
	Motorist	1	3	6
	PSAP	1	0	1
	SmarTraveler (511)	0	0	1
	VisioPaD Detection	3	2	8
	<b>Total</b>	<b>63</b>	<b>60</b>	<b>361</b>

Total Events by Severity and Detection Method



		Current Month	Last Month	YTD
Level 3	Broward CCTV	5	11	64
	Broward Road Ranger	5	4	28
	Broward VideoWall	1	0	4
	BSO	1	0	1
	District 4	1	0	7
	FHP	10	9	61
	Fire	0	2	2
	Florida's Turnpike	0	0	4
	Motorist	0	0	1
	Other	0	0	1
	Palm Beach Road Rang	0	0	1
	Road Watcher	0	1	1
	VisioPaD Detection	1	0	2
	Total	24	27	177
Total	239	202	1,292	

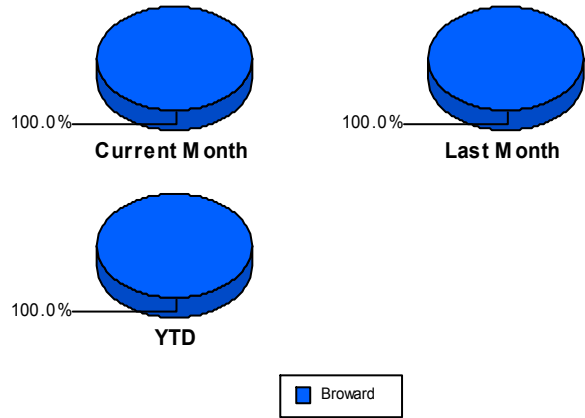
## Road Ranger / SIRV Performance Measures

### Road Ranger / SIRV Performance By County

Values presented are:  
 - Total Events with a RR/SIRV Response  
 - Total RR/SIRV Responses,  
 - Total Activities Performed

	Current Mo	Last Month	YTD
Broward	<b>4,054</b>	<b>4,070</b>	<b>22,378</b>
	<b>4,361</b>	<b>4,379</b>	<b>23,952</b>
	<b>4,617</b>	<b>4,755</b>	<b>25,453</b>

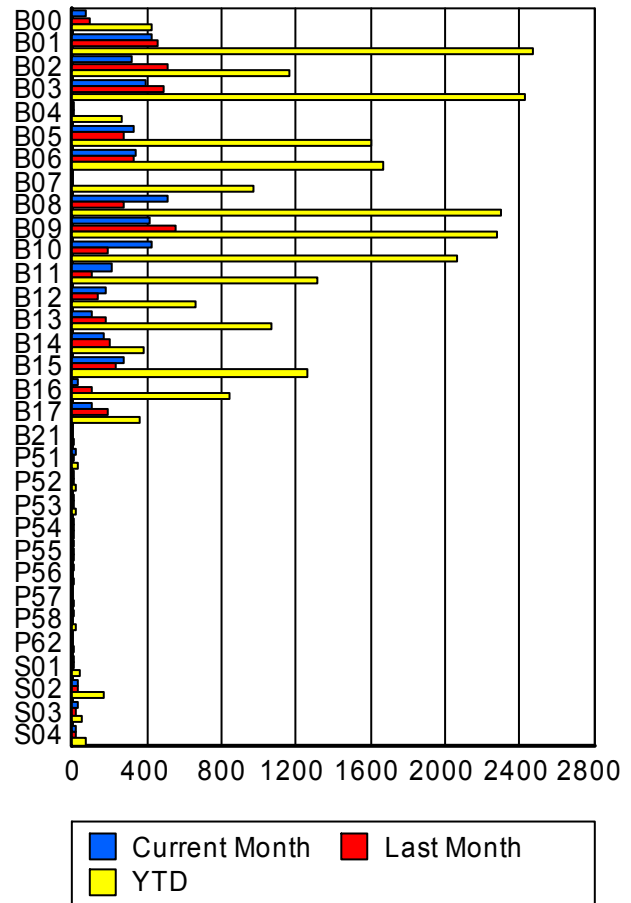
RR/SIRV Responses per County



### Road Ranger / SIRV Performance By Truck

	Current Mo	Last Month	YTD
B00	68	89	416
	69	91	425
	72	94	448
B01	415	451	2,440
	421	460	2,472
	440	498	2,622
B02	315	504	1,147
	320	514	1,164
	335	560	1,247
B03	383	482	2,407
	389	487	2,432
	405	533	2,591
B04	1	3	258
	1	3	260
	1	3	272
B05	324	273	1,593
	326	273	1,605
	349	299	1,725
B06	335	328	1,653
	342	332	1,668
	369	370	1,784
B07	0	0	957
	0	0	969
	0	0	998
B08	499	276	2,264
	512	278	2,298
	542	304	2,450

RR/SIRV Responses per Truck



	Current Mo	Last Month	YTD
B09	410	545	2,257
	416	551	2,280
	438	593	2,417
B10	416	182	2,048
	424	183	2,066
	457	202	2,215
B11	207	98	1,309
	210	98	1,318
	223	100	1,389
B12	170	124	645
	174	135	660
	185	145	701
B13	93	175	1,052
	97	179	1,065
	105	193	1,126
B14	165	199	374
	165	202	377
	172	212	394
B15	267	225	1,258
	269	226	1,263
	283	245	1,337
B16	32	101	836
	32	104	844
	33	115	888
B17	102	189	354
	104	191	359
	111	206	382
B21	0	0	3
	0	0	3
	0	0	3
P51	12	5	32
	12	5	32
	12	7	34
P52	2	4	12
	2	4	12
	2	4	12
P53	2	1	14
	2	1	14
	2	1	17
P54	1	2	4
	1	2	4
	1	2	4
P55	1	3	9
	1	3	9
	1	3	9

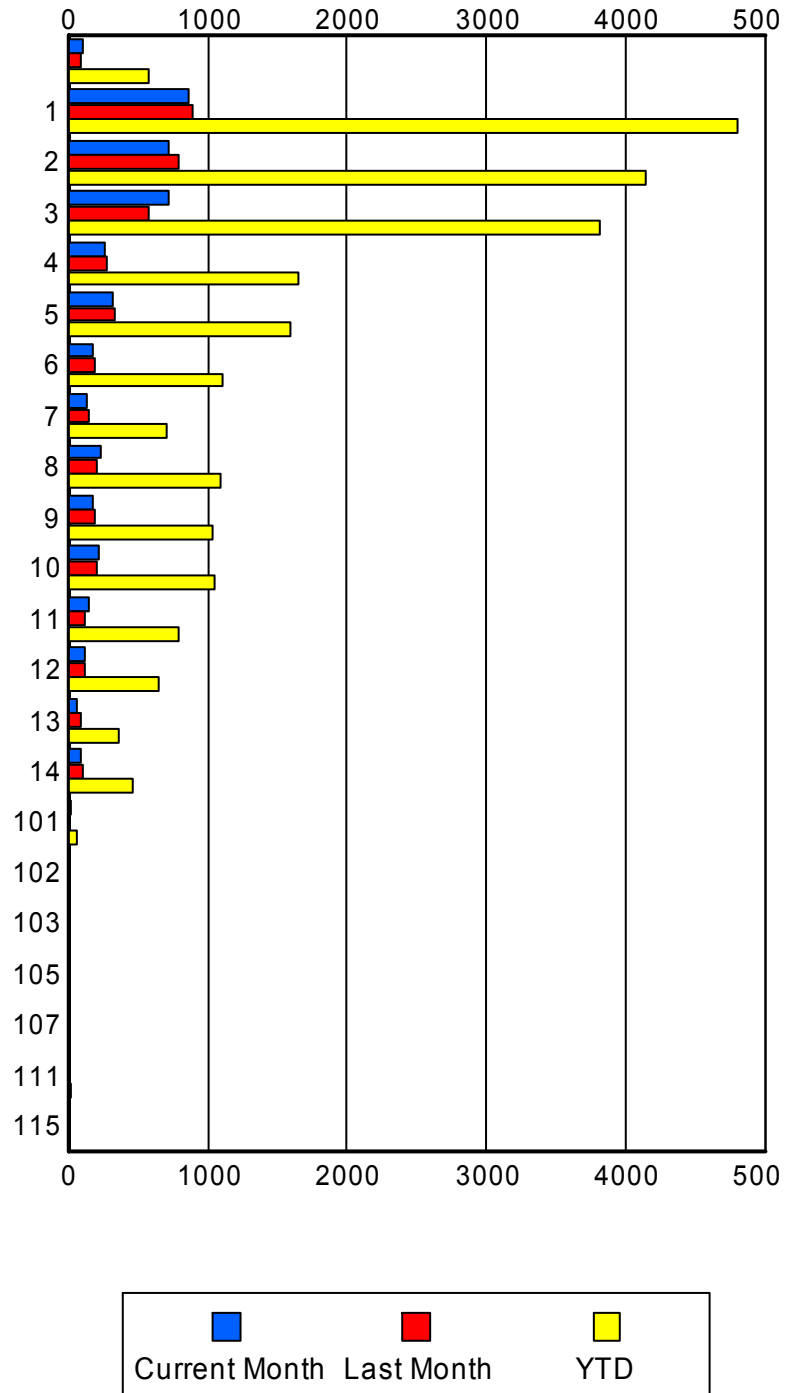
	Current Mo	Last Month	YTD
P56	1	0	6
	1	0	6
	1	0	8
P57	0	0	8
	0	0	8
	0	0	8
P58	7	0	11
	7	0	11
	7	0	11
P62	0	0	2
	0	0	2
	0	0	2
S01	6	4	42
	6	4	43
	8	4	48
S02	25	26	168
	25	26	169
	28	31	184
S03	22	12	43
	22	13	45
	23	17	51
S04	11	13	66
	11	14	69
	12	14	76

## Road Ranger / SIRV Performance By Beat

	Current Mo	Last Month	YTD
	108	91	521
	111	96	578
	121	103	617
1	814	847	4,594
	861	895	4,804
	904	963	5,085
2	700	773	4,038
	726	790	4,143
	775	854	4,401
3	705	565	3,709
	723	584	3,816
	778	627	4,043
4	259	273	1,639
	260	276	1,647
	273	301	1,734
5	317	329	1,577
	321	335	1,591
	330	358	1,666
6	171	187	1,088
	175	197	1,105
	179	209	1,165
7	130	145	697
	131	146	703
	135	161	742
8	227	208	1,085
	229	212	1,097
	242	231	1,158
9	169	196	1,029
	173	198	1,042
	189	223	1,136
10	212	204	1,043
	213	209	1,056
	231	237	1,140
11	142	122	788
	142	123	793
	150	143	866
12	118	118	641
	121	119	652
	128	135	711
13	59	85	359
	61	85	364
	65	88	392
14	89	100	464
	90	100	467
	93	106	496

Values presented are:  
 - Total Events with a RR/SIRV Response  
 - Total RR/SIRV Responses,  
 - Total Activities Performed

### RR/SIRV Responses per Beat



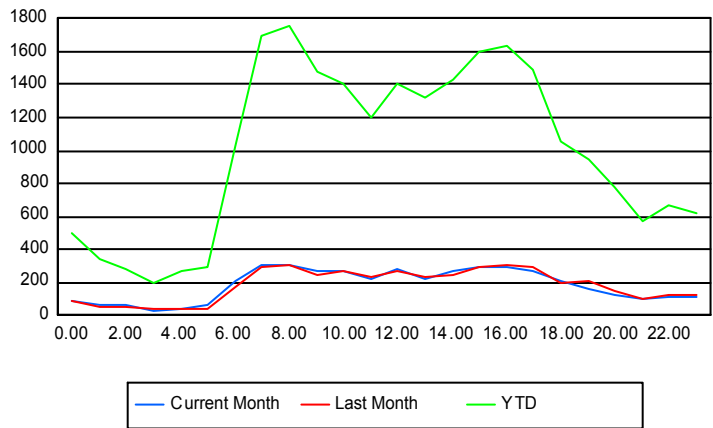
	Current Mo	Last Month	YTD
101	18	10	67
	18	10	67
	18	12	72
102	0	1	2
	0	1	2
	0	1	2
103	0	0	1
	0	0	1
	0	0	1
105	0	1	1
	0	1	1
	0	1	1
107	0	0	1
	0	0	1
	0	0	1
111	6	2	20
	6	2	20
	6	2	22
115	0	0	2
	0	0	2
	0	0	2

**Road Ranger / SIRV Performance By Time of Day**

Values presented are:  
- Total Events with a RR/SIRV Response  
- Total RR/SIRV Responses,  
- Total Activities Performed

	Current Mo	Last Month	YTD
12AM-1AM	87	77	470
	90	82	493
	94	97	535
1AM-2AM	55	56	317
	59	57	340
	61	60	359
2AM-3AM	51	50	238
	58	51	278
	61	56	306
3AM-4AM	25	33	173
	28	37	193
	31	44	212
4AM-5AM	34	36	225
	44	45	265
	49	49	290
5AM-6AM	45	41	237
	58	45	294
	61	48	312

**Number of Responses / Hour of the Day**



	Current Mo	Last Month	YTD
6AM-7AM	200	163	954
	214	173	1,027
	223	185	1,065
7AM-8AM	285	292	1,608
	307	296	1,701
	318	324	1,799
8AM-9AM	266	286	1,624
	302	311	1,762
	317	333	1,861
9AM-10AM	256	234	1,401
	274	250	1,480
	288	273	1,556
10AM-11AM	251	249	1,324
	266	268	1,401
	282	287	1,493
11AM-12PM	199	204	1,126
	221	227	1,200
	240	243	1,268
12PM-1PM	266	248	1,323
	277	264	1,403
	292	280	1,472
1PM-2PM	211	221	1,224
	224	238	1,320
	233	258	1,399
2PM-3PM	252	226	1,337
	273	241	1,433
	288	258	1,510
3PM-4PM	278	255	1,495
	294	288	1,604
	314	309	1,709
4PM-5PM	268	281	1,541
	288	309	1,630
	303	334	1,728
5PM-6PM	259	267	1,403
	273	293	1,495
	291	318	1,576
6PM-7PM	198	195	996
	209	202	1,060
	218	217	1,136
7PM-8PM	154	189	898
	161	203	944
	175	232	1,021
8PM-9PM	116	133	719
	122	146	774
	135	169	845

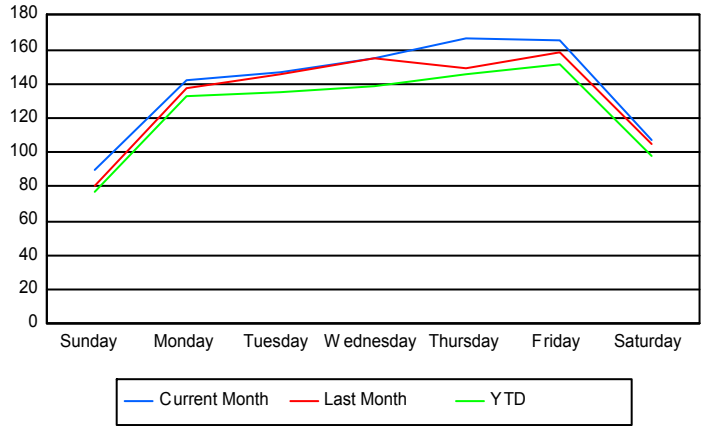
	Current Mo	Last Month	YTD
9PM-10PM	<b>97</b>	<b>94</b>	<b>524</b>
	<b>104</b>	<b>101</b>	<b>567</b>
	<b>111</b>	<b>105</b>	<b>609</b>
10PM-11PM	<b>101</b>	<b>117</b>	<b>627</b>
	<b>108</b>	<b>124</b>	<b>666</b>
	<b>120</b>	<b>138</b>	<b>724</b>
11PM-12AM	<b>100</b>	<b>123</b>	<b>594</b>
	<b>107</b>	<b>128</b>	<b>622</b>
	<b>112</b>	<b>138</b>	<b>668</b>

## Road Ranger / SIRV Performance By Day of Week

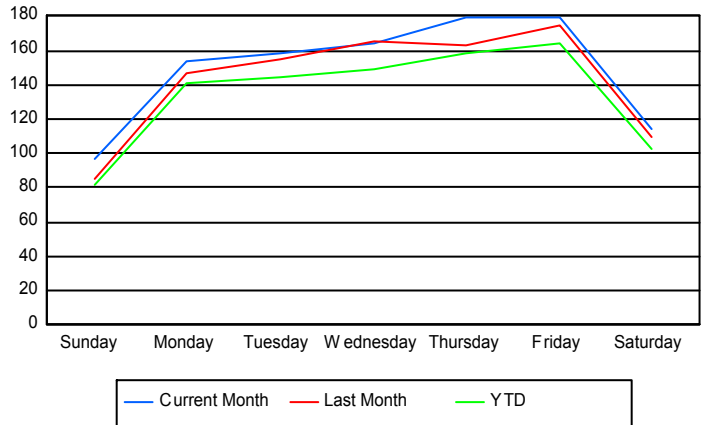
Values presented are:  
 - Total Events with a RR/SIRV Response  
 - Total RR/SIRV Responses,  
 - Total Activities Performed

	Current Mo	Last Month	YTD
Sunday	425	301	1,885
	456	314	1,980
	487	335	2,106
Monday	711	530	3,383
	767	570	3,604
	812	607	3,799
Tuesday	584	576	3,474
	632	612	3,707
	673	668	3,929
Wednesday	608	619	3,549
	645	659	3,792
	682	716	4,027
Thursday	660	742	3,745
	712	810	4,058
	751	870	4,308
Friday	650	786	3,891
	705	870	4,216
	752	964	4,500
Saturday	420	520	2,464
	444	544	2,595
	460	595	2,784

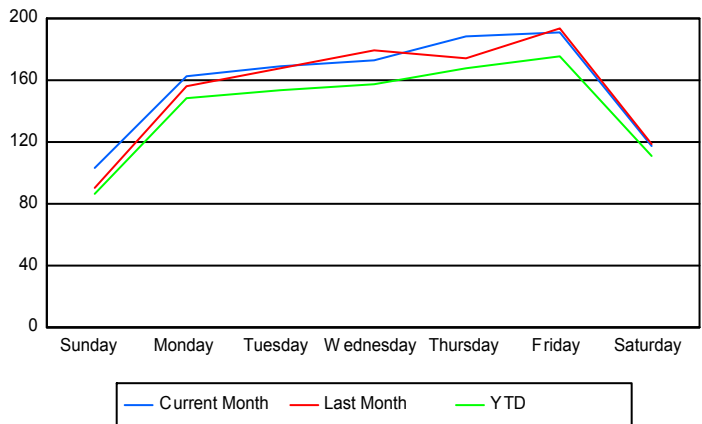
### Avg # of events with a RR/SIRV Response per Day of the Week



### Avg # of RR/SIRV Responses per Day of the Week



### Avg # of RR/SIRV Activities Performed per Day of the Week



### Road Ranger/ SIRV Responses per Time of Day and Day of Week

