



# Monthly Performance Measures Report Broward County



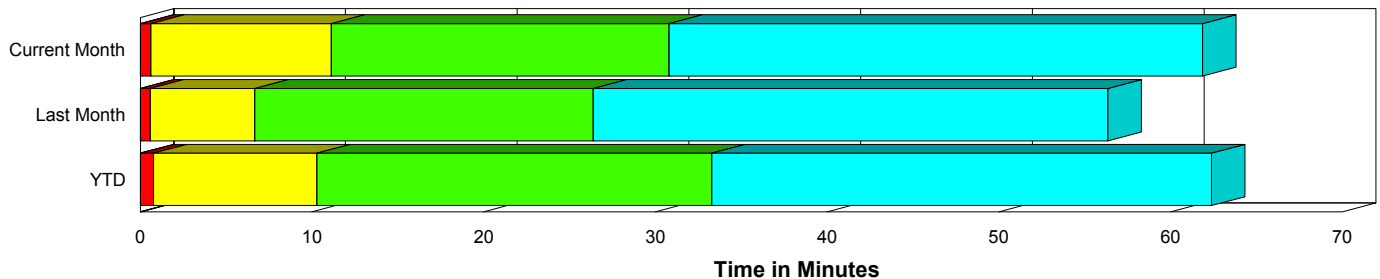
Created on:  
June 02, 2009  
8:52 am

Period From May 1, 2009 to May 31, 2009

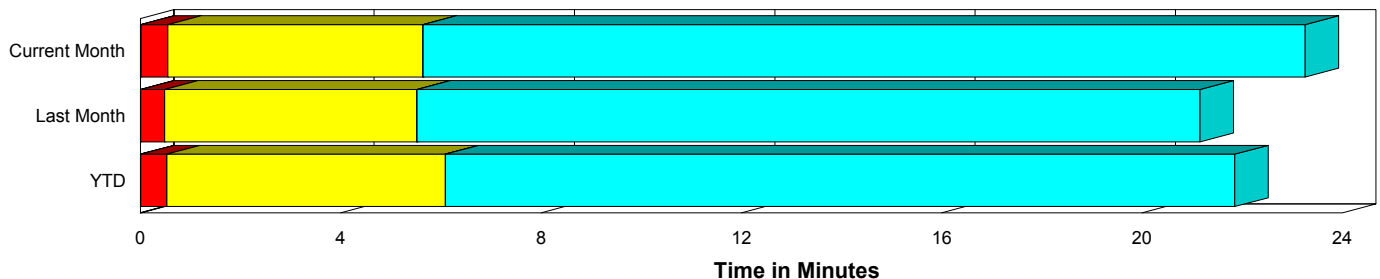
## Performance Measures Summary

	Traffic Events (No Lanes Blocked)			Incidents (Lanes Blocked)		
	<u>This Month</u>	<u>Last Month</u>	<u>YTD</u>	<u>This Month</u>	<u>Last Month</u>	<u>YTD</u>
Number of Events	4,128	3,913	21,089	208	174	1,023
TMC Detection (min.)	0.02	0.01	0.01	0.00	0.00	0.00
TMC Verification (min.)	0.53	0.48	0.52	0.62	0.58	0.76
TMC Response (min.)	6.11	5.87	6.59	11.13	6.87	10.53
RR Dispatch Time (min.)	1.02	1.09	1.27	4.85	1.63	3.58
RR Response Time (min.)	5.19	4.85	5.44	6.59	5.36	7.14
Roadway Clearance (min.)				31.67	26.85	33.06
Event Clearance (min.)	23.73	21.51	22.36	62.81	56.35	61.42
# of Events w/ RR/SIRV	2,577	2,749	13,126	140	107	684
RR/SIRV Responses	2,577	2,749	13,126	140	107	684
RR/SIRV Activities	2,260	2,389	11,091	281	220	1,376

### Incident Clearance Time-Line



### Traffic Event (Non-Lane Blockage) Time-Line



<span style="color: blue;">■</span> Avg. TMC Detection Time	<span style="color: green;">■</span> Avg. Time from TMC Response to Roadway Clearance*
<span style="color: red;">■</span> Avg. Time from TMC Detection to TMC Verification	<span style="color: cyan;">■</span> Avg. Time from Roadway Clearance to Incident/Event Clearance**
<span style="color: yellow;">■</span> Avg. Time from TMC Verification to TMC Response	

\* Roadway clearance equals all travel lanes open

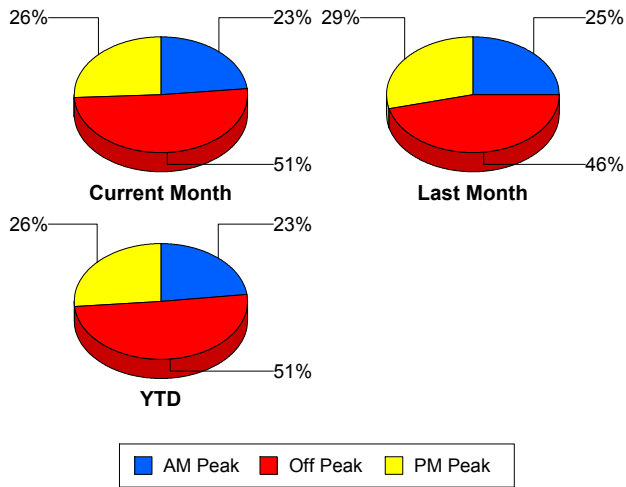
\*\* Incident clearance equals time when last responder has left the scene

## Performance Measures by Peak Period

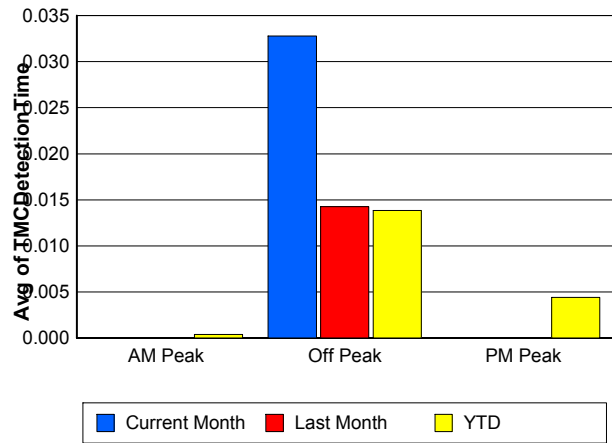
Note: AM peak period is defined as 6am to 10am and PM peak period is defined as 3pm to 7pm.

	AM Peak			Off Peak			PM Peak		
	<u>Current Month</u>	<u>Last Month</u>	<u>YTD</u>	<u>Current Month</u>	<u>Last Month</u>	<u>YTD</u>	<u>Current Month</u>	<u>Last Month</u>	<u>YTD</u>
Number of Events	1,015	1,017	5,088	2,206	1,889	11,181	1,115	1,181	5,843
Number of Incidents	48	36	233	96	88	500	64	50	290
TMC Detection (min.)	0.00	0.00	0.00	0.03	0.01	0.01	0.00	0.00	0.00
TMC Verification (min.)	0.35	0.34	0.46	0.43	0.39	0.47	0.92	0.76	0.70
TMC Response (min.)	5.43	5.48	6.21	7.17	6.71	7.73	6.41	5.40	6.32
RR Dispatch Time (min.)	0.95	0.66	0.98	1.65	1.80	2.07	0.91	0.70	0.89
RR Response Time (min.)	4.63	4.91	5.32	5.49	4.90	5.72	5.62	4.81	5.53
Event Clearance (min.)	23.10	21.28	21.49	29.37	25.94	27.34	20.41	19.75	20.42
Roadway Clearance (min.)	26.00	19.29	25.69	40.57	29.30	39.85	22.57	27.98	27.29
Incident Clearance (min.)	55.05	52.01	55.62	76.64	56.11	65.82	48.10	59.90	58.49
# of Events w/ RR/SIRV	807	844	4,023	1,085	1,099	5,501	825	913	4,286
RR/SIRV Responses	807	844	4,023	1,085	1,099	5,501	825	913	4,286
RR/SIRV Activities	788	803	3,827	953	984	4,774	800	822	3,866

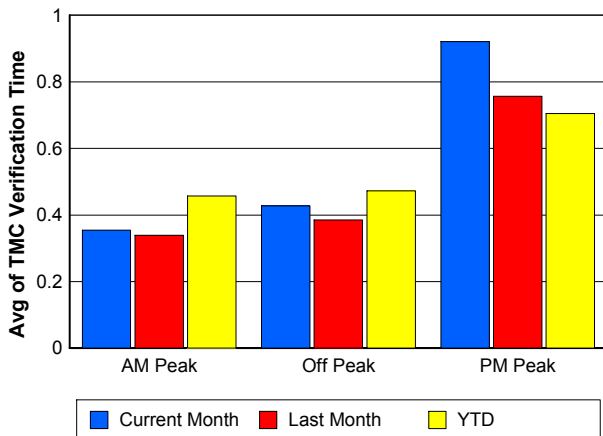
### Number of Events / Peak Period



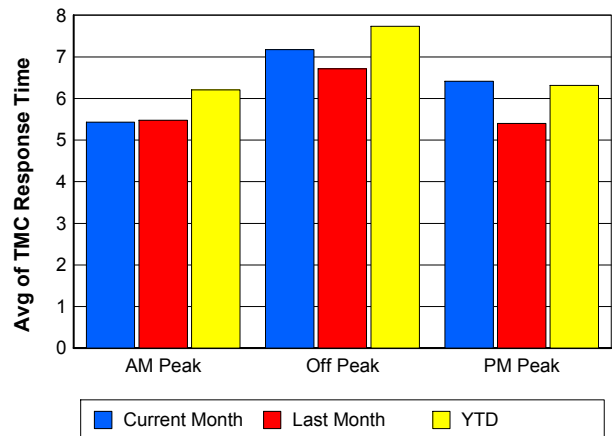
### TMC Detection Time



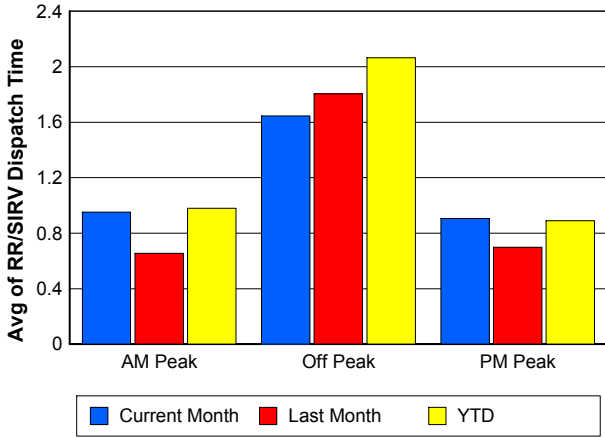
### TMC Verification Time



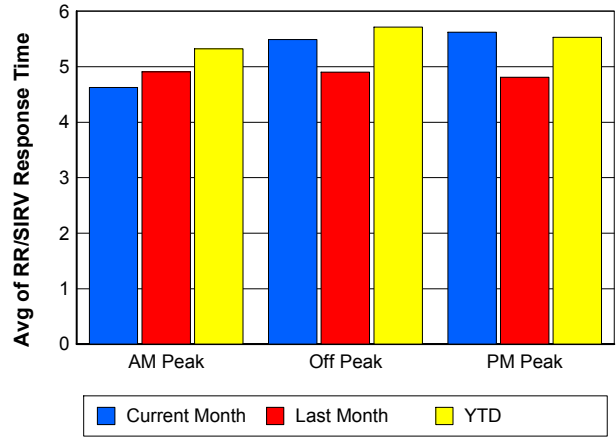
### TMC Response Time



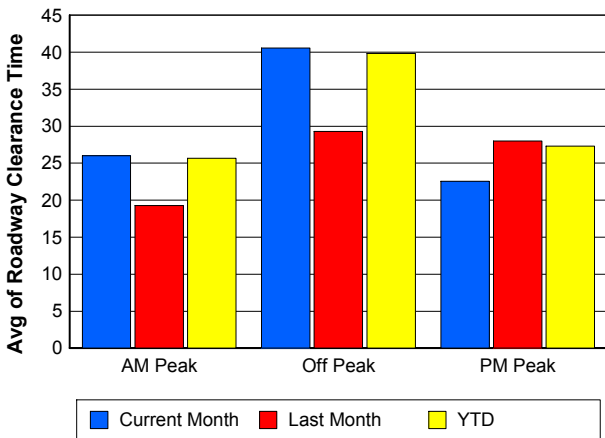
## Road Ranger / SIRV Dispatch Time



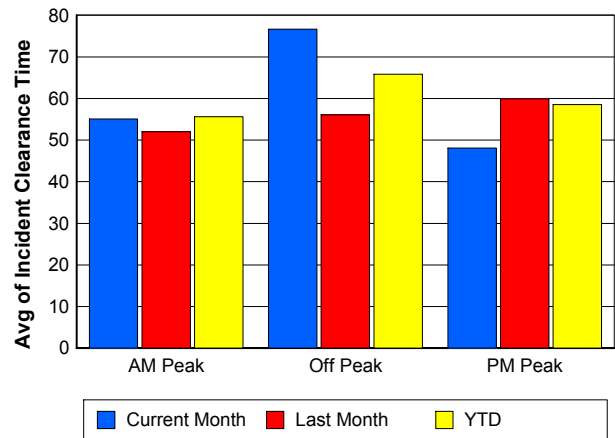
## Road Ranger / SIRV Response Time



## Roadway Clearance Time (2A)



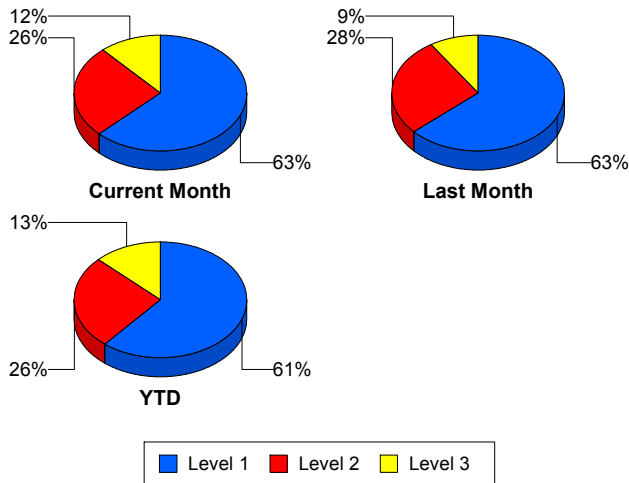
## Incident Clearance Time (3B)



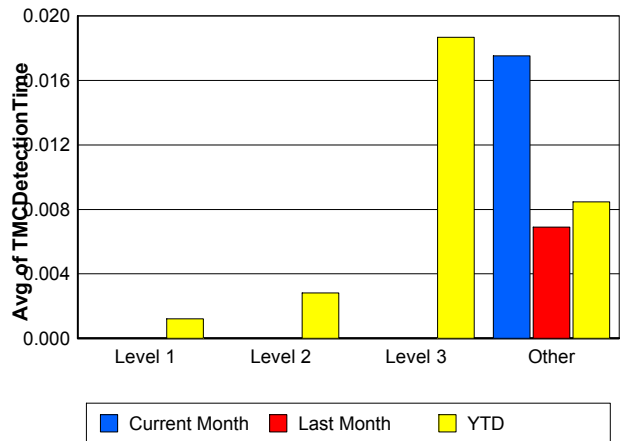
## Performance Measures by Severity

	Level 1			Level 2			Level 3			Other		
	<u>This Month</u>	<u>Last Month</u>	<u>YTD</u>	<u>This Month</u>	<u>Last Month</u>	<u>YTD</u>	<u>This Month</u>	<u>Last Month</u>	<u>YTD</u>	<u>This Month</u>	<u>Last Month</u>	<u>YTD</u>
Number of Events	130	110	624	54	48	267	24	16	132	4,128	3,913	21,089
Number of Incidents	130	110	624	54	48	267	24	16	132	0	0	0
TMC Detection (min.)	0.00	0.00	0.00	0.00	0.00	0.00	0.00	0.00	0.02	0.02	0.01	0.01
TMC Verification (min.)	0.37	0.36	0.47	1.11	0.22	0.91	0.86	3.19	1.85	0.53	0.48	0.52
TMC Response (min.)	7.74	5.33	6.95	7.59	8.82	10.57	35.78	13.93	27.12	6.11	5.87	6.59
RR Dispatch Time (min.)	1.80	1.23	1.64	3.75	2.08	3.99	21.52	3.26	11.16	1.02	1.09	1.27
RR Resp. Time (min.)	5.95	4.16	5.36	5.98	6.74	7.25	11.13	11.06	15.26	5.19	4.85	5.44
Event Clearance (min.)	49.55	43.36	47.09	68.26	78.25	73.84	121.83	79.96	103.92	23.73	21.51	22.36
Roadway Clear. (min.)	13.61	13.64	14.29	45.65	48.49	49.26	98.04	52.71	89.07			
Incident Clearance (min.)	49.55	43.36	47.09	68.26	78.25	73.84	121.83	79.96	103.92			
# of Events w/ RR/SIRV	94	74	453	27	20	122	19	13	109	2,577	2,749	13,126
RR/SIRV Responses	94	74	453	27	20	122	19	13	109	2,577	2,749	13,126
RR/SIRV Activities	158	131	790	79	60	348	44	29	238	2,260	2,389	11,091

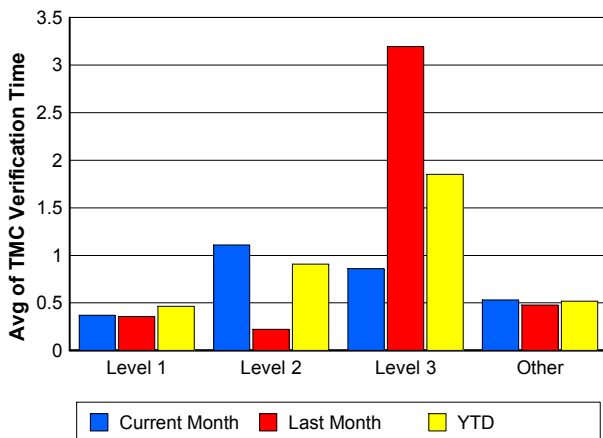
### Number of Events / Severity



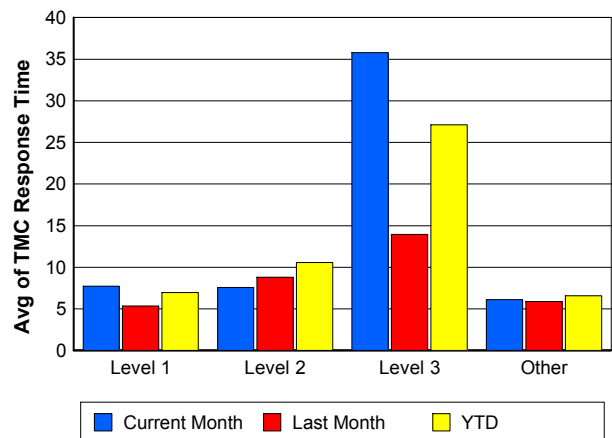
### TMC Detection Time



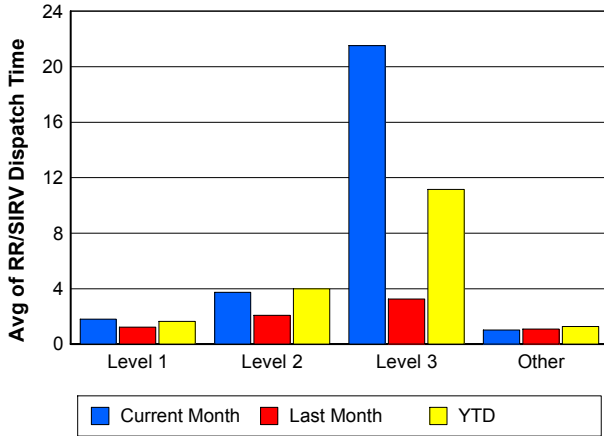
### TMC Verification Time



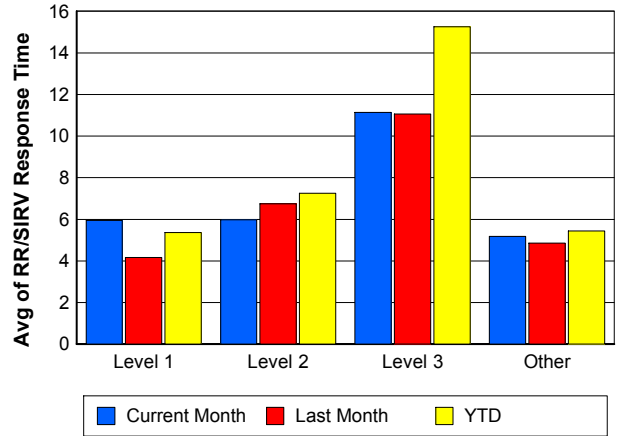
### TMC Response Time



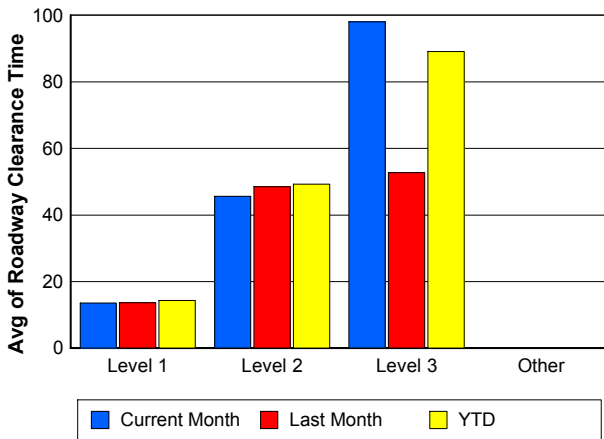
## Road Ranger / SIRV Dispatch Time



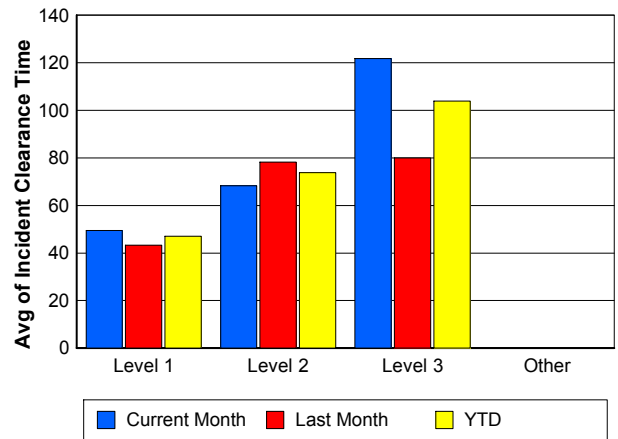
## Road Ranger / SIRV Response Time



## Roadway Clearance Time (2A)



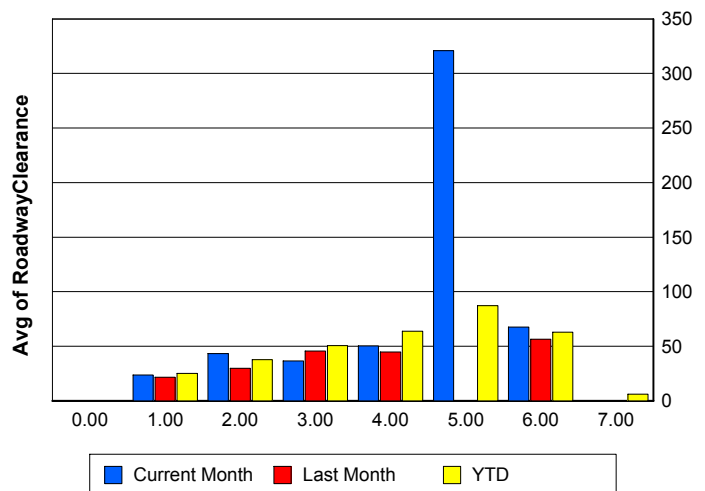
## Incident Clearance Time (3B)



## Roadway Clearance by Maximum Number of Lanes Blocked

	Current Month	Last Month	YTD
0			
1	23.71	21.72	25.17
2	43.16	29.93	37.67
3	36.51	45.73	50.68
4	50.34	44.66	63.85
5	321.05	0.00	87.07
6	67.62	56.42	62.91
7	0.00	0.00	5.97

## Roadway Clearance Time (2A)



## Performance Measures by Roadway

**595**

	<u>Current Month</u>	<u>Last Month</u>	<u>YTD</u>
Number of Events	568	576	3,011
Number of Incidents	44	33	193
TMC Detection (min.)	0.00	0.00	0.01
TMC Verification (min.)	0.94	0.53	0.67
TMC Response (min.)	5.91	6.18	6.52
RR Dispatch Time (min.)	1.26	1.05	1.15
RR Resp. Time (min.)	4.78	5.17	5.42
Event Clearance (min.)	23.18	19.35	21.77
Roadway Clear. (min.)	25.98	29.30	28.92
Incident Clearance (min.)	56.73	40.17	53.59
# of Events w/ RR/SIRV	408	430	2,028
RR/SIRV Responses	408	430	2,028
RR/SIRV Activities	377	386	1,865

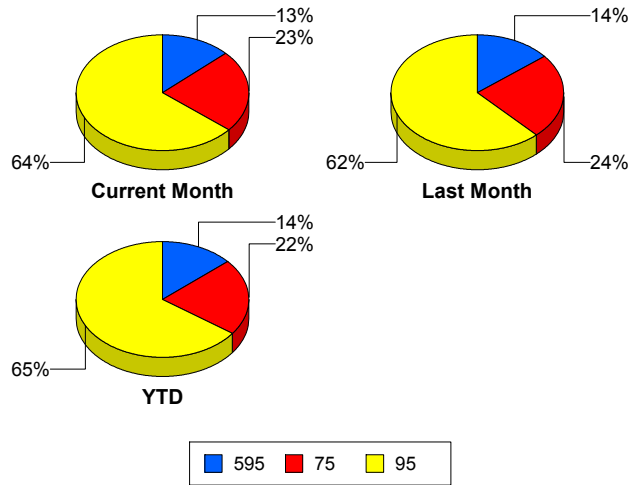
**75**

	<u>Current Month</u>	<u>Last Month</u>	<u>YTD</u>
Number of Events	995	984	4,755
Number of Incidents	14	15	82
TMC Detection (min.)	0.00	0.00	0.00
TMC Verification (min.)	0.81	0.43	0.68
TMC Response (min.)	8.74	7.11	8.24
RR Dispatch Time (min.)	1.64	0.80	1.32
RR Resp. Time (min.)	7.02	6.40	6.92
Event Clearance (min.)	30.30	24.60	26.38
Roadway Clear. (min.)	84.11	42.34	71.08
Incident Clearance (min.)	117.82	90.70	92.05
# of Events w/ RR/SIRV	548	634	2,938
RR/SIRV Responses	548	634	2,938
RR/SIRV Activities	480	537	2,482

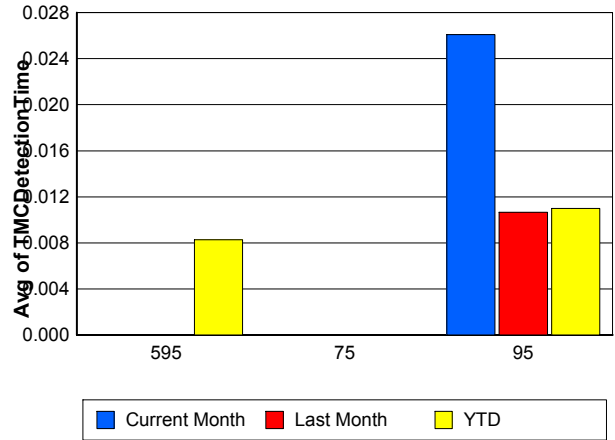
**95**

	<u>Current Month</u>	<u>Last Month</u>	<u>YTD</u>
Number of Events	2,773	2,527	14,346
Number of Incidents	150	126	748
TMC Detection (min.)	0.03	0.01	0.01
TMC Verification (min.)	0.36	0.49	0.45
TMC Response (min.)	5.82	5.46	6.45
RR Dispatch Time (min.)	1.07	1.24	1.46
RR Resp. Time (min.)	4.85	4.30	5.13
Event Clearance (min.)	24.40	23.19	23.94
Roadway Clear. (min.)	28.44	24.36	29.96
Incident Clearance (min.)	59.44	56.50	60.08
# of Events w/ RR/SIRV	1,761	1,792	8,844
RR/SIRV Responses	1,761	1,792	8,844
RR/SIRV Activities	1,684	1,686	8,120

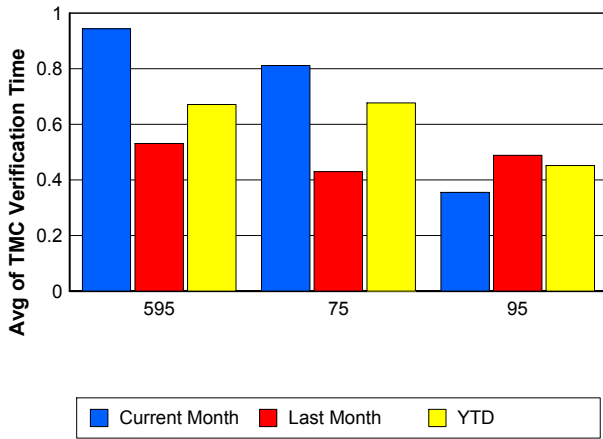
## Number of Events / Roadway



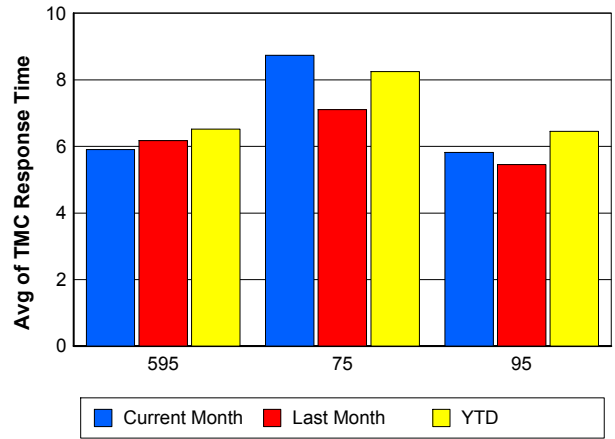
## TMC Detection Time



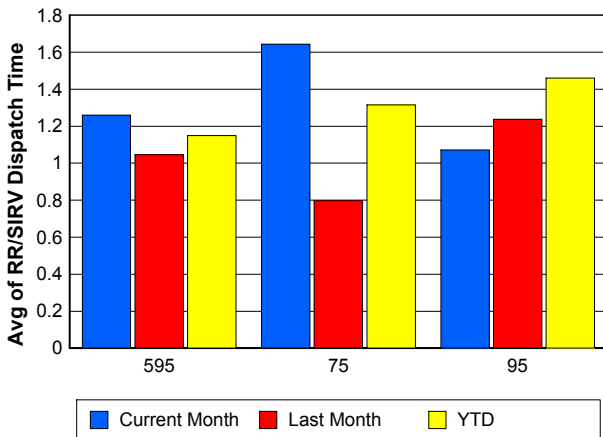
## TMC Verification Time



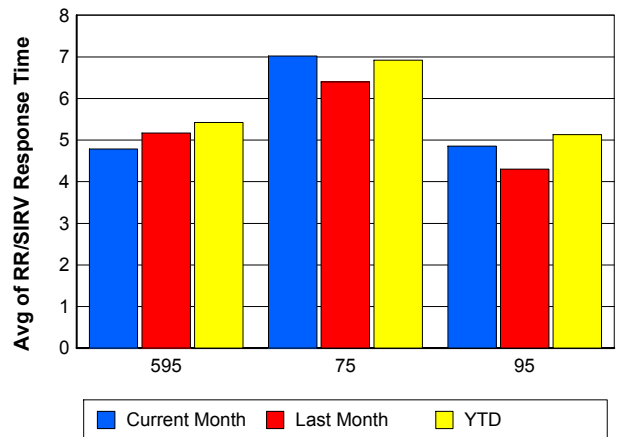
## TMC Response Time



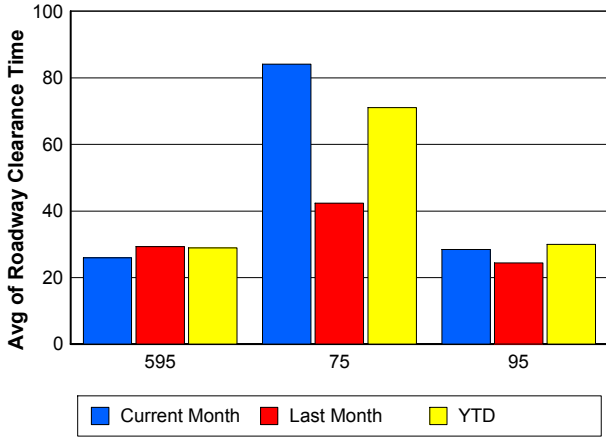
## Road Ranger / SIRV Dispatch Time



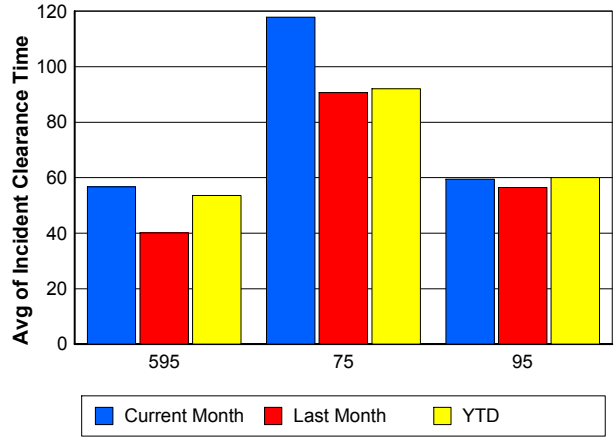
## Road Ranger / SIRV Response Time



## Roadway Clearance Time (2A)



## Incident Clearance Time (3B)



## Performance Measures by Event Type

### Accident

	<u>Current Month</u>	<u>Last Month</u>	<u>YTD</u>
Number of Events	316	244	1,532
Number of Incidents	155	121	718
TMC Detection (min.)	0.00	0.07	0.01
TMC Verification (min.)	0.61	0.71	0.75
TMC Response (min.)	7.50	7.32	8.55
RR Dispatch Time (min.)	1.50	1.11	1.71
RR Response Time (min.)	6.19	6.26	6.93
Event Clearance (min.)	56.03	56.28	56.20
Roadway Clearance (min.)	31.91	29.91	34.55
Incident Clearance (min.)	68.48	63.78	67.99
# of Events w/ RR/SIRV	221	174	1,074
RR/SIRV Assists	221	174	1,074
RR/SIRV Activities	343	275	1,646

### Debris on Roadway

	<u>Current Month</u>	<u>Last Month</u>	<u>YTD</u>
Number of Events	120	109	560
Number of Incidents	1	4	11
TMC Detection (min.)	0.60	0.00	0.17
TMC Verification (min.)	3.31	2.98	4.04
TMC Response (min.)	6.19	4.78	7.28
RR Dispatch Time (min.)	0.94	0.46	0.96
RR Response Time (min.)	5.25	4.36	6.32
Event Clearance (min.)	11.85	10.20	11.57
Roadway Clearance (min.)	40.08	56.04	32.86
Incident Clearance (min.)	46.48	57.17	38.19
# of Events w/ RR/SIRV	113	101	515
RR/SIRV Assists	113	101	515
RR/SIRV Activities	120	111	536

### Disabled Vehicle

	<u>Current Month</u>	<u>Last Month</u>	<u>YTD</u>
Number of Events	2,550	2,555	12,652
Number of Incidents	39	26	169
TMC Detection (min.)	0.00	0.00	0.00
TMC Verification (min.)	0.66	0.55	0.61
TMC Response (min.)	6.21	5.31	6.29
RR Dispatch Time (min.)	1.18	0.74	1.13
RR Response Time (min.)	5.07	4.60	5.18
Event Clearance (min.)	29.54	25.28	27.48
Roadway Clearance (min.)	32.03	13.34	20.03
Incident Clearance (min.)	46.77	45.91	39.75
# of Events w/ RR/SIRV	1,913	2,061	9,406
RR/SIRV Assists	1,913	2,061	9,406
RR/SIRV Activities	1,965	2,077	9,591

## Emergency Vehicles

	<u>Current Month</u>	<u>Last Month</u>	<u>YTD</u>
Number of Events	2	5	35
Number of Incidents	1	4	27
TMC Detection (min.)	0.00	0.00	0.00
TMC Verification (min.)	0.00	0.00	1.07
TMC Response (min.)	1.08	3.37	15.83
RR Dispatch Time (min.)	1.02	2.20	10.86
RR Response Time (min.)	0.07	1.76	4.17
Event Clearance (min.)	23.22	9.53	55.93
Roadway Clearance (min.)	14.18	7.83	59.05
Incident Clearance (min.)	23.48	11.30	64.92
# of Events w/ RR/SIRV	1	3	23
RR/SIRV Assists	1	3	23
RR/SIRV Activities	1	2	39

## Other

	<u>Current Month</u>	<u>Last Month</u>	<u>YTD</u>
Number of Events	1,326	1,136	7,065
Number of Incidents	3	5	18
TMC Detection (min.)	0.00	0.00	0.00
TMC Verification (min.)	0.04	0.04	0.06
TMC Response (min.)	7.91	15.43	11.45
RR Dispatch Time (min.)	1.26	2.78	2.08
RR Response Time (min.)	7.04	7.94	7.81
Event Clearance (min.)	11.84	11.73	11.72
Roadway Clearance (min.)	8.12	15.39	21.35
Incident Clearance (min.)	10.51	20.24	25.90
# of Events w/ RR/SIRV	459	494	2,656
RR/SIRV Assists	459	494	2,656
RR/SIRV Activities	101	112	478

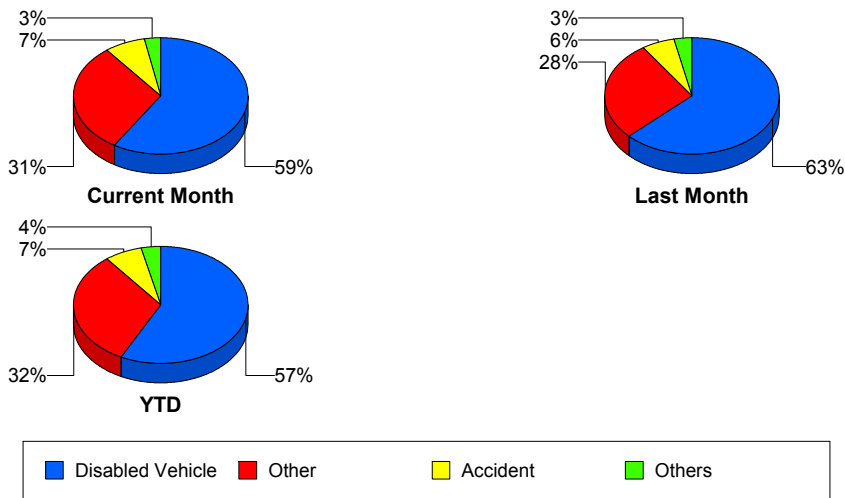
## Police Activity

	<u>Current Month</u>	<u>Last Month</u>	<u>YTD</u>
Number of Events	7	11	123
Number of Incidents	3	5	37
TMC Detection (min.)	0.00	0.00	0.00
TMC Verification (min.)	0.00	0.00	0.19
TMC Response (min.)	13.97	0.00	14.34
RR Dispatch Time (min.)	9.31	0.13	5.57
RR Response Time (min.)	12.63	0.00	8.96
Event Clearance (min.)	43.01	27.07	35.58
Roadway Clearance (min.)	52.32	17.80	38.56
Incident Clearance (min.)	55.80	24.95	49.23
# of Events w/ RR/SIRV	3	4	36
RR/SIRV Assists	3	4	36
RR/SIRV Activities	3	5	44

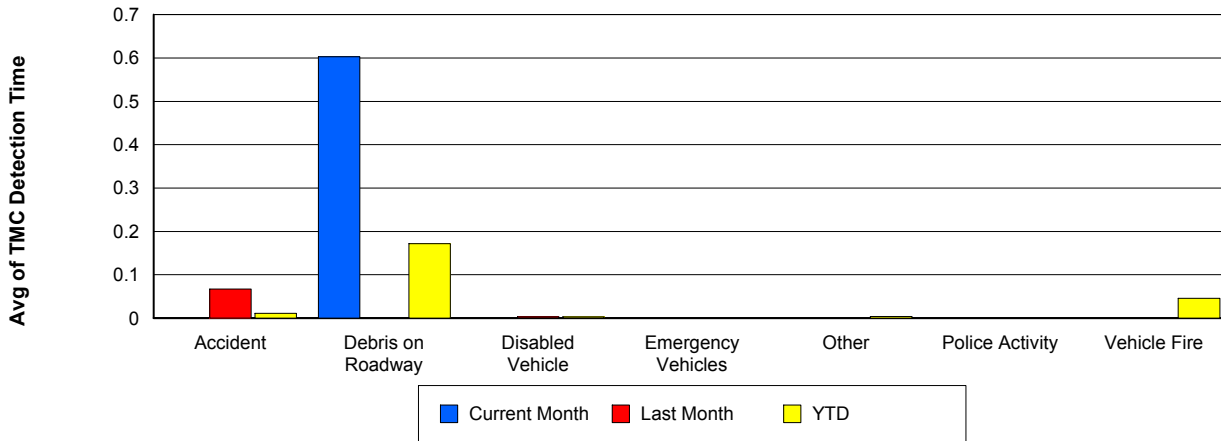
## Vehicle Fire

	<u>Current Month</u>	<u>Last Month</u>	<u>YTD</u>
Number of Events	7	11	54
Number of Incidents	6	9	43
TMC Detection (min.)	0.00	0.00	0.05
TMC Verification (min.)	0.12	0.09	1.73
TMC Response (min.)	5.19	7.71	12.65
RR Dispatch Time (min.)	0.87	4.73	2.90
RR Response Time (min.)	4.34	2.65	10.50
Event Clearance (min.)	61.12	47.46	64.14
Roadway Clearance (min.)	26.00	31.61	43.38
Incident Clearance (min.)	60.52	43.82	66.08
# of Events w/ RR/SIRV	4	5	35
RR/SIRV Assists	4	5	35
RR/SIRV Activities	5	11	73

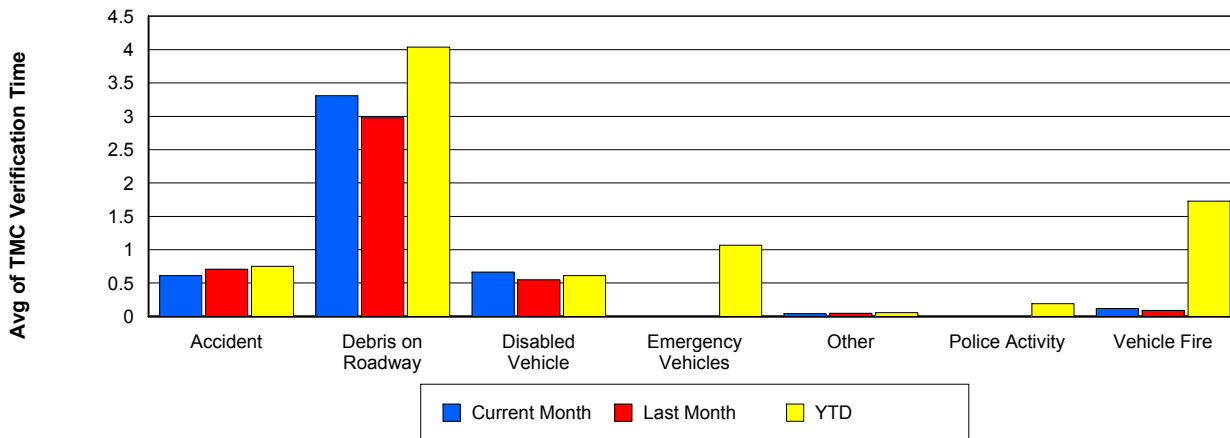
## Number of Events / Event Type



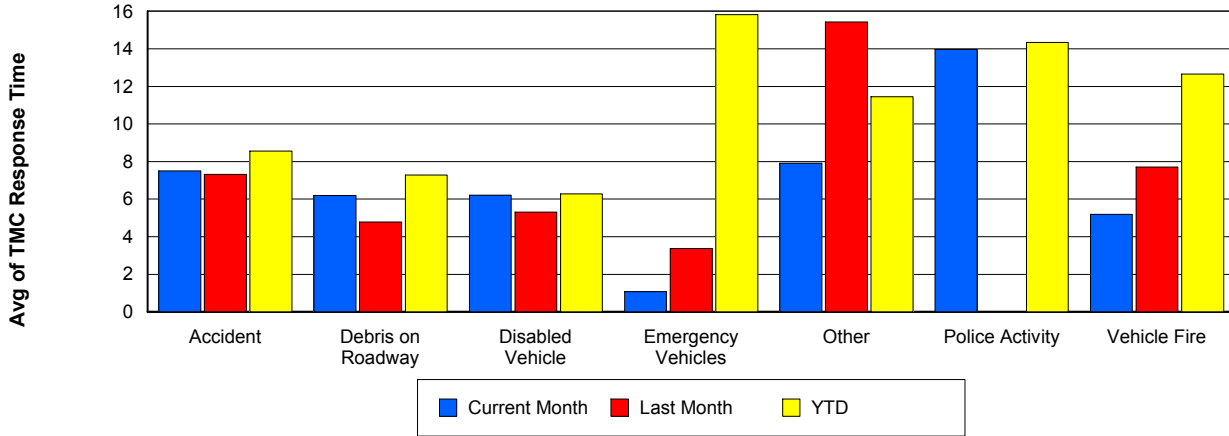
## TMC Detection Time



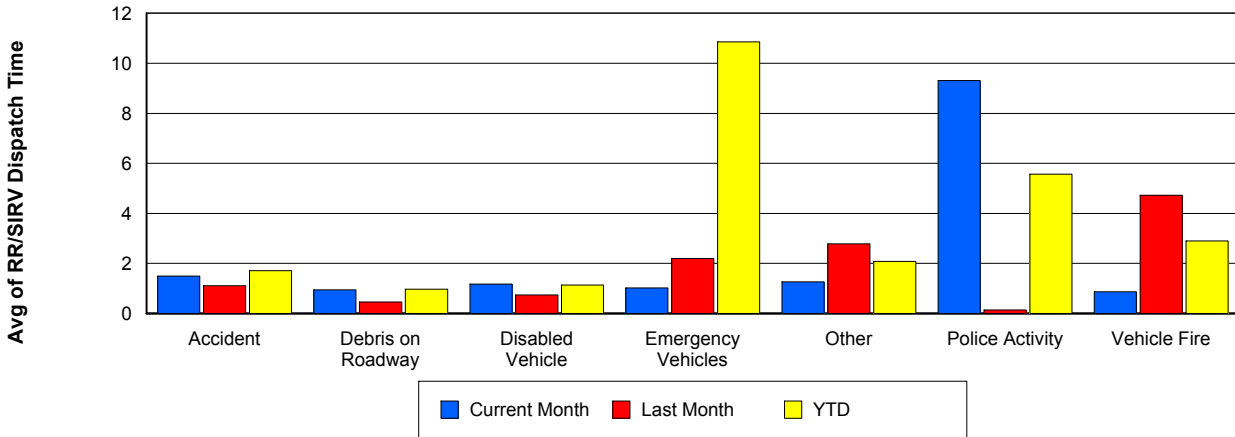
## TMC Verification Time



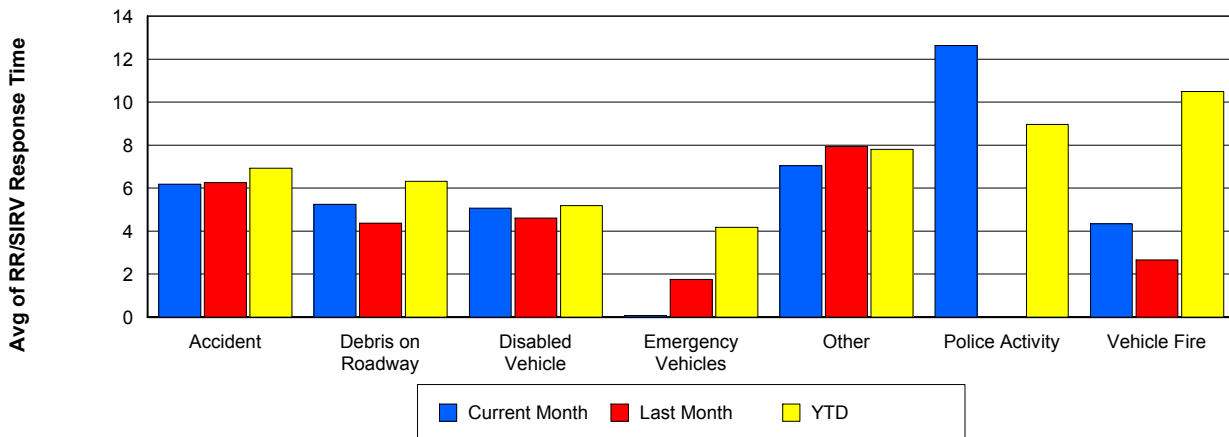
## TMC Response Time



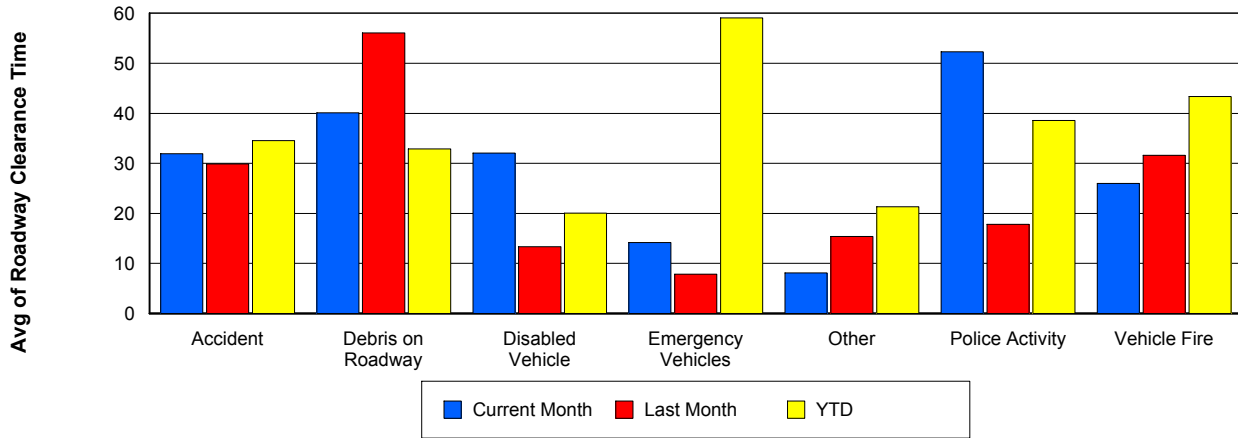
## Road Ranger / SIRV Dispatch Time



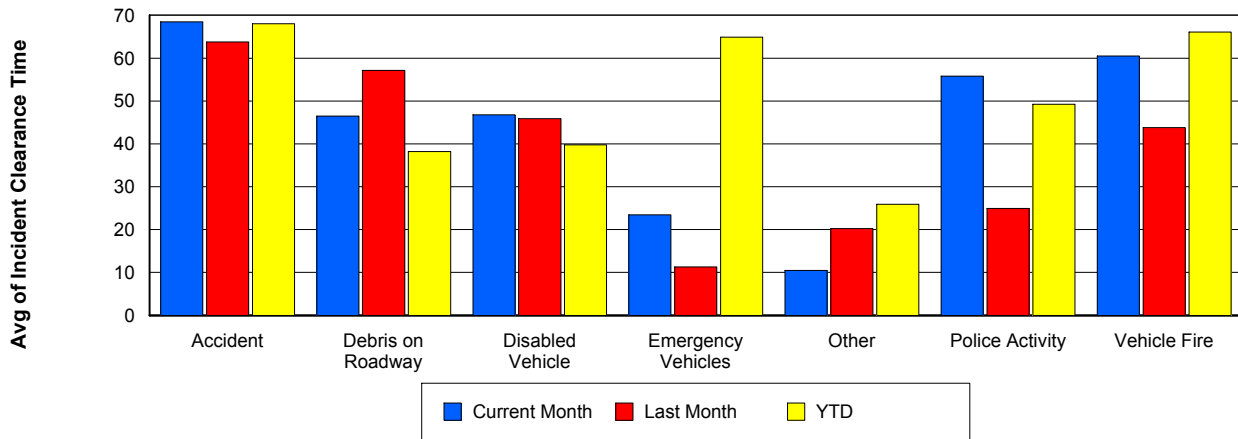
## Road Ranger / SIRV Response Time



## Roadway Clearance Time (2A)



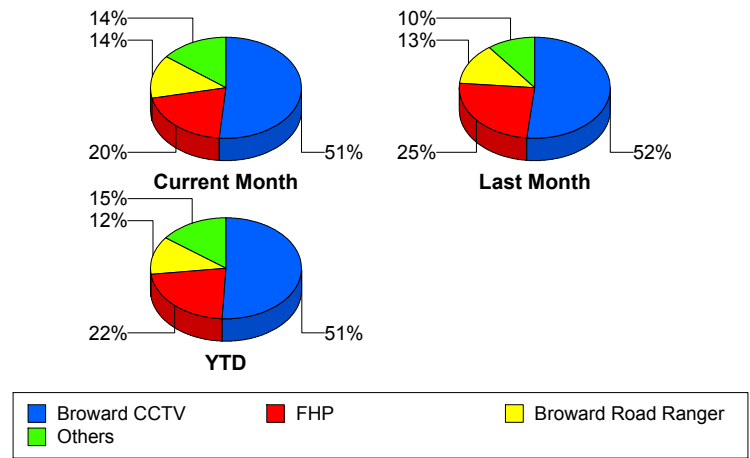
## Incident Clearance Time (3B)



## Incident Detection Methods

	Current Month	Last Month	YTD
Broward CCTV	107	90	520
Broward Road Ranger	29	23	125
Broward VideoWall	4	4	43
BSO	2	2	22
District 4	10	7	32
District 6	0	0	1
FDOT Maintenance	1	0	3
FHP	42	43	227
Fire	0	0	1
Florida's Turnpike	3	0	6
ITMS	0	0	1
Motorist	3	0	4
Other	0	0	1
Palm Beach Road Ran	0	0	2
Road Watcher	2	1	11
SIRV	1	1	4
SmarTraveler (511)	0	1	6
VisioPaD Detection	4	2	14
<b>Total</b>	<b>208</b>	<b>174</b>	<b>1,023</b>

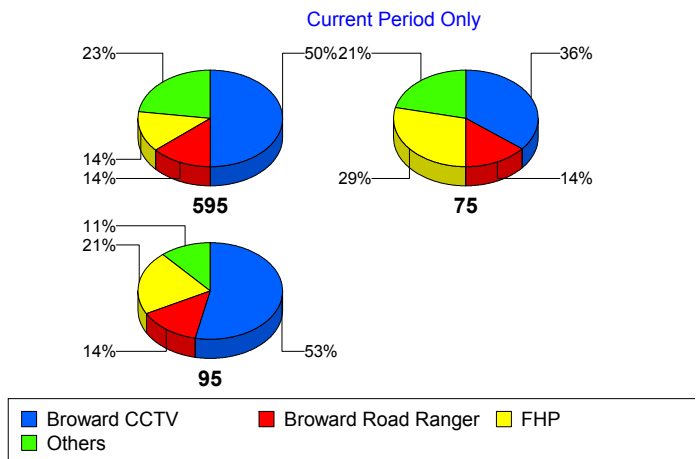
### Total Incidents by Detection Method



## Incident Detection Methods by Roadway

		Current Month	Last Month	YTD
595	Broward CCTV	22	20	87
	Broward Road Ranger	6	6	32
	Broward VideoWall	1	1	7
	BSO	0	0	2
	District 4	2	1	10
	FDOT Maintenance	1	0	2
	FHP	6	3	38
	Florida's Turnpike	3	0	6
	Motorist	1	0	2
	Road Watcher	1	0	3
	VisioPaD Detection	1	2	4
	<b>Total</b>	<b>44</b>	<b>33</b>	<b>193</b>
	75	Broward CCTV	5	6
Broward Road Ranger		2	2	8
BSO		1	2	19
District 4		2	0	3
FHP		4	5	18
Other		0	0	1
Road Watcher		0	0	2
<b>Total</b>		<b>14</b>	<b>15</b>	<b>82</b>
95	Broward CCTV	80	64	402
	Broward Road Ranger	21	15	85
	Broward VideoWall	3	3	36
	BSO	1	0	1
	District 4	6	6	19
	District 6	0	0	1
	FDOT Maintenance	0	0	1
	FHP	32	35	171
	Fire	0	0	1
	ITMS	0	0	1
	Motorist	2	0	2

Total Events by Roadway and Detection Method

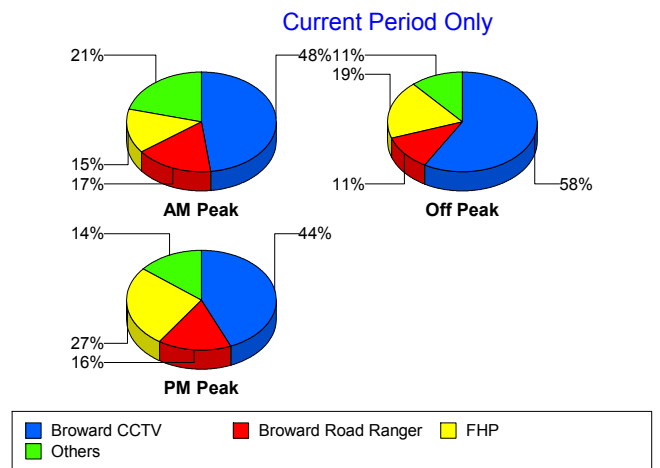


		Current Month	Last Month	YTD
95	Palm Beach Road Ran	0	0	2
	Road Watcher	1	1	6
	SIRV	1	1	4
	SmarTraveler (511)	0	1	6
	VisioPaD Detection	3	0	10
	Total	150	126	748
Total		208	174	1,023

### Incident Detection Methods by Peak Period

		Current Month	Last Month	YTD
AM Peak	Broward CCTV	23	17	97
	Broward Road Ranger	8	6	38
	Broward VideoWall	2	0	14
	BSO	0	0	3
	District 4	4	1	11
	FHP	7	11	58
	Florida's Turnpike	2	0	2
	Motorist	2	0	3
	Palm Beach Road Ran	0	0	1
	Road Watcher	0	0	4
	SIRV	0	1	1
	SmarTraveler (511)	0	0	1
	Total	48	36	233
	Off Peak	Broward CCTV	56	49
Broward Road Ranger		11	4	39
Broward VideoWall		2	3	25
BSO		1	2	18
District 4		3	3	10
FDOT Maintenance		1	0	2
FHP		18	24	109
Florida's Turnpike		0	0	3
ITMS		0	0	1

Total Events by Peak Period and Detection Method

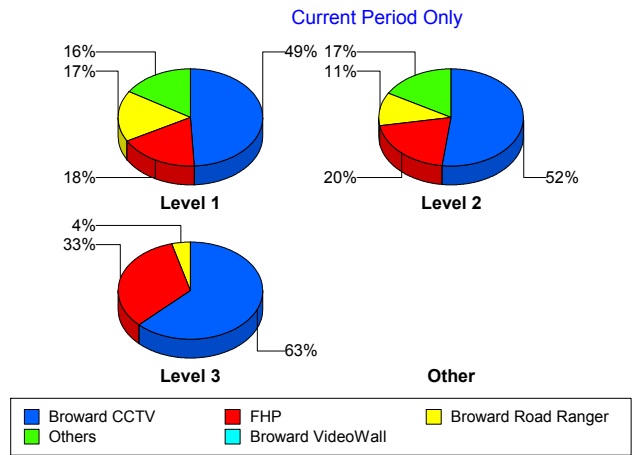


		Current Month	Last Month	YTD
Off Peak	Motorist	1	0	1
	Road Watcher	0	1	4
	SmarTraveler (511)	0	0	3
	VisioPaD Detection	3	2	12
	<b>Total</b>	<b>96</b>	<b>88</b>	<b>500</b>
PM Peak	Broward CCTV	28	24	150
	Broward Road Ranger	10	13	48
	Broward VideoWall	0	1	4
	BSO	1	0	1
	District 4	3	3	11
	District 6	0	0	1
	FDOT Maintenance	0	0	1
	FHP	17	8	60
	Fire	0	0	1
	Florida's Turnpike	1	0	1
	Other	0	0	1
	Palm Beach Road Ran	0	0	1
	Road Watcher	2	0	3
	SIRV	1	0	3
	SmarTraveler (511)	0	1	2
	VisioPaD Detection	1	0	2
	<b>Total</b>	<b>64</b>	<b>50</b>	<b>290</b>
<b>Total</b>	<b>208</b>	<b>174</b>	<b>1,023</b>	

## Incident Detection Methods by Severity

		Current Month	Last Month	YTD
Level 1	Broward CCTV	64	58	317
	Broward Road Ranger	22	16	93
	Broward VideoWall	2	3	24
	BSO	0	0	2
	District 4	10	5	25
	FDOT Maintenance	1	0	2
	FHP	23	24	132
	Motorist	3	0	4
	Palm Beach Road Ran	0	0	2
	Road Watcher	1	1	8
	SIRV	1	1	4
	SmarTraveler (511)	0	1	4
	VisioPaD Detection	3	1	7
	<b>Total</b>	<b>130</b>	<b>110</b>	<b>624</b>
	Level 2	Broward CCTV	28	27
Broward Road Ranger		6	5	22
Broward VideoWall		2	1	16
BSO		2	0	6
District 4		0	2	4
FDOT Maintenance		0	0	1
FHP		11	12	63
Florida's Turnpike		3	0	4
ITMS		0	0	1
Other		0	0	1
Road Watcher		1	0	1
SmarTraveler (511)		0	0	2
VisioPaD Detection		1	1	6
<b>Total</b>		<b>54</b>	<b>48</b>	<b>267</b>
Level 3		Broward CCTV	15	5
	Broward Road Ranger	1	2	10
	Broward VideoWall	0	0	3

**Total Events by Severity and Detection Method**



		Current Month	Last Month	YTD
Level 3	BSO	0	2	14
	District 4	0	0	3
	District 6	0	0	1
	FHP	8	7	32
	Fire	0	0	1
	Florida's Turnpike	0	0	2
	Road Watcher	0	0	2
	VisioPaD Detection	0	0	1
	Total	24	16	132
Total		208	174	1,023

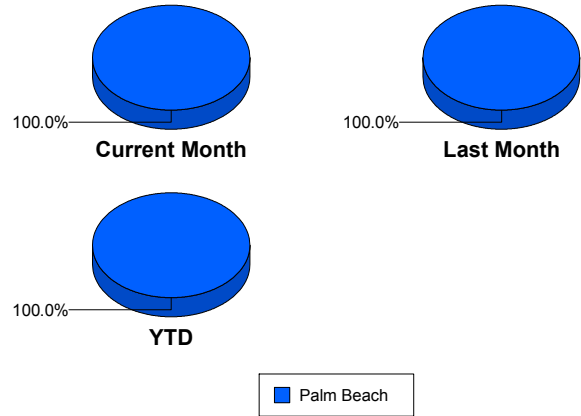
# Road Ranger / SIRV Performance Measures

## Road Ranger / SIRV Performance By County

Values presented are:  
 - Total Events with a RR/SIRV Response  
 - Total RR/SIRV Responses,  
 - Total Activities Performed

	Current Mo	Last Month	YTD
Palm Beach	1,441	1,504	6,896
	1,487	1,549	7,128
	1,576	1,656	7,609

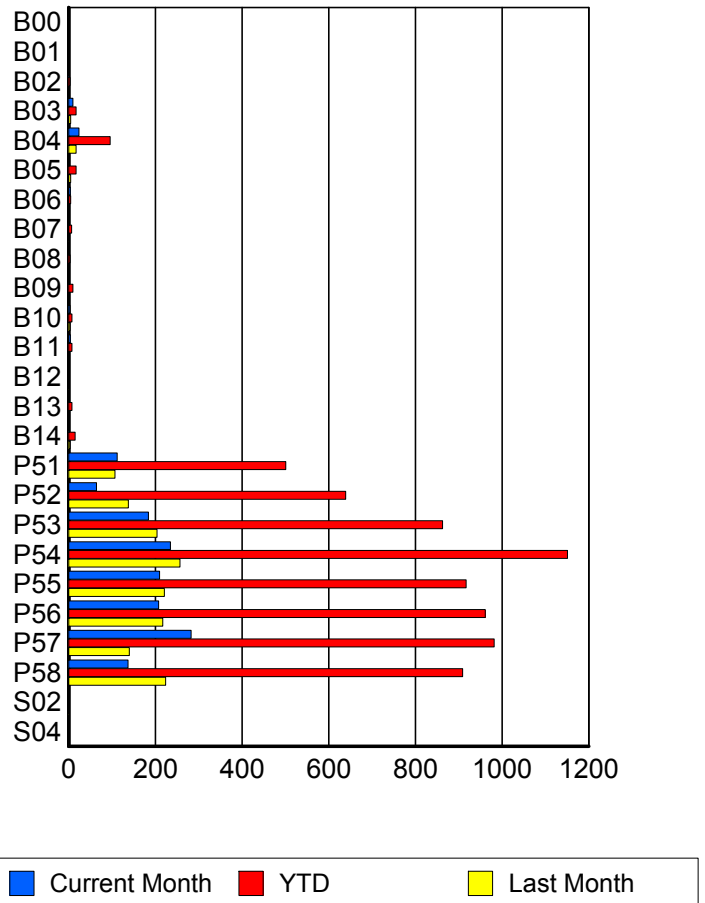
RR/SIRV Responses per County



## Road Ranger / SIRV Performance By Truck

	Current Mo	Last Month	YTD
B00	1	0	2
	1	0	2
	1	0	2
B01	0	1	1
	0	1	1
	0	1	1
B02	1	1	3
	1	1	3
	1	1	3
B03	10	5	17
	10	5	17
	11	5	18
B04	24	17	95
	24	17	96
	30	20	111
B05	1	5	16
	1	5	17
	1	6	18
B06	4	0	5
	4	0	5
	4	0	5
B07	2	1	7
	2	1	7
	2	1	7
B08	0	1	3
	0	1	3
	0	1	3

RR/SIRV Responses per Truck



	Current Mo	Last Month	YTD
B09	2	0	10
	2	0	10
	2	0	10
B10	3	3	8
	3	3	8
	3	3	8
B11	4	1	8
	4	1	8
	5	1	9
B12	0	1	2
	0	1	2
	0	1	2
B13	0	1	8
	0	1	8
	0	2	9
B14	1	3	15
	1	3	15
	1	3	16
P51	112	105	497
	112	107	501
	116	114	525
P52	64	138	635
	64	138	639
	68	143	679
P53	183	201	853
	184	204	863
	194	216	924
P54	233	254	1,141
	235	257	1,151
	248	280	1,230
P55	208	218	908
	210	221	917
	219	231	972
P56	206	216	949
	208	217	961
	220	229	1,037
P57	280	139	976
	283	140	982
	301	153	1,056
P58	133	222	897
	137	224	909
	148	244	961
S02	0	1	1
	0	1	1
	0	1	1

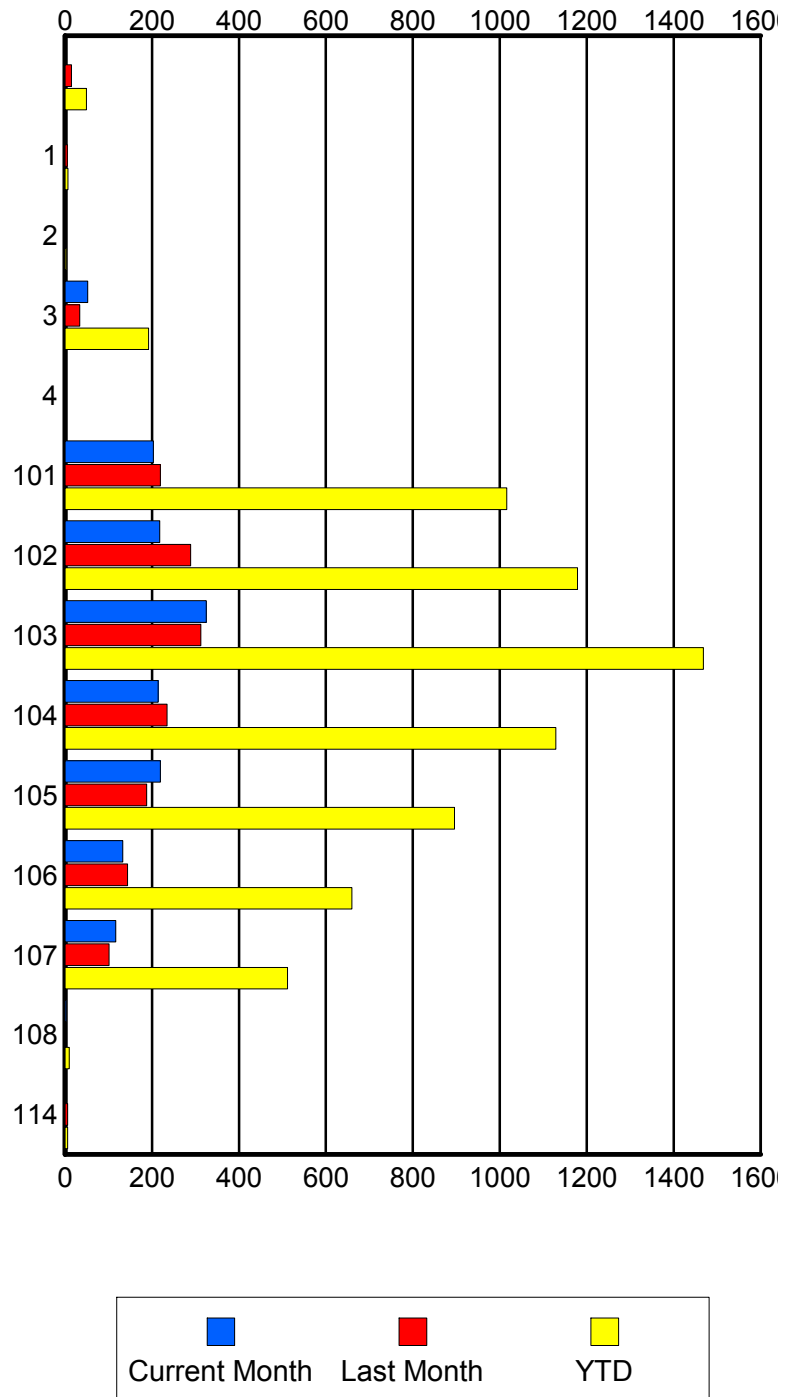
	Current Mo	Last Month	YTD
S04	1	0	2
	1	0	2
	1	0	2

### Road Ranger / SIRV Performance By Beat

	Current Mo	Last Month	YTD
	2	15	49
	2	15	49
	2	15	49
1	1	5	7
	1	5	7
	1	6	8
2	0	0	3
	0	0	3
	0	0	4
3	52	34	190
	52	34	192
	60	38	210
4	0	1	1
	0	1	1
	0	1	1
101	202	215	1,005
	203	219	1,016
	211	231	1,092
102	214	286	1,166
	218	289	1,179
	233	310	1,250
103	321	308	1,451
	325	312	1,468
	342	338	1,576
104	213	235	1,121
	214	235	1,129
	229	251	1,214
105	216	186	888
	219	188	896
	233	201	952
106	132	144	652
	133	144	660
	141	153	704
107	117	99	508
	117	101	512
	121	106	533
108	3	0	9
	3	0	10
	3	0	10
114	0	6	6
	0	6	6
	0	6	6

Values presented are:  
 - Total Events with a RR/SIRV Response  
 - Total RR/SIRV Responses,  
 - Total Activities Performed

### RR/SIRV Responses per Beat

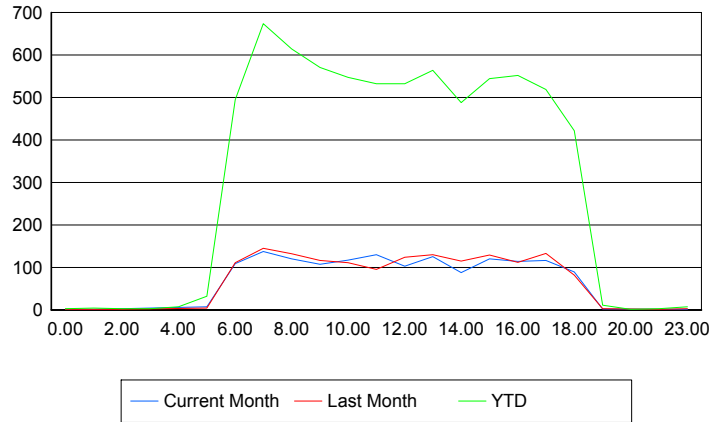


## Road Ranger / SIRV Performance By Time of Day

Values presented are:  
 - Total Events with a RR/SIRV Response  
 - Total RR/SIRV Responses,  
 - Total Activities Performed

	Current Mo	Last Month	YTD
12AM-1AM	1 1 1	1 1 1	3 3 3
1AM-2AM	1 1 1	1 1 1	4 4 4
2AM-3AM	0 0 0	1 1 1	3 3 3
3AM-4AM	0 0 0	0 0 0	3 3 3
4AM-5AM	0 0 0	0 0 0	4 7 8
5AM-6AM	7 7 7	4 4 4	30 32 32
6AM-7AM	101 109 113	108 111 115	473 495 520
7AM-8AM	131 137 148	143 145 154	647 674 722
8AM-9AM	115 120 134	129 132 138	590 614 662
9AM-10AM	103 107 112	112 116 128	553 571 627
10AM-11AM	114 117 118	106 111 116	529 547 577
11AM-12PM	127 130 137	94 95 106	516 532 578
12PM-1PM	99 103 110	119 124 132	515 532 569

## Number of Responses / Hour of the Day



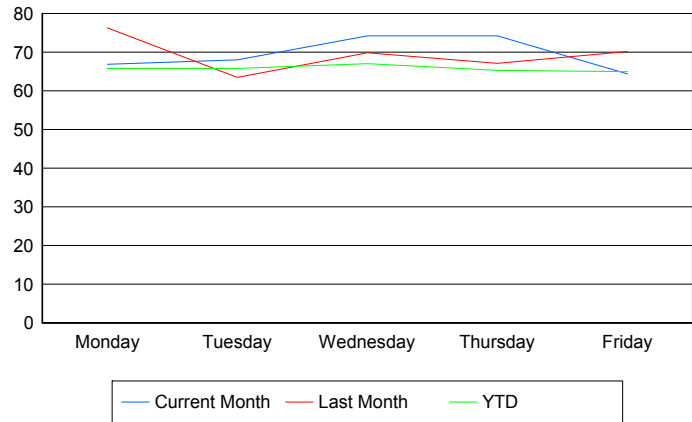
	Current Mo	Last Month	YTD
1PM-2PM	124	124	551
	125	130	564
	137	140	611
2PM-3PM	85	112	471
	88	115	488
	93	124	514
3PM-4PM	116	126	526
	120	129	544
	129	140	579
4PM-5PM	111	109	534
	114	112	552
	117	118	578
5PM-6PM	114	128	505
	116	133	519
	120	142	549
6PM-7PM	89	81	418
	89	82	422
	96	89	447
7PM-8PM	2	3	11
	2	3	11
	2	3	12
8PM-9PM	0	0	1
	0	0	1
	0	0	1
10PM-11PM	0	1	3
	0	1	3
	0	1	3
11PM-12AM	1	2	6
	1	3	7
	1	3	7

## Road Ranger / SIRV Performance By Day of Week

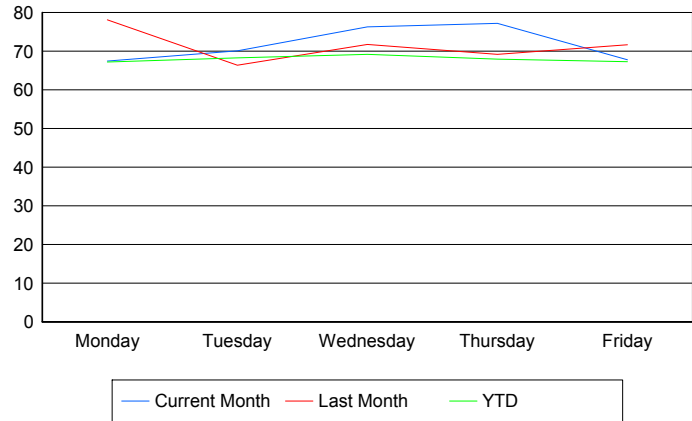
Values presented are:  
 - Total Events with a RR/SIRV Response  
 - Total RR/SIRV Responses,  
 - Total Activities Performed

	Current Mo	Last Month	YTD
Monday	261	304	1,349
	263	311	1,378
	282	327	1,461
Tuesday	270	250	1,357
	278	262	1,406
	295	279	1,500
Wednesday	296	346	1,388
	304	356	1,433
	326	383	1,538
Thursday	296	329	1,403
	308	339	1,461
	326	367	1,567
Friday	318	275	1,401
	334	281	1,450
	347	300	1,543

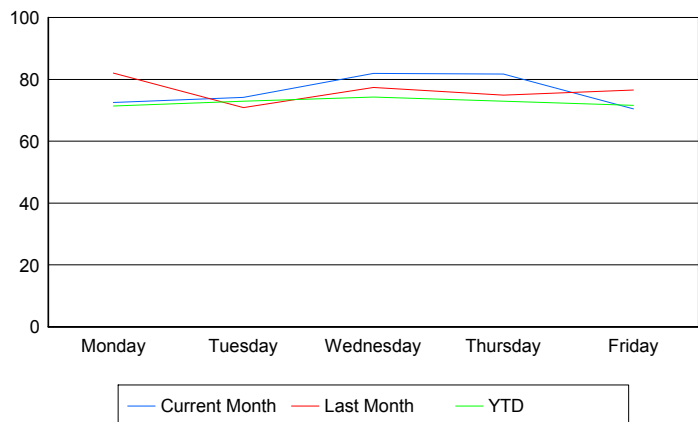
### Avg # of events with a RR/SIRV Response per Day of the Week



### Avg # of RR/SIRV Responses per Day of the Week



### Avg # of RR/SIRV Activities Performed per Day of the Week



### Road Ranger / SIRV Responses per Time of Day and Day of Week

