



# Monthly Performance Measures Report Broward County



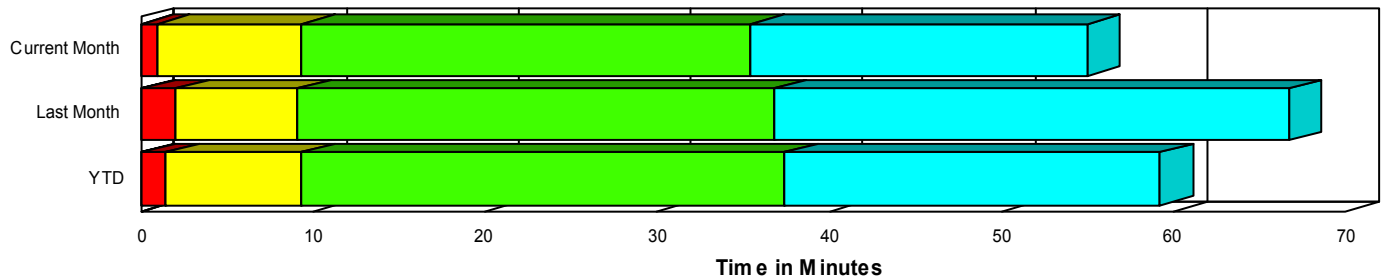
Created on:  
June 02, 2008  
9:09 am

Period From May 1, 2008 to May 31, 2008

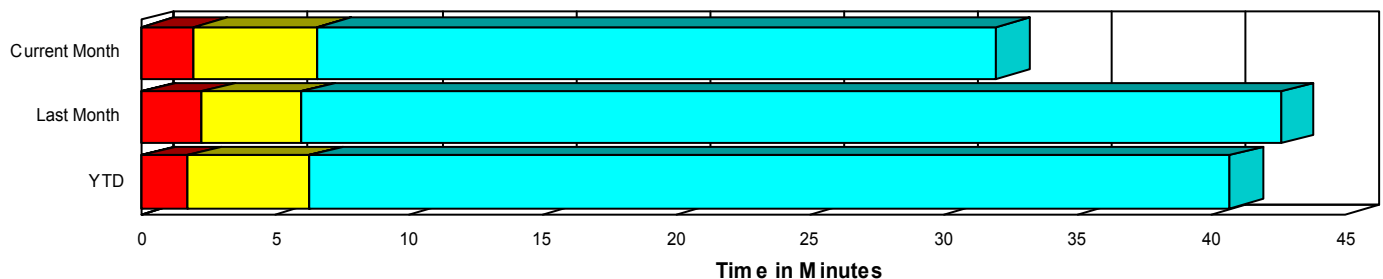
## Performance Measures Summary

	Traffic Events (No Lanes Blocked)			Incidents (Lanes Blocked)		
	<u>This Month</u>	<u>Last Month</u>	<u>YTD</u>	<u>This Month</u>	<u>Last Month</u>	<u>YTD</u>
Number of Events	4,389	3,713	21,360	202	218	1,053
TMC Detection (min.)	0.00	0.01	0.02	0.01	0.01	0.05
TMC Verification (min.)	1.96	2.24	1.73	0.91	1.98	1.42
TMC Response (min.)	6.99	6.40	6.68	9.36	9.17	9.32
RR Dispatch Time (min.)	1.66	1.15	1.48	3.00	2.71	2.85
RR Response Time (min.)	5.35	5.34	5.44	6.33	6.46	6.50
Roadway Clearance (min.)				34.24	36.47	36.58
Event Clearance (min.)	32.31	42.96	41.08	53.81	62.81	57.28
# of Events w/ RR/SIRV	4,025	3,410	17,712	195	211	1,009
RR/SIRV Responses	4,025	3,410	17,846	195	211	1,259
RR/SIRV Activities	4,052	3,455	18,001	411	425	1,990

### Incident Clearance TimeLine



### Traffic Event(Non-Lane Blockage) Time-Line



<span style="color: blue;">■</span> Avg. TMC Detection Time	<span style="color: green;">■</span> Avg. Time from TMC Response to Roadway Clearance*
<span style="color: red;">■</span> Avg. Time from TMC Detection to TMC Verification	<span style="color: cyan;">■</span> Avg. Time from Roadway Clearance to Incident/Event Clearance**
<span style="color: yellow;">■</span> Avg. Time from TMC Verification to TMC Response	

\* Roadway clearance equals all travel lanes open

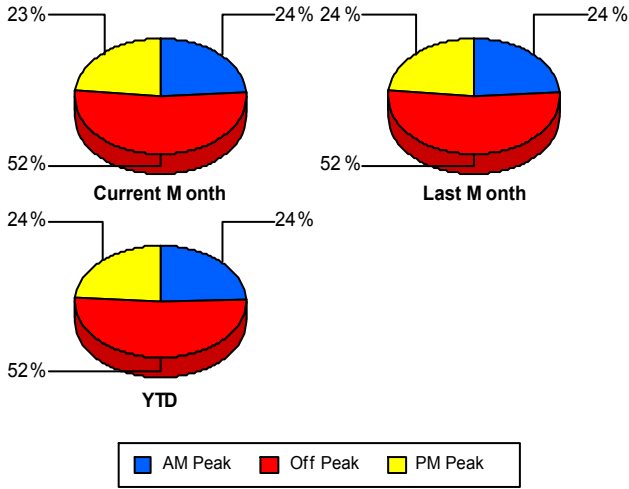
\*\* Incident clearance equals time when last responder has left the scene

## Performance Measures by Peak Period

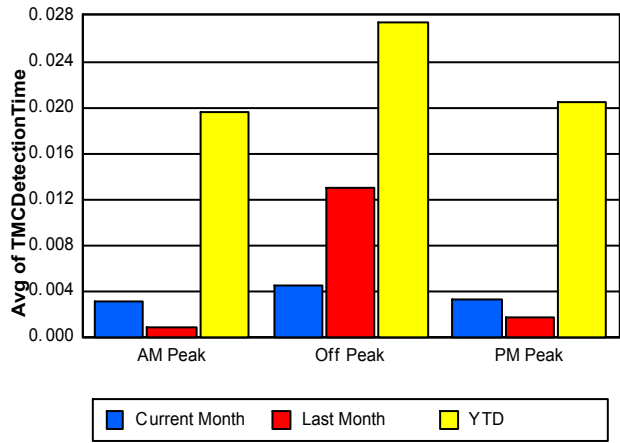
Note: AM peak period is defined as 6am to 10am and PM peak period is defined as 3pm to 7pm.

	AM Peak			Off Peak			PM Peak		
	<u>Current Month</u>	<u>Last Month</u>	<u>YTD</u>	<u>Current Month</u>	<u>Last Month</u>	<u>YTD</u>	<u>Current Month</u>	<u>Last Month</u>	<u>YTD</u>
Number of Events	1,107	948	5,460	2,407	2,050	11,628	1,077	933	5,325
Number of Incidents	43	52	244	104	123	558	55	43	251
TMC Detection (min.)	0.00	0.00	0.02	0.00	0.01	0.03	0.00	0.00	0.02
TMC Verification (min.)	0.72	1.08	0.86	2.57	2.90	2.13	1.69	1.91	1.70
TMC Response (min.)	5.54	5.03	5.59	8.01	7.68	7.59	6.83	5.84	6.56
RR Dispatch Time (min.)	0.79	0.83	1.00	1.85	1.43	1.83	2.39	1.27	1.51
RR Response Time (min.)	4.84	4.28	4.69	6.12	6.36	6.08	4.47	4.62	5.13
Event Clearance (min.)	22.83	27.16	31.11	39.28	49.76	47.50	30.53	48.73	40.49
Roadway Clearance (min.)	23.28	32.72	31.98	40.49	42.65	42.81	31.01	23.32	27.22
Incident Clearance (min.)	41.80	45.96	52.38	59.75	78.95	65.72	51.97	37.01	43.27
# of Events w/ RR/SIRV	1,033	888	4,717	2,177	1,861	9,521	1,010	872	4,483
RR/SIRV Responses	1,033	888	4,821	2,177	1,861	9,729	1,010	872	4,555
RR/SIRV Activities	1,068	941	5,002	2,274	2,009	10,154	1,121	930	4,835

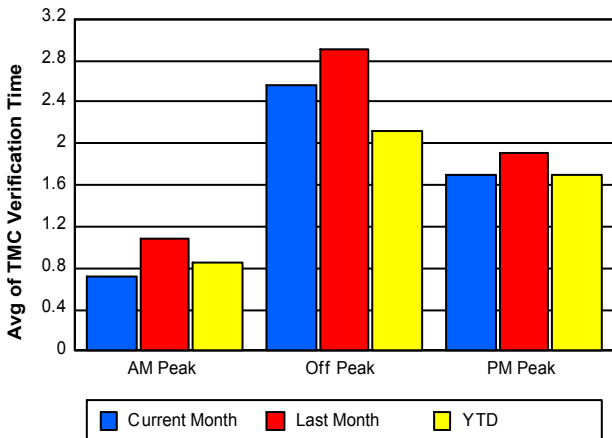
### Number of Events / Peak Period



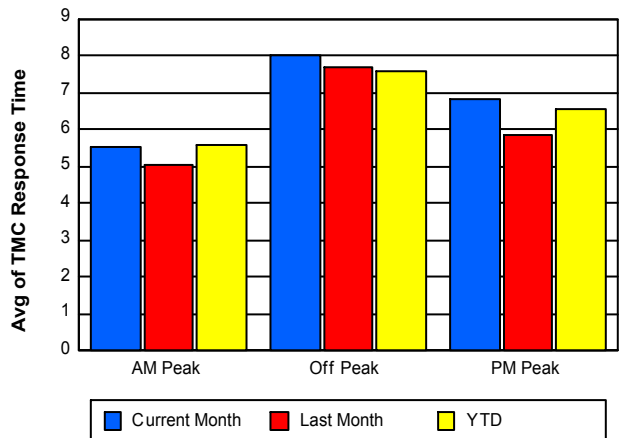
### TMC Detection Time



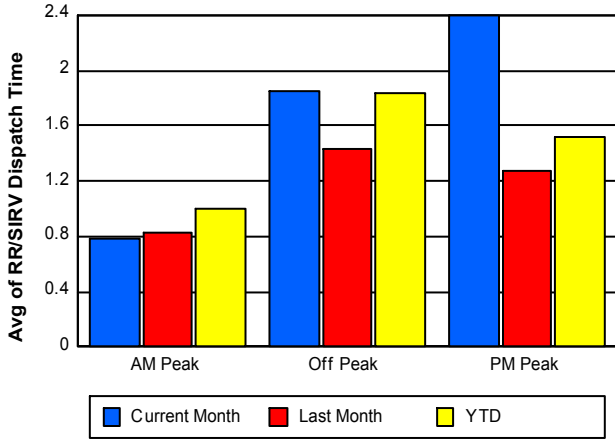
### TMC Verification Time



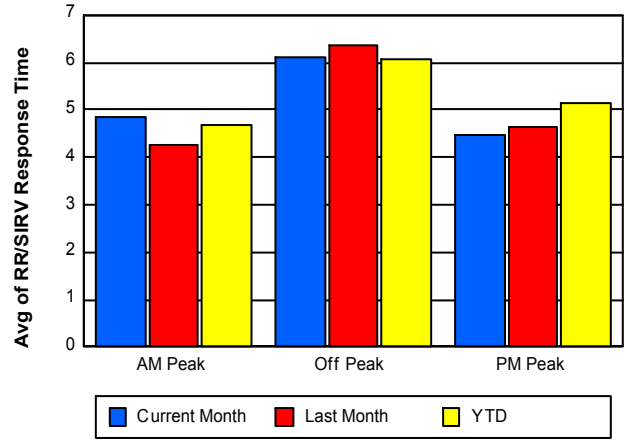
### TMC Response Time



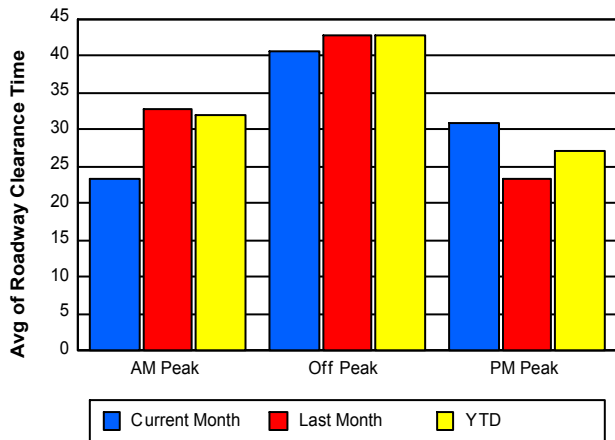
## Road Ranger / SIRV Dispatch Time



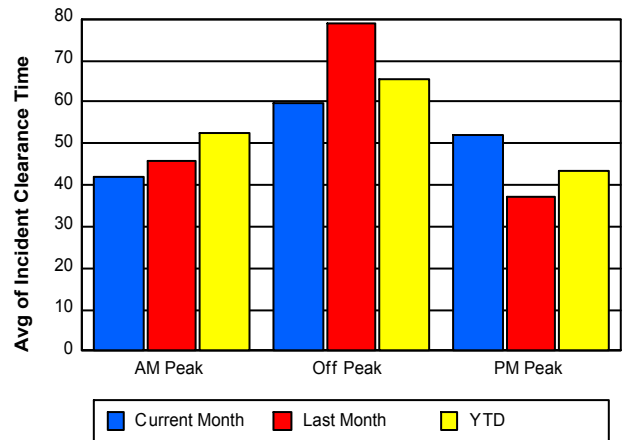
## Road Ranger / SIRV Response Time



## Roadway Clearance Time (2A)



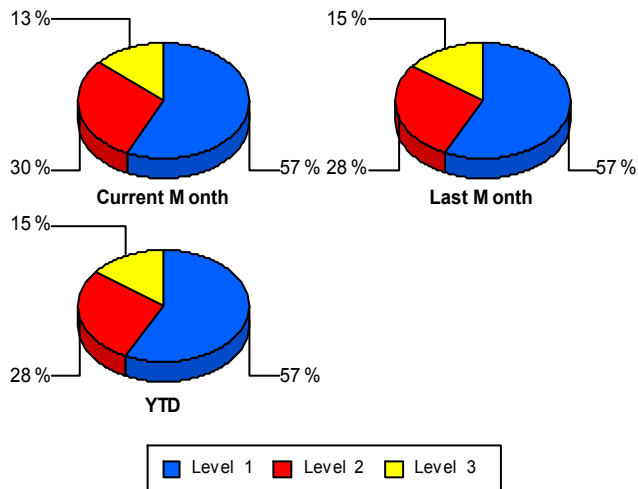
## Incident Clearance Time (3B)



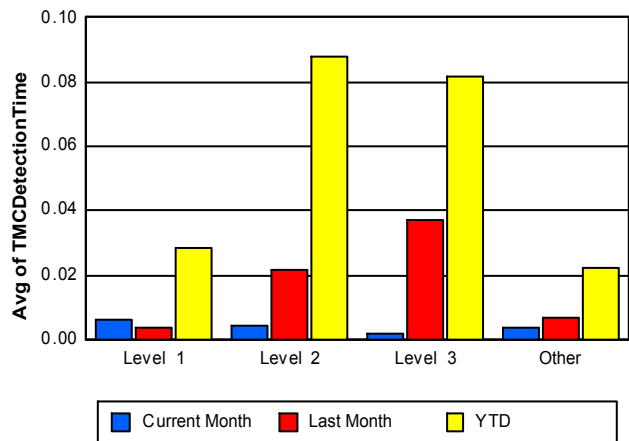
## Performance Measures by Severity

	Level 1			Level 2			Level 3			Other		
	<u>This Month</u>	<u>Last Month</u>	<u>YTD</u>	<u>This Month</u>	<u>Last Month</u>	<u>YTD</u>	<u>This Month</u>	<u>Last Month</u>	<u>YTD</u>	<u>This Month</u>	<u>Last Month</u>	<u>YTD</u>
Number of Events	115	125	602	60	61	298	27	32	153	4,389	3,713	21,360
Number of Incidents	115	125	602	60	61	298	27	32	153	0	0	0
TMC Detection (min.)	0.01	0.00	0.03	0.00	0.02	0.09	0.00	0.04	0.08	0.00	0.01	0.02
TMC Verification (min.)	0.72	1.20	0.88	0.95	3.50	2.15	1.64	2.10	2.15	1.96	2.24	1.73
TMC Response (min.)	8.90	7.46	8.12	8.92	12.20	10.92	12.47	9.97	10.76	6.99	6.40	6.68
RR Dispatch Time (min.)	2.95	2.56	2.76	2.74	3.07	2.82	3.93	2.62	3.26	1.66	1.15	1.48
RR Resp. Time (min.)	5.92	4.91	5.41	6.18	9.13	8.10	8.54	7.33	7.49	5.35	5.34	5.44
Event Clearance (min.)	39.05	59.82	43.02	69.09	61.21	65.69	82.75	77.52	96.96	32.31	42.96	41.08
Roadway Clear. (min.)	14.66	15.61	14.99	54.73	50.65	51.39	72.09	90.92	92.72			
Incident Clearance (min.)	39.05	59.82	43.02	69.09	61.21	65.69	82.75	77.52	96.96			
# of Events w/ RR/SIRV	112	121	573	59	60	294	24	30	142	4,025	3,410	17,712
RR/SIRV Responses	112	121	646	59	60	368	24	30	245	4,025	3,410	17,846
RR/SIRV Activities	182	207	920	149	128	623	80	90	447	4,052	3,455	18,001

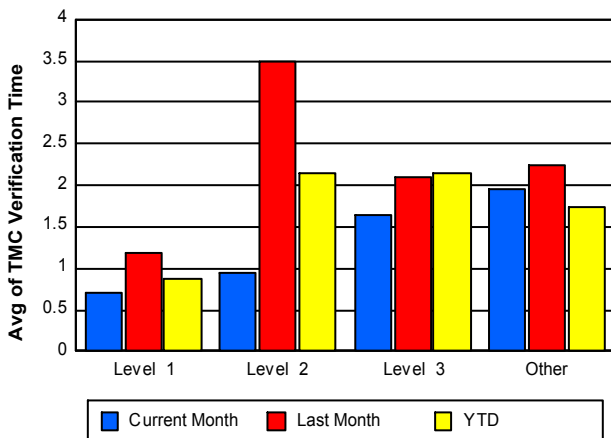
### Number of Events / Severity



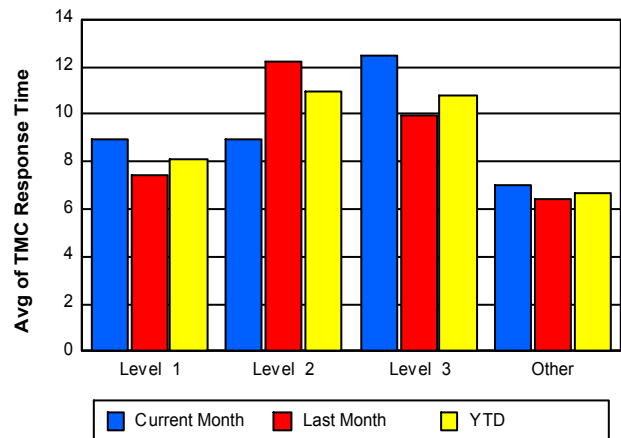
### TMC Detection Time



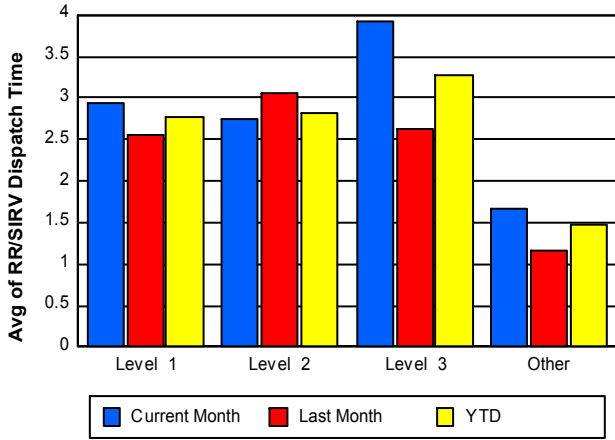
### TMC Verification Time



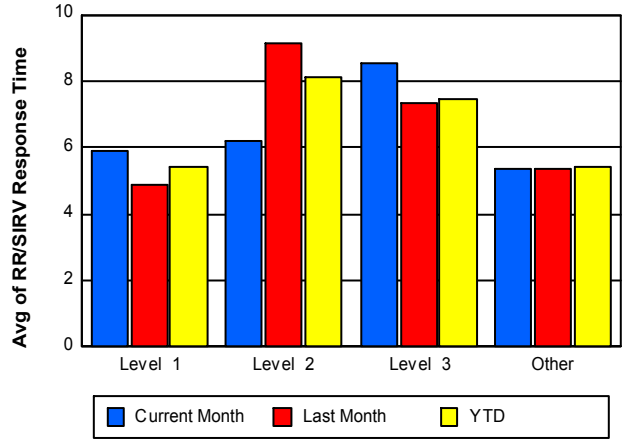
### TMC Response Time



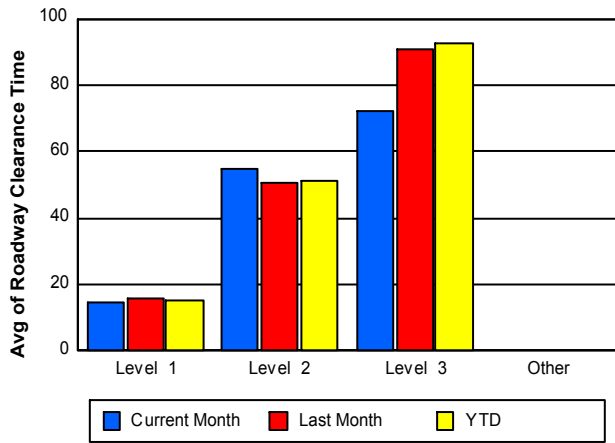
## Road Ranger / SIRV Dispatch Time



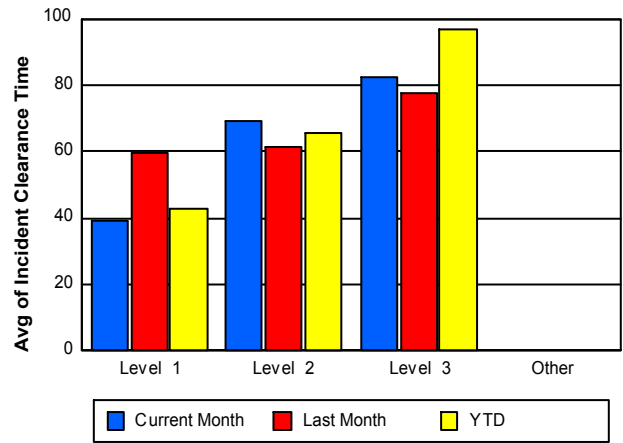
## Road Ranger / SIRV Response Time



## Roadway Clearance Time (2A)



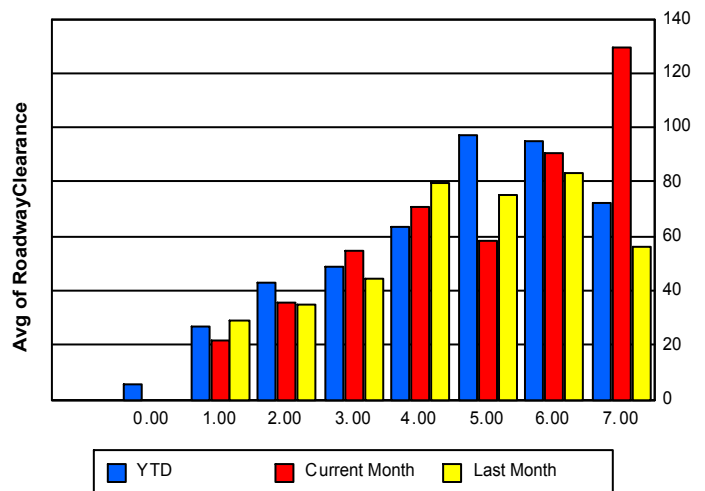
## Incident Clearance Time (3B)



## Roadway Clearance by Maximum Number of Lanes Blocked

	Current Month	Last Month	YTD
	0.00	0.00	
0			5.87
1	22.01	29.44	26.77
2	35.39	35.12	43.10
3	54.88	44.28	48.79
4	71.18	79.40	63.57
5	58.12	75.16	97.56
6	90.82	83.29	95.24

## Roadway Clearance Time(2A)



	Current Month	Last Month	YTD
7	129.37	56.00	72.04

## Performance Measures by Roadway

**595**

	<u>Current Month</u>	<u>Last Month</u>	<u>YTD</u>
Number of Events	736	664	3,632
Number of Incidents	33	41	179
TMC Detection (min.)	0.01	0.00	0.02
TMC Verification (min.)	1.87	1.75	1.91
TMC Response (min.)	6.81	6.20	6.76
RR Dispatch Time (min.)	1.25	1.06	1.25
RR Resp. Time (min.)	5.59	5.25	5.61
Event Clearance (min.)	29.27	47.66	41.86
Roadway Clear. (min.)	29.18	29.15	35.47
Incident Clearance (min.)	51.39	42.17	51.59
# of Events w/ RR/SIRV	686	606	3,111
RR/SIRV Responses	686	606	3,174
RR/SIRV Activities	751	667	3,345

**75**

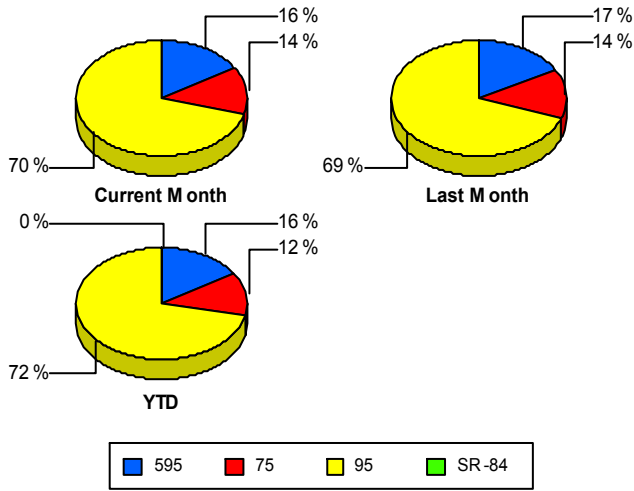
	<u>Current Month</u>	<u>Last Month</u>	<u>YTD</u>
Number of Events	626	539	2,711
Number of Incidents	14	13	54
TMC Detection (min.)	0.01	0.01	0.03
TMC Verification (min.)	5.86	6.49	4.76
TMC Response (min.)	6.05	6.72	4.93
RR Dispatch Time (min.)	0.93	1.14	0.83
RR Resp. Time (min.)	5.13	5.64	4.13
Event Clearance (min.)	31.75	56.52	40.93
Roadway Clear. (min.)	43.94	96.16	66.04
Incident Clearance (min.)	54.75	56.79	66.49
# of Events w/ RR/SIRV	614	526	2,651
RR/SIRV Responses	614	526	2,684
RR/SIRV Activities	681	596	2,904

**95**

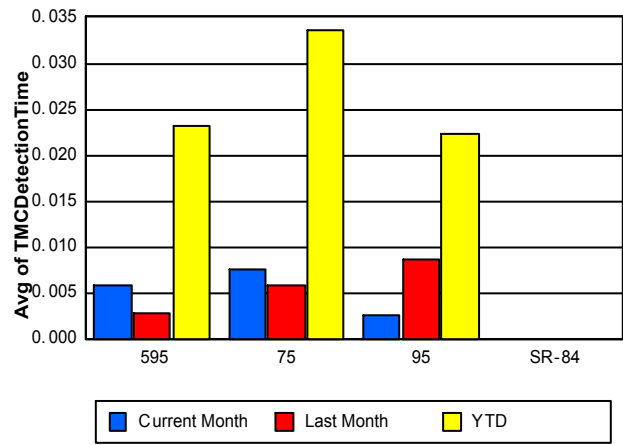
	<u>Current Month</u>	<u>Last Month</u>	<u>YTD</u>
Number of Events	3,229	2,728	16,069
Number of Incidents	155	164	820
TMC Detection (min.)	0.00	0.01	0.02
TMC Verification (min.)	1.16	1.51	1.16
TMC Response (min.)	7.44	6.63	7.27
RR Dispatch Time (min.)	2.00	1.31	1.76
RR Resp. Time (min.)	5.41	5.40	5.77
Event Clearance (min.)	34.46	40.72	41.99
Roadway Clear. (min.)	34.44	33.57	34.88
Incident Clearance (min.)	54.24	68.44	57.92
# of Events w/ RR/SIRV	2,920	2,489	12,959
RR/SIRV Responses	2,920	2,489	13,247
RR/SIRV Activities	3,031	2,617	13,742

	<u>YTD</u>
Number of Events	<b>1</b>
Number of Incidents	<b>0</b>
TMC Detection (min.)	<b>0.00</b>
TMC Verification (min.)	<b>0.47</b>
TMC Response (min.)	
RR Dispatch Time (min.)	
RR Resp. Time (min.)	
Event Clearance (min.)	<b>5.22</b>
Roadway Clear. (min.)	
Incident Clearance (min.)	
# of Events w/ RR/SIRV	<b>0</b>
RR/SIRV Responses	<b>0</b>
RR/SIRV Activities	<b>0</b>

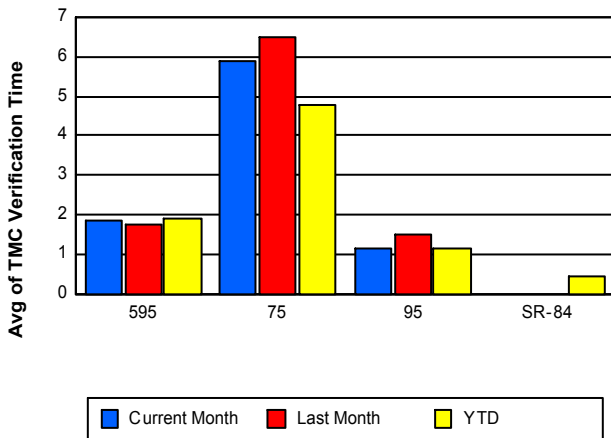
### Number of Events / Roadway



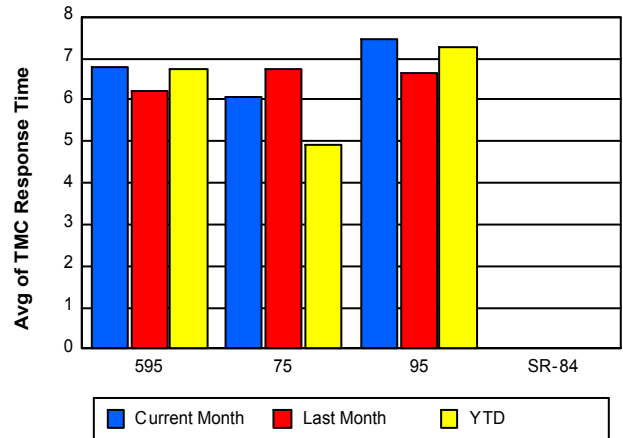
### TMC Detection Time



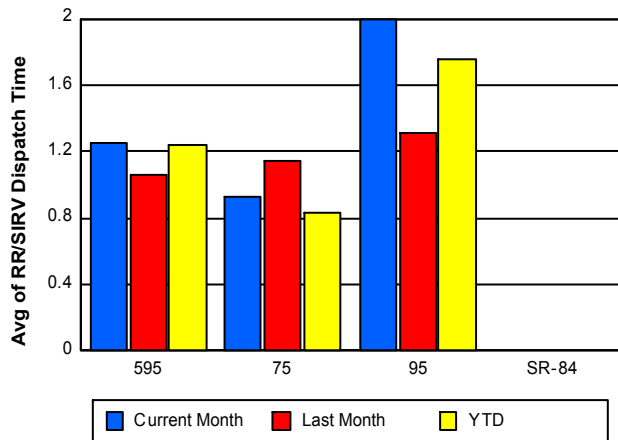
### TMC Verification Time



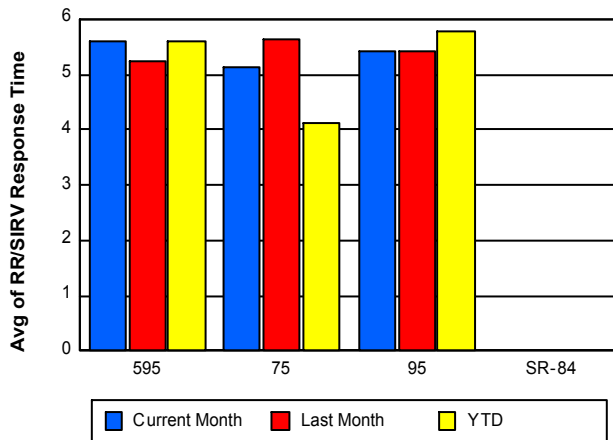
### TMC Response Time



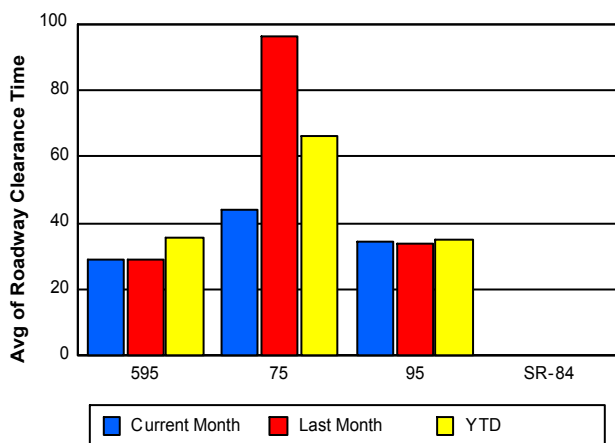
## Road Ranger / SIRV Dispatch Time



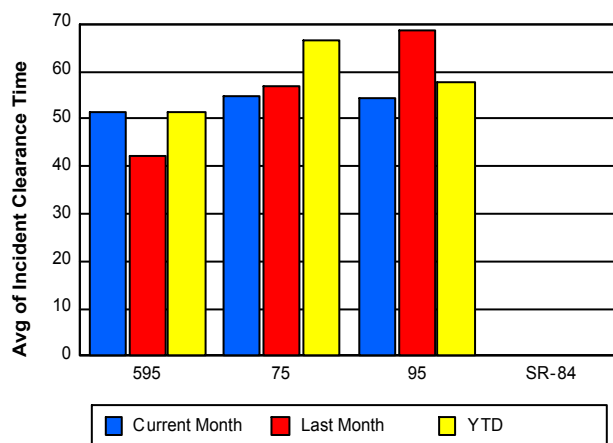
## Road Ranger / SIRV Response Time



## Roadway Clearance Time (2A)



## Incident Clearance Time (3B)



## Performance Measures by Event Type

### Abandoned Vehicle

	<u>Current Month</u>	<u>Last Month</u>	<u>YTD</u>
Number of Events	655	553	2,862
Number of Incidents	2	2	5
TMC Detection (min.)	0.00	0.00	0.04
TMC Verification (min.)	0.69	0.59	0.45
TMC Response (min.)	9.77	5.37	7.03
RR Dispatch Time (min.)	4.46	0.95	2.05
RR Response Time (min.)	5.31	4.43	5.16
Event Clearance (min.)	115.25	190.23	193.40
Roadway Clearance (min.)	19.67	24.10	21.81
Incident Clearance (min.)	58.76	1,366.07	575.18
# of Events w/ RR/SIRV	558	454	2,333
RR/SIRV Assists	558	454	2,340
RR/SIRV Activities	600	487	2,446

### Accident

	<u>Current Month</u>	<u>Last Month</u>	<u>YTD</u>
Number of Events	308	302	1,672
Number of Incidents	147	155	770
TMC Detection (min.)	0.01	0.07	0.06
TMC Verification (min.)	1.97	2.05	1.72
TMC Response (min.)	7.89	7.84	7.66
RR Dispatch Time (min.)	1.94	2.08	1.78
RR Response Time (min.)	5.95	5.75	5.91
Event Clearance (min.)	43.58	42.50	44.99
Roadway Clearance (min.)	37.57	34.54	37.13
Incident Clearance (min.)	58.61	55.57	59.21
# of Events w/ RR/SIRV	305	295	1,628
RR/SIRV Assists	305	295	1,855
RR/SIRV Activities	501	487	2,533

### Congestion

	<u>Current Month</u>	<u>Last Month</u>	<u>YTD</u>
Number of Events	2	5	11
Number of Incidents	0	1	1
TMC Detection (min.)	0.00	0.00	0.00
TMC Verification (min.)	0.00	0.00	0.00
TMC Response (min.)			
RR Dispatch Time (min.)			
RR Response Time (min.)			
Event Clearance (min.)	32.32	91.65	83.47
Roadway Clearance (min.)		8.22	8.22
Incident Clearance (min.)		98.70	98.70
# of Events w/ RR/SIRV	0	0	0
RR/SIRV Assists	0	0	0
RR/SIRV Activities	0	0	0

## Debris on Roadway

	<u>Current Month</u>	<u>Last Month</u>	<u>YTD</u>
Number of Events	205	148	805
Number of Incidents	3	0	15
TMC Detection (min.)	0.00	0.01	0.06
TMC Verification (min.)	5.21	6.54	5.78
TMC Response (min.)	7.65	8.33	8.08
RR Dispatch Time (min.)	1.35	1.30	1.24
RR Response Time (min.)	6.34	7.03	6.86
Event Clearance (min.)	12.06	12.44	12.49
Roadway Clearance (min.)	12.82		46.57
Incident Clearance (min.)	53.65		55.62
# of Events w/ RR/SIRV	199	146	783
RR/SIRV Assists	199	146	810
RR/SIRV Activities	219	151	855

## Disabled Vehicle

	<u>Current Month</u>	<u>Last Month</u>	<u>YTD</u>
Number of Events	2,819	2,428	13,050
Number of Incidents	31	40	175
TMC Detection (min.)	0.00	0.00	0.02
TMC Verification (min.)	2.33	2.65	2.12
TMC Response (min.)	6.37	6.44	6.55
RR Dispatch Time (min.)	1.13	1.05	1.38
RR Response Time (min.)	5.27	5.41	5.39
Event Clearance (min.)	19.16	18.67	19.00
Roadway Clearance (min.)	24.70	25.00	26.57
Incident Clearance (min.)	43.36	34.03	39.48
# of Events w/ RR/SIRV	2,794	2,411	12,627
RR/SIRV Assists	2,794	2,411	12,723
RR/SIRV Activities	3,053	2,652	13,562

## Emergency Vehicles

	<u>Current Month</u>	<u>Last Month</u>	<u>YTD</u>
Number of Events	8	10	27
Number of Incidents	8	9	25
TMC Detection (min.)	0.00	0.00	0.00
TMC Verification (min.)	0.00	1.55	0.57
TMC Response (min.)	8.57	12.02	9.22
RR Dispatch Time (min.)	5.81	1.65	3.50
RR Response Time (min.)	2.76	10.37	5.71
Event Clearance (min.)	31.95	51.07	37.20
Roadway Clearance (min.)	27.38	47.17	34.37
Incident Clearance (min.)	31.95	52.05	38.36
# of Events w/ RR/SIRV	6	8	20
RR/SIRV Assists	6	8	22
RR/SIRV Activities	10	14	32

## Other

	<u>Current Month</u>	<u>Last Month</u>	<u>YTD</u>
Number of Events	569	454	3,812
Number of Incidents	4	0	14
TMC Detection (min.)	0.00	0.00	0.00
TMC Verification (min.)	0.12	0.70	0.48
TMC Response (min.)	10.35	10.50	9.29
RR Dispatch Time (min.)	1.98	2.48	1.93
RR Response Time (min.)	7.04	7.17	7.43
Event Clearance (min.)	11.50	13.21	11.74
Roadway Clearance (min.)	15.01		21.96
Incident Clearance (min.)	18.18		29.81
# of Events w/ RR/SIRV	334	278	1,171
RR/SIRV Assists	334	278	1,176
RR/SIRV Activities	51	54	363

## Pedestrian

	<u>YTD</u>
Number of Events	41
Number of Incidents	0
TMC Detection (min.)	0.01
TMC Verification (min.)	1.34
TMC Response (min.)	2.56
RR Dispatch Time (min.)	0.37
RR Response Time (min.)	2.29
Event Clearance (min.)	10.68
Roadway Clearance (min.)	
Incident Clearance (min.)	
# of Events w/ RR/SIRV	37
RR/SIRV Assists	37
RR/SIRV Activities	39

## Police Activity

	<u>Current Month</u>	<u>Last Month</u>	<u>YTD</u>
Number of Events	5	13	66
Number of Incidents	2	11	43
TMC Detection (min.)	0.00	0.01	0.04
TMC Verification (min.)	3.31	3.36	1.22
TMC Response (min.)	17.92	10.33	10.95
RR Dispatch Time (min.)	1.86	1.83	3.38
RR Response Time (min.)	16.00	8.50	7.43
Event Clearance (min.)	18.17	50.15	45.92
Roadway Clearance (min.)	13.07	101.50	71.00
Incident Clearance (min.)	14.79	38.04	54.82
# of Events w/ RR/SIRV	4	11	56
RR/SIRV Assists	4	11	76
RR/SIRV Activities	3	17	91

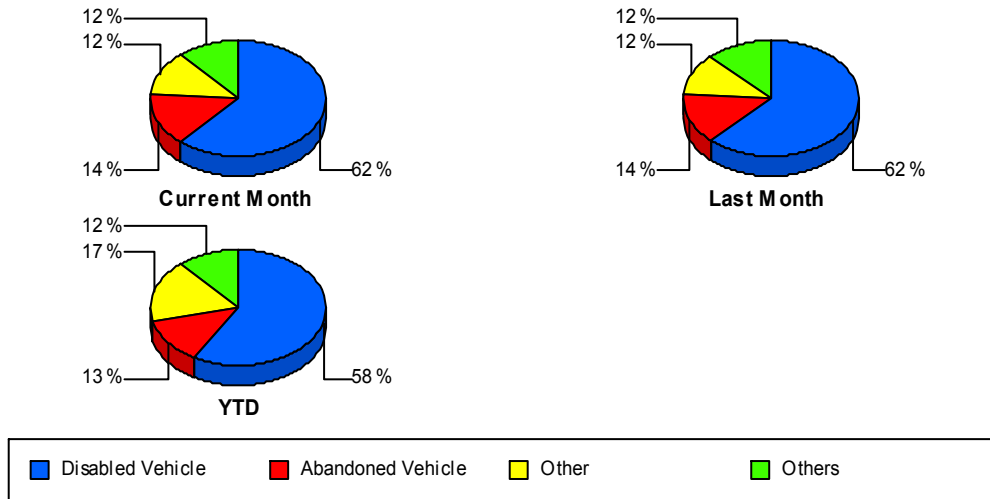
## Vehicle Fire

	<u>Current Month</u>	<u>YTD</u>
Number of Events	5	5
Number of Incidents	5	5
TMC Detection (min.)	0.00	0.00
TMC Verification (min.)	0.00	0.00
TMC Response (min.)	6.67	6.67
RR Dispatch Time (min.)	5.30	5.30
RR Response Time (min.)	1.38	1.38
Event Clearance (min.)	54.89	54.89
Roadway Clearance (min.)	49.20	49.20
Incident Clearance (min.)	54.89	54.89
# of Events w/ RR/SIRV	5	5
RR/SIRV Assists	5	5
RR/SIRV Activities	12	12

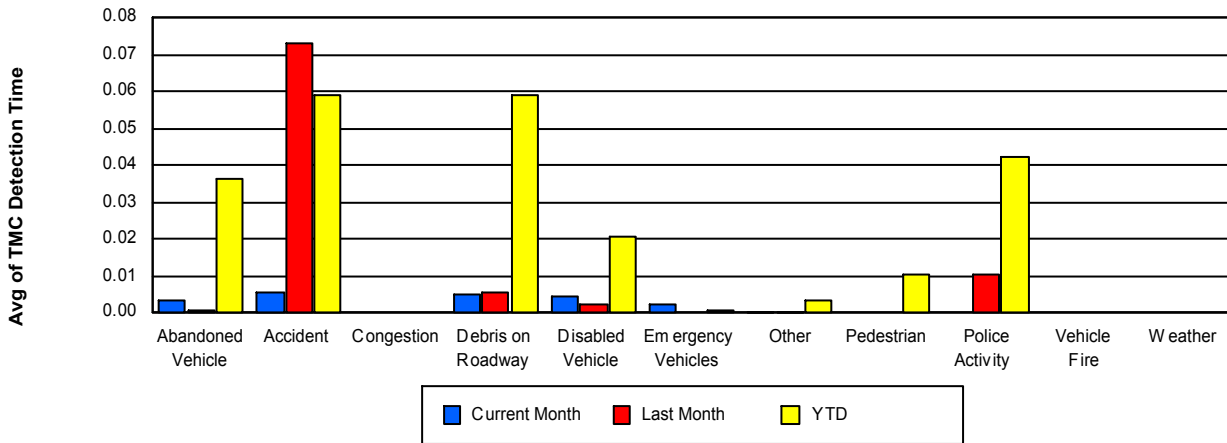
## Weather

	<u>YTD</u>
Number of Events	1
Number of Incidents	0
TMC Detection (min.)	0.00
TMC Verification (min.)	0.00
TMC Response (min.)	
RR Dispatch Time (min.)	
RR Response Time (min.)	
Event Clearance (min.)	1.25
Roadway Clearance (min.)	
Incident Clearance (min.)	
# of Events w/ RR/SIRV	0
RR/SIRV Assists	0
RR/SIRV Activities	0

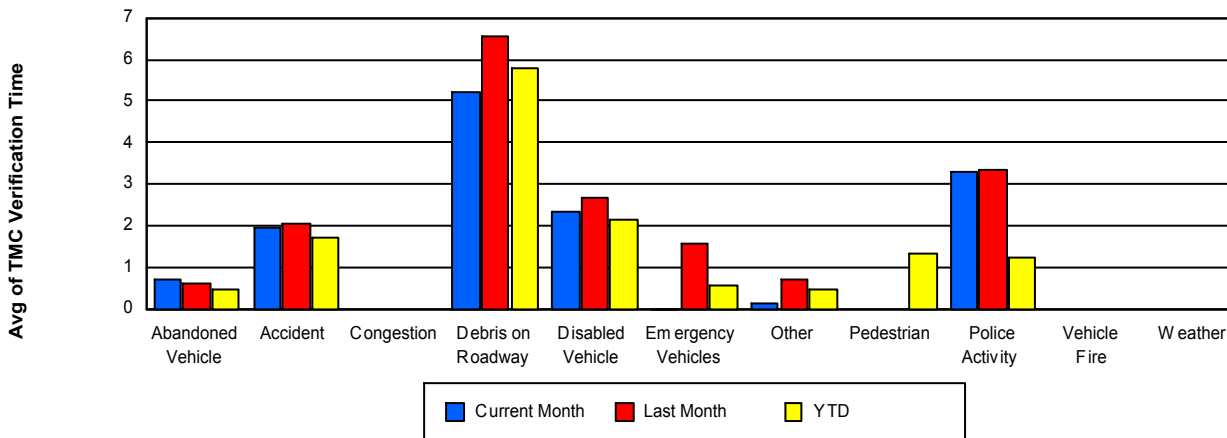
## Number of Events / Event Type



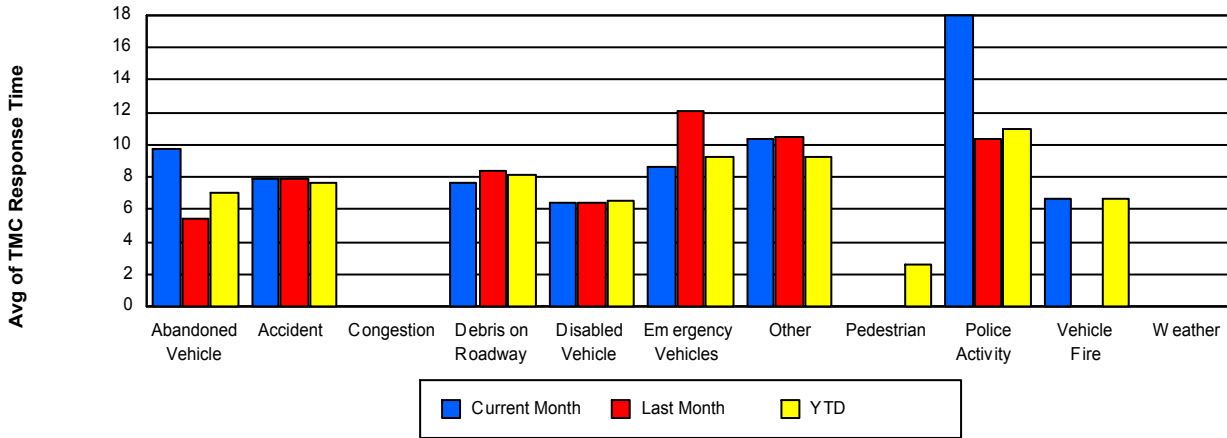
## TMC Detection Time



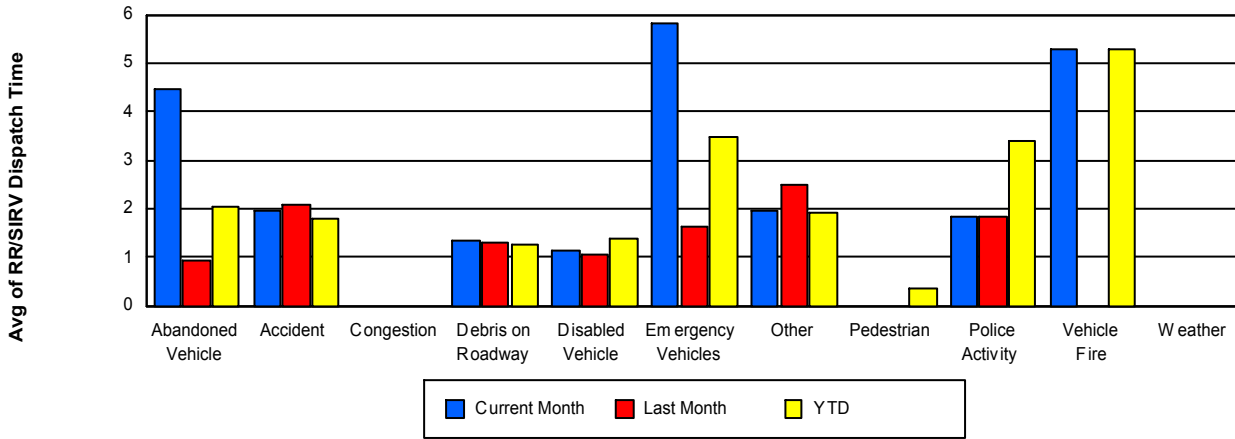
## TMC Verification Time



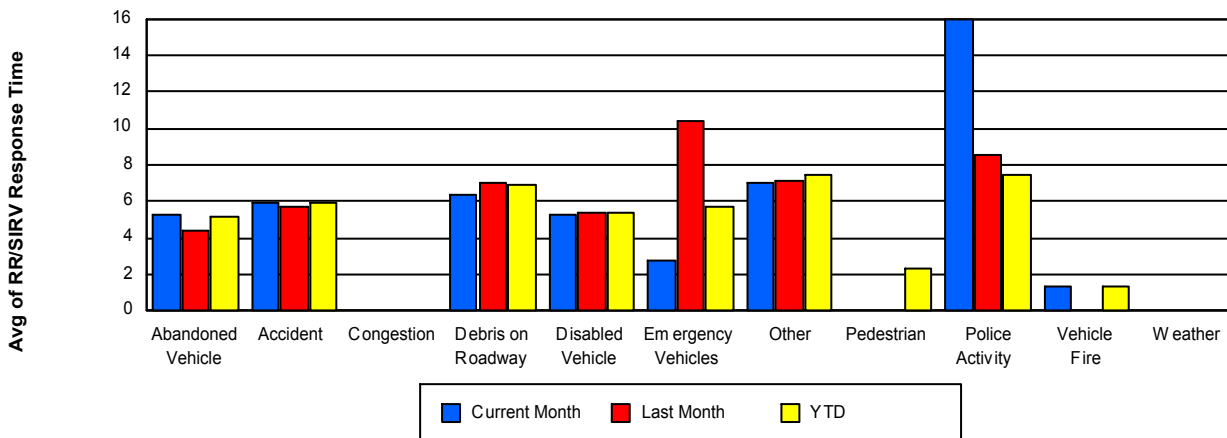
## TMC Response Time



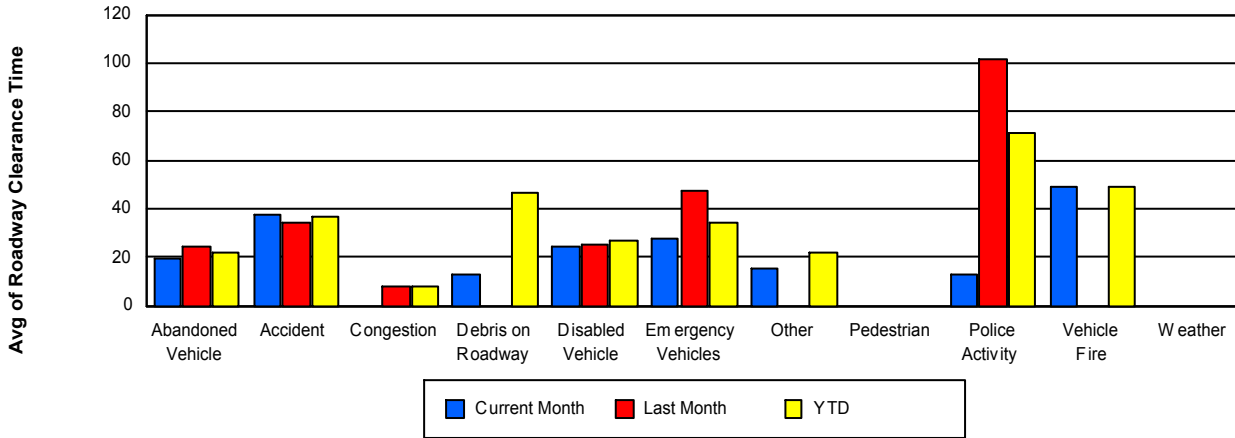
## Road Ranger / SIRV Dispatch Time



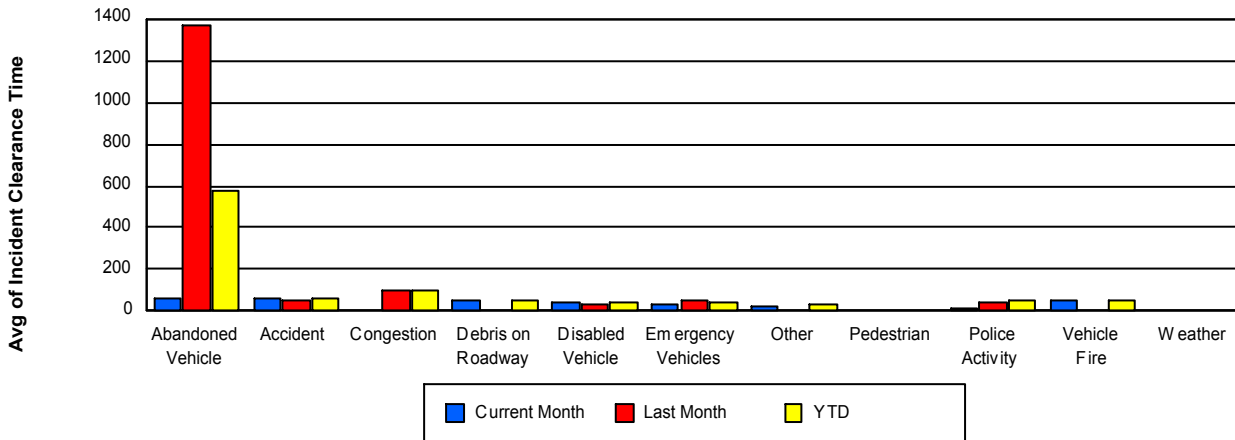
## Road Ranger / SIRV Response Time



## Roadway Clearance Time (2A)



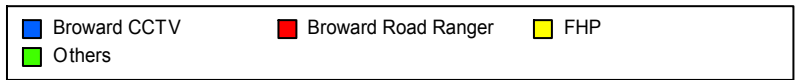
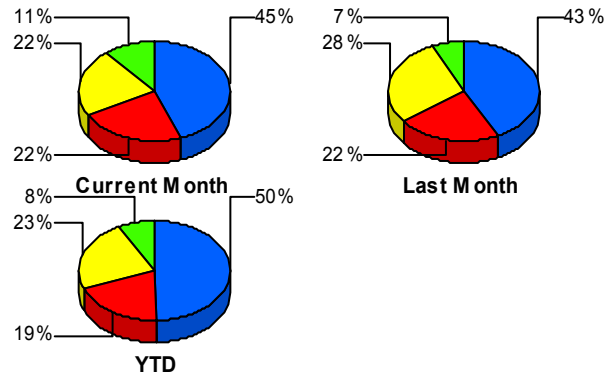
## Incident Clearance Time (3B)



## Incident Detection Methods

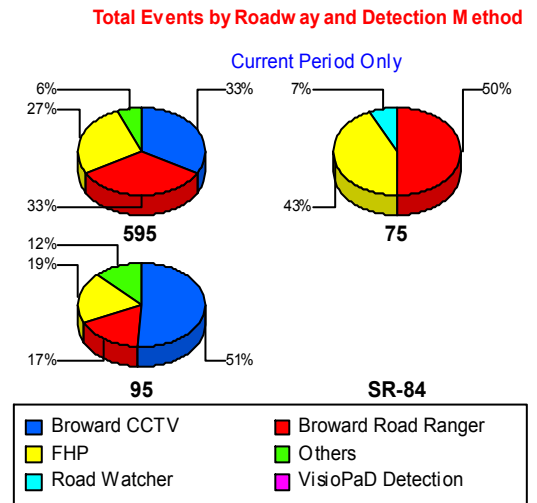
	Current Month	Last Month	YTD
Broward CCTV	90	93	523
Broward Road Ranger	45	48	204
Broward VideoWall	2	3	9
District 4	2	5	20
District 6	0	1	3
FHP	45	62	240
Fire	4	0	4
Florida's Turnpike	0	1	4
ITMS	1	0	1
Motorist	4	1	8
Other	0	1	1
Palm Beach Road Rang	1	1	4
PSAP	0	0	1
Road Watcher	2	0	6
SIRV	0	1	4
SmarTraveler (511)	1	0	5
VisioPaD Detection	5	1	16
<b>Total</b>	<b>202</b>	<b>218</b>	<b>1,053</b>

### Total Incidents by Detection Method



## Incident Detection Methods by Roadway

		Current Month	Last Month	YTD
595	Broward CCTV	11	16	76
	Broward Road Ranger	11	12	41
	District 4	2	1	5
	FHP	9	11	46
	Florida's Turnpike	0	1	4
	Motorist	0	0	1
	Road Watcher	0	0	2
	SIRV	0	0	1
	VisioPaD Detection	0	0	3
	Total	33	41	179
	75	Broward Road Ranger	7	8
District 4		0	1	4
District 6		0	0	1
FHP		6	4	22
Road Watcher		1	0	1
Total		14	13	54
95	Broward CCTV	79	77	447
	Broward Road Ranger	27	28	137
	Broward VideoWall	2	3	9
	District 4	0	3	11
	District 6	0	1	2
	FHP	30	47	172
	Fire	4	0	4
	ITMS	1	0	1
	Motorist	4	1	7
	Other	0	1	1
	Palm Beach Road Rang	1	1	4
	PSAP	0	0	1
	Road Watcher	1	0	3
	SIRV	0	1	3
	SmarTraveler (511)	1	0	5

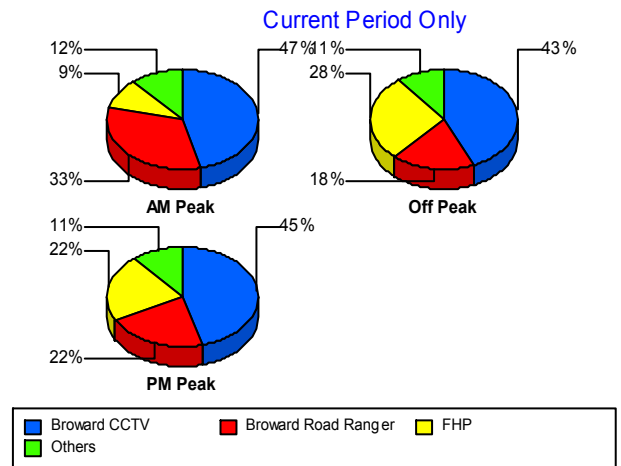


		Current Month	Last Month	YTD
95	VisioPaD Detection	5	1	13
	Total	155	164	820
Total		202	218	1,053

### Incident Detection Methods by Peak Period

		Current Month	Last Month	YTD
AM Peak	Broward CCTV	20	23	119
	Broward Road Ranger	14	15	55
	Broward VideoWall	1	1	3
	District 4	0	1	5
	FHP	4	11	45
	Fire	1	0	1
	Florida's Turnpike	0	0	2
	Motorist	1	0	3
	Palm Beach Road Rang	1	1	3
	Road Watcher	0	0	4
	SIRV	0	0	2
	SmarTraveler (511)	0	0	1
	VisioPaD Detection	1	0	1
	Total	43	52	244
	Off Peak	Broward CCTV	45	53
Broward Road Ranger		19	21	88
Broward VideoWall		0	2	4
District 4		1	2	8
District 6		0	0	2
FHP		29	41	148
Fire		3	0	3
Florida's Turnpike		0	1	1
Motorist		2	1	3
Other		0	1	1
Palm Beach Road Rang		0	0	1
PSAP		0	0	1

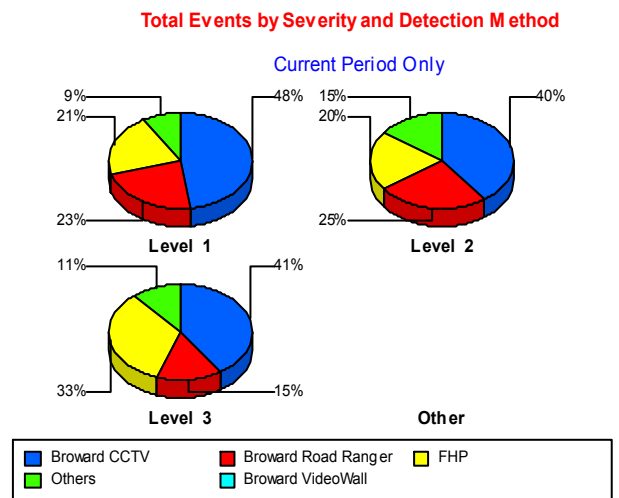
Total Events by Peak Period and Detection Method



		Current Month	Last Month	YTD
Off Peak	Road Watcher	1	0	1
	SIRV	0	0	1
	VisioPaD Detection	4	1	14
	<b>Total</b>	<b>104</b>	<b>123</b>	<b>558</b>
PM Peak	Broward CCTV	25	17	122
	Broward Road Ranger	12	12	61
	Broward VideoWall	1	0	2
	District 4	1	2	7
	District 6	0	1	1
	FHP	12	10	47
	Florida's Turnpike	0	0	1
	ITMS	1	0	1
	Motorist	1	0	2
	Road Watcher	1	0	1
	SIRV	0	1	1
	SmarTraveler (511)	1	0	4
	VisioPaD Detection	0	0	1
	<b>Total</b>	<b>55</b>	<b>43</b>	<b>251</b>
<b>Total</b>	<b>202</b>	<b>218</b>	<b>1,053</b>	

### Incident Detection Methods by Severity

		Current Month	Last Month	YTD
Level 1	Broward CCTV	55	52	319
	Broward Road Ranger	26	36	129
	Broward VideoWall	1	1	4
	District 4	1	4	13
	District 6	0	1	2
	FHP	24	29	105
	Fire	1	0	1
	Motorist	1	0	2
	Palm Beach Road Rang	1	0	3
	PSAP	0	0	1



		Current Month	Last Month	YTD
Level 1	Road Watcher	1	0	5
	SIRV	0	1	4
	SmarTraveler (511)	1	0	4
	VisioPaD Detection	3	1	10
	Total	115	125	602
Level 2	Broward CCTV	24	31	145
	Broward Road Ranger	15	4	52
	Broward VideoWall	1	0	2
	District 4	1	0	1
	District 6	0	0	1
	FHP	12	25	84
	Fire	1	0	1
	ITMS	1	0	1
	Motorist	3	1	5
	SmarTraveler (511)	0	0	1
	VisioPaD Detection	2	0	5
	Total	60	61	298
	Level 3	Broward CCTV	11	10
Broward Road Ranger		4	8	23
Broward VideoWall		0	2	3
District 4		0	1	6
FHP		9	8	51
Fire		2	0	2
Florida's Turnpike		0	1	4
Motorist		0	0	1
Other		0	1	1
Palm Beach Road Rang		0	1	1
Road Watcher		1	0	1
VisioPaD Detection		0	0	1
Total		27	32	153
Total		202	218	1,053

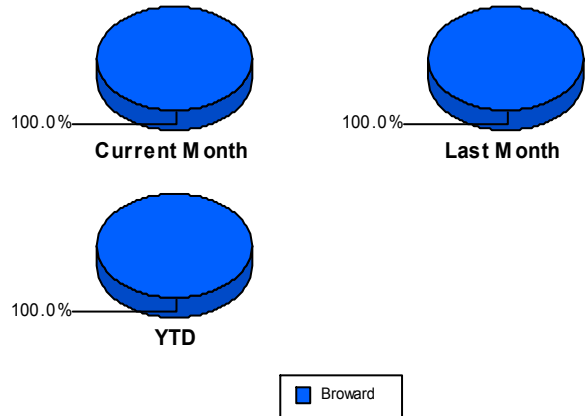
## Road Ranger / SIRV Performance Measures

### Road Ranger / SIRV Performance By County

Values presented are:  
 - Total Events with a RR/SIRV Response  
 - Total RR/SIRV Responses,  
 - Total Activities Performed

	Current Mo	Last Month	YTD
Broward	<b>4,070</b>	<b>3,531</b>	<b>18,324</b>
	<b>4,379</b>	<b>3,791</b>	<b>19,591</b>
	<b>4,755</b>	<b>4,131</b>	<b>20,836</b>

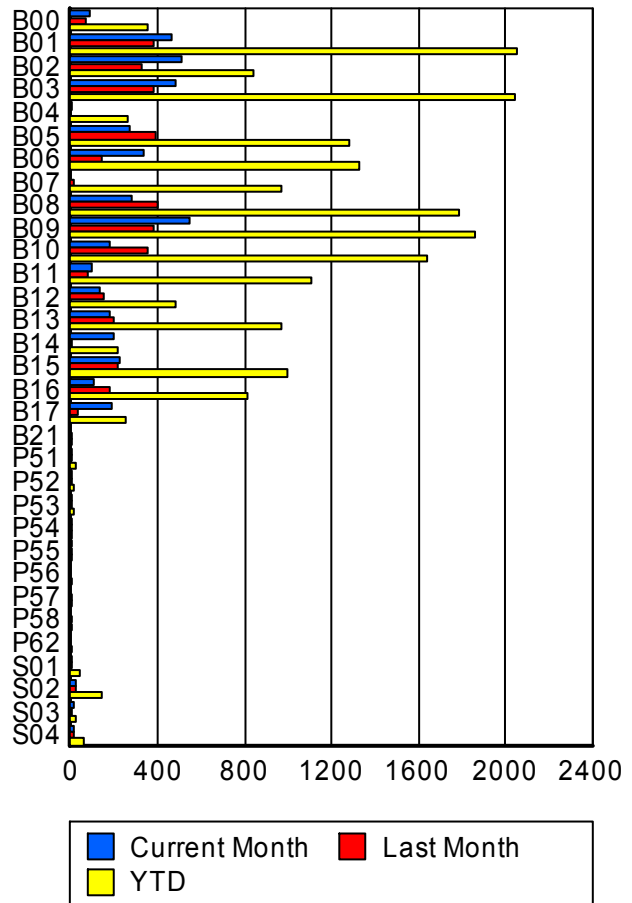
RR/SIRV Responses per County



### Road Ranger / SIRV Performance By Truck

	Current Mo	Last Month	YTD
B00	89	72	348
	91	73	356
	94	77	376
B01	451	380	2,025
	460	386	2,051
	498	429	2,182
B02	504	327	832
	514	329	844
	560	351	912
B03	482	381	2,024
	487	386	2,043
	533	422	2,186
B04	3	0	257
	3	0	259
	3	0	271
B05	273	386	1,269
	273	393	1,279
	299	428	1,376
B06	328	139	1,318
	332	139	1,326
	370	152	1,415
B07	0	12	957
	0	12	969
	0	13	998
B08	276	391	1,765
	278	397	1,786
	304	436	1,908

**RR/SIRV  
Responses per  
Truck**



	Current Mo	Last Month	YTD
B09	545	378	1,847
	551	382	1,864
	593	413	1,979
B10	182	349	1,632
	183	352	1,642
	202	388	1,758
B11	98	82	1,102
	98	82	1,108
	100	93	1,166
B12	124	150	475
	135	150	486
	145	162	516
B13	175	193	959
	179	195	968
	193	213	1,021
B14	199	9	209
	202	9	212
	212	9	222
B15	225	217	991
	226	217	994
	245	233	1,054
B16	101	179	804
	104	182	812
	115	198	855
B17	189	34	252
	191	35	255
	206	35	271
B21	0	1	3
	0	1	3
	0	1	3
P51	5	7	20
	5	7	20
	7	7	22
P52	4	1	10
	4	1	10
	4	1	10
P53	1	4	12
	1	4	12
	1	4	15
P54	2	1	3
	2	1	3
	2	1	3
P55	3	1	8
	3	1	8
	3	1	8

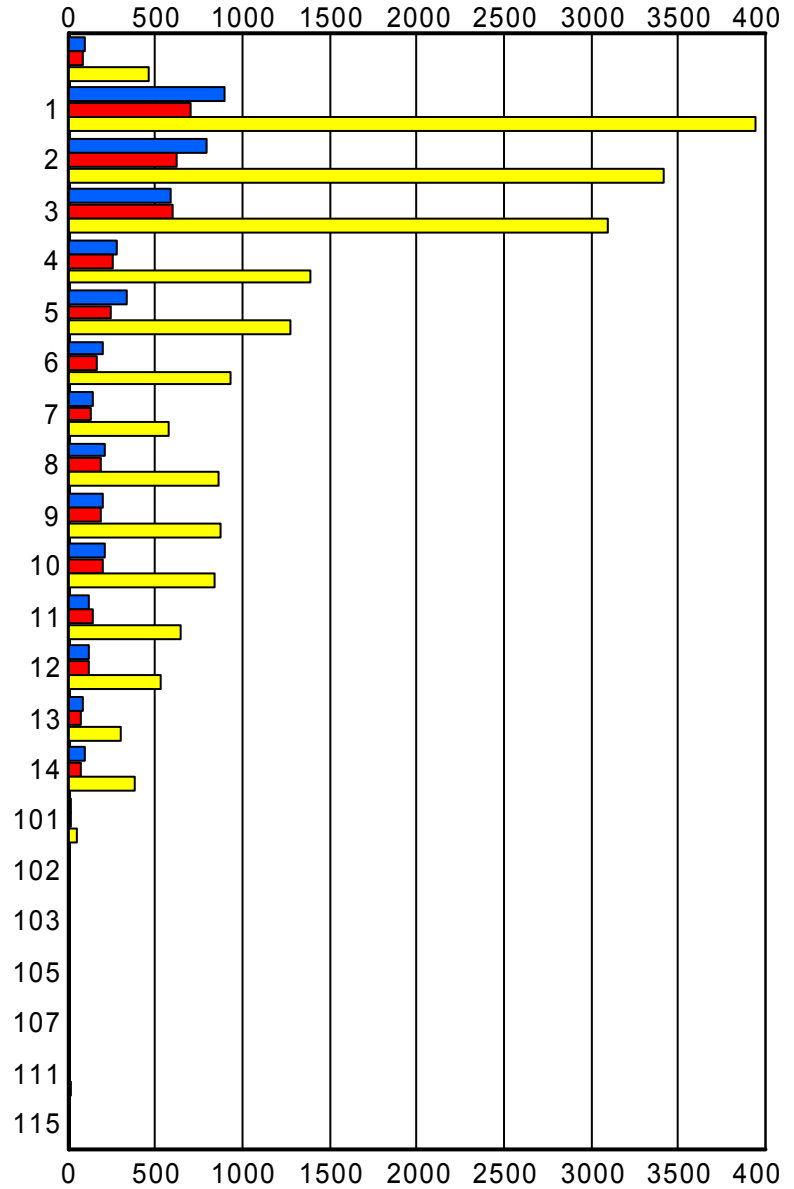
	Current Mo	Last Month	YTD
P56	0	0	5
	0	0	5
	0	0	7
P57	0	1	8
	0	1	8
	0	1	8
P58	0	1	4
	0	1	4
	0	1	4
P62	0	0	2
	0	0	2
	0	0	2
S01	4	3	36
	4	3	37
	4	3	40
S02	26	25	143
	26	25	144
	31	27	156
S03	12	8	21
	13	9	23
	17	10	28
S04	13	18	55
	14	18	58
	14	22	64

### Road Ranger / SIRV Performance By Beat

	Current Mo	Last Month	YTD
	91	84	413
	96	86	467
	103	93	496
1	847	669	3,780
	895	705	3,943
	963	768	4,181
2	773	610	3,338
	790	622	3,417
	854	671	3,626
3	565	581	3,004
	584	604	3,093
	627	646	3,265
4	273	252	1,380
	276	253	1,387
	301	272	1,461
5	329	244	1,260
	335	244	1,270
	358	263	1,336
6	187	166	917
	197	168	930
	209	187	986
7	145	124	567
	146	127	572
	161	138	607
8	208	181	858
	212	184	868
	231	192	916
9	196	179	860
	198	183	869
	223	207	947
10	204	192	831
	209	197	843
	237	215	909
11	122	142	646
	123	144	651
	143	165	716
12	118	113	523
	119	114	531
	135	130	583
13	85	75	300
	85	76	303
	88	88	327
14	100	68	375
	100	68	377
	106	80	403

Values presented are:  
 - Total Events with a RR/SIRV Response  
 - Total RR/SIRV Responses,  
 - Total Activities Performed

### RR/SIRV Responses per Beat



■ Current Month   
 ■ Last Month   
 ■ YTD

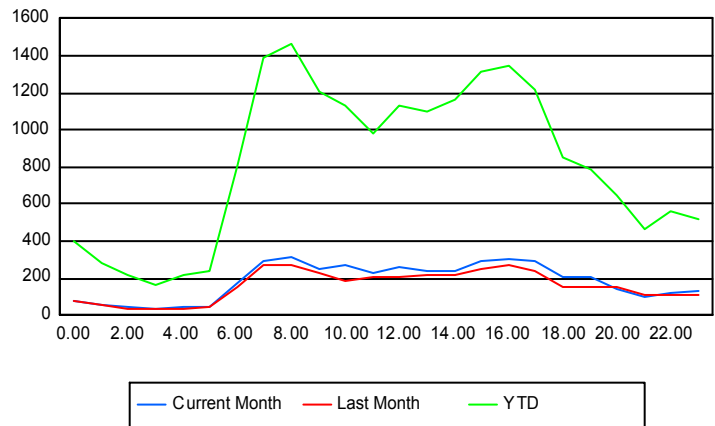
	Current Mo	Last Month	YTD
101	10	13	49
	10	13	49
	12	13	54
102	1	0	2
	1	0	2
	1	0	2
103	0	1	1
	0	1	1
	0	1	1
105	1	0	1
	1	0	1
	1	0	1
107	0	0	1
	0	0	1
	0	0	1
111	2	2	14
	2	2	14
	2	2	16
115	0	0	2
	0	0	2
	0	0	2

**Road Ranger / SIRV Performance By Time of Day**

Values presented are:  
 - Total Events with a RR/SIRV Response  
 - Total RR/SIRV Responses,  
 - Total Activities Performed

	Current Mo	Last Month	YTD
12AM-1AM	77	75	383
	82	81	403
	97	93	441
1AM-2AM	56	54	262
	57	57	281
	60	58	298
2AM-3AM	50	30	187
	51	37	220
	56	46	245
3AM-4AM	33	28	148
	37	31	165
	44	34	181
4AM-5AM	36	34	191
	45	37	221
	49	44	241
5AM-6AM	41	37	192
	45	51	236
	48	55	251

**Number of Responses / Hour of the Day**



	Current Mo	Last Month	YTD
6AM-7AM	163	143	754
	173	152	813
	185	156	842
7AM-8AM	292	248	1,323
	296	267	1,394
	324	284	1,481
8AM-9AM	286	254	1,358
	311	276	1,460
	333	295	1,544
9AM-10AM	234	213	1,145
	250	227	1,206
	273	241	1,268
10AM-11AM	249	181	1,073
	268	186	1,135
	287	202	1,211
11AM-12PM	204	195	927
	227	203	979
	243	218	1,028
12PM-1PM	248	188	1,057
	264	205	1,126
	280	225	1,180
1PM-2PM	221	195	1,013
	238	220	1,096
	258	240	1,166
2PM-3PM	226	210	1,085
	241	220	1,160
	258	244	1,222
3PM-4PM	255	237	1,217
	288	247	1,310
	309	262	1,395
4PM-5PM	281	262	1,273
	309	271	1,342
	334	292	1,425
5PM-6PM	267	224	1,144
	293	242	1,222
	318	258	1,285
6PM-7PM	195	133	798
	202	149	851
	217	173	918
7PM-8PM	189	152	744
	203	158	783
	232	177	846
8PM-9PM	133	139	603
	146	151	652
	169	170	710

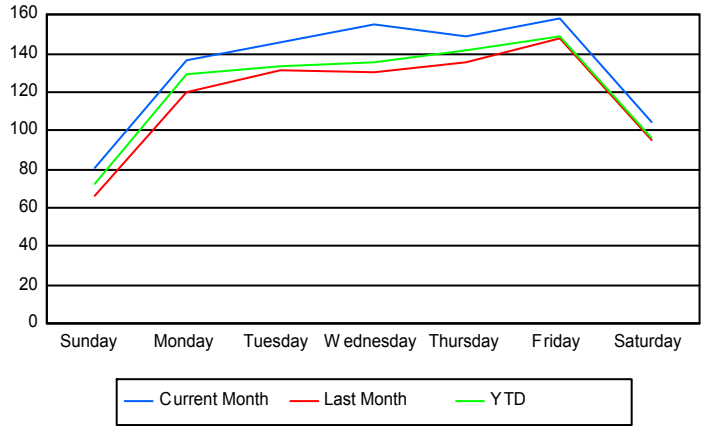
	Current Mo	Last Month	YTD
9PM-10PM	<b>94</b>	<b>100</b>	<b>427</b>
	<b>101</b>	<b>109</b>	<b>463</b>
	<b>105</b>	<b>121</b>	<b>498</b>
10PM-11PM	<b>117</b>	<b>101</b>	<b>526</b>
	<b>124</b>	<b>108</b>	<b>558</b>
	<b>138</b>	<b>124</b>	<b>604</b>
11PM-12AM	<b>123</b>	<b>98</b>	<b>494</b>
	<b>128</b>	<b>106</b>	<b>515</b>
	<b>138</b>	<b>119</b>	<b>556</b>

## Road Ranger / SIRV Performance By Day of Week

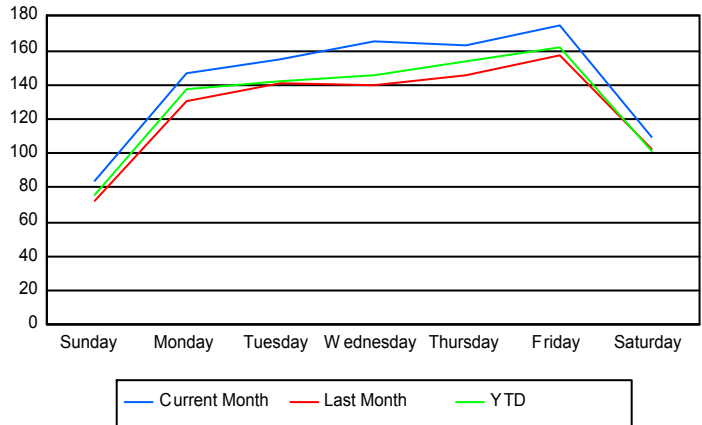
Values presented are:  
 - Total Events with a RR/SIRV Response  
 - Total RR/SIRV Responses,  
 - Total Activities Performed

	Current Mo	Last Month	YTD
Sunday	301	255	1,460
	314	280	1,524
	335	310	1,619
Monday	530	481	2,672
	570	521	2,837
	607	565	2,987
Tuesday	576	650	2,890
	612	699	3,075
	668	756	3,256
Wednesday	619	635	2,941
	659	678	3,147
	716	730	3,345
Thursday	742	540	3,085
	810	578	3,346
	870	633	3,557
Friday	786	589	3,241
	870	625	3,511
	964	684	3,748
Saturday	520	382	2,044
	544	410	2,151
	595	453	2,324

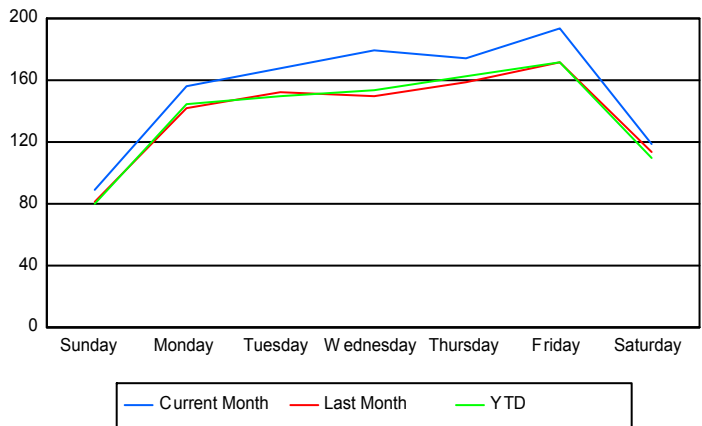
### Avg # of events with a RR/SIRV Response per Day of the Week



### Avg # of RR/SIRV Responses per Day of the Week



### Avg # of RR/SIRV Activities Performed per Day of the Week



### Road Ranger/ SIRV Responses per Time of Day and Day of Week

