



Monthly Performance Measures Report Broward County



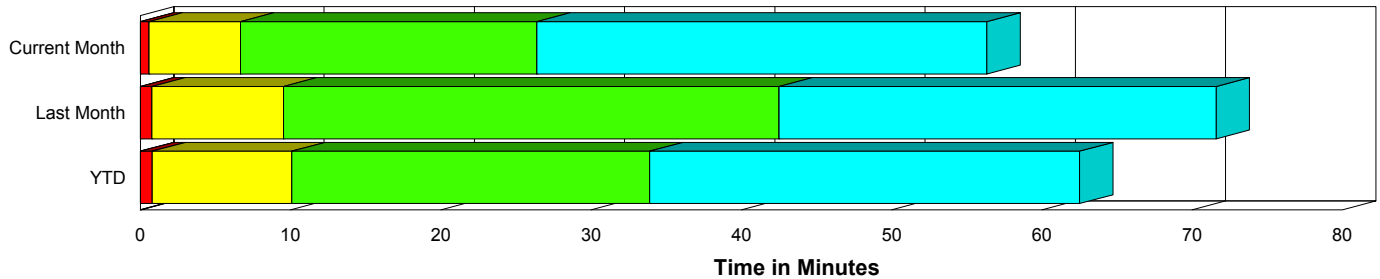
Created on:
May 04, 2009
9:04 am

Period From Apr 1, 2009 to Apr 30, 2009

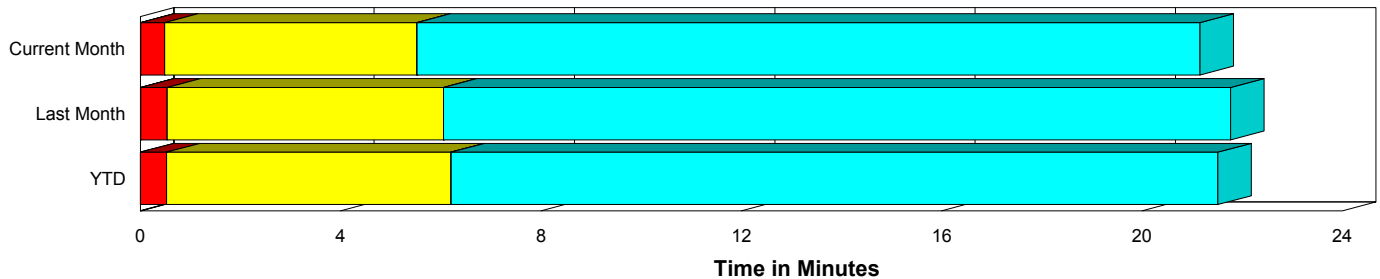
Performance Measures Summary

	Traffic Events (No Lanes Blocked)			Incidents (Lanes Blocked)		
	<u>This Month</u>	<u>Last Month</u>	<u>YTD</u>	<u>This Month</u>	<u>Last Month</u>	<u>YTD</u>
Number of Events	3,913	3,944	16,961	174	241	815
TMC Detection (min.)	0.01	0.01	0.01	0.00	0.01	0.00
TMC Verification (min.)	0.48	0.53	0.52	0.58	0.76	0.80
TMC Response (min.)	5.87	6.48	6.71	6.87	9.82	10.38
RR Dispatch Time (min.)	1.09	1.05	1.33	1.63	3.41	3.25
RR Response Time (min.)	4.85	5.55	5.50	5.36	6.68	7.28
Roadway Clearance (min.)				26.85	40.32	33.42
Event Clearance (min.)	21.51	22.21	22.03	56.35	66.86	61.06
# of Events w/ RR/SIRV	2,749	2,630	10,549	107	162	544
RR/SIRV Responses	2,749	2,630	10,549	107	162	544
RR/SIRV Activities	2,389	2,271	8,831	220	332	1,095

Incident Clearance Time-Line



Traffic Event (Non-Lane Blockage) Time-Line



■ Avg. TMC Detection Time	■ Avg. Time from TMC Response to Roadway Clearance*
■ Avg. Time from TMC Detection to TMC Verification	■ Avg. Time from Roadway Clearance to Incident/Event Clearance**
■ Avg. Time from TMC Verification to TMC Response	

* Roadway clearance equals all travel lanes open

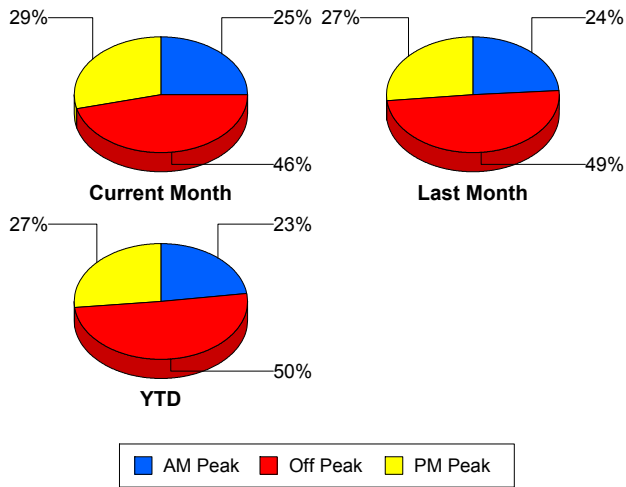
** Incident clearance equals time when last responder has left the scene

Performance Measures by Peak Period

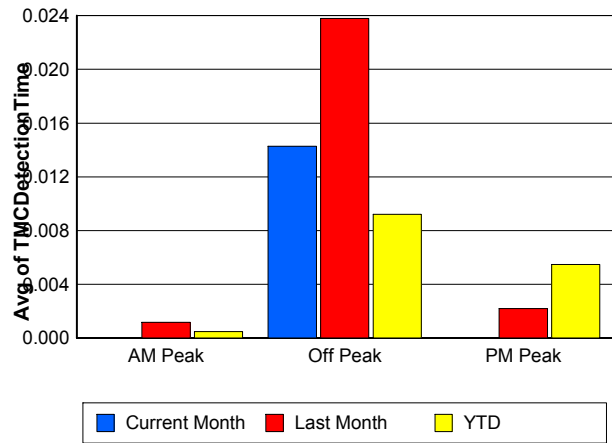
Note: AM peak period is defined as 6am to 10am and PM peak period is defined as 3pm to 7pm.

	AM Peak			Off Peak			PM Peak		
	<u>Current Month</u>	<u>Last Month</u>	<u>YTD</u>	<u>Current Month</u>	<u>Last Month</u>	<u>YTD</u>	<u>Current Month</u>	<u>Last Month</u>	<u>YTD</u>
Number of Events	1,017	995	4,073	1,889	2,069	8,975	1,181	1,121	4,728
Number of Incidents	36	61	185	88	113	404	50	67	226
TMC Detection (min.)	0.00	0.00	0.00	0.01	0.02	0.01	0.00	0.00	0.01
TMC Verification (min.)	0.34	0.47	0.48	0.39	0.55	0.48	0.76	0.59	0.65
TMC Response (min.)	5.48	6.83	6.40	6.71	6.60	7.87	5.40	6.71	6.29
RR Dispatch Time (min.)	0.66	1.34	0.99	1.80	1.22	2.17	0.70	0.98	0.89
RR Response Time (min.)	4.91	5.56	5.50	4.90	5.52	5.77	4.81	5.81	5.51
Event Clearance (min.)	21.28	22.62	21.09	25.94	27.96	26.84	19.75	20.83	20.42
Roadway Clearance (min.)	19.29	34.07	25.61	29.30	50.12	39.68	27.98	29.50	28.63
Incident Clearance (min.)	52.01	75.05	55.77	56.11	66.72	63.28	59.90	59.65	61.44
# of Events w/ RR/SIRV	844	826	3,216	1,099	1,126	4,416	913	840	3,461
RR/SIRV Responses	844	826	3,216	1,099	1,126	4,416	913	840	3,461
RR/SIRV Activities	803	826	3,039	984	992	3,821	822	785	3,066

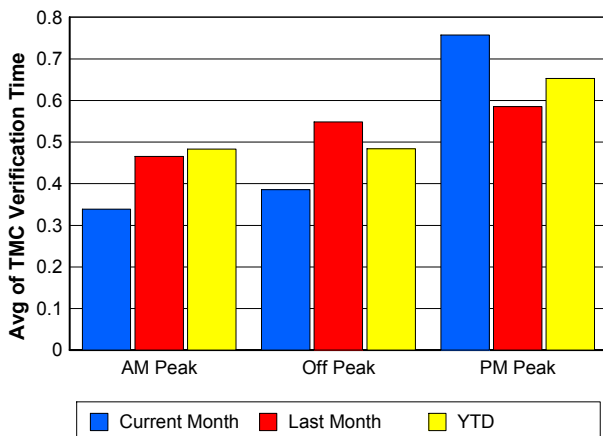
Number of Events / Peak Period



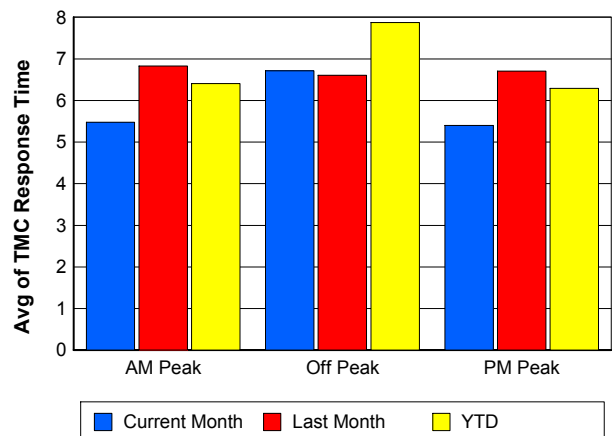
TMC Detection Time



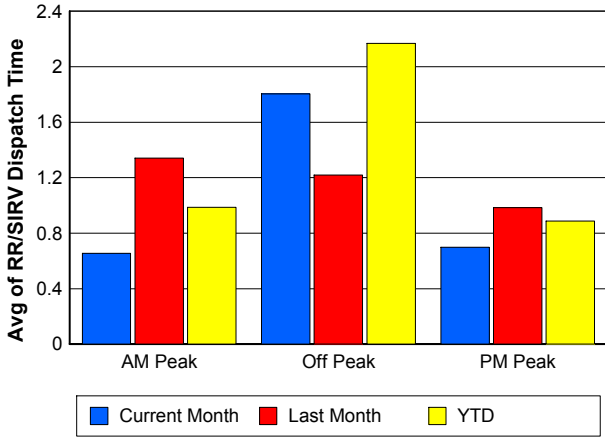
TMC Verification Time



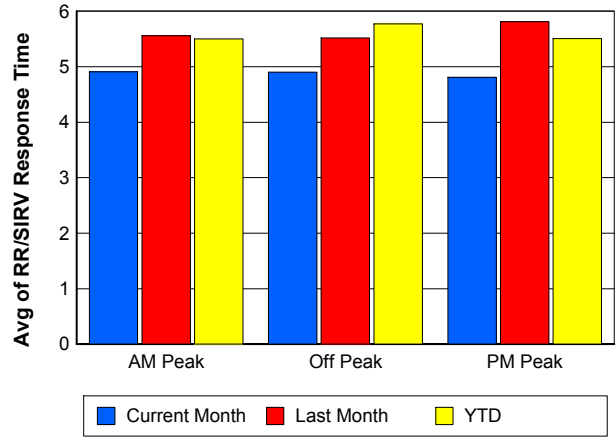
TMC Response Time



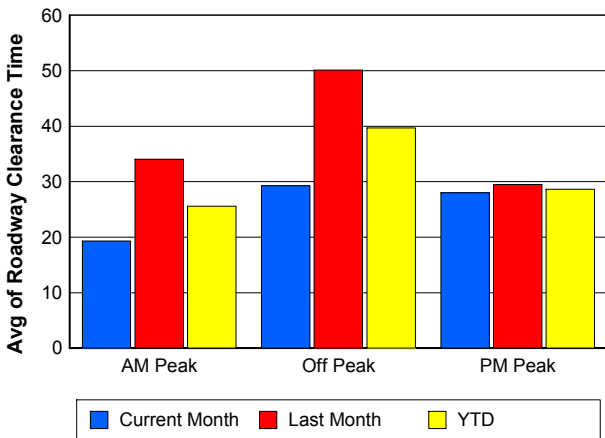
Road Ranger / SIRV Dispatch Time



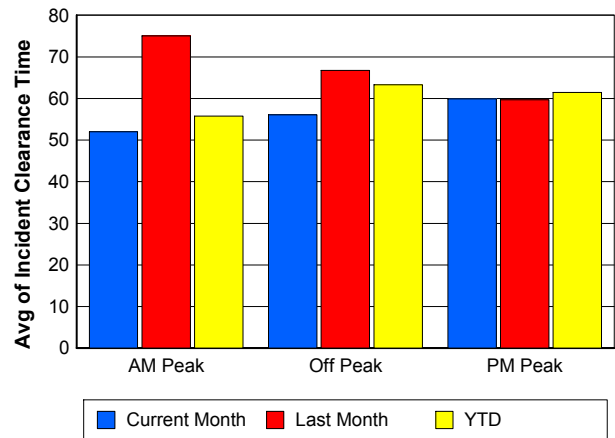
Road Ranger / SIRV Response Time



Roadway Clearance Time (2A)



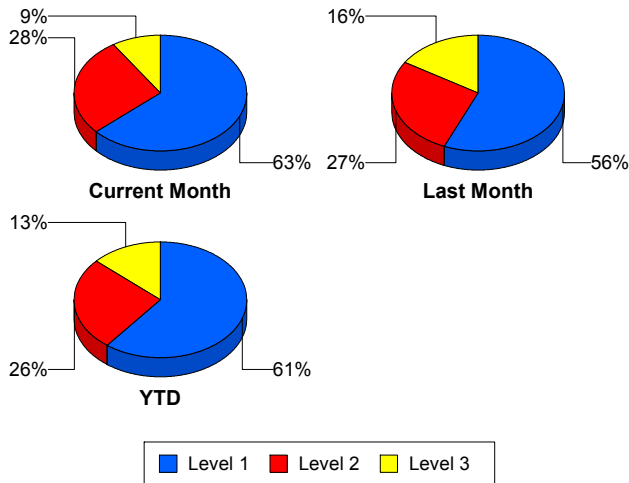
Incident Clearance Time (3B)



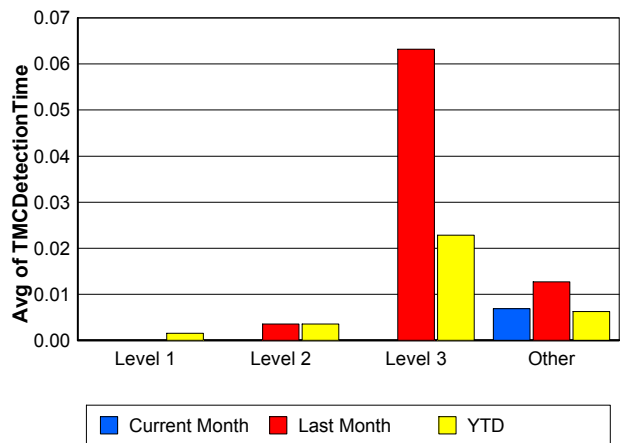
Performance Measures by Severity

	Level 1			Level 2			Level 3			Other		
	<u>This Month</u>	<u>Last Month</u>	<u>YTD</u>	<u>This Month</u>	<u>Last Month</u>	<u>YTD</u>	<u>This Month</u>	<u>Last Month</u>	<u>YTD</u>	<u>This Month</u>	<u>Last Month</u>	<u>YTD</u>
Number of Events	110	136	494	48	66	213	16	39	108	3,913	3,944	16,961
Number of Incidents	110	136	494	48	66	213	16	39	108	0	0	0
TMC Detection (min.)	0.00	0.00	0.00	0.00	0.00	0.00	0.00	0.06	0.02	0.01	0.01	0.01
TMC Verification (min.)	0.36	0.50	0.49	0.22	0.54	0.86	3.19	2.02	2.07	0.48	0.53	0.52
TMC Response (min.)	5.33	6.39	6.75	8.82	10.42	11.37	13.93	21.24	25.34	5.87	6.48	6.71
RR Dispatch Time (min.)	1.23	1.80	1.60	2.08	4.60	4.05	3.26	7.01	8.97	1.09	1.05	1.33
RR Resp. Time (min.)	4.16	4.62	5.21	6.74	5.82	7.59	11.06	14.88	16.10	4.85	5.55	5.50
Event Clearance (min.)	43.36	51.27	46.44	78.25	73.26	75.26	79.96	110.41	99.94	21.51	22.21	22.03
Roadway Clear. (min.)	13.64	15.08	14.47	48.49	50.75	50.17	52.71	110.72	87.08			
Incident Clearance (min.)	43.36	51.27	46.44	78.25	73.26	75.26	79.96	110.41	99.94			
# of Events w/ RR/SIRV	74	98	359	20	30	95	13	34	90	2,749	2,630	10,549
RR/SIRV Responses	74	98	359	20	30	95	13	34	90	2,749	2,630	10,549
RR/SIRV Activities	131	165	632	60	93	269	29	74	194	2,389	2,271	8,831

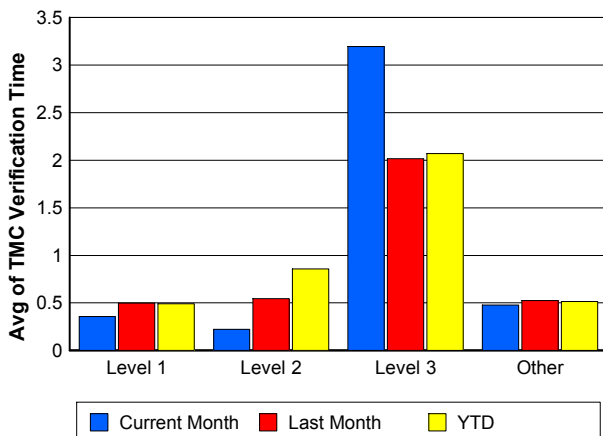
Number of Events / Severity



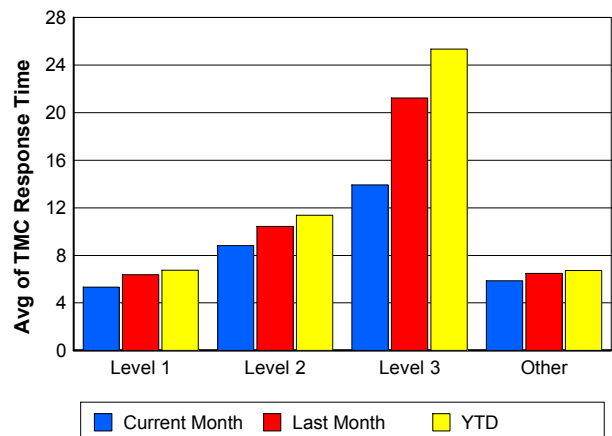
TMC Detection Time



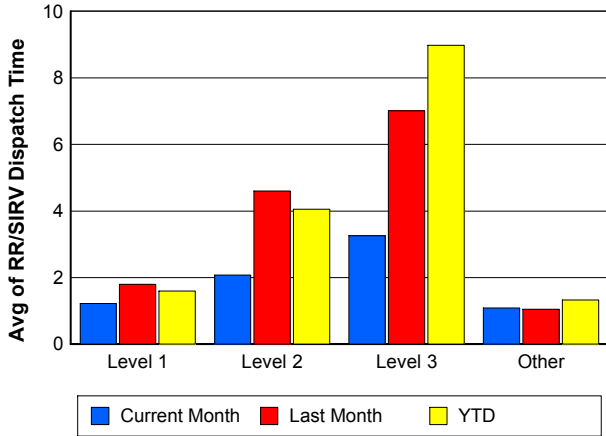
TMC Verification Time



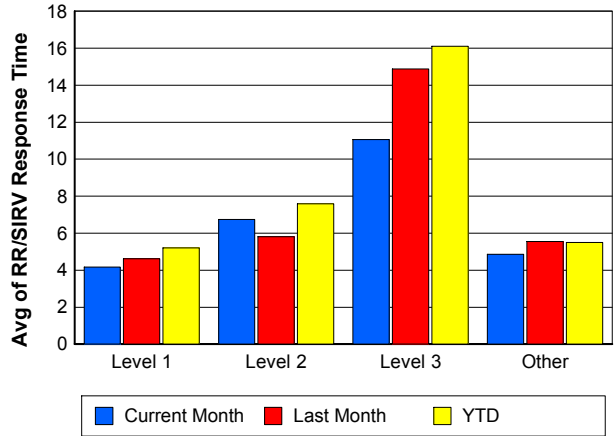
TMC Response Time



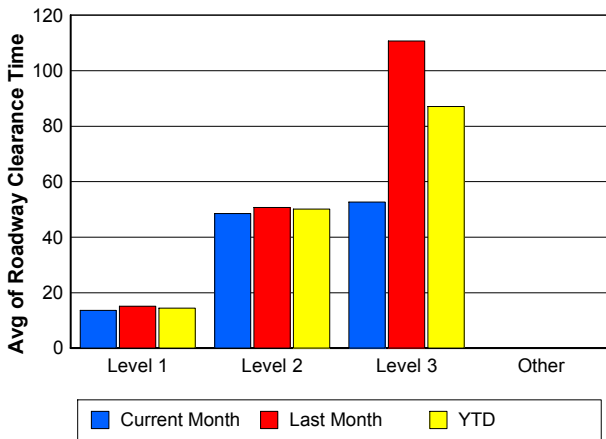
Road Ranger / SIRV Dispatch Time



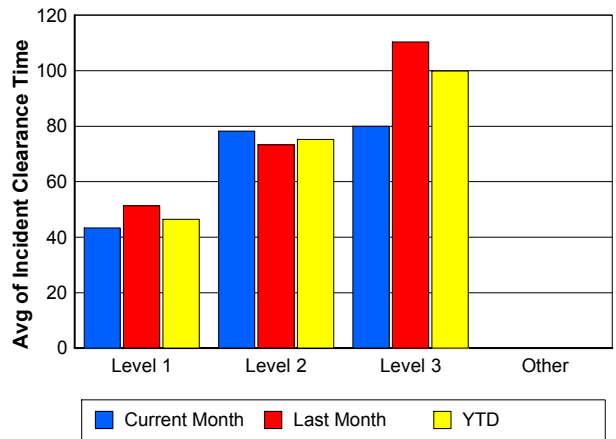
Road Ranger / SIRV Response Time



Roadway Clearance Time (2A)



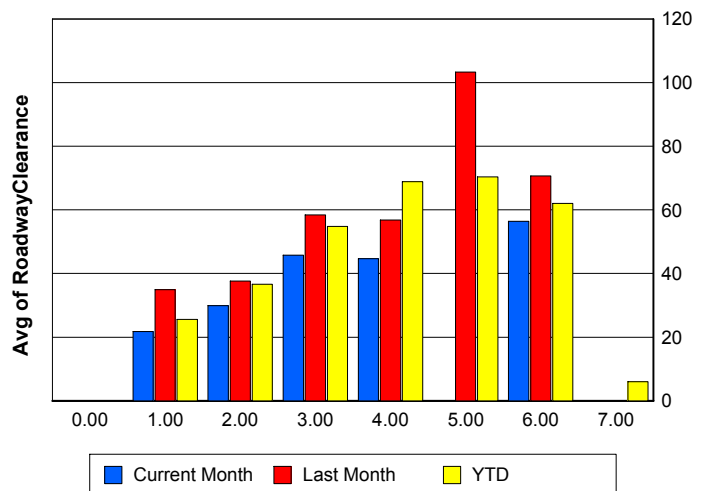
Incident Clearance Time (3B)



Roadway Clearance by Maximum Number of Lanes Blocked

	Current Month	Last Month	YTD
0			
1	21.72	34.93	25.59
2	29.93	37.63	36.64
3	45.73	58.39	54.83
4	44.66	56.82	68.82
5	0.00	103.33	70.36
6	56.42	70.67	62.08
7	0.00	0.00	5.97

Roadway Clearance Time (2A)



Performance Measures by Roadway

595

	<u>Current Month</u>	<u>Last Month</u>	<u>YTD</u>
Number of Events	576	554	2,443
Number of Incidents	33	49	149
TMC Detection (min.)	0.00	0.04	0.01
TMC Verification (min.)	0.53	0.71	0.61
TMC Response (min.)	6.18	7.14	6.67
RR Dispatch Time (min.)	1.05	0.94	1.12
RR Resp. Time (min.)	5.17	6.20	5.58
Event Clearance (min.)	19.35	22.57	21.44
Roadway Clear. (min.)	29.30	28.02	29.79
Incident Clearance (min.)	40.17	56.43	52.66
# of Events w/ RR/SIRV	430	396	1,620
RR/SIRV Responses	430	396	1,620
RR/SIRV Activities	386	396	1,488

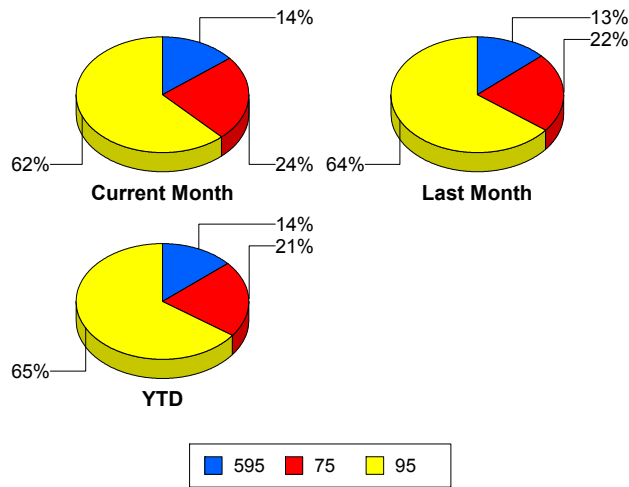
75

	<u>Current Month</u>	<u>Last Month</u>	<u>YTD</u>
Number of Events	984	932	3,760
Number of Incidents	15	24	68
TMC Detection (min.)	0.00	0.00	0.00
TMC Verification (min.)	0.43	0.62	0.64
TMC Response (min.)	7.11	7.93	8.12
RR Dispatch Time (min.)	0.80	1.21	1.24
RR Resp. Time (min.)	6.40	6.92	6.90
Event Clearance (min.)	24.60	26.23	25.35
Roadway Clear. (min.)	42.34	79.54	68.40
Incident Clearance (min.)	90.70	80.00	86.74
# of Events w/ RR/SIRV	634	616	2,390
RR/SIRV Responses	634	616	2,390
RR/SIRV Activities	537	561	2,002

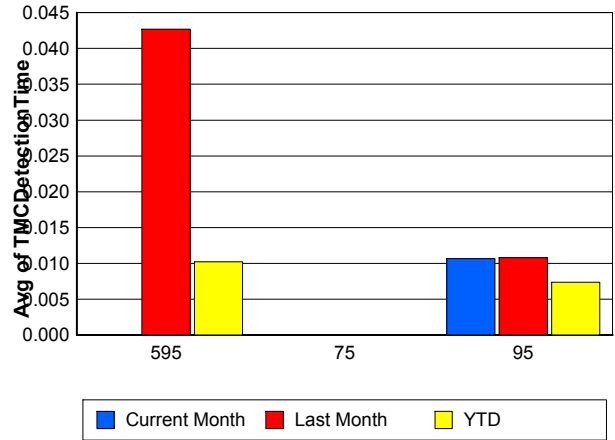
95

	<u>Current Month</u>	<u>Last Month</u>	<u>YTD</u>
Number of Events	2,527	2,699	11,573
Number of Incidents	126	168	598
TMC Detection (min.)	0.01	0.01	0.01
TMC Verification (min.)	0.49	0.48	0.48
TMC Response (min.)	5.46	6.20	6.62
RR Dispatch Time (min.)	1.24	1.23	1.56
RR Resp. Time (min.)	4.30	5.06	5.21
Event Clearance (min.)	23.19	24.73	23.82
Roadway Clear. (min.)	24.36	38.31	30.35
Incident Clearance (min.)	56.50	68.03	60.24
# of Events w/ RR/SIRV	1,792	1,780	7,083
RR/SIRV Responses	1,792	1,780	7,083
RR/SIRV Activities	1,686	1,646	6,436

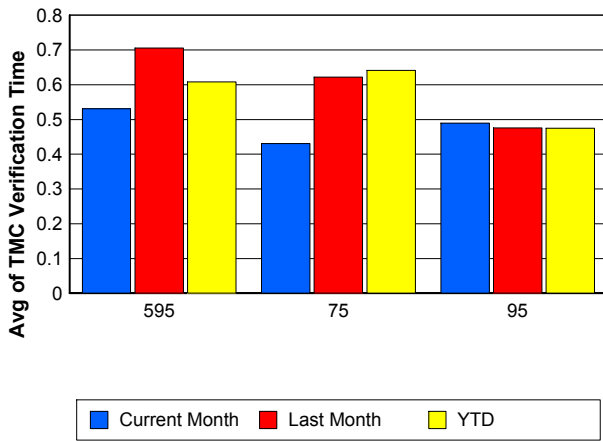
Number of Events / Roadway



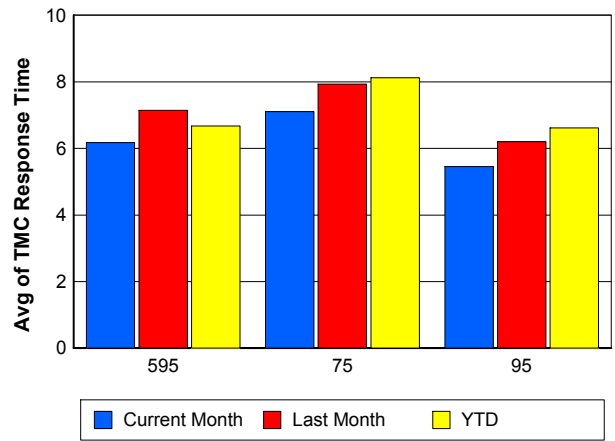
TMC Detection Time



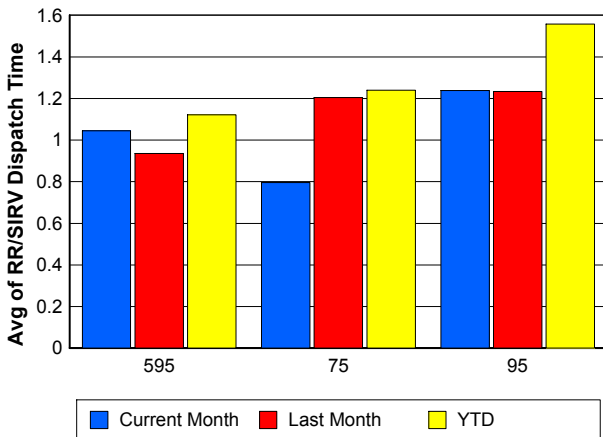
TMC Verification Time



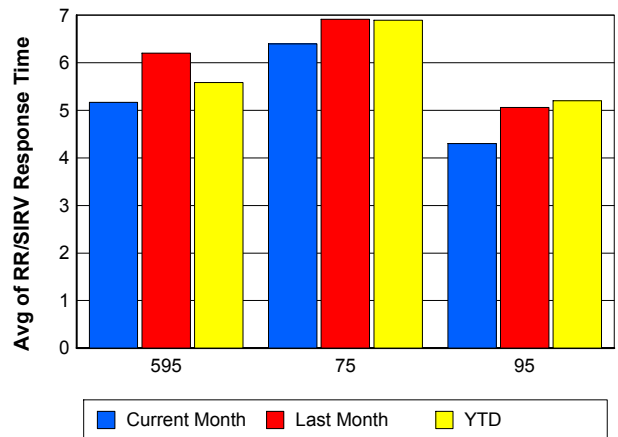
TMC Response Time



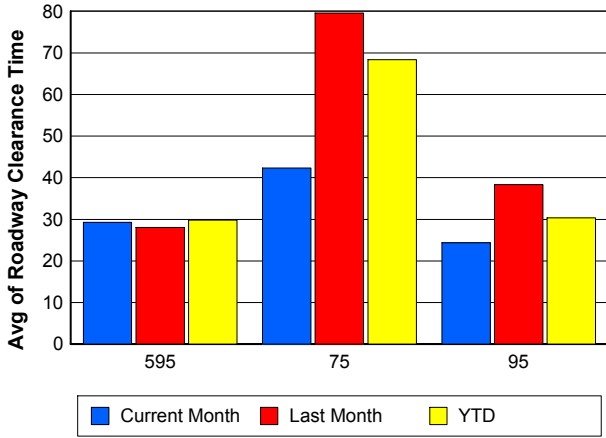
Road Ranger / SIRV Dispatch Time



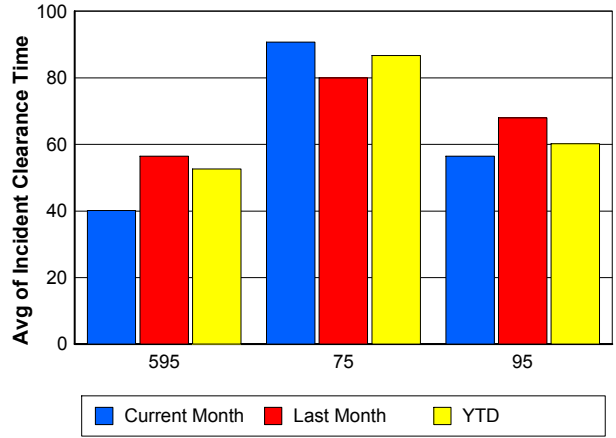
Road Ranger / SIRV Response Time



Roadway Clearance Time (2A)



Incident Clearance Time (3B)



Performance Measures by Event Type

Accident

	<u>Current Month</u>	<u>Last Month</u>	<u>YTD</u>
Number of Events	244	359	1,216
Number of Incidents	121	169	563
TMC Detection (min.)	0.07	0.00	0.01
TMC Verification (min.)	0.71	0.90	0.79
TMC Response (min.)	7.32	8.60	8.82
RR Dispatch Time (min.)	1.11	2.14	1.77
RR Response Time (min.)	6.26	6.66	7.12
Event Clearance (min.)	56.28	58.31	56.25
Roadway Clearance (min.)	29.91	39.32	35.27
Incident Clearance (min.)	63.78	72.01	67.86
# of Events w/ RR/SIRV	174	260	853
RR/SIRV Assists	174	260	853
RR/SIRV Activities	275	397	1,303

Debris on Roadway

	<u>Current Month</u>	<u>Last Month</u>	<u>YTD</u>
Number of Events	109	109	440
Number of Incidents	4	2	10
TMC Detection (min.)	0.00	0.00	0.05
TMC Verification (min.)	2.98	3.79	4.24
TMC Response (min.)	4.78	7.71	7.59
RR Dispatch Time (min.)	0.46	0.73	0.97
RR Response Time (min.)	4.36	7.03	6.62
Event Clearance (min.)	10.20	12.64	11.50
Roadway Clearance (min.)	56.04	32.85	32.14
Incident Clearance (min.)	57.17	37.07	37.36
# of Events w/ RR/SIRV	101	103	402
RR/SIRV Assists	101	103	402
RR/SIRV Activities	111	105	416

Disabled Vehicle

	<u>Current Month</u>	<u>Last Month</u>	<u>YTD</u>
Number of Events	2,555	2,419	10,102
Number of Incidents	26	32	130
TMC Detection (min.)	0.00	0.01	0.00
TMC Verification (min.)	0.55	0.59	0.60
TMC Response (min.)	5.31	6.23	6.31
RR Dispatch Time (min.)	0.74	1.00	1.12
RR Response Time (min.)	4.60	5.29	5.21
Event Clearance (min.)	25.28	25.99	26.95
Roadway Clearance (min.)	13.34	21.49	16.43
Incident Clearance (min.)	45.91	33.64	37.64
# of Events w/ RR/SIRV	2,061	1,886	7,493
RR/SIRV Assists	2,061	1,886	7,493
RR/SIRV Activities	2,077	1,937	7,626

Emergency Vehicles

	<u>Current Month</u>	<u>Last Month</u>	<u>YTD</u>
Number of Events	5	16	33
Number of Incidents	4	14	26
TMC Detection (min.)	0.00	0.00	0.00
TMC Verification (min.)	0.00	2.31	1.13
TMC Response (min.)	3.37	6.21	16.56
RR Dispatch Time (min.)	2.20	1.61	11.30
RR Response Time (min.)	1.76	4.59	4.38
Event Clearance (min.)	9.53	77.31	57.91
Roadway Clearance (min.)	7.83	78.24	60.77
Incident Clearance (min.)	11.30	85.03	66.51
# of Events w/ RR/SIRV	3	12	22
RR/SIRV Assists	3	12	22
RR/SIRV Activities	2	26	38

Other

	<u>Current Month</u>	<u>Last Month</u>	<u>YTD</u>
Number of Events	1,136	1,220	5,739
Number of Incidents	5	2	15
TMC Detection (min.)	0.00	0.02	0.00
TMC Verification (min.)	0.04	0.03	0.06
TMC Response (min.)	15.43	8.60	12.43
RR Dispatch Time (min.)	2.78	1.34	2.25
RR Response Time (min.)	7.94	7.45	8.02
Event Clearance (min.)	11.73	12.27	11.69
Roadway Clearance (min.)	15.39	71.38	23.99
Incident Clearance (min.)	20.24	72.63	28.98
# of Events w/ RR/SIRV	494	498	2,197
RR/SIRV Assists	494	498	2,197
RR/SIRV Activities	112	95	377

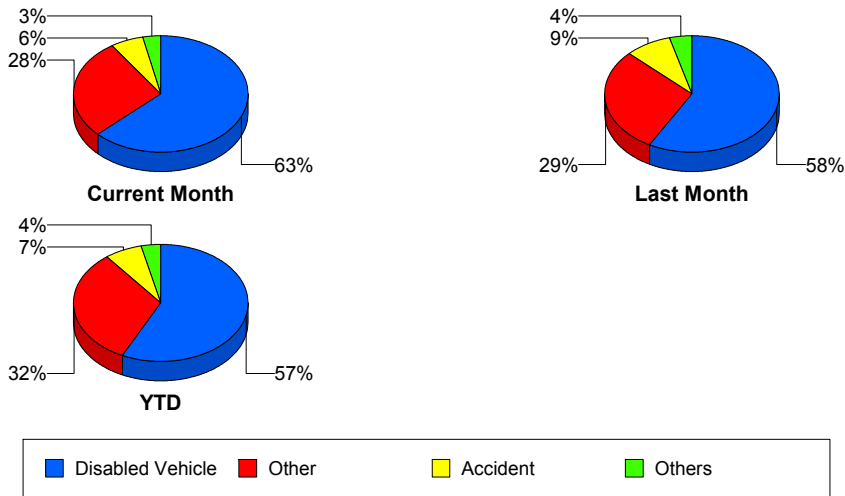
Police Activity

	<u>Current Month</u>	<u>Last Month</u>	<u>YTD</u>
Number of Events	11	34	116
Number of Incidents	5	13	34
TMC Detection (min.)	0.00	0.00	0.00
TMC Verification (min.)	0.00	0.57	0.20
TMC Response (min.)	0.00	18.58	14.35
RR Dispatch Time (min.)	0.13	6.74	5.23
RR Response Time (min.)	0.00	11.54	8.83
Event Clearance (min.)	27.07	37.97	35.13
Roadway Clearance (min.)	17.80	45.63	37.35
Incident Clearance (min.)	24.95	53.86	48.65
# of Events w/ RR/SIRV	4	12	33
RR/SIRV Assists	4	12	33
RR/SIRV Activities	5	13	41

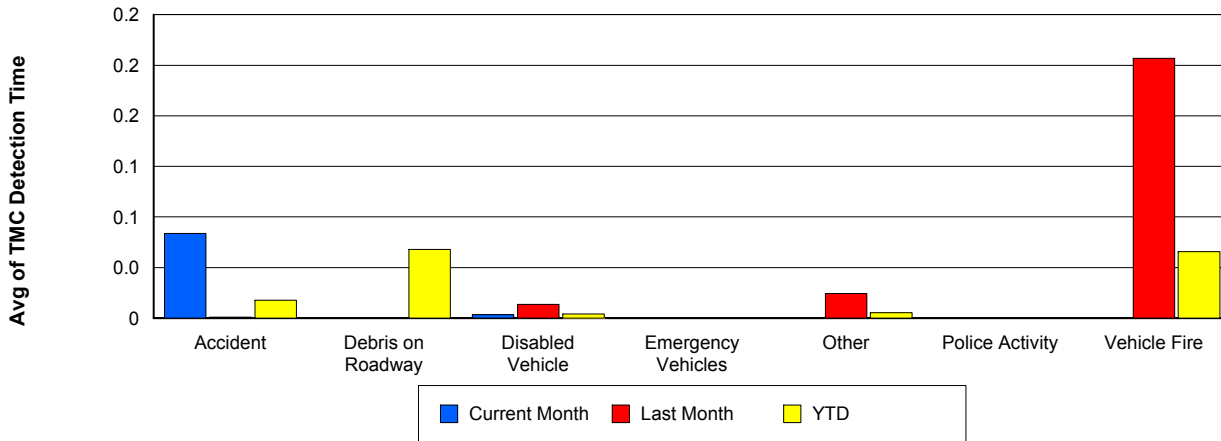
Vehicle Fire

	<u>Current Month</u>	<u>Last Month</u>	<u>YTD</u>
Number of Events	11	12	47
Number of Incidents	9	9	37
TMC Detection (min.)	0.00	0.21	0.05
TMC Verification (min.)	0.09	0.42	1.97
TMC Response (min.)	7.71	14.12	13.48
RR Dispatch Time (min.)	4.73	2.20	3.16
RR Response Time (min.)	2.65	11.76	11.18
Event Clearance (min.)	47.46	66.57	64.59
Roadway Clearance (min.)	31.61	54.21	46.20
Incident Clearance (min.)	43.82	84.12	66.98
# of Events w/ RR/SIRV	5	9	31
RR/SIRV Assists	5	9	31
RR/SIRV Activities	11	20	68

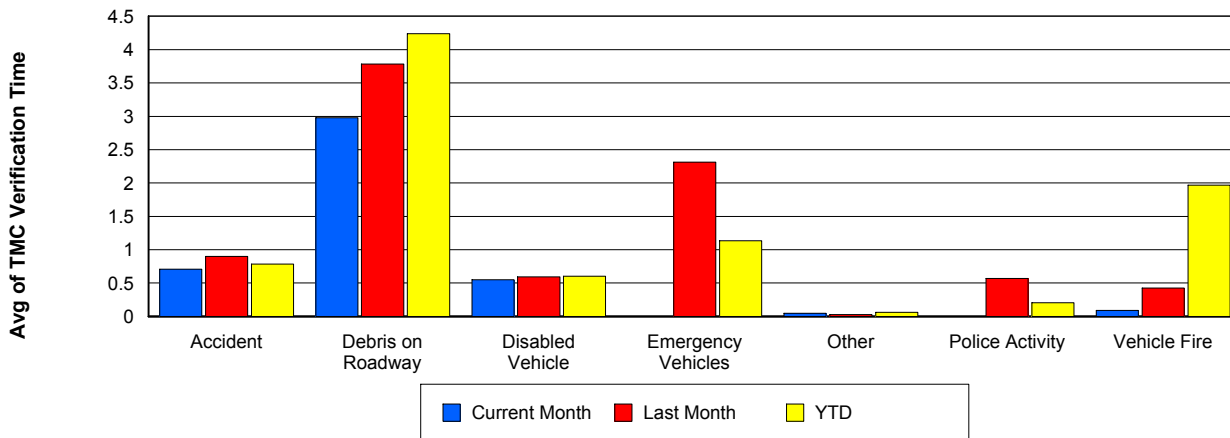
Number of Events / Event Type



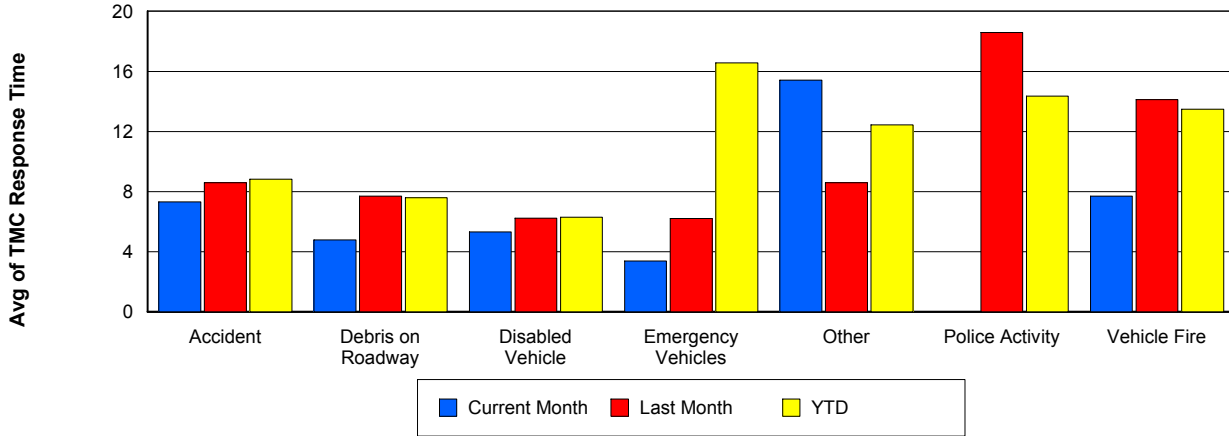
TMC Detection Time



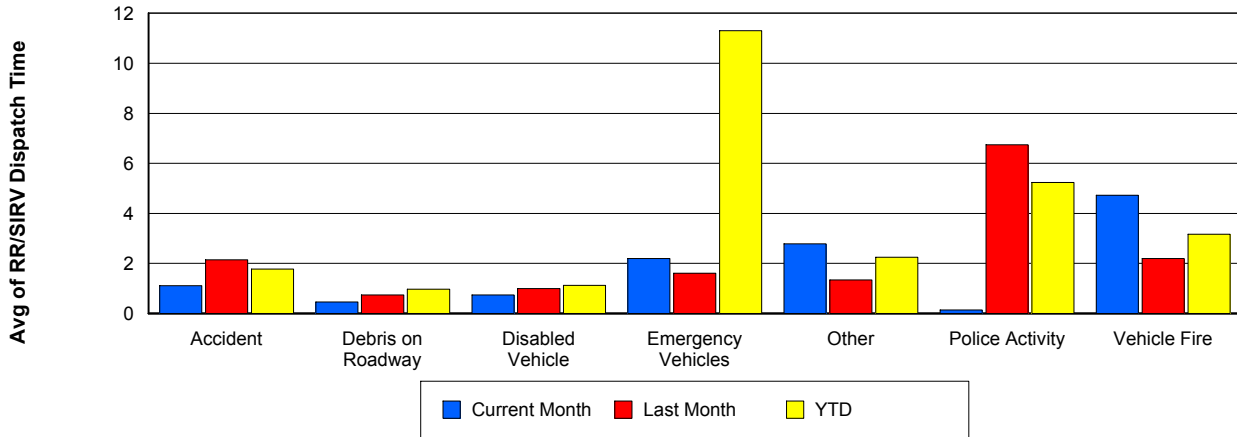
TMC Verification Time



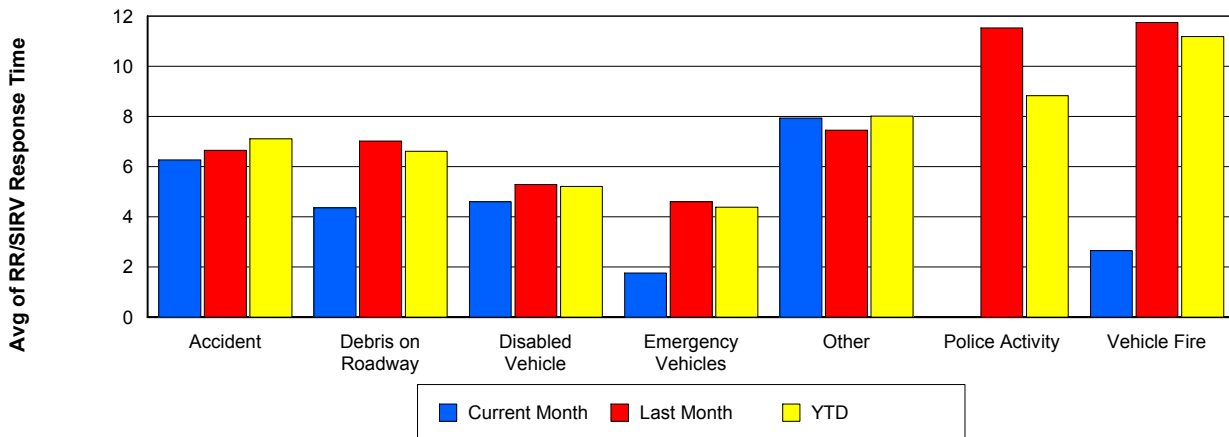
TMC Response Time



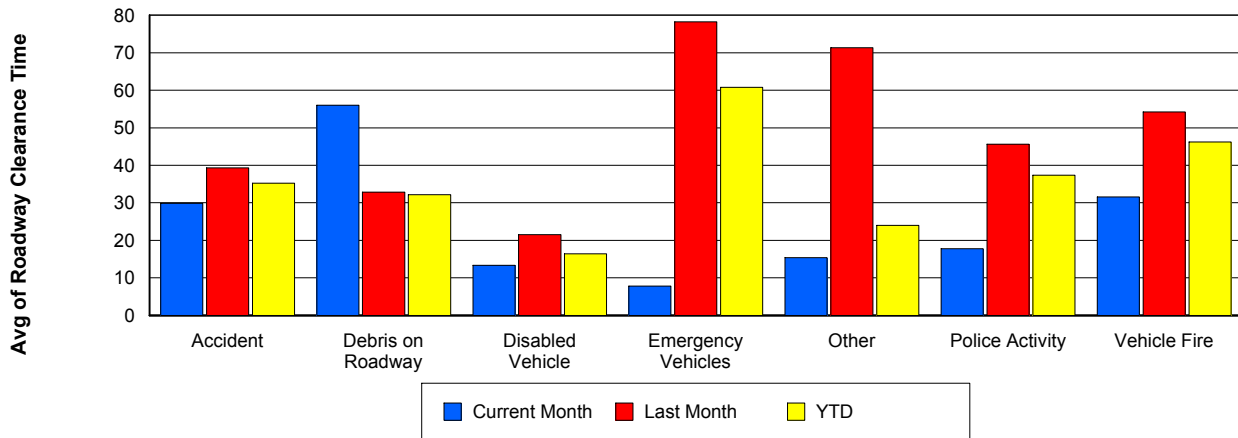
Road Ranger / SIRV Dispatch Time



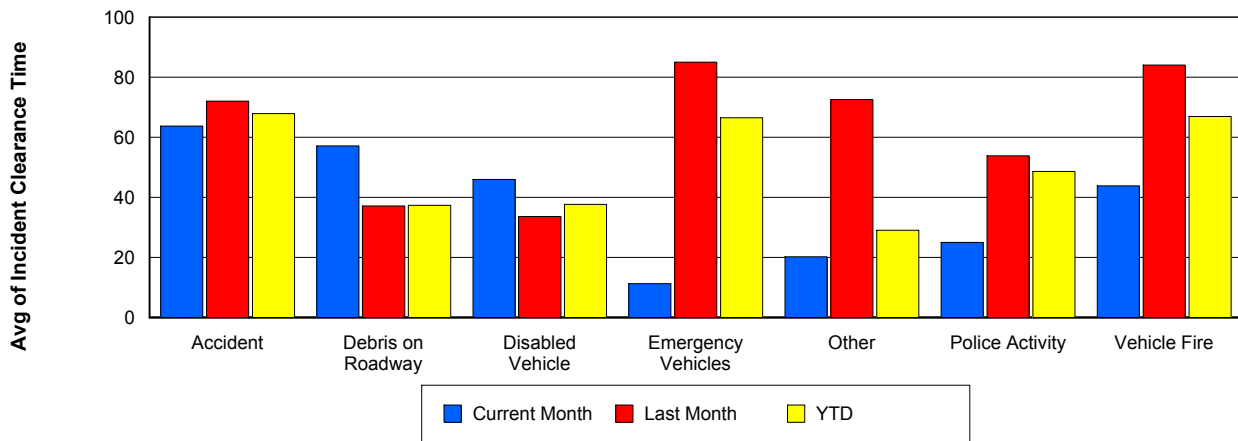
Road Ranger / SIRV Response Time



Roadway Clearance Time (2A)



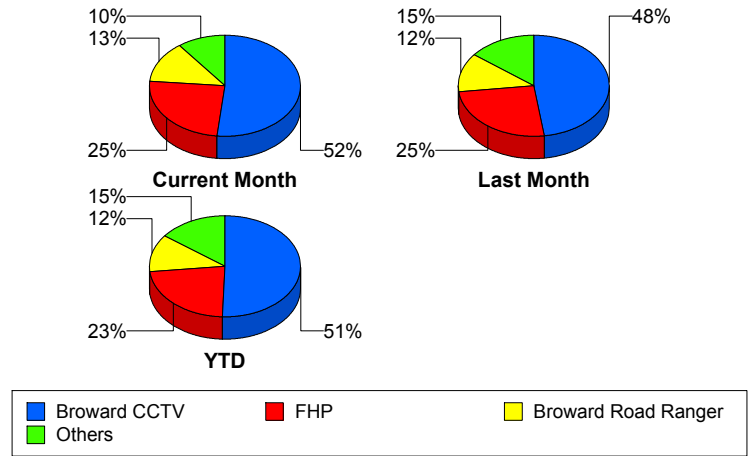
Incident Clearance Time (3B)



Incident Detection Methods

	Current Month	Last Month	YTD
Broward CCTV	90	115	413
Broward Road Ranger	23	30	96
Broward VideoWall	4	7	39
BSO	2	10	20
District 4	7	6	22
District 6	0	0	1
FDOT Maintenance	0	0	2
FHP	43	61	185
Fire	0	1	1
Florida's Turnpike	0	0	3
ITMS	0	0	1
Motorist	0	0	1
Other	0	1	1
Palm Beach Road Ran	0	1	2
Road Watcher	1	4	9
SIRV	1	1	3
SmarTraveler (511)	1	2	6
VisioPaD Detection	2	2	10
Total	174	241	815

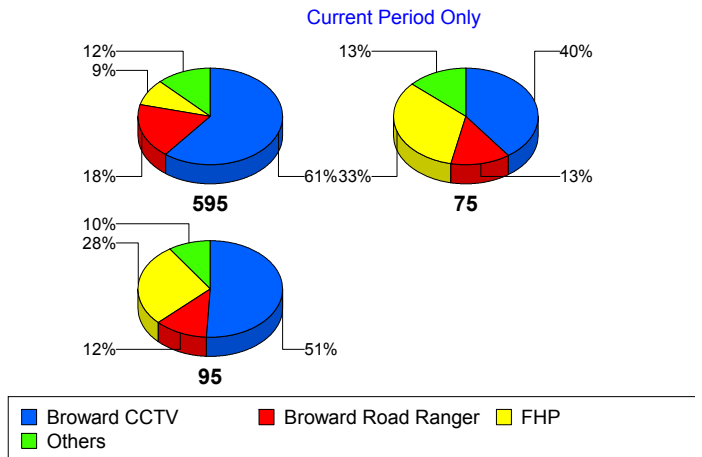
Total Incidents by Detection Method



Incident Detection Methods by Roadway

		Current Month	Last Month	YTD
595	Broward CCTV	20	19	65
	Broward Road Ranger	6	9	26
	Broward VideoWall	1	0	6
	BSO	0	2	2
	District 4	1	4	8
	FDOT Maintenance	0	0	1
	FHP	3	15	32
	Florida's Turnpike	0	0	3
	Motorist	0	0	1
	Road Watcher	0	0	2
	VisioPaD Detection	2	0	3
	Total	33	49	149
75	Broward CCTV	6	5	26
	Broward Road Ranger	2	2	6
	BSO	2	8	18
	District 4	0	0	1
	FHP	5	6	14
	Other	0	1	1
	Road Watcher	0	2	2
	Total	15	24	68
95	Broward CCTV	64	91	322
	Broward Road Ranger	15	19	64
	Broward VideoWall	3	7	33
	District 4	6	2	13
	District 6	0	0	1
	FDOT Maintenance	0	0	1
	FHP	35	40	139
	Fire	0	1	1
	ITMS	0	0	1
	Palm Beach Road Ran	0	1	2
	Road Watcher	1	2	5

Total Events by Roadway and Detection Method

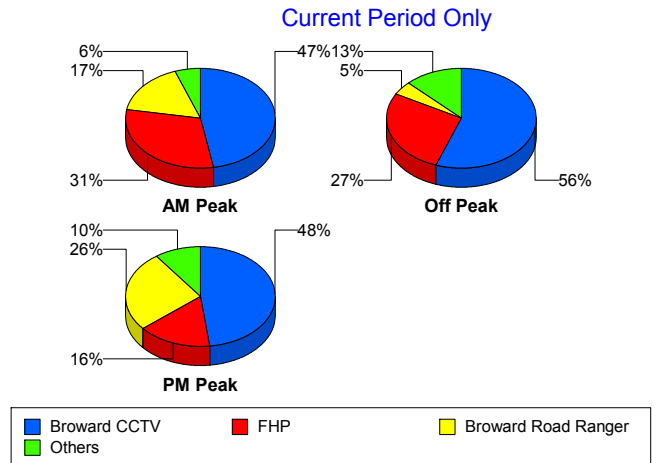


		Current Month	Last Month	YTD
95	SIRV	1	1	3
	SmarTraveler (511)	1	2	6
	VisioPaD Detection	0	2	7
	Total	126	168	598
Total	174	241	815	

Incident Detection Methods by Peak Period

		Current Month	Last Month	YTD
AM Peak	Broward CCTV	17	24	74
	Broward Road Ranger	6	11	30
	Broward VideoWall	0	1	12
	BSO	0	2	3
	District 4	1	3	7
	FHP	11	18	51
	Motorist	0	0	1
	Palm Beach Road Ran	0	0	1
	Road Watcher	0	2	4
	SIRV	1	0	1
	SmarTraveler (511)	0	0	1
	Total	36	61	185
	Off Peak	Broward CCTV	49	53
Broward Road Ranger		4	9	28
Broward VideoWall		3	6	23
BSO		2	8	17
District 4		3	2	7
FDOT Maintenance		0	0	1
FHP		24	30	91
Florida's Turnpike		0	0	3
ITMS		0	0	1
Road Watcher		1	1	4
SmarTraveler (511)		0	2	3
VisioPaD Detection		2	2	9

Total Events by Peak Period and Detection Method

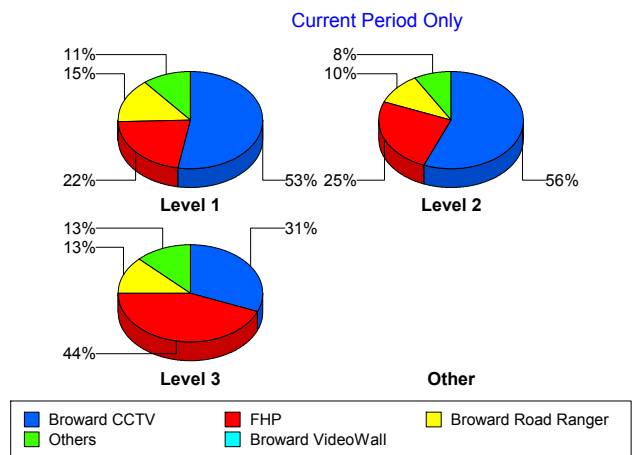


		Current Month	Last Month	YTD
Off Peak	Total	88	113	404
PM Peak	Broward CCTV	24	38	122
	Broward Road Ranger	13	10	38
	Broward VideoWall	1	0	4
	District 4	3	1	8
	District 6	0	0	1
	FDOT Maintenance	0	0	1
	FHP	8	13	43
	Fire	0	1	1
	Other	0	1	1
	Palm Beach Road Ran	0	1	1
	Road Watcher	0	1	1
	SIRV	0	1	2
	SmarTraveler (511)	1	0	2
	VisioPaD Detection	0	0	1
	Total	50	67	226
Total		174	241	815

Incident Detection Methods by Severity

		Current Month	Last Month	YTD
Level 1	Broward CCTV	58	67	253
	Broward Road Ranger	16	19	71
	Broward VideoWall	3	2	22
	BSO	0	2	2
	District 4	5	4	15
	FDOT Maintenance	0	0	1
	FHP	24	34	109
	Motorist	0	0	1
	Palm Beach Road Ran	0	1	2
	Road Watcher	1	3	7
	SIRV	1	1	3
	SmarTraveler (511)	1	2	4

Total Events by Severity and Detection Method



		Current Month	Last Month	YTD
Level 1	VisioPaD Detection	1	1	4
	Total	110	136	494
Level 2	Broward CCTV	27	33	112
	Broward Road Ranger	5	6	16
	Broward VideoWall	1	4	14
	BSO	0	3	4
	District 4	2	0	4
	FDOT Maintenance	0	0	1
	FHP	12	18	52
	Florida's Turnpike	0	0	1
	ITMS	0	0	1
	Other	0	1	1
	SmarTraveler (511)	0	0	2
	VisioPaD Detection	1	1	5
	Total	48	66	213
	Level 3	Broward CCTV	5	15
Broward Road Ranger		2	5	9
Broward VideoWall		0	1	3
BSO		2	5	14
District 4		0	2	3
District 6		0	0	1
FHP		7	9	24
Fire		0	1	1
Florida's Turnpike		0	0	2
Road Watcher		0	1	2
VisioPaD Detection		0	0	1
Total		16	39	108
Total		174	241	815

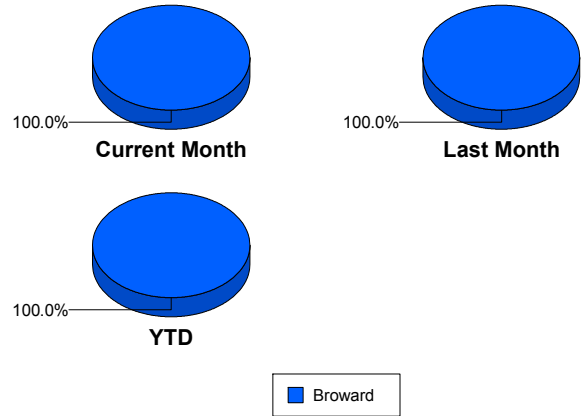
Road Ranger / SIRV Performance Measures

Road Ranger / SIRV Performance By County

Values presented are:
 - Total Events with a RR/SIRV Response
 - Total RR/SIRV Responses,
 - Total Activities Performed

	Current Mo	Last Month	YTD
Broward	2,804	2,775	10,704
	3,005	2,997	11,510
	3,132	3,149	12,017

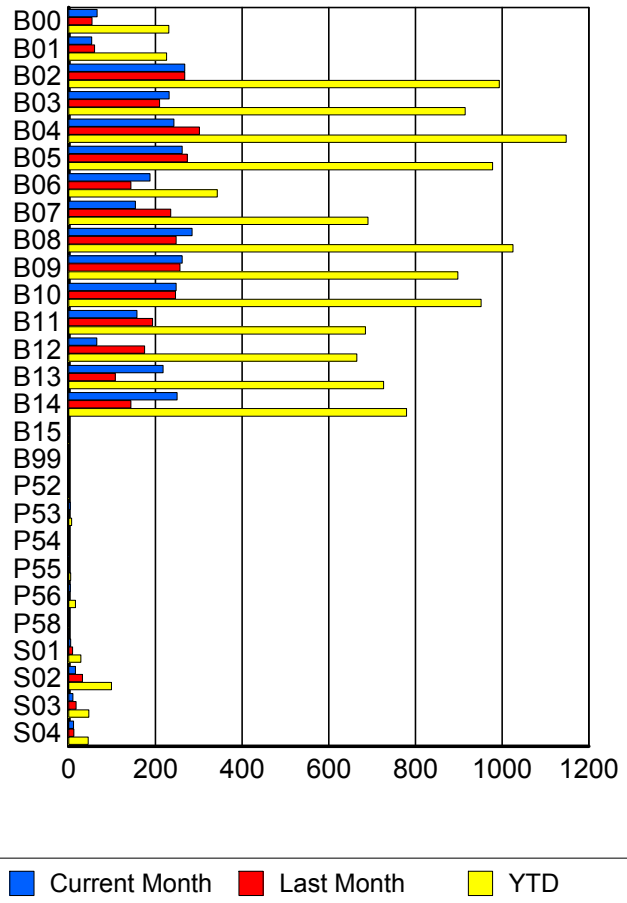
RR/SIRV Responses per County



Road Ranger / SIRV Performance By Truck

	Current Mo	Last Month	YTD
B00	64	54	227
	66	54	231
	69	55	238
B01	53	59	223
	53	60	226
	56	68	244
B02	265	268	986
	268	268	994
	275	281	1,038
B03	231	208	904
	232	210	915
	243	214	949
B04	239	299	1,135
	243	302	1,148
	258	320	1,209
B05	254	273	959
	262	274	978
	270	286	1,015
B06	184	140	335
	188	144	343
	194	147	353
B07	151	232	682
	154	236	691
	161	249	719
B08	279	244	1,014
	285	248	1,025
	302	257	1,072

RR/SIRV Responses per Truck



	Current Mo	Last Month	YTD
B09	254	254	882
	262	257	898
	274	265	937
B10	245	244	939
	248	247	952
	254	265	986
B11	155	190	672
	158	194	685
	164	208	716
B12	64	175	657
	65	175	665
	68	183	689
B13	216	106	720
	218	108	727
	224	114	754
B14	244	142	767
	250	144	780
	265	149	816
B15	0	1	1
	0	1	1
	0	1	1
B99	1	0	1
	1	0	1
	1	0	1
P52	1	0	1
	1	0	1
	1	0	1
P53	4	2	7
	4	2	7
	4	2	7
P54	0	1	1
	0	1	1
	0	1	1
P55	1	0	5
	1	0	5
	1	0	5
P56	4	2	16
	4	2	16
	4	3	17
P58	0	0	1
	0	0	1
	0	0	1
S01	4	8	26
	5	9	28
	5	11	32

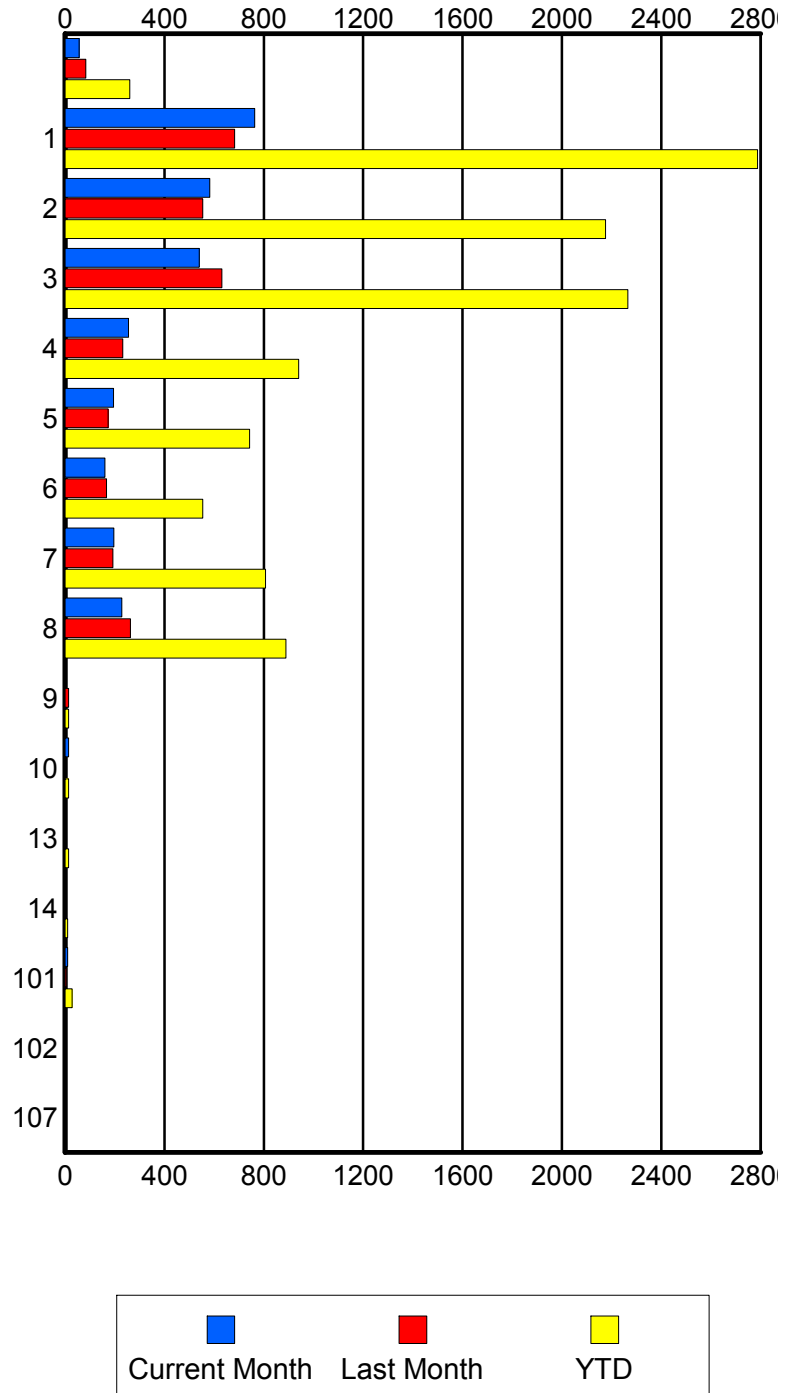
	Current Mo	Last Month	YTD
S02	16	28	94
	16	32	99
	17	36	110
S03	10	16	46
	10	17	47
	10	19	54
S04	9	12	43
	11	12	45
	12	15	52

Road Ranger / SIRV Performance By Beat

	Current Mo	Last Month	YTD
	51	75	242
	56	83	261
	59	95	292
1	715	653	2,630
	763	682	2,788
	791	706	2,889
2	566	538	2,107
	583	554	2,176
	611	581	2,275
3	529	611	2,209
	540	631	2,265
	562	651	2,355
4	247	227	918
	255	232	940
	265	246	970
5	193	171	730
	195	173	743
	197	182	762
6	155	165	545
	160	167	554
	175	184	599
7	196	191	796
	197	193	807
	208	205	853
8	223	260	876
	229	263	889
	237	279	933
9	0	12	12
	0	14	14
	0	14	14
10	13	0	13
	14	0	14
	14	0	14
13	0	0	14
	0	0	14
	0	0	15
14	0	0	11
	0	0	11
	0	0	11
101	10	5	29
	10	5	29
	10	6	30
102	3	0	4
	3	0	4
	3	0	4

Values presented are:
 - Total Events with a RR/SIRV Response
 - Total RR/SIRV Responses,
 - Total Activities Performed

RR/SIRV Responses per Beat



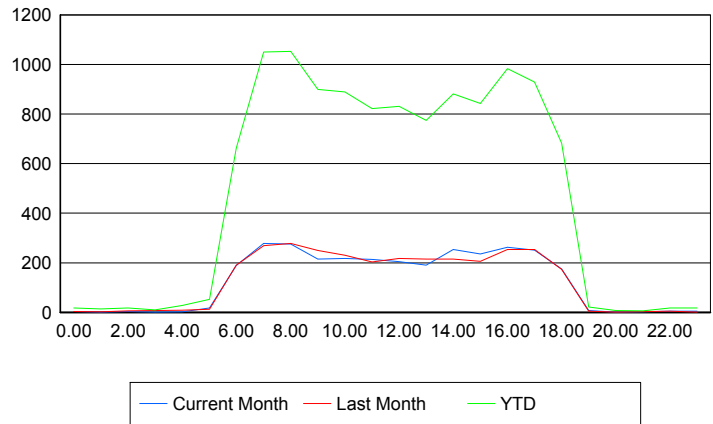
	Current Mo	Last Month	YTD
107	0	0	1
	0	0	1
	0	0	1

Road Ranger / SIRV Performance By Time of Day

Values presented are:
 - Total Events with a RR/SIRV Response
 - Total RR/SIRV Responses,
 - Total Activities Performed

	Current Mo	Last Month	YTD
12AM-1AM	3 3 3	3 3 3	17 17 18
1AM-2AM	1 1 1	2 2 2	14 14 14
2AM-3AM	3 3 3	3 6 6	13 18 18
3AM-4AM	1 1 1	0 0 0	9 10 10
4AM-5AM	2 2 2	4 9 9	21 28 29
5AM-6AM	15 17 19	12 12 13	49 52 55
6AM-7AM	172 189 195	177 190 196	601 662 684
7AM-8AM	258 278 289	246 269 287	980 1,050 1,096
8AM-9AM	247 275 285	255 278 298	963 1,053 1,101
9AM-10AM	208 215 225	228 249 258	842 899 931
10AM-11AM	198 218 238	212 230 241	813 889 936
11AM-12PM	198 213 219	192 203 222	764 822 857

Number of Responses / Hour of the Day



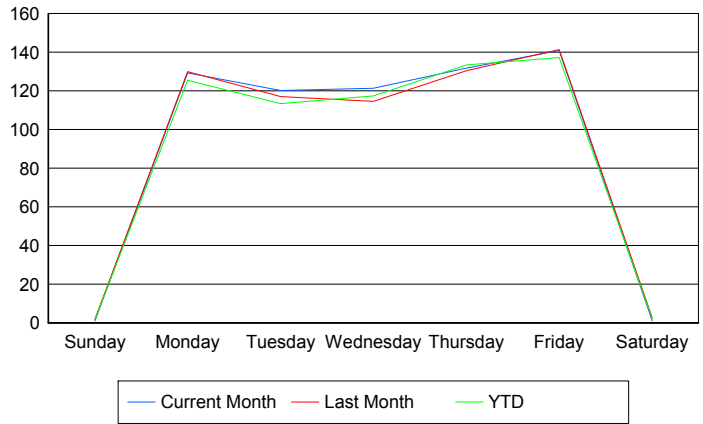
	Current Mo	Last Month	YTD
12PM-1PM	197	199	786
	205	218	831
	213	228	862
1PM-2PM	175	191	711
	190	215	775
	206	229	823
2PM-3PM	239	208	831
	253	215	882
	264	221	924
3PM-4PM	224	197	799
	235	206	843
	238	216	870
4PM-5PM	251	238	928
	262	253	984
	271	264	1,037
5PM-6PM	231	230	860
	251	254	929
	261	266	976
6PM-7PM	166	169	643
	175	174	683
	180	179	704
7PM-8PM	3	5	17
	7	5	21
	7	5	23
8PM-9PM	1	1	7
	1	1	7
	1	1	7
9PM-10PM	2	0	6
	2	0	6
	2	0	6
10PM-11PM	5	2	15
	5	4	18
	5	4	18
11PM-12AM	4	1	15
	4	1	17
	4	1	18

Road Ranger / SIRV Performance By Day of Week

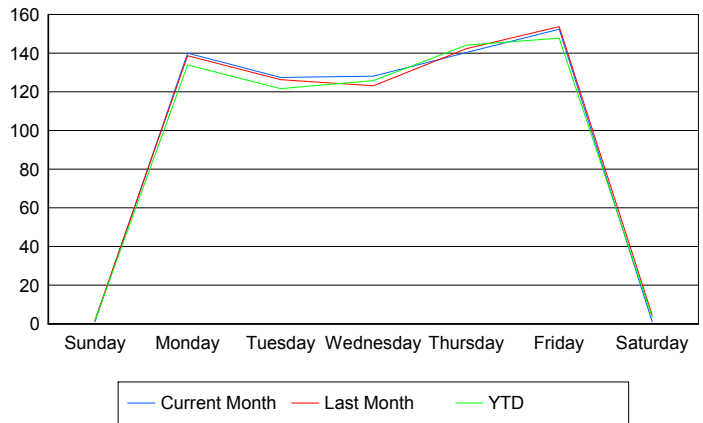
Values presented are: - Total Events with a RR/SIRV Response - Total RR/SIRV Responses, - Total Activities Performed

	Current Mo	Last Month	YTD
Sunday	1 1 1	3 3 3	8 8 10
Monday	512 555 576	646 690 717	2,117 2,260 2,337
Tuesday	476 506 518	583 629 654	1,910 2,051 2,122
Wednesday	602 636 669	454 487 518	1,979 2,123 2,235
Thursday	654 697 725	519 565 591	2,364 2,552 2,657
Friday	563 609 642	564 614 655	2,322 2,502 2,639
Saturday	1 1 1	6 9 11	11 14 17

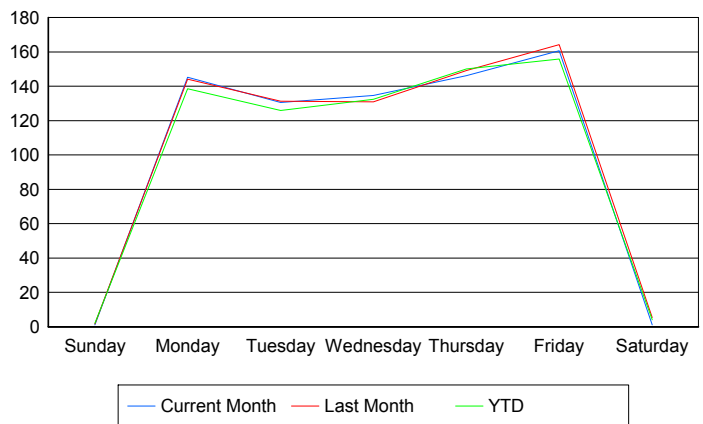
Avg # of events with a RR/SIRV Response per Day of the Week



Avg # of RR/SIRV Responses per Day of the Week



Avg # of RR/SIRV Activities Performed per Day of the Week



Road Ranger / SIRV Responses per Time of Day and Day of Week

