



Monthly Performance Measures Report Broward County



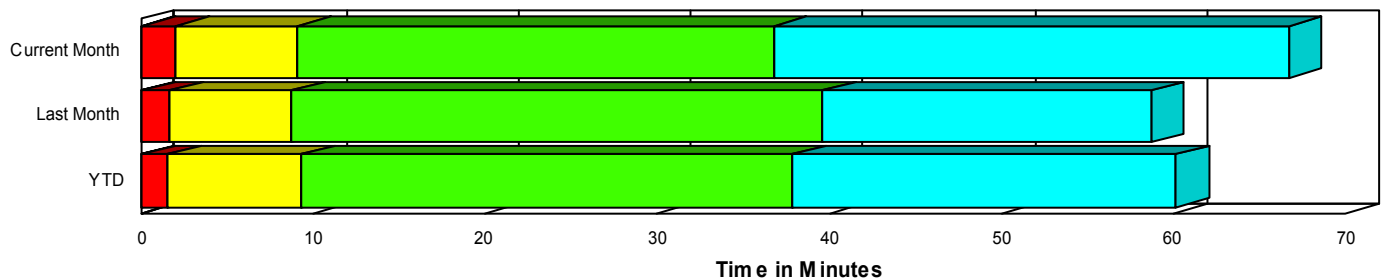
Created on:
May 04, 2008
10:58 pm

Period From Apr 1, 2008 to Apr 30, 2008

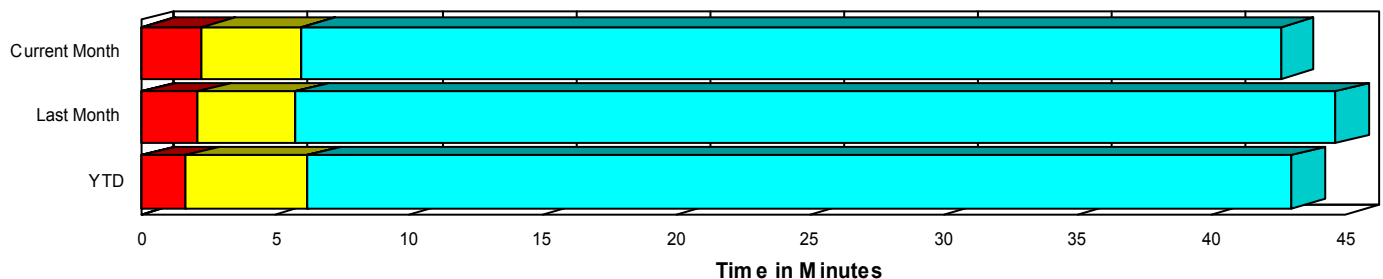
Performance Measures Summary

	Traffic Events (No Lanes Blocked)			Incidents (Lanes Blocked)		
	<u>This Month</u>	<u>Last Month</u>	<u>YTD</u>	<u>This Month</u>	<u>Last Month</u>	<u>YTD</u>
Number of Events	3,713	3,693	16,971	218	200	851
TMC Detection (min.)	0.01	0.03	0.03	0.01	0.03	0.06
TMC Verification (min.)	2.24	2.08	1.67	1.98	1.68	1.55
TMC Response (min.)	6.40	6.07	6.59	9.17	8.85	9.31
RR Dispatch Time (min.)	1.15	1.18	1.43	2.71	3.43	2.81
RR Response Time (min.)	5.34	4.99	5.46	6.46	5.49	6.54
Roadway Clearance (min.)				36.47	39.13	37.14
Event Clearance (min.)	42.96	44.96	43.35	62.81	58.22	58.11
# of Events w/ RR/SIRV	3,410	3,430	13,687	211	193	814
RR/SIRV Responses	3,410	3,430	13,821	211	193	1,064
RR/SIRV Activities	3,455	3,404	13,949	425	385	1,579

Incident Clearance TimeLine



Traffic Event(Non-Lane Blockage) Time-Line



<ul style="list-style-type: none"> Avg. TMC Detection Time Avg. Time from TMC Detection to TMC Verification Avg. Time from TMC Verification to TMC Response 	<ul style="list-style-type: none"> Avg. Time from TMC Response to Roadway Clearance* Avg. Time from Roadway Clearance to Incident/Event Clearance**
--	--

* Roadway clearance equals all travel lanes open

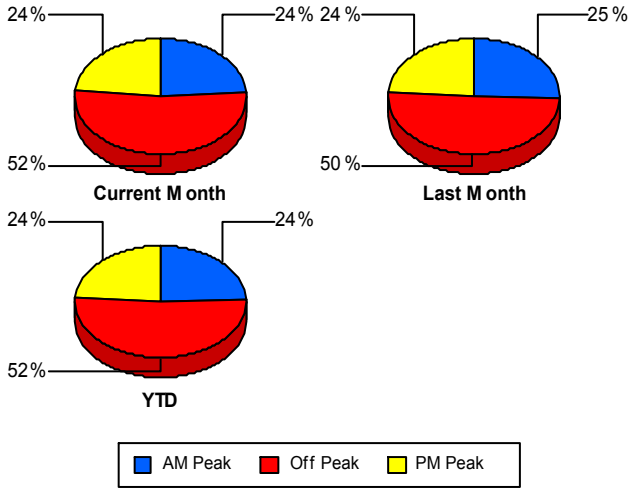
** Incident clearance equals time when last responder has left the scene

Performance Measures by Peak Period

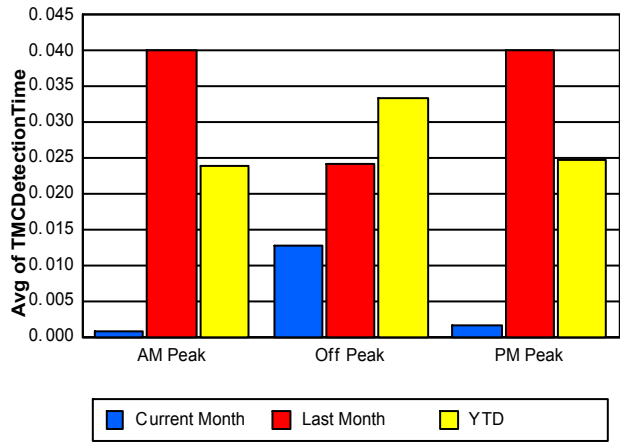
Note: AM peak period is defined as 6am to 10am and PM peak period is defined as 3pm to 7pm.

	AM Peak			Off Peak			PM Peak		
	<u>Current Month</u>	<u>Last Month</u>	<u>YTD</u>	<u>Current Month</u>	<u>Last Month</u>	<u>YTD</u>	<u>Current Month</u>	<u>Last Month</u>	<u>YTD</u>
Number of Events	948	988	4,353	2,050	1,960	9,221	933	945	4,248
Number of Incidents	52	40	201	123	114	454	43	46	196
TMC Detection (min.)	0.00	0.04	0.02	0.01	0.02	0.03	0.00	0.04	0.02
TMC Verification (min.)	1.08	1.03	0.89	2.90	2.57	2.01	1.91	2.09	1.71
TMC Response (min.)	5.03	5.16	5.60	7.68	7.08	7.47	5.84	5.69	6.49
RR Dispatch Time (min.)	0.83	0.97	1.06	1.43	1.49	1.83	1.27	1.27	1.28
RR Response Time (min.)	4.28	4.25	4.65	6.36	5.64	6.07	4.62	4.61	5.32
Event Clearance (min.)	27.16	35.15	33.22	49.76	50.61	49.65	48.73	46.29	43.01
Roadway Clearance (min.)	32.72	39.44	33.84	42.65	44.98	43.34	23.32	24.36	26.16
Incident Clearance (min.)	45.96	66.90	54.66	78.95	62.93	67.09	37.01	39.02	40.83
# of Events w/ RR/SIRV	888	944	3,684	1,861	1,784	7,344	872	895	3,473
RR/SIRV Responses	888	944	3,788	1,861	1,784	7,552	872	895	3,545
RR/SIRV Activities	941	990	3,934	2,009	1,857	7,880	930	942	3,714

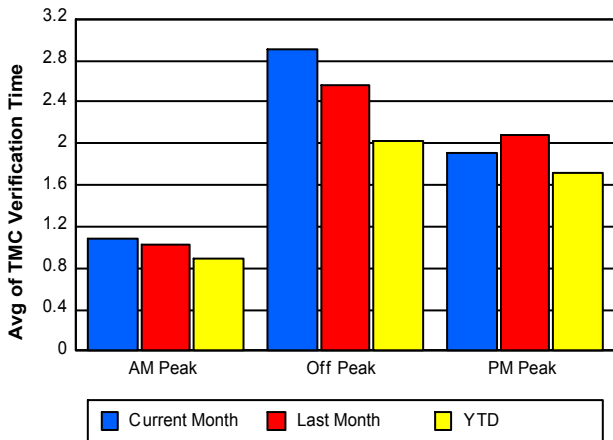
Number of Events / Peak Period



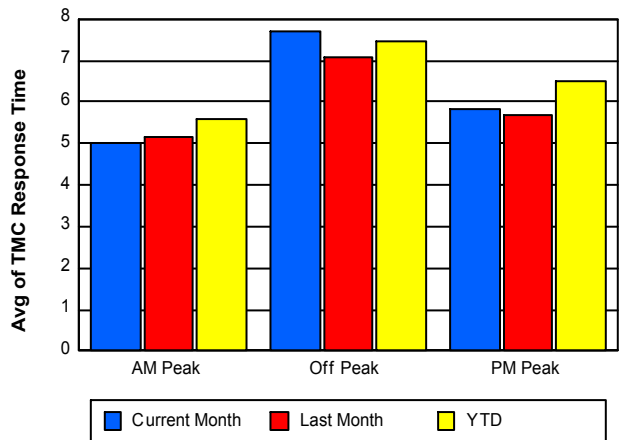
TMC Detection Time



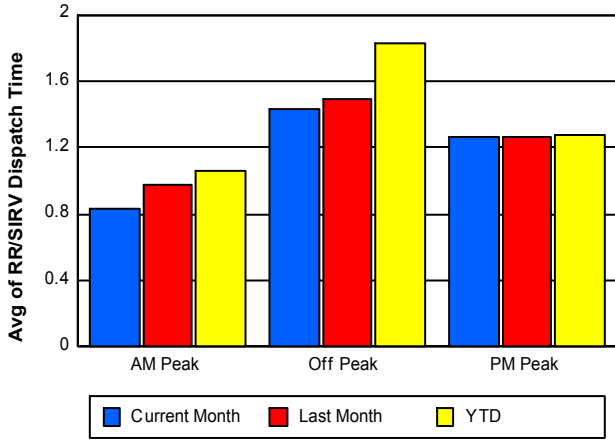
TMC Verification Time



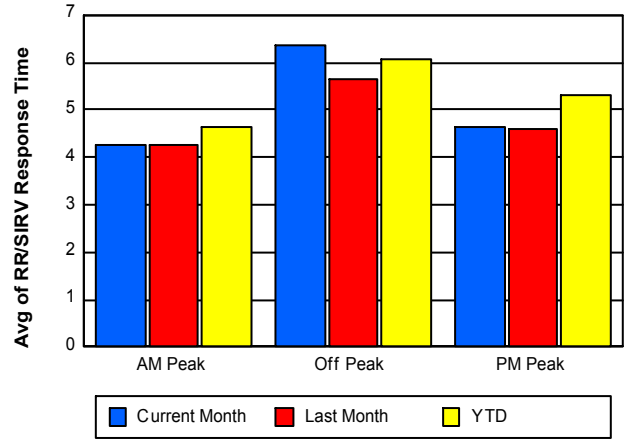
TMC Response Time



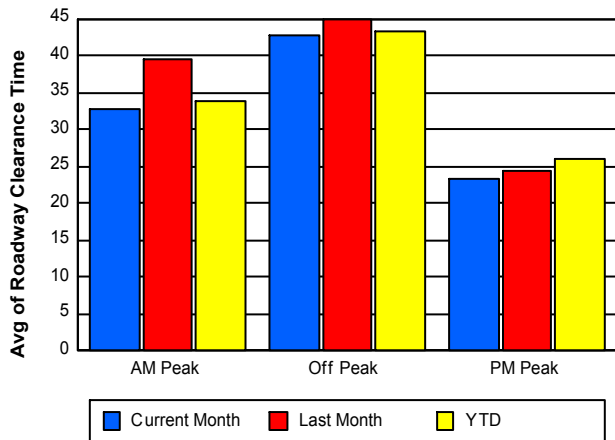
Road Ranger / SIRV Dispatch Time



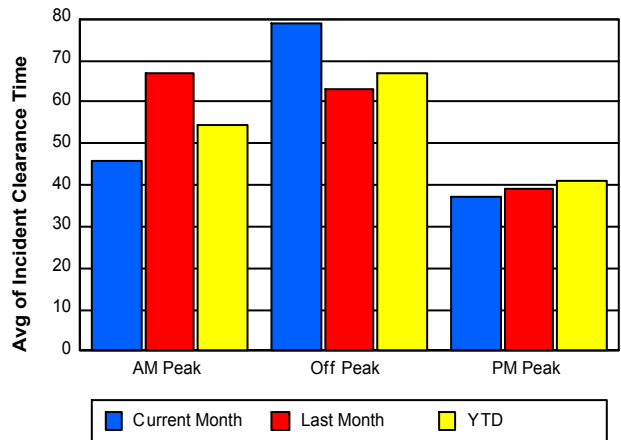
Road Ranger / SIRV Response Time



Roadway Clearance Time (2A)



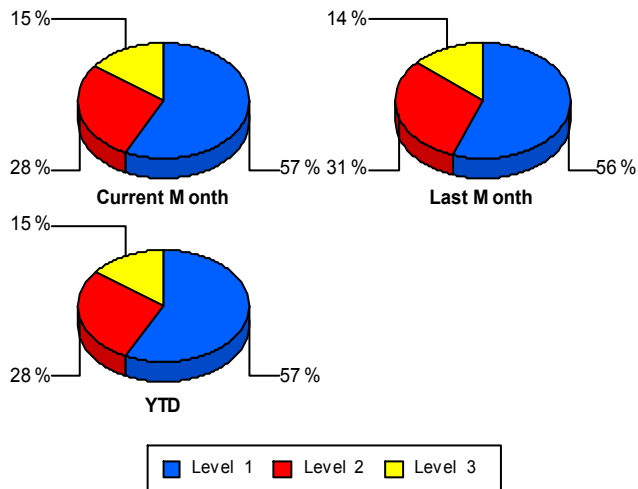
Incident Clearance Time (3B)



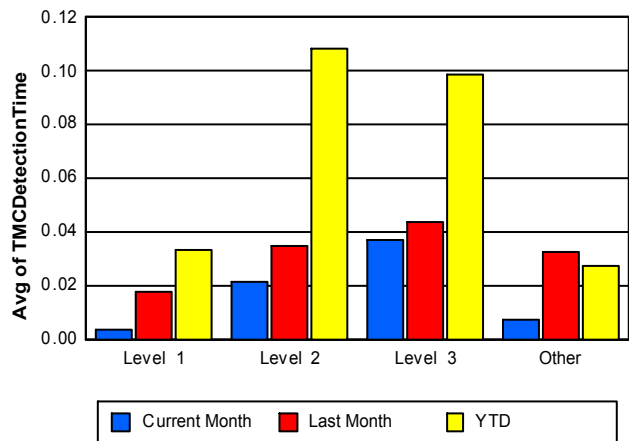
Performance Measures by Severity

	Level 1			Level 2			Level 3			Other		
	<u>This Month</u>	<u>Last Month</u>	<u>YTD</u>	<u>This Month</u>	<u>Last Month</u>	<u>YTD</u>	<u>This Month</u>	<u>Last Month</u>	<u>YTD</u>	<u>This Month</u>	<u>Last Month</u>	<u>YTD</u>
Number of Events	125	111	487	61	62	238	32	27	126	3,713	3,693	16,971
Number of Incidents	125	111	487	61	62	238	32	27	126	0	0	0
TMC Detection (min.)	0.00	0.02	0.03	0.02	0.03	0.11	0.04	0.04	0.10	0.01	0.03	0.03
TMC Verification (min.)	1.20	0.96	0.92	3.50	2.29	2.45	2.10	3.21	2.25	2.24	2.08	1.67
TMC Response (min.)	7.46	7.12	7.93	12.20	10.69	11.42	9.97	11.29	10.41	6.40	6.07	6.59
RR Dispatch Time (min.)	2.56	2.95	2.72	3.07	4.21	2.83	2.62	3.56	3.13	1.15	1.18	1.43
RR Resp. Time (min.)	4.91	4.31	5.29	9.13	6.48	8.59	7.33	7.74	7.27	5.34	4.99	5.46
Event Clearance (min.)	59.82	40.35	43.95	61.21	62.69	64.83	77.52	121.43	100.00	42.96	44.96	43.35
Roadway Clear. (min.)	15.61	16.16	15.06	50.65	49.94	50.54	90.92	108.71	97.14			
Incident Clearance (min.)	59.82	40.35	43.95	61.21	62.69	64.83	77.52	121.43	100.00			
# of Events w/ RR/SIRV	121	106	461	60	61	235	30	26	118	3,410	3,430	13,687
RR/SIRV Responses	121	106	534	60	61	309	30	26	221	3,410	3,430	13,821
RR/SIRV Activities	207	181	738	128	112	474	90	92	367	3,455	3,404	13,949

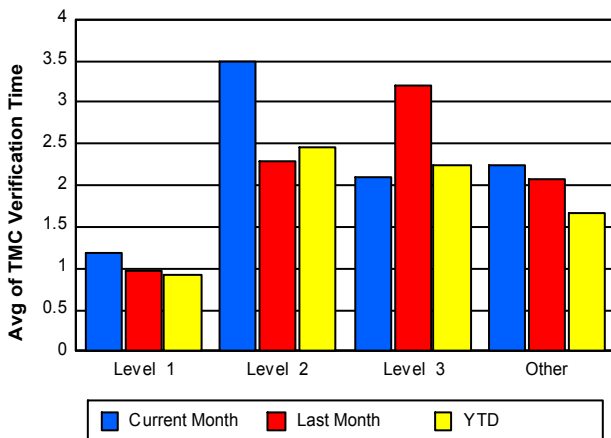
Number of Events / Severity



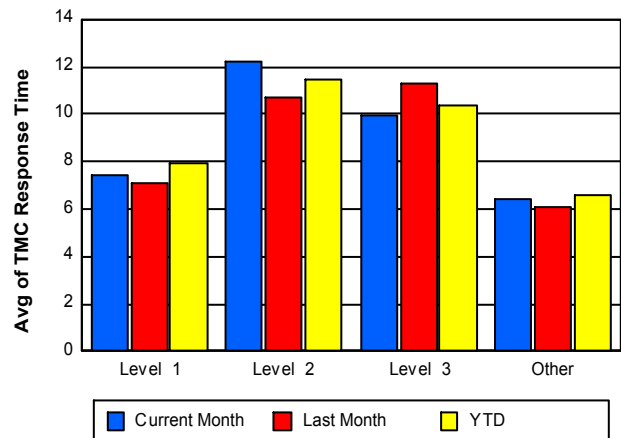
TMC Detection Time



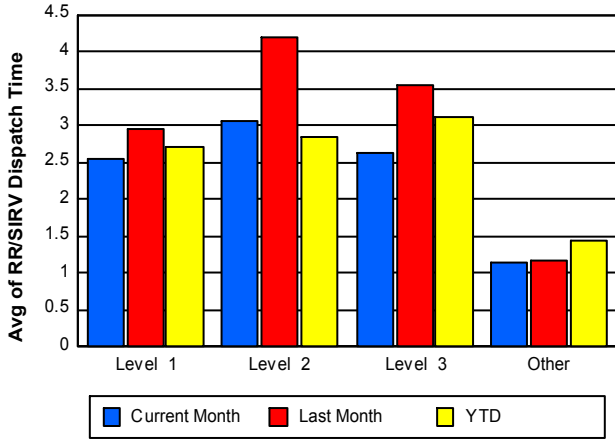
TMC Verification Time



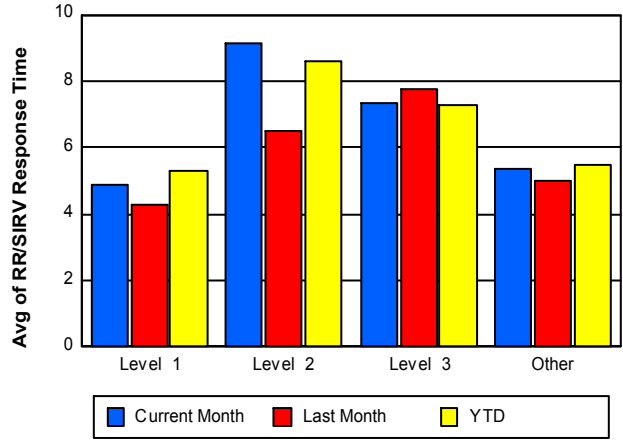
TMC Response Time



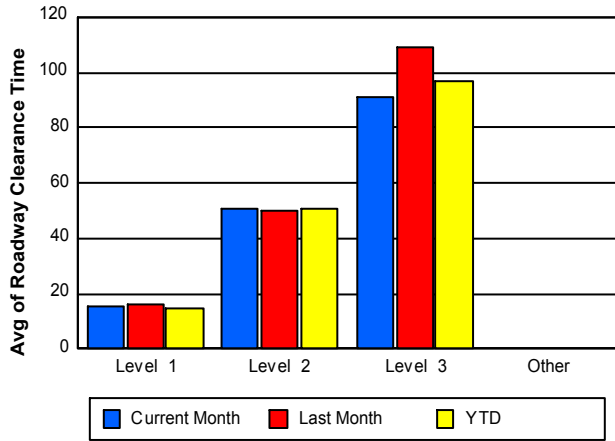
Road Ranger / SIRV Dispatch Time



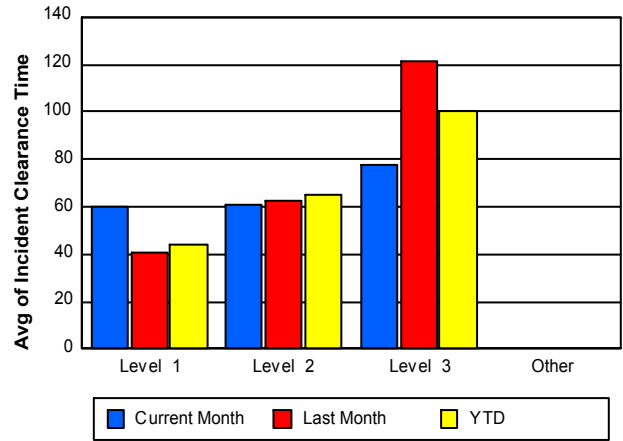
Road Ranger / SIRV Response Time



Roadway Clearance Time (2A)



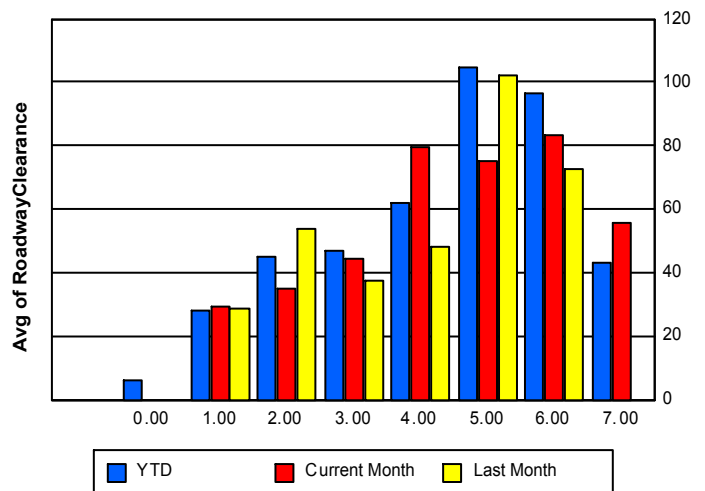
Incident Clearance Time (3B)



Roadway Clearance by Maximum Number of Lanes Blocked

	Current Month	Last Month	YTD
	0.00	0.00	
0			5.87
1	29.44	28.87	27.79
2	35.12	54.09	45.18
3	44.28	37.55	46.85
4	79.40	48.47	61.85
5	75.16	102.05	104.52
6	83.29	72.37	96.72

Roadway Clearance Time(2A)



	Current Month	Last Month	YTD
7	56.00	0.00	43.38

Performance Measures by Roadway

595

	<u>Current Month</u>	<u>Last Month</u>	<u>YTD</u>
Number of Events	664	662	2,896
Number of Incidents	41	34	146
TMC Detection (min.)	0.00	0.03	0.03
TMC Verification (min.)	1.75	2.11	1.93
TMC Response (min.)	6.20	5.75	6.74
RR Dispatch Time (min.)	1.06	1.20	1.24
RR Resp. Time (min.)	5.25	4.63	5.61
Event Clearance (min.)	47.66	41.14	45.07
Roadway Clear. (min.)	29.15	31.44	36.89
Incident Clearance (min.)	42.17	46.58	51.64
# of Events w/ RR/SIRV	606	620	2,425
RR/SIRV Responses	606	620	2,488
RR/SIRV Activities	667	649	2,594

75

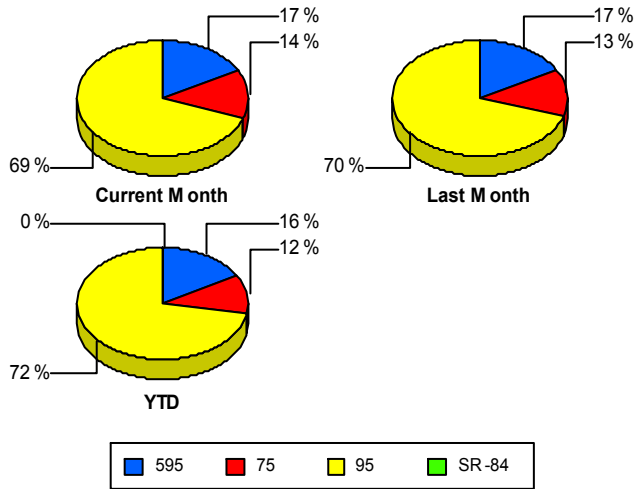
	<u>Current Month</u>	<u>Last Month</u>	<u>YTD</u>
Number of Events	539	507	2,085
Number of Incidents	13	7	40
TMC Detection (min.)	0.01	0.04	0.04
TMC Verification (min.)	6.49	5.44	4.43
TMC Response (min.)	6.72	5.67	4.59
RR Dispatch Time (min.)	1.14	1.10	0.80
RR Resp. Time (min.)	5.64	4.69	3.83
Event Clearance (min.)	56.52	32.46	43.68
Roadway Clear. (min.)	96.16	108.42	73.78
Incident Clearance (min.)	56.79	118.90	70.60
# of Events w/ RR/SIRV	526	499	2,037
RR/SIRV Responses	526	499	2,070
RR/SIRV Activities	596	534	2,223

95

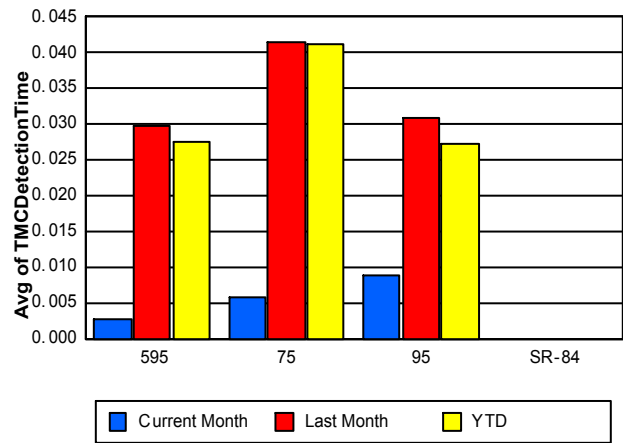
	<u>Current Month</u>	<u>Last Month</u>	<u>YTD</u>
Number of Events	2,728	2,724	12,840
Number of Incidents	164	159	665
TMC Detection (min.)	0.01	0.03	0.03
TMC Verification (min.)	1.51	1.42	1.16
TMC Response (min.)	6.63	6.47	7.22
RR Dispatch Time (min.)	1.31	1.37	1.69
RR Resp. Time (min.)	5.40	5.19	5.87
Event Clearance (min.)	40.72	49.18	43.89
Roadway Clear. (min.)	33.57	37.72	34.99
Incident Clearance (min.)	68.44	58.04	58.78
# of Events w/ RR/SIRV	2,489	2,504	10,039
RR/SIRV Responses	2,489	2,504	10,327
RR/SIRV Activities	2,617	2,606	10,711

	<u>YTD</u>
Number of Events	1
Number of Incidents	0
TMC Detection (min.)	0.00
TMC Verification (min.)	0.47
TMC Response (min.)	
RR Dispatch Time (min.)	
RR Resp. Time (min.)	
Event Clearance (min.)	5.22
Roadway Clear. (min.)	
Incident Clearance (min.)	
# of Events w/ RR/SIRV	0
RR/SIRV Responses	0
RR/SIRV Activities	0

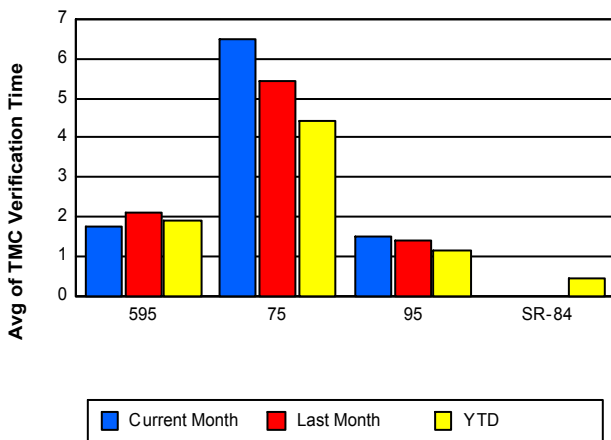
Number of Events / Roadway



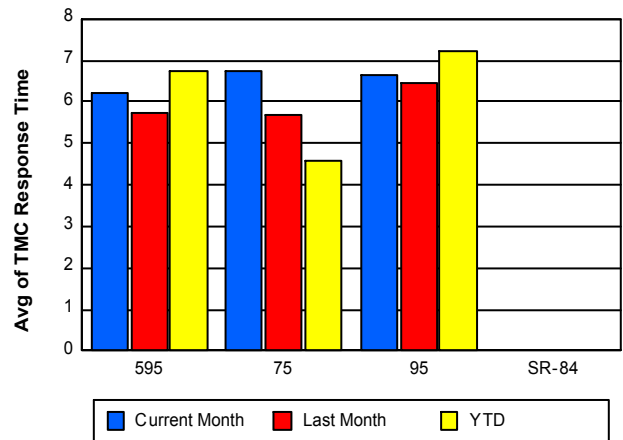
TMC Detection Time



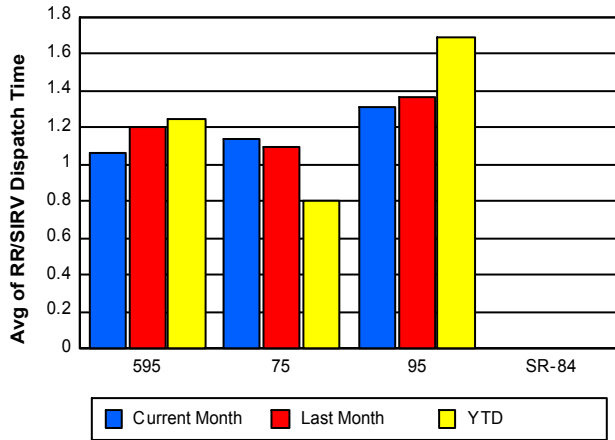
TMC Verification Time



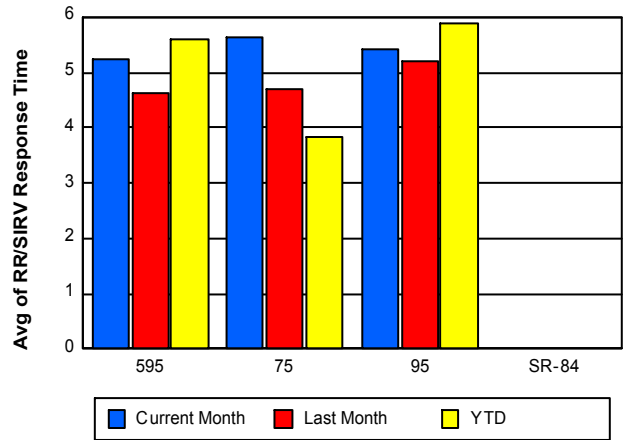
TMC Response Time



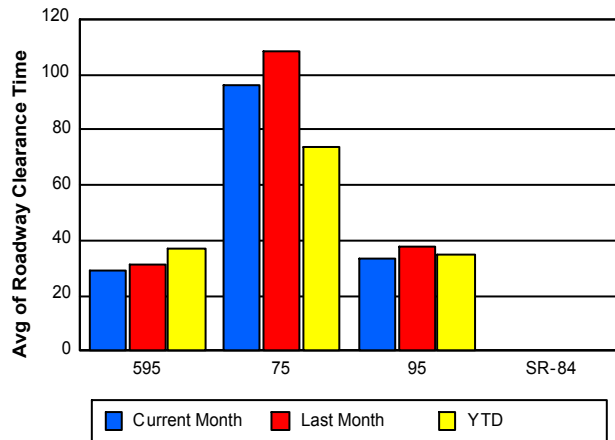
Road Ranger / SIRV Dispatch Time



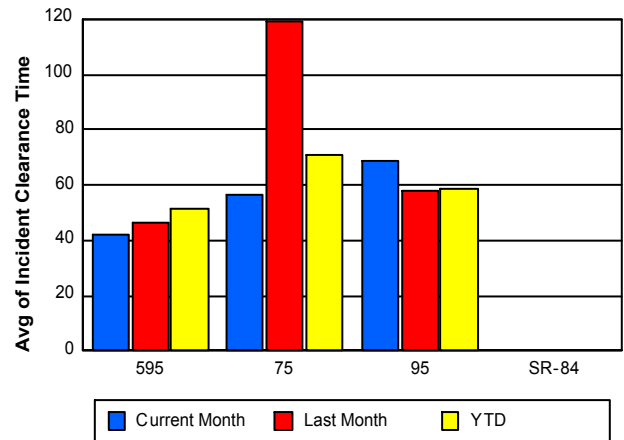
Road Ranger / SIRV Response Time



Roadway Clearance Time (2A)



Incident Clearance Time (3B)



Performance Measures by Event Type

Abandoned Vehicle

	<u>Current Month</u>	<u>Last Month</u>	<u>YTD</u>
Number of Events	553	527	2,207
Number of Incidents	2	0	3
TMC Detection (min.)	0.00	0.05	0.05
TMC Verification (min.)	0.59	0.28	0.38
TMC Response (min.)	5.37	5.01	6.17
RR Dispatch Time (min.)	0.95	0.66	1.29
RR Response Time (min.)	4.43	4.35	5.11
Event Clearance (min.)	190.23	200.47	216.55
Roadway Clearance (min.)	24.10		23.23
Incident Clearance (min.)	1,366.07		919.47
# of Events w/ RR/SIRV	454	441	1,775
RR/SIRV Assists	454	441	1,782
RR/SIRV Activities	487	458	1,846

Accident

	<u>Current Month</u>	<u>Last Month</u>	<u>YTD</u>
Number of Events	302	333	1,364
Number of Incidents	155	159	623
TMC Detection (min.)	0.07	0.04	0.07
TMC Verification (min.)	2.05	1.99	1.67
TMC Response (min.)	7.84	7.25	7.61
RR Dispatch Time (min.)	2.08	1.91	1.74
RR Response Time (min.)	5.75	5.36	5.90
Event Clearance (min.)	42.50	47.69	45.30
Roadway Clearance (min.)	34.54	41.42	37.03
Incident Clearance (min.)	55.57	61.97	59.36
# of Events w/ RR/SIRV	295	326	1,323
RR/SIRV Assists	295	326	1,550
RR/SIRV Activities	487	514	2,032

Congestion

	<u>Current Month</u>	<u>Last Month</u>	<u>YTD</u>
Number of Events	5	2	9
Number of Incidents	1	0	1
TMC Detection (min.)	0.00	0.00	0.00
TMC Verification (min.)	0.00	0.00	0.00
TMC Response (min.)			
RR Dispatch Time (min.)			
RR Response Time (min.)			
Event Clearance (min.)	91.65	91.89	94.84
Roadway Clearance (min.)	8.22		8.22
Incident Clearance (min.)	98.70		98.70
# of Events w/ RR/SIRV	0	0	0
RR/SIRV Assists	0	0	0
RR/SIRV Activities	0	0	0

Debris on Roadway

	<u>Current Month</u>	<u>Last Month</u>	<u>YTD</u>
Number of Events	148	137	600
Number of Incidents	0	2	12
TMC Detection (min.)	0.01	0.02	0.08
TMC Verification (min.)	6.54	6.80	5.98
TMC Response (min.)	8.33	8.99	8.23
RR Dispatch Time (min.)	1.30	1.45	1.21
RR Response Time (min.)	7.03	7.56	7.04
Event Clearance (min.)	12.44	13.00	12.64
Roadway Clearance (min.)		36.05	55.01
Incident Clearance (min.)		39.62	56.11
# of Events w/ RR/SIRV	146	134	584
RR/SIRV Assists	146	134	611
RR/SIRV Activities	151	142	636

Disabled Vehicle

	<u>Current Month</u>	<u>Last Month</u>	<u>YTD</u>
Number of Events	2,428	2,480	10,231
Number of Incidents	40	28	144
TMC Detection (min.)	0.00	0.03	0.02
TMC Verification (min.)	2.65	2.47	2.06
TMC Response (min.)	6.44	6.15	6.60
RR Dispatch Time (min.)	1.05	1.25	1.45
RR Response Time (min.)	5.41	4.96	5.42
Event Clearance (min.)	18.67	19.27	18.95
Roadway Clearance (min.)	25.00	26.22	26.97
Incident Clearance (min.)	34.03	44.01	38.65
# of Events w/ RR/SIRV	2,411	2,445	9,833
RR/SIRV Assists	2,411	2,445	9,929
RR/SIRV Activities	2,652	2,585	10,509

Emergency Vehicles

	<u>Current Month</u>	<u>YTD</u>
Number of Events	10	19
Number of Incidents	9	17
TMC Detection (min.)	0.00	0.00
TMC Verification (min.)	1.55	0.82
TMC Response (min.)	12.02	9.49
RR Dispatch Time (min.)	1.65	2.51
RR Response Time (min.)	10.37	6.98
Event Clearance (min.)	51.07	39.41
Roadway Clearance (min.)	47.17	37.67
Incident Clearance (min.)	52.05	41.38
# of Events w/ RR/SIRV	8	14
RR/SIRV Assists	8	16
RR/SIRV Activities	14	22

Other

	<u>Current Month</u>	<u>Last Month</u>	<u>YTD</u>
Number of Events	454	380	3,243
Number of Incidents	0	3	10
TMC Detection (min.)	0.00	0.01	0.00
TMC Verification (min.)	0.70	0.39	0.54
TMC Response (min.)	10.50	7.46	9.12
RR Dispatch Time (min.)	2.48	1.90	1.92
RR Response Time (min.)	7.17	6.12	7.49
Event Clearance (min.)	13.21	14.54	11.78
Roadway Clearance (min.)		18.51	24.74
Incident Clearance (min.)		22.96	34.47
# of Events w/ RR/SIRV	278	244	837
RR/SIRV Assists	278	244	842
RR/SIRV Activities	54	53	312

Pedestrian

	<u>YTD</u>
Number of Events	41
Number of Incidents	0
TMC Detection (min.)	0.01
TMC Verification (min.)	1.34
TMC Response (min.)	2.56
RR Dispatch Time (min.)	0.37
RR Response Time (min.)	2.29
Event Clearance (min.)	10.68
Roadway Clearance (min.)	
Incident Clearance (min.)	
# of Events w/ RR/SIRV	37
RR/SIRV Assists	37
RR/SIRV Activities	39

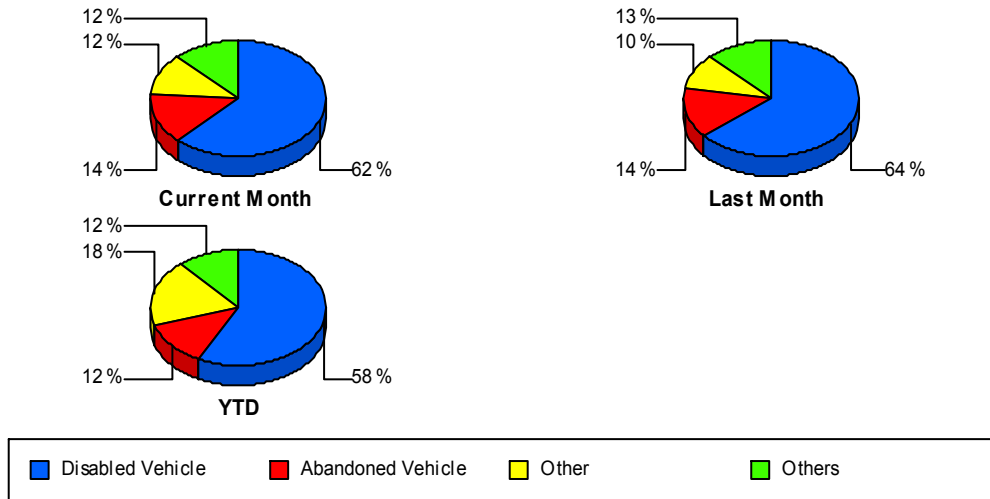
Police Activity

	<u>Current Month</u>	<u>Last Month</u>	<u>YTD</u>
Number of Events	13	16	61
Number of Incidents	11	8	41
TMC Detection (min.)	0.01	0.02	0.05
TMC Verification (min.)	3.36	0.50	1.05
TMC Response (min.)	10.33	12.30	10.52
RR Dispatch Time (min.)	1.83	4.36	3.50
RR Response Time (min.)	8.50	7.23	6.90
Event Clearance (min.)	50.15	38.03	48.19
Roadway Clearance (min.)	101.50	47.29	73.83
Incident Clearance (min.)	38.04	51.34	56.77
# of Events w/ RR/SIRV	11	15	52
RR/SIRV Assists	11	15	72
RR/SIRV Activities	17	20	88

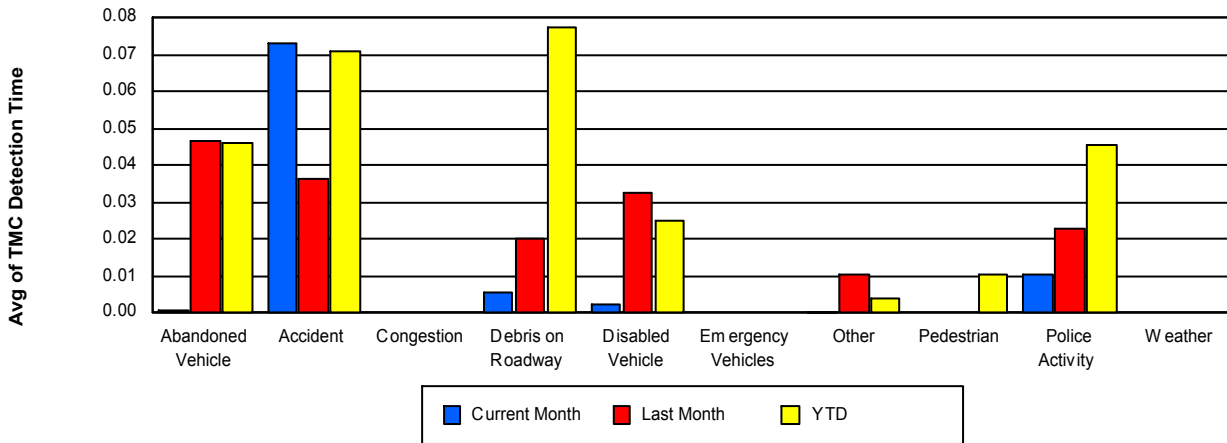
Weather

	<u>YTD</u>
Number of Events	1
Number of Incidents	0
TMC Detection (min.)	0.00
TMC Verification (min.)	0.00
TMC Response (min.)	
RR Dispatch Time (min.)	
RR Response Time (min.)	
Event Clearance (min.)	1.25
Roadway Clearance (min.)	
Incident Clearance (min.)	
# of Events w/ RR/SIRV	0
RR/SIRV Assists	0
RR/SIRV Activities	0

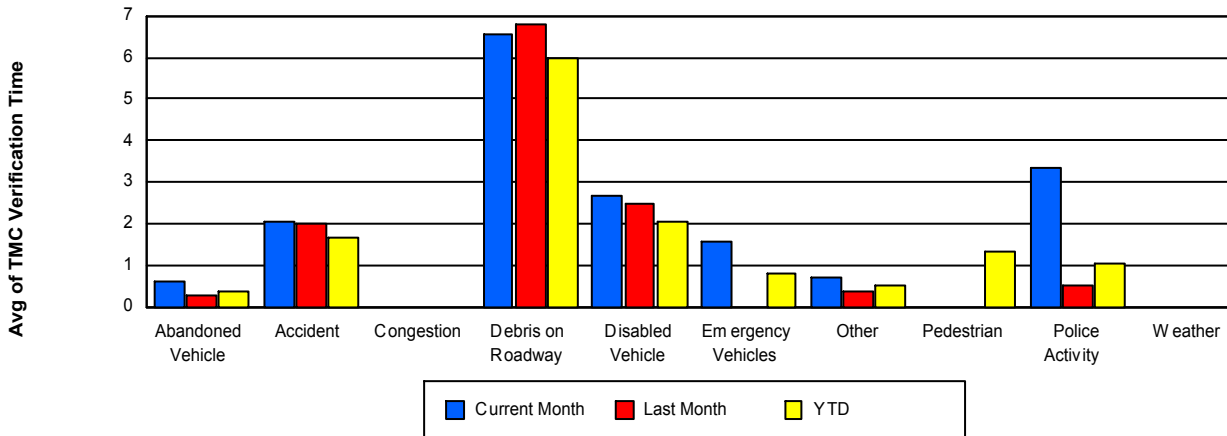
Number of Events / Event Type



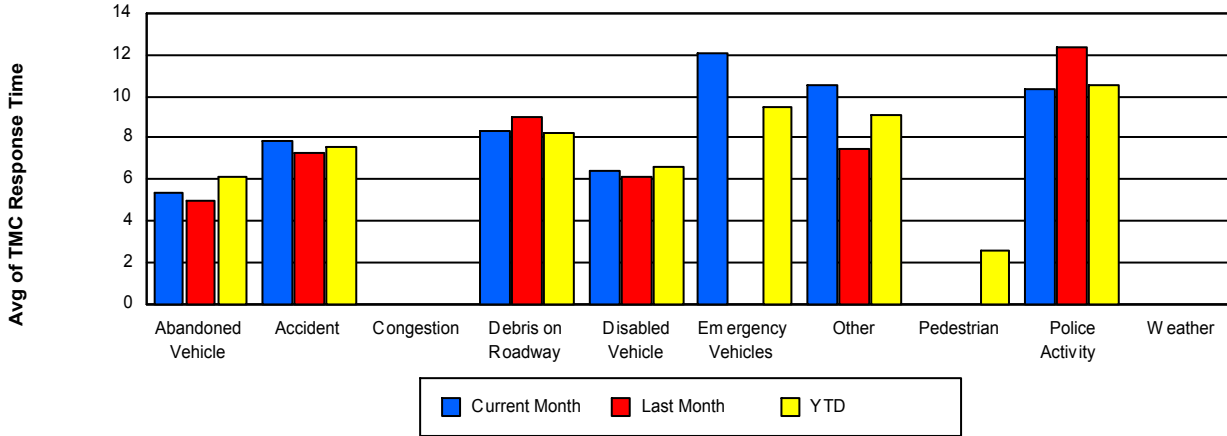
TMC Detection Time



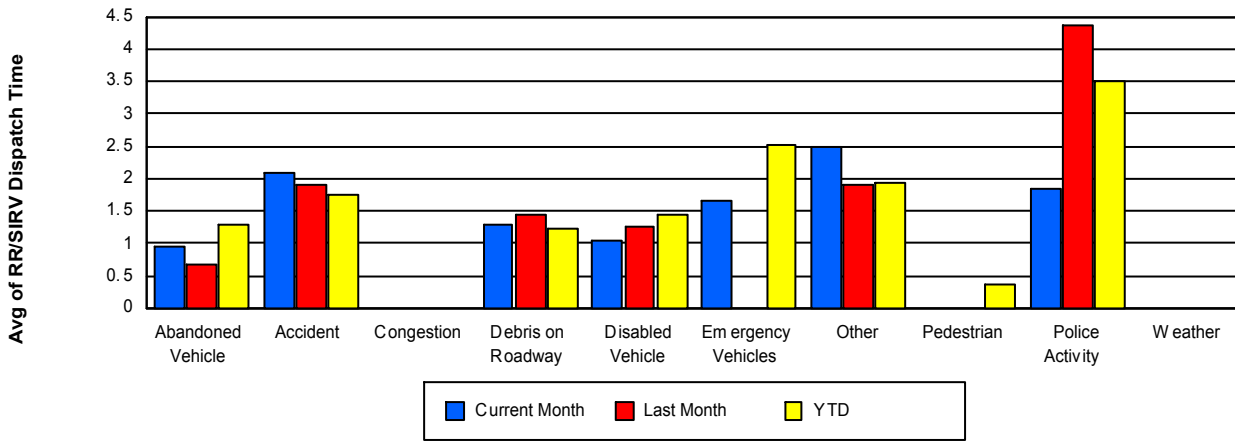
TMC Verification Time



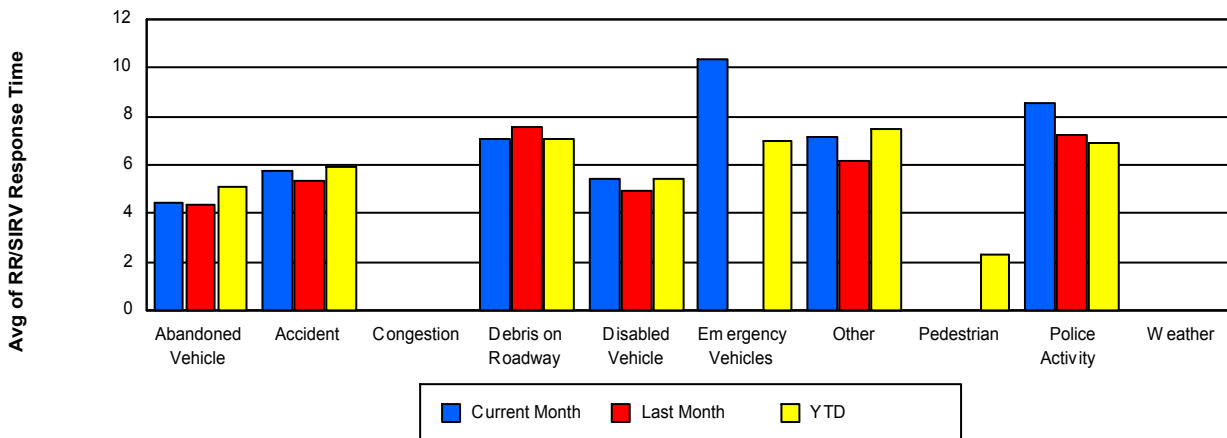
TMC Response Time



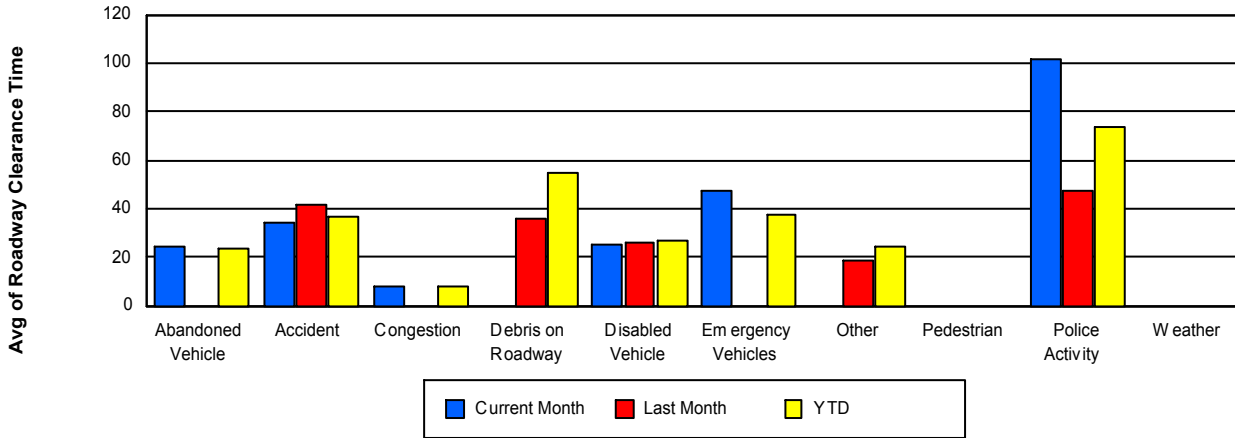
Road Ranger / SIRV Dispatch Time



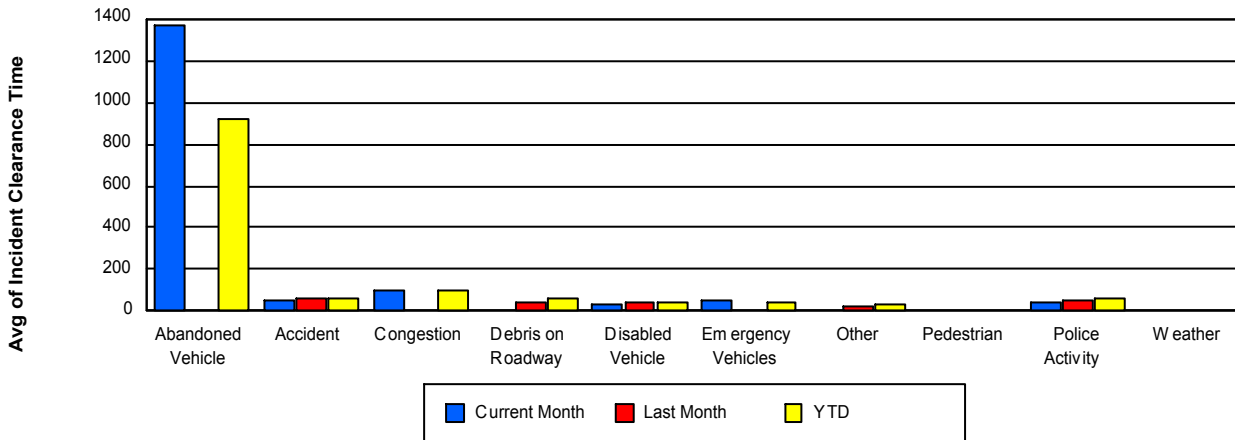
Road Ranger / SIRV Response Time



Roadway Clearance Time (2A)



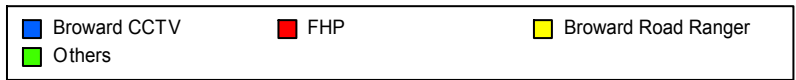
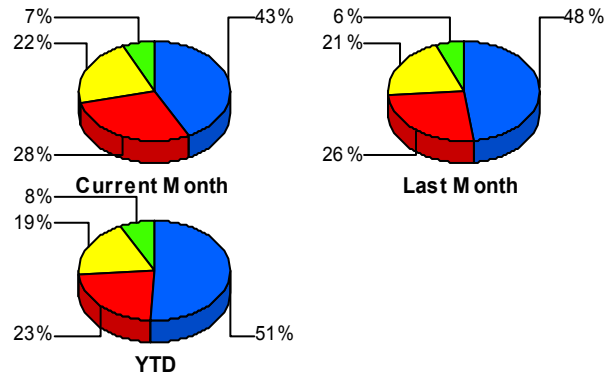
Incident Clearance Time (3B)



Incident Detection Methods

	Current Month	Last Month	YTD
Broward CCTV	93	96	433
Broward Road Ranger	48	41	159
Broward VideoWall	3	0	7
District 4	5	6	18
District 6	1	0	3
FHP	62	51	195
Florida's Turnpike	1	0	4
Motorist	1	1	4
Other	1	0	1
Palm Beach Road Rang	1	0	3
PSAP	0	0	1
Road Watcher	0	0	4
SIRV	1	1	4
SmarTraveler (511)	0	0	4
VisioPaD Detection	1	4	11
Total	218	200	851

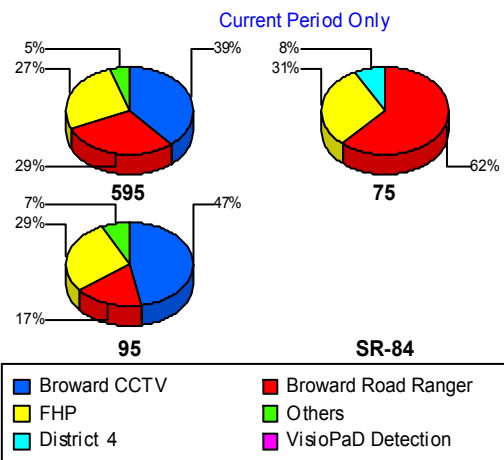
Total Incidents by Detection Method



Incident Detection Methods by Roadway

		Current Month	Last Month	YTD
595	Broward CCTV	16	14	65
	Broward Road Ranger	12	5	30
	District 4	1	1	3
	FHP	11	13	37
	Florida's Turnpike	1	0	4
	Motorist	0	0	1
	Road Watcher	0	0	2
	SIRV	0	0	1
	VisioPaD Detection	0	1	3
	Total	41	34	146
75	Broward Road Ranger	8	2	19

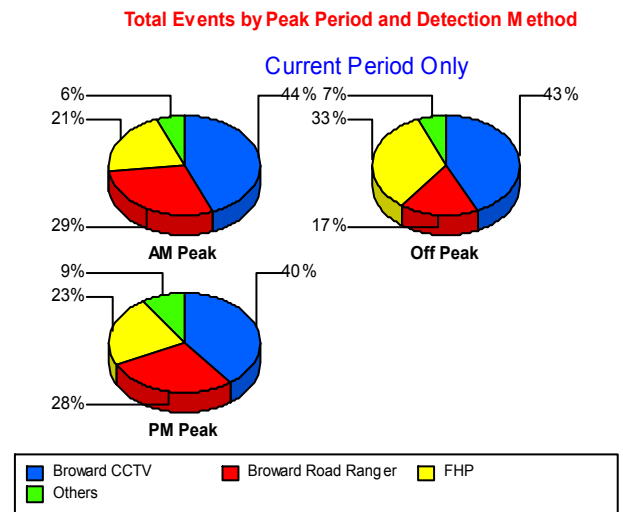
Total Events by Roadway and Detection Method



		Current Month	Last Month	YTD
75	District 4	1	0	4
	District 6	0	0	1
	FHP	4	5	16
	Total	13	7	40
95	Broward CCTV	77	82	368
	Broward Road Ranger	28	34	110
	Broward VideoWall	3	0	7
	District 4	3	5	11
	District 6	1	0	2
	FHP	47	33	142
	Motorist	1	1	3
	Other	1	0	1
	Palm Beach Road Rang	1	0	3
	PSAP	0	0	1
	Road Watcher	0	0	2
	SIRV	1	1	3
	SmarTraveler (511)	0	0	4
	VisioPaD Detection	1	3	8
	Total	164	159	665
Total		218	200	851

Incident Detection Methods by Peak Period

		Current Month	Last Month	YTD
AM Peak	Broward CCTV	23	18	99
	Broward Road Ranger	15	7	41
	Broward VideoWall	1	0	2
	District 4	1	1	5
	FHP	11	14	41
	Florida's Turnpike	0	0	2
	Motorist	0	0	2
	Palm Beach Road Rang	1	0	2
	Road Watcher	0	0	4
	SIRV	0	0	2
	SmarTraveler (511)	0	0	1
	Total	52	40	201
Off Peak	Broward CCTV	53	57	237
	Broward Road Ranger	21	21	69
	Broward VideoWall	2	0	4
	District 4	2	4	7
	District 6	0	0	2
	FHP	41	28	119
	Florida's Turnpike	1	0	1
	Motorist	1	0	1
	Other	1	0	1
	Palm Beach Road Rang	0	0	1
	PSAP	0	0	1
	SIRV	0	1	1
	VisioPaD Detection	1	3	10
	Total	123	114	454
PM Peak	Broward CCTV	17	21	97
	Broward Road Ranger	12	13	49
	Broward VideoWall	0	0	1
	District 4	2	1	6
	District 6	1	0	1

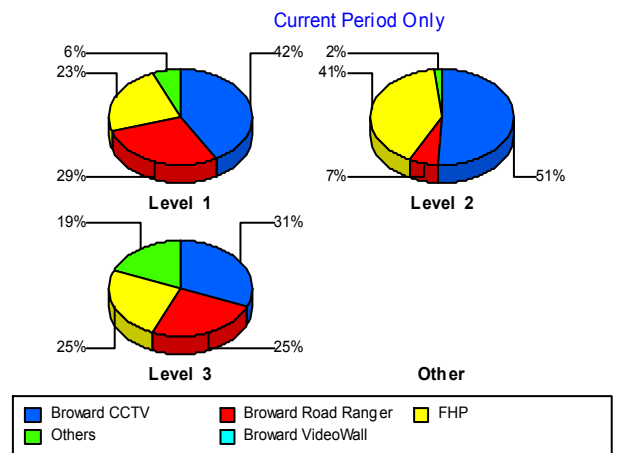


		Current Month	Last Month	YTD
PM Peak	FHP	10	9	35
	Florida's Turnpike	0	0	1
	Motorist	0	1	1
	SIRV	1	0	1
	SmarTraveler (511)	0	0	3
	VisioPaD Detection	0	1	1
	Total	43	46	196
Total	218	200	851	

Incident Detection Methods by Severity

		Current Month	Last Month	YTD
Level 1	Broward CCTV	52	57	264
	Broward Road Ranger	36	23	103
	Broward VideoWall	1	0	3
	District 4	4	5	12
	District 6	1	0	2
	FHP	29	22	81
	Motorist	0	0	1
	Palm Beach Road Rang	0	0	2
	PSAP	0	0	1
	Road Watcher	0	0	4
	SIRV	1	1	4
	SmarTraveler (511)	0	0	3
	VisioPaD Detection	1	3	7
	Total	125	111	487
Level 2	Broward CCTV	31	28	121
	Broward Road Ranger	4	16	37
	Broward VideoWall	0	0	1
	District 6	0	0	1
	FHP	25	17	72
	Motorist	1	0	2
	SmarTraveler (511)	0	0	1

Total Events by Severity and Detection Method



		Current Month	Last Month	YTD
Level 2	VisioPaD Detection	0	1	3
	Total	61	62	238
Level 3	Broward CCTV	10	11	48
	Broward Road Ranger	8	2	19
	Broward VideoWall	2	0	3
	District 4	1	1	6
	FHP	8	12	42
	Florida's Turnpike	1	0	4
	Motorist	0	1	1
	Other	1	0	1
	Palm Beach Road Rang	1	0	1
	VisioPaD Detection	0	0	1
	Total	32	27	126
	Total		218	200

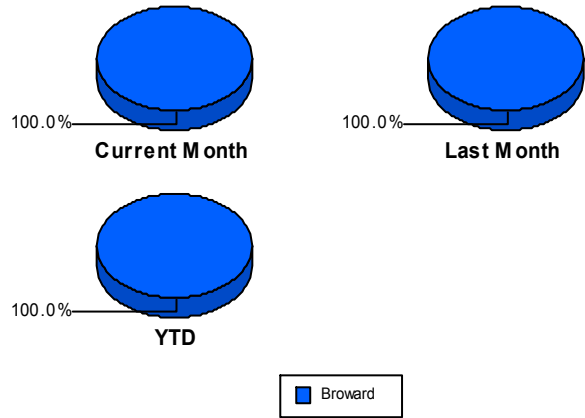
Road Ranger / SIRV Performance Measures

Road Ranger / SIRV Performance By County

Values presented are:
 - Total Events with a RR/SIRV Response
 - Total RR/SIRV Responses,
 - Total Activities Performed

	Current Mo	Last Month	YTD
Broward	3,531	3,546	14,254
	3,791	3,771	15,212
	4,131	4,001	16,081

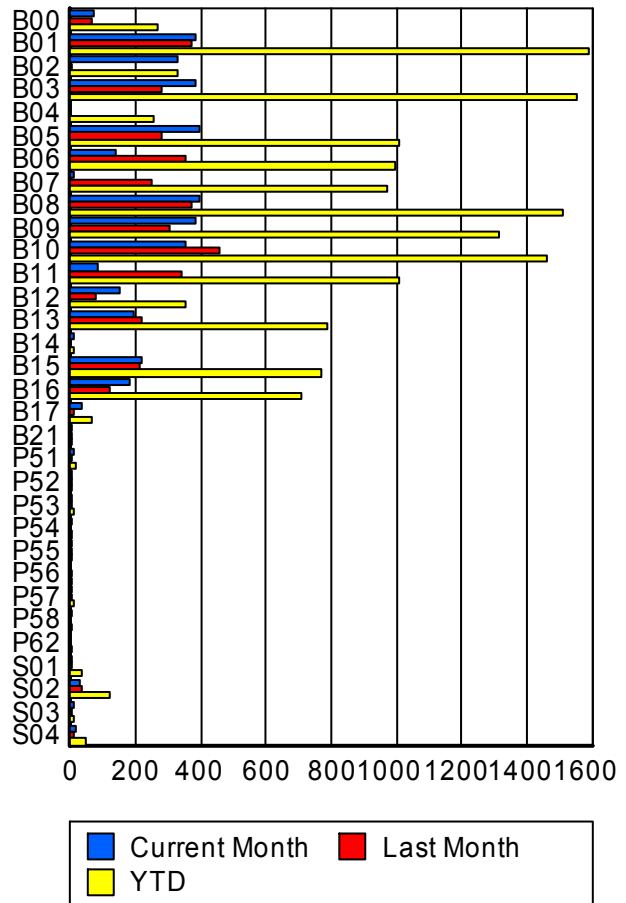
RR/SIRV Responses per County



Road Ranger / SIRV Performance By Truck

	Current Mo	Last Month	YTD
B00	72	61	259
	73	63	265
	77	71	282
B01	380	370	1,574
	386	372	1,591
	429	398	1,684
B02	327	1	328
	329	1	330
	351	1	352
B03	381	277	1,542
	386	279	1,556
	422	298	1,653
B04	0	0	254
	0	0	256
	0	0	268
B05	386	275	996
	393	276	1,006
	428	293	1,077
B06	139	353	990
	139	354	994
	152	374	1,045
B07	12	247	957
	12	249	969
	13	260	998
B08	391	368	1,489
	397	373	1,508
	436	394	1,604

RR/SIRV Responses per Truck



	Current Mo	Last Month	YTD
B09	378	304	1,302
	382	306	1,313
	413	324	1,386
B10	349	455	1,450
	352	456	1,459
	388	484	1,556
B11	82	341	1,004
	82	343	1,010
	93	366	1,066
B12	150	77	351
	150	77	351
	162	80	371
B13	193	215	784
	195	216	789
	213	227	828
B14	9	0	10
	9	0	10
	9	0	10
B15	217	212	766
	217	213	768
	233	225	809
B16	179	119	703
	182	119	708
	198	126	740
B17	34	10	63
	35	10	64
	35	10	65
B21	1	1	3
	1	1	3
	1	1	3
P51	7	1	15
	7	1	15
	7	1	15
P52	1	3	6
	1	3	6
	1	3	6
P53	4	1	11
	4	1	11
	4	2	14
P54	1	0	1
	1	0	1
	1	0	1
P55	1	1	5
	1	1	5
	1	1	5

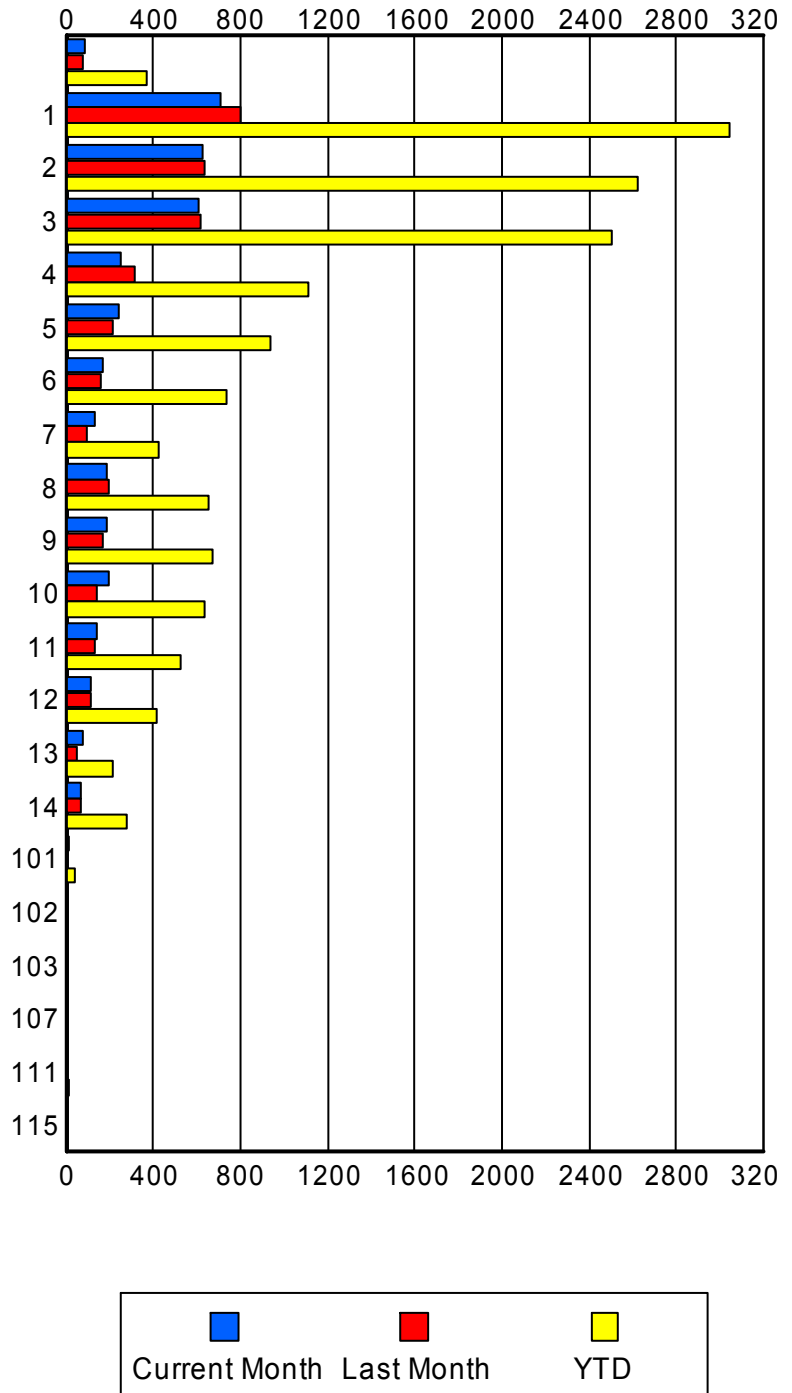
	Current Mo	Last Month	YTD
P56	0	2	5
	0	2	5
	0	4	7
P57	1	1	8
	1	1	8
	1	1	8
P58	1	0	4
	1	0	4
	1	0	4
P62	0	0	2
	0	0	2
	0	0	2
S01	3	6	32
	3	6	33
	3	6	36
S02	25	35	117
	25	35	118
	27	36	125
S03	8	1	9
	9	1	10
	10	1	11
S04	18	11	42
	18	12	44
	22	14	50

Road Ranger / SIRV Performance By Beat

	Current Mo	Last Month	YTD
	84	70	322
	86	72	371
	93	76	393
1	669	769	2,933
	705	799	3,048
	768	856	3,218
2	610	625	2,565
	622	638	2,627
	671	678	2,772
3	581	600	2,439
	604	614	2,509
	646	653	2,638
4	252	310	1,107
	253	311	1,111
	272	325	1,160
5	244	213	931
	244	216	935
	263	229	978
6	166	157	730
	168	157	733
	187	164	777
7	124	96	422
	127	97	426
	138	102	446
8	181	197	650
	184	198	656
	192	206	685
9	179	164	664
	183	164	671
	207	177	724
10	192	138	627
	197	139	634
	215	143	672
11	142	126	524
	144	127	528
	165	133	573
12	113	109	405
	114	111	412
	130	122	448
13	75	51	215
	76	51	218
	88	54	239
14	68	69	275
	68	69	277
	80	72	297

Values presented are:
 - Total Events with a RR/SIRV Response
 - Total RR/SIRV Responses,
 - Total Activities Performed

RR/SIRV Responses per Beat



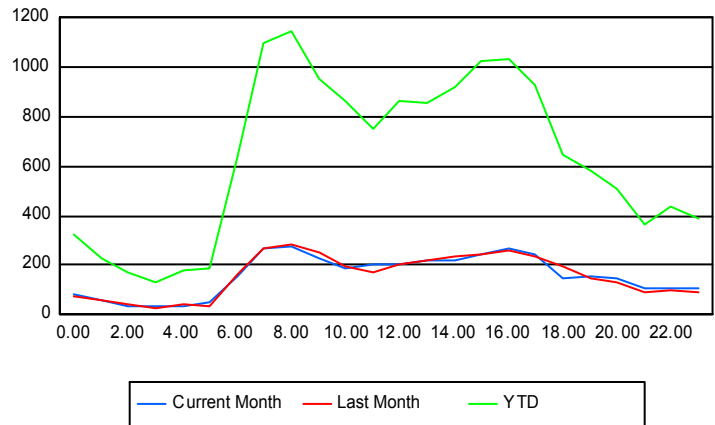
	Current Mo	Last Month	YTD
101	13	5	39
	13	5	39
	13	6	42
102	0	0	1
	0	0	1
	0	0	1
103	1	0	1
	1	0	1
	1	0	1
107	0	0	1
	0	0	1
	0	0	1
111	2	3	12
	2	3	12
	2	5	14
115	0	0	2
	0	0	2
	0	0	2

Road Ranger / SIRV Performance By Time of Day

Values presented are:
 - Total Events with a RR/SIRV Response
 - Total RR/SIRV Responses,
 - Total Activities Performed

	Current Mo	Last Month	YTD
12AM-1AM	75	70	306
	81	73	321
	93	78	344
1AM-2AM	54	51	206
	57	57	224
	58	63	238
2AM-3AM	30	36	137
	37	46	169
	46	50	189
3AM-4AM	28	30	115
	31	30	128
	34	32	137
4AM-5AM	34	36	155
	37	46	176
	44	49	192
5AM-6AM	37	34	151
	51	36	191
	55	40	203
6AM-7AM	143	150	591
	152	161	640
	156	167	657

Number of Responses / Hour of the Day



	Current Mo	Last Month	YTD
7AM-8AM	248	253	1,031
	267	266	1,098
	284	288	1,157
8AM-9AM	254	269	1,072
	276	287	1,149
	295	310	1,211
9AM-10AM	213	245	911
	227	253	956
	241	264	995
10AM-11AM	181	184	824
	186	194	867
	202	219	924
11AM-12PM	195	165	723
	203	170	752
	218	172	785
12PM-1PM	188	191	809
	205	202	862
	225	211	900
1PM-2PM	195	204	792
	220	216	858
	240	230	908
2PM-3PM	210	221	859
	220	238	919
	244	247	964
3PM-4PM	237	228	962
	247	245	1,022
	262	266	1,086
4PM-5PM	262	249	992
	271	264	1,033
	292	278	1,091
5PM-6PM	224	221	877
	242	234	929
	258	244	967
6PM-7PM	133	184	603
	149	196	649
	173	207	701
7PM-8PM	152	137	555
	158	144	580
	177	149	614
8PM-9PM	139	117	470
	151	128	506
	170	137	541
9PM-10PM	100	90	333
	109	93	362
	121	99	393

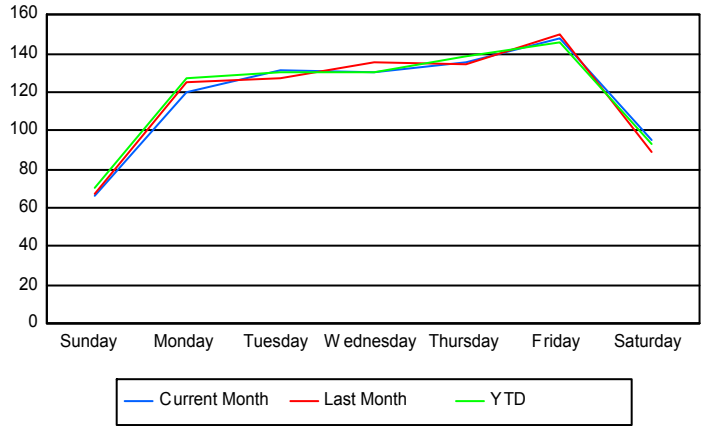
	Current Mo	Last Month	YTD
10PM-11PM	101	95	409
	108	102	434
	124	104	466
11PM-12AM	98	86	371
	106	90	387
	119	97	418

Road Ranger / SIRV Performance By Day of Week

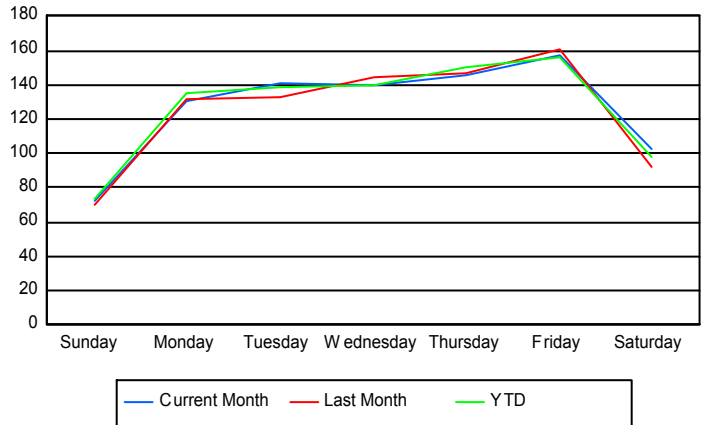
Values presented are:
 - Total Events with a RR/SIRV Response
 - Total RR/SIRV Responses,
 - Total Activities Performed

	Current Mo	Last Month	YTD
Sunday	255	325	1,159
	280	339	1,210
	310	365	1,284
Monday	481	615	2,142
	521	649	2,267
	565	681	2,380
Tuesday	650	506	2,314
	699	531	2,463
	756	555	2,588
Wednesday	635	541	2,322
	678	577	2,488
	730	618	2,629
Thursday	540	537	2,343
	578	587	2,536
	633	627	2,687
Friday	589	590	2,455
	625	634	2,641
	684	668	2,784
Saturday	382	435	1,524
	410	454	1,607
	453	487	1,729

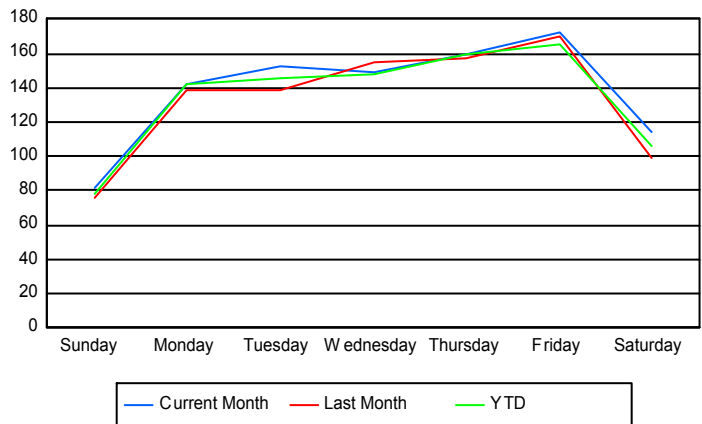
Avg # of events with a RR/SIRV Response per Day of the Week



Avg # of RR/SIRV Responses per Day of the Week



Avg # of RR/SIRV Activities Performed per Day of the Week



Road Ranger/ SIRV Responses per Time of Day and Day of Week

