



Monthly Performance Measures Report Broward County



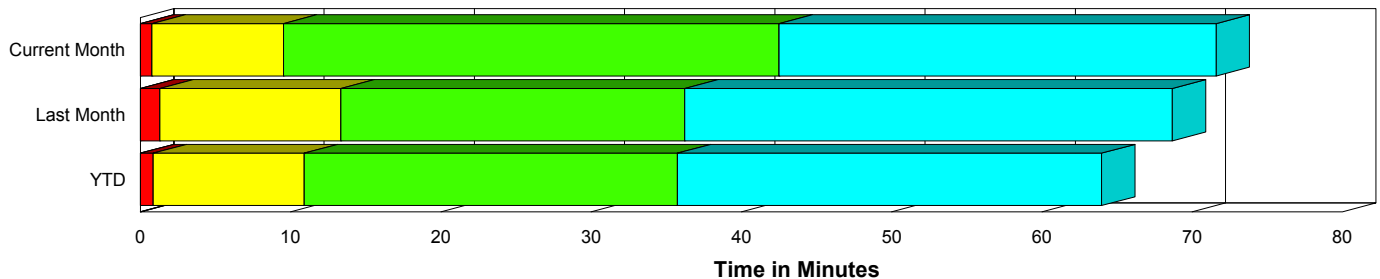
Created on:
April 06, 2009
9:31 am

Period From Mar 1, 2009 to Mar 31, 2009

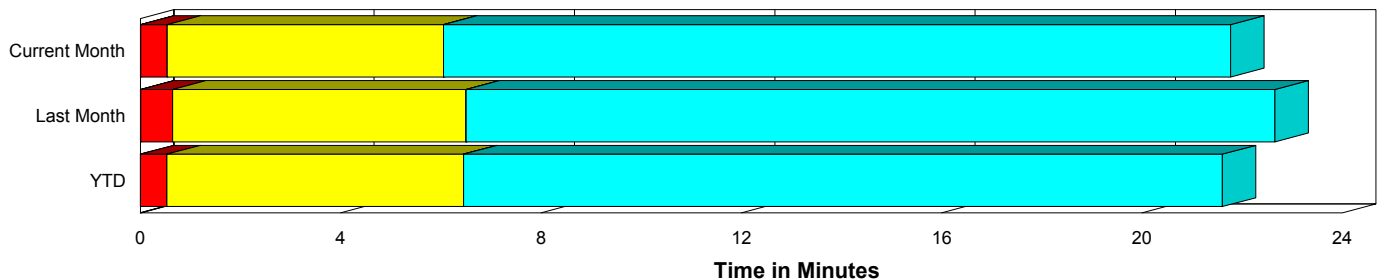
Performance Measures Summary

	Traffic Events (No Lanes Blocked)			Incidents (Lanes Blocked)		
	<u>This Month</u>	<u>Last Month</u>	<u>YTD</u>	<u>This Month</u>	<u>Last Month</u>	<u>YTD</u>
Number of Events	3,944	4,097	13,048	241	191	641
TMC Detection (min.)	0.01	0.01	0.01	0.01	0.01	0.01
TMC Verification (min.)	0.53	0.64	0.53	0.76	1.29	0.85
TMC Response (min.)	6.48	7.13	7.03	9.82	13.79	11.23
RR Dispatch Time (min.)	1.05	1.36	1.42	3.41	4.31	3.64
RR Response Time (min.)	5.55	5.80	5.74	6.68	9.40	7.74
Roadway Clearance (min.)				40.32	33.95	35.20
Event Clearance (min.)	22.21	23.29	22.19	66.86	66.14	62.34
# of Events w/ RR/SIRV	2,630	2,474	7,800	162	128	437
RR/SIRV Responses	2,630	2,474	7,800	162	128	437
RR/SIRV Activities	2,271	2,078	6,442	332	239	875

Incident Clearance Time-Line



Traffic Event (Non-Lane Blockage) Time-Line



■ Avg. TMC Detection Time	■ Avg. Time from TMC Response to Roadway Clearance*
■ Avg. Time from TMC Detection to TMC Verification	■ Avg. Time from Roadway Clearance to Incident/Event Clearance**
■ Avg. Time from TMC Verification to TMC Response	

* Roadway clearance equals all travel lanes open

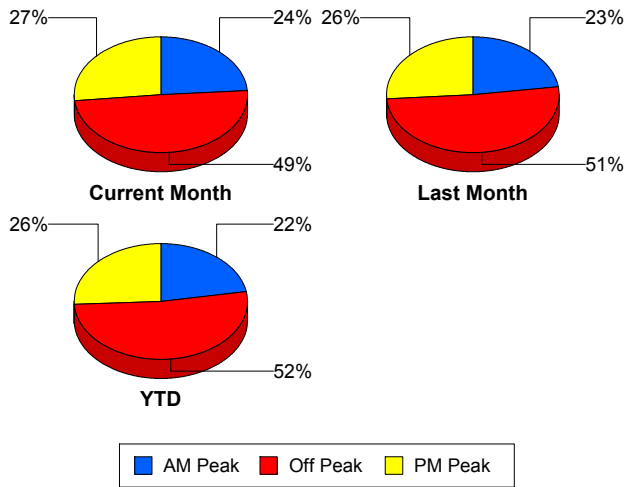
** Incident clearance equals time when last responder has left the scene

Performance Measures by Peak Period

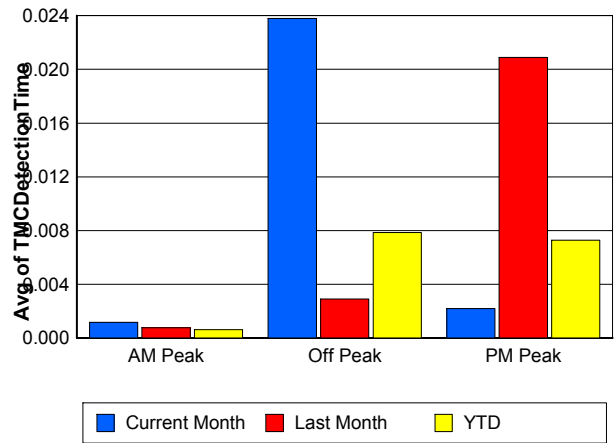
Note: AM peak period is defined as 6am to 10am and PM peak period is defined as 3pm to 7pm.

	AM Peak			Off Peak			PM Peak		
	<u>Current Month</u>	<u>Last Month</u>	<u>YTD</u>	<u>Current Month</u>	<u>Last Month</u>	<u>YTD</u>	<u>Current Month</u>	<u>Last Month</u>	<u>YTD</u>
Number of Events	995	980	3,056	2,069	2,189	7,086	1,121	1,119	3,547
Number of Incidents	61	41	149	113	97	316	67	53	176
TMC Detection (min.)	0.00	0.00	0.00	0.02	0.00	0.01	0.00	0.02	0.01
TMC Verification (min.)	0.47	0.62	0.53	0.55	0.64	0.51	0.59	0.75	0.62
TMC Response (min.)	6.83	6.61	6.74	6.60	9.30	8.27	6.71	6.17	6.63
RR Dispatch Time (min.)	1.34	0.90	1.10	1.22	2.45	2.29	0.98	0.89	0.95
RR Response Time (min.)	5.56	5.78	5.72	5.52	6.70	6.07	5.81	5.38	5.77
Event Clearance (min.)	22.62	21.73	21.03	27.96	28.86	27.09	20.83	21.05	20.64
Roadway Clearance (min.)	34.07	24.69	27.13	50.12	39.60	42.57	29.50	30.76	28.81
Incident Clearance (min.)	75.05	49.58	56.68	66.72	70.71	65.27	59.65	70.58	61.87
# of Events w/ RR/SIRV	826	756	2,372	1,126	1,026	3,317	840	820	2,548
RR/SIRV Responses	826	756	2,372	1,126	1,026	3,317	840	820	2,548
RR/SIRV Activities	826	694	2,236	992	905	2,837	785	718	2,244

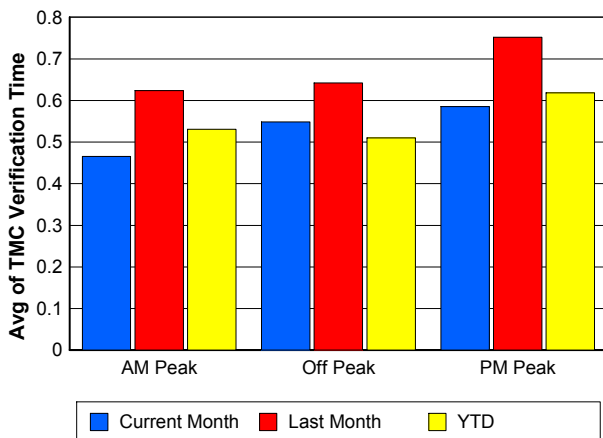
Number of Events / Peak Period



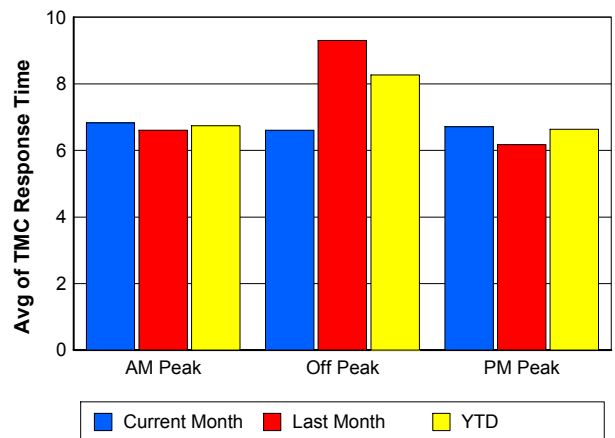
TMC Detection Time



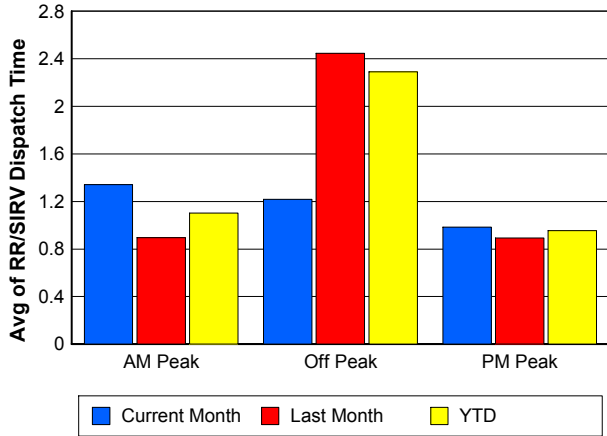
TMC Verification Time



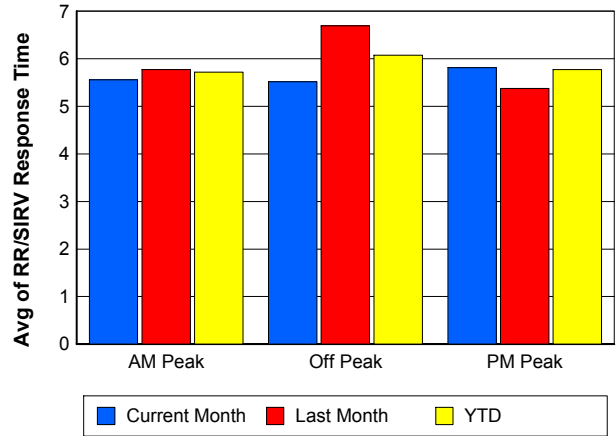
TMC Response Time



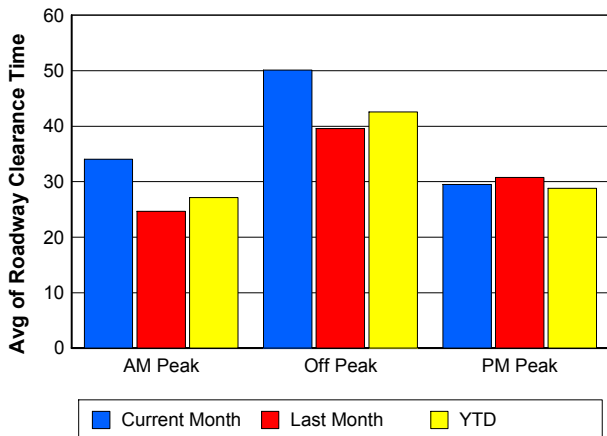
Road Ranger / SIRV Dispatch Time



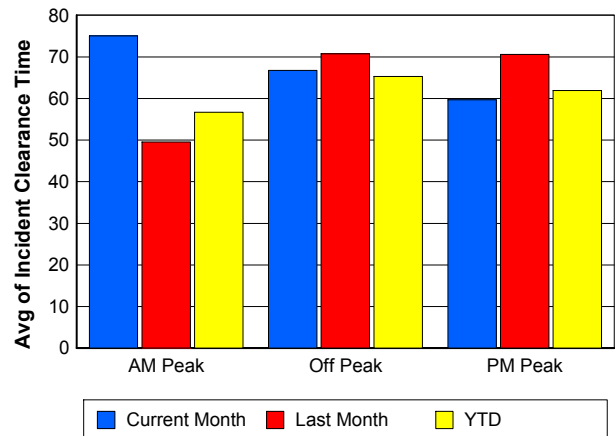
Road Ranger / SIRV Response Time



Roadway Clearance Time (2A)



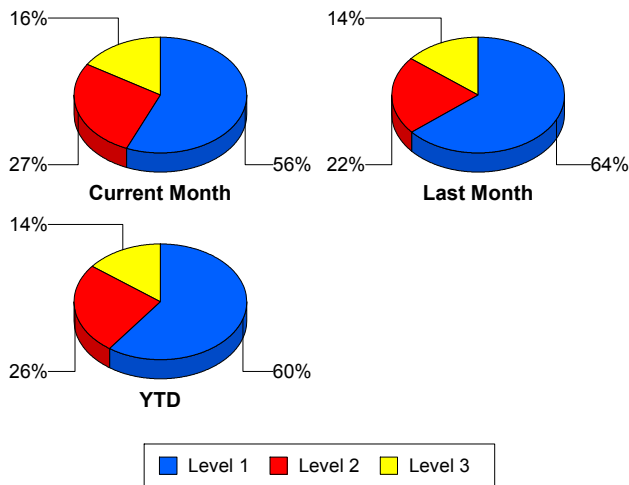
Incident Clearance Time (3B)



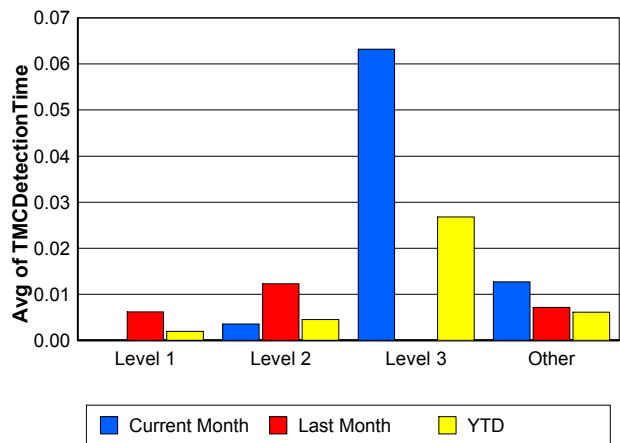
Performance Measures by Severity

	Level 1			Level 2			Level 3			Other		
	<u>This Month</u>	<u>Last Month</u>	<u>YTD</u>	<u>This Month</u>	<u>Last Month</u>	<u>YTD</u>	<u>This Month</u>	<u>Last Month</u>	<u>YTD</u>	<u>This Month</u>	<u>Last Month</u>	<u>YTD</u>
Number of Events	136	122	384	66	42	165	39	27	92	3,944	4,097	13,048
Number of Incidents	136	122	384	66	42	165	39	27	92	0	0	0
TMC Detection (min.)	0.00	0.01	0.00	0.00	0.01	0.00	0.06	0.00	0.03	0.01	0.01	0.01
TMC Verification (min.)	0.50	0.47	0.53	0.54	2.34	1.04	2.02	3.35	1.88	0.53	0.64	0.53
TMC Response (min.)	6.39	7.37	7.12	10.42	16.26	12.06	21.24	35.53	27.02	6.48	7.13	7.03
RR Dispatch Time (min.)	1.80	1.27	1.70	4.60	3.30	4.58	7.01	16.12	9.94	1.05	1.36	1.42
RR Resp. Time (min.)	4.62	6.12	5.48	5.82	12.96	7.82	14.88	18.89	16.84	5.55	5.80	5.74
Event Clearance (min.)	51.27	50.54	47.33	73.26	78.04	74.39	110.41	118.09	103.41	22.21	23.29	22.19
Roadway Clear. (min.)	15.08	14.17	14.70	50.75	50.74	50.66	110.72	97.17	93.05			
Incident Clearance (min.)	51.27	50.54	47.33	73.26	78.04	74.39	110.41	118.09	103.41			
# of Events w/ RR/SIRV	98	88	285	30	16	75	34	24	77	2,630	2,474	7,800
RR/SIRV Responses	98	88	285	30	16	75	34	24	77	2,630	2,474	7,800
RR/SIRV Activities	165	152	501	93	36	209	74	51	165	2,271	2,078	6,442

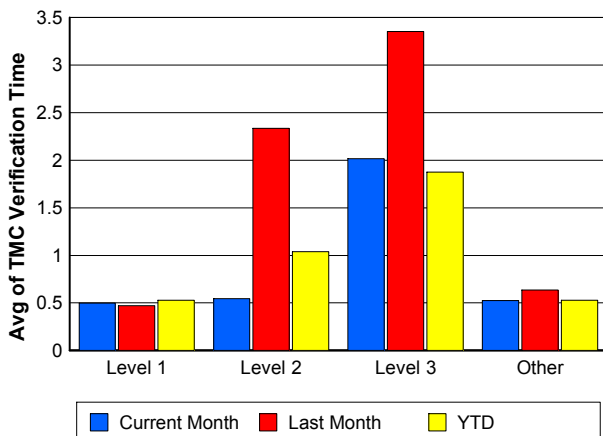
Number of Events / Severity



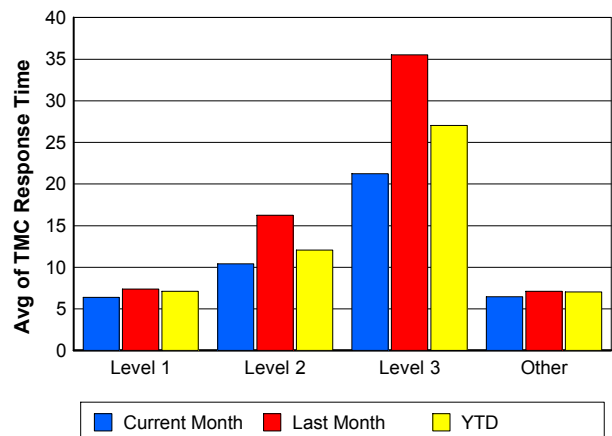
TMC Detection Time



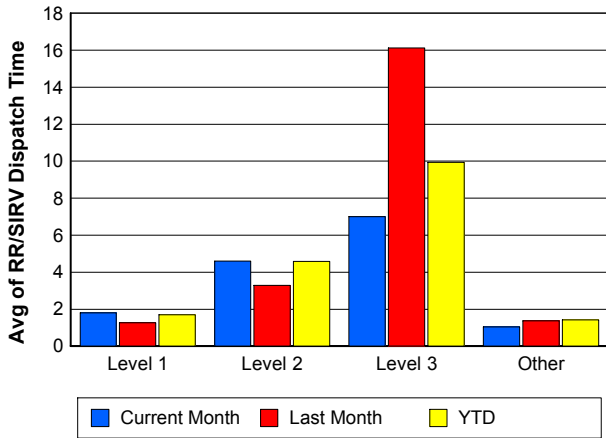
TMC Verification Time



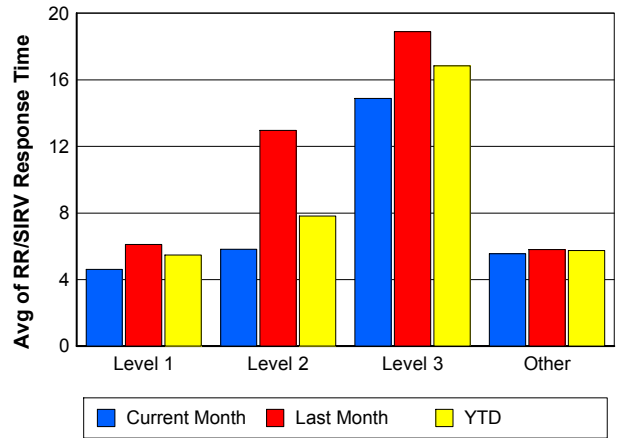
TMC Response Time



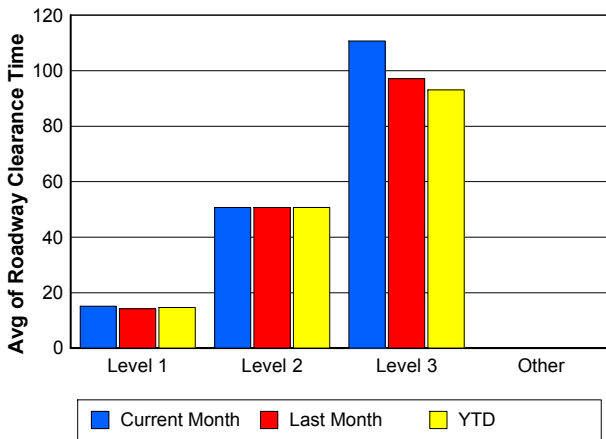
Road Ranger / SIRV Dispatch Time



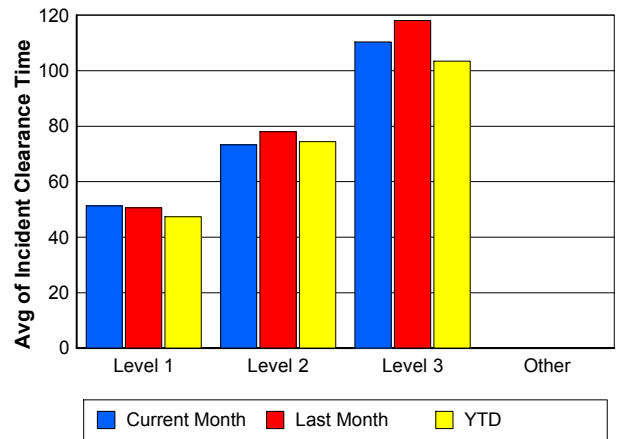
Road Ranger / SIRV Response Time



Roadway Clearance Time (2A)



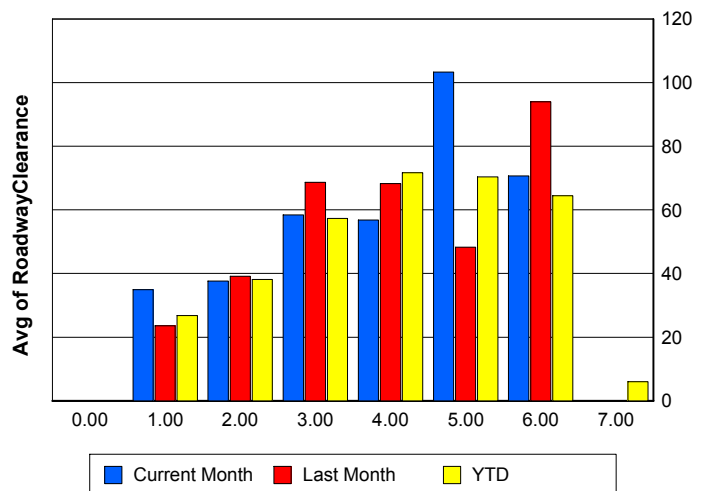
Incident Clearance Time (3B)



Roadway Clearance by Maximum Number of Lanes Blocked

	Current Month	Last Month	YTD
0			
1	34.93	23.62	26.77
2	37.63	39.09	38.18
3	58.39	68.64	57.32
4	56.82	68.21	71.66
5	103.33	48.31	70.36
6	70.67	93.97	64.44
7	0.00	0.00	5.97

Roadway Clearance Time (2A)



Performance Measures by Roadway

595

	<u>Current Month</u>	<u>Last Month</u>	<u>YTD</u>
Number of Events	554	585	1,867
Number of Incidents	49	29	116
TMC Detection (min.)	0.04	0.00	0.01
TMC Verification (min.)	0.71	0.84	0.63
TMC Response (min.)	7.14	6.90	6.85
RR Dispatch Time (min.)	0.94	1.17	1.15
RR Resp. Time (min.)	6.20	5.75	5.73
Event Clearance (min.)	22.57	24.04	22.09
Roadway Clear. (min.)	28.02	31.62	29.93
Incident Clearance (min.)	56.43	61.15	56.22
# of Events w/ RR/SIRV	396	378	1,190
RR/SIRV Responses	396	378	1,190
RR/SIRV Activities	396	349	1,102

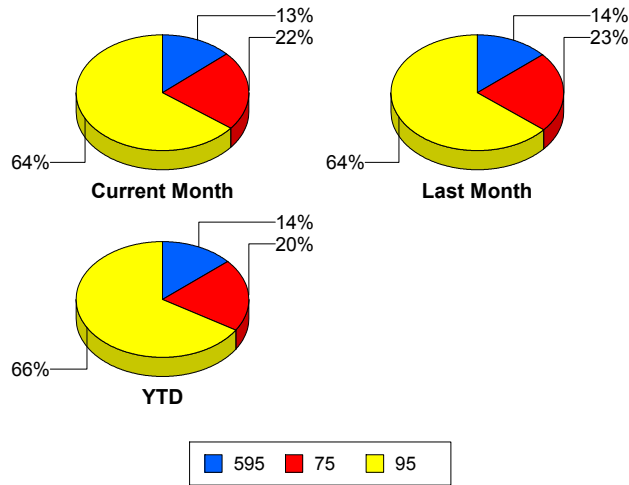
75

	<u>Current Month</u>	<u>Last Month</u>	<u>YTD</u>
Number of Events	932	967	2,776
Number of Incidents	24	23	53
TMC Detection (min.)	0.00	0.00	0.00
TMC Verification (min.)	0.62	0.68	0.72
TMC Response (min.)	7.93	10.03	8.51
RR Dispatch Time (min.)	1.21	2.10	1.40
RR Resp. Time (min.)	6.92	7.54	7.09
Event Clearance (min.)	26.23	28.62	25.62
Roadway Clear. (min.)	79.54	79.67	75.77
Incident Clearance (min.)	80.00	99.71	85.62
# of Events w/ RR/SIRV	616	578	1,756
RR/SIRV Responses	616	578	1,756
RR/SIRV Activities	561	457	1,465

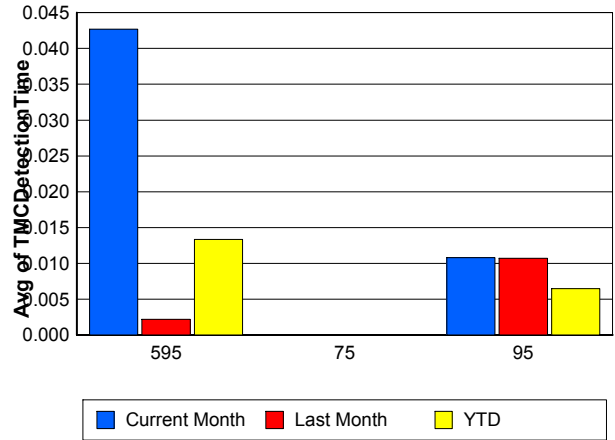
95

	<u>Current Month</u>	<u>Last Month</u>	<u>YTD</u>
Number of Events	2,699	2,736	9,046
Number of Incidents	168	139	472
TMC Detection (min.)	0.01	0.01	0.01
TMC Verification (min.)	0.48	0.63	0.47
TMC Response (min.)	6.20	6.89	7.03
RR Dispatch Time (min.)	1.23	1.37	1.67
RR Resp. Time (min.)	5.06	5.60	5.53
Event Clearance (min.)	24.73	24.23	24.00
Roadway Clear. (min.)	38.31	26.86	31.94
Incident Clearance (min.)	68.03	61.62	61.23
# of Events w/ RR/SIRV	1,780	1,646	5,291
RR/SIRV Responses	1,780	1,646	5,291
RR/SIRV Activities	1,646	1,511	4,750

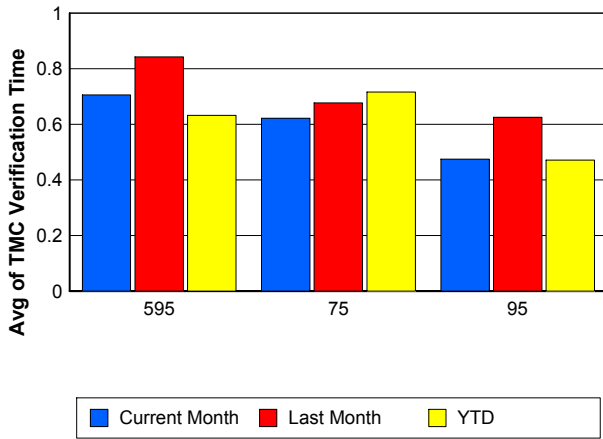
Number of Events / Roadway



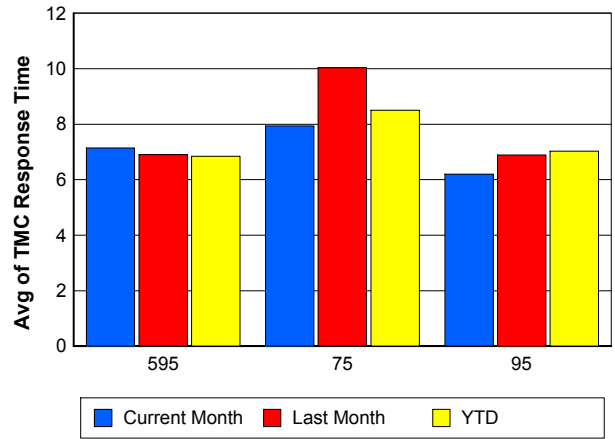
TMC Detection Time



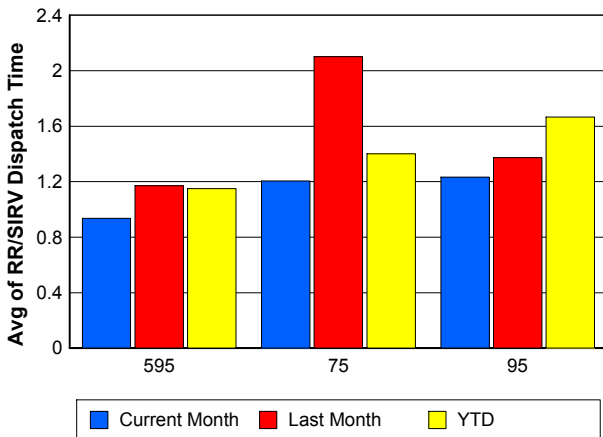
TMC Verification Time



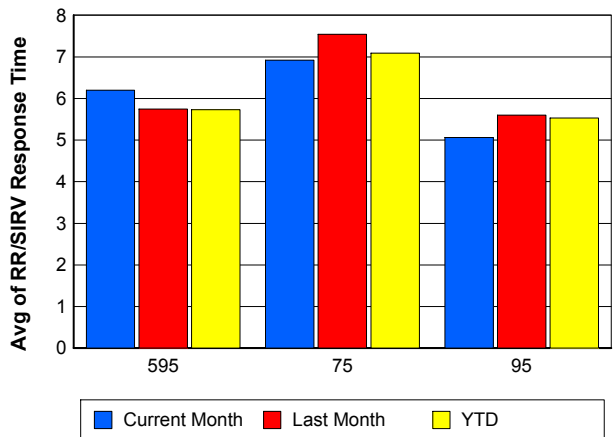
TMC Response Time



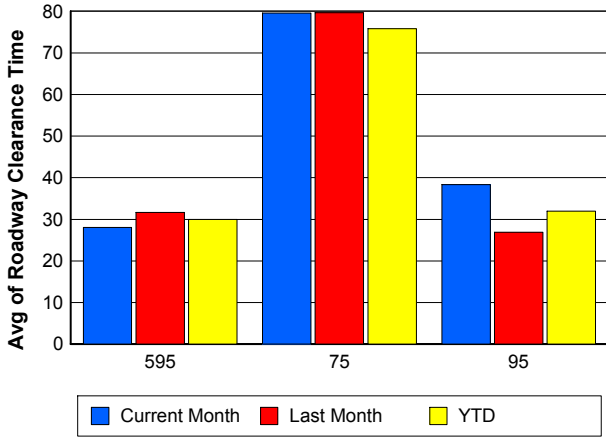
Road Ranger / SIRV Dispatch Time



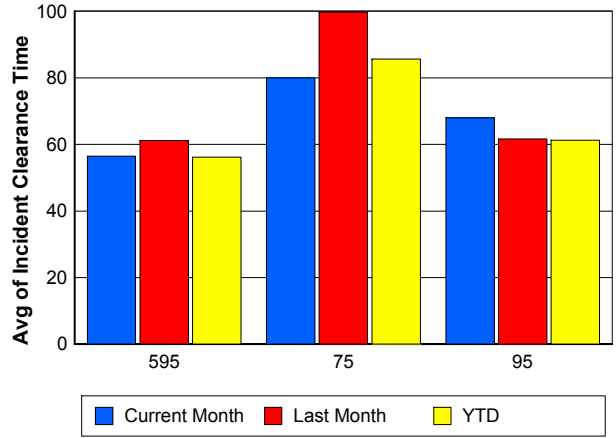
Road Ranger / SIRV Response Time



Roadway Clearance Time (2A)



Incident Clearance Time (3B)



Performance Measures by Event Type

Accident

	<u>Current Month</u>	<u>Last Month</u>	<u>YTD</u>
Number of Events	359	296	972
Number of Incidents	169	129	442
TMC Detection (min.)	0.00	0.00	0.00
TMC Verification (min.)	0.90	0.89	0.81
TMC Response (min.)	8.60	9.21	9.20
RR Dispatch Time (min.)	2.14	1.73	1.94
RR Response Time (min.)	6.66	7.48	7.33
Event Clearance (min.)	58.31	53.55	56.24
Roadway Clearance (min.)	39.32	36.57	36.74
Incident Clearance (min.)	72.01	72.26	68.97
# of Events w/ RR/SIRV	260	205	679
RR/SIRV Assists	260	205	679
RR/SIRV Activities	397	288	1,028

Debris on Roadway

	<u>Current Month</u>	<u>Last Month</u>	<u>YTD</u>
Number of Events	109	109	331
Number of Incidents	2	3	6
TMC Detection (min.)	0.00	0.22	0.07
TMC Verification (min.)	3.79	5.39	4.66
TMC Response (min.)	7.71	9.50	8.52
RR Dispatch Time (min.)	0.73	1.74	1.14
RR Response Time (min.)	7.03	7.70	7.37
Event Clearance (min.)	12.64	12.61	11.92
Roadway Clearance (min.)	32.85	5.51	16.20
Incident Clearance (min.)	37.07	17.93	24.16
# of Events w/ RR/SIRV	103	97	301
RR/SIRV Assists	103	97	301
RR/SIRV Activities	105	97	305

Disabled Vehicle

	<u>Current Month</u>	<u>Last Month</u>	<u>YTD</u>
Number of Events	2,419	2,399	7,547
Number of Incidents	32	35	104
TMC Detection (min.)	0.01	0.00	0.00
TMC Verification (min.)	0.59	0.77	0.62
TMC Response (min.)	6.23	6.69	6.68
RR Dispatch Time (min.)	1.00	1.19	1.27
RR Response Time (min.)	5.29	5.51	5.44
Event Clearance (min.)	25.99	28.66	27.52
Roadway Clearance (min.)	21.49	12.68	17.21
Incident Clearance (min.)	33.64	45.11	35.57
# of Events w/ RR/SIRV	1,886	1,750	5,432
RR/SIRV Assists	1,886	1,750	5,432
RR/SIRV Activities	1,937	1,791	5,549

Emergency Vehicles

	<u>Current Month</u>	<u>Last Month</u>	<u>YTD</u>
Number of Events	16	6	28
Number of Incidents	14	4	22
TMC Detection (min.)	0.00	0.00	0.00
TMC Verification (min.)	2.31	0.06	1.33
TMC Response (min.)	6.21	59.77	18.03
RR Dispatch Time (min.)	1.61	44.41	12.74
RR Response Time (min.)	4.59	4.65	4.67
Event Clearance (min.)	77.31	71.54	66.55
Roadway Clearance (min.)	78.24	92.96	70.40
Incident Clearance (min.)	85.03	94.21	76.55
# of Events w/ RR/SIRV	12	5	19
RR/SIRV Assists	12	5	19
RR/SIRV Activities	26	8	36

Other

	<u>Current Month</u>	<u>Last Month</u>	<u>YTD</u>
Number of Events	1,220	1,409	4,603
Number of Incidents	2	2	10
TMC Detection (min.)	0.02	0.00	0.01
TMC Verification (min.)	0.03	0.07	0.07
TMC Response (min.)	8.60	12.33	11.19
RR Dispatch Time (min.)	1.34	1.95	2.09
RR Response Time (min.)	7.45	8.13	8.05
Event Clearance (min.)	12.27	13.33	11.68
Roadway Clearance (min.)	71.38	12.56	28.30
Incident Clearance (min.)	72.63	25.82	33.35
# of Events w/ RR/SIRV	498	512	1,703
RR/SIRV Assists	498	512	1,703
RR/SIRV Activities	95	84	265

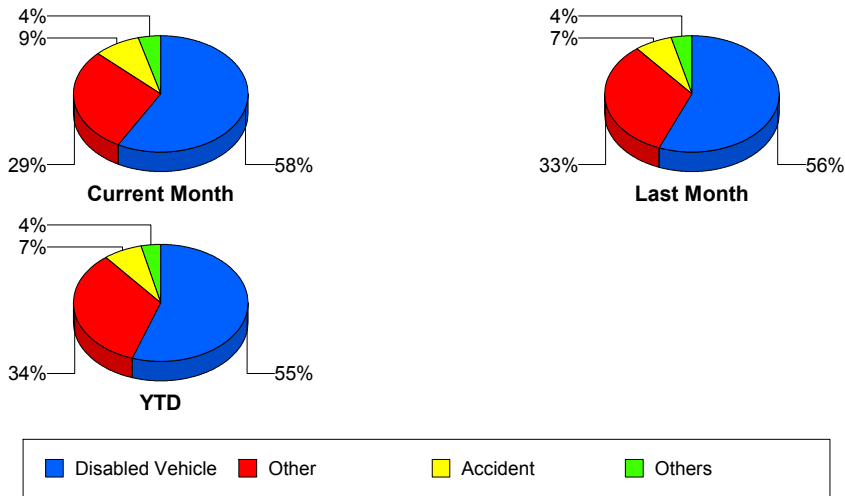
Police Activity

	<u>Current Month</u>	<u>Last Month</u>	<u>YTD</u>
Number of Events	34	38	105
Number of Incidents	13	11	29
TMC Detection (min.)	0.00	0.00	0.00
TMC Verification (min.)	0.57	0.11	0.23
TMC Response (min.)	18.58	12.34	16.01
RR Dispatch Time (min.)	6.74	5.66	5.93
RR Response Time (min.)	11.54	6.68	9.85
Event Clearance (min.)	37.97	39.41	35.98
Roadway Clearance (min.)	45.63	28.66	40.72
Incident Clearance (min.)	53.86	47.00	52.73
# of Events w/ RR/SIRV	12	11	29
RR/SIRV Assists	12	11	29
RR/SIRV Activities	13	18	36

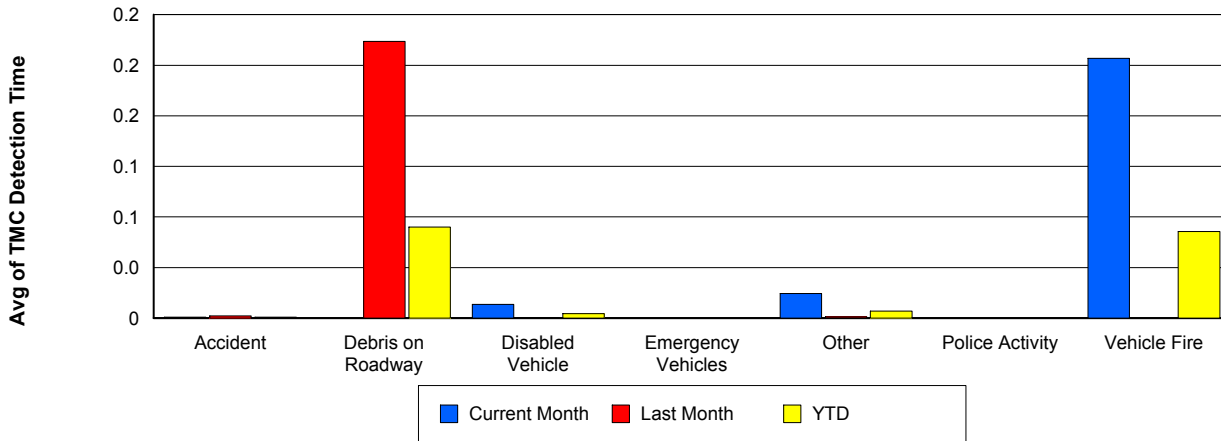
Vehicle Fire

	<u>Current Month</u>	<u>Last Month</u>	<u>YTD</u>
Number of Events	12	10	36
Number of Incidents	9	7	28
TMC Detection (min.)	0.21	0.00	0.07
TMC Verification (min.)	0.42	7.80	2.54
TMC Response (min.)	14.12	24.20	14.48
RR Dispatch Time (min.)	2.20	1.73	2.86
RR Response Time (min.)	11.76	22.47	12.67
Event Clearance (min.)	66.57	94.60	69.83
Roadway Clearance (min.)	54.21	84.72	50.89
Incident Clearance (min.)	84.12	104.59	74.43
# of Events w/ RR/SIRV	9	7	26
RR/SIRV Assists	9	7	26
RR/SIRV Activities	20	16	57

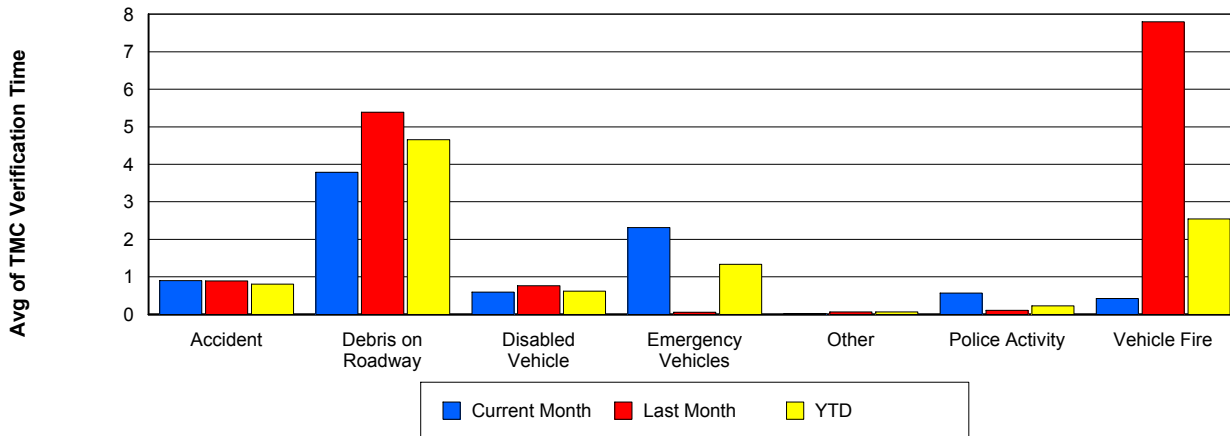
Number of Events / Event Type



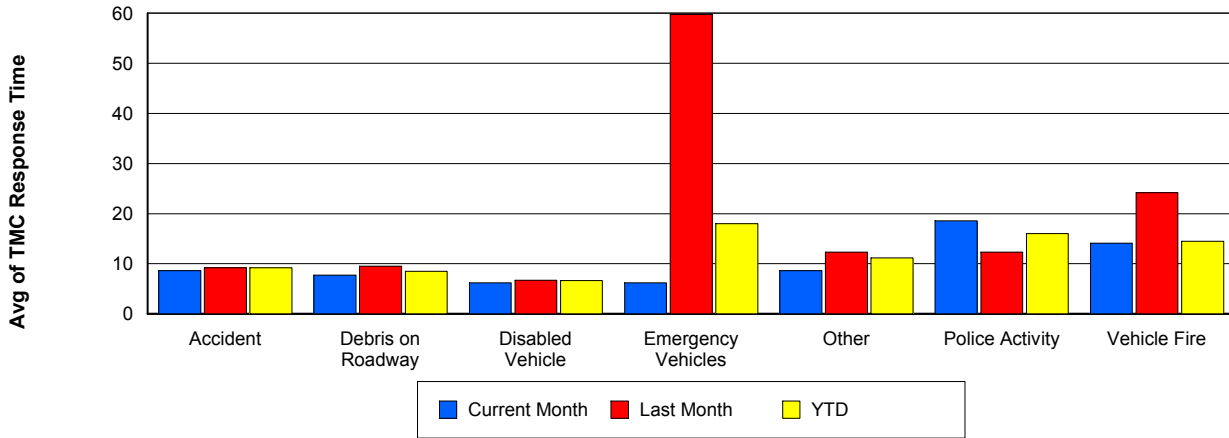
TMC Detection Time



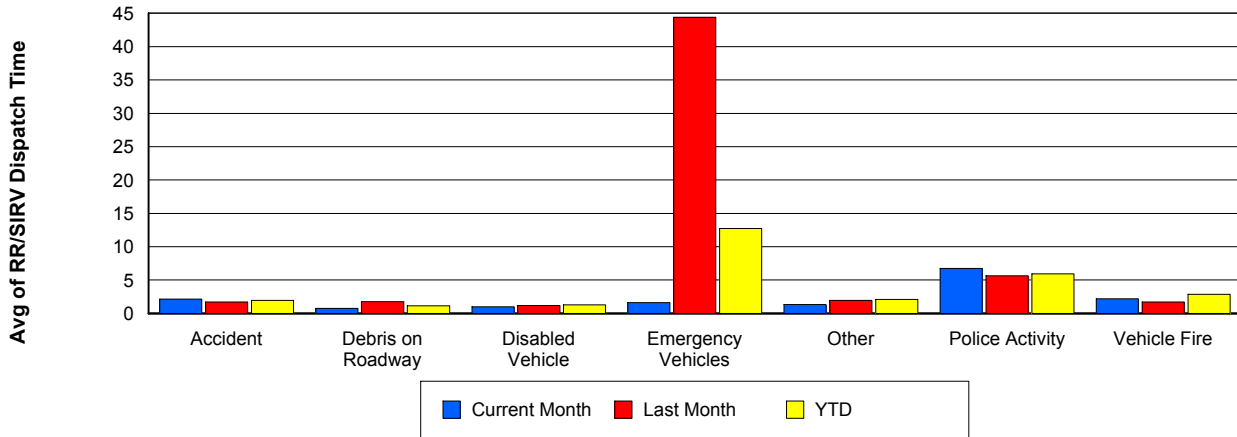
TMC Verification Time



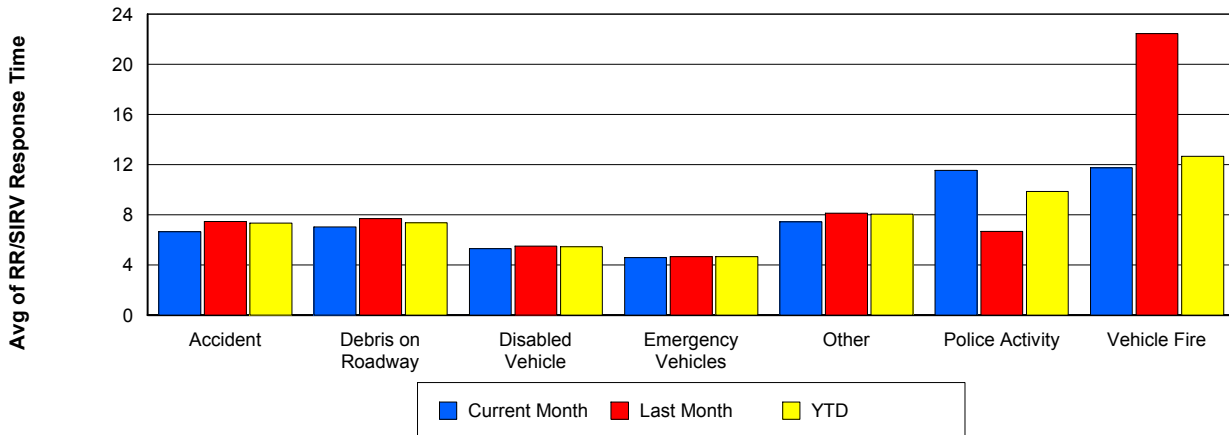
TMC Response Time



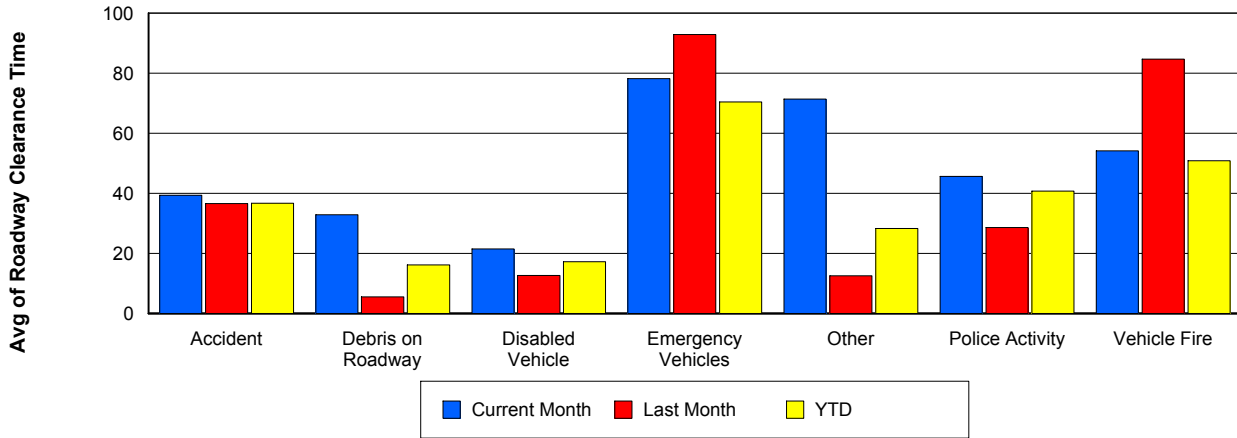
Road Ranger / SIRV Dispatch Time



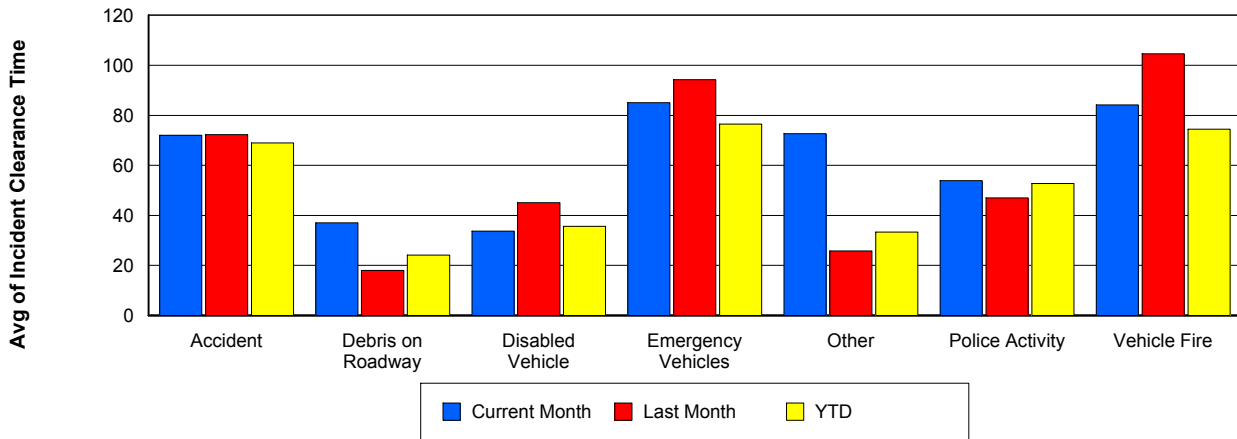
Road Ranger / SIRV Response Time



Roadway Clearance Time (2A)



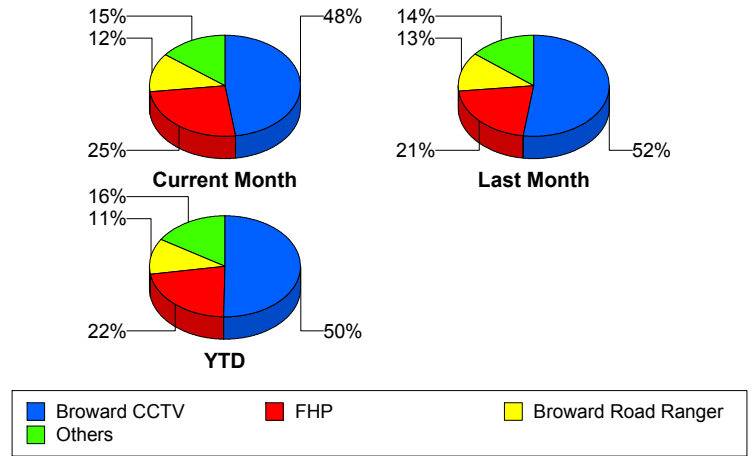
Incident Clearance Time (3B)



Incident Detection Methods

	Current Month	Last Month	YTD
Broward CCTV	115	100	323
Broward Road Ranger	30	24	73
Broward VideoWall	7	6	35
BSO	10	8	18
District 4	6	4	15
District 6	0	1	1
FDOT Maintenance	0	1	2
FHP	61	40	142
Fire	1	0	1
Florida's Turnpike	0	0	3
ITMS	0	0	1
Motorist	0	1	1
Other	1	0	1
Palm Beach Road Ran	1	1	2
Road Watcher	4	2	8
SIRV	1	1	2
SmarTraveler (511)	2	1	5
VisioPaD Detection	2	1	8
Total	241	191	641

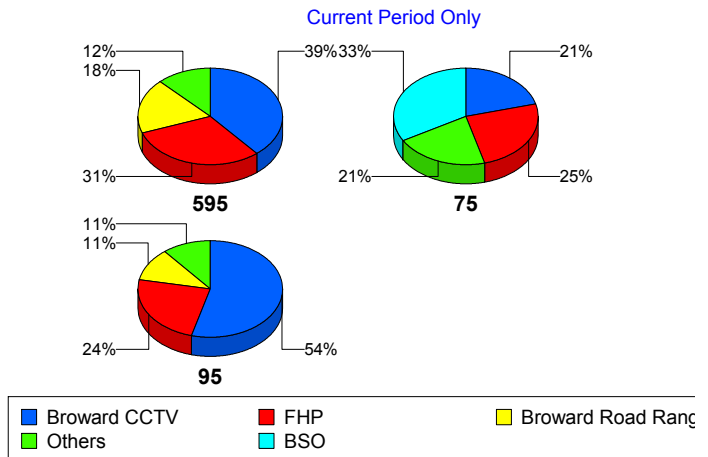
Total Incidents by Detection Method



Incident Detection Methods by Roadway

		Current Month	Last Month	YTD
595	Broward CCTV	19	10	45
	Broward Road Ranger	9	4	20
	Broward VideoWall	0	3	5
	BSO	2	0	2
	District 4	4	2	7
	FDOT Maintenance	0	1	1
	FHP	15	7	29
	Florida's Turnpike	0	0	3
	Motorist	0	1	1
	Road Watcher	0	1	2
	VisioPaD Detection	0	0	1
	Total	49	29	116
	75	Broward CCTV	5	9
Broward Road Ranger		2	2	4
BSO		8	8	16
District 4		0	1	1
FHP		6	3	9
Other		1	0	1
Road Watcher		2	0	2
Total		24	23	53
95	Broward CCTV	91	81	258
	Broward Road Ranger	19	18	49
	Broward VideoWall	7	3	30
	District 4	2	1	7
	District 6	0	1	1
	FDOT Maintenance	0	0	1
	FHP	40	30	104
	Fire	1	0	1
	ITMS	0	0	1
	Palm Beach Road Ran	1	1	2
	Road Watcher	2	1	4

Total Events by Roadway and Detection Method

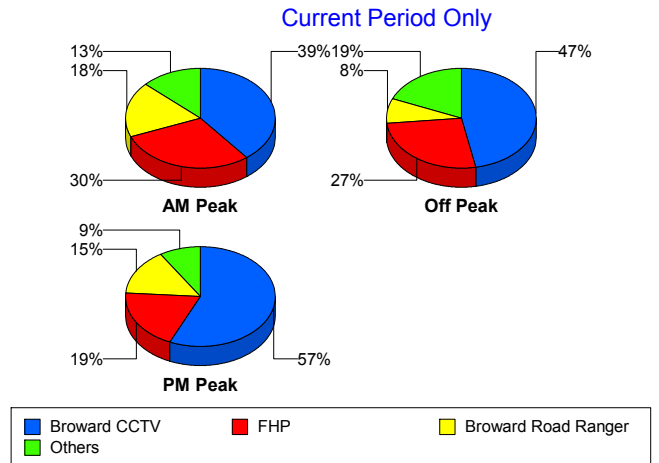


		Current Month	Last Month	YTD
95	SIRV	1	1	2
	SmarTraveler (511)	2	1	5
	VisioPaD Detection	2	1	7
	Total	168	139	472
Total	241	191	641	

Incident Detection Methods by Peak Period

		Current Month	Last Month	YTD
AM Peak	Broward CCTV	24	15	57
	Broward Road Ranger	11	8	24
	Broward VideoWall	1	4	12
	BSO	2	1	3
	District 4	3	2	6
	FHP	18	9	40
	Motorist	0	1	1
	Palm Beach Road Ran	0	1	1
	Road Watcher	2	0	4
	SmarTraveler (511)	0	0	1
	Total	61	41	149
	Off Peak	Broward CCTV	53	55
Broward Road Ranger		9	6	24
Broward VideoWall		6	2	20
BSO		8	7	15
District 4		2	1	4
FDOT Maintenance		0	1	1
FHP		30	21	67
Florida's Turnpike		0	0	3
ITMS		0	0	1
Road Watcher		1	2	3
SmarTraveler (511)		2	1	3
VisioPaD Detection		2	1	7
Total		113	97	316

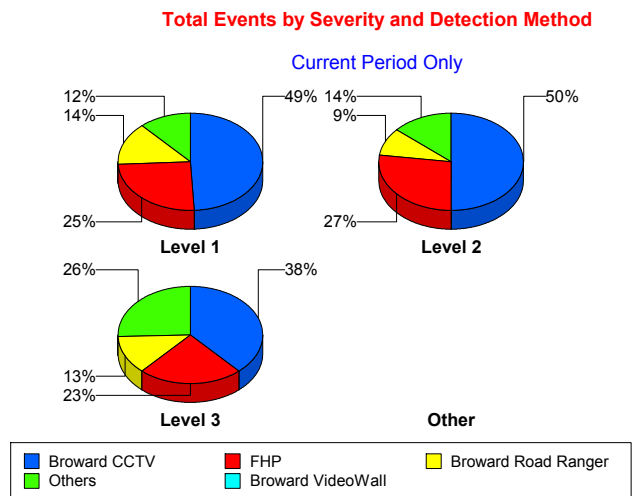
Total Events by Peak Period and Detection Method



		Current Month	Last Month	YTD
PM Peak	Broward CCTV	38	30	98
	Broward Road Ranger	10	10	25
	Broward VideoWall	0	0	3
	District 4	1	1	5
	District 6	0	1	1
	FDOT Maintenance	0	0	1
	FHP	13	10	35
	Fire	1	0	1
	Other	1	0	1
	Palm Beach Road Ran	1	0	1
	Road Watcher	1	0	1
	SIRV	1	1	2
	SmarTraveler (511)	0	0	1
	VisioPaD Detection	0	0	1
	Total	67	53	176
Total	241	191	641	

Incident Detection Methods by Severity

		Current Month	Last Month	YTD
Level 1	Broward CCTV	67	65	195
	Broward Road Ranger	19	20	55
	Broward VideoWall	2	5	19
	BSO	2	0	2
	District 4	4	3	10
	FDOT Maintenance	0	0	1
	FHP	34	22	85
	Motorist	0	1	1
	Palm Beach Road Ran	1	1	2
	Road Watcher	3	2	6
	SIRV	1	1	2
	SmarTraveler (511)	2	1	3
	VisioPaD Detection	1	1	3



		Current Month	Last Month	YTD
Level 1	Total	136	122	384
Level 2	Broward CCTV	33	22	85
	Broward Road Ranger	6	3	11
	Broward VideoWall	4	1	13
	BSO	3	1	4
	District 4	0	0	2
	FDOT Maintenance	0	1	1
	FHP	18	14	40
	Florida's Turnpike	0	0	1
	ITMS	0	0	1
	Other	1	0	1
	SmarTraveler (511)	0	0	2
	VisioPaD Detection	1	0	4
	Total	66	42	165
	Level 3	Broward CCTV	15	13
Broward Road Ranger		5	1	7
Broward VideoWall		1	0	3
BSO		5	7	12
District 4		2	1	3
District 6		0	1	1
FHP		9	4	17
Fire		1	0	1
Florida's Turnpike		0	0	2
Road Watcher		1	0	2
VisioPaD Detection		0	0	1
Total		39	27	92
Total		241	191	641

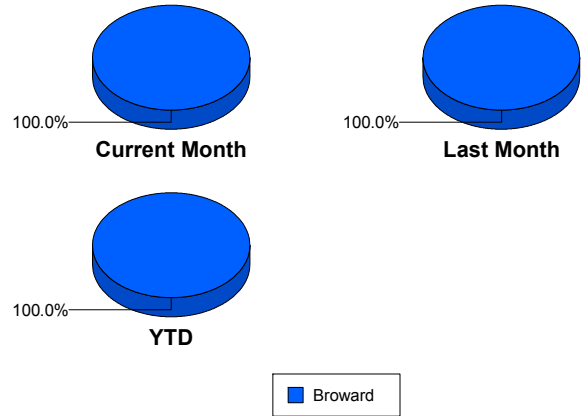
Road Ranger / SIRV Performance Measures

Road Ranger / SIRV Performance By County

Values presented are:
 - Total Events with a RR/SIRV Response
 - Total RR/SIRV Responses,
 - Total Activities Performed

	Current Mo	Last Month	YTD
Broward	2,775	2,537	7,900
	2,997	2,694	8,505
	3,149	2,796	8,885

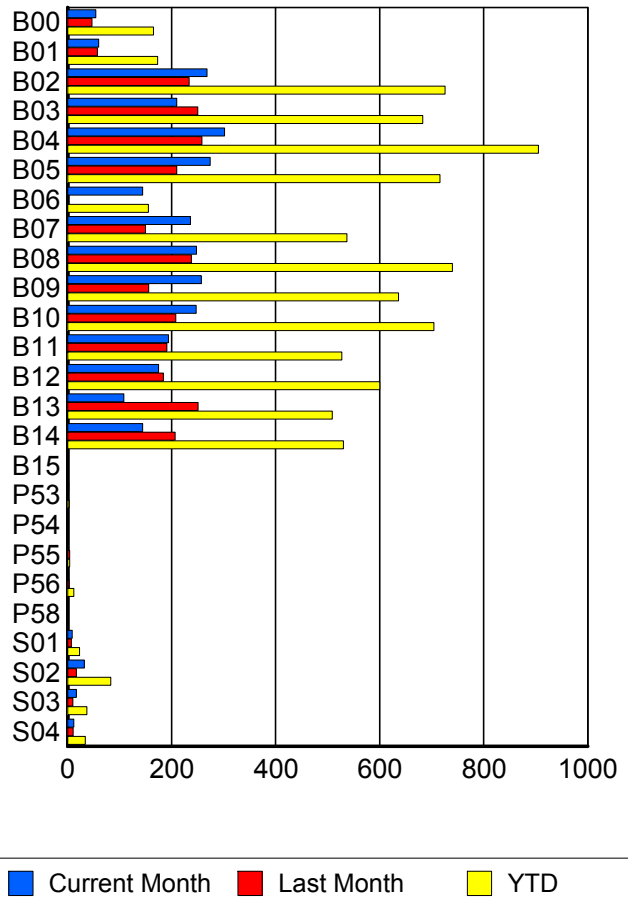
RR/SIRV Responses per County



Road Ranger / SIRV Performance By Truck

	Current Mo	Last Month	YTD
B00	54	47	163
	54	47	165
	55	48	169
B01	59	56	170
	60	57	173
	68	59	188
B02	268	231	721
	268	234	726
	281	248	763
B03	208	247	673
	210	250	683
	214	253	706
B04	299	255	896
	302	258	905
	320	271	951
B05	273	205	705
	274	210	716
	286	220	745
B06	140	0	151
	144	0	155
	147	0	159
B07	232	150	531
	236	150	537
	249	154	558
B08	244	238	735
	248	238	740
	257	245	770

RR/SIRV Responses per Truck



	Current Mo	Last Month	YTD
B09	254	154	628
	257	156	636
	265	161	663
B10	244	207	694
	247	208	704
	265	212	732
B11	190	190	517
	194	191	527
	208	196	552
B12	175	179	593
	175	184	600
	183	189	621
B13	106	248	504
	108	251	509
	114	263	530
B14	142	205	523
	144	207	530
	149	214	551
B15	1	0	1
	1	0	1
	1	0	1
P53	2	0	3
	2	0	3
	2	0	3
P54	1	0	1
	1	0	1
	1	0	1
P55	0	4	4
	0	4	4
	0	4	4
P56	2	3	12
	2	3	12
	3	3	13
P58	0	1	1
	0	1	1
	0	1	1
S01	8	7	22
	9	7	23
	11	8	27
S02	28	17	78
	32	17	83
	36	19	93
S03	16	10	36
	17	10	37
	19	15	44

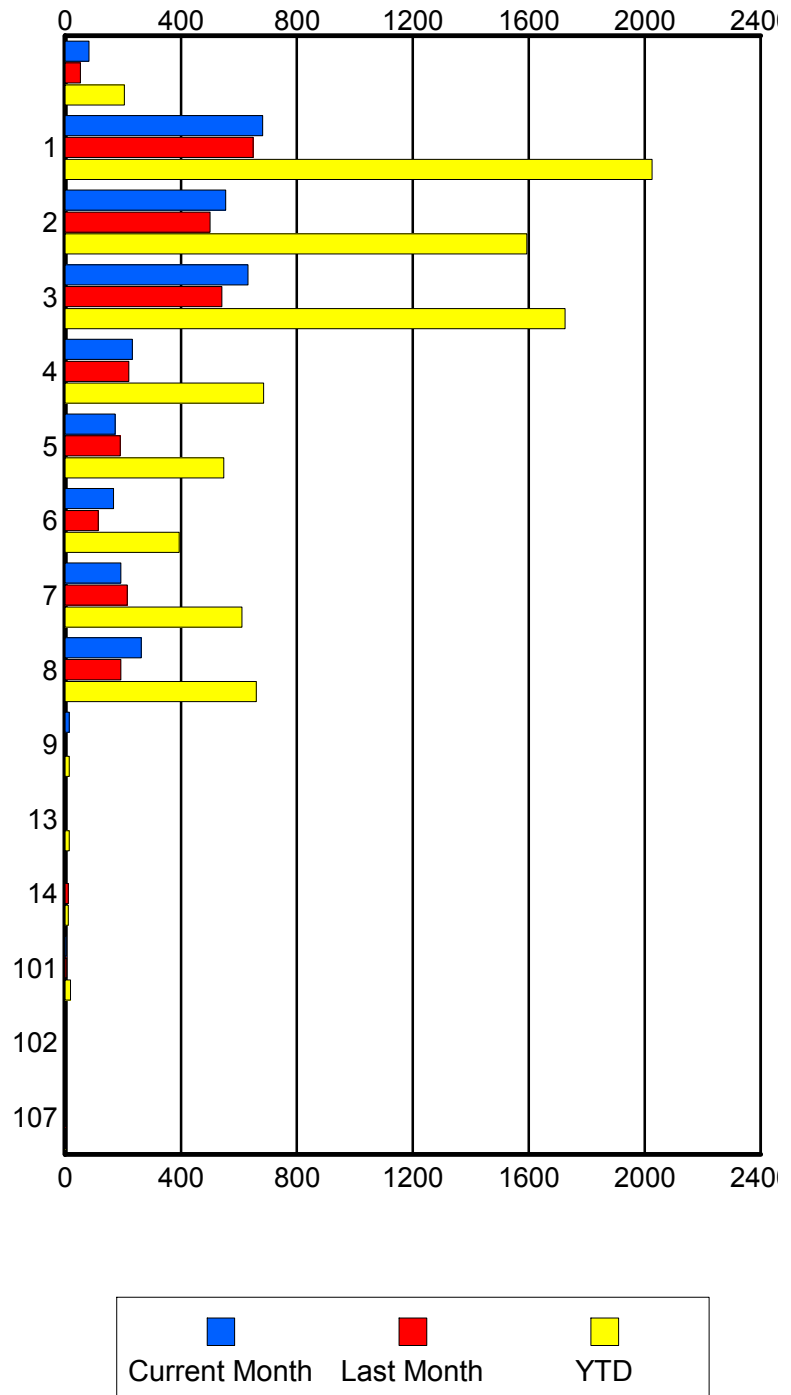
	Current Mo	Last Month	YTD
S04	12	11	34
	12	11	34
	15	13	40

Road Ranger / SIRV Performance By Beat

	Current Mo	Last Month	YTD
	75	52	191
	83	53	205
	95	63	233
1	653	610	1,915
	682	649	2,025
	706	663	2,098
2	538	487	1,541
	554	500	1,593
	581	521	1,664
3	611	533	1,680
	631	541	1,725
	651	566	1,793
4	227	217	671
	232	220	685
	246	225	705
5	171	187	537
	173	190	548
	182	194	565
6	165	114	390
	167	114	394
	184	117	424
7	191	210	600
	193	215	610
	205	224	645
8	260	190	653
	263	193	660
	279	204	696
9	12	0	12
	14	0	14
	14	0	14
13	0	0	14
	0	0	14
	0	0	15
14	0	11	11
	0	11	11
	0	11	11
101	5	6	19
	5	6	19
	6	6	20
102	0	1	1
	0	1	1
	0	1	1
107	0	1	1
	0	1	1
	0	1	1

Values presented are:
 - Total Events with a RR/SIRV Response
 - Total RR/SIRV Responses,
 - Total Activities Performed

RR/SIRV Responses per Beat

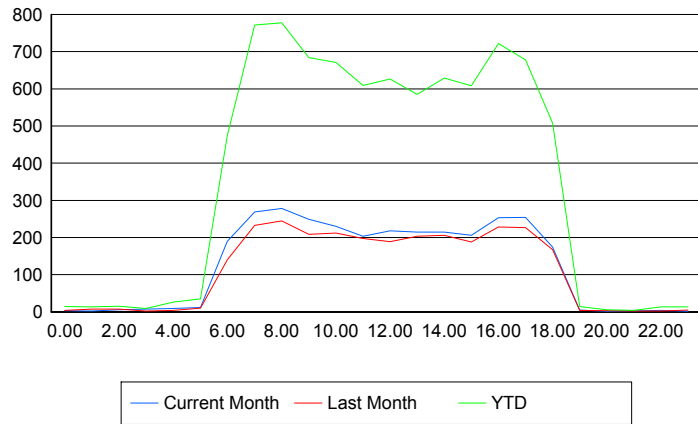


Road Ranger / SIRV Performance By Time of Day

Values presented are:
 - Total Events with a RR/SIRV Response
 - Total RR/SIRV Responses,
 - Total Activities Performed

	Current Mo	Last Month	YTD
12AM-1AM	3 3 3	4 4 5	14 14 15
1AM-2AM	2 2 2	7 7 7	13 13 13
2AM-3AM	3 6 6	5 7 7	10 15 15
3AM-4AM	0 0 0	2 2 2	8 9 9
4AM-5AM	4 9 9	4 4 5	19 26 27
5AM-6AM	12 12 13	10 10 10	34 35 36
6AM-7AM	177 190 196	126 140 146	429 473 489
7AM-8AM	246 269 287	224 233 242	722 772 807
8AM-9AM	255 278 298	233 245 250	716 778 816
9AM-10AM	228 249 258	193 209 216	634 684 706
10AM-11AM	212 230 241	195 212 220	615 671 698
11AM-12PM	192 203 222	186 197 201	566 609 638
12PM-1PM	199 218 228	181 189 195	589 626 649

Number of Responses / Hour of the Day



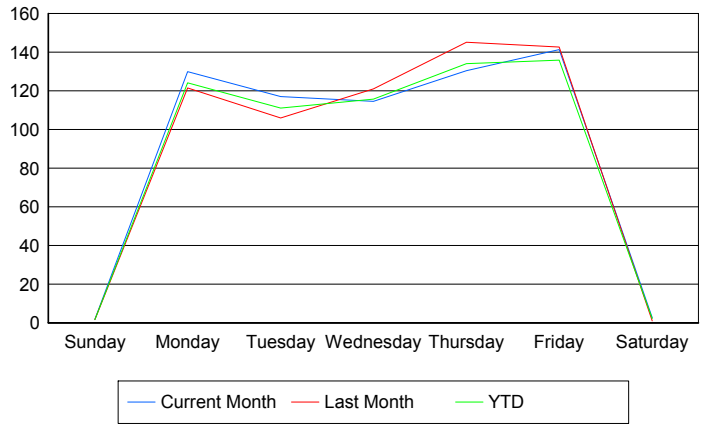
	Current Mo	Last Month	YTD
1PM-2PM	191	193	536
	215	203	585
	229	212	617
2PM-3PM	208	191	592
	215	206	629
	221	218	660
3PM-4PM	197	180	575
	206	188	608
	216	191	632
4PM-5PM	238	219	677
	253	228	722
	264	242	766
5PM-6PM	230	216	629
	254	227	678
	266	239	715
6PM-7PM	169	153	477
	174	167	508
	179	170	524
7PM-8PM	5	4	14
	5	4	14
	5	5	16
8PM-9PM	1	3	6
	1	3	6
	1	3	6
9PM-10PM	0	2	4
	0	2	4
	0	2	4
10PM-11PM	2	2	10
	4	2	13
	4	2	13
11PM-12AM	1	4	11
	1	5	13
	1	6	14

Road Ranger / SIRV Performance By Day of Week

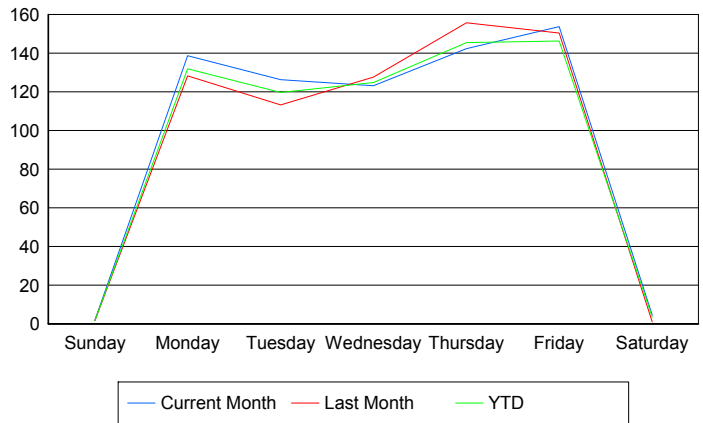
Values presented are:
 - Total Events with a RR/SIRV Response
 - Total RR/SIRV Responses,
 - Total Activities Performed

	Current Mo	Last Month	YTD
Sunday	3 3 3	3 3 5	7 7 9
Monday	646 690 717	486 513 527	1,605 1,705 1,761
Tuesday	583 629 654	422 450 463	1,434 1,545 1,604
Wednesday	454 487 518	482 509 538	1,377 1,487 1,566
Thursday	519 565 591	574 616 637	1,710 1,855 1,932
Friday	564 614 655	570 601 623	1,759 1,893 1,997
Saturday	6 9 11	2 2 3	10 13 16

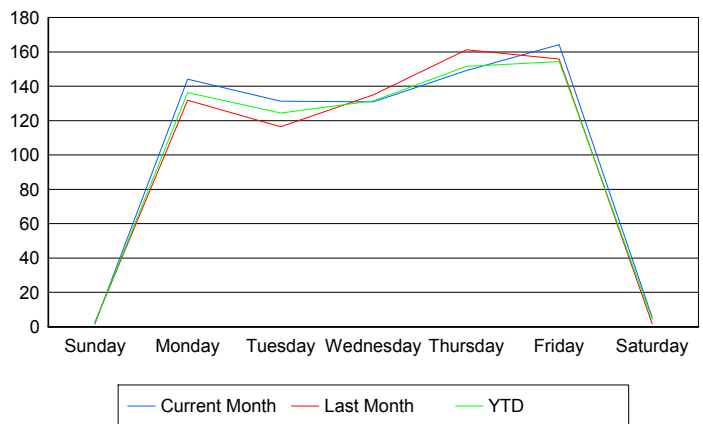
Avg # of events with a RR/SIRV Response per Day of the Week



Avg # of RR/SIRV Responses per Day of the Week



Avg # of RR/SIRV Activities Performed per Day of the Week



Road Ranger / SIRV Responses per Time of Day and Day of Week

