

Monthly Performance Measures Report Broward County



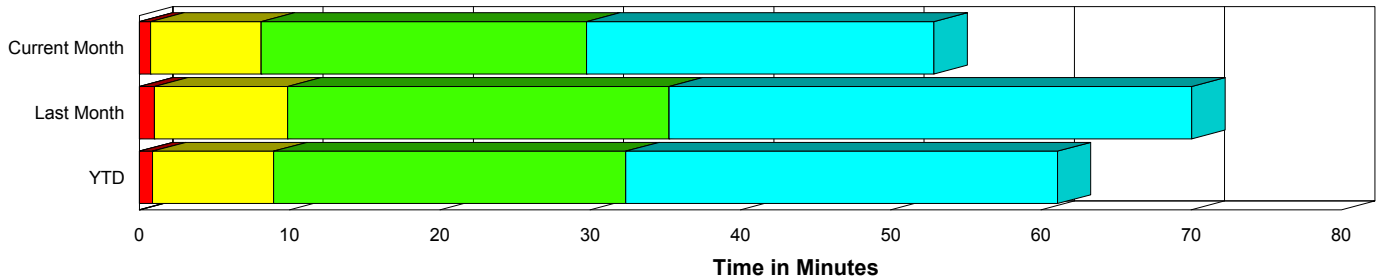
Created on:
March 01, 2010
9:07 am

Period From Feb 1, 2010 to Feb 28, 2010

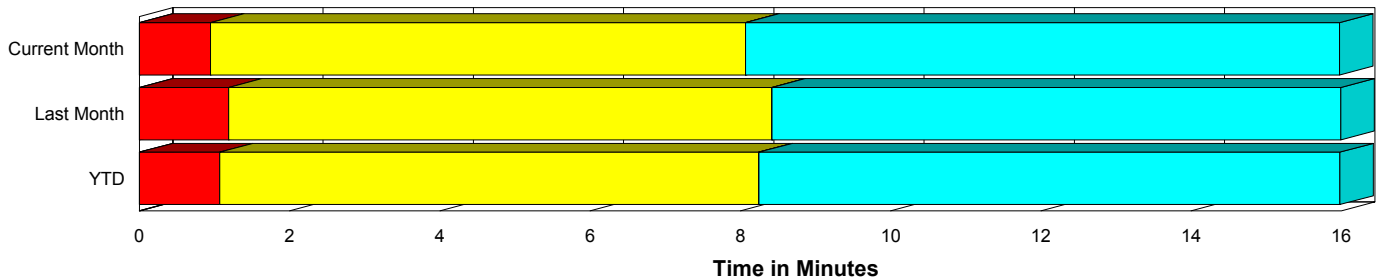
Performance Measures Summary

	Traffic Events (No Lanes Blocked)			Incidents (Lanes Blocked)		
	<u>This Month</u>	<u>Last Month</u>	<u>YTD</u>	<u>This Month</u>	<u>Last Month</u>	<u>YTD</u>
Number of Events	5,074	5,170	10,244	206	190	396
TMC Detection (min.)	0.00	0.00	0.00	0.00	0.00	0.00
TMC Verification (min.)	0.95	1.19	1.07	0.74	1.01	0.87
TMC Response (min.)	8.78	9.31	9.05	8.17	9.93	9.01
RR Dispatch Time (min.)	1.22	1.48	1.36	1.43	2.27	1.84
RR Response Time (min.)	7.62	7.97	7.80	6.74	7.68	7.19
Roadway Clearance (min.)				29.00	34.26	31.53
Event Clearance (min.)	16.68	16.88	16.78	52.02	68.61	59.98
# of Events w/ RR/SIRV	3,992	4,192	8,184	200	187	387
RR/SIRV Responses	3,992	4,192	8,184	200	187	387
RR/SIRV Activities	2,947	3,133	6,080	376	348	724

Incident Clearance Time-Line



Traffic Event (Non-Lane Blockage) Time-Line



■ Avg. TMC Detection Time	■ Avg. Time from TMC Response to Roadway Clearance*
■ Avg. Time from TMC Detection to TMC Verification	■ Avg. Time from Roadway Clearance to Incident/Event Clearance**
■ Avg. Time from TMC Verification to TMC Response	

* Roadway clearance equals all travel lanes open

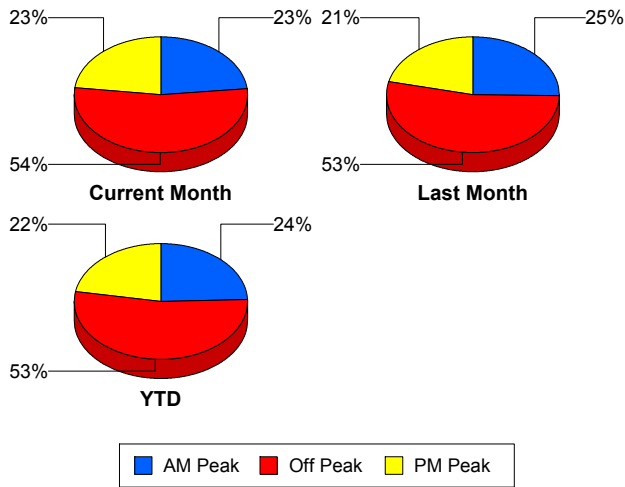
** Incident clearance equals time when last responder has left the scene

Performance Measures by Peak Period

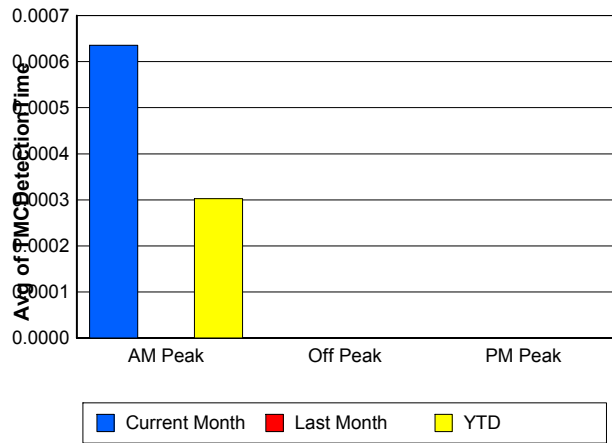
Note: AM peak period is defined as 6am to 10am and PM peak period is defined as 3pm to 7pm.

	AM Peak			Off Peak			PM Peak		
	<u>Current Month</u>	<u>Last Month</u>	<u>YTD</u>	<u>Current Month</u>	<u>Last Month</u>	<u>YTD</u>	<u>Current Month</u>	<u>Last Month</u>	<u>YTD</u>
Number of Events	1,232	1,356	2,588	2,831	2,858	5,689	1,217	1,146	2,363
Number of Incidents	29	32	61	108	99	207	69	59	128
TMC Detection (min.)	0.00	0.00	0.00	0.00	0.00	0.00	0.00	0.00	0.00
TMC Verification (min.)	0.56	0.63	0.60	0.96	1.25	1.10	1.28	1.67	1.47
TMC Response (min.)	7.57	8.88	8.24	9.26	9.24	9.25	8.82	10.05	9.43
RR Dispatch Time (min.)	0.91	1.08	1.00	1.32	1.55	1.44	1.38	1.95	1.66
RR Response Time (min.)	6.72	7.89	7.32	8.01	7.84	7.92	7.48	8.27	7.87
Event Clearance (min.)	15.81	16.49	16.16	18.51	18.43	18.47	19.31	22.06	20.64
Roadway Clearance (min.)	32.11	31.38	31.73	31.28	43.09	36.93	24.13	21.00	22.69
Incident Clearance (min.)	49.99	65.30	58.02	53.75	72.67	62.80	50.16	63.59	56.35
# of Events w/ RR/SIRV	1,022	1,127	2,149	2,175	2,286	4,461	995	966	1,961
RR/SIRV Responses	1,022	1,127	2,149	2,175	2,286	4,461	995	966	1,961
RR/SIRV Activities	796	846	1,642	1,692	1,824	3,516	835	811	1,646

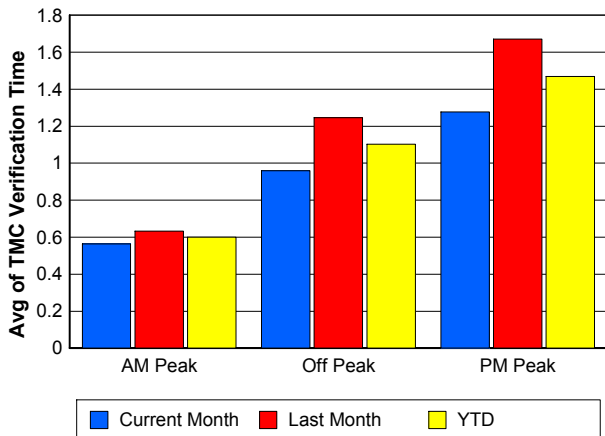
Number of Events / Peak Period



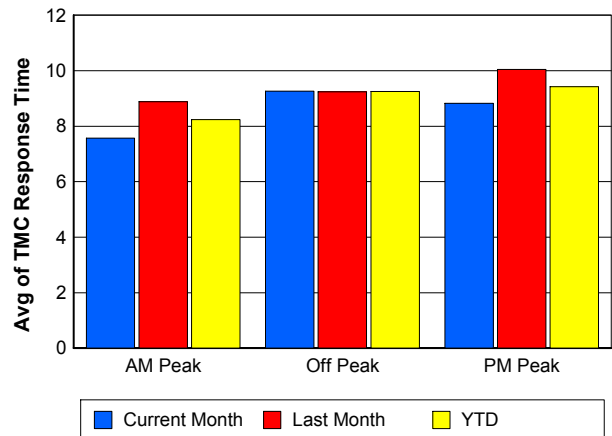
TMC Detection Time



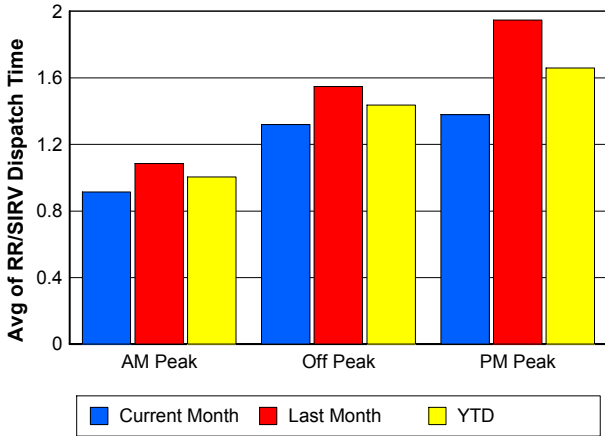
TMC Verification Time



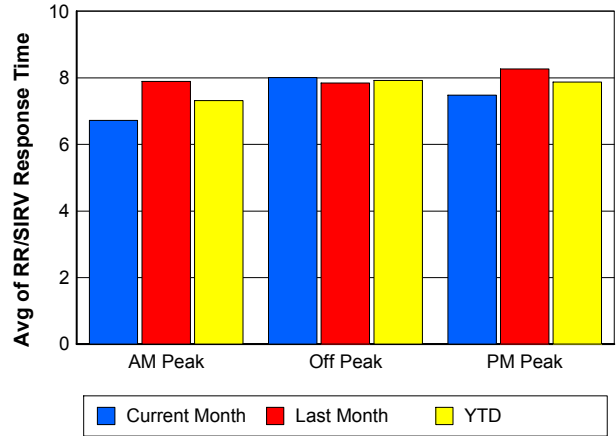
TMC Response Time



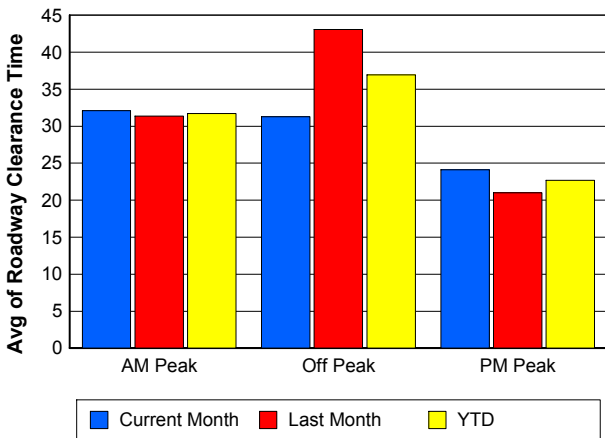
Road Ranger / SIRV Dispatch Time



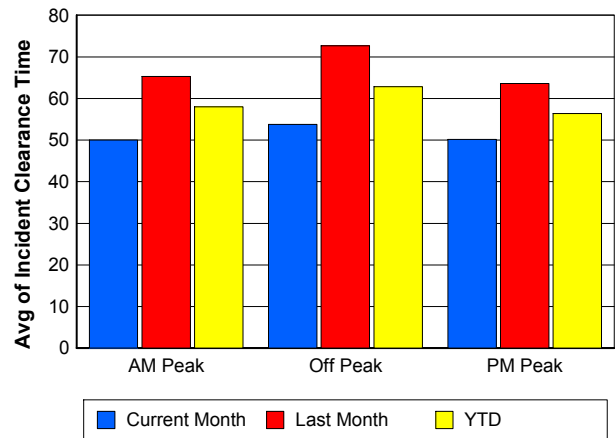
Road Ranger / SIRV Response Time



Roadway Clearance Time (2A)



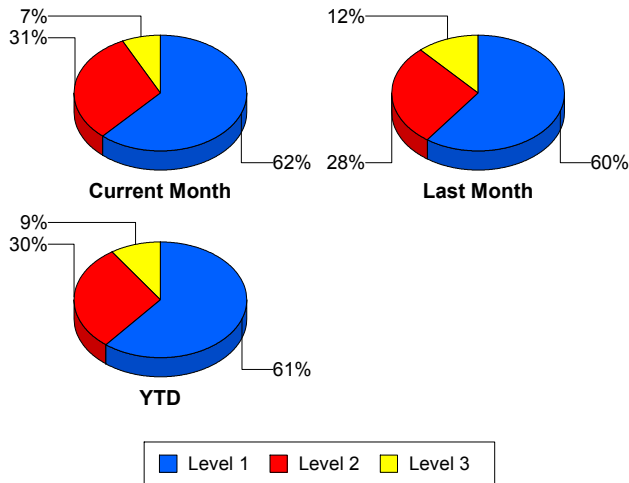
Incident Clearance Time (3B)



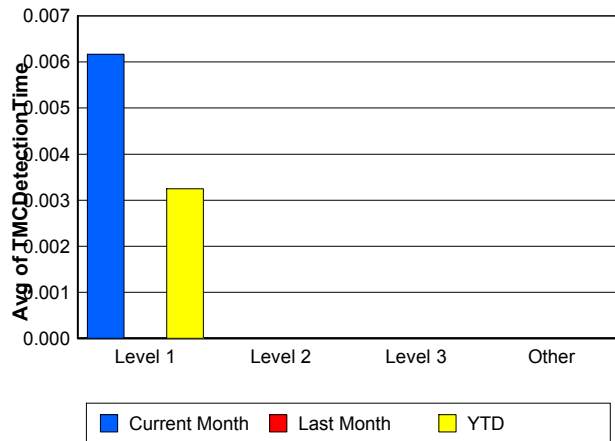
Performance Measures by Severity

	Level 1			Level 2			Level 3			Other		
	<u>This Month</u>	<u>Last Month</u>	<u>YTD</u>	<u>This Month</u>	<u>Last Month</u>	<u>YTD</u>	<u>This Month</u>	<u>Last Month</u>	<u>YTD</u>	<u>This Month</u>	<u>Last Month</u>	<u>YTD</u>
Number of Events	127	114	241	64	54	118	15	22	37	5,074	5,170	10,244
Number of Incidents	127	114	241	64	54	118	15	22	37	0	0	0
TMC Detection (min.)	0.01	0.00	0.00	0.00	0.00	0.00	0.00	0.00	0.00	0.00	0.00	0.00
TMC Verification (min.)	0.42	0.62	0.52	1.02	1.82	1.39	2.23	1.01	1.50	0.95	1.19	1.07
TMC Response (min.)	6.76	8.33	7.50	9.77	13.08	11.27	12.84	10.12	11.20	8.78	9.31	9.05
RR Dispatch Time (min.)	1.24	1.86	1.54	1.74	3.29	2.45	1.64	1.95	1.83	1.22	1.48	1.36
RR Resp. Time (min.)	5.52	6.56	6.01	8.03	9.73	8.80	11.20	8.16	9.38	7.62	7.97	7.80
Event Clearance (min.)	39.25	58.15	48.19	72.04	77.01	74.31	74.72	102.19	91.06	16.68	16.88	16.78
Roadway Clear. (min.)	13.65	16.03	14.77	52.33	49.78	51.16	59.48	90.65	78.01			
Incident Clearance (min.)	39.25	58.15	48.19	72.04	77.01	74.31	74.72	102.19	91.06			
# of Events w/ RR/SIRV	123	113	236	63	53	116	14	21	35	3,992	4,192	8,184
RR/SIRV Responses	123	113	236	63	53	116	14	21	35	3,992	4,192	8,184
RR/SIRV Activities	183	185	368	156	105	261	37	58	95	2,947	3,133	6,080

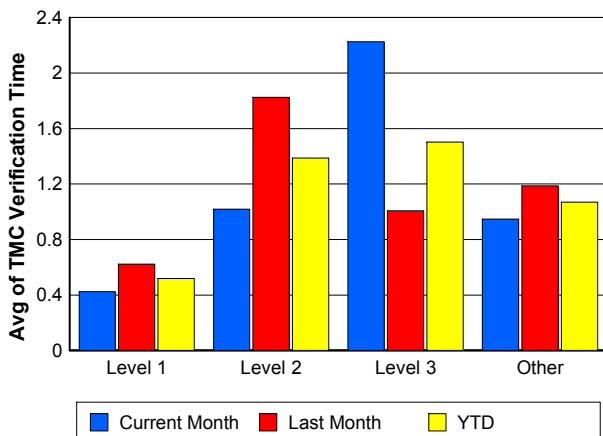
Number of Events / Severity



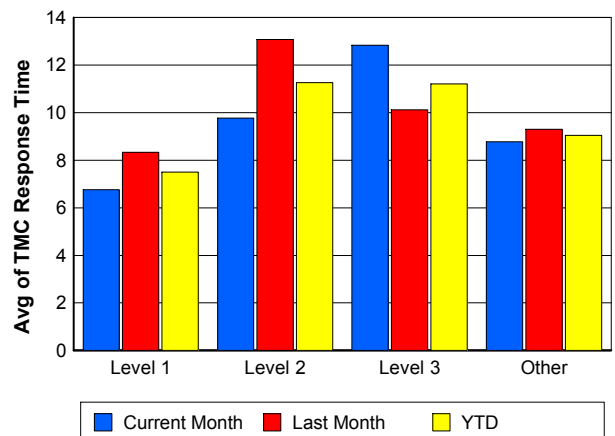
TMC Detection Time



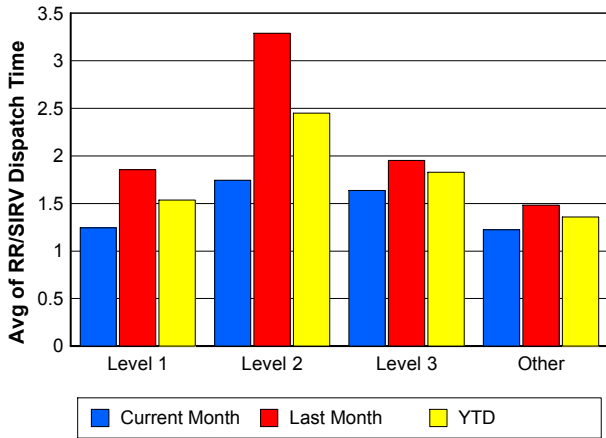
TMC Verification Time



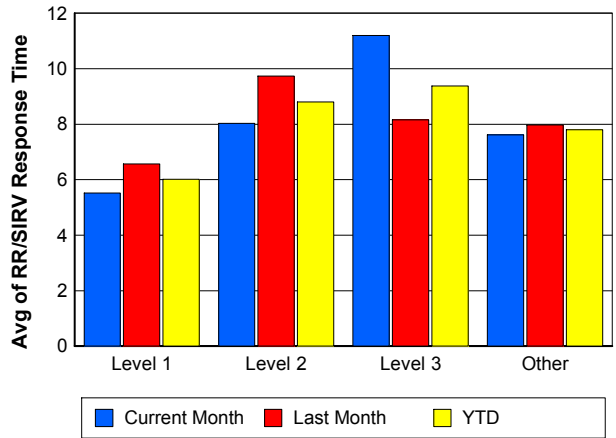
TMC Response Time



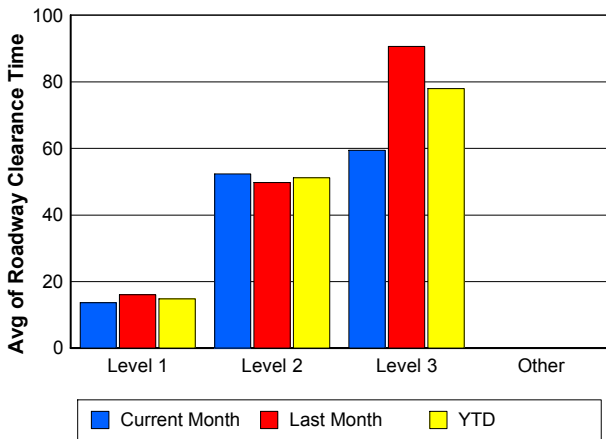
Road Ranger / SIRV Dispatch Time



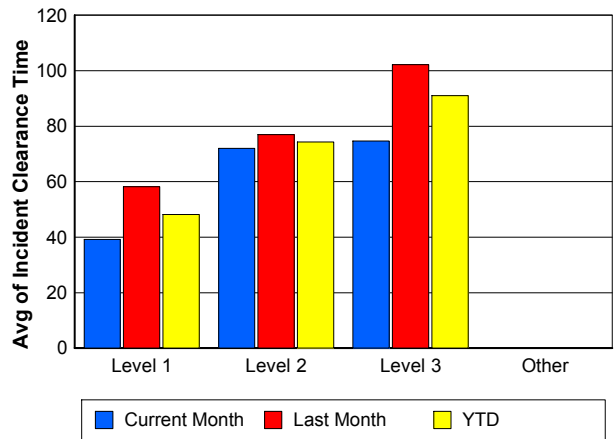
Road Ranger / SIRV Response Time



Roadway Clearance Time (2A)



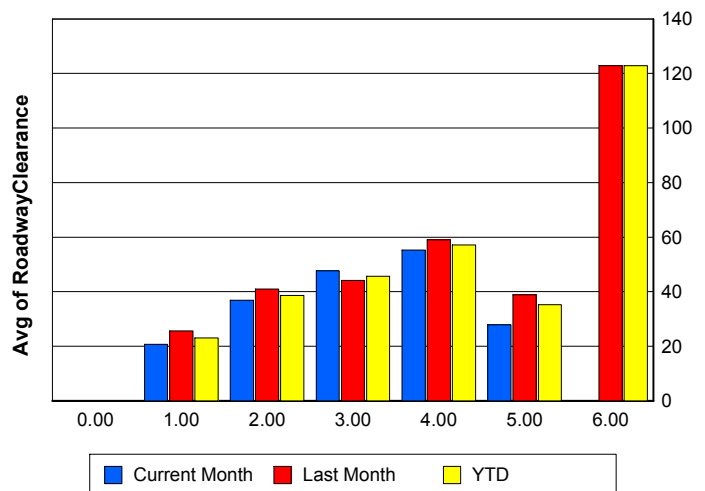
Incident Clearance Time (3B)



Roadway Clearance by Maximum Number of Lanes Blocked

	Current Month	Last Month	YTD
0			
1	20.75	25.60	23.03
2	36.81	40.92	38.66
3	47.61	44.12	45.70
4	55.23	59.02	57.13
5	27.87	38.89	35.22
6	0.00	122.82	122.82

Roadway Clearance Time (2A)



Performance Measures by Roadway

595

	<u>Current Month</u>	<u>Last Month</u>	<u>YTD</u>
Number of Events	195	195	390
Number of Incidents	14	7	21
TMC Detection (min.)	0.00	0.00	0.00
TMC Verification (min.)	1.45	2.32	1.89
TMC Response (min.)	14.39	14.72	14.57
RR Dispatch Time (min.)	2.19	2.47	2.34
RR Resp. Time (min.)	12.08	12.44	12.28
Event Clearance (min.)	20.75	18.64	19.70
Roadway Clear. (min.)	61.07	43.56	55.23
Incident Clearance (min.)	79.80	58.39	72.66
# of Events w/ RR/SIRV	128	144	272
RR/SIRV Responses	128	144	272
RR/SIRV Activities	103	97	200

75

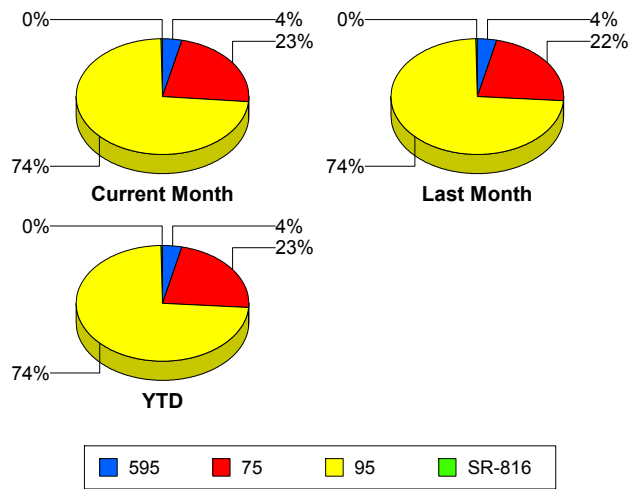
	<u>Current Month</u>	<u>Last Month</u>	<u>YTD</u>
Number of Events	1,193	1,204	2,397
Number of Incidents	25	13	38
TMC Detection (min.)	0.00	0.00	0.00
TMC Verification (min.)	1.56	1.91	1.73
TMC Response (min.)	9.66	10.13	9.90
RR Dispatch Time (min.)	1.40	1.64	1.52
RR Resp. Time (min.)	8.35	8.72	8.54
Event Clearance (min.)	18.52	18.65	18.59
Roadway Clear. (min.)	29.68	50.01	36.64
Incident Clearance (min.)	58.15	91.50	69.56
# of Events w/ RR/SIRV	902	934	1,836
RR/SIRV Responses	902	934	1,836
RR/SIRV Activities	748	738	1,486

95

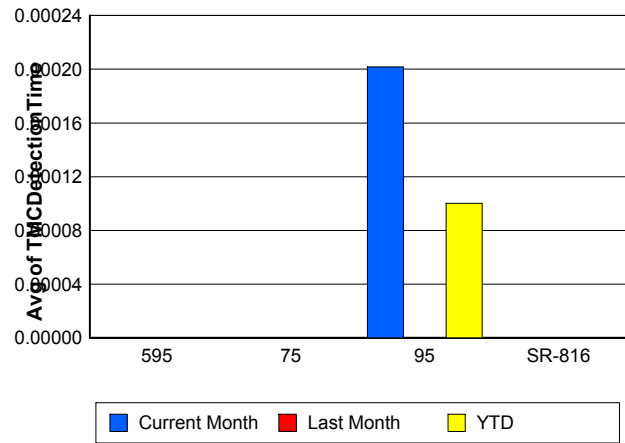
	<u>Current Month</u>	<u>Last Month</u>	<u>YTD</u>
Number of Events	3,882	3,945	7,827
Number of Incidents	160	159	319
TMC Detection (min.)	0.00	0.00	0.00
TMC Verification (min.)	0.73	0.91	0.82
TMC Response (min.)	8.29	8.97	8.64
RR Dispatch Time (min.)	1.15	1.45	1.30
RR Resp. Time (min.)	7.19	7.62	7.41
Event Clearance (min.)	17.79	18.75	18.27
Roadway Clear. (min.)	27.02	33.55	30.28
Incident Clearance (min.)	50.28	70.55	60.38
# of Events w/ RR/SIRV	3,153	3,285	6,438
RR/SIRV Responses	3,153	3,285	6,438
RR/SIRV Activities	2,461	2,629	5,090

	<u>Current Month</u>	<u>Last Month</u>	<u>YTD</u>
Number of Events	10	16	26
Number of Incidents	7	11	18
TMC Detection (min.)	0.00	0.00	0.00
TMC Verification (min.)	0.00	0.00	0.00
TMC Response (min.)	0.00	0.19	0.12
RR Dispatch Time (min.)	0.00	0.09	0.05
RR Resp. Time (min.)	0.00	0.10	0.07
Event Clearance (min.)	18.38	16.04	16.94
Roadway Clear. (min.)	7.69	20.04	15.24
Incident Clearance (min.)	14.44	20.03	17.86
# of Events w/ RR/SIRV	9	16	25
RR/SIRV Responses	9	16	25
RR/SIRV Activities	11	17	28

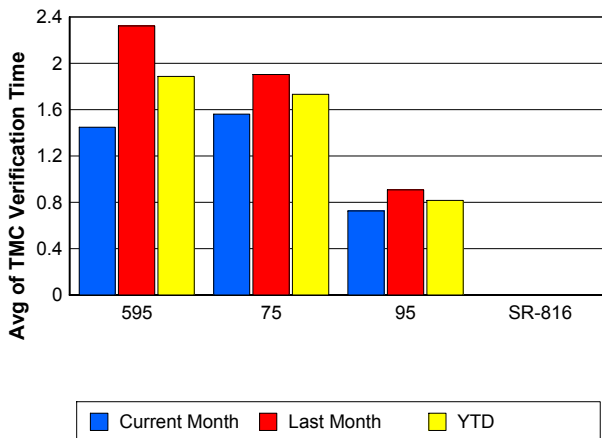
Number of Events / Roadway



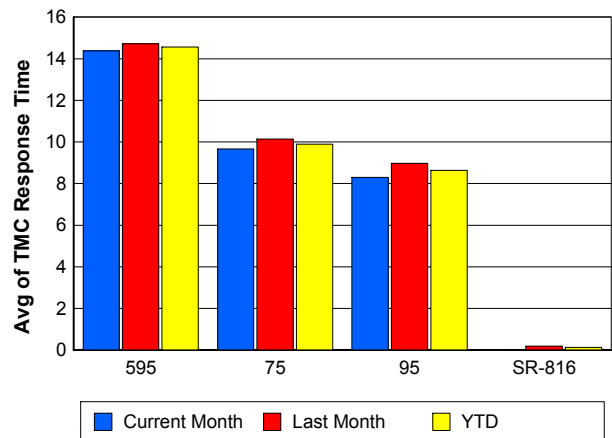
TMC Detection Time



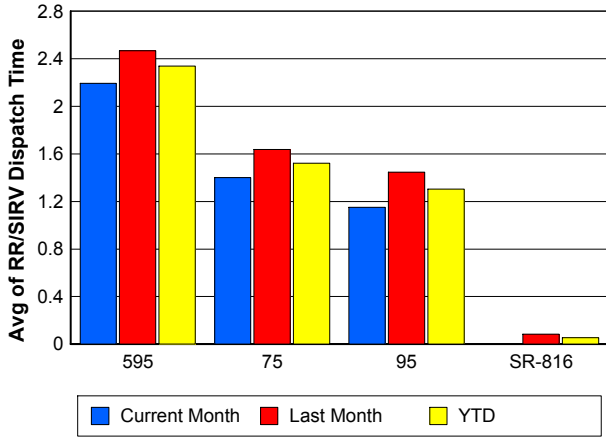
TMC Verification Time



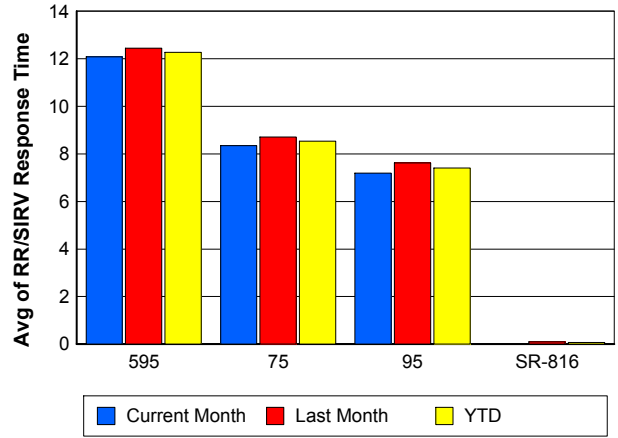
TMC Response Time



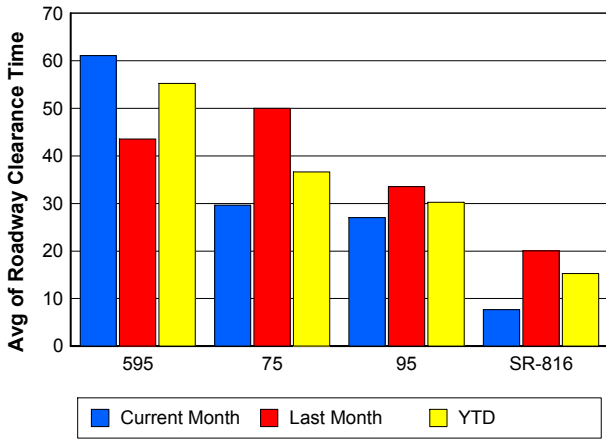
Road Ranger / SIRV Dispatch Time



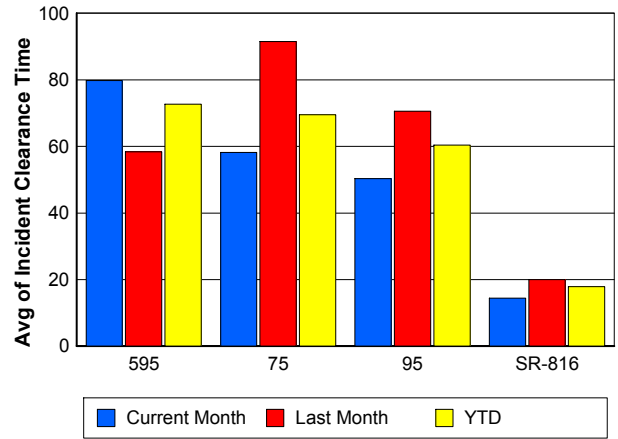
Road Ranger / SIRV Response Time



Roadway Clearance Time (2A)



Incident Clearance Time (3B)



Performance Measures by Event Type

Accident

	<u>Current Month</u>	<u>Last Month</u>	<u>YTD</u>
Number of Events	335	286	621
Number of Incidents	142	128	270
TMC Detection (min.)	0.00	0.00	0.00
TMC Verification (min.)	1.09	1.68	1.36
TMC Response (min.)	8.16	11.33	9.63
RR Dispatch Time (min.)	1.33	2.33	1.80
RR Response Time (min.)	6.82	9.01	7.84
Event Clearance (min.)	51.62	60.54	55.73
Roadway Clearance (min.)	33.01	35.02	33.96
Incident Clearance (min.)	62.87	81.15	71.54
# of Events w/ RR/SIRV	330	285	615
RR/SIRV Assists	330	285	615
RR/SIRV Activities	485	428	913

Debris on Roadway

	<u>Current Month</u>	<u>Last Month</u>	<u>YTD</u>
Number of Events	159	158	317
Number of Incidents	1	5	6
TMC Detection (min.)	0.00	0.00	0.00
TMC Verification (min.)	6.60	6.16	6.38
TMC Response (min.)	10.87	9.25	10.03
RR Dispatch Time (min.)	1.55	1.64	1.59
RR Response Time (min.)	9.27	7.57	8.39
Event Clearance (min.)	13.45	13.31	13.38
Roadway Clearance (min.)	4.38	58.09	49.14
Incident Clearance (min.)	13.12	50.76	44.49
# of Events w/ RR/SIRV	149	152	301
RR/SIRV Assists	149	152	301
RR/SIRV Activities	141	160	301

Disabled Vehicle

	<u>Current Month</u>	<u>Last Month</u>	<u>YTD</u>
Number of Events	2,722	2,888	5,610
Number of Incidents	45	37	82
TMC Detection (min.)	0.00	0.00	0.00
TMC Verification (min.)	1.23	1.64	1.44
TMC Response (min.)	8.63	9.16	8.91
RR Dispatch Time (min.)	1.13	1.37	1.26
RR Response Time (min.)	7.54	7.87	7.71
Event Clearance (min.)	20.73	20.90	20.82
Roadway Clearance (min.)	14.83	17.10	15.85
Incident Clearance (min.)	22.69	30.35	26.15
# of Events w/ RR/SIRV	2,610	2,811	5,421
RR/SIRV Assists	2,610	2,811	5,421
RR/SIRV Activities	2,517	2,703	5,220

Emergency Vehicles

	<u>Current Month</u>	<u>Last Month</u>	<u>YTD</u>
Number of Events	3	9	12
Number of Incidents	3	7	10
TMC Detection (min.)	0.00	0.00	0.00
TMC Verification (min.)	0.00	0.00	0.00
TMC Response (min.)	20.55	12.20	13.40
RR Dispatch Time (min.)	0.83	1.10	1.07
RR Response Time (min.)	19.72	11.01	12.25
Event Clearance (min.)	19.99	34.21	30.65
Roadway Clearance (min.)	16.69	27.99	24.60
Incident Clearance (min.)	19.99	31.69	28.18
# of Events w/ RR/SIRV	1	8	9
RR/SIRV Assists	1	8	9
RR/SIRV Activities	1	7	8

Other

	<u>Current Month</u>	<u>Last Month</u>	<u>YTD</u>
Number of Events	2,030	1,988	4,018
Number of Incidents	5	5	10
TMC Detection (min.)	0.00	0.00	0.00
TMC Verification (min.)	0.04	0.04	0.04
TMC Response (min.)	9.43	8.66	9.04
RR Dispatch Time (min.)	1.38	1.67	1.52
RR Response Time (min.)	7.81	7.71	7.76
Event Clearance (min.)	9.16	9.65	9.40
Roadway Clearance (min.)	31.83	91.83	61.83
Incident Clearance (min.)	46.05	96.37	71.21
# of Events w/ RR/SIRV	1,073	1,097	2,170
RR/SIRV Assists	1,073	1,097	2,170
RR/SIRV Activities	145	152	297

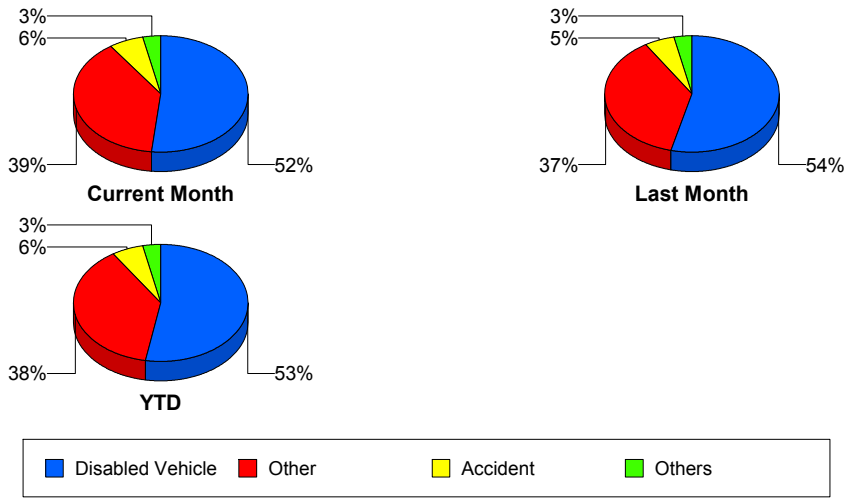
Police Activity

	<u>Current Month</u>	<u>Last Month</u>	<u>YTD</u>
Number of Events	3	10	13
Number of Incidents	2	4	6
TMC Detection (min.)	0.00	0.00	0.00
TMC Verification (min.)	0.00	4.39	3.38
TMC Response (min.)	7.88	12.67	11.30
RR Dispatch Time (min.)	0.93	1.33	1.21
RR Response Time (min.)	7.49	11.44	10.31
Event Clearance (min.)	27.56	45.87	41.64
Roadway Clearance (min.)	26.86	63.65	51.39
Incident Clearance (min.)	28.86	76.47	60.60
# of Events w/ RR/SIRV	3	7	10
RR/SIRV Assists	3	7	10
RR/SIRV Activities	3	8	11

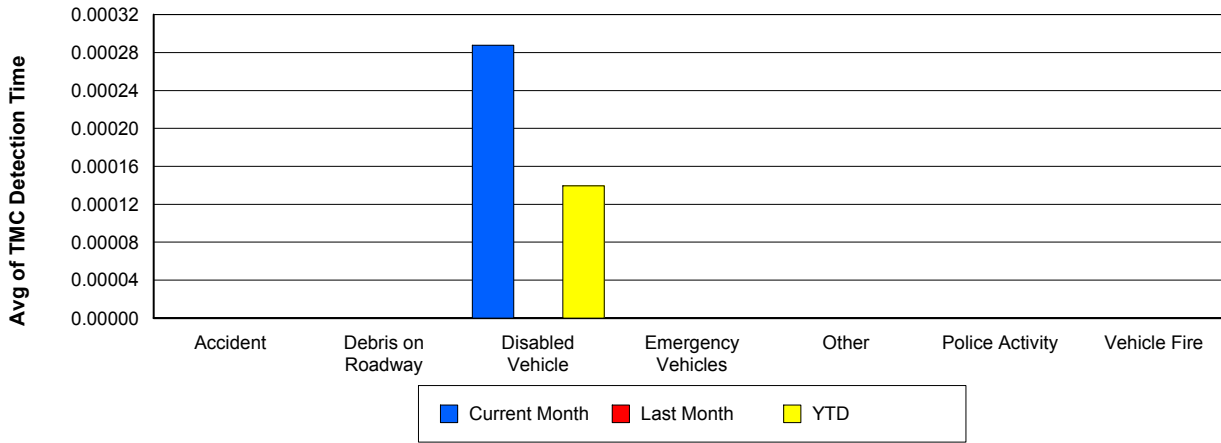
Vehicle Fire

	<u>Current Month</u>	<u>Last Month</u>	<u>YTD</u>
Number of Events	11	8	19
Number of Incidents	8	4	12
TMC Detection (min.)	0.00	0.00	0.00
TMC Verification (min.)	5.83	1.14	3.74
TMC Response (min.)	14.12	11.49	12.95
RR Dispatch Time (min.)	1.98	2.16	2.06
RR Response Time (min.)	11.99	9.33	10.81
Event Clearance (min.)	46.69	57.49	51.24
Roadway Clearance (min.)	44.12	48.46	45.57
Incident Clearance (min.)	50.82	65.39	55.67
# of Events w/ RR/SIRV	11	8	19
RR/SIRV Assists	11	8	19
RR/SIRV Activities	19	13	32

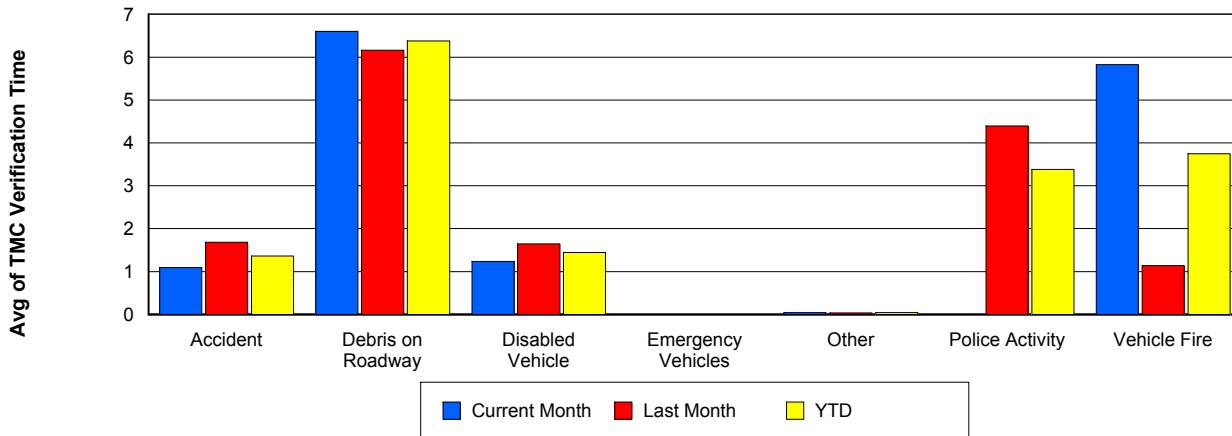
Number of Events / Event Type



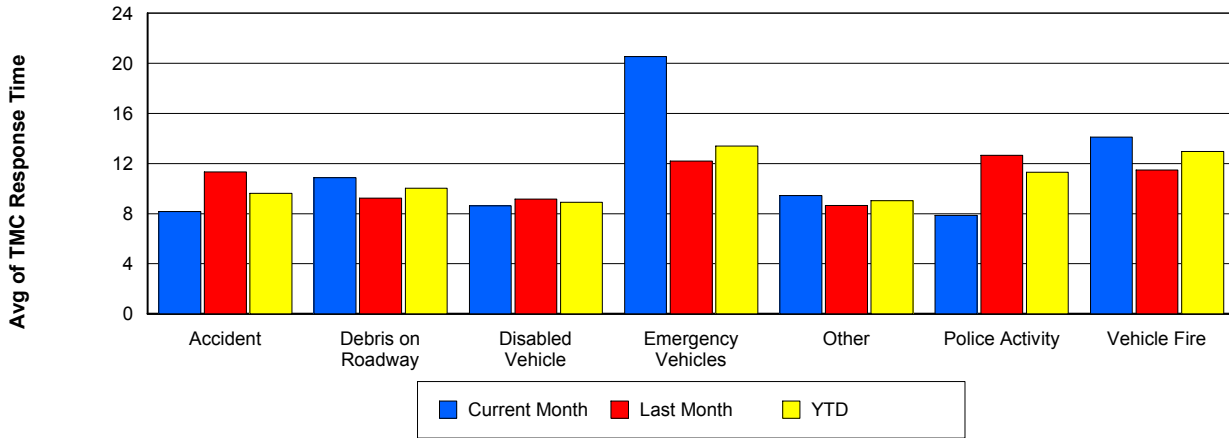
TMC Detection Time



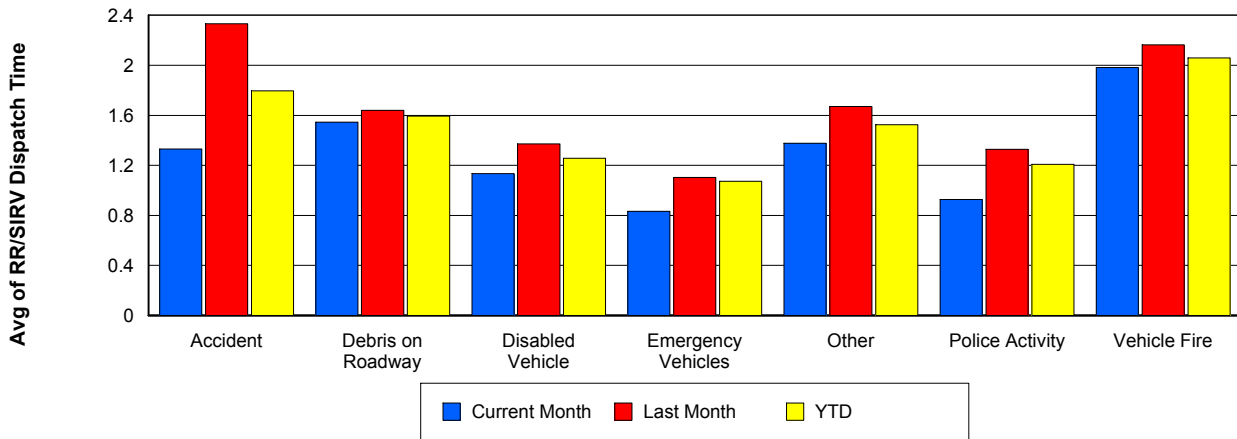
TMC Verification Time



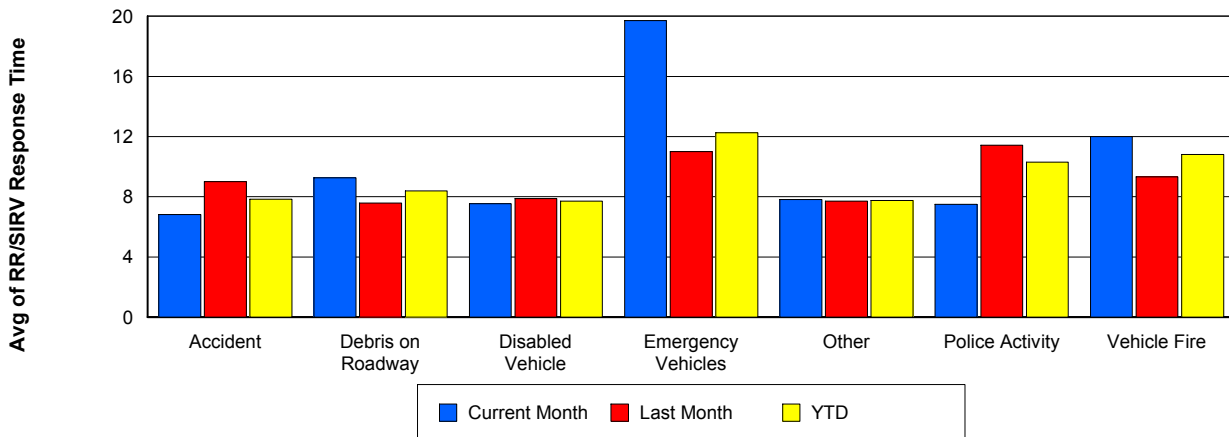
TMC Response Time



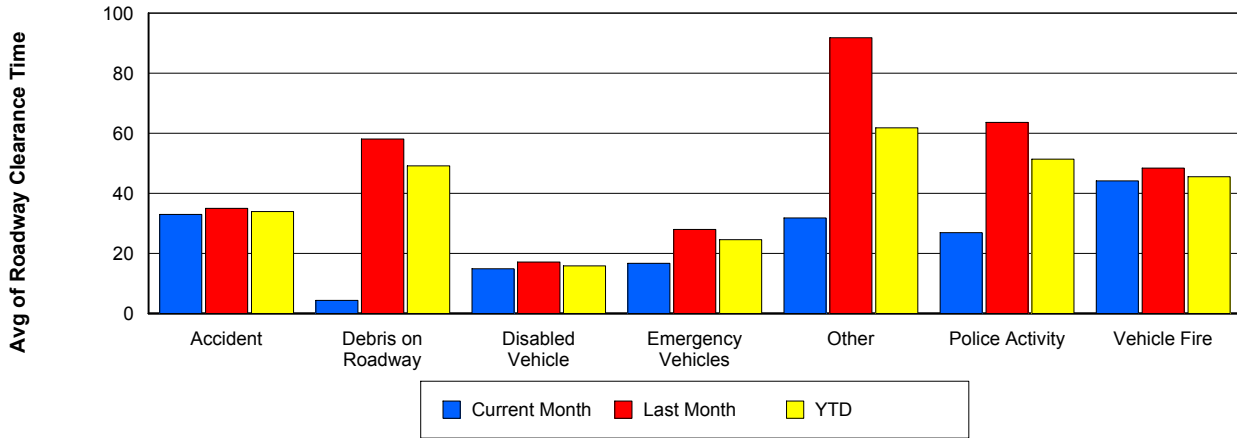
Road Ranger / SIRV Dispatch Time



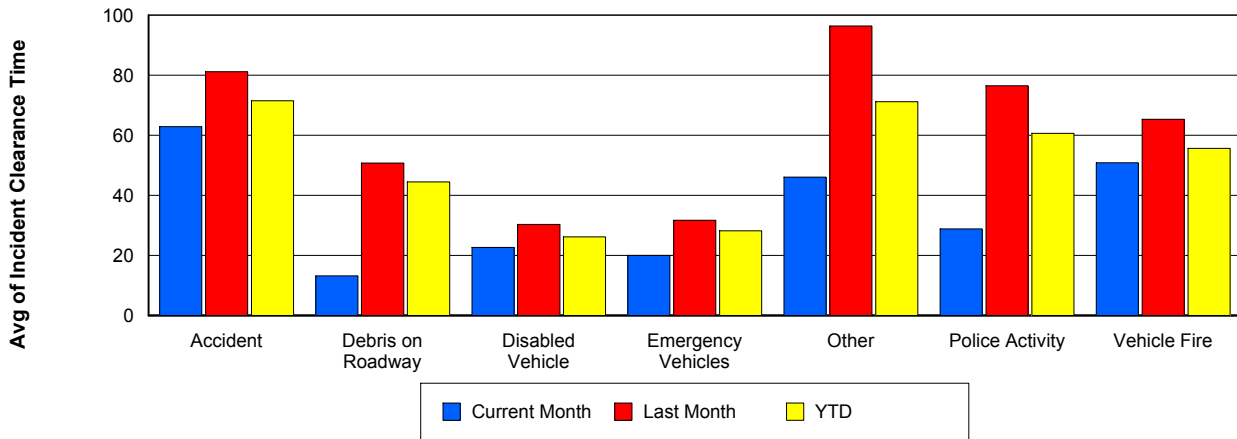
Road Ranger / SIRV Response Time



Roadway Clearance Time (2A)



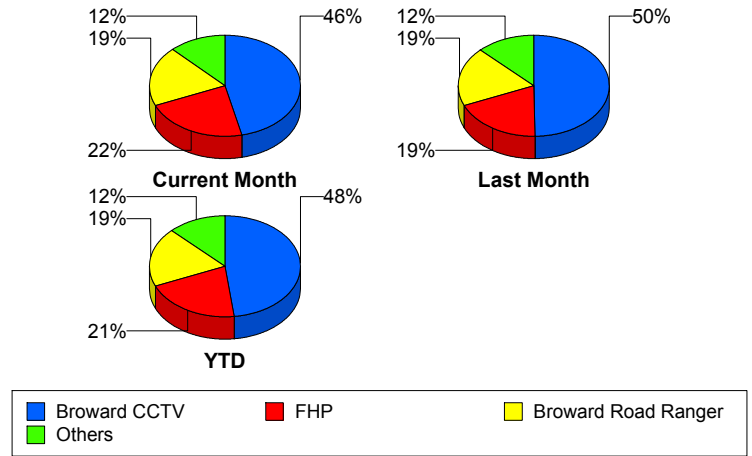
Incident Clearance Time (3B)



Incident Detection Methods

	Current Month	Last Month	YTD
Broward CCTV	94	92	186
Broward Road Ranger	39	35	74
Broward TMC	2	1	3
Broward VideoWall	8	5	13
BSO	3	3	6
County Police	1	0	1
District 4	3	4	7
FHP	45	35	80
Fire	1	0	1
Local Police	0	1	1
Motorist	1	2	3
Road Watcher	1	1	2
SIRV	1	0	1
VisioPaD Detection	4	6	10
Total	203	185	388

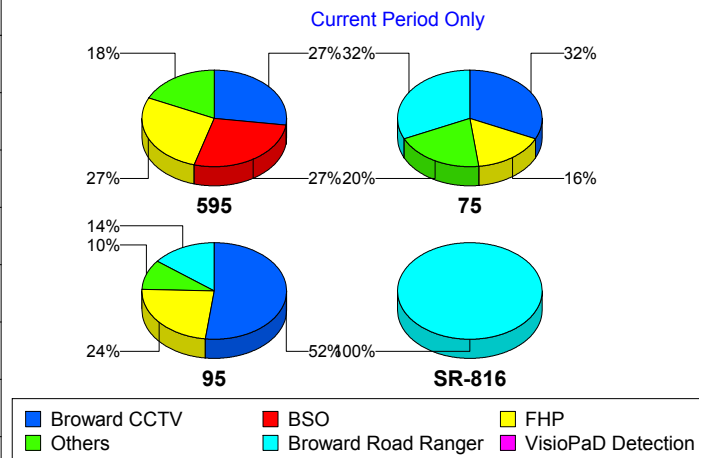
Total Incidents by Detection Method



Incident Detection Methods by Roadway

		Current Month	Last Month	YTD
595	Broward CCTV	3	1	4
	Broward Road Ranger	1	0	1
	BSO	3	0	3
	County Police	1	0	1
	FHP	3	2	5
	Total	11	3	14
75	Broward CCTV	8	4	12
	Broward Road Ranger	8	0	8
	BSO	0	2	2
	District 4	0	1	1
	FHP	4	4	8
	Fire	1	0	1

Total Events by Roadway and Detection Method

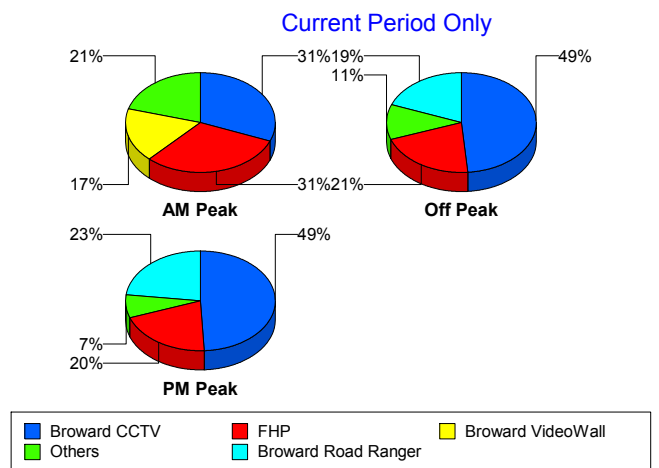


		Current Month	Last Month	YTD
75	VisioPaD Detection	4	2	6
	Total	25	13	38
95	Broward CCTV	83	87	170
	Broward Road Ranger	23	24	47
	Broward TMC	2	1	3
	Broward VideoWall	8	5	13
	BSO	0	1	1
	District 4	3	3	6
	FHP	38	29	67
	Local Police	0	1	1
	Motorist	1	2	3
	Road Watcher	1	1	2
	SIRV	1	0	1
	VisioPaD Detection	0	4	4
	Total	160	158	318
SR-816	Broward Road Ranger	7	11	18
	Total	7	11	18
Total		203	185	388

Incident Detection Methods by Peak Period

		Current Month	Last Month	YTD
AM Peak	Broward CCTV	9	12	21
	Broward Road Ranger	3	9	12
	Broward VideoWall	5	3	8
	BSO	1	0	1
	District 4	0	1	1
	FHP	9	5	14
	Local Police	0	1	1
	SIRV	1	0	1
	VisioPaD Detection	1	0	1
	Total	29	31	60
Off Peak	Broward CCTV	51	51	102

Total Events by Peak Period and Detection Method

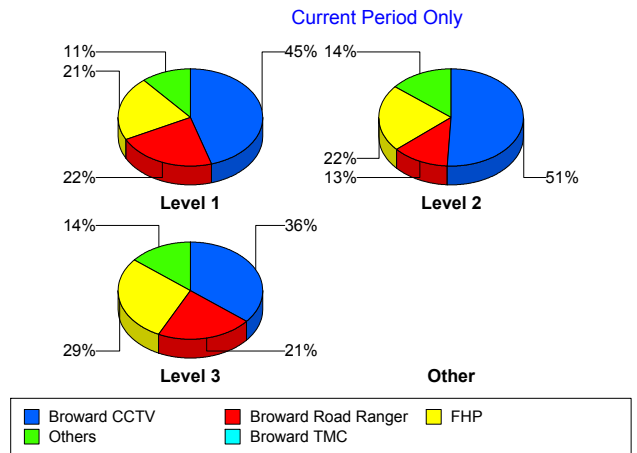


		Current Month	Last Month	YTD
Off Peak	Broward Road Ranger	20	10	30
	Broward TMC	2	1	3
	Broward VideoWall	3	1	4
	BSO	0	2	2
	County Police	1	0	1
	District 4	2	3	5
	FHP	22	21	43
	Motorist	1	1	2
	Road Watcher	1	1	2
	VisioPaD Detection	2	4	6
	Total	105	95	200
PM Peak	Broward CCTV	34	29	63
	Broward Road Ranger	16	16	32
	Broward VideoWall	0	1	1
	BSO	2	1	3
	District 4	1	0	1
	FHP	14	9	23
	Fire	1	0	1
	Motorist	0	1	1
	VisioPaD Detection	1	2	3
	Total	69	59	128
Total		203	185	388

Incident Detection Methods by Severity

		Current Month	Last Month	YTD
Level 1	Broward CCTV	57	59	116
	Broward Road Ranger	28	24	52
	Broward TMC	1	1	2
	Broward VideoWall	4	4	8
	BSO	2	1	3
	District 4	2	2	4
	FHP	27	17	44
	Motorist	1	2	3
	Road Watcher	1	1	2
	VisioPaD Detection	3	2	5
	Total	126	113	239
Level 2	Broward CCTV	32	25	57
	Broward Road Ranger	8	9	17
	Broward TMC	1	0	1
	Broward VideoWall	4	1	5
	District 4	1	1	2
	FHP	14	10	24
	Fire	1	0	1
	Local Police	0	1	1
	SIRV	1	0	1
	VisioPaD Detection	1	3	4
	Total	63	50	113
Level 3	Broward CCTV	5	8	13
	Broward Road Ranger	3	2	5
	BSO	1	2	3
	County Police	1	0	1
	District 4	0	1	1
	FHP	4	8	12
	VisioPaD Detection	0	1	1
	Total	14	22	36
Total	203	185	388	

Total Events by Severity and Detection Method



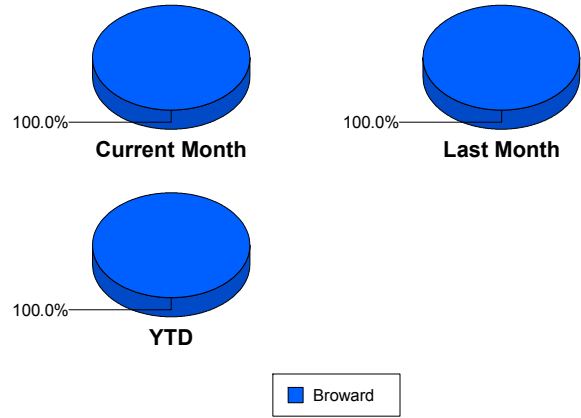
Road Ranger / SIRV Performance Measures

Road Ranger / SIRV Performance By County

Values presented are:
 - Total Events with a RR/SIRV Response
 - Total RR/SIRV Responses,
 - Total Activities Performed

	Current Mo	Last Month	YTD
Broward	3,575	3,810	7,385
	3,819	4,057	7,876
	3,950	4,210	8,160

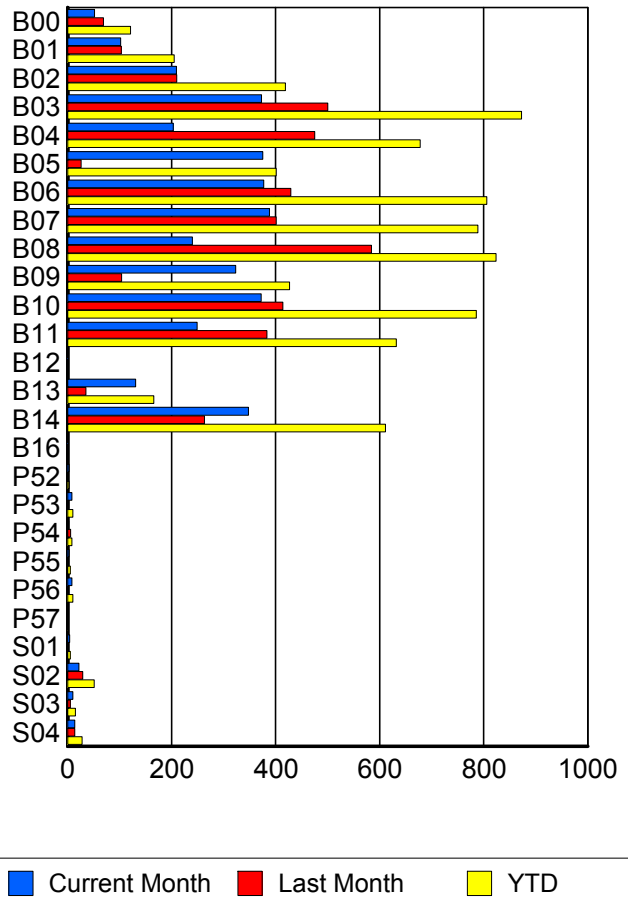
RR/SIRV Responses per County



Road Ranger / SIRV Performance By Truck

	Current Mo	Last Month	YTD
B00	51	68	119
	52	69	121
	54	76	130
B01	100	102	202
	102	103	205
	103	105	208
B02	206	208	414
	209	210	419
	210	213	423
B03	370	498	868
	373	500	873
	390	527	917
B04	203	466	669
	203	475	678
	211	489	700
B05	372	26	398
	375	26	401
	388	26	414
B06	373	422	795
	377	429	806
	388	448	836
B07	382	392	774
	388	401	789
	405	418	823
B08	237	574	811
	240	584	824
	248	608	856

RR/SIRV Responses per Truck



	Current Mo	Last Month	YTD
B09	320	102	422
	323	104	427
	339	106	445
B10	370	410	780
	372	414	786
	388	422	810
B11	247	381	628
	249	383	632
	255	395	650
B12	1	0	1
	1	0	1
	1	0	1
B13	130	34	164
	131	35	166
	132	36	168
B14	342	259	601
	348	263	611
	357	274	631
B16	1	0	1
	1	0	1
	1	0	1
P52	3	0	3
	3	0	3
	3	0	3
P53	8	2	10
	8	2	10
	8	2	10
P54	2	6	8
	2	6	8
	2	6	8
P55	3	2	5
	3	2	5
	3	2	5
P56	8	2	10
	8	2	10
	8	4	12
P57	1	0	1
	1	0	1
	1	0	1
S01	4	1	5
	4	1	5
	5	1	6
S02	21	29	50
	22	29	51
	24	31	55

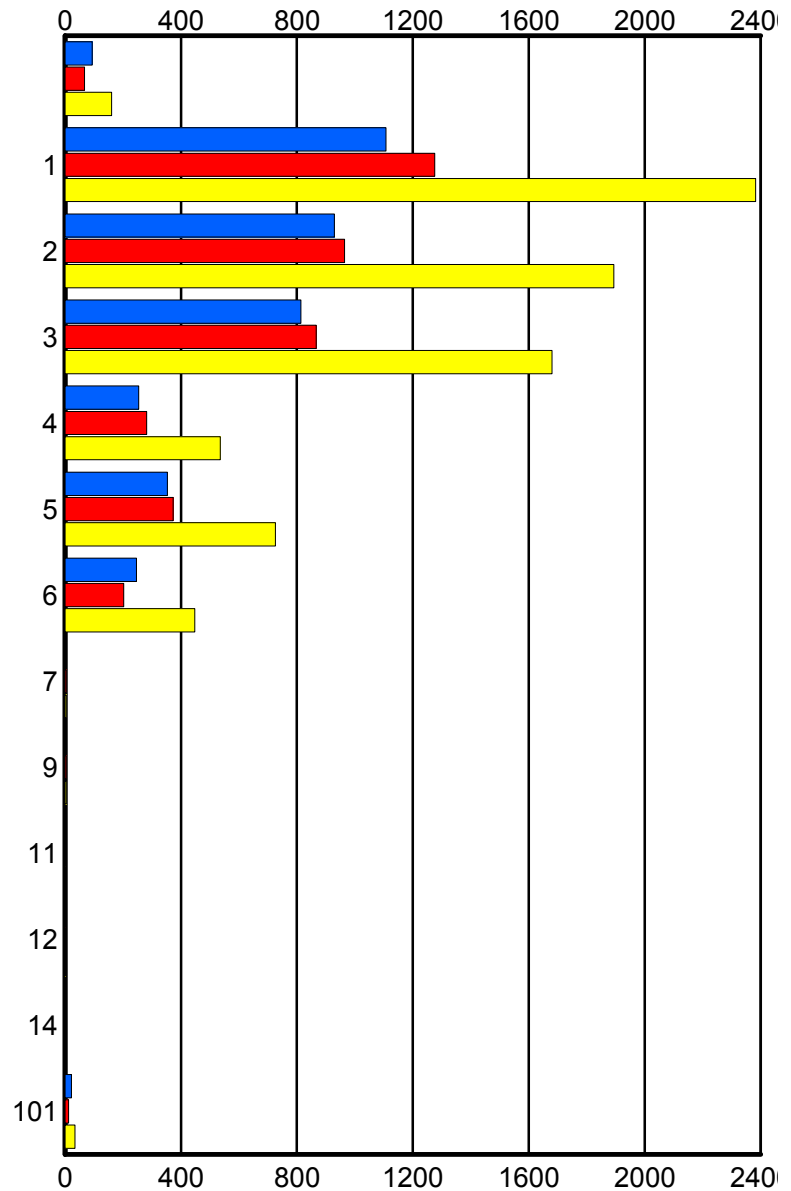
	Current Mo	Last Month	YTD
S03	8	4	12
	10	5	15
	10	6	16
S04	14	14	28
	14	14	28
	16	15	31

Road Ranger / SIRV Performance By Beat

	Current Mo	Last Month	YTD
	89	65	154
	94	67	161
	100	70	170
1	1,057	1,222	2,279
	1,107	1,276	2,383
	1,146	1,336	2,482
2	902	939	1,841
	929	964	1,893
	960	998	1,958
3	799	849	1,648
	814	866	1,680
	841	899	1,740
4	251	276	527
	254	282	536
	269	291	560
5	350	371	721
	353	373	726
	359	381	740
6	239	200	439
	246	202	448
	253	206	459
7	0	4	4
	0	4	4
	0	4	4
9	0	4	4
	0	4	4
	0	4	4
11	0	2	2
	0	2	2
	0	2	2
12	0	2	2
	0	2	2
	0	2	2
14	0	3	3
	0	3	3
	0	3	3
101	22	12	34
	22	12	34
	22	14	36

Values presented are:
 - Total Events with a RR/SIRV Response
 - Total RR/SIRV Responses,
 - Total Activities Performed

RR/SIRV Responses per Beat



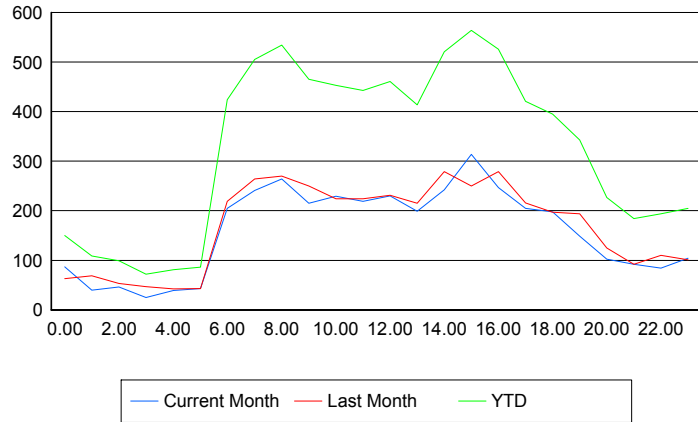
■ Current Month
 ■ Last Month
 ■ YTD

Road Ranger / SIRV Performance By Time of Day

Values presented are:
 - Total Events with a RR/SIRV Response
 - Total RR/SIRV Responses,
 - Total Activities Performed

	Current Mo	Last Month	YTD
12AM-1AM	81	61	142
	87	63	150
	90	67	157
1AM-2AM	38	66	104
	40	69	109
	42	72	114
2AM-3AM	44	47	91
	46	53	99
	46	58	104
3AM-4AM	23	45	68
	25	47	72
	29	51	80
4AM-5AM	34	41	75
	39	42	81
	43	42	85
5AM-6AM	33	36	69
	43	43	86
	43	47	90
6AM-7AM	197	203	400
	205	219	424
	211	226	437
7AM-8AM	229	252	481
	241	264	505
	250	275	525
8AM-9AM	248	254	502
	264	270	534
	273	277	550
9AM-10AM	207	240	447
	215	250	465
	220	260	480
10AM-11AM	215	210	425
	229	224	453
	237	236	473
11AM-12PM	206	208	414
	219	224	443
	224	233	457
12PM-1PM	214	220	434
	230	231	461
	237	236	473

Number of Responses / Hour of the Day



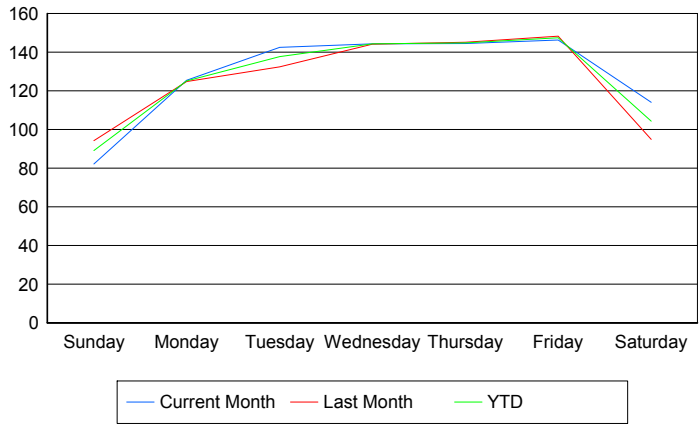
	Current Mo	Last Month	YTD
1PM-2PM	189	197	386
	199	215	414
	205	223	428
2PM-3PM	221	254	475
	242	279	521
	251	295	546
3PM-4PM	292	233	525
	314	250	564
	320	257	577
4PM-5PM	222	262	484
	247	279	526
	258	289	547
5PM-6PM	190	205	395
	205	216	421
	211	219	430
6PM-7PM	192	189	381
	198	197	395
	202	207	409
7PM-8PM	144	182	326
	149	194	343
	153	199	352
8PM-9PM	92	119	211
	102	125	227
	106	126	232
9PM-10PM	86	88	174
	92	92	184
	97	94	191
10PM-11PM	78	102	180
	84	110	194
	89	117	206
11PM-12AM	100	96	196
	104	101	205
	113	104	217

Road Ranger / SIRV Performance By Day of Week

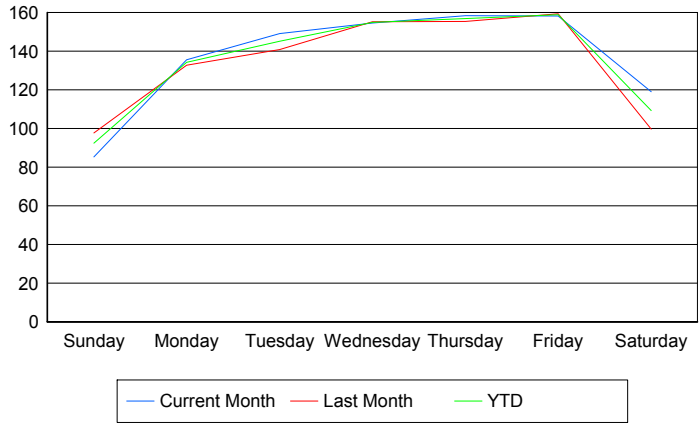
Values presented are: - Total Events with a RR/SIRV Response - Total RR/SIRV Responses, - Total Activities Performed

	Current Mo	Last Month	YTD
Sunday	325	458	783
	337	476	813
	354	491	845
Monday	504	491	995
	544	523	1,067
	553	541	1,094
Tuesday	566	530	1,096
	593	563	1,156
	609	578	1,187
Wednesday	572	574	1,146
	612	617	1,229
	634	636	1,270
Thursday	574	580	1,154
	629	621	1,250
	651	653	1,304
Friday	583	710	1,293
	630	762	1,392
	649	797	1,446
Saturday	454	472	926
	474	495	969
	500	514	1,014

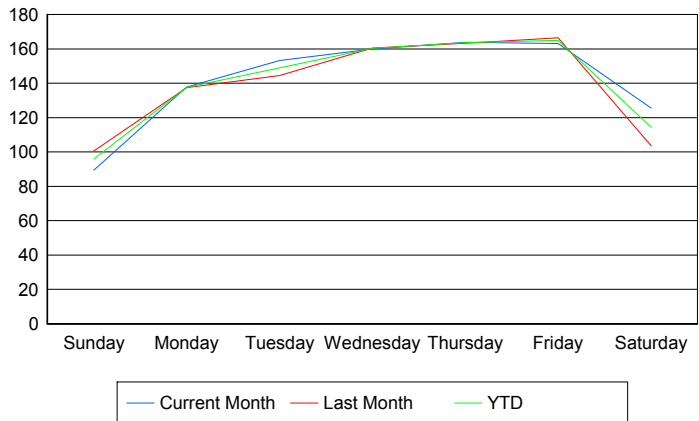
Avg # of events with a RR/SIRV Response per Day of the Week



Avg # of RR/SIRV Responses per Day of the Week



Avg # of RR/SIRV Activities Performed per Day of the Week



Road Ranger / SIRV Responses per Time of Day and Day of Week

