



Monthly Performance Measures Report Broward County



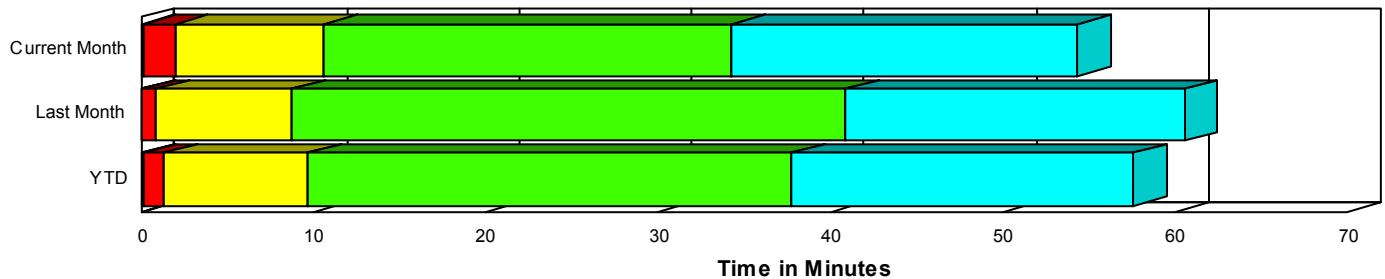
Created on:
April 08, 2008
1:21 pm

Period From Feb 1, 2008 to Feb 29, 2008

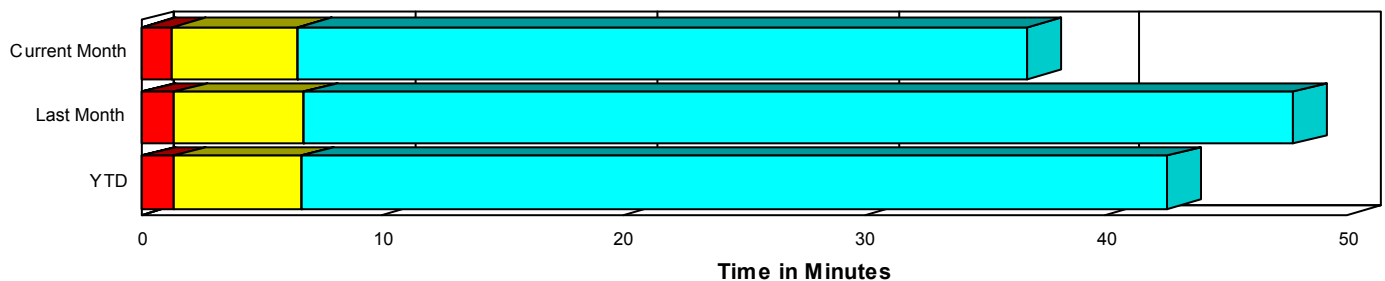
Performance Measures Summary

	Traffic Events (No Lanes Blocked)			Incidents (Lanes Blocked)		
	<u>This Month</u>	<u>Last Month</u>	<u>YTD</u>	<u>This Month</u>	<u>Last Month</u>	<u>YTD</u>
Number of Events	4,522	5,043	9,565	207	226	433
TMC Detection (min.)	0.04	0.03	0.03	0.12	0.10	0.11
TMC Verification (min.)	1.22	1.36	1.30	1.85	0.73	1.27
TMC Response (min.)	6.79	7.06	6.93	10.54	8.72	9.60
RR Dispatch Time (min.)	1.28	1.99	1.66	2.91	2.27	2.57
RR Response Time (min.)	5.71	5.76	5.74	7.75	6.45	7.08
Roadway Clearance (min.)				33.00	39.81	36.55
Event Clearance (min.)	37.08	48.09	42.88	53.02	58.11	55.68
# of Events w/ RR/SIRV	3,351	3,496	6,847	199	211	410
RR/SIRV Responses	3,387	3,594	6,981	288	372	660
RR/SIRV Activities	3,411	3,679	7,090	362	407	769

Incident Clearance TimeLine



Traffic Event (Non-Lane Blockage) Time-Line



■ Avg. TMC Detection Time	■ Avg. Time from TMC Response to Roadway Clearance*
■ Avg. Time from TMC Detection to TMC Verification	■ Avg. Time from Roadway Clearance to Incident/Event Clearance**
■ Avg. Time from TMC Verification to TMC Response	

* Roadway clearance equals all travel lanes open

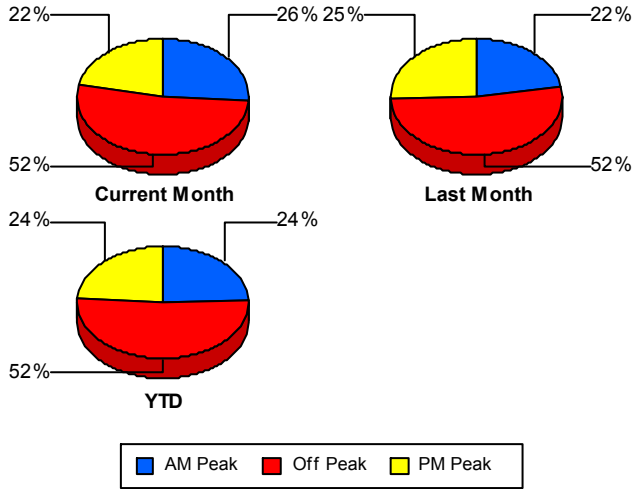
** Incident clearance equals time when last responder has left the scene

Performance Measures by Peak Period

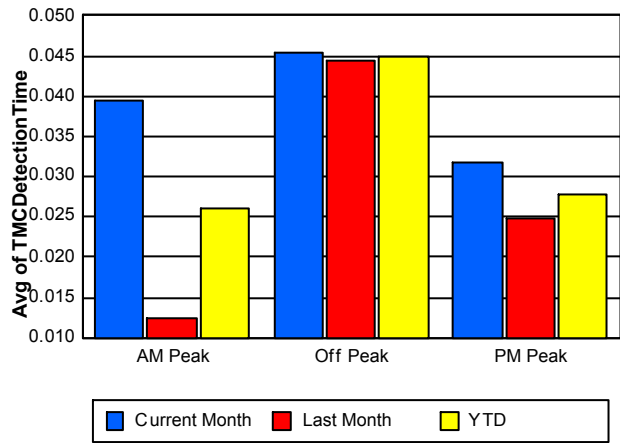
Note: AM peak period is defined as 6am to 10am and PM peak period is defined as 3pm to 7pm.

	AM Peak			Off Peak			PM Peak		
	<u>Current Month</u>	<u>Last Month</u>	<u>YTD</u>	<u>Current Month</u>	<u>Last Month</u>	<u>YTD</u>	<u>Current Month</u>	<u>Last Month</u>	<u>YTD</u>
Number of Events	1,234	1,183	2,417	2,460	2,751	5,211	1,035	1,335	2,370
Number of Incidents	56	53	109	109	108	217	42	65	107
TMC Detection (min.)	0.04	0.01	0.03	0.05	0.04	0.04	0.03	0.02	0.03
TMC Verification (min.)	0.58	0.94	0.76	1.51	1.42	1.46	1.43	1.51	1.48
TMC Response (min.)	5.91	6.23	6.07	7.41	7.66	7.54	7.44	7.00	7.20
RR Dispatch Time (min.)	1.16	1.22	1.19	1.46	2.76	2.14	1.40	1.20	1.29
RR Response Time (min.)	4.90	5.15	5.02	6.20	6.06	6.12	6.12	5.90	6.00
Event Clearance (min.)	31.81	37.92	34.80	41.64	56.04	49.24	35.66	42.39	39.45
Roadway Clearance (min.)	22.00	43.23	32.32	41.27	44.46	42.86	26.20	29.28	28.07
Incident Clearance (min.)	45.51	63.43	54.31	60.92	64.18	62.54	42.35	43.66	43.15
# of Events w/ RR/SIRV	955	897	1,852	1,822	1,877	3,699	773	933	1,706
RR/SIRV Responses	994	962	1,956	1,893	2,014	3,907	788	990	1,778
RR/SIRV Activities	1,017	986	2,003	1,944	2,070	4,014	812	1,030	1,842

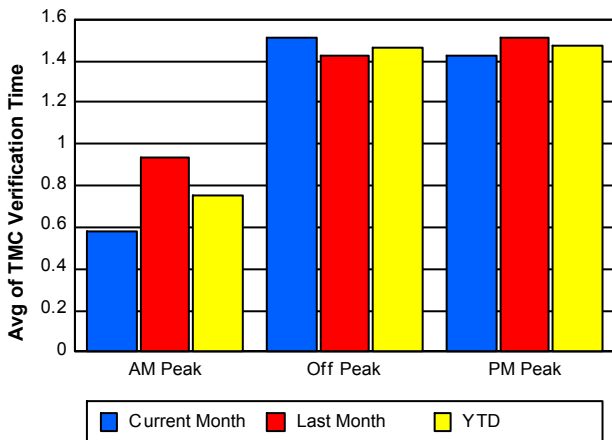
Number of Events / Peak Period



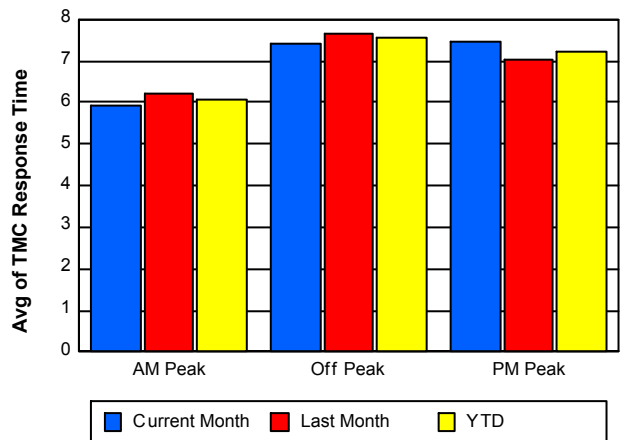
TMC Detection Time



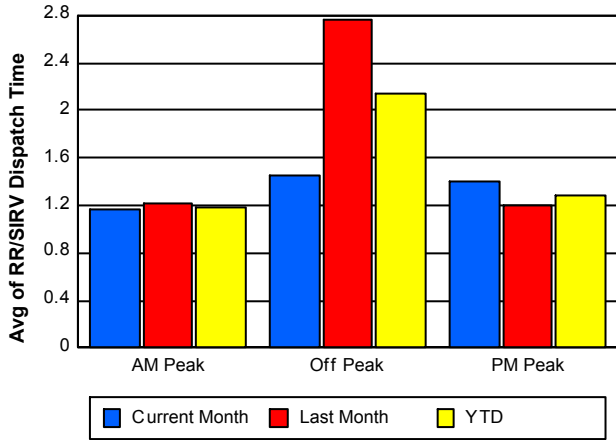
TMC Verification Time



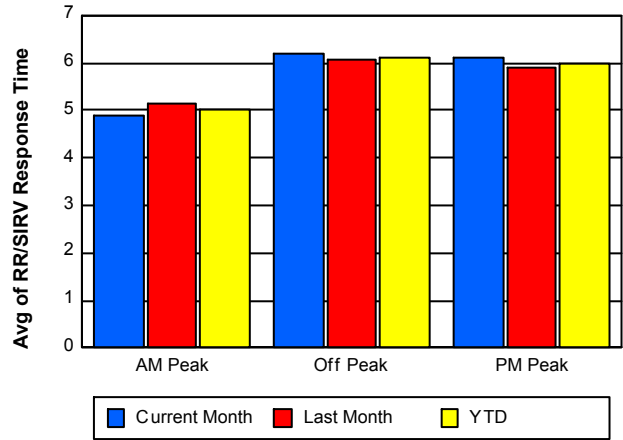
TMC Response Time



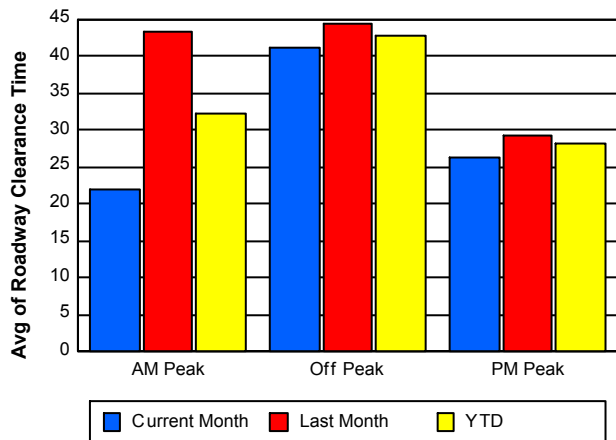
Road Ranger / SIRV Dispatch Time



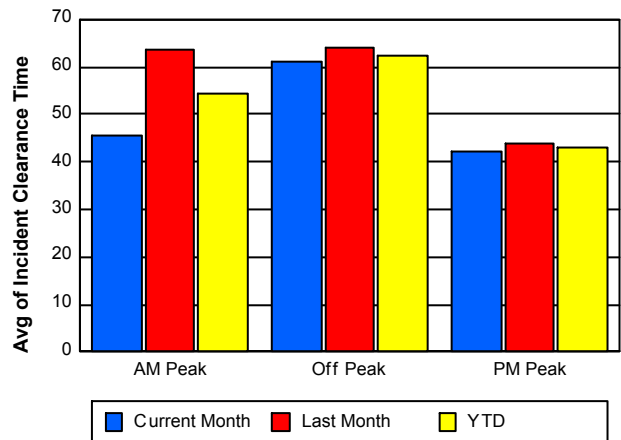
Road Ranger / SIRV Response Time



Roadway Clearance Time (2A)



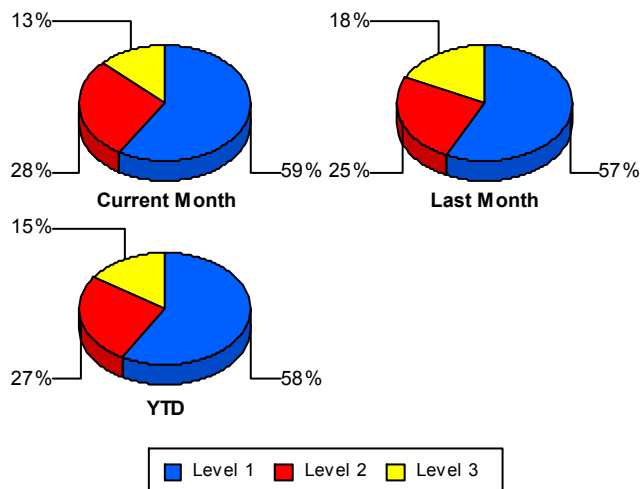
Incident Clearance Time (3B)



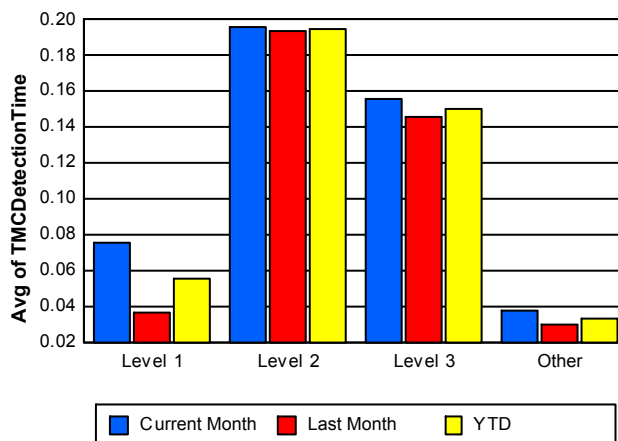
Performance Measures by Severity

	Level 1			Level 2			Level 3			Other		
	<u>This Month</u>	<u>Last Month</u>	<u>YTD</u>	<u>This Month</u>	<u>Last Month</u>	<u>YTD</u>	<u>This Month</u>	<u>Last Month</u>	<u>YTD</u>	<u>This Month</u>	<u>Last Month</u>	<u>YTD</u>
Number of Events	122	129	251	58	57	115	27	40	67	4,522	5,043	9,565
Number of Incidents	122	129	251	58	57	115	27	40	67	0	0	0
TMC Detection (min.)	0.08	0.04	0.06	0.20	0.19	0.19	0.16	0.15	0.15	0.04	0.03	0.03
TMC Verification (min.)	1.26	0.30	0.76	3.13	0.81	1.98	1.82	2.03	1.94	1.22	1.36	1.30
TMC Response (min.)	8.98	8.11	8.54	12.04	10.73	11.40	14.27	7.62	10.24	6.79	7.06	6.93
RR Dispatch Time (min.)	3.12	2.30	2.70	1.88	2.08	1.98	4.24	2.45	3.19	1.28	1.99	1.66
RR Resp. Time (min.)	6.05	5.81	5.93	10.16	8.65	9.42	9.95	5.17	7.05	5.71	5.76	5.74
Event Clearance (min.)	38.13	37.14	37.62	65.54	70.29	67.90	92.86	108.34	102.10	37.08	48.09	42.88
Roadway Clear. (min.)	14.62	14.00	14.30	49.64	52.00	50.81	80.33	105.65	95.45			
Incident Clearance (min.)	38.13	37.14	37.62	65.54	70.29	67.90	92.86	108.34	102.10			
# of Events w/ RR/SIRV	116	118	234	58	56	114	25	37	62	3,351	3,496	6,847
RR/SIRV Responses	148	159	307	85	103	188	55	110	165	3,387	3,594	6,981
RR/SIRV Activities	175	175	350	121	113	234	66	119	185	3,411	3,679	7,090

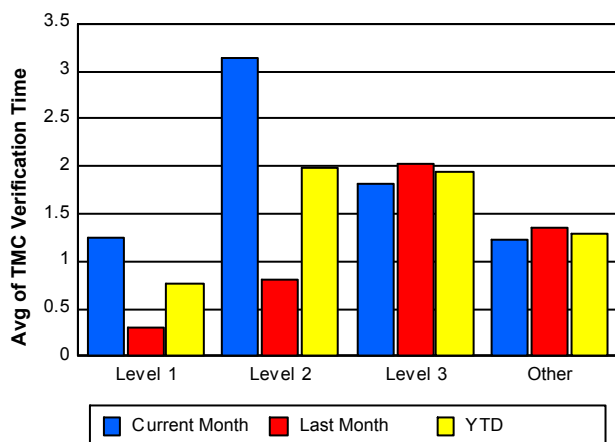
Number of Events / Severity



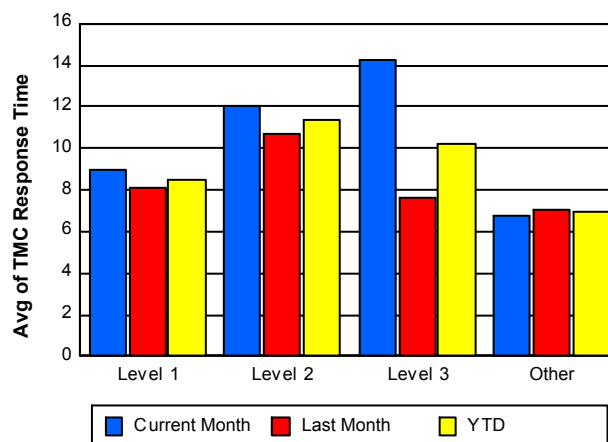
TMC Detection Time



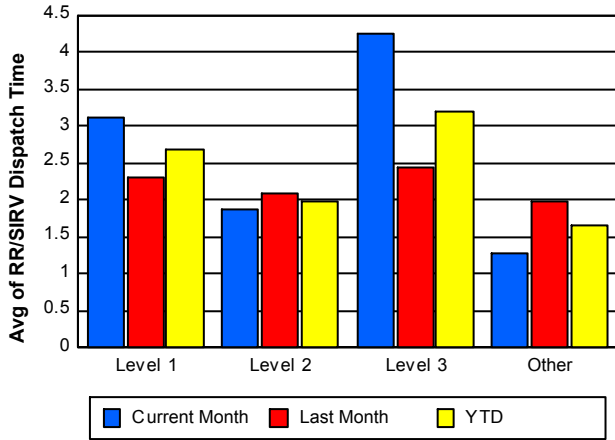
TMC Verification Time



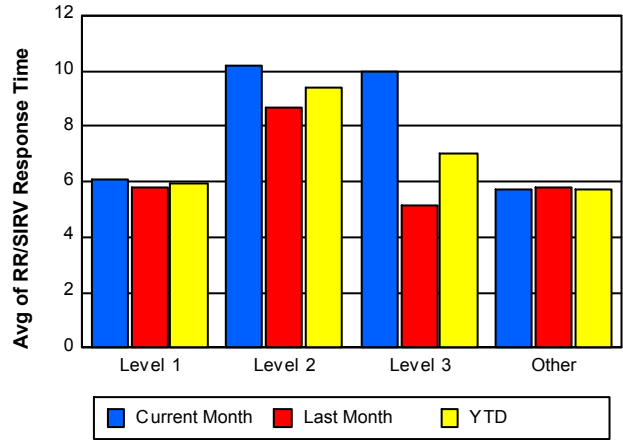
TMC Response Time



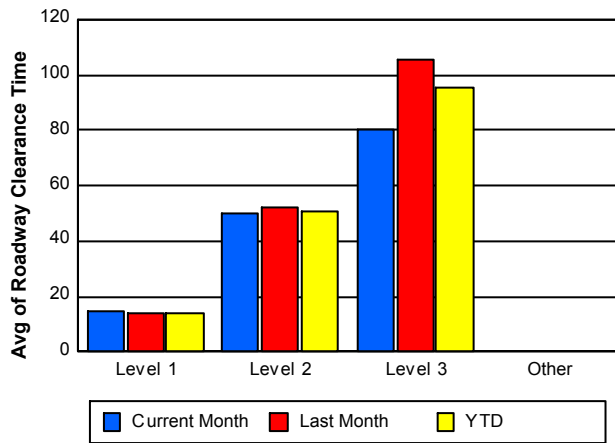
Road Ranger / SIRV Dispatch Time



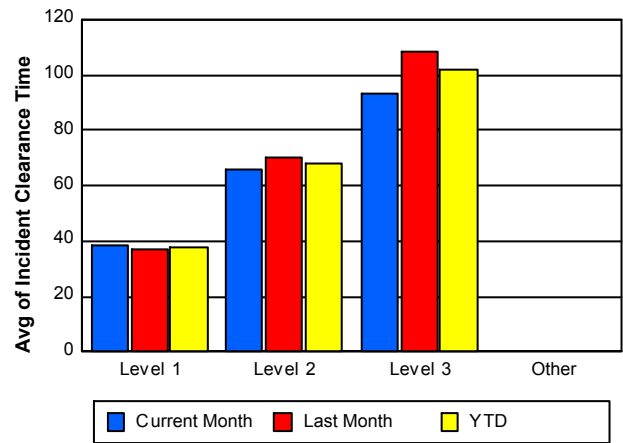
Road Ranger / SIRV Response Time



Roadway Clearance Time (2A)



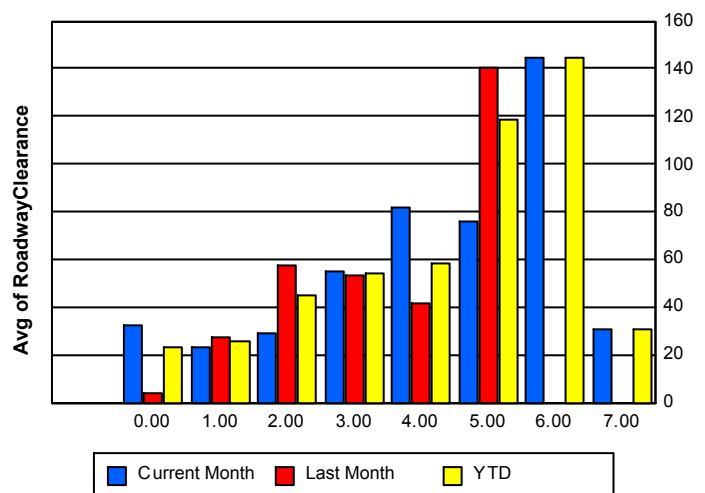
Incident Clearance Time (3B)



Roadway Clearance by Maximum Number of Lanes Blocked

	Current Month	Last Month	YTD
0	32.44	3.66	23.58
1	23.47	27.60	25.66
2	28.69	57.77	44.95
3	54.97	53.26	54.10
4	81.78	41.88	58.31
5	76.03	139.98	118.66
6	144.28	0.00	144.28

Roadway Clearance Time (2A)



	Current Month	Last Month	YTD
7	30.75	0.00	30.75

Performance Measures by Roadway

595

	<u>Current Month</u>	<u>Last Month</u>	<u>YTD</u>
Number of Events	745	825	1,570
Number of Incidents	34	37	71
TMC Detection (min.)	0.05	0.03	0.04
TMC Verification (min.)	2.06	1.79	1.92
TMC Response (min.)	7.92	7.10	7.49
RR Dispatch Time (min.)	1.34	1.36	1.35
RR Resp. Time (min.)	6.69	5.88	6.27
Event Clearance (min.)	34.87	55.34	45.63
Roadway Clear. (min.)	37.46	49.97	43.98
Incident Clearance (min.)	52.85	65.67	59.53
# of Events w/ RR/SIRV	589	610	1,199
RR/SIRV Responses	608	654	1,262
RR/SIRV Activities	613	665	1,278

75

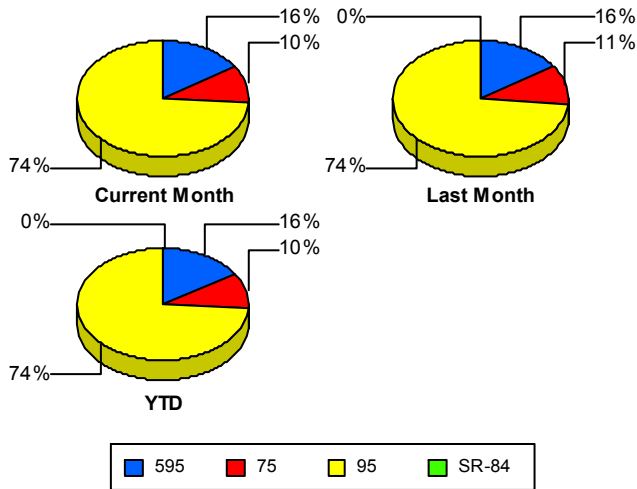
	<u>Current Month</u>	<u>Last Month</u>	<u>YTD</u>
Number of Events	478	561	1,039
Number of Incidents	7	13	20
TMC Detection (min.)	0.08	0.04	0.06
TMC Verification (min.)	2.47	3.24	2.88
TMC Response (min.)	2.59	3.28	2.96
RR Dispatch Time (min.)	0.44	0.53	0.49
RR Resp. Time (min.)	2.15	2.76	2.48
Event Clearance (min.)	45.66	39.80	42.50
Roadway Clear. (min.)	42.30	49.69	47.11
Incident Clearance (min.)	62.49	62.77	62.67
# of Events w/ RR/SIRV	467	545	1,012
RR/SIRV Responses	476	569	1,045
RR/SIRV Activities	512	581	1,093

95

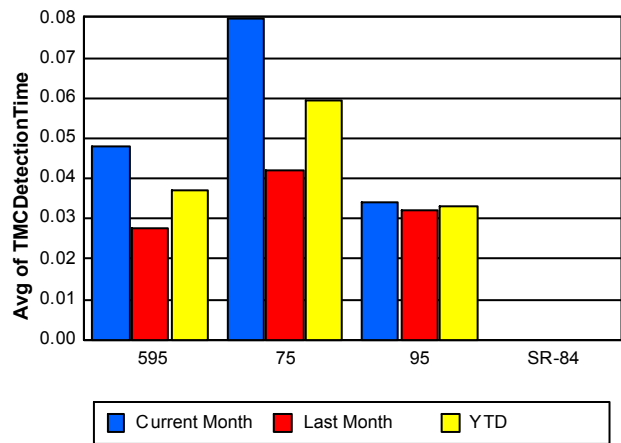
	<u>Current Month</u>	<u>Last Month</u>	<u>YTD</u>
Number of Events	3,506	3,882	7,388
Number of Incidents	166	176	342
TMC Detection (min.)	0.03	0.03	0.03
TMC Verification (min.)	0.91	0.96	0.94
TMC Response (min.)	7.67	7.99	7.83
RR Dispatch Time (min.)	1.53	2.40	1.98
RR Resp. Time (min.)	6.35	6.43	6.39
Event Clearance (min.)	37.31	48.33	43.10
Roadway Clear. (min.)	31.69	36.94	34.39
Incident Clearance (min.)	52.65	56.17	54.47
# of Events w/ RR/SIRV	2,494	2,552	5,046
RR/SIRV Responses	2,591	2,743	5,334
RR/SIRV Activities	2,648	2,840	5,488

	<u>Last Month</u>	<u>YTD</u>
Number of Events	1	1
Number of Incidents	0	0
TMC Detection (min.)	0.00	0.00
TMC Verification (min.)	0.47	0.47
TMC Response (min.)		
RR Dispatch Time (min.)		
RR Resp. Time (min.)		
Event Clearance (min.)	5.22	5.22
Roadway Clear. (min.)		
Incident Clearance (min.)		
# of Events w/ RR/SIRV	0	0
RR/SIRV Responses	0	0
RR/SIRV Activities	0	0

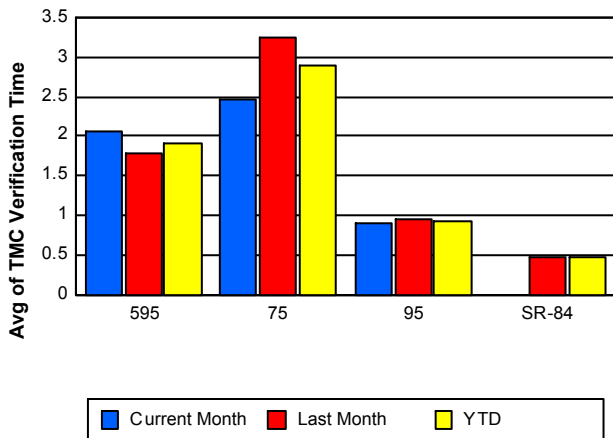
Number of Events / Roadway



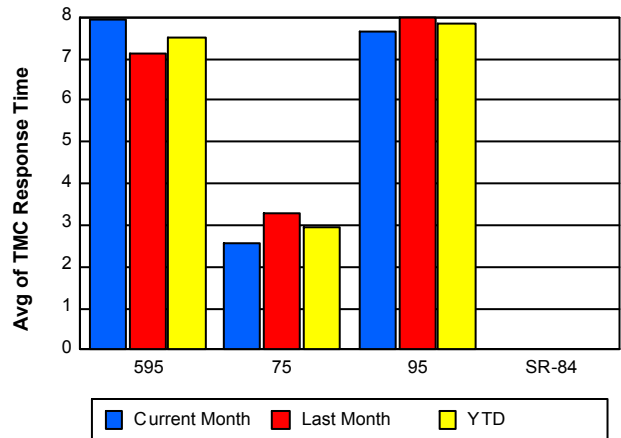
TMC Detection Time



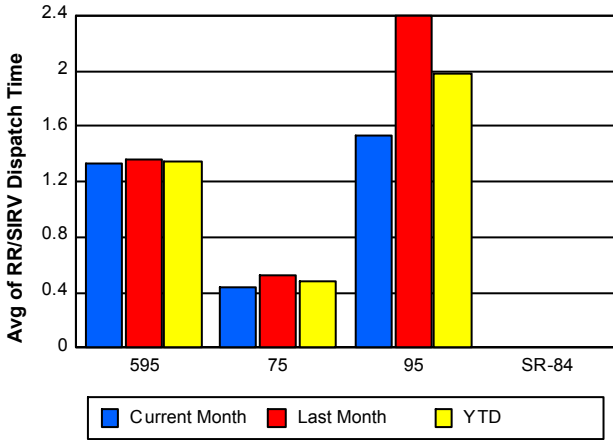
TMC Verification Time



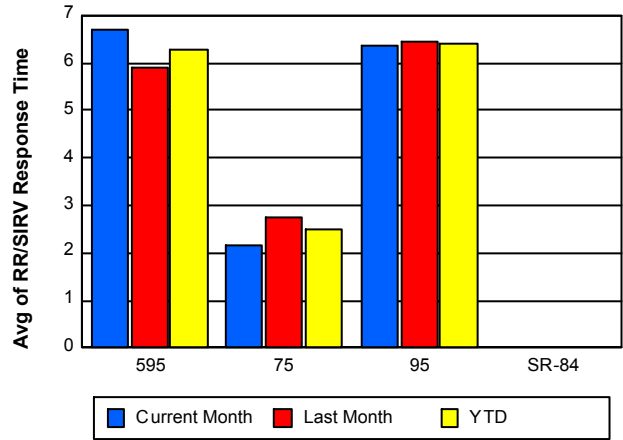
TMC Response Time



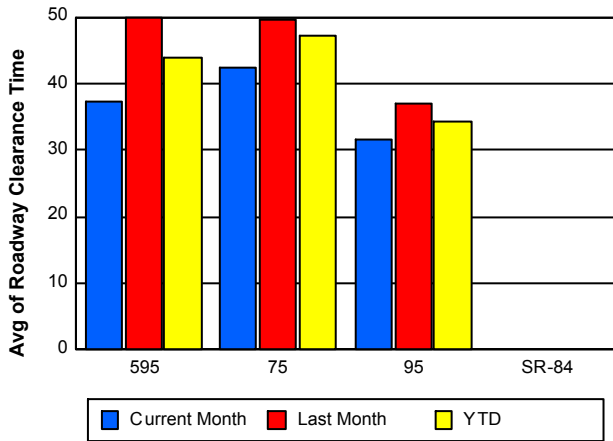
Road Ranger / SIRV Dispatch Time



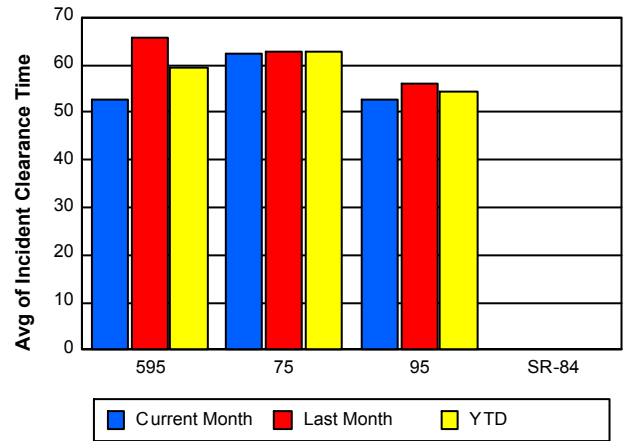
Road Ranger / SIRV Response Time



Roadway Clearance Time (2A)



Incident Clearance Time (3B)



Performance Measures by Event Type

Abandoned Vehicle

	<u>Current Month</u>	<u>Last Month</u>	<u>YTD</u>
Number of Events	528	599	1,127
Number of Incidents	0	1	1
TMC Detection (min.)	0.04	0.09	0.07
TMC Verification (min.)	0.30	0.34	0.32
TMC Response (min.)	6.06	8.22	7.17
RR Dispatch Time (min.)	0.74	2.78	1.78
RR Response Time (min.)	5.39	6.26	5.84
Event Clearance (min.)	186.73	281.29	236.99
Roadway Clearance (min.)		21.48	21.48
Incident Clearance (min.)		26.25	26.25
# of Events w/ RR/SIRV	430	450	880
RR/SIRV Assists	431	456	887
RR/SIRV Activities	444	457	901

Accident

	<u>Current Month</u>	<u>Last Month</u>	<u>YTD</u>
Number of Events	368	361	729
Number of Incidents	151	158	309
TMC Detection (min.)	0.10	0.07	0.09
TMC Verification (min.)	1.43	1.29	1.36
TMC Response (min.)	8.01	7.33	7.67
RR Dispatch Time (min.)	1.65	1.39	1.52
RR Response Time (min.)	6.46	5.95	6.20
Event Clearance (min.)	45.18	45.58	45.38
Roadway Clearance (min.)	34.43	37.53	36.02
Incident Clearance (min.)	58.70	61.06	59.91
# of Events w/ RR/SIRV	354	348	702
RR/SIRV Assists	446	483	929
RR/SIRV Activities	519	512	1,031

Congestion

	<u>Last Month</u>	<u>YTD</u>
Number of Events	2	2
Number of Incidents	0	0
TMC Detection (min.)	0.00	0.00
TMC Verification (min.)	0.00	0.00
TMC Response (min.)		
RR Dispatch Time (min.)		
RR Response Time (min.)		
Event Clearance (min.)	105.74	105.74
Roadway Clearance (min.)		
Incident Clearance (min.)		
# of Events w/ RR/SIRV	0	0
RR/SIRV Assists	0	0
RR/SIRV Activities	0	0

Debris on Roadway

	<u>Current Month</u>	<u>Last Month</u>	<u>YTD</u>
Number of Events	150	165	315
Number of Incidents	5	5	10
TMC Detection (min.)	0.11	0.16	0.14
TMC Verification (min.)	4.16	6.47	5.38
TMC Response (min.)	6.74	8.87	7.87
RR Dispatch Time (min.)	1.02	1.11	1.07
RR Response Time (min.)	5.75	7.77	6.83
Event Clearance (min.)	9.66	15.21	12.57
Roadway Clearance (min.)	16.46	101.15	58.81
Incident Clearance (min.)	19.77	99.05	59.41
# of Events w/ RR/SIRV	144	160	304
RR/SIRV Assists	147	184	331
RR/SIRV Activities	151	192	343

Disabled Vehicle

	<u>Current Month</u>	<u>Last Month</u>	<u>YTD</u>
Number of Events	2,494	2,829	5,323
Number of Incidents	38	38	76
TMC Detection (min.)	0.05	0.02	0.03
TMC Verification (min.)	1.64	1.58	1.61
TMC Response (min.)	6.94	6.84	6.89
RR Dispatch Time (min.)	1.32	2.09	1.73
RR Response Time (min.)	5.73	5.57	5.65
Event Clearance (min.)	19.21	18.68	18.93
Roadway Clearance (min.)	23.68	32.88	28.28
Incident Clearance (min.)	34.22	43.99	39.11
# of Events w/ RR/SIRV	2,382	2,595	4,977
RR/SIRV Assists	2,405	2,668	5,073
RR/SIRV Activities	2,526	2,746	5,272

Emergency Vehicles

	<u>Current Month</u>	<u>Last Month</u>	<u>YTD</u>
Number of Events	2	7	9
Number of Incidents	2	6	8
TMC Detection (min.)	0.00	0.00	0.00
TMC Verification (min.)	0.00	0.00	0.00
TMC Response (min.)	8.93	4.73	6.13
RR Dispatch Time (min.)	8.26	1.36	3.66
RR Response Time (min.)	0.67	3.37	2.47
Event Clearance (min.)	37.47	23.31	26.46
Roadway Clearance (min.)	29.35	26.19	26.98
Incident Clearance (min.)	37.47	26.68	29.38
# of Events w/ RR/SIRV	2	4	6
RR/SIRV Assists	3	5	8
RR/SIRV Activities	3	5	8

Other

	<u>Current Month</u>	<u>Last Month</u>	<u>YTD</u>
Number of Events	1,151	1,258	2,409
Number of Incidents	3	4	7
TMC Detection (min.)	0.00	0.00	0.00
TMC Verification (min.)	0.40	0.64	0.53
TMC Response (min.)	9.89	8.64	9.20
RR Dispatch Time (min.)	1.90	1.72	1.80
RR Response Time (min.)	8.42	7.51	7.92
Event Clearance (min.)	11.32	10.85	11.08
Roadway Clearance (min.)	18.48	34.10	27.41
Incident Clearance (min.)	27.67	48.20	39.40
# of Events w/ RR/SIRV	208	107	315
RR/SIRV Assists	208	112	320
RR/SIRV Activities	93	112	205

Pedestrian

	<u>Current Month</u>	<u>Last Month</u>	<u>YTD</u>
Number of Events	13	28	41
Number of Incidents	0	0	0
TMC Detection (min.)	0.03	0.00	0.01
TMC Verification (min.)	2.60	0.75	1.34
TMC Response (min.)	4.44	1.86	2.56
RR Dispatch Time (min.)	0.61	0.27	0.37
RR Response Time (min.)	4.11	1.61	2.29
Event Clearance (min.)	9.86	11.05	10.68
Roadway Clearance (min.)			
Incident Clearance (min.)			
# of Events w/ RR/SIRV	10	27	37
RR/SIRV Assists	10	27	37
RR/SIRV Activities	10	29	39

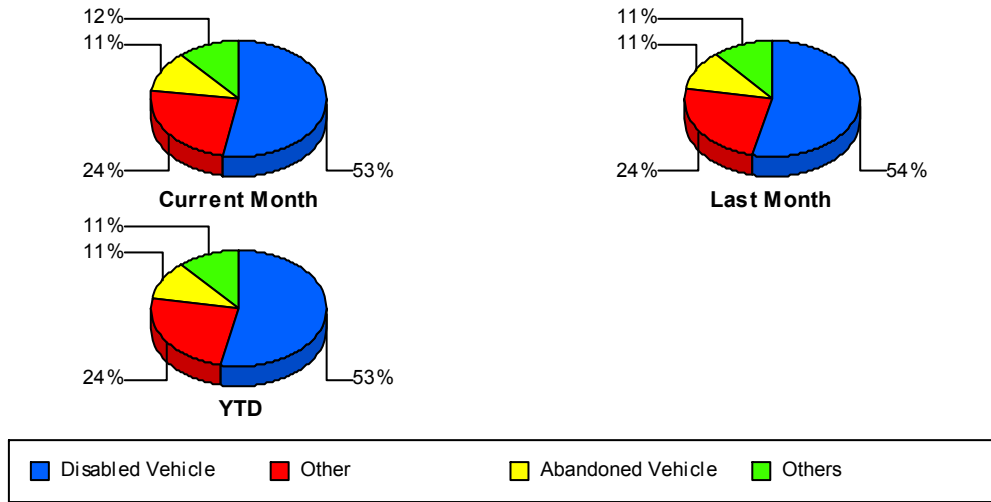
Police Activity

	<u>Current Month</u>	<u>Last Month</u>	<u>YTD</u>
Number of Events	13	19	32
Number of Incidents	8	14	22
TMC Detection (min.)	0.10	0.05	0.07
TMC Verification (min.)	0.90	0.16	0.46
TMC Response (min.)	16.20	5.76	9.78
RR Dispatch Time (min.)	4.74	3.06	3.71
RR Response Time (min.)	11.46	2.70	6.07
Event Clearance (min.)	54.21	51.30	52.48
Roadway Clearance (min.)	67.01	71.15	69.64
Incident Clearance (min.)	69.99	67.03	68.11
# of Events w/ RR/SIRV	10	16	26
RR/SIRV Assists	15	31	46
RR/SIRV Activities	18	33	51

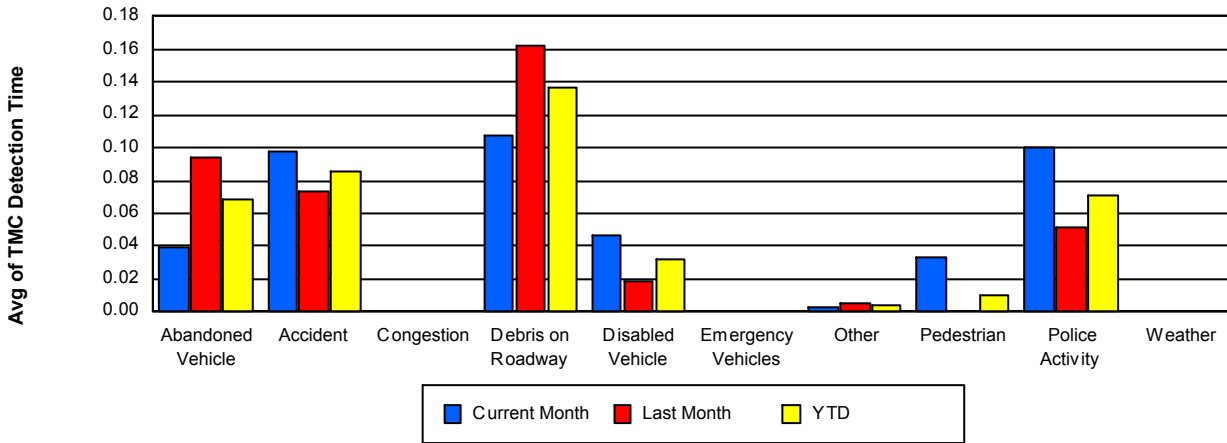
Weather

	<u>Last Month</u>	<u>YTD</u>
Number of Events	1	1
Number of Incidents	0	0
TMC Detection (min.)	0.00	0.00
TMC Verification (min.)	0.00	0.00
TMC Response (min.)		
RR Dispatch Time (min.)		
RR Response Time (min.)		
Event Clearance (min.)	1.25	1.25
Roadway Clearance (min.)		
Incident Clearance (min.)		
# of Events w/ RR/SIRV	0	0
RR/SIRV Assists	0	0
RR/SIRV Activities	0	0

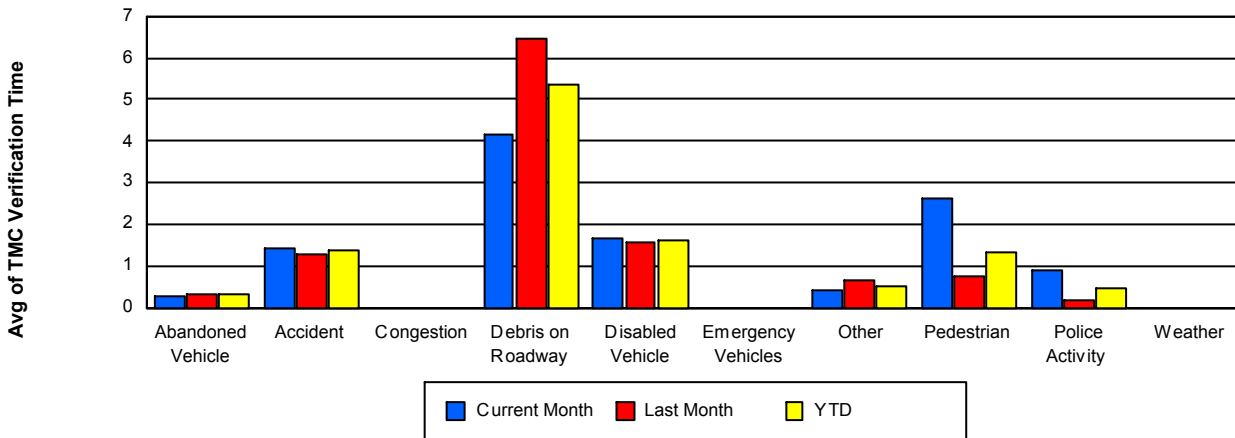
Number of Events / Event Type



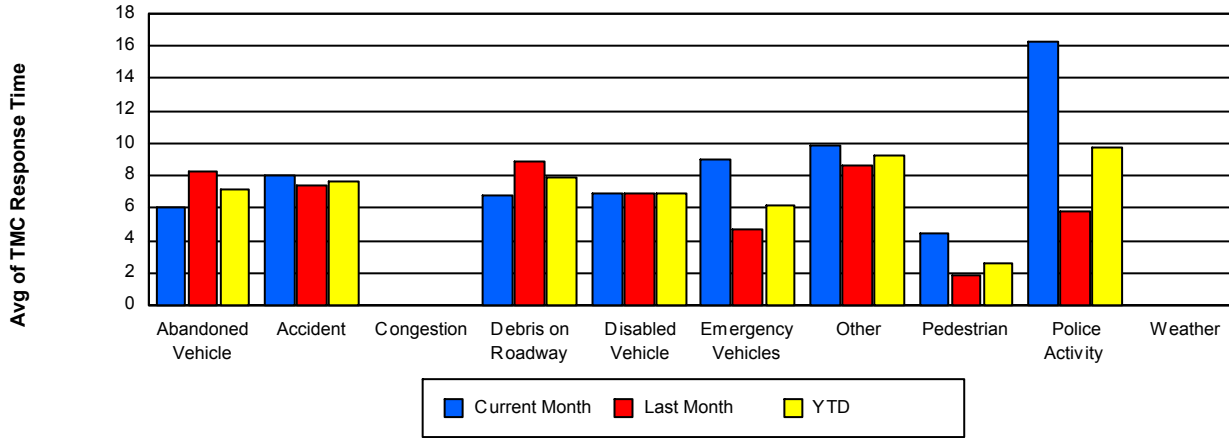
TMC Detection Time



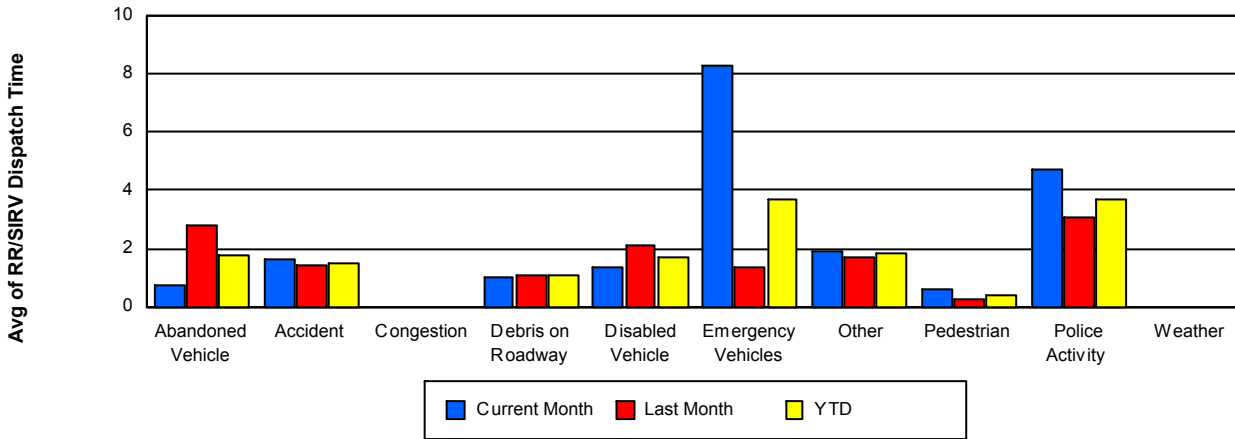
TMC Verification Time



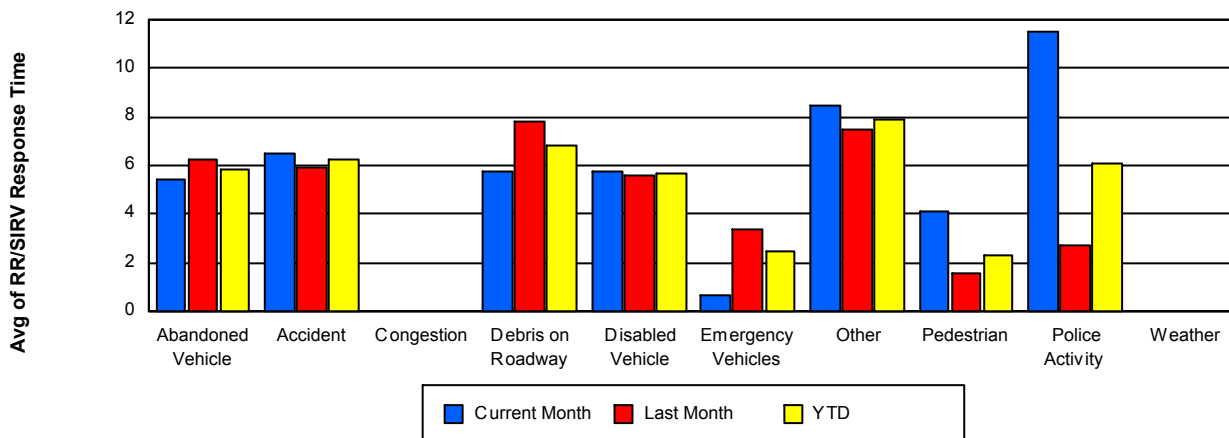
TMC Response Time



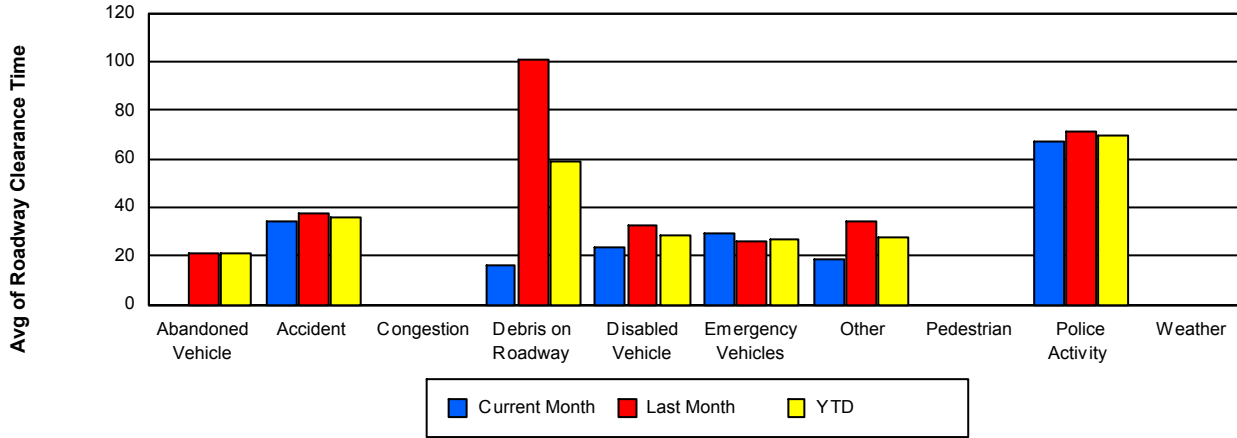
Road Ranger / SIRV Dispatch Time



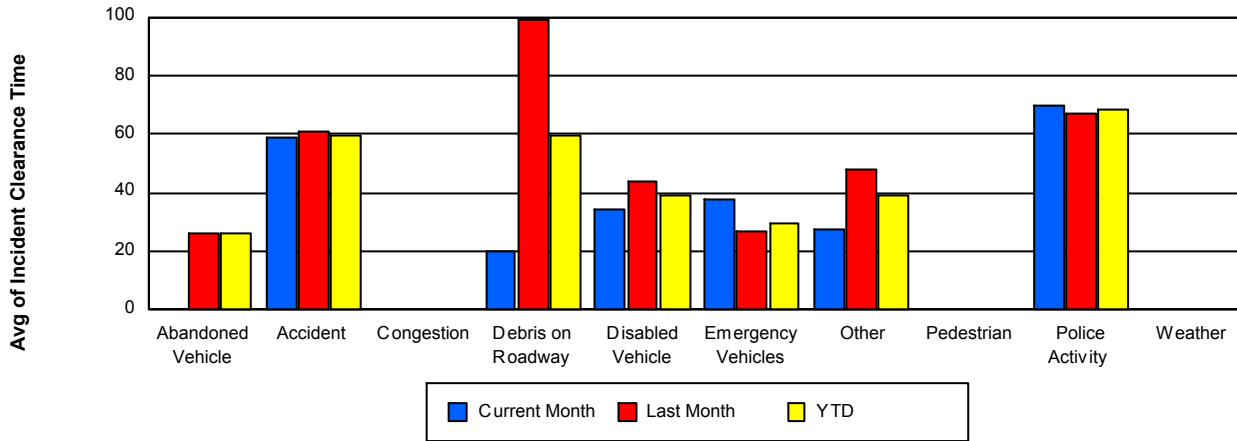
Road Ranger / SIRV Response Time



Roadway Clearance Time (2A)



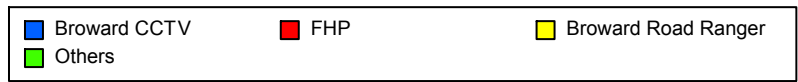
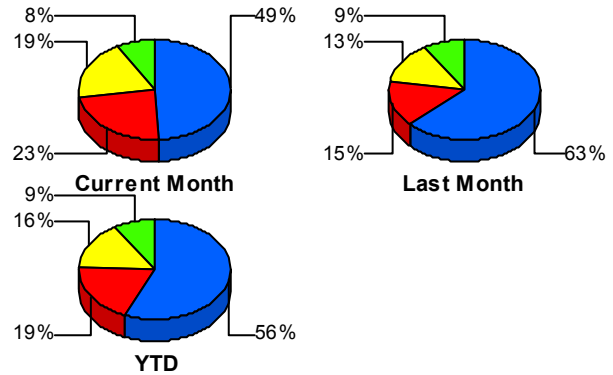
Incident Clearance Time (3B)



Incident Detection Methods

	Current Month	Last Month	YTD
Broward CCTV	102	142	244
Broward Road Ranger	40	30	70
Broward VideoWall	0	4	4
District 4	4	3	7
District 6	2	0	2
FHP	48	34	82
Florida's Turnpike	0	3	3
Motorist	2	0	2
Palm Beach Road Rang	1	1	2
PSAP	1	0	1
Road Watcher	3	1	4
SIRV	0	2	2
SmarTraveler (511)	3	1	4
VisioPaD Detection	1	5	6
Total	207	226	433

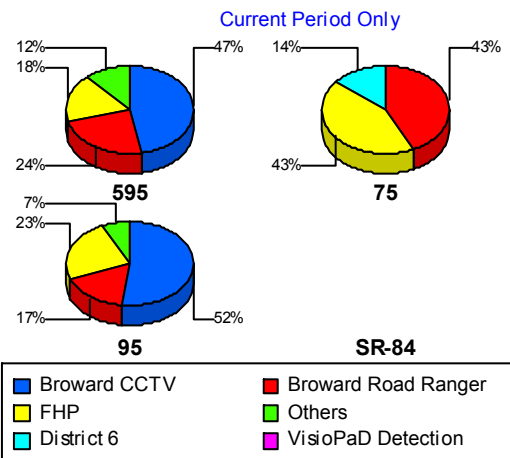
Total Incidents by Detection Method



Incident Detection Methods by Roadway

		Current Month	Last Month	YTD
595	Broward CCTV	16	19	35
	Broward Road Ranger	8	5	13
	District 4	1	0	1
	FHP	6	7	13
	Florida's Turnpike	0	3	3
	Motorist	1	0	1
	Road Watcher	2	0	2
	SIRV	0	1	1
	VisioPaD Detection	0	2	2
	Total	34	37	71
75	Broward Road Ranger	3	6	9
	District 4	0	3	3

Total Events by Roadway and Detection Method

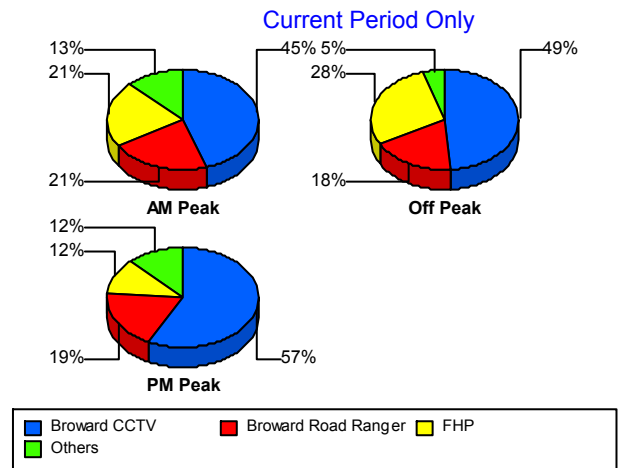


		Current Month	Last Month	YTD
75	District 6	1	0	1
	FHP	3	4	7
	Total	7	13	20
95	Broward CCTV	86	123	209
	Broward Road Ranger	29	19	48
	Broward VideoWall	0	4	4
	District 4	3	0	3
	District 6	1	0	1
	FHP	39	23	62
	Motorist	1	0	1
	Palm Beach Road Rang	1	1	2
	PSAP	1	0	1
	Road Watcher	1	1	2
	SIRV	0	1	1
	SmarTraveler (511)	3	1	4
	VisioPaD Detection	1	3	4
	Total	166	176	342
Total		207	226	433

Incident Detection Methods by Peak Period

		Current Month	Last Month	YTD
AM Peak	Broward CCTV	25	33	58
	Broward Road Ranger	12	7	19
	Broward VideoWall	0	1	1
	District 4	0	3	3
	FHP	12	4	16
	Florida's Turnpike	0	2	2
	Motorist	2	0	2
	Palm Beach Road Rang	1	0	1
	Road Watcher	3	1	4
	SIRV	0	2	2
	SmarTraveler (511)	1	0	1

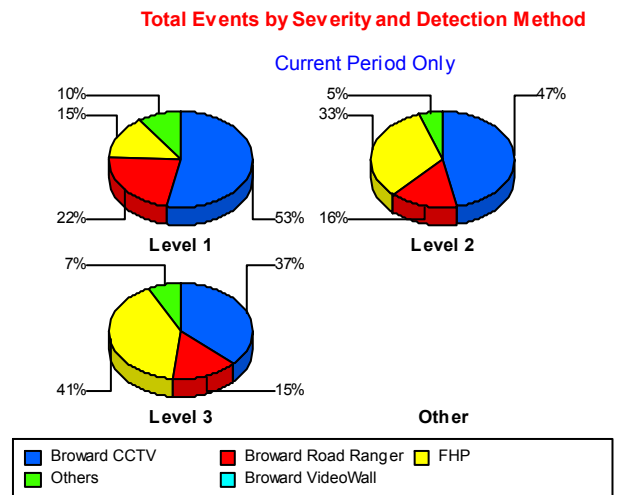
Total Events by Peak Period and Detection Method



		Current Month	Last Month	YTD
AM Peak	Total	56	53	109
Off Peak	Broward CCTV	53	74	127
	Broward Road Ranger	20	7	27
	Broward VideoWall	0	2	2
	District 4	1	0	1
	District 6	2	0	2
	FHP	31	19	50
	Palm Beach Road Rang	0	1	1
	PSAP	1	0	1
	VisioPaD Detection	1	5	6
	Total	109	108	217
PM Peak	Broward CCTV	24	35	59
	Broward Road Ranger	8	16	24
	Broward VideoWall	0	1	1
	District 4	3	0	3
	FHP	5	11	16
	Florida's Turnpike	0	1	1
	SmarTraveler (511)	2	1	3
	Total	42	65	107
Total	207	226	433	

Incident Detection Methods by Severity

		Current Month	Last Month	YTD
Level 1	Broward CCTV	65	90	155
	Broward Road Ranger	27	17	44
	Broward VideoWall	0	2	2
	District 4	2	1	3
	District 6	1	0	1
	FHP	18	12	30
	Motorist	1	0	1
	Palm Beach Road Rang	1	1	2
	PSAP	1	0	1



		Current Month	Last Month	YTD
Level 1	Road Watcher	3	1	4
	SIRV	0	2	2
	SmarTraveler (511)	2	1	3
	VisioPaD Detection	1	2	3
	Total	122	129	251
Level 2	Broward CCTV	27	35	62
	Broward Road Ranger	9	8	17
	Broward VideoWall	0	1	1
	District 6	1	0	1
	FHP	19	11	30
	Motorist	1	0	1
	SmarTraveler (511)	1	0	1
	VisioPaD Detection	0	2	2
	Total	58	57	115
Level 3	Broward CCTV	10	17	27
	Broward Road Ranger	4	5	9
	Broward VideoWall	0	1	1
	District 4	2	2	4
	FHP	11	11	22
	Florida's Turnpike	0	3	3
	VisioPaD Detection	0	1	1
	Total	27	40	67
Total		207	226	433

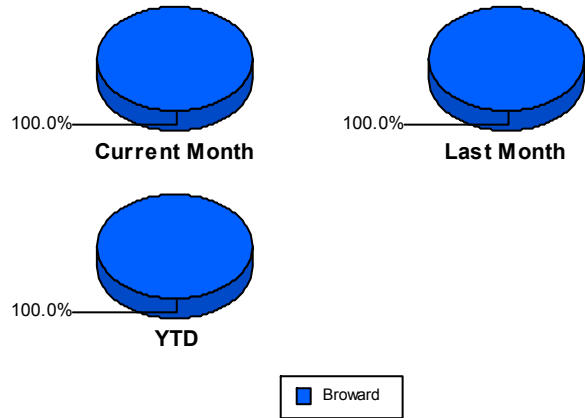
Road Ranger / SIRV Performance Measures

Road Ranger / SIRV Performance By County

Values presented are:
 - Total Events with a RR/SIRV Response
 - Total RR/SIRV Responses,
 - Total Activities Performed

	Current Mo	Last Month	YTD
Broward	3,470	3,707	7,177
	3,684	3,966	7,650
	3,863	4,086	7,949

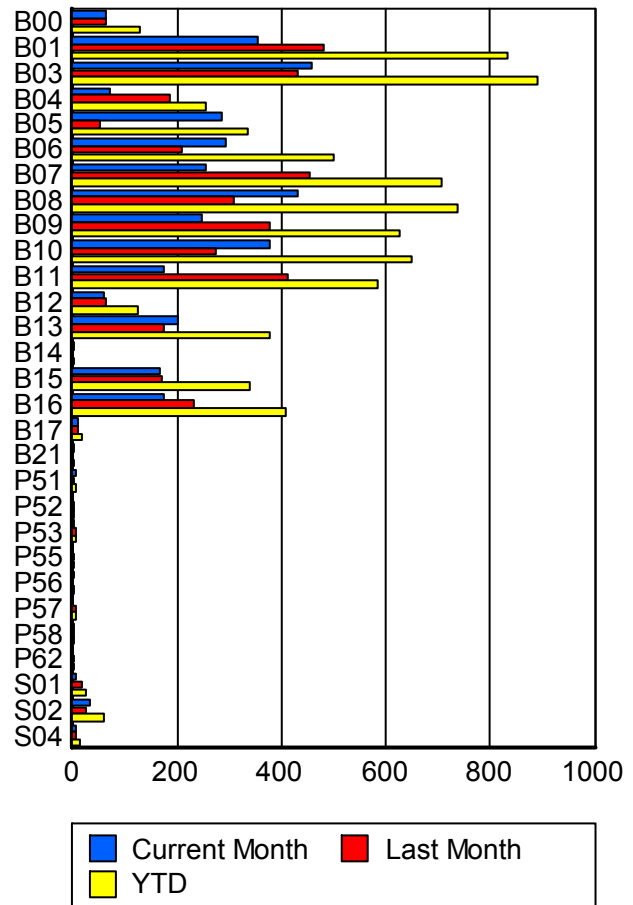
RR/SIRV Responses per County



Road Ranger / SIRV Performance By Truck

	Current Mo	Last Month	YTD
B00	63	63	126
	64	65	129
	66	68	134
B01	353	471	824
	354	479	833
	367	490	857
B03	454	430	884
	459	432	891
	488	445	933
B04	72	182	254
	72	184	256
	73	195	268
B05	282	53	335
	284	53	337
	298	58	356
B06	291	207	498
	294	207	501
	306	213	519
B07	251	447	698
	256	452	708
	266	459	725
B08	425	305	730
	430	308	738
	454	320	774
B09	246	374	620
	248	377	625
	265	384	649

**RR/SIRV
Responses per
Truck**



	Current Mo	Last Month	YTD
B10	375	271	646
	377	274	651
	398	286	684
B11	170	411	581
	173	412	585
	181	426	607
B12	60	64	124
	60	64	124
	64	65	129
B13	201	175	376
	203	175	378
	210	178	388
B14	1	0	1
	1	0	1
	1	0	1
B15	168	169	337
	168	170	338
	177	174	351
B16	175	230	405
	175	232	407
	180	236	416
B17	10	9	19
	10	9	19
	11	9	20
B21	1	0	1
	1	0	1
	1	0	1
P51	5	2	7
	5	2	7
	5	2	7
P52	0	2	2
	0	2	2
	0	2	2
P53	1	5	6
	1	5	6
	2	6	8
P55	0	3	3
	0	3	3
	0	3	3
P56	3	0	3
	3	0	3
	3	0	3
P57	0	6	6
	0	6	6
	0	6	6

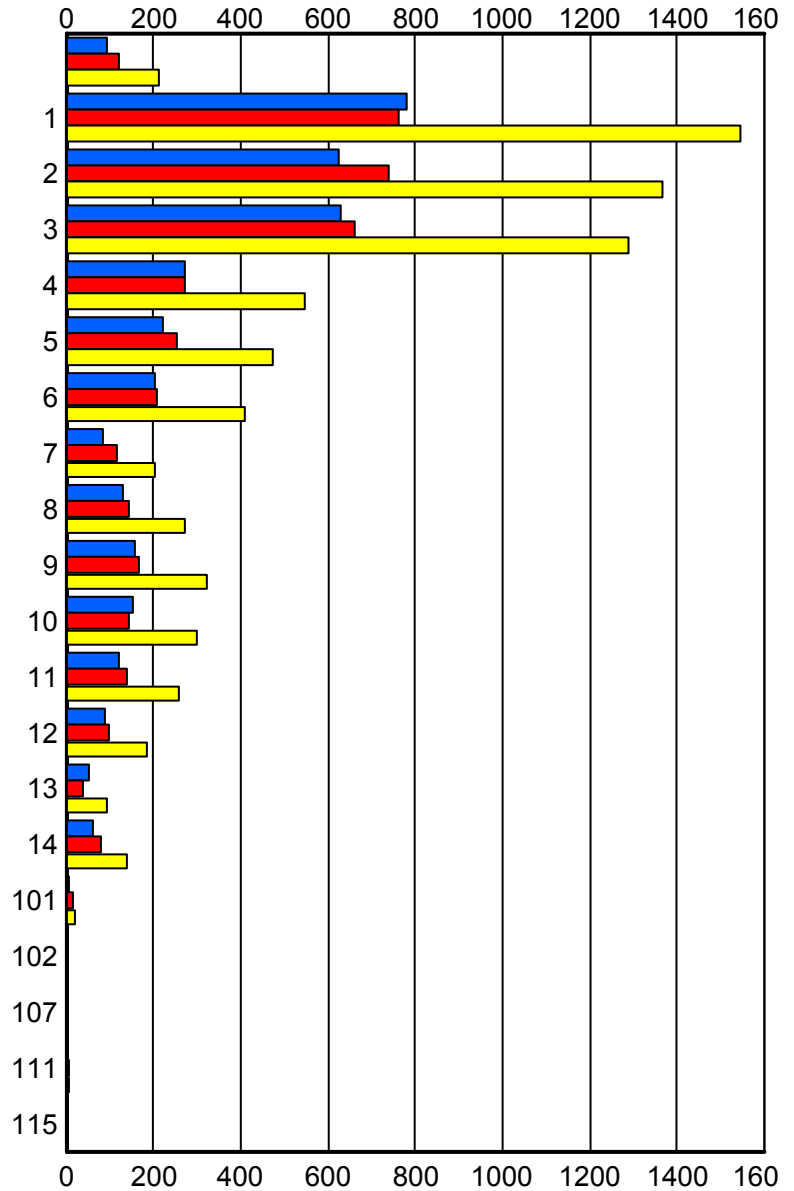
	Current Mo	Last Month	YTD
P58	1	2	3
	1	2	3
	1	2	3
P62	0	2	2
	0	2	2
	0	2	2
S01	5	18	23
	5	19	24
	5	22	27
S02	33	24	57
	33	25	58
	34	28	62
S04	7	6	13
	7	7	14
	7	7	14

Road Ranger / SIRV Performance By Beat

	Current Mo	Last Month	YTD
	80	88	168
	94	119	213
	96	128	224
1	759	736	1,495
	782	762	1,544
	811	783	1,594
2	608	722	1,330
	626	741	1,367
	653	770	1,423
3	617	641	1,258
	629	662	1,291
	654	685	1,339
4	273	272	545
	274	273	547
	283	280	563
5	220	254	474
	220	255	475
	227	259	486
6	202	205	407
	202	206	408
	218	208	426
7	86	116	202
	86	116	202
	90	116	206
8	129	143	272
	130	144	274
	137	150	287
9	156	165	321
	158	166	324
	166	174	340
10	152	145	297
	153	145	298
	167	147	314
11	118	138	256
	119	138	257
	132	143	275
12	85	98	183
	88	99	187
	97	99	196
13	51	38	89
	52	39	91
	57	40	97
14	60	78	138
	61	79	140
	64	81	145

Values presented are:
 - Total Events with a RR/SIRV Response
 - Total RR/SIRV Responses,
 - Total Activities Performed

RR/SIRV Responses per Beat



■ Current Month
 ■ Last Month
 ■ YTD

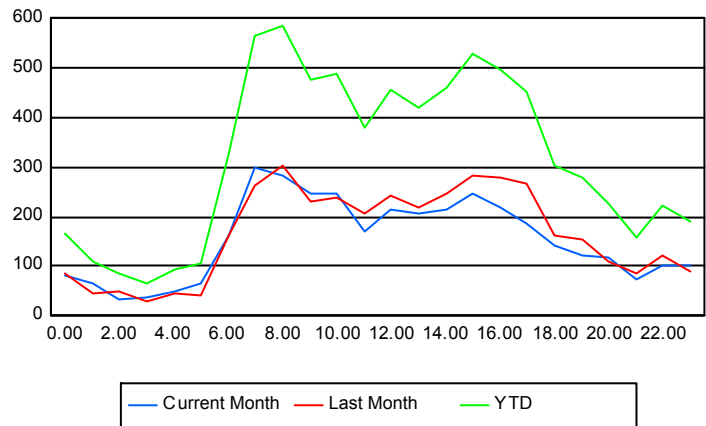
	Current Mo	Last Month	YTD
101	7	14	21
	7	14	21
	8	15	23
102	0	1	1
	0	1	1
	0	1	1
107	0	1	1
	0	1	1
	0	1	1
111	2	5	7
	2	5	7
	2	5	7
115	1	1	2
	1	1	2
	1	1	2

Road Ranger / SIRV Performance By Time of Day

Values presented are:
- Total Events with a RR/SIRV Response
- Total RR/SIRV Responses,
- Total Activities Performed

	Current Mo	Last Month	YTD
12AM-1AM	79	82	161
	81	86	167
	87	86	173
1AM-2AM	59	42	101
	64	46	110
	70	47	117
2AM-3AM	28	43	71
	35	51	86
	39	54	93
3AM-4AM	30	27	57
	38	29	67
	40	31	71
4AM-5AM	42	43	85
	48	45	93
	52	47	99
5AM-6AM	48	32	80
	64	40	104
	68	40	108
6AM-7AM	152	146	298
	164	163	327
	168	166	334
7AM-8AM	279	251	530
	300	265	565
	316	269	585

Number of Responses / Hour of the Day



	Current Mo	Last Month	YTD
8AM-9AM	267	282	549
	283	303	586
	291	315	606
9AM-10AM	235	218	453
	245	231	476
	254	236	490
10AM-11AM	232	227	459
	247	240	487
	255	248	503
11AM-12PM	170	193	363
	172	207	379
	181	214	395
12PM-1PM	203	227	430
	214	241	455
	219	245	464
1PM-2PM	196	197	393
	205	217	422
	212	226	438
2PM-3PM	201	227	428
	214	247	461
	222	251	473
3PM-4PM	234	263	497
	247	283	530
	261	297	558
4PM-5PM	216	265	481
	220	278	498
	233	288	521
5PM-6PM	178	254	432
	185	268	453
	191	274	465
6PM-7PM	135	151	286
	143	161	304
	150	171	321
7PM-8PM	118	148	266
	122	156	278
	129	159	288
8PM-9PM	110	104	214
	117	110	227
	122	112	234
9PM-10PM	66	77	143
	73	87	160
	81	92	173
10PM-11PM	95	118	213
	102	122	224
	111	127	238

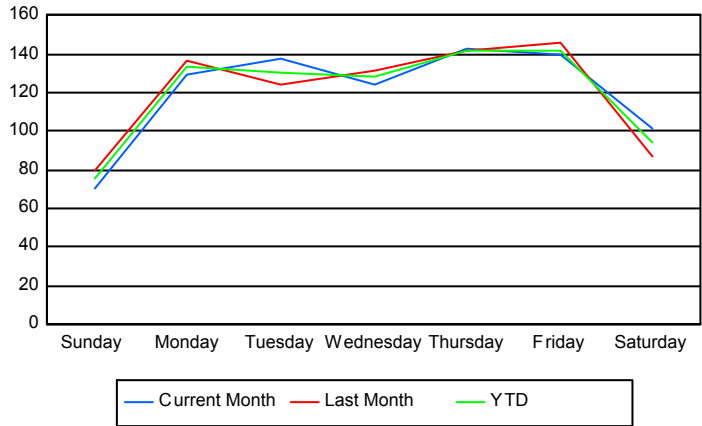
	Current Mo	Last Month	YTD
11PM-12AM	97	90	187
	101	90	191
	111	91	202

Road Ranger / SIRV Performance By Day of Week

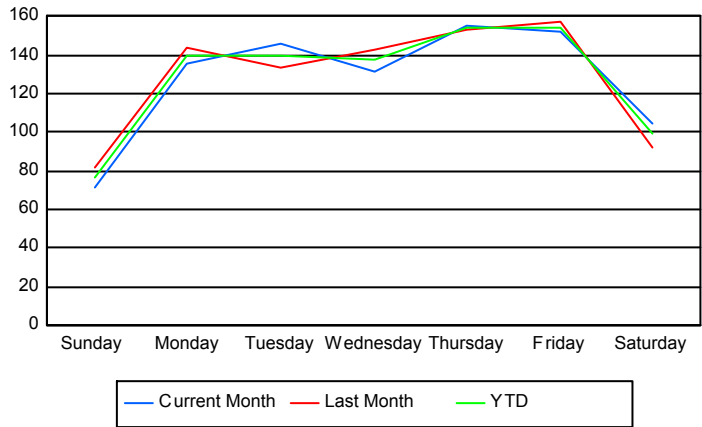
Values presented are:
 - Total Events with a RR/SIRV Response
 - Total RR/SIRV Responses,
 - Total Activities Performed

	Current Mo	Last Month	YTD
Sunday	277	302	579
	283	308	591
	292	317	609
Monday	516	530	1,046
	540	557	1,097
	563	571	1,134
Tuesday	547	611	1,158
	579	654	1,233
	608	669	1,277
Wednesday	495	651	1,146
	522	711	1,233
	545	736	1,281
Thursday	570	696	1,266
	619	752	1,371
	648	779	1,427
Friday	697	579	1,276
	758	624	1,382
	792	640	1,432
Saturday	369	338	707
	383	360	743
	415	374	789

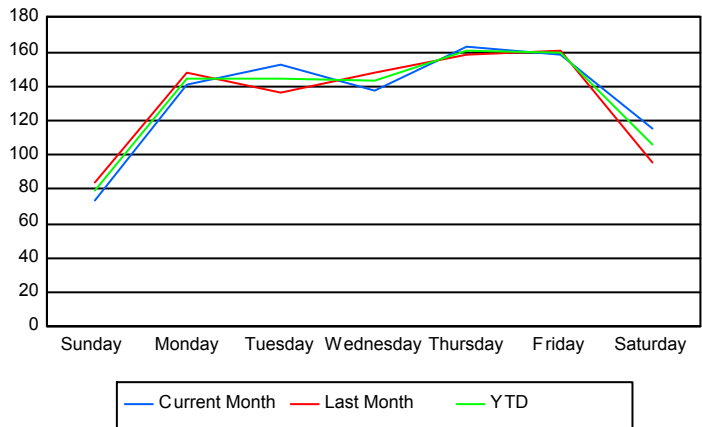
Avg # of events with a RR/SIRV Response per Day of the Week



Avg # of RR/SIRV Responses per Day of the Week



Avg # of RR/SIRV Activities Performed per Day of the Week



Road Ranger / SIRV Responses per Time of Day and Day of Week

