



Monthly Performance Measures Report Broward County



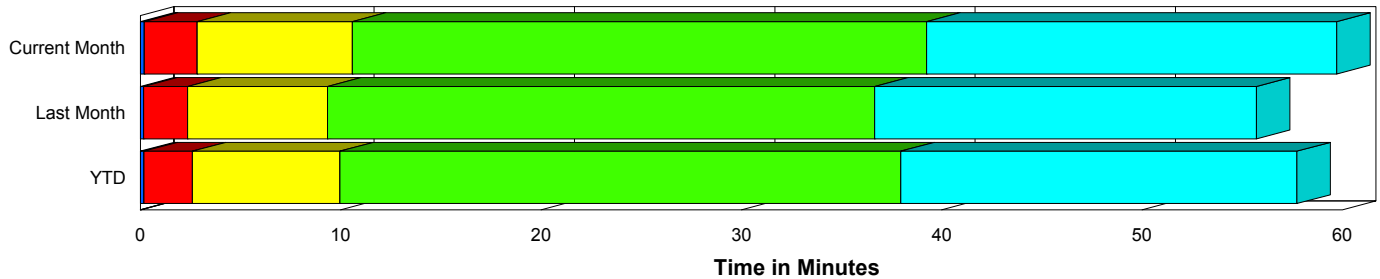
Period From Feb 1, 2007 to Feb 28, 2007

Created on:
February 19, 2010
2:42 pm

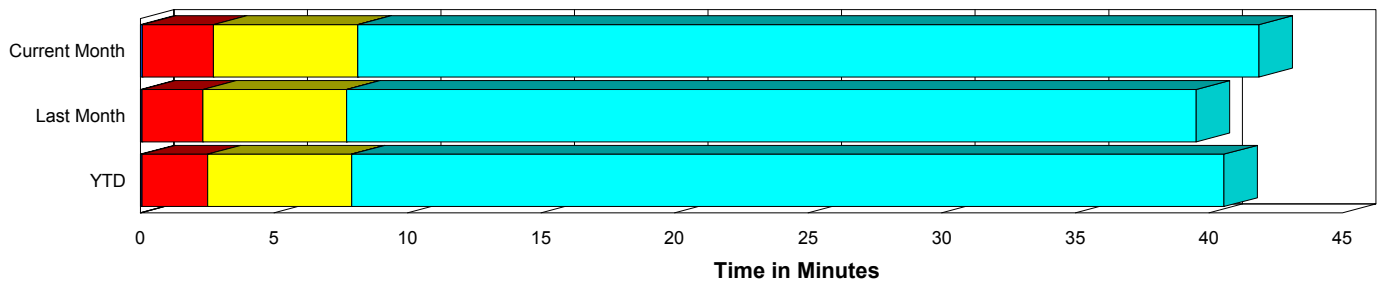
Performance Measures Summary

	Traffic Events (No Lanes Blocked)			Incidents (Lanes Blocked)		
	<u>This Month</u>	<u>Last Month</u>	<u>YTD</u>	<u>This Month</u>	<u>Last Month</u>	<u>YTD</u>
Number of Events	3,857	4,831	8,688	216	217	433
TMC Detection (min.)	0.08	0.06	0.07	0.20	0.16	0.18
TMC Verification (min.)	2.66	2.28	2.45	2.65	2.20	2.42
TMC Response (min.)	8.24	7.98	8.09	10.43	9.21	9.83
RR Dispatch Time (min.)	1.74	1.64	1.68	2.39	1.89	2.14
RR Response Time (min.)	6.60	6.37	6.48	8.04	7.36	7.71
Roadway Clearance (min.)				38.78	35.30	37.03
Event Clearance (min.)	42.06	39.84	40.82	59.26	54.24	56.74
# of Events w/ RR/SIRV	3,198	3,980	7,178	212	206	418
RR/SIRV Responses	3,270	4,061	7,331	347	320	667
RR/SIRV Activities	3,395	4,188	7,583	373	345	718

Incident Clearance Time-Line



Traffic Event (Non-Lane Blockage) Time-Line



■ Avg. TMC Detection Time	■ Avg. Time from TMC Response to Roadway Clearance*
■ Avg. Time from TMC Detection to TMC Verification	■ Avg. Time from Roadway Clearance to Incident/Event Clearance**
■ Avg. Time from TMC Verification to TMC Response	

* Roadway clearance equals all travel lanes open

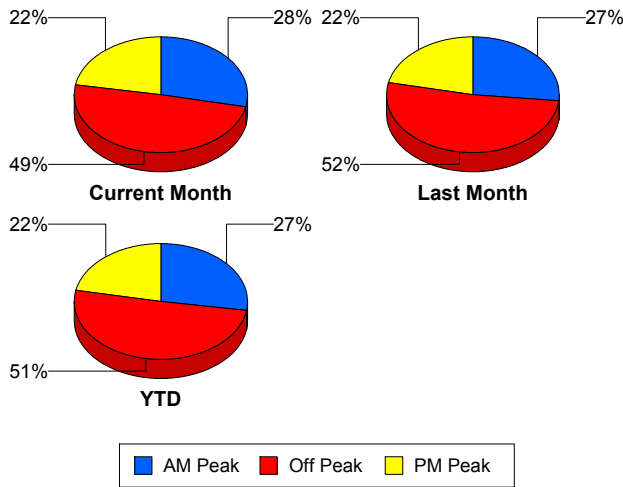
** Incident clearance equals time when last responder has left the scene

Performance Measures by Peak Period

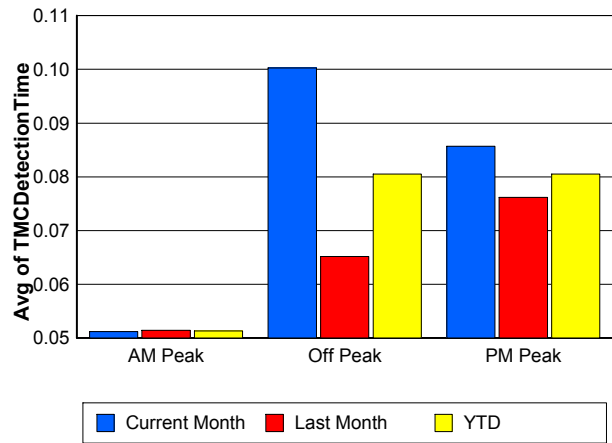
Note: AM peak period is defined as 6am to 10am and PM peak period is defined as 3pm to 7pm.

	AM Peak			Off Peak			PM Peak		
	<u>Current Month</u>	<u>Last Month</u>	<u>YTD</u>	<u>Current Month</u>	<u>Last Month</u>	<u>YTD</u>	<u>Current Month</u>	<u>Last Month</u>	<u>YTD</u>
Number of Events	1,156	1,351	2,507	2,015	2,600	4,615	902	1,097	1,999
Number of Incidents	50	56	106	106	110	216	60	51	111
TMC Detection (min.)	0.05	0.05	0.05	0.10	0.07	0.08	0.09	0.08	0.08
TMC Verification (min.)	1.55	1.54	1.54	2.98	2.45	2.68	3.36	2.79	3.05
TMC Response (min.)	6.39	6.87	6.64	9.18	8.77	8.95	9.29	7.81	8.47
RR Dispatch Time (min.)	1.37	1.00	1.17	1.82	1.87	1.85	2.22	1.95	2.07
RR Response Time (min.)	5.13	5.92	5.55	7.44	6.91	7.14	7.15	5.93	6.47
Event Clearance (min.)	34.53	35.30	34.94	50.82	48.11	49.29	36.24	28.69	32.10
Roadway Clearance (min.)	27.02	27.26	27.15	48.45	39.15	43.71	31.50	35.83	33.49
Incident Clearance (min.)	47.30	46.38	46.81	69.69	58.80	64.14	50.80	53.04	51.83
# of Events w/ RR/SIRV	1,012	1,148	2,160	1,658	2,120	3,778	740	918	1,658
RR/SIRV Responses	1,056	1,215	2,271	1,766	2,212	3,978	795	954	1,749
RR/SIRV Activities	1,099	1,258	2,357	1,856	2,286	4,142	813	989	1,802

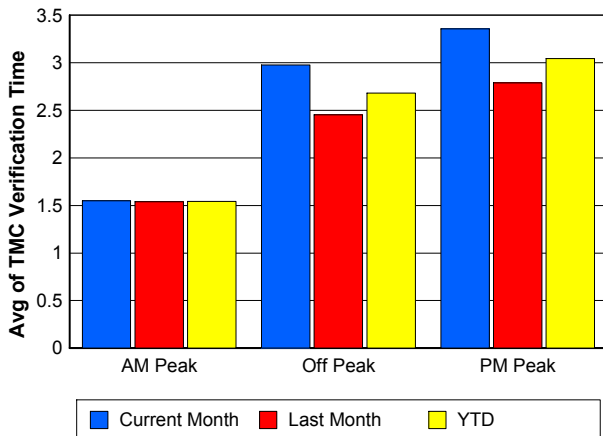
Number of Events / Peak Period



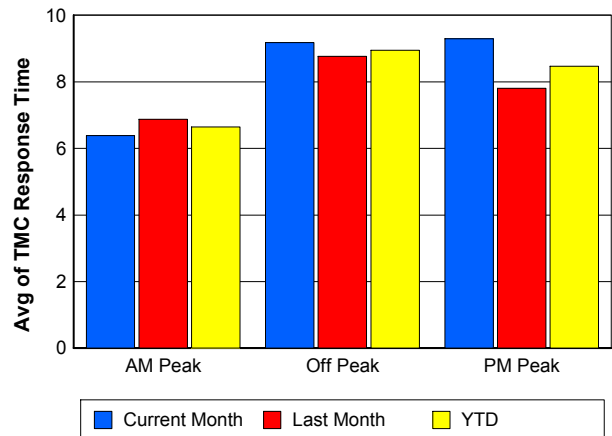
TMC Detection Time



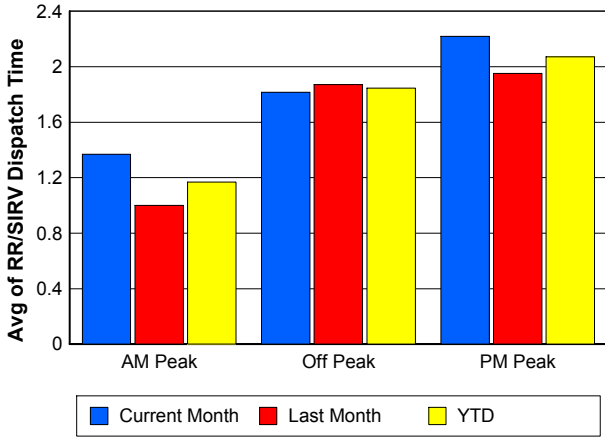
TMC Verification Time



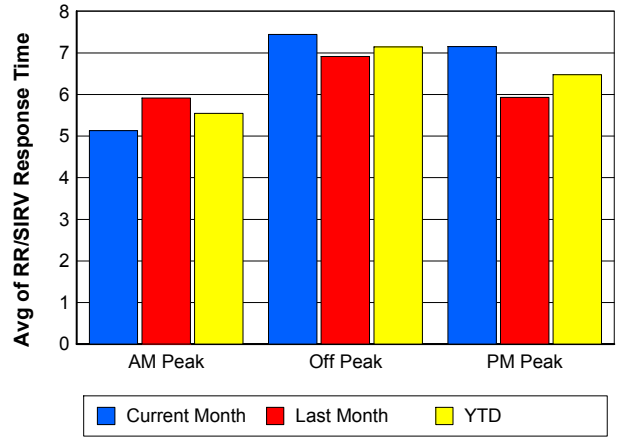
TMC Response Time



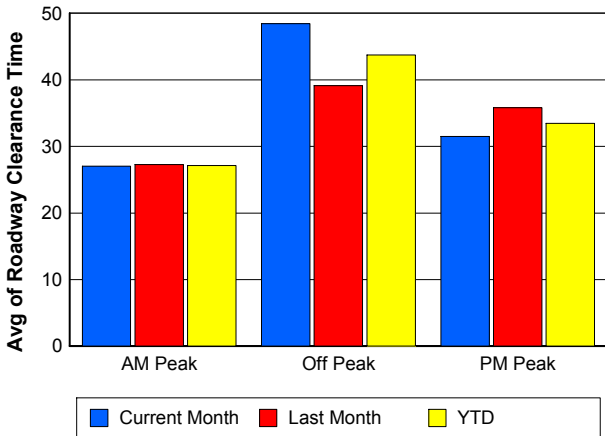
Road Ranger / SIRV Dispatch Time



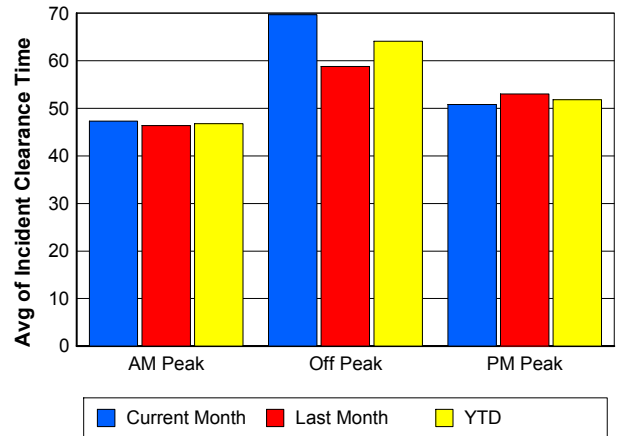
Road Ranger / SIRV Response Time



Roadway Clearance Time (2A)



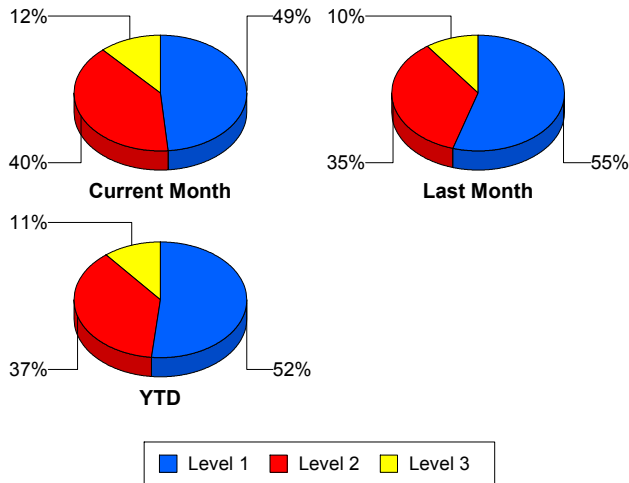
Incident Clearance Time (3B)



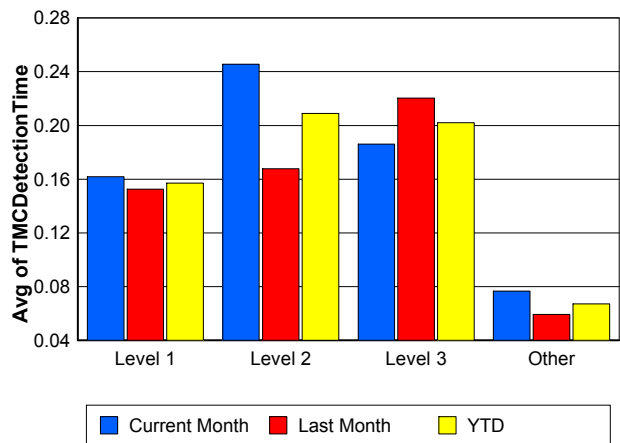
Performance Measures by Severity

	Level 1			Level 2			Level 3			Other		
	<u>This Month</u>	<u>Last Month</u>	<u>YTD</u>	<u>This Month</u>	<u>Last Month</u>	<u>YTD</u>	<u>This Month</u>	<u>Last Month</u>	<u>YTD</u>	<u>This Month</u>	<u>Last Month</u>	<u>YTD</u>
Number of Events	105	119	224	86	76	162	25	22	47	3,857	4,831	8,688
Number of Incidents	105	119	224	86	76	162	25	22	47	0	0	0
TMC Detection (min.)	0.16	0.15	0.16	0.25	0.17	0.21	0.19	0.22	0.20	0.08	0.06	0.07
TMC Verification (min.)	2.01	1.30	1.64	3.26	2.77	3.03	3.19	5.11	4.09	2.66	2.28	2.45
TMC Response (min.)	9.54	8.24	8.87	11.00	9.41	10.26	12.20	13.25	12.70	8.24	7.98	8.09
RR Dispatch Time (min.)	1.94	1.82	1.88	2.76	1.55	2.19	3.01	3.41	3.20	1.74	1.64	1.68
RR Resp. Time (min.)	7.61	6.50	7.04	8.24	7.86	8.06	9.19	9.84	9.50	6.60	6.37	6.48
Event Clearance (min.)	39.09	35.87	37.38	69.93	67.36	68.72	107.26	108.33	107.76	42.06	39.84	40.82
Roadway Clear. (min.)	15.68	13.70	14.63	53.64	52.47	53.09	84.71	92.78	88.48			
Incident Clearance (min.)	39.09	35.87	37.38	69.93	67.36	68.72	107.26	108.33	107.76			
# of Events w/ RR/SIRV	102	108	210	86	76	162	24	22	46	3,198	3,980	7,178
RR/SIRV Responses	145	133	278	139	131	270	63	56	119	3,270	4,061	7,331
RR/SIRV Activities	152	148	300	150	135	285	71	62	133	3,395	4,188	7,583

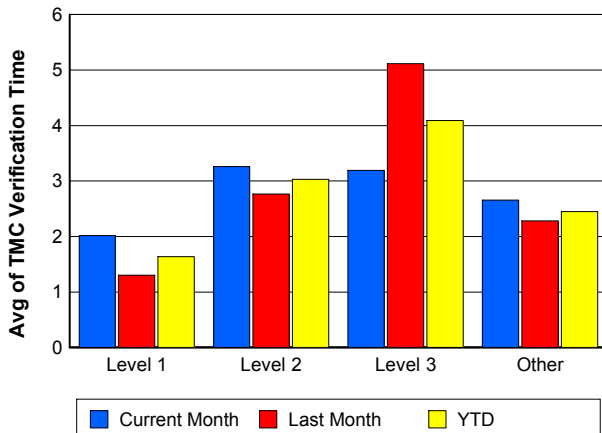
Number of Events / Severity



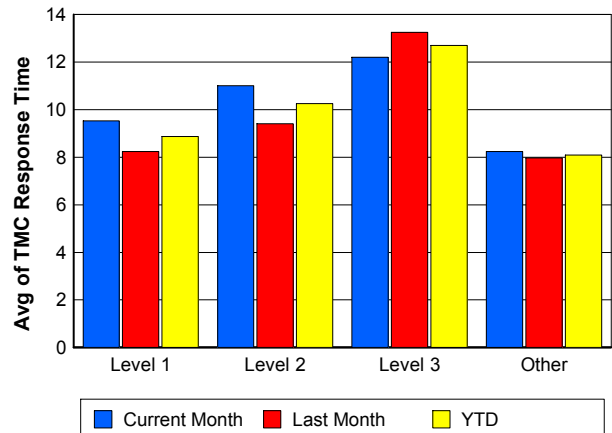
TMC Detection Time



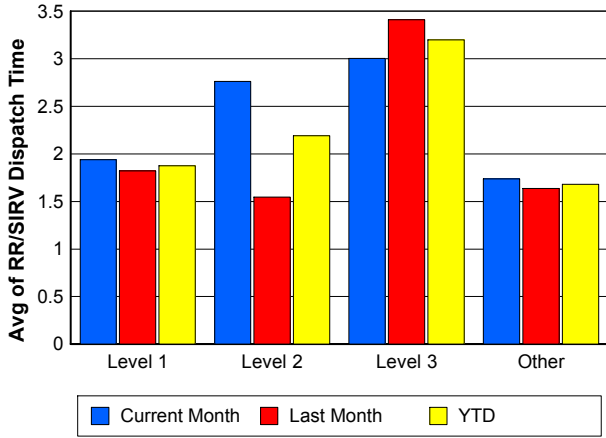
TMC Verification Time



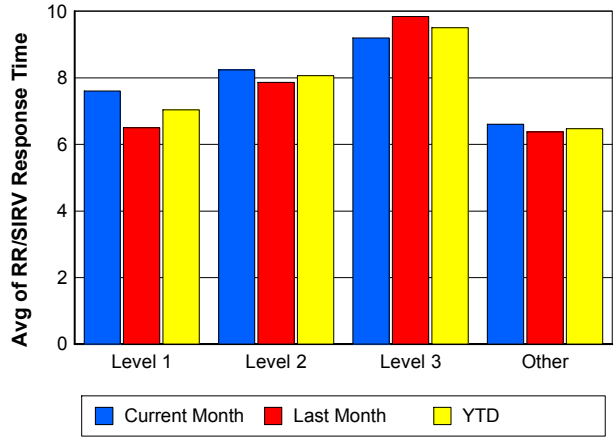
TMC Response Time



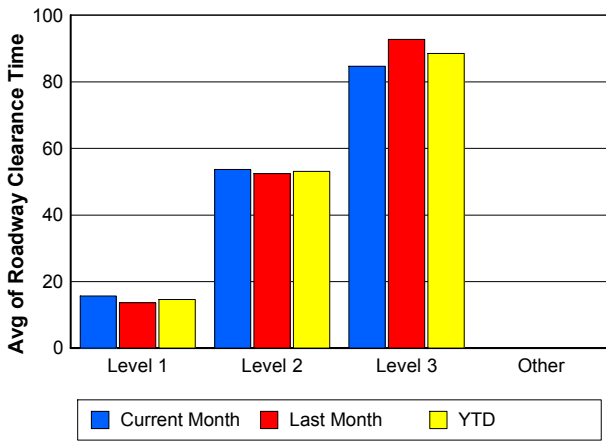
Road Ranger / SIRV Dispatch Time



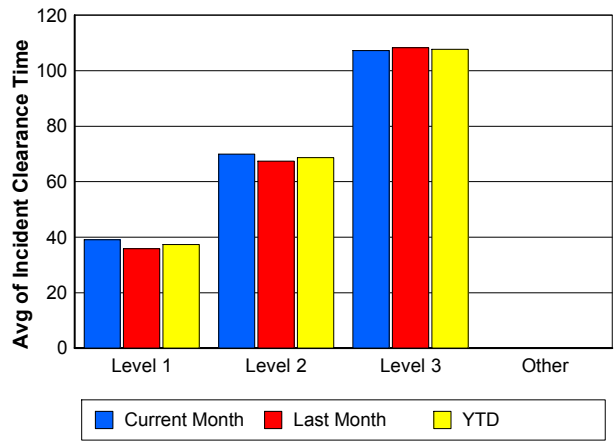
Road Ranger / SIRV Response Time



Roadway Clearance Time (2A)



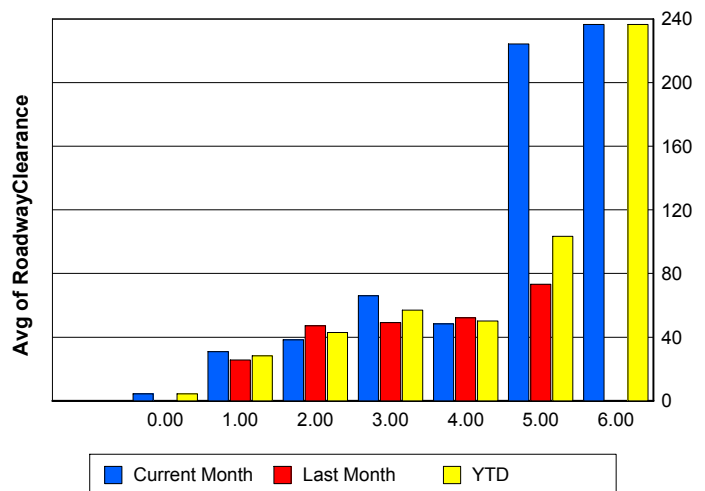
Incident Clearance Time (3B)



Roadway Clearance by Maximum Number of Lanes Blocked

	Current Month	Last Month	YTD
0	4.28		4.28
1	30.87	25.63	28.30
2	38.41	47.09	42.88
3	66.07	49.05	57.06
4	48.37	52.22	50.14
5	224.18	73.16	103.37
6	236.50	0.00	236.50

Roadway Clearance Time (2A)



Performance Measures by Roadway

595

	<u>Current Month</u>	<u>Last Month</u>	<u>YTD</u>
Number of Events	620	760	1,380
Number of Incidents	37	33	70
TMC Detection (min.)	0.08	0.07	0.08
TMC Verification (min.)	3.57	2.74	3.11
TMC Response (min.)	8.29	7.22	7.69
RR Dispatch Time (min.)	2.01	1.81	1.90
RR Resp. Time (min.)	6.42	5.46	5.89
Event Clearance (min.)	49.68	23.72	35.39
Roadway Clear. (min.)	43.56	37.12	40.52
Incident Clearance (min.)	65.57	55.60	60.87
# of Events w/ RR/SIRV	512	636	1,148
RR/SIRV Responses	557	668	1,225
RR/SIRV Activities	581	687	1,268

75

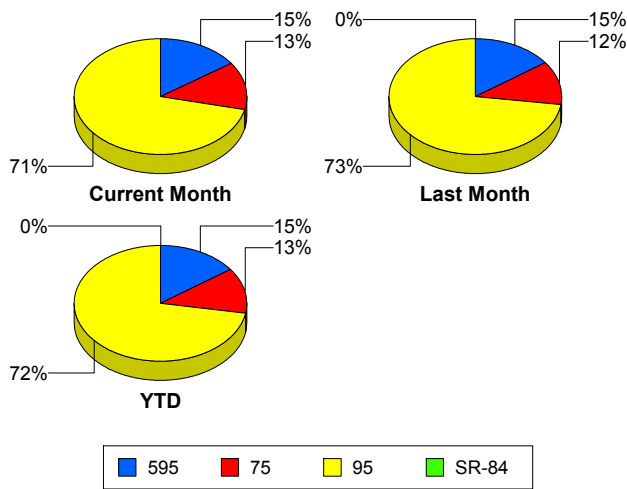
	<u>Current Month</u>	<u>Last Month</u>	<u>YTD</u>
Number of Events	548	613	1,161
Number of Incidents	15	9	24
TMC Detection (min.)	0.09	0.08	0.08
TMC Verification (min.)	4.48	3.37	3.89
TMC Response (min.)	4.65	3.54	4.06
RR Dispatch Time (min.)	1.23	0.70	0.95
RR Resp. Time (min.)	3.42	2.85	3.12
Event Clearance (min.)	30.67	32.43	31.60
Roadway Clear. (min.)	42.22	96.42	62.55
Incident Clearance (min.)	59.89	115.44	80.72
# of Events w/ RR/SIRV	538	604	1,142
RR/SIRV Responses	557	629	1,186
RR/SIRV Activities	585	648	1,233

95

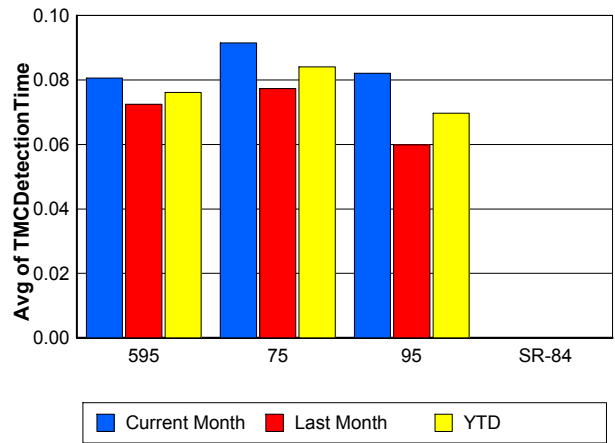
	<u>Current Month</u>	<u>Last Month</u>	<u>YTD</u>
Number of Events	2,905	3,674	6,579
Number of Incidents	164	175	339
TMC Detection (min.)	0.08	0.06	0.07
TMC Verification (min.)	2.12	2.01	2.05
TMC Response (min.)	9.24	9.14	9.18
RR Dispatch Time (min.)	1.84	1.79	1.81
RR Resp. Time (min.)	7.50	7.36	7.42
Event Clearance (min.)	43.86	45.27	44.65
Roadway Clear. (min.)	37.39	31.81	34.51
Incident Clearance (min.)	57.78	50.84	54.20
# of Events w/ RR/SIRV	2,360	2,946	5,306
RR/SIRV Responses	2,503	3,084	5,587
RR/SIRV Activities	2,602	3,198	5,800

	<u>Last Month</u>	<u>YTD</u>
Number of Events	1	1
Number of Incidents	0	0
TMC Detection (min.)	0.00	0.00
TMC Verification (min.)	1.08	1.08
TMC Response (min.)		
RR Dispatch Time (min.)		
RR Resp. Time (min.)		
Event Clearance (min.)	3.77	3.77
Roadway Clear. (min.)		
Incident Clearance (min.)		
# of Events w/ RR/SIRV	0	0
RR/SIRV Responses	0	0
RR/SIRV Activities	0	0

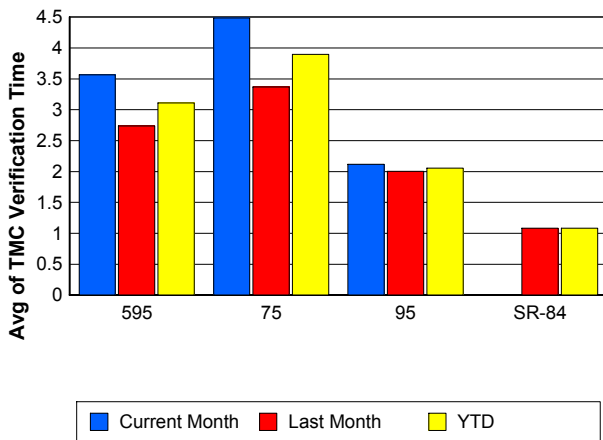
Number of Events / Roadway



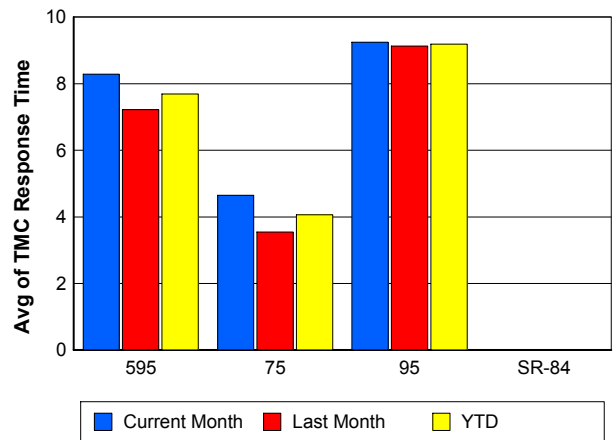
TMC Detection Time



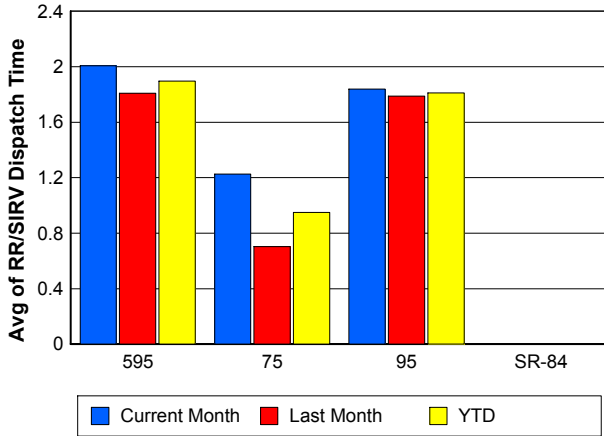
TMC Verification Time



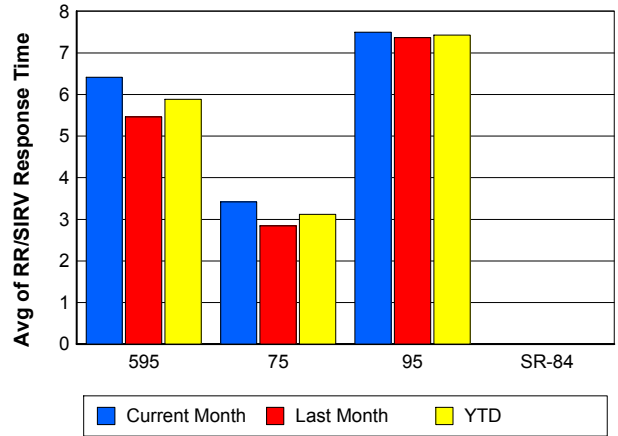
TMC Response Time



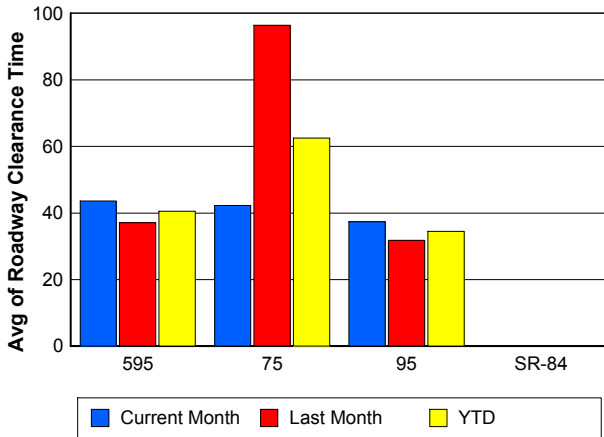
Road Ranger / SIRV Dispatch Time



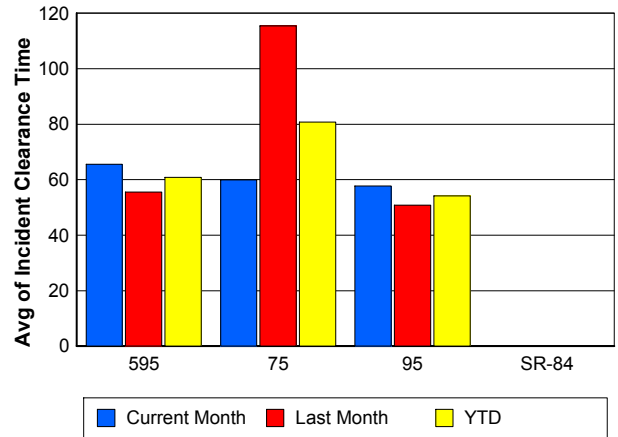
Road Ranger / SIRV Response Time



Roadway Clearance Time (2A)



Incident Clearance Time (3B)



Performance Measures by Event Type

Abandoned Vehicle

	<u>Current Month</u>	<u>Last Month</u>	<u>YTD</u>
Number of Events	548	604	1,152
Number of Incidents	0	1	1
TMC Detection (min.)	0.01	0.01	0.01
TMC Verification (min.)	0.75	0.57	0.66
TMC Response (min.)	7.26	7.74	7.51
RR Dispatch Time (min.)	1.21	0.91	1.05
RR Response Time (min.)	6.05	6.85	6.46
Event Clearance (min.)	163.26	181.16	172.64
Roadway Clearance (min.)		16.23	16.23
Incident Clearance (min.)		17.37	17.37
# of Events w/ RR/SIRV	457	481	938
RR/SIRV Assists	462	483	945
RR/SIRV Activities	470	491	961

Accident

	<u>Current Month</u>	<u>Last Month</u>	<u>YTD</u>
Number of Events	333	365	698
Number of Incidents	149	152	301
TMC Detection (min.)	0.17	0.17	0.17
TMC Verification (min.)	3.37	3.35	3.36
TMC Response (min.)	9.09	9.02	9.05
RR Dispatch Time (min.)	1.75	1.73	1.74
RR Response Time (min.)	7.33	7.30	7.31
Event Clearance (min.)	49.15	43.06	45.96
Roadway Clearance (min.)	41.87	36.72	39.27
Incident Clearance (min.)	65.13	59.22	62.15
# of Events w/ RR/SIRV	321	358	679
RR/SIRV Assists	435	468	903
RR/SIRV Activities	461	491	952

Debris on Roadway

	<u>Current Month</u>	<u>Last Month</u>	<u>YTD</u>
Number of Events	175	211	386
Number of Incidents	10	3	13
TMC Detection (min.)	0.25	0.27	0.26
TMC Verification (min.)	10.87	11.75	11.35
TMC Response (min.)	11.72	13.35	12.62
RR Dispatch Time (min.)	2.24	2.82	2.56
RR Response Time (min.)	9.47	10.50	10.04
Event Clearance (min.)	18.40	17.16	17.72
Roadway Clearance (min.)	34.01	12.08	28.95
Incident Clearance (min.)	48.83	12.85	40.53
# of Events w/ RR/SIRV	164	202	366
RR/SIRV Assists	181	216	397
RR/SIRV Activities	183	218	401

Disabled Vehicle

	<u>Current Month</u>	<u>Last Month</u>	<u>YTD</u>
Number of Events	2,374	3,009	5,383
Number of Incidents	47	48	95
TMC Detection (min.)	0.09	0.06	0.07
TMC Verification (min.)	2.78	2.23	2.47
TMC Response (min.)	8.20	7.59	7.86
RR Dispatch Time (min.)	1.77	1.65	1.70
RR Response Time (min.)	6.47	5.96	6.19
Event Clearance (min.)	20.63	20.36	20.48
Roadway Clearance (min.)	28.52	26.83	27.66
Incident Clearance (min.)	44.19	39.21	41.68
# of Events w/ RR/SIRV	2,297	2,894	5,191
RR/SIRV Assists	2,359	2,956	5,315
RR/SIRV Activities	2,474	3,073	5,547

Emergency Vehicles

	<u>Current Month</u>	<u>Last Month</u>	<u>YTD</u>
Number of Events	1	3	4
Number of Incidents	1	2	3
TMC Detection (min.)	0.00	0.00	0.00
TMC Verification (min.)	0.00	0.00	0.00
TMC Response (min.)	10.67	3.33	5.78
RR Dispatch Time (min.)	4.10	2.56	2.94
RR Response Time (min.)	6.57	0.19	2.32
Event Clearance (min.)	12.23	33.94	28.51
Roadway Clearance (min.)	10.82	26.93	21.56
Incident Clearance (min.)	12.23	40.56	31.12
# of Events w/ RR/SIRV	1	2	3
RR/SIRV Assists	1	3	4
RR/SIRV Activities	1	3	4

Other

	<u>Current Month</u>	<u>Last Month</u>	<u>YTD</u>
Number of Events	607	829	1,436
Number of Incidents	3	6	9
TMC Detection (min.)	0.03	0.02	0.02
TMC Verification (min.)	1.16	0.89	1.00
TMC Response (min.)	9.74	8.27	8.84
RR Dispatch Time (min.)	2.33	1.82	2.02
RR Response Time (min.)	7.96	6.59	7.12
Event Clearance (min.)	24.60	15.83	19.54
Roadway Clearance (min.)	27.38	27.98	27.78
Incident Clearance (min.)	40.15	32.82	35.27
# of Events w/ RR/SIRV	145	229	374
RR/SIRV Assists	146	230	376
RR/SIRV Activities	146	231	377

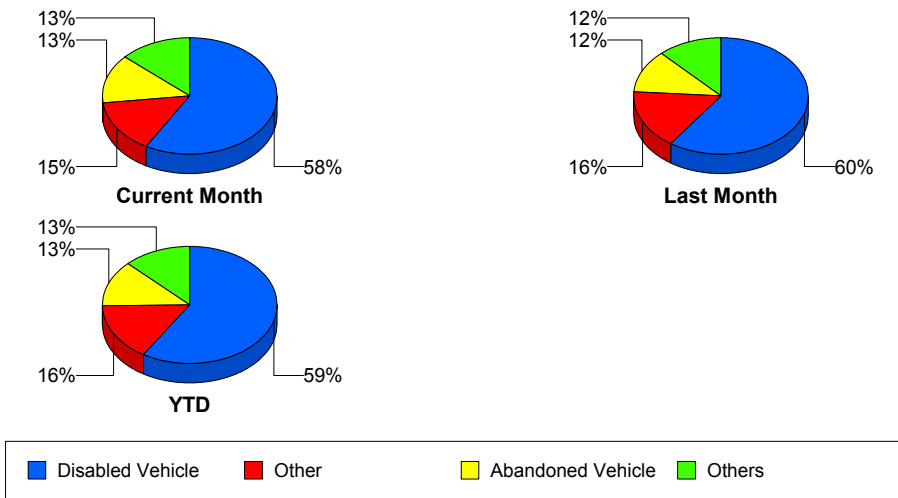
Pedestrian

	<u>Current Month</u>	<u>Last Month</u>	<u>YTD</u>
Number of Events	19	14	33
Number of Incidents	0	0	0
TMC Detection (min.)	0.30	0.07	0.20
TMC Verification (min.)	0.85	2.24	1.44
TMC Response (min.)	2.84	3.70	3.21
RR Dispatch Time (min.)	0.99	0.96	0.98
RR Response Time (min.)	2.28	2.73	2.48
Event Clearance (min.)	21.00	17.69	19.59
Roadway Clearance (min.)			
Incident Clearance (min.)			
# of Events w/ RR/SIRV	18	14	32
RR/SIRV Assists	19	14	33
RR/SIRV Activities	19	15	34

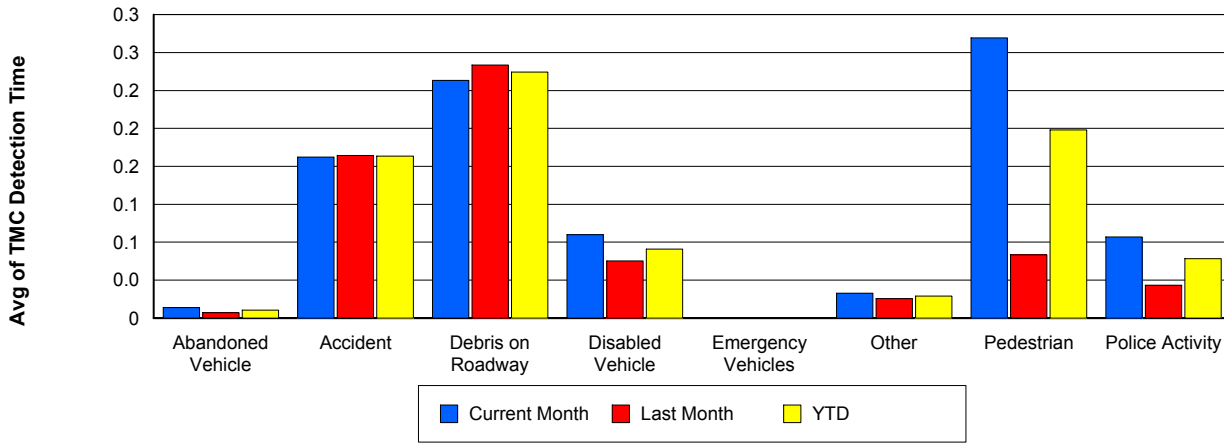
Police Activity

	<u>Current Month</u>	<u>Last Month</u>	<u>YTD</u>
Number of Events	16	13	29
Number of Incidents	6	5	11
TMC Detection (min.)	0.09	0.03	0.06
TMC Verification (min.)	3.47	0.53	2.15
TMC Response (min.)	15.31	11.68	13.63
RR Dispatch Time (min.)	3.44	3.15	3.31
RR Response Time (min.)	11.40	8.53	10.08
Event Clearance (min.)	102.04	58.12	82.35
Roadway Clearance (min.)	60.76	103.31	80.10
Incident Clearance (min.)	66.17	110.50	86.32
# of Events w/ RR/SIRV	7	6	13
RR/SIRV Assists	14	11	25
RR/SIRV Activities	14	11	25

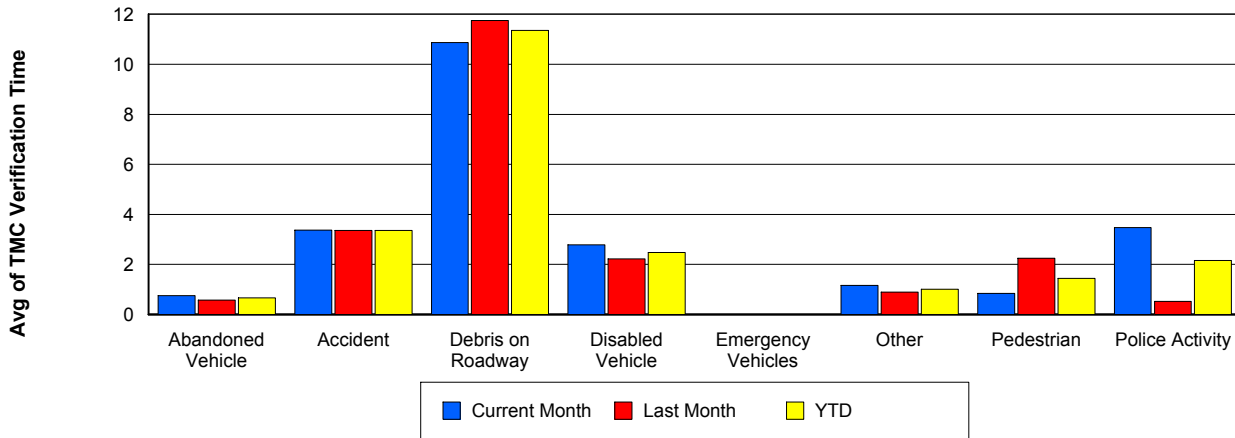
Number of Events / Event Type



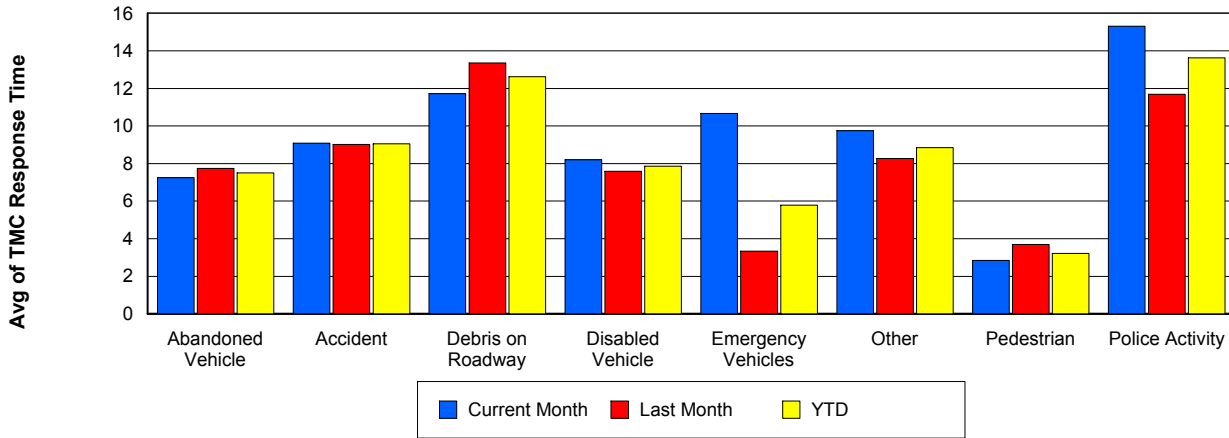
TMC Detection Time



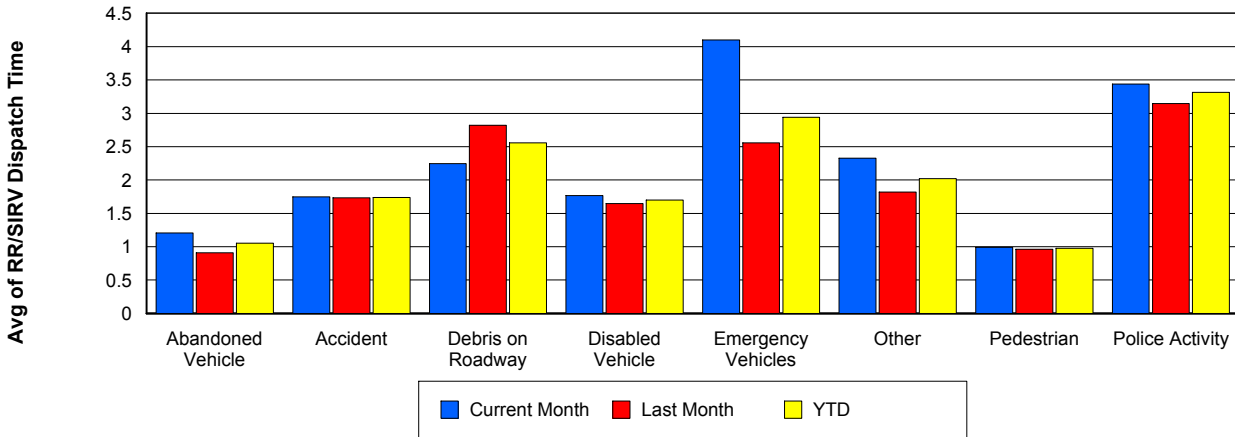
TMC Verification Time



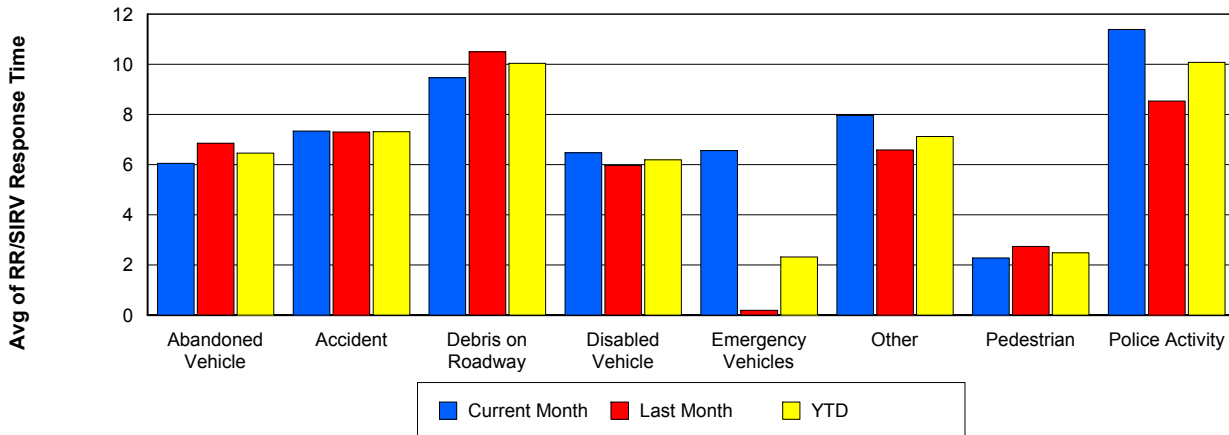
TMC Response Time



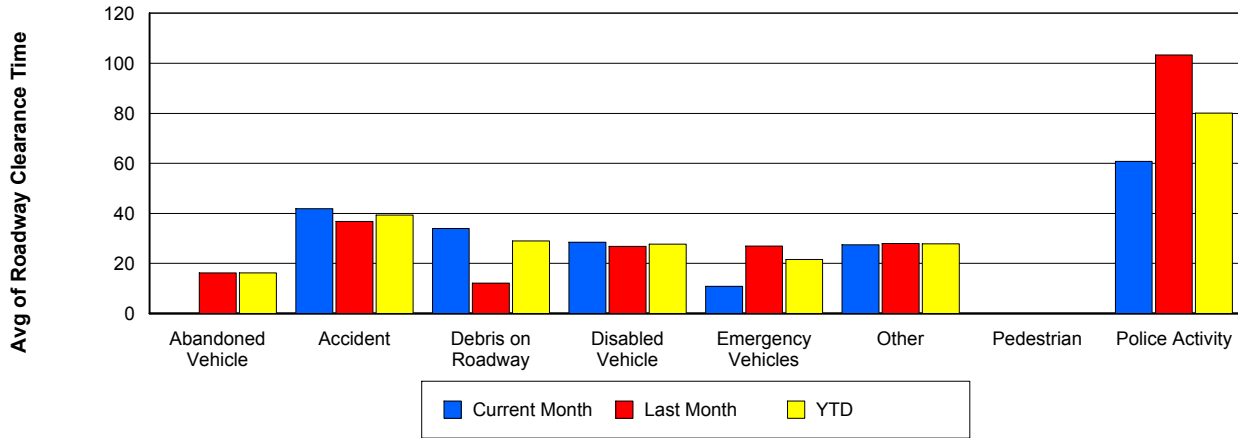
Road Ranger / SIRV Dispatch Time



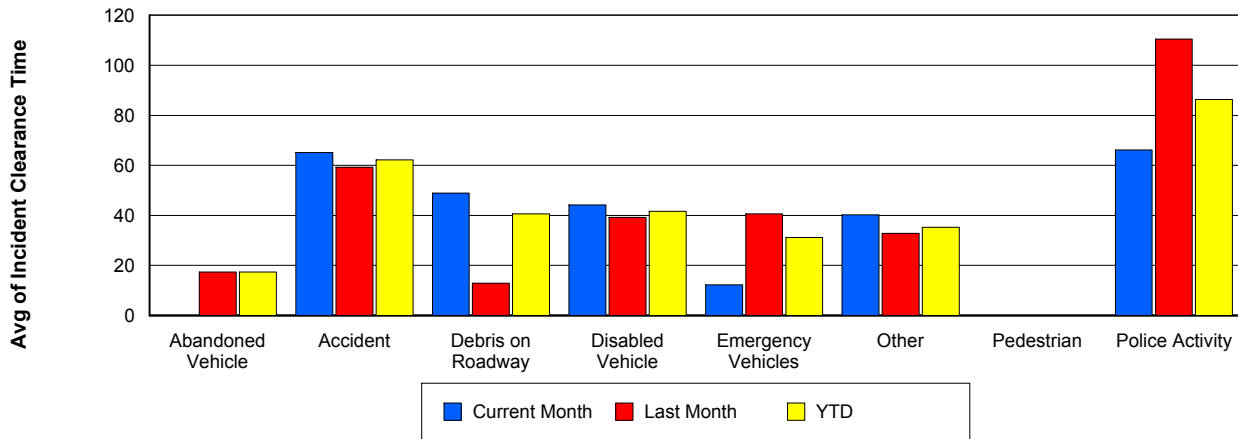
Road Ranger / SIRV Response Time



Roadway Clearance Time (2A)



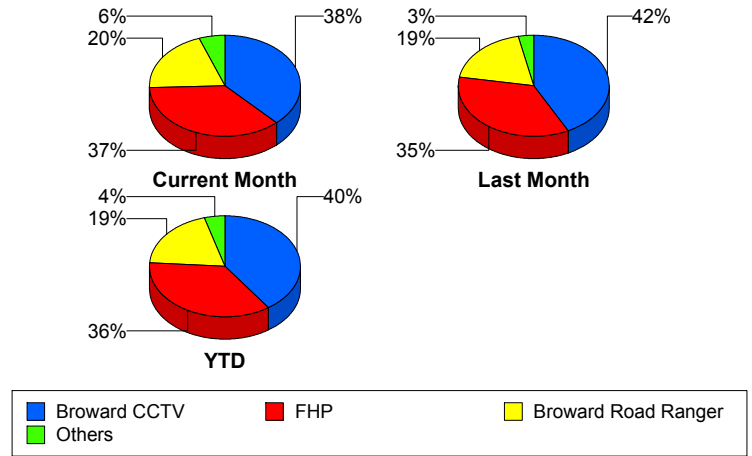
Incident Clearance Time (3B)



Incident Detection Methods

	Current Month	Last Month	YTD
Broward CCTV	82	92	174
Broward Road Ranger	43	41	84
District 4	2	3	5
FDOT Maintenance	1	0	1
FHP	79	77	156
Motorist	1	0	1
Palm Beach Road Ran	1	0	1
Road Watcher	2	0	2
SIRV	1	0	1
SmarTraveler (511)	3	2	5
VisioPaD Detection	1	2	3
Total	216	217	433

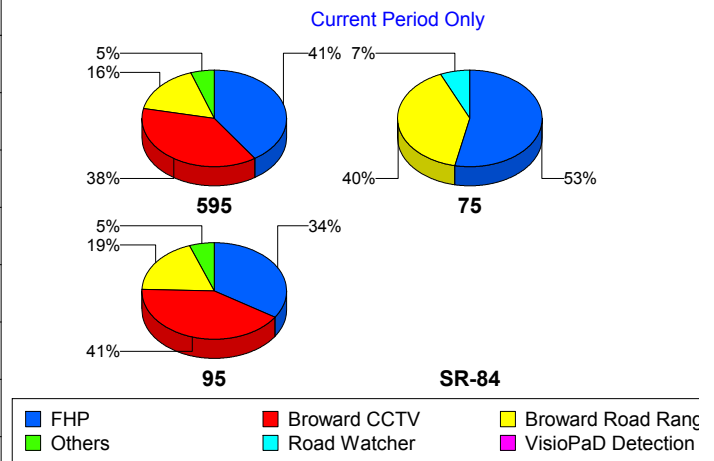
Total Incidents by Detection Method



Incident Detection Methods by Roadway

		Current Month	Last Month	YTD
595	Broward CCTV	14	15	29
	Broward Road Ranger	6	6	12
	District 4	0	1	1
	FHP	15	10	25
	SIRV	1	0	1
	SmarTraveler (511)	1	0	1
	VisioPaD Detection	0	1	1
	Total	37	33	70
75	Broward Road Ranger	6	4	10
	FHP	8	5	13
	Road Watcher	1	0	1
	Total	15	9	24
95	Broward CCTV	68	77	145
	Broward Road Ranger	31	31	62
	District 4	2	2	4

Total Events by Roadway and Detection Method

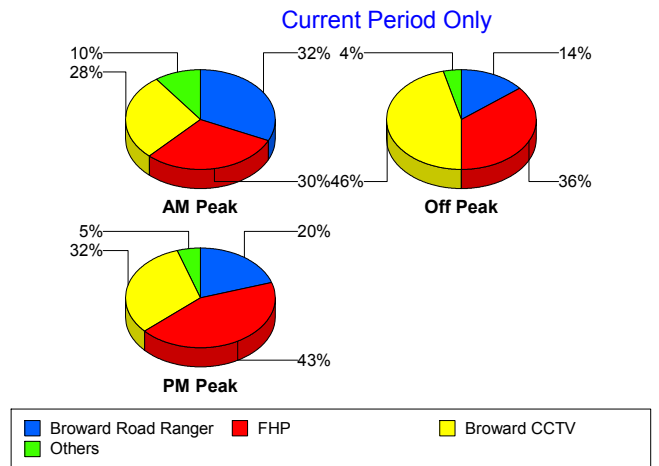


		Current Month	Last Month	YTD
95	FDOT Maintenance	1	0	1
	FHP	56	62	118
	Motorist	1	0	1
	Palm Beach Road Ran	1	0	1
	Road Watcher	1	0	1
	SmarTraveler (511)	2	2	4
	VisioPaD Detection	1	1	2
	Total	164	175	339
Total	216	217	433	

Incident Detection Methods by Peak Period

		Current Month	Last Month	YTD
AM Peak	Broward CCTV	14	26	40
	Broward Road Ranger	16	12	28
	District 4	1	0	1
	FHP	15	17	32
	Palm Beach Road Ran	1	0	1
	Road Watcher	2	0	2
	SmarTraveler (511)	1	0	1
	VisioPaD Detection	0	1	1
	Total	50	56	106
	Off Peak	Broward CCTV	49	41
Broward Road Ranger		15	20	35
District 4		0	1	1
FHP		38	45	83
Motorist		1	0	1
SIRV		1	0	1
SmarTraveler (511)		1	2	3
VisioPaD Detection		1	1	2
Total		106	110	216
PM Peak	Broward CCTV	19	25	44
	Broward Road Ranger	12	9	21

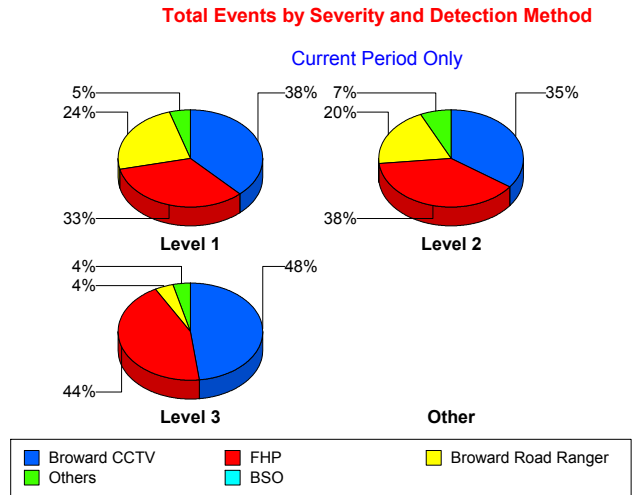
Total Events by Peak Period and Detection Method



		Current Month	Last Month	YTD
PM Peak	District 4	1	2	3
	FDOT Maintenance	1	0	1
	FHP	26	15	41
	SmarTraveler (511)	1	0	1
	Total	60	51	111
Total		216	217	433

Incident Detection Methods by Severity

		Current Month	Last Month	YTD
Level 1	Broward CCTV	40	55	95
	Broward Road Ranger	25	19	44
	District 4	2	2	4
	FHP	35	41	76
	Road Watcher	1	0	1
	SmarTraveler (511)	2	0	2
	VisioPaD Detection	0	2	2
	Total	105	119	224
Level 2	Broward CCTV	30	27	57
	Broward Road Ranger	17	20	37
	District 4	0	1	1
	FDOT Maintenance	1	0	1
	FHP	33	27	60
	Motorist	1	0	1
	Palm Beach Road Ran	1	0	1
	SIRV	1	0	1
	SmarTraveler (511)	1	1	2
	VisioPaD Detection	1	0	1
	Total	86	76	162
Level 3	Broward CCTV	12	10	22
	Broward Road Ranger	1	2	3
	FHP	11	9	20
	Road Watcher	1	0	1



		Current Month	Last Month	YTD
Level 3	SmarTraveler (511)	0	1	1
	Total	25	22	47
Total		216	217	433

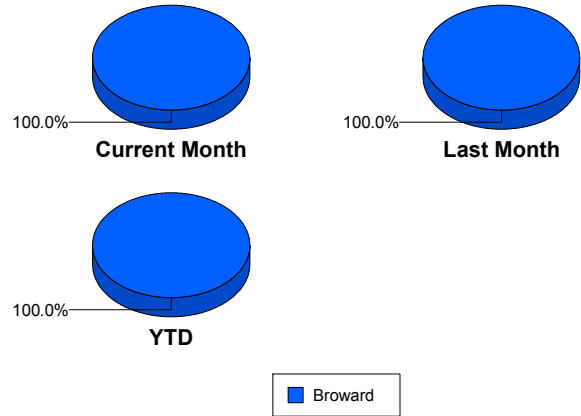
Road Ranger / SIRV Performance Measures

Road Ranger / SIRV Performance By County

Values presented are:
 - Total Events with a RR/SIRV Response
 - Total RR/SIRV Responses,
 - Total Activities Performed

	Current Mo	Last Month	YTD
Broward	3,410	4,186	7,596
	3,617	4,381	7,998
	3,768	4,533	8,301

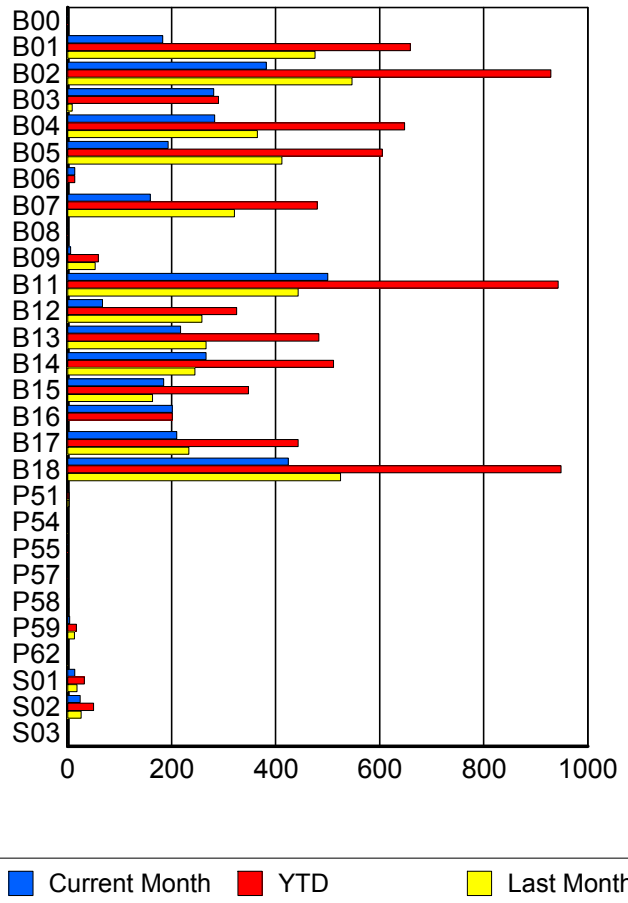
RR/SIRV Responses per County



Road Ranger / SIRV Performance By Truck

	Current Mo	Last Month	YTD
B00	1	0	1
	1	0	1
	1	0	1
B01	181	475	656
	183	476	659
	190	493	683
B02	379	546	925
	382	547	929
	401	564	965
B03	277	9	286
	281	9	290
	292	9	301
B04	281	360	641
	283	365	648
	297	379	676
B05	193	406	599
	193	412	605
	202	431	633
B06	14	0	14
	14	0	14
	17	0	17
B07	158	319	477
	159	321	480
	160	326	486
B08	1	0	1
	1	0	1
	1	0	1

RR/SIRV Responses per Truck



	Current Mo	Last Month	YTD
B09	6	53	59
	6	53	59
	6	55	61
B11	497	440	937
	500	443	943
	515	463	978
B12	67	257	324
	67	258	325
	70	262	332
B13	215	265	480
	217	266	483
	222	273	495
B14	265	243	508
	266	245	511
	275	250	525
B15	185	163	348
	185	163	348
	188	172	360
B16	200	0	200
	201	0	201
	208	0	208
B17	209	232	441
	210	233	443
	229	235	464
B18	423	523	946
	424	525	949
	438	547	985
P51	0	3	3
	0	3	3
	0	3	3
P54	0	1	1
	0	1	1
	0	1	1
P55	1	0	1
	1	0	1
	1	0	1
P57	1	0	1
	1	0	1
	1	0	1
P58	0	2	2
	0	2	2
	0	2	2
P59	4	13	17
	4	13	17
	4	14	18

	Current Mo	Last Month	YTD
P62	0	1	1
	0	1	1
	0	1	1
S01	14	18	32
	14	18	32
	26	21	47
S02	23	26	49
	24	26	50
	24	31	55
S03	0	1	1
	0	1	1
	0	1	1

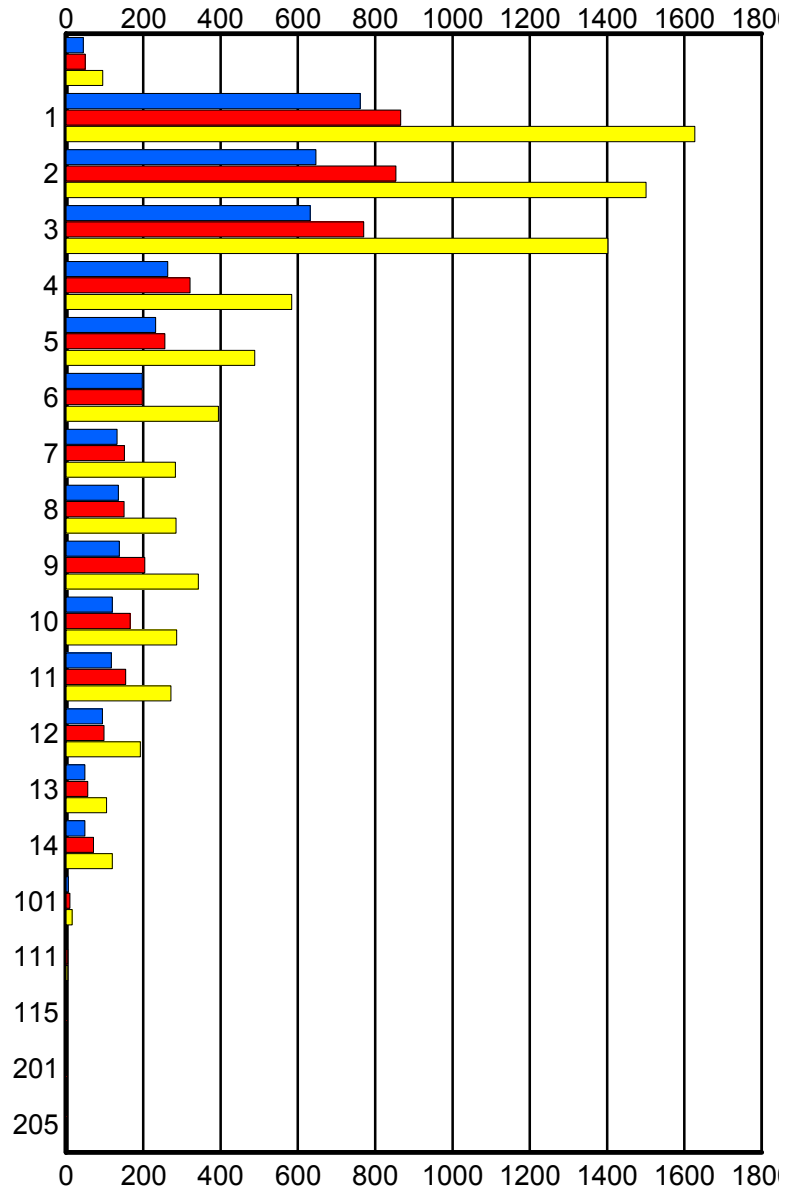
Road Ranger / SIRV Performance By Beat

	Current Mo	Last Month	YTD
	42	50	92
	45	50	95
	57	58	115
1	745	847	1,592
	761	866	1,627
	786	905	1,691
2	628	840	1,468
	647	854	1,501
	675	888	1,563
3	618	744	1,362
	632	770	1,402
	662	797	1,459
4	260	319	579
	263	321	584
	270	328	598
5	230	253	483
	232	256	488
	242	261	503
6	197	197	394
	197	197	394
	203	205	408
7	132	151	283
	132	151	283
	141	156	297
8	135	149	284
	135	150	285
	142	153	295
9	136	201	337
	138	204	342
	143	206	349
10	119	165	284
	120	166	286
	121	172	293
11	117	154	271
	117	154	271
	122	155	277
12	93	96	189
	94	98	192
	98	100	198
13	49	56	105
	49	56	105
	50	57	107
14	49	71	120
	49	71	120
	50	74	124

Values presented are:

- Total Events with a RR/SIRV Response
- Total RR/SIRV Responses,
- Total Activities Performed

RR/SIRV Responses per Beat



■
Current Month

■
Last Month

■
YTD

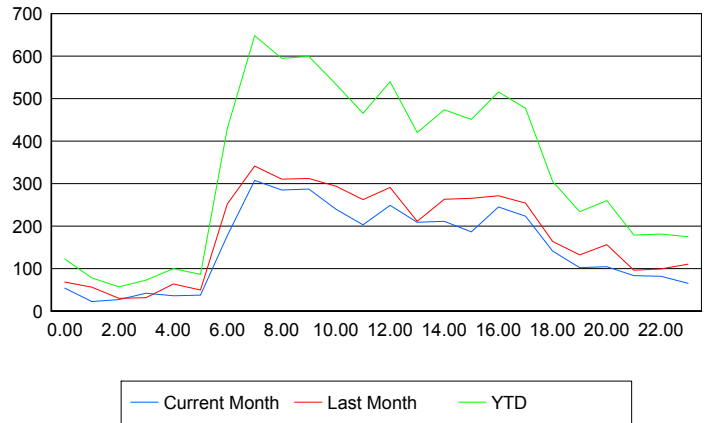
	Current Mo	Last Month	YTD
101	6	10	16
	6	10	16
	6	11	17
111	0	4	4
	0	4	4
	0	4	4
115	0	1	1
	0	1	1
	0	1	1
201	0	1	1
	0	1	1
	0	1	1
205	0	1	1
	0	1	1
	0	1	1

Road Ranger / SIRV Performance By Time of Day

Values presented are:
 - Total Events with a RR/SIRV Response
 - Total RR/SIRV Responses,
 - Total Activities Performed

	Current Mo	Last Month	YTD
12AM-1AM	50	68	118
	54	68	122
	59	70	129
1AM-2AM	21	55	76
	22	56	78
	22	58	80
2AM-3AM	22	29	51
	27	30	57
	28	30	58
3AM-4AM	28	31	59
	42	31	73
	46	33	79
4AM-5AM	33	63	96
	36	64	100
	37	66	103
5AM-6AM	34	46	80
	37	49	86
	38	56	94
6AM-7AM	172	232	404
	177	252	429
	183	265	448
7AM-8AM	295	325	620
	307	341	648
	323	351	674

Number of Responses / Hour of the Day



	Current Mo	Last Month	YTD
8AM-9AM	275	297	572
	285	310	595
	303	320	623
9AM-10AM	270	294	564
	287	312	599
	290	322	612
10AM-11AM	227	281	508
	240	294	534
	255	300	555
11AM-12PM	193	252	445
	203	262	465
	209	273	482
12PM-1PM	241	280	521
	249	291	540
	259	301	560
1PM-2PM	197	203	400
	209	211	420
	227	221	448
2PM-3PM	199	253	452
	211	263	474
	220	270	490
3PM-4PM	175	255	430
	186	265	451
	194	272	466
4PM-5PM	227	263	490
	245	271	516
	249	285	534
5PM-6PM	207	248	455
	223	254	477
	227	266	493
6PM-7PM	131	152	283
	141	164	305
	143	166	309
7PM-8PM	95	120	215
	102	132	234
	107	139	246
8PM-9PM	103	151	254
	104	156	260
	110	161	271
9PM-10PM	80	90	170
	83	96	179
	88	96	184
10PM-11PM	73	92	165
	82	99	181
	84	100	184

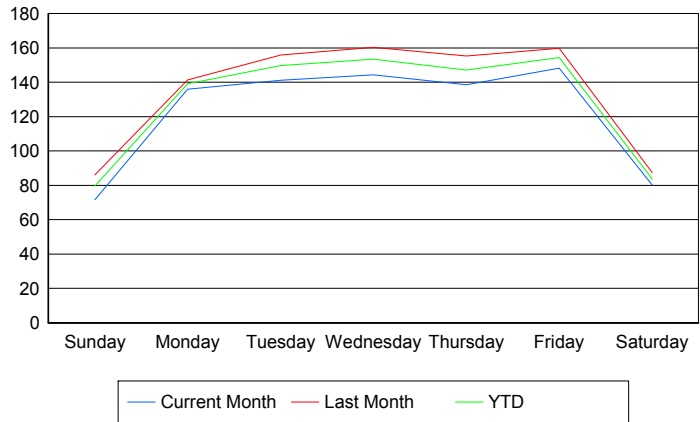
	Current Mo	Last Month	YTD
11PM-12AM	62	106	168
	65	110	175
	67	112	179

Road Ranger / SIRV Performance By Day of Week

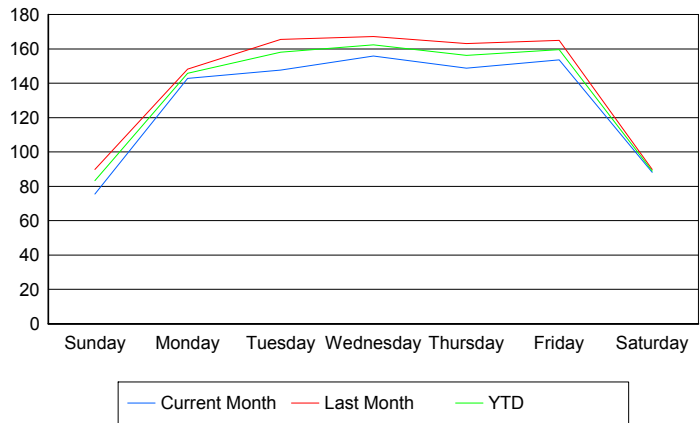
Values presented are:
 - Total Events with a RR/SIRV Response
 - Total RR/SIRV Responses,
 - Total Activities Performed

	Current Mo	Last Month	YTD
Sunday	284 300 309	341 356 373	625 656 682
Monday	541 568 587	696 728 745	1,237 1,296 1,332
Tuesday	561 587 617	777 825 866	1,338 1,412 1,483
Wednesday	572 618 646	789 824 847	1,361 1,442 1,493
Thursday	553 594 622	608 640 656	1,161 1,234 1,278
Friday	581 601 621	637 658 678	1,218 1,259 1,299
Saturday	318 349 366	340 350 368	658 699 734

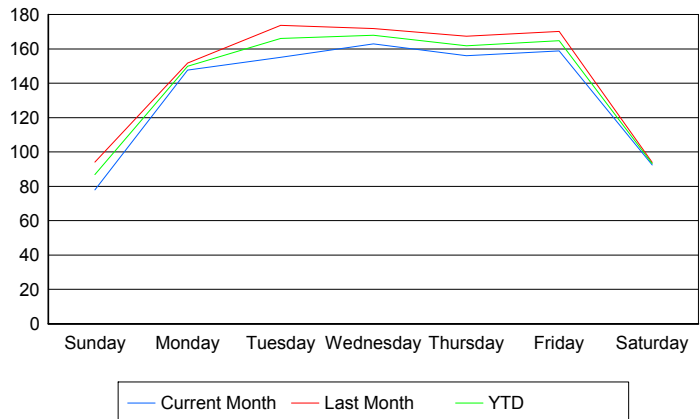
Avg # of events with a RR/SIRV Response per Day of the Week



Avg # of RR/SIRV Responses per Day of the Week



Avg # of RR/SIRV Activities Performed per Day of the Week



Road Ranger / SIRV Responses per Time of Day and Day of Week

