



# Monthly Performance Measures Report Broward County



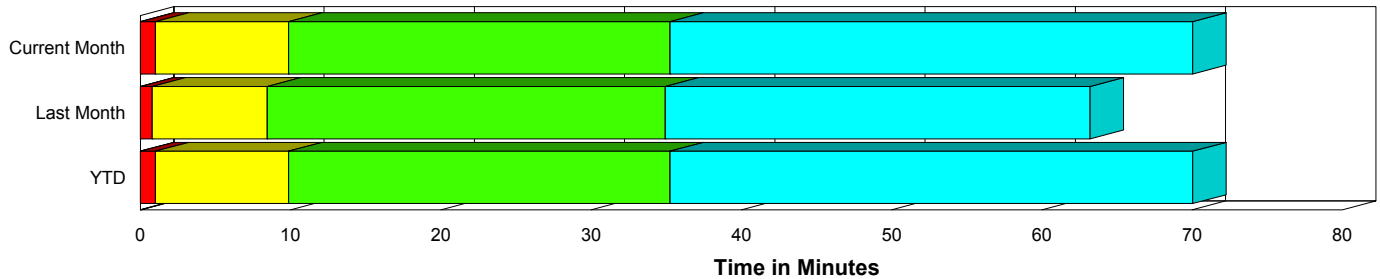
Period From Jan 1, 2010 to Jan 31, 2010

Created on:  
February 01, 2010  
9:18 am

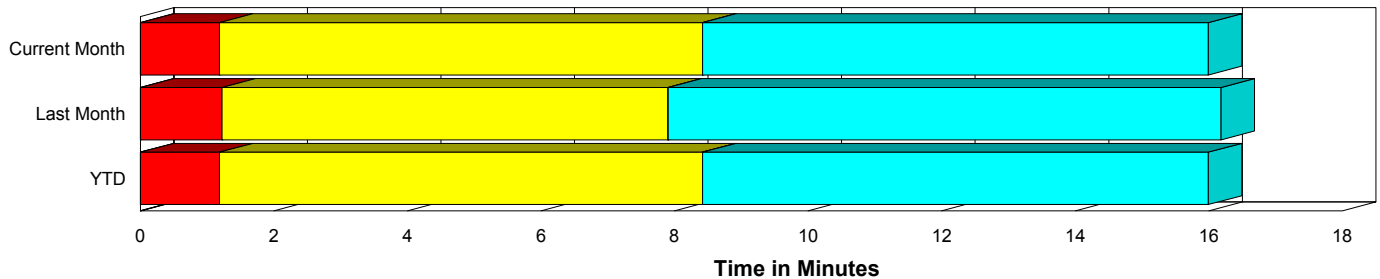
## Performance Measures Summary

	Traffic Events (No Lanes Blocked)			Incidents (Lanes Blocked)		
	<u>This Month</u>	<u>Last Month</u>	<u>YTD</u>	<u>This Month</u>	<u>Last Month</u>	<u>YTD</u>
Number of Events	5,170	5,202	5,170	190	201	190
TMC Detection (min.)	0.00	0.00	0.00	0.00	0.02	0.00
TMC Verification (min.)	1.19	1.23	1.19	1.01	0.79	1.01
TMC Response (min.)	9.31	8.68	9.31	9.93	8.48	9.93
RR Dispatch Time (min.)	1.48	1.71	1.48	2.27	1.53	2.27
RR Response Time (min.)	7.97	7.35	7.97	7.68	6.96	7.68
Roadway Clearance (min.)				34.26	33.63	34.26
Event Clearance (min.)	16.88	16.96	16.88	68.61	61.22	68.61
# of Events w/ RR/SIRV	4,192	4,180	4,192	187	193	187
RR/SIRV Responses	4,192	4,180	4,192	187	193	187
RR/SIRV Activities	3,133	3,322	3,133	348	376	348

### Incident Clearance Time-Line



### Traffic Event (Non-Lane Blockage) Time-Line



<span style="color: blue;">■</span> Avg. TMC Detection Time	<span style="color: green;">■</span> Avg. Time from TMC Response to Roadway Clearance*
<span style="color: red;">■</span> Avg. Time from TMC Detection to TMC Verification	<span style="color: cyan;">■</span> Avg. Time from Roadway Clearance to Incident/Event Clearance**
<span style="color: yellow;">■</span> Avg. Time from TMC Verification to TMC Response	

\* Roadway clearance equals all travel lanes open

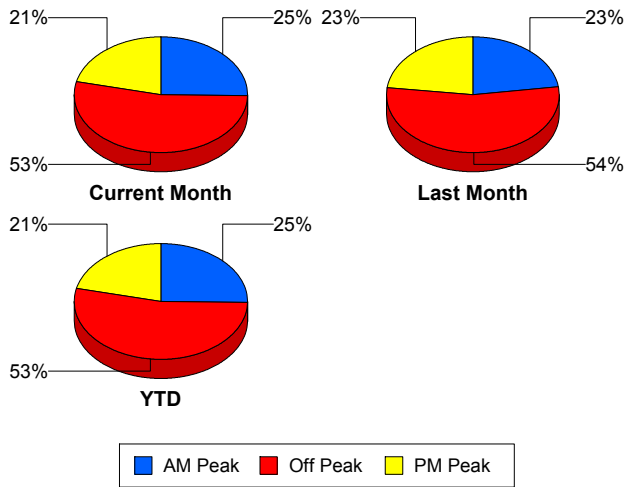
\*\* Incident clearance equals time when last responder has left the scene

## Performance Measures by Peak Period

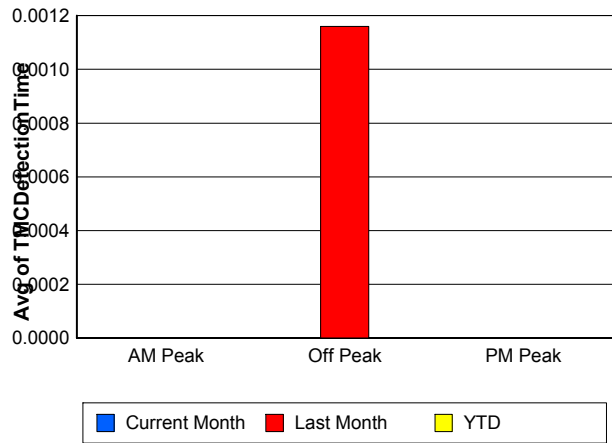
Note: AM peak period is defined as 6am to 10am and PM peak period is defined as 3pm to 7pm.

	AM Peak			Off Peak			PM Peak		
	<u>Current Month</u>	<u>Last Month</u>	<u>YTD</u>	<u>Current Month</u>	<u>Last Month</u>	<u>YTD</u>	<u>Current Month</u>	<u>Last Month</u>	<u>YTD</u>
Number of Events	1,356	1,234	1,356	2,858	2,917	2,858	1,146	1,252	1,146
Number of Incidents	32	38	32	99	103	99	59	60	59
TMC Detection (min.)	0.00	0.00	0.00	0.00	0.00	0.00	0.00	0.00	0.00
TMC Verification (min.)	0.63	0.71	0.63	1.25	1.23	1.25	1.67	1.65	1.67
TMC Response (min.)	8.88	8.08	8.88	9.24	8.82	9.24	10.05	8.91	10.05
RR Dispatch Time (min.)	1.08	1.10	1.08	1.55	2.11	1.55	1.95	1.42	1.95
RR Response Time (min.)	7.89	7.12	7.89	7.84	7.31	7.84	8.27	7.55	8.27
Event Clearance (min.)	16.49	16.01	16.49	18.43	18.91	18.43	22.06	20.48	22.06
Roadway Clearance (min.)	31.38	20.32	31.38	43.09	41.67	43.09	21.00	28.24	21.00
Incident Clearance (min.)	65.30	42.74	65.30	72.67	65.82	72.67	63.59	65.04	63.59
# of Events w/ RR/SIRV	1,127	1,058	1,127	2,286	2,293	2,286	966	1,022	966
RR/SIRV Responses	1,127	1,058	1,127	2,286	2,293	2,286	966	1,022	966
RR/SIRV Activities	846	859	846	1,824	1,930	1,824	811	909	811

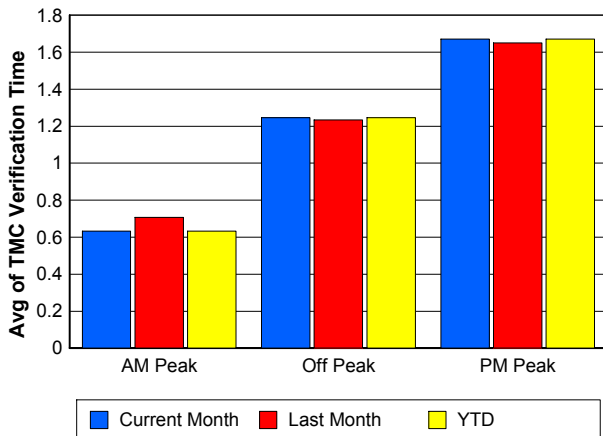
### Number of Events / Peak Period



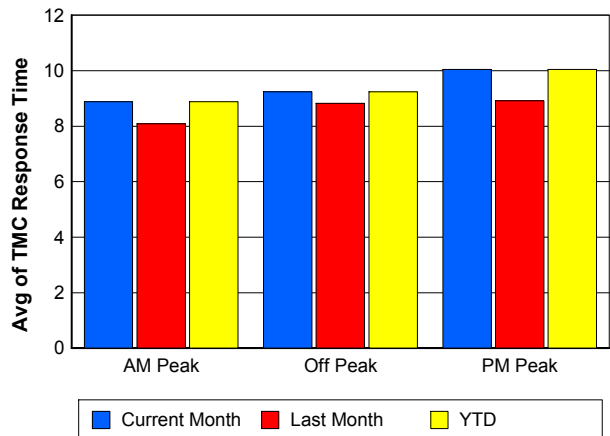
### TMC Detection Time



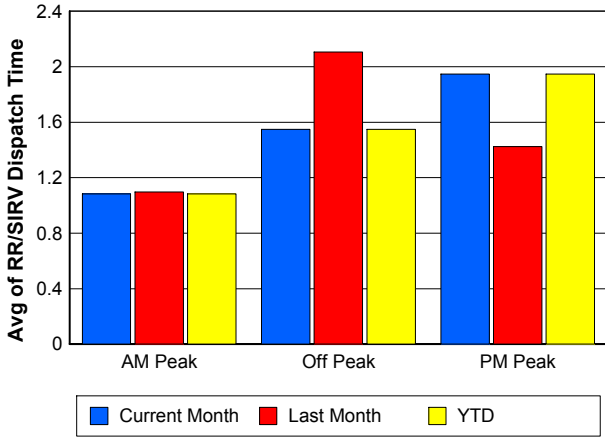
### TMC Verification Time



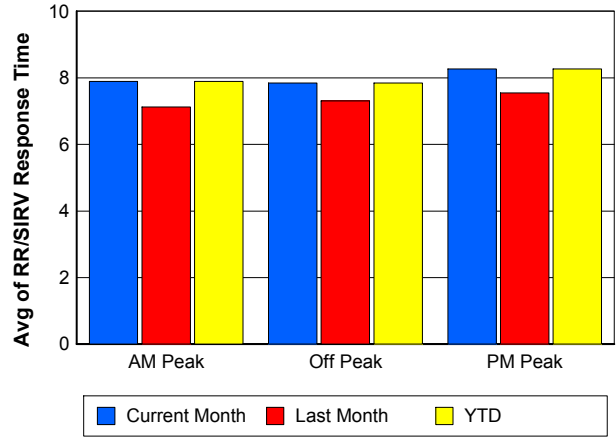
### TMC Response Time



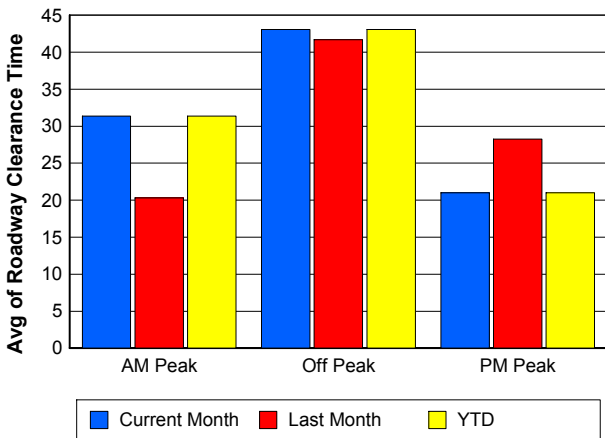
## Road Ranger / SIRV Dispatch Time



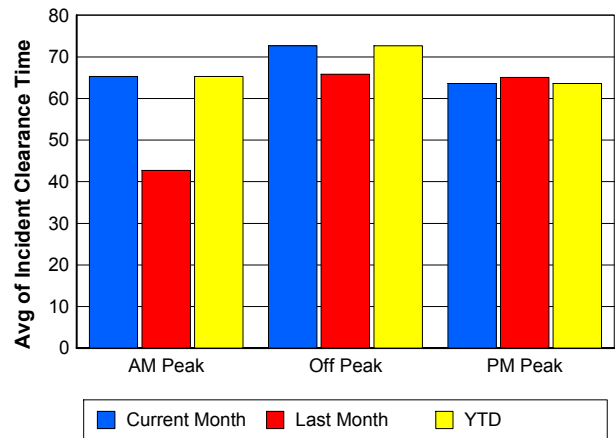
## Road Ranger / SIRV Response Time



## Roadway Clearance Time (2A)



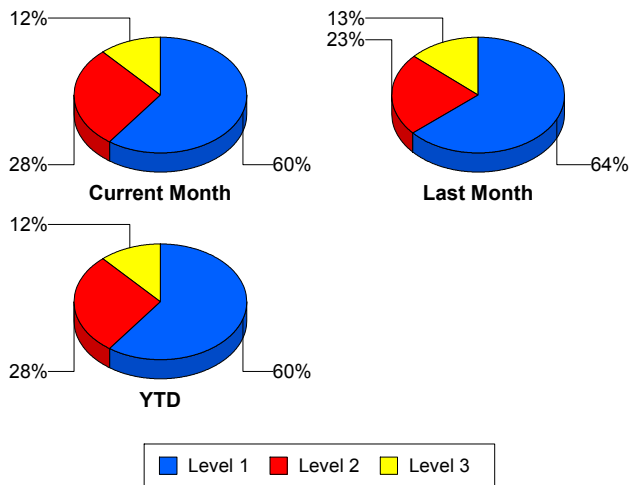
## Incident Clearance Time (3B)



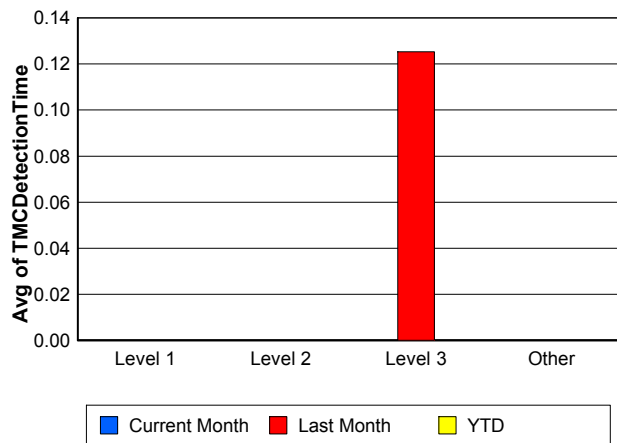
## Performance Measures by Severity

	Level 1			Level 2			Level 3			Other		
	<u>This Month</u>	<u>Last Month</u>	<u>YTD</u>	<u>This Month</u>	<u>Last Month</u>	<u>YTD</u>	<u>This Month</u>	<u>Last Month</u>	<u>YTD</u>	<u>This Month</u>	<u>Last Month</u>	<u>YTD</u>
Number of Events	114	128	114	54	46	54	22	27	22	5,170	5,202	5,170
Number of Incidents	114	128	114	54	46	54	22	27	22	0	0	0
TMC Detection (min.)	0.00	0.00	0.00	0.00	0.00	0.00	0.00	0.13	0.00	0.00	0.00	0.00
TMC Verification (min.)	0.62	0.56	0.62	1.82	1.07	1.82	1.01	1.39	1.01	1.19	1.23	1.19
TMC Response (min.)	8.33	6.49	8.33	13.08	9.16	13.08	10.12	16.27	10.12	9.31	8.68	9.31
RR Dispatch Time (min.)	1.86	1.34	1.86	3.29	1.64	3.29	1.95	2.21	1.95	1.48	1.71	1.48
RR Resp. Time (min.)	6.56	5.17	6.56	9.73	7.52	9.73	8.16	14.06	8.16	7.97	7.35	7.97
Event Clearance (min.)	58.15	47.43	58.15	77.01	70.99	77.01	102.19	109.98	102.19	16.88	16.96	16.88
Roadway Clear. (min.)	16.03	13.67	16.03	49.78	52.02	49.78	90.65	96.91	90.65			
Incident Clearance (min.)	58.15	47.43	58.15	77.01	70.99	77.01	102.19	109.98	102.19			
# of Events w/ RR/SIRV	113	122	113	53	45	53	21	26	21	4,192	4,180	4,192
RR/SIRV Responses	113	122	113	53	45	53	21	26	21	4,192	4,180	4,192
RR/SIRV Activities	185	196	185	105	110	105	58	70	58	3,133	3,322	3,133

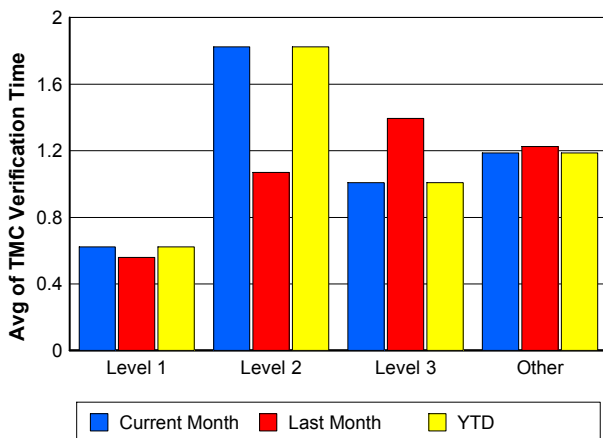
### Number of Events / Severity



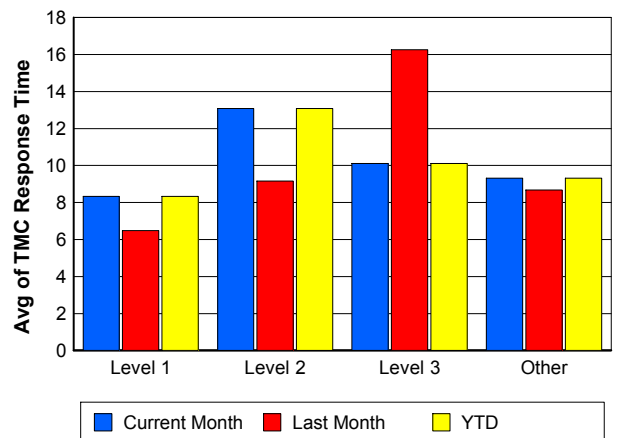
### TMC Detection Time



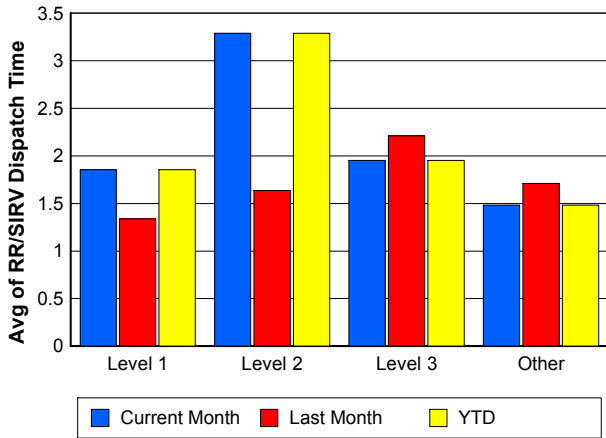
### TMC Verification Time



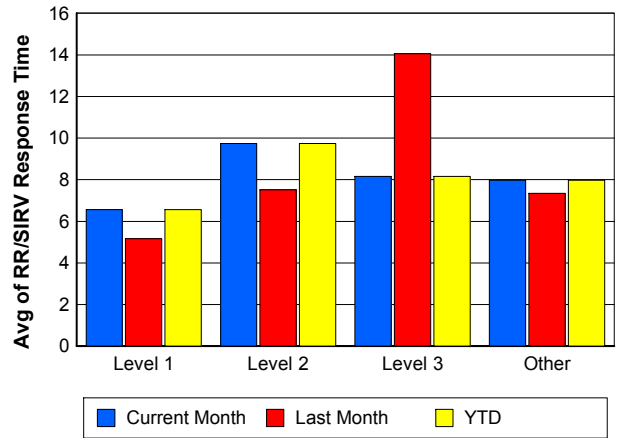
### TMC Response Time



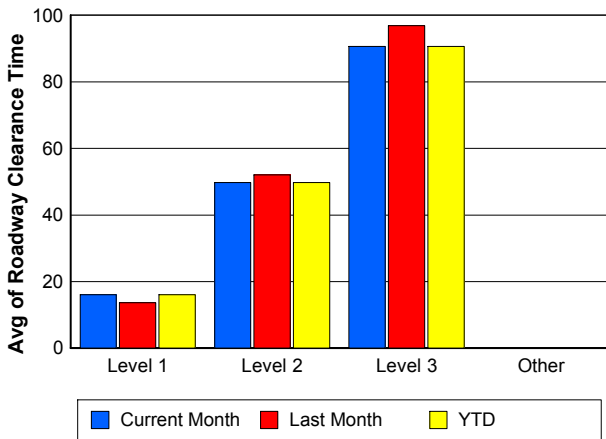
## Road Ranger / SIRV Dispatch Time



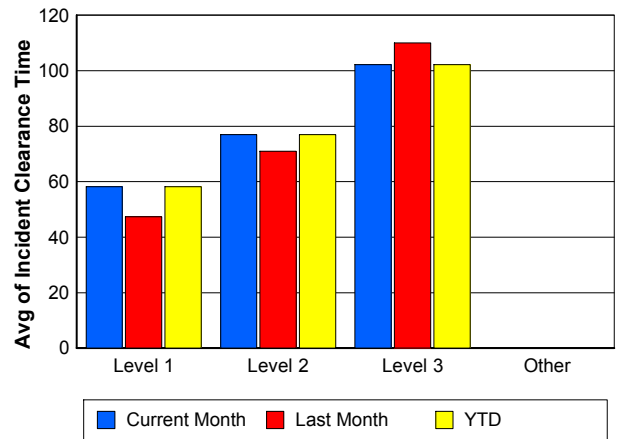
## Road Ranger / SIRV Response Time



## Roadway Clearance Time (2A)



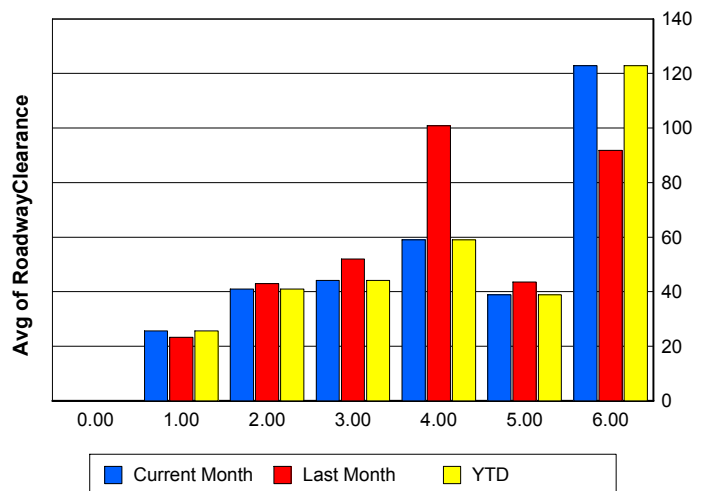
## Incident Clearance Time (3B)



## Roadway Clearance by Maximum Number of Lanes Blocked

	Current Month	Last Month	YTD
0			
1	25.60	23.31	25.60
2	40.92	42.94	40.92
3	44.12	52.02	44.12
4	59.02	100.81	59.02
5	38.89	43.51	38.89
6	122.82	91.80	122.82

## Roadway Clearance Time (2A)



## Performance Measures by Roadway

**595**

	<u>Current Month</u>	<u>Last Month</u>	<u>YTD</u>
Number of Events	195	222	195
Number of Incidents	7	12	7
TMC Detection (min.)	0.00	0.01	0.00
TMC Verification (min.)	2.32	1.39	2.32
TMC Response (min.)	14.72	13.59	14.72
RR Dispatch Time (min.)	2.47	4.83	2.47
RR Resp. Time (min.)	12.44	10.96	12.44
Event Clearance (min.)	18.64	21.12	18.64
Roadway Clear. (min.)	43.56	55.74	43.56
Incident Clearance (min.)	58.39	64.18	58.39
# of Events w/ RR/SIRV	144	168	144
RR/SIRV Responses	144	168	144
RR/SIRV Activities	97	126	97

**75**

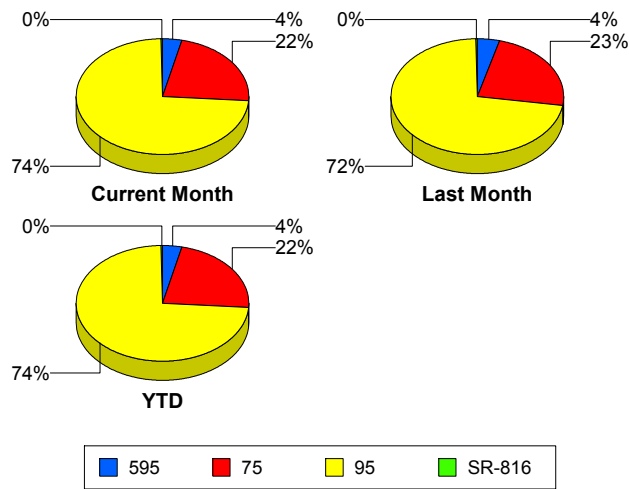
	<u>Current Month</u>	<u>Last Month</u>	<u>YTD</u>
Number of Events	1,204	1,268	1,204
Number of Incidents	13	24	13
TMC Detection (min.)	0.00	0.00	0.00
TMC Verification (min.)	1.91	1.94	1.91
TMC Response (min.)	10.13	10.36	10.13
RR Dispatch Time (min.)	1.64	2.24	1.64
RR Resp. Time (min.)	8.72	8.92	8.72
Event Clearance (min.)	18.65	19.49	18.65
Roadway Clear. (min.)	50.01	49.20	50.01
Incident Clearance (min.)	91.50	82.76	91.50
# of Events w/ RR/SIRV	934	973	934
RR/SIRV Responses	934	973	934
RR/SIRV Activities	738	839	738

**95**

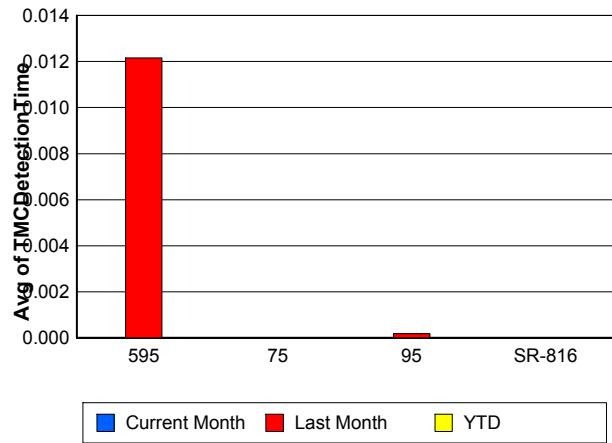
	<u>Current Month</u>	<u>Last Month</u>	<u>YTD</u>
Number of Events	3,945	3,892	3,945
Number of Incidents	159	150	159
TMC Detection (min.)	0.00	0.00	0.00
TMC Verification (min.)	0.91	0.97	0.91
TMC Response (min.)	8.97	8.00	8.97
RR Dispatch Time (min.)	1.45	1.38	1.45
RR Resp. Time (min.)	7.62	6.72	7.62
Event Clearance (min.)	18.75	18.19	18.75
Roadway Clear. (min.)	33.55	30.87	33.55
Incident Clearance (min.)	70.55	61.74	70.55
# of Events w/ RR/SIRV	3,285	3,217	3,285
RR/SIRV Responses	3,285	3,217	3,285
RR/SIRV Activities	2,629	2,716	2,629

	<u>Current Month</u>	<u>Last Month</u>	<u>YTD</u>
Number of Events	16	21	16
Number of Incidents	11	15	11
TMC Detection (min.)	0.00	0.00	0.00
TMC Verification (min.)	0.00	0.00	0.00
TMC Response (min.)	0.19	0.49	0.19
RR Dispatch Time (min.)	0.09	0.04	0.09
RR Resp. Time (min.)	0.10	0.45	0.10
Event Clearance (min.)	16.04	16.04	16.04
Roadway Clear. (min.)	20.04	18.57	20.04
Incident Clearance (min.)	20.03	19.16	20.03
# of Events w/ RR/SIRV	16	15	16
RR/SIRV Responses	16	15	16
RR/SIRV Activities	17	17	17

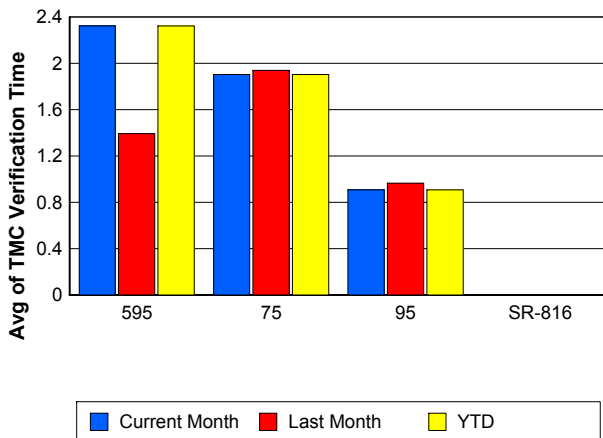
### Number of Events / Roadway



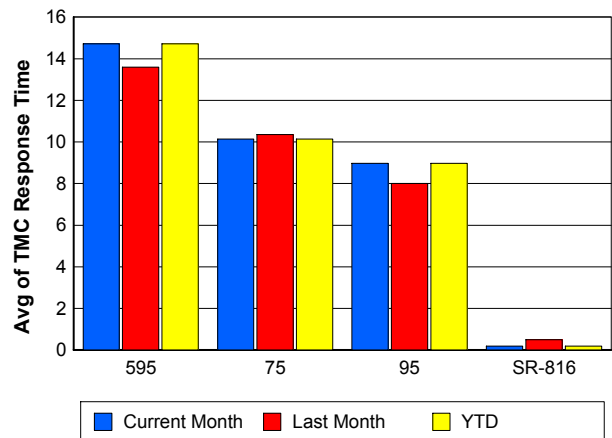
### TMC Detection Time



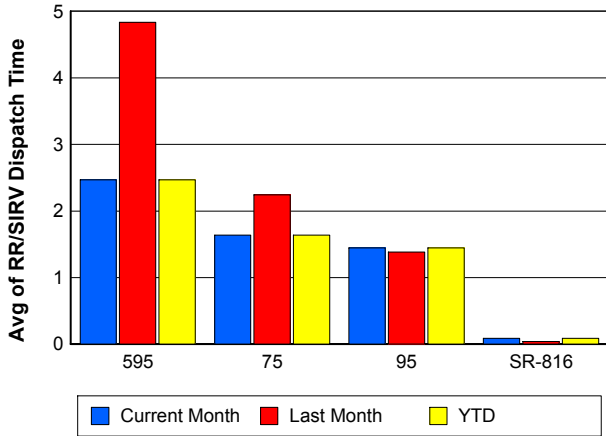
### TMC Verification Time



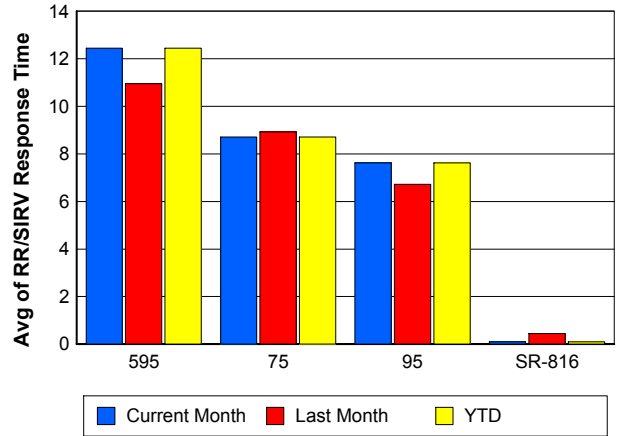
### TMC Response Time



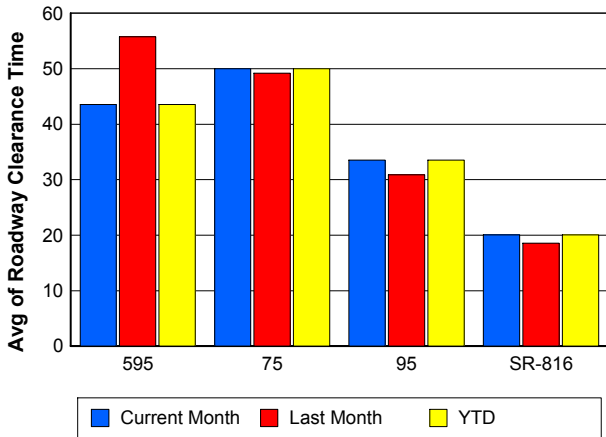
### Road Ranger / SIRV Dispatch Time



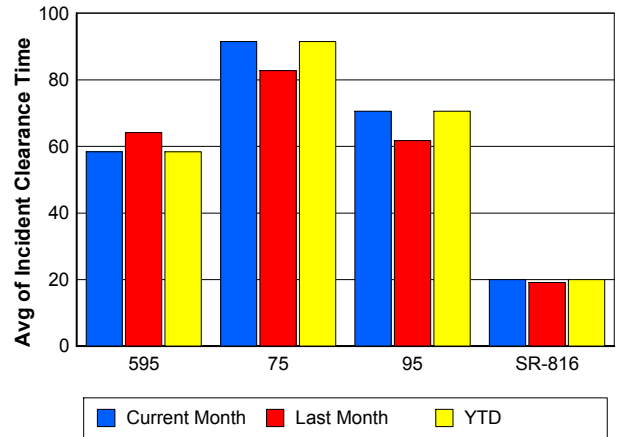
### Road Ranger / SIRV Response Time



### Roadway Clearance Time (2A)



### Incident Clearance Time (3B)



## Performance Measures by Event Type

### Accident

	<u>Current Month</u>	<u>Last Month</u>	<u>YTD</u>
Number of Events	286	303	286
Number of Incidents	128	130	128
TMC Detection (min.)	0.00	0.01	0.00
TMC Verification (min.)	1.68	1.54	1.68
TMC Response (min.)	11.33	9.09	11.33
RR Dispatch Time (min.)	2.33	1.44	2.33
RR Response Time (min.)	9.01	7.71	9.01
Event Clearance (min.)	60.54	54.32	60.54
Roadway Clearance (min.)	35.02	39.72	35.02
Incident Clearance (min.)	81.15	76.56	81.15
# of Events w/ RR/SIRV	285	300	285
RR/SIRV Assists	285	300	285
RR/SIRV Activities	428	460	428

### Debris on Roadway

	<u>Current Month</u>	<u>Last Month</u>	<u>YTD</u>
Number of Events	158	152	158
Number of Incidents	5	1	5
TMC Detection (min.)	0.00	0.00	0.00
TMC Verification (min.)	6.16	5.63	6.16
TMC Response (min.)	9.25	8.96	9.25
RR Dispatch Time (min.)	1.64	1.03	1.64
RR Response Time (min.)	7.57	7.96	7.57
Event Clearance (min.)	13.31	12.16	13.31
Roadway Clearance (min.)	58.09	37.63	58.09
Incident Clearance (min.)	50.76	42.73	50.76
# of Events w/ RR/SIRV	152	151	152
RR/SIRV Assists	152	151	152
RR/SIRV Activities	160	160	160

### Disabled Vehicle

	<u>Current Month</u>	<u>Last Month</u>	<u>YTD</u>
Number of Events	2,888	3,083	2,888
Number of Incidents	37	49	37
TMC Detection (min.)	0.00	0.00	0.00
TMC Verification (min.)	1.64	1.67	1.64
TMC Response (min.)	9.16	8.61	9.16
RR Dispatch Time (min.)	1.37	1.43	1.37
RR Response Time (min.)	7.87	7.28	7.87
Event Clearance (min.)	20.90	20.58	20.90
Roadway Clearance (min.)	17.10	16.51	17.10
Incident Clearance (min.)	30.35	26.75	30.35
# of Events w/ RR/SIRV	2,811	2,990	2,811
RR/SIRV Assists	2,811	2,990	2,811
RR/SIRV Activities	2,703	2,912	2,703

## Emergency Vehicles

	<u>Current Month</u>	<u>Last Month</u>	<u>YTD</u>
Number of Events	9	11	9
Number of Incidents	7	8	7
TMC Detection (min.)	0.00	0.00	0.00
TMC Verification (min.)	0.00	0.04	0.00
TMC Response (min.)	12.20	9.16	12.20
RR Dispatch Time (min.)	1.10	2.94	1.10
RR Response Time (min.)	11.01	6.22	11.01
Event Clearance (min.)	34.21	25.90	34.21
Roadway Clearance (min.)	27.99	29.82	27.99
Incident Clearance (min.)	31.69	31.85	31.69
# of Events w/ RR/SIRV	8	5	8
RR/SIRV Assists	8	5	8
RR/SIRV Activities	7	6	7

## Other

	<u>Current Month</u>	<u>Last Month</u>	<u>YTD</u>
Number of Events	1,988	1,820	1,988
Number of Incidents	5	2	5
TMC Detection (min.)	0.00	0.00	0.00
TMC Verification (min.)	0.04	0.03	0.04
TMC Response (min.)	8.66	9.42	8.66
RR Dispatch Time (min.)	1.67	2.80	1.67
RR Response Time (min.)	7.71	7.31	7.71
Event Clearance (min.)	9.65	9.56	9.65
Roadway Clearance (min.)	91.83	22.29	91.83
Incident Clearance (min.)	96.37	49.77	96.37
# of Events w/ RR/SIRV	1,097	901	1,097
RR/SIRV Assists	1,097	901	1,097
RR/SIRV Activities	152	129	152

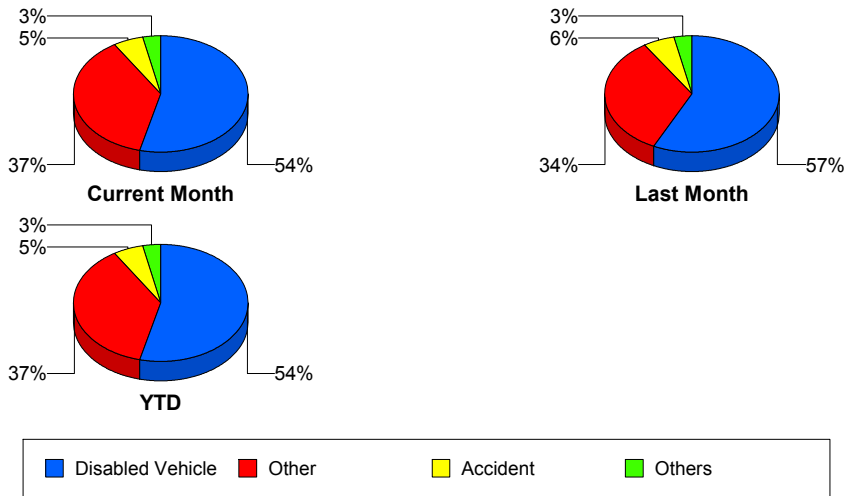
## Police Activity

	<u>Current Month</u>	<u>Last Month</u>	<u>YTD</u>
Number of Events	10	17	10
Number of Incidents	4	7	4
TMC Detection (min.)	0.00	0.04	0.00
TMC Verification (min.)	4.39	0.64	4.39
TMC Response (min.)	12.67	4.82	12.67
RR Dispatch Time (min.)	1.33	0.96	1.33
RR Response Time (min.)	11.44	4.03	11.44
Event Clearance (min.)	45.87	38.03	45.87
Roadway Clearance (min.)	63.65	47.51	63.65
Incident Clearance (min.)	76.47	49.86	76.47
# of Events w/ RR/SIRV	7	10	7
RR/SIRV Assists	7	10	7
RR/SIRV Activities	8	14	8

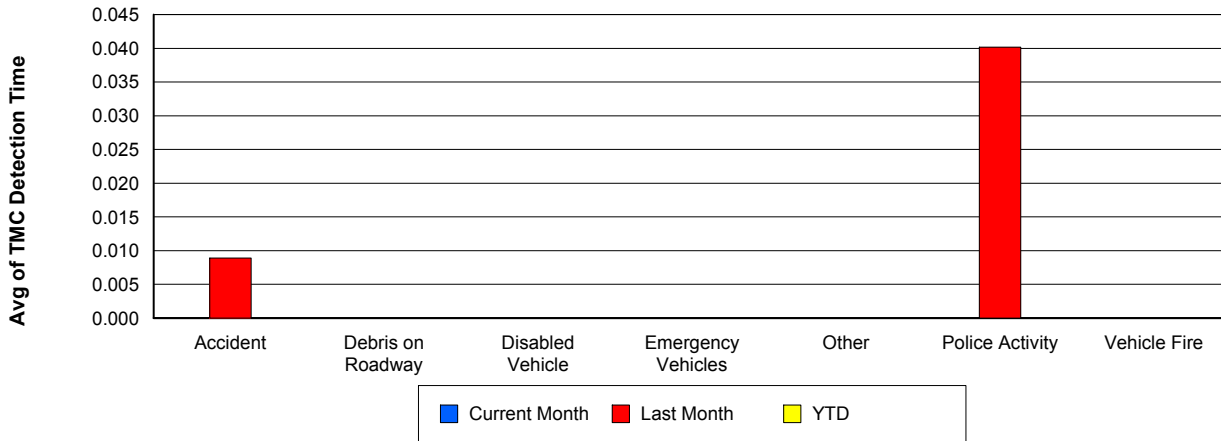
## Vehicle Fire

	<u>Current Month</u>	<u>Last Month</u>	<u>YTD</u>
Number of Events	8	6	8
Number of Incidents	4	4	4
TMC Detection (min.)	0.00	0.00	0.00
TMC Verification (min.)	1.14	0.99	1.14
TMC Response (min.)	11.49	10.84	11.49
RR Dispatch Time (min.)	2.16	3.64	2.16
RR Response Time (min.)	9.33	7.20	9.33
Event Clearance (min.)	57.49	59.72	57.49
Roadway Clearance (min.)	48.46	33.34	48.46
Incident Clearance (min.)	65.39	73.89	65.39
# of Events w/ RR/SIRV	8	6	8
RR/SIRV Assists	8	6	8
RR/SIRV Activities	13	10	13

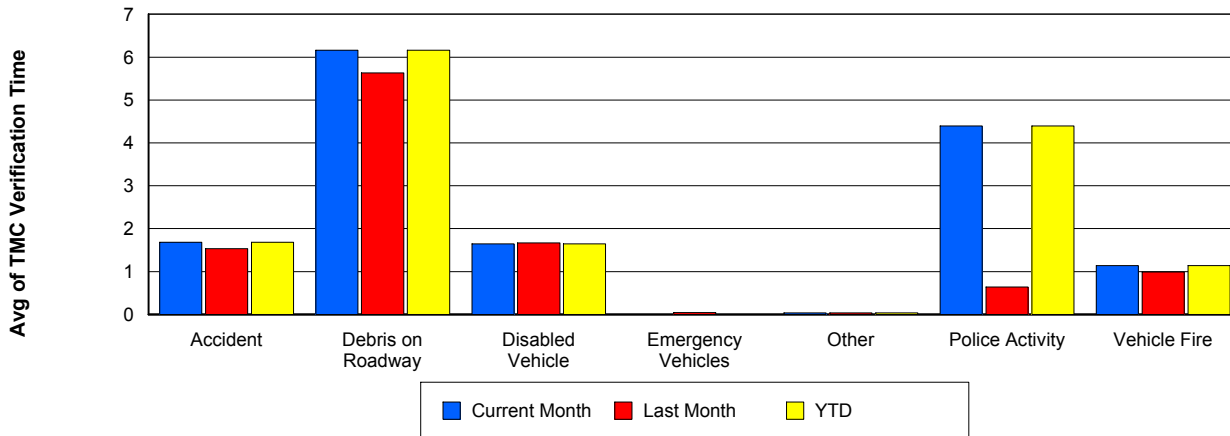
## Number of Events / Event Type



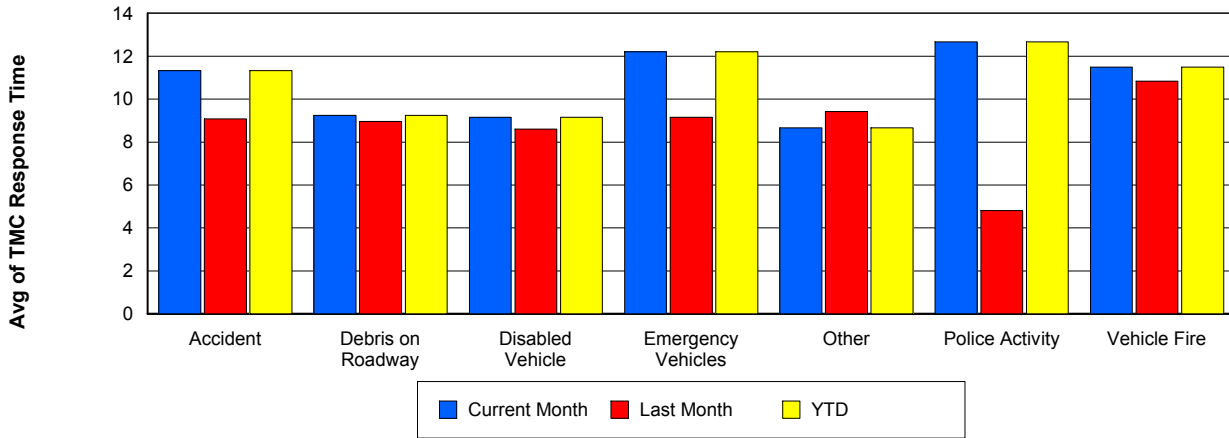
## TMC Detection Time



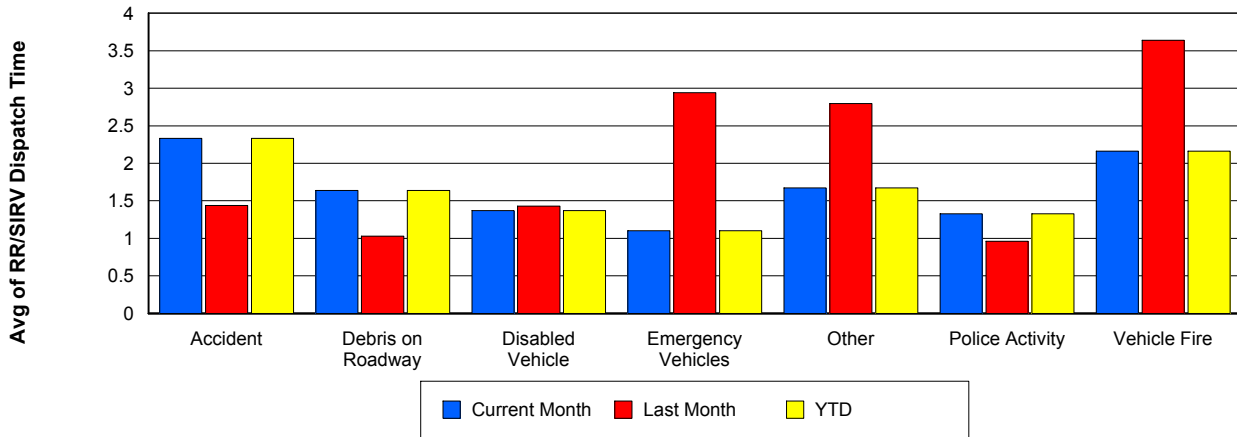
## TMC Verification Time



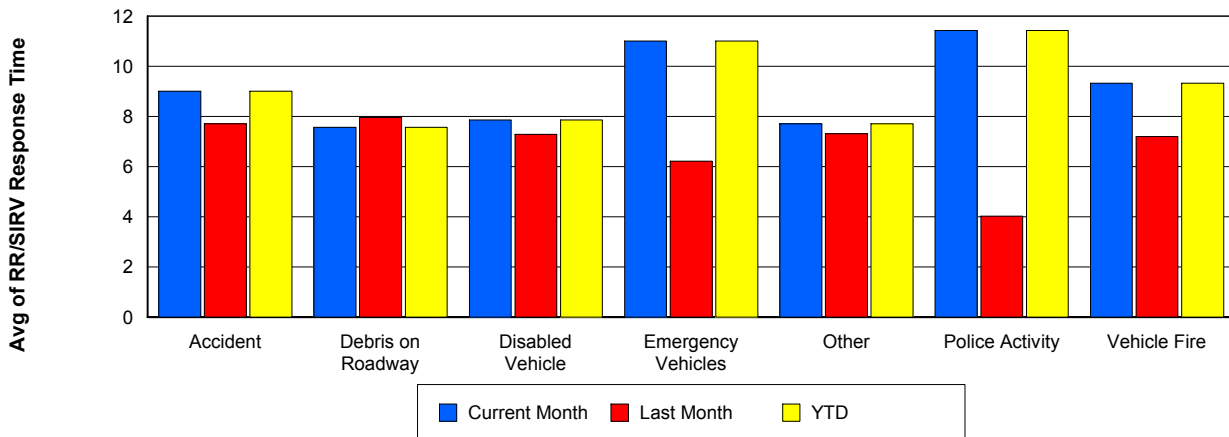
## TMC Response Time



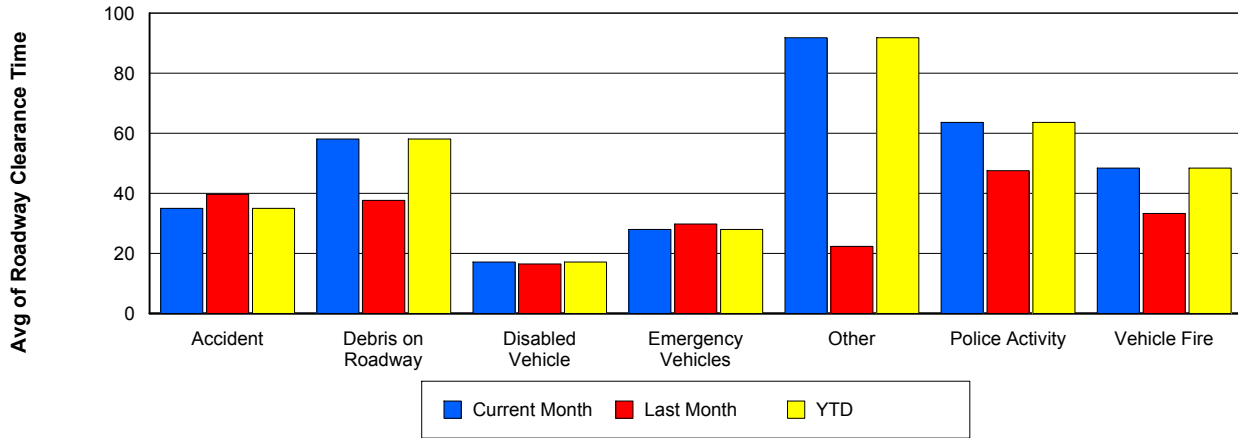
## Road Ranger / SIRV Dispatch Time



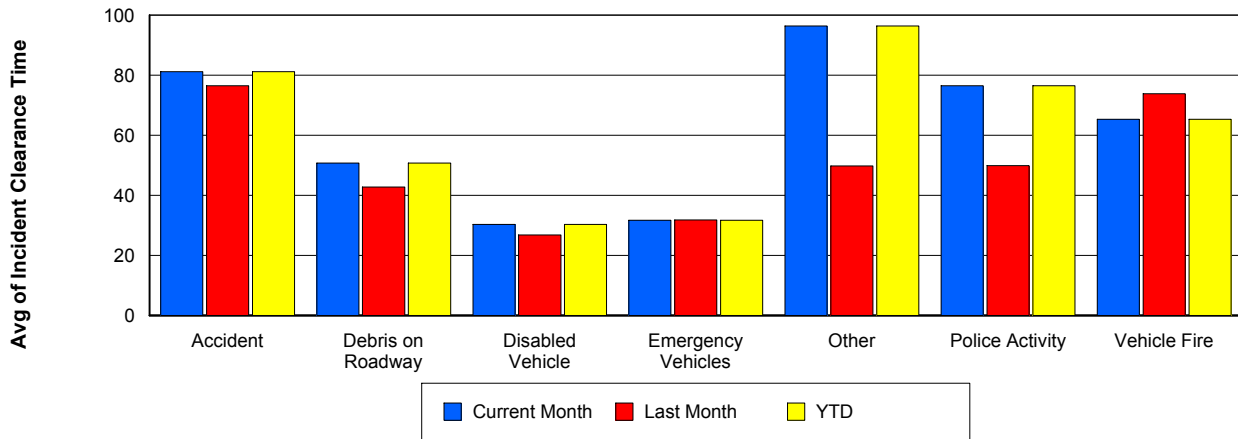
## Road Ranger / SIRV Response Time



## Roadway Clearance Time (2A)



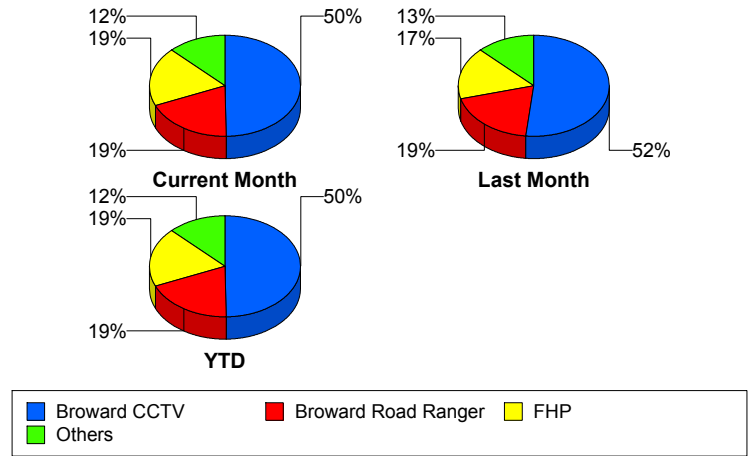
## Incident Clearance Time (3B)



## Incident Detection Methods

	Current Month	Last Month	YTD
Broward CCTV	92	103	92
Broward Road Ranger	35	38	35
Broward TMC	1	0	1
Broward VideoWall	5	4	5
BSO	3	5	3
District 4	4	8	4
FHP	35	33	35
Local Police	1	0	1
Motorist	2	2	2
Other	0	2	0
Road Watcher	1	2	1
SIRV	0	1	0
VisioPaD Detection	6	1	6
<b>Total</b>	<b>185</b>	<b>199</b>	<b>185</b>

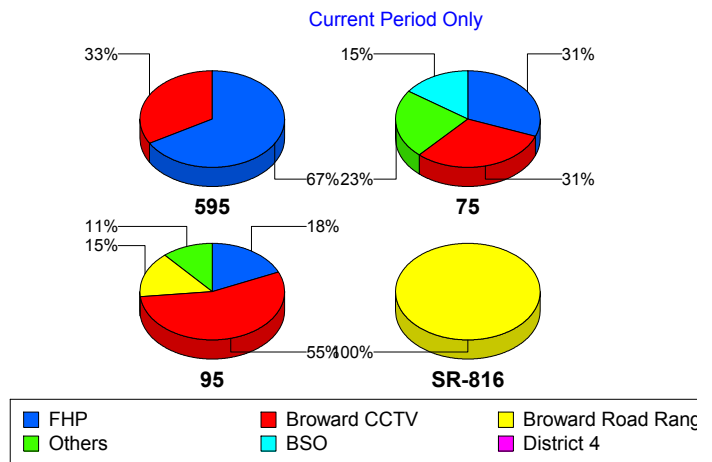
### Total Incidents by Detection Method



## Incident Detection Methods by Roadway

		Current Month	Last Month	YTD
595	Broward CCTV	1	4	1
	Broward Road Ranger	0	2	0
	BSO	0	2	0
	District 4	0	1	0
	FHP	2	1	2
	<b>Total</b>	<b>3</b>	<b>10</b>	<b>3</b>
75	Broward CCTV	4	10	4
	Broward Road Ranger	0	3	0
	BSO	2	2	2
	District 4	1	1	1
	FHP	4	5	4
	Other	0	2	0
	VisioPaD Detection	2	1	2

### Total Events by Roadway and Detection Method

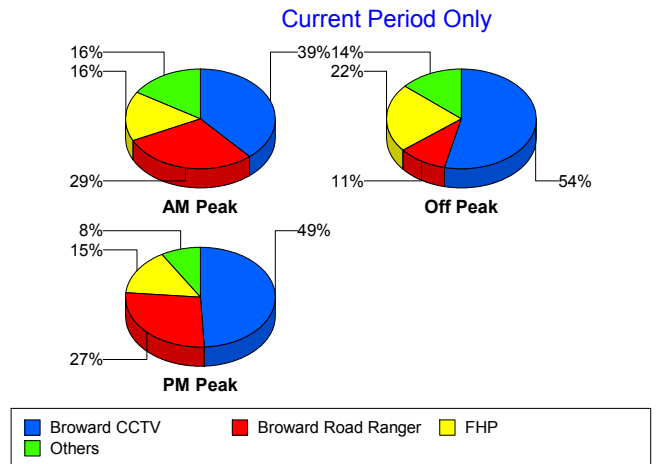


		Current Month	Last Month	YTD
75	Total	13	24	13
95	Broward CCTV	87	89	87
	Broward Road Ranger	24	20	24
	Broward TMC	1	0	1
	Broward VideoWall	5	4	5
	BSO	1	1	1
	District 4	3	5	3
	FHP	29	27	29
	Local Police	1	0	1
	Motorist	2	2	2
	Road Watcher	1	1	1
	SIRV	0	1	0
	VisioPaD Detection	4	0	4
	Total	158	150	158
	SR-816	Broward Road Ranger	11	13
District 4		0	1	0
Road Watcher		0	1	0
Total		11	15	11
Total	185	199	185	

### Incident Detection Methods by Peak Period

		Current Month	Last Month	YTD
AM Peak	Broward CCTV	12	19	12
	Broward Road Ranger	9	8	9
	Broward VideoWall	3	3	3
	District 4	1	2	1
	FHP	5	4	5
	Local Police	1	0	1
	Road Watcher	0	1	0
	Total	31	37	31
Off Peak	Broward CCTV	51	56	51
	Broward Road Ranger	10	13	10

Total Events by Peak Period and Detection Method

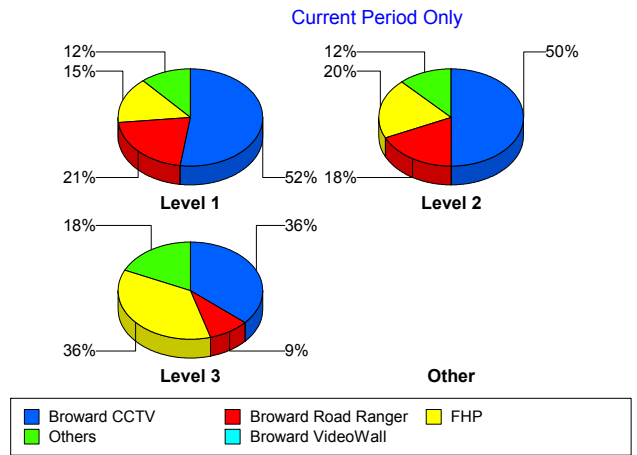


		Current Month	Last Month	YTD
Off Peak	Broward TMC	1	0	1
	Broward VideoWall	1	0	1
	BSO	2	4	2
	District 4	3	5	3
	FHP	21	18	21
	Motorist	1	2	1
	Other	0	1	0
	Road Watcher	1	1	1
	SIRV	0	1	0
	VisioPaD Detection	4	1	4
	Total	95	102	95
PM Peak	Broward CCTV	29	28	29
	Broward Road Ranger	16	17	16
	Broward VideoWall	1	1	1
	BSO	1	1	1
	District 4	0	1	0
	FHP	9	11	9
	Motorist	1	0	1
	Other	0	1	0
	VisioPaD Detection	2	0	2
	Total	59	60	59
Total		185	199	185

## Incident Detection Methods by Severity

		Current Month	Last Month	YTD
Level 1	Broward CCTV	59	64	59
	Broward Road Ranger	24	29	24
	Broward TMC	1	0	1
	Broward VideoWall	4	3	4
	BSO	1	2	1
	District 4	2	7	2
	FHP	17	18	17
	Motorist	2	0	2
	Other	0	2	0
	Road Watcher	1	1	1
	VisioPaD Detection	2	0	2
	<b>Total</b>	<b>113</b>	<b>126</b>	<b>113</b>
Level 2	Broward CCTV	25	23	25
	Broward Road Ranger	9	8	9
	Broward VideoWall	1	1	1
	BSO	0	1	0
	District 4	1	0	1
	FHP	10	8	10
	Local Police	1	0	1
	Motorist	0	2	0
	Road Watcher	0	1	0
	SIRV	0	1	0
	VisioPaD Detection	3	1	3
	<b>Total</b>	<b>50</b>	<b>46</b>	<b>50</b>
Level 3	Broward CCTV	8	16	8
	Broward Road Ranger	2	1	2
	BSO	2	2	2
	District 4	1	1	1
	FHP	8	7	8
	VisioPaD Detection	1	0	1
	<b>Total</b>	<b>22</b>	<b>27</b>	<b>22</b>

**Total Events by Severity and Detection Method**



	Current Month	Last Month	YTD
Total	185	199	185

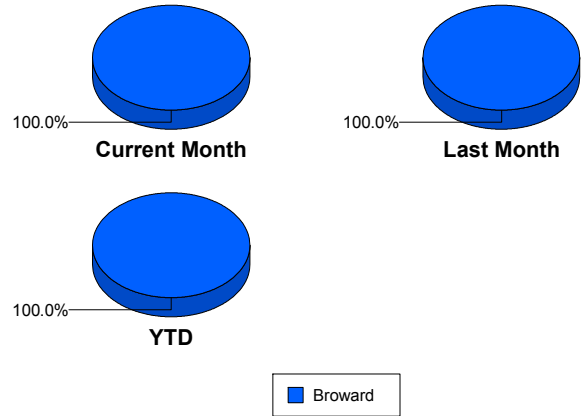
# Road Ranger / SIRV Performance Measures

## Road Ranger / SIRV Performance By County

Values presented are:  
 - Total Events with a RR/SIRV Response  
 - Total RR/SIRV Responses,  
 - Total Activities Performed

	Current Mo	Last Month	YTD
Broward	3,810	4,036	3,810
	4,057	4,310	4,057
	4,210	4,465	4,210

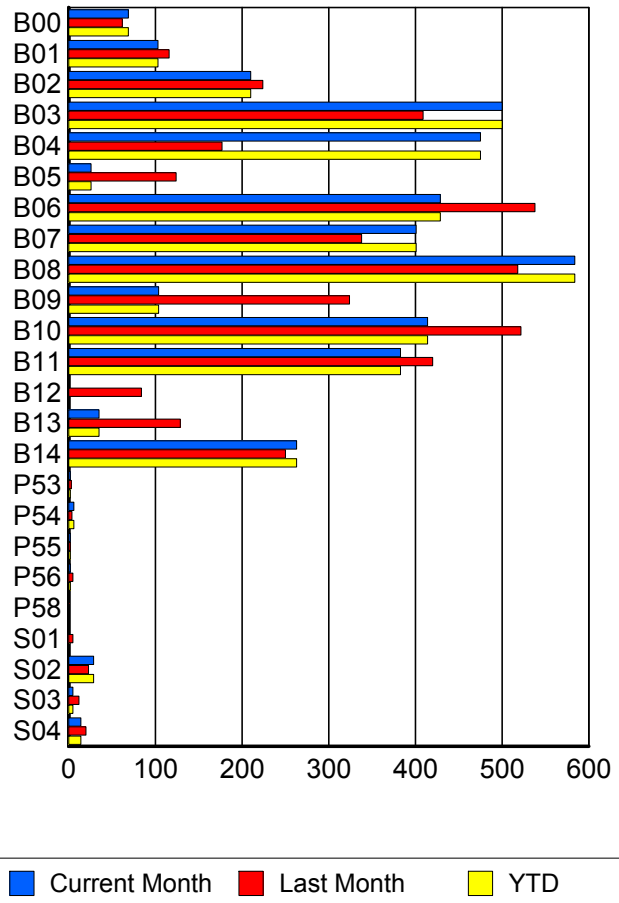
RR/SIRV Responses per County



## Road Ranger / SIRV Performance By Truck

	Current Mo	Last Month	YTD
B00	68	60	68
	69	62	69
	76	66	76
B01	102	115	102
	103	116	103
	105	120	105
B02	208	221	208
	210	224	210
	213	230	213
B03	498	400	498
	500	409	500
	527	424	527
B04	466	177	466
	475	177	475
	489	186	489
B05	26	122	26
	26	124	26
	26	128	26
B06	422	532	422
	429	538	429
	448	566	448
B07	392	335	392
	401	338	401
	418	350	418
B08	574	508	574
	584	518	584
	608	537	608

RR/SIRV Responses per Truck



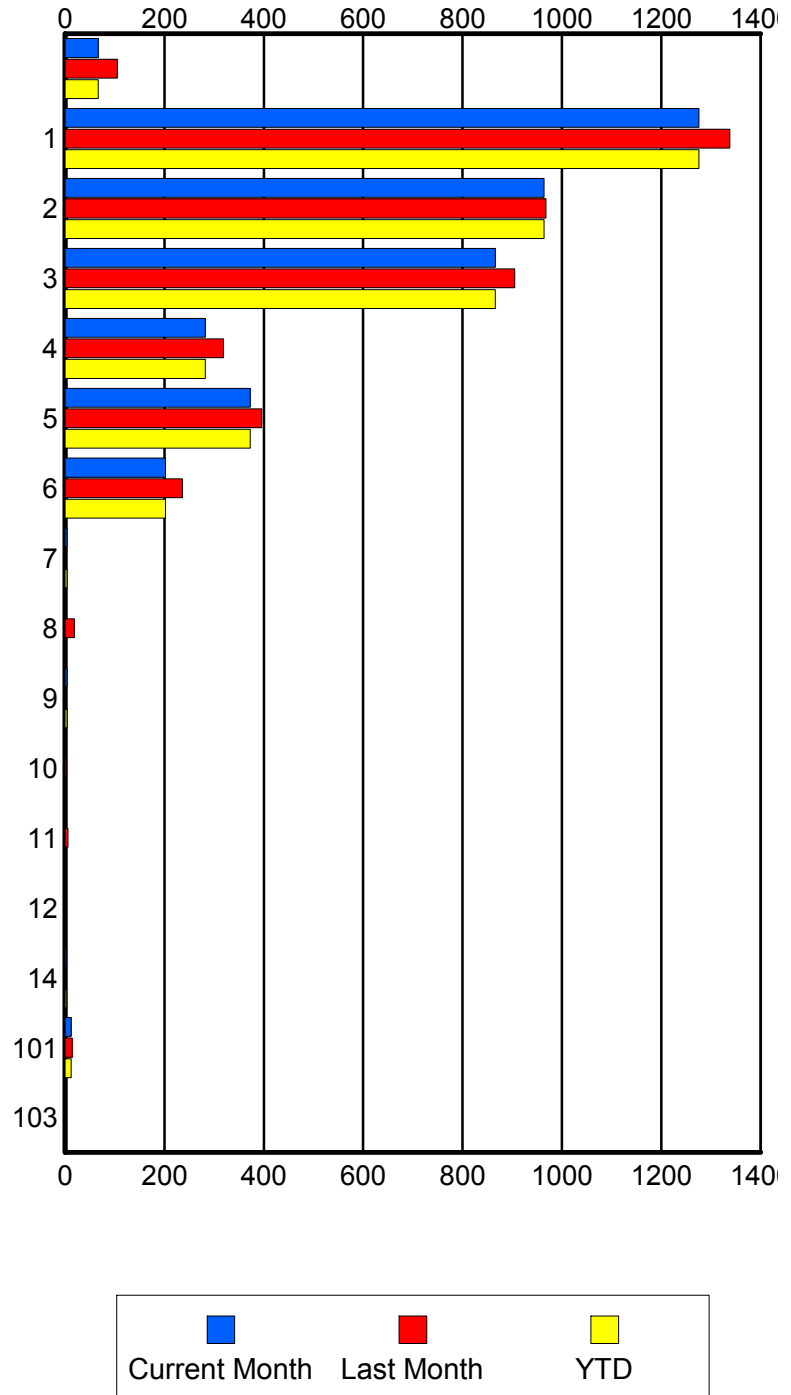
	Current Mo	Last Month	YTD
B09	102 104 106	317 324 336	102 104 106
B10	410 414 422	516 522 538	410 414 422
B11	381 383 395	415 420 429	381 383 395
B12	0 0 0	82 84 87	0 0 0
B13	34 35 36	127 129 132	34 35 36
B14	259 263 274	249 250 258	259 263 274
P53	2 2 2	3 3 3	2 2 2
P54	6 6 6	4 4 4	6 6 6
P55	2 2 2	2 2 2	2 2 2
P56	2 2 4	5 5 5	2 2 4
P58	0 0 0	1 1 1	0 0 0
S01	1 1 1	5 5 5	1 1 1
S02	29 29 31	21 23 24	29 29 31
S03	4 5 6	12 12 14	4 5 6
S04	14 14 15	19 20 20	14 14 15

### Road Ranger / SIRV Performance By Beat

	Current Mo	Last Month	YTD
	65	97	65
	67	105	67
	70	108	70
1	1,222	1,272	1,222
	1,276	1,338	1,276
	1,336	1,387	1,336
2	939	938	939
	964	968	964
	998	999	998
3	849	881	849
	866	905	866
	899	941	899
4	276	313	276
	282	319	282
	291	332	291
5	371	390	371
	373	396	373
	381	407	381
6	200	235	200
	202	236	202
	206	247	206
7	4	0	4
	4	0	4
	4	0	4
8	0	19	0
	0	19	0
	0	20	0
9	4	0	4
	4	0	4
	4	0	4
10	0	3	0
	0	3	0
	0	3	0
11	2	6	2
	2	6	2
	2	6	2
12	2	0	2
	2	0	2
	2	0	2
14	3	0	3
	3	0	3
	3	0	3
101	12	14	12
	12	14	12
	14	14	14

Values presented are:  
 - Total Events with a RR/SIRV Response  
 - Total RR/SIRV Responses,  
 - Total Activities Performed

### RR/SIRV Responses per Beat



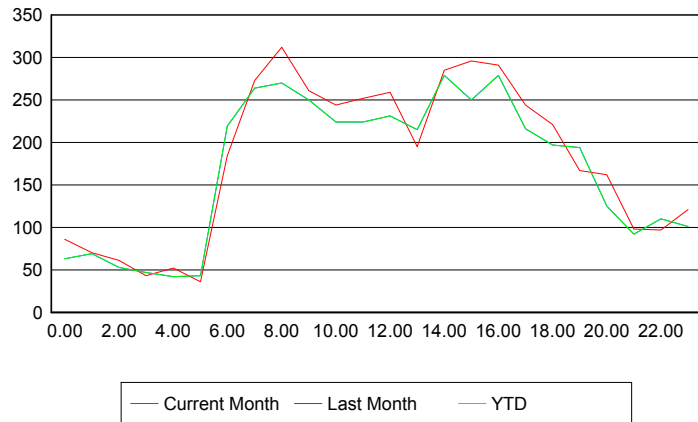
	Current Mo	Last Month	YTD
103	0	1	0
	0	1	0
	0	1	0

### Road Ranger / SIRV Performance By Time of Day

Values presented are:  
 - Total Events with a RR/SIRV Response  
 - Total RR/SIRV Responses,  
 - Total Activities Performed

	Current Mo	Last Month	YTD
12AM-1AM	61 63 67	81 86 88	61 63 67
1AM-2AM	66 69 72	70 70 71	66 69 72
2AM-3AM	47 53 58	58 61 66	47 53 58
3AM-4AM	45 47 51	42 43 43	45 47 51
4AM-5AM	41 42 42	47 52 55	41 42 42
5AM-6AM	36 43 47	31 36 37	36 43 47
6AM-7AM	203 219 226	169 184 190	203 219 226
7AM-8AM	252 264 275	260 273 284	252 264 275
8AM-9AM	254 270 277	294 312 322	254 270 277
9AM-10AM	240 250 260	243 261 266	240 250 260
10AM-11AM	210 224 236	229 244 250	210 224 236
11AM-12PM	208 224 233	226 252 265	208 224 233

### Number of Responses / Hour of the Day



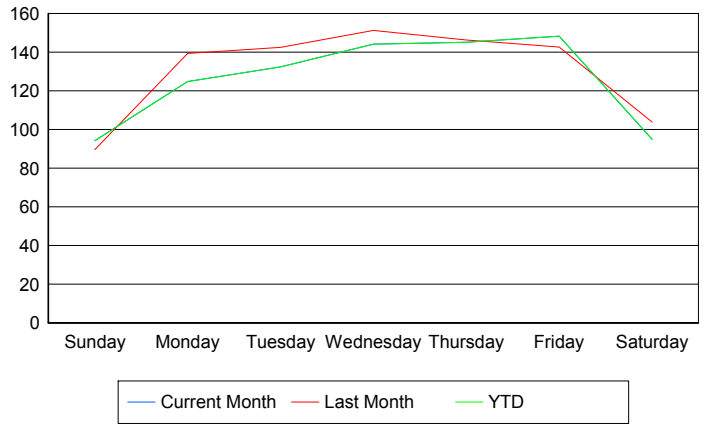
	Current Mo	Last Month	YTD
12PM-1PM	220 231 236	242 259 271	220 231 236
1PM-2PM	197 215 223	181 195 200	197 215 223
2PM-3PM	254 279 295	263 285 298	254 279 295
3PM-4PM	233 250 257	273 296 316	233 250 257
4PM-5PM	262 279 289	272 291 302	262 279 289
5PM-6PM	205 216 219	239 244 247	205 216 219
6PM-7PM	189 197 207	206 221 227	189 197 207
7PM-8PM	182 194 199	161 167 172	182 194 199
8PM-9PM	119 125 126	143 162 168	119 125 126
9PM-10PM	88 92 94	92 98 103	88 92 94
10PM-11PM	102 110 117	94 97 101	102 110 117
11PM-12AM	96 101 104	120 121 123	96 101 104

**Road Ranger / SIRV Performance By Day of Week**

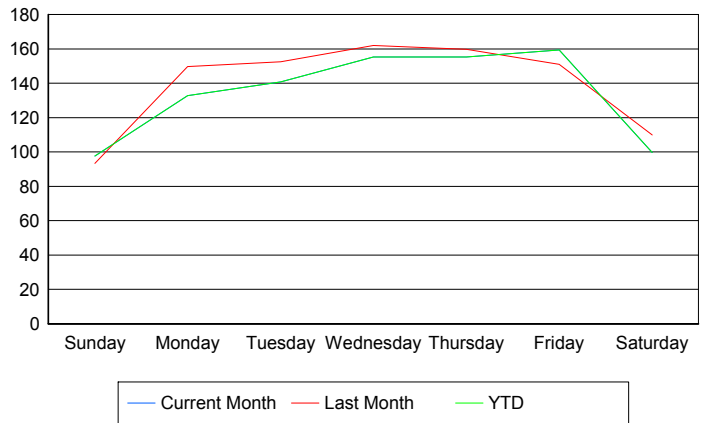
Values presented are: - Total Events with a RR/SIRV Response - Total RR/SIRV Responses, - Total Activities Performed
---

	Current Mo	Last Month	YTD
Sunday	<b>458</b>	<b>350</b>	<b>458</b>
	<b>476</b>	<b>364</b>	<b>476</b>
	<b>491</b>	<b>375</b>	<b>491</b>
Monday	<b>491</b>	<b>556</b>	<b>491</b>
	<b>523</b>	<b>598</b>	<b>523</b>
	<b>541</b>	<b>616</b>	<b>541</b>
Tuesday	<b>530</b>	<b>711</b>	<b>530</b>
	<b>563</b>	<b>760</b>	<b>563</b>
	<b>578</b>	<b>790</b>	<b>578</b>
Wednesday	<b>574</b>	<b>751</b>	<b>574</b>
	<b>617</b>	<b>802</b>	<b>617</b>
	<b>636</b>	<b>833</b>	<b>636</b>
Thursday	<b>580</b>	<b>727</b>	<b>580</b>
	<b>621</b>	<b>790</b>	<b>621</b>
	<b>653</b>	<b>823</b>	<b>653</b>
Friday	<b>710</b>	<b>543</b>	<b>710</b>
	<b>762</b>	<b>572</b>	<b>762</b>
	<b>797</b>	<b>590</b>	<b>797</b>
Saturday	<b>472</b>	<b>401</b>	<b>472</b>
	<b>495</b>	<b>424</b>	<b>495</b>
	<b>514</b>	<b>438</b>	<b>514</b>

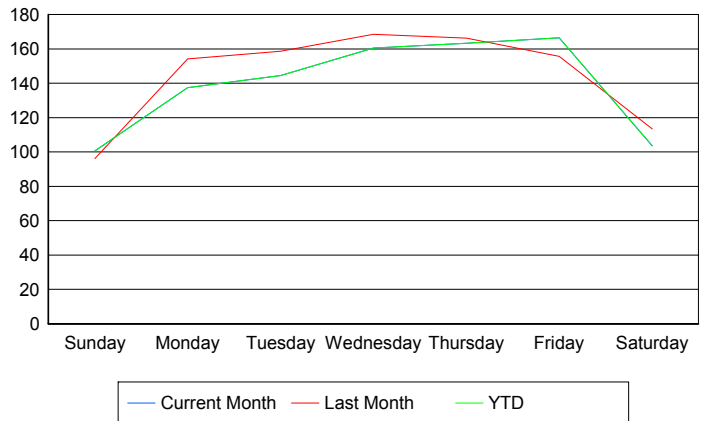
**Avg # of events with a RR/SIRV Response per Day of the Week**



**Avg # of RR/SIRV Responses per Day of the Week**



**Avg # of RR/SIRV Activities Performed per Day of the Week**



### Road Ranger / SIRV Responses per Time of Day and Day of Week

