



Monthly Performance Measures Report Broward County



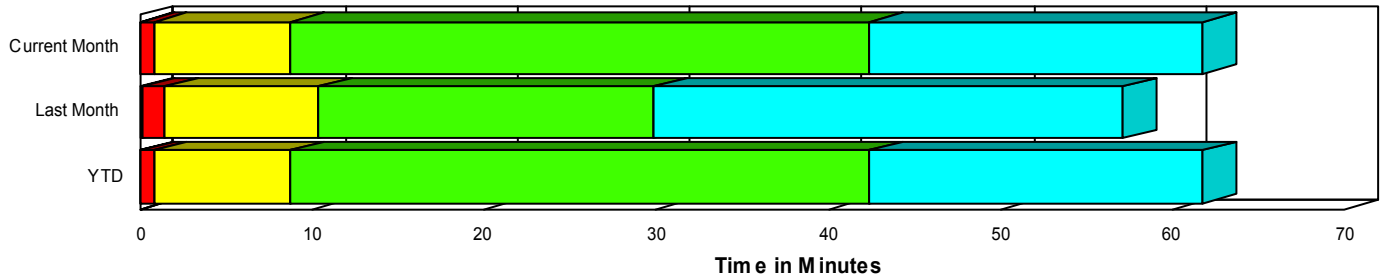
Period From Jan 1, 2008 to Jan 31, 2008

Created on:
February 04, 2008
10:05 am

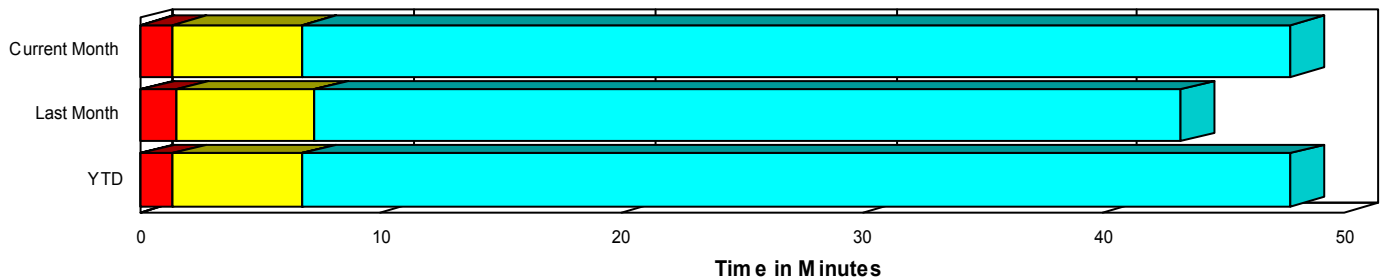
Performance Measures Summary

	Traffic Events (No Lanes Blocked)			Incidents (Lanes Blocked)		
	<u>This Month</u>	<u>Last Month</u>	<u>YTD</u>	<u>This Month</u>	<u>Last Month</u>	<u>YTD</u>
Number of Events	5,043	5,120	5,043	230	264	230
TMC Detection (min.)	0.03	0.02	0.03	0.09	0.12	0.09
TMC Verification (min.)	1.36	1.47	1.36	0.72	1.33	0.72
TMC Response (min.)	7.06	7.66	7.06	8.68	10.28	8.68
RR Dispatch Time (min.)	1.99	2.08	1.99	2.26	2.46	2.26
RR Response Time (min.)	5.76	5.69	5.76	6.42	7.86	6.42
Roadway Clearance (min.)				42.37	29.32	42.37
Event Clearance (min.)	48.09	43.60	48.09	59.14	56.10	59.14
# of Events w/ RR/SIRV	3,496	3,517	3,496	212	256	212
RR/SIRV Responses	3,594	3,611	3,594	374	456	374
RR/SIRV Activities	3,679	3,714	3,679	408	485	408

Incident Clearance TimeLine



Traffic Event(Non-Lane Blockage) Time-Line



■ Avg. TMC Detection Time	■ Avg. Time from TMC Response to Roadway Clearance*
■ Avg. Time from TMC Detection to TMC Verification	■ Avg. Time from Roadway Clearance to Incident/Event Clearance**
■ Avg. Time from TMC Verification to TMC Response	

* Roadway clearance equals all travel lanes open

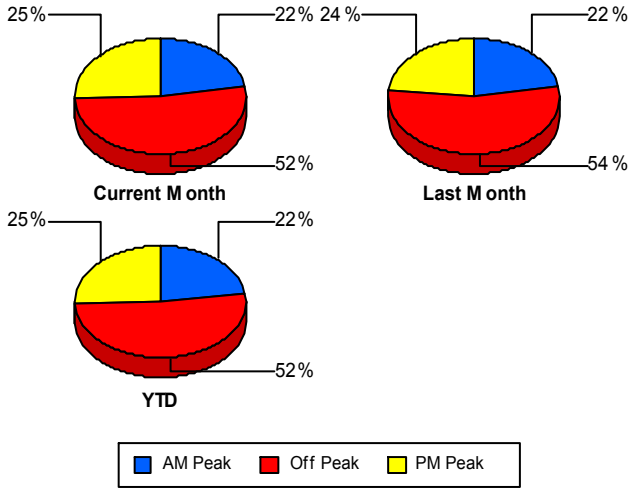
** Incident clearance equals time when last responder has left the scene

Performance Measures by Peak Period

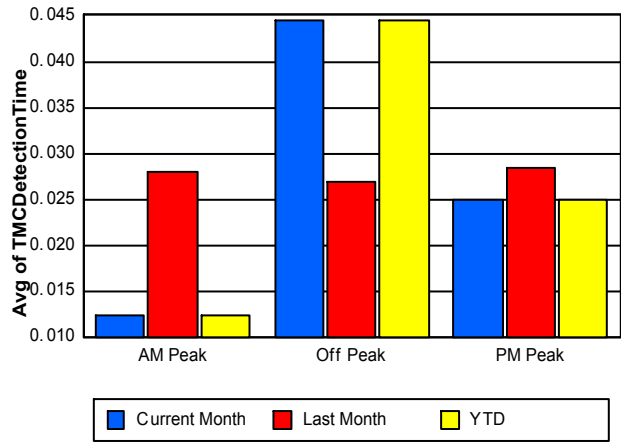
Note: AM peak period is defined as 6am to 10am and PM peak period is defined as 3pm to 7pm.

	AM Peak			Off Peak			PM Peak		
	Current Month	Last Month	YTD	Current Month	Last Month	YTD	Current Month	Last Month	YTD
Number of Events	1,185	1,195	1,185	2,752	2,916	2,752	1,336	1,273	1,336
Number of Incidents	55	65	55	109	132	109	66	67	66
TMC Detection (min.)	0.01	0.03	0.01	0.04	0.03	0.04	0.02	0.03	0.02
TMC Verification (min.)	0.94	1.17	0.94	1.42	1.44	1.42	1.51	1.80	1.51
TMC Response (min.)	6.22	6.19	6.22	7.66	8.55	7.66	7.00	8.01	7.00
RR Dispatch Time (min.)	1.22	1.69	1.22	2.76	2.46	2.76	1.20	1.72	1.20
RR Response Time (min.)	5.14	4.57	5.14	6.06	6.16	6.06	5.90	6.45	5.90
Event Clearance (min.)	37.96	31.17	37.96	56.05	48.59	56.05	42.56	46.42	42.56
Roadway Clearance (min.)	49.26	27.35	49.26	44.73	32.53	44.73	32.74	24.91	32.74
Incident Clearance (min.)	63.51	61.06	63.51	64.30	55.75	64.30	46.98	51.98	46.98
# of Events w/ RR/SIRV	898	937	898	1,877	1,963	1,877	933	873	933
RR/SIRV Responses	964	1,017	964	2,014	2,101	2,014	990	949	990
RR/SIRV Activities	987	1,055	987	2,070	2,163	2,070	1,030	981	1,030

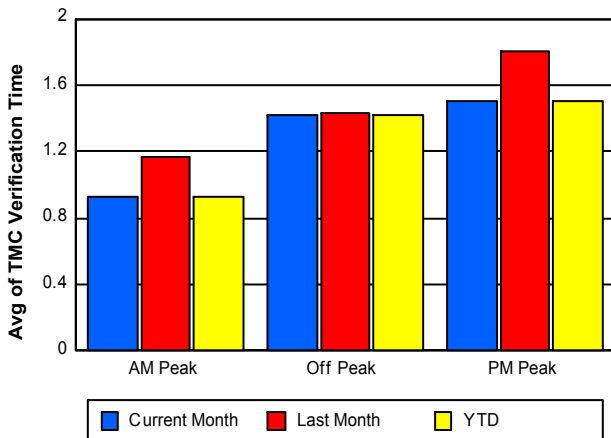
Number of Events / Peak Period



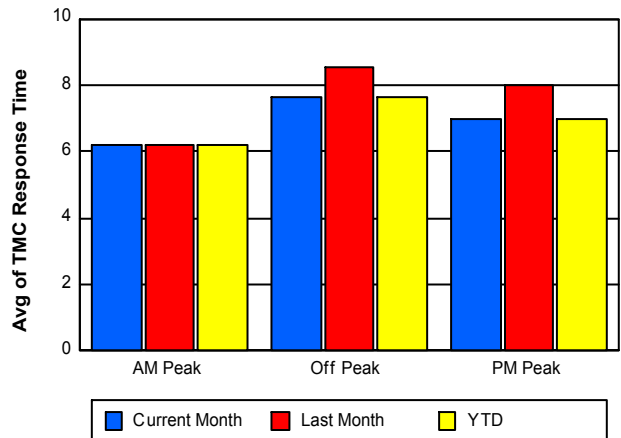
TMC Detection Time



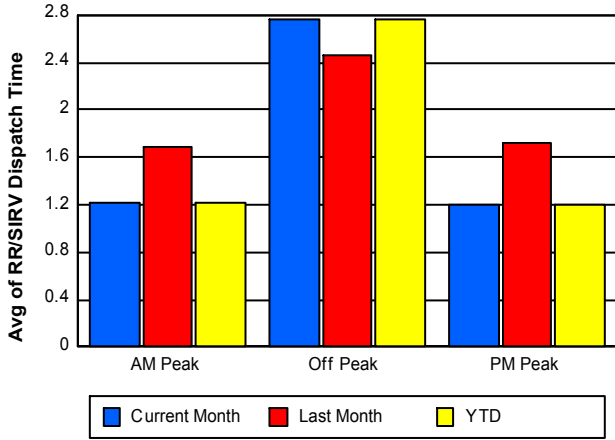
TMC Verification Time



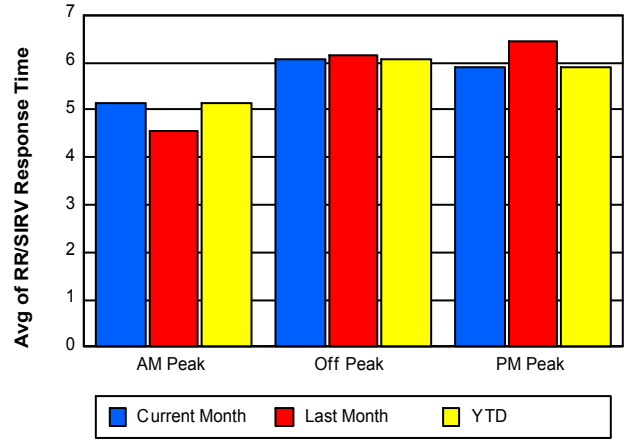
TMC Response Time



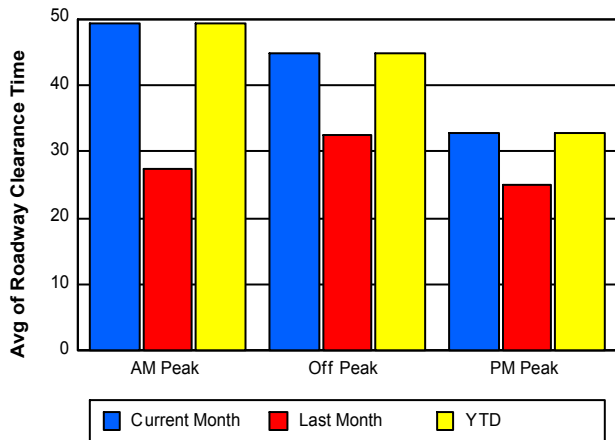
Road Ranger / SIRV Dispatch Time



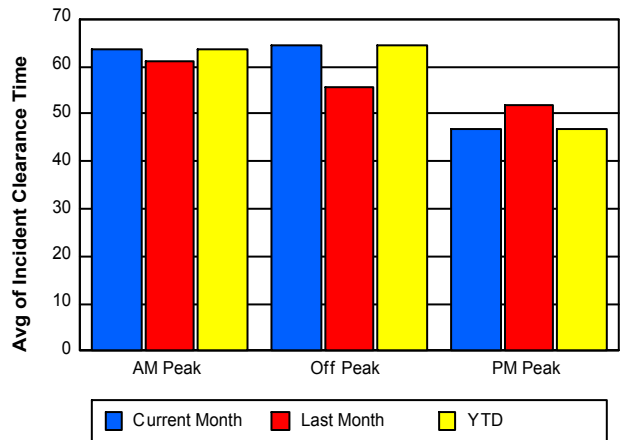
Road Ranger / SIRV Response Time



Roadway Clearance Time (2A)



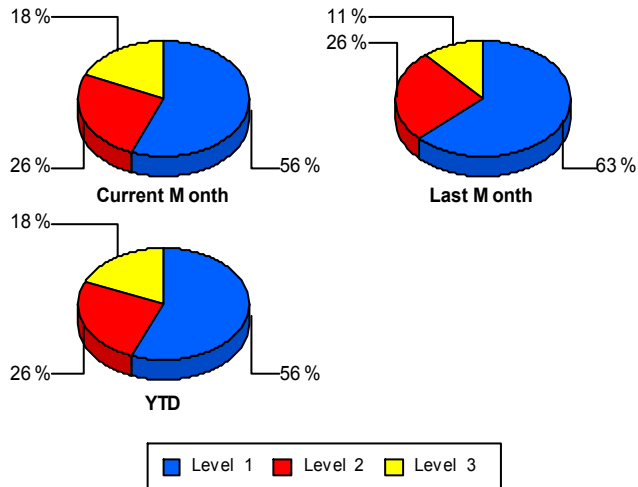
Incident Clearance Time (3B)



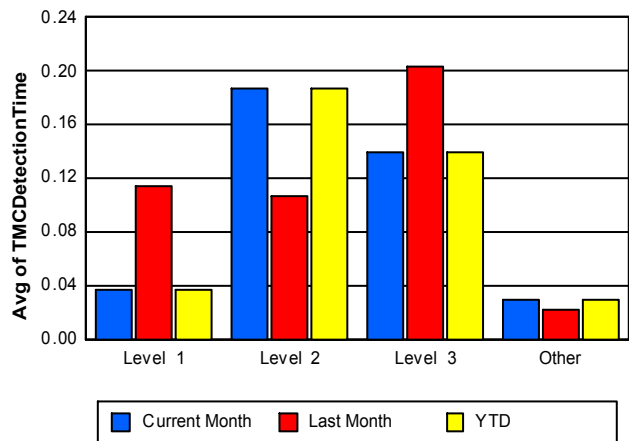
Performance Measures by Severity

	Level 1			Level 2			Level 3			Other		
	<u>This Month</u>	<u>Last Month</u>	<u>YTD</u>	<u>This Month</u>	<u>Last Month</u>	<u>YTD</u>	<u>This Month</u>	<u>Last Month</u>	<u>YTD</u>	<u>This Month</u>	<u>Last Month</u>	<u>YTD</u>
Number of Events	129	166	129	59	68	59	42	30	42	5,043	5,120	5,043
Number of Incidents	129	166	129	59	68	59	42	30	42	0	0	0
TMC Detection (min.)	0.04	0.11	0.04	0.19	0.11	0.19	0.14	0.20	0.14	0.03	0.02	0.03
TMC Verification (min.)	0.30	0.88	0.30	0.78	1.63	0.78	1.93	3.15	1.93	1.36	1.47	1.36
TMC Response (min.)	8.11	9.19	8.11	10.73	13.15	10.73	7.42	9.56	7.42	7.06	7.66	7.06
RR Dispatch Time (min.)	2.30	2.17	2.30	2.08	3.39	2.08	2.39	1.87	2.39	1.99	2.08	1.99
RR Resp. Time (min.)	5.81	7.07	5.81	8.65	9.76	8.65	5.03	7.69	5.03	5.76	5.69	5.76
Event Clearance (min.)	37.14	48.40	37.14	70.25	66.83	70.25	111.08	74.41	111.08	48.09	43.60	48.09
Roadway Clear. (min.)	14.00	15.19	14.00	52.45	49.60	52.45	115.35	61.52	115.35			
Incident Clearance (min.)	37.14	48.40	37.14	70.25	66.83	70.25	111.08	74.41	111.08			
# of Events w/ RR/SIRV	118	158	118	56	68	56	38	30	38	3,496	3,517	3,496
RR/SIRV Responses	159	253	159	103	135	103	112	68	112	3,594	3,611	3,594
RR/SIRV Activities	175	272	175	113	142	113	120	71	120	3,679	3,714	3,679

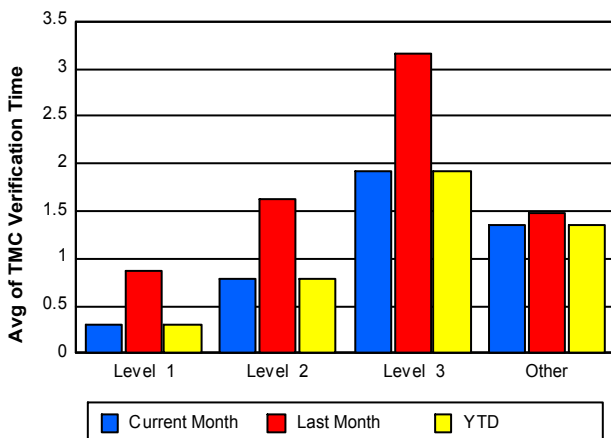
Number of Events / Severity



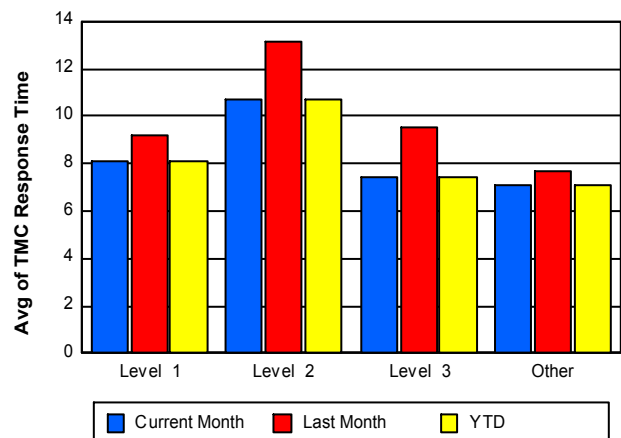
TMC Detection Time



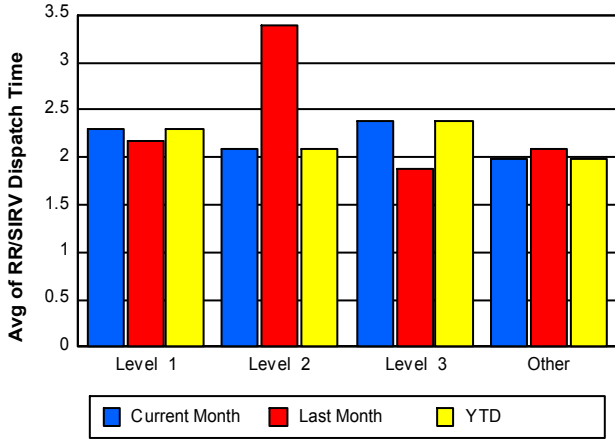
TMC Verification Time



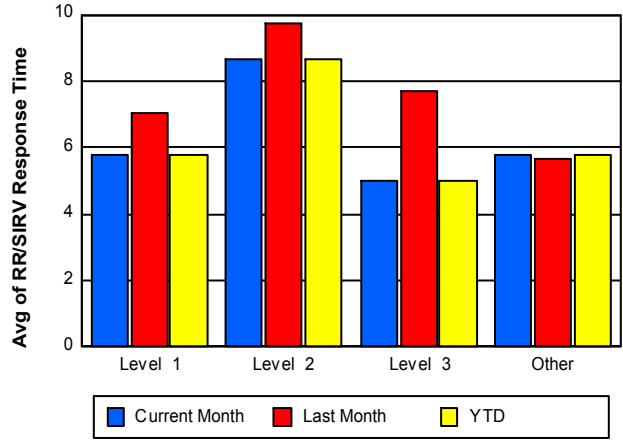
TMC Response Time



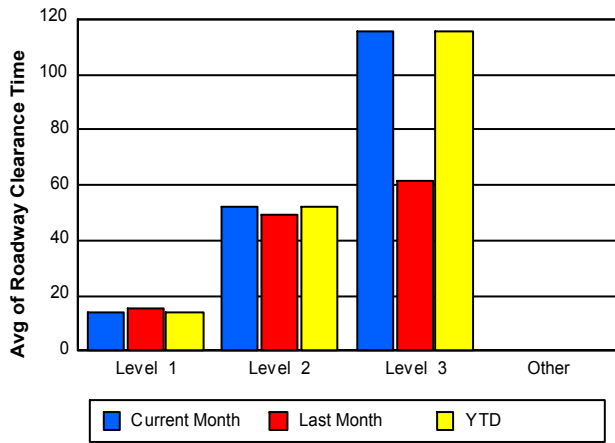
Road Ranger / SIRV Dispatch Time



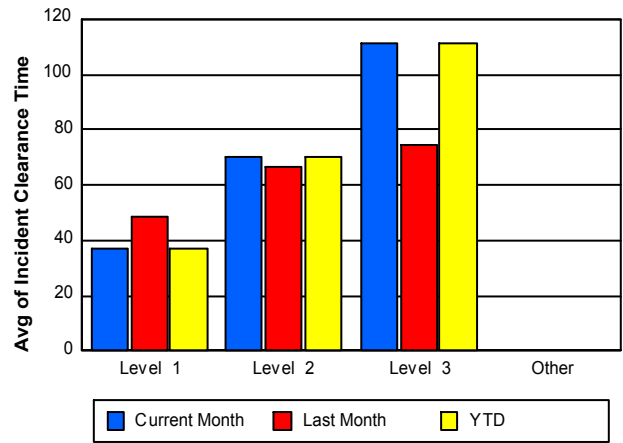
Road Ranger / SIRV Response Time



Roadway Clearance Time (2A)



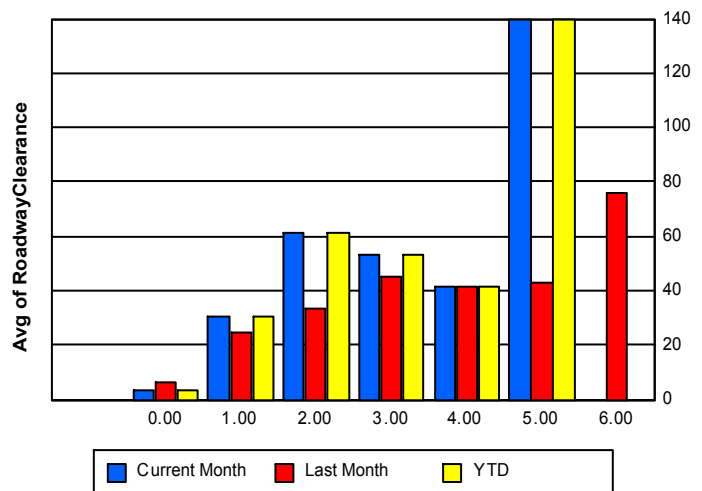
Incident Clearance Time (3B)



Roadway Clearance by Maximum Number of Lanes Blocked

	Current Month	Last Month	YTD
0	3.66	6.26	3.66
1	30.72	24.56	30.72
2	61.54	33.15	61.54
3	53.26	45.15	53.26
4	41.88	41.35	41.88
5	139.98	43.03	139.98
6	0.00	76.00	0.00

Roadway Clearance Time(2A)



Performance Measures by Roadway

595

	<u>Current Month</u>	<u>Last Month</u>	<u>YTD</u>
Number of Events	827	826	827
Number of Incidents	39	50	39
TMC Detection (min.)	0.03	0.04	0.03
TMC Verification (min.)	1.79	2.16	1.79
TMC Response (min.)	7.09	7.15	7.09
RR Dispatch Time (min.)	1.36	1.61	1.36
RR Resp. Time (min.)	5.87	5.52	5.87
Event Clearance (min.)	55.37	37.87	55.37
Roadway Clear. (min.)	58.13	37.44	58.13
Incident Clearance (min.)	65.65	56.89	65.65
# of Events w/ RR/SIRV	611	618	611
RR/SIRV Responses	656	687	656
RR/SIRV Activities	667	706	667

75

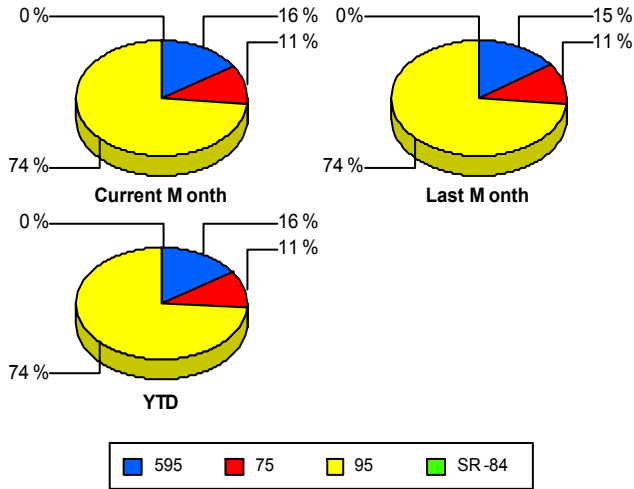
	<u>Current Month</u>	<u>Last Month</u>	<u>YTD</u>
Number of Events	561	591	561
Number of Incidents	13	12	13
TMC Detection (min.)	0.04	0.05	0.04
TMC Verification (min.)	3.24	3.26	3.24
TMC Response (min.)	3.28	3.96	3.28
RR Dispatch Time (min.)	0.53	1.15	0.53
RR Resp. Time (min.)	2.76	2.81	2.76
Event Clearance (min.)	39.80	71.30	39.80
Roadway Clear. (min.)	49.69	47.10	49.69
Incident Clearance (min.)	62.77	63.26	62.77
# of Events w/ RR/SIRV	545	567	545
RR/SIRV Responses	569	595	569
RR/SIRV Activities	580	616	580

95

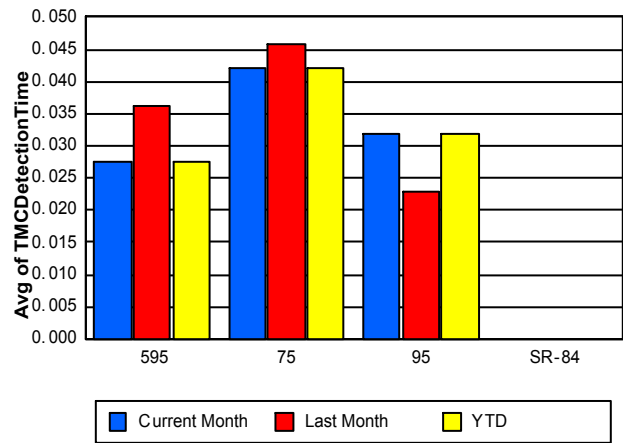
	<u>Current Month</u>	<u>Last Month</u>	<u>YTD</u>
Number of Events	3,884	3,965	3,884
Number of Incidents	178	202	178
TMC Detection (min.)	0.03	0.02	0.03
TMC Verification (min.)	0.96	1.06	0.96
TMC Response (min.)	7.99	8.85	7.99
RR Dispatch Time (min.)	2.40	2.38	2.40
RR Resp. Time (min.)	6.43	6.57	6.43
Event Clearance (min.)	48.40	41.50	48.40
Roadway Clear. (min.)	38.38	26.25	38.38
Incident Clearance (min.)	57.45	55.48	57.45
# of Events w/ RR/SIRV	2,552	2,588	2,552
RR/SIRV Responses	2,743	2,785	2,743
RR/SIRV Activities	2,840	2,877	2,840

	<u>Current Month</u>	<u>Last Month</u>	<u>YTD</u>
Number of Events	1	2	1
Number of Incidents	0	0	0
TMC Detection (min.)	0.00	0.00	0.00
TMC Verification (min.)	0.47	0.22	0.47
TMC Response (min.)			
RR Dispatch Time (min.)			
RR Resp. Time (min.)			
Event Clearance (min.)	5.22	43.49	5.22
Roadway Clear. (min.)			
Incident Clearance (min.)			
# of Events w/ RR/SIRV	0	0	0
RR/SIRV Responses	0	0	0
RR/SIRV Activities	0	0	0

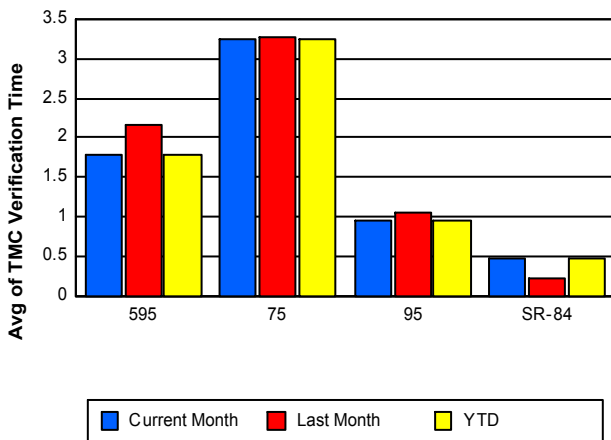
Number of Events / Roadway



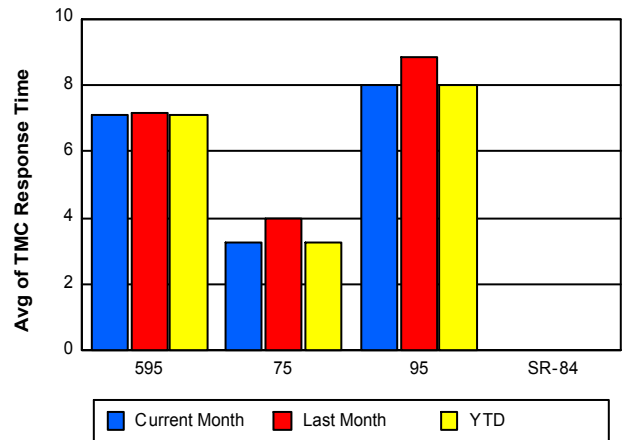
TMC Detection Time



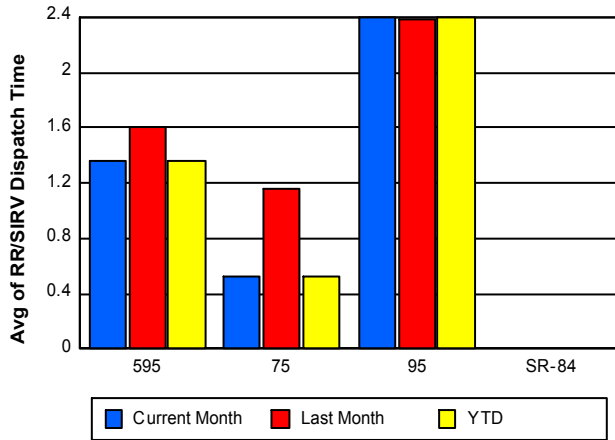
TMC Verification Time



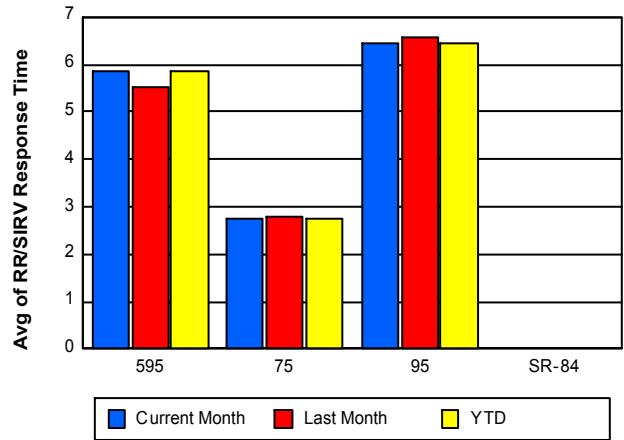
TMC Response Time



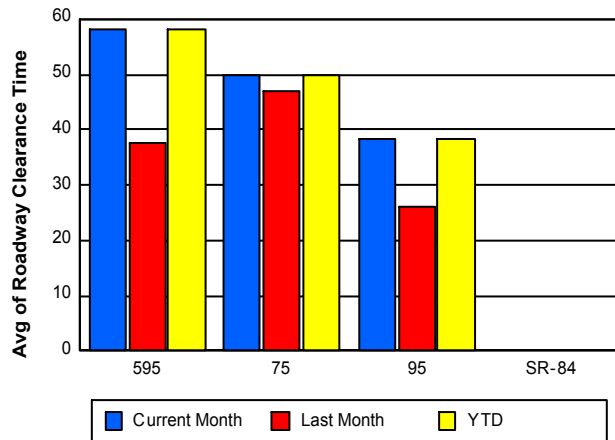
Road Ranger / SIRV Dispatch Time



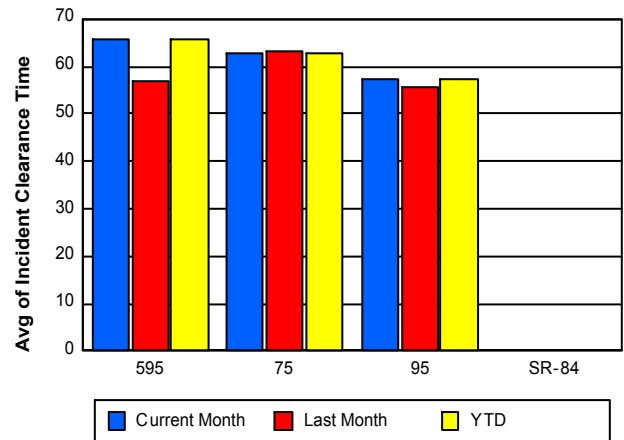
Road Ranger / SIRV Response Time



Roadway Clearance Time (2A)



Incident Clearance Time (3B)



Performance Measures by Event Type

Abandoned Vehicle

	<u>Current Month</u>	<u>Last Month</u>	<u>YTD</u>
Number of Events	599	631	599
Number of Incidents	1	1	1
TMC Detection (min.)	0.09	0.01	0.09
TMC Verification (min.)	0.34	0.56	0.34
TMC Response (min.)	8.22	10.36	8.22
RR Dispatch Time (min.)	2.78	4.75	2.78
RR Response Time (min.)	6.26	6.46	6.26
Event Clearance (min.)	281.29	231.92	281.29
Roadway Clearance (min.)	21.48	10.43	21.48
Incident Clearance (min.)	26.25	15.25	26.25
# of Events w/ RR/SIRV	450	481	450
RR/SIRV Assists	456	491	456
RR/SIRV Activities	457	499	457

Accident

	<u>Current Month</u>	<u>Last Month</u>	<u>YTD</u>
Number of Events	361	393	361
Number of Incidents	158	199	158
TMC Detection (min.)	0.07	0.11	0.07
TMC Verification (min.)	1.29	1.71	1.29
TMC Response (min.)	7.33	8.54	7.33
RR Dispatch Time (min.)	1.39	1.70	1.39
RR Response Time (min.)	5.95	6.87	5.95
Event Clearance (min.)	45.58	49.72	45.58
Roadway Clearance (min.)	37.53	30.77	37.53
Incident Clearance (min.)	61.06	61.34	61.06
# of Events w/ RR/SIRV	348	384	348
RR/SIRV Assists	483	576	483
RR/SIRV Activities	512	607	512

Congestion

	<u>Current Month</u>	<u>Last Month</u>	<u>YTD</u>
Number of Events	2	7	2
Number of Incidents	0	0	0
TMC Detection (min.)	0.00	0.00	0.00
TMC Verification (min.)	0.00	0.00	0.00
TMC Response (min.)			
RR Dispatch Time (min.)			
RR Response Time (min.)			
Event Clearance (min.)	105.74	69.43	105.74
Roadway Clearance (min.)			
Incident Clearance (min.)			
# of Events w/ RR/SIRV	0	0	0
RR/SIRV Assists	0	0	0
RR/SIRV Activities	0	0	0

Debris on Roadway

	<u>Current Month</u>	<u>Last Month</u>	<u>YTD</u>
Number of Events	165	163	165
Number of Incidents	5	2	5
TMC Detection (min.)	0.16	0.17	0.16
TMC Verification (min.)	6.47	5.72	6.47
TMC Response (min.)	8.87	7.39	8.87
RR Dispatch Time (min.)	1.11	1.86	1.11
RR Response Time (min.)	7.77	5.57	7.77
Event Clearance (min.)	15.21	10.92	15.21
Roadway Clearance (min.)	101.15	5.84	101.15
Incident Clearance (min.)	99.05	17.32	99.05
# of Events w/ RR/SIRV	160	156	160
RR/SIRV Assists	184	166	184
RR/SIRV Activities	192	170	192

Disabled Vehicle

	<u>Current Month</u>	<u>Last Month</u>	<u>YTD</u>
Number of Events	2,829	2,972	2,829
Number of Incidents	38	52	38
TMC Detection (min.)	0.02	0.02	0.02
TMC Verification (min.)	1.58	1.82	1.58
TMC Response (min.)	6.84	7.30	6.84
RR Dispatch Time (min.)	2.09	1.77	2.09
RR Response Time (min.)	5.57	5.54	5.57
Event Clearance (min.)	18.68	19.56	18.68
Roadway Clearance (min.)	32.88	22.05	32.88
Incident Clearance (min.)	43.99	38.02	43.99
# of Events w/ RR/SIRV	2,595	2,624	2,595
RR/SIRV Assists	2,668	2,692	2,668
RR/SIRV Activities	2,745	2,779	2,745

Emergency Vehicles

	<u>Current Month</u>	<u>Last Month</u>	<u>YTD</u>
Number of Events	7	3	7
Number of Incidents	6	3	6
TMC Detection (min.)	0.00	0.00	0.00
TMC Verification (min.)	0.00	0.00	0.00
TMC Response (min.)	4.73	13.50	4.73
RR Dispatch Time (min.)	1.36	1.69	1.36
RR Response Time (min.)	3.37	11.81	3.37
Event Clearance (min.)	23.31	63.14	23.31
Roadway Clearance (min.)	26.19	31.91	26.19
Incident Clearance (min.)	26.68	63.14	26.68
# of Events w/ RR/SIRV	4	3	4
RR/SIRV Assists	5	4	5
RR/SIRV Activities	5	4	5

Other

	<u>Current Month</u>	<u>Last Month</u>	<u>YTD</u>
Number of Events	1,258	1,185	1,258
Number of Incidents	4	3	4
TMC Detection (min.)	0.00	0.01	0.00
TMC Verification (min.)	0.64	0.40	0.64
TMC Response (min.)	8.64	8.53	8.64
RR Dispatch Time (min.)	1.72	1.92	1.72
RR Response Time (min.)	7.51	7.45	7.51
Event Clearance (min.)	10.85	9.14	10.85
Roadway Clearance (min.)	34.10	12.60	34.10
Incident Clearance (min.)	48.20	17.42	48.20
# of Events w/ RR/SIRV	107	104	107
RR/SIRV Assists	112	108	112
RR/SIRV Activities	112	109	112

Pedestrian

	<u>Current Month</u>	<u>Last Month</u>	<u>YTD</u>
Number of Events	28	19	28
Number of Incidents	0	0	0
TMC Detection (min.)	0.00	0.01	0.00
TMC Verification (min.)	0.75	1.11	0.75
TMC Response (min.)	1.86	1.32	1.86
RR Dispatch Time (min.)	0.27	1.24	0.27
RR Response Time (min.)	1.61	0.14	1.61
Event Clearance (min.)	11.05	12.43	11.05
Roadway Clearance (min.)			
Incident Clearance (min.)			
# of Events w/ RR/SIRV	27	14	27
RR/SIRV Assists	27	15	27
RR/SIRV Activities	29	15	29

Police Activity

	<u>Current Month</u>	<u>Last Month</u>	<u>YTD</u>
Number of Events	19	11	19
Number of Incidents	14	4	14
TMC Detection (min.)	0.05	0.12	0.05
TMC Verification (min.)	0.16	1.89	0.16
TMC Response (min.)	5.76	7.21	5.76
RR Dispatch Time (min.)	3.06	1.30	3.06
RR Response Time (min.)	2.70	5.95	2.70
Event Clearance (min.)	51.30	45.13	51.30
Roadway Clearance (min.)	71.15	78.61	71.15
Incident Clearance (min.)	67.03	83.70	67.03
# of Events w/ RR/SIRV	16	7	16
RR/SIRV Assists	31	15	31
RR/SIRV Activities	33	16	33

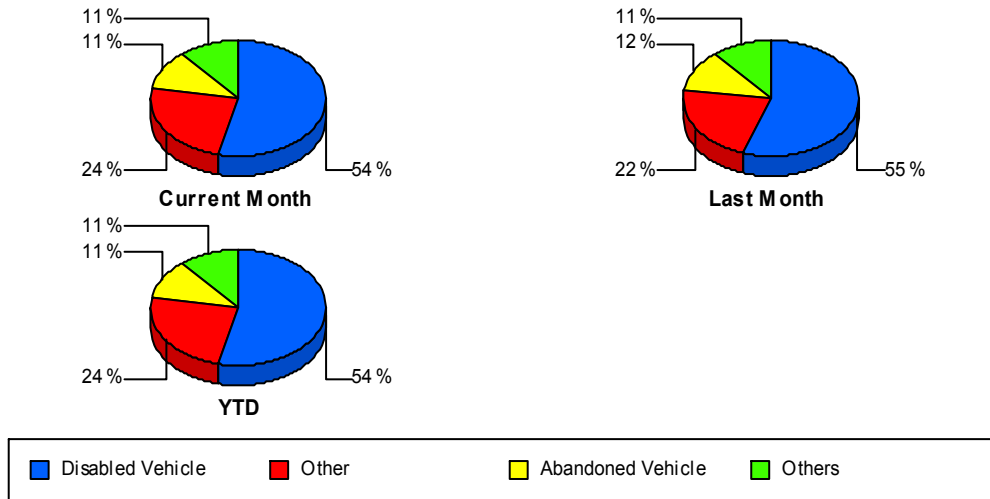
Road Work - Emergency

	<u>Current Month</u>	<u>YTD</u>
Number of Events	4	4
Number of Incidents	4	4
TMC Detection (min.)	0.00	0.00
TMC Verification (min.)	0.00	0.00
TMC Response (min.)	0.00	0.00
RR Dispatch Time (min.)	0.00	0.00
RR Response Time (min.)	0.00	0.00
Event Clearance (min.)	117.45	117.45
Roadway Clearance (min.)	187.30	187.30
Incident Clearance (min.)	117.45	117.45
# of Events w/ RR/SIRV	1	1
RR/SIRV Assists	2	2
RR/SIRV Activities	2	2

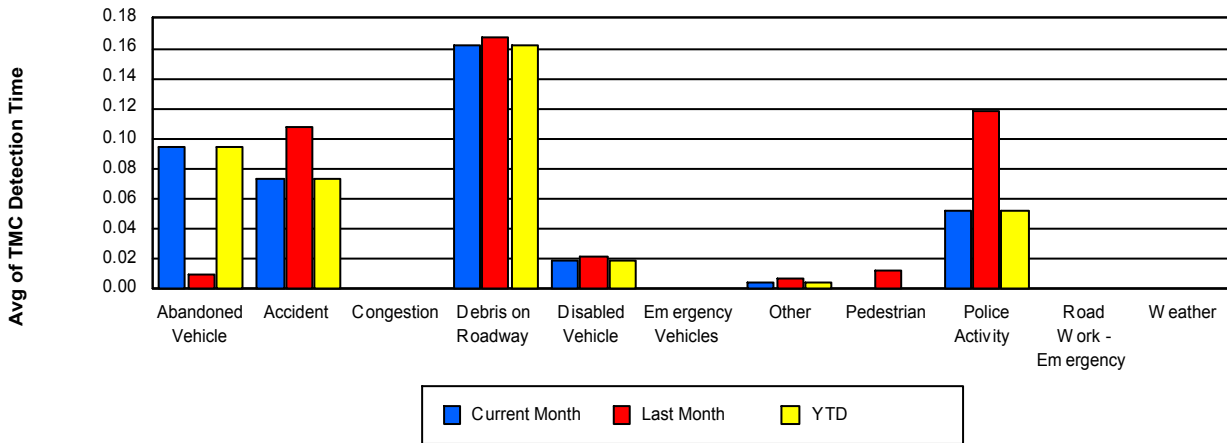
Weather

	<u>Current Month</u>	<u>YTD</u>
Number of Events	1	1
Number of Incidents	0	0
TMC Detection (min.)	0.00	0.00
TMC Verification (min.)	0.00	0.00
TMC Response (min.)		
RR Dispatch Time (min.)		
RR Response Time (min.)		
Event Clearance (min.)	1.25	1.25
Roadway Clearance (min.)		
Incident Clearance (min.)		
# of Events w/ RR/SIRV	0	0
RR/SIRV Assists	0	0
RR/SIRV Activities	0	0

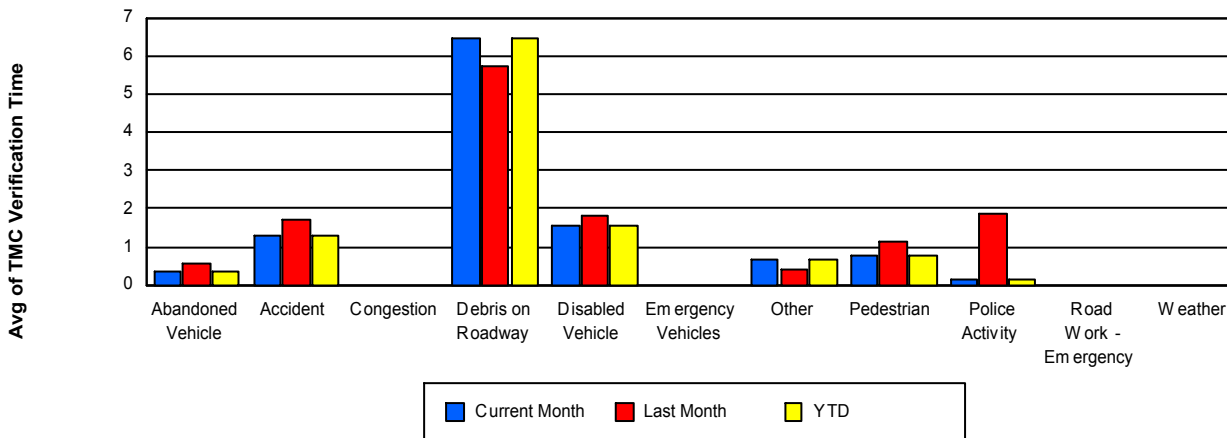
Number of Events / Event Type



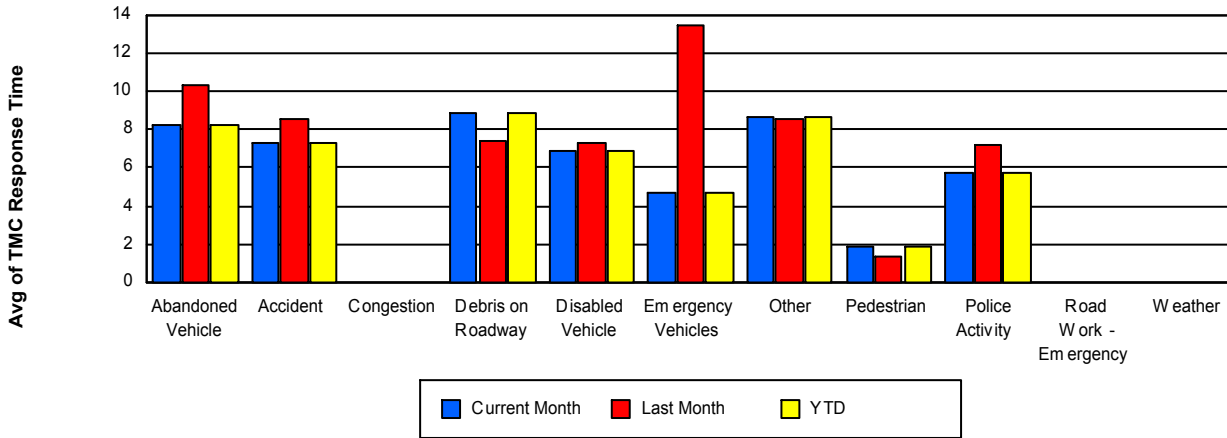
TMC Detection Time



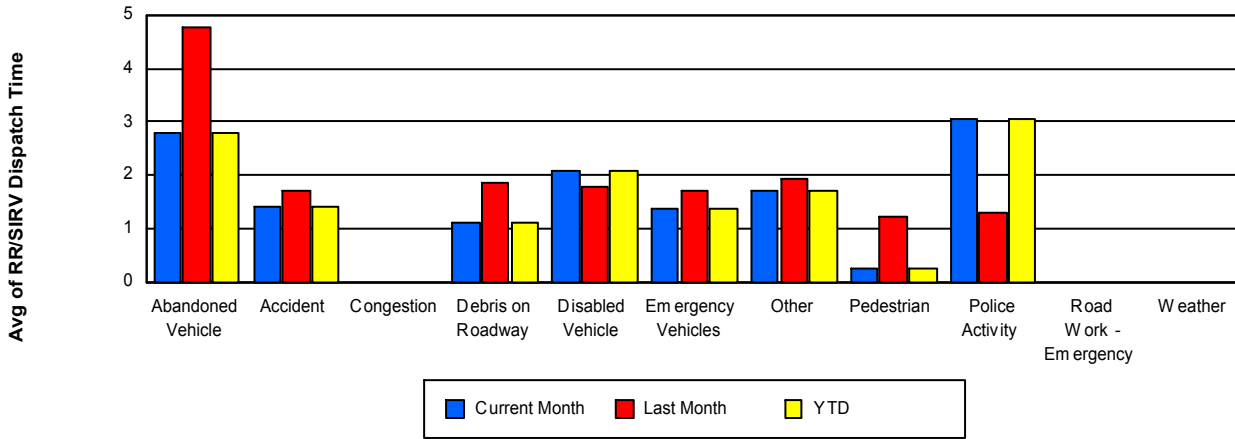
TMC Verification Time



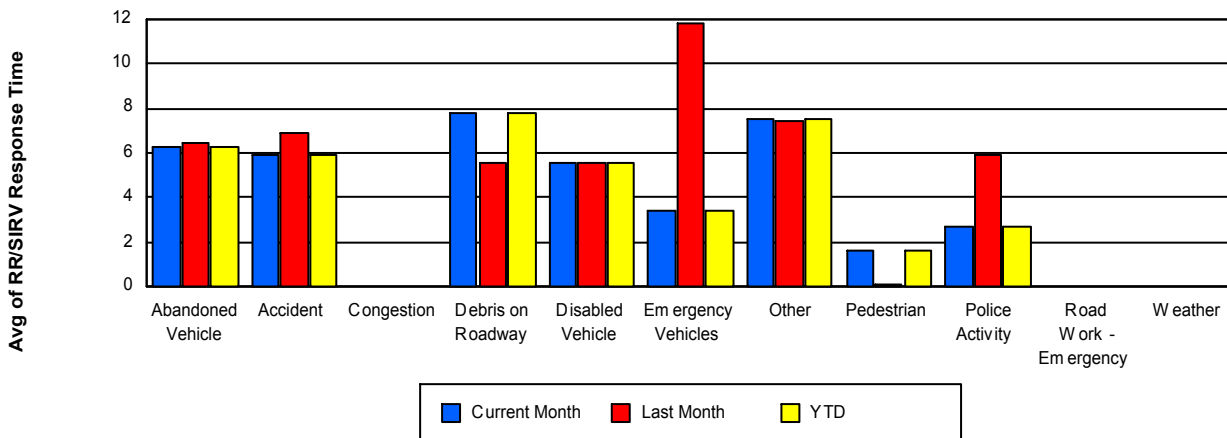
TMC Response Time



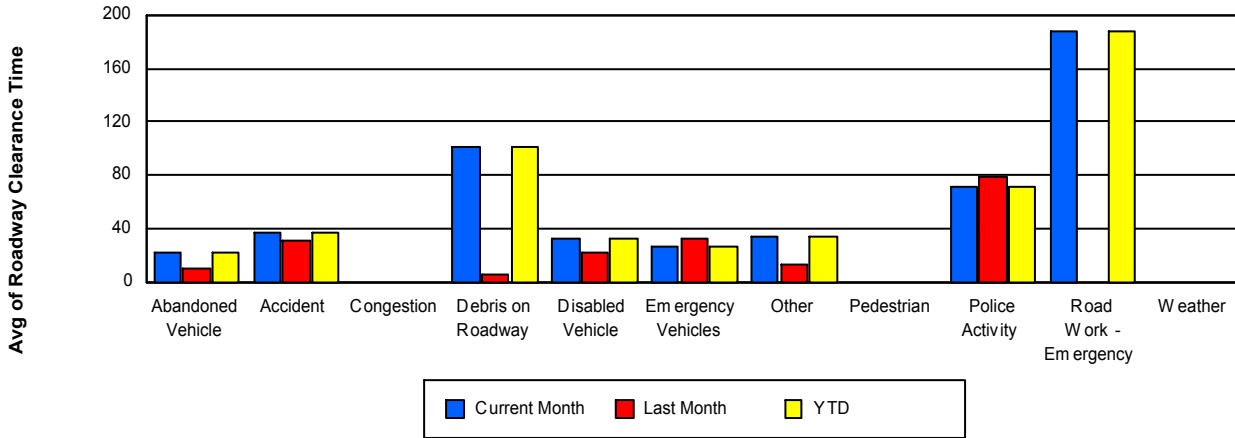
Road Ranger / SIRV Dispatch Time



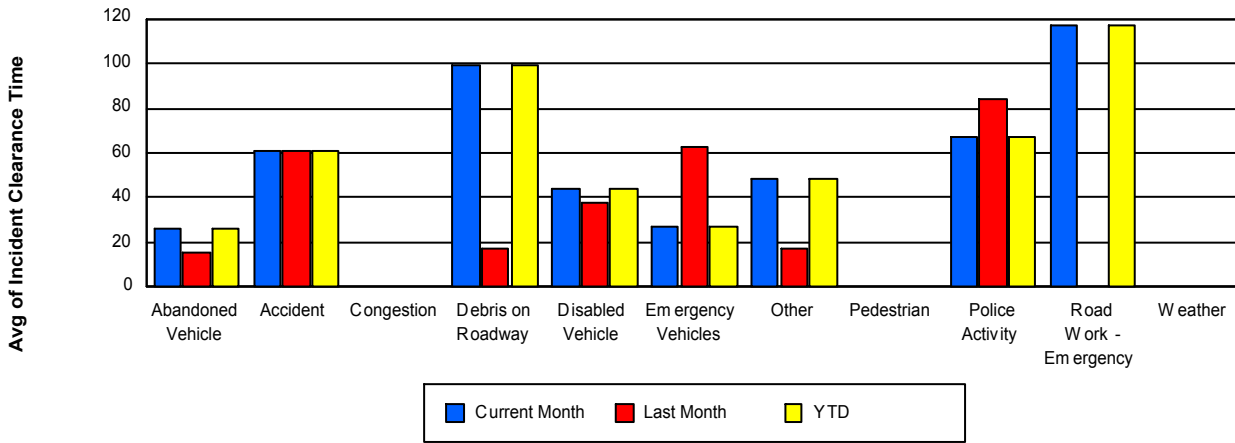
Road Ranger / SIRV Response Time



Roadway Clearance Time (2A)



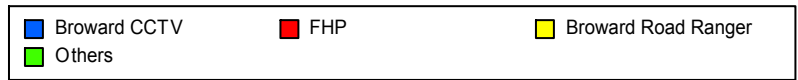
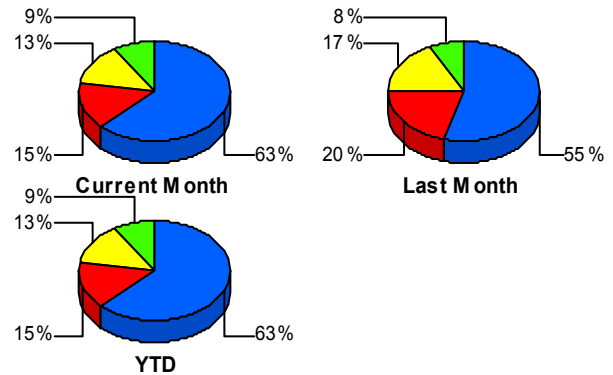
Incident Clearance Time (3B)



Incident Detection Methods

	Current Month	Last Month	YTD
Broward CCTV	144	144	144
Broward Road Ranger	31	46	31
Broward VideoWall	4	6	4
BSO	0	1	0
District 4	3	6	3
FHP	35	54	35
Florida's Turnpike	3	0	3
FLPD	0	1	0
Palm Beach Road Rang	1	1	1
Road Watcher	1	2	1
SIRV	2	0	2
SmarTraveler (511)	1	0	1
VisioPaD Detection	5	3	5
Total	230	264	230

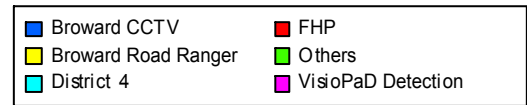
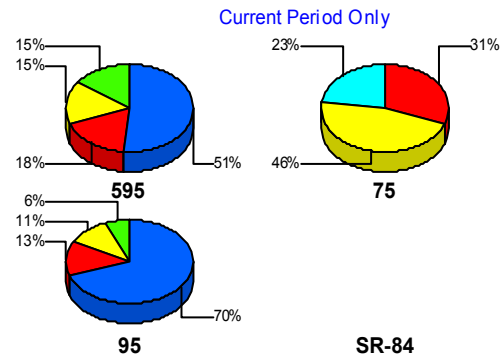
Total Incidents by Detection Method



Incident Detection Methods by Roadway

		Current Month	Last Month	YTD
595	Broward CCTV	20	24	20
	Broward Road Ranger	6	11	6
	Broward VideoWall	0	1	0
	District 4	0	2	0
	FHP	7	12	7
	Florida's Turnpike	3	0	3
	SIRV	1	0	1
	VisioPaD Detection	2	0	2
	Total	39	50	39
	75	Broward Road Ranger	6	3
BSO		0	1	0
District 4		3	1	3
FHP		4	7	4

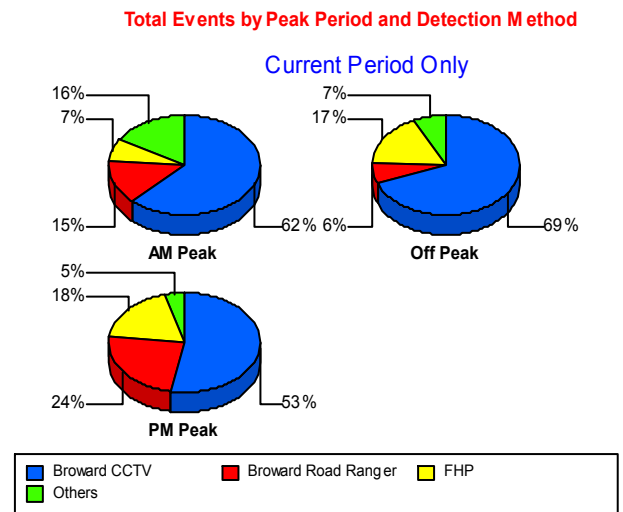
Total Events by Roadway and Detection Method



		Current Month	Last Month	YTD
75	Total	13	12	13
95	Broward CCTV	124	120	124
	Broward Road Ranger	19	32	19
	Broward VideoWall	4	5	4
	District 4	0	3	0
	FHP	24	35	24
	FLPD	0	1	0
	Palm Beach Road Rang	1	1	1
	Road Watcher	1	2	1
	SIRV	1	0	1
	SmarTraveler (511)	1	0	1
	VisioPaD Detection	3	3	3
	Total	178	202	178
	Total	230	264	230

Incident Detection Methods by Peak Period

		Current Month	Last Month	YTD
AM Peak	Broward CCTV	34	30	34
	Broward Road Ranger	8	13	8
	Broward VideoWall	1	2	1
	District 4	3	0	3
	FHP	4	18	4
	Florida's Turnpike	2	0	2
	Road Watcher	1	2	1
	SIRV	2	0	2
	Total	55	65	55
	Off Peak	Broward CCTV	75	67
Broward Road Ranger		7	24	7
Broward VideoWall		2	4	2
BSO		0	1	0
District 4		0	5	0
FHP		19	27	19

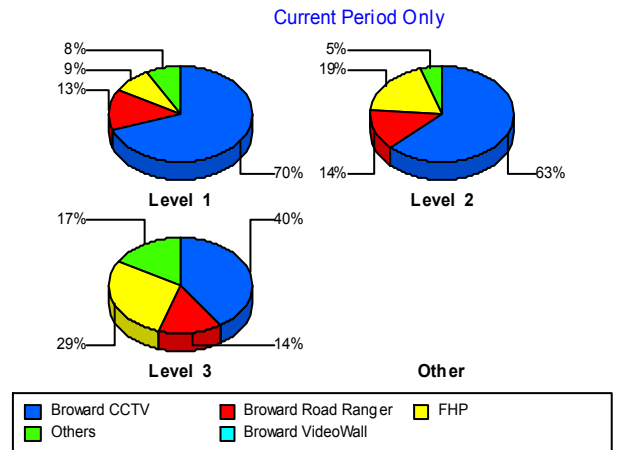


		Current Month	Last Month	YTD
Off Peak	FLPD	0	1	0
	Palm Beach Road Rang	1	1	1
	VisioPaD Detection	5	2	5
	Total	109	132	109
PM Peak	Broward CCTV	35	47	35
	Broward Road Ranger	16	9	16
	Broward VideoWall	1	0	1
	District 4	0	1	0
	FHP	12	9	12
	Florida's Turnpike	1	0	1
	SmarTraveler (511)	1	0	1
	VisioPaD Detection	0	1	0
	Total	66	67	66
Total	230	264	230	

Incident Detection Methods by Severity

		Current Month	Last Month	YTD
Level 1	Broward CCTV	90	92	90
	Broward Road Ranger	17	30	17
	Broward VideoWall	2	3	2
	District 4	1	4	1
	FHP	12	32	12
	Palm Beach Road Rang	1	1	1
	Road Watcher	1	2	1
	SIRV	2	0	2
	SmarTraveler (511)	1	0	1
	VisioPaD Detection	2	2	2
	Total	129	166	129
Level 2	Broward CCTV	37	38	37
	Broward Road Ranger	8	9	8
	Broward VideoWall	1	3	1
	District 4	0	2	0

Total Events by Severity and Detection Method



		Current Month	Last Month	YTD
Level 2	FHP	11	14	11
	FLPD	0	1	0
	VisioPaD Detection	2	1	2
	Total	59	68	59
Level 3	Broward CCTV	17	14	17
	Broward Road Ranger	6	7	6
	Broward VideoWall	1	0	1
	BSO	0	1	0
	District 4	2	0	2
	FHP	12	8	12
	Florida's Turnpike	3	0	3
	VisioPaD Detection	1	0	1
	Total	42	30	42
Total		230	264	230

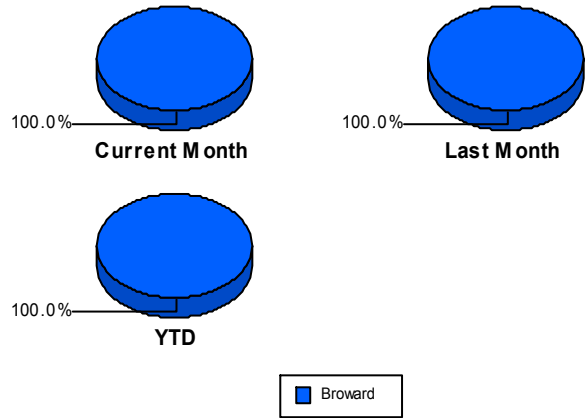
Road Ranger / SIRV Performance Measures

Road Ranger / SIRV Performance By County

Values presented are:
 - Total Events with a RR/SIRV Response
 - Total RR/SIRV Responses,
 - Total Activities Performed

	Current Mo	Last Month	YTD
Broward	3,708	3,773	3,708
	3,968	4,067	3,968
	4,087	4,199	4,087

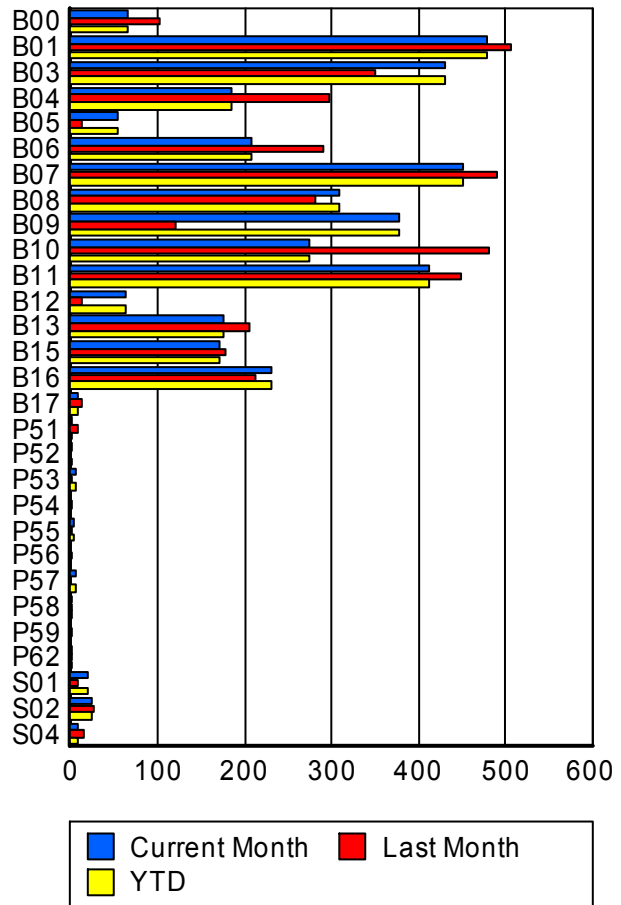
RR/SIRV Responses per County



Road Ranger / SIRV Performance By Truck

	Current Mo	Last Month	YTD
B00	64	99	64
	66	102	66
	69	105	69
B01	471	504	471
	479	506	479
	490	522	490
B03	430	349	430
	432	350	432
	445	367	445
B04	182	295	182
	184	297	184
	195	304	195
B05	53	13	53
	53	13	53
	58	13	58
B06	207	288	207
	207	290	207
	213	301	213
B07	447	483	447
	452	490	452
	459	502	459
B08	305	281	305
	308	281	308
	320	292	320
B09	374	120	374
	377	120	377
	384	123	384

RR/SIRV Responses per Truck



	Current Mo	Last Month	YTD
B10	271 274 286	478 481 496	271 274 286
B11	411 412 426	447 449 465	411 412 426
B12	64 64 65	13 13 14	64 64 65
B13	175 175 178	206 206 213	175 175 178
B15	170 171 175	174 177 178	170 171 175
B16	230 232 236	206 212 219	230 232 236
B17	9 9 9	12 12 13	9 9 9
P51	2 2 2	8 8 8	2 2 2
P52	2 2 2	0 0 0	2 2 2
P53	5 5 6	2 2 2	5 5 6
P54	0 0 0	2 2 2	0 0 0
P55	3 3 3	1 1 1	3 3 3
P56	0 0 0	1 1 1	0 0 0
P57	6 6 6	0 0 0	6 6 6
P58	2 2 2	1 1 1	2 2 2

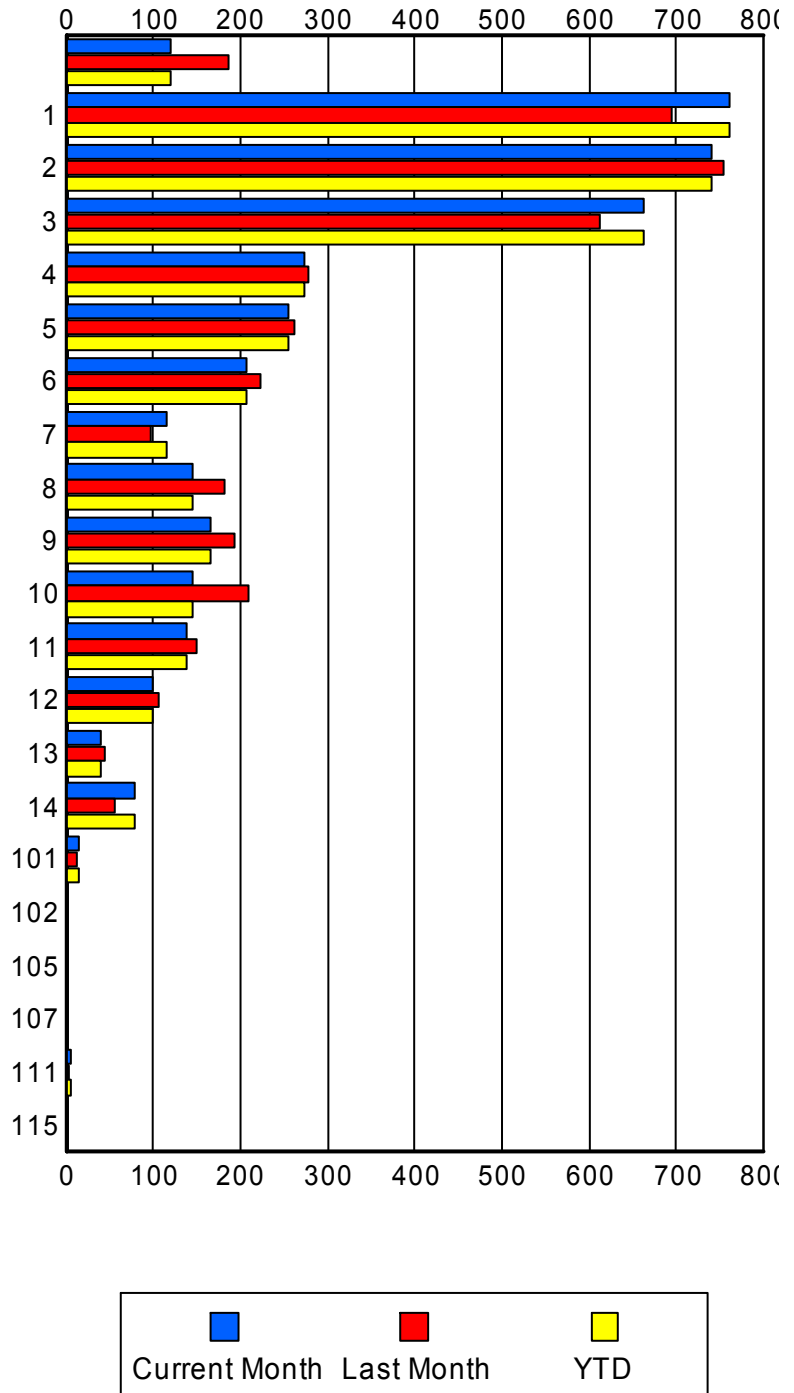
	Current Mo	Last Month	YTD
P59	0 0 0	1 1 1	0 0 0
P62	2 2 2	1 1 1	2 2 2
S01	18 19 22	9 9 12	18 19 22
S02	24 25 27	27 27 28	24 25 27
S04	6 7 7	14 15 15	6 7 7

Road Ranger / SIRV Performance By Beat

	Current Mo	Last Month	YTD
	89 120 128	150 186 193	89 120 128
1	736 762 783	672 694 718	736 762 783
2	722 741 770	743 755 781	722 741 770
3	641 662 685	595 613 630	641 662 685
4	273 274 281	274 277 285	273 274 281
5	254 255 259	258 261 272	254 255 259
6	205 206 208	221 224 234	205 206 208
7	116 116 116	97 97 100	116 116 116
8	143 144 150	182 182 187	143 144 150
9	165 166 174	193 194 201	165 166 174
10	145 145 147	209 210 217	145 145 147
11	138 138 143	149 150 154	138 138 143
12	98 99 99	107 107 109	98 99 99
13	38 39 40	45 45 46	38 39 40
14	78 79 81	55 55 55	78 79 81

Values presented are:
 - Total Events with a RR/SIRV Response
 - Total RR/SIRV Responses,
 - Total Activities Performed

RR/SIRV Responses per Beat



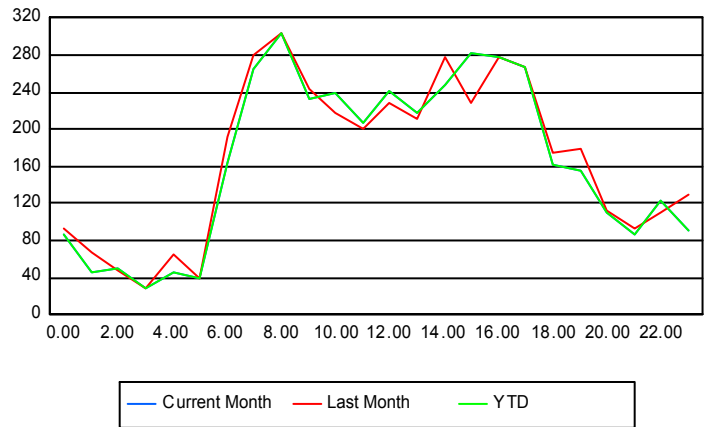
	Current Mo	Last Month	YTD
101	14	12	14
	14	12	14
	15	12	15
102	1	0	1
	1	0	1
	1	0	1
105	0	1	0
	0	1	0
	0	1	0
107	1	0	1
	1	0	1
	1	0	1
111	5	3	5
	5	3	5
	5	3	5
115	1	1	1
	1	1	1
	1	1	1

Road Ranger / SIRV Performance By Time of Day

Values presented are:
 - Total Events with a RR/SIRV Response
 - Total RR/SIRV Responses,
 - Total Activities Performed

	Current Mo	Last Month	YTD
12AM-1AM	82	87	82
	86	92	86
	86	92	86
1AM-2AM	42	57	42
	46	68	46
	47	73	47
2AM-3AM	43	43	43
	51	48	51
	54	48	54
3AM-4AM	27	28	27
	29	29	29
	31	29	31
4AM-5AM	43	56	43
	45	66	45
	47	68	47
5AM-6AM	32	38	32
	40	40	40
	40	40	40
6AM-7AM	146	161	146
	163	192	163
	165	201	165

Number of Responses / Hour of the Day



	Current Mo	Last Month	YTD
7AM-8AM	251 265 269	264 279 288	251 265 269
8AM-9AM	282 303 315	280 303 315	282 303 315
9AM-10AM	219 233 238	232 243 251	219 233 238
10AM-11AM	227 240 248	203 218 221	227 240 248
11AM-12PM	193 207 214	181 200 207	193 207 214
12PM-1PM	227 241 245	219 228 233	227 241 245
1PM-2PM	197 217 226	202 212 221	197 217 226
2PM-3PM	227 247 251	262 277 285	227 247 251
3PM-4PM	263 283 297	221 228 233	263 283 297
4PM-5PM	265 278 288	253 278 285	265 278 288
5PM-6PM	254 268 274	238 268 277	254 268 274
6PM-7PM	151 161 171	161 175 186	151 161 171
7PM-8PM	148 156 159	164 178 186	148 156 159
8PM-9PM	104 110 112	107 112 116	104 110 112
9PM-10PM	77 87 92	86 93 97	77 87 92

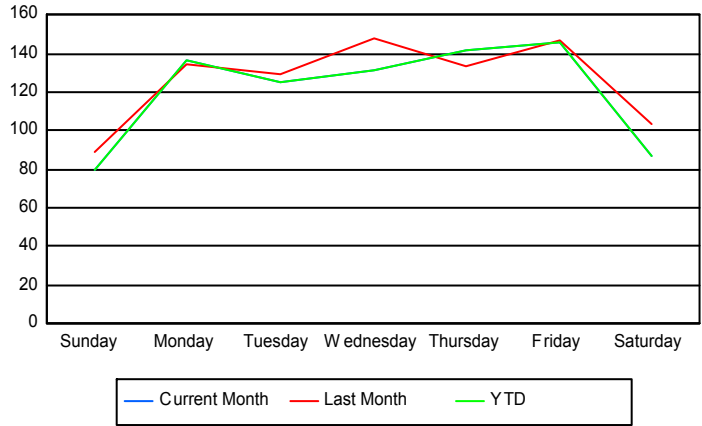
	Current Mo	Last Month	YTD
10PM-11PM	118	106	118
	122	110	122
	127	112	127
11PM-12AM	90	124	90
	90	130	90
	91	135	91

Road Ranger / SIRV Performance By Day of Week

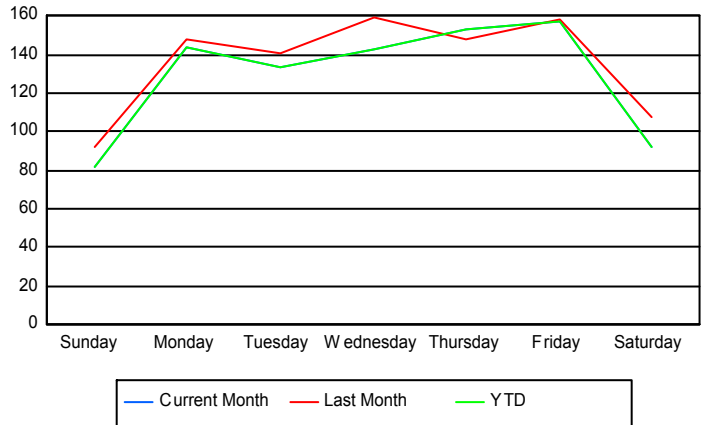
Values presented are:
 - Total Events with a RR/SIRV Response
 - Total RR/SIRV Responses,
 - Total Activities Performed

	Current Mo	Last Month	YTD
Sunday	302	440	302
	308	458	308
	317	472	317
Monday	530	660	530
	557	719	557
	570	747	570
Tuesday	611	480	611
	654	522	654
	669	536	669
Wednesday	651	589	651
	711	635	711
	736	645	736
Thursday	696	530	696
	752	588	752
	779	609	779
Friday	580	570	580
	626	613	626
	642	637	642
Saturday	338	508	338
	360	532	360
	374	553	374

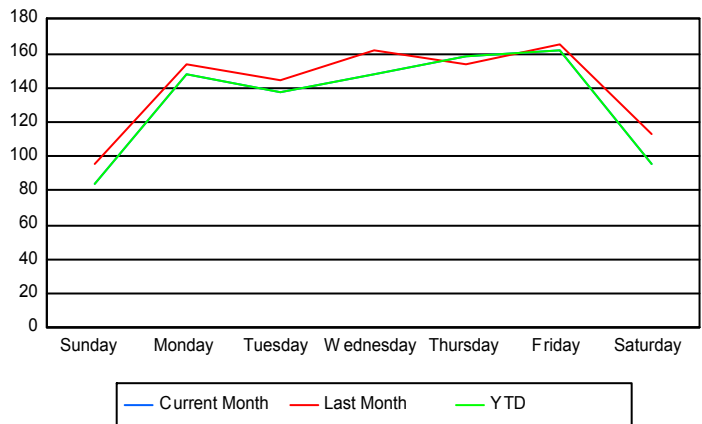
Avg # of events with a RR/SIRV Response per Day of the Week



Avg # of RR/SIRV Responses per Day of the Week



Avg # of RR/SIRV Activities Performed per Day of the Week



Road Ranger/ SIRV Responses per Time of Day and Day of Week

