



# Monthly Performance Measures Report

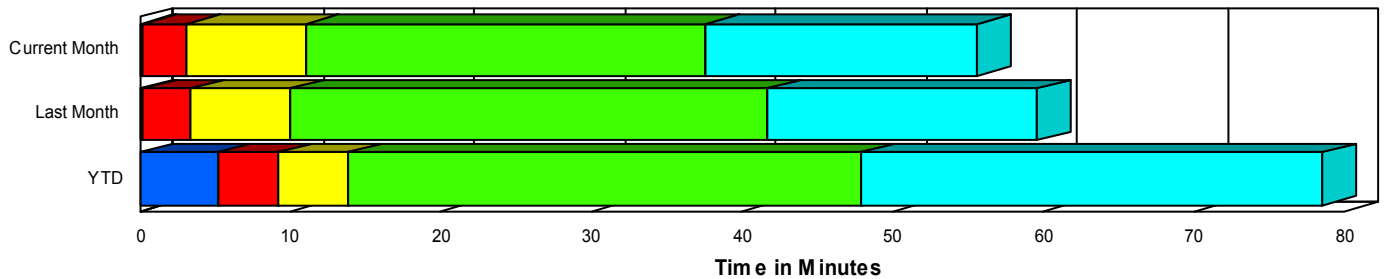
Period From Dec 1, 2006 to Dec 31, 2006

Created on:  
January 02, 2007  
10:43 am

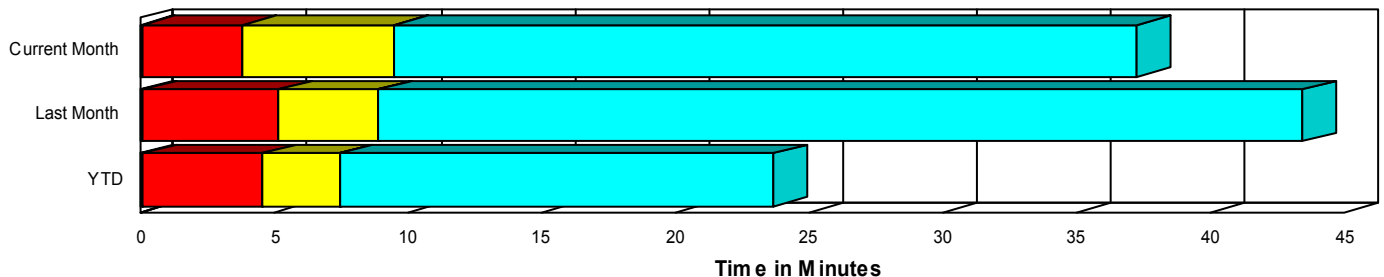
## Performance Measures Summary

	Traffic Events (No Lanes Blocked)			Incidents (Lanes Blocked)		
	<u>This Month</u>	<u>Last Month</u>	<u>YTD</u>	<u>This Month</u>	<u>Last Month</u>	<u>YTD</u>
Number of Events	5,071	4,455	50,269	226	201	2,427
TMC Detection (min.)	0.07	0.09	0.10	0.20	0.20	5.17
TMC Verification (min.)	3.78	5.08	4.50	2.91	3.22	4.09
TMC Response (min.)	9.99	9.29	7.58	10.86	9.95	8.84
RR Dispatch Time (min.)	2.16	1.96	1.69	2.15	1.76	1.62
RR Response Time (min.)	8.06	7.35	5.92	8.70	8.33	7.25
Roadway Clearance (min.)				36.91	40.55	47.42
Event Clearance (min.)	37.79	43.88	23.91	53.79	57.16	76.74
# of Events w/ RR/SIRV	4,182	3,888	46,548	220	190	2,343
RR/SIRV Responses	4,295	3,975	47,735	332	283	3,641
RR/SIRV Activities	4,468	4,132	49,611	355	302	3,907

### Incident Clearance TimeLine



### Traffic Event(Non-Lane Blockage) Time-Line



<span style="color: blue;">■</span> Avg. TMC Detection Time	<span style="color: green;">■</span> Avg. Time from TMC Response to Roadway Clearance*
<span style="color: red;">■</span> Avg. Time from TMC Detection to TMC Verification	<span style="color: cyan;">■</span> Avg. Time from Roadway Clearance to Incident/Event Clearance**
<span style="color: yellow;">■</span> Avg. Time from TMC Verification to TMC Response	

\* Roadway clearance equals all travel lanes open

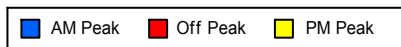
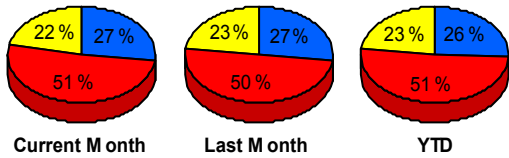
\*\* Incident clearance equals time when last responder has left the scene

## Performance Measures by Peak Period

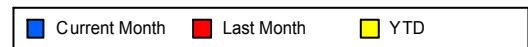
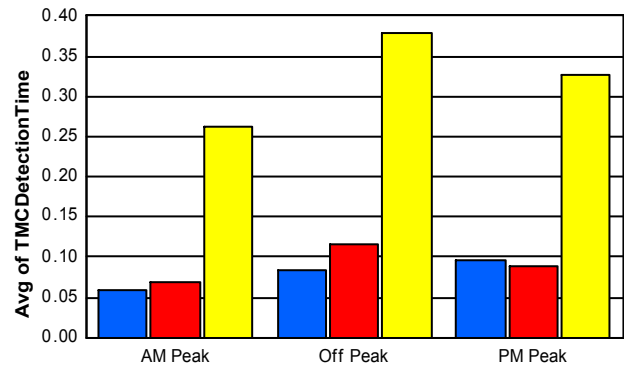
*Note: AM peak period is defined as 6am to 10am and PM peak period is defined as 3pm to 7pm.*

	AM Peak			Off Peak			PM Peak		
	<u>Current Month</u>	<u>Last Month</u>	<u>YTD</u>	<u>Current Month</u>	<u>Last Month</u>	<u>YTD</u>	<u>Current Month</u>	<u>Last Month</u>	<u>YTD</u>
Number of Events	1,423	1,259	13,583	2,712	2,330	26,901	1,162	1,067	12,212
Number of Incidents	51	44	575	118	114	1,295	57	43	557
TMC Detection (min.)	0.06	0.07	0.26	0.08	0.12	0.38	0.10	0.09	0.33
TMC Verification (min.)	2.51	3.25	3.05	4.25	6.01	5.15	4.10	4.87	4.59
TMC Response (min.)	8.05	7.99	7.03	11.42	10.05	7.99	9.35	9.31	7.55
RR Dispatch Time (min.)	1.50	1.76	1.48	2.53	2.06	1.73	2.13	1.93	1.83
RR Response Time (min.)	6.57	6.33	5.57	9.26	7.98	6.30	7.34	7.40	5.75
Event Clearance (min.)	29.83	35.81	24.09	43.78	48.84	28.27	36.68	45.07	24.87
Roadway Clearance (min.)	25.64	32.53	36.18	42.56	46.88	54.18	35.31	31.97	43.32
Incident Clearance (min.)	42.83	52.66	78.28	58.65	62.60	78.06	53.53	47.37	72.08
# of Events w/ RR/SIRV	1,213	1,115	12,585	2,207	2,037	24,880	982	926	11,426
RR/SIRV Responses	1,286	1,171	13,276	2,318	2,126	26,153	1,023	961	11,947
RR/SIRV Activities	1,347	1,221	13,857	2,412	2,205	27,197	1,064	1,008	12,464

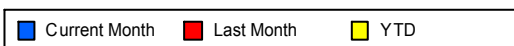
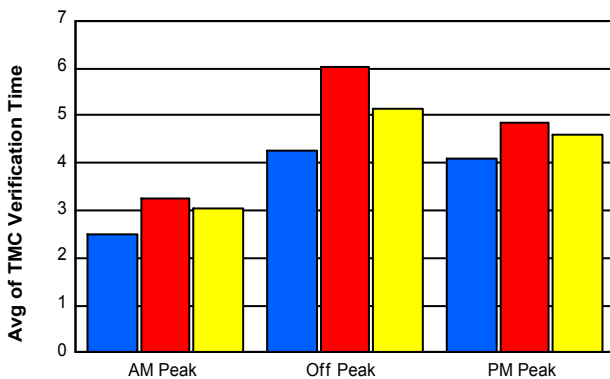
### Number of Events / Peak Period



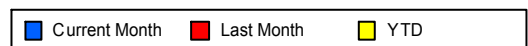
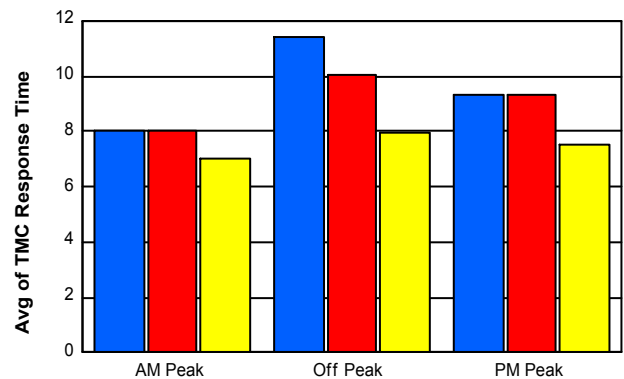
### TMC Detection Time



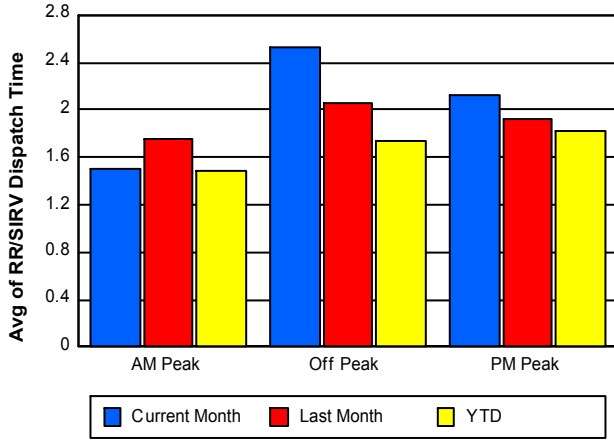
### TMC Verification Time



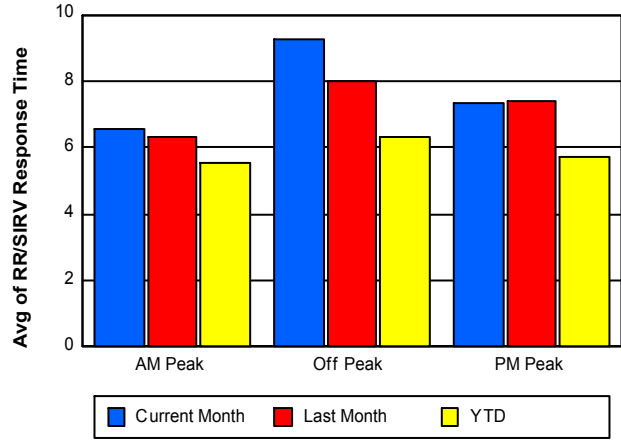
### TMC Response Time



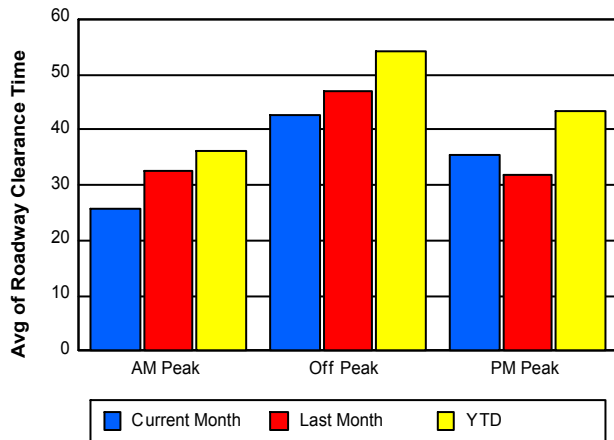
## Road Ranger / SIRV Dispatch Time



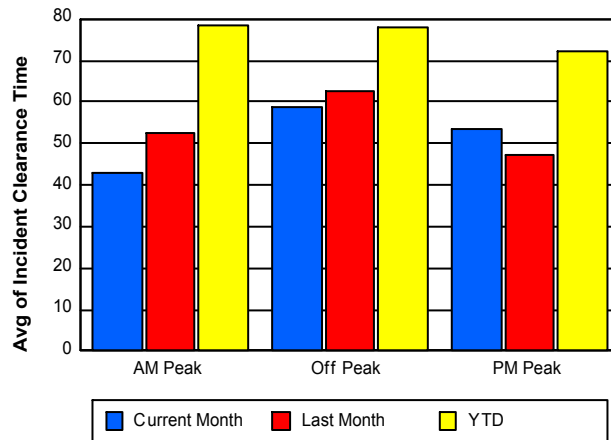
## Road Ranger / SIRV Response Time



## Roadway Clearance Time (2A)



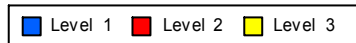
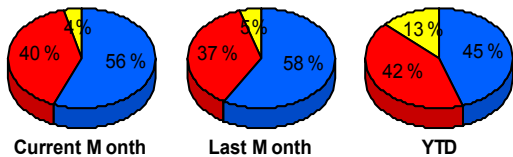
## Incident Clearance Time (3B)



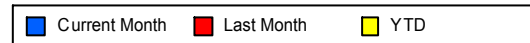
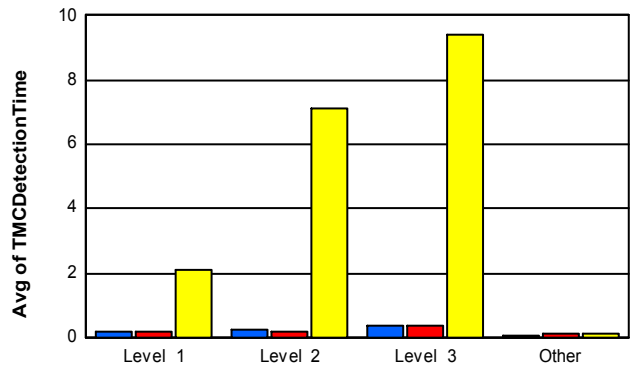
## Performance Measures by Severity

	Level 1			Level 2			Level 3			Other		
	<u>This Month</u>	<u>Last Month</u>	<u>YTD</u>	<u>This Month</u>	<u>Last Month</u>	<u>YTD</u>	<u>This Month</u>	<u>Last Month</u>	<u>YTD</u>	<u>This Month</u>	<u>Last Month</u>	<u>YTD</u>
Number of Events	127	117	1,085	90	74	1,019	9	10	323	5,071	4,455	50,269
Number of Incidents	127	117	1,085	90	74	1,019	9	10	323	0	0	0
TMC Detection (min.)	0.16	0.19	2.11	0.24	0.21	7.09	0.34	0.35	9.42	0.07	0.09	0.10
TMC Verification (min.)	1.26	2.00	1.68	4.69	3.55	5.62	8.20	14.98	7.34	3.78	5.08	4.50
TMC Response (min.)	9.44	7.35	6.48	12.44	12.39	10.38	14.52	20.42	11.64	9.99	9.29	7.58
RR Dispatch Time (min.)	1.82	1.49	1.23	2.32	2.14	1.91	4.94	2.00	2.03	2.16	1.96	1.69
RR Resp. Time (min.)	7.61	5.85	5.28	10.12	10.66	8.54	9.58	18.41	9.61	8.06	7.35	5.92
Event Clearance (min.)	36.71	36.95	52.55	67.32	71.11	82.98	159.44	190.46	138.65	37.79	43.88	23.91
Roadway Clear. (min.)	14.28	15.55	16.42	54.56	58.76	55.05	179.73	198.29	127.50			
Incident Clearance (min.)	36.71	36.95	52.55	67.32	71.11	82.98	159.44	190.46	138.65			
# of Events w/ RR/SIRV	122	108	1,026	89	72	1,008	9	10	309	4,182	3,888	46,548
RR/SIRV Responses	154	131	1,295	150	120	1,634	28	32	712	4,295	3,975	47,735
RR/SIRV Activities	167	141	1,400	157	126	1,720	31	35	787	4,468	4,132	49,611

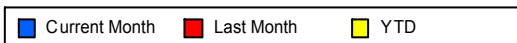
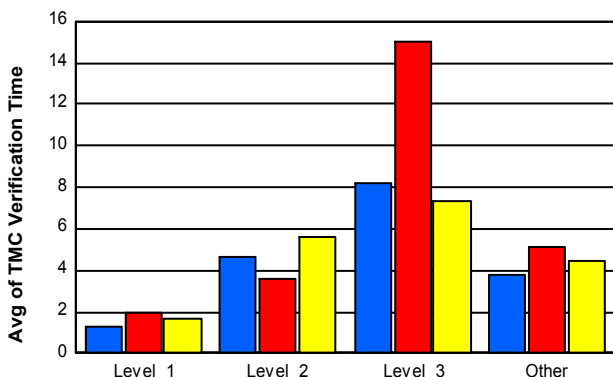
### Number of Events / Severity



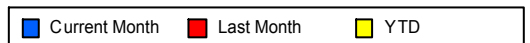
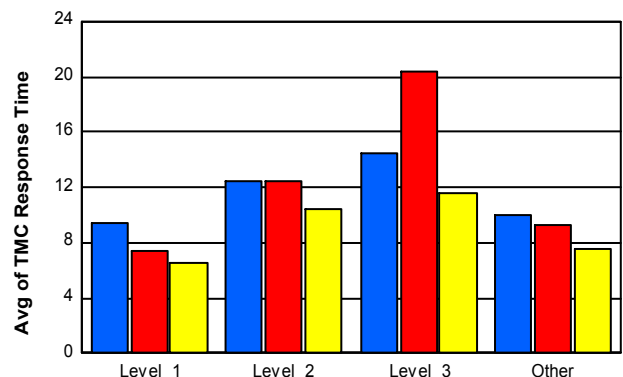
### TMC Detection Time



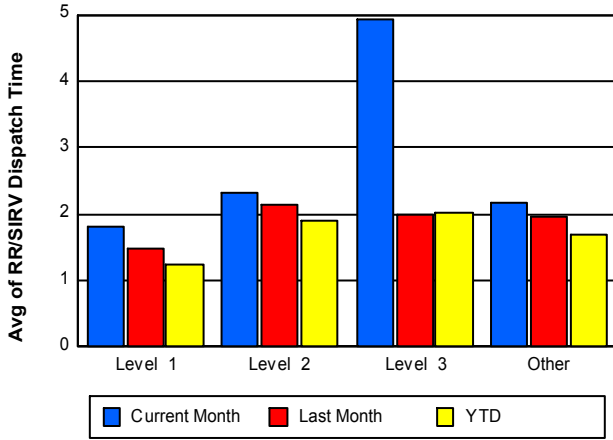
### TMC Verification Time



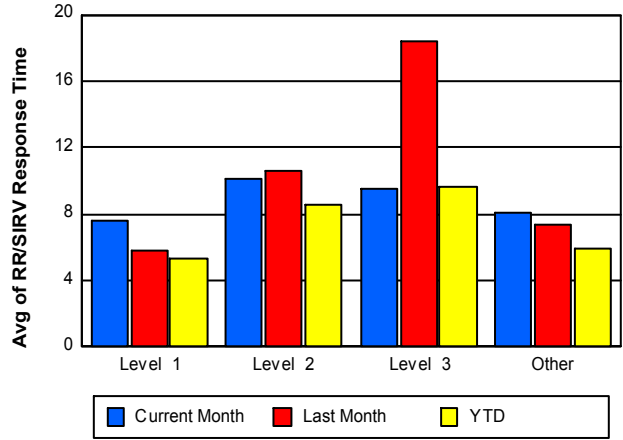
### TMC Response Time



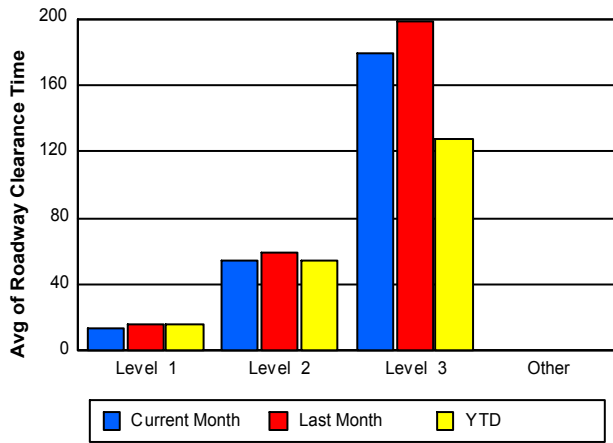
## Road Ranger / SIRV Dispatch Time



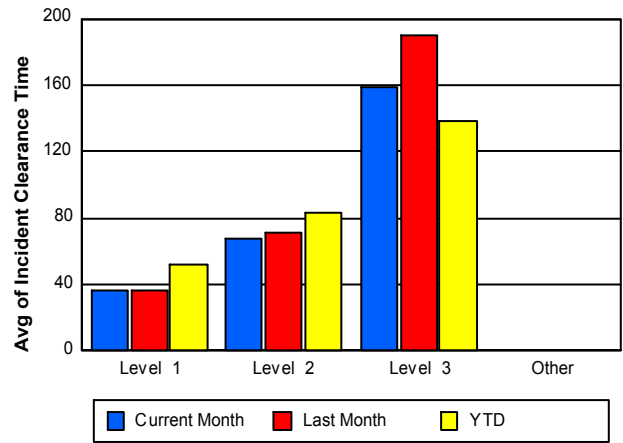
## Road Ranger / SIRV Response Time



## Roadway Clearance Time (2A)



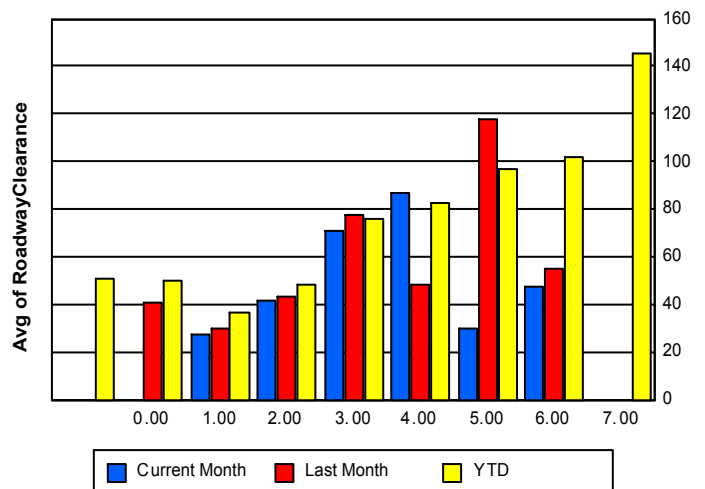
## Incident Clearance Time (3B)



## Roadway Clearance by Maximum Number of Lanes Blocked

	Current Month	Last Month	YTD
			50.51
0		41.02	49.95
1	27.03	30.29	36.35
2	41.27	43.24	48.61
3	70.69	77.31	75.69
4	86.67	48.13	82.35
5	29.61	118.08	97.11
6	47.70	54.79	102.07

## Roadway Clearance Time (2A) by Max. # Lanes Blocked



	Current Month	Last Month	YTD
7	0.00	0.00	145.43

## Performance Measures by Roadway

**595**

	<u>Current Month</u>	<u>Last Month</u>	<u>YTD</u>
Number of Events	842	780	8,416
Number of Incidents	38	27	418
TMC Detection (min.)	0.09	0.10	0.34
TMC Verification (min.)	3.60	5.32	5.19
TMC Response (min.)	9.57	9.17	7.42
RR Dispatch Time (min.)	2.00	2.03	1.64
RR Resp. Time (min.)	7.63	7.15	5.80
Event Clearance (min.)	33.80	37.35	24.26
Roadway Clear. (min.)	41.49	41.86	50.11
Incident Clearance (min.)	55.65	59.59	73.62
# of Events w/ RR/SIRV	677	660	7,804
RR/SIRV Responses	719	692	8,293
RR/SIRV Activities	749	708	8,649

**75**

	<u>Current Month</u>	<u>Last Month</u>	<u>YTD</u>
Number of Events	648	630	7,652
Number of Incidents	19	17	200
TMC Detection (min.)	0.12	0.12	0.42
TMC Verification (min.)	5.88	6.10	5.13
TMC Response (min.)	6.19	6.42	5.29
RR Dispatch Time (min.)	0.99	1.23	1.10
RR Resp. Time (min.)	5.20	5.19	4.20
Event Clearance (min.)	31.00	34.27	23.10
Roadway Clear. (min.)	69.69	89.98	75.74
Incident Clearance (min.)	83.79	95.53	96.09
# of Events w/ RR/SIRV	633	613	7,475
RR/SIRV Responses	670	637	7,768
RR/SIRV Activities	699	669	8,085

**95**

	<u>Current Month</u>	<u>Last Month</u>	<u>YTD</u>
Number of Events	3,807	3,246	36,614
Number of Incidents	169	157	1,807
TMC Detection (min.)	0.07	0.09	0.32
TMC Verification (min.)	3.42	4.71	4.18
TMC Response (min.)	10.92	9.99	8.21
RR Dispatch Time (min.)	2.41	2.08	1.83
RR Resp. Time (min.)	8.79	7.94	6.42
Event Clearance (min.)	40.78	48.13	27.61
Roadway Clear. (min.)	32.19	34.98	43.56
Incident Clearance (min.)	49.99	52.59	75.24
# of Events w/ RR/SIRV	3,092	2,805	33,599
RR/SIRV Responses	3,238	2,929	35,300
RR/SIRV Activities	3,375	3,057	36,768

**SR 84**

	<u><b>YTD</b></u>
Number of Events	<b>10</b>
Number of Incidents	<b>0</b>
TMC Detection (min.)	<b>0.19</b>
TMC Verification (min.)	<b>5.18</b>
TMC Response (min.)	<b>5.56</b>
RR Dispatch Time (min.)	<b>0.51</b>
RR Resp. Time (min.)	<b>5.05</b>
Event Clearance (min.)	<b>26.75</b>
Roadway Clear. (min.)	
Incident Clearance (min.)	
# of Events w/ RR/SIRV	<b>9</b>
RR/SIRV Responses	<b>9</b>
RR/SIRV Activities	<b>10</b>

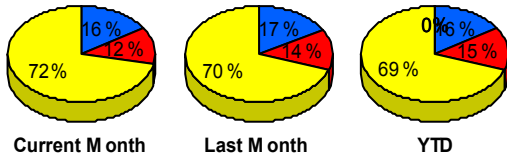
**US 1**

	<u><b>YTD</b></u>
Number of Events	<b>2</b>
Number of Incidents	<b>2</b>
TMC Detection (min.)	<b>16.04</b>
TMC Verification (min.)	<b>11.35</b>
TMC Response (min.)	<b>11.62</b>
RR Dispatch Time (min.)	<b>0.44</b>
RR Resp. Time (min.)	<b>11.18</b>
Event Clearance (min.)	<b>152.68</b>
Roadway Clear. (min.)	<b>137.51</b>
Incident Clearance (min.)	<b>152.68</b>
# of Events w/ RR/SIRV	<b>2</b>
RR/SIRV Responses	<b>4</b>
RR/SIRV Activities	<b>4</b>

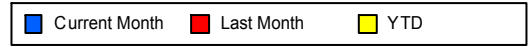
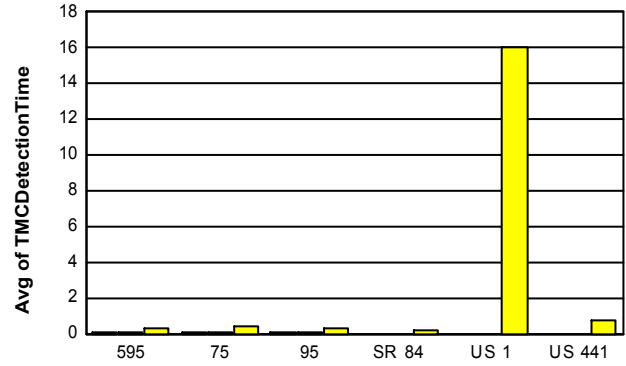
**US 441**

	<u><b>YTD</b></u>
Number of Events	<b>2</b>
Number of Incidents	<b>0</b>
TMC Detection (min.)	<b>0.73</b>
TMC Verification (min.)	<b>36.86</b>
TMC Response (min.)	<b>36.84</b>
RR Dispatch Time (min.)	<b>18.49</b>
RR Resp. Time (min.)	<b>18.35</b>
Event Clearance (min.)	<b>37.71</b>
Roadway Clear. (min.)	
Incident Clearance (min.)	
# of Events w/ RR/SIRV	<b>2</b>
RR/SIRV Responses	<b>2</b>
RR/SIRV Activities	<b>2</b>

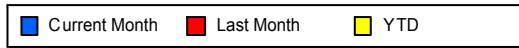
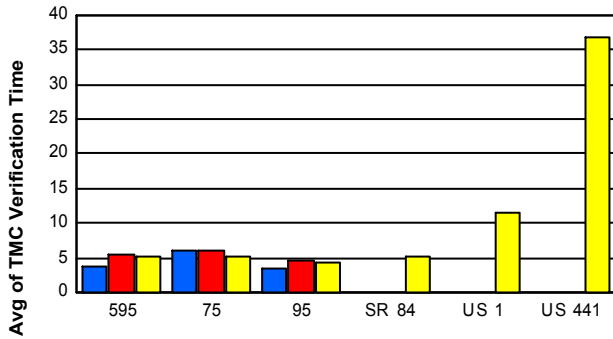
## Number of Events / Roadway



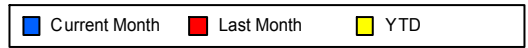
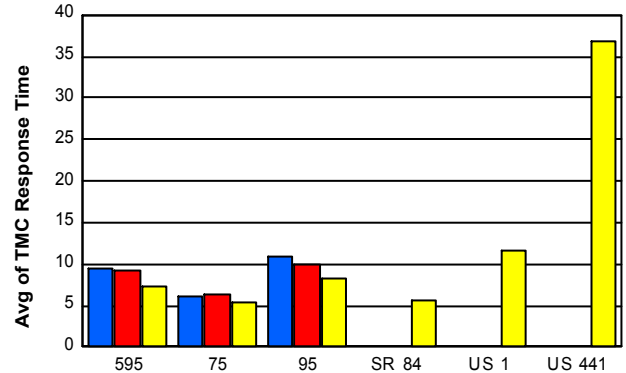
## TMC Detection Time



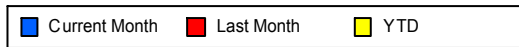
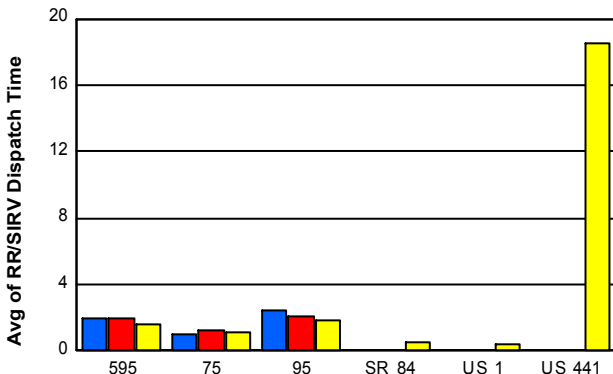
## TMC Verification Time



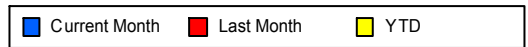
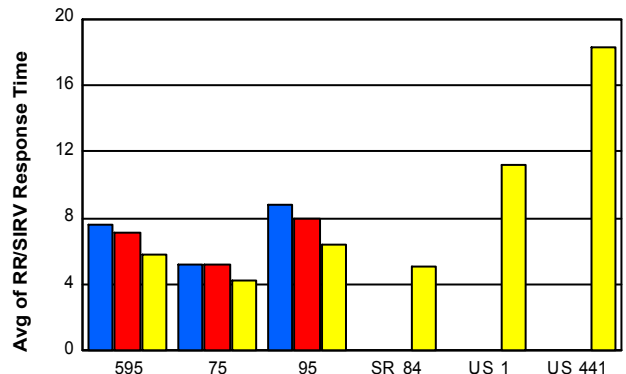
## TMC Response Time



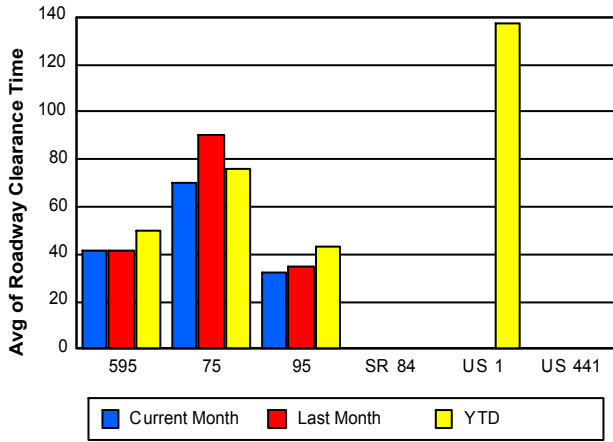
## Road Ranger / SIRV Dispatch Time



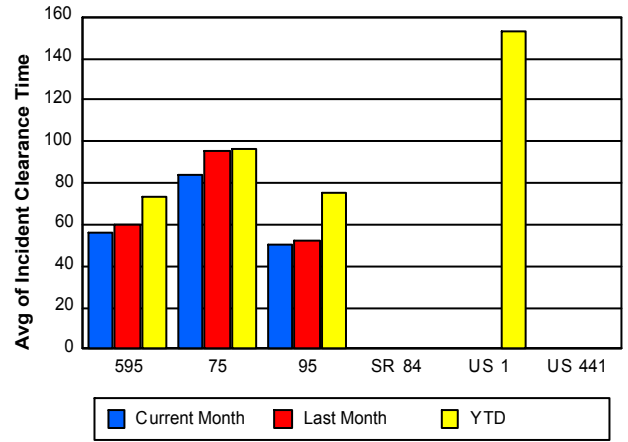
## Road Ranger / SIRV Response Time



## Roadway Clearance Time (2A)



## Incident Clearance Time (3B)



## Performance Measures by Event Type

### Abandoned Vehicle

	<u>Current Month</u>	<u>Last Month</u>	<u>YTD</u>
Number of Events	693	614	6,956
Number of Incidents	1	3	9
TMC Detection (min.)	0.02	0.01	0.01
TMC Verification (min.)	1.06	0.89	0.67
TMC Response (min.)	9.05	7.20	4.23
RR Dispatch Time (min.)	3.28	1.47	1.08
RR Response Time (min.)	7.19	5.77	3.30
Event Clearance (min.)	145.92	196.86	55.18
Roadway Clearance (min.)	7.32	46.73	61.95
Incident Clearance (min.)	25.60	48.33	22.43
# of Events w/ RR/SIRV	592	467	5,577
RR/SIRV Assists	601	474	5,672
RR/SIRV Activities	613	487	5,735

### Accident

	<u>Current Month</u>	<u>Last Month</u>	<u>YTD</u>
Number of Events	372	339	4,256
Number of Incidents	176	147	1,849
TMC Detection (min.)	0.17	0.18	2.69
TMC Verification (min.)	3.93	4.95	5.31
TMC Response (min.)	10.40	10.36	8.75
RR Dispatch Time (min.)	1.95	1.95	1.60
RR Response Time (min.)	8.43	8.49	7.17
Event Clearance (min.)	45.49	46.81	54.90
Roadway Clearance (min.)	39.70	40.59	48.03
Incident Clearance (min.)	60.58	62.33	83.85
# of Events w/ RR/SIRV	361	330	4,173
RR/SIRV Assists	472	418	5,400
RR/SIRV Activities	496	437	5,697

### Amber Alert

	<u>Last Month</u>	<u>YTD</u>
Number of Events	1	1
Number of Incidents	0	0
TMC Detection (min.)	0.00	0.00
TMC Verification (min.)	0.00	0.00
TMC Response (min.)		
RR Dispatch Time (min.)		
RR Response Time (min.)		
Event Clearance (min.)	75.17	75.17
Roadway Clearance (min.)		
Incident Clearance (min.)		
# of Events w/ RR/SIRV	0	0
RR/SIRV Assists	0	0
RR/SIRV Activities	0	0

## Congestion

	<u>YTD</u>
Number of Events	1
Number of Incidents	0
TMC Detection (min.)	0.00
TMC Verification (min.)	1.33
TMC Response (min.)	
RR Dispatch Time (min.)	
RR Response Time (min.)	
Event Clearance (min.)	
Roadway Clearance (min.)	
Incident Clearance (min.)	
# of Events w/ RR/SIRV	0
RR/SIRV Assists	0
RR/SIRV Activities	0

## Debris on Roadway

	<u>Current Month</u>	<u>Last Month</u>	<u>YTD</u>
Number of Events	256	271	2,887
Number of Incidents	10	5	54
TMC Detection (min.)	0.29	0.33	0.31
TMC Verification (min.)	12.64	15.16	12.36
TMC Response (min.)	13.53	15.77	12.97
RR Dispatch Time (min.)	2.78	2.84	2.89
RR Response Time (min.)	10.71	12.92	10.08
Event Clearance (min.)	17.25	17.81	16.35
Roadway Clearance (min.)	42.04	13.78	44.49
Incident Clearance (min.)	32.93	15.39	46.02
# of Events w/ RR/SIRV	243	260	2,828
RR/SIRV Assists	264	269	3,025
RR/SIRV Activities	270	271	3,053

## Disabled Vehicle

	<u>Current Month</u>	<u>Last Month</u>	<u>YTD</u>
Number of Events	3,188	2,989	36,415
Number of Incidents	30	34	429
TMC Detection (min.)	0.08	0.08	0.14
TMC Verification (min.)	3.93	4.95	4.49
TMC Response (min.)	9.63	8.67	7.45
RR Dispatch Time (min.)	1.93	1.94	1.68
RR Response Time (min.)	7.76	6.77	5.80
Event Clearance (min.)	21.23	19.59	19.44
Roadway Clearance (min.)	23.40	40.54	36.85
Incident Clearance (min.)	29.75	42.75	49.92
# of Events w/ RR/SIRV	3,004	2,851	35,542
RR/SIRV Assists	3,081	2,918	36,459
RR/SIRV Activities	3,233	3,060	38,204

## Emergency Vehicles

	<u>Current Month</u>	<u>Last Month</u>	<u>YTD</u>
Number of Events	2	1	21
Number of Incidents	0	1	10
TMC Detection (min.)	0.46	0.00	1.05
TMC Verification (min.)	3.53	0.00	4.47
TMC Response (min.)	3.50	3.95	9.56
RR Dispatch Time (min.)	1.82	4.57	1.70
RR Response Time (min.)	1.68	-0.62	7.86
Event Clearance (min.)	19.73	41.45	23.82
Roadway Clearance (min.)		32.57	17.39
Incident Clearance (min.)		41.45	23.85
# of Events w/ RR/SIRV	2	1	15
RR/SIRV Assists	2	2	16
RR/SIRV Activities	2	2	16

## Other

	<u>Current Month</u>	<u>Last Month</u>	<u>YTD</u>
Number of Events	760	410	2,020
Number of Incidents	3	2	15
TMC Detection (min.)	0.03	0.09	0.07
TMC Verification (min.)	2.26	4.92	4.36
TMC Response (min.)	13.67	15.14	16.21
RR Dispatch Time (min.)	2.03	2.09	2.31
RR Response Time (min.)	11.81	12.62	13.49
Event Clearance (min.)	16.71	14.15	17.16
Roadway Clearance (min.)	22.70	44.98	36.07
Incident Clearance (min.)	23.92	47.53	41.55
# of Events w/ RR/SIRV	186	148	662
RR/SIRV Assists	192	148	675
RR/SIRV Activities	194	148	680

## Pedestrian

	<u>Current Month</u>	<u>Last Month</u>	<u>YTD</u>
Number of Events	8	11	20
Number of Incidents	0	0	0
TMC Detection (min.)	0.09	0.00	0.04
TMC Verification (min.)	19.42	2.20	8.98
TMC Response (min.)	31.05	5.03	15.45
RR Dispatch Time (min.)	7.92	1.04	3.74
RR Response Time (min.)	22.64	3.89	11.38
Event Clearance (min.)	31.71	13.15	20.11
Roadway Clearance (min.)			
Incident Clearance (min.)			
# of Events w/ RR/SIRV	7	9	17
RR/SIRV Assists	7	10	18
RR/SIRV Activities	7	10	18

## Police Activity

	<u>Current Month</u>	<u>Last Month</u>	<u>YTD</u>
Number of Events	11	17	90
Number of Incidents	3	7	40
TMC Detection (min.)	0.00	0.15	0.69
TMC Verification (min.)	0.14	6.08	4.26
TMC Response (min.)	11.41	12.07	8.44
RR Dispatch Time (min.)	1.19	1.71	1.29
RR Response Time (min.)	9.84	10.41	7.19
Event Clearance (min.)	43.72	42.82	47.71
Roadway Clearance (min.)	5.27	61.18	58.61
Incident Clearance (min.)	10.03	66.30	60.11
# of Events w/ RR/SIRV	3	10	58
RR/SIRV Assists	3	16	81
RR/SIRV Activities	3	16	85

## Road Work - Emergency

	<u>Current Month</u>	<u>Last Month</u>	<u>YTD</u>
Number of Events	4	3	19
Number of Incidents	3	2	15
TMC Detection (min.)	0.00	0.00	2.31
TMC Verification (min.)	2.84	0.67	3.20
TMC Response (min.)	7.37	3.04	4.79
RR Dispatch Time (min.)	3.10	0.06	1.50
RR Response Time (min.)	3.32	2.98	3.24
Event Clearance (min.)	37.26	20.37	145.15
Roadway Clearance (min.)	47.06	22.82	164.21
Incident Clearance (min.)	48.33	25.54	176.45
# of Events w/ RR/SIRV	3	2	14
RR/SIRV Assists	4	3	24
RR/SIRV Activities	4	3	24

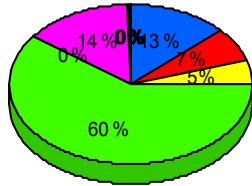
## Visibility

	<u>YTD</u>
Number of Events	7
Number of Incidents	6
TMC Detection (min.)	15.28
TMC Verification (min.)	17.88
TMC Response (min.)	20.19
RR Dispatch Time (min.)	3.29
RR Response Time (min.)	16.90
Event Clearance (min.)	204.43
Roadway Clearance (min.)	332.99
Incident Clearance (min.)	204.43
# of Events w/ RR/SIRV	4
RR/SIRV Assists	5
RR/SIRV Activities	5

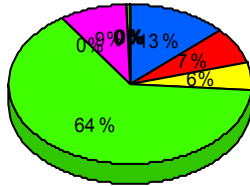
## Weather

	<u>Current Month</u>	<u>YTD</u>
Number of Events	3	3
Number of Incidents	0	0
TMC Detection (min.)	0.07	0.07
TMC Verification (min.)	2.81	2.81
TMC Response (min.)	6.75	6.75
RR Dispatch Time (min.)	3.07	3.07
RR Response Time (min.)	4.90	4.90
Event Clearance (min.)	18.99	18.99
Roadway Clearance (min.)		
Incident Clearance (min.)		
# of Events w/ RR/SIRV	1	1
RR/SIRV Assists	1	1
RR/SIRV Activities	1	1

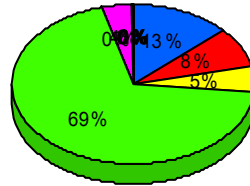
## Number of Events / Event Type



Current Month



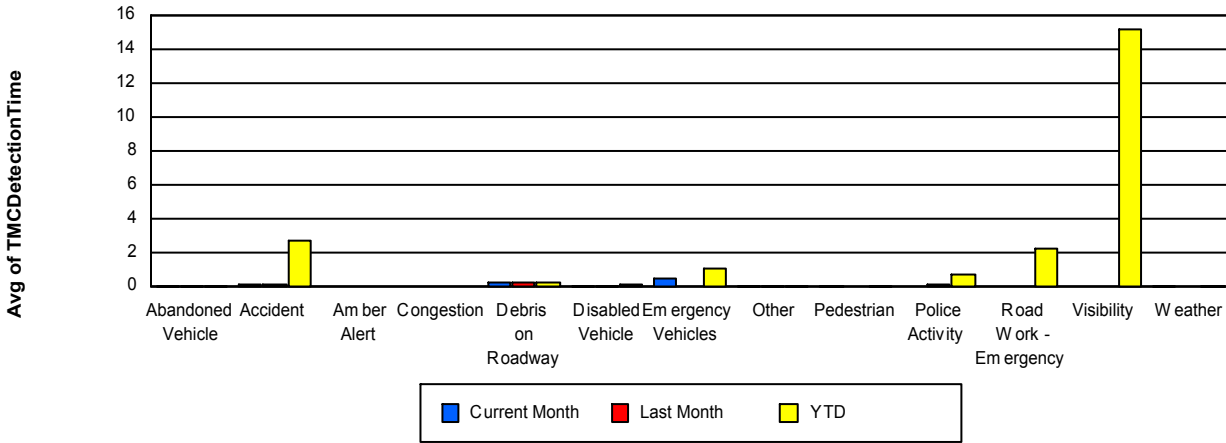
Last Month



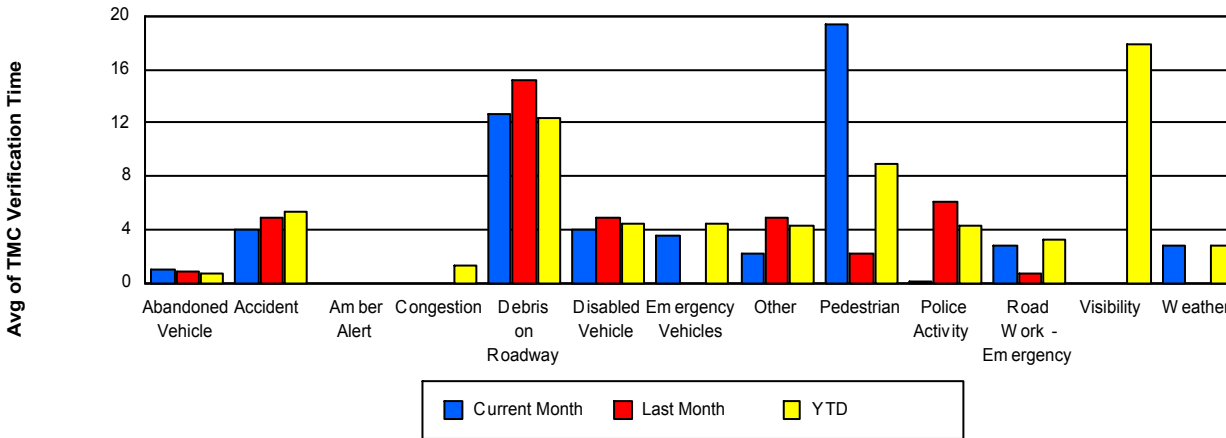
YTD



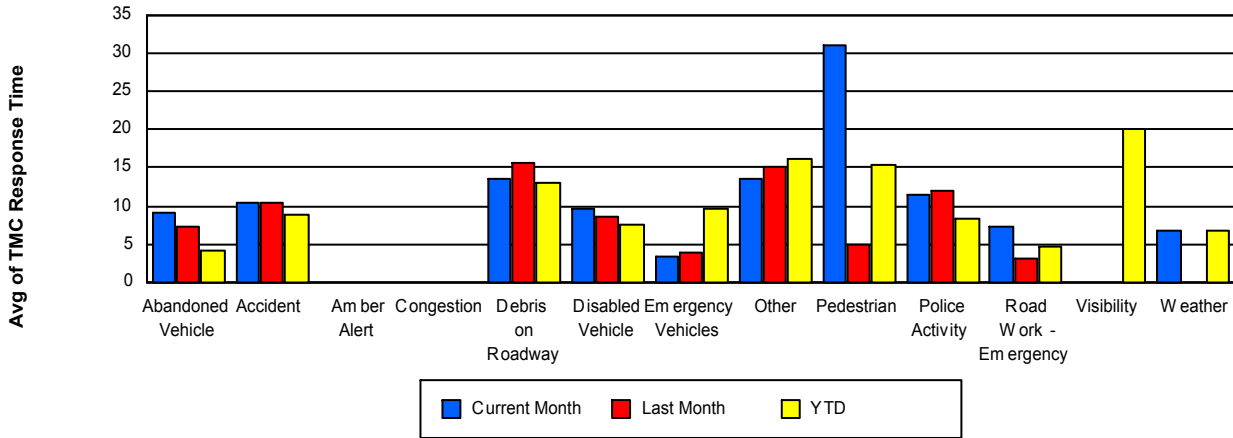
## TMC Detection Time



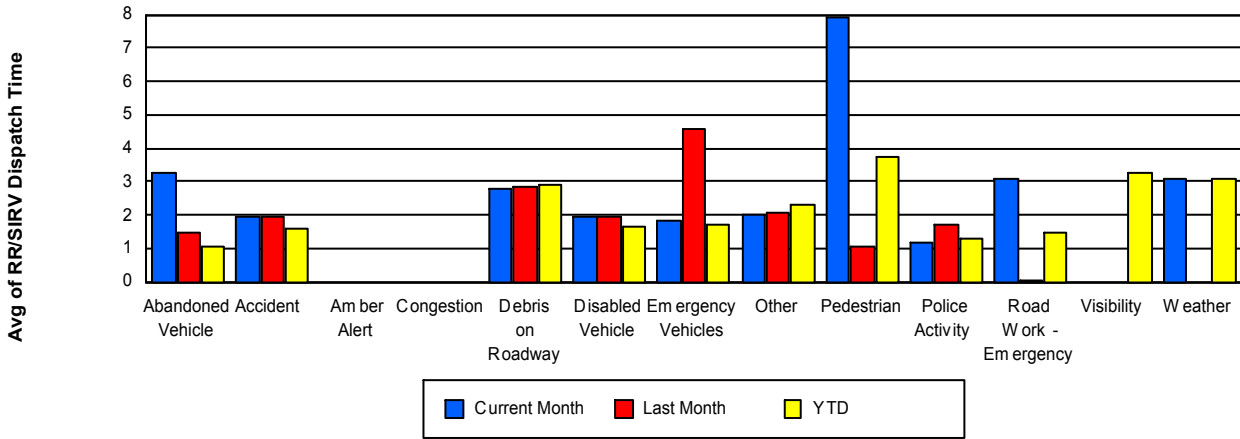
## TMC Verification Time



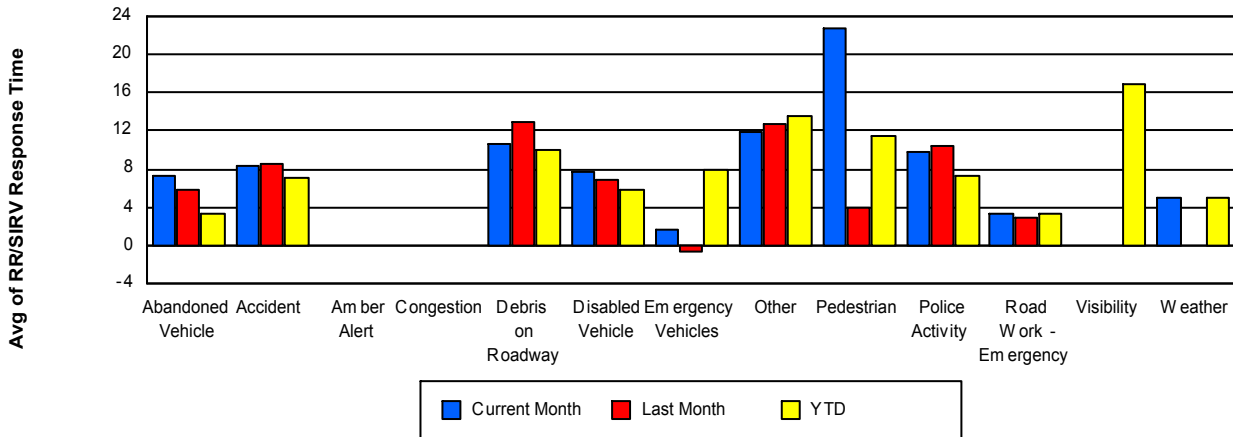
## TMC Response Time



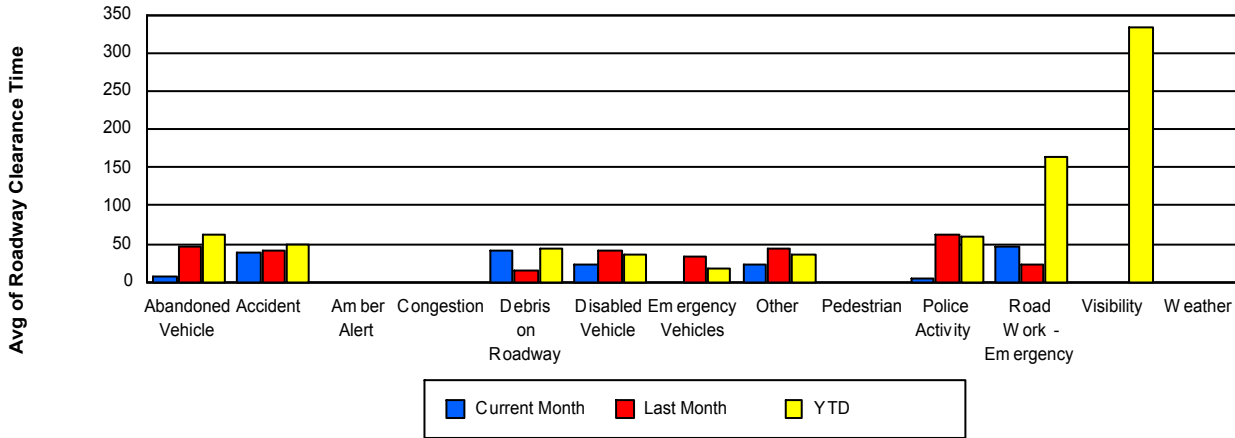
## Road Ranger / SIRV Dispatch Time



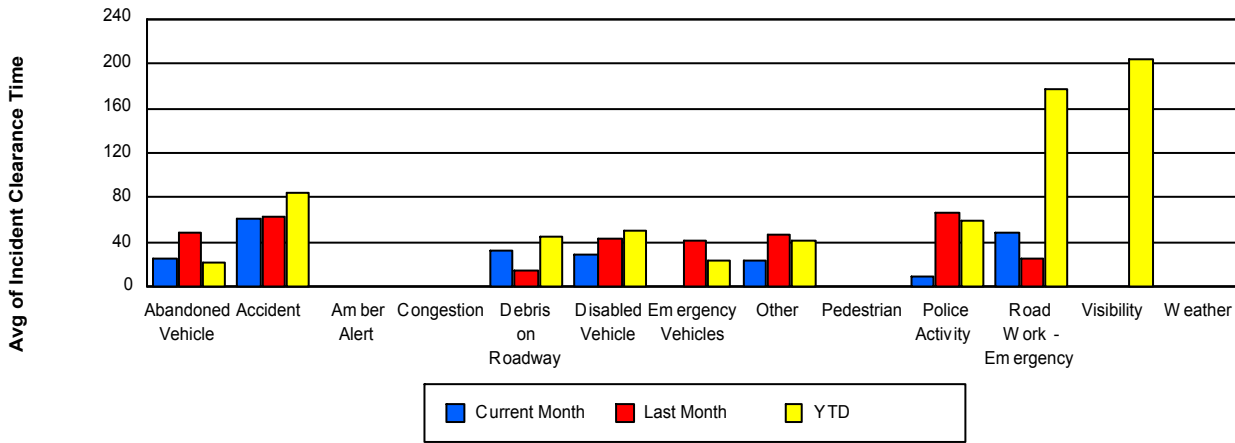
## Road Ranger / SIRV Response Time



## Roadway Clearance Time (2A)



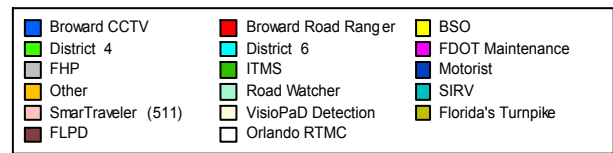
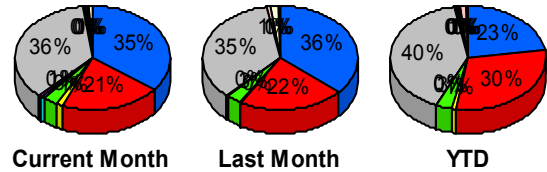
## Incident Clearance Time (3B)



## Incident Detection Methods

	Current Month	Last Month	YTD
Broward CCTV	80	73	549
Broward Road Ra	47	44	727
BSO	3	1	17
District 4	7	6	83
District 6	2	1	6
FDOT Maintenanc	1	0	3
FHP	81	70	972
Florida's Turnpike	0	1	5
ITMS	1	0	4
Motorist	0	0	7
Other	0	0	1
Road Watcher	0	0	5
SIRV	1	0	14
SmarTraveler (511)	1	2	24
VisioPaD Detectio	2	3	10
<b>Total</b>	<b>226</b>	<b>201</b>	<b>2,427</b>

## Total Incidents by Detection Method

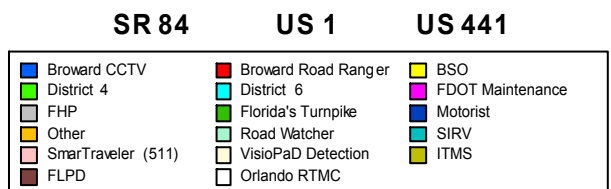
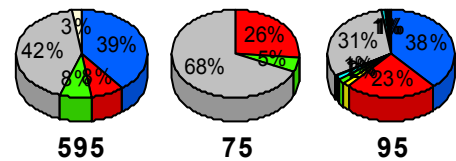


## Incident Detection Methods by Roadway

		Current Month	Last Month	YTD
595	Broward CCTV	15	11	68
	Broward Road Ra	3	7	128
	BSO	0	0	9
	District 4	3	0	20
	FHP	16	7	177
	Florida's Turnpike	0	1	5
	SIRV	0	0	3
	SmarTraveler (511)	0	0	4
	VisioPaD Detectio	1	1	4
	<b>Total</b>	<b>38</b>	<b>27</b>	<b>418</b>
75	Broward Road Ra	5	8	86

## Total Events by Roadway and Detection Method

Current Period Only



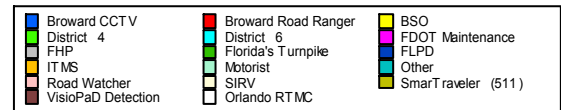
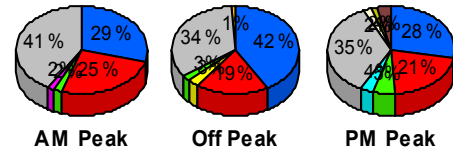
		Current Month	Last Month	YTD
75	BSO	0	1	1
	District 4	1	0	7
	District 6	0	0	2
	FHP	13	8	99
	ITMS	0	0	1
	Other	0	0	1
	Road Watcher	0	0	2
	SIRV	0	0	1
	Total	19	17	200
95	Broward CCTV	65	62	481
	Broward Road Ra	39	29	513
	BSO	3	0	7
	District 4	3	6	55
	District 6	2	1	4
	FDOT Maintenanc	1	0	3
	FHP	52	55	696
	ITMS	1	0	3
	Motorist	0	0	7
	Road Watcher	0	0	3
	SIRV	1	0	10
	SmarTraveler (511	1	2	19
	VisioPaD Detectio	1	2	6
	Total	169	157	1,807
US 1	District 4	0	0	1
	SmarTraveler (511	0	0	1
	Total	0	0	2
Total		226	201	2,427

## Incident Detection Methods by Peak Period

		Current Month	Last Month	YTD
AM Peak	Broward CCTV	15	22	155
	Broward Road Ra	13	11	185
	BSO	0	0	3
	District 4	1	0	13
	District 6	0	1	1
	FDOT Maintenanc	1	0	1
	FHP	21	7	198
	Florida's Turnpike	0	0	1
	ITMS	0	0	2
	Road Watcher	0	0	1
	SIRV	0	0	3
	SmarTraveler (511)	0	1	8
	VisioPaD Detectio	0	2	4
	<b>Total</b>	<b>51</b>	<b>44</b>	<b>575</b>
Off Peak	Broward CCTV	49	33	255
	Broward Road Ra	22	23	361
	BSO	3	1	10
	District 4	3	4	50
	District 6	0	0	2
	FDOT Maintenanc	0	0	2
	FHP	40	50	584
	Florida's Turnpike	0	1	3
	ITMS	1	0	2
	Motorist	0	0	6
	Other	0	0	1
	Road Watcher	0	0	2
	SIRV	0	0	7
	SmarTraveler (511)	0	1	6
	VisioPaD Detectio	0	1	4
<b>Total</b>	<b>118</b>	<b>114</b>	<b>1,295</b>	
PM Peak	Broward CCTV	16	18	139

### Total Events by Roadway and Detection Method

Current Period Only



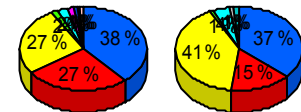
		Current Month	Last Month	YTD
PM Peak	Broward Road Ra	12	10	181
	BSO	0	0	4
	District 4	3	2	20
	District 6	2	0	3
	FHP	20	13	190
	Florida's Turnpike	0	0	1
	Motorist	0	0	1
	Road Watcher	0	0	2
	SIRV	1	0	4
	SmarTraveler (511)	1	0	10
	VisioPaD Detectio	2	0	2
	Total	57	43	557
Total	226	201	2,427	

### Incident Detection Methods by Severity

		Current Month	Last Month	YTD
	Broward CCTV	0	0	1
	Broward Road Ra	0	0	5
	FHP	0	0	1
	Total	0	0	7
Level 1	Broward CCTV	47	42	317
	Broward Road Ra	33	31	395
	BSO	2	0	5
	District 4	3	3	39
	District 6	2	1	3
	FDOT Maintenanc	0	0	2
	FHP	33	33	315
	Florida's Turnpike	0	1	1
	ITMS	1	0	3
	Motorist	0	0	3
	SIRV	1	0	7
	SmarTraveler (511)	0	1	6

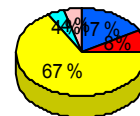
### Total Events by Roadway and Detection Method

Current Period Only



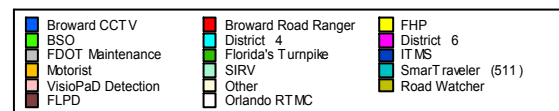
Level 1

Level 2



Level 3

Other



		Current Month	Last Month	YTD
Level 1	VisioPaD Detectio	1	1	4
	Total	123	113	1,100
Level 2	Broward CCTV	29	24	196
	Broward Road Ra	12	10	277
	BSO	1	0	8
	District 4	3	2	34
	District 6	0	0	1
	FDOT Maintenanc	1	0	1
	FHP	32	29	509
	Florida's Turnpike	0	0	3
	Motorist	0	0	4
	Other	0	0	1
	Road Watcher	0	0	4
	SIRV	0	0	2
	SmarTraveler (511)	1	1	12
	VisioPaD Detectio	0	2	2
	Total	79	68	1,054
Level 3	Broward CCTV	4	7	35
	Broward Road Ra	2	3	50
	BSO	0	1	4
	District 4	1	1	10
	District 6	0	0	2
	FHP	16	8	147
	Florida's Turnpike	0	0	1
	ITMS	0	0	1
	Road Watcher	0	0	1
	SIRV	0	0	5
	SmarTraveler (511)	0	0	6
	VisioPaD Detectio	1	0	4
	Total	24	20	266
Total		226	201	2,427

# Road Ranger / SIRV Performance Measures

## Road Ranger / SIRV Performance By County

RR/SIRV Responses per County

Values presented are:  
 - Total Events with a RR/SIRV Response  
 - Total RR/SIRV Responses,  
 - Total Activities Performed

	Current Mo	Last Month	YTD
Broward	4,402	4,078	48,891
	4,627	4,258	51,376
	4,823	4,434	53,518

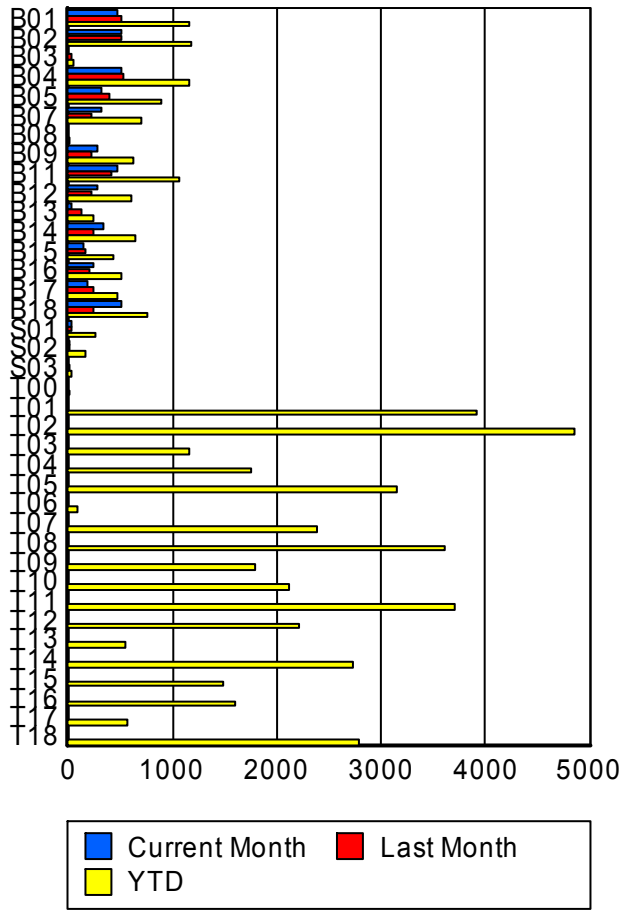


■ Broward

## Road Ranger / SIRV Performance By Truck

	Current Mo	Last Month	YTD
B01	468	501	1,144
	471	503	1,152
	485	531	1,201
B02	508	493	1,175
	510	499	1,186
	535	521	1,240
B03	0	30	54
	0	30	55
	0	31	58
B04	502	512	1,138
	506	520	1,150
	533	544	1,204
B05	318	392	882
	321	393	886
	342	406	927
B07	318	220	700
	321	220	705
	335	225	732
B08	0	0	15
	0	0	15
	0	0	17
B09	266	216	607
	270	220	615
	280	225	632
B11	469	414	1,044
	474	418	1,055
	493	443	1,102

RR/SIRV Responses per Truck



	Current Mo	Last Month	YTD
B12	280	220	606
	282	222	611
	294	231	635
B13	34	124	245
	35	124	247
	36	127	253
B14	335	229	638
	339	232	645
	345	235	656
B15	142	171	424
	142	171	424
	148	177	439
B16	239	196	506
	239	198	509
	249	204	528
B17	177	231	476
	177	233	478
	188	242	500
B18	498	236	746
	502	240	755
	520	255	788
S01	23	21	258
	24	21	261
	26	22	308
S02	14	13	164
	14	13	165
	14	14	189
S03	0	1	25
	0	1	25
	0	1	27
T00	0	0	2
	0	0	2
	0	0	2
T01	0	0	3,875
	0	0	3,912
	0	0	4,088
T02	0	0	4,815
	0	0	4,862
	0	0	5,090
T03	0	0	1,143
	0	0	1,157
	0	0	1,219
T04	0	0	1,741
	0	0	1,754
	0	0	1,836

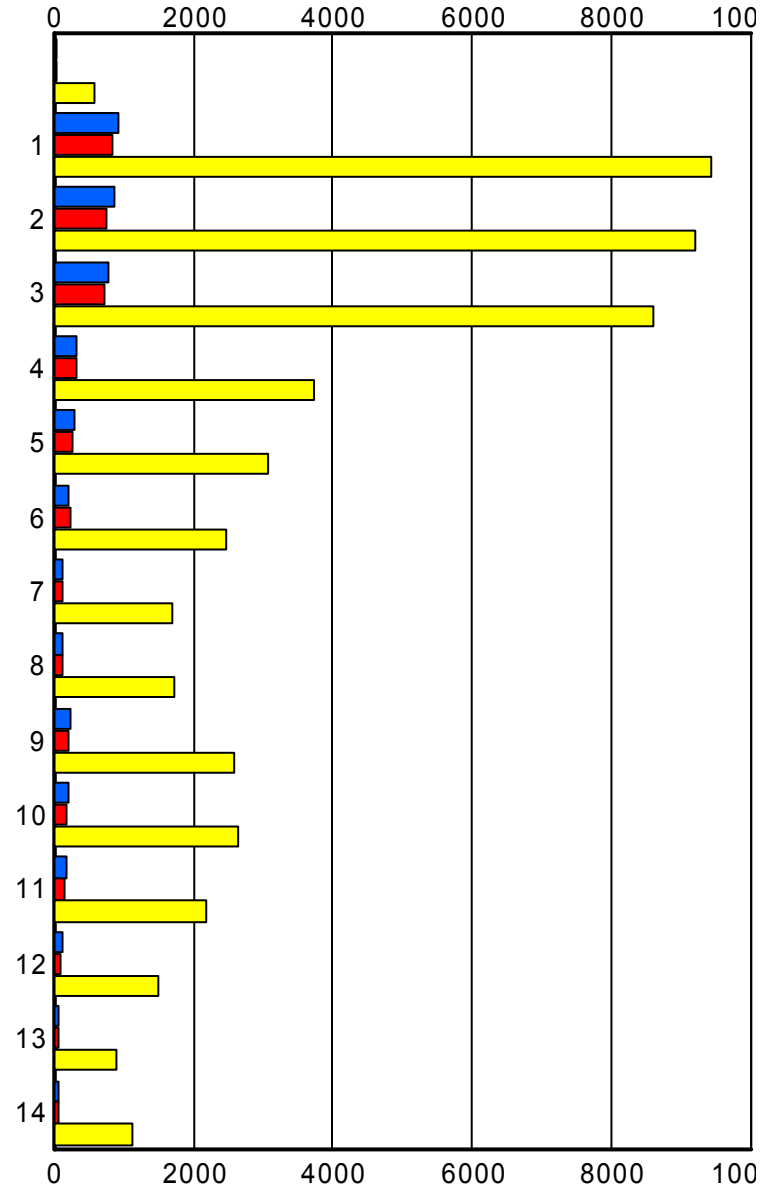
	Current Mo	Last Month	YTD
T05	0	0	3,126
	0	0	3,150
	0	0	3,282
T06	0	0	90
	0	0	90
	0	0	95
T07	0	0	2,370
	0	0	2,391
	0	0	2,462
T08	0	0	3,559
	0	0	3,601
	0	0	3,738
T09	0	0	1,769
	0	0	1,787
	0	0	1,881
T10	0	0	2,083
	0	0	2,110
	0	0	2,191
T11	0	0	3,675
	0	0	3,714
	0	0	3,908
T12	0	0	2,179
	0	0	2,208
	0	0	2,288
T13	0	0	541
	0	0	548
	0	0	564
T14	0	0	2,699
	0	0	2,724
	0	0	2,774
T15	0	0	1,464
	0	0	1,476
	0	0	1,529
T16	0	0	1,591
	0	0	1,603
	0	0	1,676
T17	0	0	566
	0	0	569
	0	0	584
T18	0	0	2,728
	0	0	2,779
	0	0	2,875

### Road Ranger / SIRV Performance By Beat

	Current Mo	Last Month	YTD
	46	38	573
	48	38	584
	51	40	661
1	890	822	9,149
	916	840	9,429
	952	875	9,814
2	856	734	8,964
	877	752	9,191
	918	792	9,581
3	766	711	8,343
	790	731	8,589
	827	755	8,944
4	319	336	3,683
	321	338	3,724
	332	347	3,890
5	282	265	3,033
	285	269	3,070
	299	276	3,170
6	208	243	2,439
	209	244	2,461
	221	257	2,568
7	129	114	1,674
	131	114	1,689
	136	119	1,763
8	134	129	1,717
	134	131	1,730
	139	138	1,807
9	222	204	2,539
	225	204	2,574
	240	214	2,675
10	219	189	2,617
	219	191	2,635
	222	203	2,740
11	187	162	2,177
	189	163	2,197
	193	168	2,277
12	129	107	1,473
	130	109	1,489
	136	112	1,549
13	73	59	882
	74	59	895
	77	59	933
14	79	74	1,109
	79	75	1,119
	80	79	1,146

Values presented are:  
 - Total Events with a RR/SIRV Response  
 - Total RR/SIRV Responses,  
 - Total Activities Performed

### RR/SIRV Responses per Beat



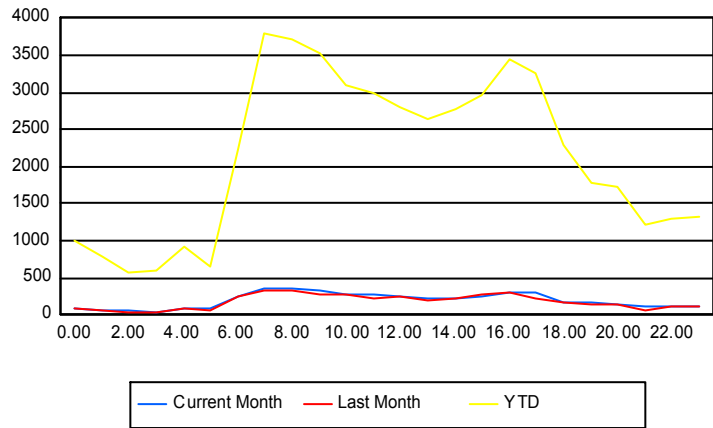
■ Current Month   
 ■ Last Month   
 ■ YTD

## Road Ranger / SIRV Performance By Time of Day

Values presented are:  
 - Total Events with a RR/SIRV Response  
 - Total RR/SIRV Responses,  
 - Total Activities Performed

	Current Mo	Last Month	YTD
12AM-1AM	99 100 103	79 80 83	972 1,007 1,047
1AM-2AM	67 68 72	53 53 55	747 776 806
2AM-3AM	53 57 57	41 42 45	529 563 590
3AM-4AM	34 40 42	35 37 38	545 586 603
4AM-5AM	89 94 95	94 94 95	860 920 944
5AM-6AM	76 84 86	49 54 60	605 660 683
6AM-7AM	244 253 265	225 239 248	2,122 2,250 2,361
7AM-8AM	346 361 384	320 338 353	3,619 3,807 3,990
8AM-9AM	326 353 369	312 320 332	3,529 3,704 3,842
9AM-10AM	297 319 329	258 274 288	3,315 3,515 3,664
10AM-11AM	256 268 275	254 269 275	2,939 3,093 3,203
11AM-12PM	272 287 300	216 229 237	2,862 2,993 3,129
12PM-1PM	240 256 272	240 253 260	2,652 2,802 2,914

## Number of Responses / Hour of the Day



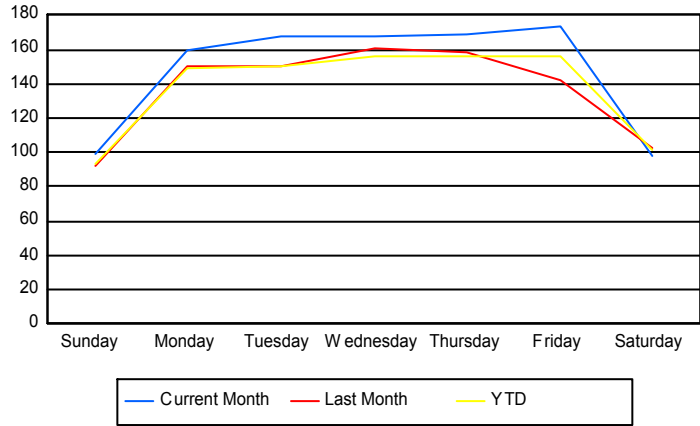
	Current Mo	Last Month	YTD
1PM-2PM	202	199	2,483
	210	205	2,628
	216	213	2,732
2PM-3PM	205	222	2,657
	209	233	2,784
	216	238	2,883
3PM-4PM	249	253	2,814
	261	264	2,958
	272	279	3,086
4PM-5PM	282	281	3,300
	292	291	3,443
	304	306	3,590
5PM-6PM	288	224	3,110
	302	232	3,247
	314	243	3,402
6PM-7PM	163	168	2,202
	168	174	2,299
	174	180	2,386
7PM-8PM	149	142	1,693
	160	150	1,774
	169	157	1,846
8PM-9PM	130	130	1,668
	133	136	1,733
	141	143	1,812
9PM-10PM	98	71	1,162
	103	73	1,228
	109	76	1,286
10PM-11PM	118	101	1,245
	126	106	1,294
	130	110	1,338
11PM-12AM	119	111	1,261
	123	112	1,312
	129	120	1,381

## Road Ranger / SIRV Performance By Day of Week

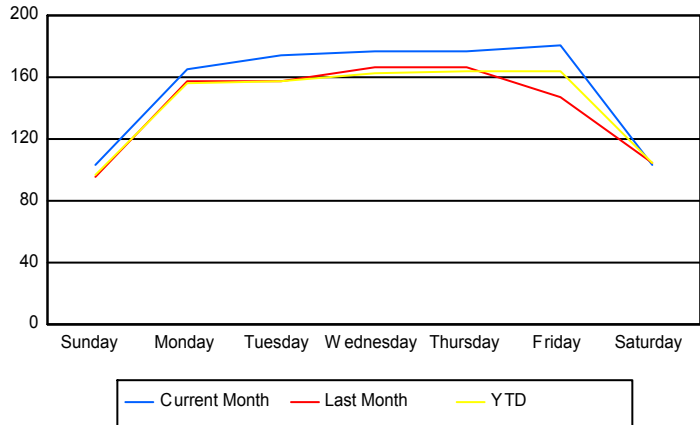
Values presented are:  
 - Total Events with a RR/SIRV Response  
 - Total RR/SIRV Responses,  
 - Total Activities Performed

	Current Mo	Last Month	YTD
Sunday	464	367	4,809
	490	383	5,016
	512	394	5,215
Monday	590	597	7,499
	614	630	7,885
	657	660	8,211
Tuesday	659	600	7,670
	691	630	8,090
	725	655	8,423
Wednesday	668	802	7,944
	707	833	8,304
	734	861	8,673
Thursday	673	743	7,924
	709	782	8,355
	734	813	8,708
Friday	862	559	7,958
	897	581	8,376
	921	608	8,705
Saturday	490	411	5,127
	519	419	5,350
	540	443	5,583

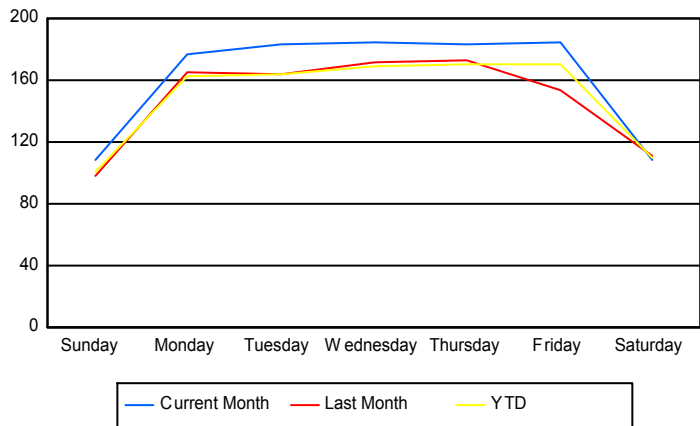
### Avg # of events with a RR/SIRV Response per Day of the Week



### Avg # of RR/SIRV Responses per Day of the Week



### Avg # of RR/SIRV Activities Performed per Day of the Week



### Road Ranger/SIRV Responses per Time of Day and Day of Week

