



# Monthly Performance Measures Report

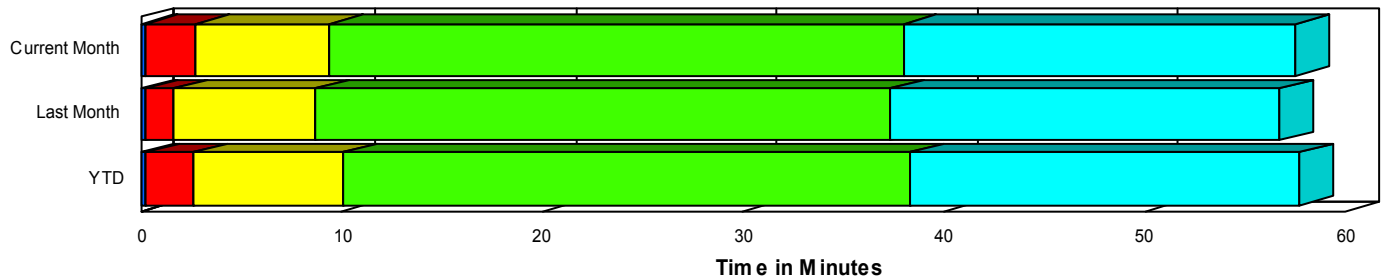
Period From Jun 1, 2007 to Jun 30, 2007

Created on:  
July 02, 2007  
8:52 am

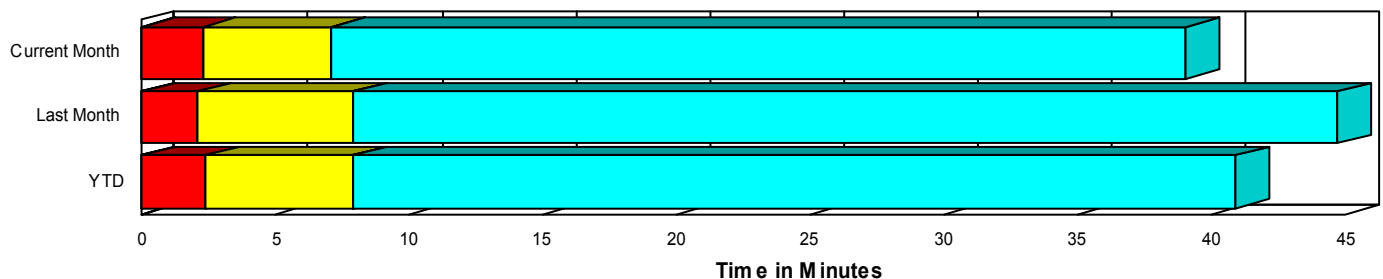
## Performance Measures Summary

	Traffic Events (No Lanes Blocked)			Incidents (Lanes Blocked)		
	<u>This Month</u>	<u>Last Month</u>	<u>YTD</u>	<u>This Month</u>	<u>Last Month</u>	<u>YTD</u>
Number of Events	5,254	5,262	28,183	244	259	1,379
TMC Detection (min.)	0.04	0.03	0.05	0.20	0.20	0.26
TMC Verification (min.)	2.28	2.10	2.39	2.55	1.45	2.39
TMC Response (min.)	7.37	8.09	8.12	9.11	8.51	9.89
RR Dispatch Time (min.)	1.78	2.23	2.01	2.53	2.28	2.52
RR Response Time (min.)	5.78	6.05	6.24	6.60	6.23	7.38
Roadway Clearance (min.)				36.98	36.61	37.95
Event Clearance (min.)	39.30	44.85	41.13	56.16	55.25	56.63
# of Events w/ RR/SIRV	4,084	4,037	22,563	236	250	1,325
RR/SIRV Responses	4,251	4,199	23,266	421	409	2,175
RR/SIRV Activities	4,455	4,372	24,189	452	447	2,329

## Incident Clearance TimeLine



## Traffic Event(Non-Lane Blockage) Time-Line



<span style="color: blue;">■</span> Avg. TMC Detection Time	<span style="color: green;">■</span> Avg. Time from TMC Response to Roadway Clearance*
<span style="color: red;">■</span> Avg. Time from TMC Detection to TMC Verification	<span style="color: cyan;">■</span> Avg. Time from Roadway Clearance to Incident/Event Clearance**
<span style="color: yellow;">■</span> Avg. Time from TMC Verification to TMC Response	

\* Roadway clearance equals all travel lanes open

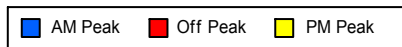
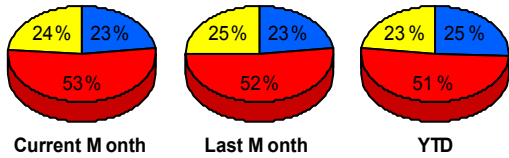
\*\* Incident clearance equals time when last responder has left the scene

## Performance Measures by Peak Period

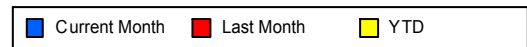
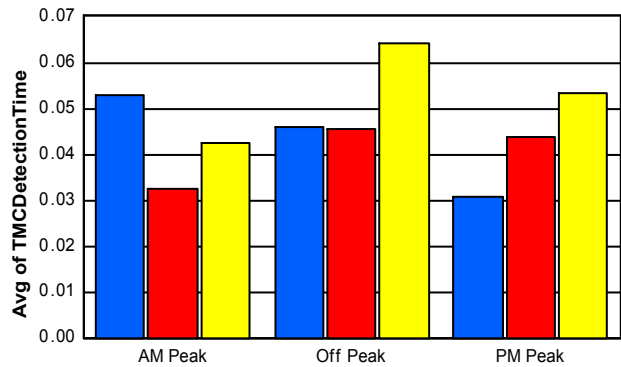
*Note: AM peak period is defined as 6am to 10am and PM peak period is defined as 3pm to 7pm.*

	AM Peak			Off Peak			PM Peak		
	<u>Current Month</u>	<u>Last Month</u>	<u>YTD</u>	<u>Current Month</u>	<u>Last Month</u>	<u>YTD</u>	<u>Current Month</u>	<u>Last Month</u>	<u>YTD</u>
Number of Events	1,263	1,290	7,470	2,921	2,854	15,189	1,314	1,377	6,903
Number of Incidents	45	64	304	147	126	719	52	69	356
TMC Detection (min.)	0.05	0.03	0.04	0.05	0.05	0.06	0.03	0.04	0.05
TMC Verification (min.)	1.44	1.37	1.44	2.74	2.52	2.84	2.10	1.78	2.44
TMC Response (min.)	6.24	7.18	6.58	8.23	9.07	9.30	7.02	7.12	7.72
RR Dispatch Time (min.)	1.69	1.50	1.44	1.82	2.73	2.32	1.96	1.91	2.06
RR Response Time (min.)	4.69	5.82	5.27	6.60	6.47	7.07	5.24	5.46	5.82
Event Clearance (min.)	28.44	41.78	34.31	43.79	47.14	48.29	42.89	44.94	35.85
Roadway Clearance (min.)	32.80	31.54	32.42	41.88	40.23	42.68	26.75	34.71	33.14
Incident Clearance (min.)	54.59	59.71	55.53	60.54	54.72	61.02	45.13	52.08	48.70
# of Events w/ RR/SIRV	1,019	1,068	6,265	2,252	2,165	12,013	1,049	1,054	5,610
RR/SIRV Responses	1,097	1,151	6,657	2,458	2,332	12,815	1,117	1,125	5,969
RR/SIRV Activities	1,149	1,210	6,943	2,581	2,441	13,380	1,177	1,168	6,195

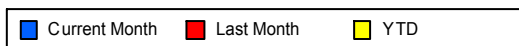
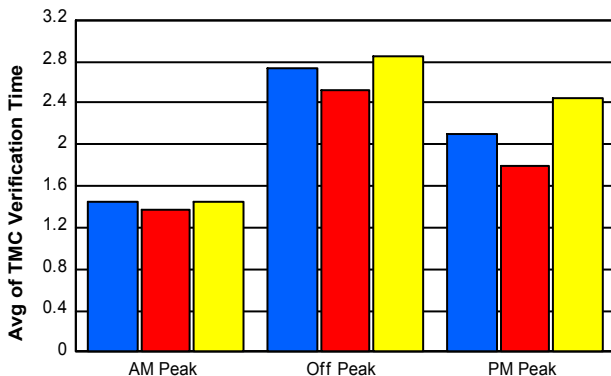
### Number of Events / Peak Period



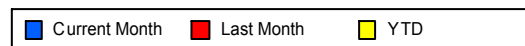
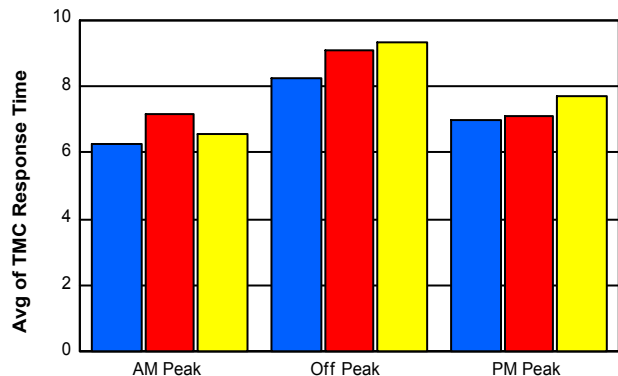
### TMC Detection Time



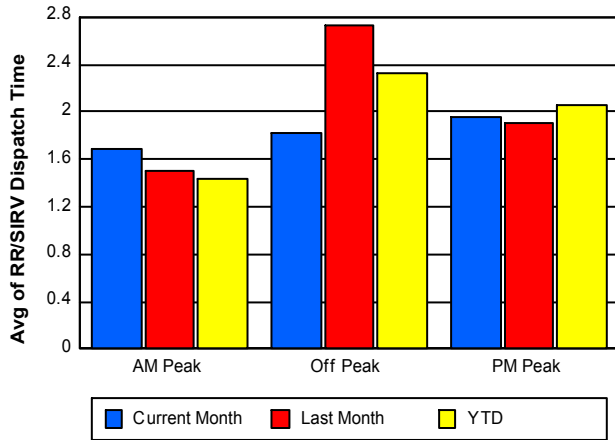
### TMC Verification Time



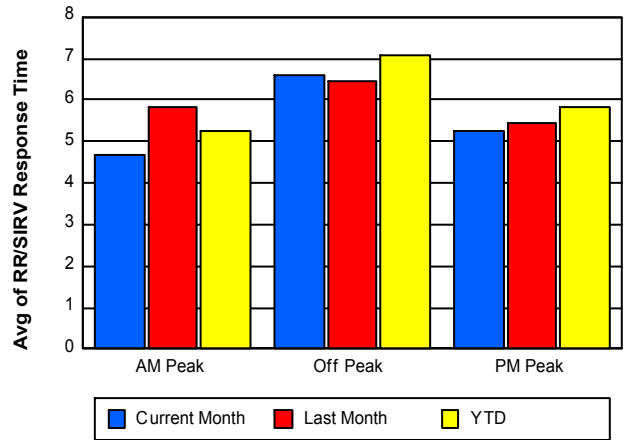
### TMC Response Time



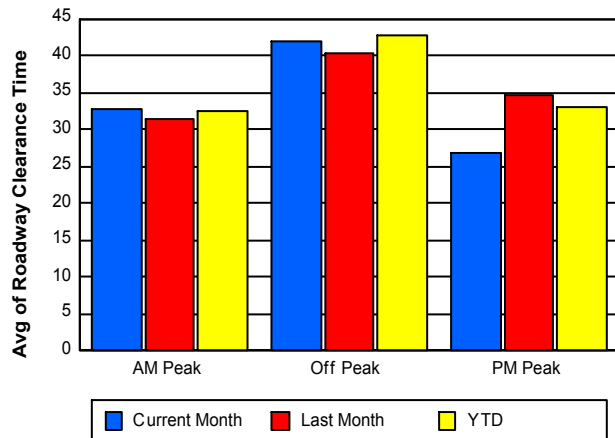
## Road Ranger / SIRV Dispatch Time



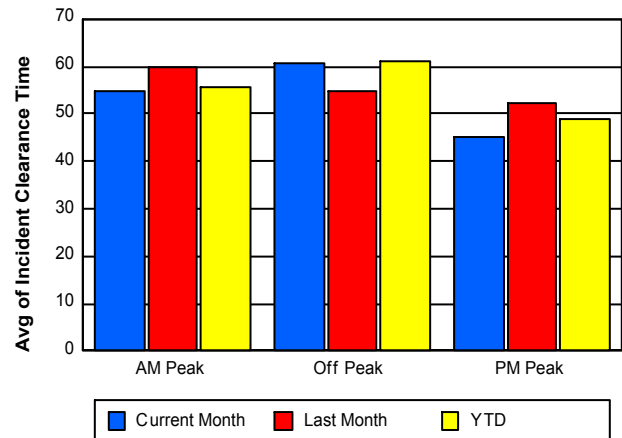
## Road Ranger / SIRV Response Time



## Roadway Clearance Time (2A)



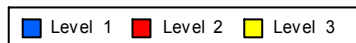
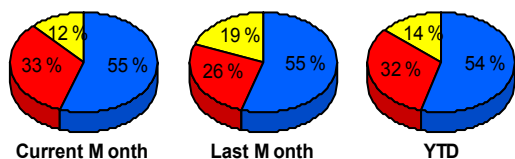
## Incident Clearance Time (3B)



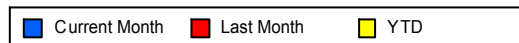
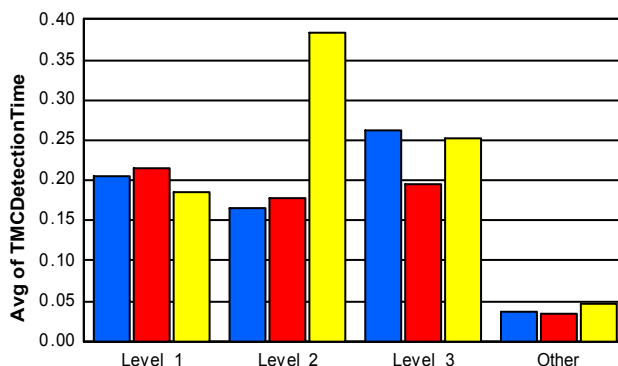
## Performance Measures by Severity

	Level 1			Level 2			Level 3			Other		
	<u>This Month</u>	<u>Last Month</u>	<u>YTD</u>	<u>This Month</u>	<u>Last Month</u>	<u>YTD</u>	<u>This Month</u>	<u>Last Month</u>	<u>YTD</u>	<u>This Month</u>	<u>Last Month</u>	<u>YTD</u>
Number of Events	135	142	748	80	68	439	29	49	192	5,254	5,262	28,183
Number of Incidents	135	142	748	80	68	439	29	49	192	0	0	0
TMC Detection (min.)	0.21	0.22	0.19	0.17	0.18	0.38	0.26	0.19	0.25	0.04	0.03	0.05
TMC Verification (min.)	2.14	0.89	1.63	2.08	2.11	3.03	5.79	2.19	3.86	2.28	2.10	2.39
TMC Response (min.)	7.72	6.55	8.56	10.72	11.56	11.59	10.85	9.79	10.99	7.37	8.09	8.12
RR Dispatch Time (min.)	2.10	1.82	2.18	2.91	2.74	2.79	3.48	3.01	3.27	1.78	2.23	2.01
RR Resp. Time (min.)	5.67	4.72	6.41	7.81	8.82	8.80	7.37	6.85	7.73	5.78	6.05	6.24
Event Clearance (min.)	38.15	36.53	37.64	70.05	68.06	67.98	101.67	91.73	104.68	39.30	44.85	41.13
Roadway Clear. (min.)	15.59	13.96	15.13	52.88	52.78	52.89	92.69	79.81	92.75			
Incident Clearance (min.)	38.15	36.53	37.64	70.05	68.06	67.98	101.67	91.73	104.68			
# of Events w/ RR/SIRV	128	136	706	79	68	433	29	46	186	4,084	4,037	22,563
RR/SIRV Responses	191	175	953	149	126	756	81	108	466	4,251	4,199	23,266
RR/SIRV Activities	210	194	1,023	156	134	792	86	119	514	4,455	4,372	24,189

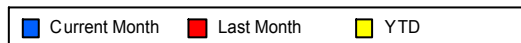
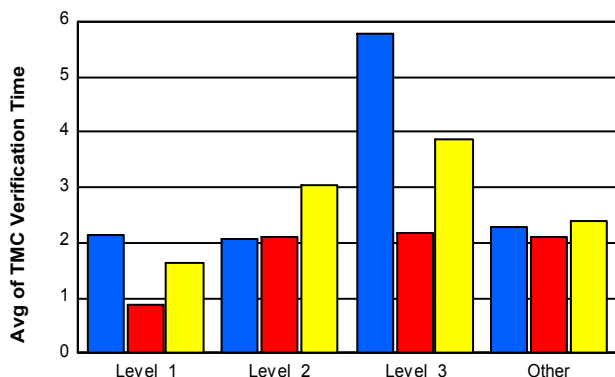
### Number of Events / Severity



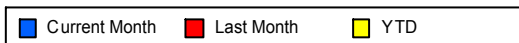
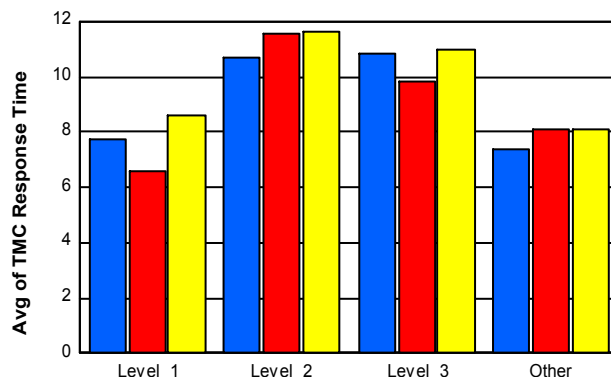
### TMC Detection Time



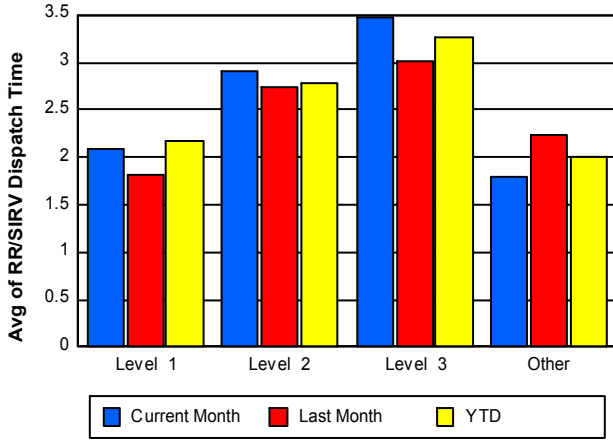
### TMC Verification Time



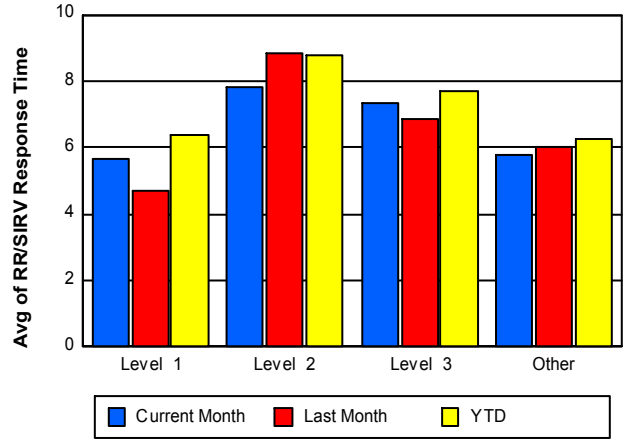
### TMC Response Time



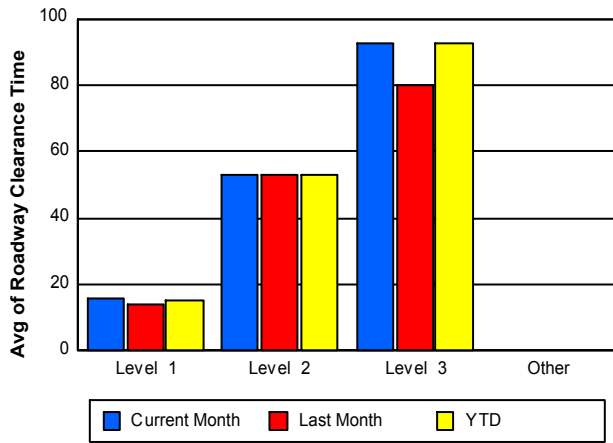
## Road Ranger / SIRV Dispatch Time



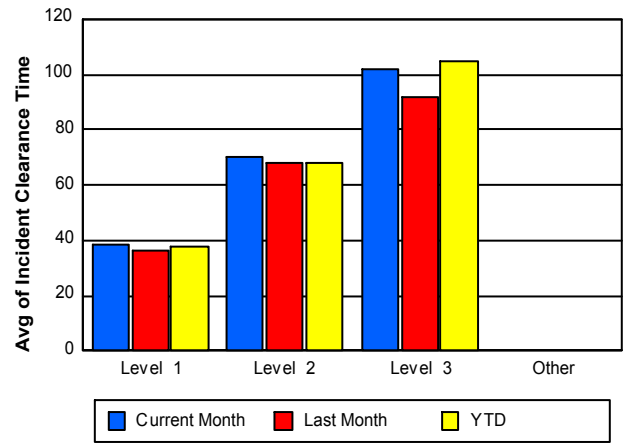
## Road Ranger / SIRV Response Time



## Roadway Clearance Time (2A)



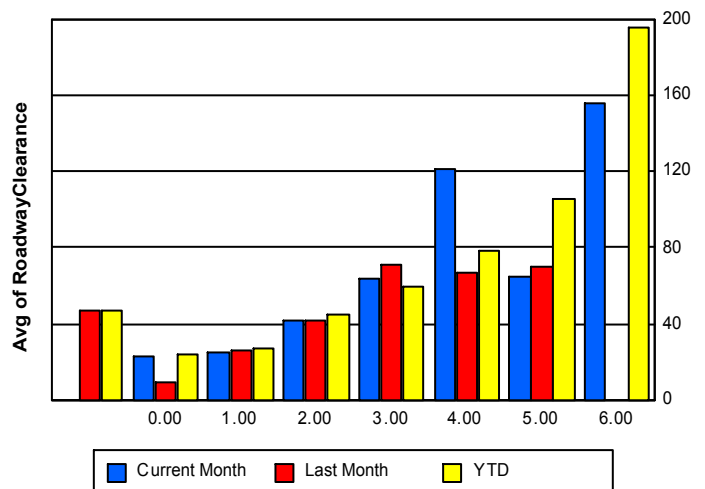
## Incident Clearance Time (3B)



## Roadway Clearance by Maximum Number of Lanes Blocked

	Current Month	Last Month	YTD
		46.32	46.32
0	22.50	8.78	23.56
1	24.95	25.77	27.40
2	41.07	42.03	44.95
3	63.97	71.27	58.97
4	121.11	66.17	78.60
5	64.45	69.77	105.90
6	155.08	0.00	195.79

## Roadway Clearance Time (2A) by Max. # Lanes Blocked



## Performance Measures by Roadway

**595**

	<u>Current Month</u>	<u>Last Month</u>	<u>YTD</u>
Number of Events	879	853	4,585
Number of Incidents	29	42	214
TMC Detection (min.)	0.08	0.05	0.07
TMC Verification (min.)	2.34	2.62	2.85
TMC Response (min.)	6.47	7.17	7.58
RR Dispatch Time (min.)	1.90	1.70	1.89
RR Resp. Time (min.)	4.83	5.65	5.85
Event Clearance (min.)	41.89	42.59	39.48
Roadway Clear. (min.)	49.46	43.88	43.71
Incident Clearance (min.)	62.53	56.71	61.19
# of Events w/ RR/SIRV	702	669	3,745
RR/SIRV Responses	759	731	4,008
RR/SIRV Activities	800	763	4,169

**75**

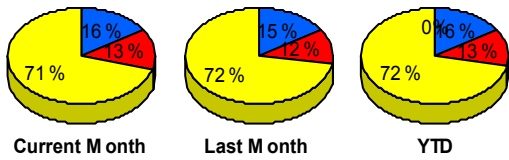
	<u>Current Month</u>	<u>Last Month</u>	<u>YTD</u>
Number of Events	739	668	3,799
Number of Incidents	16	21	98
TMC Detection (min.)	0.04	0.05	0.07
TMC Verification (min.)	4.23	2.72	3.77
TMC Response (min.)	4.13	5.15	4.35
RR Dispatch Time (min.)	1.00	3.06	1.42
RR Resp. Time (min.)	3.16	2.11	2.96
Event Clearance (min.)	46.81	62.39	43.84
Roadway Clear. (min.)	54.78	51.19	64.10
Incident Clearance (min.)	68.83	65.92	75.70
# of Events w/ RR/SIRV	718	636	3,688
RR/SIRV Responses	761	671	3,881
RR/SIRV Activities	801	700	4,076

**95**

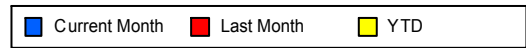
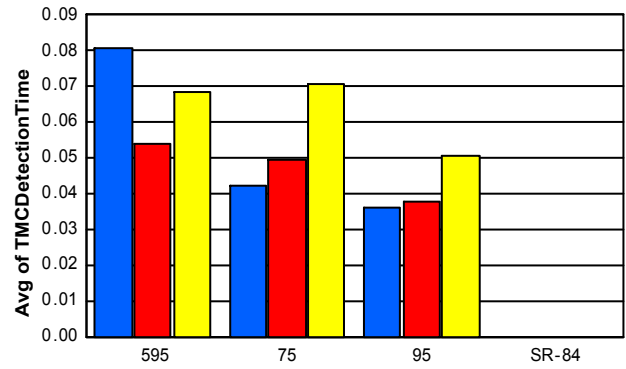
	<u>Current Month</u>	<u>Last Month</u>	<u>YTD</u>
Number of Events	3,880	4,000	21,177
Number of Incidents	199	196	1,067
TMC Detection (min.)	0.04	0.04	0.05
TMC Verification (min.)	1.91	1.84	2.05
TMC Response (min.)	8.53	8.96	9.23
RR Dispatch Time (min.)	1.98	2.19	2.19
RR Resp. Time (min.)	6.72	6.99	7.16
Event Clearance (min.)	38.35	43.08	42.01
Roadway Clear. (min.)	33.73	33.49	34.40
Incident Clearance (min.)	54.21	53.79	53.96
# of Events w/ RR/SIRV	2,900	2,982	16,455
RR/SIRV Responses	3,152	3,206	17,552
RR/SIRV Activities	3,306	3,356	18,273

	<u>YTD</u>
Number of Events	1
Number of Incidents	0
TMC Detection (min.)	0.00
TMC Verification (min.)	1.08
TMC Response (min.)	
RR Dispatch Time (min.)	
RR Resp. Time (min.)	
Event Clearance (min.)	3.77
Roadway Clear. (min.)	
Incident Clearance (min.)	
# of Events w/ RR/SIRV	0
RR/SIRV Responses	0
RR/SIRV Activities	0

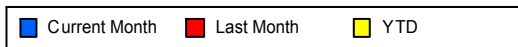
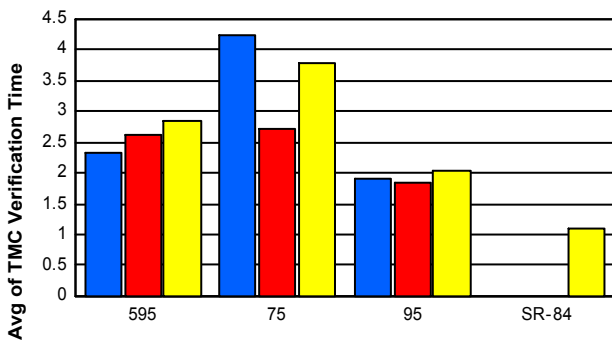
### Number of Events / Roadway



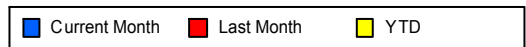
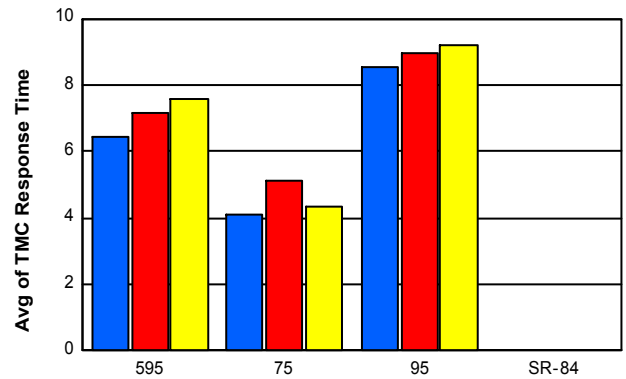
### TMC Detection Time



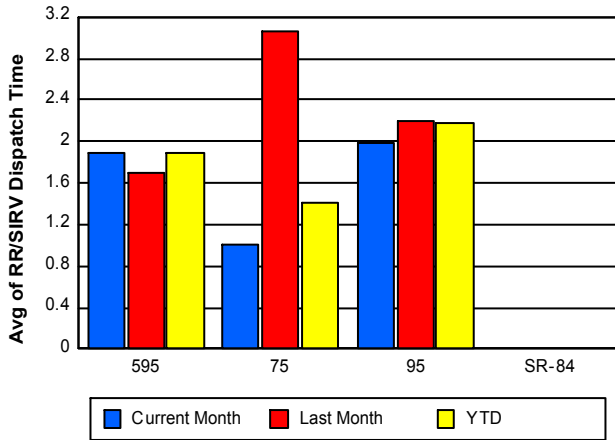
### TMC Verification Time



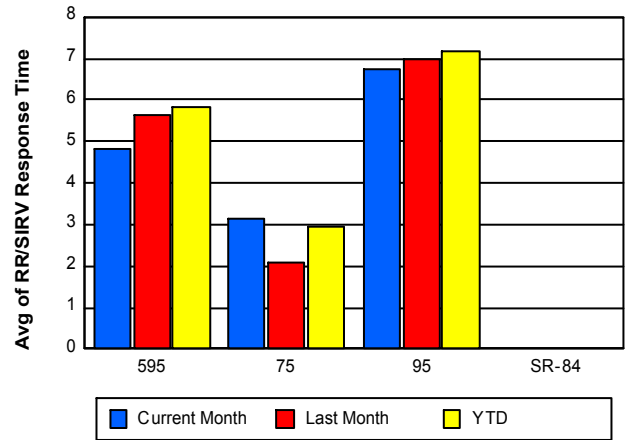
### TMC Response Time



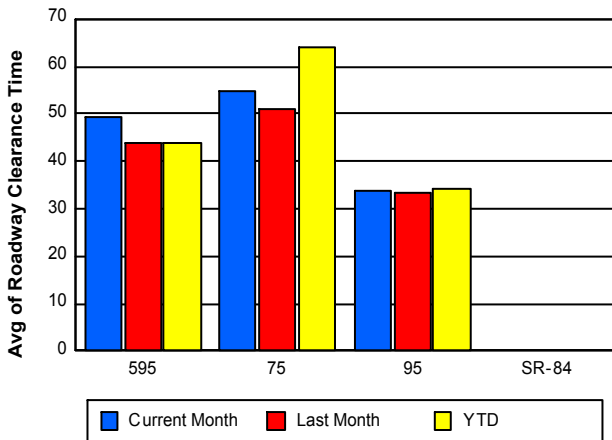
## Road Ranger / SIRV Dispatch Time



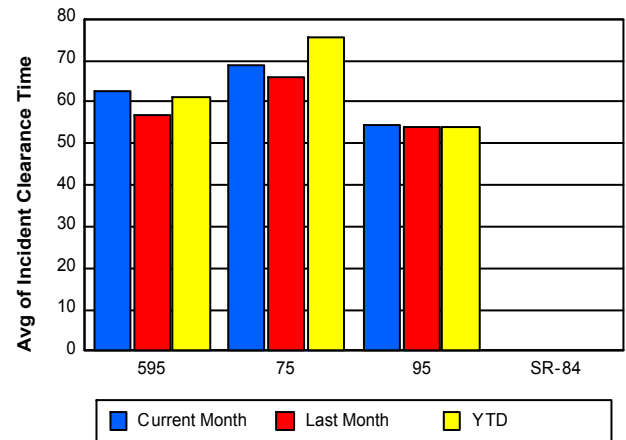
## Road Ranger / SIRV Response Time



## Roadway Clearance Time (2A)



## Incident Clearance Time (3B)



## Performance Measures by Event Type

### Abandoned Vehicle

	<u>Current Month</u>	<u>Last Month</u>	<u>YTD</u>
Number of Events	696	667	3,703
Number of Incidents	3	2	7
TMC Detection (min.)	0.01	0.01	0.01
TMC Verification (min.)	0.48	0.57	0.64
TMC Response (min.)	7.35	10.80	8.77
RR Dispatch Time (min.)	1.09	4.41	2.46
RR Response Time (min.)	6.26	6.38	6.32
Event Clearance (min.)	169.27	214.27	174.98
Roadway Clearance (min.)	15.51	5.43	13.37
Incident Clearance (min.)	33.08	12.45	24.72
# of Events w/ RR/SIRV	578	536	3,045
RR/SIRV Assists	600	553	3,112
RR/SIRV Activities	626	571	3,192

### Accident

	<u>Current Month</u>	<u>Last Month</u>	<u>YTD</u>
Number of Events	417	382	2,162
Number of Incidents	185	183	993
TMC Detection (min.)	0.19	0.17	0.22
TMC Verification (min.)	3.07	2.15	3.02
TMC Response (min.)	9.31	8.43	9.25
RR Dispatch Time (min.)	2.36	2.25	2.24
RR Response Time (min.)	6.97	6.18	7.03
Event Clearance (min.)	48.13	46.94	47.09
Roadway Clearance (min.)	39.69	36.95	38.70
Incident Clearance (min.)	62.41	59.66	61.27
# of Events w/ RR/SIRV	408	370	2,103
RR/SIRV Assists	591	521	2,897
RR/SIRV Activities	620	548	3,037

### Congestion

	<u>Current Month</u>	<u>YTD</u>
Number of Events	1	1
Number of Incidents	0	0
TMC Detection (min.)	0.00	0.00
TMC Verification (min.)	0.00	0.00
TMC Response (min.)	0.00	0.00
RR Dispatch Time (min.)	0.00	0.00
RR Response Time (min.)	0.00	0.00
Event Clearance (min.)	10.13	10.13
Roadway Clearance (min.)		
Incident Clearance (min.)		
# of Events w/ RR/SIRV	1	1
RR/SIRV Assists	1	1
RR/SIRV Activities	1	1

## Debris on Roadway

	<u>Current Month</u>	<u>Last Month</u>	<u>YTD</u>
Number of Events	231	236	1,241
Number of Incidents	6	6	36
TMC Detection (min.)	0.18	0.20	0.21
TMC Verification (min.)	7.86	8.08	8.47
TMC Response (min.)	8.32	9.42	9.66
RR Dispatch Time (min.)	1.89	2.05	2.09
RR Response Time (min.)	6.50	7.49	7.62
Event Clearance (min.)	12.74	13.66	14.26
Roadway Clearance (min.)	22.23	10.99	23.10
Incident Clearance (min.)	25.94	16.46	30.53
# of Events w/ RR/SIRV	217	215	1,170
RR/SIRV Assists	232	223	1,251
RR/SIRV Activities	235	226	1,263

## Disabled Vehicle

	<u>Current Month</u>	<u>Last Month</u>	<u>YTD</u>
Number of Events	3,233	3,260	17,656
Number of Incidents	40	43	256
TMC Detection (min.)	0.03	0.03	0.04
TMC Verification (min.)	2.47	2.25	2.56
TMC Response (min.)	6.84	7.37	7.75
RR Dispatch Time (min.)	1.66	1.75	1.83
RR Response Time (min.)	5.28	5.75	6.00
Event Clearance (min.)	19.93	21.67	21.01
Roadway Clearance (min.)	30.90	23.32	27.33
Incident Clearance (min.)	38.78	31.84	37.99
# of Events w/ RR/SIRV	2,948	2,927	16,396
RR/SIRV Assists	3,069	3,052	16,942
RR/SIRV Activities	3,245	3,203	17,770

## Emergency Vehicles

	<u>Current Month</u>	<u>Last Month</u>	<u>YTD</u>
Number of Events	1	4	17
Number of Incidents	1	3	12
TMC Detection (min.)	0.00	0.00	0.01
TMC Verification (min.)	0.00	0.00	0.06
TMC Response (min.)		5.03	9.51
RR Dispatch Time (min.)		2.56	5.95
RR Response Time (min.)		2.47	3.19
Event Clearance (min.)	7.52	41.32	38.64
Roadway Clearance (min.)	6.48	27.22	31.31
Incident Clearance (min.)	7.52	44.46	49.22
# of Events w/ RR/SIRV	0	3	12
RR/SIRV Assists	0	4	15
RR/SIRV Activities	0	5	16

## Other

	<u>Current Month</u>	<u>Last Month</u>	<u>YTD</u>
Number of Events	892	926	4,582
Number of Incidents	6	3	29
TMC Detection (min.)	0.01	0.01	0.02
TMC Verification (min.)	1.22	0.91	1.24
TMC Response (min.)	14.60	10.39	10.47
RR Dispatch Time (min.)	3.19	2.86	2.63
RR Response Time (min.)	11.20	8.44	8.29
Event Clearance (min.)	16.25	14.52	19.55
Roadway Clearance (min.)	23.49	31.66	27.25
Incident Clearance (min.)	36.76	34.72	36.26
# of Events w/ RR/SIRV	145	196	1,018
RR/SIRV Assists	155	199	1,040
RR/SIRV Activities	156	202	1,046

## Pedestrian

	<u>Current Month</u>	<u>Last Month</u>	<u>YTD</u>
Number of Events	22	25	104
Number of Incidents	0	0	0
TMC Detection (min.)	1.10	0.19	0.36
TMC Verification (min.)	0.31	2.32	1.65
TMC Response (min.)	0.97	3.66	3.84
RR Dispatch Time (min.)	1.19	0.85	1.04
RR Response Time (min.)	0.43	2.82	3.03
Event Clearance (min.)	10.66	13.17	15.81
Roadway Clearance (min.)			
Incident Clearance (min.)			
# of Events w/ RR/SIRV	19	23	95
RR/SIRV Assists	20	26	100
RR/SIRV Activities	20	28	103

## Police Activity

	<u>Current Month</u>	<u>Last Month</u>	<u>YTD</u>
Number of Events	1	15	68
Number of Incidents	1	13	28
TMC Detection (min.)	0.00	0.04	0.09
TMC Verification (min.)	0.00	2.70	1.66
TMC Response (min.)	14.30	11.23	12.83
RR Dispatch Time (min.)	4.60	4.52	3.77
RR Response Time (min.)	9.70	7.00	9.05
Event Clearance (min.)	48.37	93.53	67.56
Roadway Clearance (min.)	46.78	81.23	73.74
Incident Clearance (min.)	48.37	106.72	88.58
# of Events w/ RR/SIRV	1	11	31
RR/SIRV Assists	1	19	53
RR/SIRV Activities	1	22	56

## Road Work - Emergency

	<u>Current Month</u>	<u>Last Month</u>	<u>YTD</u>
Number of Events	3	3	13
Number of Incidents	2	3	12
TMC Detection (min.)	0.00	0.12	0.06
TMC Verification (min.)	26.17	5.13	7.51
TMC Response (min.)	26.08	6.15	15.18
RR Dispatch Time (min.)	5.73	2.94	3.65
RR Response Time (min.)	20.35	3.21	11.54
Event Clearance (min.)	46.26	24.01	99.78
Roadway Clearance (min.)	35.78	21.40	99.83
Incident Clearance (min.)	37.45	24.01	102.77
# of Events w/ RR/SIRV	3	3	9
RR/SIRV Assists	3	5	13
RR/SIRV Activities	3	8	16

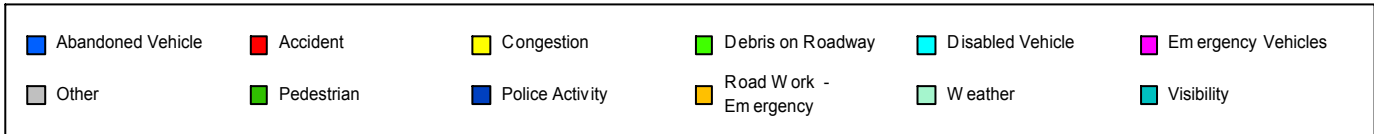
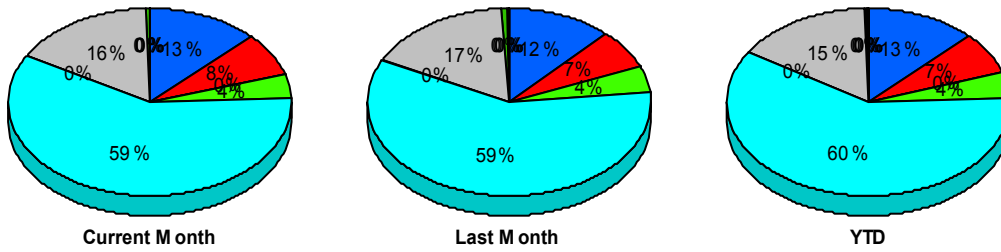
## Visibility

	<u>Last Month</u>	<u>YTD</u>
Number of Events	3	6
Number of Incidents	3	6
TMC Detection (min.)	0.50	0.57
TMC Verification (min.)	10.29	9.44
TMC Response (min.)	10.12	12.44
RR Dispatch Time (min.)	1.50	5.15
RR Response Time (min.)	8.62	7.29
Event Clearance (min.)	67.52	149.94
Roadway Clearance (min.)	114.56	259.12
Incident Clearance (min.)	67.52	149.94
# of Events w/ RR/SIRV	3	6
RR/SIRV Assists	6	15
RR/SIRV Activities	6	16

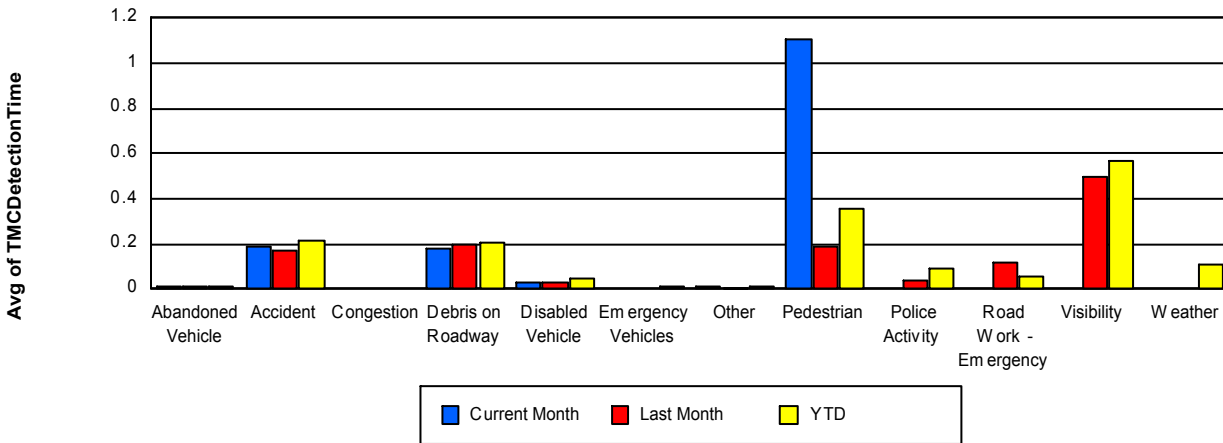
## Weather

	<u>Current Month</u>	<u>YTD</u>
Number of Events	1	9
Number of Incidents	0	0
TMC Detection (min.)	0.00	0.11
TMC Verification (min.)	0.00	8.95
TMC Response (min.)		46.01
RR Dispatch Time (min.)		9.90
RR Response Time (min.)		39.25
Event Clearance (min.)	5.43	19.20
Roadway Clearance (min.)		
Incident Clearance (min.)		
# of Events w/ RR/SIRV	0	2
RR/SIRV Assists	0	2
RR/SIRV Activities	0	2

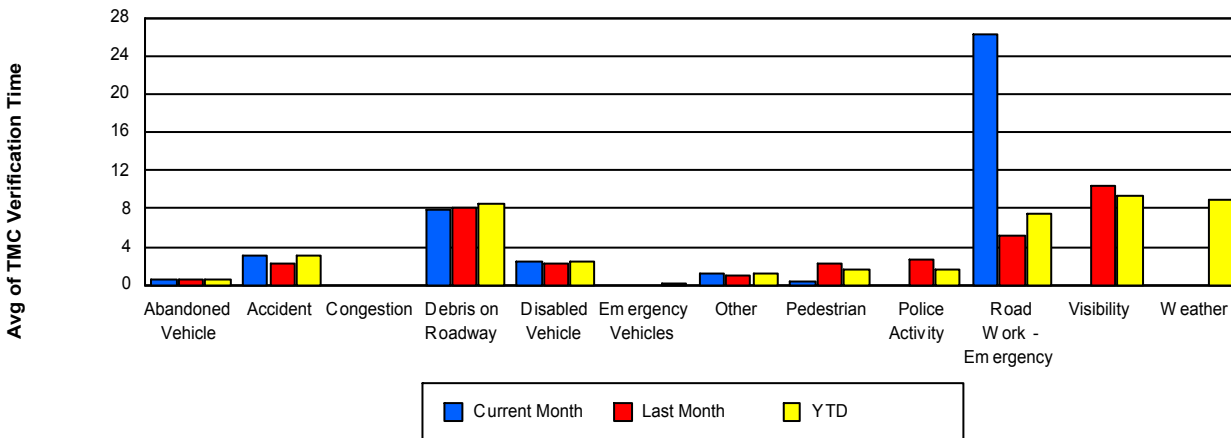
## Number of Events / Event Type



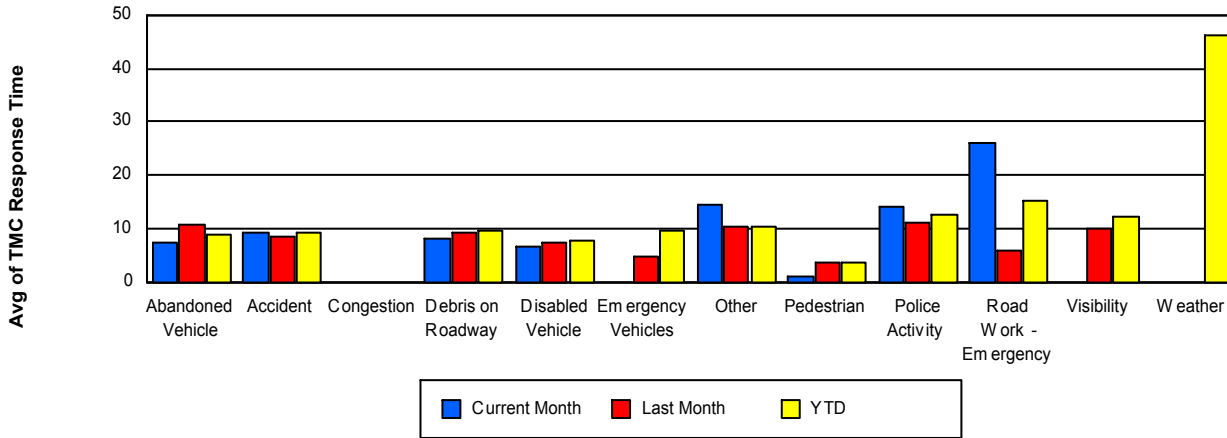
## TMC Detection Time



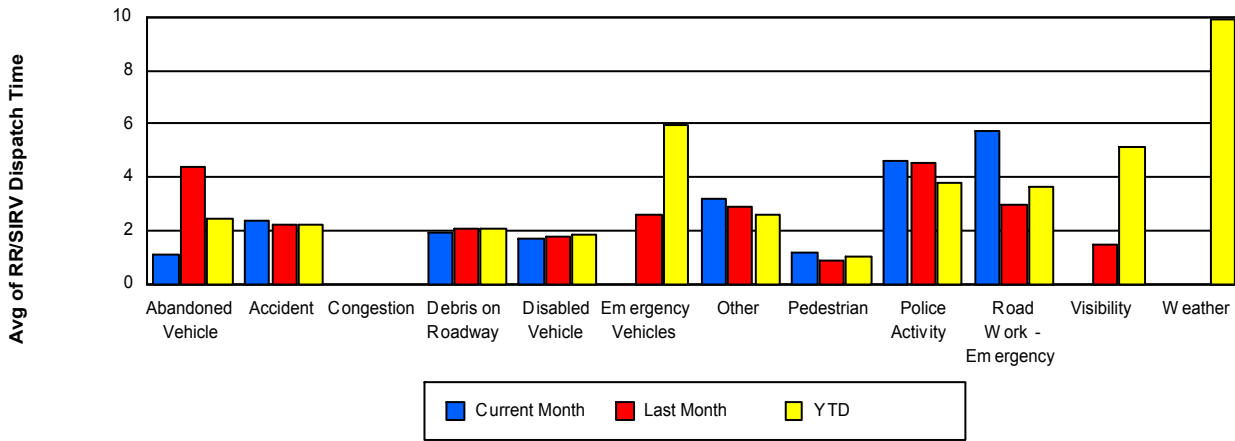
## TMC Verification Time



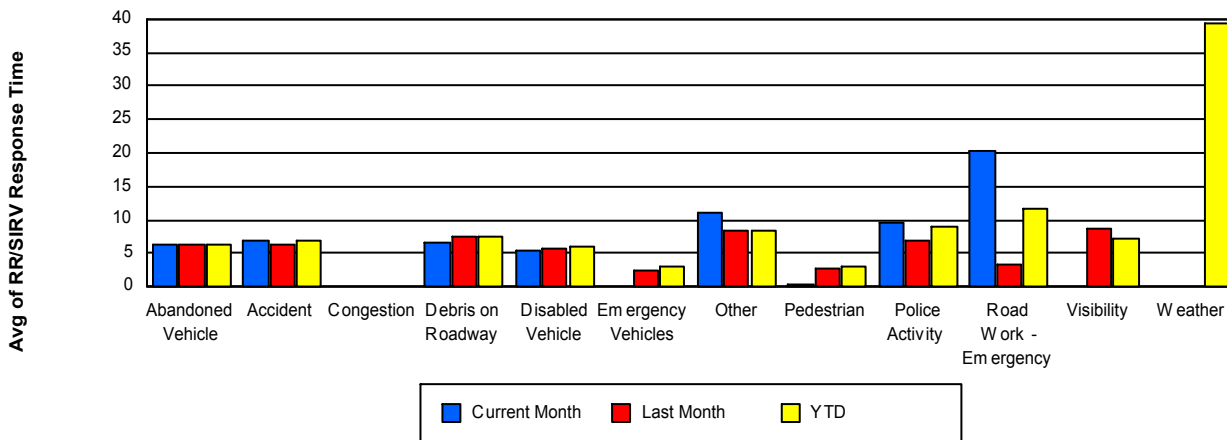
## TMC Response Time



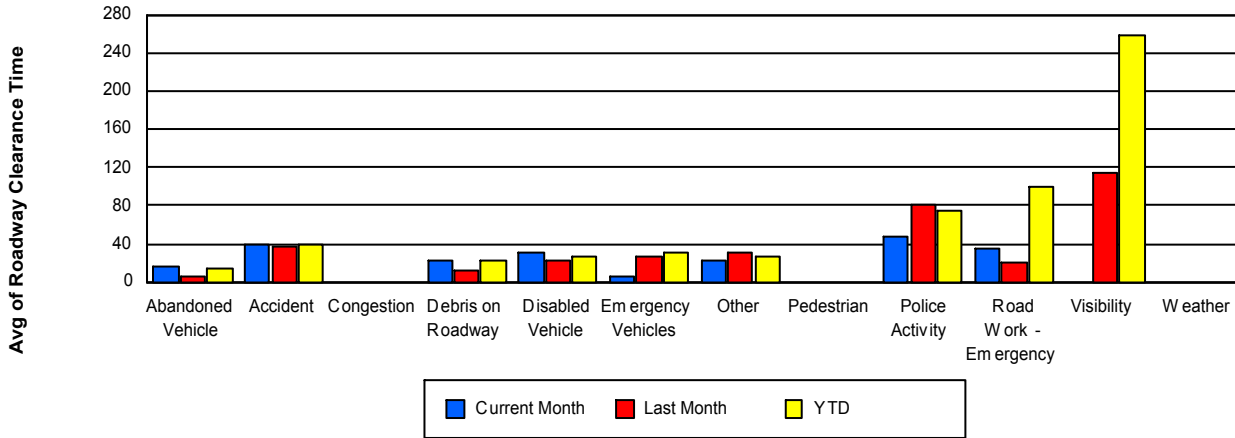
## Road Ranger / SIRV Dispatch Time



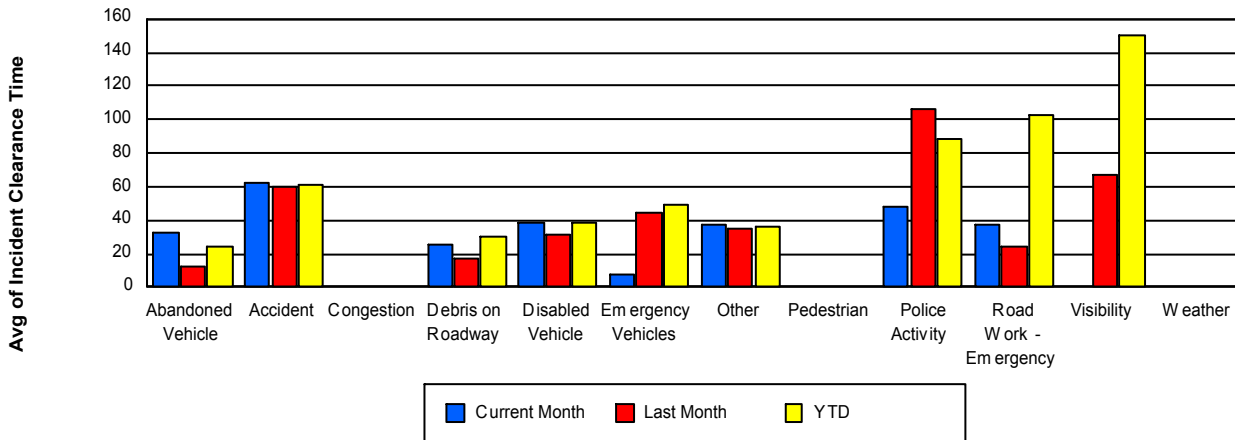
## Road Ranger / SIRV Response Time



## Roadway Clearance Time (2A)



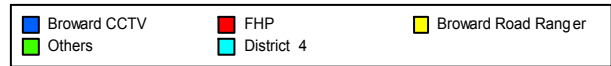
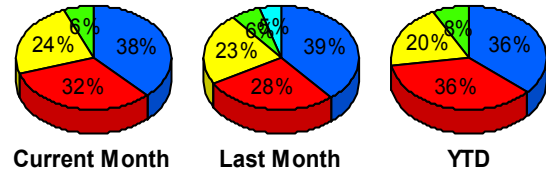
## Incident Clearance Time (3B)



## Incident Detection Methods

	Current Month	Last Month	YTD
Broward CCTV	92	101	502
Broward Road Ranger	58	59	272
Broward TMC	0	1	1
BSO	0	3	5
District 4	4	12	32
District 6	0	0	1
FDOT Maintenance	0	1	3
FHP	79	72	499
Florida's Turnpike	0	0	1
FLPD	0	0	1
Motorist	2	1	9
Palm Beach Road Rang	2	1	5
Road Watcher	4	1	10
SIRV	0	0	2
SmarTraveler (511)	2	4	19
VisioPaD Detection	1	3	17
<b>Total</b>	<b>244</b>	<b>259</b>	<b>1,379</b>

## Total Incidents by Detection Method

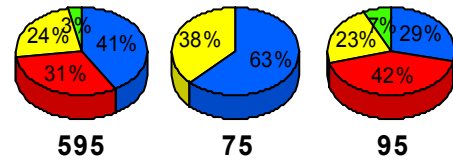


## Incident Detection Methods by Roadway

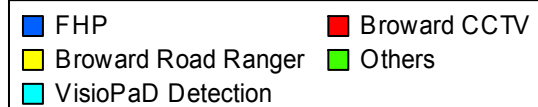
		Current Month	Last Month	YTD
595	Broward CCTV	9	15	71
	Broward Road Ranger	7	13	41
	BSO	0	1	2
	District 4	0	1	4
	FHP	12	12	85
	FLPD	0	0	1
	Motorist	0	0	2
	Road Watcher	0	0	1
	SIRV	0	0	1
	SmarTraveler (511)	1	0	3
	VisioPaD Detection	0	0	3
	<b>Total</b>	<b>29</b>	<b>42</b>	<b>214</b>
75	Broward Road Ranger	6	9	39
	BSO	0	1	1
	District 4	0	0	1
	FHP	10	11	56
	Road Watcher	0	0	1
	<b>Total</b>	<b>16</b>	<b>21</b>	<b>98</b>
95	Broward CCTV	83	86	431
	Broward Road Ranger	45	37	192
	Broward TMC	0	1	1
	BSO	0	1	2
	District 4	4	11	27
	District 6	0	0	1
	FDOT Maintenance	0	1	3
	FHP	57	49	358
	Florida's Turnpike	0	0	1
	Motorist	2	1	7
	Palm Beach Road Rang	2	1	5
	Road Watcher	4	1	8
	SIRV	0	0	1

### Total Events by Roadway and Detection Method

Current Period Only



#### SR-84



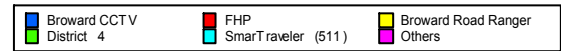
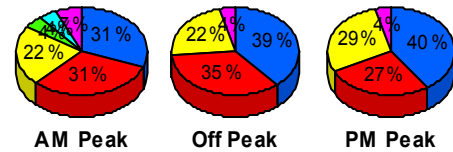
		Current Month	Last Month	YTD
95	SmarTraveler (511)	1	4	16
	VisioPaD Detection	1	3	14
	Total	199	196	1,067
Total		244	259	1,379

### Incident Detection Methods by Peak Period

		Current Month	Last Month	YTD
AM Peak	Broward CCTV	14	28	114
	Broward Road Ranger	10	15	72
	District 4	2	3	8
	FDOT Maintenance	0	1	1
	FHP	14	15	89
	Florida's Turnpike	0	0	1
	FLPD	0	0	1
	Motorist	1	0	4
	Palm Beach Road Rang	1	0	3
	Road Watcher	0	0	2
	SmarTraveler (511)	2	2	5
	VisioPaD Detection	1	0	4
	Total	45	64	304
Off Peak	Broward CCTV	57	42	257
	Broward Road Ranger	33	33	136
	Broward TMC	0	1	1
	BSO	0	1	1
	District 4	1	8	16
	District 6	0	0	1
	FDOT Maintenance	0	0	1
	FHP	51	36	275
	Motorist	1	1	5
	Palm Beach Road Rang	1	0	1
	Road Watcher	3	1	6
	SIRV	0	0	2

### Total Events by Roadway and Detection Method

Current Period Only

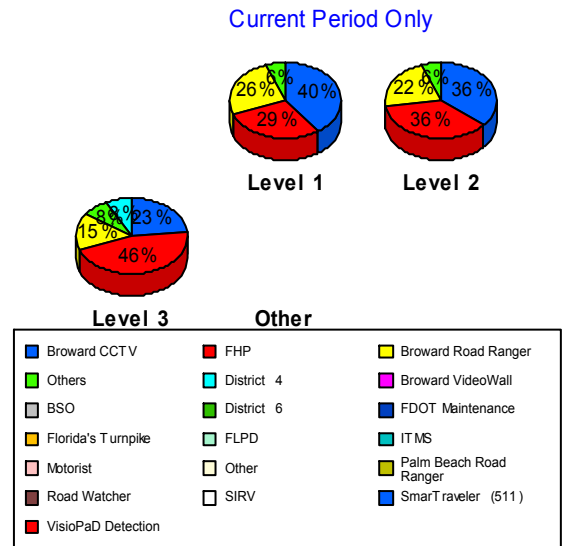


		Current Month	Last Month	YTD
Off Peak	SmarTraveler (511)	0	1	8
	VisioPaD Detection	0	2	9
	<b>Total</b>	<b>147</b>	<b>126</b>	<b>719</b>
PM Peak	Broward CCTV	21	31	131
	Broward Road Ranger	15	11	64
	BSO	0	2	4
	District 4	1	1	8
	FDOT Maintenance	0	0	1
	FHP	14	21	135
	Palm Beach Road Rang	0	1	1
	Road Watcher	1	0	2
	SmarTraveler (511)	0	1	6
	VisioPaD Detection	0	1	4
	<b>Total</b>	<b>52</b>	<b>69</b>	<b>356</b>
<b>Total</b>	<b>244</b>	<b>259</b>	<b>1,379</b>	

### Incident Detection Methods by Severity

		Current Month	Last Month	YTD
	Broward CCTV	0	1	1
	<b>Total</b>	<b>0</b>	<b>1</b>	<b>1</b>
Level 1	Broward CCTV	57	64	313
	Broward Road Ranger	37	36	165
	BSO	0	1	2
	District 4	1	6	17
	FDOT Maintenance	0	1	1
	FHP	41	33	250
	FLPD	0	0	1
	Motorist	1	0	4
	Palm Beach Road Rang	2	1	3
	Road Watcher	2	0	6
	SIRV	0	0	1
SmarTraveler (511)	1	2	11	

### Total Events by Roadway and Detection Method



		Current Month	Last Month	YTD
Level 1	VisioPaD Detection	1	2	7
	Total	143	146	781
Level 2	Broward CCTV	32	26	157
	Broward Road Ranger	19	16	91
	BSO	0	1	2
	District 4	2	5	13
	District 6	0	0	1
	FDOT Maintenance	0	0	2
	FHP	32	26	196
	Florida's Turnpike	0	0	1
	Motorist	1	1	5
	Palm Beach Road Rang	0	0	1
	Road Watcher	1	1	3
	SIRV	0	0	1
	SmarTraveler (511)	1	2	7
	VisioPaD Detection	0	1	9
	Total	88	79	489
Level 3	Broward CCTV	3	10	31
	Broward Road Ranger	2	7	16
	Broward TMC	0	1	1
	BSO	0	1	1
	District 4	1	1	2
	FHP	6	13	53
	Palm Beach Road Rang	0	0	1
	Road Watcher	1	0	1
	SmarTraveler (511)	0	0	1
	VisioPaD Detection	0	0	1
	Total	13	33	108
Total	244	259	1,379	

# Road Ranger / SIRV Performance Measures

## Road Ranger / SIRV Performance By County

RR/SIRV Responses per County

Values presented are:  
 - Total Events with a RR/SIRV Response  
 - Total RR/SIRV Responses,  
 - Total Activities Performed

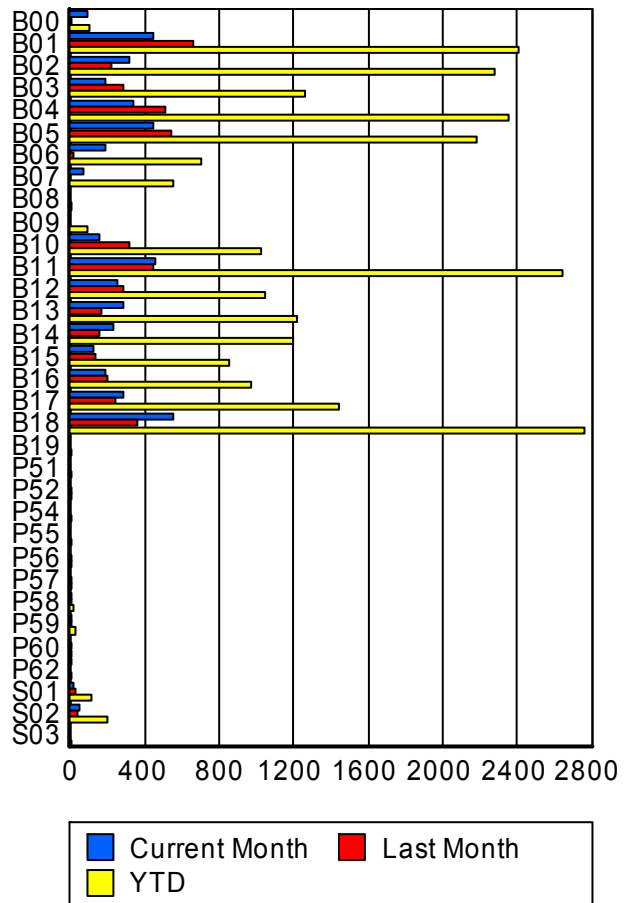
	Current Month	Last Month	YTD
Broward	4,320	4,287	23,888
	4,672	4,608	25,441
	4,907	4,819	26,518



## Road Ranger / SIRV Performance By Truck

	Current Month	Last Month	YTD
B00	93	5	99
	95	5	101
	97	5	103
B01	443	645	2,383
	445	656	2,405
	465	697	2,509
B02	311	222	2,254
	315	225	2,274
	340	232	2,385
B03	181	277	1,245
	183	284	1,264
	191	291	1,306
B04	333	502	2,316
	340	510	2,349
	365	531	2,457
B05	438	539	2,164
	442	543	2,185
	471	565	2,289
B06	191	16	699
	193	16	703
	204	16	740
B07	74	0	551
	74	0	554
	75	0	561

RR/SIRV Responses per Truck



	Current Month	Last Month	YTD
B08	0	0	1
	0	0	1
	0	0	1
B09	0	0	87
	0	0	87
	0	0	90
B10	148	314	1,006
	152	318	1,022
	161	334	1,074
B11	448	432	2,622
	455	442	2,647
	471	465	2,746
B12	251	280	1,034
	254	282	1,042
	272	299	1,089
B13	276	162	1,201
	280	163	1,213
	284	165	1,240
B14	222	153	1,185
	226	154	1,195
	237	159	1,233
B15	122	131	850
	123	132	856
	127	132	895
B16	182	188	957
	185	195	971
	193	207	1,014
B17	285	240	1,431
	286	244	1,443
	305	257	1,507
B18	546	357	2,734
	554	362	2,758
	574	376	2,857
B19	0	0	2
	0	0	2
	0	0	2
P51	0	0	6
	0	0	6
	0	0	6
P52	0	2	2
	0	2	2
	0	2	2
P54	0	0	3
	0	0	3
	0	0	5

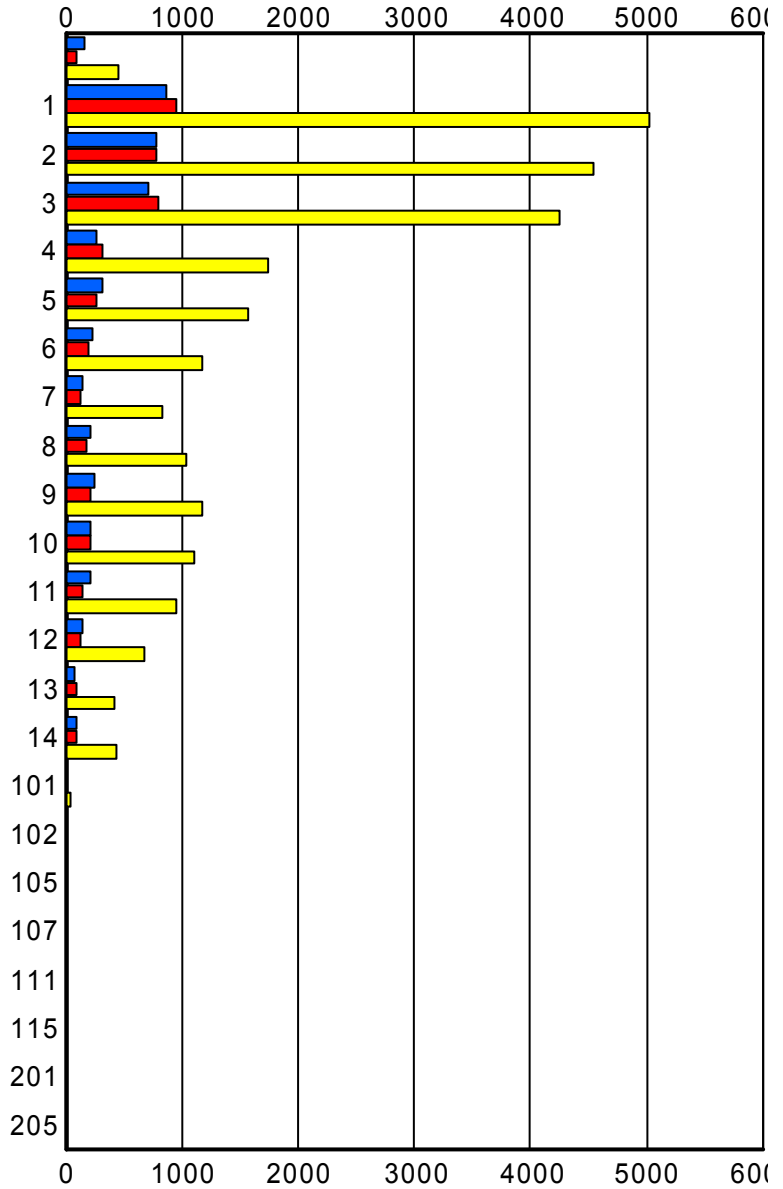
	Current Month	Last Month	YTD
P55	0 0 0	0 0 0	2 2 2
P56	0 0 0	1 1 1	1 1 1
P57	0 0 0	1 1 1	2 2 2
P58	4 4 4	1 1 1	11 11 12
P59	7 7 9	2 2 4	32 32 37
P60	0 0 0	1 1 1	1 1 1
P62	1 1 1	0 0 0	2 2 2
S01	13 13 14	29 29 31	106 108 129
S02	45 45 47	40 40 47	197 198 220
S03	0 0 0	0 0 0	1 1 1

### Road Ranger / SIRV Performance By Beat

	Current Month	Last Month	YTD
	137	90	417
	164	95	454
	170	107	503
1	827	916	4,862
	863	948	5,020
	904	992	5,234
2	750	746	4,400
	784	780	4,545
	824	816	4,733
3	688	770	4,128
	705	796	4,252
	744	836	4,441
4	255	305	1,716
	257	311	1,735
	263	322	1,782
5	319	269	1,558
	321	272	1,572
	344	287	1,645
6	229	196	1,169
	232	201	1,180
	240	210	1,229
7	142	130	827
	146	133	837
	151	140	881
8	208	178	1,030
	209	178	1,034
	226	189	1,095
9	243	216	1,160
	244	217	1,168
	260	223	1,204
10	208	215	1,090
	210	219	1,101
	216	226	1,133
11	205	142	931
	208	147	944
	216	153	970
12	145	120	668
	147	122	678
	157	123	709
13	81	83	415
	82	85	422
	85	88	435

Values presented are:  
 - Total Events with a RR/SIRV Response  
 - Total RR/SIRV Responses,  
 - Total Activities Performed

### RR/SIRV Responses per Beat



■ Current Month   
 ■ Last Month   
 ■ YTD

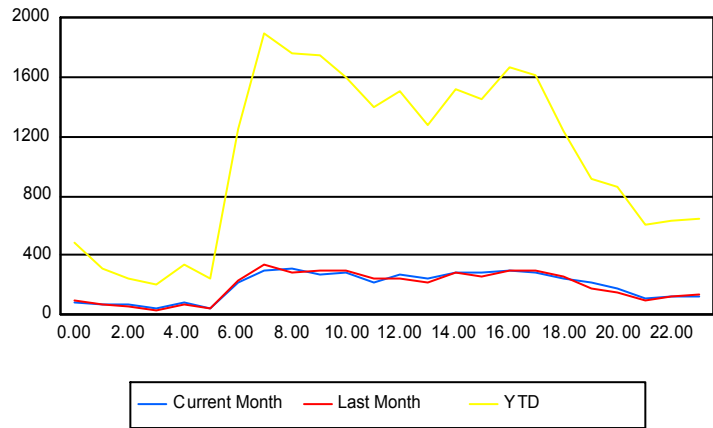
	Current Month	Last Month	YTD
14	86	95	435
	88	96	440
	93	97	457
101	9	6	42
	9	6	42
	11	8	50
102	0	0	1
	0	0	1
	0	0	1
105	1	0	1
	1	0	1
	1	0	1
107	0	0	1
	0	0	1
	0	0	1
111	2	2	11
	2	2	11
	2	2	11
115	0	0	1
	0	0	1
	0	0	1
201	0	0	1
	0	0	1
	0	0	1
205	0	0	1
	0	0	1
	0	0	1

## Road Ranger / SIRV Performance By Time of Day

Values presented are:  
 - Total Events with a RR/SIRV Response  
 - Total RR/SIRV Responses,  
 - Total Activities Performed

	Current Month	Last Month	YTD
12AM-1AM	76	97	458
	81	103	484
	88	103	502
1AM-2AM	60	65	289
	72	70	313
	75	74	327
2AM-3AM	60	50	226
	64	54	240
	66	56	247
3AM-4AM	36	28	184
	39	28	203
	39	28	214
4AM-5AM	58	55	299
	79	66	339
	80	67	345
5AM-6AM	45	43	233
	47	45	247
	48	46	259
6AM-7AM	204	214	1,172
	219	226	1,251
	227	245	1,315
7AM-8AM	276	310	1,792
	293	338	1,898
	308	347	1,968
8AM-9AM	292	261	1,657
	312	283	1,761
	330	304	1,849
9AM-10AM	247	283	1,644
	273	304	1,747
	284	314	1,811
10AM-11AM	266	287	1,517
	287	302	1,606
	297	319	1,685
11AM-12PM	204	227	1,320
	223	245	1,405
	238	260	1,472
12PM-1PM	247	226	1,424
	271	249	1,513
	286	265	1,581

## Number of Responses / Hour of the Day



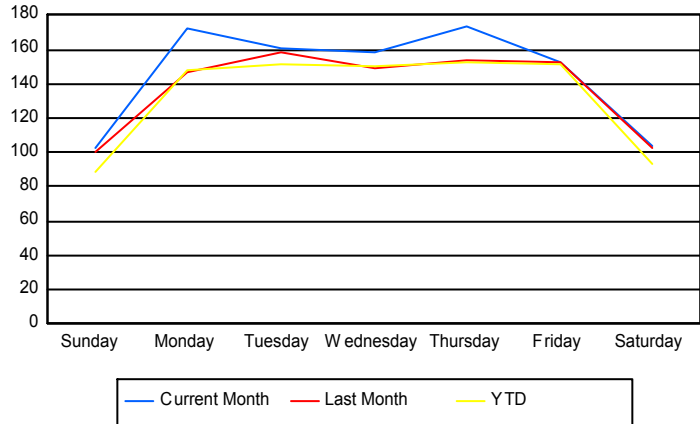
	Current Month	Last Month	YTD
1PM-2PM	223	196	1,194
	245	214	1,273
	258	226	1,346
2PM-3PM	256	261	1,404
	286	279	1,515
	306	297	1,587
3PM-4PM	262	250	1,372
	284	263	1,454
	295	270	1,503
4PM-5PM	277	283	1,552
	298	301	1,664
	311	311	1,726
5PM-6PM	281	278	1,533
	291	296	1,612
	309	308	1,680
6PM-7PM	229	243	1,153
	244	265	1,239
	262	279	1,286
7PM-8PM	210	169	873
	215	175	921
	228	179	959
8PM-9PM	166	137	828
	182	145	863
	193	151	905
9PM-10PM	102	91	557
	112	104	614
	118	106	633
10PM-11PM	120	108	589
	126	121	631
	131	126	655
11PM-12AM	123	125	618
	129	132	648
	130	138	663

## Road Ranger / SIRV Performance By Day of Week

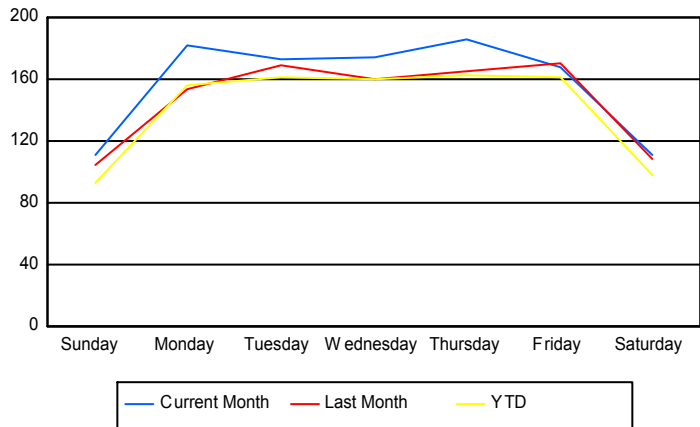
Values presented are:  
 - Total Events with a RR/SIRV Response  
 - Total RR/SIRV Responses,  
 - Total Activities Performed

	Current Month	Last Month	YTD
Sunday	407	398	2,155
	440	417	2,273
	458	438	2,372
Monday	685	582	3,788
	722	613	4,002
	755	640	4,145
Tuesday	642	788	3,910
	693	842	4,160
	729	874	4,358
Wednesday	628	743	3,859
	694	801	4,136
	731	837	4,314
Thursday	692	769	3,914
	740	825	4,186
	775	867	4,363
Friday	756	609	3,895
	830	683	4,161
	872	716	4,325
Saturday	515	401	2,387
	553	427	2,523
	587	447	2,641

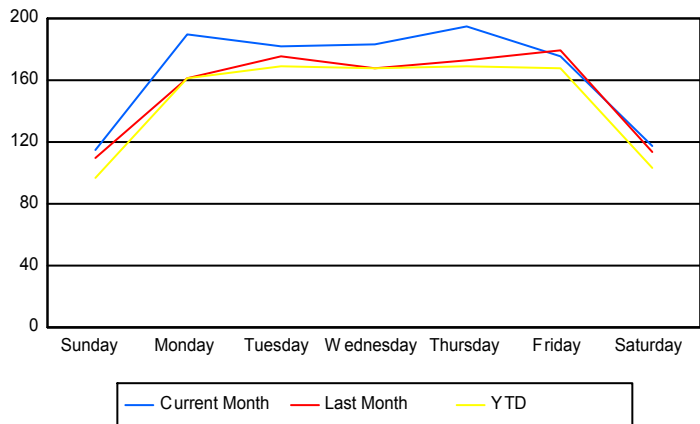
### Avg # of events with a RR/SIRV Response per Day of the Week



### Avg # of RR/SIRV Responses per Day of the Week



### Avg # of RR/SIRV Activities Performed per Day of the Week



### Road Ranger/SIRV Responses per Time of Day and Day of Week

