



# Monthly Performance Measures Report

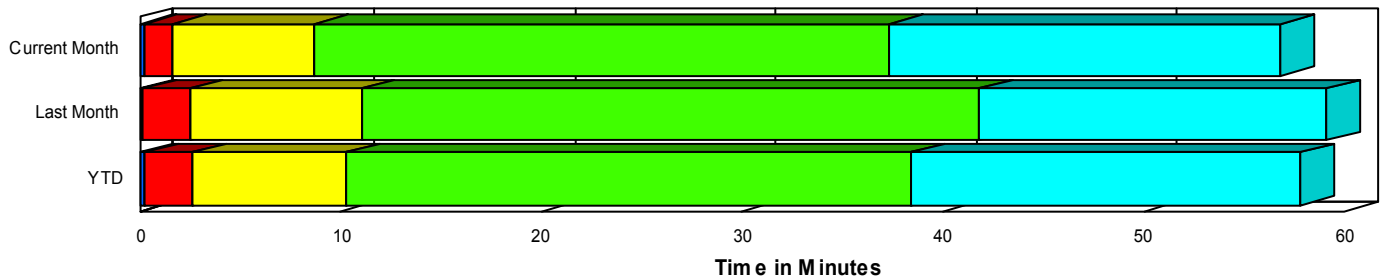
Period From May 1, 2007 to May 31, 2007

Created on:  
June 04, 2007  
12:15 pm

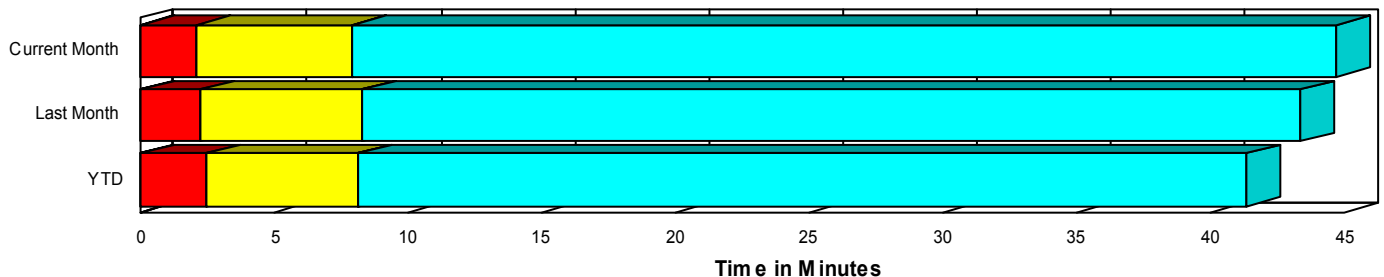
## Performance Measures Summary

	Traffic Events (No Lanes Blocked)			Incidents (Lanes Blocked)		
	<u>This Month</u>	<u>Last Month</u>	<u>YTD</u>	<u>This Month</u>	<u>Last Month</u>	<u>YTD</u>
Number of Events	5,262	4,601	22,929	259	211	1,135
TMC Detection (min.)	0.03	0.03	0.05	0.20	0.18	0.27
TMC Verification (min.)	2.10	2.23	2.42	1.45	2.30	2.35
TMC Response (min.)	8.09	8.53	8.28	8.51	10.91	10.06
RR Dispatch Time (min.)	2.23	2.55	2.06	2.28	3.02	2.52
RR Response Time (min.)	6.05	6.08	6.35	6.23	7.89	7.54
Roadway Clearance (min.)				36.61	43.18	38.16
Event Clearance (min.)	44.85	43.60	41.55	55.32	57.36	56.75
# of Events w/ RR/SIRV	4,037	3,684	18,479	250	203	1,089
RR/SIRV Responses	4,200	3,807	19,016	411	320	1,756
RR/SIRV Activities	4,373	3,954	19,735	448	335	1,878

### Incident Clearance TimeLine



### Traffic Event(Non-Lane Blockage) Time-Line



<span style="color: blue;">■</span> Avg. TMC Detection Time	<span style="color: green;">■</span> Avg. Time from TMC Response to Roadway Clearance*
<span style="color: red;">■</span> Avg. Time from TMC Detection to TMC Verification	<span style="color: cyan;">■</span> Avg. Time from Roadway Clearance to Incident/Event Clearance**
<span style="color: yellow;">■</span> Avg. Time from TMC Verification to TMC Response	

\* Roadway clearance equals all travel lanes open

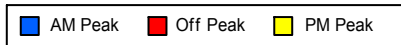
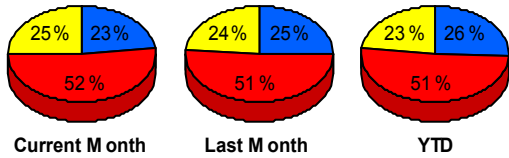
\*\* Incident clearance equals time when last responder has left the scene

## Performance Measures by Peak Period

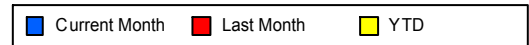
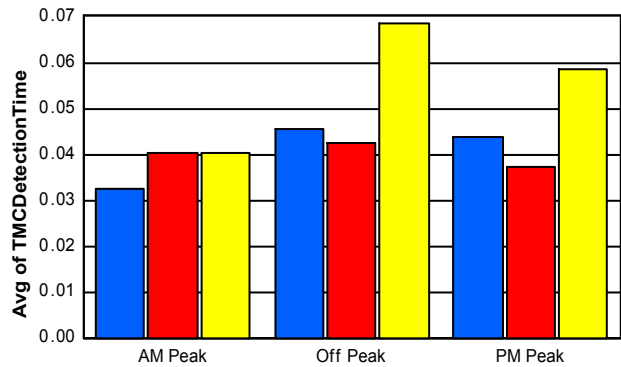
*Note: AM peak period is defined as 6am to 10am and PM peak period is defined as 3pm to 7pm.*

	AM Peak			Off Peak			PM Peak		
	<u>Current Month</u>	<u>Last Month</u>	<u>YTD</u>	<u>Current Month</u>	<u>Last Month</u>	<u>YTD</u>	<u>Current Month</u>	<u>Last Month</u>	<u>YTD</u>
Number of Events	1,290	1,208	6,207	2,854	2,450	12,268	1,377	1,154	5,589
Number of Incidents	64	45	259	126	109	572	69	57	304
TMC Detection (min.)	0.03	0.04	0.04	0.05	0.04	0.07	0.04	0.04	0.06
TMC Verification (min.)	1.37	1.62	1.44	2.52	2.53	2.87	1.78	2.23	2.52
TMC Response (min.)	7.18	6.51	6.65	9.07	10.23	9.55	7.12	7.75	7.88
RR Dispatch Time (min.)	1.50	1.53	1.39	2.73	3.25	2.44	1.91	2.26	2.08
RR Response Time (min.)	5.82	5.16	5.39	6.47	6.96	7.18	5.46	5.64	5.95
Event Clearance (min.)	41.78	37.25	35.50	47.14	54.57	49.36	44.96	29.49	34.19
Roadway Clearance (min.)	31.54	34.44	32.35	40.23	45.44	42.88	34.71	45.76	34.23
Incident Clearance (min.)	59.71	59.57	55.69	54.72	61.14	61.14	52.35	48.40	49.38
# of Events w/ RR/SIRV	1,068	1,013	5,246	2,165	1,935	9,761	1,054	939	4,561
RR/SIRV Responses	1,151	1,069	5,560	2,333	2,046	10,358	1,127	1,012	4,854
RR/SIRV Activities	1,209	1,109	5,793	2,442	2,131	10,800	1,170	1,049	5,020

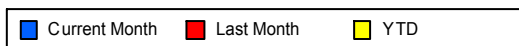
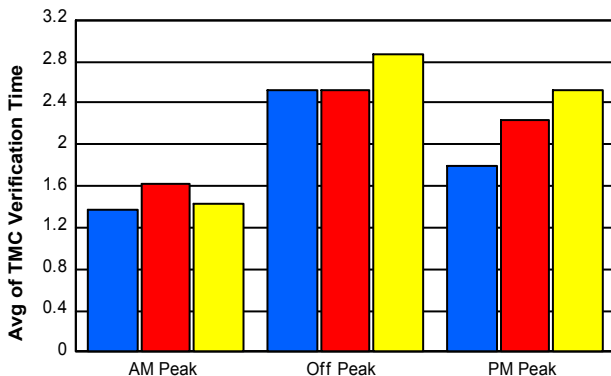
### Number of Events / Peak Period



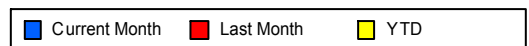
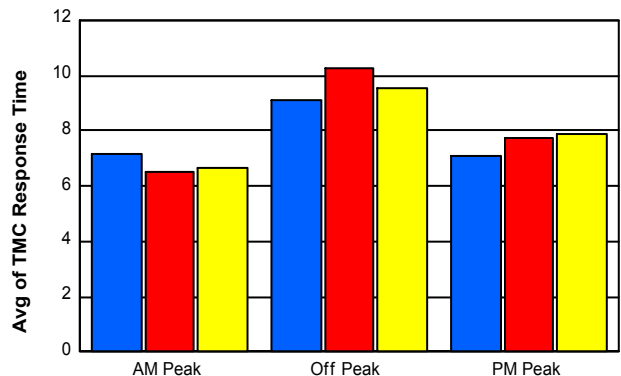
### TMC Detection Time



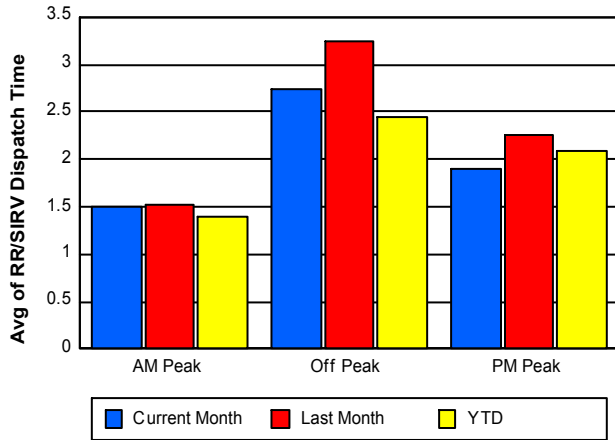
### TMC Verification Time



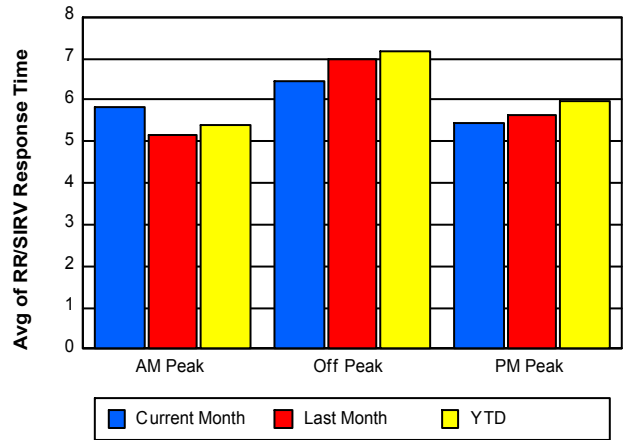
### TMC Response Time



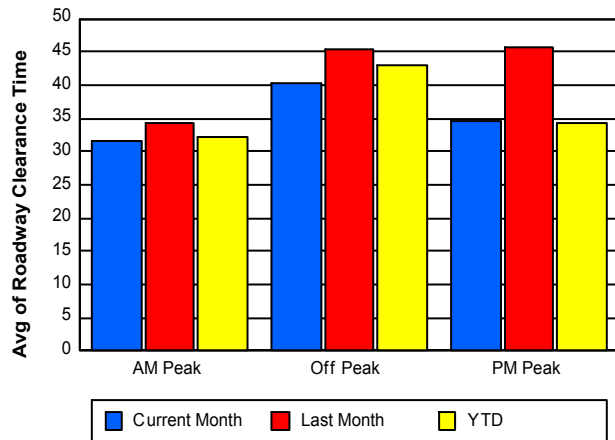
## Road Ranger / SIRV Dispatch Time



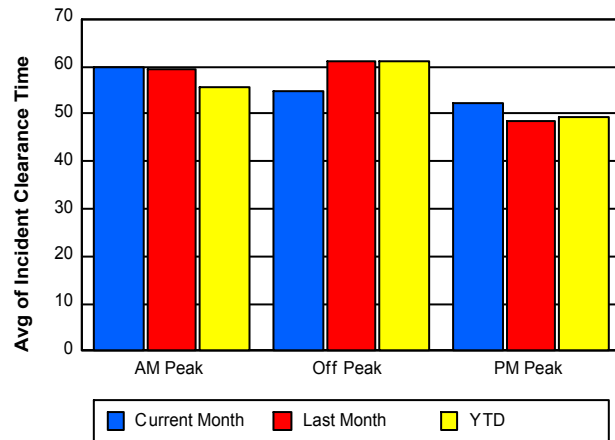
## Road Ranger / SIRV Response Time



## Roadway Clearance Time (2A)



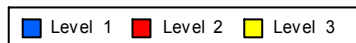
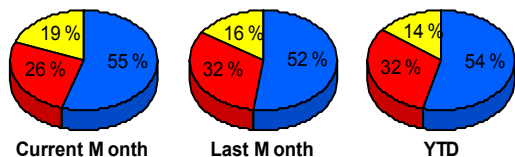
## Incident Clearance Time (3B)



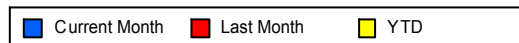
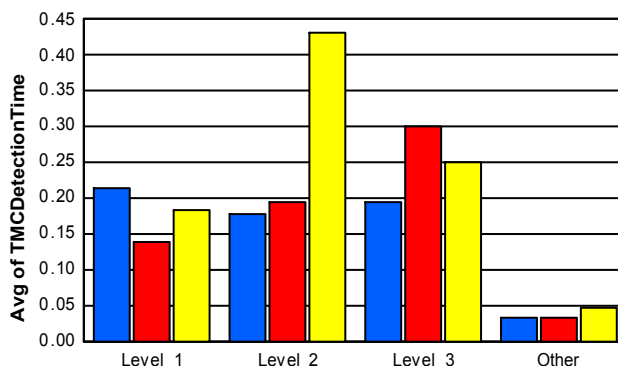
## Performance Measures by Severity

	Level 1			Level 2			Level 3			Other		
	<u>This Month</u>	<u>Last Month</u>	<u>YTD</u>	<u>This Month</u>	<u>Last Month</u>	<u>YTD</u>	<u>This Month</u>	<u>Last Month</u>	<u>YTD</u>	<u>This Month</u>	<u>Last Month</u>	<u>YTD</u>
Number of Events	142	110	613	68	68	359	49	33	163	5,262	4,601	22,929
Number of Incidents	142	110	613	68	68	359	49	33	163	0	0	0
TMC Detection (min.)	0.22	0.14	0.18	0.18	0.20	0.43	0.19	0.30	0.25	0.03	0.03	0.05
TMC Verification (min.)	0.89	1.48	1.52	2.11	2.80	3.24	2.19	4.01	3.51	2.10	2.23	2.42
TMC Response (min.)	6.55	9.64	8.75	11.56	13.83	11.78	9.79	9.30	11.01	8.09	8.53	8.28
RR Dispatch Time (min.)	1.82	2.56	2.20	2.74	3.80	2.76	3.01	3.04	3.23	2.23	2.55	2.06
RR Resp. Time (min.)	4.72	7.09	6.57	8.82	10.03	9.02	6.85	6.26	7.80	6.05	6.08	6.35
Event Clearance (min.)	36.66	36.04	37.56	68.06	64.32	67.51	91.73	114.08	105.21	44.85	43.60	41.55
Roadway Clear. (min.)	13.96	15.91	15.02	52.78	51.21	52.89	79.81	117.56	92.76			
Incident Clearance (min.)	36.66	36.04	37.56	68.06	64.32	67.51	91.73	114.08	105.21			
# of Events w/ RR/SIRV	136	107	578	68	64	354	46	32	157	4,037	3,684	18,479
RR/SIRV Responses	176	139	763	127	113	608	108	68	385	4,200	3,807	19,016
RR/SIRV Activities	195	144	814	135	115	637	118	76	427	4,373	3,954	19,735

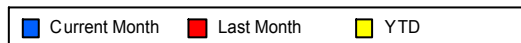
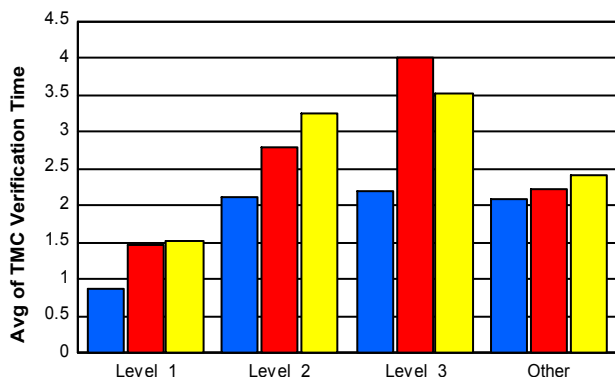
### Number of Events / Severity



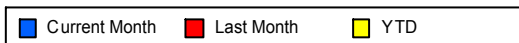
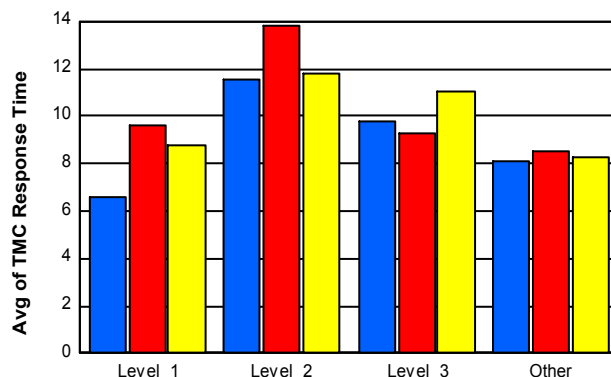
### TMC Detection Time



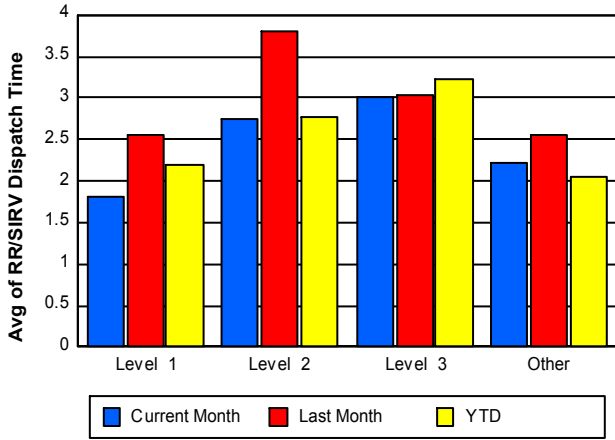
### TMC Verification Time



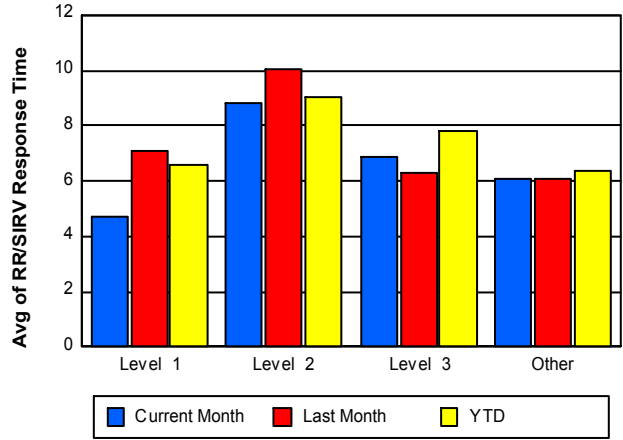
### TMC Response Time



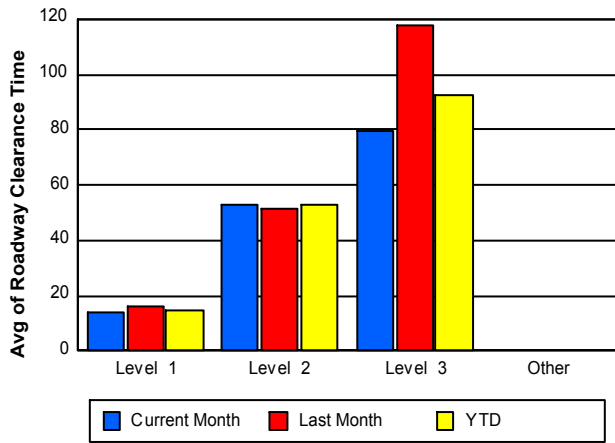
## Road Ranger / SIRV Dispatch Time



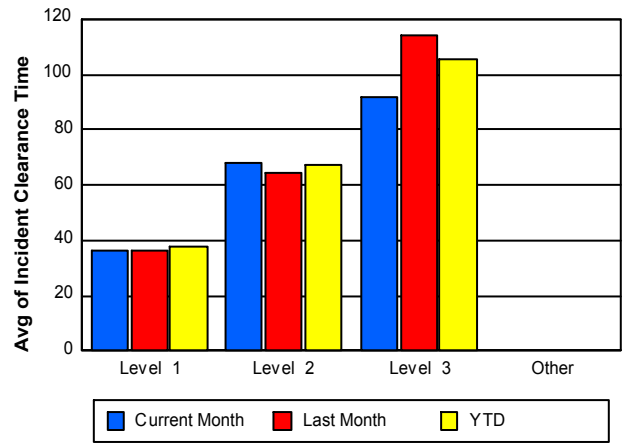
## Road Ranger / SIRV Response Time



## Roadway Clearance Time (2A)



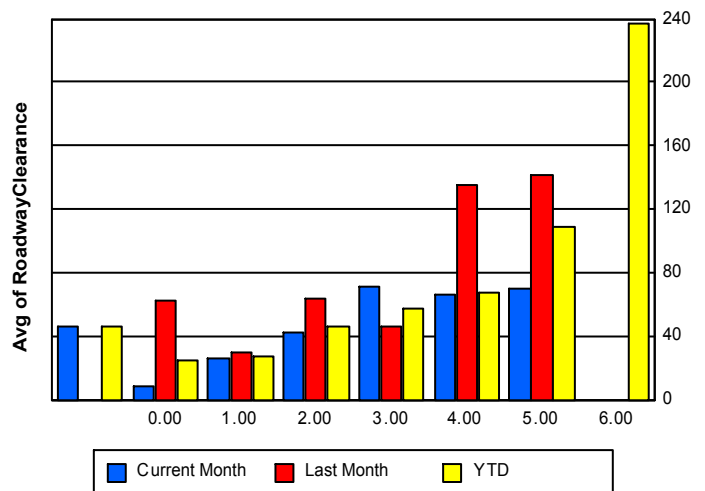
## Incident Clearance Time (3B)



## Roadway Clearance by Maximum Number of Lanes Blocked

	Current Month	Last Month	YTD
	46.32		46.32
0	8.78	62.92	24.36
1	25.77	29.41	27.91
2	42.03	63.52	45.84
3	71.27	46.49	57.82
4	66.17	135.05	67.26
5	69.77	141.42	108.86
6	0.00	0.00	236.50

## Roadway Clearance Time (2A) by Max. # Lanes Blocked



## Performance Measures by Roadway

**595**

	<u>Current Month</u>	<u>Last Month</u>	<u>YTD</u>
Number of Events	853	726	3,706
Number of Incidents	42	38	185
TMC Detection (min.)	0.05	0.07	0.07
TMC Verification (min.)	2.62	2.90	2.97
TMC Response (min.)	7.17	8.28	7.84
RR Dispatch Time (min.)	1.70	2.13	1.88
RR Resp. Time (min.)	5.65	6.36	6.08
Event Clearance (min.)	42.59	48.63	38.90
Roadway Clear. (min.)	43.88	51.82	42.80
Incident Clearance (min.)	56.71	71.94	60.99
# of Events w/ RR/SIRV	669	608	3,043
RR/SIRV Responses	732	646	3,250
RR/SIRV Activities	764	669	3,370

**75**

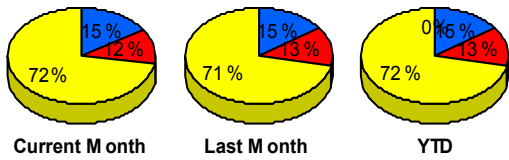
	<u>Current Month</u>	<u>Last Month</u>	<u>YTD</u>
Number of Events	668	646	3,060
Number of Incidents	21	21	82
TMC Detection (min.)	0.05	0.05	0.08
TMC Verification (min.)	2.72	3.37	3.66
TMC Response (min.)	5.15	4.26	4.40
RR Dispatch Time (min.)	3.06	1.49	1.52
RR Resp. Time (min.)	2.11	2.81	2.91
Event Clearance (min.)	62.39	57.51	43.13
Roadway Clear. (min.)	51.19	102.94	65.91
Incident Clearance (min.)	65.92	97.70	77.04
# of Events w/ RR/SIRV	636	628	2,970
RR/SIRV Responses	671	670	3,120
RR/SIRV Activities	700	712	3,275

**95**

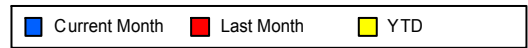
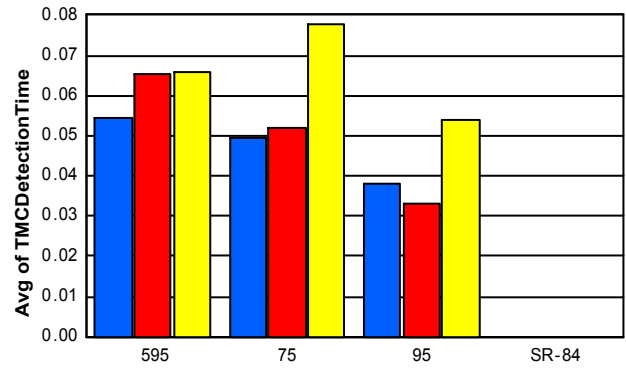
	<u>Current Month</u>	<u>Last Month</u>	<u>YTD</u>
Number of Events	4,000	3,440	17,297
Number of Incidents	196	152	868
TMC Detection (min.)	0.04	0.03	0.05
TMC Verification (min.)	1.84	1.88	2.08
TMC Response (min.)	8.96	9.79	9.38
RR Dispatch Time (min.)	2.19	2.90	2.23
RR Resp. Time (min.)	6.99	6.93	7.26
Event Clearance (min.)	43.09	40.78	42.83
Roadway Clear. (min.)	33.49	32.77	34.55
Incident Clearance (min.)	53.89	48.14	53.93
# of Events w/ RR/SIRV	2,982	2,651	13,555
RR/SIRV Responses	3,208	2,811	14,402
RR/SIRV Activities	3,357	2,908	14,968

	<u>YTD</u>
Number of Events	1
Number of Incidents	0
TMC Detection (min.)	0.00
TMC Verification (min.)	1.08
TMC Response (min.)	
RR Dispatch Time (min.)	
RR Resp. Time (min.)	
Event Clearance (min.)	3.77
Roadway Clear. (min.)	
Incident Clearance (min.)	
# of Events w/ RR/SIRV	0
RR/SIRV Responses	0
RR/SIRV Activities	0

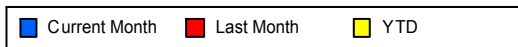
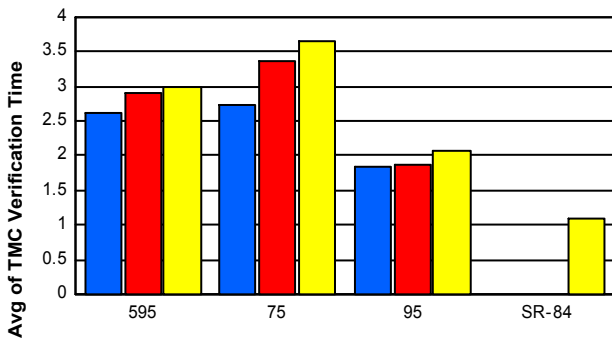
### Number of Events / Roadway



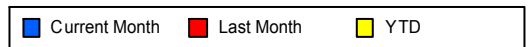
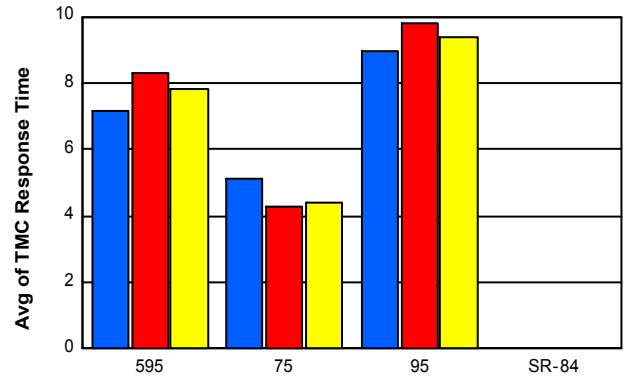
### TMC Detection Time



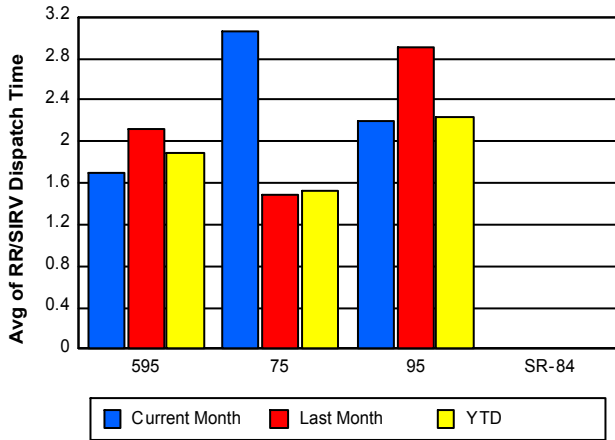
### TMC Verification Time



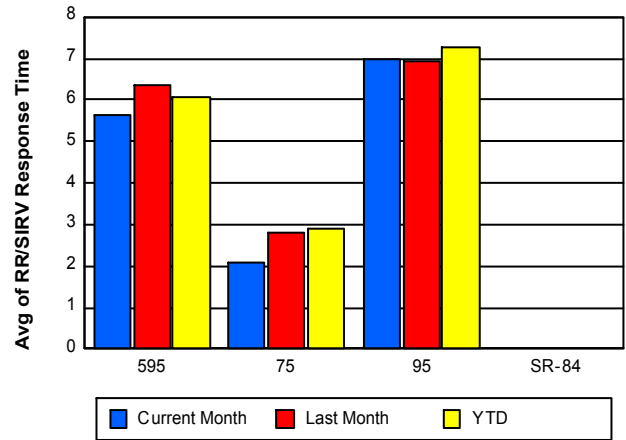
### TMC Response Time



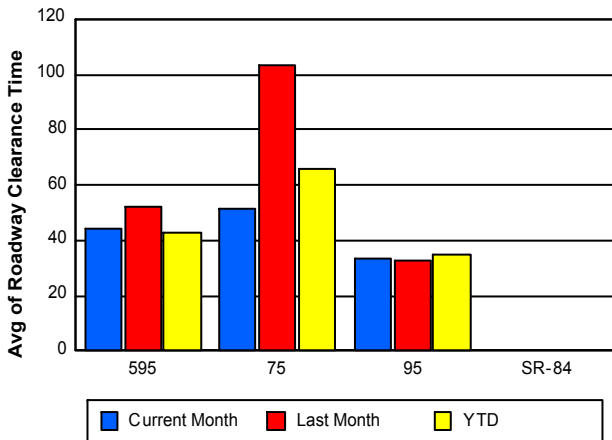
## Road Ranger / SIRV Dispatch Time



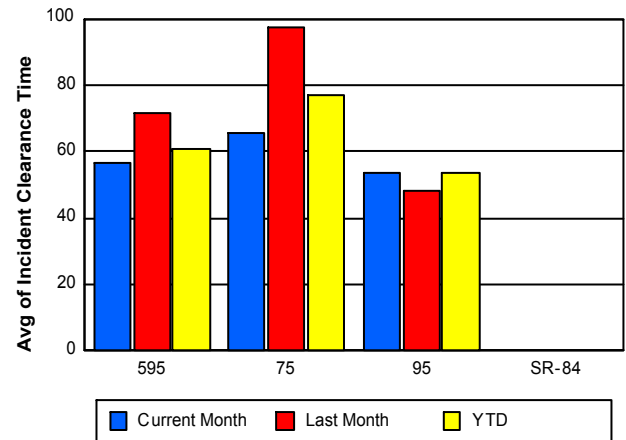
## Road Ranger / SIRV Response Time



## Roadway Clearance Time (2A)



## Incident Clearance Time (3B)



## Performance Measures by Event Type

### Abandoned Vehicle

	<u>Current Month</u>	<u>Last Month</u>	<u>YTD</u>
Number of Events	667	606	3,007
Number of Incidents	2	1	4
TMC Detection (min.)	0.01	0.01	0.01
TMC Verification (min.)	0.57	0.68	0.68
TMC Response (min.)	10.80	11.00	9.10
RR Dispatch Time (min.)	4.41	4.53	2.78
RR Response Time (min.)	6.38	6.47	6.33
Event Clearance (min.)	214.27	177.97	176.31
Roadway Clearance (min.)	5.43	19.98	11.77
Incident Clearance (min.)	12.45	31.55	18.45
# of Events w/ RR/SIRV	536	503	2,467
RR/SIRV Assists	553	514	2,512
RR/SIRV Activities	571	531	2,566

### Accident

	<u>Current Month</u>	<u>Last Month</u>	<u>YTD</u>
Number of Events	382	286	1,745
Number of Incidents	183	144	808
TMC Detection (min.)	0.17	0.19	0.23
TMC Verification (min.)	2.15	3.05	3.01
TMC Response (min.)	8.43	9.13	9.23
RR Dispatch Time (min.)	2.25	2.39	2.21
RR Response Time (min.)	6.18	6.77	7.04
Event Clearance (min.)	46.94	47.91	46.84
Roadway Clearance (min.)	36.95	39.27	38.48
Incident Clearance (min.)	59.66	60.45	61.01
# of Events w/ RR/SIRV	370	278	1,695
RR/SIRV Assists	522	383	2,307
RR/SIRV Activities	549	400	2,418

### Debris on Roadway

	<u>Current Month</u>	<u>Last Month</u>	<u>YTD</u>
Number of Events	236	220	1,010
Number of Incidents	6	5	30
TMC Detection (min.)	0.20	0.14	0.21
TMC Verification (min.)	8.08	6.20	8.61
TMC Response (min.)	9.42	7.71	9.96
RR Dispatch Time (min.)	2.05	1.74	2.13
RR Response Time (min.)	7.49	5.96	7.88
Event Clearance (min.)	13.66	11.36	14.61
Roadway Clearance (min.)	10.99	28.06	23.27
Incident Clearance (min.)	16.46	32.11	31.45
# of Events w/ RR/SIRV	215	212	953
RR/SIRV Assists	223	229	1,019
RR/SIRV Activities	226	230	1,028

## Disabled Vehicle

	<u>Current Month</u>	<u>Last Month</u>	<u>YTD</u>
Number of Events	3,260	2,969	14,423
Number of Incidents	43	46	216
TMC Detection (min.)	0.03	0.03	0.05
TMC Verification (min.)	2.25	2.45	2.58
TMC Response (min.)	7.37	7.97	7.94
RR Dispatch Time (min.)	1.75	2.21	1.86
RR Response Time (min.)	5.75	5.83	6.16
Event Clearance (min.)	21.67	21.93	21.25
Roadway Clearance (min.)	23.32	29.95	26.67
Incident Clearance (min.)	31.84	37.24	37.85
# of Events w/ RR/SIRV	2,927	2,732	13,448
RR/SIRV Assists	3,053	2,830	13,874
RR/SIRV Activities	3,204	2,956	14,526

## Emergency Vehicles

	<u>Current Month</u>	<u>Last Month</u>	<u>YTD</u>
Number of Events	4	5	16
Number of Incidents	3	2	11
TMC Detection (min.)	0.00	0.00	0.01
TMC Verification (min.)	0.00	0.00	0.06
TMC Response (min.)	5.03	1.07	9.51
RR Dispatch Time (min.)	2.56	0.99	5.95
RR Response Time (min.)	2.47	0.08	3.19
Event Clearance (min.)	46.00	23.94	41.75
Roadway Clearance (min.)	27.22	49.24	33.57
Incident Clearance (min.)	50.70	53.04	54.71
# of Events w/ RR/SIRV	3	4	12
RR/SIRV Assists	5	4	16
RR/SIRV Activities	6	4	17

## Other

	<u>Current Month</u>	<u>Last Month</u>	<u>YTD</u>
Number of Events	925	706	3,689
Number of Incidents	3	5	23
TMC Detection (min.)	0.01	0.01	0.02
TMC Verification (min.)	0.91	1.08	1.24
TMC Response (min.)	10.39	13.93	9.78
RR Dispatch Time (min.)	2.86	3.25	2.50
RR Response Time (min.)	8.44	10.71	7.81
Event Clearance (min.)	14.53	31.16	20.35
Roadway Clearance (min.)	31.66	24.15	28.22
Incident Clearance (min.)	34.72	34.89	36.12
# of Events w/ RR/SIRV	196	143	873
RR/SIRV Assists	199	144	885
RR/SIRV Activities	202	144	890

## Pedestrian

	<u>Current Month</u>	<u>Last Month</u>	<u>YTD</u>
Number of Events	25	9	82
Number of Incidents	0	0	0
TMC Detection (min.)	0.19	0.08	0.16
TMC Verification (min.)	2.32	0.74	2.01
TMC Response (min.)	3.66	6.32	4.56
RR Dispatch Time (min.)	0.85	0.94	1.00
RR Response Time (min.)	2.82	5.51	3.68
Event Clearance (min.)	13.17	11.81	17.19
Roadway Clearance (min.)			
Incident Clearance (min.)			
# of Events w/ RR/SIRV	23	7	76
RR/SIRV Assists	26	7	80
RR/SIRV Activities	28	7	83

## Police Activity

	<u>Current Month</u>	<u>Last Month</u>	<u>YTD</u>
Number of Events	15	4	67
Number of Incidents	13	2	27
TMC Detection (min.)	0.04	0.86	0.10
TMC Verification (min.)	2.70	0.22	1.68
TMC Response (min.)	11.23	18.17	12.78
RR Dispatch Time (min.)	4.52	4.72	3.74
RR Response Time (min.)	7.00	13.45	9.03
Event Clearance (min.)	93.53	46.75	67.85
Roadway Clearance (min.)	81.23	37.78	74.73
Incident Clearance (min.)	106.72	44.79	90.07
# of Events w/ RR/SIRV	11	4	30
RR/SIRV Assists	19	6	52
RR/SIRV Activities	21	6	54

## Road Work - Emergency

	<u>Current Month</u>	<u>Last Month</u>	<u>YTD</u>
Number of Events	3	3	10
Number of Incidents	3	3	10
TMC Detection (min.)	0.12	0.00	0.08
TMC Verification (min.)	5.13	1.23	1.91
TMC Response (min.)	6.15	26.58	9.73
RR Dispatch Time (min.)	2.94	0.12	2.61
RR Response Time (min.)	3.21	26.47	7.13
Event Clearance (min.)	24.01	142.04	115.83
Roadway Clearance (min.)	21.40	137.59	112.64
Incident Clearance (min.)	24.01	142.04	115.83
# of Events w/ RR/SIRV	3	1	6
RR/SIRV Assists	5	1	10
RR/SIRV Activities	8	1	13

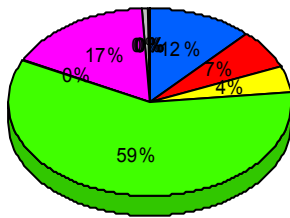
## Visibility

	<u>Current Month</u>	<u>Last Month</u>	<u>YTD</u>
Number of Events	3	3	6
Number of Incidents	3	3	6
TMC Detection (min.)	0.50	0.63	0.57
TMC Verification (min.)	10.29	8.58	9.44
TMC Response (min.)	10.12	14.77	12.44
RR Dispatch Time (min.)	1.50	8.80	5.15
RR Response Time (min.)	8.62	5.97	7.29
Event Clearance (min.)	67.52	232.35	149.94
Roadway Clearance (min.)	114.56	403.68	259.12
Incident Clearance (min.)	67.52	232.35	149.94
# of Events w/ RR/SIRV	3	3	6
RR/SIRV Assists	6	9	15
RR/SIRV Activities	6	10	16

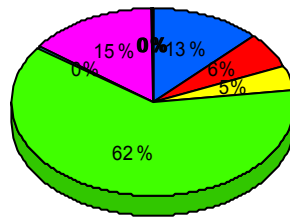
## Weather

	<u>Current Month</u>	<u>Last Month</u>	<u>YTD</u>
Number of Events	1	1	9
Number of Incidents	0	0	0
TMC Detection (min.)	0.00	0.00	0.11
TMC Verification (min.)	0.00	1.08	8.95
TMC Response (min.)			46.01
RR Dispatch Time (min.)		3.63	9.90
RR Response Time (min.)			39.25
Event Clearance (min.)	1.82	12.47	18.80
Roadway Clearance (min.)			
Incident Clearance (min.)			
# of Events w/ RR/SIRV	0	0	2
RR/SIRV Assists	0	0	2
RR/SIRV Activities	0	0	2

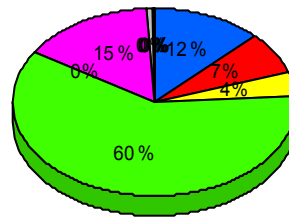
## Number of Events / Event Type



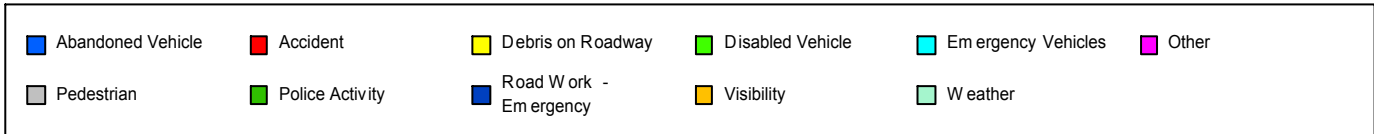
Current Month



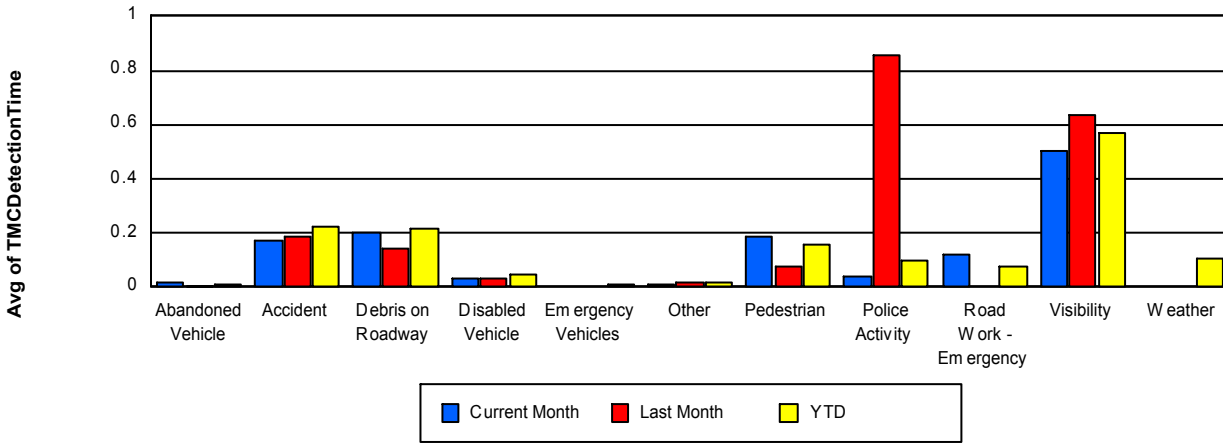
Last Month



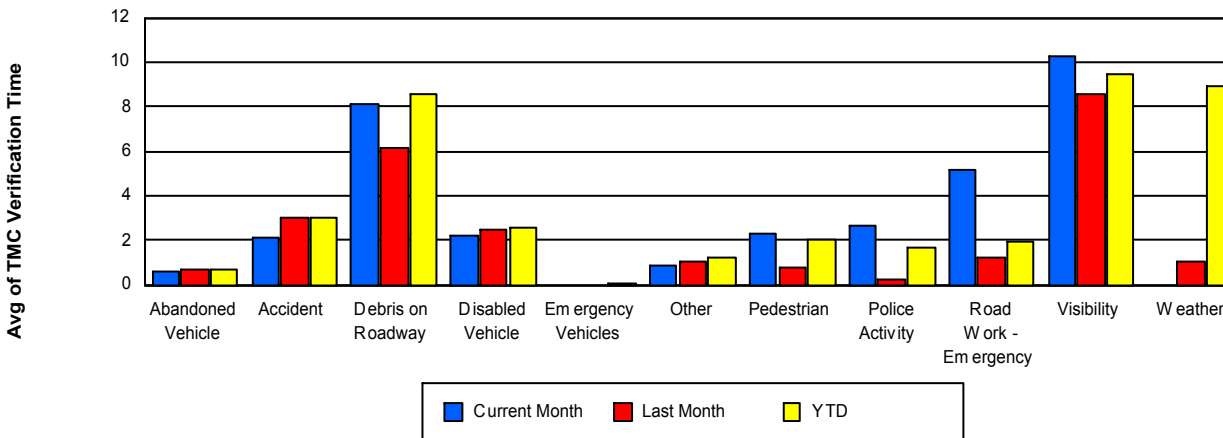
YTD



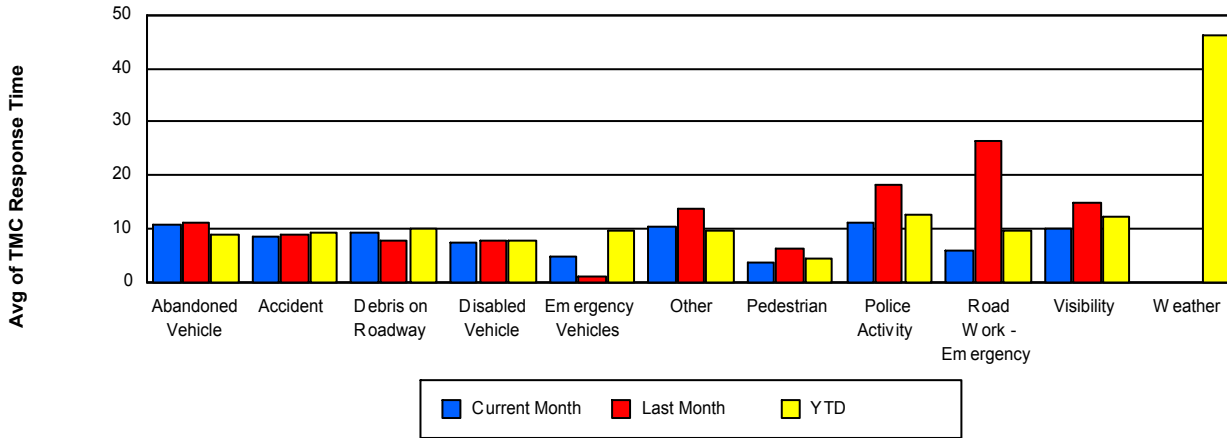
## TMC Detection Time



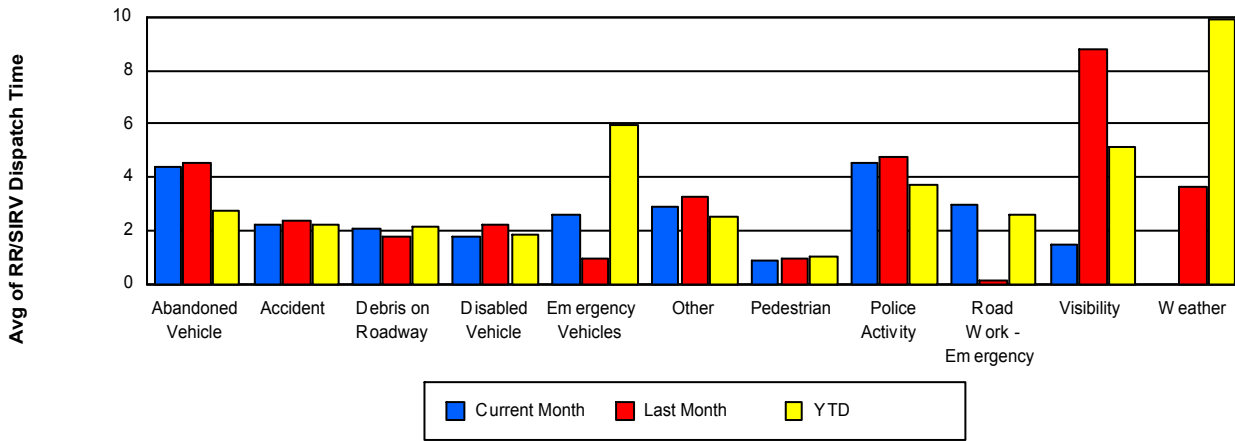
## TMC Verification Time



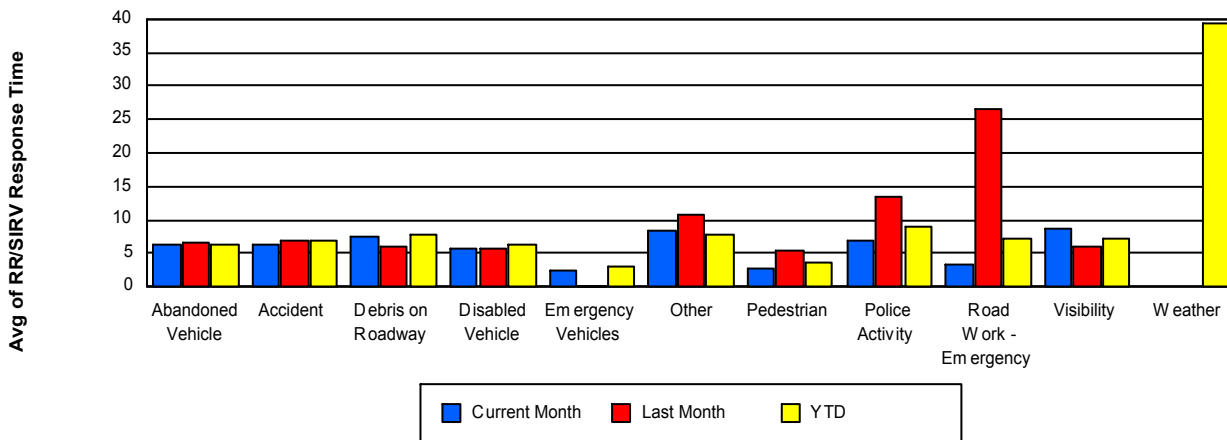
## TMC Response Time



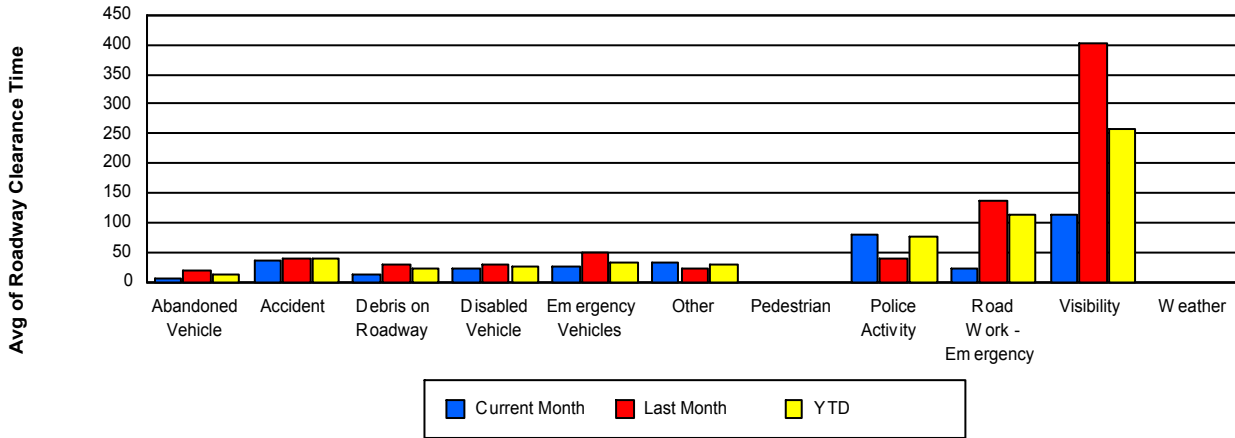
## Road Ranger / SIRV Dispatch Time



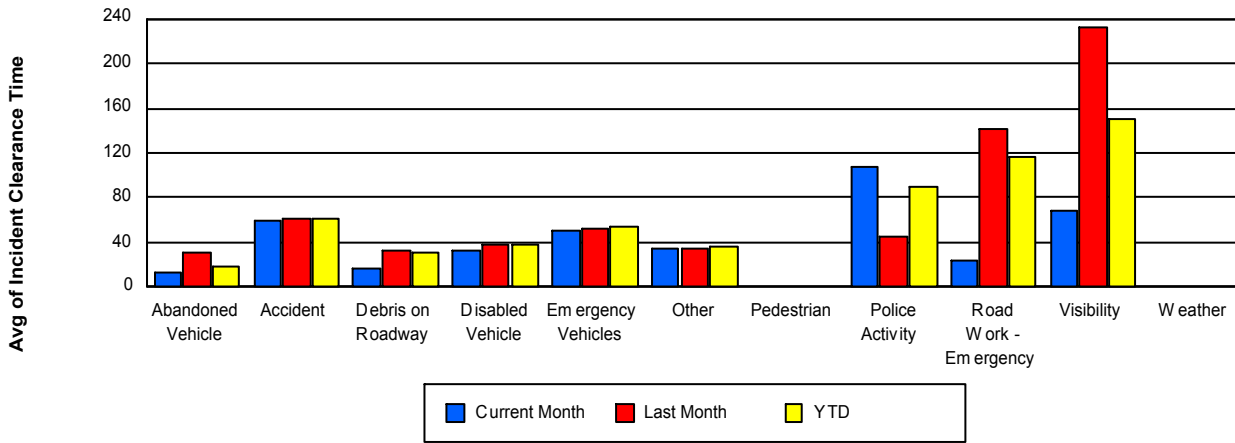
## Road Ranger / SIRV Response Time



## Roadway Clearance Time (2A)



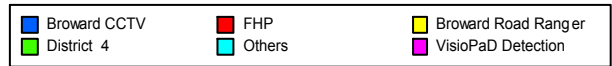
## Incident Clearance Time (3B)



## Incident Detection Methods

	Current Month	Last Month	YTD
Broward CCTV	<b>101</b>	<b>77</b>	<b>410</b>
Broward Road Ranger	<b>59</b>	<b>37</b>	<b>214</b>
Broward TMC	<b>1</b>	<b>0</b>	<b>1</b>
BSO	<b>3</b>	<b>2</b>	<b>5</b>
District 4	<b>12</b>	<b>5</b>	<b>28</b>
District 6	<b>0</b>	<b>1</b>	<b>1</b>
FDOT Maintenance	<b>1</b>	<b>0</b>	<b>3</b>
FHP	<b>72</b>	<b>74</b>	<b>420</b>
Florida's Turnpike	<b>0</b>	<b>1</b>	<b>1</b>
FLPD	<b>0</b>	<b>0</b>	<b>1</b>
Motorist	<b>1</b>	<b>4</b>	<b>7</b>
Palm Beach Road Rang	<b>1</b>	<b>0</b>	<b>3</b>
Road Watcher	<b>1</b>	<b>0</b>	<b>6</b>
SIRV	<b>0</b>	<b>1</b>	<b>2</b>
SmarTraveler (511)	<b>4</b>	<b>3</b>	<b>17</b>
VisioPaD Detection	<b>3</b>	<b>6</b>	<b>16</b>
<b>Total</b>	<b>259</b>	<b>211</b>	<b>1,135</b>

## Total Incidents by Detection Method

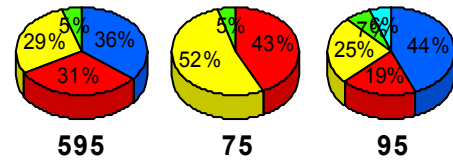


## Incident Detection Methods by Roadway

		Current Month	Last Month	YTD
595	Broward CCTV	15	10	62
	Broward Road Ranger	13	6	34
	BSO	1	1	2
	District 4	1	2	4
	FHP	12	17	73
	FLPD	0	0	1
	Motorist	0	2	2
	Road Watcher	0	0	1
	SIRV	0	0	1
	SmarTraveler (511)	0	0	2
	VisioPaD Detection	0	0	3
	<b>Total</b>	<b>42</b>	<b>38</b>	<b>185</b>
75	Broward Road Ranger	9	8	33
	BSO	1	0	1
	District 4	0	1	1
	FHP	11	12	46
	Road Watcher	0	0	1
	<b>Total</b>	<b>21</b>	<b>21</b>	<b>82</b>
95	Broward CCTV	86	67	348
	Broward Road Ranger	37	23	147
	Broward TMC	1	0	1
	BSO	1	1	2
	District 4	11	2	23
	District 6	0	1	1
	FDOT Maintenance	1	0	3
	FHP	49	45	301
	Florida's Turnpike	0	1	1
	Motorist	1	2	5
	Palm Beach Road Rang	1	0	3
	Road Watcher	1	0	4
	SIRV	0	1	1

## Total Events by Roadway and Detection Method

Current Period Only



### SR-84



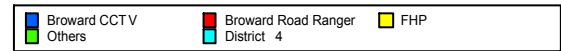
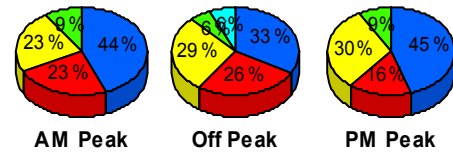
		Current Month	Last Month	YTD
95	SmarTraveler (511)	4	3	15
	VisioPaD Detection	3	6	13
	Total	196	152	868
Total		259	211	1,135

### Incident Detection Methods by Peak Period

		Current Month	Last Month	YTD
AM Peak	Broward CCTV	28	15	100
	Broward Road Ranger	15	11	62
	District 4	3	2	6
	FDOT Maintenance	1	0	1
	FHP	15	13	75
	Florida's Turnpike	0	1	1
	FLPD	0	0	1
	Motorist	0	2	3
	Palm Beach Road Rang	0	0	2
	Road Watcher	0	0	2
	SmarTraveler (511)	2	0	3
	VisioPaD Detection	0	1	3
	Total	64	45	259
Off Peak	Broward CCTV	42	40	200
	Broward Road Ranger	33	19	103
	Broward TMC	1	0	1
	BSO	1	0	1
	District 4	8	3	15
	District 6	0	1	1
	FDOT Maintenance	0	0	1
	FHP	36	39	224
	Motorist	1	2	4
	Road Watcher	1	0	3
	SIRV	0	1	2
	SmarTraveler (511)	1	1	8

### Total Events by Roadway and Detection Method

Current Period Only

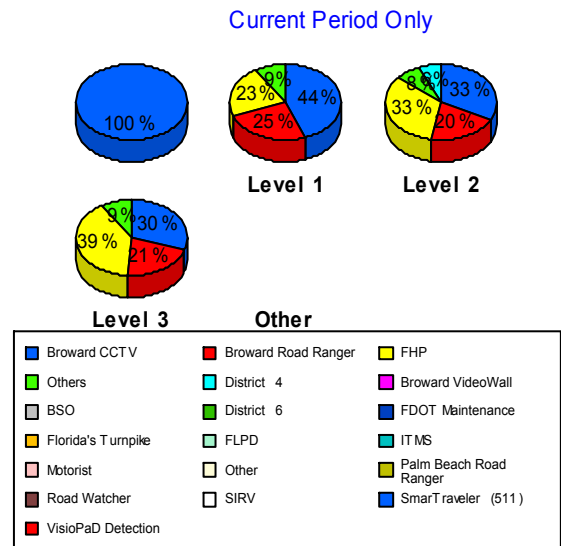


		Current Month	Last Month	YTD
Off Peak	VisioPaD Detection	2	3	9
	Total	126	109	572
PM Peak	Broward CCTV	31	22	110
	Broward Road Ranger	11	7	49
	BSO	2	2	4
	District 4	1	0	7
	FDOT Maintenance	0	0	1
	FHP	21	22	121
	Palm Beach Road Rang	1	0	1
	Road Watcher	0	0	1
	SmarTraveler (511)	1	2	6
	VisioPaD Detection	1	2	4
	Total	69	57	304
Total	259	211	1,135	

### Incident Detection Methods by Severity

		Current Month	Last Month	YTD
	Broward CCTV	1	0	1
	Total	1	0	1
Level 1	Broward CCTV	64	53	256
	Broward Road Ranger	36	24	128
	BSO	1	1	2
	District 4	6	2	16
	FDOT Maintenance	1	0	1
	FHP	33	35	209
	FLPD	0	0	1
	Motorist	0	2	3
	Palm Beach Road Rang	1	0	1
	Road Watcher	0	0	4
	SIRV	0	1	1
	SmarTraveler (511)	2	1	10
	VisioPaD Detection	2	1	6

### Total Events by Roadway and Detection Method



		Current Month	Last Month	YTD
Level 1	Total	146	120	638
Level 2	Broward CCTV	26	20	125
	Broward Road Ranger	16	10	72
	BSO	1	1	2
	District 4	5	3	11
	District 6	0	1	1
	FDOT Maintenance	0	0	2
	FHP	26	32	164
	Florida's Turnpike	0	1	1
	Motorist	1	2	4
	Palm Beach Road Rang	0	0	1
	Road Watcher	1	0	2
	SIRV	0	0	1
	SmarTraveler (511)	2	2	6
	VisioPaD Detection	1	4	9
	Total	79	76	401
Level 3	Broward CCTV	10	4	28
	Broward Road Ranger	7	3	14
	Broward TMC	1	0	1
	BSO	1	0	1
	District 4	1	0	1
	FHP	13	7	47
	Palm Beach Road Rang	0	0	1
	SmarTraveler (511)	0	0	1
	VisioPaD Detection	0	1	1
	Total	33	15	95
Total	259	211	1,135	

# Road Ranger / SIRV Performance Measures

## Road Ranger / SIRV Performance By County

RR/SIRV Responses per County

Values presented are:  
 - Total Events with a RR/SIRV Response  
 - Total RR/SIRV Responses,  
 - Total Activities Performed

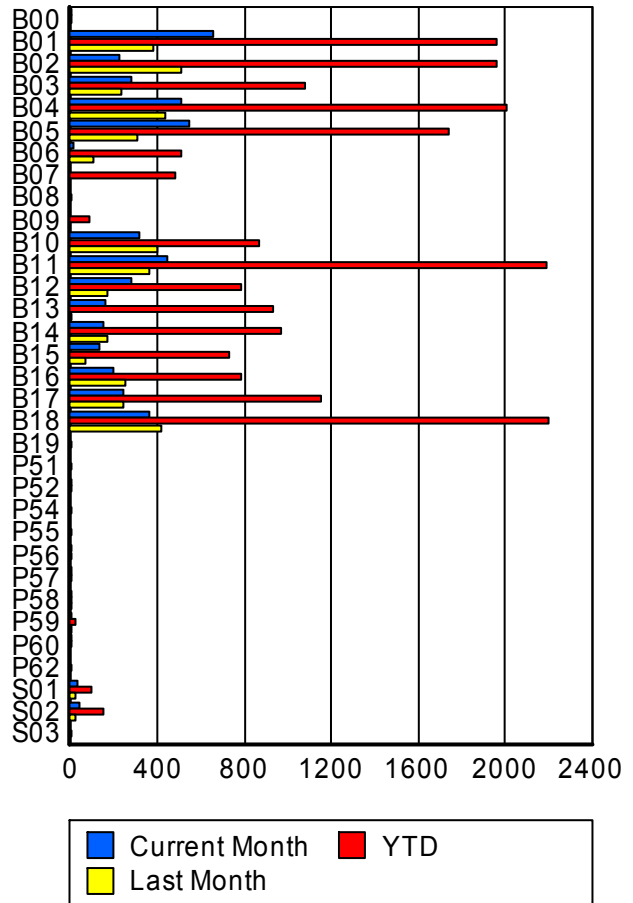
	Current Month	Last Month	YTD
Broward	4,287	3,887	19,568
	4,611	4,127	20,772
	4,821	4,289	21,613



## Road Ranger / SIRV Performance By Truck

	Current Month	Last Month	YTD
B00	5	0	6
	5	0	6
	5	0	6
B01	645	380	1,940
	656	384	1,960
	697	394	2,044
B02	222	505	1,943
	225	511	1,959
	232	540	2,045
B03	277	235	1,064
	284	237	1,081
	291	240	1,115
B04	502	425	1,983
	510	433	2,009
	531	453	2,092
B05	539	306	1,726
	543	310	1,743
	565	325	1,818
B06	16	102	508
	16	102	510
	16	106	536
B07	0	0	477
	0	0	480
	0	0	486

RR/SIRV Responses per Truck



	Current Month	Last Month	YTD
B08	0 0 0	0 0 0	1 1 1
B09	0 0 0	0 0 0	87 87 90
B10	314 318 334	396 403 420	858 870 913
B11	432 442 465	366 367 380	2,174 2,192 2,275
B12	280 282 299	164 166 171	783 788 817
B13	162 163 165	8 8 8	925 933 956
B14	153 154 159	173 174 180	963 969 996
B15	131 132 132	71 72 80	728 733 768
B16	188 195 207	250 253 257	775 786 821
B17	240 244 257	240 243 251	1,146 1,157 1,202
B18	357 362 376	411 414 428	2,188 2,204 2,283
B19	0 0 0	0 0 0	2 2 2
P51	0 0 0	0 0 0	6 6 6
P52	2 2 2	0 0 0	2 2 2
P54	0 0 0	0 0 0	3 3 5

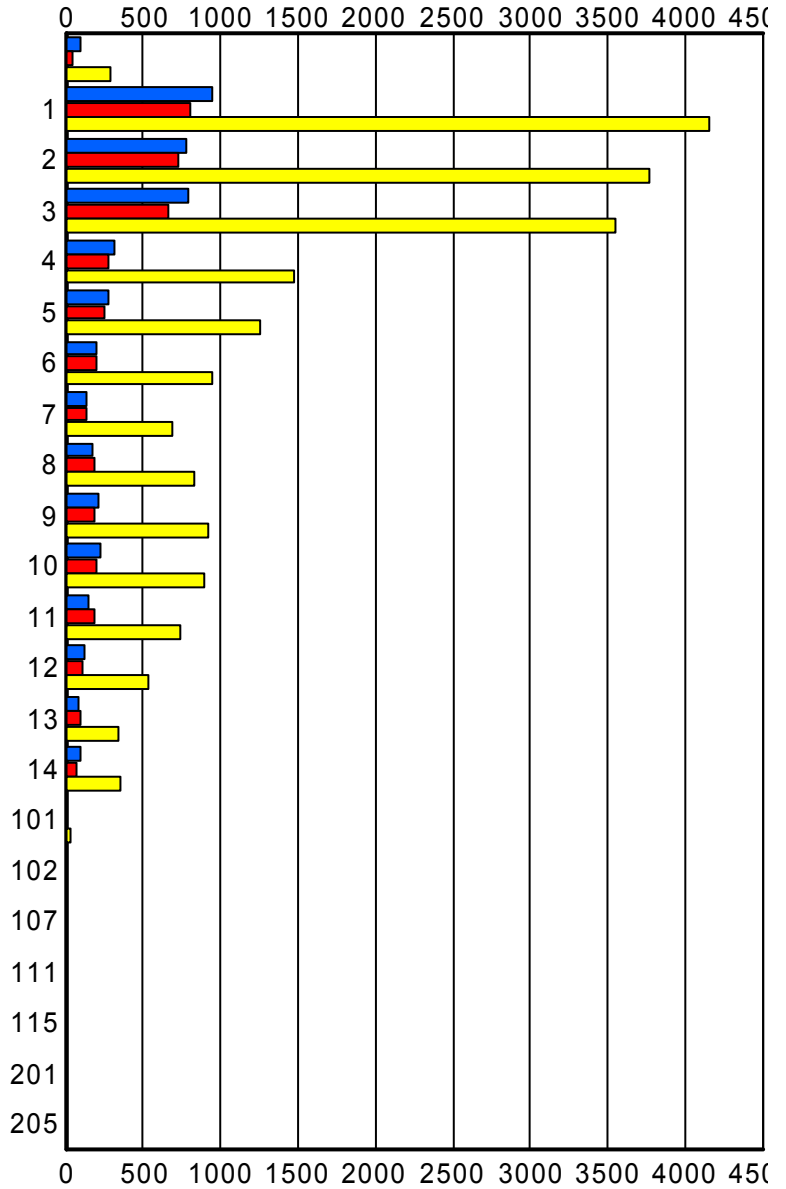
	Current Month	Last Month	YTD
P55	0 0 0	0 0 0	2 2 2
P56	1 1 1	0 0 0	1 1 1
P57	1 1 1	0 0 0	2 2 2
P58	1 1 1	4 4 5	7 7 8
P59	2 2 4	1 1 1	25 25 28
P60	1 1 1	0 0 0	1 1 1
P62	0 0 0	0 0 0	1 1 1
S01	30 30 32	19 21 22	94 96 116
S02	42 42 48	24 24 28	154 155 174
S03	0 0 0	0 0 0	1 1 1

### Road Ranger / SIRV Performance By Beat

	Current Month	Last Month	YTD
	93	44	283
	98	46	293
	109	51	335
1	916	774	4,035
	948	799	4,157
	992	831	4,330
2	746	709	3,650
	780	729	3,761
	816	762	3,909
3	770	640	3,440
	796	661	3,547
	836	680	3,697
4	305	267	1,461
	311	271	1,478
	322	278	1,519
5	269	248	1,239
	272	251	1,251
	287	264	1,301
6	196	189	940
	201	192	948
	210	205	989
7	130	134	685
	133	136	691
	140	142	730
8	178	190	822
	178	191	825
	189	202	869
9	216	180	917
	217	180	924
	223	184	944
10	215	203	882
	219	204	891
	226	207	917
11	142	185	726
	147	188	736
	153	191	754
12	120	108	523
	122	109	531
	123	116	552
13	83	89	334
	85	92	340
	88	93	350

Values presented are:  
 - Total Events with a RR/SIRV Response  
 - Total RR/SIRV Responses,  
 - Total Activities Performed

### RR/SIRV Responses per Beat



■ Current Month   
 ■ Last Month   
 ■ YTD

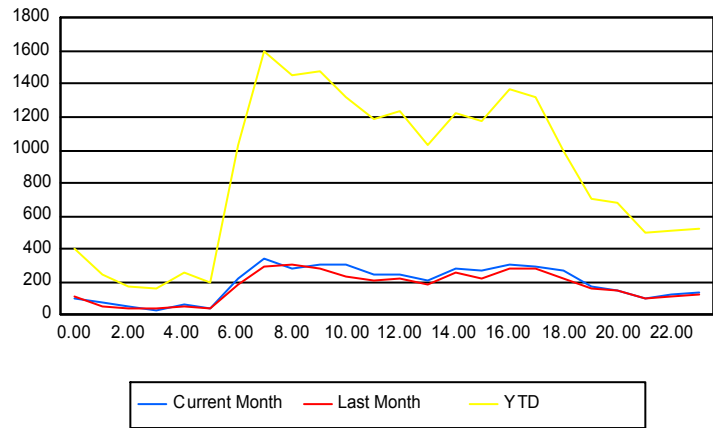
	Current Month	Last Month	YTD
14	95	73	349
	96	73	352
	97	77	364
101	6	3	33
	6	3	33
	8	4	39
102	0	0	1
	0	0	1
	0	0	1
107	0	0	1
	0	0	1
	0	0	1
111	2	2	9
	2	2	9
	2	2	9
115	0	0	1
	0	0	1
	0	0	1
201	0	0	1
	0	0	1
	0	0	1
205	0	0	1
	0	0	1
	0	0	1

## Road Ranger / SIRV Performance By Time of Day

Values presented are:  
 - Total Events with a RR/SIRV Response  
 - Total RR/SIRV Responses,  
 - Total Activities Performed

	Current Month	Last Month	YTD
12AM-1AM	97 103 103	101 110 111	382 403 414
1AM-2AM	65 70 74	47 47 47	229 241 252
2AM-3AM	50 54 56	34 34 35	166 176 181
3AM-4AM	28 28 28	38 40 44	148 164 175
4AM-5AM	55 66 67	49 52 53	241 260 265
5AM-6AM	43 45 46	32 35 35	188 200 211
6AM-7AM	214 226 245	170 187 198	968 1,032 1,088
7AM-8AM	310 338 346	284 297 303	1,516 1,605 1,659
8AM-9AM	261 283 304	286 303 314	1,365 1,449 1,519
9AM-10AM	283 304 314	273 282 294	1,397 1,474 1,527
10AM-11AM	287 302 319	220 233 253	1,251 1,319 1,388
11AM-12PM	227 246 261	195 211 220	1,116 1,183 1,235
12PM-1PM	226 249 265	207 215 221	1,177 1,242 1,295

## Number of Responses / Hour of the Day



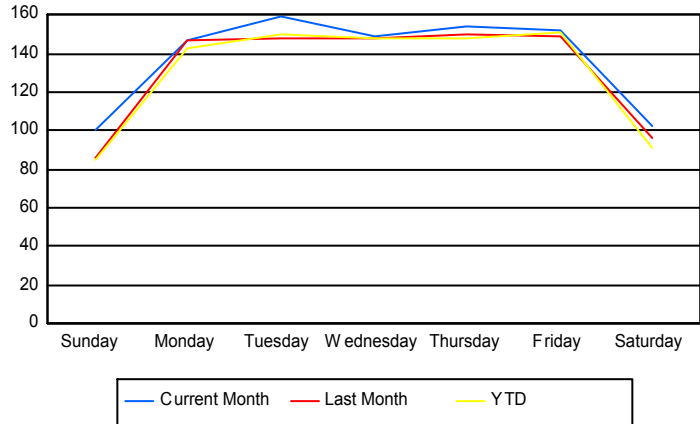
	Current Month	Last Month	YTD
1PM-2PM	196 214 226	178 184 193	971 1,028 1,088
2PM-3PM	261 279 297	229 253 267	1,148 1,229 1,281
3PM-4PM	250 264 271	205 218 228	1,110 1,171 1,209
4PM-5PM	283 302 312	259 286 299	1,275 1,367 1,416
5PM-6PM	278 296 308	270 283 293	1,252 1,321 1,371
6PM-7PM	243 265 279	205 225 229	924 995 1,024
7PM-8PM	169 175 179	154 157 160	663 706 731
8PM-9PM	137 145 151	140 143 151	662 681 712
9PM-10PM	91 104 106	92 104 105	455 502 515
10PM-11PM	108 121 126	107 109 116	469 505 524
11PM-12AM	125 132 138	112 119 120	495 519 533

## Road Ranger / SIRV Performance By Day of Week

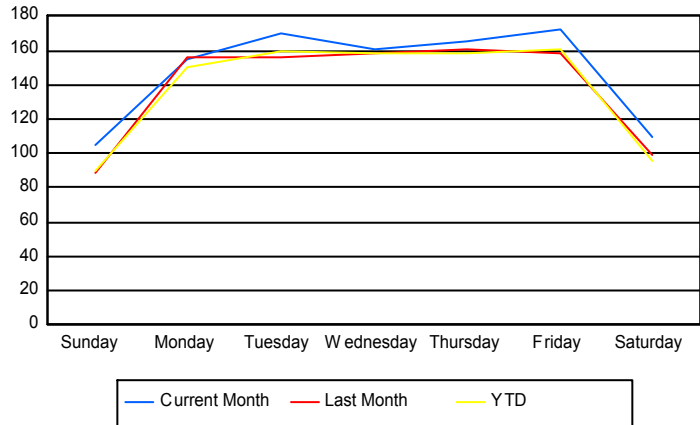
Values presented are:  
 - Total Events with a RR/SIRV Response  
 - Total RR/SIRV Responses,  
 - Total Activities Performed

	Current Month	Last Month	YTD
Sunday	398	426	1,748
	417	441	1,833
	438	460	1,914
Monday	582	732	3,103
	613	779	3,280
	640	807	3,390
Tuesday	788	582	3,268
	842	618	3,467
	873	644	3,628
Wednesday	743	589	3,231
	801	633	3,442
	837	662	3,583
Thursday	769	595	3,222
	825	635	3,446
	867	660	3,588
Friday	609	590	3,139
	685	627	3,333
	718	645	3,455
Saturday	401	382	1,872
	428	394	1,971
	448	411	2,055

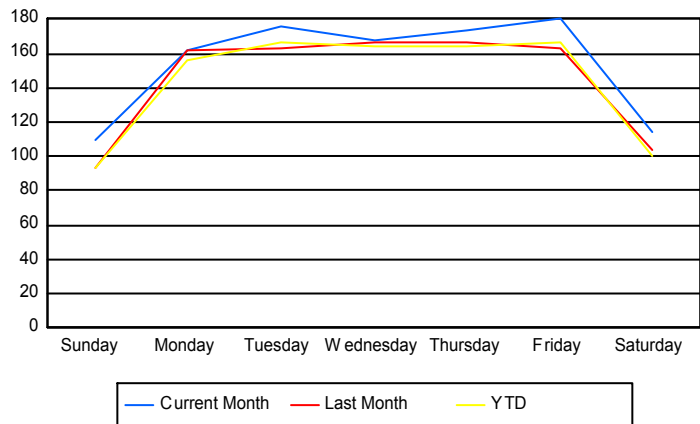
### Avg # of events with a RR/SIRV Response per Day of the Week



### Avg # of RR/SIRV Responses per Day of the Week



### Avg # of RR/SIRV Activities Performed per Day of the Week



### Road Ranger/SIRV Responses per Time of Day and Day of Week

