



Monthly Performance Measures Report

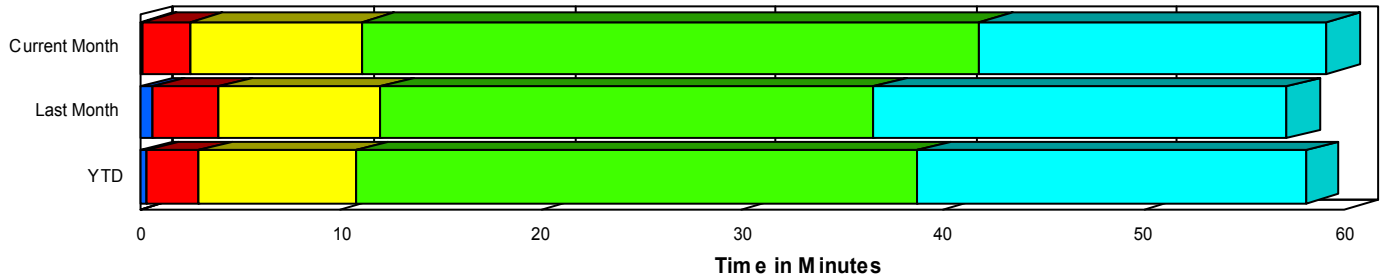
Period From Apr 1, 2007 to Apr 30, 2007

Created on:
May 07, 2007
8:14 am

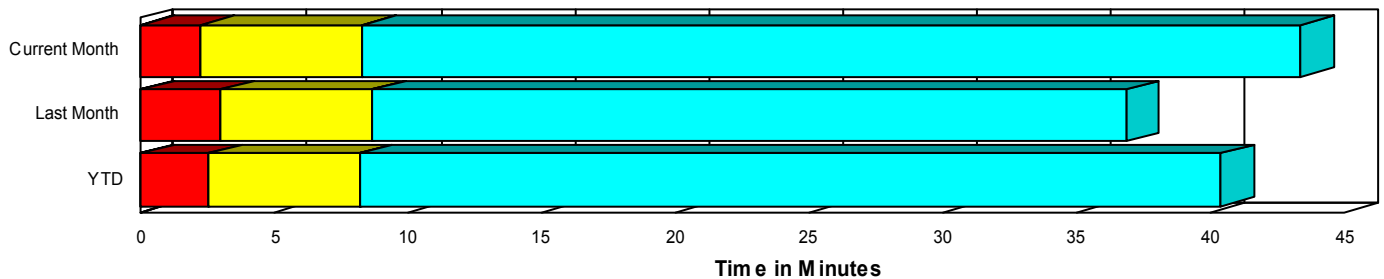
Performance Measures Summary

	Traffic Events (No Lanes Blocked)			Incidents (Lanes Blocked)		
	<u>This Month</u>	<u>Last Month</u>	<u>YTD</u>	<u>This Month</u>	<u>Last Month</u>	<u>YTD</u>
Number of Events	4,601	4,378	17,667	211	229	876
TMC Detection (min.)	0.03	0.04	0.05	0.18	0.60	0.29
TMC Verification (min.)	2.23	2.96	2.52	2.30	3.31	2.62
TMC Response (min.)	8.53	8.62	8.34	10.91	11.55	10.52
RR Dispatch Time (min.)	2.55	2.09	2.01	3.02	3.07	2.59
RR Response Time (min.)	6.08	6.70	6.43	7.89	8.46	7.94
Roadway Clearance (min.)				43.18	35.42	38.62
Event Clearance (min.)	43.60	36.85	40.56	57.36	55.99	57.17
# of Events w/ RR/SIRV	3,684	3,580	14,442	203	216	839
RR/SIRV Responses	3,807	3,678	14,816	320	354	1,345
RR/SIRV Activities	3,954	3,825	15,362	335	373	1,430

Incident Clearance TimeLine



Traffic Event(Non-Lane Blockage) Time-Line



■ Avg. TMC Detection Time	■ Avg. Time from TMC Response to Roadway Clearance*
■ Avg. Time from TMC Detection to TMC Verification	■ Avg. Time from Roadway Clearance to Incident/Event Clearance**
■ Avg. Time from TMC Verification to TMC Response	

* Roadway clearance equals all travel lanes open

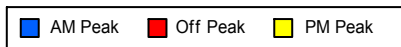
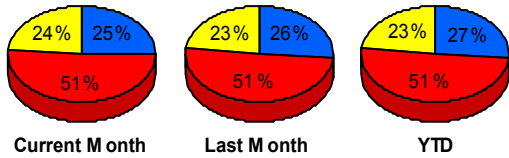
** Incident clearance equals time when last responder has left the scene

Performance Measures by Peak Period

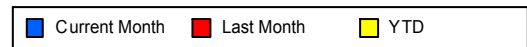
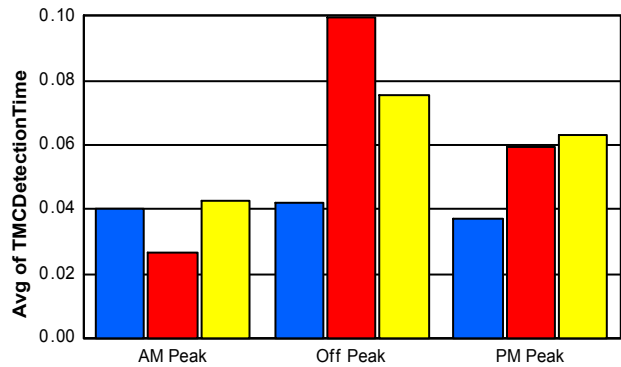
Note: AM peak period is defined as 6am to 10am and PM peak period is defined as 3pm to 7pm.

	AM Peak			Off Peak			PM Peak		
	<u>Current Month</u>	<u>Last Month</u>	<u>YTD</u>	<u>Current Month</u>	<u>Last Month</u>	<u>YTD</u>	<u>Current Month</u>	<u>Last Month</u>	<u>YTD</u>
Number of Events	1,208	1,201	4,917	2,450	2,347	9,414	1,154	1,059	4,212
Number of Incidents	45	43	195	109	119	446	57	67	235
TMC Detection (min.)	0.04	0.03	0.04	0.04	0.10	0.08	0.04	0.06	0.06
TMC Verification (min.)	1.62	1.11	1.46	2.53	4.00	2.97	2.23	2.81	2.76
TMC Response (min.)	6.51	6.25	6.52	10.23	10.61	9.69	7.75	7.82	8.11
RR Dispatch Time (min.)	1.53	1.60	1.36	3.25	2.43	2.35	2.26	2.14	2.14
RR Response Time (min.)	5.16	4.82	5.28	6.96	8.30	7.38	5.64	5.88	6.10
Event Clearance (min.)	37.25	27.92	33.86	54.57	46.70	50.04	29.49	29.28	30.68
Roadway Clearance (min.)	34.44	37.37	32.62	45.44	40.48	43.63	45.76	25.18	34.10
Incident Clearance (min.)	59.57	61.21	54.38	61.14	61.38	62.96	48.40	43.08	48.50
# of Events w/ RR/SIRV	1,013	1,005	4,178	1,935	1,881	7,596	939	910	3,507
RR/SIRV Responses	1,069	1,069	4,409	2,046	1,997	8,025	1,012	966	3,727
RR/SIRV Activities	1,109	1,118	4,584	2,131	2,081	8,358	1,049	999	3,850

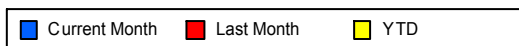
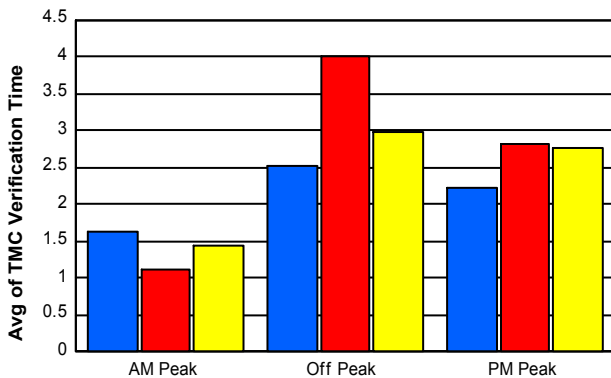
Number of Events / Peak Period



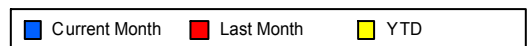
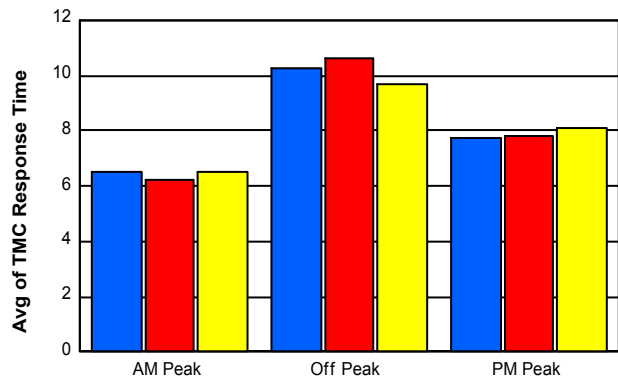
TMC Detection Time



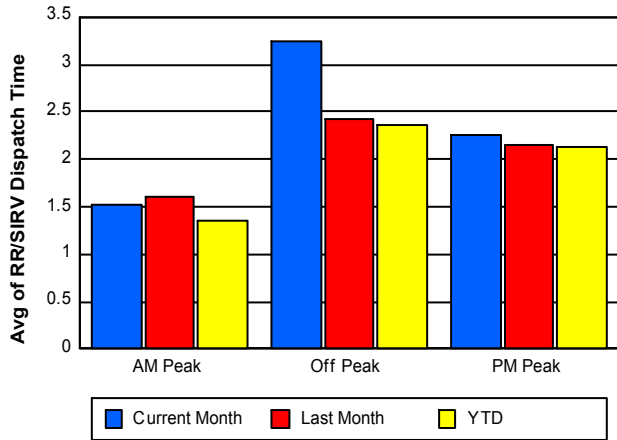
TMC Verification Time



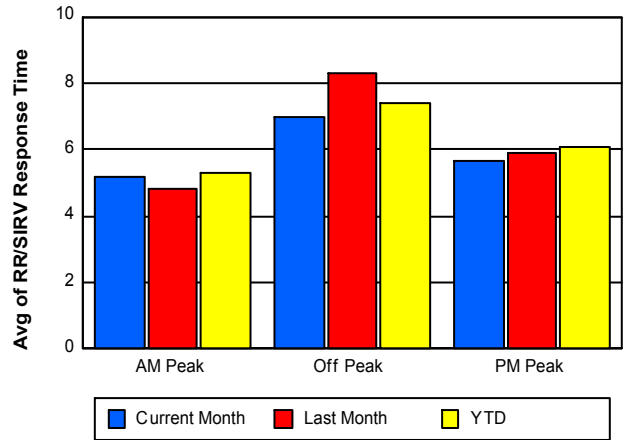
TMC Response Time



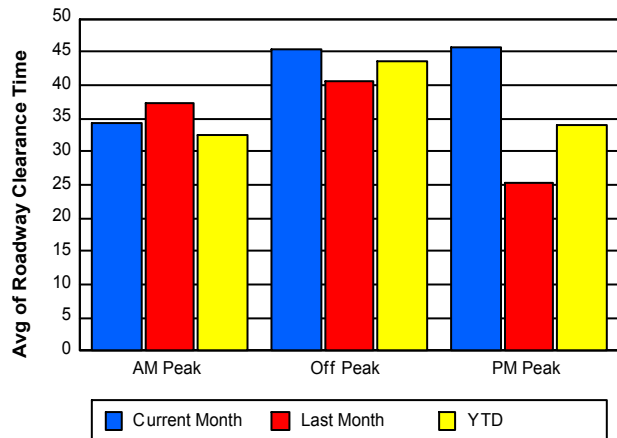
Road Ranger / SIRV Dispatch Time



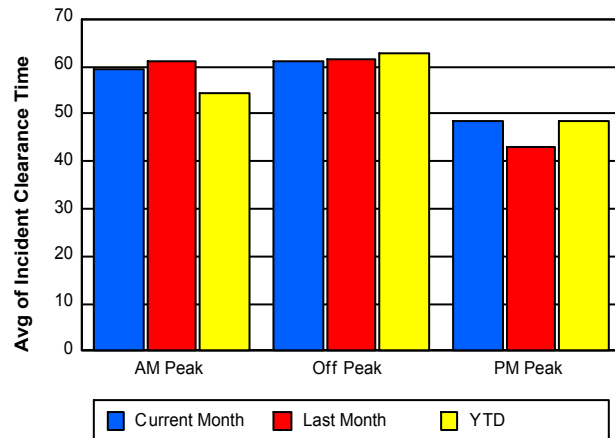
Road Ranger / SIRV Response Time



Roadway Clearance Time (2A)



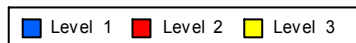
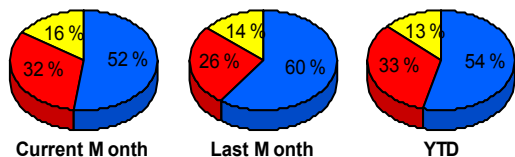
Incident Clearance Time (3B)



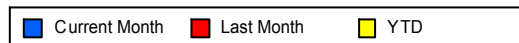
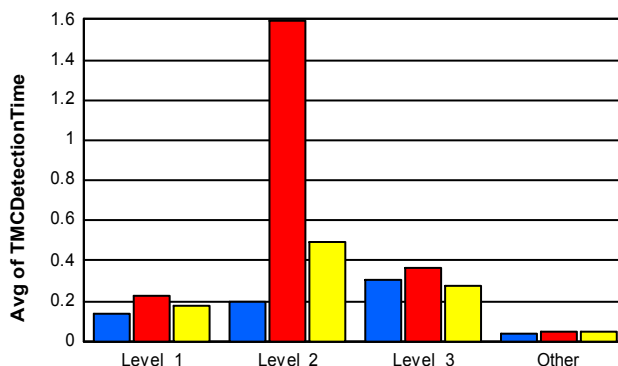
Performance Measures by Severity

	Level 1			Level 2			Level 3			Other		
	<u>This Month</u>	<u>Last Month</u>	<u>YTD</u>	<u>This Month</u>	<u>Last Month</u>	<u>YTD</u>	<u>This Month</u>	<u>Last Month</u>	<u>YTD</u>	<u>This Month</u>	<u>Last Month</u>	<u>YTD</u>
Number of Events	110	137	471	68	60	291	33	32	114	4,601	4,378	17,667
Number of Incidents	110	137	471	68	60	291	33	32	114	0	0	0
TMC Detection (min.)	0.14	0.23	0.17	0.20	1.59	0.49	0.30	0.36	0.27	0.03	0.04	0.05
TMC Verification (min.)	1.48	2.03	1.71	2.80	5.67	3.51	4.01	4.39	4.08	2.23	2.96	2.52
TMC Response (min.)	9.64	10.18	9.43	13.83	13.97	11.83	9.30	12.40	11.52	8.53	8.62	8.34
RR Dispatch Time (min.)	2.56	2.83	2.31	3.80	3.15	2.76	3.04	3.92	3.33	2.55	2.09	2.01
RR Resp. Time (min.)	7.09	7.35	7.14	10.03	10.82	9.07	6.26	8.47	8.19	6.08	6.70	6.43
Event Clearance (min.)	36.04	39.98	37.82	64.32	66.71	67.39	114.08	104.45	111.01	43.60	36.85	40.56
Roadway Clear. (min.)	15.91	16.06	15.34	51.21	53.59	52.91	117.56	84.26	98.33			
Incident Clearance (min.)	36.04	39.98	37.82	64.32	66.71	67.39	114.08	104.45	111.01			
# of Events w/ RR/SIRV	107	125	442	64	59	286	32	32	111	3,684	3,580	14,442
RR/SIRV Responses	139	170	587	113	96	481	68	88	277	3,807	3,678	14,816
RR/SIRV Activities	144	175	619	115	100	502	76	98	309	3,954	3,825	15,362

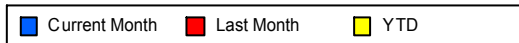
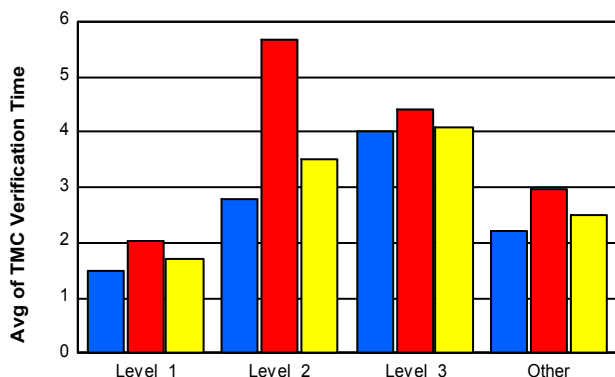
Number of Events / Severity



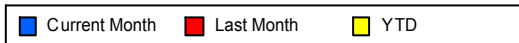
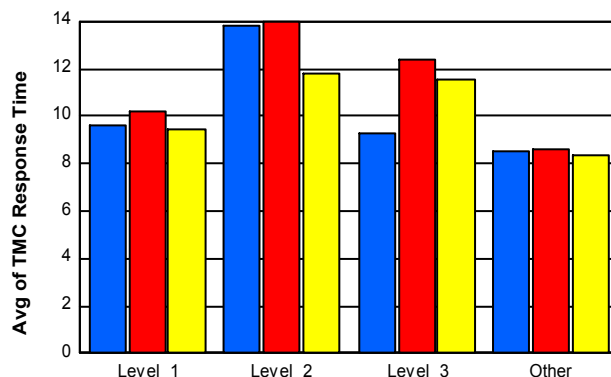
TMC Detection Time



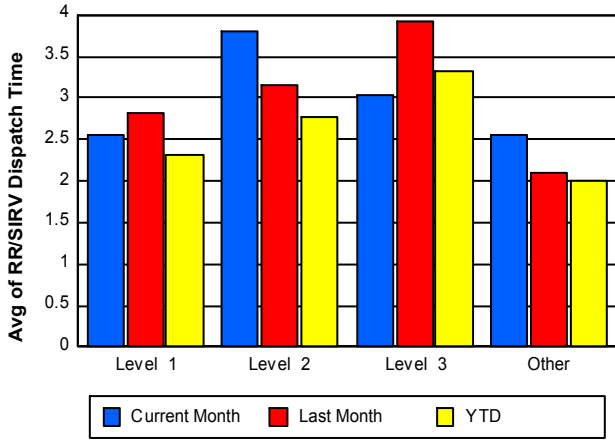
TMC Verification Time



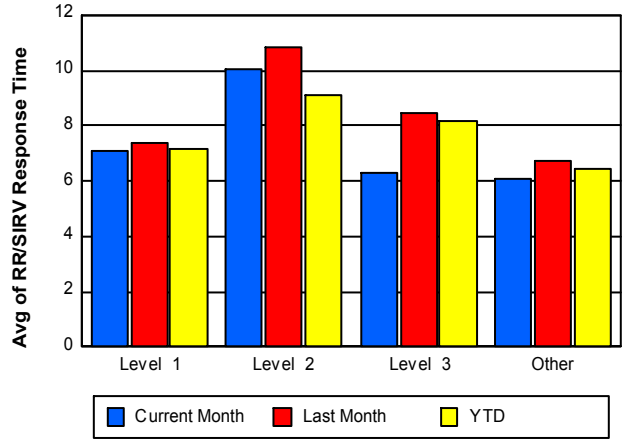
TMC Response Time



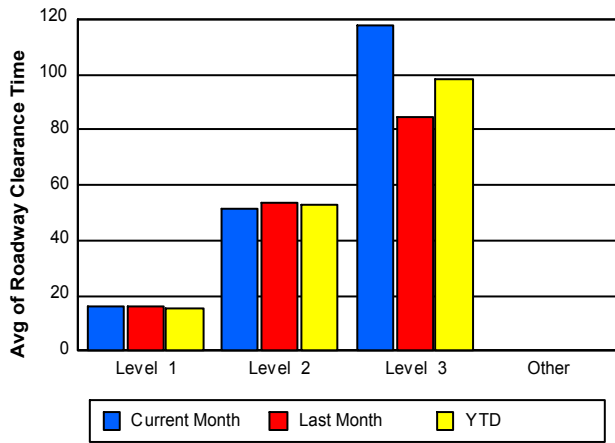
Road Ranger / SIRV Dispatch Time



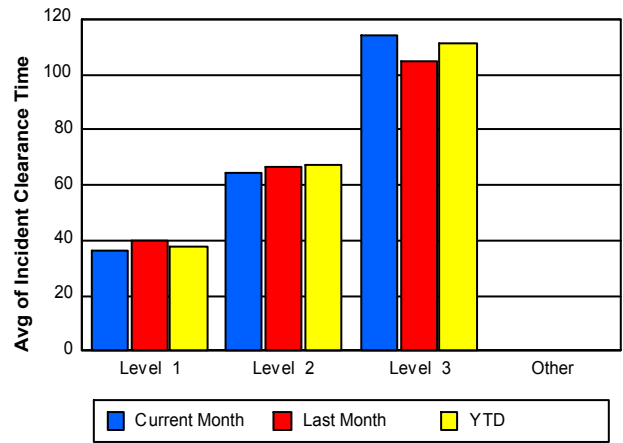
Road Ranger / SIRV Response Time



Roadway Clearance Time (2A)



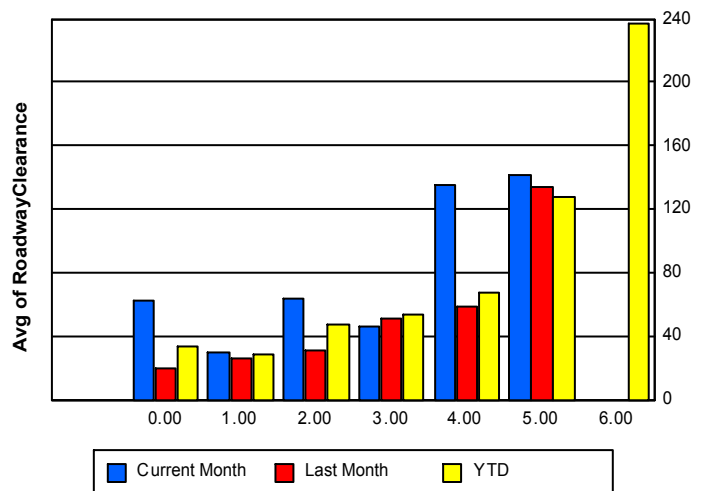
Incident Clearance Time (3B)



Roadway Clearance by Maximum Number of Lanes Blocked

	Current Month	Last Month	YTD
0	62.92	19.20	33.70
1	29.41	26.12	28.53
2	63.52	31.29	46.84
3	46.49	51.04	53.64
4	135.05	59.26	67.65
5	141.42	134.47	127.38
6	0.00	0.00	236.50

Roadway Clearance Time (2A) by Max. # Lanes Blocked



Performance Measures by Roadway

595

	<u>Current Month</u>	<u>Last Month</u>	<u>YTD</u>
Number of Events	726	747	2,853
Number of Incidents	38	35	143
TMC Detection (min.)	0.07	0.06	0.07
TMC Verification (min.)	2.90	3.20	3.08
TMC Response (min.)	8.28	8.38	8.02
RR Dispatch Time (min.)	2.13	1.82	1.94
RR Resp. Time (min.)	6.36	6.64	6.20
Event Clearance (min.)	48.63	31.74	37.80
Roadway Clear. (min.)	51.82	36.29	42.49
Incident Clearance (min.)	71.94	54.45	62.24
# of Events w/ RR/SIRV	608	618	2,374
RR/SIRV Responses	646	647	2,518
RR/SIRV Activities	669	669	2,606

75

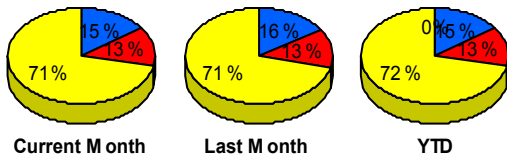
	<u>Current Month</u>	<u>Last Month</u>	<u>YTD</u>
Number of Events	646	585	2,392
Number of Incidents	21	16	61
TMC Detection (min.)	0.05	0.13	0.09
TMC Verification (min.)	3.37	4.57	3.92
TMC Response (min.)	4.26	4.39	4.19
RR Dispatch Time (min.)	1.49	0.96	1.10
RR Resp. Time (min.)	2.81	3.48	3.12
Event Clearance (min.)	57.51	28.12	37.75
Roadway Clear. (min.)	102.94	41.68	70.98
Incident Clearance (min.)	97.70	59.01	80.87
# of Events w/ RR/SIRV	628	564	2,334
RR/SIRV Responses	670	593	2,449
RR/SIRV Activities	712	630	2,575

95

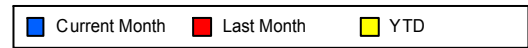
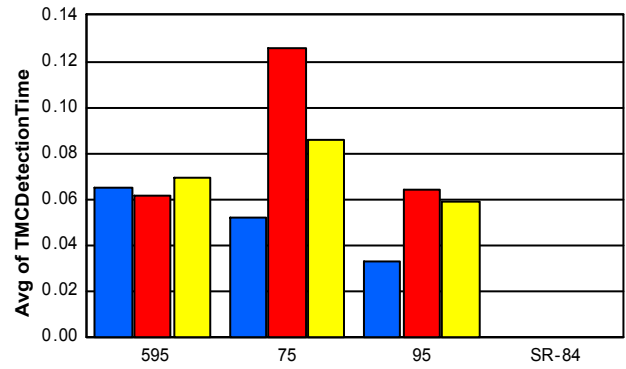
	<u>Current Month</u>	<u>Last Month</u>	<u>YTD</u>
Number of Events	3,440	3,275	13,297
Number of Incidents	152	178	672
TMC Detection (min.)	0.03	0.06	0.06
TMC Verification (min.)	1.88	2.64	2.15
TMC Response (min.)	9.79	9.84	9.50
RR Dispatch Time (min.)	2.90	2.45	2.24
RR Resp. Time (min.)	6.93	7.55	7.33
Event Clearance (min.)	40.78	40.91	42.76
Roadway Clear. (min.)	32.77	34.69	34.86
Incident Clearance (min.)	48.14	56.03	53.94
# of Events w/ RR/SIRV	2,651	2,614	10,573
RR/SIRV Responses	2,811	2,792	11,194
RR/SIRV Activities	2,908	2,899	11,611

	<u>YTD</u>
Number of Events	1
Number of Incidents	0
TMC Detection (min.)	0.00
TMC Verification (min.)	1.08
TMC Response (min.)	
RR Dispatch Time (min.)	
RR Resp. Time (min.)	
Event Clearance (min.)	3.77
Roadway Clear. (min.)	
Incident Clearance (min.)	
# of Events w/ RR/SIRV	0
RR/SIRV Responses	0
RR/SIRV Activities	0

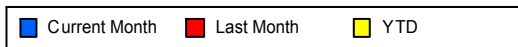
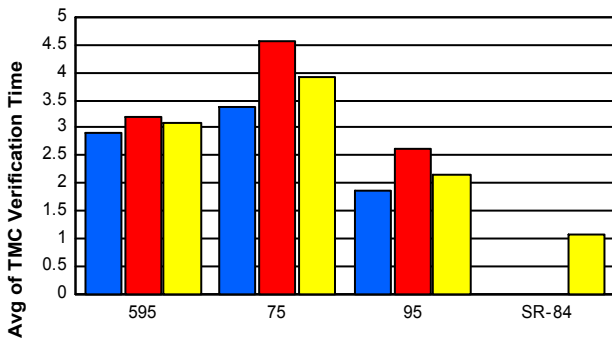
Number of Events / Roadway



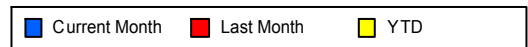
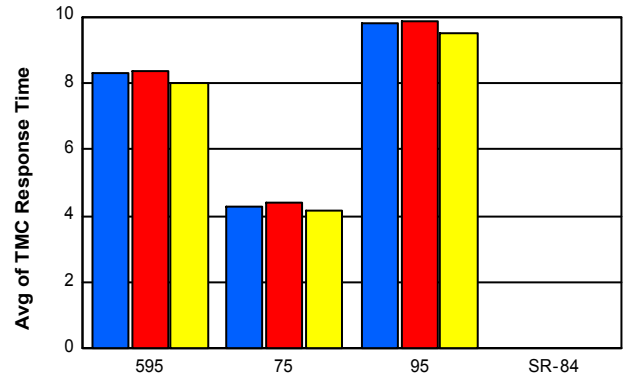
TMC Detection Time



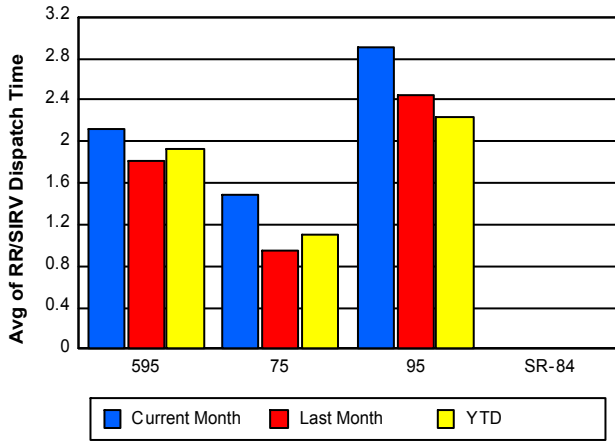
TMC Verification Time



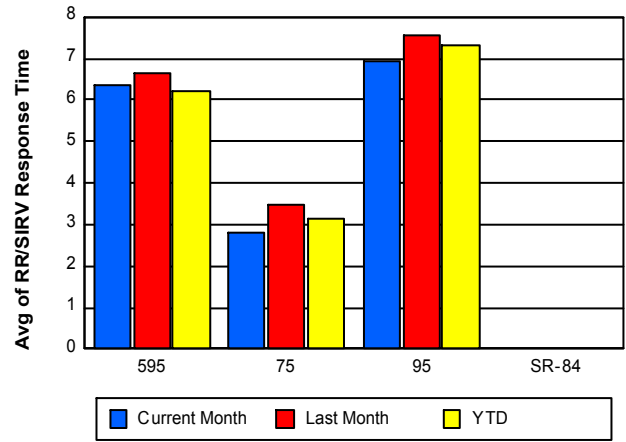
TMC Response Time



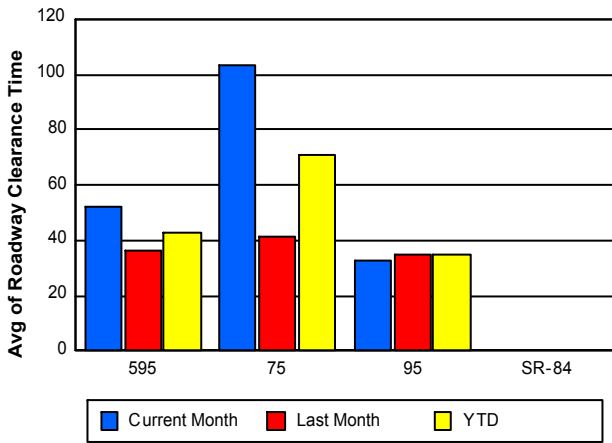
Road Ranger / SIRV Dispatch Time



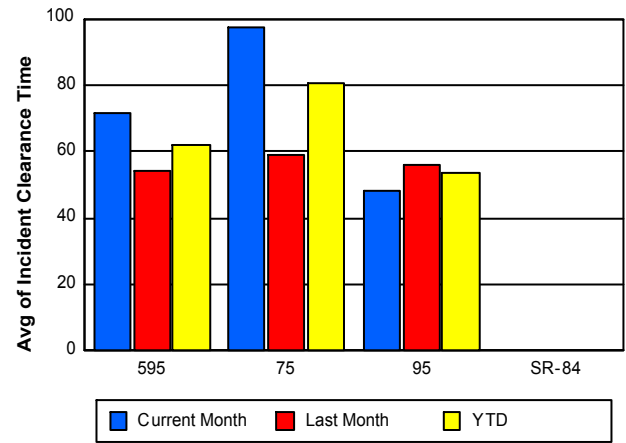
Road Ranger / SIRV Response Time



Roadway Clearance Time (2A)



Incident Clearance Time (3B)



Performance Measures by Event Type

Abandoned Vehicle

	<u>Current Month</u>	<u>Last Month</u>	<u>YTD</u>
Number of Events	606	582	2,340
Number of Incidents	1	0	2
TMC Detection (min.)	0.01	0.01	0.01
TMC Verification (min.)	0.68	0.87	0.71
TMC Response (min.)	11.00	8.36	8.63
RR Dispatch Time (min.)	4.53	2.52	2.33
RR Response Time (min.)	6.47	5.89	6.32
Event Clearance (min.)	177.97	138.31	165.48
Roadway Clearance (min.)	19.98		18.11
Incident Clearance (min.)	31.55		24.46
# of Events w/ RR/SIRV	503	490	1,931
RR/SIRV Assists	514	500	1,959
RR/SIRV Activities	531	503	1,995

Accident

	<u>Current Month</u>	<u>Last Month</u>	<u>YTD</u>
Number of Events	286	379	1,363
Number of Incidents	144	180	625
TMC Detection (min.)	0.19	0.41	0.24
TMC Verification (min.)	3.05	3.18	3.25
TMC Response (min.)	9.13	10.44	9.45
RR Dispatch Time (min.)	2.39	2.91	2.20
RR Response Time (min.)	6.77	7.62	7.28
Event Clearance (min.)	47.91	47.55	46.81
Roadway Clearance (min.)	39.27	38.08	38.93
Incident Clearance (min.)	60.45	60.91	61.40
# of Events w/ RR/SIRV	278	368	1,325
RR/SIRV Assists	383	499	1,785
RR/SIRV Activities	400	517	1,869

Debris on Roadway

	<u>Current Month</u>	<u>Last Month</u>	<u>YTD</u>
Number of Events	220	168	774
Number of Incidents	5	6	24
TMC Detection (min.)	0.14	0.23	0.22
TMC Verification (min.)	6.20	6.23	8.77
TMC Response (min.)	7.71	7.62	10.12
RR Dispatch Time (min.)	1.74	1.80	2.16
RR Response Time (min.)	5.96	5.99	7.99
Event Clearance (min.)	11.36	13.04	14.90
Roadway Clearance (min.)	28.06	19.26	26.34
Incident Clearance (min.)	32.11	26.24	35.20
# of Events w/ RR/SIRV	212	160	738
RR/SIRV Assists	229	170	796
RR/SIRV Activities	230	171	802

Disabled Vehicle

	<u>Current Month</u>	<u>Last Month</u>	<u>YTD</u>
Number of Events	2,969	2,811	11,163
Number of Incidents	46	32	173
TMC Detection (min.)	0.03	0.04	0.05
TMC Verification (min.)	2.45	3.29	2.67
TMC Response (min.)	7.97	8.74	8.10
RR Dispatch Time (min.)	2.21	1.94	1.89
RR Response Time (min.)	5.83	6.92	6.28
Event Clearance (min.)	21.93	21.52	21.13
Roadway Clearance (min.)	29.95	23.51	27.50
Incident Clearance (min.)	37.24	35.42	39.34
# of Events w/ RR/SIRV	2,732	2,598	10,521
RR/SIRV Assists	2,830	2,676	10,821
RR/SIRV Activities	2,956	2,819	11,322

Emergency Vehicles

	<u>Current Month</u>	<u>Last Month</u>	<u>YTD</u>
Number of Events	5	3	12
Number of Incidents	2	3	8
TMC Detection (min.)	0.00	0.06	0.02
TMC Verification (min.)	0.00	0.34	0.09
TMC Response (min.)	1.07	38.74	11.01
RR Dispatch Time (min.)	0.99	26.97	6.96
RR Response Time (min.)	0.08	11.78	3.42
Event Clearance (min.)	23.94	83.43	40.33
Roadway Clearance (min.)	49.24	41.48	35.95
Incident Clearance (min.)	53.04	83.43	56.21
# of Events w/ RR/SIRV	4	2	9
RR/SIRV Assists	4	3	11
RR/SIRV Activities	4	3	11

Other

	<u>Current Month</u>	<u>Last Month</u>	<u>YTD</u>
Number of Events	706	629	2,764
Number of Incidents	5	6	20
TMC Detection (min.)	0.01	0.03	0.02
TMC Verification (min.)	1.08	2.58	1.35
TMC Response (min.)	13.93	7.99	9.60
RR Dispatch Time (min.)	3.25	2.40	2.38
RR Response Time (min.)	10.71	6.46	7.63
Event Clearance (min.)	31.16	18.67	22.30
Roadway Clearance (min.)	24.15	30.57	27.71
Incident Clearance (min.)	34.89	39.14	36.33
# of Events w/ RR/SIRV	143	162	677
RR/SIRV Assists	144	168	686
RR/SIRV Activities	144	169	688

Pedestrian

	<u>Current Month</u>	<u>Last Month</u>	<u>YTD</u>
Number of Events	9	15	57
Number of Incidents	0	0	0
TMC Detection (min.)	0.08	0.06	0.14
TMC Verification (min.)	0.74	3.52	1.88
TMC Response (min.)	6.32	8.26	4.96
RR Dispatch Time (min.)	0.94	1.35	1.07
RR Response Time (min.)	5.51	6.91	4.05
Event Clearance (min.)	11.81	21.81	18.95
Roadway Clearance (min.)			
Incident Clearance (min.)			
# of Events w/ RR/SIRV	7	14	53
RR/SIRV Assists	7	14	54
RR/SIRV Activities	7	14	55

Police Activity

	<u>Current Month</u>	<u>Last Month</u>	<u>YTD</u>
Number of Events	4	19	52
Number of Incidents	2	1	14
TMC Detection (min.)	0.86	0.03	0.11
TMC Verification (min.)	0.22	0.48	1.39
TMC Response (min.)	18.17	5.06	13.69
RR Dispatch Time (min.)	4.72	1.30	3.29
RR Response Time (min.)	13.45	4.62	10.21
Event Clearance (min.)	46.75	29.87	60.44
Roadway Clearance (min.)	37.78	5.15	68.70
Incident Clearance (min.)	44.79	5.45	74.61
# of Events w/ RR/SIRV	4	2	19
RR/SIRV Assists	6	2	33
RR/SIRV Activities	6	2	33

Road Work - Emergency

	<u>Current Month</u>	<u>Last Month</u>	<u>YTD</u>
Number of Events	3	1	7
Number of Incidents	3	1	7
TMC Detection (min.)	0.00	0.00	0.06
TMC Verification (min.)	1.23	0.00	0.53
TMC Response (min.)	26.58		13.32
RR Dispatch Time (min.)	0.12		2.27
RR Response Time (min.)	26.47		11.04
Event Clearance (min.)	142.04	76.77	155.19
Roadway Clearance (min.)	137.59	75.43	151.75
Incident Clearance (min.)	142.04	76.77	155.19
# of Events w/ RR/SIRV	1	0	3
RR/SIRV Assists	1	0	5
RR/SIRV Activities	1	0	5

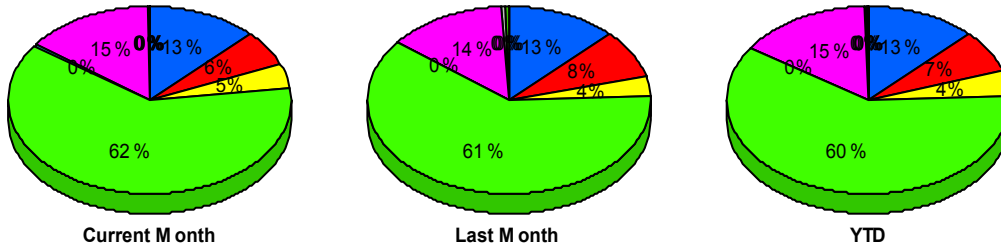
Visibility

	<u>Current Month</u>	<u>YTD</u>
Number of Events	3	3
Number of Incidents	3	3
TMC Detection (min.)	0.63	0.63
TMC Verification (min.)	8.58	8.58
TMC Response (min.)	14.77	14.77
RR Dispatch Time (min.)	8.80	8.80
RR Response Time (min.)	5.97	5.97
Event Clearance (min.)	232.35	232.35
Roadway Clearance (min.)	403.68	403.68
Incident Clearance (min.)	232.35	232.35
# of Events w/ RR/SIRV	3	3
RR/SIRV Assists	9	9
RR/SIRV Activities	10	10

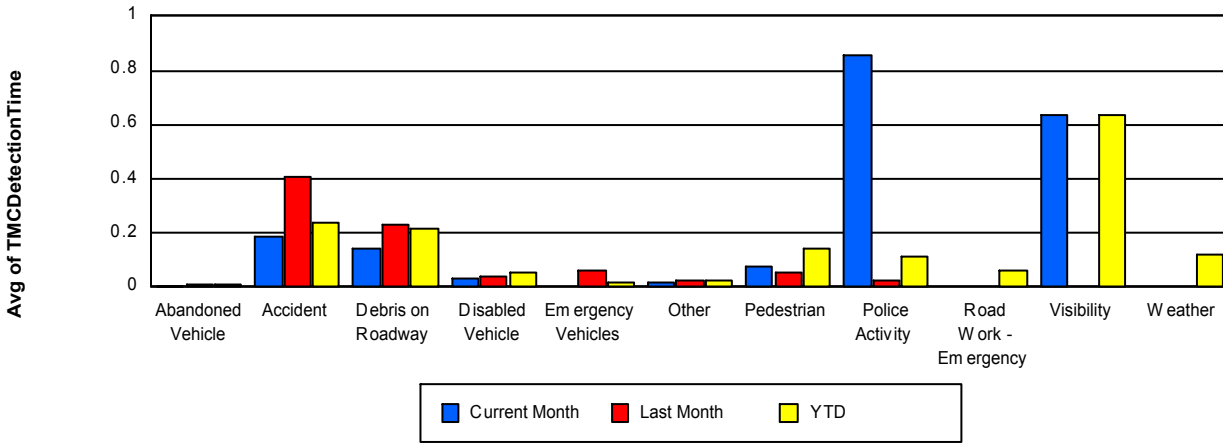
Weather

	<u>Current Month</u>	<u>YTD</u>
Number of Events	1	8
Number of Incidents	0	0
TMC Detection (min.)	0.00	0.12
TMC Verification (min.)	1.08	10.07
TMC Response (min.)		46.01
RR Dispatch Time (min.)	3.63	9.90
RR Response Time (min.)		39.25
Event Clearance (min.)	12.47	20.92
Roadway Clearance (min.)		
Incident Clearance (min.)		
# of Events w/ RR/SIRV	0	2
RR/SIRV Assists	0	2
RR/SIRV Activities	0	2

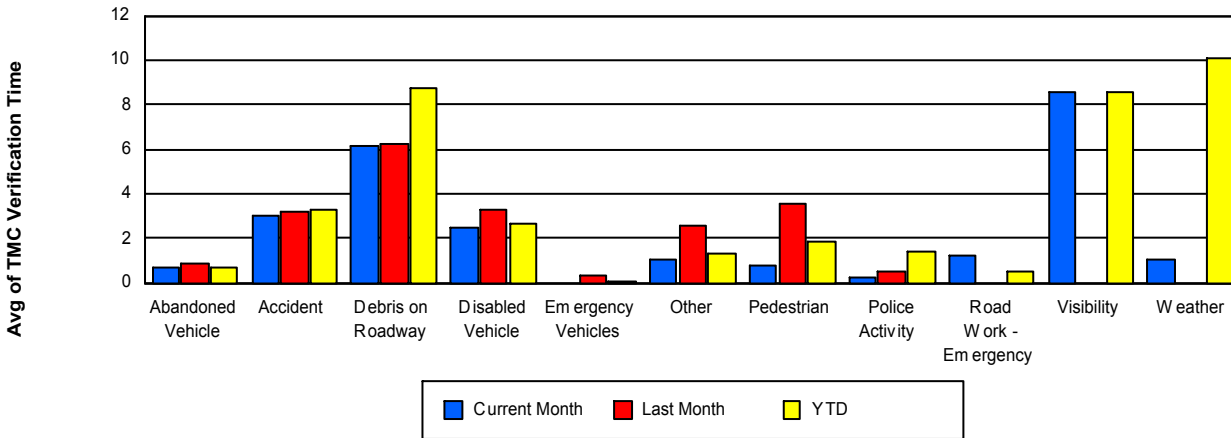
Number of Events / Event Type



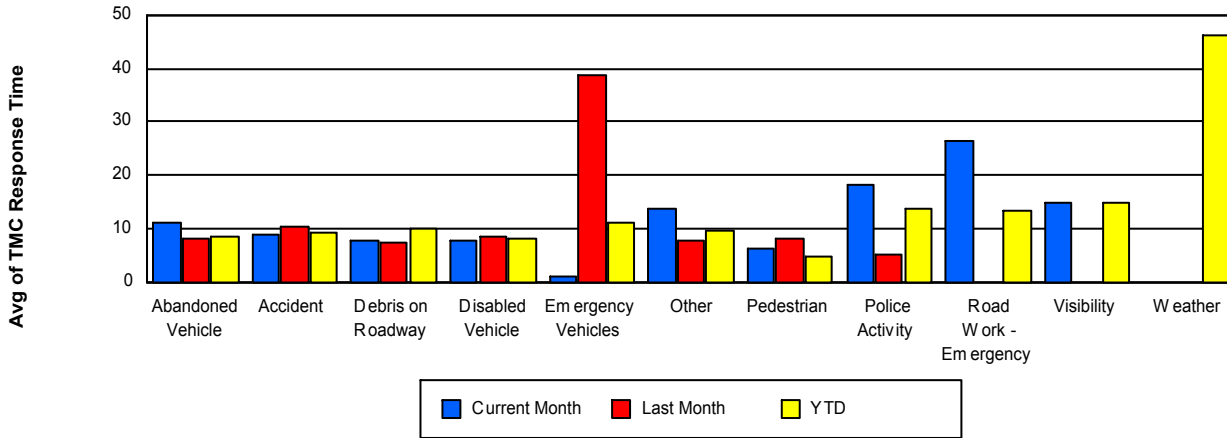
TMC Detection Time



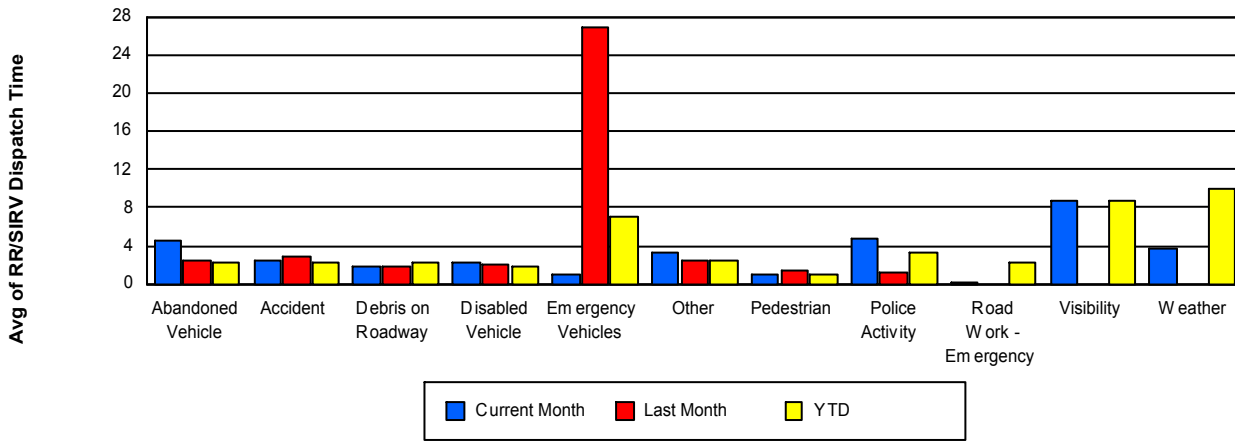
TMC Verification Time



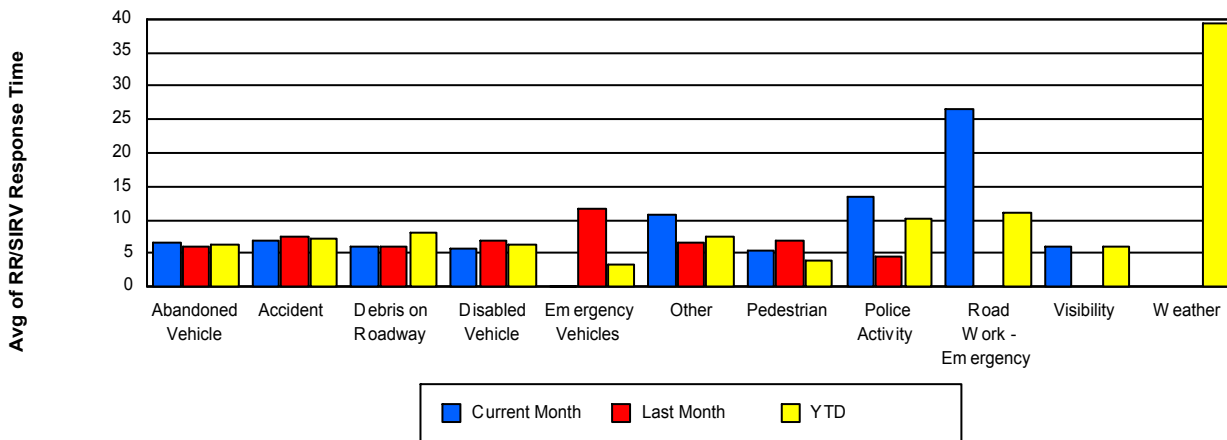
TMC Response Time



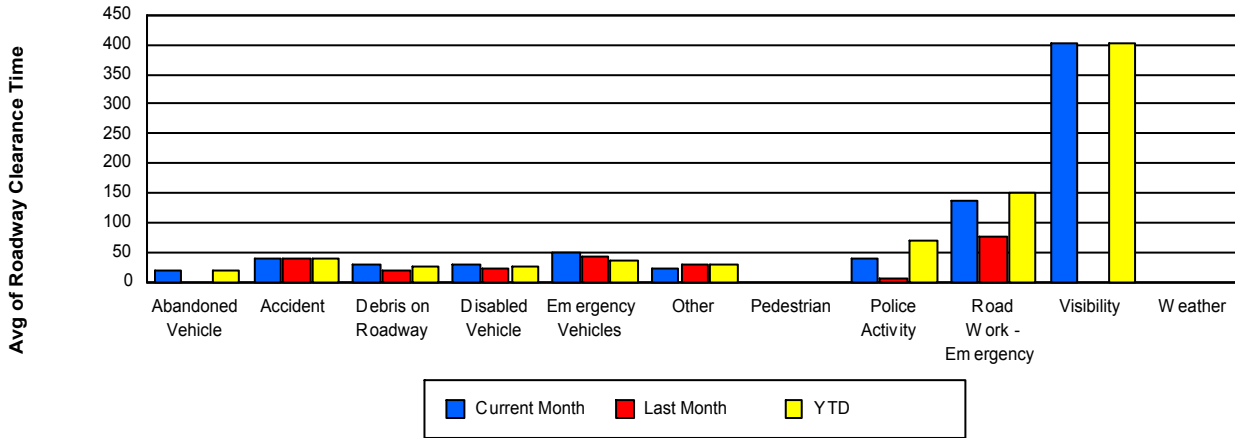
Road Ranger / SIRV Dispatch Time



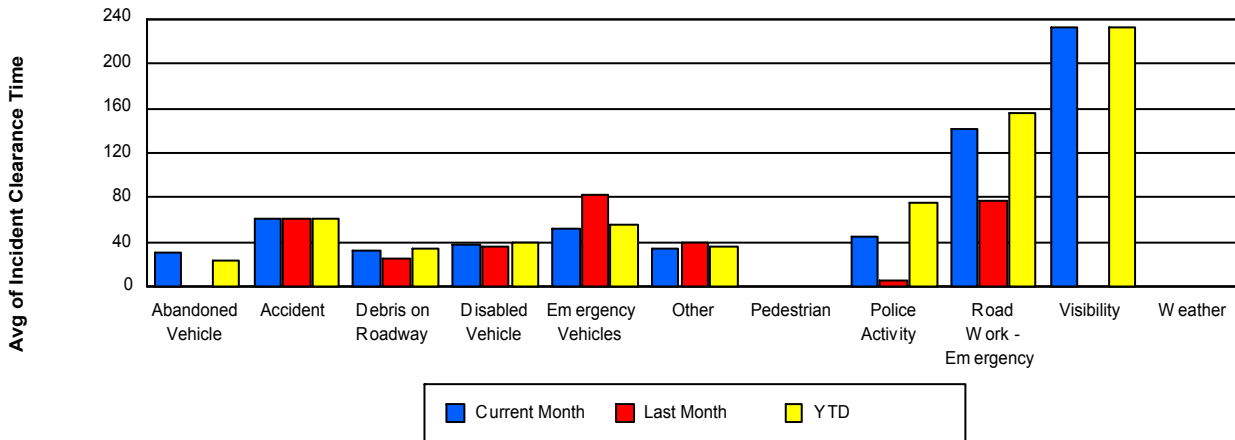
Road Ranger / SIRV Response Time



Roadway Clearance Time (2A)



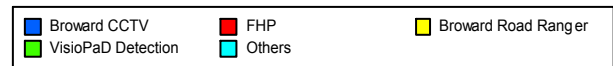
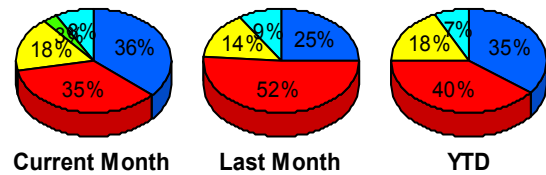
Incident Clearance Time (3B)



Incident Detection Methods

	Current Month	Last Month	YTD
Broward CCTV	77	57	309
Broward Road Ranger	37	33	155
BSO	2	0	2
District 4	5	6	16
District 6	1	0	1
FDOT Maintenance	0	0	2
FHP	74	118	348
Florida's Turnpike	1	0	1
FLPD	0	1	1
Motorist	4	1	6
Palm Beach Road Rang	0	1	2
Road Watcher	0	3	5
SIRV	1	0	2
SmarTraveler (511)	3	5	13
VisioPaD Detection	6	4	13
Total	211	229	876

Total Incidents by Detection Method

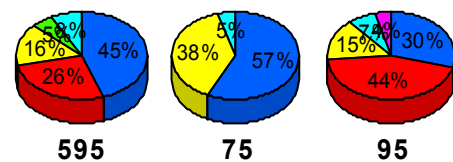


Incident Detection Methods by Roadway

		Current Month	Last Month	YTD
595	Broward CCTV	10	8	47
	Broward Road Ranger	6	3	21
	BSO	1	0	1
	District 4	2	0	3
	FHP	17	19	61
	FLPD	0	1	1
	Motorist	2	0	2
	Road Watcher	0	1	1
	SIRV	0	0	1
	SmarTraveler (511)	0	1	2
	VisioPaD Detection	0	2	3

Total Events by Roadway and Detection Method

Current Period Only



SR-84



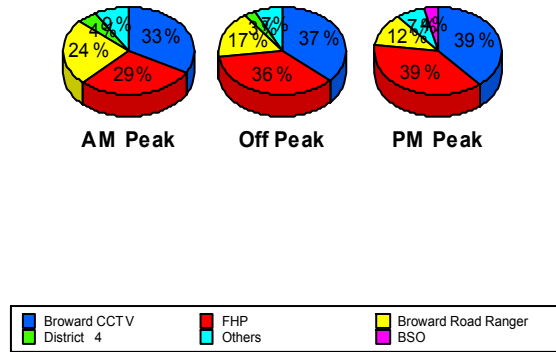
		Current Month	Last Month	YTD
595	Total	38	35	143
75	Broward Road Ranger	8	6	24
	District 4	1	0	1
	FHP	12	10	35
	Road Watcher	0	0	1
	Total	21	16	61
95	Broward CCTV	67	49	262
	Broward Road Ranger	23	24	110
	BSO	1	0	1
	District 4	2	6	12
	District 6	1	0	1
	FDOT Maintenance	0	0	2
	FHP	45	89	252
	Florida's Turnpike	1	0	1
	Motorist	2	1	4
	Palm Beach Road Rang	0	1	2
	Road Watcher	0	2	3
	SIRV	1	0	1
	SmarTraveler (511)	3	4	11
	VisioPaD Detection	6	2	10
	Total	152	178	672
Total		211	229	876

Incident Detection Methods by Peak Period

		Current Month	Last Month	YTD
AM Peak	Broward CCTV	15	16	72
	Broward Road Ranger	11	8	47
	District 4	2	0	3
	FHP	13	15	60
	Florida's Turnpike	1	0	1
	FLPD	0	1	1
	Motorist	2	1	3
	Palm Beach Road Rang	0	1	2
	Road Watcher	0	0	2
	SmarTraveler (511)	0	0	1
	VisioPaD Detection	1	1	3
	Total	45	43	195
Off Peak	Broward CCTV	40	28	158
	Broward Road Ranger	19	15	70
	District 4	3	3	7
	District 6	1	0	1
	FDOT Maintenance	0	0	1
	FHP	39	66	188
	Motorist	2	0	3
	Road Watcher	0	2	2
	SIRV	1	0	2
	SmarTraveler (511)	1	3	7
	VisioPaD Detection	3	2	7
	Total	109	119	446
PM Peak	Broward CCTV	22	13	79
	Broward Road Ranger	7	10	38
	BSO	2	0	2
	District 4	0	3	6
	FDOT Maintenance	0	0	1
	FHP	22	37	100
	Road Watcher	0	1	1

Total Events by Roadway and Detection Method

Current Period Only



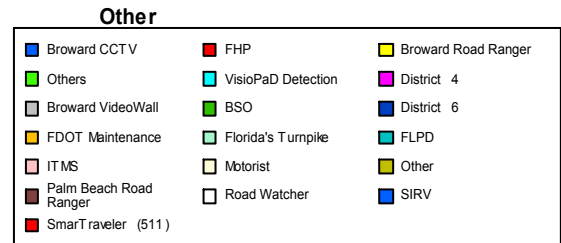
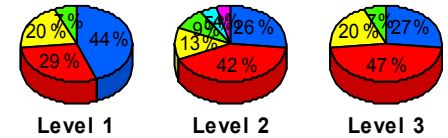
		Current Month	Last Month	YTD
PM Peak	SmarTraveler (511)	2	2	5
	VisioPaD Detection	2	1	3
	Total	57	67	235
Total		211	229	876

Incident Detection Methods by Severity

		Current Month	Last Month	YTD
Level 1	Broward CCTV	53	42	192
	Broward Road Ranger	24	24	92
	BSO	1	0	1
	District 4	2	4	10
	FHP	35	63	176
	FLPD	0	1	1
	Motorist	2	1	3
	Road Watcher	0	2	4
	SIRV	1	0	1
	SmarTraveler (511)	1	4	8
	VisioPaD Detection	1	1	4
	Total	120	142	492
Level 2	Broward CCTV	20	13	99
	Broward Road Ranger	10	7	56
	BSO	1	0	1
	District 4	3	2	6
	District 6	1	0	1
	FDOT Maintenance	0	0	2
	FHP	32	41	138
	Florida's Turnpike	1	0	1
	Motorist	2	0	3
	Palm Beach Road Rang	0	0	1
	Road Watcher	0	1	1
	SIRV	0	0	1
SmarTraveler (511)	2	0	4	

Total Events by Roadway and Detection Method

Current Period Only



		Current Month	Last Month	YTD
Level 2	VisioPaD Detection	4	3	8
	Total	76	67	322
Level 3	Broward CCTV	4	2	18
	Broward Road Ranger	3	2	7
	FHP	7	14	34
	Palm Beach Road Rang	0	1	1
	SmarTraveler (511)	0	1	1
	VisioPaD Detection	1	0	1
	Total	15	20	62
Total		211	229	876

Road Ranger / SIRV Performance Measures

Road Ranger / SIRV Performance By County

RR/SIRV Responses per County

Values presented are:
 - Total Events with a RR/SIRV Response
 - Total RR/SIRV Responses,
 - Total Activities Performed

	Current Month	Last Month	YTD
Broward	3,887	3,796	15,281
	4,127	4,032	16,161
	4,289	4,198	16,792

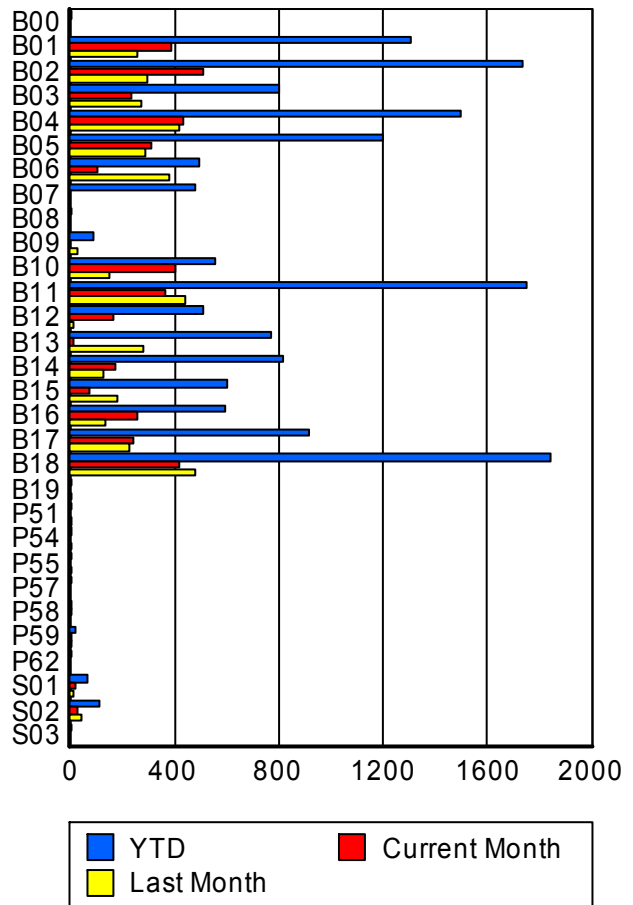


■ Broward

Road Ranger / SIRV Performance By Truck

	Current Month	Last Month	YTD
B00	0	0	1
	0	0	1
	0	0	1
B01	380	258	1,295
	384	260	1,304
	394	269	1,347
B02	505	290	1,721
	511	293	1,734
	540	307	1,813
B03	235	266	787
	237	270	797
	240	283	824
B04	425	415	1,481
	433	418	1,499
	453	432	1,561
B05	306	281	1,187
	310	284	1,200
	325	294	1,253
B06	102	376	492
	102	378	494
	106	397	520
B07	0	0	477
	0	0	480
	0	0	486

RR/SIRV Responses per Truck



	Current Month	Last Month	YTD
B08	0 0 0	0 0 0	1 1 1
B09	0 0 0	28 28 29	87 87 90
B10	396 403 420	148 149 159	544 552 579
B11	366 367 380	439 440 452	1,742 1,750 1,810
B12	164 166 171	15 15 15	503 506 518
B13	8 8 8	275 279 288	763 770 791
B14	173 174 180	128 129 131	810 815 837
B15	71 72 80	178 181 196	597 601 636
B16	250 253 257	137 137 149	587 591 614
B17	240 243 251	225 227 230	906 913 945
B18	411 414 428	474 479 494	1,831 1,842 1,907
B19	0 0 0	2 2 2	2 2 2
P51	0 0 0	3 3 3	6 6 6
P54	0 0 0	2 2 4	3 3 5
P55	0 0 0	1 1 1	2 2 2

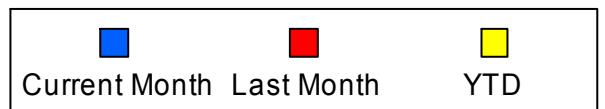
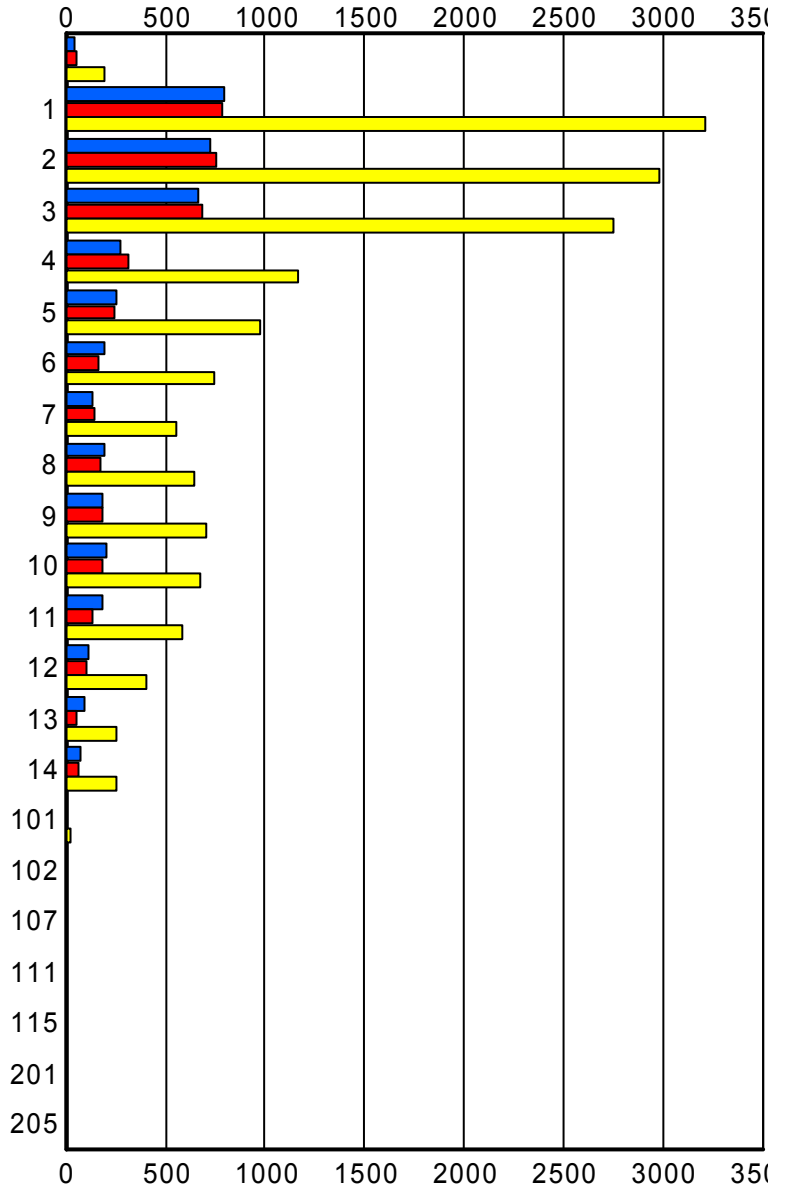
	Current Month	Last Month	YTD
P57	0 0 0	0 0 0	1 1 1
P58	4 4 5	0 0 0	6 6 7
P59	1 1 1	5 5 5	23 23 24
P62	0 0 0	0 0 0	1 1 1
S01	19 21 22	13 13 15	64 66 84
S02	24 24 28	39 39 43	112 113 126
S03	0 0 0	0 0 0	1 1 1

Road Ranger / SIRV Performance By Beat

	Current Month	Last Month	YTD
	44	54	190
	46	54	195
	51	60	226
1	774	752	3,119
	799	782	3,209
	831	815	3,338
2	709	727	2,904
	729	751	2,981
	762	768	3,093
3	640	667	2,670
	661	686	2,751
	680	720	2,861
4	267	310	1,156
	271	312	1,167
	278	321	1,197
5	248	239	970
	251	240	979
	264	247	1,014
6	189	161	744
	192	161	747
	205	166	779
7	134	138	555
	136	139	558
	142	151	590
8	190	170	644
	191	171	647
	202	183	680
9	180	184	701
	180	185	707
	184	188	721
10	203	180	667
	204	182	672
	207	191	691
11	185	128	584
	188	130	589
	191	133	601
12	108	106	403
	109	108	409
	116	115	429
13	89	57	251
	92	58	255
	93	62	262

Values presented are:
 - Total Events with a RR/SIRV Response
 - Total RR/SIRV Responses,
 - Total Activities Performed

RR/SIRV Responses per Beat



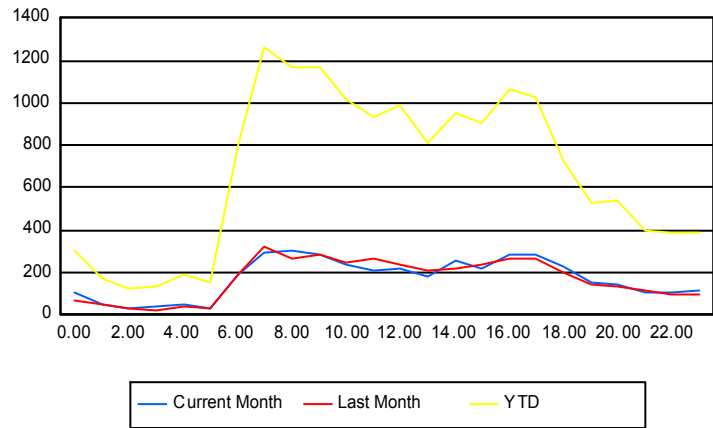
	Current Month	Last Month	YTD
14	73	60	254
	73	62	256
	77	65	267
101	3	8	27
	3	8	27
	4	10	31
102	0	1	1
	0	1	1
	0	1	1
107	0	1	1
	0	1	1
	0	1	1
111	2	1	7
	2	1	7
	2	1	7
115	0	0	1
	0	0	1
	0	0	1
201	0	0	1
	0	0	1
	0	0	1
205	0	0	1
	0	0	1
	0	0	1

Road Ranger / SIRV Performance By Time of Day

Values presented are:
 - Total Events with a RR/SIRV Response
 - Total RR/SIRV Responses,
 - Total Activities Performed

	Current Month	Last Month	YTD
12AM-1AM	101	66	285
	110	68	300
	111	71	311
1AM-2AM	47	41	164
	47	46	171
	47	51	178
2AM-3AM	34	31	116
	34	31	122
	35	32	125
3AM-4AM	38	23	120
	40	23	136
	44	24	147
4AM-5AM	49	41	186
	52	42	194
	53	42	198
5AM-6AM	32	33	145
	35	34	155
	35	36	165
6AM-7AM	170	180	754
	187	190	806
	198	197	843
7AM-8AM	284	302	1,206
	297	322	1,267
	303	336	1,313
8AM-9AM	286	246	1,104
	303	268	1,166
	314	278	1,215
9AM-10AM	273	277	1,114
	282	289	1,170
	294	307	1,213
10AM-11AM	220	236	964
	233	250	1,017
	253	261	1,069
11AM-12PM	195	249	889
	211	261	937
	220	272	974
12PM-1PM	207	222	951
	215	236	993
	221	247	1,030

Number of Responses / Hour of the Day



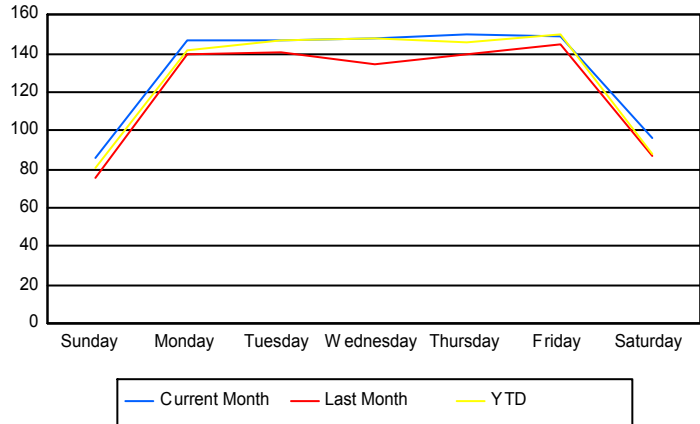
	Current Month	Last Month	YTD
1PM-2PM	178	197	775
	184	210	814
	193	221	862
2PM-3PM	229	206	887
	253	223	950
	267	227	984
3PM-4PM	205	225	860
	218	238	907
	228	244	938
4PM-5PM	259	243	992
	286	263	1,065
	299	271	1,104
5PM-6PM	270	249	974
	283	265	1,025
	293	277	1,063
6PM-7PM	205	193	681
	225	200	730
	229	207	745
7PM-8PM	154	125	494
	157	140	531
	160	146	552
8PM-9PM	140	131	525
	143	133	536
	151	139	561
9PM-10PM	92	102	364
	104	115	398
	105	120	409
10PM-11PM	107	88	361
	109	92	384
	116	96	398
11PM-12AM	112	90	370
	119	93	387
	120	96	395

Road Ranger / SIRV Performance By Day of Week

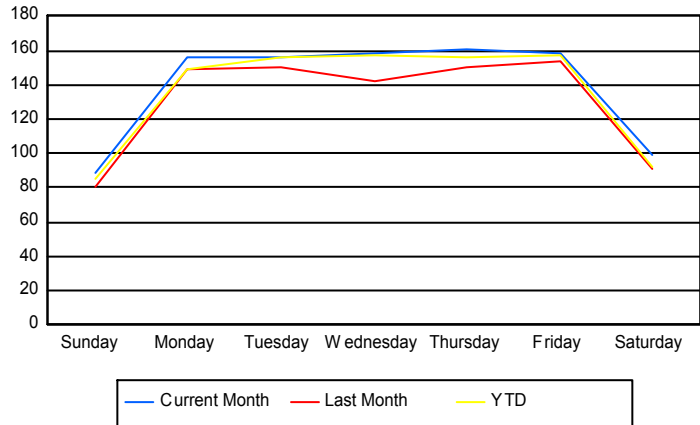
Values presented are:
 - Total Events with a RR/SIRV Response
 - Total RR/SIRV Responses,
 - Total Activities Performed

	Current Month	Last Month	YTD
Sunday	426	299	1,350
	441	319	1,416
	460	334	1,476
Monday	732	552	2,521
	779	592	2,667
	807	611	2,750
Tuesday	582	560	2,480
	618	595	2,625
	644	628	2,755
Wednesday	589	538	2,488
	633	566	2,641
	662	591	2,746
Thursday	595	695	2,453
	635	748	2,621
	660	779	2,721
Friday	590	722	2,530
	627	762	2,648
	645	793	2,737
Saturday	382	431	1,471
	394	450	1,543
	411	462	1,607

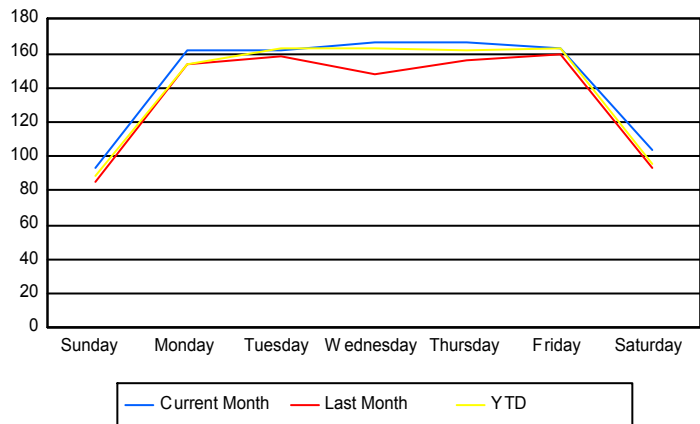
Avg # of events with a RR/SIRV Response per Day of the Week



Avg # of RR/SIRV Responses per Day of the Week



Avg # of RR/SIRV Activities Performed per Day of the Week



Road Ranger/SIRV Responses per Time of Day and Day of Week

