



# Monthly Performance Measures Report

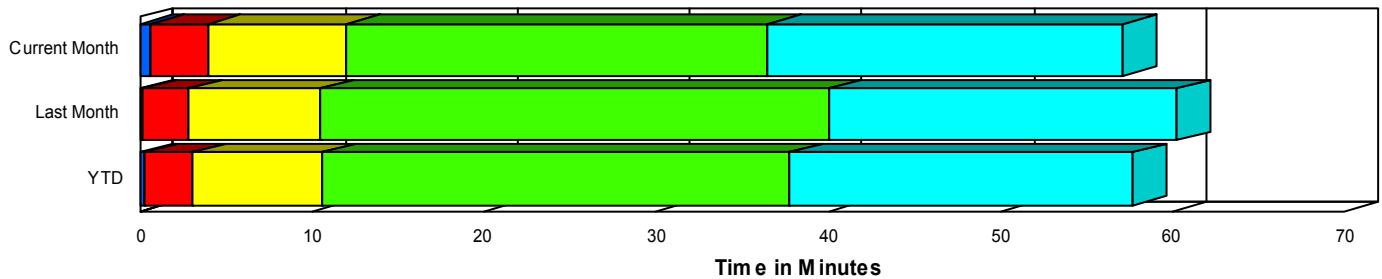
Period From Mar 1, 2007 to Mar 31, 2007

Created on:  
April 02, 2007  
11:50 am

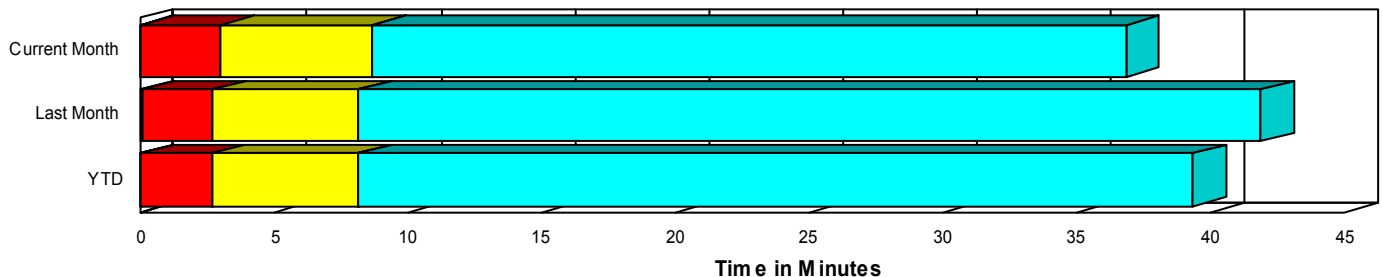
## Performance Measures Summary

	Traffic Events (No Lanes Blocked)			Incidents (Lanes Blocked)		
	<u>This Month</u>	<u>Last Month</u>	<u>YTD</u>	<u>This Month</u>	<u>Last Month</u>	<u>YTD</u>
Number of Events	4,381	3,857	13,069	229	219	665
TMC Detection (min.)	0.04	0.08	0.06	0.60	0.20	0.33
TMC Verification (min.)	2.99	2.66	2.63	3.34	2.61	2.73
TMC Response (min.)	8.66	8.24	8.28	11.55	10.40	10.40
RR Dispatch Time (min.)	2.09	1.74	1.82	3.07	2.40	2.46
RR Response Time (min.)	6.73	6.60	6.56	8.46	8.00	7.95
Roadway Clearance (min.)				35.42	40.87	37.17
Event Clearance (min.)	36.85	42.06	39.49	55.99	61.11	57.11
# of Events w/ RR/SIRV	3,583	3,198	10,761	216	214	636
RR/SIRV Responses	3,681	3,270	11,012	354	351	1,025
RR/SIRV Activities	3,829	3,395	11,412	370	377	1,092

### Incident Clearance TimeLine



### Traffic Event(Non-Lane Blockage) Time-Line



<span style="color: blue;">■</span> Avg. TMC Detection Time	<span style="color: green;">■</span> Avg. Time from TMC Response to Roadway Clearance*
<span style="color: red;">■</span> Avg. Time from TMC Detection to TMC Verification	<span style="color: cyan;">■</span> Avg. Time from Roadway Clearance to Incident/Event Clearance**
<span style="color: yellow;">■</span> Avg. Time from TMC Verification to TMC Response	

\* Roadway clearance equals all travel lanes open

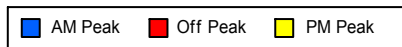
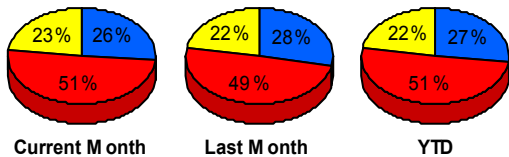
\*\* Incident clearance equals time when last responder has left the scene

## Performance Measures by Peak Period

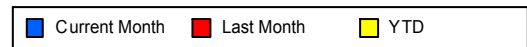
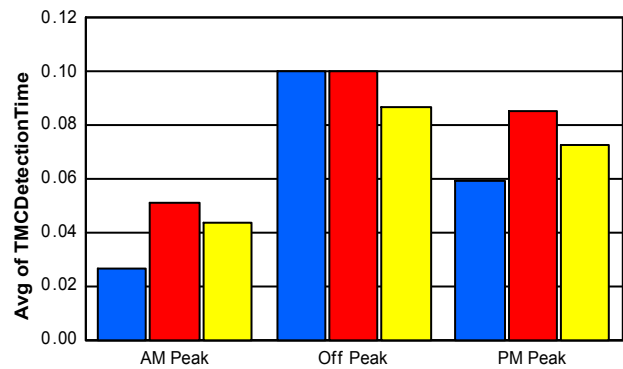
*Note: AM peak period is defined as 6am to 10am and PM peak period is defined as 3pm to 7pm.*

	AM Peak			Off Peak			PM Peak		
	<u>Current Month</u>	<u>Last Month</u>	<u>YTD</u>	<u>Current Month</u>	<u>Last Month</u>	<u>YTD</u>	<u>Current Month</u>	<u>Last Month</u>	<u>YTD</u>
Number of Events	1,201	1,157	3,709	2,350	2,017	6,967	1,059	902	3,058
Number of Incidents	43	51	150	119	108	337	67	60	178
TMC Detection (min.)	0.03	0.05	0.04	0.10	0.10	0.09	0.06	0.09	0.07
TMC Verification (min.)	1.11	1.55	1.40	4.06	2.97	3.15	2.81	3.36	2.96
TMC Response (min.)	6.24	6.39	6.52	10.68	9.18	9.52	7.82	9.29	8.24
RR Dispatch Time (min.)	1.60	1.37	1.31	2.43	1.82	2.04	2.14	2.22	2.10
RR Response Time (min.)	4.81	5.13	5.31	8.36	7.44	7.55	5.88	7.15	6.26
Event Clearance (min.)	27.92	34.78	32.75	46.69	50.90	48.44	29.28	36.24	31.12
Roadway Clearance (min.)	37.37	32.89	32.07	40.48	49.84	43.05	25.18	31.50	30.36
Incident Clearance (min.)	61.21	52.81	52.82	61.38	70.76	63.54	43.08	50.80	48.54
# of Events w/ RR/SIRV	1,005	1,012	3,165	1,884	1,660	5,664	910	740	2,568
RR/SIRV Responses	1,069	1,056	3,340	2,000	1,770	5,982	966	795	2,715
RR/SIRV Activities	1,118	1,099	3,475	2,082	1,860	6,228	999	813	2,801

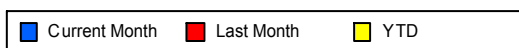
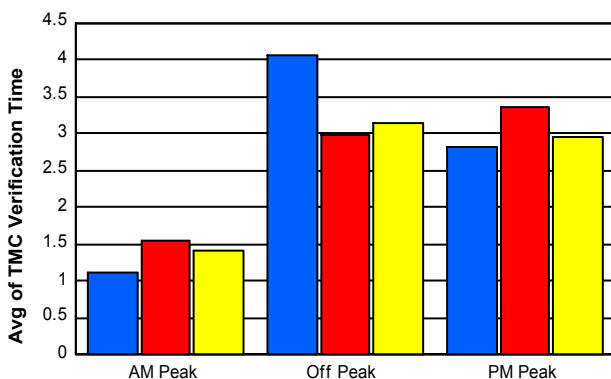
### Number of Events / Peak Period



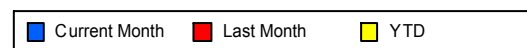
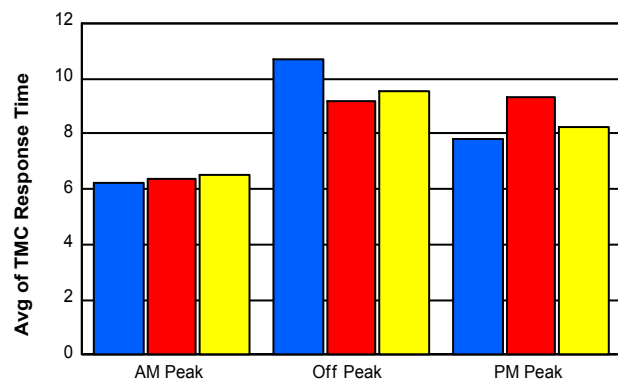
### TMC Detection Time



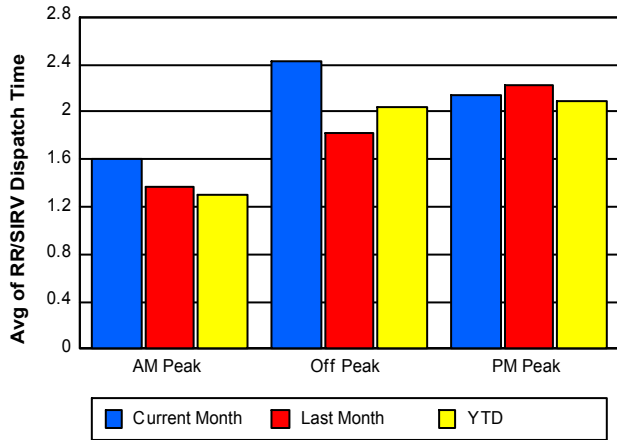
### TMC Verification Time



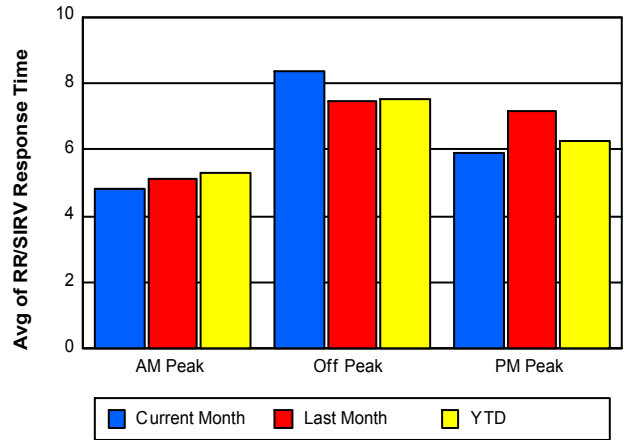
### TMC Response Time



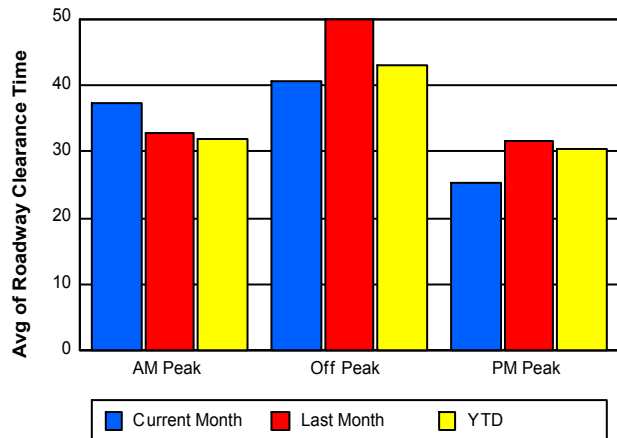
## Road Ranger / SIRV Dispatch Time



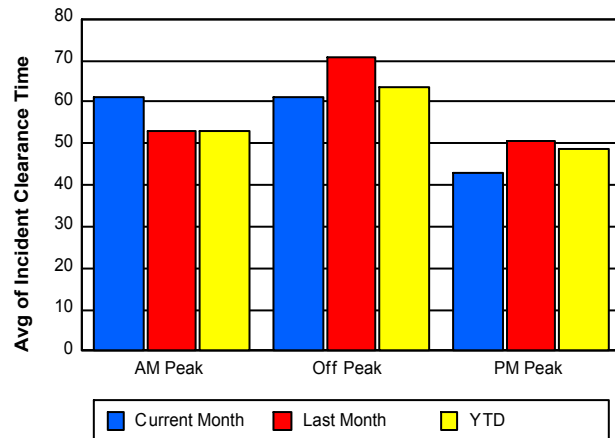
## Road Ranger / SIRV Response Time



## Roadway Clearance Time (2A)



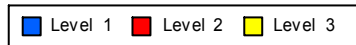
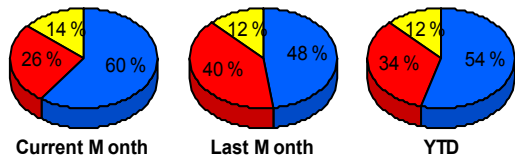
## Incident Clearance Time (3B)



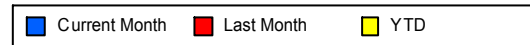
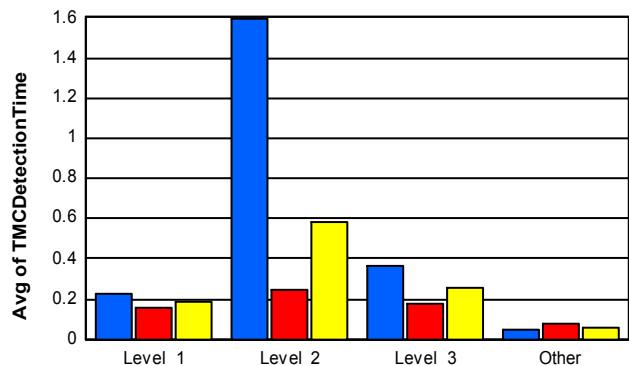
## Performance Measures by Severity

	Level 1			Level 2			Level 3			Other		
	<u>This Month</u>	<u>Last Month</u>	<u>YTD</u>	<u>This Month</u>	<u>Last Month</u>	<u>YTD</u>	<u>This Month</u>	<u>Last Month</u>	<u>YTD</u>	<u>This Month</u>	<u>Last Month</u>	<u>YTD</u>
Number of Events	137	105	361	60	87	223	32	27	81	4,381	3,857	13,069
Number of Incidents	137	105	361	60	87	223	32	27	81	0	0	0
TMC Detection (min.)	0.23	0.16	0.18	1.59	0.25	0.58	0.36	0.17	0.26	0.04	0.08	0.06
TMC Verification (min.)	2.07	2.01	1.80	5.67	3.22	3.73	4.39	2.96	4.11	2.99	2.66	2.63
TMC Response (min.)	10.18	9.54	9.36	13.97	11.03	11.26	12.40	11.71	12.42	8.66	8.24	8.28
RR Dispatch Time (min.)	2.83	1.94	2.23	3.15	2.81	2.47	3.92	2.89	3.45	2.09	1.74	1.82
RR Resp. Time (min.)	7.35	7.61	7.15	10.82	8.22	8.79	8.47	8.83	8.97	6.73	6.60	6.56
Event Clearance (min.)	39.98	39.09	38.37	66.71	70.28	68.32	104.45	117.20	109.75	36.85	42.06	39.49
Roadway Clear. (min.)	16.06	15.68	15.17	53.59	54.15	53.43	84.26	96.04	90.50			
Incident Clearance (min.)	39.98	39.09	38.37	66.71	70.28	68.32	104.45	117.20	109.75			
# of Events w/ RR/SIRV	125	102	335	59	87	222	32	25	79	3,583	3,198	10,761
RR/SIRV Responses	170	145	448	96	141	368	88	65	209	3,681	3,270	11,012
RR/SIRV Activities	175	152	475	100	152	387	95	73	230	3,829	3,395	11,412

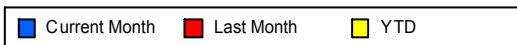
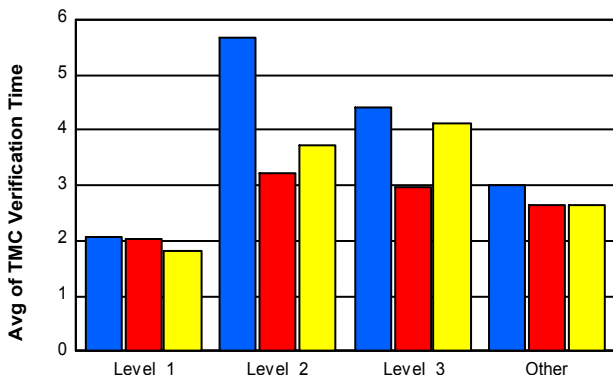
### Number of Events / Severity



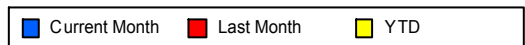
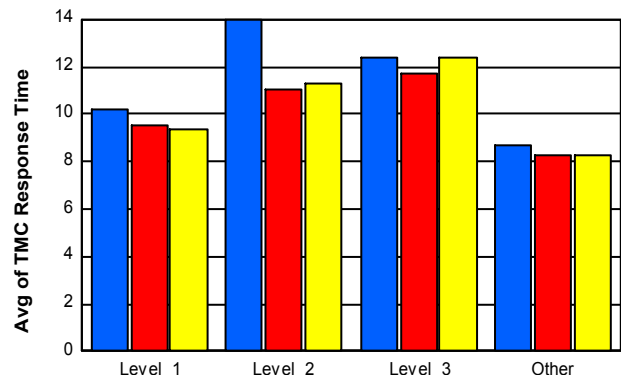
### TMC Detection Time



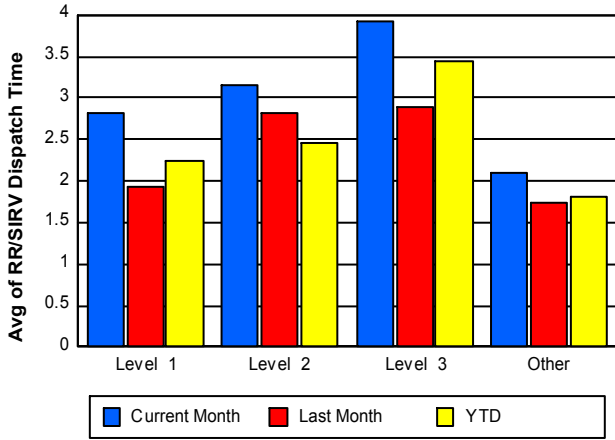
### TMC Verification Time



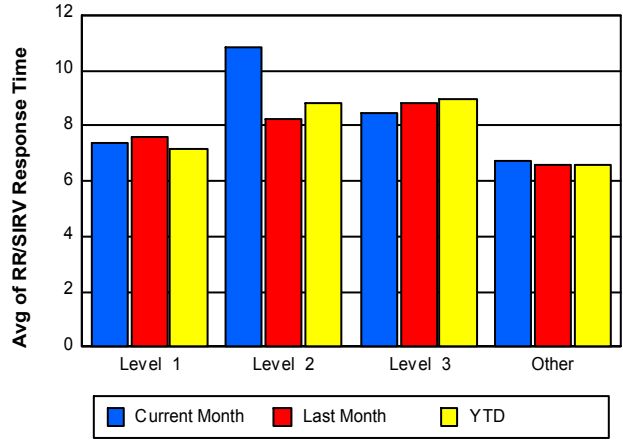
### TMC Response Time



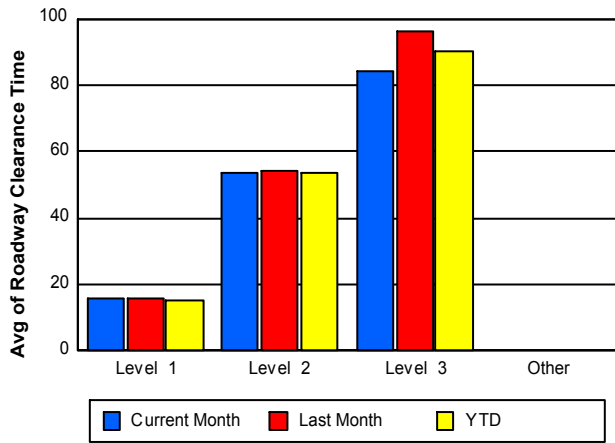
## Road Ranger / SIRV Dispatch Time



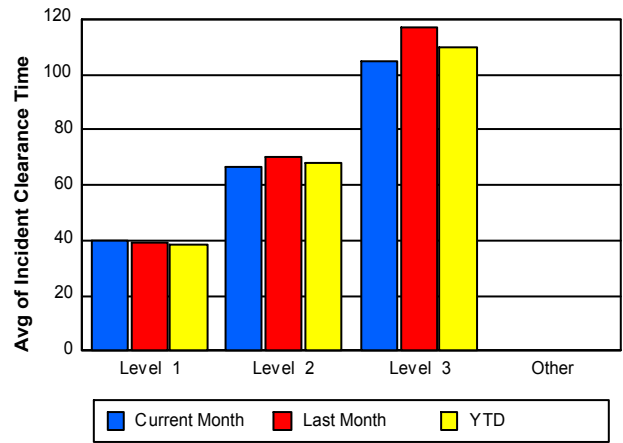
## Road Ranger / SIRV Response Time



## Roadway Clearance Time (2A)



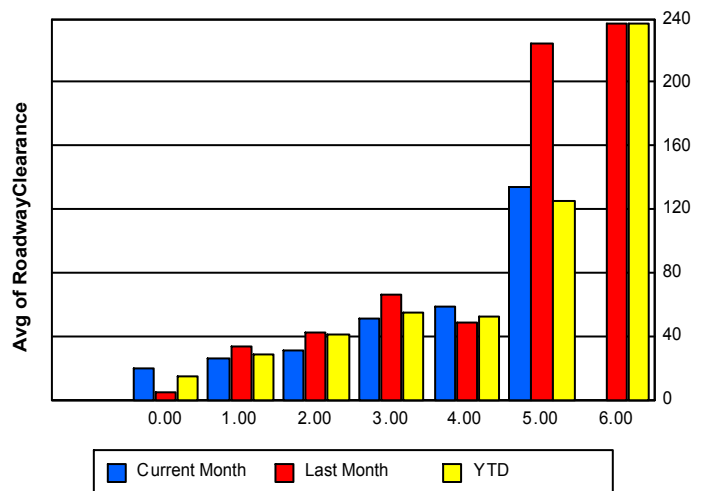
## Incident Clearance Time (3B)



## Roadway Clearance by Maximum Number of Lanes Blocked

	Current Month	Last Month	YTD
0	19.20	4.28	14.23
1	26.12	33.07	28.25
2	31.29	41.76	40.71
3	51.04	66.07	55.19
4	59.26	48.37	52.68
5	134.47	224.18	124.75
6	0.00	236.50	236.50

## Roadway Clearance Time (2A) by Max. # Lanes Blocked



## Performance Measures by Roadway

**595**

	<u>Current Month</u>	<u>Last Month</u>	<u>YTD</u>
Number of Events	748	620	2,128
Number of Incidents	35	37	105
TMC Detection (min.)	0.06	0.08	0.07
TMC Verification (min.)	3.23	3.57	3.15
TMC Response (min.)	8.41	8.29	7.94
RR Dispatch Time (min.)	1.81	2.01	1.87
RR Resp. Time (min.)	6.67	6.42	6.16
Event Clearance (min.)	31.74	49.68	34.10
Roadway Clear. (min.)	36.29	43.56	39.11
Incident Clearance (min.)	54.45	65.57	58.73
# of Events w/ RR/SIRV	619	512	1,767
RR/SIRV Responses	648	557	1,873
RR/SIRV Activities	668	581	1,936

**75**

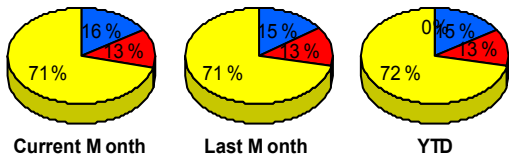
	<u>Current Month</u>	<u>Last Month</u>	<u>YTD</u>
Number of Events	586	548	1,747
Number of Incidents	16	15	40
TMC Detection (min.)	0.13	0.09	0.10
TMC Verification (min.)	4.65	4.48	4.15
TMC Response (min.)	4.48	4.65	4.20
RR Dispatch Time (min.)	0.97	1.23	0.96
RR Resp. Time (min.)	3.56	3.42	3.26
Event Clearance (min.)	28.17	30.67	30.45
Roadway Clear. (min.)	41.68	42.22	54.20
Incident Clearance (min.)	59.01	59.89	72.04
# of Events w/ RR/SIRV	565	538	1,707
RR/SIRV Responses	594	557	1,780
RR/SIRV Activities	631	585	1,864

**95**

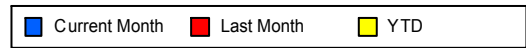
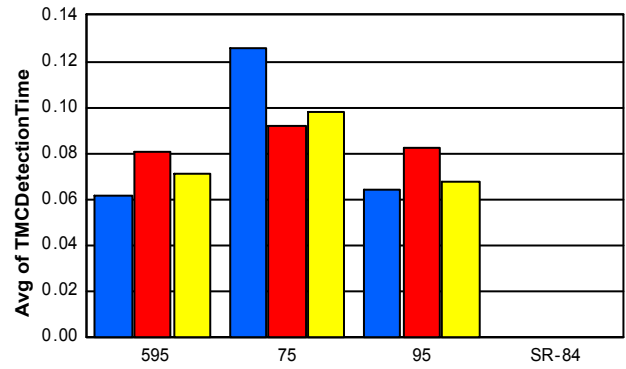
	<u>Current Month</u>	<u>Last Month</u>	<u>YTD</u>
Number of Events	3,276	2,908	9,858
Number of Incidents	178	167	520
TMC Detection (min.)	0.06	0.08	0.07
TMC Verification (min.)	2.66	2.11	2.26
TMC Response (min.)	9.86	9.24	9.41
RR Dispatch Time (min.)	2.45	1.84	2.02
RR Resp. Time (min.)	7.57	7.50	7.47
Event Clearance (min.)	40.91	44.01	43.45
Roadway Clear. (min.)	34.69	40.15	35.47
Incident Clearance (min.)	56.03	60.23	55.63
# of Events w/ RR/SIRV	2,615	2,362	7,923
RR/SIRV Responses	2,793	2,507	8,384
RR/SIRV Activities	2,900	2,606	8,704

	<u>YTD</u>
Number of Events	1
Number of Incidents	0
TMC Detection (min.)	0.00
TMC Verification (min.)	1.08
TMC Response (min.)	
RR Dispatch Time (min.)	
RR Resp. Time (min.)	
Event Clearance (min.)	3.77
Roadway Clear. (min.)	
Incident Clearance (min.)	
# of Events w/ RR/SIRV	0
RR/SIRV Responses	0
RR/SIRV Activities	0

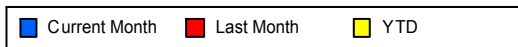
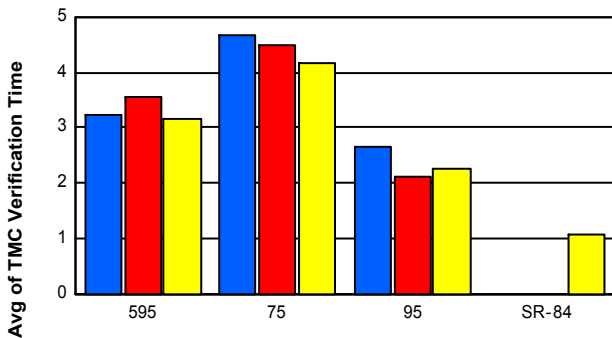
### Number of Events / Roadway



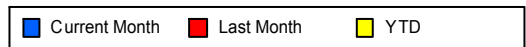
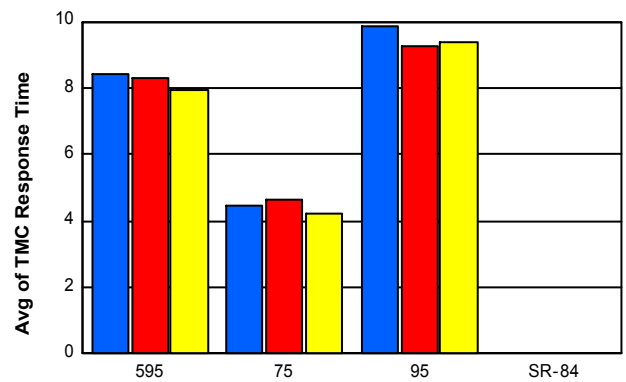
### TMC Detection Time



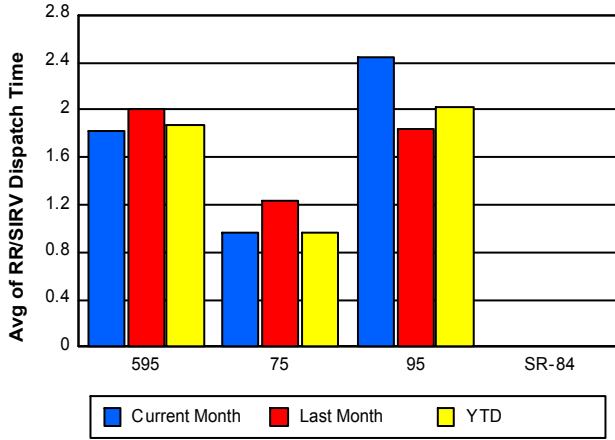
### TMC Verification Time



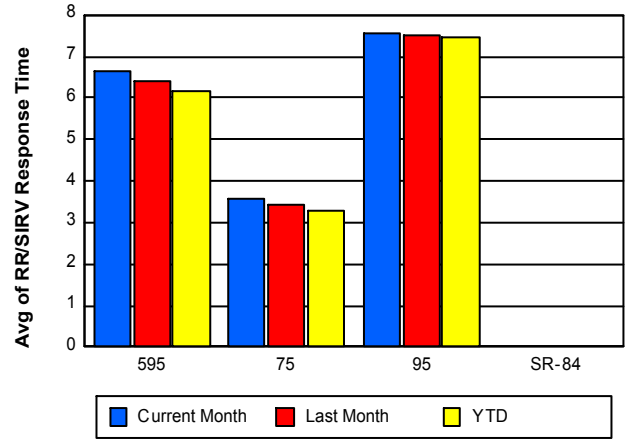
### TMC Response Time



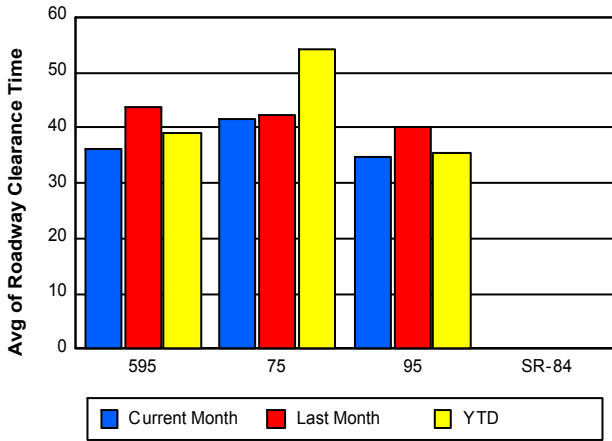
## Road Ranger / SIRV Dispatch Time



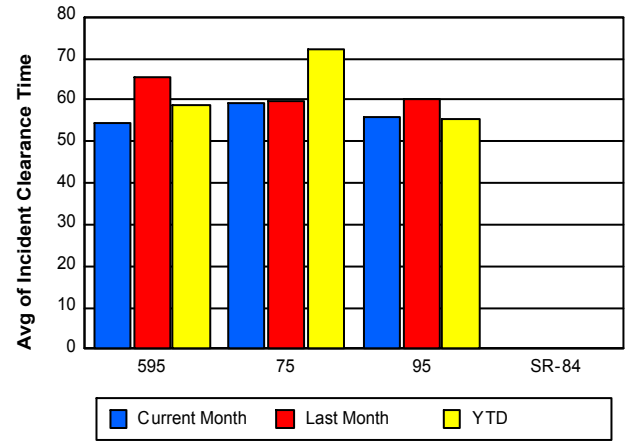
## Road Ranger / SIRV Response Time



## Roadway Clearance Time (2A)



## Incident Clearance Time (3B)



## Performance Measures by Event Type

### Abandoned Vehicle

	<u>Current Month</u>	<u>Last Month</u>	<u>YTD</u>
Number of Events	579	548	1,731
Number of Incidents	0	0	1
TMC Detection (min.)	0.01	0.01	0.01
TMC Verification (min.)	0.87	0.75	0.73
TMC Response (min.)	8.37	7.26	7.80
RR Dispatch Time (min.)	2.53	1.21	1.56
RR Response Time (min.)	5.89	6.05	6.26
Event Clearance (min.)	138.92	163.26	161.36
Roadway Clearance (min.)			16.23
Incident Clearance (min.)			17.37
# of Events w/ RR/SIRV	487	457	1,425
RR/SIRV Assists	497	462	1,442
RR/SIRV Activities	500	470	1,461

### Accident

	<u>Current Month</u>	<u>Last Month</u>	<u>YTD</u>
Number of Events	379	333	1,077
Number of Incidents	180	149	481
TMC Detection (min.)	0.41	0.17	0.25
TMC Verification (min.)	3.20	3.37	3.30
TMC Response (min.)	10.44	9.09	9.54
RR Dispatch Time (min.)	2.91	1.75	2.15
RR Response Time (min.)	7.62	7.33	7.42
Event Clearance (min.)	47.55	49.15	46.52
Roadway Clearance (min.)	38.08	41.87	38.82
Incident Clearance (min.)	60.91	65.13	61.69
# of Events w/ RR/SIRV	368	321	1,047
RR/SIRV Assists	499	435	1,402
RR/SIRV Activities	514	461	1,466

### Debris on Roadway

	<u>Current Month</u>	<u>Last Month</u>	<u>YTD</u>
Number of Events	170	175	556
Number of Incidents	6	10	19
TMC Detection (min.)	0.23	0.25	0.25
TMC Verification (min.)	6.25	10.87	9.79
TMC Response (min.)	7.63	11.72	11.08
RR Dispatch Time (min.)	1.81	2.24	2.33
RR Response Time (min.)	5.98	9.47	8.80
Event Clearance (min.)	12.99	18.40	16.28
Roadway Clearance (min.)	19.26	34.01	25.89
Incident Clearance (min.)	26.24	48.83	36.02
# of Events w/ RR/SIRV	162	164	528
RR/SIRV Assists	172	181	569
RR/SIRV Activities	173	183	574

## Disabled Vehicle

	<u>Current Month</u>	<u>Last Month</u>	<u>YTD</u>
Number of Events	2,815	2,374	8,198
Number of Incidents	32	47	127
TMC Detection (min.)	0.04	0.09	0.06
TMC Verification (min.)	3.34	2.78	2.77
TMC Response (min.)	8.78	8.20	8.17
RR Dispatch Time (min.)	1.94	1.77	1.78
RR Response Time (min.)	6.96	6.47	6.45
Event Clearance (min.)	21.54	20.63	20.84
Roadway Clearance (min.)	23.51	28.52	26.62
Incident Clearance (min.)	35.42	44.19	40.10
# of Events w/ RR/SIRV	2,602	2,297	7,793
RR/SIRV Assists	2,680	2,359	7,995
RR/SIRV Activities	2,824	2,474	8,371

## Emergency Vehicles

	<u>Current Month</u>	<u>Last Month</u>	<u>YTD</u>
Number of Events	3	1	7
Number of Incidents	3	1	6
TMC Detection (min.)	0.06	0.00	0.03
TMC Verification (min.)	0.34	0.00	0.15
TMC Response (min.)	38.74	10.67	18.96
RR Dispatch Time (min.)	26.97	4.10	10.95
RR Response Time (min.)	11.78	6.57	6.10
Event Clearance (min.)	83.43	12.23	52.05
Roadway Clearance (min.)	41.48	10.82	31.52
Incident Clearance (min.)	83.43	12.23	57.27
# of Events w/ RR/SIRV	2	1	5
RR/SIRV Assists	3	1	7
RR/SIRV Activities	3	1	7

## Other

	<u>Current Month</u>	<u>Last Month</u>	<u>YTD</u>
Number of Events	628	600	2,057
Number of Incidents	6	3	15
TMC Detection (min.)	0.03	0.03	0.02
TMC Verification (min.)	2.58	1.04	1.45
TMC Response (min.)	7.99	9.23	8.44
RR Dispatch Time (min.)	2.40	2.25	2.10
RR Response Time (min.)	6.46	7.53	6.80
Event Clearance (min.)	18.69	24.63	19.27
Roadway Clearance (min.)	30.57	27.38	28.90
Incident Clearance (min.)	39.14	40.15	36.82
# of Events w/ RR/SIRV	162	143	534
RR/SIRV Assists	168	144	542
RR/SIRV Activities	169	144	544

## Pedestrian

	<u>Current Month</u>	<u>Last Month</u>	<u>YTD</u>
Number of Events	15	19	48
Number of Incidents	0	0	0
TMC Detection (min.)	0.06	0.30	0.15
TMC Verification (min.)	3.52	0.85	2.09
TMC Response (min.)	8.26	2.84	4.75
RR Dispatch Time (min.)	1.35	0.99	1.09
RR Response Time (min.)	6.91	2.28	3.83
Event Clearance (min.)	21.81	21.00	20.28
Roadway Clearance (min.)			
Incident Clearance (min.)			
# of Events w/ RR/SIRV	14	18	46
RR/SIRV Assists	14	19	47
RR/SIRV Activities	14	19	48

## Police Activity

	<u>Current Month</u>	<u>Last Month</u>	<u>YTD</u>
Number of Events	19	16	48
Number of Incidents	1	6	12
TMC Detection (min.)	0.03	0.09	0.05
TMC Verification (min.)	0.48	3.47	1.49
TMC Response (min.)	5.06	15.31	12.49
RR Dispatch Time (min.)	1.30	3.44	2.96
RR Response Time (min.)	4.62	11.40	9.35
Event Clearance (min.)	29.87	102.04	61.58
Roadway Clearance (min.)	5.15	60.76	73.85
Incident Clearance (min.)	5.45	66.17	79.58
# of Events w/ RR/SIRV	2	7	15
RR/SIRV Assists	2	14	27
RR/SIRV Activities	2	14	27

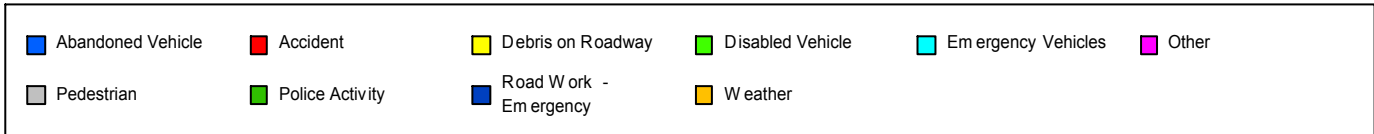
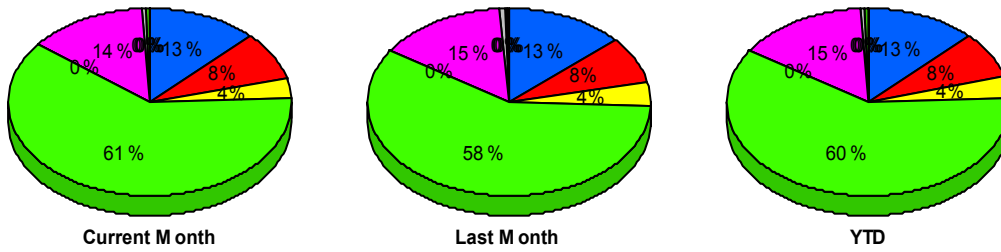
## Road Work - Emergency

	<u>Current Month</u>	<u>Last Month</u>	<u>YTD</u>
Number of Events	1	3	4
Number of Incidents	1	3	4
TMC Detection (min.)	0.00	0.14	0.10
TMC Verification (min.)	0.00	0.00	0.00
TMC Response (min.)		6.68	6.68
RR Dispatch Time (min.)		3.35	3.35
RR Response Time (min.)		3.33	3.33
Event Clearance (min.)	76.77	194.47	165.05
Roadway Clearance (min.)	75.43	191.34	162.36
Incident Clearance (min.)	76.77	194.47	165.05
# of Events w/ RR/SIRV	0	2	2
RR/SIRV Assists	0	4	4
RR/SIRV Activities	0	4	4

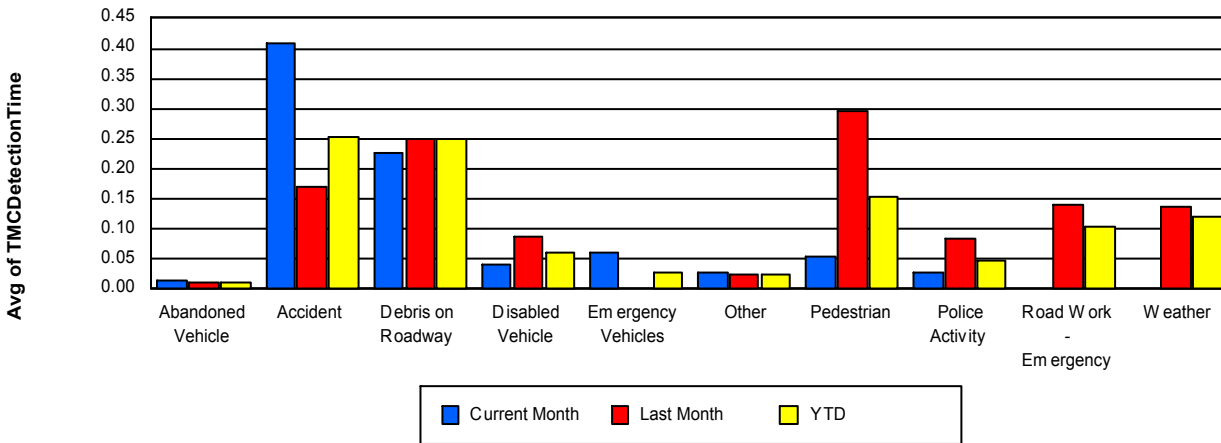
## Weather

	<u>Current Month</u>	<u>Last Month</u>	<u>YTD</u>
Number of Events	1	7	8
Number of Incidents	0	0	0
TMC Detection (min.)	0.00	0.14	0.12
TMC Verification (min.)	1.23	11.35	10.09
TMC Response (min.)		46.01	46.01
RR Dispatch Time (min.)		11.99	11.99
RR Response Time (min.)		39.25	39.25
Event Clearance (min.)	2.07	22.13	19.62
Roadway Clearance (min.)			
Incident Clearance (min.)			
# of Events w/ RR/SIRV	0	2	2
RR/SIRV Assists	0	2	2
RR/SIRV Activities	0	2	2

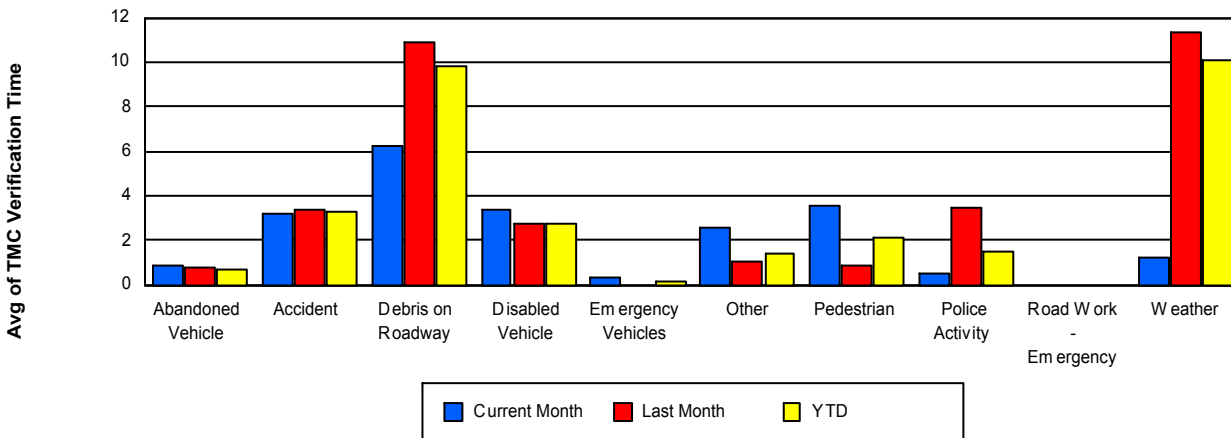
## Number of Events / Event Type



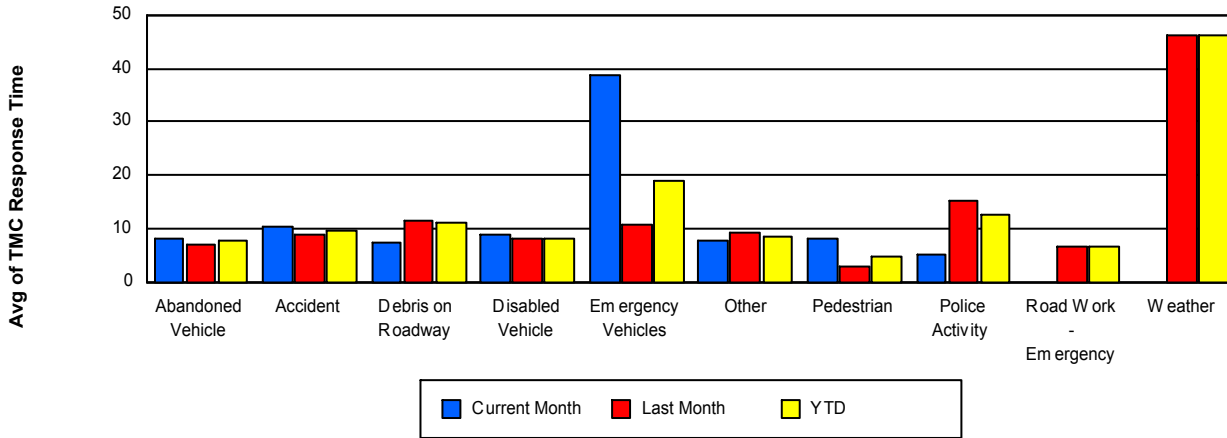
## TMC Detection Time



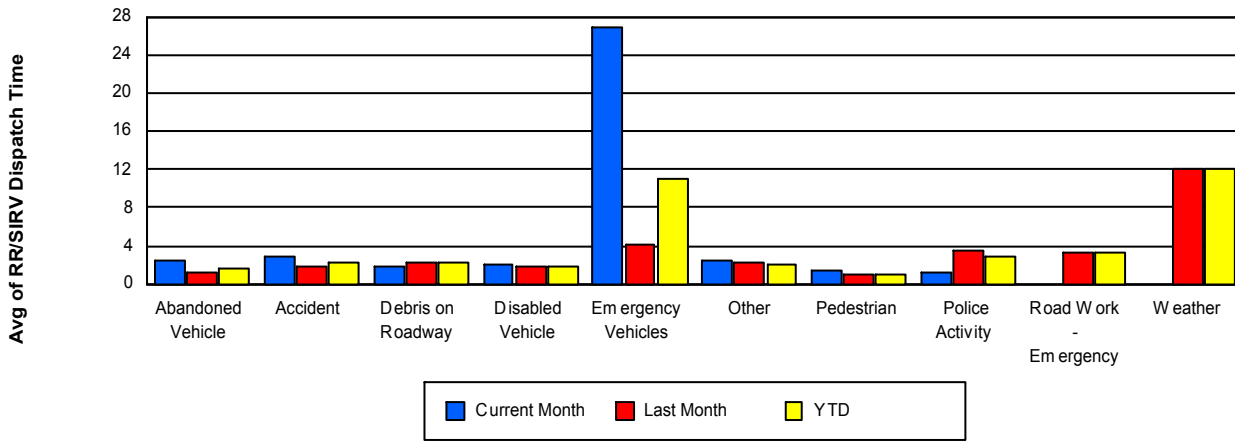
## TMC Verification Time



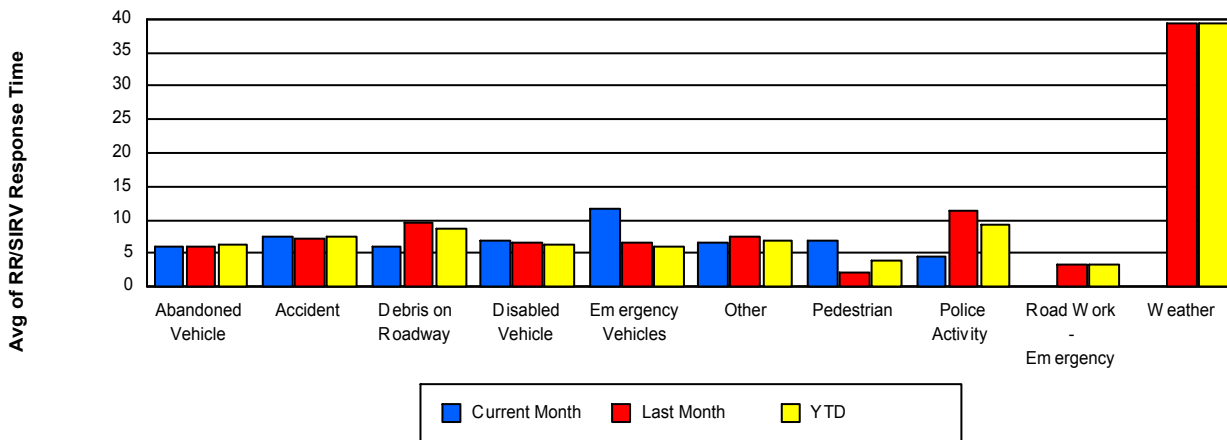
## TMC Response Time



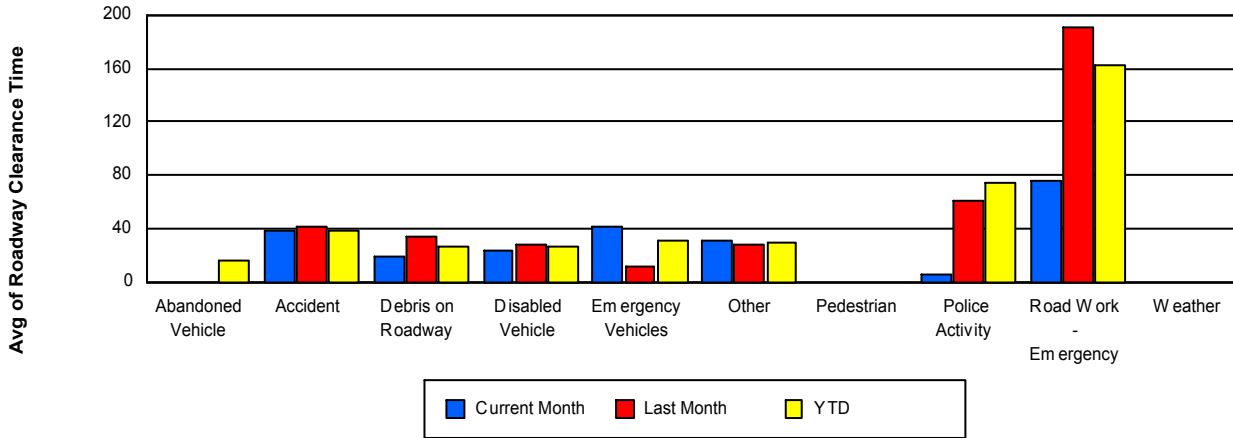
## Road Ranger / SIRV Dispatch Time



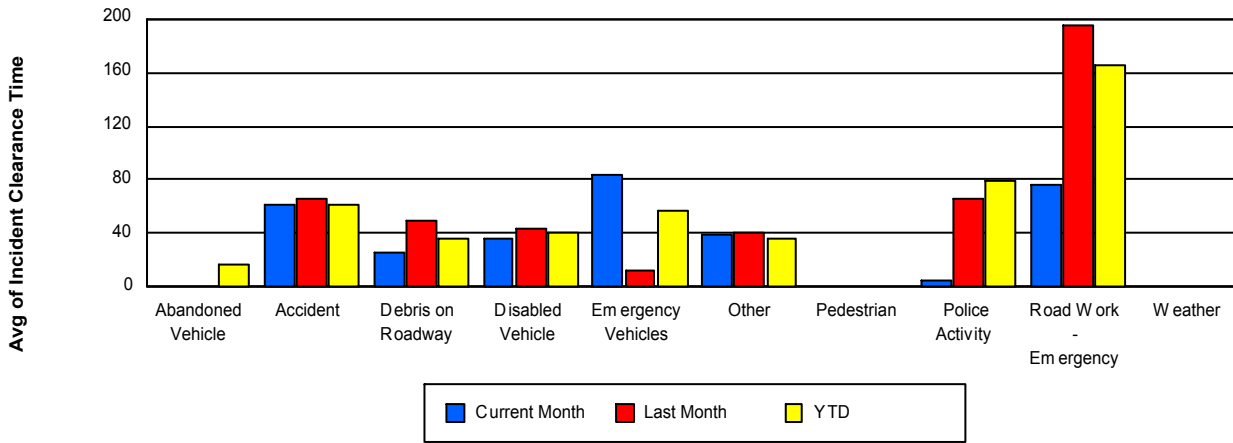
## Road Ranger / SIRV Response Time



## Roadway Clearance Time (2A)



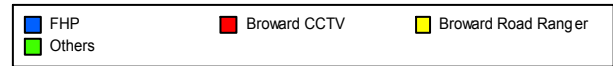
## Incident Clearance Time (3B)



## Incident Detection Methods

	Current Month	Last Month	YTD
Broward CCTV	57	83	232
Broward Road Ranger	33	44	118
District 4	6	2	11
FDOT Maintenance	0	2	2
FHP	118	79	274
FLPD	1	0	1
Motorist	1	1	2
Palm Beach Road Rang	1	1	2
Road Watcher	3	2	5
SIRV	0	1	1
SmarTraveler (511)	5	3	10
VisioPaD Detection	4	1	7
<b>Total</b>	<b>229</b>	<b>219</b>	<b>665</b>

### Total Incidents by Detection Method

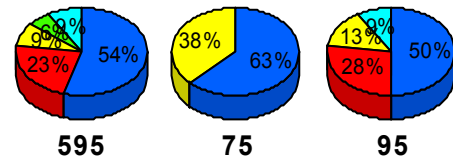


### Incident Detection Methods by Roadway

		Current Month	Last Month	YTD
595	Broward CCTV	8	14	37
	Broward Road Ranger	3	6	15
	District 4	0	0	1
	FHP	19	15	44
	FLPD	1	0	1
	Road Watcher	1	0	1
	SIRV	0	1	1
	SmarTraveler (511)	1	1	2
	VisioPaD Detection	2	0	3
	<b>Total</b>	<b>35</b>	<b>37</b>	<b>105</b>
75	Broward Road Ranger	6	6	16
	FHP	10	8	23
	Road Watcher	0	1	1
	<b>Total</b>	<b>16</b>	<b>15</b>	<b>40</b>

### Total Events by Roadway and Detection Method

Current Period Only



**SR-84**



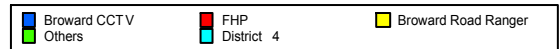
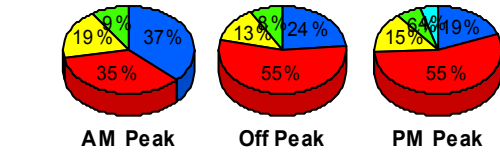
		Current Month	Last Month	YTD
95	Broward CCTV	49	69	195
	Broward Road Ranger	24	32	87
	District 4	6	2	10
	FDOT Maintenance	0	2	2
	FHP	89	56	207
	Motorist	1	1	2
	Palm Beach Road Rang	1	1	2
	Road Watcher	2	1	3
	SmarTraveler (511)	4	2	8
	VisioPaD Detection	2	1	4
	Total	178	167	520
Total		229	219	665

### Incident Detection Methods by Peak Period

		Current Month	Last Month	YTD
AM Peak	Broward CCTV	16	15	57
	Broward Road Ranger	8	16	36
	District 4	0	1	1
	FHP	15	15	47
	FLPD	1	0	1
	Motorist	1	0	1
	Palm Beach Road Rang	1	1	2
	Road Watcher	0	2	2
	SmarTraveler (511)	0	1	1
	VisioPaD Detection	1	0	2
	Total	43	51	150
Off Peak	Broward CCTV	28	49	118
	Broward Road Ranger	15	16	51
	District 4	3	0	4
	FDOT Maintenance	0	1	1
	FHP	66	38	149
	Motorist	0	1	1

### Total Events by Roadway and Detection Method

Current Period Only



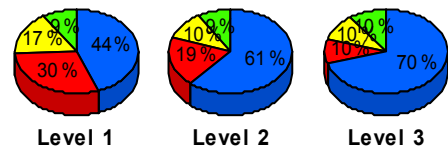
		Current Month	Last Month	YTD
Off Peak	Road Watcher	2	0	2
	SIRV	0	1	1
	SmarTraveler (511)	3	1	6
	VisioPaD Detection	2	1	4
	Total	119	108	337
PM Peak	Broward CCTV	13	19	57
	Broward Road Ranger	10	12	31
	District 4	3	1	6
	FDOT Maintenance	0	1	1
	FHP	37	26	78
	Road Watcher	1	0	1
	SmarTraveler (511)	2	1	3
	VisioPaD Detection	1	0	1
	Total	67	60	178
Total		229	219	665

### Incident Detection Methods by Severity

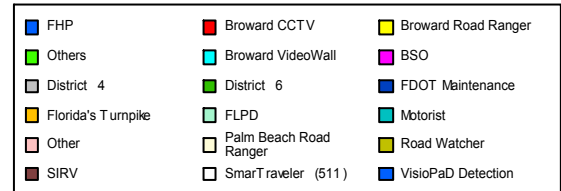
		Current Month	Last Month	YTD
Level 1	Broward CCTV	42	41	139
	Broward Road Ranger	24	25	68
	District 4	4	2	8
	FHP	63	37	141
	FLPD	1	0	1
	Motorist	1	0	1
	Road Watcher	2	2	4
	SmarTraveler (511)	4	2	7
	VisioPaD Detection	1	0	3
	Total	142	109	372
Level 2	Broward CCTV	13	35	79
	Broward Road Ranger	7	18	46
	District 4	2	0	3
	FDOT Maintenance	0	2	2

### Total Events by Roadway and Detection Method

Current Period Only



#### Other



		Current Month	Last Month	YTD
Level 2	FHP	41	35	106
	Motorist	0	1	1
	Palm Beach Road Rang	0	1	1
	Road Watcher	1	0	1
	SIRV	0	1	1
	SmarTraveler (511)	0	1	2
	VisioPaD Detection	3	1	4
	Total	67	95	246
Level 3	Broward CCTV	2	7	14
	Broward Road Ranger	2	1	4
	FHP	14	7	27
	Palm Beach Road Rang	1	0	1
	SmarTraveler (511)	1	0	1
	Total	20	15	47
Total		229	219	665

# Road Ranger / SIRV Performance Measures

## Road Ranger / SIRV Performance By County

RR/SIRV Responses per County

Values presented are:  
 - Total Events with a RR/SIRV Response  
 - Total RR/SIRV Responses,  
 - Total Activities Performed

	Current Month	Last Month	YTD
Broward	<b>3,799</b>	<b>3,412</b>	<b>11,397</b>
	<b>4,035</b>	<b>3,621</b>	<b>12,037</b>
	<b>4,199</b>	<b>3,772</b>	<b>12,504</b>

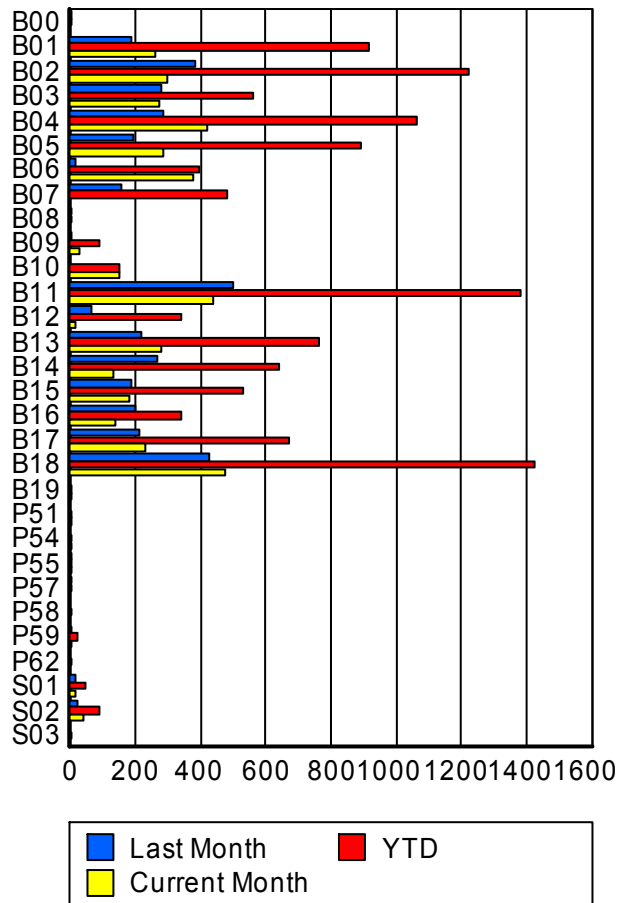


■ Broward

## Road Ranger / SIRV Performance By Truck

	Current Month	Last Month	YTD
B00	0	1	1
	0	1	1
	0	1	1
B01	257	182	914
	259	184	919
	268	191	952
B02	292	380	1,218
	295	383	1,225
	310	402	1,276
B03	267	277	553
	271	281	561
	284	292	585
B04	415	281	1,056
	418	283	1,066
	432	297	1,108
B05	281	194	881
	284	194	890
	294	203	928
B06	377	14	391
	379	14	393
	398	17	415
B07	0	158	477
	0	159	480
	0	160	486

**RR/SIRV  
Responses per  
Truck**



	Current Month	Last Month	YTD
B08	0	1	1
	0	1	1
	0	1	1
B09	28	6	87
	28	6	87
	29	6	90
B10	148	0	148
	149	0	149
	159	0	159
B11	439	497	1,376
	440	500	1,383
	452	515	1,430
B12	15	67	339
	15	67	340
	15	70	347
B13	275	215	755
	279	217	762
	288	222	783
B14	128	266	637
	129	267	641
	131	276	657
B15	178	185	526
	181	185	529
	196	188	556
B16	137	200	337
	137	201	338
	149	208	357
B17	226	209	667
	228	210	671
	231	229	695
B18	473	423	1,419
	478	424	1,427
	493	438	1,478
B19	2	0	2
	2	0	2
	2	0	2
P51	3	0	6
	3	0	6
	3	0	6
P54	2	0	3
	2	0	3
	4	0	5
P55	1	1	2
	1	1	2
	1	1	2

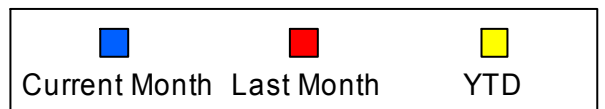
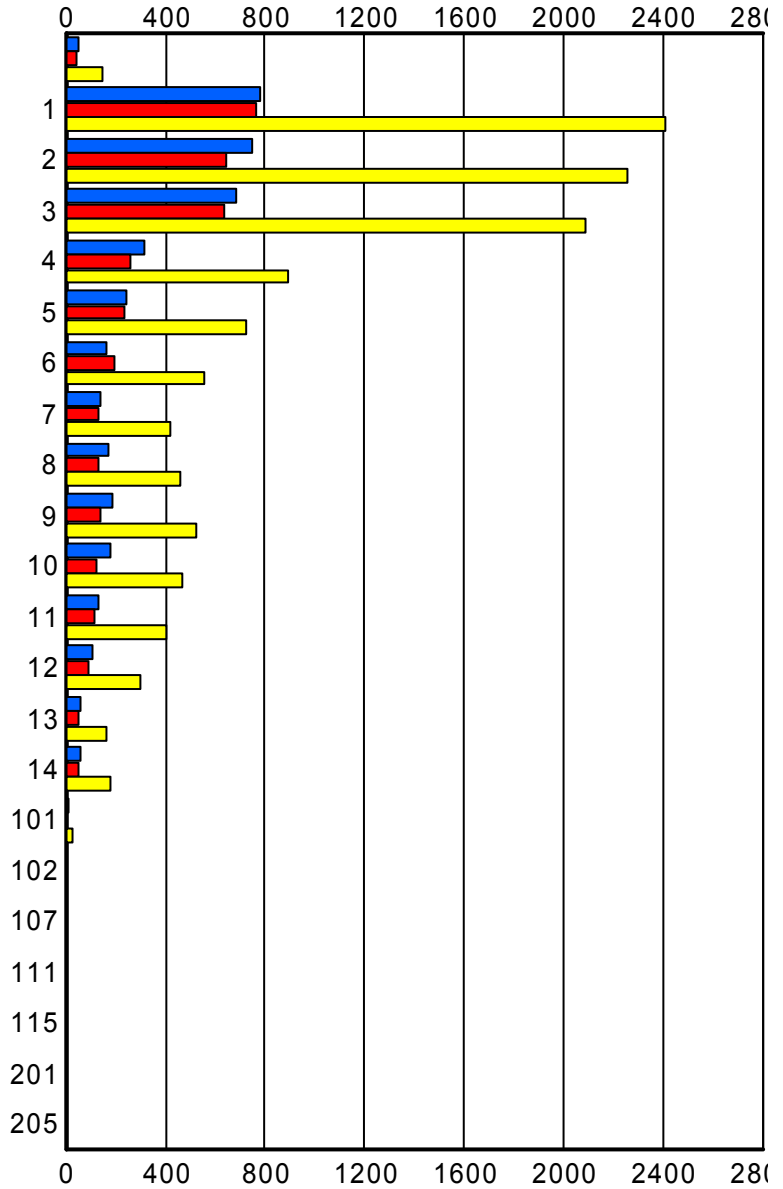
	Current Month	Last Month	YTD
P57	0	1	1
	0	1	1
	0	1	1
P58	0	0	2
	0	0	2
	0	0	2
P59	5	4	22
	5	4	22
	5	4	23
P62	0	0	1
	0	0	1
	0	0	1
S01	13	14	45
	13	14	45
	12	26	59
S02	39	23	88
	39	24	89
	43	24	98
S03	0	0	1
	0	0	1
	0	0	1

### Road Ranger / SIRV Performance By Beat

	Current Month	Last Month	YTD
	54	42	146
	54	45	149
	57	57	172
1	752	746	2,345
	782	762	2,410
	815	787	2,507
2	728	628	2,196
	752	647	2,253
	769	675	2,332
3	667	619	2,030
	686	634	2,090
	720	664	2,181
4	310	260	889
	312	263	896
	321	270	919
5	239	230	722
	240	232	728
	247	242	750
6	161	197	555
	161	197	555
	166	203	574
7	139	132	422
	140	132	423
	152	141	449
8	170	135	454
	171	135	456
	183	142	478
9	183	136	520
	184	138	526
	187	143	536
10	181	119	465
	183	120	469
	192	121	485
11	128	117	399
	130	117	401
	133	122	410
12	107	93	296
	109	94	301
	117	98	315
13	57	49	162
	58	49	163
	62	50	169

Values presented are:  
 - Total Events with a RR/SIRV Response  
 - Total RR/SIRV Responses,  
 - Total Activities Performed

### RR/SIRV Responses per Beat



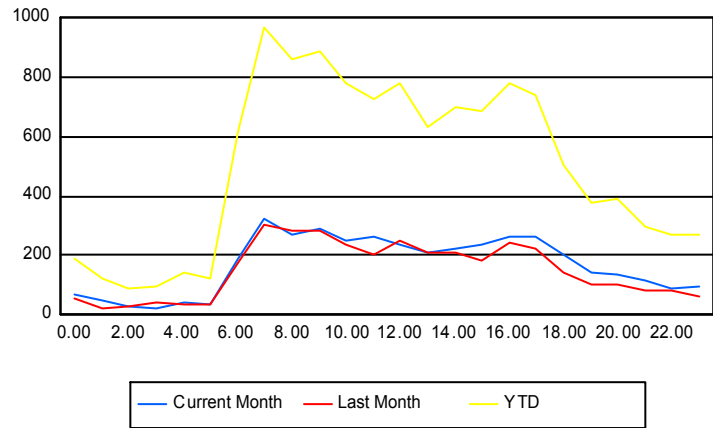
	Current Month	Last Month	YTD
14	60	50	181
	62	50	183
	65	51	190
101	8	6	24
	8	6	24
	10	6	27
102	1	0	1
	1	0	1
	1	0	1
107	1	0	1
	1	0	1
	1	0	1
111	1	0	5
	1	0	5
	1	0	5
115	0	0	1
	0	0	1
	0	0	1
201	0	0	1
	0	0	1
	0	0	1
205	0	0	1
	0	0	1
	0	0	1

## Road Ranger / SIRV Performance By Time of Day

Values presented are:  
 - Total Events with a RR/SIRV Response  
 - Total RR/SIRV Responses,  
 - Total Activities Performed

	Current Month	Last Month	YTD
12AM-1AM	67	50	185
	69	54	191
	73	59	202
1AM-2AM	42	21	118
	47	22	125
	49	22	129
2AM-3AM	31	22	82
	31	27	88
	32	28	90
3AM-4AM	23	28	82
	23	42	96
	24	46	103
4AM-5AM	41	33	137
	42	36	142
	42	37	145
5AM-6AM	33	34	113
	34	37	120
	36	38	130
6AM-7AM	180	172	584
	190	177	619
	197	183	645
7AM-8AM	302	295	922
	322	307	970
	336	323	1,010
8AM-9AM	246	275	818
	268	285	863
	278	303	901
9AM-10AM	277	270	841
	289	287	888
	307	290	919
10AM-11AM	236	227	744
	250	240	784
	261	255	816
11AM-12PM	249	193	694
	261	203	726
	272	209	754
12PM-1PM	222	242	744
	236	251	778
	247	261	809

## Number of Responses / Hour of the Day



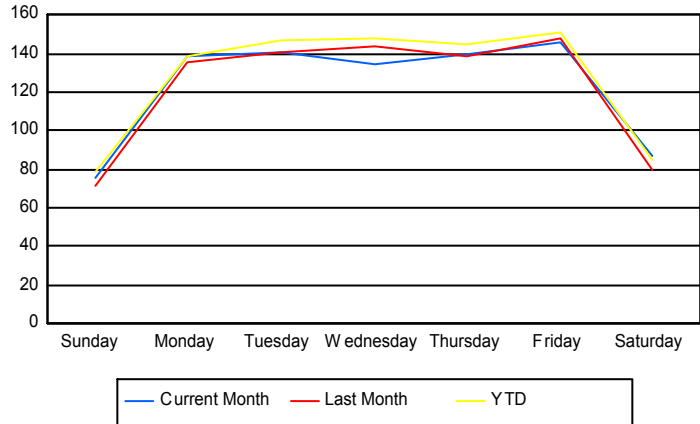
	Current Month	Last Month	YTD
1PM-2PM	197 210 221	197 209 227	597 630 669
2PM-3PM	208 225 229	199 211 220	660 699 719
3PM-4PM	225 238 244	175 186 194	655 689 710
4PM-5PM	243 263 271	227 245 249	733 779 805
5PM-6PM	249 265 277	207 223 227	704 742 770
6PM-7PM	193 200 207	131 141 143	476 505 516
7PM-8PM	126 141 147	95 102 107	341 375 393
8PM-9PM	131 133 139	103 104 110	385 393 410
9PM-10PM	102 115 120	80 83 88	272 294 304
10PM-11PM	86 90 94	74 84 86	252 273 280
11PM-12AM	90 93 96	62 65 67	258 268 275

## Road Ranger / SIRV Performance By Day of Week

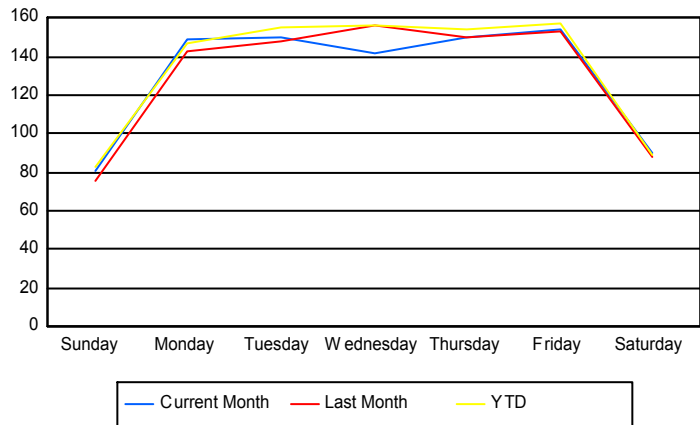
Values presented are:  
 - Total Events with a RR/SIRV Response  
 - Total RR/SIRV Responses,  
 - Total Activities Performed

	Current Month	Last Month	YTD
Sunday	300	284	925
	320	300	976
	333	309	1,015
Monday	551	541	1,788
	591	568	1,887
	610	587	1,942
Tuesday	560	561	1,898
	595	587	2,007
	628	617	2,111
Wednesday	538	572	1,899
	566	618	2,008
	591	646	2,084
Thursday	696	555	1,859
	749	598	1,987
	780	626	2,062
Friday	725	581	1,943
	765	601	2,024
	796	621	2,095
Saturday	430	318	1,088
	449	349	1,148
	461	366	1,195

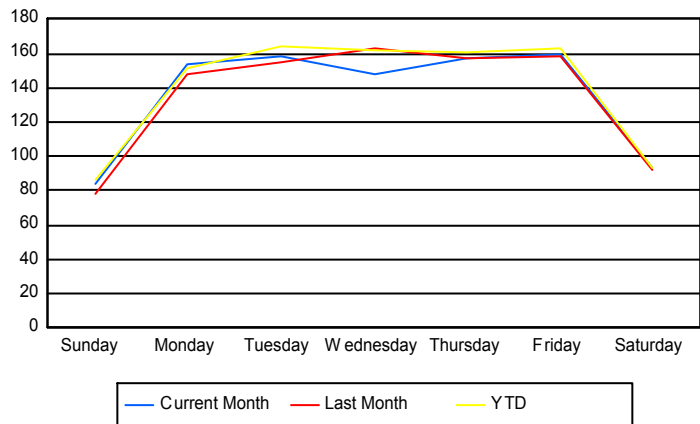
### Avg # of events with a RR/SIRV Response per Day of the Week



### Avg # of RR/SIRV Responses per Day of the Week



### Avg # of RR/SIRV Activities Performed per Day of the Week



### Road Ranger/SIRV Responses per Time of Day and Day of Week

