



Monthly Performance Measures Report

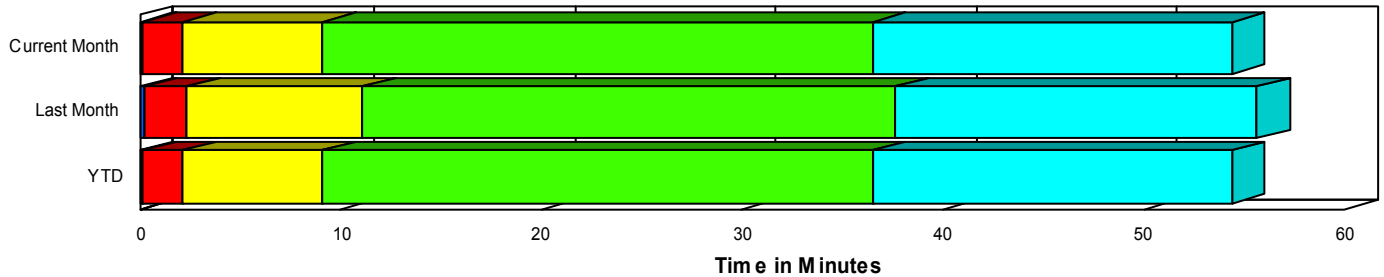
Period From Jan 1, 2007 to Jan 31, 2007

Created on:
February 05, 2007
9:27 am

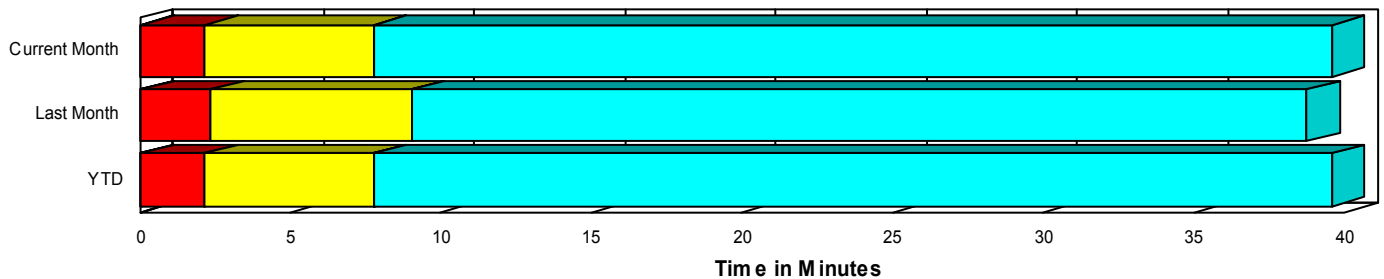
Performance Measures Summary

	Traffic Events (No Lanes Blocked)			Incidents (Lanes Blocked)		
	<u>This Month</u>	<u>Last Month</u>	<u>YTD</u>	<u>This Month</u>	<u>Last Month</u>	<u>YTD</u>
Number of Events	4,831	4,900	4,831	235	226	235
TMC Detection (min.)	0.06	0.06	0.06	0.15	0.20	0.15
TMC Verification (min.)	2.09	2.30	2.09	2.02	2.12	2.02
TMC Response (min.)	7.97	9.21	7.97	9.16	10.92	9.16
RR Dispatch Time (min.)	1.64	1.95	1.64	1.92	2.16	1.92
RR Response Time (min.)	6.37	7.52	6.37	7.28	8.75	7.28
Roadway Clearance (min.)				38.31	36.91	38.31
Event Clearance (min.)	39.84	38.97	39.84	56.10	53.79	56.10
# of Events w/ RR/SIRV	3,980	4,011	3,980	206	220	206
RR/SIRV Responses	4,062	4,098	4,062	323	327	323
RR/SIRV Activities	4,189	4,267	4,189	341	354	341

Incident Clearance TimeLine



Traffic Event(Non-Lane Blockage) Time-Line



■ Avg. TMC Detection Time	■ Avg. Time from TMC Response to Roadway Clearance*
■ Avg. Time from TMC Detection to TMC Verification	■ Avg. Time from Roadway Clearance to Incident/Event Clearance**
■ Avg. Time from TMC Verification to TMC Response	

* Roadway clearance equals all travel lanes open

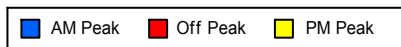
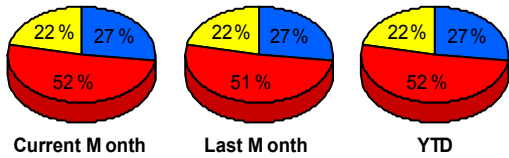
** Incident clearance equals time when last responder has left the scene

Performance Measures by Peak Period

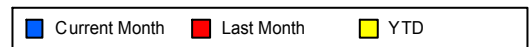
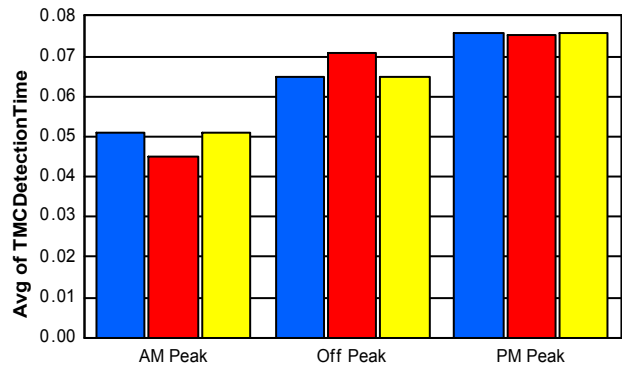
Note: AM peak period is defined as 6am to 10am and PM peak period is defined as 3pm to 7pm.

	AM Peak			Off Peak			PM Peak		
	<u>Current Month</u>	<u>Last Month</u>	<u>YTD</u>	<u>Current Month</u>	<u>Last Month</u>	<u>YTD</u>	<u>Current Month</u>	<u>Last Month</u>	<u>YTD</u>
Number of Events	1,357	1,388	1,357	2,609	2,624	2,609	1,100	1,114	1,100
Number of Incidents	62	51	62	119	118	119	54	57	54
TMC Detection (min.)	0.05	0.05	0.05	0.06	0.07	0.06	0.08	0.08	0.08
TMC Verification (min.)	1.49	1.44	1.49	2.14	2.88	2.14	2.71	1.97	2.71
TMC Response (min.)	6.87	7.55	6.87	8.76	10.77	8.76	7.80	8.16	7.80
RR Dispatch Time (min.)	1.00	1.39	1.00	1.87	2.36	1.87	1.96	1.75	1.96
RR Response Time (min.)	5.91	6.19	5.91	6.91	8.81	6.91	5.91	6.57	5.91
Event Clearance (min.)	35.34	29.68	35.34	48.36	46.11	48.36	28.65	36.72	28.65
Roadway Clearance (min.)	28.29	25.64	28.29	45.33	42.56	45.33	34.32	35.31	34.32
Incident Clearance (min.)	46.31	42.83	46.31	63.56	58.66	63.56	50.91	53.53	50.91
# of Events w/ RR/SIRV	1,148	1,178	1,148	2,120	2,119	2,120	918	934	918
RR/SIRV Responses	1,216	1,239	1,216	2,214	2,215	2,214	955	971	955
RR/SIRV Activities	1,256	1,299	1,256	2,285	2,310	2,285	989	1,012	989

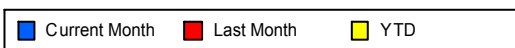
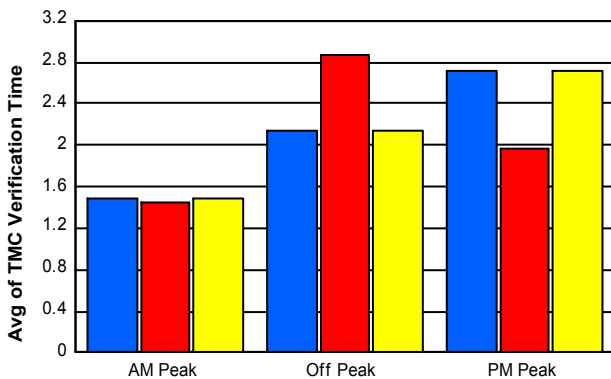
Number of Events / Peak Period



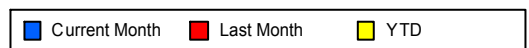
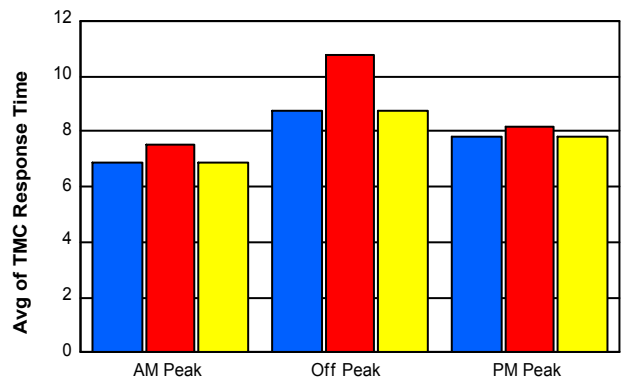
TMC Detection Time



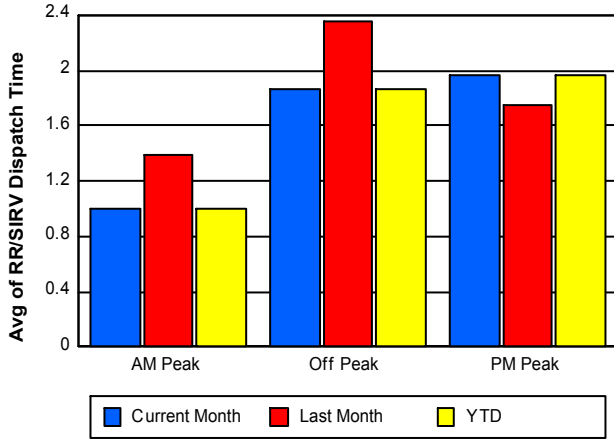
TMC Verification Time



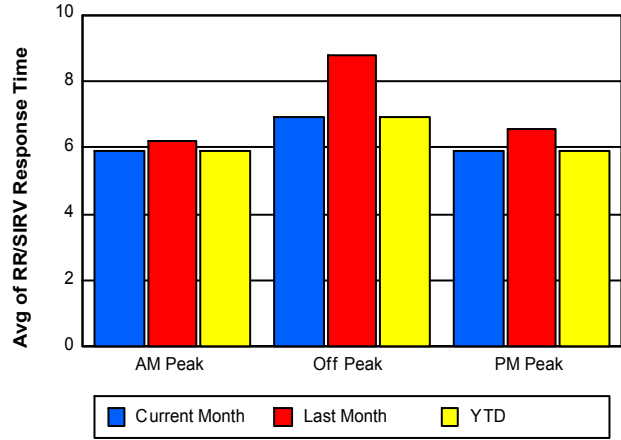
TMC Response Time



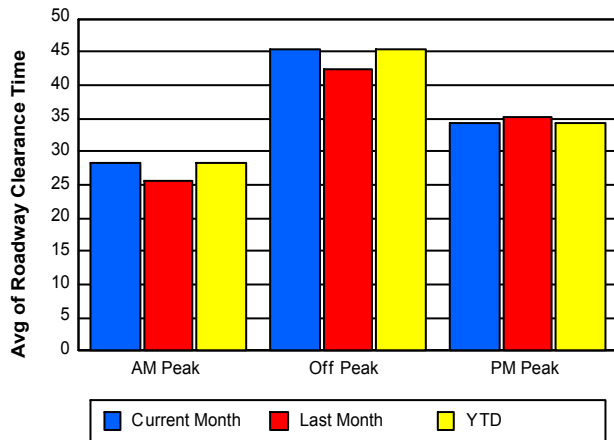
Road Ranger / SIRV Dispatch Time



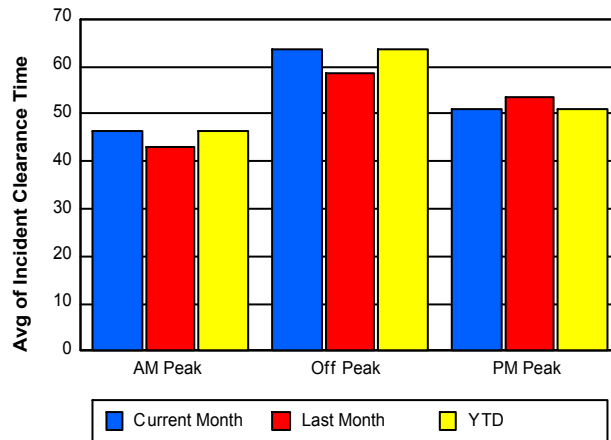
Road Ranger / SIRV Response Time



Roadway Clearance Time (2A)



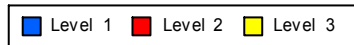
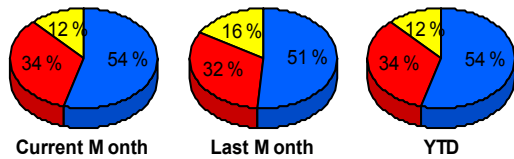
Incident Clearance Time (3B)



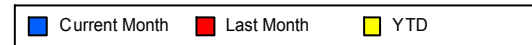
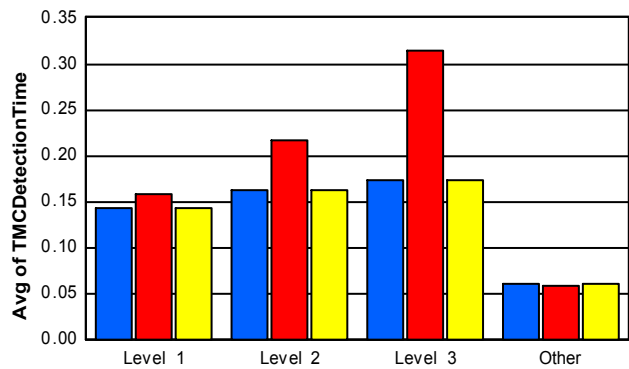
Performance Measures by Severity

	Level 1			Level 2			Level 3			Other		
	<u>This Month</u>	<u>Last Month</u>	<u>YTD</u>	<u>This Month</u>	<u>Last Month</u>	<u>YTD</u>	<u>This Month</u>	<u>Last Month</u>	<u>YTD</u>	<u>This Month</u>	<u>Last Month</u>	<u>YTD</u>
Number of Events	128	116	128	79	73	79	28	37	28	4,831	4,900	4,831
Number of Incidents	128	116	128	79	73	79	28	37	28	0	0	0
TMC Detection (min.)	0.14	0.16	0.14	0.16	0.22	0.16	0.17	0.31	0.17	0.06	0.06	0.06
TMC Verification (min.)	1.20	1.14	1.20	2.63	2.36	2.63	4.00	4.70	4.00	2.09	2.30	2.09
TMC Response (min.)	8.14	9.67	8.14	9.41	11.97	9.41	13.25	12.75	13.25	7.97	9.21	7.97
RR Dispatch Time (min.)	1.82	1.90	1.82	1.55	2.11	1.55	3.72	3.10	3.72	1.64	1.95	1.64
RR Resp. Time (min.)	6.41	7.75	6.41	7.86	9.86	7.86	9.53	9.65	9.53	6.37	7.52	6.37
Event Clearance (min.)	34.67	35.69	34.67	67.61	64.79	67.61	121.62	88.84	121.62	39.84	38.97	39.84
Roadway Clear. (min.)	13.85	13.78	13.85	52.75	52.47	52.75	109.34	78.76	109.34			
Incident Clearance (min.)	34.67	35.69	34.67	67.61	64.79	67.61	121.62	88.84	121.62			
# of Events w/ RR/SIRV	108	112	108	76	73	76	22	35	22	3,980	4,011	3,980
RR/SIRV Responses	136	139	136	131	113	131	56	75	56	4,062	4,098	4,062
RR/SIRV Activities	150	152	150	133	118	133	58	84	58	4,189	4,267	4,189

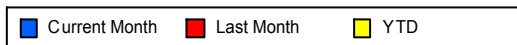
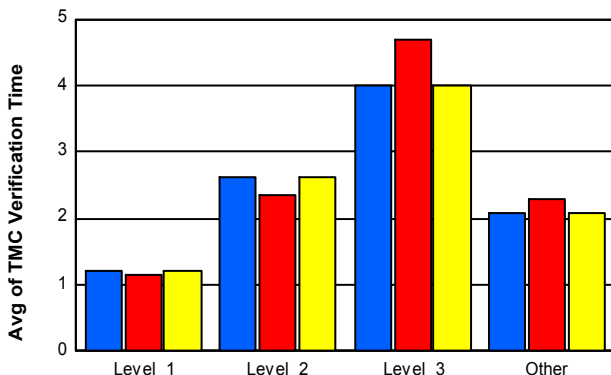
Number of Events / Severity



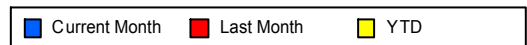
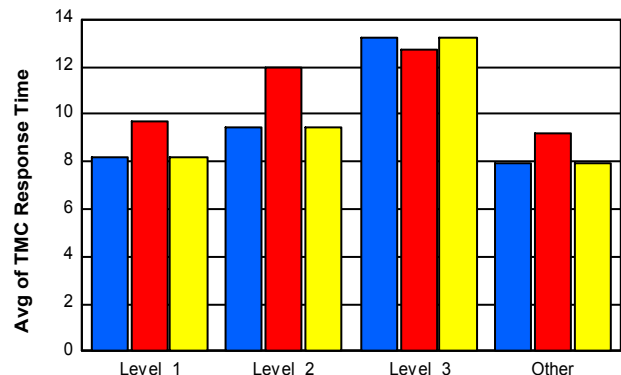
TMC Detection Time



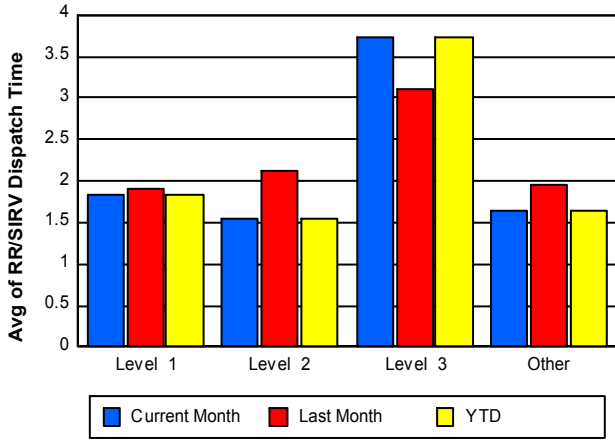
TMC Verification Time



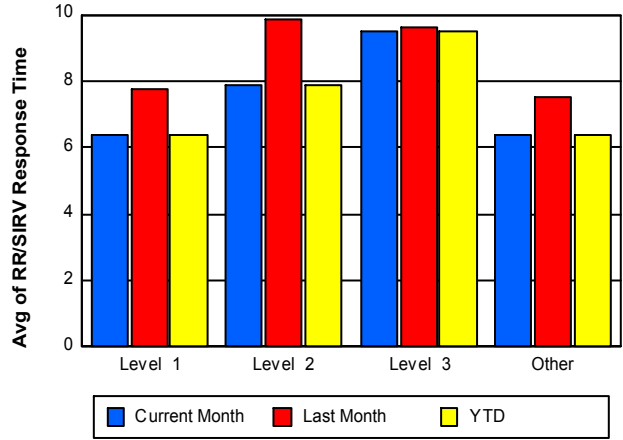
TMC Response Time



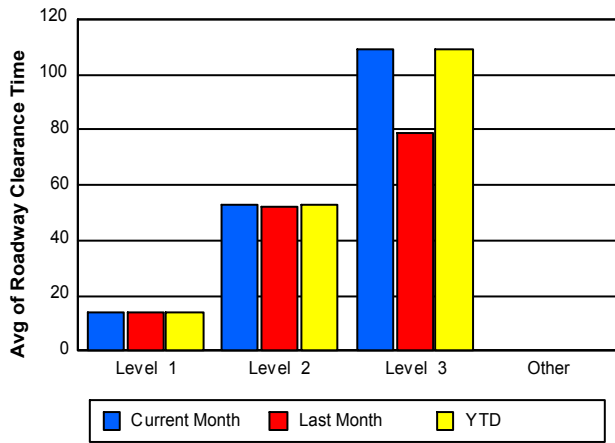
Road Ranger / SIRV Dispatch Time



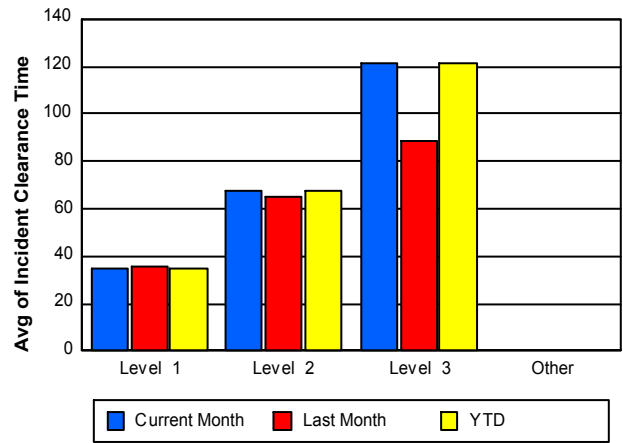
Road Ranger / SIRV Response Time



Roadway Clearance Time (2A)



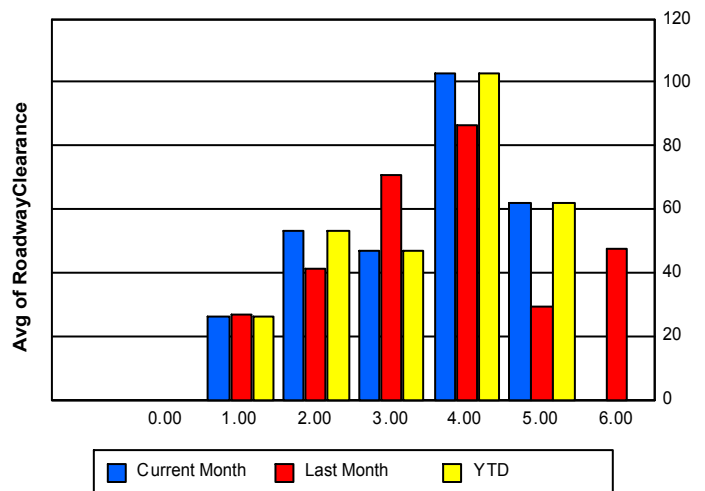
Incident Clearance Time (3B)



Roadway Clearance by Maximum Number of Lanes Blocked

	Current Month	Last Month	YTD
0			
1	25.94	27.03	25.94
2	53.28	41.29	53.28
3	46.66	70.69	46.66
4	102.82	86.67	102.82
5	61.79	29.61	61.79
6	0.00	47.70	0.00

Roadway Clearance Time (2A) by Max. # Lanes Blocked



Performance Measures by Roadway

595

	<u>Current Month</u>	<u>Last Month</u>	<u>YTD</u>
Number of Events	760	810	760
Number of Incidents	33	38	33
TMC Detection (min.)	0.07	0.06	0.07
TMC Verification (min.)	2.62	1.95	2.62
TMC Response (min.)	7.22	8.56	7.22
RR Dispatch Time (min.)	1.81	1.85	1.81
RR Resp. Time (min.)	5.46	6.78	5.46
Event Clearance (min.)	23.72	33.85	23.72
Roadway Clear. (min.)	37.12	41.49	37.12
Incident Clearance (min.)	55.60	55.65	55.60
# of Events w/ RR/SIRV	636	645	636
RR/SIRV Responses	668	681	668
RR/SIRV Activities	687	713	687

75

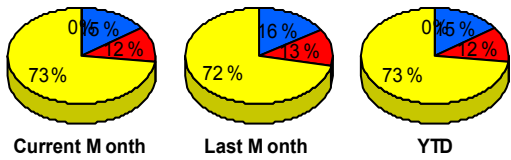
	<u>Current Month</u>	<u>Last Month</u>	<u>YTD</u>
Number of Events	613	648	613
Number of Incidents	9	19	9
TMC Detection (min.)	0.08	0.12	0.08
TMC Verification (min.)	3.35	5.78	3.35
TMC Response (min.)	3.54	6.23	3.54
RR Dispatch Time (min.)	0.70	1.01	0.70
RR Resp. Time (min.)	2.85	5.22	2.85
Event Clearance (min.)	32.43	30.99	32.43
Roadway Clear. (min.)	96.42	69.69	96.42
Incident Clearance (min.)	115.44	83.79	115.44
# of Events w/ RR/SIRV	604	633	604
RR/SIRV Responses	629	665	629
RR/SIRV Activities	645	692	645

95

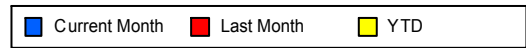
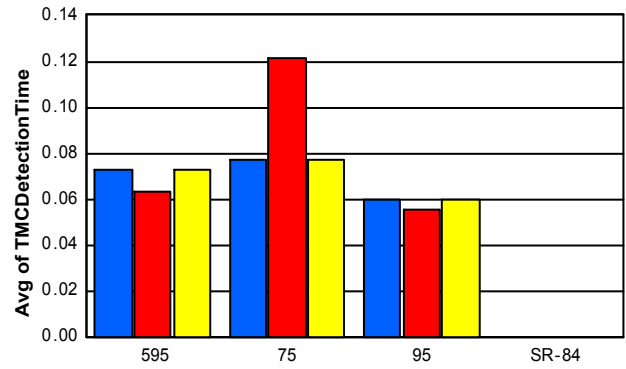
	<u>Current Month</u>	<u>Last Month</u>	<u>YTD</u>
Number of Events	3,692	3,668	3,692
Number of Incidents	193	169	193
TMC Detection (min.)	0.06	0.06	0.06
TMC Verification (min.)	1.77	1.75	1.77
TMC Response (min.)	9.13	10.11	9.13
RR Dispatch Time (min.)	1.79	2.16	1.79
RR Resp. Time (min.)	7.36	8.27	7.36
Event Clearance (min.)	45.43	42.42	45.43
Roadway Clear. (min.)	35.80	32.20	35.80
Incident Clearance (min.)	53.42	50.00	53.42
# of Events w/ RR/SIRV	2,946	2,953	2,946
RR/SIRV Responses	3,088	3,079	3,088
RR/SIRV Activities	3,198	3,216	3,198

	<u>Current Month</u>	<u>YTD</u>
Number of Events	1	1
Number of Incidents	0	0
TMC Detection (min.)	0.00	0.00
TMC Verification (min.)	1.08	1.08
TMC Response (min.)		
RR Dispatch Time (min.)		
RR Resp. Time (min.)		
Event Clearance (min.)	3.77	3.77
Roadway Clear. (min.)		
Incident Clearance (min.)		
# of Events w/ RR/SIRV	0	0
RR/SIRV Responses	0	0
RR/SIRV Activities	0	0

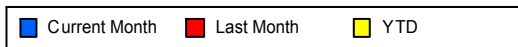
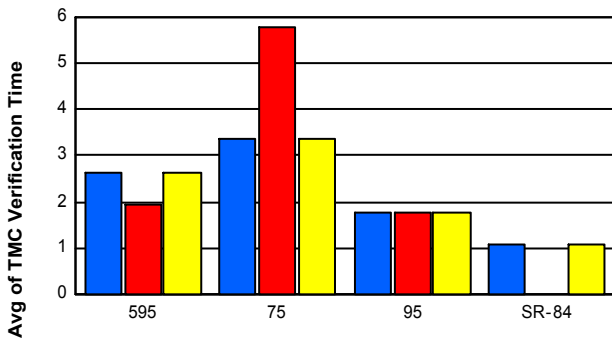
Number of Events / Roadway



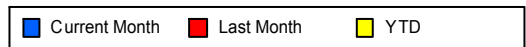
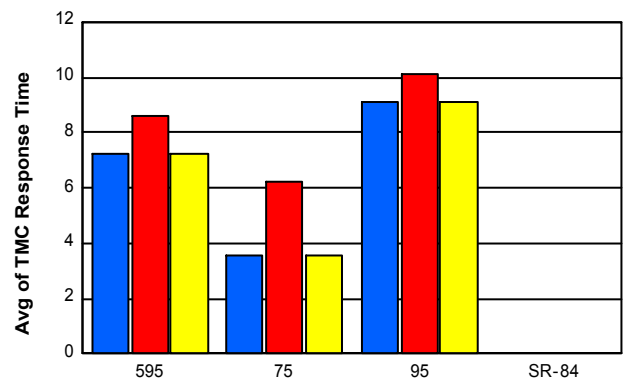
TMC Detection Time



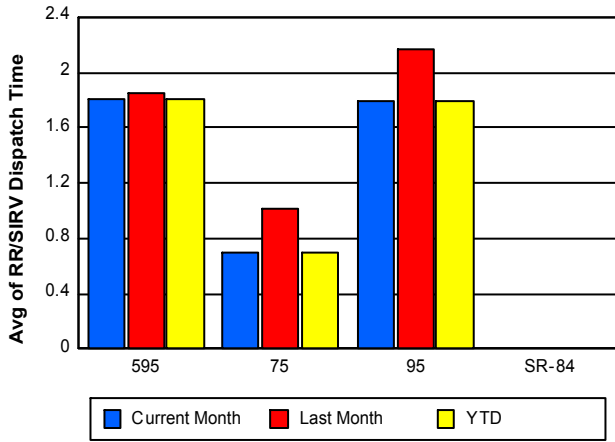
TMC Verification Time



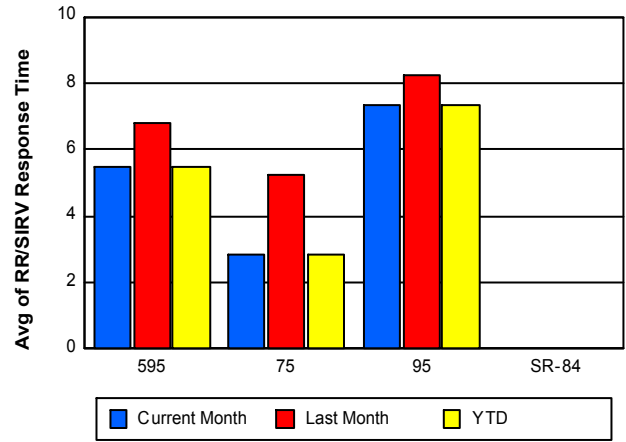
TMC Response Time



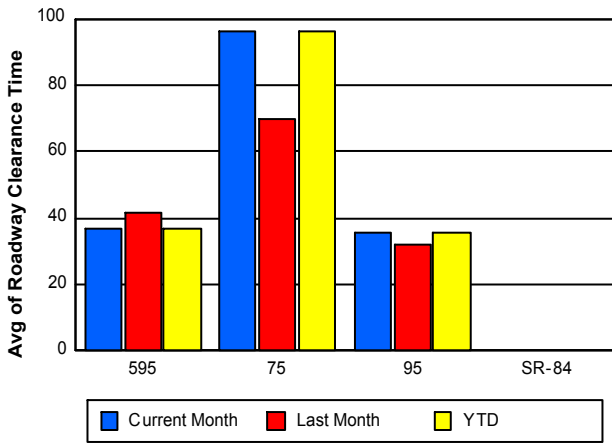
Road Ranger / SIRV Dispatch Time



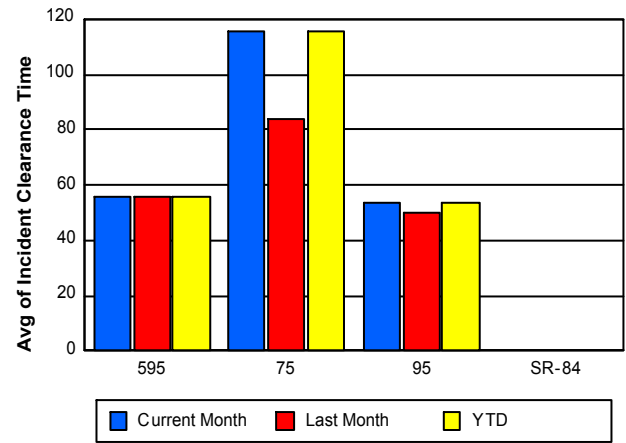
Road Ranger / SIRV Response Time



Roadway Clearance Time (2A)



Incident Clearance Time (3B)



Performance Measures by Event Type

Abandoned Vehicle

	<u>Current Month</u>	<u>Last Month</u>	<u>YTD</u>
Number of Events	604	696	604
Number of Incidents	1	1	1
TMC Detection (min.)	0.01	0.02	0.01
TMC Verification (min.)	0.56	0.65	0.56
TMC Response (min.)	7.74	9.17	7.74
RR Dispatch Time (min.)	0.91	3.27	0.91
RR Response Time (min.)	6.85	7.31	6.85
Event Clearance (min.)	181.16	152.00	181.16
Roadway Clearance (min.)	16.23	7.32	16.23
Incident Clearance (min.)	17.37	25.60	17.37
# of Events w/ RR/SIRV	481	594	481
RR/SIRV Assists	483	600	483
RR/SIRV Activities	491	612	491

Accident

	<u>Current Month</u>	<u>Last Month</u>	<u>YTD</u>
Number of Events	365	363	365
Number of Incidents	152	176	152
TMC Detection (min.)	0.17	0.17	0.17
TMC Verification (min.)	3.34	2.82	3.34
TMC Response (min.)	9.01	10.15	9.01
RR Dispatch Time (min.)	1.73	1.79	1.73
RR Response Time (min.)	7.29	8.33	7.29
Event Clearance (min.)	43.06	46.03	43.06
Roadway Clearance (min.)	36.72	39.70	36.72
Incident Clearance (min.)	59.22	60.58	59.22
# of Events w/ RR/SIRV	358	352	358
RR/SIRV Assists	470	458	470
RR/SIRV Activities	489	486	489

Debris on Roadway

	<u>Current Month</u>	<u>Last Month</u>	<u>YTD</u>
Number of Events	211	199	211
Number of Incidents	3	10	3
TMC Detection (min.)	0.27	0.23	0.27
TMC Verification (min.)	11.33	8.16	11.33
TMC Response (min.)	13.35	10.65	13.35
RR Dispatch Time (min.)	2.82	1.97	2.82
RR Response Time (min.)	10.50	8.68	10.50
Event Clearance (min.)	17.16	15.39	17.16
Roadway Clearance (min.)	12.08	42.04	12.08
Incident Clearance (min.)	12.85	32.93	12.85
# of Events w/ RR/SIRV	202	186	202
RR/SIRV Assists	216	207	216
RR/SIRV Activities	218	211	218

Disabled Vehicle

	<u>Current Month</u>	<u>Last Month</u>	<u>YTD</u>
Number of Events	3,009	3,110	3,009
Number of Incidents	48	30	48
TMC Detection (min.)	0.06	0.06	0.06
TMC Verification (min.)	1.95	2.53	1.95
TMC Response (min.)	7.58	9.08	7.58
RR Dispatch Time (min.)	1.64	1.73	1.64
RR Response Time (min.)	5.96	7.41	5.96
Event Clearance (min.)	20.36	20.91	20.36
Roadway Clearance (min.)	26.83	23.40	26.83
Incident Clearance (min.)	39.21	29.75	39.21
# of Events w/ RR/SIRV	2,894	2,927	2,894
RR/SIRV Assists	2,958	2,984	2,958
RR/SIRV Activities	3,072	3,134	3,072

Emergency Vehicles

	<u>Current Month</u>	<u>Last Month</u>	<u>YTD</u>
Number of Events	3	2	3
Number of Incidents	2	0	2
TMC Detection (min.)	0.00	0.46	0.00
TMC Verification (min.)	0.00	3.50	0.00
TMC Response (min.)	3.33	3.50	3.33
RR Dispatch Time (min.)	2.56	1.82	2.56
RR Response Time (min.)	0.19	1.68	0.19
Event Clearance (min.)	33.94	19.73	33.94
Roadway Clearance (min.)	26.93		26.93
Incident Clearance (min.)	40.56		40.56
# of Events w/ RR/SIRV	2	2	2
RR/SIRV Assists	3	2	3
RR/SIRV Activities	3	2	3

Interagency Coordination

	<u>Current Month</u>	<u>YTD</u>
Number of Events	18	18
Number of Incidents	18	18
TMC Detection (min.)	0.00	0.00
TMC Verification (min.)	0.00	0.00
TMC Response (min.)		
RR Dispatch Time (min.)		
RR Response Time (min.)		
Event Clearance (min.)	78.54	78.54
Roadway Clearance (min.)	74.55	74.55
Incident Clearance (min.)	78.54	78.54
# of Events w/ RR/SIRV	0	0
RR/SIRV Assists	0	0
RR/SIRV Activities	0	0

Other

	<u>Current Month</u>	<u>Last Month</u>	<u>YTD</u>
Number of Events	825	734	825
Number of Incidents	6	3	6
TMC Detection (min.)	0.02	0.01	0.02
TMC Verification (min.)	0.89	0.92	0.89
TMC Response (min.)	8.34	9.89	8.34
RR Dispatch Time (min.)	1.82	1.87	1.82
RR Response Time (min.)	6.65	8.54	6.65
Event Clearance (min.)	15.81	15.90	15.81
Roadway Clearance (min.)	27.98	22.70	27.98
Incident Clearance (min.)	32.82	23.92	32.82
# of Events w/ RR/SIRV	227	158	227
RR/SIRV Assists	228	161	228
RR/SIRV Activities	229	163	229

Pedestrian

	<u>Current Month</u>	<u>Last Month</u>	<u>YTD</u>
Number of Events	14	7	14
Number of Incidents	0	0	0
TMC Detection (min.)	0.07	0.11	0.07
TMC Verification (min.)	2.24	9.53	2.24
TMC Response (min.)	3.70	21.45	3.70
RR Dispatch Time (min.)	0.96	2.79	0.96
RR Response Time (min.)	2.73	18.96	2.73
Event Clearance (min.)	17.69	23.54	17.69
Roadway Clearance (min.)			
Incident Clearance (min.)			
# of Events w/ RR/SIRV	14	6	14
RR/SIRV Assists	14	6	14
RR/SIRV Activities	15	6	15

Police Activity

	<u>Current Month</u>	<u>Last Month</u>	<u>YTD</u>
Number of Events	13	11	13
Number of Incidents	5	3	5
TMC Detection (min.)	0.03	0.00	0.03
TMC Verification (min.)	0.53	0.14	0.53
TMC Response (min.)	11.68	11.41	11.68
RR Dispatch Time (min.)	4.29	1.19	4.29
RR Response Time (min.)	7.39	9.84	7.39
Event Clearance (min.)	58.12	43.72	58.12
Roadway Clearance (min.)	103.31	5.27	103.31
Incident Clearance (min.)	110.50	10.03	110.50
# of Events w/ RR/SIRV	6	3	6
RR/SIRV Assists	11	3	11
RR/SIRV Activities	11	3	11

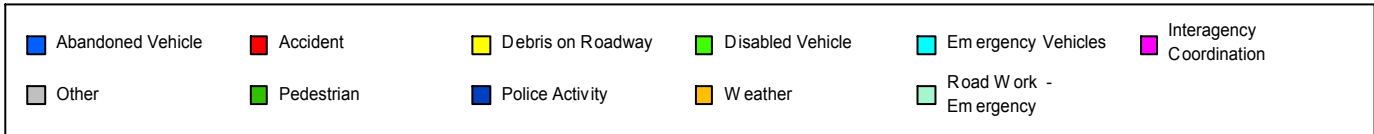
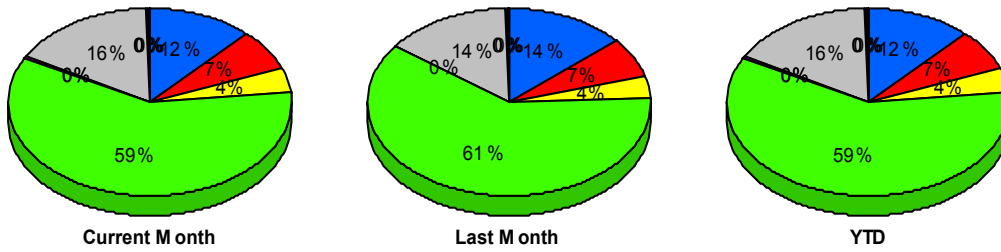
Road Work - Emergency

	<u>Last Month</u>
Number of Events	4
Number of Incidents	3
TMC Detection (min.)	0.00
TMC Verification (min.)	2.83
TMC Response (min.)	7.37
RR Dispatch Time (min.)	3.10
RR Response Time (min.)	3.32
Event Clearance (min.)	37.26
Roadway Clearance (min.)	47.06
Incident Clearance (min.)	48.33
# of Events w/ RR/SIRV	3
RR/SIRV Assists	4
RR/SIRV Activities	4

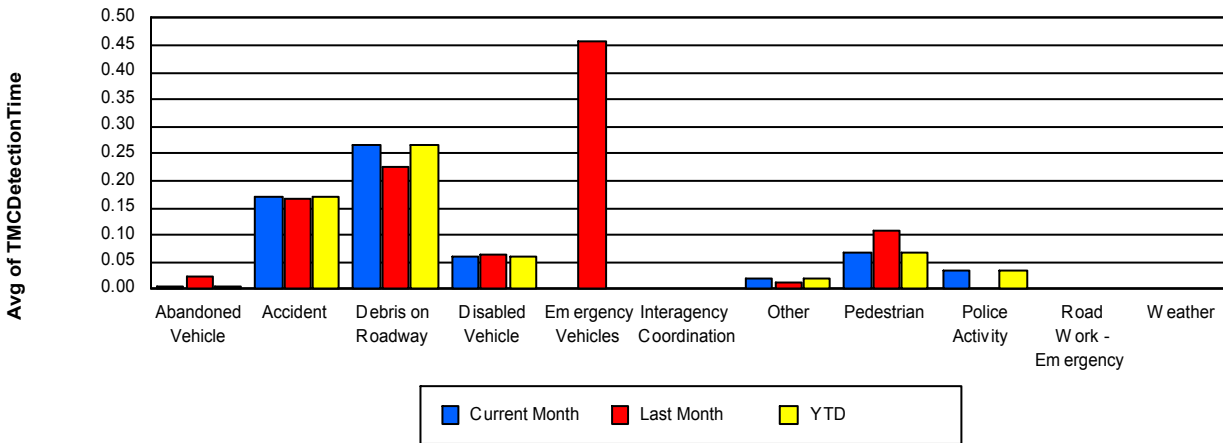
Weather

	<u>Current Month</u>	<u>YTD</u>
Number of Events	4	4
Number of Incidents	0	0
TMC Detection (min.)	0.00	0.00
TMC Verification (min.)	0.81	0.81
TMC Response (min.)	1.23	1.23
RR Dispatch Time (min.)	0.77	0.77
RR Response Time (min.)	0.14	0.14
Event Clearance (min.)	20.19	20.19
Roadway Clearance (min.)		
Incident Clearance (min.)		
# of Events w/ RR/SIRV	2	2
RR/SIRV Assists	2	2
RR/SIRV Activities	2	2

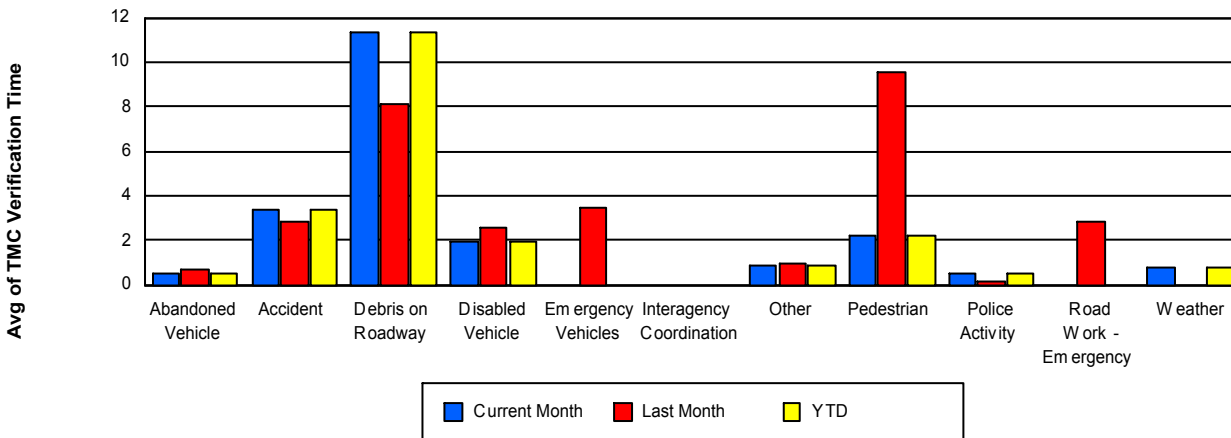
Number of Events / Event Type



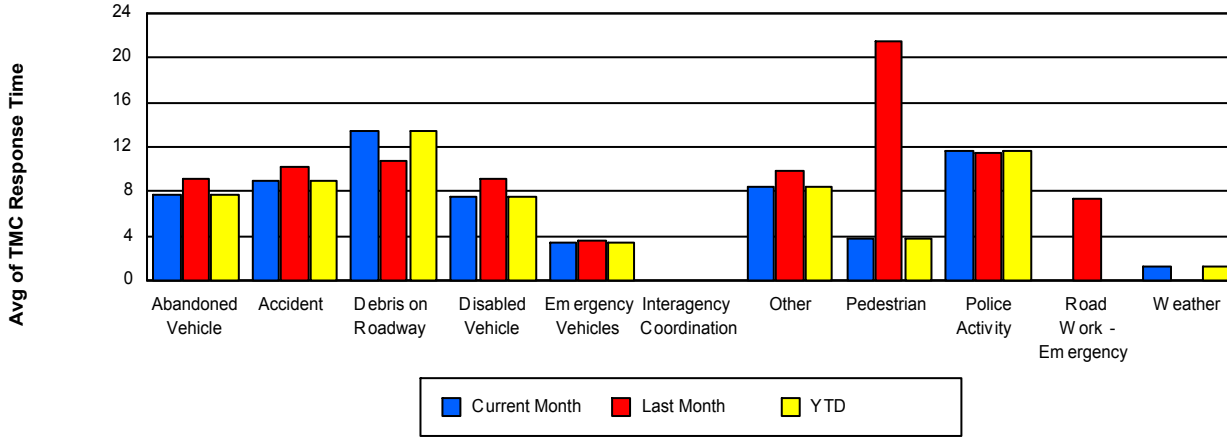
TMC Detection Time



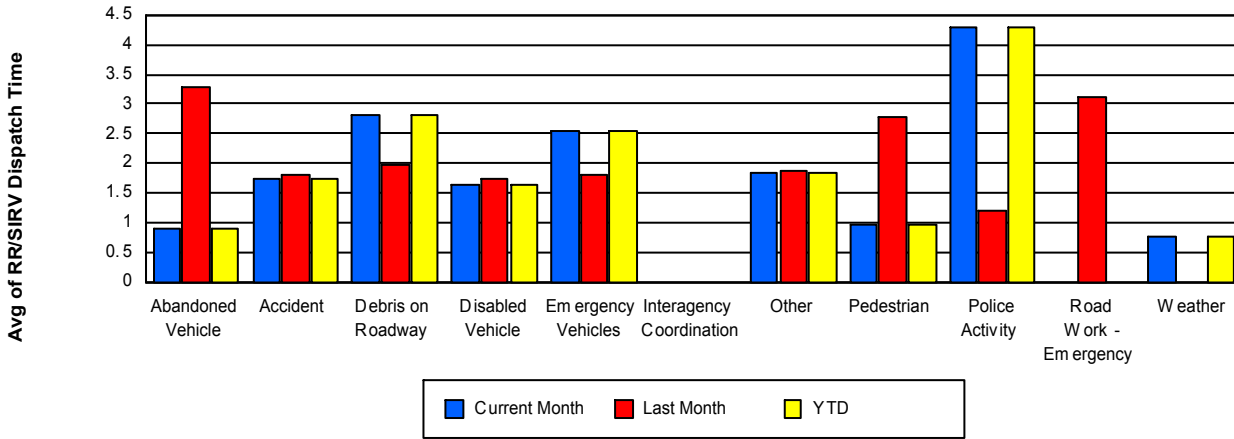
TMC Verification Time



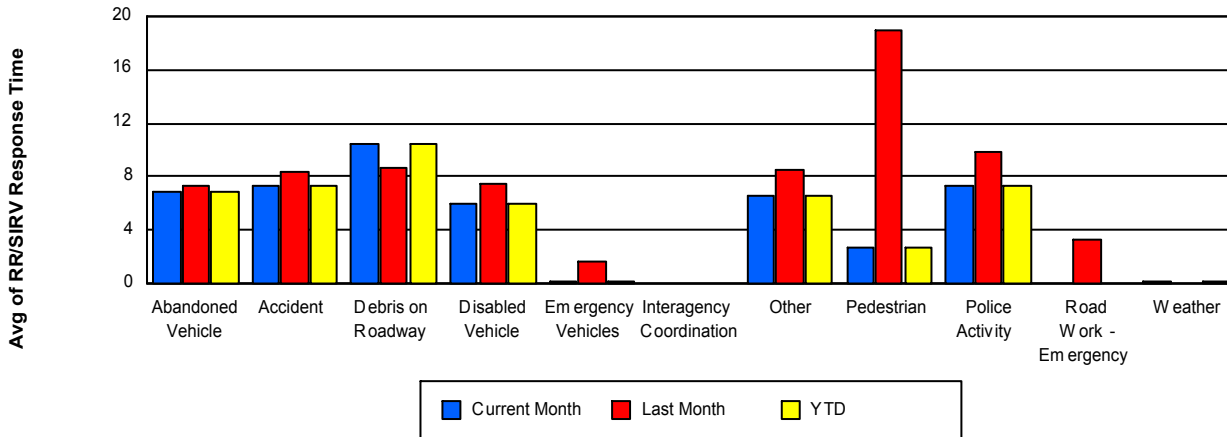
TMC Response Time



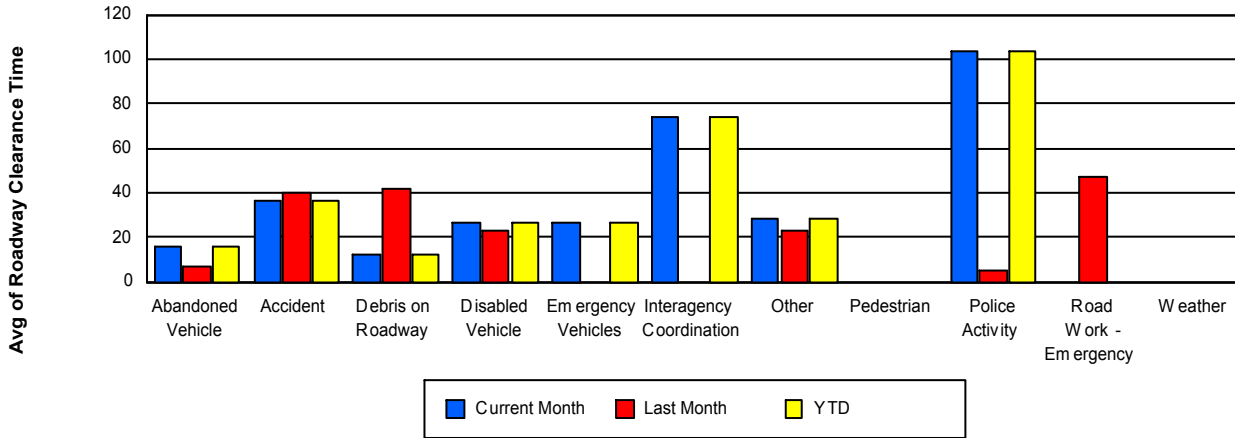
Road Ranger / SIRV Dispatch Time



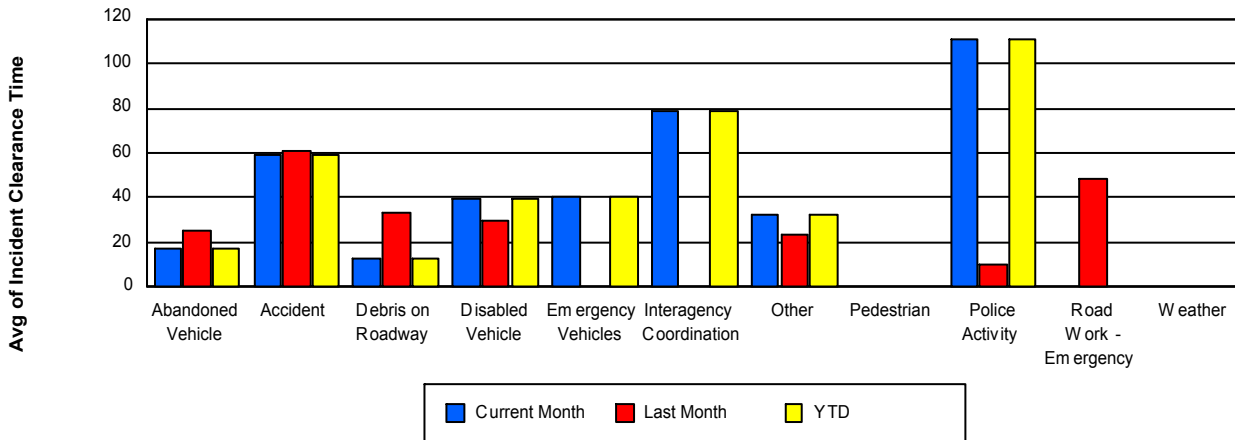
Road Ranger / SIRV Response Time



Roadway Clearance Time (2A)



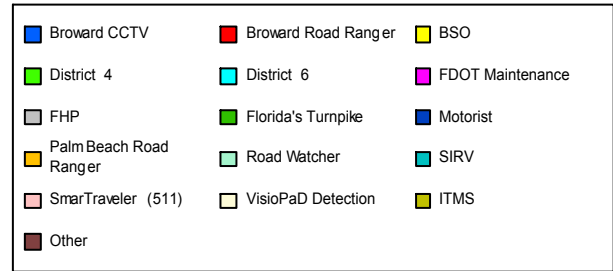
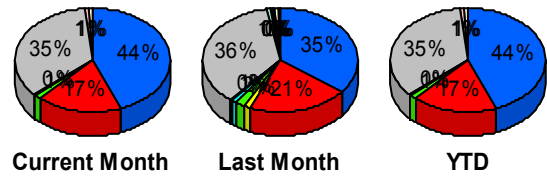
Incident Clearance Time (3B)



Incident Detection Methods

	Current Month	Last Month	YTD
Broward CCTV	104	80	104
Broward Road Ra	41	47	41
BSO	0	3	0
District 4	3	5	3
District 6	0	2	0
FDOT Maintenanc	1	1	1
FHP	82	81	82
ITMS	0	1	0
Road Watcher	0	2	0
SIRV	0	1	0
SmarTraveler (511)	2	1	2
VisioPaD Detectio	2	2	2
Total	235	226	235

Total Incidents by Detection Method

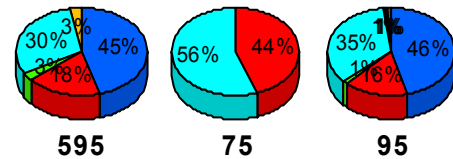


Incident Detection Methods by Roadway

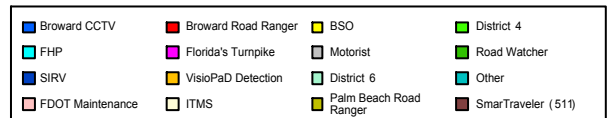
		Current Month	Last Month	YTD
595	Broward CCTV	15	15	15
	Broward Road Ra	6	3	6
	District 4	1	2	1
	FHP	10	16	10
	Road Watcher	0	1	0
	VisioPaD Detectio	1	1	1
	Total	33	38	33
75	Broward Road Ra	4	5	4
	FHP	5	13	5
	Road Watcher	0	1	0
	Total	9	19	9
95	Broward CCTV	89	65	89
	Broward Road Ra	31	39	31
	BSO	0	3	0

Total Events by Roadway and Detection Method

Current Period Only



SR-84



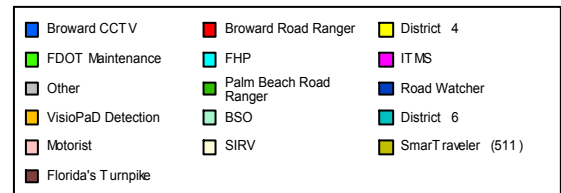
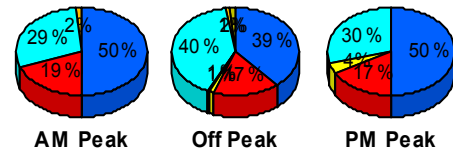
		Current Month	Last Month	YTD
95	District 4	2	3	2
	District 6	0	2	0
	FDOT Maintenanc	1	1	1
	FHP	67	52	67
	ITMS	0	1	0
	SIRV	0	1	0
	SmarTraveler (511)	2	1	2
	VisioPaD Detectio	1	1	1
	Total	193	169	193
Total	235	226	235	

Incident Detection Methods by Peak Period

		Current Month	Last Month	YTD
AM Peak	Broward CCTV	31	15	31
	Broward Road Ra	12	13	12
	District 4	0	1	0
	FDOT Maintenanc	0	1	0
	FHP	18	21	18
	VisioPaD Detectio	1	0	1
	Total	62	51	62
Off Peak	Broward CCTV	46	49	46
	Broward Road Ra	20	22	20
	BSO	0	3	0
	District 4	1	1	1
	FDOT Maintenanc	1	0	1
	FHP	48	40	48
	ITMS	0	1	0
	Road Watcher	0	2	0
	SmarTraveler (511)	2	0	2
	VisioPaD Detectio	1	0	1
	Total	119	118	119
PM Peak	Broward CCTV	27	16	27

Total Events by Roadway and Detection Method

Current Period Only



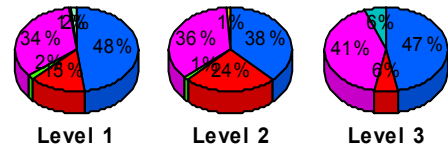
		Current Month	Last Month	YTD
PM Peak	Broward Road Ra	9	12	9
	District 4	2	3	2
	District 6	0	2	0
	FHP	16	20	16
	SIRV	0	1	0
	SmarTraveler (511)	0	1	0
	VisioPaD Detectio	0	2	0
	Total	54	57	54
Total	235	226	235	

Incident Detection Methods by Severity

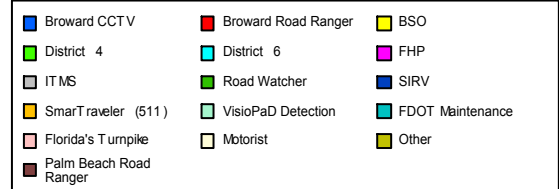
		Current Month	Last Month	YTD
Level 1	Broward CCTV	63	47	63
	Broward Road Ra	19	33	19
	BSO	0	2	0
	District 4	2	2	2
	District 6	0	2	0
	FHP	44	33	44
	ITMS	0	1	0
	Road Watcher	0	1	0
	SIRV	0	1	0
	SmarTraveler (511)	1	0	1
	VisioPaD Detectio	2	1	2
	Total	131	123	131
Level 2	Broward CCTV	33	29	33
	Broward Road Ra	21	12	21
	BSO	0	1	0
	District 4	1	3	1
	FDOT Maintenanc	0	1	0
	FHP	31	32	31
	SmarTraveler (511)	1	1	1
	Total	87	79	87

Total Events by Roadway and Detection Method

Current Period Only



Other



		Current Month	Last Month	YTD
Level 3	Broward CCTV	8	4	8
	Broward Road Ra	1	2	1
	FDOT Maintenanc	1	0	1
	FHP	7	16	7
	Road Watcher	0	1	0
	VisioPaD Detectio	0	1	0
	Total	17	24	17
Total		235	226	235

Road Ranger / SIRV Performance Measures

Road Ranger / SIRV Performance By County

RR/SIRV Responses per County

Values presented are:
 - Total Events with a RR/SIRV Response
 - Total RR/SIRV Responses,
 - Total Activities Performed

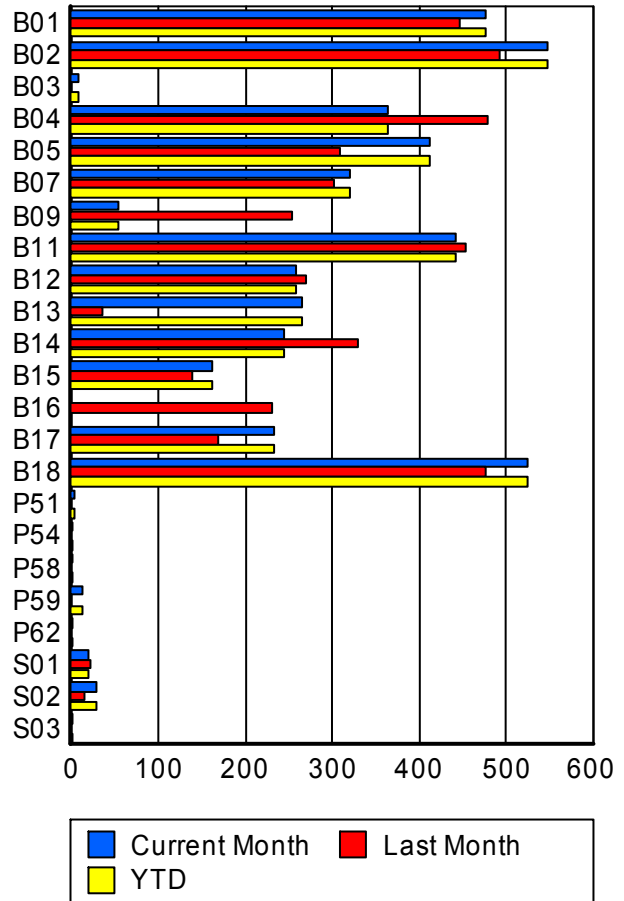
	Current Mo	Last Month	YTD
Broward	4,186	4,231	4,186
	4,385	4,425	4,385
	4,530	4,621	4,530



Road Ranger / SIRV Performance By Truck

	Current Mo	Last Month	YTD
B01	475	445	475
	476	448	476
	493	461	493
B02	546	490	546
	547	492	547
	564	517	564
B03	9	0	9
	9	0	9
	9	0	9
B04	360	476	360
	365	480	365
	379	506	379
B05	406	306	406
	412	309	412
	431	330	431
B07	319	300	319
	321	303	321
	326	316	326
B09	53	252	53
	53	255	53
	55	265	55
B11	440	449	440
	443	454	443
	463	474	463
B12	257	267	257
	258	269	258
	262	281	262

**RR/SIRV
Responses per
Truck**



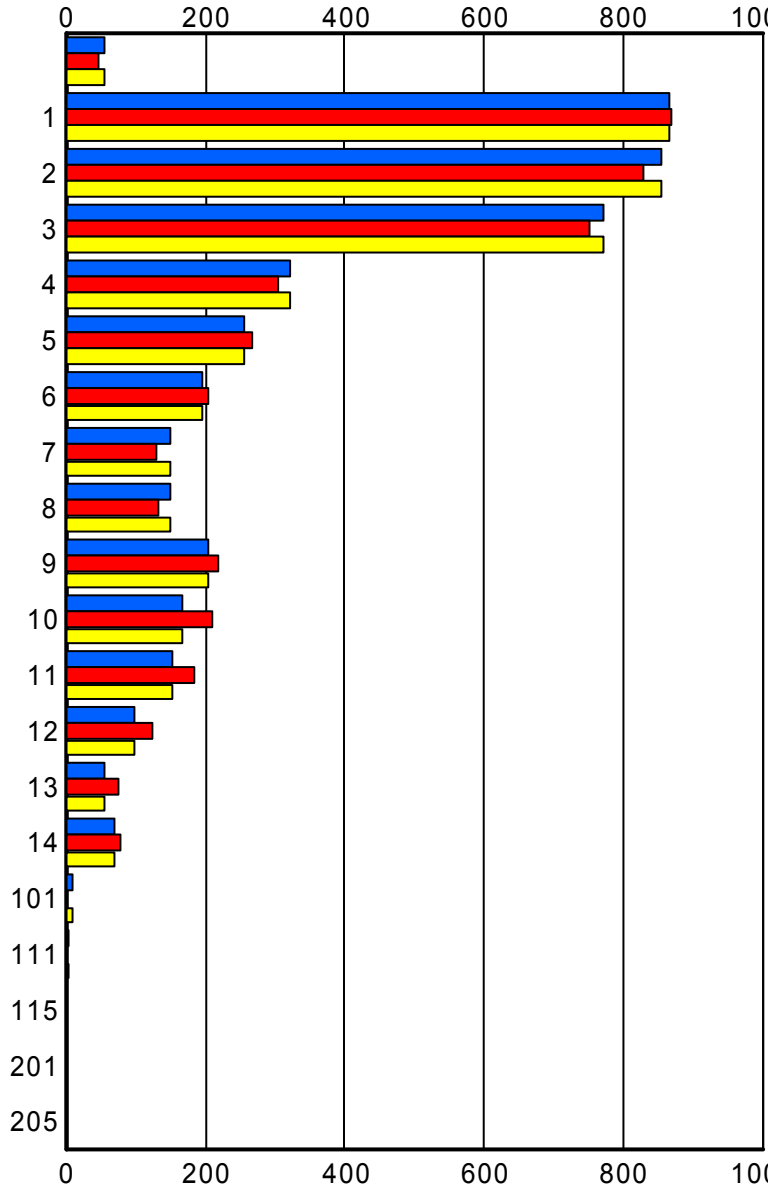
	Current Mo	Last Month	YTD
B13	265	34	265
	266	35	266
	273	36	273
B14	243	325	243
	245	329	245
	250	335	250
B15	163	138	163
	163	138	163
	172	143	172
B16	0	230	0
	0	230	0
	0	239	0
B17	232	169	232
	233	169	233
	235	180	235
B18	523	473	523
	525	477	525
	547	494	547
P51	3	0	3
	3	0	3
	3	0	3
P54	1	0	1
	1	0	1
	1	0	1
P58	2	0	2
	2	0	2
	2	0	2
P59	13	0	13
	13	0	13
	14	0	14
P62	1	0	1
	1	0	1
	1	0	1
S01	20	22	20
	20	23	20
	21	30	21
S02	28	14	28
	28	14	28
	28	14	28
S03	1	0	1
	1	0	1
	1	0	1

Road Ranger / SIRV Performance By Beat

	Current Mo	Last Month	YTD
	54	44	54
	54	46	54
	55	53	55
1	847	848	847
	866	868	866
	905	901	905
2	840	808	840
	854	828	854
	888	869	888
3	744	729	744
	770	752	770
	797	787	797
4	319	303	319
	321	305	321
	328	316	328
5	253	265	253
	256	268	256
	261	282	261
6	197	204	197
	197	205	197
	205	217	205
7	151	129	151
	151	131	151
	156	136	156
8	149	134	149
	150	134	150
	153	139	153
9	201	215	201
	204	218	204
	206	233	206
10	165	211	165
	166	211	166
	172	214	172
11	154	181	154
	154	183	154
	155	187	155
12	96	124	96
	98	125	98
	100	132	100
13	56	73	56
	56	74	56
	57	77	57
14	71	77	71
	71	77	71
	74	78	74

Values presented are:
 - Total Events with a RR/SIRV Response
 - Total RR/SIRV Responses,
 - Total Activities Performed

RR/SIRV Responses per Beat



■ Current Month
 ■ Last Month
 ■ YTD

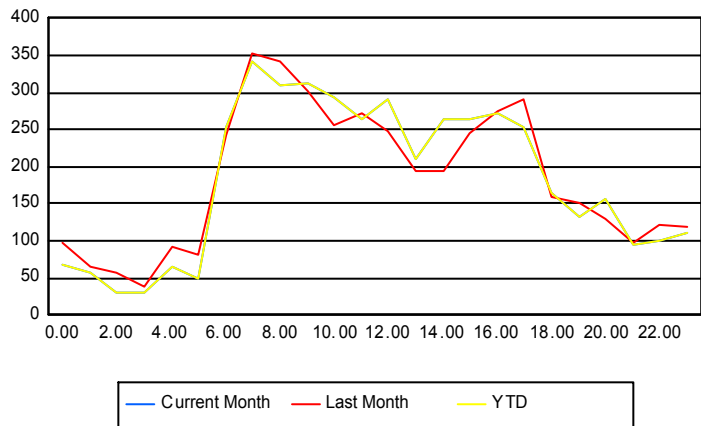
	Current Mo	Last Month	YTD
101	10	0	10
	10	0	10
	11	0	11
111	4	0	4
	4	0	4
	4	0	4
115	1	0	1
	1	0	1
	1	0	1
201	1	0	1
	1	0	1
	1	0	1
205	1	0	1
	1	0	1
	1	0	1

Road Ranger / SIRV Performance By Time of Day

Values presented are:
- Total Events with a RR/SIRV Response
- Total RR/SIRV Responses,
- Total Activities Performed

	Current Mo	Last Month	YTD
12AM-1AM	68	97	68
	68	98	68
	70	101	70
1AM-2AM	55	64	55
	56	65	56
	58	69	58
2AM-3AM	29	53	29
	30	57	30
	30	59	30
3AM-4AM	31	33	31
	31	39	31
	33	41	33
4AM-5AM	63	86	63
	64	91	64
	66	91	66
5AM-6AM	46	72	46
	49	80	49
	54	82	54
6AM-7AM	232	236	232
	253	243	253
	265	255	265
7AM-8AM	325	341	325
	341	353	341
	350	376	350

Number of Responses / Hour of the Day



	Current Mo	Last Month	YTD
8AM-9AM	297 310 319	318 342 356	297 310 319
9AM-10AM	294 312 322	283 301 312	294 312 322
10AM-11AM	281 294 300	248 257 264	281 294 300
11AM-12PM	252 263 274	261 273 285	252 263 274
12PM-1PM	280 291 301	233 247 262	280 291 301
1PM-2PM	203 211 221	186 193 198	203 211 221
2PM-3PM	253 263 270	192 194 201	253 263 270
3PM-4PM	255 265 272	234 245 256	255 265 272
4PM-5PM	263 272 286	266 274 286	263 272 286
5PM-6PM	248 254 266	279 292 304	248 254 266
6PM-7PM	152 164 165	155 160 166	152 164 165
7PM-8PM	120 133 139	142 152 161	120 133 139
8PM-9PM	151 156 161	128 130 139	151 156 161
9PM-10PM	90 96 96	93 98 104	90 96 96
10PM-11PM	92 99 100	113 121 127	92 99 100

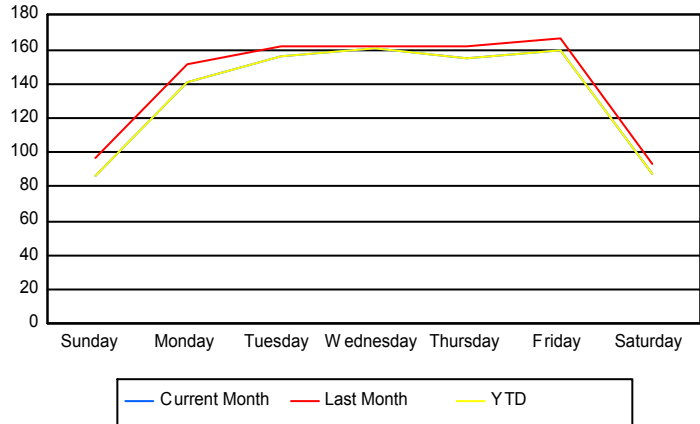
	Current Mo	Last Month	YTD
11PM-12AM	106	118	106
	110	120	110
	112	126	112

Road Ranger / SIRV Performance By Day of Week

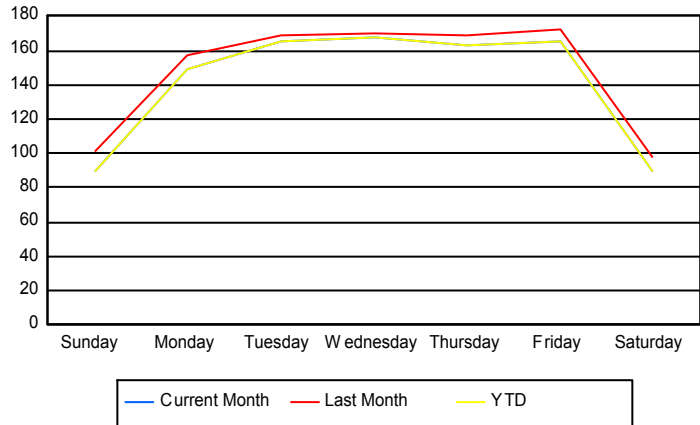
Values presented are:
 - Total Events with a RR/SIRV Response
 - Total RR/SIRV Responses,
 - Total Activities Performed

	Current Mo	Last Month	YTD
Sunday	341	455	341
	356	480	356
	373	507	373
Monday	696	564	696
	731	584	731
	747	627	747
Tuesday	777	636	777
	825	665	825
	863	700	863
Wednesday	789	645	789
	824	677	824
	846	701	846
Thursday	608	644	608
	640	676	640
	656	700	656
Friday	637	828	637
	659	857	659
	677	881	677
Saturday	340	462	340
	350	486	350
	368	505	368

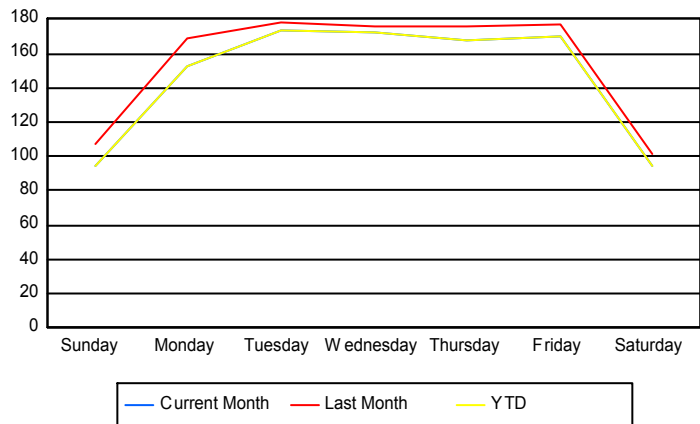
Avg # of events with a RR/SIRV Response per Day of the Week



Avg # of RR/SIRV Responses per Day of the Week



Avg # of RR/SIRV Activities Performed per Day of the Week



Road Ranger/SIRV Responses per Time of Day and Day of Week

