



Weekly Performance Measures Report Broward, Palm Beach Counties Period From Jul 11, 2010 to Jul 17, 2010

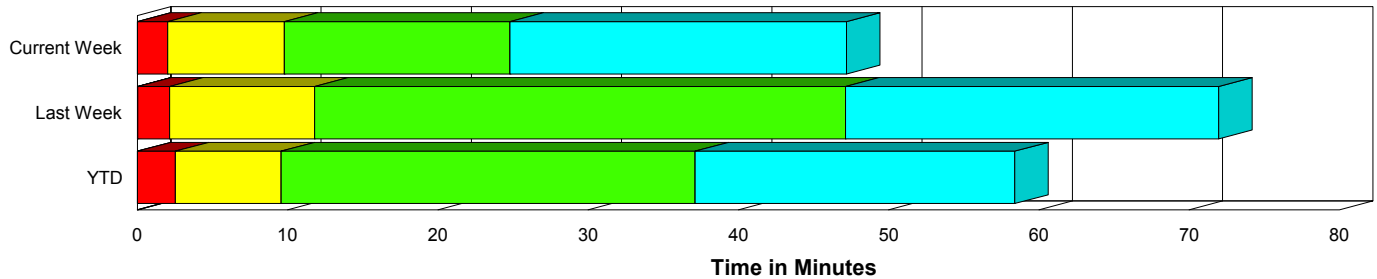


Created on:
July 19, 2010
8:55 am

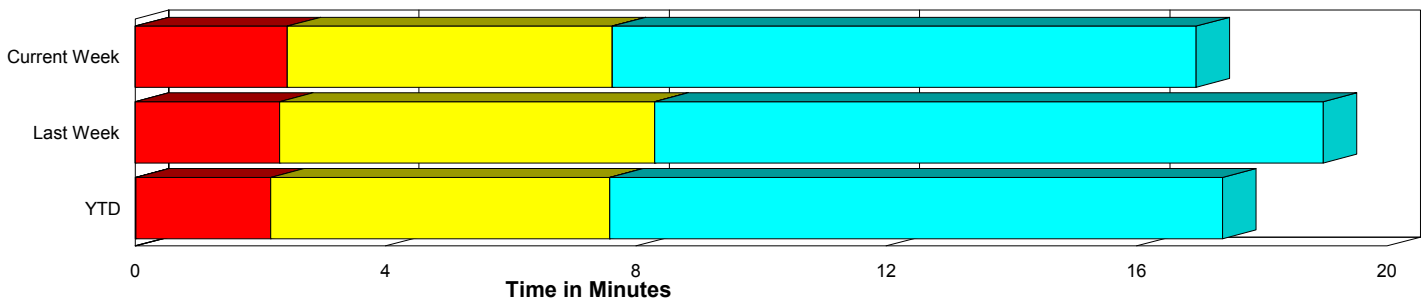
Performance Measures Summary

	Traffic Events (No Lanes Blocked)			Incidents (Lanes Blocked)		
	<u>This Week</u>	<u>Last Week</u>	<u>YTD</u>	<u>This Week</u>	<u>Last Week</u>	<u>YTD</u>
Number of Events	1,783	1,704	49,964	64	84	2,095
TMC Detection (min.)	0.00	0.00	0.01	0.00	0.03	0.02
TMC Verification (min.)	2.43	2.31	2.16	2.03	2.13	2.52
TMC Response (min.)	8.56	9.52	8.58	9.82	11.93	9.69
RR Dispatch Time (min.)	1.45	1.92	1.76	1.52	2.13	1.98
RR Response Time (min.)	7.26	7.60	6.86	8.29	9.76	7.74
Roadway Clearance (min.)				24.48	45.43	36.47
Event Clearance (min.)	17.90	20.20	18.39	46.87	69.49	57.27
# of Events w/ RR/SIRV	1,563	1,471	42,768	64	83	2,041
RR/SIRV Responses	1,563	1,471	42,768	64	83	2,041
RR/SIRV Activities	1,407	1,189	36,265	109	127	3,486

Incident Clearance Time-Line



Traffic Event (Non-Lane Blockage) Time-Line



■ Avg. TMC Detection Time	■ Avg. Time from TMC Response to Roadway Clearance*
■ Avg. Time from TMC Detection to TMC Verification	■ Avg. Time from Roadway Clearance to Incident/Event Clearance**
■ Avg. Time from TMC Verification to TMC Response	

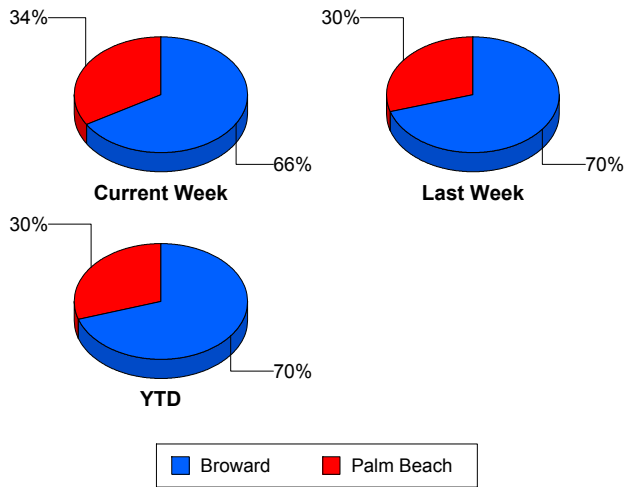
* Roadway clearance equals all travel lanes open

** Incident clearance equals time when last responder has left the scene

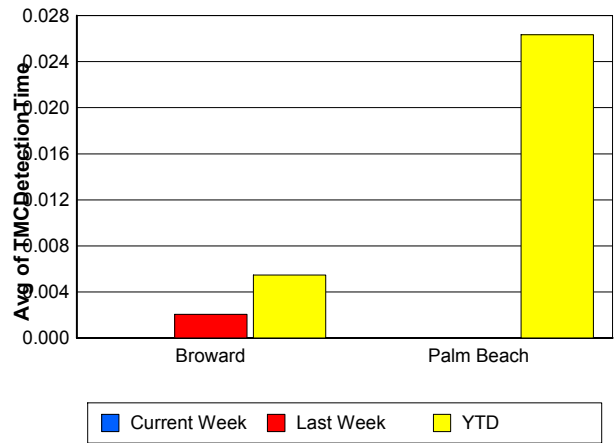
Performance Measures by County

	Broward			Palm Beach		
	<u>Current Week</u>	<u>Last Week</u>	<u>YTD</u>	<u>Current Week</u>	<u>Last Week</u>	<u>YTD</u>
Number of Events	1,227	1,257	36,503	620	531	15,556
Number of Incidents	45	53	1,370	19	31	725
TMC Detection (min.)	0.00	0.00	0.01	0.00	0.00	0.03
TMC Verification (min.)	1.17	1.08	1.20	4.88	5.21	4.44
TMC Response (min.)	9.68	10.82	9.35	7.17	8.01	7.54
RR Dispatch Time (min.)	1.02	1.54	1.36	2.21	2.77	2.62
RR Response Time (min.)	8.79	9.40	8.10	5.28	5.33	5.03
Event Clearance (min.)	19.30	21.81	19.39	18.13	24.19	21.26
Roadway Clearance (min.)	20.29	46.62	33.66	34.41	43.38	41.80
Incident Clearance (min.)	44.31	71.18	54.22	52.92	66.60	62.69
# of Events w/ RR/SIRV	1,035	1,060	30,241	592	494	14,568
RR/SIRV Responses	1,035	1,060	30,241	592	494	14,568
RR/SIRV Activities	880	794	24,322	636	522	15,429

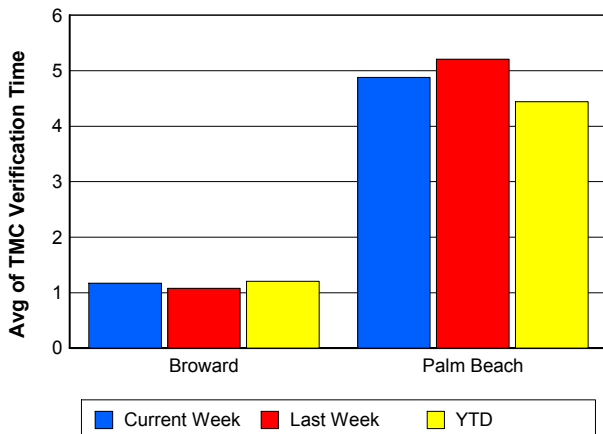
Number of Events / County



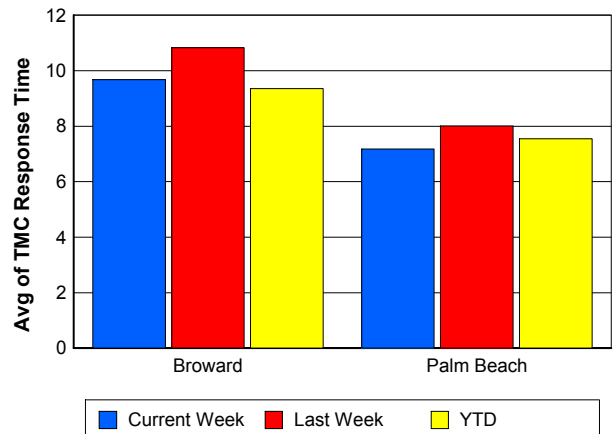
TMC Detection Time



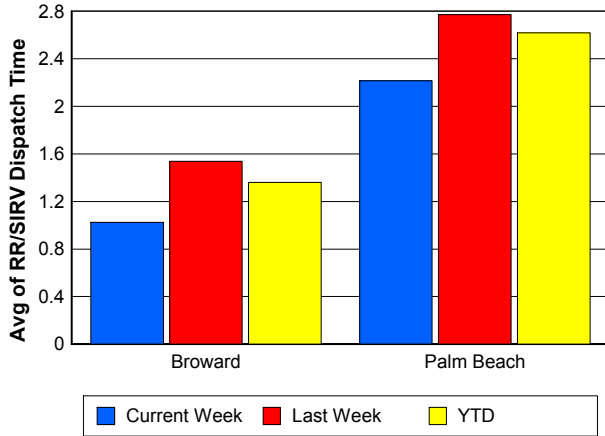
TMC Verification Time



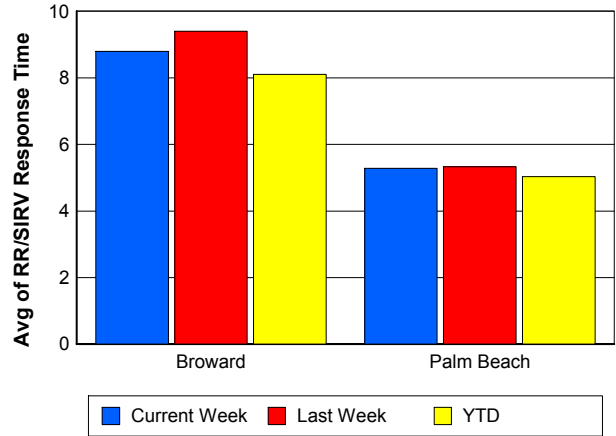
TMC Response Time



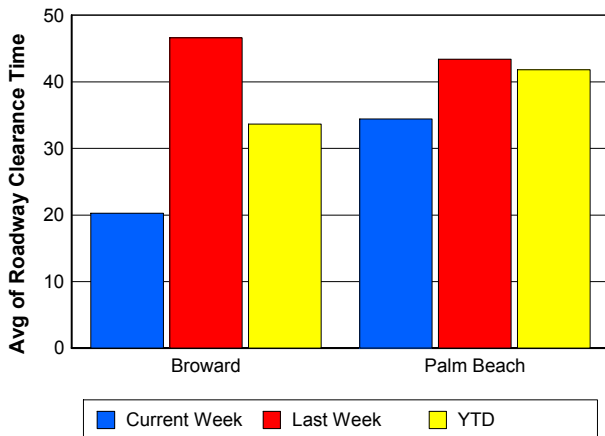
Road Ranger / SIRV Dispatch Time



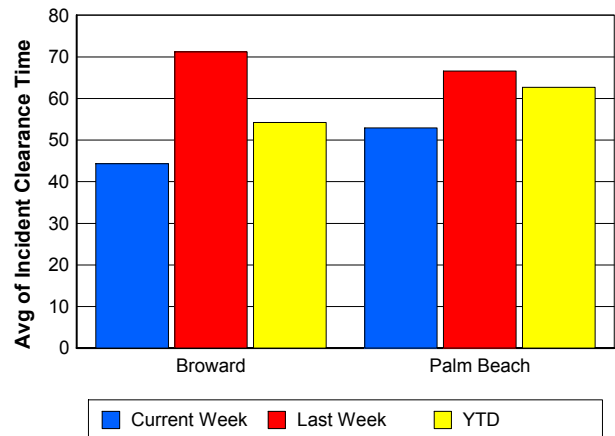
Road Ranger / SIRV Response Time



Roadway Clearance Time (2A)



Incident Clearance Time (3B)

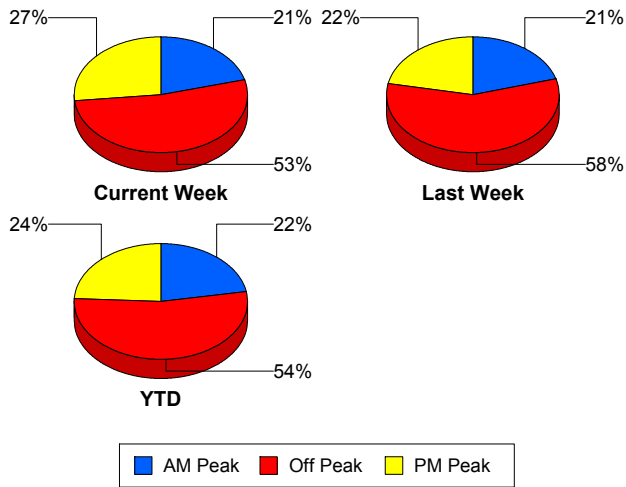


Performance Measures by Peak Period

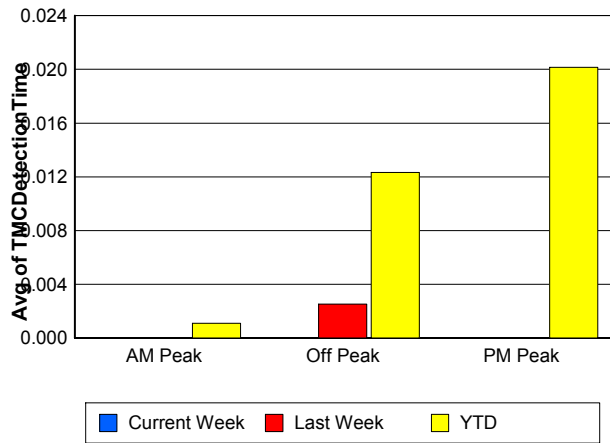
Note: AM peak period is defined as 6am to 10am and PM peak period is defined as 3pm to 7pm.

	AM Peak			Off Peak			PM Peak		
	<u>Current Week</u>	<u>Last Week</u>	<u>YTD</u>	<u>Current Week</u>	<u>Last Week</u>	<u>YTD</u>	<u>Current Week</u>	<u>Last Week</u>	<u>YTD</u>
Number of Events	384	367	11,600	971	1,029	27,862	492	392	12,597
Number of Incidents	14	11	459	31	51	1,100	19	22	536
TMC Detection (min.)	0.00	0.00	0.00	0.00	0.00	0.01	0.00	0.00	0.02
TMC Verification (min.)	1.33	1.77	1.33	2.79	2.57	2.31	2.55	2.10	2.64
TMC Response (min.)	8.13	9.36	8.10	9.36	10.79	9.06	7.61	7.31	8.29
RR Dispatch Time (min.)	1.19	1.28	1.32	1.52	2.31	1.89	1.55	1.58	1.94
RR Response Time (min.)	6.99	8.06	6.80	8.04	8.38	7.19	6.17	5.94	6.43
Event Clearance (min.)	17.24	20.22	18.54	19.30	24.21	20.47	19.42	20.20	20.10
Roadway Clearance (min.)	19.35	53.65	33.25	29.86	49.42	41.42	19.47	32.05	29.08
Incident Clearance (min.)	46.66	95.59	53.54	50.23	72.24	61.60	41.54	50.07	51.12
# of Events w/ RR/SIRV	344	328	10,191	850	878	23,628	433	348	10,990
RR/SIRV Responses	344	328	10,191	850	878	23,628	433	348	10,990
RR/SIRV Activities	326	283	8,886	768	722	20,717	422	311	10,148

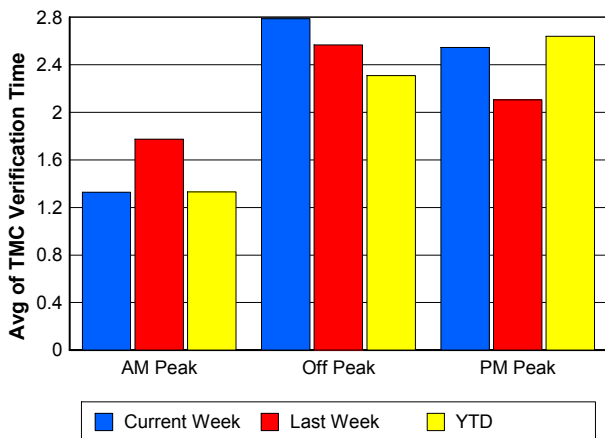
Number of Events / Peak Period



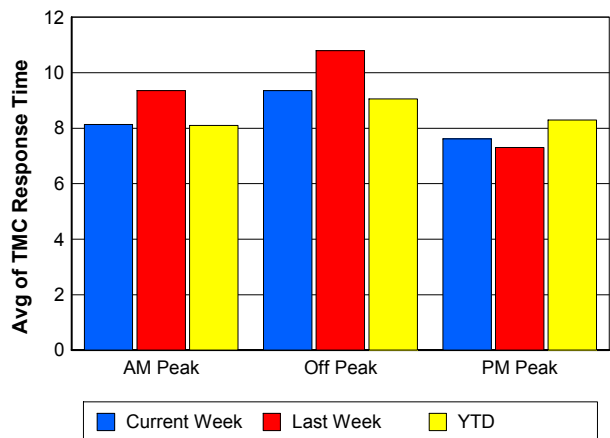
TMC Detection Time



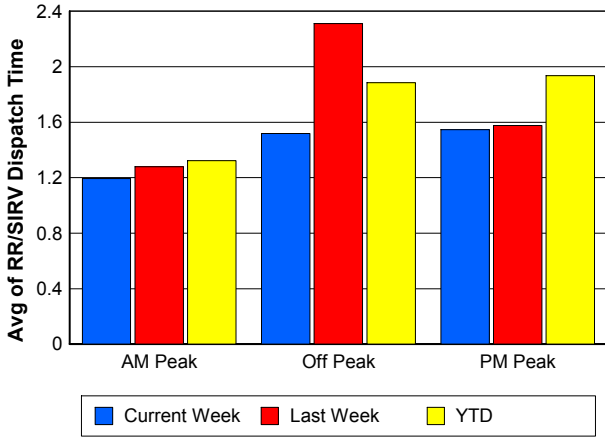
TMC Verification Time



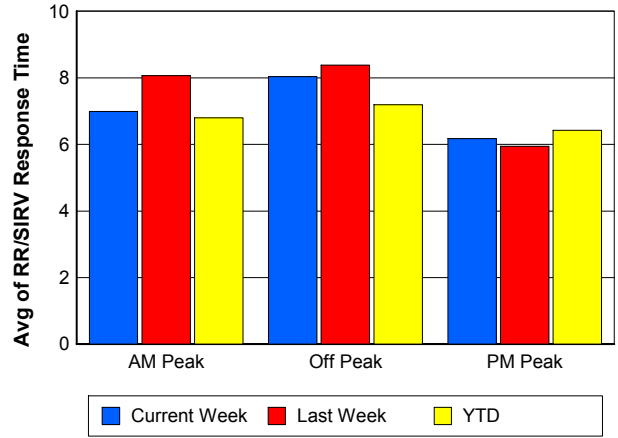
TMC Response Time



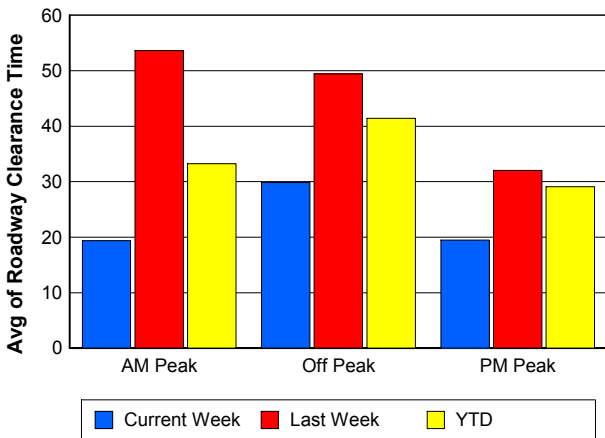
Road Ranger / SIRV Dispatch Time



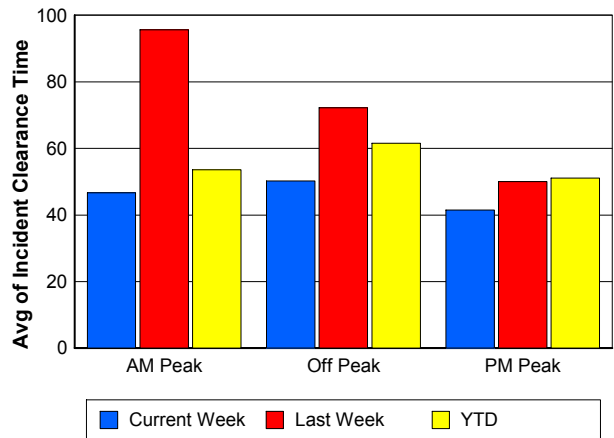
Road Ranger / SIRV Response Time



Roadway Clearance Time (2A)



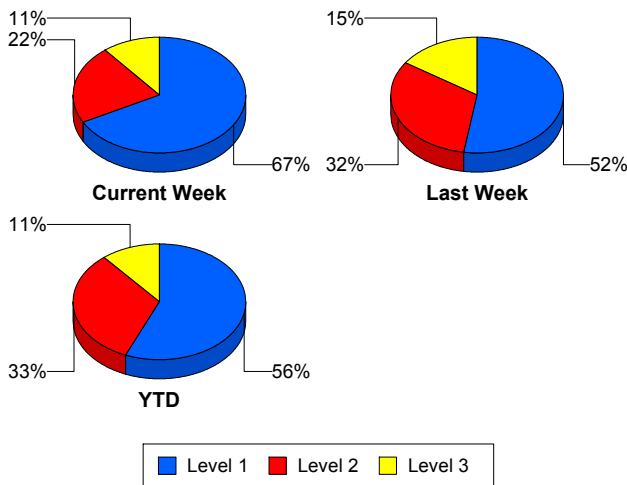
Incident Clearance Time (3B)



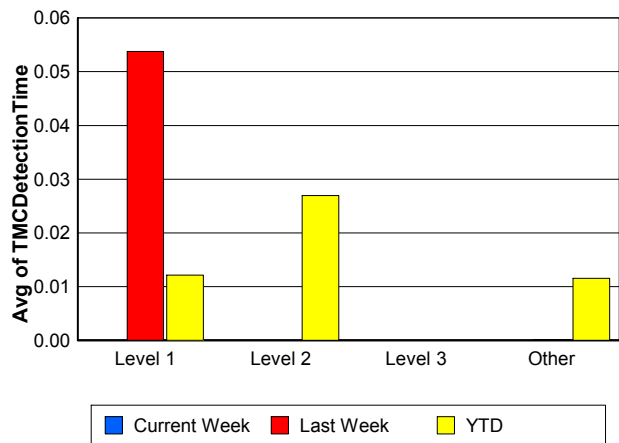
Performance Measures by Severity

	Level 1			Level 2			Level 3			Other		
	<u>This Week</u>	<u>Last Week</u>	<u>YTD</u>	<u>This Week</u>	<u>Last Week</u>	<u>YTD</u>	<u>This Week</u>	<u>Last Week</u>	<u>YTD</u>	<u>This Week</u>	<u>Last Week</u>	<u>YTD</u>
Number of Events	43	44	1,181	14	27	681	7	13	231	1,783	1,704	49,966
Number of Incidents	43	44	1,181	14	27	681	7	13	231	0	0	2
TMC Detection (min.)	0.00	0.05	0.01	0.00	0.00	0.03	0.00	0.00	0.00	0.00	0.00	0.01
TMC Verification (min.)	1.31	1.97	1.40	2.90	2.41	4.32	4.69	2.10	2.91	2.43	2.31	2.16
TMC Response (min.)	8.66	8.24	7.62	10.49	12.44	12.15	15.45	21.98	12.90	8.56	9.52	8.58
RR Dispatch Time (min.)	1.31	1.38	1.42	1.87	2.84	2.50	2.09	3.15	3.38	1.45	1.92	1.76
RR Resp. Time (min.)	7.33	6.87	6.24	8.62	9.57	9.70	13.36	18.83	9.51	7.26	7.60	6.86
Event Clearance (min.)	40.64	45.57	40.04	55.34	72.15	69.10	68.19	144.93	110.12	17.90	20.20	18.39
Roadway Clear. (min.)	13.16	14.50	14.97	45.40	54.72	52.51	52.17	130.80	99.63			-21.46
Incident Clearance (min.)	40.64	45.57	40.04	55.34	72.15	69.10	68.19	144.93	109.88			0.00
# of Events w/ RR/SIRV	43	43	1,156	14	27	674	7	13	209	1,563	1,471	42,770
RR/SIRV Responses	43	43	1,156	14	27	674	7	13	209	1,563	1,471	42,770
RR/SIRV Activities	63	54	1,696	31	40	1,270	15	33	515	1,407	1,189	36,270

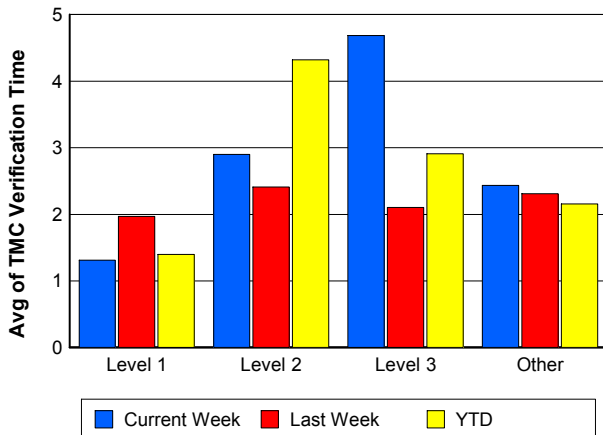
Number of Events / Severity



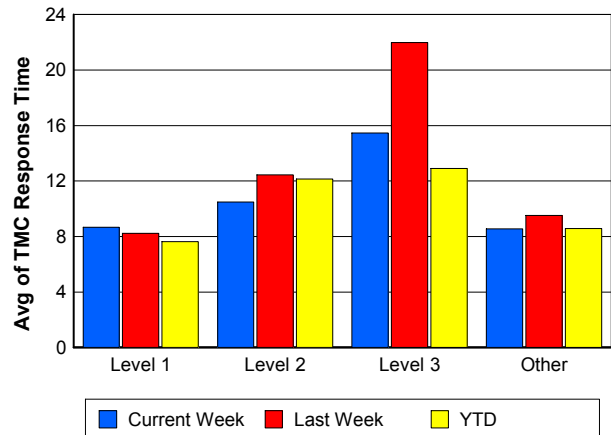
TMC Detection Time



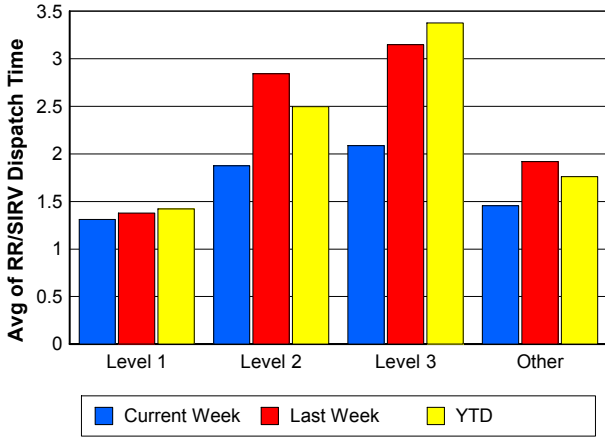
TMC Verification Time



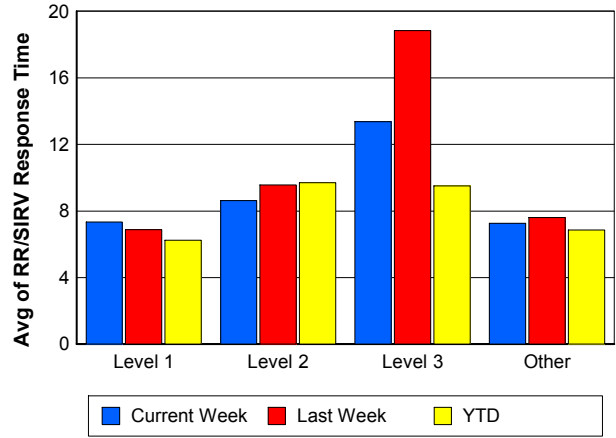
TMC Response Time



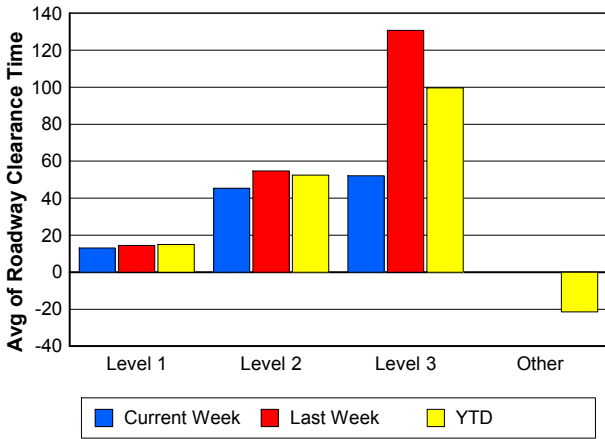
Road Ranger / SIRV Dispatch Time



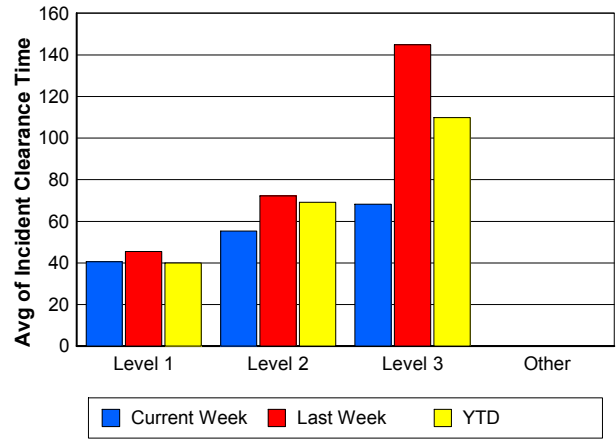
Road Ranger / SIRV Response Time



Roadway Clearance Time (2A)



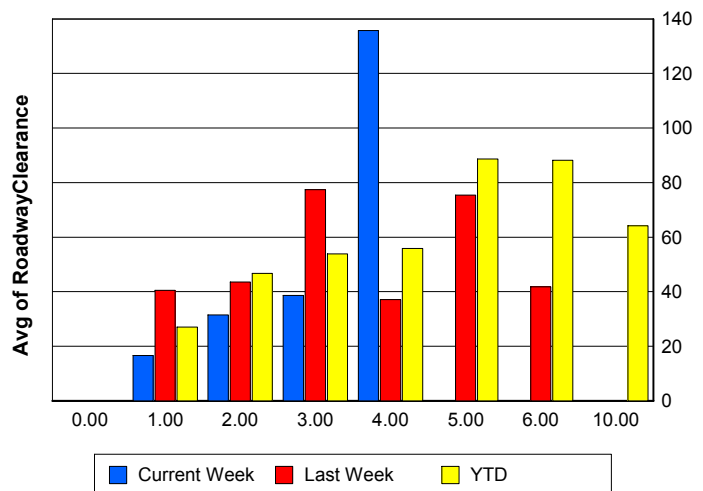
Incident Clearance Time (3B)



Roadway Clearance by Maximum Number of Lanes Blocked

	Current Week	Last Week	YTD
0			
1	16.57	40.51	27.05
2	31.50	43.60	46.68
3	38.62	77.37	53.84
4	135.78	37.06	55.90
5	0.00	75.40	88.65
6	0.00	41.78	88.21
10	0.00	0.00	64.12

Roadway Clearance Time (2A)



Performance Measures by Roadway

595

	<u>Current Week</u>	<u>Last Week</u>	<u>YTD</u>
Number of Events	62	45	1,229
Number of Incidents	2	1	57
TMC Detection (min.)	0.00	0.00	0.00
TMC Verification (min.)	1.26	0.57	1.78
TMC Response (min.)	14.43	12.19	15.32
RR Dispatch Time (min.)	1.18	3.77	2.03
RR Resp. Time (min.)	13.25	9.40	13.36
Event Clearance (min.)	17.72	16.42	19.30
Roadway Clear. (min.)	11.60	11.82	47.65
Incident Clearance (min.)	30.10	19.90	60.30
# of Events w/ RR/SIRV	44	34	890
RR/SIRV Responses	44	34	890
RR/SIRV Activities	28	14	572

75

	<u>Current Week</u>	<u>Last Week</u>	<u>YTD</u>
Number of Events	260	278	7,896
Number of Incidents	5	7	149
TMC Detection (min.)	0.00	0.00	0.01
TMC Verification (min.)	2.14	2.13	2.16
TMC Response (min.)	10.53	12.82	10.34
RR Dispatch Time (min.)	0.91	1.42	1.42
RR Resp. Time (min.)	9.70	11.56	9.06
Event Clearance (min.)	18.61	23.12	20.14
Roadway Clear. (min.)	32.97	94.29	52.43
Incident Clearance (min.)	46.58	108.43	69.59
# of Events w/ RR/SIRV	220	225	6,341
RR/SIRV Responses	220	225	6,341
RR/SIRV Activities	190	148	5,234

95

	<u>Current Week</u>	<u>Last Week</u>	<u>YTD</u>
Number of Events	1,509	1,451	42,504
Number of Incidents	55	75	1,822
TMC Detection (min.)	0.00	0.00	0.01
TMC Verification (min.)	2.53	2.41	2.20
TMC Response (min.)	8.27	9.29	8.29
RR Dispatch Time (min.)	1.57	1.98	1.83
RR Resp. Time (min.)	6.86	7.26	6.47
Event Clearance (min.)	19.07	22.66	19.95
Roadway Clear. (min.)	24.62	41.91	35.25
Incident Clearance (min.)	48.65	67.43	57.04
# of Events w/ RR/SIRV	1,347	1,282	37,225
RR/SIRV Responses	1,347	1,282	37,225
RR/SIRV Activities	1,284	1,144	33,616

OKEEB

	<u>YTD</u>
Number of Events	1
Number of Incidents	0
TMC Detection (min.)	0.00
TMC Verification (min.)	0.00
TMC Response (min.)	0.00
RR Dispatch Time (min.)	0.00
RR Resp. Time (min.)	0.00
Event Clearance (min.)	18.45
Roadway Clear. (min.)	
Incident Clearance (min.)	
# of Events w/ RR/SIRV	1
RR/SIRV Responses	1
RR/SIRV Activities	1

SR-816

	<u>Current Week</u>	<u>Last Week</u>	<u>YTD</u>
Number of Events	5	1	81
Number of Incidents	2	1	50
TMC Detection (min.)	0.00	0.00	0.00
TMC Verification (min.)	0.00	0.00	0.95
TMC Response (min.)	0.00	0.00	1.46
RR Dispatch Time (min.)	0.00	0.00	0.12
RR Resp. Time (min.)	0.00	0.00	1.35
Event Clearance (min.)	14.06	1.10	15.07
Roadway Clear. (min.)	12.23	0.53	16.16
Incident Clearance (min.)	15.33	1.10	19.18
# of Events w/ RR/SIRV	5	1	71
RR/SIRV Responses	5	1	71
RR/SIRV Activities	6	1	77

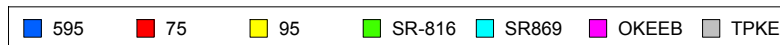
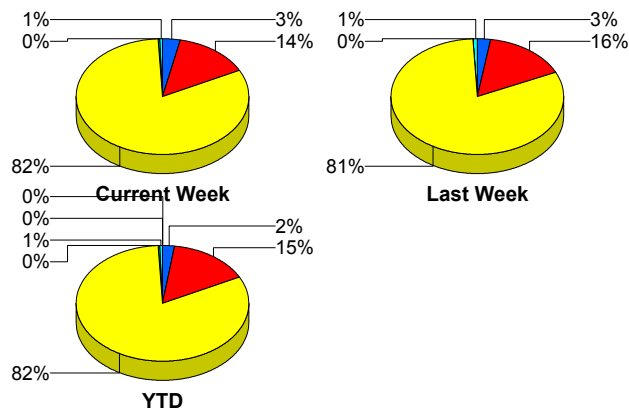
SR869

	<u>Current Week</u>	<u>Last Week</u>	<u>YTD</u>
Number of Events	11	13	338
Number of Incidents	0	0	7
TMC Detection (min.)	0.00	0.00	0.00
TMC Verification (min.)	0.58	0.03	0.88
TMC Response (min.)	5.37	2.31	8.07
RR Dispatch Time (min.)	0.60	0.71	1.20
RR Resp. Time (min.)	4.86	1.97	7.22
Event Clearance (min.)	12.05	16.50	18.39
Roadway Clear. (min.)			37.30
Incident Clearance (min.)			60.64
# of Events w/ RR/SIRV	11	12	281
RR/SIRV Responses	11	12	281
RR/SIRV Activities	8	9	251

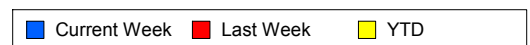
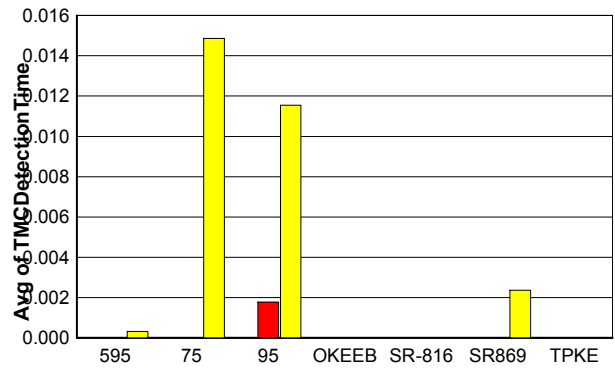
TPKE

	<u>YTD</u>
Number of Events	10
Number of Incidents	10
TMC Detection (min.)	0.00
TMC Verification (min.)	0.00
TMC Response (min.)	
RR Dispatch Time (min.)	
RR Resp. Time (min.)	
Event Clearance (min.)	62.29
Roadway Clear. (min.)	59.66
Incident Clearance (min.)	62.29
# of Events w/ RR/SIRV	0
RR/SIRV Responses	0
RR/SIRV Activities	0

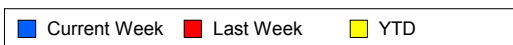
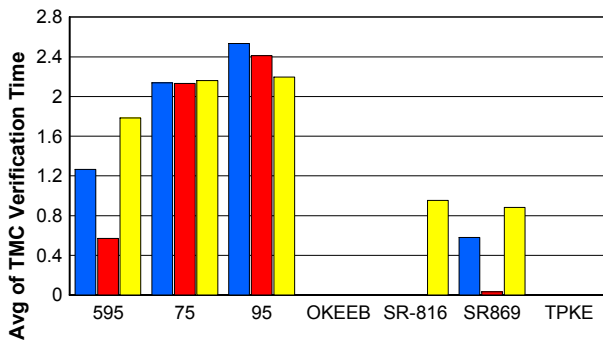
Number of Events / Roadway



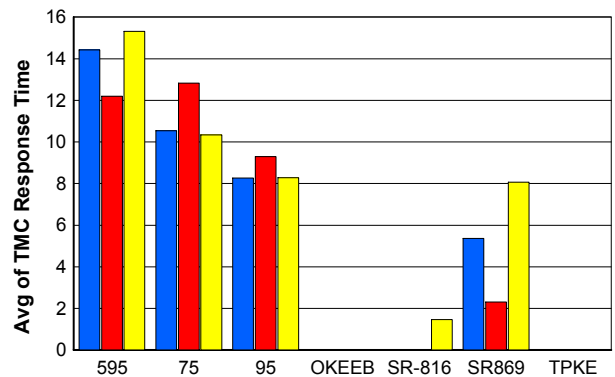
TMC Detection Time



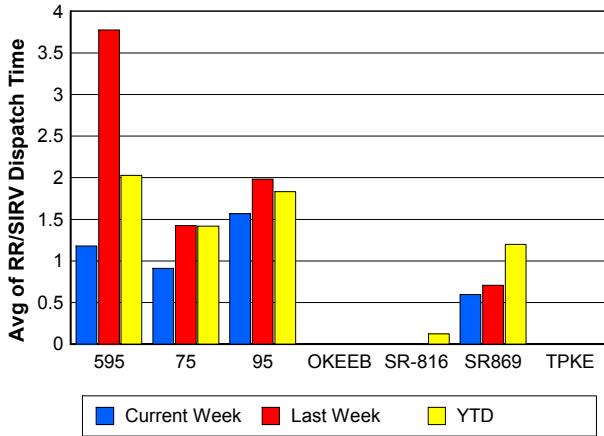
TMC Verification Time



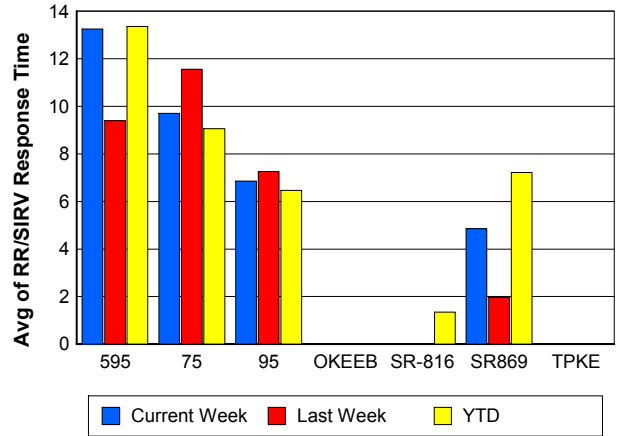
TMC Response Time



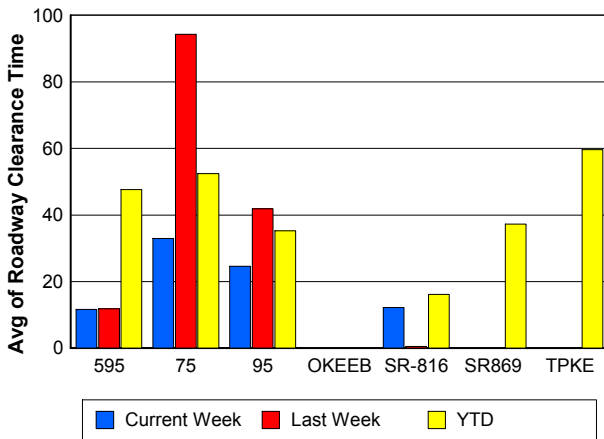
Road Ranger / SIRV Dispatch Time



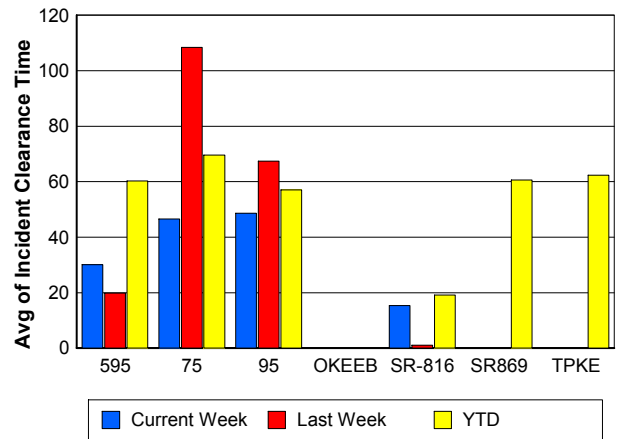
Road Ranger / SIRV Response Time



Roadway Clearance Time (2A)



Incident Clearance Time (3B)



Performance Measures by Event Type

Accident

	<u>Current Week</u>	<u>Last Week</u>	<u>YTD</u>
Number of Events	99	111	3,149
Number of Incidents	44	56	1,453
TMC Detection (min.)	0.00	0.02	0.02
TMC Verification (min.)	4.34	3.40	3.59
TMC Response (min.)	11.86	11.10	10.47
RR Dispatch Time (min.)	2.02	2.61	1.92
RR Response Time (min.)	9.83	8.49	8.57
Event Clearance (min.)	49.12	58.04	54.21
Roadway Clearance (min.)	28.11	42.46	39.00
Incident Clearance (min.)	55.47	71.62	64.79
# of Events w/ RR/SIRV	99	110	3,101
RR/SIRV Assists	99	110	3,101
RR/SIRV Activities	139	146	4,364

Debris on Roadway

	<u>Current Week</u>	<u>Last Week</u>	<u>YTD</u>
Number of Events	85	63	2,177
Number of Incidents	1	3	32
TMC Detection (min.)	0.00	0.00	0.00
TMC Verification (min.)	6.78	7.93	8.16
TMC Response (min.)	9.10	12.06	10.70
RR Dispatch Time (min.)	1.62	2.33	2.36
RR Response Time (min.)	7.45	9.58	8.32
Event Clearance (min.)	11.39	19.71	13.95
Roadway Clearance (min.)	3.87	65.17	30.87
Incident Clearance (min.)	5.07	60.07	32.34
# of Events w/ RR/SIRV	83	60	2,114
RR/SIRV Assists	83	60	2,114
RR/SIRV Activities	91	62	2,160

Disabled Vehicle

	<u>Current Week</u>	<u>Last Week</u>	<u>YTD</u>
Number of Events	1,274	1,163	33,456
Number of Incidents	14	18	403
TMC Detection (min.)	0.00	0.00	0.01
TMC Verification (min.)	2.67	2.74	2.45
TMC Response (min.)	8.41	9.51	8.24
RR Dispatch Time (min.)	1.46	1.89	1.73
RR Response Time (min.)	7.16	7.69	6.60
Event Clearance (min.)	18.77	21.16	20.06
Roadway Clearance (min.)	16.48	49.74	21.80
Incident Clearance (min.)	24.27	70.25	32.23
# of Events w/ RR/SIRV	1,208	1,095	31,848
RR/SIRV Assists	1,208	1,095	31,848
RR/SIRV Activities	1,229	1,059	31,639

Emergency Vehicles

	<u>Last Week</u>	<u>YTD</u>
Number of Events	1	39
Number of Incidents	1	33
TMC Detection (min.)	0.00	0.00
TMC Verification (min.)	0.00	0.74
TMC Response (min.)	9.77	8.51
RR Dispatch Time (min.)	9.72	1.53
RR Response Time (min.)	0.05	6.93
Event Clearance (min.)	45.47	33.84
Roadway Clearance (min.)	42.53	30.59
Incident Clearance (min.)	45.47	35.64
# of Events w/ RR/SIRV	1	27
RR/SIRV Assists	1	27
RR/SIRV Activities	2	30

Other

	<u>Current Week</u>	<u>Last Week</u>	<u>YTD</u>
Number of Events	369	437	12,813
Number of Incidents	1	0	28
TMC Detection (min.)	0.00	0.00	0.00
TMC Verification (min.)	0.02	0.06	0.09
TMC Response (min.)	5.74	6.27	10.13
RR Dispatch Time (min.)	1.19	1.68	1.68
RR Response Time (min.)	4.83	4.51	7.62
Event Clearance (min.)	12.59	17.06	11.69
Roadway Clearance (min.)	2.30		30.06
Incident Clearance (min.)	6.13		38.22
# of Events w/ RR/SIRV	217	276	7,328
RR/SIRV Assists	217	276	7,328
RR/SIRV Activities	31	31	1,098

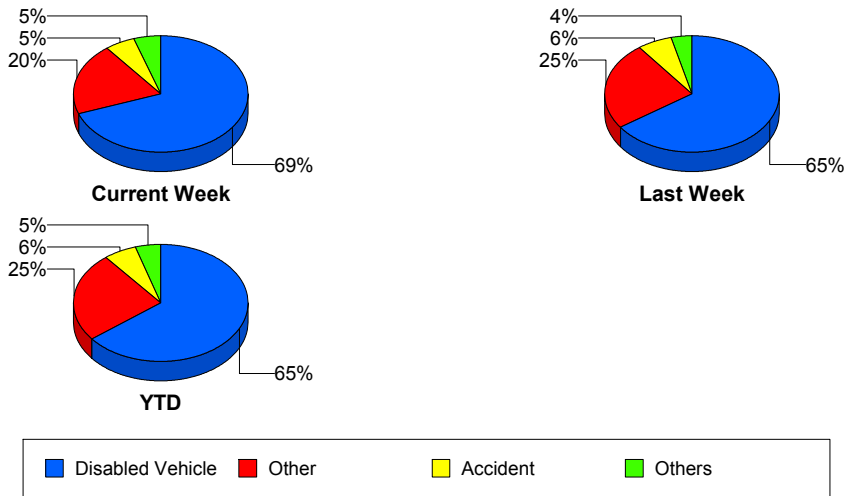
Police Activity

	<u>Current Week</u>	<u>Last Week</u>	<u>YTD</u>
Number of Events	3	5	131
Number of Incidents	2	4	75
TMC Detection (min.)	0.00	0.00	0.05
TMC Verification (min.)	0.00	2.37	1.24
TMC Response (min.)	8.06	9.01	13.20
RR Dispatch Time (min.)	1.59	5.58	5.14
RR Response Time (min.)	6.47	2.74	8.52
Event Clearance (min.)	31.89	58.93	48.43
Roadway Clearance (min.)	16.65	55.08	64.17
Incident Clearance (min.)	39.45	60.75	62.22
# of Events w/ RR/SIRV	3	4	108
RR/SIRV Assists	3	4	108
RR/SIRV Activities	5	5	118

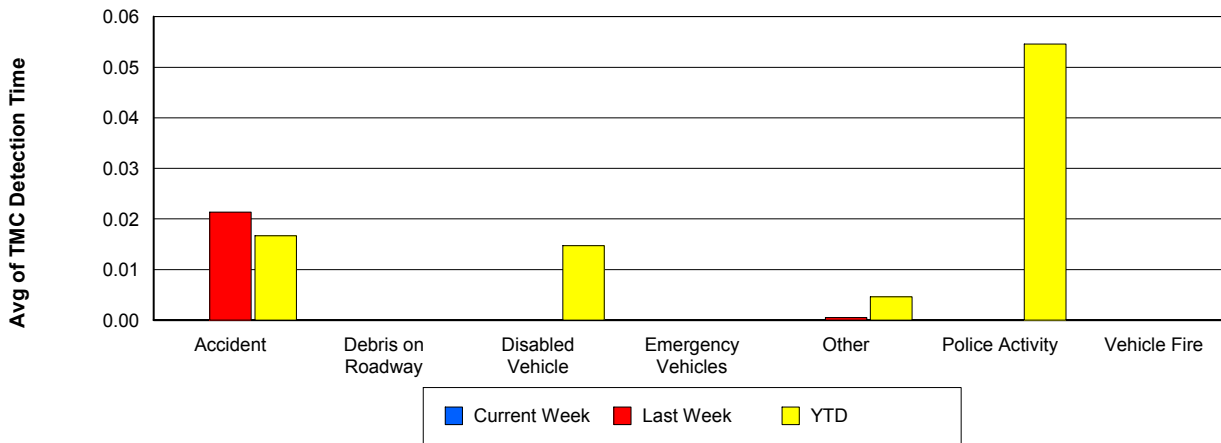
Vehicle Fire

	<u>Current Week</u>	<u>Last Week</u>	<u>YTD</u>
Number of Events	5	2	99
Number of Incidents	2	2	70
TMC Detection (min.)	0.00	0.00	0.00
TMC Verification (min.)	5.65	0.30	2.32
TMC Response (min.)	10.50	0.00	11.92
RR Dispatch Time (min.)	0.69	0.41	2.00
RR Response Time (min.)	9.81	0.00	9.92
Event Clearance (min.)	57.85	46.62	58.12
Roadway Clearance (min.)	29.80	42.16	46.52
Incident Clearance (min.)	64.43	46.62	65.98
# of Events w/ RR/SIRV	5	2	97
RR/SIRV Assists	5	2	97
RR/SIRV Activities	11	4	172

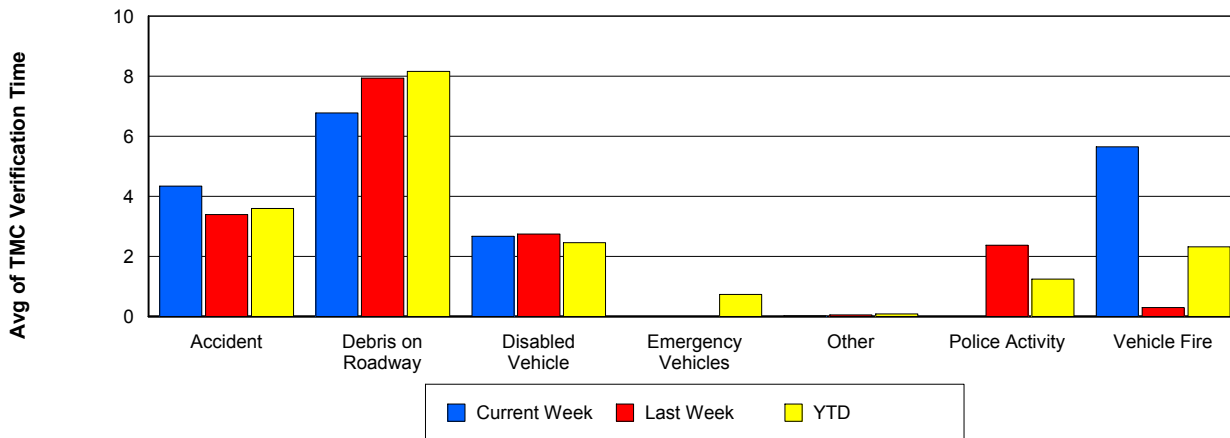
Number of Events / Event Type



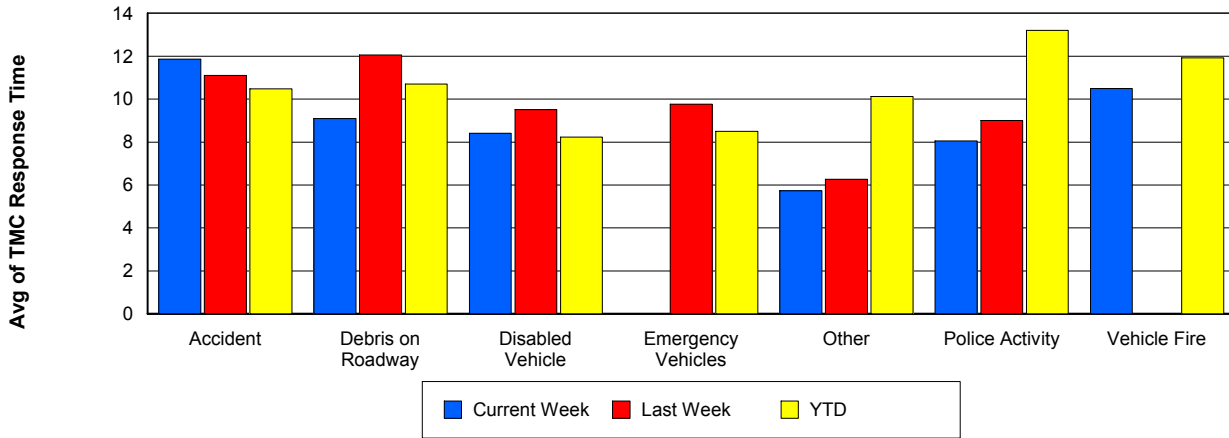
TMC Detection Time



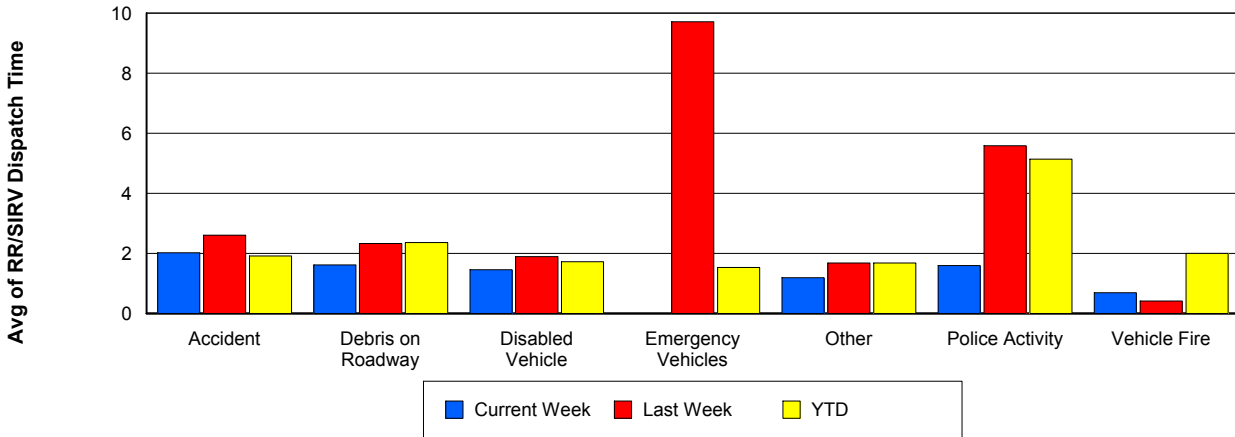
TMC Verification Time



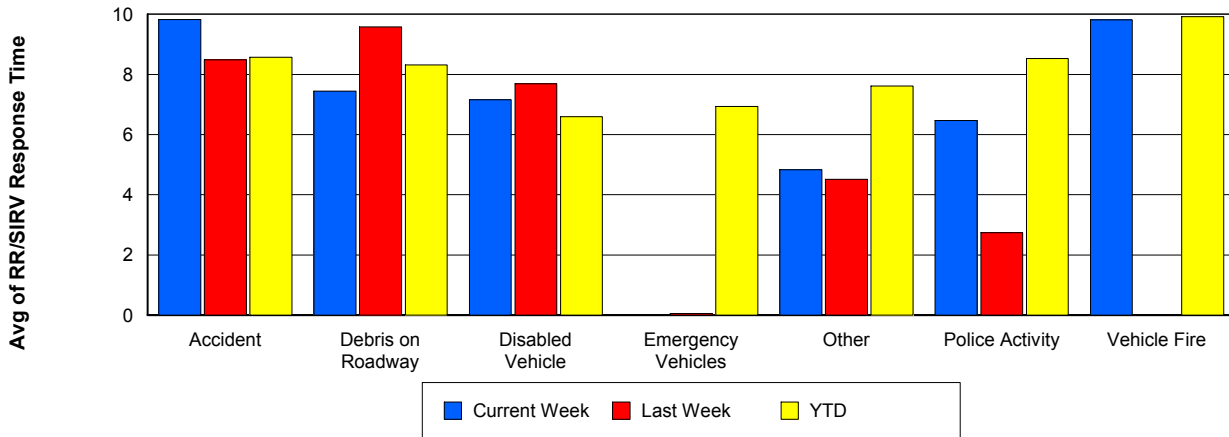
TMC Response Time



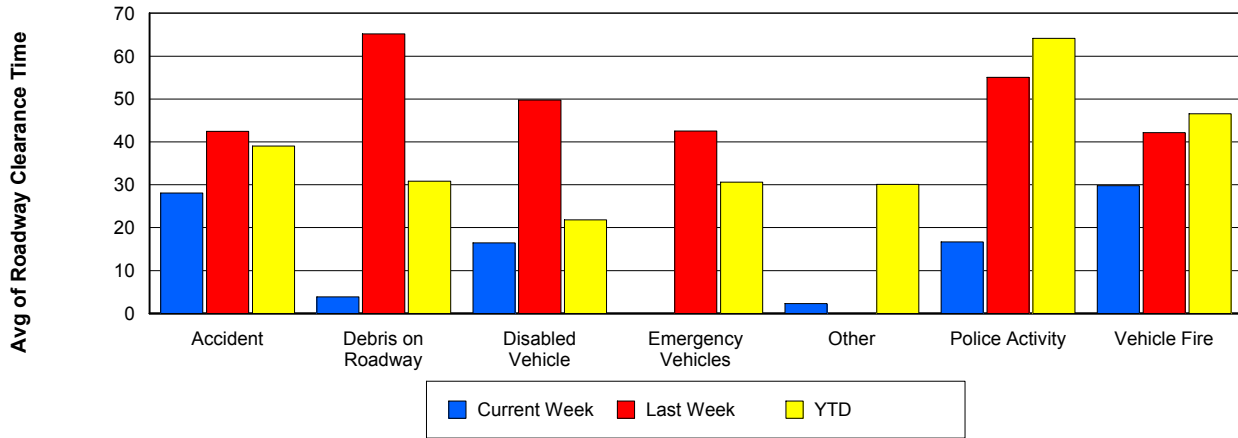
Road Ranger / SIRV Dispatch Time



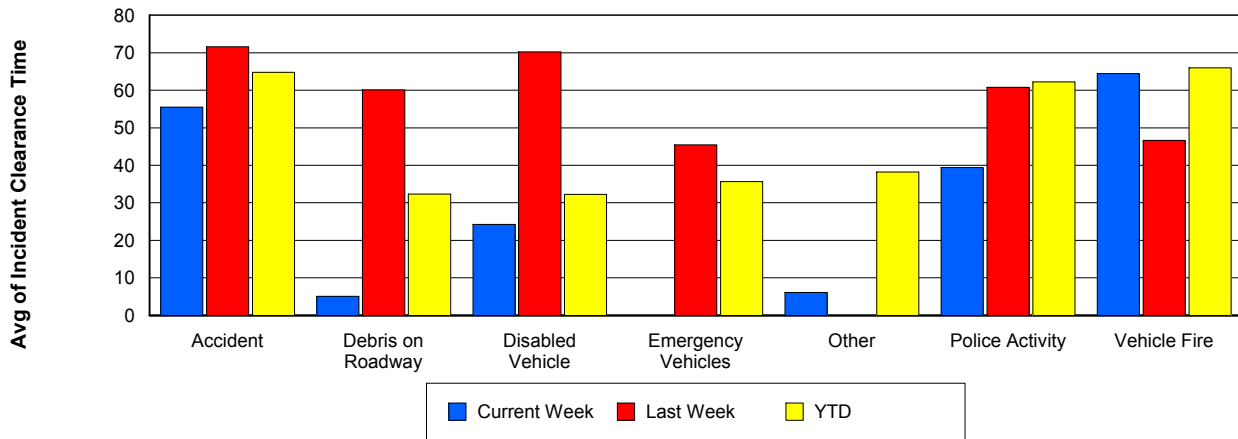
Road Ranger / SIRV Response Time



Roadway Clearance Time (2A)



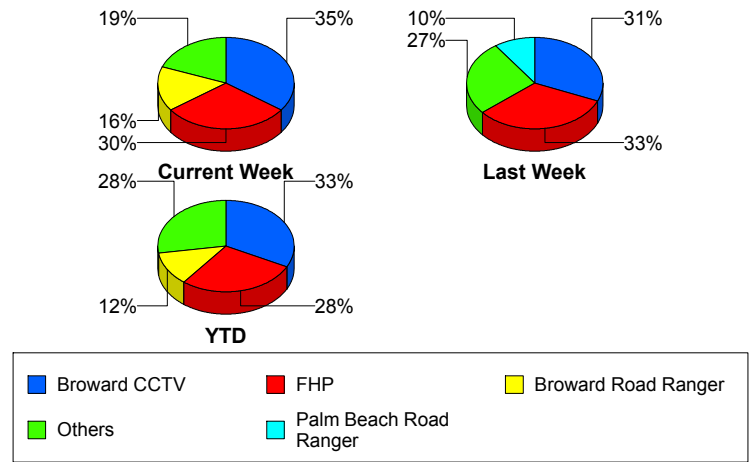
Incident Clearance Time (3B)



Incident Detection Methods

	Current Week	Last Week	YTD
Broward CCTV	22	26	674
Broward Road Ranger	10	6	245
Broward TMC	0	1	13
Broward VideoWall	1	3	35
BSO	1	2	27
County Police	0	0	2
District 4	0	1	49
District 6	0	0	2
FDOT Maintenance	0	0	5
FHP	19	27	578
Fire	0	0	5
Florida's Turnpike	0	0	12
ITMS	0	0	1
ITMS CCTV	3	6	119
Local Police	0	0	1
Media	0	0	2
Motorist	1	1	21
Other	0	0	1
Palm Beach Road Ran	5	8	236
Road Watcher	0	0	10
SIRV	0	0	3
TSS Detection	0	0	1
VisioPaD Detection	1	2	25
Total	63	83	2,067

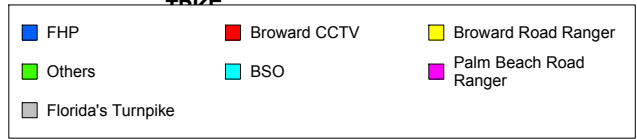
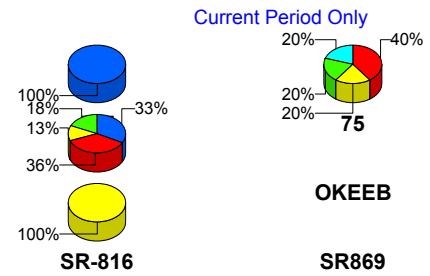
Total Incidents by Detection Method



Incident Detection Methods by Roadway

		Current Week	Last Week	YTD
595	Broward CCTV	0	1	14
	Broward Road Ranger	0	0	7
	BSO	0	0	3
	County Police	0	0	1
	FHP	1	0	10
	SIRV	0	0	1
	VisioPaD Detection	0	0	1
	Total	1	1	37
75	Broward CCTV	2	3	59
	Broward Road Ranger	1	0	20
	Broward VideoWall	0	1	1
	BSO	1	2	18
	District 4	0	0	4
	District 6	0	0	1
	FHP	0	1	30
	Fire	0	0	4
	Road Watcher	0	0	1
	VisioPaD Detection	1	0	11
	Total	5	7	149
95	Broward CCTV	20	22	601
	Broward Road Ranger	7	5	172
	Broward TMC	0	1	13
	Broward VideoWall	1	2	34
	BSO	0	0	4
	County Police	0	0	1
	District 4	0	1	43
	District 6	0	0	1
	FDOT Maintenance	0	0	5
	FHP	18	26	536
	Fire	0	0	1
	ITMS	0	0	1

Total Events by Roadway and Detection Method

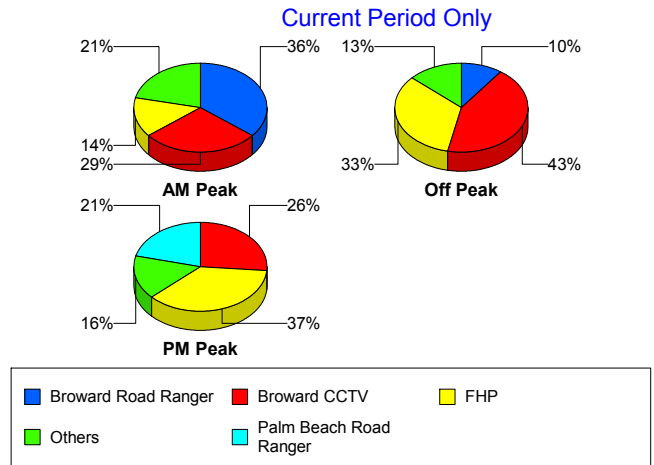


		Current Week	Last Week	YTD
95	ITMS CCTV	3	6	119
	Local Police	0	0	1
	Media	0	0	2
	Motorist	1	1	21
	Other	0	0	1
	Palm Beach Road Ran	5	8	236
	Road Watcher	0	0	7
	SIRV	0	0	2
	TSS Detection	0	0	1
	VisioPaD Detection	0	2	13
	Total	55	74	1,815
SR-816	Broward Road Ranger	2	1	44
	BSO	0	0	1
	District 4	0	0	2
	FHP	0	0	1
	Road Watcher	0	0	2
	Total	2	1	50
SR869	Broward Road Ranger	0	0	2
	BSO	0	0	1
	FHP	0	0	1
	Florida's Turnpike	0	0	2
	Total	0	0	6
TPKE	Florida's Turnpike	0	0	10
	Total	0	0	10
Total		63	83	2,067

Incident Detection Methods by Peak Period

		Current Week	Last Week	YTD
AM Peak	Broward CCTV	4	6	144
	Broward Road Ranger	5	1	63
	Broward TMC	0	0	3
	Broward VideoWall	1	2	20
	BSO	0	0	5
	County Police	0	0	1
	District 4	0	0	12
	District 6	0	0	1
	FDOT Maintenance	0	0	1
	FHP	2	0	105
	Fire	0	0	2
	Florida's Turnpike	0	0	2
	ITMS CCTV	2	1	28
	Local Police	0	0	1
	Media	0	0	1
	Motorist	0	0	2
	Palm Beach Road Ran	0	0	58
	Road Watcher	0	0	2
	SIRV	0	0	1
	VisioPaD Detection	0	0	2
Total	14	10	454	
Off Peak	Broward CCTV	13	12	364
	Broward Road Ranger	3	3	107
	Broward TMC	0	0	6
	Broward VideoWall	0	1	12
	BSO	1	1	14
	County Police	0	0	1
	District 4	0	0	24
	District 6	0	0	1
	FDOT Maintenance	0	0	3
	FHP	10	22	323

Total Events by Peak Period and Detection Method

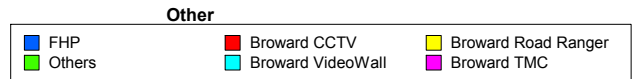
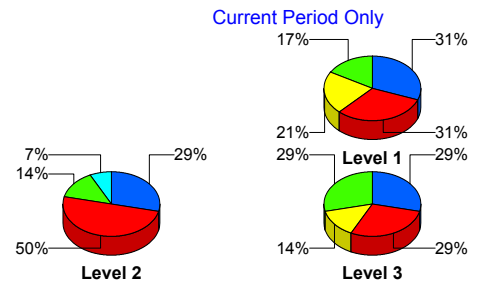


		Current Week	Last Week	YTD
Off Peak	Florida's Turnpike	0	0	9
	ITMS	0	0	1
	ITMS CCTV	1	5	65
	Motorist	1	1	13
	Other	0	0	1
	Palm Beach Road Ran	1	5	119
	Road Watcher	0	0	4
	SIRV	0	0	1
	TSS Detection	0	0	1
	VisioPaD Detection	0	1	14
	Total	30	51	1,083
PM Peak	Broward CCTV	5	8	166
	Broward Road Ranger	2	2	75
	Broward TMC	0	1	4
	Broward VideoWall	0	0	3
	BSO	0	1	8
	District 4	0	1	13
	FDOT Maintenance	0	0	1
	FHP	7	5	151
	Fire	0	0	3
	Florida's Turnpike	0	0	1
	ITMS CCTV	0	0	26
	Media	0	0	1
	Motorist	0	0	6
	Palm Beach Road Ran	4	3	59
	Road Watcher	0	0	4
	SIRV	0	0	1
	VisioPaD Detection	1	1	9
	Total	19	22	531
Total	63	83	2,067	

Incident Detection Methods by Severity

		Current Week	Last Week	YTD
	FHP	0	0	1
	Total	0	0	1
Level 1	Broward CCTV	13	18	408
	Broward Road Ranger	9	3	179
	Broward TMC	0	1	10
	Broward VideoWall	0	2	21
	BSO	0	1	7
	County Police	0	0	1
	District 4	0	1	31
	District 6	0	0	1
	FDOT Maintenance	0	0	2
	FHP	13	10	252
	Fire	0	0	2
	ITMS CCTV	2	2	61
	Media	0	0	1
	Motorist	1	0	12
	Other	0	0	1
	Palm Beach Road Ran	4	6	155
	Road Watcher	0	0	9
	SIRV	0	0	1
	TSS Detection	0	0	1
	VisioPaD Detection	0	0	11
	Total	42	44	1,166
Level 2	Broward CCTV	7	4	200
	Broward Road Ranger	0	1	53
	Broward TMC	0	0	3
	Broward VideoWall	1	0	13
	BSO	0	0	3
	District 4	0	0	13
	FDOT Maintenance	0	0	3
	FHP	4	15	253

Total Events by Severity and Detection Method



		Current Week	Last Week	YTD
Level 2	Fire	0	0	1
	Florida's Turnpike	0	0	1
	ITMS	0	0	1
	ITMS CCTV	0	4	46
	Local Police	0	0	1
	Motorist	0	0	8
	Palm Beach Road Ran	1	1	62
	Road Watcher	0	0	1
	SIRV	0	0	1
	VisioPaD Detection	1	2	11
	Total	14	27	674
Level 3	Broward CCTV	2	4	66
	Broward Road Ranger	1	2	13
	Broward VideoWall	0	1	1
	BSO	1	1	17
	County Police	0	0	1
	District 4	0	0	5
	District 6	0	0	1
	FHP	2	2	73
	Fire	0	0	2
	Florida's Turnpike	0	0	11
	ITMS CCTV	1	0	12
	Media	0	0	1
	Motorist	0	1	1
	Palm Beach Road Ran	0	1	19
	SIRV	0	0	1
	VisioPaD Detection	0	0	3
	Total	7	12	227
Total	63	83	2,067	

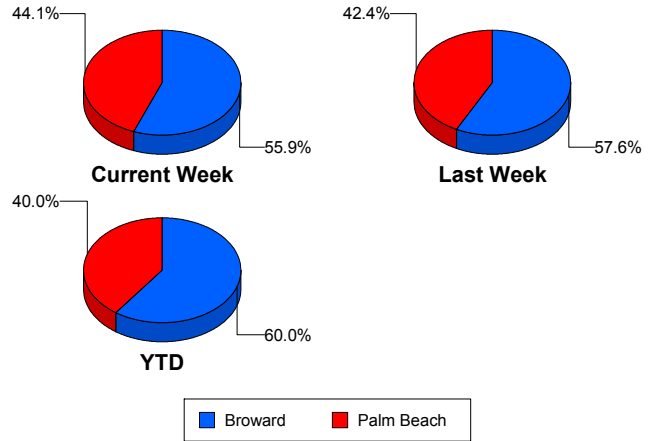
Road Ranger / SIRV Performance Measures

Road Ranger / SIRV Performance By County

Values presented are:
 - Total Events with a RR/SIRV Response
 - Total RR/SIRV Responses,
 - Total Activities Performed

	Current We	Last Week	YTD
Broward	911	842	25,912
	978	891	27,684
	1,025	929	28,772
Palm Beach	736	633	17,897
	771	657	18,474
	816	685	19,674

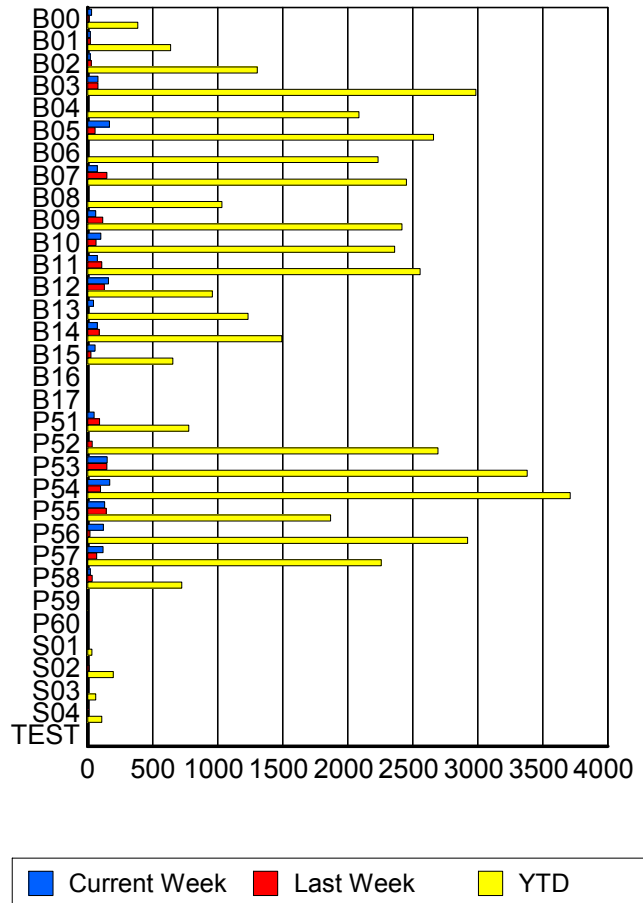
RR/SIRV Responses per County



Road Ranger / SIRV Performance By Truck

	Current We	Last Week	YTD
B00	29	11	380
	30	11	386
	31	12	409
B01	21	22	629
	21	22	639
	22	22	661
B02	20	27	1,288
	20	27	1,305
	21	27	1,332
B03	78	80	2,960
	80	80	2,986
	92	84	3,132
B04	0	1	2,056
	0	1	2,086
	0	1	2,173
B05	164	56	2,641
	168	57	2,661
	174	61	2,759
B06	1	0	2,204
	1	0	2,233
	1	0	2,329
B07	74	147	2,425
	75	147	2,453
	81	152	2,543
B08	1	0	1,018
	1	0	1,034
	1	0	1,072

RR/SIRV Responses per Truck



	Current We	Last Week	YTD
B09	60 63 66	115 117 123	2,390 2,417 2,519
B10	102 102 106	65 65 66	2,333 2,362 2,432
B11	74 74 75	109 109 117	2,526 2,558 2,656
B12	157 160 163	126 128 135	947 959 1,000
B13	46 46 47	0 0 0	1,222 1,233 1,262
B14	73 74 79	88 90 93	1,474 1,495 1,547
B15	57 57 61	25 26 26	649 656 685
B16	0 0 0	0 0 0	1 1 1
B17	0 0 0	1 1 1	2 2 2
P51	51 51 54	92 92 98	767 777 821
P52	2 2 3	36 36 38	2,661 2,694 2,869
P53	148 150 158	146 149 155	3,346 3,382 3,593
P54	169 171 178	98 100 102	3,665 3,712 3,933
P55	129 132 138	143 143 150	1,855 1,868 1,977
P56	120 121 131	18 18 20	2,887 2,922 3,123

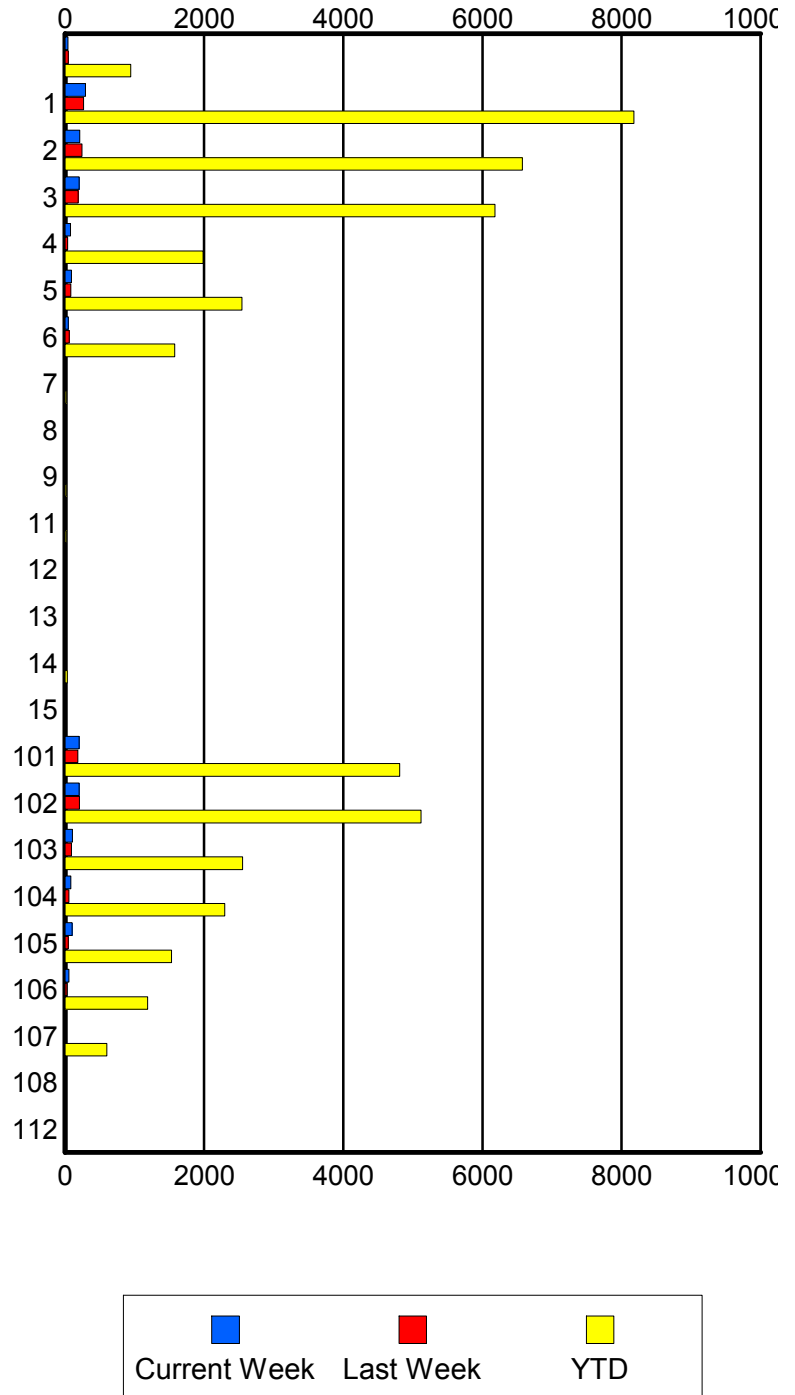
	Current We	Last Week	YTD
P57	114	69	2,231
	118	70	2,259
	126	72	2,414
P58	20	36	719
	20	36	725
	20	36	762
P59	0	0	3
	0	0	3
	0	0	3
P60	0	0	1
	0	0	1
	0	0	1
S01	0	2	34
	0	2	34
	0	2	37
S02	7	9	191
	7	10	198
	8	10	213
S03	1	3	59
	2	3	63
	2	3	69
S04	3	6	106
	3	6	108
	3	6	115
TEST	0	2	2
	0	2	2
	0	2	2

Road Ranger / SIRV Performance By Beat

	Current We	Last Week	YTD
	42	46	919
	43	47	944
	48	50	1,001
1	280	263	7,825
	294	268	8,180
	304	278	8,496
2	205	238	6,381
	212	243	6,575
	224	257	6,855
3	201	185	6,054
	204	189	6,179
	219	197	6,426
4	74	35	1,947
	77	35	1,986
	81	40	2,058
5	90	82	2,518
	90	82	2,542
	94	84	2,611
6	48	59	1,545
	48	61	1,578
	50	61	1,633
7	0	0	16
	0	0	17
	0	0	18
8	0	0	9
	0	0	9
	0	0	9
9	1	0	18
	1	0	18
	1	0	18
11	0	0	20
	0	0	20
	0	0	20
12	0	0	2
	0	0	2
	0	0	2
13	8	0	16
	8	0	16
	8	0	16
14	13	2	34
	13	2	34
	13	2	35
15	0	0	14
	0	0	14
	0	0	14

Values presented are:
 - Total Events with a RR/SIRV Response
 - Total RR/SIRV Responses,
 - Total Activities Performed

RR/SIRV Responses per Beat



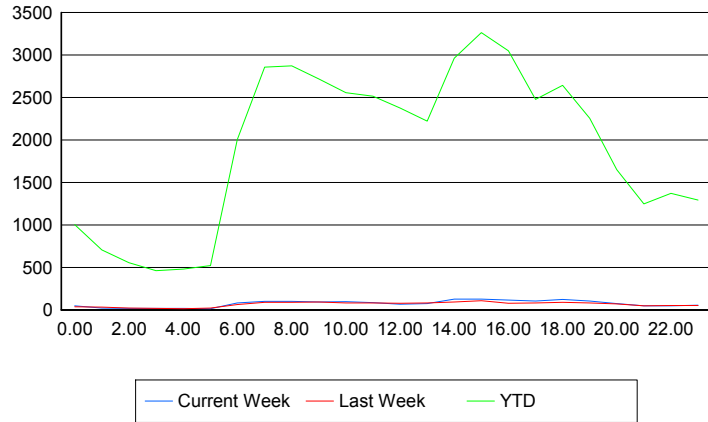
	Current We	Last Week	YTD
101	197	177	4,732
	200	182	4,813
	211	189	5,112
102	195	201	5,045
	201	205	5,117
	214	212	5,433
103	107	91	2,520
	108	92	2,552
	115	96	2,698
104	81	56	2,274
	81	56	2,295
	84	56	2,449
105	98	48	1,520
	100	48	1,530
	104	51	1,632
106	53	27	1,176
	54	27	1,187
	56	30	1,263
107	15	11	598
	15	11	600
	15	11	640
108	0	0	3
	0	0	4
	0	0	4
112	0	0	2
	0	0	2
	0	0	3

Road Ranger / SIRV Performance By Time of Day

Values presented are:
 - Total Events with a RR/SIRV Response
 - Total RR/SIRV Responses,
 - Total Activities Performed

	Current We	Last Week	YTD
12AM-1AM	47	33	962
	48	38	1,003
	50	41	1,064
1AM-2AM	18	30	675
	21	31	707
	21	34	734
2AM-3AM	17	22	518
	19	22	554
	20	24	589
3AM-4AM	16	16	438
	16	17	461
	16	17	493
4AM-5AM	16	14	425
	18	15	480
	23	15	514
5AM-6AM	10	20	445
	12	22	520
	13	22	536
6AM-7AM	77	59	1,891
	83	64	2,005
	85	68	2,093
7AM-8AM	88	86	2,714
	99	88	2,857
	105	92	2,991
8AM-9AM	97	83	2,694
	101	87	2,872
	113	93	3,016
9AM-10AM	89	88	2,613
	93	91	2,719
	98	94	2,854
10AM-11AM	93	78	2,438
	98	80	2,557
	107	83	2,682
11AM-12PM	81	80	2,397
	85	82	2,514
	91	84	2,639
12PM-1PM	64	74	2,249
	65	76	2,375
	66	77	2,478

Number of Responses / Hour of the Day



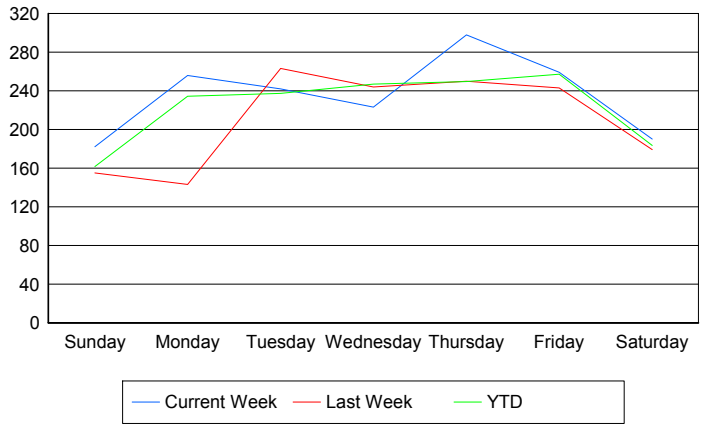
	Current We	Last Week	YTD
1PM-2PM	70	76	2,085
	75	82	2,221
	78	83	2,315
2PM-3PM	119	90	2,799
	126	94	2,962
	130	96	3,135
3PM-4PM	124	100	3,143
	127	106	3,263
	133	113	3,429
4PM-5PM	102	68	2,875
	114	76	3,047
	117	83	3,221
5PM-6PM	97	82	2,357
	103	83	2,478
	110	85	2,616
6PM-7PM	112	86	2,550
	122	89	2,641
	131	93	2,773
7PM-8PM	100	81	2,198
	104	83	2,257
	109	89	2,378
8PM-9PM	69	63	1,575
	72	71	1,649
	74	74	1,729
9PM-10PM	44	45	1,196
	46	46	1,247
	47	47	1,321
10PM-11PM	45	50	1,322
	46	52	1,371
	47	53	1,456
11PM-12AM	52	51	1,250
	56	53	1,291
	57	54	1,390

Road Ranger / SIRV Performance By Day of Week

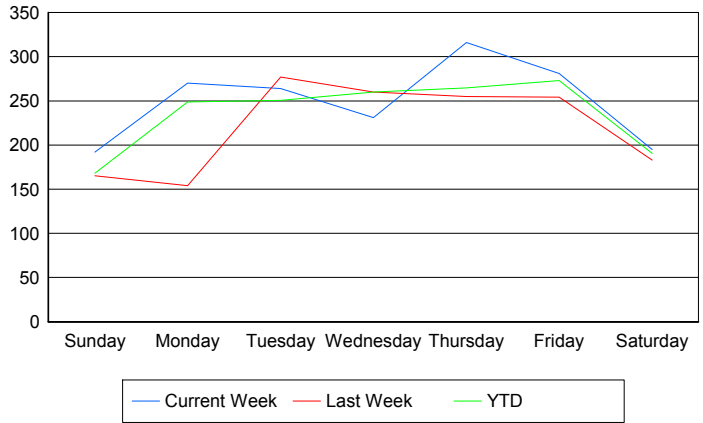
Values presented are: - Total Events with a RR/SIRV Response - Total RR/SIRV Responses, - Total Activities Performed

	Current We	Last Week	YTD
Sunday	182 192 202	155 165 173	4,453 4,634 4,854
Monday	256 270 276	143 154 157	6,414 6,760 7,093
Tuesday	242 264 279	263 277 285	6,605 6,832 7,287
Wednesday	223 231 248	244 260 273	6,831 7,054 7,574
Thursday	298 316 332	250 255 268	6,927 7,209 7,711
Friday	259 281 303	243 254 259	7,360 7,726 8,160
Saturday	190 195 201	179 183 199	5,257 5,460 5,767

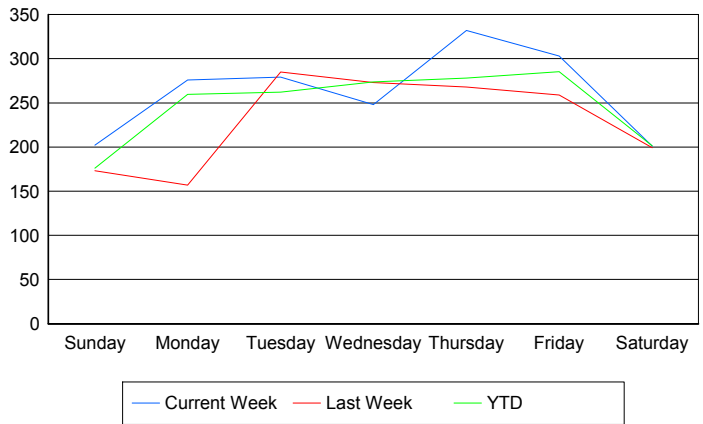
Avg # of events with a RR/SIRV Response per Day of the Week



Avg # of RR/SIRV Responses per Day of the Week



Avg # of RR/SIRV Activities Performed per Day of the Week



Road Ranger / SIRV Responses per Time of Day and Day of Week

