



Weekly Performance Measures Report Broward, Palm Beach Counties Period From Jun 27, 2010 to Jul 3, 2010

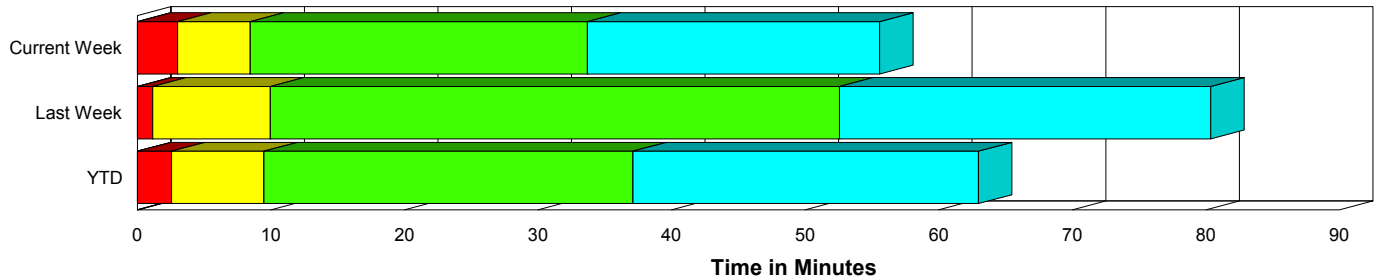


Created on:
July 06, 2010
8:48 am

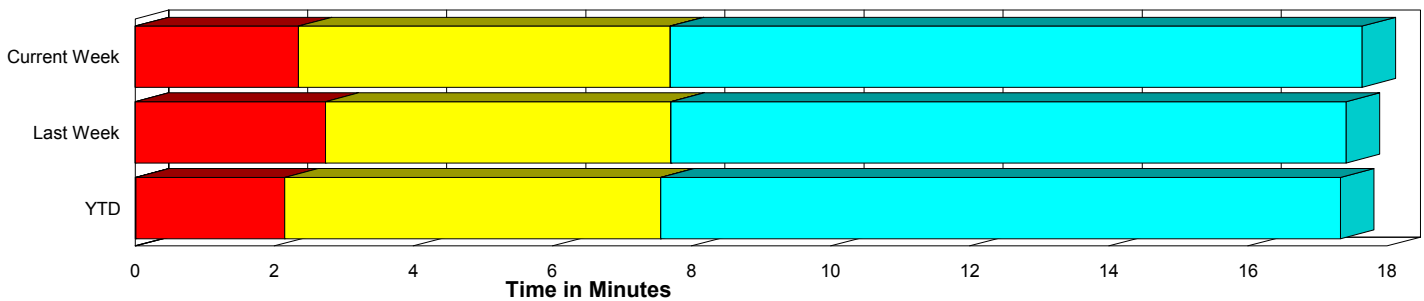
Performance Measures Summary

	Traffic Events (No Lanes Blocked)			Incidents (Lanes Blocked)		
	<u>This Week</u>	<u>Last Week</u>	<u>YTD</u>	<u>This Week</u>	<u>Last Week</u>	<u>YTD</u>
Number of Events	1,763	1,985	46,477	67	61	1,947
TMC Detection (min.)	0.00	0.00	0.01	0.01	0.00	0.02
TMC Verification (min.)	2.35	2.74	2.14	3.02	1.15	2.55
TMC Response (min.)	8.72	9.11	8.55	8.65	10.03	9.59
RR Dispatch Time (min.)	1.84	1.78	1.77	1.58	2.02	1.99
RR Response Time (min.)	6.93	7.22	6.81	7.06	8.00	7.64
Roadway Clearance (min.)				32.19	51.80	36.48
Event Clearance (min.)	18.67	18.82	18.34	54.06	78.05	61.98
# of Events w/ RR/SIRV	1,528	1,710	39,734	64	59	1,894
RR/SIRV Responses	1,528	1,710	39,734	64	59	1,894
RR/SIRV Activities	1,324	1,389	33,669	96	113	3,250

Incident Clearance Time-Line



Traffic Event (Non-Lane Blockage) Time-Line



■ Avg. TMC Detection Time	■ Avg. Time from TMC Response to Roadway Clearance*
■ Avg. Time from TMC Detection to TMC Verification	■ Avg. Time from Roadway Clearance to Incident/Event Clearance**
■ Avg. Time from TMC Verification to TMC Response	

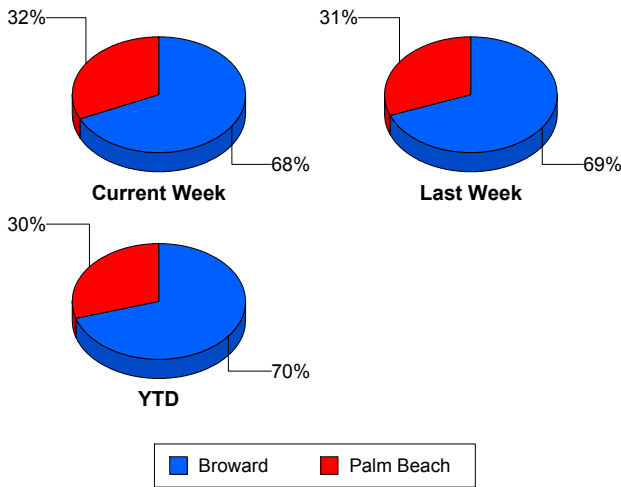
* Roadway clearance equals all travel lanes open

** Incident clearance equals time when last responder has left the scene

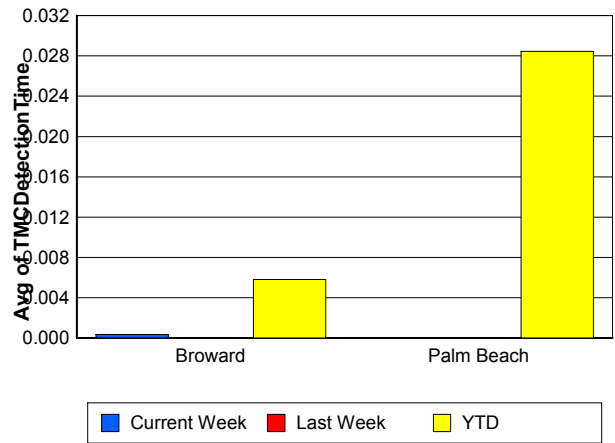
Performance Measures by County

	Broward			Palm Beach		
	<u>Current Week</u>	<u>Last Week</u>	<u>YTD</u>	<u>Current Week</u>	<u>Last Week</u>	<u>YTD</u>
Number of Events	1,246	1,414	34,019	584	632	14,405
Number of Incidents	34	40	1,272	33	21	675
TMC Detection (min.)	0.00	0.00	0.01	0.00	0.00	0.03
TMC Verification (min.)	1.26	1.54	1.21	4.76	5.27	4.39
TMC Response (min.)	9.72	9.93	9.29	7.33	8.06	7.54
RR Dispatch Time (min.)	1.38	1.11	1.37	2.67	3.13	2.63
RR Response Time (min.)	8.57	8.90	8.03	4.66	4.96	5.01
Event Clearance (min.)	20.37	20.09	19.59	19.10	21.69	21.29
Roadway Clearance (min.)	29.80	40.16	33.59	34.65	73.97	41.93
Incident Clearance (min.)	62.69	68.30	61.36	45.17	96.63	62.79
# of Events w/ RR/SIRV	1,042	1,173	28,146	550	596	13,482
RR/SIRV Responses	1,042	1,173	28,146	550	596	13,482
RR/SIRV Activities	830	872	22,648	590	630	14,271

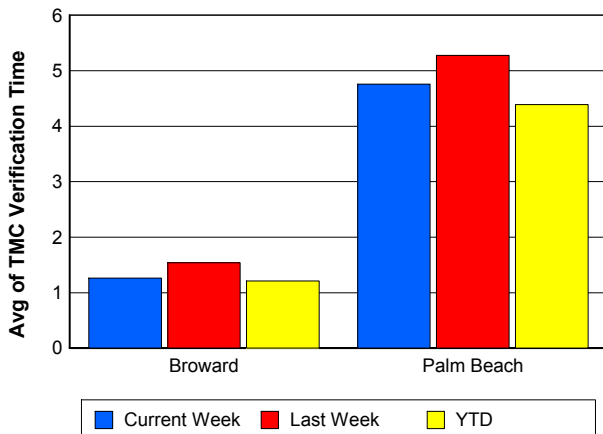
Number of Events / County



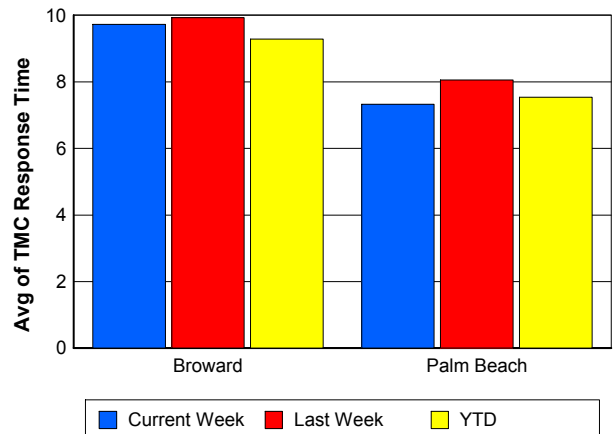
TMC Detection Time



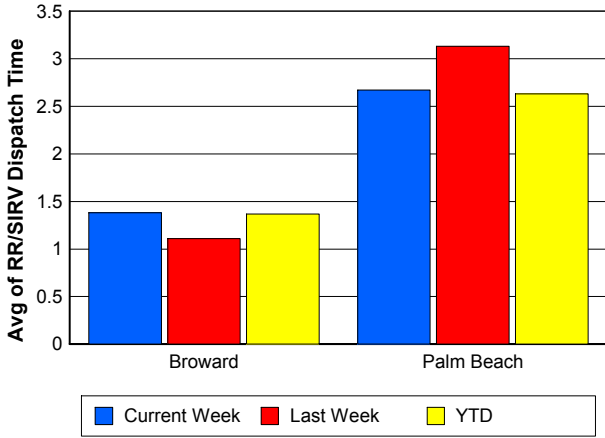
TMC Verification Time



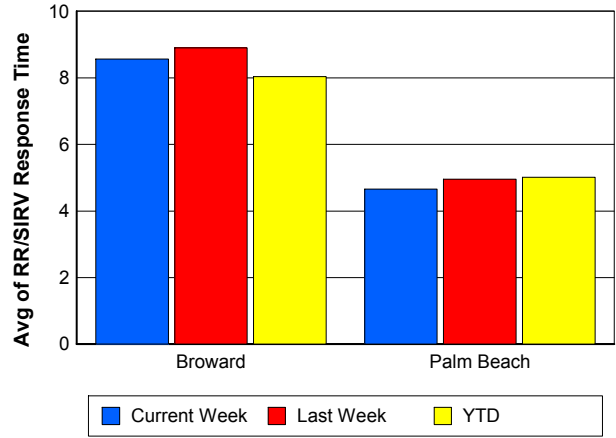
TMC Response Time



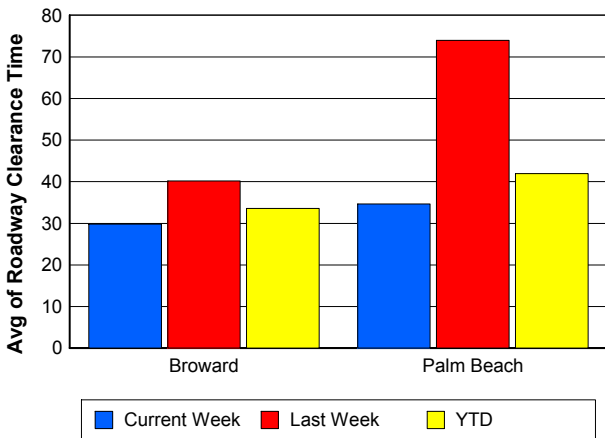
Road Ranger / SIRV Dispatch Time



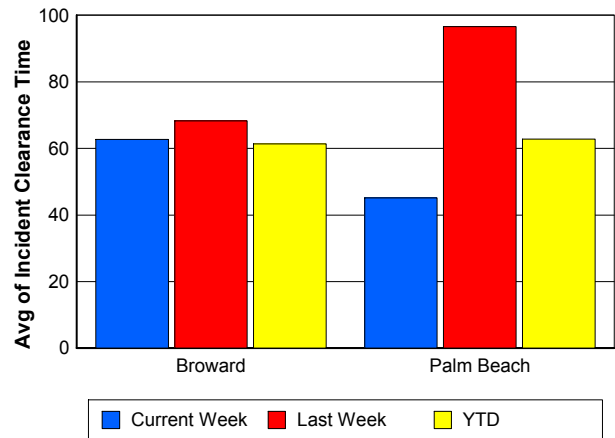
Road Ranger / SIRV Response Time



Roadway Clearance Time (2A)



Incident Clearance Time (3B)

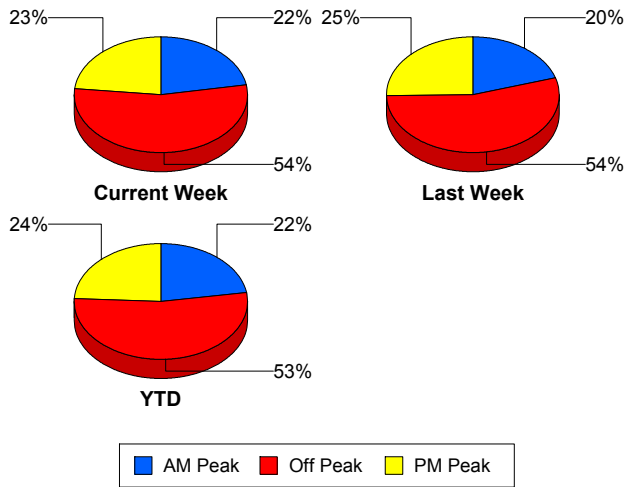


Performance Measures by Peak Period

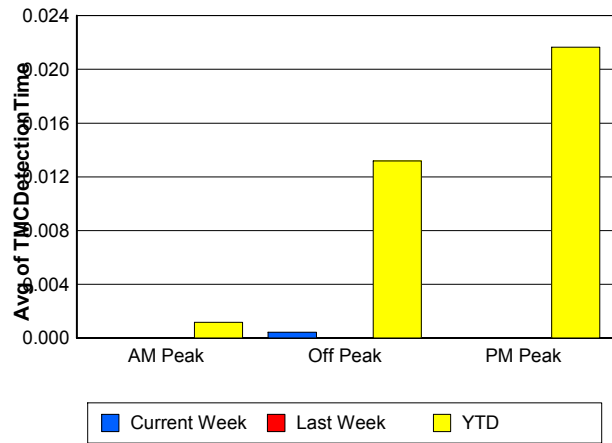
Note: AM peak period is defined as 6am to 10am and PM peak period is defined as 3pm to 7pm.

	AM Peak			Off Peak			PM Peak		
	<u>Current Week</u>	<u>Last Week</u>	<u>YTD</u>	<u>Current Week</u>	<u>Last Week</u>	<u>YTD</u>	<u>Current Week</u>	<u>Last Week</u>	<u>YTD</u>
Number of Events	407	415	10,849	994	1,112	25,862	429	519	11,713
Number of Incidents	18	11	434	36	38	1,018	13	12	495
TMC Detection (min.)	0.00	0.00	0.00	0.00	0.00	0.01	0.00	0.00	0.02
TMC Verification (min.)	0.90	1.09	1.32	2.82	2.49	2.28	2.74	4.40	2.66
TMC Response (min.)	8.83	5.90	8.05	9.58	9.27	8.98	6.77	11.34	8.35
RR Dispatch Time (min.)	1.37	1.18	1.33	2.01	1.63	1.88	1.83	2.67	1.96
RR Response Time (min.)	7.48	4.81	6.75	7.64	7.58	7.11	4.95	8.42	6.45
Event Clearance (min.)	20.01	17.39	18.77	21.20	20.56	20.52	17.08	23.19	20.38
Roadway Clearance (min.)	47.40	50.08	33.19	29.56	52.04	41.37	18.41	52.61	29.32
Incident Clearance (min.)	67.42	87.95	58.67	52.51	75.63	65.30	39.88	76.65	57.56
# of Events w/ RR/SIRV	354	367	9,519	869	962	21,900	369	440	10,209
RR/SIRV Responses	354	367	9,519	869	962	21,900	369	440	10,209
RR/SIRV Activities	313	289	8,277	760	824	19,227	347	389	9,415

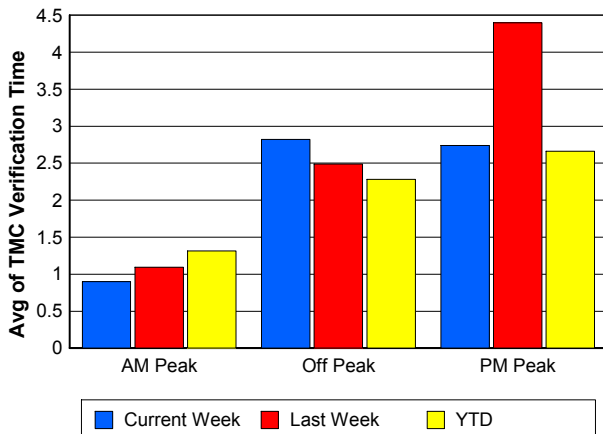
Number of Events / Peak Period



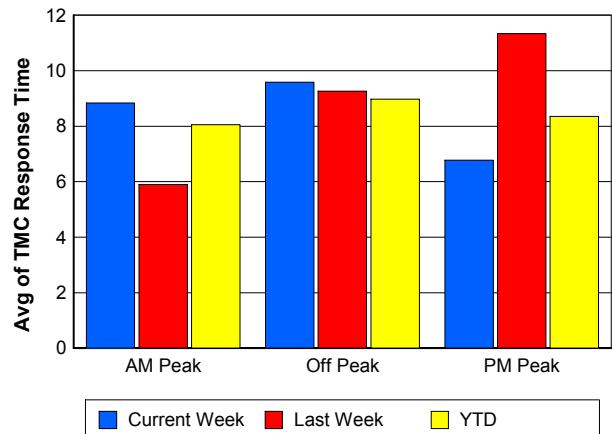
TMC Detection Time



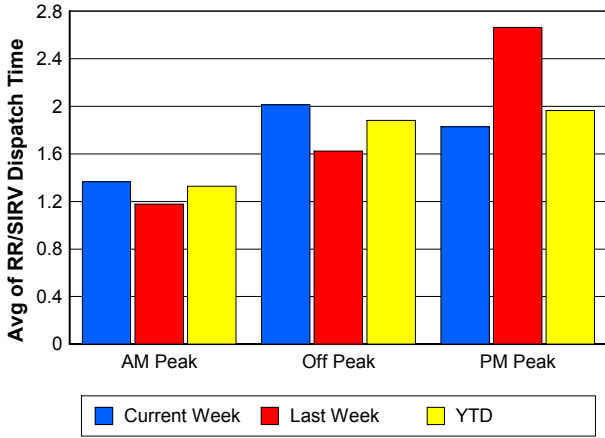
TMC Verification Time



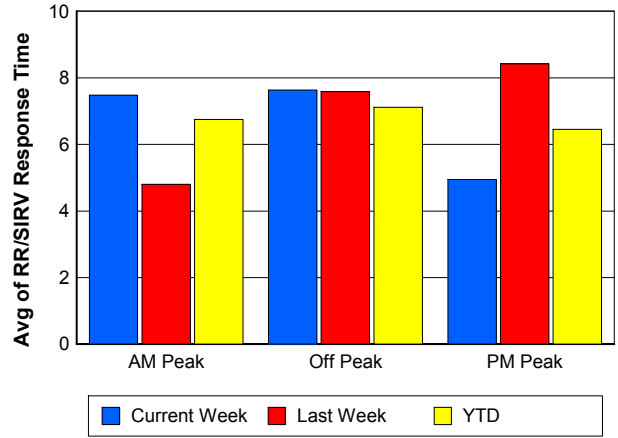
TMC Response Time



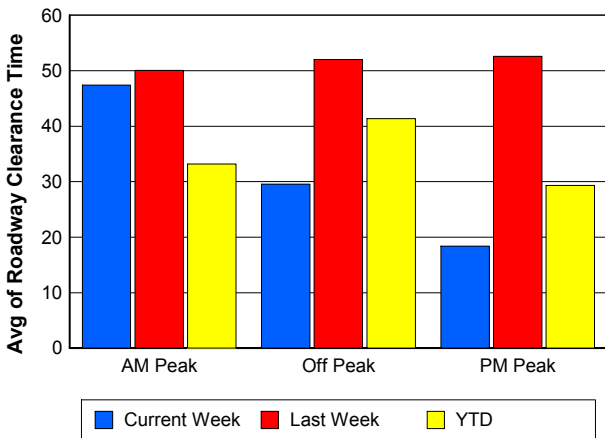
Road Ranger / SIRV Dispatch Time



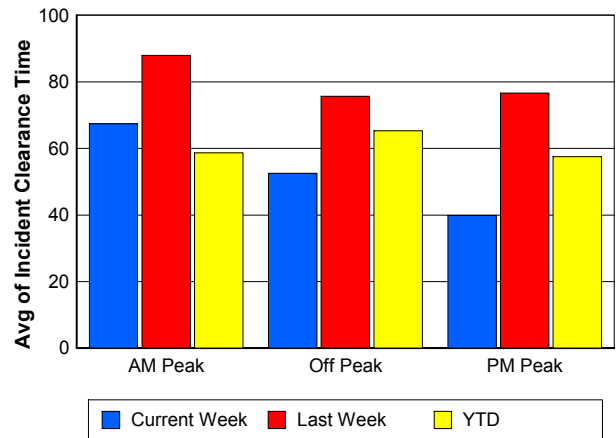
Road Ranger / SIRV Response Time



Roadway Clearance Time (2A)



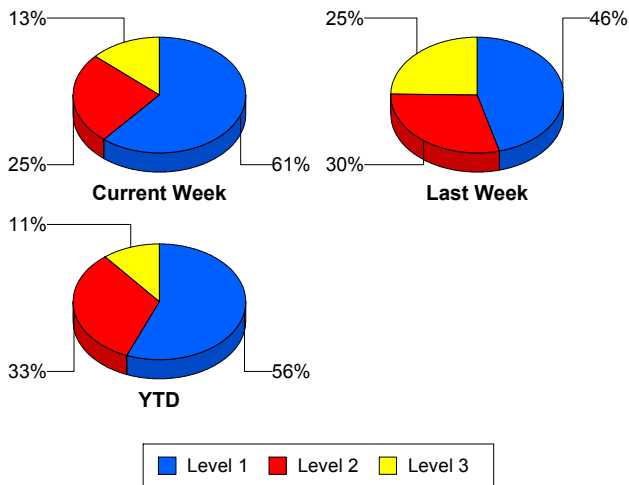
Incident Clearance Time (3B)



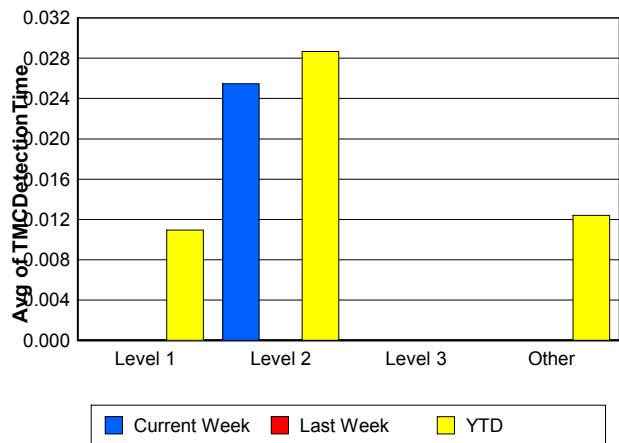
Performance Measures by Severity

	Level 1			Level 2			Level 3			Other		
	<u>This Week</u>	<u>Last Week</u>	<u>YTD</u>	<u>This Week</u>	<u>Last Week</u>	<u>YTD</u>	<u>This Week</u>	<u>Last Week</u>	<u>YTD</u>	<u>This Week</u>	<u>Last Week</u>	<u>YTD</u>
Number of Events	41	28	1,094	17	18	640	9	15	211	1,763	1,985	46,479
Number of Incidents	41	28	1,094	17	18	640	9	15	211	0	0	2
TMC Detection (min.)	0.00	0.00	0.01	0.03	0.00	0.03	0.00	0.00	0.00	0.00	0.00	0.01
TMC Verification (min.)	1.27	0.57	1.38	8.55	2.17	4.43	0.52	0.98	2.90	2.35	2.74	2.14
TMC Response (min.)	7.72	10.36	7.56	13.00	9.75	12.17	3.85	9.78	12.17	8.72	9.11	8.55
RR Dispatch Time (min.)	1.08	1.08	1.43	3.09	1.07	2.50	0.82	5.06	3.44	1.84	1.78	1.77
RR Resp. Time (min.)	6.65	9.30	6.17	9.90	8.68	9.73	3.02	4.72	8.72	6.93	7.22	6.81
Event Clearance (min.)	41.27	46.32	45.33	68.22	74.06	73.54	85.59	142.07	112.90	18.67	18.82	18.34
Roadway Clear. (min.)	14.81	14.77	15.06	52.01	46.07	52.57	73.94	127.79	99.29			-21.46
Incident Clearance (min.)	41.27	46.32	45.33	68.22	74.06	73.54	85.59	142.07	112.64			0.00
# of Events w/ RR/SIRV	39	27	1,070	17	18	633	8	14	189	1,528	1,710	39,736
RR/SIRV Responses	39	27	1,070	17	18	633	8	14	189	1,528	1,710	39,736
RR/SIRV Activities	55	45	1,579	21	35	1,199	20	33	467	1,324	1,389	33,674

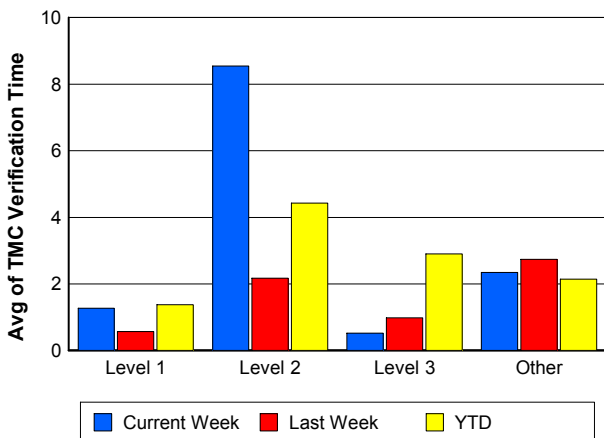
Number of Events / Severity



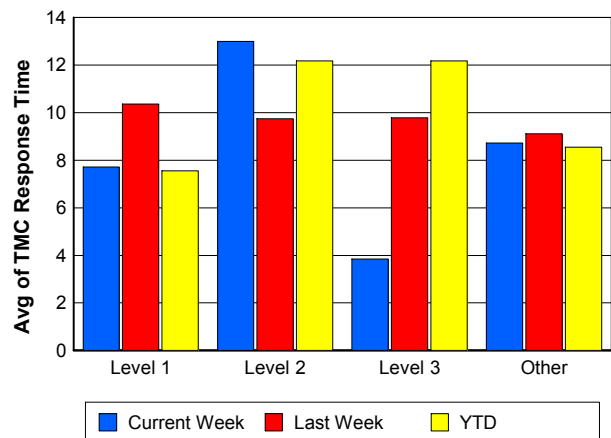
TMC Detection Time



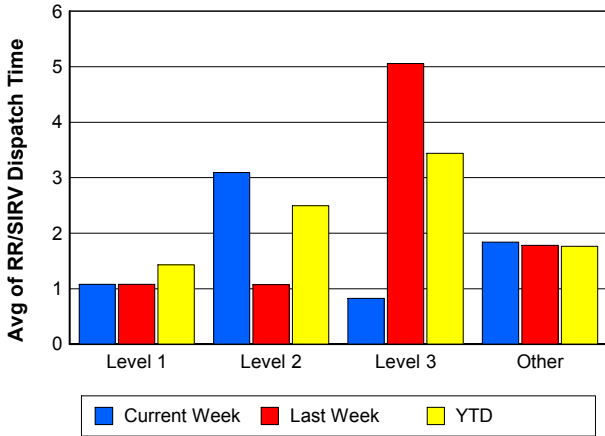
TMC Verification Time



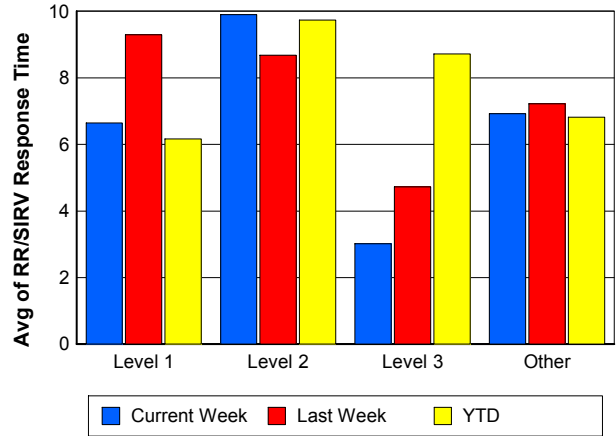
TMC Response Time



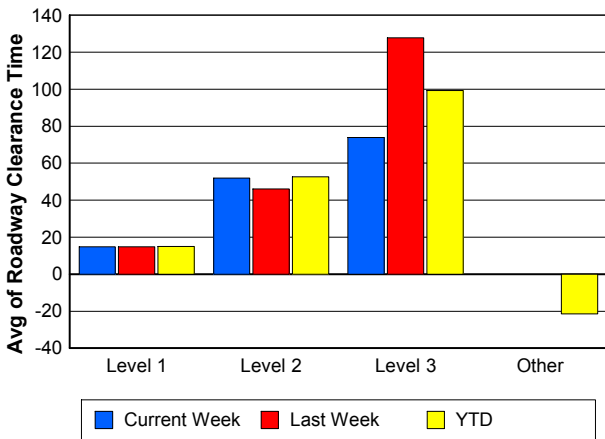
Road Ranger / SIRV Dispatch Time



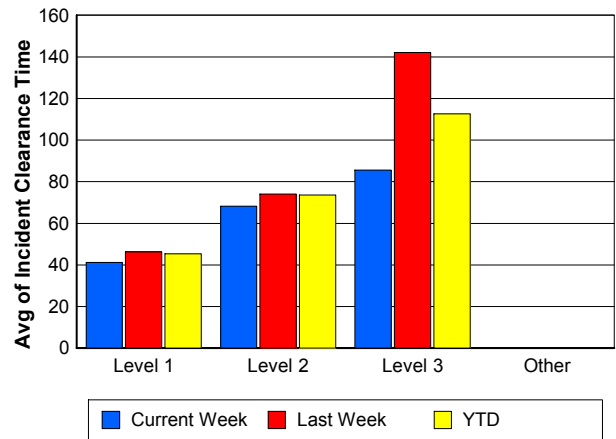
Road Ranger / SIRV Response Time



Roadway Clearance Time (2A)



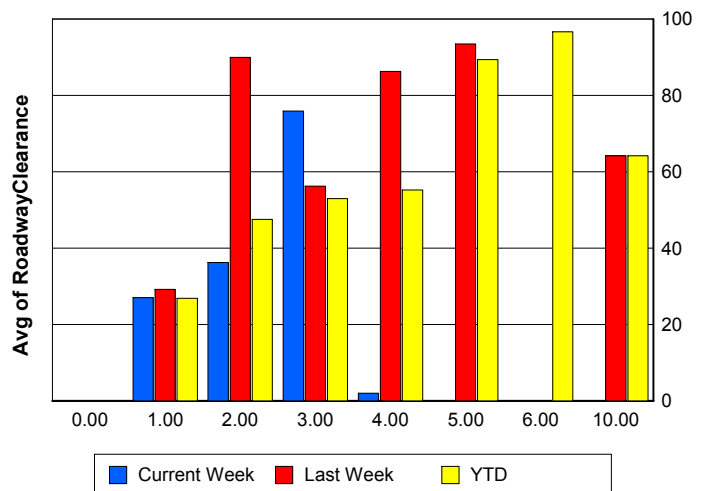
Incident Clearance Time (3B)



Roadway Clearance by Maximum Number of Lanes Blocked

	Current Week	Last Week	YTD
0			
1	26.99	29.15	26.80
2	36.20	89.89	47.48
3	75.85	56.17	52.96
4	1.98	86.27	55.19
5	0.00	93.44	89.37
6	0.00	0.00	96.66
10	0.00	64.12	64.12

Roadway Clearance Time (2A)



Performance Measures by Roadway

595

	<u>Current Week</u>	<u>Last Week</u>	<u>YTD</u>
Number of Events	49	33	1,122
Number of Incidents	2	2	54
TMC Detection (min.)	0.00	0.00	0.00
TMC Verification (min.)	2.10	3.65	1.86
TMC Response (min.)	10.02	26.11	15.47
RR Dispatch Time (min.)	1.18	2.77	2.00
RR Resp. Time (min.)	9.05	21.49	13.50
Event Clearance (min.)	16.93	21.18	19.66
Roadway Clear. (min.)	16.91	63.29	49.65
Incident Clearance (min.)	55.51	17.61	65.59
# of Events w/ RR/SIRV	43	24	812
RR/SIRV Responses	43	24	812
RR/SIRV Activities	33	12	530

75

	<u>Current Week</u>	<u>Last Week</u>	<u>YTD</u>
Number of Events	246	322	7,358
Number of Incidents	5	1	137
TMC Detection (min.)	0.00	0.00	0.02
TMC Verification (min.)	1.92	3.10	2.16
TMC Response (min.)	9.73	11.72	10.25
RR Dispatch Time (min.)	1.32	0.86	1.44
RR Resp. Time (min.)	8.73	10.99	8.96
Event Clearance (min.)	21.90	19.93	20.35
Roadway Clear. (min.)	38.32	41.13	51.00
Incident Clearance (min.)	53.91	90.58	83.09
# of Events w/ RR/SIRV	198	245	5,896
RR/SIRV Responses	198	245	5,896
RR/SIRV Activities	168	202	4,896

95

	<u>Current Week</u>	<u>Last Week</u>	<u>YTD</u>
Number of Events	1,520	1,685	39,544
Number of Incidents	60	58	1,692
TMC Detection (min.)	0.00	0.00	0.01
TMC Verification (min.)	2.48	2.60	2.17
TMC Response (min.)	8.56	8.57	8.25
RR Dispatch Time (min.)	1.93	1.93	1.84
RR Resp. Time (min.)	6.63	6.51	6.42
Event Clearance (min.)	19.78	20.73	20.07
Roadway Clear. (min.)	32.19	51.59	35.30
Incident Clearance (min.)	54.03	79.92	61.19
# of Events w/ RR/SIRV	1,340	1,496	34,596
RR/SIRV Responses	1,340	1,496	34,596
RR/SIRV Activities	1,210	1,284	31,188

OKEEB

	<u>YTD</u>
Number of Events	1
Number of Incidents	0
TMC Detection (min.)	0.00
TMC Verification (min.)	0.00
TMC Response (min.)	0.00
RR Dispatch Time (min.)	0.00
RR Resp. Time (min.)	0.00
Event Clearance (min.)	18.45
Roadway Clear. (min.)	
Incident Clearance (min.)	
# of Events w/ RR/SIRV	1
RR/SIRV Responses	1
RR/SIRV Activities	1

SR-816

	<u>Current Week</u>	<u>YTD</u>
Number of Events	3	75
Number of Incidents	0	47
TMC Detection (min.)	0.00	0.00
TMC Verification (min.)	0.00	1.03
TMC Response (min.)	0.00	1.59
RR Dispatch Time (min.)	0.00	0.14
RR Resp. Time (min.)	0.00	1.47
Event Clearance (min.)	1.90	15.32
Roadway Clear. (min.)		16.66
Incident Clearance (min.)		19.72
# of Events w/ RR/SIRV	2	65
RR/SIRV Responses	2	65
RR/SIRV Activities	2	70

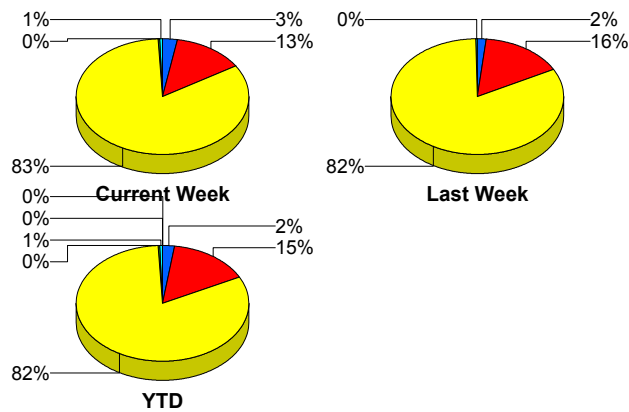
SR869

	<u>Current Week</u>	<u>Last Week</u>	<u>YTD</u>
Number of Events	12	6	314
Number of Incidents	0	0	7
TMC Detection (min.)	0.00	0.00	0.00
TMC Verification (min.)	0.10	0.00	0.93
TMC Response (min.)	10.25	6.63	8.42
RR Dispatch Time (min.)	1.19	1.01	1.25
RR Resp. Time (min.)	9.70	5.74	7.54
Event Clearance (min.)	21.75	12.78	18.69
Roadway Clear. (min.)			37.30
Incident Clearance (min.)			60.61
# of Events w/ RR/SIRV	9	4	258
RR/SIRV Responses	9	4	258
RR/SIRV Activities	7	4	234

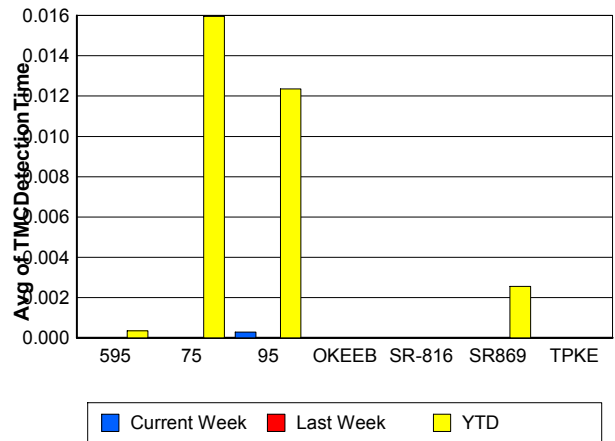
TPKE

	<u>YTD</u>
Number of Events	10
Number of Incidents	10
TMC Detection (min.)	0.00
TMC Verification (min.)	0.00
TMC Response (min.)	
RR Dispatch Time (min.)	
RR Resp. Time (min.)	
Event Clearance (min.)	62.29
Roadway Clear. (min.)	59.66
Incident Clearance (min.)	62.29
# of Events w/ RR/SIRV	0
RR/SIRV Responses	0
RR/SIRV Activities	0

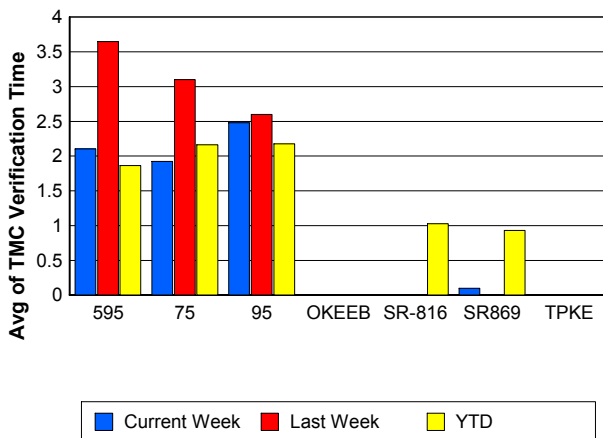
Number of Events / Roadway



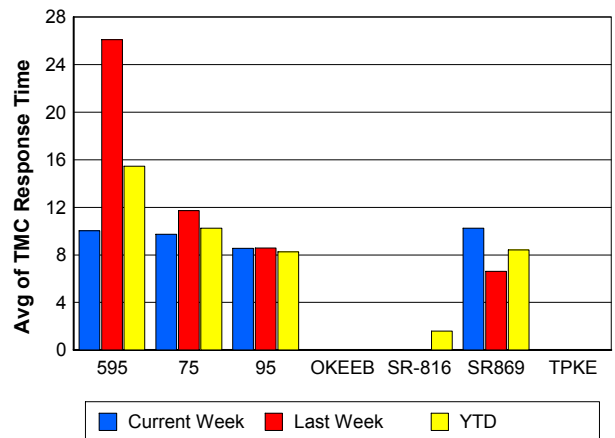
TMC Detection Time



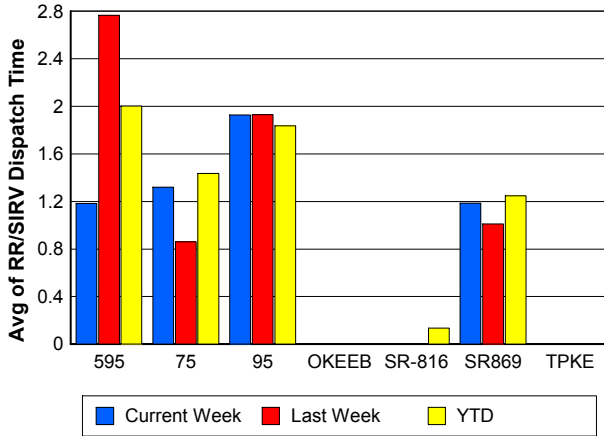
TMC Verification Time



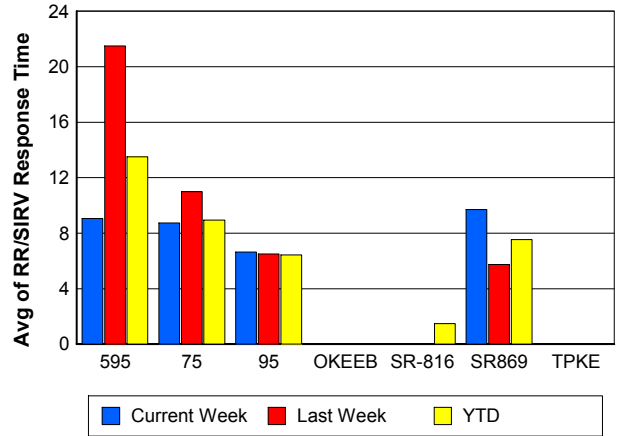
TMC Response Time



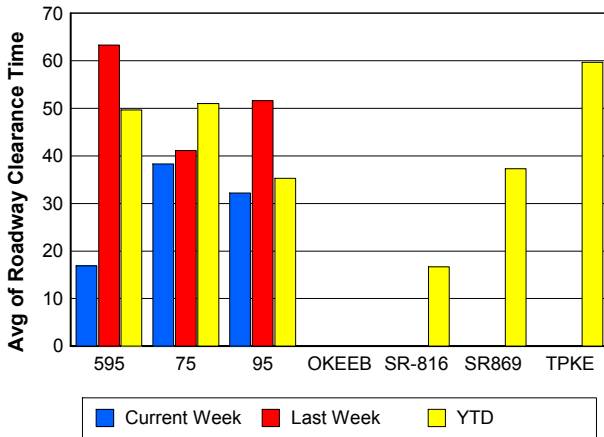
Road Ranger / SIRV Dispatch Time



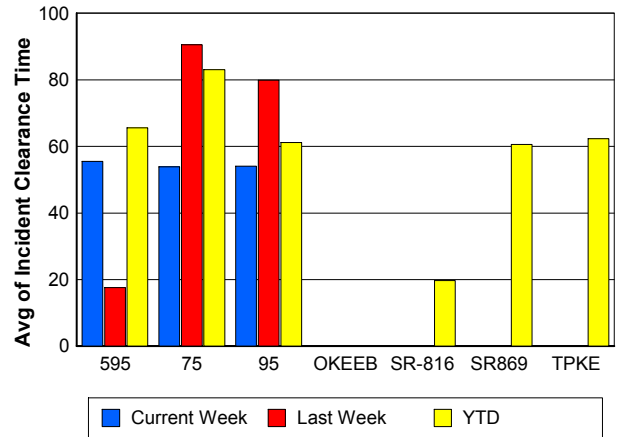
Road Ranger / SIRV Response Time



Roadway Clearance Time (2A)



Incident Clearance Time (3B)



Performance Measures by Event Type

Accident

	<u>Current Week</u>	<u>Last Week</u>	<u>YTD</u>
Number of Events	84	97	2,939
Number of Incidents	36	40	1,353
TMC Detection (min.)	0.01	0.00	0.02
TMC Verification (min.)	4.77	3.27	3.57
TMC Response (min.)	11.14	11.66	10.40
RR Dispatch Time (min.)	1.81	2.88	1.89
RR Response Time (min.)	9.31	8.73	8.53
Event Clearance (min.)	60.27	59.73	57.26
Roadway Clearance (min.)	41.17	56.86	39.21
Incident Clearance (min.)	74.97	88.44	71.36
# of Events w/ RR/SIRV	81	97	2,892
RR/SIRV Assists	81	97	2,892
RR/SIRV Activities	113	140	4,079

Debris on Roadway

	<u>Current Week</u>	<u>Last Week</u>	<u>YTD</u>
Number of Events	86	100	2,029
Number of Incidents	1	1	28
TMC Detection (min.)	0.00	0.00	0.00
TMC Verification (min.)	7.29	12.97	8.23
TMC Response (min.)	8.96	15.22	10.73
RR Dispatch Time (min.)	1.95	3.73	2.39
RR Response Time (min.)	6.95	11.36	8.32
Event Clearance (min.)	13.46	16.75	13.88
Roadway Clearance (min.)	29.10	1.27	28.16
Incident Clearance (min.)	31.73	3.12	30.34
# of Events w/ RR/SIRV	84	99	1,971
RR/SIRV Assists	84	99	1,971
RR/SIRV Activities	89	98	2,007

Disabled Vehicle

	<u>Current Week</u>	<u>Last Week</u>	<u>YTD</u>
Number of Events	1,248	1,321	31,019
Number of Incidents	18	12	371
TMC Detection (min.)	0.00	0.00	0.02
TMC Verification (min.)	2.52	2.93	2.43
TMC Response (min.)	8.33	8.56	8.18
RR Dispatch Time (min.)	1.80	1.68	1.73
RR Response Time (min.)	6.62	6.90	6.53
Event Clearance (min.)	19.61	20.30	20.08
Roadway Clearance (min.)	18.03	29.30	20.65
Incident Clearance (min.)	26.87	39.66	30.80
# of Events w/ RR/SIRV	1,173	1,244	29,545
RR/SIRV Assists	1,173	1,244	29,545
RR/SIRV Activities	1,159	1,208	29,351

Emergency Vehicles

	<u>Current Week</u>	<u>YTD</u>
Number of Events	3	38
Number of Incidents	3	32
TMC Detection (min.)	0.00	0.00
TMC Verification (min.)	0.00	0.76
TMC Response (min.)	5.68	8.45
RR Dispatch Time (min.)	1.38	1.21
RR Response Time (min.)	4.31	7.23
Event Clearance (min.)	36.47	33.54
Roadway Clearance (min.)	23.22	30.21
Incident Clearance (min.)	36.47	35.33
# of Events w/ RR/SIRV	3	26
RR/SIRV Assists	3	26
RR/SIRV Activities	3	28

Other

	<u>Current Week</u>	<u>Last Week</u>	<u>YTD</u>
Number of Events	391	515	12,007
Number of Incidents	1	1	27
TMC Detection (min.)	0.00	0.00	0.00
TMC Verification (min.)	0.12	0.05	0.09
TMC Response (min.)	12.49	5.86	10.37
RR Dispatch Time (min.)	1.76	1.24	1.70
RR Response Time (min.)	9.94	4.98	7.79
Event Clearance (min.)	13.16	13.61	11.46
Roadway Clearance (min.)	6.95	32.60	31.09
Incident Clearance (min.)	13.52	35.67	38.18
# of Events w/ RR/SIRV	234	319	6,835
RR/SIRV Assists	234	319	6,835
RR/SIRV Activities	36	35	1,036

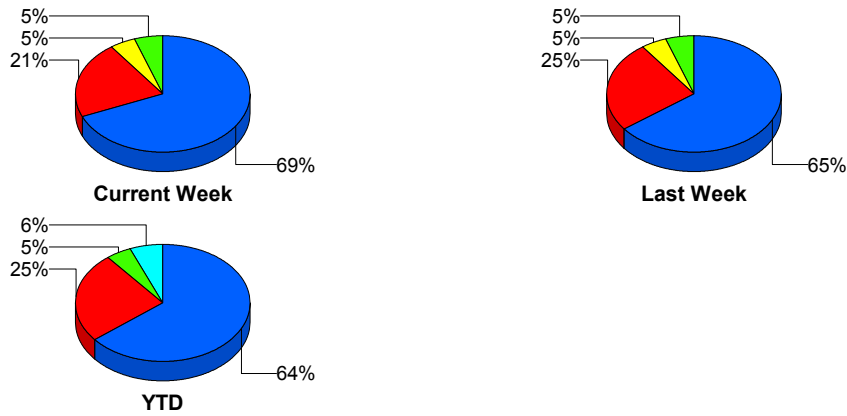
Police Activity

	<u>Current Week</u>	<u>Last Week</u>	<u>YTD</u>
Number of Events	6	6	123
Number of Incidents	5	4	69
TMC Detection (min.)	0.00	0.00	0.06
TMC Verification (min.)	0.94	0.00	1.23
TMC Response (min.)	2.90	5.99	13.54
RR Dispatch Time (min.)	0.37	3.70	5.22
RR Response Time (min.)	2.53	2.29	8.82
Event Clearance (min.)	36.28	69.40	51.14
Roadway Clearance (min.)	30.74	93.85	66.07
Incident Clearance (min.)	36.63	101.93	67.84
# of Events w/ RR/SIRV	5	5	101
RR/SIRV Assists	5	5	101
RR/SIRV Activities	5	8	108

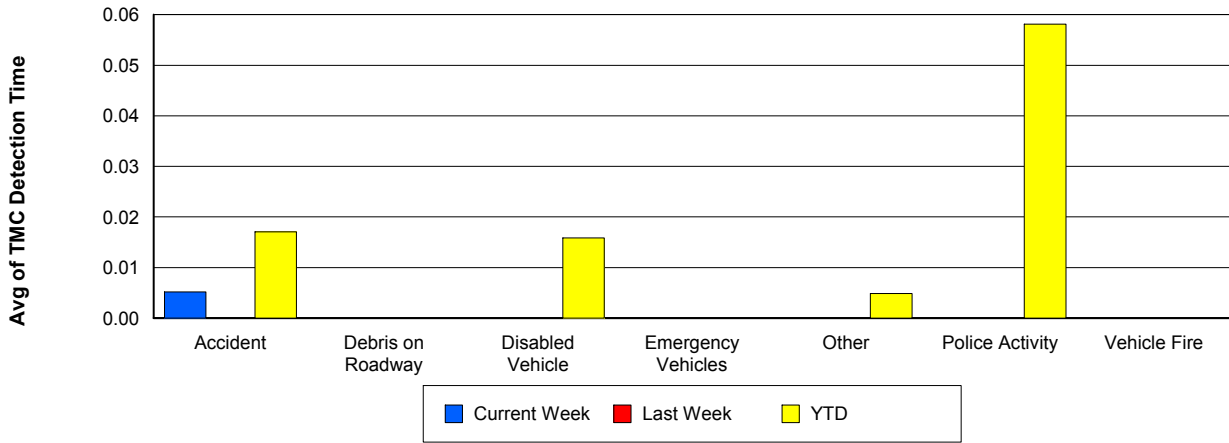
Vehicle Fire

	<u>Current Week</u>	<u>Last Week</u>	<u>YTD</u>
Number of Events	3	4	92
Number of Incidents	3	3	66
TMC Detection (min.)	0.00	0.00	0.00
TMC Verification (min.)	0.97	0.41	2.17
TMC Response (min.)	5.80	5.79	12.14
RR Dispatch Time (min.)	0.77	3.73	2.11
RR Response Time (min.)	5.03	2.06	10.04
Event Clearance (min.)	33.92	90.92	61.95
Roadway Clearance (min.)	30.15	41.44	47.16
Incident Clearance (min.)	33.92	100.32	71.59
# of Events w/ RR/SIRV	3	4	90
RR/SIRV Assists	3	4	90
RR/SIRV Activities	6	12	157

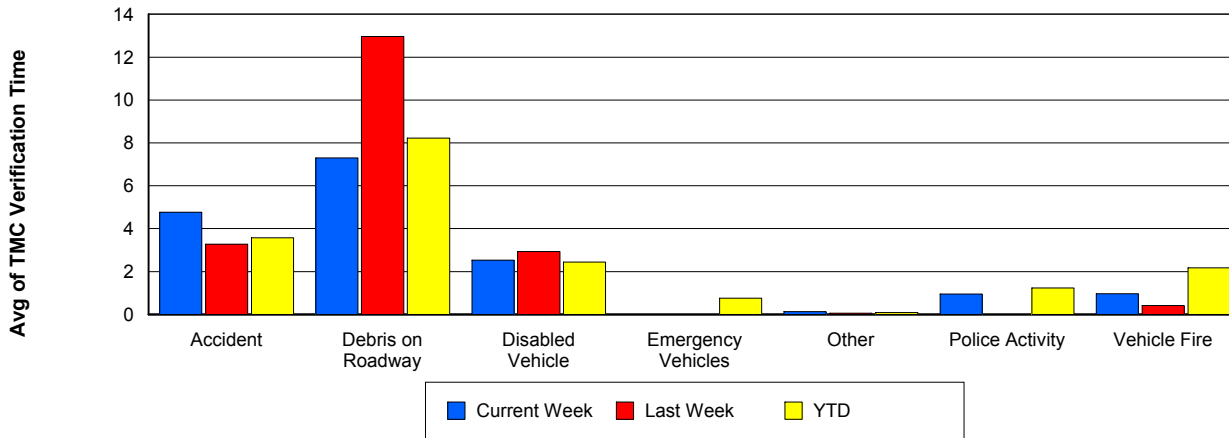
Number of Events / Event Type



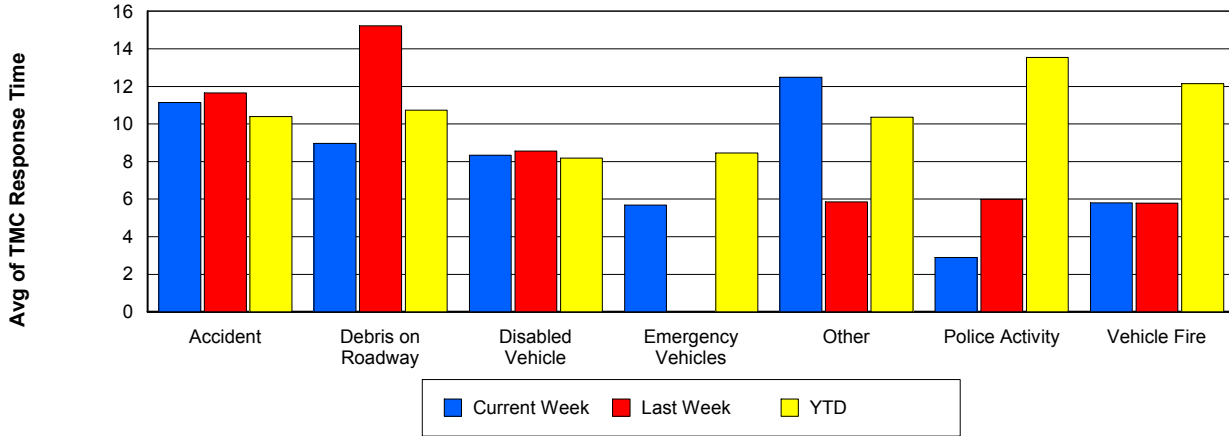
TMC Detection Time



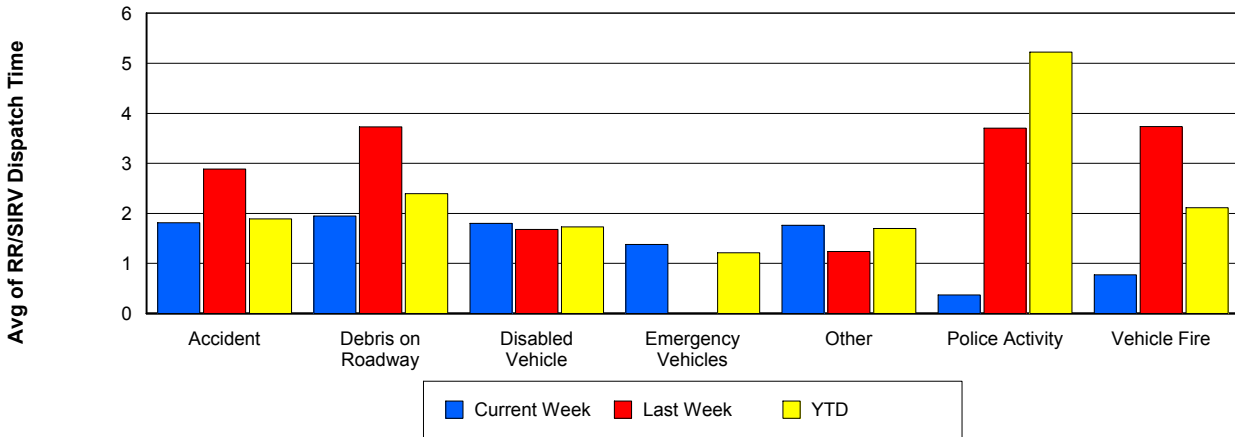
TMC Verification Time



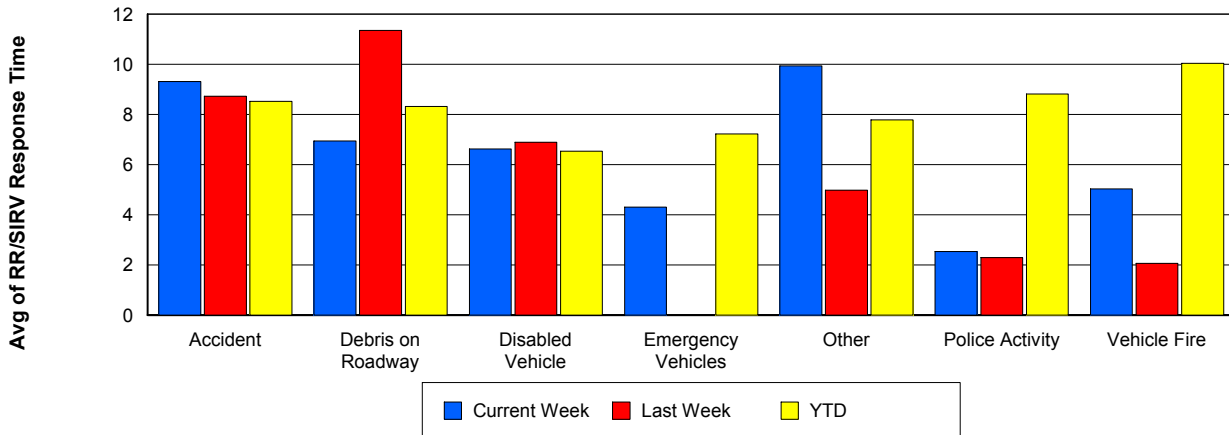
TMC Response Time



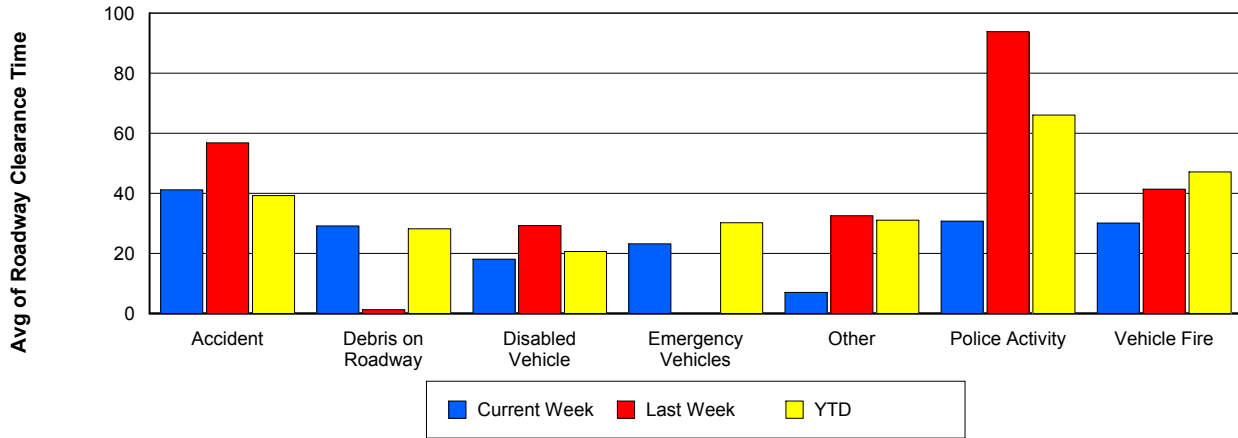
Road Ranger / SIRV Dispatch Time



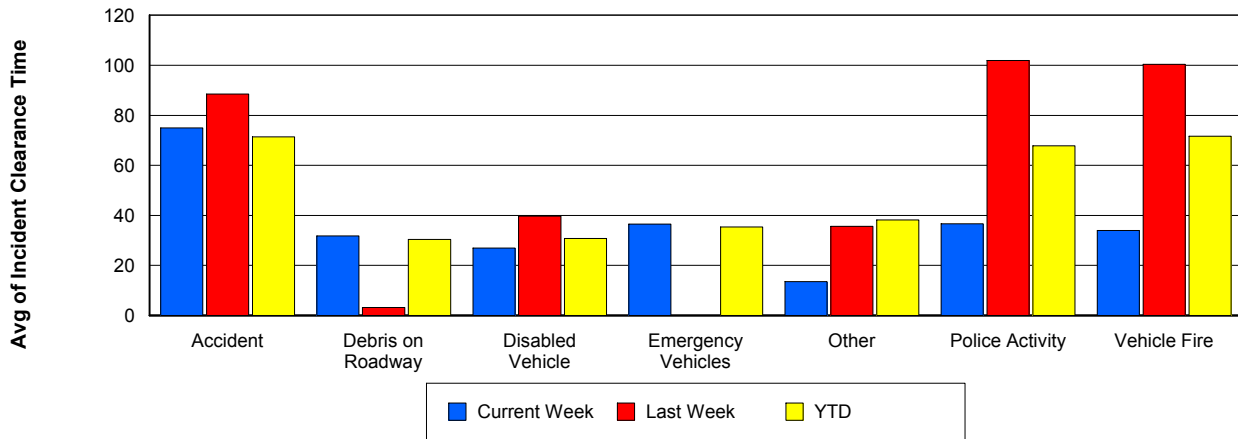
Road Ranger / SIRV Response Time



Roadway Clearance Time (2A)



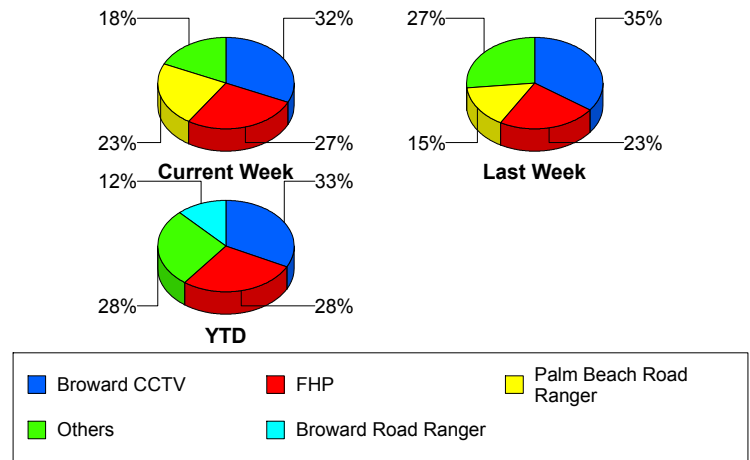
Incident Clearance Time (3B)



Incident Detection Methods

	Current Week	Last Week	YTD
Broward CCTV	21	21	626
Broward Road Ranger	2	6	229
Broward TMC	0	0	12
Broward VideoWall	1	1	31
BSO	1	0	24
County Police	0	0	2
District 4	0	0	48
District 6	0	0	2
FDOT Maintenance	1	0	5
FHP	18	14	532
Fire	0	0	5
Florida's Turnpike	0	0	12
ITMS	0	0	1
ITMS CCTV	4	7	110
Local Police	0	0	1
Media	0	0	2
Motorist	1	0	19
Other	0	0	1
Palm Beach Road Ran	15	9	223
Road Watcher	0	0	10
SIRV	0	1	3
TSS Detection	0	1	1
VisioPaD Detection	2	0	22
Total	66	60	1,921

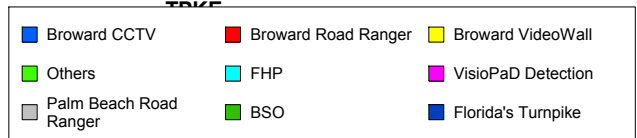
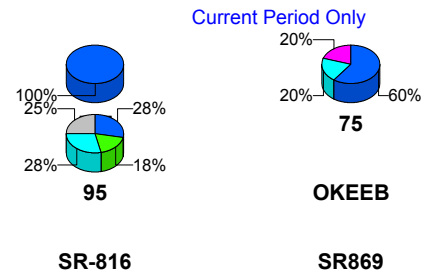
Total Incidents by Detection Method



Incident Detection Methods by Roadway

		Current Week	Last Week	YTD
595	Broward CCTV	1	0	13
	Broward Road Ranger	0	0	7
	BSO	0	0	3
	County Police	0	0	1
	FHP	0	0	9
	SIRV	0	1	1
	VisioPaD Detection	0	0	1
	Total	1	1	35
75	Broward CCTV	3	0	54
	Broward Road Ranger	0	0	19
	BSO	0	0	15
	District 4	0	0	4
	District 6	0	0	1
	FHP	1	1	29
	Fire	0	0	4
	Road Watcher	0	0	1
	VisioPaD Detection	1	0	10
	Total	5	1	137
95	Broward CCTV	17	21	559
	Broward Road Ranger	2	6	160
	Broward TMC	0	0	12
	Broward VideoWall	1	1	31
	BSO	1	0	4
	County Police	0	0	1
	District 4	0	0	42
	District 6	0	0	1
	FDOT Maintenance	1	0	5
	FHP	17	13	492
	Fire	0	0	1
	ITMS	0	0	1
	ITMS CCTV	4	7	110

Total Events by Roadway and Detection Method

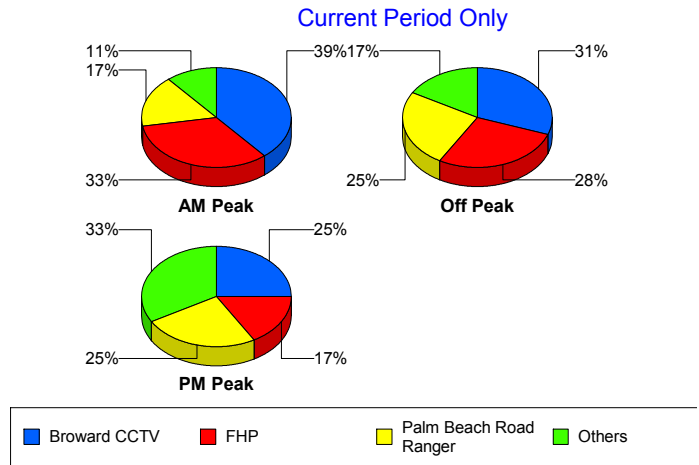


		Current Week	Last Week	YTD
95	Local Police	0	0	1
	Media	0	0	2
	Motorist	1	0	19
	Other	0	0	1
	Palm Beach Road Ran	15	9	223
	Road Watcher	0	0	7
	SIRV	0	0	2
	TSS Detection	0	1	1
	VisioPaD Detection	1	0	11
	Total	60	58	1,686
SR-816	Broward Road Ranger	0	0	41
	BSO	0	0	1
	District 4	0	0	2
	FHP	0	0	1
	Road Watcher	0	0	2
	Total	0	0	47
SR869	Broward Road Ranger	0	0	2
	BSO	0	0	1
	FHP	0	0	1
	Florida's Turnpike	0	0	2
	Total	0	0	6
TPKE	Florida's Turnpike	0	0	10
	Total	0	0	10
Total		66	60	1,921

Incident Detection Methods by Peak Period

		Current Week	Last Week	YTD
AM Peak	Broward CCTV	7	2	134
	Broward Road Ranger	0	1	57
	Broward TMC	0	0	3
	Broward VideoWall	0	1	17
	BSO	1	0	5
	County Police	0	0	1
	District 4	0	0	12
	District 6	0	0	1
	FDOT Maintenance	0	0	1
	FHP	6	5	103
	Fire	0	0	2
	Florida's Turnpike	0	0	2
	ITMS CCTV	0	1	25
	Local Police	0	0	1
	Media	0	0	1
	Motorist	0	0	2
	Palm Beach Road Ran	3	1	58
	Road Watcher	0	0	2
	SIRV	0	0	1
	VisioPaD Detection	1	0	2
Total	18	11	430	
Off Peak	Broward CCTV	11	15	339
	Broward Road Ranger	1	4	101
	Broward TMC	0	0	6
	Broward VideoWall	1	0	11
	BSO	0	0	12
	County Police	0	0	1
	District 4	0	0	24
	District 6	0	0	1
	FDOT Maintenance	0	0	3
	FHP	10	9	291

Total Events by Peak Period and Detection Method

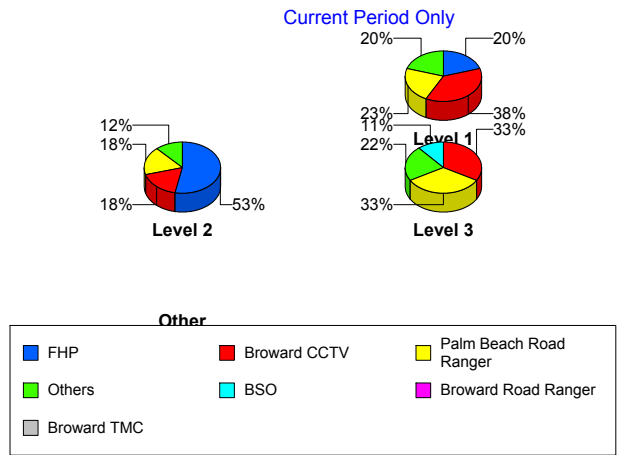


		Current Week	Last Week	YTD
Off Peak	Florida's Turnpike	0	0	9
	ITMS	0	0	1
	ITMS CCTV	2	0	59
	Motorist	1	0	11
	Other	0	0	1
	Palm Beach Road Ran	9	7	113
	Road Watcher	0	0	4
	SIRV	0	1	1
	TSS Detection	0	1	1
	VisioPaD Detection	1	0	13
	Total	36	37	1,002
PM Peak	Broward CCTV	3	4	153
	Broward Road Ranger	1	1	71
	Broward TMC	0	0	3
	Broward VideoWall	0	0	3
	BSO	0	0	7
	District 4	0	0	12
	FDOT Maintenance	1	0	1
	FHP	2	0	139
	Fire	0	0	3
	Florida's Turnpike	0	0	1
	ITMS CCTV	2	6	26
	Media	0	0	1
	Motorist	0	0	6
	Palm Beach Road Ran	3	1	52
	Road Watcher	0	0	4
	SIRV	0	0	1
	VisioPaD Detection	0	0	7
	Total	12	12	490
Total	66	60	1,921	

Incident Detection Methods by Severity

		Current Week	Last Week	YTD
	FHP	0	0	1
	Total	0	0	1
Level 1	Broward CCTV	15	10	377
	Broward Road Ranger	2	4	167
	Broward TMC	0	0	9
	Broward VideoWall	0	1	19
	BSO	0	0	6
	County Police	0	0	1
	District 4	0	0	30
	District 6	0	0	1
	FDOT Maintenance	1	0	2
	FHP	8	5	229
	Fire	0	0	2
	ITMS CCTV	3	2	57
	Media	0	0	1
	Motorist	1	0	11
	Other	0	0	1
	Palm Beach Road Ran	9	4	145
	Road Watcher	0	0	9
	SIRV	0	0	1
	TSS Detection	0	1	1
	VisioPaD Detection	1	0	11
Total	40	27	1,080	
Level 2	Broward CCTV	3	7	189
	Broward Road Ranger	0	2	52
	Broward TMC	0	0	3
	Broward VideoWall	1	0	12
	BSO	0	0	3
	District 4	0	0	13
	FDOT Maintenance	0	0	3
	FHP	9	6	234

Total Events by Severity and Detection Method



		Current Week	Last Week	YTD
Level 2	Fire	0	0	1
	Florida's Turnpike	0	0	1
	ITMS	0	0	1
	ITMS CCTV	1	1	42
	Local Police	0	0	1
	Motorist	0	0	8
	Palm Beach Road Ran	3	2	60
	Road Watcher	0	0	1
	SIRV	0	0	1
	VisioPaD Detection	0	0	8
	Total	17	18	633
Level 3	Broward CCTV	3	4	60
	Broward Road Ranger	0	0	10
	BSO	1	0	15
	County Police	0	0	1
	District 4	0	0	5
	District 6	0	0	1
	FHP	1	3	69
	Fire	0	0	2
	Florida's Turnpike	0	0	11
	ITMS CCTV	0	4	11
	Media	0	0	1
	Palm Beach Road Ran	3	3	18
	SIRV	0	1	1
	VisioPaD Detection	1	0	3
	Total	9	15	208
Total		66	60	1,921

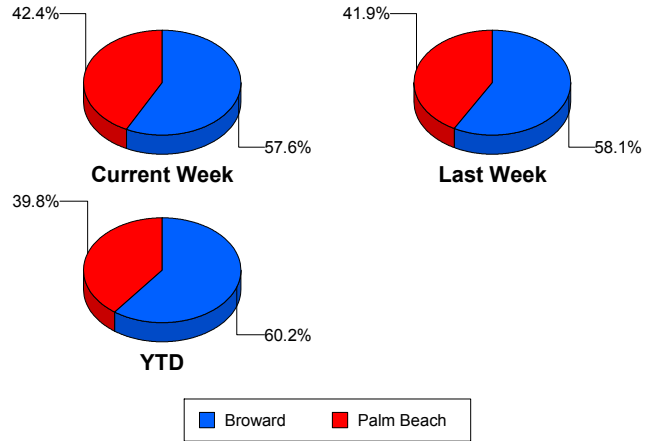
Road Ranger / SIRV Performance Measures

Road Ranger / SIRV Performance By County

Values presented are:
 - Total Events with a RR/SIRV Response
 - Total RR/SIRV Responses,
 - Total Activities Performed

	Current We	Last Week	YTD
Broward	907	956	24,159
	958	1,023	25,821
	1,000	1,049	26,818
Palm Beach	680	713	16,528
	705	739	17,057
	740	788	18,173

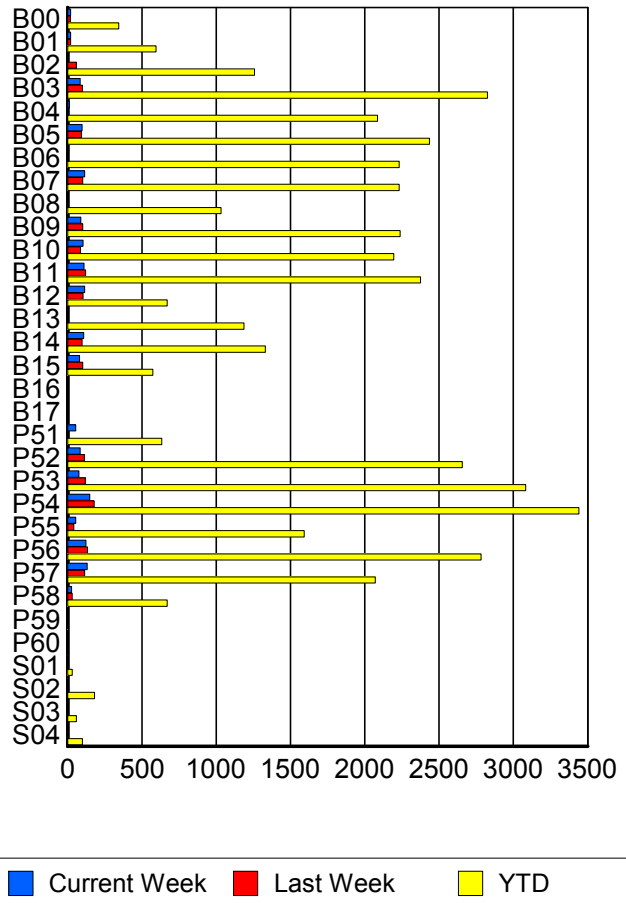
RR/SIRV Responses per County



Road Ranger / SIRV Performance By Truck

	Current We	Last Week	YTD
B00	20	18	340
	20	18	345
	22	18	366
B01	19	20	586
	20	20	596
	20	22	617
B02	0	58	1,241
	0	58	1,258
	0	58	1,284
B03	83	100	2,802
	84	100	2,826
	89	107	2,956
B04	11	1	2,055
	11	1	2,085
	11	1	2,172
B05	96	93	2,421
	97	94	2,436
	108	98	2,524
B06	0	0	2,203
	0	0	2,232
	0	0	2,328
B07	113	101	2,204
	114	101	2,231
	115	103	2,310
B08	0	0	1,017
	0	0	1,033
	0	0	1,071

RR/SIRV Responses per Truck



	Current We	Last Week	YTD
B09	89	101	2,215
	90	101	2,237
	93	104	2,330
B10	104	87	2,166
	104	87	2,195
	107	89	2,260
B11	108	118	2,343
	110	122	2,375
	113	124	2,464
B12	112	102	664
	114	103	671
	121	105	702
B13	0	1	1,176
	0	1	1,187
	0	1	1,215
B14	108	95	1,313
	109	97	1,331
	110	97	1,375
B15	80	101	567
	80	102	573
	86	103	598
B16	0	0	1
	0	0	1
	0	0	1
B17	0	1	1
	0	1	1
	0	1	1
P51	54	8	624
	54	8	634
	57	8	669
P52	84	110	2,623
	85	112	2,656
	87	123	2,828
P53	77	117	3,052
	77	118	3,083
	79	122	3,280
P54	147	174	3,398
	148	178	3,441
	157	189	3,653
P55	54	41	1,583
	54	41	1,593
	57	51	1,689
P56	121	133	2,749
	123	134	2,783
	131	139	2,972

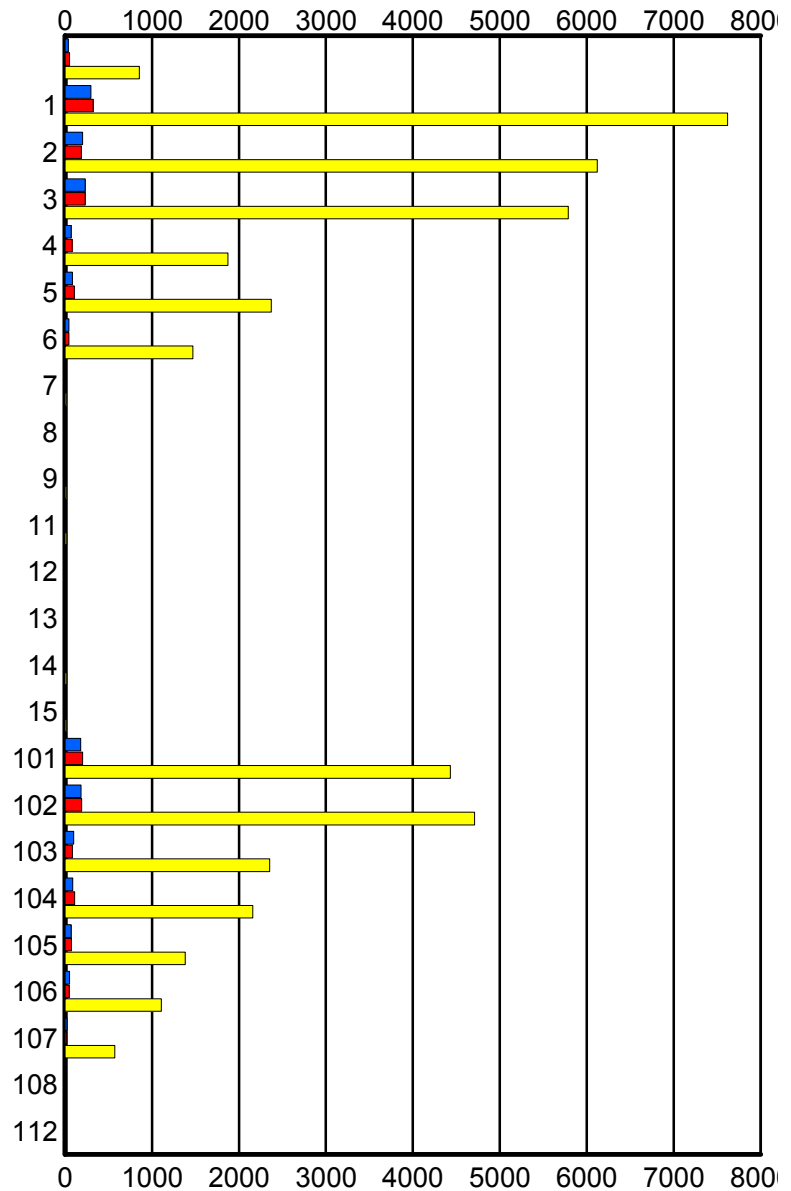
	Current We	Last Week	YTD
P57	130	115	2,048
	132	115	2,071
	140	123	2,216
P58	27	32	663
	27	32	669
	27	32	706
P59	1	0	3
	1	0	3
	1	0	3
P60	0	0	1
	0	0	1
	0	0	1
S01	3	2	32
	3	2	32
	3	2	35
S02	4	7	175
	4	8	181
	4	8	195
S03	2	4	55
	2	4	58
	2	5	64
S04	0	4	97
	0	4	99
	0	4	106

Road Ranger / SIRV Performance By Beat

	Current We	Last Week	YTD
	36	50	831
	36	51	854
	38	53	903
1	283	306	7,282
	298	322	7,618
	314	325	7,914
2	199	180	5,938
	201	187	6,120
	209	193	6,374
3	228	230	5,668
	233	230	5,786
	242	237	6,010
4	68	81	1,838
	69	83	1,874
	74	86	1,937
5	82	105	2,346
	84	105	2,370
	86	108	2,433
6	42	45	1,438
	45	46	1,469
	46	49	1,522
7	0	0	16
	0	0	17
	0	0	18
8	0	0	9
	0	0	9
	0	0	9
9	0	0	17
	0	0	17
	0	0	17
11	0	7	20
	0	7	20
	0	7	20
12	0	0	2
	0	0	2
	0	0	2
13	0	0	8
	0	0	8
	0	0	8
14	0	0	19
	0	0	19
	0	0	20
15	0	0	14
	0	0	14
	0	0	14

Values presented are:
 - Total Events with a RR/SIRV Response
 - Total RR/SIRV Responses,
 - Total Activities Performed

RR/SIRV Responses per Beat



■ Current Week
 ■ Last Week
 ■ YTD

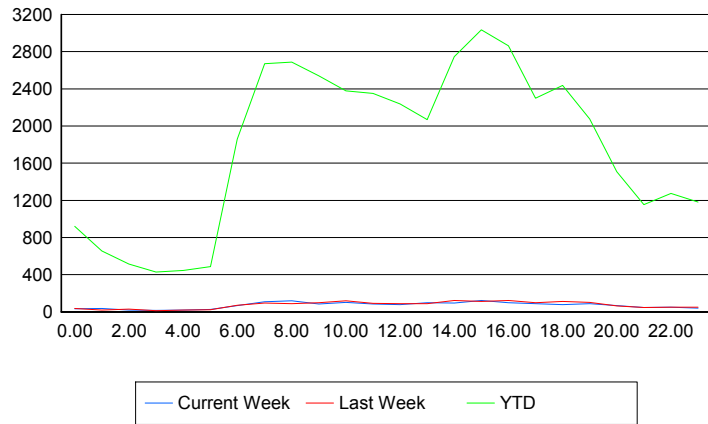
	Current We	Last Week	YTD
101	178	196	4,358
	180	201	4,431
	186	218	4,712
102	180	189	4,649
	183	190	4,711
	193	205	5,007
103	97	86	2,322
	98	86	2,352
	102	88	2,487
104	89	111	2,137
	89	112	2,158
	94	122	2,309
105	70	72	1,374
	70	72	1,382
	74	73	1,477
106	53	48	1,096
	53	50	1,106
	58	51	1,177
107	24	20	572
	24	20	574
	24	22	614
108	0	0	3
	0	0	4
	0	0	4
112	0	0	2
	0	0	2
	0	0	3

Road Ranger / SIRV Performance By Time of Day

Values presented are:
 - Total Events with a RR/SIRV Response
 - Total RR/SIRV Responses,
 - Total Activities Performed

	Current We	Last Week	YTD
12AM-1AM	33	36	882
	33	37	919
	35	39	973
1AM-2AM	34	20	627
	36	20	656
	37	20	679
2AM-3AM	20	26	479
	20	28	513
	20	28	545
3AM-4AM	16	13	406
	17	13	428
	22	14	460
4AM-5AM	17	16	395
	19	20	447
	23	21	476
5AM-6AM	22	18	415
	26	21	486
	26	22	501
6AM-7AM	57	67	1,755
	67	72	1,860
	70	75	1,940
7AM-8AM	103	91	2,540
	107	96	2,670
	109	99	2,794
8AM-9AM	107	85	2,514
	118	88	2,688
	121	90	2,810
9AM-10AM	81	93	2,436
	83	98	2,541
	83	101	2,662
10AM-11AM	101	109	2,267
	103	120	2,379
	106	127	2,492
11AM-12PM	80	90	2,236
	85	92	2,350
	90	97	2,464
12PM-1PM	72	83	2,111
	79	88	2,238
	81	88	2,335

Number of Responses / Hour of the Day



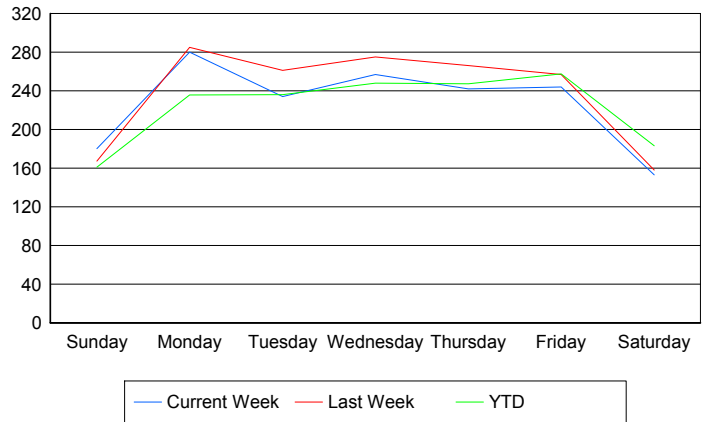
	Current We	Last Week	YTD
1PM-2PM	91	77	1,939
	97	87	2,068
	100	89	2,154
2PM-3PM	93	116	2,590
	95	121	2,747
	97	124	2,909
3PM-4PM	118	110	2,919
	122	113	3,036
	126	118	3,183
4PM-5PM	97	121	2,705
	98	124	2,864
	102	130	3,021
5PM-6PM	87	90	2,178
	88	98	2,300
	99	104	2,421
6PM-7PM	74	107	2,352
	78	111	2,436
	81	112	2,549
7PM-8PM	86	101	2,017
	88	103	2,076
	94	108	2,180
8PM-9PM	65	58	1,443
	67	64	1,508
	75	71	1,581
9PM-10PM	45	45	1,107
	46	46	1,155
	48	49	1,227
10PM-11PM	49	47	1,227
	51	51	1,274
	53	52	1,356
11PM-12AM	39	50	1,147
	40	51	1,183
	42	59	1,279

Road Ranger / SIRV Performance By Day of Week

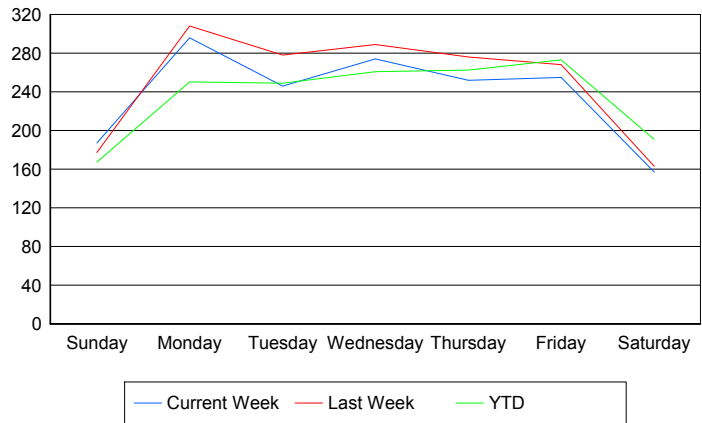
Values presented are:
 - Total Events with a RR/SIRV Response
 - Total RR/SIRV Responses,
 - Total Activities Performed

	Current We	Last Week	YTD
Sunday	177 183 188	169 180 188	4,116 4,277 4,479
Monday	280 296 310	285 308 316	6,015 6,357 6,660
Tuesday	234 246 258	261 278 282	6,100 6,359 6,723
Wednesday	257 274 287	275 289 307	6,364 6,636 7,053
Thursday	242 252 261	266 276 294	6,379 6,692 7,111
Friday	244 255 266	257 268 280	6,858 7,197 7,598
Saturday	153 157 170	158 163 170	4,888 5,082 5,367

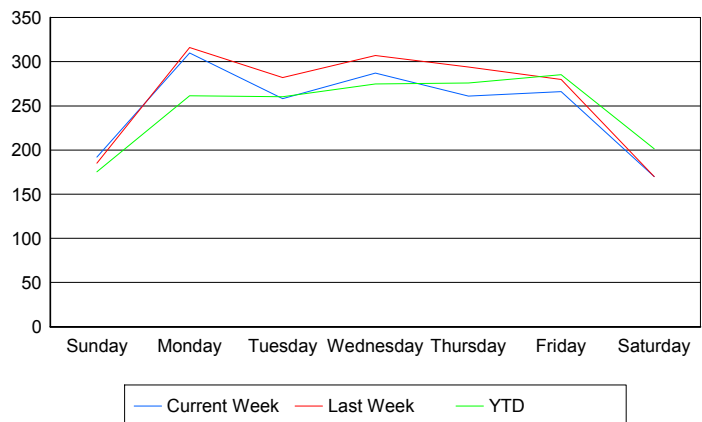
Avg # of events with a RR/SIRV Response per Day of the Week



Avg # of RR/SIRV Responses per Day of the Week



Avg # of RR/SIRV Activities Performed per Day of the Week



Road Ranger / SIRV Responses per Time of Day and Day of Week

