



Weekly Performance Measures Report Broward, Palm Beach Counties

Period From Jun 20, 2010 to Jun 26, 2010

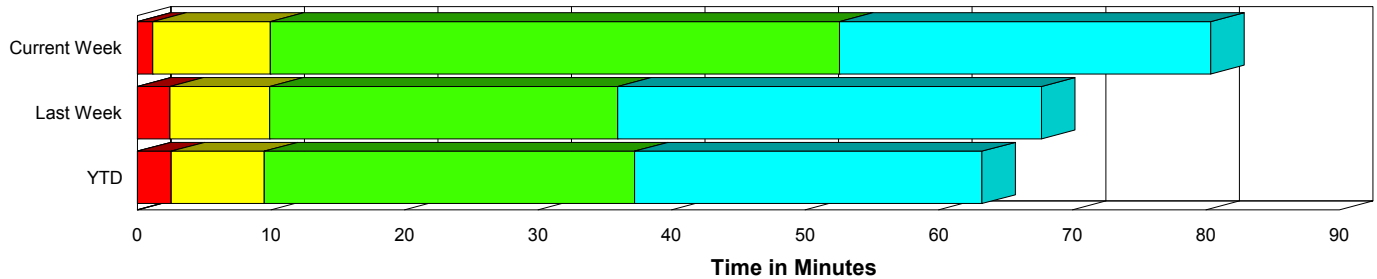


Created on:
June 28, 2010
9:21 am

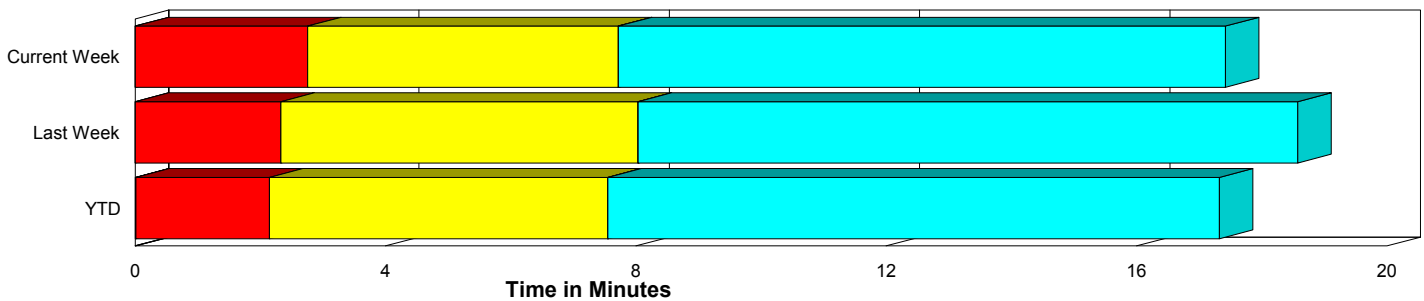
Performance Measures Summary

	Traffic Events (No Lanes Blocked)			Incidents (Lanes Blocked)		
	<u>This Week</u>	<u>Last Week</u>	<u>YTD</u>	<u>This Week</u>	<u>Last Week</u>	<u>YTD</u>
Number of Events	1,986	1,947	44,715	61	53	1,880
TMC Detection (min.)	0.00	0.00	0.01	0.00	0.00	0.02
TMC Verification (min.)	2.76	2.33	2.13	1.15	2.44	2.54
TMC Response (min.)	9.14	9.05	8.55	10.03	9.96	9.63
RR Dispatch Time (min.)	1.78	1.71	1.76	2.02	2.27	2.00
RR Response Time (min.)	7.25	7.35	6.81	8.00	7.65	7.66
Roadway Clearance (min.)				51.80	35.43	36.64
Event Clearance (min.)	18.83	19.59	18.33	78.05	66.44	62.26
# of Events w/ RR/SIRV	1,711	1,736	38,207	59	53	1,830
RR/SIRV Responses	1,711	1,736	38,207	59	53	1,830
RR/SIRV Activities	1,390	1,453	32,346	113	98	3,154

Incident Clearance Time-Line



Traffic Event (Non-Lane Blockage) Time-Line



■ Avg. TMC Detection Time	■ Avg. Time from TMC Response to Roadway Clearance*
■ Avg. Time from TMC Detection to TMC Verification	■ Avg. Time from Roadway Clearance to Incident/Event Clearance**
■ Avg. Time from TMC Verification to TMC Response	

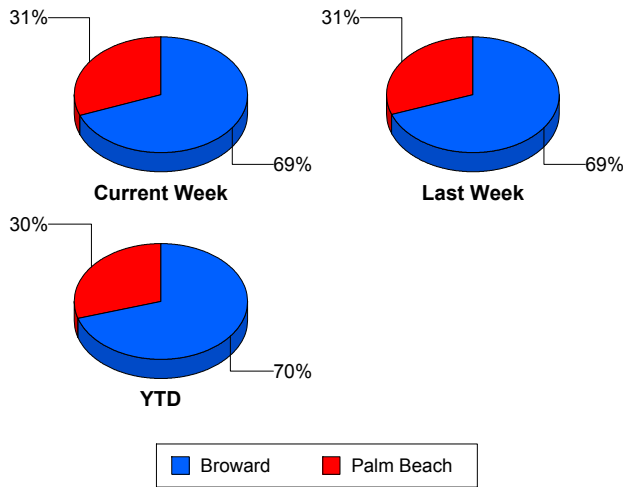
* Roadway clearance equals all travel lanes open

** Incident clearance equals time when last responder has left the scene

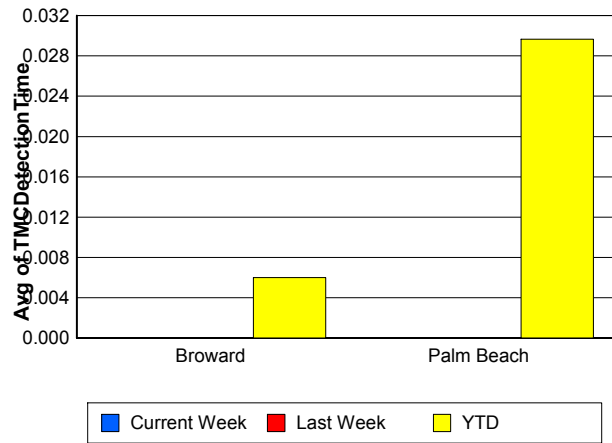
Performance Measures by County

	Broward			Palm Beach		
	<u>Current Week</u>	<u>Last Week</u>	<u>YTD</u>	<u>Current Week</u>	<u>Last Week</u>	<u>YTD</u>
Number of Events	1,415	1,387	32,774	632	613	13,821
Number of Incidents	40	36	1,238	21	17	642
TMC Detection (min.)	0.00	0.00	0.01	0.00	0.00	0.03
TMC Verification (min.)	1.57	1.26	1.21	5.27	4.75	4.38
TMC Response (min.)	9.97	10.23	9.27	8.06	7.43	7.55
RR Dispatch Time (min.)	1.11	1.31	1.37	3.13	2.58	2.63
RR Response Time (min.)	8.95	9.04	8.02	4.96	4.96	5.03
Event Clearance (min.)	20.11	21.04	19.56	21.69	20.34	21.38
Roadway Clearance (min.)	40.16	35.98	33.70	73.97	34.26	42.30
Incident Clearance (min.)	68.30	71.91	61.33	96.63	54.85	63.69
# of Events w/ RR/SIRV	1,174	1,200	27,105	596	589	12,932
RR/SIRV Responses	1,174	1,200	27,105	596	589	12,932
RR/SIRV Activities	873	907	21,819	630	644	13,681

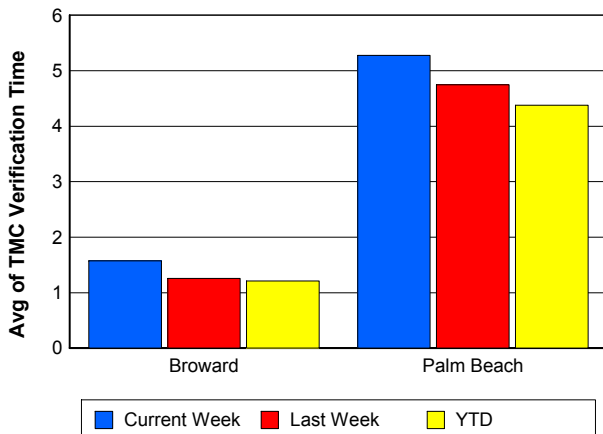
Number of Events / County



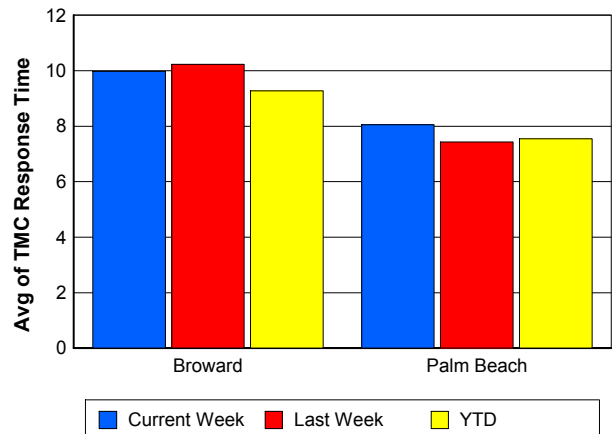
TMC Detection Time



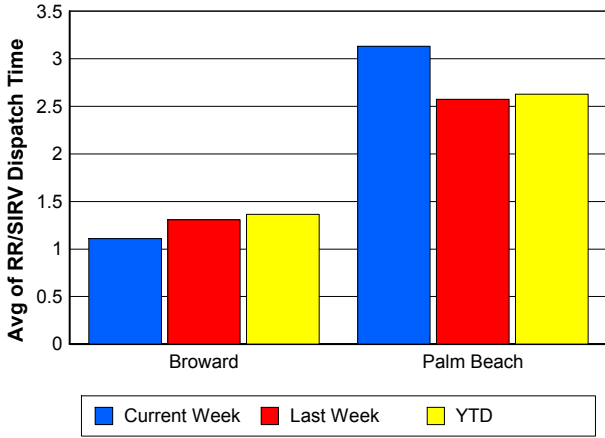
TMC Verification Time



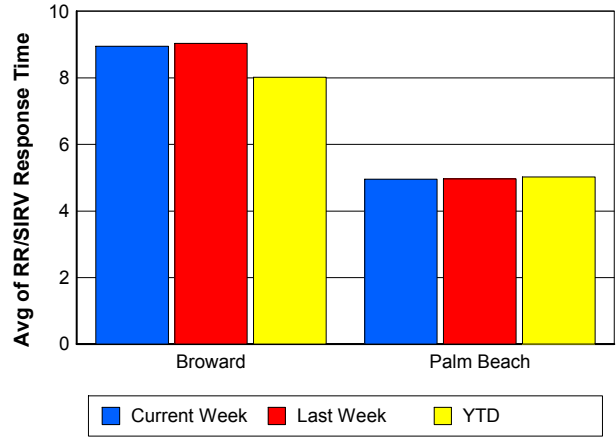
TMC Response Time



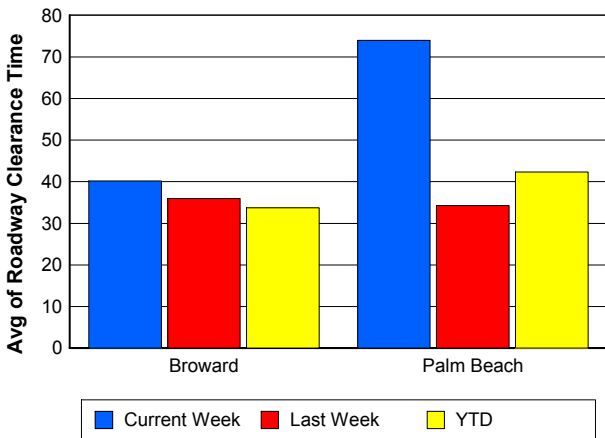
Road Ranger / SIRV Dispatch Time



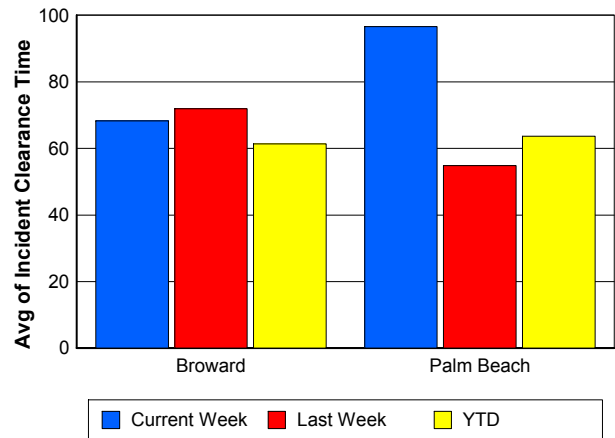
Road Ranger / SIRV Response Time



Roadway Clearance Time (2A)



Incident Clearance Time (3B)

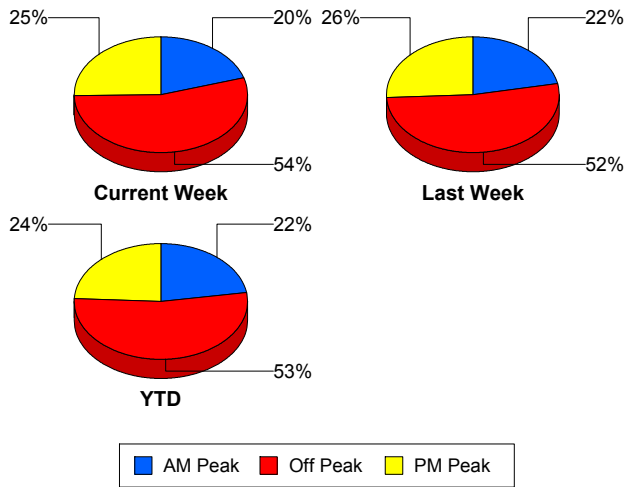


Performance Measures by Peak Period

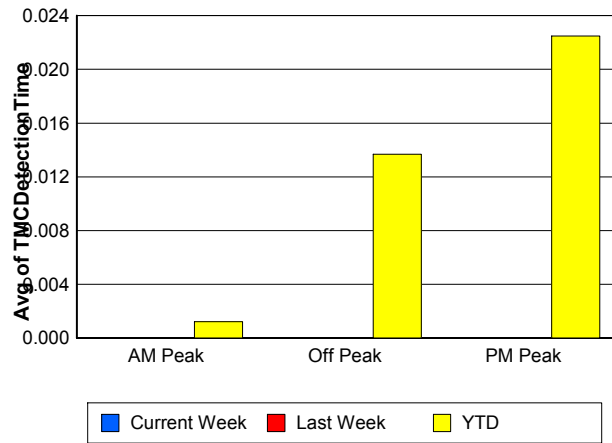
Note: AM peak period is defined as 6am to 10am and PM peak period is defined as 3pm to 7pm.

	AM Peak			Off Peak			PM Peak		
	<u>Current Week</u>	<u>Last Week</u>	<u>YTD</u>	<u>Current Week</u>	<u>Last Week</u>	<u>YTD</u>	<u>Current Week</u>	<u>Last Week</u>	<u>YTD</u>
Number of Events	416	441	10,443	1,112	1,040	24,868	519	519	11,284
Number of Incidents	11	17	416	38	26	982	12	10	482
TMC Detection (min.)	0.00	0.00	0.00	0.00	0.00	0.01	0.00	0.00	0.02
TMC Verification (min.)	1.21	1.58	1.34	2.49	2.47	2.26	4.40	2.69	2.66
TMC Response (min.)	6.05	8.97	8.03	9.27	8.90	8.95	11.34	9.50	8.41
RR Dispatch Time (min.)	1.18	1.22	1.33	1.63	1.58	1.88	2.67	2.46	1.97
RR Response Time (min.)	4.96	7.83	6.72	7.58	7.29	7.09	8.42	7.11	6.51
Event Clearance (min.)	17.47	20.14	18.72	20.56	20.80	20.49	23.19	21.48	20.51
Roadway Clearance (min.)	50.08	21.71	32.57	52.04	46.15	41.81	52.61	30.88	29.61
Incident Clearance (min.)	87.95	69.11	58.29	75.63	63.30	65.77	76.65	70.02	58.04
# of Events w/ RR/SIRV	368	409	9,166	962	918	21,031	440	462	9,840
RR/SIRV Responses	368	409	9,166	962	918	21,031	440	462	9,840
RR/SIRV Activities	290	348	7,965	824	785	18,467	389	418	9,068

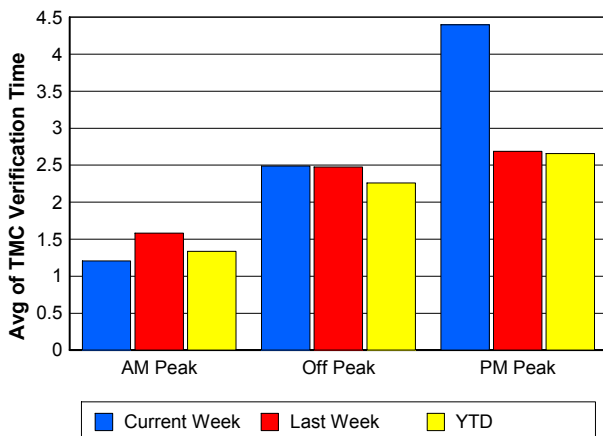
Number of Events / Peak Period



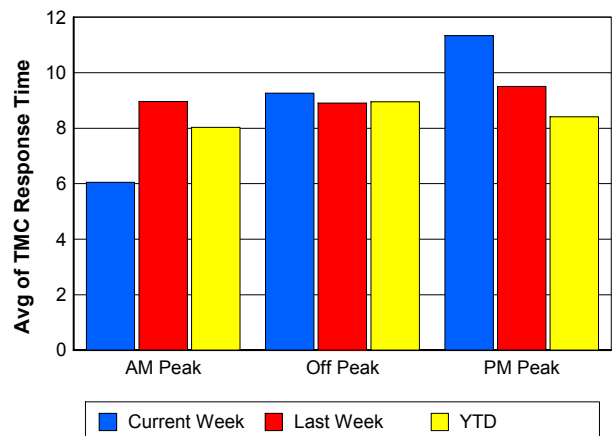
TMC Detection Time



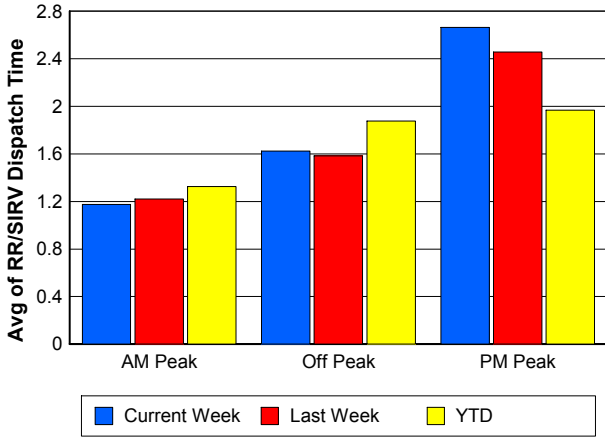
TMC Verification Time



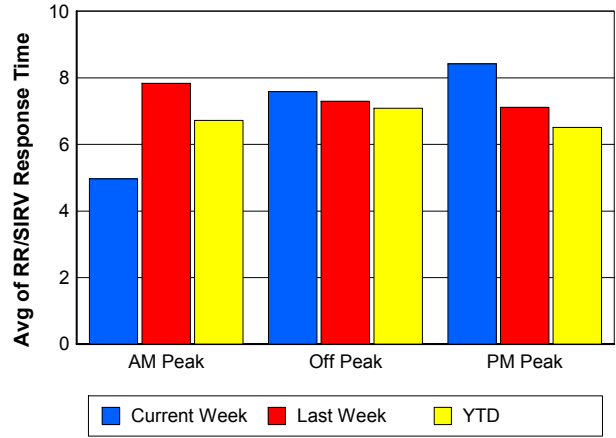
TMC Response Time



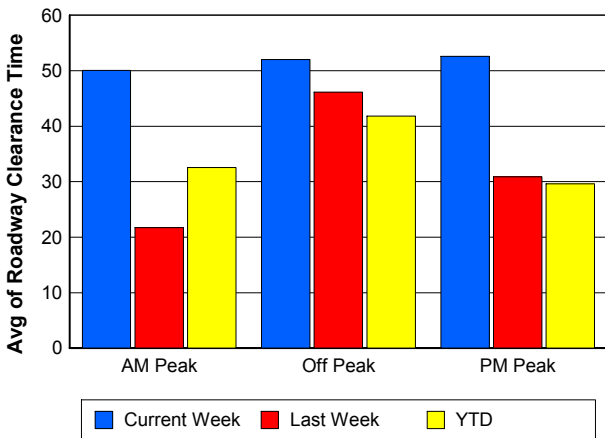
Road Ranger / SIRV Dispatch Time



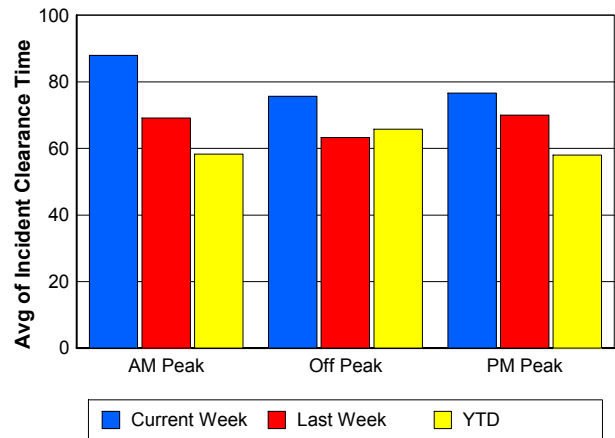
Road Ranger / SIRV Response Time



Roadway Clearance Time (2A)



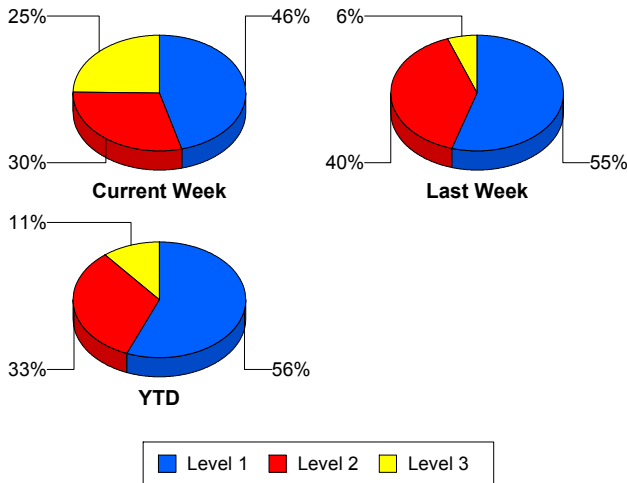
Incident Clearance Time (3B)



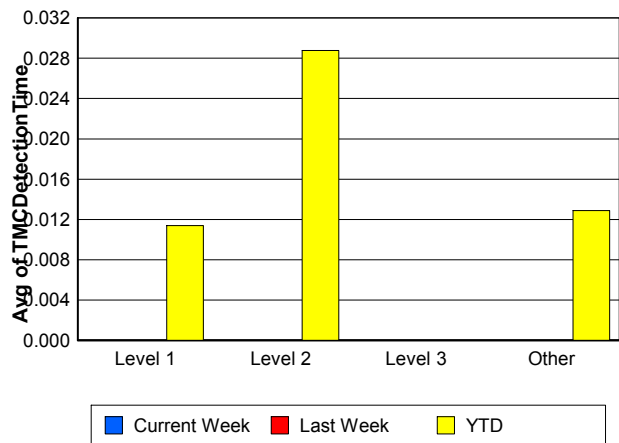
Performance Measures by Severity

	Level 1			Level 2			Level 3			Other		
	<u>This Week</u>	<u>Last Week</u>	<u>YTD</u>	<u>This Week</u>	<u>Last Week</u>	<u>YTD</u>	<u>This Week</u>	<u>Last Week</u>	<u>YTD</u>	<u>This Week</u>	<u>Last Week</u>	<u>YTD</u>
Number of Events	28	29	1,053	18	21	623	15	3	202	1,986	1,947	44,717
Number of Incidents	28	29	1,053	18	21	623	15	3	202	0	0	2
TMC Detection (min.)	0.00	0.00	0.01	0.00	0.00	0.03	0.00	0.00	0.00	0.00	0.00	0.01
TMC Verification (min.)	0.57	1.58	1.38	2.17	3.19	4.32	0.98	5.51	3.01	2.76	2.33	2.13
TMC Response (min.)	10.36	8.92	7.55	9.75	11.63	12.15	9.78	7.99	12.54	9.14	9.05	8.55
RR Dispatch Time (min.)	1.08	2.31	1.44	1.07	2.39	2.48	5.06	1.06	3.56	1.78	1.71	1.76
RR Resp. Time (min.)	9.30	6.54	6.15	8.68	9.24	9.73	4.72	6.93	8.97	7.25	7.35	6.81
Event Clearance (min.)	46.32	53.30	45.48	74.06	75.02	73.69	142.07	133.28	114.12	18.83	19.59	18.33
Roadway Clear. (min.)	14.77	14.07	15.07	46.07	49.62	52.59	127.79	142.63	100.42			-21.46
Incident Clearance (min.)	46.32	53.30	45.48	74.06	75.02	73.69	142.07	133.28	113.84			0.00
# of Events w/ RR/SIRV	27	29	1,031	18	21	616	14	3	181	1,711	1,736	38,209
RR/SIRV Responses	27	29	1,031	18	21	616	14	3	181	1,711	1,736	38,209
RR/SIRV Activities	45	41	1,524	35	45	1,178	33	12	447	1,390	1,453	32,351

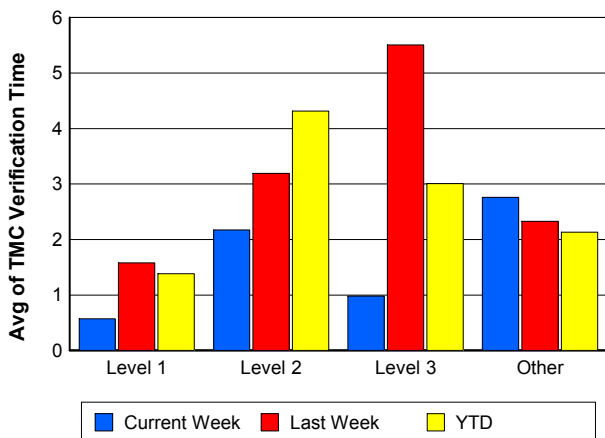
Number of Events / Severity



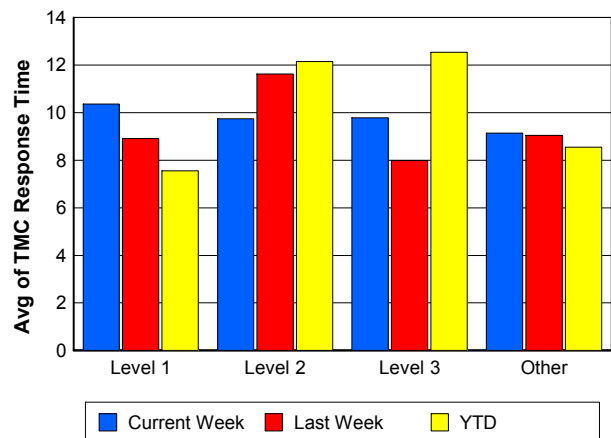
TMC Detection Time



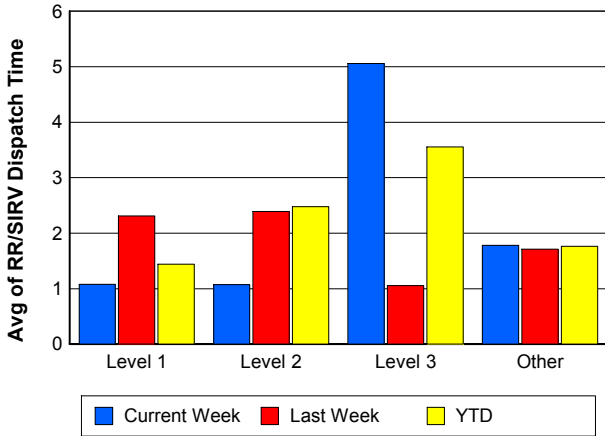
TMC Verification Time



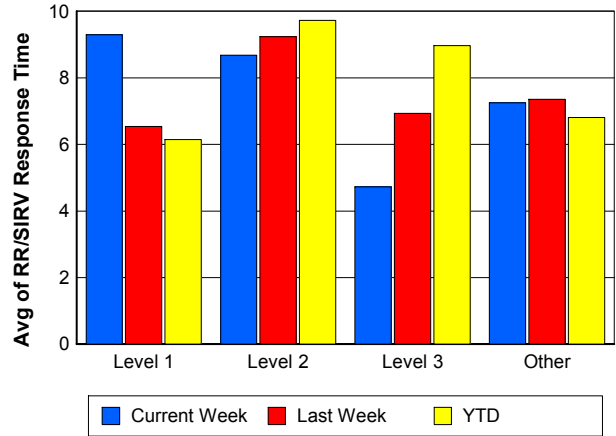
TMC Response Time



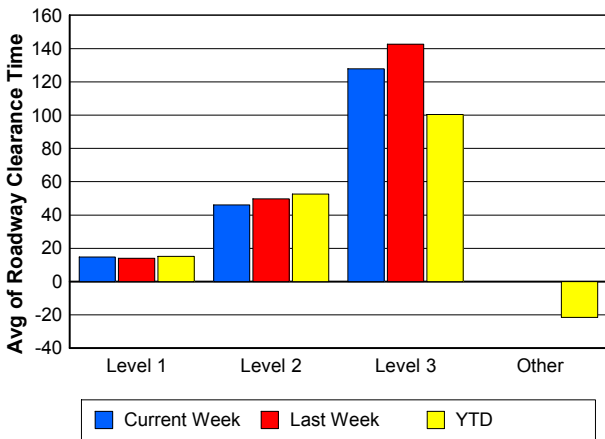
Road Ranger / SIRV Dispatch Time



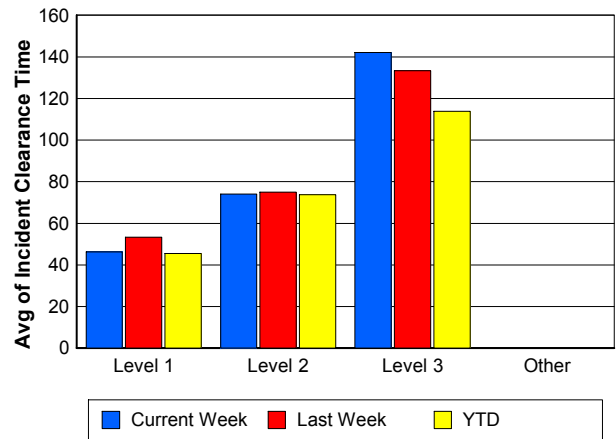
Road Ranger / SIRV Response Time



Roadway Clearance Time (2A)



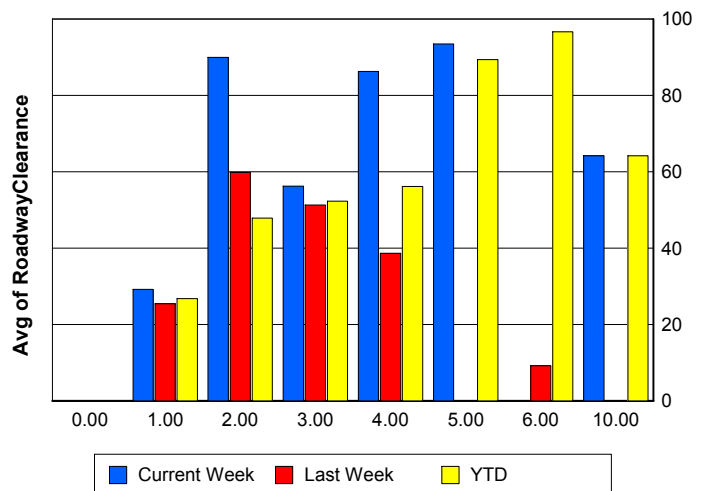
Incident Clearance Time (3B)



Roadway Clearance by Maximum Number of Lanes Blocked

	Current Week	Last Week	YTD
0			
1	29.15	25.42	26.79
2	89.89	59.82	47.83
3	56.17	51.31	52.26
4	86.27	38.63	56.09
5	93.44	0.00	89.37
6	0.00	9.15	96.66
10	64.12	0.00	64.12

Roadway Clearance Time (2A)



Performance Measures by Roadway

595

	<u>Current Week</u>	<u>Last Week</u>	<u>YTD</u>
Number of Events	33	37	1,073
Number of Incidents	2	1	52
TMC Detection (min.)	0.00	0.00	0.00
TMC Verification (min.)	3.65	0.08	1.85
TMC Response (min.)	26.11	16.65	15.83
RR Dispatch Time (min.)	2.77	1.36	2.05
RR Resp. Time (min.)	21.49	15.76	13.79
Event Clearance (min.)	21.18	18.44	19.79
Roadway Clear. (min.)	63.29	124.52	50.91
Incident Clearance (min.)	17.61	127.83	65.98
# of Events w/ RR/SIRV	24	24	769
RR/SIRV Responses	24	24	769
RR/SIRV Activities	12	16	497

75

	<u>Current Week</u>	<u>Last Week</u>	<u>YTD</u>
Number of Events	322	311	7,112
Number of Incidents	1	2	132
TMC Detection (min.)	0.00	0.00	0.02
TMC Verification (min.)	3.10	1.88	2.17
TMC Response (min.)	11.72	10.15	10.27
RR Dispatch Time (min.)	0.86	1.37	1.44
RR Resp. Time (min.)	10.99	8.84	8.96
Event Clearance (min.)	19.93	19.28	20.30
Roadway Clear. (min.)	41.13	35.50	51.48
Incident Clearance (min.)	90.58	38.83	84.19
# of Events w/ RR/SIRV	245	260	5,698
RR/SIRV Responses	245	260	5,698
RR/SIRV Activities	202	215	4,728

95

	<u>Current Week</u>	<u>Last Week</u>	<u>YTD</u>
Number of Events	1,686	1,635	38,025
Number of Incidents	58	50	1,632
TMC Detection (min.)	0.00	0.00	0.01
TMC Verification (min.)	2.63	2.50	2.16
TMC Response (min.)	8.60	8.84	8.24
RR Dispatch Time (min.)	1.93	1.79	1.83
RR Resp. Time (min.)	6.54	7.05	6.41
Event Clearance (min.)	20.74	21.23	20.08
Roadway Clear. (min.)	51.59	33.65	35.41
Incident Clearance (min.)	79.92	66.31	61.46
# of Events w/ RR/SIRV	1,497	1,495	33,257
RR/SIRV Responses	1,497	1,495	33,257
RR/SIRV Activities	1,285	1,315	29,979

OKEEB

	<u>YTD</u>
Number of Events	1
Number of Incidents	0
TMC Detection (min.)	0.00
TMC Verification (min.)	0.00
TMC Response (min.)	0.00
RR Dispatch Time (min.)	0.00
RR Resp. Time (min.)	0.00
Event Clearance (min.)	18.45
Roadway Clear. (min.)	
Incident Clearance (min.)	
# of Events w/ RR/SIRV	1
RR/SIRV Responses	1
RR/SIRV Activities	1

SR-816

	<u>Last Week</u>	<u>YTD</u>
Number of Events	2	72
Number of Incidents	0	47
TMC Detection (min.)	0.00	0.00
TMC Verification (min.)	0.00	1.07
TMC Response (min.)		1.65
RR Dispatch Time (min.)		0.14
RR Resp. Time (min.)		1.52
Event Clearance (min.)	2.22	15.88
Roadway Clear. (min.)		16.66
Incident Clearance (min.)		19.72
# of Events w/ RR/SIRV	0	63
RR/SIRV Responses	0	63
RR/SIRV Activities	0	68

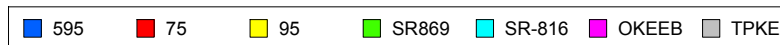
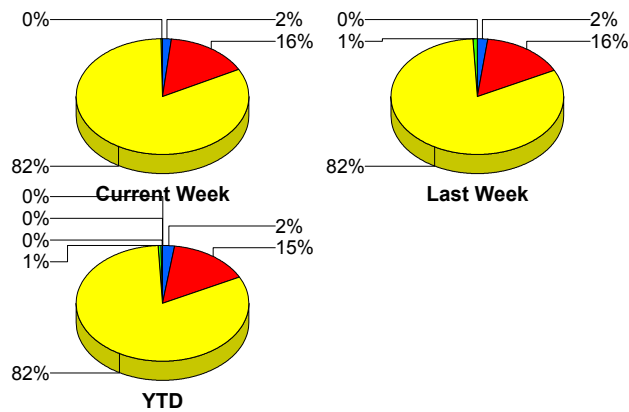
SR869

	<u>Current Week</u>	<u>Last Week</u>	<u>YTD</u>
Number of Events	6	15	302
Number of Incidents	0	0	7
TMC Detection (min.)	0.00	0.00	0.00
TMC Verification (min.)	0.00	0.00	0.96
TMC Response (min.)	6.63	10.51	8.36
RR Dispatch Time (min.)	1.01	2.20	1.25
RR Resp. Time (min.)	5.74	9.87	7.47
Event Clearance (min.)	12.78	17.76	18.57
Roadway Clear. (min.)			37.30
Incident Clearance (min.)			60.61
# of Events w/ RR/SIRV	4	10	249
RR/SIRV Responses	4	10	249
RR/SIRV Activities	4	5	227

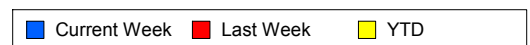
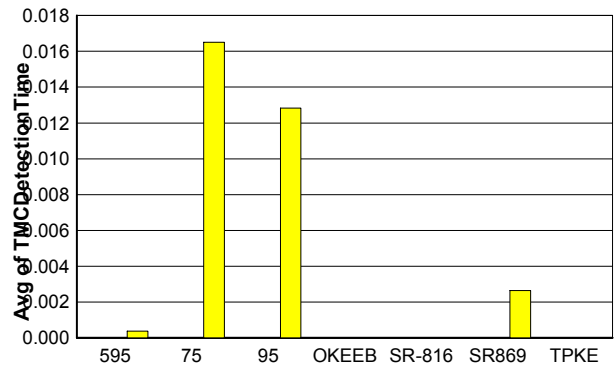
TPKE

	<u>YTD</u>
Number of Events	10
Number of Incidents	10
TMC Detection (min.)	0.00
TMC Verification (min.)	0.00
TMC Response (min.)	
RR Dispatch Time (min.)	
RR Resp. Time (min.)	
Event Clearance (min.)	62.29
Roadway Clear. (min.)	59.66
Incident Clearance (min.)	62.29
# of Events w/ RR/SIRV	0
RR/SIRV Responses	0
RR/SIRV Activities	0

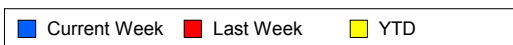
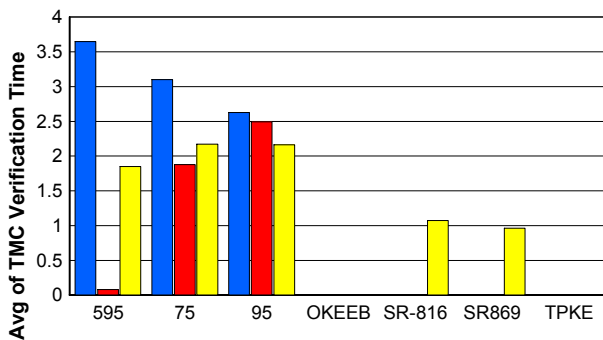
Number of Events / Roadway



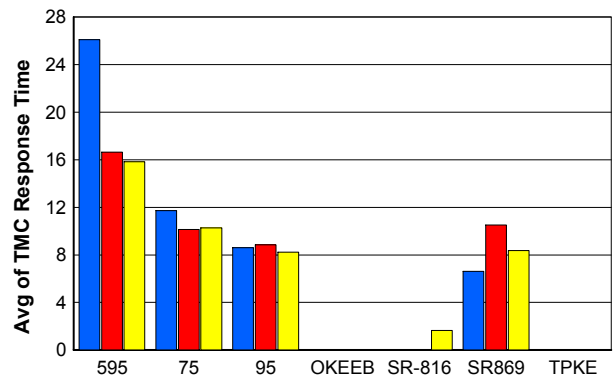
TMC Detection Time



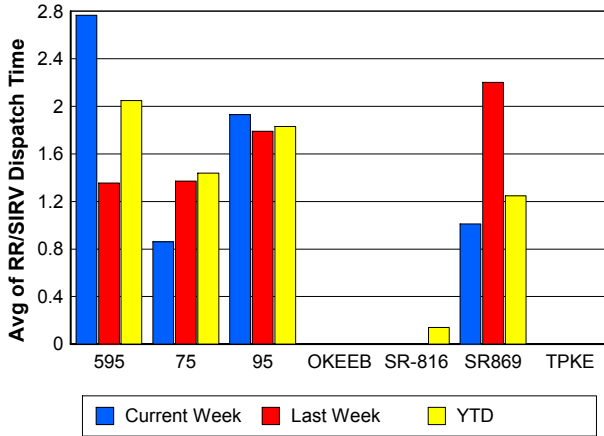
TMC Verification Time



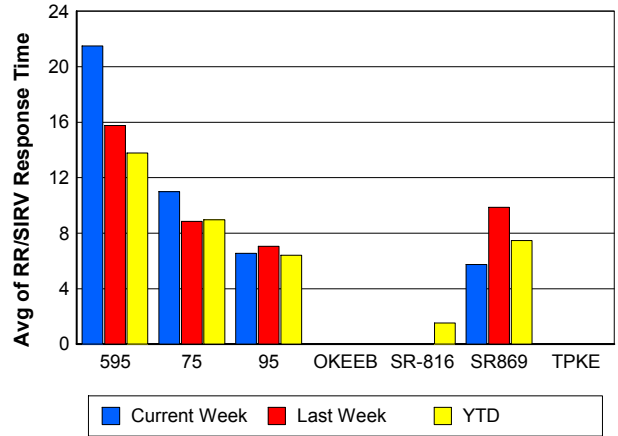
TMC Response Time



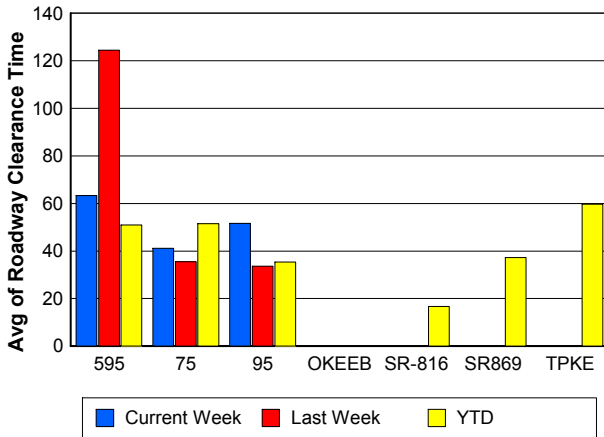
Road Ranger / SIRV Dispatch Time



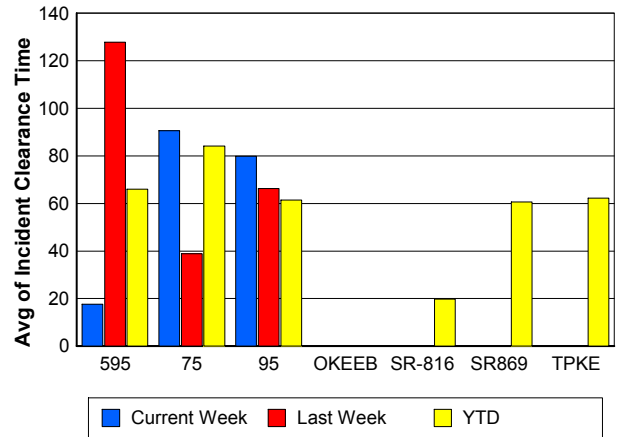
Road Ranger / SIRV Response Time



Roadway Clearance Time (2A)



Incident Clearance Time (3B)



Performance Measures by Event Type

Accident

	<u>Current Week</u>	<u>Last Week</u>	<u>YTD</u>
Number of Events	97	79	2,855
Number of Incidents	40	33	1,317
TMC Detection (min.)	0.00	0.00	0.02
TMC Verification (min.)	3.27	3.40	3.54
TMC Response (min.)	11.66	11.36	10.38
RR Dispatch Time (min.)	2.88	1.67	1.89
RR Response Time (min.)	8.73	9.69	8.51
Event Clearance (min.)	59.73	58.87	57.17
Roadway Clearance (min.)	56.86	41.30	39.16
Incident Clearance (min.)	88.44	78.71	71.26
# of Events w/ RR/SIRV	97	79	2,811
RR/SIRV Assists	97	79	2,811
RR/SIRV Activities	140	115	3,966

Debris on Roadway

	<u>Current Week</u>	<u>Last Week</u>	<u>YTD</u>
Number of Events	101	113	1,944
Number of Incidents	1	1	27
TMC Detection (min.)	0.00	0.00	0.00
TMC Verification (min.)	13.32	7.49	8.29
TMC Response (min.)	15.57	10.62	10.83
RR Dispatch Time (min.)	3.69	1.81	2.41
RR Response Time (min.)	11.74	8.81	8.40
Event Clearance (min.)	17.06	13.63	13.92
Roadway Clearance (min.)	1.27	20.30	28.12
Incident Clearance (min.)	3.12	28.22	30.29
# of Events w/ RR/SIRV	100	113	1,888
RR/SIRV Assists	100	113	1,888
RR/SIRV Activities	99	117	1,919

Disabled Vehicle

	<u>Current Week</u>	<u>Last Week</u>	<u>YTD</u>
Number of Events	1,321	1,346	29,771
Number of Incidents	12	12	353
TMC Detection (min.)	0.00	0.00	0.02
TMC Verification (min.)	2.93	2.55	2.43
TMC Response (min.)	8.56	8.84	8.18
RR Dispatch Time (min.)	1.68	1.75	1.73
RR Response Time (min.)	6.90	7.12	6.53
Event Clearance (min.)	20.30	21.24	20.10
Roadway Clearance (min.)	29.30	24.86	20.78
Incident Clearance (min.)	39.66	51.72	31.00
# of Events w/ RR/SIRV	1,244	1,285	28,372
RR/SIRV Assists	1,244	1,285	28,372
RR/SIRV Activities	1,208	1,262	28,192

Emergency Vehicles

	<u>Last Week</u>	<u>YTD</u>
Number of Events	4	35
Number of Incidents	2	29
TMC Detection (min.)	0.00	0.00
TMC Verification (min.)	0.00	0.82
TMC Response (min.)	8.53	8.87
RR Dispatch Time (min.)	0.20	1.19
RR Response Time (min.)	8.33	7.67
Event Clearance (min.)	22.65	33.28
Roadway Clearance (min.)	32.92	30.94
Incident Clearance (min.)	42.11	35.22
# of Events w/ RR/SIRV	2	23
RR/SIRV Assists	2	23
RR/SIRV Activities	3	25

Other

	<u>Current Week</u>	<u>Last Week</u>	<u>YTD</u>
Number of Events	515	445	11,616
Number of Incidents	1	0	26
TMC Detection (min.)	0.00	0.00	0.01
TMC Verification (min.)	0.05	0.16	0.09
TMC Response (min.)	5.86	8.24	10.29
RR Dispatch Time (min.)	1.24	1.68	1.69
RR Response Time (min.)	4.98	6.69	7.71
Event Clearance (min.)	13.61	14.52	11.40
Roadway Clearance (min.)	32.60		32.02
Incident Clearance (min.)	35.67		39.12
# of Events w/ RR/SIRV	319	297	6,601
RR/SIRV Assists	319	297	6,601
RR/SIRV Activities	35	39	1,000

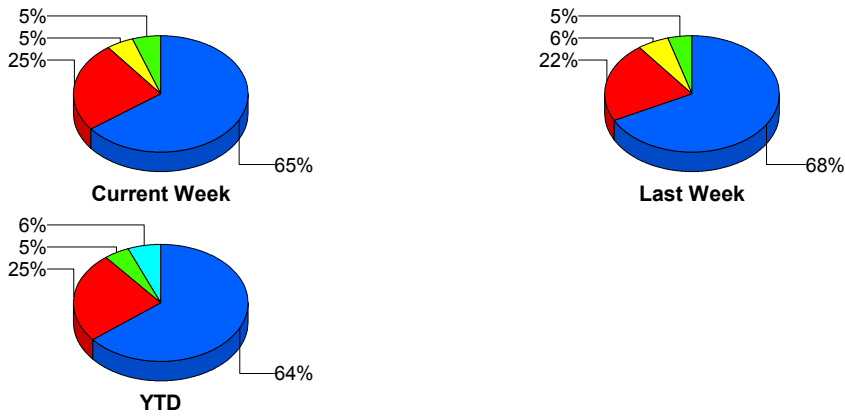
Police Activity

	<u>Current Week</u>	<u>Last Week</u>	<u>YTD</u>
Number of Events	6	3	117
Number of Incidents	4	2	64
TMC Detection (min.)	0.00	0.00	0.06
TMC Verification (min.)	0.00	4.79	1.25
TMC Response (min.)	5.99	5.44	14.24
RR Dispatch Time (min.)	3.70	0.88	5.48
RR Response Time (min.)	2.29	4.57	9.23
Event Clearance (min.)	69.40	26.89	51.90
Roadway Clearance (min.)	93.85	29.29	68.83
Incident Clearance (min.)	101.93	32.15	70.28
# of Events w/ RR/SIRV	5	3	96
RR/SIRV Assists	5	3	96
RR/SIRV Activities	8	3	103

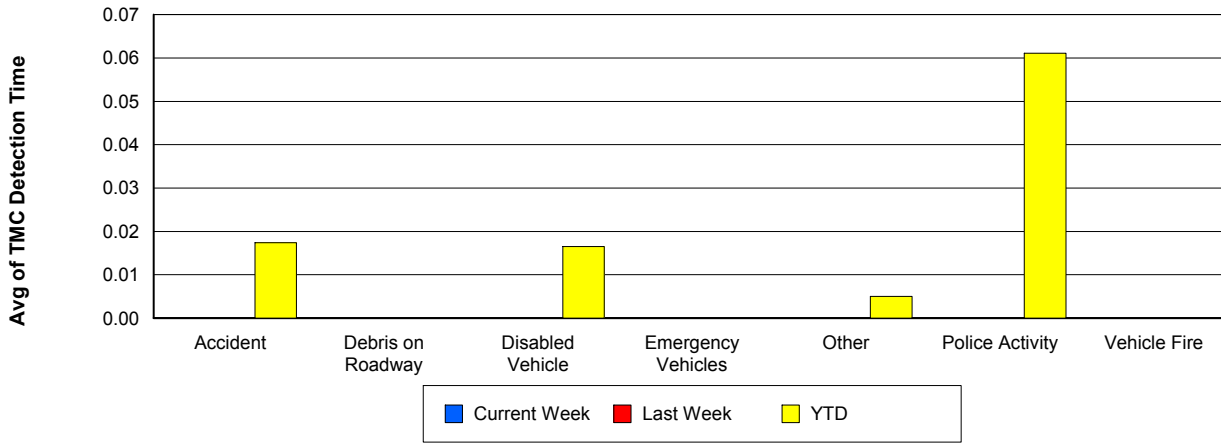
Vehicle Fire

	<u>Current Week</u>	<u>Last Week</u>	<u>YTD</u>
Number of Events	4	4	89
Number of Incidents	3	3	63
TMC Detection (min.)	0.00	0.00	0.00
TMC Verification (min.)	0.41	2.27	2.22
TMC Response (min.)	5.79	5.88	12.37
RR Dispatch Time (min.)	3.73	1.08	2.16
RR Response Time (min.)	2.06	4.80	10.22
Event Clearance (min.)	90.92	35.82	62.89
Roadway Clearance (min.)	41.44	24.01	47.97
Incident Clearance (min.)	100.32	42.13	73.38
# of Events w/ RR/SIRV	4	4	87
RR/SIRV Assists	4	4	87
RR/SIRV Activities	12	6	151

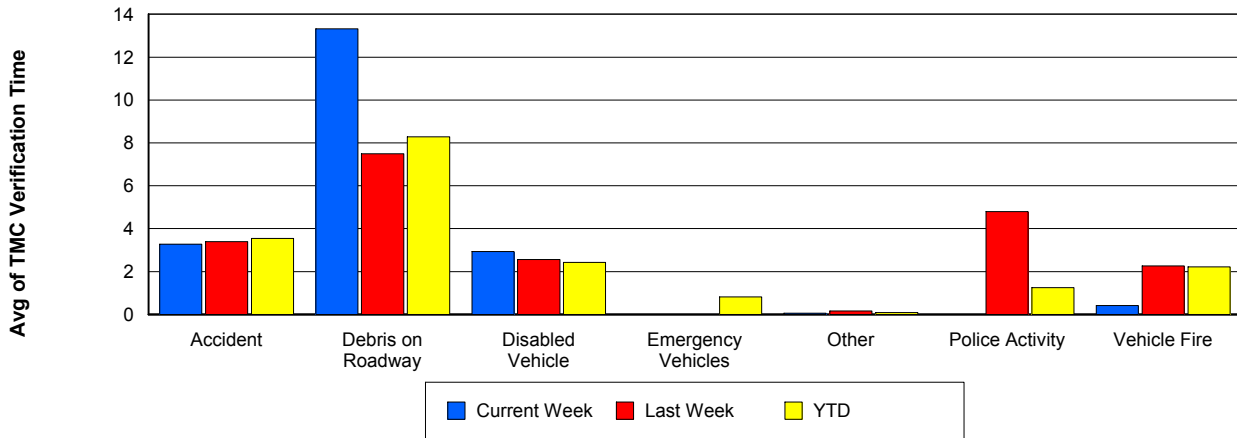
Number of Events / Event Type



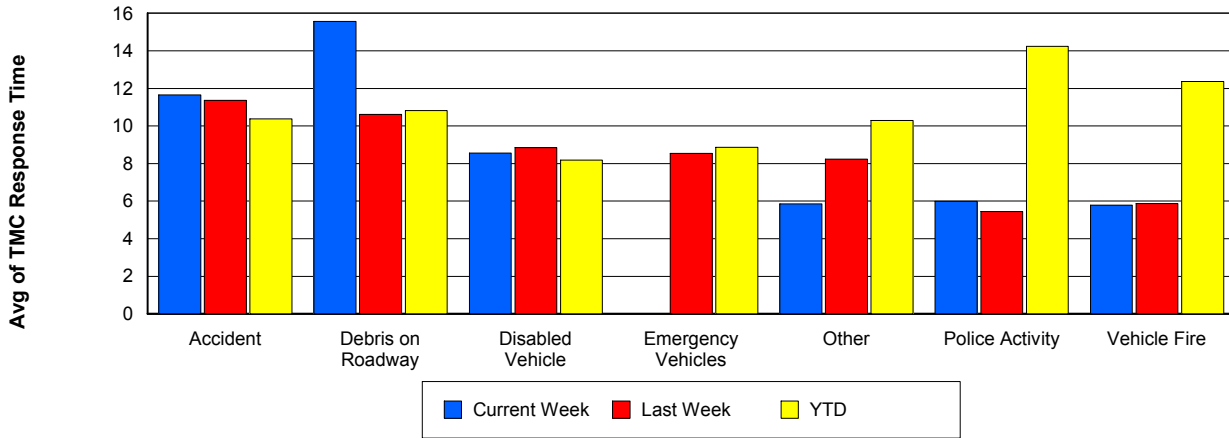
TMC Detection Time



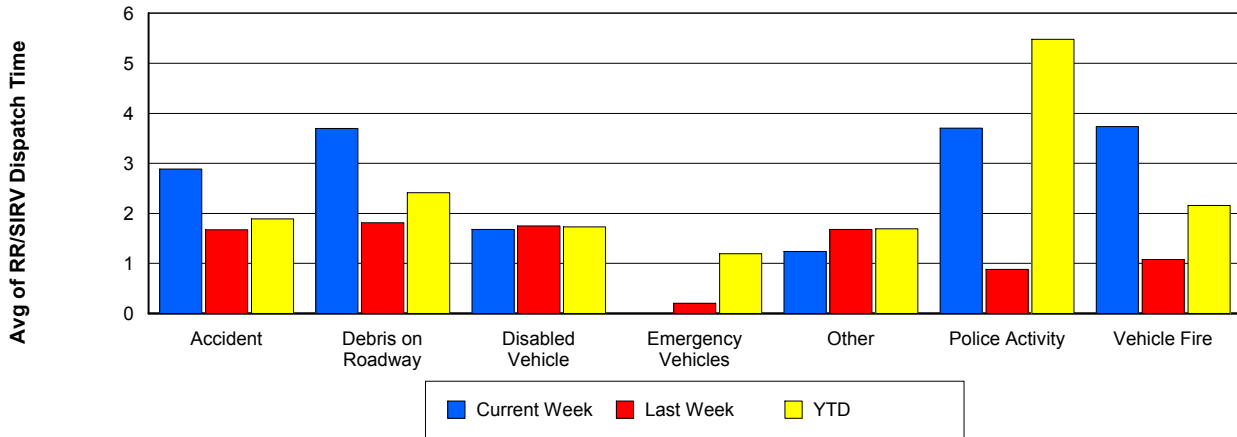
TMC Verification Time



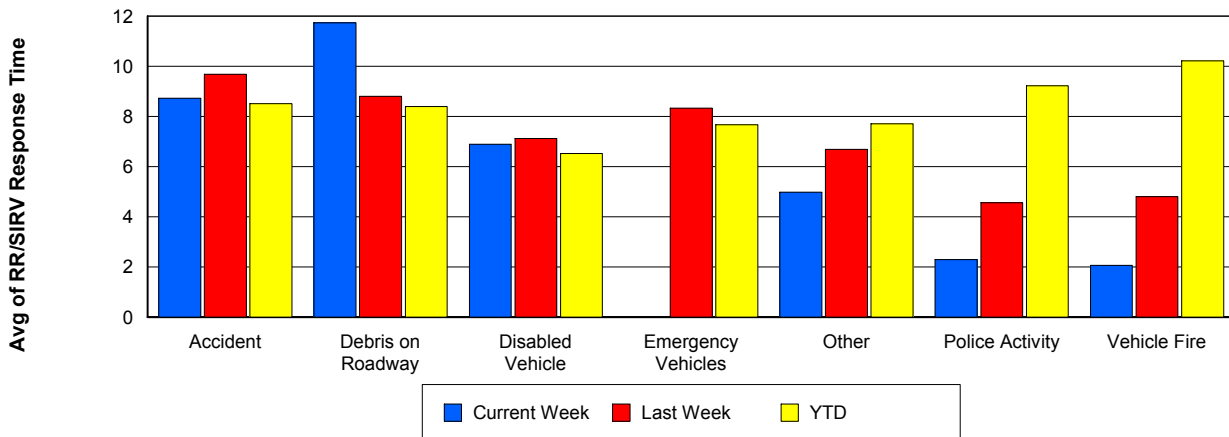
TMC Response Time



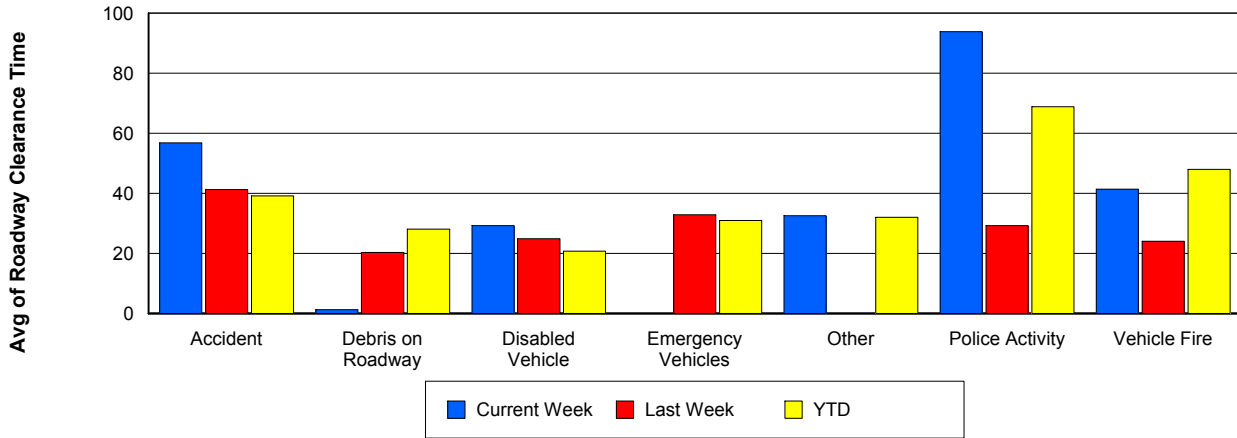
Road Ranger / SIRV Dispatch Time



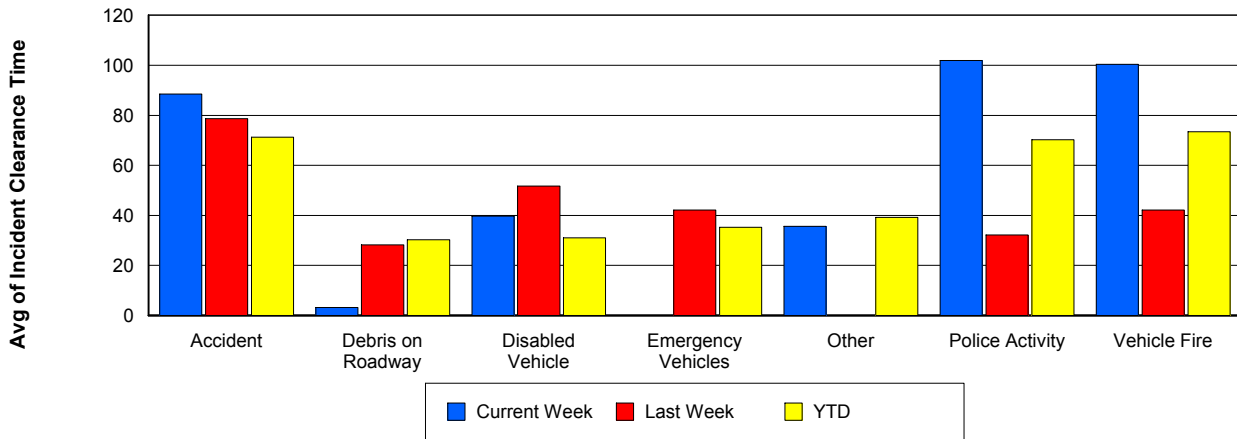
Road Ranger / SIRV Response Time



Roadway Clearance Time (2A)



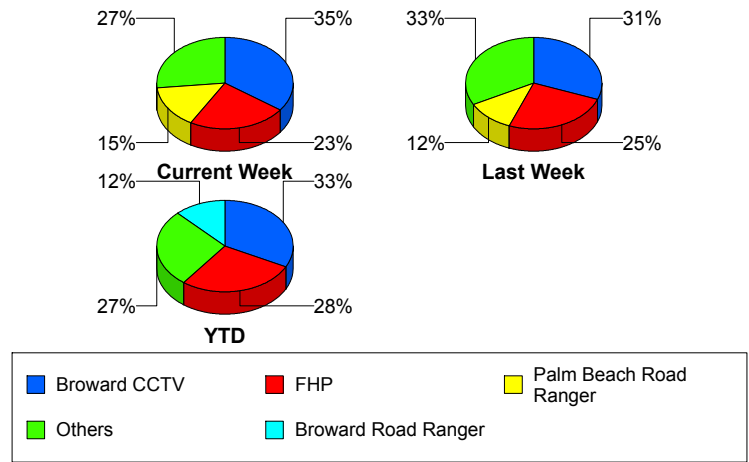
Incident Clearance Time (3B)



Incident Detection Methods

	Current Week	Last Week	YTD
Broward CCTV	21	16	605
Broward Road Ranger	6	5	227
Broward TMC	0	0	12
Broward VideoWall	1	3	30
BSO	0	0	23
County Police	0	0	2
District 4	0	2	48
District 6	0	0	2
FDOT Maintenance	0	0	4
FHP	14	13	514
Fire	0	0	5
Florida's Turnpike	0	0	12
ITMS	0	0	1
ITMS CCTV	7	5	106
Local Police	0	0	1
Media	0	0	2
Motorist	0	1	18
Other	0	0	1
Palm Beach Road Ran	9	6	208
Road Watcher	0	1	10
SIRV	1	0	3
TSS Detection	1	0	1
VisioPaD Detection	0	0	20
Total	60	52	1,855

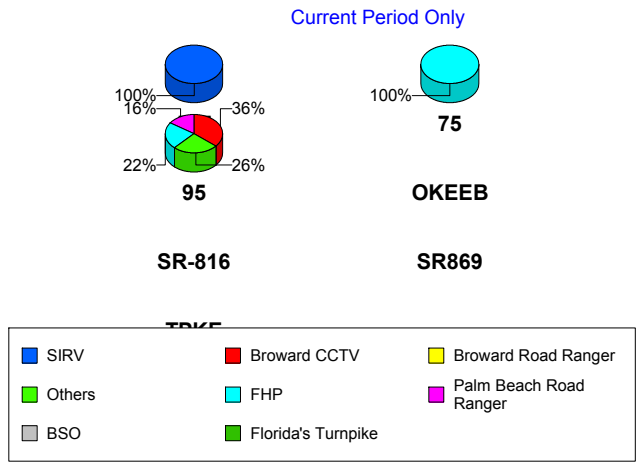
Total Incidents by Detection Method



Incident Detection Methods by Roadway

		Current Week	Last Week	YTD
595	Broward CCTV	0	0	12
	Broward Road Ranger	0	0	7
	BSO	0	0	3
	County Police	0	0	1
	FHP	0	1	9
	SIRV	1	0	1
	VisioPaD Detection	0	0	1
	Total	1	1	34
75	Broward CCTV	0	1	51
	Broward Road Ranger	0	0	19
	BSO	0	0	15
	District 4	0	0	4
	District 6	0	0	1
	FHP	1	1	28
	Fire	0	0	4
	Road Watcher	0	0	1
	VisioPaD Detection	0	0	9
	Total	1	2	132
	95	Broward CCTV	21	15
Broward Road Ranger		6	5	158
Broward TMC		0	0	12
Broward VideoWall		1	3	30
BSO		0	0	3
County Police		0	0	1
District 4		0	2	42
District 6		0	0	1
FDOT Maintenance		0	0	4
FHP		13	11	475
Fire		0	0	1
ITMS		0	0	1
ITMS CCTV		7	5	106

Total Events by Roadway and Detection Method

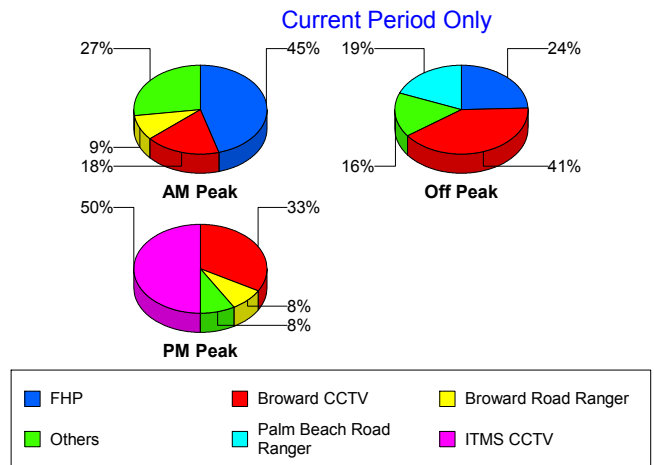


		Current Week	Last Week	YTD
95	Local Police	0	0	1
	Media	0	0	2
	Motorist	0	1	18
	Other	0	0	1
	Palm Beach Road Ran	9	6	208
	Road Watcher	0	1	7
	SIRV	0	0	2
	TSS Detection	1	0	1
	VisioPaD Detection	0	0	10
	Total	58	49	1,626
SR-816	Broward Road Ranger	0	0	41
	BSO	0	0	1
	District 4	0	0	2
	FHP	0	0	1
	Road Watcher	0	0	2
	Total	0	0	47
SR869	Broward Road Ranger	0	0	2
	BSO	0	0	1
	FHP	0	0	1
	Florida's Turnpike	0	0	2
	Total	0	0	6
TPKE	Florida's Turnpike	0	0	10
	Total	0	0	10
Total		60	52	1,855

Incident Detection Methods by Peak Period

		Current Week	Last Week	YTD
AM Peak	Broward CCTV	2	8	127
	Broward Road Ranger	1	1	57
	Broward TMC	0	0	3
	Broward VideoWall	1	1	17
	BSO	0	0	4
	County Police	0	0	1
	District 4	0	1	12
	District 6	0	0	1
	FDOT Maintenance	0	0	1
	FHP	5	3	97
	Fire	0	0	2
	Florida's Turnpike	0	0	2
	ITMS CCTV	1	0	25
	Local Police	0	0	1
	Media	0	0	1
	Motorist	0	0	2
	Palm Beach Road Ran	1	2	55
	Road Watcher	0	0	2
	SIRV	0	0	1
	VisioPaD Detection	0	0	1
Total	11	16	412	
Off Peak	Broward CCTV	15	5	328
	Broward Road Ranger	4	3	100
	Broward TMC	0	0	6
	Broward VideoWall	0	2	10
	BSO	0	0	12
	County Police	0	0	1
	District 4	0	1	24
	District 6	0	0	1
	FDOT Maintenance	0	0	3
	FHP	9	9	281

Total Events by Peak Period and Detection Method

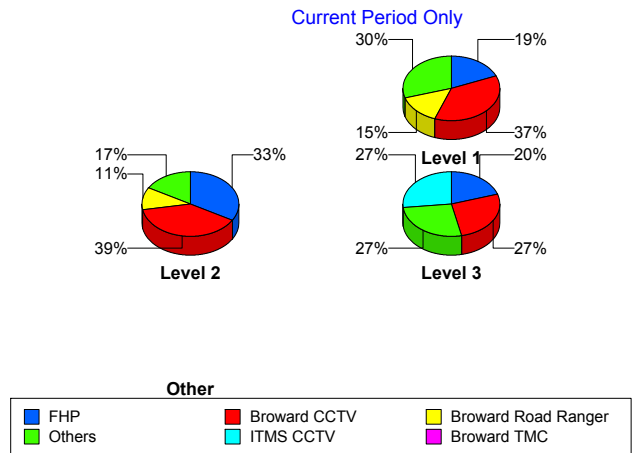


		Current Week	Last Week	YTD
Off Peak	Florida's Turnpike	0	0	9
	ITMS	0	0	1
	ITMS CCTV	0	4	57
	Motorist	0	1	10
	Other	0	0	1
	Palm Beach Road Ran	7	1	104
	Road Watcher	0	0	4
	SIRV	1	0	1
	TSS Detection	1	0	1
	VisioPaD Detection	0	0	12
	Total	37	26	966
PM Peak	Broward CCTV	4	3	150
	Broward Road Ranger	1	1	70
	Broward TMC	0	0	3
	Broward VideoWall	0	0	3
	BSO	0	0	7
	District 4	0	0	12
	FHP	0	1	137
	Fire	0	0	3
	Florida's Turnpike	0	0	1
	ITMS CCTV	6	1	24
	Media	0	0	1
	Motorist	0	0	6
	Palm Beach Road Ran	1	3	49
	Road Watcher	0	1	4
	SIRV	0	0	1
	VisioPaD Detection	0	0	7
	Total	12	10	478
Total	60	52	1,855	

Incident Detection Methods by Severity

		Current Week	Last Week	YTD
	FHP	0	0	1
	Total	0	0	1
Level 1	Broward CCTV	10	10	362
	Broward Road Ranger	4	3	165
	Broward TMC	0	0	9
	Broward VideoWall	1	2	19
	BSO	0	0	6
	County Police	0	0	1
	District 4	0	1	30
	District 6	0	0	1
	FDOT Maintenance	0	0	1
	FHP	5	5	221
	Fire	0	0	2
	ITMS CCTV	2	3	54
	Media	0	0	1
	Motorist	0	0	10
	Other	0	0	1
	Palm Beach Road Ran	4	3	136
	Road Watcher	0	1	9
	SIRV	0	0	1
	TSS Detection	1	0	1
	VisioPaD Detection	0	0	10
	Total	27	28	1,040
	Level 2	Broward CCTV	7	5
Broward Road Ranger		2	2	52
Broward TMC		0	0	3
Broward VideoWall		0	1	11
BSO		0	0	3
District 4		0	1	13
FDOT Maintenance		0	0	3
FHP		6	6	225

Total Events by Severity and Detection Method



		Current Week	Last Week	YTD
Level 2	Fire	0	0	1
	Florida's Turnpike	0	0	1
	ITMS	0	0	1
	ITMS CCTV	1	2	41
	Local Police	0	0	1
	Motorist	0	1	8
	Palm Beach Road Ran	2	3	57
	Road Watcher	0	0	1
	SIRV	0	0	1
	VisioPaD Detection	0	0	8
	Total	18	21	616
Level 3	Broward CCTV	4	1	57
	Broward Road Ranger	0	0	10
	BSO	0	0	14
	County Police	0	0	1
	District 4	0	0	5
	District 6	0	0	1
	FHP	3	2	68
	Fire	0	0	2
	Florida's Turnpike	0	0	11
	ITMS CCTV	4	0	11
	Media	0	0	1
	Palm Beach Road Ran	3	0	15
	SIRV	1	0	1
	VisioPaD Detection	0	0	2
	Total	15	3	199
Total	60	52	1,855	

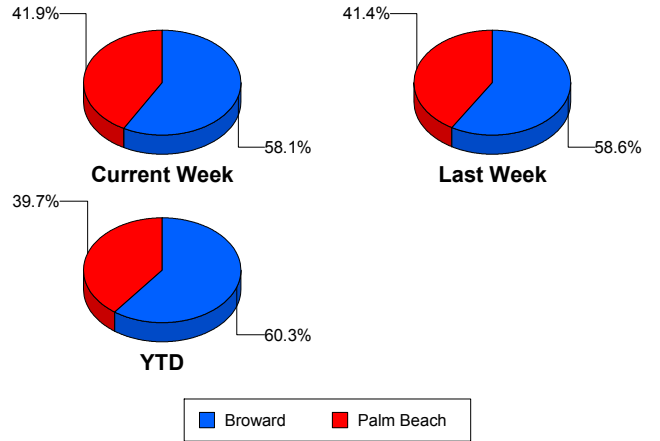
Road Ranger / SIRV Performance Measures

Road Ranger / SIRV Performance By County

Values presented are:
 - Total Events with a RR/SIRV Response
 - Total RR/SIRV Responses,
 - Total Activities Performed

	Current We	Last Week	YTD
Broward	956	995	23,252
	1,023	1,056	24,864
	1,049	1,088	25,818
Palm Beach	713	722	15,848
	739	745	16,356
	788	799	17,433

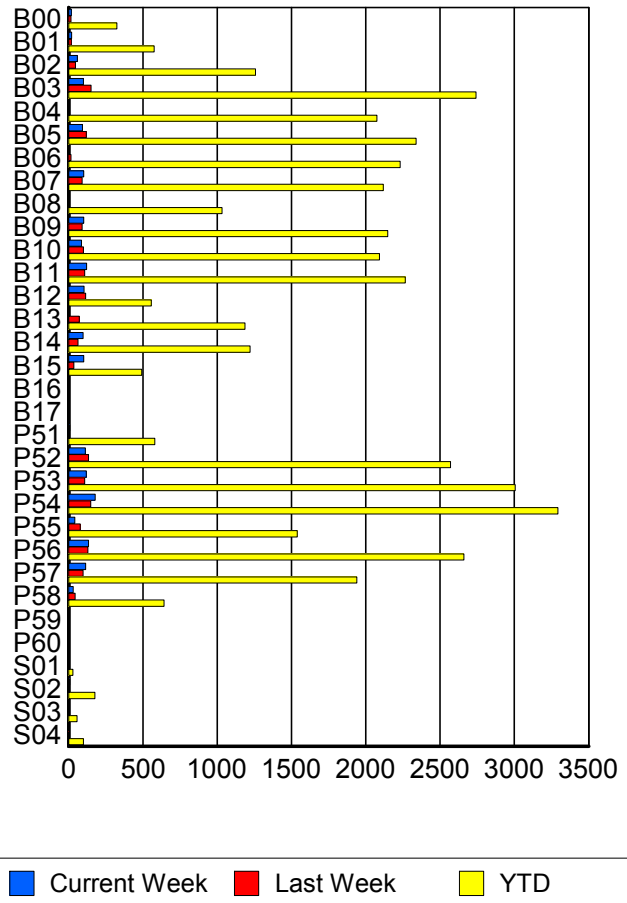
RR/SIRV Responses per County



Road Ranger / SIRV Performance By Truck

	Current We	Last Week	YTD
B00	18	16	320
	18	16	325
	18	17	344
B01	20	19	567
	20	19	576
	22	20	597
B02	58	45	1,241
	58	46	1,258
	58	47	1,284
B03	100	152	2,719
	100	152	2,742
	107	156	2,867
B04	1	0	2,044
	1	0	2,074
	1	0	2,161
B05	93	120	2,325
	94	120	2,339
	98	123	2,416
B06	0	17	2,203
	0	17	2,232
	0	20	2,328
B07	101	90	2,091
	101	92	2,117
	103	95	2,195
B08	0	4	1,017
	0	4	1,033
	0	4	1,071

RR/SIRV Responses per Truck



	Current We	Last Week	YTD
B09	101	91	2,126
	101	91	2,147
	104	95	2,237
B10	87	97	2,062
	87	99	2,091
	89	100	2,153
B11	118	104	2,235
	122	108	2,265
	124	111	2,351
B12	102	115	552
	103	115	557
	105	119	581
B13	1	72	1,176
	1	72	1,187
	1	73	1,215
B14	95	63	1,205
	97	63	1,222
	97	66	1,265
B15	101	35	487
	102	36	493
	103	37	512
B16	0	0	1
	0	0	1
	0	0	1
B17	1	0	1
	1	0	1
	1	0	1
P51	8	1	570
	8	1	580
	8	1	612
P52	110	131	2,539
	112	134	2,571
	123	143	2,741
P53	117	109	2,975
	118	109	3,006
	122	119	3,201
P54	174	147	3,251
	178	148	3,293
	189	155	3,496
P55	41	78	1,529
	41	79	1,539
	51	85	1,632
P56	133	125	2,628
	134	129	2,660
	139	139	2,841

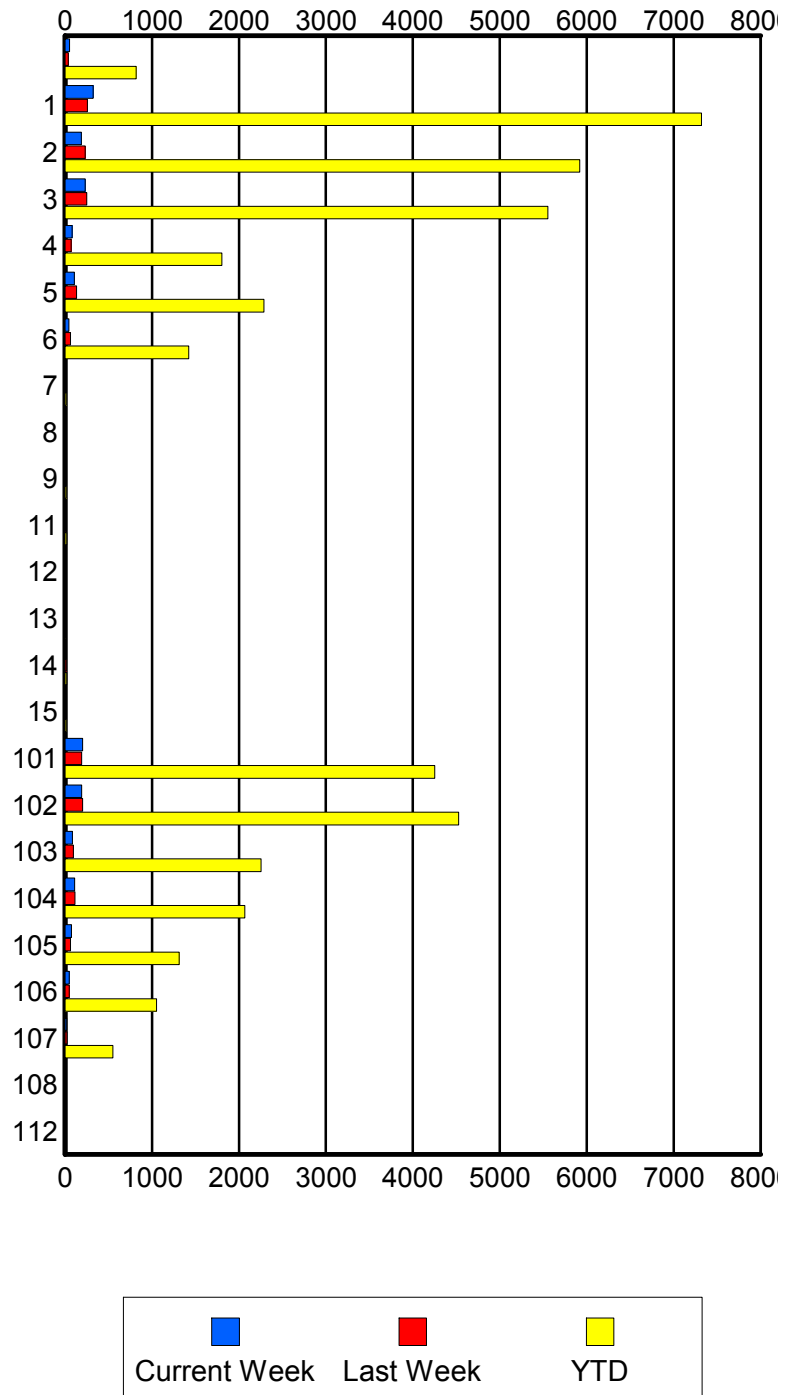
	Current We	Last Week	YTD
P57	115	95	1,918
	115	97	1,939
	123	107	2,076
P58	32	43	636
	32	44	642
	32	45	679
P59	0	0	2
	0	0	2
	0	0	2
P60	0	0	1
	0	0	1
	0	0	1
S01	2	0	29
	2	0	29
	2	0	32
S02	7	4	171
	8	4	177
	8	4	191
S03	4	3	53
	4	3	56
	5	3	62
S04	4	3	97
	4	3	99
	4	3	106

Road Ranger / SIRV Performance By Beat

	Current We	Last Week	YTD
	50	38	795
	51	38	818
	53	39	865
1	306	249	6,999
	322	257	7,320
	325	265	7,600
2	180	220	5,739
	187	231	5,919
	193	242	6,165
3	230	246	5,440
	230	249	5,553
	237	253	5,768
4	81	67	1,770
	83	70	1,805
	86	70	1,863
5	105	129	2,264
	105	131	2,286
	108	133	2,347
6	45	62	1,396
	46	63	1,424
	49	69	1,476
7	0	0	16
	0	0	17
	0	0	18
8	0	0	9
	0	0	9
	0	0	9
9	0	0	17
	0	0	17
	0	0	17
11	7	11	20
	7	11	20
	7	11	20
12	0	0	2
	0	0	2
	0	0	2
13	0	0	8
	0	0	8
	0	0	8
14	0	15	19
	0	15	19
	0	16	20
15	0	0	14
	0	0	14
	0	0	14

Values presented are:
 - Total Events with a RR/SIRV Response
 - Total RR/SIRV Responses,
 - Total Activities Performed

RR/SIRV Responses per Beat



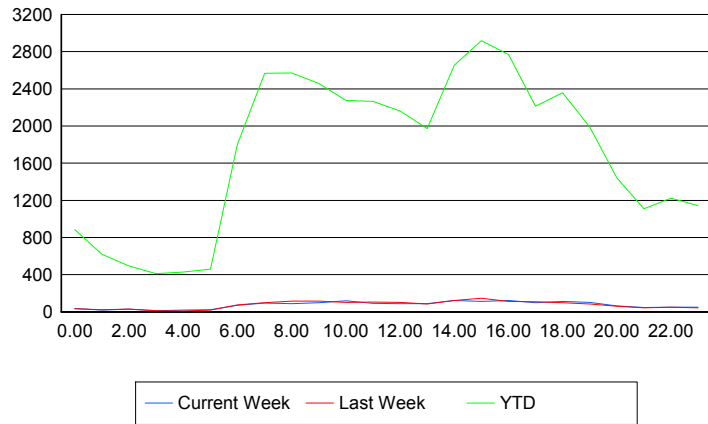
	Current We	Last Week	YTD
101	196 201 218	188 192 202	4,180 4,251 4,526
102	189 190 205	199 201 214	4,469 4,528 4,814
103	86 86 88	93 95 103	2,225 2,254 2,385
104	111 112 122	111 113 123	2,048 2,069 2,215
105	72 72 73	64 64 67	1,304 1,312 1,403
106	48 50 51	50 50 57	1,043 1,053 1,119
107	20 20 22	21 21 23	548 550 590
108	0 0 0	0 0 0	3 4 4
112	0 0 0	0 0 0	2 2 3

Road Ranger / SIRV Performance By Time of Day

Values presented are:
 - Total Events with a RR/SIRV Response
 - Total RR/SIRV Responses,
 - Total Activities Performed

	Current We	Last Week	YTD
12AM-1AM	36	32	849
	37	33	886
	39	33	938
1AM-2AM	20	23	593
	20	23	620
	20	23	642
2AM-3AM	26	28	459
	28	29	493
	28	33	525
3AM-4AM	13	13	390
	13	14	411
	14	14	438
4AM-5AM	16	4	378
	20	9	428
	21	12	453
5AM-6AM	18	17	393
	21	18	460
	22	18	475
6AM-7AM	67	73	1,698
	72	75	1,797
	75	78	1,870
7AM-8AM	91	89	2,437
	96	99	2,566
	99	102	2,685
8AM-9AM	85	108	2,407
	88	116	2,571
	90	118	2,689
9AM-10AM	93	111	2,355
	98	117	2,458
	101	120	2,579
10AM-11AM	109	97	2,166
	120	103	2,276
	127	108	2,386
11AM-12PM	90	99	2,156
	92	104	2,265
	97	107	2,374
12PM-1PM	83	96	2,039
	88	102	2,161
	88	109	2,254

Number of Responses / Hour of the Day



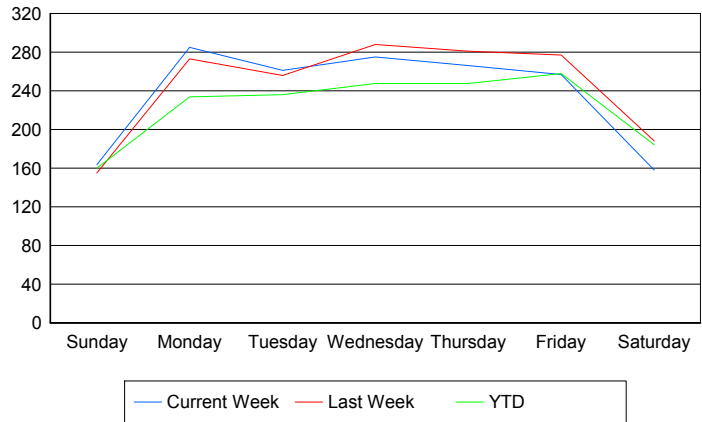
	Current We	Last Week	YTD
1PM-2PM	77	83	1,848
	87	86	1,971
	89	94	2,054
2PM-3PM	116	116	2,497
	121	124	2,652
	124	130	2,812
3PM-4PM	110	143	2,801
	113	145	2,918
	118	153	3,057
4PM-5PM	121	105	2,608
	124	113	2,770
	130	122	2,919
5PM-6PM	90	104	2,091
	98	109	2,212
	104	115	2,322
6PM-7PM	107	96	2,278
	111	98	2,358
	112	100	2,468
7PM-8PM	101	85	1,931
	103	86	1,989
	108	92	2,086
8PM-9PM	58	60	1,378
	64	60	1,442
	71	63	1,506
9PM-10PM	45	43	1,062
	46	45	1,110
	49	46	1,179
10PM-11PM	47	50	1,178
	51	50	1,223
	52	52	1,303
11PM-12AM	50	42	1,108
	51	43	1,143
	59	45	1,237

Road Ranger / SIRV Performance By Day of Week

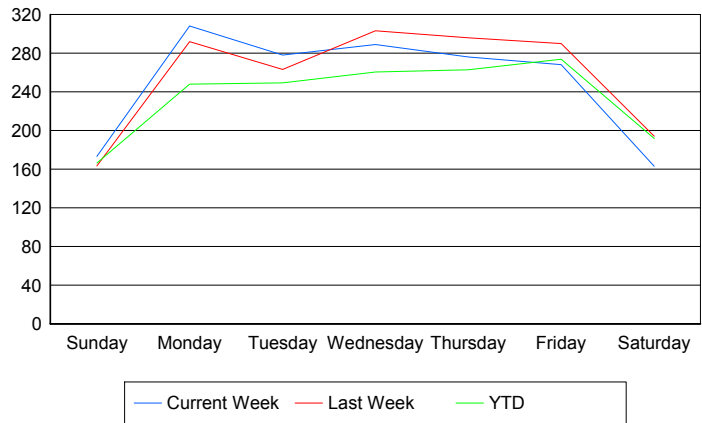
Values presented are:
 - Total Events with a RR/SIRV Response
 - Total RR/SIRV Responses,
 - Total Activities Performed

	Current We	Last Week	YTD
Sunday	169	155	3,939
	180	163	4,094
	188	175	4,291
Monday	285	273	5,735
	308	292	6,083
	316	311	6,350
Tuesday	261	256	5,866
	278	263	6,187
	282	278	6,465
Wednesday	275	288	6,107
	289	303	6,430
	307	309	6,766
Thursday	266	281	6,137
	276	296	6,455
	294	307	6,850
Friday	257	277	6,614
	268	290	6,942
	280	306	7,332
Saturday	158	188	4,735
	163	194	4,925
	170	201	5,197

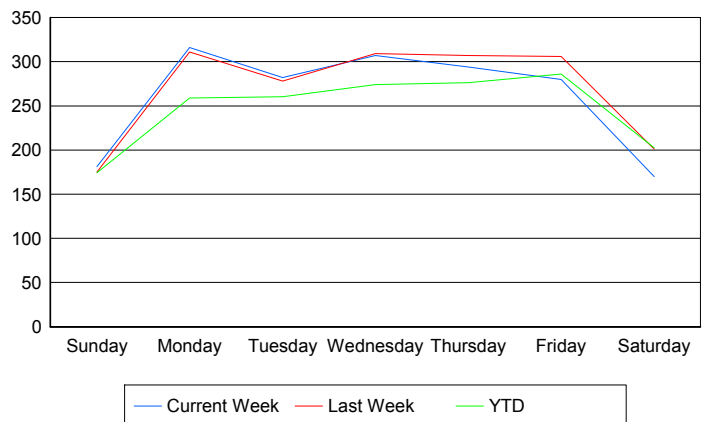
Avg # of events with a RR/SIRV Response per Day of the Week



Avg # of RR/SIRV Responses per Day of the Week



Avg # of RR/SIRV Activities Performed per Day of the Week



Road Ranger / SIRV Responses per Time of Day and Day of Week

