



Weekly Performance Measures Report Broward, Palm Beach Counties

Period From Jun 6, 2010 to Jun 12, 2010

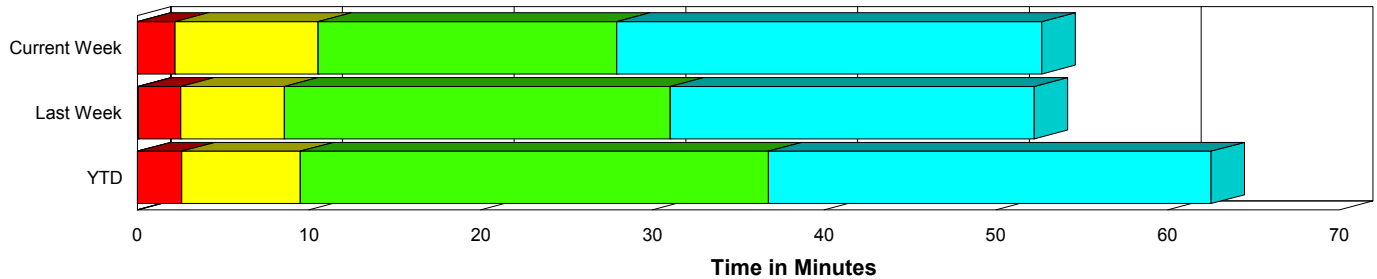


Created on:
June 14, 2010
8:49 am

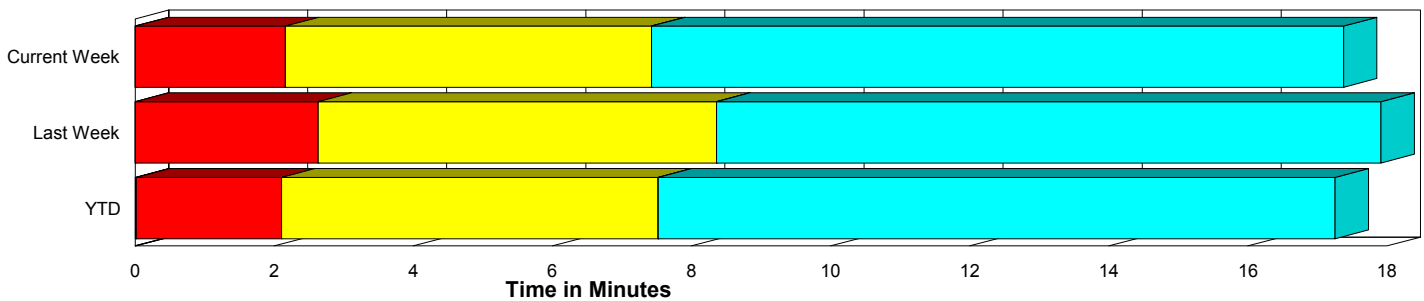
Performance Measures Summary

	Traffic Events (No Lanes Blocked)			Incidents (Lanes Blocked)		
	<u>This Week</u>	<u>Last Week</u>	<u>YTD</u>	<u>This Week</u>	<u>Last Week</u>	<u>YTD</u>
Number of Events	1,921	1,793	40,782	78	93	1,766
TMC Detection (min.)	0.00	0.00	0.01	0.00	0.06	0.02
TMC Verification (min.)	2.16	2.63	2.09	2.20	2.46	2.59
TMC Response (min.)	8.41	9.69	8.49	10.66	8.55	9.60
RR Dispatch Time (min.)	1.68	2.00	1.77	1.98	1.35	1.99
RR Response Time (min.)	6.81	7.79	6.76	8.78	7.20	7.65
Roadway Clearance (min.)				26.69	30.52	36.15
Event Clearance (min.)	18.37	19.25	18.24	51.42	51.57	61.59
# of Events w/ RR/SIRV	1,659	1,534	34,760	78	93	1,718
RR/SIRV Responses	1,659	1,534	34,760	78	93	1,718
RR/SIRV Activities	1,420	1,282	29,503	126	147	2,943

Incident Clearance Time-Line



Traffic Event (Non-Lane Blockage) Time-Line



■ Avg. TMC Detection Time	■ Avg. Time from TMC Response to Roadway Clearance*
■ Avg. Time from TMC Detection to TMC Verification	■ Avg. Time from Roadway Clearance to Incident/Event Clearance**
■ Avg. Time from TMC Verification to TMC Response	

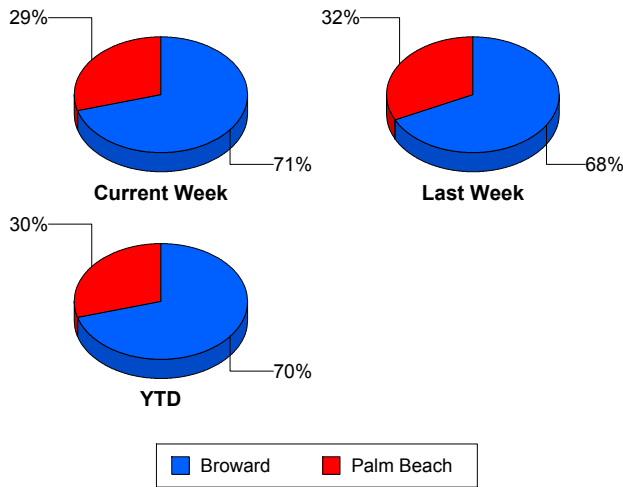
* Roadway clearance equals all travel lanes open

** Incident clearance equals time when last responder has left the scene

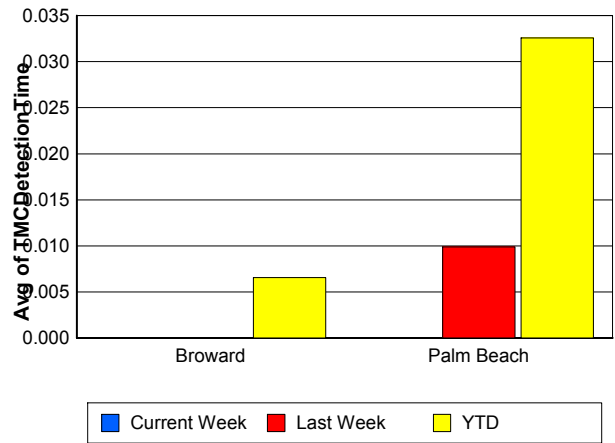
Performance Measures by County

	Broward			Palm Beach		
	<u>Current Week</u>	<u>Last Week</u>	<u>YTD</u>	<u>Current Week</u>	<u>Last Week</u>	<u>YTD</u>
Number of Events	1,410	1,277	29,972	589	609	12,576
Number of Incidents	50	57	1,162	28	36	604
TMC Detection (min.)	0.00	0.00	0.01	0.00	0.01	0.03
TMC Verification (min.)	1.32	1.25	1.19	4.17	5.52	4.31
TMC Response (min.)	9.51	9.29	9.20	7.08	10.05	7.53
RR Dispatch Time (min.)	1.17	1.20	1.38	2.76	3.43	2.61
RR Response Time (min.)	8.59	8.28	7.93	4.43	6.99	5.03
Event Clearance (min.)	18.82	19.86	19.47	21.67	22.90	21.42
Roadway Clearance (min.)	21.95	27.48	33.40	35.16	35.32	41.43
Incident Clearance (min.)	52.21	50.41	60.76	50.01	53.41	62.80
# of Events w/ RR/SIRV	1,170	1,067	24,731	567	560	11,747
RR/SIRV Responses	1,170	1,067	24,731	567	560	11,747
RR/SIRV Activities	926	828	20,039	620	601	12,407

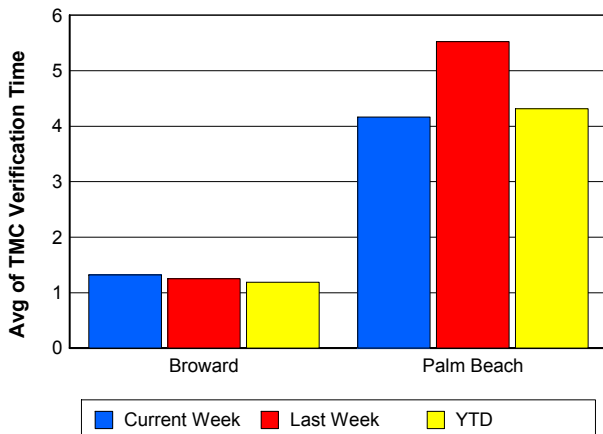
Number of Events / County



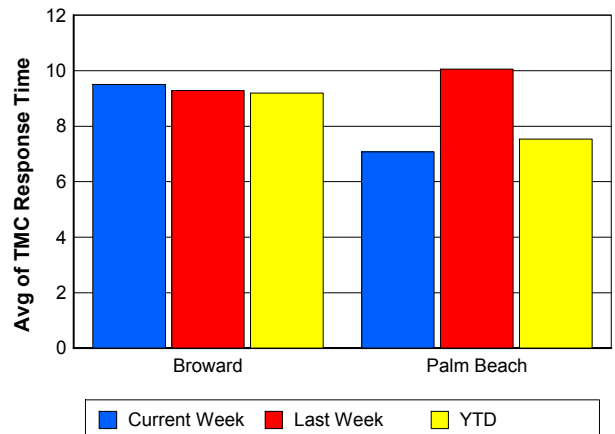
TMC Detection Time



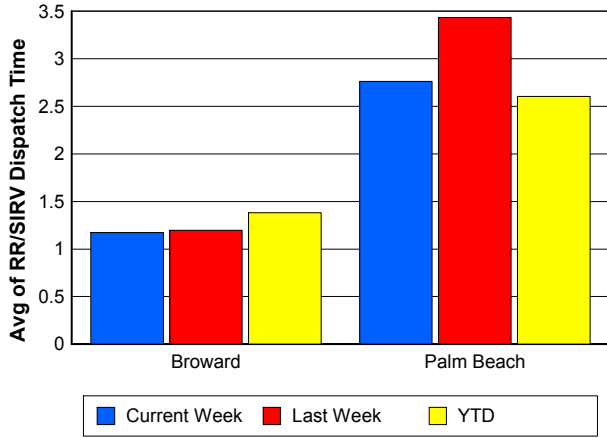
TMC Verification Time



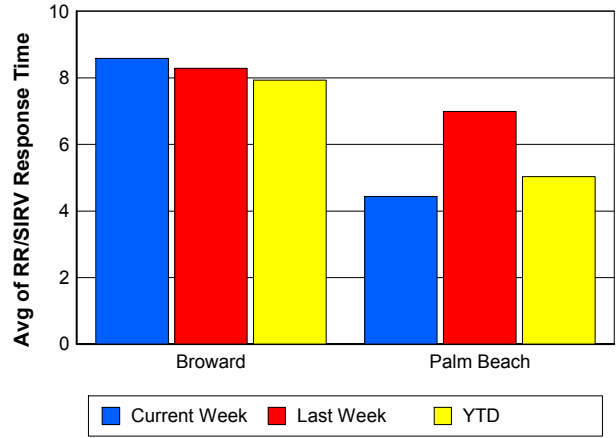
TMC Response Time



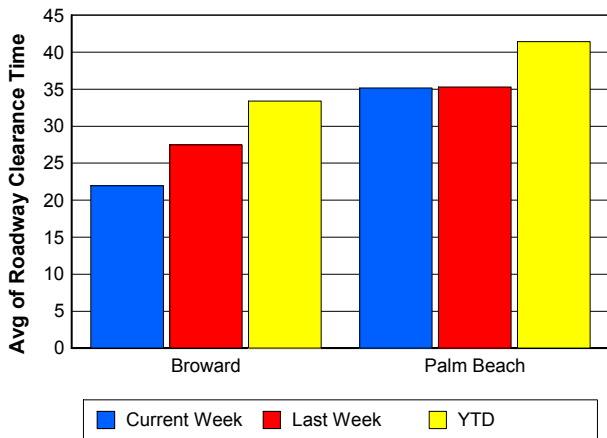
Road Ranger / SIRV Dispatch Time



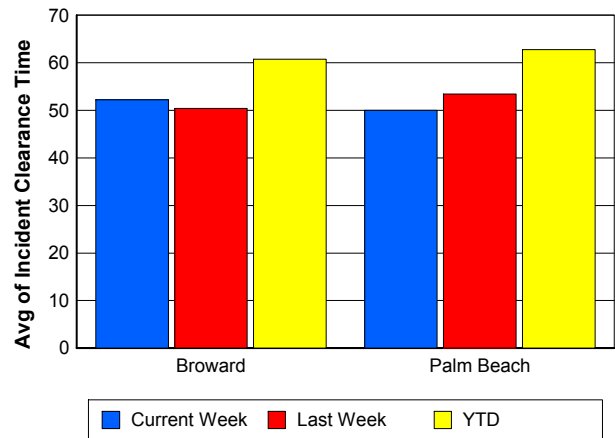
Road Ranger / SIRV Response Time



Roadway Clearance Time (2A)



Incident Clearance Time (3B)

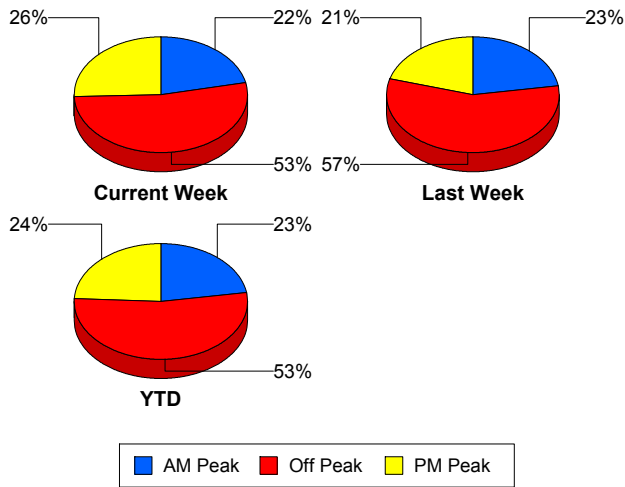


Performance Measures by Peak Period

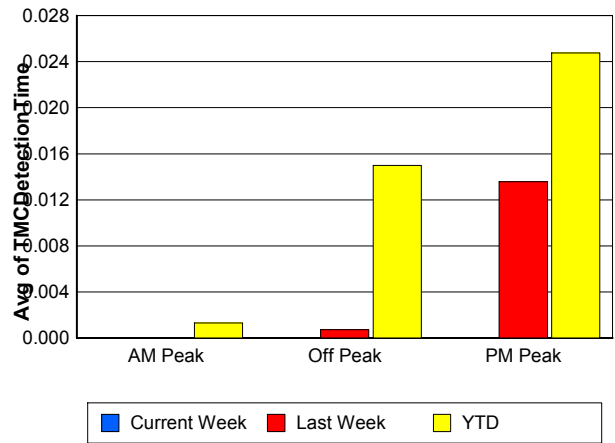
Note: AM peak period is defined as 6am to 10am and PM peak period is defined as 3pm to 7pm.

	AM Peak			Off Peak			PM Peak		
	<u>Current Week</u>	<u>Last Week</u>	<u>YTD</u>	<u>Current Week</u>	<u>Last Week</u>	<u>YTD</u>	<u>Current Week</u>	<u>Last Week</u>	<u>YTD</u>
Number of Events	432	425	9,586	1,057	1,073	22,716	510	388	10,246
Number of Incidents	21	22	388	45	49	918	12	22	460
TMC Detection (min.)	0.00	0.00	0.00	0.00	0.00	0.01	0.00	0.01	0.02
TMC Verification (min.)	1.33	2.35	1.33	2.54	2.67	2.24	2.09	2.82	2.57
TMC Response (min.)	9.18	9.72	8.06	8.51	10.00	8.94	8.04	8.56	8.22
RR Dispatch Time (min.)	1.74	1.70	1.34	1.73	2.10	1.90	1.57	1.90	1.91
RR Response Time (min.)	7.38	7.90	6.74	6.89	7.92	7.06	6.59	7.17	6.39
Event Clearance (min.)	19.08	18.42	18.71	20.26	21.47	20.48	18.90	21.77	20.32
Roadway Clearance (min.)	28.77	24.43	32.55	26.97	34.88	41.26	22.04	26.88	28.98
Incident Clearance (min.)	66.35	38.85	56.97	47.13	56.72	65.43	41.41	52.83	57.30
# of Events w/ RR/SIRV	381	376	8,389	917	906	19,151	439	345	8,938
RR/SIRV Responses	381	376	8,389	917	906	19,151	439	345	8,938
RR/SIRV Activities	357	319	7,327	802	778	16,858	387	332	8,261

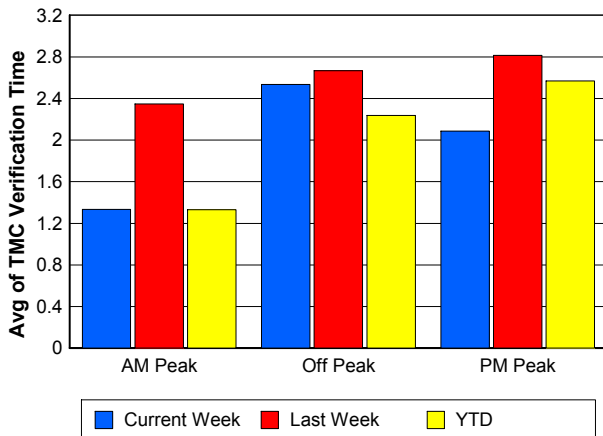
Number of Events / Peak Period



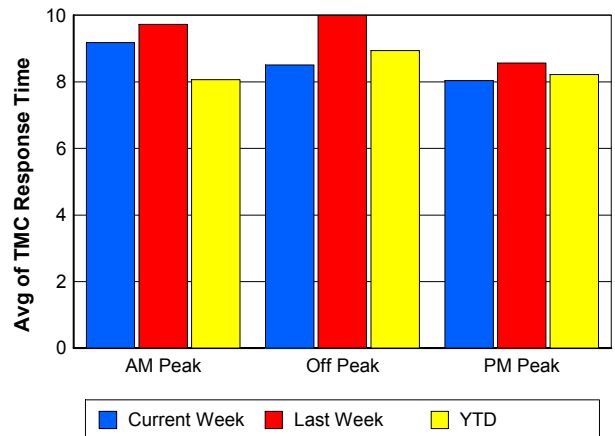
TMC Detection Time



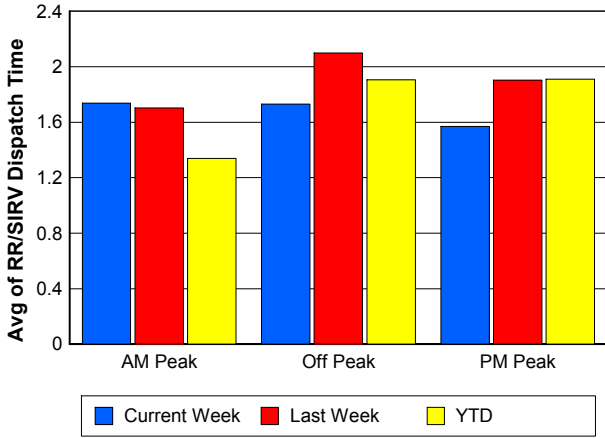
TMC Verification Time



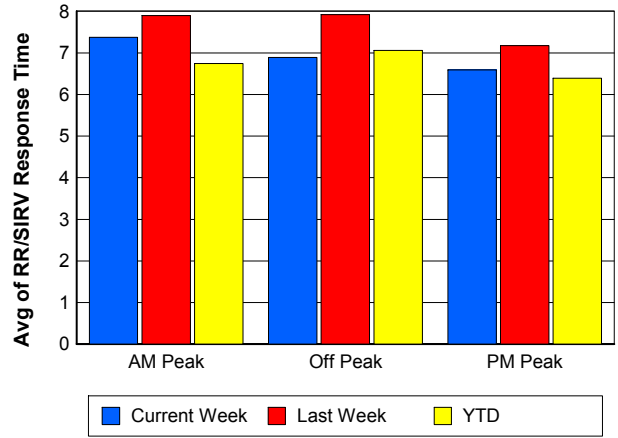
TMC Response Time



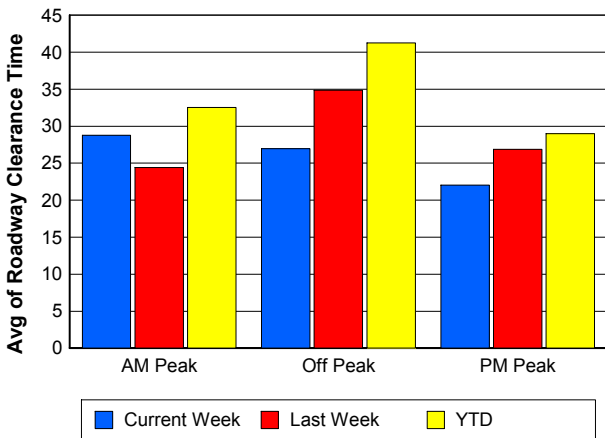
Road Ranger / SIRV Dispatch Time



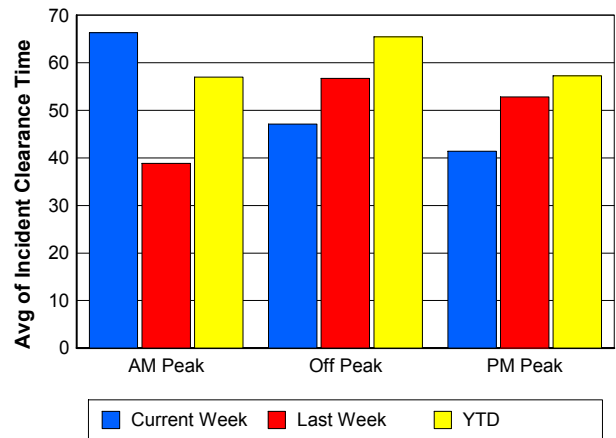
Road Ranger / SIRV Response Time



Roadway Clearance Time (2A)



Incident Clearance Time (3B)

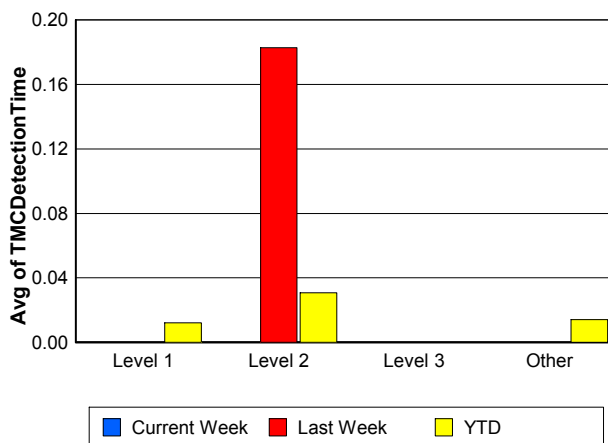
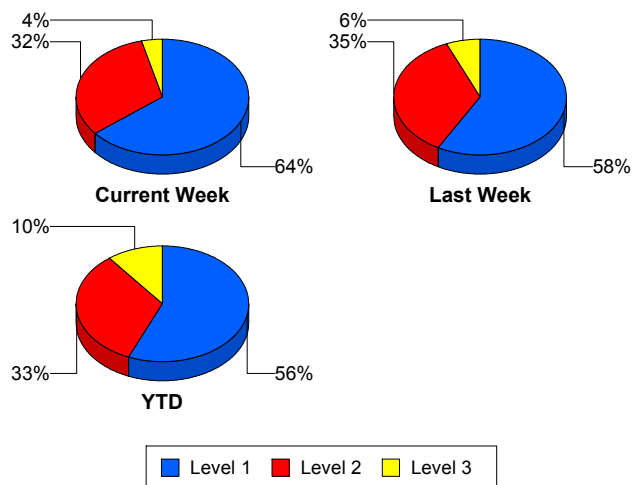


Performance Measures by Severity

	Level 1			Level 2			Level 3			Other		
	<u>This Week</u>	<u>Last Week</u>	<u>YTD</u>	<u>This Week</u>	<u>Last Week</u>	<u>YTD</u>	<u>This Week</u>	<u>Last Week</u>	<u>YTD</u>	<u>This Week</u>	<u>Last Week</u>	<u>YTD</u>
Number of Events	50	54	996	25	33	584	3	6	184	1,921	1,793	40,784
Number of Incidents	50	54	996	25	33	584	3	6	184	0	0	2
TMC Detection (min.)	0.00	0.00	0.01	0.00	0.18	0.03	0.00	0.00	0.00	0.00	0.00	0.01
TMC Verification (min.)	1.37	1.40	1.40	3.65	4.63	4.42	3.91	0.11	3.15	2.16	2.63	2.09
TMC Response (min.)	8.16	7.21	7.43	15.43	10.36	12.25	8.42	10.85	12.87	8.41	9.69	8.49
RR Dispatch Time (min.)	2.06	1.34	1.43	1.71	1.37	2.53	3.00	1.30	3.48	1.68	2.00	1.76
RR Resp. Time (min.)	6.26	5.87	6.05	13.73	9.00	9.78	5.42	9.41	9.37	6.81	7.79	6.76
Event Clearance (min.)	42.00	43.32	45.23	68.49	66.12	73.63	66.21	45.81	111.53	18.37	19.25	18.25
Roadway Clear. (min.)	16.14	14.15	15.11	46.05	56.67	52.89	41.24	33.94	97.50			-21.46
Incident Clearance (min.)	42.00	43.32	45.23	68.49	66.12	73.63	66.21	45.81	111.22			0.00
# of Events w/ RR/SIRV	50	54	975	25	33	577	3	6	164	1,659	1,534	34,762
RR/SIRV Responses	50	54	975	25	33	577	3	6	164	1,659	1,534	34,762
RR/SIRV Activities	67	77	1,438	51	59	1,098	8	11	402	1,420	1,282	29,508

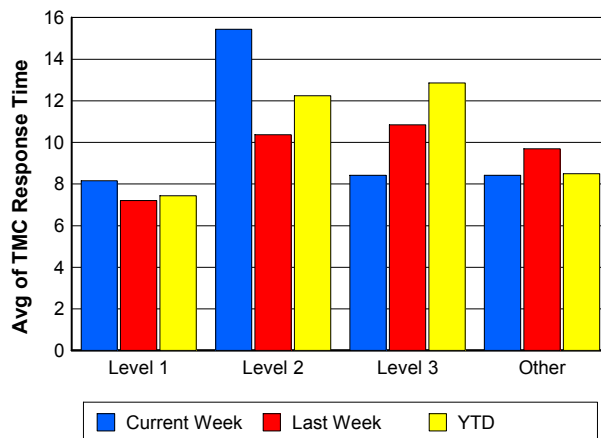
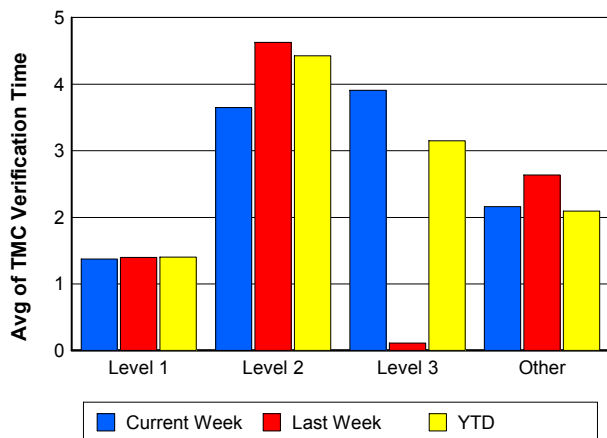
Number of Events / Severity

TMC Detection Time

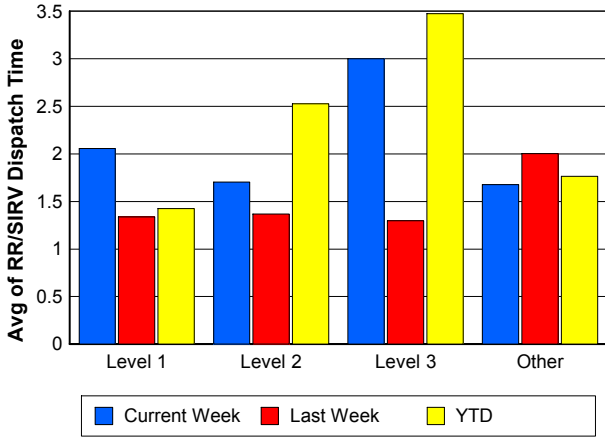


TMC Verification Time

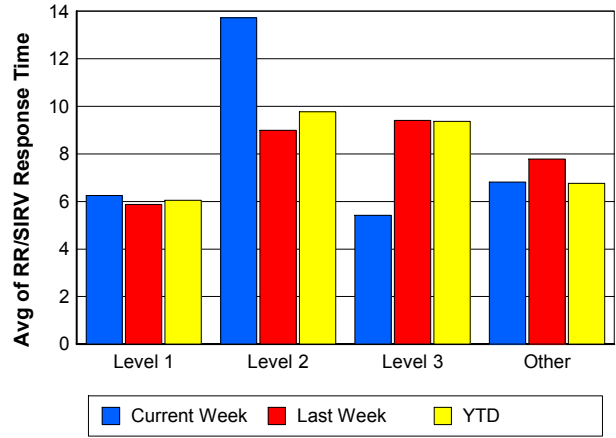
TMC Response Time



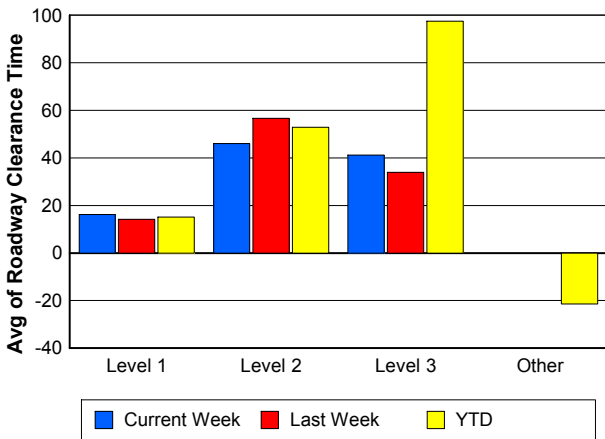
Road Ranger / SIRV Dispatch Time



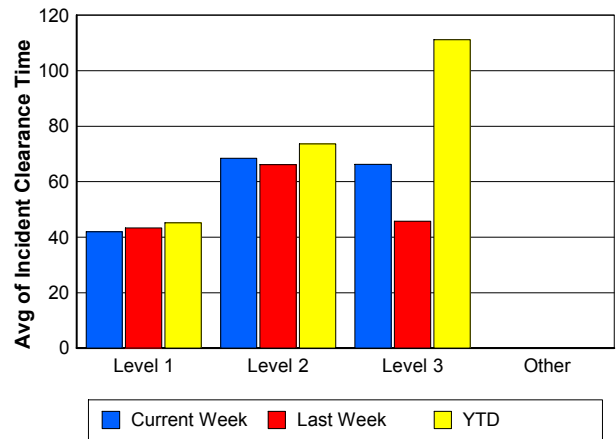
Road Ranger / SIRV Response Time



Roadway Clearance Time (2A)



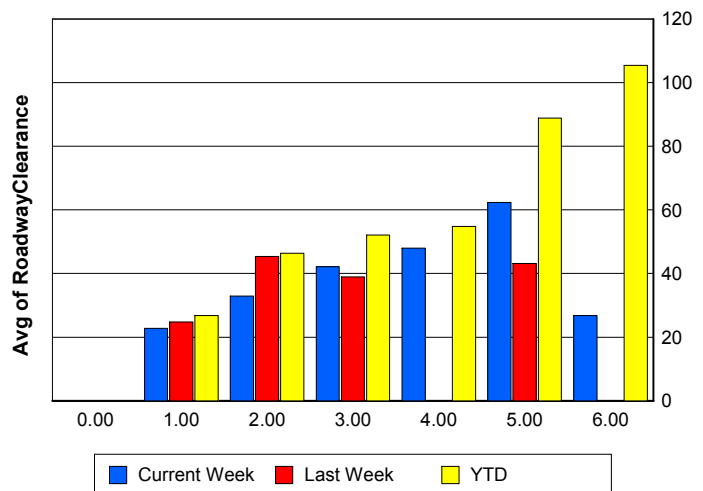
Incident Clearance Time (3B)



Roadway Clearance by Maximum Number of Lanes Blocked

	Current Week	Last Week	YTD
0			
1	22.76	24.76	26.76
2	32.87	45.32	46.34
3	42.16	38.95	52.11
4	47.98	0.00	54.77
5	62.37	43.15	88.87
6	26.73	0.00	105.41

Roadway Clearance Time (2A)



Performance Measures by Roadway

595

	<u>Current Week</u>	<u>Last Week</u>	<u>YTD</u>
Number of Events	50	29	1,003
Number of Incidents	3	0	49
TMC Detection (min.)	0.00	0.00	0.00
TMC Verification (min.)	3.10	2.59	1.86
TMC Response (min.)	21.56	25.98	15.53
RR Dispatch Time (min.)	1.52	1.23	2.05
RR Resp. Time (min.)	20.55	24.90	13.54
Event Clearance (min.)	18.33	18.74	19.79
Roadway Clear. (min.)	13.99		48.91
Incident Clearance (min.)	37.89		66.69
# of Events w/ RR/SIRV	30	20	721
RR/SIRV Responses	30	20	721
RR/SIRV Activities	15	7	469

75

	<u>Current Week</u>	<u>Last Week</u>	<u>YTD</u>
Number of Events	311	268	6,479
Number of Incidents	9	4	129
TMC Detection (min.)	0.00	0.00	0.02
TMC Verification (min.)	2.75	1.82	2.14
TMC Response (min.)	11.54	7.77	10.21
RR Dispatch Time (min.)	0.83	1.23	1.47
RR Resp. Time (min.)	10.88	6.88	8.87
Event Clearance (min.)	21.45	20.27	20.36
Roadway Clear. (min.)	25.73	53.20	51.81
Incident Clearance (min.)	63.50	83.31	84.85
# of Events w/ RR/SIRV	260	218	5,193
RR/SIRV Responses	260	218	5,193
RR/SIRV Activities	213	176	4,311

95

	<u>Current Week</u>	<u>Last Week</u>	<u>YTD</u>
Number of Events	1,624	1,572	34,704
Number of Incidents	65	86	1,524
TMC Detection (min.)	0.00	0.00	0.01
TMC Verification (min.)	2.04	2.79	2.13
TMC Response (min.)	7.89	9.80	8.19
RR Dispatch Time (min.)	1.82	2.11	1.83
RR Resp. Time (min.)	6.11	7.77	6.38
Event Clearance (min.)	19.33	21.00	20.00
Roadway Clear. (min.)	27.24	30.25	34.85
Incident Clearance (min.)	50.40	51.36	60.59
# of Events w/ RR/SIRV	1,435	1,374	30,265
RR/SIRV Responses	1,435	1,374	30,265
RR/SIRV Activities	1,307	1,233	27,379

OKEEB

	<u>YTD</u>
Number of Events	1
Number of Incidents	0
TMC Detection (min.)	0.00
TMC Verification (min.)	0.00
TMC Response (min.)	0.00
RR Dispatch Time (min.)	0.00
RR Resp. Time (min.)	0.00
Event Clearance (min.)	18.45
Roadway Clear. (min.)	
Incident Clearance (min.)	
# of Events w/ RR/SIRV	1
RR/SIRV Responses	1
RR/SIRV Activities	1

SR-816

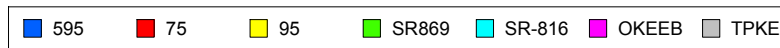
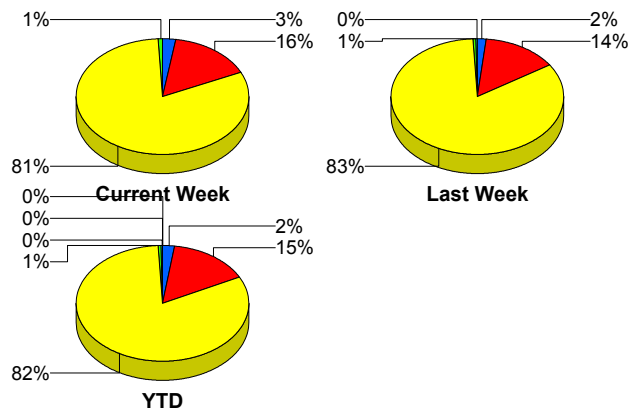
	<u>Last Week</u>	<u>YTD</u>
Number of Events	3	70
Number of Incidents	2	47
TMC Detection (min.)	0.00	0.00
TMC Verification (min.)	0.00	1.10
TMC Response (min.)	0.00	1.65
RR Dispatch Time (min.)	0.00	0.14
RR Resp. Time (min.)	0.00	1.52
Event Clearance (min.)	7.77	16.27
Roadway Clear. (min.)	11.22	16.66
Incident Clearance (min.)	11.16	19.72
# of Events w/ RR/SIRV	2	63
RR/SIRV Responses	2	63
RR/SIRV Activities	2	68

SR869

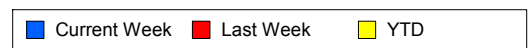
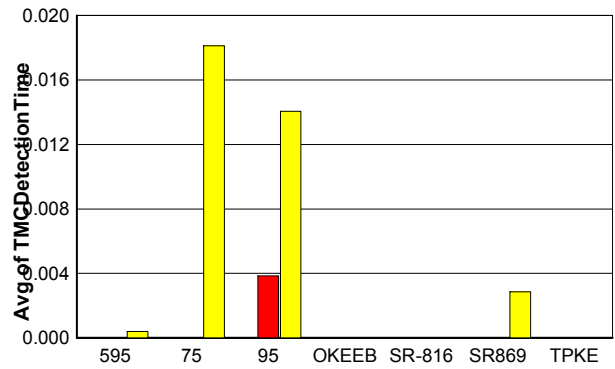
	<u>Current Week</u>	<u>Last Week</u>	<u>YTD</u>
Number of Events	14	14	281
Number of Incidents	1	1	7
TMC Detection (min.)	0.00	0.00	0.00
TMC Verification (min.)	0.00	0.05	1.04
TMC Response (min.)	4.06	8.49	8.33
RR Dispatch Time (min.)	4.92	0.77	1.21
RR Resp. Time (min.)	1.51	7.82	7.43
Event Clearance (min.)	21.73	21.17	18.74
Roadway Clear. (min.)	37.67	0.93	37.30
Incident Clearance (min.)	49.70	24.00	60.61
# of Events w/ RR/SIRV	12	13	235
RR/SIRV Responses	12	13	235
RR/SIRV Activities	11	11	218

	<u>YTD</u>
Number of Events	10
Number of Incidents	10
TMC Detection (min.)	0.00
TMC Verification (min.)	0.00
TMC Response (min.)	
RR Dispatch Time (min.)	
RR Resp. Time (min.)	
Event Clearance (min.)	62.29
Roadway Clear. (min.)	59.66
Incident Clearance (min.)	62.29
# of Events w/ RR/SIRV	0
RR/SIRV Responses	0
RR/SIRV Activities	0

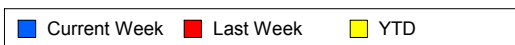
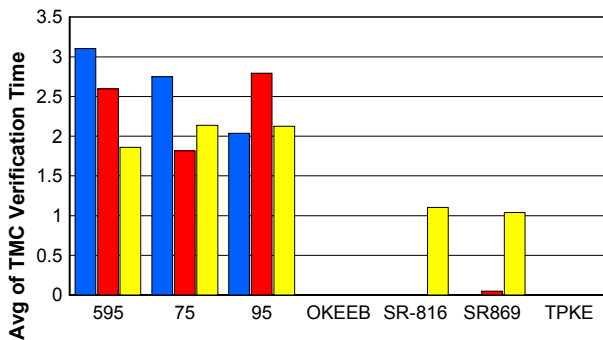
Number of Events / Roadway



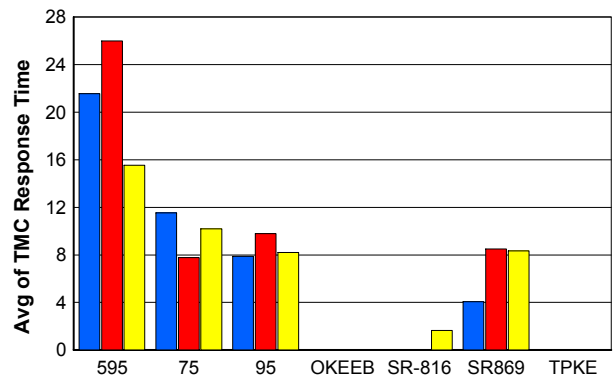
TMC Detection Time



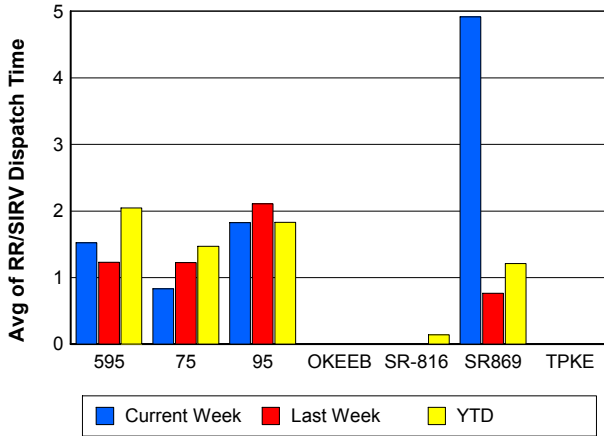
TMC Verification Time



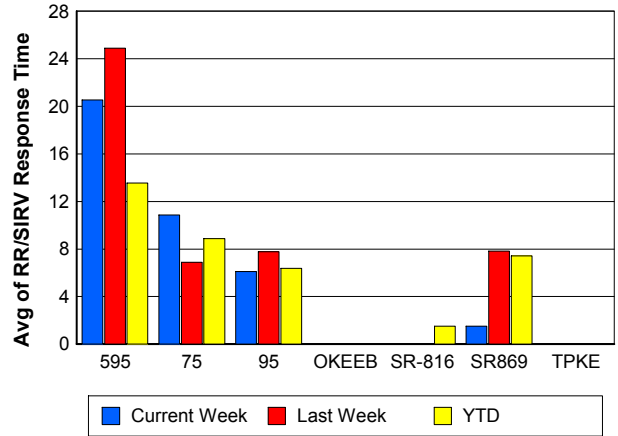
TMC Response Time



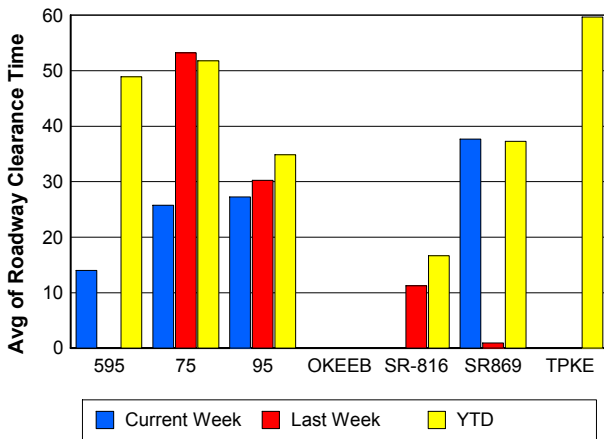
Road Ranger / SIRV Dispatch Time



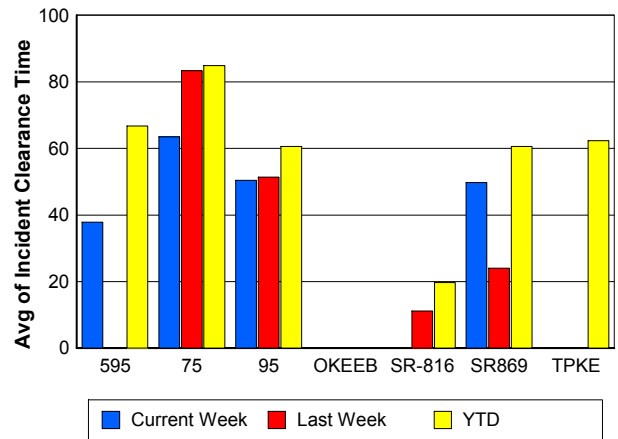
Road Ranger / SIRV Response Time



Roadway Clearance Time (2A)



Incident Clearance Time (3B)



Performance Measures by Event Type

Accident

	<u>Current Week</u>	<u>Last Week</u>	<u>YTD</u>
Number of Events	100	146	2,679
Number of Incidents	53	67	1,244
TMC Detection (min.)	0.00	0.04	0.02
TMC Verification (min.)	3.52	4.52	3.55
TMC Response (min.)	9.17	12.15	10.30
RR Dispatch Time (min.)	2.07	1.34	1.86
RR Response Time (min.)	7.25	10.84	8.46
Event Clearance (min.)	50.11	51.71	57.02
Roadway Clearance (min.)	29.53	33.40	38.53
Incident Clearance (min.)	61.35	59.92	70.51
# of Events w/ RR/SIRV	99	145	2,635
RR/SIRV Assists	99	145	2,635
RR/SIRV Activities	139	189	3,711

Debris on Roadway

	<u>Current Week</u>	<u>Last Week</u>	<u>YTD</u>
Number of Events	98	90	1,730
Number of Incidents	1	2	25
TMC Detection (min.)	0.00	0.00	0.00
TMC Verification (min.)	5.64	13.09	8.05
TMC Response (min.)	7.43	16.09	10.56
RR Dispatch Time (min.)	1.80	2.93	2.38
RR Response Time (min.)	5.70	13.08	8.18
Event Clearance (min.)	10.17	18.78	13.75
Roadway Clearance (min.)	12.85	62.32	29.51
Incident Clearance (min.)	18.27	59.12	31.46
# of Events w/ RR/SIRV	89	90	1,675
RR/SIRV Assists	89	90	1,675
RR/SIRV Activities	95	95	1,703

Disabled Vehicle

	<u>Current Week</u>	<u>Last Week</u>	<u>YTD</u>
Number of Events	1,340	1,207	27,104
Number of Incidents	17	17	329
TMC Detection (min.)	0.00	0.00	0.02
TMC Verification (min.)	2.50	2.53	2.40
TMC Response (min.)	8.32	8.73	8.13
RR Dispatch Time (min.)	1.64	1.99	1.73
RR Response Time (min.)	6.75	6.98	6.48
Event Clearance (min.)	20.78	20.60	20.03
Roadway Clearance (min.)	18.01	17.01	20.32
Incident Clearance (min.)	23.59	26.35	29.93
# of Events w/ RR/SIRV	1,279	1,134	25,843
RR/SIRV Assists	1,279	1,134	25,843
RR/SIRV Activities	1,264	1,107	25,722

Emergency Vehicles

	<u>Current Week</u>	<u>YTD</u>
Number of Events	1	31
Number of Incidents	1	27
TMC Detection (min.)	0.00	0.00
TMC Verification (min.)	0.00	0.93
TMC Response (min.)	0.00	8.90
RR Dispatch Time (min.)	0.00	1.29
RR Response Time (min.)	0.00	7.59
Event Clearance (min.)	31.58	34.66
Roadway Clearance (min.)	28.97	30.79
Incident Clearance (min.)	31.58	34.71
# of Events w/ RR/SIRV	1	21
RR/SIRV Assists	1	21
RR/SIRV Activities	1	22

Other

	<u>Current Week</u>	<u>Last Week</u>	<u>YTD</u>
Number of Events	444	434	10,656
Number of Incidents	1	3	25
TMC Detection (min.)	0.00	0.00	0.01
TMC Verification (min.)	0.09	0.15	0.09
TMC Response (min.)	13.33	8.72	10.55
RR Dispatch Time (min.)	1.63	1.79	1.72
RR Response Time (min.)	12.49	3.98	7.86
Event Clearance (min.)	11.02	11.44	11.17
Roadway Clearance (min.)	13.93	15.23	32.00
Incident Clearance (min.)	16.77	19.78	39.26
# of Events w/ RR/SIRV	254	250	5,985
RR/SIRV Assists	254	250	5,985
RR/SIRV Activities	34	26	926

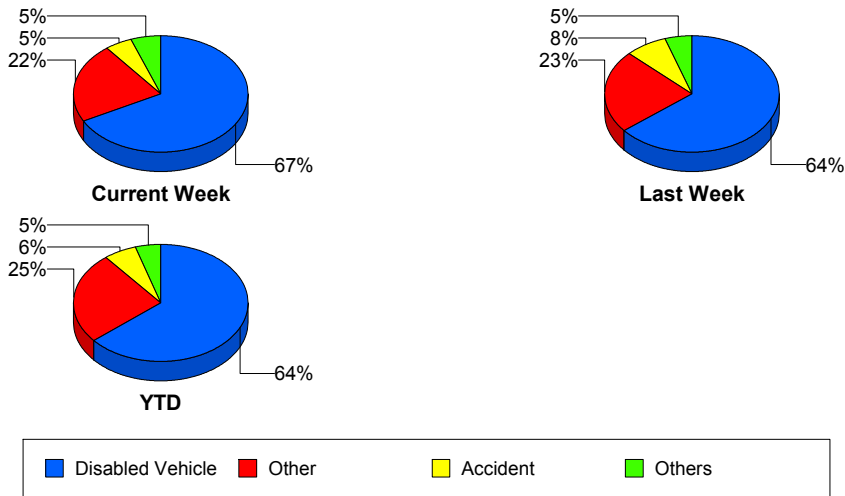
Police Activity

	<u>Current Week</u>	<u>Last Week</u>	<u>YTD</u>
Number of Events	6	2	108
Number of Incidents	3	1	58
TMC Detection (min.)	0.00	0.00	0.07
TMC Verification (min.)	3.83	1.02	1.24
TMC Response (min.)	11.75	2.03	15.24
RR Dispatch Time (min.)	5.56	0.37	5.74
RR Response Time (min.)	3.77	1.83	9.94
Event Clearance (min.)	26.97	11.10	51.62
Roadway Clearance (min.)	23.21	16.28	68.47
Incident Clearance (min.)	36.55	17.35	69.41
# of Events w/ RR/SIRV	6	2	88
RR/SIRV Assists	6	2	88
RR/SIRV Activities	4	1	92

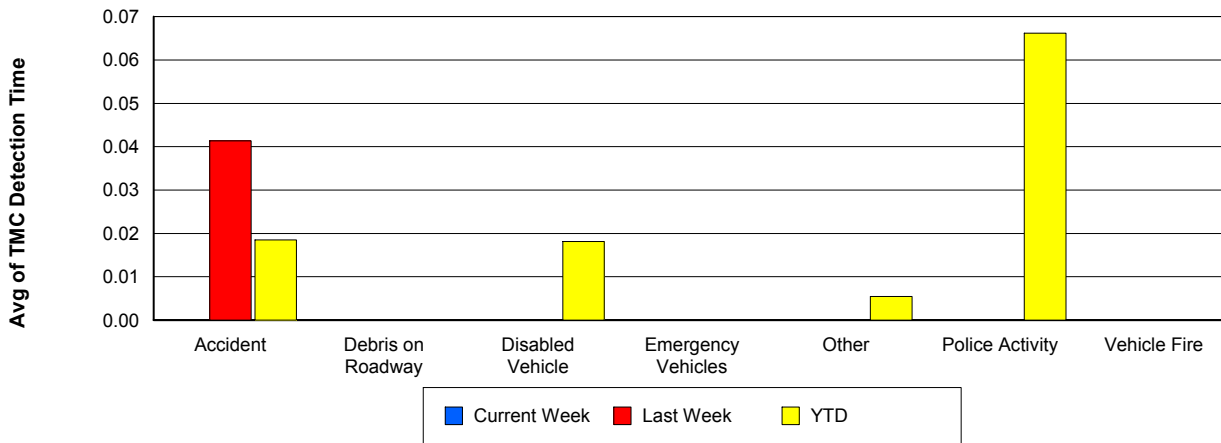
Vehicle Fire

	<u>Current Week</u>	<u>Last Week</u>	<u>YTD</u>
Number of Events	4	3	81
Number of Incidents	2	3	57
TMC Detection (min.)	0.00	0.00	0.00
TMC Verification (min.)	2.90	1.55	2.31
TMC Response (min.)	48.84	8.28	13.06
RR Dispatch Time (min.)	5.33	0.72	2.13
RR Response Time (min.)	43.51	7.57	10.94
Event Clearance (min.)	59.87	46.27	62.85
Roadway Clearance (min.)	42.79	41.51	49.58
Incident Clearance (min.)	91.05	46.27	73.61
# of Events w/ RR/SIRV	4	3	79
RR/SIRV Assists	4	3	79
RR/SIRV Activities	5	8	133

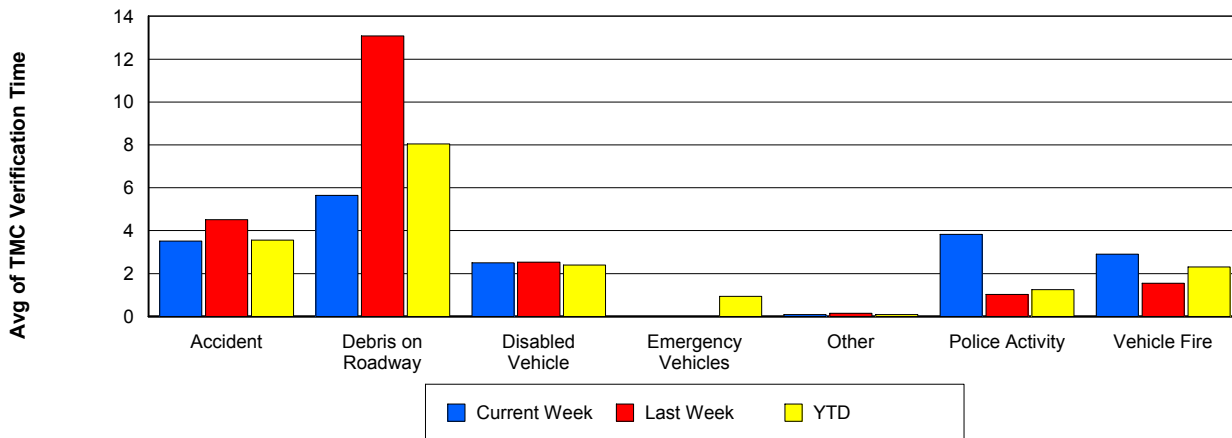
Number of Events / Event Type



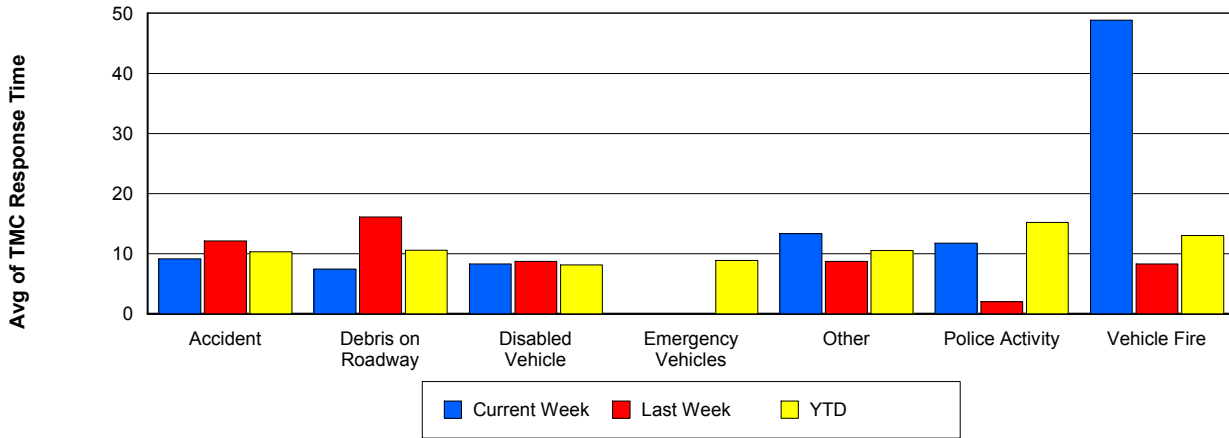
TMC Detection Time



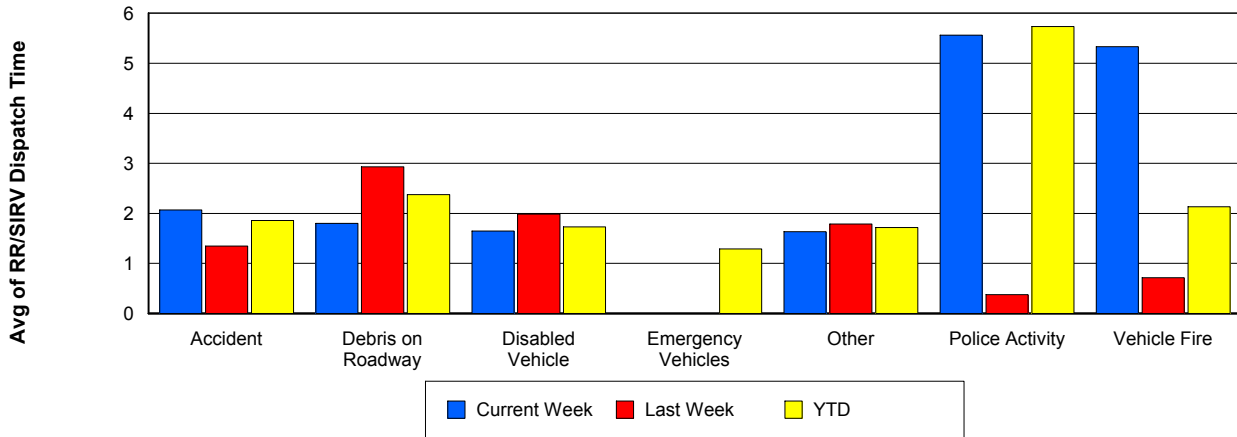
TMC Verification Time



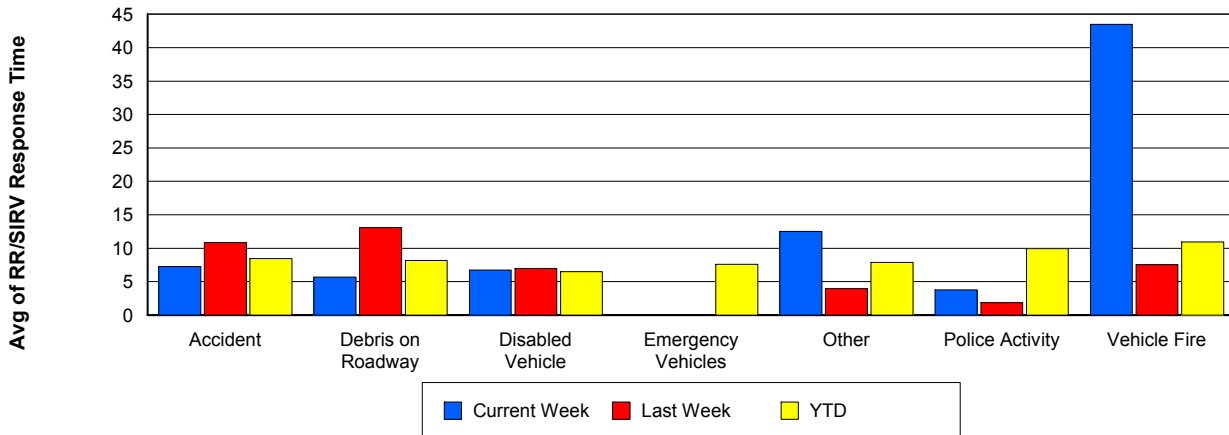
TMC Response Time



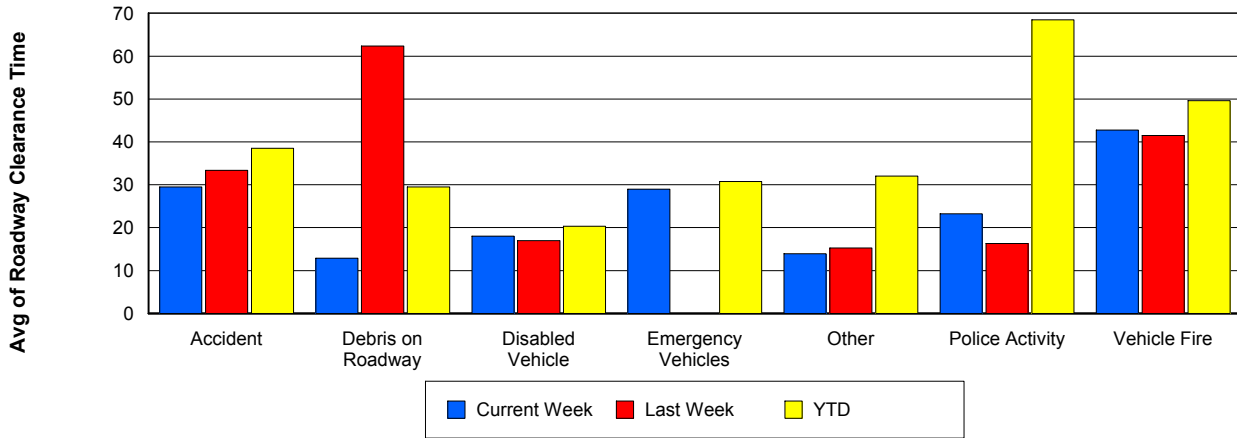
Road Ranger / SIRV Dispatch Time



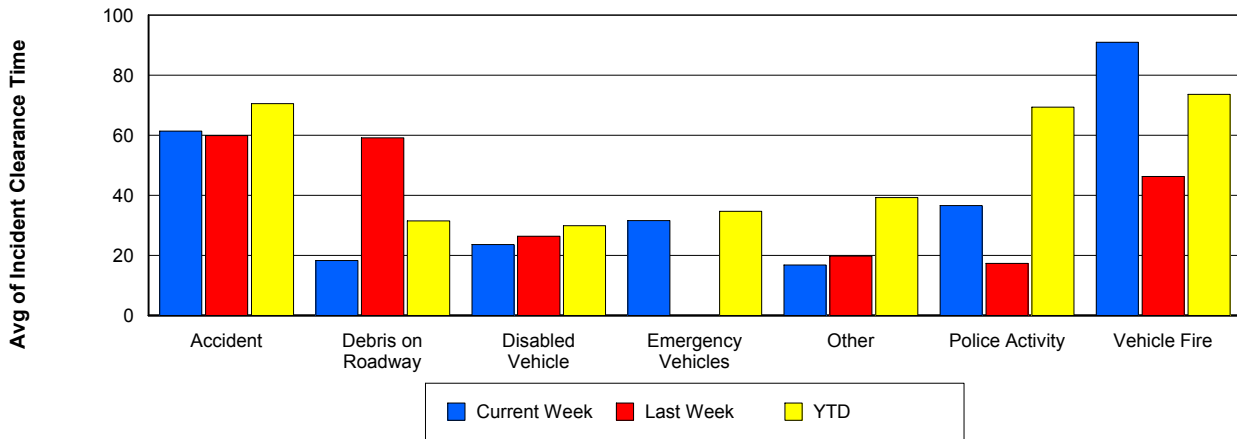
Road Ranger / SIRV Response Time



Roadway Clearance Time (2A)



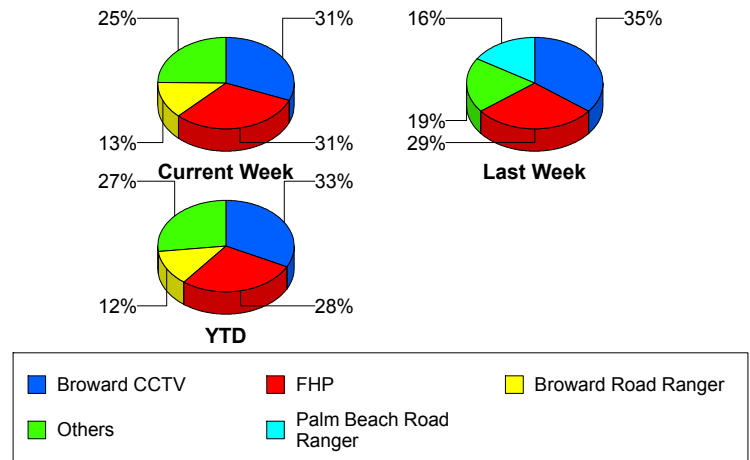
Incident Clearance Time (3B)



Incident Detection Methods

	Current Week	Last Week	YTD
Broward CCTV	24	33	568
Broward Road Ranger	10	9	216
Broward TMC	0	0	12
Broward VideoWall	0	1	26
BSO	1	1	23
County Police	0	0	2
District 4	1	2	46
District 6	0	1	2
FDOT Maintenance	0	1	4
FHP	24	27	487
Fire	0	0	5
Florida's Turnpike	0	1	12
ITMS	0	0	1
ITMS CCTV	7	1	94
Local Police	0	0	1
Media	0	0	2
Motorist	0	0	17
Other	0	0	1
Palm Beach Road Ran	9	15	193
Road Watcher	0	0	9
SIRV	0	1	2
VisioPaD Detection	1	0	20
Total	77	93	1,743

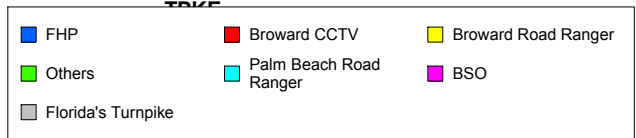
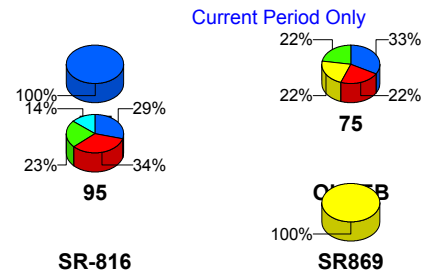
Total Incidents by Detection Method



Incident Detection Methods by Roadway

		Current Week	Last Week	YTD
595	Broward CCTV	0	0	12
	Broward Road Ranger	0	0	7
	BSO	0	0	3
	County Police	0	0	1
	FHP	2	0	8
	VisioPaD Detection	0	0	1
	Total	2	0	32
75	Broward CCTV	2	2	50
	Broward Road Ranger	2	2	19
	BSO	1	0	15
	District 4	0	0	4
	District 6	0	0	1
	FHP	3	0	26
	Fire	0	0	4
	Road Watcher	0	0	1
	VisioPaD Detection	1	0	9
	Total	9	4	129
95	Broward CCTV	22	31	506
	Broward Road Ranger	7	5	147
	Broward TMC	0	0	12
	Broward VideoWall	0	1	26
	BSO	0	1	3
	County Police	0	0	1
	District 4	1	2	40
	District 6	0	1	1
	FDOT Maintenance	0	1	4
	FHP	19	27	451
	Fire	0	0	1
	ITMS	0	0	1
	ITMS CCTV	7	1	94
Local Police	0	0	1	

Total Events by Roadway and Detection Method

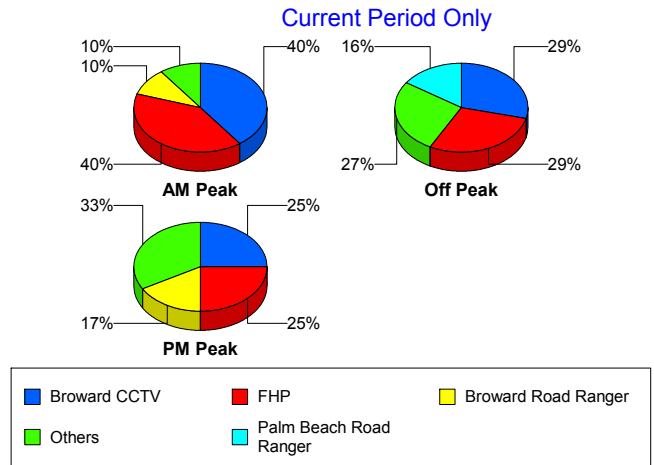


		Current Week	Last Week	YTD
95	Media	0	0	2
	Motorist	0	0	17
	Other	0	0	1
	Palm Beach Road Ran	9	15	193
	Road Watcher	0	0	6
	SIRV	0	1	2
	VisioPaD Detection	0	0	10
	Total	65	86	1,519
SR-816	Broward Road Ranger	0	2	41
	BSO	0	0	1
	District 4	0	0	2
	FHP	0	0	1
	Road Watcher	0	0	2
	Total	0	2	47
SR869	Broward Road Ranger	1	0	2
	BSO	0	0	1
	FHP	0	0	1
	Florida's Turnpike	0	1	2
	Total	1	1	6
TPKE	Florida's Turnpike	0	0	10
	Total	0	0	10
Total		77	93	1,743

Incident Detection Methods by Peak Period

		Current Week	Last Week	YTD
AM Peak	Broward CCTV	8	8	117
	Broward Road Ranger	2	4	55
	Broward TMC	0	0	3
	Broward VideoWall	0	1	15
	BSO	0	0	4
	County Police	0	0	1
	District 4	0	0	11
	District 6	0	1	1
	FDOT Maintenance	0	1	1
	FHP	8	5	89
	Fire	0	0	2
	Florida's Turnpike	0	0	2
	ITMS CCTV	1	1	24
	Local Police	0	0	1
	Media	0	0	1
	Motorist	0	0	2
	Palm Beach Road Ran	1	1	52
	Road Watcher	0	0	2
	SIRV	0	0	1
	VisioPaD Detection	0	0	1
Total	20	22	385	
Off Peak	Broward CCTV	13	16	308
	Broward Road Ranger	6	3	93
	Broward TMC	0	0	6
	Broward VideoWall	0	0	8
	BSO	1	1	12
	County Police	0	0	1
	District 4	1	2	23
	District 6	0	0	1
	FDOT Maintenance	0	0	3
	FHP	13	17	263

Total Events by Peak Period and Detection Method

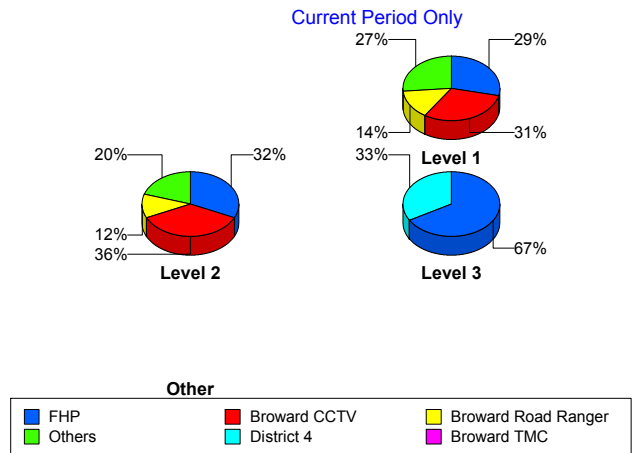


		Current Week	Last Week	YTD
Off Peak	Florida's Turnpike	0	1	9
	ITMS	0	0	1
	ITMS CCTV	4	0	53
	Motorist	0	0	9
	Other	0	0	1
	Palm Beach Road Ran	7	9	96
	Road Watcher	0	0	4
	VisioPaD Detection	0	0	12
	Total	45	49	903
PM Peak	Broward CCTV	3	9	143
	Broward Road Ranger	2	2	68
	Broward TMC	0	0	3
	Broward VideoWall	0	0	3
	BSO	0	0	7
	District 4	0	0	12
	FHP	3	5	136
	Fire	0	0	3
	Florida's Turnpike	0	0	1
	ITMS CCTV	2	0	17
	Media	0	0	1
	Motorist	0	0	6
	Palm Beach Road Ran	1	5	45
	Road Watcher	0	0	3
	SIRV	0	1	1
	VisioPaD Detection	1	0	7
	Total	12	22	456
Total		77	93	1,743

Incident Detection Methods by Severity

		Current Week	Last Week	YTD
	FHP	0	0	1
	Total	0	0	1
Level 1	Broward CCTV	15	20	342
	Broward Road Ranger	7	9	158
	Broward TMC	0	0	9
	Broward VideoWall	0	1	16
	BSO	0	0	6
	County Police	0	0	1
	District 4	0	1	29
	District 6	0	1	1
	FDOT Maintenance	0	1	1
	FHP	14	11	211
	Fire	0	0	2
	ITMS CCTV	5	0	49
	Media	0	0	1
	Motorist	0	0	10
	Other	0	0	1
	Palm Beach Road Ran	7	9	129
	Road Watcher	0	0	8
	SIRV	0	1	1
	VisioPaD Detection	1	0	10
	Total	49	54	985
Level 2	Broward CCTV	9	9	174
	Broward Road Ranger	3	0	48
	Broward TMC	0	0	3
	Broward VideoWall	0	0	10
	BSO	1	1	3
	District 4	0	1	12
	FDOT Maintenance	0	0	3
	FHP	8	16	213
	Fire	0	0	1

Total Events by Severity and Detection Method



		Current Week	Last Week	YTD
Level 2	Florida's Turnpike	0	0	1
	ITMS	0	0	1
	ITMS CCTV	2	0	38
	Local Police	0	0	1
	Motorist	0	0	7
	Palm Beach Road Ran	2	6	52
	Road Watcher	0	0	1
	SIRV	0	0	1
	VisioPaD Detection	0	0	8
	Total	25	33	577
Level 3	Broward CCTV	0	4	52
	Broward Road Ranger	0	0	10
	BSO	0	0	14
	County Police	0	0	1
	District 4	1	0	5
	District 6	0	0	1
	FHP	2	0	63
	Fire	0	0	2
	Florida's Turnpike	0	1	11
	ITMS CCTV	0	1	7
	Media	0	0	1
	Palm Beach Road Ran	0	0	12
	VisioPaD Detection	0	0	2
Total	3	6	181	
Total		77	93	1,743

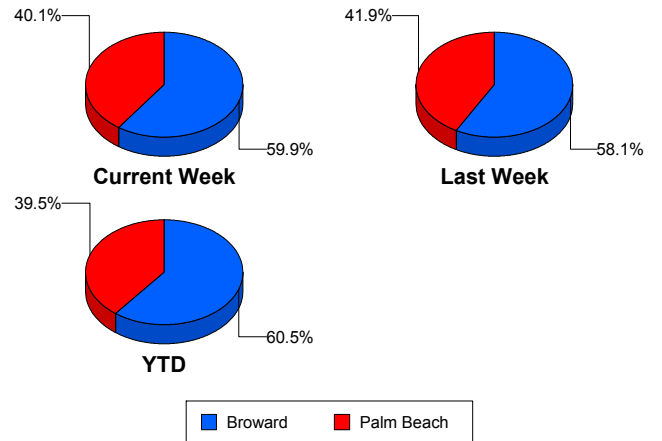
Road Ranger / SIRV Performance Measures

Road Ranger / SIRV Performance By County

Values presented are:
 - Total Events with a RR/SIRV Response
 - Total RR/SIRV Responses,
 - Total Activities Performed

	Current We	Last Week	YTD
Broward	1,000	887	21,301
	1,057	943	22,792
	1,092	982	23,681
Palm Beach	689	661	14,413
	709	680	14,880
	765	737	15,846

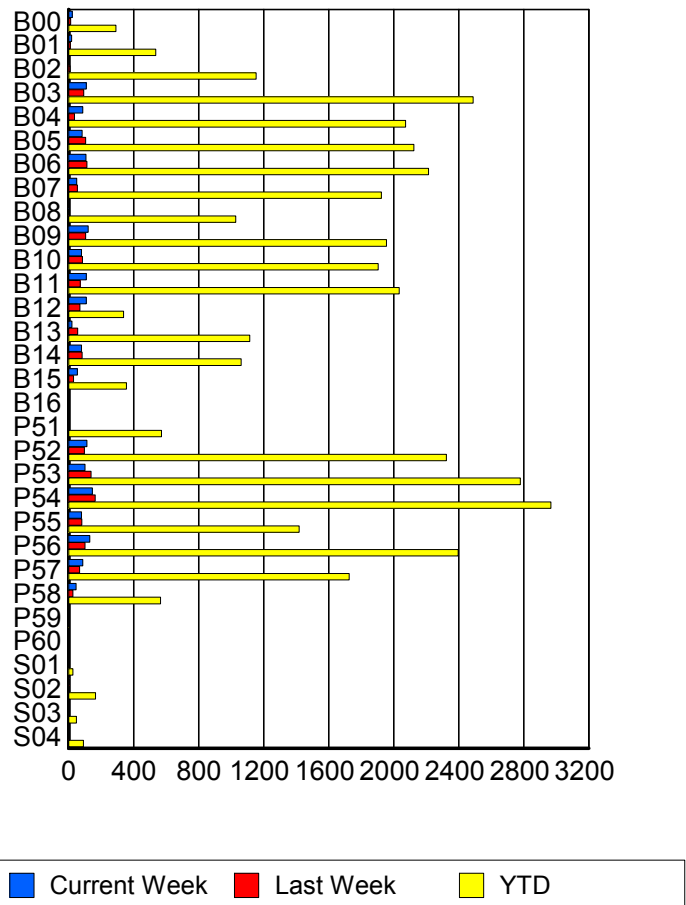
RR/SIRV Responses per County



Road Ranger / SIRV Performance By Truck

	Current We	Last Week	YTD
B00	23	12	286
	23	12	291
	25	13	309
B01	18	11	528
	18	11	537
	18	12	555
B02	3	9	1,138
	3	9	1,154
	3	9	1,179
B03	103	94	2,467
	108	94	2,490
	112	95	2,604
B04	85	34	2,043
	87	36	2,073
	92	36	2,160
B05	83	104	2,112
	83	104	2,125
	84	108	2,195
B06	106	111	2,186
	107	112	2,215
	111	118	2,308
B07	50	54	1,900
	50	54	1,924
	50	54	1,997
B08	2	2	1,013
	2	2	1,029
	2	2	1,067

RR/SIRV Responses per Truck



	Current We	Last Week	YTD
B09	120	105	1,934
	121	105	1,955
	123	108	2,038
B10	79	85	1,878
	79	86	1,905
	80	90	1,964
B11	104	72	2,013
	108	72	2,035
	118	74	2,116
B12	107	69	335
	108	70	339
	110	75	357
B13	20	55	1,103
	20	55	1,114
	21	57	1,141
B14	78	81	1,047
	79	84	1,062
	80	90	1,102
B15	53	30	351
	54	31	355
	56	31	372
B16	0	0	1
	0	0	1
	0	0	1
P51	0	0	561
	0	0	571
	0	0	603
P52	111	98	2,298
	113	98	2,325
	122	105	2,475
P53	101	138	2,749
	101	139	2,779
	106	153	2,960
P54	146	163	2,930
	146	164	2,967
	153	176	3,152
P55	79	81	1,410
	79	81	1,419
	91	89	1,496
P56	131	99	2,370
	131	100	2,397
	142	109	2,563
P57	88	67	1,708
	88	68	1,727
	95	74	1,846

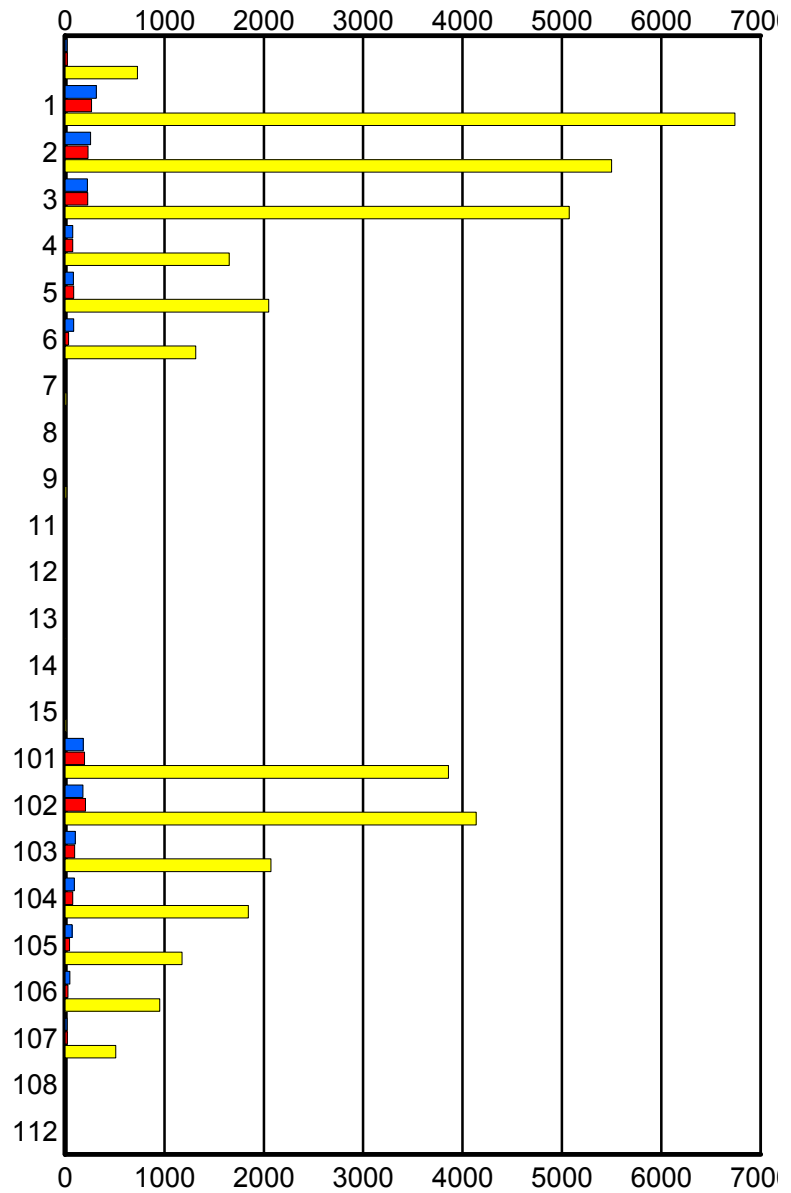
	Current We	Last Week	YTD
P58	46	27	561
	46	27	566
	51	28	602
P59	0	0	2
	0	0	2
	0	0	2
P60	0	0	1
	0	0	1
	0	0	1
S01	1	1	27
	1	1	27
	1	2	30
S02	4	4	160
	4	4	165
	4	6	179
S03	3	2	46
	3	2	49
	3	3	54
S04	3	2	90
	4	2	92
	4	2	99

Road Ranger / SIRV Performance By Beat

	Current We	Last Week	YTD
	17	22	707
	19	22	729
	19	26	773
1	306	258	6,444
	315	268	6,741
	326	281	7,010
2	245	227	5,339
	257	231	5,501
	268	237	5,730
3	222	226	4,964
	225	228	5,074
	231	237	5,278
4	77	76	1,622
	78	78	1,652
	78	79	1,707
5	85	84	2,030
	85	87	2,050
	86	90	2,106
6	85	36	1,289
	86	37	1,315
	92	40	1,358
7	0	0	16
	0	0	17
	0	0	18
8	0	0	9
	0	0	9
	0	0	9
9	0	0	17
	0	0	17
	0	0	17
11	0	0	2
	0	0	2
	0	0	2
12	0	0	2
	0	0	2
	0	0	2
13	0	0	8
	0	0	8
	0	0	8
14	0	0	4
	0	0	4
	0	0	4
15	0	0	14
	0	0	14
	0	0	14

Values presented are:
 - Total Events with a RR/SIRV Response
 - Total RR/SIRV Responses,
 - Total Activities Performed

RR/SIRV Responses per Beat



■ Current Week
 ■ Last Week
 ■ YTD

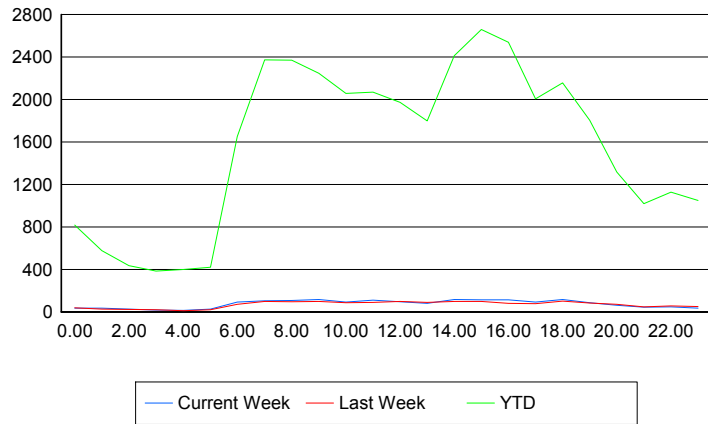
	Current We	Last Week	YTD
101	182	193	3,796
	184	195	3,858
	207	214	4,106
102	178	204	4,081
	179	205	4,137
	195	221	4,395
103	104	95	2,046
	104	97	2,073
	112	103	2,194
104	93	78	1,826
	93	78	1,844
	99	83	1,970
105	72	46	1,168
	72	46	1,176
	72	50	1,263
106	48	28	945
	48	28	953
	50	33	1,011
107	21	23	507
	21	23	509
	22	25	545
108	0	0	3
	0	0	4
	0	0	4
112	0	0	2
	0	0	2
	0	0	3

Road Ranger / SIRV Performance By Time of Day

Values presented are:
 - Total Events with a RR/SIRV Response
 - Total RR/SIRV Responses,
 - Total Activities Performed

	Current We	Last Week	YTD
12AM-1AM	34	36	781
	35	38	816
	37	40	866
1AM-2AM	33	24	550
	34	26	577
	36	28	599
2AM-3AM	25	23	405
	25	23	436
	28	23	464
3AM-4AM	18	19	364
	18	21	384
	19	22	410
4AM-5AM	12	10	358
	13	11	399
	14	11	420
5AM-6AM	21	18	358
	25	19	421
	27	20	435
6AM-7AM	89	70	1,558
	91	72	1,650
	95	74	1,717
7AM-8AM	97	95	2,257
	104	99	2,373
	107	106	2,484
8AM-9AM	96	92	2,214
	106	96	2,369
	114	105	2,481
9AM-10AM	107	93	2,151
	115	98	2,246
	122	102	2,358
10AM-11AM	86	82	1,960
	91	85	2,056
	93	91	2,151
11AM-12PM	108	85	1,967
	110	90	2,070
	115	96	2,170
12PM-1PM	90	90	1,860
	96	97	1,974
	102	101	2,057

Number of Responses / Hour of the Day



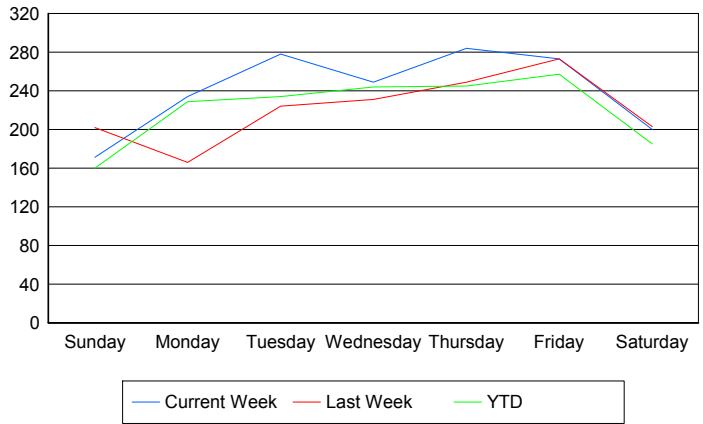
	Current We	Last Week	YTD
1PM-2PM	74	84	1,688
	79	90	1,799
	84	92	1,871
2PM-3PM	111	93	2,265
	116	97	2,412
	122	103	2,558
3PM-4PM	111	93	2,548
	114	97	2,660
	118	104	2,786
4PM-5PM	107	77	2,382
	112	80	2,537
	120	86	2,667
5PM-6PM	92	70	1,897
	93	78	2,006
	96	85	2,103
6PM-7PM	114	98	2,075
	116	101	2,155
	122	108	2,256
7PM-8PM	84	81	1,745
	86	82	1,805
	92	88	1,886
8PM-9PM	61	68	1,260
	62	70	1,318
	66	74	1,372
9PM-10PM	42	46	974
	44	48	1,019
	45	52	1,084
10PM-11PM	44	54	1,081
	46	55	1,126
	46	58	1,199
11PM-12AM	33	47	1,016
	35	50	1,050
	37	50	1,133

Road Ranger / SIRV Performance By Day of Week

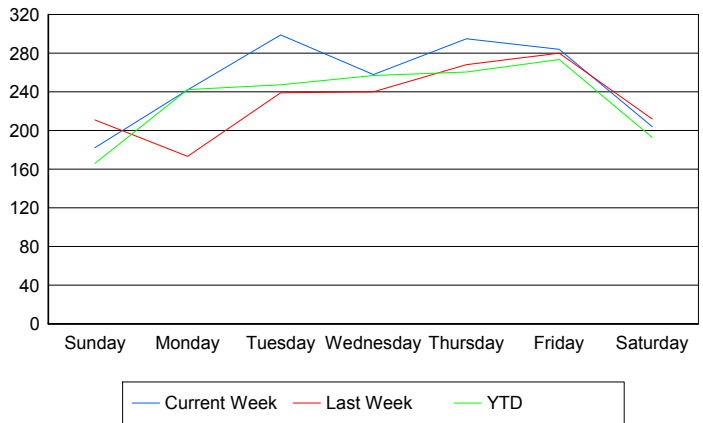
Values presented are: - Total Events with a RR/SIRV Response - Total RR/SIRV Responses, - Total Activities Performed

	Current We	Last Week	YTD
Sunday	173 184 192	202 211 223	3,615 3,751 3,928
Monday	234 242 249	166 173 181	5,177 5,483 5,723
Tuesday	278 299 315	224 239 256	5,349 5,646 5,905
Wednesday	249 258 273	231 240 261	5,544 5,838 6,150
Thursday	284 295 311	249 268 284	5,590 5,883 6,249
Friday	273 284 301	273 280 285	6,080 6,384 6,746
Saturday	200 204 216	203 212 229	4,389 4,568 4,826

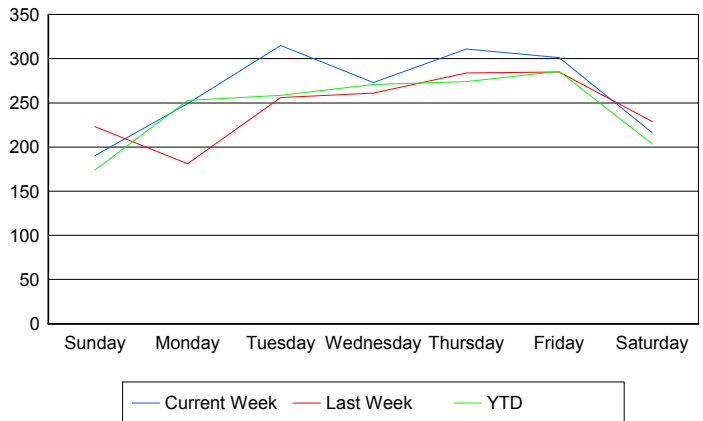
Avg # of events with a RR/SIRV Response per Day of the Week



Avg # of RR/SIRV Responses per Day of the Week



Avg # of RR/SIRV Activities Performed per Day of the Week



Road Ranger / SIRV Responses per Time of Day and Day of Week

