



Weekly Performance Measures Report Broward, Palm Beach Counties

Period From May 30, 2010 to Jun 5, 2010

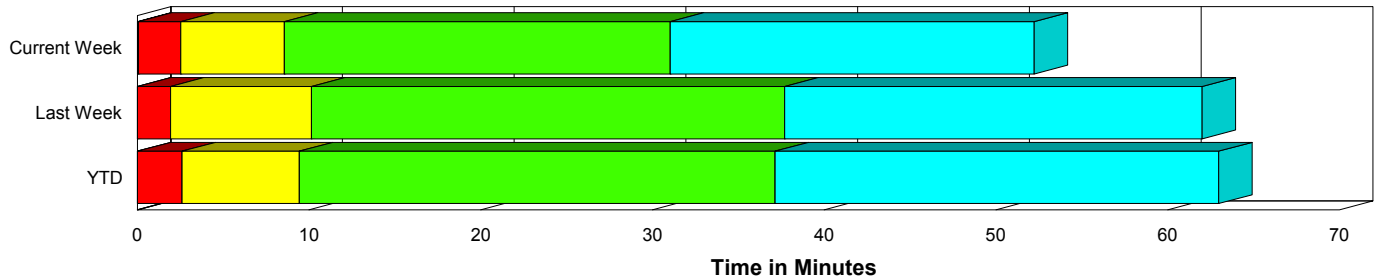


Created on:
June 07, 2010
8:48 am

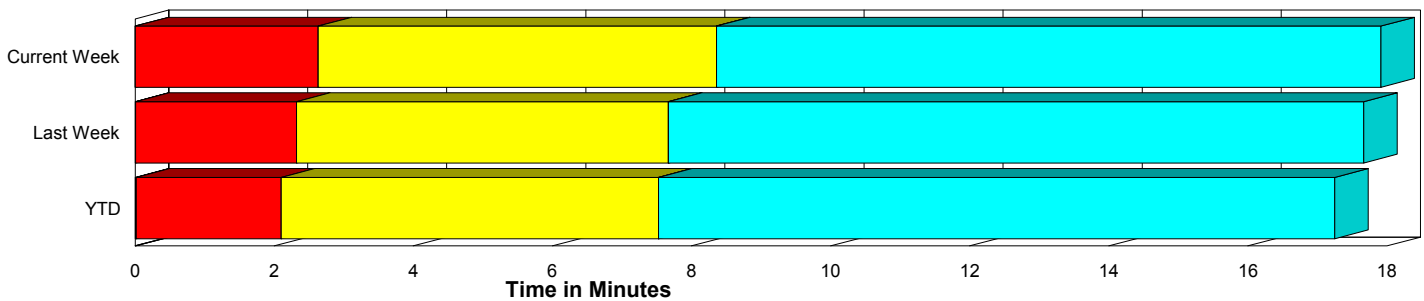
Performance Measures Summary

	Traffic Events (No Lanes Blocked)			Incidents (Lanes Blocked)		
	<u>This Week</u>	<u>Last Week</u>	<u>YTD</u>	<u>This Week</u>	<u>Last Week</u>	<u>YTD</u>
Number of Events	1,793	1,878	38,861	93	75	1,688
TMC Detection (min.)	0.00	0.01	0.01	0.06	0.00	0.02
TMC Verification (min.)	2.63	2.32	2.09	2.46	1.93	2.61
TMC Response (min.)	9.69	8.75	8.50	8.55	10.34	9.55
RR Dispatch Time (min.)	2.00	2.05	1.77	1.35	2.46	1.99
RR Response Time (min.)	7.79	6.57	6.76	7.20	7.89	7.59
Roadway Clearance (min.)				30.52	35.43	36.58
Event Clearance (min.)	19.25	18.75	18.24	51.57	58.30	62.06
# of Events w/ RR/SIRV	1,534	1,628	33,101	93	71	1,640
RR/SIRV Responses	1,534	1,628	33,101	93	71	1,640
RR/SIRV Activities	1,282	1,369	28,083	147	109	2,817

Incident Clearance Time-Line



Traffic Event (Non-Lane Blockage) Time-Line



■ Avg. TMC Detection Time	■ Avg. Time from TMC Response to Roadway Clearance*
■ Avg. Time from TMC Detection to TMC Verification	■ Avg. Time from Roadway Clearance to Incident/Event Clearance**
■ Avg. Time from TMC Verification to TMC Response	

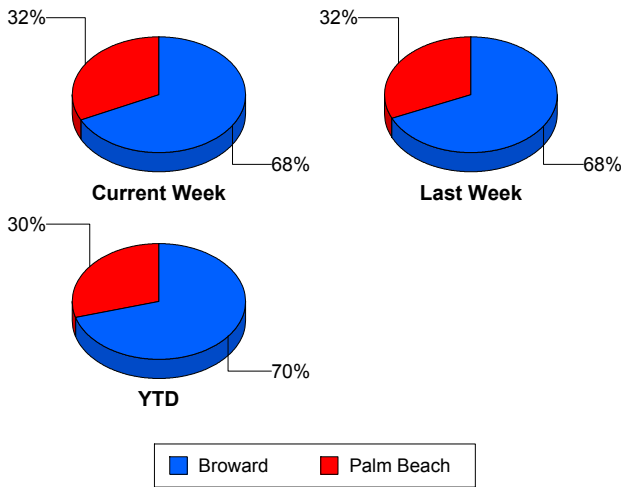
* Roadway clearance equals all travel lanes open

** Incident clearance equals time when last responder has left the scene

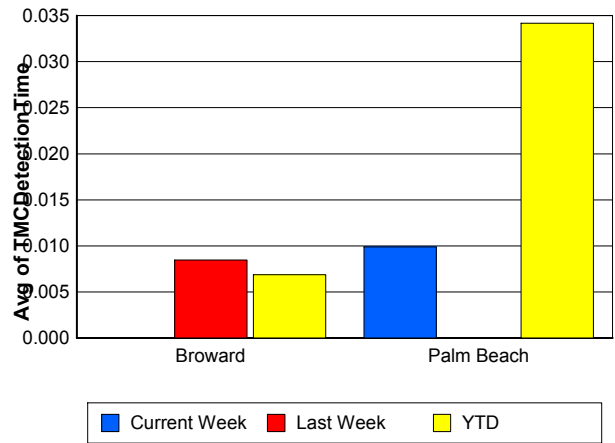
Performance Measures by County

	Broward			Palm Beach		
	<u>Current Week</u>	<u>Last Week</u>	<u>YTD</u>	<u>Current Week</u>	<u>Last Week</u>	<u>YTD</u>
Number of Events	1,277	1,336	28,562	609	617	11,987
Number of Incidents	57	45	1,112	36	30	576
TMC Detection (min.)	0.00	0.01	0.01	0.01	0.00	0.03
TMC Verification (min.)	1.25	0.91	1.18	5.52	5.30	4.32
TMC Response (min.)	9.29	8.47	9.18	10.05	9.37	7.56
RR Dispatch Time (min.)	1.20	1.28	1.39	3.43	3.66	2.60
RR Response Time (min.)	8.28	7.34	7.90	6.99	5.60	5.06
Event Clearance (min.)	19.86	19.55	19.50	22.90	21.84	21.40
Roadway Clearance (min.)	27.48	36.09	33.92	35.32	34.44	41.73
Incident Clearance (min.)	50.41	63.12	61.14	53.41	51.06	63.42
# of Events w/ RR/SIRV	1,067	1,138	23,561	560	561	11,180
RR/SIRV Responses	1,067	1,138	23,561	560	561	11,180
RR/SIRV Activities	828	877	19,113	601	601	11,787

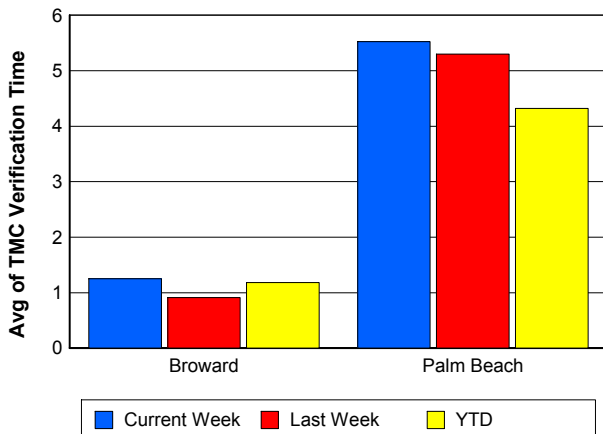
Number of Events / County



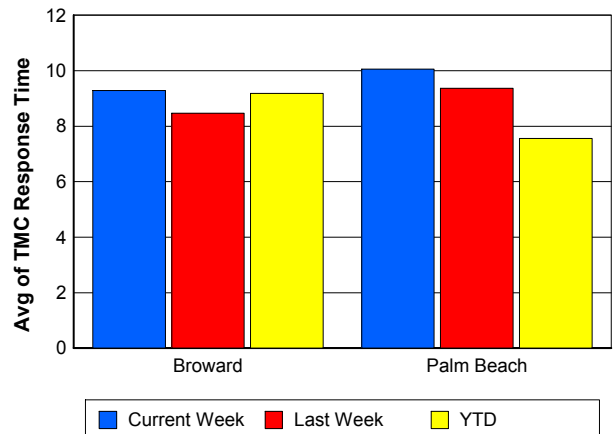
TMC Detection Time



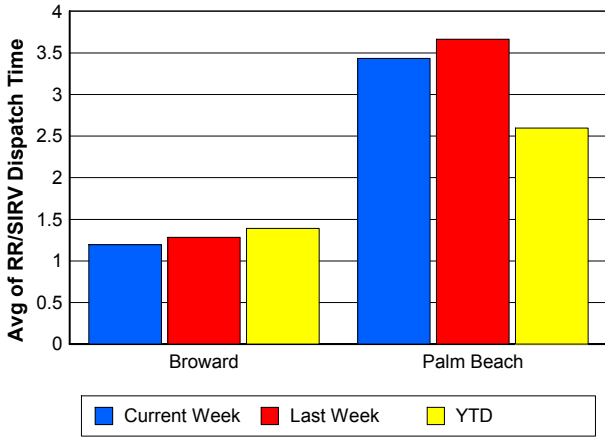
TMC Verification Time



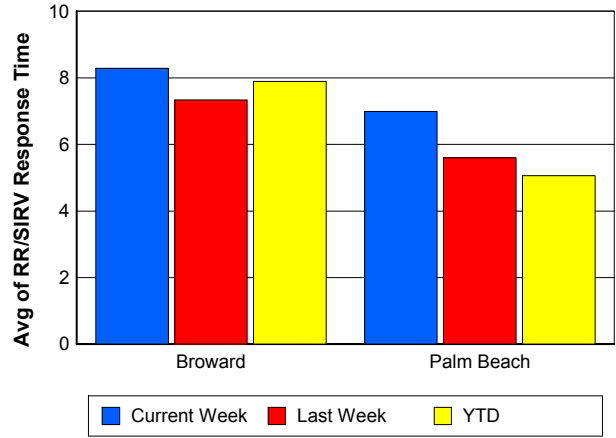
TMC Response Time



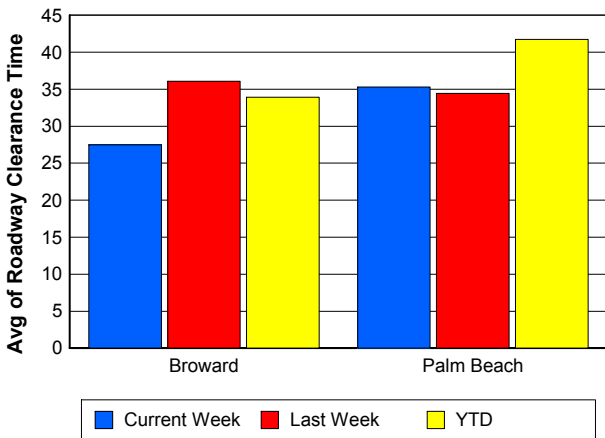
Road Ranger / SIRV Dispatch Time



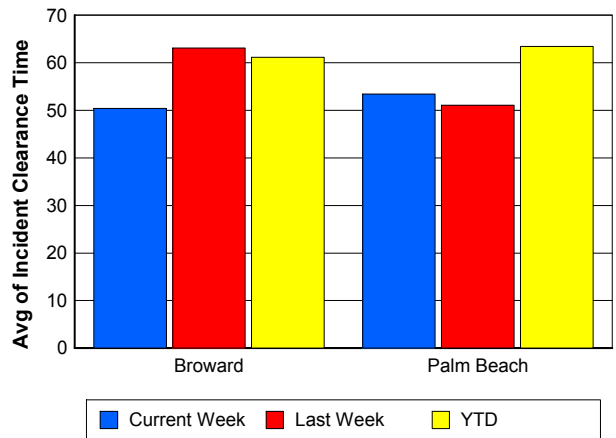
Road Ranger / SIRV Response Time



Roadway Clearance Time (2A)



Incident Clearance Time (3B)

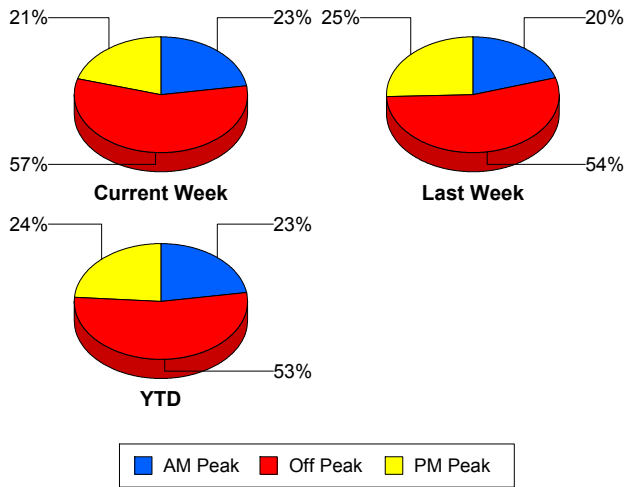


Performance Measures by Peak Period

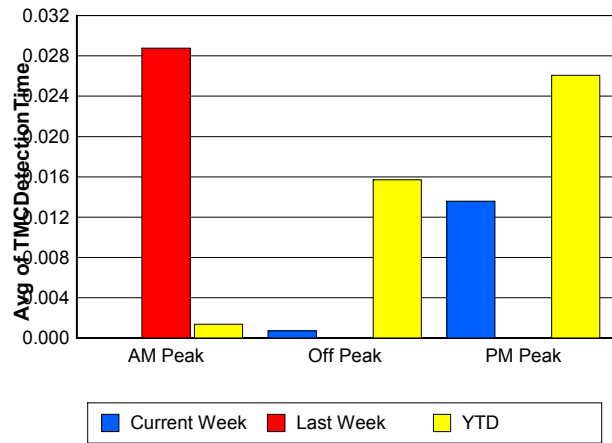
Note: AM peak period is defined as 6am to 10am and PM peak period is defined as 3pm to 7pm.

	AM Peak			Off Peak			PM Peak		
	<u>Current Week</u>	<u>Last Week</u>	<u>YTD</u>	<u>Current Week</u>	<u>Last Week</u>	<u>YTD</u>	<u>Current Week</u>	<u>Last Week</u>	<u>YTD</u>
Number of Events	425	394	9,154	1,073	1,061	21,659	388	498	9,736
Number of Incidents	22	16	367	49	43	873	22	16	448
TMC Detection (min.)	0.00	0.03	0.00	0.00	0.00	0.02	0.01	0.00	0.03
TMC Verification (min.)	2.35	1.54	1.33	2.67	2.38	2.22	2.82	2.74	2.59
TMC Response (min.)	9.72	8.19	8.01	10.00	9.46	8.96	8.56	8.15	8.23
RR Dispatch Time (min.)	1.70	1.44	1.32	2.10	2.36	1.91	1.90	1.98	1.93
RR Response Time (min.)	7.90	6.72	6.71	7.92	6.92	7.06	7.17	6.06	6.38
Event Clearance (min.)	18.42	18.79	18.70	21.47	20.59	20.49	21.77	20.78	20.39
Roadway Clearance (min.)	24.43	26.81	32.77	34.88	40.51	42.00	26.88	30.37	29.17
Incident Clearance (min.)	38.85	42.67	56.43	56.72	56.89	66.38	52.83	77.71	57.72
# of Events w/ RR/SIRV	376	357	8,008	906	900	18,234	345	442	8,499
RR/SIRV Responses	376	357	8,008	906	900	18,234	345	442	8,499
RR/SIRV Activities	319	307	6,970	778	752	16,056	332	419	7,874

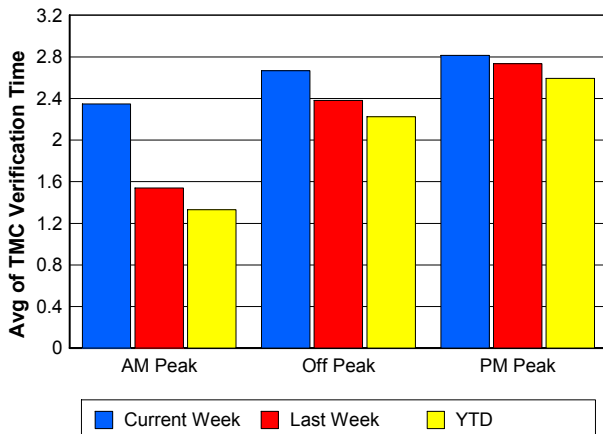
Number of Events / Peak Period



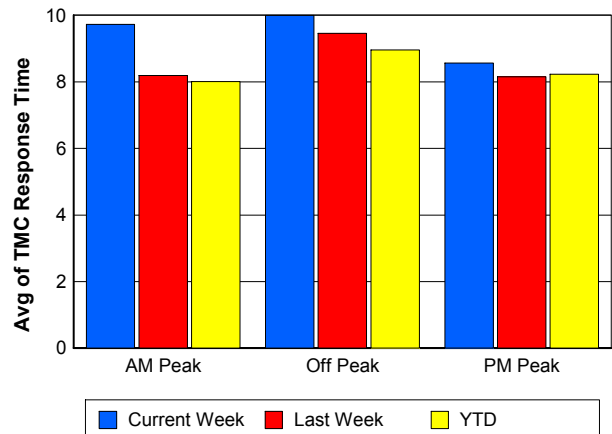
TMC Detection Time



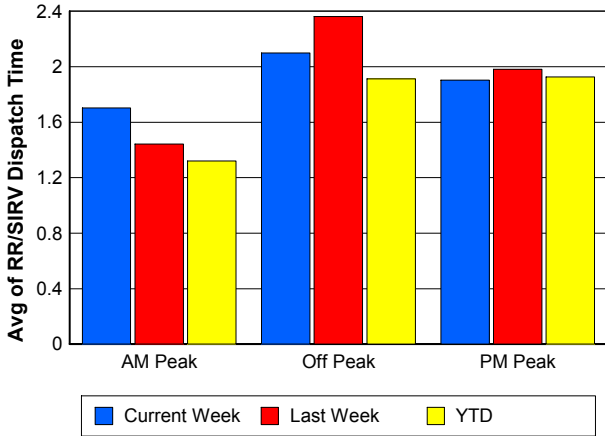
TMC Verification Time



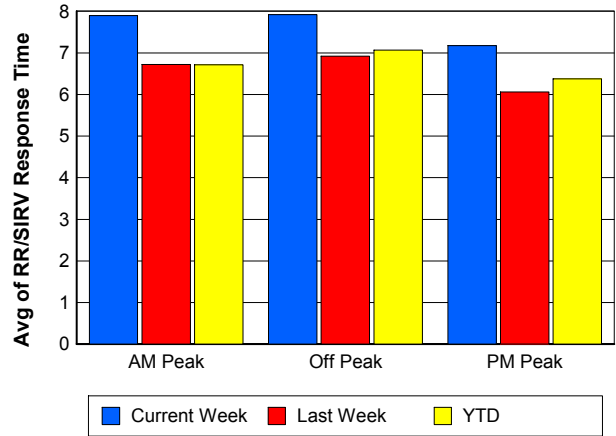
TMC Response Time



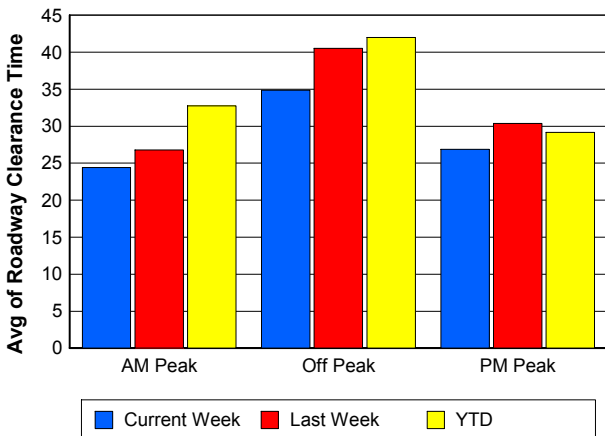
Road Ranger / SIRV Dispatch Time



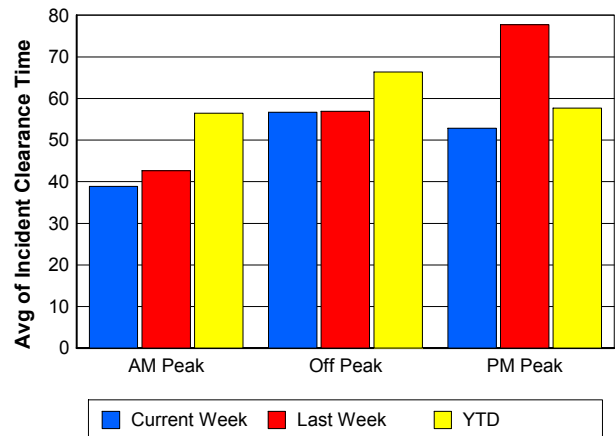
Road Ranger / SIRV Response Time



Roadway Clearance Time (2A)



Incident Clearance Time (3B)

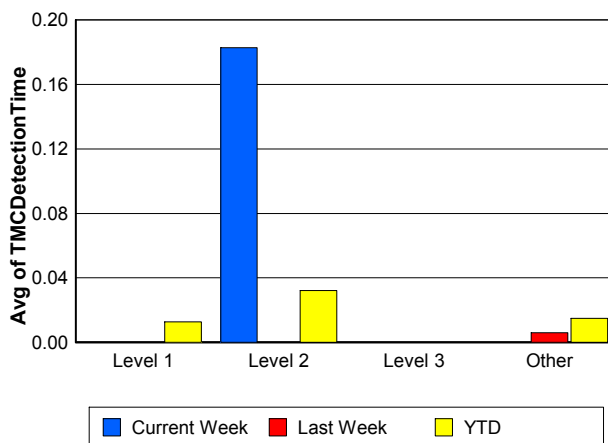
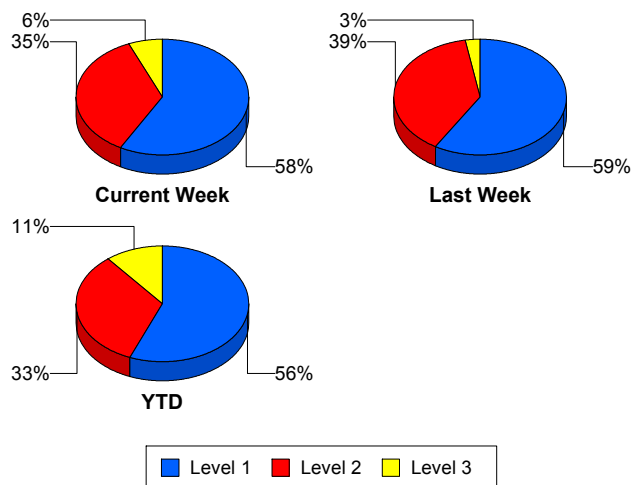


Performance Measures by Severity

	Level 1			Level 2			Level 3			Other		
	<u>This Week</u>	<u>Last Week</u>	<u>YTD</u>	<u>This Week</u>	<u>Last Week</u>	<u>YTD</u>	<u>This Week</u>	<u>Last Week</u>	<u>YTD</u>	<u>This Week</u>	<u>Last Week</u>	<u>YTD</u>
Number of Events	54	44	946	33	29	559	6	2	181	1,793	1,878	38,863
Number of Incidents	54	44	946	33	29	559	6	2	181	0	0	2
TMC Detection (min.)	0.00	0.00	0.01	0.18	0.00	0.03	0.00	0.00	0.00	0.00	0.01	0.01
TMC Verification (min.)	1.40	1.49	1.40	4.63	2.73	4.46	0.11	0.00	3.14	2.63	2.32	2.09
TMC Response (min.)	7.21	7.70	7.39	10.36	13.59	12.10	10.85	11.87	12.95	9.69	8.75	8.50
RR Dispatch Time (min.)	1.34	2.00	1.39	1.37	3.21	2.57	1.30	0.69	3.48	2.00	2.05	1.77
RR Resp. Time (min.)	5.87	5.76	6.04	9.00	10.38	9.60	9.41	11.17	9.45	7.79	6.57	6.76
Event Clearance (min.)	43.32	45.85	45.40	66.12	73.45	73.86	45.81	112.47	112.28	19.25	18.75	18.24
Roadway Clear. (min.)	14.15	14.76	15.06	56.67	58.01	53.20	33.94	162.78	98.43			-21.46
Incident Clearance (min.)	43.32	45.85	45.40	66.12	73.45	73.86	45.81	112.47	111.97			0.00
# of Events w/ RR/SIRV	54	40	925	33	29	552	6	2	161	1,534	1,628	33,103
RR/SIRV Responses	54	40	925	33	29	552	6	2	161	1,534	1,628	33,103
RR/SIRV Activities	77	55	1,371	59	50	1,047	11	4	394	1,282	1,369	28,088

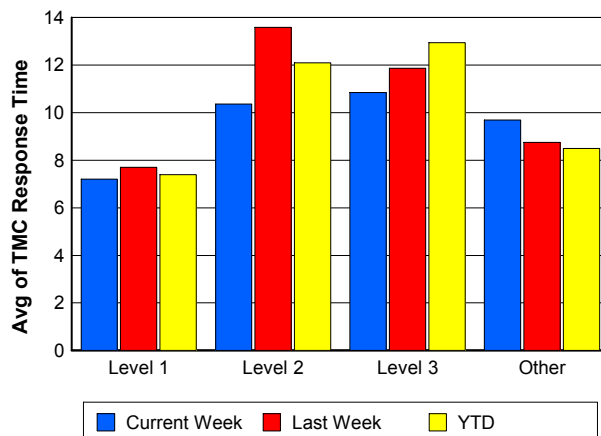
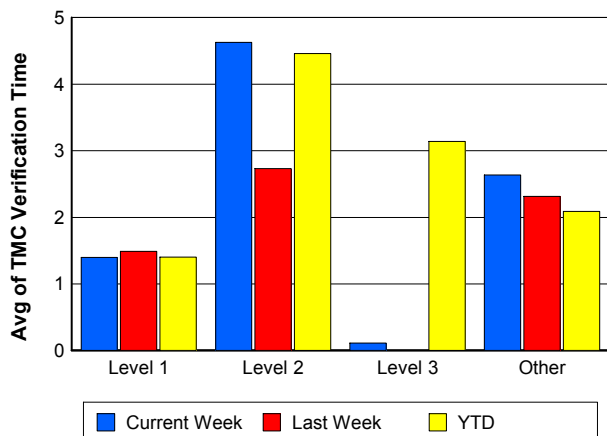
Number of Events / Severity

TMC Detection Time

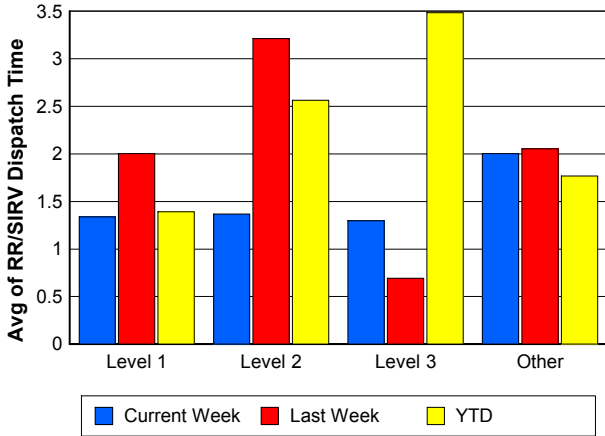


TMC Verification Time

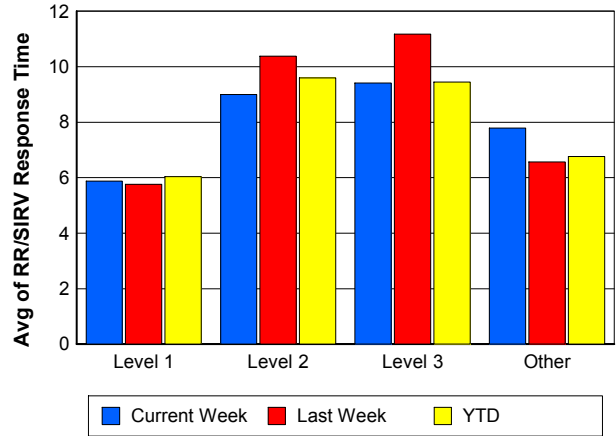
TMC Response Time



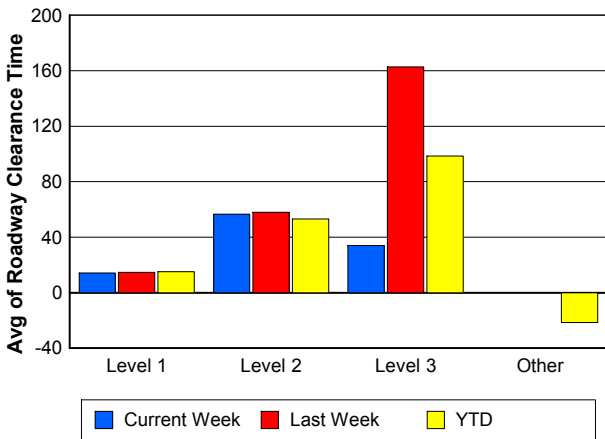
Road Ranger / SIRV Dispatch Time



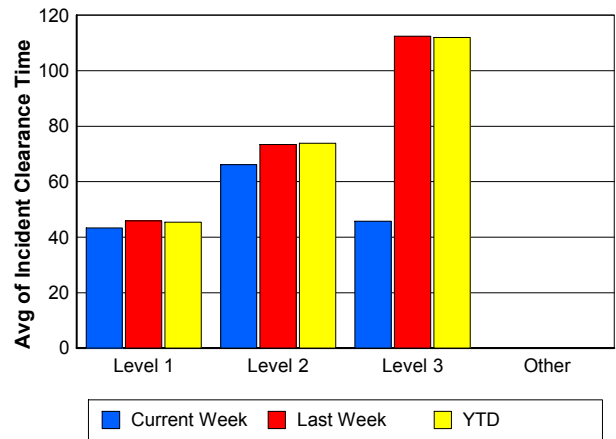
Road Ranger / SIRV Response Time



Roadway Clearance Time (2A)



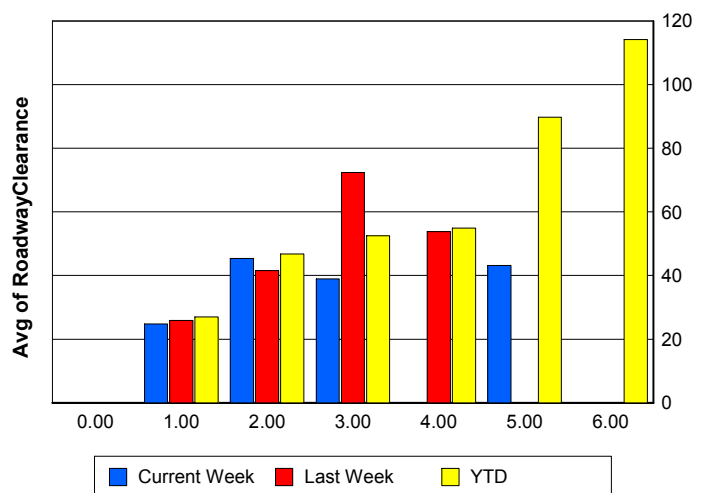
Incident Clearance Time (3B)



Roadway Clearance by Maximum Number of Lanes Blocked

	Current Week	Last Week	YTD
0			
1	24.76	25.88	26.98
2	45.32	41.57	46.73
3	38.95	72.39	52.53
4	0.00	53.83	54.89
5	43.15	0.00	89.70
6	0.00	0.00	114.15

Roadway Clearance Time (2A)



Performance Measures by Roadway

595

	<u>Current Week</u>	<u>Last Week</u>	<u>YTD</u>
Number of Events	29	49	953
Number of Incidents	0	0	46
TMC Detection (min.)	0.00	0.00	0.00
TMC Verification (min.)	2.59	1.72	1.80
TMC Response (min.)	25.98	19.38	15.33
RR Dispatch Time (min.)	1.23	4.37	2.07
RR Resp. Time (min.)	24.90	14.87	13.30
Event Clearance (min.)	18.74	21.17	19.87
Roadway Clear. (min.)			51.18
Incident Clearance (min.)			68.57
# of Events w/ RR/SIRV	20	40	691
RR/SIRV Responses	20	40	691
RR/SIRV Activities	7	21	454

75

	<u>Current Week</u>	<u>Last Week</u>	<u>YTD</u>
Number of Events	268	248	6,168
Number of Incidents	4	4	120
TMC Detection (min.)	0.00	0.00	0.02
TMC Verification (min.)	1.82	2.13	2.11
TMC Response (min.)	7.77	10.74	10.13
RR Dispatch Time (min.)	1.23	1.70	1.50
RR Resp. Time (min.)	6.88	9.07	8.76
Event Clearance (min.)	20.27	21.79	20.31
Roadway Clear. (min.)	53.20	67.99	53.77
Incident Clearance (min.)	83.31	57.14	86.45
# of Events w/ RR/SIRV	218	203	4,933
RR/SIRV Responses	218	203	4,933
RR/SIRV Activities	176	165	4,098

95

	<u>Current Week</u>	<u>Last Week</u>	<u>YTD</u>
Number of Events	1,572	1,643	33,080
Number of Incidents	86	70	1,459
TMC Detection (min.)	0.00	0.01	0.01
TMC Verification (min.)	2.79	2.36	2.13
TMC Response (min.)	9.80	8.40	8.21
RR Dispatch Time (min.)	2.11	2.07	1.83
RR Resp. Time (min.)	7.77	6.17	6.39
Event Clearance (min.)	21.00	20.06	20.03
Roadway Clear. (min.)	30.25	33.95	35.19
Incident Clearance (min.)	51.36	58.98	61.05
# of Events w/ RR/SIRV	1,374	1,444	28,830
RR/SIRV Responses	1,374	1,444	28,830
RR/SIRV Activities	1,233	1,279	26,072

OKEEB

	<u>YTD</u>
Number of Events	1
Number of Incidents	0
TMC Detection (min.)	0.00
TMC Verification (min.)	0.00
TMC Response (min.)	0.00
RR Dispatch Time (min.)	0.00
RR Resp. Time (min.)	0.00
Event Clearance (min.)	18.45
Roadway Clear. (min.)	
Incident Clearance (min.)	
# of Events w/ RR/SIRV	1
RR/SIRV Responses	1
RR/SIRV Activities	1

SR-816

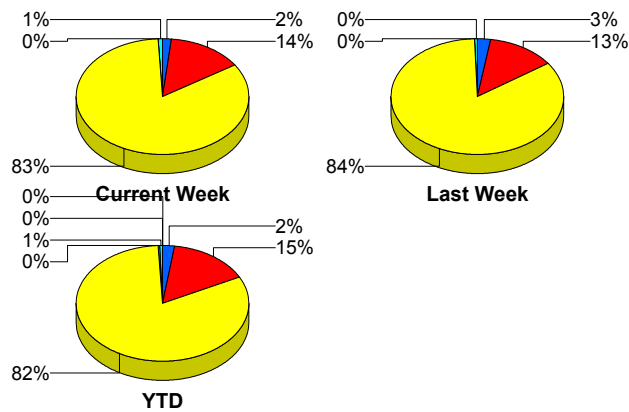
	<u>Current Week</u>	<u>Last Week</u>	<u>YTD</u>
Number of Events	3	4	70
Number of Incidents	2	1	47
TMC Detection (min.)	0.00	0.00	0.00
TMC Verification (min.)	0.00	2.00	1.10
TMC Response (min.)	0.00	3.99	1.65
RR Dispatch Time (min.)	0.00	0.56	0.14
RR Resp. Time (min.)	0.00	3.70	1.52
Event Clearance (min.)	7.77	7.55	16.27
Roadway Clear. (min.)	11.22	8.48	16.66
Incident Clearance (min.)	11.16	15.42	19.72
# of Events w/ RR/SIRV	2	3	63
RR/SIRV Responses	2	3	63
RR/SIRV Activities	2	2	68

SR869

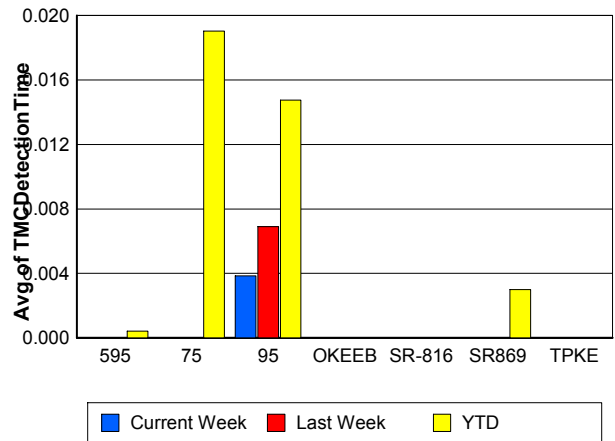
	<u>Current Week</u>	<u>Last Week</u>	<u>YTD</u>
Number of Events	14	9	267
Number of Incidents	1	0	6
TMC Detection (min.)	0.00	0.00	0.00
TMC Verification (min.)	0.05	0.08	1.09
TMC Response (min.)	8.49	9.07	8.56
RR Dispatch Time (min.)	0.77	0.38	1.01
RR Resp. Time (min.)	7.82	8.73	7.75
Event Clearance (min.)	21.17	17.86	18.58
Roadway Clear. (min.)	0.93		37.24
Incident Clearance (min.)	24.00		62.42
# of Events w/ RR/SIRV	13	9	223
RR/SIRV Responses	13	9	223
RR/SIRV Activities	11	11	207

	<u>YTD</u>
Number of Events	10
Number of Incidents	10
TMC Detection (min.)	0.00
TMC Verification (min.)	0.00
TMC Response (min.)	
RR Dispatch Time (min.)	
RR Resp. Time (min.)	
Event Clearance (min.)	62.29
Roadway Clear. (min.)	59.66
Incident Clearance (min.)	62.29
# of Events w/ RR/SIRV	0
RR/SIRV Responses	0
RR/SIRV Activities	0

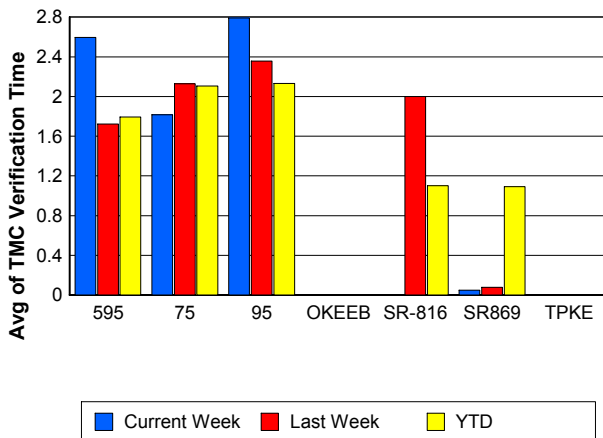
Number of Events / Roadway



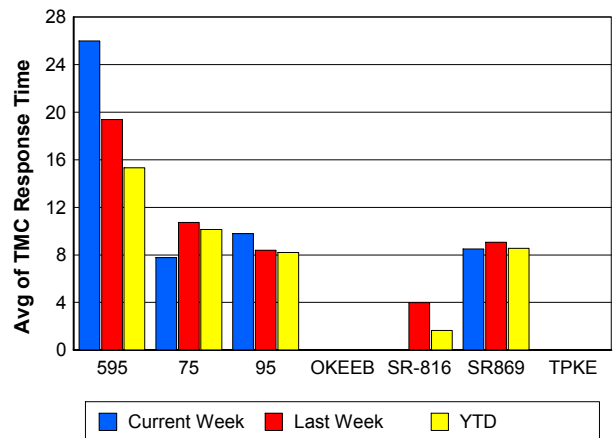
TMC Detection Time



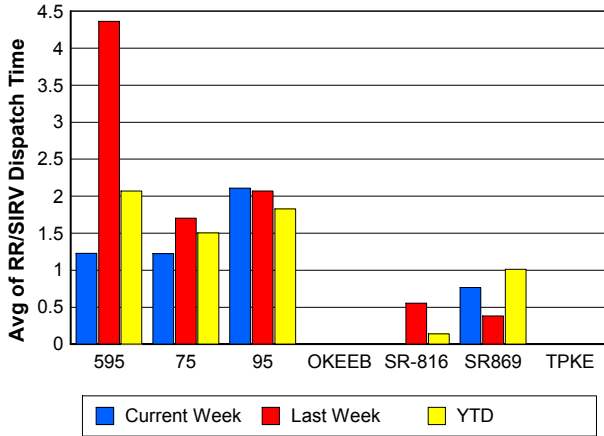
TMC Verification Time



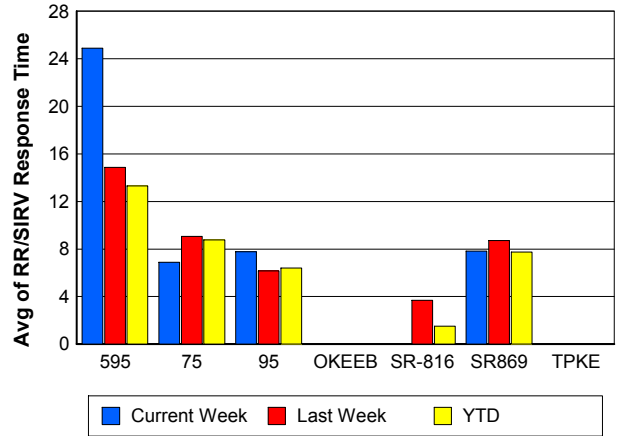
TMC Response Time



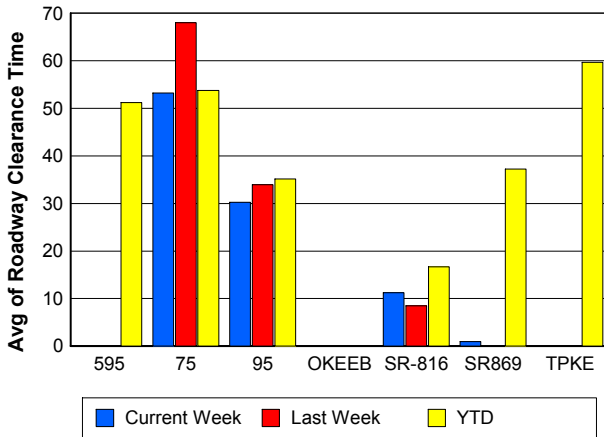
Road Ranger / SIRV Dispatch Time



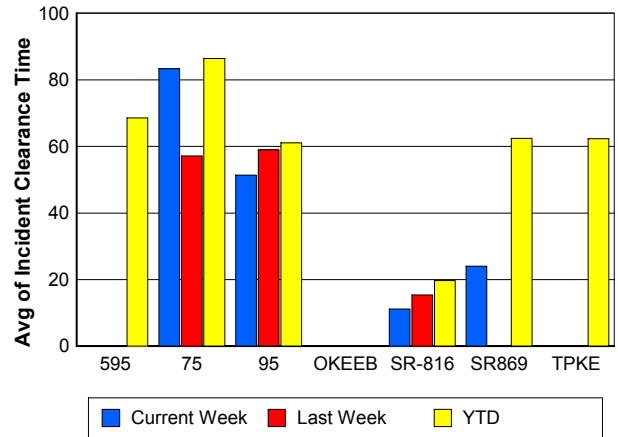
Road Ranger / SIRV Response Time



Roadway Clearance Time (2A)



Incident Clearance Time (3B)



Performance Measures by Event Type

Accident

	<u>Current Week</u>	<u>Last Week</u>	<u>YTD</u>
Number of Events	146	109	2,579
Number of Incidents	67	42	1,191
TMC Detection (min.)	0.04	0.00	0.02
TMC Verification (min.)	4.52	4.10	3.56
TMC Response (min.)	12.15	12.22	10.34
RR Dispatch Time (min.)	1.34	2.50	1.85
RR Response Time (min.)	10.84	9.61	8.51
Event Clearance (min.)	51.71	59.55	57.29
Roadway Clearance (min.)	33.40	40.37	38.93
Incident Clearance (min.)	59.92	75.72	70.92
# of Events w/ RR/SIRV	145	108	2,536
RR/SIRV Assists	145	108	2,536
RR/SIRV Activities	189	132	3,572

Debris on Roadway

	<u>Current Week</u>	<u>Last Week</u>	<u>YTD</u>
Number of Events	90	83	1,632
Number of Incidents	2	0	24
TMC Detection (min.)	0.00	0.00	0.00
TMC Verification (min.)	13.09	6.79	8.19
TMC Response (min.)	16.09	9.90	10.74
RR Dispatch Time (min.)	2.93	2.61	2.41
RR Response Time (min.)	13.08	7.27	8.31
Event Clearance (min.)	18.78	12.48	13.97
Roadway Clearance (min.)	62.32		30.20
Incident Clearance (min.)	59.12		32.01
# of Events w/ RR/SIRV	90	80	1,586
RR/SIRV Assists	90	80	1,586
RR/SIRV Activities	95	85	1,608

Disabled Vehicle

	<u>Current Week</u>	<u>Last Week</u>	<u>YTD</u>
Number of Events	1,207	1,272	25,764
Number of Incidents	17	19	312
TMC Detection (min.)	0.00	0.01	0.02
TMC Verification (min.)	2.53	2.71	2.39
TMC Response (min.)	8.73	8.21	8.12
RR Dispatch Time (min.)	1.99	1.87	1.73
RR Response Time (min.)	6.98	6.38	6.47
Event Clearance (min.)	20.60	19.65	19.99
Roadway Clearance (min.)	17.01	22.37	20.45
Incident Clearance (min.)	26.35	28.50	30.28
# of Events w/ RR/SIRV	1,134	1,216	24,564
RR/SIRV Assists	1,134	1,216	24,564
RR/SIRV Activities	1,107	1,205	24,458

Emergency Vehicles

	<u>Last Week</u>	<u>YTD</u>
Number of Events	1	30
Number of Incidents	1	26
TMC Detection (min.)	0.00	0.00
TMC Verification (min.)	0.00	0.96
TMC Response (min.)		9.43
RR Dispatch Time (min.)		1.35
RR Response Time (min.)		8.04
Event Clearance (min.)	16.12	34.76
Roadway Clearance (min.)	15.08	30.86
Incident Clearance (min.)	16.12	34.83
# of Events w/ RR/SIRV	0	20
RR/SIRV Assists	0	20
RR/SIRV Activities	0	21

Other

	<u>Current Week</u>	<u>Last Week</u>	<u>YTD</u>
Number of Events	434	464	10,212
Number of Incidents	3	2	24
TMC Detection (min.)	0.00	0.00	0.01
TMC Verification (min.)	0.15	0.07	0.09
TMC Response (min.)	8.72	18.38	10.45
RR Dispatch Time (min.)	1.79	2.61	1.72
RR Response Time (min.)	3.98	6.29	7.70
Event Clearance (min.)	11.44	13.52	11.17
Roadway Clearance (min.)	15.23	28.87	32.75
Incident Clearance (min.)	19.78	40.79	40.20
# of Events w/ RR/SIRV	250	274	5,731
RR/SIRV Assists	250	274	5,731
RR/SIRV Activities	26	33	892

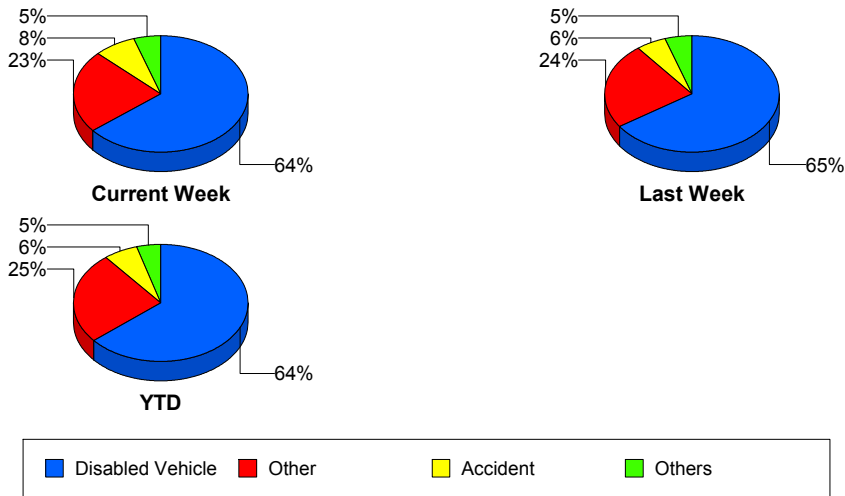
Police Activity

	<u>Current Week</u>	<u>Last Week</u>	<u>YTD</u>
Number of Events	2	8	102
Number of Incidents	1	4	55
TMC Detection (min.)	0.00	0.00	0.07
TMC Verification (min.)	1.02	0.14	1.09
TMC Response (min.)	2.03	16.61	15.45
RR Dispatch Time (min.)	0.37	7.46	5.75
RR Response Time (min.)	1.83	7.53	10.33
Event Clearance (min.)	11.10	25.78	53.07
Roadway Clearance (min.)	16.28	19.10	70.94
Incident Clearance (min.)	17.35	31.82	71.21
# of Events w/ RR/SIRV	2	5	82
RR/SIRV Assists	2	5	82
RR/SIRV Activities	1	4	88

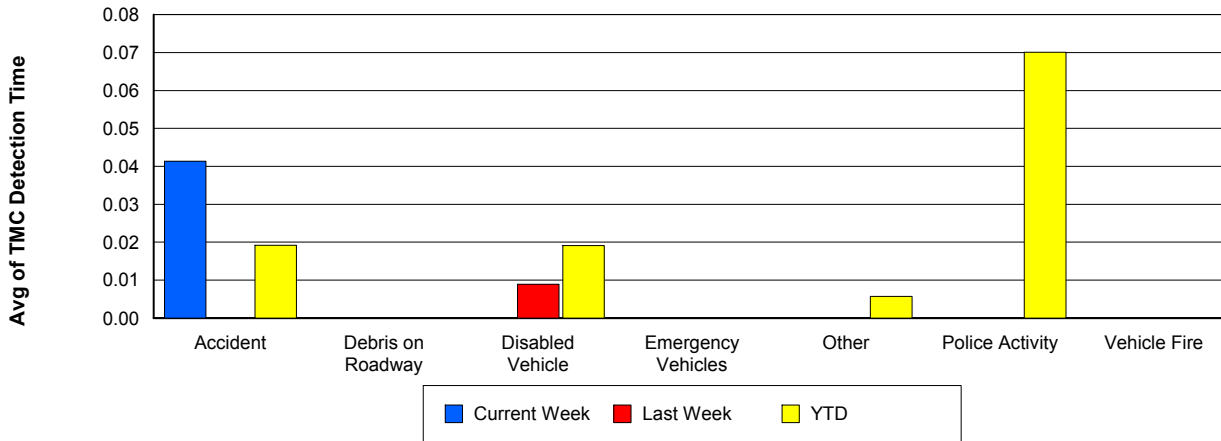
Vehicle Fire

	<u>Current Week</u>	<u>Last Week</u>	<u>YTD</u>
Number of Events	3	6	77
Number of Incidents	3	6	55
TMC Detection (min.)	0.00	0.00	0.00
TMC Verification (min.)	1.55	1.57	2.27
TMC Response (min.)	8.28	5.42	11.07
RR Dispatch Time (min.)	0.72	0.98	1.96
RR Response Time (min.)	7.57	4.44	9.13
Event Clearance (min.)	46.27	62.33	63.00
Roadway Clearance (min.)	41.51	56.05	49.83
Incident Clearance (min.)	46.27	62.33	72.97
# of Events w/ RR/SIRV	3	6	75
RR/SIRV Assists	3	6	75
RR/SIRV Activities	8	10	128

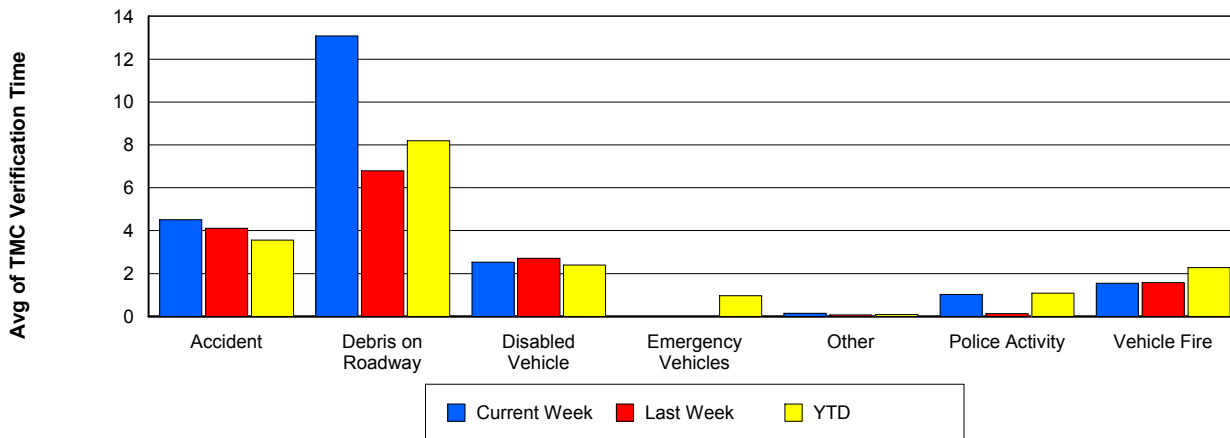
Number of Events / Event Type



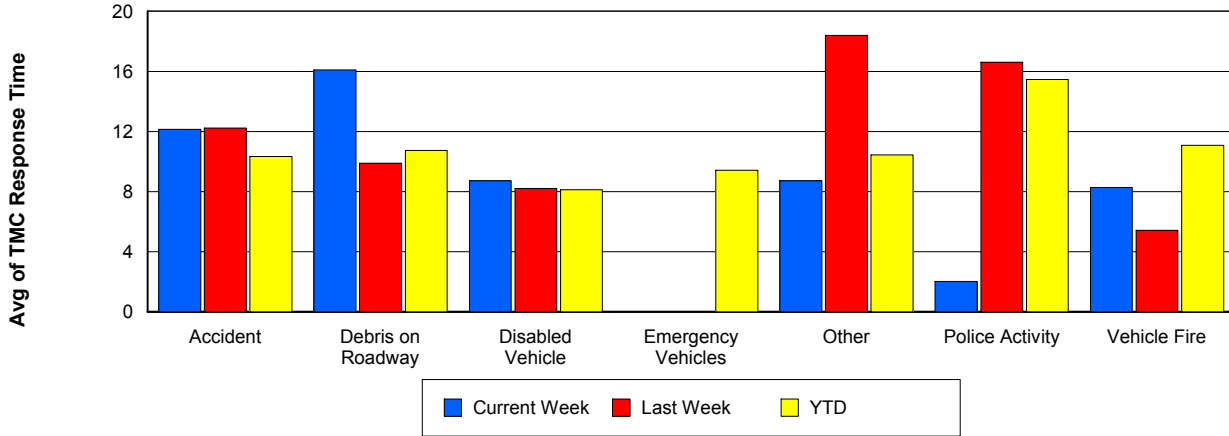
TMC Detection Time



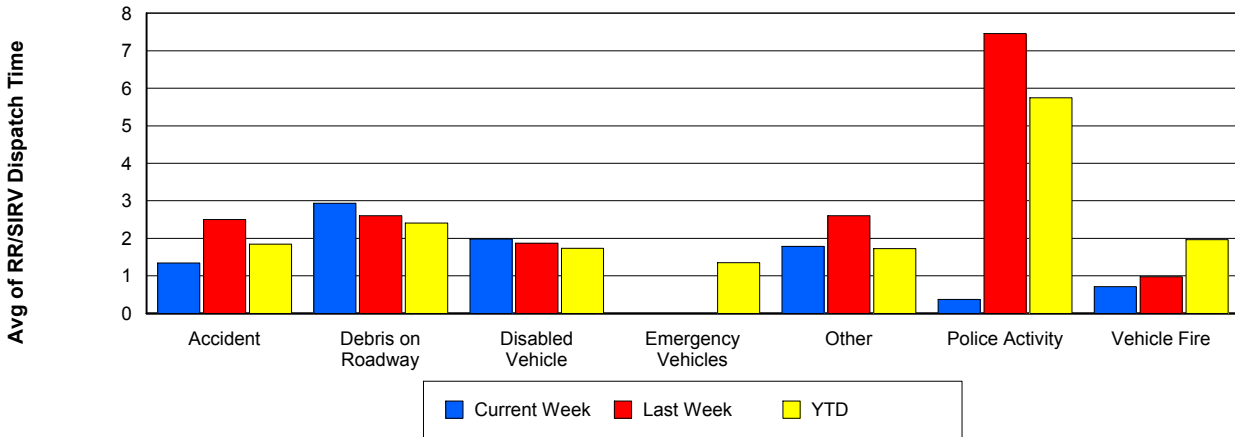
TMC Verification Time



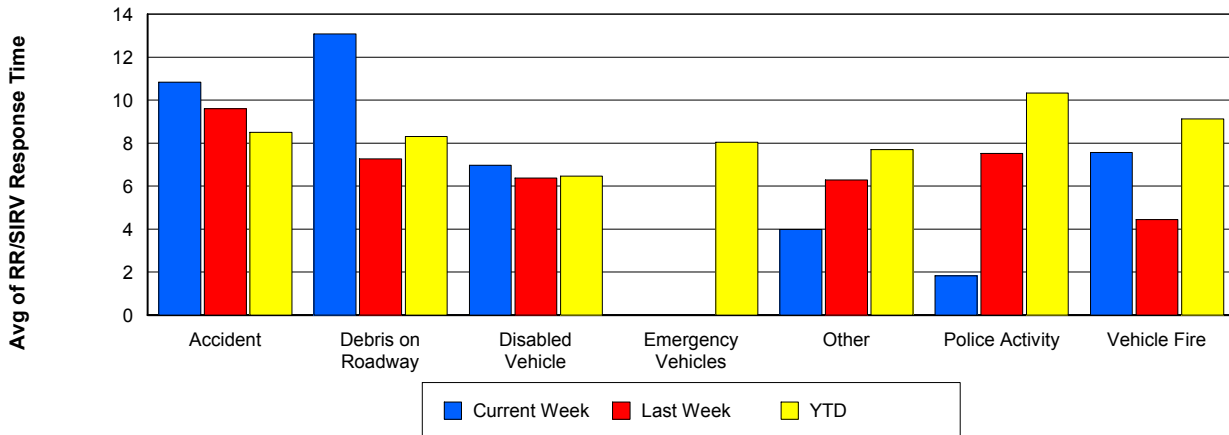
TMC Response Time



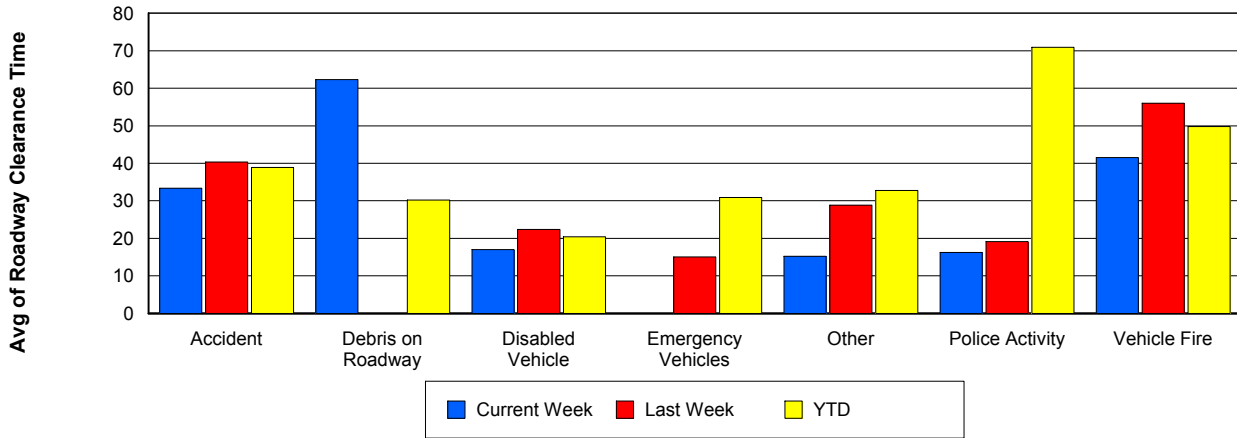
Road Ranger / SIRV Dispatch Time



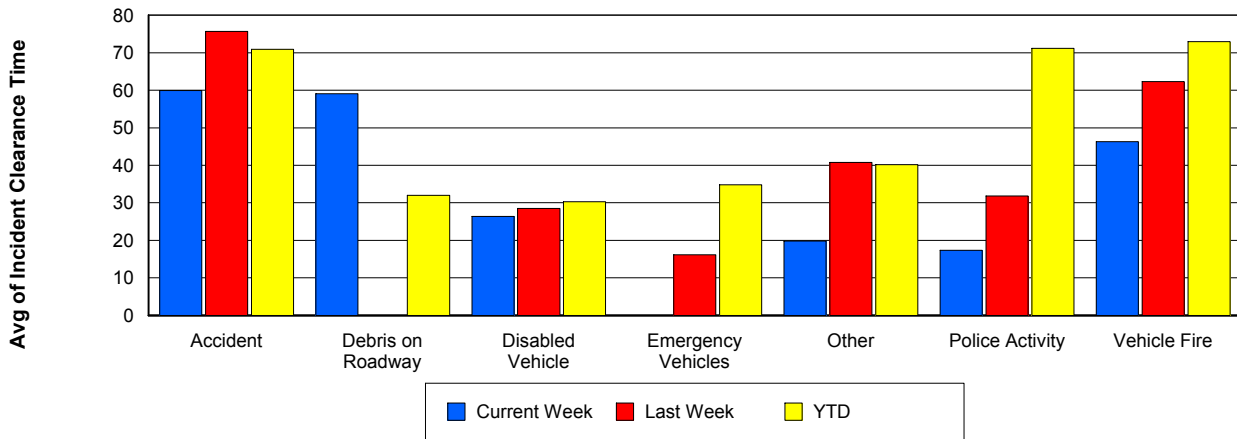
Road Ranger / SIRV Response Time



Roadway Clearance Time (2A)



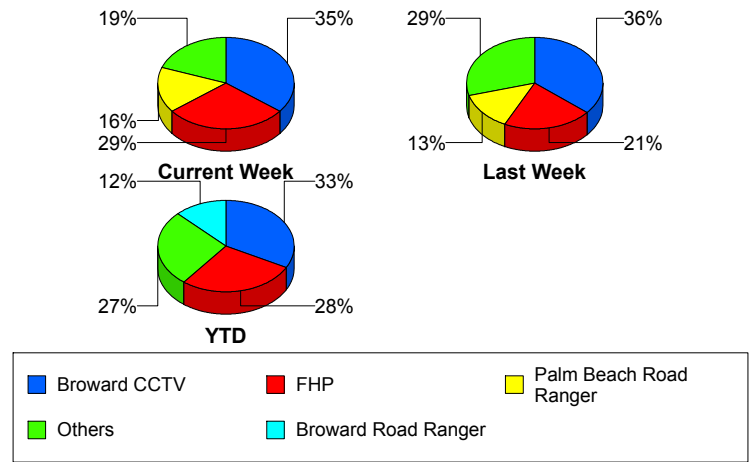
Incident Clearance Time (3B)



Incident Detection Methods

	Current Week	Last Week	YTD
Broward CCTV	33	27	544
Broward Road Ranger	9	3	206
Broward TMC	0	2	12
Broward VideoWall	1	4	26
BSO	1	0	22
County Police	0	0	2
District 4	2	3	45
District 6	1	0	2
FDOT Maintenance	1	0	4
FHP	27	16	463
Fire	0	0	5
Florida's Turnpike	1	0	12
ITMS	0	0	1
ITMS CCTV	1	9	87
Local Police	0	0	1
Media	0	0	2
Motorist	0	1	17
Other	0	0	1
Palm Beach Road Ran	15	10	184
Road Watcher	0	0	9
SIRV	1	0	2
VisioPaD Detection	0	0	19
Total	93	75	1,666

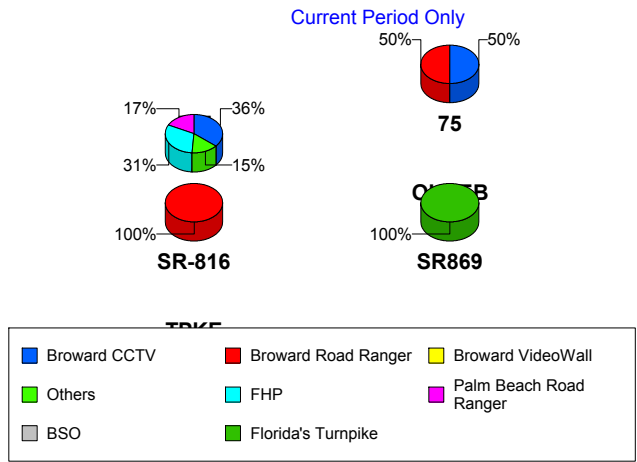
Total Incidents by Detection Method



Incident Detection Methods by Roadway

		Current Week	Last Week	YTD
595	Broward CCTV	0	0	12
	Broward Road Ranger	0	0	7
	BSO	0	0	3
	County Police	0	0	1
	FHP	0	0	6
	VisioPaD Detection	0	0	1
	Total	0	0	30
75	Broward CCTV	2	3	48
	Broward Road Ranger	2	0	17
	BSO	0	0	14
	District 4	0	1	4
	District 6	0	0	1
	FHP	0	0	23
	Fire	0	0	4
	Road Watcher	0	0	1
	VisioPaD Detection	0	0	8
	Total	4	4	120
95	Broward CCTV	31	24	484
	Broward Road Ranger	5	3	140
	Broward TMC	0	2	12
	Broward VideoWall	1	4	26
	BSO	1	0	3
	County Police	0	0	1
	District 4	2	1	39
	District 6	1	0	1
	FDOT Maintenance	1	0	4
	FHP	27	16	432
	Fire	0	0	1
	ITMS	0	0	1
	ITMS CCTV	1	9	87
Local Police	0	0	1	

Total Events by Roadway and Detection Method

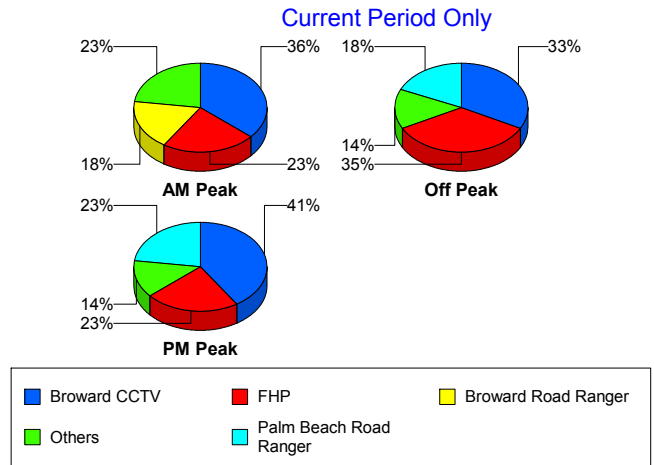


		Current Week	Last Week	YTD
95	Media	0	0	2
	Motorist	0	1	17
	Other	0	0	1
	Palm Beach Road Ran	15	10	184
	Road Watcher	0	0	6
	SIRV	1	0	2
	VisioPaD Detection	0	0	10
	Total	86	70	1,454
SR-816	Broward Road Ranger	2	0	41
	BSO	0	0	1
	District 4	0	1	2
	FHP	0	0	1
	Road Watcher	0	0	2
	Total	2	1	47
SR869	Broward Road Ranger	0	0	1
	BSO	0	0	1
	FHP	0	0	1
	Florida's Turnpike	1	0	2
	Total	1	0	5
TPKE	Florida's Turnpike	0	0	10
	Total	0	0	10
Total		93	75	1,666

Incident Detection Methods by Peak Period

		Current Week	Last Week	YTD
AM Peak	Broward CCTV	8	5	109
	Broward Road Ranger	4	1	53
	Broward TMC	0	2	3
	Broward VideoWall	1	1	15
	BSO	0	0	4
	County Police	0	0	1
	District 4	0	1	11
	District 6	1	0	1
	FDOT Maintenance	1	0	1
	FHP	5	1	81
	Fire	0	0	2
	Florida's Turnpike	0	0	2
	ITMS CCTV	1	2	23
	Local Police	0	0	1
	Media	0	0	1
	Motorist	0	0	2
	Palm Beach Road Ran	1	3	51
	Road Watcher	0	0	2
	SIRV	0	0	1
	VisioPaD Detection	0	0	1
Total	22	16	365	
Off Peak	Broward CCTV	16	17	295
	Broward Road Ranger	3	2	87
	Broward TMC	0	0	6
	Broward VideoWall	0	2	8
	BSO	1	0	11
	County Police	0	0	1
	District 4	2	1	22
	District 6	0	0	1
	FDOT Maintenance	0	0	3
	FHP	17	12	250

Total Events by Peak Period and Detection Method

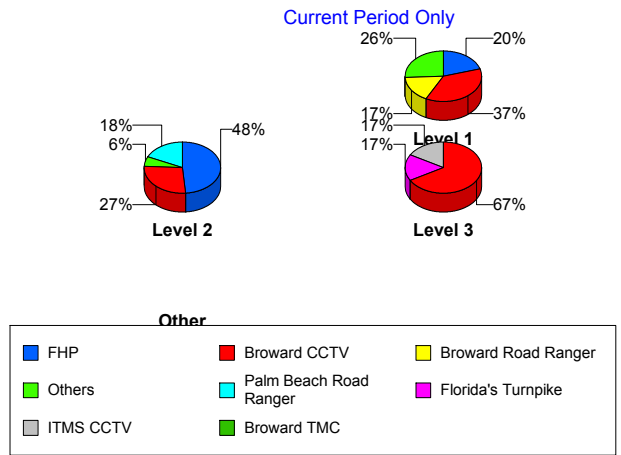


		Current Week	Last Week	YTD
Off Peak	Florida's Turnpike	1	0	9
	ITMS	0	0	1
	ITMS CCTV	0	5	49
	Motorist	0	1	9
	Other	0	0	1
	Palm Beach Road Ran	9	3	89
	Road Watcher	0	0	4
	VisioPaD Detection	0	0	12
	Total	49	43	858
PM Peak	Broward CCTV	9	5	140
	Broward Road Ranger	2	0	66
	Broward TMC	0	0	3
	Broward VideoWall	0	1	3
	BSO	0	0	7
	District 4	0	1	12
	FHP	5	3	133
	Fire	0	0	3
	Florida's Turnpike	0	0	1
	ITMS CCTV	0	2	15
	Media	0	0	1
	Motorist	0	0	6
	Palm Beach Road Ran	5	4	44
	Road Watcher	0	0	3
	SIRV	1	0	1
	VisioPaD Detection	0	0	6
	Total	22	16	444
Total		93	75	1,666

Incident Detection Methods by Severity

		Current Week	Last Week	YTD
	FHP	0	0	1
	Total	0	0	1
Level 1	Broward CCTV	20	16	327
	Broward Road Ranger	9	2	151
	Broward TMC	0	2	9
	Broward VideoWall	1	3	16
	BSO	0	0	6
	County Police	0	0	1
	District 4	1	2	29
	District 6	1	0	1
	FDOT Maintenance	1	0	1
	FHP	11	7	197
	Fire	0	0	2
	ITMS CCTV	0	5	44
	Media	0	0	1
	Motorist	0	1	10
	Other	0	0	1
	Palm Beach Road Ran	9	6	122
	Road Watcher	0	0	8
	SIRV	1	0	1
	VisioPaD Detection	0	0	9
	Total	54	44	936
Level 2	Broward CCTV	9	9	165
	Broward Road Ranger	0	1	45
	Broward TMC	0	0	3
	Broward VideoWall	0	1	10
	BSO	1	0	2
	District 4	1	1	12
	FDOT Maintenance	0	0	3
	FHP	16	9	205
	Fire	0	0	1

Total Events by Severity and Detection Method



		Current Week	Last Week	YTD
Level 2	Florida's Turnpike	0	0	1
	ITMS	0	0	1
	ITMS CCTV	0	4	36
	Local Police	0	0	1
	Motorist	0	0	7
	Palm Beach Road Ran	6	4	50
	Road Watcher	0	0	1
	SIRV	0	0	1
	VisioPaD Detection	0	0	8
	Total	33	29	552
Level 3	Broward CCTV	4	2	52
	Broward Road Ranger	0	0	10
	BSO	0	0	14
	County Police	0	0	1
	District 4	0	0	4
	District 6	0	0	1
	FHP	0	0	61
	Fire	0	0	2
	Florida's Turnpike	1	0	11
	ITMS CCTV	1	0	7
	Media	0	0	1
	Palm Beach Road Ran	0	0	12
	VisioPaD Detection	0	0	2
	Total	6	2	178
Total	93	75	1,666	

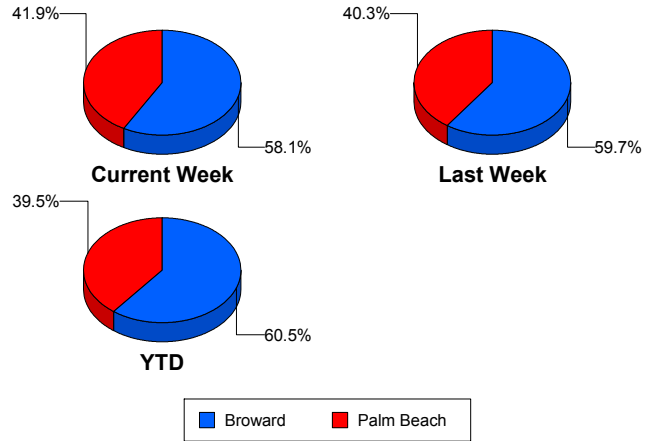
Road Ranger / SIRV Performance Measures

Road Ranger / SIRV Performance By County

Values presented are:
 - Total Events with a RR/SIRV Response
 - Total RR/SIRV Responses,
 - Total Activities Performed

	Current We	Last Week	YTD
Broward	887	953	20,301
	943	1,006	21,739
	982	1,050	22,589
Palm Beach	661	658	13,724
	680	679	14,175
	737	732	15,081

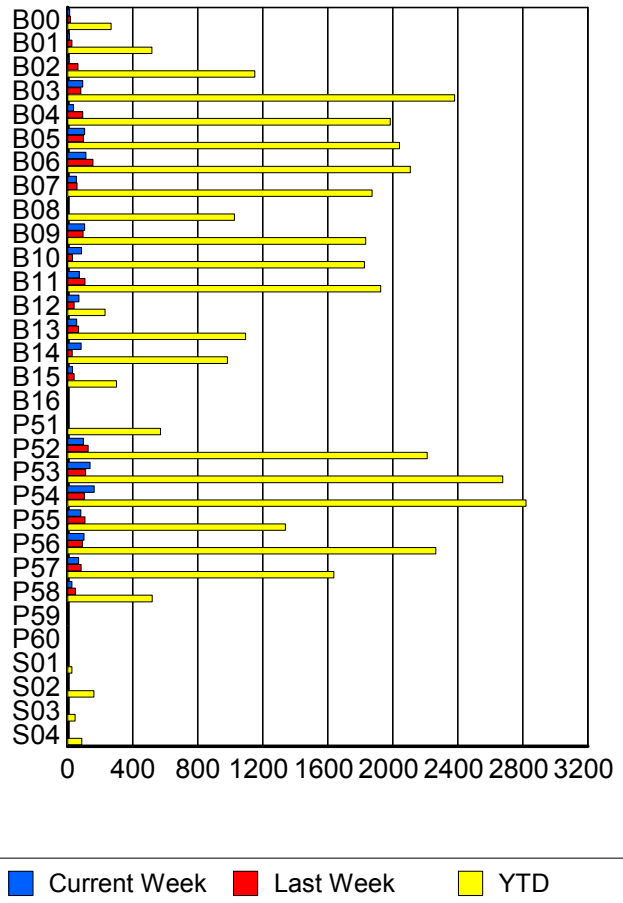
RR/SIRV Responses per County



Road Ranger / SIRV Performance By Truck

	Current We	Last Week	YTD
B00	12	16	263
	12	16	268
	13	17	284
B01	11	25	510
	11	26	519
	12	32	537
B02	9	62	1,135
	9	63	1,151
	9	65	1,176
B03	94	81	2,364
	94	82	2,382
	95	88	2,492
B04	34	94	1,958
	36	94	1,986
	36	96	2,068
B05	104	97	2,029
	104	97	2,042
	108	102	2,111
B06	111	153	2,080
	112	155	2,108
	118	162	2,197
B07	54	58	1,850
	54	58	1,874
	54	59	1,947
B08	2	1	1,011
	2	1	1,027
	2	1	1,065

RR/SIRV Responses per Truck



	Current We	Last Week	YTD
B09	105	95	1,814
	105	95	1,834
	108	96	1,915
B10	85	30	1,799
	86	31	1,826
	90	31	1,884
B11	72	106	1,909
	72	106	1,927
	74	112	1,998
B12	69	39	228
	70	40	231
	75	43	247
B13	55	68	1,083
	55	68	1,094
	57	70	1,120
B14	81	28	969
	84	28	983
	90	28	1,022
B15	30	41	298
	31	41	301
	31	42	316
B16	0	0	1
	0	0	1
	0	0	1
P51	0	0	561
	0	0	571
	0	0	603
P52	98	125	2,187
	98	127	2,212
	105	140	2,353
P53	138	107	2,648
	139	110	2,678
	153	113	2,854
P54	163	101	2,784
	164	103	2,821
	176	114	2,999
P55	81	107	1,331
	81	107	1,340
	89	113	1,405
P56	99	92	2,239
	100	92	2,266
	109	100	2,421
P57	67	83	1,620
	68	84	1,639
	74	94	1,751

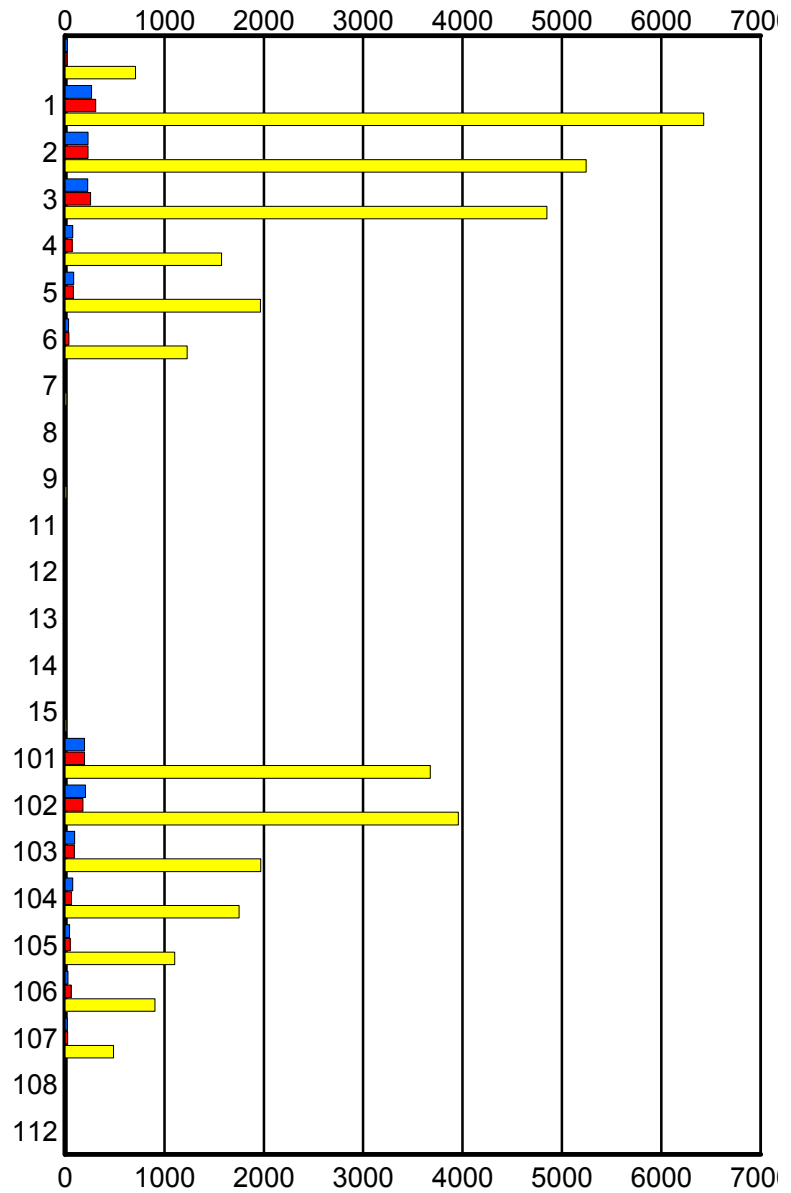
	Current We	Last Week	YTD
P58	27	48	515
	27	49	520
	28	51	551
P59	0	0	2
	0	0	2
	0	0	2
P60	0	0	1
	0	0	1
	0	0	1
S01	1	0	26
	1	0	26
	2	0	29
S02	4	4	156
	4	4	161
	6	4	175
S03	2	3	43
	2	3	46
	3	4	51
S04	2	5	87
	2	5	88
	2	5	95

Road Ranger / SIRV Performance By Beat

	Current We	Last Week	YTD
	22	19	690
	22	20	710
	26	21	754
1	258	297	6,138
	268	307	6,426
	281	320	6,684
2	227	231	5,094
	231	233	5,244
	237	241	5,462
3	226	256	4,742
	228	258	4,849
	237	272	5,047
4	76	70	1,545
	78	71	1,574
	79	73	1,629
5	84	84	1,945
	87	85	1,965
	90	89	2,020
6	36	38	1,204
	37	39	1,229
	40	41	1,266
7	0	0	16
	0	0	17
	0	0	18
8	0	0	9
	0	0	9
	0	0	9
9	0	0	17
	0	0	17
	0	0	17
11	0	0	2
	0	0	2
	0	0	2
12	0	0	2
	0	0	2
	0	0	2
13	0	0	8
	0	0	8
	0	0	8
14	0	0	4
	0	0	4
	0	0	4
15	0	0	14
	0	0	14
	0	0	14

Values presented are:
 - Total Events with a RR/SIRV Response
 - Total RR/SIRV Responses,
 - Total Activities Performed

RR/SIRV Responses per Beat



■ Current Week
 ■ Last Week
 ■ YTD

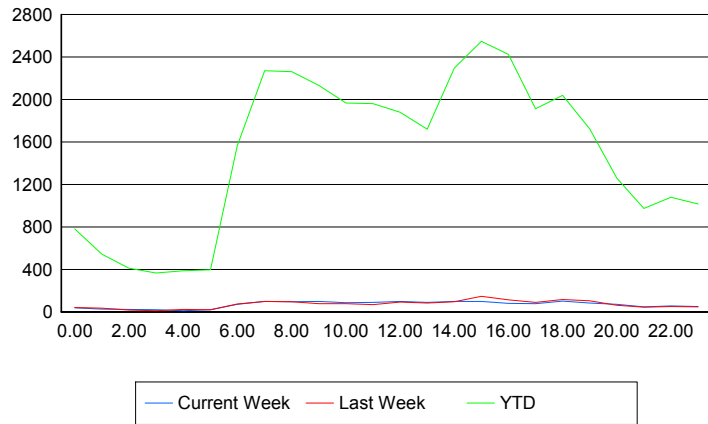
	Current We	Last Week	YTD
101	193 195 214	194 195 209	3,614 3,674 3,899
102	204 205 221	177 179 196	3,903 3,958 4,200
103	95 97 103	92 95 101	1,942 1,969 2,082
104	78 78 83	65 65 69	1,733 1,751 1,871
105	46 46 50	49 51 56	1,096 1,104 1,191
106	28 28 33	61 62 66	897 905 961
107	23 23 25	25 25 28	486 488 523
108	0 0 0	0 0 0	3 4 4
112	0 0 0	0 0 0	2 2 3

Road Ranger / SIRV Performance By Time of Day

Values presented are:
 - Total Events with a RR/SIRV Response
 - Total RR/SIRV Responses,
 - Total Activities Performed

	Current We	Last Week	YTD
12AM-1AM	36	39	747
	38	42	781
	40	43	829
1AM-2AM	24	31	517
	26	36	543
	28	36	563
2AM-3AM	23	16	380
	23	18	411
	23	18	436
3AM-4AM	19	12	346
	21	12	366
	22	12	391
4AM-5AM	10	21	346
	11	23	386
	11	24	406
5AM-6AM	18	19	337
	19	19	396
	20	19	408
6AM-7AM	70	71	1,469
	72	74	1,564
	74	75	1,622
7AM-8AM	95	99	2,160
	99	99	2,270
	106	107	2,377
8AM-9AM	92	86	2,118
	96	96	2,263
	105	105	2,367
9AM-10AM	93	76	2,044
	98	78	2,132
	102	79	2,236
10AM-11AM	82	75	1,874
	85	78	1,966
	91	79	2,058
11AM-12PM	85	64	1,859
	90	67	1,961
	96	70	2,055
12PM-1PM	90	91	1,770
	97	93	1,878
	101	96	1,955

Number of Responses / Hour of the Day



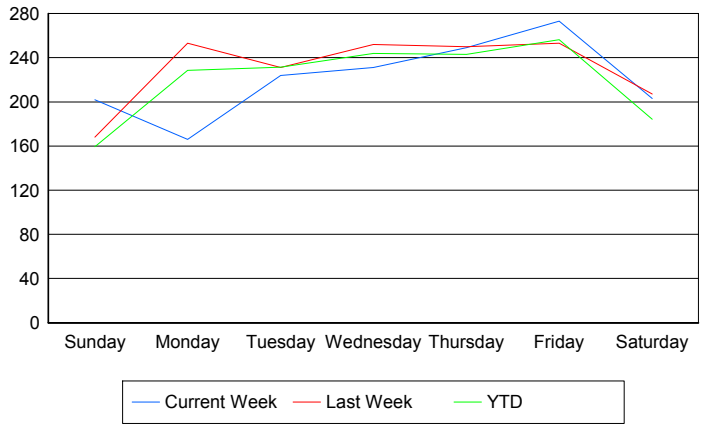
	Current We	Last Week	YTD
1PM-2PM	84	82	1,614
	90	83	1,720
	92	85	1,787
2PM-3PM	93	89	2,154
	97	95	2,296
	103	113	2,436
3PM-4PM	93	143	2,437
	97	146	2,546
	104	156	2,668
4PM-5PM	77	103	2,275
	80	114	2,425
	86	122	2,547
5PM-6PM	70	86	1,805
	78	89	1,913
	85	94	2,007
6PM-7PM	98	113	1,961
	101	116	2,039
	108	125	2,134
7PM-8PM	81	98	1,661
	82	103	1,722
	88	105	1,794
8PM-9PM	68	57	1,199
	70	62	1,259
	74	64	1,306
9PM-10PM	46	44	932
	48	45	975
	52	49	1,039
10PM-11PM	54	50	1,037
	55	51	1,080
	58	57	1,153
11PM-12AM	47	46	983
	50	46	1,015
	50	49	1,096

Road Ranger / SIRV Performance By Day of Week

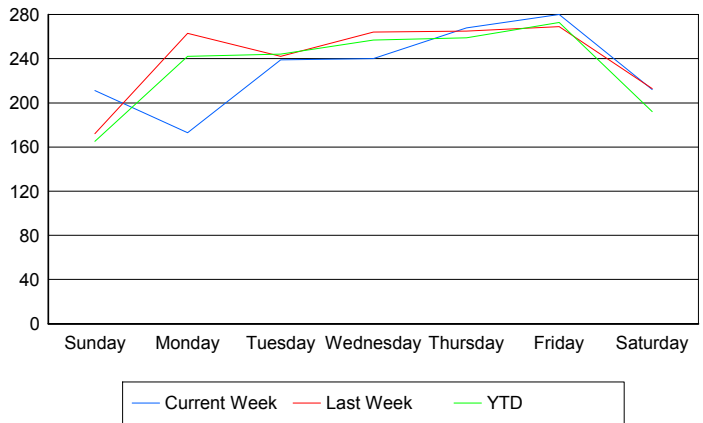
Values presented are: - Total Events with a RR/SIRV Response - Total RR/SIRV Responses, - Total Activities Performed

	Current We	Last Week	YTD
Sunday	202 211 223	165 169 176	3,442 3,567 3,736
Monday	166 173 181	253 263 282	4,943 5,241 5,474
Tuesday	224 239 256	231 242 255	5,071 5,347 5,590
Wednesday	231 240 261	252 264 272	5,295 5,580 5,877
Thursday	249 268 284	250 265 280	5,306 5,650 5,938
Friday	273 280 285	253 269 293	5,807 6,176 6,445
Saturday	203 212 229	207 213 224	4,189 4,364 4,610

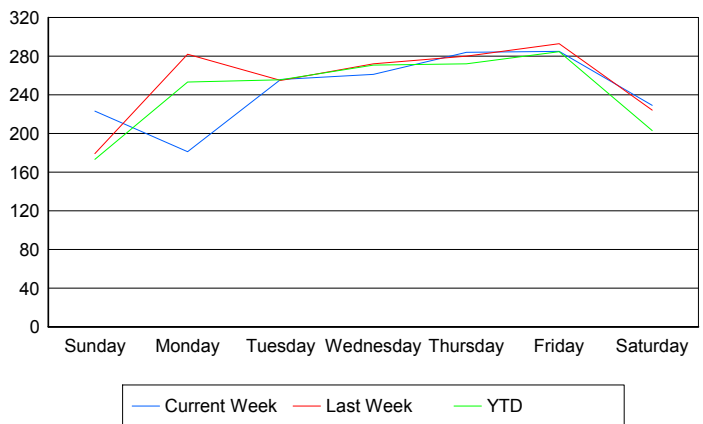
Avg # of events with a RR/SIRV Response per Day of the Week



Avg # of RR/SIRV Responses per Day of the Week



Avg # of RR/SIRV Activities Performed per Day of the Week



Road Ranger / SIRV Responses per Time of Day and Day of Week

