

Weekly Performance Measures Report Broward, Palm Beach Counties



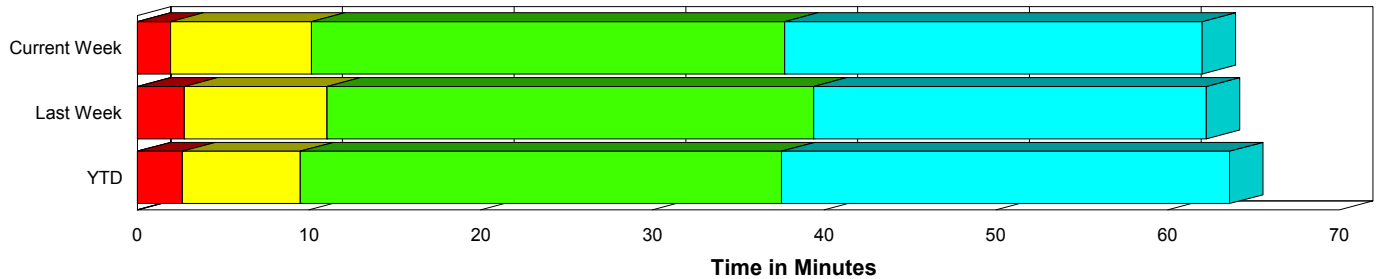
Created on:
June 01, 2010
8:49 am

Period From May 23, 2010 to May 29, 2010

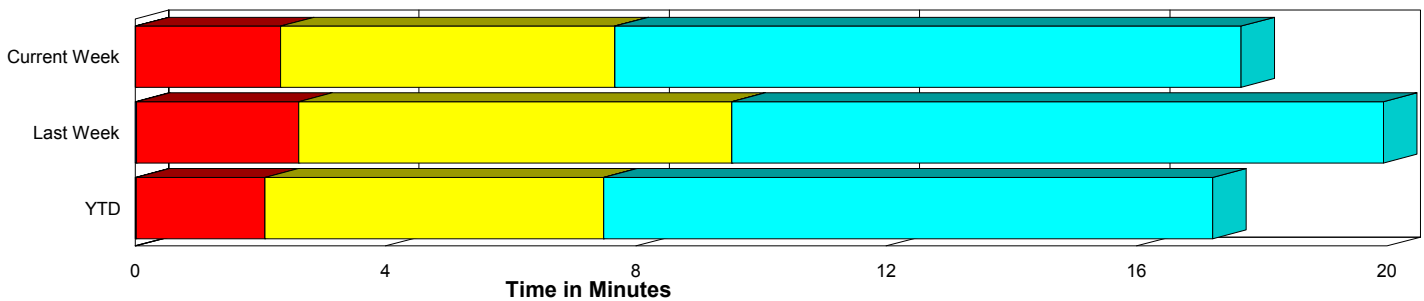
Performance Measures Summary

	Traffic Events (No Lanes Blocked)			Incidents (Lanes Blocked)		
	<u>This Week</u>	<u>Last Week</u>	<u>YTD</u>	<u>This Week</u>	<u>Last Week</u>	<u>YTD</u>
Number of Events	1,878	1,764	37,068	75	89	1,595
TMC Detection (min.)	0.01	0.02	0.02	0.00	0.01	0.01
TMC Verification (min.)	2.32	2.59	2.06	1.93	2.72	2.62
TMC Response (min.)	8.75	10.57	8.44	10.34	11.01	9.61
RR Dispatch Time (min.)	2.05	2.06	1.76	2.46	2.68	2.03
RR Response Time (min.)	6.57	8.33	6.71	7.89	8.41	7.62
Roadway Clearance (min.)				35.43	38.59	36.94
Event Clearance (min.)	18.75	21.00	18.19	58.30	61.13	62.67
# of Events w/ RR/SIRV	1,628	1,567	31,567	71	87	1,547
RR/SIRV Responses	1,628	1,567	31,567	71	87	1,547
RR/SIRV Activities	1,369	1,327	26,801	109	173	2,670

Incident Clearance Time-Line



Traffic Event (Non-Lane Blockage) Time-Line



■ Avg. TMC Detection Time	■ Avg. Time from TMC Response to Roadway Clearance*
■ Avg. Time from TMC Detection to TMC Verification	■ Avg. Time from Roadway Clearance to Incident/Event Clearance**
■ Avg. Time from TMC Verification to TMC Response	

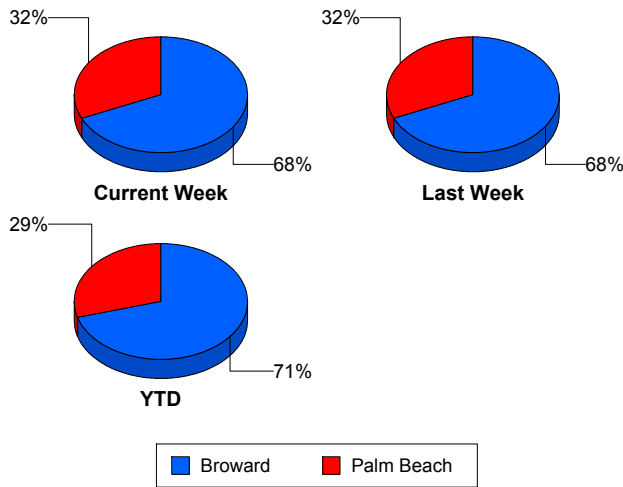
* Roadway clearance equals all travel lanes open

** Incident clearance equals time when last responder has left the scene

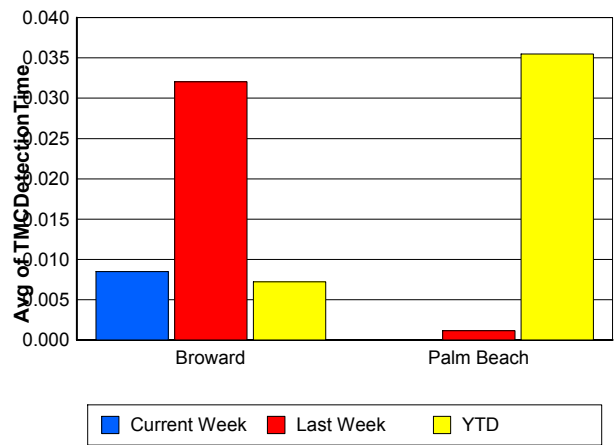
Performance Measures by County

	Broward			Palm Beach		
	<u>Current Week</u>	<u>Last Week</u>	<u>YTD</u>	<u>Current Week</u>	<u>Last Week</u>	<u>YTD</u>
Number of Events	1,336	1,265	27,285	617	588	11,378
Number of Incidents	45	54	1,055	30	35	540
TMC Detection (min.)	0.01	0.03	0.01	0.00	0.00	0.04
TMC Verification (min.)	0.91	1.41	1.18	5.30	5.16	4.26
TMC Response (min.)	8.47	11.25	9.18	9.37	9.61	7.42
RR Dispatch Time (min.)	1.28	1.71	1.40	3.66	2.85	2.55
RR Response Time (min.)	7.34	9.39	7.88	5.60	6.72	4.96
Event Clearance (min.)	19.55	22.60	19.48	21.84	23.64	21.32
Roadway Clearance (min.)	36.09	33.22	34.26	34.44	46.87	42.16
Incident Clearance (min.)	63.12	57.86	61.72	51.06	66.19	64.09
# of Events w/ RR/SIRV	1,138	1,105	22,494	561	549	10,620
RR/SIRV Responses	1,138	1,105	22,494	561	549	10,620
RR/SIRV Activities	877	918	18,285	601	582	11,186

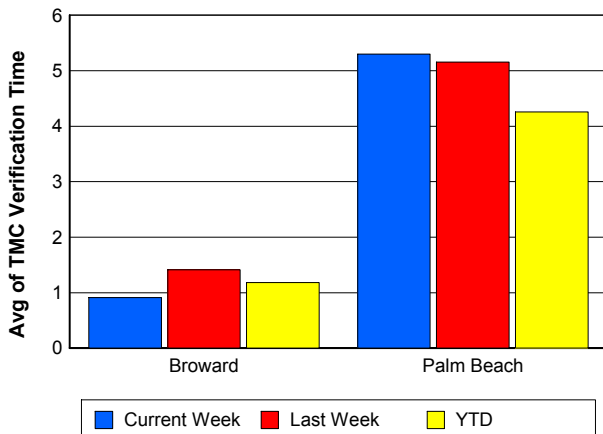
Number of Events / County



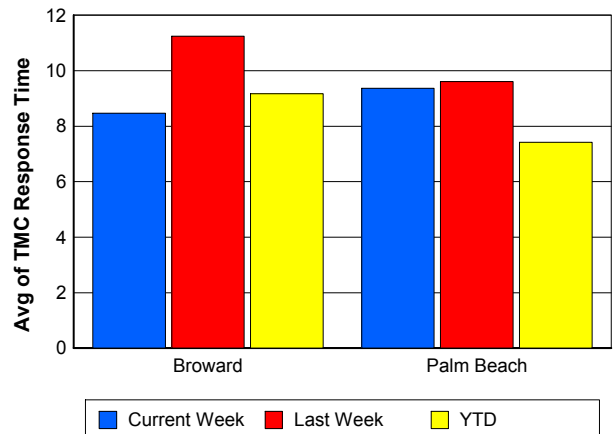
TMC Detection Time



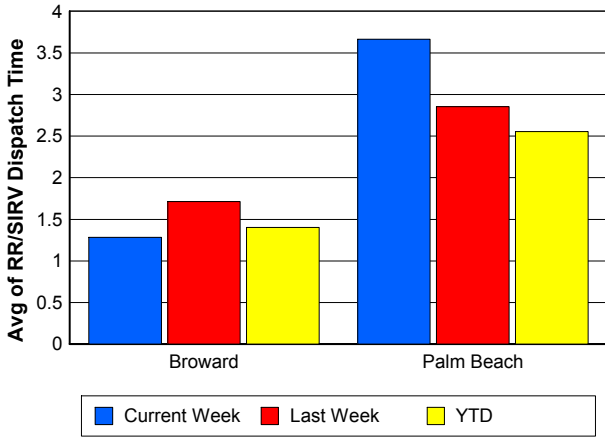
TMC Verification Time



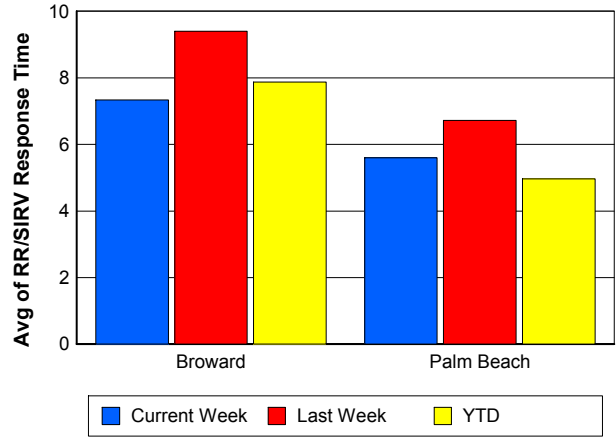
TMC Response Time



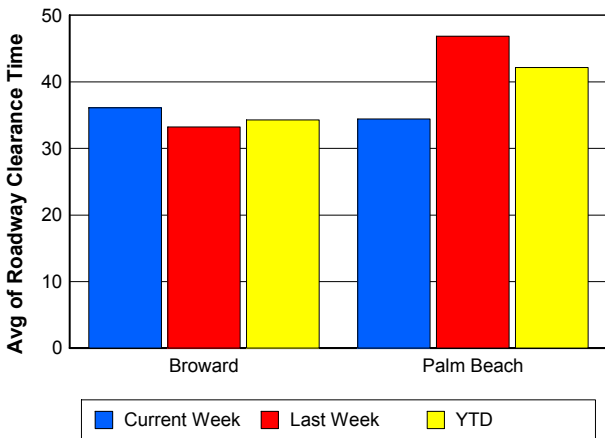
Road Ranger / SIRV Dispatch Time



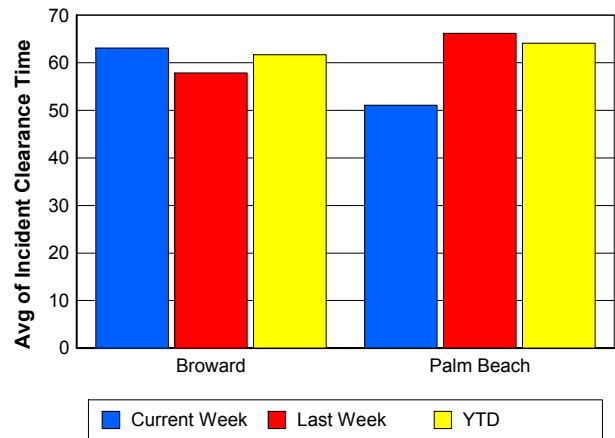
Road Ranger / SIRV Response Time



Roadway Clearance Time (2A)



Incident Clearance Time (3B)

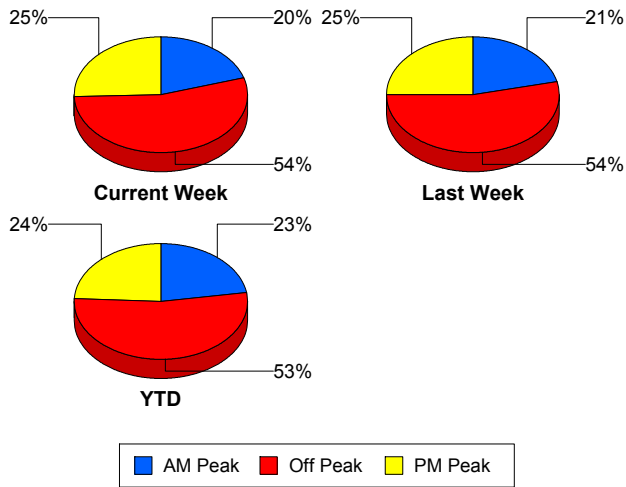


Performance Measures by Peak Period

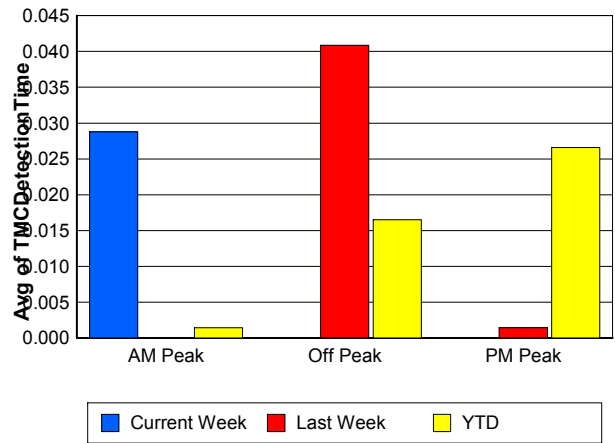
Note: AM peak period is defined as 6am to 10am and PM peak period is defined as 3pm to 7pm.

	AM Peak			Off Peak			PM Peak		
	<u>Current Week</u>	<u>Last Week</u>	<u>YTD</u>	<u>Current Week</u>	<u>Last Week</u>	<u>YTD</u>	<u>Current Week</u>	<u>Last Week</u>	<u>YTD</u>
Number of Events	394	398	8,729	1,061	992	20,586	498	463	9,348
Number of Incidents	16	16	345	43	47	824	16	26	426
TMC Detection (min.)	0.03	0.00	0.00	0.00	0.04	0.02	0.00	0.00	0.03
TMC Verification (min.)	1.54	1.26	1.28	2.38	2.92	2.20	2.74	3.05	2.58
TMC Response (min.)	8.19	11.88	7.93	9.46	10.90	8.91	8.15	8.90	8.21
RR Dispatch Time (min.)	1.44	2.87	1.30	2.36	1.90	1.90	1.98	1.83	1.93
RR Response Time (min.)	6.72	8.58	6.65	6.92	8.90	7.02	6.06	7.00	6.34
Event Clearance (min.)	18.79	22.88	18.71	20.59	23.76	20.44	20.78	21.20	20.34
Roadway Clearance (min.)	26.81	28.01	33.30	40.51	50.66	42.42	30.37	23.27	29.29
Incident Clearance (min.)	42.67	45.59	57.55	56.89	73.02	66.95	77.71	49.21	57.97
# of Events w/ RR/SIRV	357	360	7,632	900	884	17,328	442	410	8,154
RR/SIRV Responses	357	360	7,632	900	884	17,328	442	410	8,154
RR/SIRV Activities	307	333	6,651	752	776	15,278	419	391	7,542

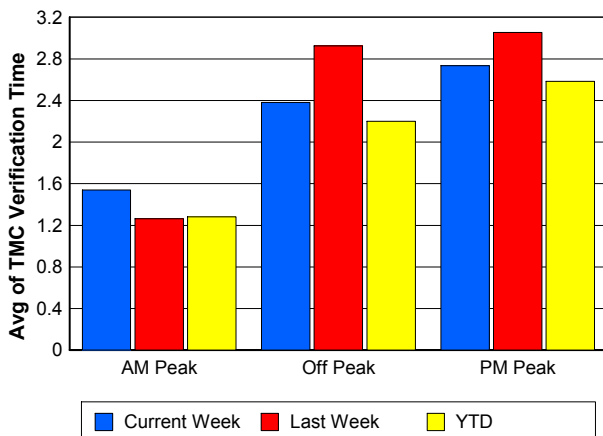
Number of Events / Peak Period



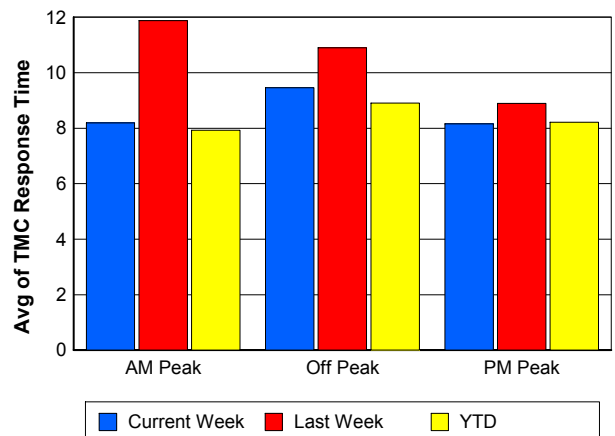
TMC Detection Time



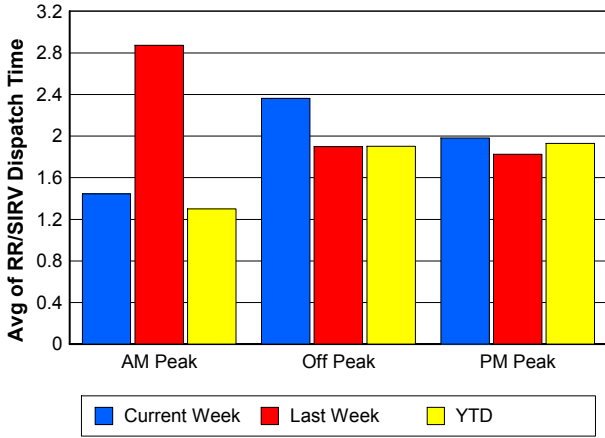
TMC Verification Time



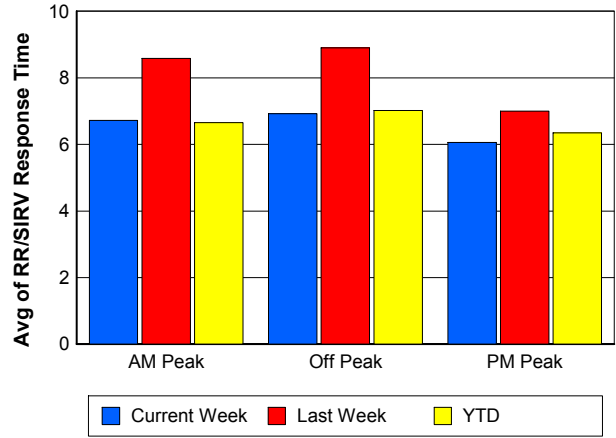
TMC Response Time



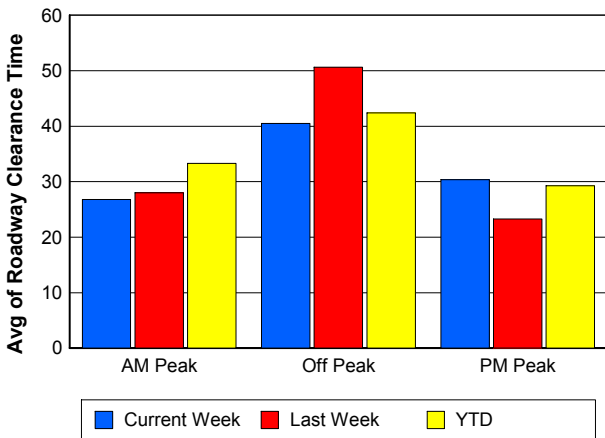
Road Ranger / SIRV Dispatch Time



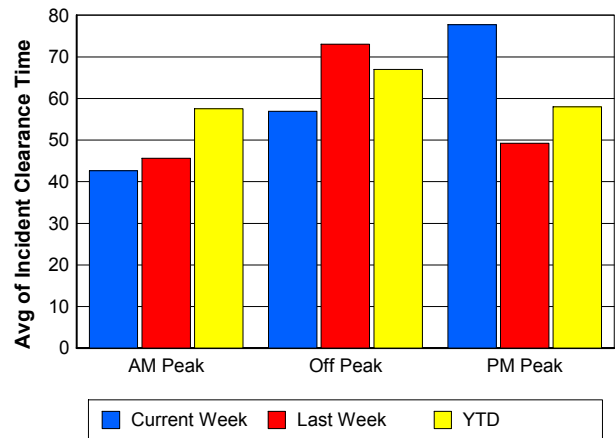
Road Ranger / SIRV Response Time



Roadway Clearance Time (2A)



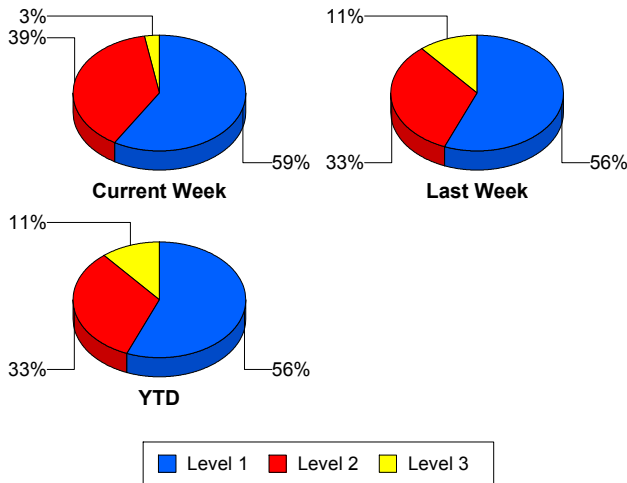
Incident Clearance Time (3B)



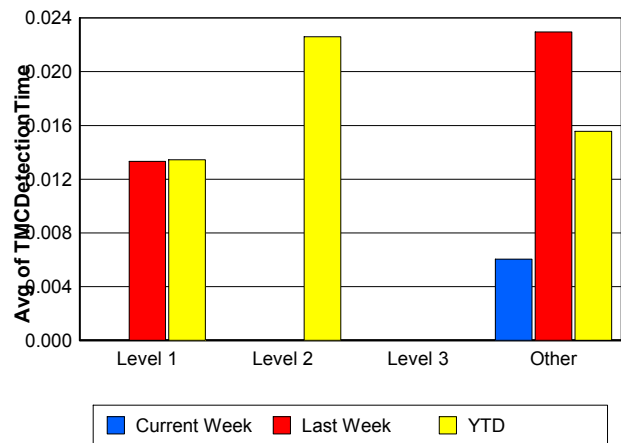
Performance Measures by Severity

	Level 1			Level 2			Level 3			Other		
	<u>This Week</u>	<u>Last Week</u>	<u>YTD</u>	<u>This Week</u>	<u>Last Week</u>	<u>YTD</u>	<u>This Week</u>	<u>Last Week</u>	<u>YTD</u>	<u>This Week</u>	<u>Last Week</u>	<u>YTD</u>
Number of Events	44	50	892	29	29	526	2	10	175	1,878	1,764	37,070
Number of Incidents	44	50	892	29	29	526	2	10	175	0	0	2
TMC Detection (min.)	0.00	0.01	0.01	0.00	0.00	0.02	0.00	0.00	0.00	0.01	0.02	0.02
TMC Verification (min.)	1.49	1.62	1.40	2.73	4.58	4.45	0.00	2.83	3.24	2.32	2.59	2.06
TMC Response (min.)	7.70	8.62	7.41	13.59	11.28	12.21	11.87	22.90	13.02	8.75	10.57	8.44
RR Dispatch Time (min.)	2.00	1.98	1.40	3.21	1.70	2.64	0.69	9.66	3.57	2.05	2.06	1.76
RR Resp. Time (min.)	5.76	6.80	6.05	10.38	9.58	9.64	11.17	13.24	9.45	6.57	8.33	6.71
Event Clearance (min.)	45.85	48.56	45.53	73.45	62.96	74.34	112.47	118.70	114.56	18.75	21.00	18.19
Roadway Clear. (min.)	14.76	17.69	15.11	58.01	51.87	52.98	162.78	104.52	100.64			-21.46
Incident Clearance (min.)	45.85	48.56	45.53	73.45	62.96	74.34	112.47	118.70	114.24			0.00
# of Events w/ RR/SIRV	40	49	871	29	29	519	2	9	155	1,628	1,567	31,569
RR/SIRV Responses	40	49	871	29	29	519	2	9	155	1,628	1,567	31,569
RR/SIRV Activities	55	74	1,294	50	70	988	4	29	383	1,369	1,327	26,806

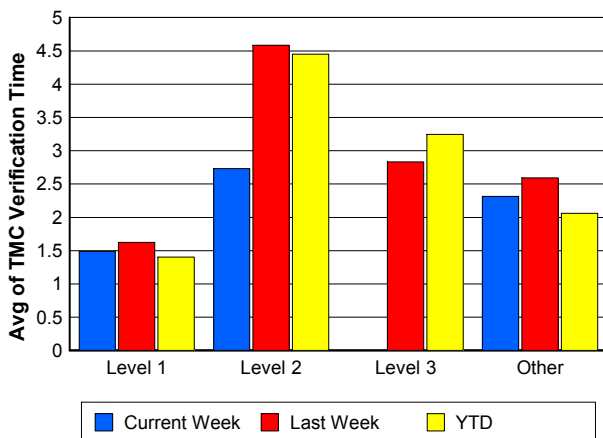
Number of Events / Severity



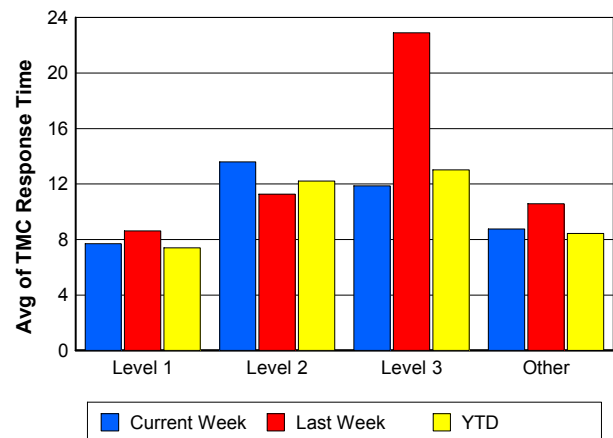
TMC Detection Time



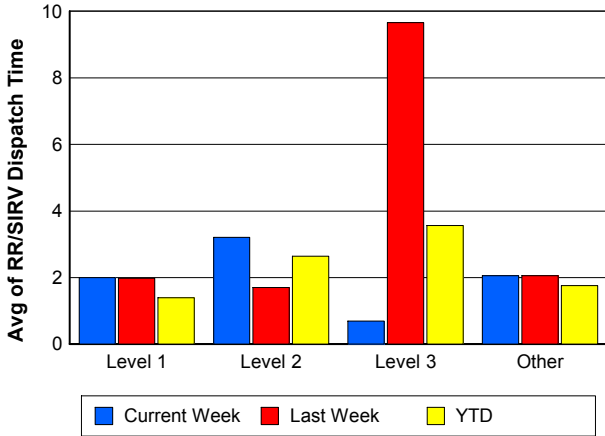
TMC Verification Time



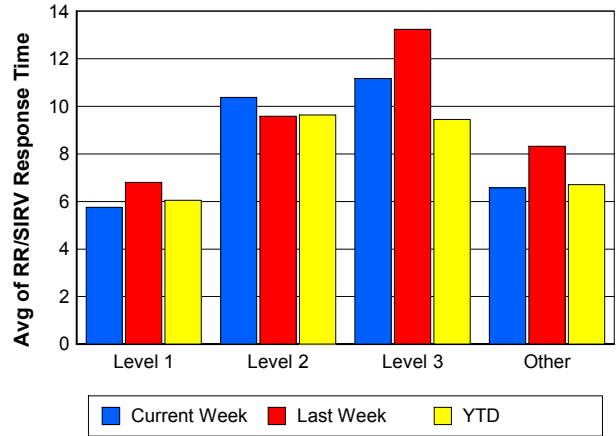
TMC Response Time



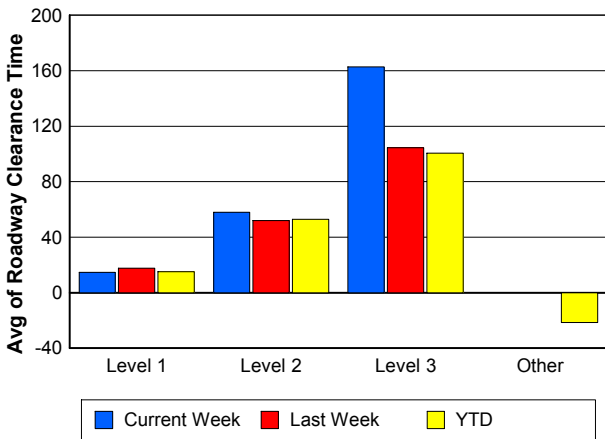
Road Ranger / SIRV Dispatch Time



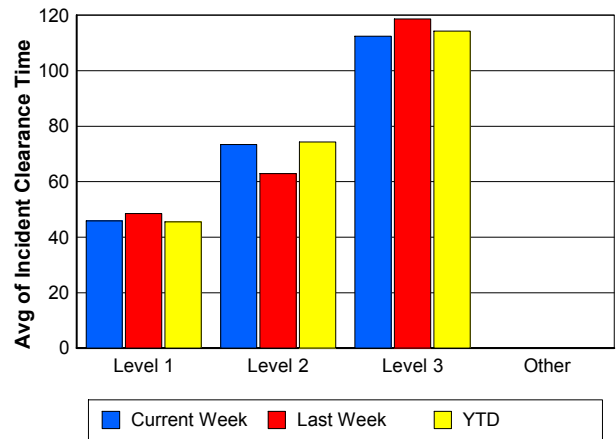
Road Ranger / SIRV Response Time



Roadway Clearance Time (2A)



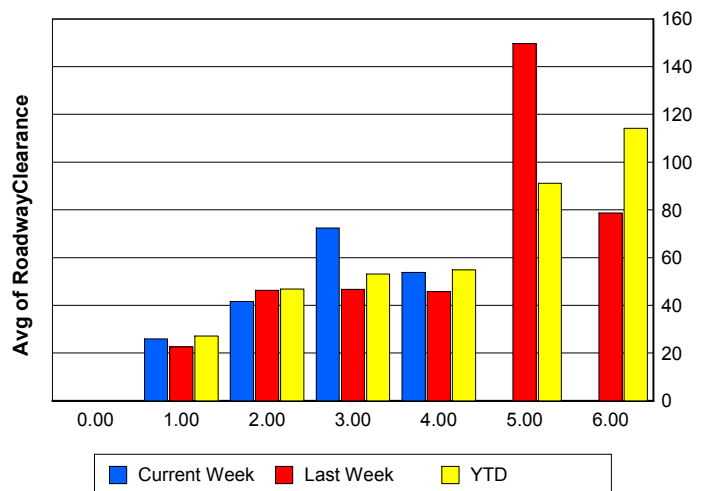
Incident Clearance Time (3B)



Roadway Clearance by Maximum Number of Lanes Blocked

	Current Week	Last Week	YTD
0			
1	25.88	22.54	27.13
2	41.57	46.26	46.80
3	72.39	46.63	53.12
4	53.83	45.69	54.89
5	0.00	149.72	91.20
6	0.00	78.76	114.15

Roadway Clearance Time (2A)



Performance Measures by Roadway

595

	<u>Current Week</u>	<u>Last Week</u>	<u>YTD</u>
Number of Events	49	30	924
Number of Incidents	0	1	46
TMC Detection (min.)	0.00	0.00	0.00
TMC Verification (min.)	1.72	1.58	1.77
TMC Response (min.)	19.38	23.14	15.13
RR Dispatch Time (min.)	4.37	1.80	2.10
RR Resp. Time (min.)	14.87	21.67	13.09
Event Clearance (min.)	21.17	23.31	19.90
Roadway Clear. (min.)		24.50	51.18
Incident Clearance (min.)		87.33	68.57
# of Events w/ RR/SIRV	40	27	671
RR/SIRV Responses	40	27	671
RR/SIRV Activities	21	13	447

75

	<u>Current Week</u>	<u>Last Week</u>	<u>YTD</u>
Number of Events	248	250	5,900
Number of Incidents	4	6	116
TMC Detection (min.)	0.00	0.00	0.02
TMC Verification (min.)	2.13	3.13	2.12
TMC Response (min.)	10.74	12.95	10.24
RR Dispatch Time (min.)	1.70	1.83	1.52
RR Resp. Time (min.)	9.07	10.95	8.85
Event Clearance (min.)	21.79	20.99	20.31
Roadway Clear. (min.)	67.99	32.78	53.79
Incident Clearance (min.)	57.14	54.67	86.56
# of Events w/ RR/SIRV	203	215	4,715
RR/SIRV Responses	203	215	4,715
RR/SIRV Activities	165	184	3,922

95

	<u>Current Week</u>	<u>Last Week</u>	<u>YTD</u>
Number of Events	1,643	1,556	31,508
Number of Incidents	70	80	1,373
TMC Detection (min.)	0.01	0.03	0.02
TMC Verification (min.)	2.36	2.56	2.10
TMC Response (min.)	8.40	10.15	8.13
RR Dispatch Time (min.)	2.07	2.15	1.82
RR Resp. Time (min.)	6.17	7.82	6.32
Event Clearance (min.)	20.06	23.19	19.98
Roadway Clear. (min.)	33.95	39.29	35.50
Incident Clearance (min.)	58.98	61.86	61.65
# of Events w/ RR/SIRV	1,444	1,398	27,456
RR/SIRV Responses	1,444	1,398	27,456
RR/SIRV Activities	1,279	1,291	24,839

OKEEB

	<u>YTD</u>
Number of Events	1
Number of Incidents	0
TMC Detection (min.)	0.00
TMC Verification (min.)	0.00
TMC Response (min.)	0.00
RR Dispatch Time (min.)	0.00
RR Resp. Time (min.)	0.00
Event Clearance (min.)	18.45
Roadway Clear. (min.)	
Incident Clearance (min.)	
# of Events w/ RR/SIRV	1
RR/SIRV Responses	1
RR/SIRV Activities	1

SR-816

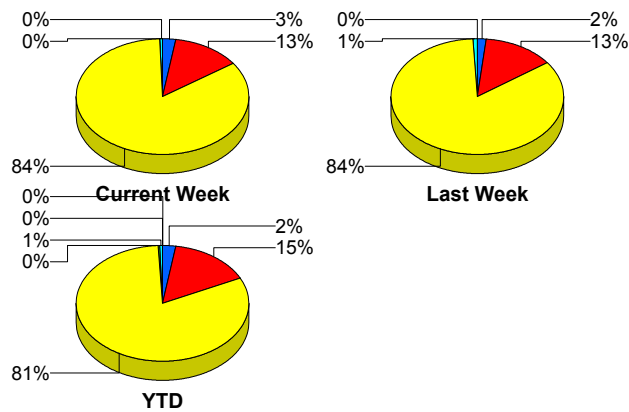
	<u>Current Week</u>	<u>YTD</u>
Number of Events	4	67
Number of Incidents	1	45
TMC Detection (min.)	0.00	0.00
TMC Verification (min.)	2.00	1.15
TMC Response (min.)	3.99	1.70
RR Dispatch Time (min.)	0.56	0.15
RR Resp. Time (min.)	3.70	1.57
Event Clearance (min.)	7.55	16.65
Roadway Clear. (min.)	8.48	16.91
Incident Clearance (min.)	15.42	20.11
# of Events w/ RR/SIRV	3	61
RR/SIRV Responses	3	61
RR/SIRV Activities	2	66

SR869

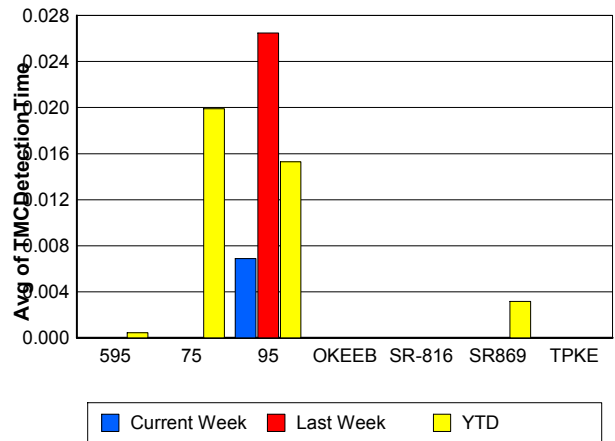
	<u>Current Week</u>	<u>Last Week</u>	<u>YTD</u>
Number of Events	9	16	253
Number of Incidents	0	1	5
TMC Detection (min.)	0.00	0.00	0.00
TMC Verification (min.)	0.08	0.10	1.15
TMC Response (min.)	9.07	8.05	8.57
RR Dispatch Time (min.)	0.38	0.82	1.03
RR Resp. Time (min.)	8.73	7.38	7.75
Event Clearance (min.)	17.86	26.05	18.44
Roadway Clear. (min.)		34.38	44.50
Incident Clearance (min.)		38.38	70.11
# of Events w/ RR/SIRV	9	14	210
RR/SIRV Responses	9	14	210
RR/SIRV Activities	11	12	196

	<u>Last Week</u>	<u>YTD</u>
Number of Events	1	10
Number of Incidents	1	10
TMC Detection (min.)	0.00	0.00
TMC Verification (min.)	0.00	0.00
TMC Response (min.)		
RR Dispatch Time (min.)		
RR Resp. Time (min.)		
Event Clearance (min.)	38.33	62.29
Roadway Clear. (min.)	35.63	59.66
Incident Clearance (min.)	38.33	62.29
# of Events w/ RR/SIRV	0	0
RR/SIRV Responses	0	0
RR/SIRV Activities	0	0

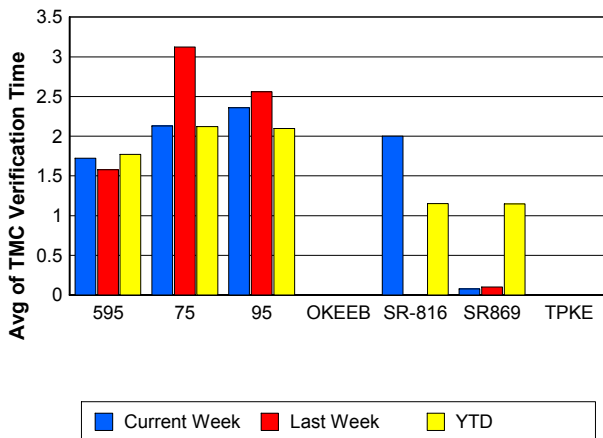
Number of Events / Roadway



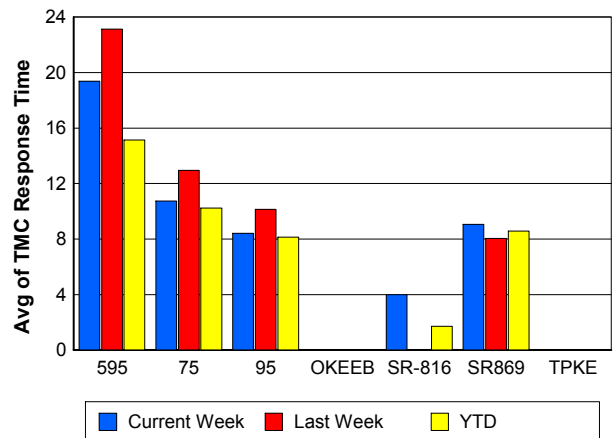
TMC Detection Time



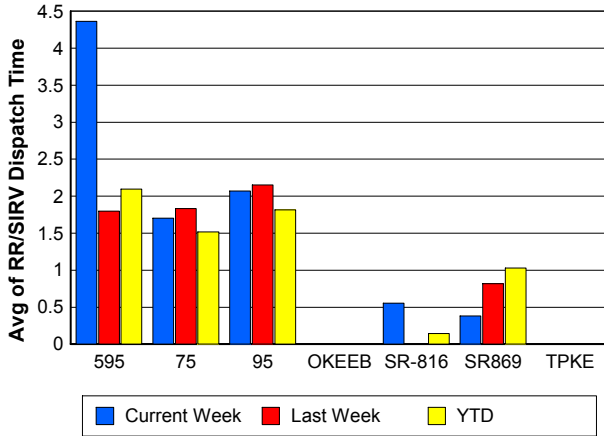
TMC Verification Time



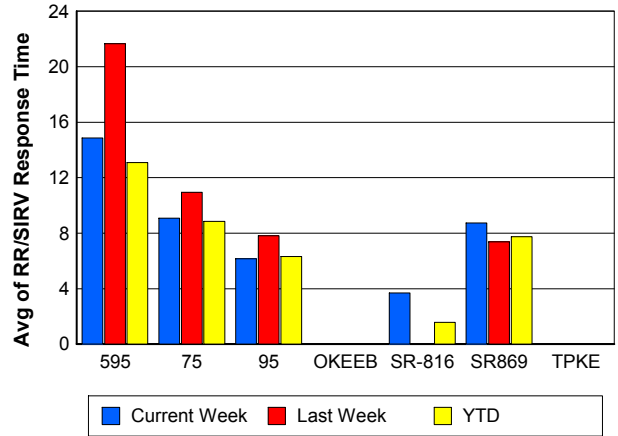
TMC Response Time



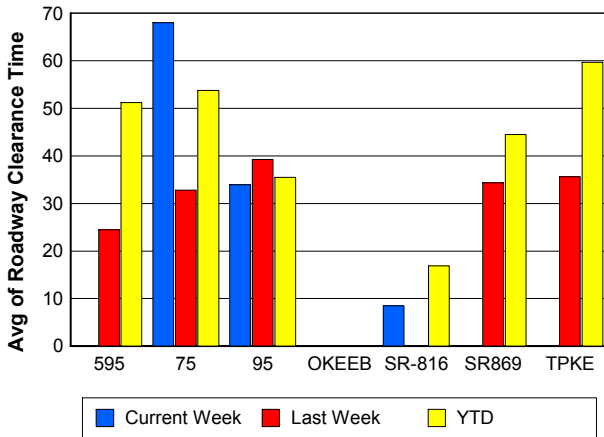
Road Ranger / SIRV Dispatch Time



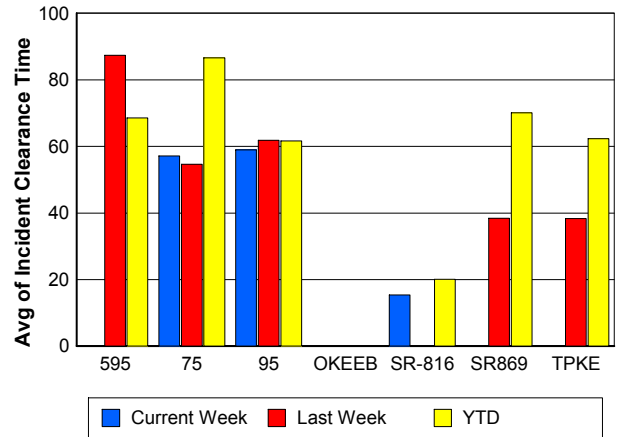
Road Ranger / SIRV Response Time



Roadway Clearance Time (2A)



Incident Clearance Time (3B)



Performance Measures by Event Type

Accident

	<u>Current Week</u>	<u>Last Week</u>	<u>YTD</u>
Number of Events	109	132	2,433
Number of Incidents	42	67	1,124
TMC Detection (min.)	0.00	0.00	0.02
TMC Verification (min.)	4.10	5.30	3.50
TMC Response (min.)	12.22	10.99	10.23
RR Dispatch Time (min.)	2.50	1.84	1.88
RR Response Time (min.)	9.61	9.13	8.37
Event Clearance (min.)	59.55	61.76	57.63
Roadway Clearance (min.)	40.37	41.92	39.26
Incident Clearance (min.)	75.72	68.66	71.57
# of Events w/ RR/SIRV	108	128	2,391
RR/SIRV Assists	108	128	2,391
RR/SIRV Activities	132	207	3,383

Debris on Roadway

	<u>Current Week</u>	<u>Last Week</u>	<u>YTD</u>
Number of Events	83	90	1,542
Number of Incidents	0	1	22
TMC Detection (min.)	0.00	0.00	0.00
TMC Verification (min.)	6.79	8.81	7.91
TMC Response (min.)	9.90	13.43	10.41
RR Dispatch Time (min.)	2.61	3.46	2.38
RR Response Time (min.)	7.27	9.80	8.02
Event Clearance (min.)	12.48	15.16	13.69
Roadway Clearance (min.)		3.20	27.28
Incident Clearance (min.)		3.37	29.55
# of Events w/ RR/SIRV	80	87	1,496
RR/SIRV Assists	80	87	1,496
RR/SIRV Activities	85	89	1,513

Disabled Vehicle

	<u>Current Week</u>	<u>Last Week</u>	<u>YTD</u>
Number of Events	1,272	1,216	24,557
Number of Incidents	19	13	295
TMC Detection (min.)	0.01	0.03	0.02
TMC Verification (min.)	2.71	2.64	2.39
TMC Response (min.)	8.21	10.29	8.09
RR Dispatch Time (min.)	1.87	2.13	1.72
RR Response Time (min.)	6.38	8.11	6.44
Event Clearance (min.)	19.65	22.01	19.96
Roadway Clearance (min.)	22.37	23.45	20.64
Incident Clearance (min.)	28.50	31.31	30.50
# of Events w/ RR/SIRV	1,216	1,163	23,430
RR/SIRV Assists	1,216	1,163	23,430
RR/SIRV Activities	1,205	1,155	23,351

Emergency Vehicles

	<u>Current Week</u>	<u>Last Week</u>	<u>YTD</u>
Number of Events	1	1	30
Number of Incidents	1	1	26
TMC Detection (min.)	0.00	0.00	0.00
TMC Verification (min.)	0.00	0.00	0.96
TMC Response (min.)		0.00	9.43
RR Dispatch Time (min.)		0.00	1.35
RR Response Time (min.)		0.00	8.04
Event Clearance (min.)	16.12	18.98	34.76
Roadway Clearance (min.)	15.08	13.23	30.86
Incident Clearance (min.)	16.12	18.98	34.83
# of Events w/ RR/SIRV	0	1	20
RR/SIRV Assists	0	1	20
RR/SIRV Activities	0	2	21

Other

	<u>Current Week</u>	<u>Last Week</u>	<u>YTD</u>
Number of Events	464	401	9,778
Number of Incidents	2	1	21
TMC Detection (min.)	0.00	0.00	0.01
TMC Verification (min.)	0.07	0.20	0.08
TMC Response (min.)	18.38	7.73	10.50
RR Dispatch Time (min.)	2.61	1.38	1.72
RR Response Time (min.)	6.29	6.34	7.81
Event Clearance (min.)	13.52	14.13	11.16
Roadway Clearance (min.)	28.87	12.42	35.25
Incident Clearance (min.)	40.79	19.82	43.12
# of Events w/ RR/SIRV	274	262	5,481
RR/SIRV Assists	274	262	5,481
RR/SIRV Activities	33	33	866

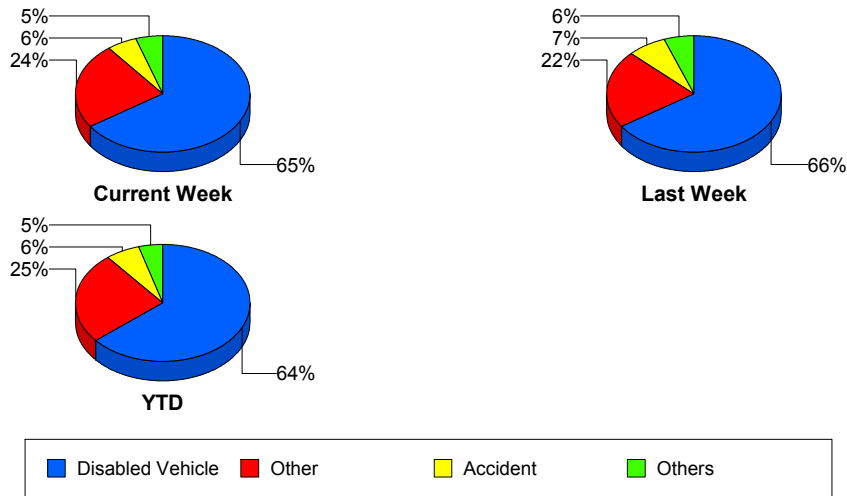
Police Activity

	<u>Current Week</u>	<u>Last Week</u>	<u>YTD</u>
Number of Events	8	6	100
Number of Incidents	4	2	54
TMC Detection (min.)	0.00	0.00	0.07
TMC Verification (min.)	0.14	0.00	1.09
TMC Response (min.)	16.61	23.17	15.67
RR Dispatch Time (min.)	7.46	11.17	5.88
RR Response Time (min.)	7.53	10.89	10.47
Event Clearance (min.)	25.78	46.56	53.91
Roadway Clearance (min.)	19.10	100.38	71.95
Incident Clearance (min.)	31.82	104.99	72.20
# of Events w/ RR/SIRV	5	6	80
RR/SIRV Assists	5	6	80
RR/SIRV Activities	4	6	87

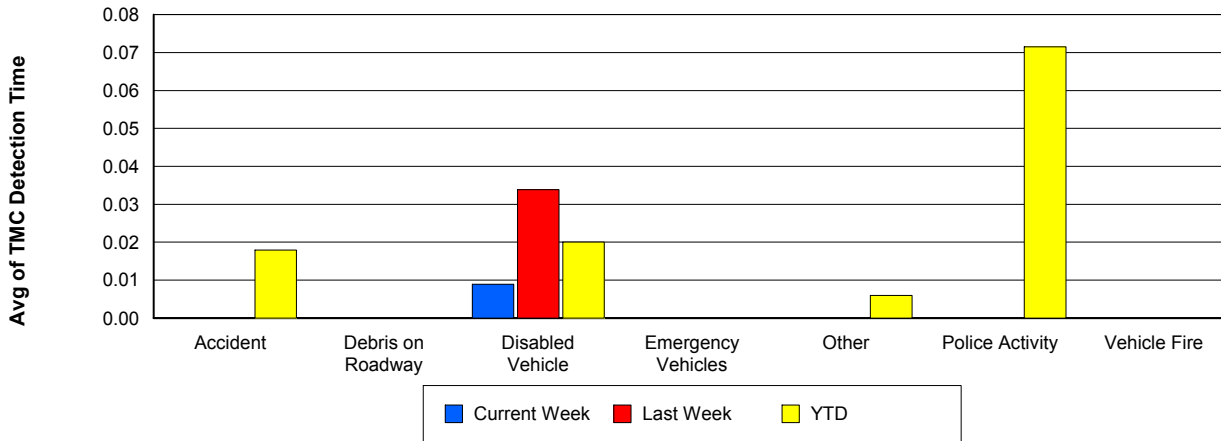
Vehicle Fire

	<u>Current Week</u>	<u>Last Week</u>	<u>YTD</u>
Number of Events	6	5	74
Number of Incidents	6	4	52
TMC Detection (min.)	0.00	0.00	0.00
TMC Verification (min.)	1.57	0.95	2.30
TMC Response (min.)	5.42	22.62	11.19
RR Dispatch Time (min.)	0.98	2.94	2.01
RR Response Time (min.)	4.44	19.68	9.20
Event Clearance (min.)	62.33	40.96	63.68
Roadway Clearance (min.)	56.05	22.70	50.30
Incident Clearance (min.)	62.33	45.32	74.52
# of Events w/ RR/SIRV	6	5	72
RR/SIRV Assists	6	5	72
RR/SIRV Activities	10	6	120

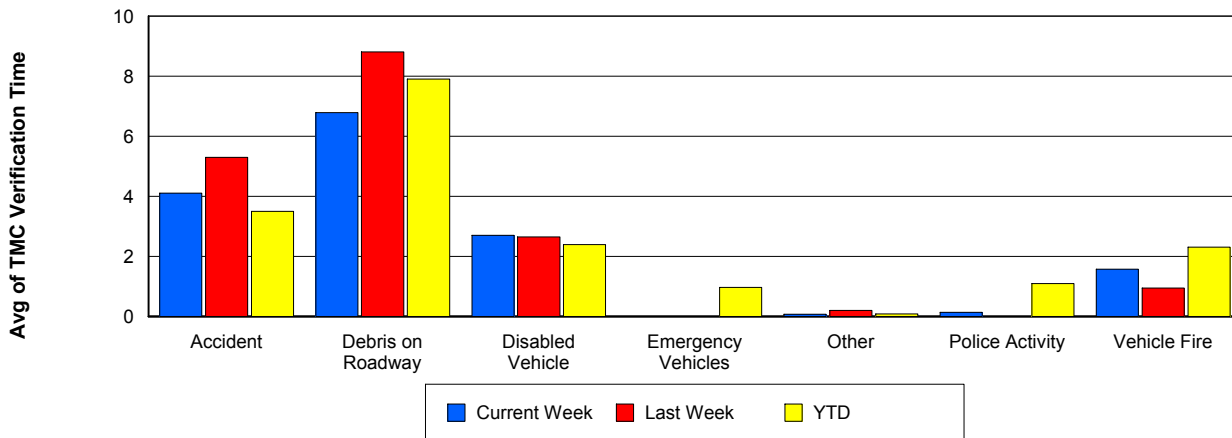
Number of Events / Event Type



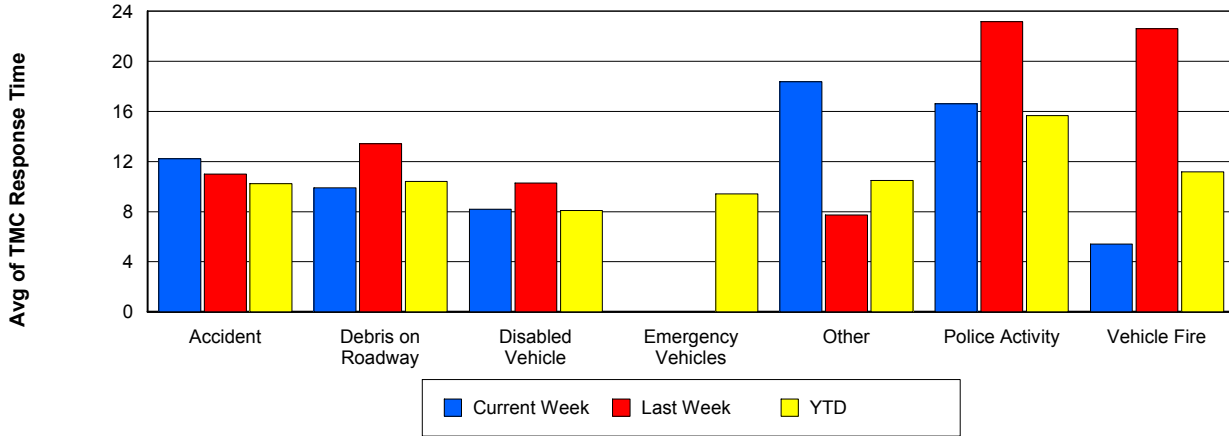
TMC Detection Time



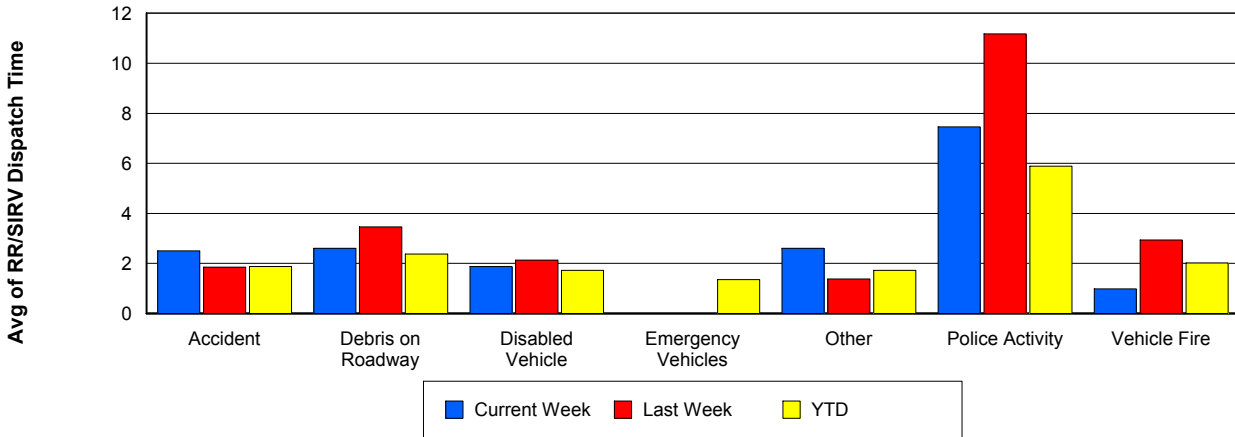
TMC Verification Time



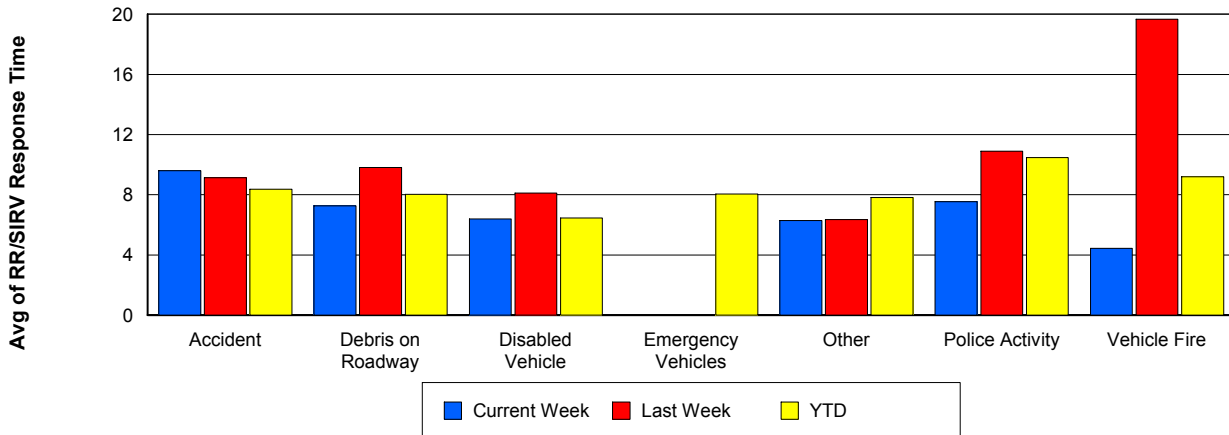
TMC Response Time



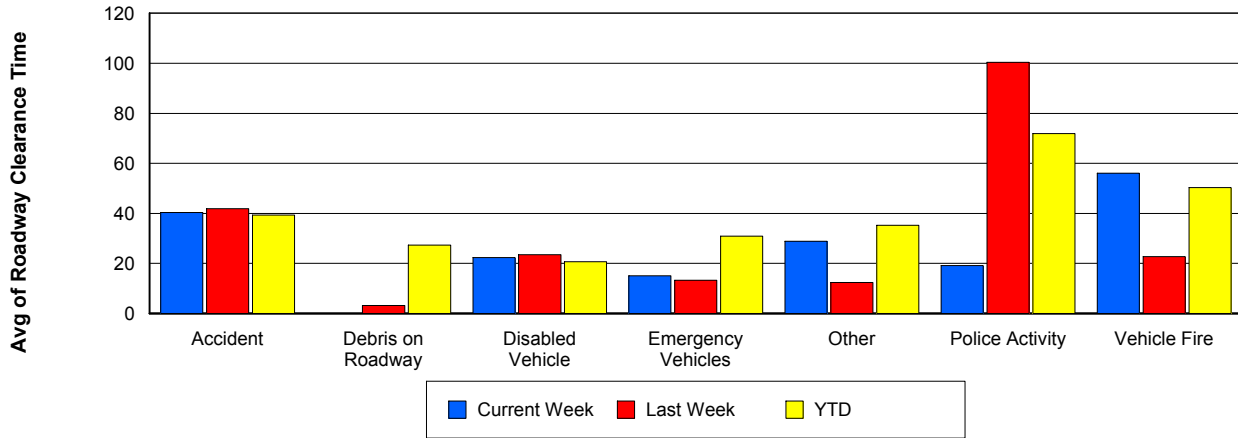
Road Ranger / SIRV Dispatch Time



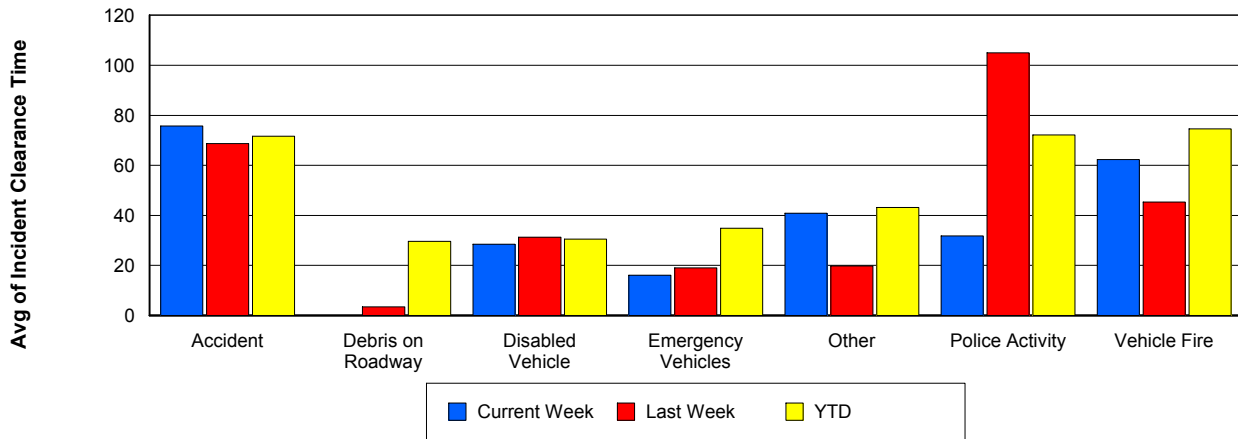
Road Ranger / SIRV Response Time



Roadway Clearance Time (2A)



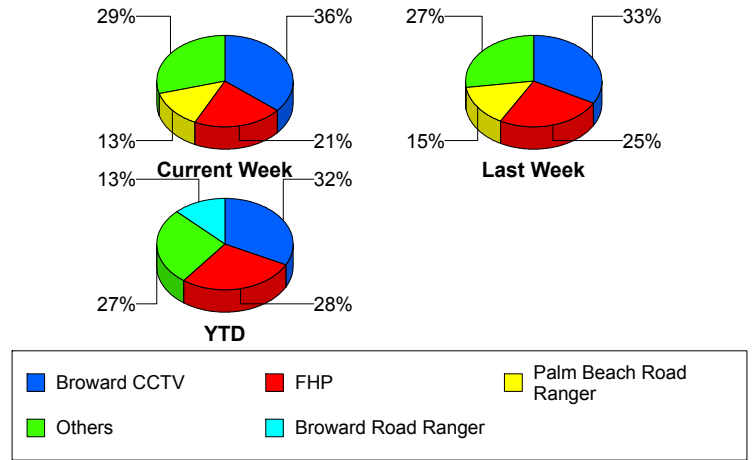
Incident Clearance Time (3B)



Incident Detection Methods

	Current Week	Last Week	YTD
Broward CCTV	27	29	511
Broward Road Ranger	3	8	197
Broward TMC	2	0	12
Broward VideoWall	4	1	25
BSO	0	1	21
County Police	0	0	2
District 4	3	2	43
District 6	0	0	1
FDOT Maintenance	0	1	3
FHP	16	22	436
Fire	0	0	5
Florida's Turnpike	0	2	11
ITMS	0	1	1
ITMS CCTV	9	2	86
Local Police	0	0	1
Media	0	0	2
Motorist	1	3	17
Other	0	0	1
Palm Beach Road Ran	10	13	169
Road Watcher	0	1	9
SIRV	0	0	1
VisioPaD Detection	0	2	19
Total	75	88	1,573

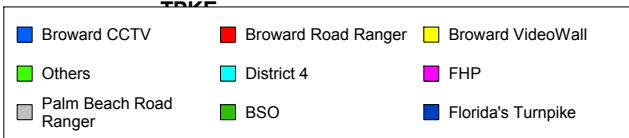
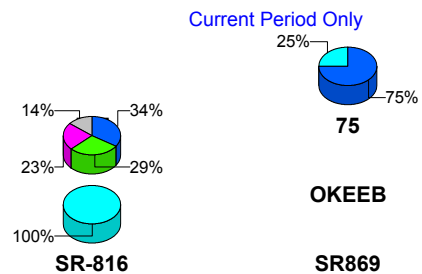
Total Incidents by Detection Method



Incident Detection Methods by Roadway

		Current Week	Last Week	YTD
595	Broward CCTV	0	0	12
	Broward Road Ranger	0	0	7
	BSO	0	0	3
	County Police	0	0	1
	FHP	0	0	6
	VisioPaD Detection	0	0	1
	Total	0	0	30
75	Broward CCTV	3	1	46
	Broward Road Ranger	0	2	15
	BSO	0	1	14
	District 4	1	0	4
	District 6	0	0	1
	FHP	0	1	23
	Fire	0	0	4
	Road Watcher	0	0	1
	VisioPaD Detection	0	1	8
	Total	4	6	116
95	Broward CCTV	24	28	453
	Broward Road Ranger	3	6	135
	Broward TMC	2	0	12
	Broward VideoWall	4	1	25
	BSO	0	0	2
	County Police	0	0	1
	District 4	1	2	37
	FDOT Maintenance	0	1	3
	FHP	16	21	405
	Fire	0	0	1
	ITMS	0	1	1
	ITMS CCTV	9	2	86
	Local Police	0	0	1
Media	0	0	2	

Total Events by Roadway and Detection Method

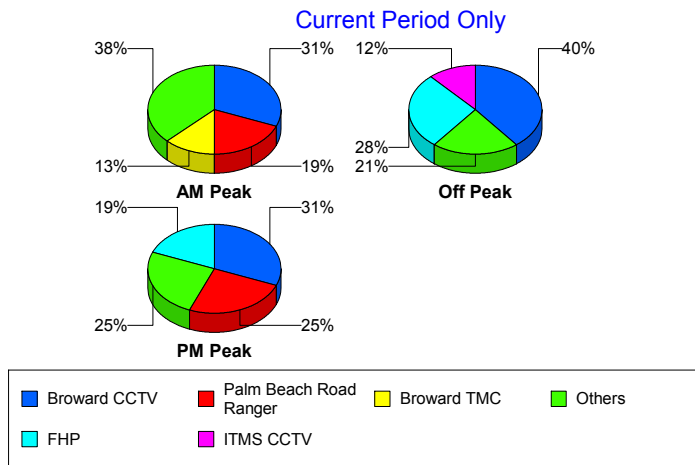


		Current Week	Last Week	YTD
95	Motorist	1	3	17
	Other	0	0	1
	Palm Beach Road Ran	10	13	169
	Road Watcher	0	1	6
	SIRV	0	0	1
	VisioPaD Detection	0	1	10
	Total	70	80	1,368
SR-816	Broward Road Ranger	0	0	39
	BSO	0	0	1
	District 4	1	0	2
	FHP	0	0	1
	Road Watcher	0	0	2
	Total	1	0	45
SR869	Broward Road Ranger	0	0	1
	BSO	0	0	1
	FHP	0	0	1
	Florida's Turnpike	0	1	1
	Total	0	1	4
TPKE	Florida's Turnpike	0	1	10
	Total	0	1	10
Total		75	88	1,573

Incident Detection Methods by Peak Period

		Current Week	Last Week	YTD
AM Peak	Broward CCTV	5	6	101
	Broward Road Ranger	1	1	49
	Broward TMC	2	0	3
	Broward VideoWall	1	0	14
	BSO	0	0	4
	County Police	0	0	1
	District 4	1	0	11
	FHP	1	5	76
	Fire	0	0	2
	Florida's Turnpike	0	1	2
	ITMS CCTV	2	0	22
	Local Police	0	0	1
	Media	0	0	1
	Motorist	0	0	2
	Palm Beach Road Ran	3	2	50
	Road Watcher	0	0	2
	SIRV	0	0	1
	VisioPaD Detection	0	0	1
	Total	16	15	343
	Off Peak	Broward CCTV	17	15
Broward Road Ranger		2	3	84
Broward TMC		0	0	6
Broward VideoWall		2	1	8
BSO		0	1	10
County Police		0	0	1
District 4		1	0	20
District 6		0	0	1
FDOT Maintenance		0	1	3
FHP		12	12	233
Florida's Turnpike		0	1	8
ITMS		0	1	1

Total Events by Peak Period and Detection Method

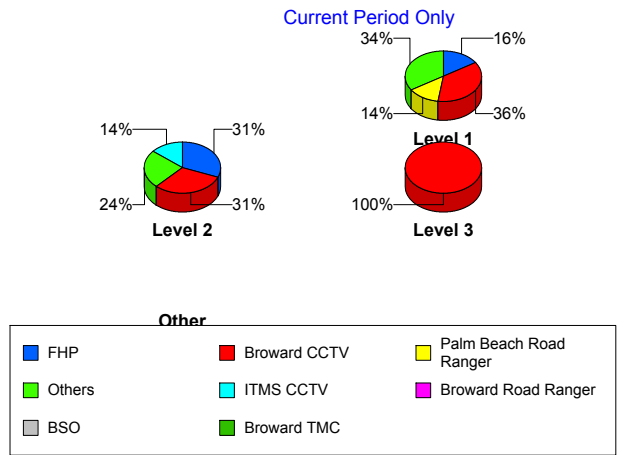


		Current Week	Last Week	YTD
Off Peak	ITMS CCTV	5	1	49
	Motorist	1	2	9
	Other	0	0	1
	Palm Beach Road Ran	3	7	80
	Road Watcher	0	0	4
	VisioPaD Detection	0	2	12
	Total	43	47	809
PM Peak	Broward CCTV	5	8	131
	Broward Road Ranger	0	4	64
	Broward TMC	0	0	3
	Broward VideoWall	1	0	3
	BSO	0	0	7
	District 4	1	2	12
	FHP	3	5	128
	Fire	0	0	3
	Florida's Turnpike	0	0	1
	ITMS CCTV	2	1	15
	Media	0	0	1
	Motorist	0	1	6
	Palm Beach Road Ran	4	4	39
	Road Watcher	0	1	3
	VisioPaD Detection	0	0	6
	Total	16	26	422
Total		75	88	1,573

Incident Detection Methods by Severity

		Current Week	Last Week	YTD	
	FHP	0	0	1	
	Total	0	0	1	
Level 1	Broward CCTV	16	17	307	
	Broward Road Ranger	2	5	142	
	Broward TMC	2	0	9	
	Broward VideoWall	3	0	15	
	BSO	0	1	6	
	County Police	0	0	1	
	District 4	2	2	28	
	FHP	7	11	186	
	Fire	0	0	2	
	ITMS CCTV	5	1	44	
	Media	0	0	1	
	Motorist	1	1	10	
	Other	0	0	1	
	Palm Beach Road Ran	6	9	113	
	Road Watcher	0	1	8	
	VisioPaD Detection	0	1	9	
	Total	44	49	882	
	Level 2	Broward CCTV	9	8	156
		Broward Road Ranger	1	3	45
Broward TMC		0	0	3	
Broward VideoWall		1	1	10	
BSO		0	0	1	
District 4		1	0	11	
FDOT Maintenance		0	1	3	
FHP		9	6	189	
Fire		0	0	1	
Florida's Turnpike		0	1	1	
ITMS		0	1	1	
ITMS CCTV		4	1	36	

Total Events by Severity and Detection Method



		Current Week	Last Week	YTD
Level 2	Local Police	0	0	1
	Motorist	0	2	7
	Palm Beach Road Ran	4	4	44
	Road Watcher	0	0	1
	SIRV	0	0	1
	VisioPaD Detection	0	1	8
	Total	29	29	519
Level 3	Broward CCTV	2	4	48
	Broward Road Ranger	0	0	10
	BSO	0	0	14
	County Police	0	0	1
	District 4	0	0	4
	District 6	0	0	1
	FHP	0	5	61
	Fire	0	0	2
	Florida's Turnpike	0	1	10
	ITMS CCTV	0	0	6
	Media	0	0	1
	Palm Beach Road Ran	0	0	12
	VisioPaD Detection	0	0	2
	Total	2	10	172
Total		75	88	1,573

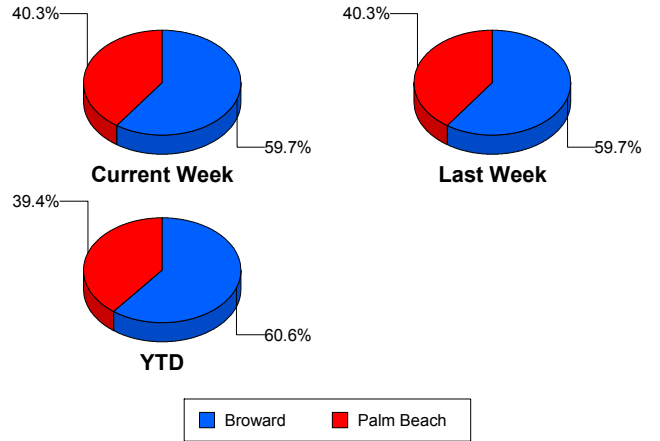
Road Ranger / SIRV Performance Measures

Road Ranger / SIRV Performance By County

Values presented are:
 - Total Events with a RR/SIRV Response
 - Total RR/SIRV Responses,
 - Total Activities Performed

	Current We	Last Week	YTD
Broward	953	940	19,414
	1,006	1,033	20,801
	1,050	1,073	21,607
Palm Beach	658	679	13,063
	679	696	13,501
	732	748	14,344

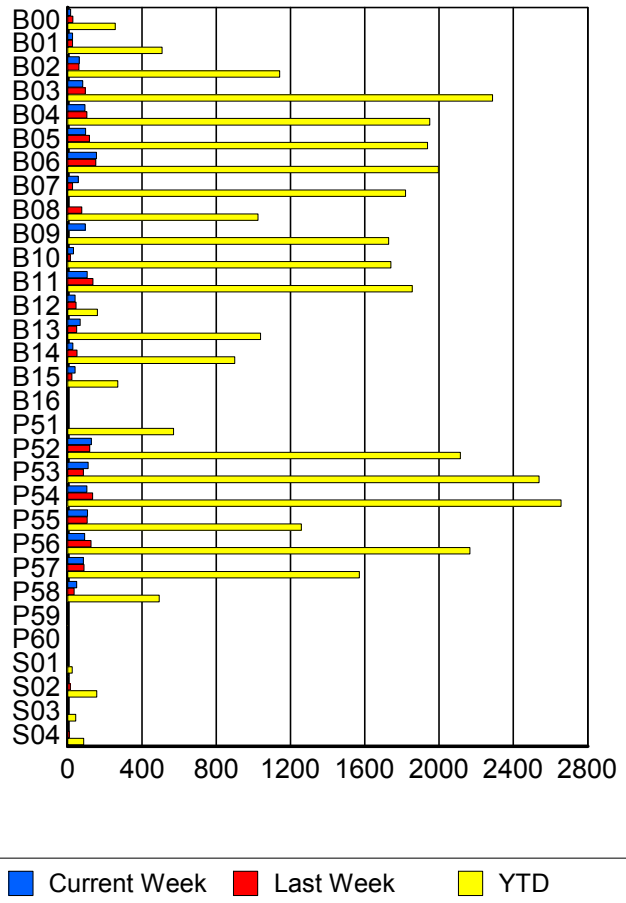
RR/SIRV Responses per County



Road Ranger / SIRV Performance By Truck

	Current We	Last Week	YTD
B00	16	28	251
	16	29	256
	17	31	271
B01	25	27	499
	26	27	508
	32	29	525
B02	62	61	1,126
	63	61	1,142
	65	63	1,167
B03	81	95	2,270
	82	96	2,288
	88	99	2,397
B04	94	103	1,924
	94	104	1,950
	96	110	2,032
B05	97	117	1,925
	97	117	1,938
	102	119	2,003
B06	153	150	1,969
	155	152	1,996
	162	158	2,079
B07	58	27	1,796
	58	27	1,820
	59	27	1,893
B08	1	76	1,009
	1	77	1,025
	1	80	1,063

RR/SIRV Responses per Truck



	Current We	Last Week	YTD
B09	95	2	1,709
	95	2	1,729
	96	2	1,807
B10	30	14	1,714
	31	15	1,740
	31	15	1,794
B11	106	135	1,837
	106	136	1,855
	112	143	1,924
B12	39	45	159
	40	45	161
	43	47	172
B13	68	47	1,028
	68	48	1,039
	70	49	1,063
B14	28	51	888
	28	51	899
	28	53	932
B15	41	22	268
	41	23	270
	42	23	285
B16	0	0	1
	0	0	1
	0	0	1
P51	0	0	561
	0	0	571
	0	0	603
P52	125	118	2,089
	127	119	2,114
	140	126	2,248
P53	107	84	2,510
	110	84	2,539
	113	94	2,701
P54	101	133	2,621
	103	134	2,657
	114	142	2,823
P55	107	106	1,250
	107	106	1,259
	113	113	1,316
P56	92	126	2,140
	92	126	2,166
	100	138	2,312
P57	83	89	1,553
	84	89	1,571
	94	94	1,677

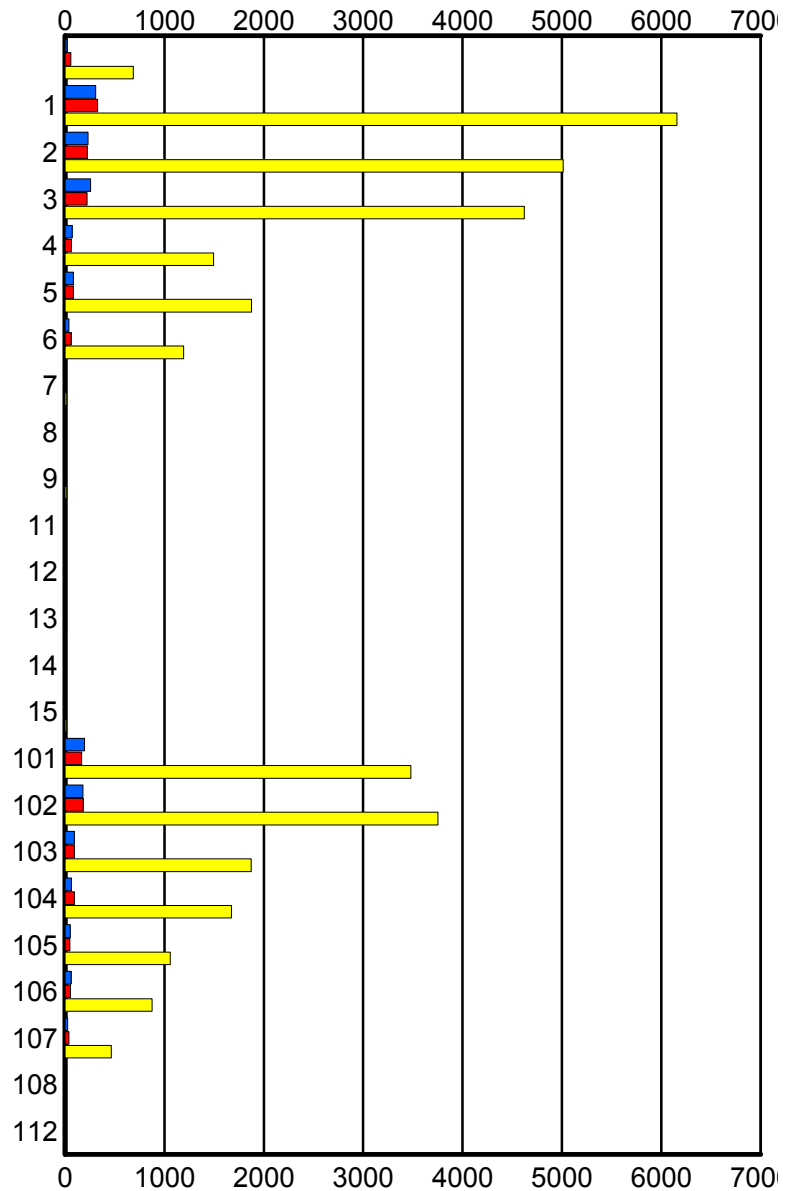
	Current We	Last Week	YTD
P58	48	35	488
	49	36	493
	51	39	523
P59	0	1	2
	0	1	2
	0	1	2
P60	0	0	1
	0	0	1
	0	0	1
S01	0	1	25
	0	1	25
	0	1	27
S02	4	14	152
	4	14	157
	4	14	169
S03	3	0	41
	3	0	44
	4	0	48
S04	5	9	85
	5	9	86
	5	11	93

Road Ranger / SIRV Performance By Beat

	Current We	Last Week	YTD
	19	57	668
	20	58	688
	21	60	728
1	297	306	5,880
	307	327	6,158
	320	341	6,403
2	231	221	4,867
	233	226	5,013
	241	236	5,225
3	256	218	4,516
	258	222	4,621
	272	225	4,810
4	70	63	1,469
	71	63	1,496
	73	67	1,550
5	84	82	1,861
	85	84	1,878
	89	89	1,930
6	38	61	1,168
	39	61	1,192
	41	63	1,226
7	0	0	16
	0	0	17
	0	0	18
8	0	9	9
	0	9	9
	0	9	9
9	0	0	17
	0	0	17
	0	0	17
11	0	0	2
	0	0	2
	0	0	2
12	0	0	2
	0	0	2
	0	0	2
13	0	0	8
	0	0	8
	0	0	8
14	0	0	4
	0	0	4
	0	0	4
15	0	0	14
	0	0	14
	0	0	14

Values presented are:
 - Total Events with a RR/SIRV Response
 - Total RR/SIRV Responses,
 - Total Activities Performed

RR/SIRV Responses per Beat



■ Current Week
 ■ Last Week
 ■ YTD

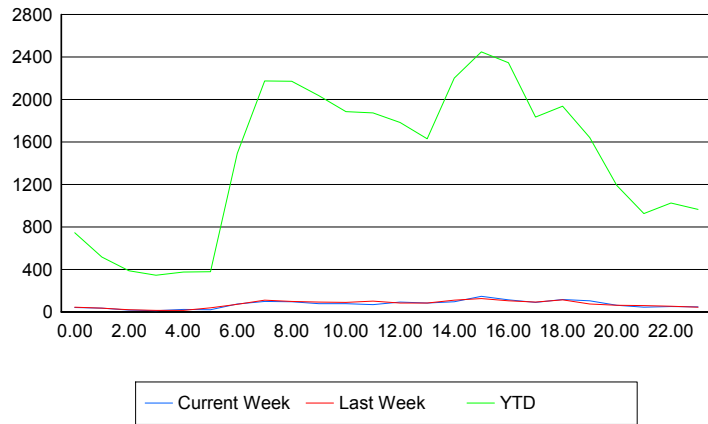
	Current We	Last Week	YTD
101	194	165	3,421
	195	166	3,479
	209	174	3,685
102	177	182	3,699
	179	183	3,753
	196	193	3,979
103	92	92	1,847
	95	93	1,872
	101	96	1,979
104	65	92	1,655
	65	92	1,673
	69	105	1,788
105	49	50	1,050
	51	50	1,058
	56	57	1,141
106	61	56	869
	62	56	877
	66	62	928
107	25	39	463
	25	39	465
	28	44	498
108	0	0	3
	0	0	4
	0	0	4
112	0	0	2
	0	0	2
	0	0	3

Road Ranger / SIRV Performance By Time of Day

Values presented are:
 - Total Events with a RR/SIRV Response
 - Total RR/SIRV Responses,
 - Total Activities Performed

	Current We	Last Week	YTD
12AM-1AM	39	44	711
	42	45	744
	43	47	789
1AM-2AM	31	31	493
	36	35	517
	36	35	535
2AM-3AM	16	17	357
	18	21	388
	18	25	413
3AM-4AM	12	15	327
	12	15	345
	12	17	369
4AM-5AM	21	13	336
	23	13	375
	24	13	395
5AM-6AM	19	27	319
	19	39	377
	19	39	388
6AM-7AM	71	65	1,399
	74	71	1,492
	75	73	1,548
7AM-8AM	99	103	2,065
	99	111	2,173
	107	120	2,271
8AM-9AM	86	94	2,026
	96	99	2,171
	105	106	2,262
9AM-10AM	76	90	1,951
	78	93	2,037
	79	97	2,134
10AM-11AM	75	82	1,792
	78	88	1,884
	79	94	1,967
11AM-12PM	64	89	1,774
	67	100	1,872
	70	106	1,959
12PM-1PM	91	76	1,680
	93	82	1,782
	96	84	1,854

Number of Responses / Hour of the Day



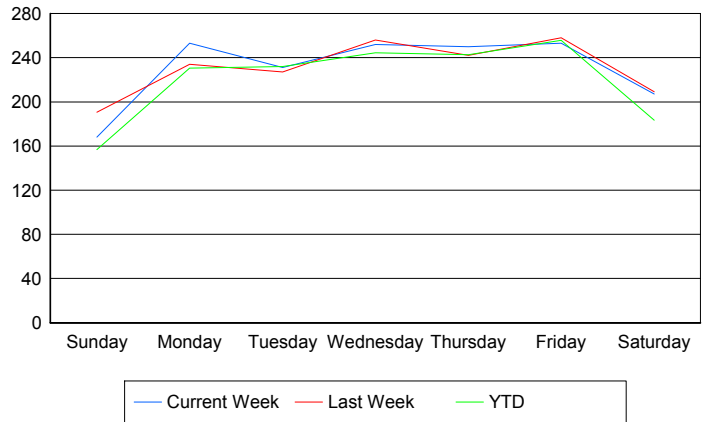
	Current We	Last Week	YTD
1PM-2PM	82	77	1,530
	83	82	1,630
	85	83	1,695
2PM-3PM	89	105	2,061
	95	111	2,200
	113	118	2,333
3PM-4PM	143	115	2,344
	146	125	2,449
	156	126	2,564
4PM-5PM	103	97	2,198
	114	105	2,345
	122	115	2,461
5PM-6PM	86	89	1,735
	89	92	1,835
	94	99	1,922
6PM-7PM	113	107	1,863
	116	112	1,938
	125	119	2,026
7PM-8PM	98	72	1,580
	103	73	1,641
	105	77	1,706
8PM-9PM	57	60	1,131
	62	61	1,189
	64	64	1,232
9PM-10PM	44	57	886
	45	58	927
	49	62	987
10PM-11PM	50	50	983
	51	54	1,025
	57	55	1,095
11PM-12AM	46	44	936
	46	44	966
	49	47	1,046

Road Ranger / SIRV Performance By Day of Week

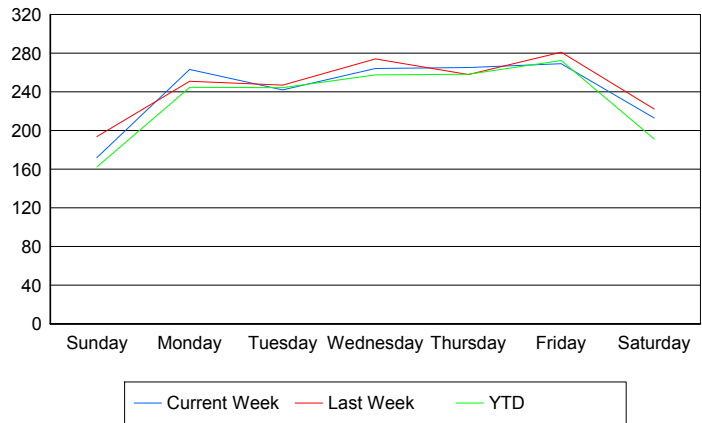
Values presented are:
 - Total Events with a RR/SIRV Response
 - Total RR/SIRV Responses,
 - Total Activities Performed

	Current We	Last Week	YTD
Sunday	165	193	3,240
	169	196	3,356
	176	202	3,513
Monday	253	234	4,777
	263	251	5,068
	282	270	5,293
Tuesday	231	227	4,847
	242	247	5,108
	255	256	5,334
Wednesday	252	256	5,064
	264	274	5,340
	272	295	5,616
Thursday	250	242	5,057
	265	258	5,382
	280	268	5,654
Friday	253	258	5,534
	269	281	5,896
	293	296	6,160
Saturday	207	209	3,986
	213	222	4,152
	224	234	4,381

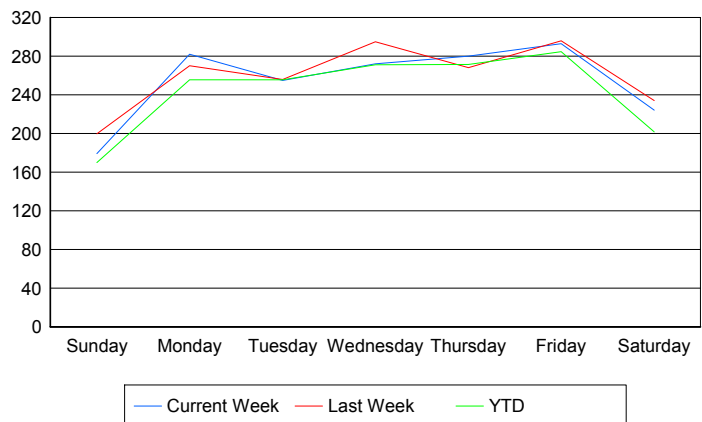
Avg # of events with a RR/SIRV Response per Day of the Week



Avg # of RR/SIRV Responses per Day of the Week



Avg # of RR/SIRV Activities Performed per Day of the Week



Road Ranger / SIRV Responses per Time of Day and Day of Week

