



Weekly Performance Measures Report Broward, Palm Beach Counties



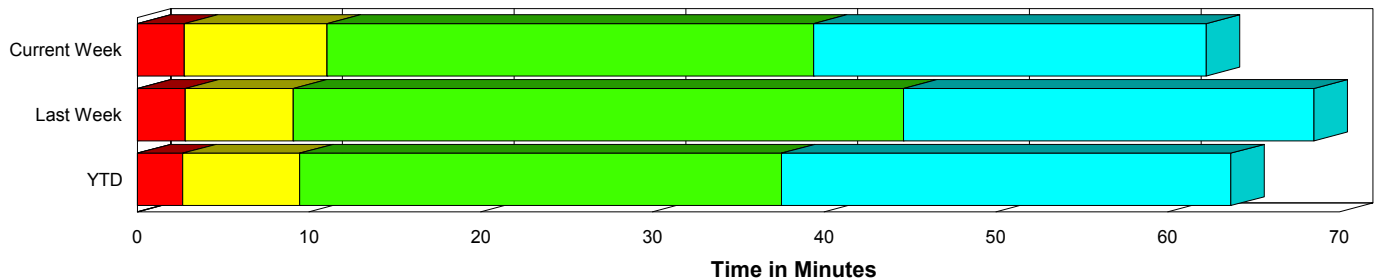
Created on:
May 24, 2010
8:43 am

Period From May 16, 2010 to May 22, 2010

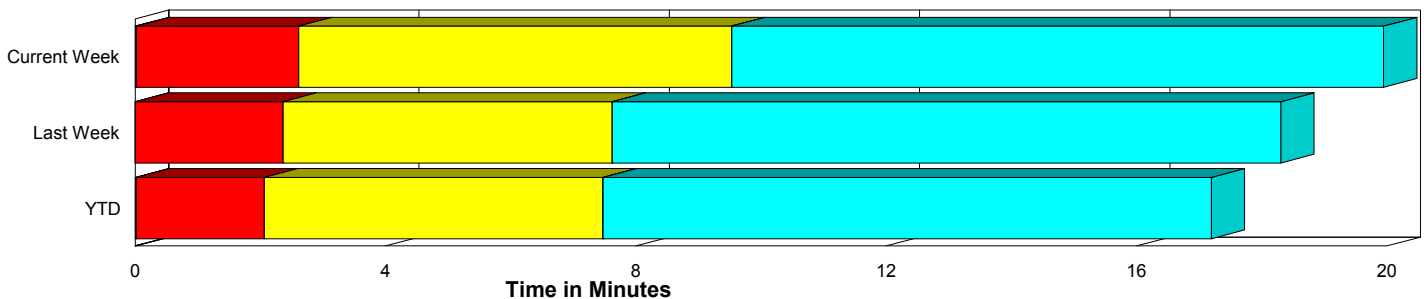
Performance Measures Summary

	Traffic Events (No Lanes Blocked)			Incidents (Lanes Blocked)		
	<u>This Week</u>	<u>Last Week</u>	<u>YTD</u>	<u>This Week</u>	<u>Last Week</u>	<u>YTD</u>
Number of Events	1,764	1,889	35,190	89	68	1,520
TMC Detection (min.)	0.02	0.00	0.02	0.01	0.00	0.02
TMC Verification (min.)	2.59	2.36	2.05	2.72	2.80	2.65
TMC Response (min.)	10.57	8.69	8.42	11.01	9.31	9.58
RR Dispatch Time (min.)	2.06	1.97	1.74	2.68	2.31	2.01
RR Response Time (min.)	8.33	6.69	6.72	8.41	7.00	7.60
Roadway Clearance (min.)				38.59	46.24	37.01
Event Clearance (min.)	21.00	19.37	18.16	61.13	70.34	62.89
# of Events w/ RR/SIRV	1,567	1,643	29,939	87	63	1,476
RR/SIRV Responses	1,567	1,643	29,939	87	63	1,476
RR/SIRV Activities	1,327	1,431	25,432	173	113	2,561

Incident Clearance Time-Line



Traffic Event (Non-Lane Blockage) Time-Line



■ Avg. TMC Detection Time	■ Avg. Time from TMC Response to Roadway Clearance*
■ Avg. Time from TMC Detection to TMC Verification	■ Avg. Time from Roadway Clearance to Incident/Event Clearance**
■ Avg. Time from TMC Verification to TMC Response	

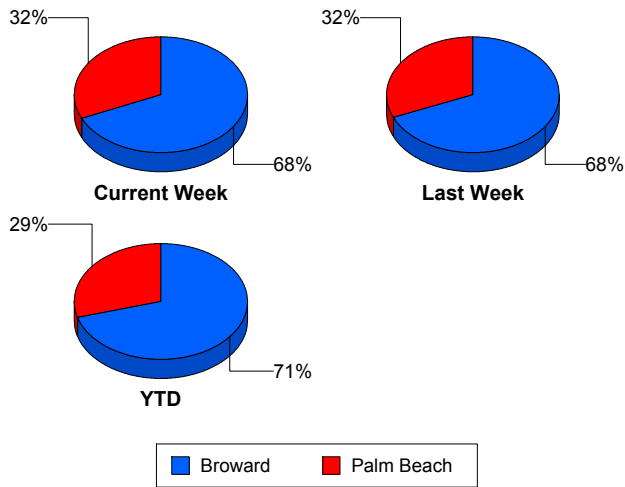
* Roadway clearance equals all travel lanes open

** Incident clearance equals time when last responder has left the scene

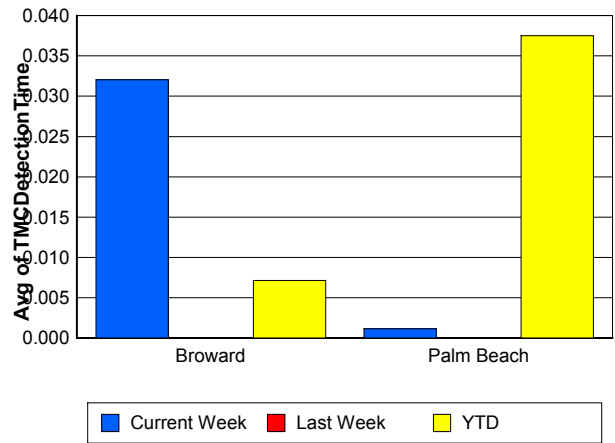
Performance Measures by County

	Broward			Palm Beach		
	<u>Current Week</u>	<u>Last Week</u>	<u>YTD</u>	<u>Current Week</u>	<u>Last Week</u>	<u>YTD</u>
Number of Events	1,265	1,340	25,949	588	617	10,761
Number of Incidents	54	40	1,010	35	28	510
TMC Detection (min.)	0.03	0.00	0.01	0.00	0.00	0.04
TMC Verification (min.)	1.41	1.27	1.19	5.16	4.78	4.20
TMC Response (min.)	11.25	9.02	9.21	9.61	8.28	7.31
RR Dispatch Time (min.)	1.71	1.36	1.41	2.85	3.20	2.49
RR Response Time (min.)	9.39	7.76	7.90	6.72	5.16	4.93
Event Clearance (min.)	22.60	20.86	19.48	23.64	21.67	21.29
Roadway Clearance (min.)	33.22	36.52	34.18	46.87	60.13	42.62
Incident Clearance (min.)	57.86	66.33	61.66	66.19	75.93	64.85
# of Events w/ RR/SIRV	1,105	1,127	21,356	549	579	10,059
RR/SIRV Responses	1,105	1,127	21,356	549	579	10,059
RR/SIRV Activities	918	928	17,408	582	616	10,585

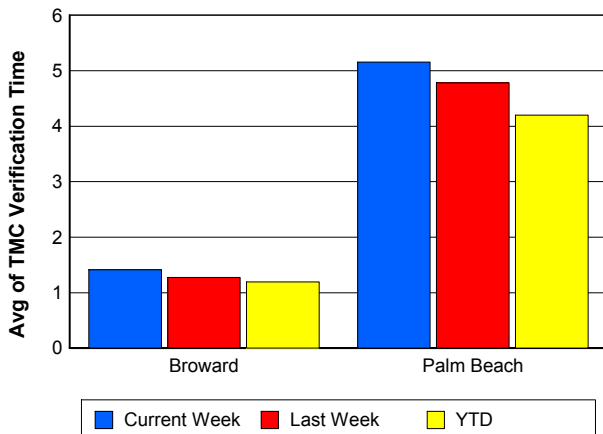
Number of Events / County



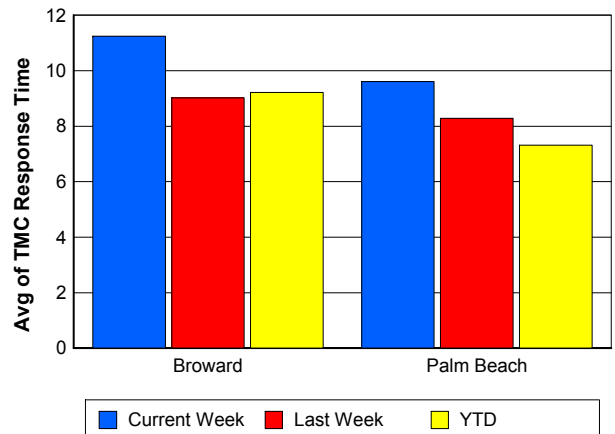
TMC Detection Time



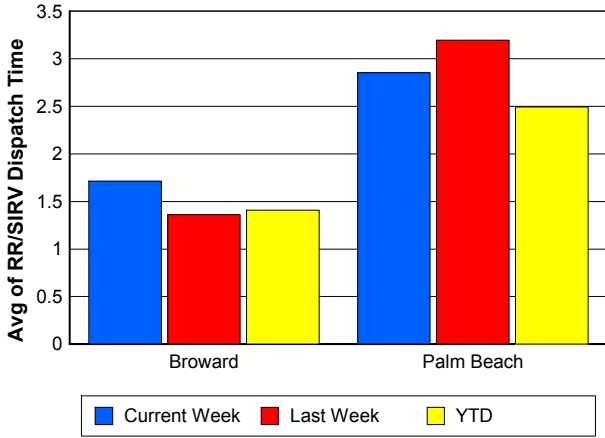
TMC Verification Time



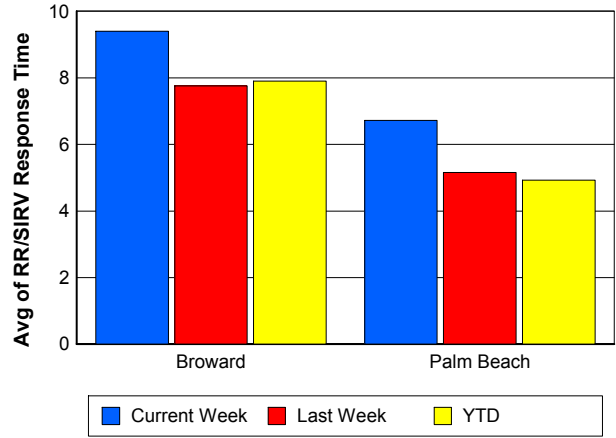
TMC Response Time



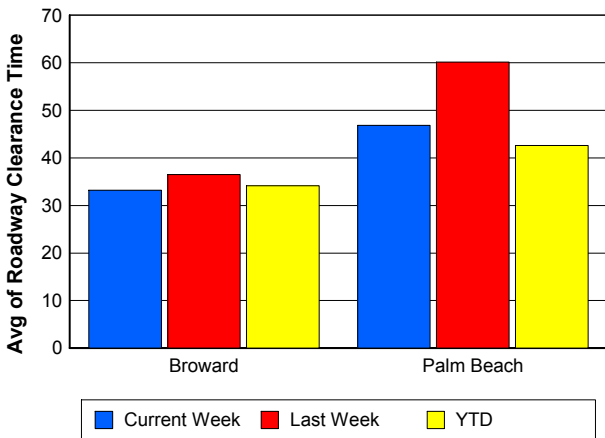
Road Ranger / SIRV Dispatch Time



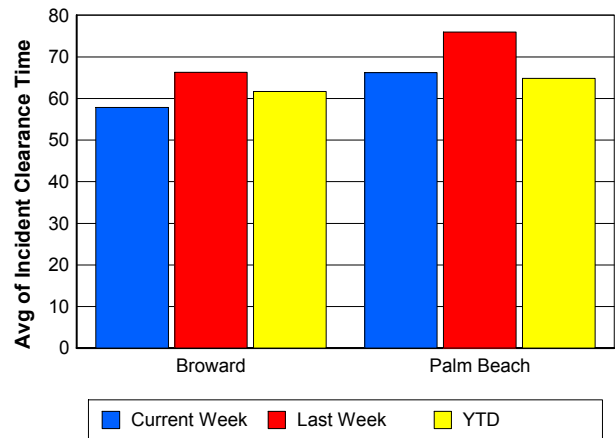
Road Ranger / SIRV Response Time



Roadway Clearance Time (2A)



Incident Clearance Time (3B)

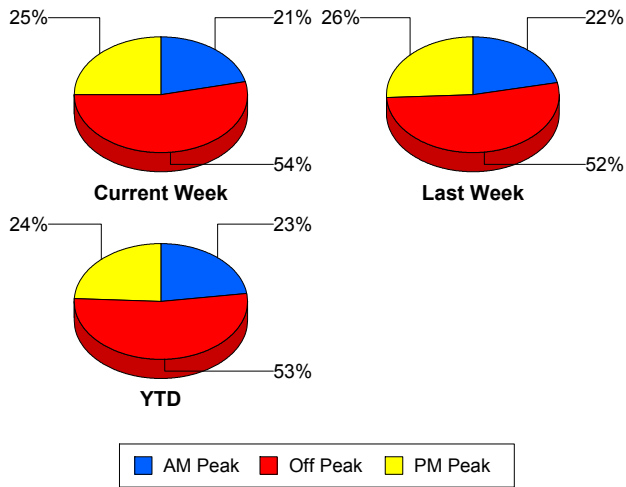


Performance Measures by Peak Period

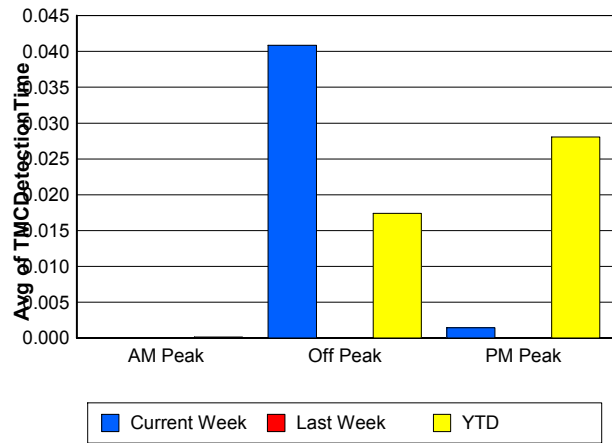
Note: AM peak period is defined as 6am to 10am and PM peak period is defined as 3pm to 7pm.

	AM Peak			Off Peak			PM Peak		
	<u>Current Week</u>	<u>Last Week</u>	<u>YTD</u>	<u>Current Week</u>	<u>Last Week</u>	<u>YTD</u>	<u>Current Week</u>	<u>Last Week</u>	<u>YTD</u>
Number of Events	398	424	8,335	992	1,027	19,525	463	506	8,850
Number of Incidents	16	23	329	47	32	781	26	13	410
TMC Detection (min.)	0.00	0.00	0.00	0.04	0.00	0.02	0.00	0.00	0.03
TMC Verification (min.)	1.26	1.74	1.27	2.92	2.62	2.19	3.05	2.43	2.58
TMC Response (min.)	11.88	7.83	7.91	10.90	9.32	8.88	8.90	8.26	8.22
RR Dispatch Time (min.)	2.87	1.59	1.29	1.90	2.19	1.88	1.83	1.90	1.93
RR Response Time (min.)	8.58	6.18	6.65	8.90	7.06	7.03	7.00	6.42	6.36
Event Clearance (min.)	22.88	21.40	18.71	23.76	22.09	20.43	21.20	18.91	20.31
Roadway Clearance (min.)	28.01	25.91	33.61	50.66	61.90	42.52	23.27	43.67	29.24
Incident Clearance (min.)	45.59	45.26	58.28	73.02	91.37	67.50	49.21	61.01	57.20
# of Events w/ RR/SIRV	360	385	7,275	884	887	16,428	410	434	7,712
RR/SIRV Responses	360	385	7,275	884	887	16,428	410	434	7,712
RR/SIRV Activities	333	350	6,344	776	798	14,526	391	396	7,123

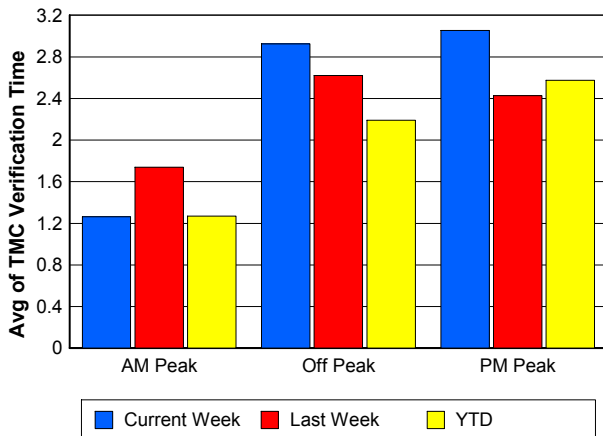
Number of Events / Peak Period



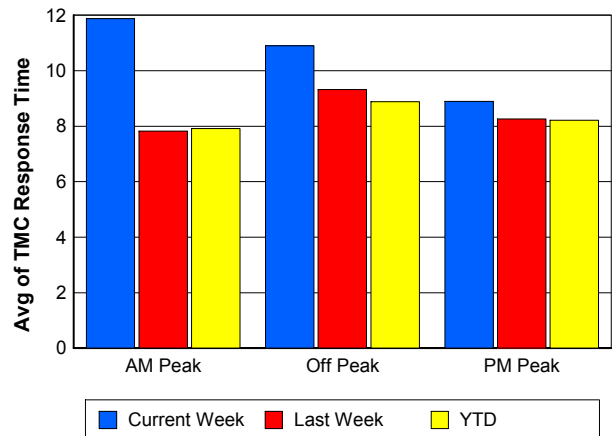
TMC Detection Time



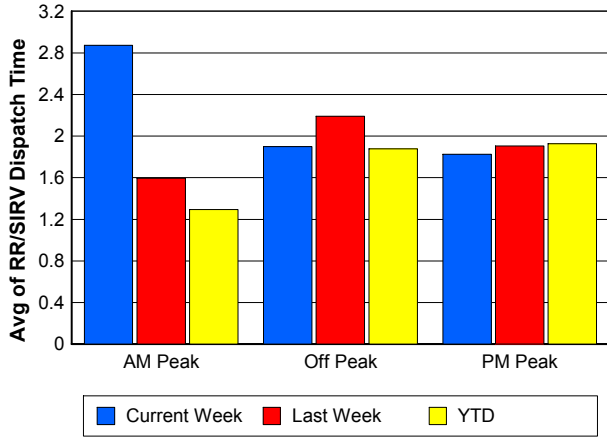
TMC Verification Time



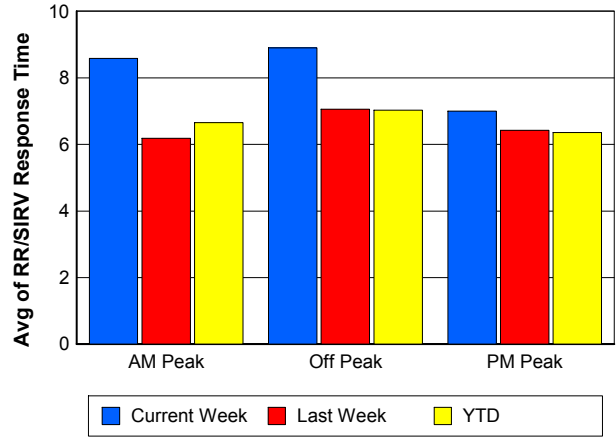
TMC Response Time



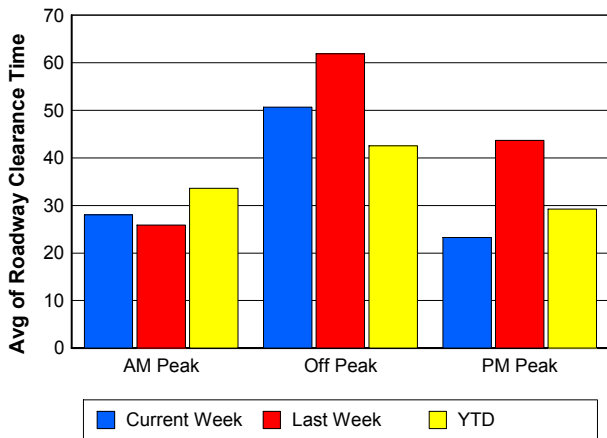
Road Ranger / SIRV Dispatch Time



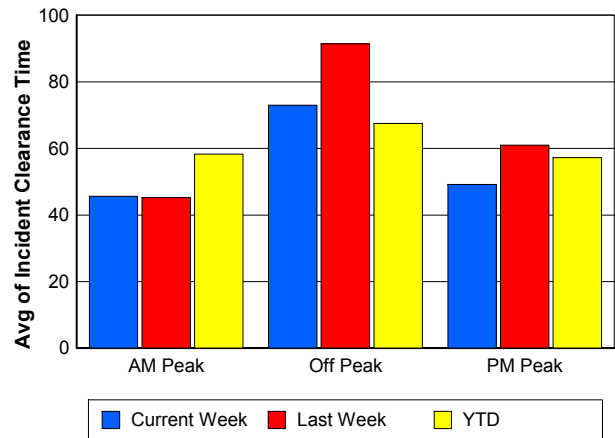
Road Ranger / SIRV Response Time



Roadway Clearance Time (2A)



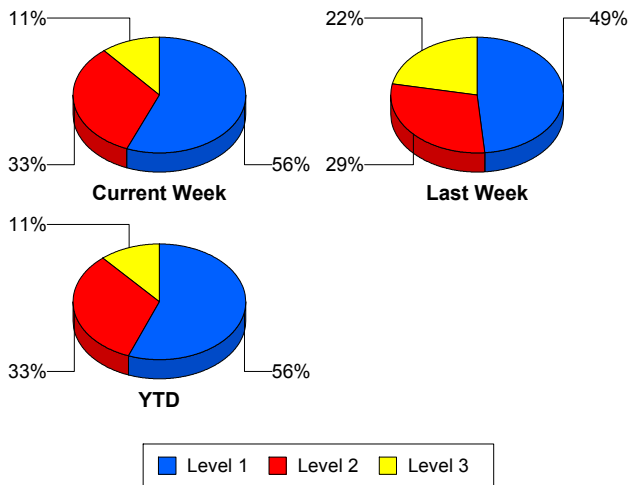
Incident Clearance Time (3B)



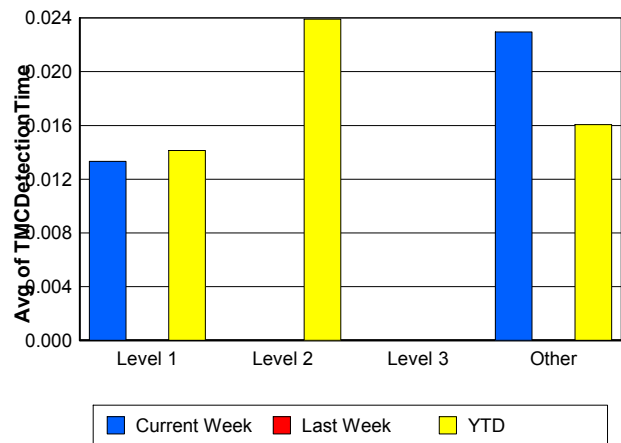
Performance Measures by Severity

	Level 1			Level 2			Level 3			Other		
	<u>This Week</u>	<u>Last Week</u>	<u>YTD</u>	<u>This Week</u>	<u>Last Week</u>	<u>YTD</u>	<u>This Week</u>	<u>Last Week</u>	<u>YTD</u>	<u>This Week</u>	<u>Last Week</u>	<u>YTD</u>
Number of Events	50	33	848	29	20	497	10	15	173	1,764	1,889	35,192
Number of Incidents	50	33	848	29	20	497	10	15	173	0	0	2
TMC Detection (min.)	0.01	0.00	0.01	0.00	0.00	0.02	0.00	0.00	0.00	0.02	0.00	0.02
TMC Verification (min.)	1.62	1.77	1.40	4.58	4.98	4.55	2.83	2.15	3.28	2.59	2.36	2.05
TMC Response (min.)	8.62	5.83	7.39	11.28	12.75	12.13	22.90	13.17	13.03	10.57	8.69	8.42
RR Dispatch Time (min.)	1.98	1.33	1.37	1.70	1.73	2.61	9.66	6.23	3.61	2.06	1.97	1.74
RR Resp. Time (min.)	6.80	4.50	6.06	9.58	11.02	9.59	13.24	6.95	9.43	8.33	6.69	6.72
Event Clearance (min.)	48.56	36.54	45.51	62.96	82.65	74.40	118.70	126.03	114.58	21.00	19.37	18.16
Roadway Clear. (min.)	17.69	13.87	15.13	51.87	46.85	52.69	104.52	116.67	99.92			-21.46
Incident Clearance (min.)	48.56	36.54	45.51	62.96	82.65	74.40	118.70	126.03	114.26			0.00
# of Events w/ RR/SIRV	49	32	831	29	20	490	9	11	153	1,567	1,643	29,941
RR/SIRV Responses	49	32	831	29	20	490	9	11	153	1,567	1,643	29,941
RR/SIRV Activities	74	47	1,239	70	35	938	29	31	379	1,327	1,431	25,437

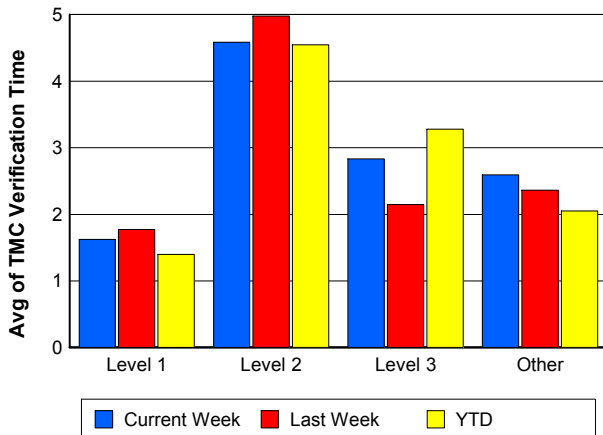
Number of Events / Severity



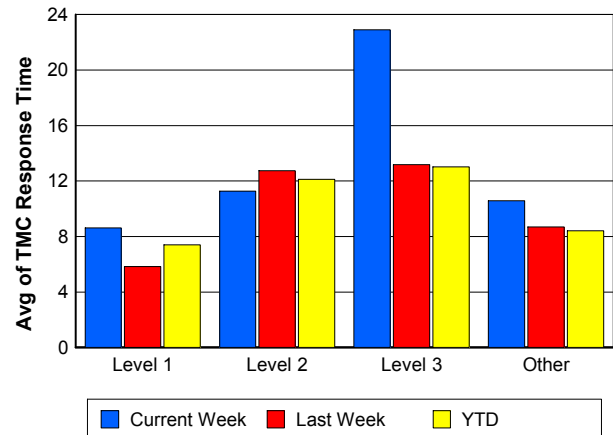
TMC Detection Time



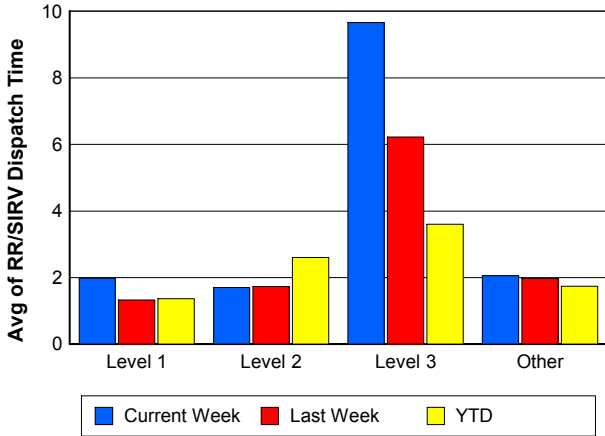
TMC Verification Time



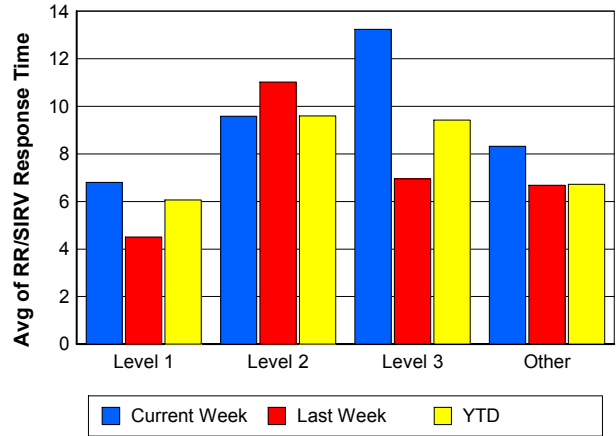
TMC Response Time



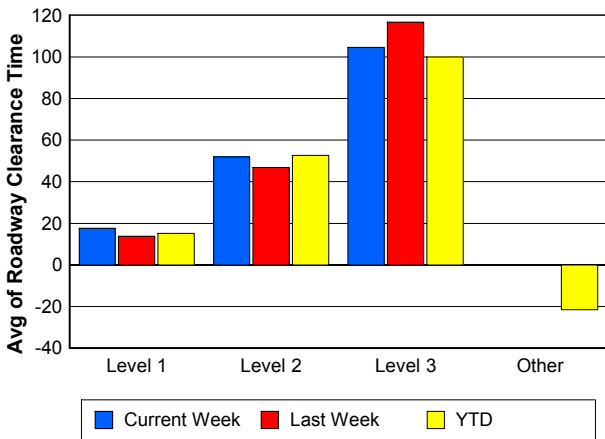
Road Ranger / SIRV Dispatch Time



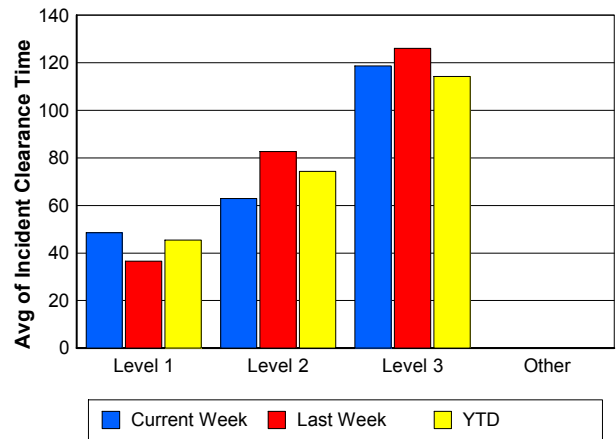
Road Ranger / SIRV Response Time



Roadway Clearance Time (2A)



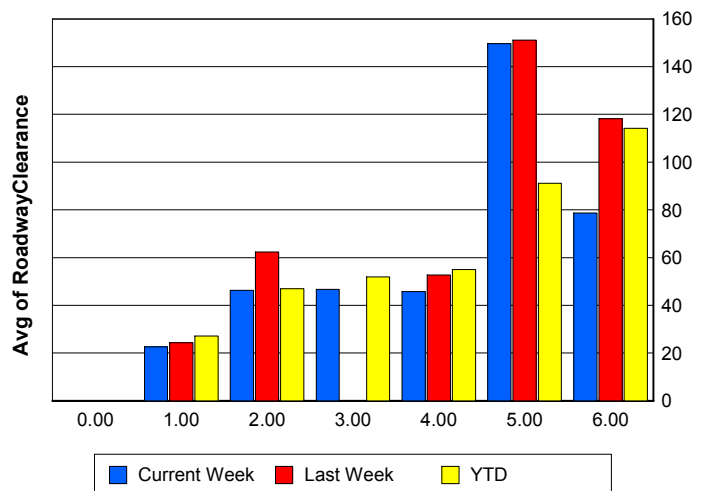
Incident Clearance Time (3B)



Roadway Clearance by Maximum Number of Lanes Blocked

	Current Week	Last Week	YTD
0			
1	22.54	24.36	27.20
2	46.26	62.29	46.98
3	46.63	0.00	51.93
4	45.69	52.66	55.00
5	149.72	151.19	91.20
6	78.76	118.20	114.15

Roadway Clearance Time (2A)



Performance Measures by Roadway

595

	<u>Current Week</u>	<u>Last Week</u>	<u>YTD</u>
Number of Events	30	40	875
Number of Incidents	1	1	46
TMC Detection (min.)	0.00	0.00	0.00
TMC Verification (min.)	1.58	0.62	1.77
TMC Response (min.)	23.14	15.20	14.89
RR Dispatch Time (min.)	1.80	1.35	1.95
RR Resp. Time (min.)	21.67	14.80	12.99
Event Clearance (min.)	23.31	13.40	19.83
Roadway Clear. (min.)	24.50	10.83	51.18
Incident Clearance (min.)	87.33	17.25	68.57
# of Events w/ RR/SIRV	27	25	631
RR/SIRV Responses	27	25	631
RR/SIRV Activities	13	14	426

75

	<u>Current Week</u>	<u>Last Week</u>	<u>YTD</u>
Number of Events	250	260	5,652
Number of Incidents	6	5	112
TMC Detection (min.)	0.00	0.00	0.02
TMC Verification (min.)	3.13	2.53	2.12
TMC Response (min.)	12.95	10.11	10.21
RR Dispatch Time (min.)	1.83	1.20	1.51
RR Resp. Time (min.)	10.95	9.19	8.84
Event Clearance (min.)	20.99	21.11	20.25
Roadway Clear. (min.)	32.78	53.24	53.28
Incident Clearance (min.)	54.67	57.68	87.61
# of Events w/ RR/SIRV	215	220	4,512
RR/SIRV Responses	215	220	4,512
RR/SIRV Activities	184	207	3,757

95

	<u>Current Week</u>	<u>Last Week</u>	<u>YTD</u>
Number of Events	1,556	1,639	29,865
Number of Incidents	80	57	1,303
TMC Detection (min.)	0.03	0.00	0.02
TMC Verification (min.)	2.56	2.42	2.08
TMC Response (min.)	10.15	8.48	8.12
RR Dispatch Time (min.)	2.15	2.13	1.80
RR Resp. Time (min.)	7.82	6.26	6.33
Event Clearance (min.)	23.19	21.28	19.97
Roadway Clear. (min.)	39.29	46.86	35.58
Incident Clearance (min.)	61.86	74.61	61.80
# of Events w/ RR/SIRV	1,398	1,448	26,012
RR/SIRV Responses	1,398	1,448	26,012
RR/SIRV Activities	1,291	1,309	23,560

OKEEB

	<u>YTD</u>
Number of Events	1
Number of Incidents	0
TMC Detection (min.)	0.00
TMC Verification (min.)	0.00
TMC Response (min.)	0.00
RR Dispatch Time (min.)	0.00
RR Resp. Time (min.)	0.00
Event Clearance (min.)	18.45
Roadway Clear. (min.)	
Incident Clearance (min.)	
# of Events w/ RR/SIRV	1
RR/SIRV Responses	1
RR/SIRV Activities	1

SR-816

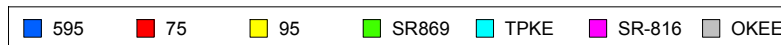
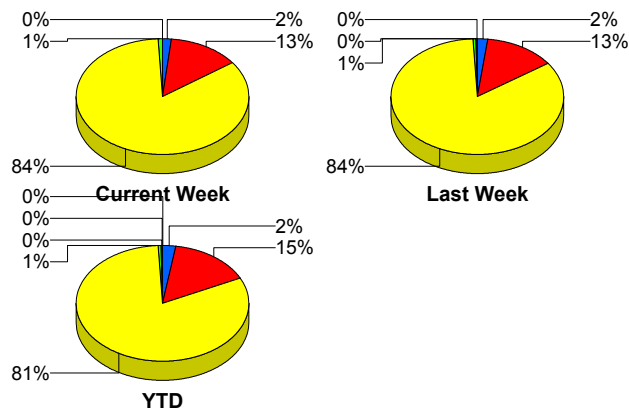
	<u>Last Week</u>	<u>YTD</u>
Number of Events	4	63
Number of Incidents	3	44
TMC Detection (min.)	0.00	0.00
TMC Verification (min.)	0.00	1.10
TMC Response (min.)	0.00	1.62
RR Dispatch Time (min.)	0.00	0.12
RR Resp. Time (min.)	0.00	1.50
Event Clearance (min.)	9.98	17.23
Roadway Clear. (min.)	3.78	17.10
Incident Clearance (min.)	13.06	20.21
# of Events w/ RR/SIRV	3	58
RR/SIRV Responses	3	58
RR/SIRV Activities	3	64

SR869

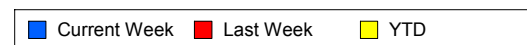
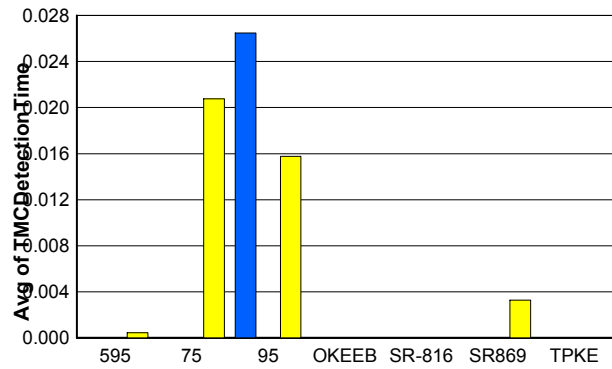
	<u>Current Week</u>	<u>Last Week</u>	<u>YTD</u>
Number of Events	16	12	244
Number of Incidents	1	0	5
TMC Detection (min.)	0.00	0.00	0.00
TMC Verification (min.)	0.10	0.72	1.19
TMC Response (min.)	8.05	3.94	8.54
RR Dispatch Time (min.)	0.82	0.51	1.06
RR Resp. Time (min.)	7.38	3.67	7.70
Event Clearance (min.)	26.05	16.69	18.46
Roadway Clear. (min.)	34.38		44.50
Incident Clearance (min.)	38.38		70.11
# of Events w/ RR/SIRV	14	10	201
RR/SIRV Responses	14	10	201
RR/SIRV Activities	12	11	185

	<u>Current Week</u>	<u>Last Week</u>	<u>YTD</u>
Number of Events	1	2	10
Number of Incidents	1	2	10
TMC Detection (min.)	0.00	0.00	0.00
TMC Verification (min.)	0.00	0.00	0.00
TMC Response (min.)			
RR Dispatch Time (min.)			
RR Resp. Time (min.)			
Event Clearance (min.)	38.33	94.85	62.29
Roadway Clear. (min.)	35.63	92.63	59.66
Incident Clearance (min.)	38.33	94.85	62.29
# of Events w/ RR/SIRV	0	0	0
RR/SIRV Responses	0	0	0
RR/SIRV Activities	0	0	0

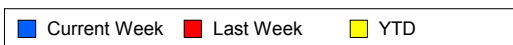
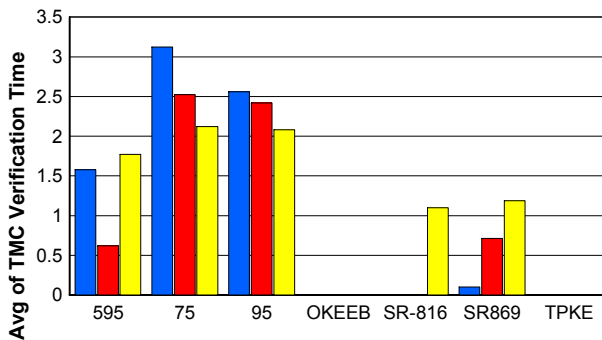
Number of Events / Roadway



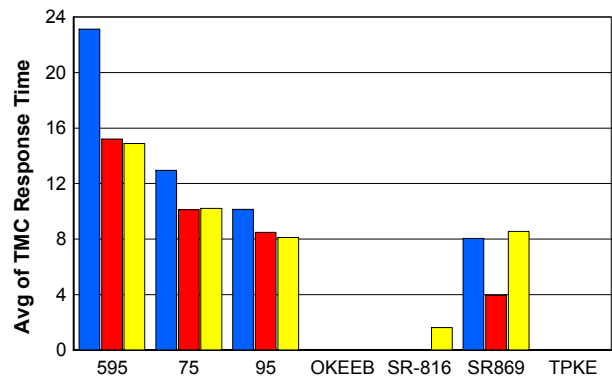
TMC Detection Time



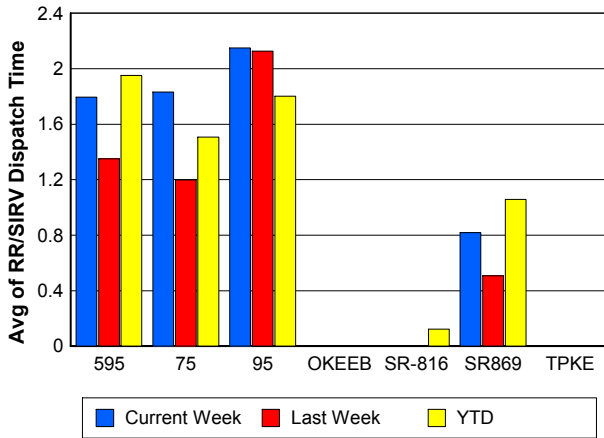
TMC Verification Time



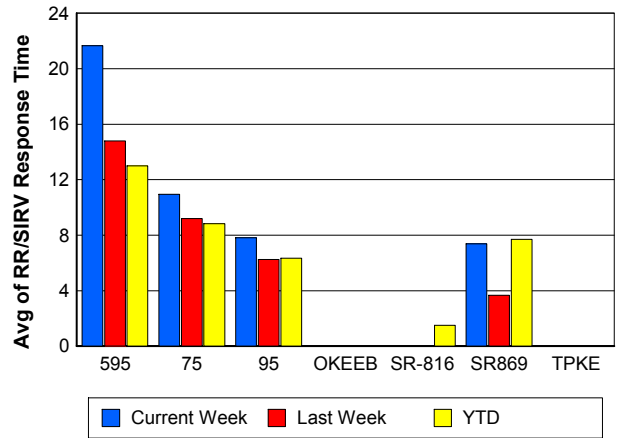
TMC Response Time



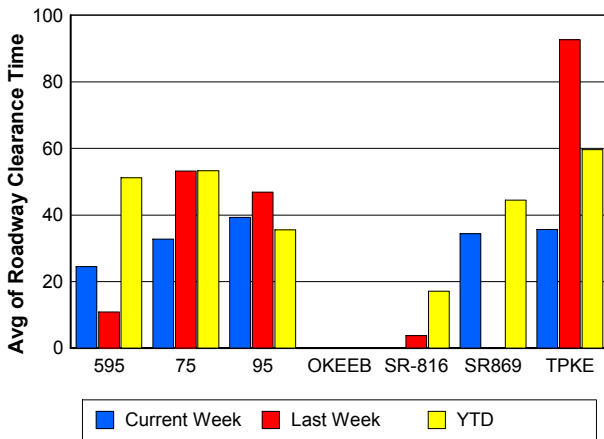
Road Ranger / SIRV Dispatch Time



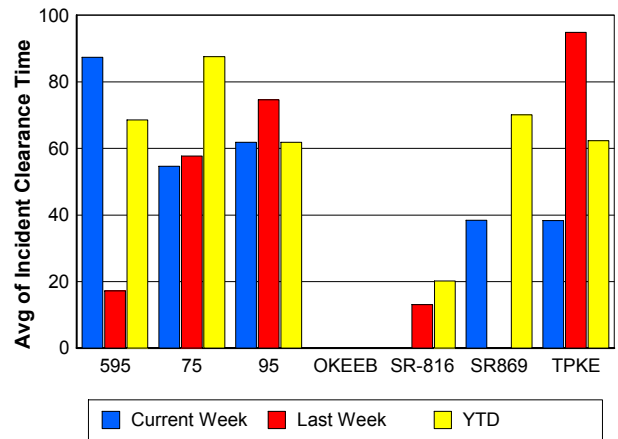
Road Ranger / SIRV Response Time



Roadway Clearance Time (2A)



Incident Clearance Time (3B)



Performance Measures by Event Type

Accident

	<u>Current Week</u>	<u>Last Week</u>	<u>YTD</u>
Number of Events	132	101	2,324
Number of Incidents	67	50	1,082
TMC Detection (min.)	0.00	0.00	0.02
TMC Verification (min.)	5.30	3.95	3.47
TMC Response (min.)	10.99	9.66	10.15
RR Dispatch Time (min.)	1.84	2.25	1.85
RR Response Time (min.)	9.13	7.44	8.31
Event Clearance (min.)	61.76	59.32	57.54
Roadway Clearance (min.)	41.92	41.96	39.22
Incident Clearance (min.)	68.66	72.74	71.41
# of Events w/ RR/SIRV	128	98	2,283
RR/SIRV Assists	128	98	2,283
RR/SIRV Activities	207	146	3,251

Debris on Roadway

	<u>Current Week</u>	<u>Last Week</u>	<u>YTD</u>
Number of Events	90	89	1,459
Number of Incidents	1	0	22
TMC Detection (min.)	0.00	0.00	0.00
TMC Verification (min.)	8.81	8.12	7.98
TMC Response (min.)	13.43	10.76	10.44
RR Dispatch Time (min.)	3.46	2.77	2.37
RR Response Time (min.)	9.80	7.99	8.07
Event Clearance (min.)	15.16	15.74	13.76
Roadway Clearance (min.)	3.20		27.28
Incident Clearance (min.)	3.37		29.55
# of Events w/ RR/SIRV	87	87	1,416
RR/SIRV Assists	87	87	1,416
RR/SIRV Activities	89	89	1,428

Disabled Vehicle

	<u>Current Week</u>	<u>Last Week</u>	<u>YTD</u>
Number of Events	1,216	1,305	23,285
Number of Incidents	13	13	276
TMC Detection (min.)	0.03	0.00	0.02
TMC Verification (min.)	2.64	2.68	2.37
TMC Response (min.)	10.29	8.49	8.08
RR Dispatch Time (min.)	2.13	1.96	1.71
RR Response Time (min.)	8.11	6.56	6.45
Event Clearance (min.)	22.01	20.59	19.98
Roadway Clearance (min.)	23.45	27.24	20.53
Incident Clearance (min.)	31.31	31.26	30.64
# of Events w/ RR/SIRV	1,163	1,252	22,214
RR/SIRV Assists	1,163	1,252	22,214
RR/SIRV Activities	1,155	1,264	22,146

Emergency Vehicles

	<u>Current Week</u>	<u>Last Week</u>	<u>YTD</u>
Number of Events	1	1	29
Number of Incidents	1	1	25
TMC Detection (min.)	0.00	0.00	0.00
TMC Verification (min.)	0.00	0.00	1.00
TMC Response (min.)	0.00		9.43
RR Dispatch Time (min.)	0.00		1.35
RR Response Time (min.)	0.00		8.04
Event Clearance (min.)	18.98	13.03	35.40
Roadway Clearance (min.)	13.23	9.05	31.49
Incident Clearance (min.)	18.98	13.03	35.58
# of Events w/ RR/SIRV	1	0	20
RR/SIRV Assists	1	0	20
RR/SIRV Activities	2	0	21

Other

	<u>Current Week</u>	<u>Last Week</u>	<u>YTD</u>
Number of Events	401	453	9,314
Number of Incidents	1	0	19
TMC Detection (min.)	0.00	0.00	0.01
TMC Verification (min.)	0.20	0.07	0.08
TMC Response (min.)	7.73	7.42	10.18
RR Dispatch Time (min.)	1.38	1.54	1.67
RR Response Time (min.)	6.34	6.13	7.87
Event Clearance (min.)	14.13	13.78	11.04
Roadway Clearance (min.)	12.42		35.92
Incident Clearance (min.)	19.82		43.36
# of Events w/ RR/SIRV	262	262	5,207
RR/SIRV Assists	262	262	5,207
RR/SIRV Activities	33	33	833

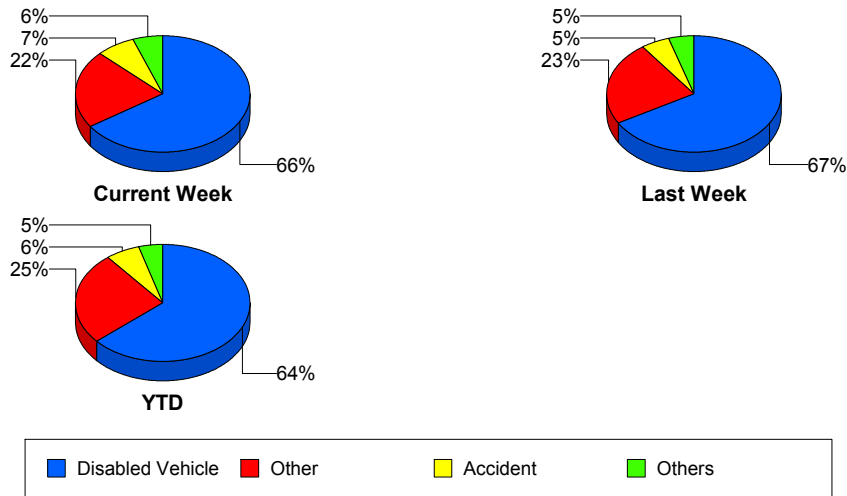
Police Activity

	<u>Current Week</u>	<u>Last Week</u>	<u>YTD</u>
Number of Events	6	5	92
Number of Incidents	2	4	50
TMC Detection (min.)	0.00	0.00	0.08
TMC Verification (min.)	0.00	2.88	1.17
TMC Response (min.)	23.17	21.67	15.60
RR Dispatch Time (min.)	11.17	14.61	5.78
RR Response Time (min.)	10.89	7.06	10.66
Event Clearance (min.)	46.56	156.93	56.36
Roadway Clearance (min.)	100.38	170.83	76.18
Incident Clearance (min.)	104.99	182.31	75.43
# of Events w/ RR/SIRV	6	4	75
RR/SIRV Assists	6	4	75
RR/SIRV Activities	6	9	83

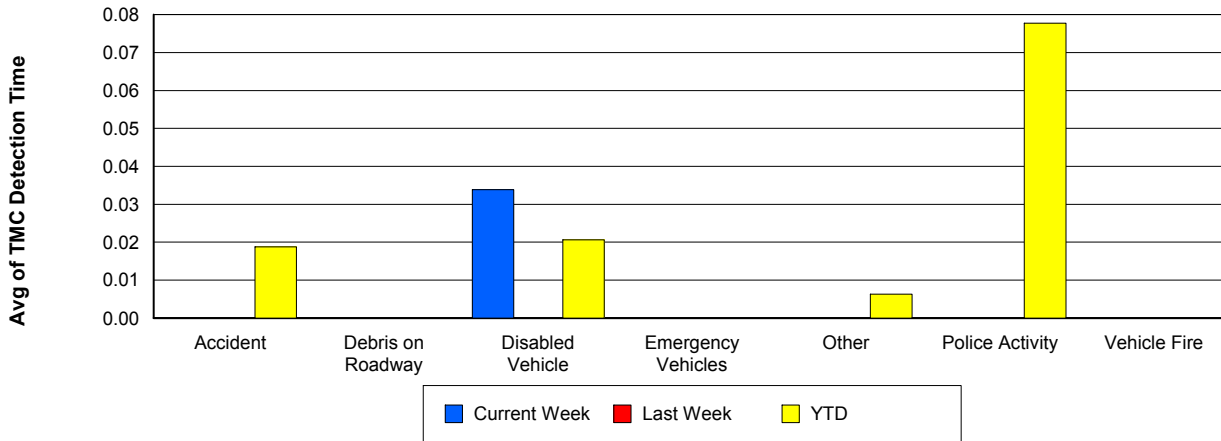
Vehicle Fire

	<u>Current Week</u>	<u>YTD</u>
Number of Events	5	68
Number of Incidents	4	46
TMC Detection (min.)	0.00	0.00
TMC Verification (min.)	0.95	2.37
TMC Response (min.)	22.62	11.74
RR Dispatch Time (min.)	2.94	2.11
RR Response Time (min.)	19.68	9.65
Event Clearance (min.)	40.96	63.80
Roadway Clearance (min.)	22.70	49.56
Incident Clearance (min.)	45.32	76.11
# of Events w/ RR/SIRV	5	66
RR/SIRV Assists	5	66
RR/SIRV Activities	6	110

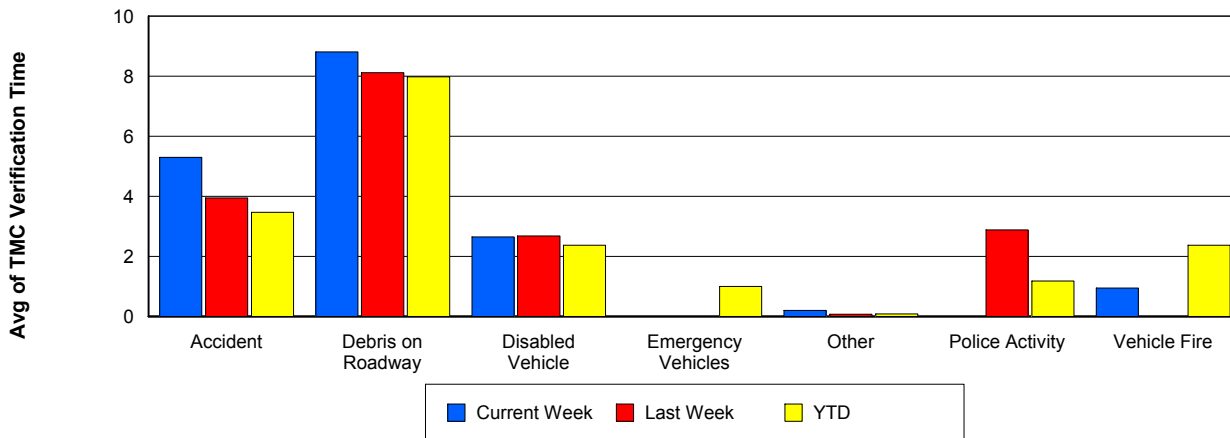
Number of Events / Event Type



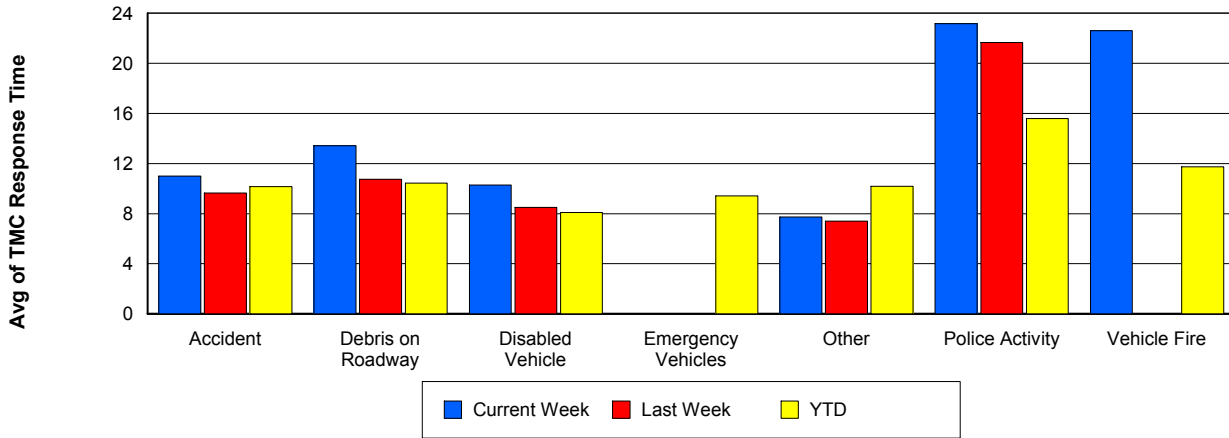
TMC Detection Time



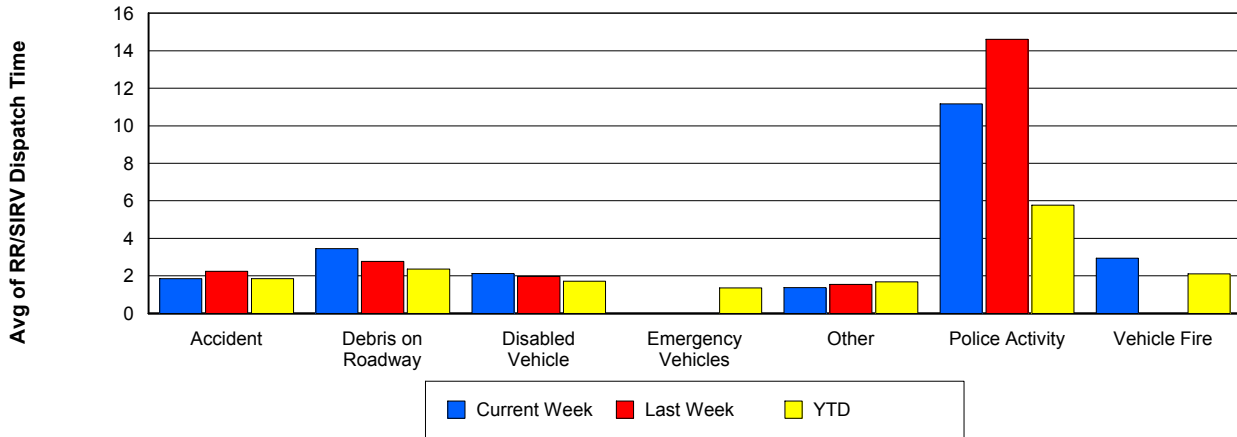
TMC Verification Time



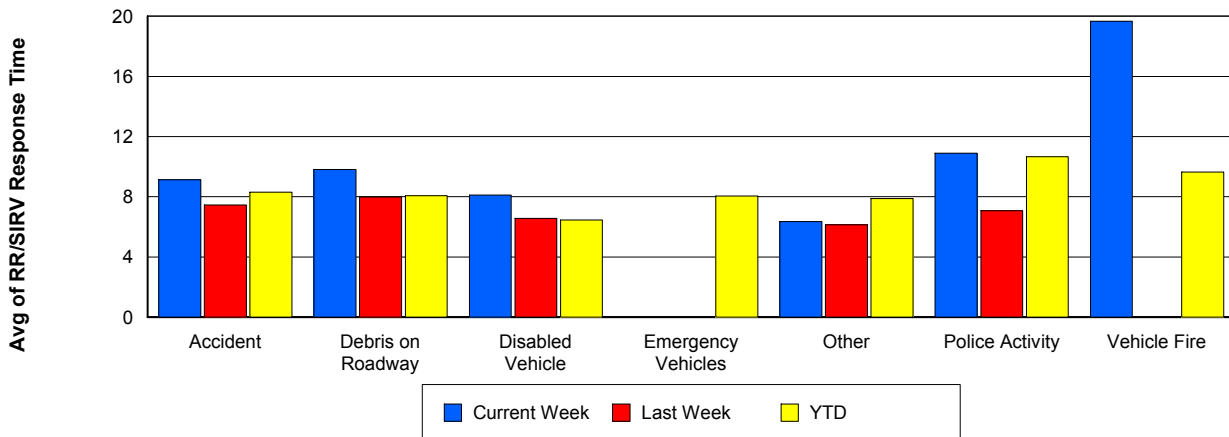
TMC Response Time



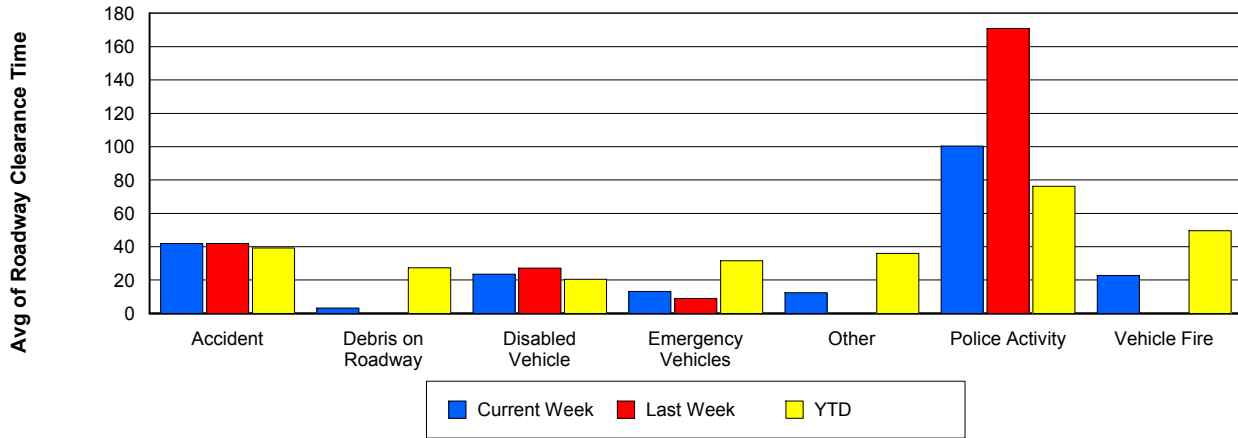
Road Ranger / SIRV Dispatch Time



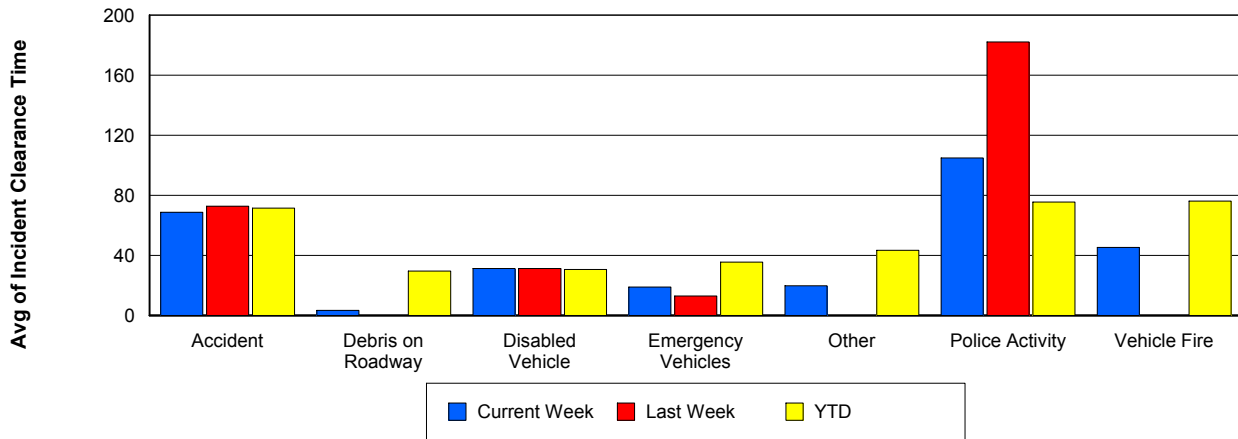
Road Ranger / SIRV Response Time



Roadway Clearance Time (2A)



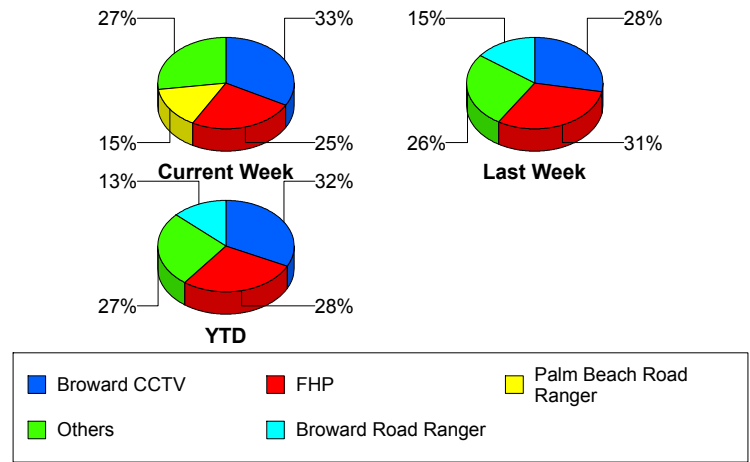
Incident Clearance Time (3B)



Incident Detection Methods

	Current Week	Last Week	YTD
Broward CCTV	29	19	484
Broward Road Ranger	8	10	194
Broward TMC	0	1	10
Broward VideoWall	1	0	21
BSO	1	2	21
County Police	0	0	2
District 4	2	2	40
District 6	0	1	1
FDOT Maintenance	1	0	3
FHP	22	21	420
Fire	0	1	5
Florida's Turnpike	2	2	11
ITMS	1	0	1
ITMS CCTV	2	0	77
Local Police	0	0	1
Media	0	0	2
Motorist	3	0	16
Other	0	0	1
Palm Beach Road Ran	13	9	159
Road Watcher	1	0	9
SIRV	0	0	1
VisioPaD Detection	2	0	19
Total	88	68	1,498

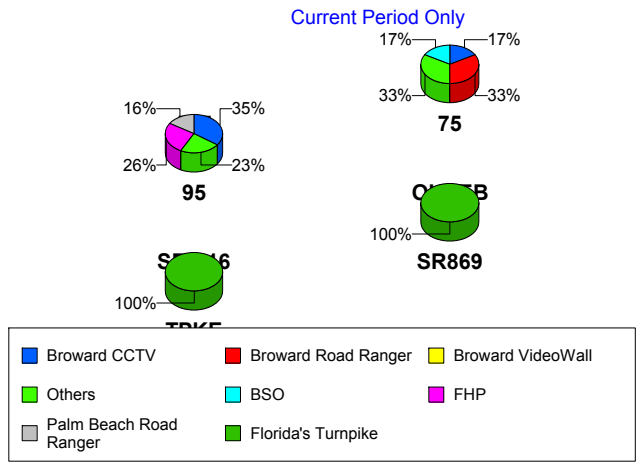
Total Incidents by Detection Method



Incident Detection Methods by Roadway

		Current Week	Last Week	YTD
595	Broward CCTV	0	1	12
	Broward Road Ranger	0	0	7
	BSO	0	0	3
	County Police	0	0	1
	FHP	0	0	6
	VisioPaD Detection	0	0	1
	Total	0	1	30
75	Broward CCTV	1	1	43
	Broward Road Ranger	2	0	15
	BSO	1	2	14
	District 4	0	0	3
	District 6	0	1	1
	FHP	1	0	23
	Fire	0	1	4
	Road Watcher	0	0	1
	VisioPaD Detection	1	0	8
	Total	6	5	112
95	Broward CCTV	28	17	429
	Broward Road Ranger	6	7	132
	Broward TMC	0	1	10
	Broward VideoWall	1	0	21
	BSO	0	0	2
	County Police	0	0	1
	District 4	2	2	36
	FDOT Maintenance	1	0	3
	FHP	21	21	389
	Fire	0	0	1
	ITMS	1	0	1
	ITMS CCTV	2	0	77
	Local Police	0	0	1
	Media	0	0	2

Total Events by Roadway and Detection Method

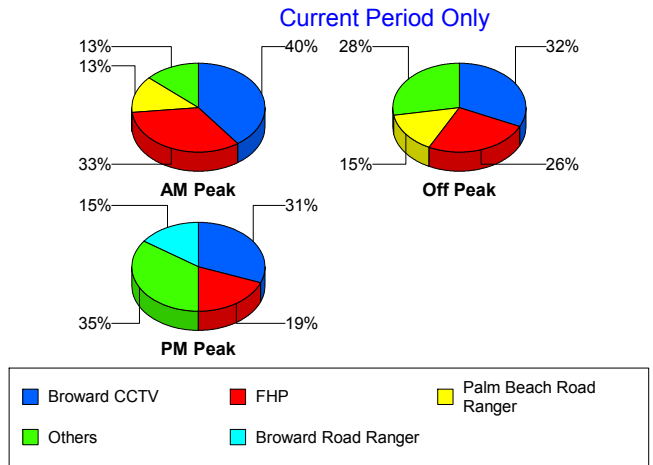


		Current Week	Last Week	YTD
95	Motorist	3	0	16
	Other	0	0	1
	Palm Beach Road Ran	13	9	159
	Road Watcher	1	0	6
	SIRV	0	0	1
	VisioPaD Detection	1	0	10
	Total	80	57	1,298
SR-816	Broward Road Ranger	0	3	39
	BSO	0	0	1
	District 4	0	0	1
	FHP	0	0	1
	Road Watcher	0	0	2
	Total	0	3	44
SR869	Broward Road Ranger	0	0	1
	BSO	0	0	1
	FHP	0	0	1
	Florida's Turnpike	1	0	1
	Total	1	0	4
TPKE	Florida's Turnpike	1	2	10
	Total	1	2	10
Total		88	68	1,498

Incident Detection Methods by Peak Period

		Current Week	Last Week	YTD
AM Peak	Broward CCTV	6	5	96
	Broward Road Ranger	1	7	48
	Broward TMC	0	1	1
	Broward VideoWall	0	0	13
	BSO	0	1	4
	County Police	0	0	1
	District 4	0	1	10
	FHP	5	3	75
	Fire	0	1	2
	Florida's Turnpike	1	0	2
	ITMS CCTV	0	0	20
	Local Police	0	0	1
	Media	0	0	1
	Motorist	0	0	2
	Palm Beach Road Ran	2	4	47
	Road Watcher	0	0	2
	SIRV	0	0	1
	VisioPaD Detection	0	0	1
	Total	15	23	327
	Off Peak	Broward CCTV	15	11
Broward Road Ranger		3	2	82
Broward TMC		0	0	6
Broward VideoWall		1	0	6
BSO		1	0	10
County Police		0	0	1
District 4		0	1	19
District 6		0	1	1
FDOT Maintenance		1	0	3
FHP		12	12	221
Florida's Turnpike		1	2	8
ITMS		1	0	1

Total Events by Peak Period and Detection Method

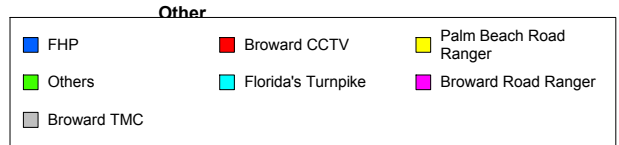
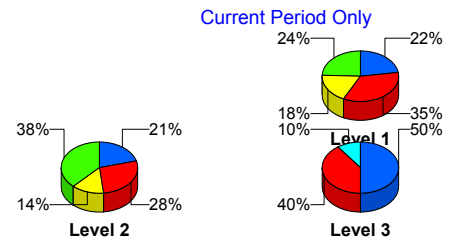


		Current Week	Last Week	YTD
Off Peak	ITMS CCTV	1	0	44
	Motorist	2	0	8
	Other	0	0	1
	Palm Beach Road Ran	7	3	77
	Road Watcher	0	0	4
	VisioPaD Detection	2	0	12
	Total	47	32	766
PM Peak	Broward CCTV	8	3	126
	Broward Road Ranger	4	1	64
	Broward TMC	0	0	3
	Broward VideoWall	0	0	2
	BSO	0	1	7
	District 4	2	0	11
	FHP	5	6	125
	Fire	0	0	3
	Florida's Turnpike	0	0	1
	ITMS CCTV	1	0	13
	Media	0	0	1
	Motorist	1	0	6
	Palm Beach Road Ran	4	2	35
	Road Watcher	1	0	3
	VisioPaD Detection	0	0	6
	Total	26	13	406
Total		88	68	1,498

Incident Detection Methods by Severity

		Current Week	Last Week	YTD
	FHP	0	0	1
	Total	0	0	1
Level 1	Broward CCTV	17	7	291
	Broward Road Ranger	5	8	140
	Broward TMC	0	1	7
	Broward VideoWall	0	0	12
	BSO	1	1	6
	County Police	0	0	1
	District 4	2	2	26
	FHP	11	8	179
	Fire	0	1	2
	ITMS CCTV	1	0	39
	Media	0	0	1
	Motorist	1	0	9
	Other	0	0	1
	Palm Beach Road Ran	9	5	107
	Road Watcher	1	0	8
	VisioPaD Detection	1	0	9
	Total	49	33	838
	Level 2	Broward CCTV	8	8
Broward Road Ranger		3	1	44
Broward TMC		0	0	3
Broward VideoWall		1	0	9
BSO		0	0	1
District 4		0	0	10
FDOT Maintenance		1	0	3
FHP		6	8	180
Fire		0	0	1
Florida's Turnpike		1	0	1
ITMS		1	0	1
ITMS CCTV		1	0	32

Total Events by Severity and Detection Method



		Current Week	Last Week	YTD
Level 2	Local Police	0	0	1
	Motorist	2	0	7
	Palm Beach Road Ran	4	3	40
	Road Watcher	0	0	1
	SIRV	0	0	1
	VisioPaD Detection	1	0	8
	Total	29	20	490
Level 3	Broward CCTV	4	4	46
	Broward Road Ranger	0	1	10
	BSO	0	1	14
	County Police	0	0	1
	District 4	0	0	4
	District 6	0	1	1
	FHP	5	5	61
	Fire	0	0	2
	Florida's Turnpike	1	2	10
	ITMS CCTV	0	0	6
	Media	0	0	1
	Palm Beach Road Ran	0	1	12
	VisioPaD Detection	0	0	2
	Total	10	15	170
Total	88	68	1,498	

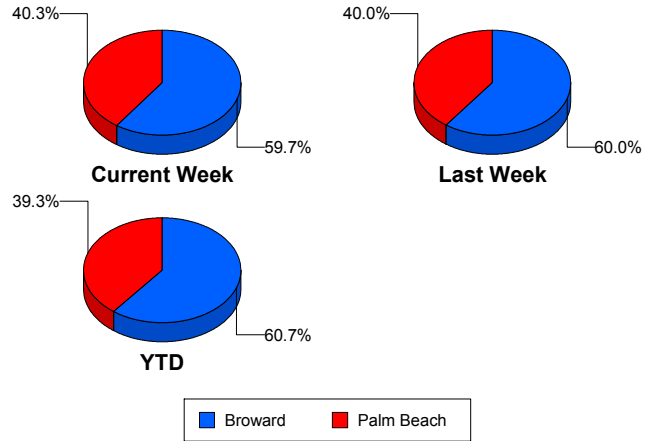
Road Ranger / SIRV Performance Measures

Road Ranger / SIRV Performance By County

Values presented are:
 - Total Events with a RR/SIRV Response
 - Total RR/SIRV Responses,
 - Total Activities Performed

	Current We	Last Week	YTD
Broward	940	990	18,461
	1,033	1,063	19,795
	1,073	1,127	20,557
Palm Beach	679	681	12,405
	696	708	12,822
	748	751	13,612

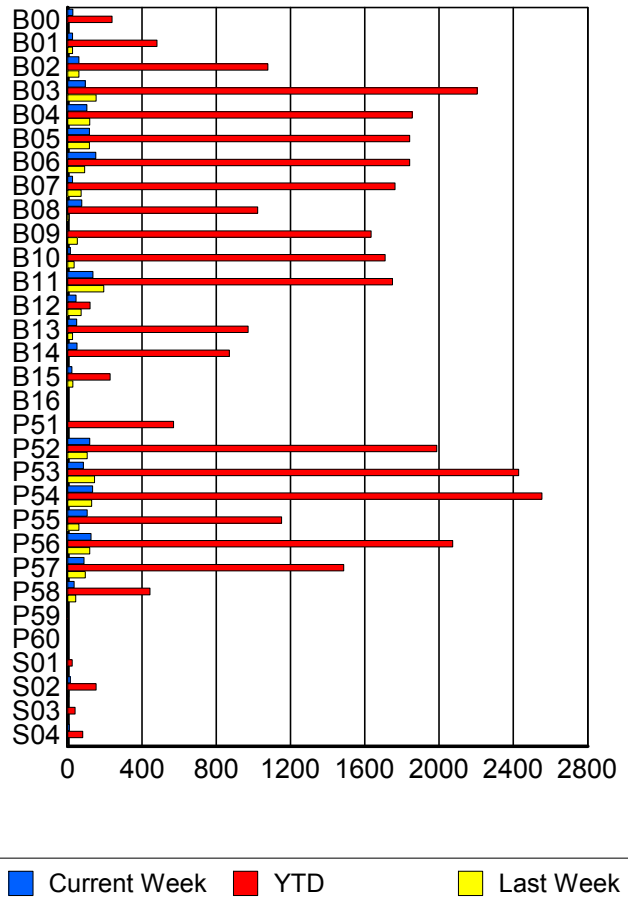
RR/SIRV Responses per County



Road Ranger / SIRV Performance By Truck

	Current We	Last Week	YTD
B00	28	0	235
	29	0	240
	31	0	254
B01	27	26	474
	27	26	482
	29	28	493
B02	61	58	1,064
	61	60	1,079
	63	62	1,102
B03	95	152	2,189
	96	153	2,206
	99	164	2,309
B04	103	117	1,830
	104	119	1,856
	110	128	1,936
B05	117	118	1,828
	117	118	1,841
	119	122	1,901
B06	150	89	1,816
	152	91	1,841
	158	96	1,917
B07	27	73	1,738
	27	73	1,762
	27	77	1,834
B08	76	7	1,008
	77	7	1,024
	80	7	1,062

RR/SIRV Responses per Truck



	Current We	Last Week	YTD
B09	2	51	1,614
	2	53	1,634
	2	63	1,711
B10	14	35	1,684
	15	36	1,709
	15	36	1,763
B11	135	190	1,731
	136	194	1,749
	143	203	1,812
B12	45	72	120
	45	73	121
	47	79	129
B13	47	27	960
	48	27	971
	49	28	993
B14	51	0	860
	51	0	871
	53	0	904
B15	22	29	227
	23	29	229
	23	30	243
B16	0	0	1
	0	0	1
	0	0	1
P51	0	2	561
	0	2	571
	0	2	603
P52	118	105	1,964
	119	105	1,987
	126	110	2,108
P53	84	144	2,403
	84	145	2,429
	94	154	2,588
P54	133	127	2,520
	134	129	2,554
	142	132	2,709
P55	106	61	1,143
	106	61	1,152
	113	63	1,203
P56	126	115	2,048
	126	119	2,074
	138	126	2,212
P57	89	94	1,470
	89	95	1,487
	94	109	1,583

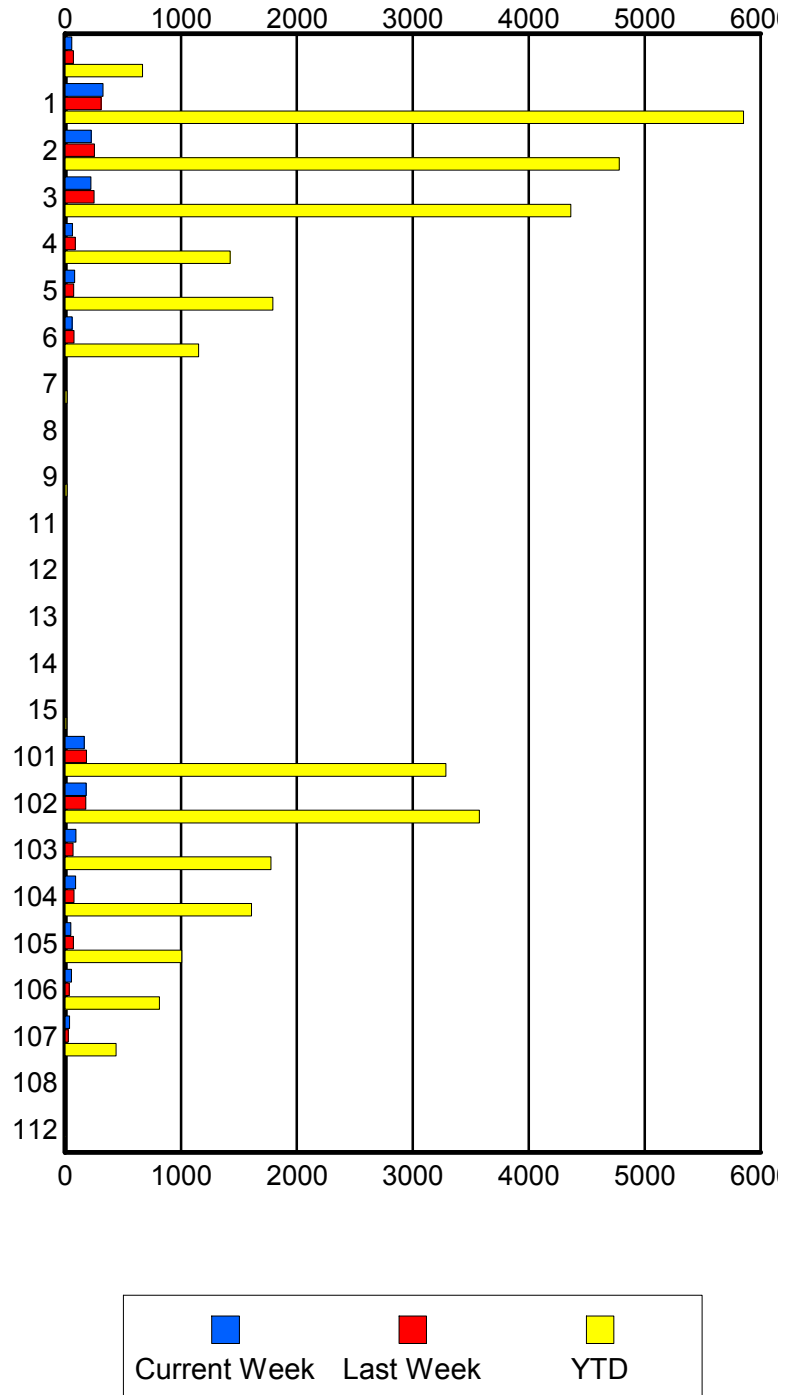
	Current We	Last Week	YTD
P58	35	43	440
	36	43	444
	39	46	472
P59	1	0	2
	1	0	2
	1	0	2
P60	0	0	1
	0	0	1
	0	0	1
S01	1	1	25
	1	1	25
	1	1	27
S02	14	6	148
	14	6	153
	14	6	165
S03	0	3	38
	0	3	41
	0	3	44
S04	9	3	80
	9	3	81
	11	3	88

Road Ranger / SIRV Performance By Beat

	Current We	Last Week	YTD
	57	72	649
	58	72	668
	60	76	707
1	306	296	5,583
	327	310	5,851
	341	327	6,083
2	221	245	4,636
	226	254	4,780
	236	272	4,984
3	218	245	4,260
	222	250	4,363
	225	263	4,538
4	63	85	1,399
	63	88	1,425
	67	96	1,477
5	82	72	1,777
	84	74	1,793
	89	78	1,841
6	61	74	1,130
	61	78	1,153
	63	81	1,185
7	0	0	16
	0	0	17
	0	0	18
8	9	0	9
	9	0	9
	9	0	9
9	0	0	17
	0	0	17
	0	0	17
11	0	0	2
	0	0	2
	0	0	2
12	0	0	2
	0	0	2
	0	0	2
13	0	0	8
	0	0	8
	0	0	8
14	0	0	4
	0	0	4
	0	0	4
15	0	0	14
	0	0	14
	0	0	14

Values presented are:
 - Total Events with a RR/SIRV Response
 - Total RR/SIRV Responses,
 - Total Activities Performed

RR/SIRV Responses per Beat



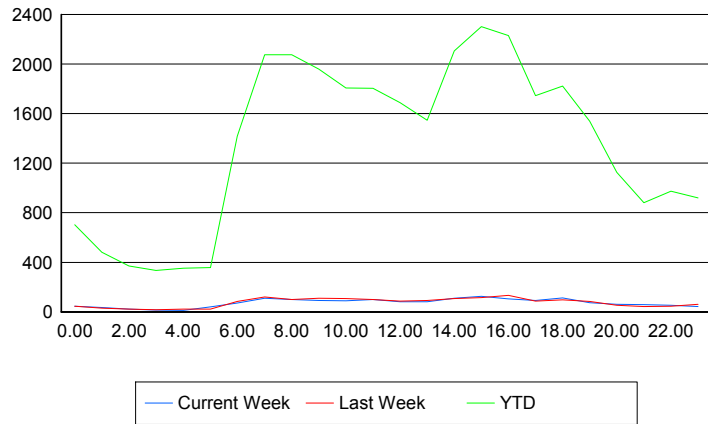
	Current We	Last Week	YTD
101	165	181	3,227
	166	185	3,284
	174	195	3,476
102	182	179	3,522
	183	180	3,574
	193	196	3,783
103	92	67	1,755
	93	69	1,777
	96	74	1,878
104	92	75	1,590
	92	77	1,608
	105	79	1,719
105	50	70	1,001
	50	71	1,007
	57	77	1,085
106	56	35	808
	56	35	815
	62	36	862
107	39	28	438
	39	28	440
	44	28	470
108	0	0	3
	0	0	4
	0	0	4
112	0	0	2
	0	0	2
	0	0	3

Road Ranger / SIRV Performance By Time of Day

Values presented are:
 - Total Events with a RR/SIRV Response
 - Total RR/SIRV Responses,
 - Total Activities Performed

	Current We	Last Week	YTD
12AM-1AM	44	40	672
	45	45	702
	47	50	746
1AM-2AM	31	27	462
	35	29	481
	35	32	499
2AM-3AM	17	23	341
	21	23	370
	25	23	395
3AM-4AM	15	16	315
	15	17	333
	17	17	357
4AM-5AM	13	16	315
	13	22	352
	13	22	371
5AM-6AM	27	21	300
	39	21	358
	39	21	369
6AM-7AM	65	79	1,328
	71	83	1,418
	73	85	1,473
7AM-8AM	103	108	1,966
	111	119	2,074
	120	123	2,164
8AM-9AM	94	89	1,940
	99	100	2,075
	106	107	2,157
9AM-10AM	90	101	1,875
	93	109	1,959
	97	116	2,055
10AM-11AM	82	104	1,717
	88	107	1,806
	94	108	1,888
11AM-12PM	89	93	1,710
	100	100	1,805
	106	102	1,889
12PM-1PM	76	85	1,589
	82	86	1,689
	84	94	1,758

Number of Responses / Hour of the Day



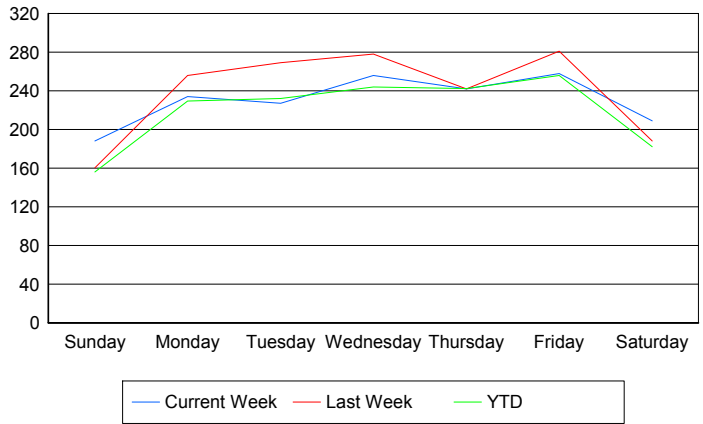
	Current We	Last Week	YTD
1PM-2PM	77	87	1,448
	82	91	1,547
	83	98	1,610
2PM-3PM	105	95	1,972
	111	107	2,105
	118	113	2,220
3PM-4PM	115	109	2,201
	125	115	2,303
	126	126	2,408
4PM-5PM	97	126	2,095
	105	132	2,231
	115	141	2,339
5PM-6PM	89	83	1,649
	92	86	1,746
	99	90	1,828
6PM-7PM	107	95	1,750
	112	96	1,822
	119	107	1,901
7PM-8PM	72	79	1,482
	73	83	1,538
	77	89	1,601
8PM-9PM	60	51	1,074
	61	52	1,127
	64	55	1,168
9PM-10PM	57	43	842
	58	43	882
	62	46	938
10PM-11PM	50	44	933
	54	45	974
	55	48	1,038
11PM-12AM	44	57	890
	44	60	920
	47	65	997

Road Ranger / SIRV Performance By Day of Week

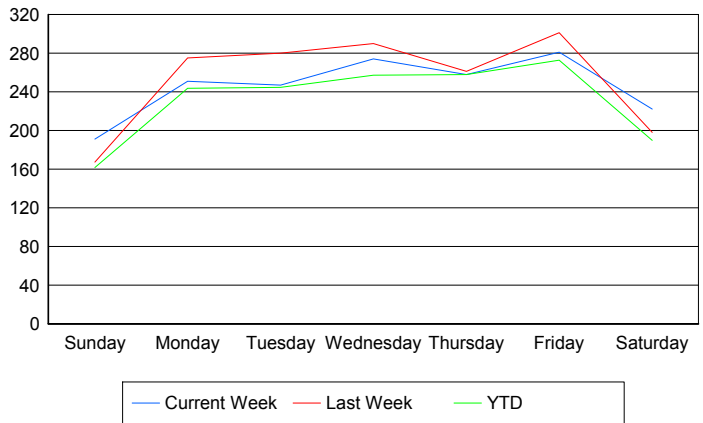
Values presented are:
 - Total Events with a RR/SIRV Response
 - Total RR/SIRV Responses,
 - Total Activities Performed

	Current We	Last Week	YTD
Sunday	193	159	3,075
	196	166	3,187
	202	188	3,337
Monday	234	256	4,524
	251	275	4,805
	270	284	5,011
Tuesday	227	269	4,616
	247	280	4,866
	256	291	5,079
Wednesday	256	278	4,812
	274	290	5,076
	295	307	5,344
Thursday	242	242	4,807
	258	261	5,117
	268	275	5,374
Friday	258	281	5,281
	281	301	5,627
	296	323	5,867
Saturday	209	188	3,779
	222	198	3,939
	234	210	4,157

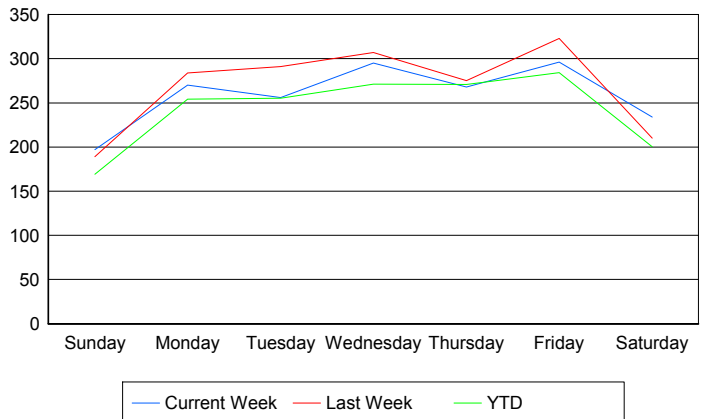
Avg # of events with a RR/SIRV Response per Day of the Week



Avg # of RR/SIRV Responses per Day of the Week



Avg # of RR/SIRV Activities Performed per Day of the Week



Road Ranger / SIRV Responses per Time of Day and Day of Week

