



# Weekly Performance Measures Report Broward, Palm Beach Counties



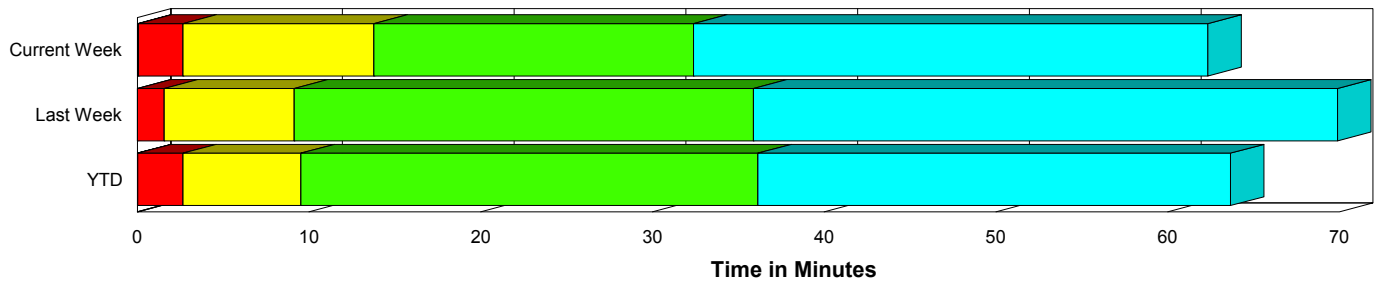
Created on:  
April 29, 2010  
10:11 am

Period From Apr 18, 2010 to Apr 24, 2010

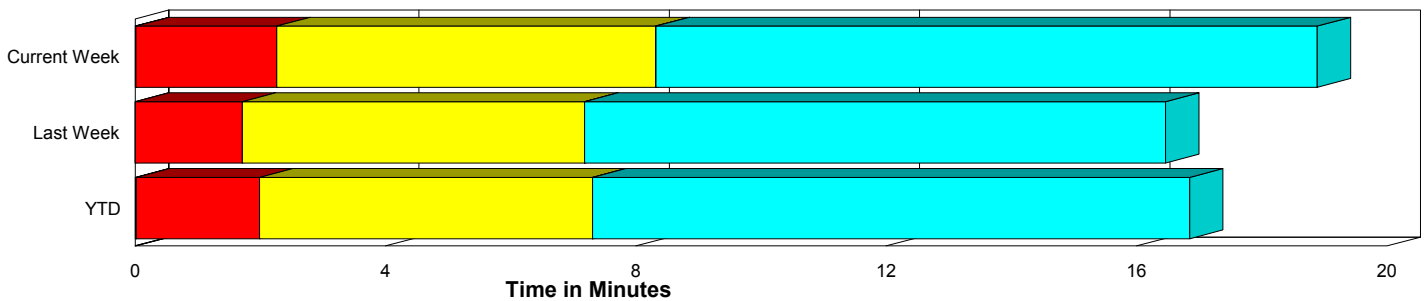
## Performance Measures Summary

	Traffic Events (No Lanes Blocked)			Incidents (Lanes Blocked)		
	<u>This Week</u>	<u>Last Week</u>	<u>YTD</u>	<u>This Week</u>	<u>Last Week</u>	<u>YTD</u>
Number of Events	1,803	1,732	27,925	84	81	1,185
TMC Detection (min.)	0.01	0.00	0.02	0.05	0.01	0.02
TMC Verification (min.)	2.25	1.71	1.97	2.61	1.56	2.65
TMC Response (min.)	9.42	8.01	8.25	13.86	9.17	9.64
RR Dispatch Time (min.)	2.09	1.69	1.69	2.64	1.90	1.93
RR Response Time (min.)	7.47	6.44	6.61	11.20	7.35	7.73
Roadway Clearance (min.)				32.19	35.29	35.58
Event Clearance (min.)	19.99	17.29	17.80	62.08	69.29	63.11
# of Events w/ RR/SIRV	1,513	1,461	23,529	83	80	1,159
RR/SIRV Responses	1,513	1,461	23,529	83	80	1,159
RR/SIRV Activities	1,255	1,253	19,892	117	147	1,976

### Incident Clearance Time-Line



### Traffic Event (Non-Lane Blockage) Time-Line



<span style="color: blue;">■</span> Avg. TMC Detection Time	<span style="color: green;">■</span> Avg. Time from TMC Response to Roadway Clearance*
<span style="color: red;">■</span> Avg. Time from TMC Detection to TMC Verification	<span style="color: cyan;">■</span> Avg. Time from Roadway Clearance to Incident/Event Clearance**
<span style="color: yellow;">■</span> Avg. Time from TMC Verification to TMC Response	

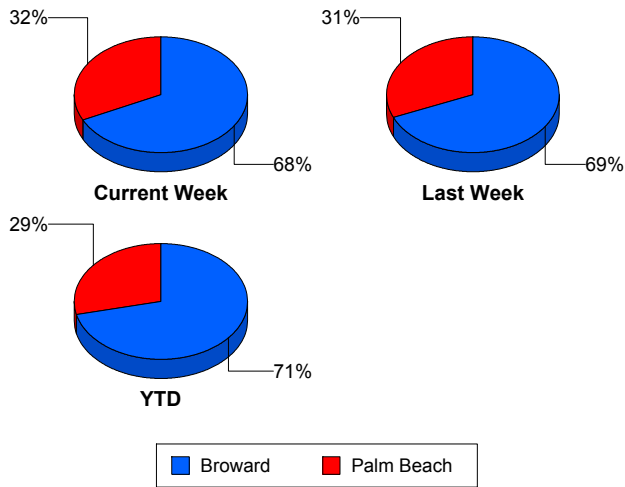
\* Roadway clearance equals all travel lanes open

\*\* Incident clearance equals time when last responder has left the scene

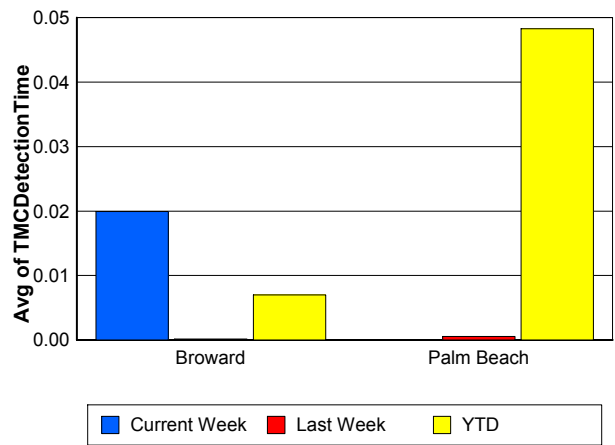
## Performance Measures by County

	Broward			Palm Beach		
	<u>Current Week</u>	<u>Last Week</u>	<u>YTD</u>	<u>Current Week</u>	<u>Last Week</u>	<u>YTD</u>
Number of Events	1,278	1,242	20,782	609	571	8,328
Number of Incidents	44	56	798	40	25	387
TMC Detection (min.)	0.02	0.00	0.01	0.00	0.00	0.05
TMC Verification (min.)	1.26	1.18	1.17	4.40	2.86	4.06
TMC Response (min.)	10.09	8.81	9.13	9.14	6.90	7.00
RR Dispatch Time (min.)	1.63	1.09	1.39	3.08	2.94	2.36
RR Response Time (min.)	8.72	7.85	7.84	6.21	4.34	4.73
Event Clearance (min.)	20.70	18.97	19.03	24.31	21.00	21.18
Roadway Clearance (min.)	27.45	32.10	33.09	37.42	42.42	40.72
Incident Clearance (min.)	57.18	69.70	62.26	67.49	68.37	64.24
# of Events w/ RR/SIRV	1,055	1,032	16,902	541	509	7,786
RR/SIRV Responses	1,055	1,032	16,902	541	509	7,786
RR/SIRV Activities	813	873	13,677	559	527	8,191

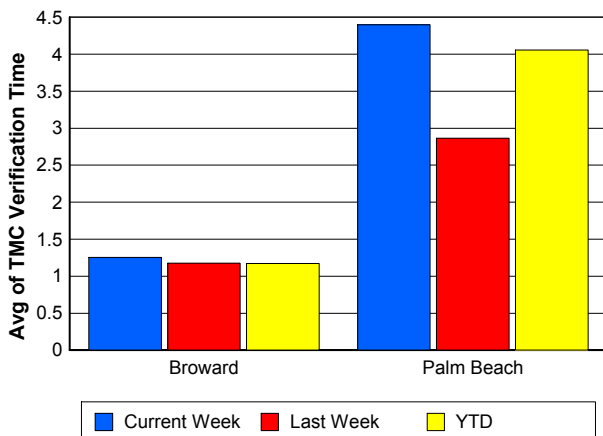
### Number of Events / County



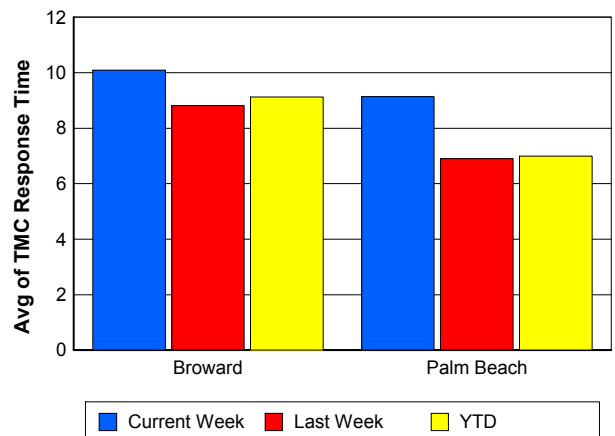
### TMC Detection Time



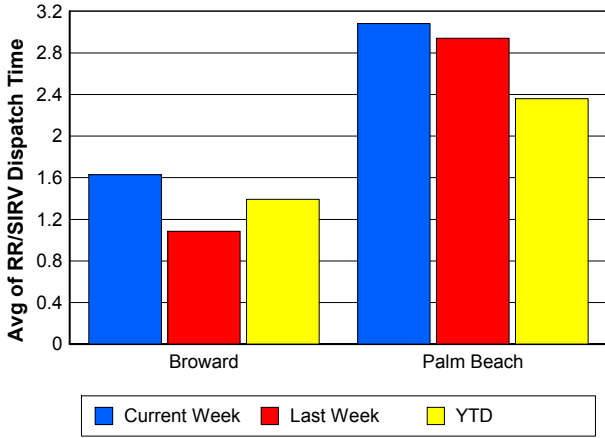
### TMC Verification Time



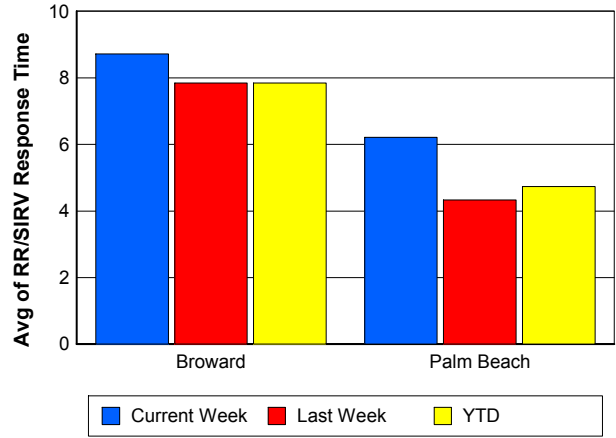
### TMC Response Time



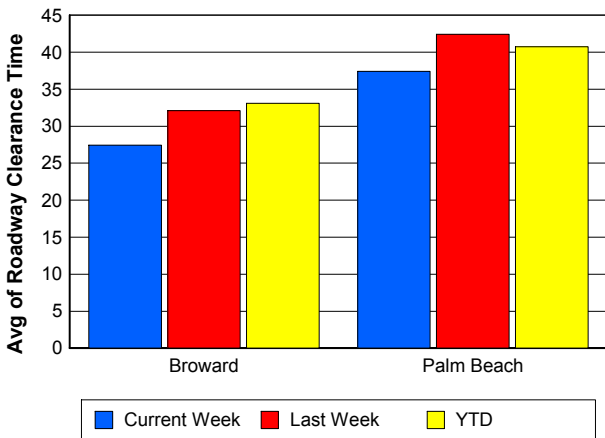
## Road Ranger / SIRV Dispatch Time



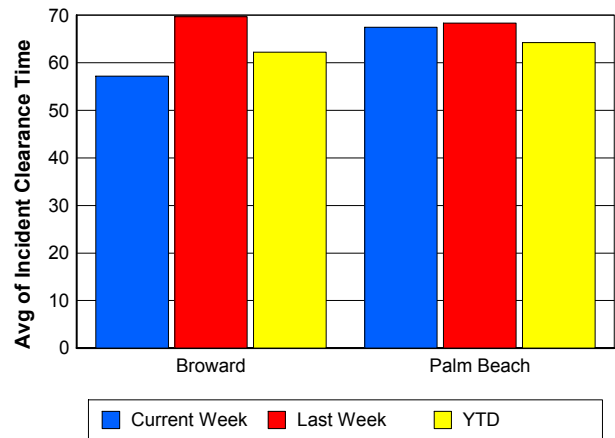
## Road Ranger / SIRV Response Time



## Roadway Clearance Time (2A)



## Incident Clearance Time (3B)

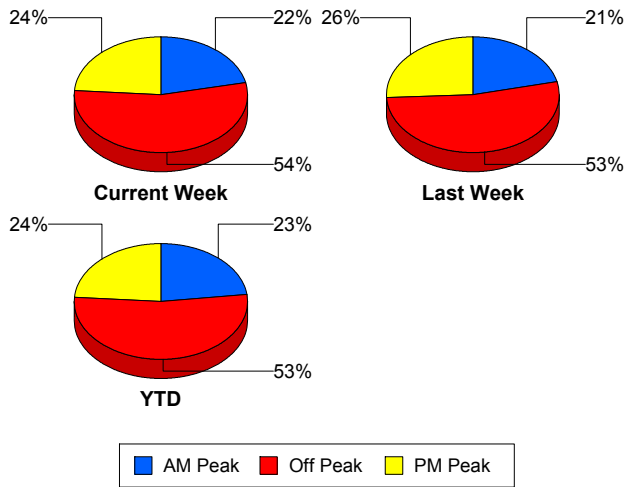


## Performance Measures by Peak Period

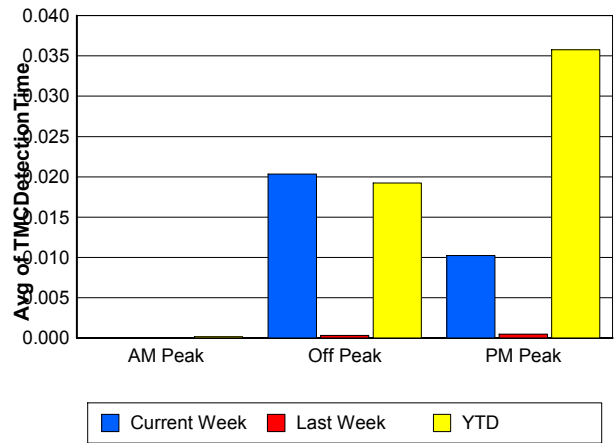
Note: AM peak period is defined as 6am to 10am and PM peak period is defined as 3pm to 7pm.

	AM Peak			Off Peak			PM Peak		
	<u>Current Week</u>	<u>Last Week</u>	<u>YTD</u>	<u>Current Week</u>	<u>Last Week</u>	<u>YTD</u>	<u>Current Week</u>	<u>Last Week</u>	<u>YTD</u>
Number of Events	410	388	6,699	1,025	958	15,481	452	467	6,930
Number of Incidents	22	16	241	46	44	617	16	21	327
TMC Detection (min.)	0.00	0.00	0.00	0.02	0.00	0.02	0.01	0.00	0.04
TMC Verification (min.)	0.87	1.53	1.24	2.46	1.79	2.10	3.12	1.70	2.50
TMC Response (min.)	8.69	8.97	7.76	9.39	8.77	8.71	11.33	6.14	8.06
RR Dispatch Time (min.)	1.26	1.61	1.18	2.01	2.01	1.82	3.11	1.16	1.92
RR Response Time (min.)	7.54	7.34	6.63	7.41	6.89	6.93	8.54	5.14	6.20
Event Clearance (min.)	19.43	20.82	18.15	21.66	20.61	20.07	24.54	16.56	20.15
Roadway Clearance (min.)	29.29	55.94	33.12	33.10	32.84	40.57	33.58	24.67	27.99
Incident Clearance (min.)	56.87	85.22	61.39	61.41	71.85	66.39	71.21	51.78	57.45
# of Events w/ RR/SIRV	341	342	5,794	865	797	12,891	390	402	6,003
RR/SIRV Responses	341	342	5,794	865	797	12,891	390	402	6,003
RR/SIRV Activities	302	306	5,022	740	710	11,331	330	384	5,515

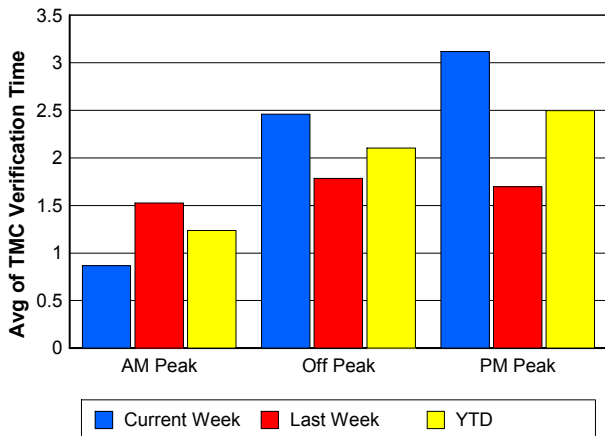
### Number of Events / Peak Period



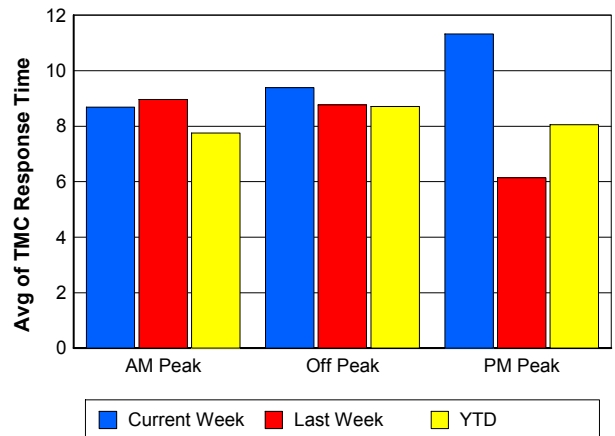
### TMC Detection Time



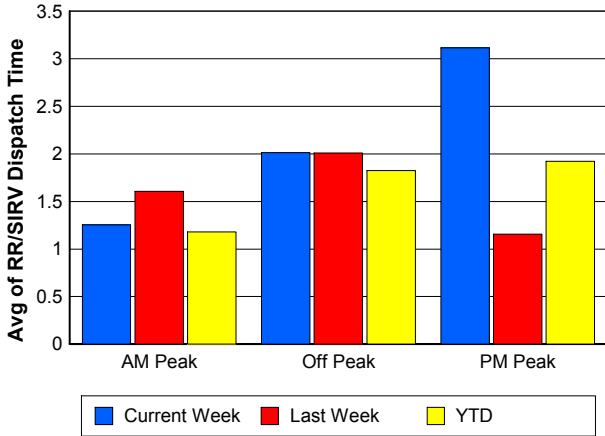
### TMC Verification Time



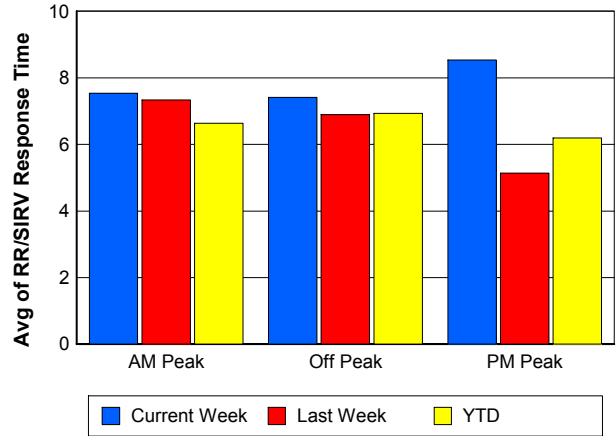
### TMC Response Time



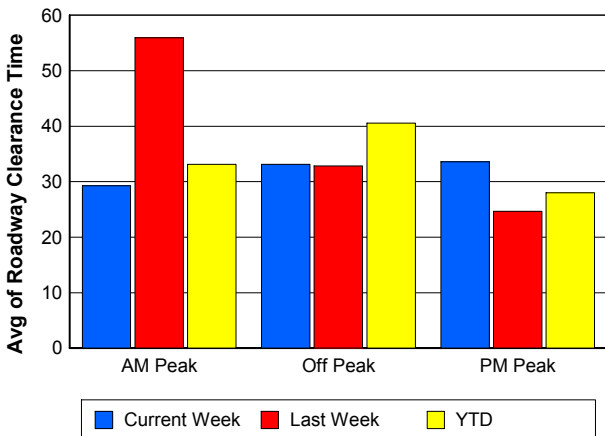
## Road Ranger / SIRV Dispatch Time



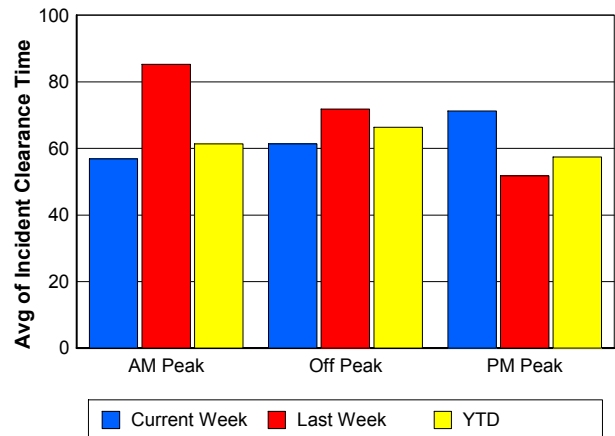
## Road Ranger / SIRV Response Time



## Roadway Clearance Time (2A)



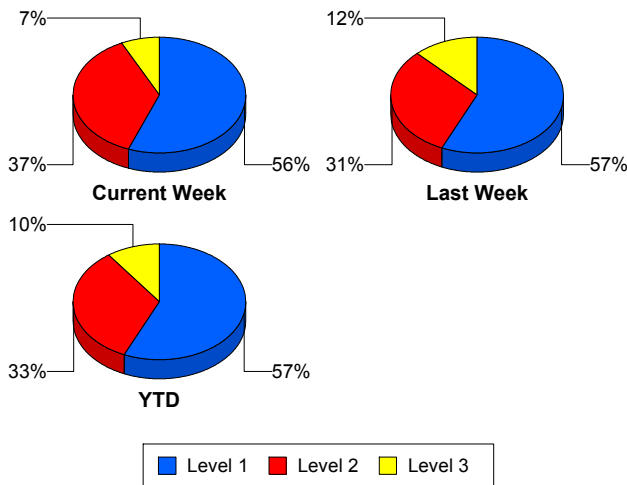
## Incident Clearance Time (3B)



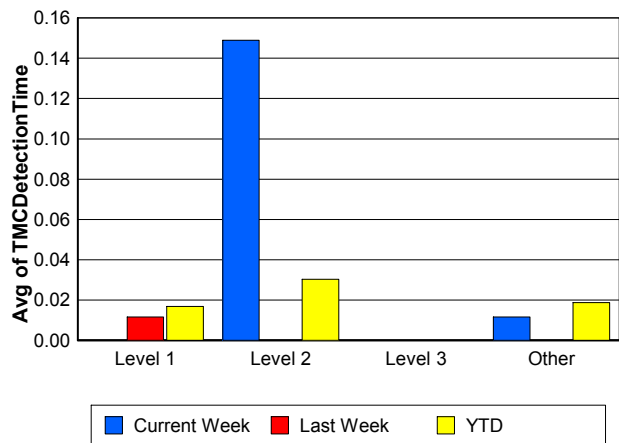
## Performance Measures by Severity

	Level 1			Level 2			Level 3			Other		
	<u>This Week</u>	<u>Last Week</u>	<u>YTD</u>	<u>This Week</u>	<u>Last Week</u>	<u>YTD</u>	<u>This Week</u>	<u>Last Week</u>	<u>YTD</u>	<u>This Week</u>	<u>Last Week</u>	<u>YTD</u>
Number of Events	47	46	672	31	25	393	6	10	118	1,803	1,732	27,927
Number of Incidents	47	46	672	31	25	393	6	10	118	0	0	2
TMC Detection (min.)	0.00	0.01	0.02	0.15	0.00	0.03	0.00	0.00	0.00	0.01	0.00	0.02
TMC Verification (min.)	1.08	1.25	1.36	4.65	0.98	4.56	4.11	4.46	3.63	2.25	1.71	1.97
TMC Response (min.)	11.10	5.07	7.41	16.44	13.92	12.51	22.02	15.31	12.58	9.42	8.01	8.24
RR Dispatch Time (min.)	1.58	0.93	1.30	2.10	3.38	2.73	13.68	2.58	2.86	2.09	1.69	1.69
RR Resp. Time (min.)	9.55	4.31	6.14	14.35	10.54	9.81	8.34	12.73	9.71	7.47	6.44	6.61
Event Clearance (min.)	49.49	52.99	47.36	76.79	89.82	75.20	84.75	92.93	112.03	19.99	17.29	17.81
Roadway Clear. (min.)	16.72	16.12	15.20	48.75	52.26	53.00	67.91	81.00	94.60			-21.46
Incident Clearance (min.)	49.49	52.99	47.36	76.79	89.82	75.20	84.75	92.93	111.56			0.00
# of Events w/ RR/SIRV	47	45	659	30	25	386	6	10	112	1,513	1,461	23,531
RR/SIRV Responses	47	45	659	30	25	386	6	10	112	1,513	1,461	23,531
RR/SIRV Activities	64	75	985	43	52	719	10	20	267	1,255	1,253	19,897

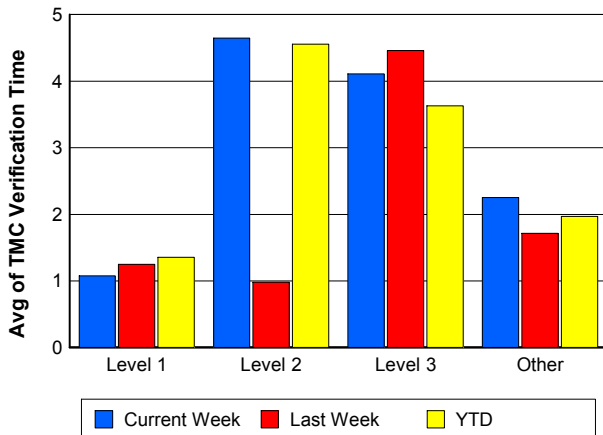
### Number of Events / Severity



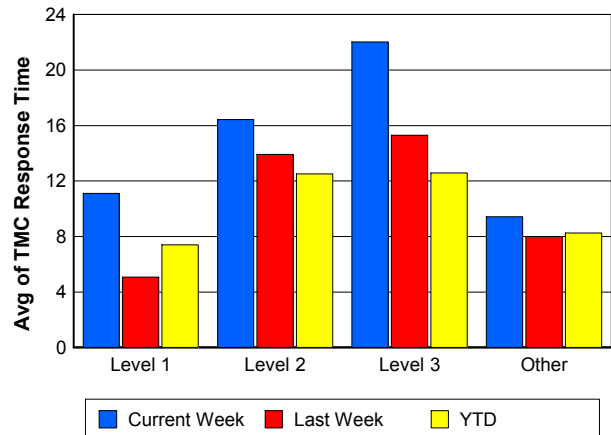
### TMC Detection Time



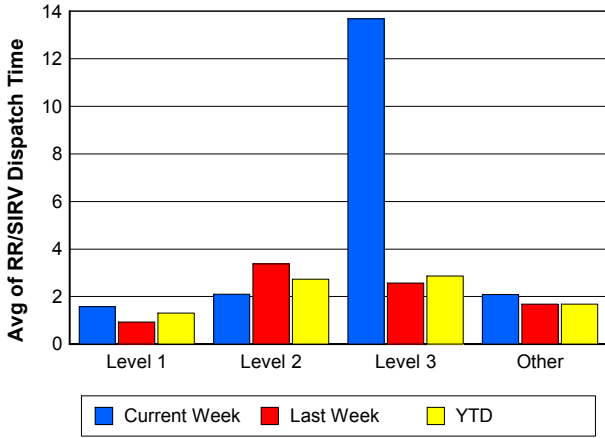
### TMC Verification Time



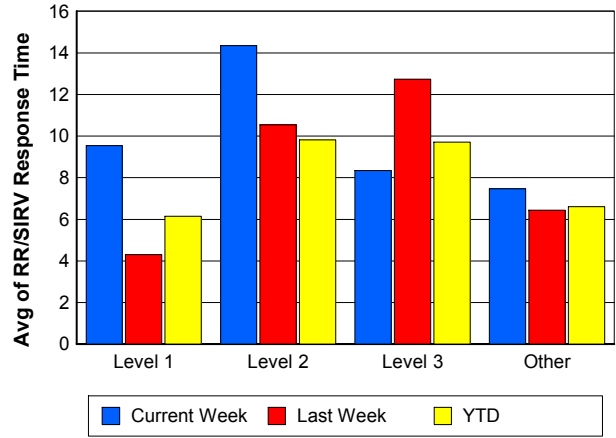
### TMC Response Time



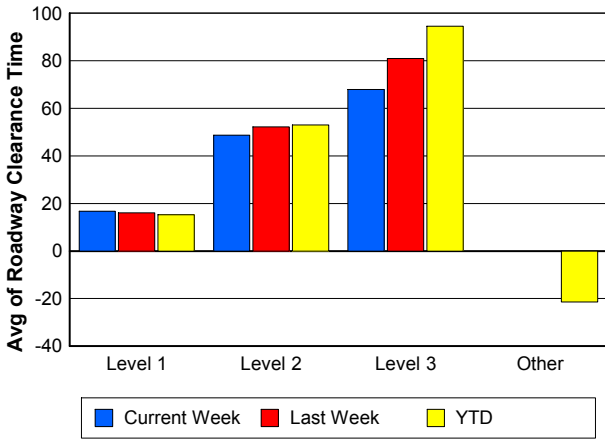
## Road Ranger / SIRV Dispatch Time



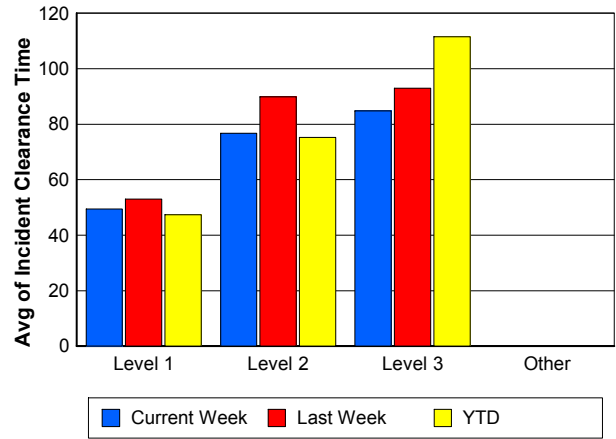
## Road Ranger / SIRV Response Time



## Roadway Clearance Time (2A)



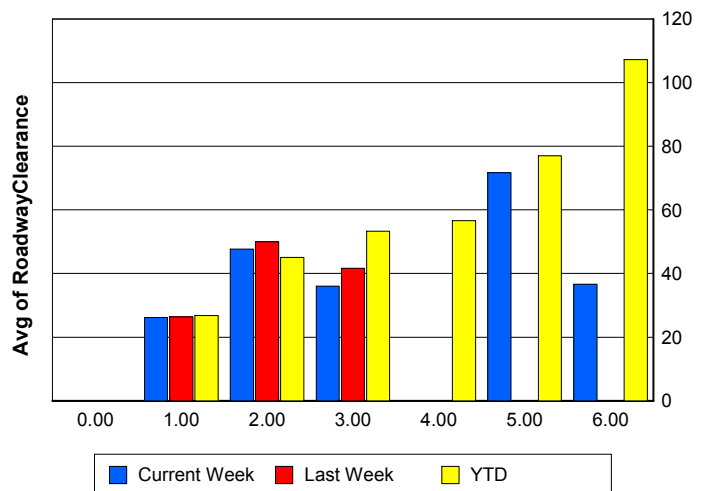
## Incident Clearance Time (3B)



## Roadway Clearance by Maximum Number of Lanes Blocked

	Current Week	Last Week	YTD
0			
1	26.21	26.38	26.73
2	47.65	50.01	45.03
3	36.04	41.67	53.25
4	0.00	0.00	56.62
5	71.65	0.00	76.97
6	36.60	0.00	107.19

## Roadway Clearance Time (2A)



## Performance Measures by Roadway

**595**

	<u>Current Week</u>	<u>Last Week</u>	<u>YTD</u>
Number of Events	48	29	736
Number of Incidents	1	1	36
TMC Detection (min.)	0.00	0.00	0.00
TMC Verification (min.)	0.72	2.49	1.66
TMC Response (min.)	15.03	15.21	14.66
RR Dispatch Time (min.)	2.21	1.50	2.05
RR Resp. Time (min.)	12.85	13.79	12.60
Event Clearance (min.)	17.50	15.51	19.65
Roadway Clear. (min.)	54.33	20.77	50.76
Incident Clearance (min.)	56.52	68.88	70.20
# of Events w/ RR/SIRV	33	21	527
RR/SIRV Responses	33	21	527
RR/SIRV Activities	23	12	357

**75**

	<u>Current Week</u>	<u>Last Week</u>	<u>YTD</u>
Number of Events	286	274	4,596
Number of Incidents	4	7	83
TMC Detection (min.)	0.00	0.00	0.03
TMC Verification (min.)	2.13	2.68	2.04
TMC Response (min.)	9.32	11.42	10.06
RR Dispatch Time (min.)	1.52	1.45	1.48
RR Resp. Time (min.)	8.19	10.06	8.72
Event Clearance (min.)	19.32	20.21	19.59
Roadway Clear. (min.)	38.10	33.42	44.38
Incident Clearance (min.)	84.43	75.57	86.03
# of Events w/ RR/SIRV	240	224	3,608
RR/SIRV Responses	240	224	3,608
RR/SIRV Activities	200	194	2,968

**95**

	<u>Current Week</u>	<u>Last Week</u>	<u>YTD</u>
Number of Events	1,541	1,497	23,531
Number of Incidents	79	70	1,027
TMC Detection (min.)	0.02	0.00	0.02
TMC Verification (min.)	2.33	1.52	2.00
TMC Response (min.)	9.68	7.46	7.94
RR Dispatch Time (min.)	2.24	1.75	1.74
RR Resp. Time (min.)	7.52	5.83	6.23
Event Clearance (min.)	22.51	19.61	19.68
Roadway Clear. (min.)	31.62	36.58	34.84
Incident Clearance (min.)	61.02	70.94	62.09
# of Events w/ RR/SIRV	1,313	1,283	20,347
RR/SIRV Responses	1,313	1,283	20,347
RR/SIRV Activities	1,139	1,183	18,344

**OKEEB**

	<u>YTD</u>
Number of Events	1
Number of Incidents	0
TMC Detection (min.)	0.00
TMC Verification (min.)	0.00
TMC Response (min.)	0.00
RR Dispatch Time (min.)	0.00
RR Resp. Time (min.)	0.00
Event Clearance (min.)	18.45
Roadway Clear. (min.)	
Incident Clearance (min.)	
# of Events w/ RR/SIRV	1
RR/SIRV Responses	1
RR/SIRV Activities	1

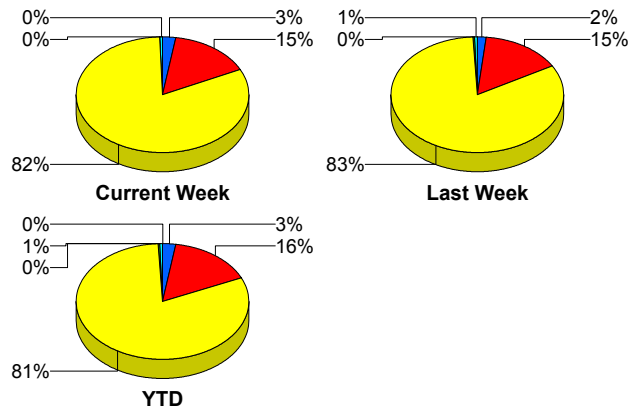
**SR-816**

	<u>Current Week</u>	<u>Last Week</u>	<u>YTD</u>
Number of Events	4	3	49
Number of Incidents	0	3	35
TMC Detection (min.)	0.00	0.00	0.00
TMC Verification (min.)	6.64	0.00	1.41
TMC Response (min.)	13.27	0.38	2.01
RR Dispatch Time (min.)	0.05	0.35	0.13
RR Resp. Time (min.)	13.22	0.03	1.89
Event Clearance (min.)	8.11	16.29	20.02
Roadway Clear. (min.)		14.21	19.80
Incident Clearance (min.)		16.29	22.80
# of Events w/ RR/SIRV	2	3	46
RR/SIRV Responses	2	3	46
RR/SIRV Activities	2	3	50

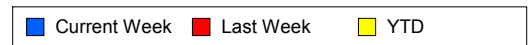
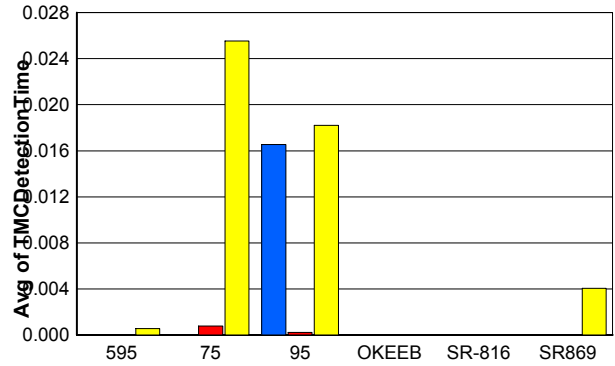
**SR869**

	<u>Current Week</u>	<u>Last Week</u>	<u>YTD</u>
Number of Events	8	10	197
Number of Incidents	0	0	4
TMC Detection (min.)	0.00	0.00	0.00
TMC Verification (min.)	2.44	1.95	1.40
TMC Response (min.)	7.26	5.60	8.48
RR Dispatch Time (min.)	0.78	0.86	0.97
RR Resp. Time (min.)	6.48	5.40	7.77
Event Clearance (min.)	22.06	15.67	17.49
Roadway Clear. (min.)			47.03
Incident Clearance (min.)			78.04
# of Events w/ RR/SIRV	8	10	159
RR/SIRV Responses	8	10	159
RR/SIRV Activities	8	8	148

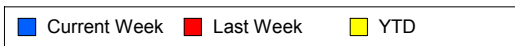
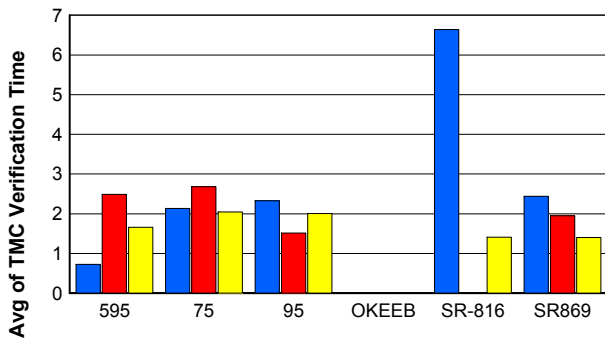
## Number of Events / Roadway



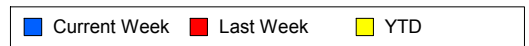
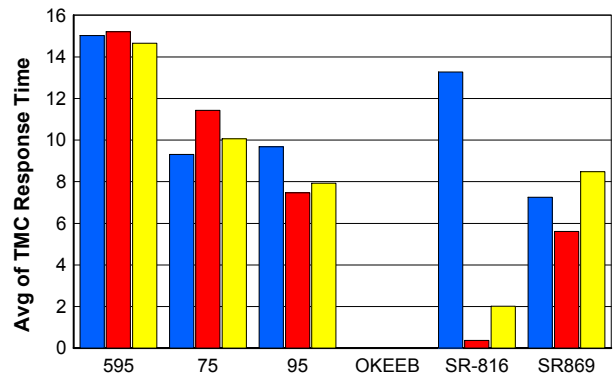
## TMC Detection Time



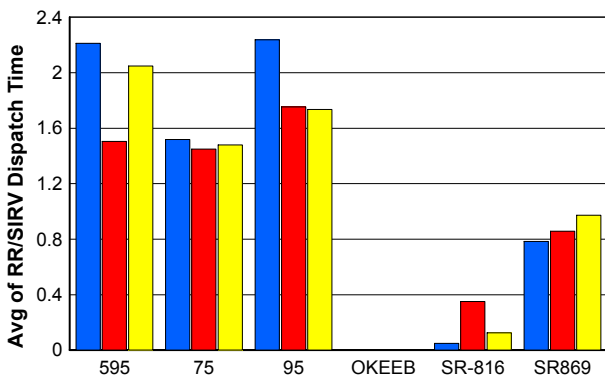
## TMC Verification Time



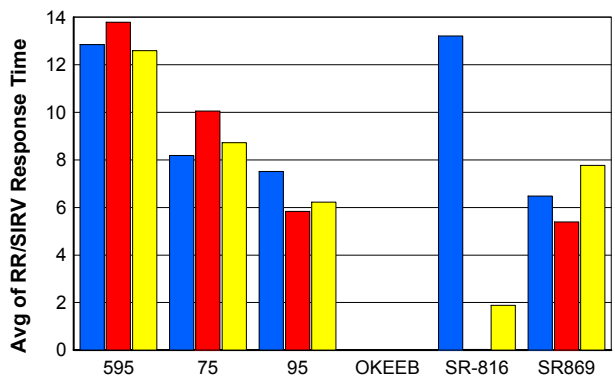
## TMC Response Time



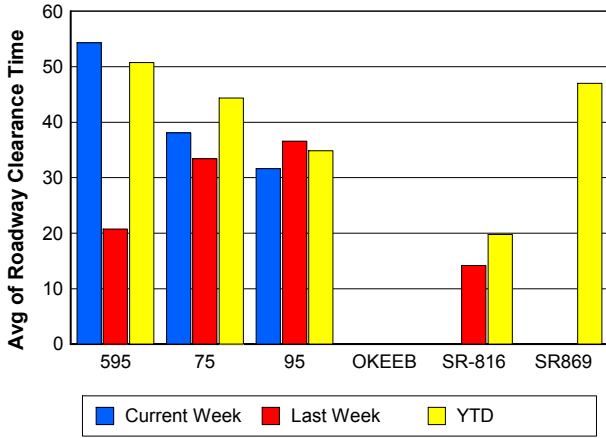
## Road Ranger / SIRV Dispatch Time



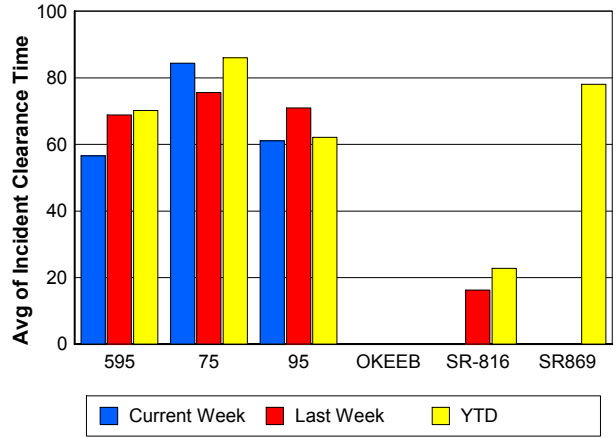
## Road Ranger / SIRV Response Time



## Roadway Clearance Time (2A)



## Incident Clearance Time (3B)



## Performance Measures by Event Type

### Accident

	<u>Current Week</u>	<u>Last Week</u>	<u>YTD</u>
Number of Events	128	123	1,849
Number of Incidents	65	59	853
TMC Detection (min.)	0.04	0.00	0.02
TMC Verification (min.)	4.52	2.84	3.40
TMC Response (min.)	14.77	9.05	9.91
RR Dispatch Time (min.)	2.63	1.95	1.80
RR Response Time (min.)	12.25	7.15	8.13
Event Clearance (min.)	59.10	65.53	56.88
Roadway Clearance (min.)	35.98	40.56	38.46
Incident Clearance (min.)	71.63	83.62	72.17
# of Events w/ RR/SIRV	126	123	1,825
RR/SIRV Assists	126	123	1,825
RR/SIRV Activities	154	182	2,558

### Debris on Roadway

	<u>Current Week</u>	<u>Last Week</u>	<u>YTD</u>
Number of Events	69	74	1,112
Number of Incidents	1	1	16
TMC Detection (min.)	0.00	0.00	0.00
TMC Verification (min.)	11.27	8.72	7.91
TMC Response (min.)	13.48	11.62	10.15
RR Dispatch Time (min.)	3.62	2.93	2.36
RR Response Time (min.)	9.56	8.66	7.79
Event Clearance (min.)	16.92	15.55	13.55
Roadway Clearance (min.)	16.93	9.23	27.14
Incident Clearance (min.)	17.58	12.18	27.96
# of Events w/ RR/SIRV	69	73	1,078
RR/SIRV Assists	69	73	1,078
RR/SIRV Activities	67	74	1,078

### Disabled Vehicle

	<u>Current Week</u>	<u>Last Week</u>	<u>YTD</u>
Number of Events	1,225	1,186	18,182
Number of Incidents	13	13	209
TMC Detection (min.)	0.02	0.00	0.02
TMC Verification (min.)	2.34	1.75	2.32
TMC Response (min.)	8.74	7.35	7.91
RR Dispatch Time (min.)	2.03	1.39	1.64
RR Response Time (min.)	6.94	6.21	6.35
Event Clearance (min.)	21.45	17.85	19.93
Roadway Clearance (min.)	15.96	11.58	20.52
Incident Clearance (min.)	26.84	17.44	31.10
# of Events w/ RR/SIRV	1,131	1,107	17,340
RR/SIRV Assists	1,131	1,107	17,340
RR/SIRV Activities	1,093	1,084	17,273

## Emergency Vehicles

	<u>YTD</u>
Number of Events	22
Number of Incidents	19
TMC Detection (min.)	0.00
TMC Verification (min.)	1.33
TMC Response (min.)	11.34
RR Dispatch Time (min.)	1.49
RR Response Time (min.)	9.76
Event Clearance (min.)	39.20
Roadway Clearance (min.)	35.63
Incident Clearance (min.)	39.64
# of Events w/ RR/SIRV	16
RR/SIRV Assists	16
RR/SIRV Activities	17

## Other

	<u>Current Week</u>	<u>Last Week</u>	<u>YTD</u>
Number of Events	447	410	7,699
Number of Incidents	1	0	17
TMC Detection (min.)	0.00	0.00	0.01
TMC Verification (min.)	0.15	0.02	0.07
TMC Response (min.)	11.76	15.45	10.56
RR Dispatch Time (min.)	1.86	2.75	1.68
RR Response Time (min.)	9.37	5.33	8.19
Event Clearance (min.)	12.67	11.11	10.44
Roadway Clearance (min.)	11.78		39.37
Incident Clearance (min.)	16.45		47.23
# of Events w/ RR/SIRV	253	218	4,204
RR/SIRV Assists	253	218	4,204
RR/SIRV Activities	42	36	695

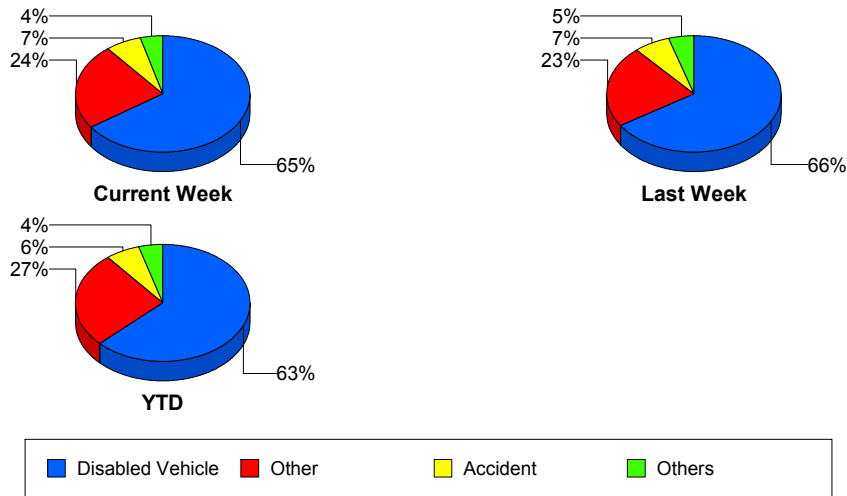
## Police Activity

	<u>Current Week</u>	<u>Last Week</u>	<u>YTD</u>
Number of Events	5	6	70
Number of Incidents	2	5	36
TMC Detection (min.)	0.00	0.00	0.10
TMC Verification (min.)	0.00	2.62	1.09
TMC Response (min.)	10.03	16.48	11.52
RR Dispatch Time (min.)	0.44	1.78	3.44
RR Response Time (min.)	9.60	14.70	10.20
Event Clearance (min.)	39.47	35.46	39.07
Roadway Clearance (min.)	32.34	37.55	42.88
Incident Clearance (min.)	31.83	41.74	48.40
# of Events w/ RR/SIRV	4	6	55
RR/SIRV Assists	4	6	55
RR/SIRV Activities	4	9	57

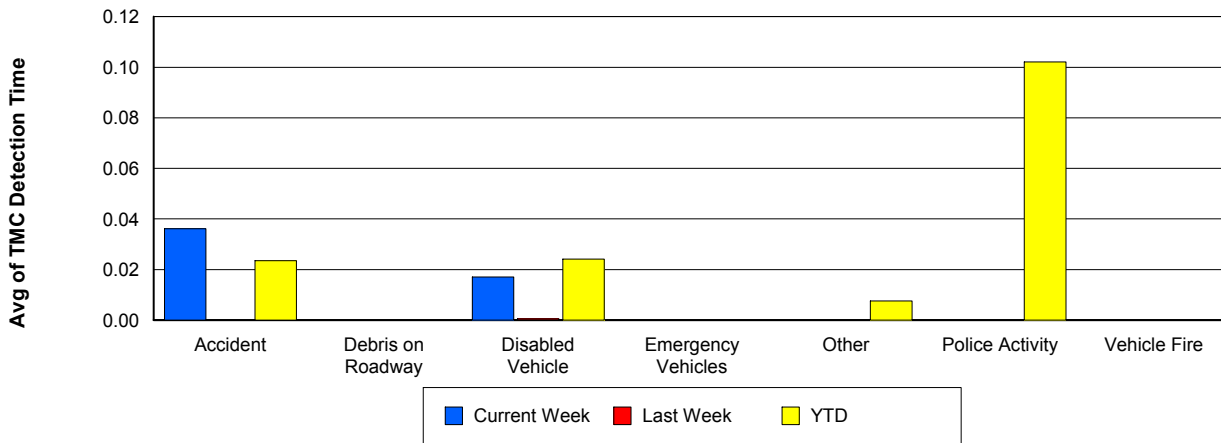
## Vehicle Fire

	<u>Current Week</u>	<u>Last Week</u>	<u>YTD</u>
Number of Events	3	3	55
Number of Incidents	2	3	35
TMC Detection (min.)	0.00	0.00	0.00
TMC Verification (min.)	3.78	0.00	2.87
TMC Response (min.)	11.41	21.13	11.72
RR Dispatch Time (min.)	8.02	3.67	2.14
RR Response Time (min.)	2.50	17.46	9.59
Event Clearance (min.)	50.60	77.03	63.27
Roadway Clearance (min.)	32.41	39.21	50.01
Incident Clearance (min.)	56.45	77.03	78.19
# of Events w/ RR/SIRV	3	3	54
RR/SIRV Assists	3	3	54
RR/SIRV Activities	4	5	87

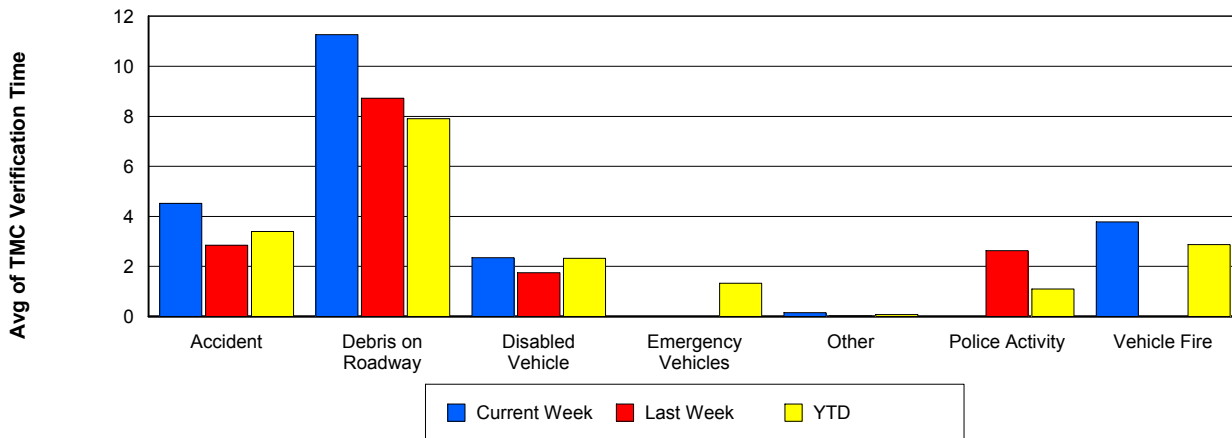
## Number of Events / Event Type



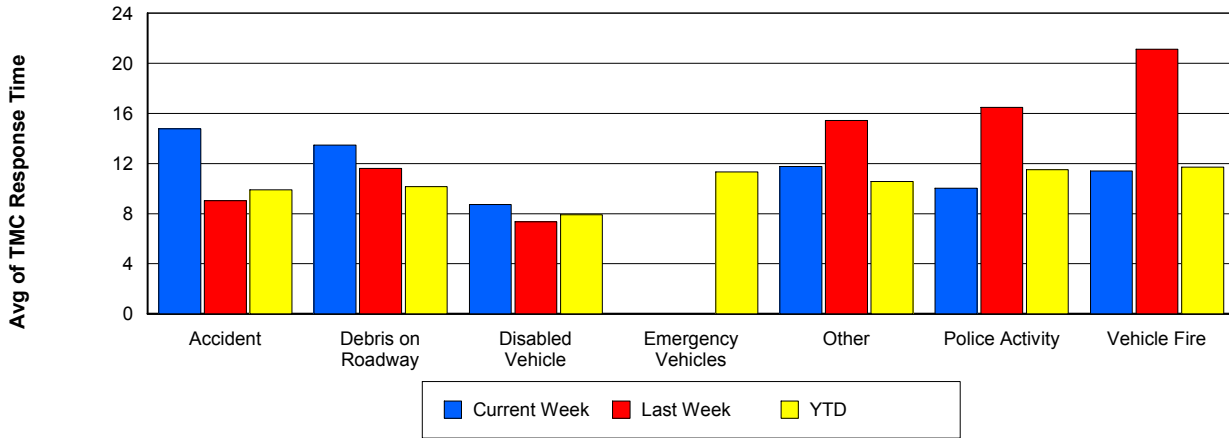
## TMC Detection Time



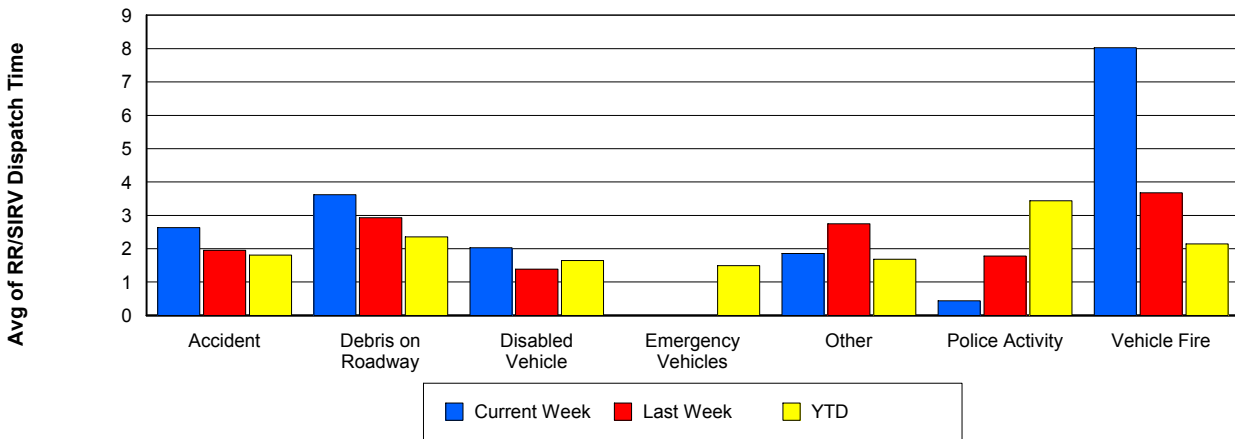
## TMC Verification Time



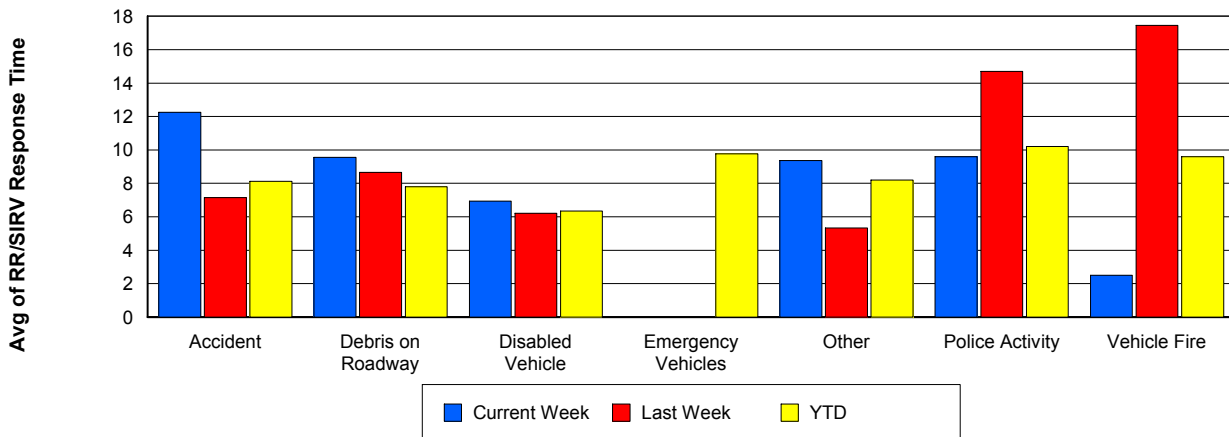
## TMC Response Time



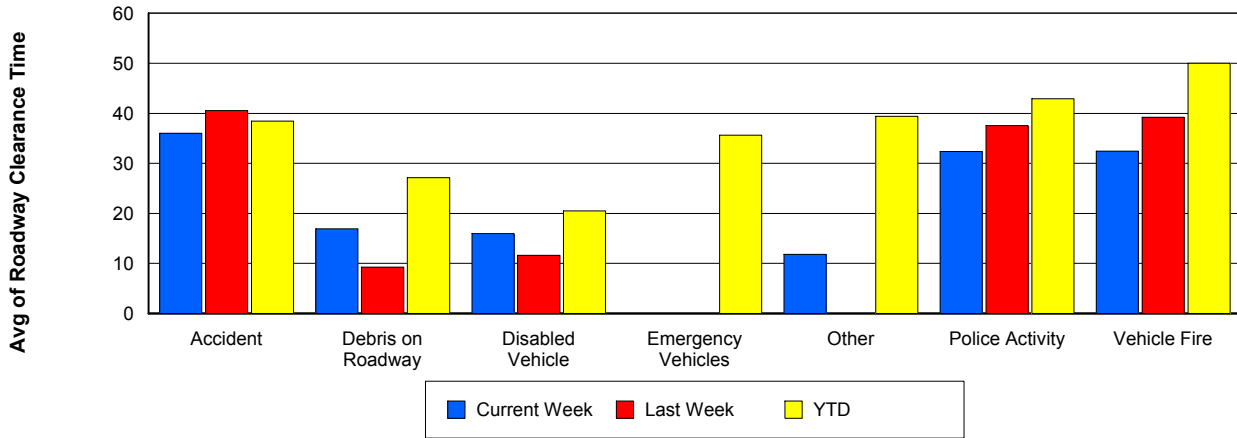
## Road Ranger / SIRV Dispatch Time



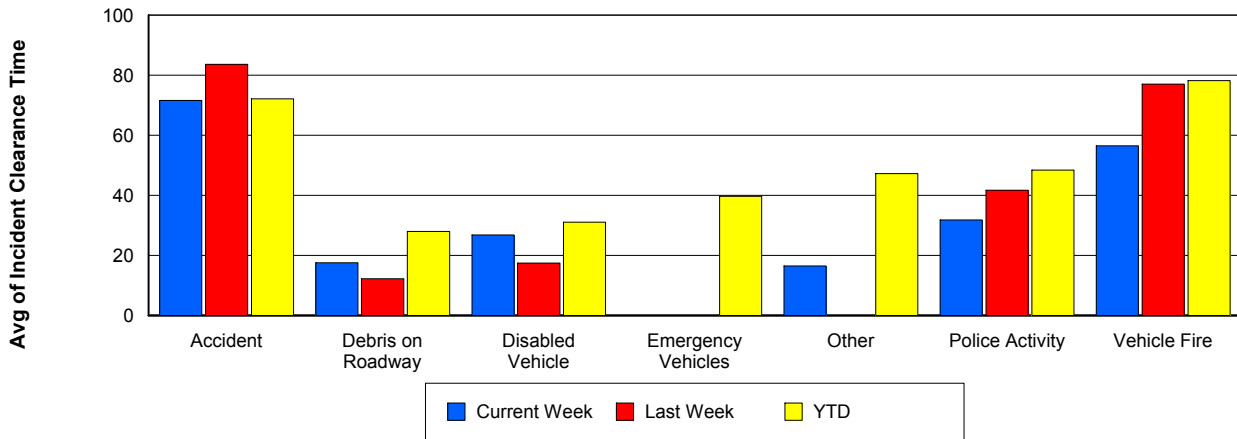
## Road Ranger / SIRV Response Time



## Roadway Clearance Time (2A)



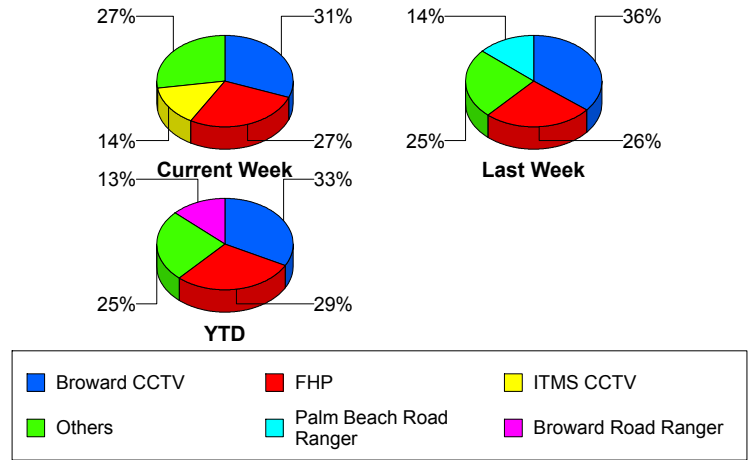
## Incident Clearance Time (3B)



## Incident Detection Methods

	Current Week	Last Week	YTD
Broward CCTV	26	29	384
Broward Road Ranger	5	8	152
Broward TMC	0	0	8
Broward VideoWall	1	0	17
BSO	0	0	15
County Police	0	0	1
District 4	1	4	28
FDOT Maintenance	1	0	2
FHP	23	21	337
Fire	1	0	2
ITMS CCTV	12	5	63
Local Police	0	0	1
Media	0	0	2
Motorist	1	1	11
Other	0	0	1
Palm Beach Road Ran	12	11	119
Road Watcher	1	0	7
SIRV	0	0	1
VisioPaD Detection	0	2	16
<b>Total</b>	<b>84</b>	<b>81</b>	<b>1,167</b>

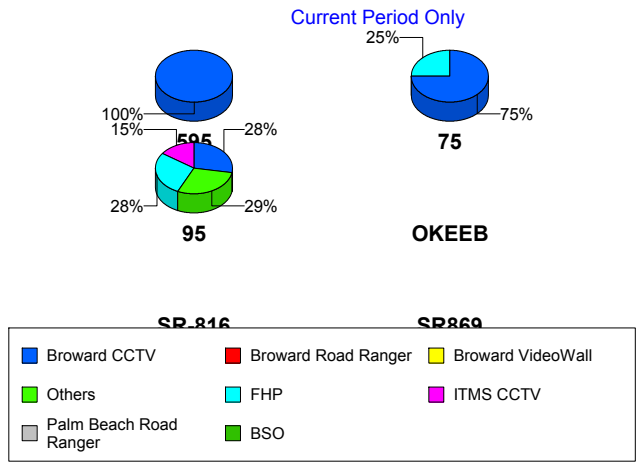
### Total Incidents by Detection Method



## Incident Detection Methods by Roadway

		Current Week	Last Week	YTD
595	Broward CCTV	1	1	9
	Broward Road Ranger	0	0	5
	BSO	0	0	3
	County Police	0	0	1
	FHP	0	0	5
	VisioPaD Detection	0	0	1
	<b>Total</b>	<b>1</b>	<b>1</b>	<b>24</b>
75	Broward CCTV	3	4	32
	Broward Road Ranger	0	0	11
	BSO	0	0	8
	District 4	0	1	3
	FHP	1	1	20
	Fire	0	0	1
	Road Watcher	0	0	1
	VisioPaD Detection	0	1	7
	<b>Total</b>	<b>4</b>	<b>7</b>	<b>83</b>
95	Broward CCTV	22	24	343
	Broward Road Ranger	5	6	104
	Broward TMC	0	0	8
	Broward VideoWall	1	0	17
	BSO	0	0	2
	District 4	1	3	25
	FDOT Maintenance	1	0	2
	FHP	22	19	310
	Fire	1	0	1
	ITMS CCTV	12	5	63
	Local Police	0	0	1
	Media	0	0	2
	Motorist	1	1	11
	Other	0	0	1
Palm Beach Road Ran	12	11	119	

Total Events by Roadway and Detection Method

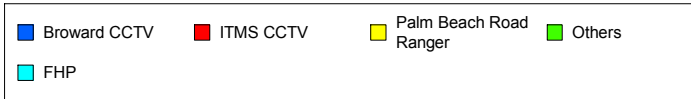
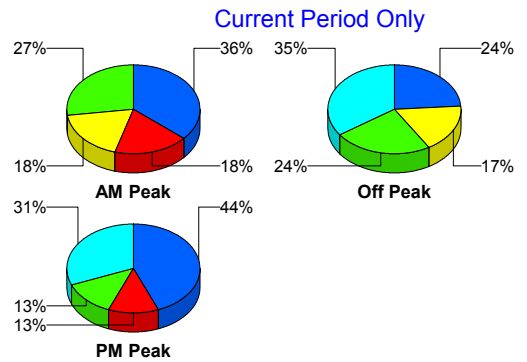


		Current Week	Last Week	YTD
95	Road Watcher	1	0	4
	SIRV	0	0	1
	VisioPaD Detection	0	1	8
	Total	79	70	1,022
SR-816	Broward Road Ranger	0	2	31
	BSO	0	0	1
	FHP	0	1	1
	Road Watcher	0	0	2
	Total	0	3	35
SR869	Broward Road Ranger	0	0	1
	BSO	0	0	1
	FHP	0	0	1
	Total	0	0	3
Total		84	81	1,167

### Incident Detection Methods by Peak Period

		Current Week	Last Week	YTD
AM Peak	Broward CCTV	8	7	68
	Broward Road Ranger	2	1	35
	Broward VideoWall	1	0	11
	BSO	0	0	3
	District 4	0	2	7
	FHP	2	4	59
	ITMS CCTV	4	0	16
	Local Police	0	0	1
	Media	0	0	1
	Motorist	1	0	1
	Palm Beach Road Ran	4	2	35
	Road Watcher	0	0	1
	SIRV	0	0	1
	VisioPaD Detection	0	0	1
	Total	22	16	240

Total Events by Peak Period and Detection Method

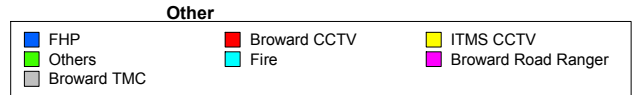
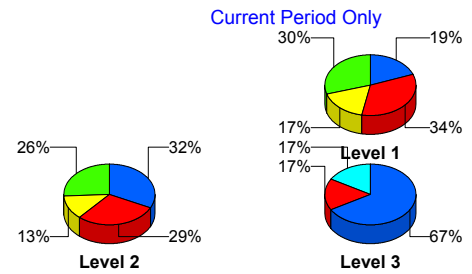


		Current Week	Last Week	YTD
Off Peak	Broward CCTV	11	16	209
	Broward Road Ranger	2	6	65
	Broward TMC	0	0	5
	Broward VideoWall	0	0	5
	BSO	0	0	8
	County Police	0	0	1
	District 4	1	0	14
	FDOT Maintenance	1	0	2
	FHP	16	12	177
	ITMS CCTV	6	4	38
	Motorist	0	0	5
	Other	0	0	1
	Palm Beach Road Ran	8	5	60
	Road Watcher	1	0	4
	VisioPaD Detection	0	1	9
	<b>Total</b>	<b>46</b>	<b>44</b>	<b>603</b>
PM Peak	Broward CCTV	7	6	107
	Broward Road Ranger	1	1	52
	Broward TMC	0	0	3
	Broward VideoWall	0	0	1
	BSO	0	0	4
	District 4	0	2	7
	FHP	5	5	102
	Fire	1	0	2
	ITMS CCTV	2	1	9
	Media	0	0	1
	Motorist	0	1	5
	Palm Beach Road Ran	0	4	24
	Road Watcher	0	0	2
	VisioPaD Detection	0	1	6
	<b>Total</b>	<b>16</b>	<b>21</b>	<b>325</b>
<b>Total</b>	<b>84</b>	<b>81</b>	<b>1,167</b>	

## Incident Detection Methods by Severity

		Current Week	Last Week	YTD
	FHP	0	0	1
	Total	0	0	1
Level 1	Broward CCTV	16	17	237
	Broward Road Ranger	4	6	109
	Broward TMC	0	0	5
	Broward VideoWall	0	0	10
	BSO	0	0	4
	District 4	0	3	16
	FHP	9	9	150
	ITMS CCTV	8	1	30
	Media	0	0	1
	Motorist	1	0	8
	Other	0	0	1
	Palm Beach Road Ran	8	9	81
	Road Watcher	1	0	6
	VisioPaD Detection	0	1	8
	Total	47	46	666
	Level 2	Broward CCTV	9	9
Broward Road Ranger		1	2	36
Broward TMC		0	0	3
Broward VideoWall		1	0	7
BSO		0	0	1
District 4		1	0	8
FDOT Maintenance		1	0	2
FHP		10	7	144
Fire		0	0	1
ITMS CCTV		4	4	29
Local Police		0	0	1
Motorist		0	1	3
Palm Beach Road Ran		4	1	28
Road Watcher		0	0	1

Total Events by Severity and Detection Method



		Current Week	Last Week	YTD
Level 2	SIRV	0	0	1
	VisioPaD Detection	0	1	6
	Total	31	25	386
Level 3	Broward CCTV	1	3	32
	Broward Road Ranger	0	0	7
	BSO	0	0	10
	County Police	0	0	1
	District 4	0	1	4
	FHP	4	5	43
	Fire	1	0	1
	ITMS CCTV	0	0	4
	Media	0	0	1
	Palm Beach Road Ran	0	1	10
	VisioPaD Detection	0	0	2
	Total	6	10	115
Total		84	81	1,167

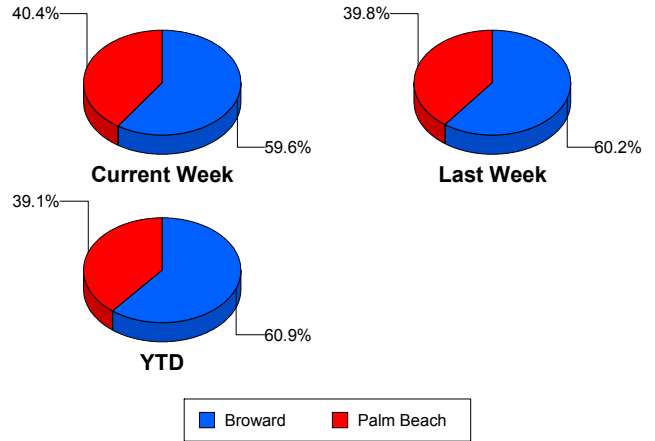
# Road Ranger / SIRV Performance Measures

## Road Ranger / SIRV Performance By County

Values presented are:  
 - Total Events with a RR/SIRV Response  
 - Total RR/SIRV Responses,  
 - Total Activities Performed

	Current We	Last Week	YTD
Broward	885	914	14,577
	941	987	15,589
	964	1,022	16,158
Palm Beach	620	634	9,663
	639	652	9,991
	687	689	10,599

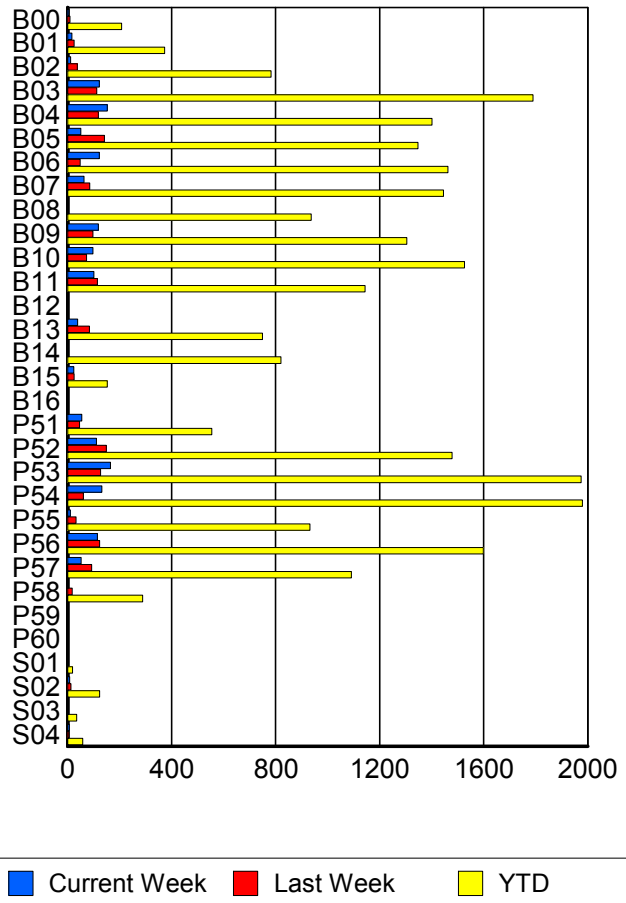
RR/SIRV Responses per County



## Road Ranger / SIRV Performance By Truck

	Current We	Last Week	YTD
B00	5	9	204
	5	9	208
	6	9	219
B01	16	25	365
	16	25	373
	16	25	377
B02	12	37	773
	12	37	783
	12	37	796
B03	120	111	1,775
	122	112	1,790
	125	117	1,872
B04	150	117	1,382
	152	118	1,401
	155	122	1,455
B05	51	141	1,338
	51	142	1,347
	52	146	1,395
B06	120	48	1,444
	122	48	1,462
	126	48	1,516
B07	61	83	1,421
	63	85	1,445
	65	88	1,506
B08	1	0	922
	1	0	937
	1	0	972

RR/SIRV Responses per Truck



	Current We	Last Week	YTD
B09	117	97	1,288
	118	98	1,304
	123	101	1,361
B10	97	72	1,506
	98	73	1,526
	100	76	1,572
B11	100	112	1,133
	101	114	1,144
	103	122	1,183
B12	0	0	3
	0	0	3
	0	0	3
B13	38	82	740
	38	84	749
	38	88	766
B14	1	0	809
	1	0	820
	1	0	851
B15	24	24	151
	24	25	152
	25	27	158
B16	0	0	1
	0	0	1
	0	0	1
P51	53	45	546
	54	46	554
	62	49	586
P52	110	148	1,459
	111	149	1,479
	122	158	1,577
P53	165	125	1,952
	165	127	1,975
	173	134	2,095
P54	130	60	1,952
	132	60	1,980
	140	64	2,101
P55	10	32	923
	10	32	932
	10	32	973
P56	113	120	1,577
	115	123	1,598
	125	128	1,702
P57	52	92	1,077
	52	92	1,091
	54	97	1,154

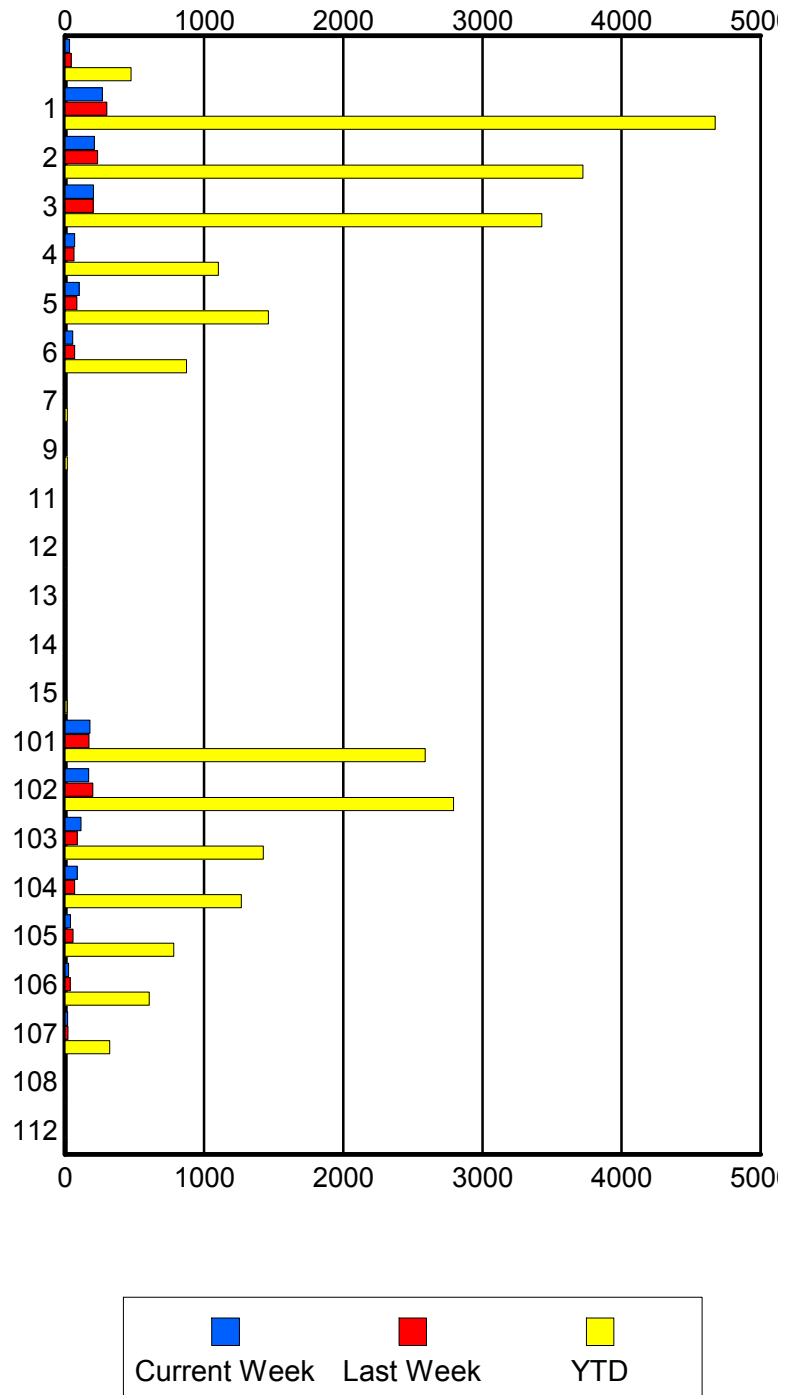
	Current We	Last Week	YTD
P58	0	18	286
	0	18	289
	0	18	308
P59	0	1	1
	0	1	1
	0	1	1
P60	0	0	1
	0	0	1
	0	0	1
S01	1	1	19
	1	1	19
	1	1	21
S02	8	11	118
	8	13	123
	8	15	134
S03	1	1	32
	1	1	35
	1	1	38
S04	6	6	57
	7	6	58
	7	7	63

### Road Ranger / SIRV Performance By Beat

	Current We	Last Week	YTD
	31	40	457
	32	43	474
	33	48	506
1	259	285	4,457
	269	300	4,673
	276	310	4,851
2	208	227	3,618
	211	234	3,723
	218	243	3,873
3	200	196	3,346
	204	201	3,426
	208	210	3,559
4	67	64	1,081
	70	65	1,103
	72	67	1,141
5	99	84	1,450
	100	84	1,461
	101	86	1,495
6	55	65	857
	56	68	873
	58	70	894
7	0	0	16
	0	0	17
	0	0	18
9	0	0	17
	0	0	17
	0	0	17
11	0	0	2
	0	0	2
	0	0	2
12	0	0	2
	0	0	2
	0	0	2
13	0	0	8
	0	0	8
	0	0	8
14	0	0	4
	0	0	4
	0	0	4
15	0	0	14
	0	0	14
	0	0	14
101	178	171	2,542
	180	173	2,588
	188	188	2,733

Values presented are:  
 - Total Events with a RR/SIRV Response  
 - Total RR/SIRV Responses,  
 - Total Activities Performed

### RR/SIRV Responses per Beat



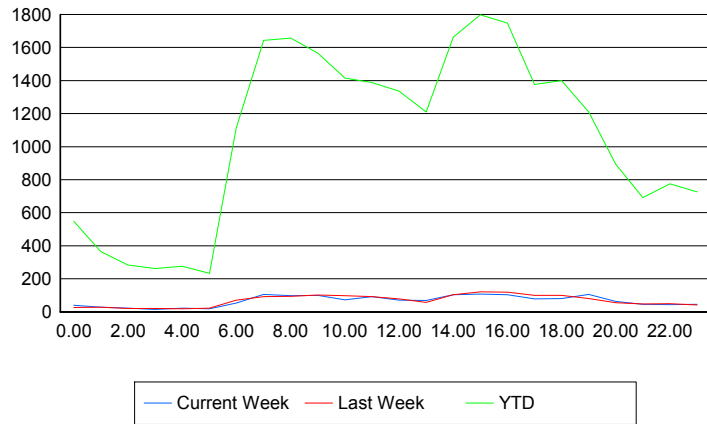
	Current We	Last Week	YTD
102	167	198	2,747
	170	199	2,793
	175	208	2,956
103	114	85	1,408
	115	88	1,424
	126	92	1,501
104	85	68	1,251
	88	69	1,266
	100	70	1,357
105	40	57	777
	40	57	782
	42	61	837
106	26	38	597
	26	38	604
	33	38	638
107	19	20	318
	19	20	320
	21	20	344
108	0	0	3
	0	0	4
	0	0	4
112	0	0	2
	0	0	2
	0	0	3

## Road Ranger / SIRV Performance By Time of Day

Values presented are:  
 - Total Events with a RR/SIRV Response  
 - Total RR/SIRV Responses,  
 - Total Activities Performed

	Current We	Last Week	YTD
12AM-1AM	38	26	528
	40	27	548
	41	29	580
1AM-2AM	27	29	353
	28	29	364
	28	30	376
2AM-3AM	20	20	264
	23	20	284
	23	22	296
3AM-4AM	14	19	247
	14	20	262
	15	20	283
4AM-5AM	21	18	252
	22	18	275
	22	21	292
5AM-6AM	18	18	198
	18	22	234
	18	23	244
6AM-7AM	49	67	1,045
	53	70	1,114
	55	75	1,159
7AM-8AM	100	89	1,564
	105	93	1,644
	110	95	1,714
8AM-9AM	91	88	1,557
	97	94	1,657
	101	96	1,717
9AM-10AM	95	98	1,497
	99	102	1,566
	104	111	1,644
10AM-11AM	69	91	1,346
	72	97	1,416
	76	106	1,484
11AM-12PM	86	86	1,321
	92	92	1,388
	97	96	1,447
12PM-1PM	69	72	1,255
	71	79	1,336
	72	80	1,384

## Number of Responses / Hour of the Day



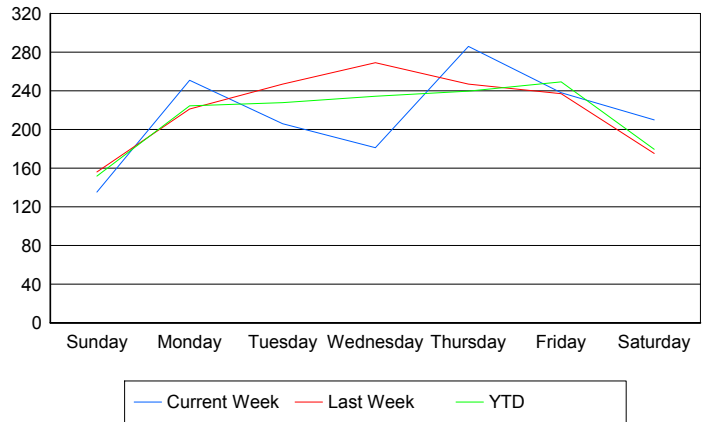
	Current We	Last Week	YTD
1PM-2PM	67	54	1,136
	68	58	1,210
	73	59	1,260
2PM-3PM	95	99	1,555
	104	104	1,663
	111	106	1,755
3PM-4PM	103	121	1,729
	107	121	1,799
	113	126	1,878
4PM-5PM	99	112	1,639
	104	120	1,748
	108	125	1,826
5PM-6PM	73	90	1,299
	79	100	1,376
	83	101	1,435
6PM-7PM	76	97	1,343
	80	99	1,400
	81	103	1,455
7PM-8PM	103	75	1,159
	106	81	1,210
	113	82	1,259
8PM-9PM	60	53	851
	63	55	892
	68	56	924
9PM-10PM	46	44	659
	46	48	692
	47	56	733
10PM-11PM	42	43	741
	44	49	775
	45	50	827
11PM-12AM	44	39	702
	45	41	727
	47	43	785

## Road Ranger / SIRV Performance By Day of Week

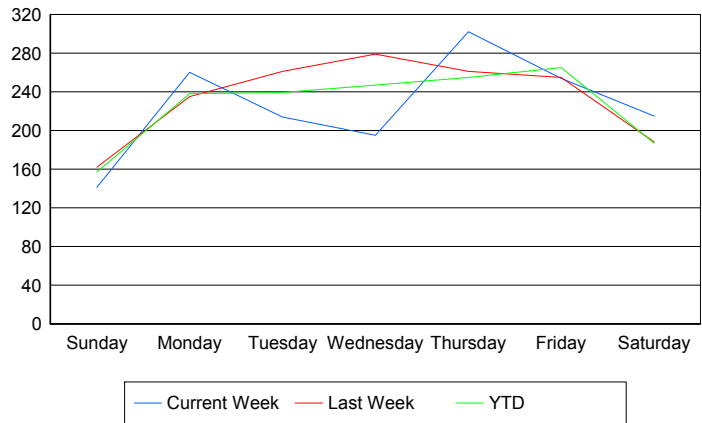
Values presented are:  
 - Total Events with a RR/SIRV Response  
 - Total RR/SIRV Responses,  
 - Total Activities Performed

	Current We	Last Week	YTD
Sunday	134	154	2,388
	140	160	2,475
	146	165	2,584
Monday	251	221	3,547
	260	235	3,761
	272	241	3,921
Tuesday	206	247	3,630
	214	261	3,816
	220	280	3,984
Wednesday	181	269	3,714
	195	279	3,914
	202	286	4,107
Thursday	286	247	3,808
	302	261	4,049
	314	273	4,248
Friday	238	237	4,164
	254	255	4,427
	270	267	4,609
Saturday	210	175	3,013
	215	188	3,138
	227	199	3,304

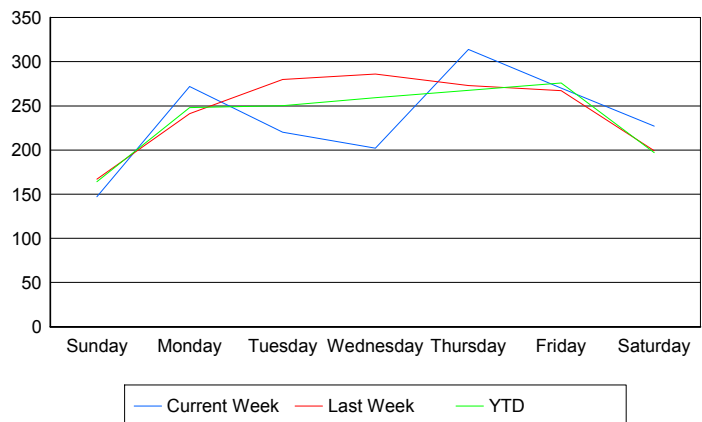
### Avg # of events with a RR/SIRV Response per Day of the Week



### Avg # of RR/SIRV Responses per Day of the Week



### Avg # of RR/SIRV Activities Performed per Day of the Week



### Road Ranger / SIRV Responses per Time of Day and Day of Week

