



# Weekly Performance Measures Report Broward, Palm Beach Counties



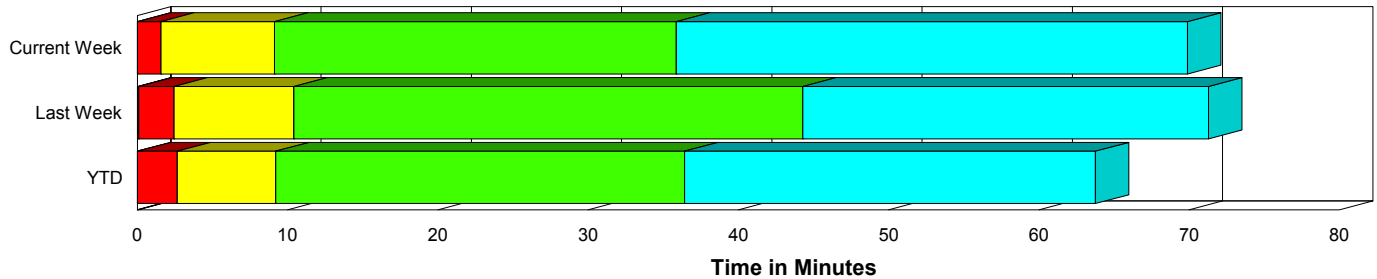
Created on:  
April 20, 2010  
8:32 pm

Period From Apr 11, 2010 to Apr 17, 2010

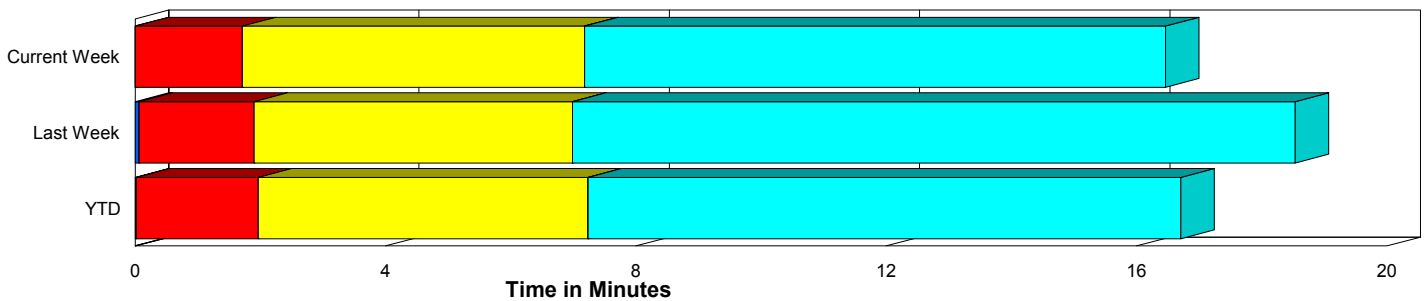
## Performance Measures Summary

	Traffic Events (No Lanes Blocked)			Incidents (Lanes Blocked)		
	<u>This Week</u>	<u>Last Week</u>	<u>YTD</u>	<u>This Week</u>	<u>Last Week</u>	<u>YTD</u>
Number of Events	1,732	1,881	26,122	81	73	1,101
TMC Detection (min.)	0.00	0.06	0.02	0.01	0.10	0.02
TMC Verification (min.)	1.71	1.84	1.95	1.56	2.34	2.65
TMC Response (min.)	8.01	7.60	8.17	9.17	10.45	9.32
RR Dispatch Time (min.)	1.69	1.60	1.66	1.90	1.73	1.87
RR Response Time (min.)	6.44	6.18	6.55	7.35	8.76	7.47
Roadway Clearance (min.)				35.29	43.30	35.84
Event Clearance (min.)	17.29	19.21	17.65	69.29	70.29	63.19
# of Events w/ RR/SIRV	1,461	1,633	22,016	80	68	1,076
RR/SIRV Responses	1,461	1,633	22,016	80	68	1,076
RR/SIRV Activities	1,253	1,435	18,637	147	120	1,859

### Incident Clearance Time-Line



### Traffic Event (Non-Lane Blockage) Time-Line



<span style="color: blue;">■</span> Avg. TMC Detection Time	<span style="color: green;">■</span> Avg. Time from TMC Response to Roadway Clearance*
<span style="color: red;">■</span> Avg. Time from TMC Detection to TMC Verification	<span style="color: cyan;">■</span> Avg. Time from Roadway Clearance to Incident/Event Clearance**
<span style="color: yellow;">■</span> Avg. Time from TMC Verification to TMC Response	

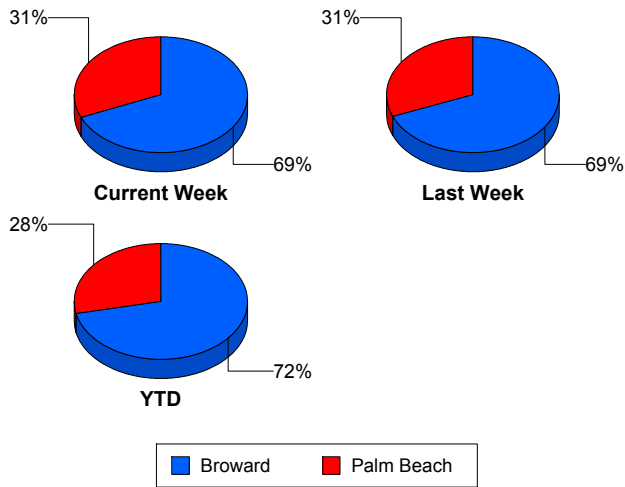
\* Roadway clearance equals all travel lanes open

\*\* Incident clearance equals time when last responder has left the scene

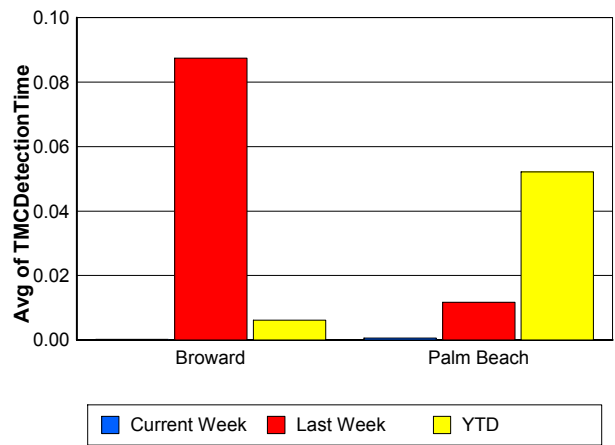
## Performance Measures by County

	Broward			Palm Beach		
	<u>Current Week</u>	<u>Last Week</u>	<u>YTD</u>	<u>Current Week</u>	<u>Last Week</u>	<u>YTD</u>
Number of Events	1,242	1,345	19,504	571	609	7,719
Number of Incidents	56	49	754	25	24	347
TMC Detection (min.)	0.00	0.09	0.01	0.00	0.01	0.05
TMC Verification (min.)	1.18	1.20	1.17	2.86	3.31	4.03
TMC Response (min.)	8.81	9.04	9.06	6.90	5.72	6.84
RR Dispatch Time (min.)	1.09	1.39	1.38	2.94	2.03	2.31
RR Response Time (min.)	7.85	7.74	7.78	4.34	4.08	4.63
Event Clearance (min.)	18.97	21.23	18.92	21.00	20.87	20.94
Roadway Clearance (min.)	32.10	45.89	33.42	42.42	38.02	41.11
Incident Clearance (min.)	69.70	73.53	62.56	68.37	63.68	63.87
# of Events w/ RR/SIRV	1,032	1,131	15,847	509	570	7,245
RR/SIRV Responses	1,032	1,131	15,847	509	570	7,245
RR/SIRV Activities	873	941	12,864	527	614	7,632

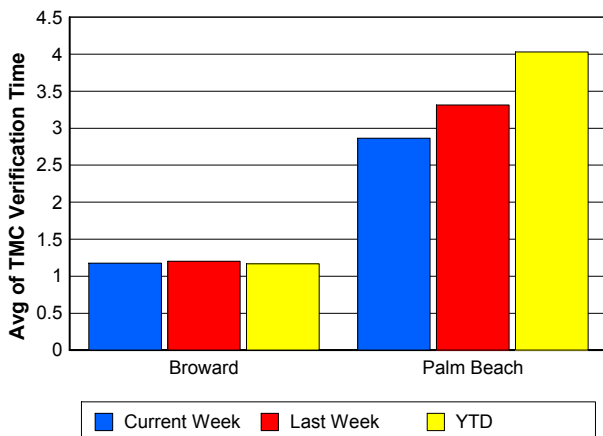
### Number of Events / County



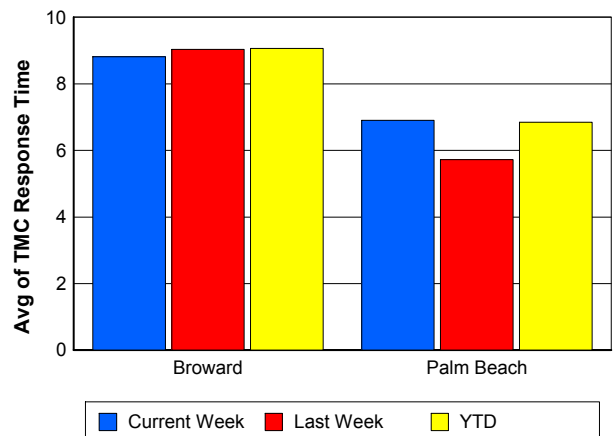
### TMC Detection Time



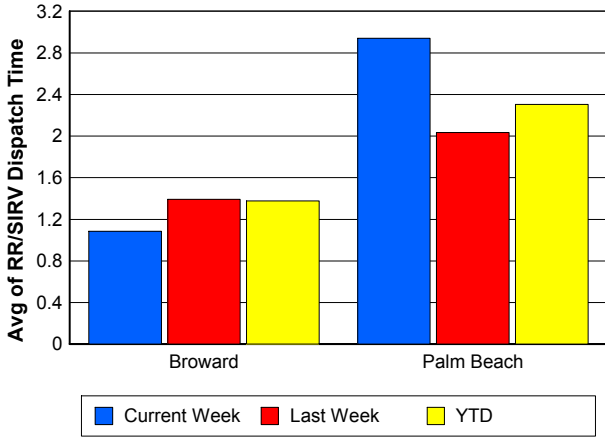
### TMC Verification Time



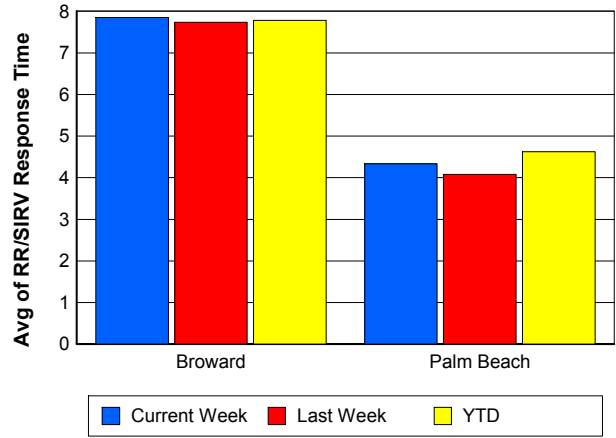
### TMC Response Time



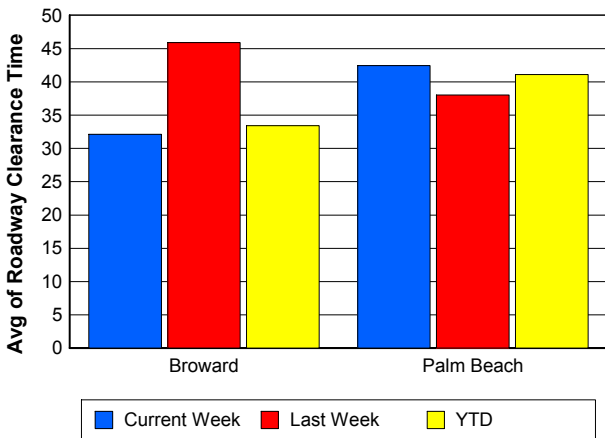
## Road Ranger / SIRV Dispatch Time



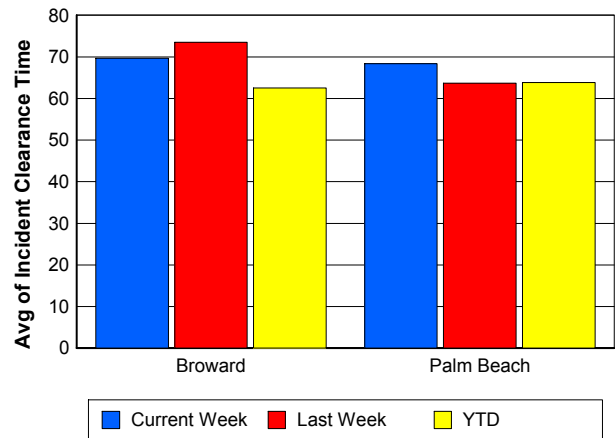
## Road Ranger / SIRV Response Time



## Roadway Clearance Time (2A)



## Incident Clearance Time (3B)

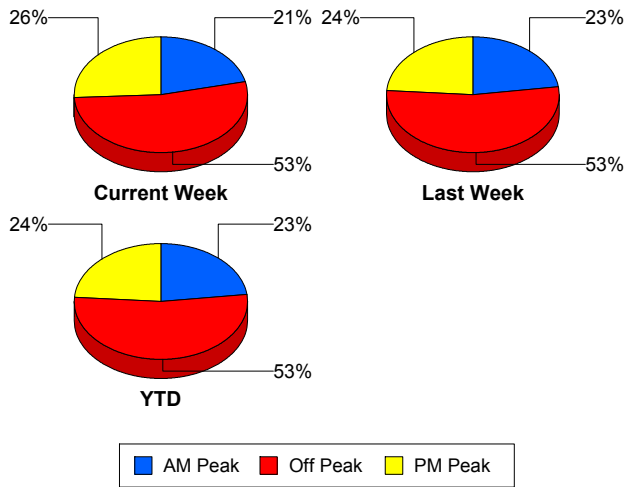


## Performance Measures by Peak Period

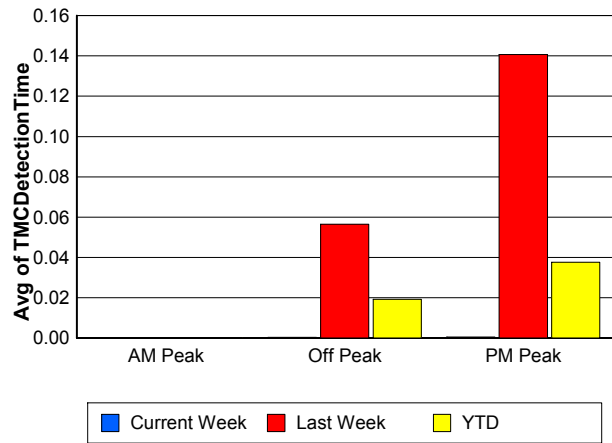
Note: AM peak period is defined as 6am to 10am and PM peak period is defined as 3pm to 7pm.

	AM Peak			Off Peak			PM Peak		
	<u>Current Week</u>	<u>Last Week</u>	<u>YTD</u>	<u>Current Week</u>	<u>Last Week</u>	<u>YTD</u>	<u>Current Week</u>	<u>Last Week</u>	<u>YTD</u>
Number of Events	388	445	6,289	958	1,041	14,456	467	468	6,478
Number of Incidents	16	16	219	44	31	571	21	26	311
TMC Detection (min.)	0.00	0.00	0.00	0.00	0.06	0.02	0.00	0.14	0.04
TMC Verification (min.)	1.53	1.26	1.26	1.79	2.17	2.08	1.70	1.73	2.45
TMC Response (min.)	8.97	8.22	7.70	8.77	7.99	8.66	6.14	6.74	7.85
RR Dispatch Time (min.)	1.61	1.29	1.18	2.01	1.66	1.81	1.16	1.81	1.84
RR Response Time (min.)	7.34	7.08	6.57	6.89	6.59	6.89	5.14	4.95	6.05
Event Clearance (min.)	20.82	19.97	18.07	20.61	21.46	19.96	16.56	21.44	19.84
Roadway Clearance (min.)	55.94	37.13	33.50	32.84	55.06	41.17	24.67	33.09	27.71
Incident Clearance (min.)	85.22	52.65	61.84	71.85	76.73	66.79	51.78	73.47	56.74
# of Events w/ RR/SIRV	342	403	5,453	797	880	12,026	402	418	5,613
RR/SIRV Responses	342	403	5,453	797	880	12,026	402	418	5,613
RR/SIRV Activities	306	379	4,720	710	787	10,591	384	389	5,185

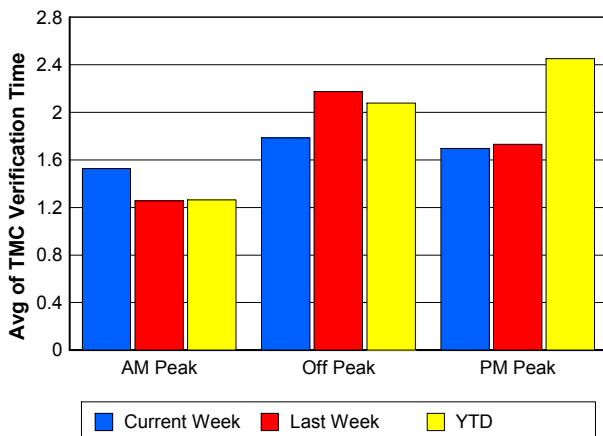
### Number of Events / Peak Period



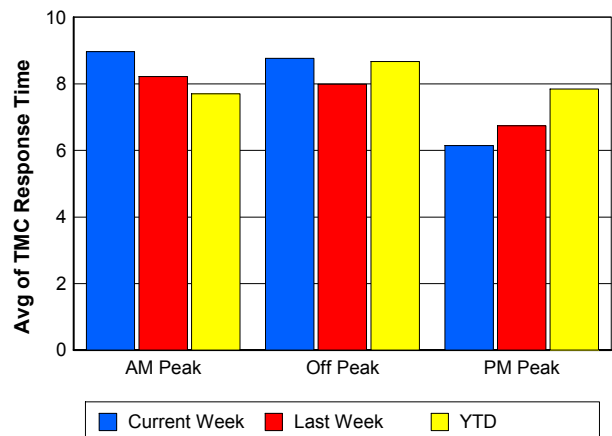
### TMC Detection Time



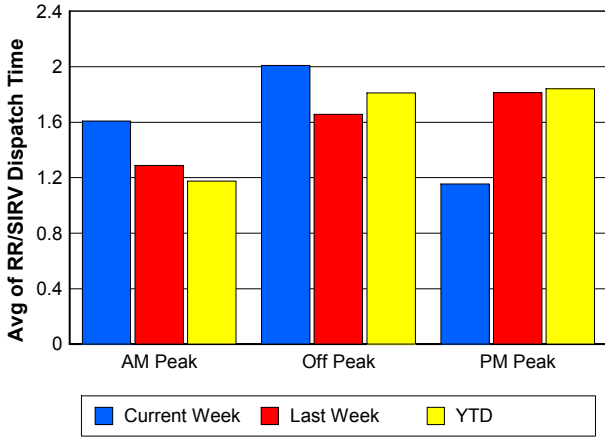
### TMC Verification Time



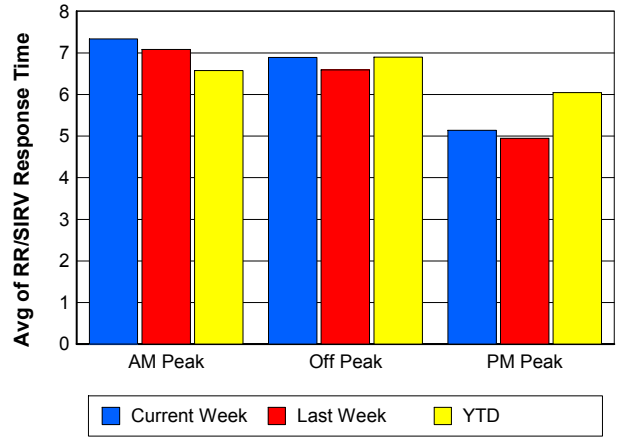
### TMC Response Time



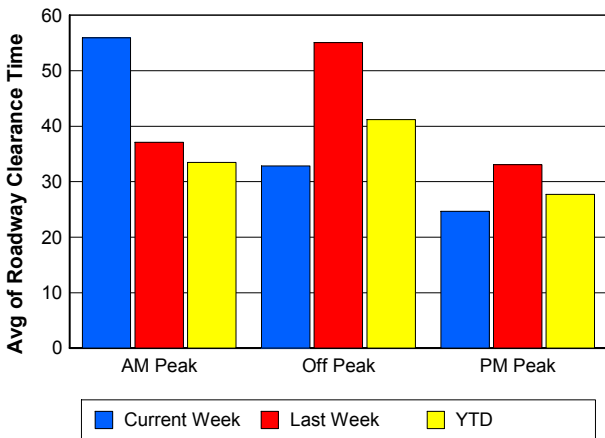
## Road Ranger / SIRV Dispatch Time



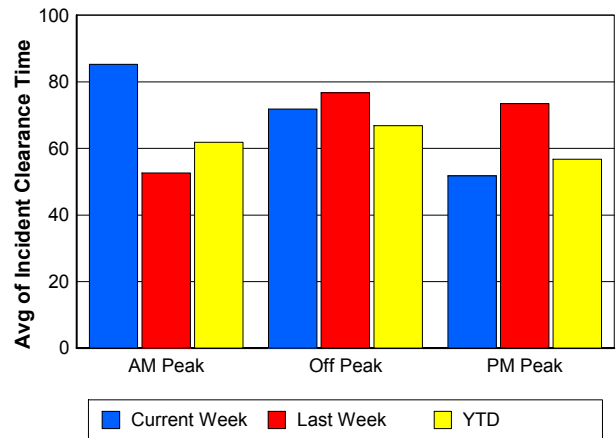
## Road Ranger / SIRV Response Time



## Roadway Clearance Time (2A)



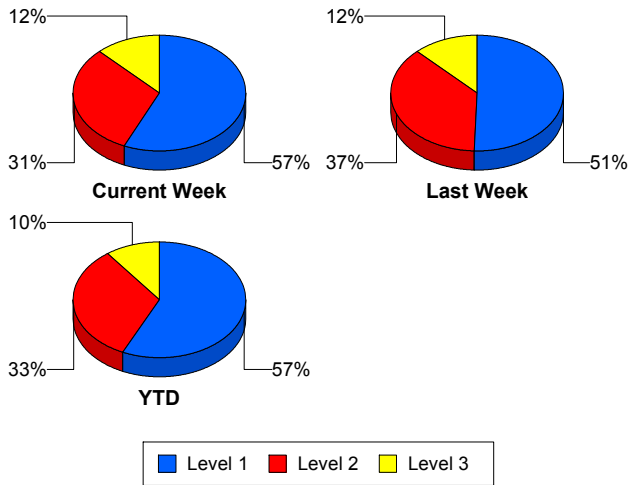
## Incident Clearance Time (3B)



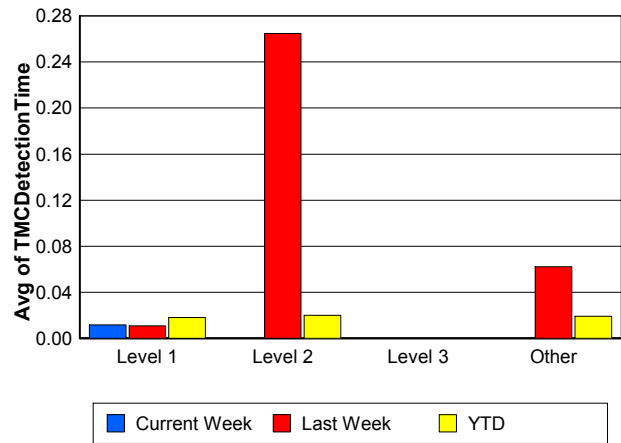
## Performance Measures by Severity

	Level 1			Level 2			Level 3			Other		
	<u>This Week</u>	<u>Last Week</u>	<u>YTD</u>	<u>This Week</u>	<u>Last Week</u>	<u>YTD</u>	<u>This Week</u>	<u>Last Week</u>	<u>YTD</u>	<u>This Week</u>	<u>Last Week</u>	<u>YTD</u>
Number of Events	46	37	625	25	27	362	10	9	112	1,732	1,881	26,124
Number of Incidents	46	37	625	25	27	362	10	9	112	0	0	2
TMC Detection (min.)	0.01	0.01	0.02	0.00	0.26	0.02	0.00	0.00	0.00	0.00	0.06	0.02
TMC Verification (min.)	1.25	1.79	1.38	0.98	2.94	4.55	4.46	2.85	3.60	1.71	1.84	1.95
TMC Response (min.)	5.07	8.15	7.13	13.92	10.84	12.19	15.31	19.40	12.04	8.01	7.60	8.17
RR Dispatch Time (min.)	0.93	1.47	1.28	3.38	1.60	2.78	2.58	3.26	2.25	1.69	1.60	1.66
RR Resp. Time (min.)	4.31	6.71	5.88	10.54	9.30	9.44	12.73	16.13	9.79	6.44	6.18	6.55
Event Clearance (min.)	52.99	52.63	47.20	89.82	71.94	75.06	92.93	137.94	113.49	17.29	19.21	17.66
Roadway Clear. (min.)	16.12	16.40	15.09	52.26	54.67	53.37	81.00	119.83	96.03			-21.46
Incident Clearance (min.)	52.99	52.63	47.20	89.82	71.94	75.06	92.93	137.94	112.99			0.00
# of Events w/ RR/SIRV	45	36	612	25	24	356	10	8	106	1,461	1,633	22,018
RR/SIRV Responses	45	36	612	25	24	356	10	8	106	1,461	1,633	22,018
RR/SIRV Activities	75	53	921	52	42	676	20	25	257	1,253	1,435	18,642

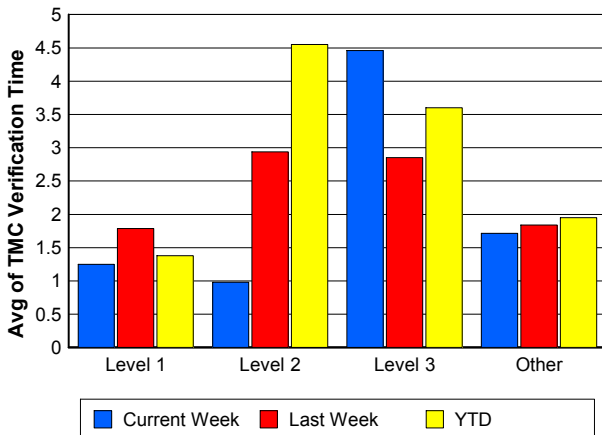
### Number of Events / Severity



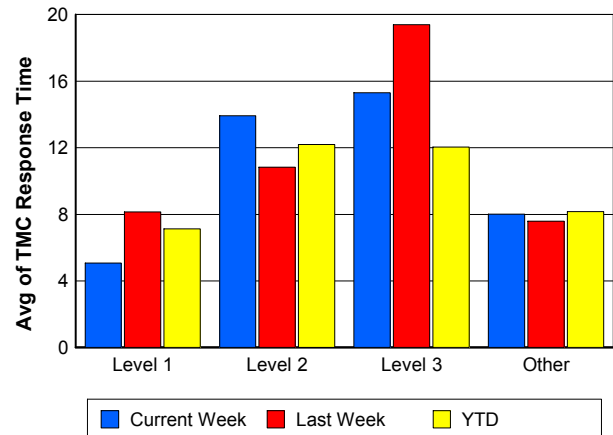
### TMC Detection Time



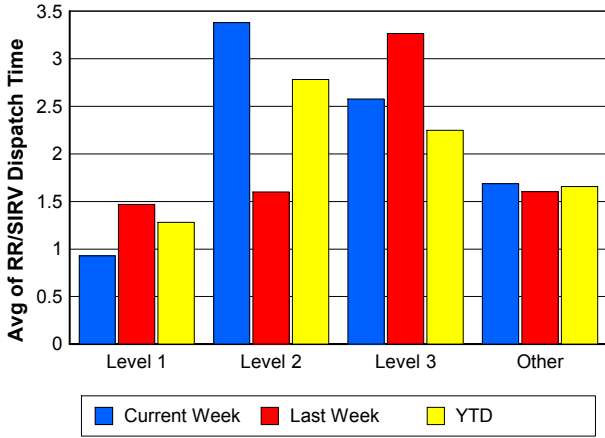
### TMC Verification Time



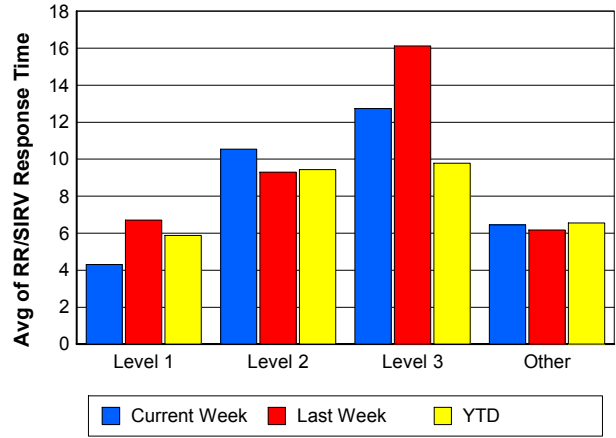
### TMC Response Time



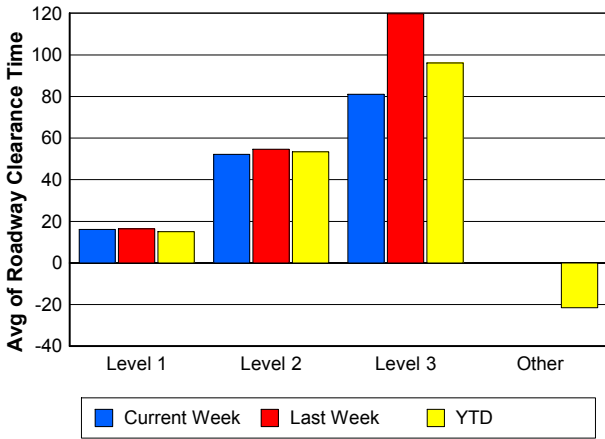
## Road Ranger / SIRV Dispatch Time



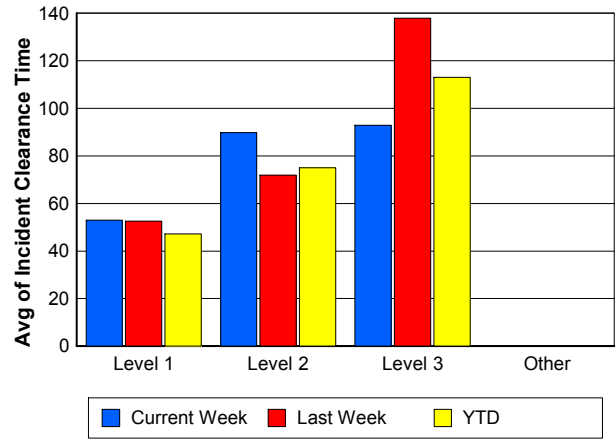
## Road Ranger / SIRV Response Time



## Roadway Clearance Time (2A)



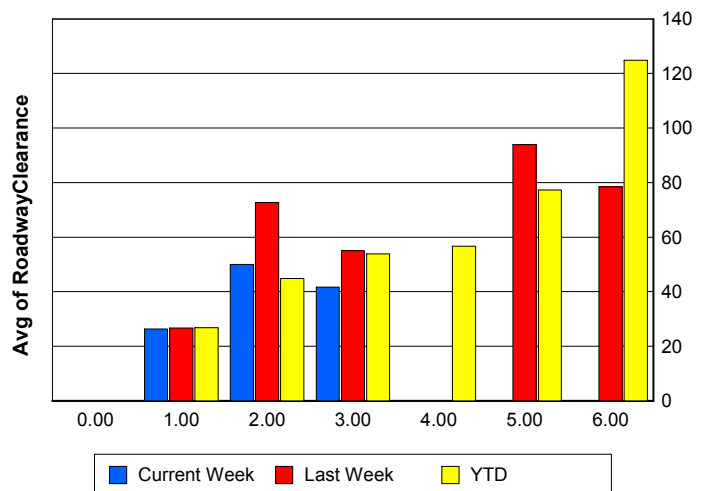
## Incident Clearance Time (3B)



## Roadway Clearance by Maximum Number of Lanes Blocked

	Current Week	Last Week	YTD
0			
1	26.38	26.67	26.78
2	50.01	72.76	44.85
3	41.67	55.03	53.92
4	0.00	0.00	56.62
5	0.00	93.87	77.32
6	0.00	78.52	124.84

## Roadway Clearance Time (2A)



## Performance Measures by Roadway

**595**

	<u>Current Week</u>	<u>Last Week</u>	<u>YTD</u>
Number of Events	29	41	688
Number of Incidents	1	1	35
TMC Detection (min.)	0.00	0.01	0.00
TMC Verification (min.)	2.49	2.41	1.73
TMC Response (min.)	15.21	17.35	14.63
RR Dispatch Time (min.)	1.50	1.78	2.04
RR Resp. Time (min.)	13.79	14.91	12.58
Event Clearance (min.)	15.51	18.79	19.80
Roadway Clear. (min.)	20.77	25.82	50.66
Incident Clearance (min.)	68.88	28.35	70.59
# of Events w/ RR/SIRV	21	33	494
RR/SIRV Responses	21	33	494
RR/SIRV Activities	12	16	334

**75**

	<u>Current Week</u>	<u>Last Week</u>	<u>YTD</u>
Number of Events	274	281	4,310
Number of Incidents	7	8	79
TMC Detection (min.)	0.00	0.42	0.03
TMC Verification (min.)	2.68	2.78	2.04
TMC Response (min.)	11.42	9.87	10.12
RR Dispatch Time (min.)	1.45	1.11	1.48
RR Resp. Time (min.)	10.06	8.53	8.76
Event Clearance (min.)	20.21	23.62	19.61
Roadway Clear. (min.)	33.42	68.19	44.69
Incident Clearance (min.)	75.57	141.98	86.11
# of Events w/ RR/SIRV	224	234	3,368
RR/SIRV Responses	224	234	3,368
RR/SIRV Activities	194	206	2,768

**95**

	<u>Current Week</u>	<u>Last Week</u>	<u>YTD</u>
Number of Events	1,497	1,618	21,990
Number of Incidents	70	62	948
TMC Detection (min.)	0.00	0.00	0.02
TMC Verification (min.)	1.52	1.68	1.98
TMC Response (min.)	7.46	7.25	7.82
RR Dispatch Time (min.)	1.75	1.69	1.70
RR Resp. Time (min.)	5.83	5.80	6.14
Event Clearance (min.)	19.61	20.66	19.48
Roadway Clear. (min.)	36.58	40.18	35.10
Incident Clearance (min.)	70.94	62.34	62.18
# of Events w/ RR/SIRV	1,283	1,422	19,034
RR/SIRV Responses	1,283	1,422	19,034
RR/SIRV Activities	1,183	1,321	17,205

**OKEEB**

	<u>YTD</u>
Number of Events	1
Number of Incidents	0
TMC Detection (min.)	0.00
TMC Verification (min.)	0.00
TMC Response (min.)	0.00
RR Dispatch Time (min.)	0.00
RR Resp. Time (min.)	0.00
Event Clearance (min.)	18.45
Roadway Clear. (min.)	
Incident Clearance (min.)	
# of Events w/ RR/SIRV	1
RR/SIRV Responses	1
RR/SIRV Activities	1

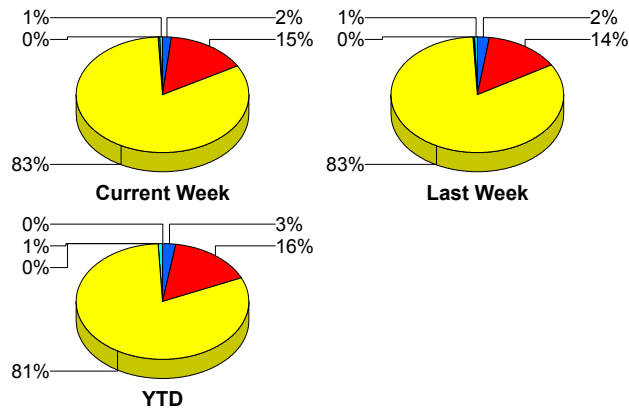
**SR-816**

	<u>Current Week</u>	<u>Last Week</u>	<u>YTD</u>
Number of Events	3	2	45
Number of Incidents	3	2	35
TMC Detection (min.)	0.00	0.00	0.00
TMC Verification (min.)	0.00	8.11	0.95
TMC Response (min.)	0.38	8.10	1.50
RR Dispatch Time (min.)	0.35	0.54	0.13
RR Resp. Time (min.)	0.03	7.56	1.37
Event Clearance (min.)	16.29	50.97	21.08
Roadway Clear. (min.)	14.21	49.41	19.80
Incident Clearance (min.)	16.29	50.97	22.80
# of Events w/ RR/SIRV	3	2	44
RR/SIRV Responses	3	2	44
RR/SIRV Activities	3	2	48

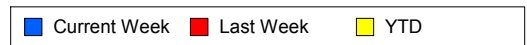
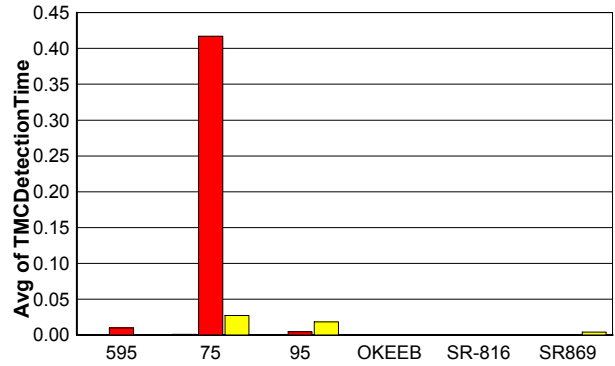
**SR869**

	<u>Current Week</u>	<u>Last Week</u>	<u>YTD</u>
Number of Events	10	12	189
Number of Incidents	0	0	4
TMC Detection (min.)	0.00	0.00	0.00
TMC Verification (min.)	1.95	0.88	1.36
TMC Response (min.)	5.60	9.28	8.56
RR Dispatch Time (min.)	0.86	0.93	0.98
RR Resp. Time (min.)	5.40	8.35	7.86
Event Clearance (min.)	15.67	27.77	17.29
Roadway Clear. (min.)			47.03
Incident Clearance (min.)			78.04
# of Events w/ RR/SIRV	10	10	151
RR/SIRV Responses	10	10	151
RR/SIRV Activities	8	10	140

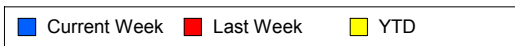
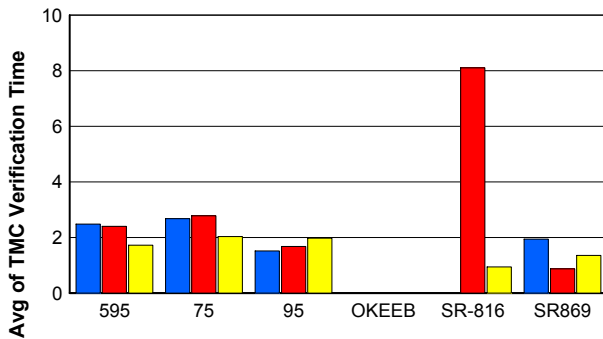
## Number of Events / Roadway



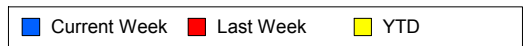
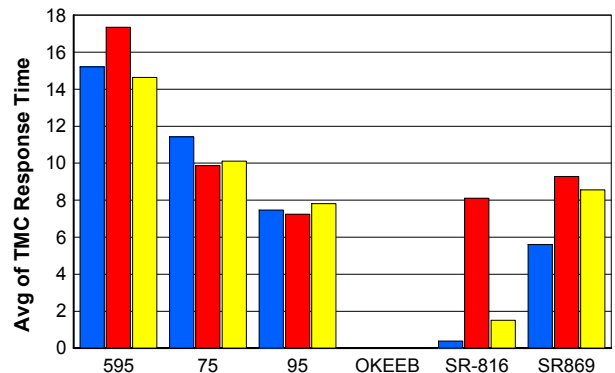
## TMC Detection Time



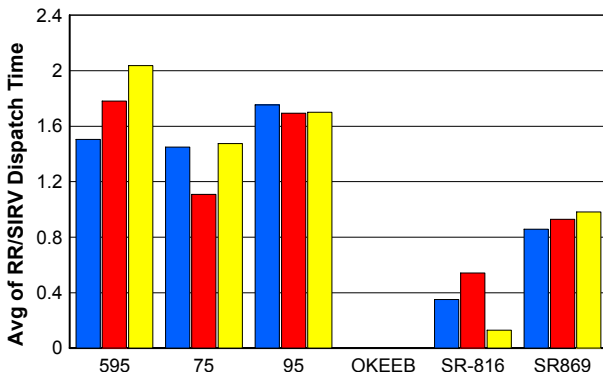
## TMC Verification Time



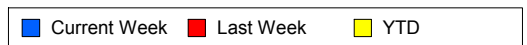
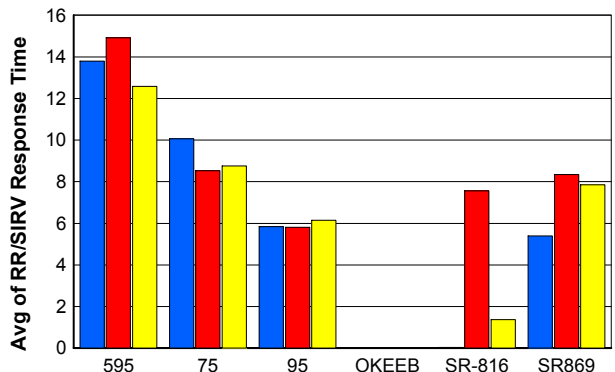
## TMC Response Time



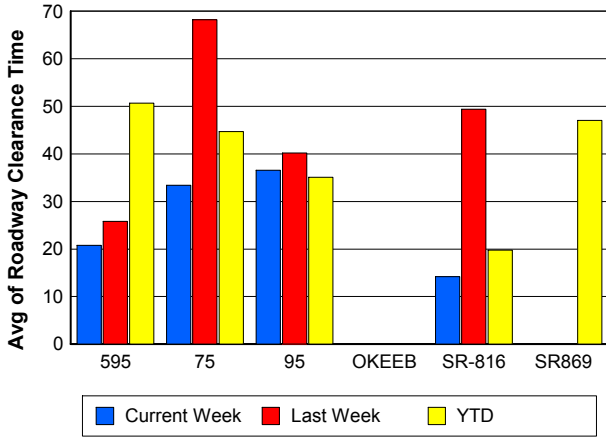
## Road Ranger / SIRV Dispatch Time



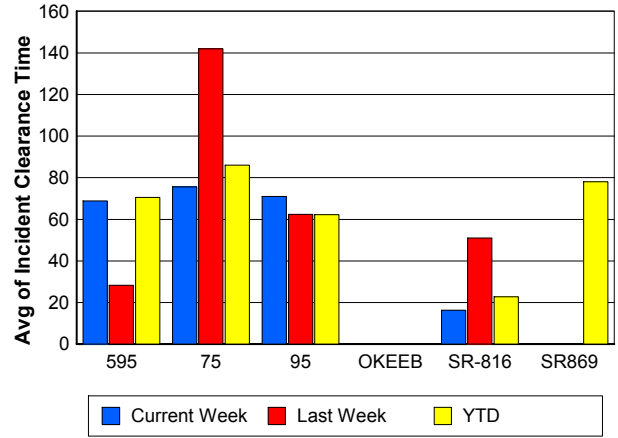
## Road Ranger / SIRV Response Time



## Roadway Clearance Time (2A)



## Incident Clearance Time (3B)



## Performance Measures by Event Type

### Accident

	<u>Current Week</u>	<u>Last Week</u>	<u>YTD</u>
Number of Events	123	104	1,721
Number of Incidents	59	52	788
TMC Detection (min.)	0.00	0.00	0.02
TMC Verification (min.)	2.84	2.31	3.32
TMC Response (min.)	9.05	8.69	9.57
RR Dispatch Time (min.)	1.95	1.17	1.74
RR Response Time (min.)	7.15	7.50	7.84
Event Clearance (min.)	65.53	62.03	56.71
Roadway Clearance (min.)	40.56	41.63	38.66
Incident Clearance (min.)	83.62	73.67	72.22
# of Events w/ RR/SIRV	123	101	1,699
RR/SIRV Assists	123	101	1,699
RR/SIRV Activities	182	147	2,404

### Debris on Roadway

	<u>Current Week</u>	<u>Last Week</u>	<u>YTD</u>
Number of Events	74	100	1,043
Number of Incidents	1	1	15
TMC Detection (min.)	0.00	0.00	0.00
TMC Verification (min.)	8.72	6.14	7.69
TMC Response (min.)	11.62	9.09	9.94
RR Dispatch Time (min.)	2.93	2.04	2.27
RR Response Time (min.)	8.66	7.35	7.68
Event Clearance (min.)	15.55	11.89	13.33
Roadway Clearance (min.)	9.23	14.90	27.82
Incident Clearance (min.)	12.18	14.80	28.65
# of Events w/ RR/SIRV	73	97	1,009
RR/SIRV Assists	73	97	1,009
RR/SIRV Activities	74	91	1,011

### Disabled Vehicle

	<u>Current Week</u>	<u>Last Week</u>	<u>YTD</u>
Number of Events	1,186	1,315	16,957
Number of Incidents	13	8	196
TMC Detection (min.)	0.00	0.09	0.02
TMC Verification (min.)	1.75	2.10	2.32
TMC Response (min.)	7.35	7.53	7.86
RR Dispatch Time (min.)	1.39	1.50	1.62
RR Response Time (min.)	6.21	6.10	6.31
Event Clearance (min.)	17.85	20.38	19.82
Roadway Clearance (min.)	11.58	20.92	20.82
Incident Clearance (min.)	17.44	26.58	31.38
# of Events w/ RR/SIRV	1,107	1,256	16,209
RR/SIRV Assists	1,107	1,256	16,209
RR/SIRV Activities	1,084	1,263	16,180

## Emergency Vehicles

	<u>Last Week</u>	<u>YTD</u>
Number of Events	2	22
Number of Incidents	2	19
TMC Detection (min.)	0.00	0.00
TMC Verification (min.)	0.00	1.33
TMC Response (min.)	27.48	11.34
RR Dispatch Time (min.)	8.73	1.49
RR Response Time (min.)	18.75	9.76
Event Clearance (min.)	34.31	39.20
Roadway Clearance (min.)	21.88	35.63
Incident Clearance (min.)	34.31	39.64
# of Events w/ RR/SIRV	1	16
RR/SIRV Assists	1	16
RR/SIRV Activities	2	17

## Other

	<u>Current Week</u>	<u>Last Week</u>	<u>YTD</u>
Number of Events	410	414	7,252
Number of Incidents	0	1	16
TMC Detection (min.)	0.00	0.00	0.01
TMC Verification (min.)	0.02	0.07	0.07
TMC Response (min.)	15.45	8.86	10.48
RR Dispatch Time (min.)	2.75	1.82	1.67
RR Response Time (min.)	5.33	7.32	8.11
Event Clearance (min.)	11.11	13.45	10.30
Roadway Clearance (min.)		3.25	41.09
Incident Clearance (min.)		10.58	49.15
# of Events w/ RR/SIRV	218	229	3,951
RR/SIRV Assists	218	229	3,951
RR/SIRV Activities	36	34	653

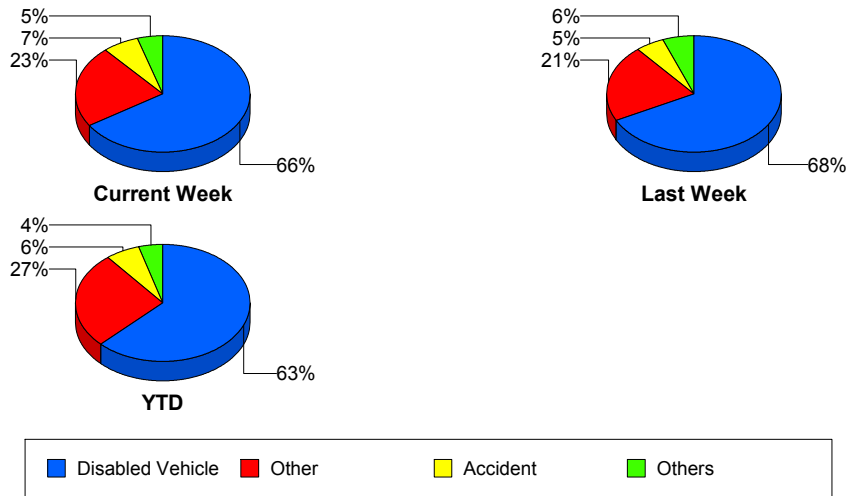
## Police Activity

	<u>Current Week</u>	<u>Last Week</u>	<u>YTD</u>
Number of Events	6	7	65
Number of Incidents	5	6	34
TMC Detection (min.)	0.00	1.02	0.11
TMC Verification (min.)	2.62	0.57	1.18
TMC Response (min.)	16.48	0.92	11.68
RR Dispatch Time (min.)	1.78	17.77	3.67
RR Response Time (min.)	14.70	0.76	10.27
Event Clearance (min.)	35.46	58.55	39.04
Roadway Clearance (min.)	37.55	49.53	43.50
Incident Clearance (min.)	41.74	53.66	49.38
# of Events w/ RR/SIRV	6	5	51
RR/SIRV Assists	6	5	51
RR/SIRV Activities	9	4	53

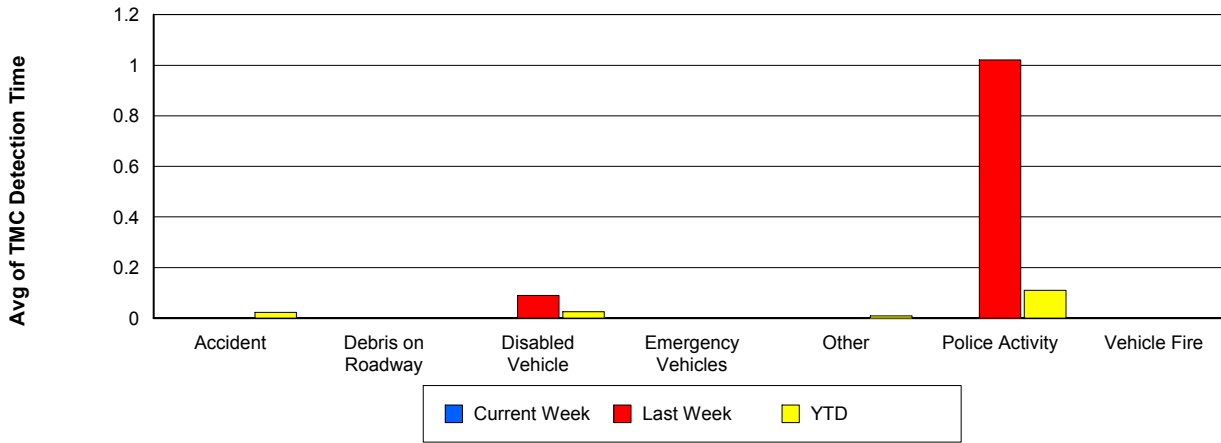
## Vehicle Fire

	<u>Current Week</u>	<u>Last Week</u>	<u>YTD</u>
Number of Events	3	4	52
Number of Incidents	3	3	33
TMC Detection (min.)	0.00	0.00	0.00
TMC Verification (min.)	0.00	1.47	2.82
TMC Response (min.)	21.13	13.70	11.73
RR Dispatch Time (min.)	3.67	2.41	1.80
RR Response Time (min.)	17.46	11.29	9.88
Event Clearance (min.)	77.03	175.87	64.00
Roadway Clearance (min.)	39.21	156.63	51.07
Incident Clearance (min.)	77.03	223.90	79.51
# of Events w/ RR/SIRV	3	4	51
RR/SIRV Assists	3	4	51
RR/SIRV Activities	5	9	83

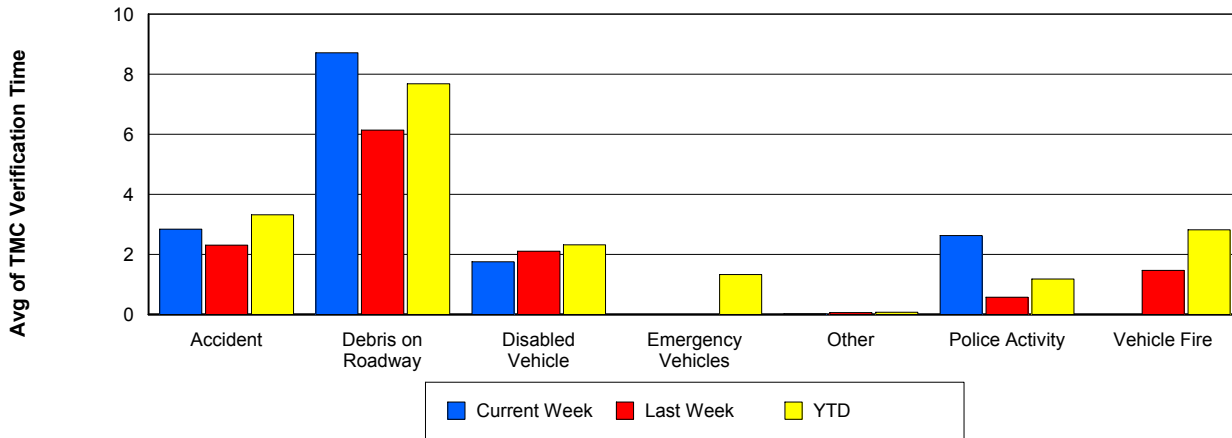
## Number of Events / Event Type



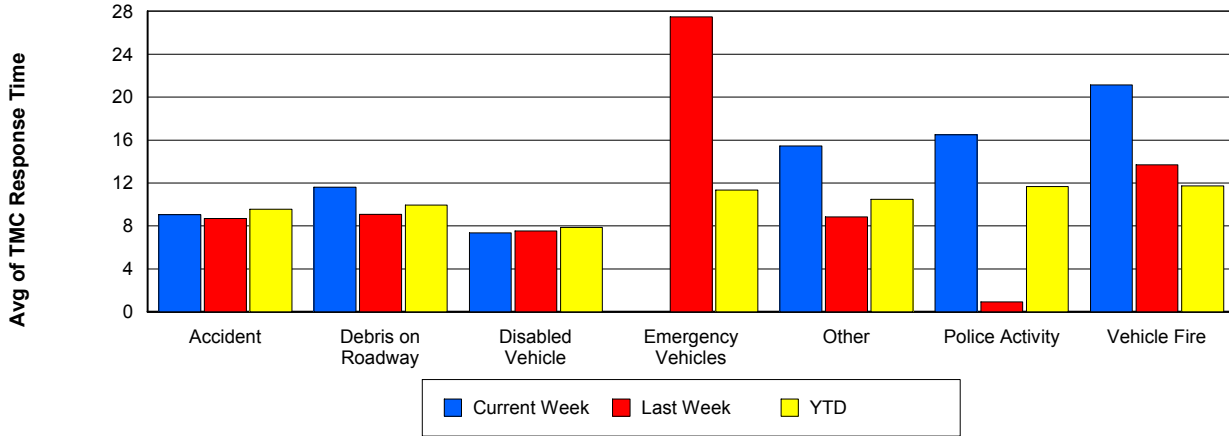
## TMC Detection Time



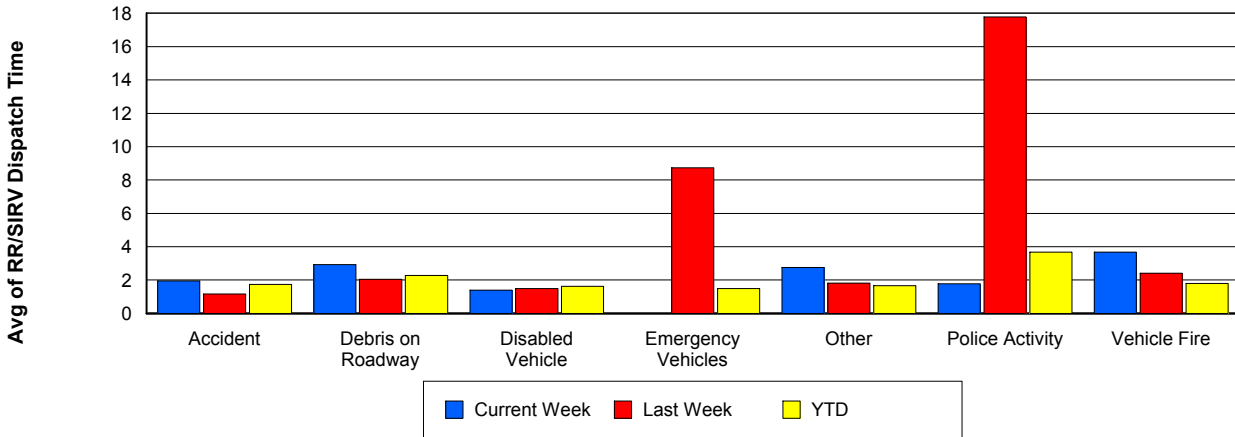
## TMC Verification Time



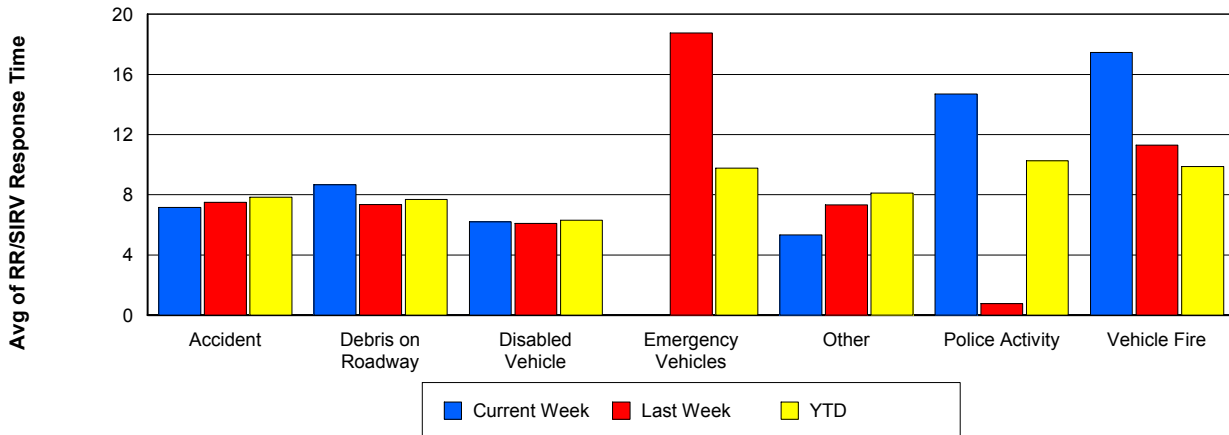
## TMC Response Time



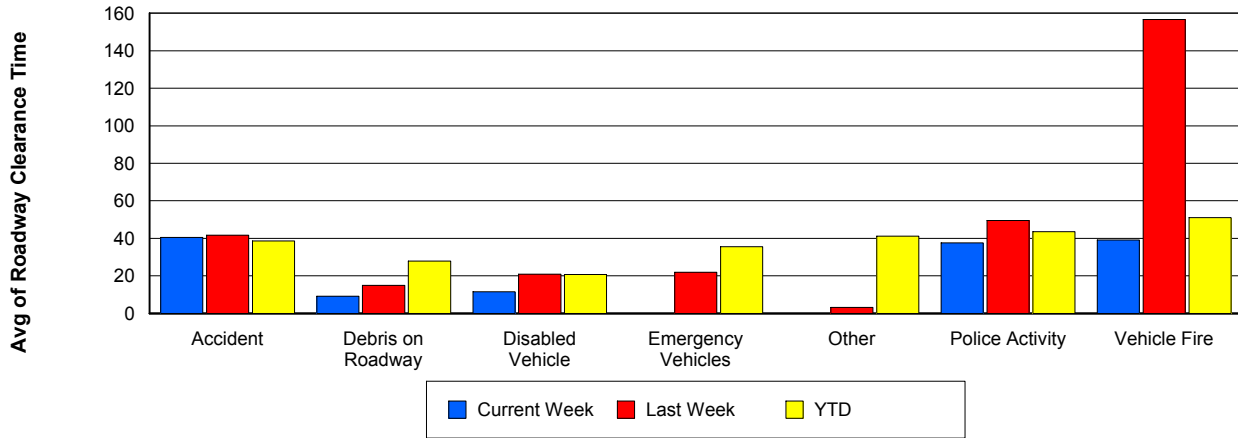
## Road Ranger / SIRV Dispatch Time



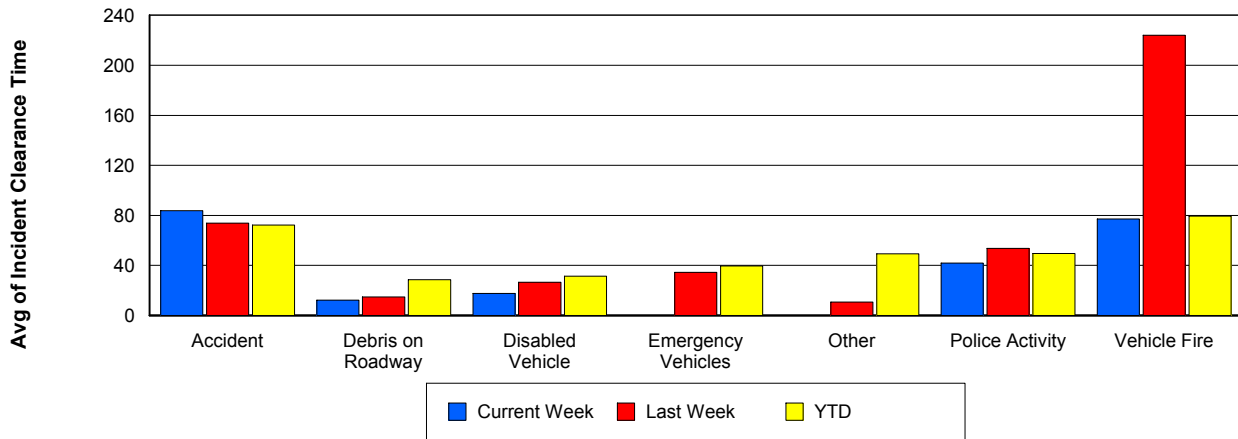
## Road Ranger / SIRV Response Time



## Roadway Clearance Time (2A)



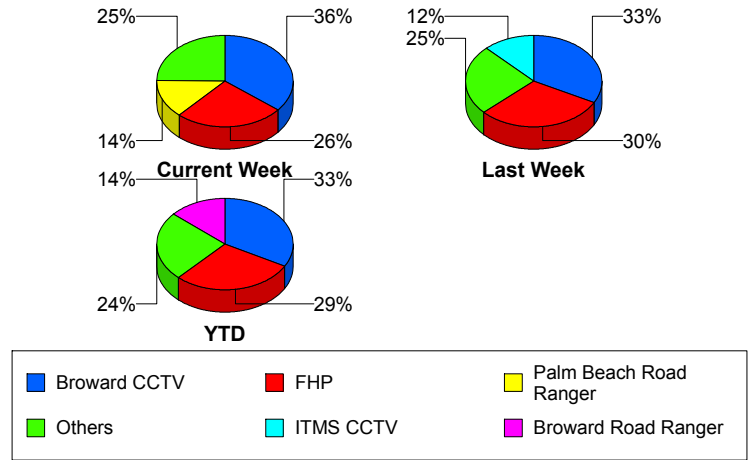
## Incident Clearance Time (3B)



## Incident Detection Methods

	Current Week	Last Week	YTD
Broward CCTV	<b>29</b>	<b>24</b>	<b>358</b>
Broward Road Ranger	<b>8</b>	<b>7</b>	<b>147</b>
Broward TMC	<b>0</b>	<b>0</b>	<b>8</b>
Broward VideoWall	<b>0</b>	<b>0</b>	<b>16</b>
BSO	<b>0</b>	<b>3</b>	<b>15</b>
County Police	<b>0</b>	<b>0</b>	<b>1</b>
District 4	<b>4</b>	<b>2</b>	<b>27</b>
FDOT Maintenance	<b>0</b>	<b>0</b>	<b>1</b>
FHP	<b>21</b>	<b>22</b>	<b>314</b>
Fire	<b>0</b>	<b>0</b>	<b>1</b>
ITMS CCTV	<b>5</b>	<b>9</b>	<b>51</b>
Local Police	<b>0</b>	<b>0</b>	<b>1</b>
Media	<b>0</b>	<b>0</b>	<b>2</b>
Motorist	<b>1</b>	<b>0</b>	<b>10</b>
Other	<b>0</b>	<b>0</b>	<b>1</b>
Palm Beach Road Ran	<b>11</b>	<b>3</b>	<b>107</b>
Road Watcher	<b>0</b>	<b>1</b>	<b>6</b>
SIRV	<b>0</b>	<b>0</b>	<b>1</b>
VisioPaD Detection	<b>2</b>	<b>2</b>	<b>16</b>
<b>Total</b>	<b>81</b>	<b>73</b>	<b>1,083</b>

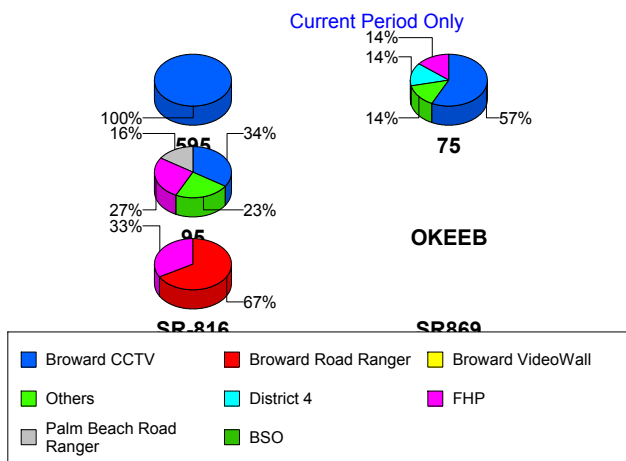
### Total Incidents by Detection Method



## Incident Detection Methods by Roadway

		Current Week	Last Week	YTD
595	Broward CCTV	1	0	8
	Broward Road Ranger	0	0	5
	BSO	0	0	3
	County Police	0	0	1
	FHP	0	0	5
	VisioPaD Detection	0	1	1
	<b>Total</b>	<b>1</b>	<b>1</b>	<b>23</b>
75	Broward CCTV	4	2	29
	Broward Road Ranger	0	0	11
	BSO	0	3	8
	District 4	1	0	3
	FHP	1	3	19
	Fire	0	0	1
	Road Watcher	0	0	1
	VisioPaD Detection	1	0	7
	<b>Total</b>	<b>7</b>	<b>8</b>	<b>79</b>
95	Broward CCTV	24	22	321
	Broward Road Ranger	6	6	99
	Broward TMC	0	0	8
	Broward VideoWall	0	0	16
	BSO	0	0	2
	District 4	3	2	24
	FDOT Maintenance	0	0	1
	FHP	19	19	288
	ITMS CCTV	5	9	51
	Local Police	0	0	1
	Media	0	0	2
	Motorist	1	0	10
	Other	0	0	1
	Palm Beach Road Ran	11	3	107
Road Watcher	0	0	3	

Total Events by Roadway and Detection Method

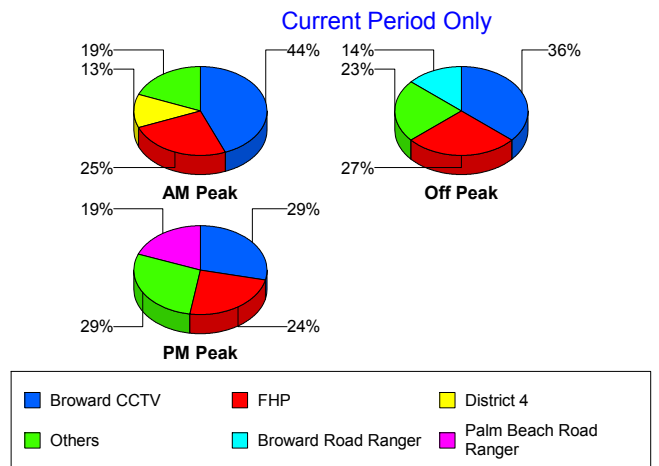


		Current Week	Last Week	YTD
95	SIRV	0	0	1
	VisioPaD Detection	1	1	8
	Total	70	62	943
SR-816	Broward Road Ranger	2	1	31
	BSO	0	0	1
	FHP	1	0	1
	Road Watcher	0	1	2
	Total	3	2	35
SR869	Broward Road Ranger	0	0	1
	BSO	0	0	1
	FHP	0	0	1
	Total	0	0	3
Total	81	73	1,083	

### Incident Detection Methods by Peak Period

		Current Week	Last Week	YTD
AM Peak	Broward CCTV	7	6	60
	Broward Road Ranger	1	1	33
	Broward VideoWall	0	0	10
	BSO	0	1	3
	District 4	2	0	7
	FHP	4	2	57
	ITMS CCTV	0	5	12
	Local Police	0	0	1
	Media	0	0	1
	Palm Beach Road Ran	2	1	31
	Road Watcher	0	0	1
	SIRV	0	0	1
	VisioPaD Detection	0	0	1
	Total	16	16	218
Off Peak	Broward CCTV	16	10	198
	Broward Road Ranger	6	3	63

Total Events by Peak Period and Detection Method

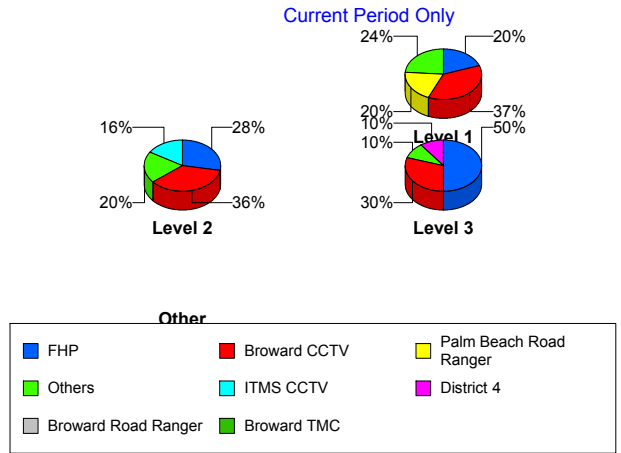


		Current Week	Last Week	YTD
Off Peak	Broward TMC	0	0	5
	Broward VideoWall	0	0	5
	BSO	0	2	8
	County Police	0	0	1
	District 4	0	1	13
	FDOT Maintenance	0	0	1
	FHP	12	10	161
	ITMS CCTV	4	2	32
	Motorist	0	0	5
	Other	0	0	1
	Palm Beach Road Ran	5	2	52
	Road Watcher	0	0	3
	VisioPaD Detection	1	1	9
	Total	44	31	557
PM Peak	Broward CCTV	6	8	100
	Broward Road Ranger	1	3	51
	Broward TMC	0	0	3
	Broward VideoWall	0	0	1
	BSO	0	0	4
	District 4	2	1	7
	FHP	5	10	97
	Fire	0	0	1
	ITMS CCTV	1	2	7
	Media	0	0	1
	Motorist	1	0	5
	Palm Beach Road Ran	4	0	24
	Road Watcher	0	1	2
	VisioPaD Detection	1	1	6
Total	21	26	309	
Total	81	73	1,083	

## Incident Detection Methods by Severity

		Current Week	Last Week	YTD
	FHP	0	0	1
	Total	0	0	1
Level 1	Broward CCTV	17	12	221
	Broward Road Ranger	6	5	105
	Broward TMC	0	0	5
	Broward VideoWall	0	0	10
	BSO	0	0	4
	District 4	3	1	16
	FHP	9	12	141
	ITMS CCTV	1	3	22
	Media	0	0	1
	Motorist	0	0	7
	Other	0	0	1
	Palm Beach Road Ran	9	3	73
	Road Watcher	0	0	5
	VisioPaD Detection	1	1	8
	Total	46	37	619
Level 2	Broward CCTV	9	9	106
	Broward Road Ranger	2	2	35
	Broward TMC	0	0	3
	Broward VideoWall	0	0	6
	BSO	0	0	1
	District 4	0	1	7
	FDOT Maintenance	0	0	1
	FHP	7	9	134
	Fire	0	0	1
	ITMS CCTV	4	5	25
	Local Police	0	0	1
	Motorist	1	0	3
	Palm Beach Road Ran	1	0	24
Road Watcher	0	1	1	

Total Events by Severity and Detection Method



		Current Week	Last Week	YTD
Level 2	SIRV	0	0	1
	VisioPaD Detection	1	0	6
	Total	25	27	355
Level 3	Broward CCTV	3	3	31
	Broward Road Ranger	0	0	7
	BSO	0	3	10
	County Police	0	0	1
	District 4	1	0	4
	FHP	5	1	39
	ITMS CCTV	0	1	4
	Media	0	0	1
	Palm Beach Road Ran	1	0	10
	VisioPaD Detection	0	1	2
	Total	10	9	109
Total		81	73	1,083

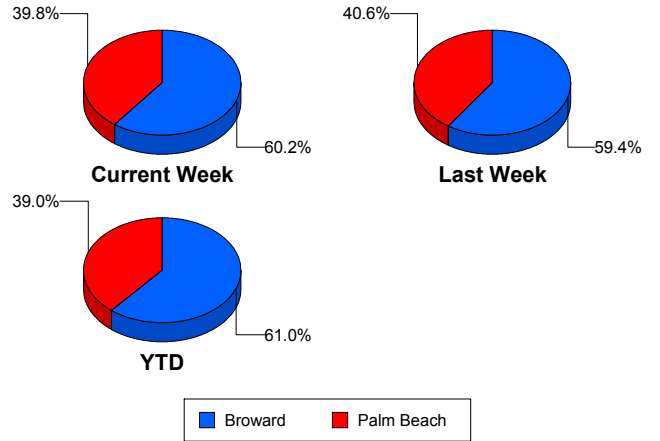
# Road Ranger / SIRV Performance Measures

## Road Ranger / SIRV Performance By County

Values presented are:  
 - Total Events with a RR/SIRV Response  
 - Total RR/SIRV Responses,  
 - Total Activities Performed

	Current We	Last Week	YTD
Broward	914	984	13,692
	987	1,047	14,648
	1,022	1,099	15,194
Palm Beach	634	692	9,043
	652	717	9,352
	689	778	9,912

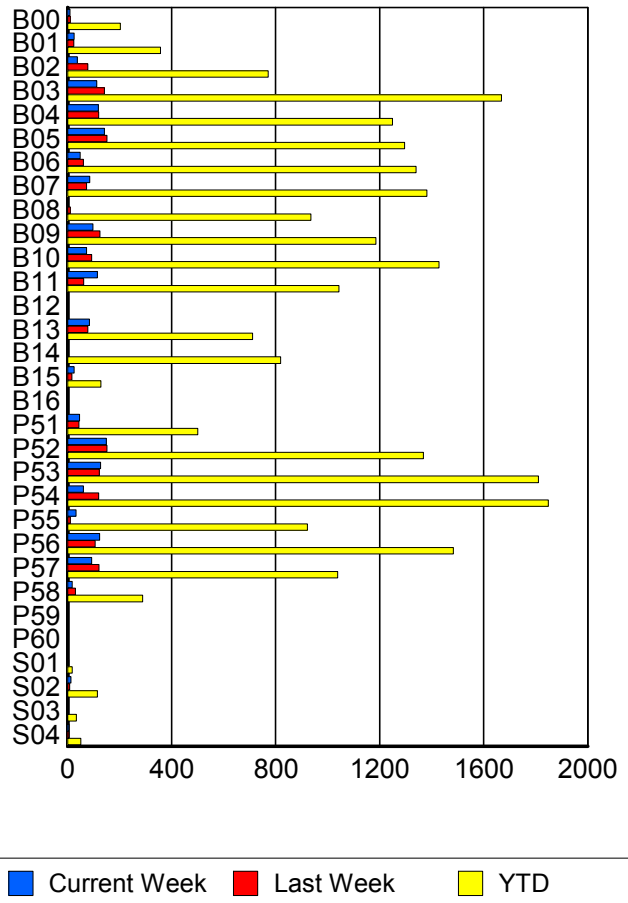
RR/SIRV Responses per County



## Road Ranger / SIRV Performance By Truck

	Current We	Last Week	YTD
B00	9	10	199
	9	10	203
	9	10	213
B01	25	24	349
	25	24	357
	25	25	361
B02	37	78	761
	37	78	771
	37	78	784
B03	111	141	1,655
	112	142	1,668
	117	151	1,747
B04	117	115	1,232
	118	119	1,249
	122	125	1,300
B05	141	150	1,287
	142	151	1,296
	146	156	1,343
B06	48	60	1,324
	48	60	1,340
	48	62	1,390
B07	83	73	1,360
	85	73	1,382
	88	80	1,441
B08	0	10	921
	0	10	936
	0	11	971

RR/SIRV Responses per Truck



	Current We	Last Week	YTD
B09	97	122	1,171
	98	124	1,186
	101	128	1,238
B10	72	91	1,409
	73	93	1,428
	76	98	1,472
B11	112	62	1,033
	114	62	1,043
	122	66	1,080
B12	0	1	3
	0	1	3
	0	1	3
B13	82	78	702
	84	78	711
	88	81	728
B14	0	0	808
	0	0	819
	0	0	850
B15	24	16	127
	25	16	128
	27	16	133
B16	0	0	1
	0	0	1
	0	0	1
P51	45	44	493
	46	44	500
	49	47	524
P52	148	149	1,349
	149	151	1,368
	158	159	1,455
P53	125	120	1,787
	127	122	1,810
	134	137	1,922
P54	60	118	1,822
	60	119	1,848
	64	130	1,961
P55	32	10	913
	32	10	922
	32	10	963
P56	120	105	1,464
	123	106	1,483
	128	114	1,577
P57	92	120	1,025
	92	121	1,039
	97	133	1,100

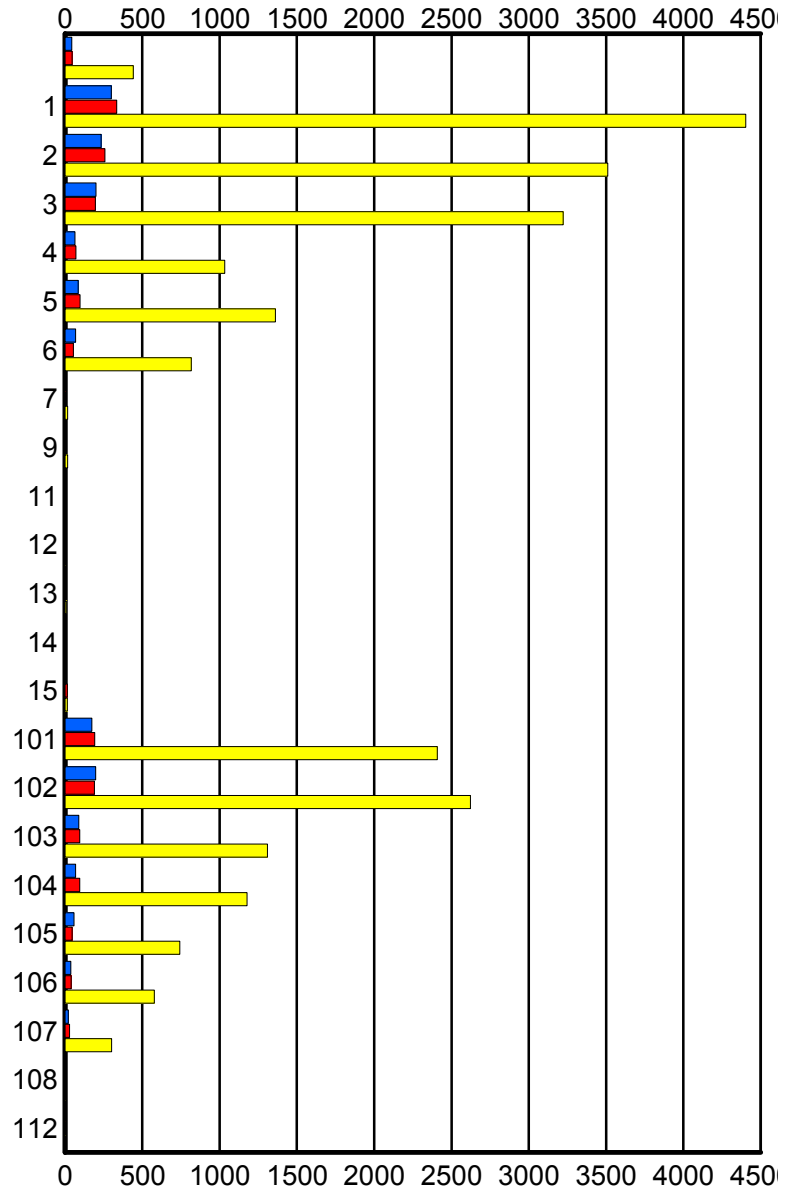
	Current We	Last Week	YTD
P58	18	30	286
	18	30	289
	18	33	308
P59	1	0	1
	1	0	1
	1	0	1
P60	0	0	1
	0	0	1
	0	0	1
S01	1	4	18
	1	4	18
	1	5	20
S02	11	8	110
	13	8	115
	15	10	126
S03	1	3	31
	1	3	34
	1	5	37
S04	6	5	51
	6	5	51
	7	6	56

### Road Ranger / SIRV Performance By Beat

	Current We	Last Week	YTD
	40	44	426
	43	46	442
	48	52	473
1	285	323	4,198
	300	334	4,404
	310	348	4,575
2	227	250	3,410
	234	258	3,512
	243	274	3,655
3	196	191	3,146
	201	197	3,222
	210	205	3,351
4	64	68	1,014
	65	70	1,033
	67	75	1,069
5	84	98	1,351
	84	98	1,361
	86	100	1,394
6	65	53	802
	68	53	817
	70	54	836
7	0	4	16
	0	4	17
	0	5	18
9	0	0	17
	0	0	17
	0	0	17
11	0	0	2
	0	0	2
	0	0	2
12	0	0	2
	0	0	2
	0	0	2
13	0	0	8
	0	0	8
	0	0	8
14	0	0	4
	0	0	4
	0	0	4
15	0	14	14
	0	14	14
	0	14	14
101	171	191	2,364
	173	192	2,408
	188	204	2,545

Values presented are:  
 - Total Events with a RR/SIRV Response  
 - Total RR/SIRV Responses,  
 - Total Activities Performed

### RR/SIRV Responses per Beat



■ Current Week   
 ■ Last Week   
 ■ YTD

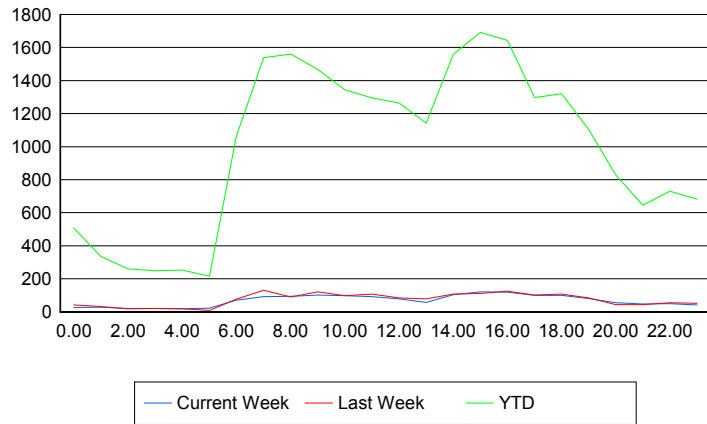
	Current We	Last Week	YTD
102	198 199 208	187 189 206	2,580 2,623 2,781
103	85 88 92	94 96 102	1,294 1,309 1,375
104	68 69 70	93 95 105	1,166 1,178 1,257
105	57 57 61	46 46 49	737 742 795
106	38 38 38	40 40 48	571 578 605
107	20 20 20	30 30 33	299 301 323
108	0 0 0	0 0 0	3 4 4
112	0 0 0	2 2 3	2 2 3

## Road Ranger / SIRV Performance By Time of Day

Values presented are:  
 - Total Events with a RR/SIRV Response  
 - Total RR/SIRV Responses,  
 - Total Activities Performed

	Current We	Last Week	YTD
12AM-1AM	26	42	490
	27	42	508
	29	47	539
1AM-2AM	29	32	326
	29	33	336
	30	35	348
2AM-3AM	20	16	244
	20	19	261
	22	21	273
3AM-4AM	19	20	233
	20	21	248
	20	21	268
4AM-5AM	18	16	231
	18	18	253
	21	20	270
5AM-6AM	18	9	180
	22	9	216
	23	11	226
6AM-7AM	67	71	996
	70	77	1,061
	75	83	1,104
7AM-8AM	89	122	1,464
	93	130	1,539
	95	135	1,604
8AM-9AM	88	84	1,466
	94	91	1,560
	96	98	1,616
9AM-10AM	98	116	1,402
	102	122	1,467
	111	131	1,540
10AM-11AM	91	94	1,277
	97	98	1,344
	106	103	1,408
11AM-12PM	86	100	1,235
	92	107	1,296
	96	110	1,350
12PM-1PM	72	80	1,186
	79	84	1,265
	80	88	1,312

## Number of Responses / Hour of the Day



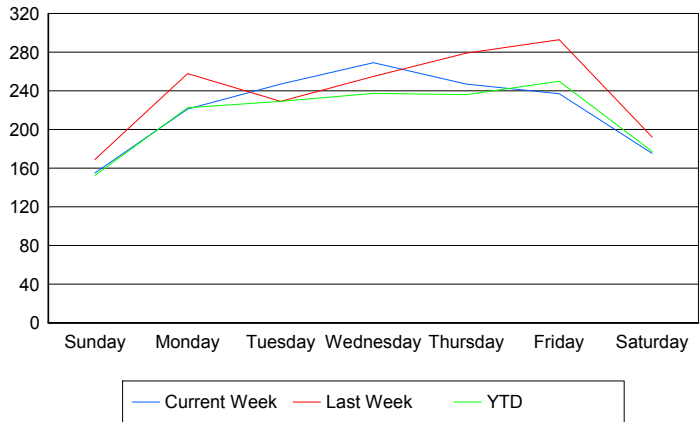
	Current We	Last Week	YTD
1PM-2PM	54	78	1,069
	58	79	1,142
	59	84	1,187
2PM-3PM	99	104	1,460
	104	108	1,559
	106	115	1,644
3PM-4PM	121	106	1,626
	121	112	1,692
	126	119	1,765
4PM-5PM	112	118	1,540
	120	125	1,644
	125	131	1,718
5PM-6PM	90	94	1,226
	100	102	1,297
	101	109	1,352
6PM-7PM	97	102	1,267
	99	108	1,320
	103	115	1,374
7PM-8PM	75	81	1,056
	81	85	1,104
	82	91	1,146
8PM-9PM	53	44	791
	55	44	829
	56	47	856
9PM-10PM	44	43	613
	48	43	646
	56	46	686
10PM-11PM	43	53	699
	49	55	731
	50	62	782
11PM-12AM	39	51	658
	41	52	682
	43	55	738

## Road Ranger / SIRV Performance By Day of Week

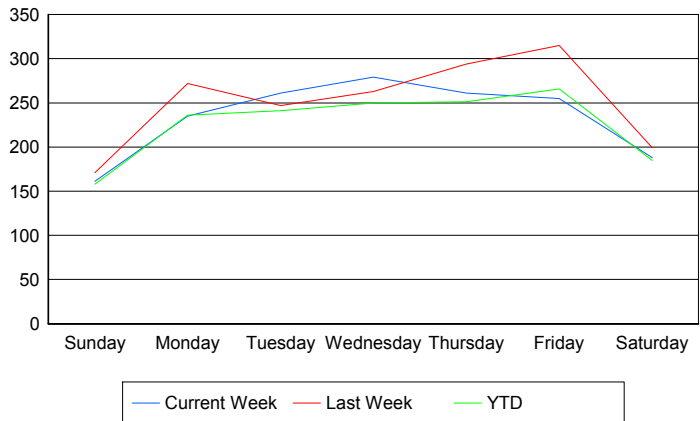
Values presented are:  
 - Total Events with a RR/SIRV Response  
 - Total RR/SIRV Responses,  
 - Total Activities Performed

	Current We	Last Week	YTD
Sunday	154	172	2,254
	160	174	2,335
	165	186	2,438
Monday	221	258	3,296
	235	272	3,501
	241	287	3,649
Tuesday	247	229	3,424
	261	247	3,602
	280	261	3,764
Wednesday	269	255	3,533
	279	263	3,719
	286	287	3,905
Thursday	247	279	3,522
	261	294	3,747
	273	318	3,934
Friday	237	293	3,926
	255	315	4,173
	267	327	4,339
Saturday	175	192	2,803
	188	199	2,923
	199	211	3,077

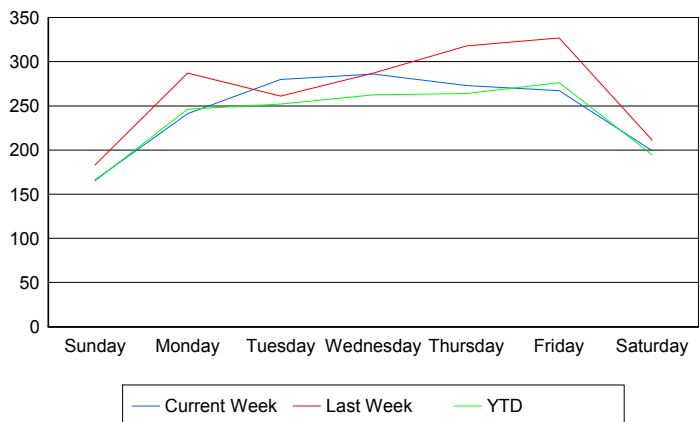
### Avg # of events with a RR/SIRV Response per Day of the Week



### Avg # of RR/SIRV Responses per Day of the Week



### Avg # of RR/SIRV Activities Performed per Day of the Week



### Road Ranger / SIRV Responses per Time of Day and Day of Week

