



# Weekly Performance Measures Report Broward, Palm Beach Counties

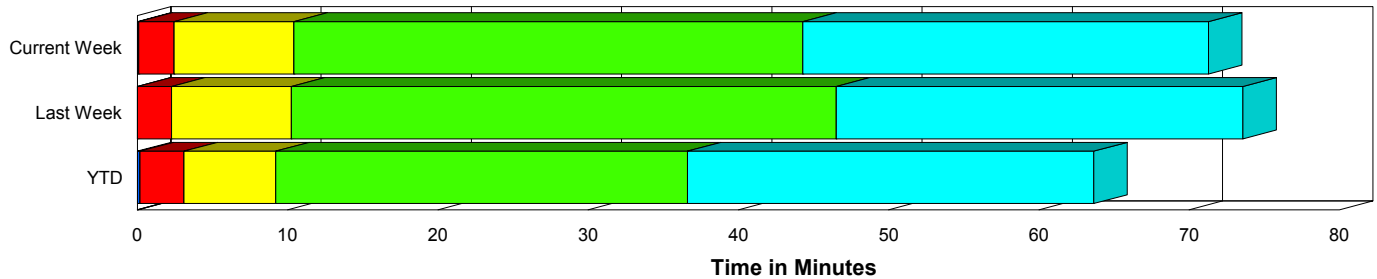
Period From Apr 4, 2010 to Apr 10, 2010

Created on:  
April 12, 2010  
3:55 pm

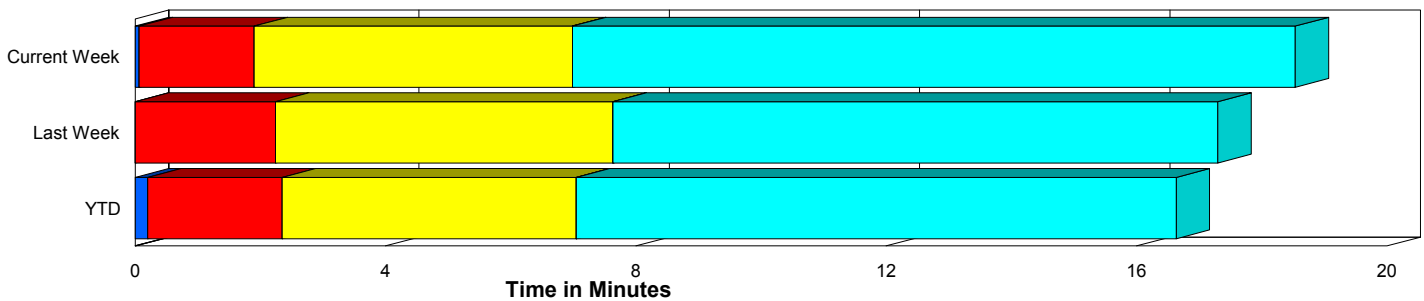
## Performance Measures Summary

	Traffic Events (No Lanes Blocked)			Incidents (Lanes Blocked)		
	<u>This Week</u>	<u>Last Week</u>	<u>YTD</u>	<u>This Week</u>	<u>Last Week</u>	<u>YTD</u>
Number of Events	1,881	1,828	24,390	73	52	1,020
TMC Detection (min.)	0.06	0.00	0.20	0.10	0.00	0.19
TMC Verification (min.)	1.84	2.24	2.15	2.34	2.28	2.91
TMC Response (min.)	7.60	8.63	7.90	10.45	10.26	9.14
RR Dispatch Time (min.)	1.60	1.66	1.43	1.73	1.47	1.69
RR Response Time (min.)	6.18	7.00	6.56	8.76	8.79	7.48
Roadway Clearance (min.)				43.30	46.53	36.06
Event Clearance (min.)	19.21	18.30	17.68	70.29	72.67	62.85
# of Events w/ RR/SIRV	1,633	1,554	20,555	68	52	996
RR/SIRV Responses	1,633	1,554	20,555	68	52	996
RR/SIRV Activities	1,435	1,374	17,384	120	91	1,712

### Incident Clearance Time-Line



### Traffic Event (Non-Lane Blockage) Time-Line



<span style="color: blue;">■</span> Avg. TMC Detection Time	<span style="color: green;">■</span> Avg. Time from TMC Response to Roadway Clearance*
<span style="color: red;">■</span> Avg. Time from TMC Detection to TMC Verification	<span style="color: cyan;">■</span> Avg. Time from Roadway Clearance to Incident/Event Clearance**
<span style="color: yellow;">■</span> Avg. Time from TMC Verification to TMC Response	

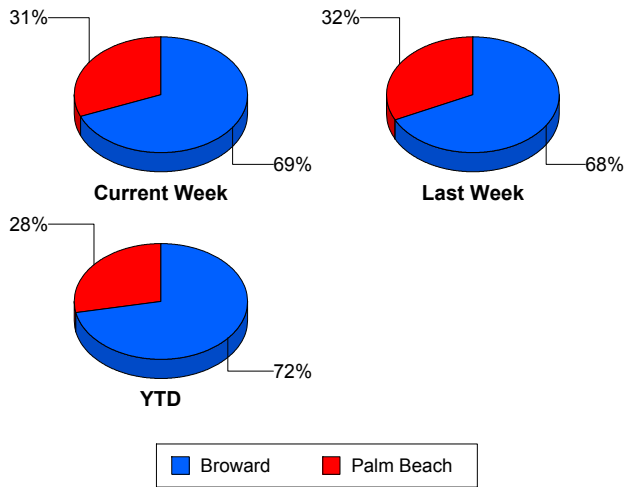
\* Roadway clearance equals all travel lanes open

\*\* Incident clearance equals time when last responder has left the scene

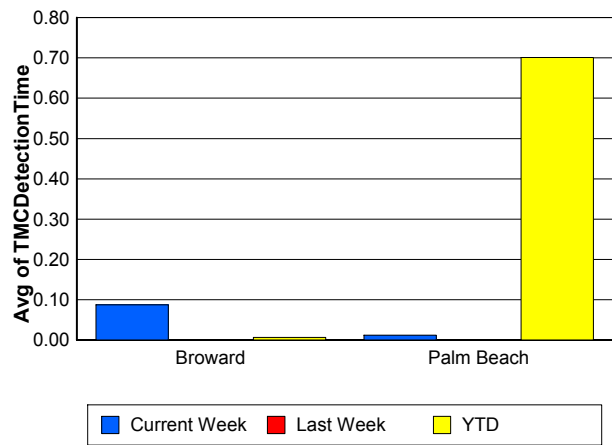
## Performance Measures by County

	Broward			Palm Beach		
	<u>Current Week</u>	<u>Last Week</u>	<u>YTD</u>	<u>Current Week</u>	<u>Last Week</u>	<u>YTD</u>
Number of Events	1,345	1,275	18,262	609	605	7,148
Number of Incidents	49	39	698	24	13	322
TMC Detection (min.)	0.09	0.00	0.01	0.01	0.00	0.70
TMC Verification (min.)	1.20	1.40	1.17	3.31	4.04	4.77
TMC Response (min.)	9.04	9.44	9.08	5.72	7.57	6.09
RR Dispatch Time (min.)	1.39	1.27	1.40	2.03	2.39	1.55
RR Response Time (min.)	7.74	8.29	7.78	4.08	5.23	4.65
Event Clearance (min.)	21.23	19.64	18.92	20.87	20.15	20.97
Roadway Clearance (min.)	45.89	44.96	33.53	38.02	51.24	41.54
Incident Clearance (min.)	73.53	72.77	61.98	63.68	72.38	64.74
# of Events w/ RR/SIRV	1,131	1,051	14,815	570	555	6,736
RR/SIRV Responses	1,131	1,051	14,815	570	555	6,736
RR/SIRV Activities	941	876	11,991	614	589	7,105

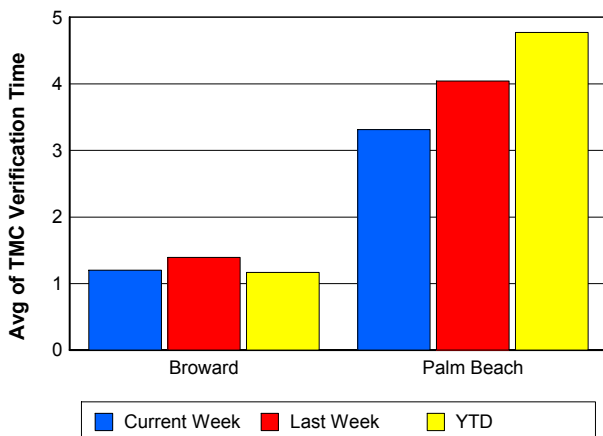
### Number of Events / County



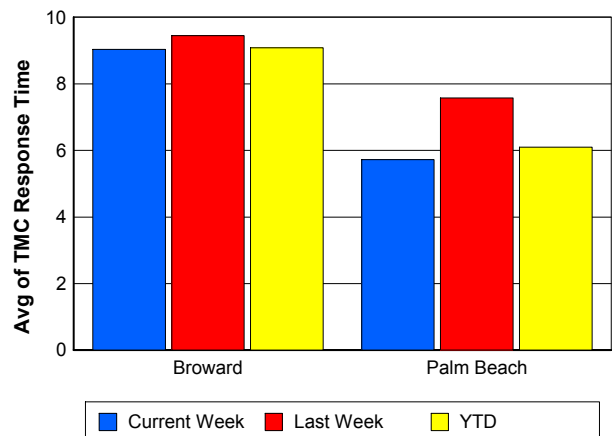
### TMC Detection Time



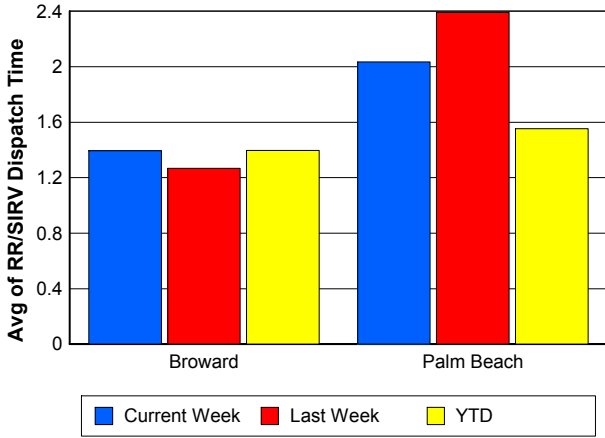
### TMC Verification Time



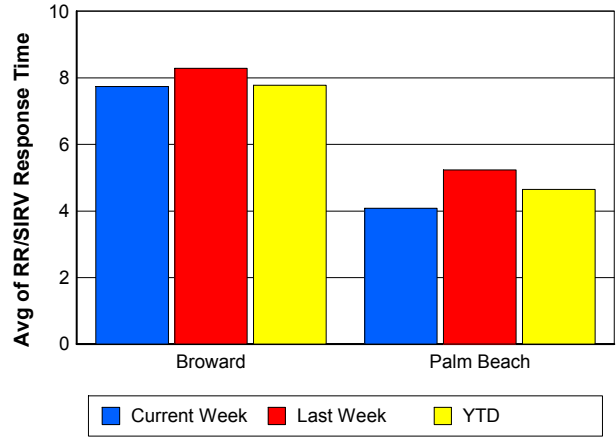
### TMC Response Time



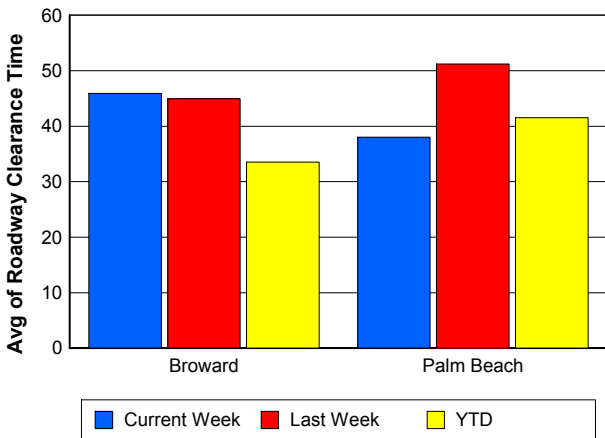
### Road Ranger / SIRV Dispatch Time



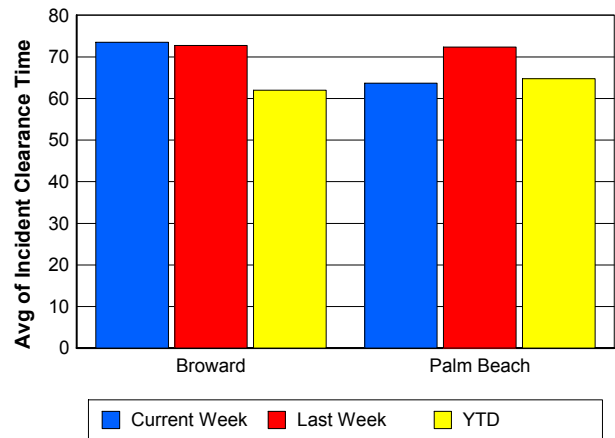
### Road Ranger / SIRV Response Time



### Roadway Clearance Time (2A)



### Incident Clearance Time (3B)

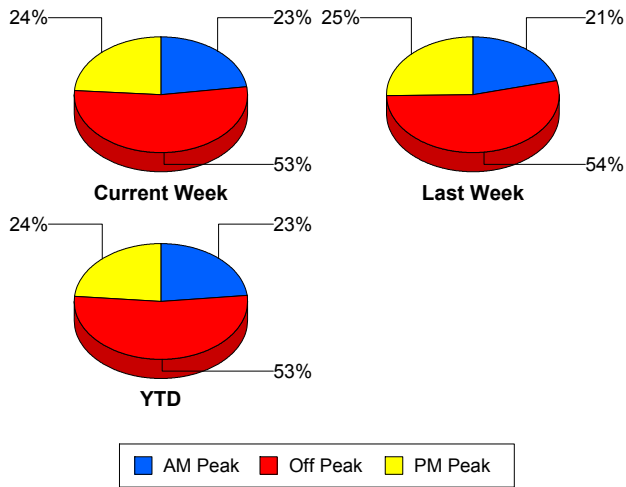


## Performance Measures by Peak Period

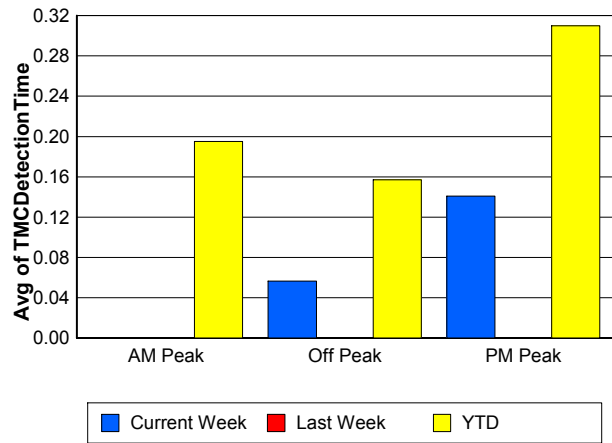
Note: AM peak period is defined as 6am to 10am and PM peak period is defined as 3pm to 7pm.

	AM Peak			Off Peak			PM Peak		
	<u>Current Week</u>	<u>Last Week</u>	<u>YTD</u>	<u>Current Week</u>	<u>Last Week</u>	<u>YTD</u>	<u>Current Week</u>	<u>Last Week</u>	<u>YTD</u>
Number of Events	445	398	5,901	1,041	1,007	13,498	468	475	6,011
Number of Incidents	16	9	203	31	32	527	26	11	290
TMC Detection (min.)	0.00	0.00	0.20	0.06	0.00	0.16	0.14	0.00	0.31
TMC Verification (min.)	1.26	1.49	1.44	2.17	2.07	2.24	1.73	3.24	2.78
TMC Response (min.)	8.22	7.91	7.30	7.99	8.63	8.45	6.74	9.49	7.60
RR Dispatch Time (min.)	1.29	1.34	0.91	1.66	1.50	1.63	1.81	2.24	1.57
RR Response Time (min.)	7.08	6.65	6.52	6.59	7.21	6.89	4.95	7.15	6.12
Event Clearance (min.)	19.97	18.47	17.90	21.46	20.62	19.93	21.44	19.18	20.09
Roadway Clearance (min.)	37.13	23.42	32.02	55.06	57.73	42.09	33.09	32.84	27.93
Incident Clearance (min.)	52.65	56.40	60.55	76.73	84.57	66.91	73.47	51.38	57.10
# of Events w/ RR/SIRV	403	350	5,111	880	845	11,229	418	411	5,211
RR/SIRV Responses	403	350	5,111	880	845	11,229	418	411	5,211
RR/SIRV Activities	379	309	4,414	787	783	9,881	389	373	4,801

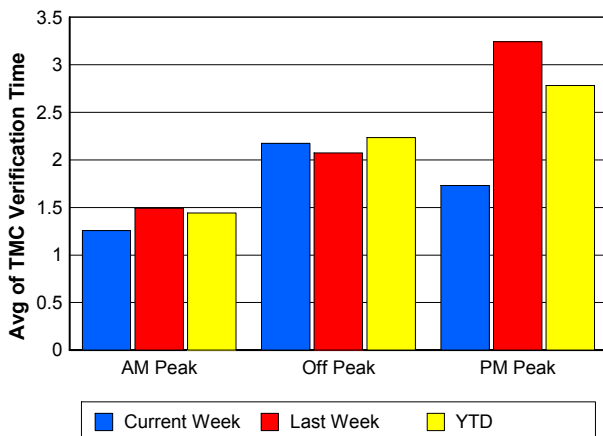
### Number of Events / Peak Period



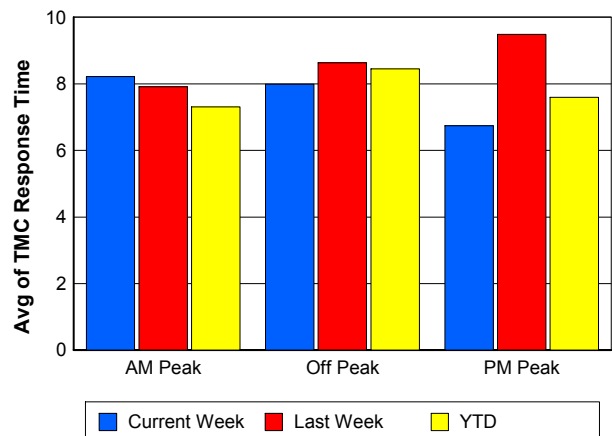
### TMC Detection Time



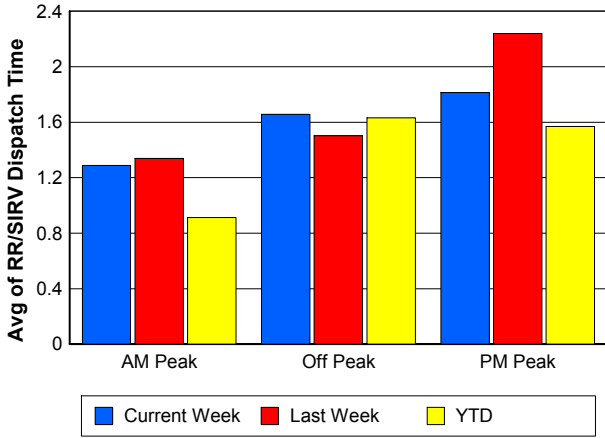
### TMC Verification Time



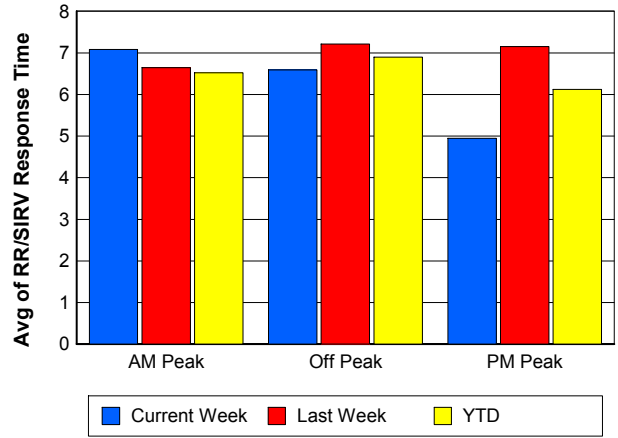
### TMC Response Time



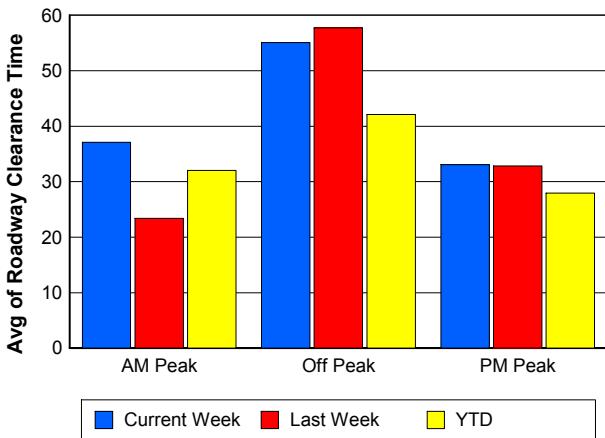
### Road Ranger / SIRV Dispatch Time



### Road Ranger / SIRV Response Time



### Roadway Clearance Time (2A)



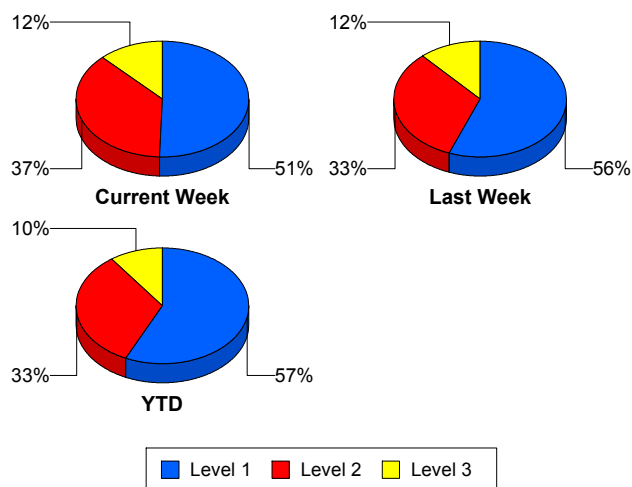
### Incident Clearance Time (3B)



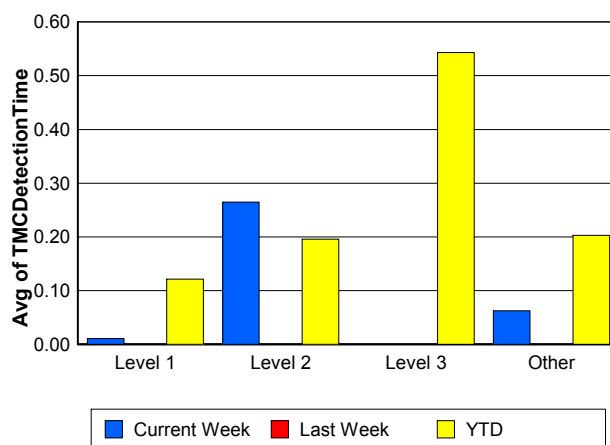
## Performance Measures by Severity

	Level 1			Level 2			Level 3			Other		
	<u>This Week</u>	<u>Last Week</u>	<u>YTD</u>	<u>This Week</u>	<u>Last Week</u>	<u>YTD</u>	<u>This Week</u>	<u>Last Week</u>	<u>YTD</u>	<u>This Week</u>	<u>Last Week</u>	<u>YTD</u>
Number of Events	37	29	580	27	17	338	9	6	102	1,881	1,828	24,390
Number of Incidents	37	29	580	27	17	338	9	6	102	0	0	0
TMC Detection (min.)	0.01	0.00	0.12	0.26	0.00	0.20	0.00	0.00	0.54	0.06	0.00	0.20
TMC Verification (min.)	1.79	0.92	1.49	2.94	4.23	5.01	2.85	3.32	4.07	1.84	2.24	2.15
TMC Response (min.)	8.15	9.69	7.17	10.84	10.31	11.87	19.40	12.88	11.08	7.60	8.63	7.90
RR Dispatch Time (min.)	1.47	1.17	1.20	1.60	1.72	2.55	3.26	2.23	1.59	1.60	1.66	1.43
RR Resp. Time (min.)	6.71	8.52	6.00	9.30	8.59	9.36	16.13	10.65	9.49	6.18	7.00	6.56
Event Clearance (min.)	52.63	56.01	46.97	71.94	74.03	74.08	137.94	149.39	115.98	19.21	18.30	17.68
Roadway Clear. (min.)	16.40	17.23	15.02	54.67	63.20	53.44	119.83	140.89	98.05			
Incident Clearance (min.)	52.63	56.01	46.97	71.94	74.03	74.08	137.94	149.39	115.98			
# of Events w/ RR/SIRV	36	29	568	24	17	332	8	6	96	1,633	1,554	20,555
RR/SIRV Responses	36	29	568	24	17	332	8	6	96	1,633	1,554	20,555
RR/SIRV Activities	53	48	848	42	30	627	25	13	237	1,435	1,374	17,384

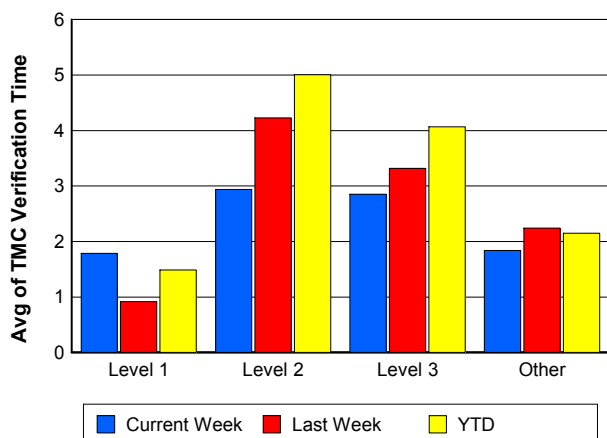
### Number of Events / Severity



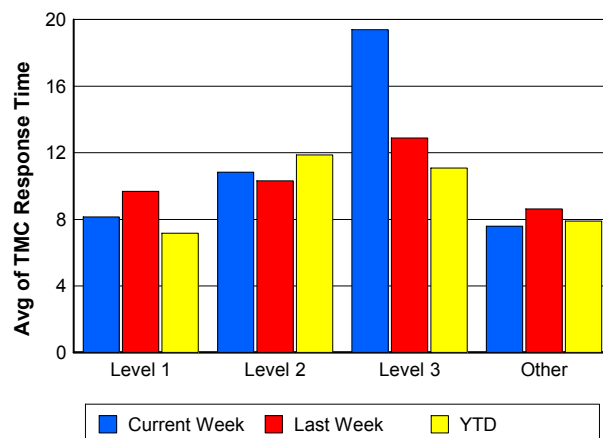
### TMC Detection Time



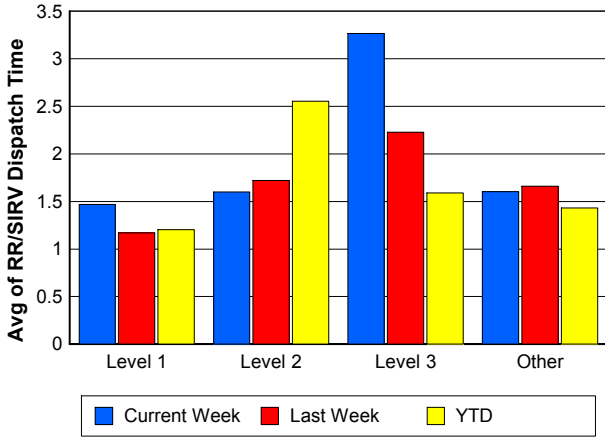
### TMC Verification Time



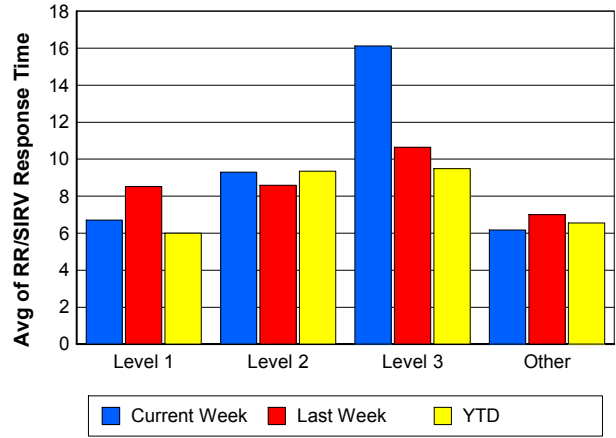
### TMC Response Time



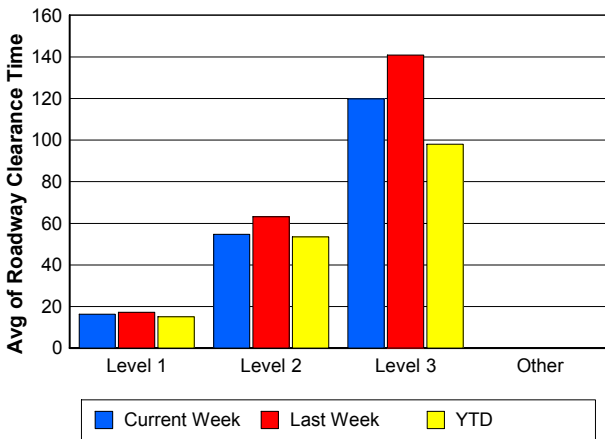
## Road Ranger / SIRV Dispatch Time



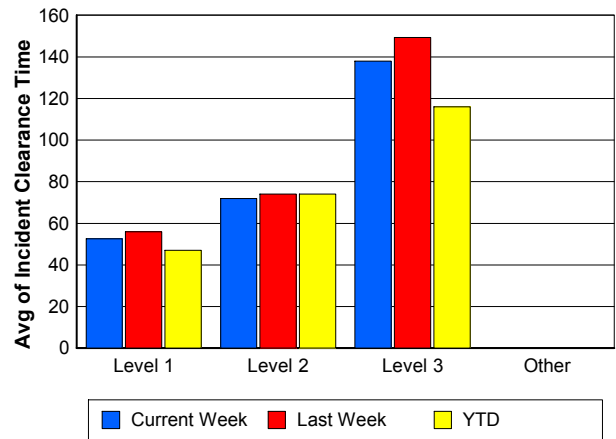
## Road Ranger / SIRV Response Time



## Roadway Clearance Time (2A)



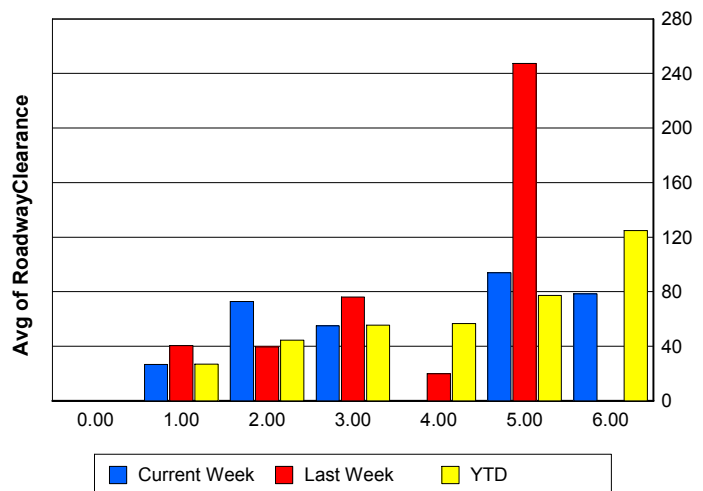
## Incident Clearance Time (3B)



## Roadway Clearance by Maximum Number of Lanes Blocked

	Current Week	Last Week	YTD
0			
1	26.67	40.39	26.91
2	72.76	39.55	44.54
3	55.03	76.10	55.43
4	0.00	19.77	56.62
5	93.87	247.42	77.32
6	78.52	0.00	124.84

## Roadway Clearance Time (2A)



## Performance Measures by Roadway

**595**

	<u>Current Week</u>	<u>Last Week</u>	<u>YTD</u>
Number of Events	41	40	659
Number of Incidents	1	0	34
TMC Detection (min.)	0.01	0.00	0.00
TMC Verification (min.)	2.41	0.68	1.69
TMC Response (min.)	17.35	9.91	14.61
RR Dispatch Time (min.)	1.78	1.45	2.06
RR Resp. Time (min.)	14.91	8.94	12.53
Event Clearance (min.)	18.79	14.57	19.99
Roadway Clear. (min.)	25.82		51.54
Incident Clearance (min.)	28.35		70.64
# of Events w/ RR/SIRV	33	29	473
RR/SIRV Responses	33	29	473
RR/SIRV Activities	16	10	322

**75**

	<u>Current Week</u>	<u>Last Week</u>	<u>YTD</u>
Number of Events	281	301	4,036
Number of Incidents	8	6	72
TMC Detection (min.)	0.42	0.00	0.03
TMC Verification (min.)	2.78	2.98	1.99
TMC Response (min.)	9.87	10.76	10.02
RR Dispatch Time (min.)	1.11	1.34	1.48
RR Resp. Time (min.)	8.53	9.63	8.66
Event Clearance (min.)	23.62	22.77	19.57
Roadway Clear. (min.)	68.19	76.92	45.79
Incident Clearance (min.)	141.98	113.16	87.14
# of Events w/ RR/SIRV	234	239	3,144
RR/SIRV Responses	234	239	3,144
RR/SIRV Activities	206	201	2,574

**95**

	<u>Current Week</u>	<u>Last Week</u>	<u>YTD</u>
Number of Events	1,618	1,521	20,493
Number of Incidents	62	44	878
TMC Detection (min.)	0.00	0.00	0.24
TMC Verification (min.)	1.68	2.16	2.24
TMC Response (min.)	7.25	8.41	7.51
RR Dispatch Time (min.)	1.69	1.73	1.43
RR Resp. Time (min.)	5.80	6.67	6.16
Event Clearance (min.)	20.66	19.35	19.48
Roadway Clear. (min.)	40.18	43.93	35.18
Incident Clearance (min.)	62.34	67.79	61.93
# of Events w/ RR/SIRV	1,422	1,321	17,751
RR/SIRV Responses	1,422	1,321	17,751
RR/SIRV Activities	1,321	1,238	16,022

**OKEEB**

	<u>YTD</u>
Number of Events	1
Number of Incidents	0
TMC Detection (min.)	0.00
TMC Verification (min.)	0.00
TMC Response (min.)	0.00
RR Dispatch Time (min.)	0.00
RR Resp. Time (min.)	0.00
Event Clearance (min.)	18.45
Roadway Clear. (min.)	
Incident Clearance (min.)	
# of Events w/ RR/SIRV	1
RR/SIRV Responses	1
RR/SIRV Activities	1

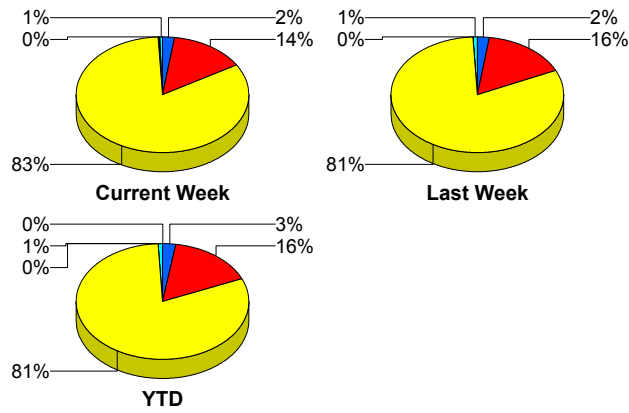
**SR-816**

	<u>Current Week</u>	<u>Last Week</u>	<u>YTD</u>
Number of Events	2	2	42
Number of Incidents	2	2	32
TMC Detection (min.)	0.00	0.00	0.00
TMC Verification (min.)	8.11	0.00	1.01
TMC Response (min.)	8.10	0.00	1.58
RR Dispatch Time (min.)	0.54	0.00	0.11
RR Resp. Time (min.)	7.56	0.00	1.47
Event Clearance (min.)	50.97	58.67	21.42
Roadway Clear. (min.)	49.41	12.38	20.32
Incident Clearance (min.)	50.97	58.67	23.41
# of Events w/ RR/SIRV	2	2	41
RR/SIRV Responses	2	2	41
RR/SIRV Activities	2	2	45

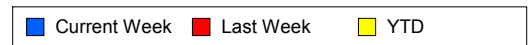
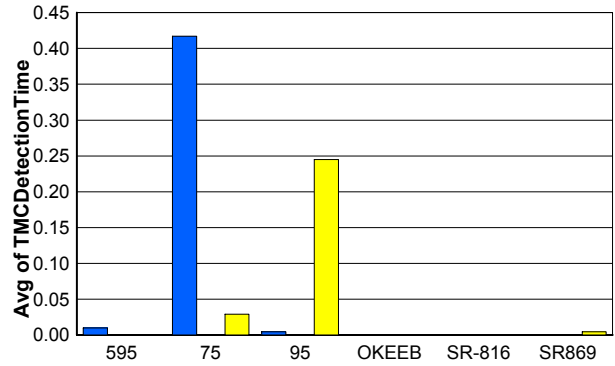
**SR869**

	<u>Current Week</u>	<u>Last Week</u>	<u>YTD</u>
Number of Events	12	16	179
Number of Incidents	0	0	4
TMC Detection (min.)	0.00	0.00	0.00
TMC Verification (min.)	0.88	0.11	1.32
TMC Response (min.)	9.28	3.99	8.74
RR Dispatch Time (min.)	0.93	0.29	0.99
RR Resp. Time (min.)	8.35	3.76	8.01
Event Clearance (min.)	27.77	14.75	17.38
Roadway Clear. (min.)			47.03
Incident Clearance (min.)			78.04
# of Events w/ RR/SIRV	10	15	141
RR/SIRV Responses	10	15	141
RR/SIRV Activities	10	14	132

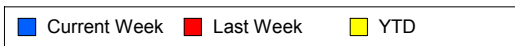
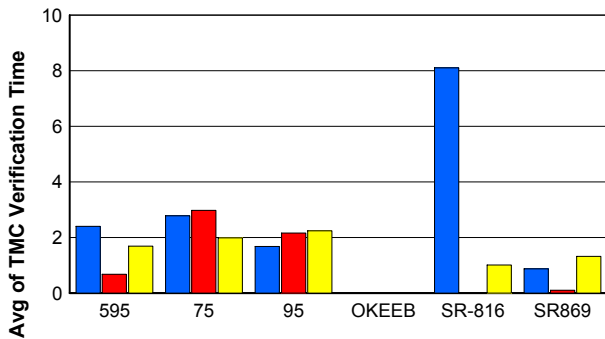
## Number of Events / Roadway



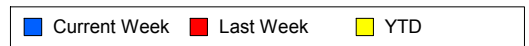
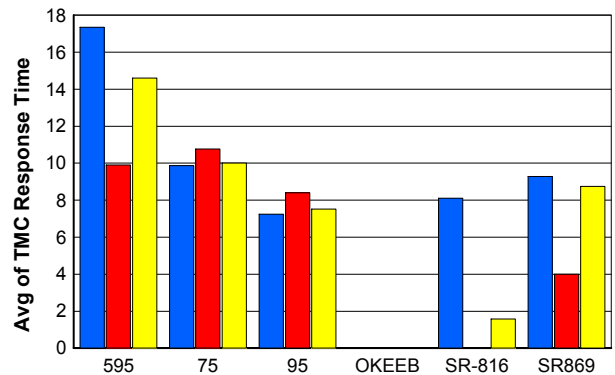
## TMC Detection Time



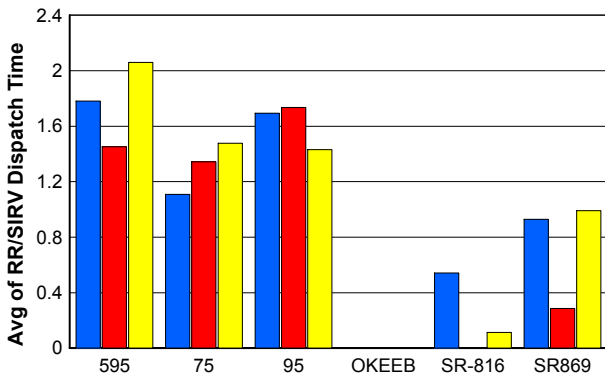
## TMC Verification Time



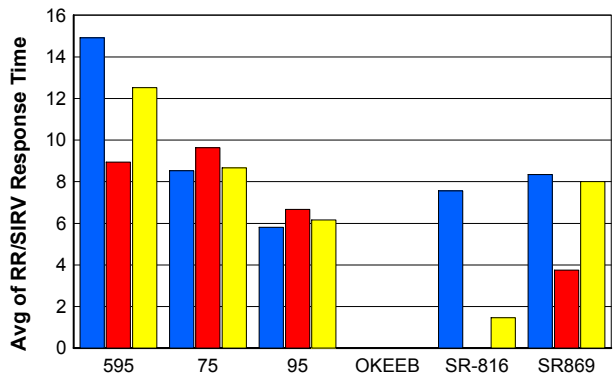
## TMC Response Time



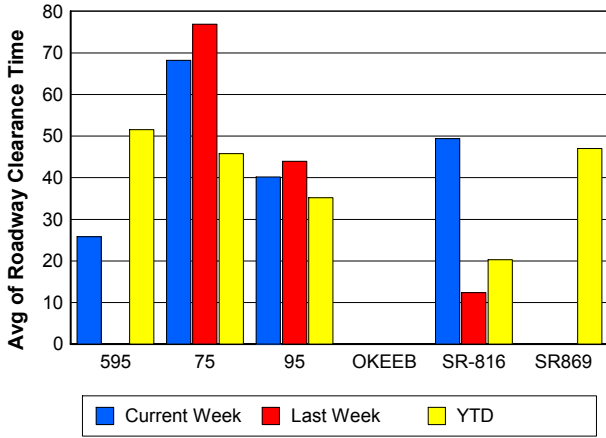
## Road Ranger / SIRV Dispatch Time



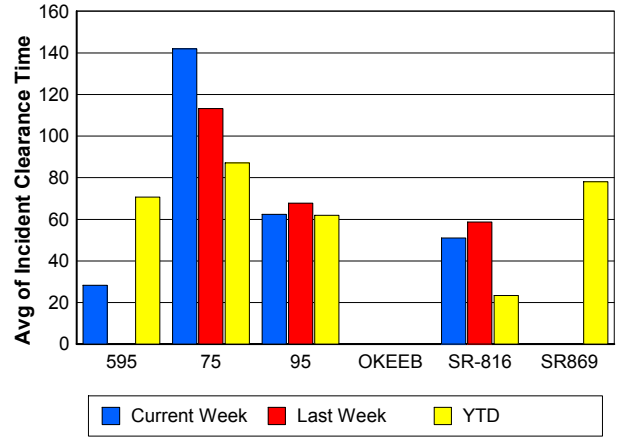
## Road Ranger / SIRV Response Time



## Roadway Clearance Time (2A)



## Incident Clearance Time (3B)



## Performance Measures by Event Type

### Accident

	<u>Current Week</u>	<u>Last Week</u>	<u>YTD</u>
Number of Events	104	88	1,598
Number of Incidents	52	36	729
TMC Detection (min.)	0.00	0.00	0.27
TMC Verification (min.)	2.31	3.25	3.60
TMC Response (min.)	8.69	8.76	9.33
RR Dispatch Time (min.)	1.17	1.34	1.46
RR Response Time (min.)	7.50	7.41	7.89
Event Clearance (min.)	62.03	51.07	56.21
Roadway Clearance (min.)	41.63	47.12	38.75
Incident Clearance (min.)	73.67	75.13	71.84
# of Events w/ RR/SIRV	101	88	1,576
RR/SIRV Assists	101	88	1,576
RR/SIRV Activities	147	116	2,222

### Debris on Roadway

	<u>Current Week</u>	<u>Last Week</u>	<u>YTD</u>
Number of Events	100	70	969
Number of Incidents	1	0	14
TMC Detection (min.)	0.00	0.00	0.25
TMC Verification (min.)	6.14	7.70	7.86
TMC Response (min.)	9.09	11.00	9.53
RR Dispatch Time (min.)	2.04	2.88	1.96
RR Response Time (min.)	7.35	8.00	7.60
Event Clearance (min.)	11.89	13.04	13.16
Roadway Clearance (min.)	14.90		29.15
Incident Clearance (min.)	14.80		29.82
# of Events w/ RR/SIRV	97	67	936
RR/SIRV Assists	97	67	936
RR/SIRV Activities	91	66	937

### Disabled Vehicle

	<u>Current Week</u>	<u>Last Week</u>	<u>YTD</u>
Number of Events	1,315	1,305	15,771
Number of Incidents	8	9	183
TMC Detection (min.)	0.09	0.00	0.28
TMC Verification (min.)	2.10	2.54	2.61
TMC Response (min.)	7.53	8.51	7.60
RR Dispatch Time (min.)	1.50	1.65	1.36
RR Response Time (min.)	6.10	6.93	6.32
Event Clearance (min.)	20.38	20.24	19.96
Roadway Clearance (min.)	20.92	19.68	21.48
Incident Clearance (min.)	26.58	55.04	32.37
# of Events w/ RR/SIRV	1,256	1,218	15,102
RR/SIRV Assists	1,256	1,218	15,102
RR/SIRV Activities	1,263	1,220	15,096

## Emergency Vehicles

	<u>Current Week</u>	<u>Last Week</u>	<u>YTD</u>
Number of Events	2	1	22
Number of Incidents	2	1	19
TMC Detection (min.)	0.00	0.00	0.00
TMC Verification (min.)	0.00	27.95	1.33
TMC Response (min.)	27.48	27.92	11.34
RR Dispatch Time (min.)	8.73	0.53	1.49
RR Response Time (min.)	18.75	27.38	9.76
Event Clearance (min.)	34.31	95.43	39.20
Roadway Clearance (min.)	21.88	91.58	35.63
Incident Clearance (min.)	34.31	95.43	39.64
# of Events w/ RR/SIRV	1	1	16
RR/SIRV Assists	1	1	16
RR/SIRV Activities	2	1	17

## Other

	<u>Current Week</u>	<u>Last Week</u>	<u>YTD</u>
Number of Events	414	399	6,842
Number of Incidents	1	0	16
TMC Detection (min.)	0.00	0.00	0.01
TMC Verification (min.)	0.07	0.13	0.07
TMC Response (min.)	8.86	9.45	10.18
RR Dispatch Time (min.)	1.82	1.45	1.61
RR Response Time (min.)	7.32	7.76	8.29
Event Clearance (min.)	13.45	11.36	10.25
Roadway Clearance (min.)	3.25		41.09
Incident Clearance (min.)	10.58		49.15
# of Events w/ RR/SIRV	229	216	3,733
RR/SIRV Assists	229	216	3,733
RR/SIRV Activities	34	37	617

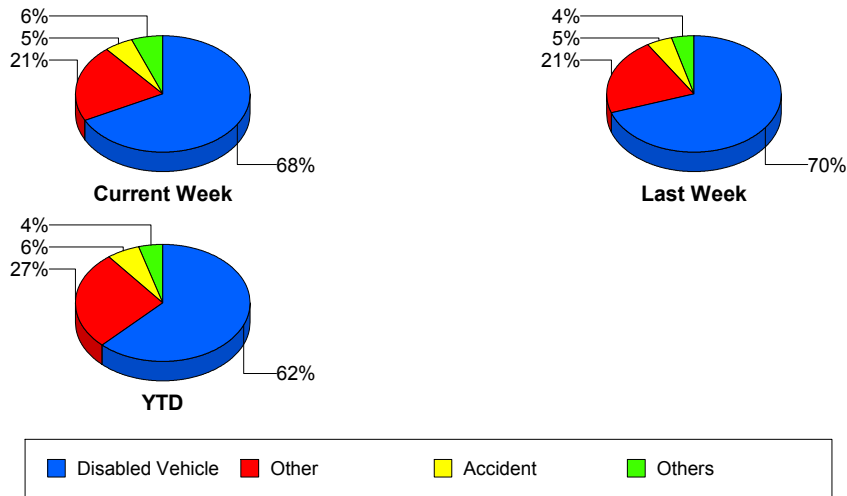
## Police Activity

	<u>Current Week</u>	<u>Last Week</u>	<u>YTD</u>
Number of Events	7	7	59
Number of Incidents	6	5	29
TMC Detection (min.)	1.02	0.00	0.12
TMC Verification (min.)	0.57	1.29	1.03
TMC Response (min.)	0.92	8.80	10.72
RR Dispatch Time (min.)	17.77	2.39	3.92
RR Response Time (min.)	0.76	7.43	9.38
Event Clearance (min.)	58.55	59.59	39.41
Roadway Clearance (min.)	49.53	86.55	44.53
Incident Clearance (min.)	53.66	80.69	50.69
# of Events w/ RR/SIRV	5	6	45
RR/SIRV Assists	5	6	45
RR/SIRV Activities	4	10	44

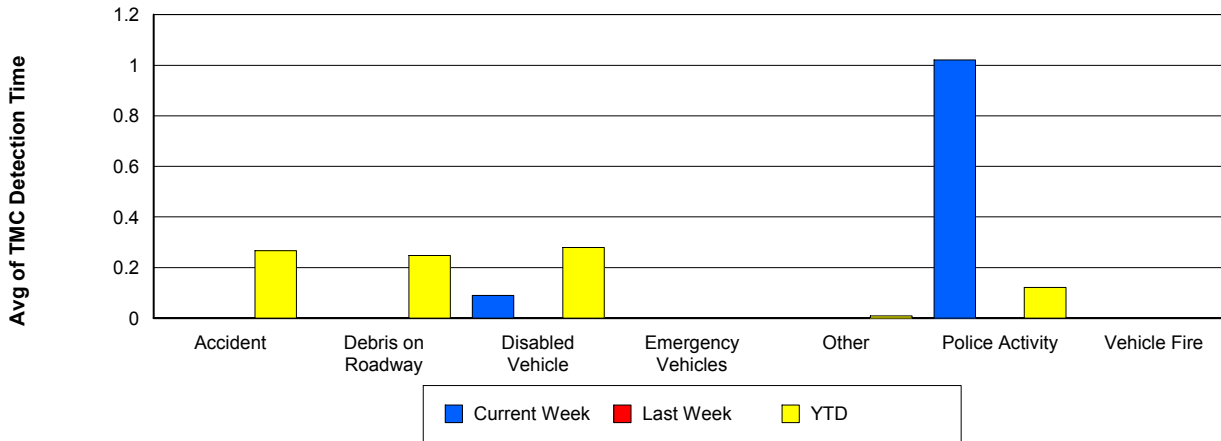
## Vehicle Fire

	<u>Current Week</u>	<u>Last Week</u>	<u>YTD</u>
Number of Events	4	2	49
Number of Incidents	3	1	30
TMC Detection (min.)	0.00	0.00	0.00
TMC Verification (min.)	1.47	0.00	3.00
TMC Response (min.)	13.70	3.04	11.12
RR Dispatch Time (min.)	2.41	0.15	1.68
RR Response Time (min.)	11.29	2.89	9.39
Event Clearance (min.)	175.87	96.59	63.20
Roadway Clearance (min.)	156.63	21.65	52.26
Incident Clearance (min.)	223.90	80.27	79.76
# of Events w/ RR/SIRV	4	2	48
RR/SIRV Assists	4	2	48
RR/SIRV Activities	9	5	78

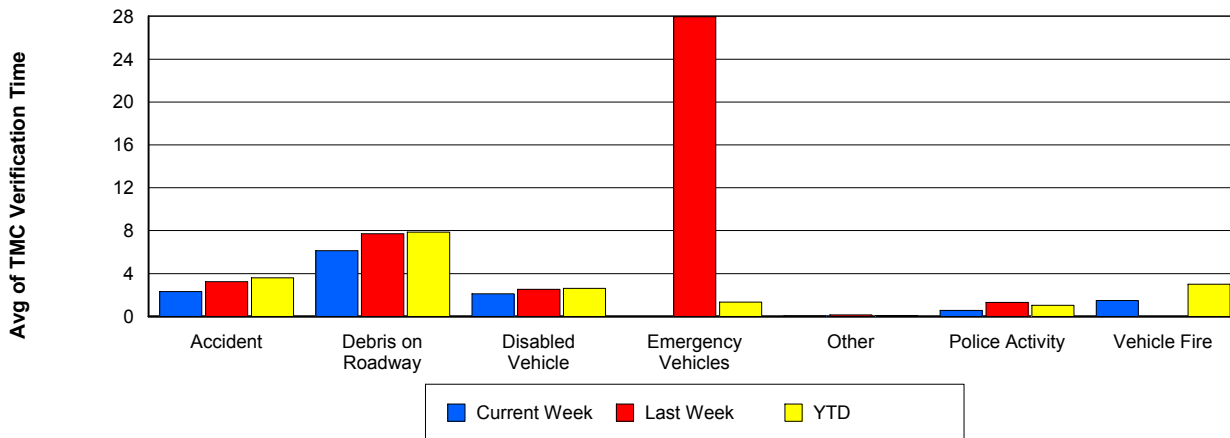
## Number of Events / Event Type



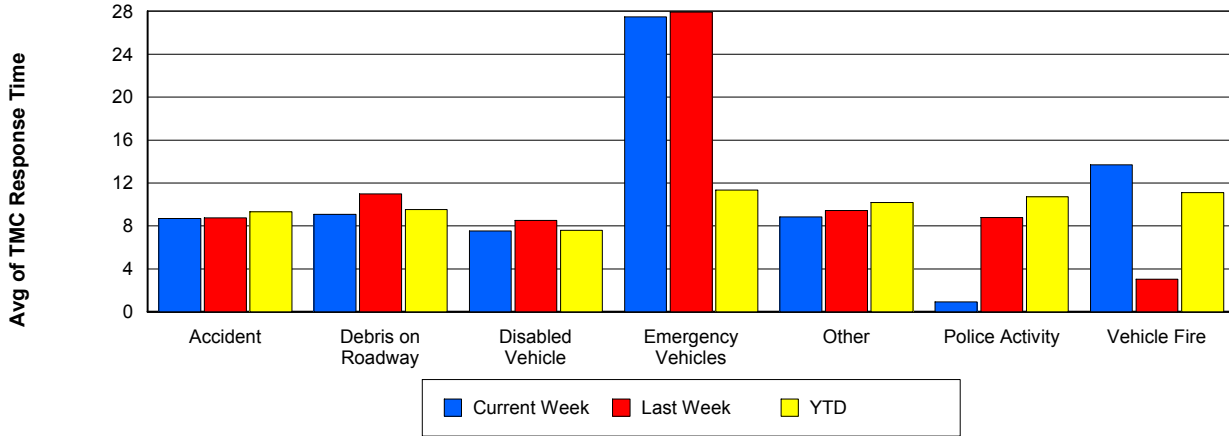
## TMC Detection Time



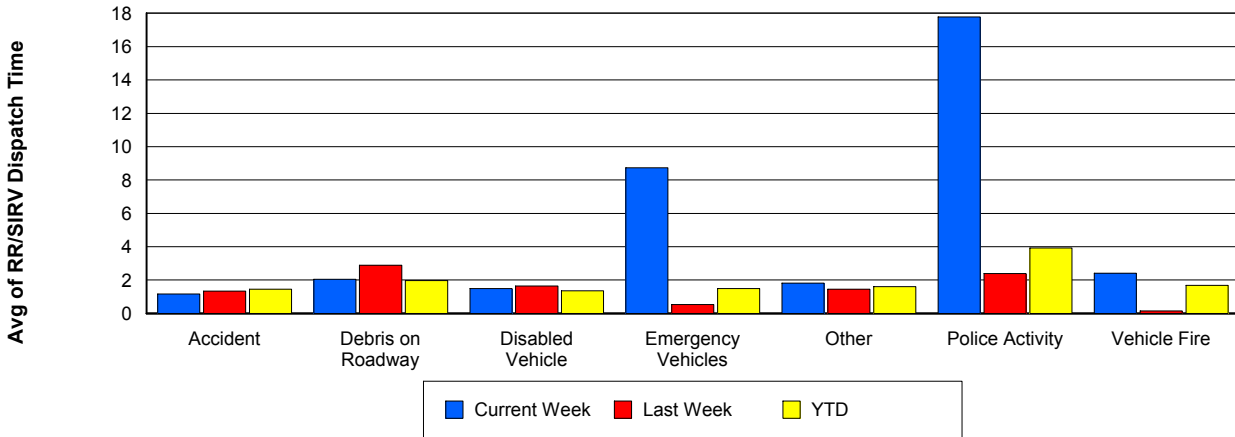
## TMC Verification Time



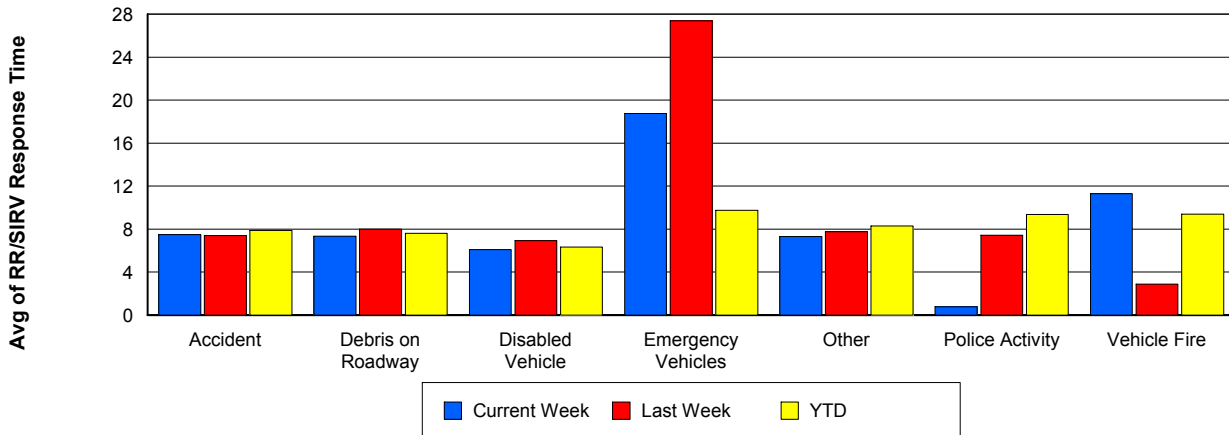
## TMC Response Time



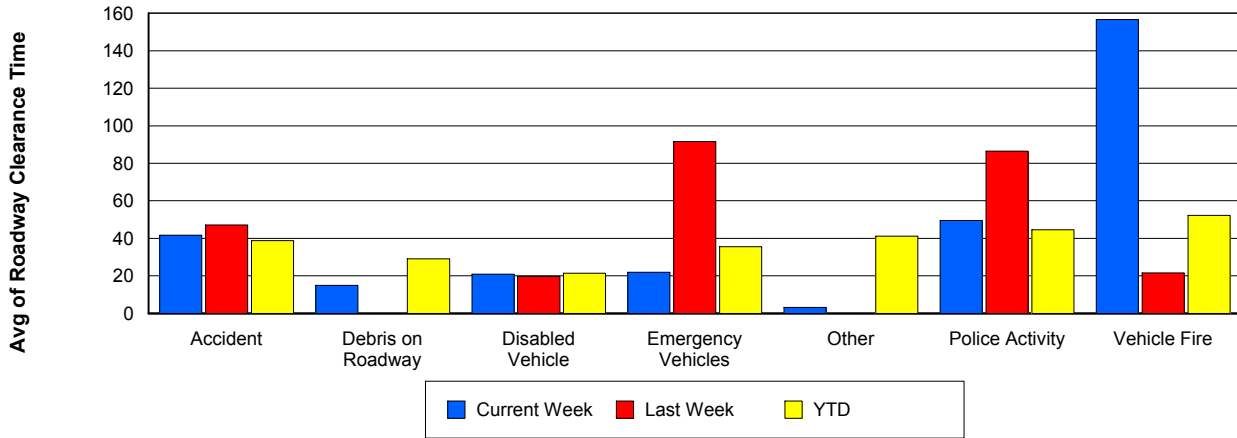
## Road Ranger / SIRV Dispatch Time



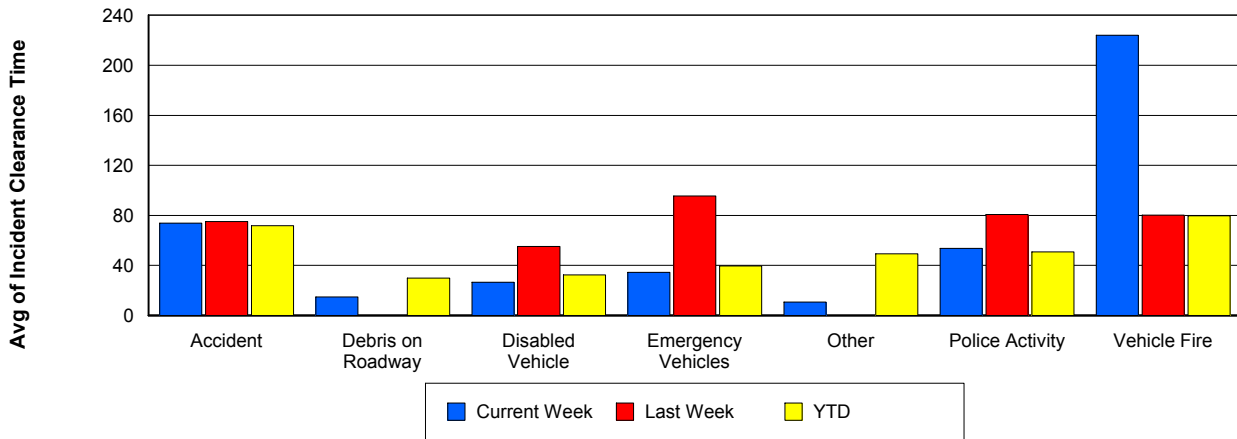
## Road Ranger / SIRV Response Time



## Roadway Clearance Time (2A)



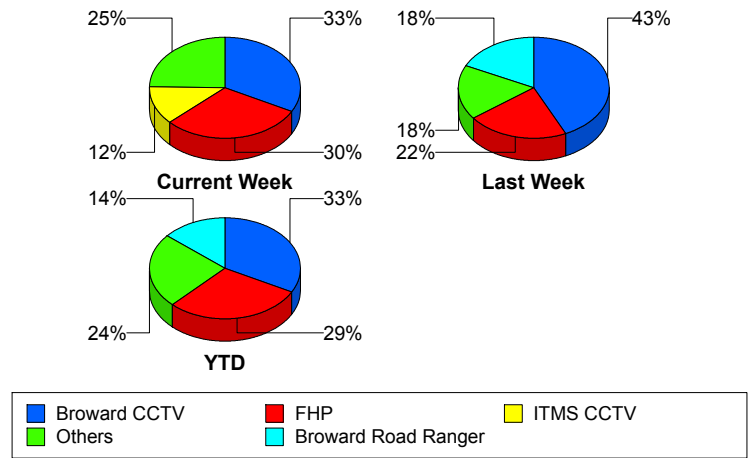
## Incident Clearance Time (3B)



## Incident Detection Methods

	Current Week	Last Week	YTD
Broward CCTV	24	22	329
Broward Road Ranger	7	9	139
Broward TMC	0	1	8
Broward VideoWall	0	0	16
BSO	3	0	15
County Police	0	0	1
District 4	2	1	23
FDOT Maintenance	0	0	1
FHP	22	11	295
Fire	0	0	1
ITMS CCTV	9	2	46
Local Police	0	0	1
Media	0	0	2
Motorist	0	1	9
Other	0	0	1
Palm Beach Road Ran	3	3	96
Road Watcher	1	0	6
SIRV	0	0	1
VisioPaD Detection	2	1	14
<b>Total</b>	<b>73</b>	<b>51</b>	<b>1,004</b>

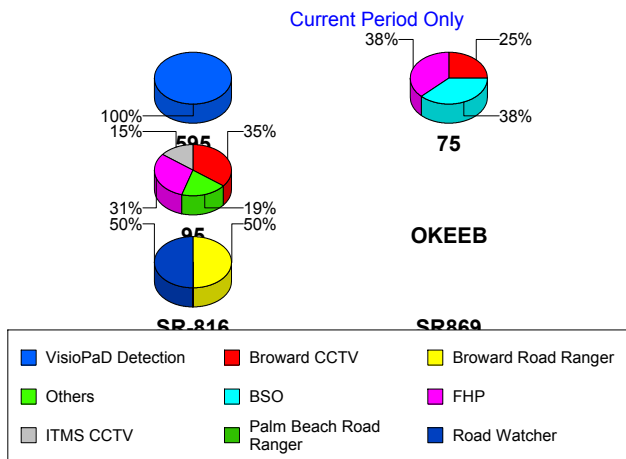
### Total Incidents by Detection Method



## Incident Detection Methods by Roadway

		Current Week	Last Week	YTD
595	Broward CCTV	0	0	7
	Broward Road Ranger	0	0	5
	BSO	0	0	3
	County Police	0	0	1
	FHP	0	0	5
	VisioPaD Detection	1	0	1
	<b>Total</b>	<b>1</b>	<b>0</b>	<b>22</b>
75	Broward CCTV	2	3	25
	Broward Road Ranger	0	1	11
	BSO	3	0	8
	District 4	0	1	2
	FHP	3	1	18
	Fire	0	0	1
	Road Watcher	0	0	1
	VisioPaD Detection	0	0	6
	<b>Total</b>	<b>8</b>	<b>6</b>	<b>72</b>
95	Broward CCTV	22	19	297
	Broward Road Ranger	6	6	93
	Broward TMC	0	1	8
	Broward VideoWall	0	0	16
	BSO	0	0	2
	District 4	2	0	21
	FDOT Maintenance	0	0	1
	FHP	19	10	271
	ITMS CCTV	9	2	46
	Local Police	0	0	1
	Media	0	0	2
	Motorist	0	1	9
	Other	0	0	1
	Palm Beach Road Ran	3	3	96
	Road Watcher	0	0	3

Total Events by Roadway and Detection Method

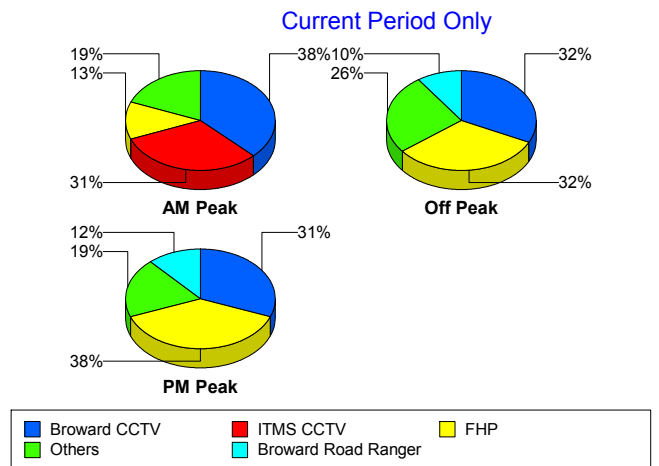


		Current Week	Last Week	YTD
95	SIRV	0	0	1
	VisioPaD Detection	1	1	7
	Total	62	43	875
SR-816	Broward Road Ranger	1	2	29
	BSO	0	0	1
	Road Watcher	1	0	2
	Total	2	2	32
SR869	Broward Road Ranger	0	0	1
	BSO	0	0	1
	FHP	0	0	1
	Total	0	0	3
Total	73	51	1,004	

### Incident Detection Methods by Peak Period

		Current Week	Last Week	YTD
AM Peak	Broward CCTV	6	3	53
	Broward Road Ranger	1	3	32
	Broward VideoWall	0	0	10
	BSO	1	0	3
	District 4	0	0	5
	FHP	2	0	53
	ITMS CCTV	5	0	12
	Local Police	0	0	1
	Media	0	0	1
	Palm Beach Road Ran	1	3	29
	Road Watcher	0	0	1
	SIRV	0	0	1
	VisioPaD Detection	0	0	1
	Total	16	9	202
	Off Peak	Broward CCTV	10	14
Broward Road Ranger		3	4	57
Broward TMC		0	0	5

Total Events by Peak Period and Detection Method

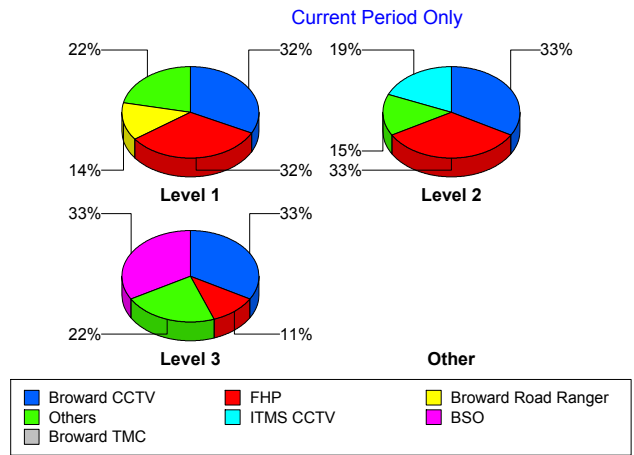


		Current Week	Last Week	YTD
Off Peak	Broward VideoWall	0	0	5
	BSO	2	0	8
	County Police	0	0	1
	District 4	1	1	13
	FDOT Maintenance	0	0	1
	FHP	10	9	150
	ITMS CCTV	2	2	28
	Motorist	0	0	5
	Other	0	0	1
	Palm Beach Road Ran	2	0	47
	Road Watcher	0	0	3
	VisioPaD Detection	1	1	8
	Total	31	31	514
PM Peak	Broward CCTV	8	5	94
	Broward Road Ranger	3	2	50
	Broward TMC	0	1	3
	Broward VideoWall	0	0	1
	BSO	0	0	4
	District 4	1	0	5
	FHP	10	2	92
	Fire	0	0	1
	ITMS CCTV	2	0	6
	Media	0	0	1
	Motorist	0	1	4
	Palm Beach Road Ran	0	0	20
	Road Watcher	1	0	2
	VisioPaD Detection	1	0	5
Total	26	11	288	
Total	73	51	1,004	

## Incident Detection Methods by Severity

		Current Week	Last Week	YTD
Level 1	Broward CCTV	12	14	204
	Broward Road Ranger	5	7	99
	Broward TMC	0	1	5
	Broward VideoWall	0	0	10
	BSO	0	0	4
	District 4	1	0	13
	FHP	12	5	133
	ITMS CCTV	3	0	21
	Media	0	0	1
	Motorist	0	0	7
	Other	0	0	1
	Palm Beach Road Ran	3	1	64
	Road Watcher	0	0	5
	VisioPaD Detection	1	0	7
	<b>Total</b>	<b>37</b>	<b>28</b>	<b>574</b>
Level 2	Broward CCTV	9	4	97
	Broward Road Ranger	2	2	33
	Broward TMC	0	0	3
	Broward VideoWall	0	0	6
	BSO	0	0	1
	District 4	1	0	7
	FDOT Maintenance	0	0	1
	FHP	9	5	128
	Fire	0	0	1
	ITMS CCTV	5	2	21
	Local Police	0	0	1
	Motorist	0	1	2
	Palm Beach Road Ran	0	2	23
	Road Watcher	1	0	1
	SIRV	0	0	1
VisioPaD Detection	0	1	5	

**Total Events by Severity and Detection Method**



		Current Week	Last Week	YTD
Level 2	Total	<b>27</b>	<b>17</b>	<b>331</b>
Level 3	Broward CCTV	<b>3</b>	<b>4</b>	<b>28</b>
	Broward Road Ranger	<b>0</b>	<b>0</b>	<b>7</b>
	BSO	<b>3</b>	<b>0</b>	<b>10</b>
	County Police	<b>0</b>	<b>0</b>	<b>1</b>
	District 4	<b>0</b>	<b>1</b>	<b>3</b>
	FHP	<b>1</b>	<b>1</b>	<b>34</b>
	ITMS CCTV	<b>1</b>	<b>0</b>	<b>4</b>
	Media	<b>0</b>	<b>0</b>	<b>1</b>
	Palm Beach Road Ran	<b>0</b>	<b>0</b>	<b>9</b>
	VisioPaD Detection	<b>1</b>	<b>0</b>	<b>2</b>
	Total	<b>9</b>	<b>6</b>	<b>99</b>
Total		<b>73</b>	<b>51</b>	<b>1,004</b>

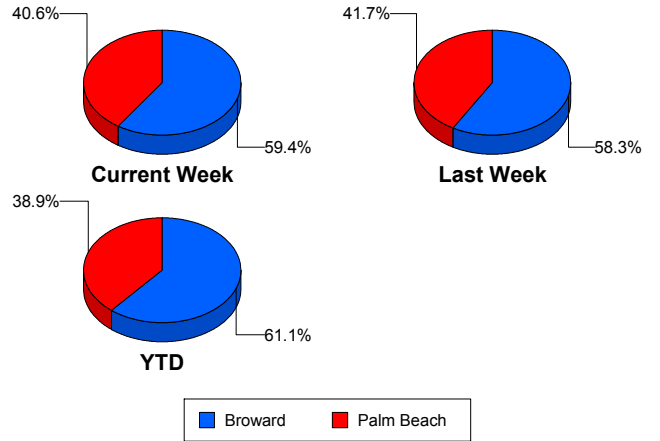
# Road Ranger / SIRV Performance Measures

## Road Ranger / SIRV Performance By County

Values presented are:  
 - Total Events with a RR/SIRV Response  
 - Total RR/SIRV Responses,  
 - Total Activities Performed

	Current We	Last Week	YTD
Broward	984	921	12,778
	1,047	972	13,661
	1,099	1,017	14,172
Palm Beach	692	668	8,409
	717	694	8,700
	778	743	9,223

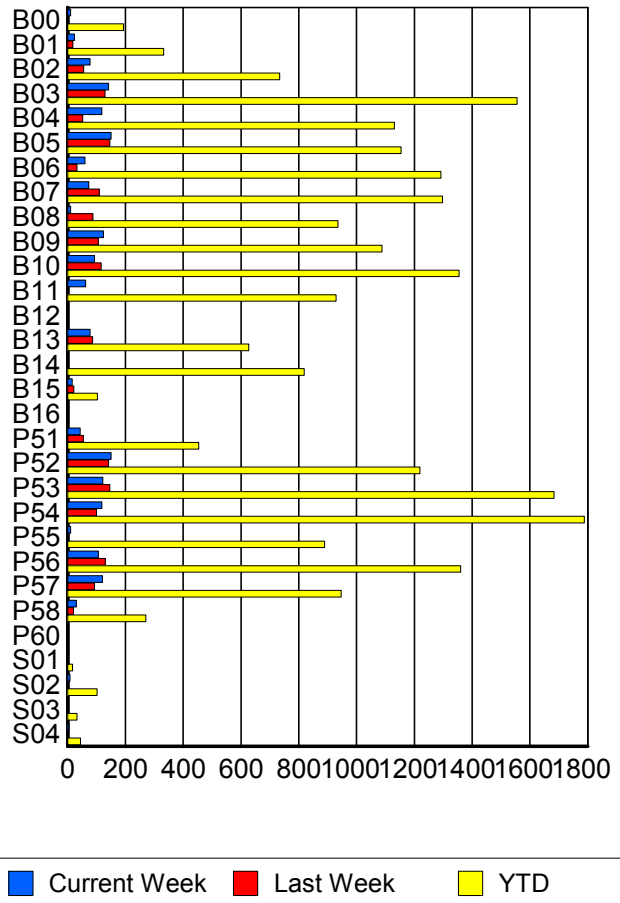
RR/SIRV Responses per County



## Road Ranger / SIRV Performance By Truck

	Current We	Last Week	YTD
B00	10	3	190
	10	3	194
	10	3	204
B01	24	17	324
	24	18	332
	25	18	336
B02	78	56	724
	78	56	734
	78	58	747
B03	141	129	1,544
	142	130	1,556
	151	139	1,630
B04	115	52	1,115
	119	52	1,131
	125	57	1,178
B05	150	146	1,146
	151	146	1,154
	156	153	1,197
B06	60	33	1,276
	60	33	1,292
	62	37	1,342
B07	73	108	1,277
	73	110	1,297
	80	114	1,353
B08	10	87	921
	10	88	936
	11	90	971

RR/SIRV Responses per Truck



	Current We	Last Week	YTD
B09	122	106	1,074
	124	106	1,088
	128	109	1,137
B10	91	114	1,337
	93	116	1,355
	98	120	1,396
B11	62	0	921
	62	0	929
	66	0	958
B12	1	0	3
	1	0	3
	1	0	3
B13	78	85	620
	78	86	627
	81	88	640
B14	0	0	808
	0	0	819
	0	0	850
B15	16	21	103
	16	21	103
	16	23	106
B16	0	0	1
	0	0	1
	0	0	1
P51	44	52	448
	44	55	454
	47	56	475
P52	149	138	1,201
	151	142	1,219
	159	152	1,297
P53	120	145	1,662
	122	146	1,683
	137	160	1,788
P54	118	99	1,762
	119	100	1,788
	130	107	1,897
P55	10	4	881
	10	4	890
	10	4	931
P56	105	128	1,344
	106	131	1,360
	114	139	1,449
P57	120	92	933
	121	93	947
	133	103	1,003

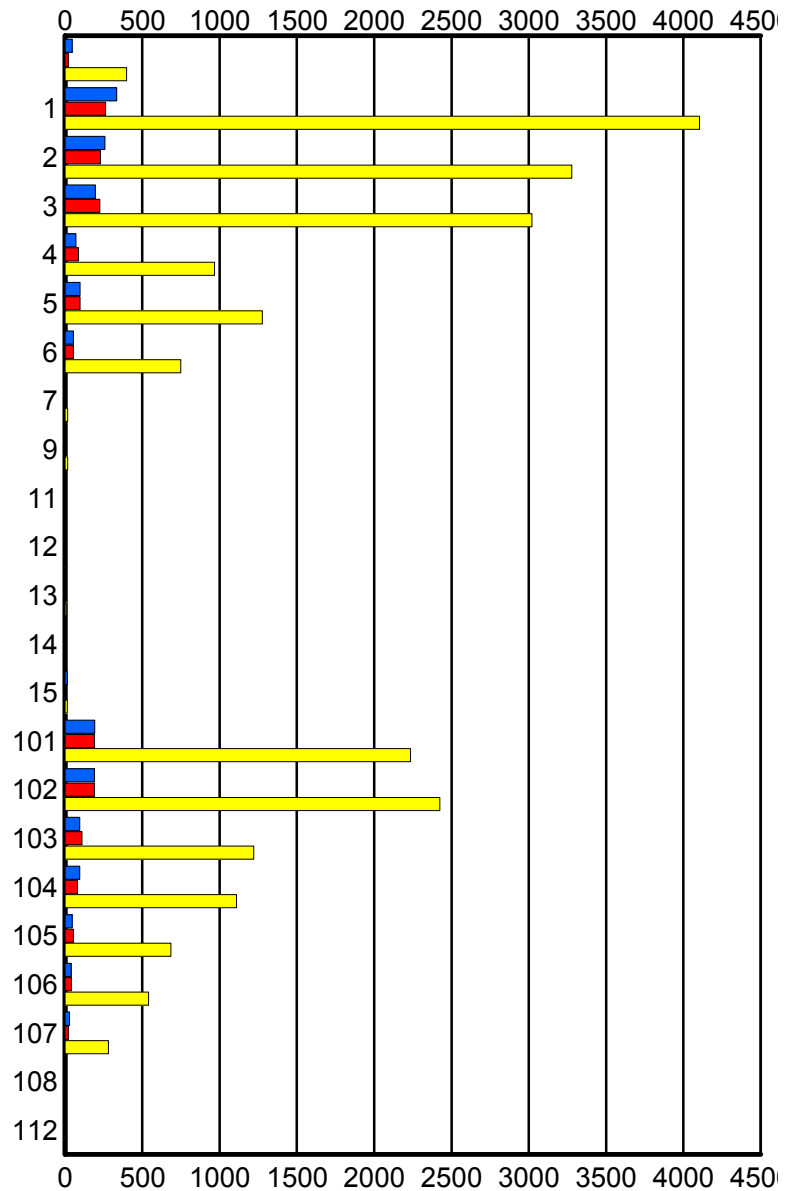
	Current We	Last Week	YTD
P58	30	20	268
	30	20	271
	33	20	290
P60	0	0	1
	0	0	1
	0	0	1
S01	4	1	17
	4	1	17
	5	1	19
S02	8	4	99
	8	4	102
	10	4	111
S03	3	4	30
	3	4	33
	5	4	36
S04	5	1	45
	5	1	45
	6	1	49

### Road Ranger / SIRV Performance By Beat

	Current We	Last Week	YTD
	44	21	386
	46	21	399
	52	21	425
1	323	253	3,913
	334	263	4,104
	348	274	4,265
2	250	223	3,183
	258	230	3,278
	274	244	3,412
3	191	223	2,950
	197	225	3,021
	205	239	3,141
4	68	84	950
	70	86	968
	75	88	1,002
5	98	97	1,267
	98	98	1,277
	100	100	1,308
6	53	54	737
	53	54	749
	54	55	766
7	4	4	16
	4	4	17
	5	4	18
9	0	0	17
	0	0	17
	0	0	17
11	0	0	2
	0	0	2
	0	0	2
12	0	0	2
	0	0	2
	0	0	2
13	0	0	8
	0	0	8
	0	0	8
14	0	0	4
	0	0	4
	0	0	4
15	14	0	14
	14	0	14
	14	0	14
101	191	186	2,193
	192	190	2,235
	204	204	2,357

Values presented are:  
 - Total Events with a RR/SIRV Response  
 - Total RR/SIRV Responses,  
 - Total Activities Performed

### RR/SIRV Responses per Beat



■ Current Week   
 ■ Last Week   
 ■ YTD

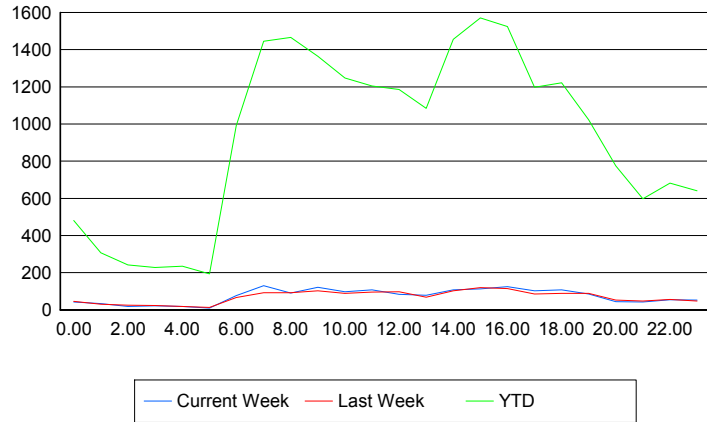
	Current We	Last Week	YTD
102	187	187	2,382
	189	191	2,424
	206	207	2,573
103	94	107	1,209
	96	110	1,221
	102	113	1,283
104	93	79	1,098
	95	80	1,109
	105	84	1,187
105	46	53	680
	46	53	685
	49	61	734
106	40	39	533
	40	41	540
	48	46	567
107	30	20	279
	30	20	281
	33	20	303
108	0	0	3
	0	0	4
	0	0	4
112	2	0	2
	2	0	2
	3	0	3

## Road Ranger / SIRV Performance By Time of Day

Values presented are:  
 - Total Events with a RR/SIRV Response  
 - Total RR/SIRV Responses,  
 - Total Activities Performed

	Current We	Last Week	YTD
12AM-1AM	42	45	464
	42	45	481
	47	47	510
1AM-2AM	32	30	297
	33	30	307
	35	31	318
2AM-3AM	16	22	224
	19	25	241
	21	25	251
3AM-4AM	20	19	214
	21	23	228
	21	24	248
4AM-5AM	16	15	213
	18	19	235
	20	20	249
5AM-6AM	9	13	162
	9	13	194
	11	14	203
6AM-7AM	71	62	929
	77	67	991
	83	70	1,029
7AM-8AM	122	87	1,375
	130	93	1,446
	135	95	1,509
8AM-9AM	84	91	1,378
	91	93	1,466
	98	97	1,520
9AM-10AM	116	100	1,304
	122	103	1,365
	131	109	1,429
10AM-11AM	94	87	1,186
	98	89	1,247
	103	92	1,302
11AM-12PM	100	91	1,149
	107	95	1,204
	110	102	1,254
12PM-1PM	80	94	1,114
	84	98	1,186
	88	107	1,232

## Number of Responses / Hour of the Day



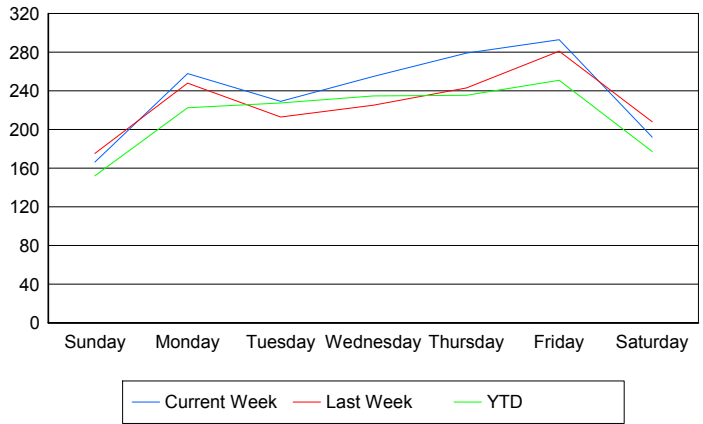
	Current We	Last Week	YTD
1PM-2PM	78	64	1,015
	79	68	1,084
	84	73	1,128
2PM-3PM	104	96	1,361
	108	103	1,455
	115	111	1,538
3PM-4PM	106	118	1,505
	112	120	1,571
	119	129	1,639
4PM-5PM	118	105	1,428
	125	114	1,524
	131	117	1,593
5PM-6PM	94	84	1,136
	102	86	1,197
	109	92	1,251
6PM-7PM	102	86	1,170
	108	88	1,221
	115	92	1,271
7PM-8PM	81	86	981
	85	89	1,023
	91	92	1,064
8PM-9PM	44	51	738
	44	53	774
	47	55	800
9PM-10PM	43	44	569
	43	48	598
	46	51	630
10PM-11PM	53	53	656
	55	56	682
	62	62	732
11PM-12AM	51	46	619
	52	48	641
	55	53	695

**Road Ranger / SIRV Performance By Day of Week**

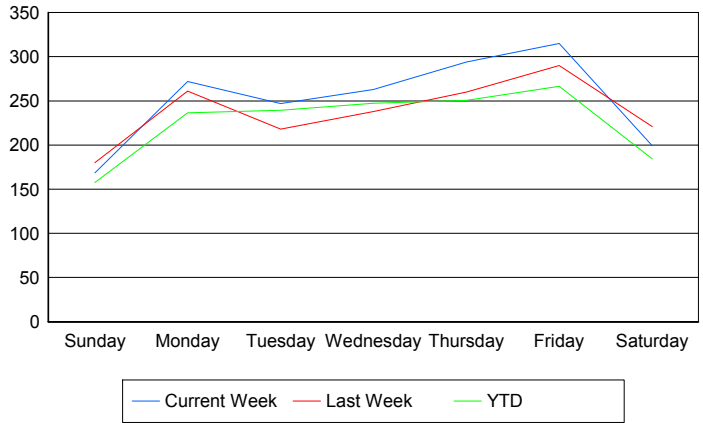
Values presented are: - Total Events with a RR/SIRV Response - Total RR/SIRV Responses, - Total Activities Performed
---

	Current We	Last Week	YTD
Sunday	172	173	2,100
	174	178	2,175
	186	183	2,273
Monday	258	248	3,075
	272	261	3,266
	287	273	3,408
Tuesday	229	213	3,177
	247	218	3,341
	261	236	3,484
Wednesday	255	225	3,264
	263	238	3,440
	287	258	3,619
Thursday	279	243	3,275
	294	260	3,486
	318	270	3,661
Friday	293	281	3,689
	315	290	3,918
	327	305	4,072
Saturday	192	208	2,628
	199	221	2,735
	211	235	2,878

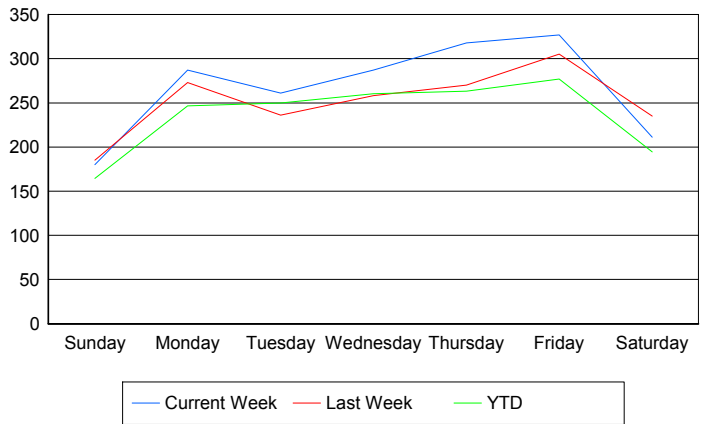
**Avg # of events with a RR/SIRV Response per Day of the Week**



**Avg # of RR/SIRV Responses per Day of the Week**



**Avg # of RR/SIRV Activities Performed per Day of the Week**



### Road Ranger / SIRV Responses per Time of Day and Day of Week

