



Weekly Performance Measures Report Broward, Palm Beach Counties

Period From Mar 28, 2010 to Apr 3, 2010

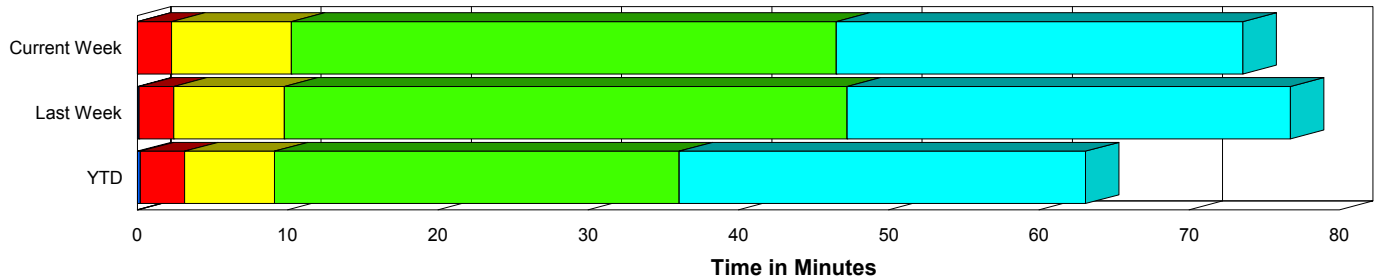


Created on:
April 08, 2010
9:53 am

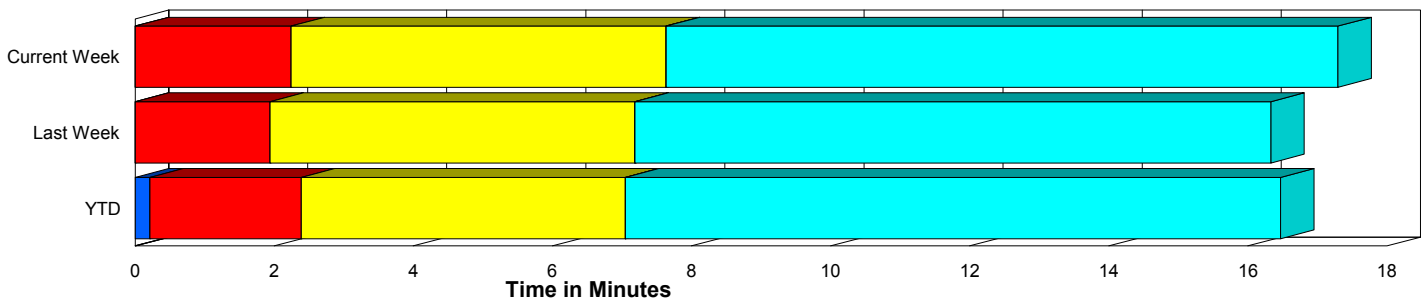
Performance Measures Summary

	Traffic Events (No Lanes Blocked)			Incidents (Lanes Blocked)		
	<u>This Week</u>	<u>Last Week</u>	<u>YTD</u>	<u>This Week</u>	<u>Last Week</u>	<u>YTD</u>
Number of Events	1,828	1,725	22,509	52	81	947
TMC Detection (min.)	0.00	0.00	0.21	0.00	0.12	0.19
TMC Verification (min.)	2.24	1.94	2.18	2.28	2.30	2.96
TMC Response (min.)	8.63	8.03	7.92	10.26	9.58	9.05
RR Dispatch Time (min.)	1.66	1.87	1.42	1.47	1.35	1.69
RR Response Time (min.)	7.00	6.25	6.59	8.79	8.24	7.38
Roadway Clearance (min.)				46.53	46.27	35.50
Event Clearance (min.)	18.30	17.17	17.56	72.67	75.75	62.28
# of Events w/ RR/SIRV	1,554	1,497	18,922	52	80	928
RR/SIRV Responses	1,554	1,497	18,922	52	80	928
RR/SIRV Activities	1,374	1,289	15,949	91	153	1,592

Incident Clearance Time-Line



Traffic Event (Non-Lane Blockage) Time-Line



■ Avg. TMC Detection Time	■ Avg. Time from TMC Response to Roadway Clearance*
■ Avg. Time from TMC Detection to TMC Verification	■ Avg. Time from Roadway Clearance to Incident/Event Clearance**
■ Avg. Time from TMC Verification to TMC Response	

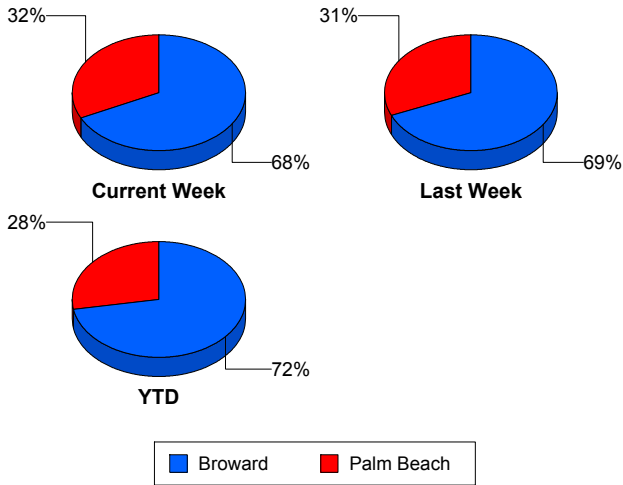
* Roadway clearance equals all travel lanes open

** Incident clearance equals time when last responder has left the scene

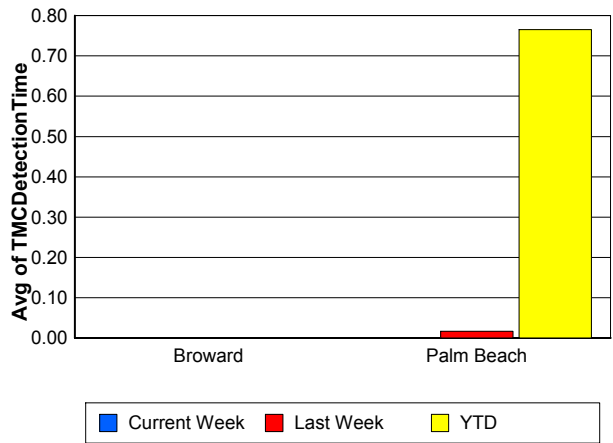
Performance Measures by County

	Broward			Palm Beach		
	<u>Current Week</u>	<u>Last Week</u>	<u>YTD</u>	<u>Current Week</u>	<u>Last Week</u>	<u>YTD</u>
Number of Events	1,275	1,238	16,917	605	568	6,539
Number of Incidents	39	57	649	13	24	298
TMC Detection (min.)	0.00	0.00	0.00	0.00	0.02	0.77
TMC Verification (min.)	1.40	1.42	1.16	4.04	3.14	4.91
TMC Response (min.)	9.44	9.17	9.09	7.57	6.44	6.13
RR Dispatch Time (min.)	1.27	1.66	1.40	2.39	2.21	1.51
RR Response Time (min.)	8.29	7.54	7.78	5.23	4.51	4.70
Event Clearance (min.)	19.64	19.37	18.74	20.15	20.75	20.98
Roadway Clearance (min.)	44.96	41.13	32.59	51.24	58.50	41.83
Incident Clearance (min.)	72.77	72.63	61.11	72.38	83.16	64.83
# of Events w/ RR/SIRV	1,051	1,050	13,684	555	527	6,166
RR/SIRV Responses	1,051	1,050	13,684	555	527	6,166
RR/SIRV Activities	876	898	11,050	589	544	6,491

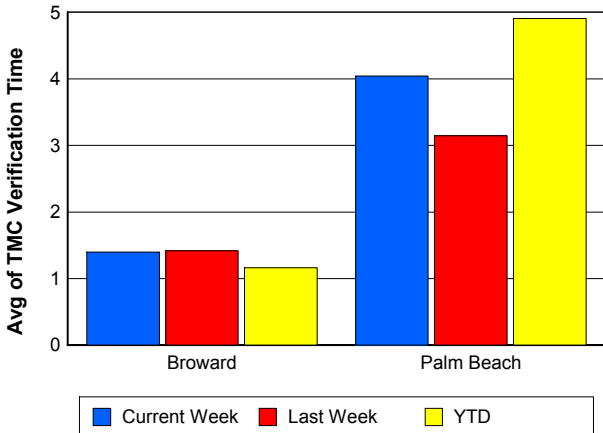
Number of Events / County



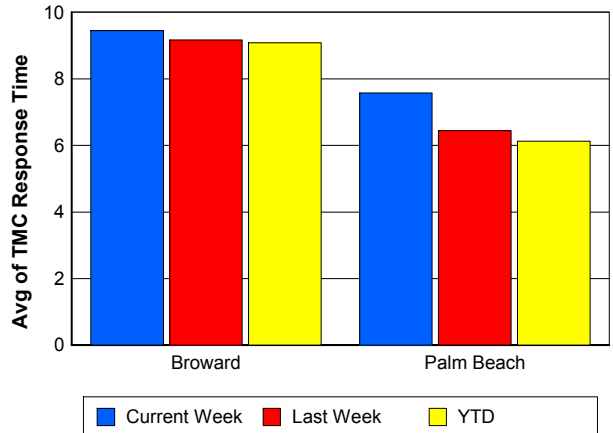
TMC Detection Time



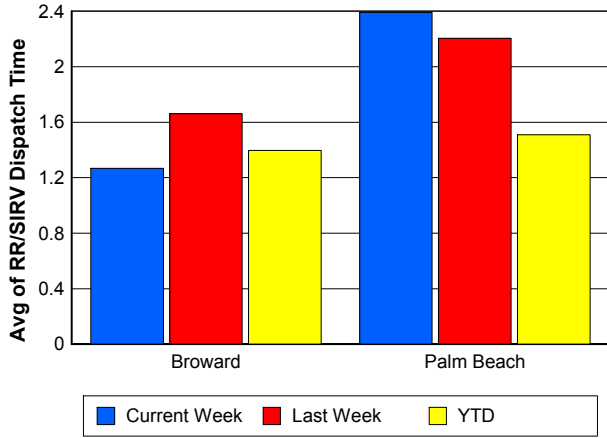
TMC Verification Time



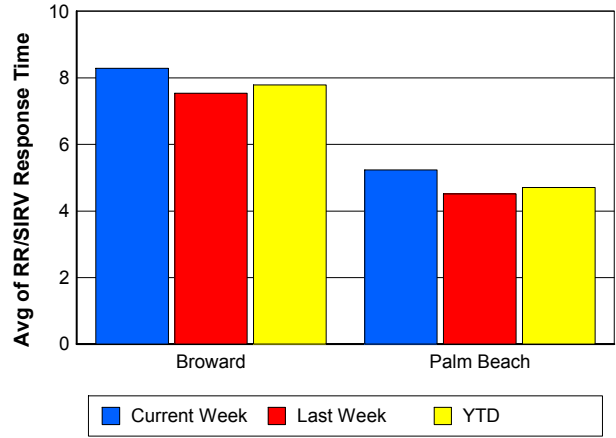
TMC Response Time



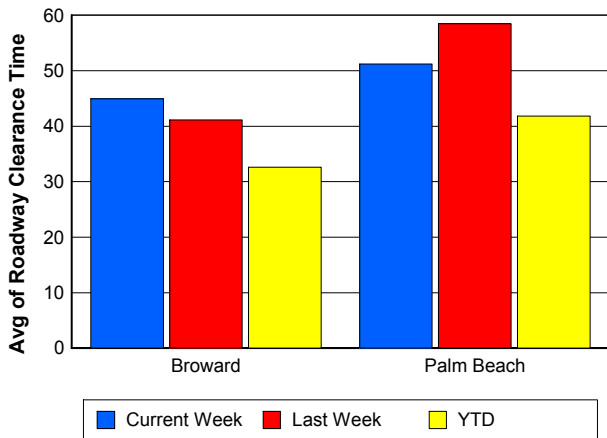
Road Ranger / SIRV Dispatch Time



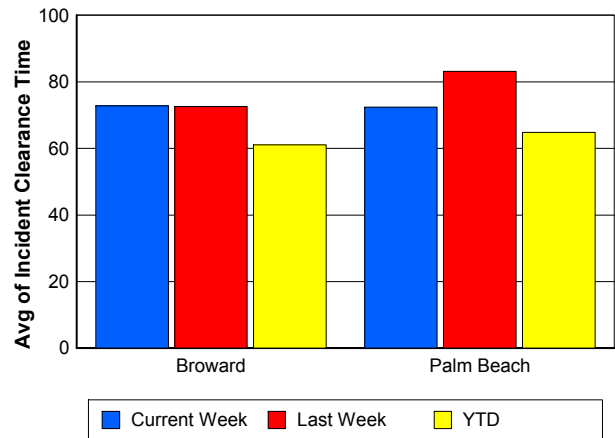
Road Ranger / SIRV Response Time



Roadway Clearance Time (2A)



Incident Clearance Time (3B)

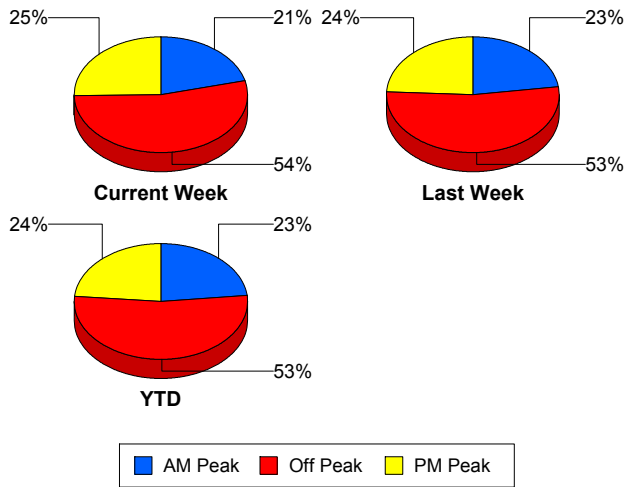


Performance Measures by Peak Period

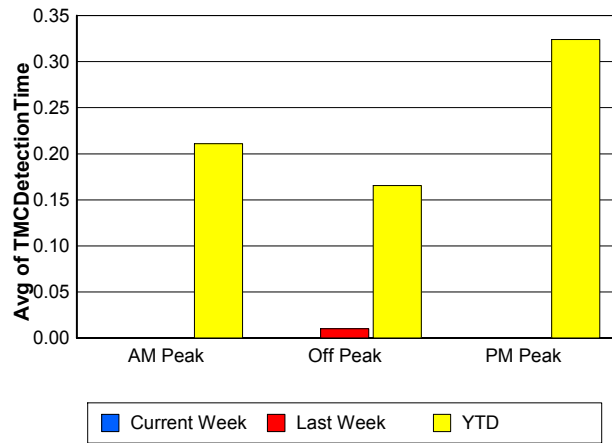
Note: AM peak period is defined as 6am to 10am and PM peak period is defined as 3pm to 7pm.

	AM Peak			Off Peak			PM Peak		
	<u>Current Week</u>	<u>Last Week</u>	<u>YTD</u>	<u>Current Week</u>	<u>Last Week</u>	<u>YTD</u>	<u>Current Week</u>	<u>Last Week</u>	<u>YTD</u>
Number of Events	398	409	5,456	1,007	963	12,457	475	434	5,543
Number of Incidents	9	16	187	32	45	496	11	20	264
TMC Detection (min.)	0.00	0.00	0.21	0.00	0.01	0.17	0.00	0.00	0.32
TMC Verification (min.)	1.49	1.20	1.46	2.07	2.21	2.24	3.24	2.13	2.87
TMC Response (min.)	7.91	8.21	7.22	8.63	8.80	8.49	9.49	6.63	7.67
RR Dispatch Time (min.)	1.34	1.21	0.88	1.50	2.19	1.63	2.24	1.66	1.55
RR Response Time (min.)	6.65	7.08	6.47	7.21	6.64	6.92	7.15	5.21	6.22
Event Clearance (min.)	18.47	18.85	17.73	20.62	21.00	19.80	19.18	18.05	19.98
Roadway Clearance (min.)	23.42	26.51	31.59	57.73	57.89	41.28	32.84	35.95	27.42
Incident Clearance (min.)	56.40	74.91	61.23	84.57	83.13	66.30	51.38	59.82	55.49
# of Events w/ RR/SIRV	350	360	4,708	845	842	10,349	411	375	4,793
RR/SIRV Responses	350	360	4,708	845	842	10,349	411	375	4,793
RR/SIRV Activities	309	320	4,035	783	766	9,094	373	356	4,412

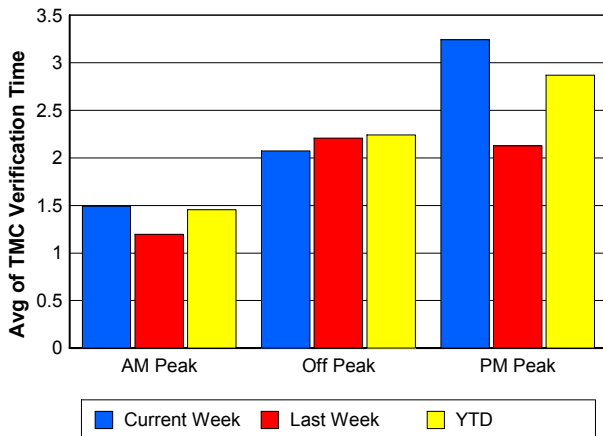
Number of Events / Peak Period



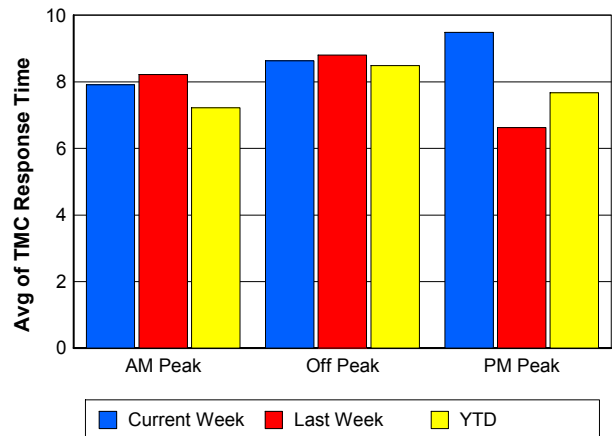
TMC Detection Time



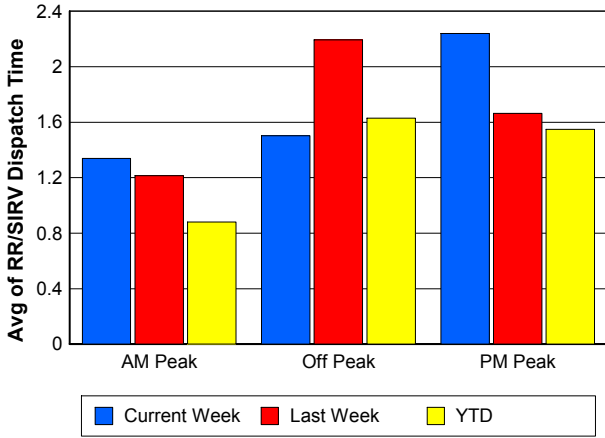
TMC Verification Time



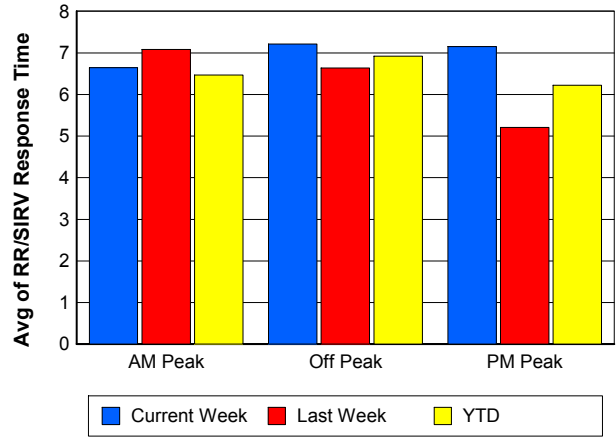
TMC Response Time



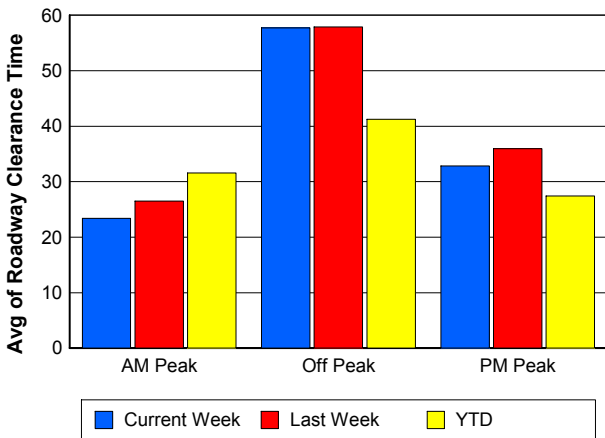
Road Ranger / SIRV Dispatch Time



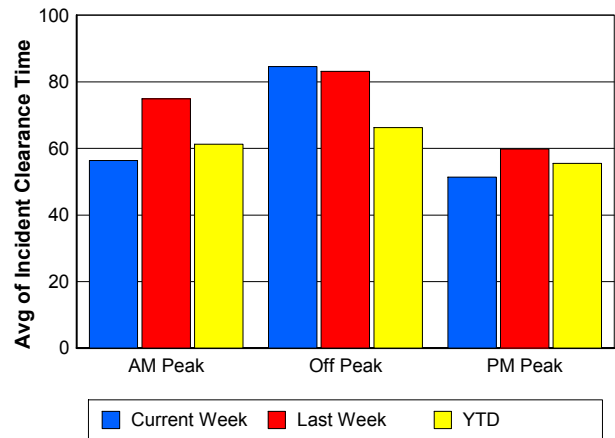
Road Ranger / SIRV Response Time



Roadway Clearance Time (2A)



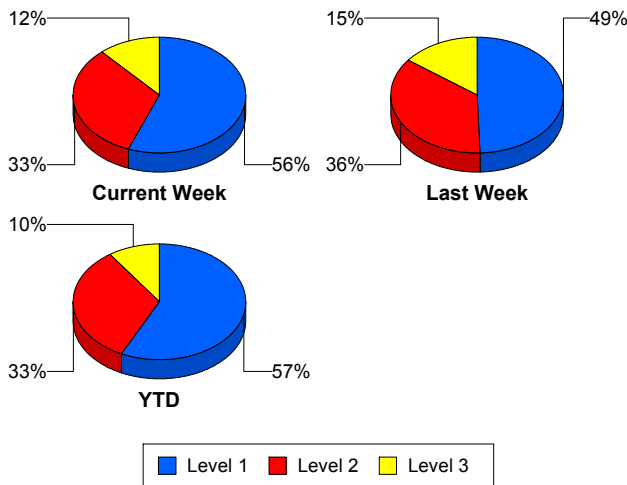
Incident Clearance Time (3B)



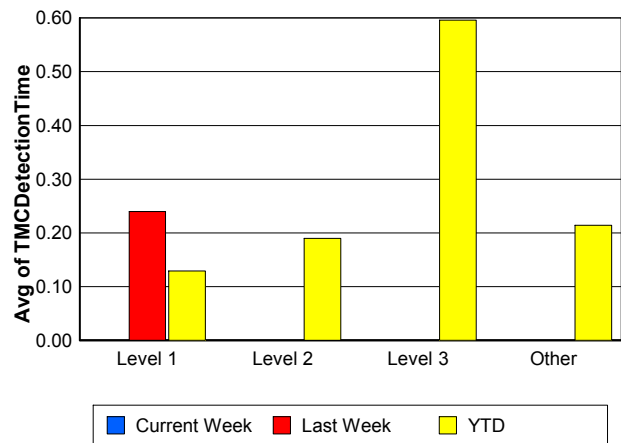
Performance Measures by Severity

	Level 1			Level 2			Level 3			Other		
	<u>This Week</u>	<u>Last Week</u>	<u>YTD</u>	<u>This Week</u>	<u>Last Week</u>	<u>YTD</u>	<u>This Week</u>	<u>Last Week</u>	<u>YTD</u>	<u>This Week</u>	<u>Last Week</u>	<u>YTD</u>
Number of Events	29	40	543	17	29	311	6	12	93	1,828	1,725	22,509
Number of Incidents	29	40	543	17	29	311	6	12	93	0	0	0
TMC Detection (min.)	0.00	0.24	0.13	0.00	0.00	0.19	0.00	0.00	0.60	0.00	0.00	0.21
TMC Verification (min.)	0.93	1.34	1.47	4.23	3.56	5.19	3.32	2.46	4.18	2.24	1.94	2.18
TMC Response (min.)	9.69	8.31	7.10	10.31	9.80	11.95	12.88	13.49	10.32	8.63	8.03	7.92
RR Dispatch Time (min.)	1.17	1.15	1.19	1.72	1.60	2.63	2.23	1.43	1.44	1.66	1.87	1.42
RR Resp. Time (min.)	8.52	7.19	5.95	8.59	8.20	9.36	10.65	12.06	8.88	7.00	6.25	6.59
Event Clearance (min.)	56.01	47.02	46.59	74.03	79.28	74.26	149.39	162.99	113.86	18.30	17.17	17.56
Roadway Clear. (min.)	17.23	14.54	14.93	63.20	54.25	53.34	140.89	132.75	95.94			
Incident Clearance (min.)	56.01	47.02	46.59	74.03	79.28	74.26	149.39	162.99	113.86			
# of Events w/ RR/SIRV	29	40	532	17	29	308	6	11	88	1,554	1,497	18,922
RR/SIRV Responses	29	40	532	17	29	308	6	11	88	1,554	1,497	18,922
RR/SIRV Activities	48	66	795	30	57	585	13	30	212	1,374	1,289	15,949

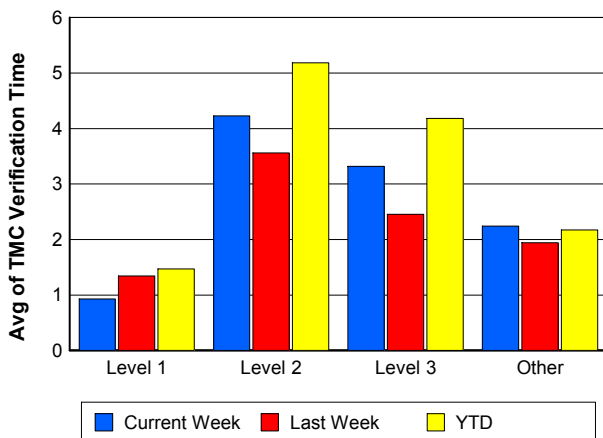
Number of Events / Severity



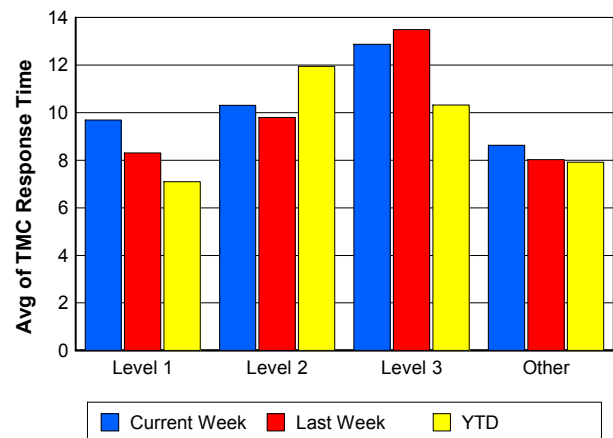
TMC Detection Time



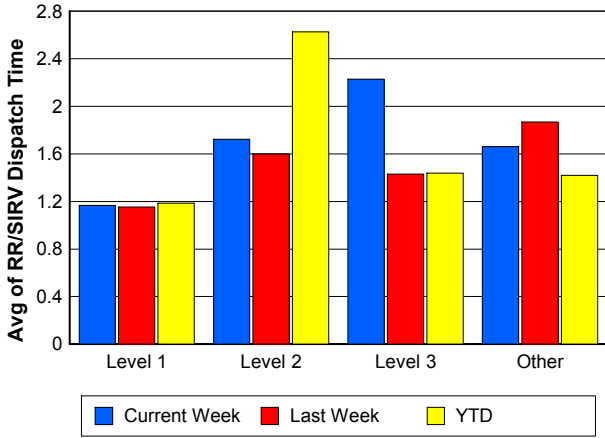
TMC Verification Time



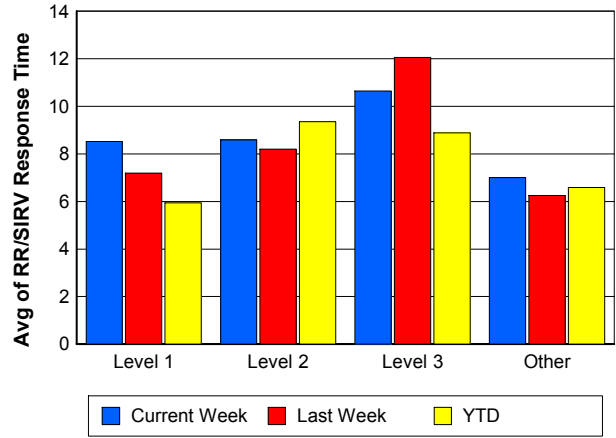
TMC Response Time



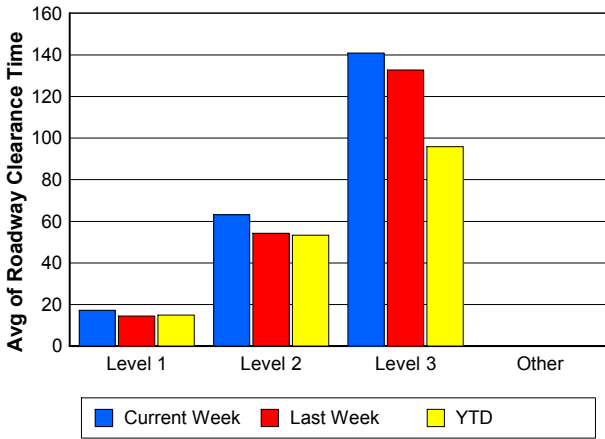
Road Ranger / SIRV Dispatch Time



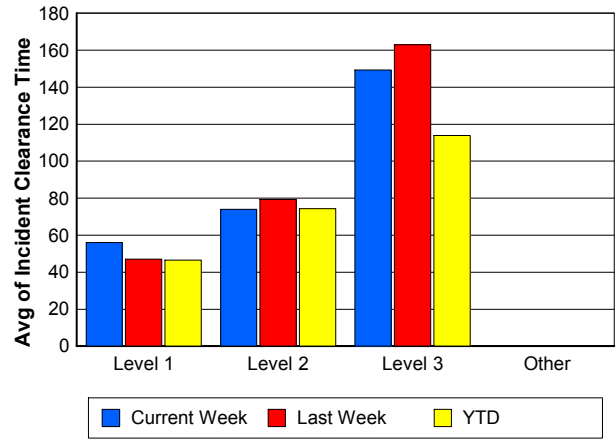
Road Ranger / SIRV Response Time



Roadway Clearance Time (2A)



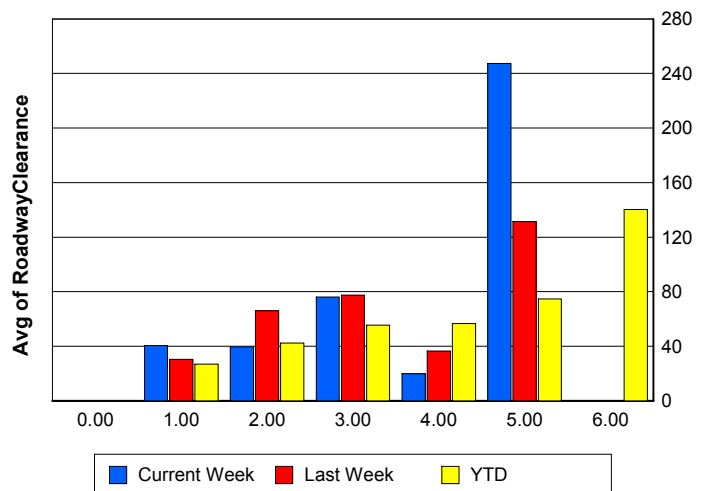
Incident Clearance Time (3B)



Roadway Clearance by Maximum Number of Lanes Blocked

	Current Week	Last Week	YTD
0			
1	40.39	30.51	26.92
2	39.55	66.05	42.40
3	76.10	77.40	55.46
4	19.77	36.41	56.62
5	247.42	131.31	74.78
6	0.00	0.00	140.28

Roadway Clearance Time (2A)



Performance Measures by Roadway

595

	<u>Current Week</u>	<u>Last Week</u>	<u>YTD</u>
Number of Events	40	57	618
Number of Incidents	0	3	33
TMC Detection (min.)	0.00	0.00	0.00
TMC Verification (min.)	0.68	1.81	1.65
TMC Response (min.)	9.91	14.98	14.43
RR Dispatch Time (min.)	1.45	1.73	2.08
RR Resp. Time (min.)	8.94	13.82	12.38
Event Clearance (min.)	14.57	20.71	20.07
Roadway Clear. (min.)		92.04	52.32
Incident Clearance (min.)		99.52	71.92
# of Events w/ RR/SIRV	29	41	440
RR/SIRV Responses	29	41	440
RR/SIRV Activities	10	25	306

75

	<u>Current Week</u>	<u>Last Week</u>	<u>YTD</u>
Number of Events	301	245	3,755
Number of Incidents	6	5	64
TMC Detection (min.)	0.00	0.00	0.00
TMC Verification (min.)	2.98	2.08	1.94
TMC Response (min.)	10.76	8.90	10.03
RR Dispatch Time (min.)	1.34	1.25	1.51
RR Resp. Time (min.)	9.63	7.73	8.67
Event Clearance (min.)	22.77	19.67	19.27
Roadway Clear. (min.)	76.92	32.76	42.99
Incident Clearance (min.)	113.16	79.78	80.28
# of Events w/ RR/SIRV	239	199	2,910
RR/SIRV Responses	239	199	2,910
RR/SIRV Activities	201	175	2,368

95

	<u>Current Week</u>	<u>Last Week</u>	<u>YTD</u>
Number of Events	1,521	1,488	18,875
Number of Incidents	44	66	816
TMC Detection (min.)	0.00	0.01	0.27
TMC Verification (min.)	2.16	1.95	2.29
TMC Response (min.)	8.41	7.94	7.54
RR Dispatch Time (min.)	1.73	1.94	1.41
RR Resp. Time (min.)	6.67	6.08	6.20
Event Clearance (min.)	19.35	19.76	19.38
Roadway Clear. (min.)	43.93	47.86	34.81
Incident Clearance (min.)	67.79	78.27	61.90
# of Events w/ RR/SIRV	1,321	1,323	16,329
RR/SIRV Responses	1,321	1,323	16,329
RR/SIRV Activities	1,238	1,227	14,701

OKEEB

	<u>YTD</u>
Number of Events	1
Number of Incidents	0
TMC Detection (min.)	0.00
TMC Verification (min.)	0.00
TMC Response (min.)	0.00
RR Dispatch Time (min.)	0.00
RR Resp. Time (min.)	0.00
Event Clearance (min.)	18.45
Roadway Clear. (min.)	
Incident Clearance (min.)	
# of Events w/ RR/SIRV	1
RR/SIRV Responses	1
RR/SIRV Activities	1

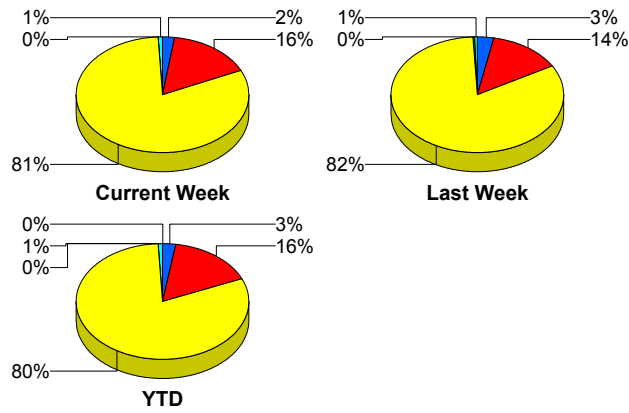
SR-816

	<u>Current Week</u>	<u>Last Week</u>	<u>YTD</u>
Number of Events	2	6	40
Number of Incidents	2	5	30
TMC Detection (min.)	0.00	0.00	0.00
TMC Verification (min.)	0.00	2.31	0.66
TMC Response (min.)	0.00	2.30	1.25
RR Dispatch Time (min.)	0.00	0.12	0.09
RR Resp. Time (min.)	0.00	2.18	1.16
Event Clearance (min.)	58.67	23.20	19.94
Roadway Clear. (min.)	12.38	18.16	18.38
Incident Clearance (min.)	58.67	21.93	21.58
# of Events w/ RR/SIRV	2	6	39
RR/SIRV Responses	2	6	39
RR/SIRV Activities	2	6	43

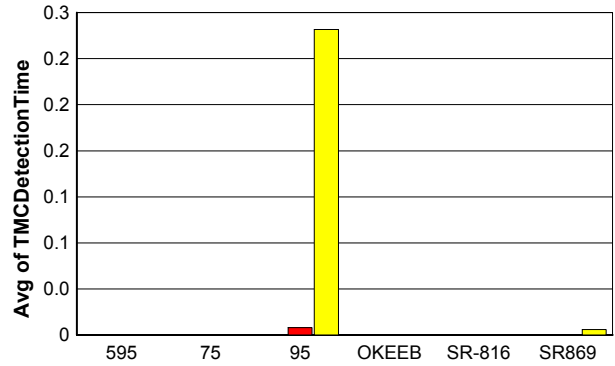
SR869

	<u>Current Week</u>	<u>Last Week</u>	<u>YTD</u>
Number of Events	16	10	167
Number of Incidents	0	2	4
TMC Detection (min.)	0.00	0.00	0.00
TMC Verification (min.)	0.11	0.37	1.35
TMC Response (min.)	3.99	3.81	8.70
RR Dispatch Time (min.)	0.29	2.18	1.00
RR Resp. Time (min.)	3.76	3.35	7.98
Event Clearance (min.)	14.75	22.20	16.64
Roadway Clear. (min.)		29.43	47.03
Incident Clearance (min.)		81.57	78.04
# of Events w/ RR/SIRV	15	8	131
RR/SIRV Responses	15	8	131
RR/SIRV Activities	14	9	122

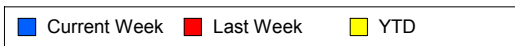
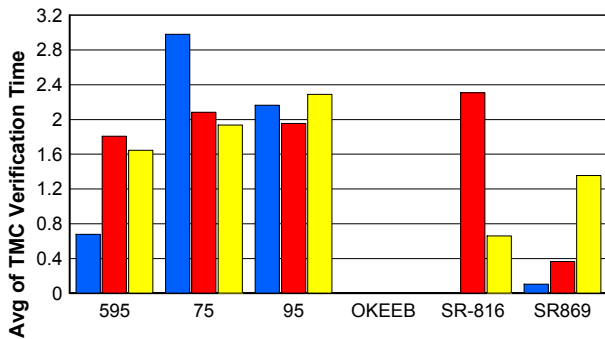
Number of Events / Roadway



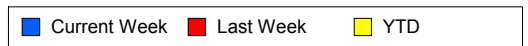
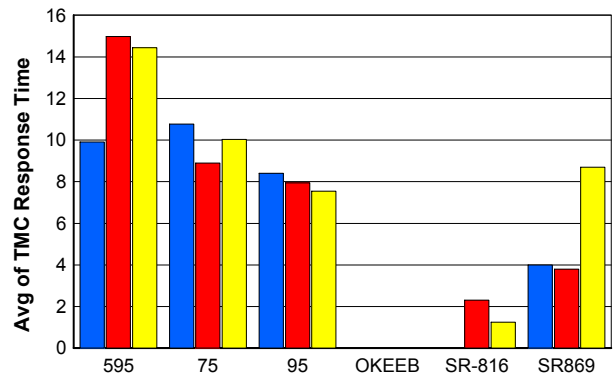
TMC Detection Time



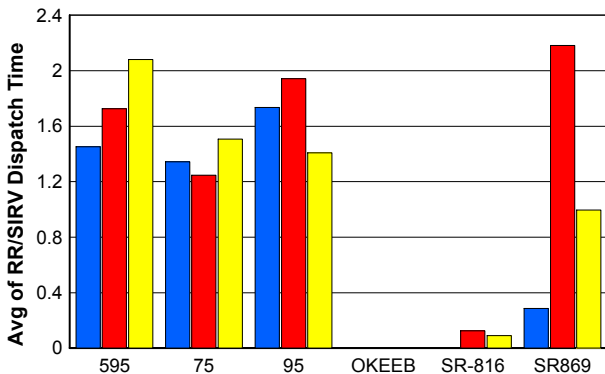
TMC Verification Time



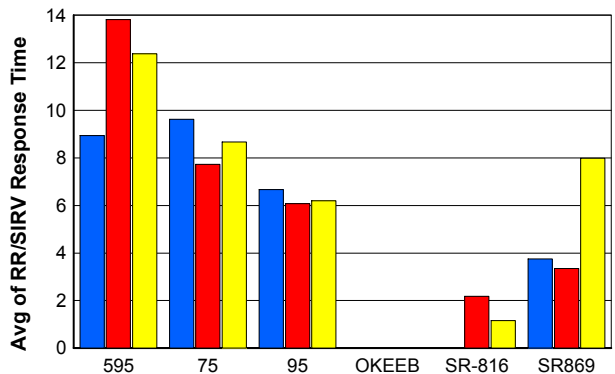
TMC Response Time



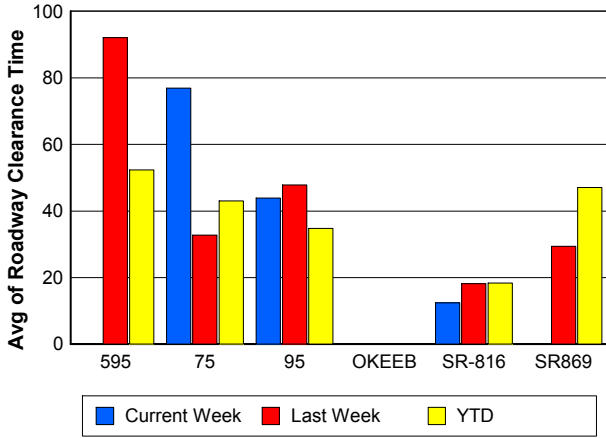
Road Ranger / SIRV Dispatch Time



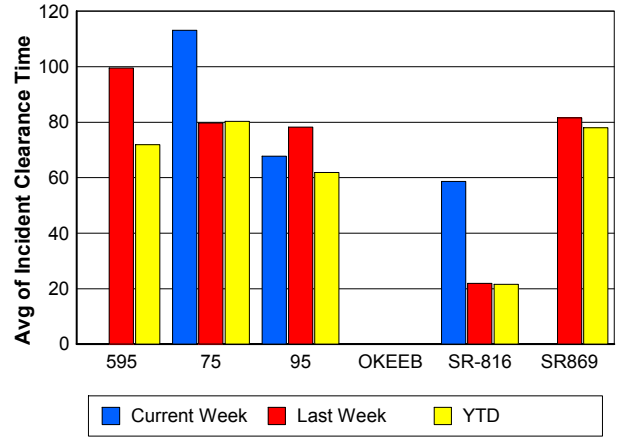
Road Ranger / SIRV Response Time



Roadway Clearance Time (2A)



Incident Clearance Time (3B)



Performance Measures by Event Type

Accident

	<u>Current Week</u>	<u>Last Week</u>	<u>YTD</u>
Number of Events	88	124	1,494
Number of Incidents	36	63	677
TMC Detection (min.)	0.00	0.00	0.29
TMC Verification (min.)	3.25	3.40	3.68
TMC Response (min.)	8.76	9.60	9.38
RR Dispatch Time (min.)	1.34	1.08	1.48
RR Response Time (min.)	7.41	8.56	7.92
Event Clearance (min.)	51.07	61.24	55.81
Roadway Clearance (min.)	47.12	54.73	38.53
Incident Clearance (min.)	75.13	89.25	71.69
# of Events w/ RR/SIRV	88	123	1,475
RR/SIRV Assists	88	123	1,475
RR/SIRV Activities	116	182	2,075

Debris on Roadway

	<u>Current Week</u>	<u>Last Week</u>	<u>YTD</u>
Number of Events	70	71	869
Number of Incidents	0	0	13
TMC Detection (min.)	0.00	0.00	0.28
TMC Verification (min.)	7.70	8.47	8.05
TMC Response (min.)	11.00	10.33	9.58
RR Dispatch Time (min.)	2.88	1.61	1.95
RR Response Time (min.)	8.00	8.81	7.63
Event Clearance (min.)	13.04	15.88	13.31
Roadway Clearance (min.)			30.24
Incident Clearance (min.)			30.98
# of Events w/ RR/SIRV	67	70	839
RR/SIRV Assists	67	70	839
RR/SIRV Activities	66	71	846

Disabled Vehicle

	<u>Current Week</u>	<u>Last Week</u>	<u>YTD</u>
Number of Events	1,305	1,199	14,456
Number of Incidents	9	11	175
TMC Detection (min.)	0.00	0.01	0.30
TMC Verification (min.)	2.54	2.10	2.66
TMC Response (min.)	8.51	7.66	7.61
RR Dispatch Time (min.)	1.65	1.95	1.35
RR Response Time (min.)	6.93	5.82	6.34
Event Clearance (min.)	20.24	18.60	19.93
Roadway Clearance (min.)	19.68	14.36	21.50
Incident Clearance (min.)	55.04	25.38	32.63
# of Events w/ RR/SIRV	1,218	1,134	13,846
RR/SIRV Assists	1,218	1,134	13,846
RR/SIRV Activities	1,220	1,119	13,833

Emergency Vehicles

	<u>Current Week</u>	<u>Last Week</u>	<u>YTD</u>
Number of Events	1	1	20
Number of Incidents	1	1	17
TMC Detection (min.)	0.00	0.00	0.00
TMC Verification (min.)	27.95	0.00	1.47
TMC Response (min.)	27.92	0.00	10.10
RR Dispatch Time (min.)	0.53	0.00	1.01
RR Response Time (min.)	27.38	0.00	9.07
Event Clearance (min.)	95.43	19.93	39.69
Roadway Clearance (min.)	91.58	17.05	37.25
Incident Clearance (min.)	95.43	19.93	40.27
# of Events w/ RR/SIRV	1	1	15
RR/SIRV Assists	1	1	15
RR/SIRV Activities	1	2	15

Other

	<u>Current Week</u>	<u>Last Week</u>	<u>YTD</u>
Number of Events	399	397	6,428
Number of Incidents	0	1	15
TMC Detection (min.)	0.00	0.00	0.01
TMC Verification (min.)	0.13	0.01	0.07
TMC Response (min.)	9.45	10.73	10.26
RR Dispatch Time (min.)	1.45	1.87	1.59
RR Response Time (min.)	7.76	8.76	8.34
Event Clearance (min.)	11.36	10.77	10.04
Roadway Clearance (min.)		21.78	43.61
Incident Clearance (min.)		25.03	51.72
# of Events w/ RR/SIRV	216	235	3,504
RR/SIRV Assists	216	235	3,504
RR/SIRV Activities	37	51	583

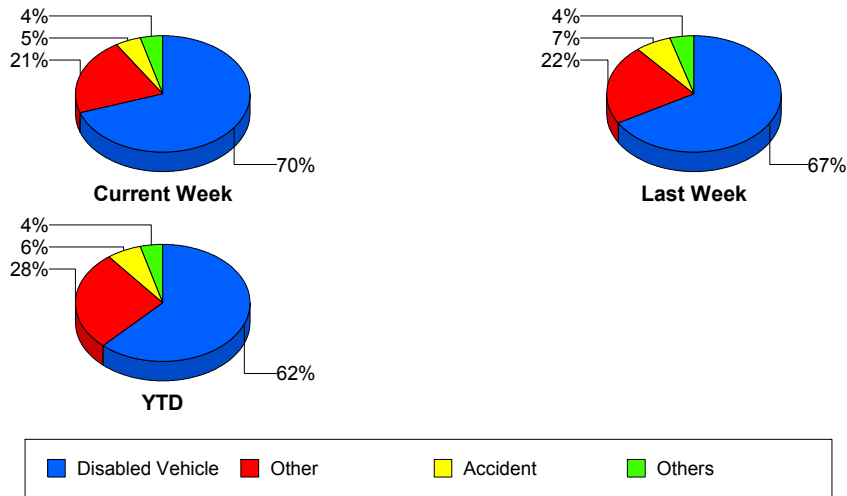
Police Activity

	<u>Current Week</u>	<u>Last Week</u>	<u>YTD</u>
Number of Events	7	2	52
Number of Incidents	5	2	23
TMC Detection (min.)	0.00	0.00	0.00
TMC Verification (min.)	1.29	0.23	1.09
TMC Response (min.)	8.80	5.06	11.81
RR Dispatch Time (min.)	2.39	4.00	2.19
RR Response Time (min.)	7.43	1.06	10.34
Event Clearance (min.)	59.59	20.23	36.83
Roadway Clearance (min.)	86.55	17.08	43.22
Incident Clearance (min.)	80.69	20.23	49.92
# of Events w/ RR/SIRV	6	2	40
RR/SIRV Assists	6	2	40
RR/SIRV Activities	10	5	40

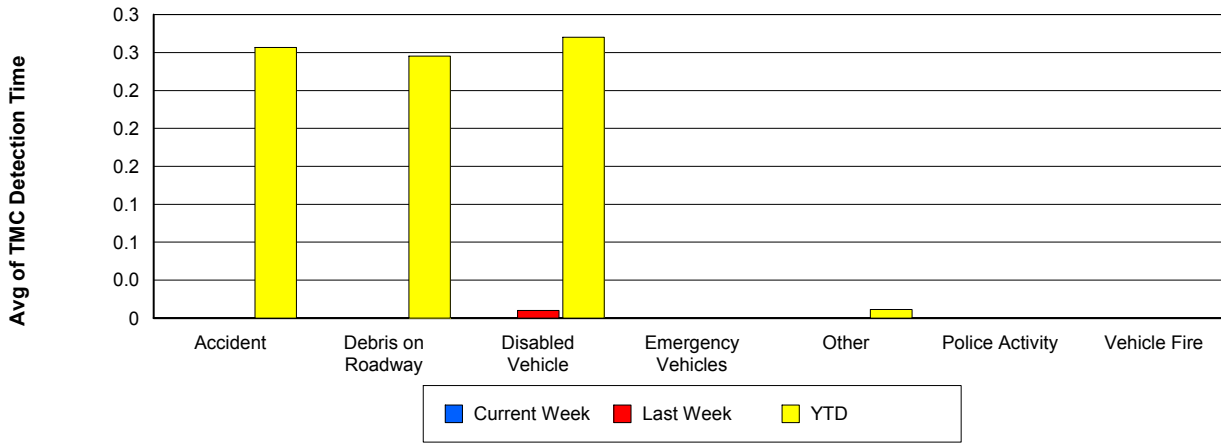
Vehicle Fire

	<u>Current Week</u>	<u>Last Week</u>	<u>YTD</u>
Number of Events	2	4	45
Number of Incidents	1	3	27
TMC Detection (min.)	0.00	0.00	0.00
TMC Verification (min.)	0.00	1.46	3.15
TMC Response (min.)	3.04	26.10	10.87
RR Dispatch Time (min.)	0.15	1.45	1.61
RR Response Time (min.)	2.89	24.65	9.21
Event Clearance (min.)	96.59	59.00	53.19
Roadway Clearance (min.)	21.65	23.09	40.66
Incident Clearance (min.)	80.27	49.59	63.74
# of Events w/ RR/SIRV	2	4	44
RR/SIRV Assists	2	4	44
RR/SIRV Activities	5	6	69

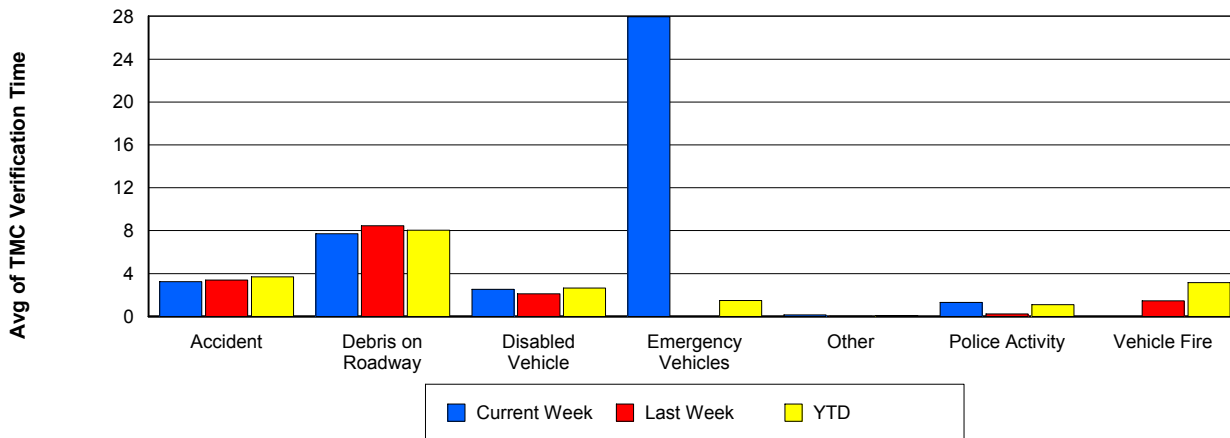
Number of Events / Event Type



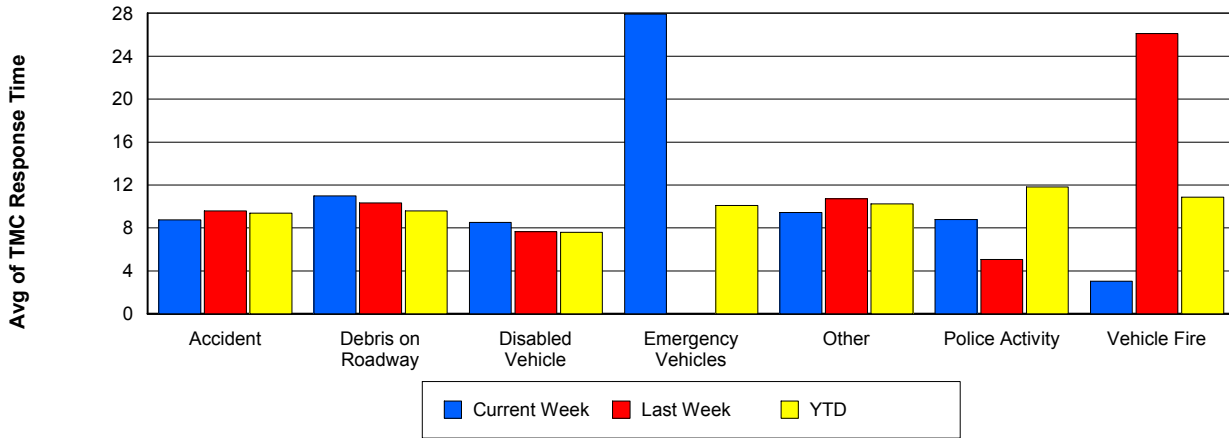
TMC Detection Time



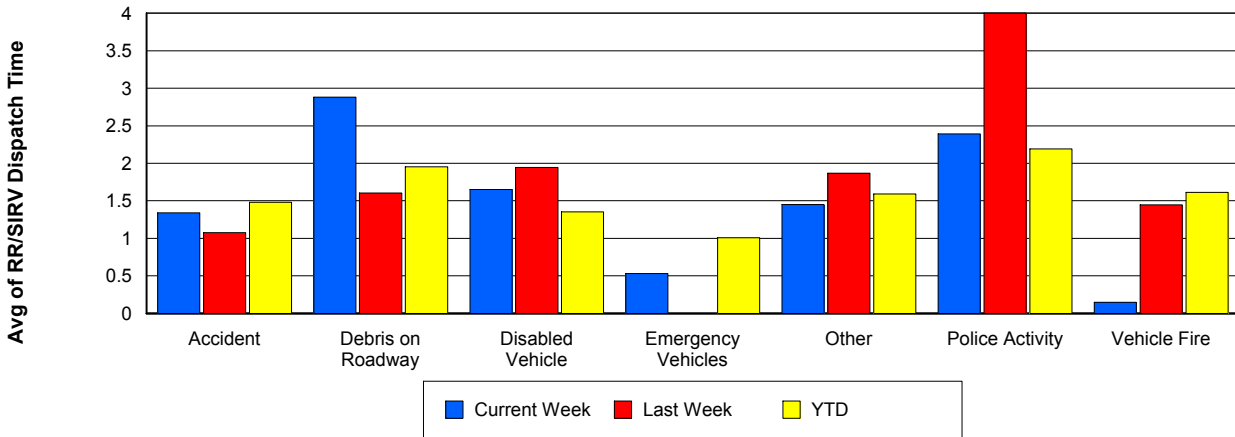
TMC Verification Time



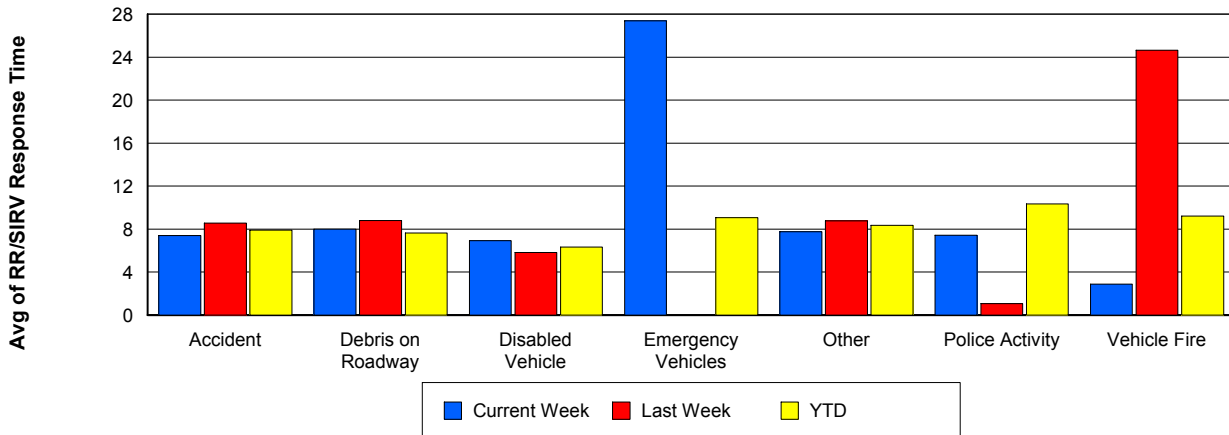
TMC Response Time



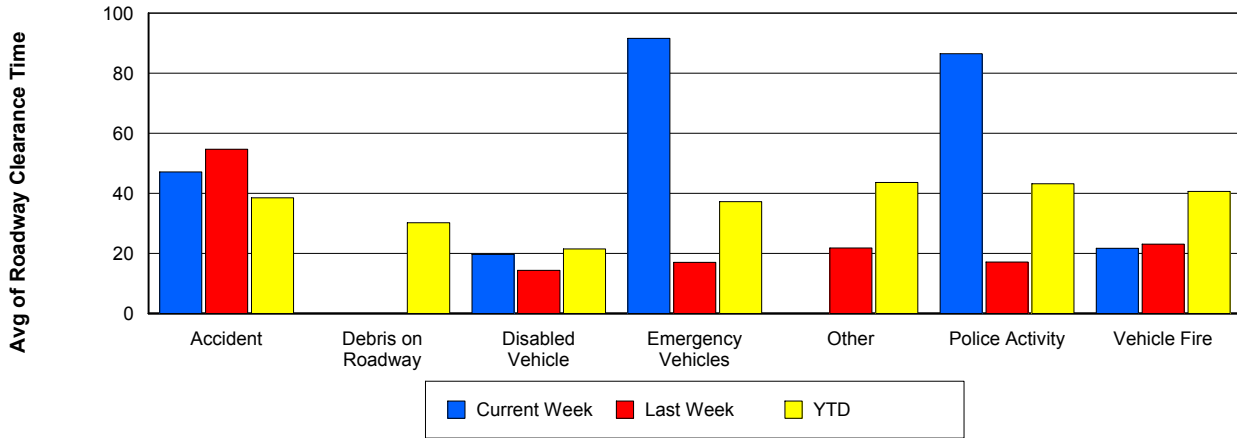
Road Ranger / SIRV Dispatch Time



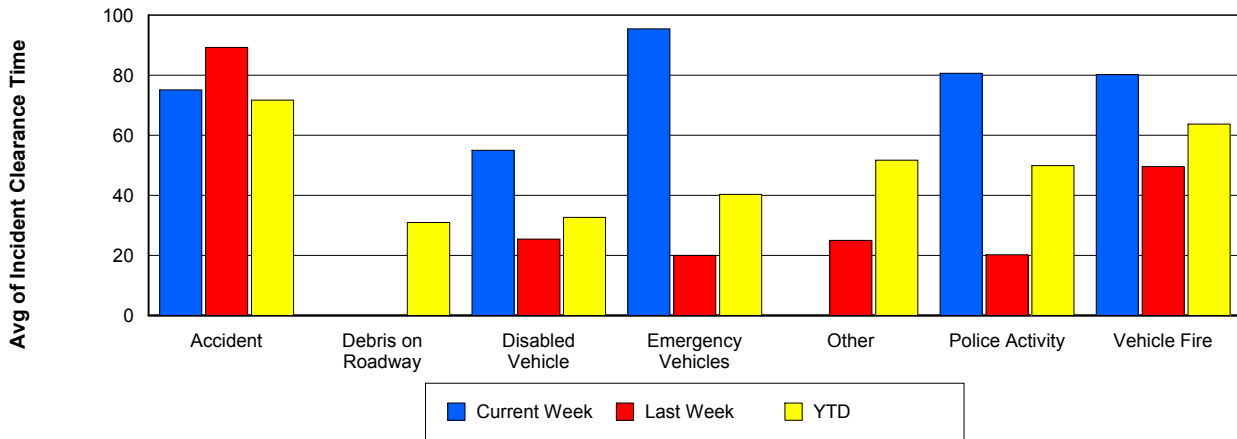
Road Ranger / SIRV Response Time



Roadway Clearance Time (2A)



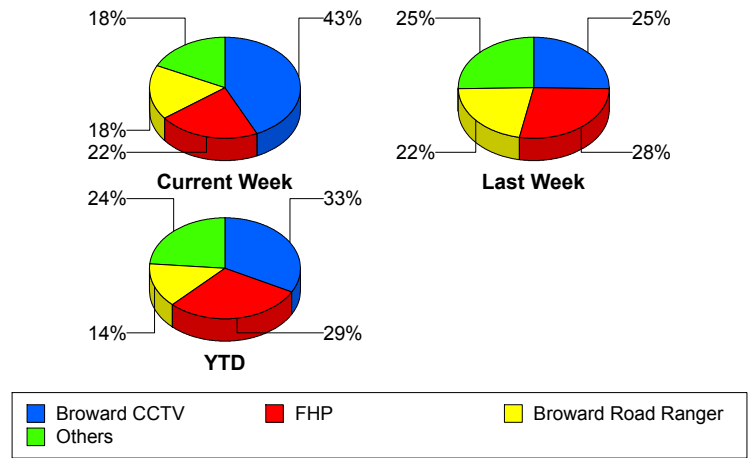
Incident Clearance Time (3B)



Incident Detection Methods

	Current Week	Last Week	YTD
Broward CCTV	22	20	305
Broward Road Ranger	9	17	132
Broward TMC	1	0	8
Broward VideoWall	0	0	16
BSO	0	2	12
County Police	0	0	1
District 4	1	2	21
FDOT Maintenance	0	0	1
FHP	11	22	273
Fire	0	0	1
ITMS CCTV	2	6	37
Local Police	0	0	1
Media	0	1	2
Motorist	1	0	9
Other	0	1	1
Palm Beach Road Ran	3	8	93
Road Watcher	0	0	5
SIRV	0	0	1
VisioPaD Detection	1	0	12
Total	51	79	931

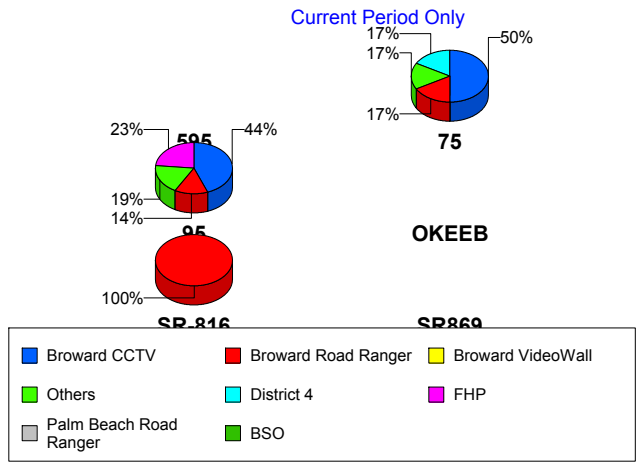
Total Incidents by Detection Method



Incident Detection Methods by Roadway

		Current Week	Last Week	YTD
595	Broward CCTV	0	1	7
	Broward Road Ranger	0	1	5
	BSO	0	0	3
	County Police	0	0	1
	FHP	0	0	5
	Total	0	2	21
75	Broward CCTV	3	1	23
	Broward Road Ranger	1	0	11
	BSO	0	1	5
	District 4	1	0	2
	FHP	1	3	15
	Fire	0	0	1
	Road Watcher	0	0	1
	VisioPaD Detection	0	0	6
	Total	6	5	64
95	Broward CCTV	19	18	275
	Broward Road Ranger	6	11	87
	Broward TMC	1	0	8
	Broward VideoWall	0	0	16
	BSO	0	0	2
	District 4	0	2	19
	FDOT Maintenance	0	0	1
	FHP	10	18	252
	ITMS CCTV	2	6	37
	Local Police	0	0	1
	Media	0	1	2
	Motorist	1	0	9
	Other	0	1	1
	Palm Beach Road Ran	3	8	93
	Road Watcher	0	0	3
SIRV	0	0	1	

Total Events by Roadway and Detection Method

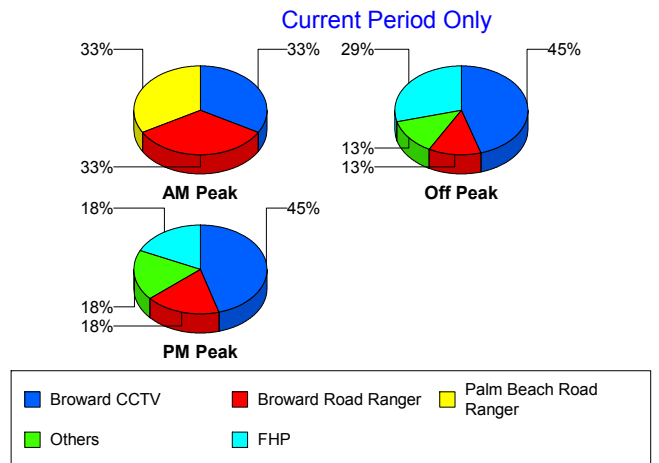


		Current Week	Last Week	YTD
95	VisioPaD Detection	1	0	6
	Total	43	65	813
SR-816	Broward Road Ranger	2	5	28
	BSO	0	0	1
	Road Watcher	0	0	1
	Total	2	5	30
SR869	Broward Road Ranger	0	0	1
	BSO	0	1	1
	FHP	0	1	1
	Total	0	2	3
Total		51	79	931

Incident Detection Methods by Peak Period

		Current Week	Last Week	YTD
AM Peak	Broward CCTV	3	2	47
	Broward Road Ranger	3	4	31
	Broward VideoWall	0	0	10
	BSO	0	1	2
	District 4	0	1	5
	FHP	0	4	51
	ITMS CCTV	0	2	7
	Local Police	0	0	1
	Media	0	0	1
	Palm Beach Road Ran	3	2	28
	Road Watcher	0	0	1
	SIRV	0	0	1
	VisioPaD Detection	0	0	1
	Total	9	16	186
	Off Peak	Broward CCTV	14	15
Broward Road Ranger		4	5	54
Broward TMC		0	0	5
Broward VideoWall		0	0	5

Total Events by Peak Period and Detection Method

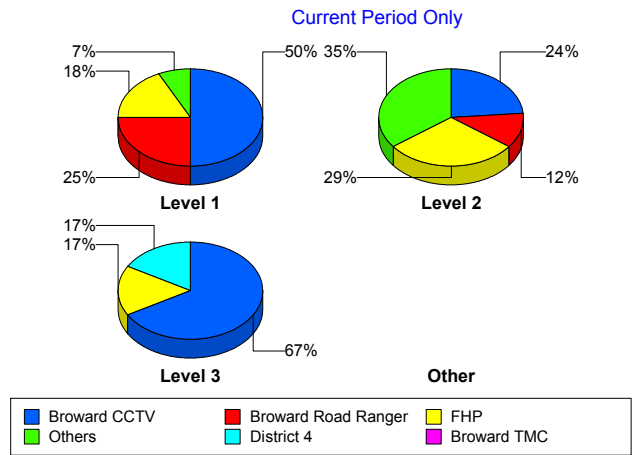


		Current Week	Last Week	YTD
Off Peak	BSO	0	0	6
	County Police	0	0	1
	District 4	1	1	12
	FDOT Maintenance	0	0	1
	FHP	9	11	140
	ITMS CCTV	2	4	26
	Motorist	0	0	5
	Other	0	1	1
	Palm Beach Road Ran	0	6	45
	Road Watcher	0	0	3
	VisioPaD Detection	1	0	7
	Total	31	43	483
PM Peak	Broward CCTV	5	3	86
	Broward Road Ranger	2	8	47
	Broward TMC	1	0	3
	Broward VideoWall	0	0	1
	BSO	0	1	4
	District 4	0	0	4
	FHP	2	7	82
	Fire	0	0	1
	ITMS CCTV	0	0	4
	Media	0	1	1
	Motorist	1	0	4
	Palm Beach Road Ran	0	0	20
	Road Watcher	0	0	1
	VisioPaD Detection	0	0	4
	Total	11	20	262
Total	51	79	931	

Incident Detection Methods by Severity

		Current Week	Last Week	YTD
Level 1	Broward CCTV	14	10	192
	Broward Road Ranger	7	12	94
	Broward TMC	1	0	5
	Broward VideoWall	0	0	10
	BSO	0	1	4
	District 4	0	1	12
	FHP	5	7	121
	ITMS CCTV	0	4	18
	Media	0	1	1
	Motorist	0	0	7
	Other	0	1	1
	Palm Beach Road Ran	1	3	61
	Road Watcher	0	0	5
	VisioPaD Detection	0	0	6
	Total	28	40	537
Level 2	Broward CCTV	4	6	88
	Broward Road Ranger	2	5	31
	Broward TMC	0	0	3
	Broward VideoWall	0	0	6
	BSO	0	0	1
	District 4	0	1	6
	FDOT Maintenance	0	0	1
	FHP	5	11	119
	Fire	0	0	1
	ITMS CCTV	2	2	16
	Local Police	0	0	1
	Motorist	1	0	2
	Palm Beach Road Ran	2	4	23
	SIRV	0	0	1
	VisioPaD Detection	1	0	5
Total	17	29	304	

Total Events by Severity and Detection Method



		Current Week	Last Week	YTD
Level 3	Broward CCTV	4	4	25
	Broward Road Ranger	0	0	7
	BSO	0	1	7
	County Police	0	0	1
	District 4	1	0	3
	FHP	1	4	33
	ITMS CCTV	0	0	3
	Media	0	0	1
	Palm Beach Road Ran	0	1	9
	VisioPaD Detection	0	0	1
	Total	6	10	90
Total	51	79	931	

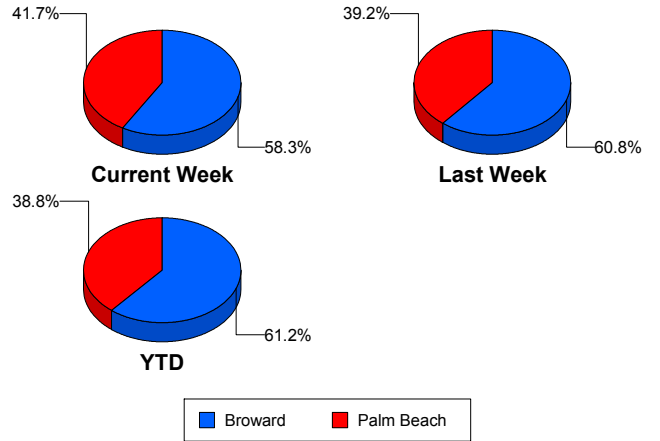
Road Ranger / SIRV Performance Measures

Road Ranger / SIRV Performance By County

Values presented are:
 - Total Events with a RR/SIRV Response
 - Total RR/SIRV Responses,
 - Total Activities Performed

	Current We	Last Week	YTD
Broward	921	935	11,794
	972	1,018	12,614
	1,017	1,054	13,073
Palm Beach	668	632	7,717
	694	656	7,983
	743	693	8,445

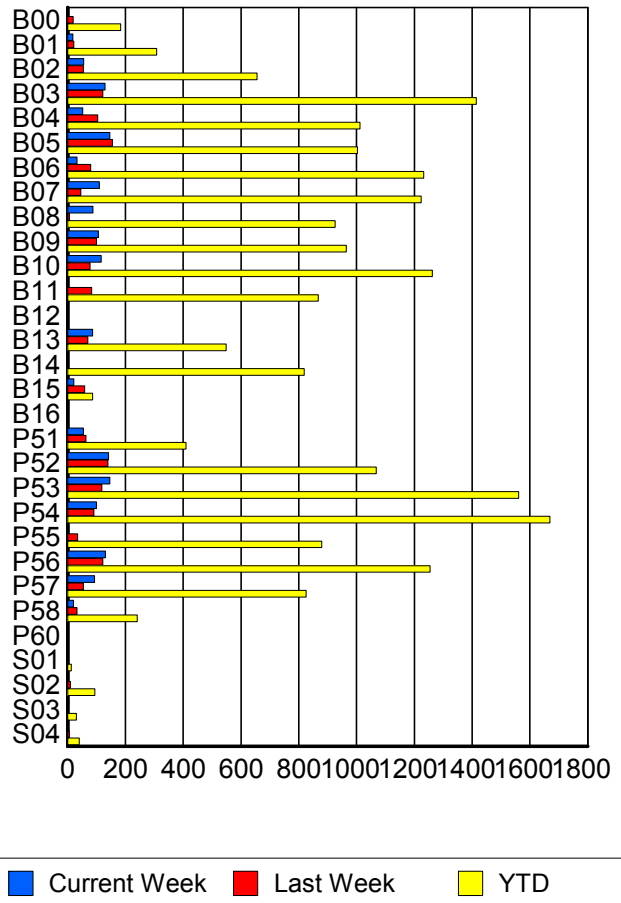
RR/SIRV Responses per County



Road Ranger / SIRV Performance By Truck

	Current We	Last Week	YTD
B00	3	18	180
	3	19	184
	3	19	194
B01	17	21	300
	18	21	308
	18	21	311
B02	56	53	646
	56	54	656
	58	55	669
B03	129	119	1,403
	130	122	1,414
	139	129	1,479
B04	52	104	1,000
	52	104	1,012
	57	109	1,053
B05	146	155	996
	146	155	1,003
	153	163	1,041
B06	33	79	1,216
	33	80	1,232
	37	81	1,280
B07	108	46	1,204
	110	46	1,224
	114	47	1,273
B08	87	5	911
	88	6	926
	90	6	960

RR/SIRV Responses per Truck



	Current We	Last Week	YTD
B09	106 106 109	98 100 107	952 964 1,009
B10	114 116 120	75 78 79	1,246 1,262 1,298
B11	0 0 0	80 83 85	859 867 892
B12	0 0 0	0 0 0	2 2 2
B13	85 86 88	68 70 71	542 549 559
B14	0 0 0	0 0 0	808 819 850
B15	21 21 23	59 59 60	87 87 90
B16	0 0 0	0 0 0	1 1 1
P51	52 55 56	63 63 69	404 410 428
P52	138 142 152	138 140 150	1,052 1,068 1,138
P53	145 146 160	115 119 123	1,542 1,561 1,651
P54	99 100 107	88 91 100	1,644 1,669 1,767
P55	4 4 4	35 35 36	871 880 921
P56	128 131 139	122 122 128	1,239 1,254 1,335
P57	92 93 103	54 54 54	813 826 870

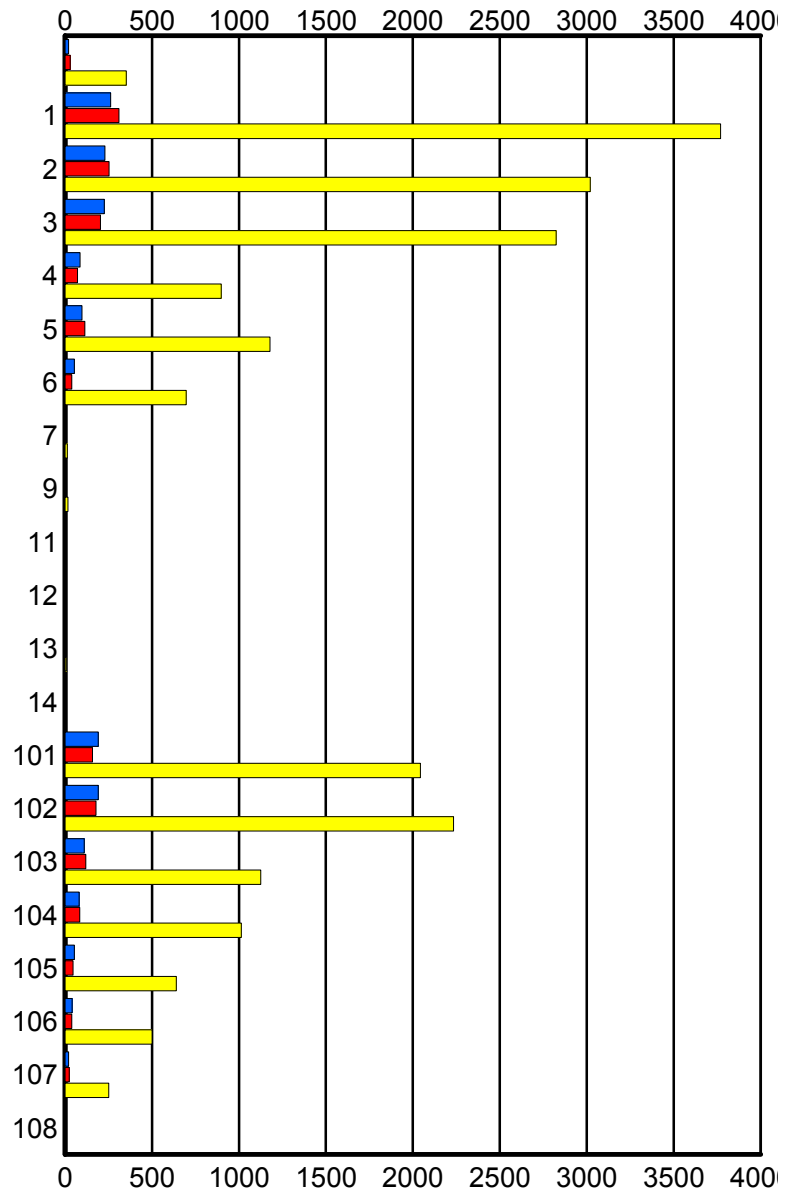
	Current We	Last Week	YTD
P58	20	32	238
	20	33	241
	20	34	257
P60	0	0	1
	0	0	1
	0	0	1
S01	1	3	13
	1	3	13
	1	3	14
S02	4	9	91
	4	9	94
	4	10	101
S03	4	2	27
	4	2	30
	4	2	31
S04	1	6	40
	1	6	40
	1	6	43

Road Ranger / SIRV Performance By Beat

	Current We	Last Week	YTD
	21	28	342
	21	30	353
	21	31	373
1	253	284	3,590
	263	310	3,770
	274	319	3,917
2	223	249	2,933
	230	254	3,020
	244	268	3,138
3	223	198	2,759
	225	203	2,824
	239	211	2,936
4	84	70	882
	86	71	898
	88	72	927
5	97	113	1,169
	98	114	1,179
	100	115	1,208
6	54	38	684
	54	39	696
	55	41	712
7	4	0	12
	4	0	13
	4	0	13
9	0	0	17
	0	0	17
	0	0	17
11	0	0	2
	0	0	2
	0	0	2
12	0	0	2
	0	0	2
	0	0	2
13	0	0	8
	0	0	8
	0	0	8
14	0	0	4
	0	0	4
	0	0	4
101	186	151	2,002
	190	157	2,043
	204	167	2,153
102	187	174	2,195
	191	178	2,235
	207	190	2,367

Values presented are:
 - Total Events with a RR/SIRV Response
 - Total RR/SIRV Responses,
 - Total Activities Performed

RR/SIRV Responses per Beat



■ Current Week
 ■ Last Week
 ■ YTD

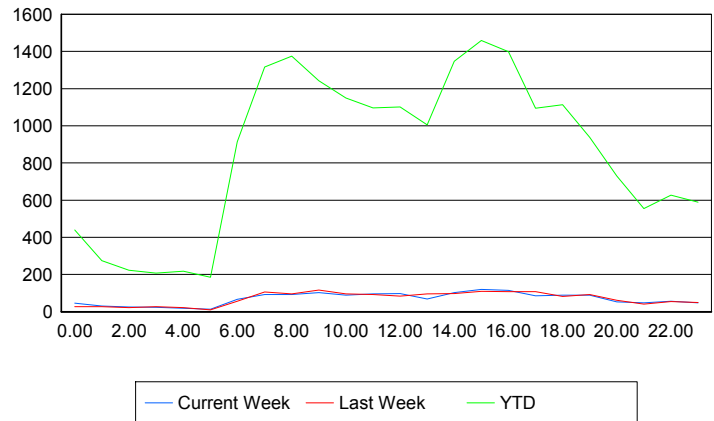
	Current We	Last Week	YTD
103	107	119	1,115
	110	119	1,125
	113	127	1,181
104	79	85	1,005
	80	85	1,014
	84	88	1,082
105	53	47	634
	53	47	639
	61	49	685
106	39	39	493
	41	39	500
	46	40	519
107	20	24	249
	20	24	251
	20	25	270
108	0	3	3
	0	4	4
	0	4	4

Road Ranger / SIRV Performance By Time of Day

Values presented are:
 - Total Events with a RR/SIRV Response
 - Total RR/SIRV Responses,
 - Total Activities Performed

	Current We	Last Week	YTD
12AM-1AM	45	25	422
	45	26	439
	47	26	463
1AM-2AM	30	26	265
	30	26	274
	31	27	283
2AM-3AM	22	20	208
	25	21	222
	25	21	230
3AM-4AM	19	23	194
	23	26	207
	24	30	227
4AM-5AM	15	15	197
	19	21	217
	20	21	229
5AM-6AM	13	8	153
	13	10	185
	14	10	192
6AM-7AM	62	51	858
	67	56	914
	70	57	946

Number of Responses / Hour of the Day



	Current We	Last Week	YTD
7AM-8AM	87	93	1,253
	93	106	1,316
	95	111	1,374
8AM-9AM	91	92	1,294
	93	96	1,375
	97	98	1,422
9AM-10AM	100	110	1,188
	103	116	1,243
	109	122	1,298
10AM-11AM	87	90	1,092
	89	95	1,149
	92	96	1,199
11AM-12PM	91	92	1,049
	95	92	1,097
	102	98	1,144
12PM-1PM	94	77	1,034
	98	84	1,102
	107	87	1,144
1PM-2PM	64	85	937
	68	95	1,005
	73	97	1,044
2PM-3PM	96	94	1,257
	103	97	1,347
	111	103	1,423
3PM-4PM	118	104	1,399
	120	109	1,459
	129	112	1,520
4PM-5PM	105	100	1,310
	114	108	1,399
	117	111	1,462
5PM-6PM	84	101	1,042
	86	107	1,095
	92	111	1,142
6PM-7PM	86	75	1,068
	88	82	1,113
	92	83	1,156
7PM-8PM	86	88	900
	89	93	938
	92	98	973
8PM-9PM	51	58	694
	53	62	730
	55	64	753
9PM-10PM	44	40	526
	48	41	555
	51	44	584

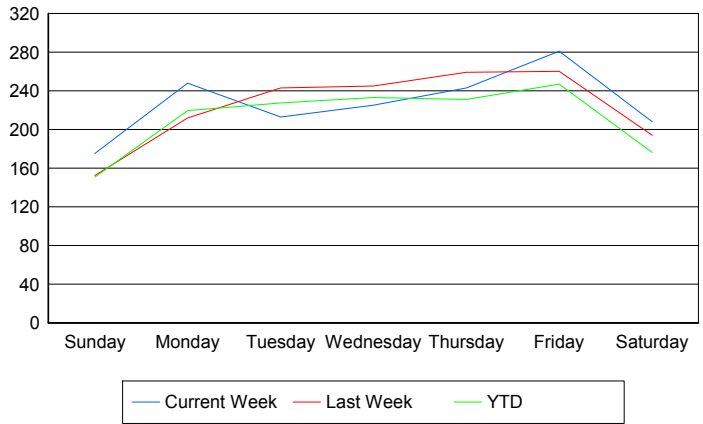
	Current We	Last Week	YTD
10PM-11PM	53	54	603
	56	55	627
	62	58	670
11PM-12AM	46	46	568
	48	50	589
	53	62	640

Road Ranger / SIRV Performance By Day of Week

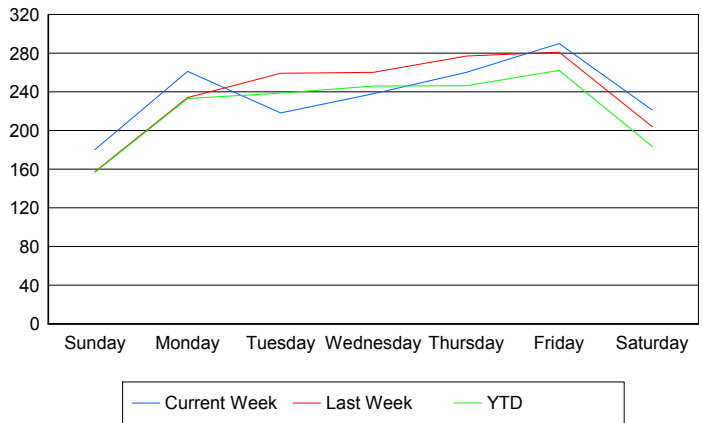
Values presented are: - Total Events with a RR/SIRV Response - Total RR/SIRV Responses, - Total Activities Performed

	Current We	Last Week	YTD
Sunday	173	154	1,928
	178	159	2,001
	183	162	2,087
Monday	248	212	2,817
	261	234	2,994
	273	247	3,121
Tuesday	213	243	2,948
	218	259	3,094
	236	272	3,223
Wednesday	225	245	3,009
	238	260	3,177
	258	275	3,332
Thursday	243	259	2,996
	260	277	3,192
	270	286	3,343
Friday	281	260	3,396
	290	281	3,603
	305	288	3,745
Saturday	208	194	2,436
	221	204	2,536
	235	217	2,667

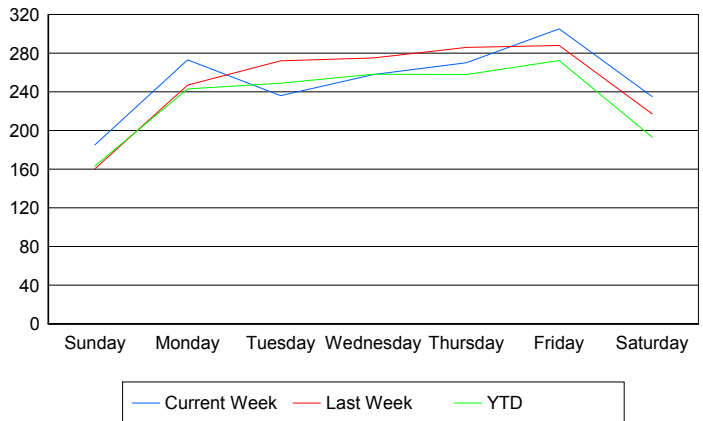
Avg # of events with a RR/SIRV Response per Day of the Week



Avg # of RR/SIRV Responses per Day of the Week



Avg # of RR/SIRV Activities Performed per Day of the Week



Road Ranger / SIRV Responses per Time of Day and Day of Week

