



Quarterly
Performance Measures Report
Broward, Palm Beach Counties
 Period From Apr 1, 2010 to Jun 30, 2010

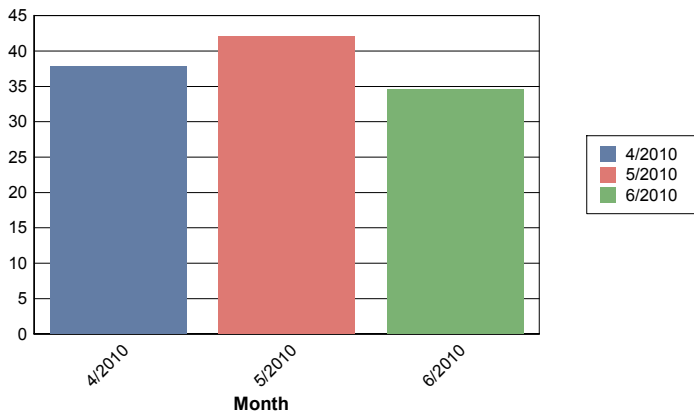


Created on:
 July 21, 2010
 2:50 pm

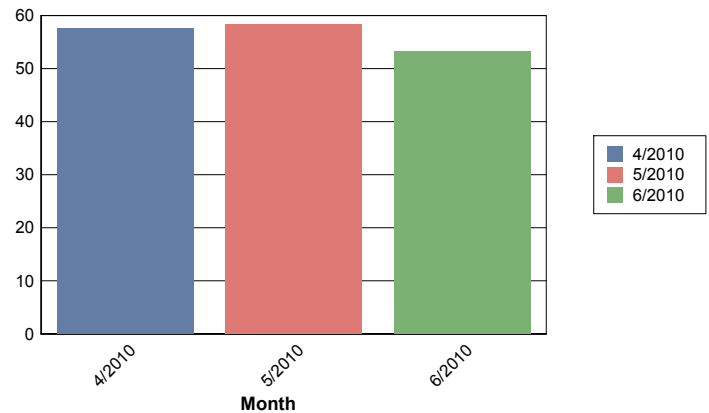
2nd Quarter

	April	May	June	Total
Total # of Events (incl. incidents)	8,127	8,402	8,532	25,061
Number of Incidents	340	349	301	990
TMC Verification (mins.)	1.96	2.51	2.38	2.29
Roadway Clearance (2A) (mins.)	37.80	42.05	34.53	38.31
Incident Clearance (3B) (mins.)	57.61	58.31	53.35	56.56
Total Road Ranger Responses (stops)	7,005	7,394	7,475	21,874

Roadway Clearance (2A)



Incident Clearance (3B)



Benefit Cost Analysis

Broward - April 1 to April 30

		<u>Costs</u>	
Emission Benefit	\$92,883.75	Total Broward Cost	\$857,483.18
Delay Benefit	\$11,830,880.07		
Safety Benefit	\$1,338,877.27		
Dms Benefit	\$589,026.40		
Fuel Benefit	\$1,783,351.50		
Road Ranger Benefit	\$512,877.17		
Total Benefit	\$16,147,896.17		
Total Cost	\$857,483.18		
Benefit Cost Ratio	18.83		
Cash Flow	\$15,290,412.99		

Broward - May 1 to May 31

		<u>Costs</u>	
Emission Benefit	\$124,561.40	Total Broward Cost	\$886,065.95
Delay Benefit	\$12,060,329.29		
Safety Benefit	\$1,333,485.10		
Dms Benefit	\$812,671.69		
Fuel Benefit	\$2,105,757.81		
Road Ranger Benefit	\$543,867.97		
Total Benefit	\$16,980,673.26		
Total Cost	\$886,065.95		
Benefit Cost Ratio	19.16		
Cash Flow	\$16,094,607.31		

Broward - June 1 to June 30

		<u>Costs</u>	
Emission Benefit	\$88,713.79	Total Broward Cost	\$857,483.18
Delay Benefit	\$11,997,844.95		
Safety Benefit	\$1,338,877.27		
Dms Benefit	\$463,220.32		
Fuel Benefit	\$1,742,990.14		
Road Ranger Benefit	\$468,571.47		
Total Benefit	\$16,100,217.94		
Total Cost	\$857,483.18		
Benefit Cost Ratio	18.78		
Cash Flow	\$15,242,734.76		

Broward - April 1 to June 30

		<u>Costs</u>	
Emission Benefit	\$314,966.05	Total Broward Cost	\$2,601,032.31
Delay Benefit	\$36,284,768.92		
Safety Benefit	\$4,011,239.65		
Dms Benefit	\$1,856,437.92		
Fuel Benefit	\$5,748,888.24		
Road Ranger Benefit	\$1,525,316.61		
Total Benefit	\$49,741,617.39		
Total Cost	\$2,601,032.31		
Benefit Cost Ratio	19.12		
Cash Flow	\$47,140,585.09		

Palm Beach - April 1 to April 30

		<u>Costs</u>	
Emission Benefit	\$13,598.64	Total Palm Beach Cost	\$439,726.03
Delay Benefit	\$2,014,464.82		
Safety Benefit	\$890,536.71		
Dms Benefit	\$173,816.48		
Fuel Benefit	\$267,380.90		
Road Ranger Benefit	\$269,797.70		
Total Benefit	\$3,629,595.25		
Total Cost	\$439,726.03		
Benefit Cost Ratio	8.25		
Cash Flow	\$3,189,869.22		

Palm Beach - May 1 to May 31

		<u>Costs</u>	
Emission Benefit	\$11,580.52	Total Palm Beach Cost	\$454,383.56
Delay Benefit	\$1,718,329.24		
Safety Benefit	\$912,314.50		
Dms Benefit	\$203,857.65		
Fuel Benefit	\$225,266.63		
Road Ranger Benefit	\$299,139.41		
Total Benefit	\$3,370,487.95		
Total Cost	\$454,383.56		
Benefit Cost Ratio	7.42		
Cash Flow	\$2,916,104.39		

Palm Beach - June 1 to June 30

		<u>Costs</u>	
Emission Benefit	\$10,381.39	Total Palm Beach	\$439,726.03
Delay Benefit	\$1,704,903.76	Cost	
Safety Benefit	\$890,536.71		
Dms Benefit	\$150,606.09		
Fuel Benefit	\$214,007.03		
Road Ranger Benefit	\$263,493.55		
Total Benefit	\$3,233,928.52		
Total Cost	\$439,726.03		
Benefit Cost Ratio	7.35		
Cash Flow	\$2,794,202.49		

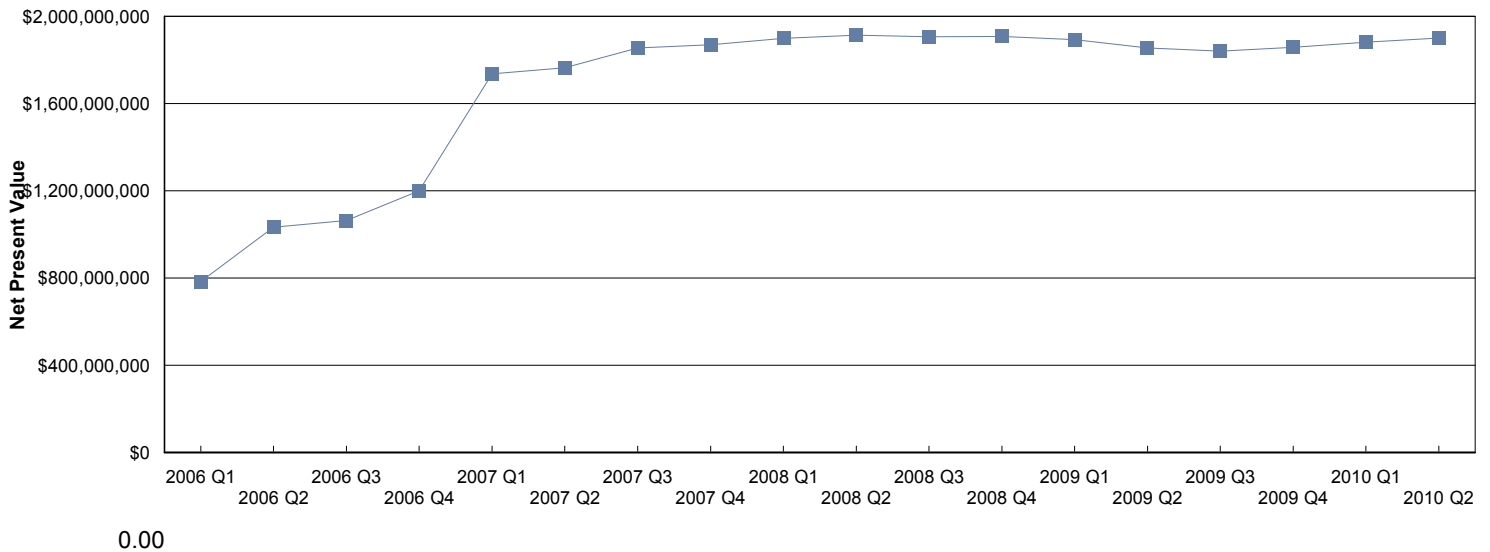
Palm Beach - April 1 to June 30

		<u>Costs</u>	
Emission Benefit	\$35,715.50	Total Palm Beach	\$1,333,835.62
Delay Benefit	\$5,454,588.92	Cost	
Safety Benefit	\$2,693,387.91		
Dms Benefit	\$529,229.83		
Fuel Benefit	\$708,924.17		
Road Ranger Benefit	\$832,430.66		
Total Benefit	\$10,254,276.99		
Total Cost	\$1,333,835.62		
Benefit Cost Ratio	7.69		
Cash Flow	\$8,920,441.37		

Net Present Value

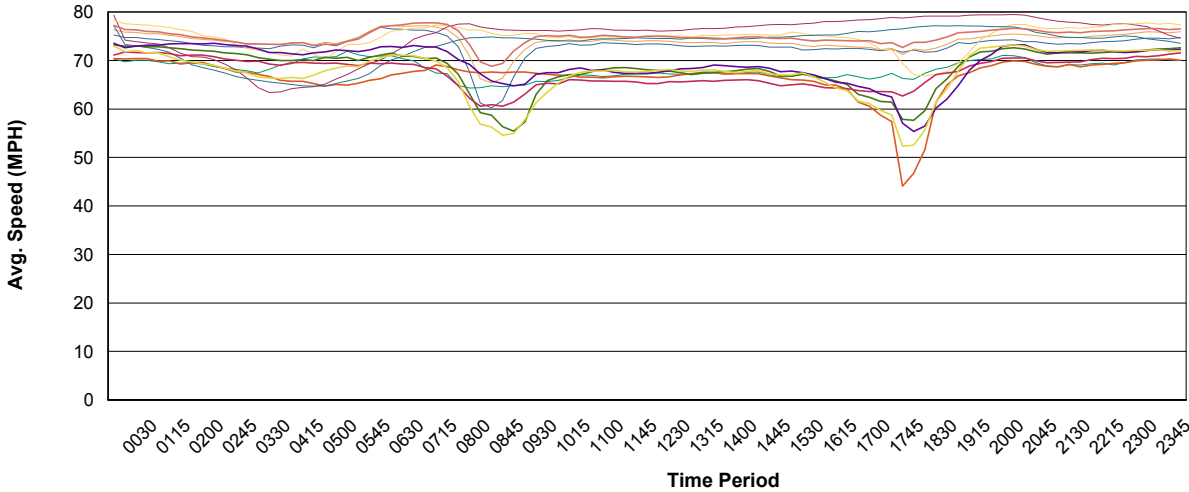
<u>Quarter</u>	<u>Cash Flow</u>	<u>Net Present Value</u>
2006 Q1	\$17,678,574.53	\$783,617,333.32
2006 Q2	\$31,019,351.82	\$1,032,863,198.58
2006 Q3	\$26,777,258.75	\$1,063,082,207.72
2006 Q4	\$39,885,451.30	\$1,200,359,724.53
2007 Q1	\$54,669,516.90	\$1,736,065,358.01
2007 Q2	\$52,212,353.04	\$1,763,804,946.03
2007 Q3	\$60,841,263.81	\$1,855,171,151.94
2007 Q4	\$50,755,928.53	\$1,869,805,562.76
2008 Q1	\$53,921,917.38	\$1,899,257,059.92
2008 Q2	\$54,403,467.88	\$1,914,072,760.78
2008 Q3	\$47,369,453.51	\$1,905,588,651.39
2008 Q4	\$50,581,610.88	\$1,907,794,347.98
2009 Q1	\$43,899,848.88	\$1,892,281,556.06
2009 Q2	\$35,548,232.13	\$1,854,202,050.81
2009 Q3	\$41,114,181.38	\$1,839,886,513.16
2009 Q4	\$53,416,923.88	\$1,857,224,115.43
2010 Q1	\$58,172,295.38	\$1,881,787,353.17
2010 Q2	\$56,061,025.13	\$1,900,153,273.95

Net Present Value per Quarter



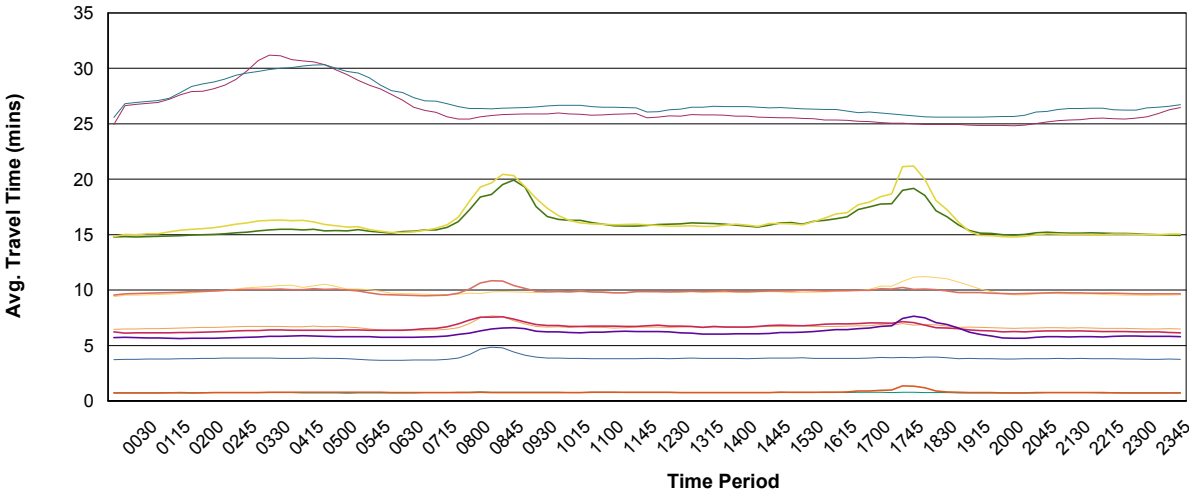
Travel Reliability Data

Average Speed by Segment on Weekdays



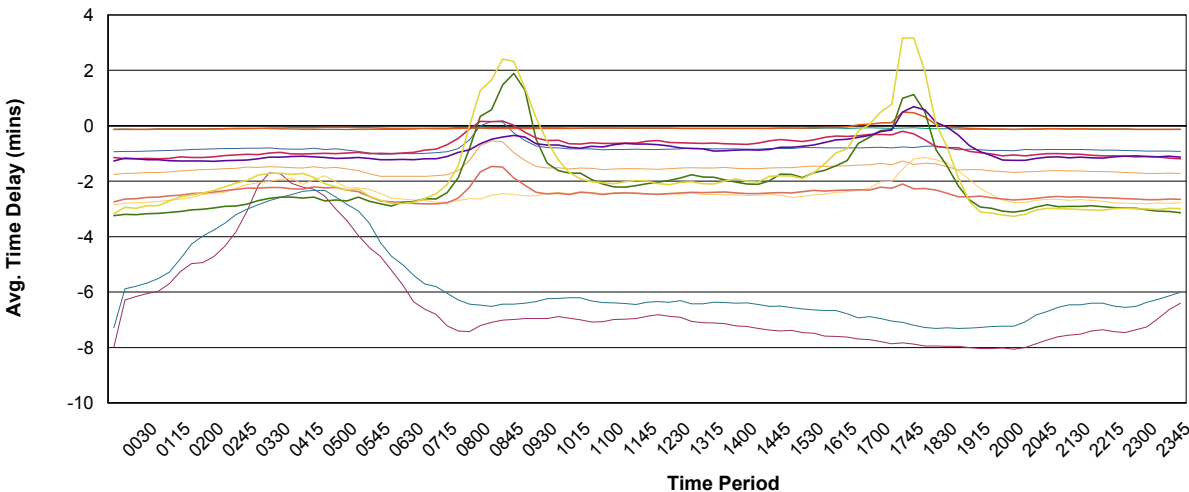
- BC 75SB10 to MDC
- DMS44
- BC 75SB14 to MDC
- DMS44
- BC I-595 EB Hiatus to I-95
- BC I-595 WB I-95 to Hiatus
- BC I-75 NB I-595 to Col Ln
- BC I-75 NB MD Ln to I-595
- BC I-75 SB Col Ln to I-595
- BC I-75 SB I-595 to MD Ln
- BC I-95 NB I-595 to PB Ln
- BC I-95 NB MD Ln to I-595
- BC I-95 SB I-595 to MD Ln
- BC I-95 SB PB Ln to I-595

Average Travel Time by Segment on Weekdays



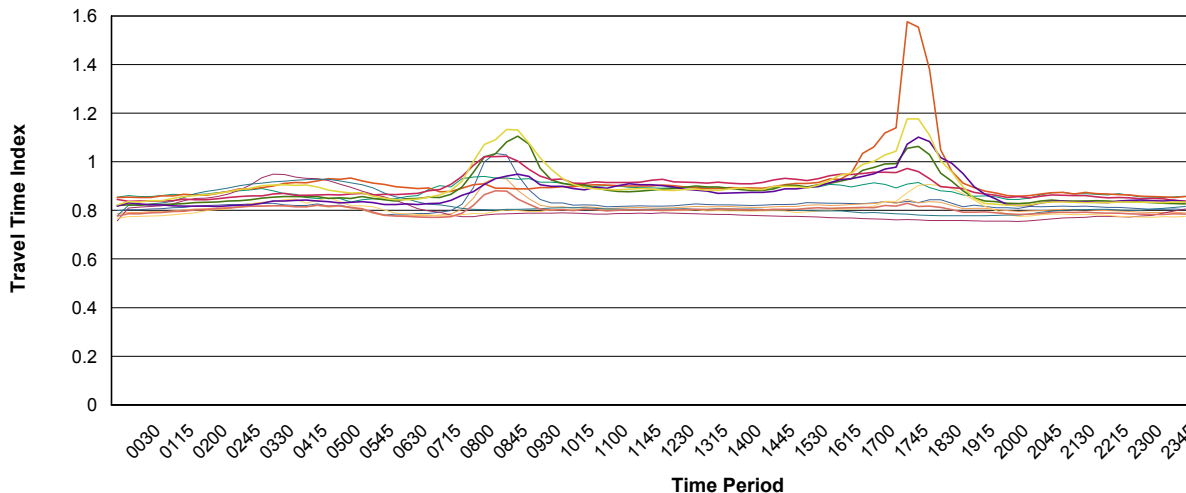
- BC 75SB10 to MDC
- DMS44
- BC 75SB14 to MDC
- DMS44
- BC I-595 EB Hiatus to I-95
- BC I-595 WB I-95 to Hiatus
- BC I-75 NB I-595 to Col Ln
- BC I-75 NB MD Ln to I-595
- BC I-75 SB Col Ln to I-595
- BC I-75 SB I-595 to MD Ln
- BC I-95 NB I-595 to PB Ln
- BC I-95 NB MD Ln to I-595
- BC I-95 SB I-595 to MD Ln
- BC I-95 SB PB Ln to I-595

Average Time Delay by Segment on Weekdays



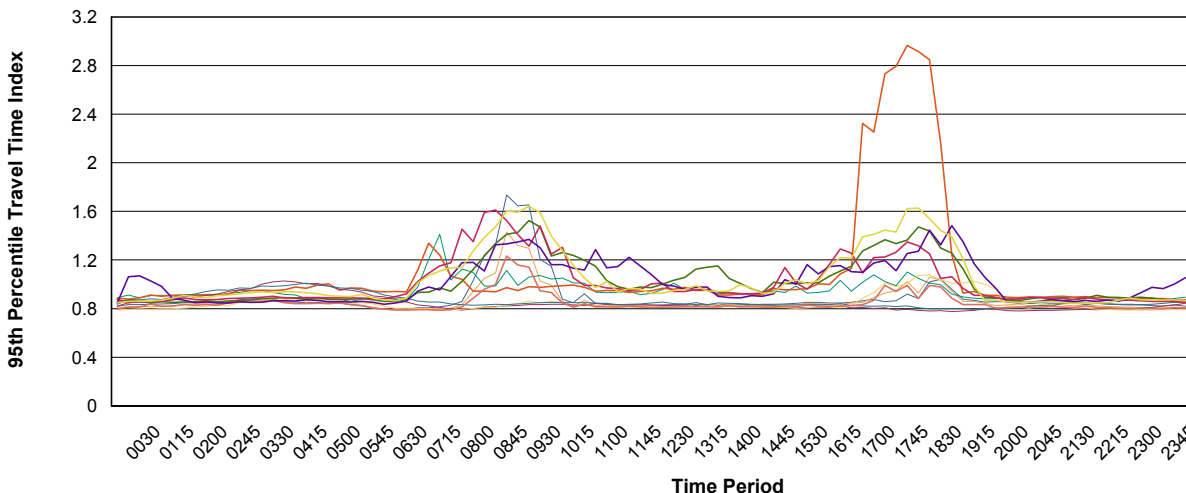
- BC 75SB10 to MDC
- DMS44
- BC 75SB14 to MDC
- DMS44
- BC I-595 EB Hiatus to I-95
- BC I-595 WB I-95 to Hiatus
- BC I-75 NB I-595 to Col Ln
- BC I-75 NB MD Ln to I-595
- BC I-75 SB Col Ln to I-595
- BC I-75 SB I-595 to MD Ln
- BC I-95 NB I-595 to PB Ln
- BC I-95 NB MD Ln to I-595
- BC I-95 SB I-595 to MD Ln
- BC I-95 SB PB Ln to I-595

Travel Time Index by Segment on Weekdays



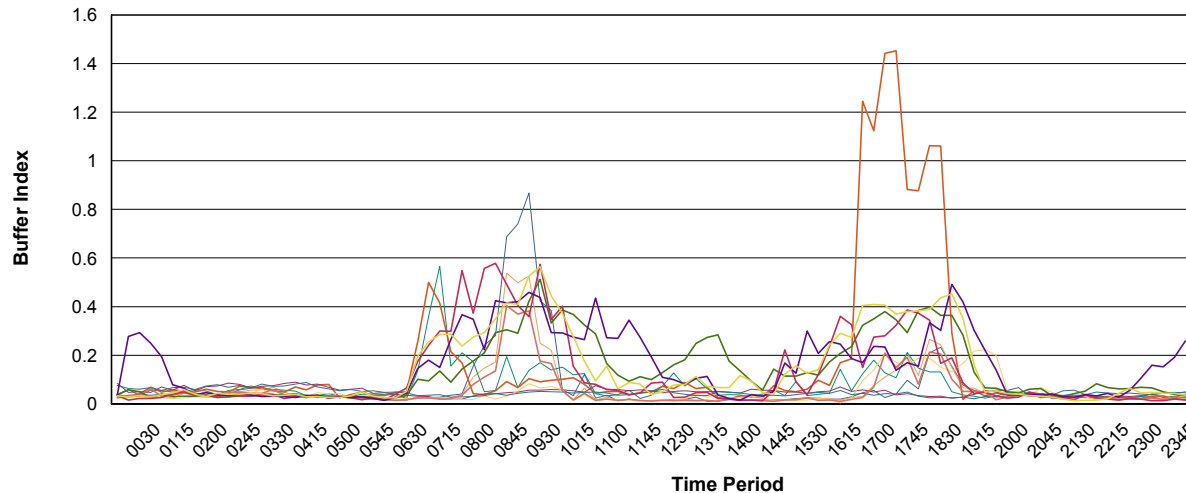
- BC 75SB10 to MDC DMS44
- BC 75SB14 to MDC DMS44
- BC I-595 EB Hiatus to I-95
- BC I-595 WB I-95 to Hiatus
- BC I-75 NB I-595 to Col Ln
- BC I-75 NB MD Ln to I-595
- BC I-75 SB Col Ln to I-595
- BC I-75 SB I-595 to MD Ln
- BC I-95 NB I-595 to PB Ln
- BC I-95 NB MD Ln to I-595
- BC I-95 SB I-595 to MD Ln
- BC I-95 SB PB Ln to I-595

95th Percentile Travel Time Index by Segment on Weekdays



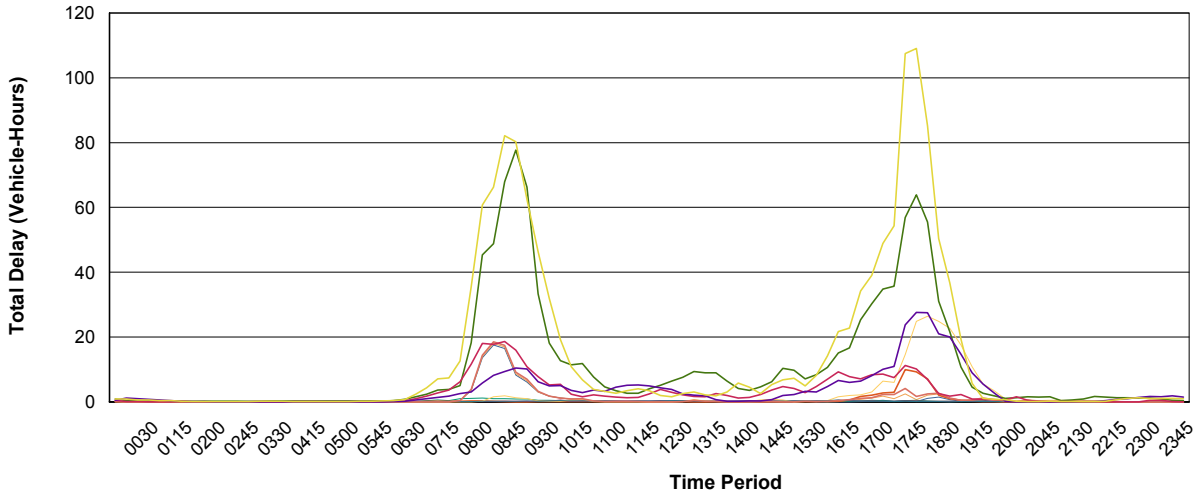
- BC 75SB10 to MDC DMS44
- BC 75SB14 to MDC DMS44
- BC I-595 EB Hiatus to I-95
- BC I-595 WB I-95 to Hiatus
- BC I-75 NB I-595 to Col Ln
- BC I-75 NB MD Ln to I-595
- BC I-75 SB Col Ln to I-595
- BC I-75 SB I-595 to MD Ln
- BC I-95 NB I-595 to PB Ln
- BC I-95 NB MD Ln to I-595
- BC I-95 SB I-595 to MD Ln
- BC I-95 SB PB Ln to I-595

Buffer Index by Segment on Weekdays



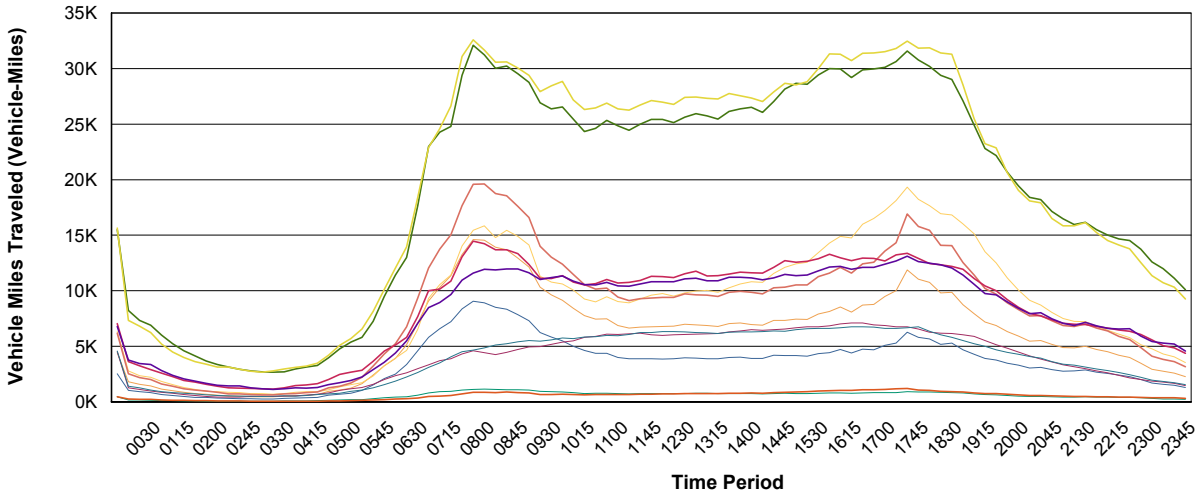
- BC 75SB10 to MDC DMS44
- BC 75SB14 to MDC DMS44
- BC I-595 EB Hiatus to I-95
- BC I-595 WB I-95 to Hiatus
- BC I-75 NB I-595 to Col Ln
- BC I-75 NB MD Ln to I-595
- BC I-75 SB Col Ln to I-595
- BC I-75 SB I-595 to MD Ln
- BC I-95 NB I-595 to PB Ln
- BC I-95 NB MD Ln to I-595
- BC I-95 SB I-595 to MD Ln
- BC I-95 SB PB Ln to I-595

Total Delay by Segment per Weekday



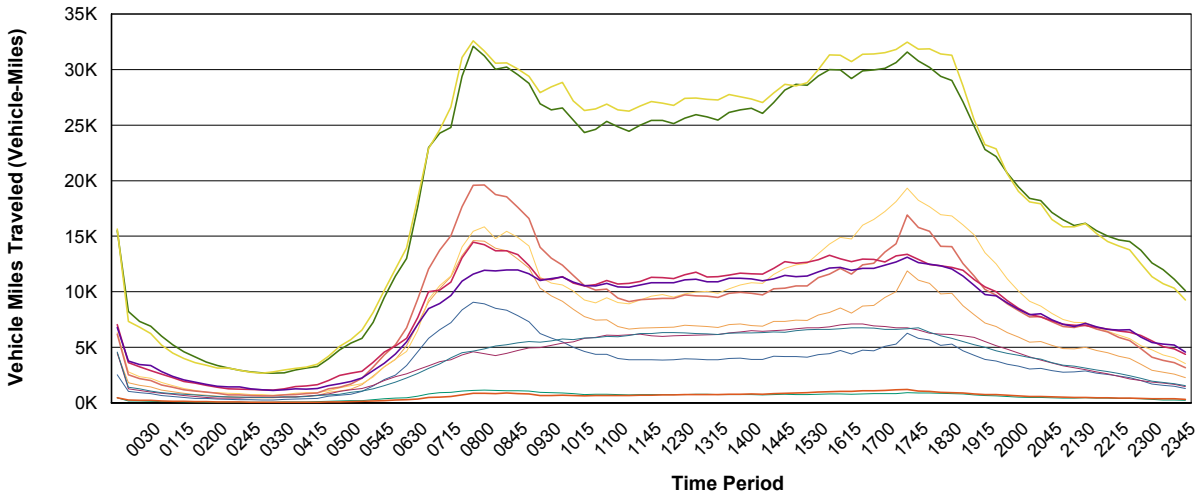
- BC 75SB10 to MDC
- DMS44
- BC 75SB14 to MDC
- DMS44
- BC I-595 EB Hiatus to I-95
- BC I-595 WB I-95 to Hiatus
- BC I-75 NB I-595 to Col Ln
- BC I-75 NB MD Ln to I-595
- BC I-75 SB Col Ln to I-595
- BC I-75 SB I-595 to MD Ln
- BC I-95 NB I-595 to PB Ln
- BC I-95 NB MD Ln to I-595
- BC I-95 SB I-595 to MD Ln
- BC I-95 SB PB Ln to I-595

Vehicle Miles Traveled by Segment per Weekday



- BC 75SB10 to MDC
- DMS44
- BC 75SB14 to MDC
- DMS44
- BC I-595 EB Hiatus to I-95
- BC I-595 WB I-95 to Hiatus
- BC I-75 NB I-595 to Col Ln
- BC I-75 NB MD Ln to I-595
- BC I-75 SB Col Ln to I-595
- BC I-75 SB I-595 to MD Ln
- BC I-95 NB I-595 to PB Ln
- BC I-95 NB MD Ln to I-595
- BC I-95 SB I-595 to MD Ln
- BC I-95 SB PB Ln to I-595

Vehicle Miles Traveled by Segment per Weekday



- BC 75SB10 to MDC
- DMS44
- BC 75SB14 to MDC
- DMS44
- BC I-595 EB Hiatus to I-95
- BC I-595 WB I-95 to Hiatus
- BC I-75 NB I-595 to Col Ln
- BC I-75 NB MD Ln to I-595
- BC I-75 SB Col Ln to I-595
- BC I-75 SB I-595 to MD Ln
- BC I-95 NB I-595 to PB Ln
- BC I-95 NB MD Ln to I-595
- BC I-95 SB I-595 to MD Ln
- BC I-95 SB PB Ln to I-595

Travel Time Index, 95th Percentile Travel Time Index, and Buffer Index by Peak Period on Weekdays

		BC 75SB10 to MDC DMS44	BC 75SB14 to MDC DMS44	BC I-595 EB Hiatus to I-95	BC I-595 WB I-95 to Hiatus	BC I-75 NB I-595 to Col Ln	BC I-75 NB MD Ln to I-595	BC I-75 SB Col Ln to I-595	BC I-75 SB I-595 to MD Ln	BC I-95 NB I-595 to PB Ln	BC I-95 NB MD Ln to I-595
AM Peak	Travel Time Index	0.90	0.85	0.93	0.89	0.78	0.79	0.81	0.83	0.98	0.96
	Peak TTI	1.23	1.02	2.01	1.94	0.83	0.87	0.86	0.96	1.25	1.52
	Planning Time Idx	1.18	1.02	1.00	0.94	0.82	0.82	0.84	0.94	1.28	1.31
	Buffer Index	0.33	0.22	0.17	0.11	0.04	0.04	0.04	0.17	0.27	0.44
	Peak Buffer Index	0.87	0.54	0.57	0.41	0.06	0.08	0.05	0.40	0.51	0.58
	Average VMT	7,480	12,167	1,020	735	4,555	13,276	4,958	16,396	28,357	12,453
	Peak VMT	9,856	16,175	1,302	1,091	6,851	16,835	7,108	21,961	35,067	16,061
Off Peak	Travel Time Index	0.80	0.79	0.86	0.86	0.76	0.78	0.78	0.78	0.83	0.85
	Peak TTI	0.97	0.87	1.89	1.99	1.00	0.93	0.97	0.85	0.99	2.04
	Planning Time Idx	0.84	0.83	0.90	0.93	0.94	0.85	0.93	0.83	0.87	0.88
	Buffer Index	0.03	0.03	0.05	0.05	0.07	0.04	0.06	0.03	0.05	0.04
	Peak Buffer Index	0.07	0.07	0.36	0.50	0.09	0.22	0.09	0.06	0.13	0.24
	Average VMT	2,116	3,672	355	362	3,123	5,310	3,126	5,115	12,815	5,755
	Peak VMT	6,323	10,045	943	948	13,502	16,660	14,118	13,399	28,169	13,219
PM Peak	Travel Time Index	0.83	0.83	0.90	1.09	0.76	0.84	0.79	0.81	0.96	0.94
	Peak TTI	2.09	1.33	1.67	1.69	0.81	1.15	0.84	1.14	1.28	2.28
	Planning Time Idx	0.86	0.90	0.98	2.32	0.80	0.96	0.82	0.87	1.28	1.15
	Buffer Index	0.08	0.10	0.10	0.67	0.04	0.11	0.04	0.10	0.28	0.24
	Peak Buffer Index	0.23	0.27	0.21	1.45	0.07	0.21	0.06	0.21	0.40	0.39
	Average VMT	4,924	9,159	813	1,016	6,664	15,947	6,467	13,079	29,661	12,745
	Peak VMT	7,182	13,025	1,038	1,353	13,833	20,591	16,553	18,086	34,152	15,118
Weekday Mid Day	Travel Time Index	0.82	0.81	0.90	0.90	0.78	0.80	0.80	0.80	0.89	0.92
	Peak TTI	1.69	1.57	1.93	1.92	4.67	2.13	4.75	2.12	1.20	2.21
	Planning Time Idx	0.83	0.83	0.93	0.94	0.83	0.81	0.84	0.81	1.04	0.96
	Buffer Index	0.02	0.02	0.06	0.05	0.05	0.02	0.04	0.02	0.18	0.06
	Peak Buffer Index	0.12	0.06	0.13	0.11	0.07	0.04	0.06	0.04	0.37	0.22
	Average VMT	4,074	7,091	747	717	6,134	9,978	6,160	9,833	25,654	11,313
	Peak VMT	5,538	9,499	950	1,024	11,177	14,542	14,202	12,999	31,913	14,334
Total	Travel Time Index	0.83	0.82	0.89	0.93	0.77	0.80	0.79	0.80	0.89	0.90
	Peak TTI	2.09	1.57	2.01	1.99	4.67	2.13	4.75	2.12	1.28	2.28
	Planning Time Idx	0.86	0.85	0.93	0.96	0.91	0.87	0.92	0.84	1.04	0.95
	Buffer Index	0.10	0.08	0.08	0.20	0.06	0.06	0.05	0.06	0.15	0.14
	Peak Buffer Index	0.87	0.54	0.57	1.45	0.09	0.22	0.09	0.40	0.51	0.58
	Average VMT	3,215	5,585	526	525	4,122	7,980	4,139	7,763	18,114	8,010
	Peak VMT	9,856	16,175	1,302	1,353	13,833	20,591	16,553	21,961	35,067	16,061

BC I-95 SB I-595 to MD Ln	BC I-95 SB PB Ln to I-595	Total
0.90	1.01	0.91
1.58	1.28	2.01
1.18	1.39	1.13
0.35	0.37	0.26
0.46	0.56	0.87
11,166	29,376	11,828
13,951	36,168	36,168
0.83	0.83	0.82
2.53	1.03	2.53
0.86	0.91	0.90
0.06	0.04	0.04
0.30	0.25	0.50
5,558	12,788	5,008
12,743	31,379	31,379
0.97	0.99	0.91
3.12	1.41	3.12
1.23	1.39	1.14
0.25	0.33	0.21
0.49	0.45	1.45
12,128	30,886	11,984
15,311	36,507	36,507
0.89	0.89	0.86
2.60	1.21	4.75
1.00	0.97	0.92
0.16	0.10	0.09
0.43	0.28	0.43
10,884	27,141	9,995
13,783	33,087	33,087
0.88	0.90	0.86
3.12	1.41	4.75
1.03	1.08	0.94
0.16	0.16	0.12
0.49	0.56	1.45
7,632	18,555	7,185
15,311	36,507	36,507

Travel Time Index, 95th Percentile Travel Time Index, and Buffer Index by Time of Day on Weekdays

		BC 75SB10 to MDC DMS44	BC 75SB14 to MDC DMS44	BC I-595 EB Hiatus to I-95	BC I-595 WB I-95 to Hiatus	BC I-75 NB I-595 to Col Ln	BC I-75 NB MD Ln to I-595	BC I-75 SB Col Ln to I-595	BC I-75 SB I-595 to MD Ln	BC I-95 NB I-595 to PB Ln	BC I-95 NB MD Ln to I-595	BC I-95 SB I-595 to MD Ln	BC I-95 SB PB Ln to I-595	Total
	Travel Time Idx	0.80	0.79	0.85	0.85	0.76	0.77	0.78	0.78	0.82	0.85	0.82	0.82	0.81
	Plan. Time Idx	0.82	0.81	0.89	0.89	0.82	0.79	0.84	0.80	0.85	0.87	0.85	0.85	0.87
	Buffer Index	0.03	0.03	0.04	0.04	0.08	0.03	0.08	0.02	0.04	0.03	0.03	0.03	0.04
	VMT	2,528	4,422	437	442	4,494	6,312	4,557	6,178	15,506	7,050	6,784	15,641	6,196
0000	Travel Time Idx	0.80	0.79	0.86	0.85	0.81	0.77	0.82	0.79	0.82	0.84	0.83	0.84	0.82
	Plan. Time Idx	0.83	0.82	0.91	0.88	0.85	0.79	0.87	0.81	0.87	0.85	1.06	0.86	0.87
	Buffer Index	0.04	0.03	0.06	0.03	0.05	0.03	0.06	0.03	0.06	0.02	0.28	0.03	0.06
	VMT	1,036	1,800	171	238	1,263	2,786	1,407	2,526	8,224	3,610	3,756	7,338	2,846
0015	Travel Time Idx	0.80	0.79	0.86	0.85	0.81	0.78	0.82	0.79	0.82	0.84	0.83	0.83	0.82
	Plan. Time Idx	0.83	0.82	0.89	0.89	0.85	0.80	0.87	0.81	0.86	0.86	1.07	0.86	0.87
	Buffer Index	0.04	0.03	0.03	0.04	0.05	0.03	0.06	0.03	0.05	0.02	0.29	0.03	0.06
	VMT	907	1,570	150	226	1,100	2,360	1,256	2,183	7,338	3,246	3,439	6,817	2,549
0030	Travel Time Idx	0.81	0.79	0.86	0.85	0.82	0.78	0.83	0.79	0.82	0.84	0.82	0.84	0.82
	Plan. Time Idx	0.83	0.81	0.91	0.91	0.85	0.79	0.88	0.84	0.84	0.86	1.03	0.86	0.87
	Buffer Index	0.04	0.03	0.06	0.07	0.05	0.02	0.07	0.06	0.03	0.02	0.25	0.03	0.06
	VMT	828	1,429	130	206	965	2,201	1,042	1,992	6,896	2,909	3,350	6,227	2,348
0045	Travel Time Idx	0.81	0.79	0.86	0.86	0.82	0.78	0.83	0.79	0.82	0.84	0.82	0.84	0.82
	Plan. Time Idx	0.84	0.82	0.91	0.90	0.88	0.80	0.88	0.82	0.86	0.86	0.98	0.87	0.87
	Buffer Index	0.04	0.03	0.06	0.05	0.07	0.03	0.05	0.03	0.04	0.03	0.19	0.04	0.05
	VMT	658	1,151	110	176	858	1,837	908	1,605	6,012	2,582	2,821	5,192	1,992
0100	Travel Time Idx	0.81	0.80	0.87	0.86	0.83	0.78	0.84	0.79	0.83	0.84	0.82	0.85	0.83
	Plan. Time Idx	0.84	0.82	0.91	0.91	0.87	0.80	0.89	0.82	0.85	0.87	0.88	0.89	0.88
	Buffer Index	0.04	0.02	0.05	0.06	0.06	0.02	0.07	0.04	0.03	0.04	0.08	0.04	0.04
	VMT	562	1,001	91	148	756	1,541	837	1,410	5,228	2,254	2,385	4,464	1,723
0115	Travel Time Idx	0.81	0.80	0.86	0.87	0.84	0.79	0.85	0.80	0.83	0.85	0.82	0.86	0.83
	Plan. Time Idx	0.85	0.84	0.91	0.91	0.90	0.80	0.91	0.83	0.85	0.89	0.87	0.91	0.89
	Buffer Index	0.04	0.04	0.05	0.05	0.08	0.02	0.07	0.05	0.03	0.05	0.06	0.06	0.05
	VMT	470	839	74	127	653	1,280	769	1,179	4,589	1,920	2,070	3,999	1,497
0130	Travel Time Idx	0.82	0.81	0.86	0.86	0.85	0.79	0.87	0.80	0.83	0.84	0.82	0.86	0.83
	Plan. Time Idx	0.85	0.84	0.91	0.91	0.89	0.81	0.92	0.83	0.86	0.87	0.85	0.89	0.90
	Buffer Index	0.04	0.04	0.06	0.05	0.05	0.03	0.06	0.03	0.03	0.04	0.04	0.04	0.04
	VMT	405	744	69	107	552	1,102	700	1,058	4,122	1,773	1,870	3,612	1,343
0145	Travel Time Idx	0.82	0.81	0.87	0.86	0.85	0.80	0.88	0.80	0.83	0.84	0.82	0.87	0.84
	Plan. Time Idx	0.86	0.84	0.91	0.92	0.91	0.82	0.94	0.83	0.86	0.87	0.85	0.89	0.90
	Buffer Index	0.05	0.04	0.05	0.06	0.07	0.03	0.07	0.04	0.04	0.03	0.05	0.03	0.05
	VMT	387	688	58	92	478	943	627	953	3,678	1,567	1,658	3,387	1,210
0200	Travel Time Idx	0.82	0.81	0.87	0.87	0.86	0.80	0.88	0.81	0.84	0.85	0.82	0.87	0.84
	Plan. Time Idx	0.85	0.83	0.91	0.91	0.92	0.82	0.95	0.83	0.86	0.88	0.85	0.91	0.90
	Buffer Index	0.03	0.03	0.04	0.05	0.07	0.03	0.08	0.03	0.03	0.03	0.04	0.04	0.04
	VMT	333	597	54	79	436	901	571	841	3,353	1,410	1,493	3,135	1,100
0215	Travel Time Idx	0.82	0.81	0.88	0.88	0.87	0.81	0.89	0.81	0.84	0.85	0.82	0.88	0.85
	Plan. Time Idx	0.86	0.84	0.93	0.92	0.94	0.83	0.95	0.85	0.86	0.88	0.85	0.91	0.92
	Buffer Index	0.04	0.04	0.05	0.05	0.09	0.03	0.07	0.05	0.03	0.03	0.03	0.04	0.05
	VMT	295	520	48	69	413	846	529	722	3,127	1,269	1,435	3,127	1,033

		BC 75SB10 to MDC DMS44	BC 75SB14 to MDC DMS44	BC I-595 EB Hiatus to I-95	BC I-595 WB I-95 to Hiatus	BC I-75 NB I-595 to Col Ln	BC I-75 NB MD Ln to I-595	BC I-75 SB Col Ln to I-595	BC I-75 SB I-595 to MD Ln	BC I-95 NB I-595 to PB Ln	BC I-95 NB MD Ln to I-595	BC I-95 SB I-595 to MD Ln	BC I-95 SB PB Ln to I-595	Total
0230	Travel Time Idx	0.82	0.81	0.88	0.89	0.88	0.82	0.90	0.81	0.84	0.86	0.82	0.89	0.85
	Plan. Time Idx	0.87	0.85	0.93	0.95	0.95	0.85	0.97	0.85	0.87	0.88	0.86	0.92	0.93
	Buffer Index	0.06	0.05	0.06	0.07	0.08	0.04	0.08	0.05	0.03	0.03	0.04	0.04	0.05
	VMT	286	505	44	66	429	822	517	699	2,912	1,222	1,428	2,916	987
0245	Travel Time Idx	0.83	0.82	0.88	0.89	0.91	0.83	0.91	0.82	0.84	0.86	0.82	0.89	0.86
	Plan. Time Idx	0.88	0.86	0.95	0.95	0.96	0.86	0.97	0.85	0.87	0.89	0.85	0.93	0.93
	Buffer Index	0.06	0.06	0.07	0.07	0.06	0.04	0.07	0.04	0.03	0.03	0.04	0.04	0.05
	VMT	264	456	48	59	486	748	500	642	2,775	1,204	1,261	2,743	935
0300	Travel Time Idx	0.83	0.82	0.89	0.89	0.93	0.83	0.91	0.82	0.85	0.86	0.83	0.90	0.86
	Plan. Time Idx	0.88	0.86	0.95	0.95	1.00	0.88	0.99	0.85	0.88	0.89	0.85	0.94	0.95
	Buffer Index	0.07	0.06	0.06	0.06	0.07	0.06	0.08	0.04	0.04	0.04	0.03	0.04	0.05
	VMT	258	442	48	54	507	747	480	616	2,692	1,157	1,162	2,664	902
0315	Travel Time Idx	0.83	0.82	0.88	0.90	0.95	0.84	0.92	0.82	0.85	0.87	0.84	0.90	0.87
	Plan. Time Idx	0.88	0.88	0.93	0.95	1.02	0.87	0.98	0.87	0.88	0.90	0.86	0.93	0.97
	Buffer Index	0.06	0.07	0.06	0.05	0.07	0.04	0.07	0.06	0.03	0.04	0.03	0.03	0.05
	VMT	255	453	51	51	492	686	500	625	2,657	1,134	1,100	2,772	898
0330	Travel Time Idx	0.82	0.82	0.87	0.91	0.95	0.84	0.92	0.82	0.86	0.87	0.84	0.91	0.87
	Plan. Time Idx	0.85	0.86	0.92	0.95	1.03	0.87	0.99	0.85	0.89	0.89	0.86	0.94	0.96
	Buffer Index	0.04	0.05	0.06	0.05	0.08	0.03	0.07	0.04	0.04	0.02	0.03	0.04	0.05
	VMT	310	518	62	55	496	728	541	695	2,695	1,267	1,173	2,941	957
0345	Travel Time Idx	0.82	0.82	0.87	0.91	0.94	0.85	0.92	0.82	0.86	0.86	0.84	0.90	0.87
	Plan. Time Idx	0.86	0.84	0.91	0.98	1.02	0.88	1.00	0.84	0.89	0.89	0.86	0.94	0.96
	Buffer Index	0.04	0.03	0.05	0.07	0.09	0.04	0.08	0.03	0.03	0.03	0.03	0.04	0.05
	VMT	344	548	86	52	546	858	508	737	2,956	1,443	1,248	3,084	1,034
0400	Travel Time Idx	0.82	0.81	0.85	0.91	0.93	0.83	0.93	0.81	0.86	0.86	0.84	0.90	0.86
	Plan. Time Idx	0.85	0.84	0.88	0.97	1.00	0.85	1.01	0.84	0.88	0.89	0.87	0.93	0.95
	Buffer Index	0.03	0.04	0.03	0.06	0.08	0.03	0.09	0.03	0.03	0.03	0.03	0.03	0.04
	VMT	364	604	85	52	597	900	574	815	3,136	1,504	1,240	3,219	1,091
0415	Travel Time Idx	0.83	0.82	0.85	0.92	0.93	0.84	0.93	0.82	0.86	0.86	0.84	0.90	0.87
	Plan. Time Idx	0.85	0.84	0.88	0.99	1.01	0.88	0.99	0.84	0.89	0.89	0.87	0.92	0.96
	Buffer Index	0.03	0.03	0.03	0.08	0.08	0.05	0.07	0.03	0.03	0.03	0.03	0.03	0.04
	VMT	402	646	101	57	671	900	638	874	3,259	1,626	1,289	3,470	1,161
0430	Travel Time Idx	0.82	0.81	0.85	0.93	0.92	0.85	0.93	0.82	0.85	0.86	0.84	0.88	0.86
	Plan. Time Idx	0.84	0.84	0.89	1.00	0.99	0.89	0.99	0.85	0.88	0.89	0.86	0.91	0.95
	Buffer Index	0.03	0.03	0.04	0.08	0.07	0.04	0.06	0.03	0.03	0.03	0.02	0.03	0.04
	VMT	608	947	121	69	788	1,082	696	1,253	3,973	2,012	1,552	4,178	1,440
0445	Travel Time Idx	0.82	0.82	0.85	0.93	0.91	0.84	0.92	0.82	0.85	0.86	0.83	0.88	0.86
	Plan. Time Idx	0.85	0.85	0.87	0.95	0.96	0.87	0.97	0.84	0.87	0.89	0.86	0.90	0.94
	Buffer Index	0.03	0.03	0.03	0.02	0.06	0.04	0.05	0.03	0.03	0.03	0.03	0.03	0.03
	VMT	679	1,050	170	86	1,012	1,343	777	1,398	4,756	2,462	1,726	5,080	1,711
0500	Travel Time Idx	0.81	0.81	0.84	0.93	0.90	0.82	0.91	0.81	0.85	0.87	0.83	0.87	0.85
	Plan. Time Idx	0.83	0.83	0.86	0.97	0.95	0.84	0.97	0.83	0.88	0.89	0.85	0.90	0.93
	Buffer Index	0.03	0.03	0.03	0.04	0.06	0.02	0.06	0.02	0.03	0.02	0.03	0.03	0.03
	VMT	760	1,236	204	102	1,182	1,539	926	1,697	5,357	2,663	1,929	5,674	1,939

		BC 75SB10 to MDC DMS44	BC 75SB14 to MDC DMS44	BC I-595 EB Hiatus to I-95	BC I-595 WB I-95 to Hiatus	BC I-75 NB I-595 to Col Ln	BC I-75 NB MD Ln to I-595	BC I-75 SB Col Ln to I-595	BC I-75 SB I-595 to MD Ln	BC I-95 NB I-595 to PB Ln	BC I-95 NB MD Ln to I-595	BC I-95 SB I-595 to MD Ln	BC I-95 SB PB Ln to I-595	Total
0515	Travel Time Idx	0.80	0.80	0.84	0.92	0.88	0.82	0.91	0.81	0.86	0.87	0.84	0.87	0.85
	Plan. Time Idx	0.83	0.82	0.88	0.97	0.94	0.85	0.95	0.83	0.88	0.89	0.86	0.92	0.93
	Buffer Index	0.03	0.02	0.04	0.05	0.06	0.03	0.05	0.02	0.03	0.02	0.03	0.05	0.04
	VMT	1,020	1,638	197	121	1,284	1,719	1,060	2,196	5,814	2,834	2,222	6,536	2,220
0530	Travel Time Idx	0.79	0.79	0.85	0.91	0.87	0.81	0.89	0.79	0.85	0.86	0.83	0.86	0.84
	Plan. Time Idx	0.81	0.80	0.88	0.94	0.90	0.84	0.94	0.81	0.87	0.88	0.85	0.89	0.92
	Buffer Index	0.02	0.02	0.04	0.03	0.04	0.03	0.05	0.02	0.03	0.02	0.02	0.03	0.03
	VMT	1,510	2,392	267	150	1,564	2,323	1,248	3,205	7,244	3,647	2,890	8,120	2,880
0545	Travel Time Idx	0.78	0.78	0.85	0.91	0.86	0.80	0.87	0.78	0.84	0.87	0.82	0.85	0.83
	Plan. Time Idx	0.79	0.79	0.88	0.94	0.90	0.82	0.91	0.79	0.86	0.88	0.84	0.87	0.91
	Buffer Index	0.02	0.02	0.04	0.03	0.05	0.02	0.05	0.02	0.02	0.02	0.01	0.02	0.03
	VMT	2,083	3,251	356	200	2,015	3,247	1,536	4,314	9,489	4,577	3,547	10,107	3,727
0600	Travel Time Idx	0.78	0.78	0.85	0.90	0.84	0.79	0.86	0.78	0.84	0.86	0.82	0.84	0.83
	Plan. Time Idx	0.80	0.79	0.88	0.94	0.87	0.80	0.90	0.79	0.86	0.90	0.85	0.87	0.89
	Buffer Index	0.02	0.02	0.04	0.05	0.04	0.02	0.05	0.01	0.02	0.04	0.03	0.02	0.03
	VMT	2,499	3,913	419	235	2,359	3,919	1,861	5,230	11,416	5,117	4,379	12,038	4,449
0615	Travel Time Idx	0.78	0.78	0.86	0.89	0.83	0.79	0.85	0.78	0.85	0.87	0.83	0.84	0.83
	Plan. Time Idx	0.80	0.79	0.88	0.94	0.85	0.80	0.89	0.79	0.88	0.92	0.86	0.89	0.89
	Buffer Index	0.02	0.02	0.02	0.05	0.04	0.02	0.04	0.02	0.03	0.06	0.04	0.05	0.03
	VMT	3,347	5,153	452	276	2,594	4,632	2,226	6,740	12,992	5,793	5,499	13,932	5,303
0630	Travel Time Idx	0.79	0.78	0.86	0.89	0.81	0.78	0.84	0.77	0.85	0.87	0.82	0.85	0.83
	Plan. Time Idx	0.81	0.80	0.98	1.12	0.83	0.80	0.86	0.79	0.93	1.02	0.94	1.01	0.89
	Buffer Index	0.03	0.03	0.13	0.26	0.03	0.02	0.03	0.02	0.10	0.17	0.15	0.20	0.10
	VMT	4,604	7,092	599	343	2,968	6,526	2,636	9,329	17,654	7,658	7,076	18,414	7,075
0645	Travel Time Idx	0.79	0.78	0.89	0.89	0.80	0.78	0.83	0.77	0.85	0.88	0.83	0.85	0.83
	Plan. Time Idx	0.81	0.80	1.20	1.34	0.82	0.80	0.85	0.79	0.93	1.09	0.98	1.07	0.89
	Buffer Index	0.03	0.02	0.36	0.50	0.03	0.03	0.03	0.02	0.09	0.24	0.18	0.25	0.15
	VMT	5,788	9,077	798	474	3,325	9,321	3,083	12,053	22,966	9,988	8,471	22,881	9,019
0700	Travel Time Idx	0.79	0.78	0.90	0.88	0.79	0.78	0.82	0.77	0.85	0.89	0.83	0.86	0.83
	Plan. Time Idx	0.81	0.80	1.41	1.24	0.81	0.79	0.85	0.79	0.97	1.15	0.95	1.11	0.91
	Buffer Index	0.03	0.02	0.57	0.41	0.02	0.02	0.04	0.02	0.13	0.30	0.15	0.29	0.17
	VMT	6,566	10,303	910	515	3,688	10,563	3,489	13,728	24,258	10,153	8,938	24,587	9,808
0715	Travel Time Idx	0.80	0.79	0.90	0.88	0.78	0.78	0.82	0.77	0.87	0.91	0.84	0.88	0.83
	Plan. Time Idx	0.83	0.80	1.04	1.07	0.80	0.79	0.84	0.79	0.94	1.18	1.06	1.13	0.90
	Buffer Index	0.04	0.02	0.15	0.21	0.02	0.02	0.03	0.02	0.09	0.30	0.27	0.29	0.12
	VMT	7,210	11,351	951	570	3,869	11,412	4,041	15,027	24,798	10,872	9,667	26,642	10,534
0730	Travel Time Idx	0.83	0.80	0.93	0.89	0.77	0.78	0.81	0.79	0.90	0.94	0.86	0.92	0.85
	Plan. Time Idx	0.86	0.83	1.13	1.04	0.79	0.80	0.83	0.82	1.02	1.45	1.18	1.14	0.95
	Buffer Index	0.04	0.04	0.21	0.17	0.02	0.02	0.03	0.03	0.14	0.55	0.37	0.24	0.15
	VMT	8,353	13,246	1,056	700	4,316	14,033	4,495	17,664	29,385	13,043	10,947	31,103	12,362
0745	Travel Time Idx	0.89	0.85	0.94	0.91	0.77	0.79	0.80	0.82	0.96	0.98	0.88	1.00	0.88
	Plan. Time Idx	1.03	0.94	1.10	0.94	0.80	0.80	0.83	0.89	1.12	1.35	1.18	1.27	1.03
	Buffer Index	0.15	0.11	0.17	0.04	0.03	0.02	0.03	0.08	0.18	0.37	0.35	0.27	0.15
	VMT	9,053	14,591	1,111	847	4,584	15,428	4,659	19,570	32,104	14,474	11,593	32,597	13,384

		BC 75SB10 to MDC DMS44	BC 75SB14 to MDC DMS44	BC I-95 EB Hiatus to I-95	BC I-95 WB I-95 to Hiatus	BC I-75 NB I-95 to Col Ln	BC I-75 NB MD Ln to I-95	BC I-75 SB Col Ln to I-95	BC I-75 SB I-95 to MD Ln	BC I-95 NB I-95 to PB Ln	BC I-95 NB MD Ln to I-95	BC I-95 SB I-95 to MD Ln	BC I-95 SB PB Ln to I-95	Total
0800	Travel Time Idx	1.00	0.91	0.94	0.91	0.78	0.79	0.80	0.86	1.02	1.02	0.91	1.07	0.92
	Plan. Time Idx	1.24	1.05	0.99	0.94	0.81	0.81	0.83	0.96	1.23	1.59	1.11	1.39	1.17
	Buffer Index	0.24	0.15	0.05	0.04	0.04	0.03	0.03	0.11	0.21	0.56	0.22	0.29	0.16
	VMT	8,912	14,553	1,144	855	4,417	15,830	4,849	19,625	31,227	14,218	11,923	31,677	13,269
0815	Travel Time Idx	1.03	0.93	0.93	0.89	0.78	0.80	0.80	0.88	1.03	1.02	0.93	1.09	0.93
	Plan. Time Idx	1.33	1.09	0.98	0.94	0.82	0.81	0.84	1.00	1.34	1.61	1.33	1.47	1.22
	Buffer Index	0.28	0.17	0.05	0.05	0.04	0.02	0.04	0.13	0.29	0.58	0.42	0.35	0.20
	VMT	8,513	13,903	1,097	828	4,235	14,784	5,103	18,745	30,037	13,673	11,872	30,568	12,780
0830	Travel Time Idx	1.03	0.93	0.93	0.89	0.79	0.80	0.80	0.88	1.08	1.02	0.94	1.13	0.94
	Plan. Time Idx	1.73	1.43	1.11	0.97	0.82	0.83	0.83	1.23	1.41	1.53	1.33	1.60	1.27
	Buffer Index	0.69	0.54	0.19	0.09	0.05	0.03	0.03	0.40	0.30	0.49	0.42	0.42	0.30
	VMT	8,334	13,694	1,087	875	4,442	15,441	5,238	18,546	30,226	13,678	11,968	30,610	12,845
0845	Travel Time Idx	0.95	0.88	0.93	0.89	0.79	0.80	0.80	0.85	1.11	1.00	0.95	1.13	0.92
	Plan. Time Idx	1.65	1.32	0.99	0.95	0.83	0.84	0.84	1.16	1.43	1.41	1.35	1.59	1.30
	Buffer Index	0.74	0.50	0.07	0.07	0.05	0.05	0.04	0.37	0.29	0.40	0.42	0.41	0.28
	VMT	7,853	12,941	1,076	836	4,721	14,903	5,392	17,592	29,541	13,333	11,960	30,057	12,517
0900	Travel Time Idx	0.88	0.85	0.93	0.89	0.79	0.80	0.81	0.83	1.07	0.97	0.94	1.08	0.90
	Plan. Time Idx	1.65	1.29	1.06	0.98	0.83	0.86	0.84	1.14	1.53	1.32	1.37	1.64	1.24
	Buffer Index	0.87	0.53	0.14	0.10	0.06	0.08	0.05	0.38	0.42	0.36	0.46	0.53	0.33
	VMT	7,308	12,130	1,050	797	4,931	14,110	5,520	16,599	28,765	12,363	11,617	29,381	12,048
0915	Travel Time Idx	0.84	0.82	0.92	0.89	0.79	0.79	0.81	0.81	0.97	0.94	0.91	1.02	0.88
	Plan. Time Idx	1.20	1.03	1.07	0.97	0.83	0.85	0.85	0.95	1.47	1.48	1.30	1.59	1.14
	Buffer Index	0.42	0.25	0.17	0.09	0.06	0.07	0.05	0.18	0.51	0.57	0.44	0.56	0.28
	VMT	6,237	10,328	949	659	4,978	11,296	5,463	14,012	26,922	11,127	11,018	27,936	10,910
0930	Travel Time Idx	0.83	0.81	0.92	0.89	0.79	0.80	0.81	0.80	0.93	0.93	0.90	0.97	0.86
	Plan. Time Idx	1.15	0.99	1.04	0.98	0.83	0.86	0.85	0.93	1.23	1.25	1.16	1.40	1.08
	Buffer Index	0.38	0.22	0.14	0.10	0.06	0.07	0.05	0.16	0.33	0.35	0.29	0.44	0.22
	VMT	5,818	9,642	919	649	5,166	10,771	5,570	13,027	26,374	11,081	11,168	28,449	10,720
0945	Travel Time Idx	0.83	0.82	0.91	0.90	0.79	0.80	0.81	0.80	0.91	0.93	0.90	0.93	0.86
	Plan. Time Idx	0.88	0.86	1.05	0.99	0.84	0.85	0.85	0.85	1.26	1.30	1.16	1.28	1.00
	Buffer Index	0.06	0.05	0.15	0.10	0.06	0.06	0.05	0.05	0.39	0.40	0.29	0.37	0.17
	VMT	5,478	9,147	889	686	5,367	10,593	5,738	12,385	26,534	11,342	11,335	28,851	10,696
1000	Travel Time Idx	0.82	0.81	0.90	0.90	0.79	0.80	0.81	0.80	0.90	0.91	0.89	0.91	0.85
	Plan. Time Idx	0.85	0.82	1.01	0.99	0.83	0.81	0.85	0.81	1.24	1.05	1.13	1.16	0.97
	Buffer Index	0.03	0.02	0.12	0.11	0.05	0.01	0.04	0.01	0.37	0.16	0.27	0.28	0.12
	VMT	4,991	8,421	830	664	5,474	10,047	5,675	11,476	25,459	10,791	10,873	27,187	10,157
1015	Travel Time Idx	0.82	0.81	0.90	0.90	0.79	0.81	0.81	0.80	0.91	0.91	0.88	0.89	0.85
	Plan. Time Idx	0.92	0.87	1.01	0.98	0.83	0.84	0.85	0.84	1.20	0.99	1.12	1.05	0.95
	Buffer Index	0.12	0.06	0.12	0.08	0.05	0.04	0.05	0.04	0.32	0.09	0.26	0.18	0.12
	VMT	4,614	7,764	748	620	5,793	9,241	5,819	10,561	24,337	10,516	10,542	26,303	9,738
1030	Travel Time Idx	0.82	0.81	0.90	0.91	0.78	0.80	0.81	0.80	0.89	0.92	0.90	0.89	0.85
	Plan. Time Idx	0.84	0.82	0.94	0.94	0.84	0.81	0.85	0.81	1.15	0.99	1.28	0.97	0.93
	Buffer Index	0.02	0.01	0.04	0.04	0.07	0.01	0.05	0.01	0.29	0.08	0.43	0.09	0.10
	VMT	4,377	7,449	755	647	5,874	8,988	5,863	10,154	24,623	10,647	10,530	26,472	9,698

		BC 75SB10 to MDC DMS44	BC 75SB14 to MDC DMS44	BC I-595 EB Hiatus to I-95	BC I-595 WB I-95 to Hiatus	BC I-75 NB I-595 to Col Ln	BC I-75 NB MD Ln to I-595	BC I-75 SB Col Ln to I-595	BC I-75 SB I-595 to MD Ln	BC I-95 NB I-595 to PB Ln	BC I-95 NB MD Ln to I-595	BC I-95 SB I-595 to MD Ln	BC I-95 SB PB Ln to I-595	Total
1045	Travel Time Idx	0.81	0.81	0.90	0.90	0.79	0.80	0.81	0.80	0.88	0.91	0.89	0.89	0.85
	Plan. Time Idx	0.84	0.83	0.93	0.95	0.83	0.82	0.84	0.81	1.03	0.97	1.13	1.02	0.92
	Buffer Index	0.04	0.03	0.03	0.05	0.06	0.02	0.04	0.02	0.17	0.06	0.27	0.15	0.08
	VMT	4,374	7,482	768	652	6,094	9,461	5,963	10,217	25,334	11,009	10,757	26,892	9,940
1100	Travel Time Idx	0.82	0.81	0.90	0.90	0.79	0.80	0.81	0.80	0.88	0.91	0.90	0.88	0.85
	Plan. Time Idx	0.83	0.82	0.93	0.95	0.83	0.82	0.83	0.81	0.98	0.96	1.14	0.94	0.92
	Buffer Index	0.01	0.01	0.04	0.05	0.06	0.02	0.03	0.01	0.12	0.05	0.27	0.06	0.06
	VMT	4,000	6,863	733	645	6,067	9,026	5,941	9,427	24,846	10,696	10,423	26,371	9,596
1115	Travel Time Idx	0.82	0.81	0.89	0.90	0.79	0.80	0.81	0.80	0.88	0.91	0.91	0.89	0.85
	Plan. Time Idx	0.83	0.83	0.94	0.93	0.83	0.82	0.83	0.82	0.96	0.95	1.22	0.97	0.92
	Buffer Index	0.02	0.02	0.06	0.04	0.05	0.02	0.04	0.02	0.09	0.04	0.34	0.09	0.07
	VMT	3,882	6,645	715	650	6,128	8,900	6,059	9,110	24,457	10,745	10,392	26,267	9,505
1130	Travel Time Idx	0.82	0.81	0.89	0.90	0.79	0.80	0.80	0.80	0.88	0.92	0.91	0.89	0.85
	Plan. Time Idx	0.83	0.82	0.91	0.94	0.83	0.81	0.84	0.81	0.98	0.96	1.15	0.96	0.92
	Buffer Index	0.01	0.01	0.02	0.05	0.06	0.01	0.04	0.01	0.11	0.04	0.27	0.08	0.06
	VMT	3,876	6,731	726	671	6,166	9,251	6,222	9,283	24,991	10,935	10,608	26,703	9,690
1145	Travel Time Idx	0.82	0.81	0.89	0.90	0.79	0.80	0.80	0.80	0.88	0.92	0.91	0.89	0.85
	Plan. Time Idx	0.83	0.82	0.92	0.94	0.83	0.81	0.85	0.81	0.97	1.00	1.08	0.92	0.92
	Buffer Index	0.01	0.01	0.03	0.05	0.05	0.01	0.05	0.01	0.10	0.09	0.19	0.04	0.05
	VMT	3,862	6,751	743	675	6,025	9,588	6,240	9,335	25,416	11,296	10,803	27,127	9,822
1200	Travel Time Idx	0.82	0.81	0.89	0.90	0.79	0.80	0.81	0.80	0.89	0.93	0.90	0.88	0.85
	Plan. Time Idx	0.83	0.82	0.96	0.97	0.83	0.81	0.85	0.81	1.00	1.01	1.00	0.93	0.92
	Buffer Index	0.01	0.02	0.07	0.07	0.05	0.01	0.06	0.01	0.13	0.09	0.11	0.05	0.06
	VMT	3,852	6,773	751	708	5,964	9,740	6,312	9,406	25,435	11,276	10,801	26,988	9,859
1215	Travel Time Idx	0.82	0.81	0.89	0.90	0.79	0.80	0.81	0.80	0.89	0.92	0.90	0.88	0.85
	Plan. Time Idx	0.83	0.82	1.01	0.96	0.83	0.81	0.84	0.81	1.03	0.94	0.99	0.95	0.92
	Buffer Index	0.02	0.01	0.13	0.06	0.05	0.02	0.05	0.01	0.16	0.03	0.10	0.08	0.06
	VMT	3,872	6,794	735	706	6,022	9,526	6,325	9,404	25,141	11,184	10,802	26,781	9,800
1230	Travel Time Idx	0.82	0.81	0.89	0.90	0.79	0.80	0.81	0.80	0.89	0.92	0.89	0.89	0.85
	Plan. Time Idx	0.84	0.83	0.96	0.97	0.83	0.82	0.84	0.81	1.06	0.94	0.96	0.96	0.92
	Buffer Index	0.02	0.02	0.07	0.09	0.05	0.02	0.04	0.01	0.18	0.03	0.08	0.08	0.06
	VMT	3,968	6,985	743	736	6,063	9,803	6,300	9,703	25,626	11,529	11,073	27,393	10,019
1245	Travel Time Idx	0.83	0.82	0.89	0.89	0.79	0.80	0.80	0.80	0.90	0.91	0.88	0.89	0.85
	Plan. Time Idx	0.85	0.83	0.99	0.95	0.82	0.83	0.83	0.82	1.12	0.96	0.98	0.99	0.92
	Buffer Index	0.03	0.01	0.10	0.06	0.05	0.04	0.03	0.01	0.25	0.05	0.11	0.11	0.07
	VMT	3,928	6,938	761	726	6,097	9,981	6,230	9,640	25,927	11,758	11,125	27,445	10,072
1300	Travel Time Idx	0.82	0.81	0.89	0.89	0.78	0.80	0.81	0.80	0.90	0.91	0.88	0.88	0.85
	Plan. Time Idx	0.83	0.83	0.95	0.95	0.82	0.82	0.83	0.81	1.14	0.96	0.98	0.95	0.92
	Buffer Index	0.01	0.01	0.06	0.07	0.05	0.03	0.03	0.01	0.27	0.05	0.11	0.07	0.07
	VMT	3,882	6,853	759	739	6,109	10,037	6,197	9,587	25,727	11,335	10,896	27,335	9,980
1315	Travel Time Idx	0.82	0.81	0.89	0.89	0.78	0.80	0.81	0.80	0.90	0.92	0.87	0.88	0.85
	Plan. Time Idx	0.83	0.82	0.92	0.91	0.82	0.83	0.85	0.81	1.15	0.94	0.90	0.94	0.91
	Buffer Index	0.01	0.01	0.04	0.03	0.05	0.04	0.05	0.01	0.28	0.02	0.04	0.07	0.05
	VMT	3,865	6,784	734	740	6,142	9,853	6,134	9,489	25,465	11,353	10,892	27,274	9,919

		BC 75SB10 to MDC DMS44	BC 75SB14 to MDC DMS44	BC I-595 EB Hiatus to I-95	BC I-595 WB I-95 to Hiatus	BC I-75 NB I-595 to Col Ln	BC I-75 NB MD Ln to I-595	BC I-75 SB Col Ln to I-595	BC I-75 SB I-595 to MD Ln	BC I-95 NB I-595 to PB Ln	BC I-95 NB MD Ln to I-595	BC I-95 SB I-595 to MD Ln	BC I-95 SB PB Ln to I-595	Total
1330	Travel Time Idx	0.82	0.82	0.89	0.89	0.78	0.80	0.81	0.81	0.89	0.91	0.87	0.89	0.85
	Plan. Time Idx	0.84	0.84	0.93	0.91	0.82	0.82	0.84	0.82	1.05	0.93	0.89	0.95	0.91
	Buffer Index	0.02	0.02	0.04	0.02	0.05	0.02	0.05	0.02	0.18	0.02	0.02	0.07	0.04
	VMT	4,002	7,040	748	772	6,284	10,257	6,248	9,864	26,133	11,493	11,206	27,744	10,175
1345	Travel Time Idx	0.82	0.81	0.89	0.89	0.78	0.80	0.81	0.80	0.89	0.91	0.87	0.89	0.85
	Plan. Time Idx	0.83	0.83	0.92	0.92	0.81	0.82	0.84	0.82	1.01	0.92	0.89	1.00	0.92
	Buffer Index	0.02	0.01	0.04	0.03	0.04	0.02	0.04	0.01	0.13	0.01	0.02	0.12	0.04
	VMT	4,014	7,088	750	775	6,371	10,610	6,278	9,939	26,360	11,681	11,205	27,557	10,245
1400	Travel Time Idx	0.82	0.81	0.89	0.89	0.78	0.80	0.81	0.80	0.88	0.91	0.87	0.89	0.85
	Plan. Time Idx	0.83	0.82	0.91	0.92	0.83	0.82	0.84	0.81	0.96	0.92	0.91	0.97	0.91
	Buffer Index	0.02	0.02	0.03	0.03	0.06	0.03	0.04	0.02	0.09	0.01	0.04	0.09	0.04
	VMT	3,915	6,957	741	791	6,488	10,813	6,294	9,844	26,513	11,610	11,154	27,346	10,232
1415	Travel Time Idx	0.82	0.81	0.89	0.89	0.78	0.80	0.80	0.80	0.88	0.92	0.87	0.89	0.85
	Plan. Time Idx	0.84	0.83	0.92	0.91	0.82	0.82	0.83	0.81	0.93	0.93	0.90	0.93	0.91
	Buffer Index	0.02	0.02	0.04	0.02	0.06	0.03	0.03	0.01	0.06	0.01	0.03	0.05	0.03
	VMT	3,891	6,899	709	771	6,446	10,741	6,324	9,713	26,060	11,579	10,980	27,046	10,123
1430	Travel Time Idx	0.82	0.82	0.89	0.90	0.78	0.80	0.80	0.80	0.89	0.93	0.88	0.90	0.85
	Plan. Time Idx	0.84	0.83	0.95	0.96	0.82	0.81	0.83	0.81	1.02	0.98	0.92	0.93	0.92
	Buffer Index	0.01	0.01	0.06	0.07	0.05	0.01	0.03	0.01	0.14	0.05	0.05	0.04	0.05
	VMT	4,188	7,320	737	817	6,503	11,542	6,390	10,255	27,036	12,093	11,146	27,894	10,520
1445	Travel Time Idx	0.82	0.82	0.90	0.91	0.78	0.80	0.80	0.80	0.90	0.93	0.89	0.90	0.85
	Plan. Time Idx	0.84	0.83	0.93	0.96	0.81	0.81	0.83	0.82	1.01	1.14	1.04	1.01	0.93
	Buffer Index	0.02	0.02	0.03	0.05	0.05	0.02	0.03	0.02	0.11	0.22	0.17	0.12	0.07
	VMT	4,160	7,325	753	843	6,546	12,105	6,351	10,307	28,151	12,706	11,466	28,674	10,810
1500	Travel Time Idx	0.82	0.82	0.90	0.91	0.78	0.79	0.80	0.80	0.90	0.93	0.89	0.90	0.85
	Plan. Time Idx	0.84	0.83	0.98	0.96	0.81	0.80	0.83	0.82	1.01	1.01	1.00	1.04	0.94
	Buffer Index	0.02	0.02	0.09	0.05	0.05	0.01	0.04	0.02	0.11	0.09	0.13	0.16	0.07
	VMT	4,167	7,428	741	879	6,677	12,429	6,500	10,519	28,674	12,566	11,351	28,525	10,899
1515	Travel Time Idx	0.83	0.82	0.90	0.91	0.77	0.79	0.80	0.81	0.90	0.92	0.89	0.89	0.85
	Plan. Time Idx	0.85	0.84	0.93	0.97	0.81	0.81	0.83	0.83	1.01	0.96	1.16	1.00	0.93
	Buffer Index	0.02	0.03	0.03	0.06	0.04	0.02	0.04	0.02	0.13	0.04	0.30	0.13	0.07
	VMT	4,117	7,416	730	911	6,745	12,554	6,569	10,511	28,595	12,637	11,426	28,807	10,946
1530	Travel Time Idx	0.83	0.82	0.90	0.91	0.77	0.80	0.80	0.81	0.91	0.93	0.90	0.90	0.86
	Plan. Time Idx	0.85	0.84	0.93	1.00	0.81	0.81	0.84	0.82	1.01	1.04	1.09	1.03	0.94
	Buffer Index	0.02	0.02	0.04	0.10	0.05	0.02	0.05	0.01	0.12	0.12	0.21	0.14	0.07
	VMT	4,326	7,915	772	970	6,755	13,439	6,598	11,266	29,436	12,869	11,783	29,986	11,372
1545	Travel Time Idx	0.83	0.82	0.91	0.93	0.77	0.80	0.80	0.81	0.91	0.94	0.91	0.92	0.86
	Plan. Time Idx	0.85	0.84	0.95	1.00	0.81	0.82	0.83	0.82	1.07	1.16	1.15	1.15	0.96
	Buffer Index	0.02	0.02	0.04	0.08	0.05	0.02	0.04	0.01	0.17	0.24	0.26	0.24	0.10
	VMT	4,416	8,119	797	997	6,837	14,300	6,603	11,592	30,010	13,272	12,121	31,317	11,729
1600	Travel Time Idx	0.83	0.82	0.90	0.93	0.77	0.81	0.80	0.81	0.92	0.95	0.93	0.94	0.87
	Plan. Time Idx	0.85	0.83	1.03	1.09	0.82	0.81	0.84	0.82	1.11	1.29	1.15	1.22	1.02
	Buffer Index	0.02	0.02	0.14	0.17	0.07	0.00	0.06	0.01	0.21	0.36	0.25	0.29	0.13
	VMT	4,705	8,548	794	1,017	7,016	14,879	6,666	12,113	29,982	12,960	12,191	31,290	11,877

		BC 75SB10 to MDC DMS44	BC 75SB14 to MDC DMS44	BC I-95 EB Hiatus to I-95	BC I-95 WB I-95 to Hiatus	BC I-75 NB I-95 to Col Ln	BC I-75 NB MD Ln to I-95	BC I-75 SB Col Ln to I-95	BC I-75 SB I-95 to MD Ln	BC I-95 NB I-95 to PB Ln	BC I-95 NB MD Ln to I-95	BC I-95 SB I-95 to MD Ln	BC I-95 SB PB Ln to I-95	Total
1615	Travel Time Idx	0.83	0.82	0.90	0.95	0.77	0.81	0.79	0.81	0.93	0.95	0.93	0.95	0.87
	Plan. Time Idx	0.85	0.85	0.94	1.13	0.81	0.83	0.82	0.83	1.15	1.26	1.10	1.21	1.03
	Buffer Index	0.03	0.03	0.05	0.18	0.05	0.02	0.04	0.02	0.23	0.33	0.19	0.27	0.12
	VMT	4,392	8,079	759	1,030	7,084	14,747	6,762	11,580	29,201	12,714	11,934	30,707	11,612
1630	Travel Time Idx	0.83	0.83	0.91	1.03	0.77	0.81	0.79	0.81	0.96	0.95	0.94	0.99	0.88
	Plan. Time Idx	0.87	0.85	1.02	2.32	0.81	0.89	0.82	0.83	1.28	1.09	1.10	1.39	1.08
	Buffer Index	0.05	0.03	0.12	1.25	0.06	0.10	0.04	0.03	0.32	0.15	0.17	0.41	0.22
	VMT	4,736	8,716	789	1,077	7,083	15,974	6,762	12,425	29,896	12,927	12,112	31,366	12,019
1645	Travel Time Idx	0.83	0.83	0.91	1.06	0.77	0.82	0.79	0.81	0.98	0.96	0.95	1.00	0.89
	Plan. Time Idx	0.88	0.89	1.08	2.25	0.80	0.93	0.82	0.87	1.32	1.22	1.17	1.41	1.17
	Buffer Index	0.05	0.07	0.18	1.12	0.05	0.14	0.04	0.07	0.35	0.27	0.24	0.41	0.25
	VMT	4,685	8,769	810	1,083	6,928	16,493	6,721	12,564	29,977	12,895	12,101	31,420	12,068
1700	Travel Time Idx	0.84	0.84	0.91	1.12	0.76	0.84	0.79	0.82	0.99	0.96	0.97	1.03	0.90
	Plan. Time Idx	0.86	0.93	1.02	2.73	0.81	1.01	0.82	0.99	1.37	1.22	1.20	1.45	1.17
	Buffer Index	0.03	0.11	0.13	1.44	0.06	0.21	0.04	0.21	0.38	0.28	0.23	0.41	0.29
	VMT	5,076	9,475	821	1,124	6,859	17,235	6,603	13,579	30,121	12,670	12,377	31,520	12,320
1715	Travel Time Idx	0.83	0.83	0.89	1.14	0.76	0.84	0.79	0.82	0.99	0.96	0.98	1.04	0.91
	Plan. Time Idx	0.86	0.95	0.99	2.80	0.79	0.98	0.82	0.94	1.33	1.26	1.11	1.43	1.13
	Buffer Index	0.04	0.14	0.11	1.45	0.04	0.17	0.04	0.15	0.35	0.32	0.14	0.37	0.27
	VMT	5,293	9,991	837	1,177	6,741	18,102	6,596	14,325	30,640	13,229	12,677	31,819	12,651
1730	Travel Time Idx	0.84	0.85	0.91	1.58	0.76	0.87	0.78	0.83	1.06	0.97	1.07	1.18	0.97
	Plan. Time Idx	0.92	1.02	1.10	2.97	0.79	1.01	0.82	0.99	1.37	1.35	1.25	1.62	1.55
	Buffer Index	0.10	0.21	0.21	0.88	0.04	0.16	0.05	0.19	0.29	0.39	0.17	0.38	0.25
	VMT	6,275	11,877	910	1,184	6,747	19,332	6,660	16,902	31,583	13,374	13,105	32,482	13,404
1745	Travel Time Idx	0.83	0.83	0.92	1.55	0.76	0.90	0.78	0.82	1.06	0.96	1.10	1.18	0.97
	Plan. Time Idx	0.88	0.93	1.05	2.92	0.79	1.07	0.81	0.88	1.47	1.32	1.27	1.63	1.51
	Buffer Index	0.06	0.12	0.15	0.88	0.03	0.19	0.03	0.08	0.38	0.37	0.15	0.38	0.23
	VMT	5,813	11,051	896	1,061	6,558	18,235	6,750	15,789	30,765	12,921	12,614	31,832	12,890
1800	Travel Time Idx	0.84	0.84	0.89	1.38	0.76	0.91	0.78	0.82	1.03	0.93	1.08	1.11	0.95
	Plan. Time Idx	1.02	1.06	1.01	2.85	0.78	1.08	0.80	0.99	1.44	1.25	1.45	1.54	1.41
	Buffer Index	0.21	0.27	0.13	1.06	0.03	0.19	0.02	0.21	0.40	0.34	0.33	0.39	0.30
	VMT	5,646	10,762	878	1,019	6,251	17,656	6,355	15,439	30,205	12,447	12,481	31,866	12,616
1815	Travel Time Idx	0.84	0.83	0.88	1.05	0.76	0.90	0.78	0.81	0.95	0.90	1.02	1.00	0.89
	Plan. Time Idx	1.04	1.04	1.00	2.16	0.78	1.04	0.80	0.98	1.30	1.05	1.33	1.44	1.19
	Buffer Index	0.23	0.24	0.13	1.06	0.03	0.15	0.03	0.20	0.36	0.17	0.30	0.44	0.28
	VMT	5,166	9,805	852	947	6,165	16,937	6,019	14,076	29,390	12,323	12,325	31,417	12,150
1830	Travel Time Idx	0.83	0.82	0.88	0.96	0.76	0.89	0.78	0.80	0.92	0.89	0.99	0.96	0.87
	Plan. Time Idx	0.96	0.94	0.92	1.24	0.78	1.01	0.80	0.88	1.26	1.06	1.48	1.39	1.10
	Buffer Index	0.15	0.15	0.05	0.29	0.02	0.13	0.02	0.10	0.36	0.19	0.49	0.45	0.20
	VMT	5,296	9,863	831	917	6,144	16,816	5,793	14,068	29,017	12,176	12,044	31,303	12,022
1845	Travel Time Idx	0.82	0.81	0.86	0.91	0.76	0.87	0.78	0.79	0.88	0.89	0.95	0.90	0.85
	Plan. Time Idx	0.88	0.86	0.90	0.93	0.78	1.01	0.80	0.83	1.13	0.97	1.35	1.21	1.01
	Buffer Index	0.08	0.07	0.04	0.02	0.03	0.17	0.03	0.05	0.28	0.09	0.42	0.35	0.13
	VMT	4,671	8,730	785	870	6,038	16,024	5,523	12,520	27,087	11,936	11,402	28,522	11,176

		BC 75SB10 to MDC DMS44	BC 75SB14 to MDC DMS44	BC I-595 EB Hiatus to I-95	BC I-595 WB I-95 to Hiatus	BC I-75 NB I-595 to Col Ln	BC I-75 NB MD Ln to I-595	BC I-75 SB Col Ln to I-595	BC I-75 SB I-595 to MD Ln	BC I-95 NB I-595 to PB Ln	BC I-95 NB MD Ln to I-595	BC I-95 SB I-595 to MD Ln	BC I-95 SB PB Ln to I-595	Total
1900	Travel Time Idx	0.82	0.81	0.86	0.89	0.76	0.84	0.78	0.79	0.85	0.87	0.90	0.85	0.84
	Plan. Time Idx	0.87	0.86	0.89	0.94	0.79	1.03	0.79	0.83	0.96	0.91	1.17	0.98	0.95
	Buffer Index	0.06	0.06	0.03	0.05	0.04	0.22	0.02	0.05	0.13	0.04	0.30	0.16	0.10
	VMT	4,264	7,939	712	809	5,873	15,127	5,241	11,404	24,916	11,087	10,586	25,472	10,286
1915	Travel Time Idx	0.82	0.81	0.86	0.88	0.76	0.82	0.78	0.79	0.84	0.87	0.87	0.83	0.83
	Plan. Time Idx	0.85	0.84	0.88	0.91	0.80	1.00	0.80	0.83	0.89	0.91	1.06	0.87	0.90
	Buffer Index	0.05	0.04	0.02	0.03	0.05	0.22	0.03	0.05	0.07	0.05	0.22	0.05	0.07
	VMT	3,894	7,168	651	750	5,519	13,507	5,003	10,198	22,817	10,436	9,729	23,241	9,409
1930	Travel Time Idx	0.81	0.80	0.86	0.87	0.76	0.80	0.78	0.79	0.84	0.86	0.85	0.83	0.82
	Plan. Time Idx	0.86	0.82	0.88	0.91	0.79	0.96	0.80	0.80	0.89	0.89	0.96	0.87	0.89
	Buffer Index	0.06	0.03	0.03	0.04	0.05	0.20	0.03	0.02	0.06	0.03	0.14	0.05	0.06
	VMT	3,765	6,862	625	732	5,139	12,508	4,672	9,696	22,164	9,988	9,641	22,875	9,056
1945	Travel Time Idx	0.81	0.80	0.85	0.86	0.76	0.78	0.78	0.79	0.83	0.85	0.82	0.82	0.81
	Plan. Time Idx	0.86	0.83	0.89	0.89	0.78	0.82	0.80	0.81	0.87	0.87	0.85	0.86	0.87
	Buffer Index	0.05	0.04	0.05	0.04	0.04	0.05	0.03	0.03	0.05	0.02	0.04	0.04	0.04
	VMT	3,477	6,318	556	669	4,812	11,148	4,440	8,896	20,679	9,187	8,996	20,613	8,316
2000	Travel Time Idx	0.81	0.80	0.85	0.86	0.75	0.78	0.78	0.78	0.83	0.86	0.82	0.82	0.81
	Plan. Time Idx	0.86	0.84	0.88	0.89	0.78	0.82	0.81	0.81	0.86	0.88	0.85	0.85	0.87
	Buffer Index	0.07	0.05	0.04	0.04	0.03	0.05	0.03	0.04	0.04	0.03	0.04	0.04	0.04
	VMT	3,309	5,923	512	619	4,470	10,051	4,272	8,319	19,450	8,505	8,423	19,032	7,740
2015	Travel Time Idx	0.82	0.80	0.85	0.86	0.76	0.78	0.78	0.79	0.83	0.85	0.82	0.82	0.81
	Plan. Time Idx	0.84	0.82	0.89	0.89	0.78	0.80	0.82	0.81	0.88	0.89	0.85	0.85	0.88
	Buffer Index	0.03	0.03	0.05	0.04	0.04	0.03	0.04	0.03	0.06	0.05	0.04	0.03	0.04
	VMT	3,048	5,467	483	578	4,132	9,148	4,064	7,732	18,408	7,968	7,934	18,078	7,253
2030	Travel Time Idx	0.81	0.80	0.86	0.87	0.76	0.78	0.79	0.79	0.84	0.86	0.83	0.83	0.82
	Plan. Time Idx	0.85	0.83	0.89	0.89	0.79	0.83	0.82	0.81	0.89	0.89	0.86	0.86	0.88
	Buffer Index	0.04	0.04	0.03	0.03	0.03	0.07	0.04	0.03	0.06	0.04	0.04	0.03	0.04
	VMT	3,083	5,515	489	572	3,855	8,694	3,922	7,760	18,188	7,728	8,009	17,916	7,144
2045	Travel Time Idx	0.82	0.80	0.87	0.87	0.77	0.78	0.80	0.79	0.84	0.86	0.84	0.84	0.82
	Plan. Time Idx	0.84	0.84	0.89	0.90	0.79	0.82	0.82	0.82	0.87	0.88	0.87	0.86	0.88
	Buffer Index	0.03	0.04	0.03	0.03	0.03	0.05	0.03	0.03	0.03	0.02	0.04	0.03	0.03
	VMT	2,896	5,166	445	534	3,585	8,038	3,621	7,292	17,137	7,371	7,469	16,495	6,671
2100	Travel Time Idx	0.82	0.80	0.87	0.87	0.77	0.78	0.80	0.79	0.84	0.86	0.84	0.83	0.82
	Plan. Time Idx	0.85	0.83	0.89	0.90	0.79	0.81	0.84	0.81	0.87	0.88	0.86	0.85	0.88
	Buffer Index	0.04	0.03	0.02	0.03	0.02	0.03	0.05	0.02	0.03	0.02	0.03	0.02	0.03
	VMT	2,757	4,881	431	499	3,339	7,495	3,393	6,876	16,468	7,073	7,077	15,849	6,345
2115	Travel Time Idx	0.82	0.80	0.87	0.87	0.77	0.78	0.80	0.79	0.84	0.86	0.83	0.83	0.82
	Plan. Time Idx	0.85	0.82	0.89	0.89	0.79	0.80	0.85	0.81	0.87	0.88	0.86	0.84	0.88
	Buffer Index	0.04	0.03	0.03	0.03	0.03	0.03	0.06	0.02	0.04	0.02	0.03	0.01	0.03
	VMT	2,772	4,845	426	469	3,143	7,254	3,286	6,784	15,964	6,970	6,865	15,830	6,218
2130	Travel Time Idx	0.82	0.80	0.87	0.87	0.77	0.78	0.80	0.79	0.84	0.86	0.84	0.83	0.82
	Plan. Time Idx	0.85	0.83	0.89	0.90	0.79	0.81	0.83	0.82	0.88	0.89	0.87	0.84	0.88
	Buffer Index	0.04	0.04	0.03	0.03	0.03	0.03	0.04	0.04	0.05	0.04	0.04	0.01	0.03
	VMT	2,860	4,990	440	487	2,987	7,210	3,113	6,996	16,153	6,944	7,166	16,137	6,290

		BC 75SB10 to MDC DMS44	BC 75SB14 to MDC DMS44	BC I-595 EB Hiatus to I-95	BC I-595 WB I-95 to Hiatus	BC I-75 NB I-595 to Col Ln	BC I-75 NB MD Ln to I-595	BC I-75 SB Col Ln to I-595	BC I-75 SB I-595 to MD Ln	BC I-95 NB I-595 to PB Ln	BC I-95 NB MD Ln to I-595	BC I-95 SB I-595 to MD Ln	BC I-95 SB PB Ln to I-595	Total
2145	Travel Time Idx	0.81	0.80	0.87	0.87	0.77	0.78	0.81	0.79	0.84	0.86	0.83	0.83	0.82
	Plan. Time Idx	0.84	0.82	0.89	0.89	0.79	0.79	0.84	0.81	0.91	0.88	0.86	0.85	0.88
	Buffer Index	0.03	0.03	0.03	0.03	0.02	0.02	0.05	0.02	0.08	0.02	0.03	0.02	0.03
	VMT	2,675	4,711	418	461	2,774	6,800	2,955	6,630	15,511	6,793	6,827	15,224	5,982
2200	Travel Time Idx	0.81	0.80	0.86	0.87	0.78	0.78	0.80	0.79	0.84	0.85	0.83	0.83	0.82
	Plan. Time Idx	0.84	0.82	0.89	0.89	0.79	0.79	0.84	0.81	0.89	0.87	0.87	0.85	0.88
	Buffer Index	0.03	0.02	0.03	0.03	0.02	0.02	0.04	0.02	0.07	0.02	0.04	0.02	0.03
	VMT	2,553	4,514	415	438	2,622	6,421	2,809	6,376	15,001	6,632	6,600	14,517	5,742
2215	Travel Time Idx	0.81	0.80	0.87	0.86	0.77	0.78	0.80	0.79	0.84	0.85	0.84	0.83	0.82
	Plan. Time Idx	0.83	0.81	0.89	0.89	0.80	0.79	0.84	0.80	0.89	0.87	0.86	0.87	0.88
	Buffer Index	0.03	0.02	0.03	0.03	0.03	0.02	0.04	0.02	0.06	0.02	0.03	0.04	0.03
	VMT	2,396	4,195	389	433	2,379	6,086	2,637	5,896	14,664	6,450	6,550	14,102	5,515
2230	Travel Time Idx	0.81	0.80	0.86	0.86	0.77	0.77	0.80	0.79	0.84	0.85	0.84	0.83	0.82
	Plan. Time Idx	0.83	0.81	0.89	0.88	0.80	0.79	0.84	0.80	0.89	0.87	0.89	0.89	0.87
	Buffer Index	0.02	0.02	0.03	0.02	0.03	0.02	0.04	0.02	0.06	0.02	0.05	0.06	0.03
	VMT	2,272	3,993	382	427	2,135	5,760	2,428	5,597	14,520	6,338	6,580	13,772	5,350
2245	Travel Time Idx	0.81	0.79	0.86	0.86	0.78	0.77	0.80	0.79	0.84	0.85	0.84	0.83	0.82
	Plan. Time Idx	0.83	0.81	0.88	0.88	0.80	0.79	0.83	0.80	0.89	0.86	0.93	0.87	0.87
	Buffer Index	0.03	0.02	0.03	0.02	0.03	0.02	0.04	0.02	0.07	0.02	0.11	0.05	0.04
	VMT	2,009	3,480	350	391	1,998	5,143	2,217	4,874	13,743	6,059	5,918	12,544	4,894
2300	Travel Time Idx	0.80	0.79	0.85	0.86	0.78	0.77	0.81	0.78	0.83	0.85	0.84	0.83	0.82
	Plan. Time Idx	0.83	0.81	0.89	0.88	0.81	0.79	0.84	0.80	0.89	0.86	0.97	0.87	0.87
	Buffer Index	0.03	0.02	0.04	0.03	0.04	0.02	0.04	0.02	0.07	0.01	0.16	0.05	0.04
	VMT	1,685	2,927	302	370	1,868	4,770	1,947	4,111	12,580	5,570	5,425	11,344	4,408
2315	Travel Time Idx	0.80	0.79	0.85	0.86	0.79	0.77	0.81	0.78	0.83	0.85	0.84	0.83	0.82
	Plan. Time Idx	0.82	0.81	0.88	0.88	0.82	0.79	0.84	0.80	0.87	0.86	0.97	0.87	0.87
	Buffer Index	0.02	0.02	0.03	0.03	0.04	0.02	0.04	0.02	0.05	0.01	0.15	0.04	0.04
	VMT	1,586	2,741	253	366	1,761	4,303	1,832	3,803	12,000	5,055	5,279	10,714	4,141
2330	Travel Time Idx	0.81	0.79	0.86	0.85	0.80	0.77	0.81	0.79	0.83	0.84	0.84	0.84	0.82
	Plan. Time Idx	0.83	0.81	0.88	0.87	0.83	0.79	0.85	0.81	0.86	0.86	1.00	0.87	0.87
	Buffer Index	0.03	0.02	0.03	0.02	0.04	0.03	0.05	0.03	0.04	0.02	0.19	0.04	0.04
	VMT	1,472	2,572	246	350	1,646	4,051	1,721	3,606	11,135	4,851	5,201	10,312	3,930
2345	Travel Time Idx	0.80	0.79	0.86	0.86	0.81	0.78	0.82	0.78	0.83	0.84	0.84	0.83	0.82
	Plan. Time Idx	0.82	0.81	0.89	0.87	0.84	0.79	0.85	0.80	0.85	0.85	1.05	0.86	0.86
	Buffer Index	0.02	0.02	0.04	0.02	0.05	0.02	0.05	0.03	0.03	0.02	0.26	0.03	0.05
	VMT	1,293	2,256	210	305	1,463	3,537	1,548	3,148	10,086	4,361	4,567	9,245	3,502
Total	Travel Time Idx	0.82	0.81	0.87	0.90	0.79	0.79	0.81	0.80	0.87	0.88	0.86	0.88	0.84
	Plan. Time Idx	0.86	0.85	0.93	0.96	0.91	0.87	0.92	0.84	1.04	0.95	1.03	1.08	0.94
	Buffer Index	0.06	0.05	0.06	0.12	0.06	0.04	0.05	0.05	0.11	0.10	0.12	0.11	0.08
	VMT	3,215	5,585	526	525	4,122	7,980	4,139	7,763	18,114	8,010	7,632	18,555	7,185

Regional Buffer Index

<u>Segment Name</u>	<u>Overall BI</u>	<u>Overall VMT</u>	<u>AM Peak BI</u>	<u>AM Peak VMT</u>	<u>PM Peak BI</u>	<u>PM Peak VMT</u>
BC 75SB10 to MDC DMS44	0.61	13,017	0.87	7,770	0.23	5,246
BC 75SB14 to MDC DMS44	0.42	24,455	0.54	13,669	0.27	10,787
BC I-595 EB Hiatus to I-95	0.39	1,904	0.57	945	0.21	959
BC I-595 WB I-95 to Hiatus	1.11	1,699	0.41	560	1.45	1,140
BC I-75 NB I-595 to Col Ln	0.06	10,973	0.06	4,807	0.07	6,166
BC I-75 NB MD Ln to I-595	0.15	31,621	0.08	14,220	0.21	17,401
BC I-75 SB Col Ln to I-595	0.05	11,164	0.05	5,006	0.06	6,158
BC I-75 SB I-595 to MD Ln	0.32	34,154	0.40	18,579	0.21	15,574
BC I-95 NB I-595 to PB Ln	0.45	60,594	0.51	28,219	0.40	32,375
BC I-95 NB MD Ln to I-595	0.48	25,648	0.58	12,162	0.39	13,487
BC I-95 SB I-595 to MD Ln	0.48	26,527	0.46	12,904	0.49	13,622
BC I-95 SB PB Ln to I-595	0.50	61,481	0.56	29,354	0.45	32,127

Regional Buffer Index: 0.399

RegionalBufferIndexReport

<u>QUARTER</u>	<u>BUFFERINDEX</u>
2008 Q3	0.415
2008 Q4	0.406
2009 Q1	0.468
2009 Q2	0.406
2009 Q3	0.417
2009 Q4	0.406
2010 Q1	0.429
2010 Q2	0.399

RegionalBufferIndex per Quarter

