



Monthly Performance Measures Report Broward, Palm Beach Counties

Period From Jun 1, 2010 to Jun 30, 2010

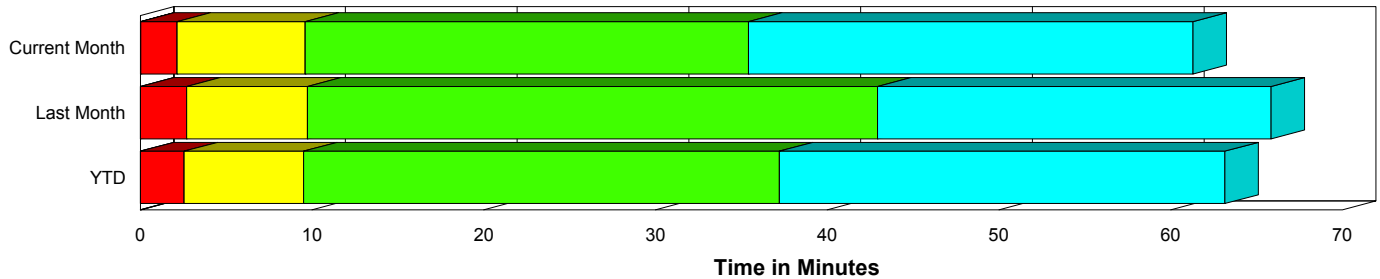


Created on:
July 01, 2010
9:15 am

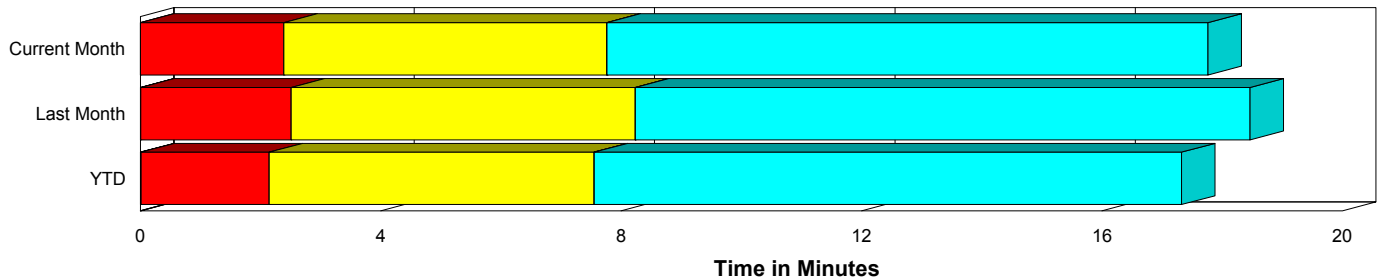
Performance Measures Summary

	Traffic Events (No Lanes Blocked)			Incidents (Lanes Blocked)		
	<u>This Month</u>	<u>Last Month</u>	<u>YTD</u>	<u>This Month</u>	<u>Last Month</u>	<u>YTD</u>
Number of Events	8,231	8,053	45,751	301	349	1,916
TMC Detection (min.)	0.00	0.01	0.01	0.02	0.00	0.02
TMC Verification (min.)	2.39	2.51	2.13	2.11	2.69	2.54
TMC Response (min.)	8.87	9.34	8.54	9.67	9.88	9.62
RR Dispatch Time (min.)	1.72	2.04	1.76	1.74	2.29	1.98
RR Response Time (min.)	7.15	7.26	6.81	7.96	7.68	7.67
Roadway Clearance (min.)				34.53	42.05	36.57
Event Clearance (min.)	18.87	19.58	18.33	59.92	63.64	62.16
# of Events w/ RR/SIRV	7,179	7,058	39,123	296	336	1,863
RR/SIRV Responses	7,179	7,058	39,123	296	336	1,863
RR/SIRV Activities	6,032	6,021	33,136	512	588	3,209

Incident Clearance Time-Line



Traffic Event (Non-Lane Blockage) Time-Line



■ Avg. TMC Detection Time	■ Avg. Time from TMC Response to Roadway Clearance*
■ Avg. Time from TMC Detection to TMC Verification	■ Avg. Time from Roadway Clearance to Incident/Event Clearance**
■ Avg. Time from TMC Verification to TMC Response	

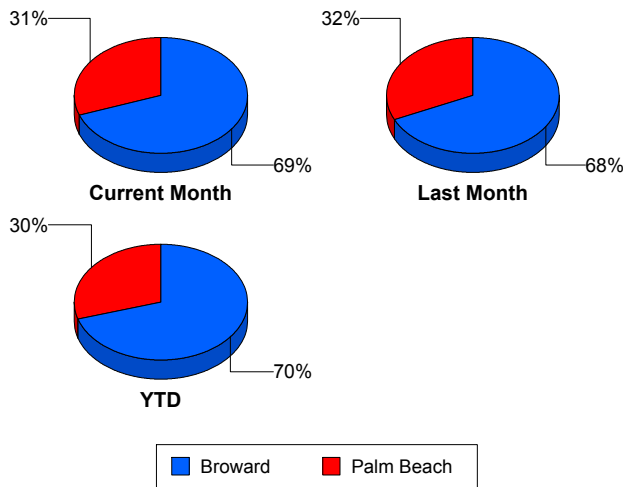
* Roadway clearance equals all travel lanes open

** Incident clearance equals time when last responder has left the scene

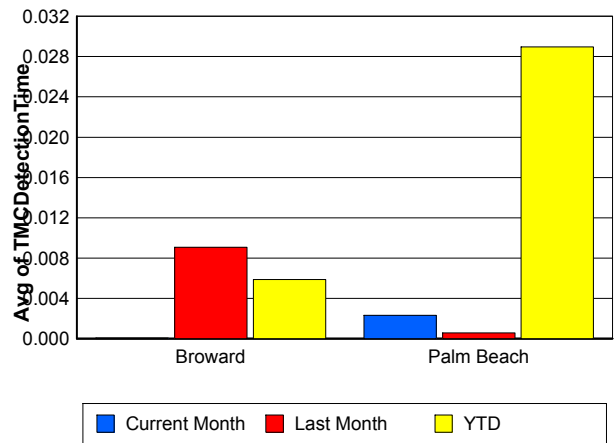
Performance Measures by County

	Broward			Palm Beach		
	<u>Current Month</u>	<u>Last Month</u>	<u>YTD</u>	<u>Current Month</u>	<u>Last Month</u>	<u>YTD</u>
Number of Events	5,924	5,724	33,512	2,608	2,678	14,155
Number of Incidents	192	219	1,258	109	130	658
TMC Detection (min.)	0.00	0.01	0.01	0.00	0.00	0.03
TMC Verification (min.)	1.33	1.24	1.21	4.77	5.24	4.38
TMC Response (min.)	9.67	9.46	9.28	7.80	9.24	7.54
RR Dispatch Time (min.)	1.19	1.40	1.36	2.80	3.35	2.63
RR Response Time (min.)	8.65	8.14	8.03	5.08	5.99	5.01
Event Clearance (min.)	19.94	20.94	19.57	21.16	22.38	21.33
Roadway Clearance (min.)	30.34	39.58	33.68	41.91	46.22	42.11
Incident Clearance (min.)	59.91	62.64	61.40	59.95	65.31	63.25
# of Events w/ RR/SIRV	4,997	4,910	27,738	2,478	2,484	13,248
RR/SIRV Responses	4,997	4,910	27,738	2,478	2,484	13,248
RR/SIRV Activities	3,854	3,984	22,323	2,690	2,625	14,022

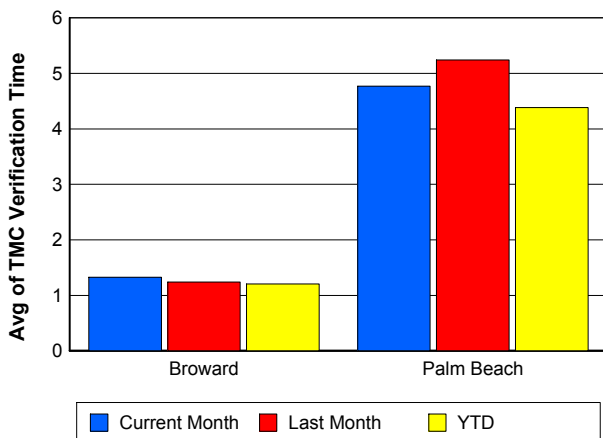
Number of Events / County



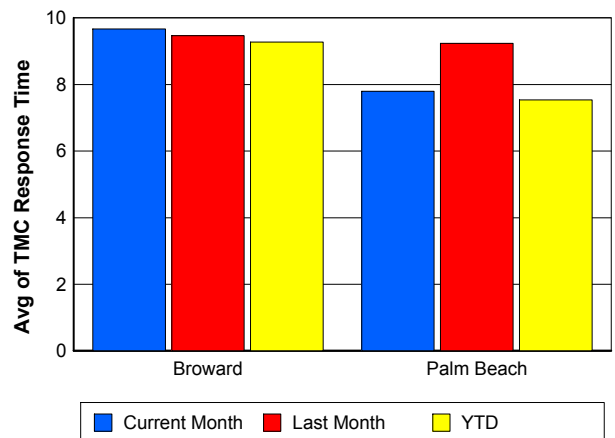
TMC Detection Time



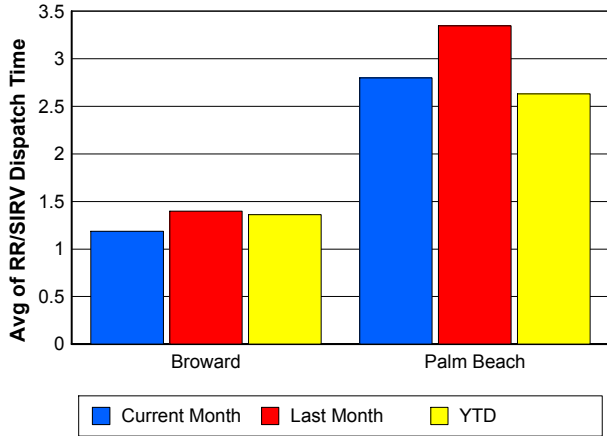
TMC Verification Time



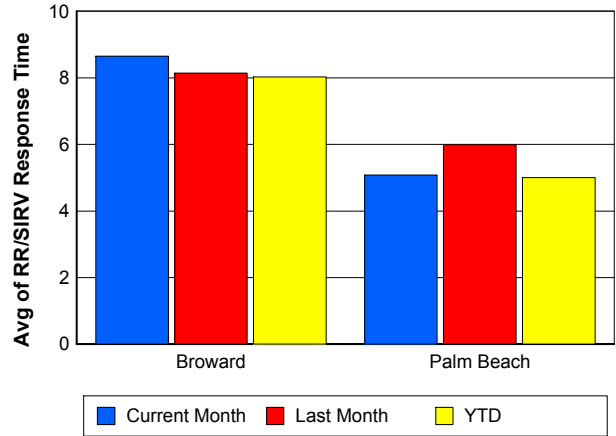
TMC Response Time



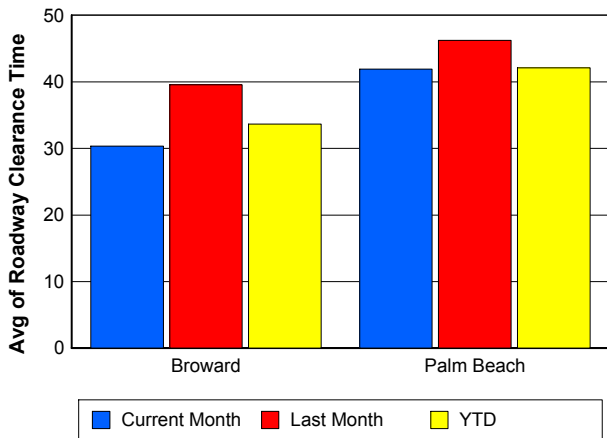
Road Ranger / SIRV Dispatch Time



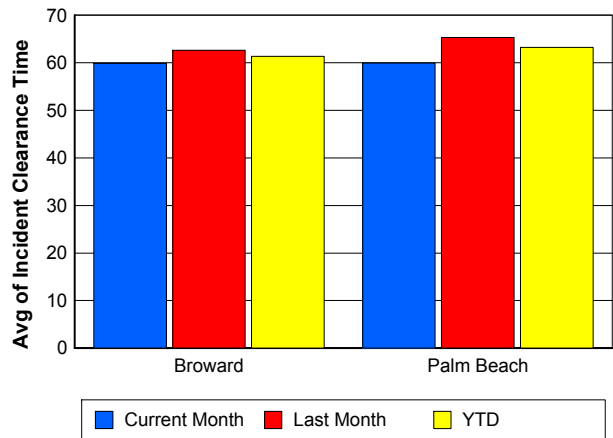
Road Ranger / SIRV Response Time



Roadway Clearance Time (2A)



Incident Clearance Time (3B)

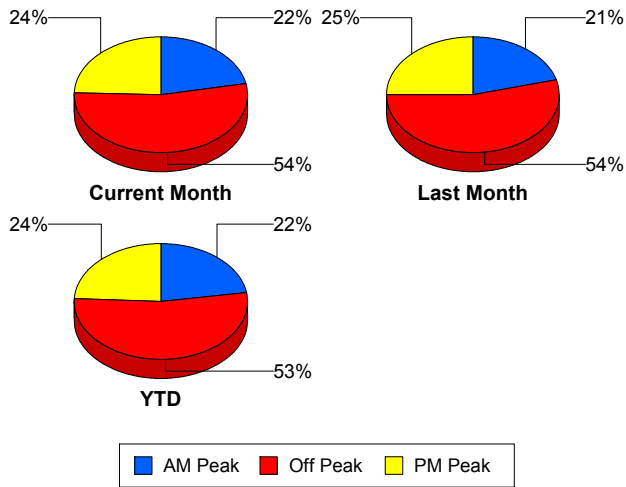


Performance Measures by Peak Period

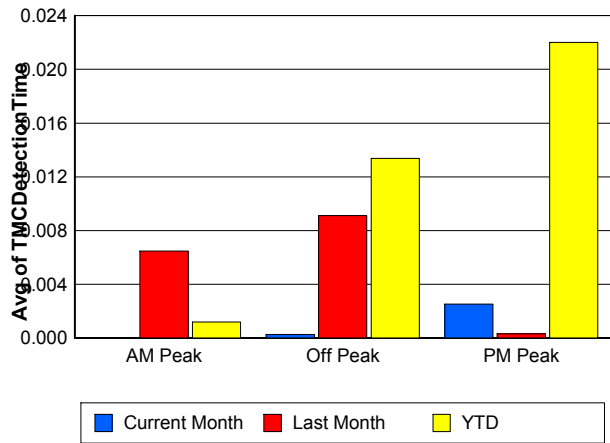
Note: AM peak period is defined as 6am to 10am and PM peak period is defined as 3pm to 7pm.

	AM Peak			Off Peak			PM Peak		
	<u>Current Month</u>	<u>Last Month</u>	<u>YTD</u>	<u>Current Month</u>	<u>Last Month</u>	<u>YTD</u>	<u>Current Month</u>	<u>Last Month</u>	<u>YTD</u>
Number of Events	1,874	1,748	10,678	4,573	4,544	25,457	2,085	2,110	11,532
Number of Incidents	78	85	428	163	182	1,000	60	82	488
TMC Detection (min.)	0.00	0.01	0.00	0.00	0.01	0.01	0.00	0.00	0.02
TMC Verification (min.)	1.26	1.76	1.32	2.56	2.63	2.27	2.98	2.90	2.66
TMC Response (min.)	8.32	9.15	8.05	9.08	9.69	8.95	9.06	8.92	8.38
RR Dispatch Time (min.)	1.32	1.84	1.33	1.75	2.13	1.87	2.01	2.08	1.97
RR Response Time (min.)	7.02	7.13	6.75	7.33	7.51	7.09	7.06	6.93	6.47
Event Clearance (min.)	18.90	21.01	18.77	20.72	21.66	20.49	20.70	21.17	20.43
Roadway Clearance (min.)	32.16	35.49	32.99	37.23	50.85	41.62	30.28	29.34	29.38
Incident Clearance (min.)	63.87	49.90	58.52	59.55	71.90	65.67	55.80	59.37	57.65
# of Events w/ RR/SIRV	1,674	1,589	9,375	3,978	3,946	21,553	1,823	1,859	10,058
RR/SIRV Responses	1,674	1,589	9,375	3,978	3,946	21,553	1,823	1,859	10,058
RR/SIRV Activities	1,438	1,413	8,150	3,435	3,476	18,917	1,671	1,720	9,278

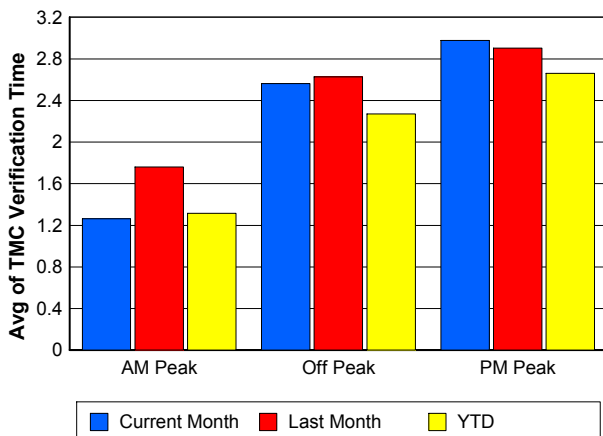
Number of Events / Peak Period



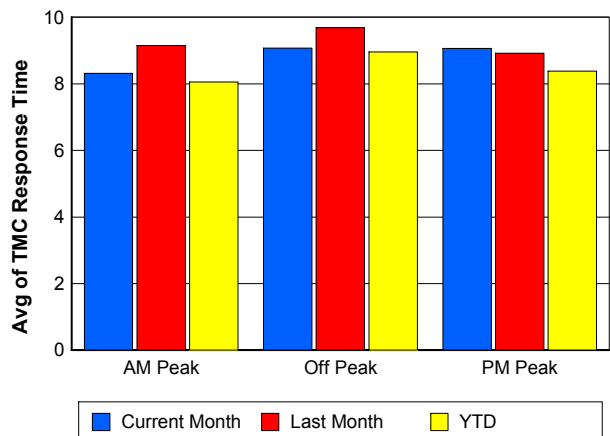
TMC Detection Time



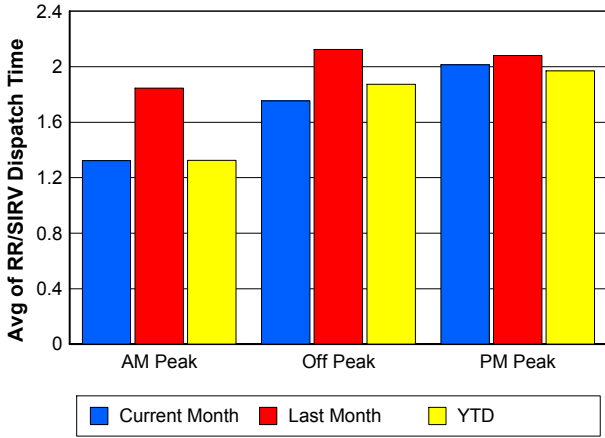
TMC Verification Time



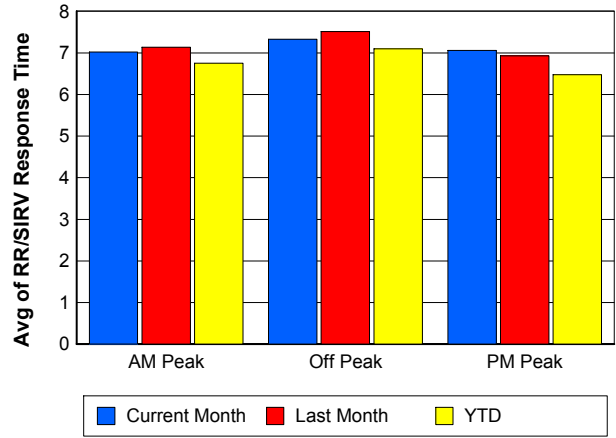
TMC Response Time



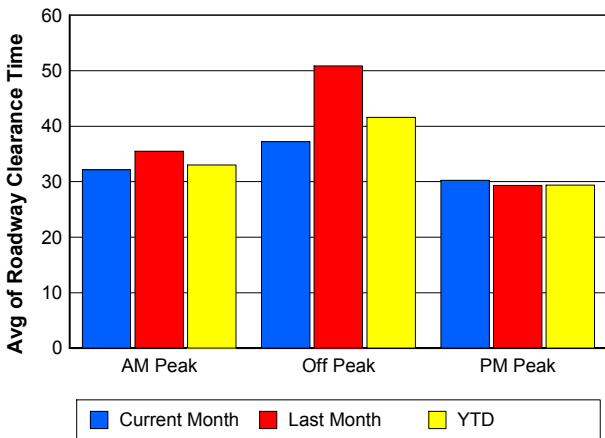
Road Ranger / SIRV Dispatch Time



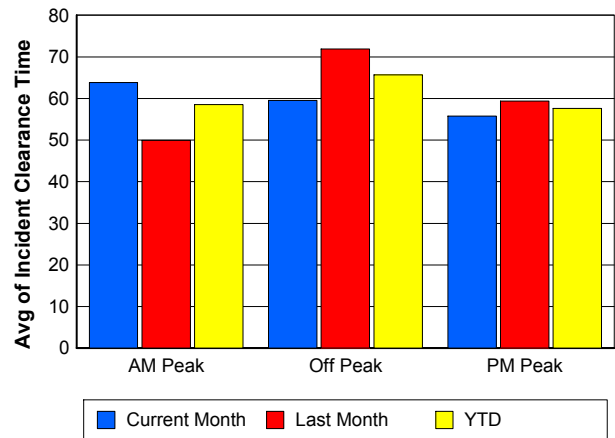
Road Ranger / SIRV Response Time



Roadway Clearance Time (2A)



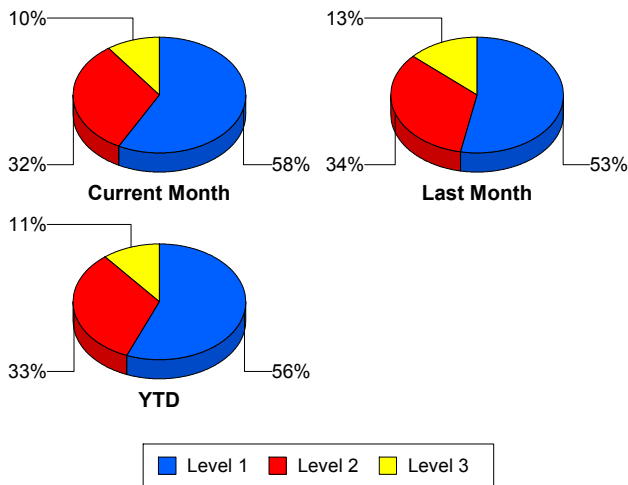
Incident Clearance Time (3B)



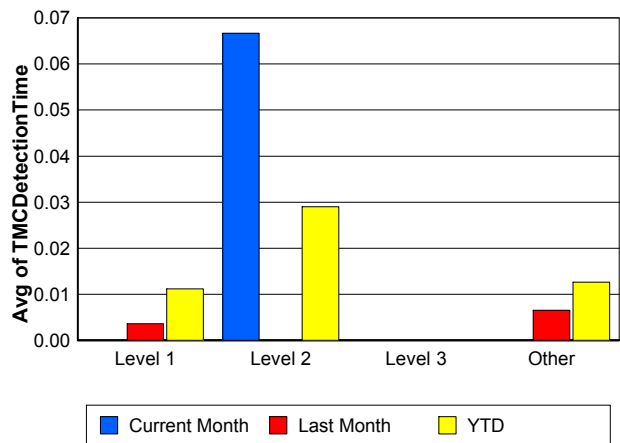
Performance Measures by Severity

	Level 1			Level 2			Level 3			Other		
	<u>This Month</u>	<u>Last Month</u>	<u>YTD</u>	<u>This Month</u>	<u>Last Month</u>	<u>YTD</u>	<u>This Month</u>	<u>Last Month</u>	<u>YTD</u>	<u>This Month</u>	<u>Last Month</u>	<u>YTD</u>
Number of Events	174	185	1,075	97	117	633	30	47	206	8,231	8,053	45,753
Number of Incidents	174	185	1,075	97	117	633	30	47	206	0	0	2
TMC Detection (min.)	0.00	0.00	0.01	0.07	0.00	0.03	0.00	0.00	0.00	0.00	0.01	0.01
TMC Verification (min.)	1.06	1.93	1.37	4.16	3.94	4.37	1.61	2.60	2.97	2.39	2.51	2.13
TMC Response (min.)	8.20	7.80	7.55	12.29	11.28	12.16	9.24	14.73	12.46	8.87	9.34	8.54
RR Dispatch Time (min.)	1.51	1.79	1.43	1.66	2.10	2.46	3.38	5.07	3.52	1.72	2.04	1.76
RR Resp. Time (min.)	6.73	6.07	6.16	10.64	9.38	9.76	5.76	9.65	8.92	7.15	7.26	6.81
Event Clearance (min.)	44.81	41.71	45.40	70.93	72.74	73.66	111.99	126.83	113.88	18.87	19.58	18.33
Roadway Clear. (min.)	14.71	15.32	15.07	50.25	53.15	52.61	98.67	119.65	100.07			-21.46
Incident Clearance (min.)	44.81	41.71	45.40	70.93	72.74	73.66	111.99	126.83	113.61			0.00
# of Events w/ RR/SIRV	171	179	1,051	97	117	626	28	40	184	7,179	7,058	39,125
RR/SIRV Responses	171	179	1,051	97	117	626	28	40	184	7,179	7,058	39,125
RR/SIRV Activities	250	258	1,555	190	221	1,191	72	109	458	6,032	6,021	33,141

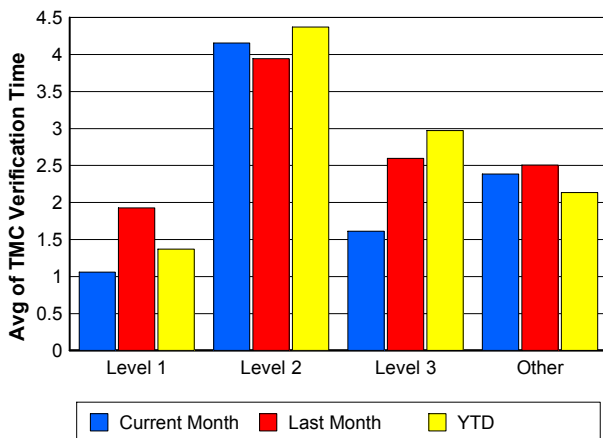
Number of Events / Severity



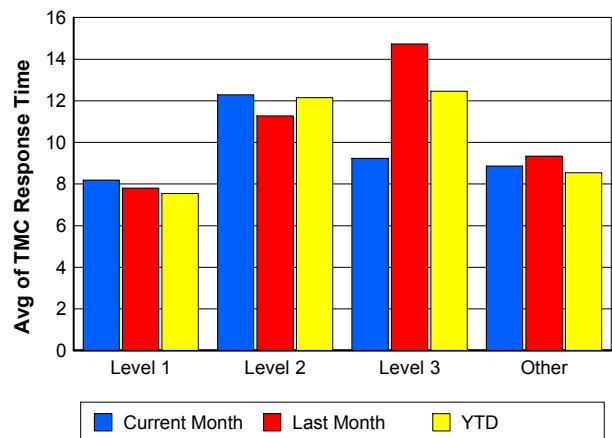
TMC Detection Time



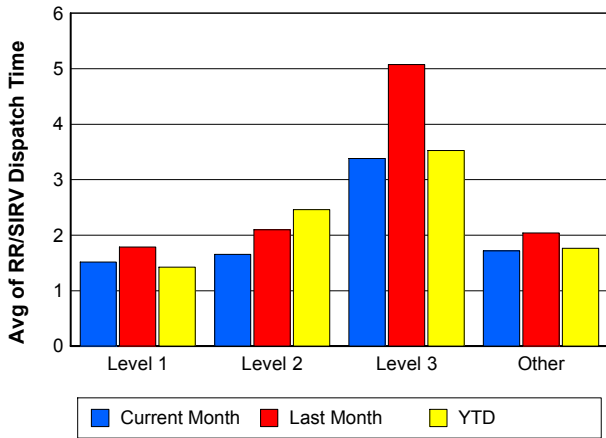
TMC Verification Time



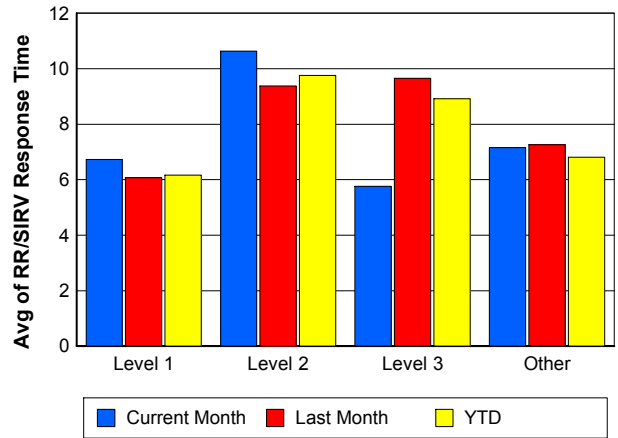
TMC Response Time



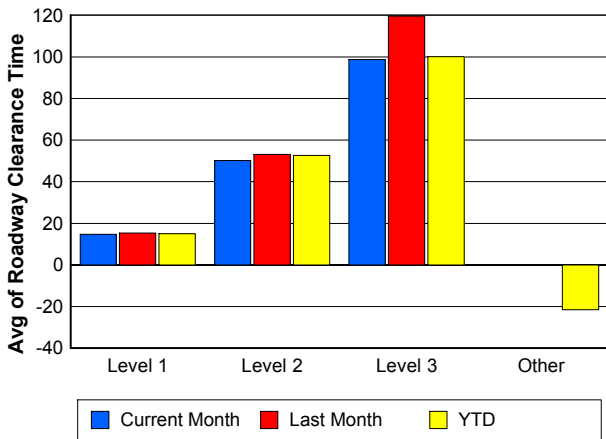
Road Ranger / SIRV Dispatch Time



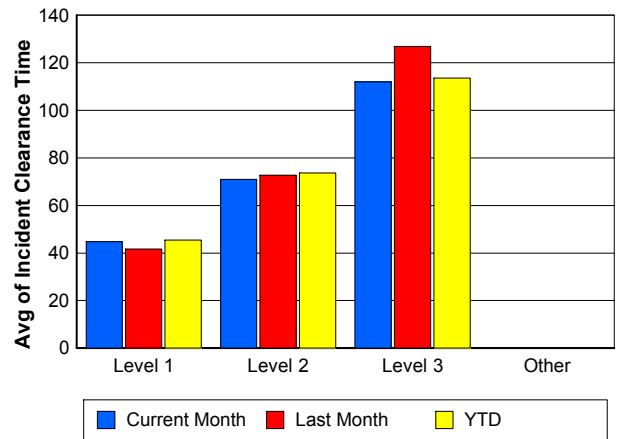
Road Ranger / SIRV Response Time



Roadway Clearance Time (2A)



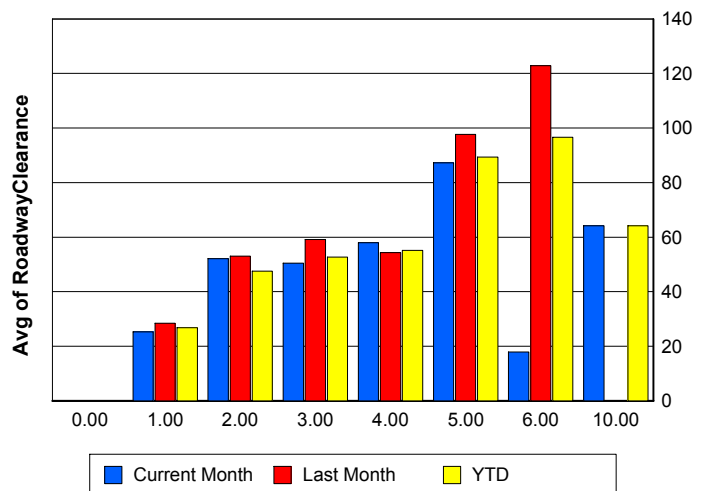
Incident Clearance Time (3B)



Roadway Clearance by Maximum Number of Lanes Blocked

	Current Month	Last Month	YTD
0			
1	25.25	28.49	26.83
2	52.13	53.09	47.57
3	50.44	59.16	52.66
4	57.90	54.32	55.19
5	87.23	97.62	89.37
6	17.94	122.85	96.66
10	64.12	0.00	64.12

Roadway Clearance Time (2A)



Performance Measures by Roadway

595

	<u>Current Month</u>	<u>Last Month</u>	<u>YTD</u>
Number of Events	173	160	1,102
Number of Incidents	8	5	54
TMC Detection (min.)	0.00	0.00	0.00
TMC Verification (min.)	2.36	1.95	1.86
TMC Response (min.)	19.08	18.14	15.69
RR Dispatch Time (min.)	1.70	2.39	2.03
RR Resp. Time (min.)	17.22	16.11	13.67
Event Clearance (min.)	19.00	20.02	19.72
Roadway Clear. (min.)	40.86	67.02	49.65
Incident Clearance (min.)	48.47	82.46	65.59
# of Events w/ RR/SIRV	121	121	795
RR/SIRV Responses	121	121	795
RR/SIRV Activities	69	73	517

75

	<u>Current Month</u>	<u>Last Month</u>	<u>YTD</u>
Number of Events	1,295	1,135	7,256
Number of Incidents	19	28	135
TMC Detection (min.)	0.00	0.00	0.02
TMC Verification (min.)	2.31	2.57	2.16
TMC Response (min.)	10.19	10.86	10.23
RR Dispatch Time (min.)	1.04	1.55	1.43
RR Resp. Time (min.)	9.35	9.45	8.93
Event Clearance (min.)	19.95	23.03	20.27
Roadway Clear. (min.)	37.68	78.56	51.52
Incident Clearance (min.)	65.50	90.73	83.59
# of Events w/ RR/SIRV	1,051	955	5,813
RR/SIRV Responses	1,051	955	5,813
RR/SIRV Activities	867	826	4,829

95

	<u>Current Month</u>	<u>Last Month</u>	<u>YTD</u>
Number of Events	7,009	7,036	38,918
Number of Incidents	270	304	1,663
TMC Detection (min.)	0.00	0.01	0.01
TMC Verification (min.)	2.41	2.54	2.17
TMC Response (min.)	8.60	9.06	8.25
RR Dispatch Time (min.)	1.83	2.13	1.83
RR Resp. Time (min.)	6.75	6.86	6.42
Event Clearance (min.)	20.43	21.17	20.07
Roadway Clear. (min.)	34.41	38.90	35.36
Incident Clearance (min.)	60.40	62.15	61.37
# of Events w/ RR/SIRV	6,262	6,257	34,060
RR/SIRV Responses	6,262	6,257	34,060
RR/SIRV Activities	5,575	5,651	30,698

OKEEB

	<u>YTD</u>
Number of Events	1
Number of Incidents	0
TMC Detection (min.)	0.00
TMC Verification (min.)	0.00
TMC Response (min.)	0.00
RR Dispatch Time (min.)	0.00
RR Resp. Time (min.)	0.00
Event Clearance (min.)	18.45
Roadway Clear. (min.)	
Incident Clearance (min.)	
# of Events w/ RR/SIRV	1
RR/SIRV Responses	1
RR/SIRV Activities	1

SR-816

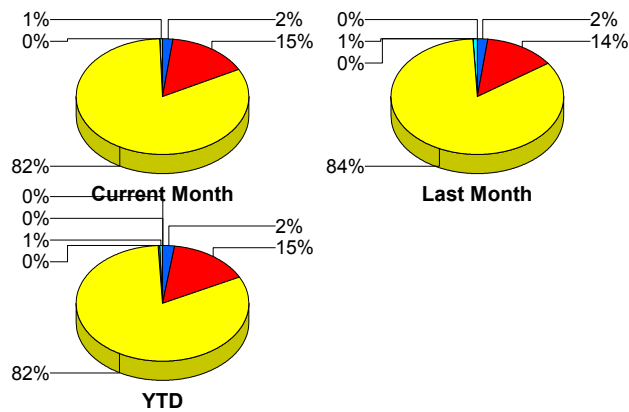
	<u>Current Month</u>	<u>Last Month</u>	<u>YTD</u>
Number of Events	6	12	73
Number of Incidents	2	8	47
TMC Detection (min.)	0.00	0.00	0.00
TMC Verification (min.)	0.00	0.67	1.06
TMC Response (min.)	0.00	0.89	1.62
RR Dispatch Time (min.)	0.00	0.17	0.14
RR Resp. Time (min.)	0.00	0.82	1.50
Event Clearance (min.)	5.09	9.31	15.70
Roadway Clear. (min.)	11.22	7.71	16.66
Incident Clearance (min.)	11.16	12.01	19.72
# of Events w/ RR/SIRV	3	10	64
RR/SIRV Responses	3	10	64
RR/SIRV Activities	3	9	69

SR869

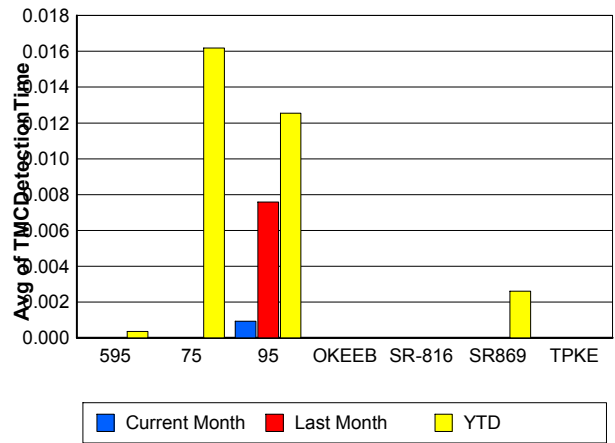
	<u>Current Month</u>	<u>Last Month</u>	<u>YTD</u>
Number of Events	49	56	307
Number of Incidents	2	1	7
TMC Detection (min.)	0.00	0.00	0.00
TMC Verification (min.)	0.01	0.24	0.95
TMC Response (min.)	6.73	8.30	8.24
RR Dispatch Time (min.)	2.41	1.19	1.23
RR Resp. Time (min.)	5.46	7.15	7.36
Event Clearance (min.)	19.72	21.54	18.54
Roadway Clear. (min.)	19.30	34.38	37.30
Incident Clearance (min.)	36.85	38.38	60.61
# of Events w/ RR/SIRV	38	51	253
RR/SIRV Responses	38	51	253
RR/SIRV Activities	30	50	231

	<u>Last Month</u>	<u>YTD</u>
Number of Events	3	10
Number of Incidents	3	10
TMC Detection (min.)	0.00	0.00
TMC Verification (min.)	0.00	0.00
TMC Response (min.)		
RR Dispatch Time (min.)		
RR Resp. Time (min.)		
Event Clearance (min.)	76.01	62.29
Roadway Clear. (min.)	73.63	59.66
Incident Clearance (min.)	76.01	62.29
# of Events w/ RR/SIRV	0	0
RR/SIRV Responses	0	0
RR/SIRV Activities	0	0

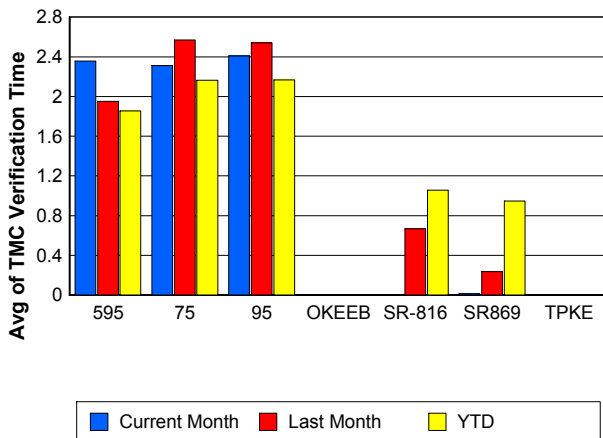
Number of Events / Roadway



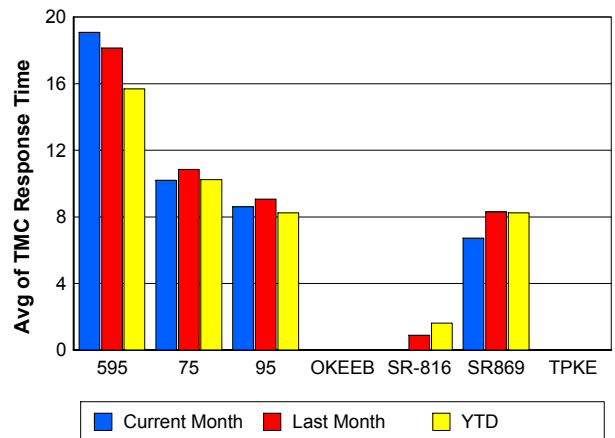
TMC Detection Time



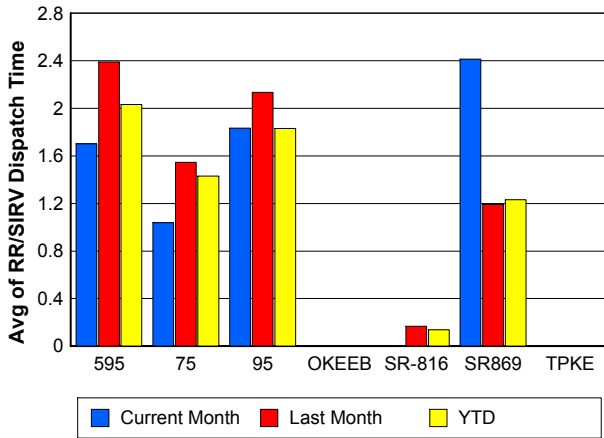
TMC Verification Time



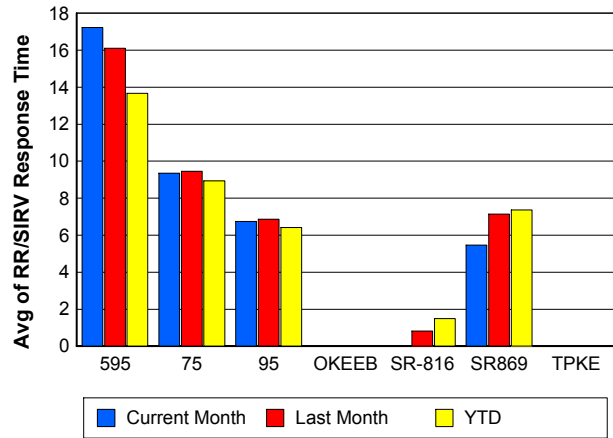
TMC Response Time



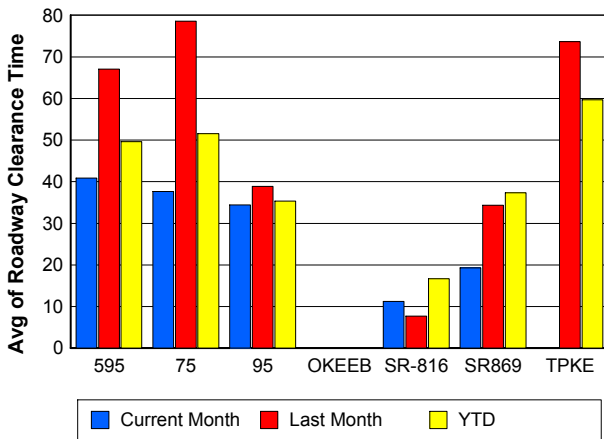
Road Ranger / SIRV Dispatch Time



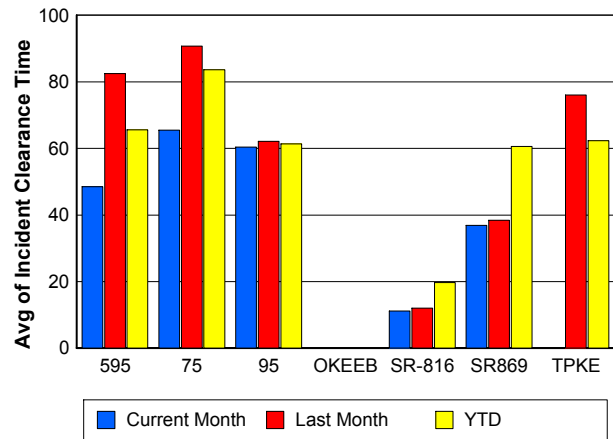
Road Ranger / SIRV Response Time



Roadway Clearance Time (2A)



Incident Clearance Time (3B)



Performance Measures by Event Type

Accident

	<u>Current Month</u>	<u>Last Month</u>	<u>YTD</u>
Number of Events	435	500	2,893
Number of Incidents	198	234	1,335
TMC Detection (min.)	0.01	0.00	0.02
TMC Verification (min.)	3.63	4.23	3.54
TMC Response (min.)	11.14	10.79	10.38
RR Dispatch Time (min.)	1.89	2.12	1.88
RR Response Time (min.)	9.28	8.64	8.51
Event Clearance (min.)	54.89	61.72	57.28
Roadway Clearance (min.)	38.93	42.59	39.28
Incident Clearance (min.)	71.03	72.01	71.47
# of Events w/ RR/SIRV	433	490	2,849
RR/SIRV Assists	433	490	2,849
RR/SIRV Activities	617	701	4,030

Debris on Roadway

	<u>Current Month</u>	<u>Last Month</u>	<u>YTD</u>
Number of Events	434	379	1,994
Number of Incidents	6	4	28
TMC Detection (min.)	0.00	0.00	0.00
TMC Verification (min.)	9.11	8.28	8.22
TMC Response (min.)	11.69	11.54	10.73
RR Dispatch Time (min.)	2.43	2.52	2.39
RR Response Time (min.)	9.21	8.98	8.32
Event Clearance (min.)	14.18	14.57	13.83
Roadway Clearance (min.)	31.36	27.50	28.16
Incident Clearance (min.)	33.26	33.88	30.34
# of Events w/ RR/SIRV	424	369	1,938
RR/SIRV Assists	424	369	1,938
RR/SIRV Activities	439	381	1,970

Disabled Vehicle

	<u>Current Month</u>	<u>Last Month</u>	<u>YTD</u>
Number of Events	5,649	5,600	30,516
Number of Incidents	64	72	364
TMC Detection (min.)	0.00	0.01	0.02
TMC Verification (min.)	2.54	2.78	2.43
TMC Response (min.)	8.46	9.02	8.18
RR Dispatch Time (min.)	1.68	2.05	1.73
RR Response Time (min.)	6.82	7.05	6.53
Event Clearance (min.)	20.43	20.49	20.07
Roadway Clearance (min.)	20.31	21.35	20.59
Incident Clearance (min.)	32.35	28.63	30.75
# of Events w/ RR/SIRV	5,362	5,338	29,077
RR/SIRV Assists	5,362	5,338	29,077
RR/SIRV Activities	5,264	5,307	28,887

Emergency Vehicles

	<u>Current Month</u>	<u>Last Month</u>	<u>YTD</u>
Number of Events	7	5	37
Number of Incidents	5	5	31
TMC Detection (min.)	0.00	0.00	0.00
TMC Verification (min.)	0.00	0.00	0.78
TMC Response (min.)	6.82	0.00	8.83
RR Dispatch Time (min.)	0.91	0.00	1.26
RR Response Time (min.)	5.92	0.00	7.56
Event Clearance (min.)	31.57	21.78	34.15
Roadway Clearance (min.)	32.07	17.22	31.05
Incident Clearance (min.)	42.92	21.78	36.13
# of Events w/ RR/SIRV	5	1	25
RR/SIRV Assists	5	1	25
RR/SIRV Activities	6	2	27

Other

	<u>Current Month</u>	<u>Last Month</u>	<u>YTD</u>
Number of Events	1,952	1,853	11,844
Number of Incidents	5	4	27
TMC Detection (min.)	0.00	0.00	0.00
TMC Verification (min.)	0.13	0.13	0.09
TMC Response (min.)	8.76	9.94	10.25
RR Dispatch Time (min.)	1.55	1.78	1.69
RR Response Time (min.)	7.35	5.85	7.71
Event Clearance (min.)	13.12	13.44	11.48
Roadway Clearance (min.)	16.90	21.21	31.09
Incident Clearance (min.)	21.72	29.52	38.18
# of Events w/ RR/SIRV	1,201	1,137	6,747
RR/SIRV Assists	1,201	1,137	6,747
RR/SIRV Activities	154	143	1,025

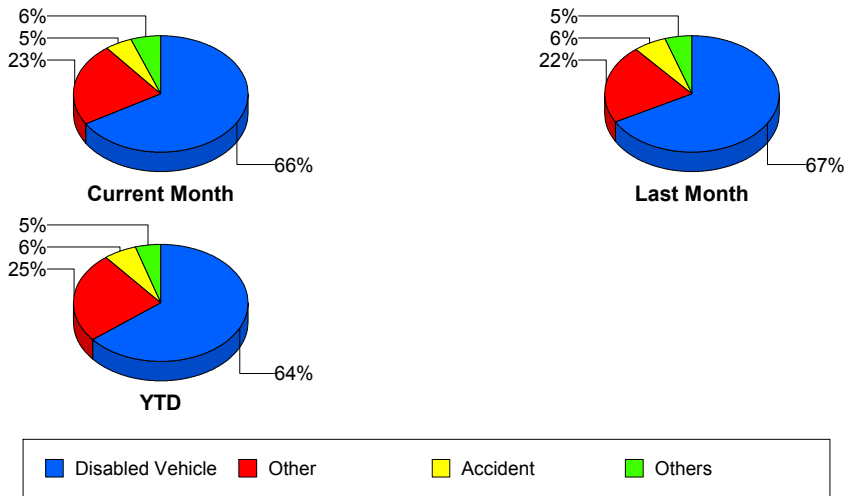
Police Activity

	<u>Current Month</u>	<u>Last Month</u>	<u>YTD</u>
Number of Events	18	27	119
Number of Incidents	11	15	65
TMC Detection (min.)	0.00	0.00	0.06
TMC Verification (min.)	2.50	0.57	1.28
TMC Response (min.)	7.21	16.83	14.13
RR Dispatch Time (min.)	3.51	7.62	5.44
RR Response Time (min.)	3.31	8.39	9.16
Event Clearance (min.)	39.93	78.93	51.39
Roadway Clearance (min.)	47.44	137.07	67.81
Incident Clearance (min.)	55.18	125.09	69.32
# of Events w/ RR/SIRV	16	22	97
RR/SIRV Assists	16	22	97
RR/SIRV Activities	17	26	104

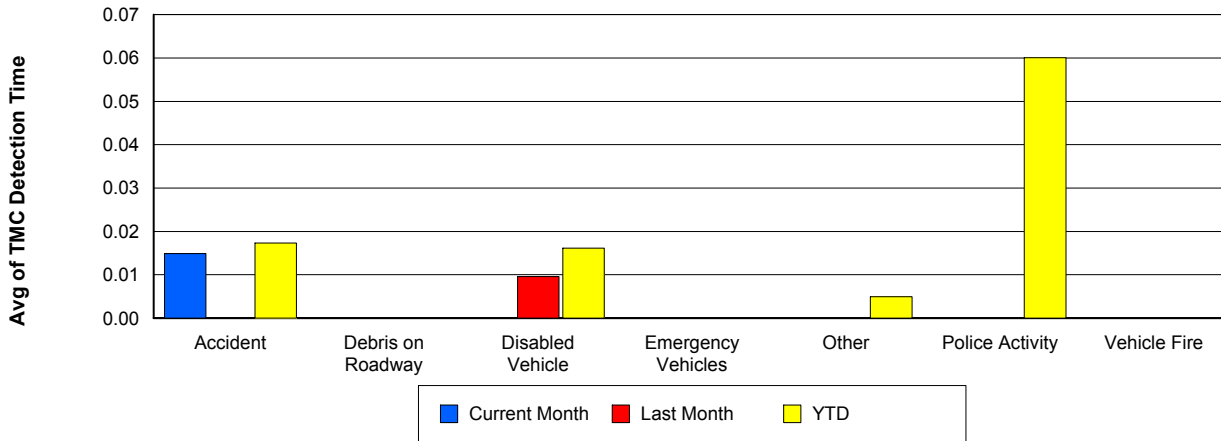
Vehicle Fire

	<u>Current Month</u>	<u>Last Month</u>	<u>YTD</u>
Number of Events	16	16	91
Number of Incidents	12	14	65
TMC Detection (min.)	0.00	0.00	0.00
TMC Verification (min.)	1.86	0.89	2.20
TMC Response (min.)	16.85	11.29	12.27
RR Dispatch Time (min.)	2.71	1.78	2.12
RR Response Time (min.)	14.13	9.52	10.16
Event Clearance (min.)	56.87	69.36	62.35
Roadway Clearance (min.)	35.93	56.08	47.54
Incident Clearance (min.)	64.42	72.54	72.30
# of Events w/ RR/SIRV	16	16	89
RR/SIRV Assists	16	16	89
RR/SIRV Activities	30	29	153

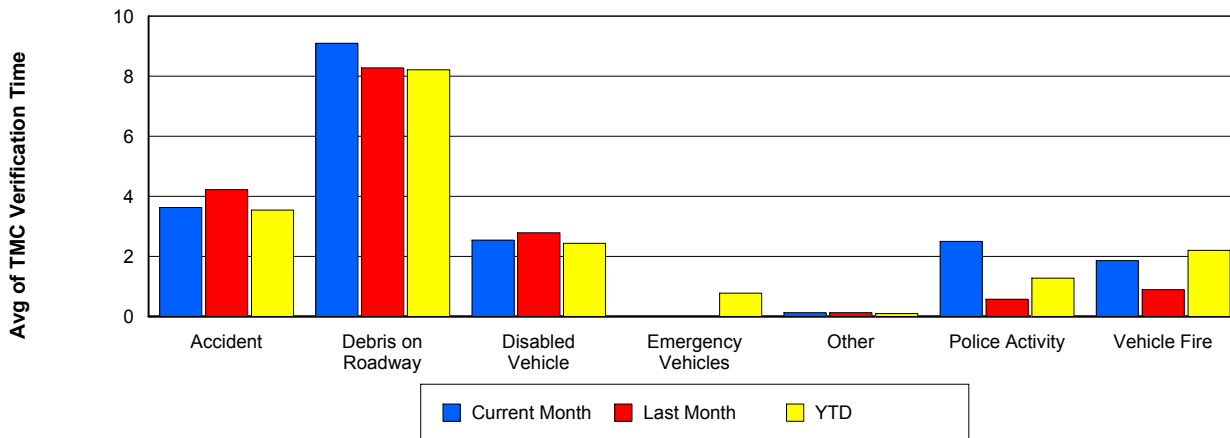
Number of Events / Event Type



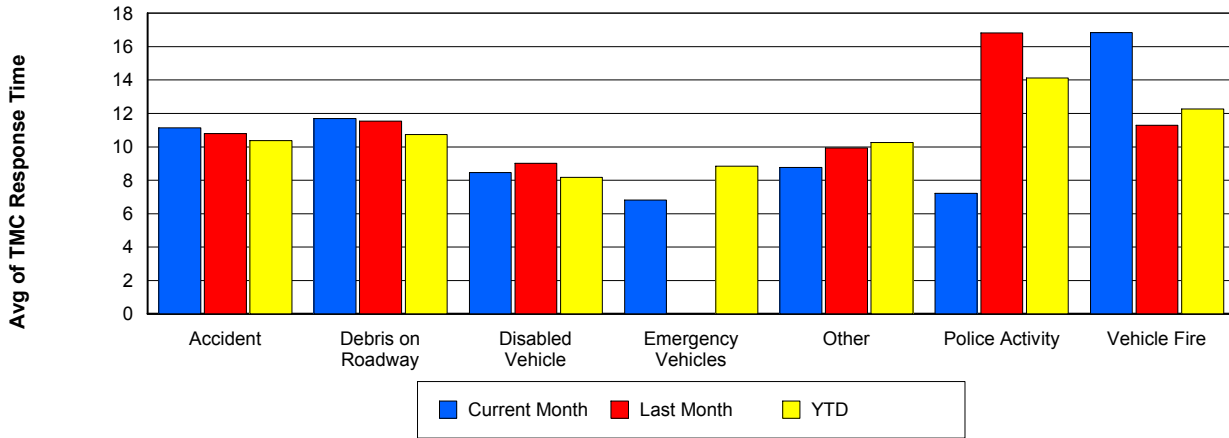
TMC Detection Time



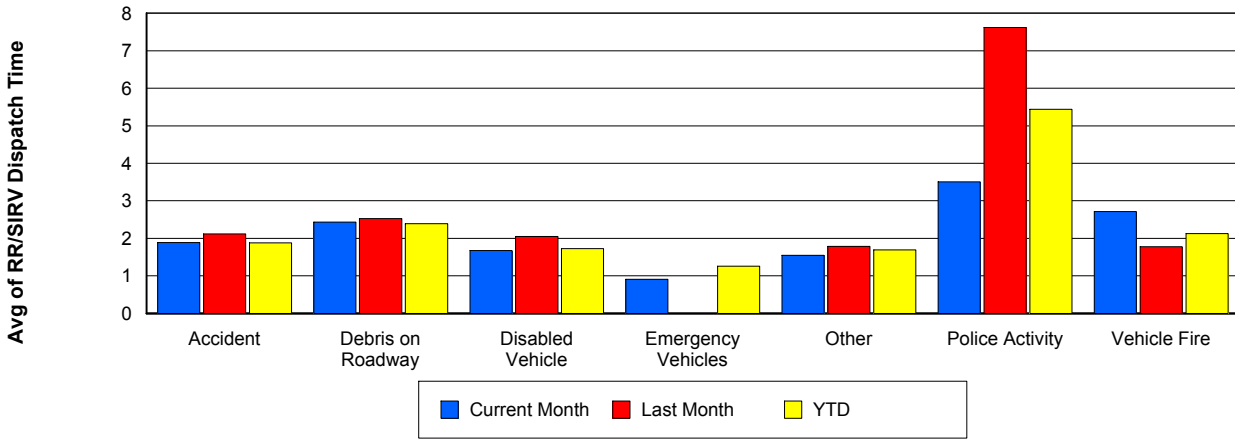
TMC Verification Time



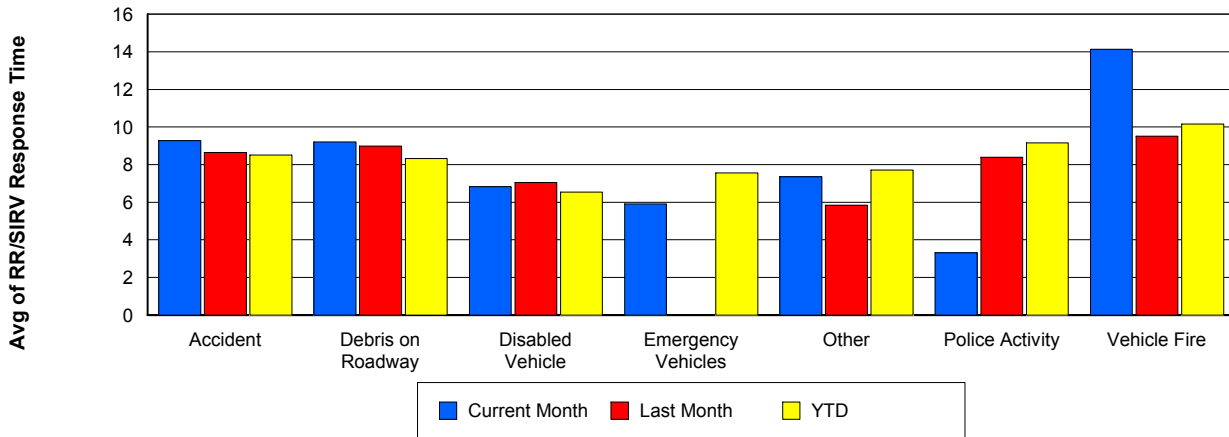
TMC Response Time



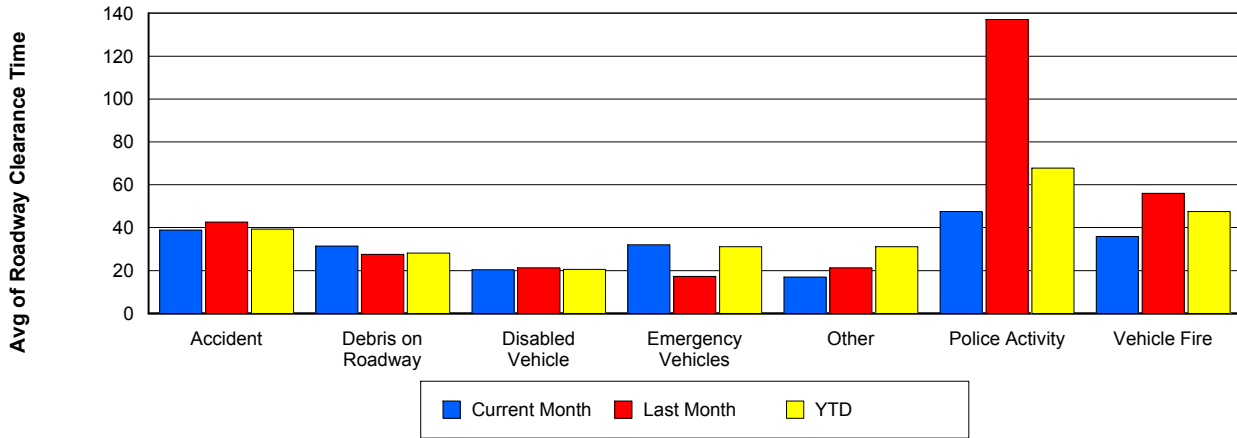
Road Ranger / SIRV Dispatch Time



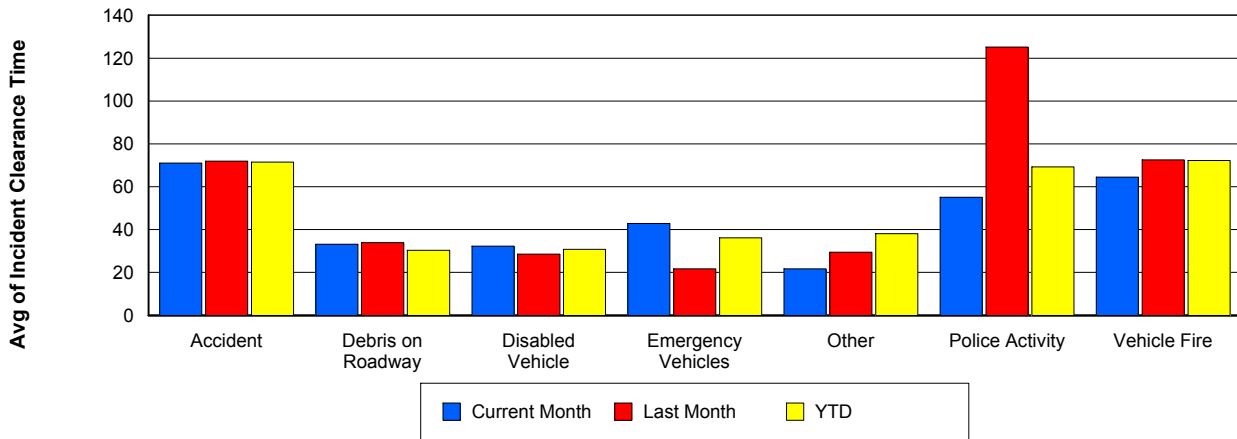
Road Ranger / SIRV Response Time



Roadway Clearance Time (2A)



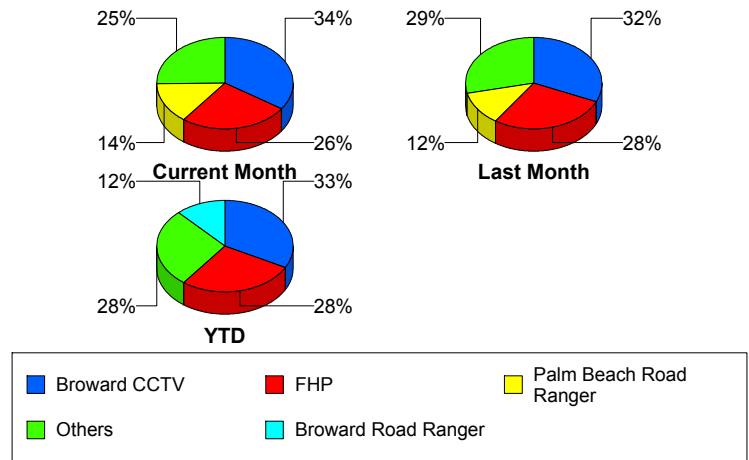
Incident Clearance Time (3B)



Incident Detection Methods

	Current Month	Last Month	YTD
Broward CCTV	102	110	617
Broward Road Ranger	29	38	228
Broward TMC	0	3	12
Broward VideoWall	5	6	30
BSO	3	5	24
County Police	0	0	2
District 4	5	7	48
District 6	0	2	2
FDOT Maintenance	1	1	4
FHP	77	96	524
Fire	0	3	5
Florida's Turnpike	1	4	12
ITMS	0	1	1
ITMS CCTV	23	19	109
Local Police	0	0	1
Media	0	0	2
Motorist	1	5	18
Other	0	0	1
Palm Beach Road Ran	43	42	214
Road Watcher	1	2	10
SIRV	2	0	3
TSS Detection	1	0	1
VisioPaD Detection	3	3	22
Total	297	347	1,890

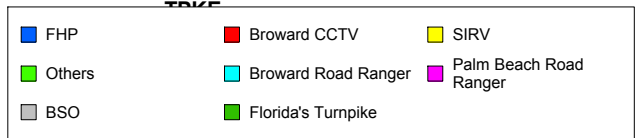
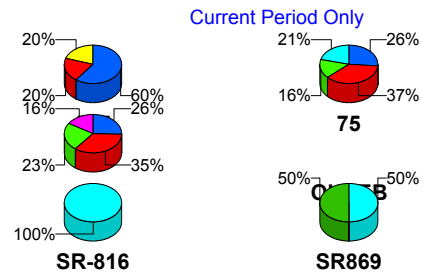
Total Incidents by Detection Method



Incident Detection Methods by Roadway

		Current Month	Last Month	YTD
595	Broward CCTV	1	2	13
	Broward Road Ranger	0	1	7
	BSO	0	0	3
	County Police	0	0	1
	FHP	3	0	9
	SIRV	1	0	1
	VisioPaD Detection	0	0	1
	Total	5	3	35
75	Broward CCTV	7	11	53
	Broward Road Ranger	4	3	19
	BSO	1	5	15
	District 4	0	1	4
	District 6	0	1	1
	FHP	5	3	28
	Fire	0	3	4
	Road Watcher	0	0	1
	VisioPaD Detection	2	1	10
	Total	19	28	135
	95	Broward CCTV	94	97
Broward Road Ranger		22	27	159
Broward TMC		0	3	12
Broward VideoWall		5	6	30
BSO		2	0	4
County Police		0	0	1
District 4		5	5	42
District 6		0	1	1
FDOT Maintenance		1	1	4
FHP		69	93	485
Fire		0	0	1
ITMS		0	1	1
ITMS CCTV		23	19	109

Total Events by Roadway and Detection Method

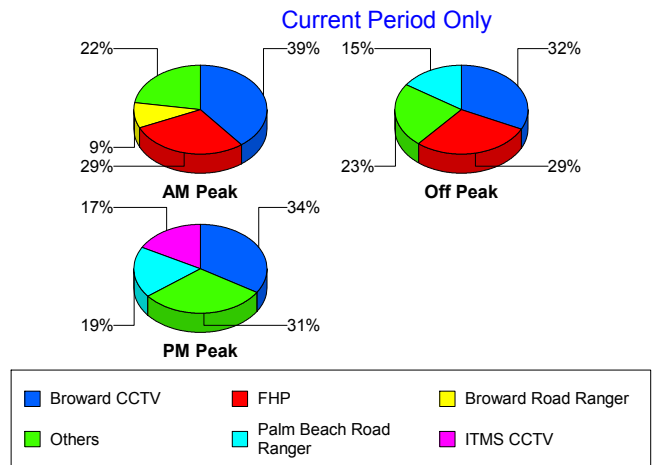


		Current Month	Last Month	YTD
95	Local Police	0	0	1
	Media	0	0	2
	Motorist	1	5	18
	Other	0	0	1
	Palm Beach Road Ran	43	42	214
	Road Watcher	1	2	7
	SIRV	1	0	2
	TSS Detection	1	0	1
	VisioPaD Detection	1	2	11
	Total	269	304	1,657
SR-816	Broward Road Ranger	2	7	41
	BSO	0	0	1
	District 4	0	1	2
	FHP	0	0	1
	Road Watcher	0	0	2
	Total	2	8	47
SR869	Broward Road Ranger	1	0	2
	BSO	0	0	1
	FHP	0	0	1
	Florida's Turnpike	1	1	2
	Total	2	1	6
TPKE	Florida's Turnpike	0	3	10
	Total	0	3	10
Total		297	347	1,890

Incident Detection Methods by Peak Period

		Current Month	Last Month	YTD
AM Peak	Broward CCTV	30	27	132
	Broward Road Ranger	7	14	57
	Broward TMC	0	3	3
	Broward VideoWall	3	2	17
	BSO	1	1	5
	County Police	0	0	1
	District 4	1	2	12
	District 6	0	1	1
	FDOT Maintenance	1	0	1
	FHP	22	16	100
	Fire	0	2	2
	Florida's Turnpike	0	1	2
	ITMS CCTV	3	5	25
	Local Police	0	0	1
	Media	0	0	1
	Motorist	0	0	2
	Palm Beach Road Ran	7	9	57
	Road Watcher	0	1	2
	SIRV	0	0	1
	VisioPaD Detection	1	0	2
Total	76	84	424	
Off Peak	Broward CCTV	52	61	334
	Broward Road Ranger	15	15	100
	Broward TMC	0	0	6
	Broward VideoWall	2	3	10
	BSO	2	2	12
	County Police	0	0	1
	District 4	4	2	24
	District 6	0	1	1
	FDOT Maintenance	0	1	3
	FHP	47	57	287

Total Events by Peak Period and Detection Method

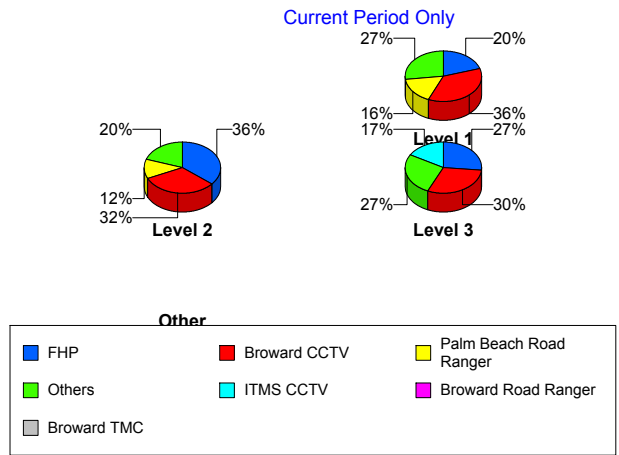


		Current Month	Last Month	YTD
Off Peak	Florida's Turnpike	1	3	9
	ITMS	0	1	1
	ITMS CCTV	10	9	59
	Motorist	1	4	10
	Other	0	0	1
	Palm Beach Road Ran	25	20	107
	Road Watcher	0	0	4
	SIRV	1	0	1
	TSS Detection	1	0	1
	VisioPaD Detection	1	3	13
	Total	162	182	984
PM Peak	Broward CCTV	20	22	151
	Broward Road Ranger	7	9	71
	Broward TMC	0	0	3
	Broward VideoWall	0	1	3
	BSO	0	2	7
	District 4	0	3	12
	FHP	8	23	138
	Fire	0	1	3
	Florida's Turnpike	0	0	1
	ITMS CCTV	10	5	25
	Media	0	0	1
	Motorist	0	1	6
	Palm Beach Road Ran	11	13	50
	Road Watcher	1	1	4
	SIRV	1	0	1
	VisioPaD Detection	1	0	7
	Total	59	81	483
Total		297	347	1,890

Incident Detection Methods by Severity

		Current Month	Last Month	YTD
	FHP	0	0	1
	Total	0	0	1
Level 1	Broward CCTV	62	57	370
	Broward Road Ranger	22	29	166
	Broward TMC	0	3	9
	Broward VideoWall	4	4	19
	BSO	0	2	6
	County Police	0	0	1
	District 4	2	6	30
	District 6	0	1	1
	FDOT Maintenance	1	0	1
	FHP	34	39	225
	Fire	0	2	2
	ITMS CCTV	12	11	56
	Media	0	0	1
	Motorist	0	2	10
	Other	0	0	1
	Palm Beach Road Ran	28	24	141
	Road Watcher	1	2	9
	SIRV	1	0	1
	TSS Detection	1	0	1
	VisioPaD Detection	2	1	11
Total	170	183	1,061	
Level 2	Broward CCTV	31	36	189
	Broward Road Ranger	7	7	52
	Broward TMC	0	0	3
	Broward VideoWall	1	2	11
	BSO	2	0	3
	District 4	2	1	13
	FDOT Maintenance	0	1	3
	FHP	35	40	230

Total Events by Severity and Detection Method



		Current Month	Last Month	YTD
Level 2	Fire	0	0	1
	Florida's Turnpike	0	1	1
	ITMS	0	1	1
	ITMS CCTV	6	7	42
	Local Police	0	0	1
	Motorist	1	3	8
	Palm Beach Road Ran	12	16	58
	Road Watcher	0	0	1
	SIRV	0	0	1
	VisioPaD Detection	0	2	8
	Total	97	117	626
Level 3	Broward CCTV	9	17	58
	Broward Road Ranger	0	2	10
	BSO	1	3	15
	County Police	0	0	1
	District 4	1	0	5
	District 6	0	1	1
	FHP	8	17	69
	Fire	0	1	2
	Florida's Turnpike	1	3	11
	ITMS CCTV	5	1	11
	Media	0	0	1
	Palm Beach Road Ran	3	2	15
	SIRV	1	0	1
	VisioPaD Detection	1	0	3
	Total	30	47	203
Total		297	347	1,890

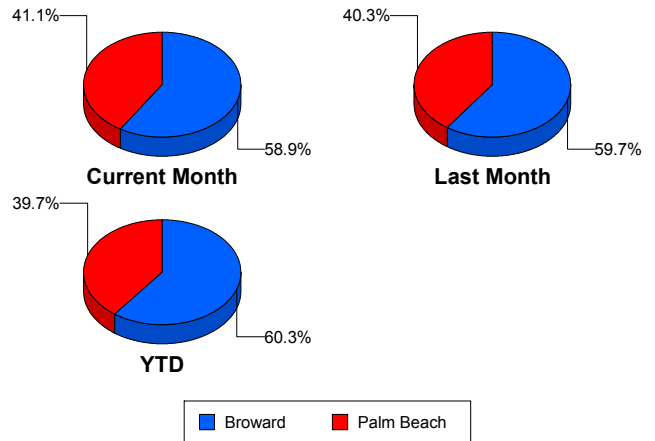
Road Ranger / SIRV Performance Measures

Road Ranger / SIRV Performance By County

Values presented are:
 - Total Events with a RR/SIRV Response
 - Total RR/SIRV Responses,
 - Total Activities Performed

	Current Mo	Last Month	YTD
Broward	4,193	4,243	23,809
	4,456	4,557	25,454
	4,598	4,767	26,430
Palm Beach	3,011	2,986	16,241
	3,112	3,077	16,764
	3,342	3,290	17,866

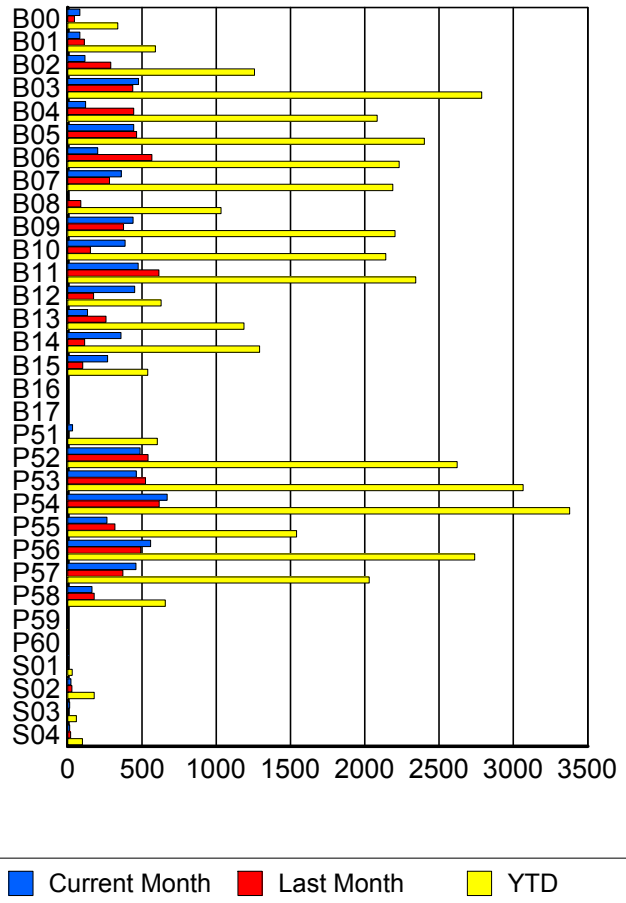
RR/SIRV Responses per County



Road Ranger / SIRV Performance By Truck

	Current Mo	Last Month	YTD
B00	82	45	333
	82	46	338
	88	50	359
B01	81	111	580
	82	112	590
	86	123	611
B02	115	287	1,241
	116	291	1,258
	117	301	1,284
B03	472	435	2,763
	477	438	2,786
	494	461	2,912
B04	119	440	2,053
	122	445	2,083
	127	467	2,170
B05	442	464	2,385
	444	464	2,400
	457	477	2,479
B06	201	558	2,203
	203	567	2,232
	212	600	2,328
B07	359	282	2,162
	361	282	2,188
	367	290	2,267
B08	7	88	1,017
	7	89	1,033
	7	92	1,071

RR/SIRV Responses per Truck



	Current Mo	Last Month	YTD
B09	439	372	2,182
	441	376	2,204
	455	396	2,297
B10	384	150	2,112
	387	154	2,141
	395	160	2,205
B11	463	607	2,311
	476	614	2,342
	493	641	2,429
B12	449	171	623
	452	174	629
	469	185	657
B13	134	257	1,176
	134	259	1,187
	138	265	1,215
B14	354	112	1,275
	359	114	1,293
	368	117	1,336
B15	266	100	534
	270	101	540
	279	106	564
B16	0	0	1
	0	0	1
	0	0	1
B17	1	0	1
	1	0	1
	1	0	1
P51	33	3	594
	33	3	604
	35	3	638
P52	480	536	2,590
	487	541	2,622
	524	575	2,793
P53	461	519	3,034
	462	525	3,065
	491	560	3,261
P54	665	609	3,337
	670	616	3,379
	711	655	3,588
P55	263	319	1,530
	264	319	1,540
	298	337	1,633
P56	551	487	2,706
	558	491	2,739
	598	529	2,925

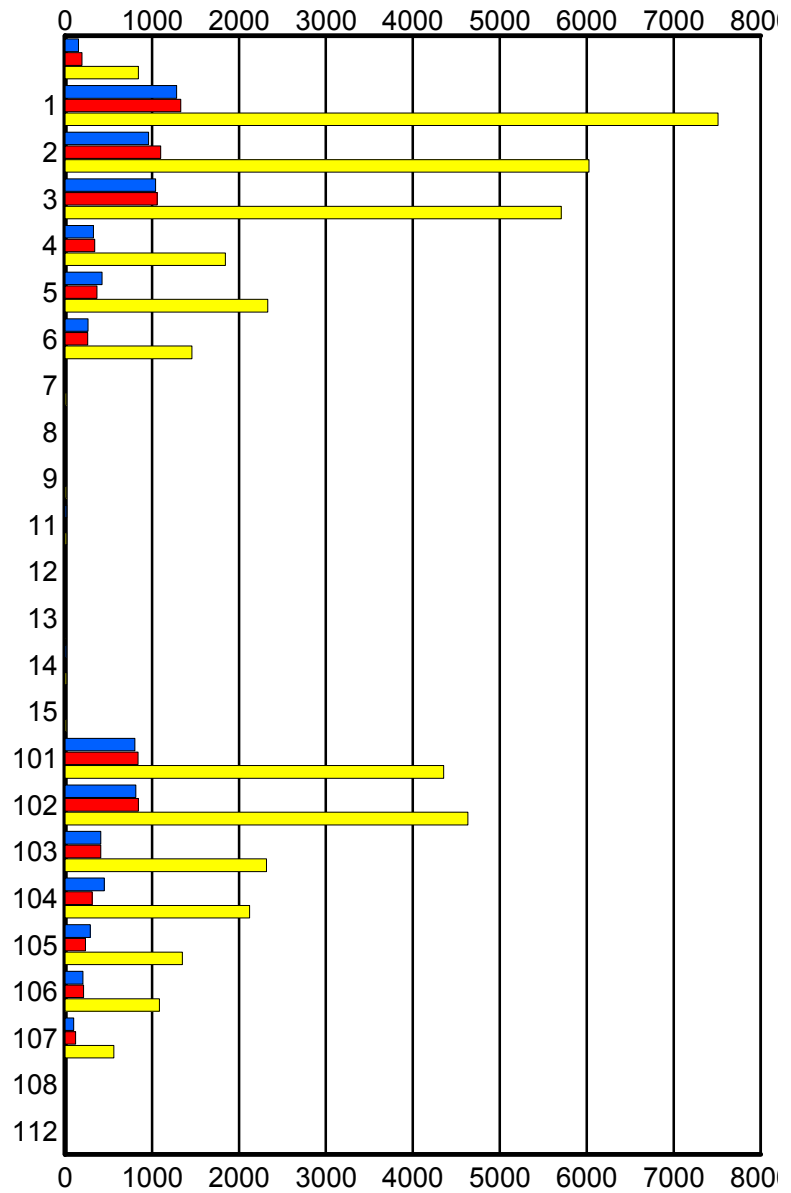
	Current Mo	Last Month	YTD
P57	454	369	2,007
	459	371	2,030
	498	410	2,175
P58	164	177	652
	165	179	658
	172	189	695
P59	1	1	3
	1	1	3
	1	1	3
P60	0	0	1
	0	0	1
	0	0	1
S01	6	4	31
	6	4	31
	7	4	34
S02	21	29	174
	22	29	180
	23	31	194
S03	14	8	55
	14	8	58
	16	9	64
S04	12	21	97
	13	21	99
	13	23	106

Road Ranger / SIRV Performance By Beat

	Current Mo	Last Month	YTD
	151	191	822
	154	193	845
	160	202	892
1	1,233	1,271	7,181
	1,283	1,329	7,511
	1,321	1,388	7,798
2	927	1,071	5,843
	962	1,101	6,024
	998	1,156	6,274
3	1,029	1,042	5,589
	1,042	1,059	5,707
	1,072	1,108	5,928
4	318	336	1,808
	325	342	1,844
	331	357	1,904
5	422	359	2,309
	426	366	2,331
	434	383	2,393
6	259	254	1,427
	266	261	1,458
	285	270	1,511
7	0	0	16
	0	0	17
	0	0	18
8	0	9	9
	0	9	9
	0	9	9
9	0	0	17
	0	0	17
	0	0	17
11	18	0	20
	18	0	20
	18	0	20
12	0	0	2
	0	0	2
	0	0	2
13	0	0	8
	0	0	8
	0	0	8
14	15	0	19
	15	0	19
	16	0	20
15	0	0	14
	0	0	14
	0	0	14

Values presented are:
 - Total Events with a RR/SIRV Response
 - Total RR/SIRV Responses,
 - Total Activities Performed

RR/SIRV Responses per Beat



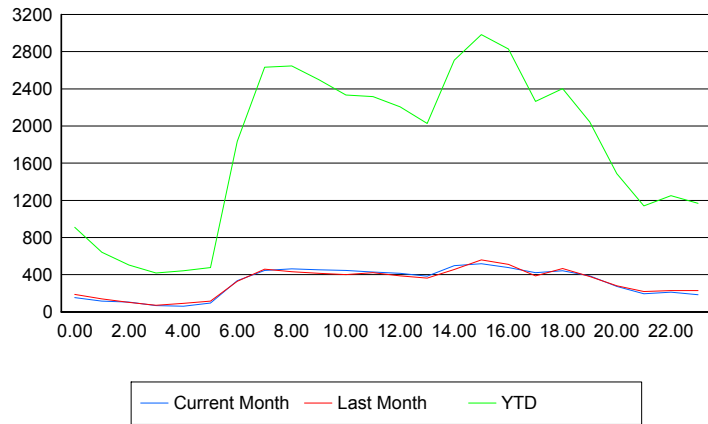
	Current Mo	Last Month	YTD
101	792 804 873	827 839 893	4,283 4,355 4,634
102	808 815 879	839 844 904	4,572 4,633 4,926
103	408 412 436	404 411 438	2,287 2,316 2,449
104	448 451 486	310 312 331	2,103 2,124 2,274
105	290 290 301	233 236 262	1,340 1,348 1,442
106	205 207 225	211 212 227	1,074 1,084 1,153
107	98 98 105	120 120 129	561 563 603
108	0 0 0	0 0 0	3 4 4
112	0 0 0	0 0 0	2 2 3

Road Ranger / SIRV Performance By Time of Day

Values presented are:
 - Total Events with a RR/SIRV Response
 - Total RR/SIRV Responses,
 - Total Activities Performed

	Current Mo	Last Month	YTD
12AM-1AM	148	174	874
	152	187	911
	160	198	965
1AM-2AM	113	127	614
	116	139	641
	121	143	664
2AM-3AM	103	92	471
	106	102	505
	113	114	537
3AM-4AM	63	69	395
	66	72	417
	70	75	445
4AM-5AM	49	77	390
	60	93	441
	66	95	467
5AM-6AM	82	102	407
	94	117	478
	97	119	493
6AM-7AM	316	311	1,729
	334	327	1,836
	346	338	1,909
7AM-8AM	417	436	2,499
	446	461	2,632
	462	488	2,752
8AM-9AM	431	394	2,475
	464	431	2,647
	486	461	2,767
9AM-10AM	427	396	2,396
	451	413	2,500
	466	429	2,621
10AM-11AM	420	382	2,224
	444	402	2,335
	466	414	2,447
11AM-12PM	410	393	2,204
	428	420	2,317
	448	441	2,429
12PM-1PM	388	373	2,085
	414	387	2,207
	430	406	2,302

Number of Responses / Hour of the Day



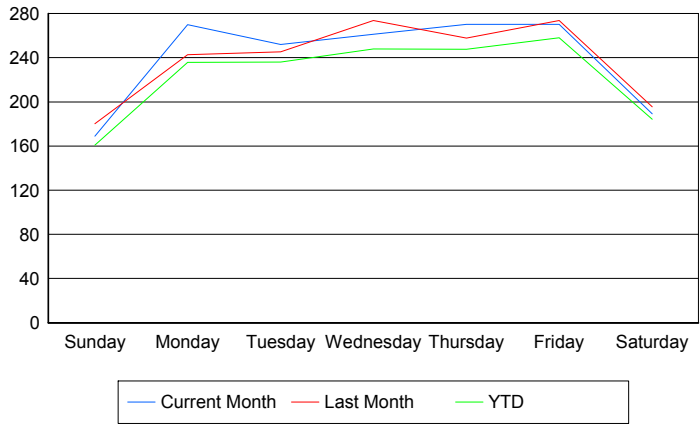
	Current Mo	Last Month	YTD
1PM-2PM	356	345	1,900
	385	363	2,028
	403	377	2,113
2PM-3PM	476	430	2,552
	498	457	2,708
	519	493	2,869
3PM-4PM	506	534	2,869
	519	558	2,983
	547	586	3,130
4PM-5PM	456	483	2,670
	476	512	2,829
	506	547	2,985
5PM-6PM	398	370	2,144
	420	388	2,266
	450	413	2,384
6PM-7PM	427	451	2,318
	442	466	2,402
	459	498	2,515
7PM-8PM	380	370	1,984
	387	380	2,043
	413	395	2,144
8PM-9PM	266	265	1,421
	274	282	1,486
	296	293	1,555
9PM-10PM	188	212	1,092
	196	219	1,141
	203	241	1,211
10PM-11PM	205	221	1,206
	211	230	1,251
	216	245	1,331
11PM-12AM	179	222	1,131
	185	228	1,167
	197	248	1,261

Road Ranger / SIRV Performance By Day of Week

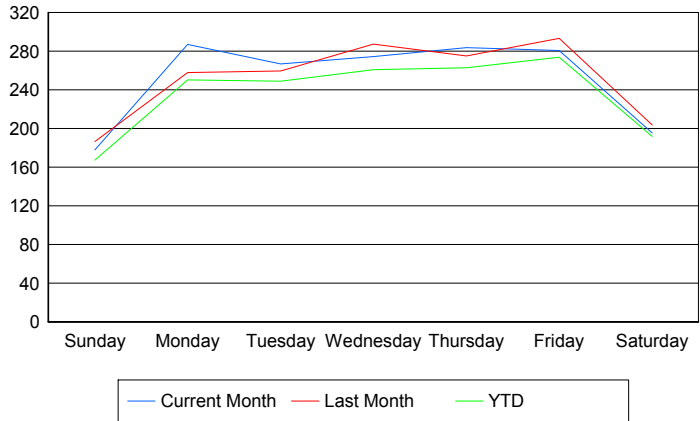
Values presented are:
 - Total Events with a RR/SIRV Response
 - Total RR/SIRV Responses,
 - Total Activities Performed

	Current Mo	Last Month	YTD
Sunday	674	895	4,116
	710	926	4,277
	743	976	4,479
Monday	1,072	1,182	6,015
	1,138	1,254	6,357
	1,186	1,323	6,660
Tuesday	1,252	979	6,100
	1,324	1,036	6,359
	1,388	1,081	6,723
Wednesday	1,300	1,088	6,364
	1,364	1,143	6,636
	1,437	1,214	7,053
Thursday	1,082	1,025	6,139
	1,137	1,093	6,457
	1,198	1,149	6,852
Friday	1,080	1,091	6,614
	1,122	1,169	6,942
	1,172	1,239	7,332
Saturday	749	972	4,735
	773	1,013	4,925
	816	1,075	5,197

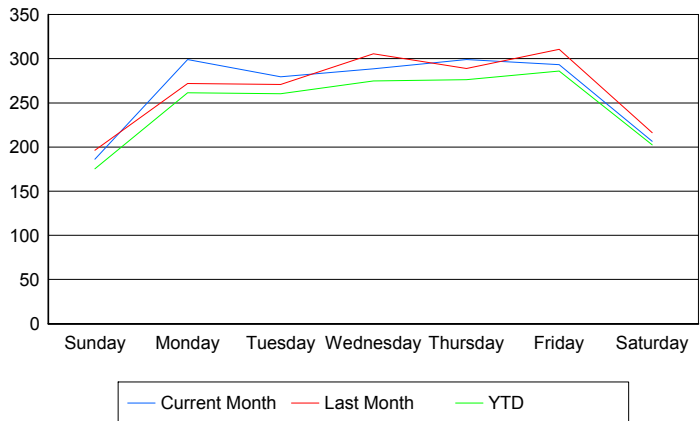
Avg # of events with a RR/SIRV Response per Day of the Week



Avg # of RR/SIRV Responses per Day of the Week



Avg # of RR/SIRV Activities Performed per Day of the Week



Road Ranger / SIRV Responses per Time of Day and Day of Week

