



Monthly Performance Measures Report Broward, Palm Beach Counties



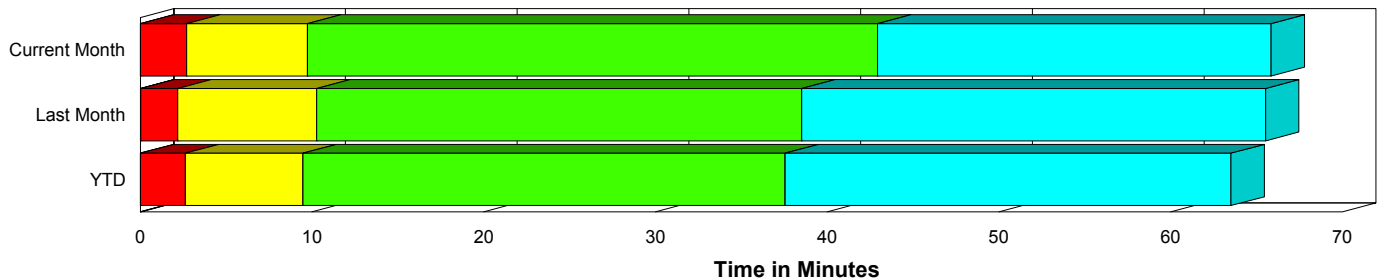
Created on:
June 01, 2010
10:18 am

Period From May 1, 2010 to May 31, 2010

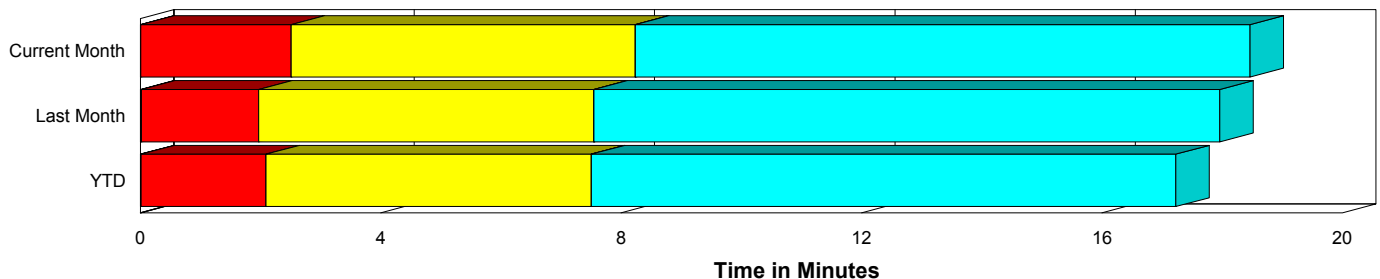
Performance Measures Summary

	Traffic Events (No Lanes Blocked)			Incidents (Lanes Blocked)		
	<u>This Month</u>	<u>Last Month</u>	<u>YTD</u>	<u>This Month</u>	<u>Last Month</u>	<u>YTD</u>
Number of Events	8,053	7,787	37,520	349	340	1,615
TMC Detection (min.)	0.01	0.02	0.02	0.00	0.04	0.01
TMC Verification (min.)	2.51	1.95	2.08	2.69	2.14	2.62
TMC Response (min.)	9.34	8.37	8.47	9.88	10.33	9.60
RR Dispatch Time (min.)	2.04	1.82	1.77	2.29	2.16	2.03
RR Response Time (min.)	7.26	6.68	6.73	7.68	8.19	7.61
Roadway Clearance (min.)				42.05	37.80	36.96
Event Clearance (min.)	19.58	18.80	18.21	63.64	64.40	62.57
# of Events w/ RR/SIRV	7,058	6,675	31,944	336	330	1,567
RR/SIRV Responses	7,058	6,675	31,944	336	330	1,567
RR/SIRV Activities	6,021	5,762	27,104	588	566	2,697

Incident Clearance Time-Line



Traffic Event (Non-Lane Blockage) Time-Line



<ul style="list-style-type: none"> ■ Avg. TMC Detection Time ■ Avg. Time from TMC Detection to TMC Verification ■ Avg. Time from TMC Verification to TMC Response 	<ul style="list-style-type: none"> ■ Avg. Time from TMC Response to Roadway Clearance* ■ Avg. Time from Roadway Clearance to Incident/Event Clearance**
---	--

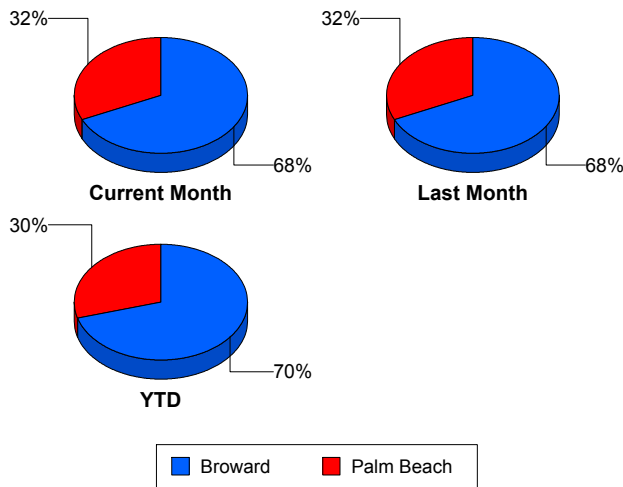
* Roadway clearance equals all travel lanes open

** Incident clearance equals time when last responder has left the scene

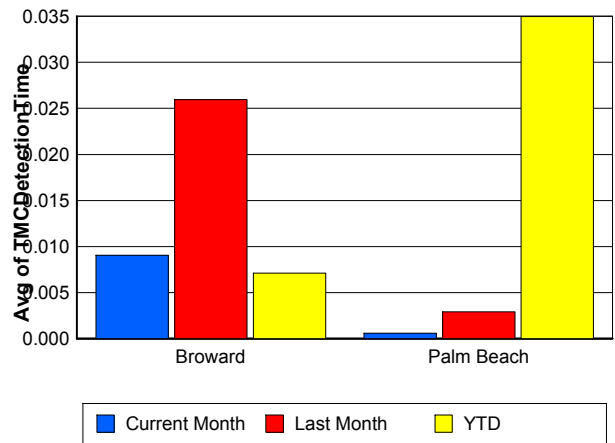
Performance Measures by County

	Broward			Palm Beach		
	<u>Current Month</u>	<u>Last Month</u>	<u>YTD</u>	<u>Current Month</u>	<u>Last Month</u>	<u>YTD</u>
Number of Events	5,724	5,522	27,588	2,678	2,605	11,547
Number of Incidents	219	220	1,066	130	120	549
TMC Detection (min.)	0.01	0.03	0.01	0.00	0.00	0.03
TMC Verification (min.)	1.24	1.22	1.18	5.24	3.52	4.30
TMC Response (min.)	9.46	9.36	9.19	9.24	7.13	7.48
RR Dispatch Time (min.)	1.40	1.42	1.40	3.35	2.66	2.59
RR Response Time (min.)	8.14	8.10	7.90	5.99	4.74	4.99
Event Clearance (min.)	20.94	20.44	19.48	22.38	21.26	21.36
Roadway Clearance (min.)	39.58	36.18	34.28	46.22	40.77	42.15
Incident Clearance (min.)	62.64	64.28	61.66	65.31	64.64	63.90
# of Events w/ RR/SIRV	4,910	4,626	22,741	2,484	2,379	10,770
RR/SIRV Responses	4,910	4,626	22,741	2,484	2,379	10,770
RR/SIRV Activities	3,984	3,837	18,469	2,625	2,491	11,332

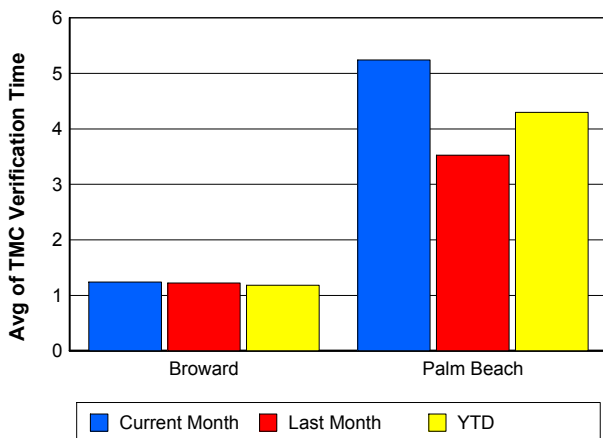
Number of Events / County



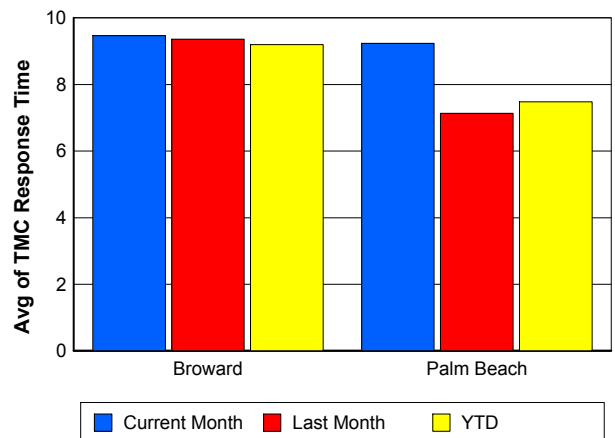
TMC Detection Time



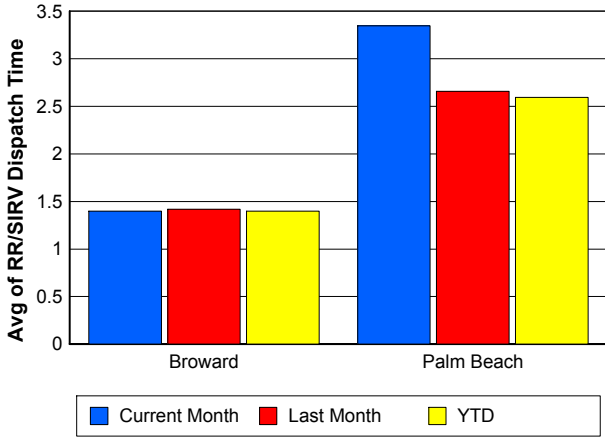
TMC Verification Time



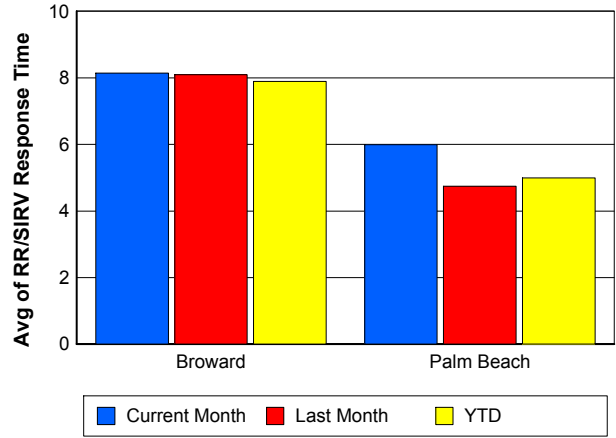
TMC Response Time



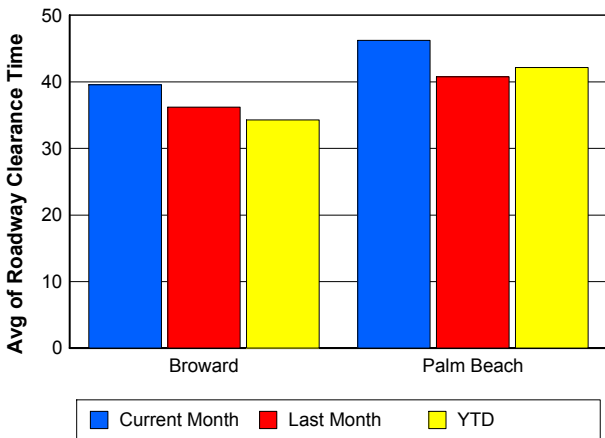
Road Ranger / SIRV Dispatch Time



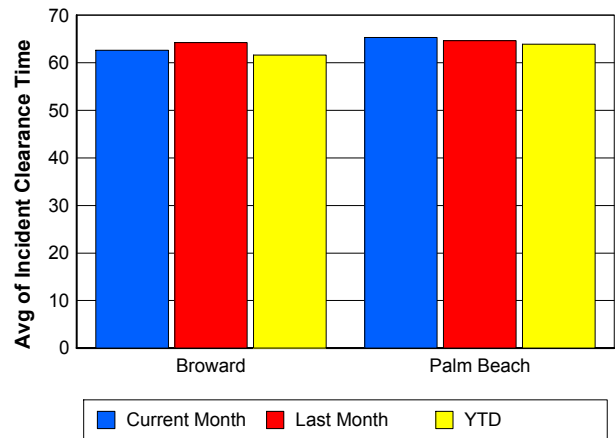
Road Ranger / SIRV Response Time



Roadway Clearance Time (2A)



Incident Clearance Time (3B)

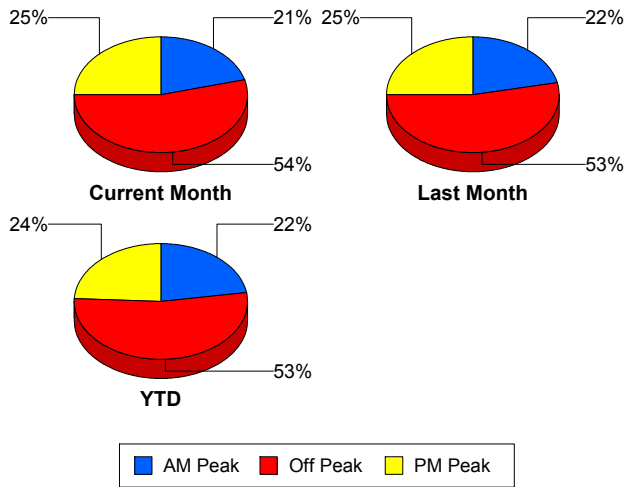


Performance Measures by Peak Period

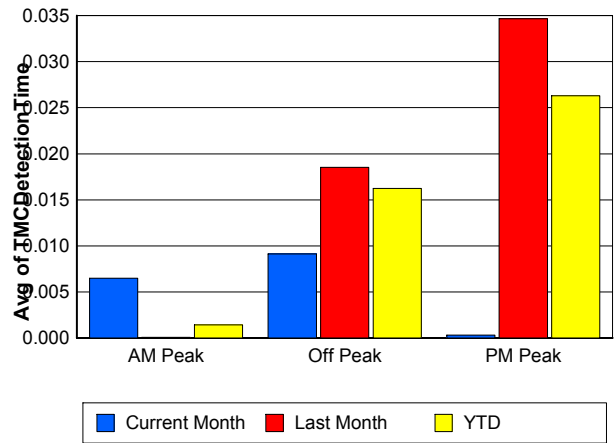
Note: AM peak period is defined as 6am to 10am and PM peak period is defined as 3pm to 7pm.

	AM Peak			Off Peak			PM Peak		
	<u>Current Month</u>	<u>Last Month</u>	<u>YTD</u>	<u>Current Month</u>	<u>Last Month</u>	<u>YTD</u>	<u>Current Month</u>	<u>Last Month</u>	<u>YTD</u>
Number of Events	1,748	1,767	8,804	4,544	4,321	20,884	2,110	2,039	9,447
Number of Incidents	85	82	350	182	173	837	82	85	428
TMC Detection (min.)	0.01	0.00	0.00	0.01	0.02	0.02	0.00	0.03	0.03
TMC Verification (min.)	1.76	1.16	1.33	2.63	2.11	2.21	2.90	2.33	2.59
TMC Response (min.)	9.15	8.13	8.00	9.69	8.78	8.93	8.92	8.18	8.23
RR Dispatch Time (min.)	1.84	1.39	1.33	2.13	1.91	1.90	2.08	2.07	1.96
RR Response Time (min.)	7.13	6.89	6.69	7.51	6.98	7.04	6.93	6.25	6.35
Event Clearance (min.)	21.01	19.56	18.74	21.66	21.21	20.43	21.17	20.64	20.37
Roadway Clearance (min.)	35.49	34.44	33.18	50.85	40.60	42.47	29.34	35.35	29.26
Incident Clearance (min.)	49.90	56.48	57.32	71.90	68.01	66.86	59.37	64.72	57.91
# of Events w/ RR/SIRV	1,589	1,553	7,701	3,946	3,651	17,575	1,859	1,801	8,235
RR/SIRV Responses	1,589	1,553	7,701	3,946	3,651	17,575	1,859	1,801	8,235
RR/SIRV Activities	1,413	1,405	6,712	3,476	3,257	15,482	1,720	1,666	7,607

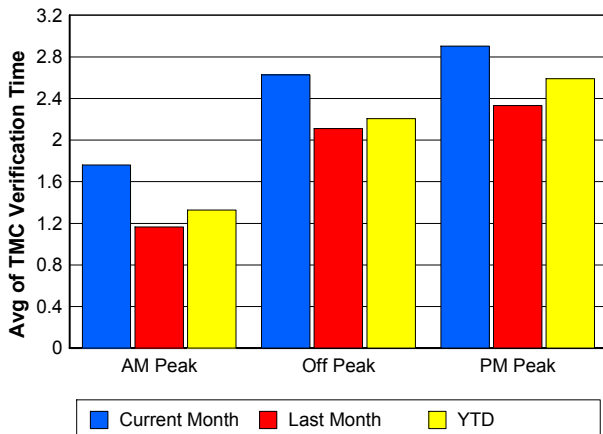
Number of Events / Peak Period



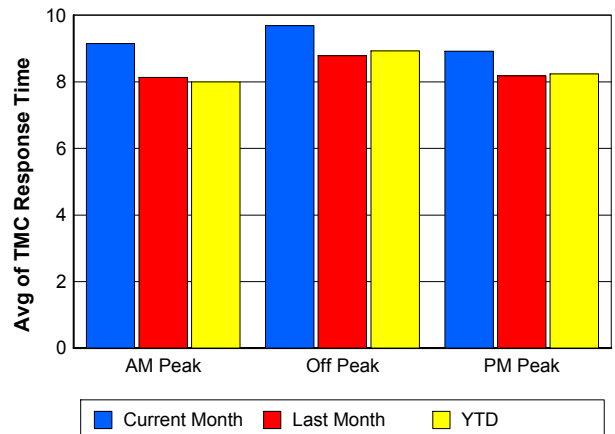
TMC Detection Time



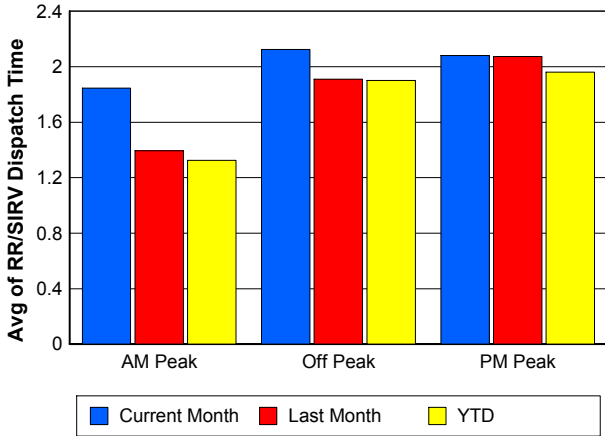
TMC Verification Time



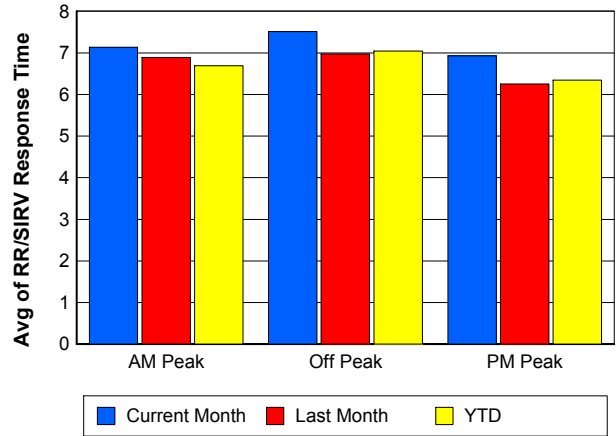
TMC Response Time



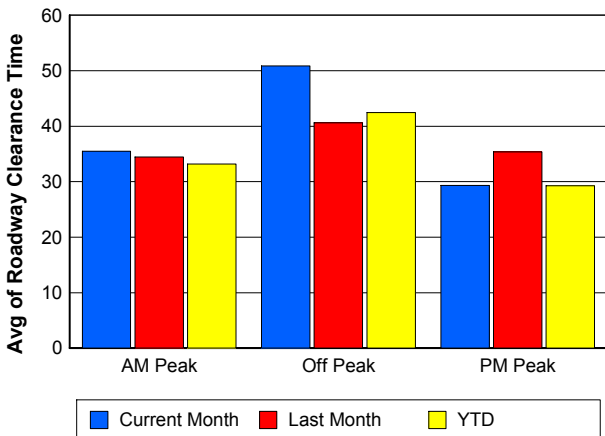
Road Ranger / SIRV Dispatch Time



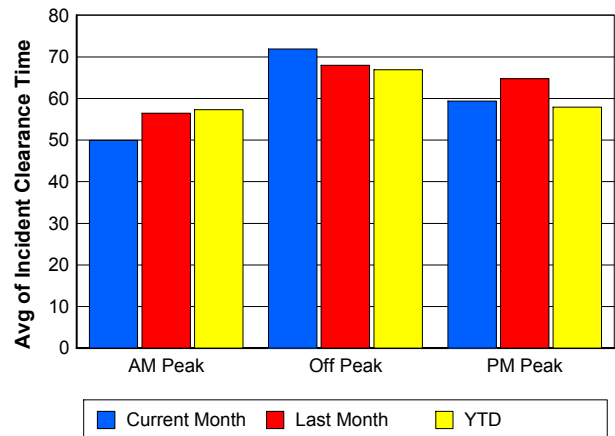
Road Ranger / SIRV Response Time



Roadway Clearance Time (2A)



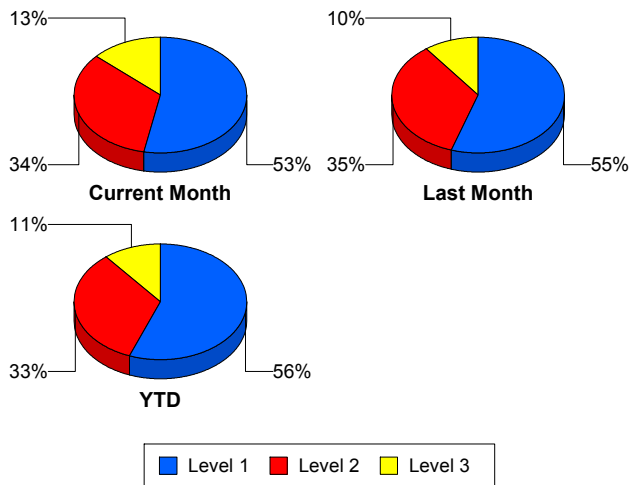
Incident Clearance Time (3B)



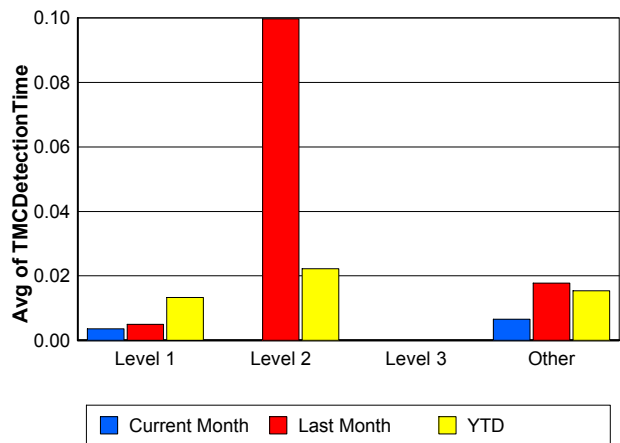
Performance Measures by Severity

	Level 1			Level 2			Level 3			Other		
	<u>This Month</u>	<u>Last Month</u>	<u>YTD</u>	<u>This Month</u>	<u>Last Month</u>	<u>YTD</u>	<u>This Month</u>	<u>Last Month</u>	<u>YTD</u>	<u>This Month</u>	<u>Last Month</u>	<u>YTD</u>
Number of Events	185	187	901	117	118	536	47	35	176	8,053	7,787	37,522
Number of Incidents	185	187	901	117	118	536	47	35	176	0	0	2
TMC Detection (min.)	0.00	0.00	0.01	0.00	0.10	0.02	0.00	0.00	0.00	0.01	0.02	0.02
TMC Verification (min.)	1.93	1.10	1.43	3.94	3.39	4.41	2.60	3.54	3.23	2.51	1.95	2.08
TMC Response (min.)	7.80	7.74	7.42	11.28	12.76	12.13	14.73	15.94	13.02	9.34	8.37	8.47
RR Dispatch Time (min.)	1.79	1.36	1.41	2.10	2.50	2.61	5.07	5.35	3.55	2.04	1.82	1.77
RR Resp. Time (min.)	6.07	6.43	6.05	9.38	10.26	9.59	9.65	10.59	9.47	7.26	6.68	6.73
Event Clearance (min.)	41.71	47.25	45.52	72.74	76.20	74.15	126.83	116.30	114.20	19.58	18.80	18.21
Roadway Clear. (min.)	15.32	15.80	15.14	53.15	53.33	53.04	119.65	103.02	100.31			-21.46
Incident Clearance (min.)	41.71	47.25	45.52	72.74	76.20	74.15	126.83	116.30	113.88			0.00
# of Events w/ RR/SIRV	179	183	880	117	114	529	40	33	156	7,058	6,675	31,946
RR/SIRV Responses	179	183	880	117	114	529	40	33	156	7,058	6,675	31,946
RR/SIRV Activities	258	277	1,305	221	212	1,001	109	77	386	6,021	5,762	27,109

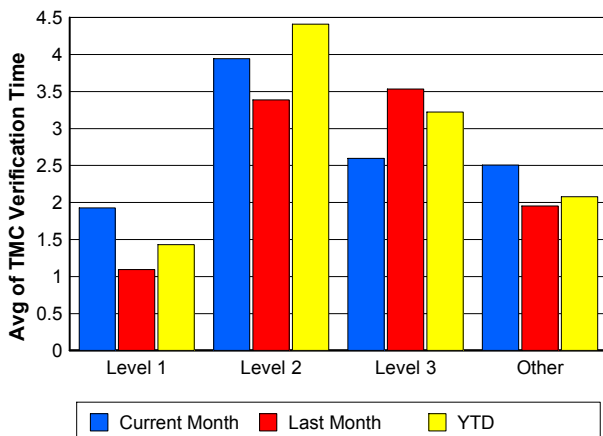
Number of Events / Severity



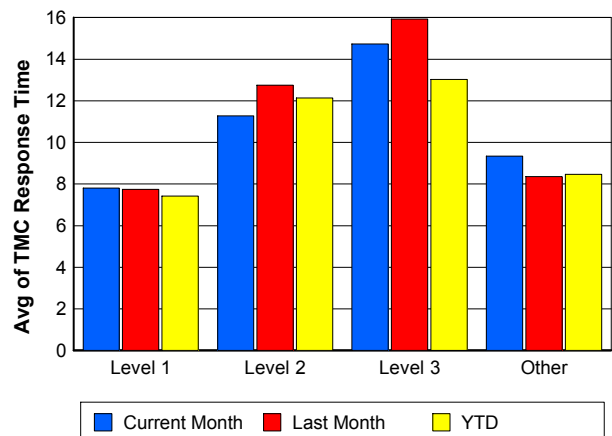
TMC Detection Time



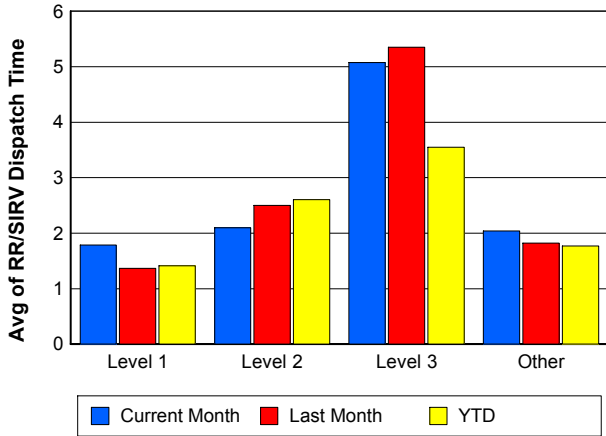
TMC Verification Time



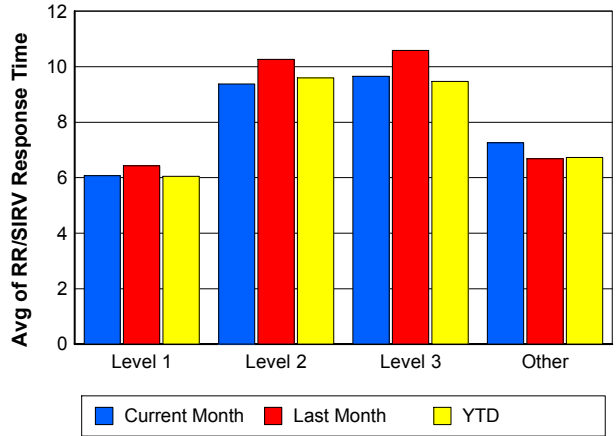
TMC Response Time



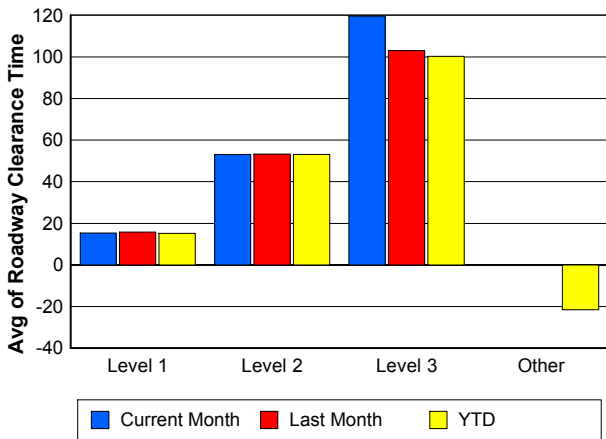
Road Ranger / SIRV Dispatch Time



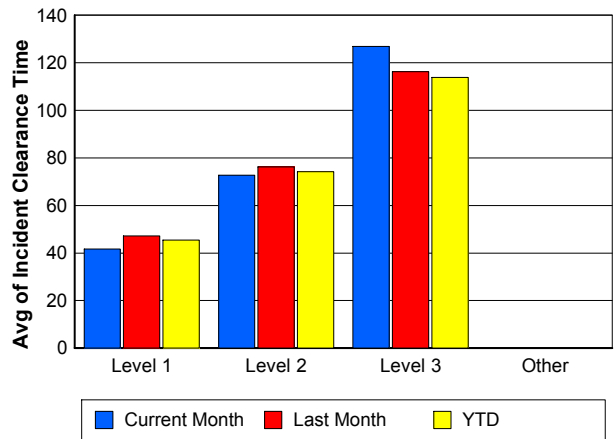
Road Ranger / SIRV Response Time



Roadway Clearance Time (2A)



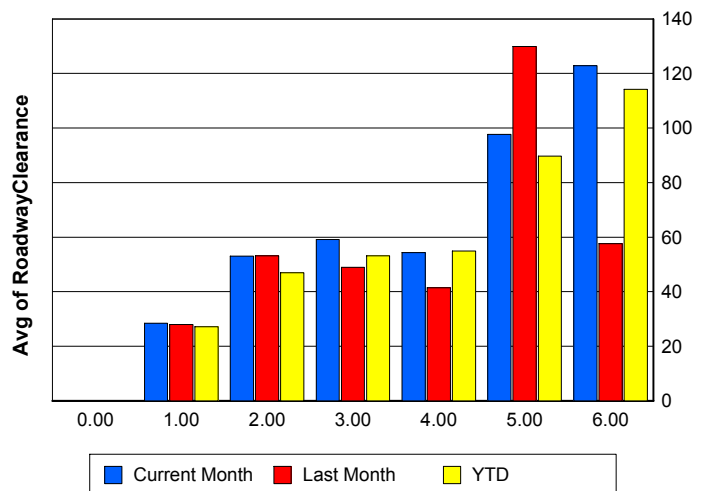
Incident Clearance Time (3B)



Roadway Clearance by Maximum Number of Lanes Blocked

	Current Month	Last Month	YTD
0			
1	28.49	28.00	27.16
2	53.09	53.20	46.91
3	59.16	48.94	53.12
4	54.32	41.43	54.89
5	97.62	129.84	89.70
6	122.85	57.56	114.15

Roadway Clearance Time (2A)



Performance Measures by Roadway

595

	<u>Current Month</u>	<u>Last Month</u>	<u>YTD</u>
Number of Events	160	164	929
Number of Incidents	5	8	46
TMC Detection (min.)	0.00	0.00	0.00
TMC Verification (min.)	1.95	1.99	1.76
TMC Response (min.)	18.14	14.92	15.20
RR Dispatch Time (min.)	2.39	1.82	2.09
RR Resp. Time (min.)	16.11	12.91	13.16
Event Clearance (min.)	20.02	18.53	19.86
Roadway Clear. (min.)	67.02	36.61	51.18
Incident Clearance (min.)	82.46	46.07	68.57
# of Events w/ RR/SIRV	121	124	674
RR/SIRV Responses	121	124	674
RR/SIRV Activities	73	71	448

75

	<u>Current Month</u>	<u>Last Month</u>	<u>YTD</u>
Number of Events	1,135	1,220	5,961
Number of Incidents	28	27	116
TMC Detection (min.)	0.00	0.10	0.02
TMC Verification (min.)	2.57	2.43	2.13
TMC Response (min.)	10.86	10.34	10.24
RR Dispatch Time (min.)	1.55	1.55	1.52
RR Resp. Time (min.)	9.45	8.84	8.84
Event Clearance (min.)	23.03	21.35	20.34
Roadway Clear. (min.)	78.56	59.34	53.79
Incident Clearance (min.)	90.73	98.62	86.56
# of Events w/ RR/SIRV	955	1,020	4,762
RR/SIRV Responses	955	1,020	4,762
RR/SIRV Activities	826	875	3,962

95

	<u>Current Month</u>	<u>Last Month</u>	<u>YTD</u>
Number of Events	7,036	6,685	31,909
Number of Incidents	304	297	1,393
TMC Detection (min.)	0.01	0.00	0.02
TMC Verification (min.)	2.54	1.88	2.11
TMC Response (min.)	9.06	8.09	8.17
RR Dispatch Time (min.)	2.13	1.90	1.83
RR Resp. Time (min.)	6.86	6.33	6.35
Event Clearance (min.)	21.17	20.65	20.00
Roadway Clear. (min.)	38.90	36.09	35.54
Incident Clearance (min.)	62.15	62.67	61.55
# of Events w/ RR/SIRV	6,257	5,810	27,798
RR/SIRV Responses	6,257	5,810	27,798
RR/SIRV Activities	5,651	5,332	25,123

OKEEB

	<u>YTD</u>
Number of Events	1
Number of Incidents	0
TMC Detection (min.)	0.00
TMC Verification (min.)	0.00
TMC Response (min.)	0.00
RR Dispatch Time (min.)	0.00
RR Resp. Time (min.)	0.00
Event Clearance (min.)	18.45
Roadway Clear. (min.)	
Incident Clearance (min.)	
# of Events w/ RR/SIRV	1
RR/SIRV Responses	1
RR/SIRV Activities	1

SR-816

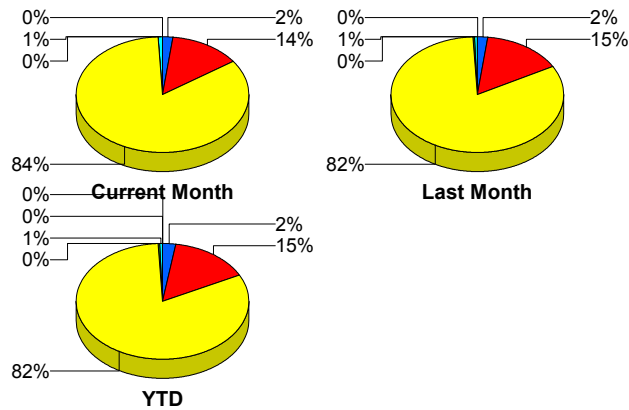
	<u>Current Month</u>	<u>Last Month</u>	<u>YTD</u>
Number of Events	12	15	67
Number of Incidents	8	7	45
TMC Detection (min.)	0.00	0.00	0.00
TMC Verification (min.)	0.67	2.85	1.15
TMC Response (min.)	0.89	3.78	1.70
RR Dispatch Time (min.)	0.17	0.30	0.15
RR Resp. Time (min.)	0.82	3.48	1.57
Event Clearance (min.)	9.31	13.73	16.65
Roadway Clear. (min.)	7.71	21.10	16.91
Incident Clearance (min.)	12.01	23.05	20.11
# of Events w/ RR/SIRV	10	12	61
RR/SIRV Responses	10	12	61
RR/SIRV Activities	9	14	66

SR869

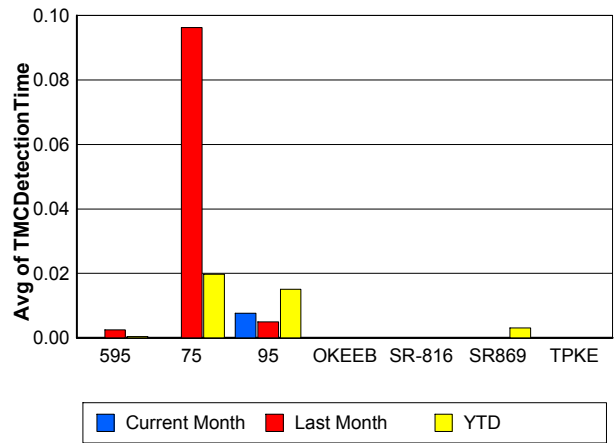
	<u>Current Month</u>	<u>Last Month</u>	<u>YTD</u>
Number of Events	56	42	258
Number of Incidents	1	0	5
TMC Detection (min.)	0.00	0.00	0.00
TMC Verification (min.)	0.24	1.25	1.13
TMC Response (min.)	8.30	7.90	8.48
RR Dispatch Time (min.)	1.19	0.79	1.02
RR Resp. Time (min.)	7.15	7.29	7.66
Event Clearance (min.)	21.54	20.73	18.32
Roadway Clear. (min.)	34.38		44.50
Incident Clearance (min.)	38.38		70.11
# of Events w/ RR/SIRV	51	39	215
RR/SIRV Responses	51	39	215
RR/SIRV Activities	50	36	201

	<u>Current Month</u>	<u>Last Month</u>	<u>YTD</u>
Number of Events	3	1	10
Number of Incidents	3	1	10
TMC Detection (min.)	0.00	0.00	0.00
TMC Verification (min.)	0.00	0.00	0.00
TMC Response (min.)			
RR Dispatch Time (min.)			
RR Resp. Time (min.)			
Event Clearance (min.)	76.01	92.35	62.29
Roadway Clear. (min.)	73.63	90.48	59.66
Incident Clearance (min.)	76.01	92.35	62.29
# of Events w/ RR/SIRV	0	0	0
RR/SIRV Responses	0	0	0
RR/SIRV Activities	0	0	0

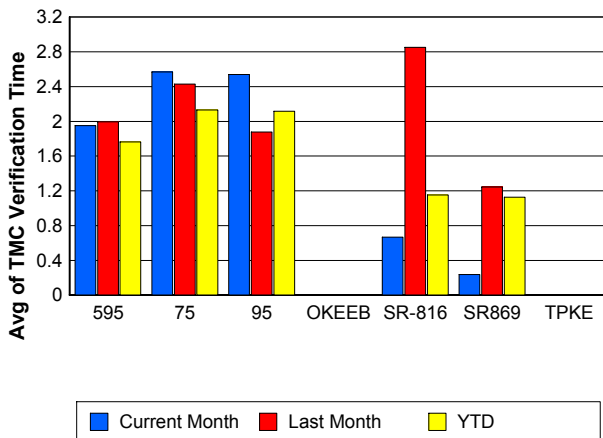
Number of Events / Roadway



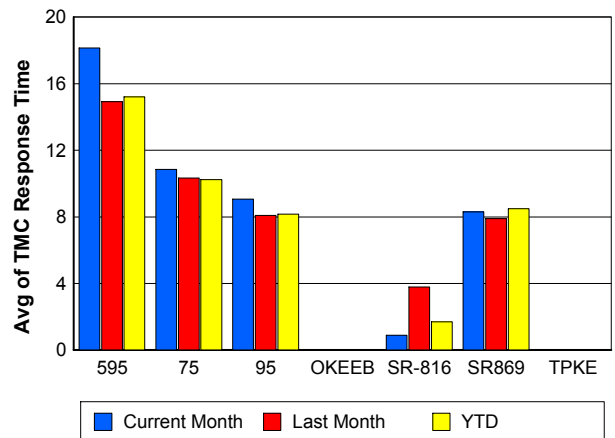
TMC Detection Time



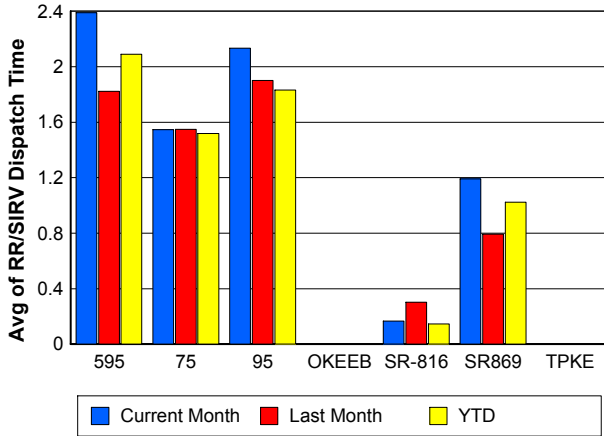
TMC Verification Time



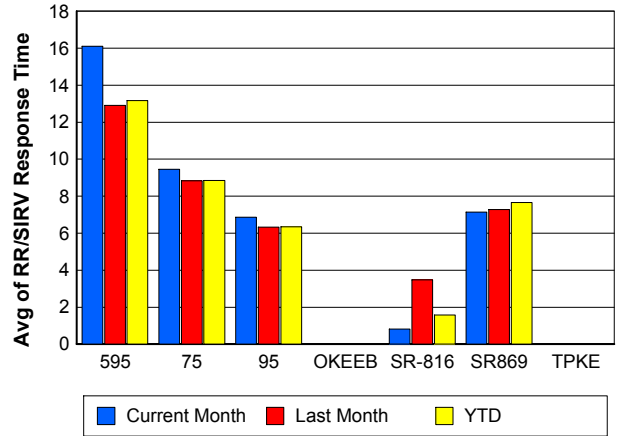
TMC Response Time



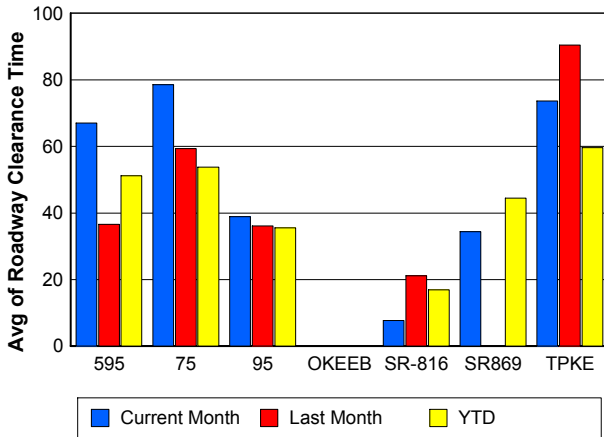
Road Ranger / SIRV Dispatch Time



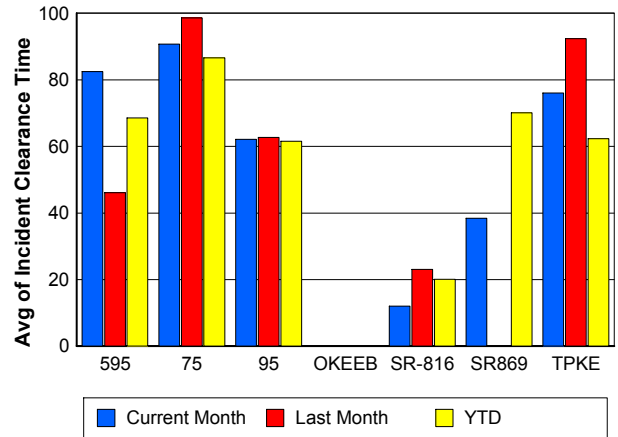
Road Ranger / SIRV Response Time



Roadway Clearance Time (2A)



Incident Clearance Time (3B)



Performance Measures by Event Type

Accident

	<u>Current Month</u>	<u>Last Month</u>	<u>YTD</u>
Number of Events	500	495	2,458
Number of Incidents	234	238	1,137
TMC Detection (min.)	0.00	0.01	0.02
TMC Verification (min.)	4.23	3.07	3.52
TMC Response (min.)	10.79	11.38	10.24
RR Dispatch Time (min.)	2.12	1.95	1.88
RR Response Time (min.)	8.64	9.47	8.37
Event Clearance (min.)	61.72	60.23	57.70
Roadway Clearance (min.)	42.59	40.65	39.35
Incident Clearance (min.)	72.01	74.26	71.55
# of Events w/ RR/SIRV	490	487	2,416
RR/SIRV Assists	490	487	2,416
RR/SIRV Activities	701	686	3,413

Debris on Roadway

	<u>Current Month</u>	<u>Last Month</u>	<u>YTD</u>
Number of Events	379	352	1,560
Number of Incidents	4	5	22
TMC Detection (min.)	0.00	0.00	0.00
TMC Verification (min.)	8.28	8.03	7.97
TMC Response (min.)	11.54	10.88	10.47
RR Dispatch Time (min.)	2.52	2.67	2.38
RR Response Time (min.)	8.98	8.20	8.07
Event Clearance (min.)	14.57	13.86	13.73
Roadway Clearance (min.)	27.50	19.42	27.28
Incident Clearance (min.)	33.88	22.36	29.55
# of Events w/ RR/SIRV	369	346	1,514
RR/SIRV Assists	369	346	1,514
RR/SIRV Activities	381	343	1,531

Disabled Vehicle

	<u>Current Month</u>	<u>Last Month</u>	<u>YTD</u>
Number of Events	5,600	5,415	24,867
Number of Incidents	72	58	300
TMC Detection (min.)	0.01	0.03	0.02
TMC Verification (min.)	2.78	2.10	2.41
TMC Response (min.)	9.02	7.85	8.12
RR Dispatch Time (min.)	2.05	1.68	1.74
RR Response Time (min.)	7.05	6.33	6.47
Event Clearance (min.)	20.49	19.76	19.99
Roadway Clearance (min.)	21.35	16.78	20.65
Incident Clearance (min.)	28.63	26.57	30.41
# of Events w/ RR/SIRV	5,338	5,100	23,715
RR/SIRV Assists	5,338	5,100	23,715
RR/SIRV Activities	5,307	5,041	23,623

Emergency Vehicles

	<u>Current Month</u>	<u>Last Month</u>	<u>YTD</u>
Number of Events	5	6	30
Number of Incidents	5	5	26
TMC Detection (min.)	0.00	0.00	0.00
TMC Verification (min.)	0.00	4.66	0.96
TMC Response (min.)	0.00	14.21	9.43
RR Dispatch Time (min.)	0.00	2.49	1.35
RR Response Time (min.)	0.00	11.55	8.04
Event Clearance (min.)	21.78	39.24	34.76
Roadway Clearance (min.)	17.22	34.92	30.86
Incident Clearance (min.)	21.78	41.48	34.83
# of Events w/ RR/SIRV	1	5	20
RR/SIRV Assists	1	5	20
RR/SIRV Activities	2	5	21

Other

	<u>Current Month</u>	<u>Last Month</u>	<u>YTD</u>
Number of Events	1,853	1,776	9,892
Number of Incidents	4	3	22
TMC Detection (min.)	0.00	0.00	0.01
TMC Verification (min.)	0.13	0.11	0.08
TMC Response (min.)	9.94	11.74	10.51
RR Dispatch Time (min.)	1.78	2.12	1.72
RR Response Time (min.)	5.85	7.34	7.77
Event Clearance (min.)	13.44	12.81	11.15
Roadway Clearance (min.)	21.21	5.29	34.32
Incident Clearance (min.)	29.52	9.40	41.92
# of Events w/ RR/SIRV	1,137	988	5,546
RR/SIRV Assists	1,137	988	5,546
RR/SIRV Activities	143	160	871

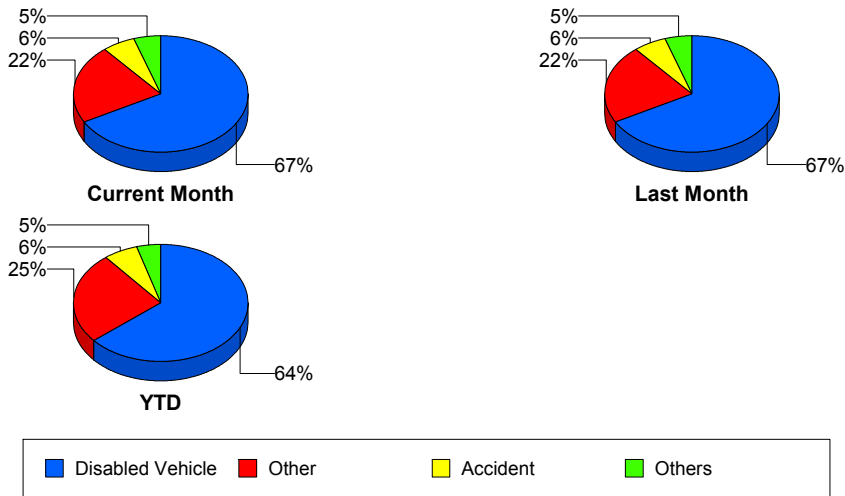
Police Activity

	<u>Current Month</u>	<u>Last Month</u>	<u>YTD</u>
Number of Events	27	27	101
Number of Incidents	15	20	54
TMC Detection (min.)	0.00	0.26	0.07
TMC Verification (min.)	0.57	1.37	1.08
TMC Response (min.)	16.83	17.48	15.67
RR Dispatch Time (min.)	7.62	9.64	5.82
RR Response Time (min.)	8.39	11.12	10.47
Event Clearance (min.)	78.93	60.53	53.43
Roadway Clearance (min.)	137.07	57.48	71.95
Incident Clearance (min.)	125.09	57.84	72.20
# of Events w/ RR/SIRV	22	23	81
RR/SIRV Assists	22	23	81
RR/SIRV Activities	26	30	87

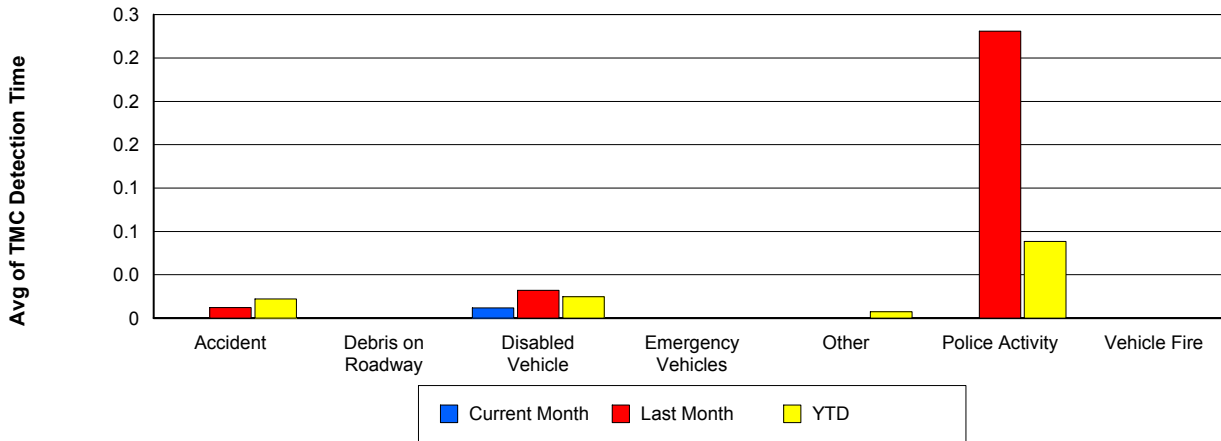
Vehicle Fire

	<u>Current Month</u>	<u>Last Month</u>	<u>YTD</u>
Number of Events	16	13	75
Number of Incidents	14	11	53
TMC Detection (min.)	0.00	0.00	0.00
TMC Verification (min.)	0.89	1.32	2.27
TMC Response (min.)	11.29	12.36	11.23
RR Dispatch Time (min.)	1.78	3.55	1.99
RR Response Time (min.)	9.52	9.04	9.25
Event Clearance (min.)	69.36	96.14	63.52
Roadway Clearance (min.)	56.08	69.74	50.17
Incident Clearance (min.)	72.54	107.19	74.09
# of Events w/ RR/SIRV	16	13	73
RR/SIRV Assists	16	13	73
RR/SIRV Activities	29	25	123

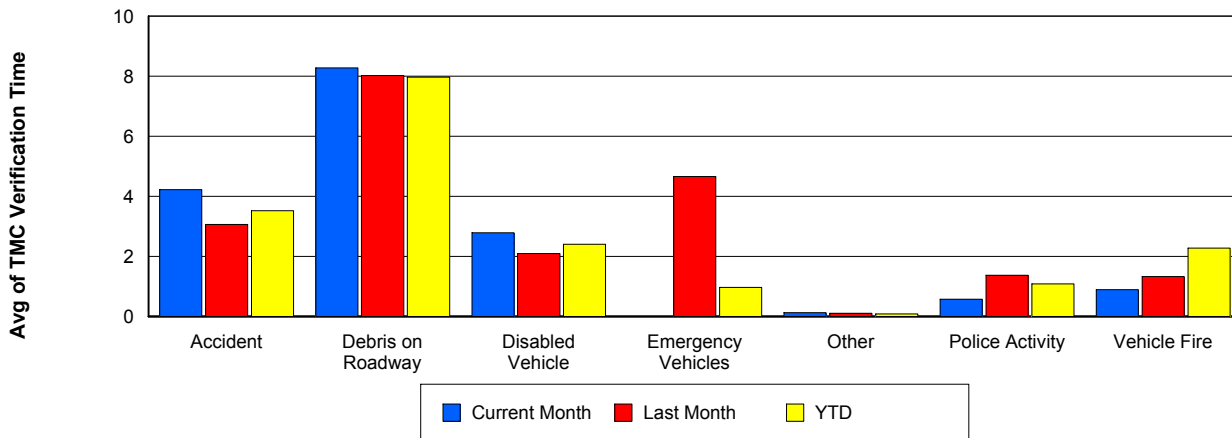
Number of Events / Event Type



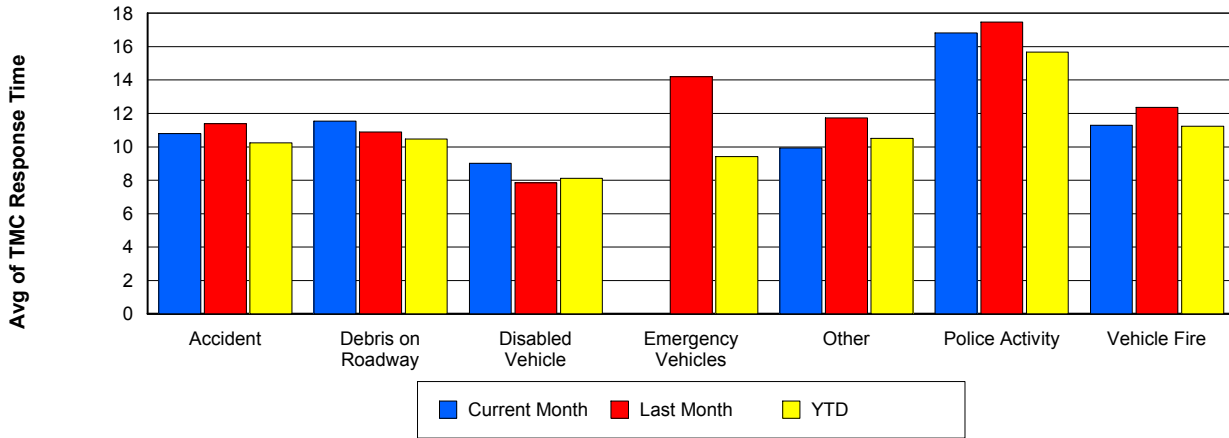
TMC Detection Time



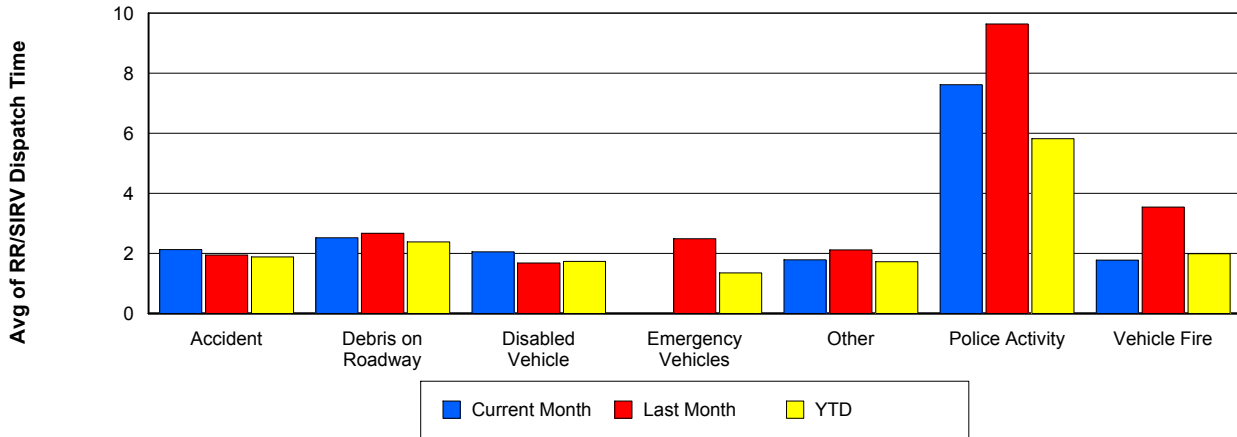
TMC Verification Time



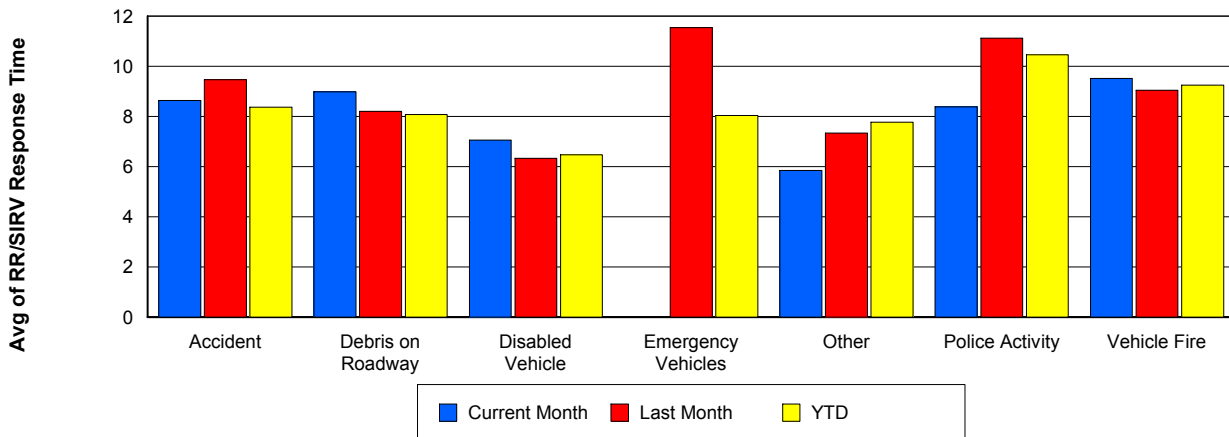
TMC Response Time



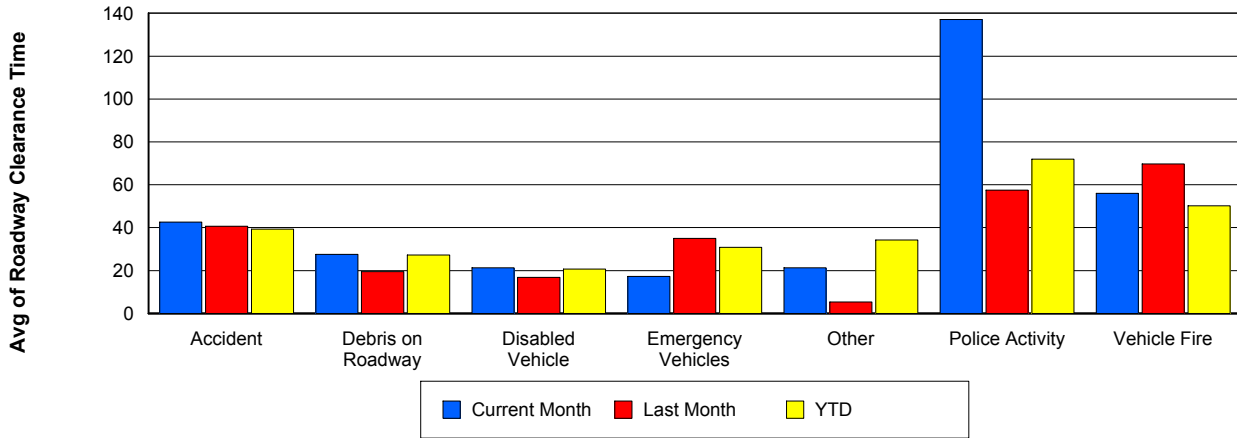
Road Ranger / SIRV Dispatch Time



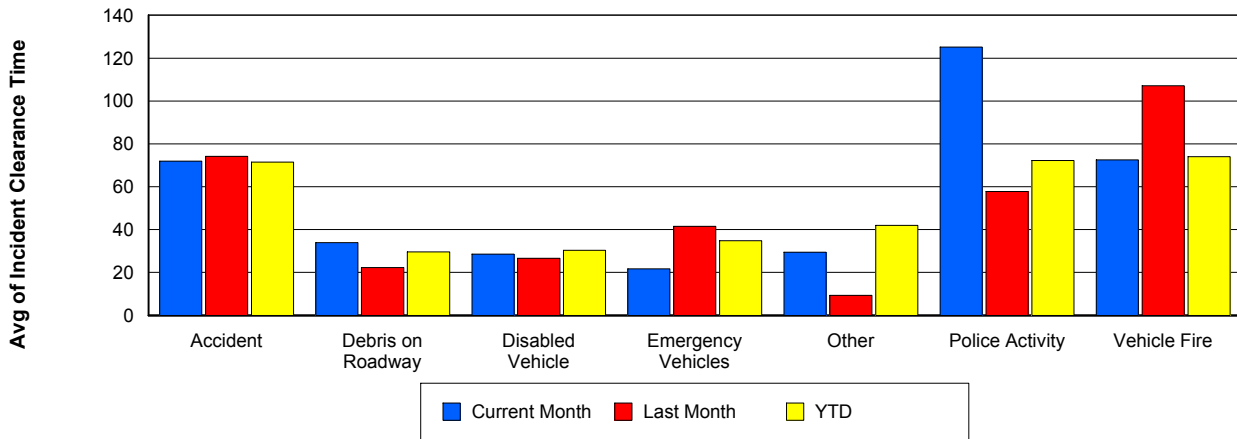
Road Ranger / SIRV Response Time



Roadway Clearance Time (2A)



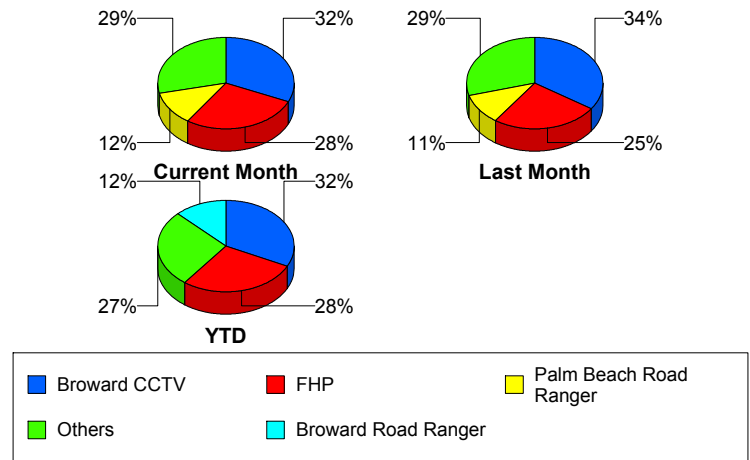
Incident Clearance Time (3B)



Incident Detection Methods

	Current Month	Last Month	YTD
Broward CCTV	110	116	515
Broward Road Ranger	38	31	199
Broward TMC	3	1	12
Broward VideoWall	6	3	25
BSO	5	4	21
County Police	0	1	2
District 4	7	15	43
District 6	2	0	2
FDOT Maintenance	1	1	3
FHP	96	85	447
Fire	3	1	5
Florida's Turnpike	4	1	11
ITMS	1	0	1
ITMS CCTV	19	32	86
Local Police	0	0	1
Media	0	0	2
Motorist	5	3	17
Other	0	0	1
Palm Beach Road Ran	42	37	171
Road Watcher	2	2	9
SIRV	0	0	1
VisioPaD Detection	3	4	19
Total	347	337	1,593

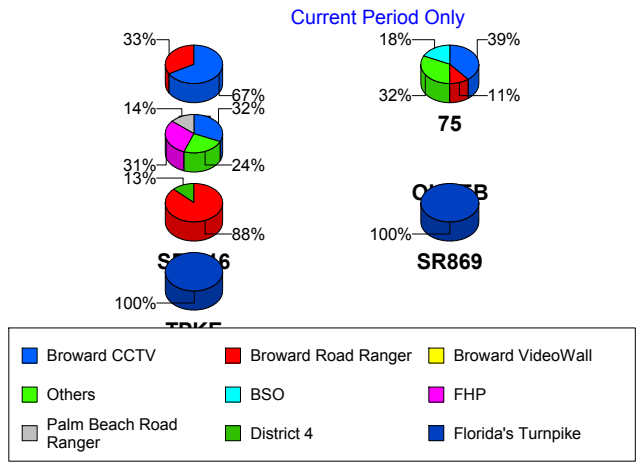
Total Incidents by Detection Method



Incident Detection Methods by Roadway

		Current Month	Last Month	YTD
595	Broward CCTV	2	3	12
	Broward Road Ranger	1	1	7
	BSO	0	0	3
	County Police	0	0	1
	FHP	0	1	6
	VisioPaD Detection	0	1	1
	Total	3	6	30
75	Broward CCTV	11	15	46
	Broward Road Ranger	3	1	15
	BSO	5	4	14
	District 4	1	1	4
	District 6	1	0	1
	FHP	3	5	23
	Fire	3	0	4
	Road Watcher	0	0	1
	VisioPaD Detection	1	1	8
	Total	28	27	116
95	Broward CCTV	97	98	457
	Broward Road Ranger	27	25	137
	Broward TMC	3	1	12
	Broward VideoWall	6	3	25
	BSO	0	0	2
	County Police	0	1	1
	District 4	5	13	37
	District 6	1	0	1
	FDOT Maintenance	1	1	3
	FHP	93	78	416
	Fire	0	1	1
	ITMS	1	0	1
	ITMS CCTV	19	32	86
Local Police	0	0	1	

Total Events by Roadway and Detection Method

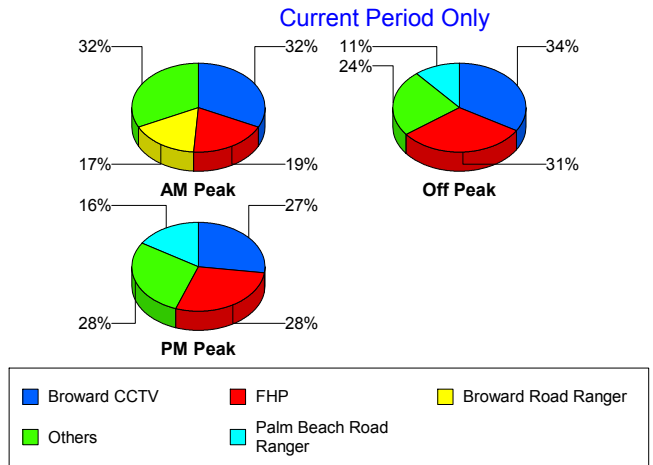


		Current Month	Last Month	YTD
95	Media	0	0	2
	Motorist	5	3	17
	Other	0	0	1
	Palm Beach Road Ran	42	37	171
	Road Watcher	2	1	6
	SIRV	0	0	1
	VisioPaD Detection	2	2	10
	Total	304	296	1,388
SR-816	Broward Road Ranger	7	4	39
	BSO	0	0	1
	District 4	1	1	2
	FHP	0	1	1
	Road Watcher	0	1	2
	Total	8	7	45
SR869	Broward Road Ranger	0	0	1
	BSO	0	0	1
	FHP	0	0	1
	Florida's Turnpike	1	0	1
	Total	1	0	4
TPKE	Florida's Turnpike	3	1	10
	Total	3	1	10
Total		347	337	1,593

Incident Detection Methods by Peak Period

		Current Month	Last Month	YTD
AM Peak	Broward CCTV	27	31	102
	Broward Road Ranger	14	5	50
	Broward TMC	3	0	3
	Broward VideoWall	2	2	14
	BSO	1	1	4
	County Police	0	1	1
	District 4	2	4	11
	District 6	1	0	1
	FHP	16	11	78
	Fire	2	0	2
	Florida's Turnpike	1	1	2
	ITMS CCTV	5	10	22
	Local Police	0	0	1
	Media	0	0	1
	Motorist	0	2	2
	Palm Beach Road Ran	9	14	50
	Road Watcher	1	0	2
	SIRV	0	0	1
	VisioPaD Detection	0	0	1
	Total	84	82	348
Off Peak	Broward CCTV	61	59	282
	Broward Road Ranger	15	18	85
	Broward TMC	0	1	6
	Broward VideoWall	3	0	8
	BSO	2	2	10
	County Police	0	0	1
	District 4	2	6	20
	District 6	1	0	1
	FDOT Maintenance	1	1	3
	FHP	57	48	240
	Florida's Turnpike	3	0	8

Total Events by Peak Period and Detection Method

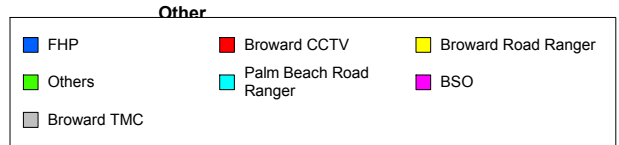
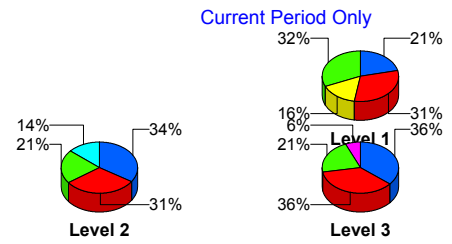


		Current Month	Last Month	YTD
Off Peak	ITMS	1	0	1
	ITMS CCTV	9	16	49
	Motorist	4	0	9
	Other	0	0	1
	Palm Beach Road Ran	20	17	82
	Road Watcher	0	1	4
	VisioPaD Detection	3	2	12
	Total	182	171	822
PM Peak	Broward CCTV	22	26	131
	Broward Road Ranger	9	8	64
	Broward TMC	0	0	3
	Broward VideoWall	1	1	3
	BSO	2	1	7
	District 4	3	5	12
	FHP	23	26	130
	Fire	1	1	3
	Florida's Turnpike	0	0	1
	ITMS CCTV	5	6	15
	Media	0	0	1
	Motorist	1	1	6
	Palm Beach Road Ran	13	6	39
	Road Watcher	1	1	3
	VisioPaD Detection	0	2	6
	Total	81	84	424
Total	347	337	1,593	

Incident Detection Methods by Severity

		Current Month	Last Month	YTD	
	FHP	0	0	1	
	Total	0	0	1	
Level 1	Broward CCTV	57	69	308	
	Broward Road Ranger	29	22	144	
	Broward TMC	3	1	9	
	Broward VideoWall	4	1	15	
	BSO	2	0	6	
	County Police	0	1	1	
	District 4	6	10	28	
	District 6	1	0	1	
	FHP	39	33	191	
	Fire	2	0	2	
	ITMS CCTV	11	15	44	
	Media	0	0	1	
	Motorist	2	1	10	
	Other	0	0	1	
	Palm Beach Road Ran	24	28	113	
	Road Watcher	2	1	8	
	VisioPaD Detection	1	2	9	
	Total	183	184	891	
	Level 2	Broward CCTV	36	36	158
		Broward Road Ranger	7	8	45
Broward TMC		0	0	3	
Broward VideoWall		2	2	10	
BSO		0	0	1	
District 4		1	4	11	
FDOT Maintenance		1	1	3	
FHP		40	40	195	
Fire		0	0	1	
Florida's Turnpike		1	0	1	
ITMS		1	0	1	

Total Events by Severity and Detection Method



		Current Month	Last Month	YTD
Level 2	ITMS CCTV	7	15	36
	Local Police	0	0	1
	Motorist	3	2	7
	Palm Beach Road Ran	16	8	46
	Road Watcher	0	1	1
	SIRV	0	0	1
	VisioPaD Detection	2	1	8
	Total	117	118	529
Level 3	Broward CCTV	17	11	49
	Broward Road Ranger	2	1	10
	BSO	3	4	14
	County Police	0	0	1
	District 4	0	1	4
	District 6	1	0	1
	FHP	17	12	61
	Fire	1	1	2
	Florida's Turnpike	3	1	10
	ITMS CCTV	1	2	6
	Media	0	0	1
	Palm Beach Road Ran	2	1	12
	VisioPaD Detection	0	1	2
	Total	47	35	173
Total	347	337	1,593	

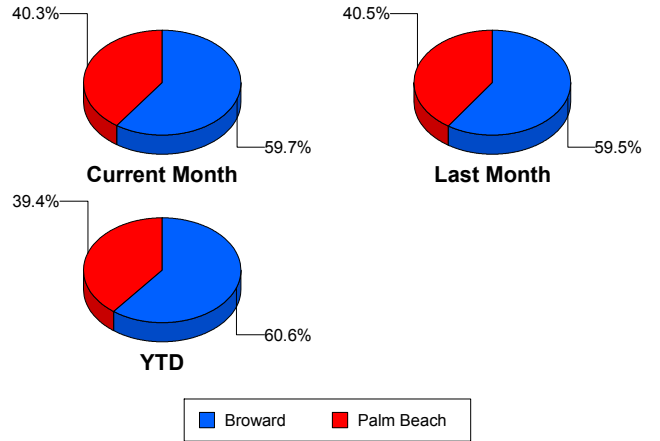
Road Ranger / SIRV Performance Measures

Road Ranger / SIRV Performance By County

Values presented are:
 - Total Events with a RR/SIRV Response
 - Total RR/SIRV Responses,
 - Total Activities Performed

	Current Mo	Last Month	YTD
Broward	4,243	4,005	19,616
	4,557	4,297	21,015
	4,767	4,462	21,832
Palm Beach	2,986	2,832	13,230
	3,077	2,929	13,670
	3,290	3,128	14,524

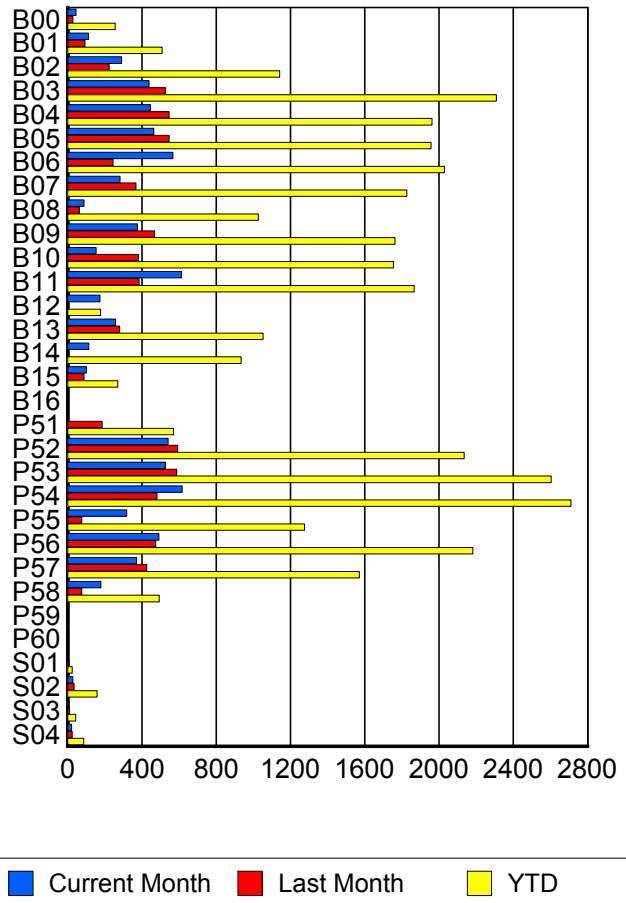
RR/SIRV Responses per County



Road Ranger / SIRV Performance By Truck

	Current Mo	Last Month	YTD
B00	45	28	251
	46	28	256
	50	29	271
B01	111	94	499
	112	94	508
	123	97	525
B02	287	222	1,126
	291	224	1,142
	301	228	1,167
B03	435	521	2,291
	438	526	2,309
	461	551	2,418
B04	440	536	1,934
	445	546	1,961
	467	570	2,043
B05	464	540	1,943
	464	546	1,956
	477	562	2,022
B06	558	242	2,002
	567	244	2,029
	600	250	2,116
B07	282	362	1,803
	282	368	1,827
	290	385	1,900
B08	88	62	1,010
	89	63	1,026
	92	64	1,064

RR/SIRV Responses per Truck



	Current Mo	Last Month	YTD
B09	372	464	1,743
	376	468	1,763
	396	483	1,842
B10	150	375	1,728
	154	381	1,754
	160	397	1,810
B11	607	382	1,848
	614	385	1,866
	641	403	1,936
B12	171	1	174
	174	1	177
	185	1	188
B13	257	277	1,042
	259	280	1,053
	265	288	1,077
B14	112	1	921
	114	1	934
	117	1	968
B15	100	88	268
	101	89	270
	106	97	285
B16	0	0	1
	0	0	1
	0	0	1
P51	3	180	561
	3	186	571
	3	201	603
P52	536	585	2,110
	541	592	2,135
	575	627	2,269
P53	519	582	2,573
	525	588	2,603
	560	638	2,770
P54	609	476	2,672
	616	481	2,709
	655	514	2,877
P55	319	77	1,267
	319	77	1,276
	337	77	1,335
P56	487	466	2,155
	491	474	2,181
	529	501	2,327
P57	369	423	1,553
	371	427	1,571
	410	456	1,677

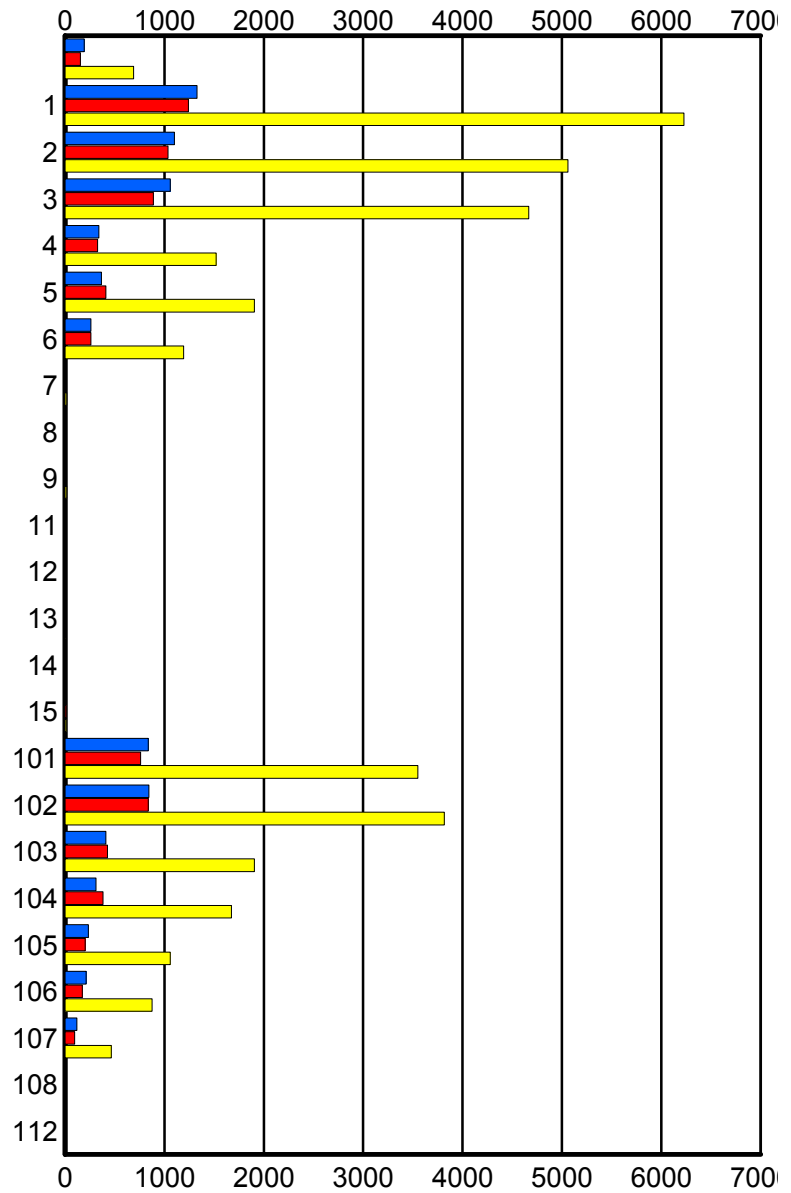
	Current Mo	Last Month	YTD
P58	177	77	488
	179	77	493
	189	81	523
P59	1	1	2
	1	1	2
	1	1	2
P60	0	0	1
	0	0	1
	0	0	1
S01	4	8	25
	4	8	25
	4	9	27
S02	29	34	153
	29	36	158
	31	40	171
S03	8	10	41
	8	10	44
	9	12	48
S04	21	24	85
	21	25	86
	23	27	93

Road Ranger / SIRV Performance By Beat

	Current Mo	Last Month	YTD
	191	147	671
	193	154	691
	202	166	732
1	1,271	1,197	5,948
	1,329	1,243	6,228
	1,388	1,288	6,477
2	1,071	1,004	4,916
	1,101	1,036	5,062
	1,156	1,080	5,276
3	1,042	866	4,560
	1,059	889	4,665
	1,108	926	4,856
4	336	319	1,490
	342	327	1,519
	357	339	1,573
5	359	410	1,887
	366	411	1,905
	383	421	1,959
6	254	256	1,168
	261	261	1,192
	270	271	1,226
7	0	8	16
	0	8	17
	0	9	18
8	9	0	9
	9	0	9
	9	0	9
9	0	0	17
	0	0	17
	0	0	17
11	0	0	2
	0	0	2
	0	0	2
12	0	0	2
	0	0	2
	0	0	2
13	0	0	8
	0	0	8
	0	0	8
14	0	0	4
	0	0	4
	0	0	4
15	0	14	14
	0	14	14
	0	14	14

Values presented are:
 - Total Events with a RR/SIRV Response
 - Total RR/SIRV Responses,
 - Total Activities Performed

RR/SIRV Responses per Beat



■ Current Month
 ■ Last Month
 ■ YTD

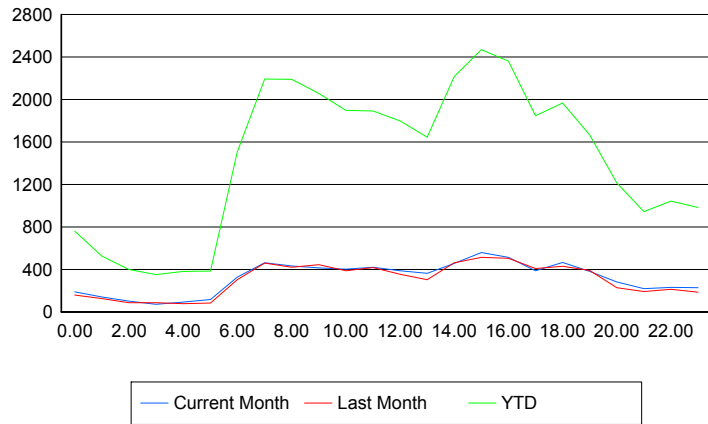
	Current Mo	Last Month	YTD
101	827	750	3,491
	839	760	3,551
	893	813	3,761
102	839	827	3,764
	844	838	3,818
	904	884	4,047
103	404	416	1,879
	411	426	1,904
	438	454	2,013
104	310	374	1,655
	312	382	1,673
	331	412	1,788
105	233	203	1,050
	236	203	1,058
	262	216	1,141
106	211	173	869
	212	174	877
	227	191	928
107	120	98	463
	120	98	465
	129	103	498
108	0	0	3
	0	0	4
	0	0	4
112	0	2	2
	0	2	2
	0	3	3

Road Ranger / SIRV Performance By Time of Day

Values presented are:
 - Total Events with a RR/SIRV Response
 - Total RR/SIRV Responses,
 - Total Activities Performed

	Current Mo	Last Month	YTD
12AM-1AM	174 187 198	153 157 169	726 760 805
1AM-2AM	127 139 143	123 126 131	501 525 543
2AM-3AM	92 102 114	78 87 92	368 399 424
3AM-4AM	69 72 75	79 86 88	332 351 375
4AM-5AM	77 93 95	74 78 84	341 381 401
5AM-6AM	102 117 119	72 84 87	325 384 396
6AM-7AM	311 327 338	278 302 317	1,413 1,507 1,563
7AM-8AM	436 461 488	435 460 474	2,082 2,191 2,290
8AM-9AM	394 431 461	394 421 438	2,044 2,189 2,281
9AM-10AM	396 413 429	427 444 474	1,969 2,056 2,155
10AM-11AM	382 402 414	369 388 409	1,804 1,898 1,981
11AM-12PM	393 420 441	392 417 441	1,794 1,892 1,981
12PM-1PM	373 387 406	333 353 366	1,697 1,799 1,872

Number of Responses / Hour of the Day



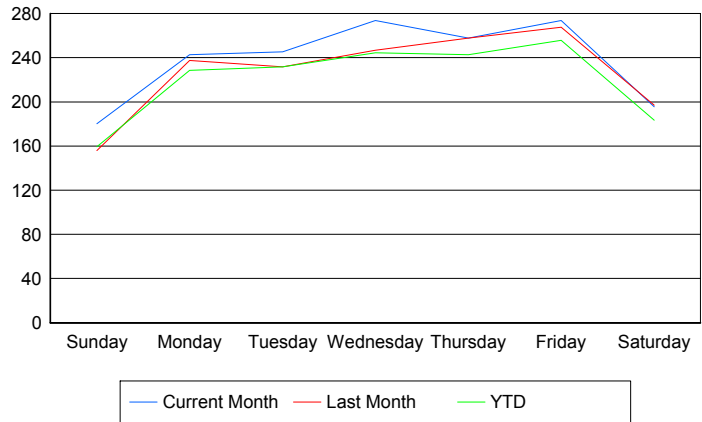
	Current Mo	Last Month	YTD
1PM-2PM	345	286	1,544
	363	302	1,644
	377	318	1,710
2PM-3PM	430	437	2,076
	457	462	2,216
	493	486	2,350
3PM-4PM	534	491	2,363
	558	514	2,468
	586	545	2,583
4PM-5PM	483	470	2,214
	512	503	2,361
	547	526	2,479
5PM-6PM	370	377	1,746
	388	407	1,847
	413	423	1,934
6PM-7PM	451	414	1,891
	466	430	1,966
	498	448	2,056
7PM-8PM	370	374	1,604
	380	389	1,665
	395	408	1,731
8PM-9PM	265	220	1,155
	282	228	1,215
	293	239	1,259
9PM-10PM	212	183	904
	219	191	945
	241	204	1,008
10PM-11PM	221	199	1,001
	230	212	1,044
	245	227	1,115
11PM-12AM	222	179	952
	228	185	984
	248	196	1,064

Road Ranger / SIRV Performance By Day of Week

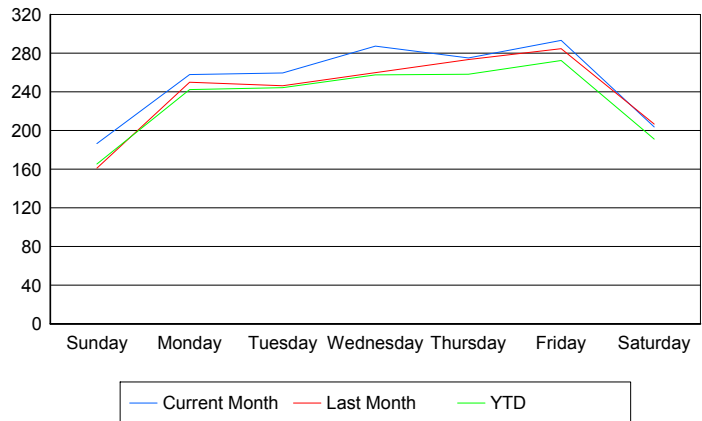
Values presented are:
 - Total Events with a RR/SIRV Response
 - Total RR/SIRV Responses,
 - Total Activities Performed

	Current Mo	Last Month	YTD
Sunday	895	619	3,442
	926	640	3,567
	976	673	3,736
Monday	1,182	944	4,943
	1,254	993	5,241
	1,323	1,030	5,474
Tuesday	979	921	4,848
	1,036	979	5,109
	1,081	1,031	5,335
Wednesday	1,088	967	5,064
	1,143	1,020	5,340
	1,214	1,070	5,616
Thursday	1,025	1,278	5,057
	1,093	1,356	5,382
	1,149	1,431	5,654
Friday	1,091	1,328	5,534
	1,169	1,414	5,896
	1,239	1,481	6,160
Saturday	972	786	3,986
	1,013	824	4,152
	1,075	874	4,381

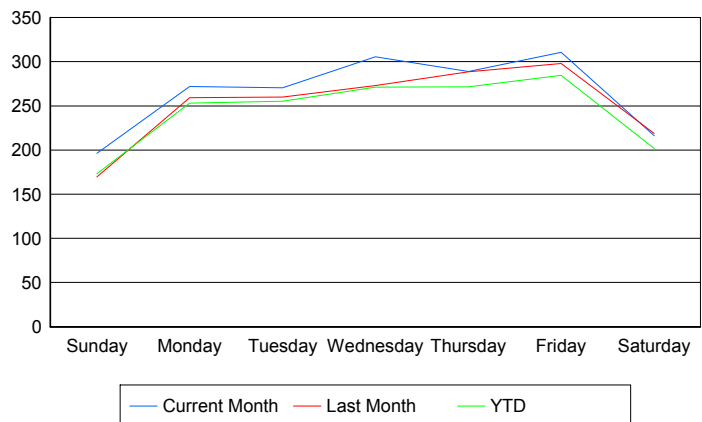
Avg # of events with a RR/SIRV Response per Day of the Week



Avg # of RR/SIRV Responses per Day of the Week



Avg # of RR/SIRV Activities Performed per Day of the Week



Road Ranger / SIRV Responses per Time of Day and Day of Week

