



Monthly Performance Measures Report Broward, Palm Beach Counties

Period From Apr 1, 2010 to Apr 30, 2010

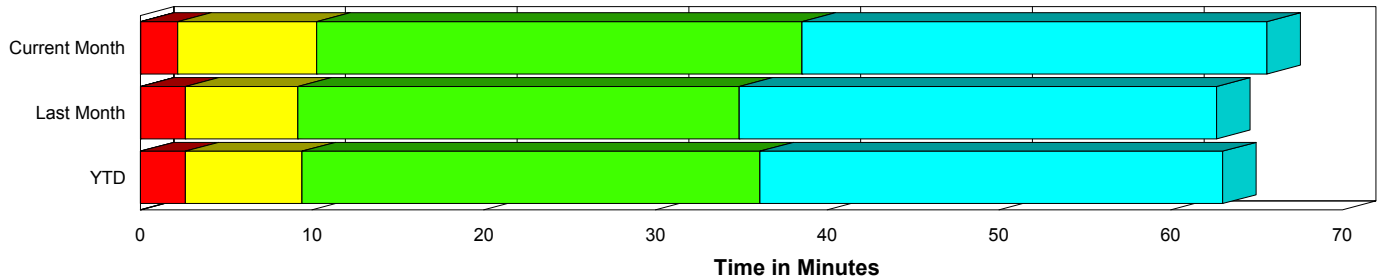


Created on:
May 05, 2010
11:22 am

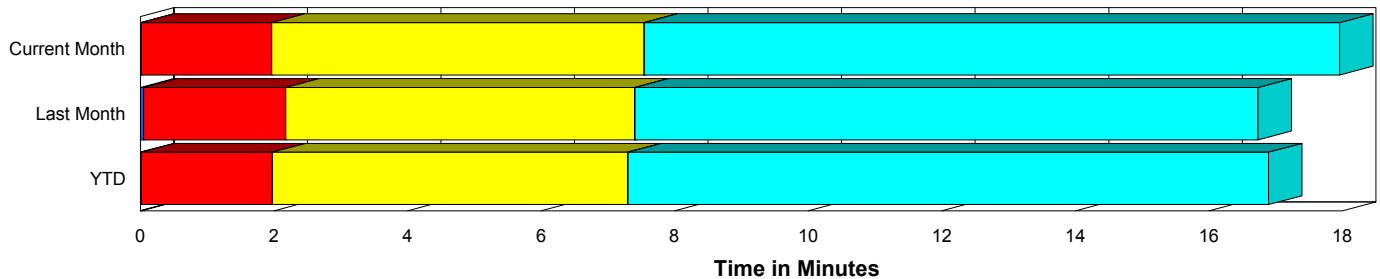
Performance Measures Summary

	Traffic Events (No Lanes Blocked)			Incidents (Lanes Blocked)		
	<u>This Month</u>	<u>Last Month</u>	<u>YTD</u>	<u>This Month</u>	<u>Last Month</u>	<u>YTD</u>
Number of Events	7,787	7,790	29,467	339	331	1,259
TMC Detection (min.)	0.02	0.05	0.02	0.04	0.03	0.02
TMC Verification (min.)	1.95	2.13	1.96	2.15	2.66	2.62
TMC Response (min.)	8.37	8.35	8.23	10.33	9.26	9.53
RR Dispatch Time (min.)	1.82	1.74	1.69	2.16	1.72	1.95
RR Response Time (min.)	6.68	6.62	6.59	8.19	7.58	7.59
Roadway Clearance (min.)				37.65	34.32	35.45
Event Clearance (min.)	18.80	17.72	17.84	64.32	62.57	62.31
# of Events w/ RR/SIRV	6,675	6,544	24,886	330	326	1,231
RR/SIRV Responses	6,675	6,544	24,886	330	326	1,231
RR/SIRV Activities	5,762	5,584	21,083	566	574	2,109

Incident Clearance Time-Line



Traffic Event (Non-Lane Blockage) Time-Line



■ Avg. TMC Detection Time	■ Avg. Time from TMC Response to Roadway Clearance*
■ Avg. Time from TMC Detection to TMC Verification	■ Avg. Time from Roadway Clearance to Incident/Event Clearance**
■ Avg. Time from TMC Verification to TMC Response	

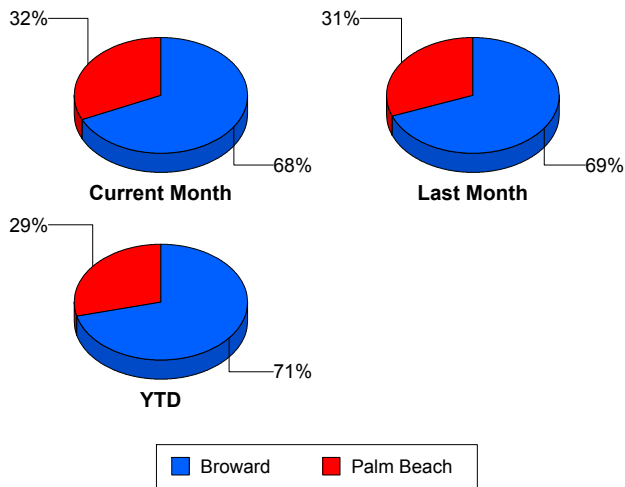
* Roadway clearance equals all travel lanes open

** Incident clearance equals time when last responder has left the scene

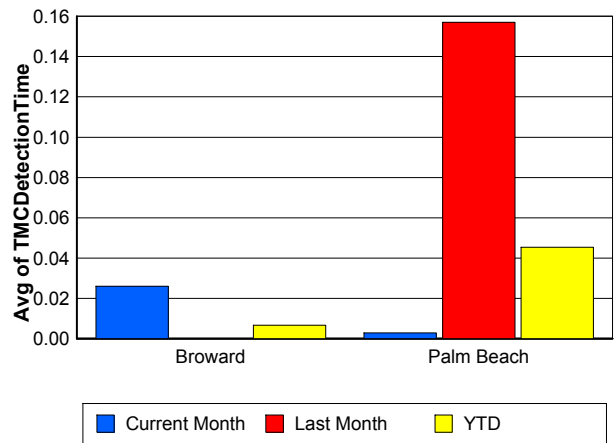
Performance Measures by County

	Broward			Palm Beach		
	<u>Current Month</u>	<u>Last Month</u>	<u>YTD</u>	<u>Current Month</u>	<u>Last Month</u>	<u>YTD</u>
Number of Events	5,522	5,611	21,864	2,604	2,510	8,862
Number of Incidents	220	230	847	119	101	412
TMC Detection (min.)	0.03	0.00	0.01	0.00	0.16	0.05
TMC Verification (min.)	1.22	1.30	1.17	3.53	4.05	4.01
TMC Response (min.)	9.36	9.00	9.12	7.13	7.46	6.95
RR Dispatch Time (min.)	1.42	1.43	1.40	2.66	2.35	2.37
RR Response Time (min.)	8.10	7.66	7.83	4.74	5.15	4.69
Event Clearance (min.)	20.44	19.16	19.10	21.24	20.43	21.03
Roadway Clearance (min.)	36.18	31.97	32.91	40.35	39.68	40.67
Incident Clearance (min.)	64.28	61.00	61.41	64.40	63.80	63.59
# of Events w/ RR/SIRV	4,626	4,561	17,831	2,379	2,309	8,286
RR/SIRV Responses	4,626	4,561	17,831	2,379	2,309	8,286
RR/SIRV Activities	3,837	3,779	14,485	2,491	2,379	8,707

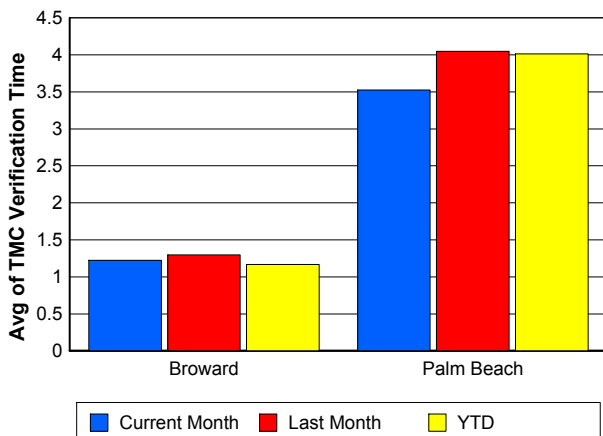
Number of Events / County



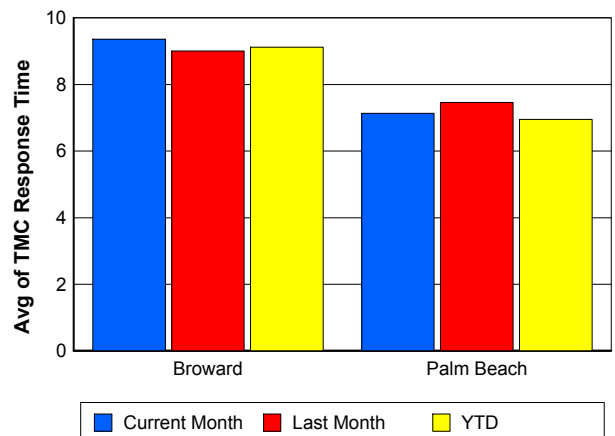
TMC Detection Time



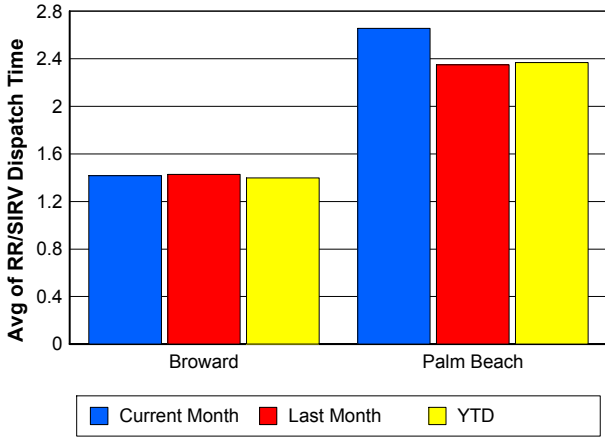
TMC Verification Time



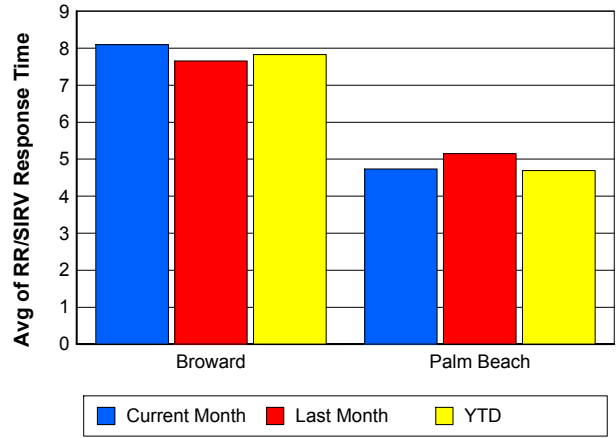
TMC Response Time



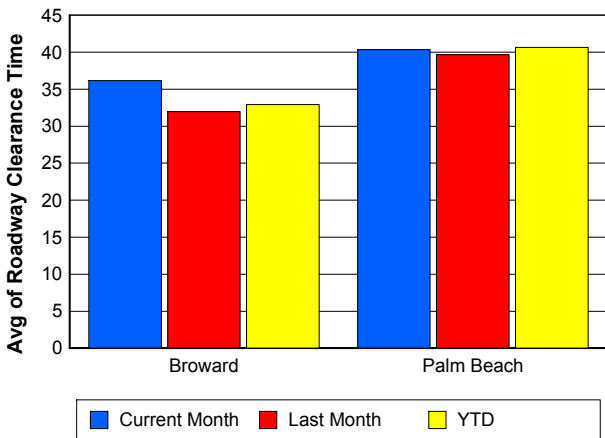
Road Ranger / SIRV Dispatch Time



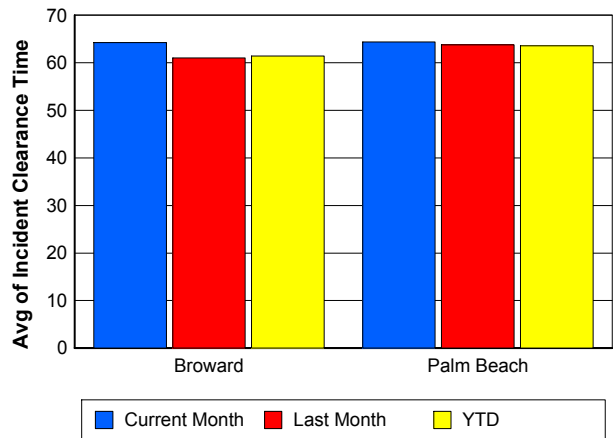
Road Ranger / SIRV Response Time



Roadway Clearance Time (2A)



Incident Clearance Time (3B)

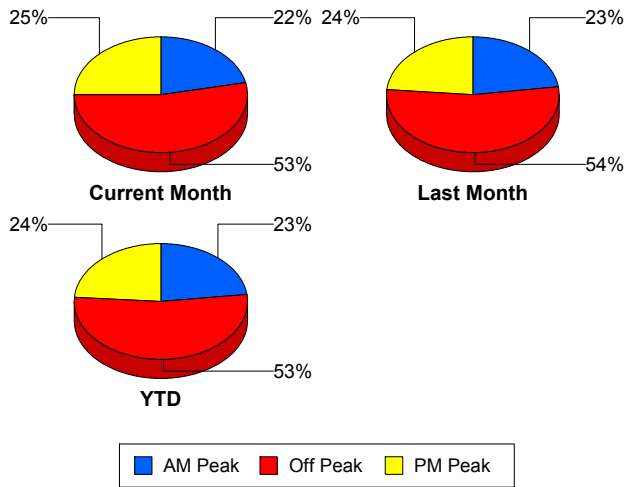


Performance Measures by Peak Period

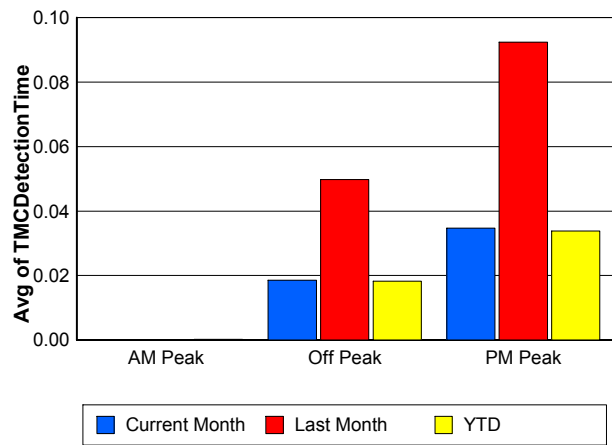
Note: AM peak period is defined as 6am to 10am and PM peak period is defined as 3pm to 7pm.

	AM Peak			Off Peak			PM Peak		
	<u>Current Month</u>	<u>Last Month</u>	<u>YTD</u>	<u>Current Month</u>	<u>Last Month</u>	<u>YTD</u>	<u>Current Month</u>	<u>Last Month</u>	<u>YTD</u>
Number of Events	1,766	1,846	7,055	4,321	4,360	16,335	2,039	1,915	7,336
Number of Incidents	81	74	264	173	177	650	85	80	345
TMC Detection (min.)	0.00	0.00	0.00	0.02	0.05	0.02	0.03	0.09	0.03
TMC Verification (min.)	1.16	1.35	1.22	2.11	2.24	2.09	2.33	2.71	2.50
TMC Response (min.)	8.13	8.15	7.69	8.78	8.91	8.71	8.18	7.58	8.04
RR Dispatch Time (min.)	1.39	1.28	1.19	1.91	1.84	1.84	2.07	1.95	1.92
RR Response Time (min.)	6.89	6.89	6.57	6.98	7.08	6.91	6.25	5.65	6.18
Event Clearance (min.)	19.52	18.47	18.17	21.21	20.22	20.08	20.64	19.07	20.14
Roadway Clearance (min.)	33.75	26.68	32.22	40.60	38.88	40.03	35.35	31.31	29.30
Incident Clearance (min.)	56.04	58.75	59.55	68.01	66.16	65.52	64.72	55.19	57.70
# of Events w/ RR/SIRV	1,553	1,602	6,112	3,651	3,644	13,629	1,801	1,624	6,376
RR/SIRV Responses	1,553	1,602	6,112	3,651	3,644	13,629	1,801	1,624	6,376
RR/SIRV Activities	1,405	1,398	5,299	3,257	3,237	12,006	1,666	1,523	5,887

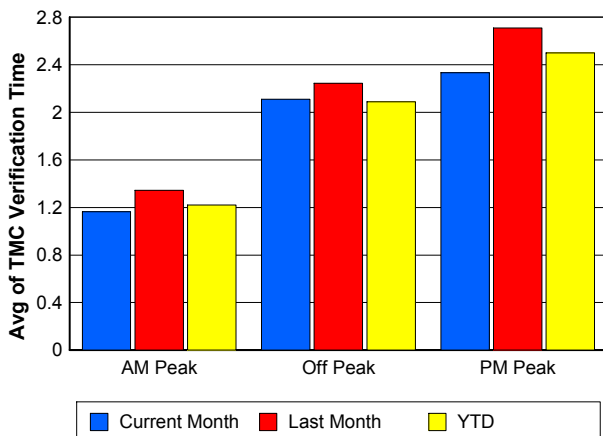
Number of Events / Peak Period



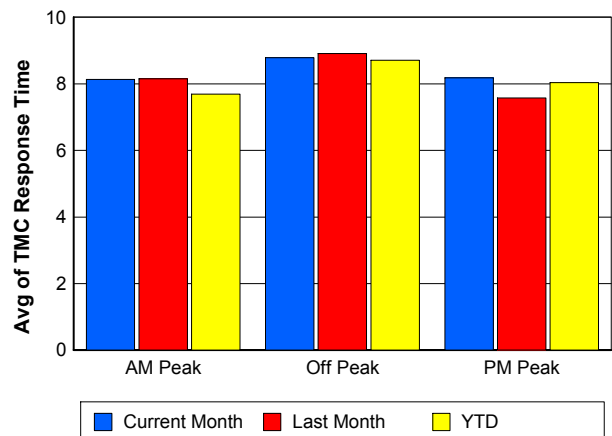
TMC Detection Time



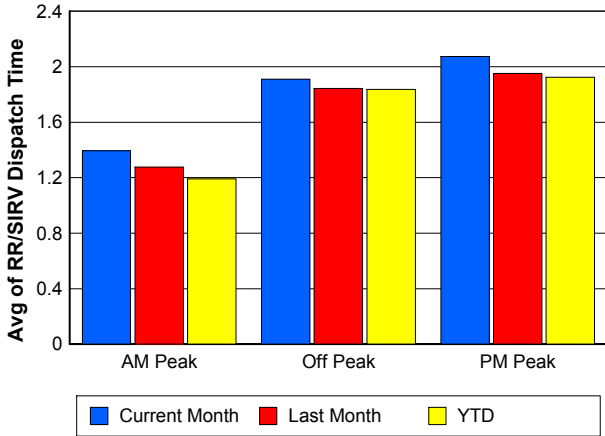
TMC Verification Time



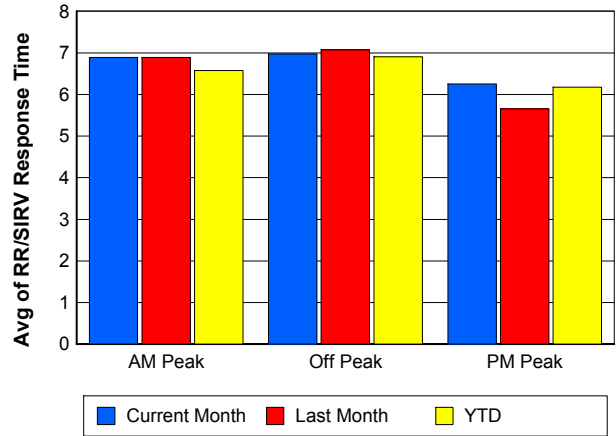
TMC Response Time



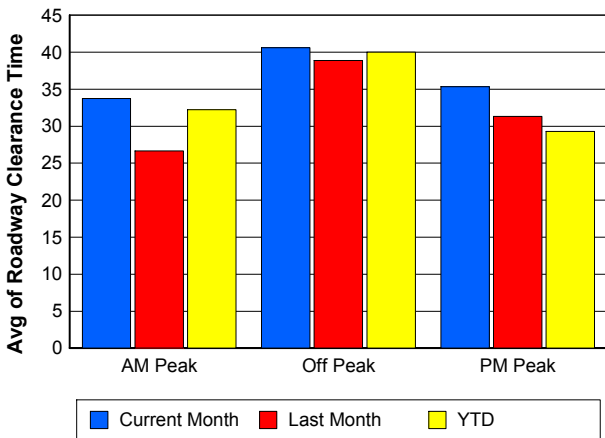
Road Ranger / SIRV Dispatch Time



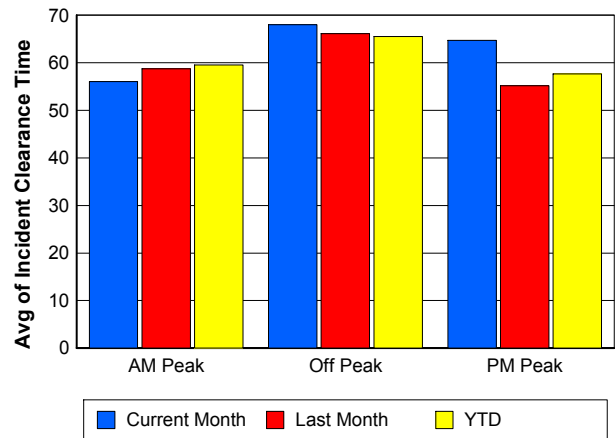
Road Ranger / SIRV Response Time



Roadway Clearance Time (2A)



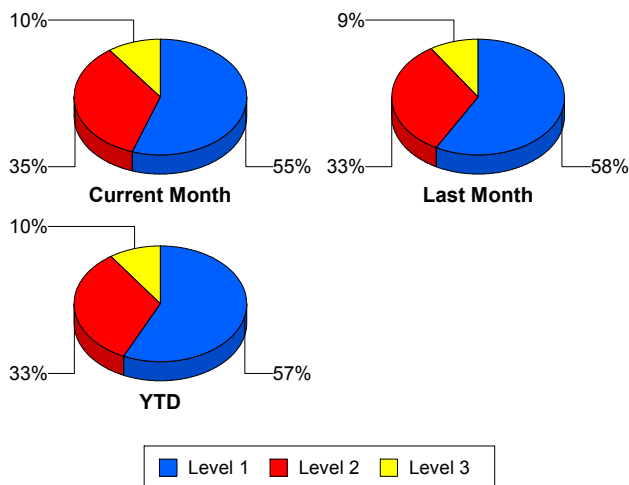
Incident Clearance Time (3B)



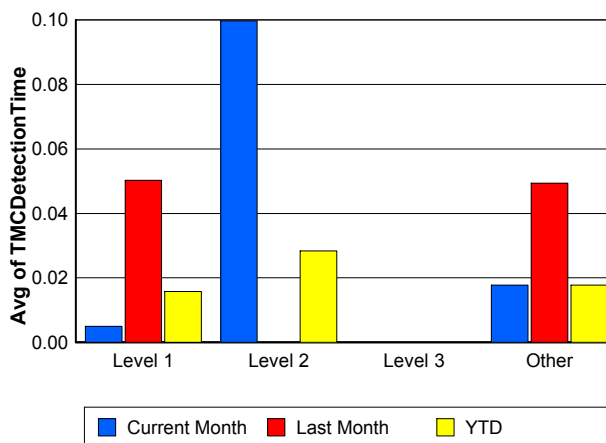
Performance Measures by Severity

	Level 1			Level 2			Level 3			Other		
	<u>This Month</u>	<u>Last Month</u>	<u>YTD</u>	<u>This Month</u>	<u>Last Month</u>	<u>YTD</u>	<u>This Month</u>	<u>Last Month</u>	<u>YTD</u>	<u>This Month</u>	<u>Last Month</u>	<u>YTD</u>
Number of Events	187	191	716	118	108	419	34	30	122	7,787	7,792	29,469
Number of Incidents	187	191	716	118	108	419	34	30	122	0	2	2
TMC Detection (min.)	0.00	0.05	0.02	0.10	0.00	0.03	0.00	0.00	0.00	0.02	0.05	0.02
TMC Verification (min.)	1.10	1.42	1.30	3.39	4.35	4.54	3.64	4.34	3.66	1.95	2.13	1.96
TMC Response (min.)	7.74	7.59	7.33	12.76	11.62	12.38	15.94	11.52	12.43	8.37	8.35	8.23
RR Dispatch Time (min.)	1.36	1.24	1.31	2.50	2.60	2.75	5.35	1.69	3.02	1.82	1.74	1.69
RR Resp. Time (min.)	6.43	6.35	6.05	10.26	9.15	9.65	10.59	9.83	9.41	6.68	6.62	6.59
Event Clearance (min.)	47.25	44.14	46.50	76.20	75.92	74.54	117.00	129.96	112.65	18.80	17.74	17.84
Roadway Clear. (min.)	15.80	14.87	15.09	53.33	51.05	53.01	103.39	101.71	95.54		-21.46	-21.46
Incident Clearance (min.)	47.25	44.14	46.50	76.20	75.92	74.54	117.00	128.09	112.19		0.00	0.00
# of Events w/ RR/SIRV	183	188	701	114	107	412	33	29	116	6,675	6,546	24,888
RR/SIRV Responses	183	188	701	114	107	412	33	29	116	6,675	6,546	24,888
RR/SIRV Activities	277	292	1,047	212	199	780	77	78	277	5,762	5,589	21,088

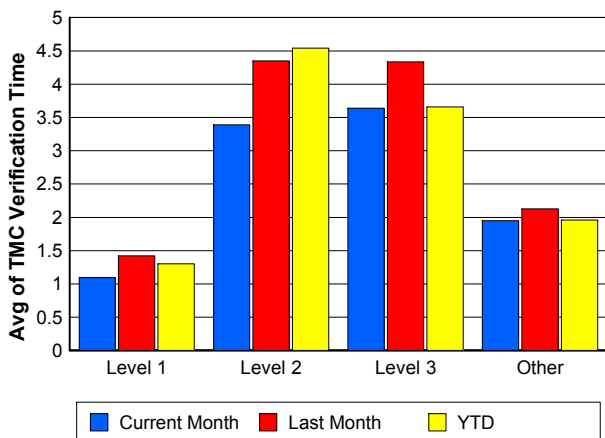
Number of Events / Severity



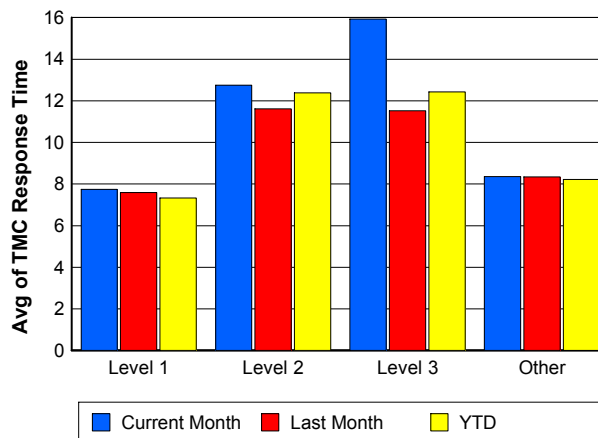
TMC Detection Time



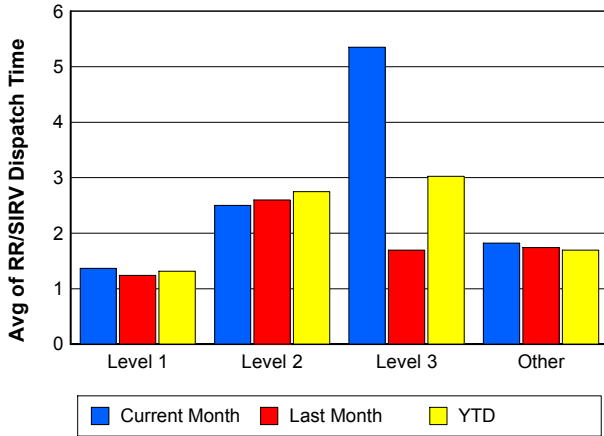
TMC Verification Time



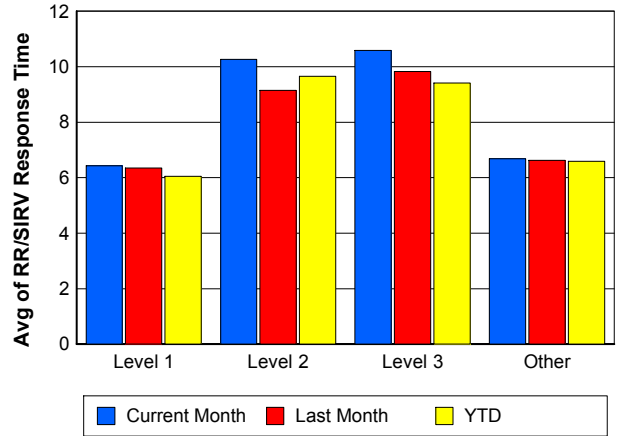
TMC Response Time



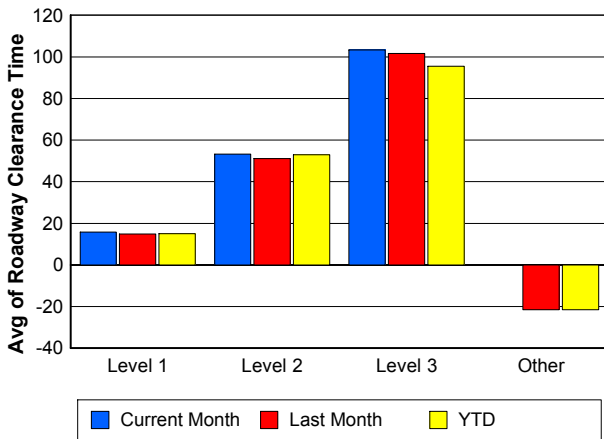
Road Ranger / SIRV Dispatch Time



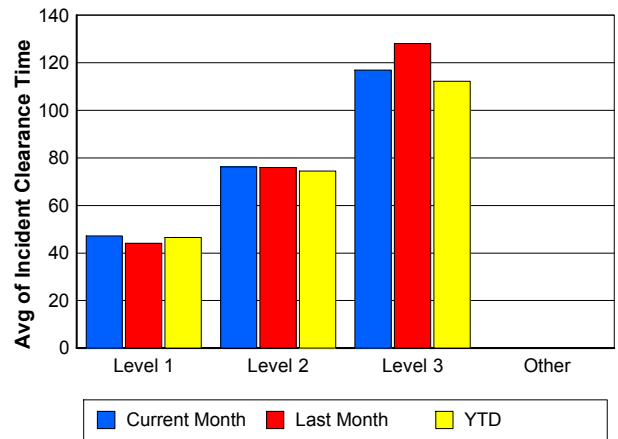
Road Ranger / SIRV Response Time



Roadway Clearance Time (2A)



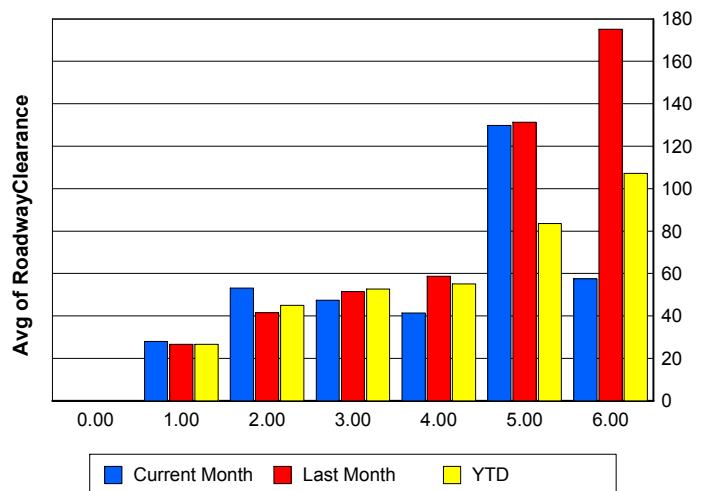
Incident Clearance Time (3B)



Roadway Clearance by Maximum Number of Lanes Blocked

	Current Month	Last Month	YTD
0			
1	28.00	26.65	26.69
2	53.20	41.58	45.01
3	47.34	51.51	52.63
4	41.43	58.68	55.15
5	129.84	131.31	83.54
6	57.56	175.20	107.19

Roadway Clearance Time (2A)



Performance Measures by Roadway

595

	<u>Current Month</u>	<u>Last Month</u>	<u>YTD</u>
Number of Events	164	215	769
Number of Incidents	8	12	41
TMC Detection (min.)	0.00	0.00	0.00
TMC Verification (min.)	1.99	1.22	1.72
TMC Response (min.)	14.92	14.37	14.58
RR Dispatch Time (min.)	1.82	1.64	2.02
RR Resp. Time (min.)	12.91	12.76	12.54
Event Clearance (min.)	18.53	21.04	19.82
Roadway Clear. (min.)	36.61	47.21	49.25
Incident Clearance (min.)	46.07	70.62	66.88
# of Events w/ RR/SIRV	124	157	553
RR/SIRV Responses	124	157	553
RR/SIRV Activities	71	104	375

75

	<u>Current Month</u>	<u>Last Month</u>	<u>YTD</u>
Number of Events	1,220	1,209	4,826
Number of Incidents	27	23	88
TMC Detection (min.)	0.10	0.00	0.02
TMC Verification (min.)	2.43	2.20	2.03
TMC Response (min.)	10.34	10.14	10.08
RR Dispatch Time (min.)	1.55	1.45	1.51
RR Resp. Time (min.)	8.84	8.81	8.69
Event Clearance (min.)	21.35	20.29	19.71
Roadway Clear. (min.)	59.34	45.45	45.90
Incident Clearance (min.)	98.62	95.40	85.23
# of Events w/ RR/SIRV	1,020	951	3,807
RR/SIRV Responses	1,020	951	3,807
RR/SIRV Activities	875	775	3,136

95

	<u>Current Month</u>	<u>Last Month</u>	<u>YTD</u>
Number of Events	6,685	6,614	24,873
Number of Incidents	297	281	1,089
TMC Detection (min.)	0.00	0.06	0.02
TMC Verification (min.)	1.88	2.19	1.99
TMC Response (min.)	8.09	8.04	7.91
RR Dispatch Time (min.)	1.90	1.80	1.74
RR Resp. Time (min.)	6.33	6.25	6.20
Event Clearance (min.)	20.65	19.40	19.66
Roadway Clear. (min.)	36.09	33.32	34.61
Incident Clearance (min.)	62.67	60.10	61.39
# of Events w/ RR/SIRV	5,810	5,696	21,541
RR/SIRV Responses	5,810	5,696	21,541
RR/SIRV Activities	5,332	5,214	19,472

OKEEB

	<u>YTD</u>
Number of Events	1
Number of Incidents	0
TMC Detection (min.)	0.00
TMC Verification (min.)	0.00
TMC Response (min.)	0.00
RR Dispatch Time (min.)	0.00
RR Resp. Time (min.)	0.00
Event Clearance (min.)	18.45
Roadway Clear. (min.)	
Incident Clearance (min.)	
# of Events w/ RR/SIRV	1
RR/SIRV Responses	1
RR/SIRV Activities	1

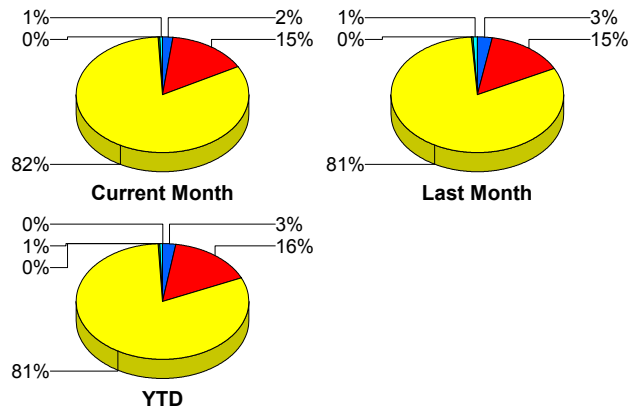
SR-816

	<u>Current Month</u>	<u>Last Month</u>	<u>YTD</u>
Number of Events	15	14	55
Number of Incidents	7	12	37
TMC Detection (min.)	0.00	0.00	0.00
TMC Verification (min.)	2.85	1.89	1.26
TMC Response (min.)	3.78	3.26	1.84
RR Dispatch Time (min.)	0.30	0.16	0.14
RR Resp. Time (min.)	3.48	3.11	1.70
Event Clearance (min.)	13.73	25.52	18.25
Roadway Clear. (min.)	21.10	23.09	18.89
Incident Clearance (min.)	23.05	27.15	21.85
# of Events w/ RR/SIRV	12	14	51
RR/SIRV Responses	12	14	51
RR/SIRV Activities	14	15	57

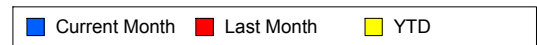
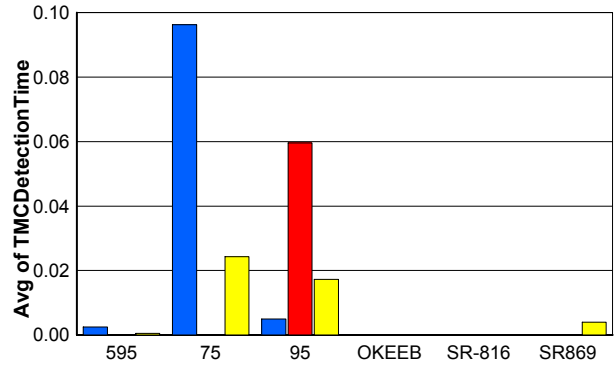
SR869

	<u>Current Month</u>	<u>Last Month</u>	<u>YTD</u>
Number of Events	42	69	202
Number of Incidents	0	3	4
TMC Detection (min.)	0.00	0.00	0.00
TMC Verification (min.)	1.25	0.60	1.37
TMC Response (min.)	7.90	7.70	8.54
RR Dispatch Time (min.)	0.79	1.26	0.97
RR Resp. Time (min.)	7.29	6.79	7.83
Event Clearance (min.)	20.73	14.94	17.43
Roadway Clear. (min.)		36.75	47.03
Incident Clearance (min.)		72.34	78.04
# of Events w/ RR/SIRV	39	52	164
RR/SIRV Responses	39	52	164
RR/SIRV Activities	36	50	151

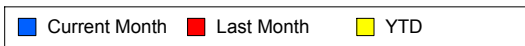
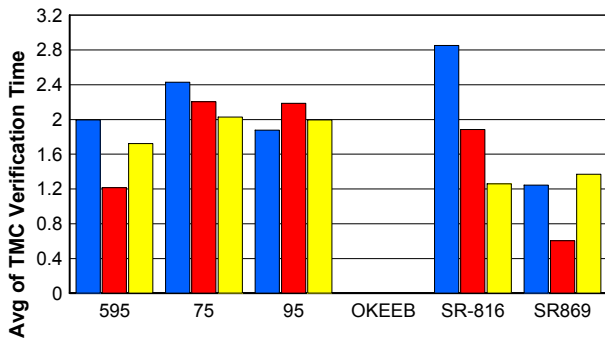
Number of Events / Roadway



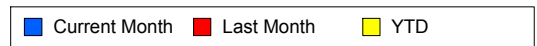
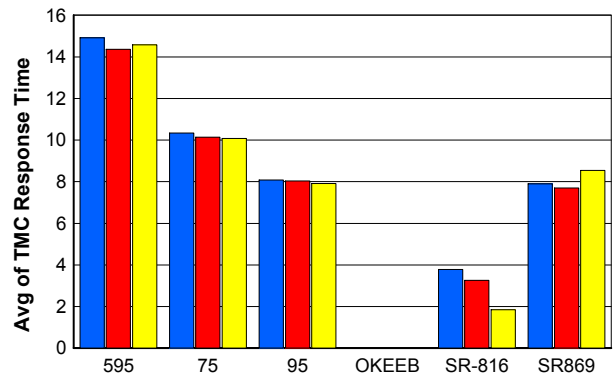
TMC Detection Time



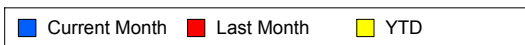
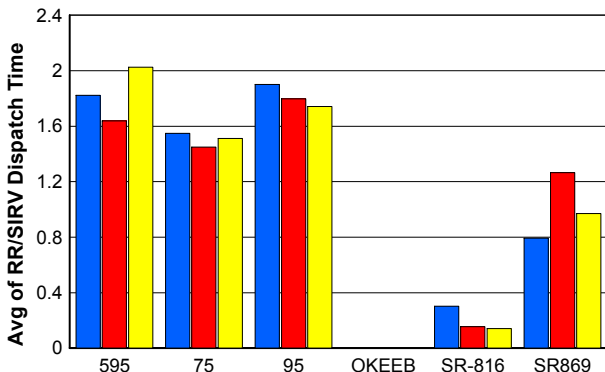
TMC Verification Time



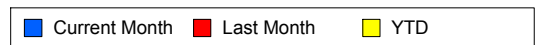
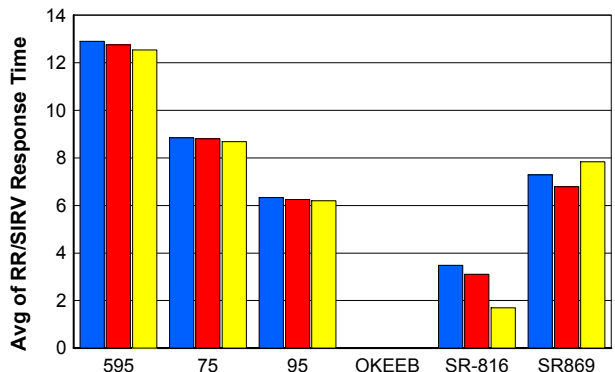
TMC Response Time



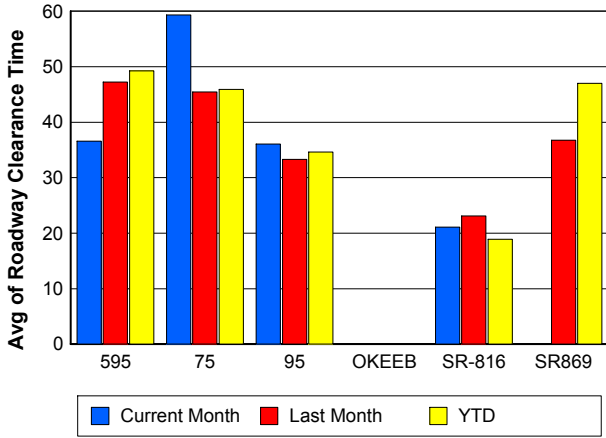
Road Ranger / SIRV Dispatch Time



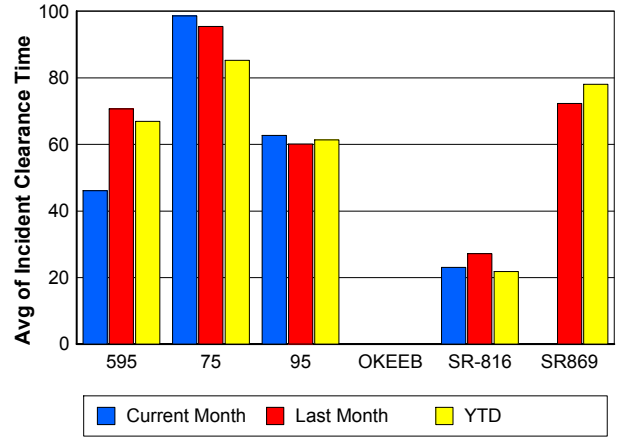
Road Ranger / SIRV Response Time



Roadway Clearance Time (2A)



Incident Clearance Time (3B)



Performance Measures by Event Type

Accident

	<u>Current Month</u>	<u>Last Month</u>	<u>YTD</u>
Number of Events	494	518	1,952
Number of Incidents	237	254	897
TMC Detection (min.)	0.01	0.07	0.02
TMC Verification (min.)	3.07	3.59	3.36
TMC Response (min.)	11.38	9.69	10.10
RR Dispatch Time (min.)	1.95	1.63	1.82
RR Response Time (min.)	9.47	8.09	8.31
Event Clearance (min.)	60.16	53.85	56.66
Roadway Clearance (min.)	40.44	37.29	38.35
Incident Clearance (min.)	74.18	68.81	71.48
# of Events w/ RR/SIRV	487	512	1,926
RR/SIRV Assists	487	512	1,926
RR/SIRV Activities	686	745	2,712

Debris on Roadway

	<u>Current Month</u>	<u>Last Month</u>	<u>YTD</u>
Number of Events	352	277	1,181
Number of Incidents	5	3	18
TMC Detection (min.)	0.00	0.00	0.00
TMC Verification (min.)	8.03	8.89	7.87
TMC Response (min.)	10.88	10.64	10.12
RR Dispatch Time (min.)	2.67	2.54	2.34
RR Response Time (min.)	8.20	8.17	7.78
Event Clearance (min.)	13.86	14.25	13.46
Roadway Clearance (min.)	19.42	21.12	27.24
Incident Clearance (min.)	22.36	23.08	28.58
# of Events w/ RR/SIRV	346	265	1,145
RR/SIRV Assists	346	265	1,145
RR/SIRV Activities	343	266	1,150

Disabled Vehicle

	<u>Current Month</u>	<u>Last Month</u>	<u>YTD</u>
Number of Events	5,415	5,214	19,267
Number of Incidents	58	48	228
TMC Detection (min.)	0.03	0.06	0.02
TMC Verification (min.)	2.10	2.45	2.30
TMC Response (min.)	7.85	7.98	7.86
RR Dispatch Time (min.)	1.68	1.74	1.65
RR Response Time (min.)	6.33	6.31	6.30
Event Clearance (min.)	19.76	19.77	19.84
Roadway Clearance (min.)	16.78	23.25	20.42
Incident Clearance (min.)	26.57	35.08	30.97
# of Events w/ RR/SIRV	5,100	4,910	18,377
RR/SIRV Assists	5,100	4,910	18,377
RR/SIRV Activities	5,041	4,866	18,316

Emergency Vehicles

	<u>Current Month</u>	<u>Last Month</u>	<u>YTD</u>
Number of Events	6	3	25
Number of Incidents	5	3	21
TMC Detection (min.)	0.00	0.00	0.00
TMC Verification (min.)	4.66	0.00	1.16
TMC Response (min.)	14.21	3.22	10.02
RR Dispatch Time (min.)	2.49	1.64	1.42
RR Response Time (min.)	11.55	1.58	8.54
Event Clearance (min.)	39.24	23.38	37.35
Roadway Clearance (min.)	34.92	19.82	34.11
Incident Clearance (min.)	41.48	23.38	37.93
# of Events w/ RR/SIRV	5	3	19
RR/SIRV Assists	5	3	19
RR/SIRV Activities	5	4	19

Other

	<u>Current Month</u>	<u>Last Month</u>	<u>YTD</u>
Number of Events	1,776	2,031	8,039
Number of Incidents	3	4	18
TMC Detection (min.)	0.00	0.03	0.01
TMC Verification (min.)	0.11	0.10	0.07
TMC Response (min.)	11.74	11.70	10.63
RR Dispatch Time (min.)	2.12	1.60	1.71
RR Response Time (min.)	7.34	9.42	8.16
Event Clearance (min.)	12.81	10.53	10.62
Roadway Clearance (min.)	5.29	6.95	37.23
Incident Clearance (min.)	9.40	9.74	44.67
# of Events w/ RR/SIRV	988	1,107	4,409
RR/SIRV Assists	988	1,107	4,409
RR/SIRV Activities	160	196	728

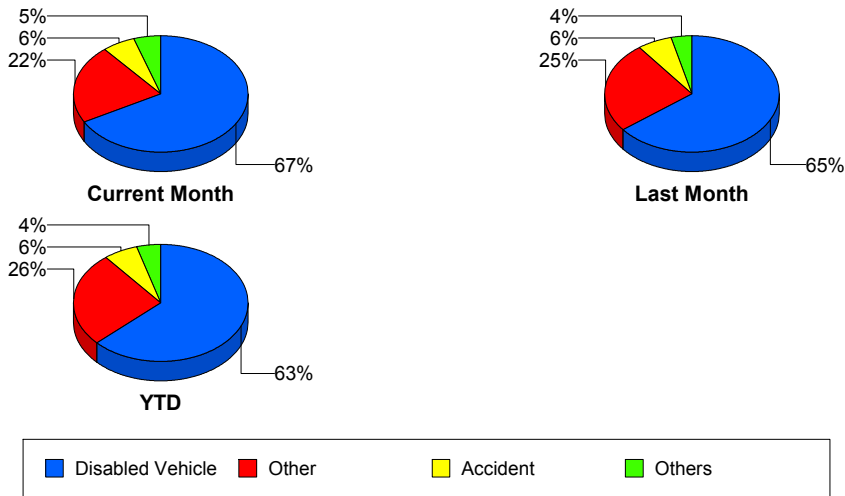
Police Activity

	<u>Current Month</u>	<u>Last Month</u>	<u>YTD</u>
Number of Events	27	15	74
Number of Incidents	20	8	39
TMC Detection (min.)	0.26	0.00	0.10
TMC Verification (min.)	1.37	0.85	1.27
TMC Response (min.)	17.48	7.13	15.17
RR Dispatch Time (min.)	9.64	2.76	5.14
RR Response Time (min.)	11.12	4.81	11.36
Event Clearance (min.)	60.53	33.53	44.13
Roadway Clearance (min.)	57.48	27.20	46.91
Incident Clearance (min.)	57.84	42.14	51.86
# of Events w/ RR/SIRV	23	11	59
RR/SIRV Assists	23	11	59
RR/SIRV Activities	30	12	61

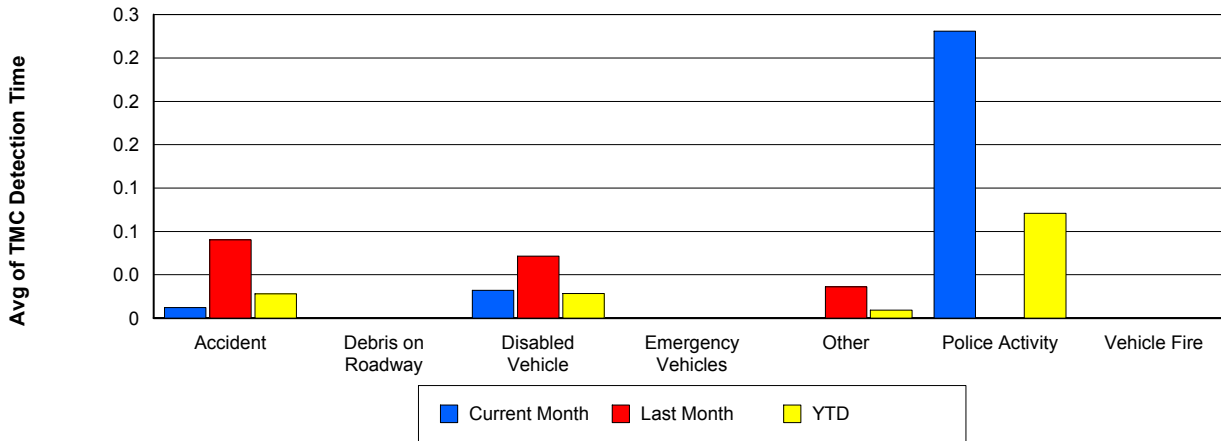
Vehicle Fire

	<u>Current Month</u>	<u>Last Month</u>	<u>YTD</u>
Number of Events	13	18	58
Number of Incidents	11	11	38
TMC Detection (min.)	0.00	0.00	0.00
TMC Verification (min.)	1.32	2.48	2.72
TMC Response (min.)	12.36	11.55	11.21
RR Dispatch Time (min.)	3.55	1.27	2.05
RR Response Time (min.)	9.04	10.23	9.17
Event Clearance (min.)	96.14	60.11	62.81
Roadway Clearance (min.)	69.74	36.83	49.08
Incident Clearance (min.)	107.19	72.30	76.32
# of Events w/ RR/SIRV	13	18	57
RR/SIRV Assists	13	18	57
RR/SIRV Activities	25	30	94

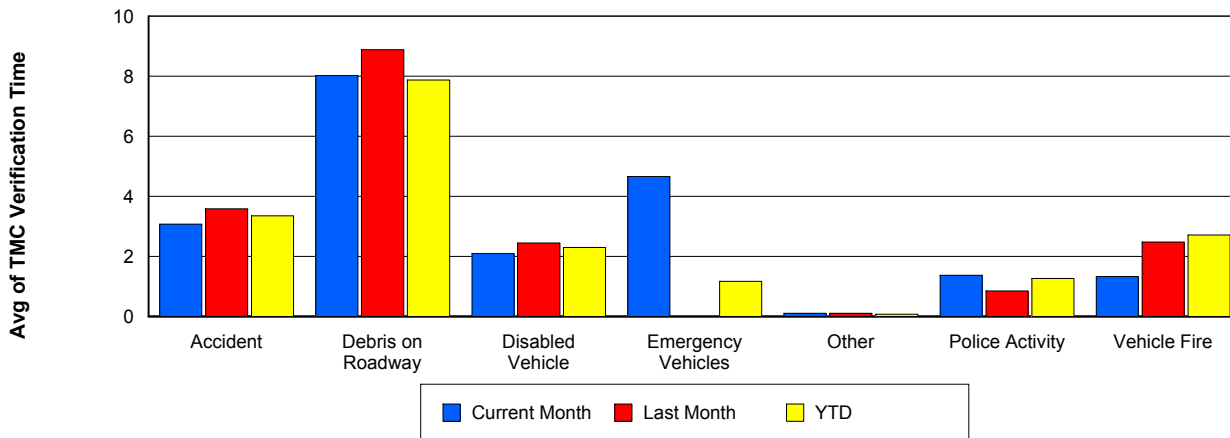
Number of Events / Event Type



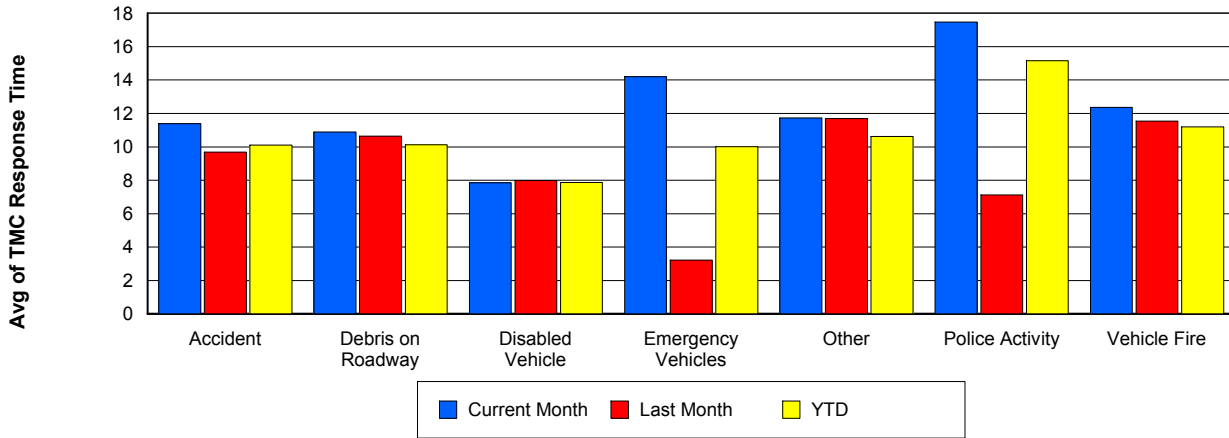
TMC Detection Time



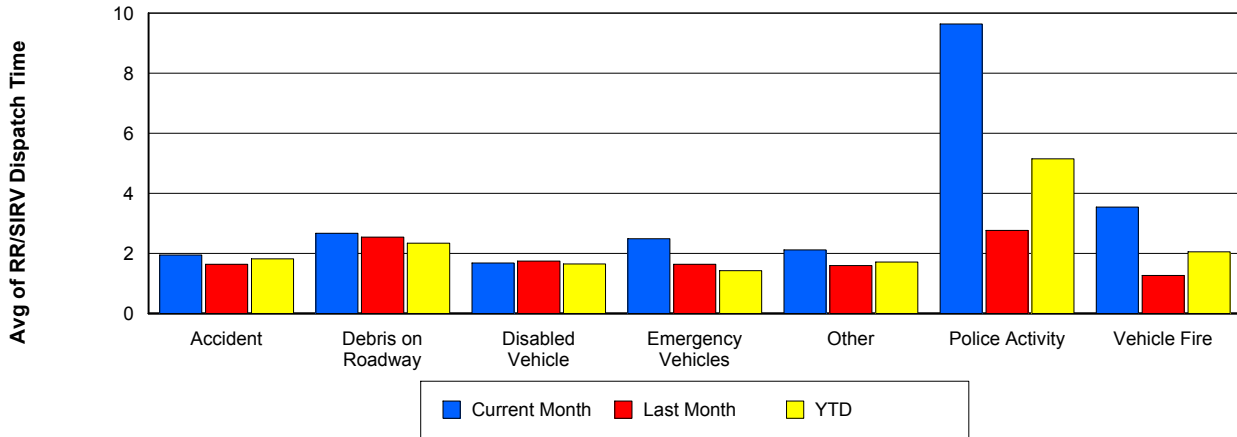
TMC Verification Time



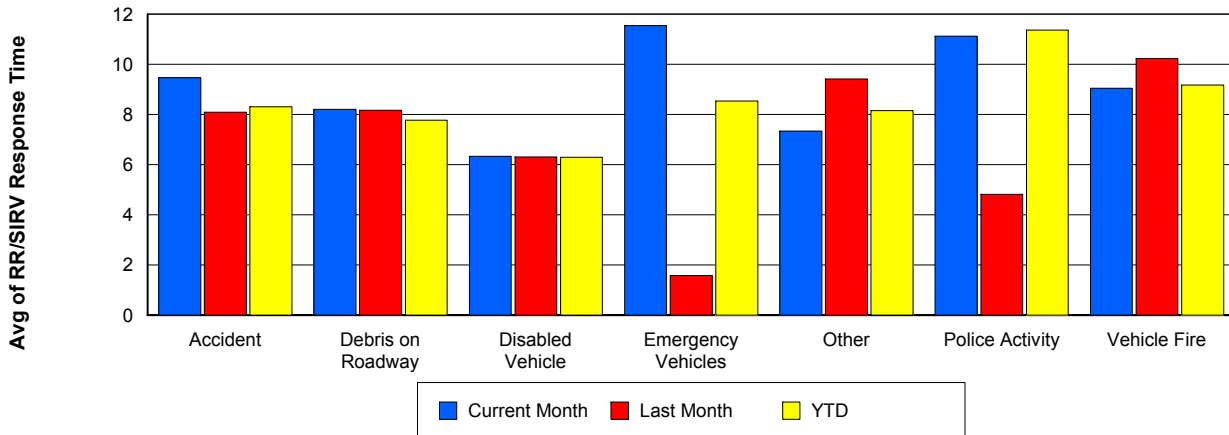
TMC Response Time



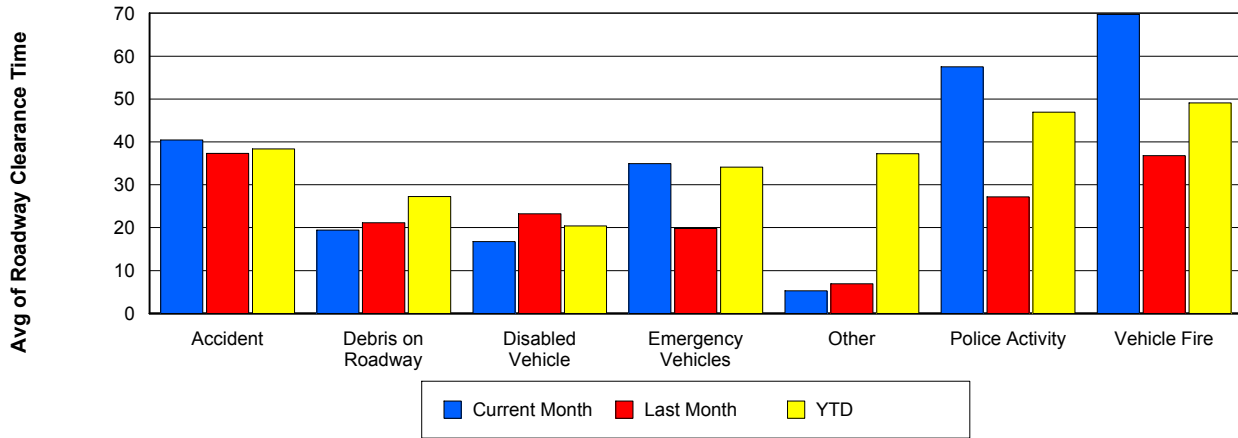
Road Ranger / SIRV Dispatch Time



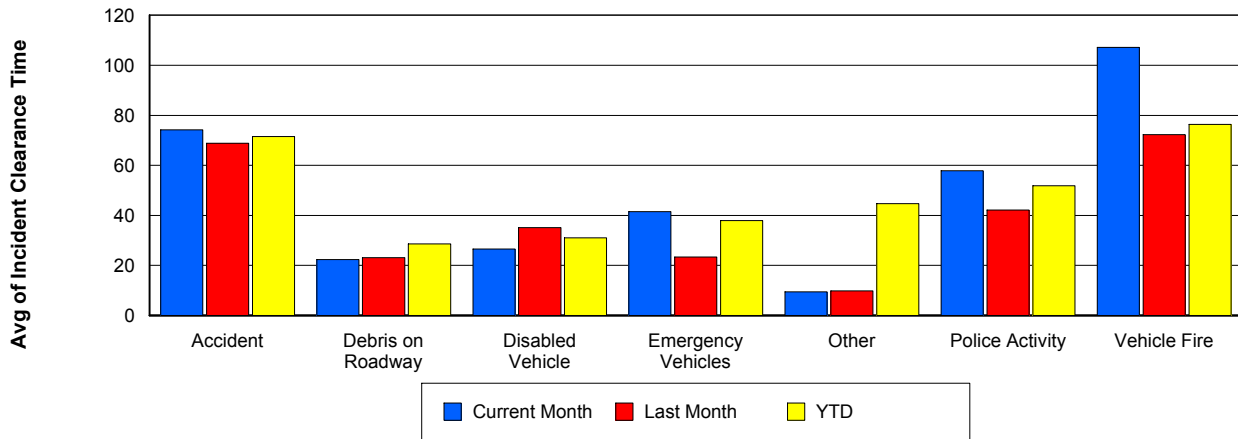
Road Ranger / SIRV Response Time



Roadway Clearance Time (2A)



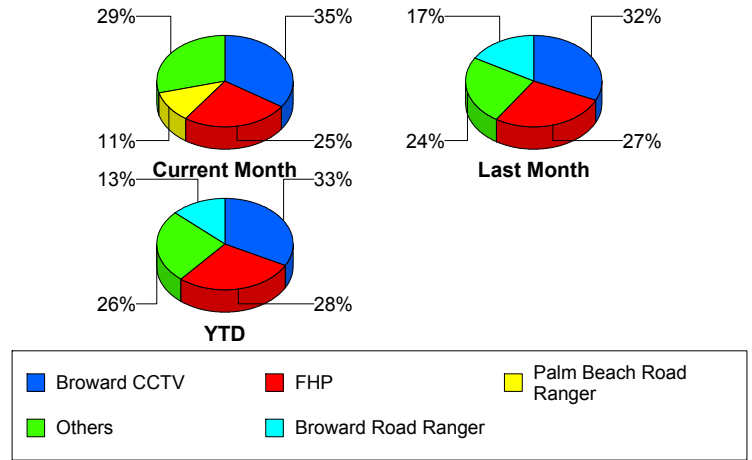
Incident Clearance Time (3B)



Incident Detection Methods

	Current Month	Last Month	YTD
Broward CCTV	116	103	405
Broward Road Ranger	31	54	161
Broward TMC	1	2	9
Broward VideoWall	3	3	19
BSO	4	6	16
County Police	1	0	2
District 4	15	9	36
FDOT Maintenance	1	1	2
FHP	85	88	351
Fire	1	0	2
ITMS CCTV	32	18	67
Local Police	0	0	1
Media	0	2	2
Motorist	3	2	12
Other	0	1	1
Palm Beach Road Ran	37	29	129
Road Watcher	2	3	7
SIRV	0	0	1
VisioPaD Detection	4	2	16
Total	336	323	1,239

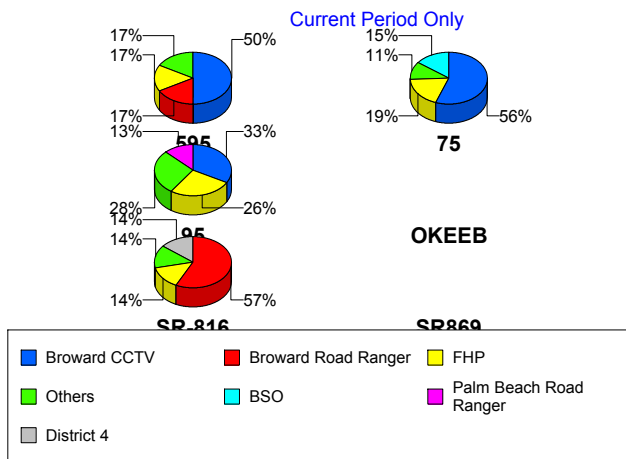
Total Incidents by Detection Method



Incident Detection Methods by Roadway

		Current Month	Last Month	YTD
595	Broward CCTV	3	3	10
	Broward Road Ranger	1	4	6
	BSO	0	0	3
	County Police	0	0	1
	FHP	1	0	6
	VisioPaD Detection	1	0	1
	Total	6	7	27
75	Broward CCTV	15	8	35
	Broward Road Ranger	1	3	12
	BSO	4	3	9
	District 4	1	1	3
	FHP	5	7	20
	Fire	0	0	1
	Road Watcher	0	1	1
	VisioPaD Detection	1	0	7
	Total	27	23	88
95	Broward CCTV	98	92	360
	Broward Road Ranger	25	36	110
	Broward TMC	1	2	9
	Broward VideoWall	3	3	19
	BSO	0	1	2
	County Police	1	0	1
	District 4	13	8	32
	FDOT Maintenance	1	1	2
	FHP	78	80	323
	Fire	1	0	1
	ITMS CCTV	32	18	67
	Local Police	0	0	1
	Media	0	2	2
	Motorist	3	2	12
	Other	0	1	1

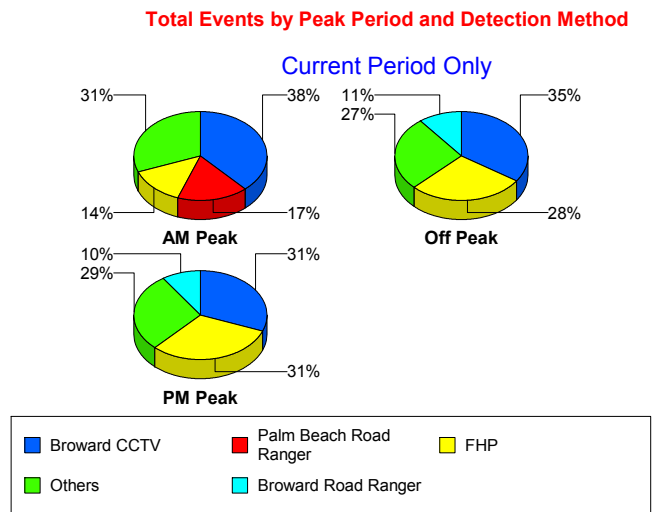
Total Events by Roadway and Detection Method



		Current Month	Last Month	YTD
95	Palm Beach Road Ran	37	29	129
	Road Watcher	1	1	4
	SIRV	0	0	1
	VisioPaD Detection	2	2	8
	Total	296	278	1,084
SR-816	Broward Road Ranger	4	10	32
	BSO	0	1	1
	District 4	1	0	1
	FHP	1	0	1
	Road Watcher	1	1	2
	Total	7	12	37
SR869	Broward Road Ranger	0	1	1
	BSO	0	1	1
	FHP	0	1	1
	Total	0	3	3
Total		336	323	1,239

Incident Detection Methods by Peak Period

		Current Month	Last Month	YTD
AM Peak	Broward CCTV	31	23	75
	Broward Road Ranger	5	18	36
	Broward VideoWall	2	2	12
	BSO	1	1	3
	County Police	1	0	1
	District 4	4	3	9
	FHP	11	11	62
	ITMS CCTV	10	3	17
	Local Police	0	0	1
	Media	0	1	1
	Motorist	2	0	2
	Palm Beach Road Ran	14	11	41
	Road Watcher	0	1	1



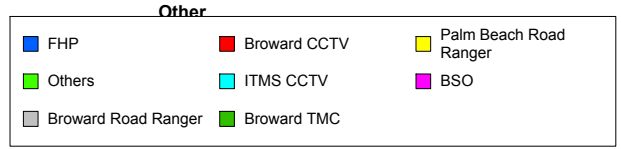
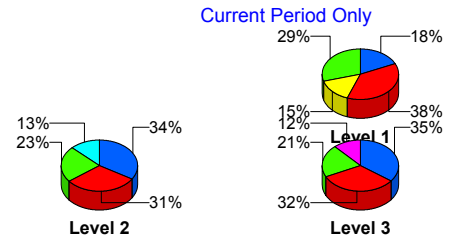
		Current Month	Last Month	YTD
AM Peak	SIRV	0	0	1
	VisioPaD Detection	0	0	1
	Total	81	74	263
Off Peak	Broward CCTV	59	60	221
	Broward Road Ranger	18	21	70
	Broward TMC	1	1	6
	Broward VideoWall	0	1	5
	BSO	2	4	8
	County Police	0	0	1
	District 4	6	5	18
	FDOT Maintenance	1	1	2
	FHP	48	47	183
	ITMS CCTV	16	14	40
	Motorist	0	1	5
	Other	0	1	1
	Palm Beach Road Ran	17	14	62
	Road Watcher	1	1	4
	VisioPaD Detection	2	1	9
	Total	171	172	635
PM Peak	Broward CCTV	26	20	109
	Broward Road Ranger	8	15	55
	Broward TMC	0	1	3
	Broward VideoWall	1	0	2
	BSO	1	1	5
	District 4	5	1	9
	FHP	26	31	107
	Fire	1	0	2
	ITMS CCTV	6	1	10
	Media	0	1	1
	Motorist	1	1	5
	Palm Beach Road Ran	6	4	26
	Road Watcher	1	1	2

		Current Month	Last Month	YTD
PM Peak	VisioPaD Detection	2	1	6
	Total	84	78	342
Total		336	323	1,239

Incident Detection Methods by Severity

		Current Month	Last Month	YTD
	FHP	0	1	1
	Total	0	1	1
Level 1	Broward CCTV	69	66	251
	Broward Road Ranger	22	39	115
	Broward TMC	1	2	6
	Broward VideoWall	1	2	11
	BSO	0	1	4
	County Police	1	0	1
	District 4	10	5	22
	FHP	33	39	152
	ITMS CCTV	15	10	33
	Media	0	1	1
	Motorist	1	1	8
	Other	0	1	1
	Palm Beach Road Ran	28	17	89
	Road Watcher	1	3	6
	VisioPaD Detection	2	1	8
	Total	184	188	708
Level 2	Broward CCTV	36	29	122
	Broward Road Ranger	8	13	38
	Broward TMC	0	0	3
	Broward VideoWall	2	1	8
	BSO	0	1	1
	District 4	4	3	10
	FDOT Maintenance	1	1	2
	FHP	40	40	155

Total Events by Severity and Detection Method



		Current Month	Last Month	YTD
Level 2	Fire	0	0	1
	ITMS CCTV	15	7	29
	Local Police	0	0	1
	Motorist	2	1	4
	Palm Beach Road Ran	8	10	30
	Road Watcher	1	0	1
	SIRV	0	0	1
	VisioPaD Detection	1	1	6
	Total	118	107	412
Level 3	Broward CCTV	11	8	32
	Broward Road Ranger	1	2	8
	BSO	4	4	11
	County Police	0	0	1
	District 4	1	1	4
	FHP	12	9	44
	Fire	1	0	1
	ITMS CCTV	2	1	5
	Media	0	1	1
	Palm Beach Road Ran	1	2	10
	VisioPaD Detection	1	0	2
	Total	34	28	119
Total		336	323	1,239

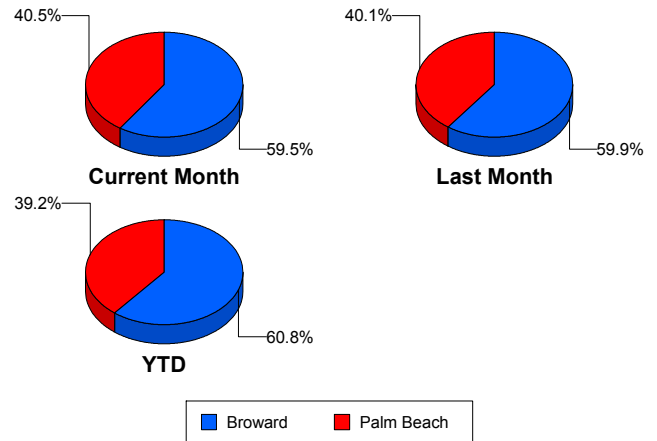
Road Ranger / SIRV Performance Measures

Road Ranger / SIRV Performance By County

Values presented are:
 - Total Events with a RR/SIRV Response
 - Total RR/SIRV Responses,
 - Total Activities Performed

	Current Mo	Last Month	YTD
Broward	4,005	3,983	15,373
	4,297	4,285	16,458
	4,462	4,443	17,065
Palm Beach	2,832	2,773	10,244
	2,929	2,868	10,595
	3,128	3,022	11,234

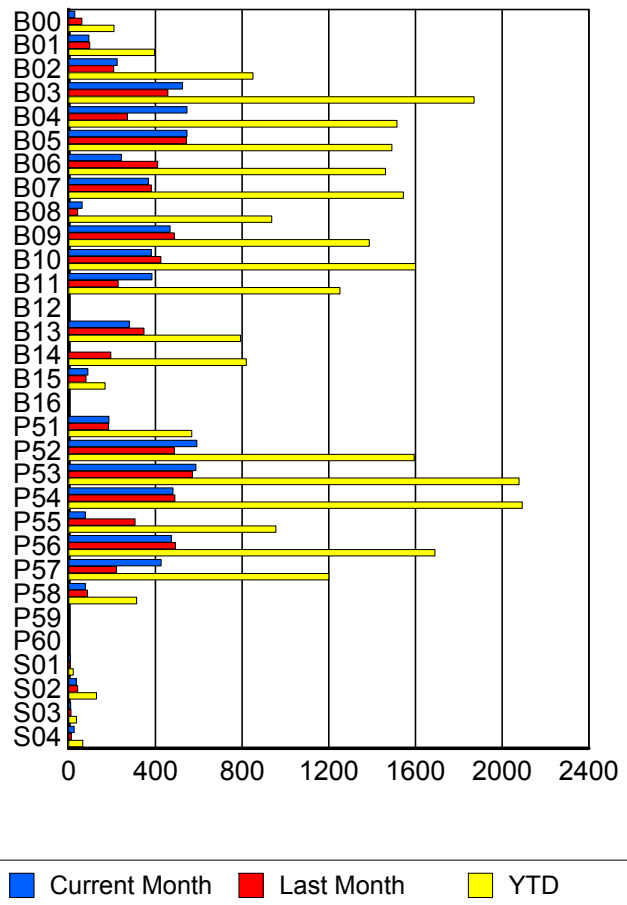
RR/SIRV Responses per County



Road Ranger / SIRV Performance By Truck

	Current Mo	Last Month	YTD
B00	28	59	206
	28	61	210
	29	62	221
B01	94	92	388
	94	97	396
	97	97	402
B02	222	203	839
	224	208	851
	228	215	866
B03	521	453	1,856
	526	458	1,871
	551	474	1,957
B04	536	269	1,494
	546	272	1,516
	570	285	1,576
B05	540	540	1,479
	546	544	1,492
	562	568	1,545
B06	242	406	1,444
	244	411	1,462
	250	427	1,516
B07	362	379	1,521
	368	382	1,545
	385	396	1,610
B08	62	41	922
	63	42	937
	64	44	972

RR/SIRV Responses per Truck



	Current Mo	Last Month	YTD
B09	464	480	1,371
	468	487	1,387
	483	512	1,446
B10	375	416	1,578
	381	426	1,600
	397	436	1,650
B11	382	224	1,241
	385	228	1,252
	403	235	1,295
B12	1	1	3
	1	1	3
	1	1	3
B13	277	343	785
	280	347	794
	288	355	812
B14	1	194	809
	1	195	820
	1	206	851
B15	88	80	168
	89	80	169
	97	82	179
B16	0	0	1
	0	0	1
	0	0	1
P51	180	181	558
	186	184	568
	201	191	600
P52	585	483	1,574
	592	488	1,594
	627	517	1,694
P53	582	564	2,054
	588	571	2,078
	638	602	2,210
P54	476	482	2,063
	481	490	2,093
	514	520	2,222
P55	77	305	948
	77	307	957
	77	322	998
P56	466	490	1,668
	474	494	1,690
	501	521	1,798
P57	423	221	1,184
	427	222	1,200
	456	234	1,267

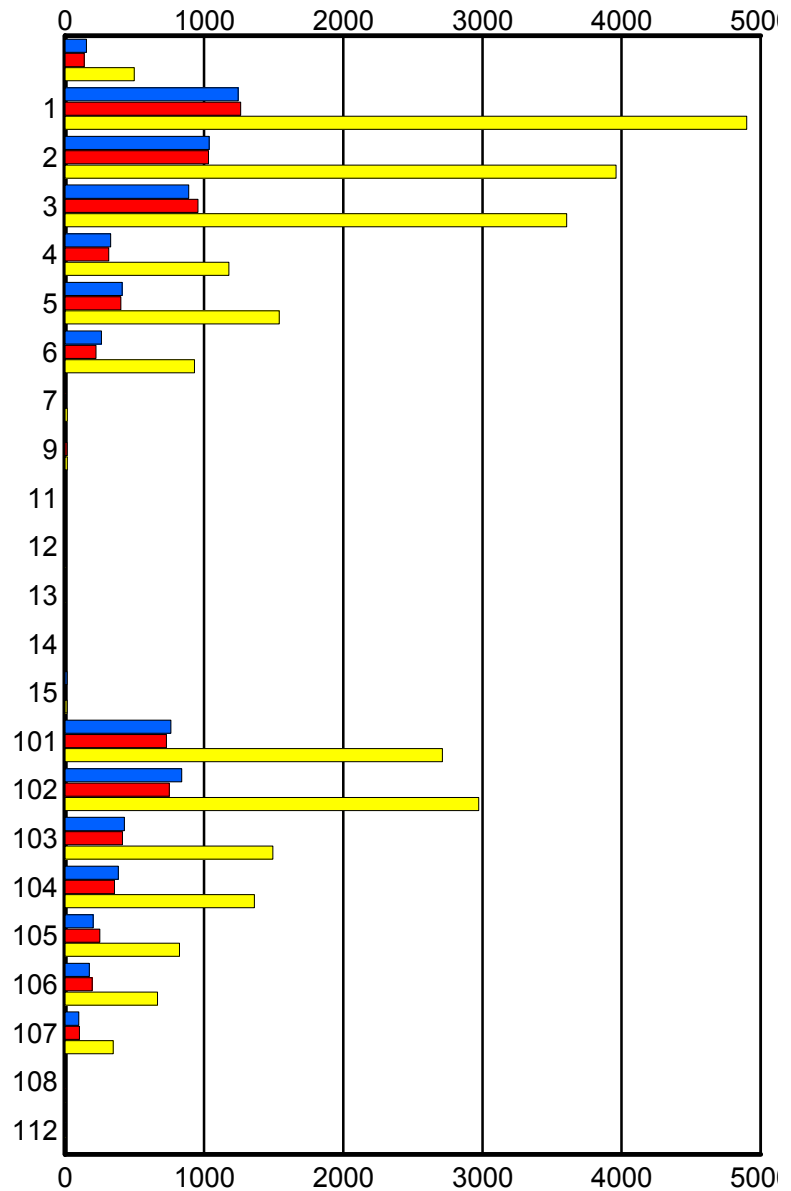
	Current Mo	Last Month	YTD
P58	77	85	311
	77	87	314
	81	89	334
P59	1	0	1
	1	0	1
	1	0	1
P60	0	0	1
	0	0	1
	0	0	1
S01	8	6	21
	8	6	21
	9	6	23
S02	34	40	124
	36	42	129
	40	45	140
S03	10	11	33
	10	11	36
	12	11	39
S04	24	12	64
	25	12	65
	27	12	70

Road Ranger / SIRV Performance By Beat

	Current Mo	Last Month	YTD
	147	134	480
	154	138	498
	166	144	530
1	1,197	1,191	4,677
	1,243	1,262	4,899
	1,288	1,308	5,089
2	1,004	1,000	3,845
	1,036	1,032	3,961
	1,080	1,082	4,120
3	866	924	3,518
	889	956	3,606
	926	996	3,748
4	319	308	1,154
	327	314	1,177
	339	317	1,216
5	410	397	1,528
	411	402	1,539
	421	415	1,576
6	256	219	914
	261	222	931
	271	226	956
7	8	4	16
	8	5	17
	9	5	18
9	0	13	17
	0	13	17
	0	13	17
11	0	0	2
	0	0	2
	0	0	2
12	0	0	2
	0	0	2
	0	0	2
13	0	8	8
	0	8	8
	0	8	8
14	0	1	4
	0	1	4
	0	1	4
15	14	0	14
	14	0	14
	14	0	14
101	750	714	2,664
	760	728	2,712
	813	769	2,868

Values presented are:
 - Total Events with a RR/SIRV Response
 - Total RR/SIRV Responses,
 - Total Activities Performed

RR/SIRV Responses per Beat



■ Current Month
 ■ Last Month
 ■ YTD

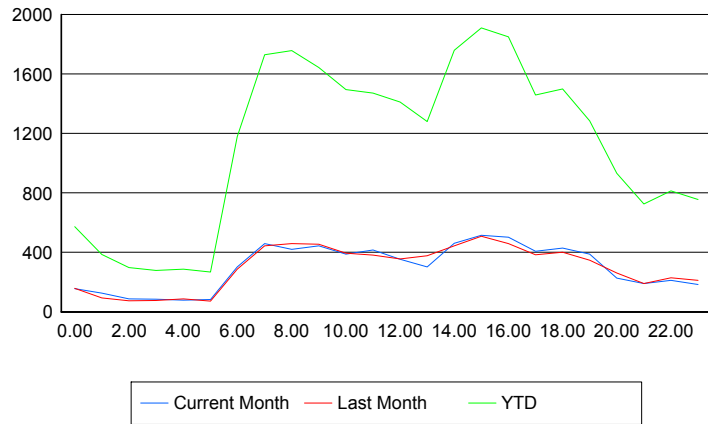
	Current Mo	Last Month	YTD
102	827	736	2,925
	838	750	2,974
	884	791	3,143
103	416	409	1,475
	426	413	1,493
	454	431	1,575
104	374	356	1,345
	382	356	1,361
	412	377	1,457
105	203	250	817
	203	250	822
	216	269	879
106	173	194	658
	174	195	665
	191	202	701
107	98	103	343
	98	104	345
	103	107	369
108	0	3	3
	0	4	4
	0	4	4
112	2	0	2
	2	0	2
	3	0	3

Road Ranger / SIRV Performance By Time of Day

Values presented are:
 - Total Events with a RR/SIRV Response
 - Total RR/SIRV Responses,
 - Total Activities Performed

	Current Mo	Last Month	YTD
12AM-1AM	153	151	552
	157	158	573
	169	163	607
1AM-2AM	123	91	374
	126	94	386
	131	97	400
2AM-3AM	78	72	276
	87	75	297
	92	76	310
3AM-4AM	79	71	263
	86	76	279
	88	84	300
4AM-5AM	74	73	264
	78	87	288
	84	91	306
5AM-6AM	72	63	223
	84	72	267
	87	74	277
6AM-7AM	278	269	1,102
	302	288	1,180
	317	292	1,225
7AM-8AM	435	416	1,646
	460	444	1,730
	474	462	1,802
8AM-9AM	394	426	1,650
	421	458	1,758
	438	471	1,820
9AM-10AM	427	426	1,573
	444	454	1,643
	474	474	1,726
10AM-11AM	369	378	1,422
	388	394	1,496
	409	407	1,567
11AM-12PM	392	371	1,401
	417	381	1,472
	441	396	1,540
12PM-1PM	333	329	1,324
	353	356	1,412
	366	375	1,466

Number of Responses / Hour of the Day



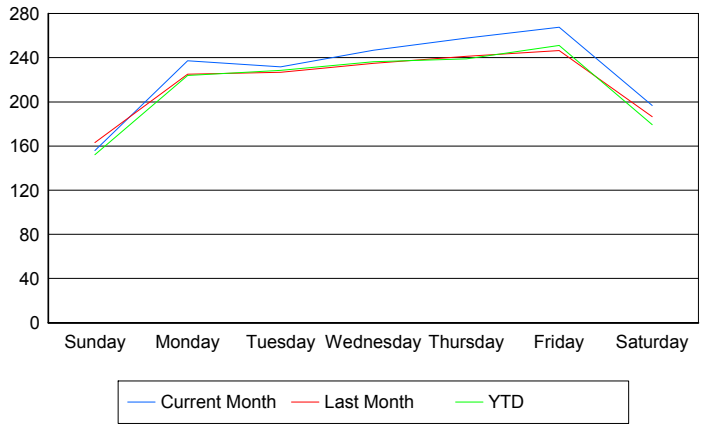
	Current Mo	Last Month	YTD
1PM-2PM	286	349	1,199
	302	378	1,281
	318	388	1,333
2PM-3PM	437	412	1,646
	462	443	1,759
	486	475	1,857
3PM-4PM	491	496	1,829
	514	509	1,910
	545	533	1,997
4PM-5PM	470	431	1,731
	503	460	1,849
	526	474	1,932
5PM-6PM	377	363	1,376
	407	384	1,459
	423	404	1,521
6PM-7PM	414	374	1,440
	430	400	1,500
	448	411	1,558
7PM-8PM	374	336	1,234
	389	348	1,285
	408	361	1,336
8PM-9PM	220	247	890
	228	261	933
	239	268	966
9PM-10PM	183	181	692
	191	191	726
	204	206	767
10PM-11PM	199	227	780
	212	230	814
	227	246	870
11PM-12AM	179	204	730
	185	212	756
	196	237	816

Road Ranger / SIRV Performance By Day of Week

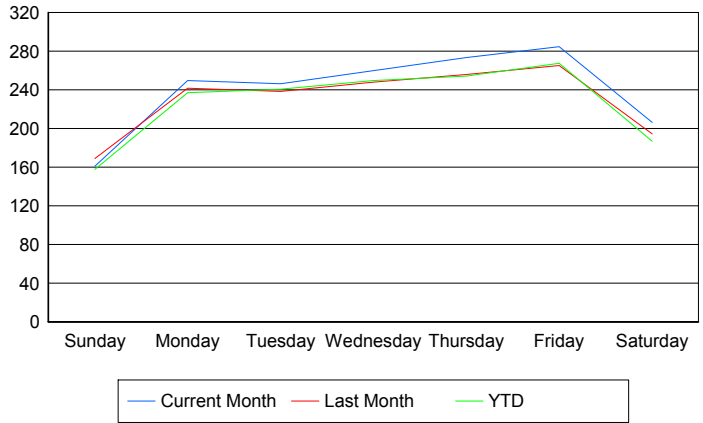
Values presented are: - Total Events with a RR/SIRV Response - Total RR/SIRV Responses, - Total Activities Performed

	Current Mo	Last Month	YTD
Sunday	619 640 673	650 674 699	2,547 2,641 2,760
Monday	944 993 1,030	1,121 1,204 1,259	3,761 3,987 4,151
Tuesday	921 979 1,031	1,130 1,187 1,242	3,869 4,073 4,254
Wednesday	967 1,020 1,070	1,165 1,232 1,294	3,976 4,197 4,402
Thursday	1,278 1,356 1,431	964 1,021 1,057	4,032 4,289 4,505
Friday	1,328 1,414 1,481	985 1,059 1,094	4,443 4,727 4,921
Saturday	786 824 874	745 776 820	3,014 3,139 3,306

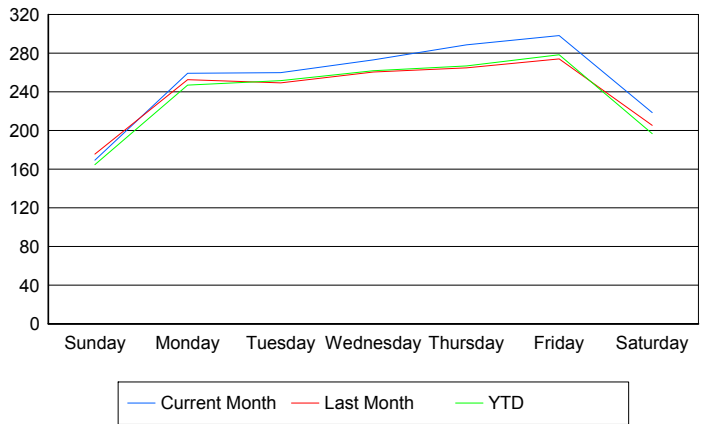
Avg # of events with a RR/SIRV Response per Day of the Week



Avg # of RR/SIRV Responses per Day of the Week



Avg # of RR/SIRV Activities Performed per Day of the Week



Road Ranger / SIRV Responses per Time of Day and Day of Week

